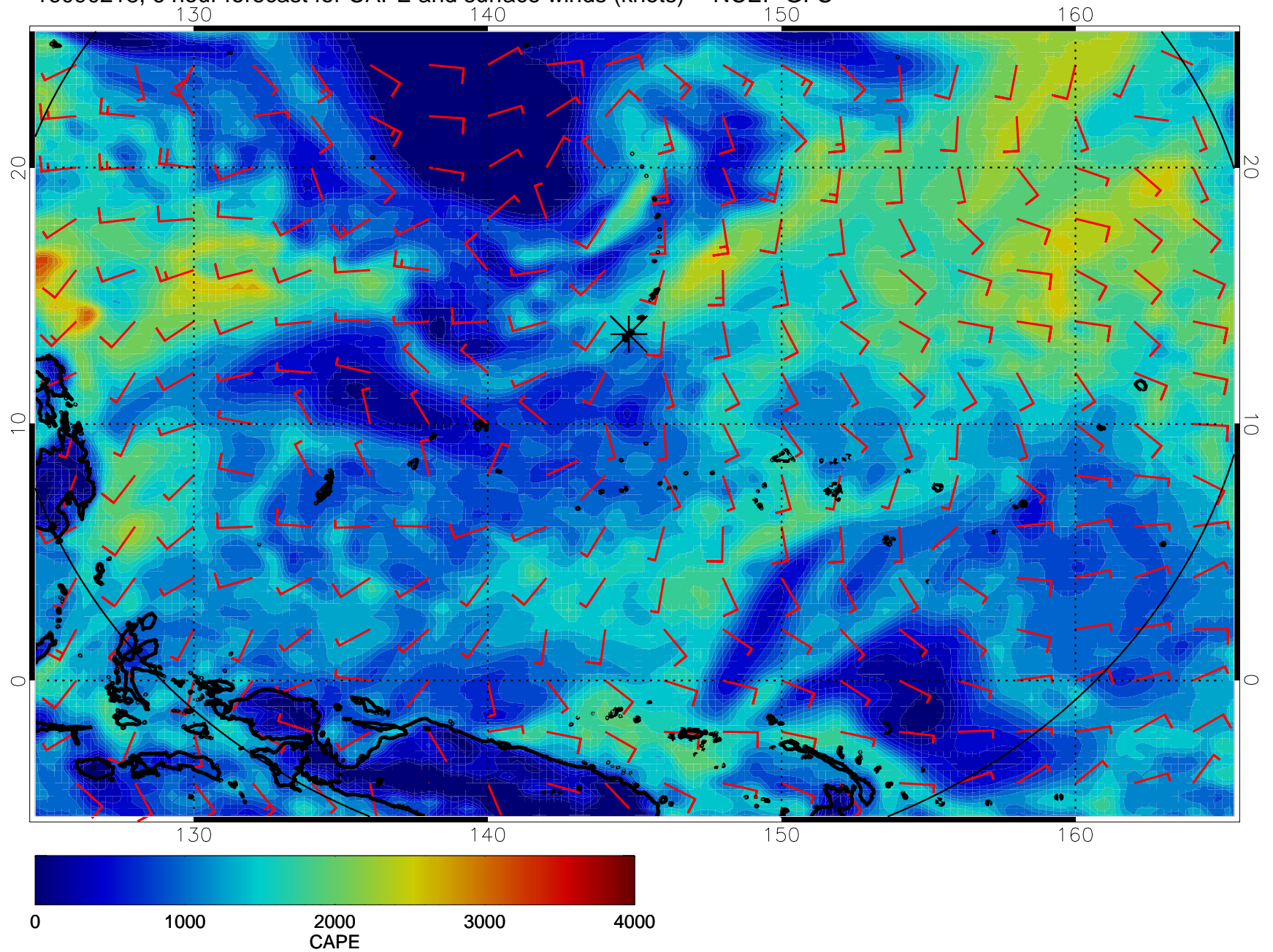
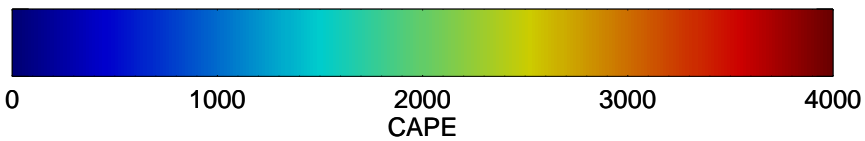
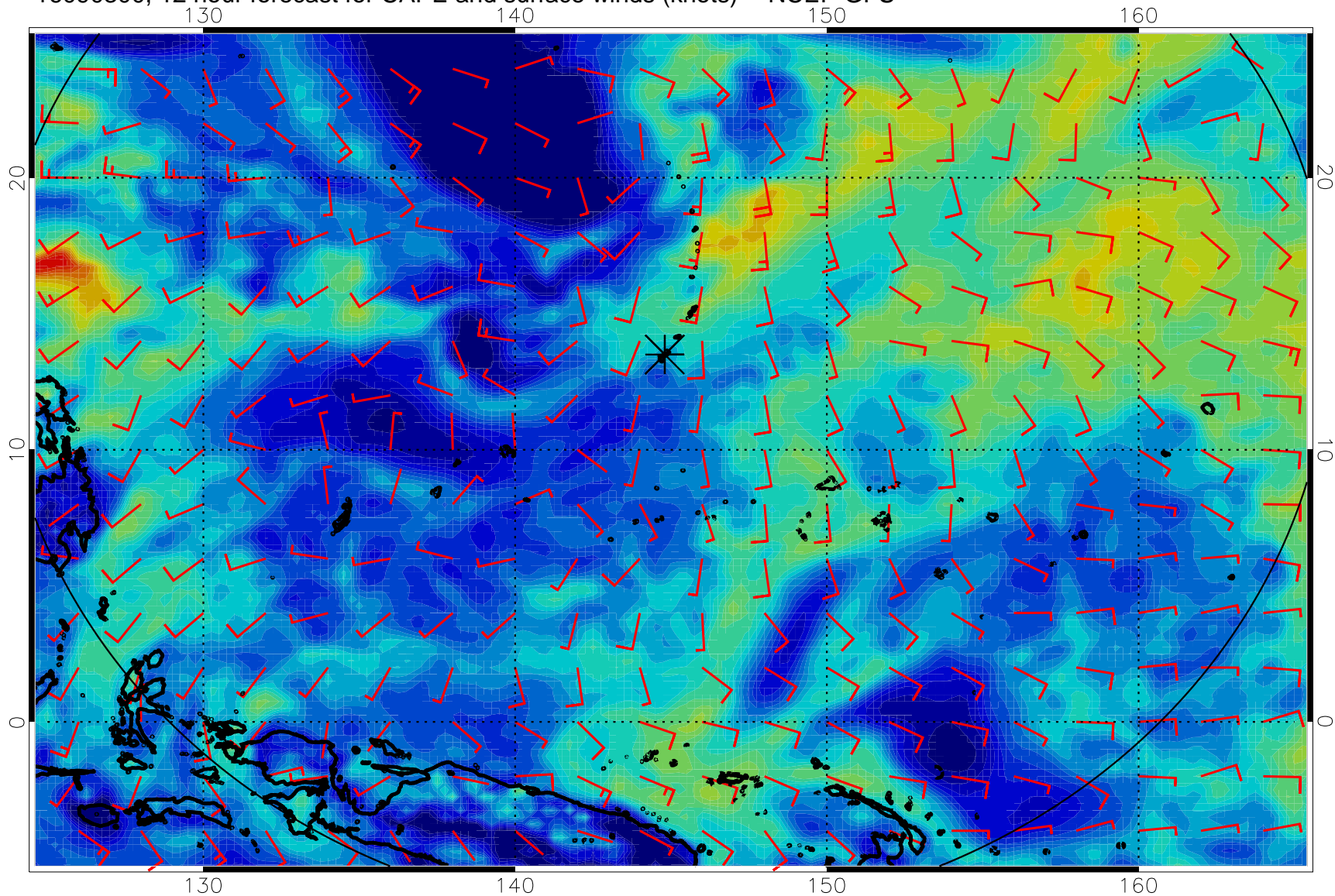


16090218, 6 hour forecast for CAPE and surface winds (knots) -- NCEP GFS

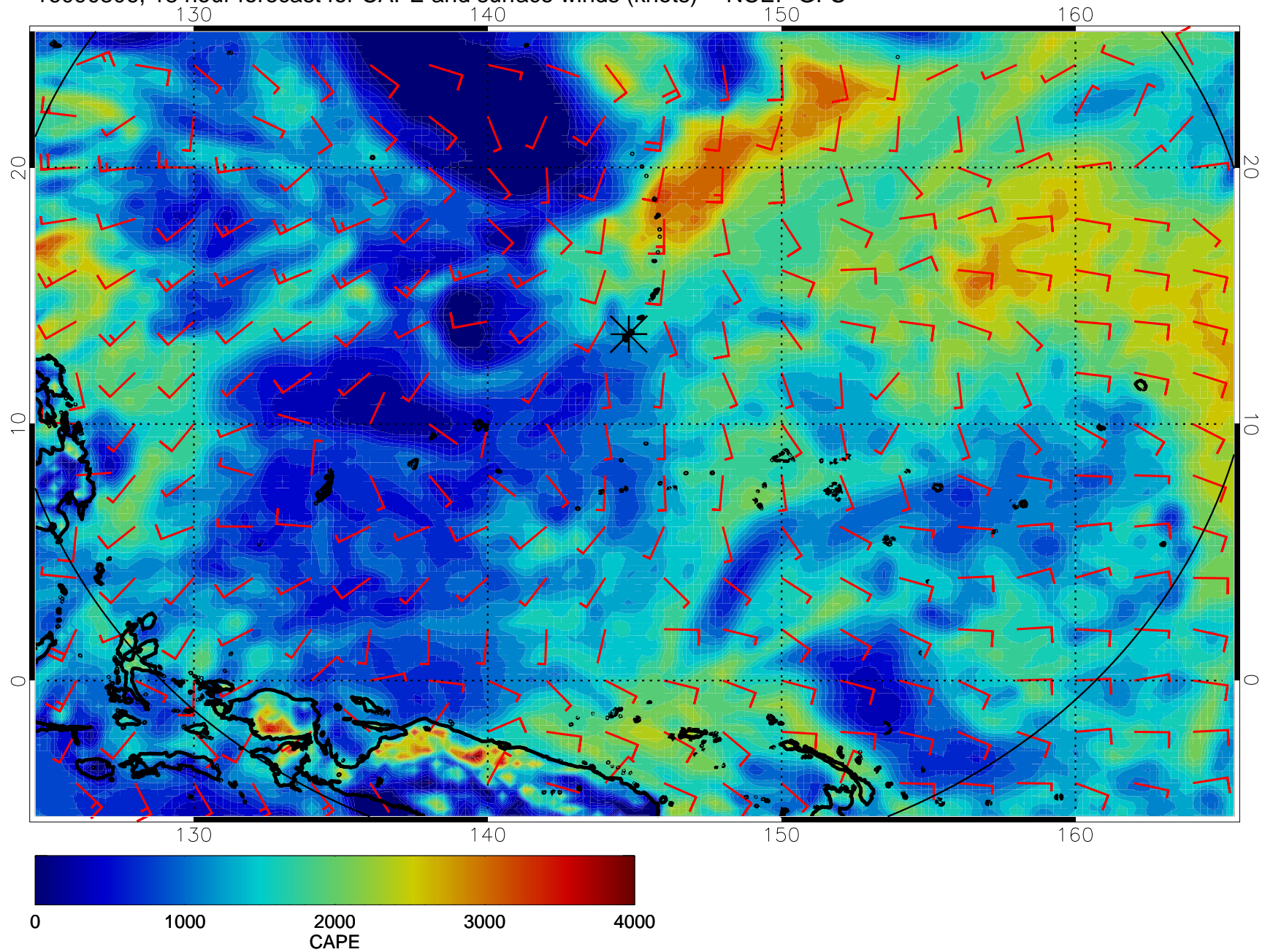


16090300, 12 hour forecast for CAPE and surface winds (knots) -- NCEP GFS

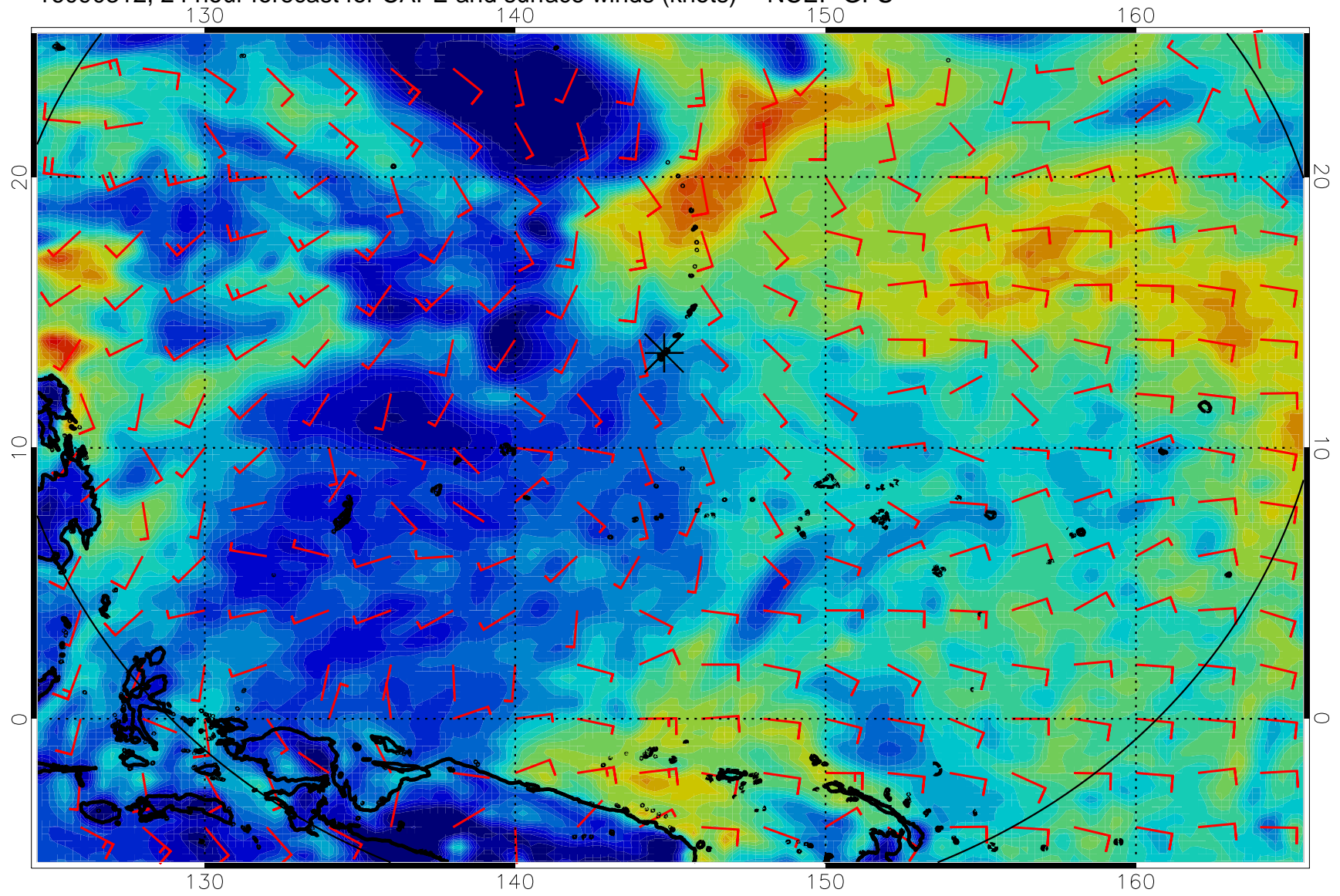




16090306, 18 hour forecast for CAPE and surface winds (knots) -- NCEP GFS

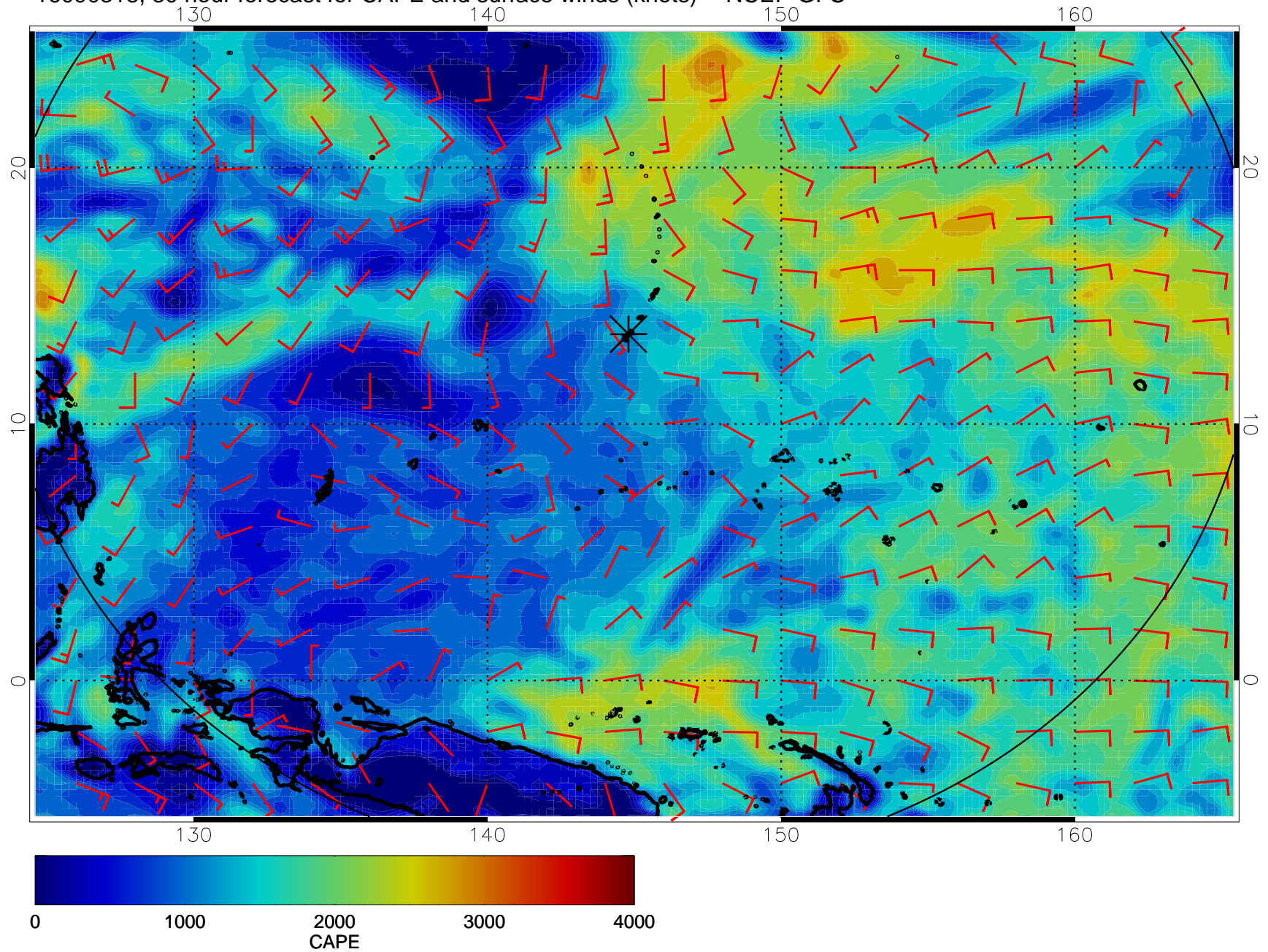


16090312, 24 hour forecast for CAPE and surface winds (knots) -- NCEP GFS

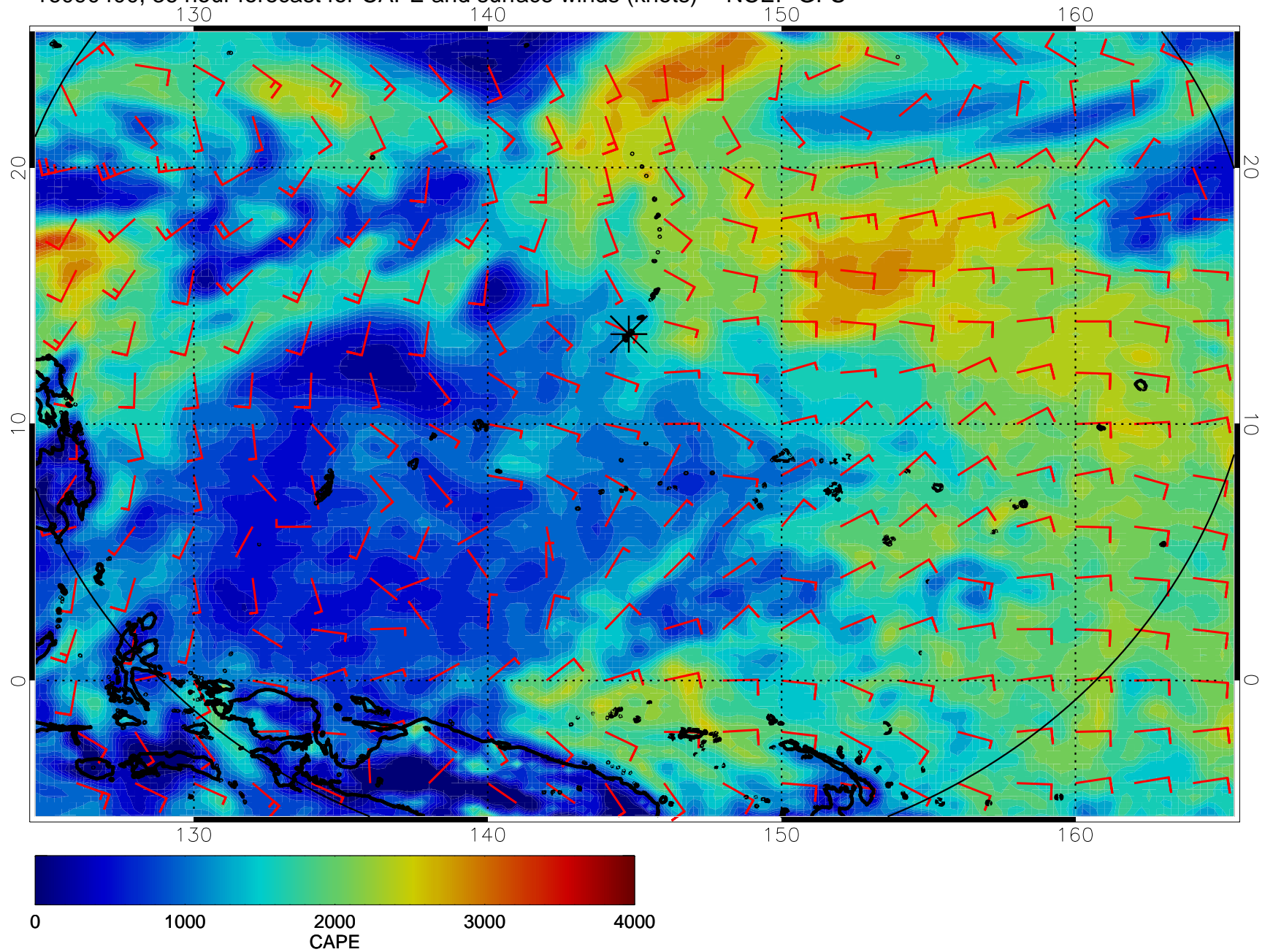




16090318, 30 hour forecast for CAPE and surface winds (knots) -- NCEP GFS

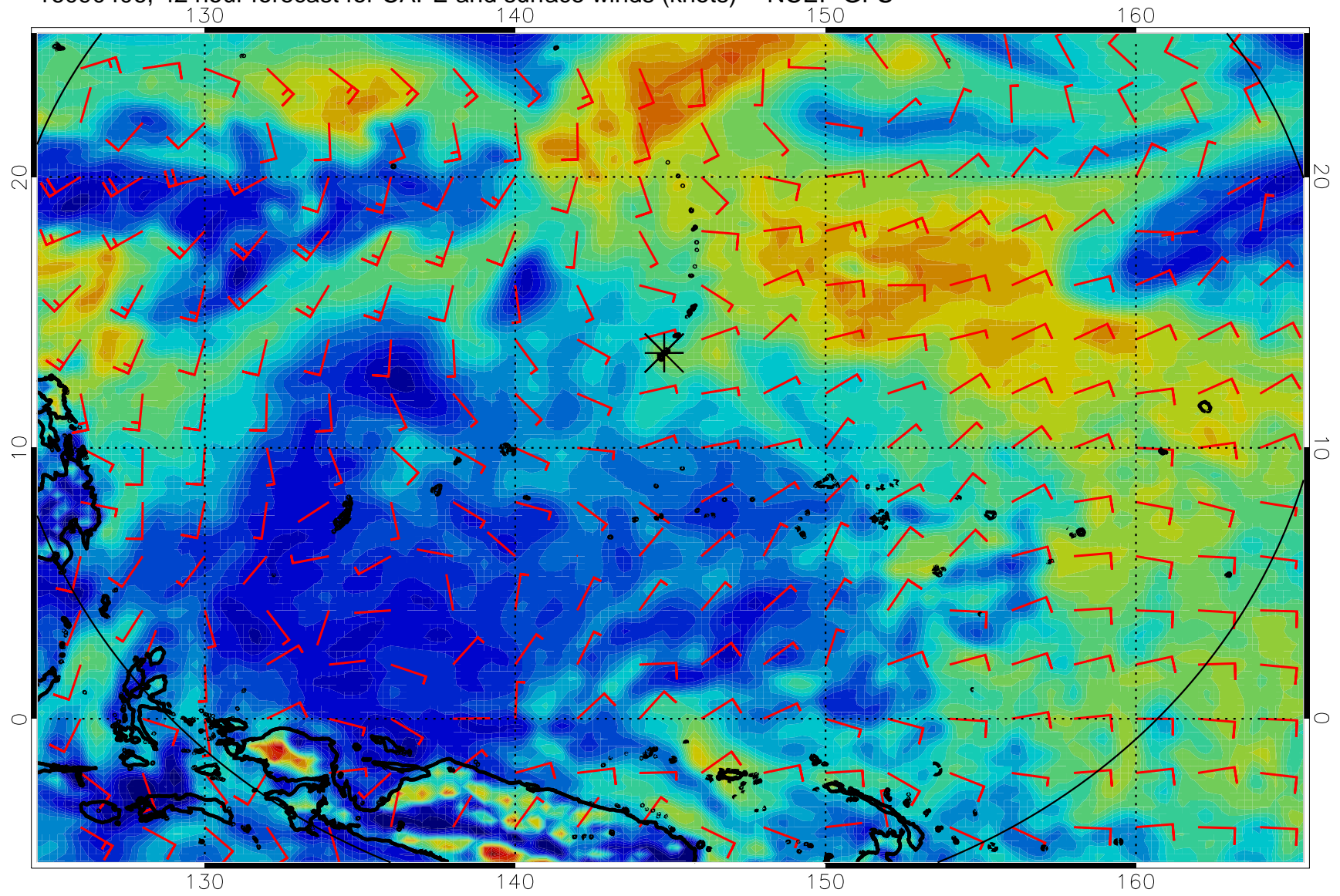


16090400, 36 hour forecast for CAPE and surface winds (knots) -- NCEP GFS

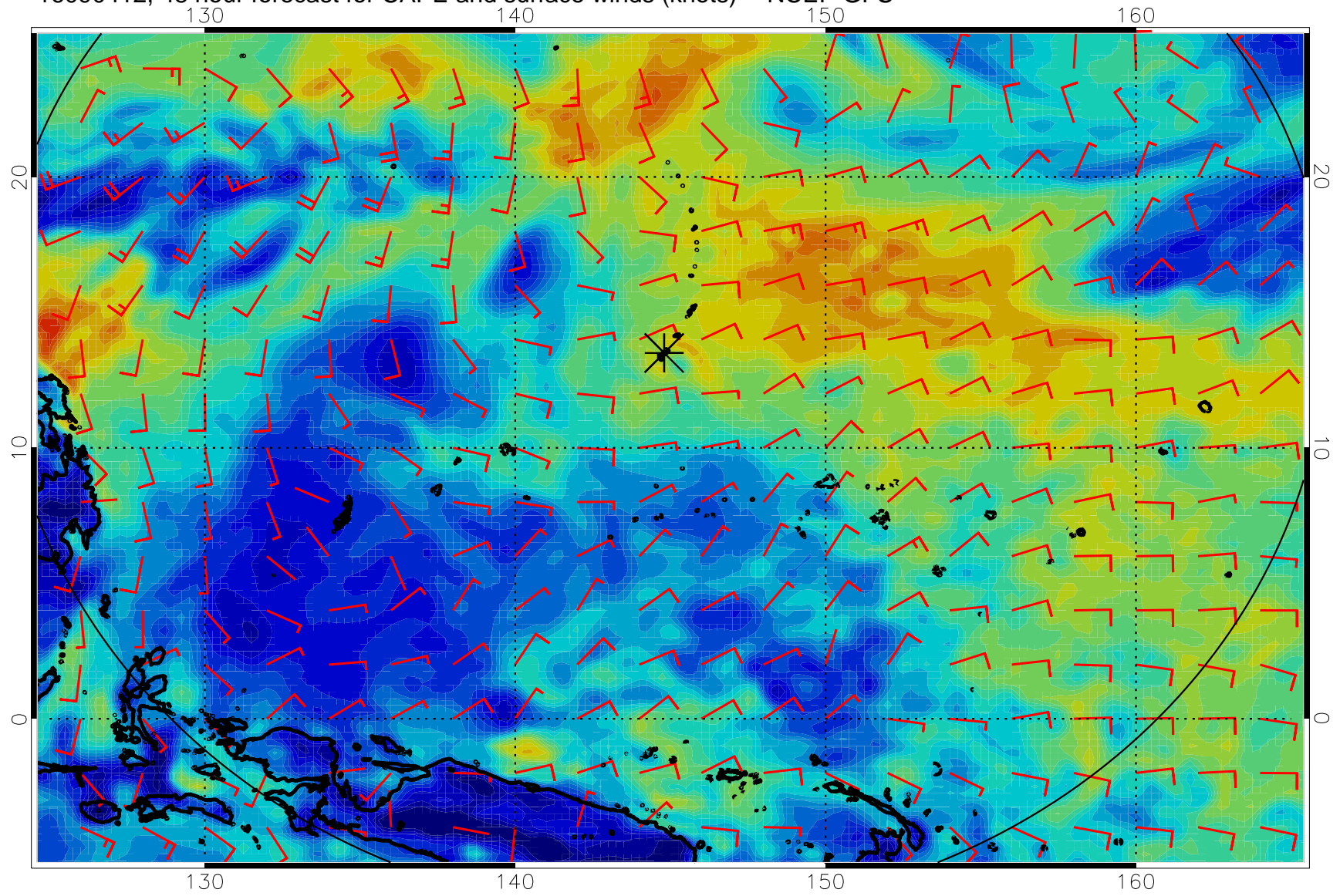




16090406, 42 hour forecast for CAPE and surface winds (knots) -- NCEP GFS

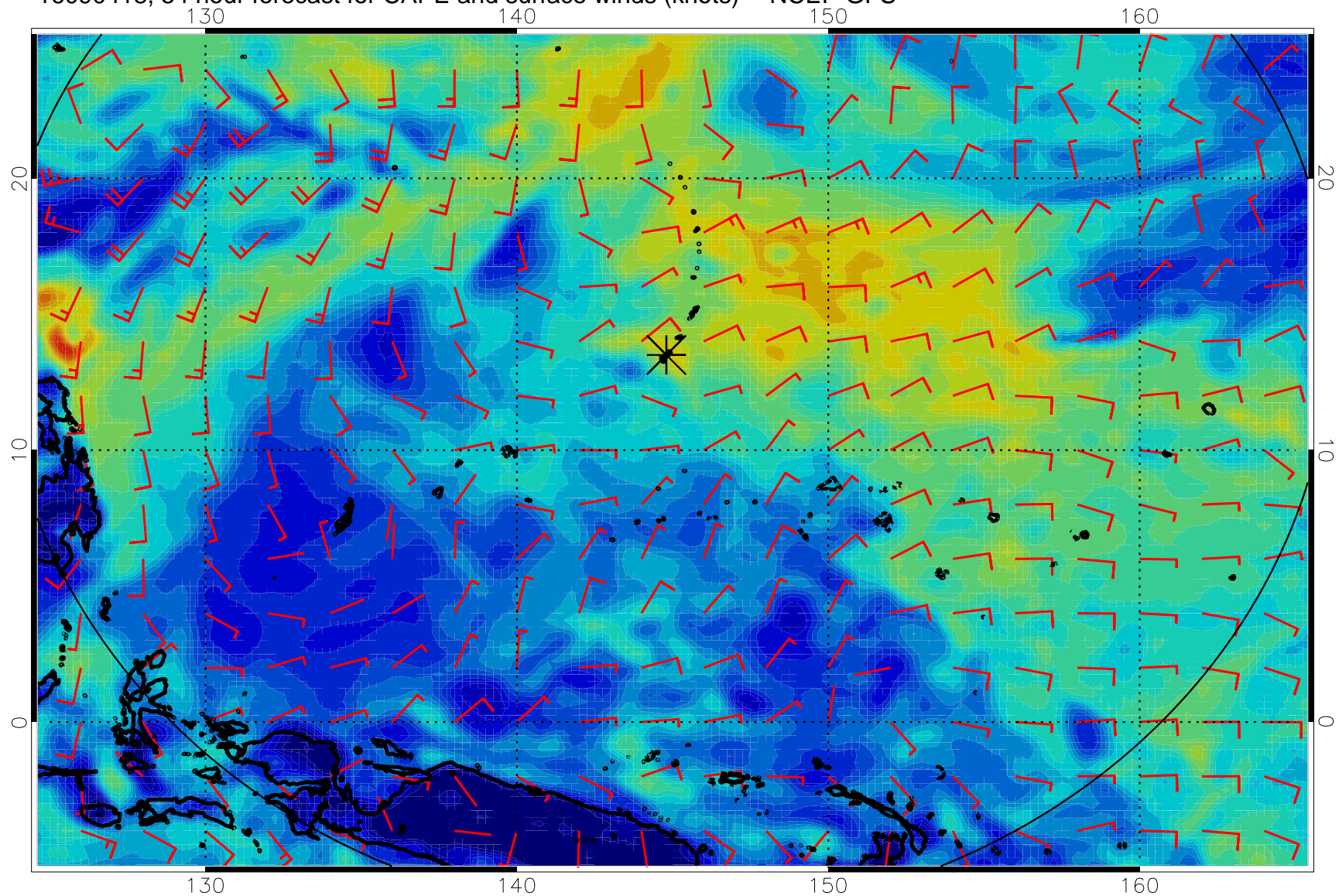


16090412, 48 hour forecast for CAPE and surface winds (knots) -- NCEP GFS

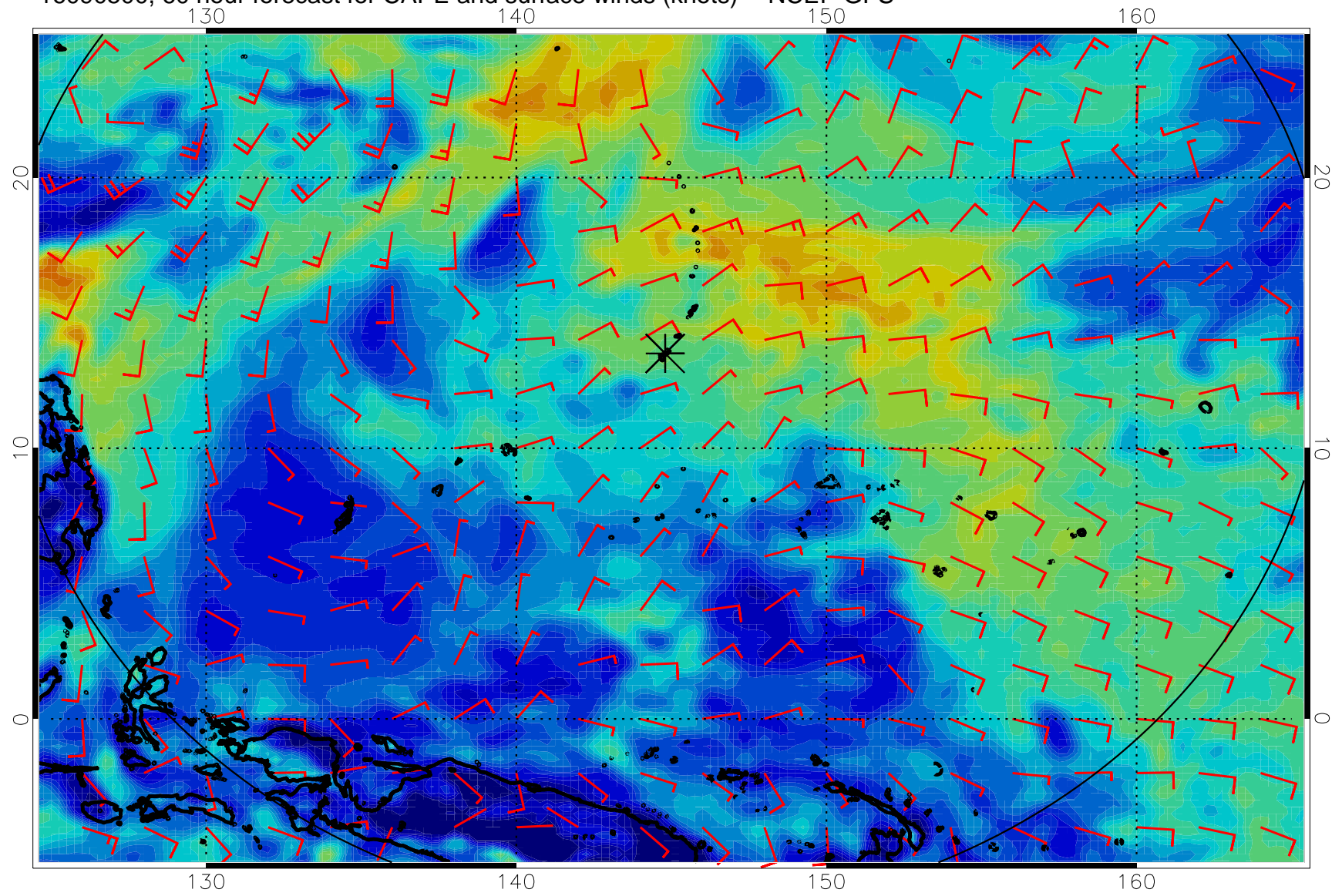




16090418, 54 hour forecast for CAPE and surface winds (knots) -- NCEP GFS

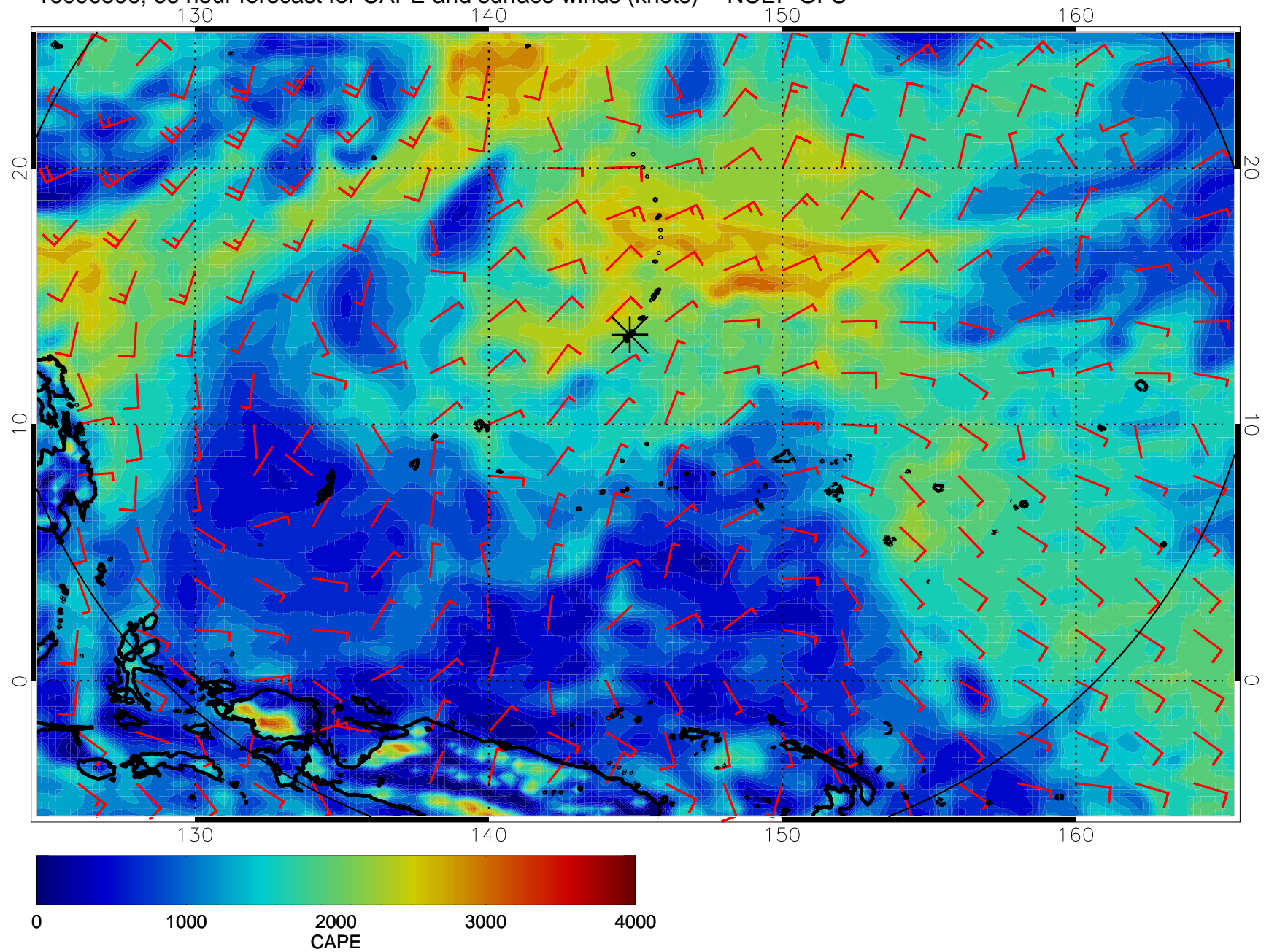


16090500, 60 hour forecast for CAPE and surface winds (knots) -- NCEP GFS

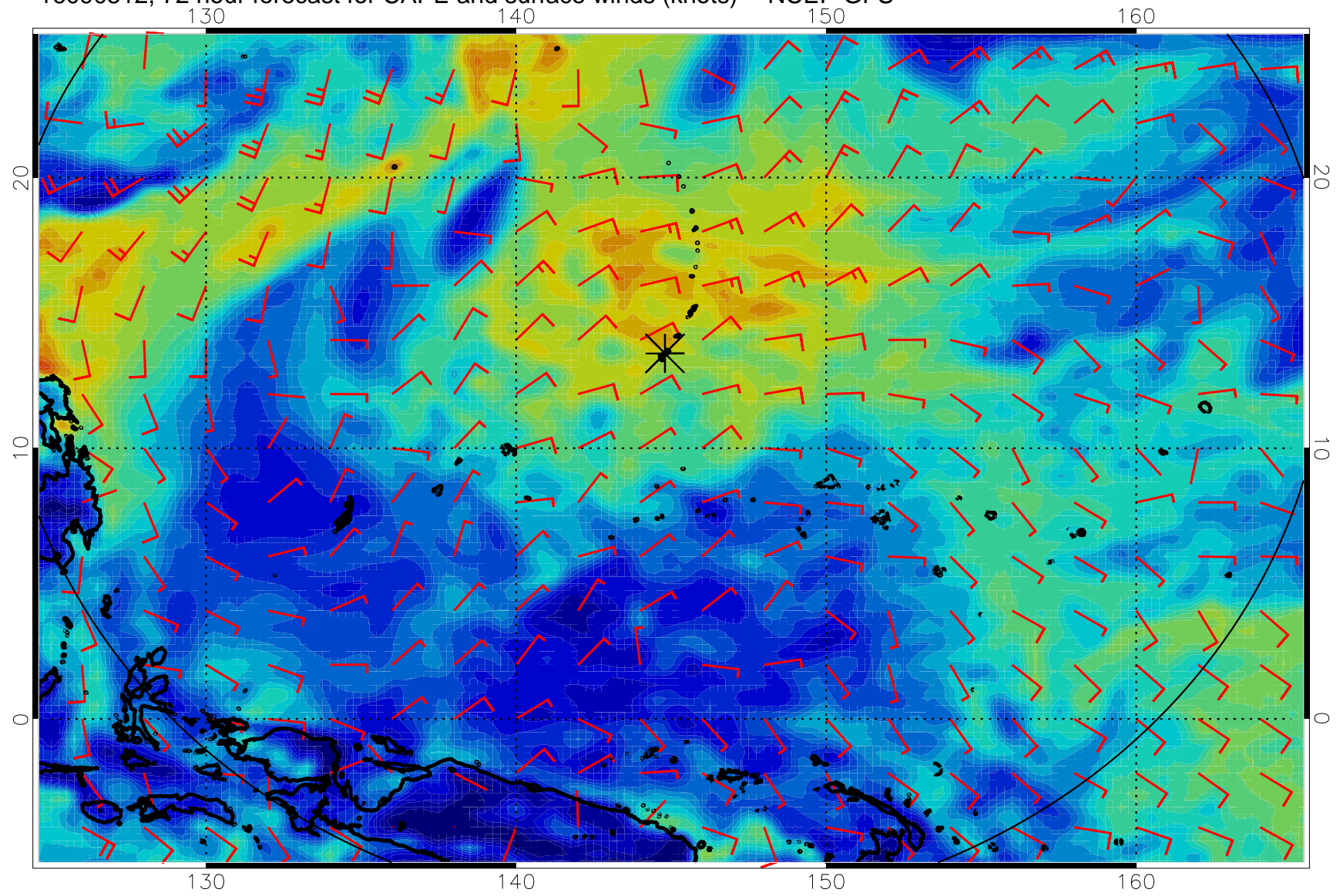




16090506, 66 hour forecast for CAPE and surface winds (knots) -- NCEP GFS

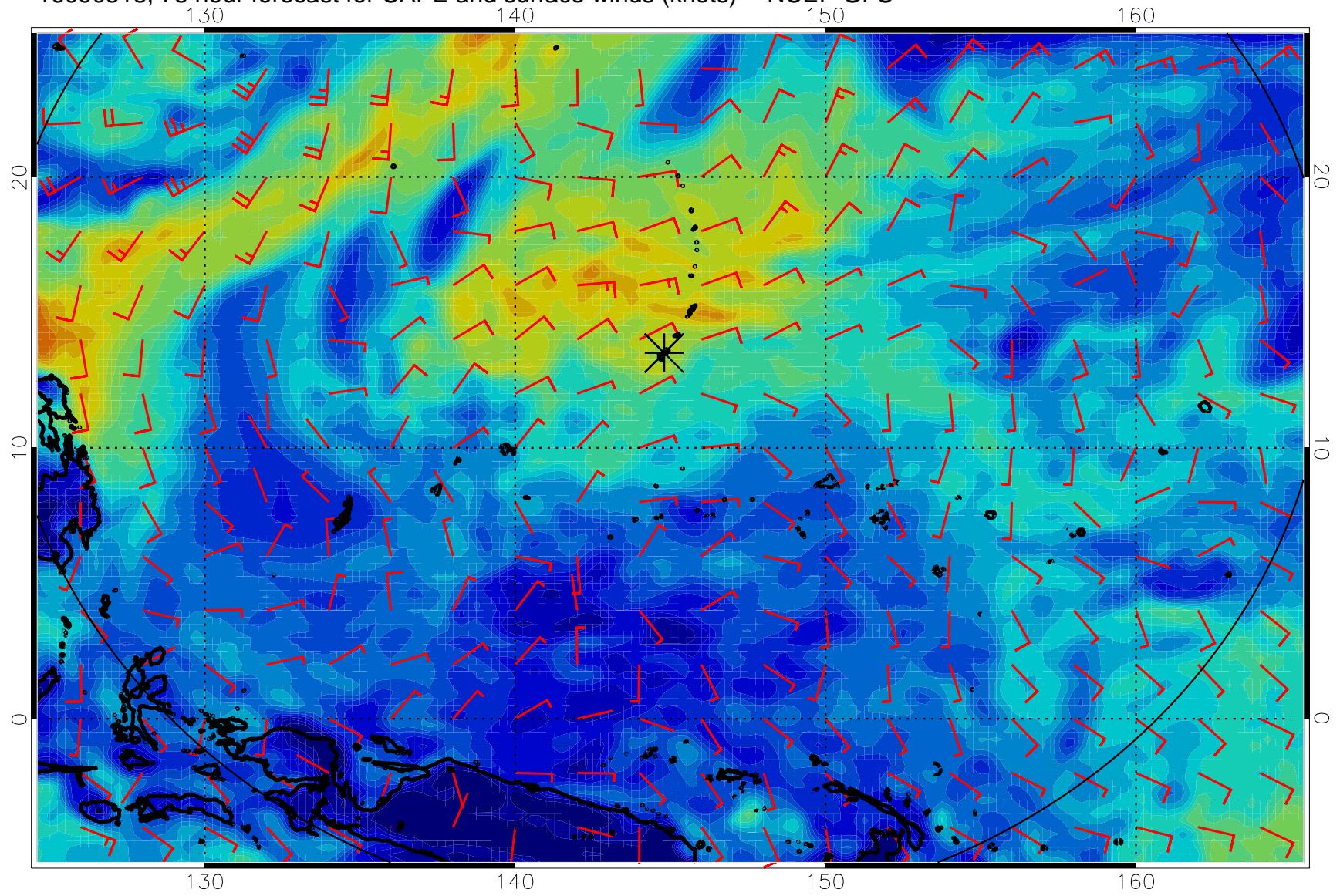


16090512, 72 hour forecast for CAPE and surface winds (knots) -- NCEP GFS

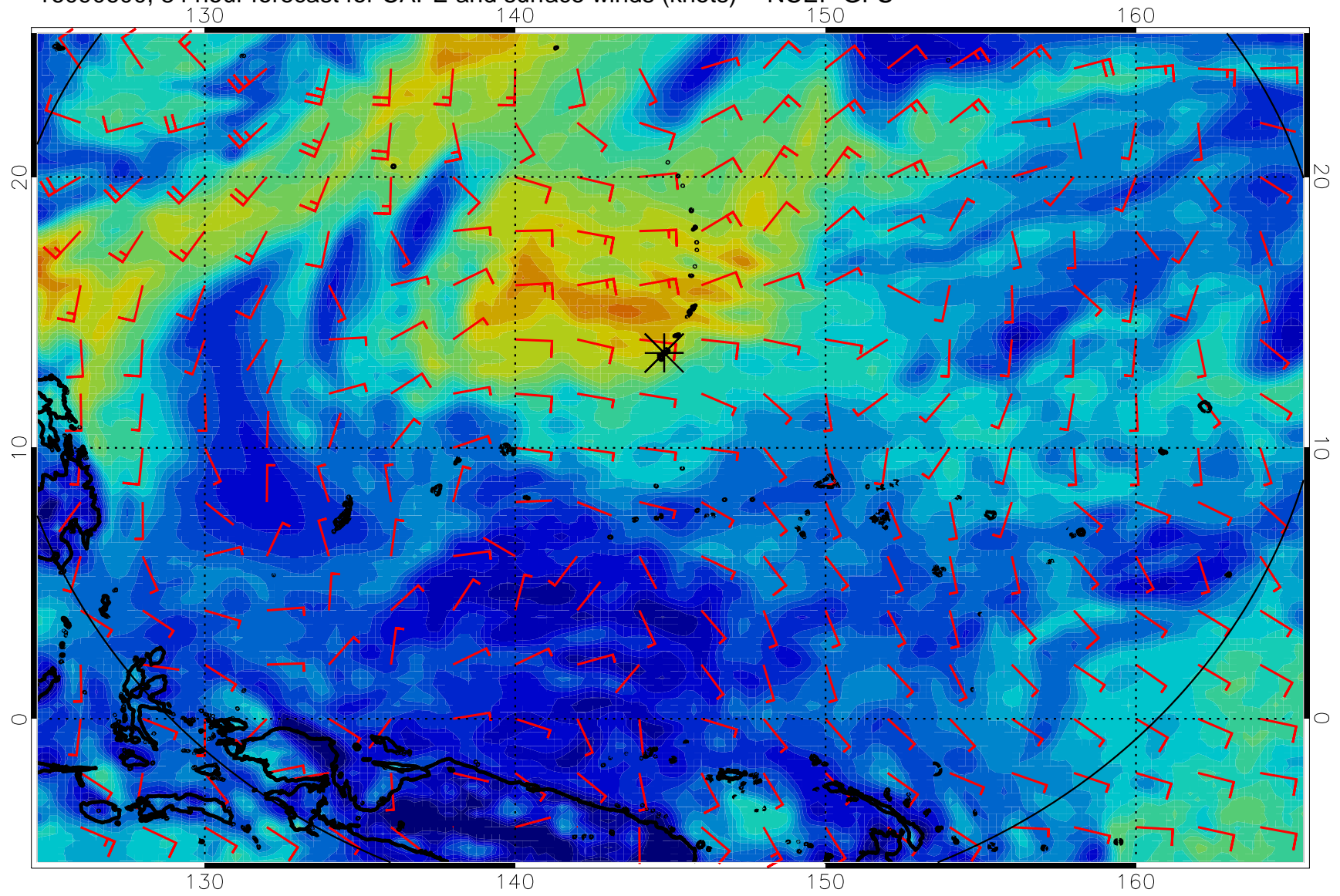




16090518, 78 hour forecast for CAPE and surface winds (knots) -- NCEP GFS

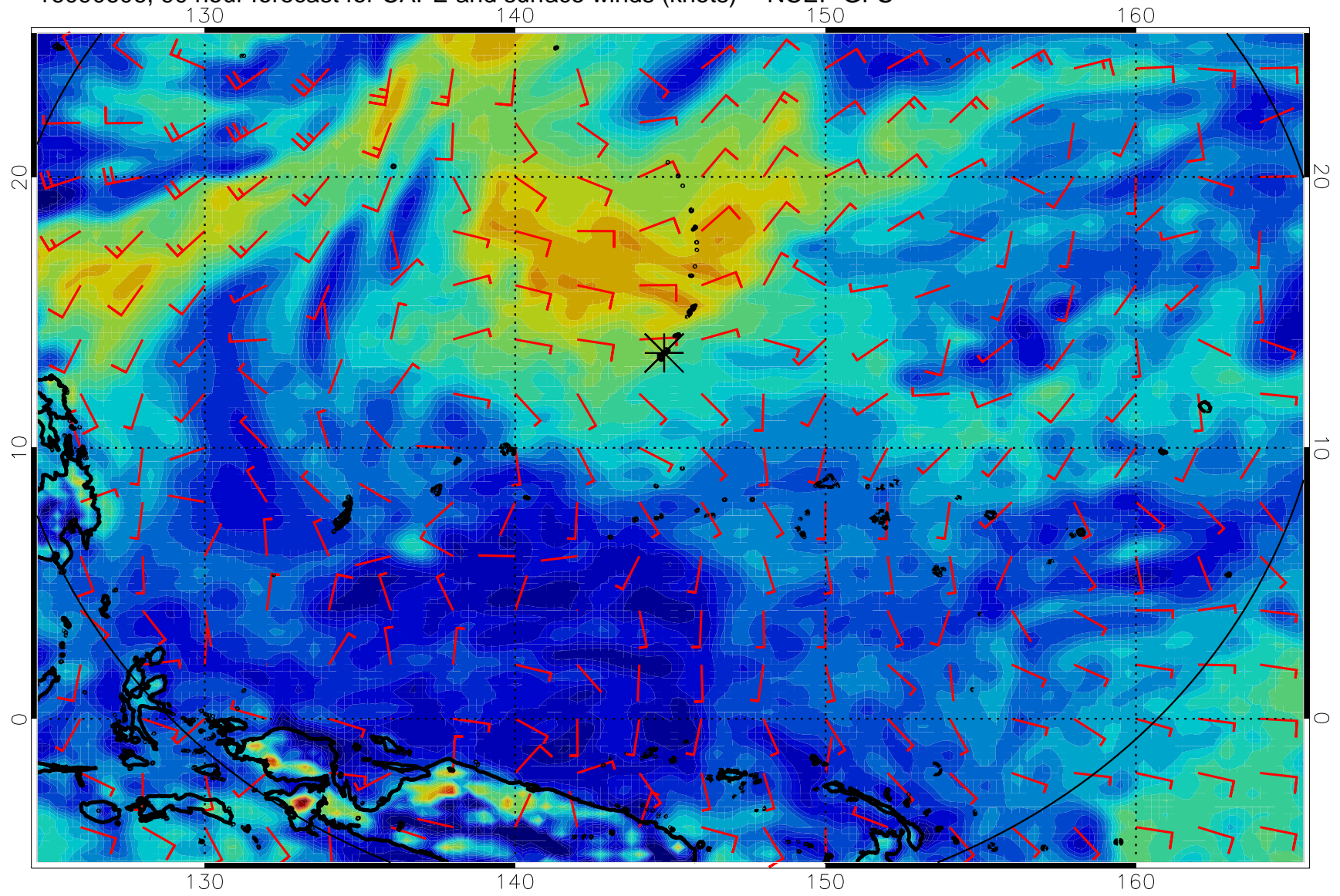


16090600, 84 hour forecast for CAPE and surface winds (knots) -- NCEP GFS

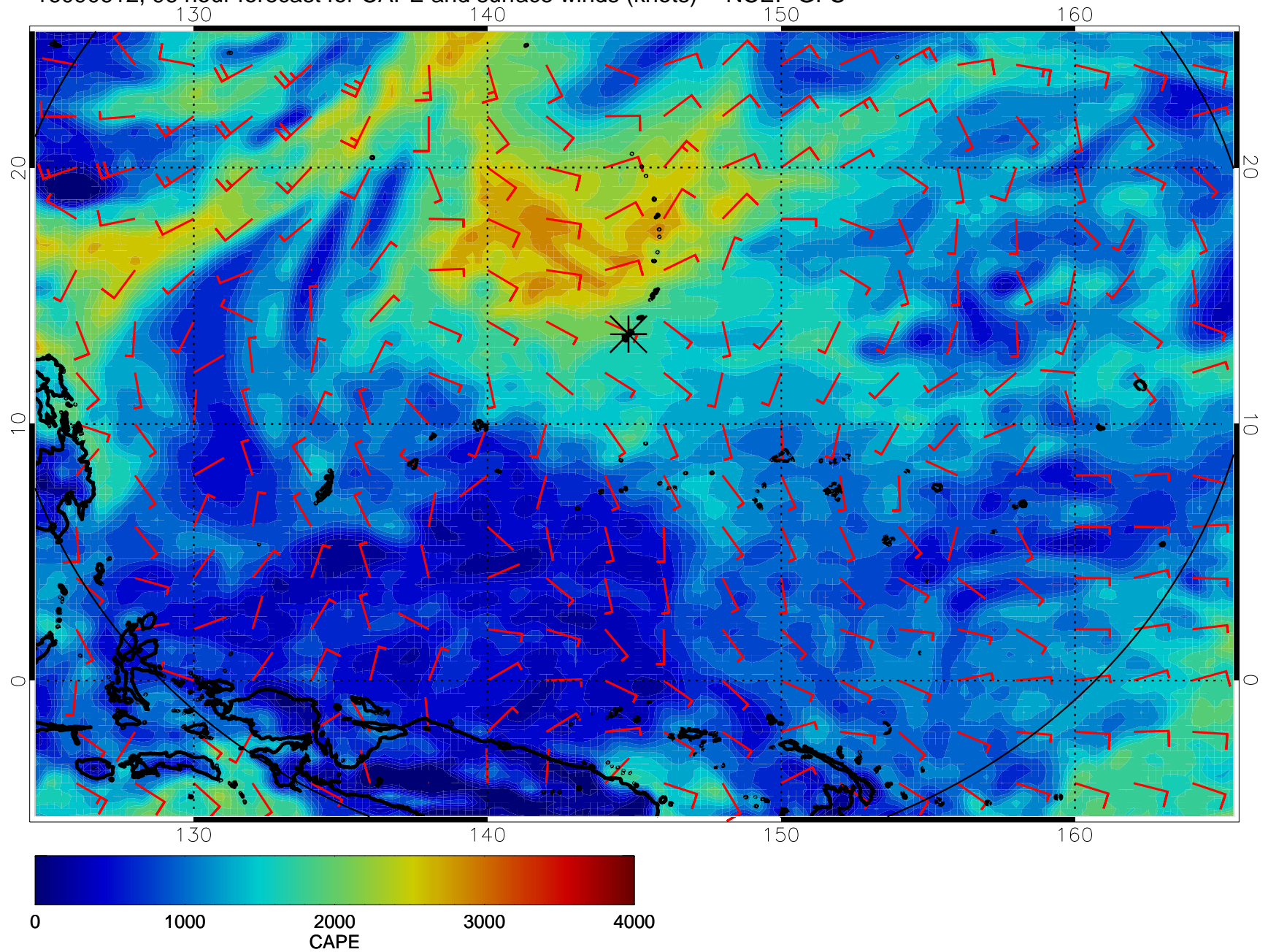




16090606, 90 hour forecast for CAPE and surface winds (knots) -- NCEP GFS

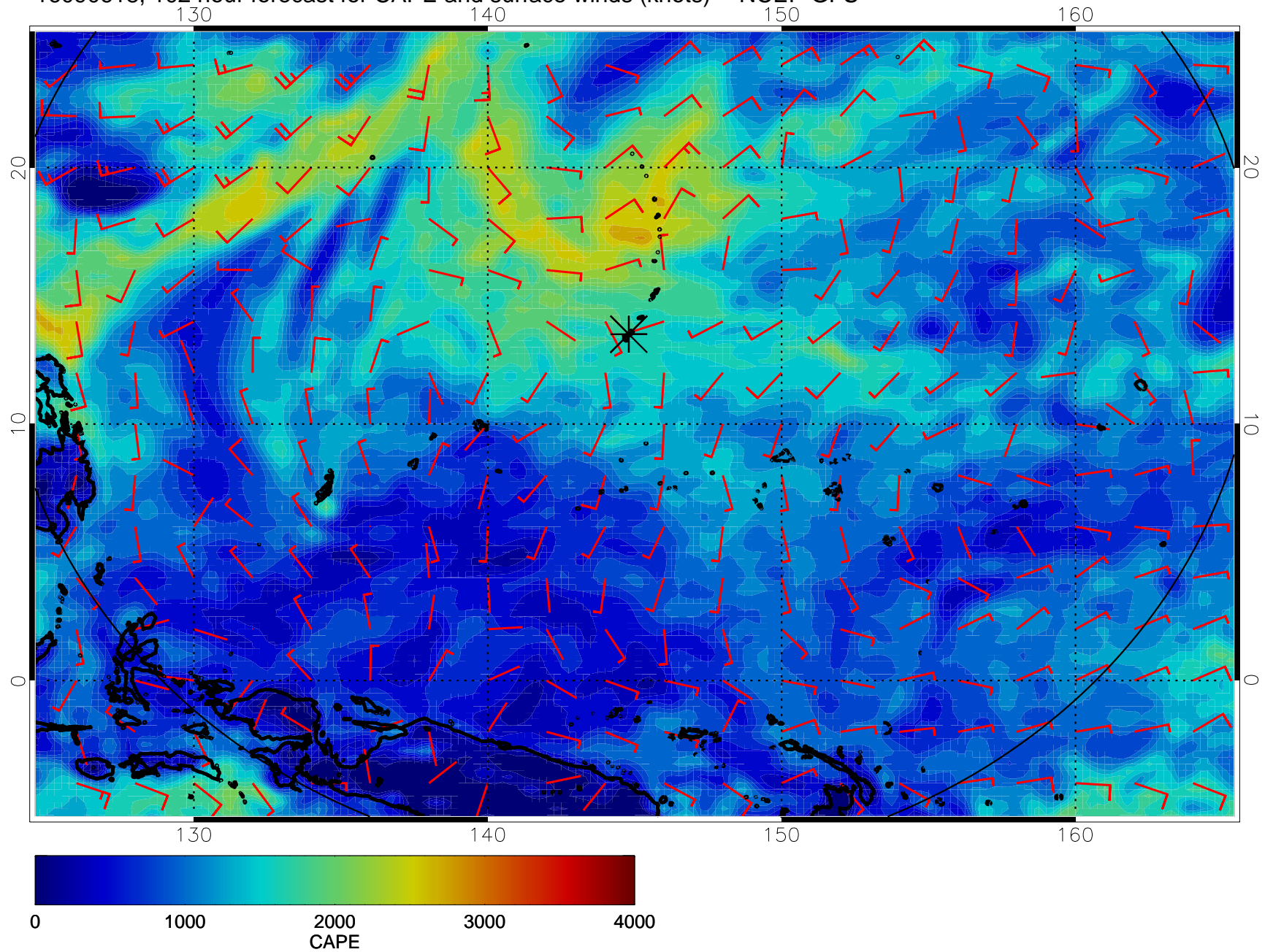


16090612, 96 hour forecast for CAPE and surface winds (knots) -- NCEP GFS

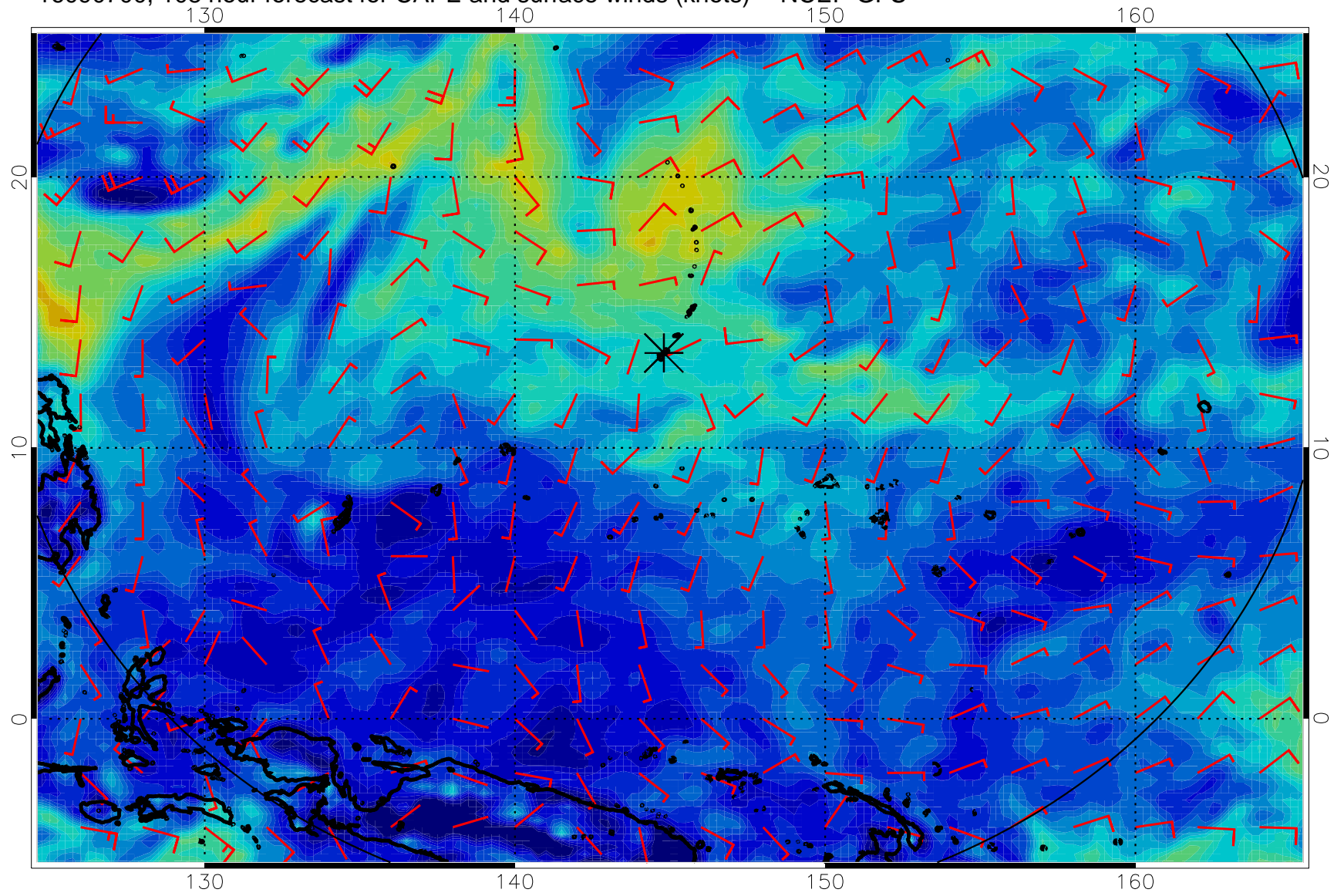




16090618, 102 hour forecast for CAPE and surface winds (knots) -- NCEP GFS

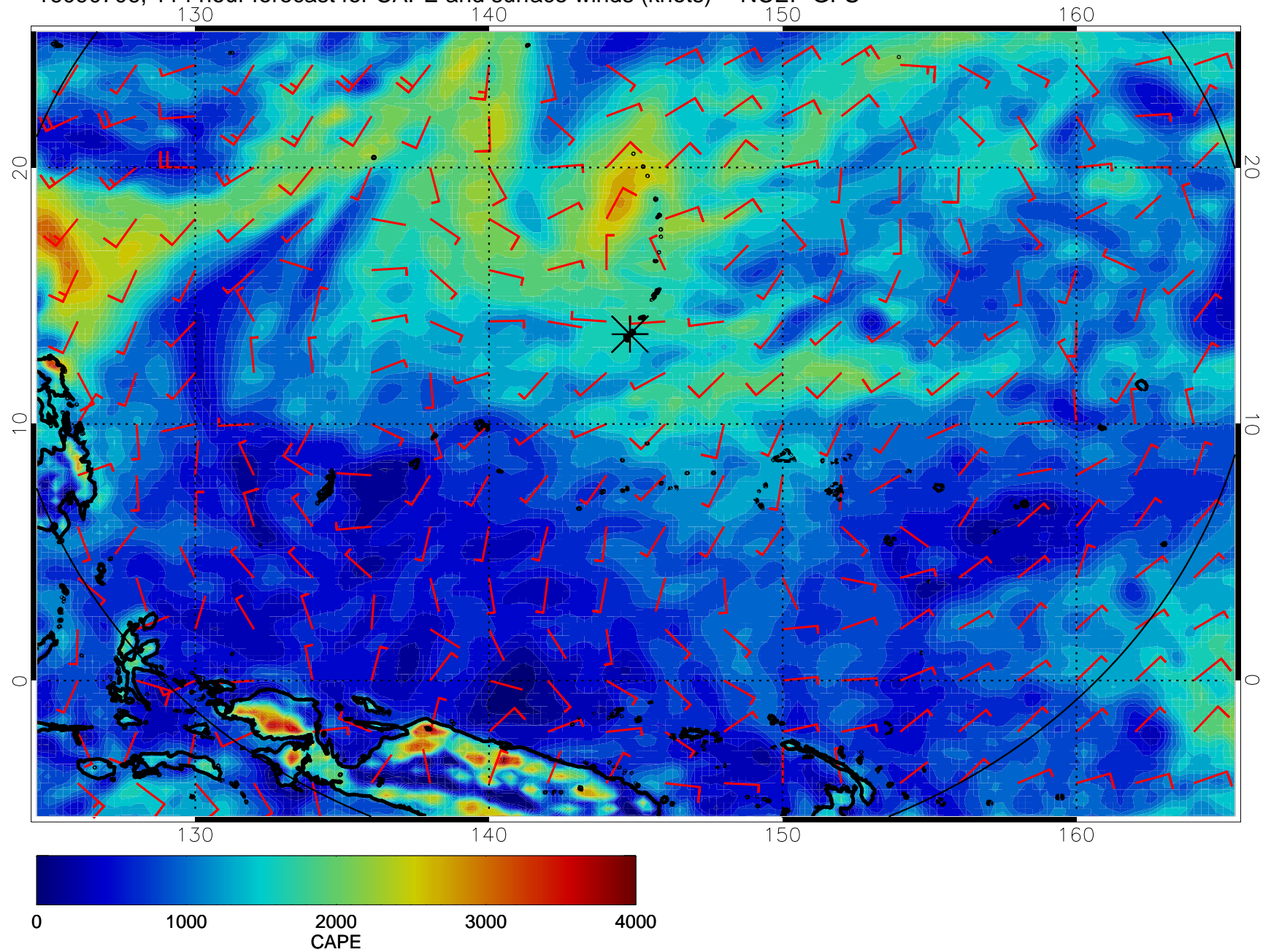


16090700, 108 hour forecast for CAPE and surface winds (knots) -- NCEP GFS





16090706, 114 hour forecast for CAPE and surface winds (knots) -- NCEP GFS



16090712, 120 hour forecast for CAPE and surface winds (knots) -- NCEP GFS

