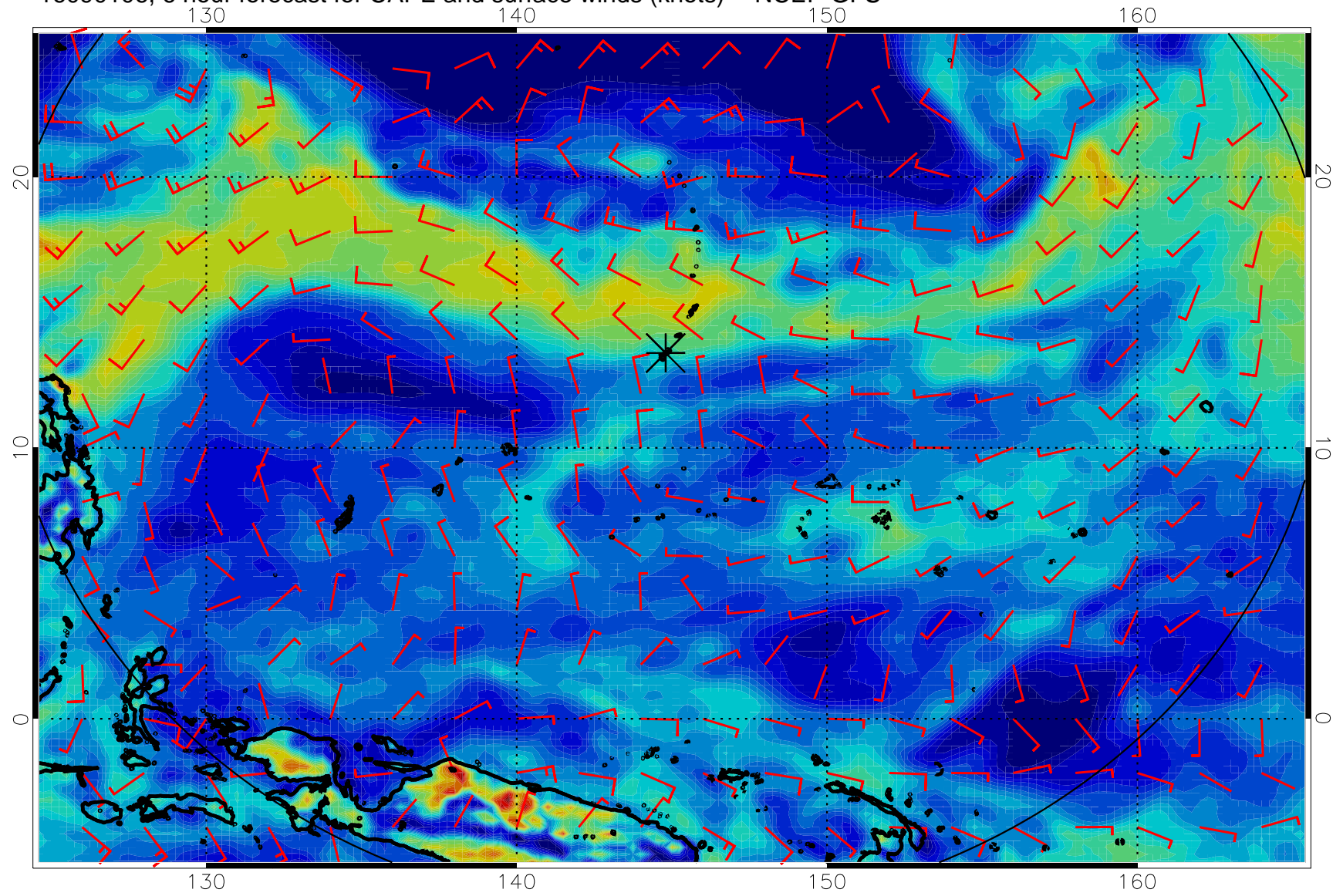
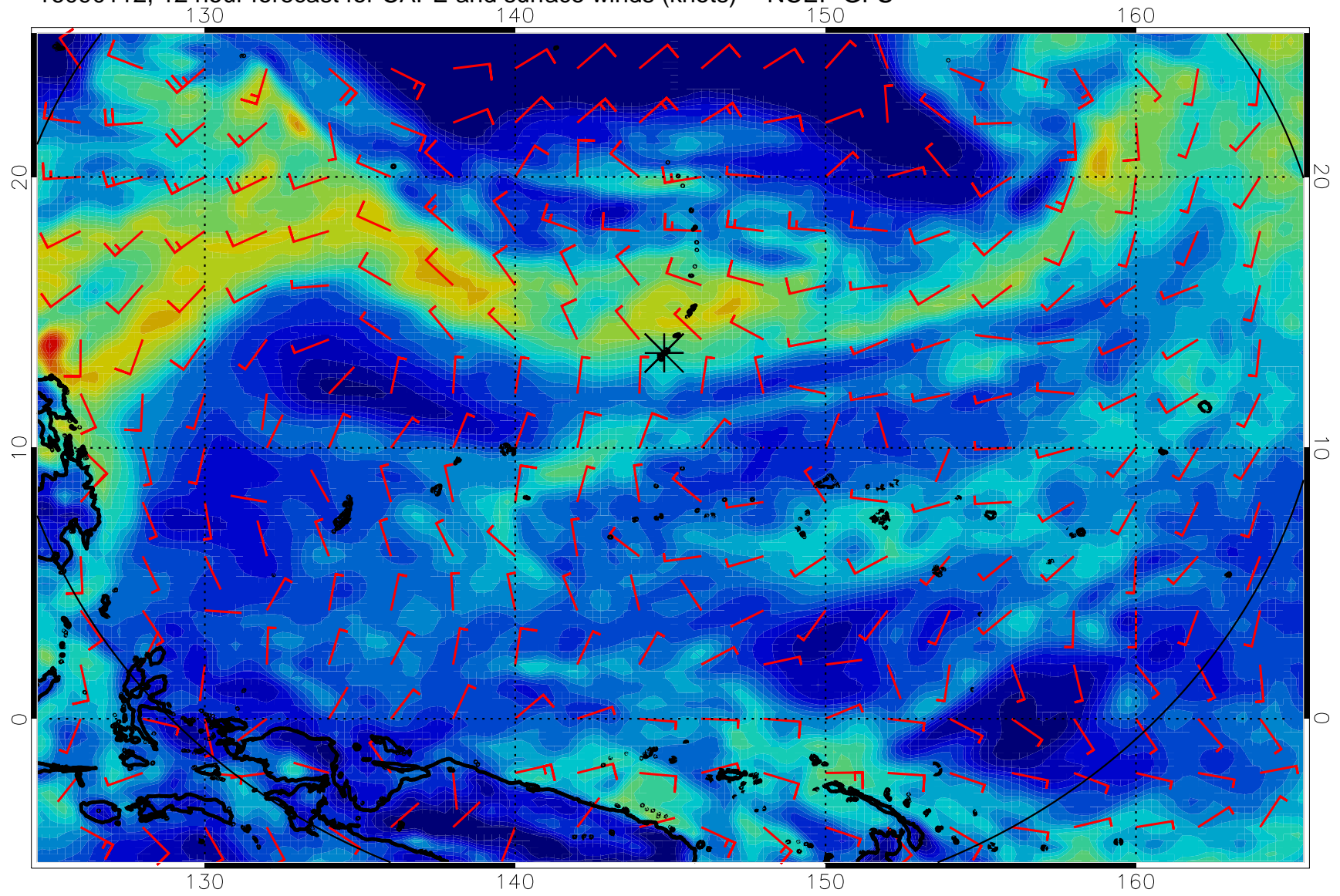


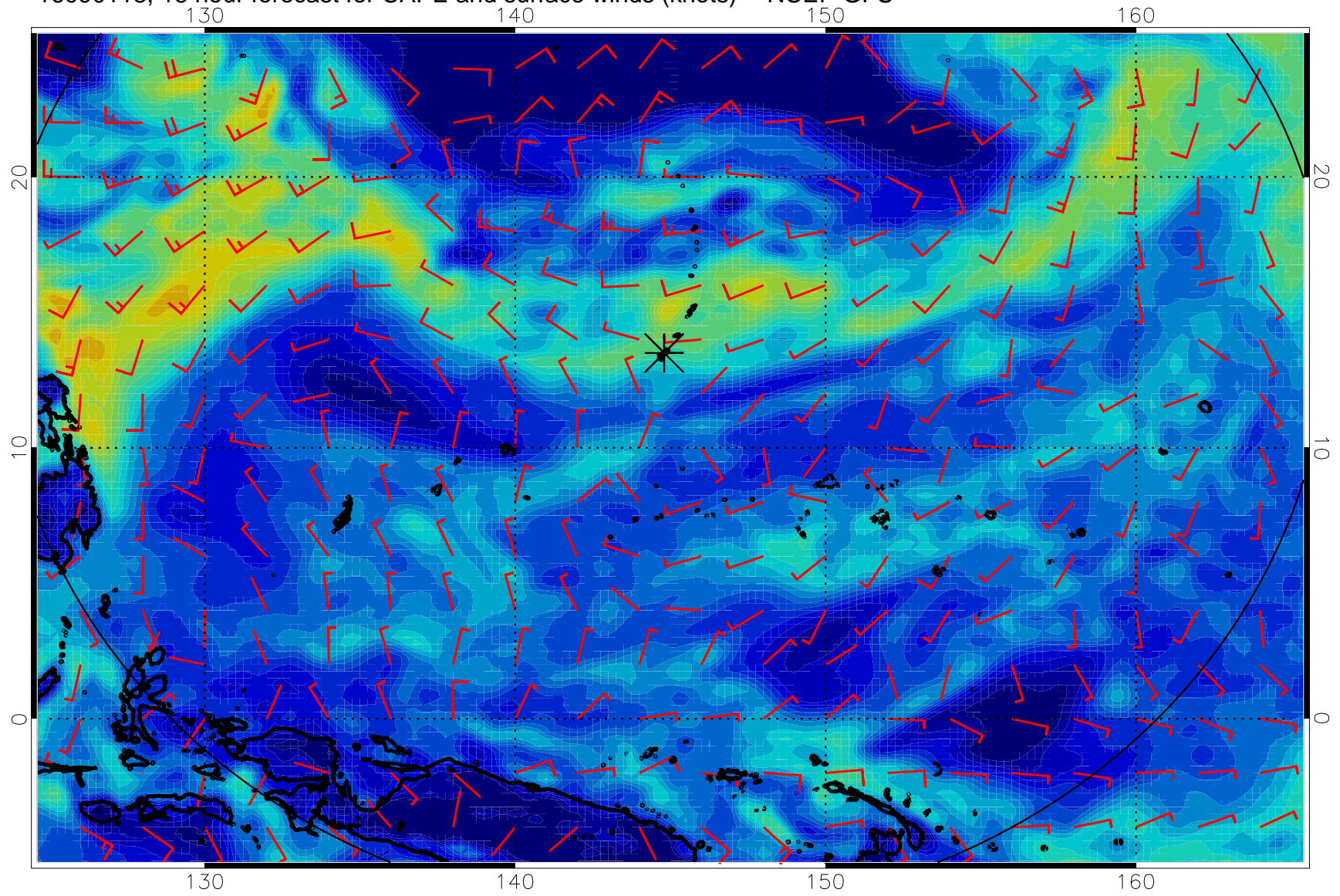
16090106, 6 hour forecast for CAPE and surface winds (knots) -- NCEP GFS



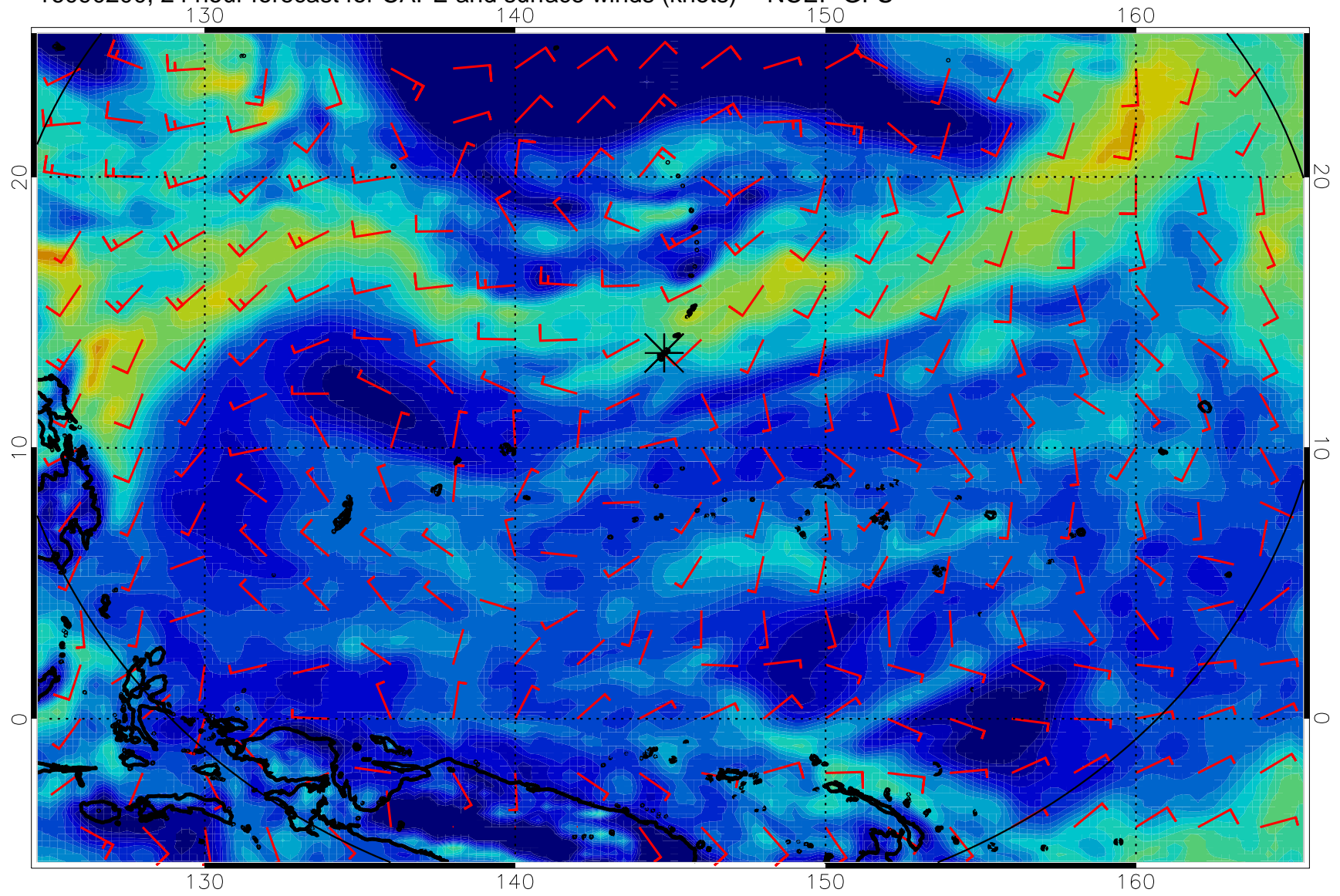
16090112, 12 hour forecast for CAPE and surface winds (knots) -- NCEP GFS



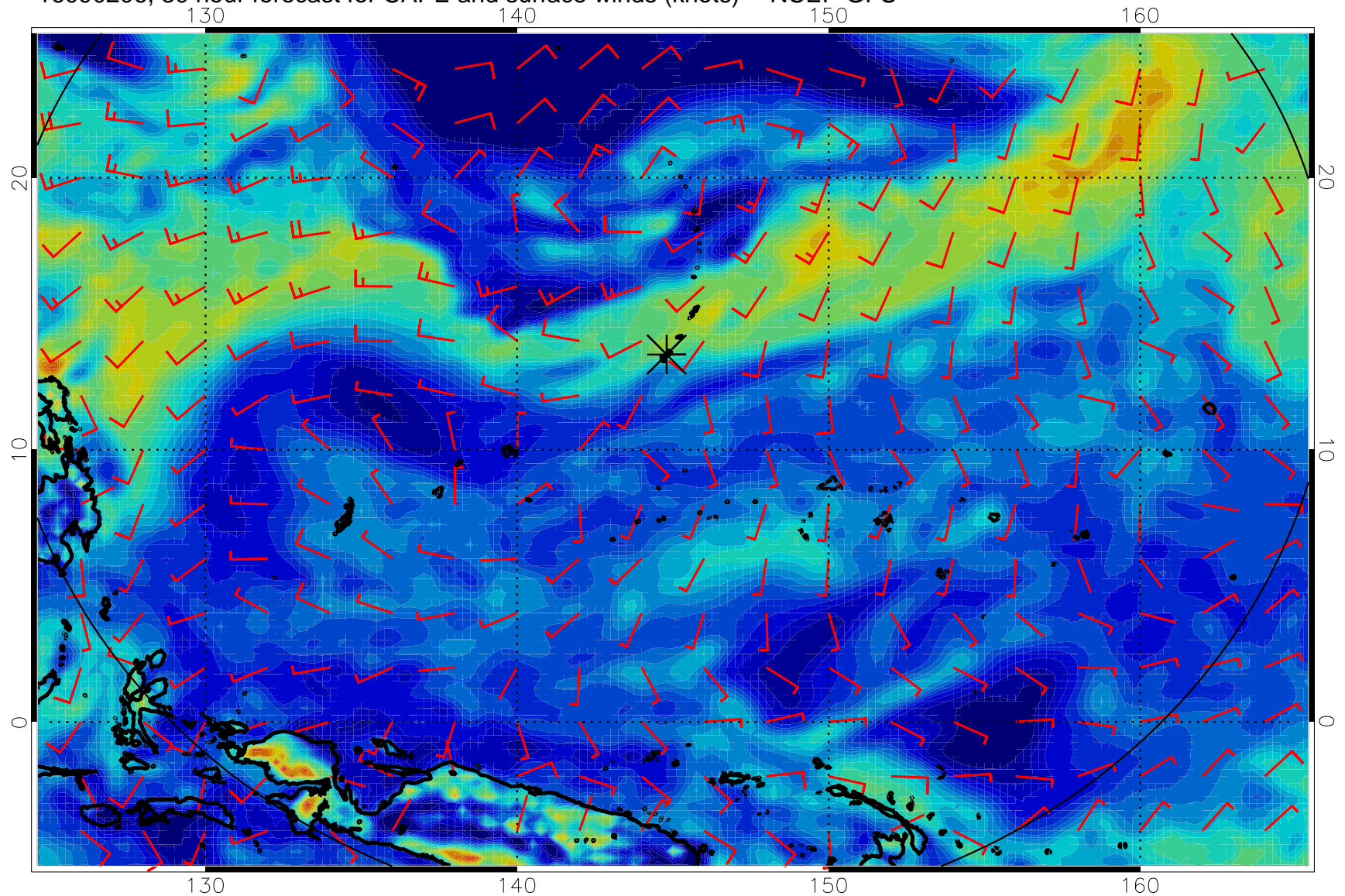
16090118, 18 hour forecast for CAPE and surface winds (knots) -- NCEP GFS



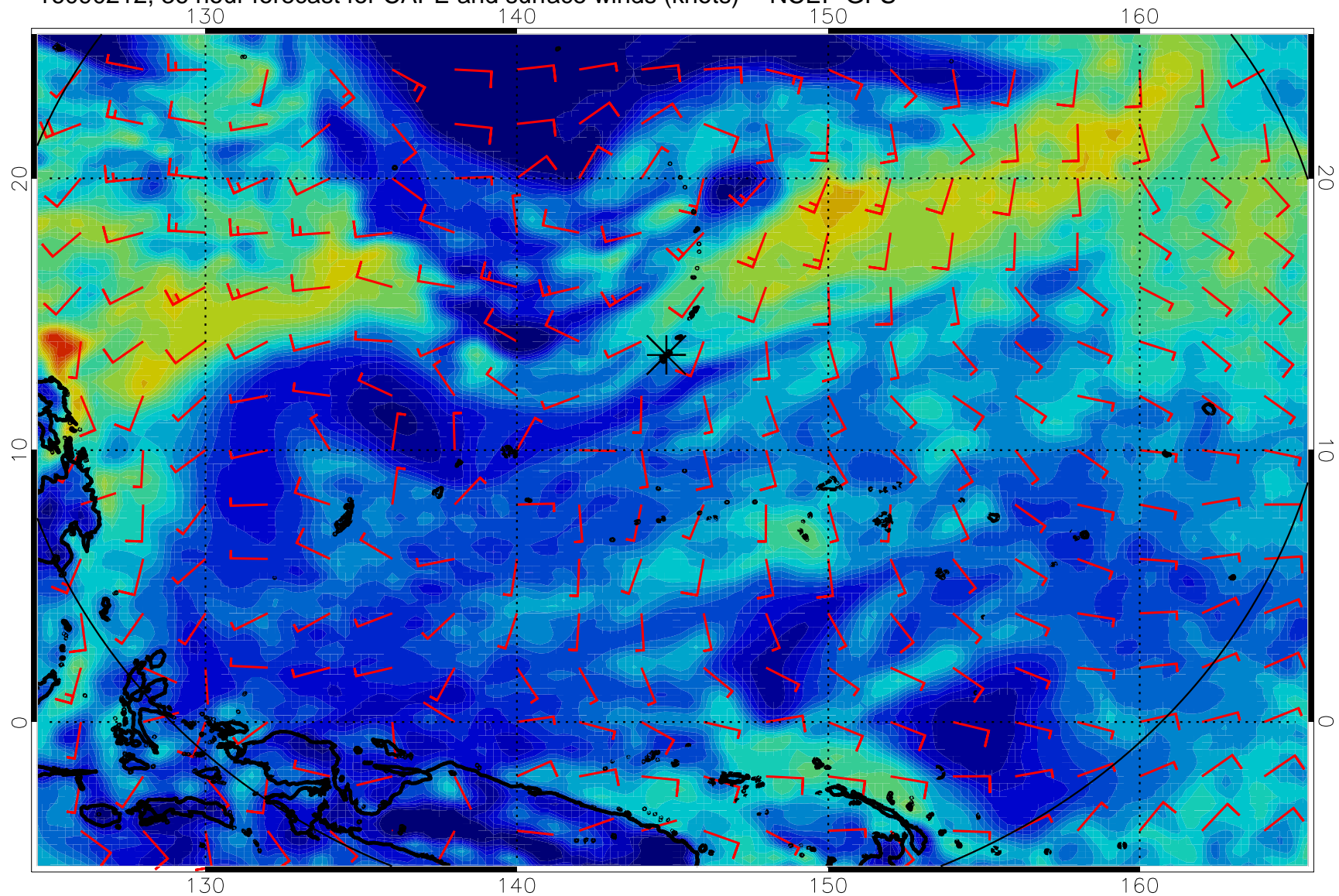
16090200, 24 hour forecast for CAPE and surface winds (knots) -- NCEP GFS



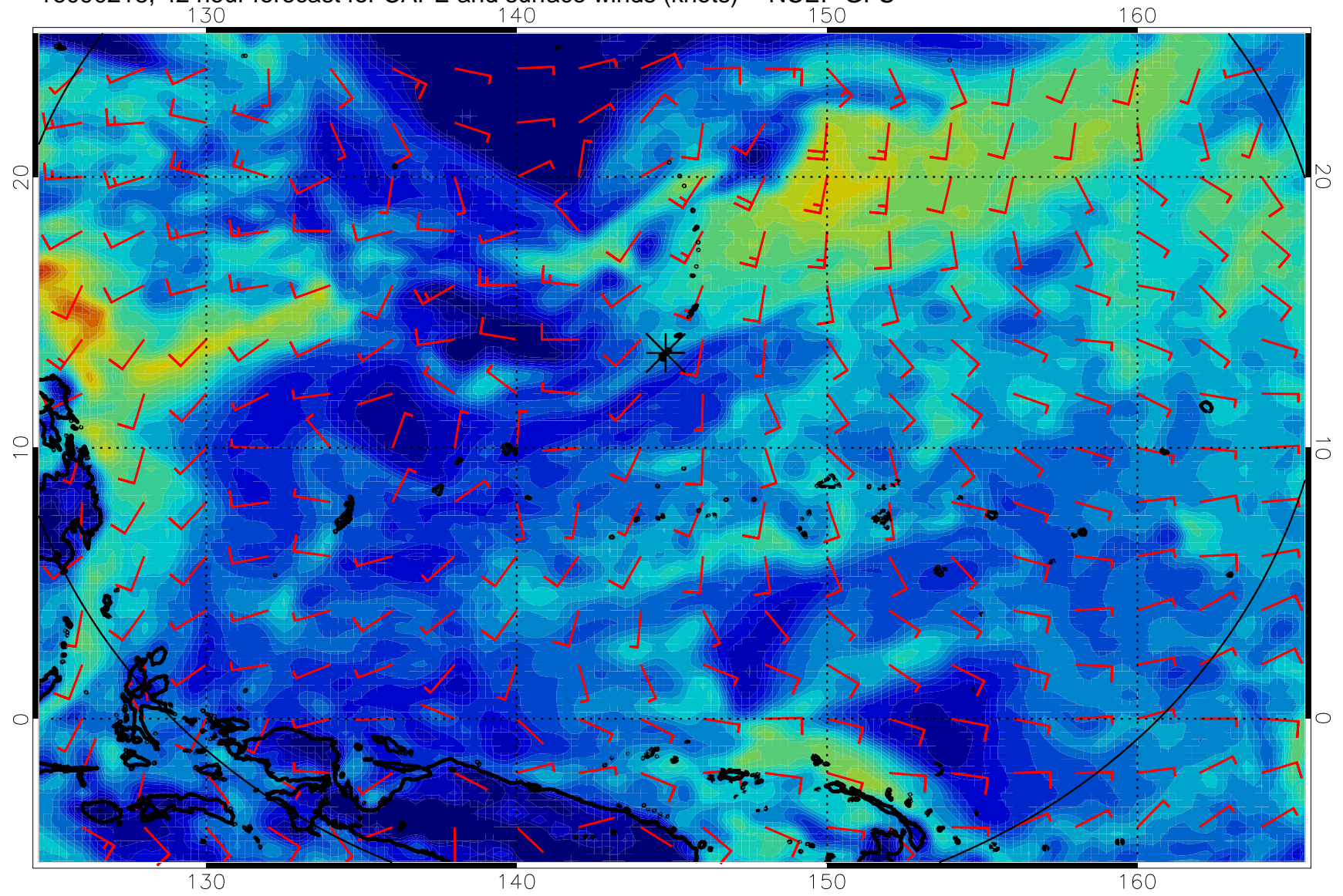
16090206, 30 hour forecast for CAPE and surface winds (knots) -- NCEP GFS



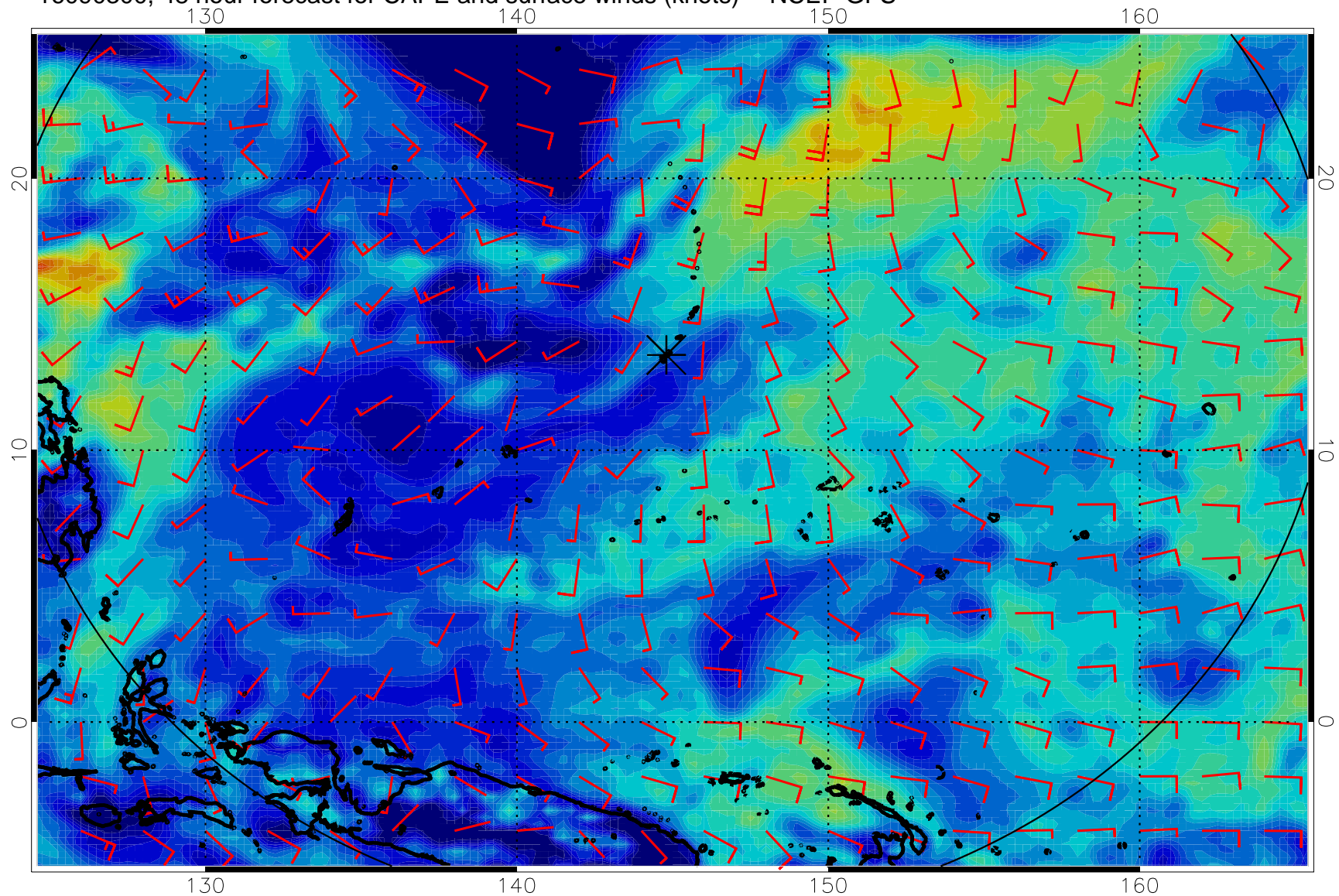
16090212, 36 hour forecast for CAPE and surface winds (knots) -- NCEP GFS



16090218, 42 hour forecast for CAPE and surface winds (knots) -- NCEP GFS

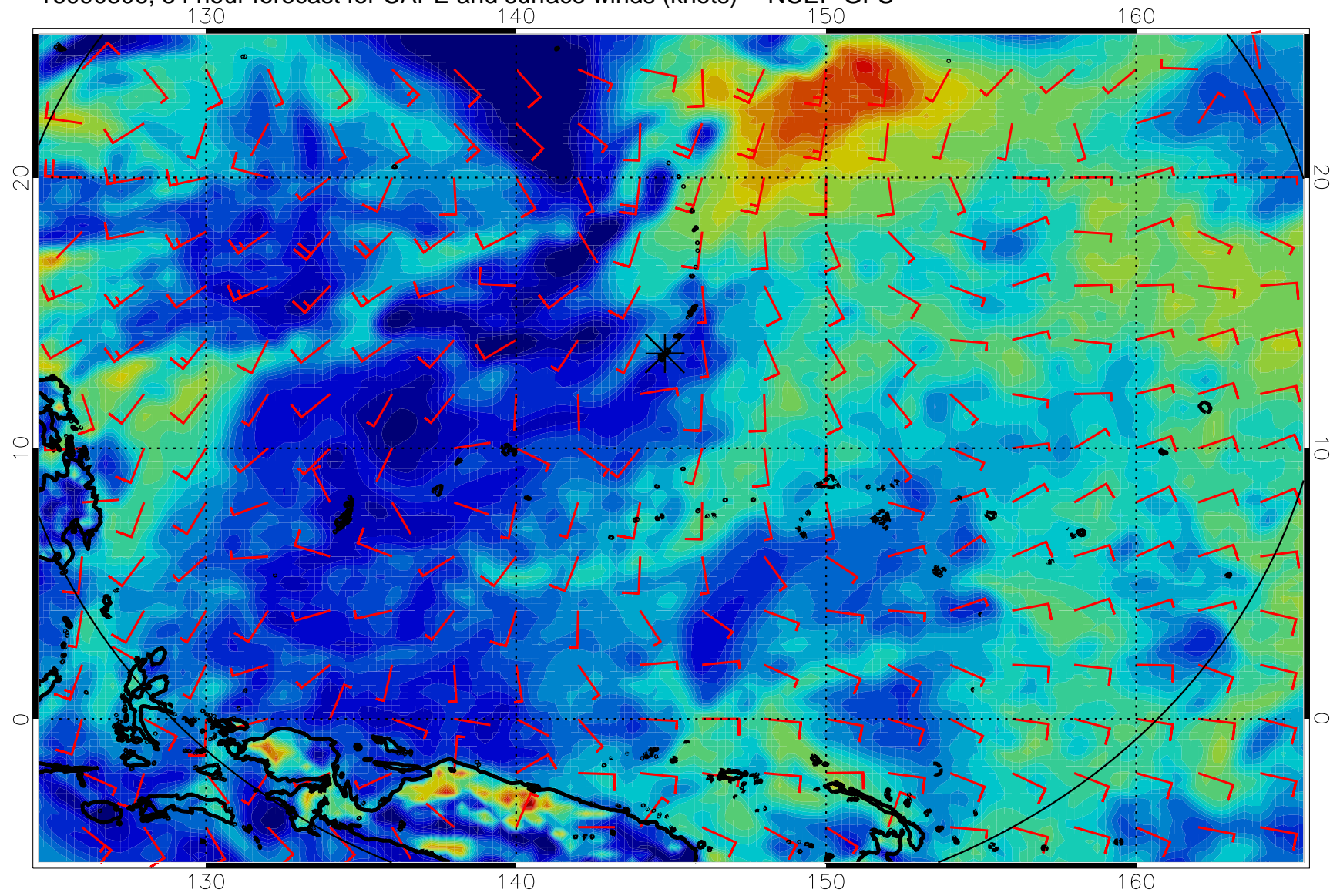


16090300, 48 hour forecast for CAPE and surface winds (knots) -- NCEP GFS

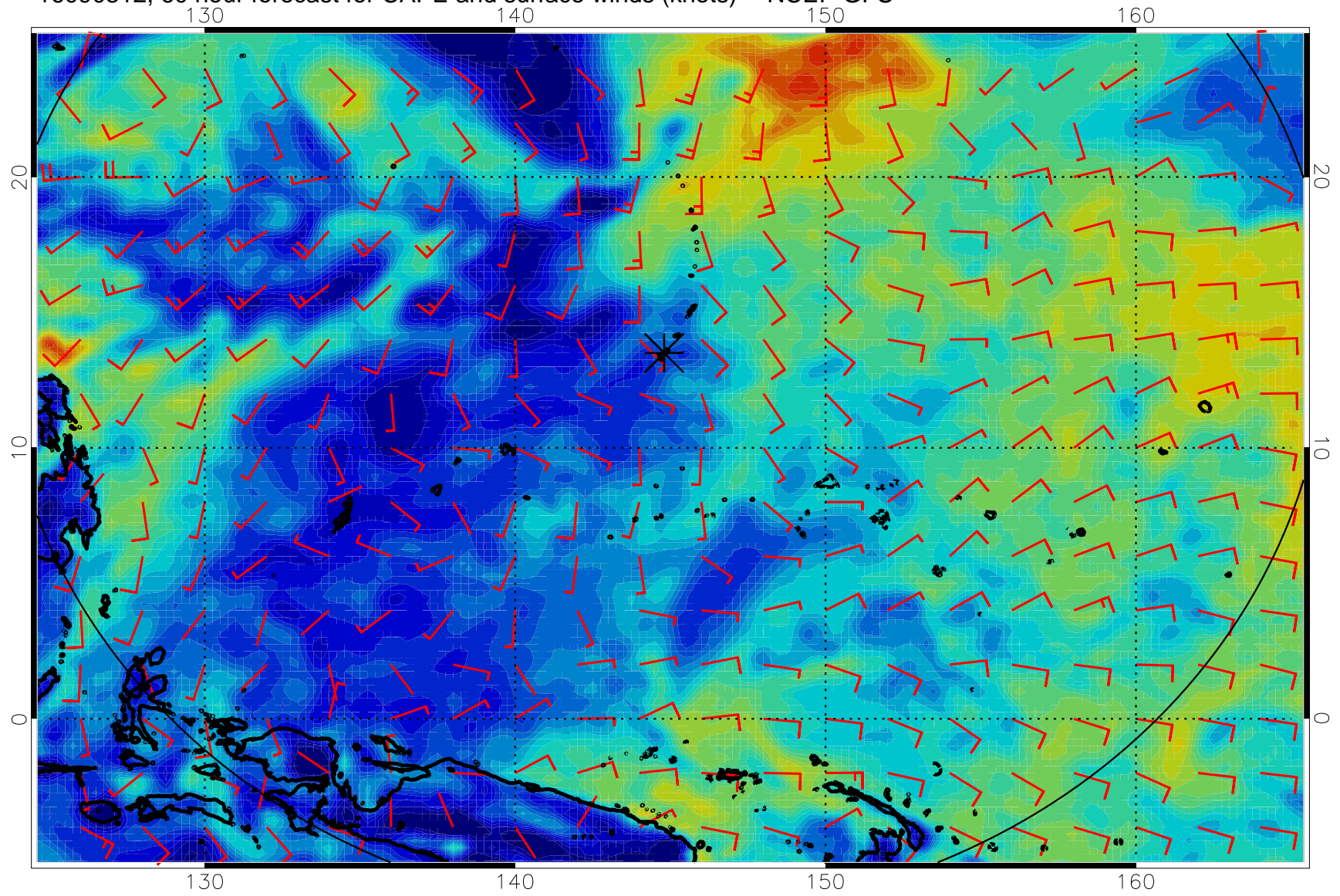




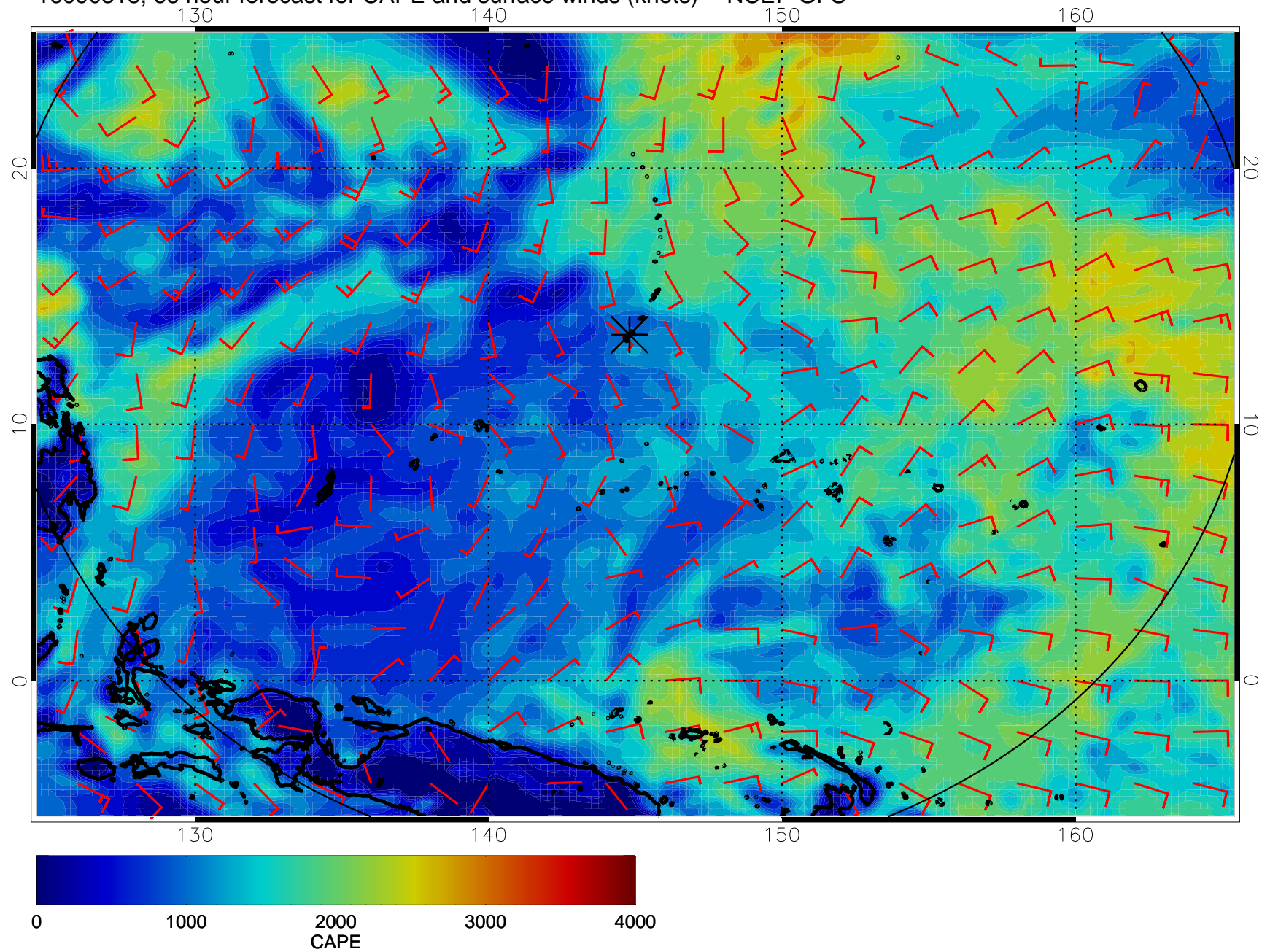
16090306, 54 hour forecast for CAPE and surface winds (knots) -- NCEP GFS



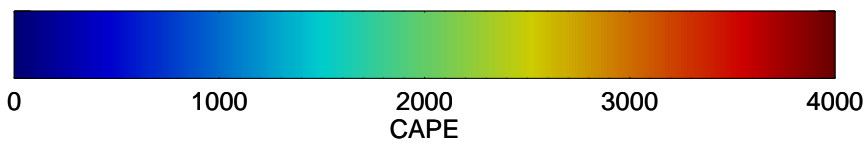
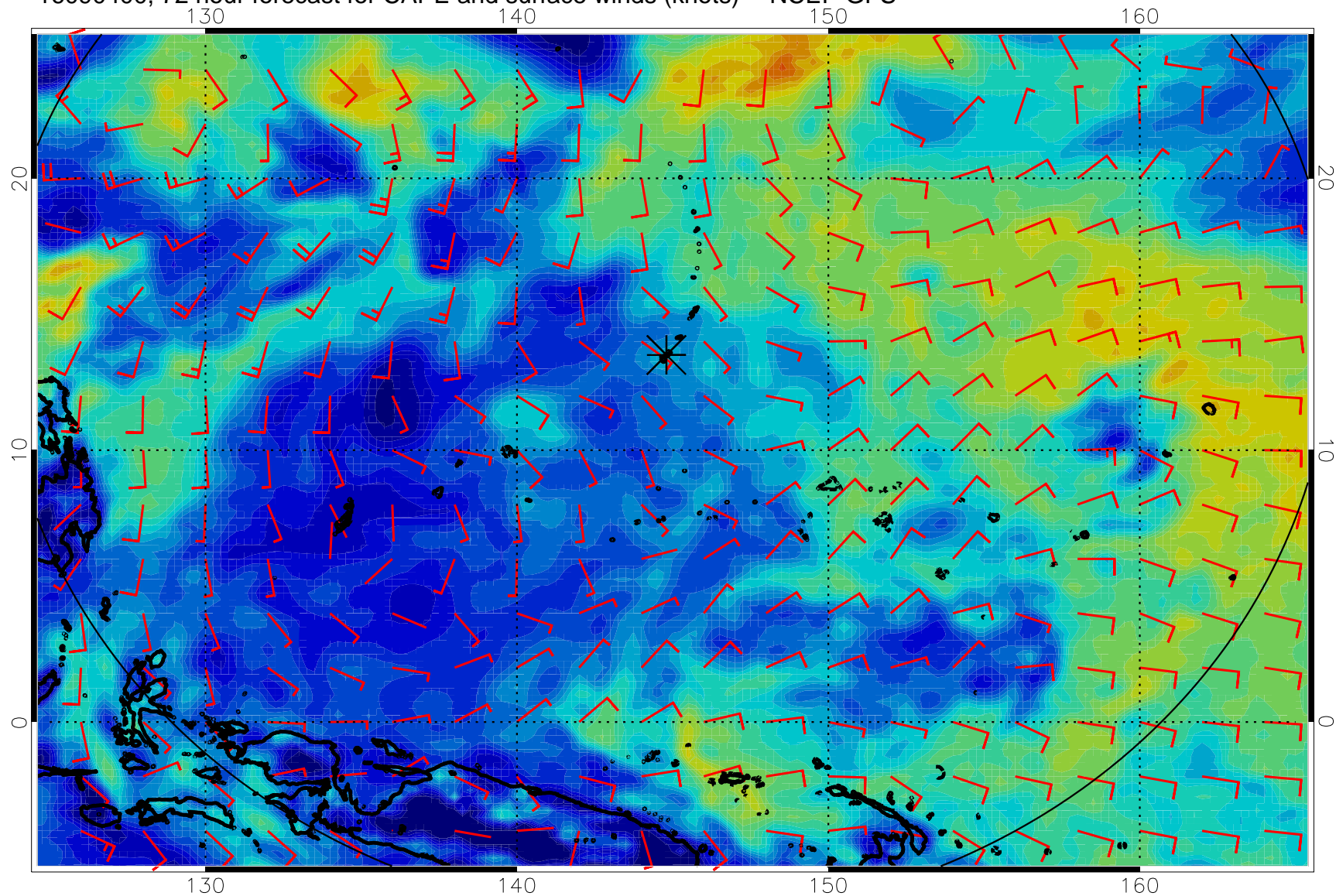
16090312, 60 hour forecast for CAPE and surface winds (knots) -- NCEP GFS



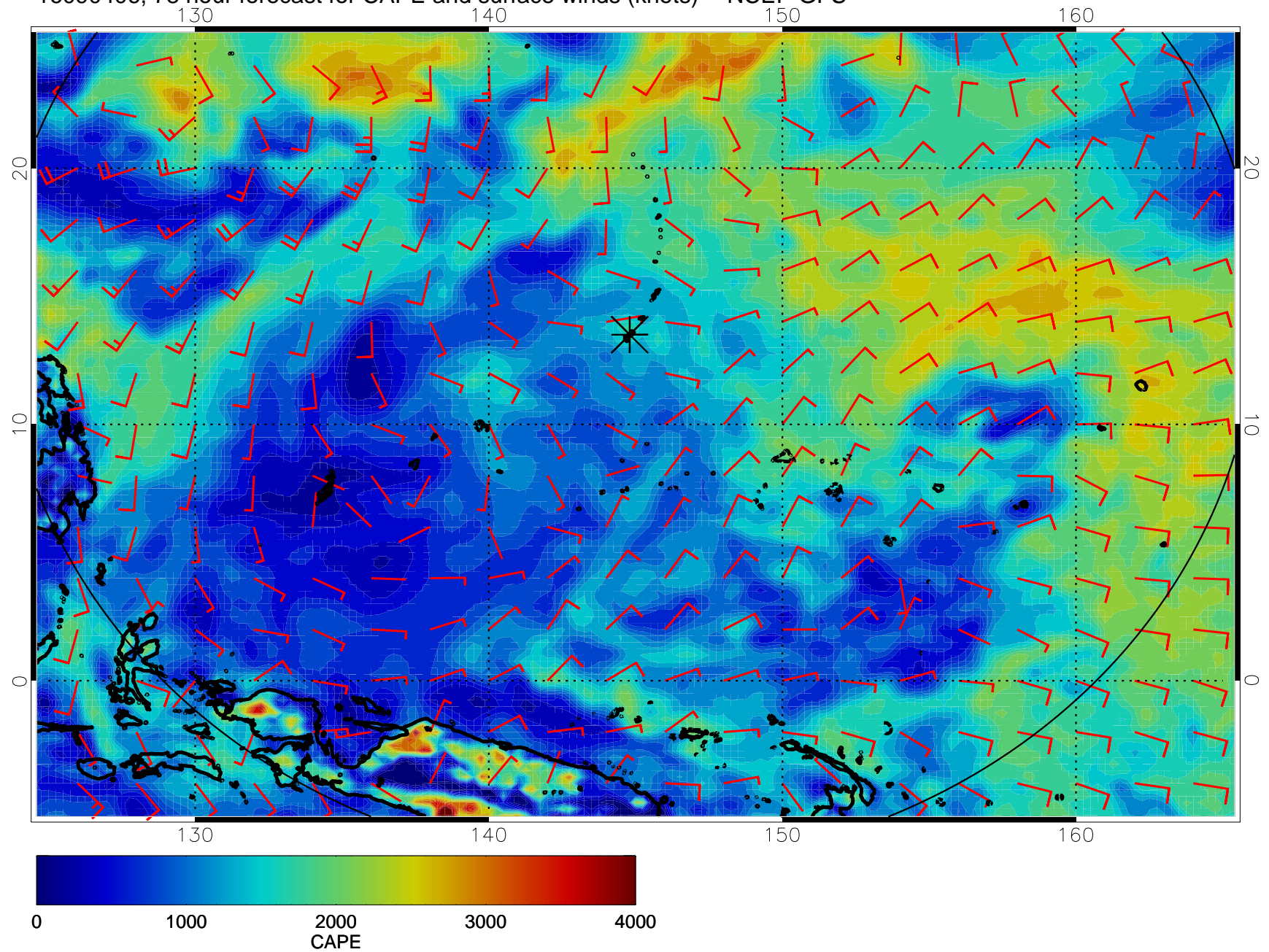
16090318, 66 hour forecast for CAPE and surface winds (knots) -- NCEP GFS



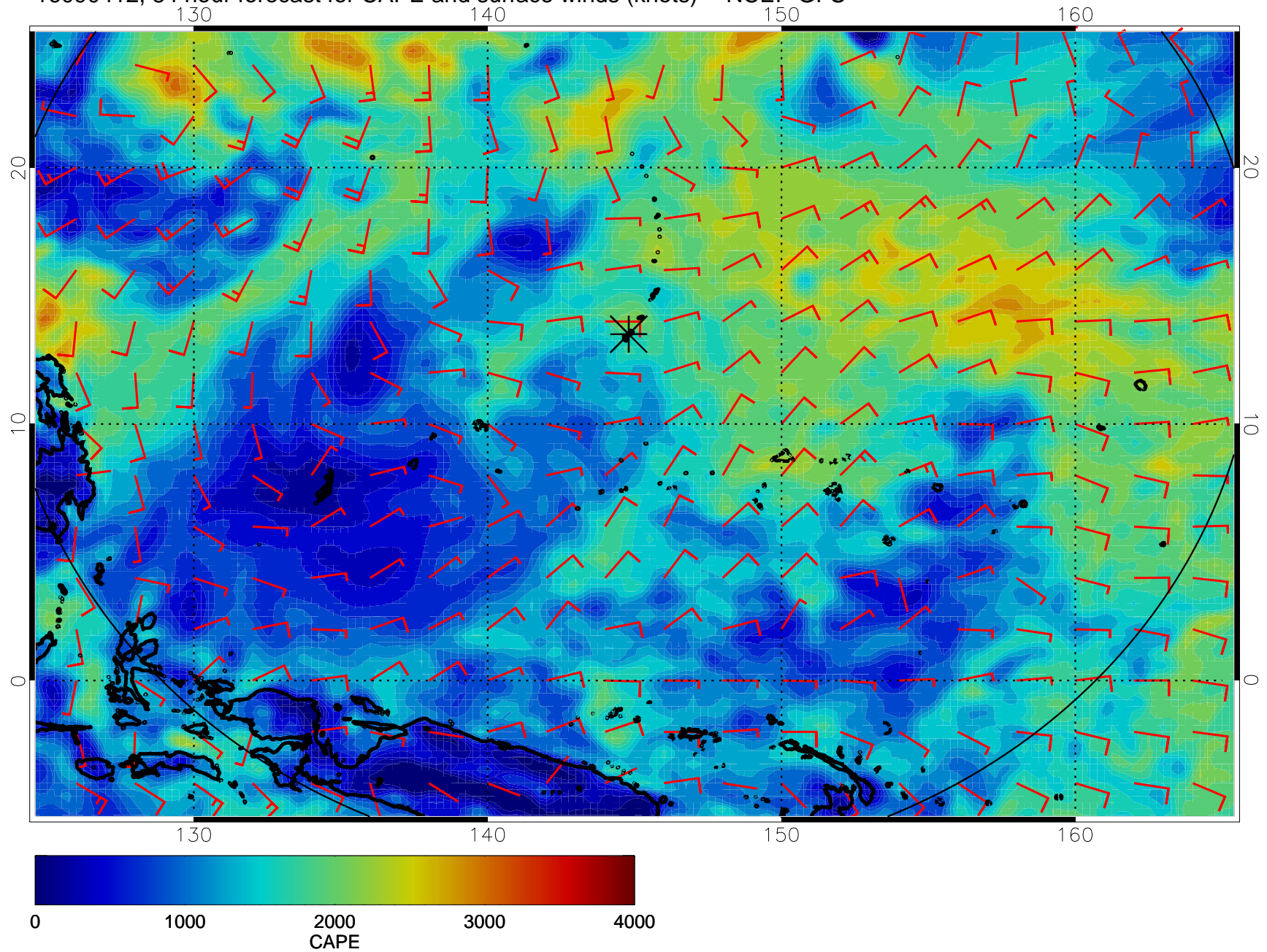
16090400, 72 hour forecast for CAPE and surface winds (knots) -- NCEP GFS



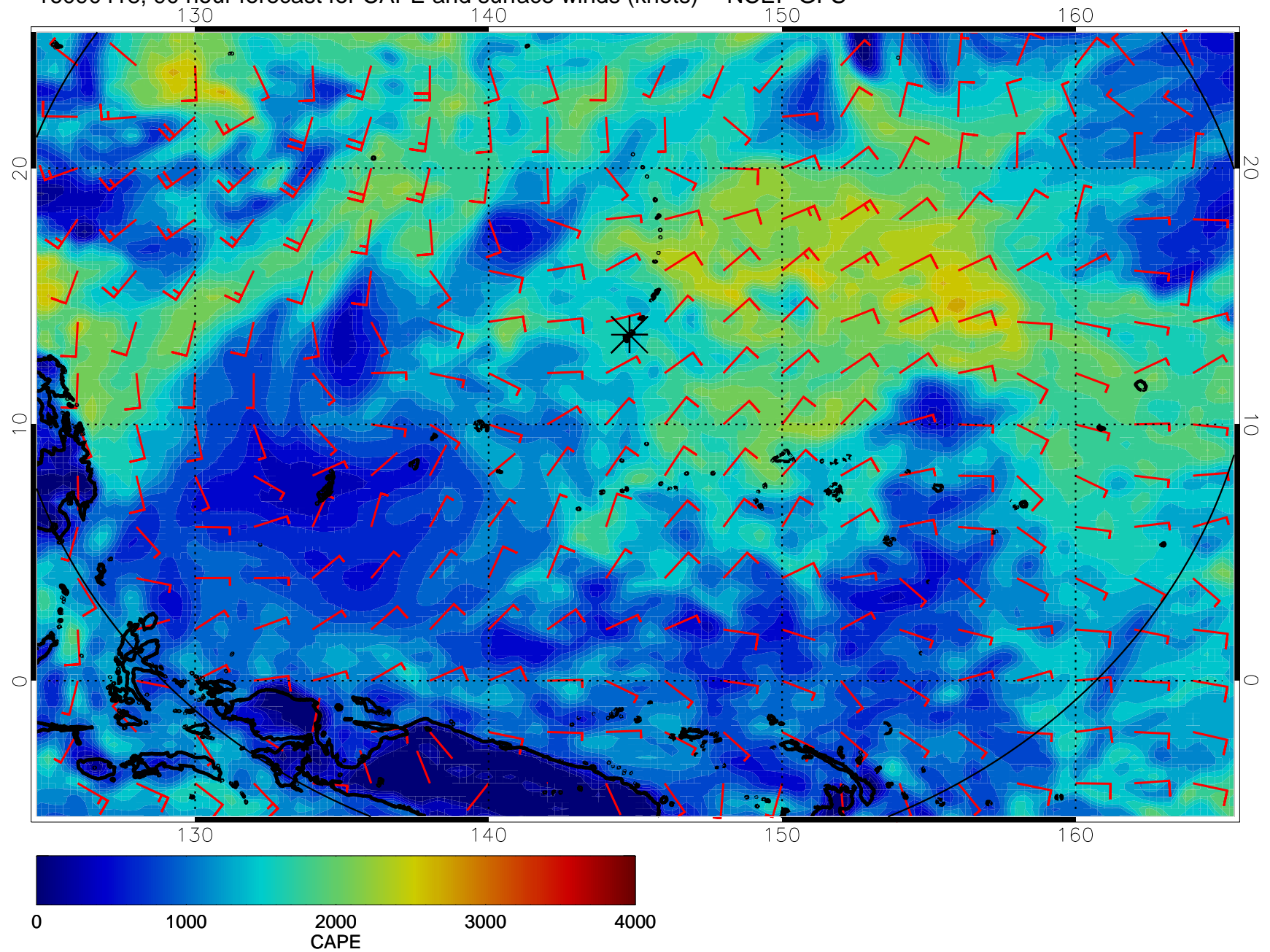
16090406, 78 hour forecast for CAPE and surface winds (knots) -- NCEP GFS



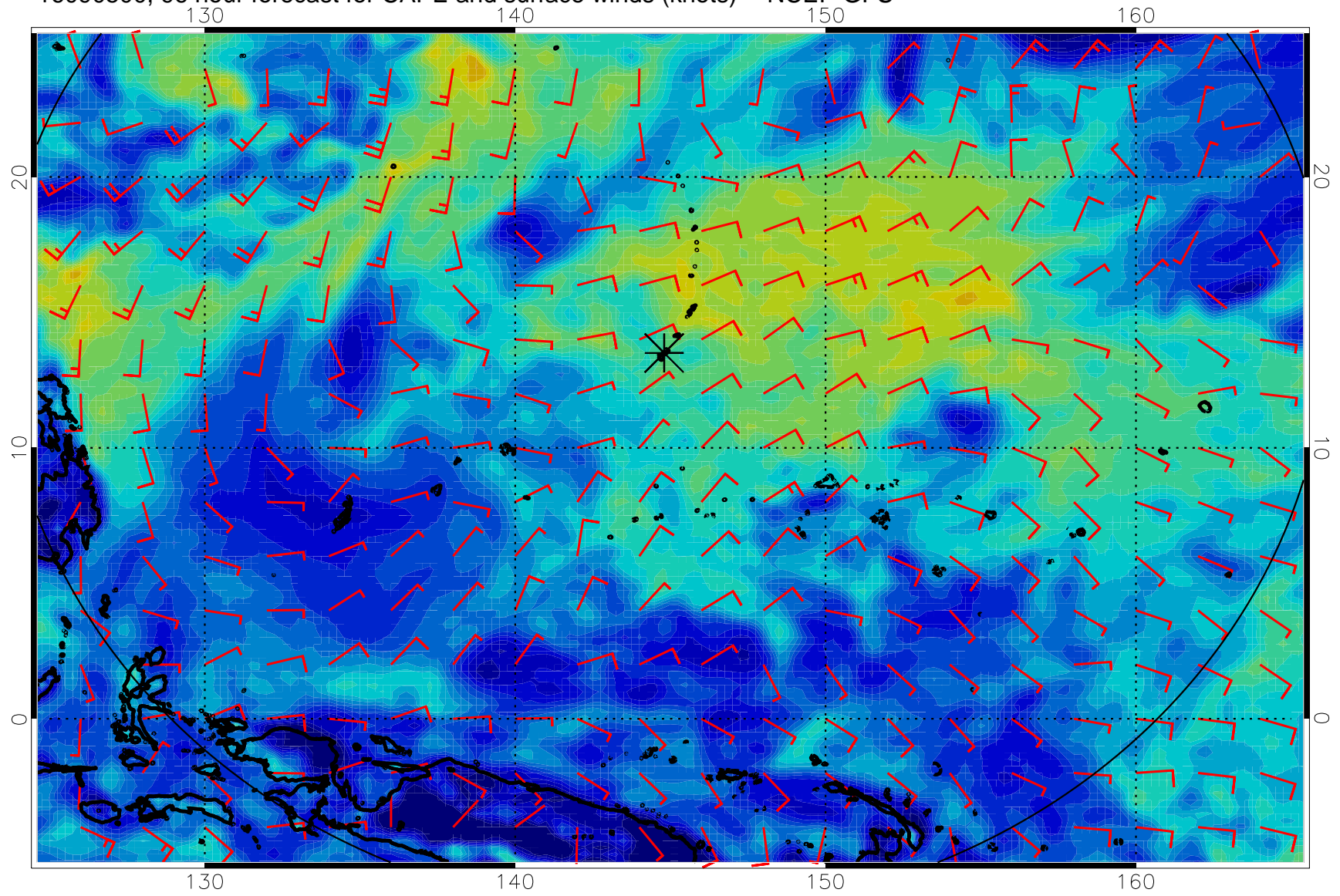
16090412, 84 hour forecast for CAPE and surface winds (knots) -- NCEP GFS



16090418, 90 hour forecast for CAPE and surface winds (knots) -- NCEP GFS

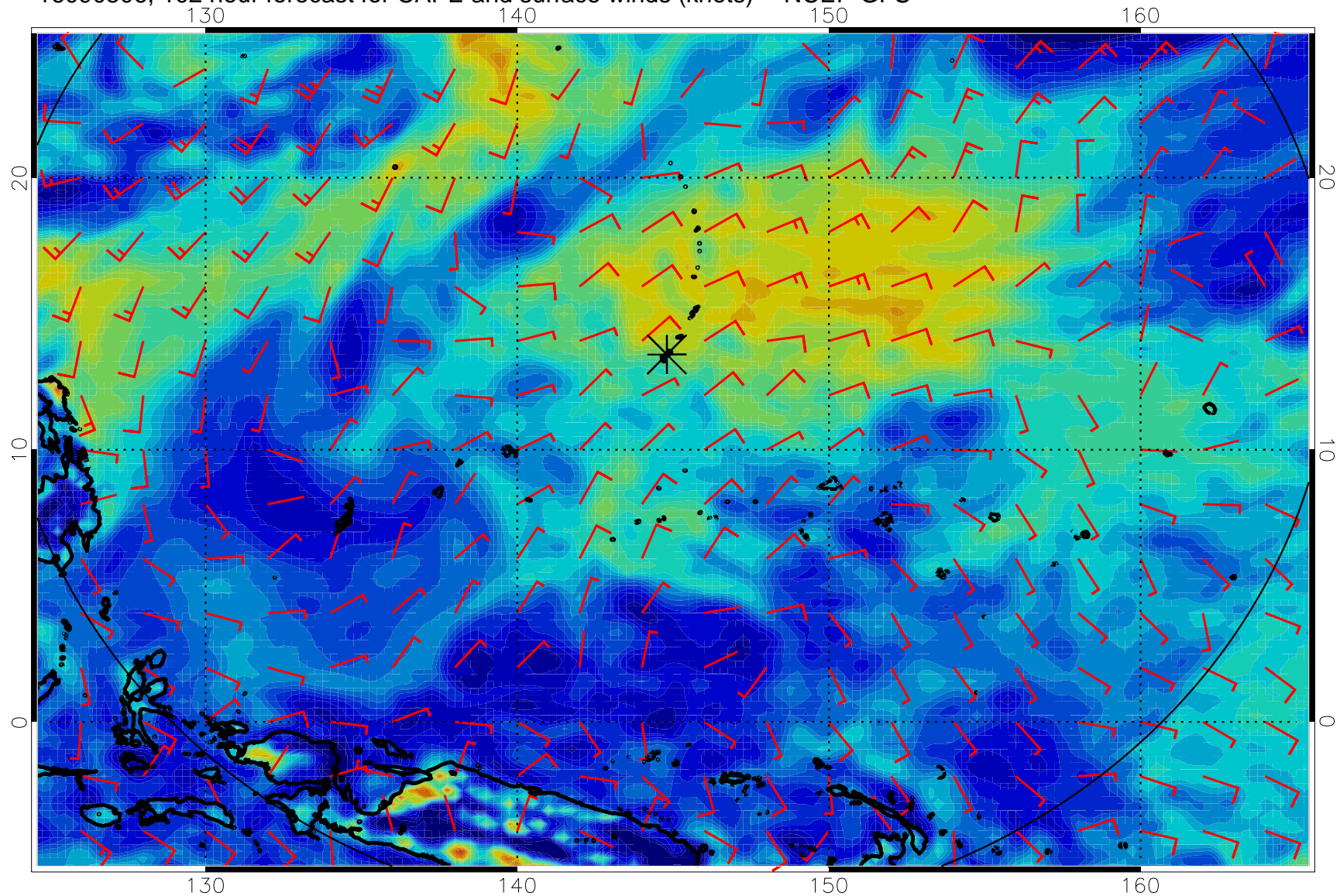


16090500, 96 hour forecast for CAPE and surface winds (knots) -- NCEP GFS

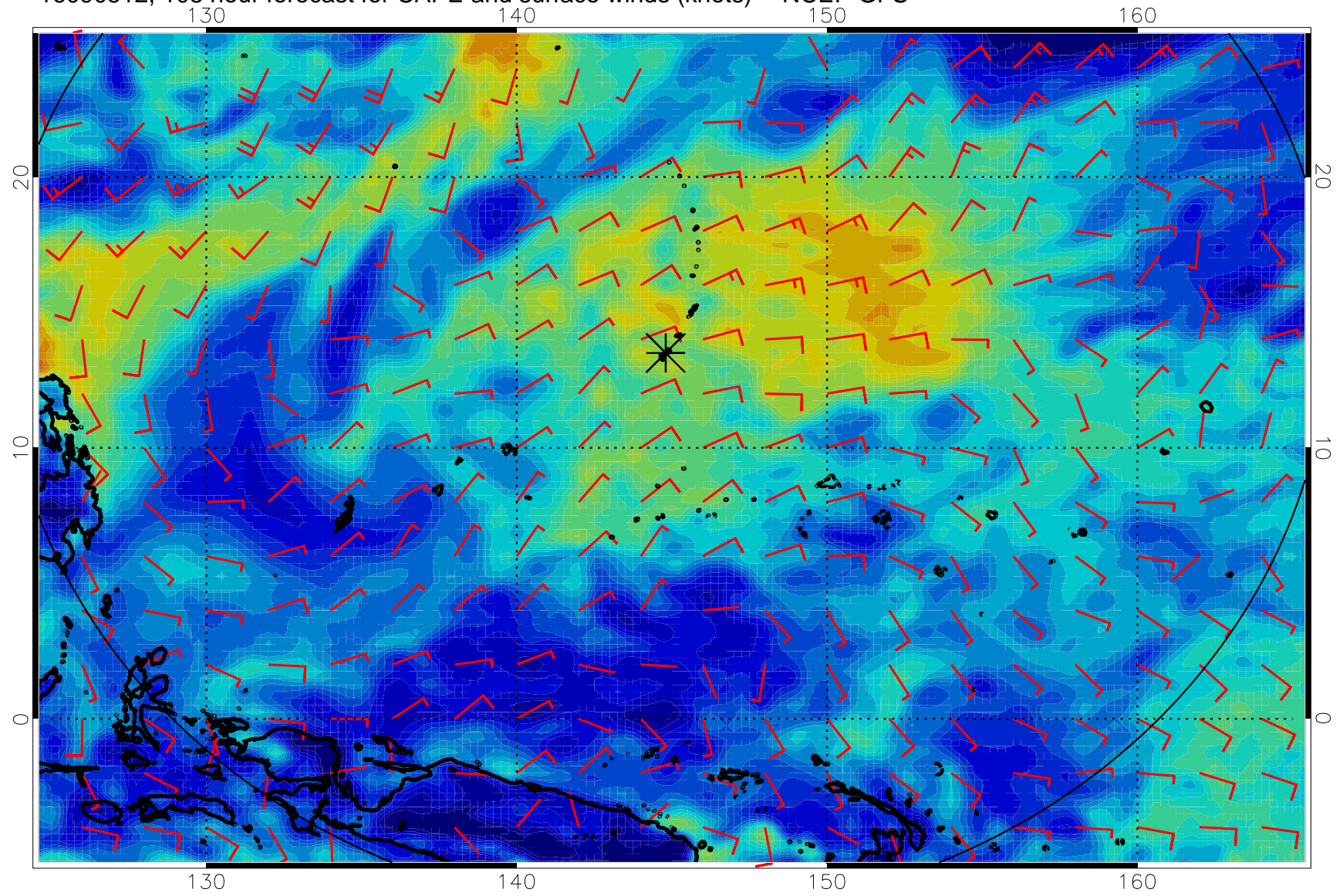




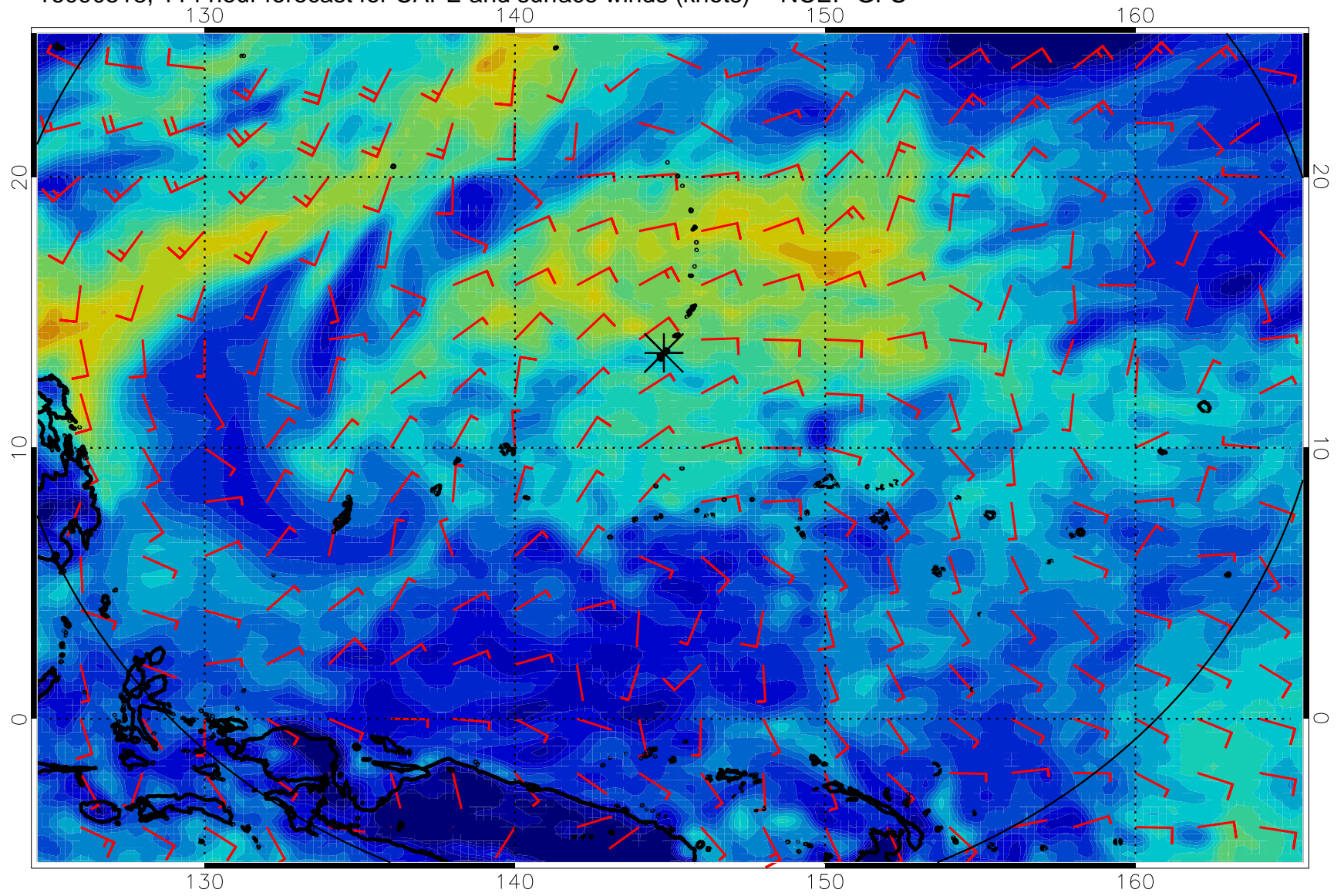
16090506, 102 hour forecast for CAPE and surface winds (knots) -- NCEP GFS



16090512, 108 hour forecast for CAPE and surface winds (knots) -- NCEP GFS



16090518, 114 hour forecast for CAPE and surface winds (knots) -- NCEP GFS



16090600, 120 hour forecast for CAPE and surface winds (knots) -- NCEP GFS

