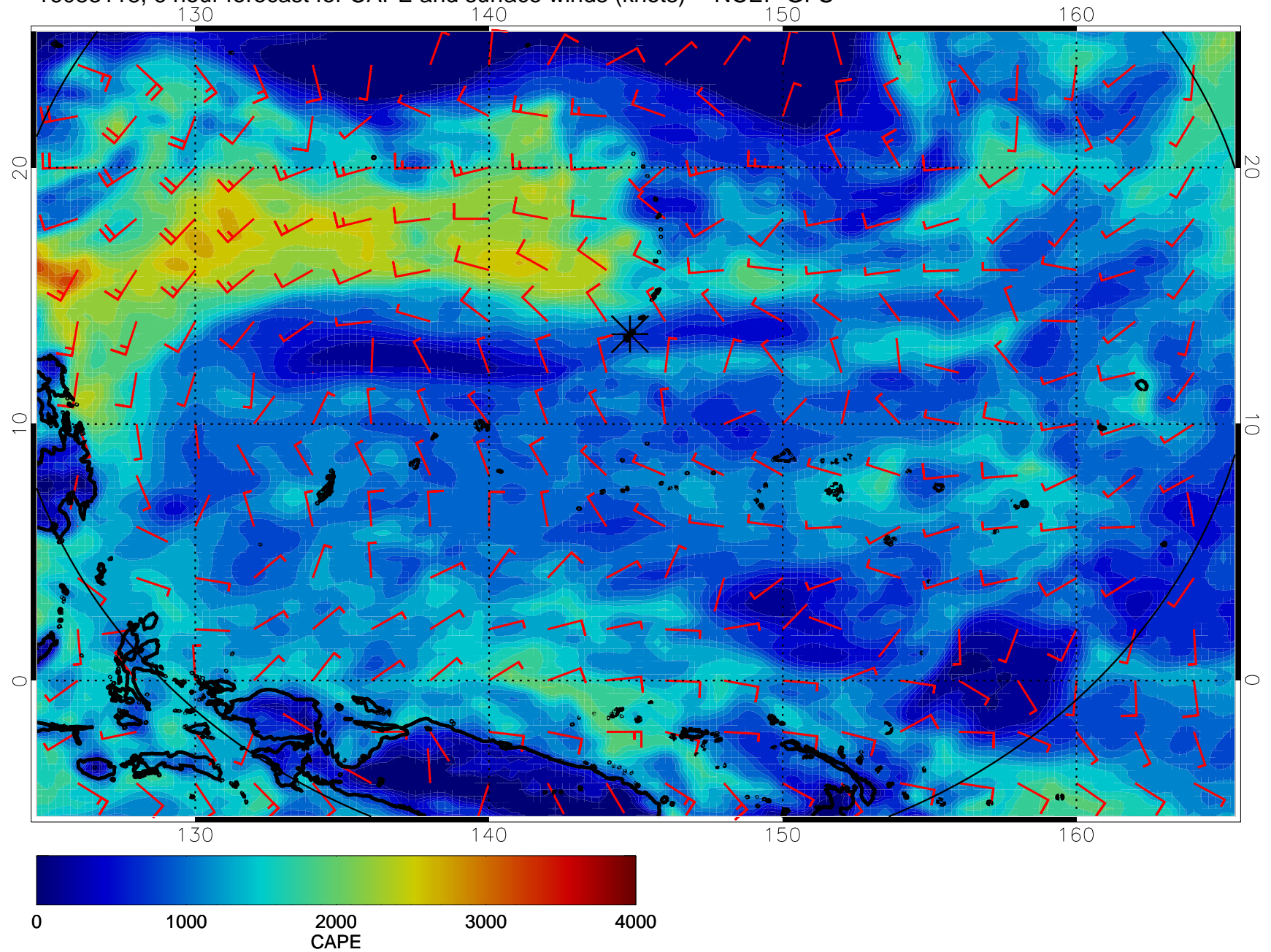
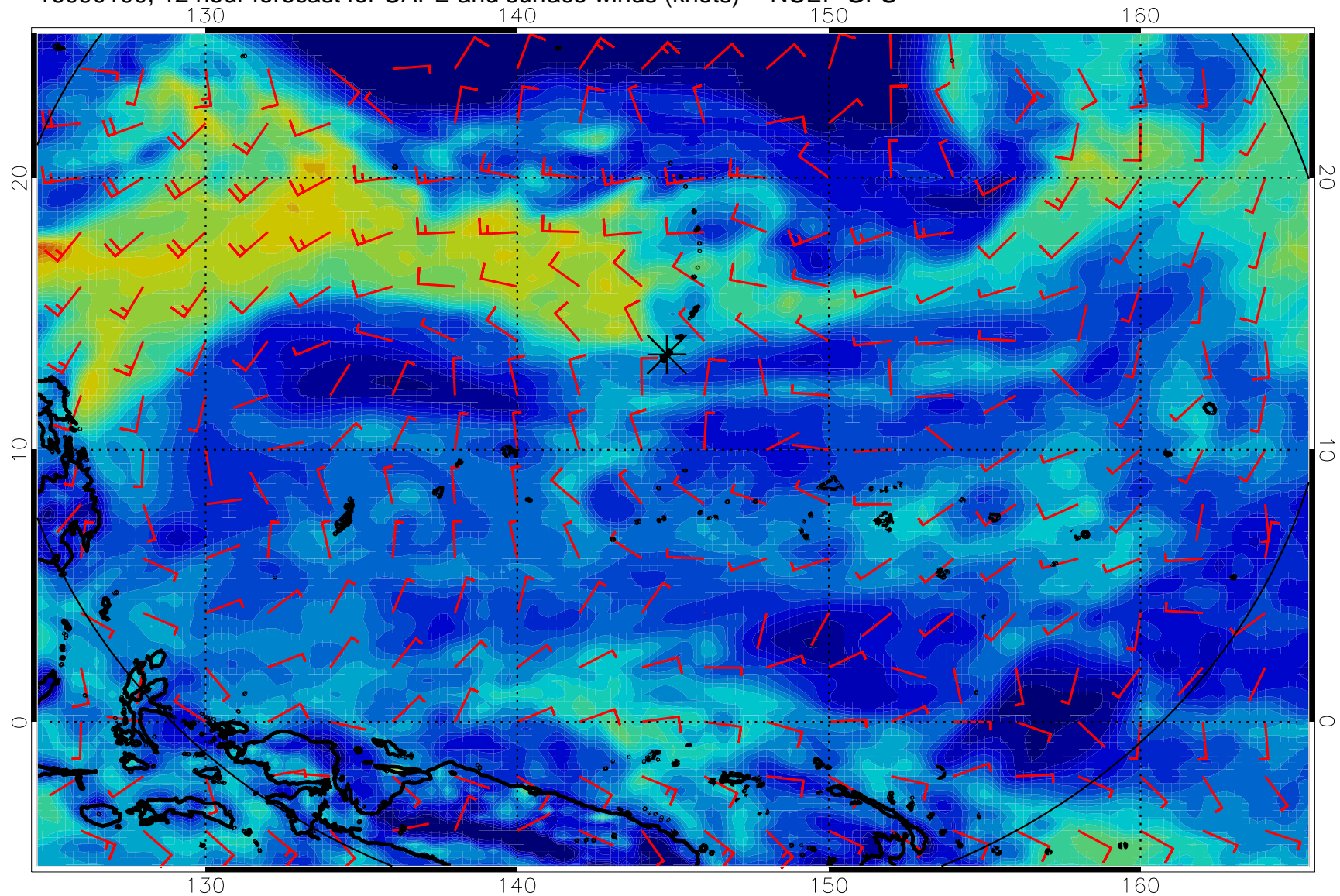


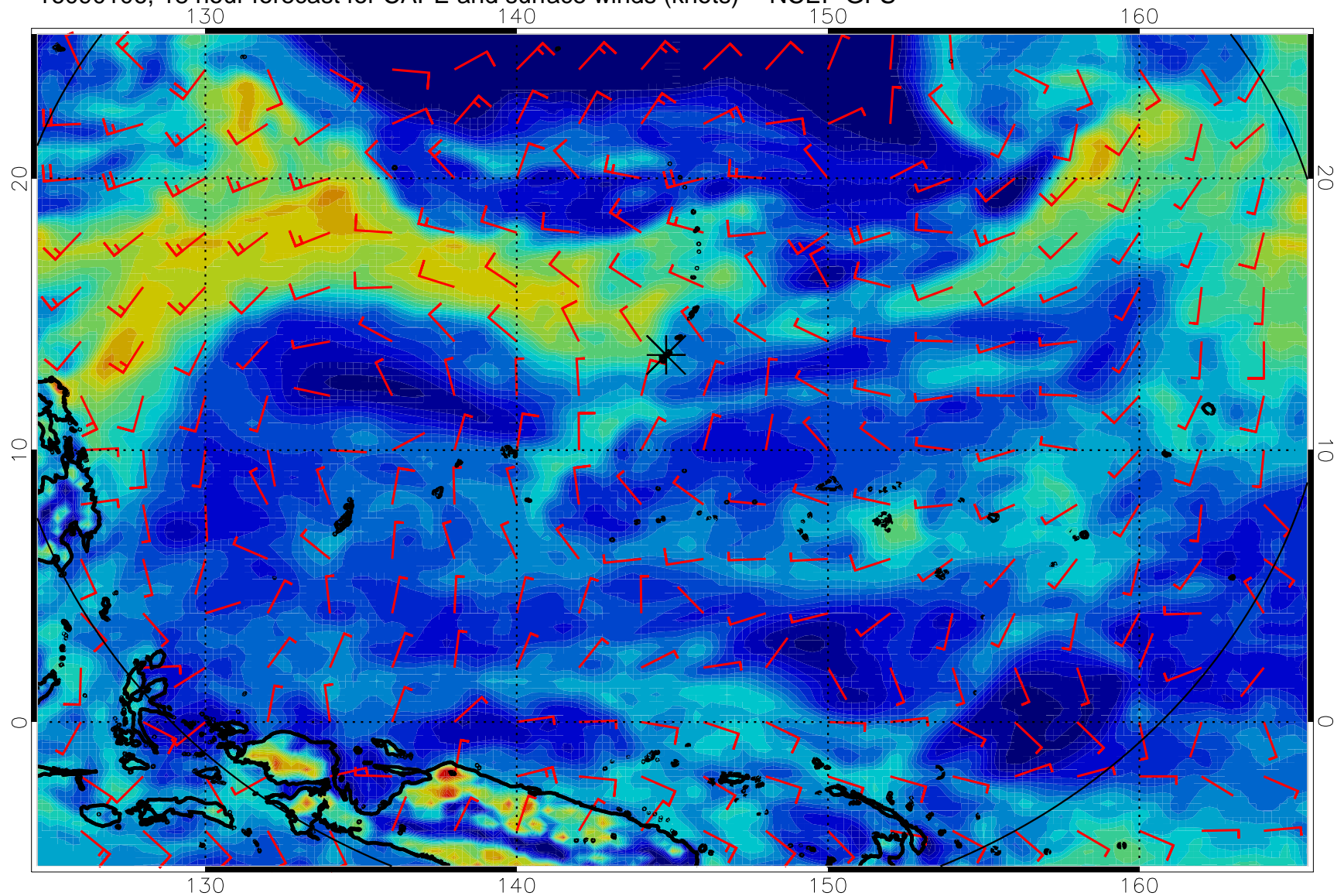
16083118, 6 hour forecast for CAPE and surface winds (knots) -- NCEP GFS



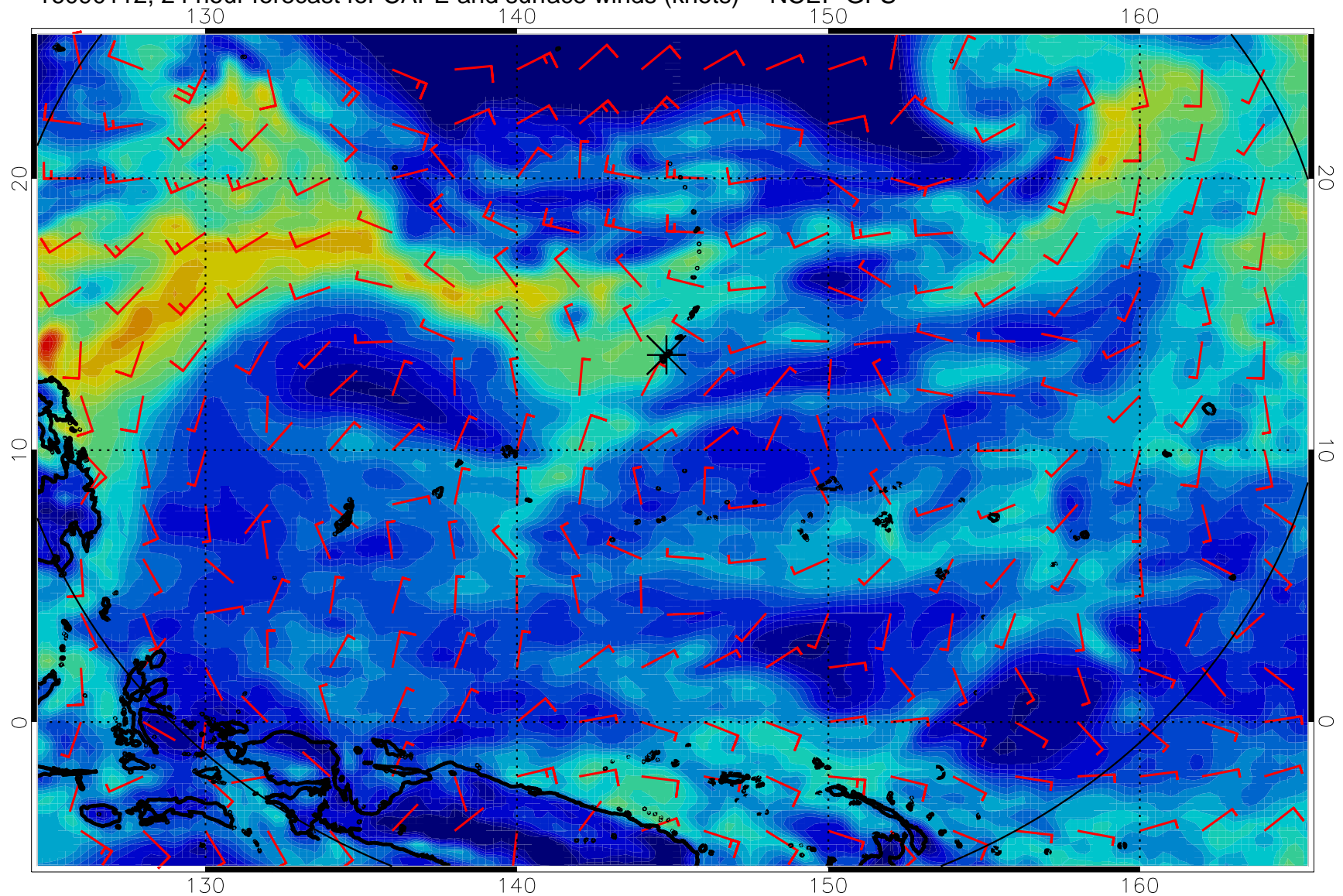
16090100, 12 hour forecast for CAPE and surface winds (knots) -- NCEP GFS



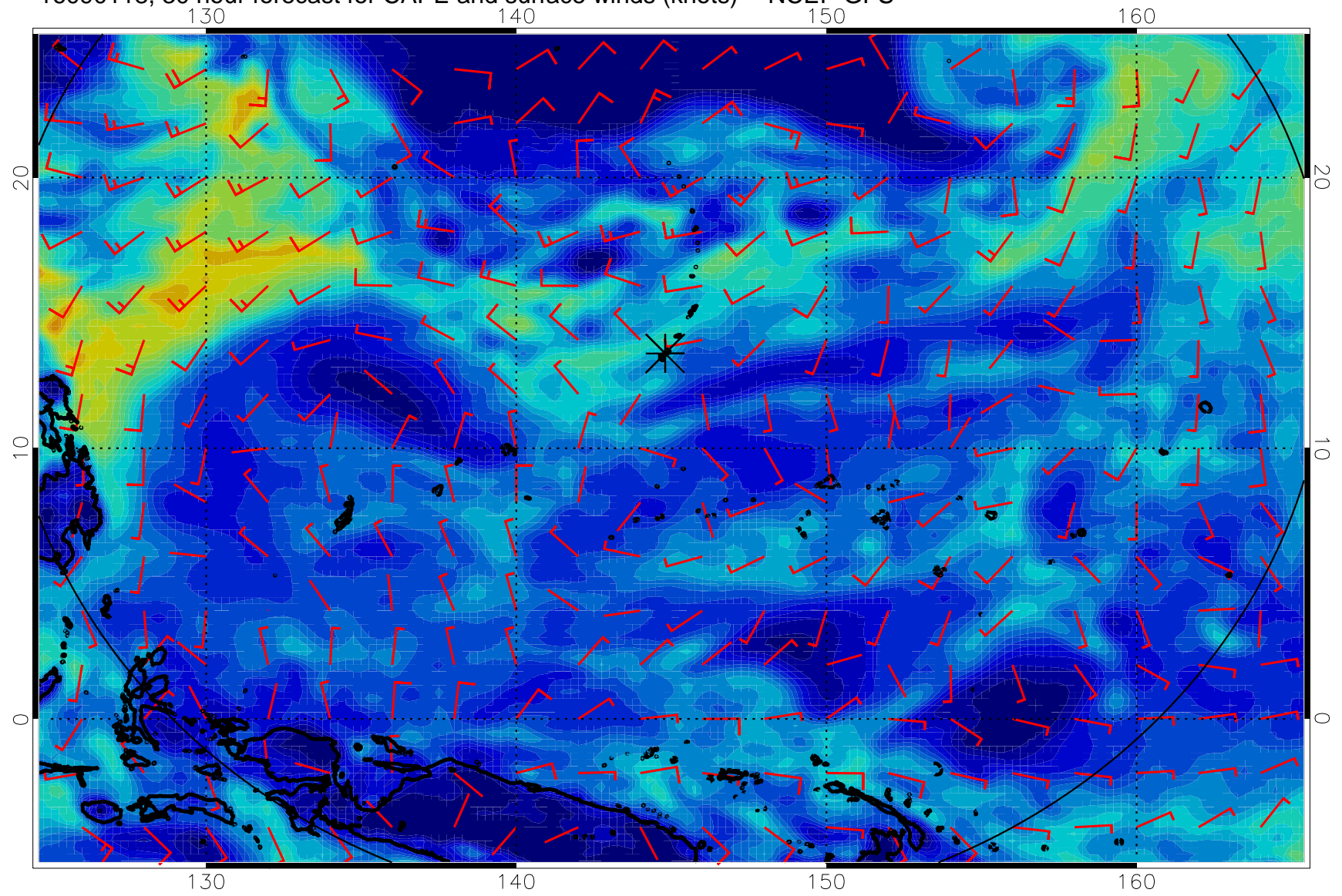
16090106, 18 hour forecast for CAPE and surface winds (knots) -- NCEP GFS



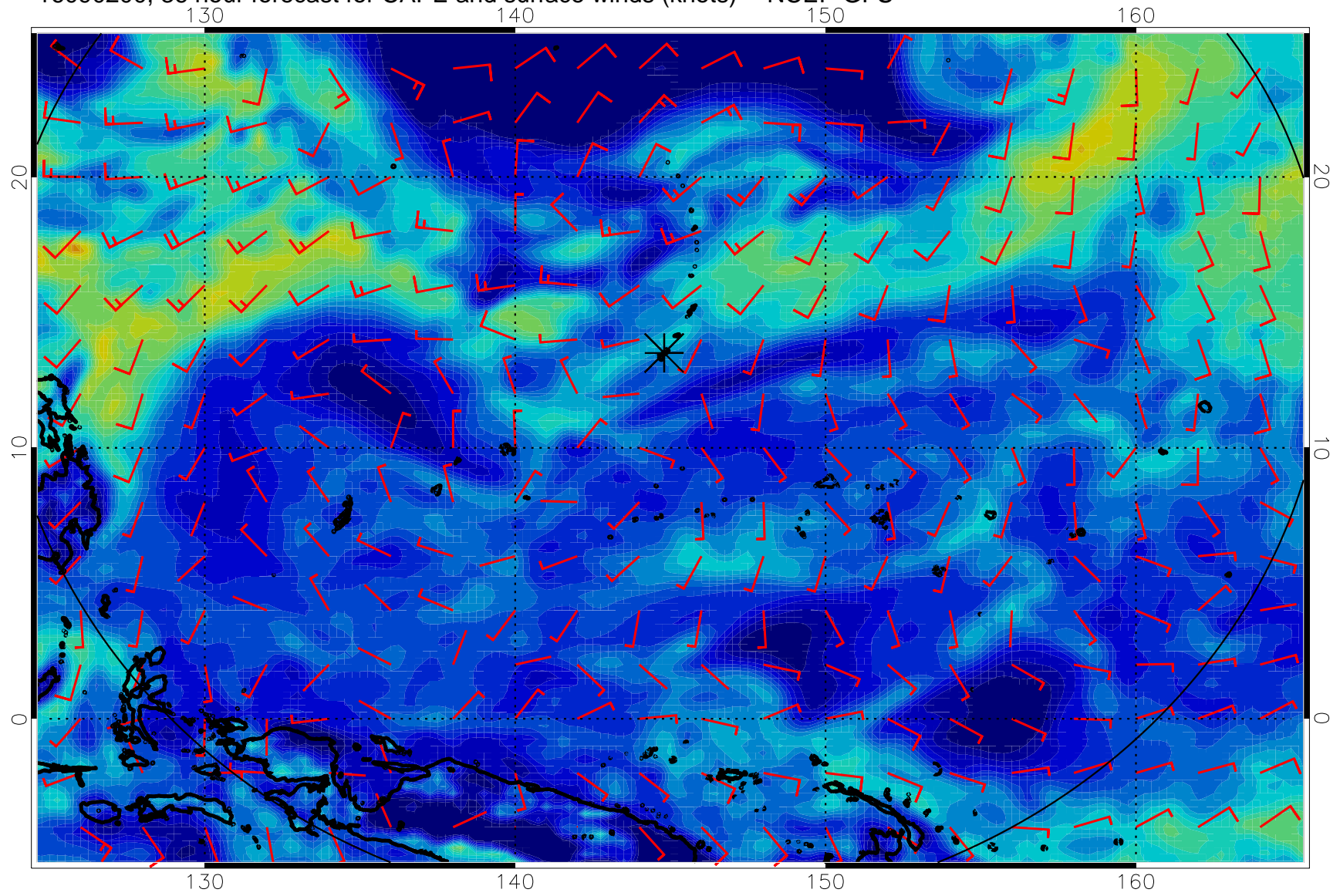
16090112, 24 hour forecast for CAPE and surface winds (knots) -- NCEP GFS



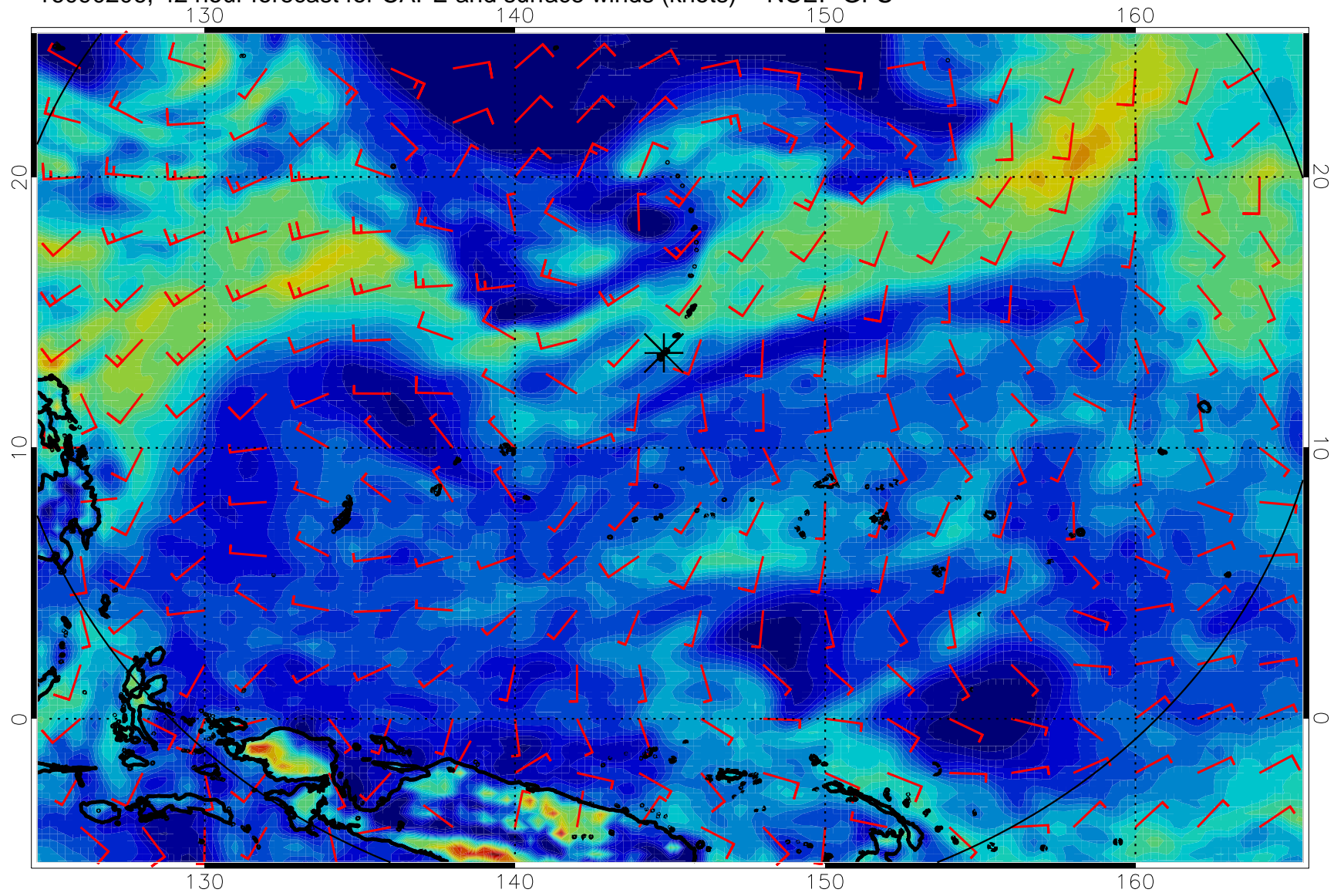
16090118, 30 hour forecast for CAPE and surface winds (knots) -- NCEP GFS



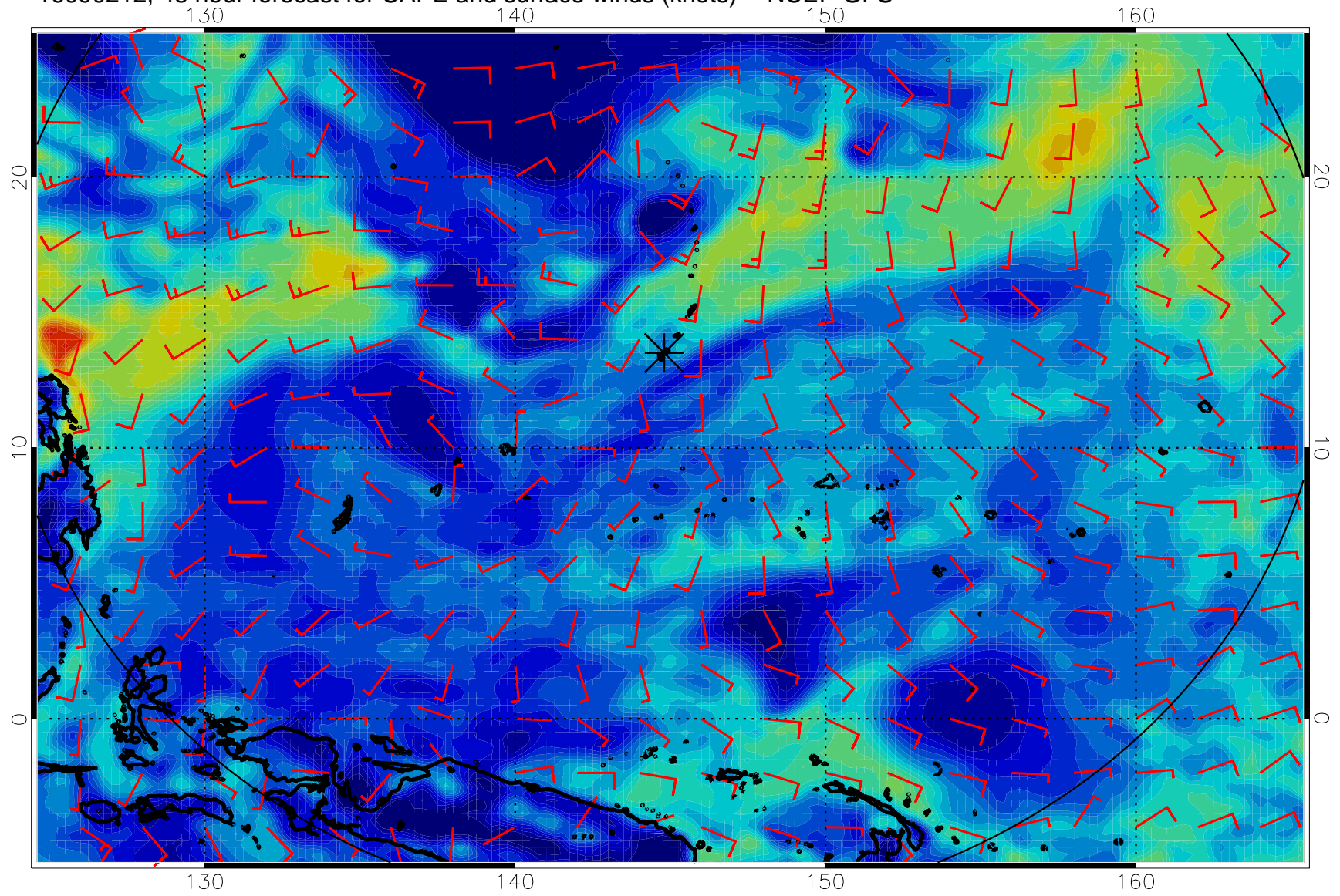
16090200, 36 hour forecast for CAPE and surface winds (knots) -- NCEP GFS



16090206, 42 hour forecast for CAPE and surface winds (knots) -- NCEP GFS

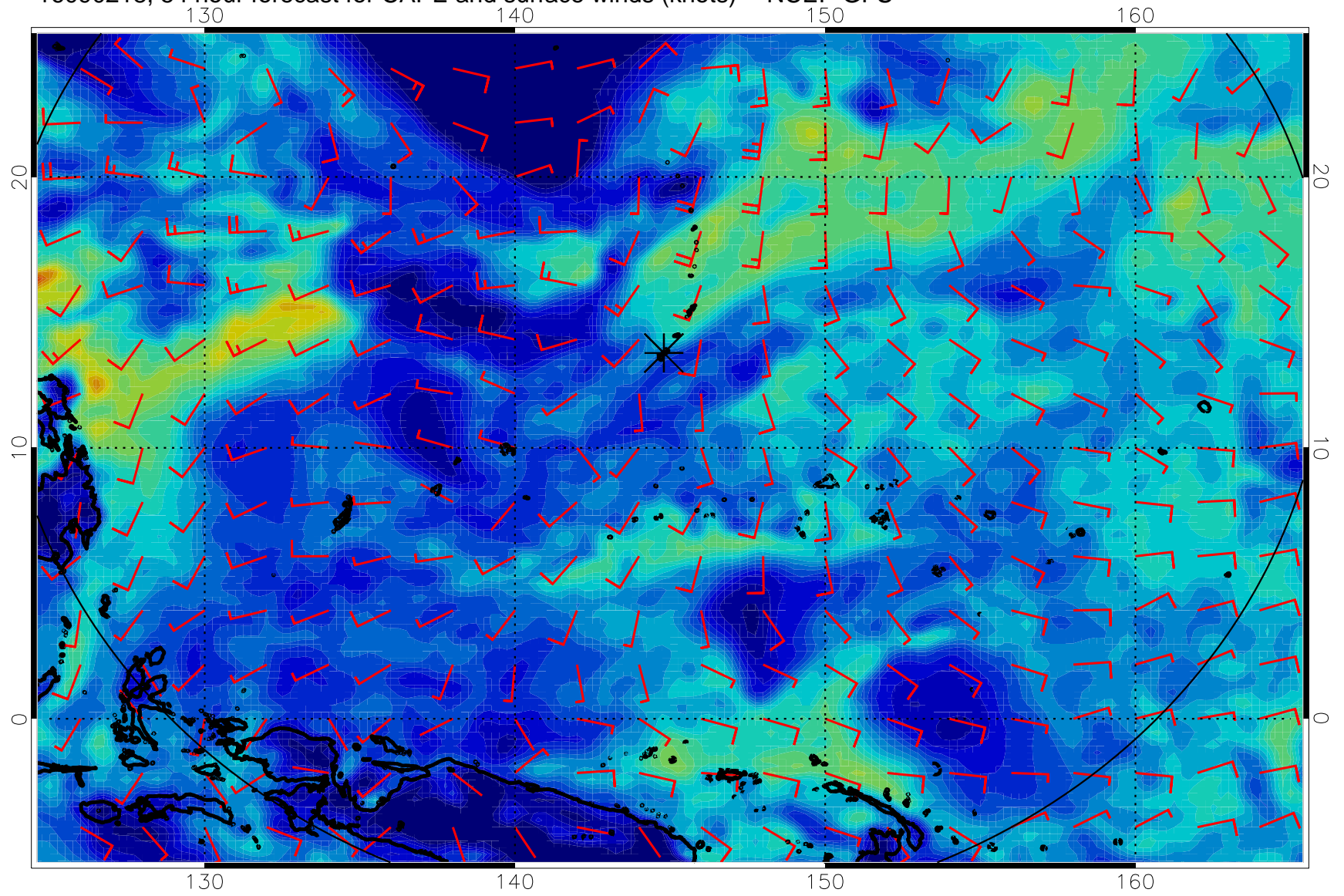


16090212, 48 hour forecast for CAPE and surface winds (knots) -- NCEP GFS

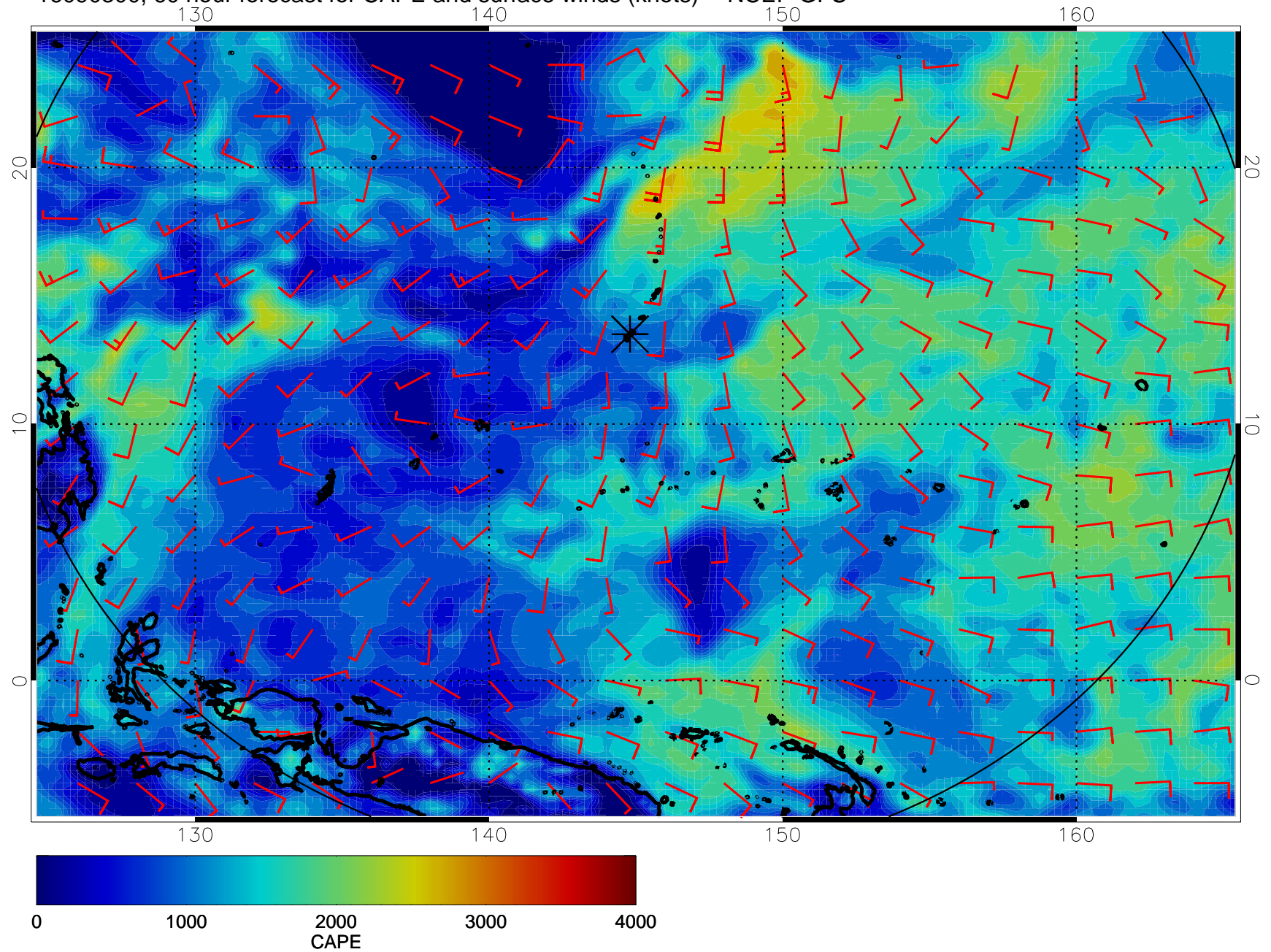




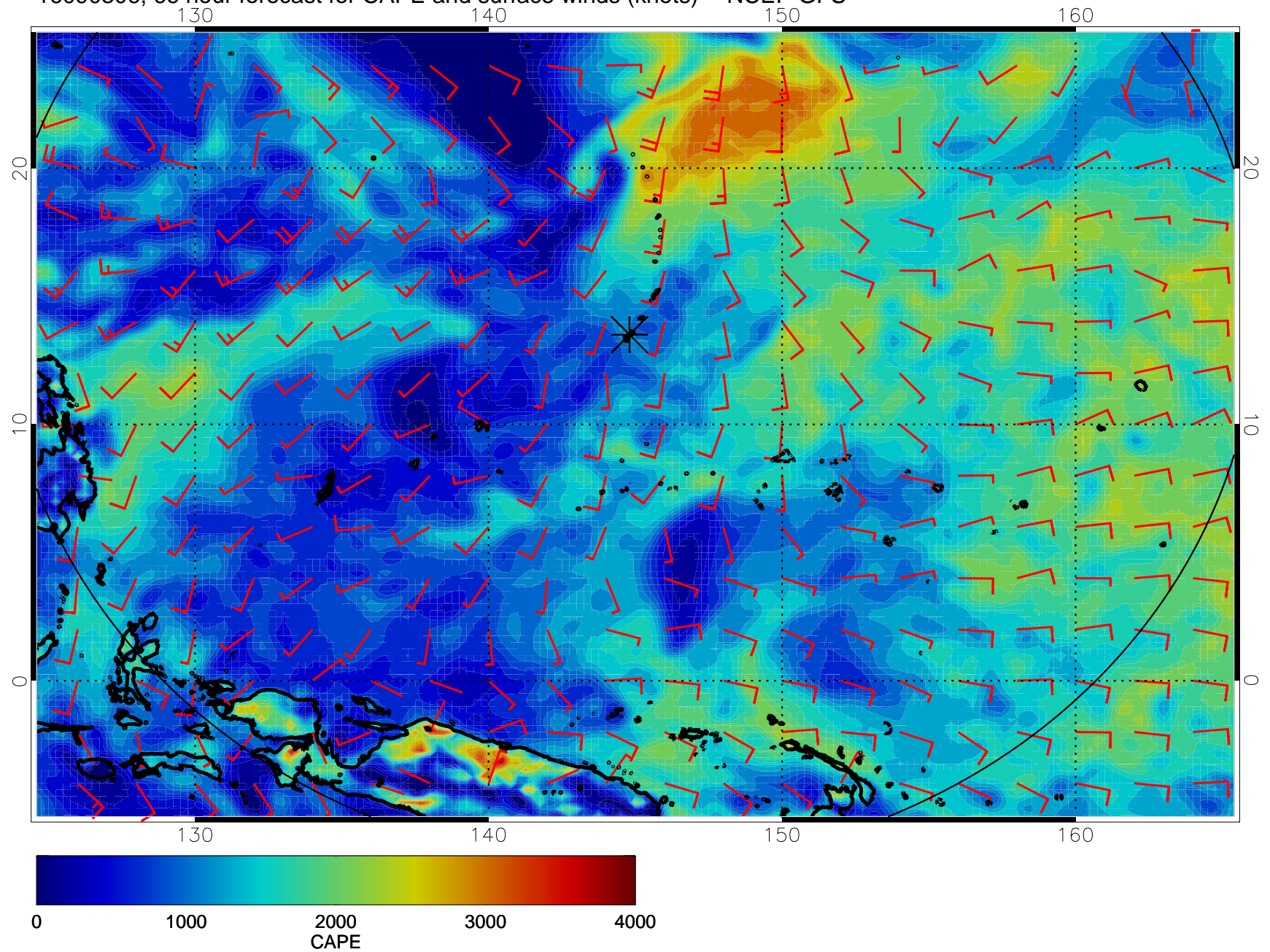
16090218, 54 hour forecast for CAPE and surface winds (knots) -- NCEP GFS



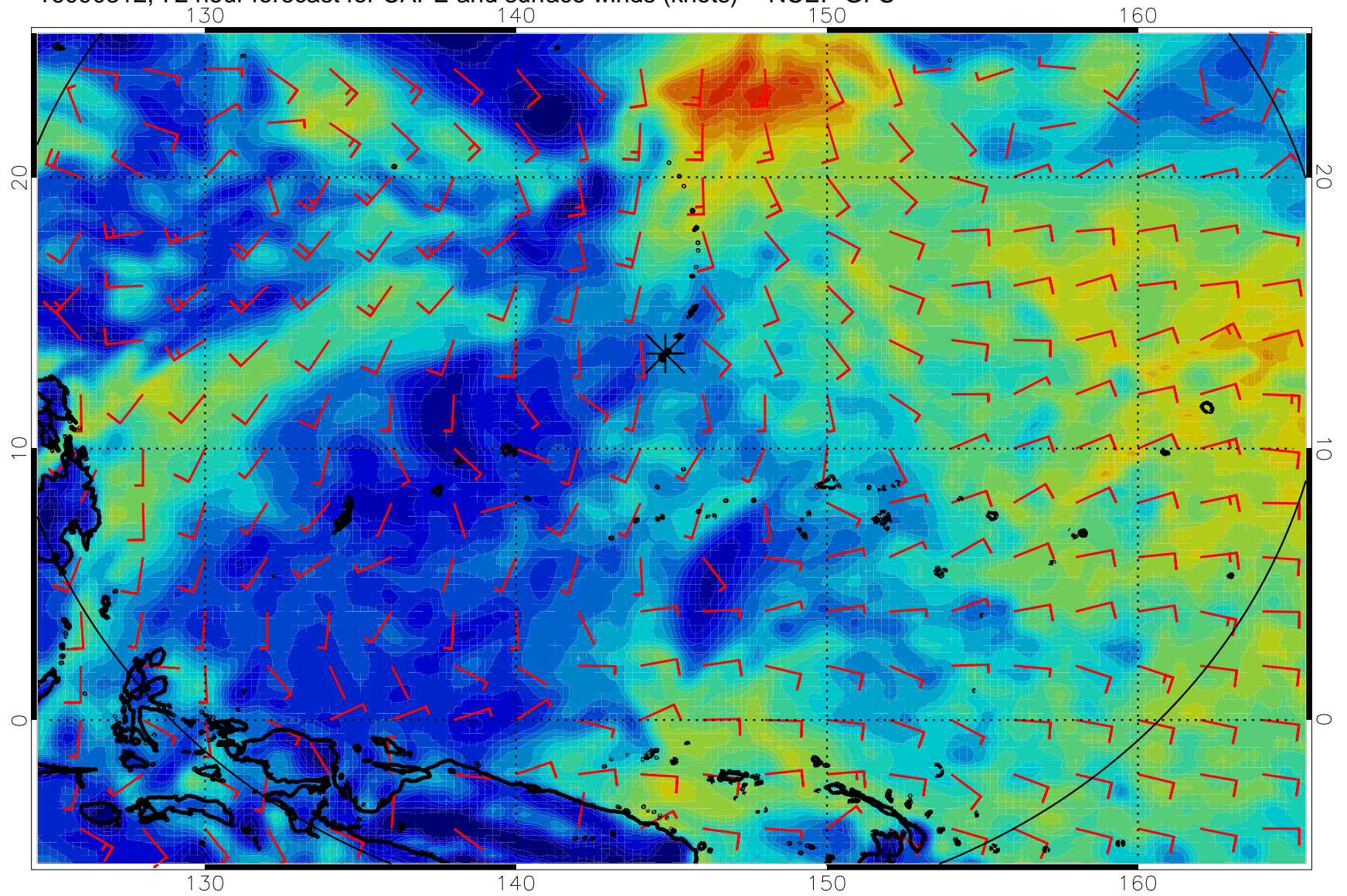
16090300, 60 hour forecast for CAPE and surface winds (knots) -- NCEP GFS



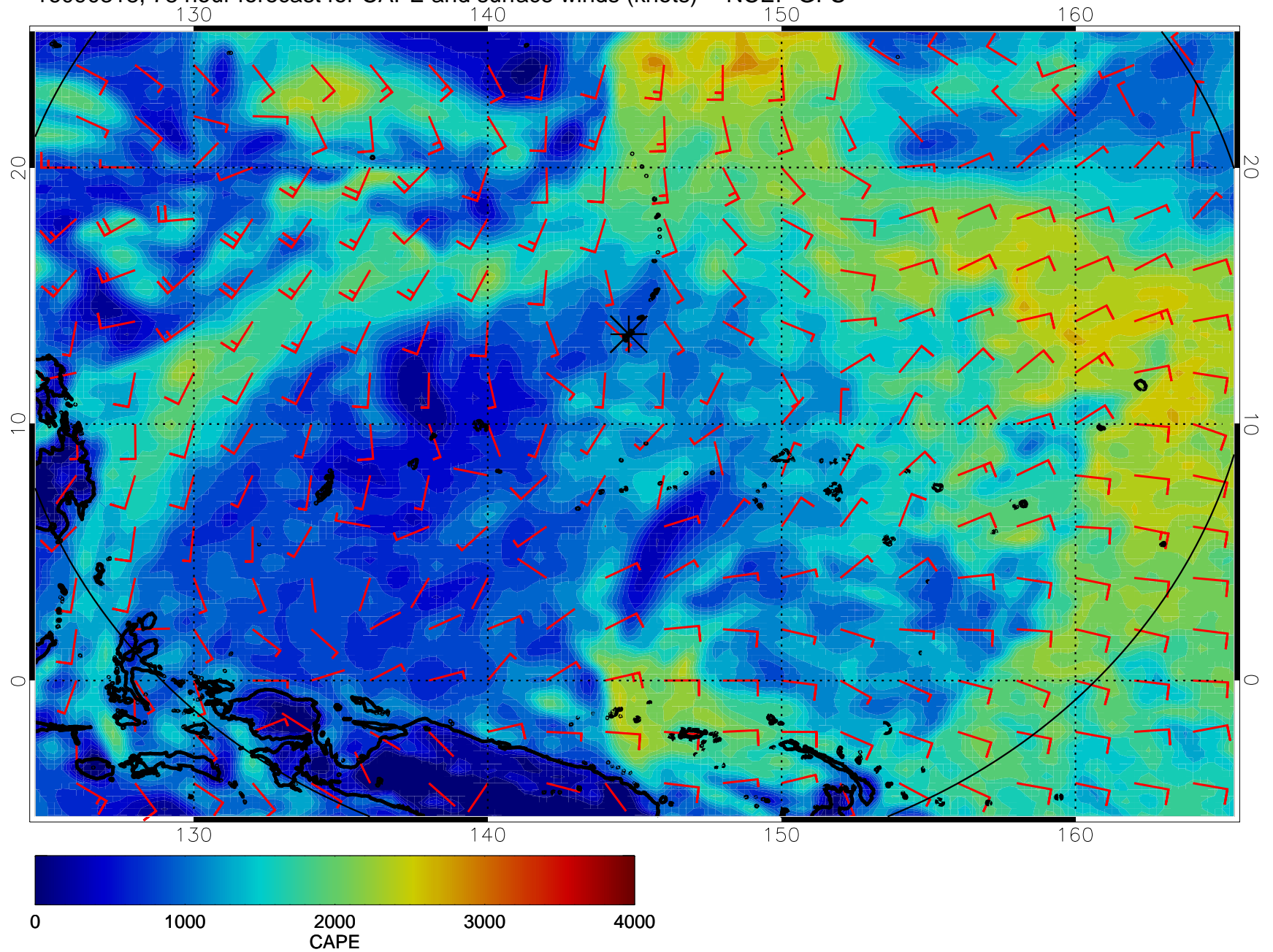
16090306, 66 hour forecast for CAPE and surface winds (knots) -- NCEP GFS



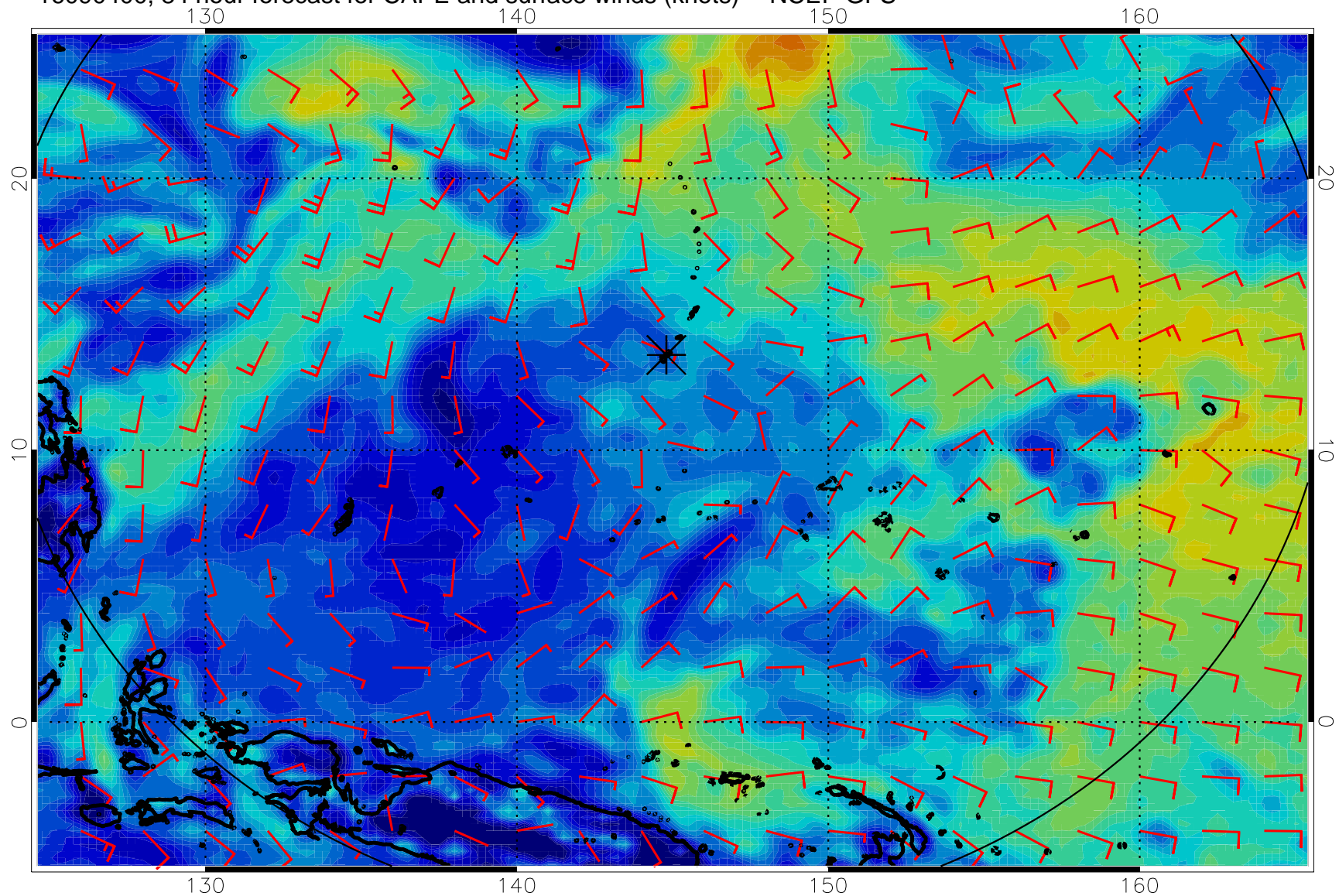
16090312, 72 hour forecast for CAPE and surface winds (knots) -- NCEP GFS



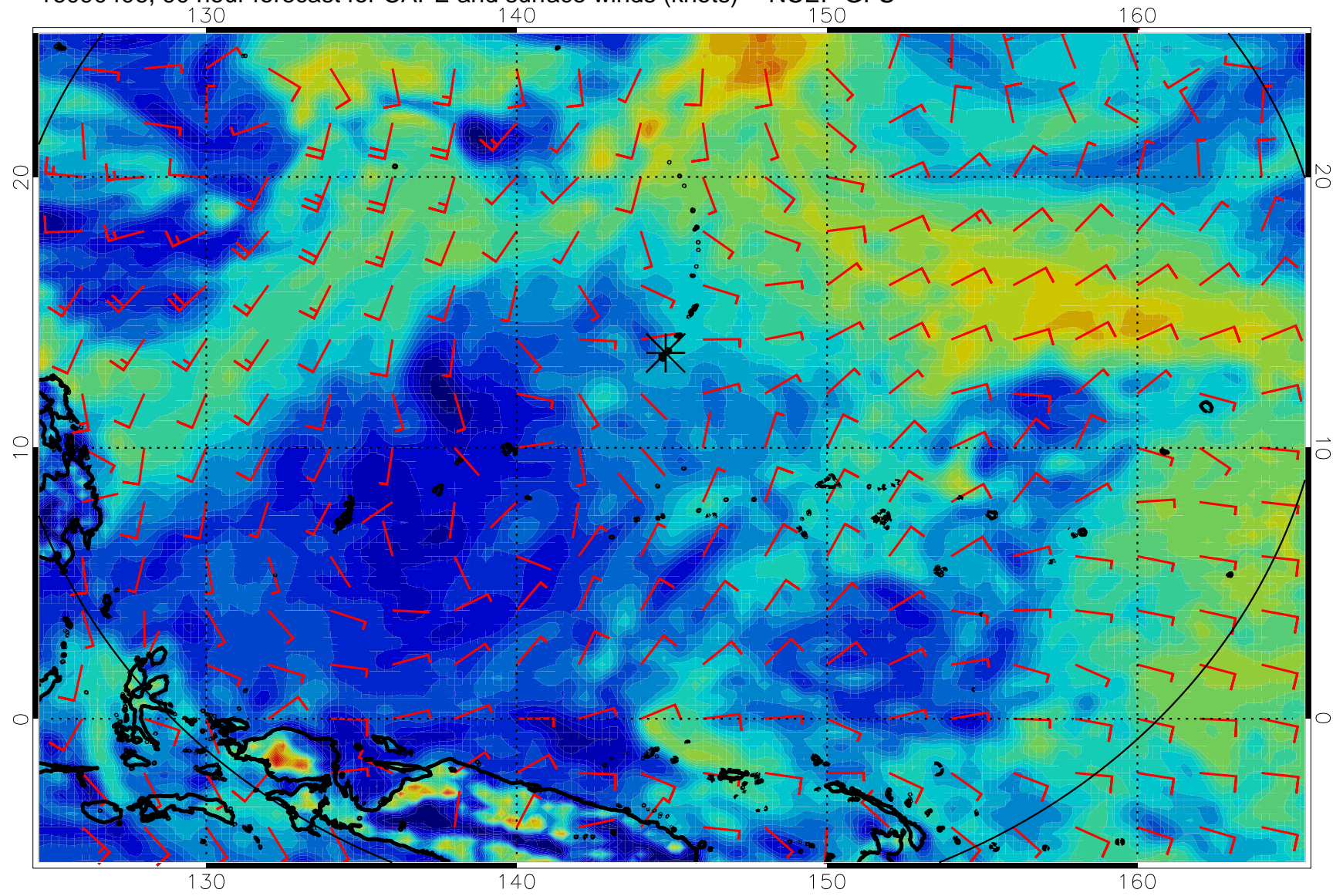
16090318, 78 hour forecast for CAPE and surface winds (knots) -- NCEP GFS



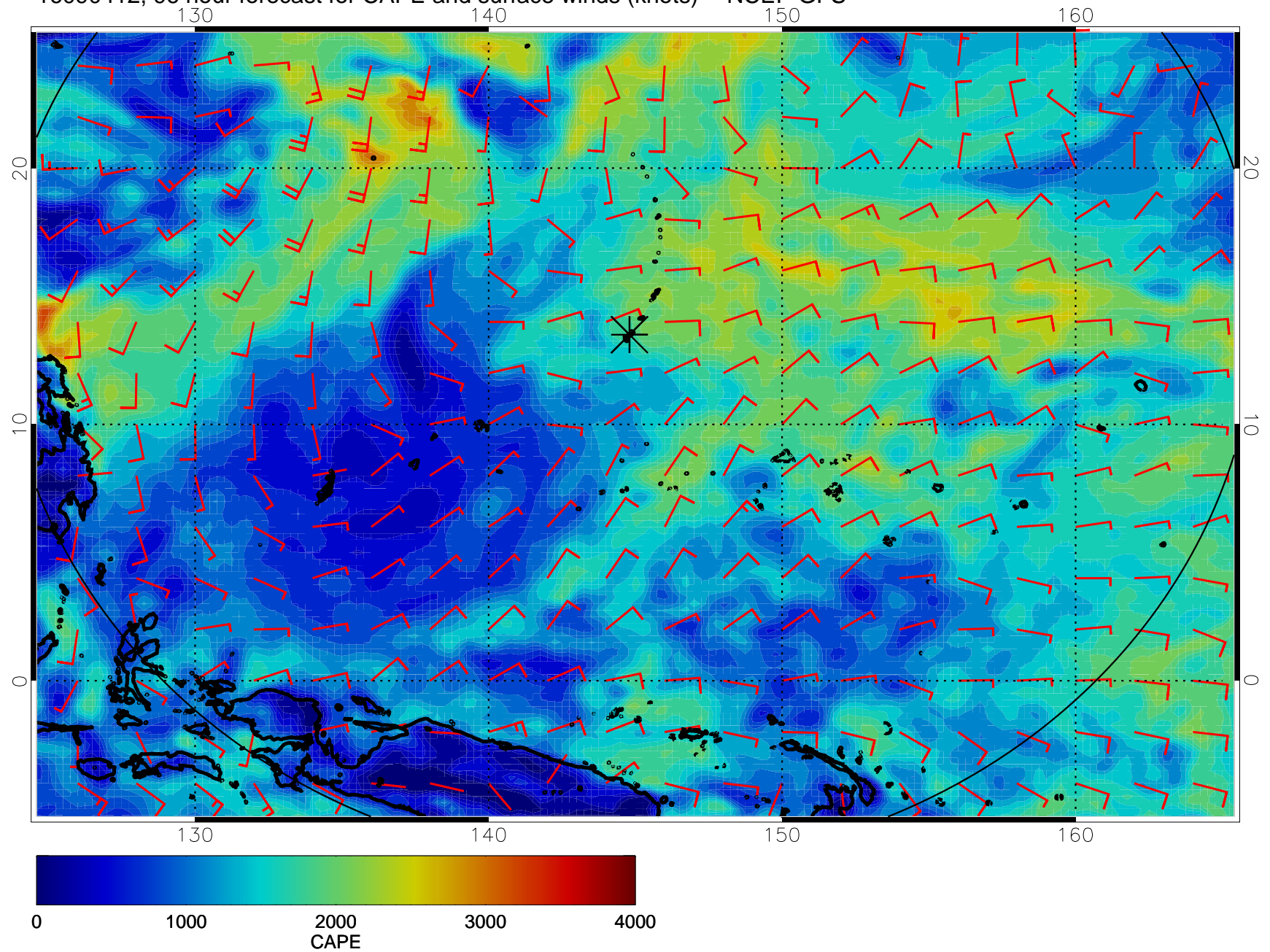
16090400, 84 hour forecast for CAPE and surface winds (knots) -- NCEP GFS



16090406, 90 hour forecast for CAPE and surface winds (knots) -- NCEP GFS

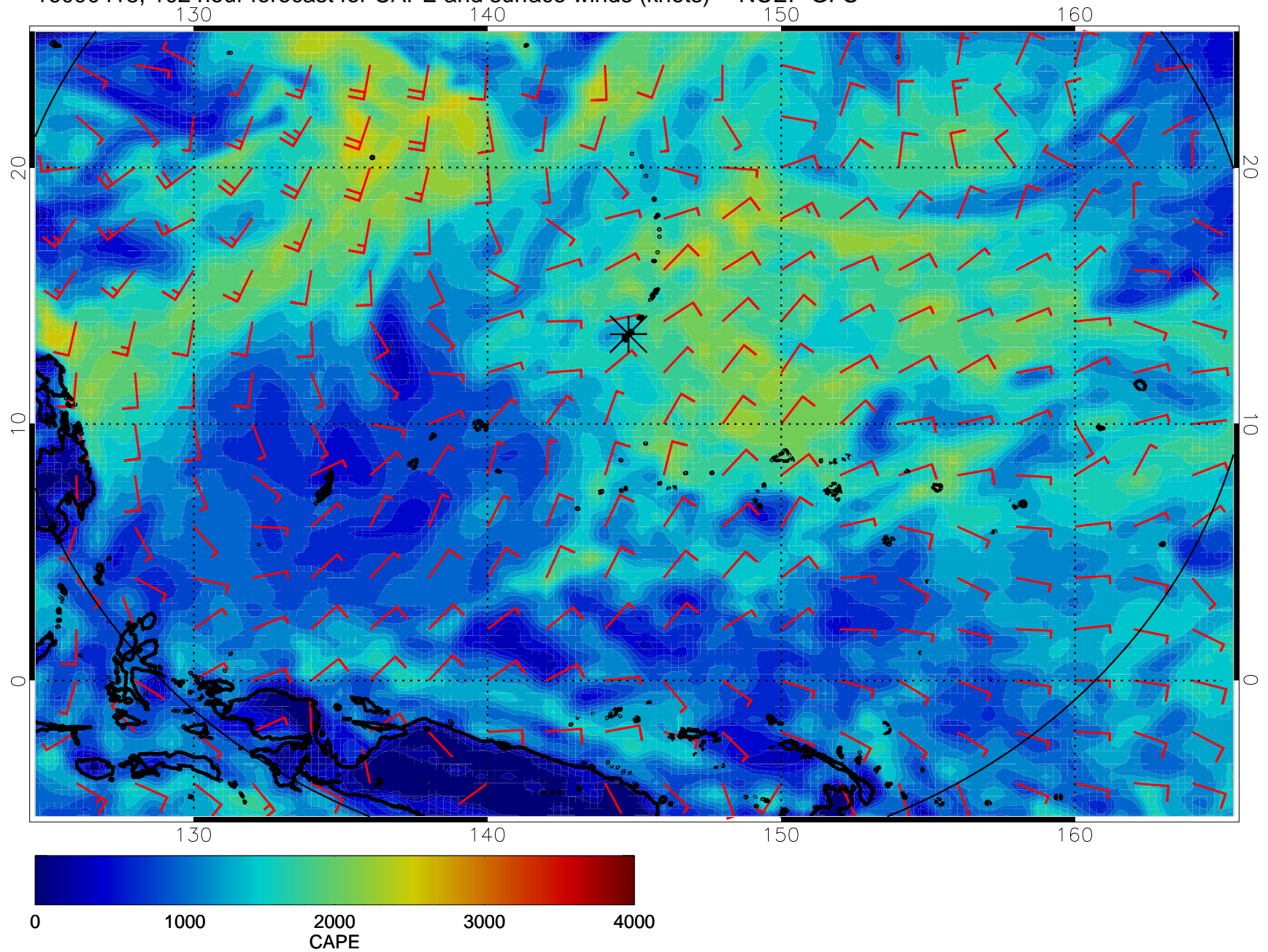


16090412, 96 hour forecast for CAPE and surface winds (knots) -- NCEP GFS

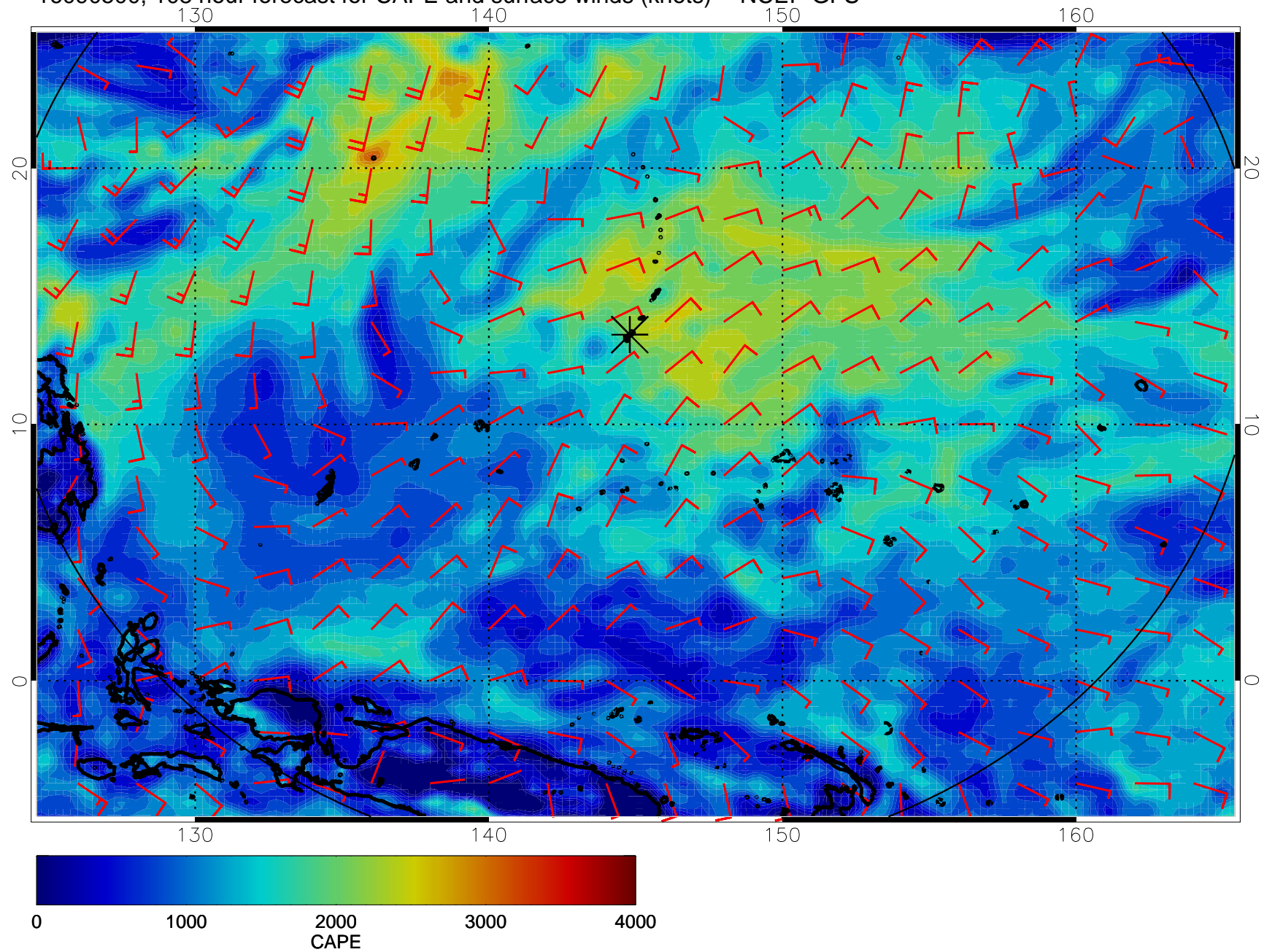




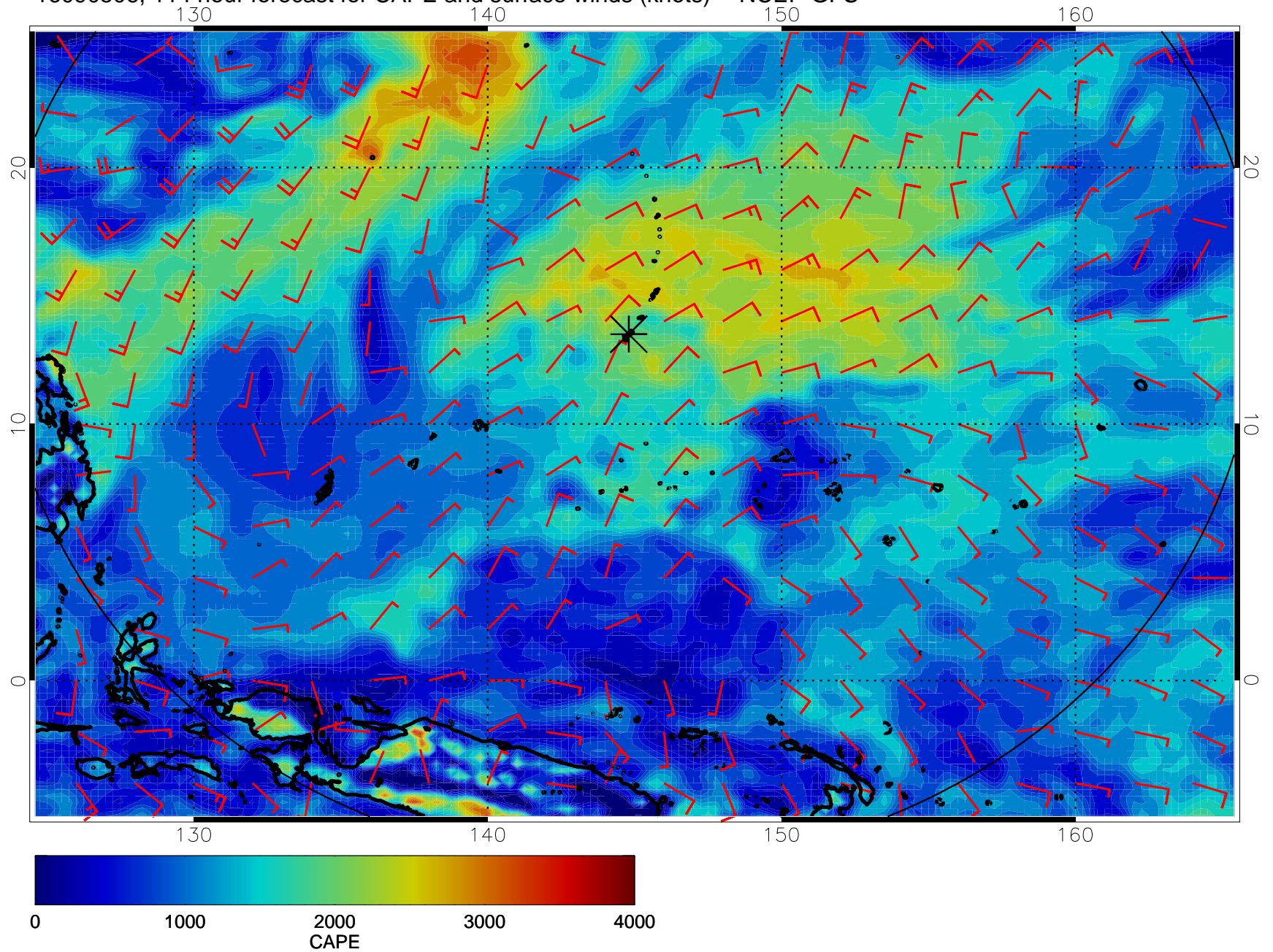
16090418, 102 hour forecast for CAPE and surface winds (knots) -- NCEP GFS



16090500, 108 hour forecast for CAPE and surface winds (knots) -- NCEP GFS



16090506, 114 hour forecast for CAPE and surface winds (knots) -- NCEP GFS



16090512, 120 hour forecast for CAPE and surface winds (knots) -- NCEP GFS

