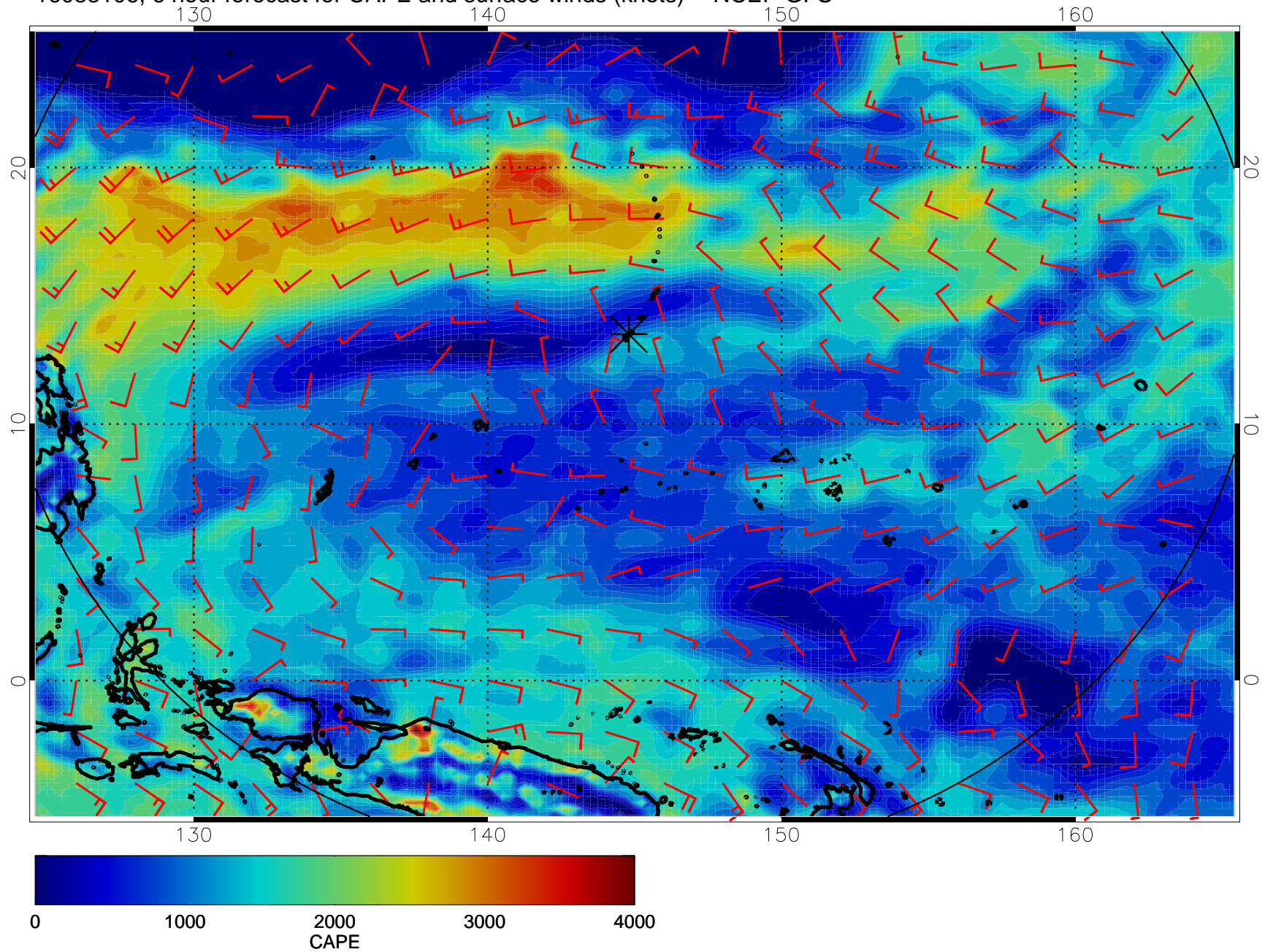
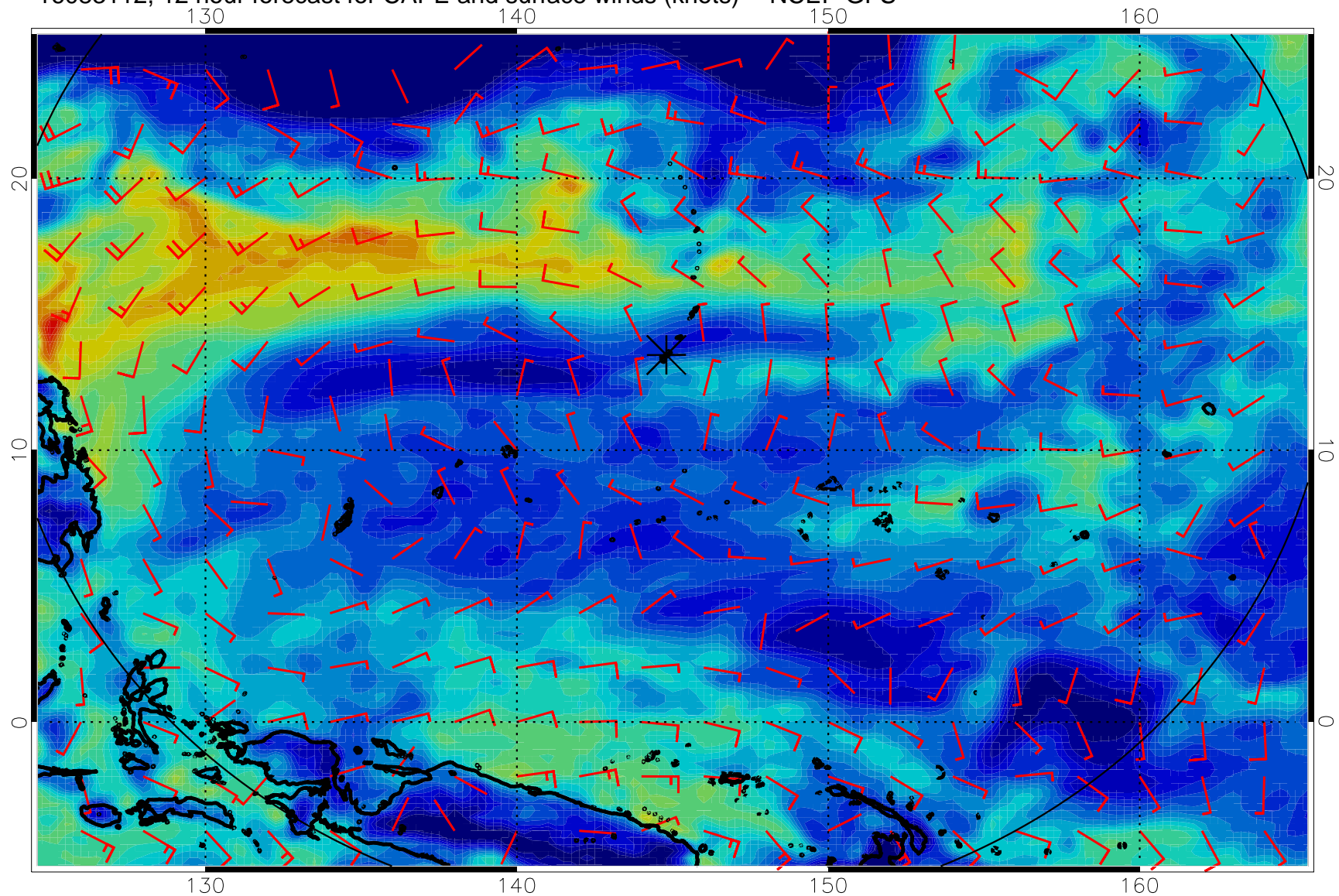


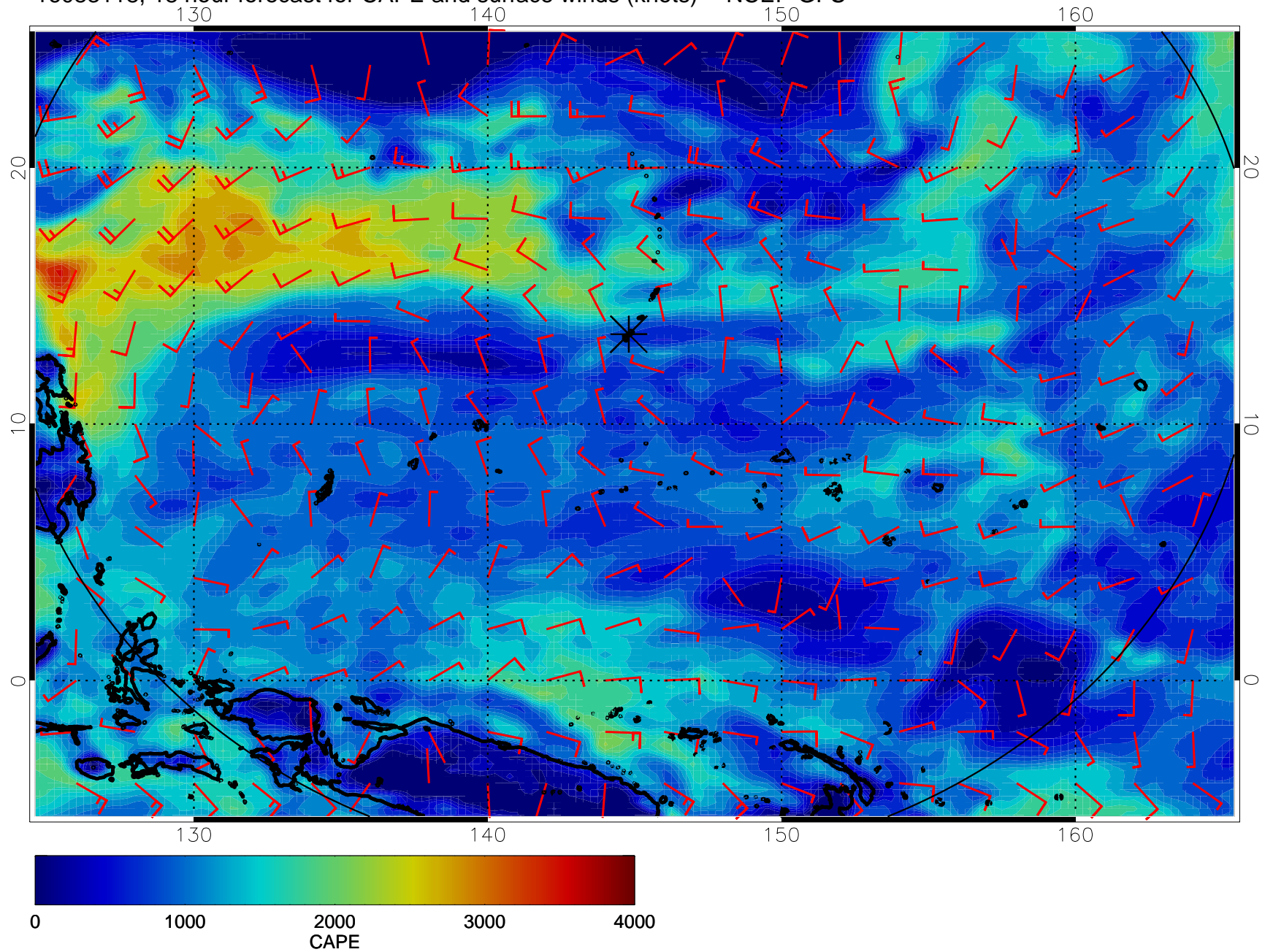
16083106, 6 hour forecast for CAPE and surface winds (knots) -- NCEP GFS



16083112, 12 hour forecast for CAPE and surface winds (knots) -- NCEP GFS

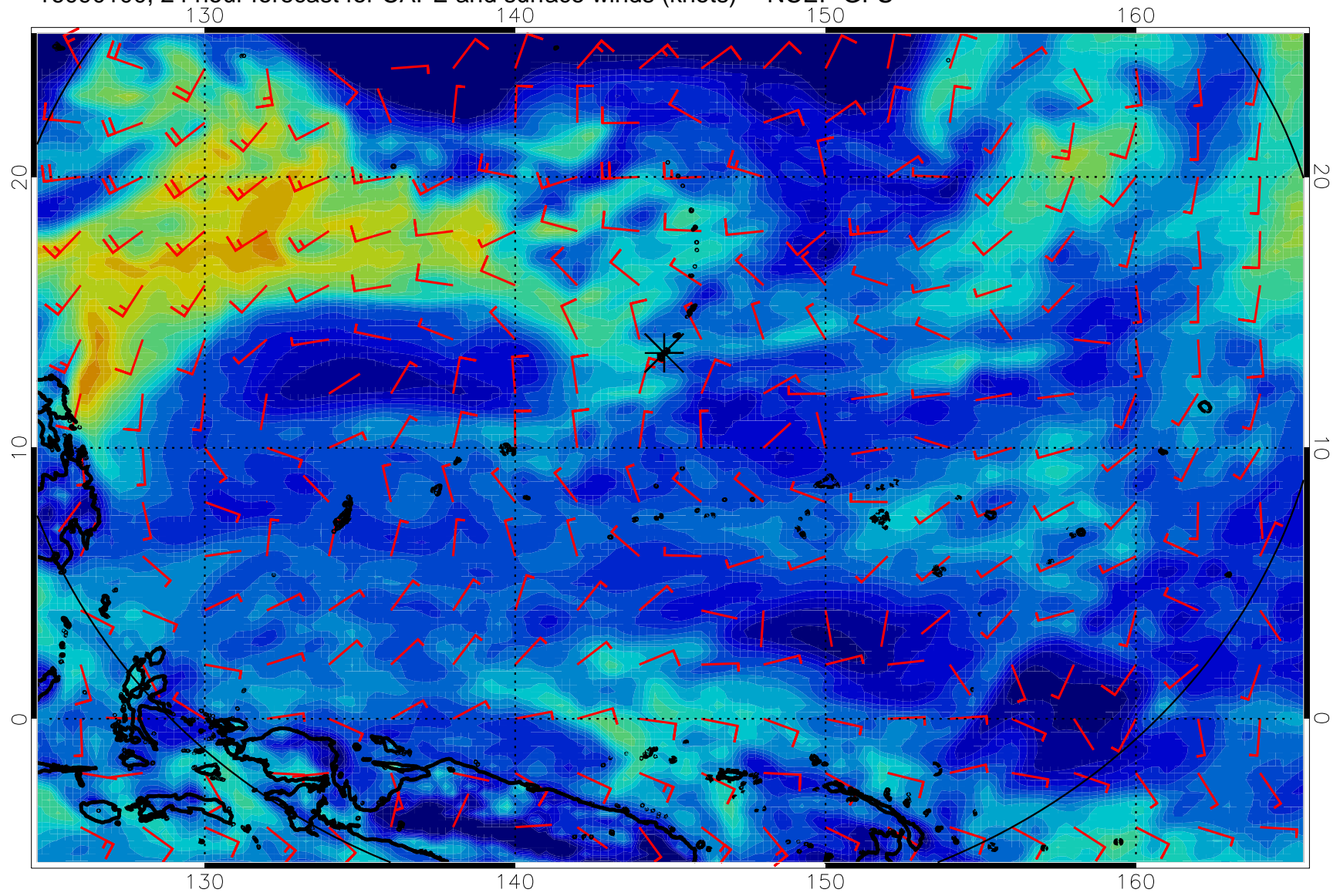


16083118, 18 hour forecast for CAPE and surface winds (knots) -- NCEP GFS



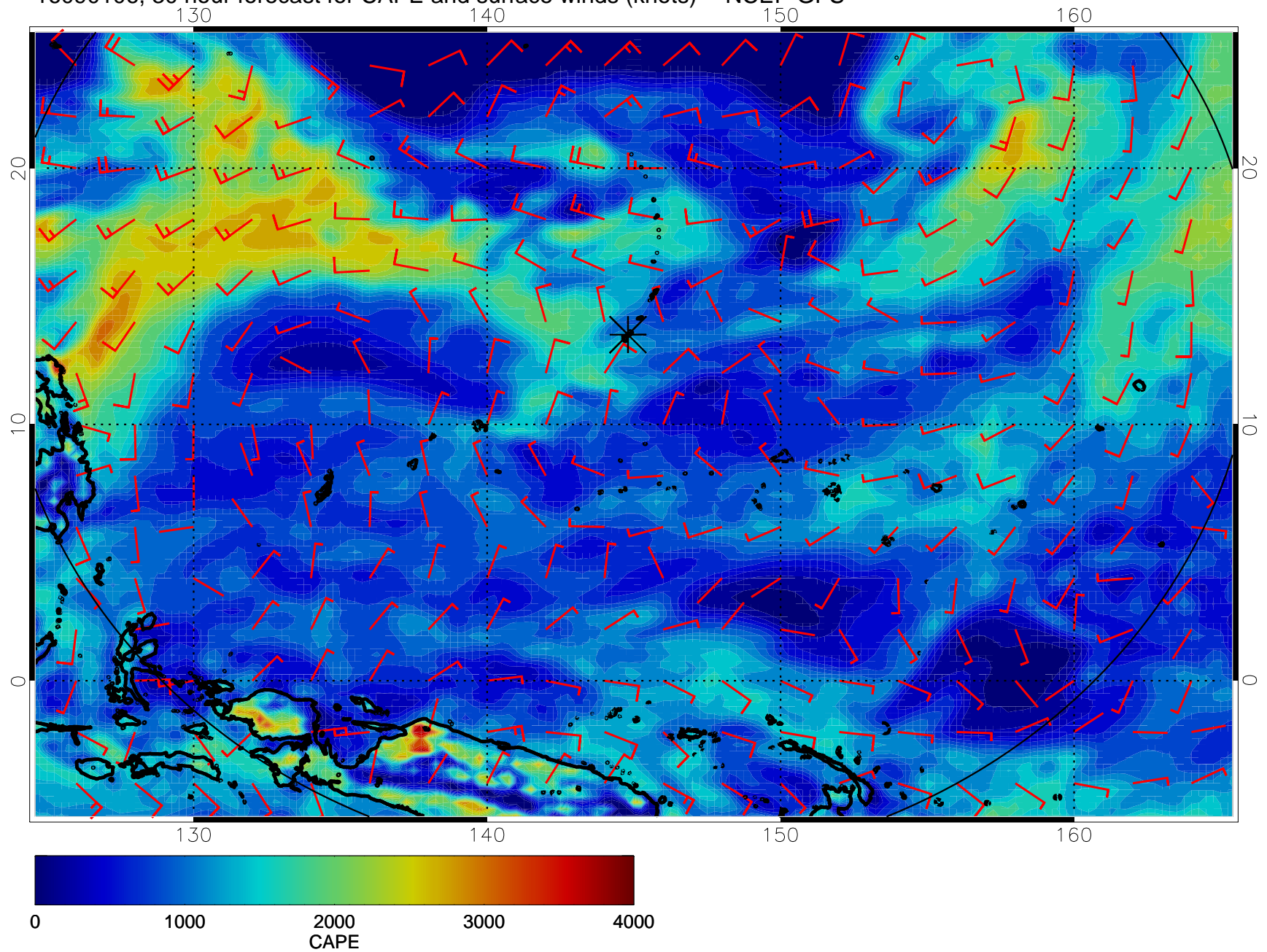


16090100, 24 hour forecast for CAPE and surface winds (knots) -- NCEP GFS

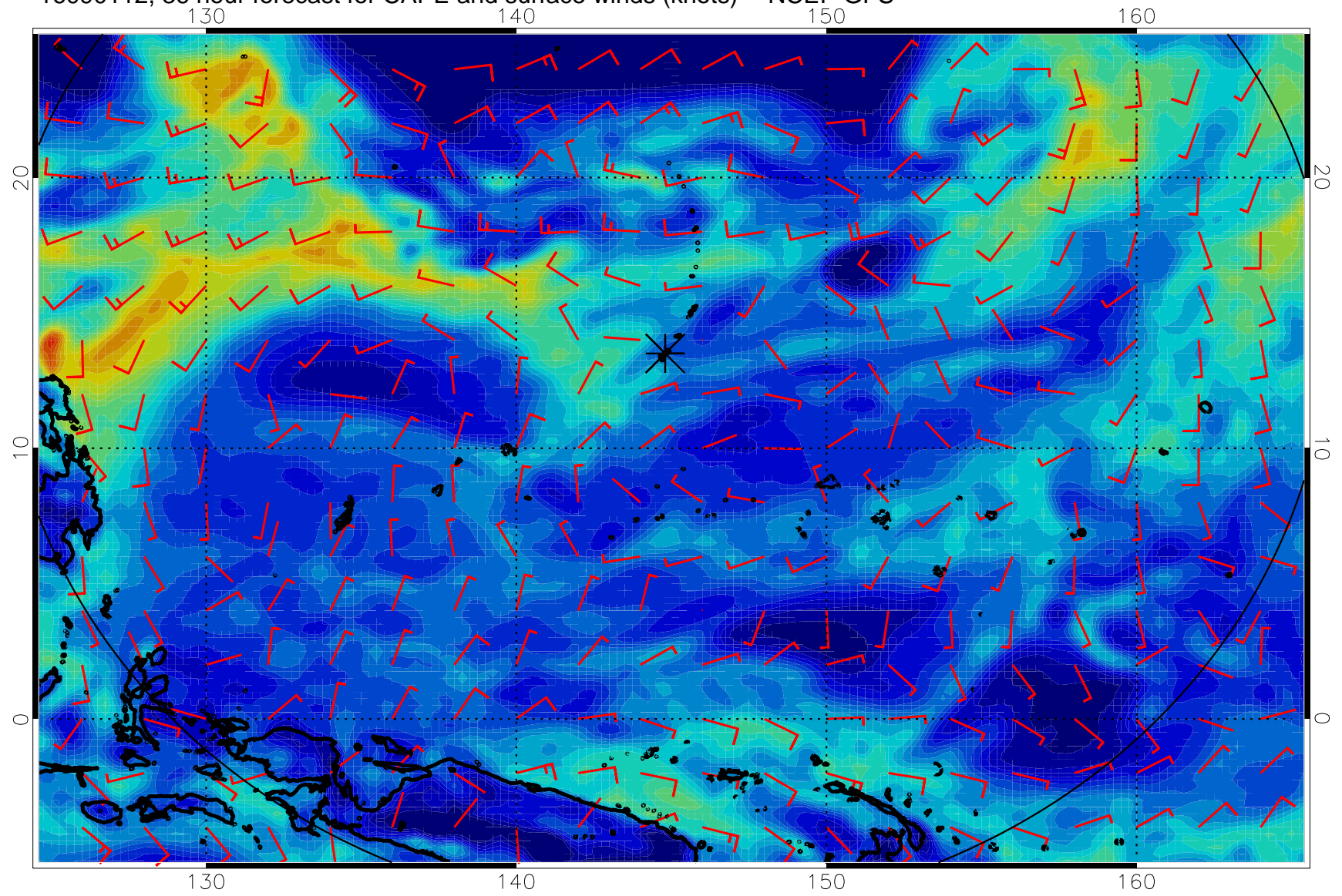




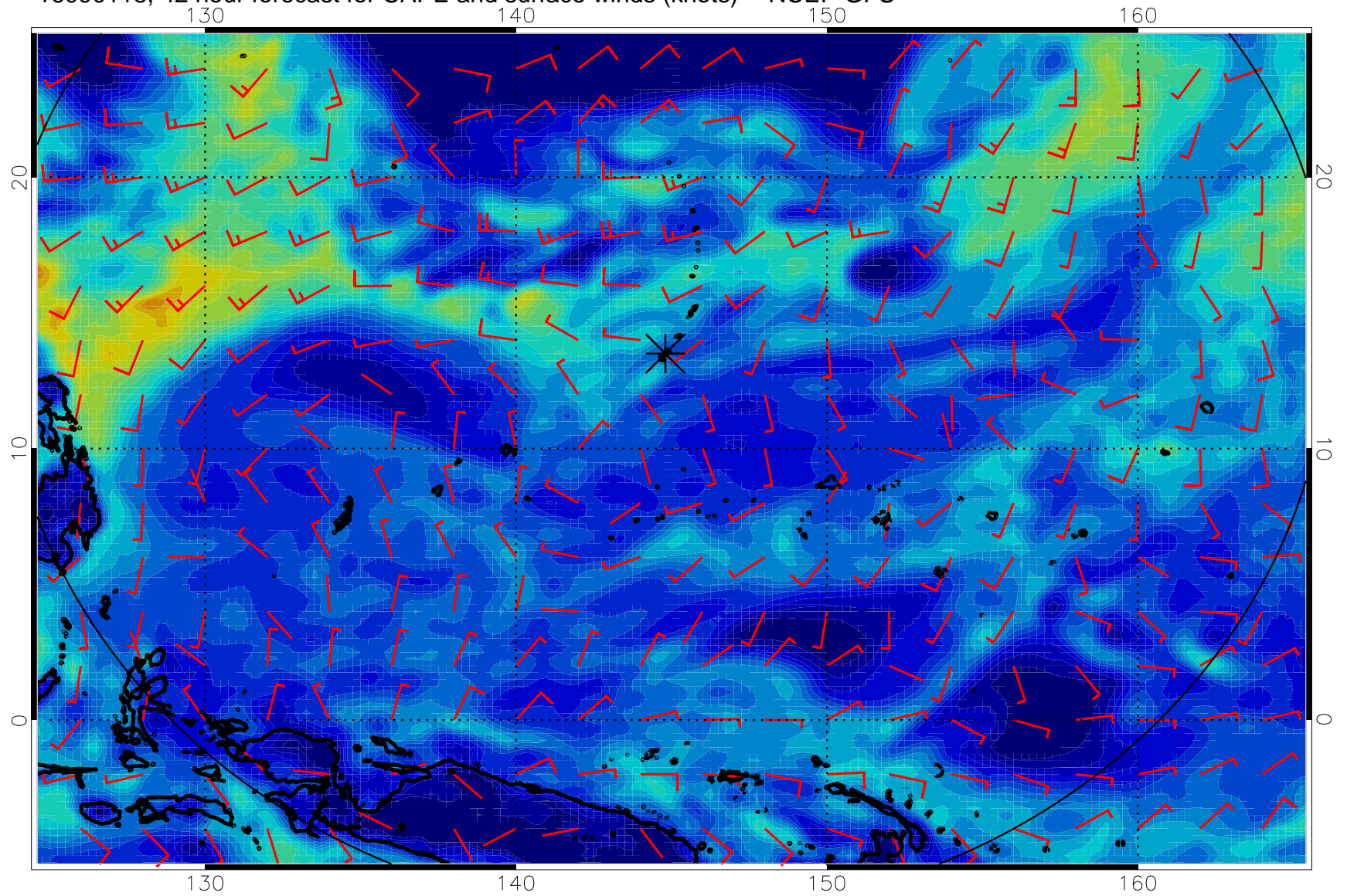
16090106, 30 hour forecast for CAPE and surface winds (knots) -- NCEP GFS



16090112, 36 hour forecast for CAPE and surface winds (knots) -- NCEP GFS

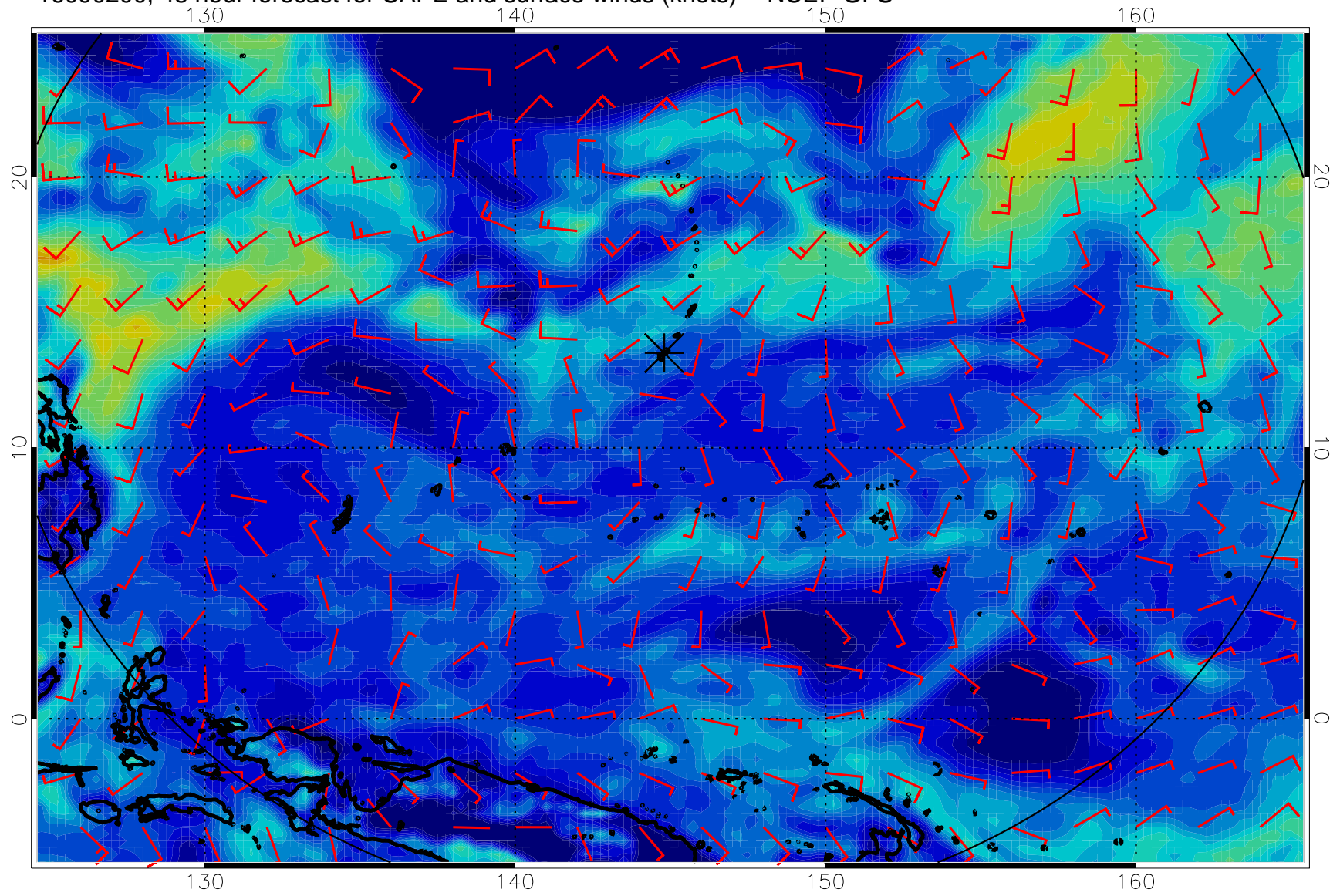


16090118, 42 hour forecast for CAPE and surface winds (knots) -- NCEP GFS

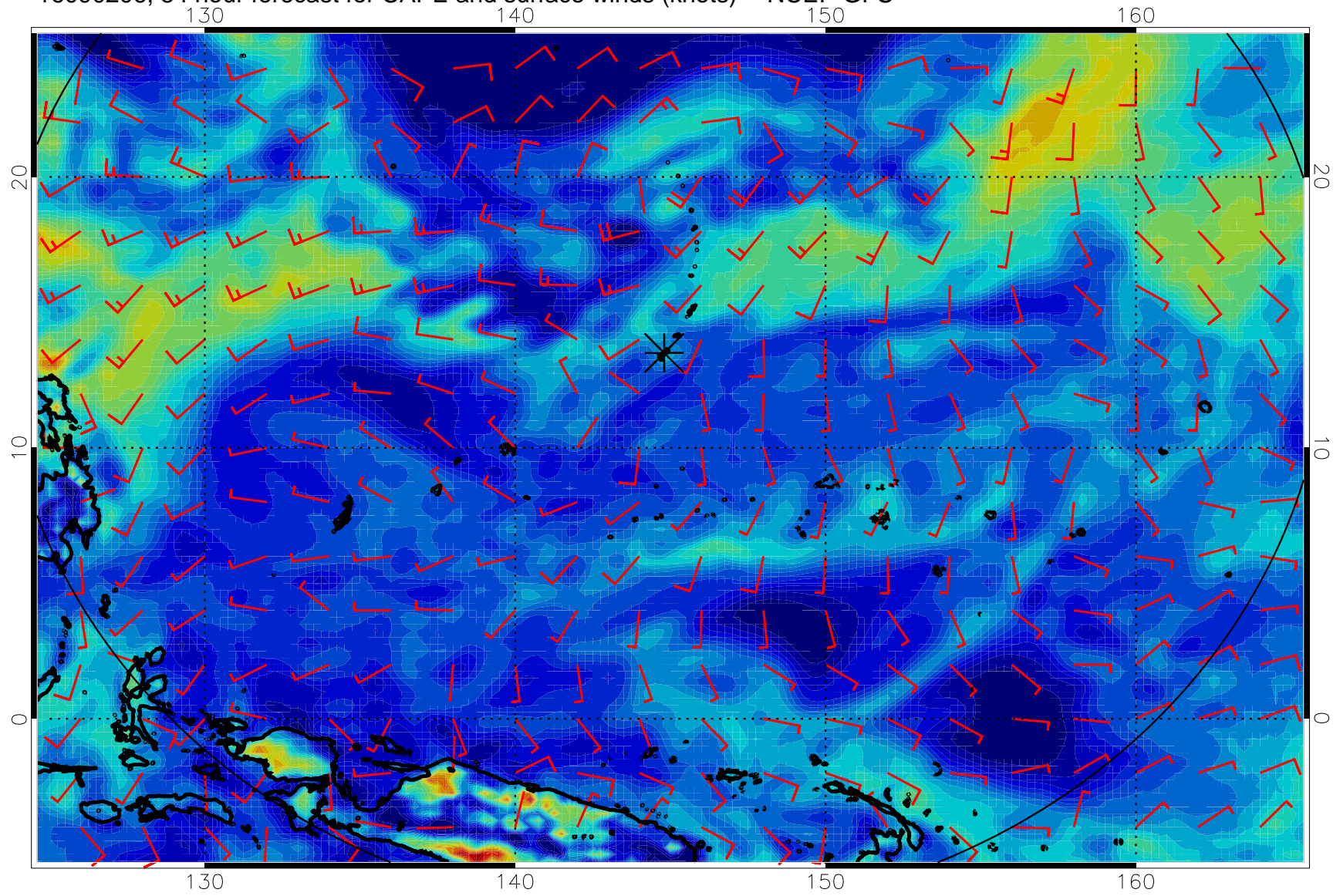




16090200, 48 hour forecast for CAPE and surface winds (knots) -- NCEP GFS

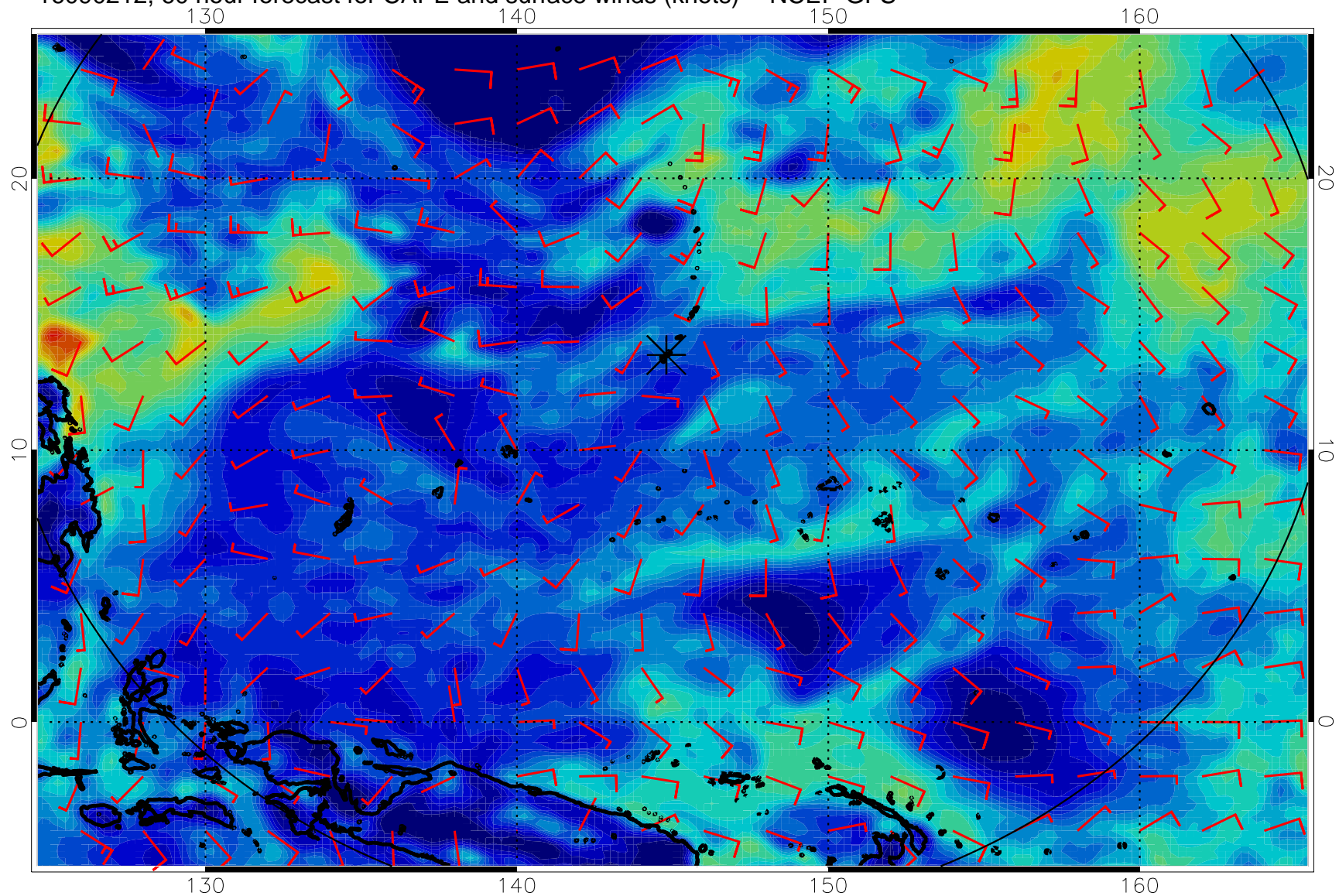


16090206, 54 hour forecast for CAPE and surface winds (knots) -- NCEP GFS



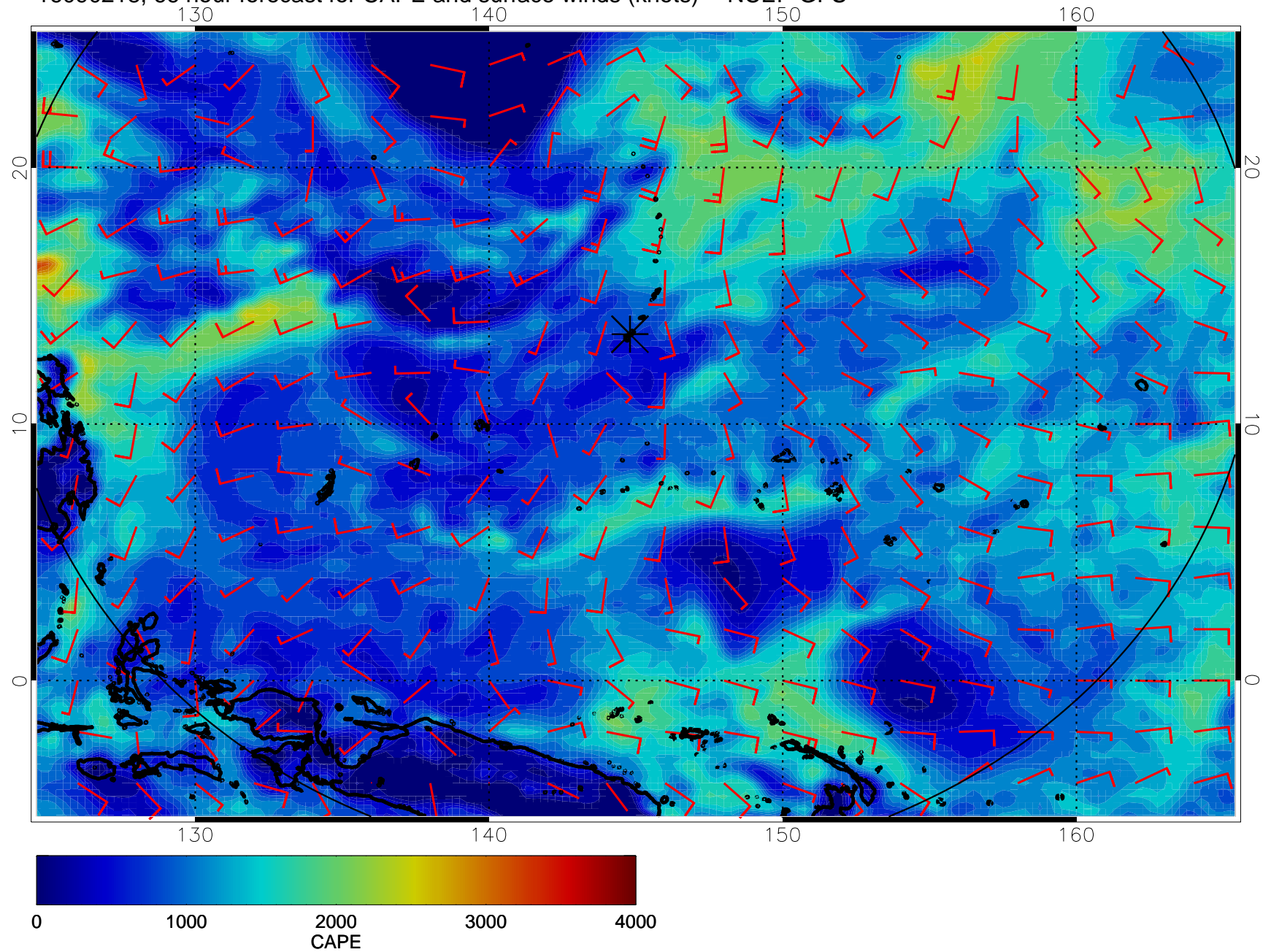


16090212, 60 hour forecast for CAPE and surface winds (knots) -- NCEP GFS

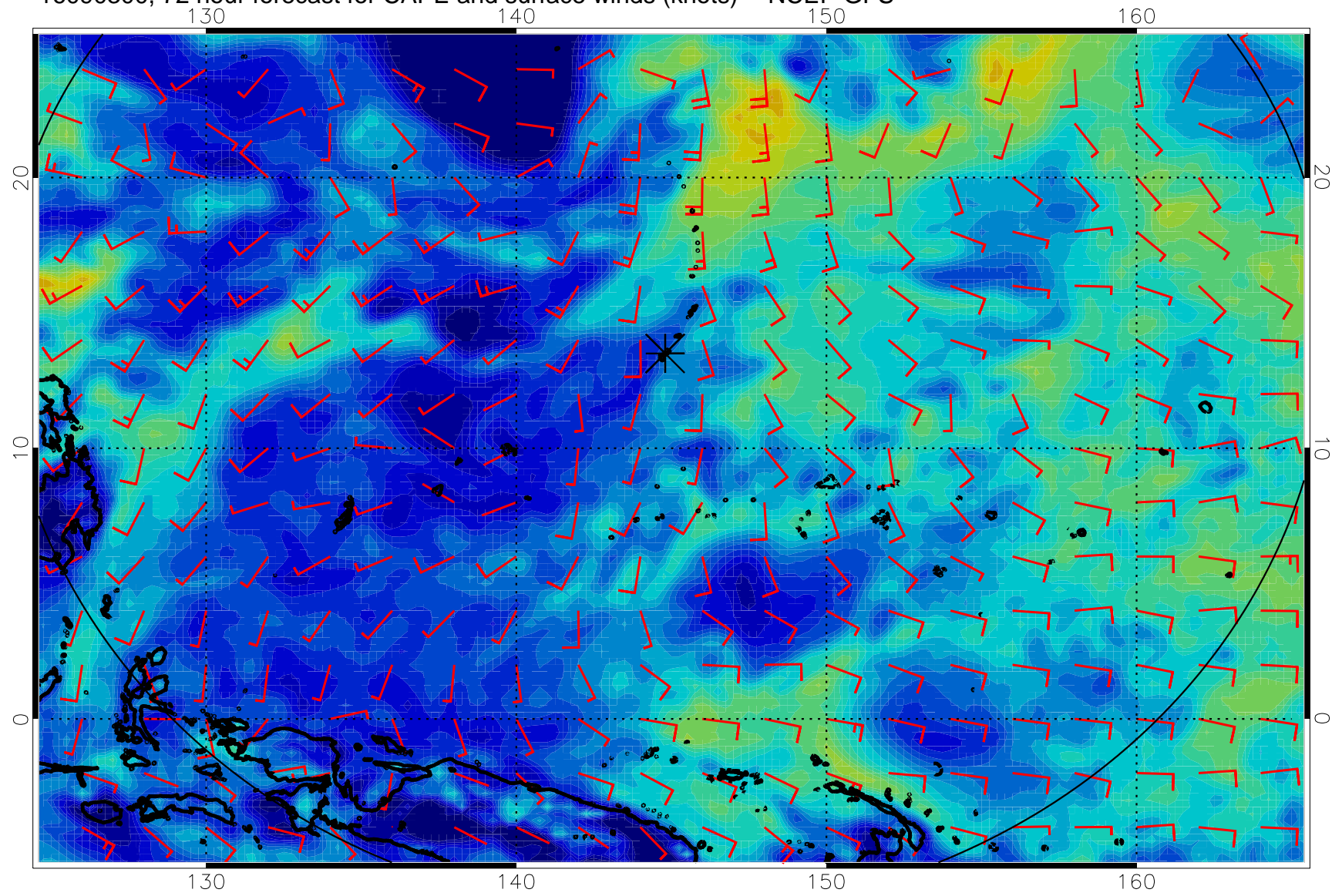




16090218, 66 hour forecast for CAPE and surface winds (knots) -- NCEP GFS

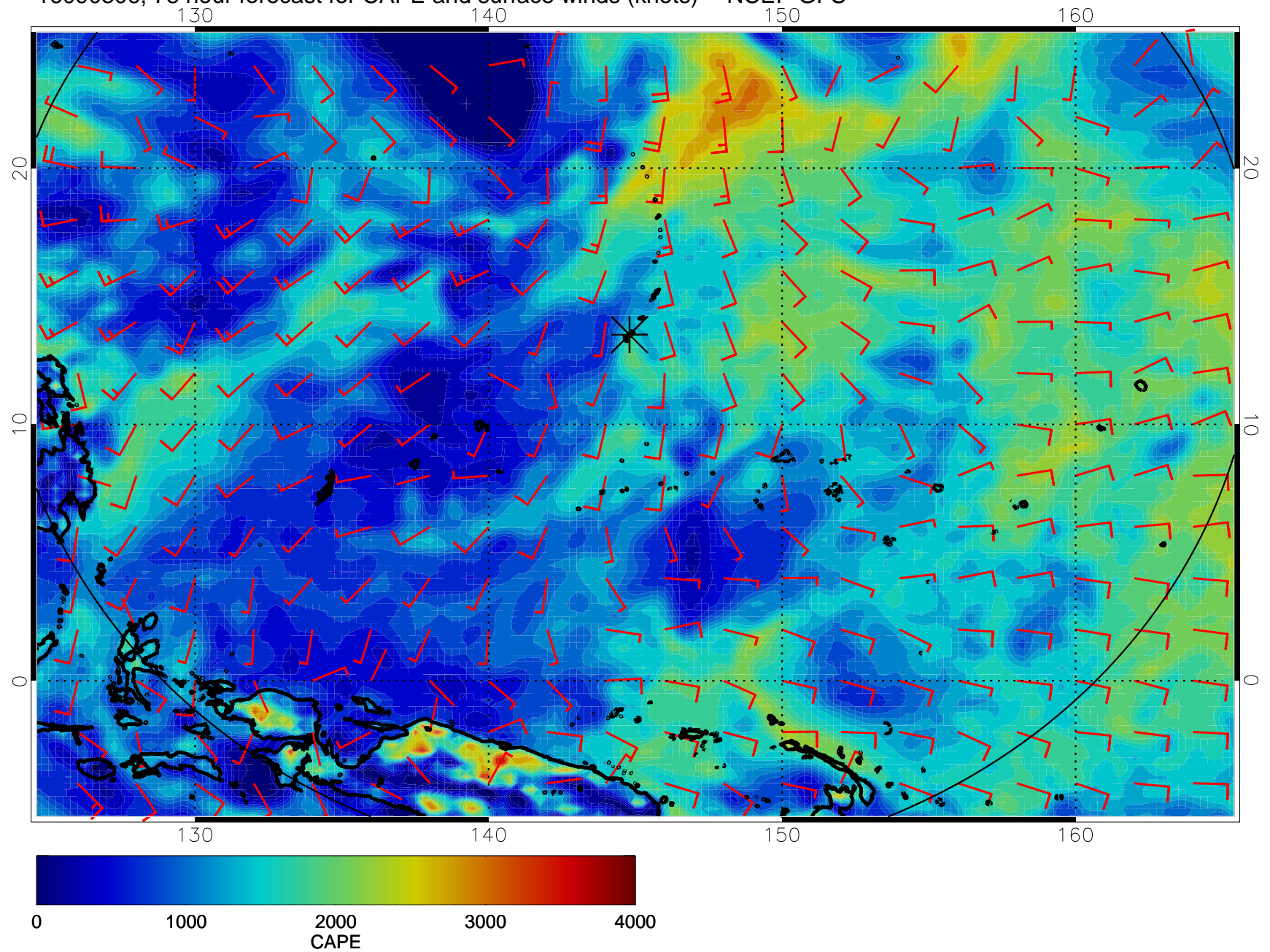


16090300, 72 hour forecast for CAPE and surface winds (knots) -- NCEP GFS



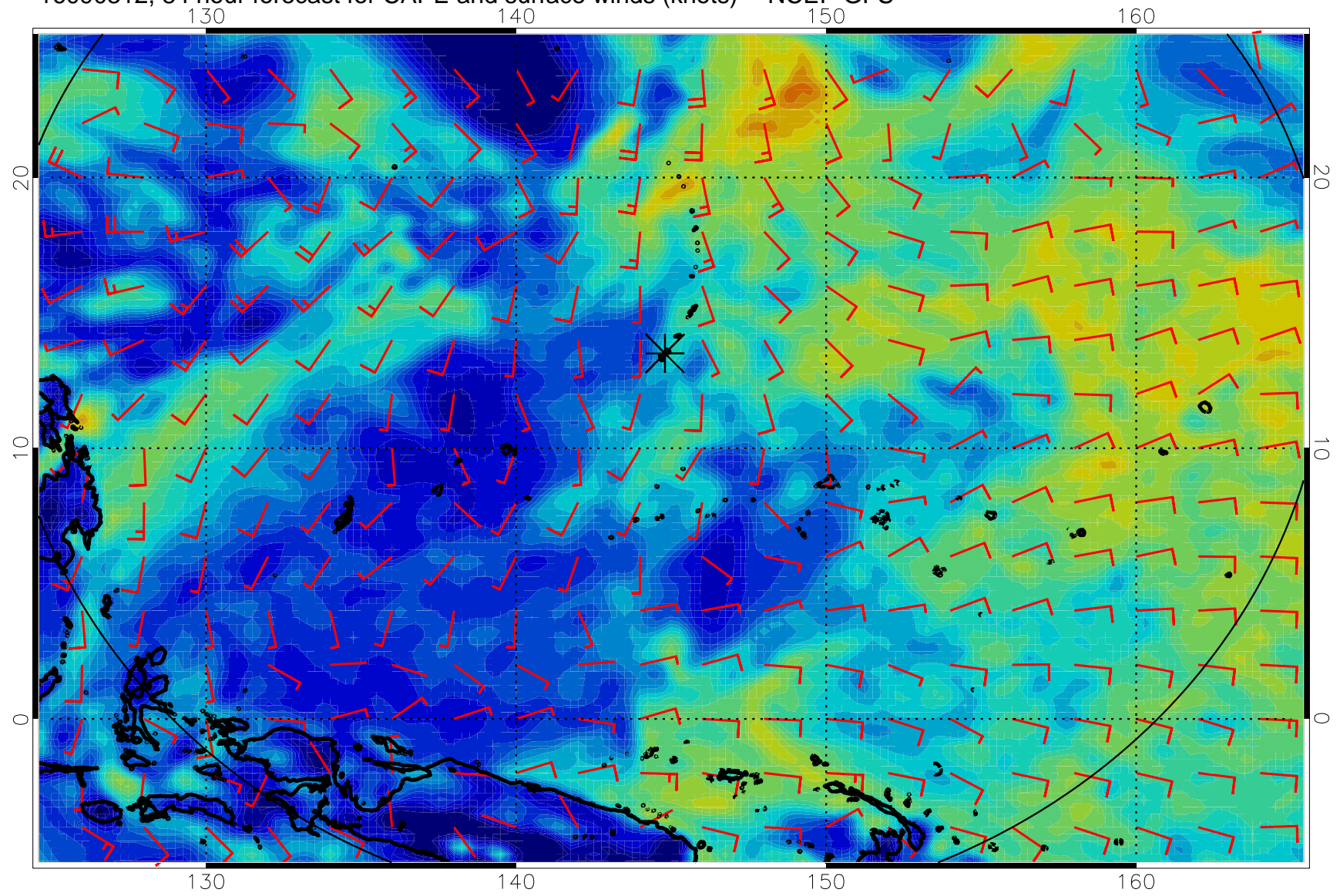


16090306, 78 hour forecast for CAPE and surface winds (knots) -- NCEP GFS

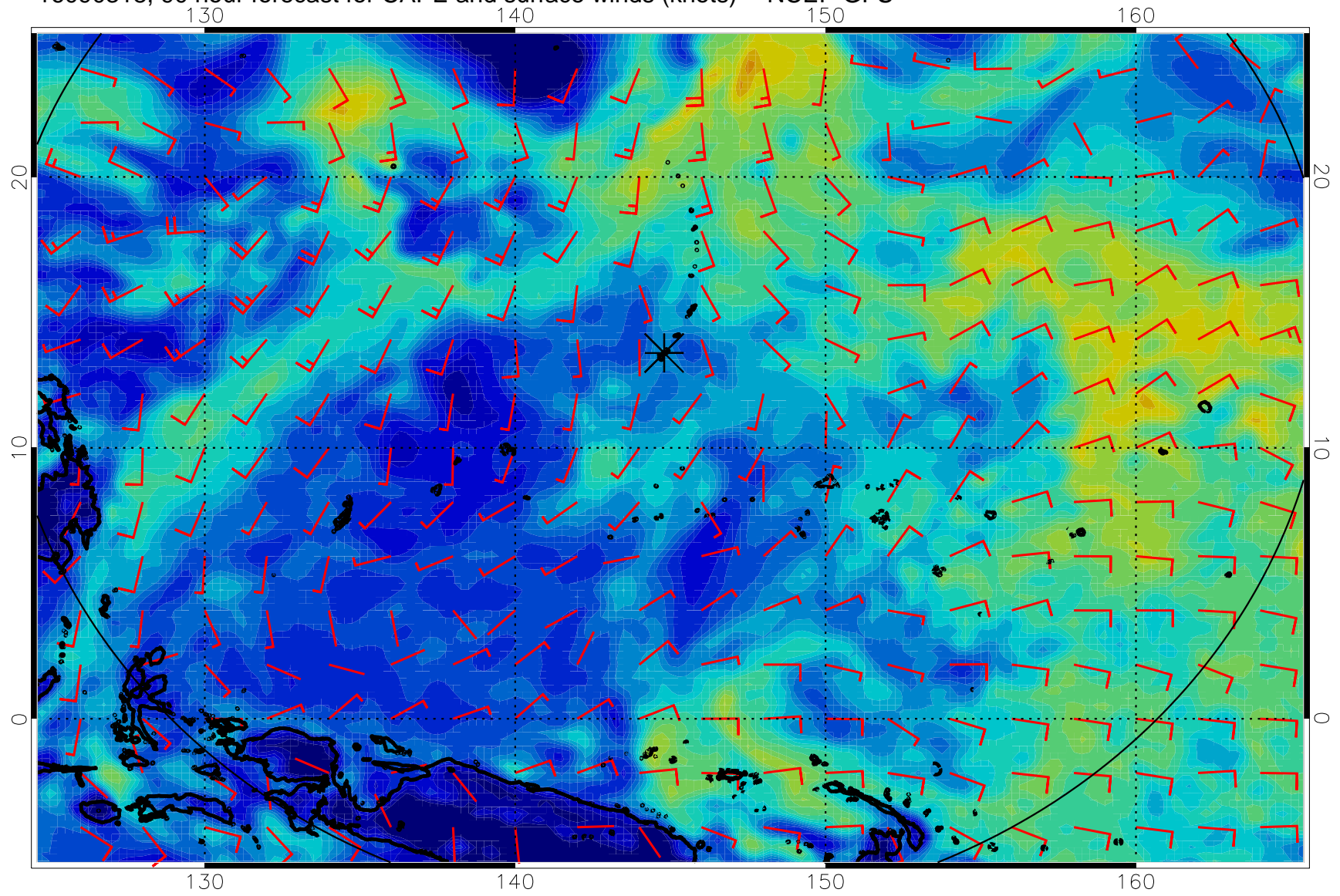




16090312, 84 hour forecast for CAPE and surface winds (knots) -- NCEP GFS

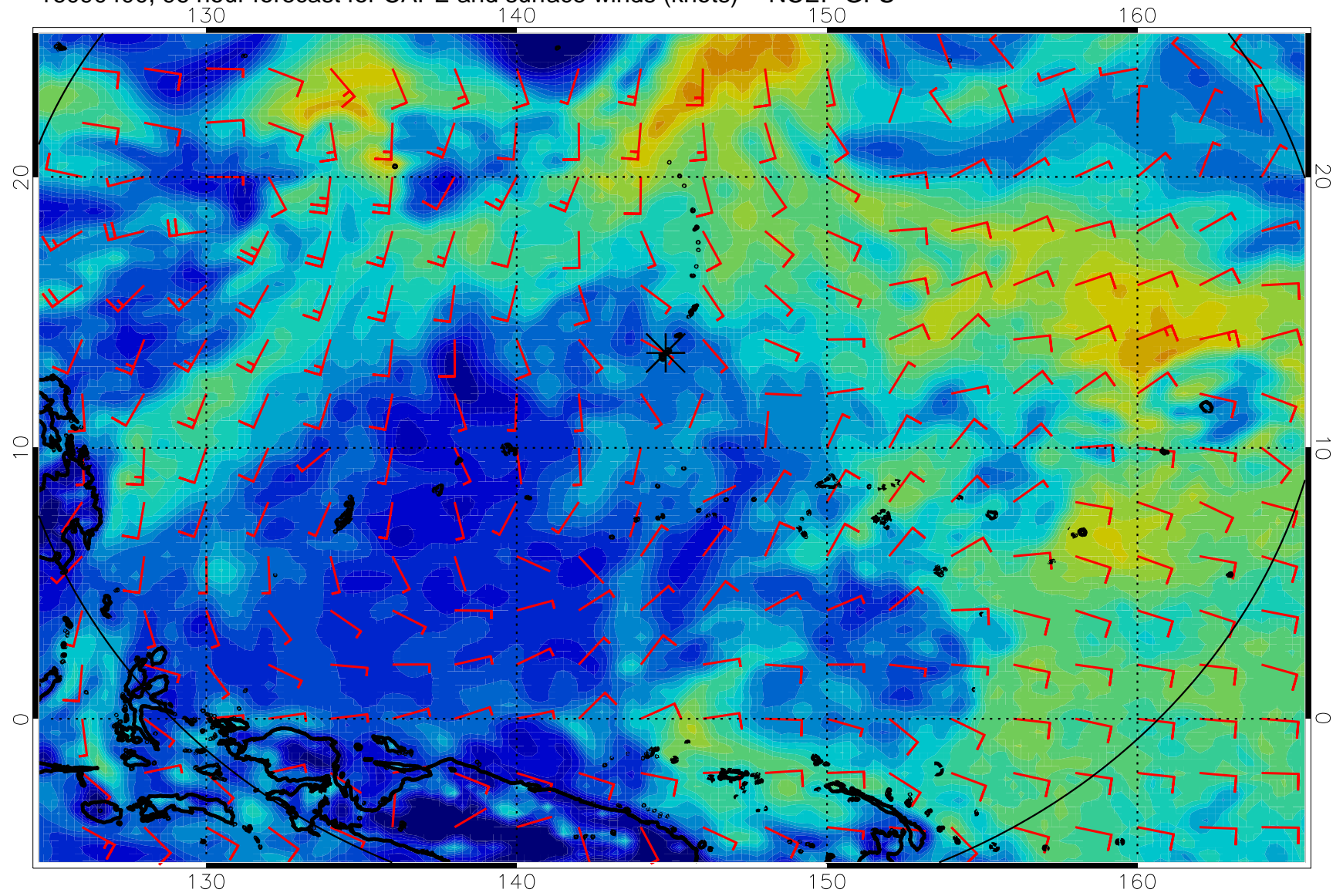


16090318, 90 hour forecast for CAPE and surface winds (knots) -- NCEP GFS



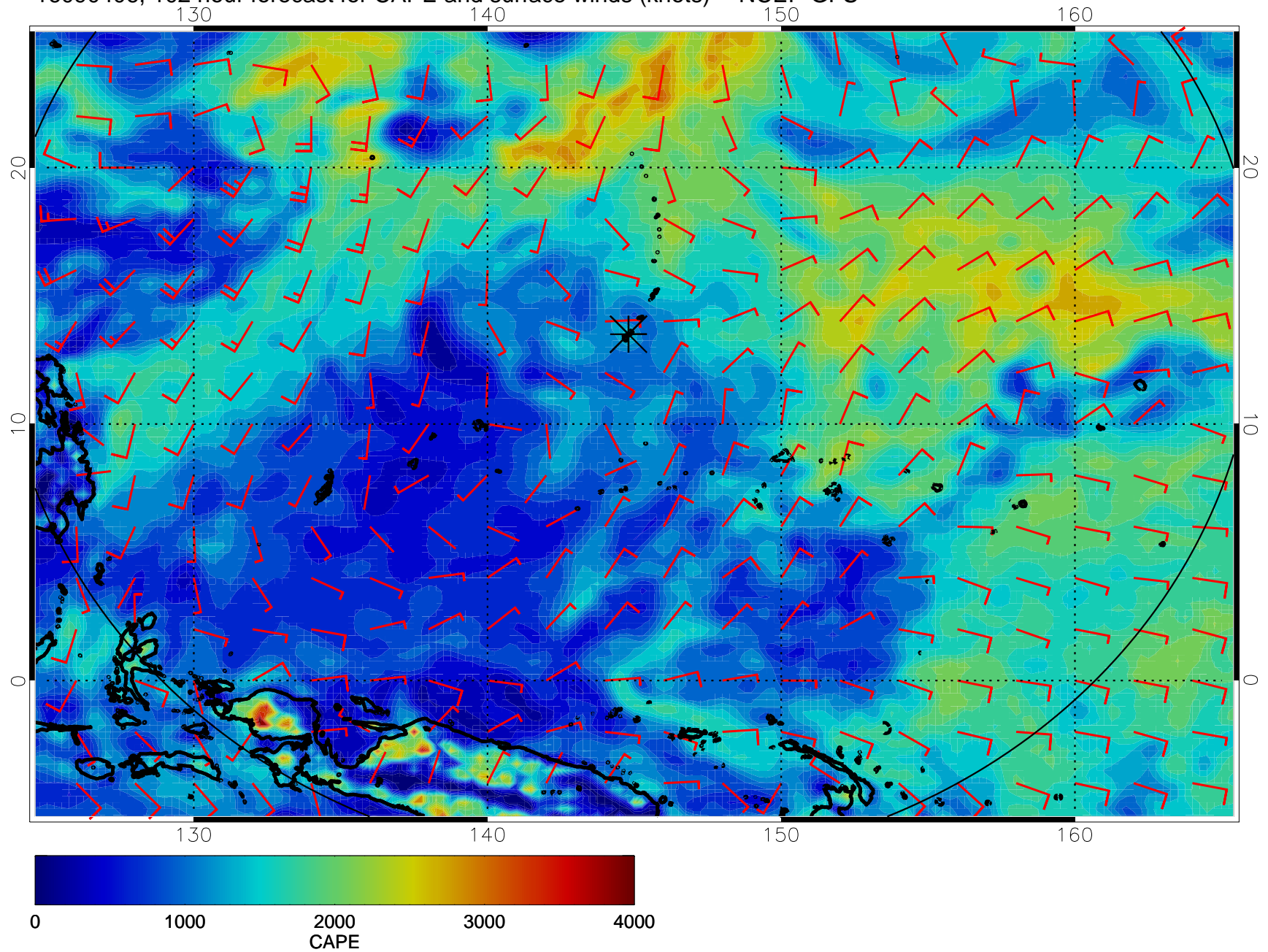


16090400, 96 hour forecast for CAPE and surface winds (knots) -- NCEP GFS

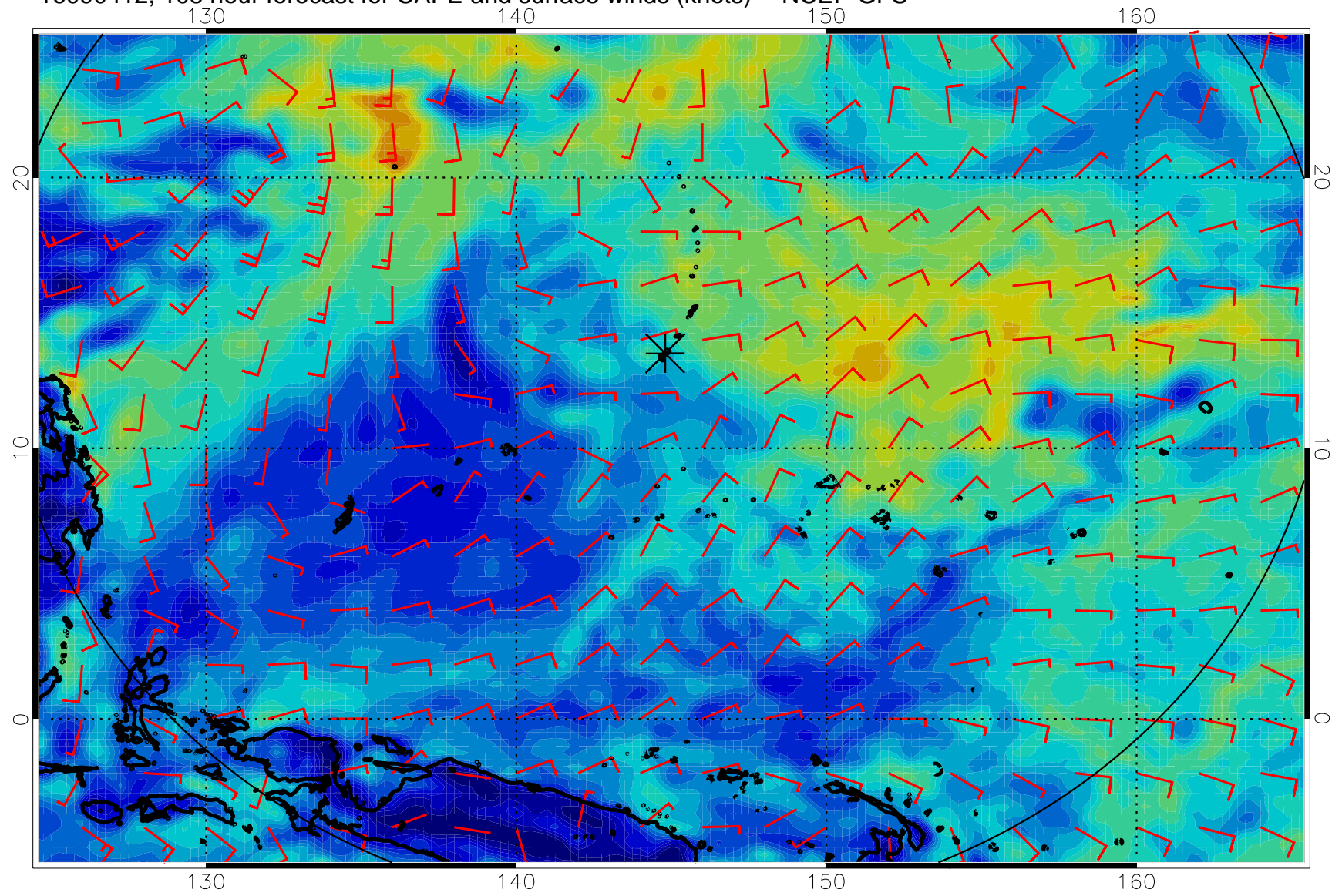




16090406, 102 hour forecast for CAPE and surface winds (knots) -- NCEP GFS

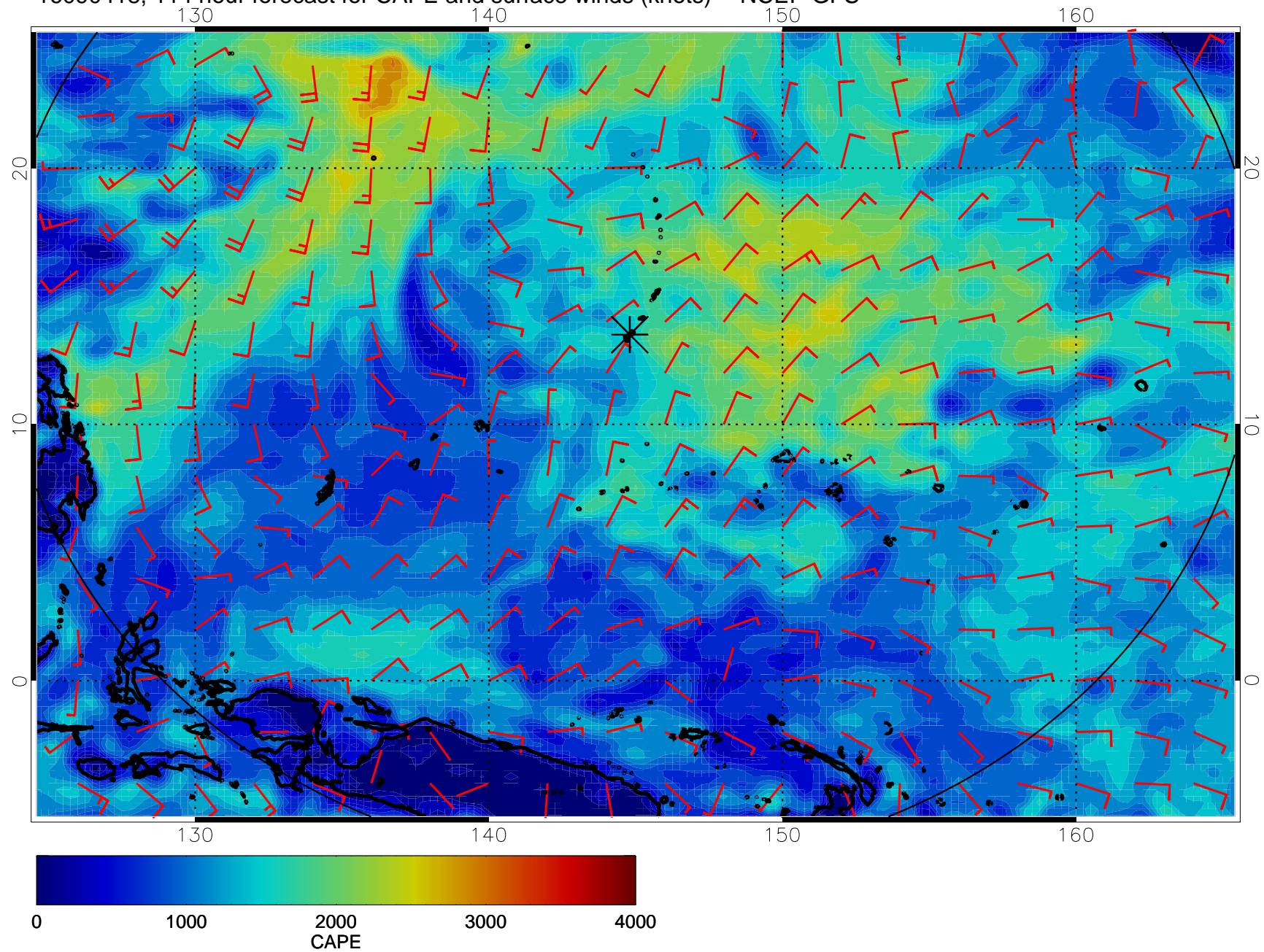


16090412, 108 hour forecast for CAPE and surface winds (knots) -- NCEP GFS





16090418, 114 hour forecast for CAPE and surface winds (knots) -- NCEP GFS



16090500, 120 hour forecast for CAPE and surface winds (knots) -- NCEP GFS

