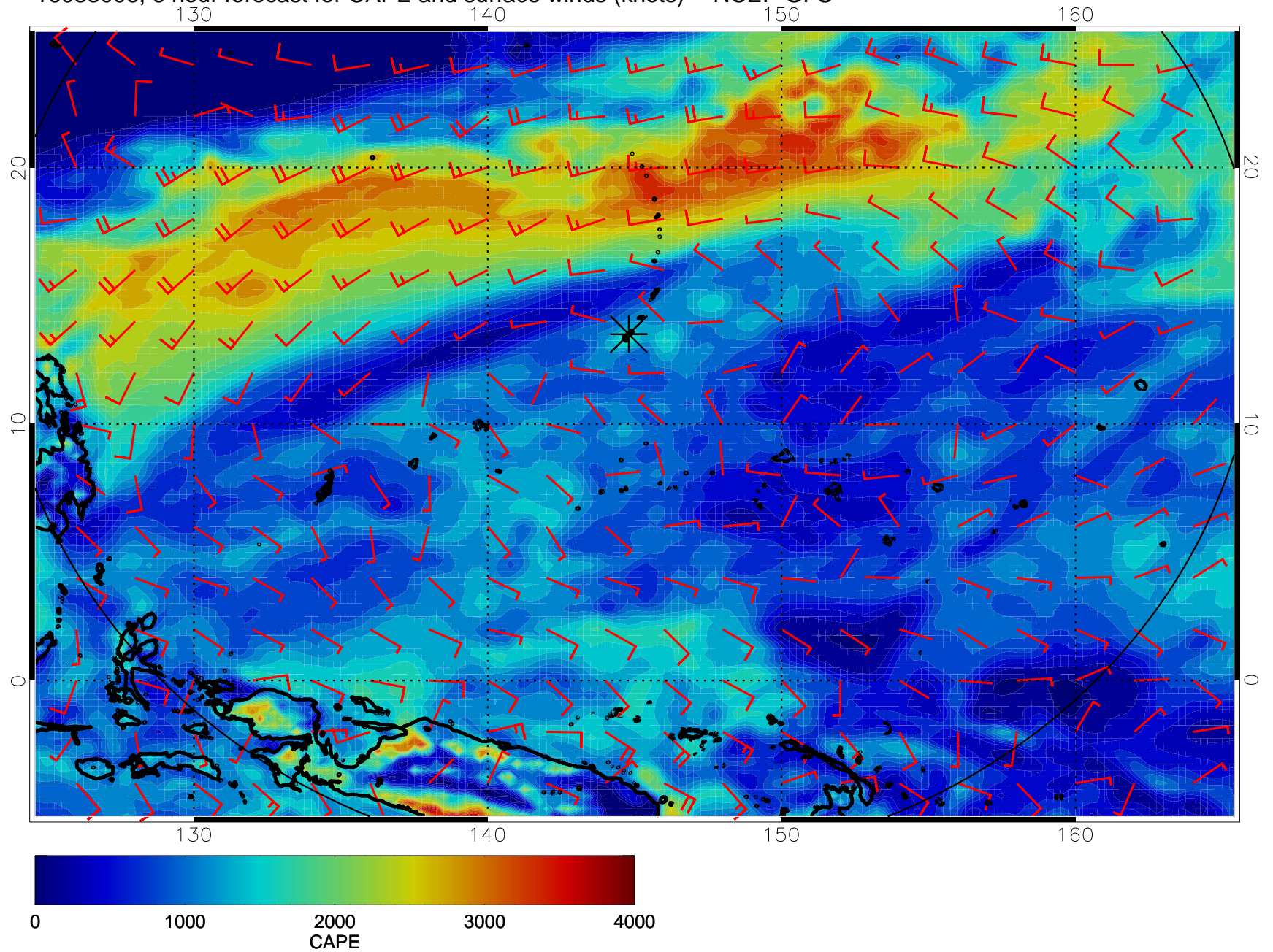
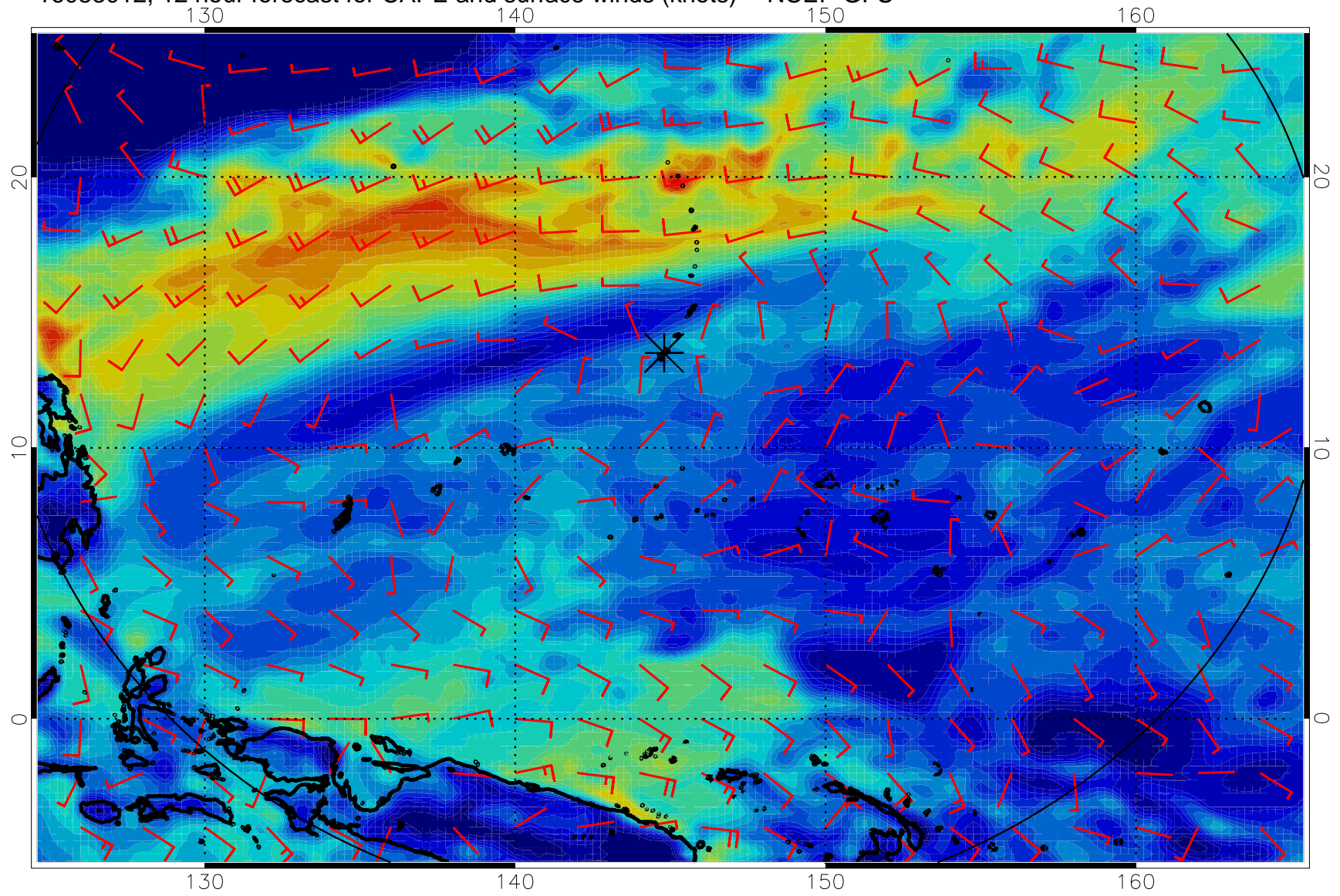


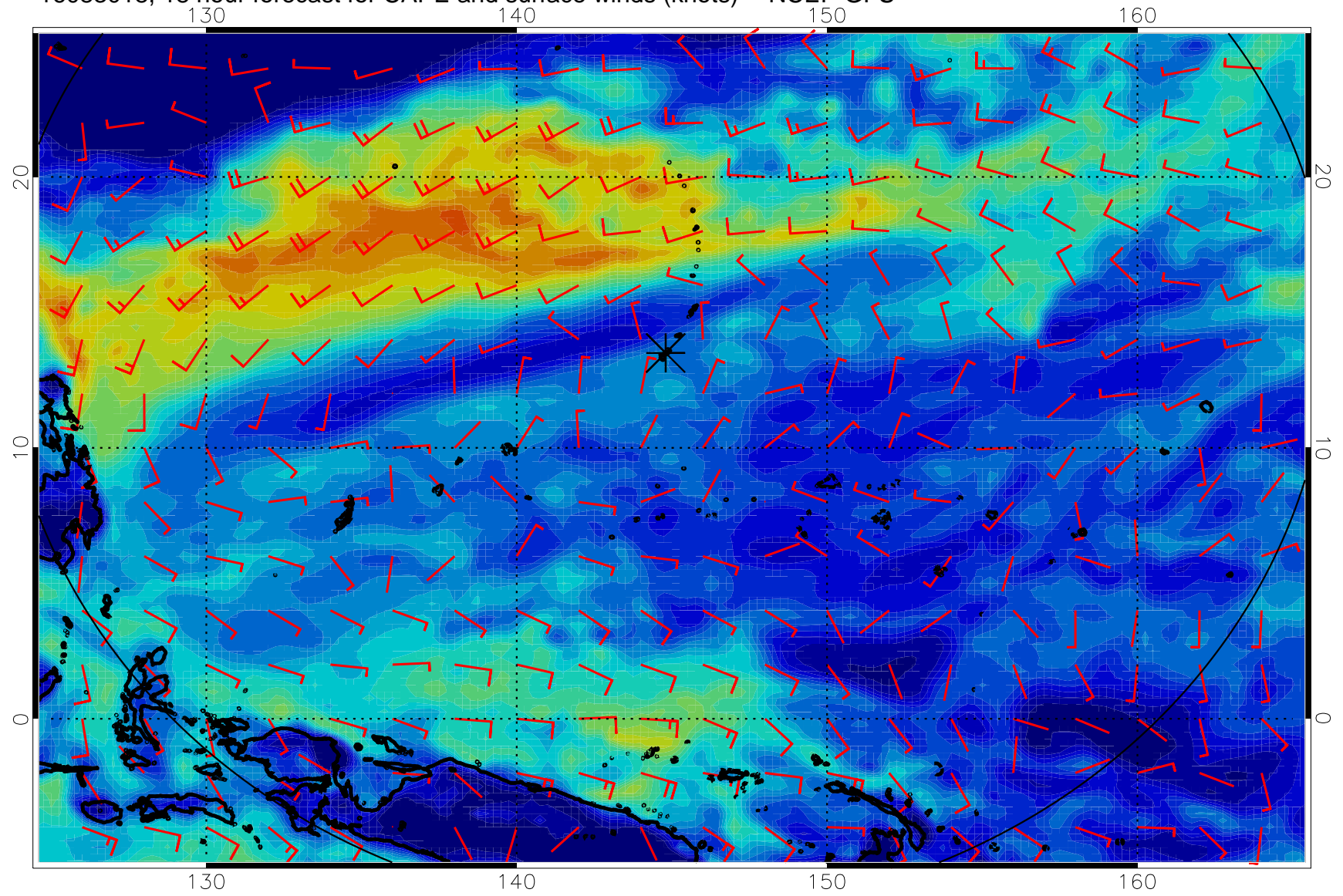
16083006, 6 hour forecast for CAPE and surface winds (knots) -- NCEP GFS



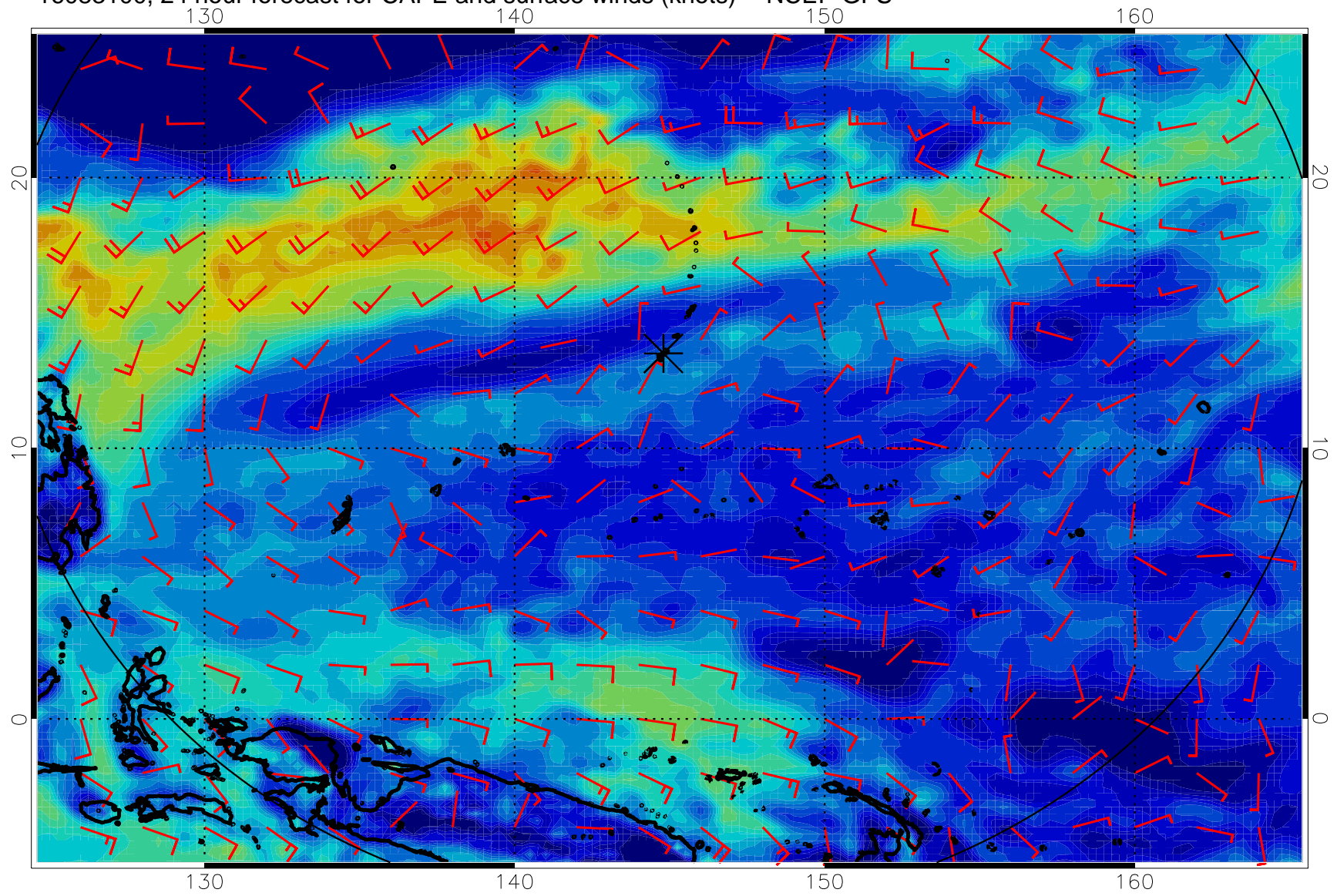
16083012, 12 hour forecast for CAPE and surface winds (knots) -- NCEP GFS



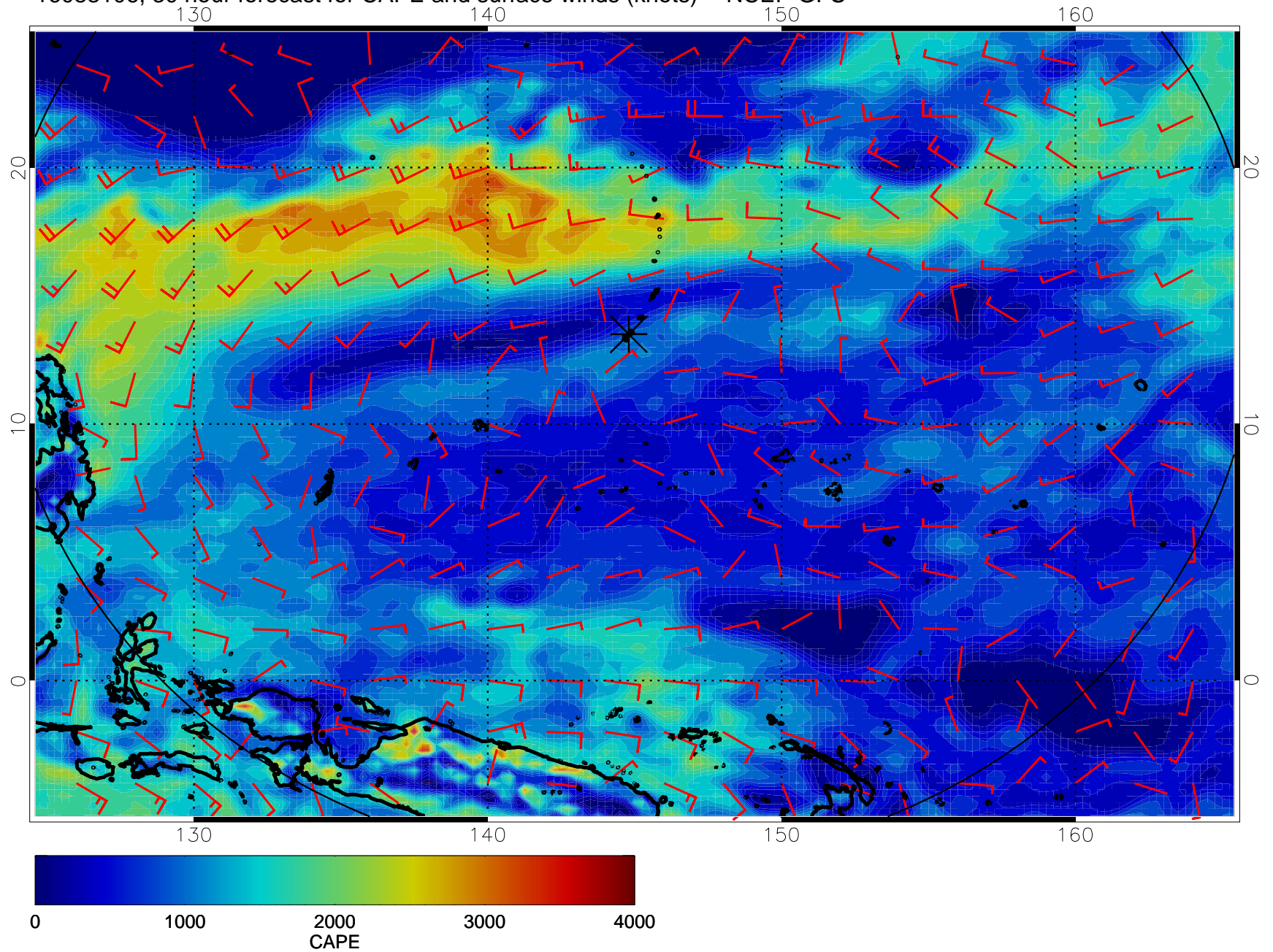
16083018, 18 hour forecast for CAPE and surface winds (knots) -- NCEP GFS



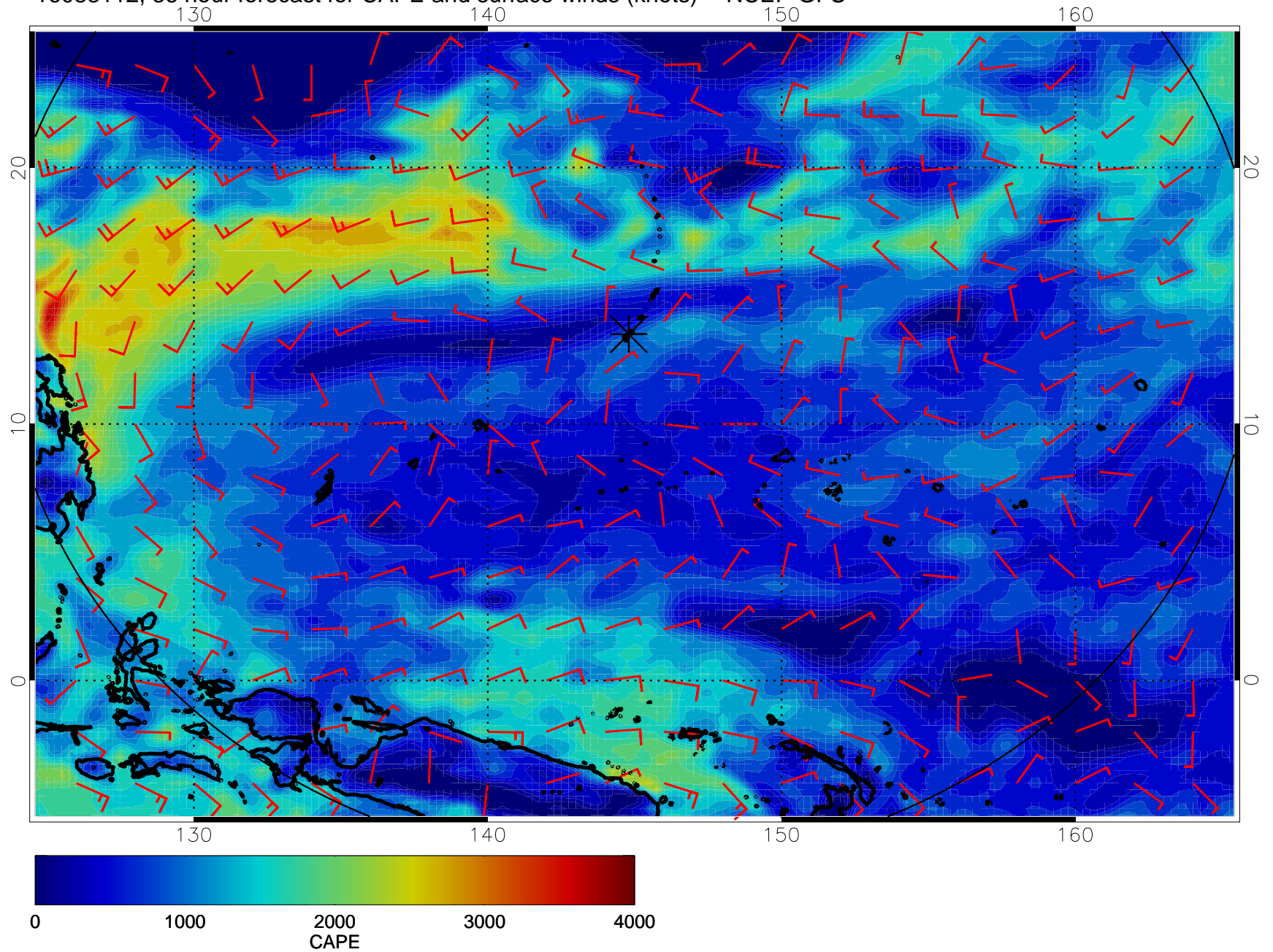
16083100, 24 hour forecast for CAPE and surface winds (knots) -- NCEP GFS



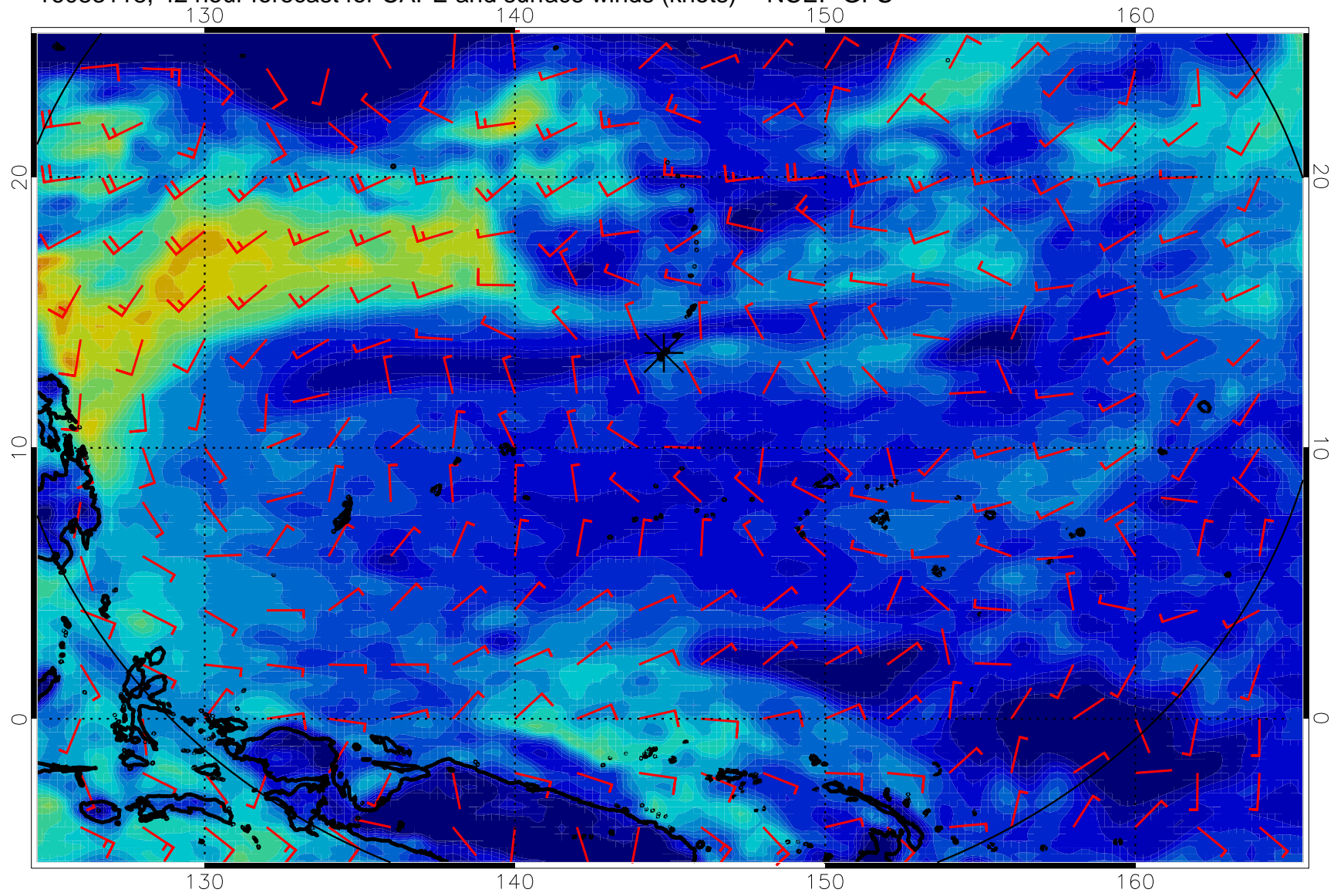
16083106, 30 hour forecast for CAPE and surface winds (knots) -- NCEP GFS



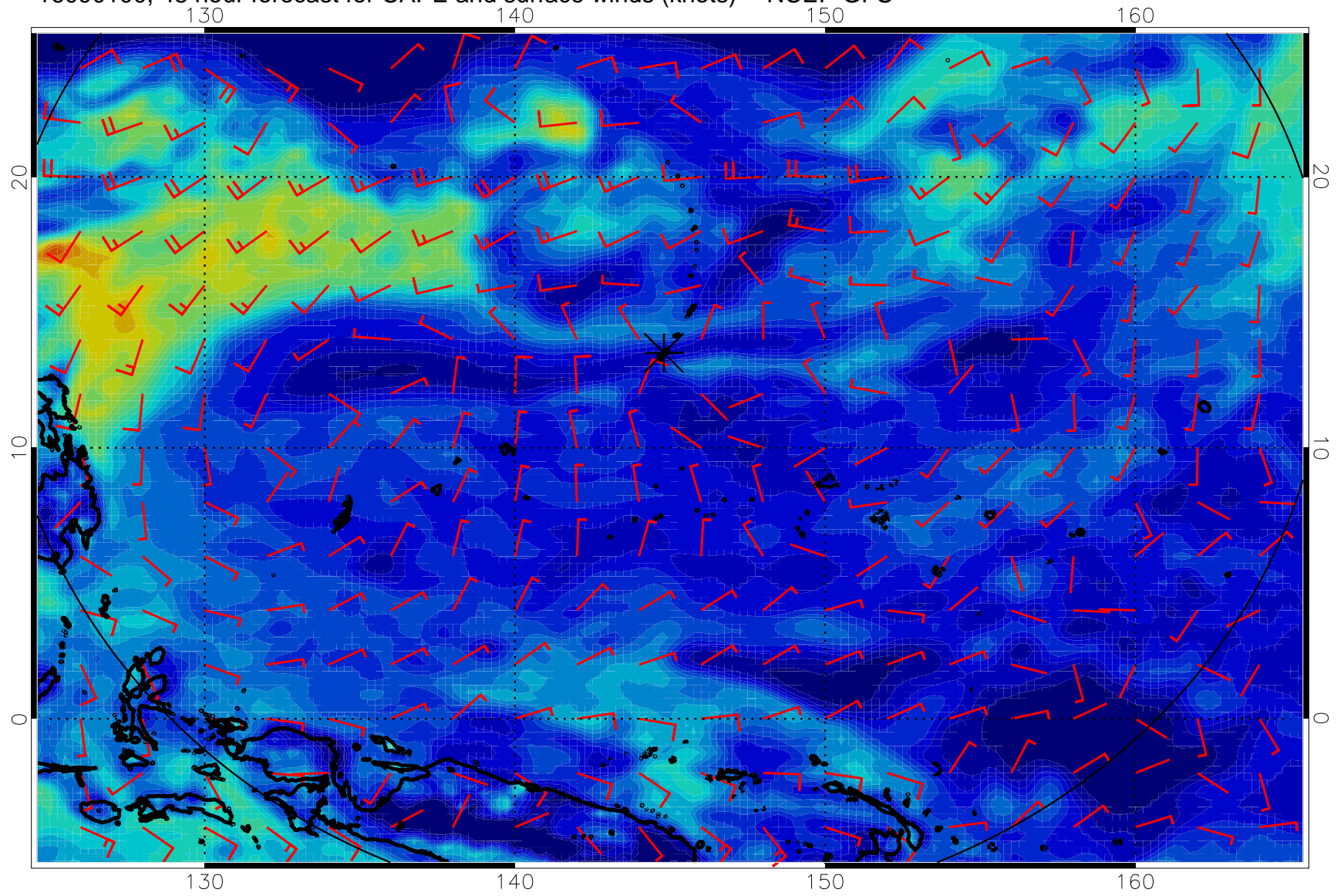
16083112, 36 hour forecast for CAPE and surface winds (knots) -- NCEP GFS



16083118, 42 hour forecast for CAPE and surface winds (knots) -- NCEP GFS

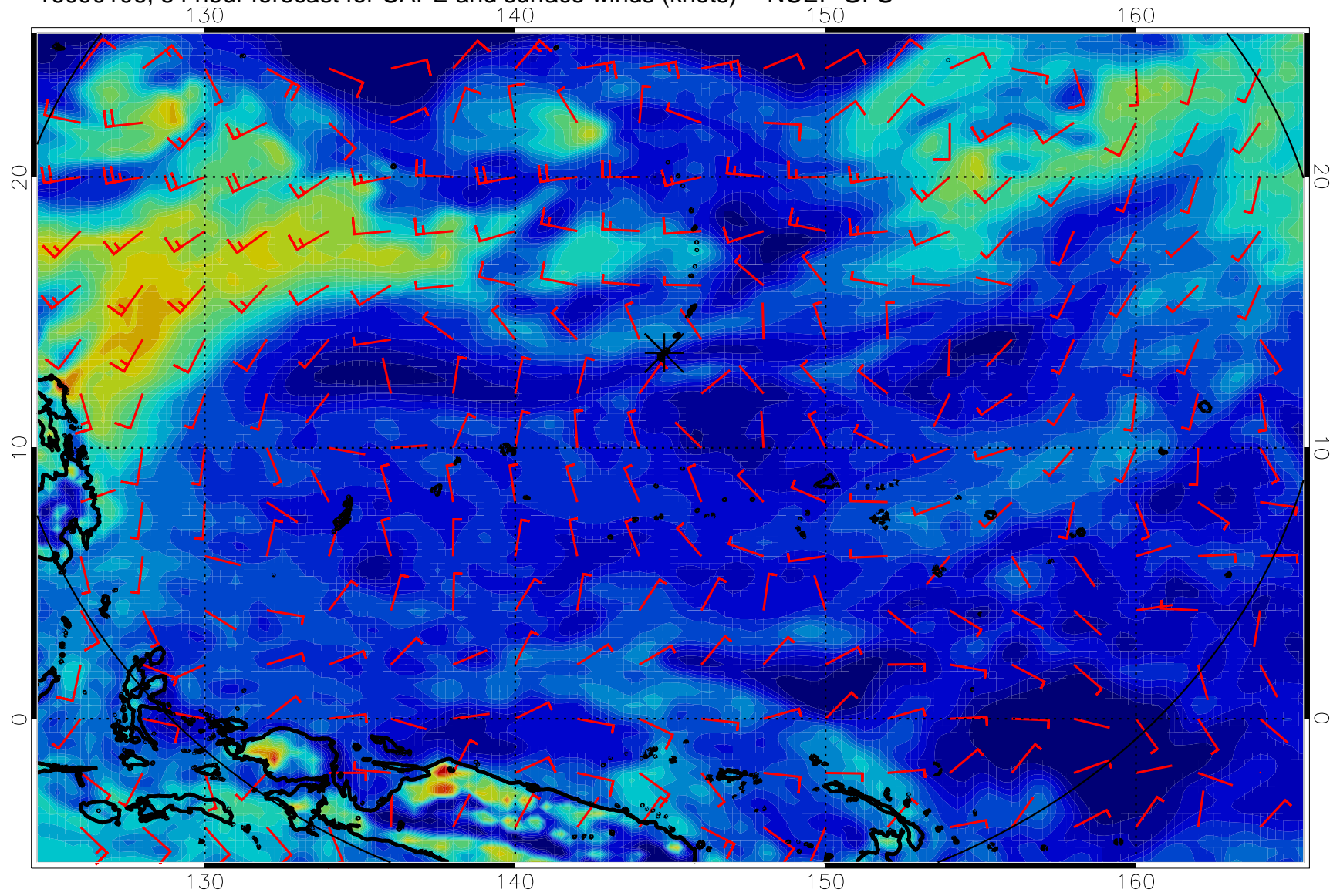


16090100, 48 hour forecast for CAPE and surface winds (knots) -- NCEP GFS

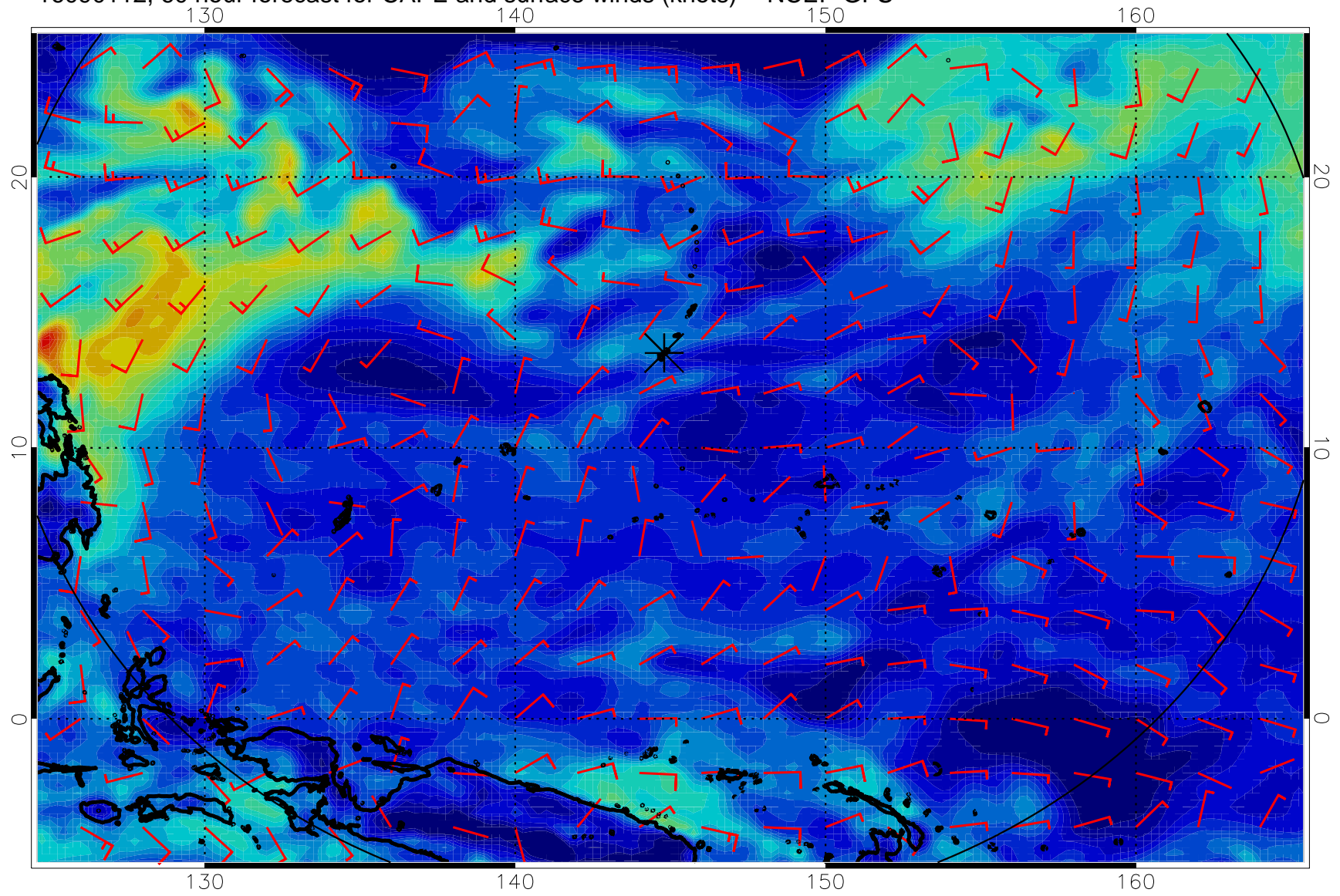




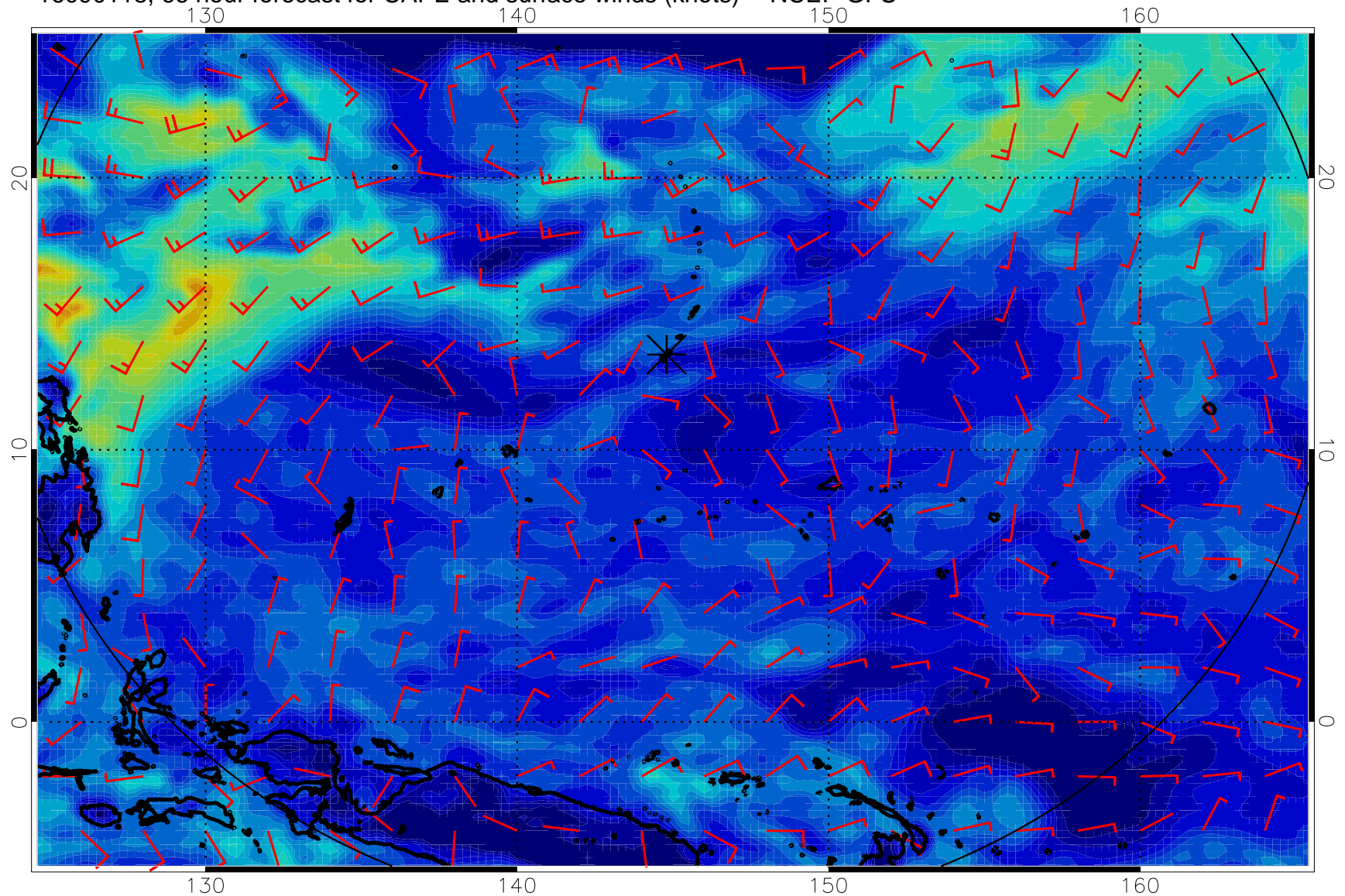
16090106, 54 hour forecast for CAPE and surface winds (knots) -- NCEP GFS



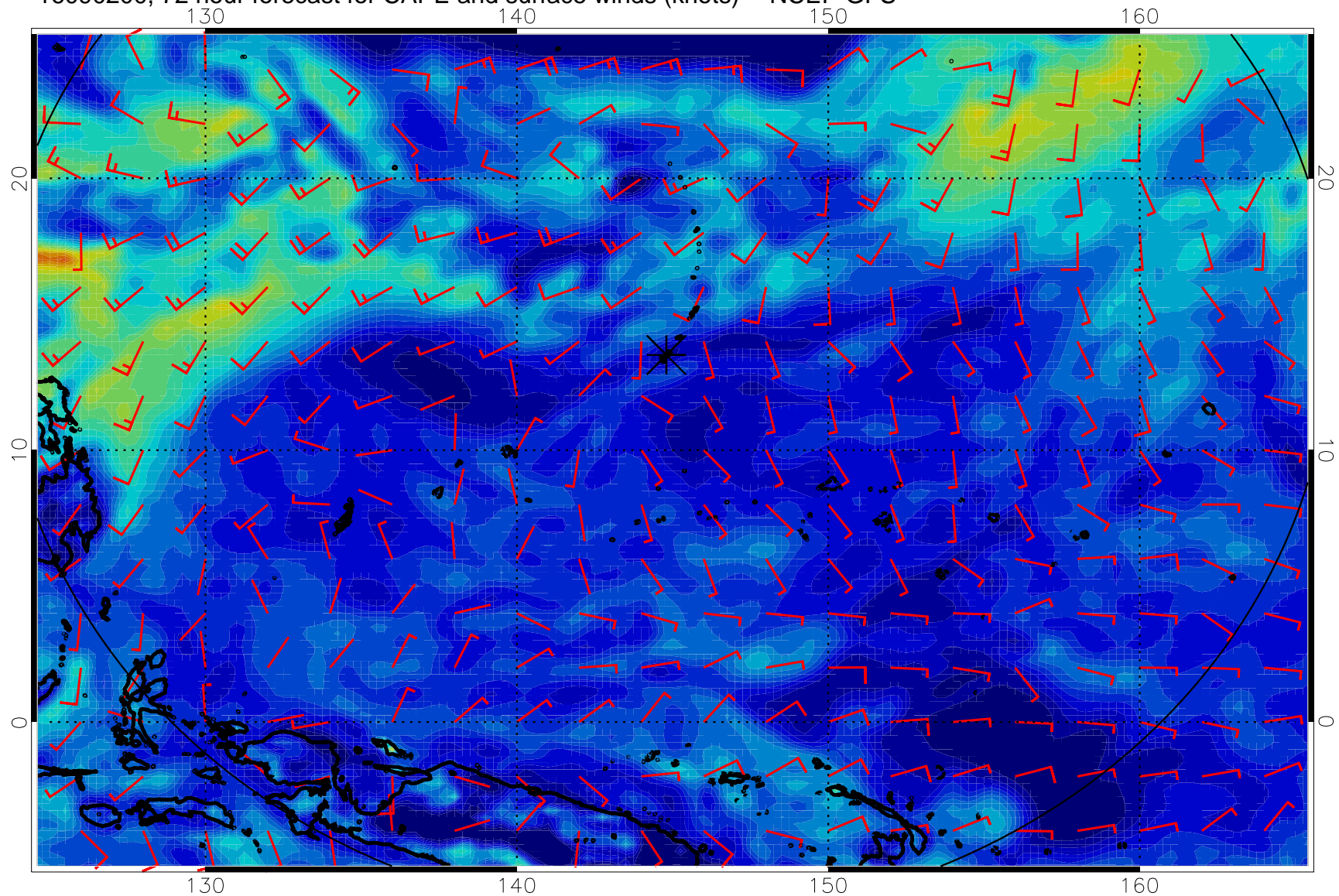
16090112, 60 hour forecast for CAPE and surface winds (knots) -- NCEP GFS



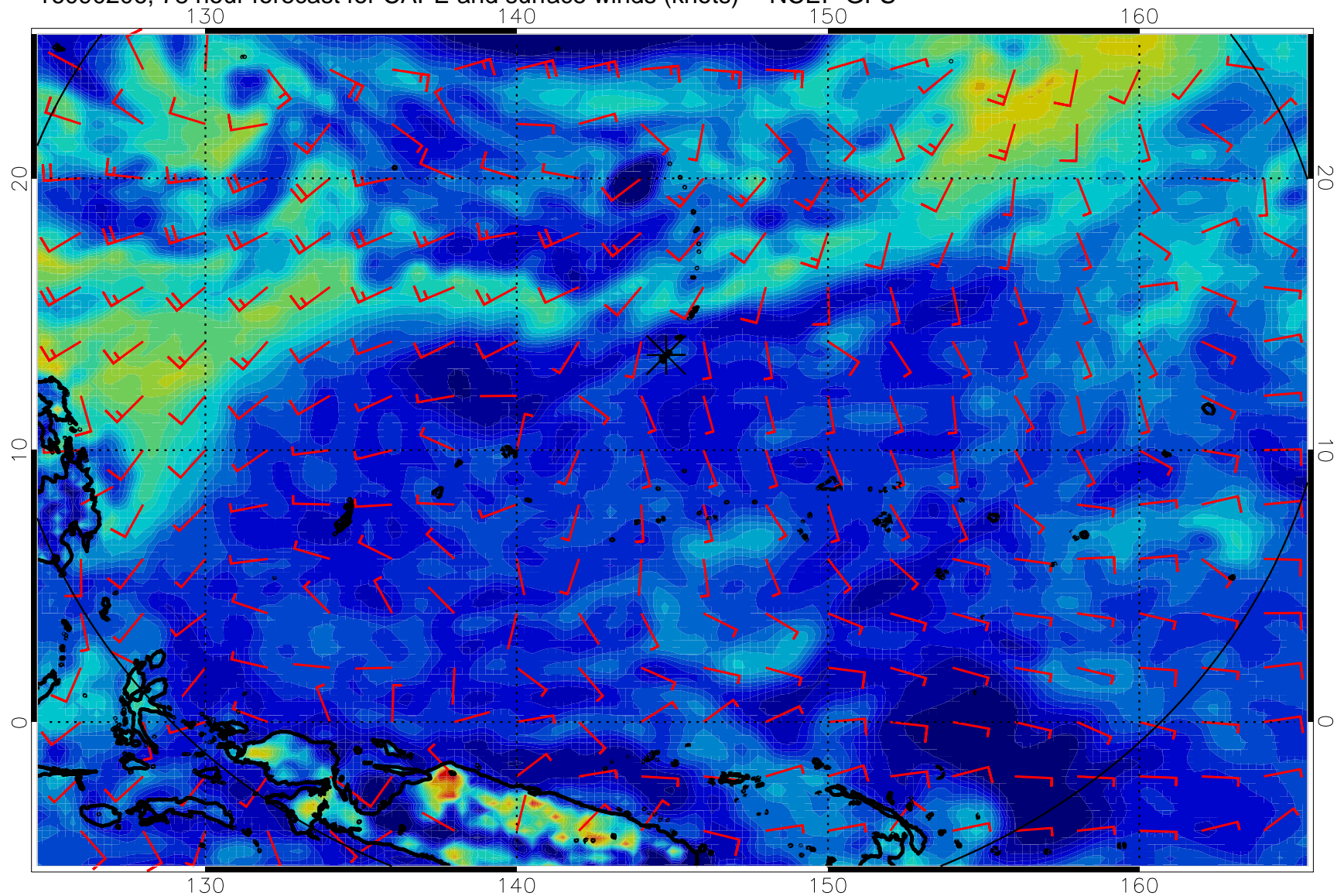
16090118, 66 hour forecast for CAPE and surface winds (knots) -- NCEP GFS



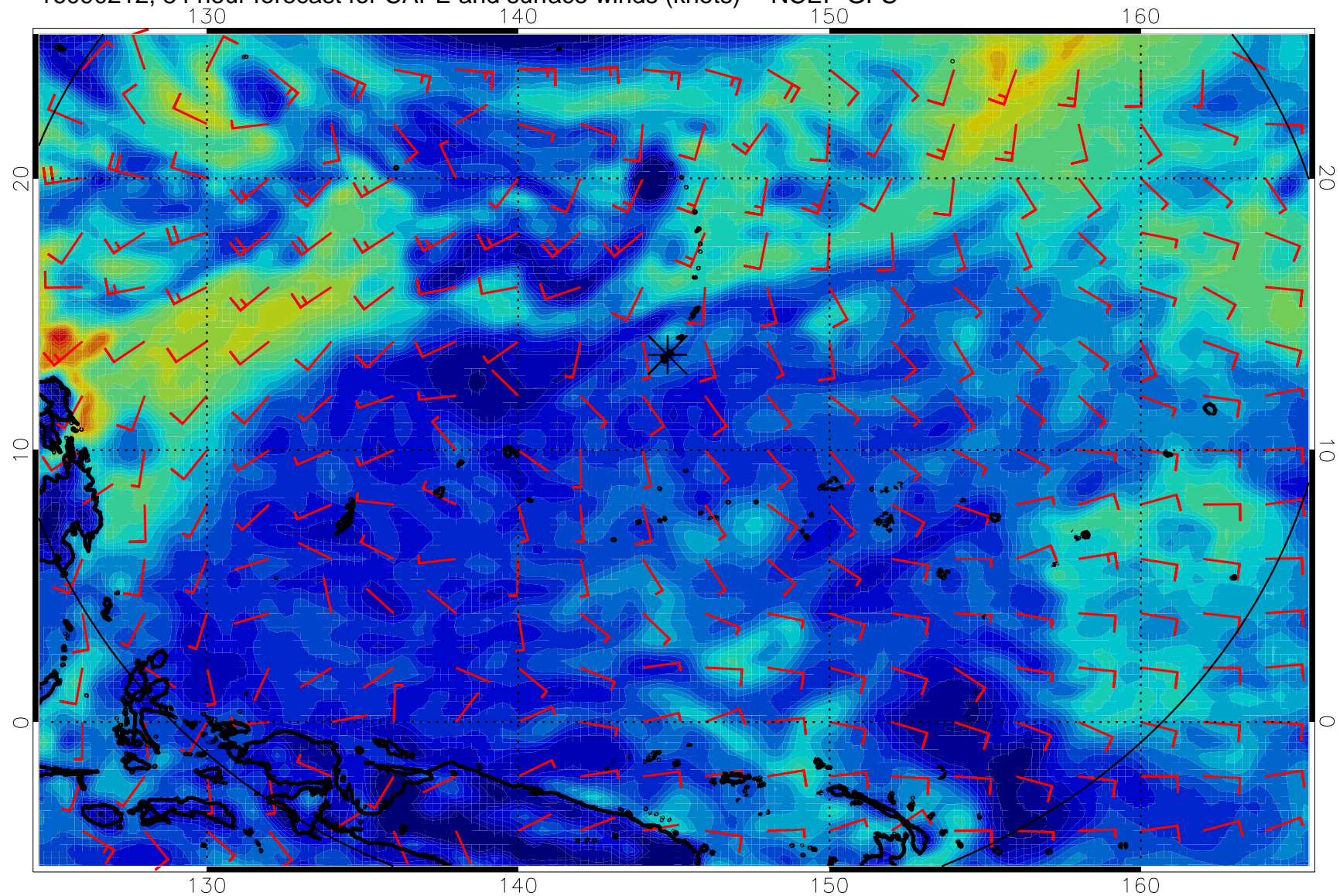
16090200, 72 hour forecast for CAPE and surface winds (knots) -- NCEP GFS



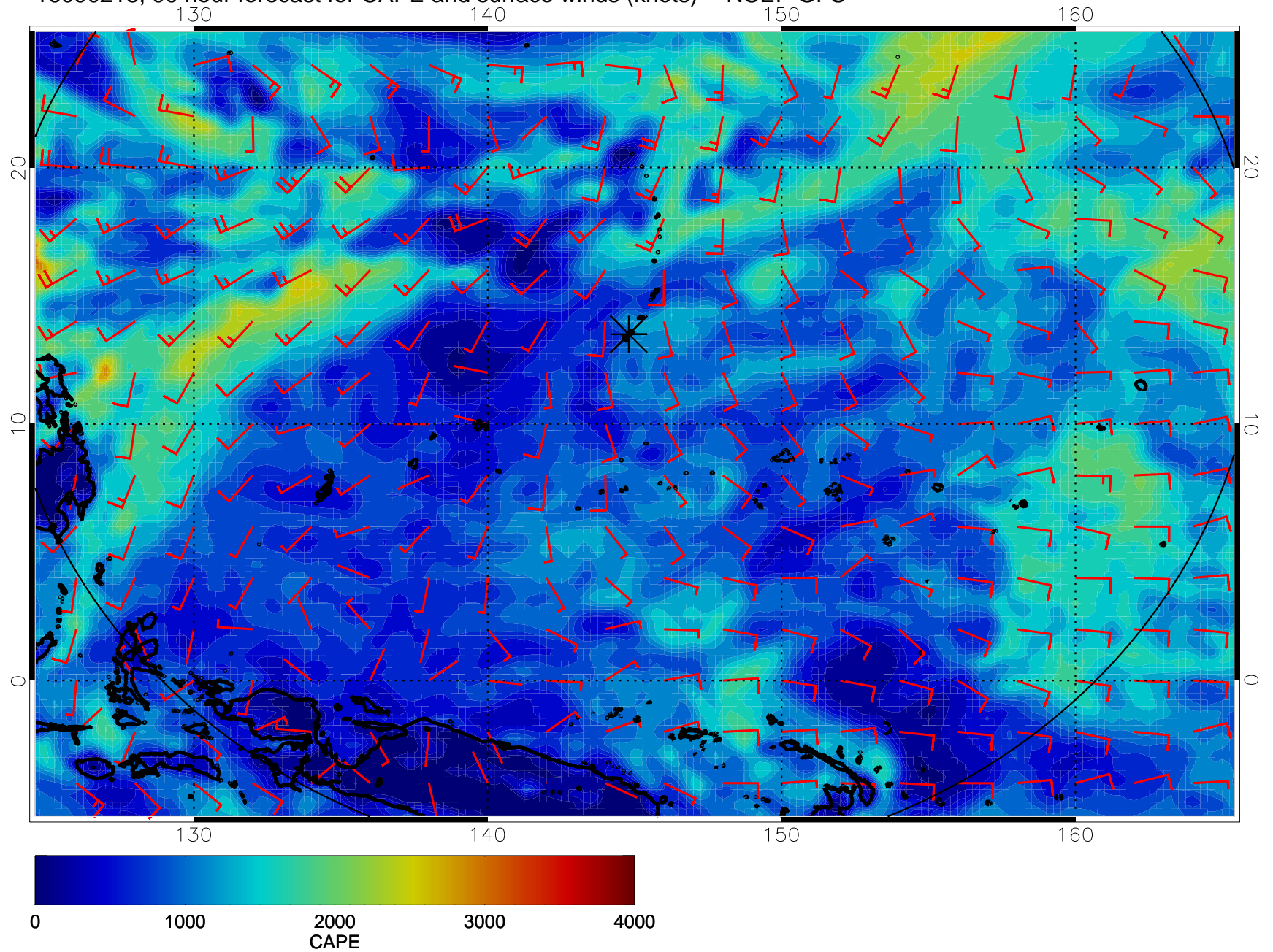
16090206, 78 hour forecast for CAPE and surface winds (knots) -- NCEP GFS



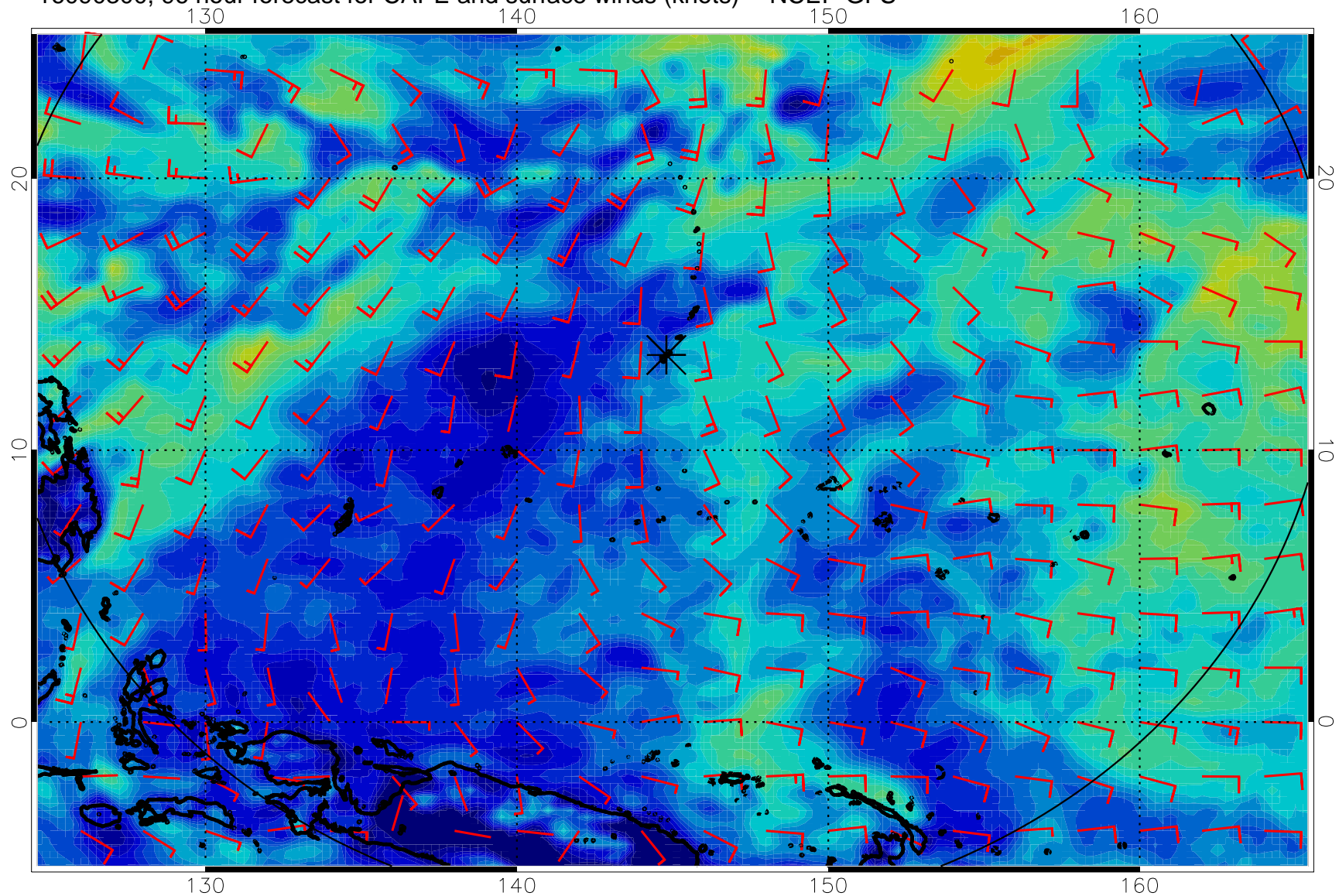
16090212, 84 hour forecast for CAPE and surface winds (knots) -- NCEP GFS



16090218, 90 hour forecast for CAPE and surface winds (knots) -- NCEP GFS

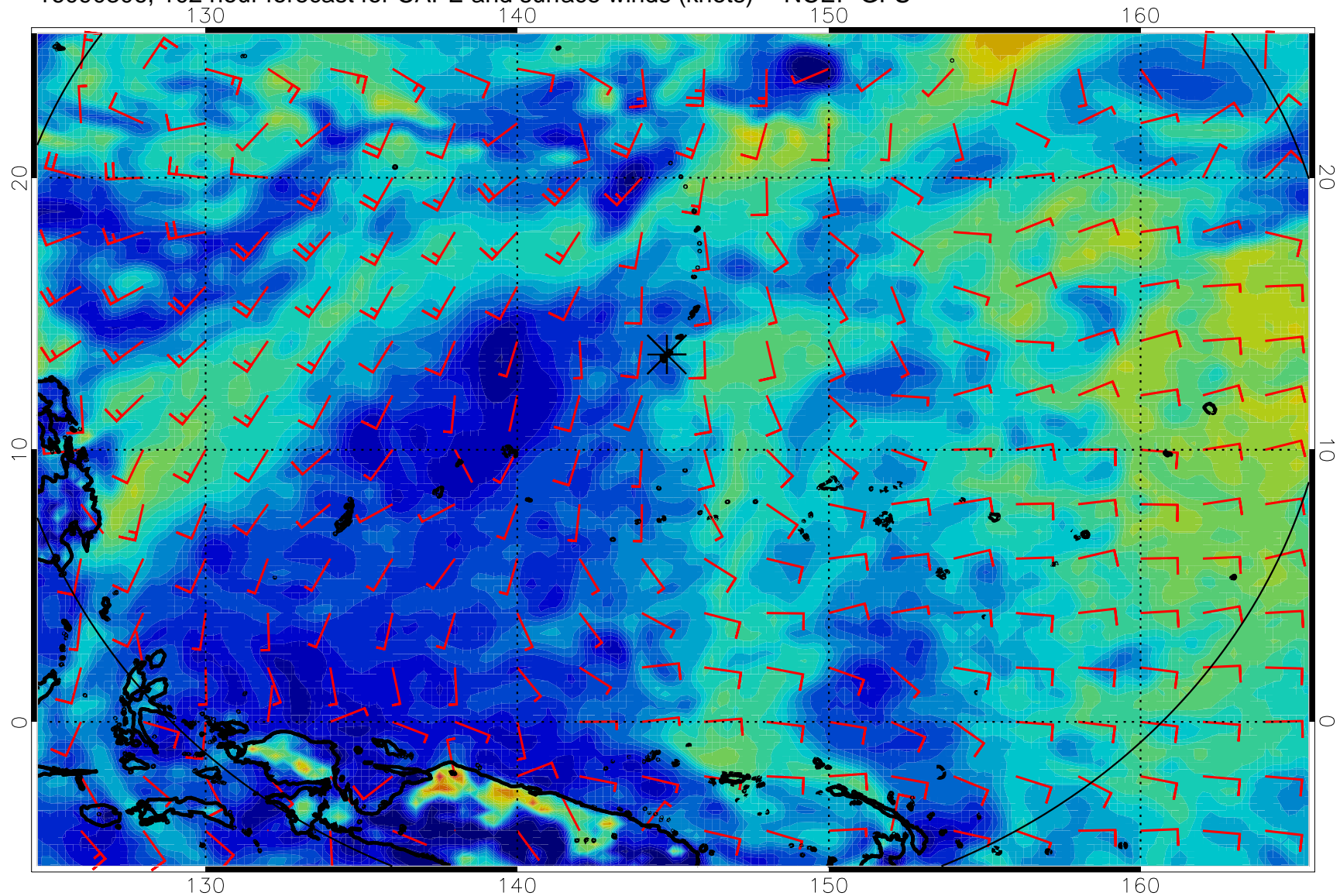


16090300, 96 hour forecast for CAPE and surface winds (knots) -- NCEP GFS

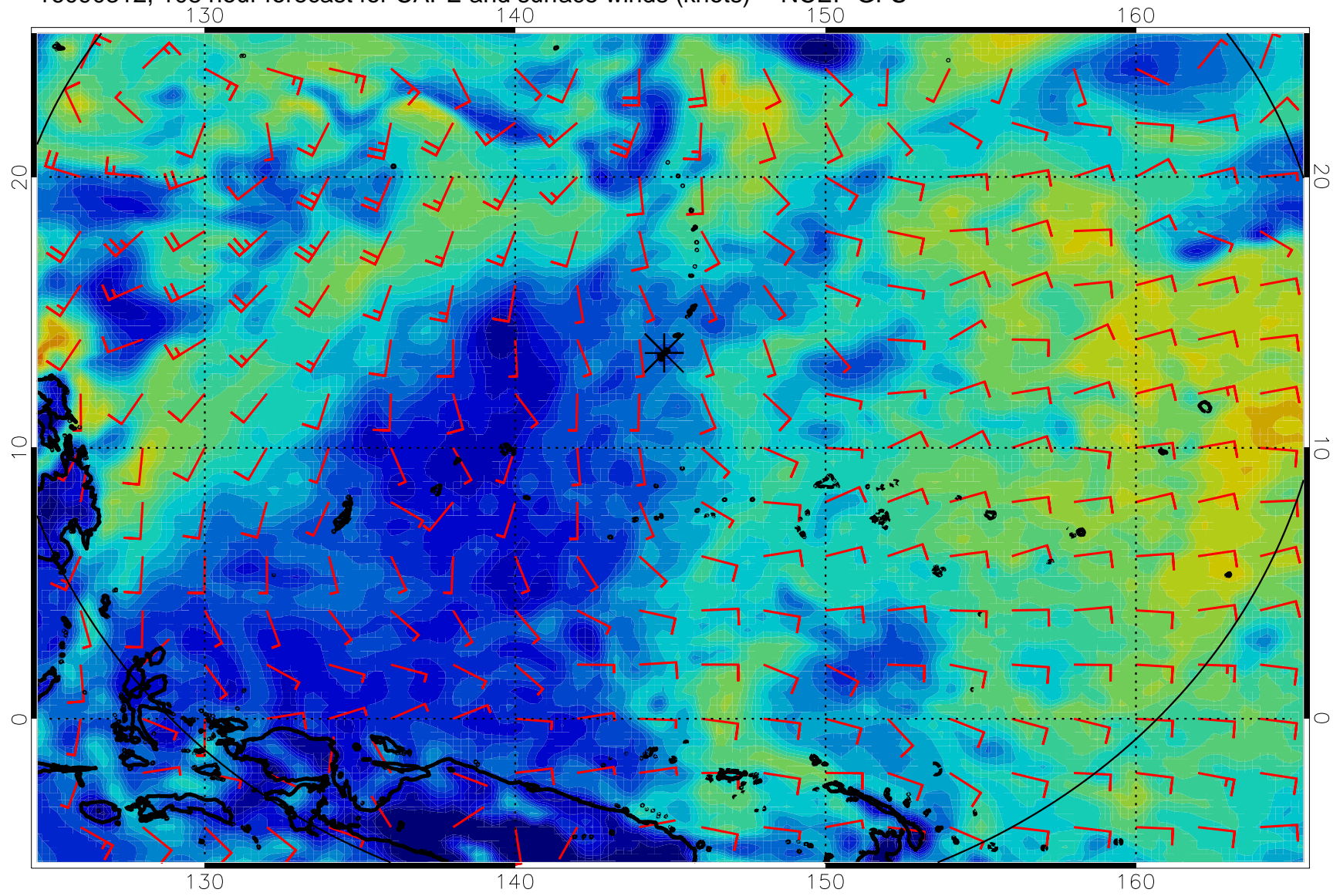




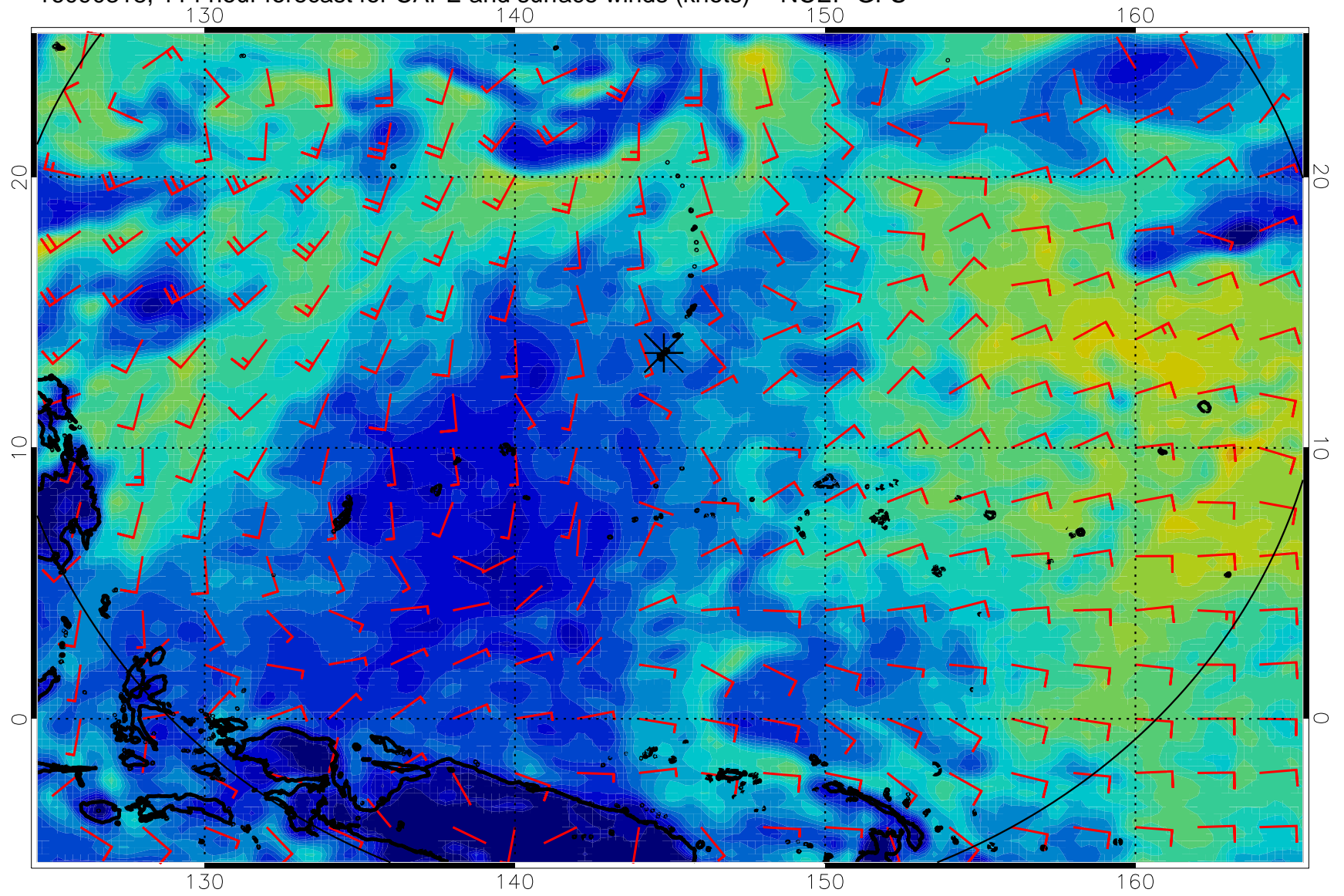
16090306, 102 hour forecast for CAPE and surface winds (knots) -- NCEP GFS



16090312, 108 hour forecast for CAPE and surface winds (knots) -- NCEP GFS



16090318, 114 hour forecast for CAPE and surface winds (knots) -- NCEP GFS



16090400, 120 hour forecast for CAPE and surface winds (knots) -- NCEP GFS

