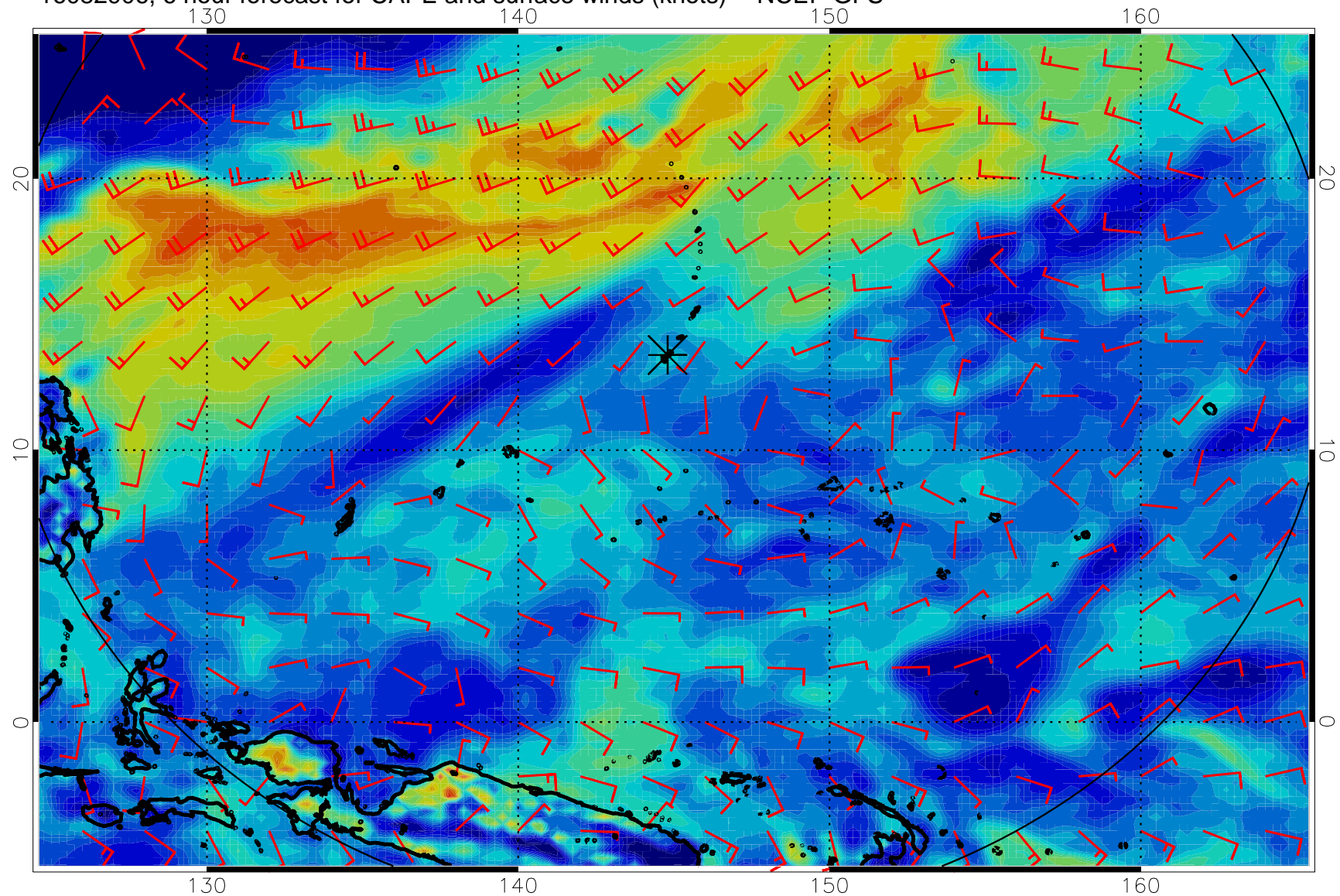
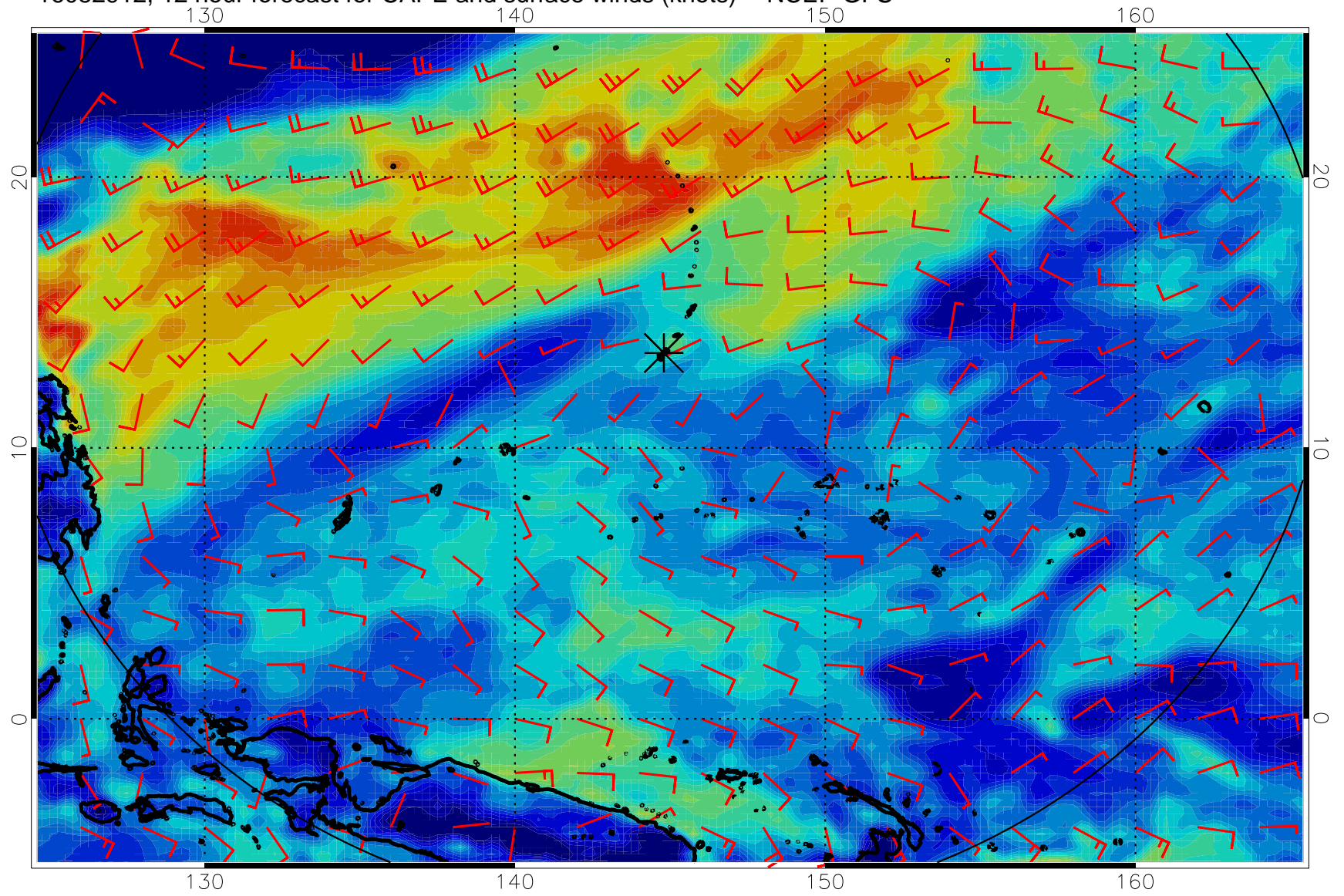


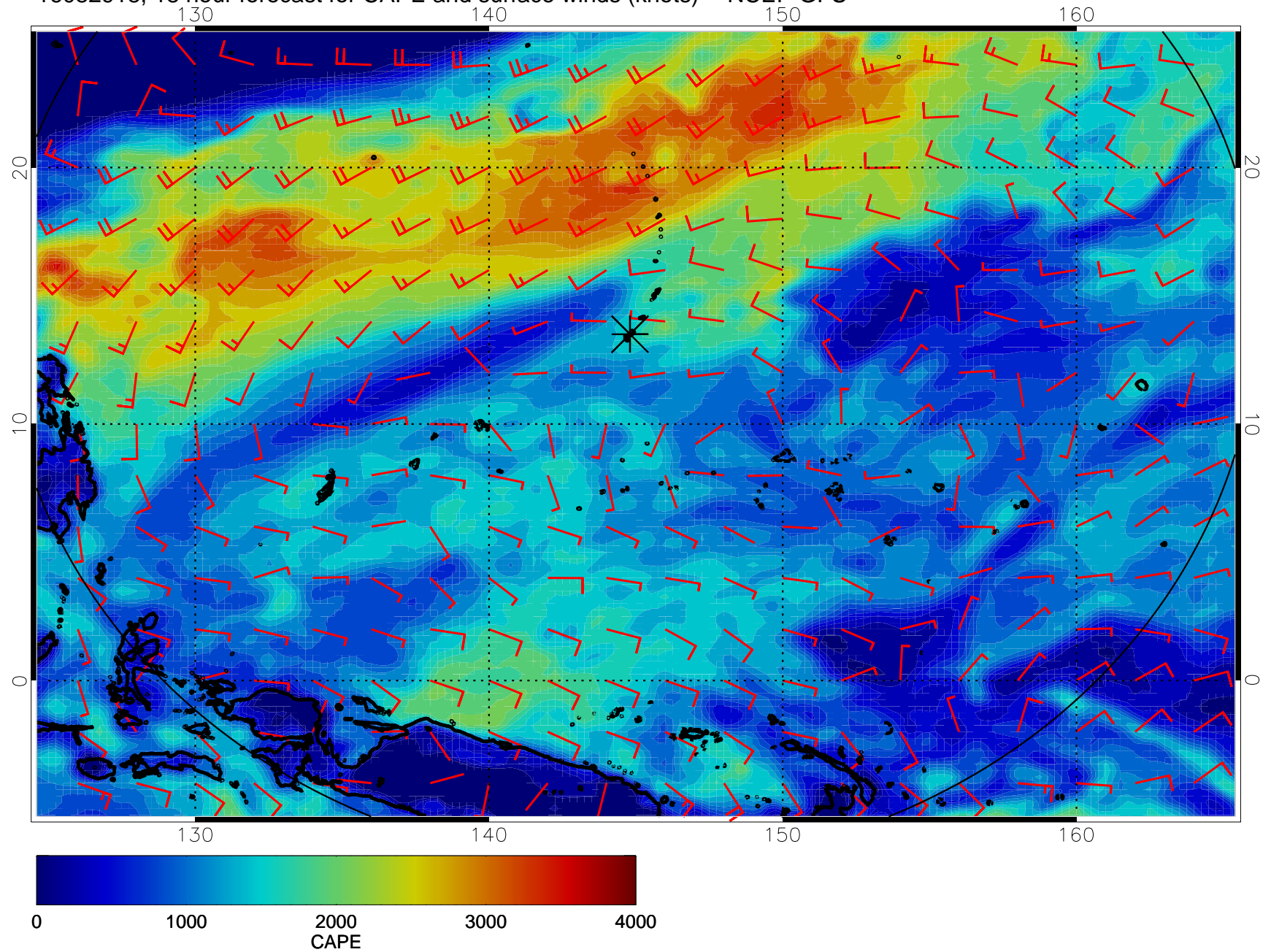
16082906, 6 hour forecast for CAPE and surface winds (knots) -- NCEP GFS



16082912, 12 hour forecast for CAPE and surface winds (knots) -- NCEP GFS

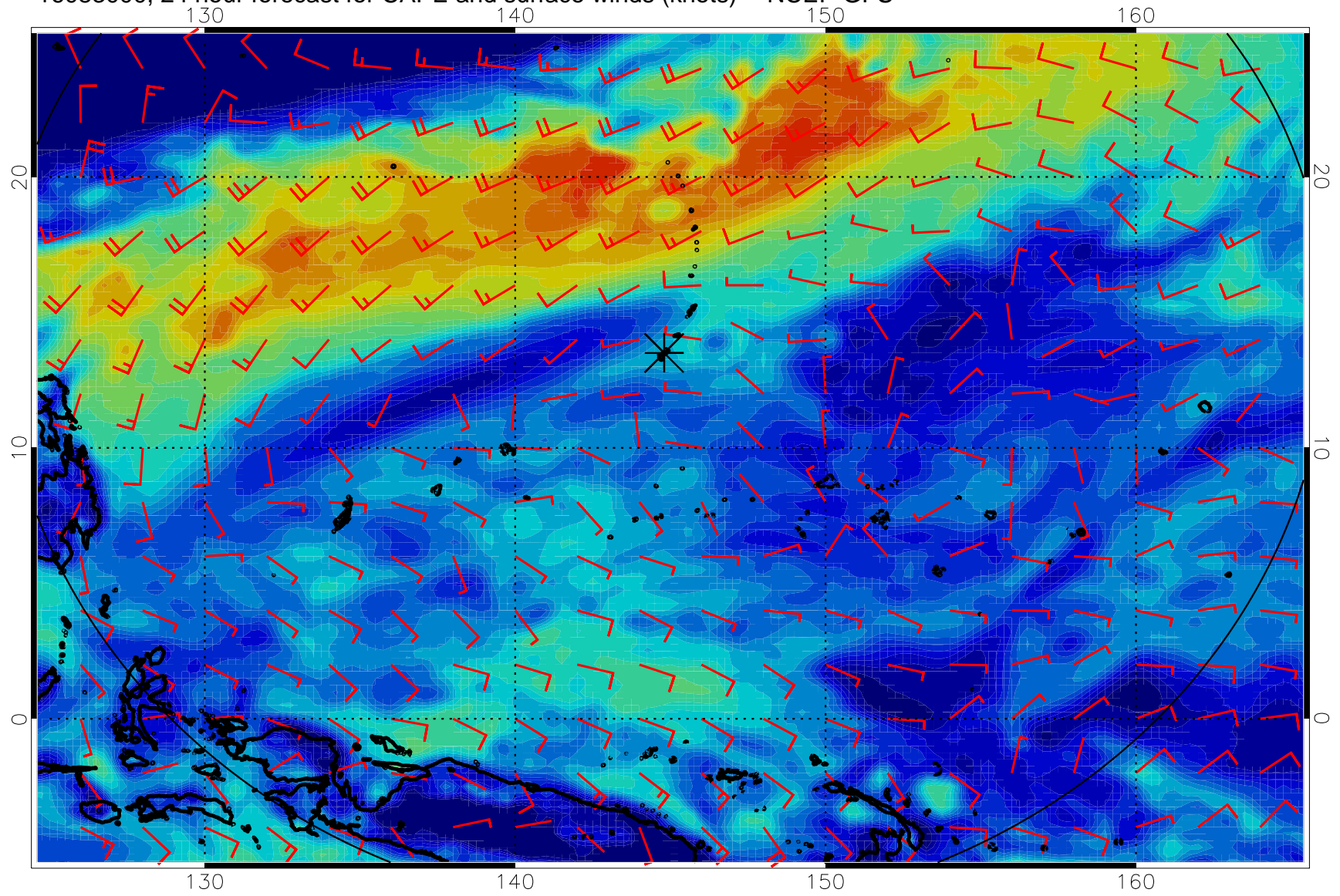


16082918, 18 hour forecast for CAPE and surface winds (knots) -- NCEP GFS



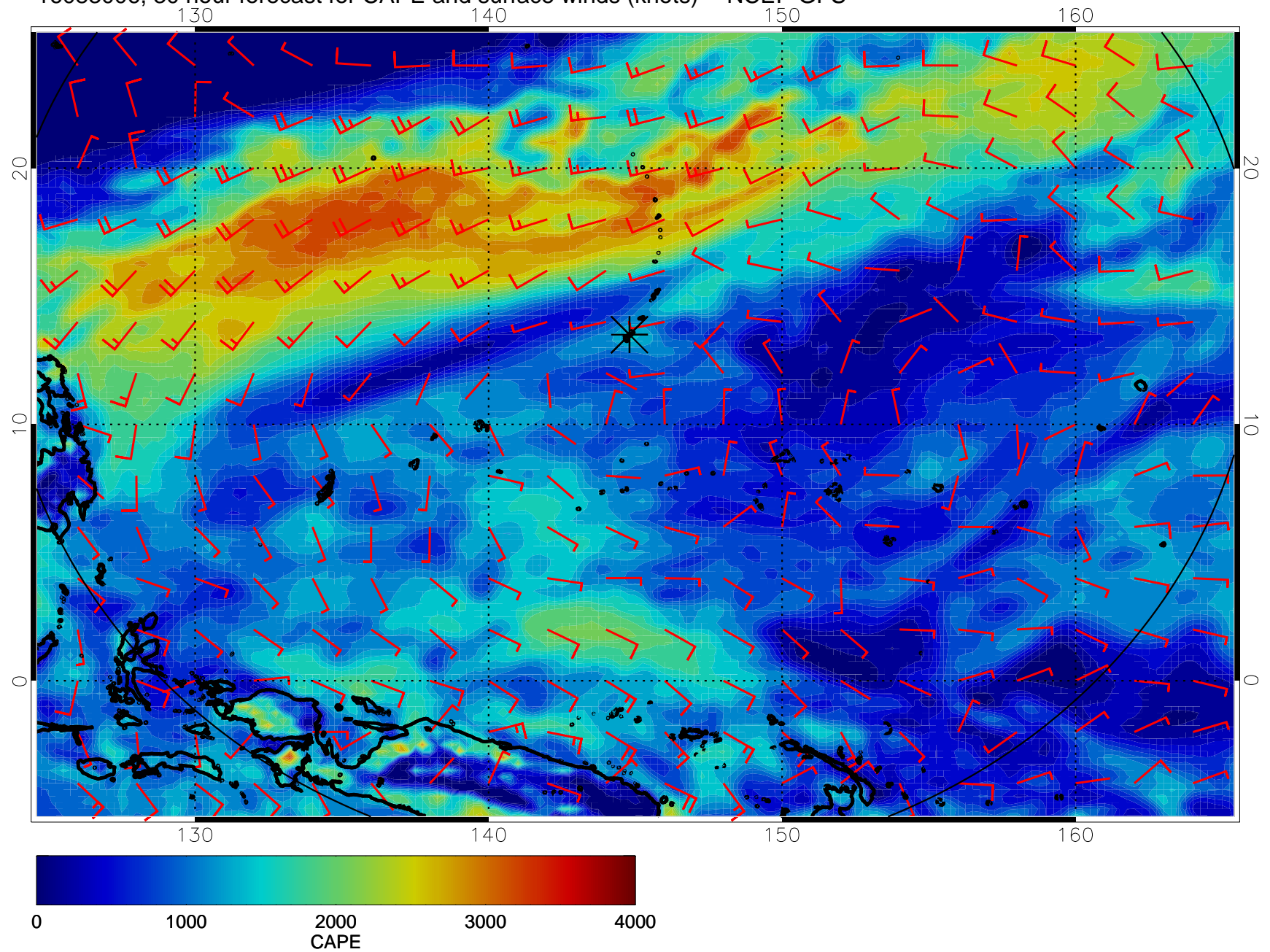


16083000, 24 hour forecast for CAPE and surface winds (knots) -- NCEP GFS

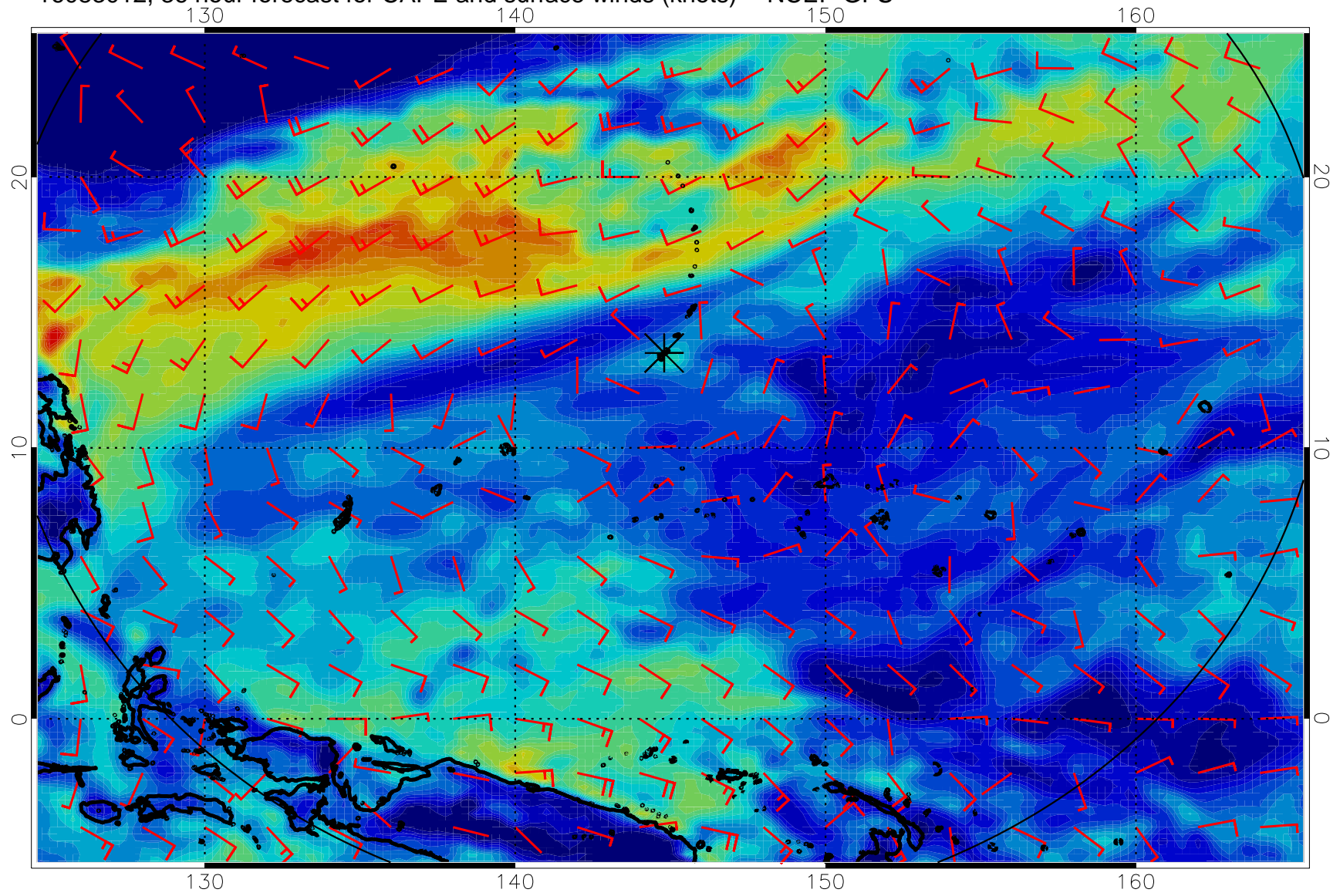




16083006, 30 hour forecast for CAPE and surface winds (knots) -- NCEP GFS

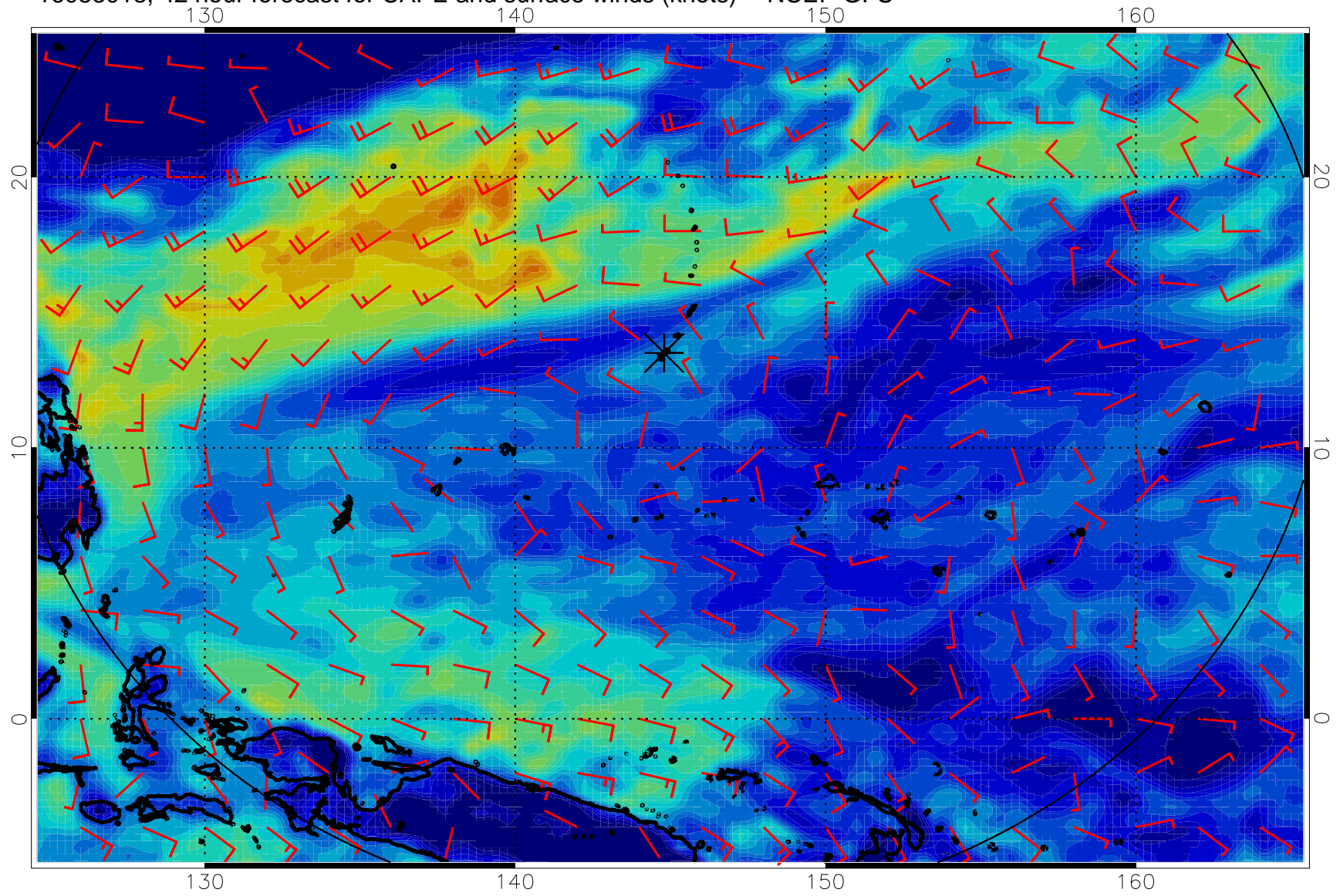


16083012, 36 hour forecast for CAPE and surface winds (knots) -- NCEP GFS



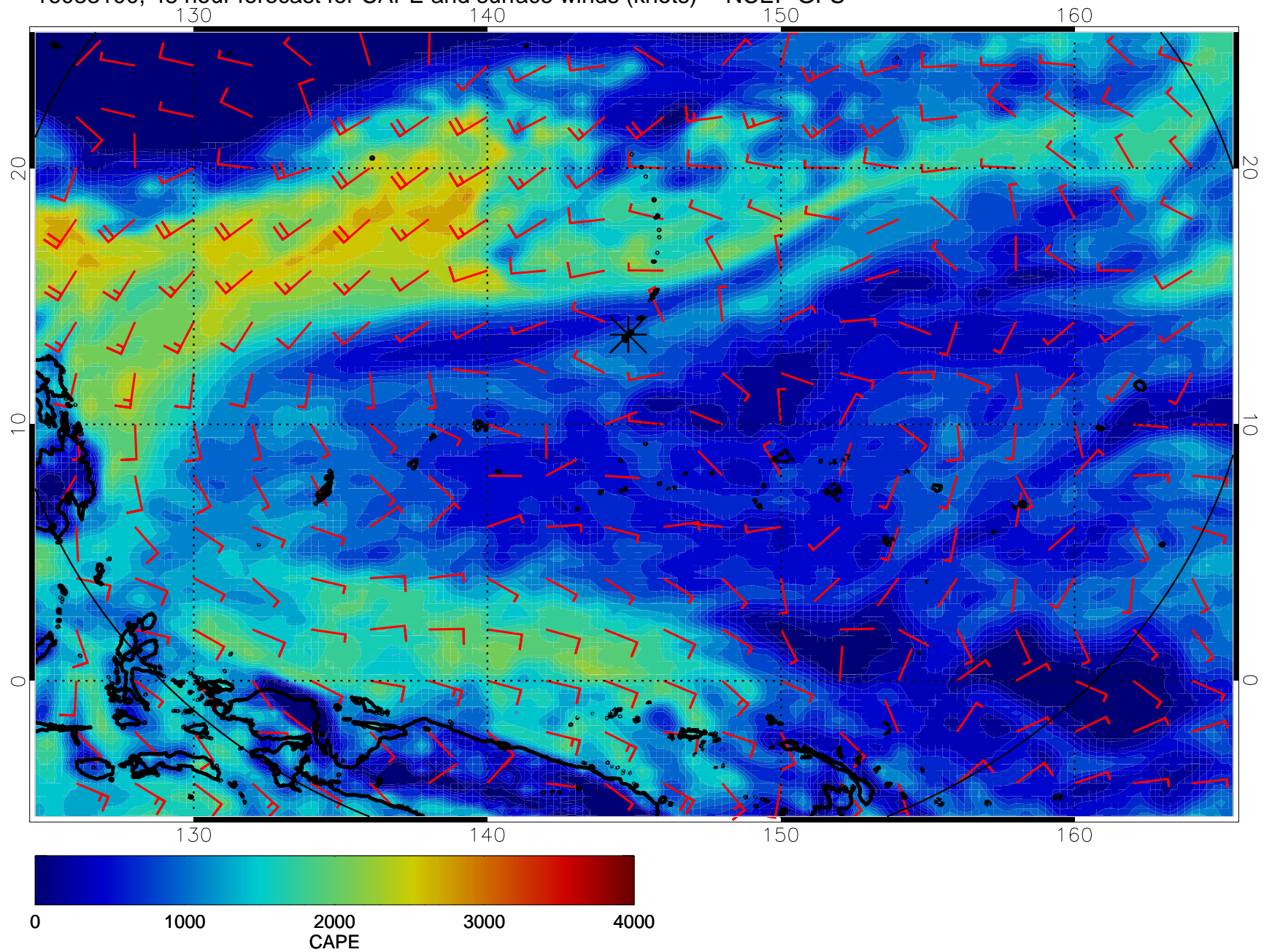


16083018, 42 hour forecast for CAPE and surface winds (knots) -- NCEP GFS

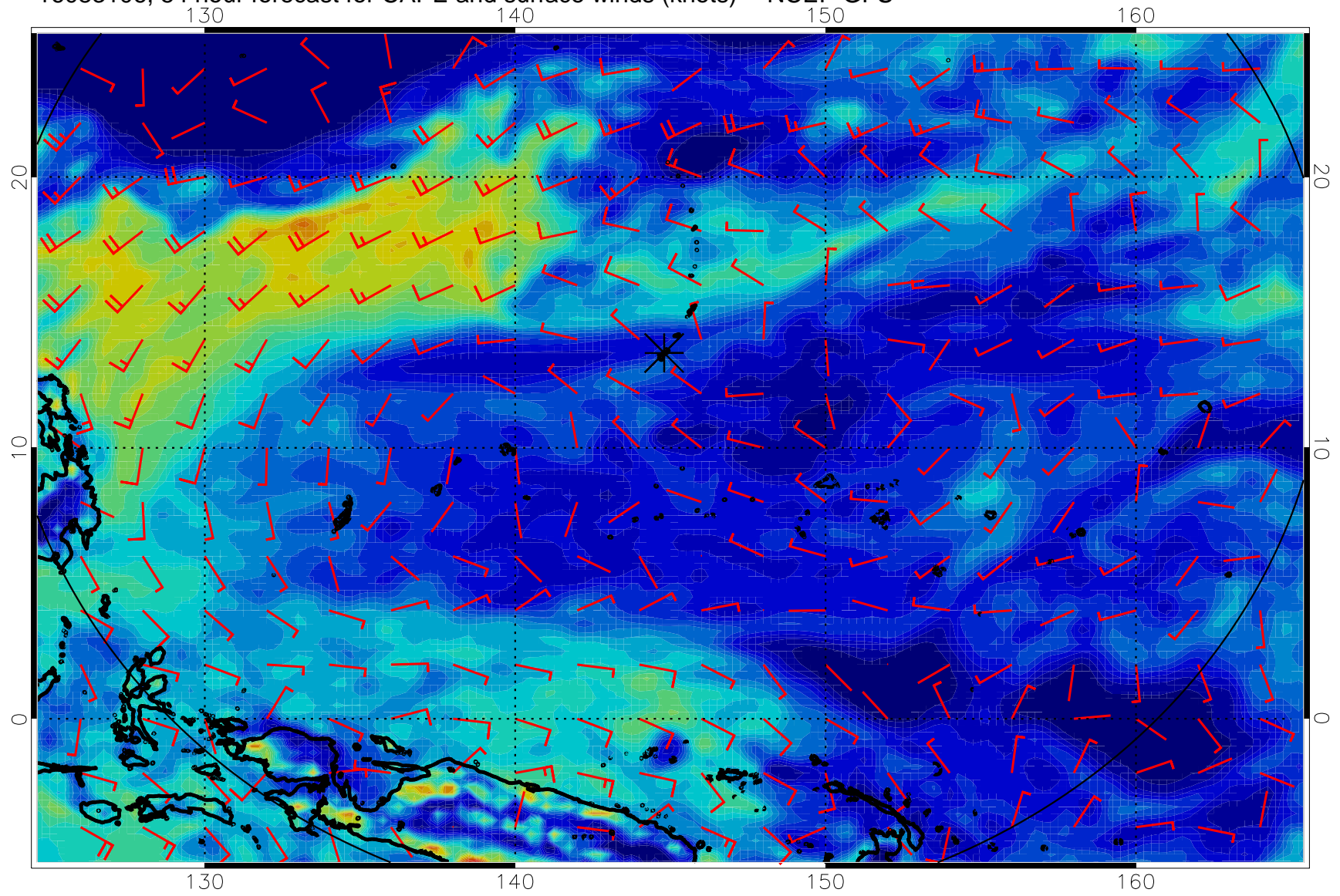




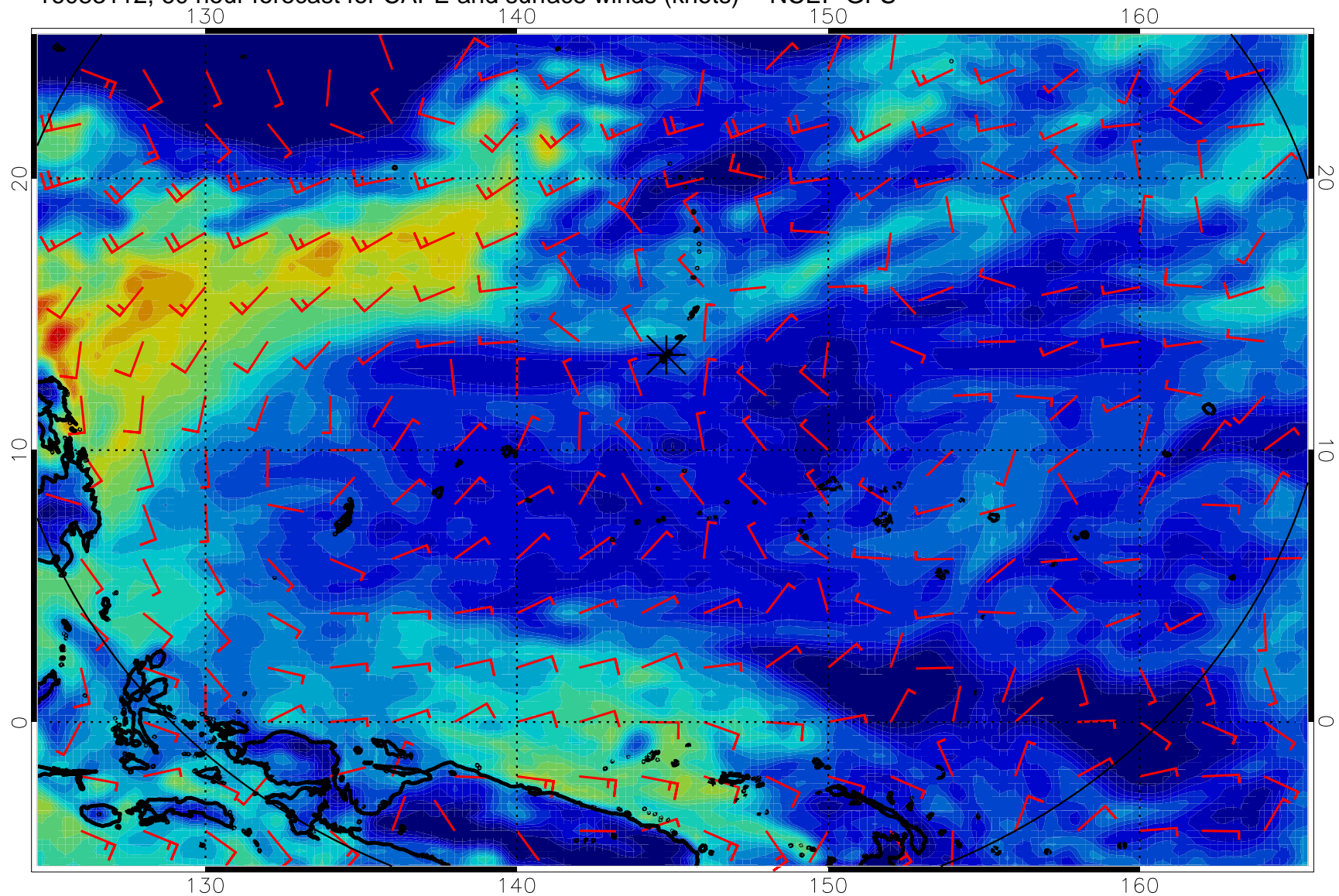
16083100, 48 hour forecast for CAPE and surface winds (knots) -- NCEP GFS



16083106, 54 hour forecast for CAPE and surface winds (knots) -- NCEP GFS

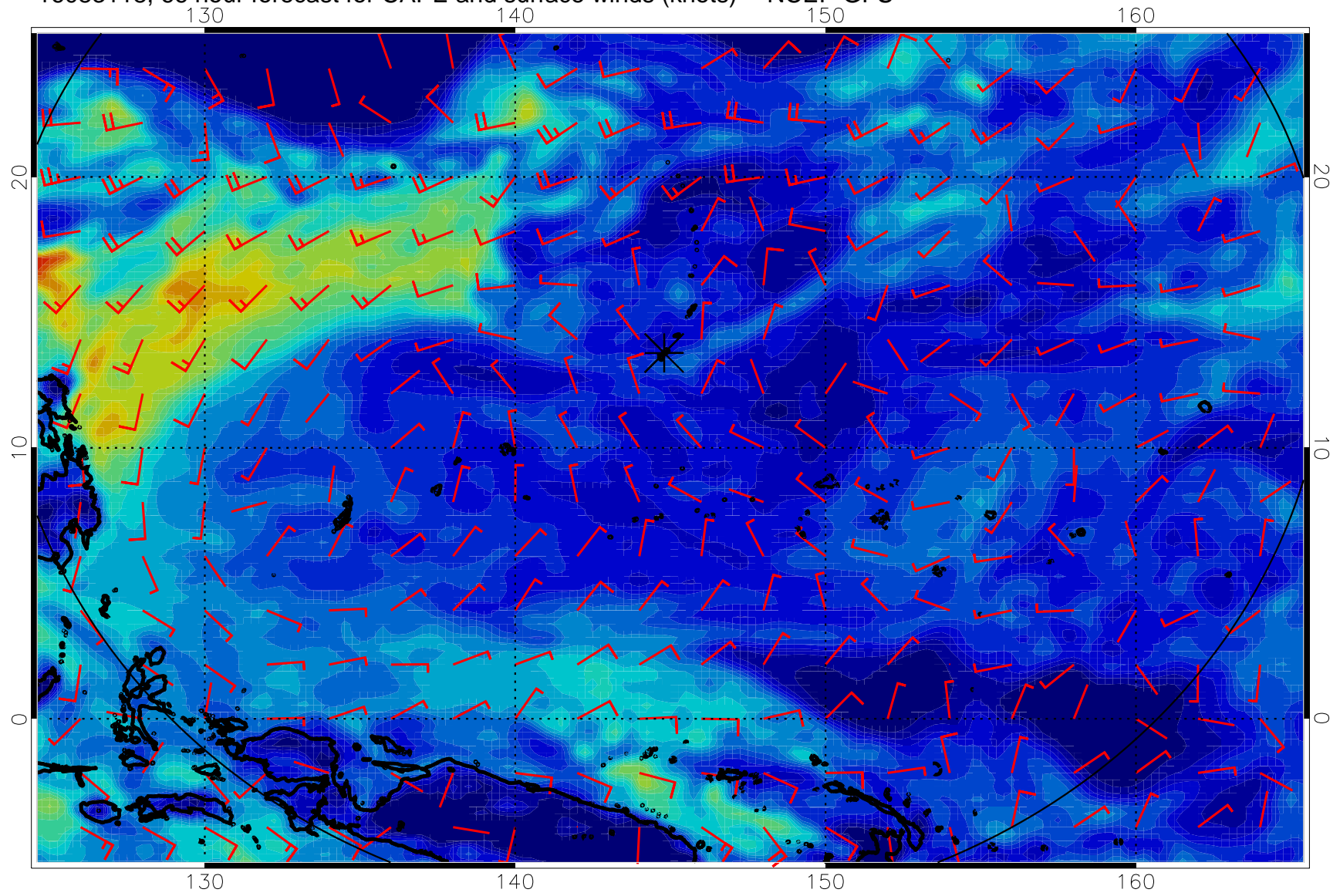


16083112, 60 hour forecast for CAPE and surface winds (knots) -- NCEP GFS

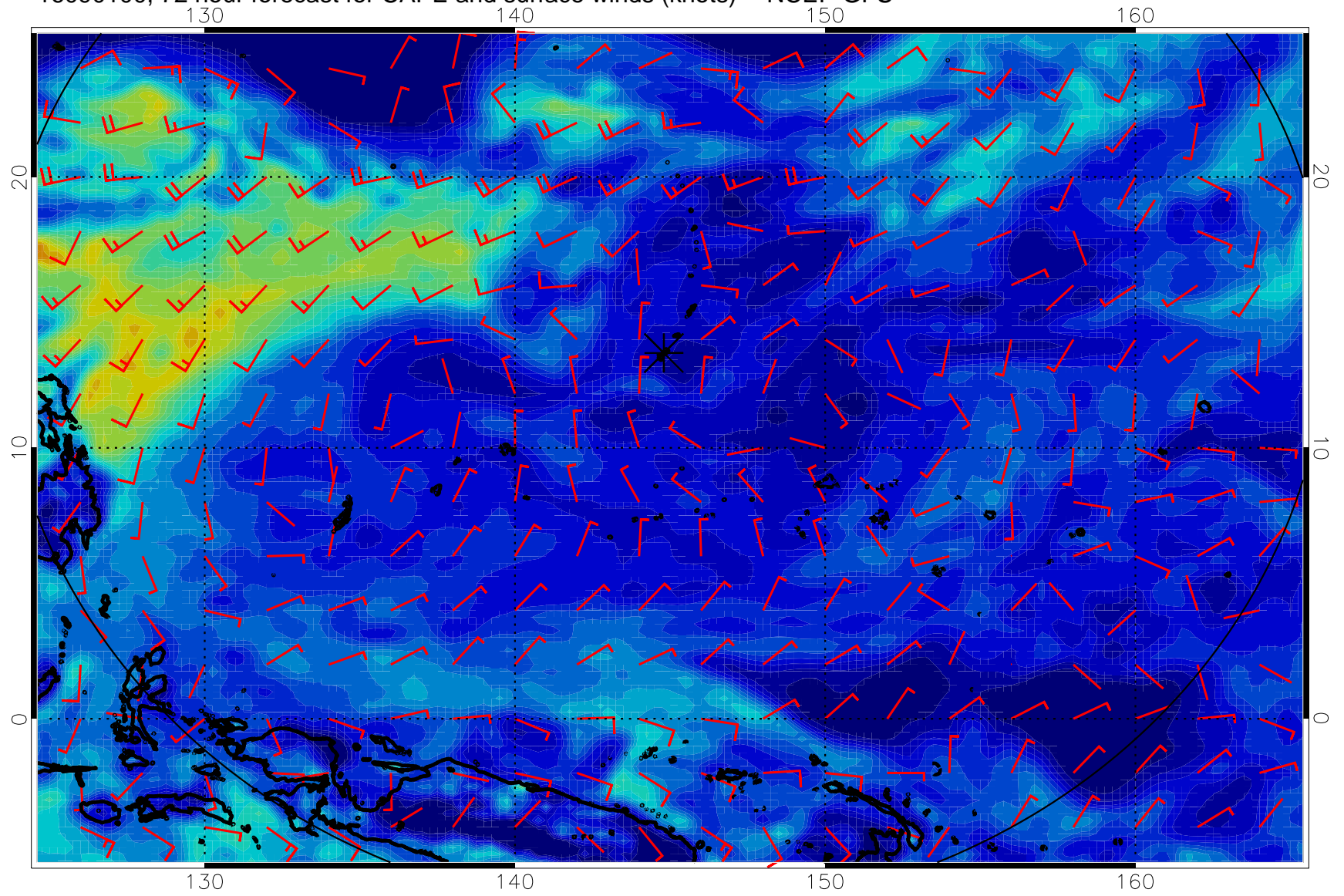




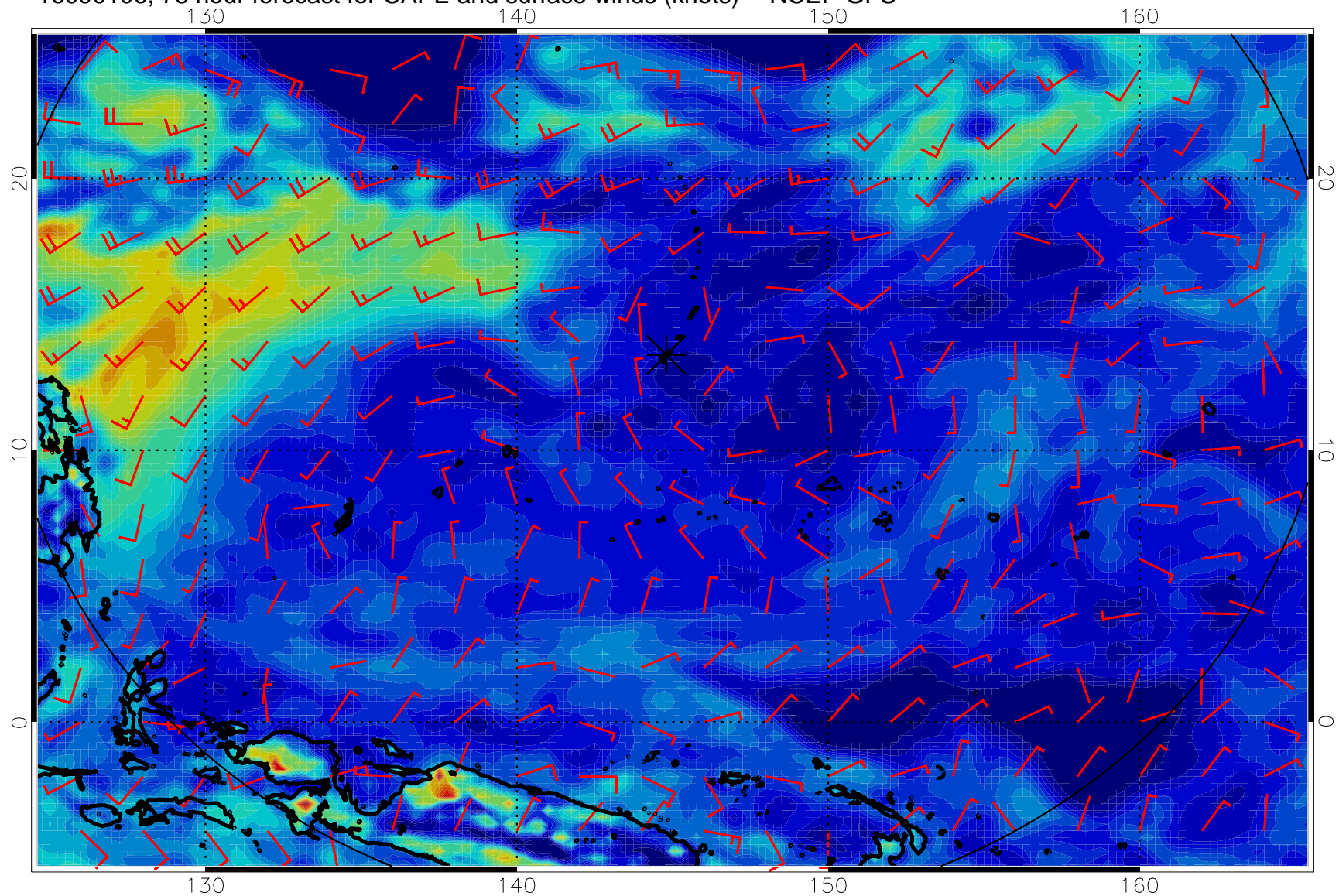
16083118, 66 hour forecast for CAPE and surface winds (knots) -- NCEP GFS



16090100, 72 hour forecast for CAPE and surface winds (knots) -- NCEP GFS

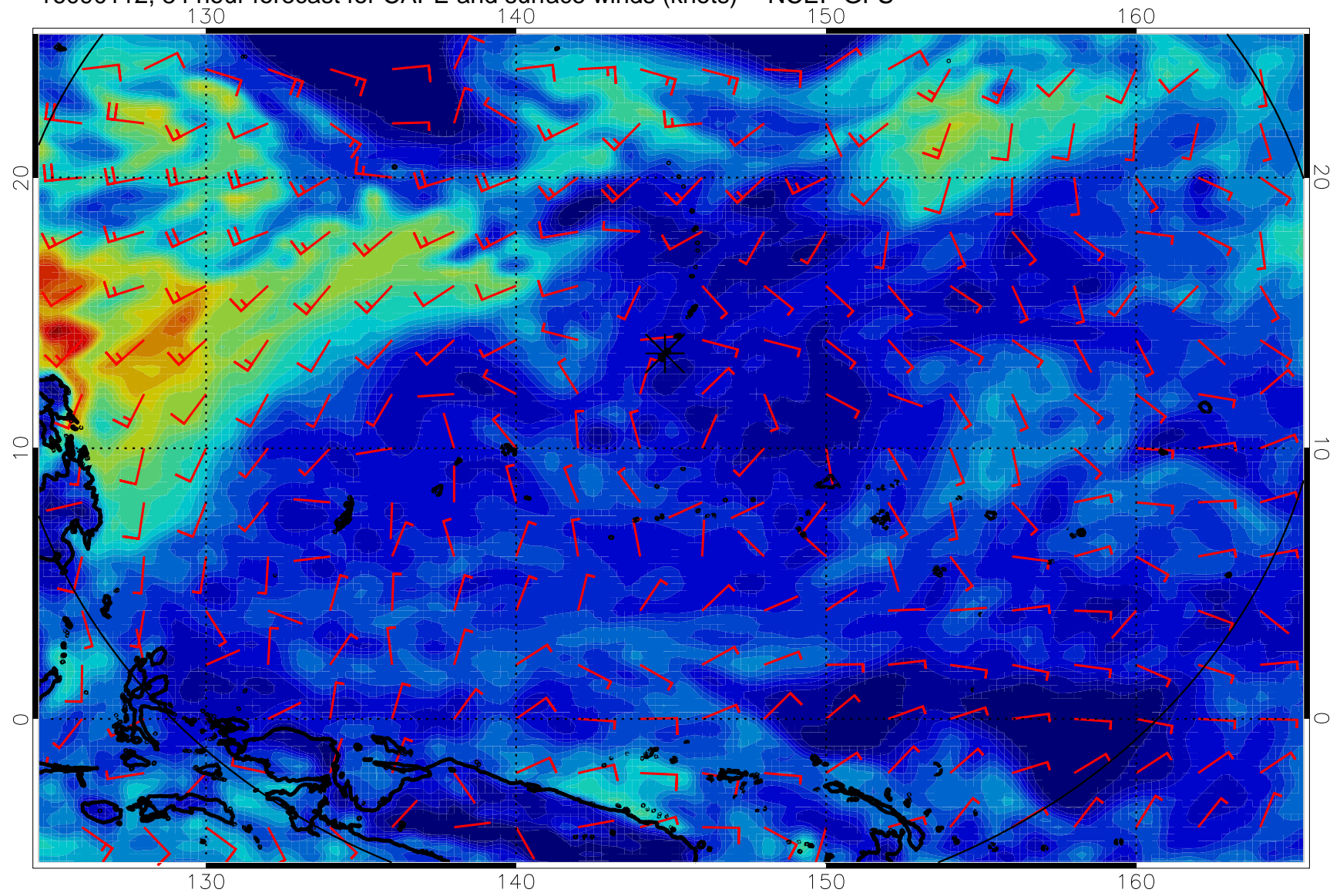


16090106, 78 hour forecast for CAPE and surface winds (knots) -- NCEP GFS

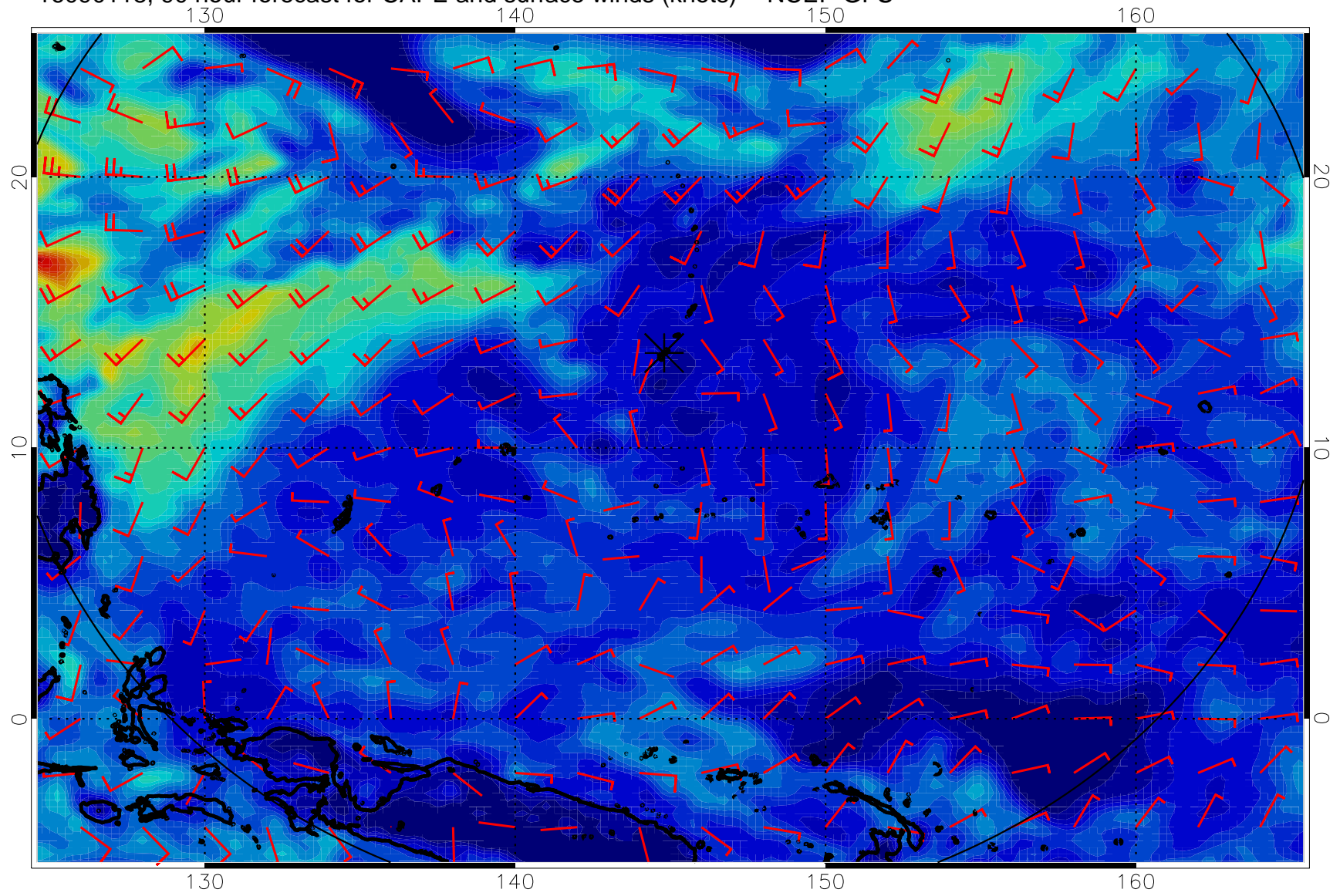




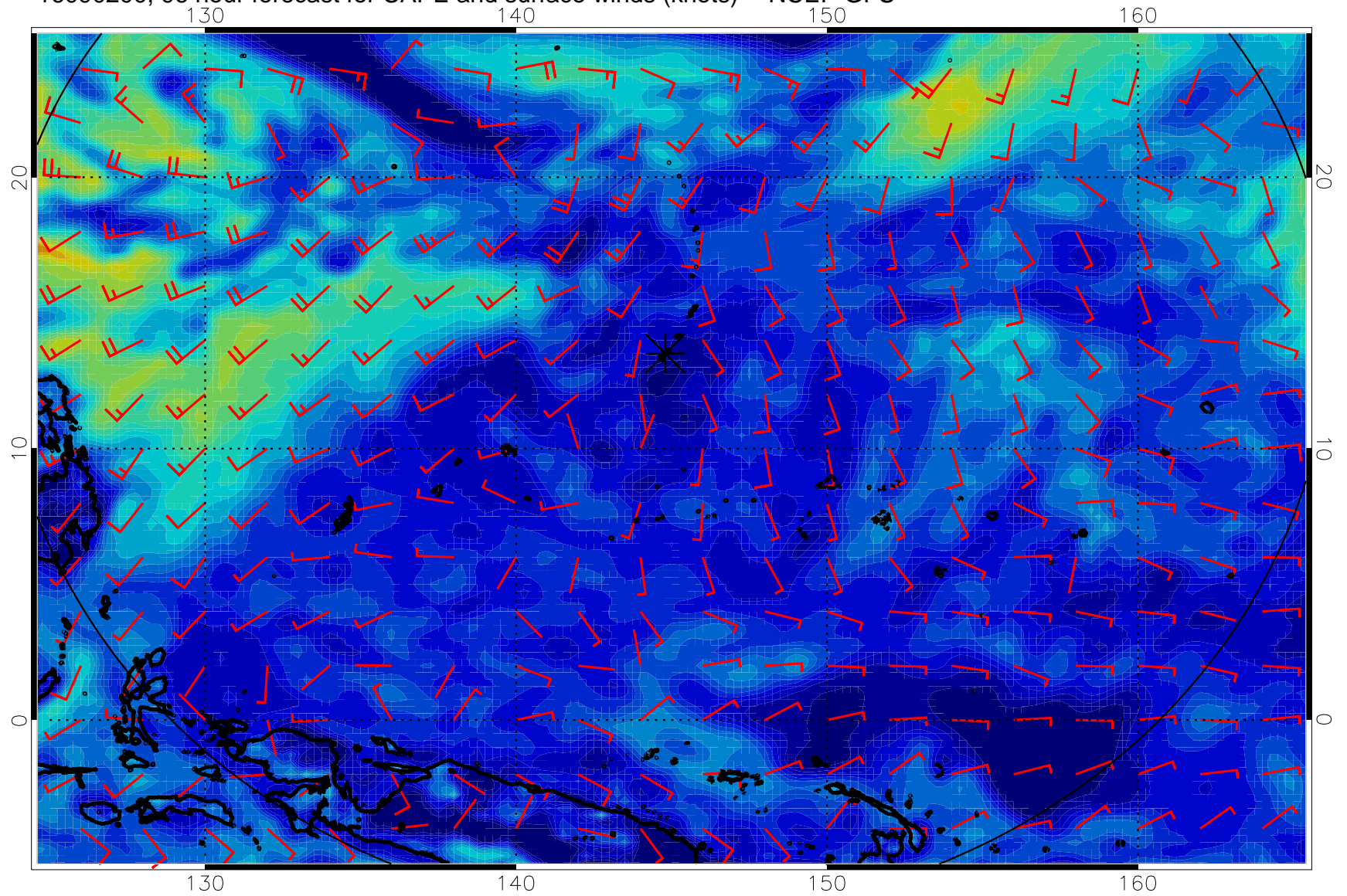
16090112, 84 hour forecast for CAPE and surface winds (knots) -- NCEP GFS



16090118, 90 hour forecast for CAPE and surface winds (knots) -- NCEP GFS

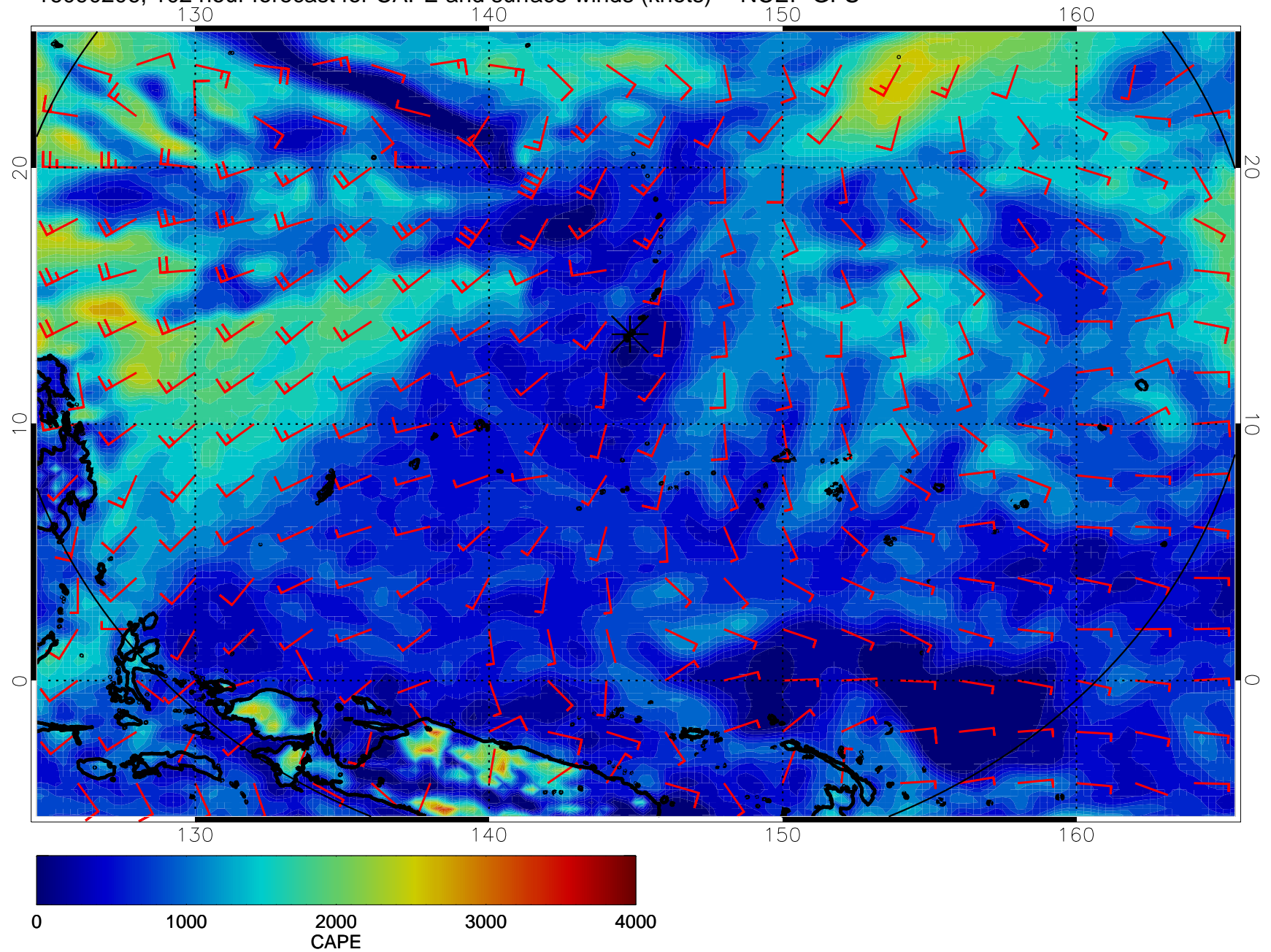


16090200, 96 hour forecast for CAPE and surface winds (knots) -- NCEP GFS

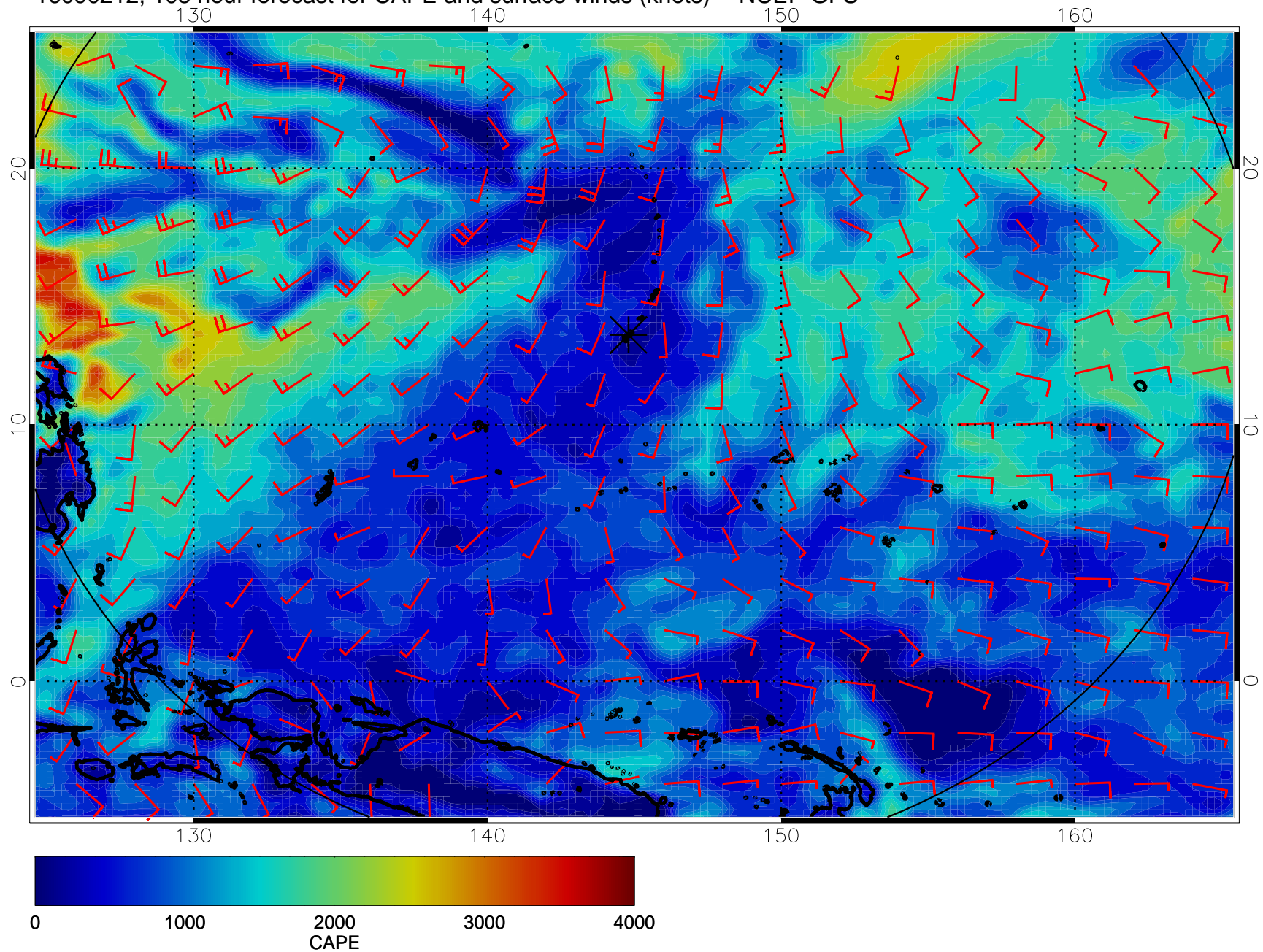




16090206, 102 hour forecast for CAPE and surface winds (knots) -- NCEP GFS

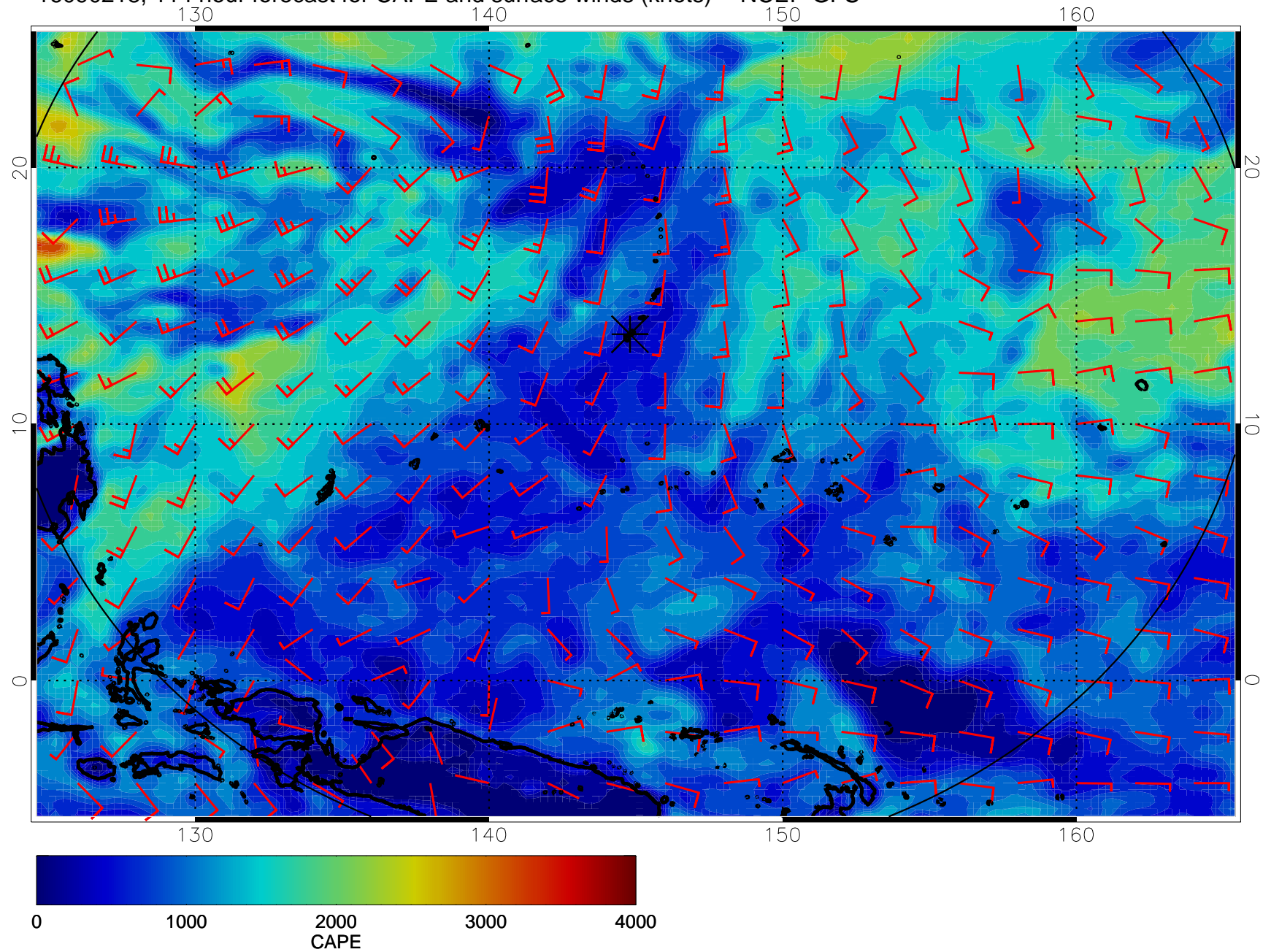


16090212, 108 hour forecast for CAPE and surface winds (knots) -- NCEP GFS





16090218, 114 hour forecast for CAPE and surface winds (knots) -- NCEP GFS





16090300, 120 hour forecast for CAPE and surface winds (knots) -- NCEP GFS

