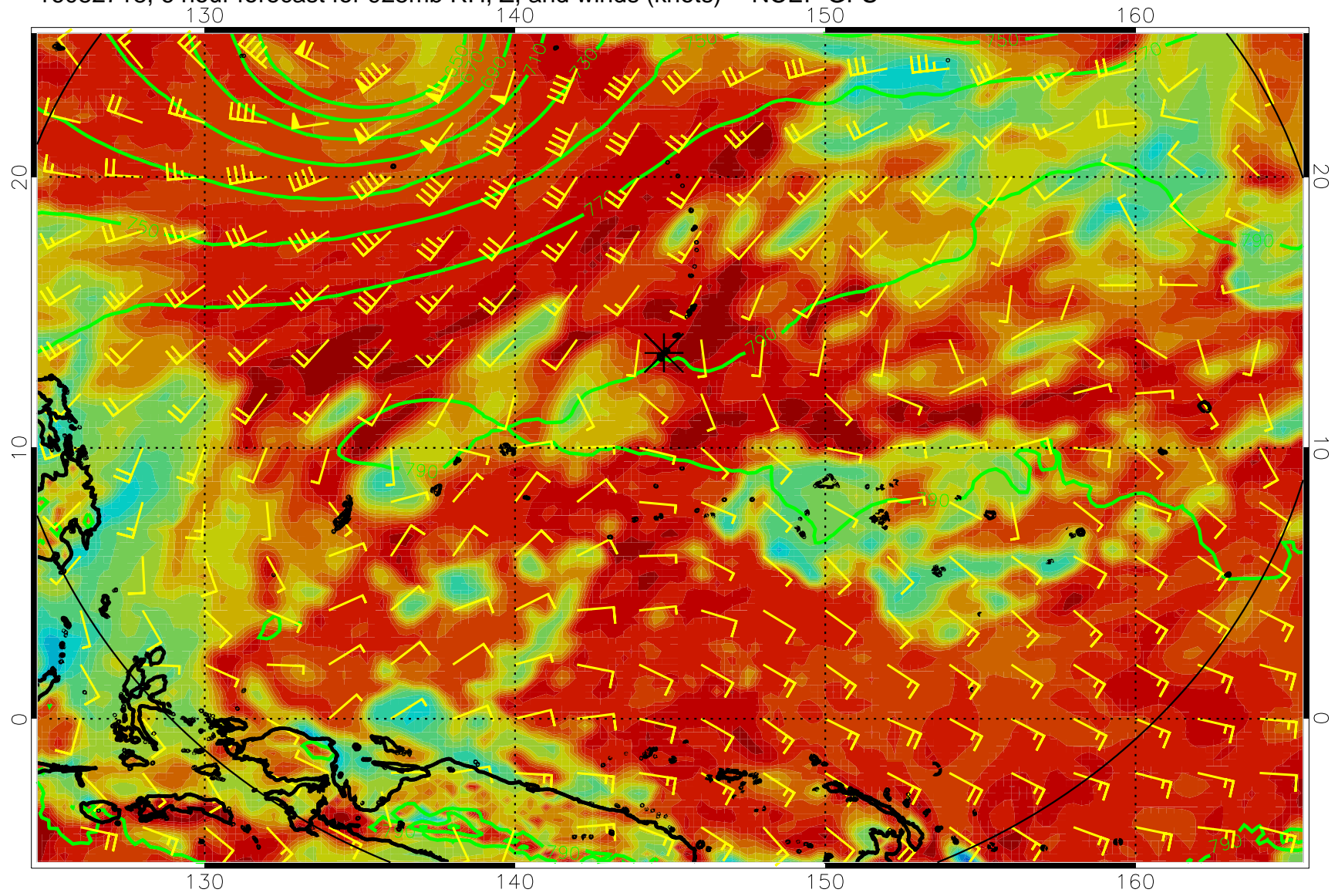
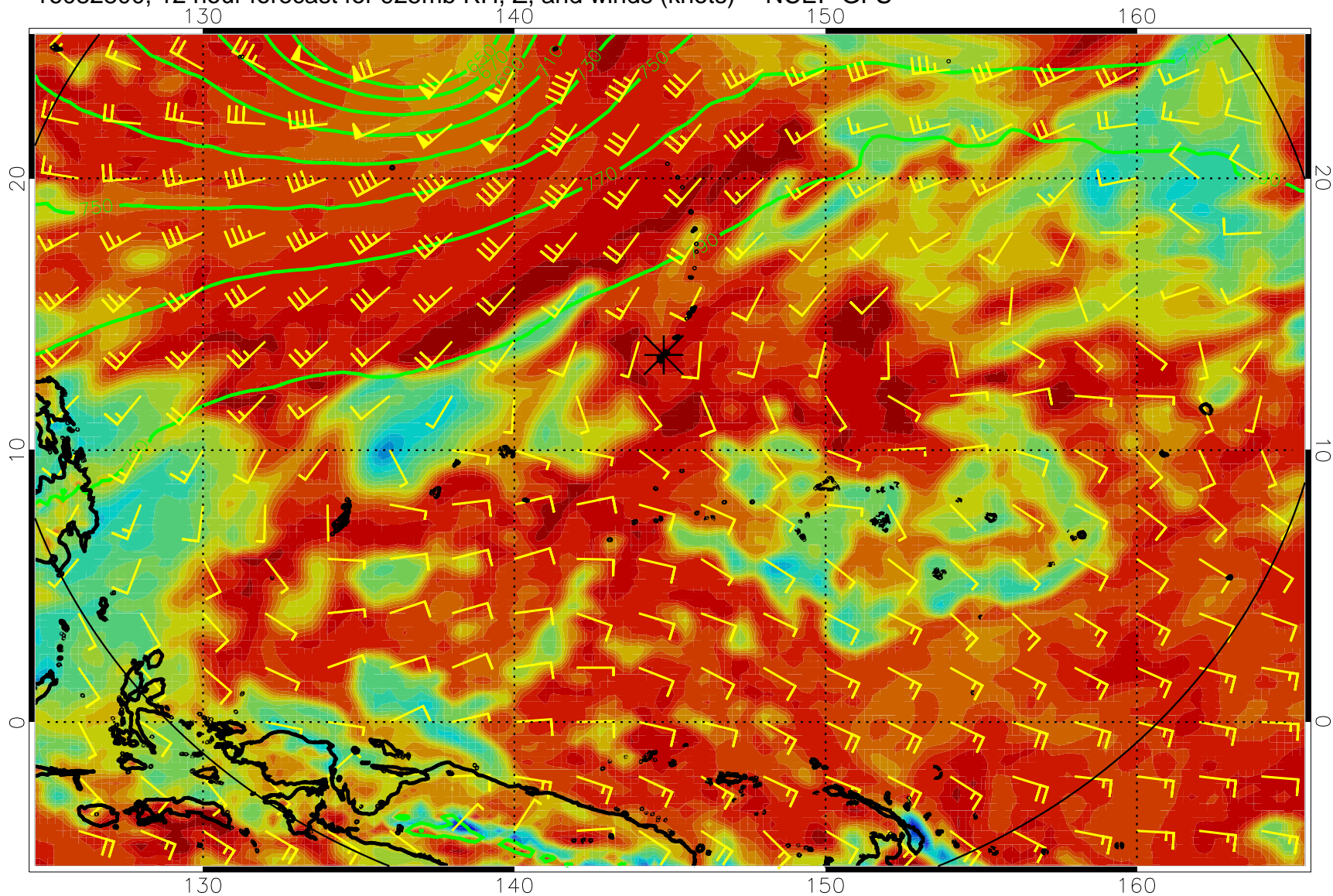


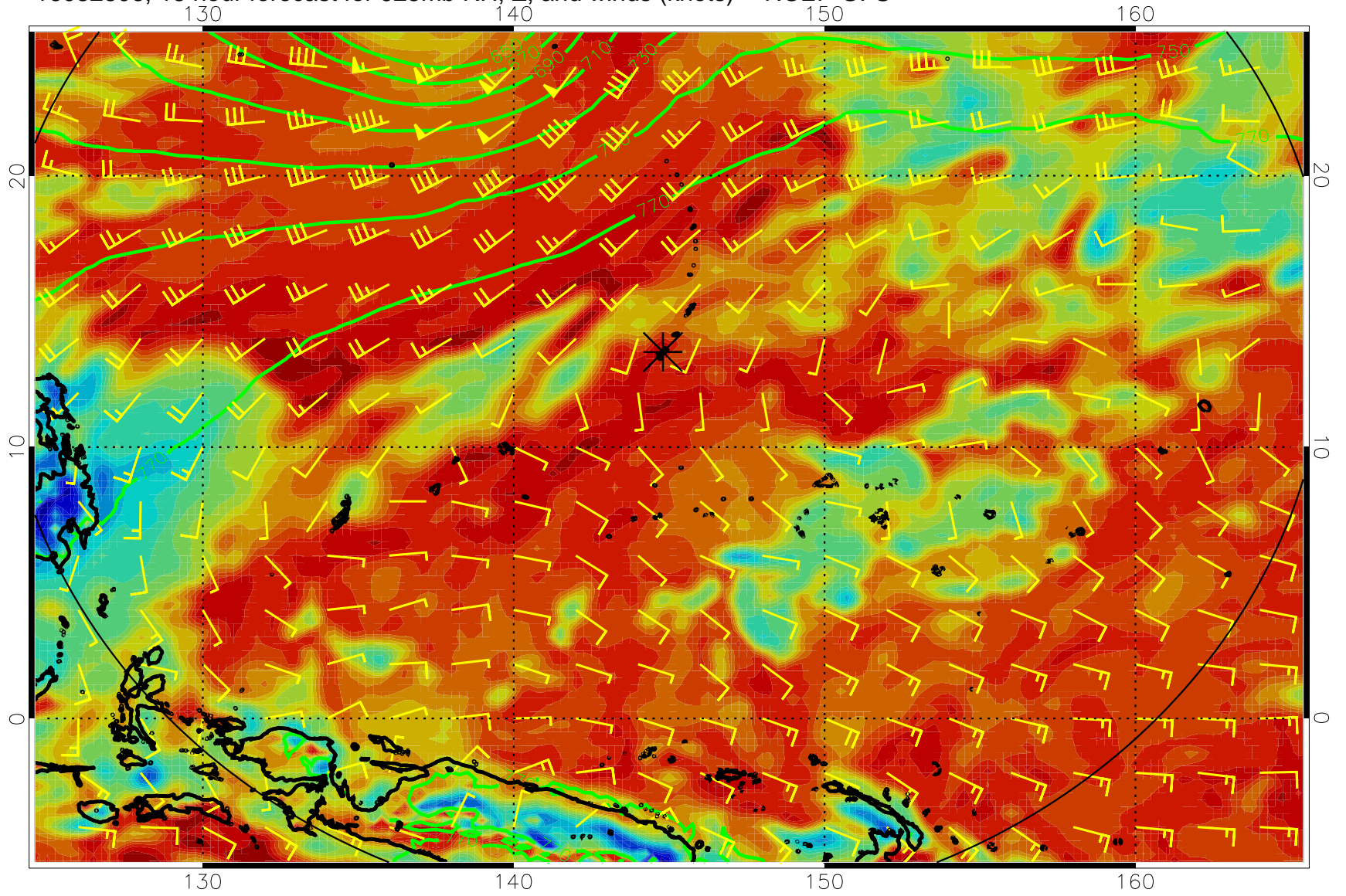
16082718, 6 hour forecast for 925mb RH, Z, and winds (knots) -- NCEP GFS



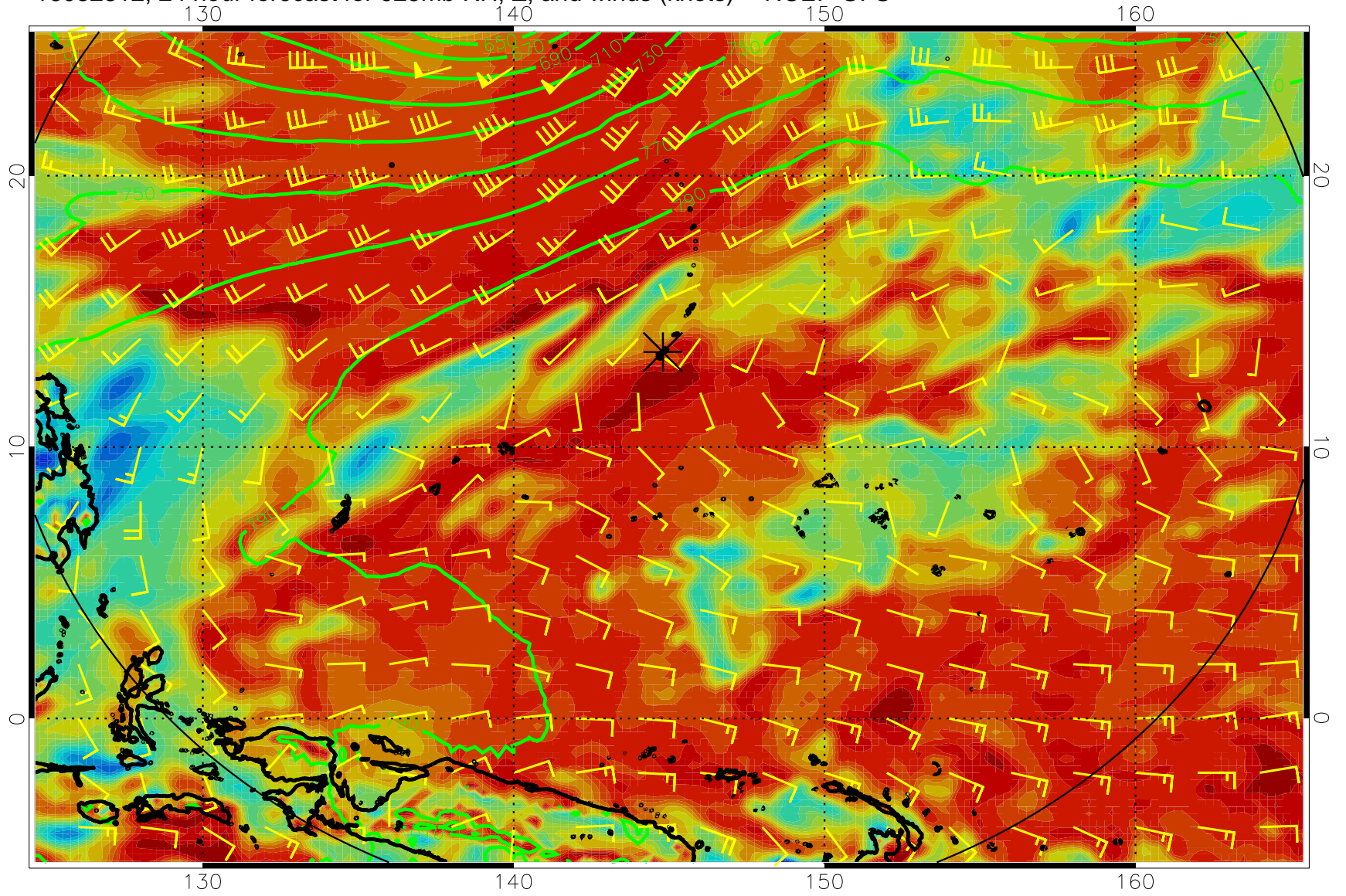
16082800, 12 hour forecast for 925mb RH, Z, and winds (knots) -- NCEP GFS



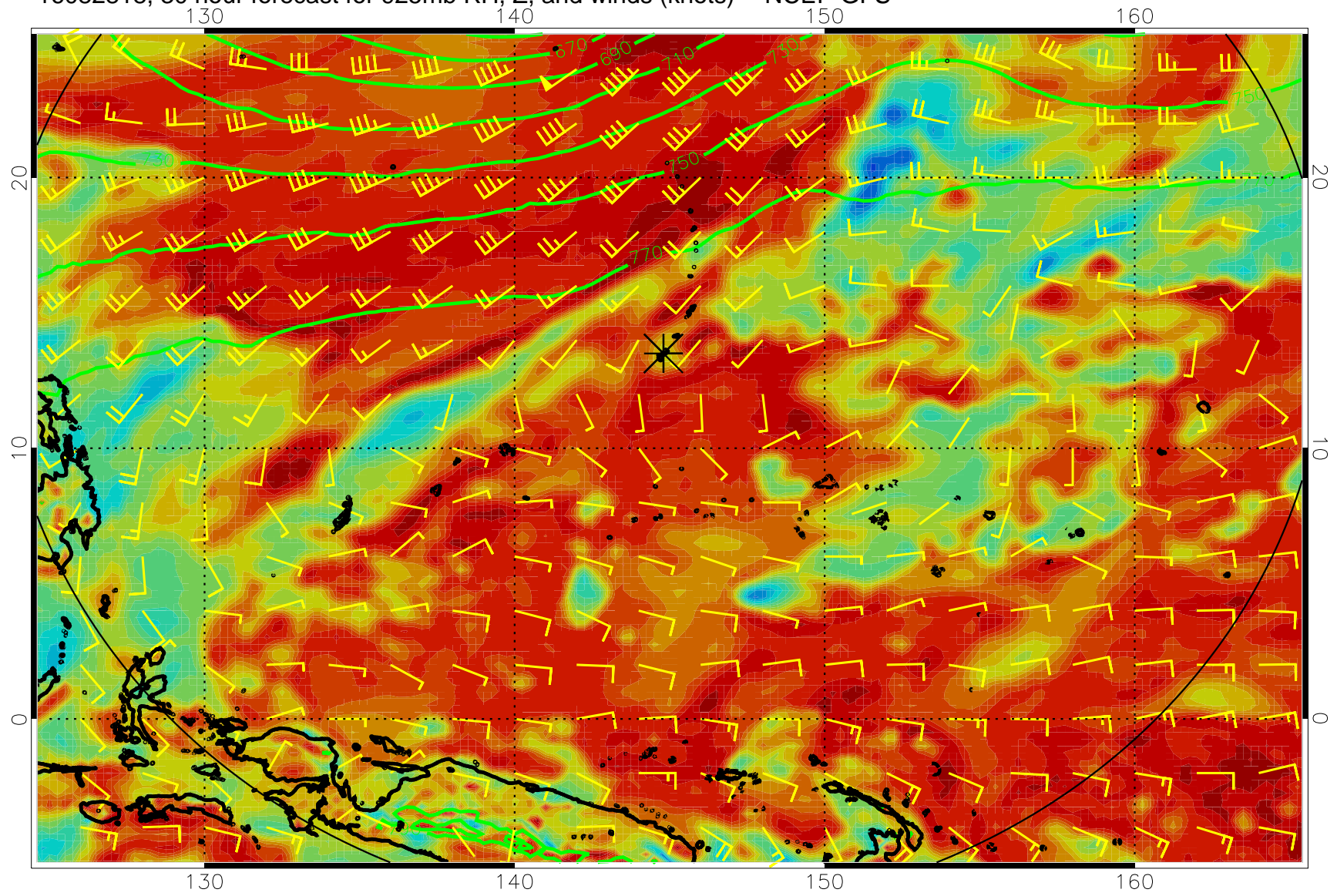
16082806, 18 hour forecast for 925mb RH, Z, and winds (knots) -- NCEP GFS



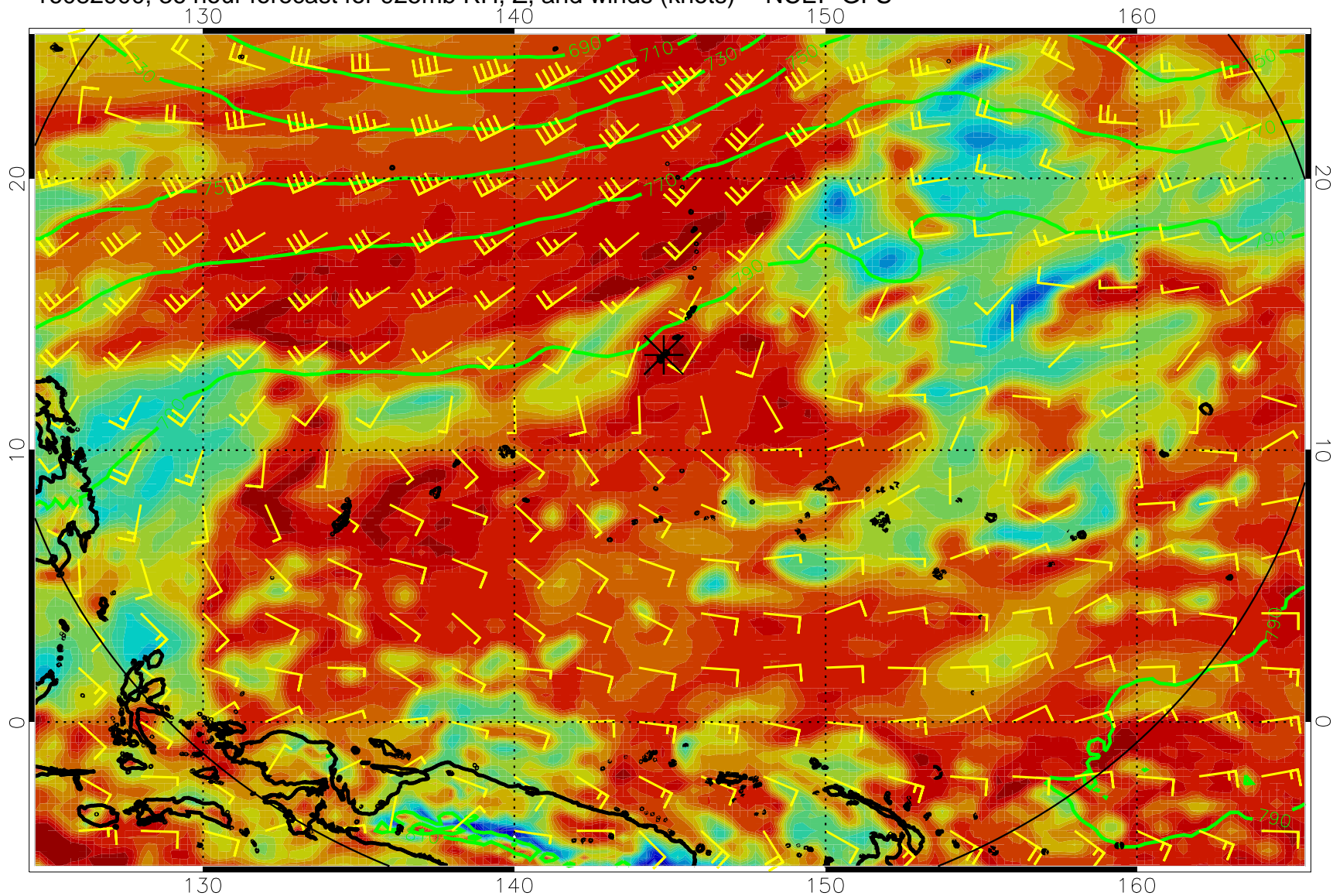
16082812, 24 hour forecast for 925mb RH, Z, and winds (knots) -- NCEP GFS



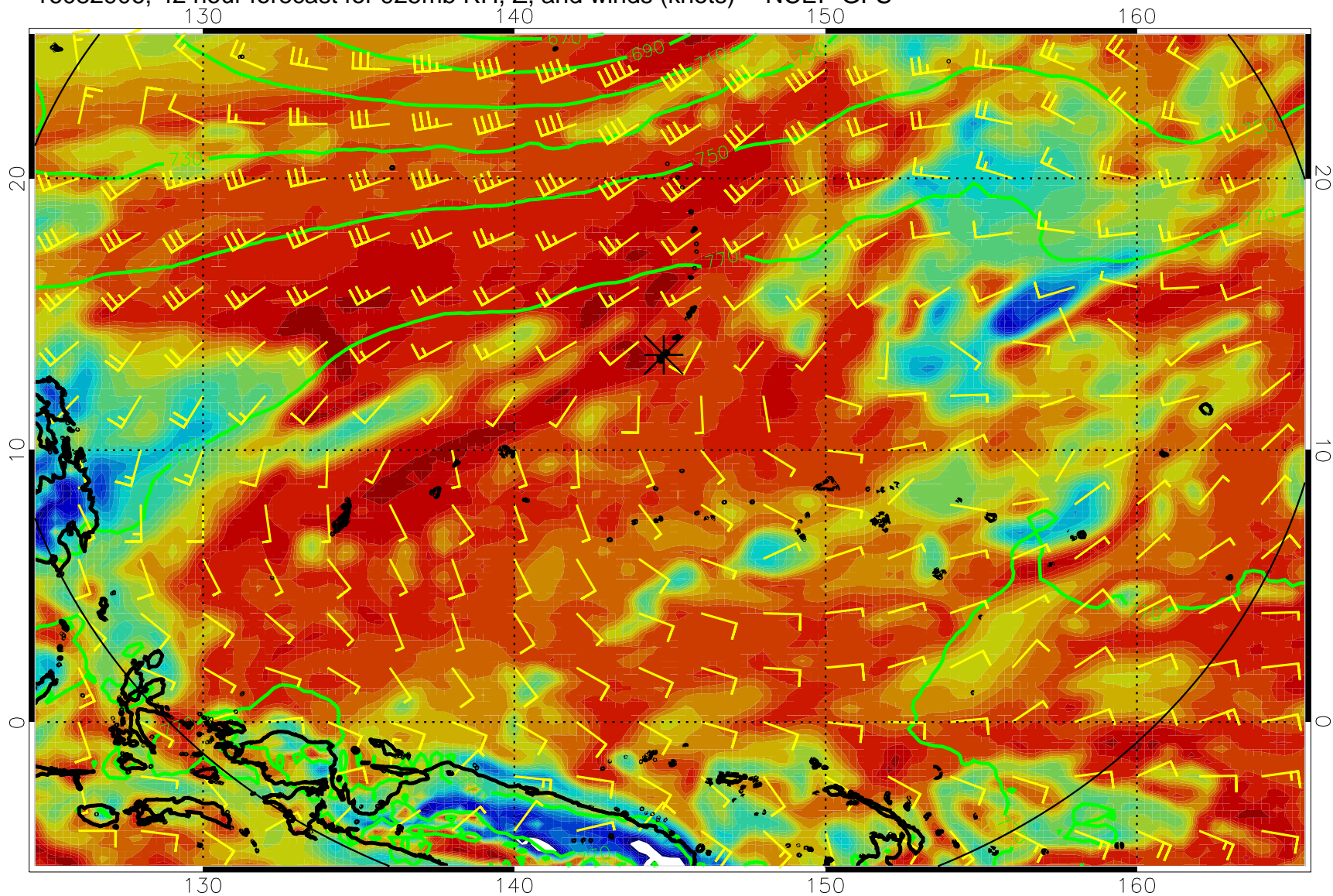
16082818, 30 hour forecast for 925mb RH, Z, and winds (knots) -- NCEP GFS



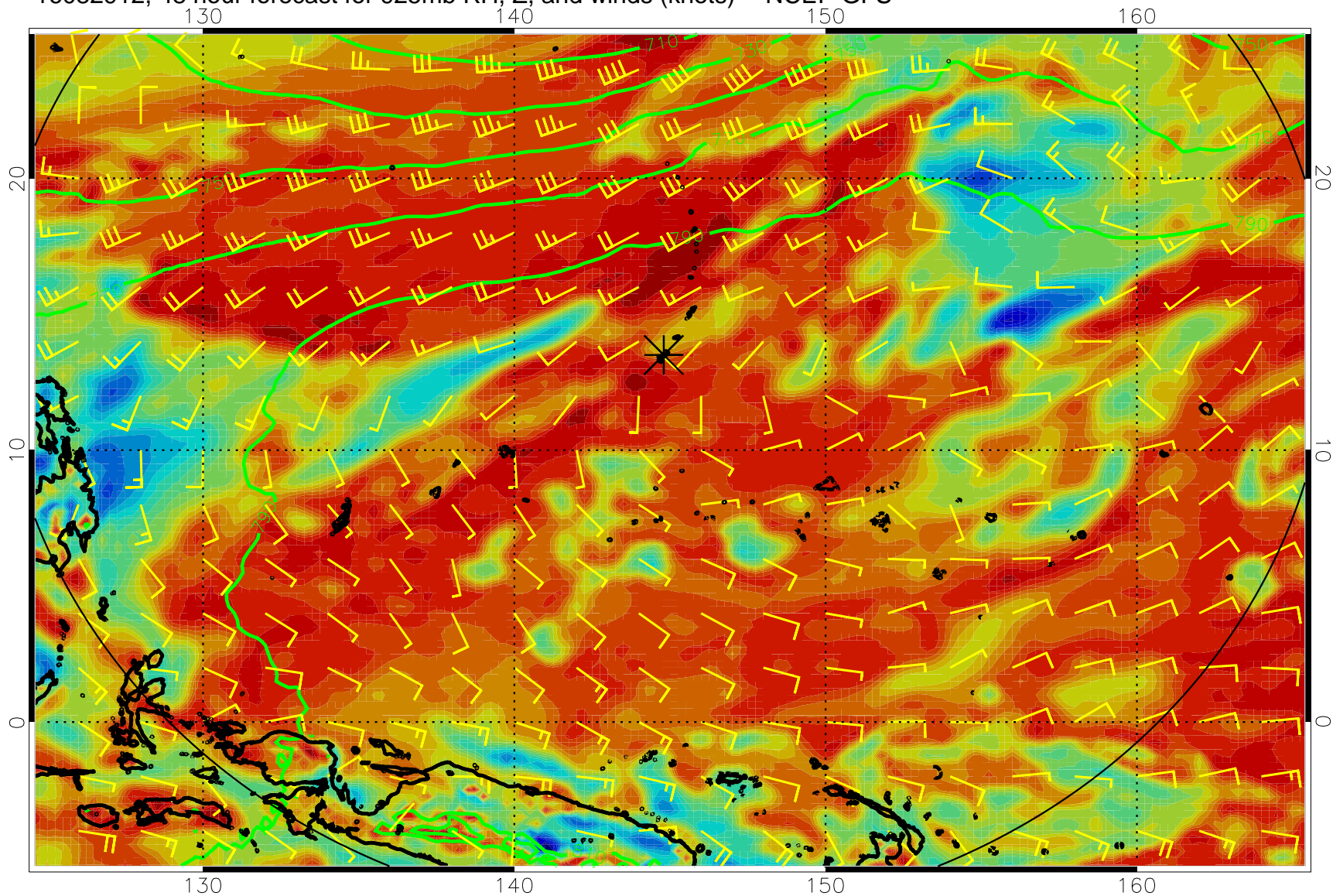
16082900, 36 hour forecast for 925mb RH, Z, and winds (knots) -- NCEP GFS



16082906, 42 hour forecast for 925mb RH, Z, and winds (knots) -- NCEP GFS

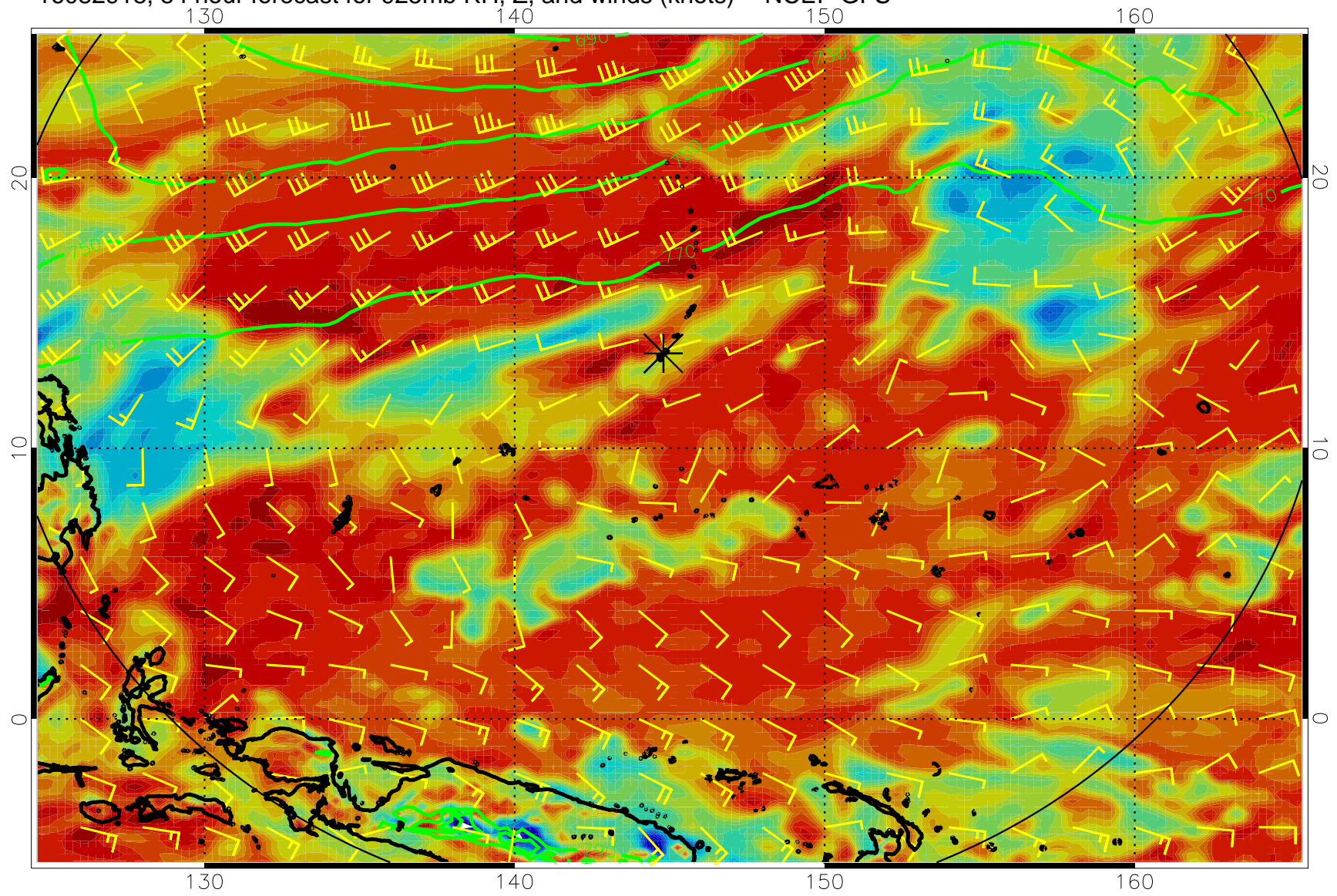


16082912, 48 hour forecast for 925mb RH, Z, and winds (knots) -- NCEP GFS

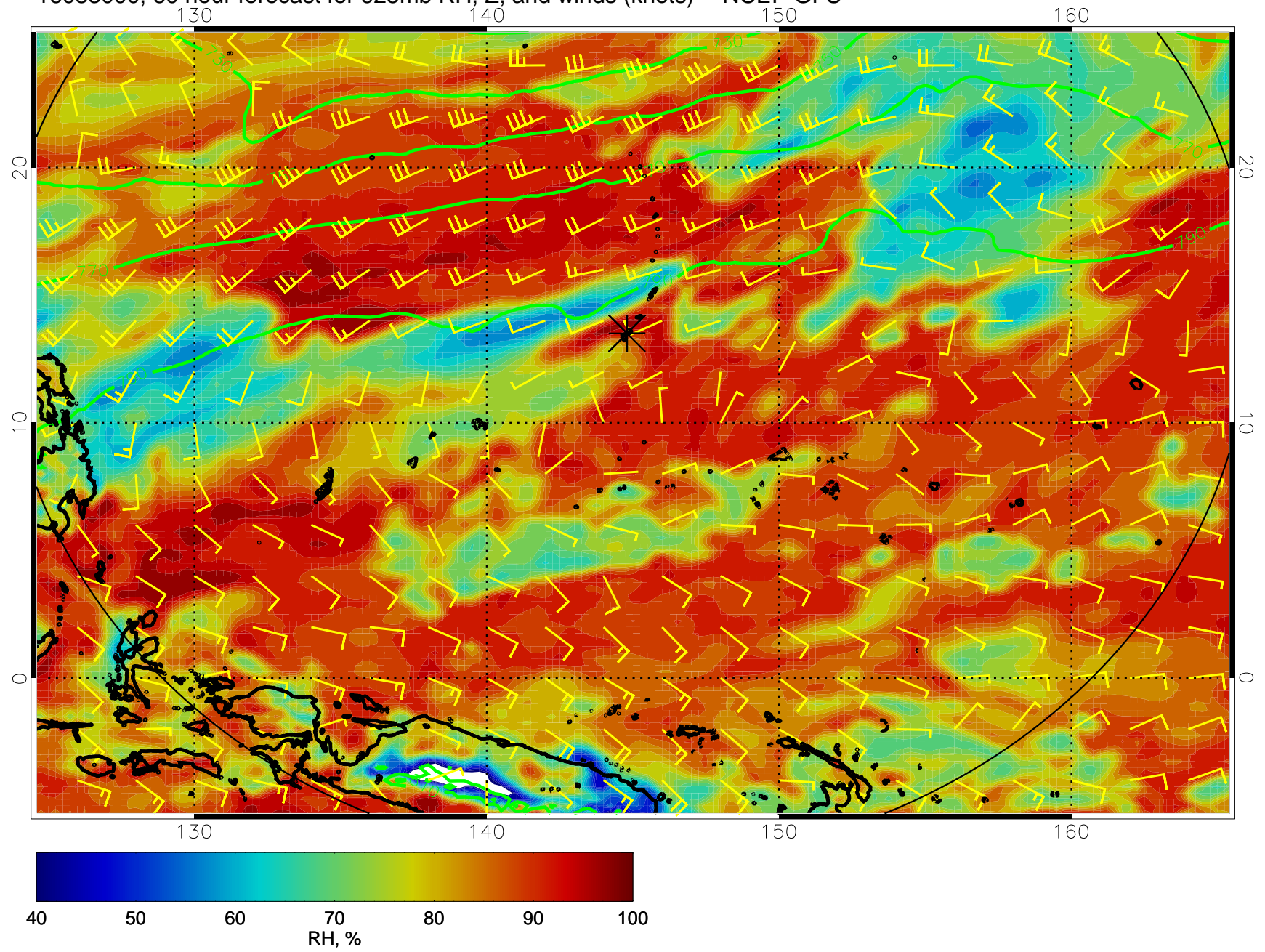




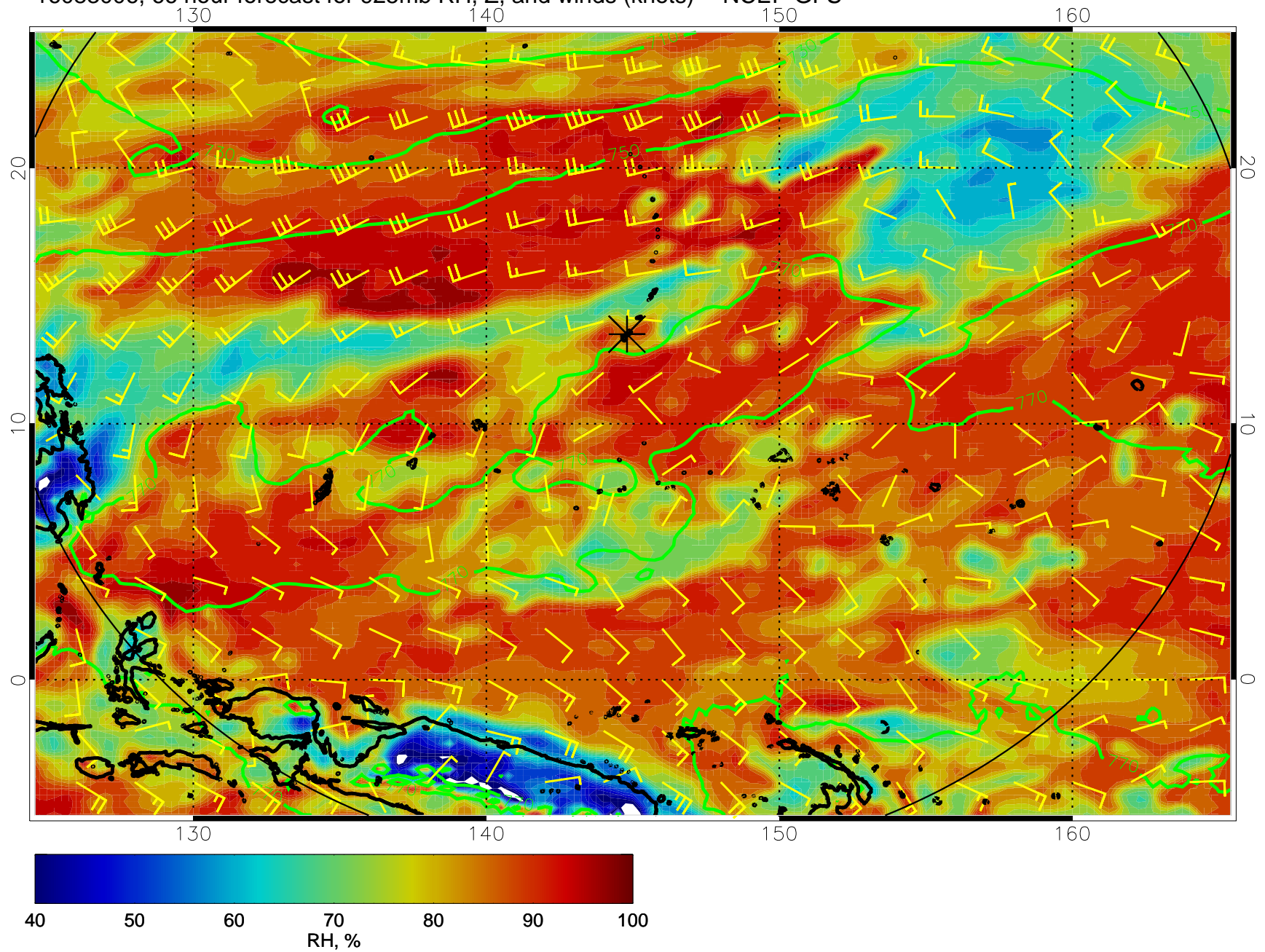
16082918, 54 hour forecast for 925mb RH, Z, and winds (knots) -- NCEP GFS



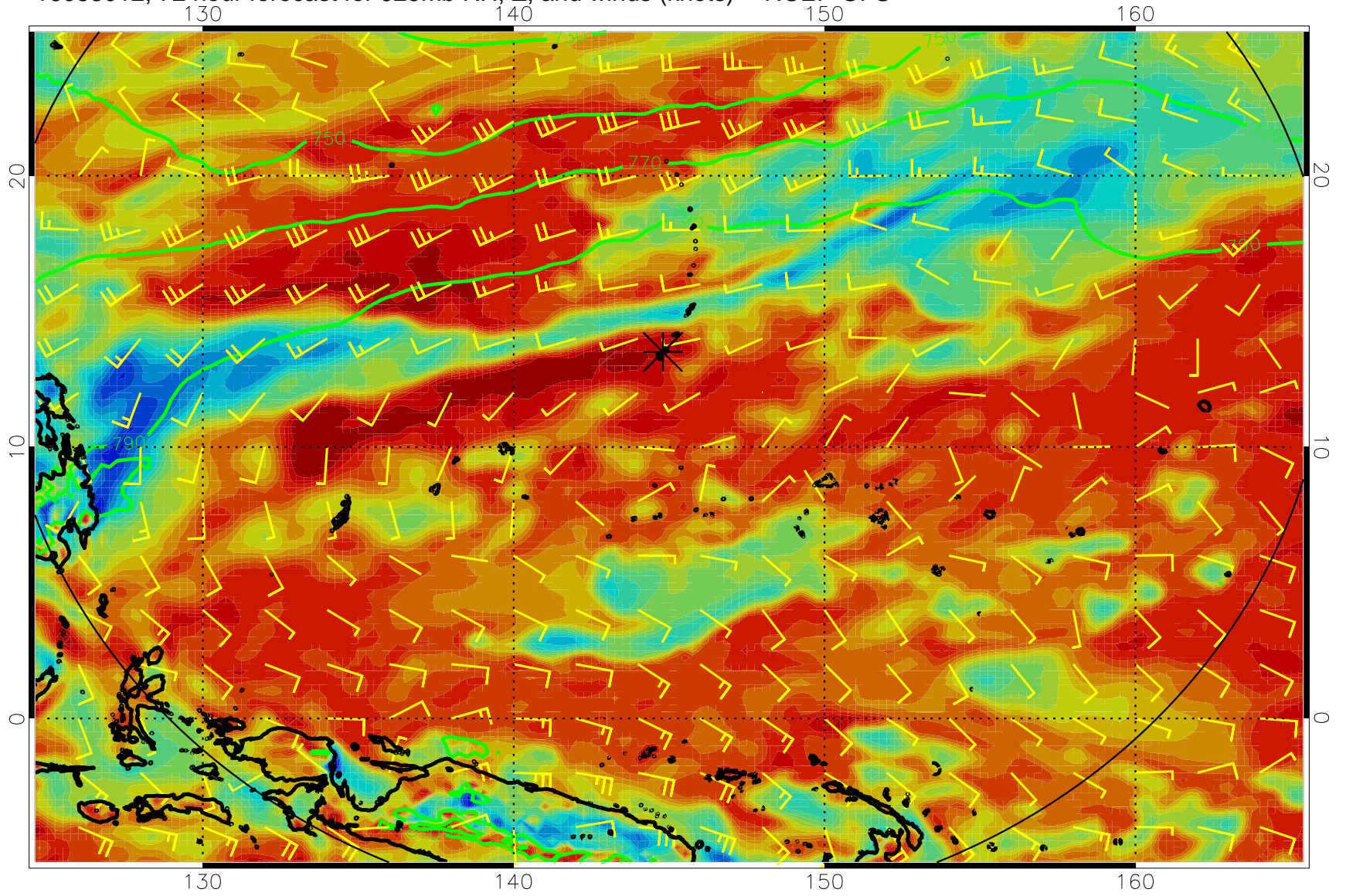
16083000, 60 hour forecast for 925mb RH, Z, and winds (knots) -- NCEP GFS



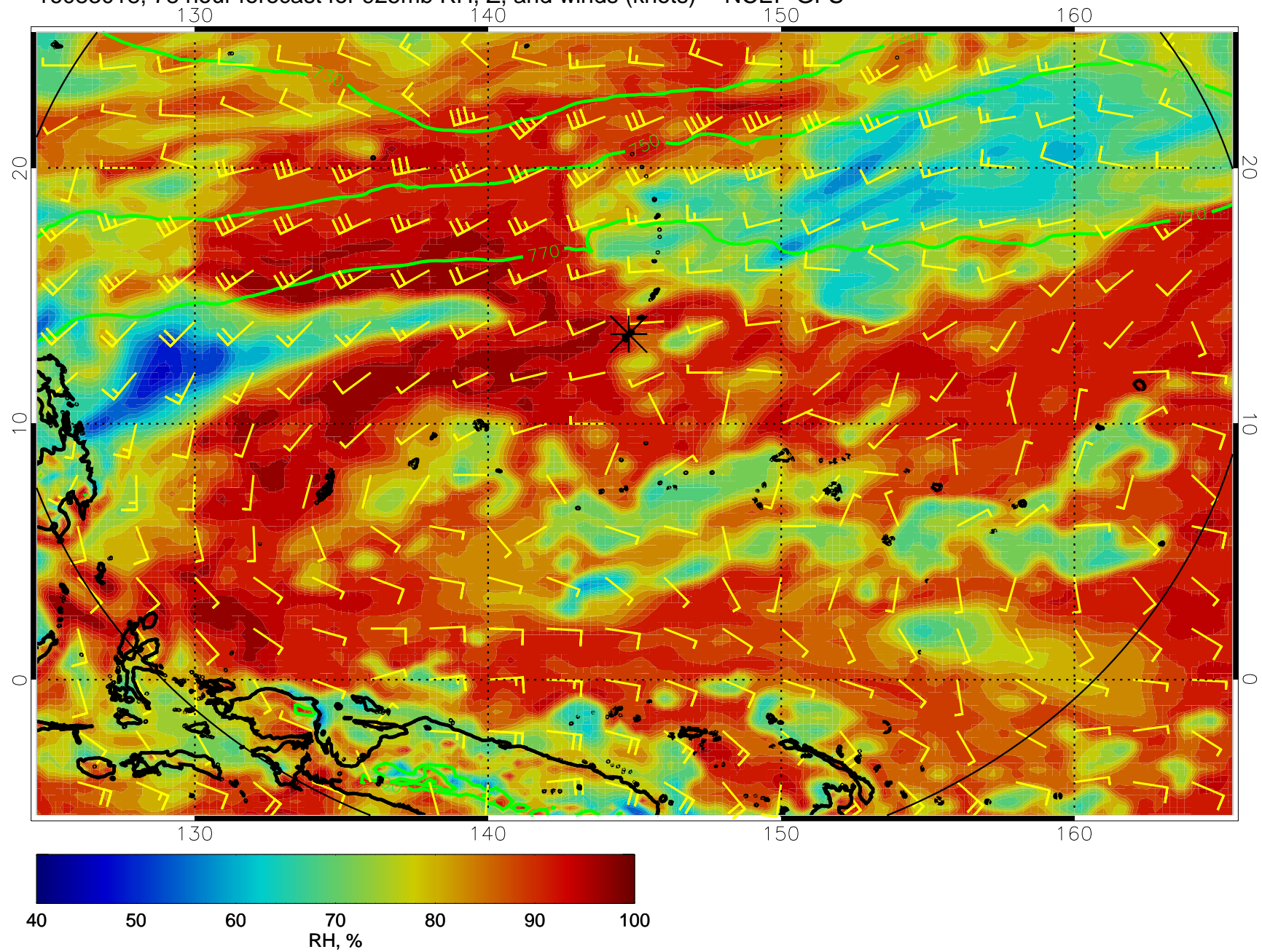
16083006, 66 hour forecast for 925mb RH, Z, and winds (knots) -- NCEP GFS



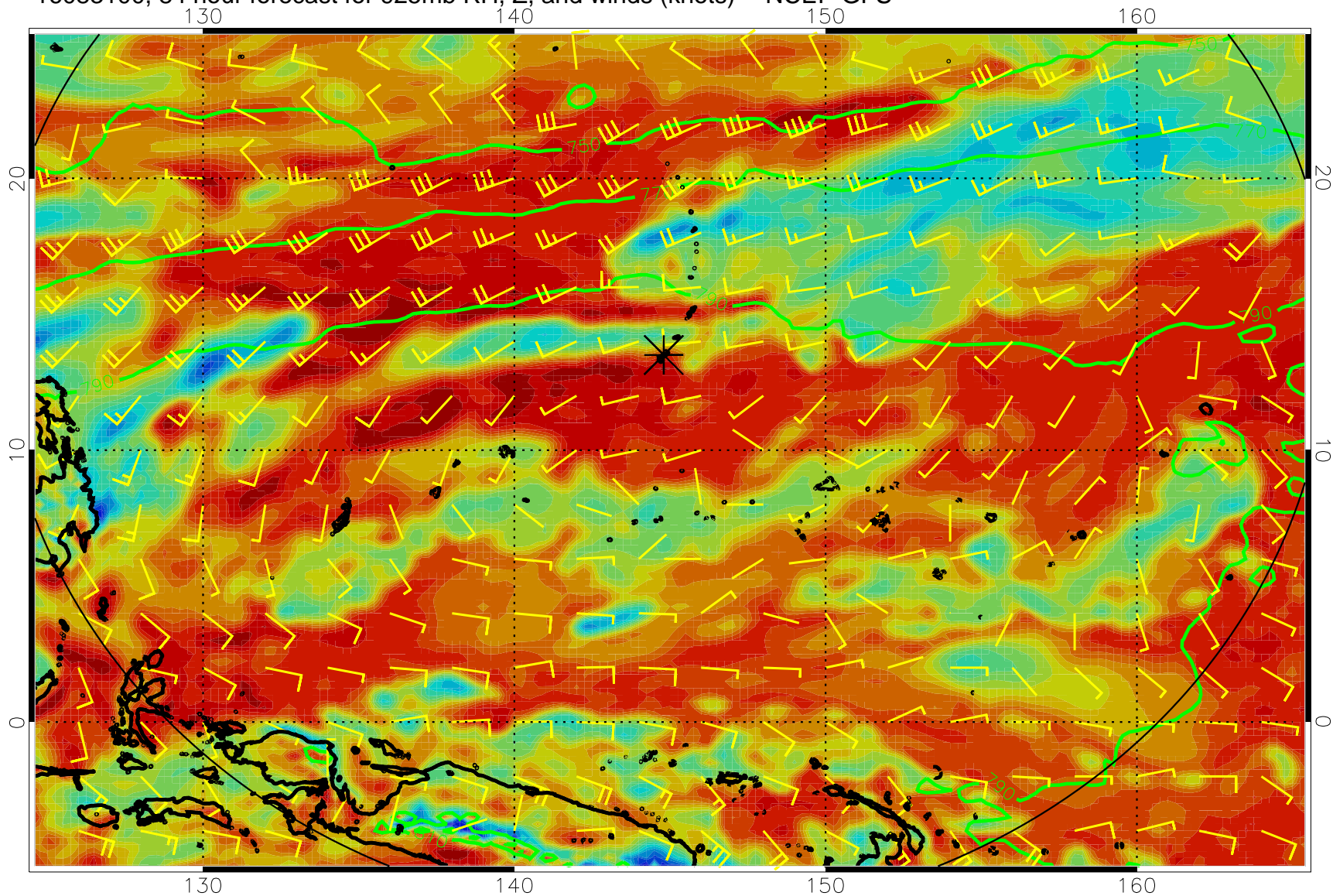
16083012, 72 hour forecast for 925mb RH, Z, and winds (knots) -- NCEP GFS



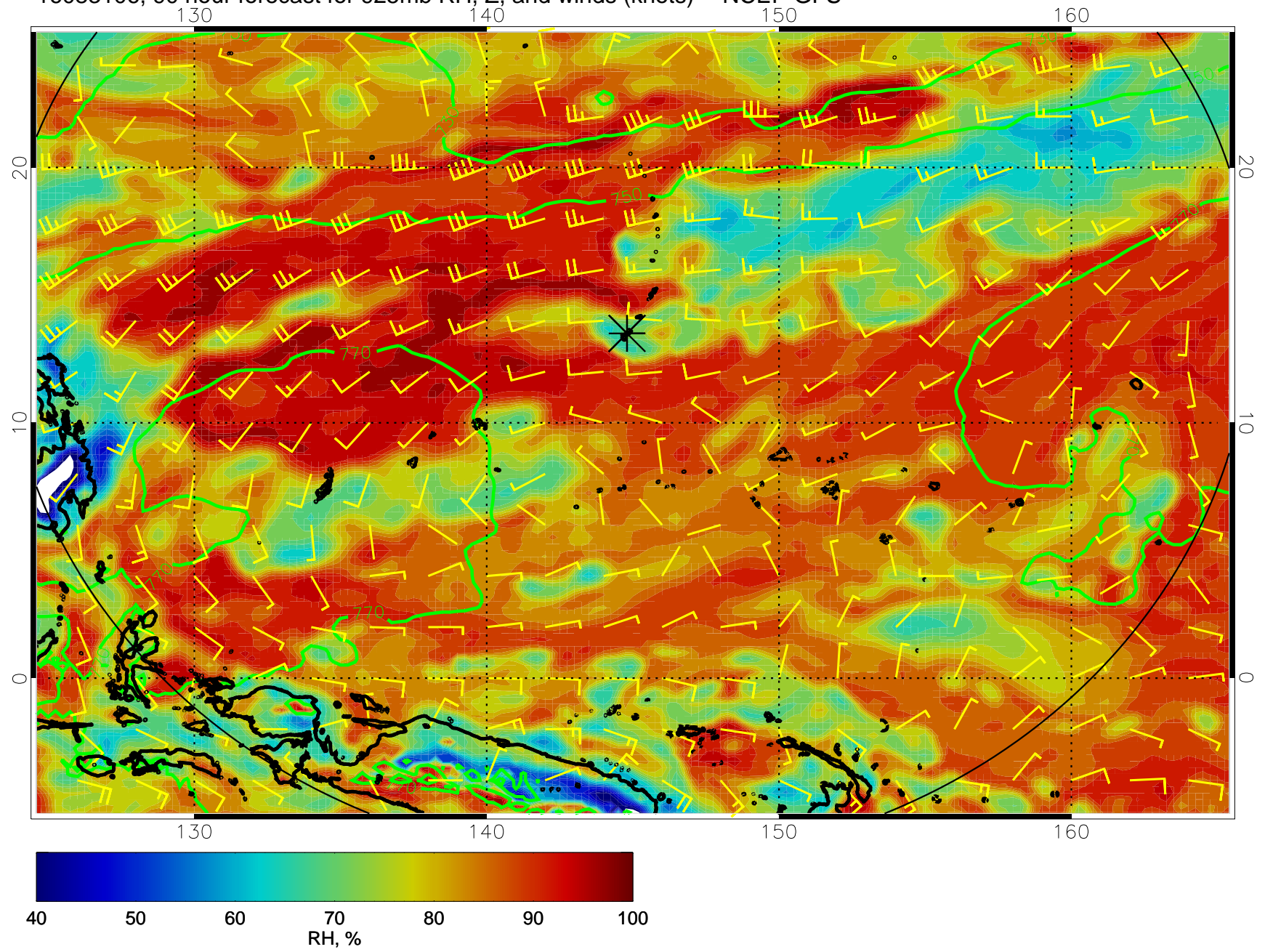
16083018, 78 hour forecast for 925mb RH, Z, and winds (knots) -- NCEP GFS



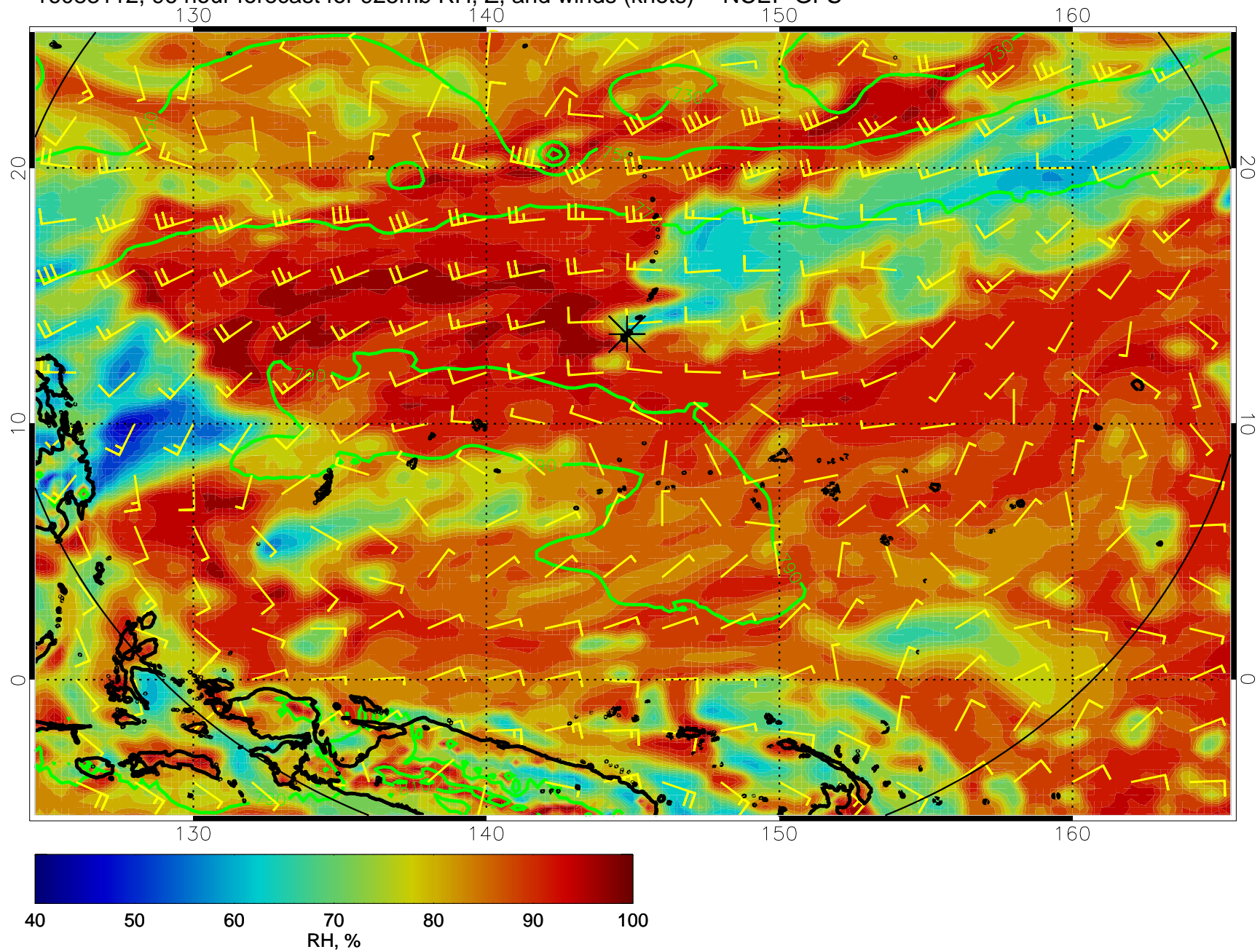
16083100, 84 hour forecast for 925mb RH, Z, and winds (knots) -- NCEP GFS



16083106, 90 hour forecast for 925mb RH, Z, and winds (knots) -- NCEP GFS

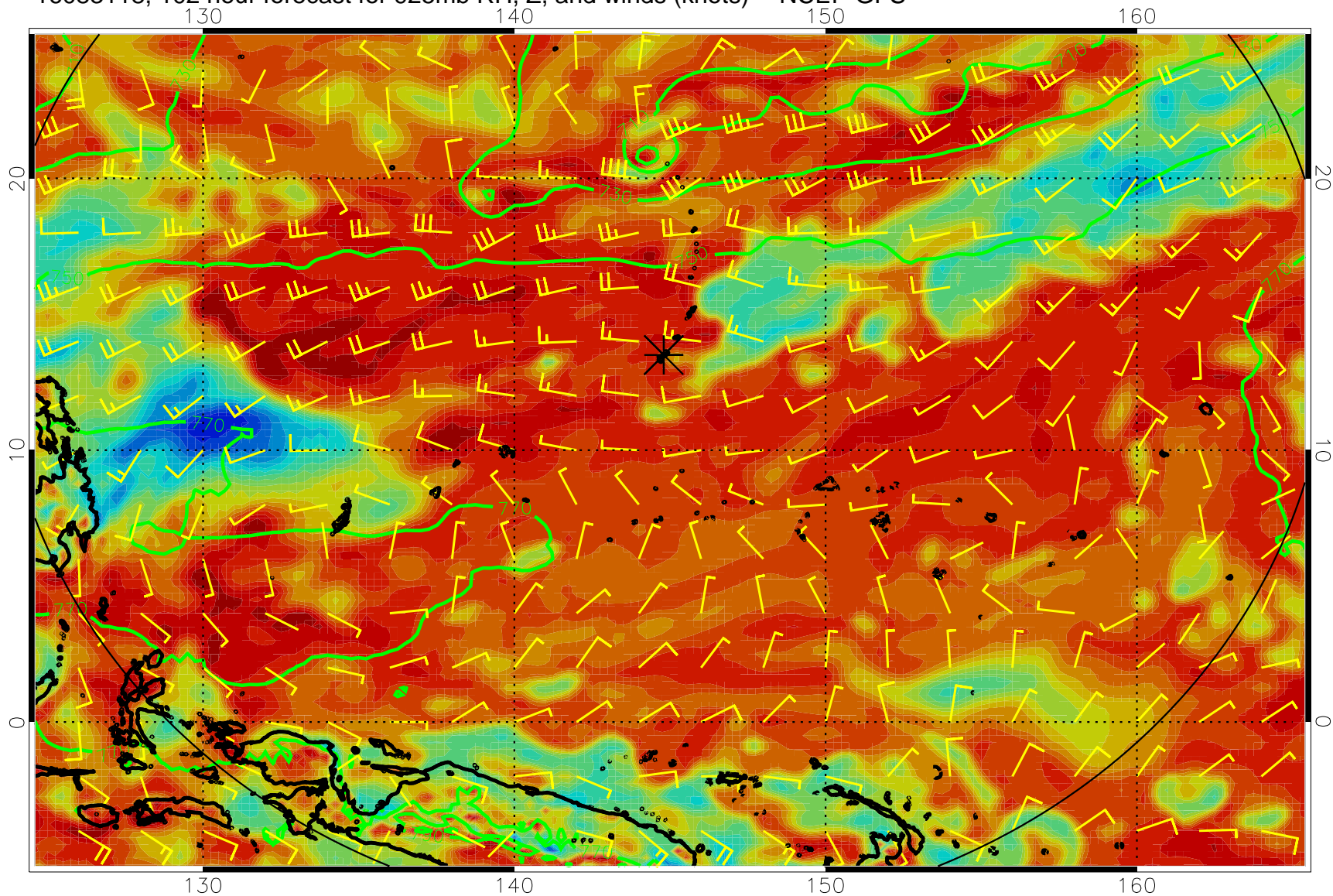


16083112, 96 hour forecast for 925mb RH, Z, and winds (knots) -- NCEP GFS

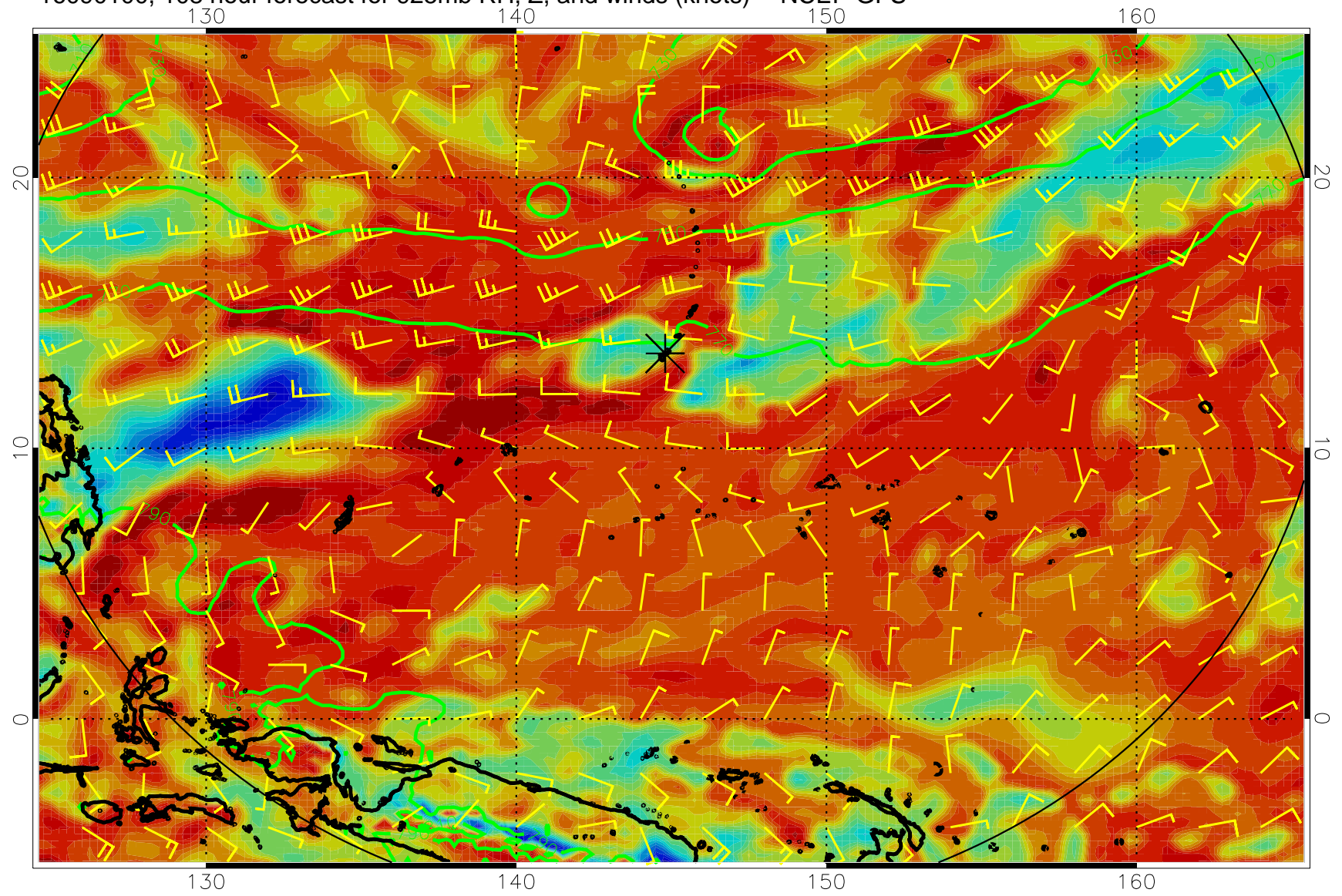




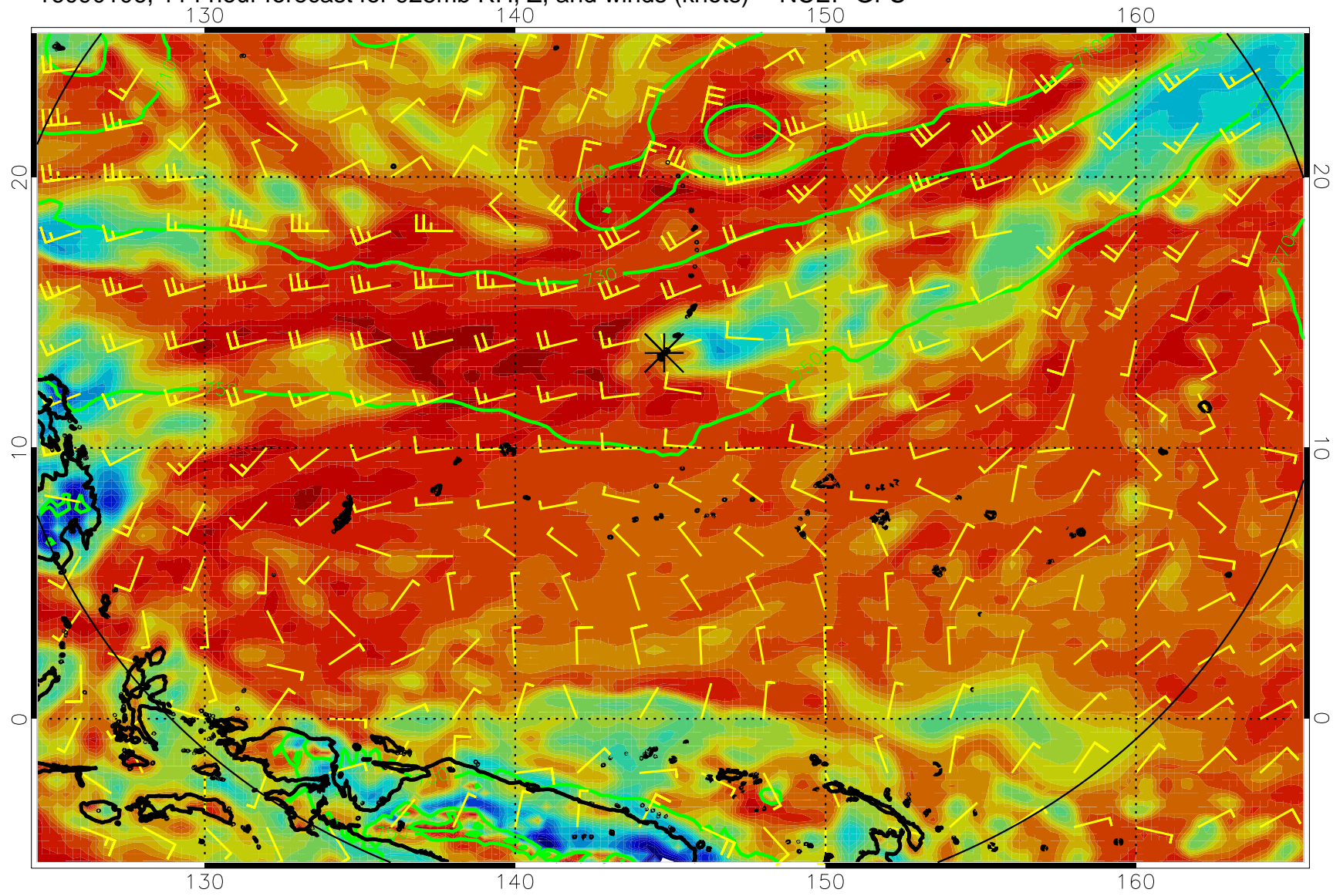
16083118, 102 hour forecast for 925mb RH, Z, and winds (knots) -- NCEP GFS



16090100, 108 hour forecast for 925mb RH, Z, and winds (knots) -- NCEP GFS



16090106, 114 hour forecast for 925mb RH, Z, and winds (knots) -- NCEP GFS



16090112, 120 hour forecast for 925mb RH, Z, and winds (knots) -- NCEP GFS

