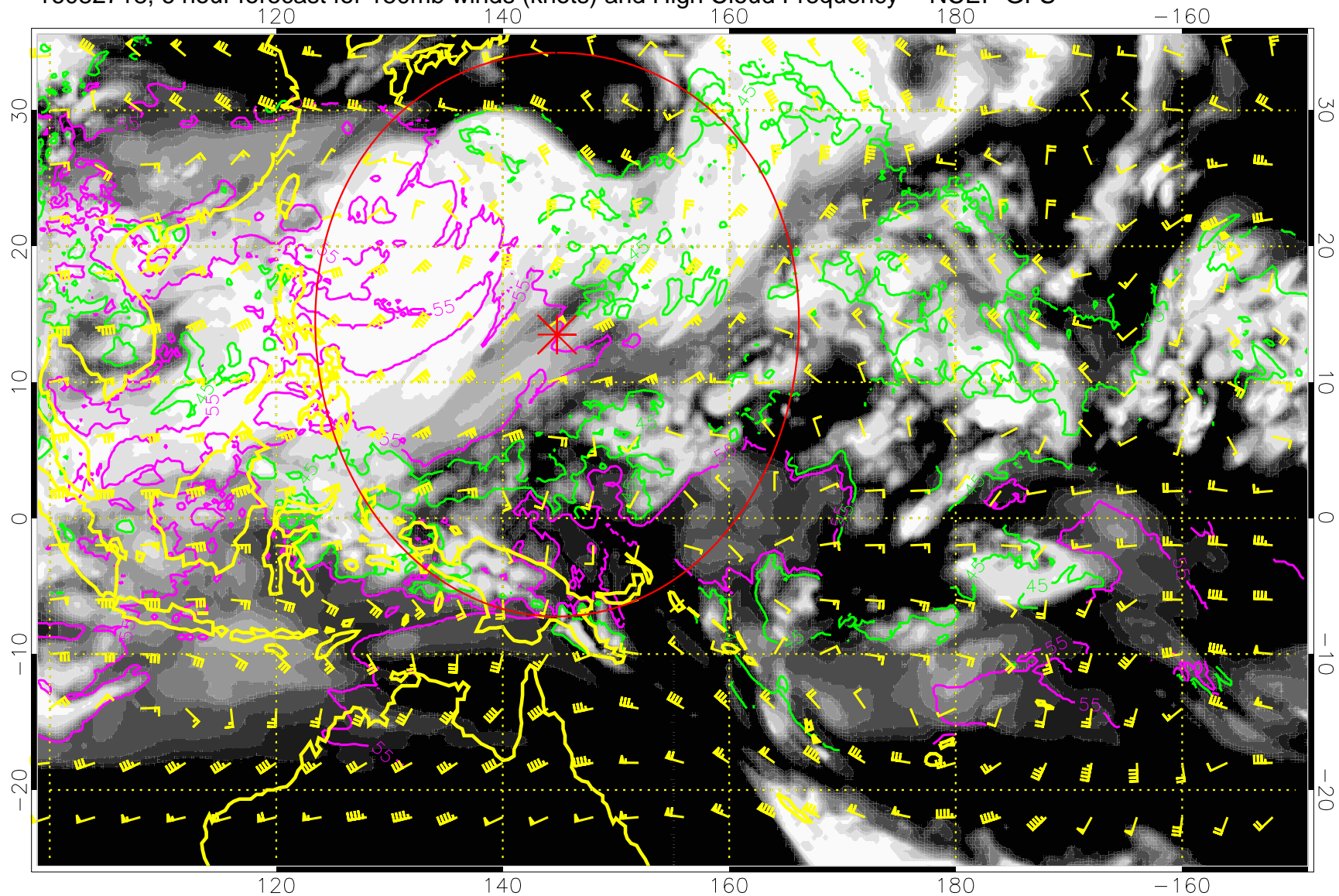


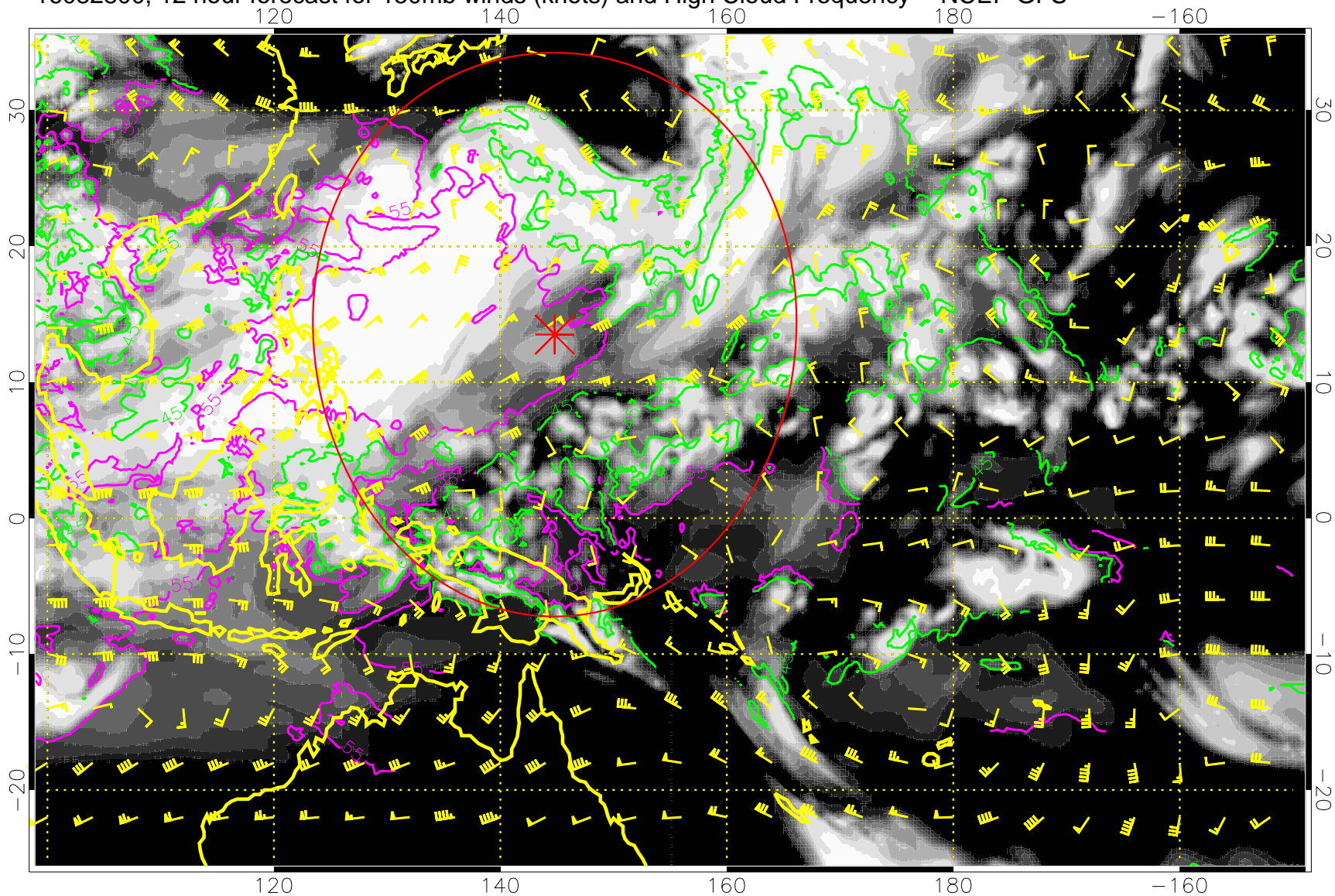
16082718, 6 hour forecast for 150mb winds (knots) and High Cloud Frequency -- NCEP GFS



45 kft  
55 kft

Range ring of 2304 km

16082800, 12 hour forecast for 150mb winds (knots) and High Cloud Frequency -- NCEP GFS

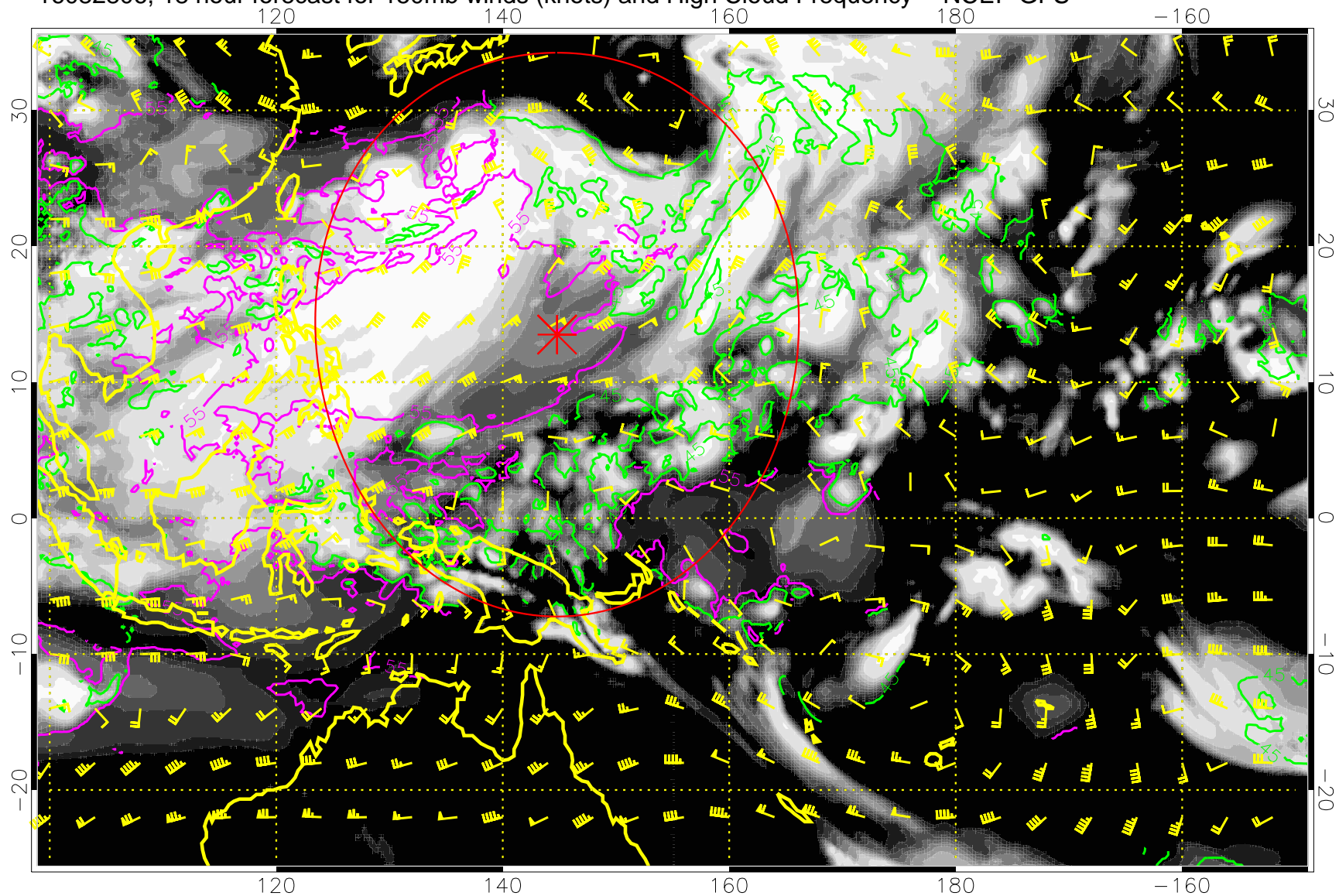


45 kft  
55 kft

Range ring of 2304 km



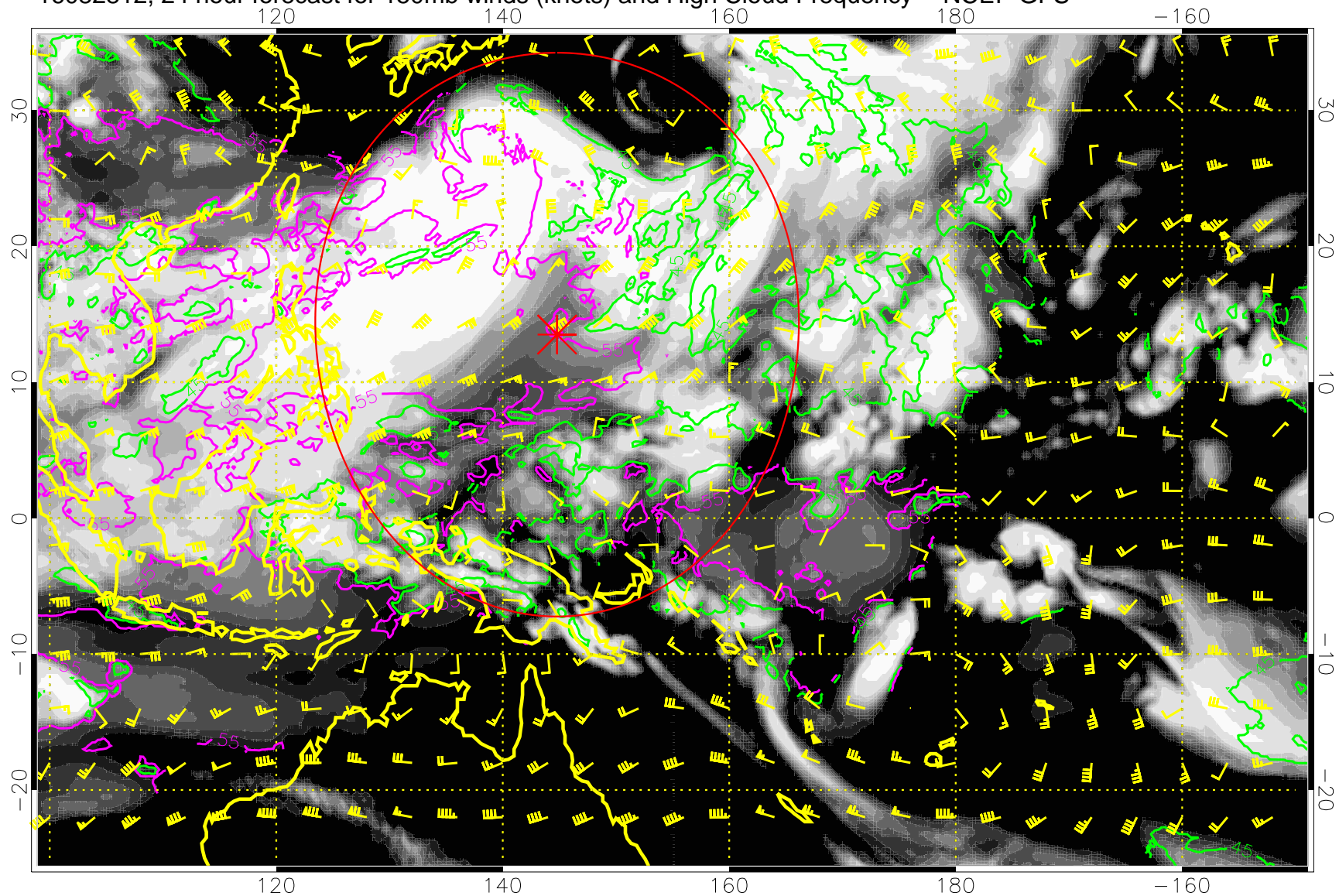
16082806, 18 hour forecast for 150mb winds (knots) and High Cloud Frequency -- NCEP GFS



45 kft  
55 kft

Range ring of 2304 km

16082812, 24 hour forecast for 150mb winds (knots) and High Cloud Frequency -- NCEP GFS

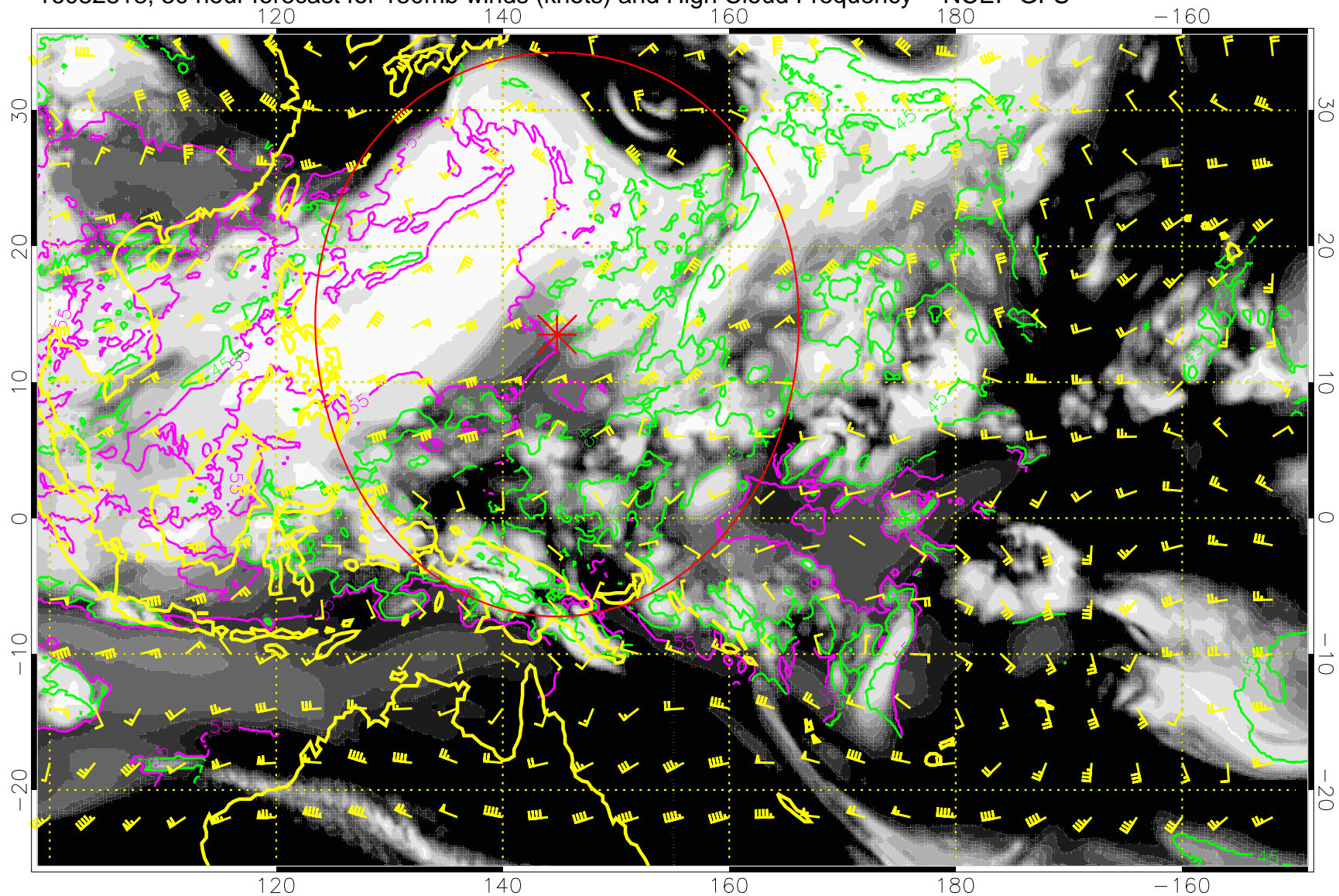


45 kft  
55 kft

Range ring of 2304 km



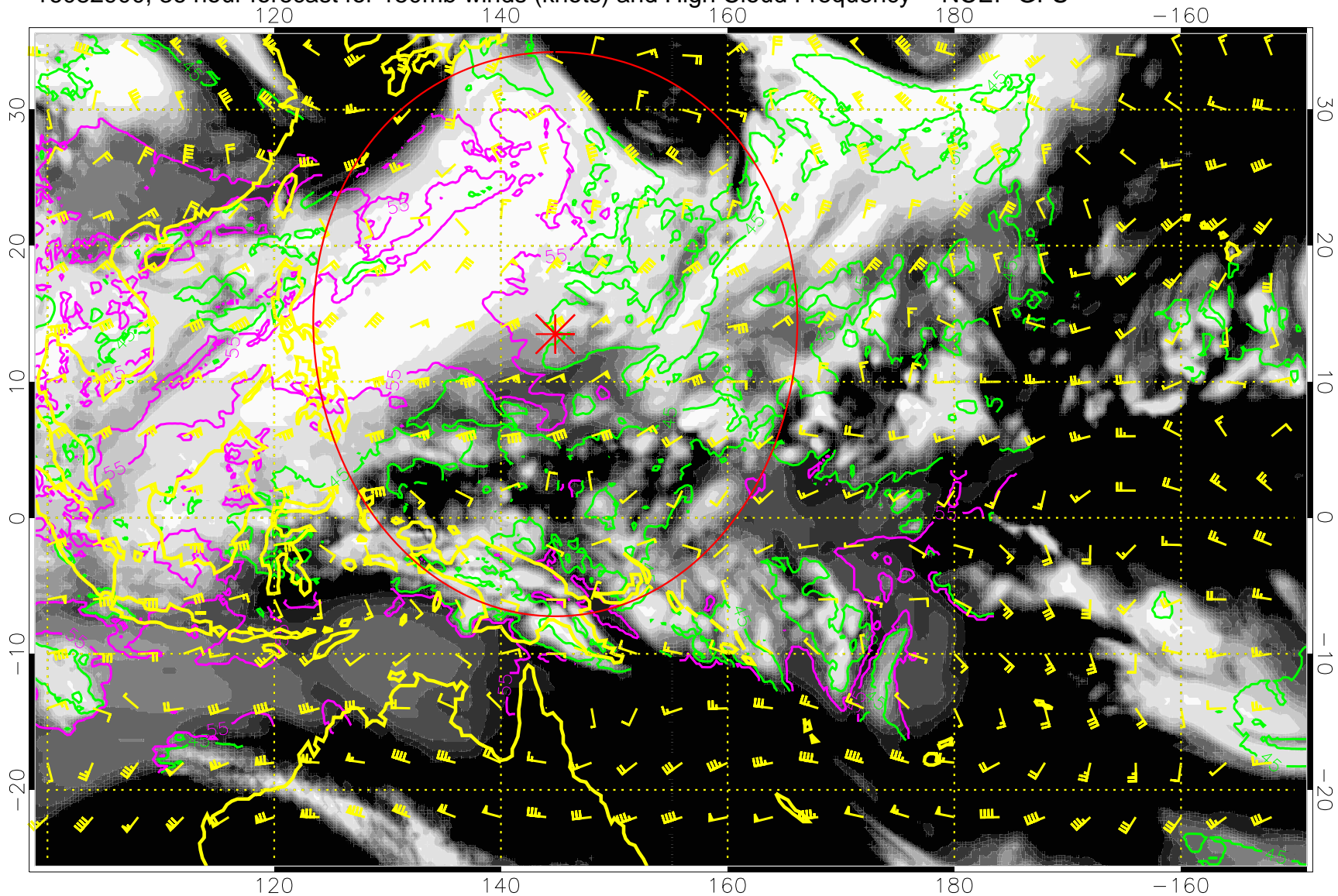
16082818, 30 hour forecast for 150mb winds (knots) and High Cloud Frequency -- NCEP GFS



45 kft  
55 kft

Range ring of 2304 km

16082900, 36 hour forecast for 150mb winds (knots) and High Cloud Frequency -- NCEP GFS

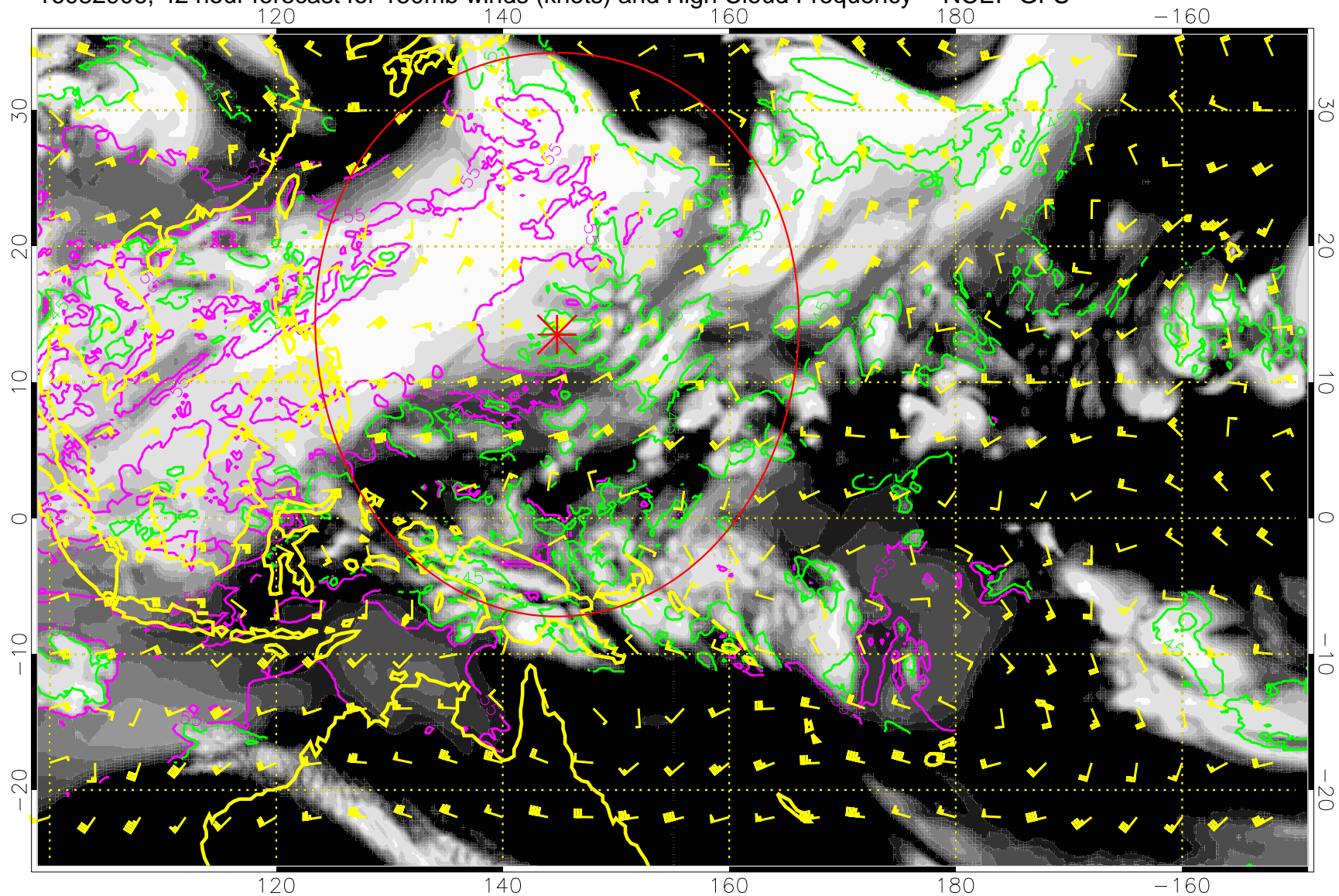


45 kft  
55 kft

Range ring of 2304 km



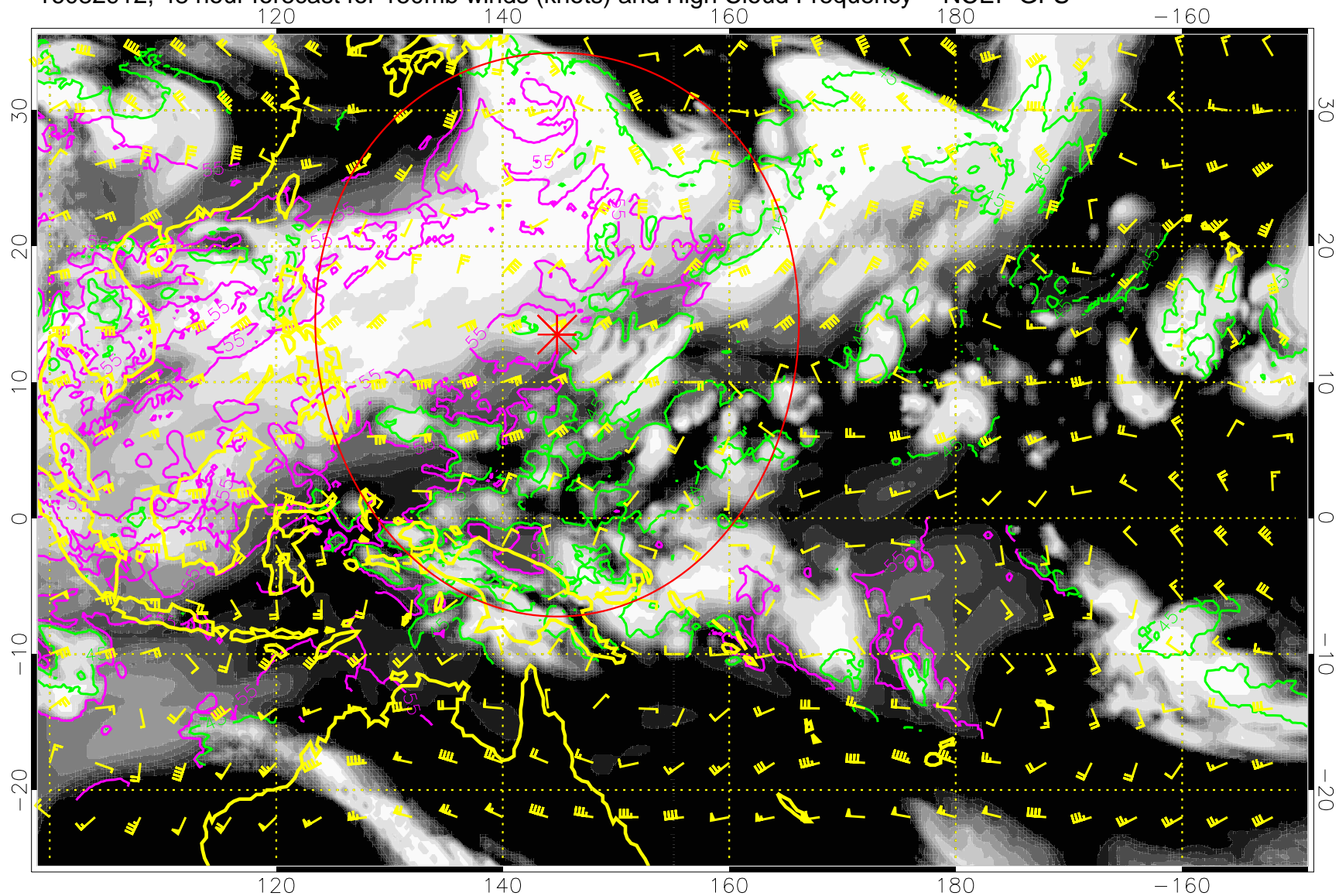
16082906, 42 hour forecast for 150mb winds (knots) and High Cloud Frequency -- NCEP GFS



45 kft  
55 kft

Range ring of 2304 km

16082912, 48 hour forecast for 150mb winds (knots) and High Cloud Frequency -- NCEP GFS

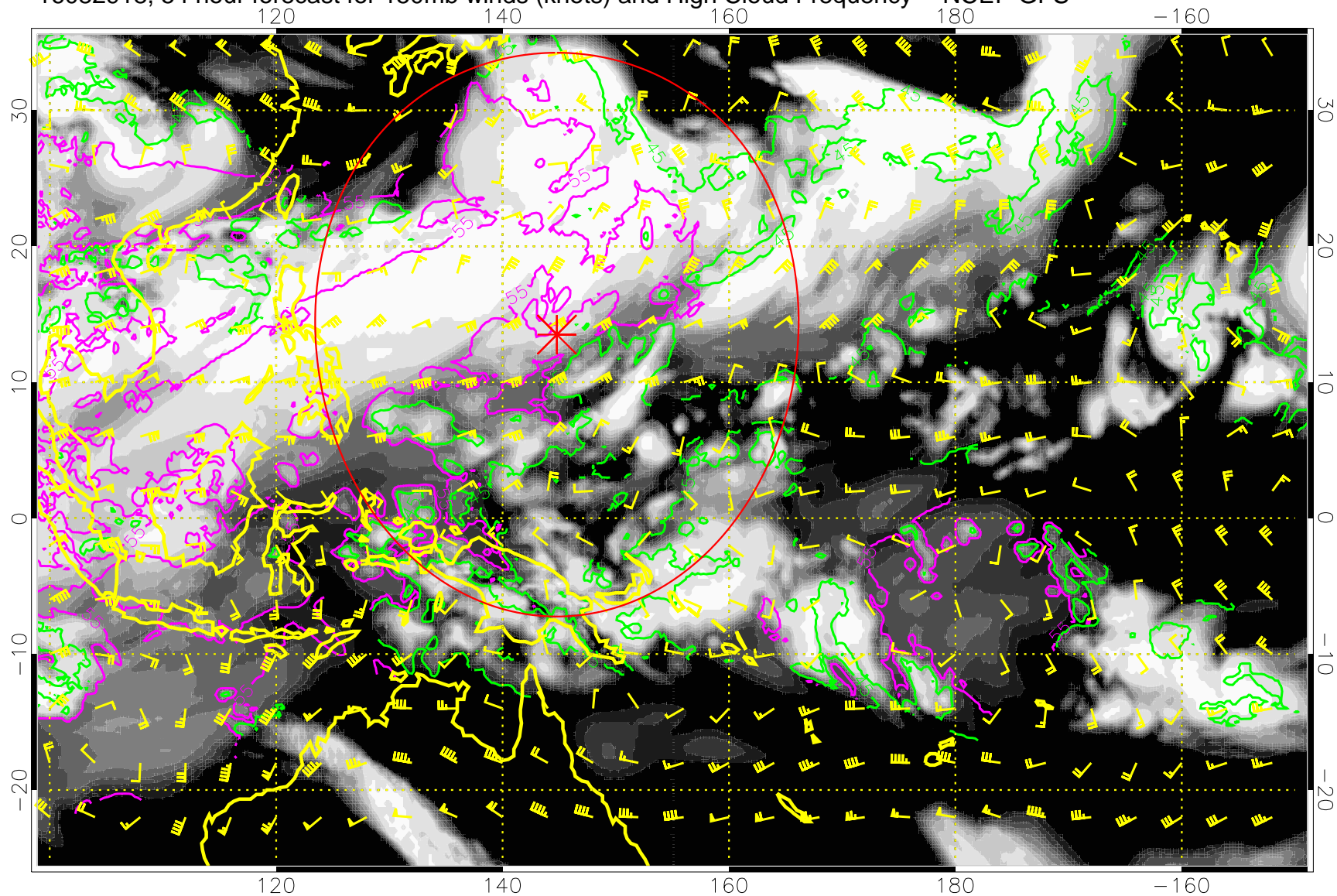


45 kft  
55 kft

Range ring of 2304 km



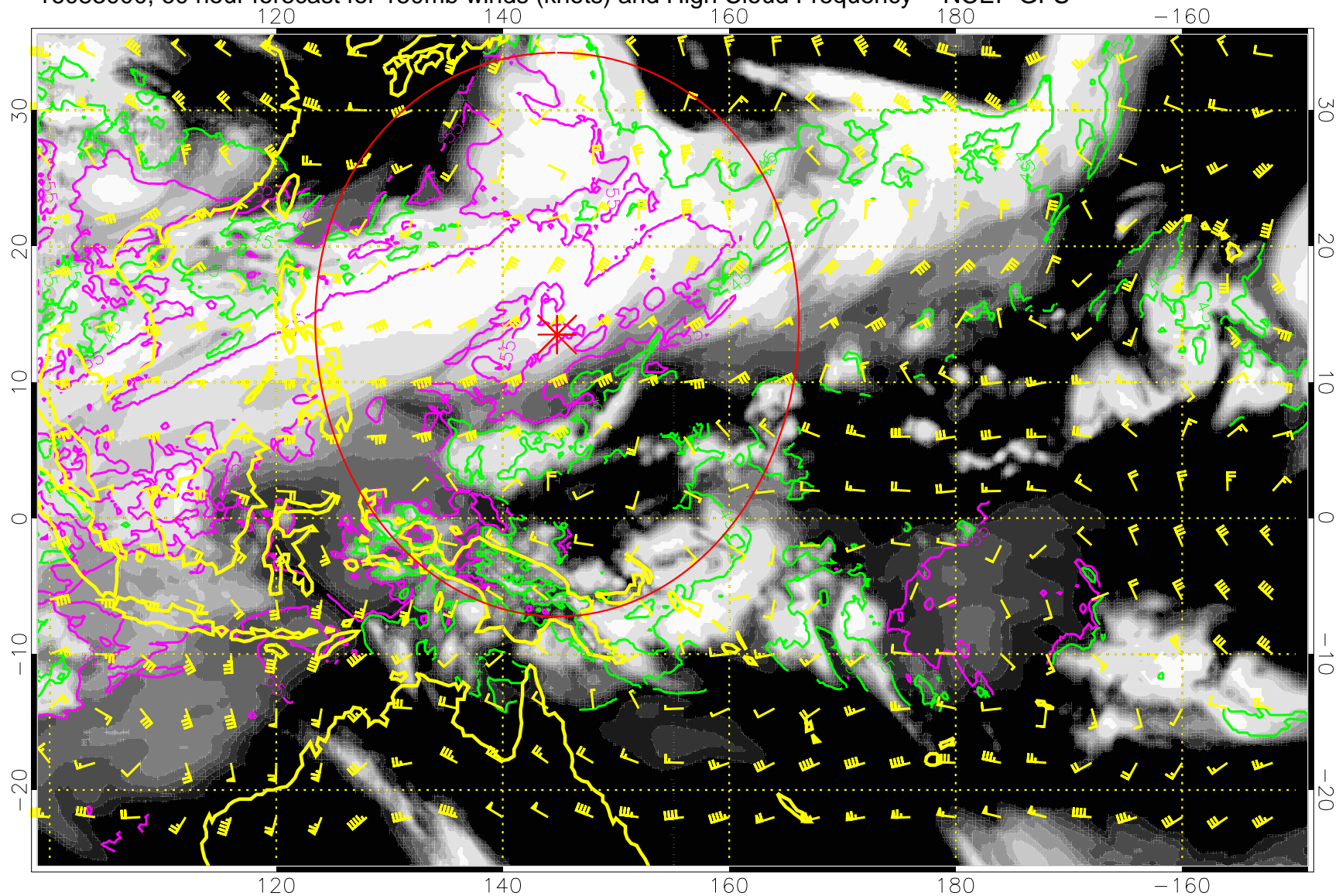
16082918, 54 hour forecast for 150mb winds (knots) and High Cloud Frequency -- NCEP GFS



45 kft  
55 kft

Range ring of 2304 km

16083000, 60 hour forecast for 150mb winds (knots) and High Cloud Frequency -- NCEP GFS

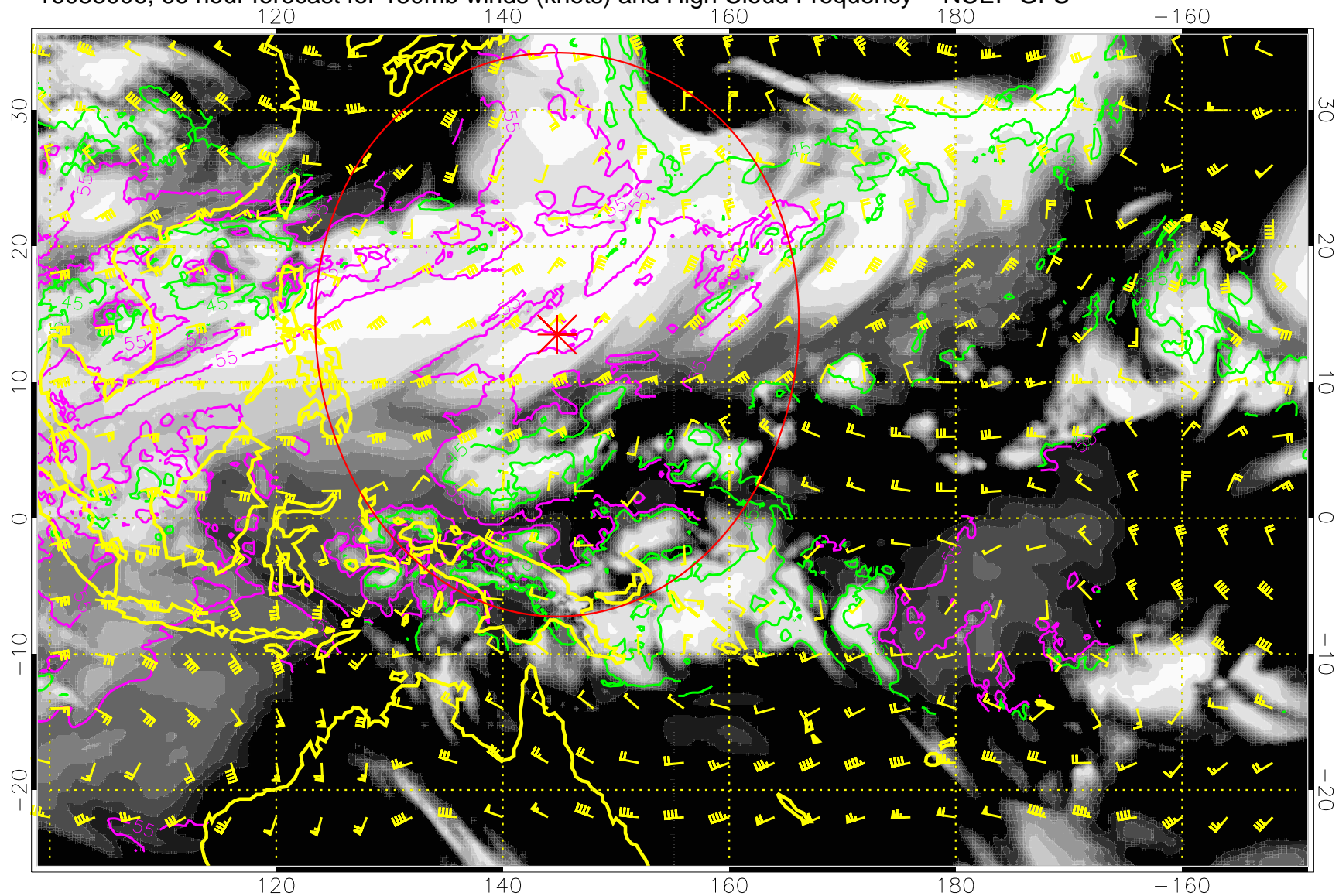


45 kft  
55 kft

Range ring of 2304 km



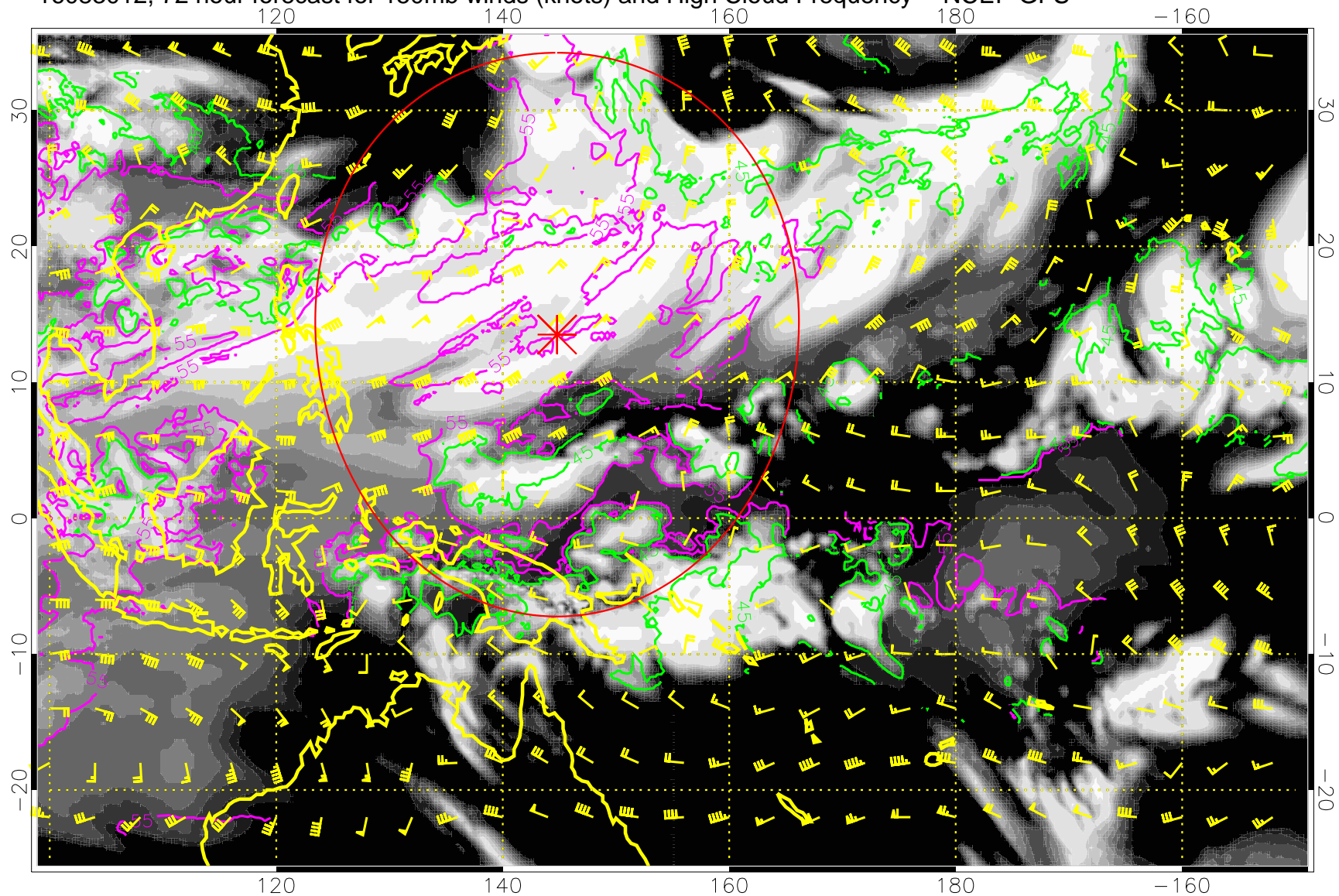
16083006, 66 hour forecast for 150mb winds (knots) and High Cloud Frequency -- NCEP GFS



45 kft  
55 kft

Range ring of 2304 km

16083012, 72 hour forecast for 150mb winds (knots) and High Cloud Frequency -- NCEP GFS

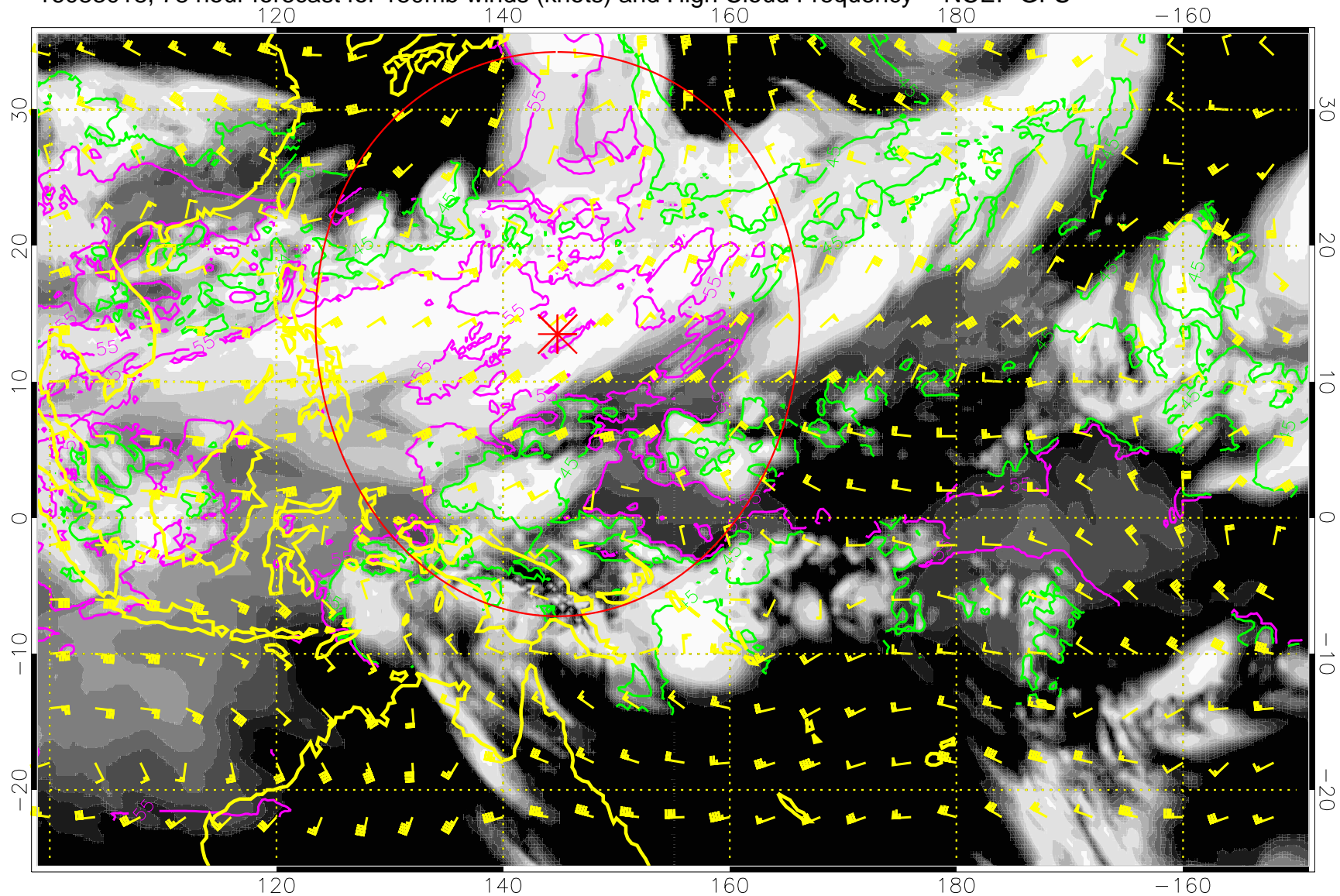


45 kft  
55 kft

Range ring of 2304 km



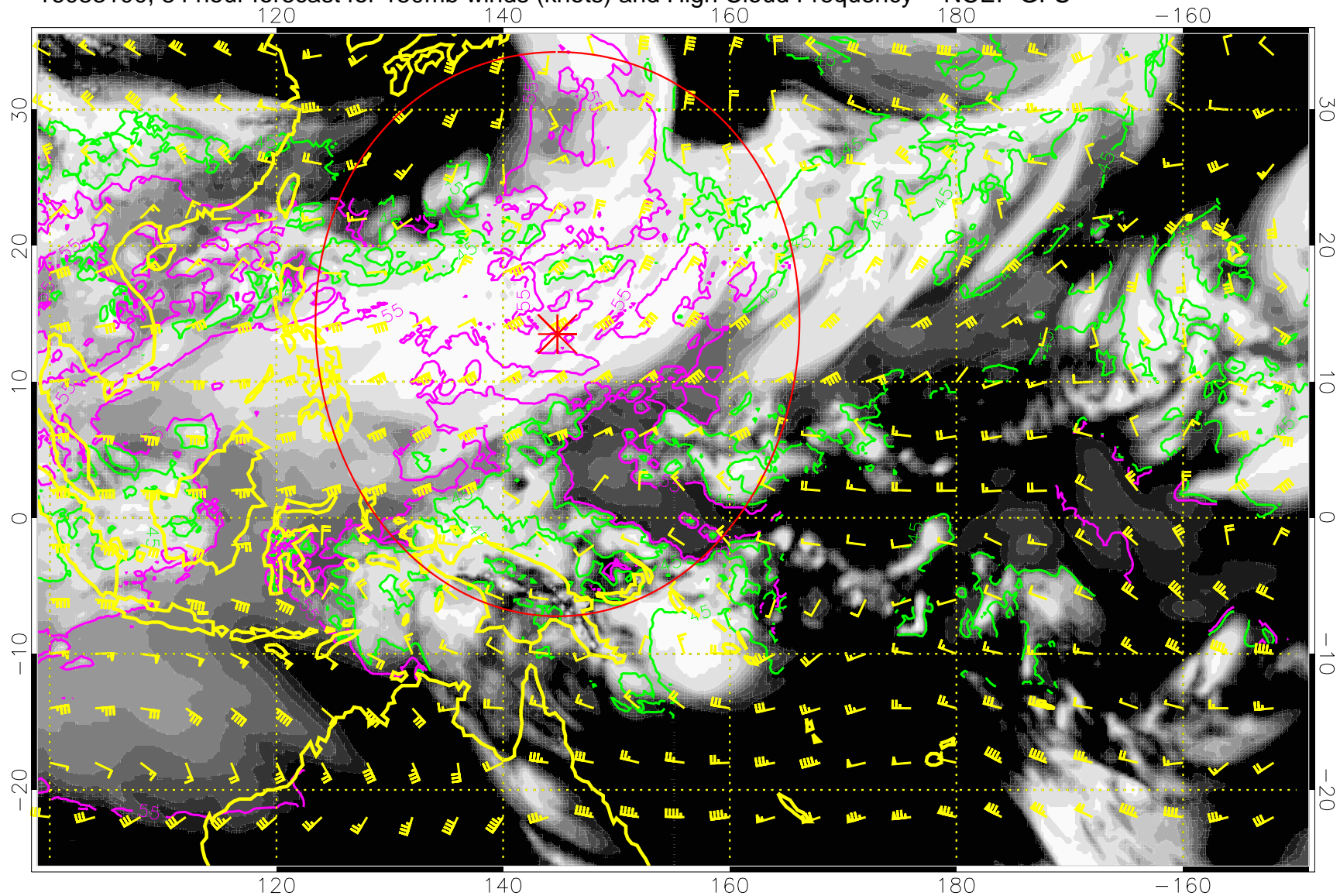
16083018, 78 hour forecast for 150mb winds (knots) and High Cloud Frequency -- NCEP GFS



45 kft  
55 kft

Range ring of 2304 km

16083100, 84 hour forecast for 150mb winds (knots) and High Cloud Frequency -- NCEP GFS

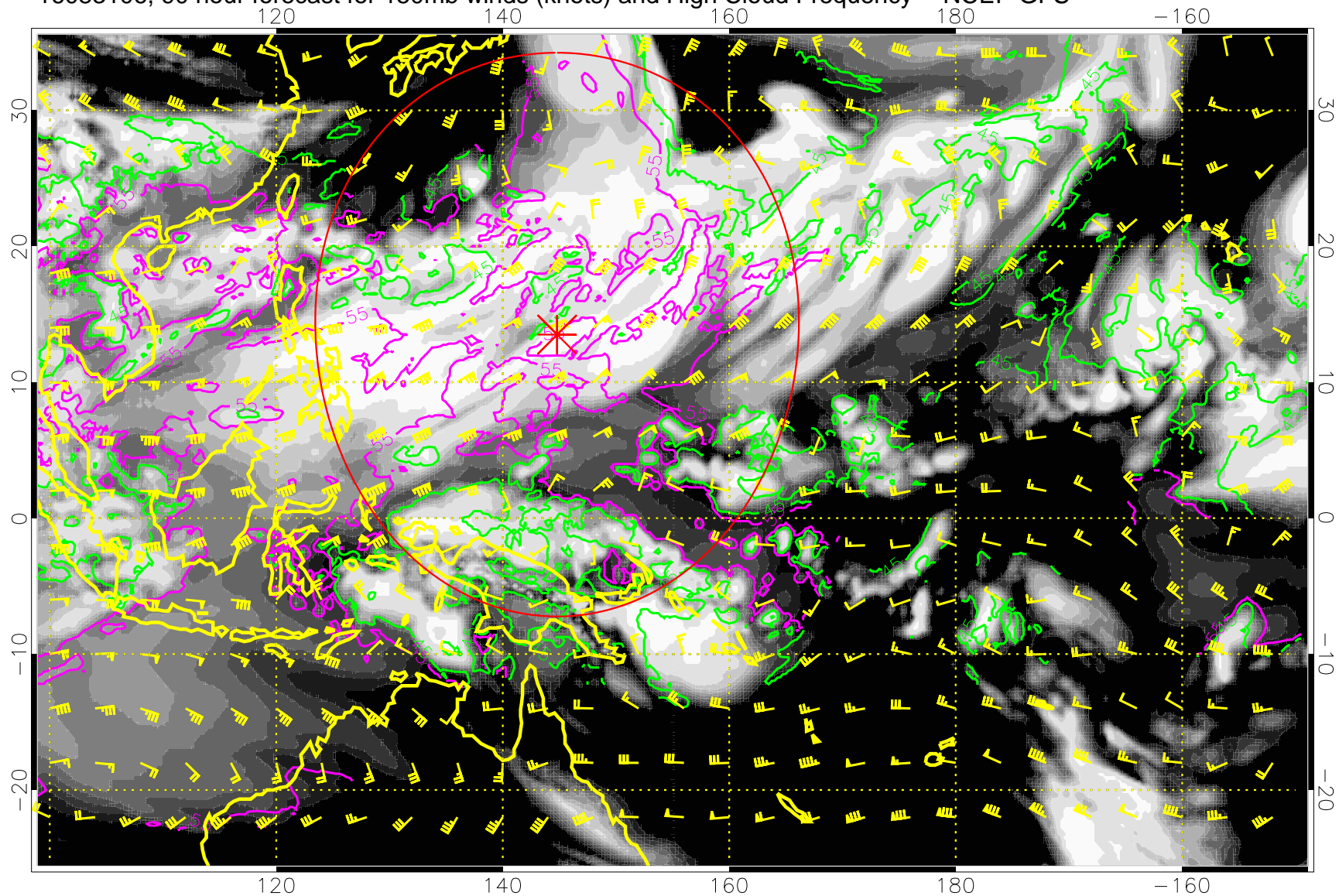


45 kft  
55 kft

Range ring of 2304 km



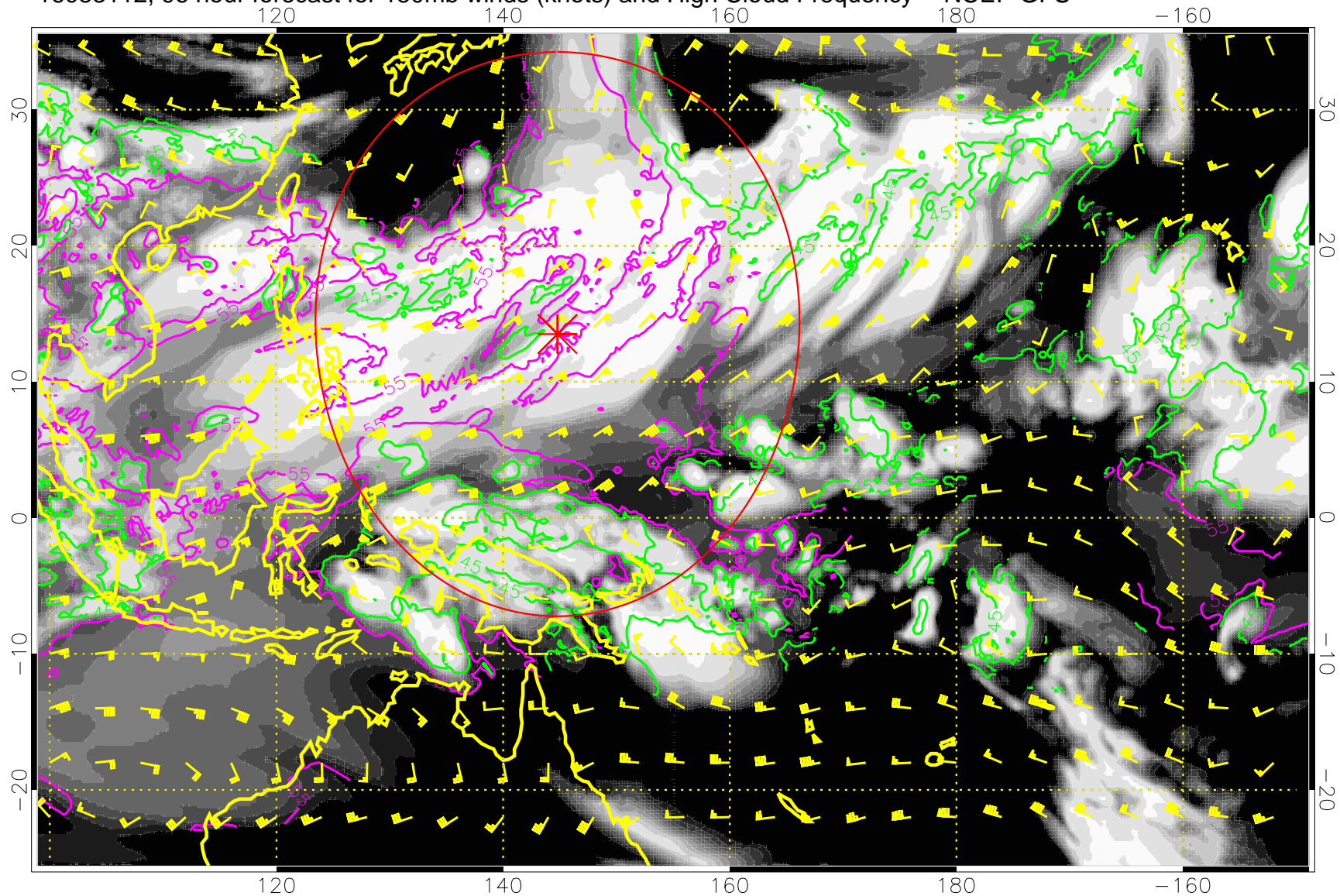
16083106, 90 hour forecast for 150mb winds (knots) and High Cloud Frequency -- NCEP GFS



45 kft  
55 kft

Range ring of 2304 km

16083112, 96 hour forecast for 150mb winds (knots) and High Cloud Frequency -- NCEP GFS



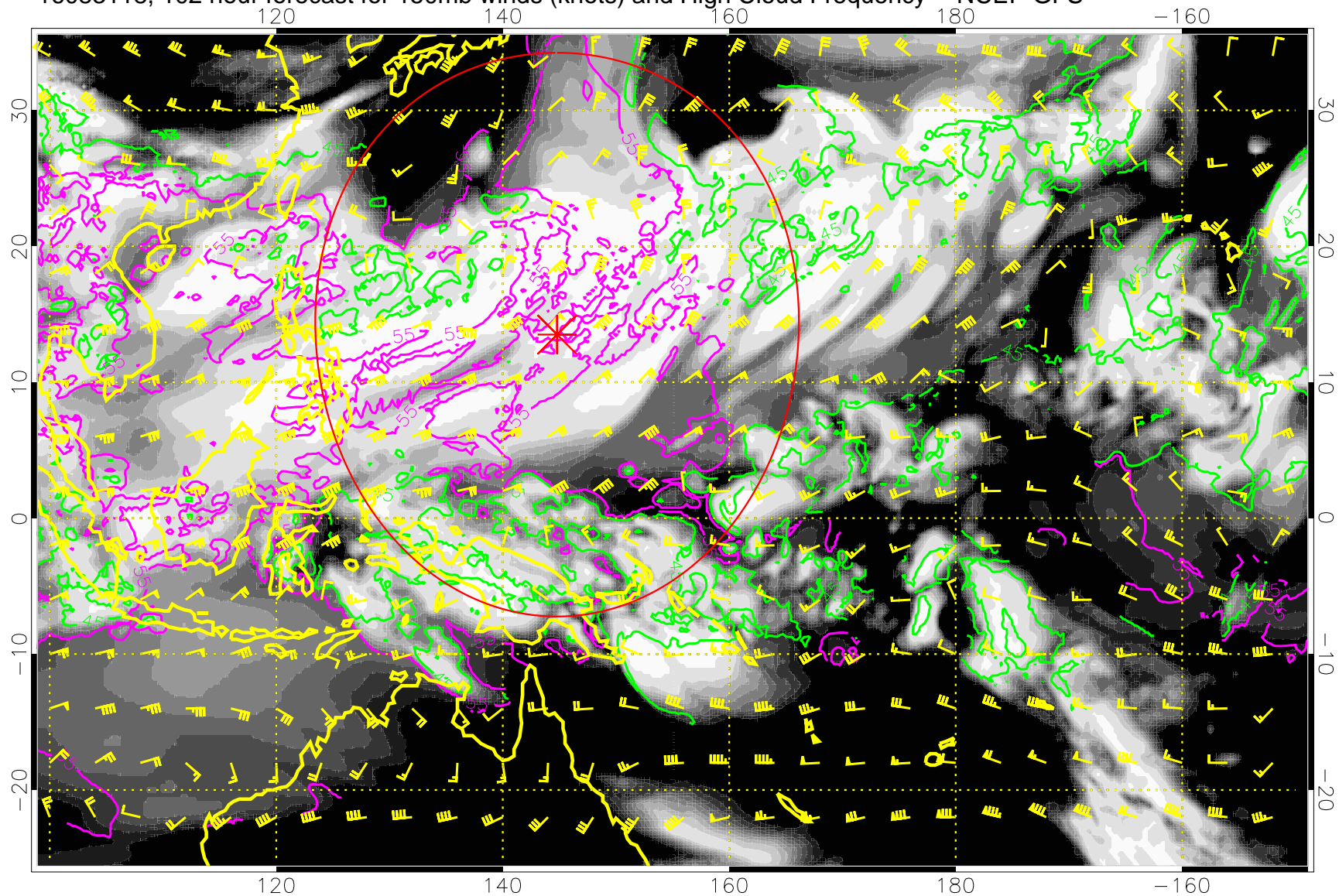
0.0 0.2 0.4 0.6 0.8 1.0  
High Cloud Frequency

45 kft  
55 kft

Range ring of 2304 km



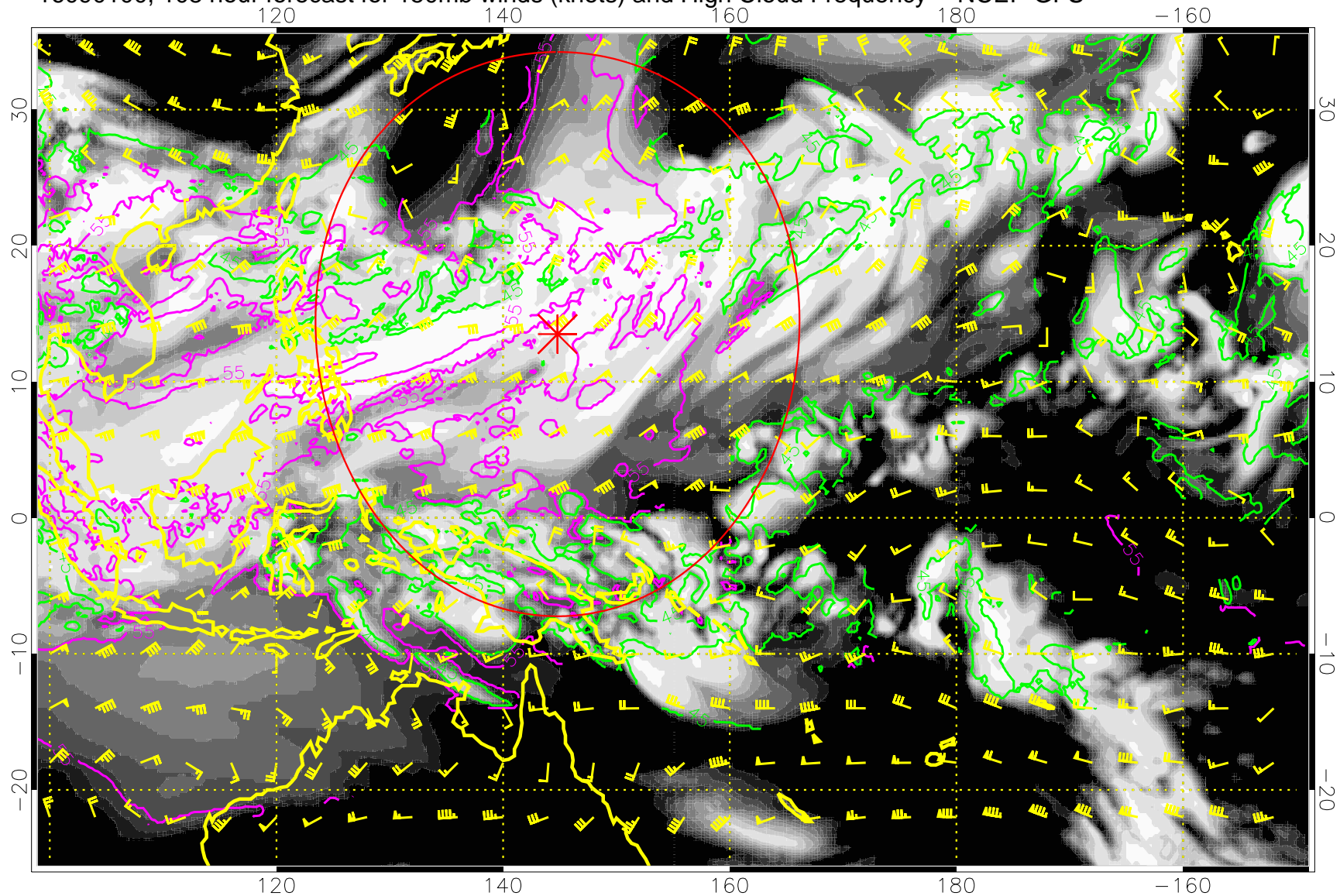
16083118, 102 hour forecast for 150mb winds (knots) and High Cloud Frequency -- NCEP GFS



45 kft  
55 kft

Range ring of 2304 km

16090100, 108 hour forecast for 150mb winds (knots) and High Cloud Frequency -- NCEP GFS



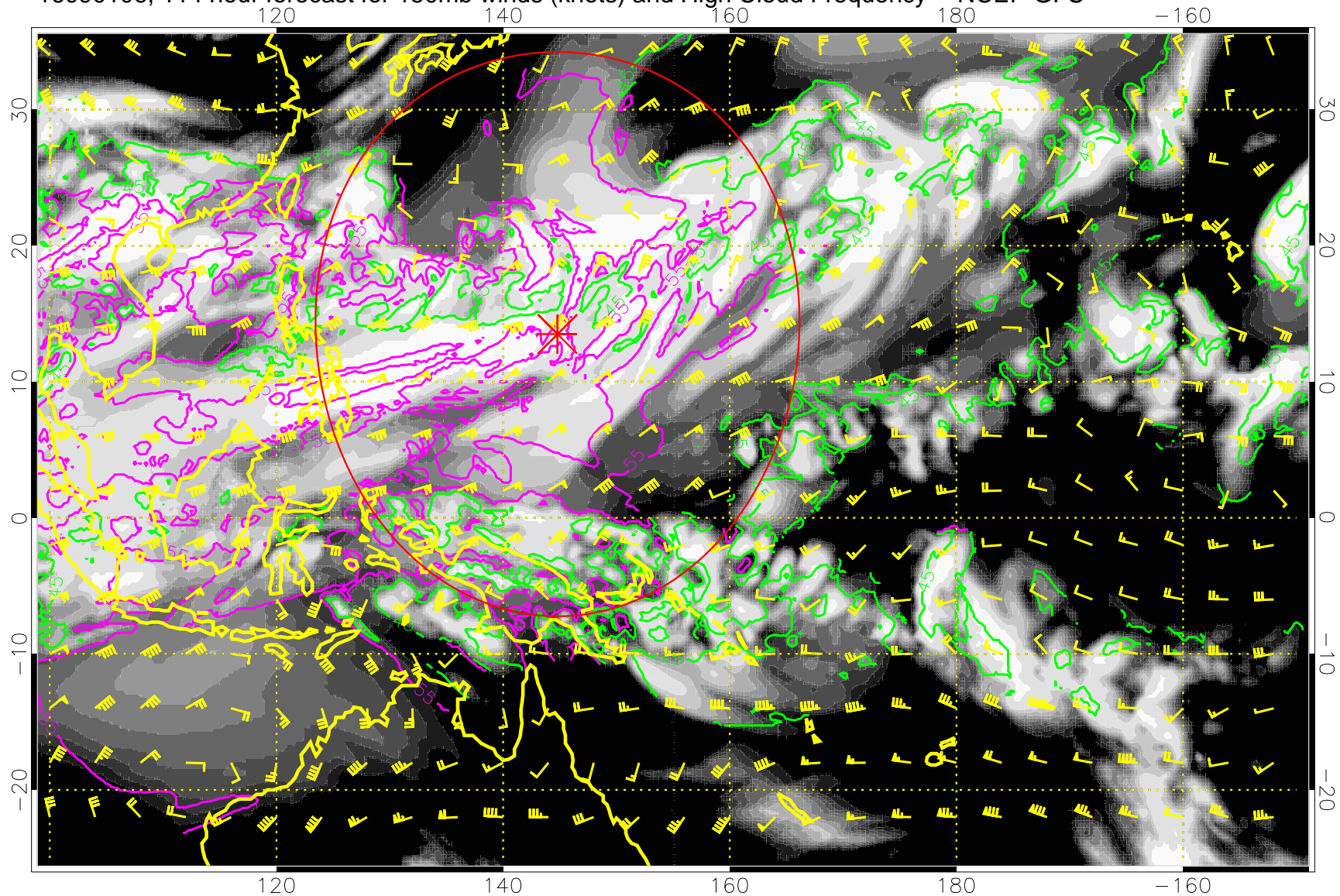
0.0      0.2      0.4      0.6      0.8      1.0  
High Cloud Frequency

45 kft  
55 kft

Range ring of 2304 km



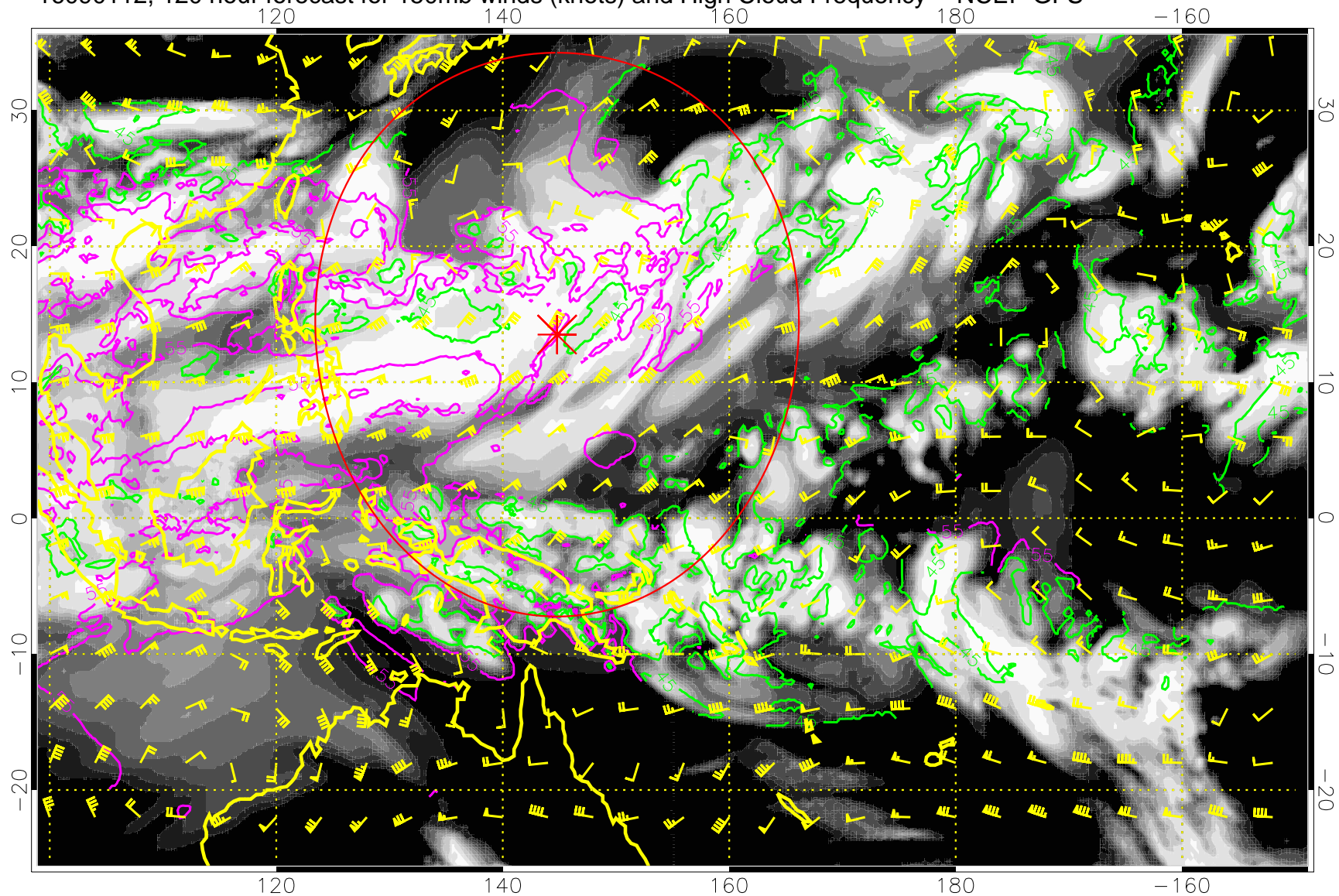
16090106, 114 hour forecast for 150mb winds (knots) and High Cloud Frequency -- NCEP GFS



45 kft  
55 kft

Range ring of 2304 km

16090112, 120 hour forecast for 150mb winds (knots) and High Cloud Frequency -- NCEP GFS



45 kft  
55 kft

Range ring of 2304 km