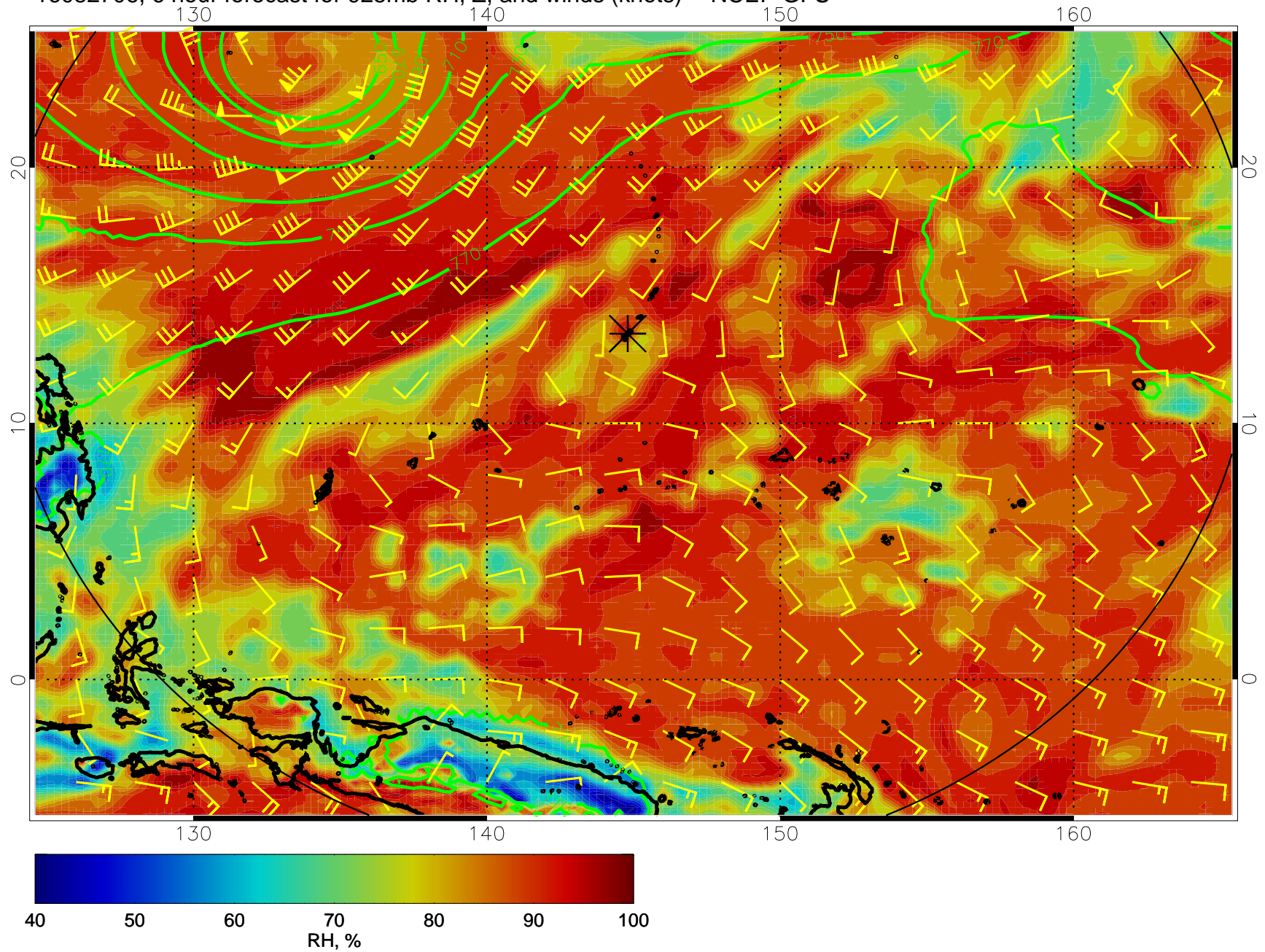
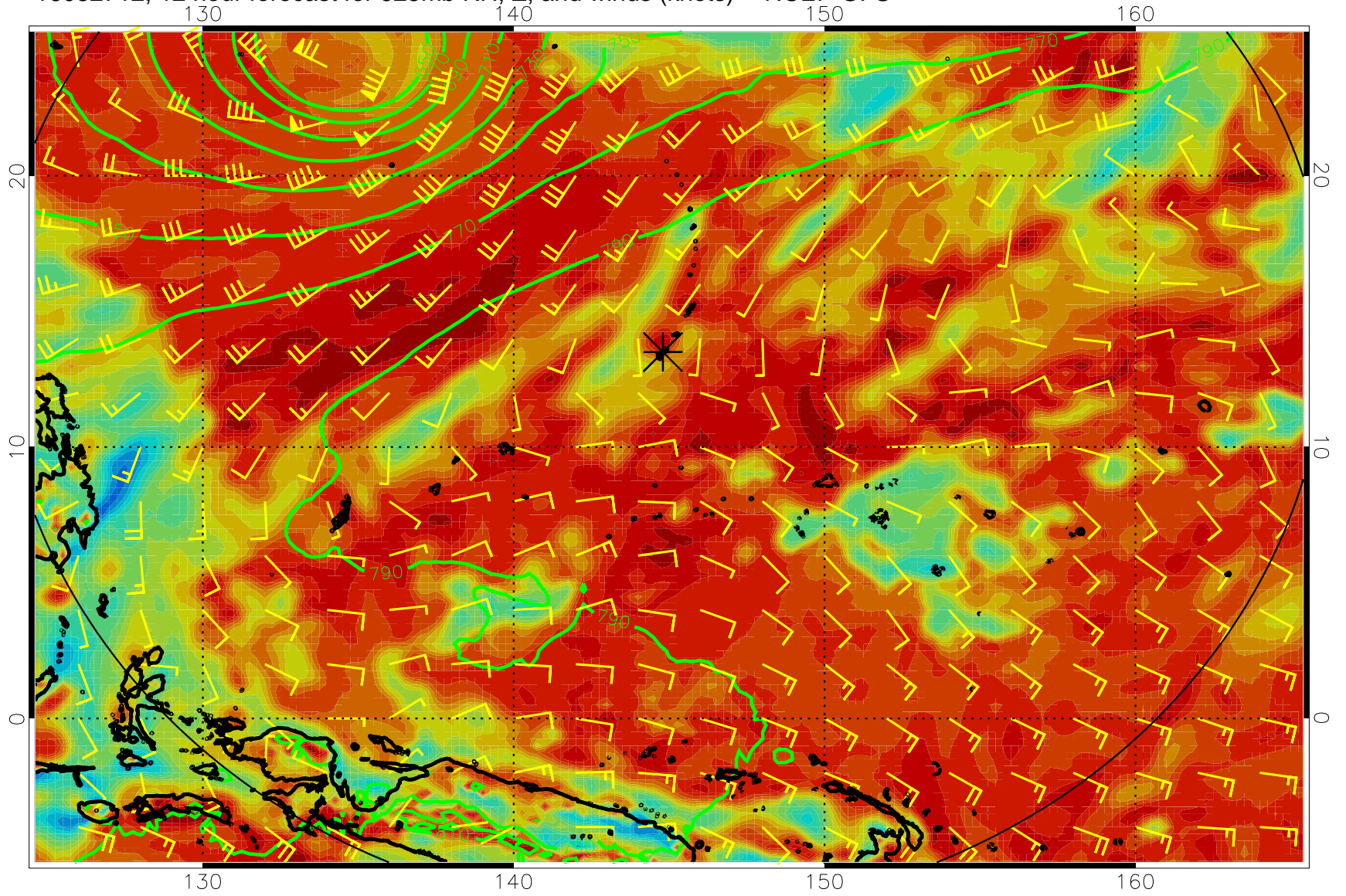


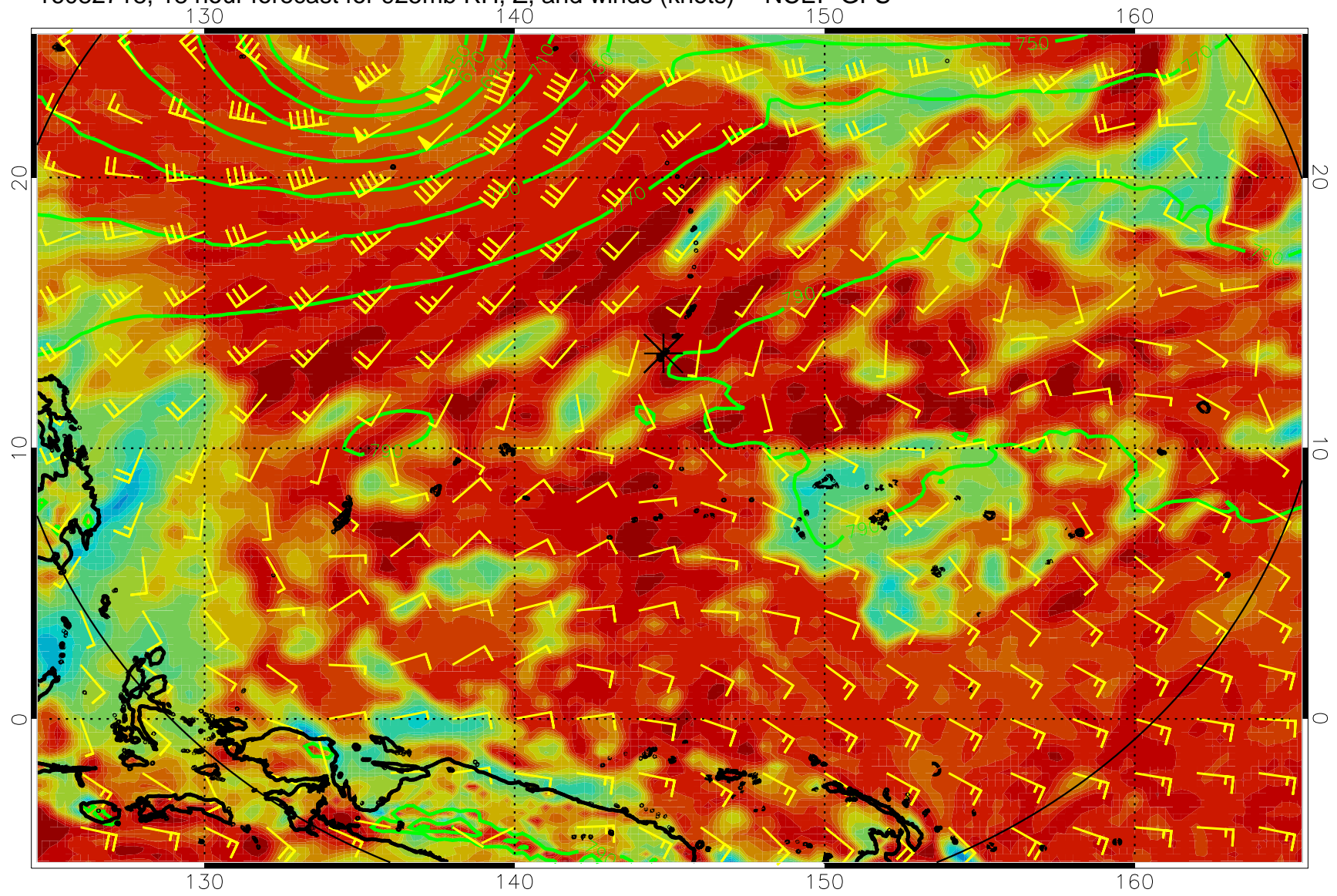
16082706, 6 hour forecast for 925mb RH, Z, and winds (knots) -- NCEP GFS



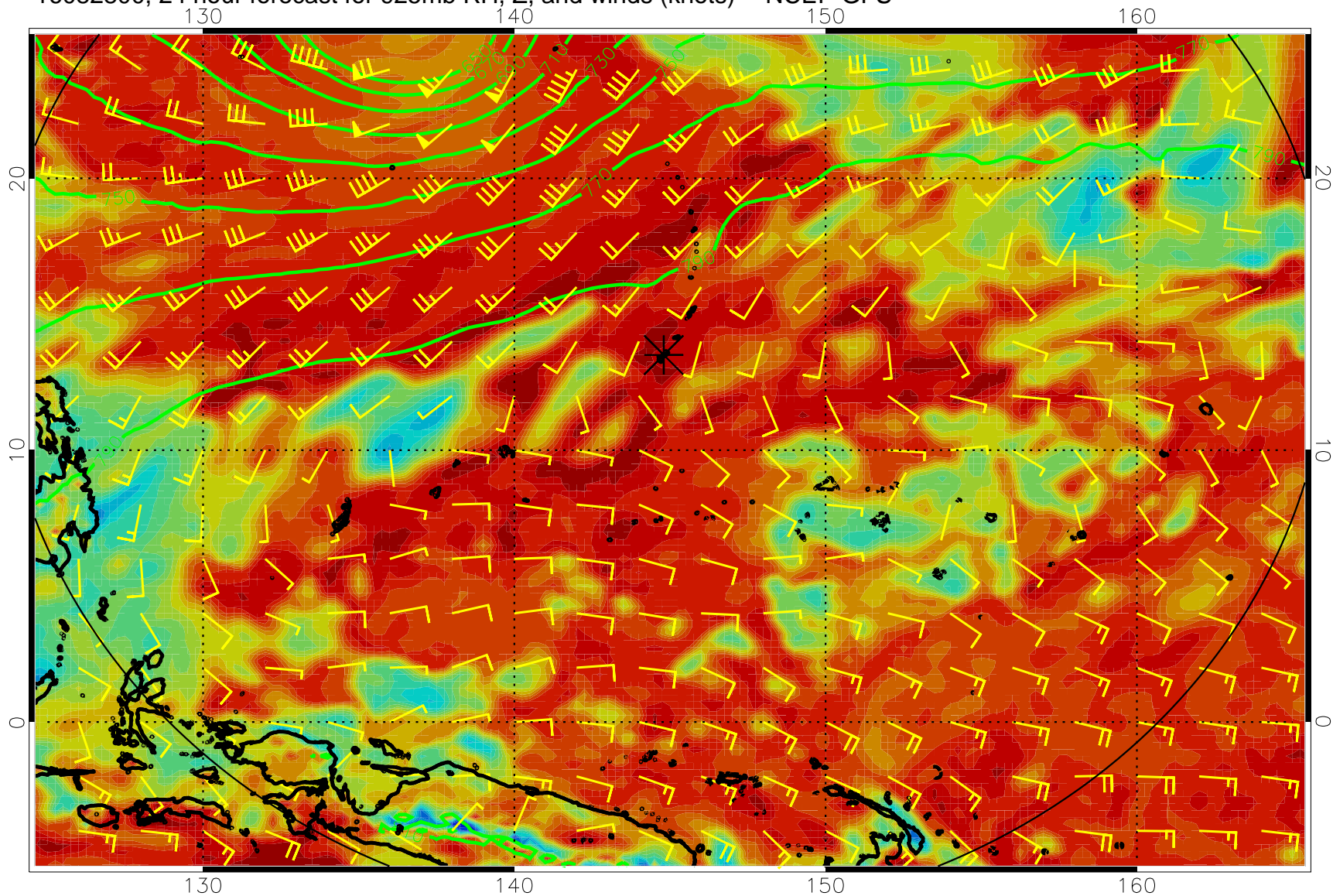
16082712, 12 hour forecast for 925mb RH, Z, and winds (knots) -- NCEP GFS



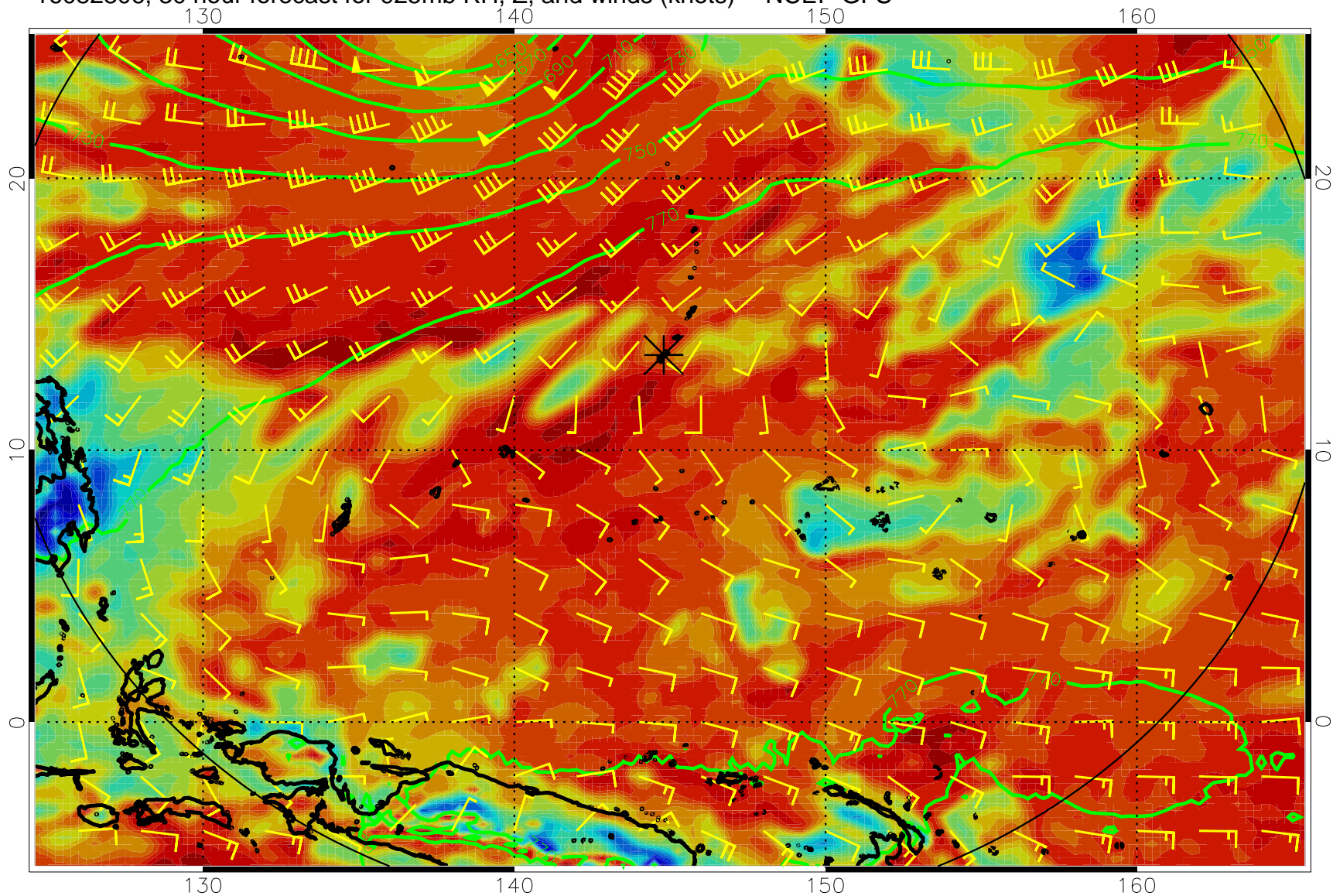
16082718, 18 hour forecast for 925mb RH, Z, and winds (knots) -- NCEP GFS



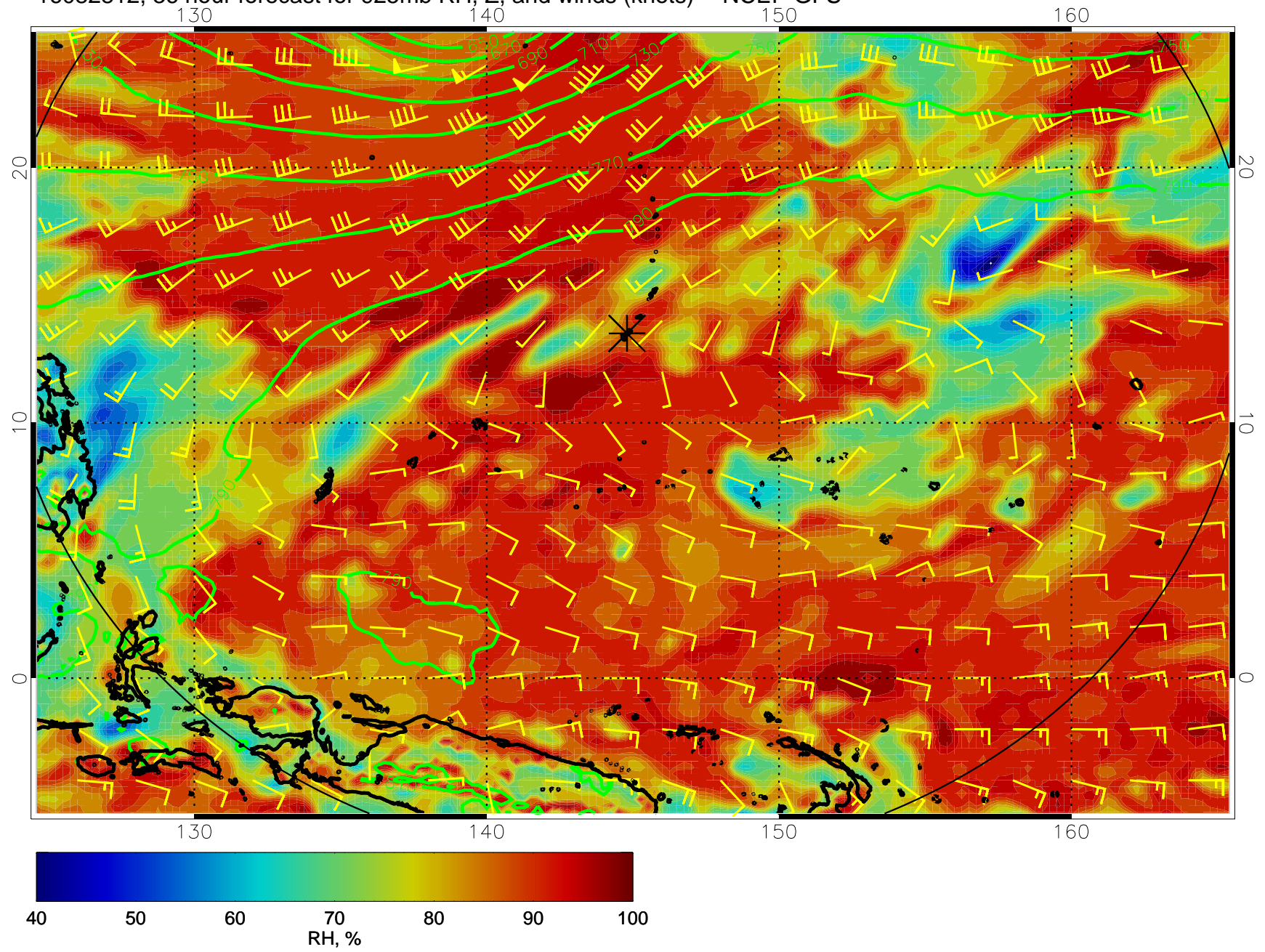
16082800, 24 hour forecast for 925mb RH, Z, and winds (knots) -- NCEP GFS



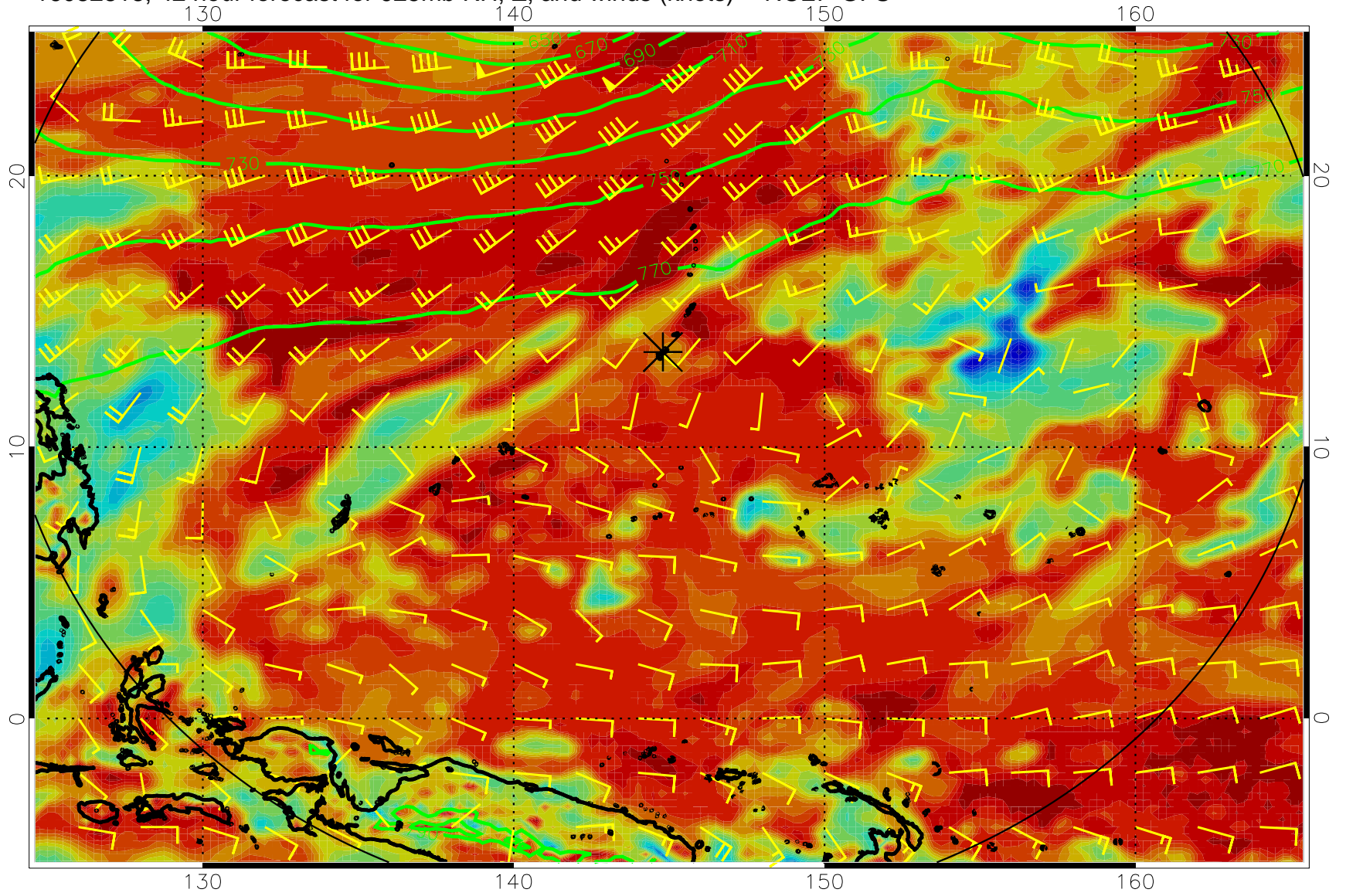
16082806, 30 hour forecast for 925mb RH, Z, and winds (knots) -- NCEP GFS



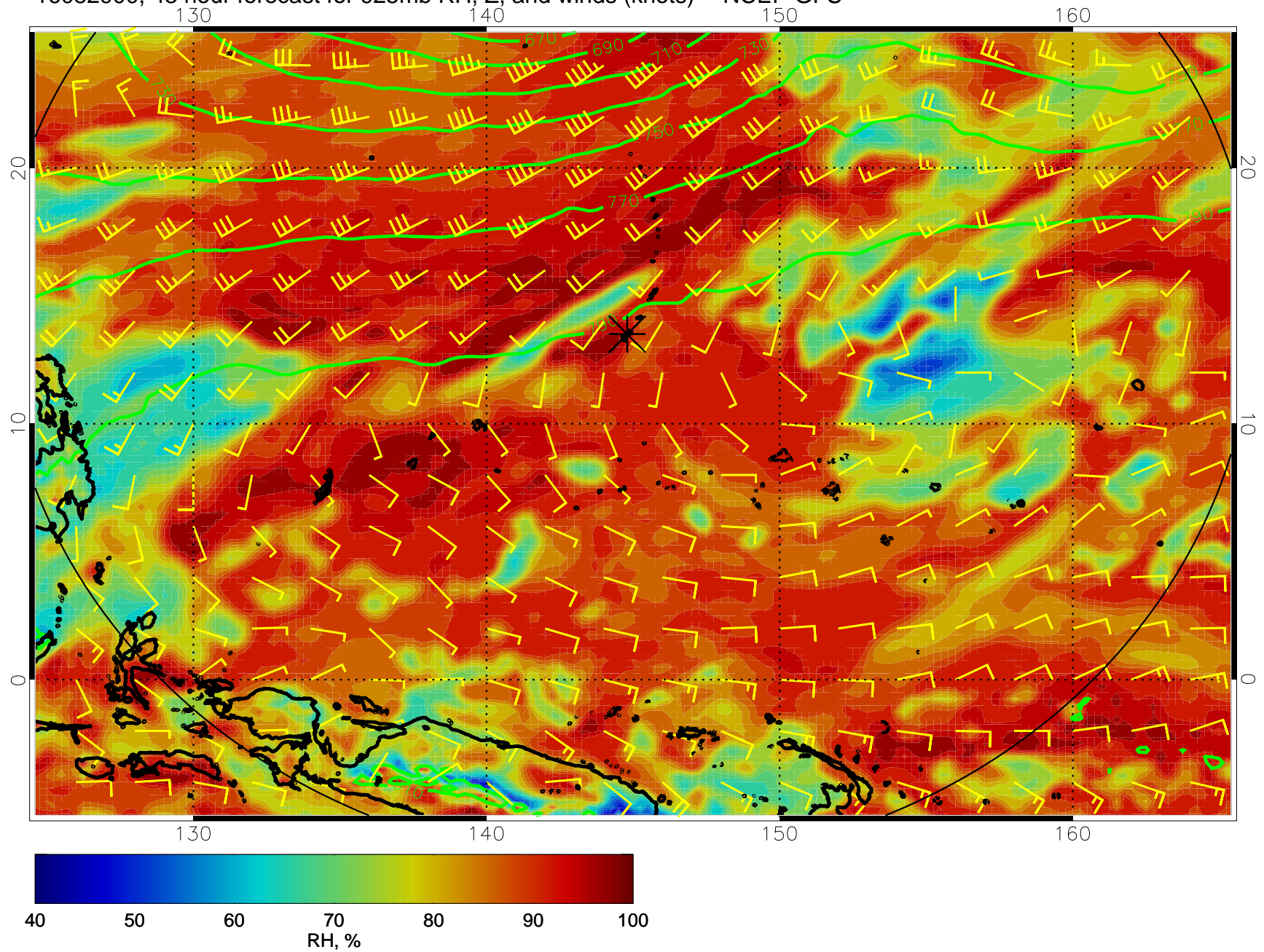
16082812, 36 hour forecast for 925mb RH, Z, and winds (knots) -- NCEP GFS



16082818, 42 hour forecast for 925mb RH, Z, and winds (knots) -- NCEP GFS

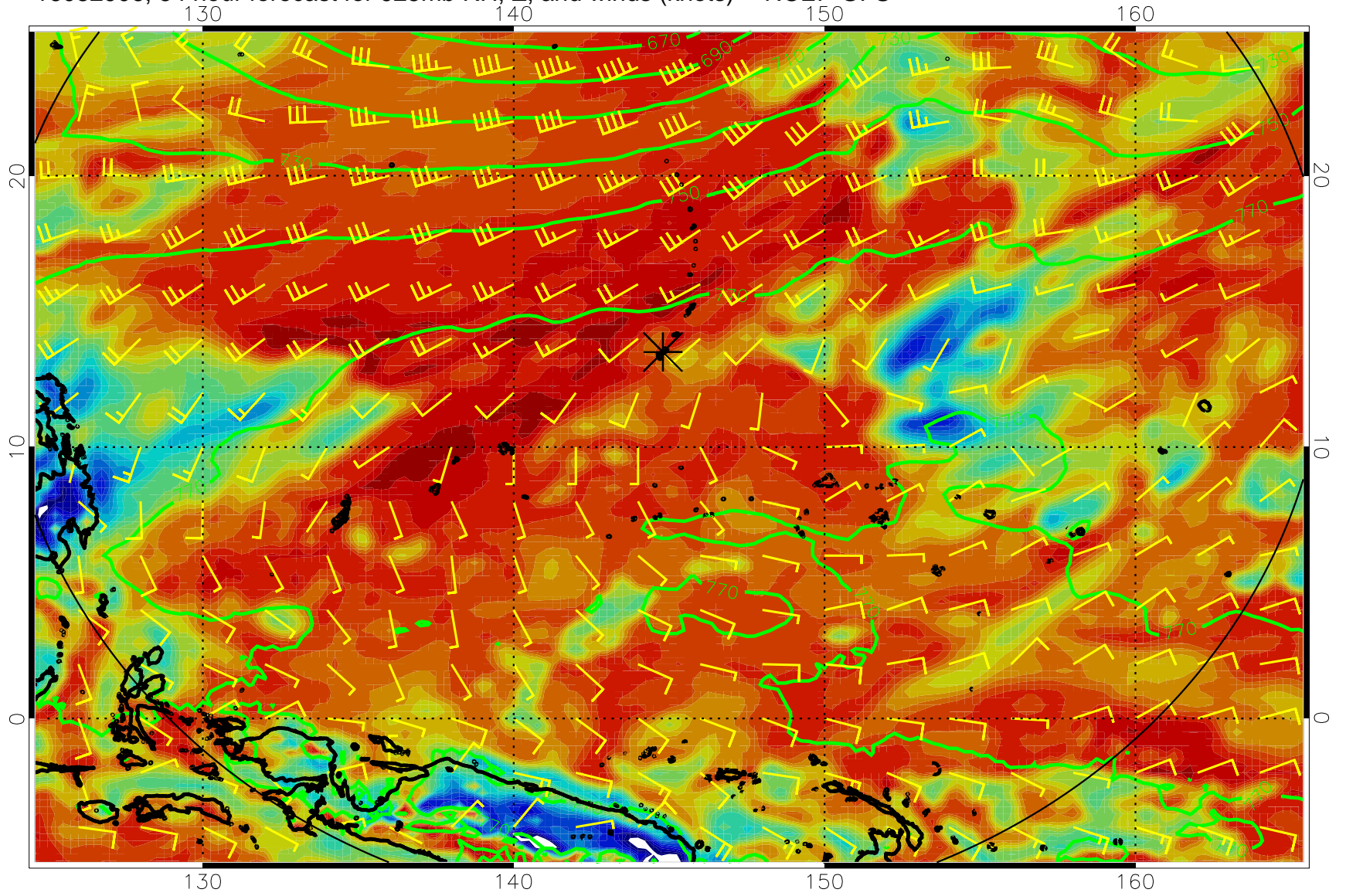


16082900, 48 hour forecast for 925mb RH, Z, and winds (knots) -- NCEP GFS

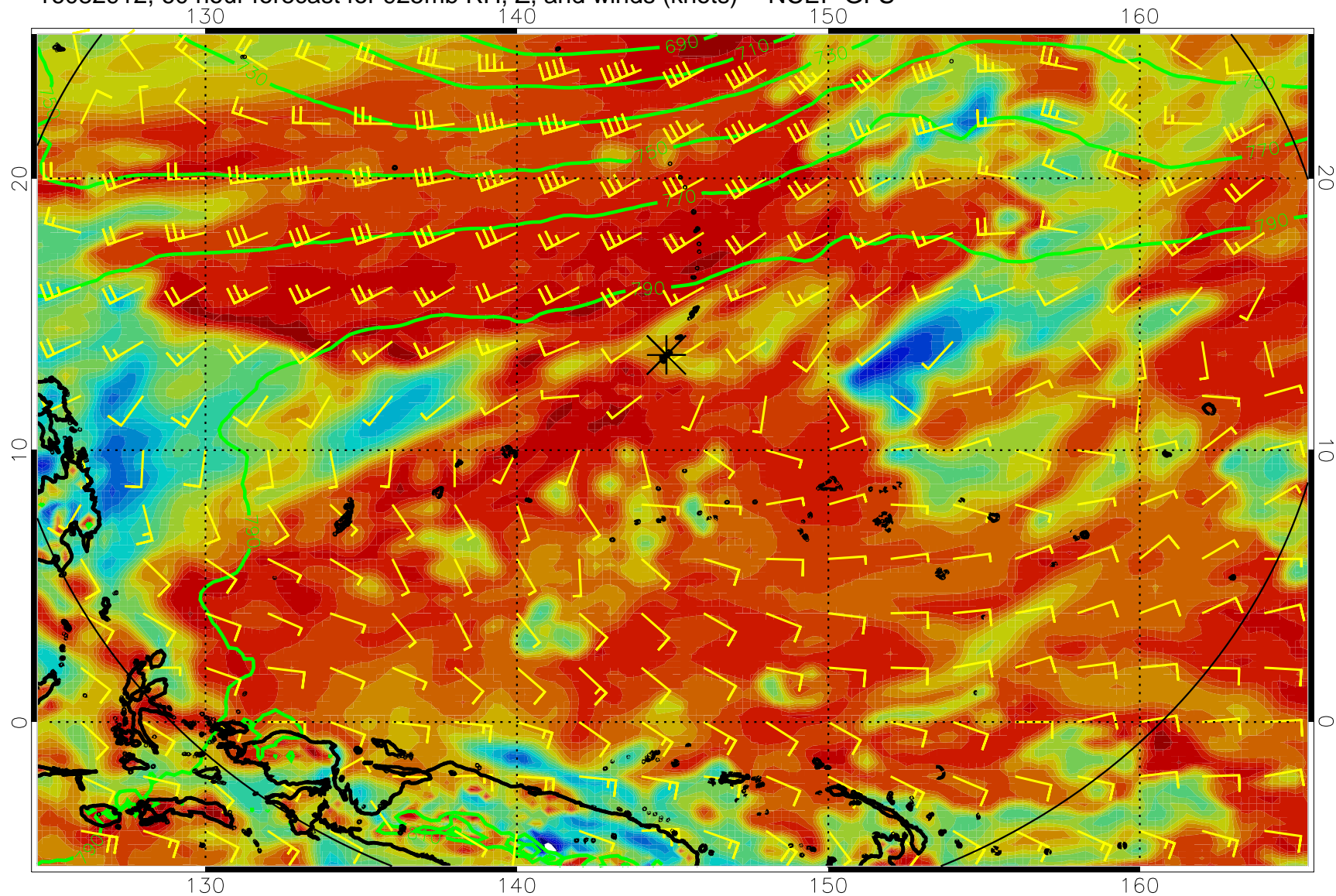




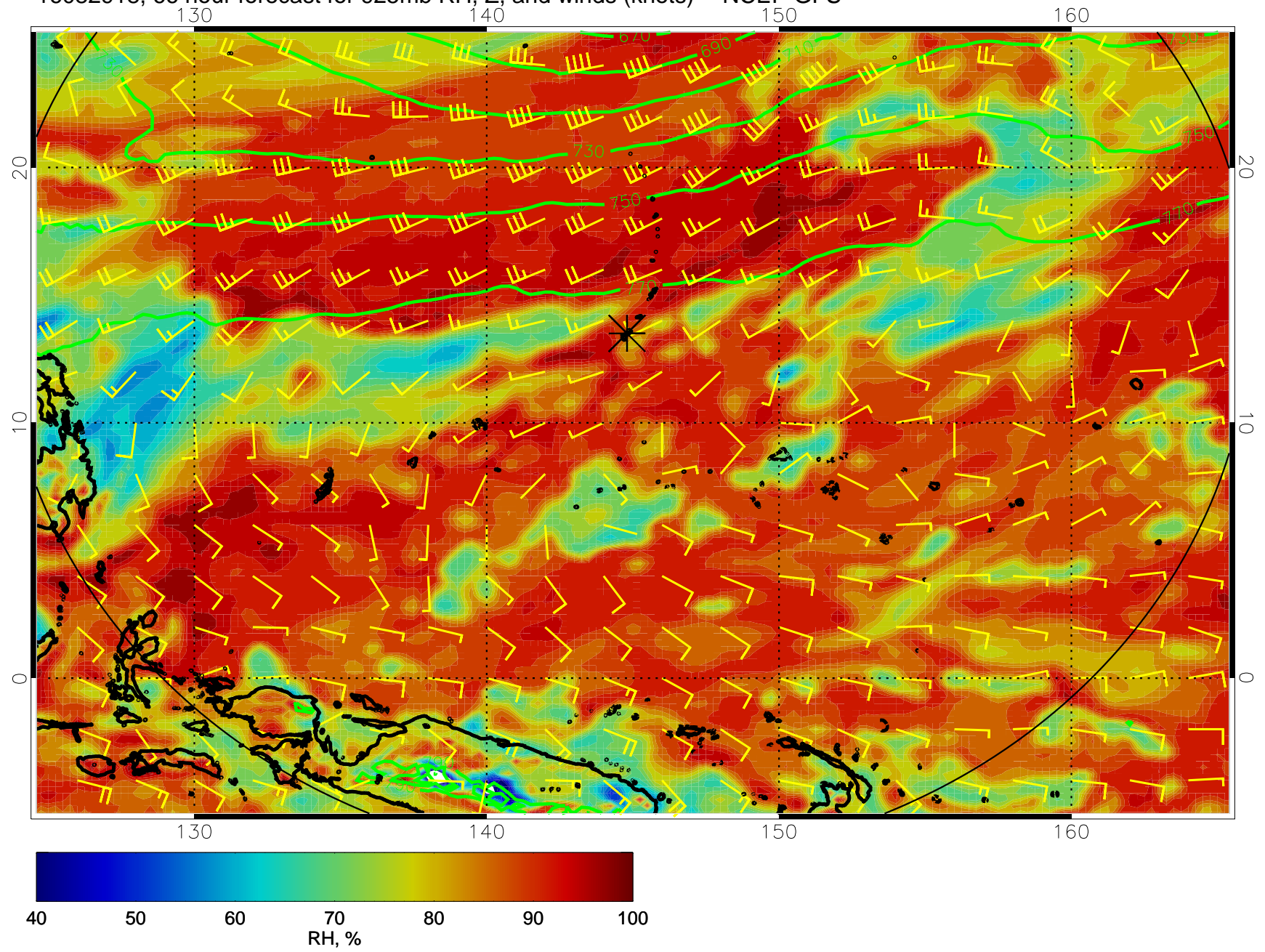
16082906, 54 hour forecast for 925mb RH, Z, and winds (knots) -- NCEP GFS



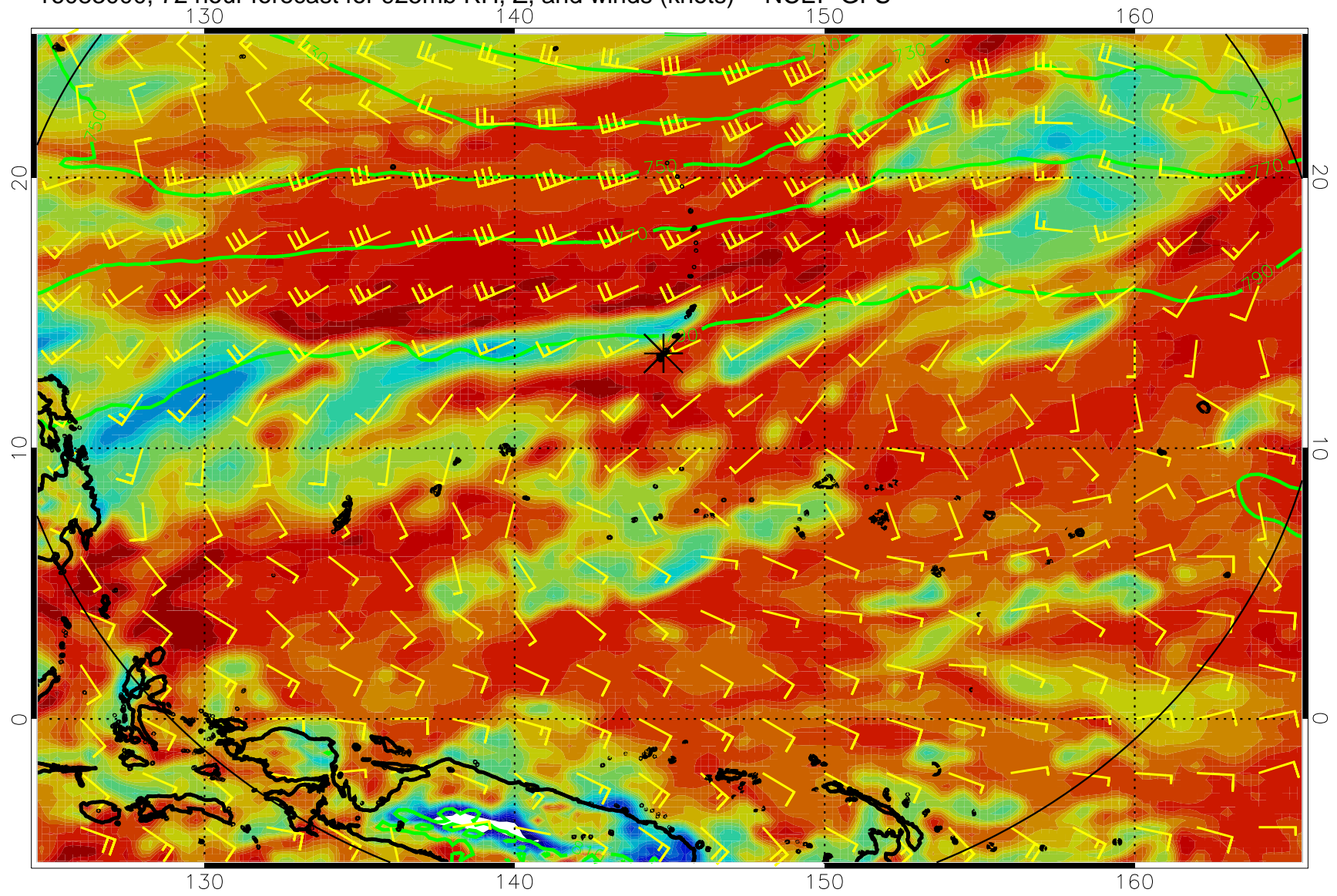
16082912, 60 hour forecast for 925mb RH, Z, and winds (knots) -- NCEP GFS



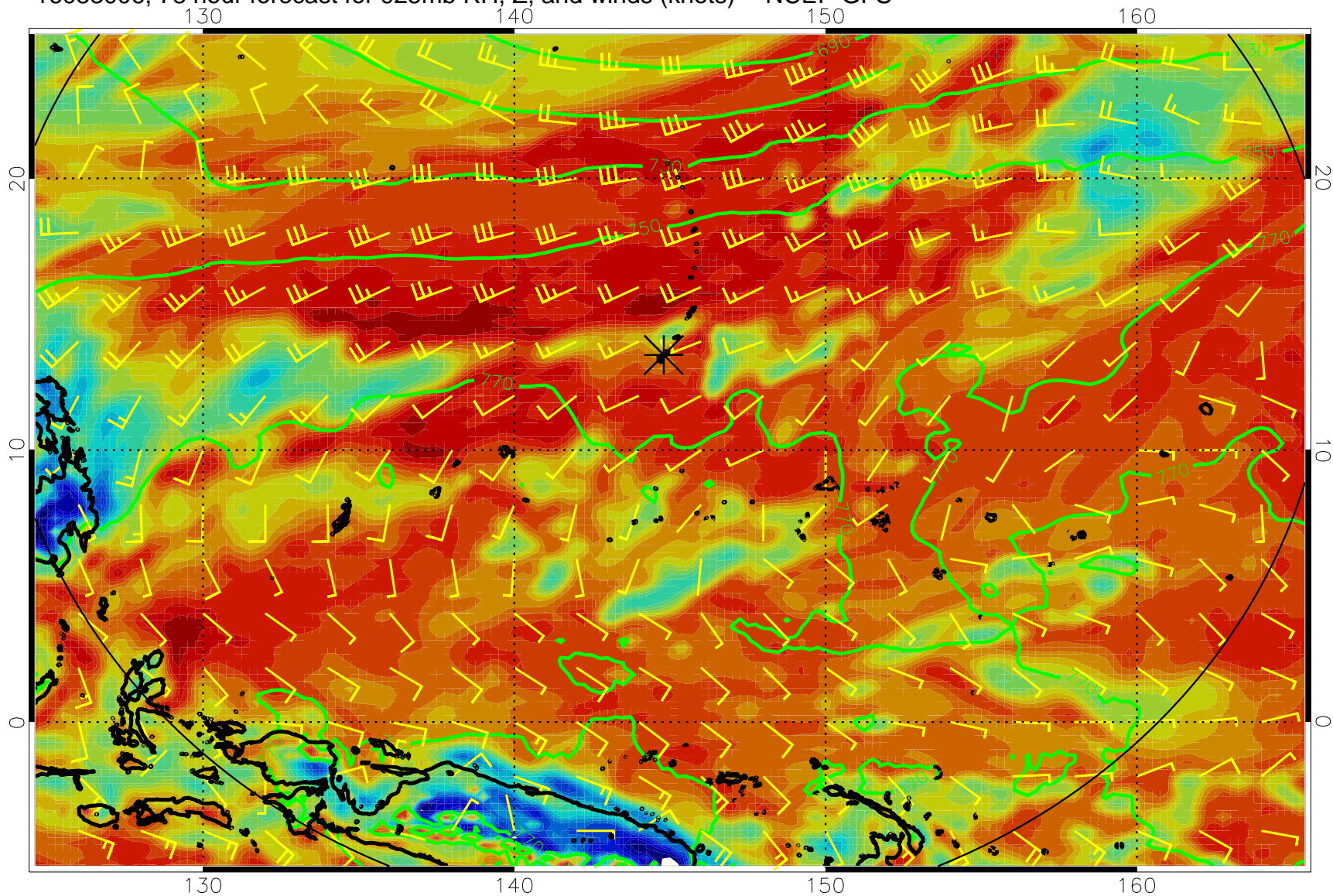
16082918, 66 hour forecast for 925mb RH, Z, and winds (knots) -- NCEP GFS



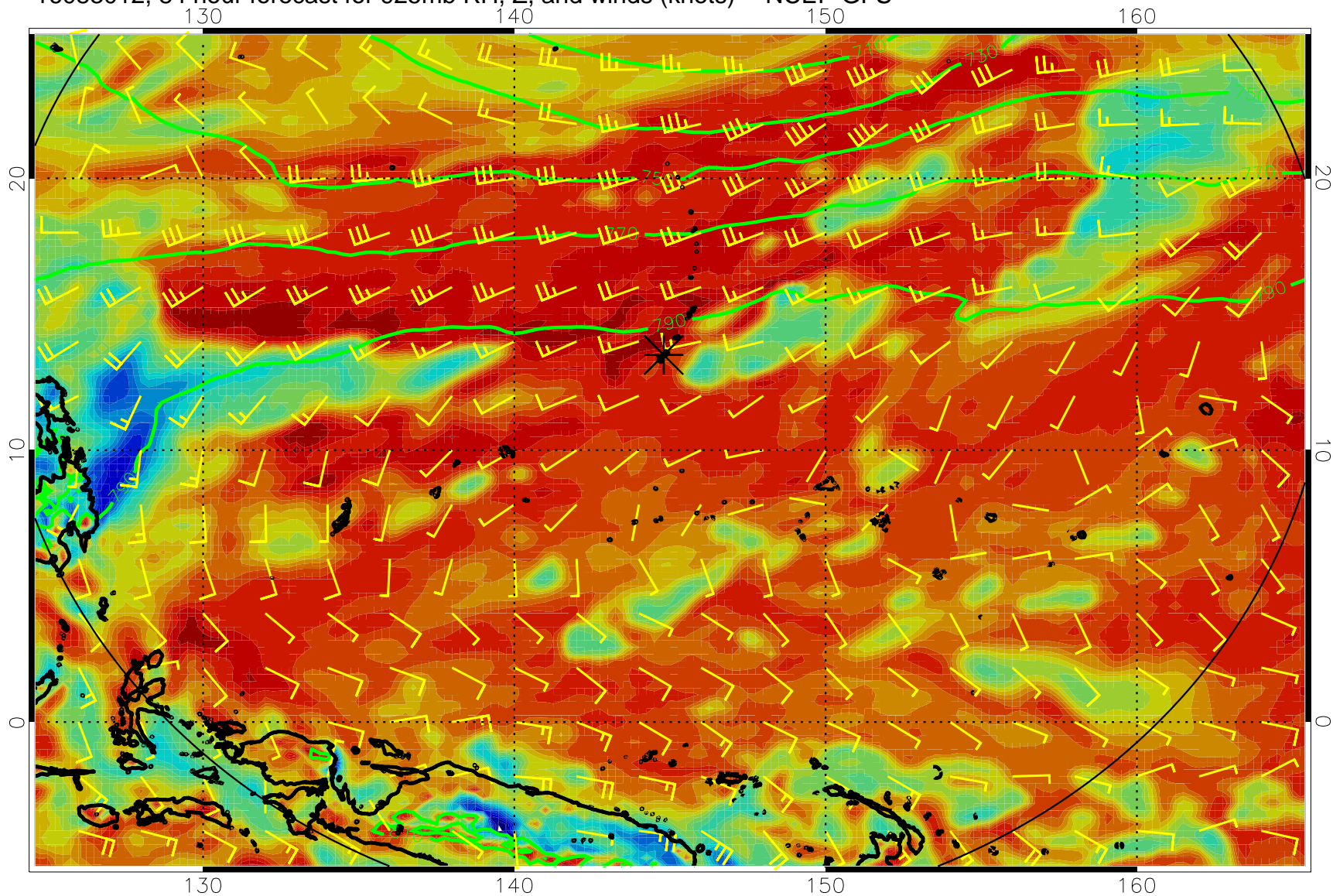
16083000, 72 hour forecast for 925mb RH, Z, and winds (knots) -- NCEP GFS



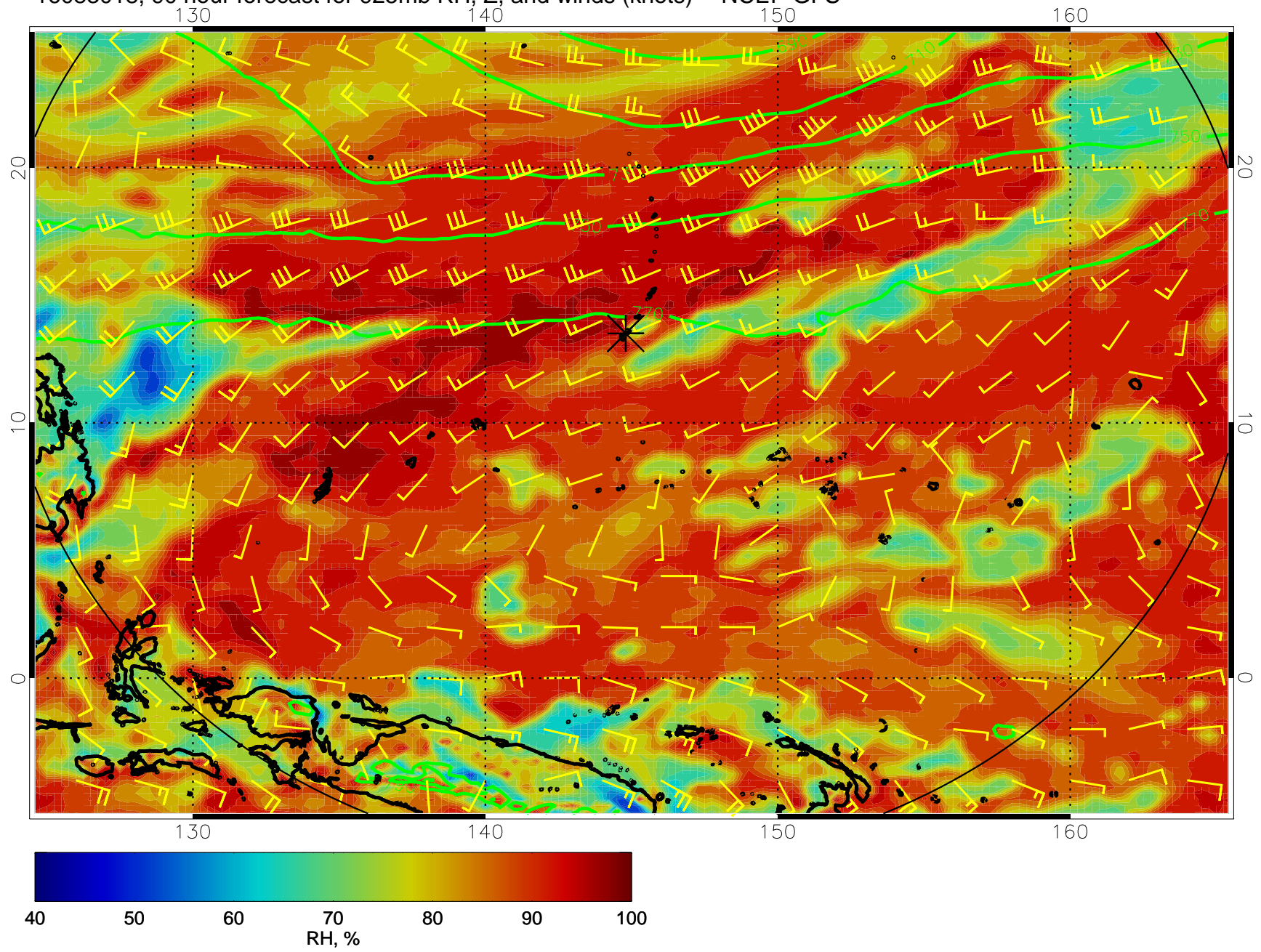
16083006, 78 hour forecast for 925mb RH, Z, and winds (knots) -- NCEP GFS



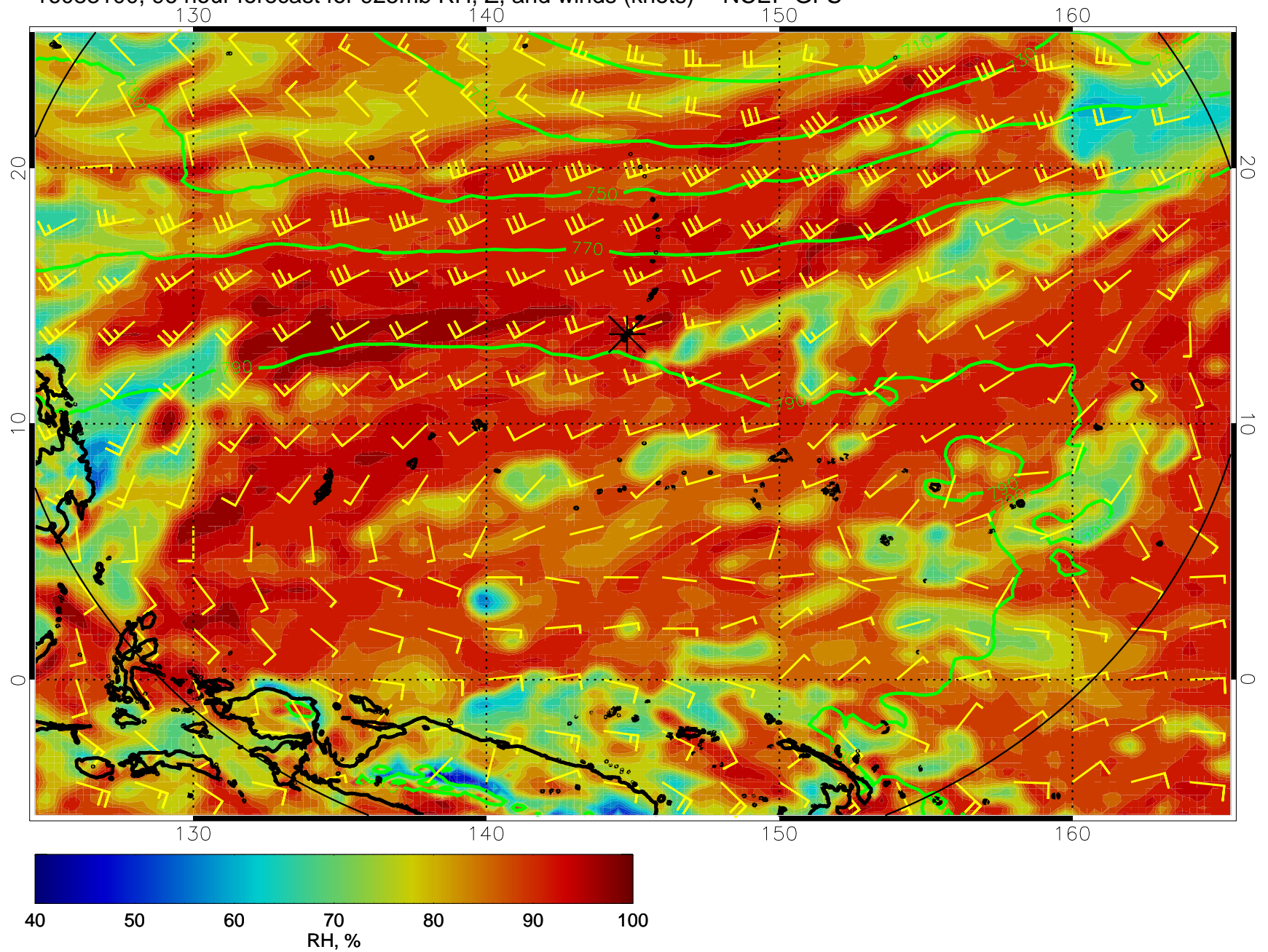
16083012, 84 hour forecast for 925mb RH, Z, and winds (knots) -- NCEP GFS



16083018, 90 hour forecast for 925mb RH, Z, and winds (knots) -- NCEP GFS

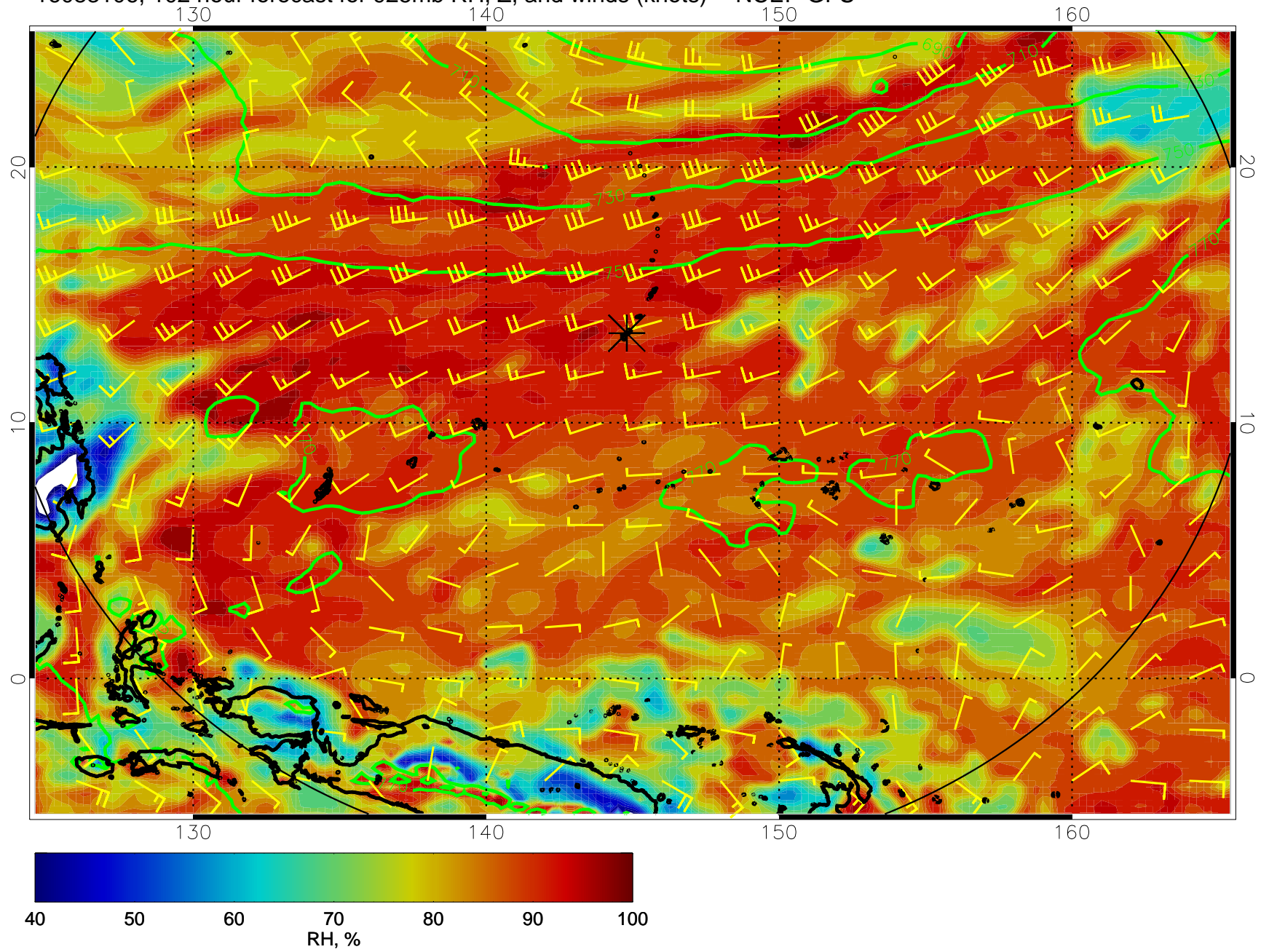


16083100, 96 hour forecast for 925mb RH, Z, and winds (knots) -- NCEP GFS

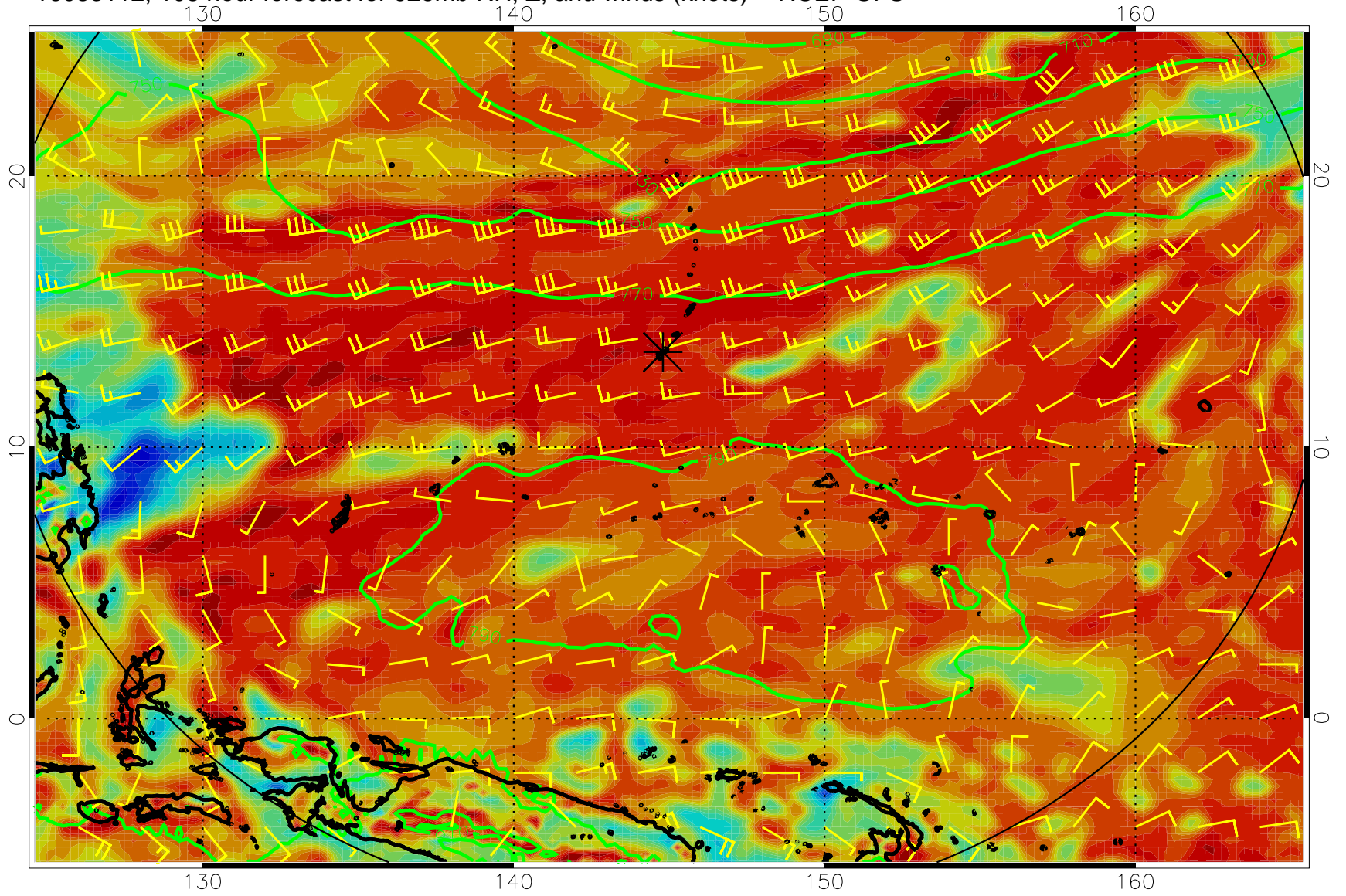




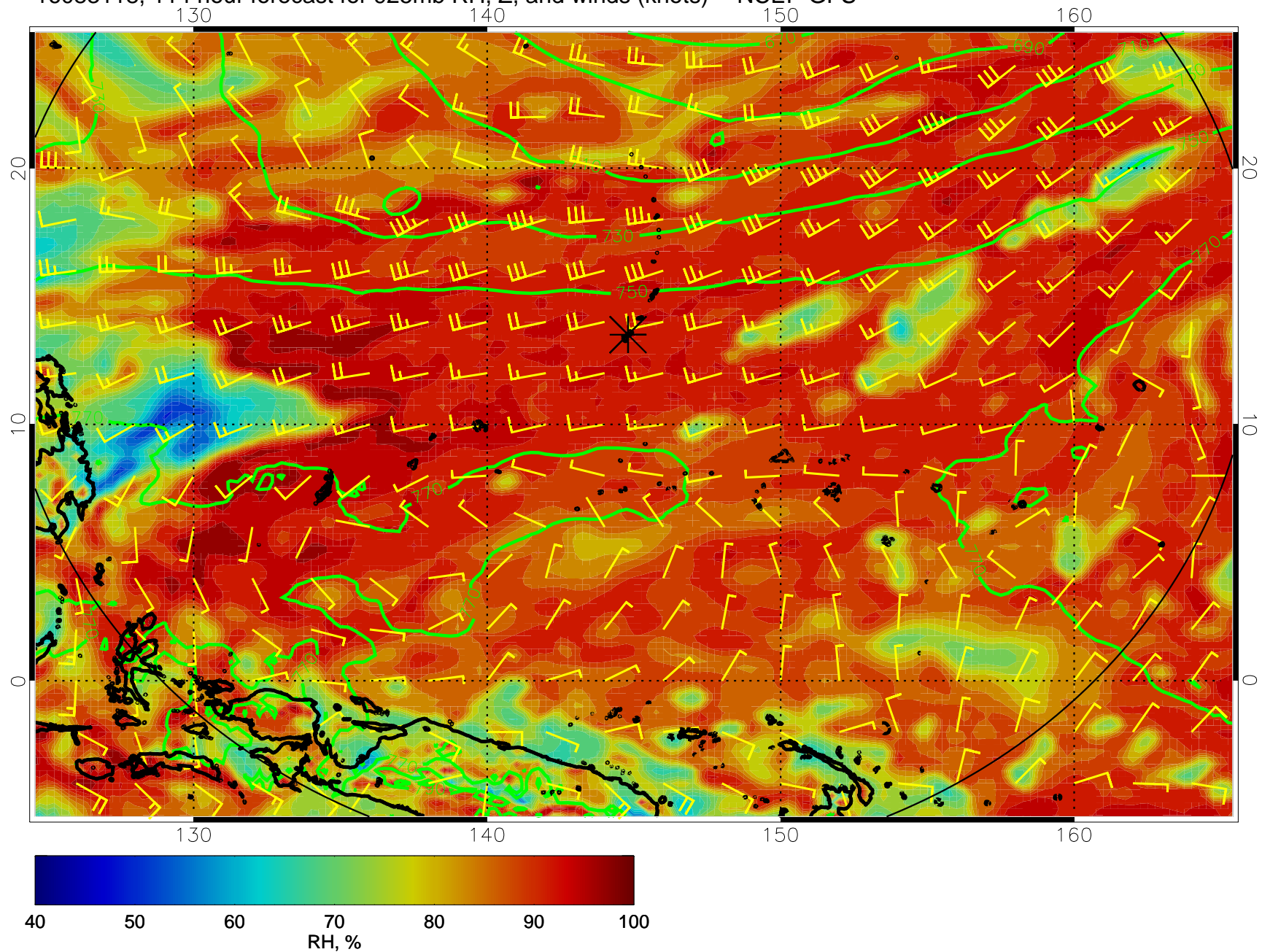
16083106, 102 hour forecast for 925mb RH, Z, and winds (knots) -- NCEP GFS



16083112, 108 hour forecast for 925mb RH, Z, and winds (knots) -- NCEP GFS



16083118, 114 hour forecast for 925mb RH, Z, and winds (knots) -- NCEP GFS



16090100, 120 hour forecast for 925mb RH, Z, and winds (knots) -- NCEP GFS

