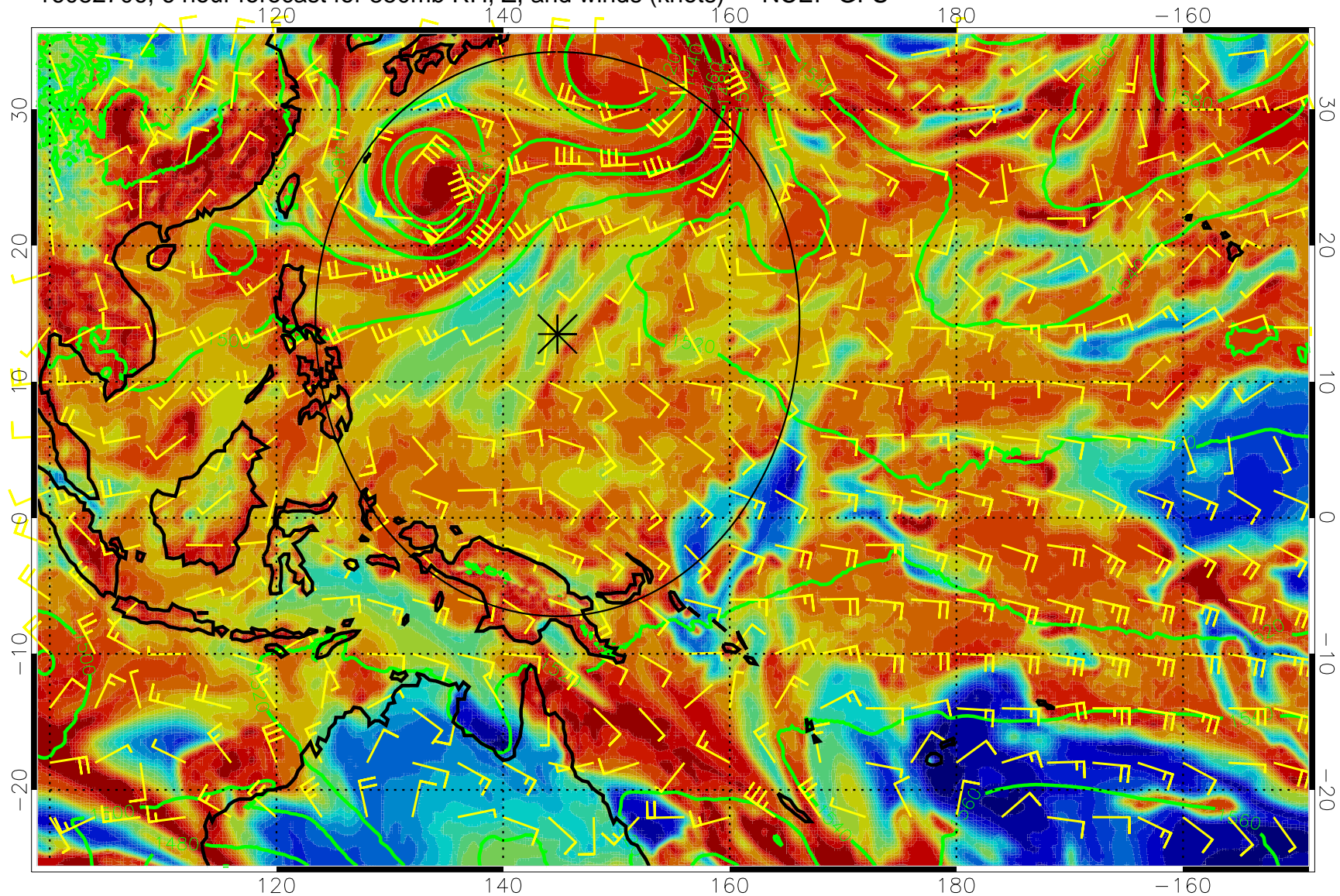


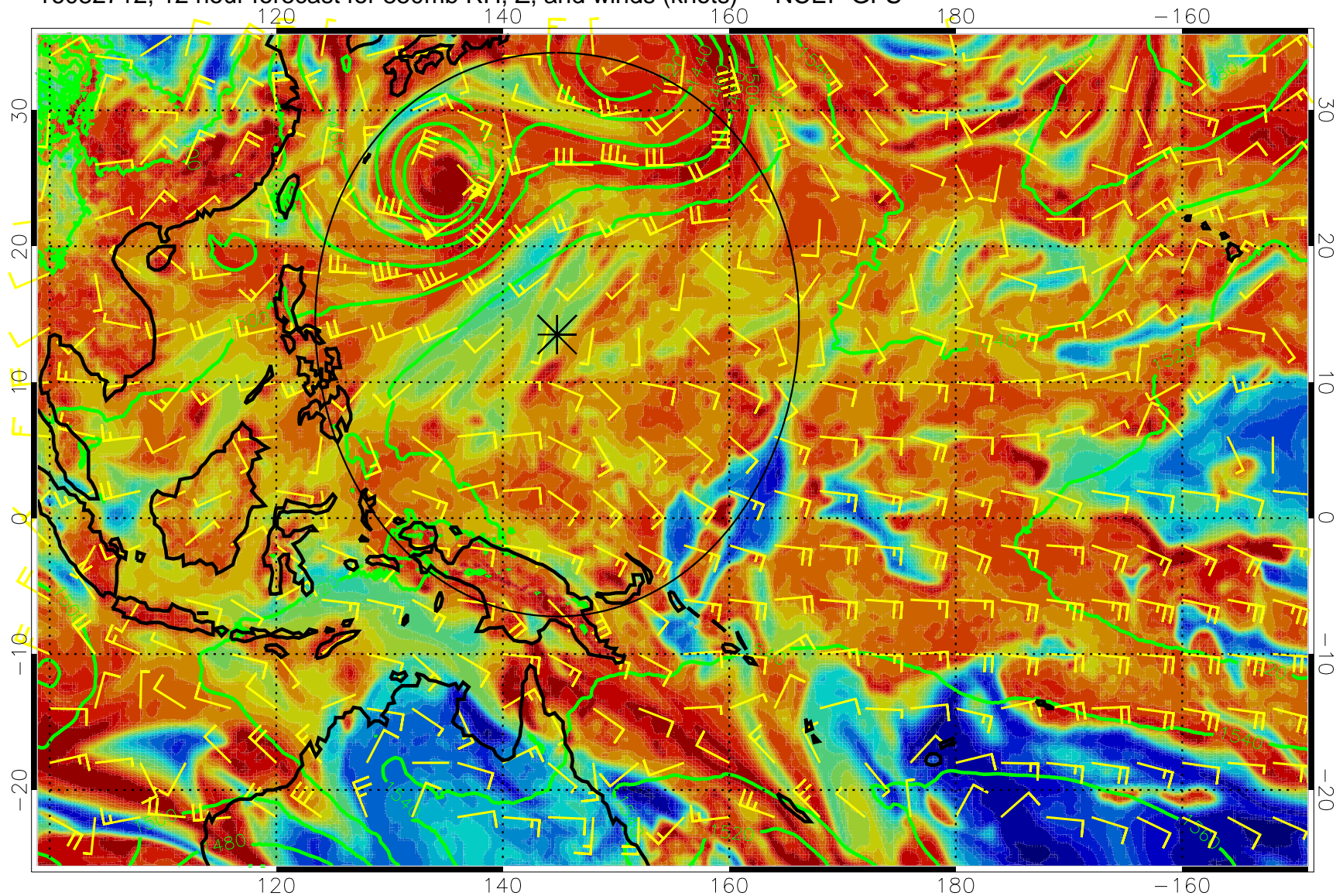
16082706, 6 hour forecast for 850mb RH, Z, and winds (knots) -- NCEP GFS



Precip (tot dot, conv sol) mm/day 40 mm/day contours, min 20



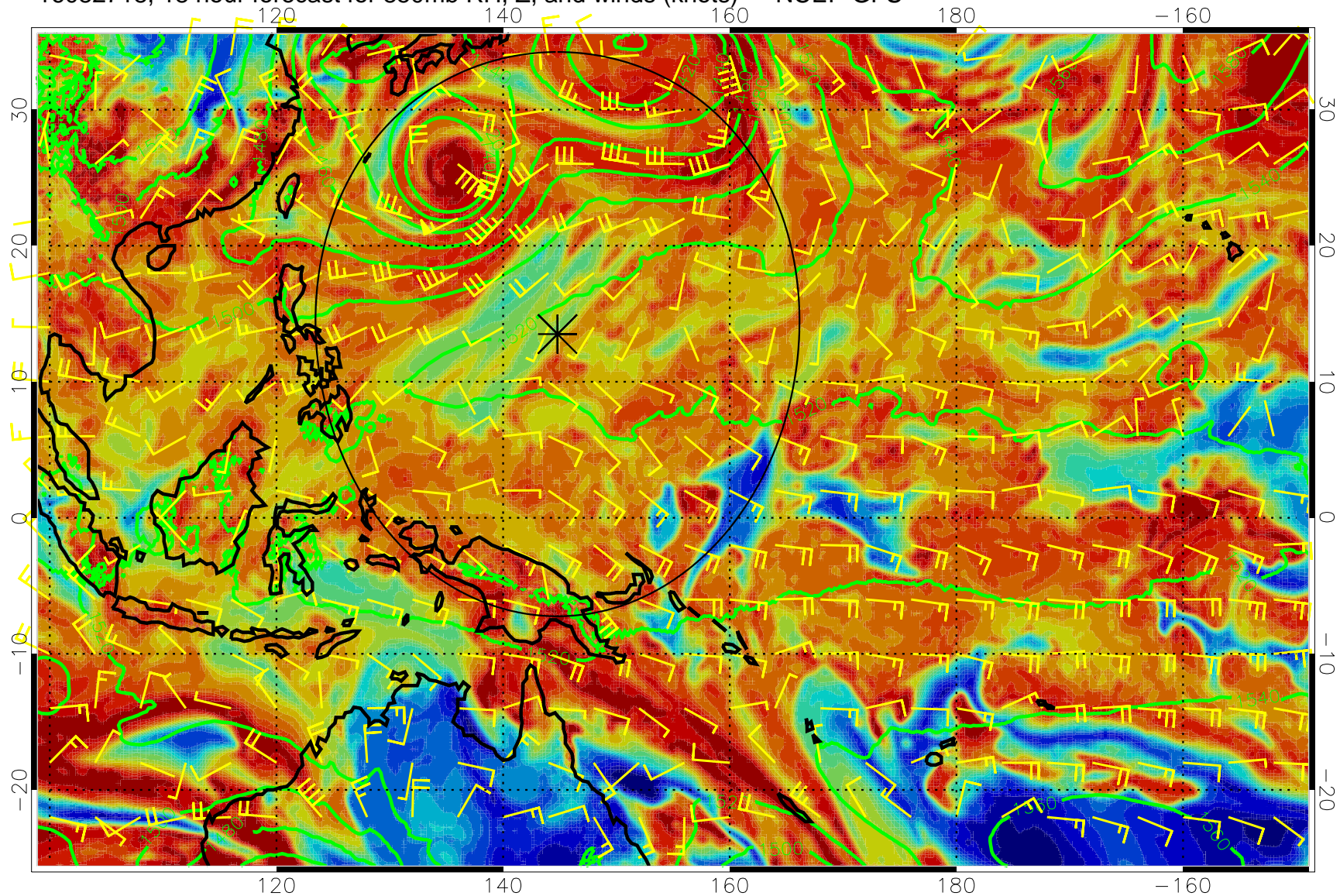
16082712, 12 hour forecast for 850mb RH, Z, and winds (knots) -- NCEP GFS



Precip (tot dot, conv sol) mm/day 40 mm/day contours, min 20



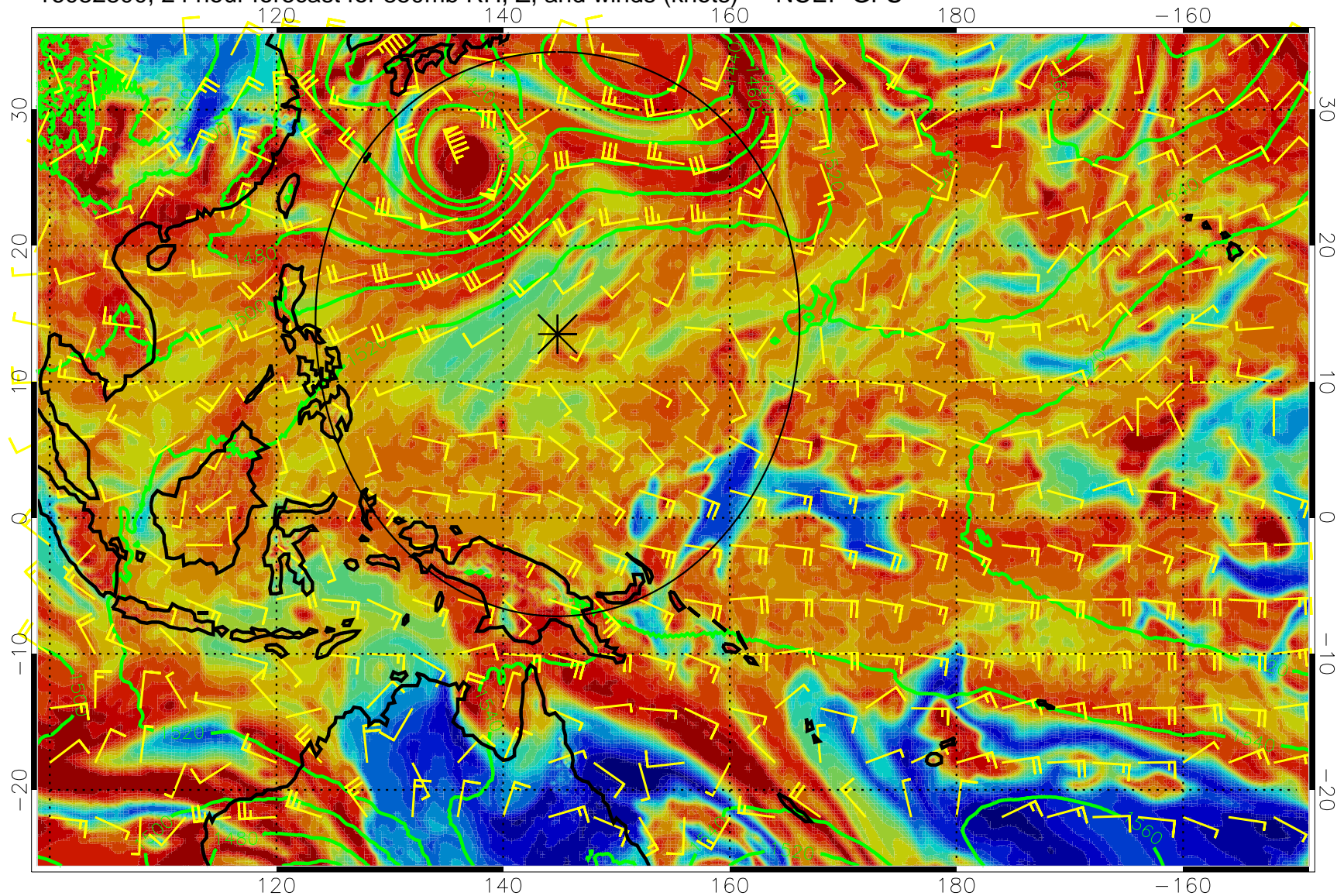
16082718, 18 hour forecast for 850mb RH, Z, and winds (knots) -- NCEP GFS



Precip (tot dot, conv sol) mm/day 40 mm/day contours, min 20



16082800, 24 hour forecast for 850mb RH, Z, and winds (knots) -- NCEP GFS

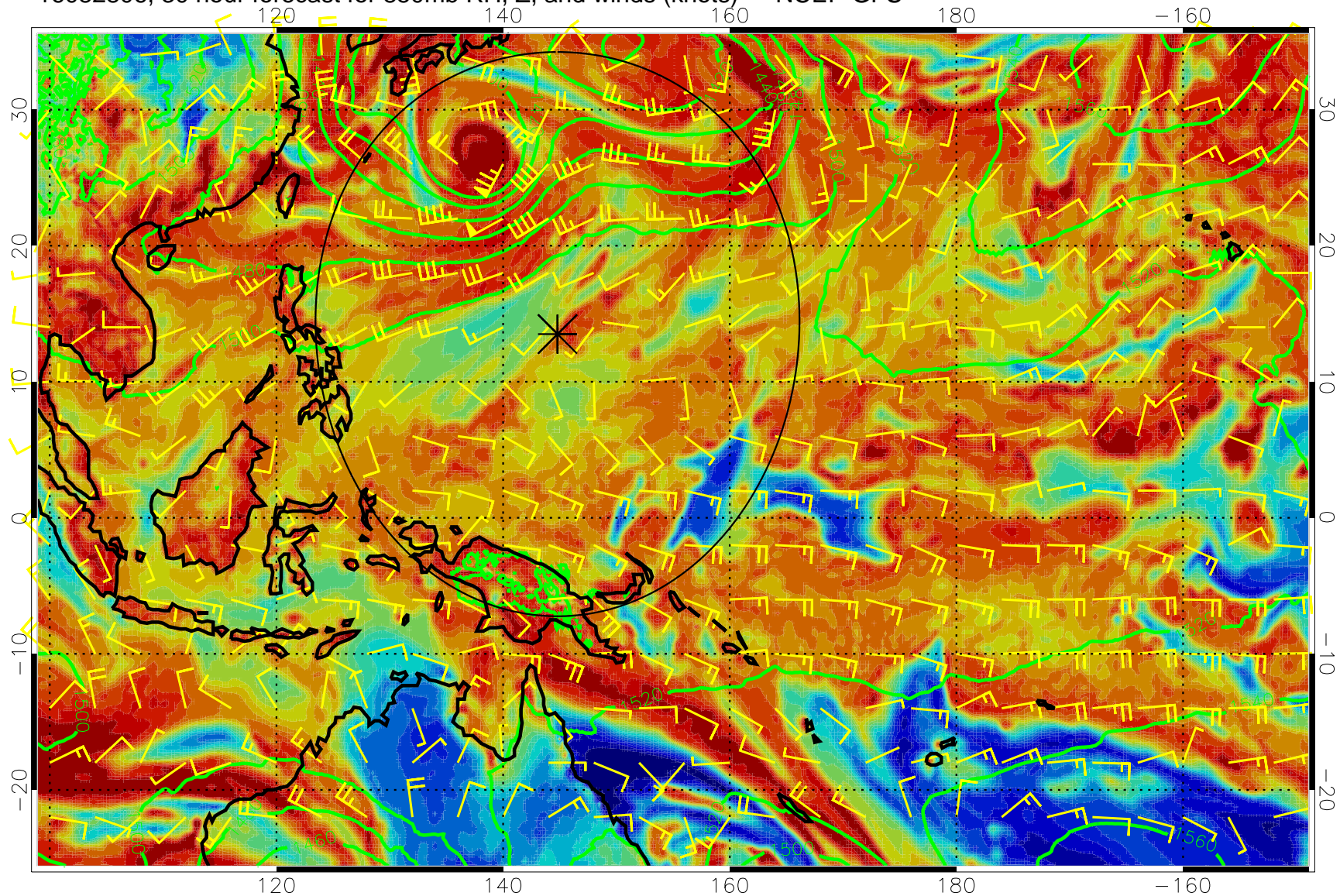


Precip (tot dot, conv sol) mm/day 40 mm/day contours, min 20





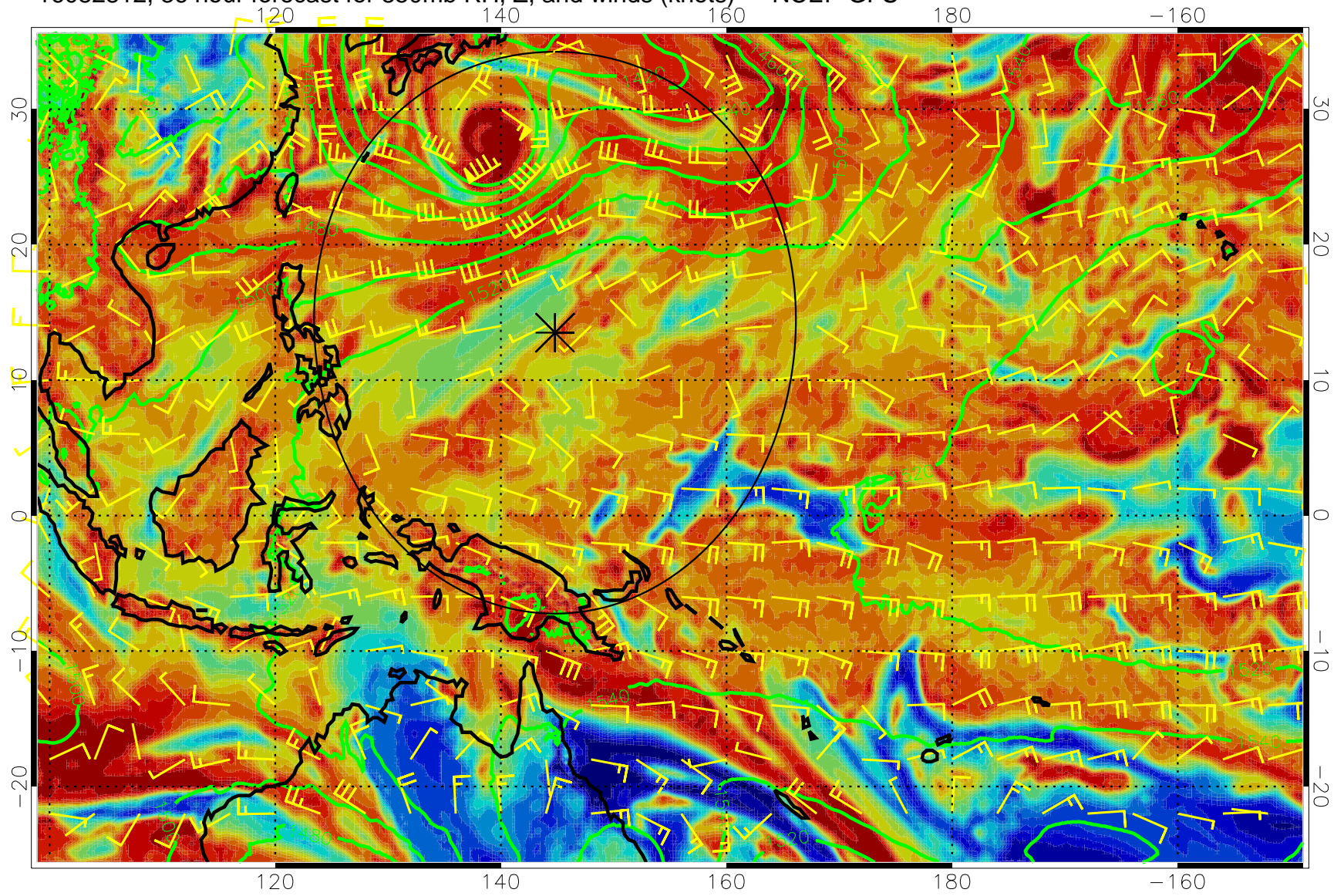
16082806, 30 hour forecast for 850mb RH, Z, and winds (knots) -- NCEP GFS



Precip (tot dot, conv sol) mm/day 40 mm/day contours, min 20



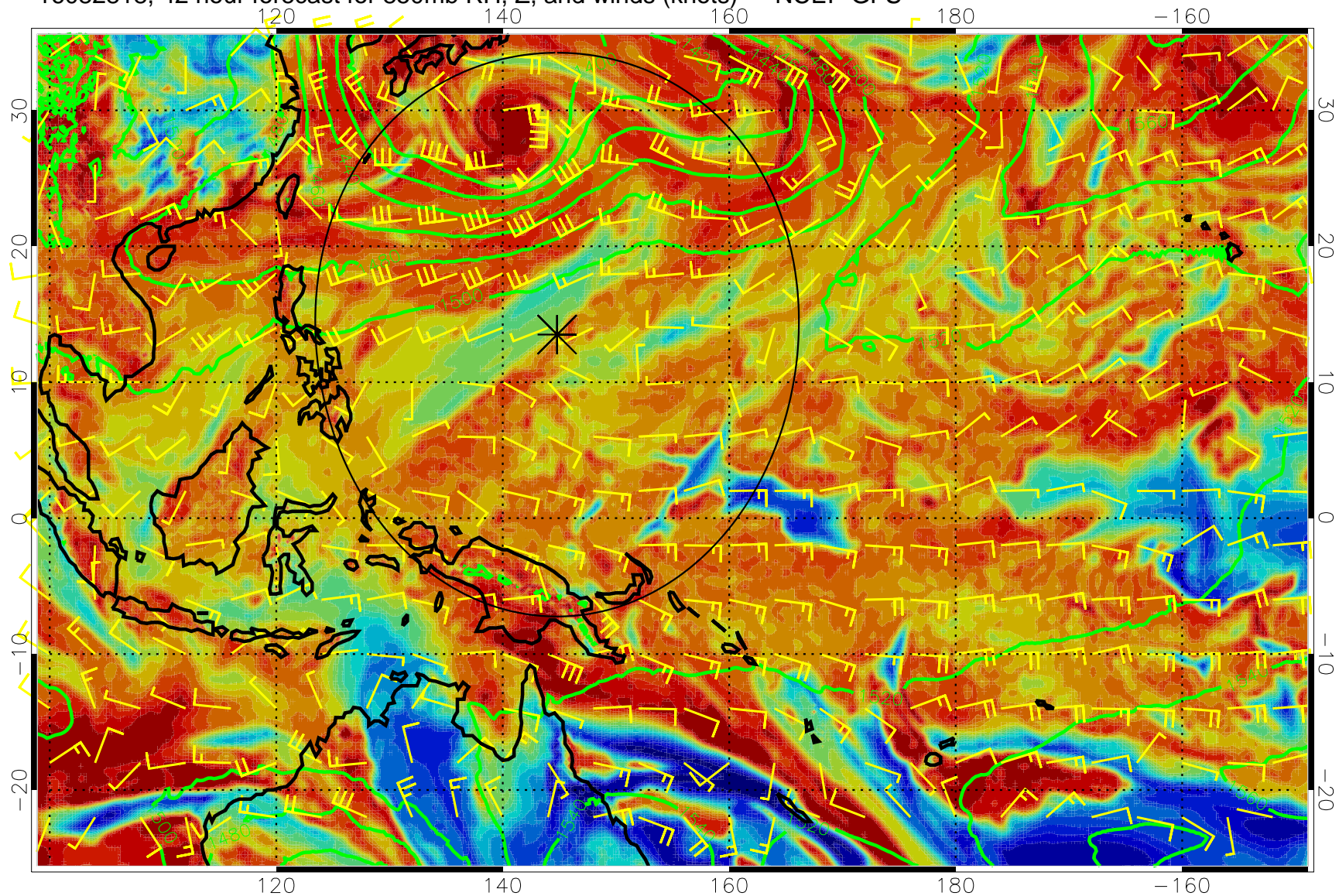
16082812, 36 hour forecast for 850mb RH, Z, and winds (knots) -- NCEP GFS



Precip (tot dot, conv sol) mm/day 40 mm/day contours, min 20



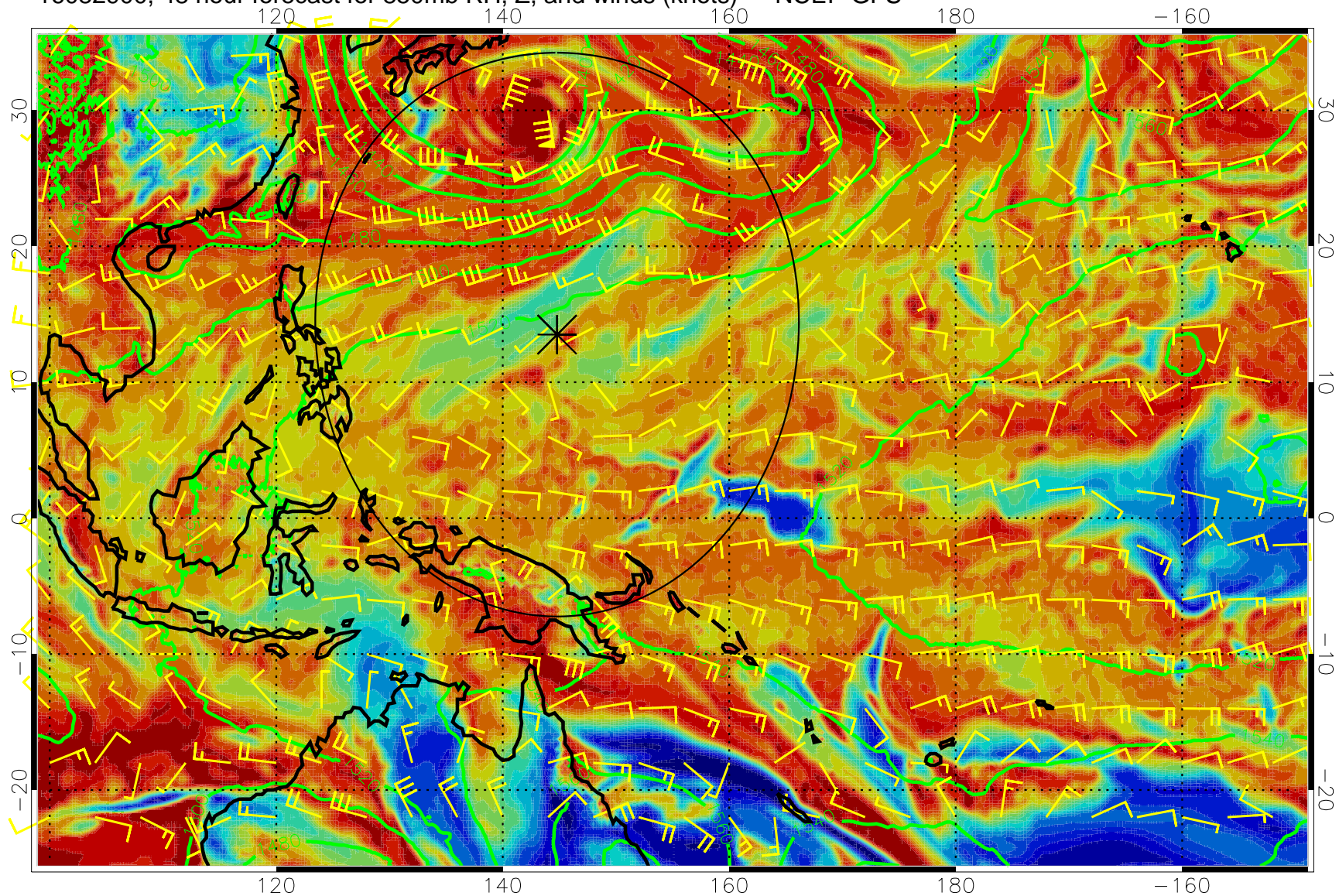
16082818, 42 hour forecast for 850mb RH, Z, and winds (knots) -- NCEP GFS



Precip (tot dot, conv sol) mm/day 40 mm/day contours, min 20



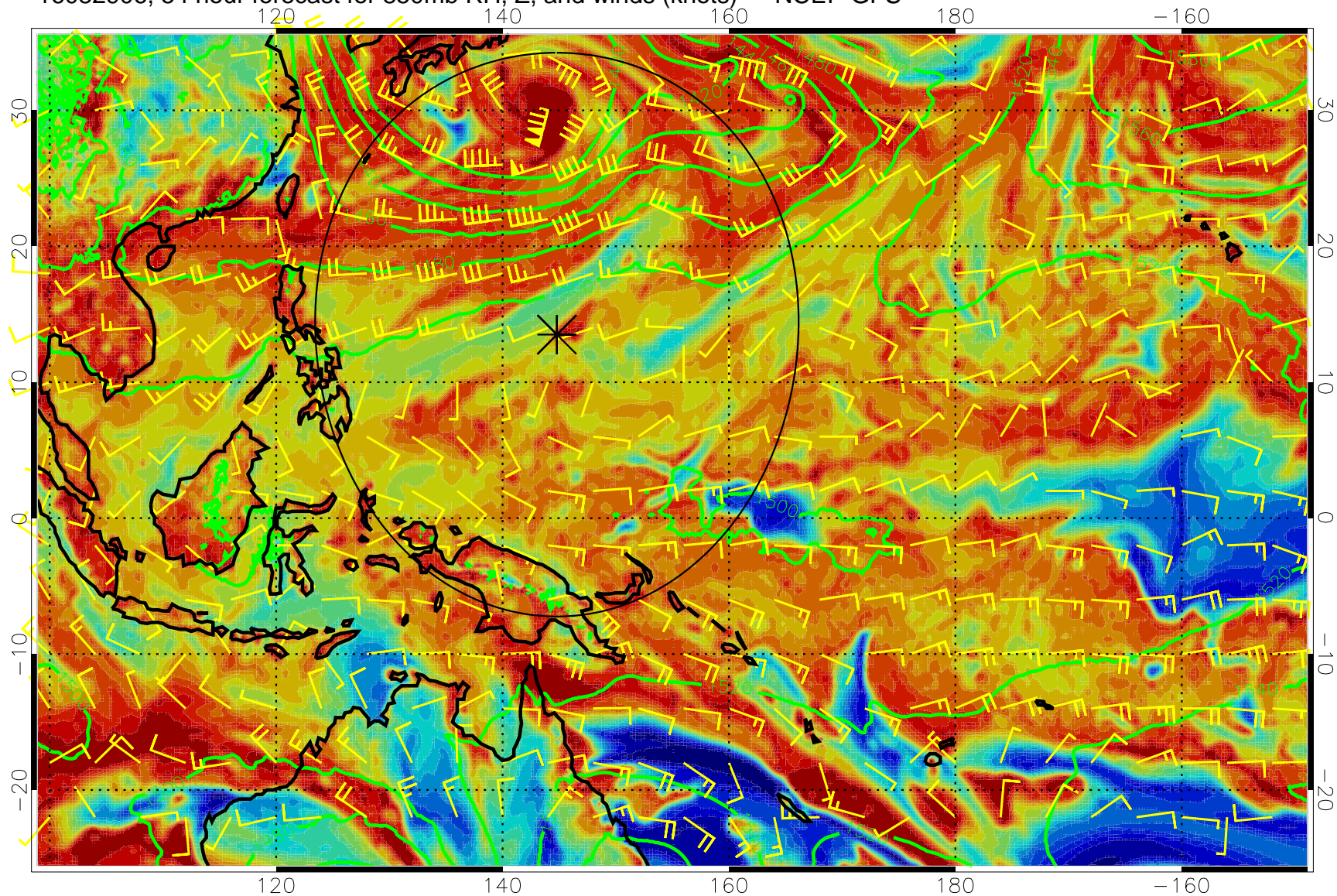
16082900, 48 hour forecast for 850mb RH, Z, and winds (knots) -- NCEP GFS



Precip (tot dot, conv sol) mm/day 40 mm/day contours, min 20



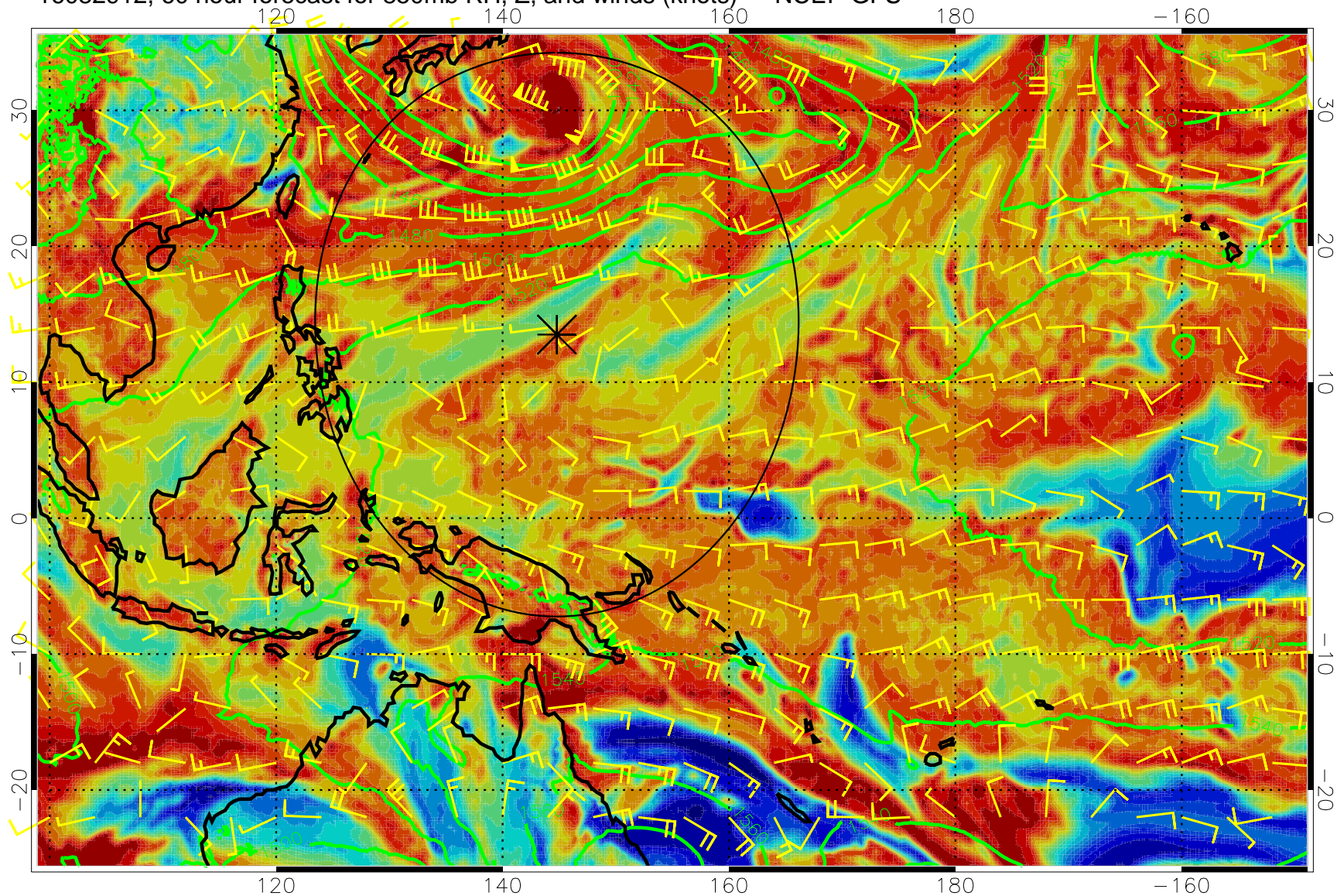
16082906, 54 hour forecast for 850mb RH, Z, and winds (knots) -- NCEP GFS



Precip (tot dot, conv sol) mm/day 40 mm/day contours, min 20



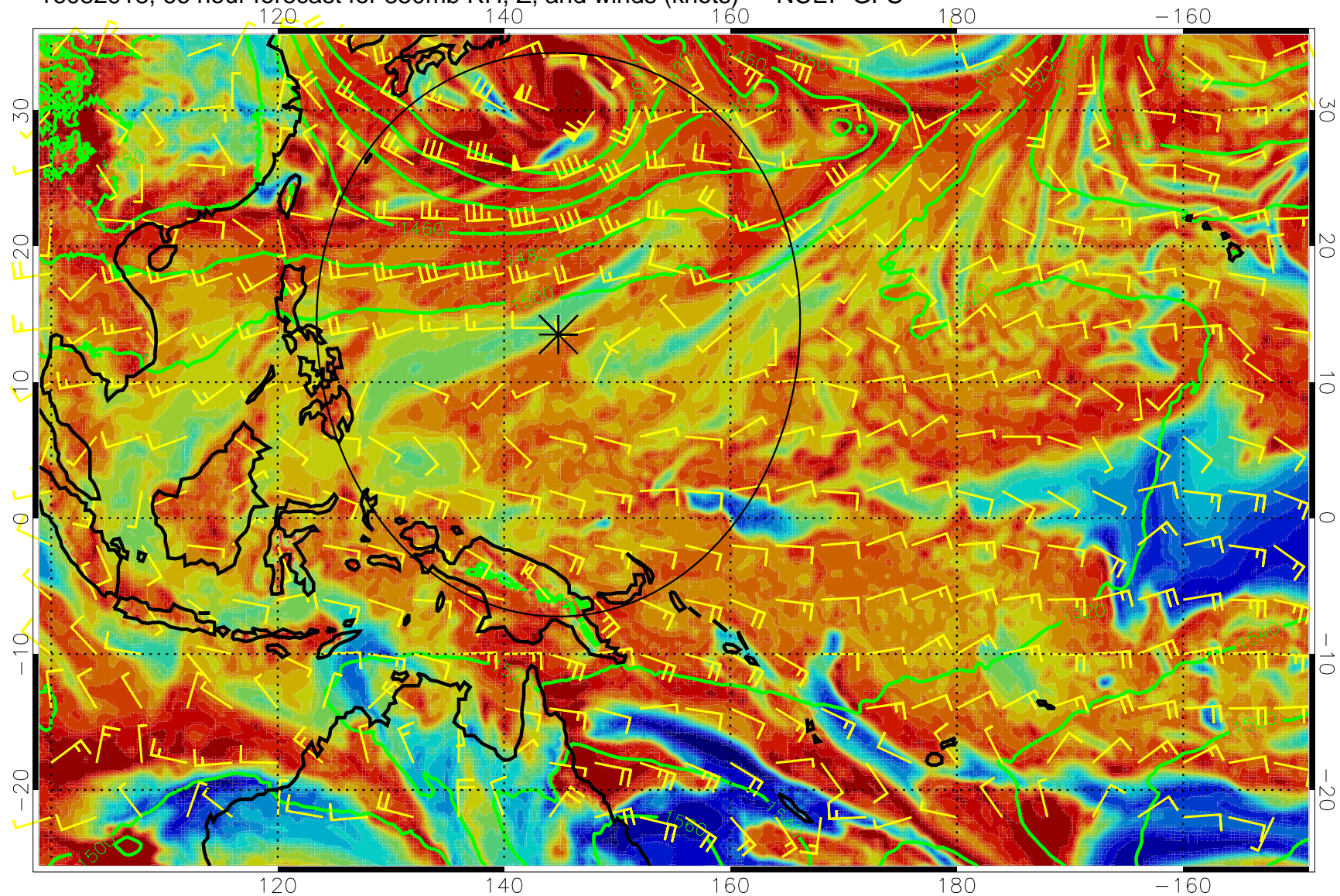
16082912, 60 hour forecast for 850mb RH, Z, and winds (knots) -- NCEP GFS



Precip (tot dot, conv sol) mm/day 40 mm/day contours, min 20



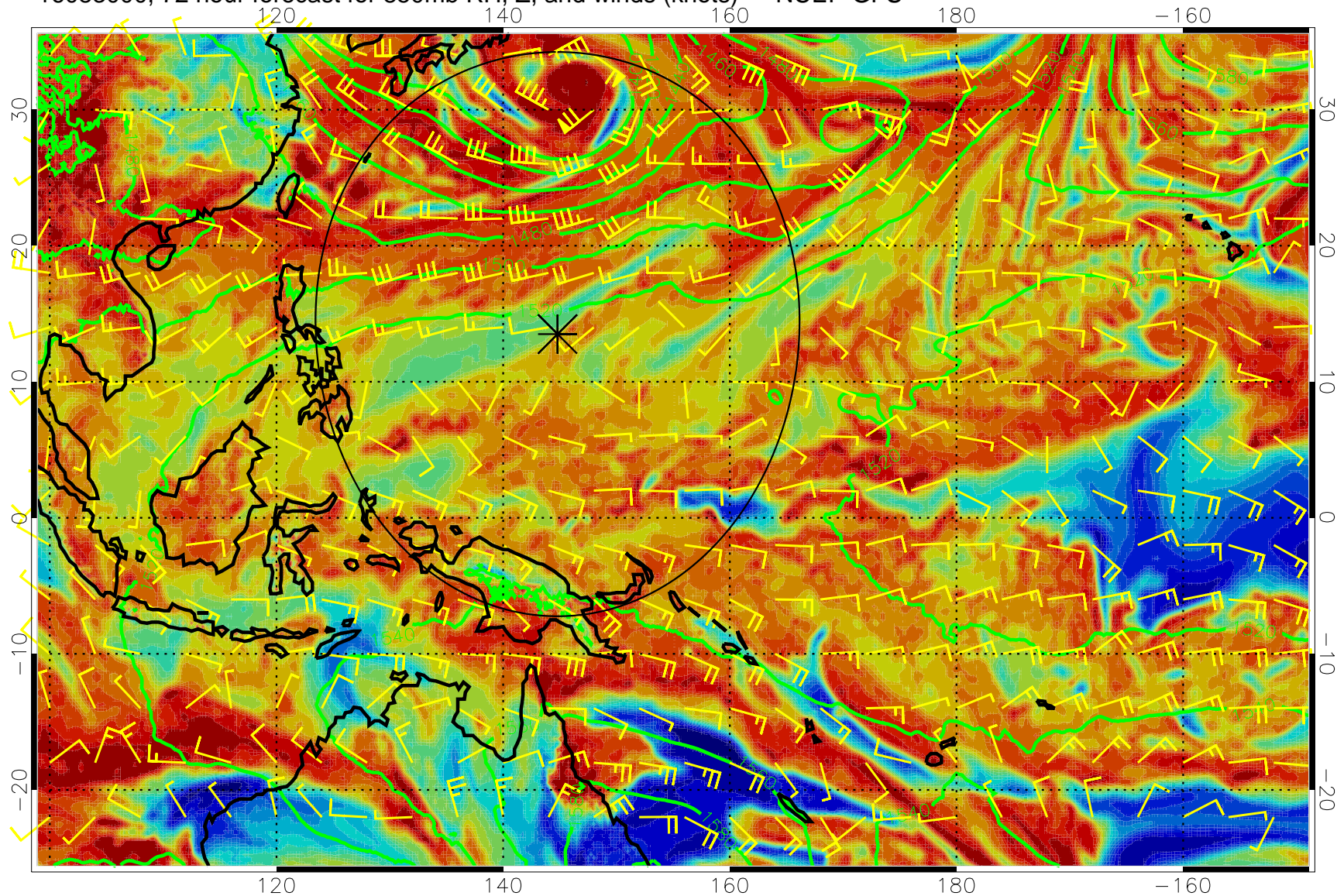
16082918, 66 hour forecast for 850mb RH, Z, and winds (knots) -- NCEP GFS



Precip (tot dot, conv sol) mm/day 40 mm/day contours, min 20



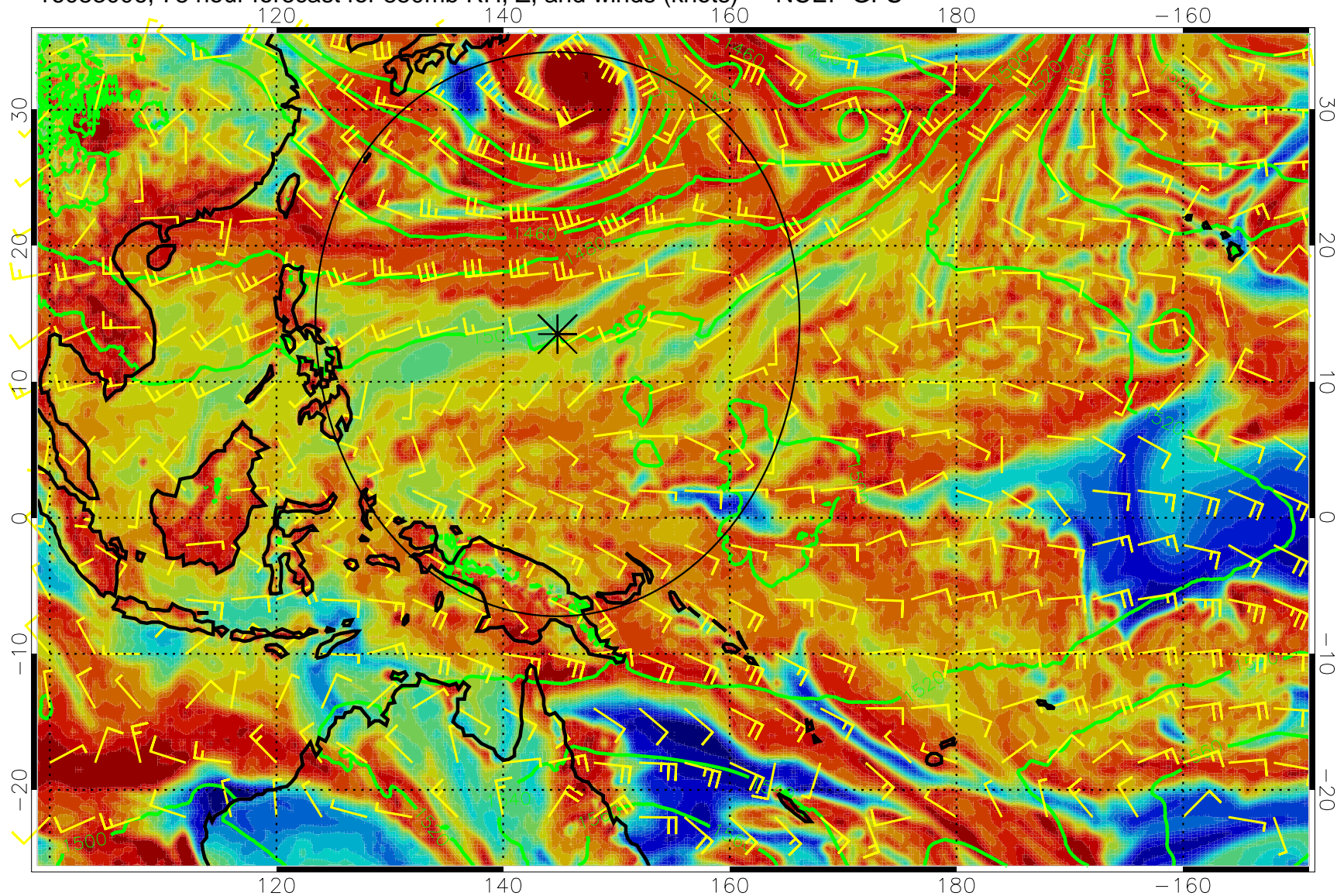
16083000, 72 hour forecast for 850mb RH, Z, and winds (knots) -- NCEP GFS



Precip (tot dot, conv sol) mm/day 40 mm/day contours, min 20



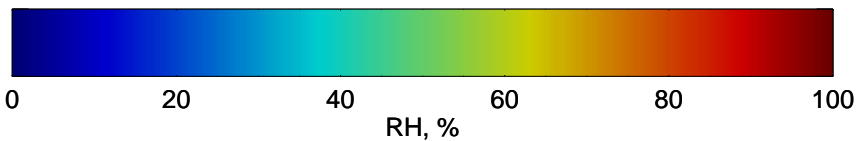
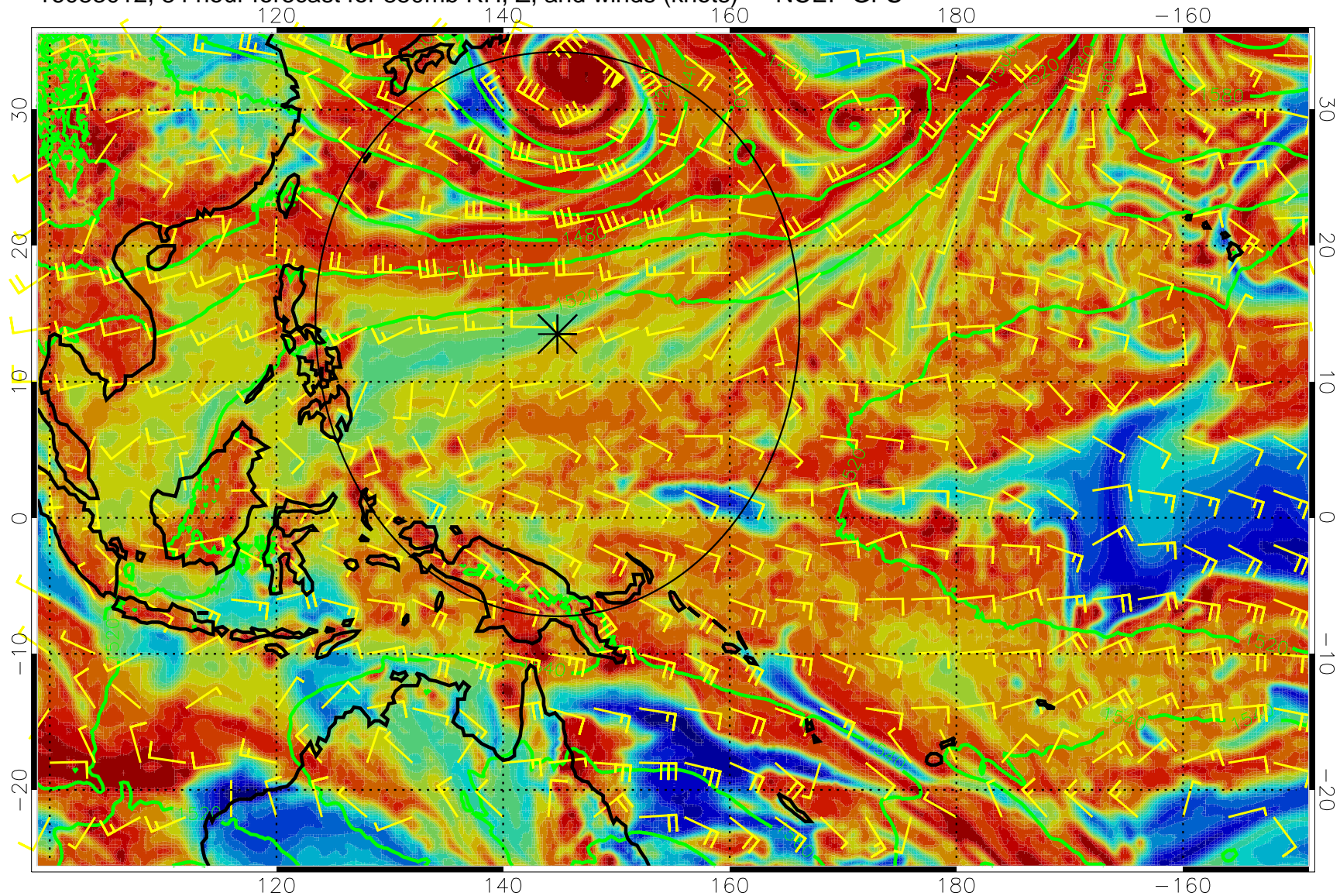
16083006, 78 hour forecast for 850mb RH, Z, and winds (knots) -- NCEP GFS



Precip (tot dot, conv sol) mm/day 40 mm/day contours, min 20



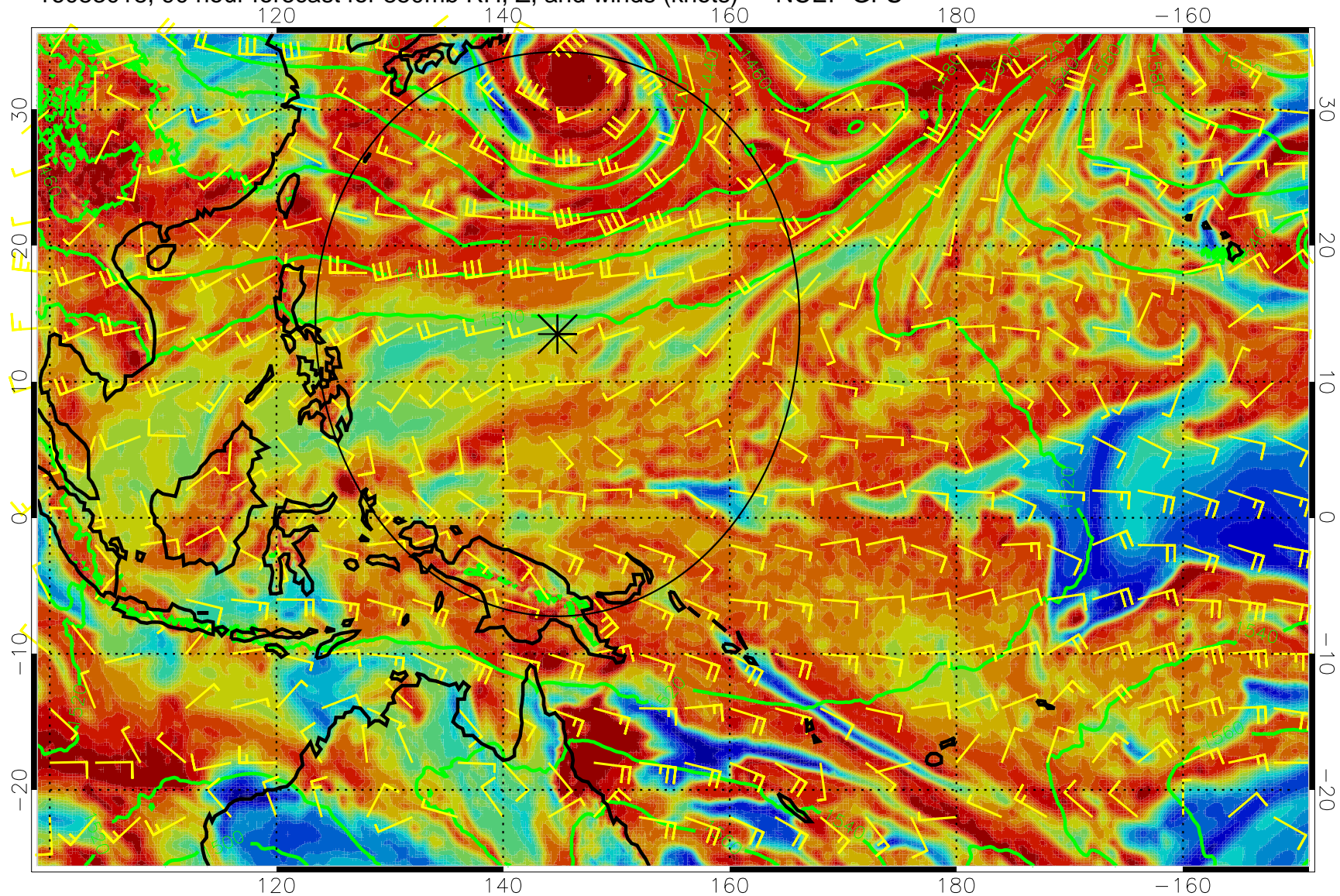
16083012, 84 hour forecast for 850mb RH, Z, and winds (knots) -- NCEP GFS



Precip (tot dot, conv sol) mm/day 40 mm/day contours, min 20



16083018, 90 hour forecast for 850mb RH, Z, and winds (knots) -- NCEP GFS

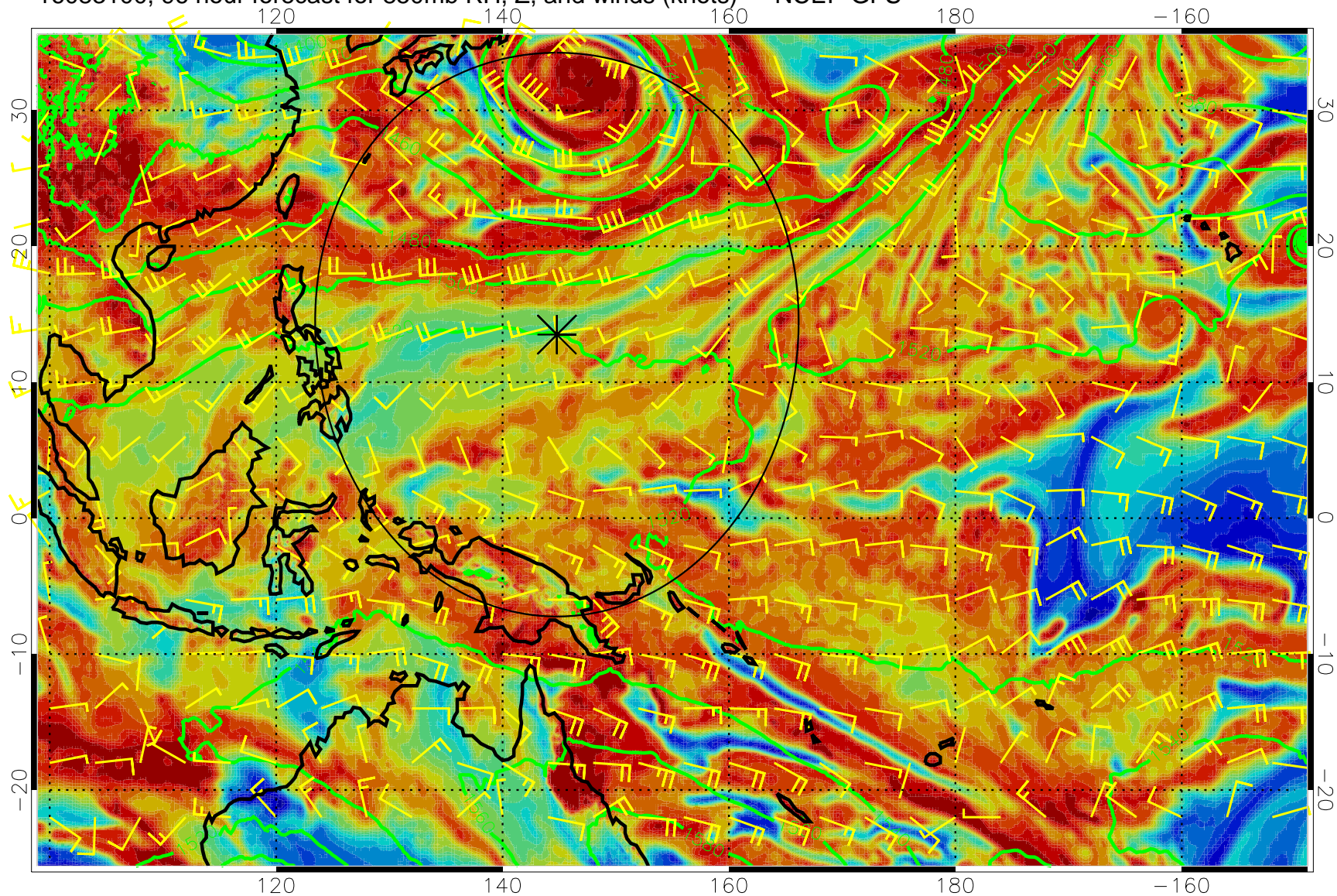


Precip (tot dot, conv sol) mm/day 40 mm/day contours, min 20





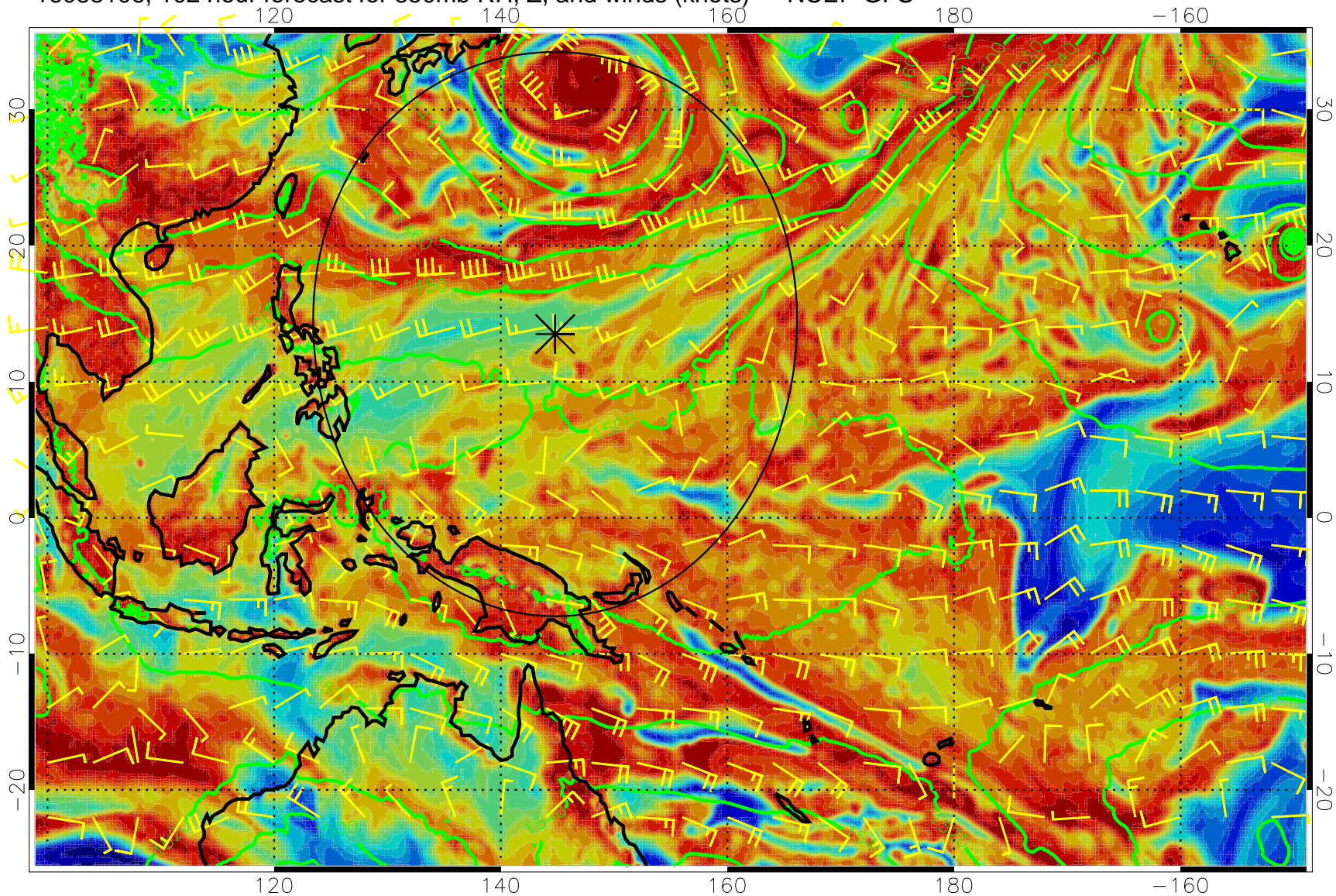
16083100, 96 hour forecast for 850mb RH, Z, and winds (knots) -- NCEP GFS



Precip (tot dot, conv sol) mm/day 40 mm/day contours, min 20



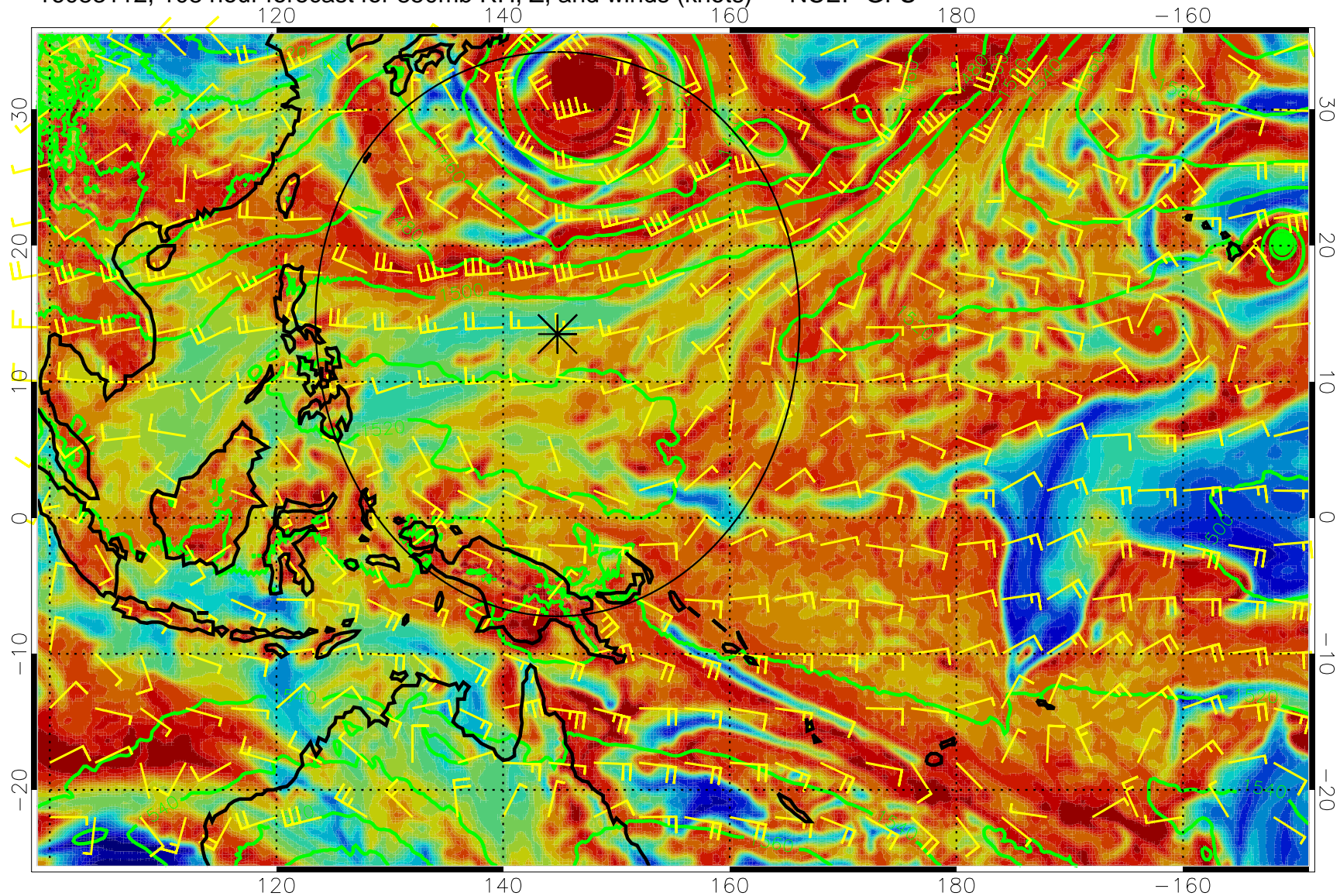
16083106, 102 hour forecast for 850mb RH, Z, and winds (knots) -- NCEP GFS



Precip (tot dot, conv sol) mm/day 40 mm/day contours, min 20



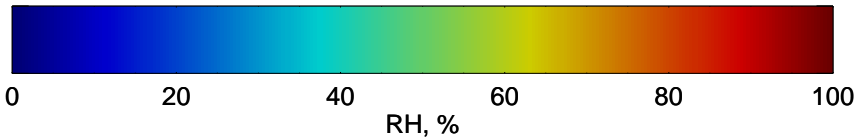
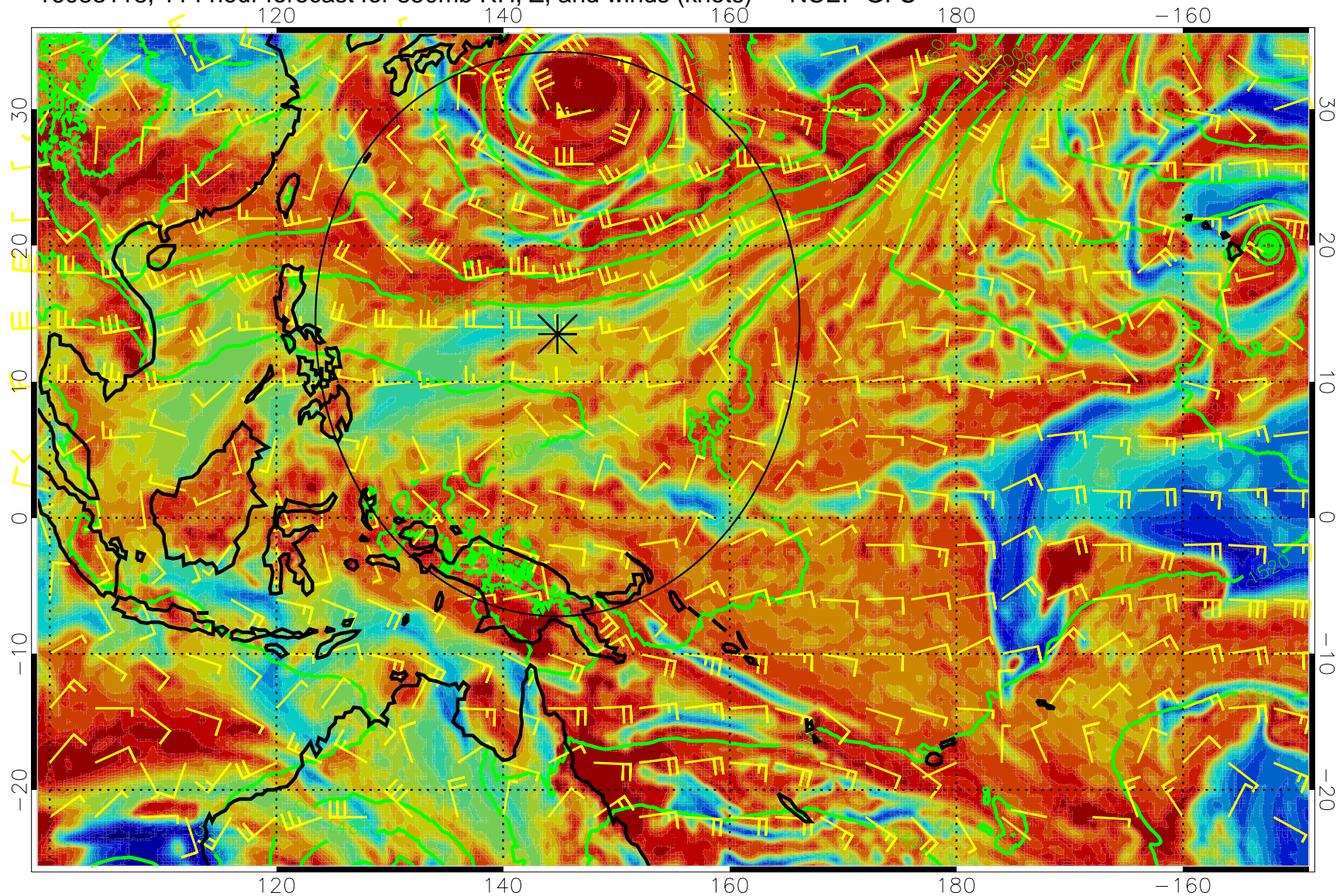
16083112, 108 hour forecast for 850mb RH, Z, and winds (knots) -- NCEP GFS



Precip (tot dot, conv sol) mm/day 40 mm/day contours, min 20



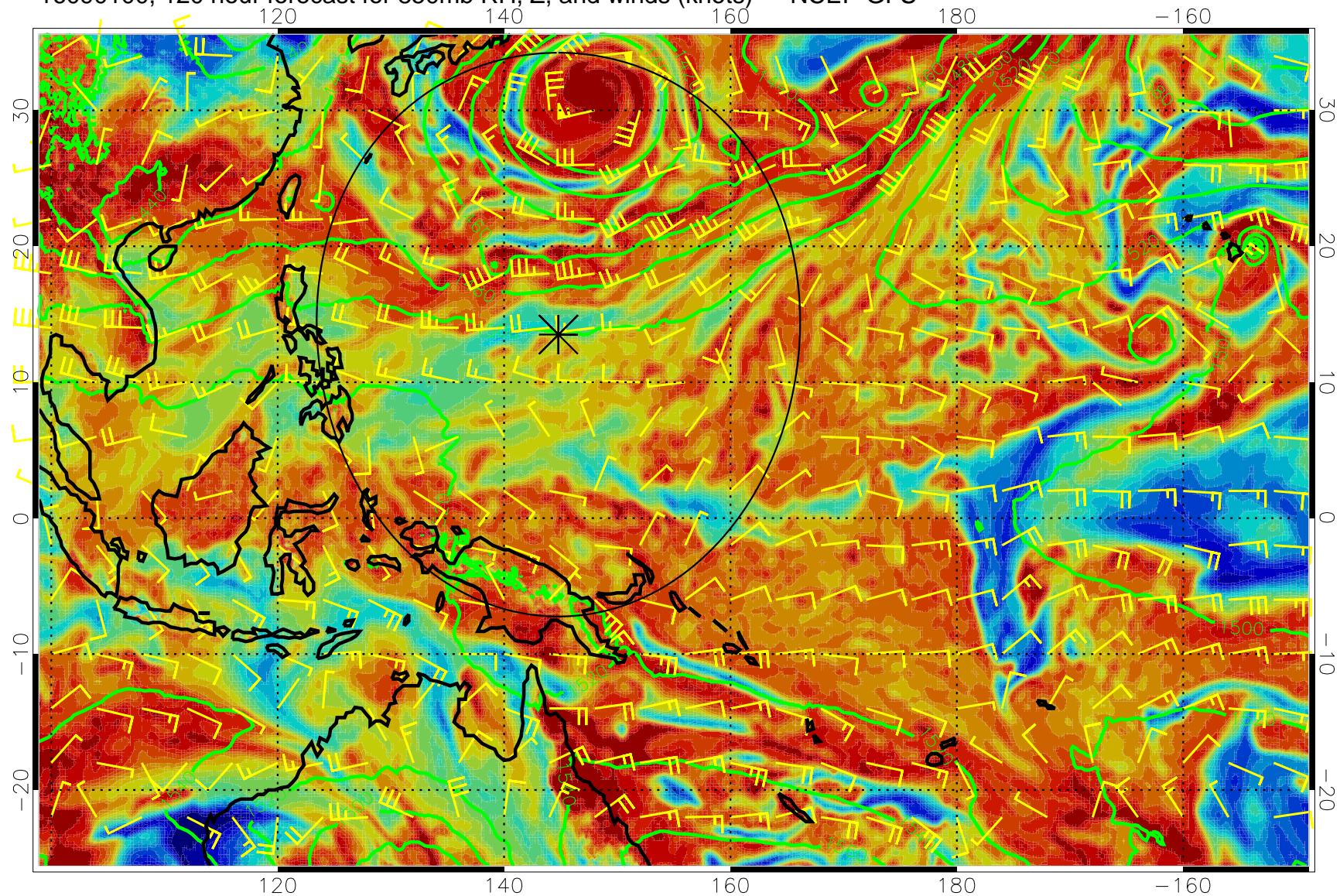
16083118, 114 hour forecast for 850mb RH, Z, and winds (knots) -- NCEP GFS



Precip (tot dot, conv sol) mm/day 40 mm/day contours, min 20



16090100, 120 hour forecast for 850mb RH, Z, and winds (knots) -- NCEP GFS



Precip (tot dot, conv sol) mm/day 40 mm/day contours, min 20