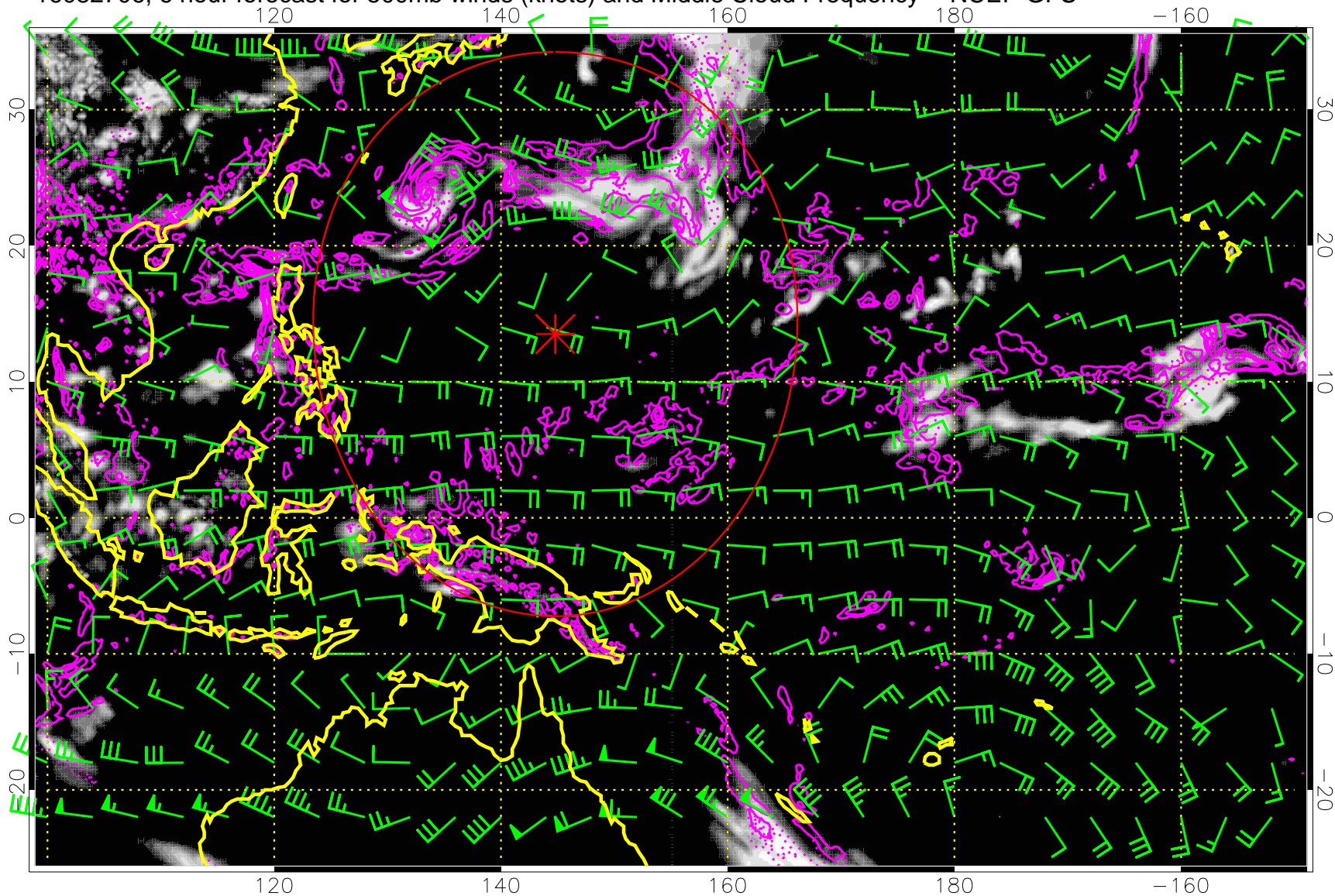


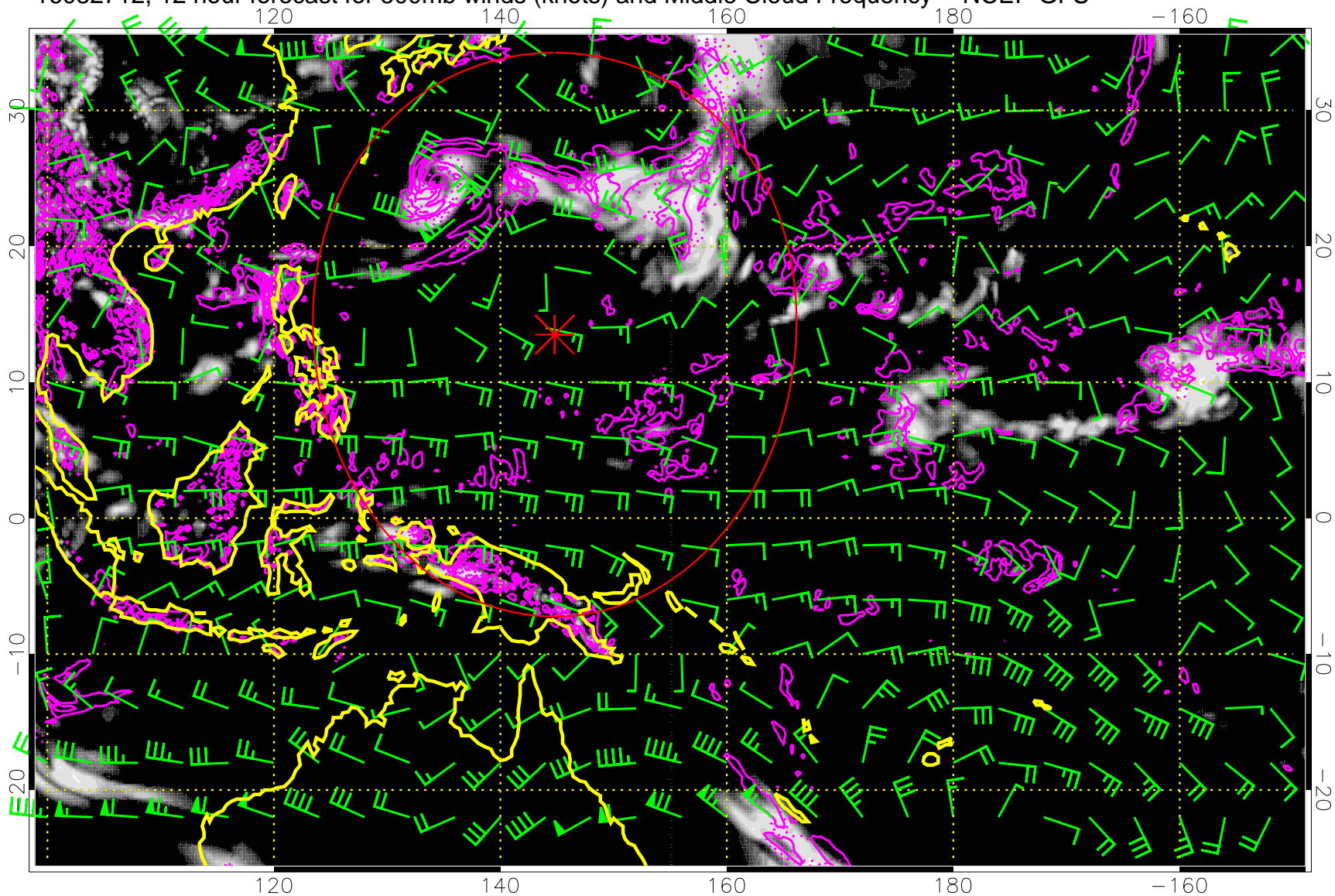
16082706, 6 hour forecast for 500mb winds (knots) and Middle Cloud Frequency -- NCEP GFS



Precip (tot dot, conv sol) mm/day 40 mm/day contours, min 20

Range ring of 2304 km

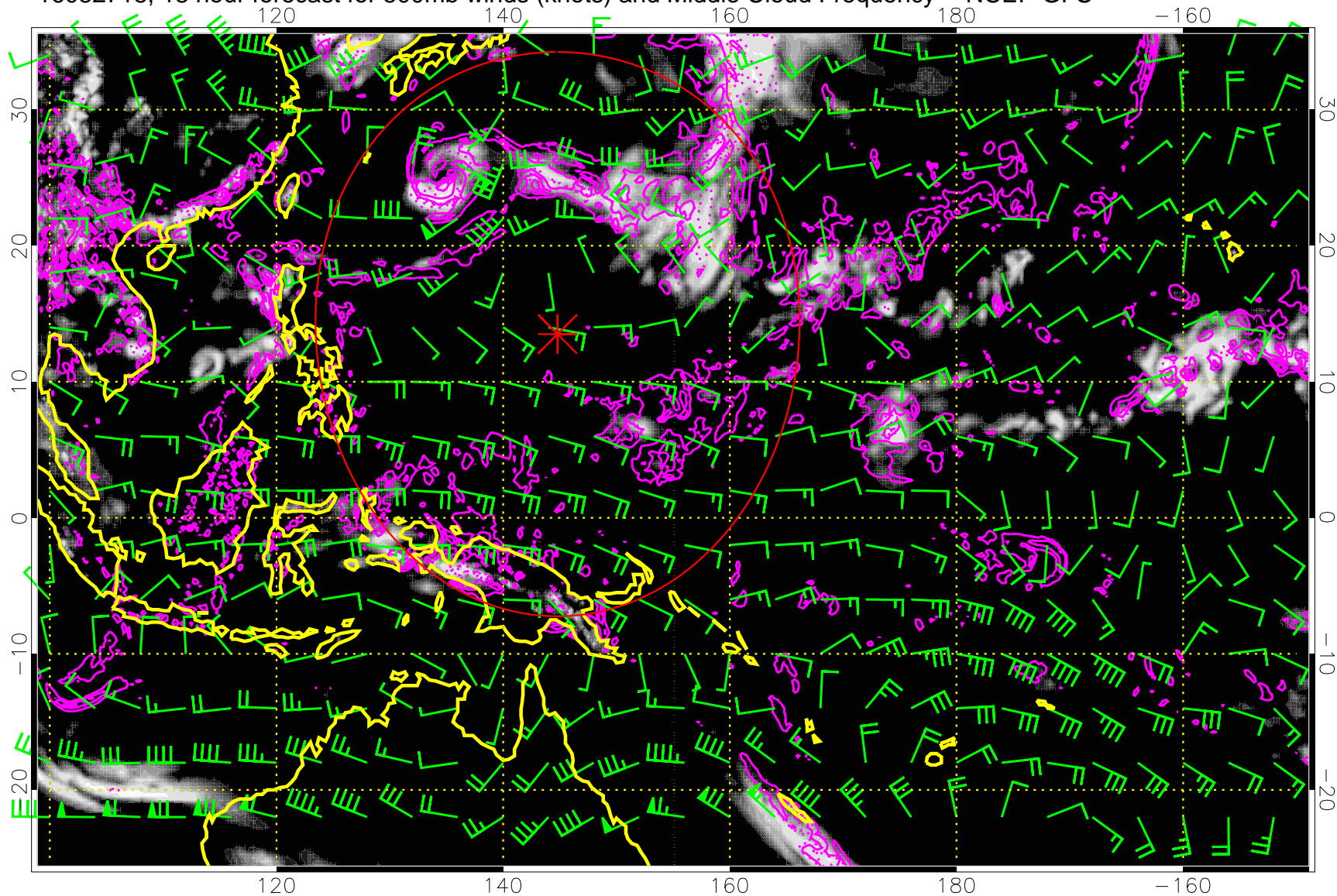
16082712, 12 hour forecast for 500mb winds (knots) and Middle Cloud Frequency -- NCEP GFS



Precip (tot dot, conv sol) mm/day 40 mm/day contours, min 20

Range ring of 2304 km

16082718, 18 hour forecast for 500mb winds (knots) and Middle Cloud Frequency -- NCEP GFS

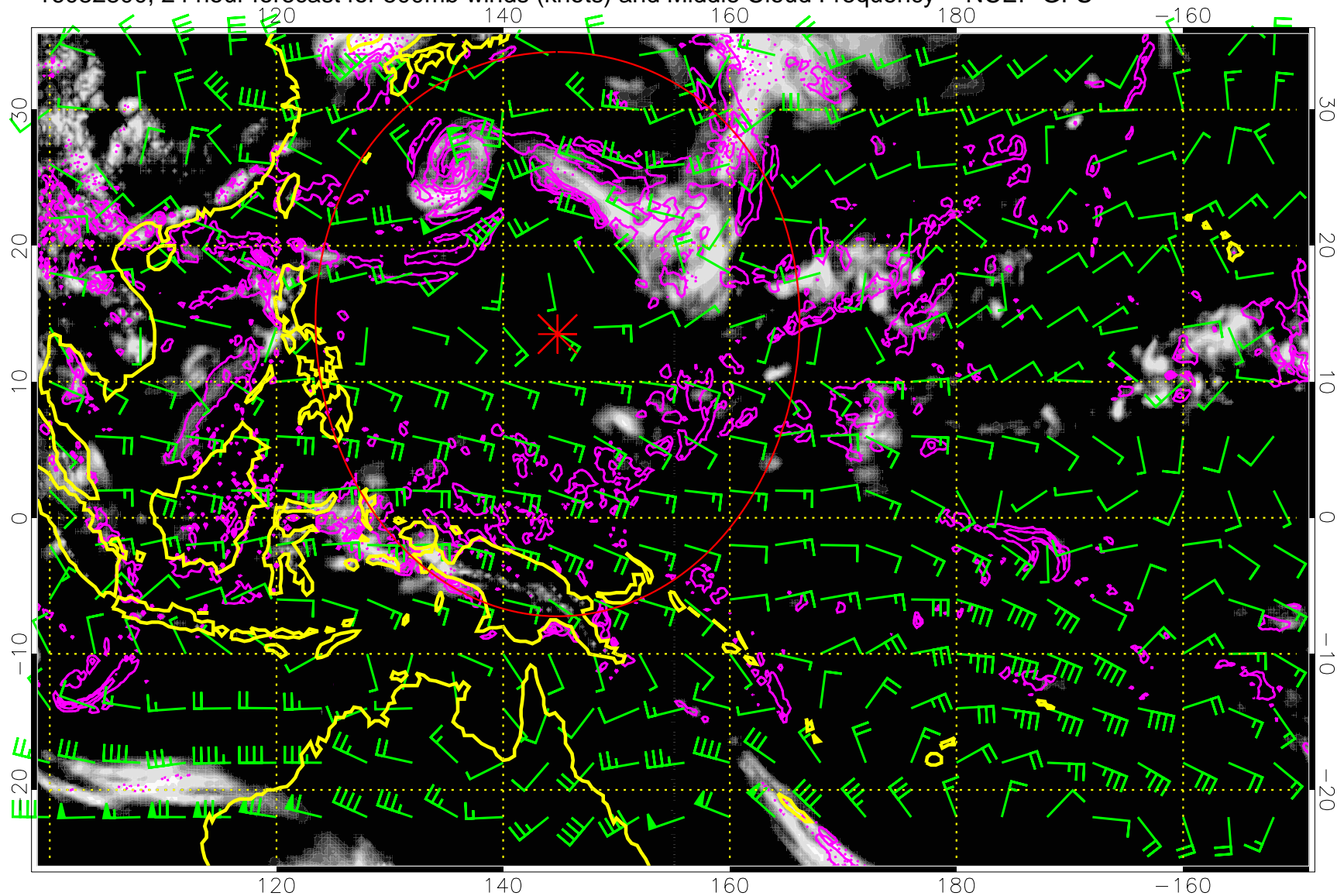


Precip (tot dot, conv sol) mm/day 40 mm/day contours, min 20

Range ring of 2304 km



16082800, 24 hour forecast for 500mb winds (knots) and Middle Cloud Frequency -- NCEP GFS

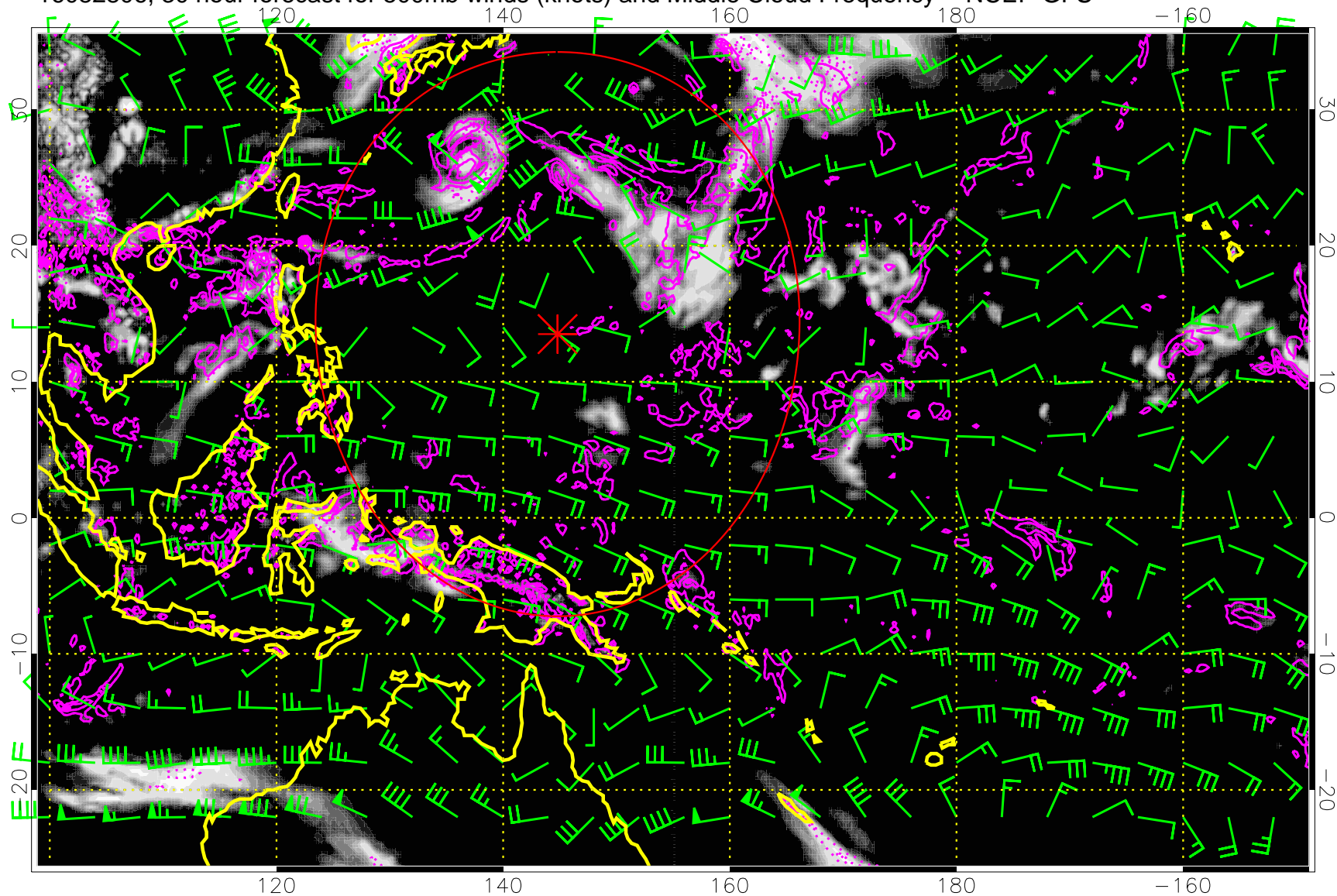


Precip (tot dot, conv sol) mm/day 40 mm/day contours, min 20

Range ring of 2304 km



16082806, 30 hour forecast for 500mb winds (knots) and Middle Cloud Frequency -- NCEP GFS

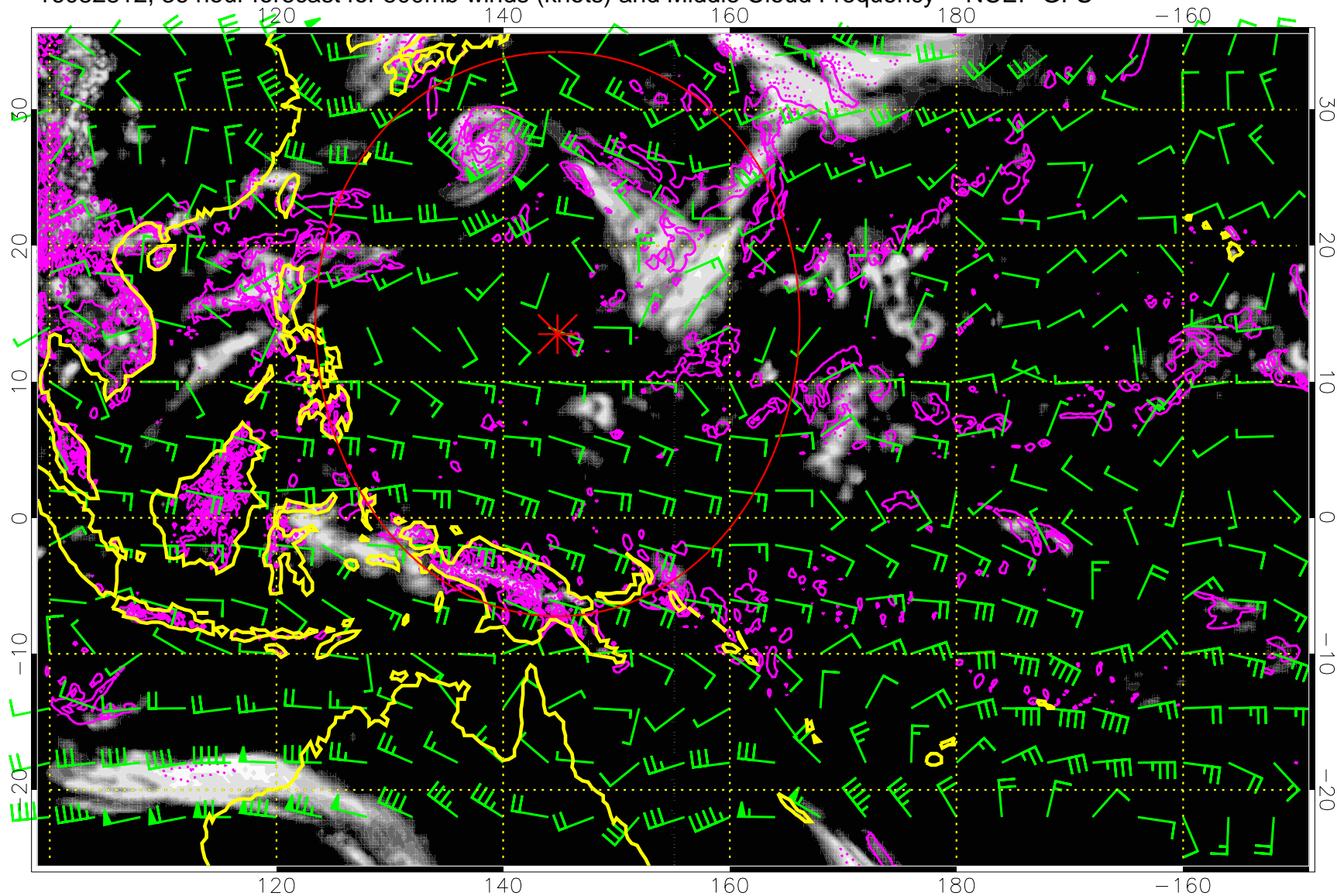


0.0 0.2 0.4 0.6 0.8 1.0  
Middle Cloud Frequency

Precip (tot dot, conv sol) mm/day 40 mm/day contours, min 20

Range ring of 2304 km

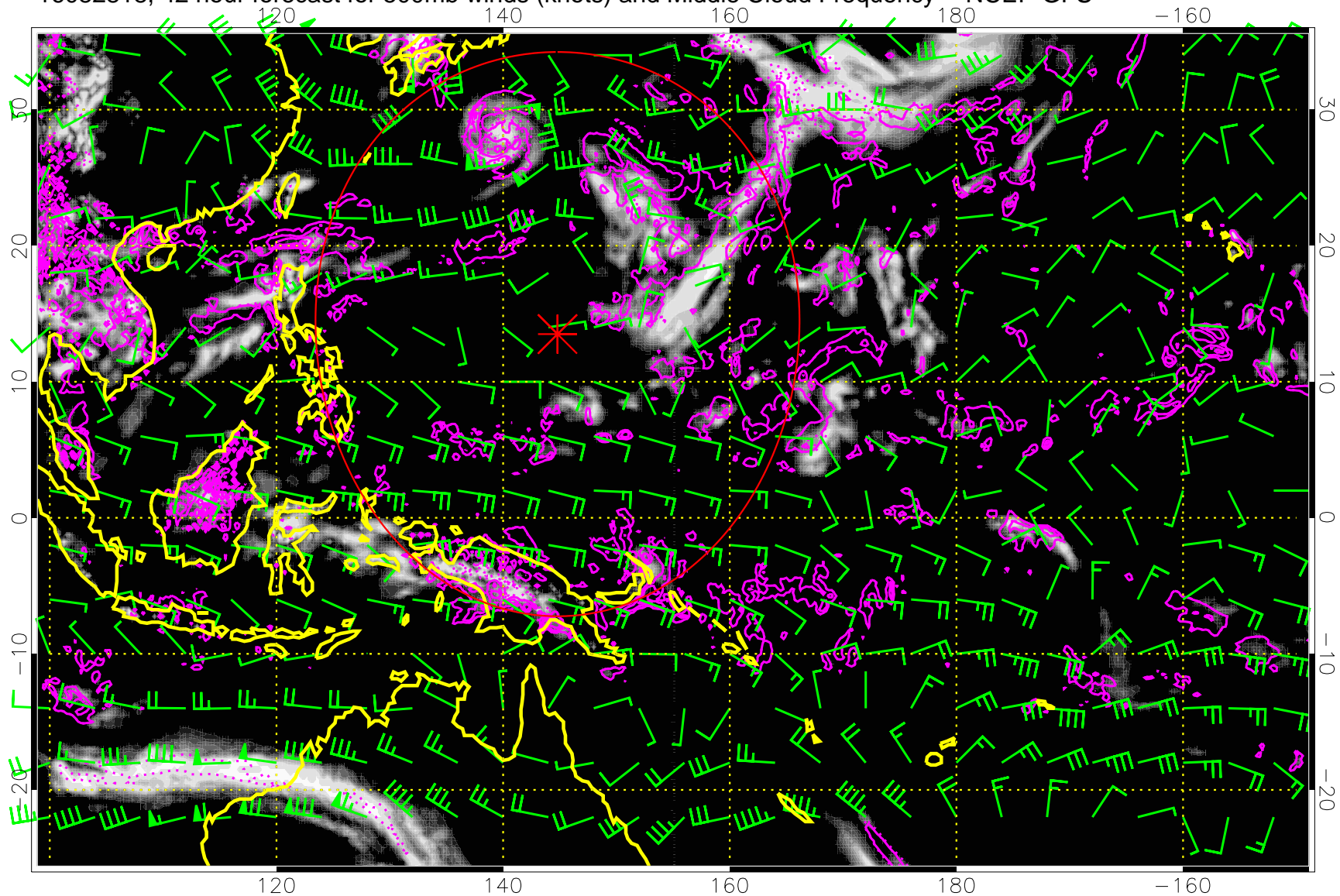
16082812, 36 hour forecast for 500mb winds (knots) and Middle Cloud Frequency -- NCEP GFS



Precip (tot dot, conv sol) mm/day 40 mm/day contours, min 20

Range ring of 2304 km

16082818, 42 hour forecast for 500mb winds (knots) and Middle Cloud Frequency -- NCEP GFS



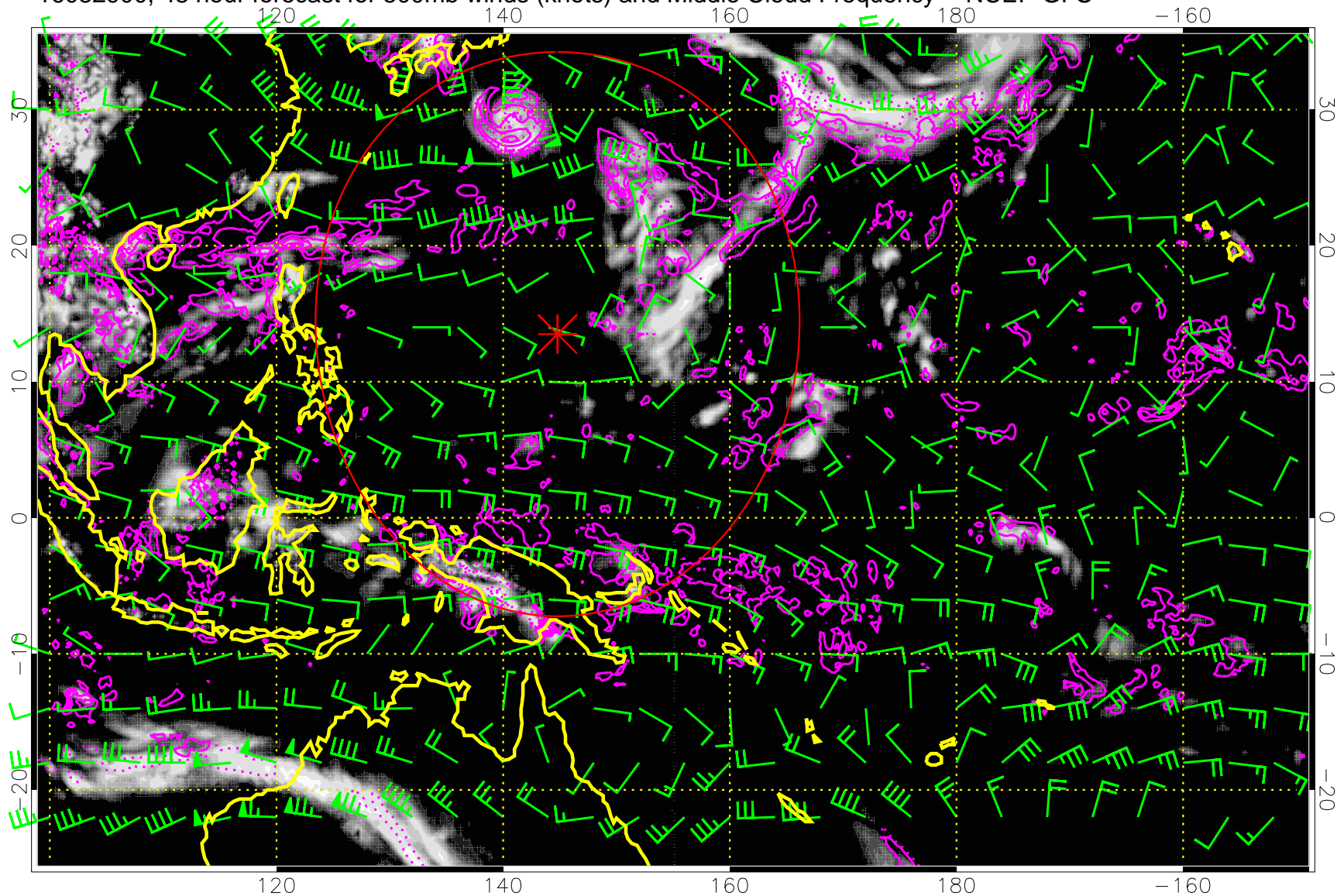
0.0 0.2 0.4 0.6 0.8 1.0  
Middle Cloud Frequency

Precip (tot dot, conv sol) mm/day 40 mm/day contours, min 20

Range ring of 2304 km



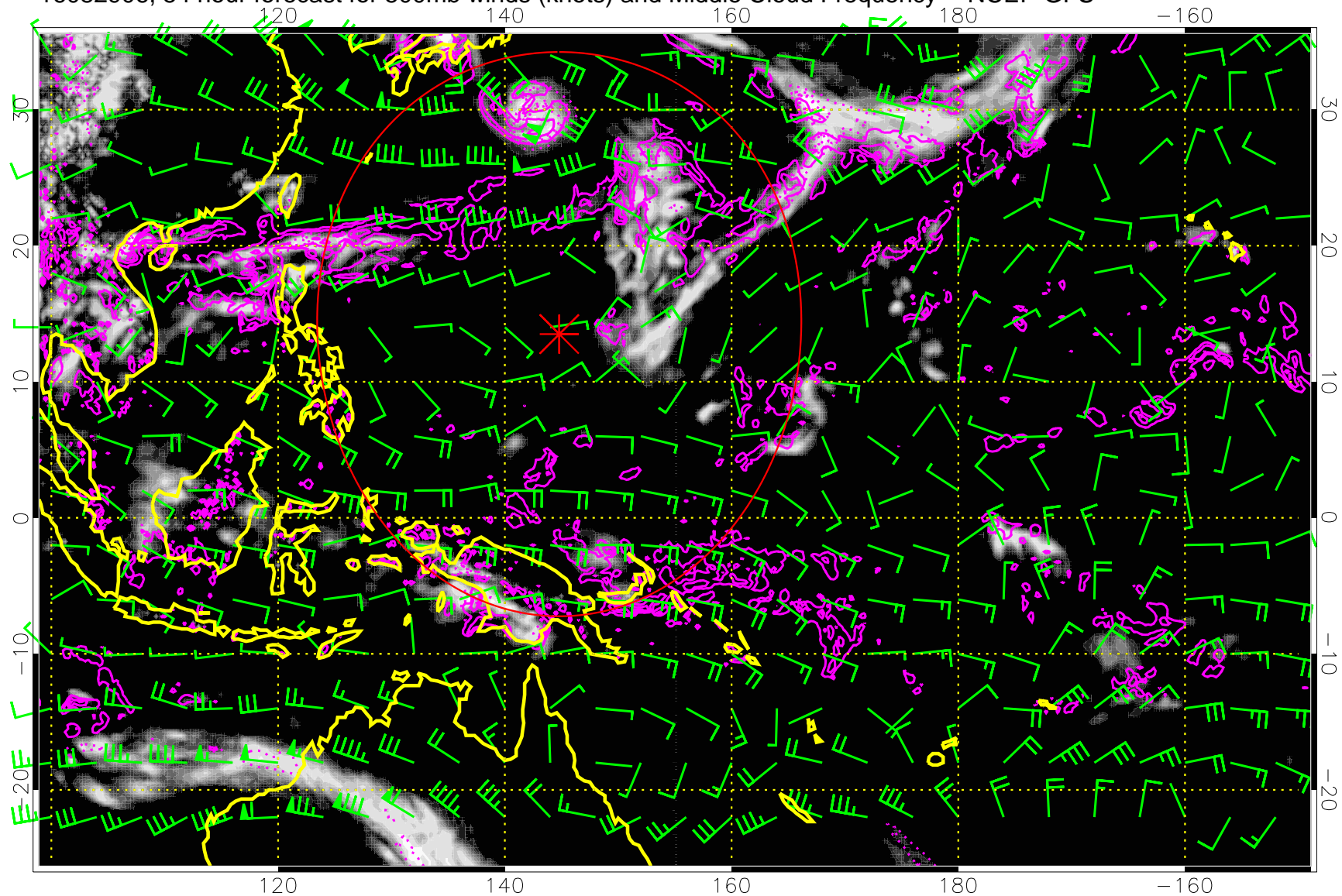
16082900, 48 hour forecast for 500mb winds (knots) and Middle Cloud Frequency -- NCEP GFS



Precip (tot dot, conv sol) mm/day 40 mm/day contours, min 20

Range ring of 2304 km

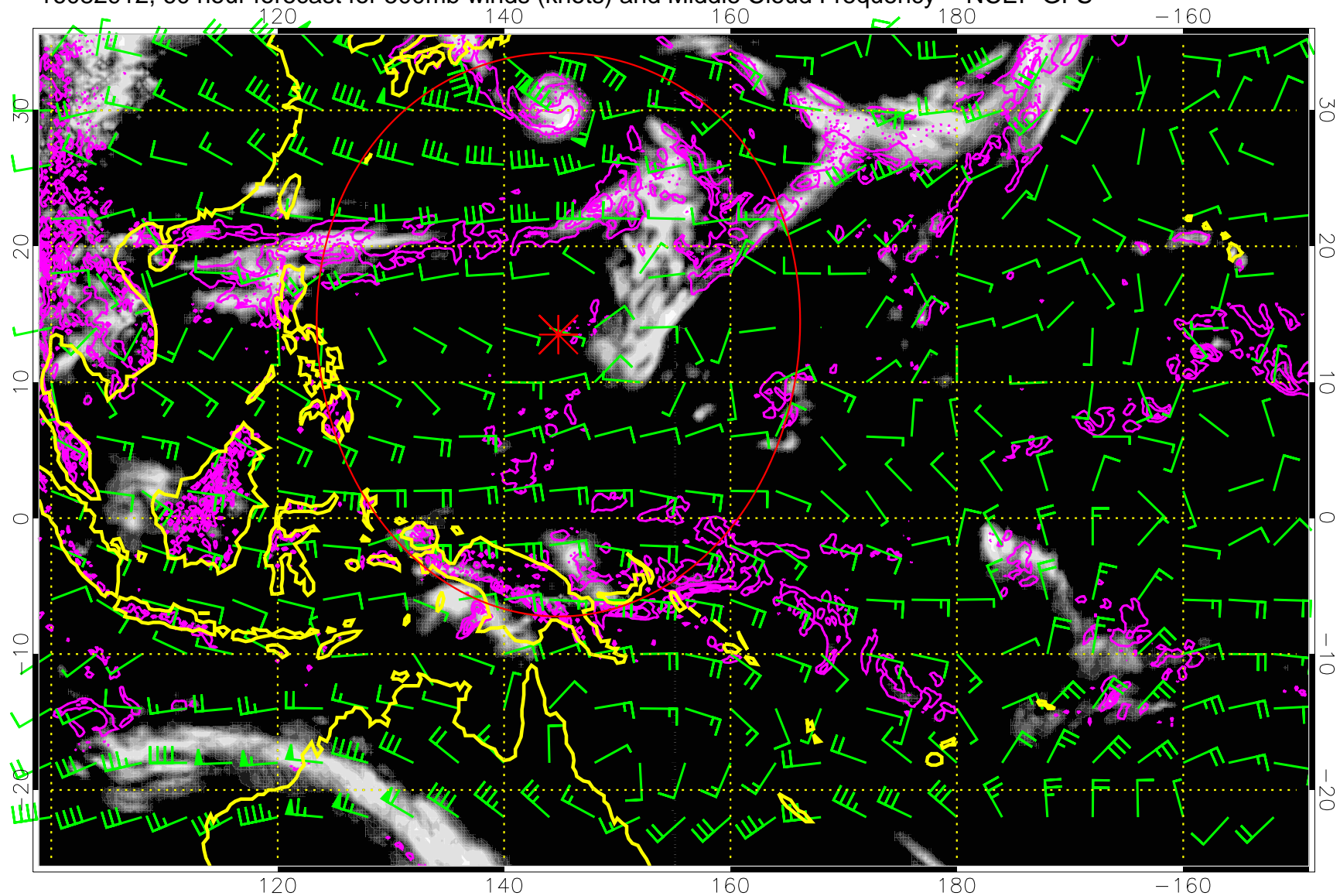
16082906, 54 hour forecast for 500mb winds (knots) and Middle Cloud Frequency -- NCEP GFS



Precip (tot dot, conv sol) mm/day 40 mm/day contours, min 20

Range ring of 2304 km

16082912, 60 hour forecast for 500mb winds (knots) and Middle Cloud Frequency -- NCEP GFS



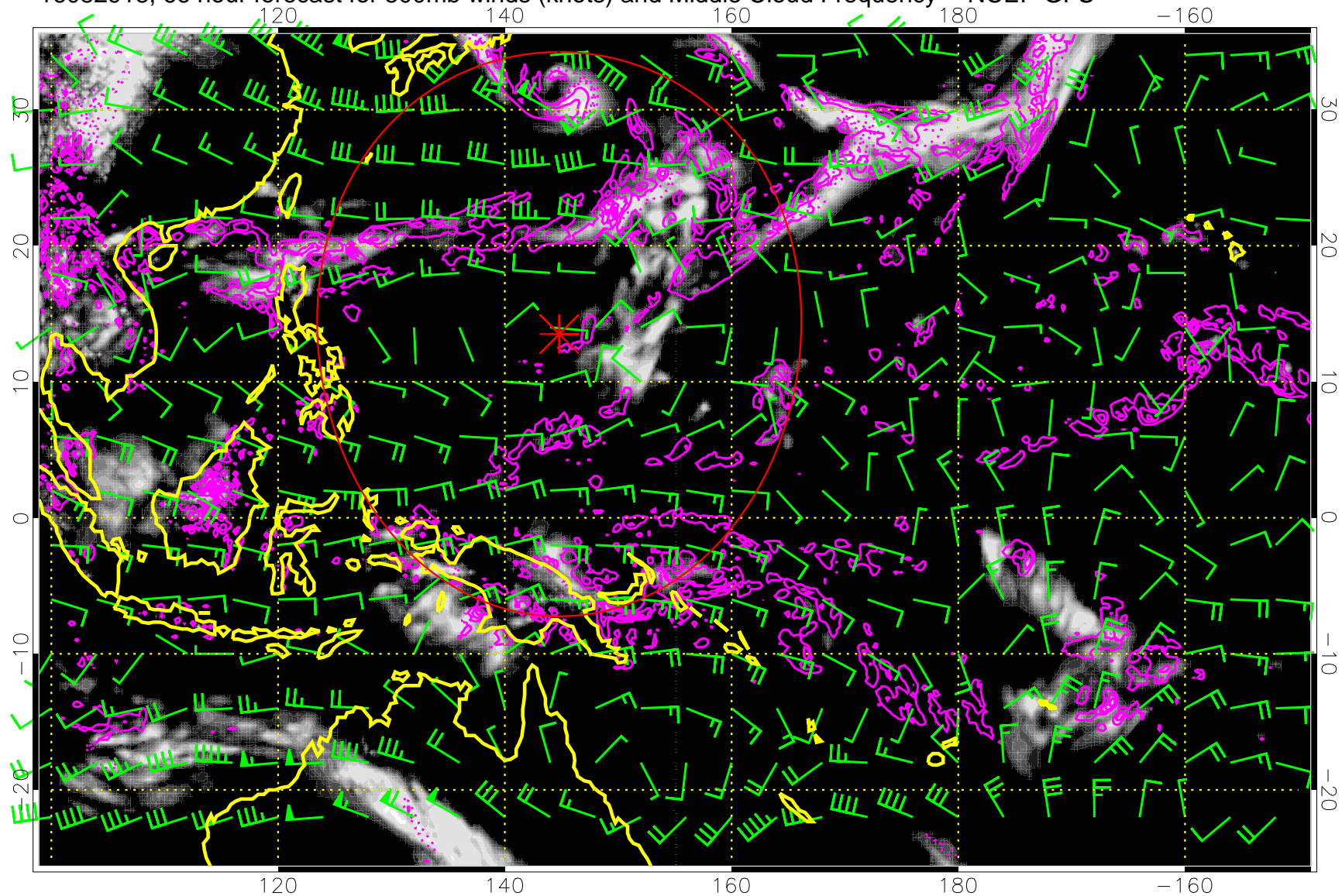
0.0 0.2 0.4 0.6 0.8 1.0  
Middle Cloud Frequency

Precip (tot dot, conv sol) mm/day 40 mm/day contours, min 20

Range ring of 2304 km



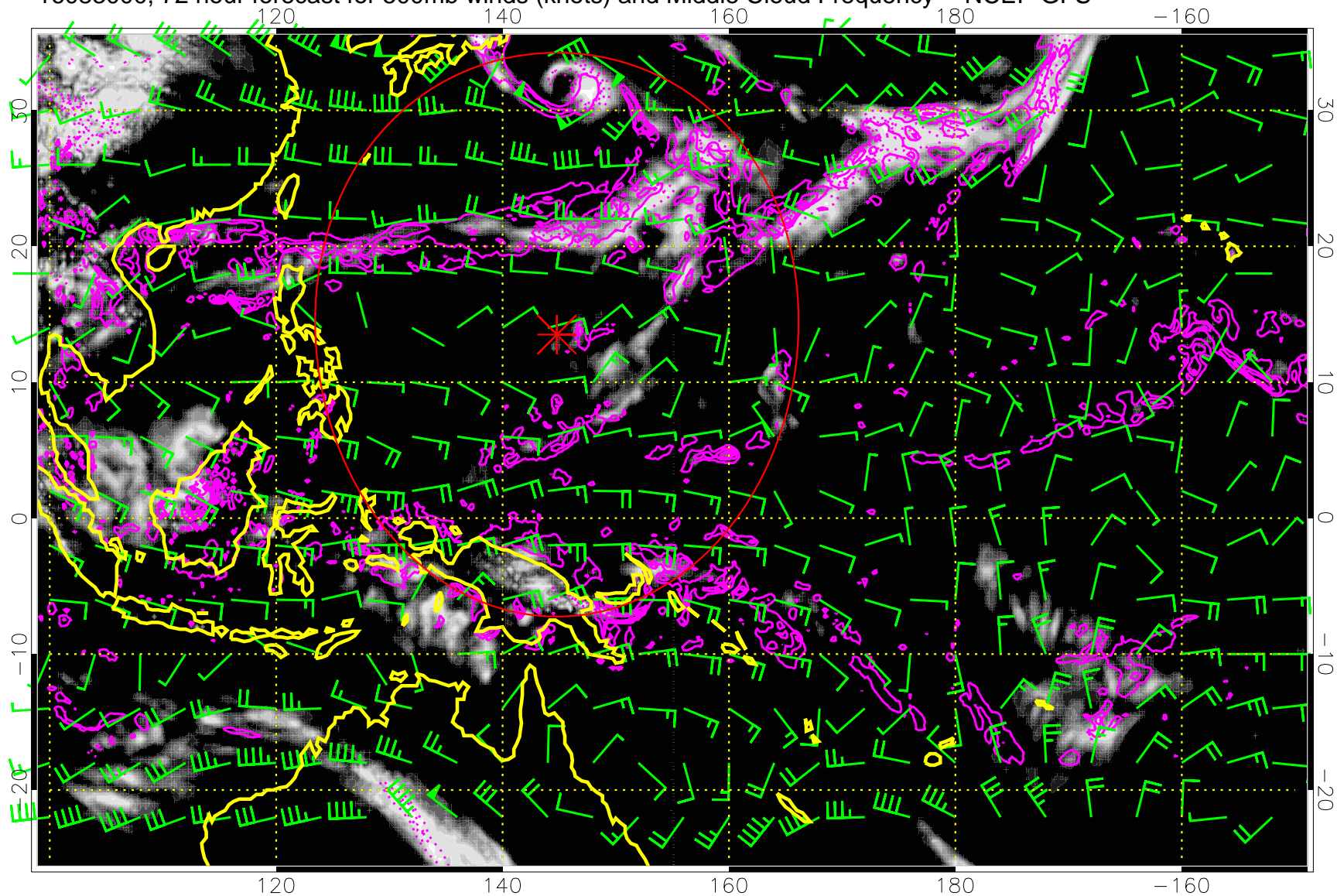
16082918, 66 hour forecast for 500mb winds (knots) and Middle Cloud Frequency -- NCEP GFS



Precip (tot dot, conv sol) mm/day 40 mm/day contours, min 20

Range ring of 2304 km

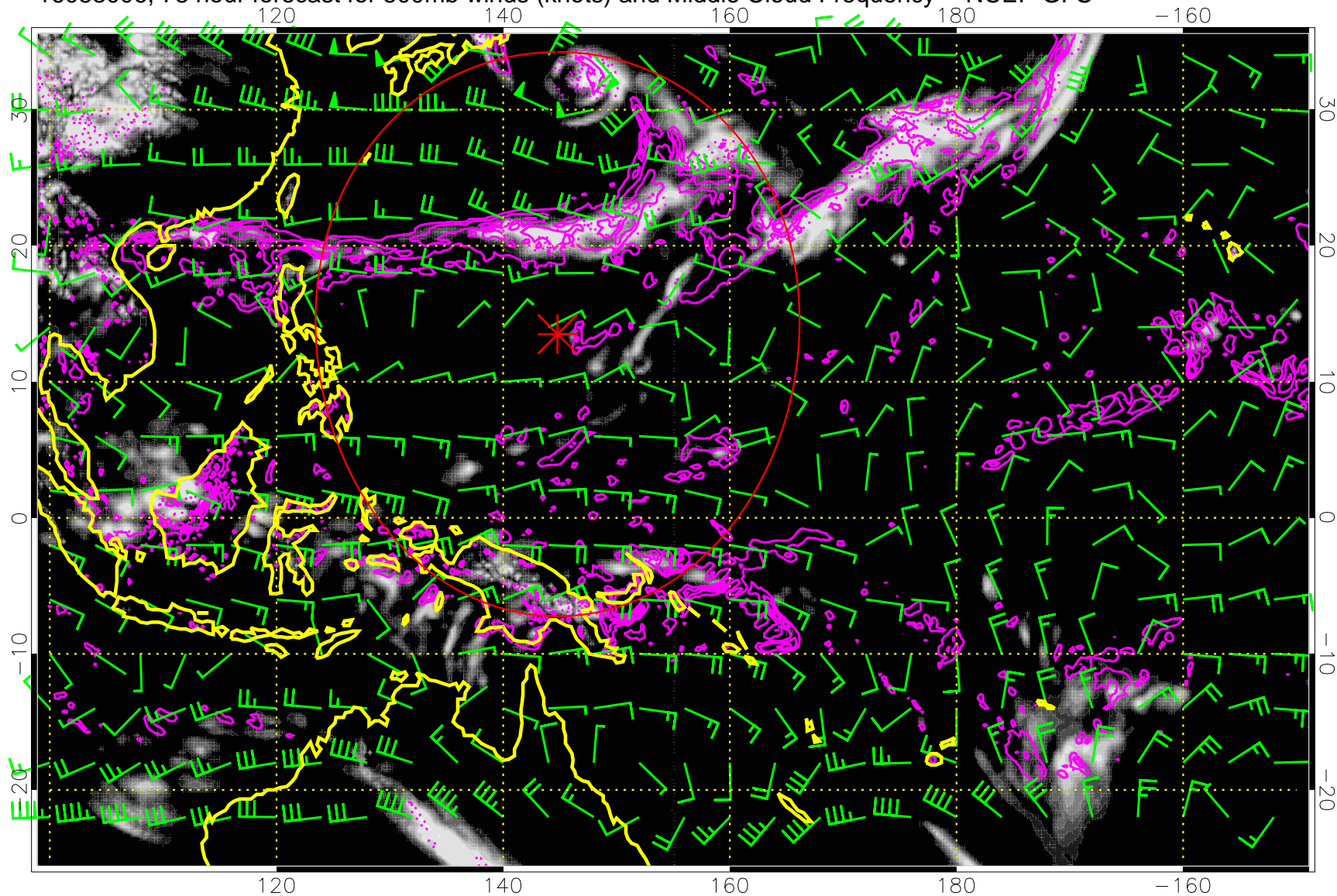
16083000, 72 hour forecast for 500mb winds (knots) and Middle Cloud Frequency -- NCEP GFS



Precip (tot dot, conv sol) mm/day 40 mm/day contours, min 20

Range ring of 2304 km

16083006, 78 hour forecast for 500mb winds (knots) and Middle Cloud Frequency -- NCEP GFS

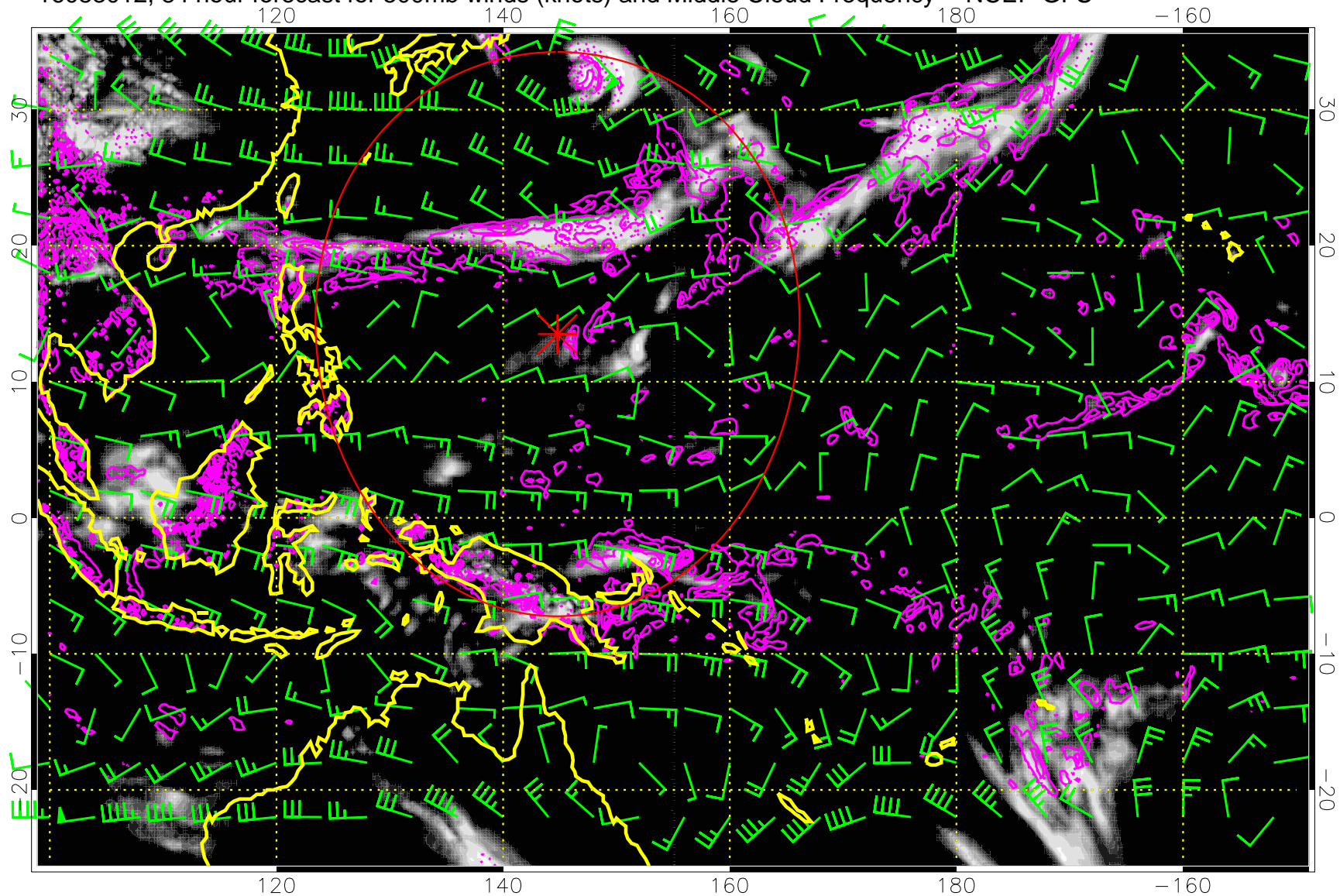


Precip (tot dot, conv sol) mm/day 40 mm/day contours, min 20

Range ring of 2304 km



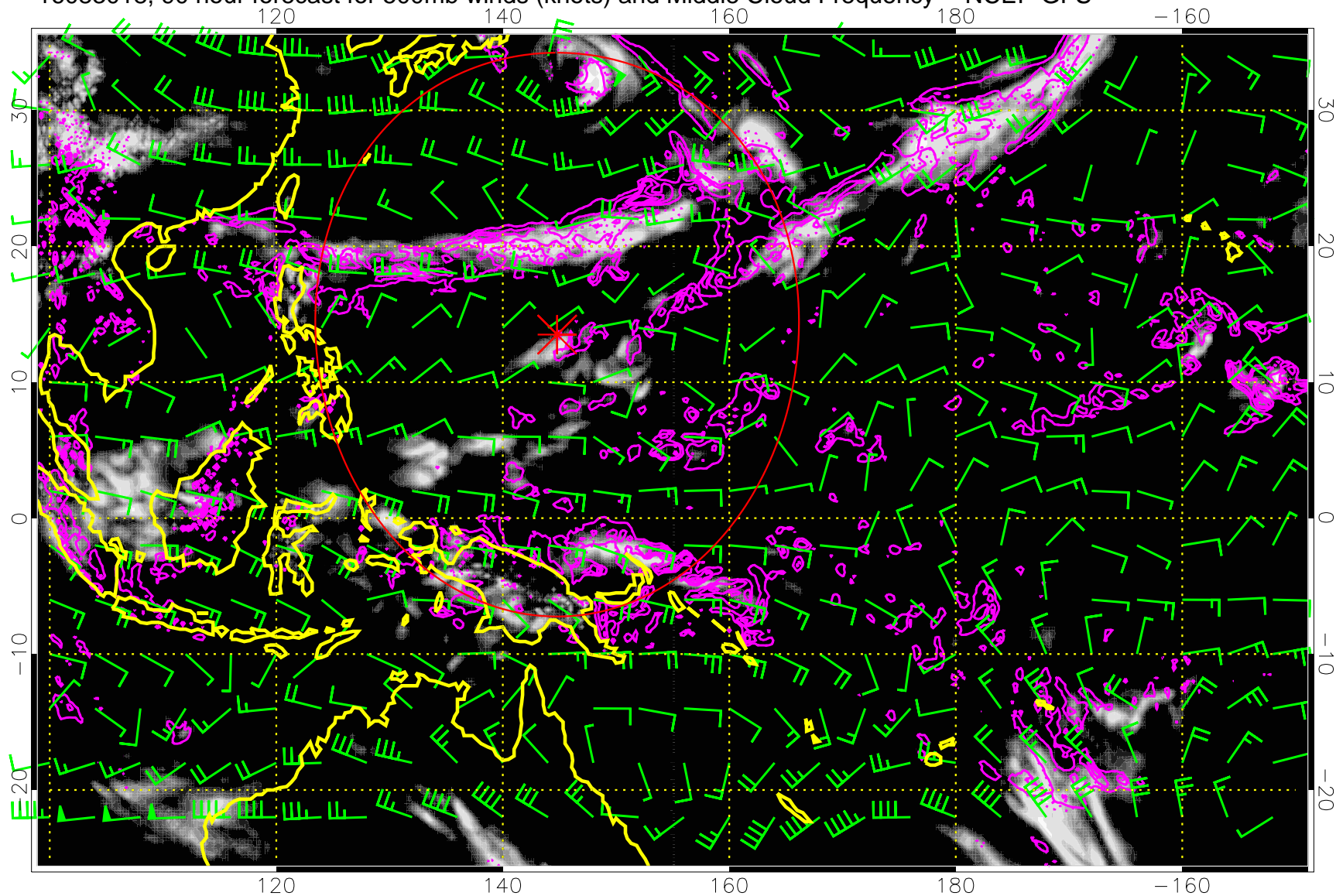
16083012, 84 hour forecast for 500mb winds (knots) and Middle Cloud Frequency -- NCEP GFS



Precip (tot dot, conv sol) mm/day 40 mm/day contours, min 20

Range ring of 2304 km

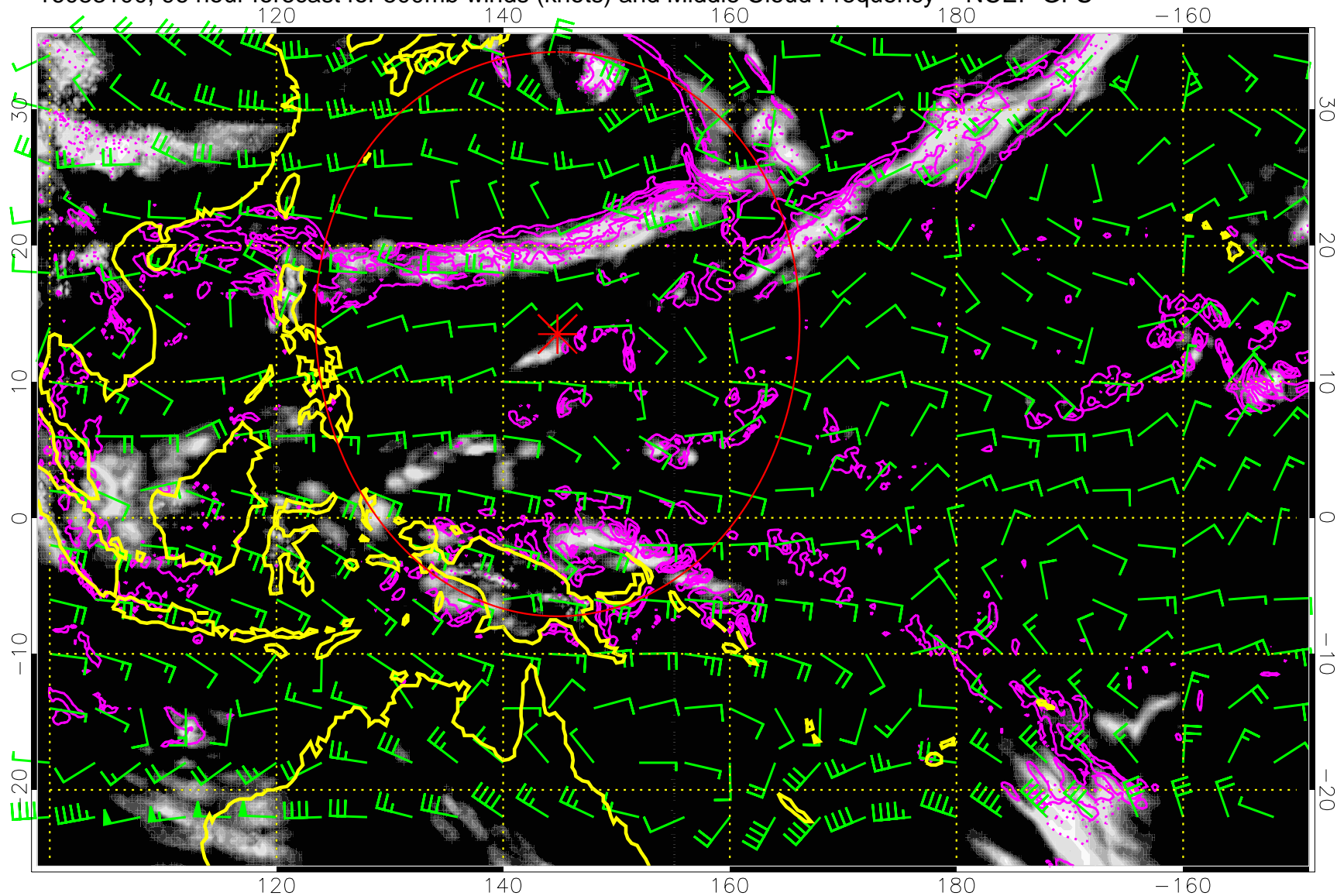
16083018, 90 hour forecast for 500mb winds (knots) and Middle Cloud Frequency -- NCEP GFS



Precip (tot dot, conv sol) mm/day 40 mm/day contours, min 20

Range ring of 2304 km

16083100, 96 hour forecast for 500mb winds (knots) and Middle Cloud Frequency -- NCEP GFS



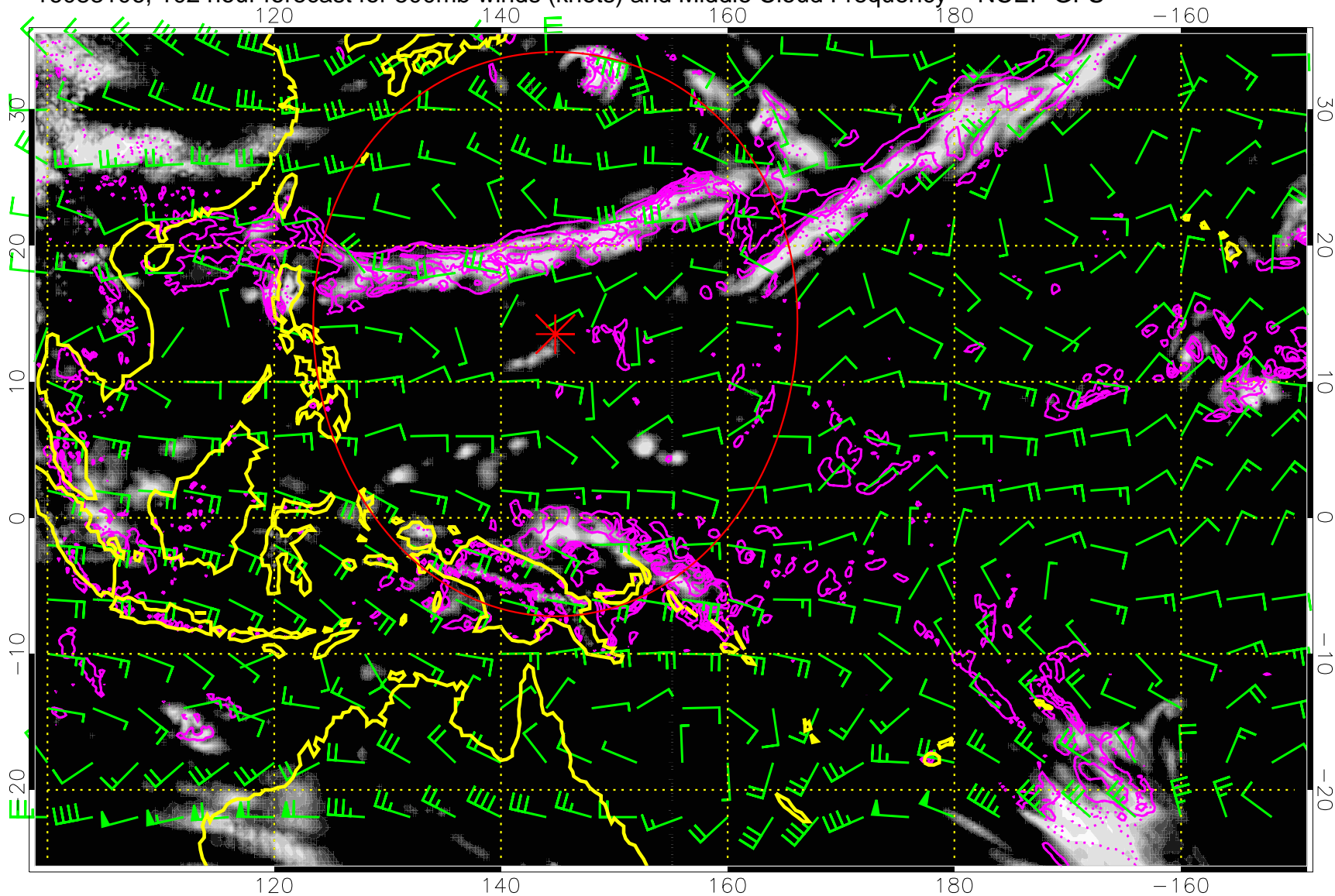
Precip (tot dot, conv sol) mm/day 40 mm/day contours, min 20

0.0 0.2 0.4 0.6 0.8 1.0  
Middle Cloud Frequency

Range ring of 2304 km



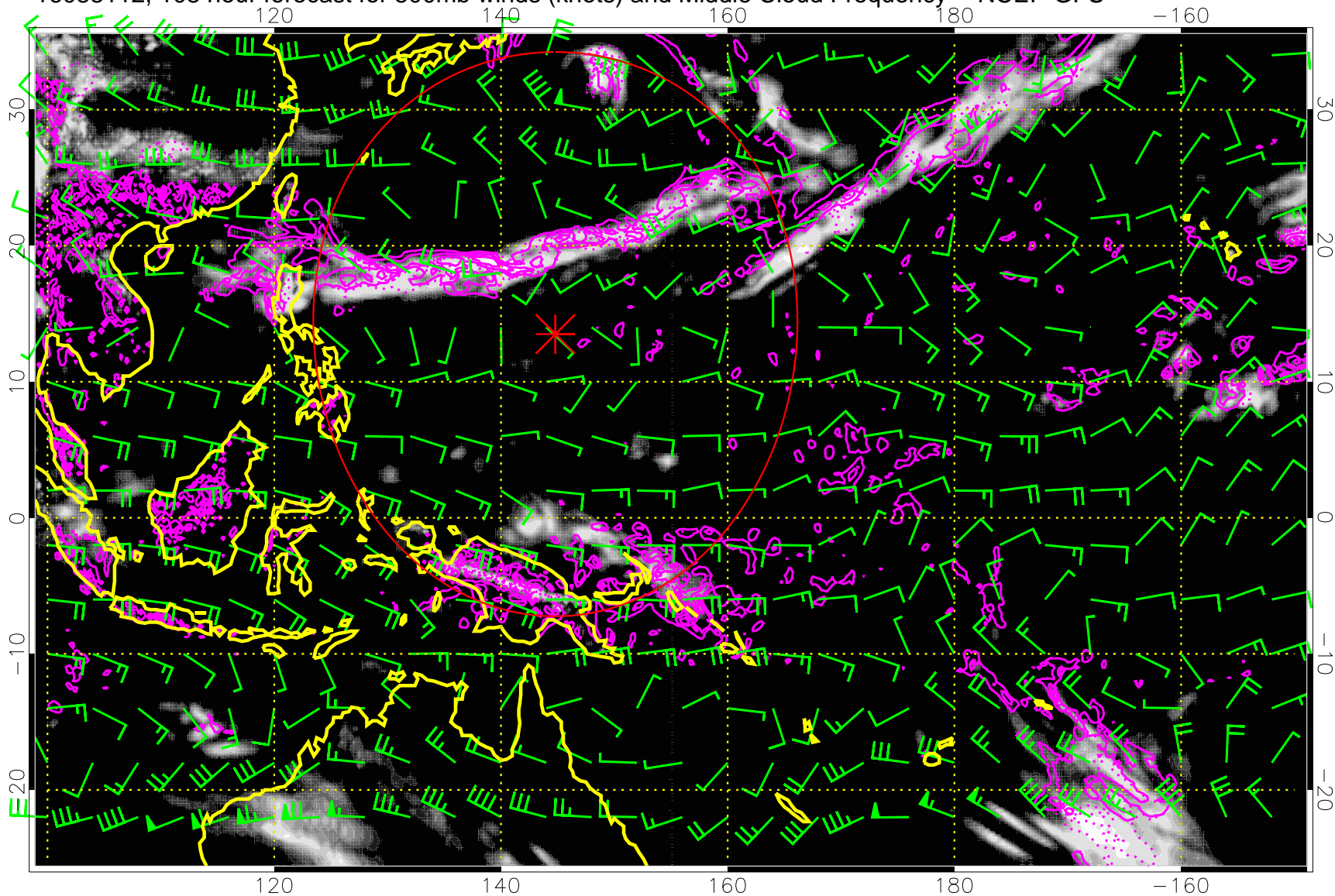
16083106, 102 hour forecast for 500mb winds (knots) and Middle Cloud Frequency -- NCEP GFS



Precip (tot dot, conv sol) mm/day 40 mm/day contours, min 20

Range ring of 2304 km

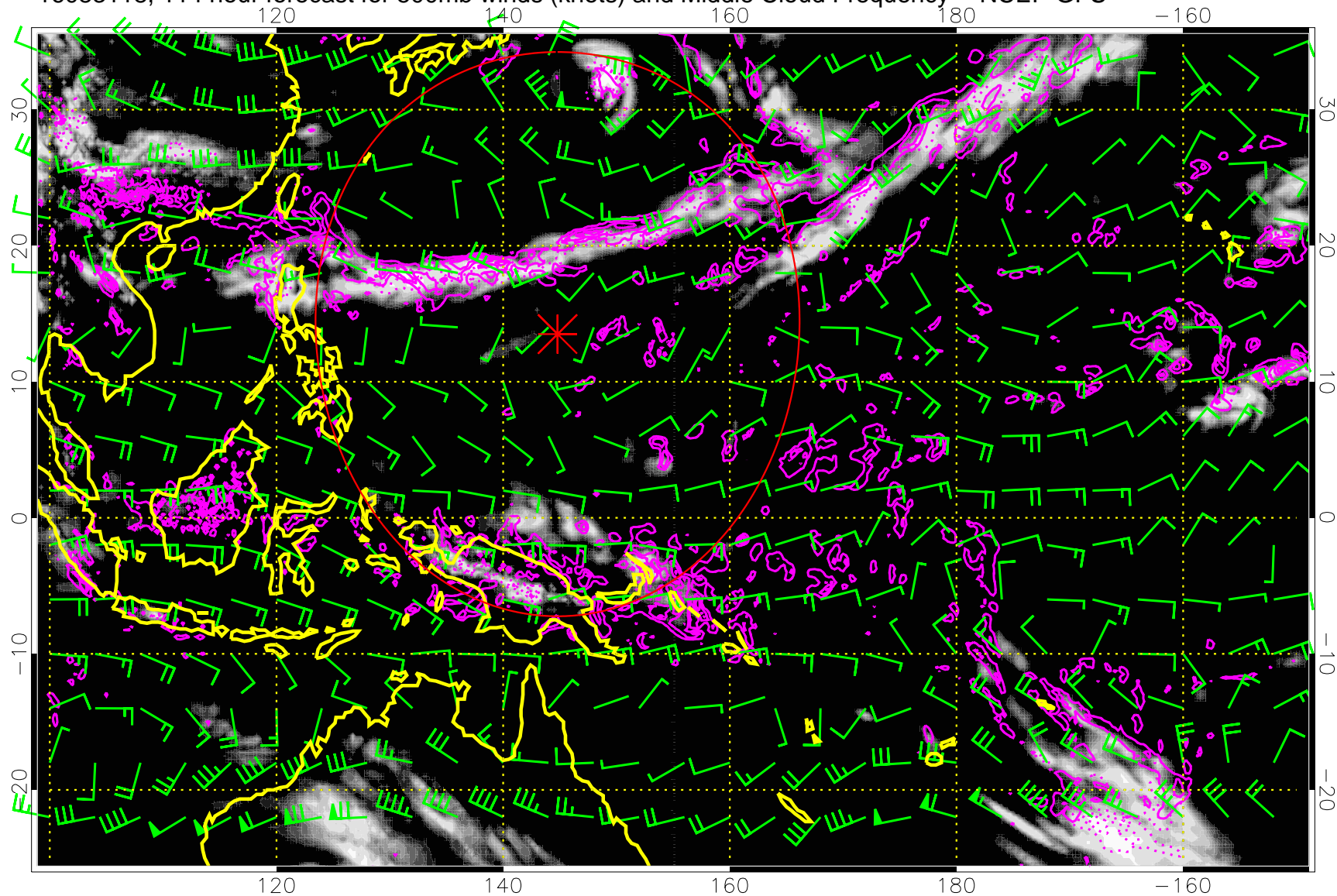
16083112, 108 hour forecast for 500mb winds (knots) and Middle Cloud Frequency -- NCEP GFS



Precip (tot dot, conv sol) mm/day 40 mm/day contours, min 20

Range ring of 2304 km

16083118, 114 hour forecast for 500mb winds (knots) and Middle Cloud Frequency -- NCEP GFS

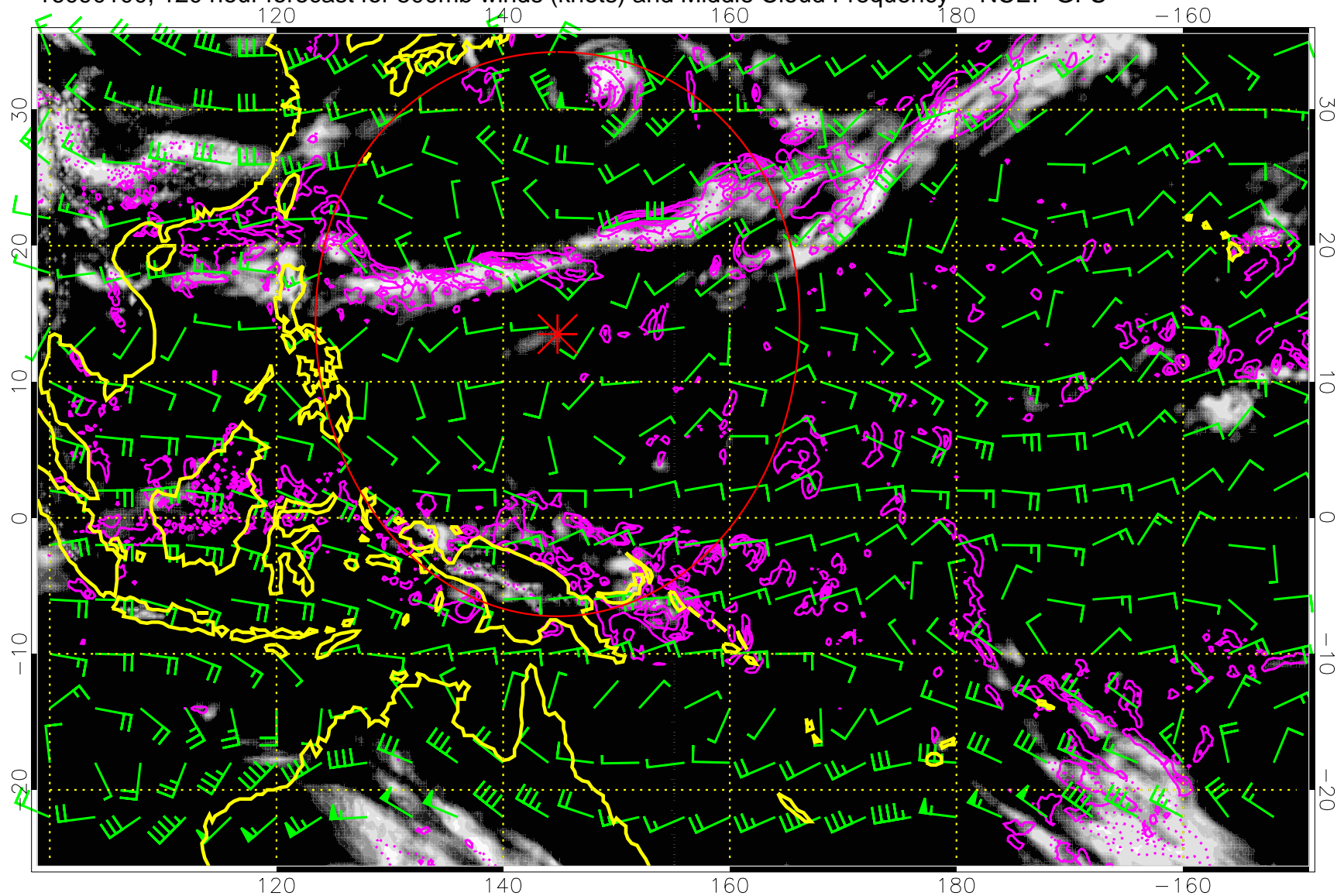


Precip (tot dot, conv sol) mm/day 40 mm/day contours, min 20

Range ring of 2304 km



16090100, 120 hour forecast for 500mb winds (knots) and Middle Cloud Frequency -- NCEP GFS



Middle Cloud Frequency

Precip (tot dot, conv sol) mm/day 40 mm/day contours, min 20

Range ring of 2304 km