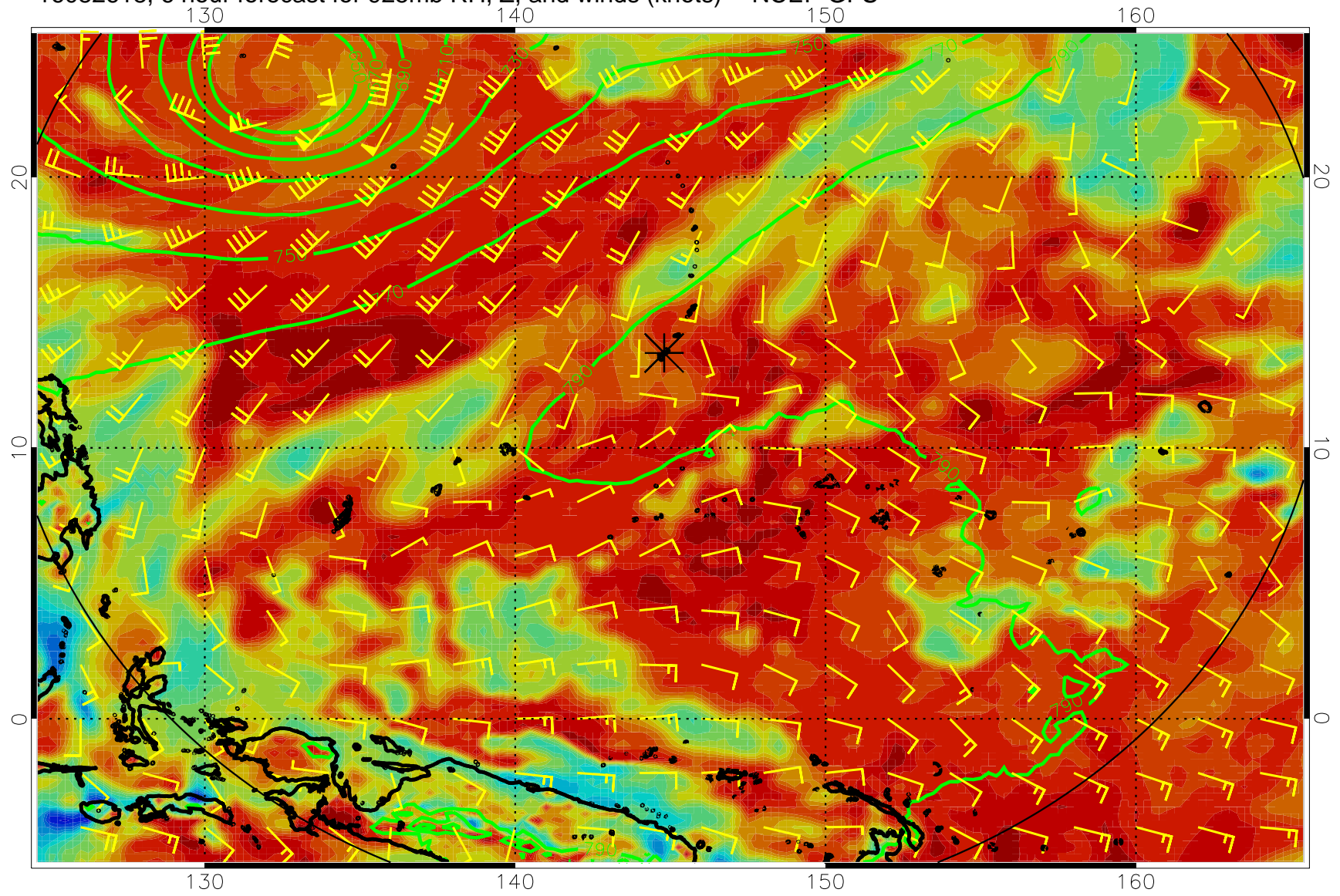
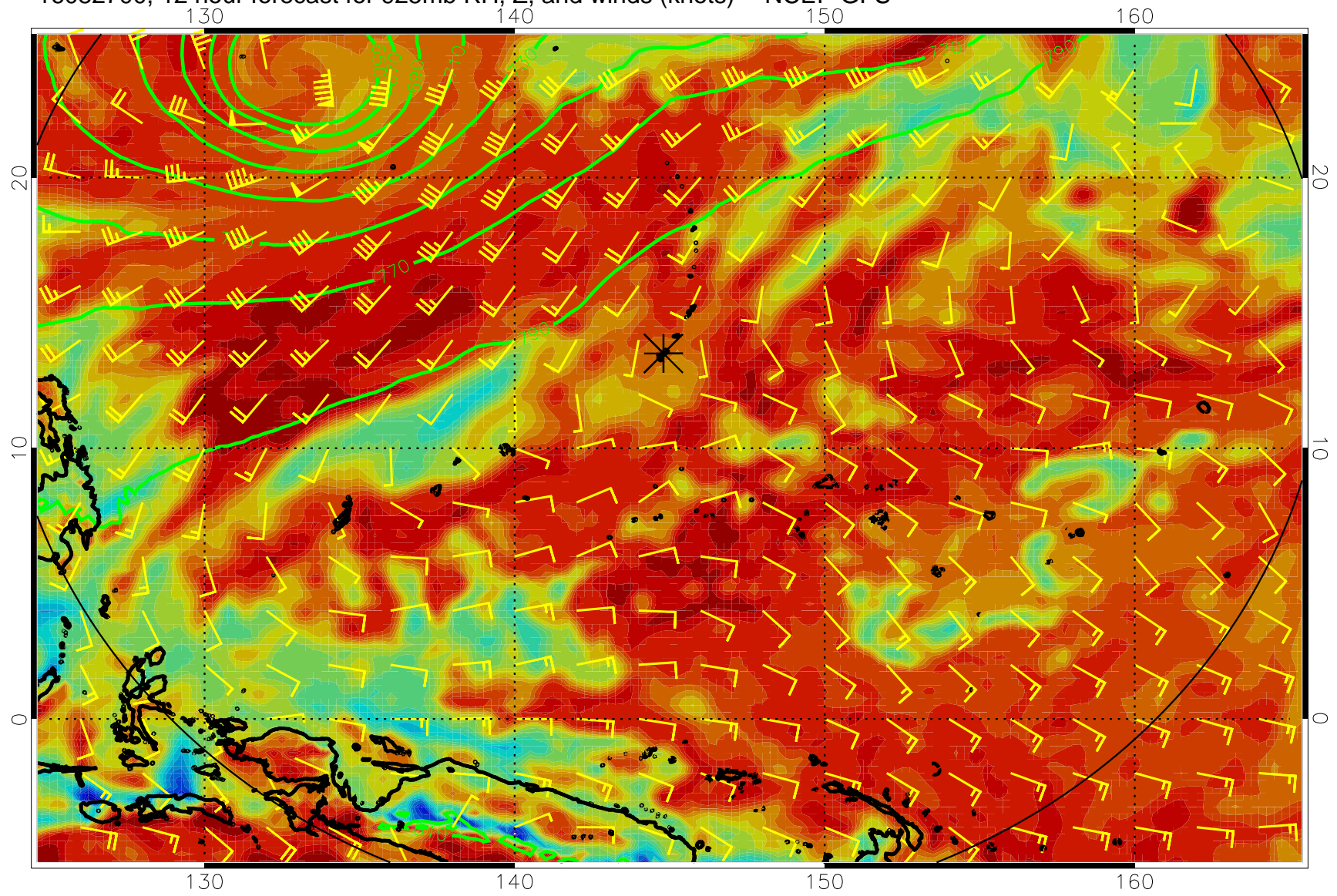


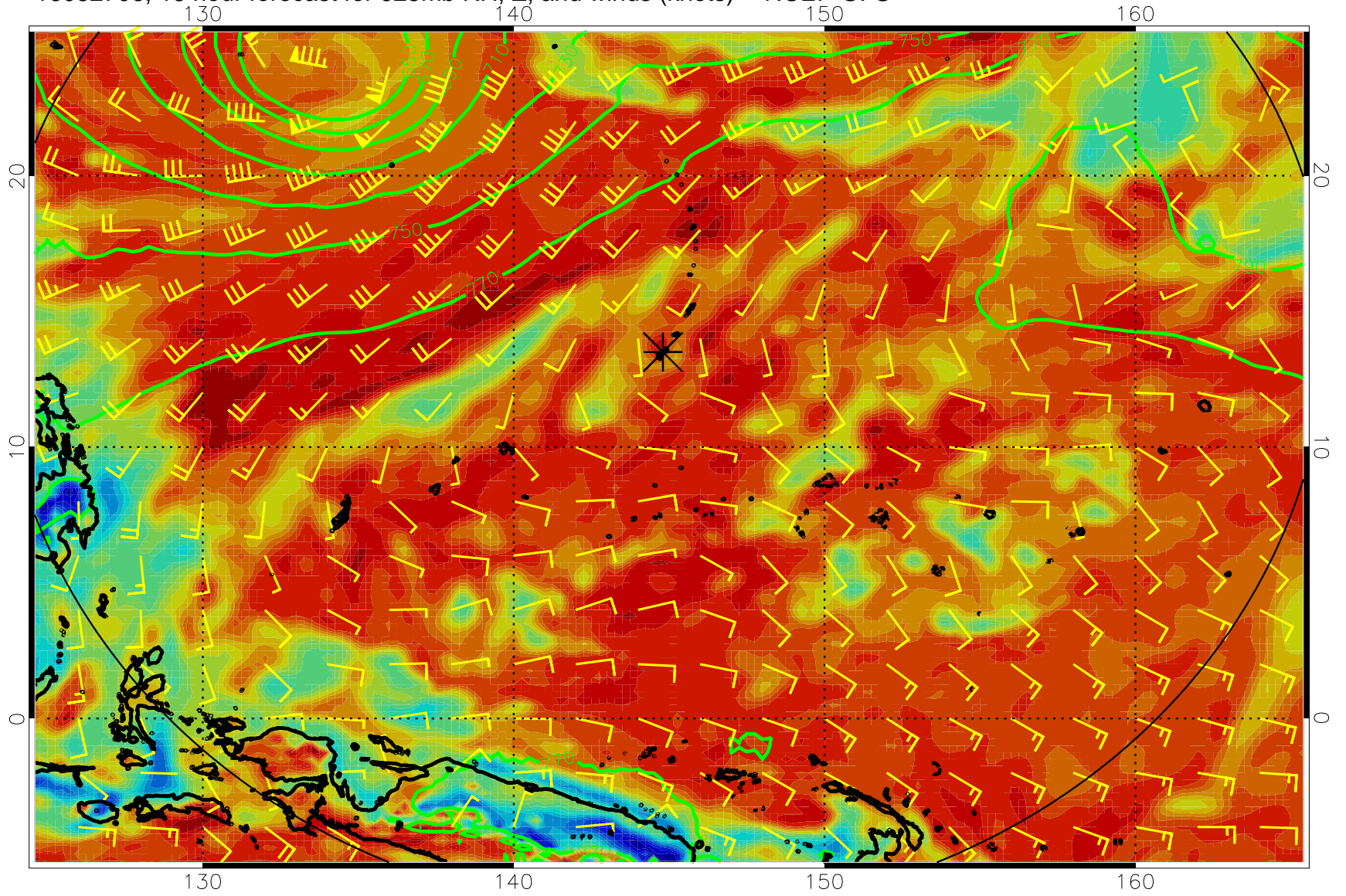
16082618, 6 hour forecast for 925mb RH, Z, and winds (knots) -- NCEP GFS



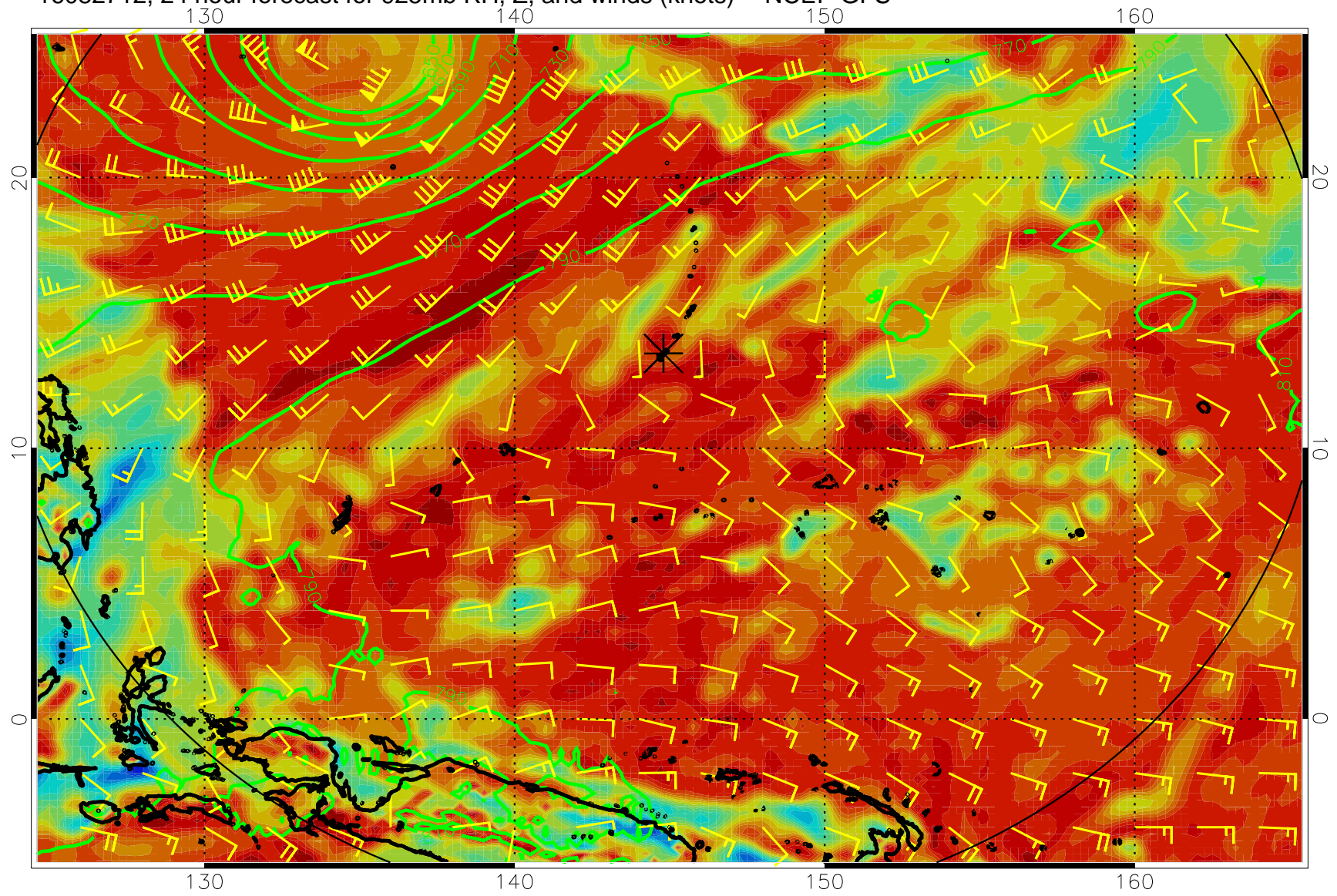
16082700, 12 hour forecast for 925mb RH, Z, and winds (knots) -- NCEP GFS



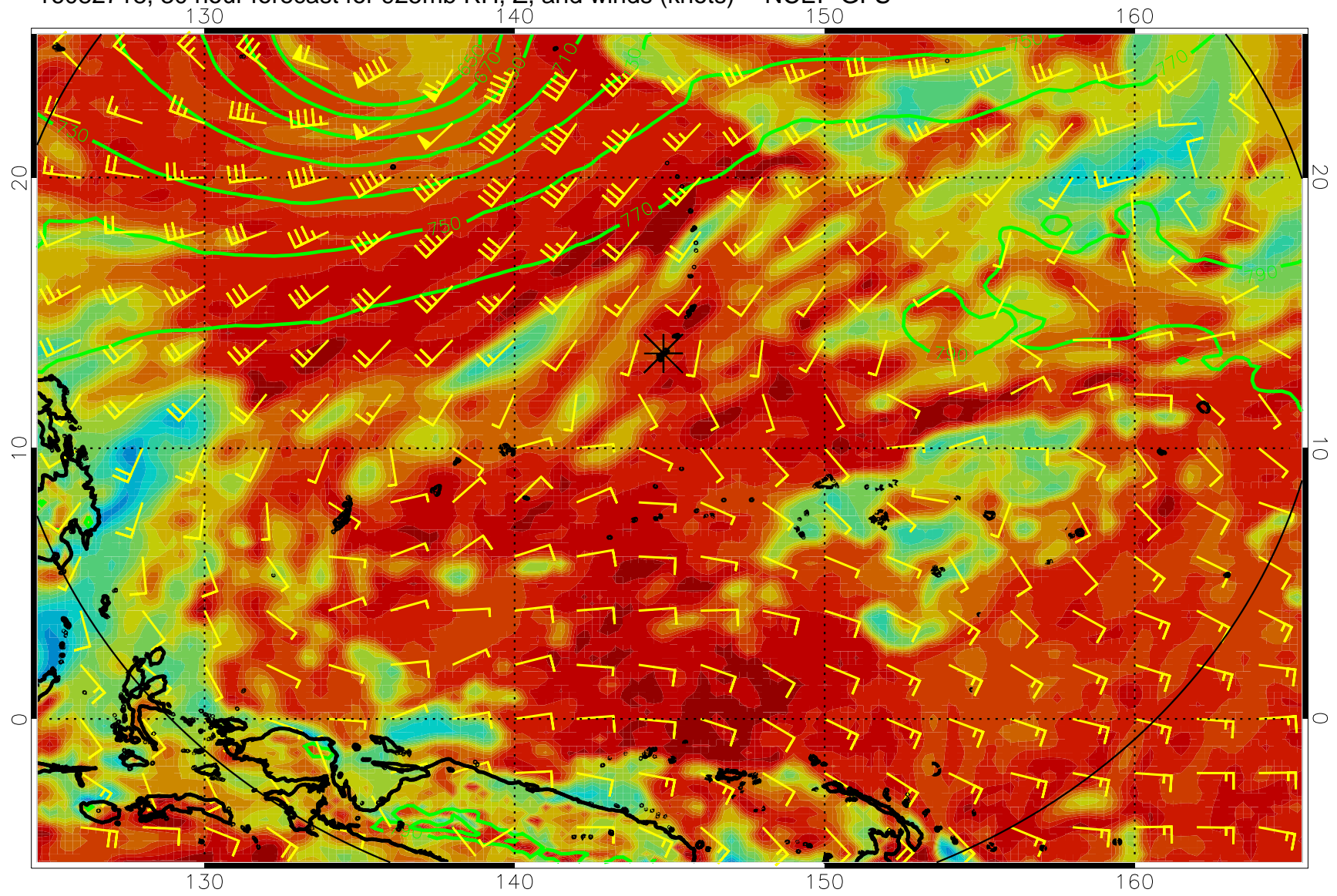
16082706, 18 hour forecast for 925mb RH, Z, and winds (knots) -- NCEP GFS



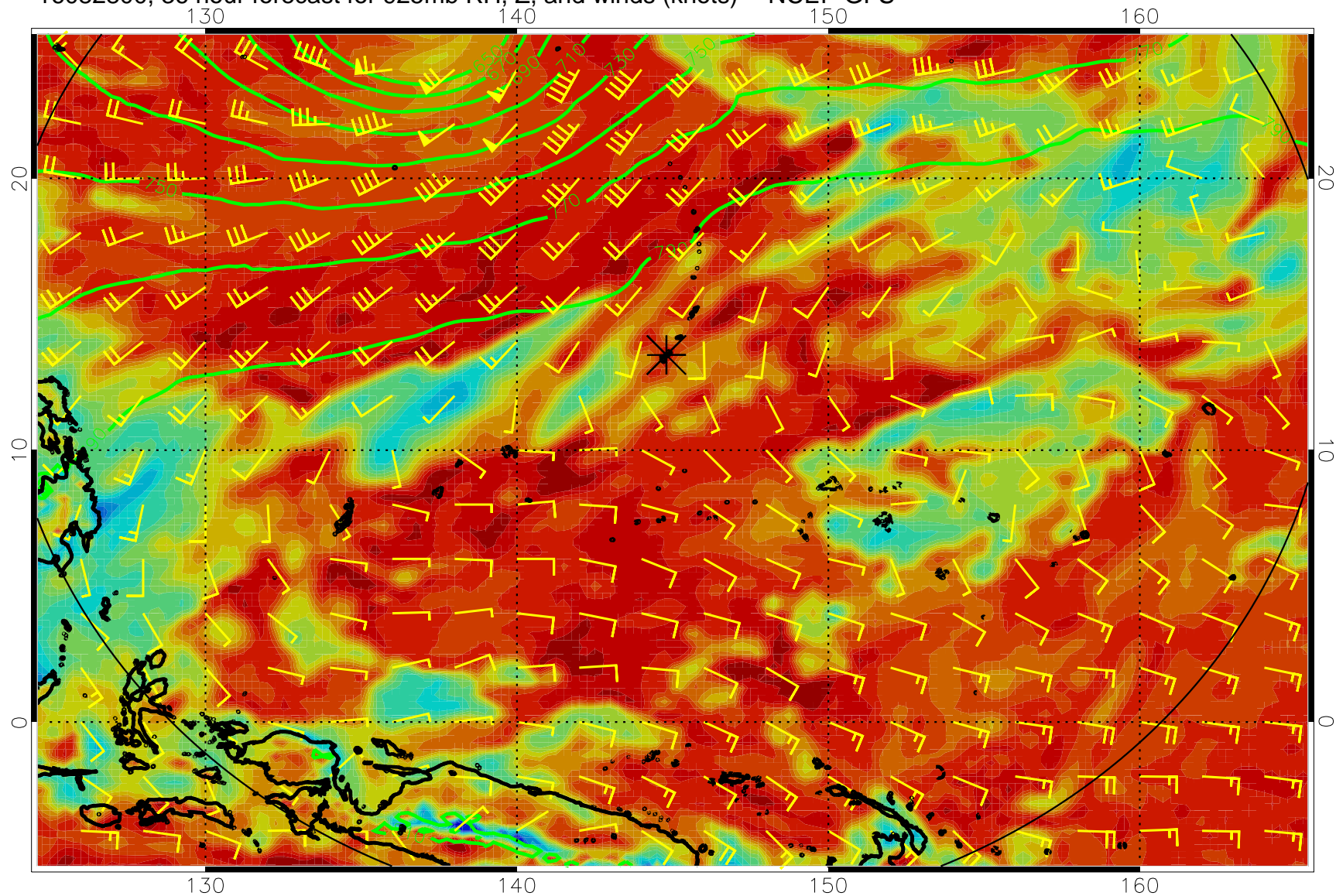
16082712, 24 hour forecast for 925mb RH, Z, and winds (knots) -- NCEP GFS



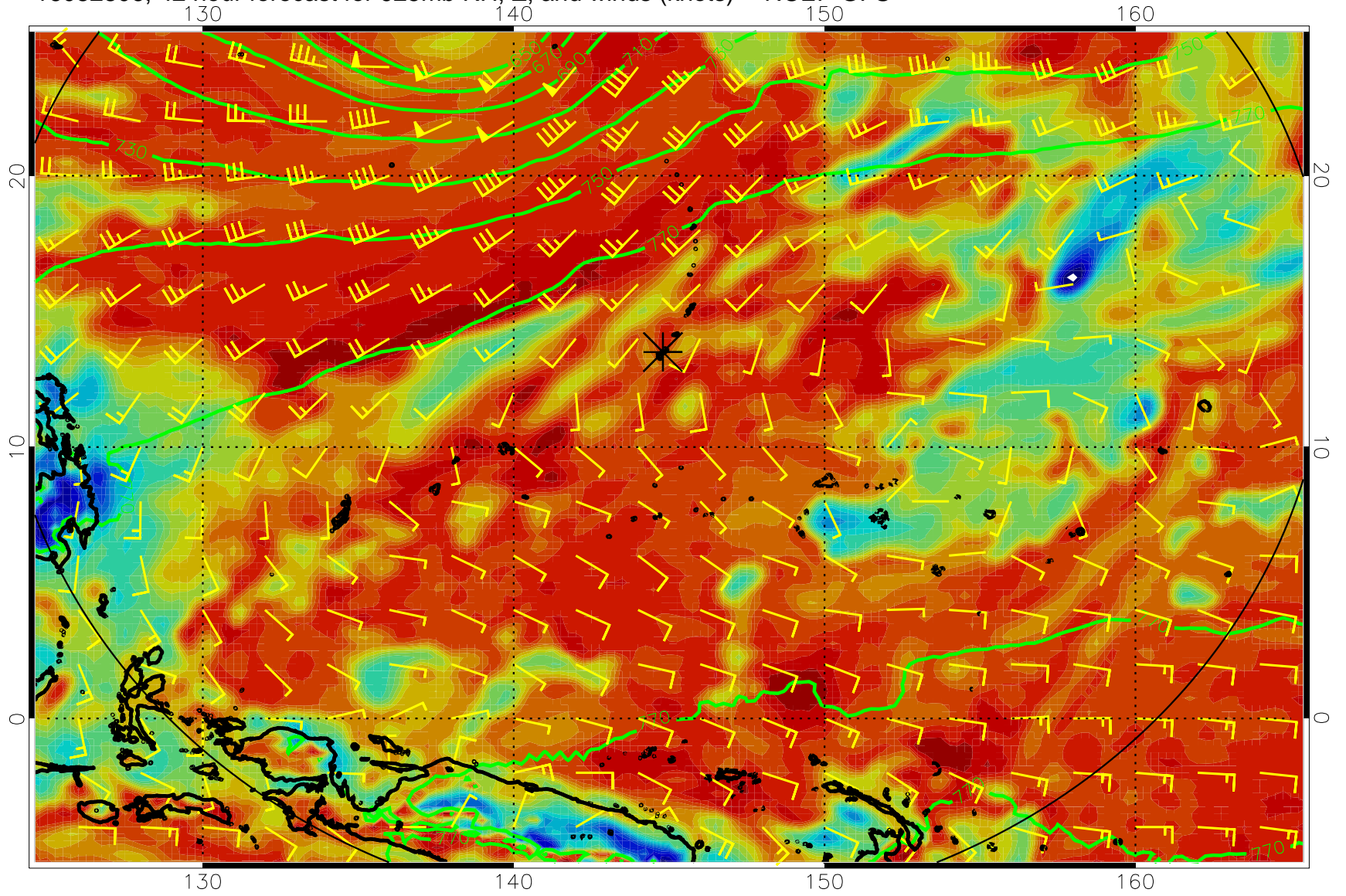
16082718, 30 hour forecast for 925mb RH, Z, and winds (knots) -- NCEP GFS



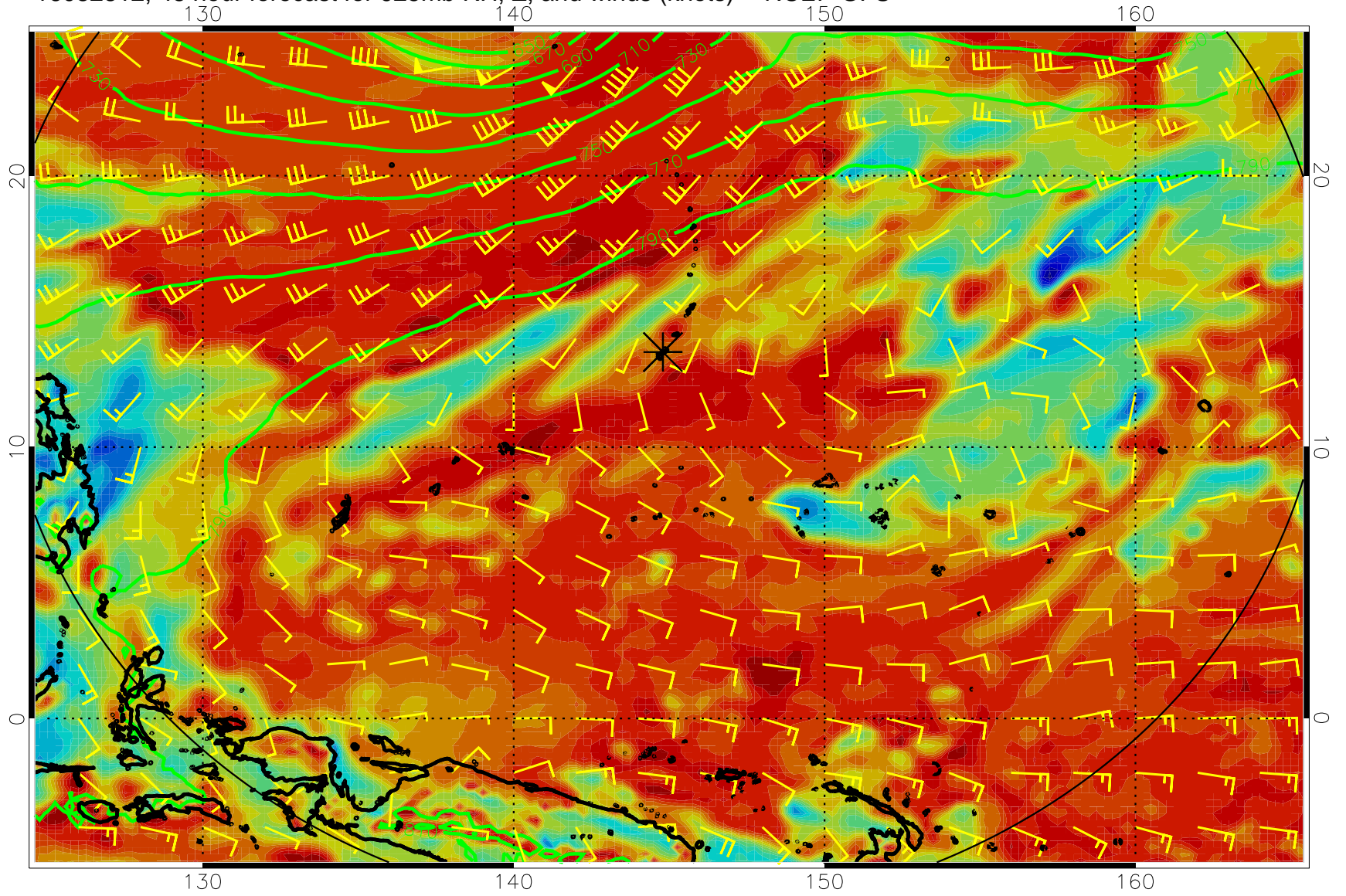
16082800, 36 hour forecast for 925mb RH, Z, and winds (knots) -- NCEP GFS



16082806, 42 hour forecast for 925mb RH, Z, and winds (knots) -- NCEP GFS

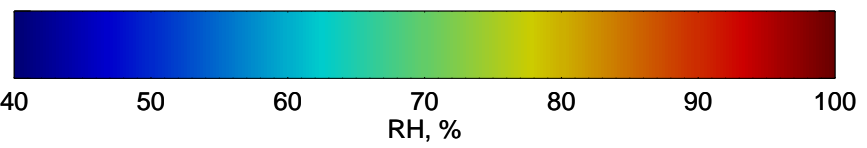
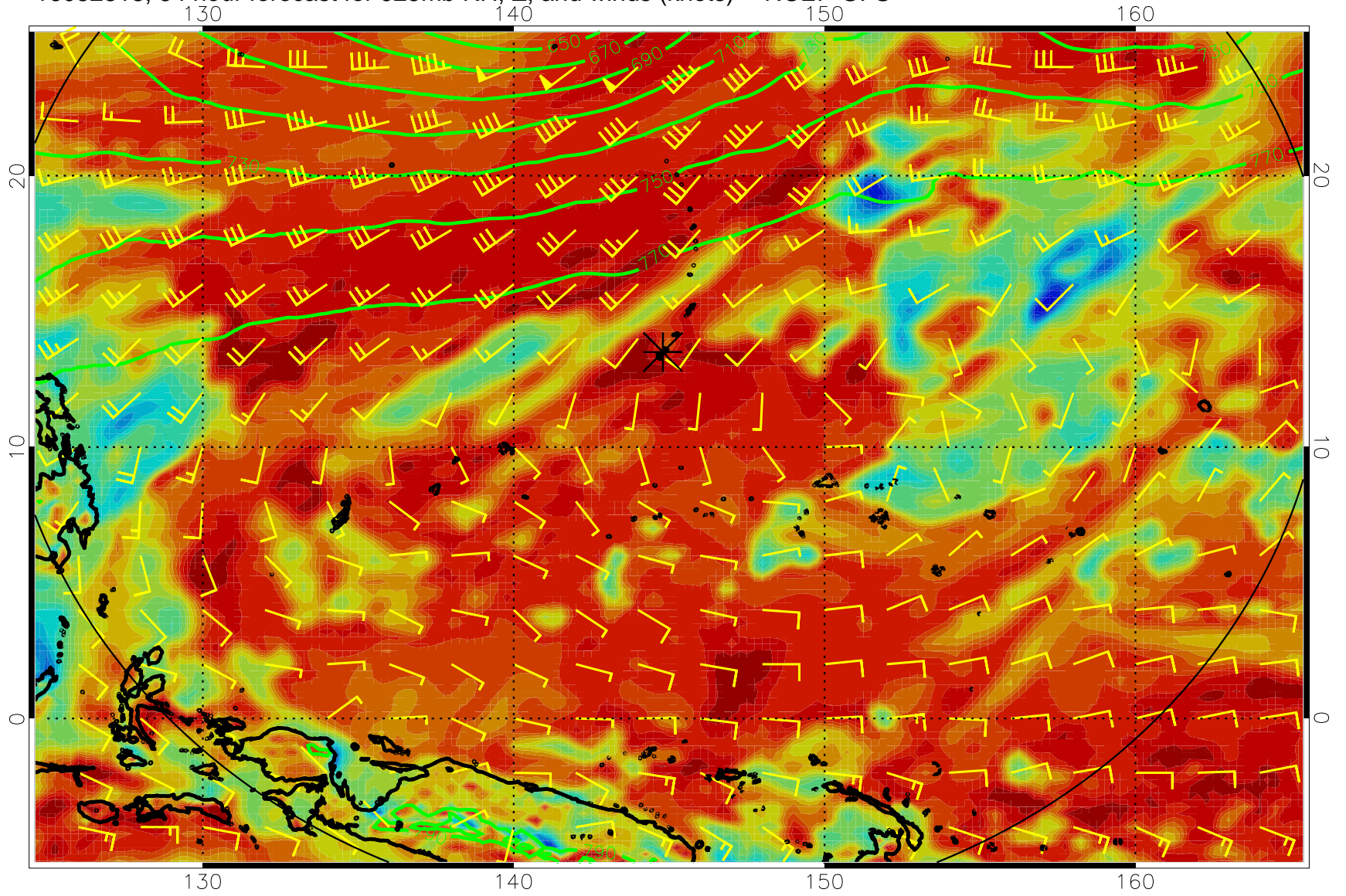


16082812, 48 hour forecast for 925mb RH, Z, and winds (knots) -- NCEP GFS

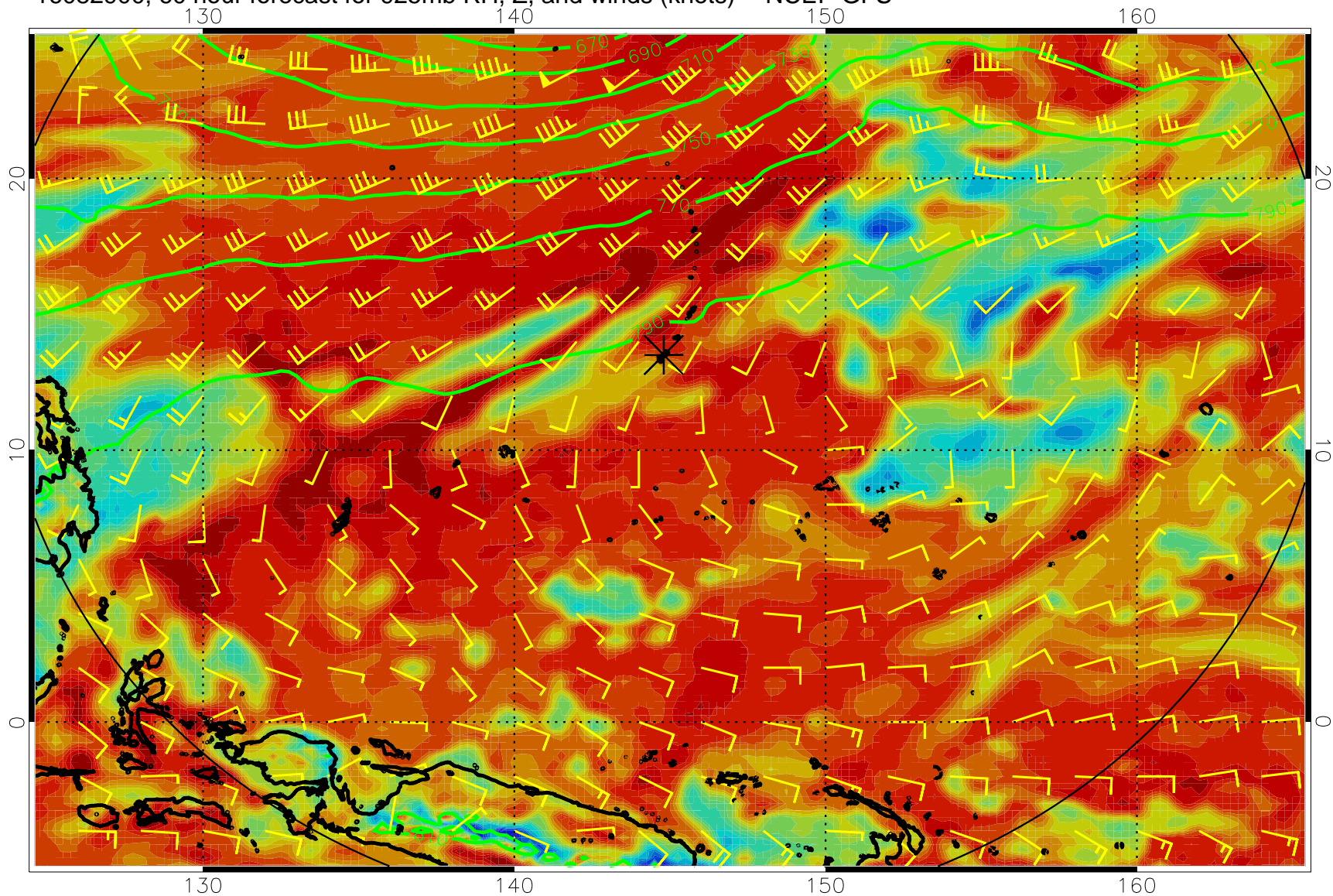




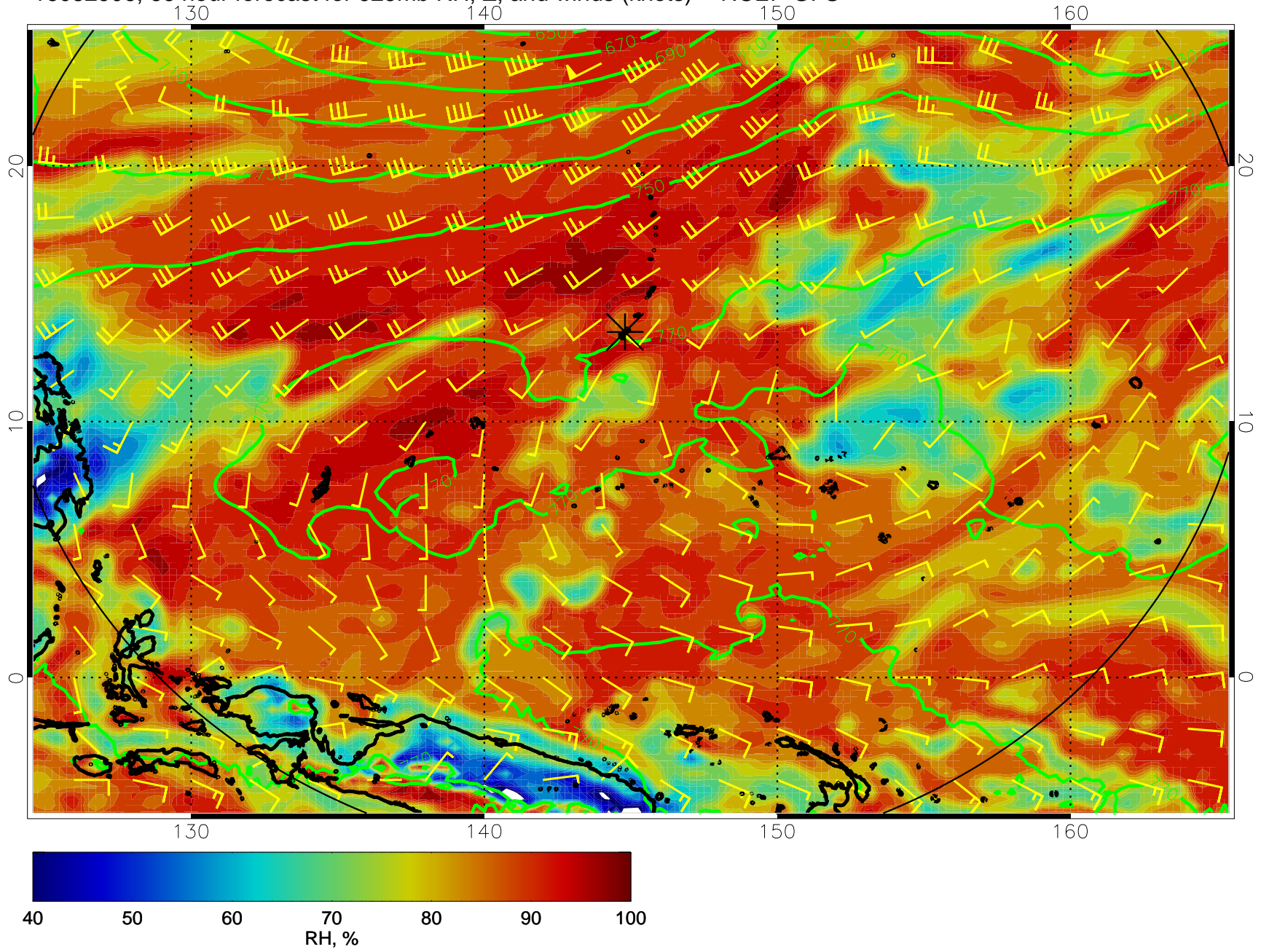
16082818, 54 hour forecast for 925mb RH, Z, and winds (knots) -- NCEP GFS



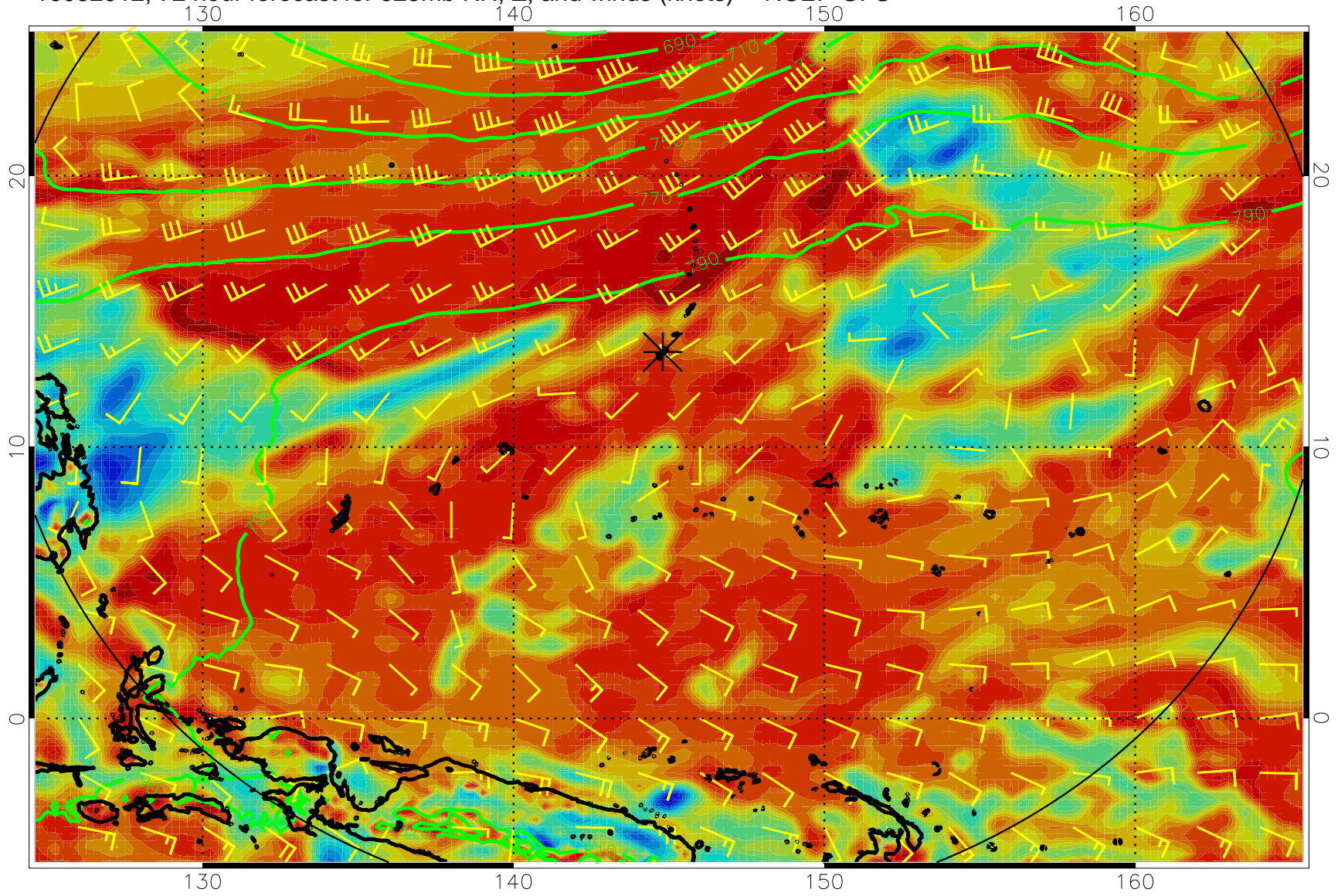
16082900, 60 hour forecast for 925mb RH, Z, and winds (knots) -- NCEP GFS



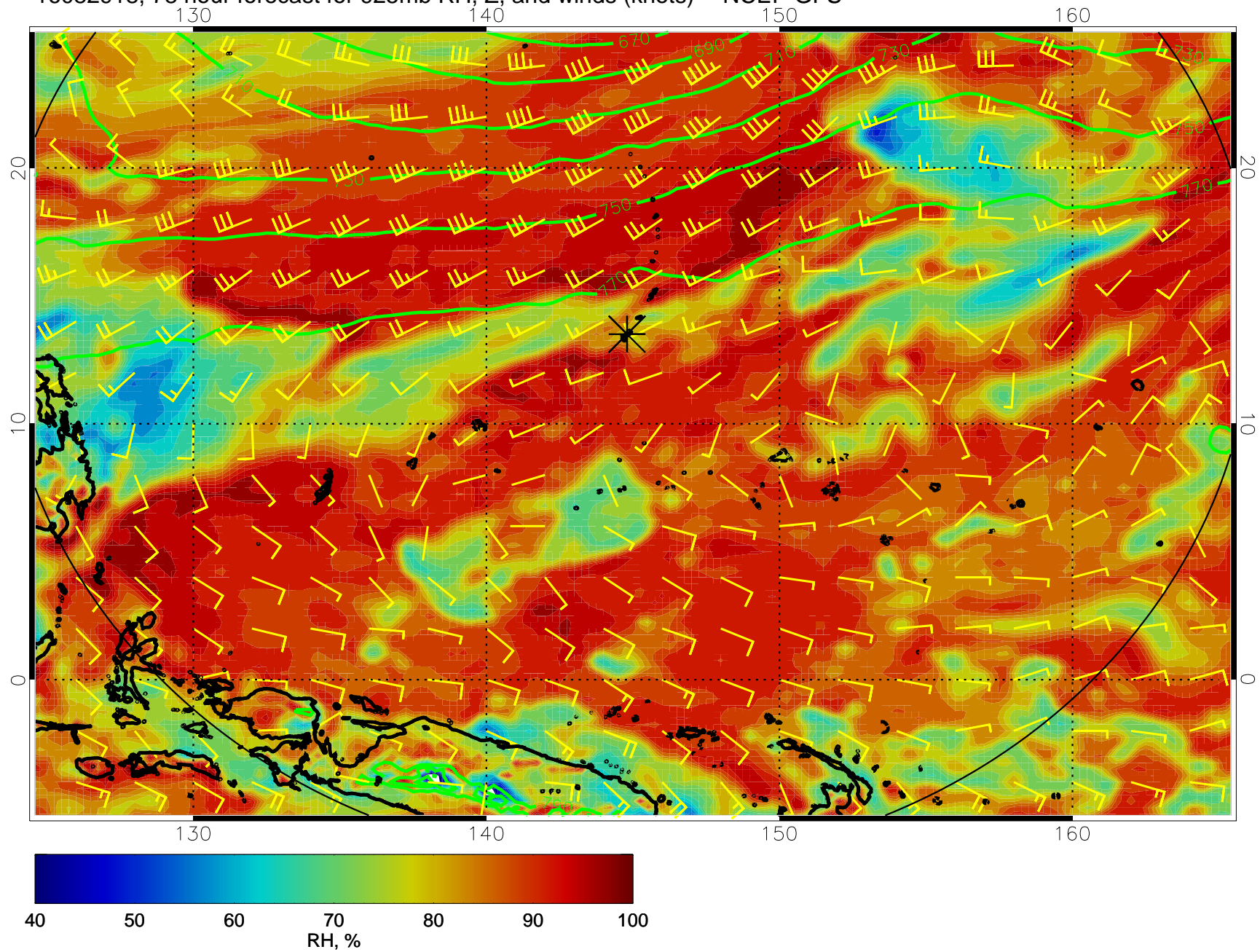
16082906, 66 hour forecast for 925mb RH, Z, and winds (knots) -- NCEP GFS



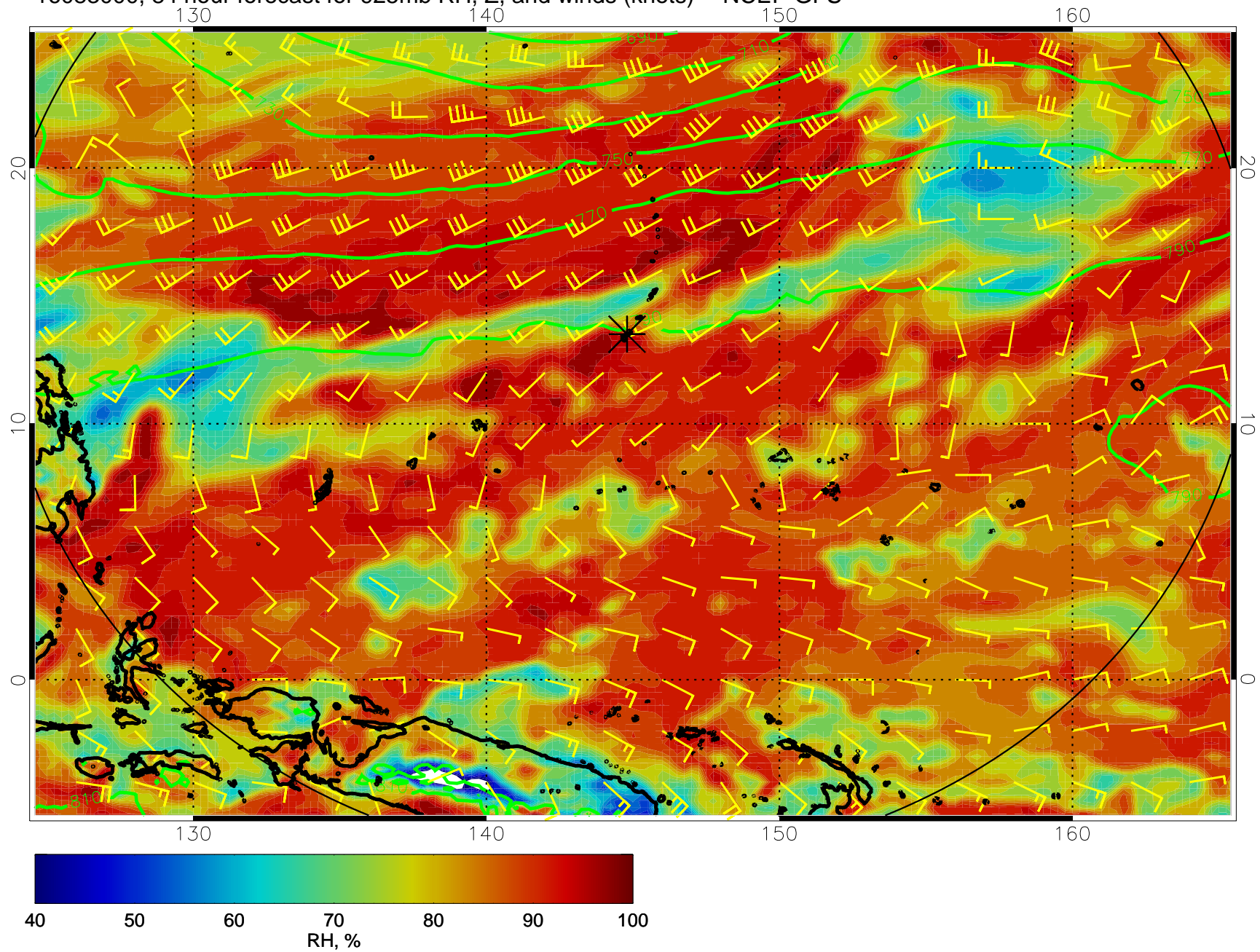
16082912, 72 hour forecast for 925mb RH, Z, and winds (knots) -- NCEP GFS



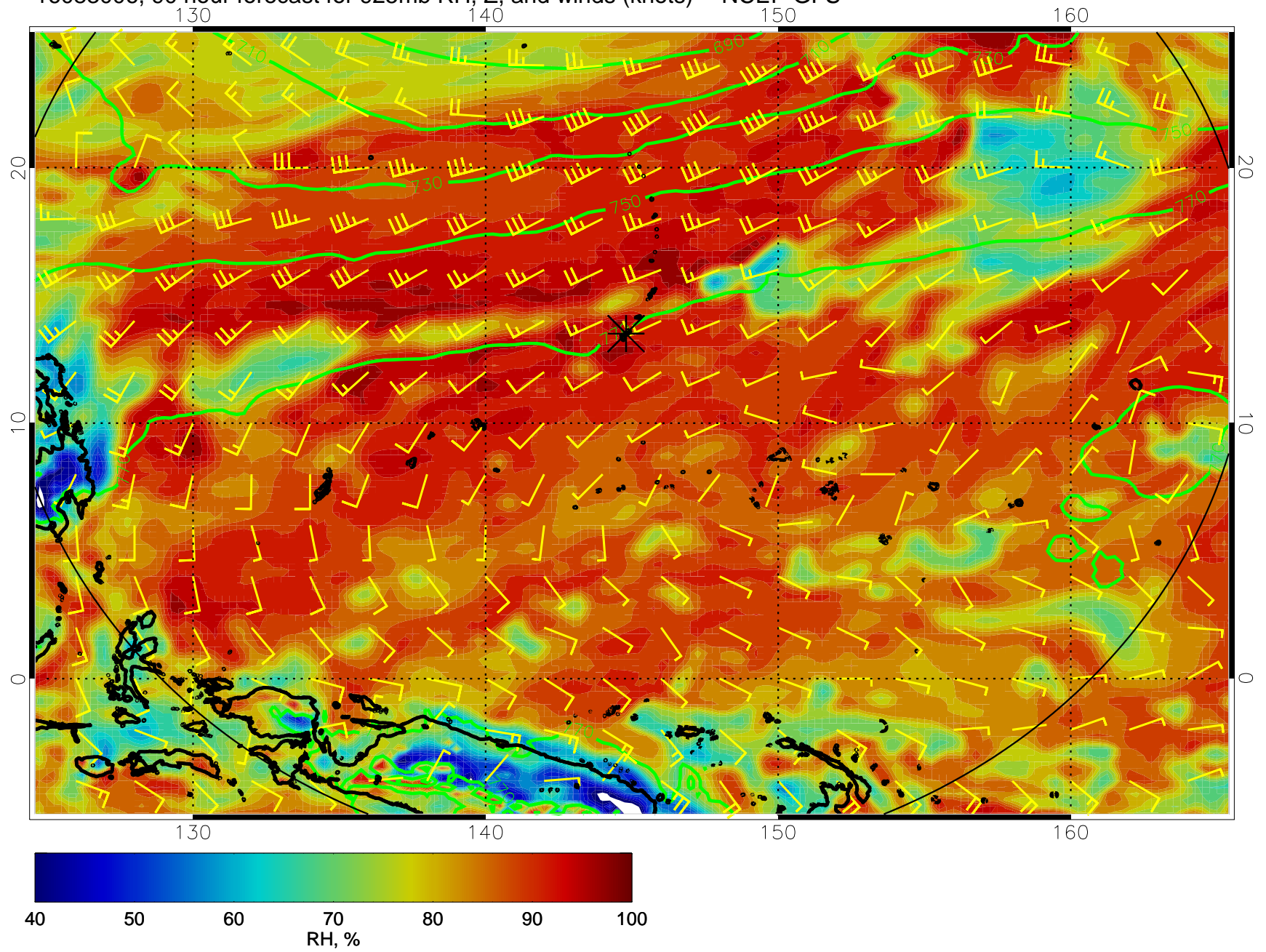
16082918, 78 hour forecast for 925mb RH, Z, and winds (knots) -- NCEP GFS



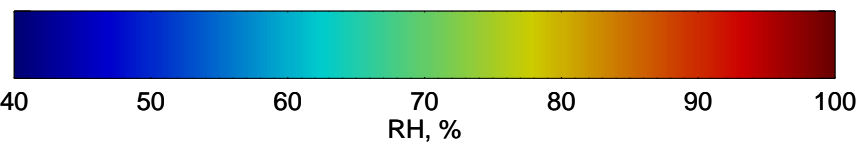
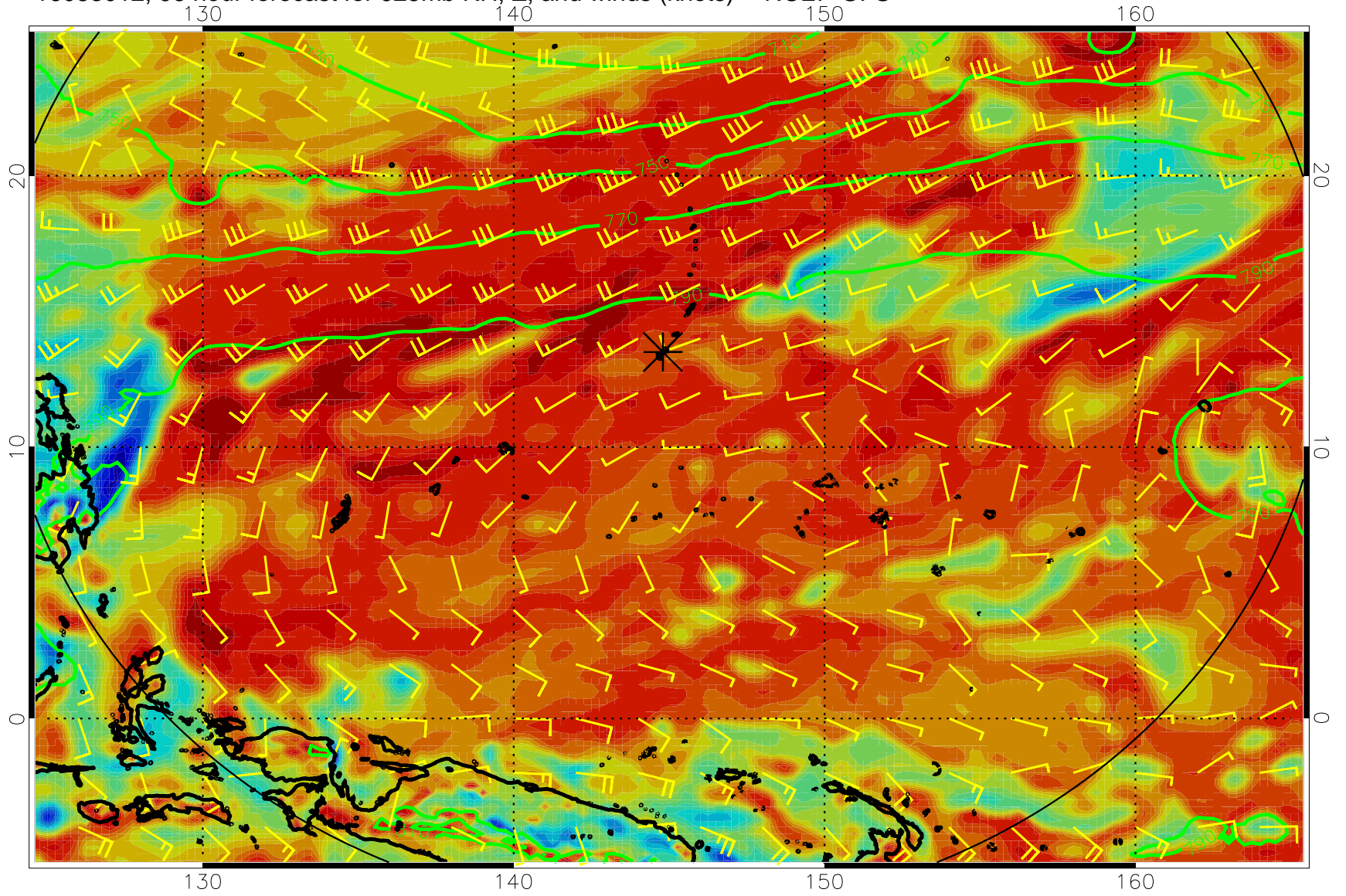
16083000, 84 hour forecast for 925mb RH, Z, and winds (knots) -- NCEP GFS



16083006, 90 hour forecast for 925mb RH, Z, and winds (knots) -- NCEP GFS

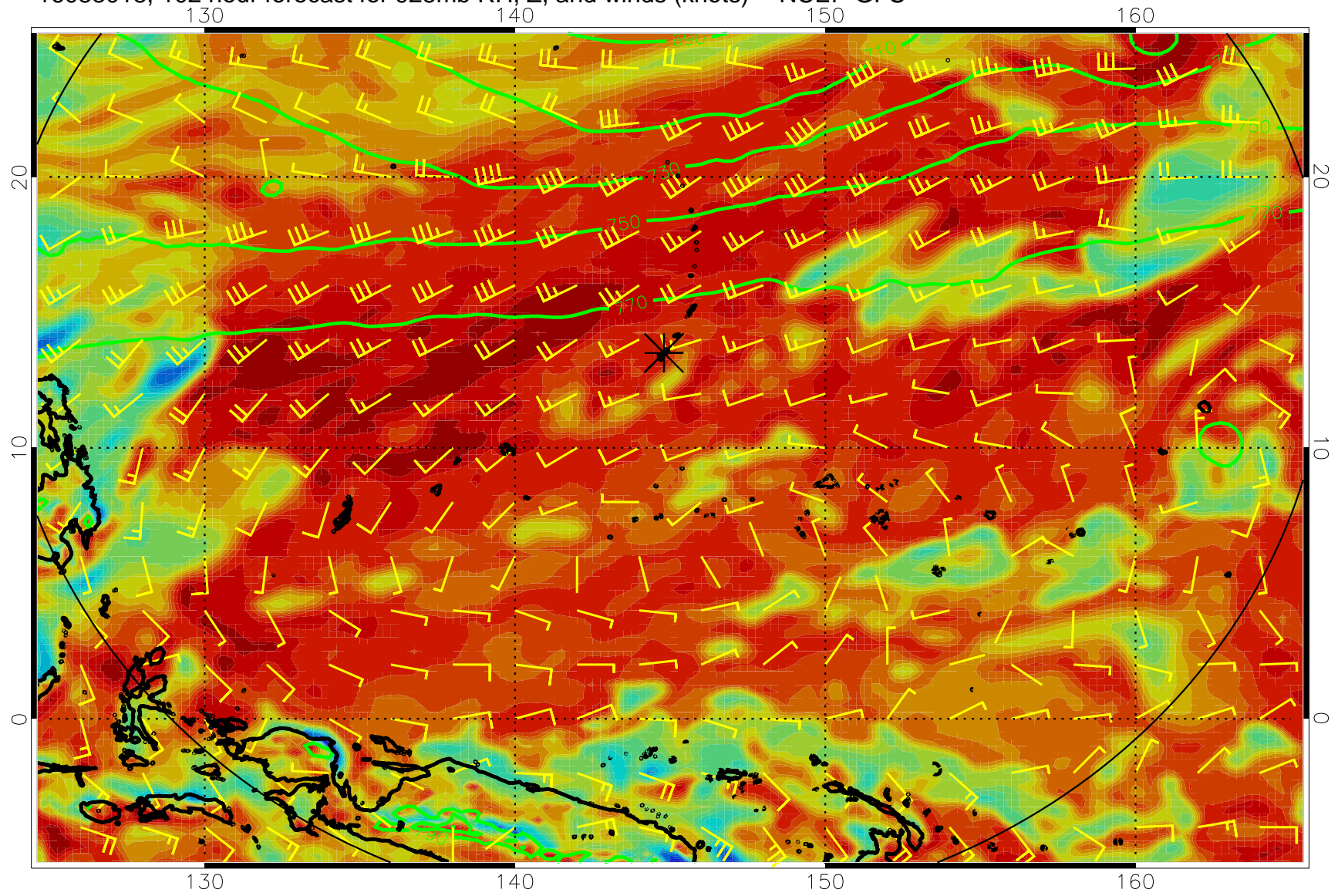


16083012, 96 hour forecast for 925mb RH, Z, and winds (knots) -- NCEP GFS

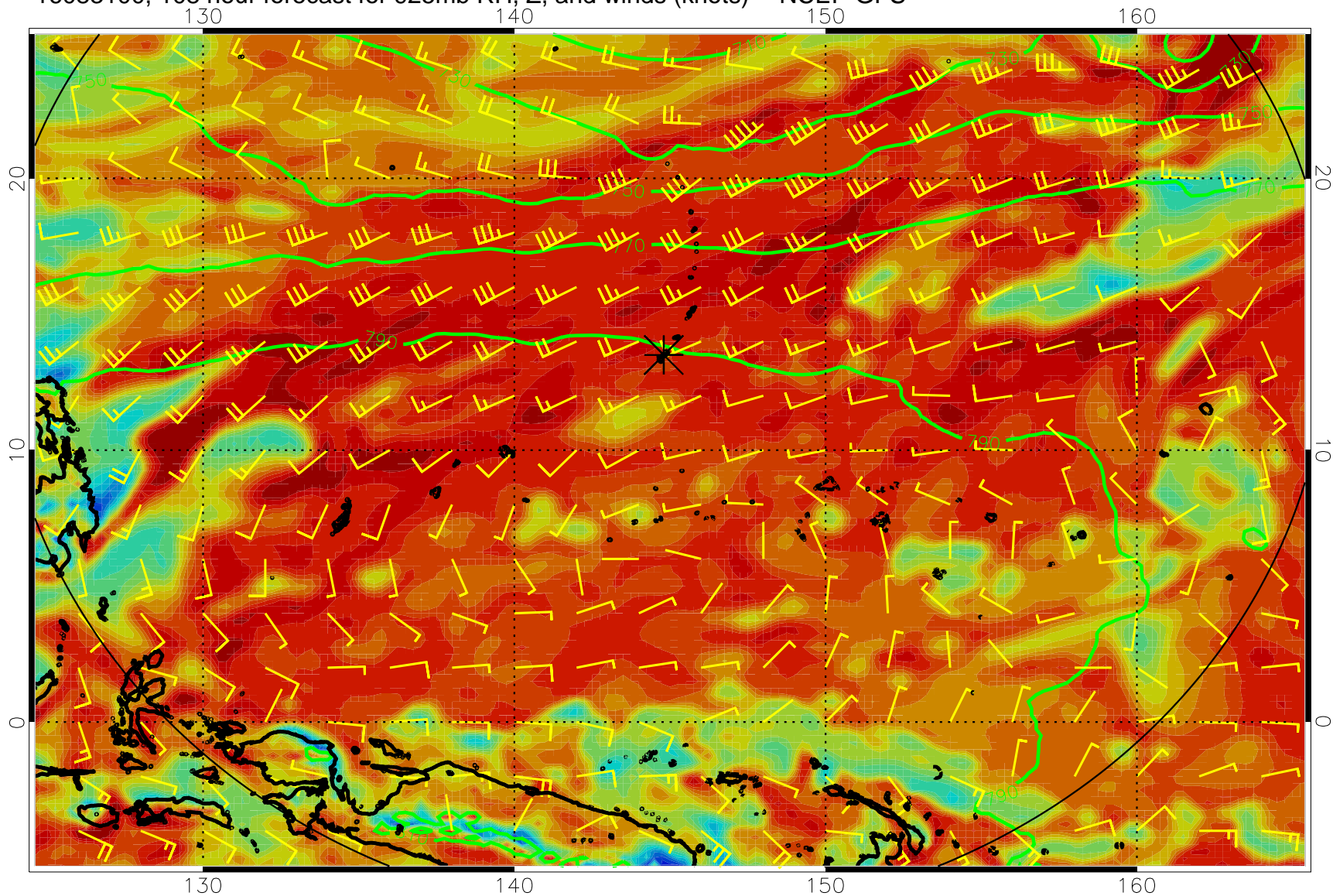




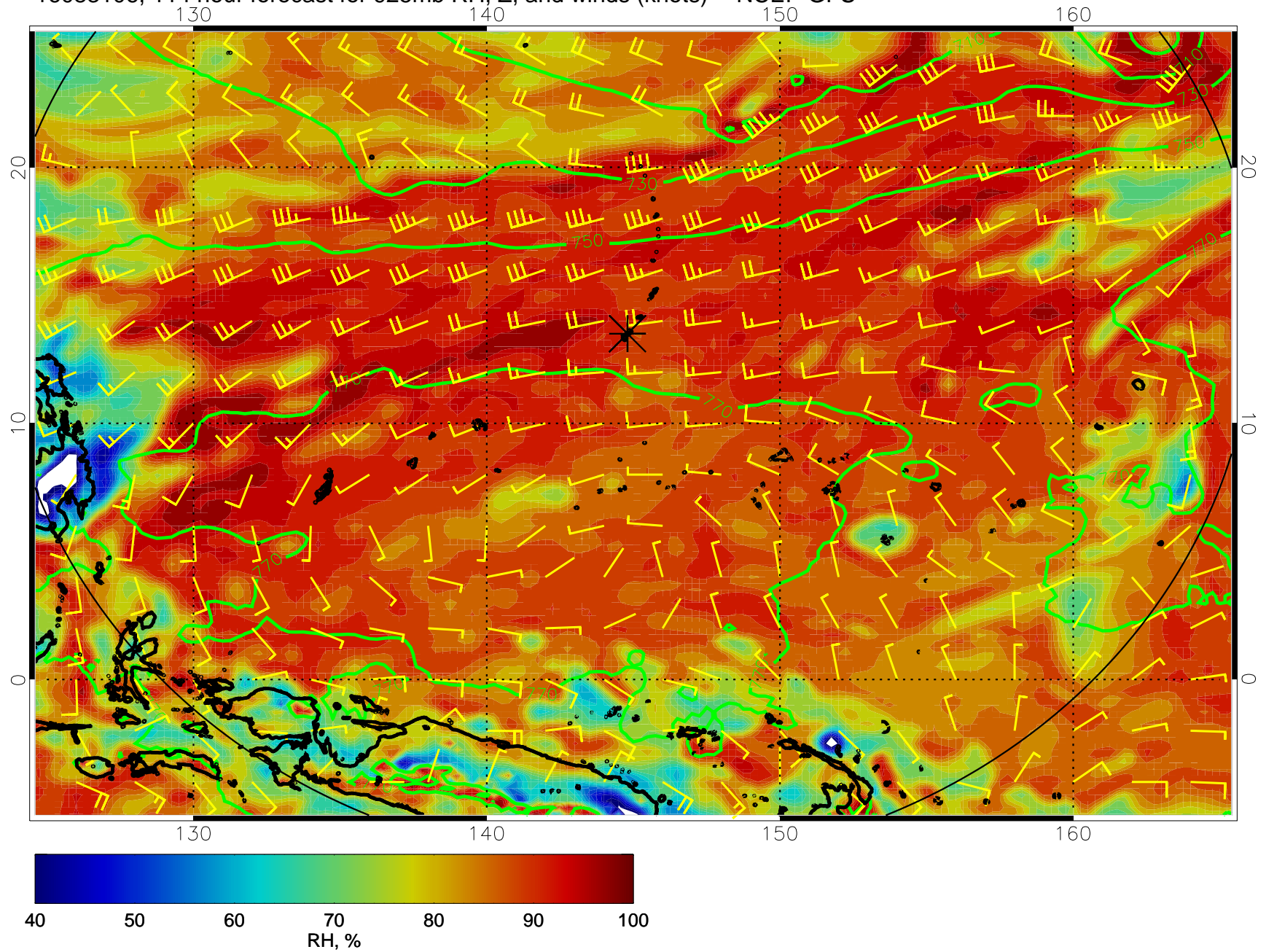
16083018, 102 hour forecast for 925mb RH, Z, and winds (knots) -- NCEP GFS



16083100, 108 hour forecast for 925mb RH, Z, and winds (knots) -- NCEP GFS



16083106, 114 hour forecast for 925mb RH, Z, and winds (knots) -- NCEP GFS



16083112, 120 hour forecast for 925mb RH, Z, and winds (knots) -- NCEP GFS

