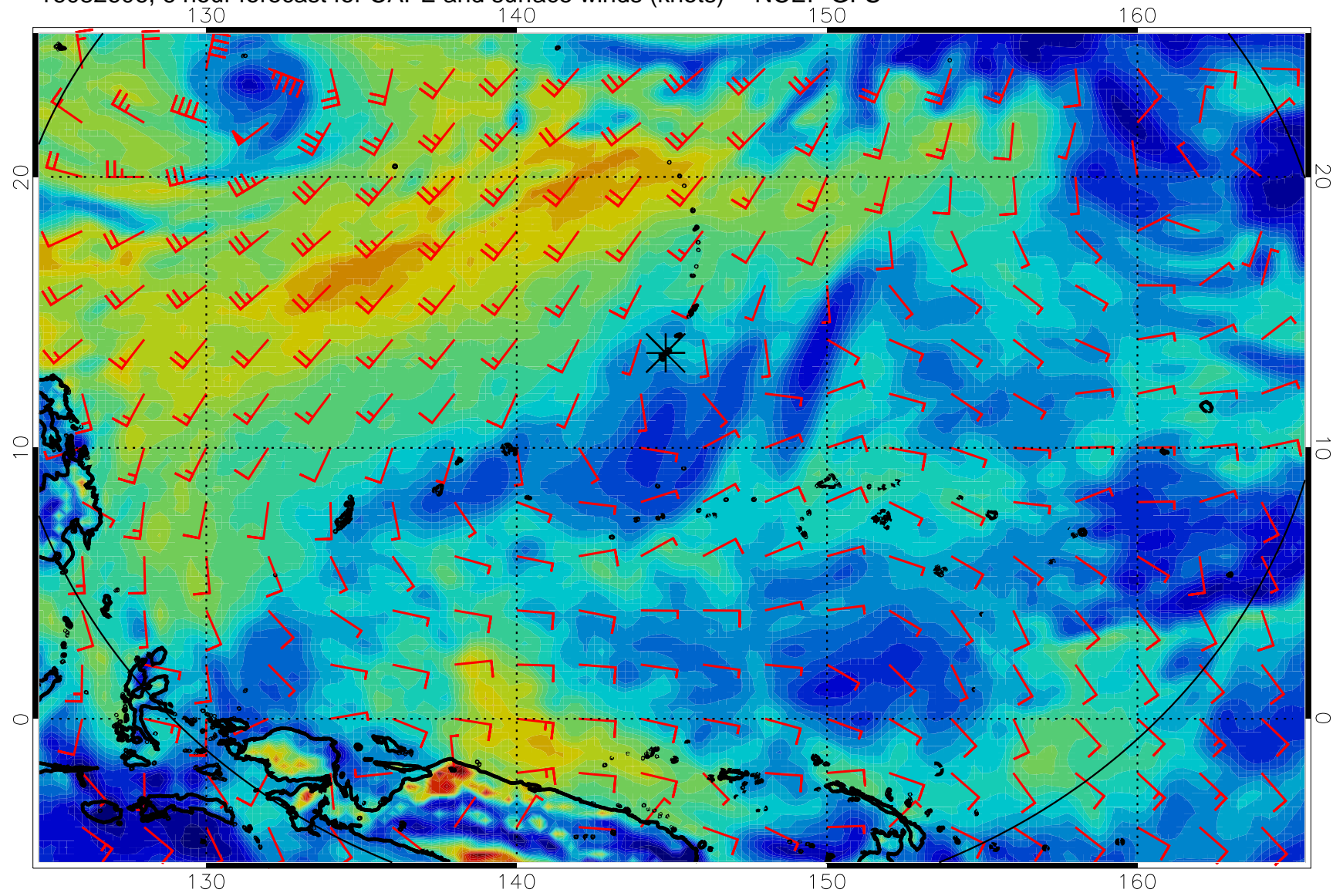
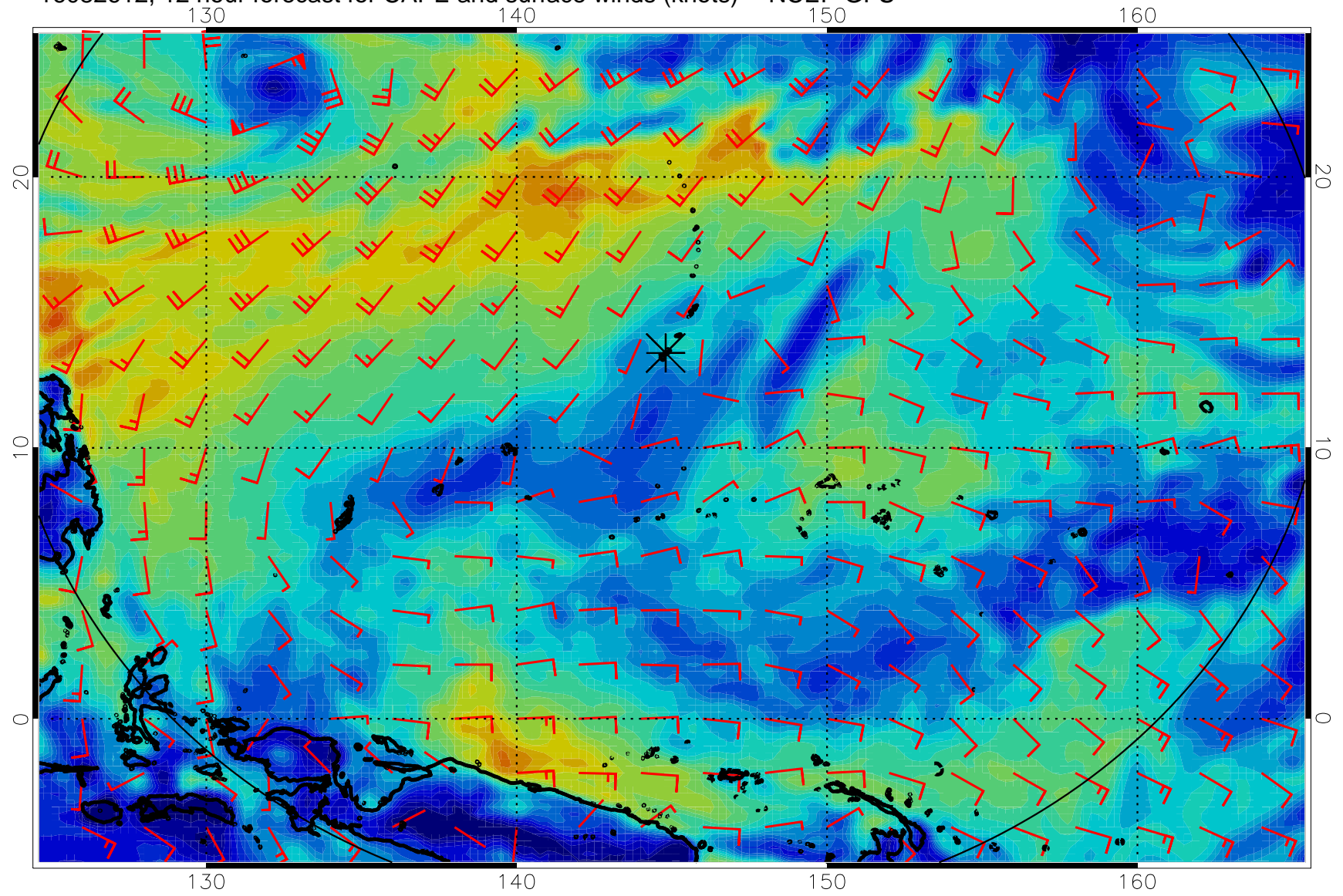


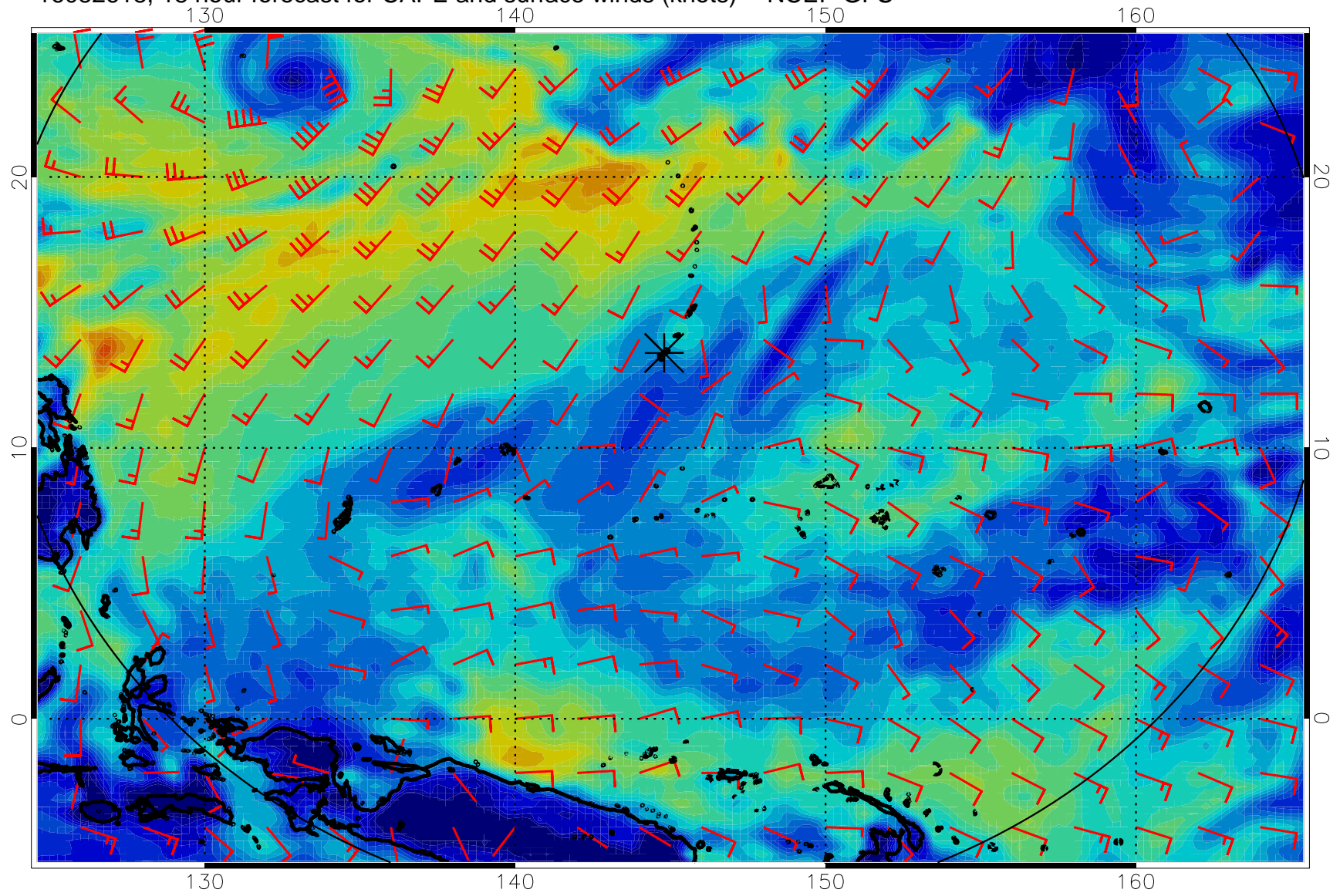
16082606, 6 hour forecast for CAPE and surface winds (knots) -- NCEP GFS



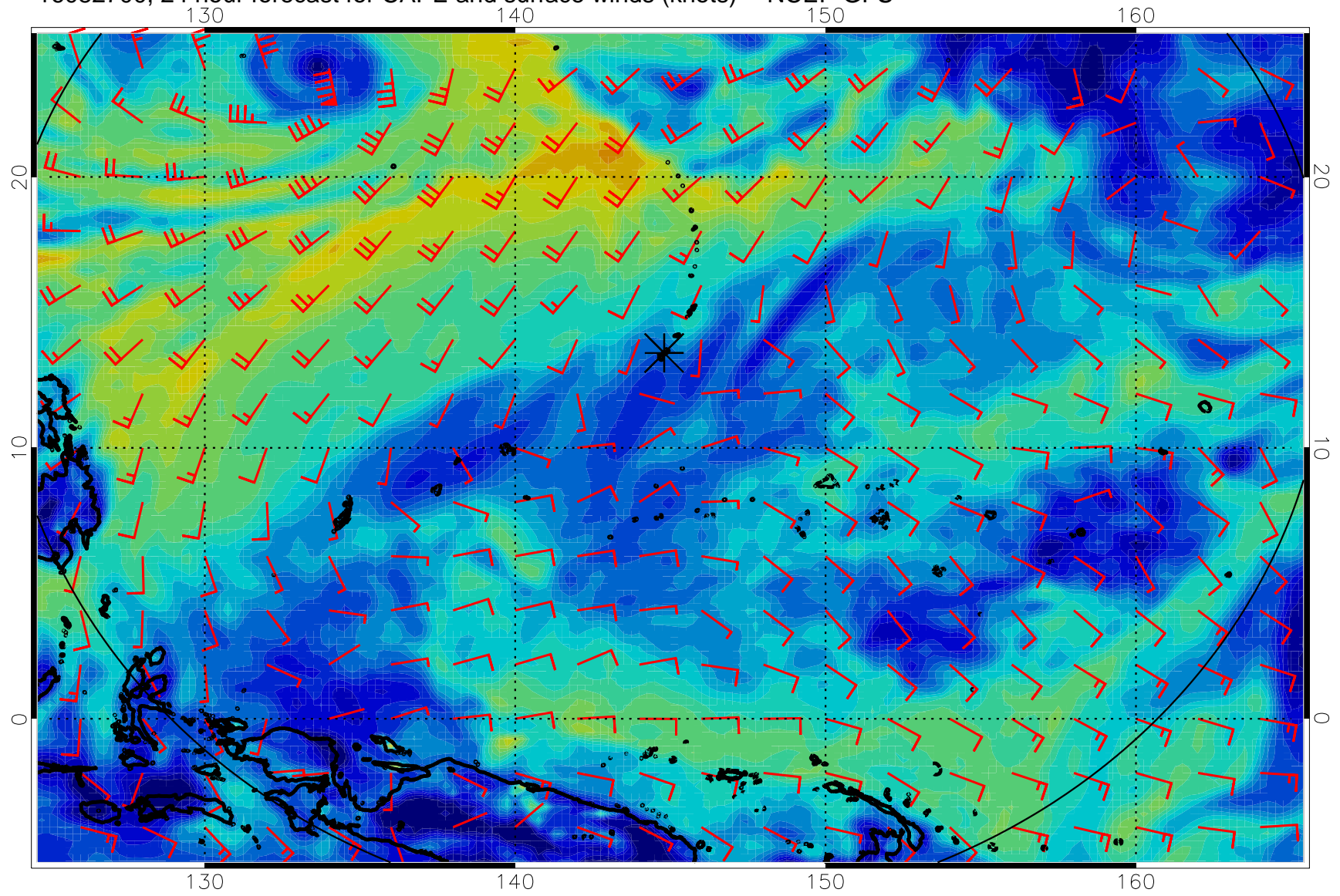
16082612, 12 hour forecast for CAPE and surface winds (knots) -- NCEP GFS



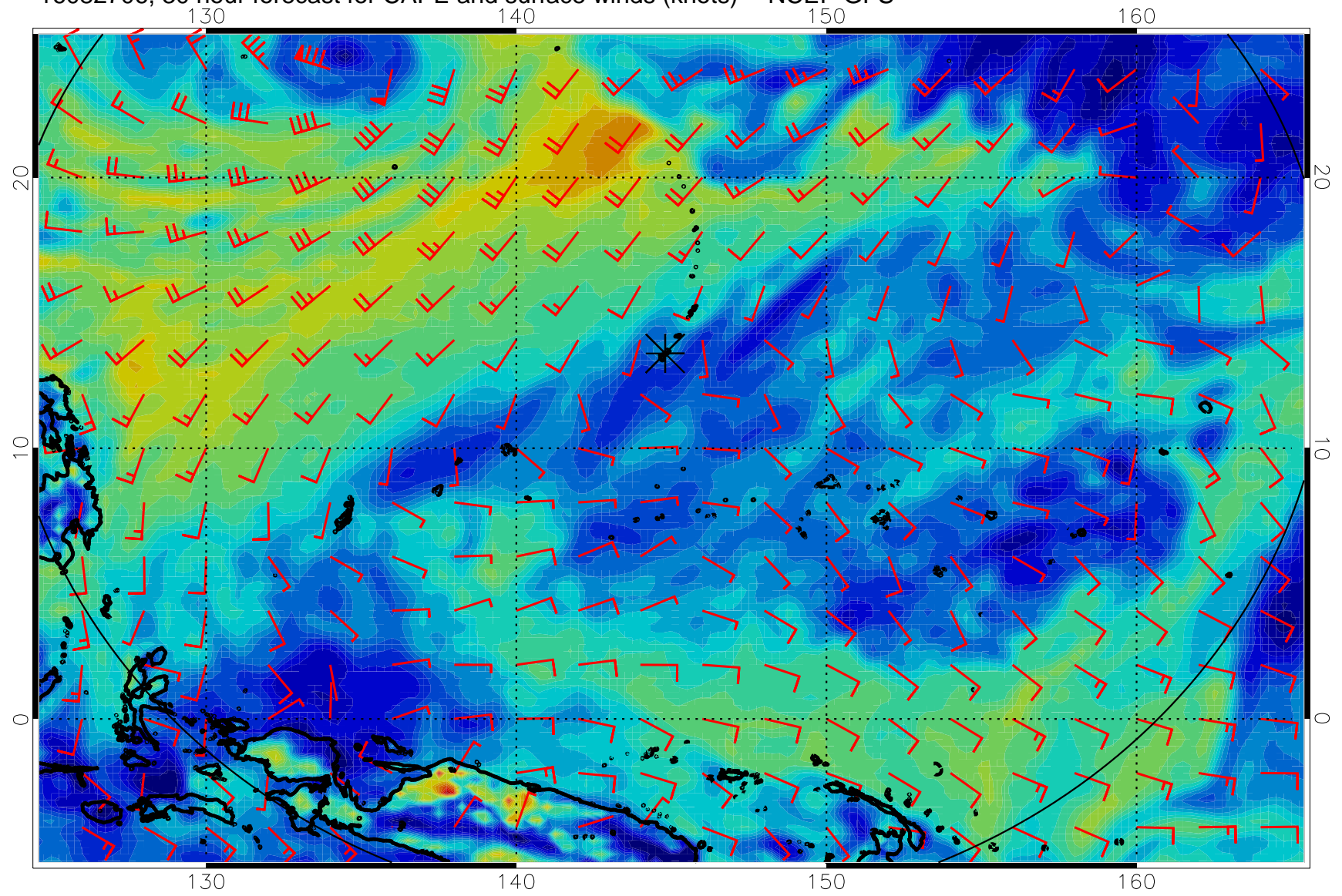
16082618, 18 hour forecast for CAPE and surface winds (knots) -- NCEP GFS



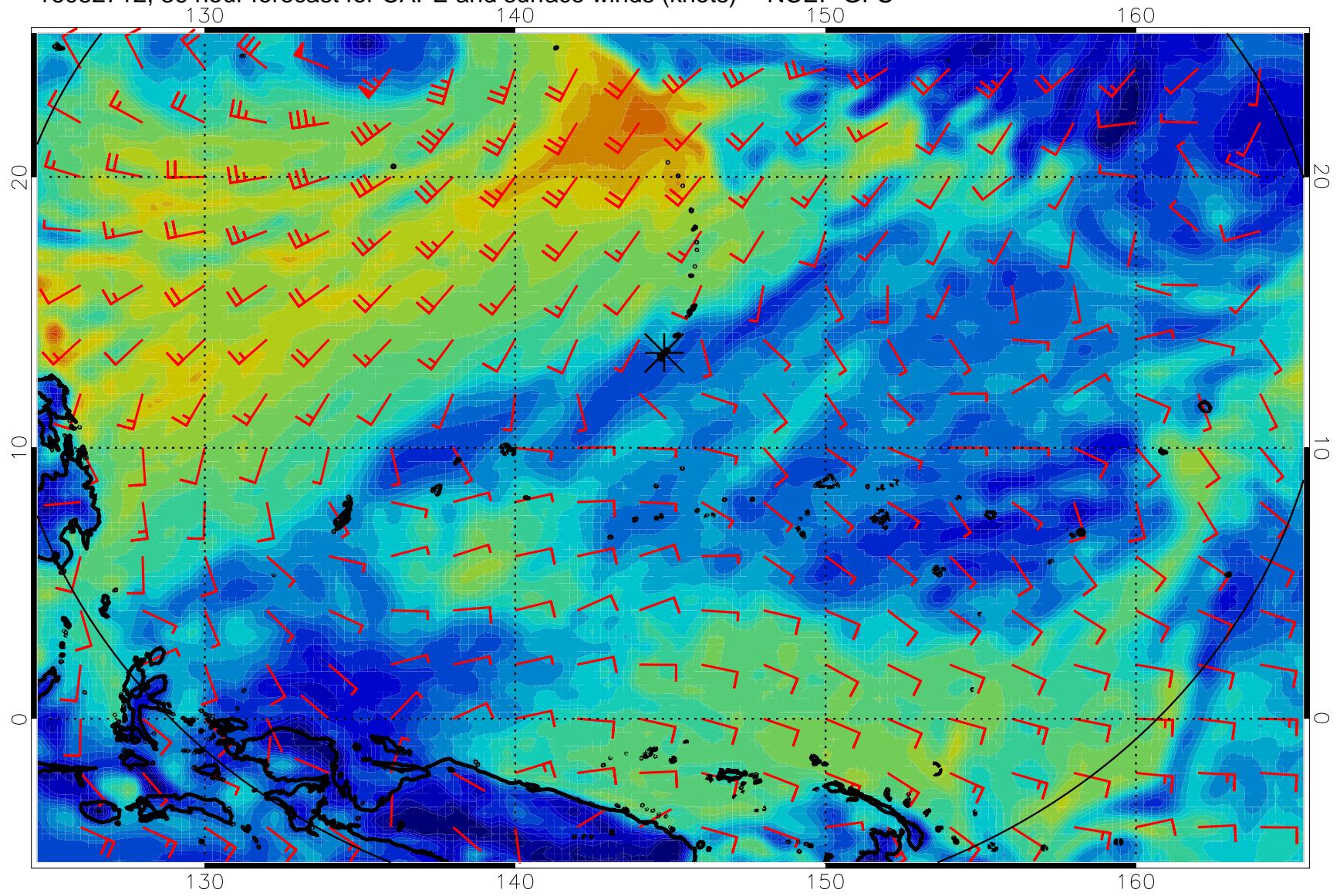
16082700, 24 hour forecast for CAPE and surface winds (knots) -- NCEP GFS



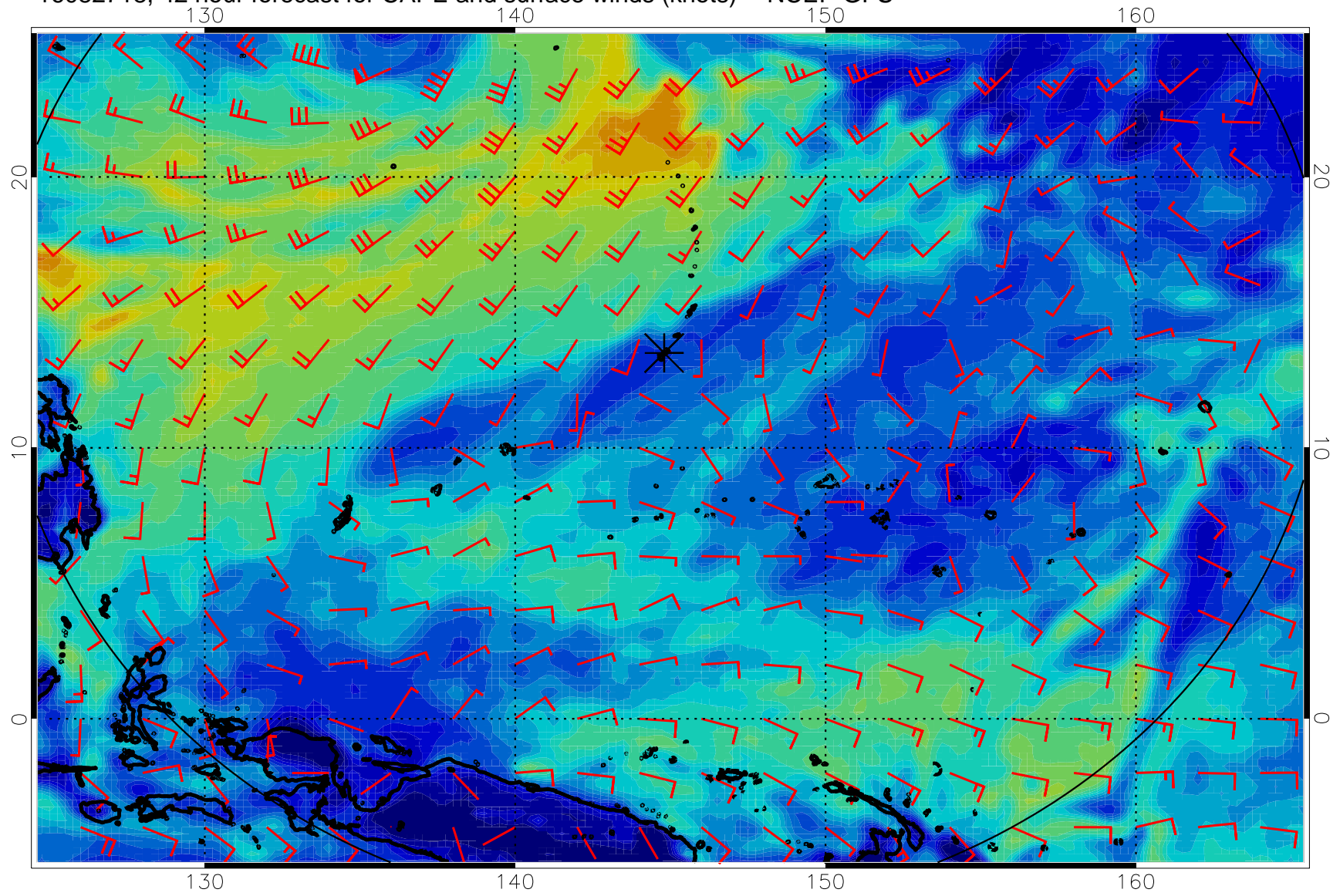
16082706, 30 hour forecast for CAPE and surface winds (knots) -- NCEP GFS



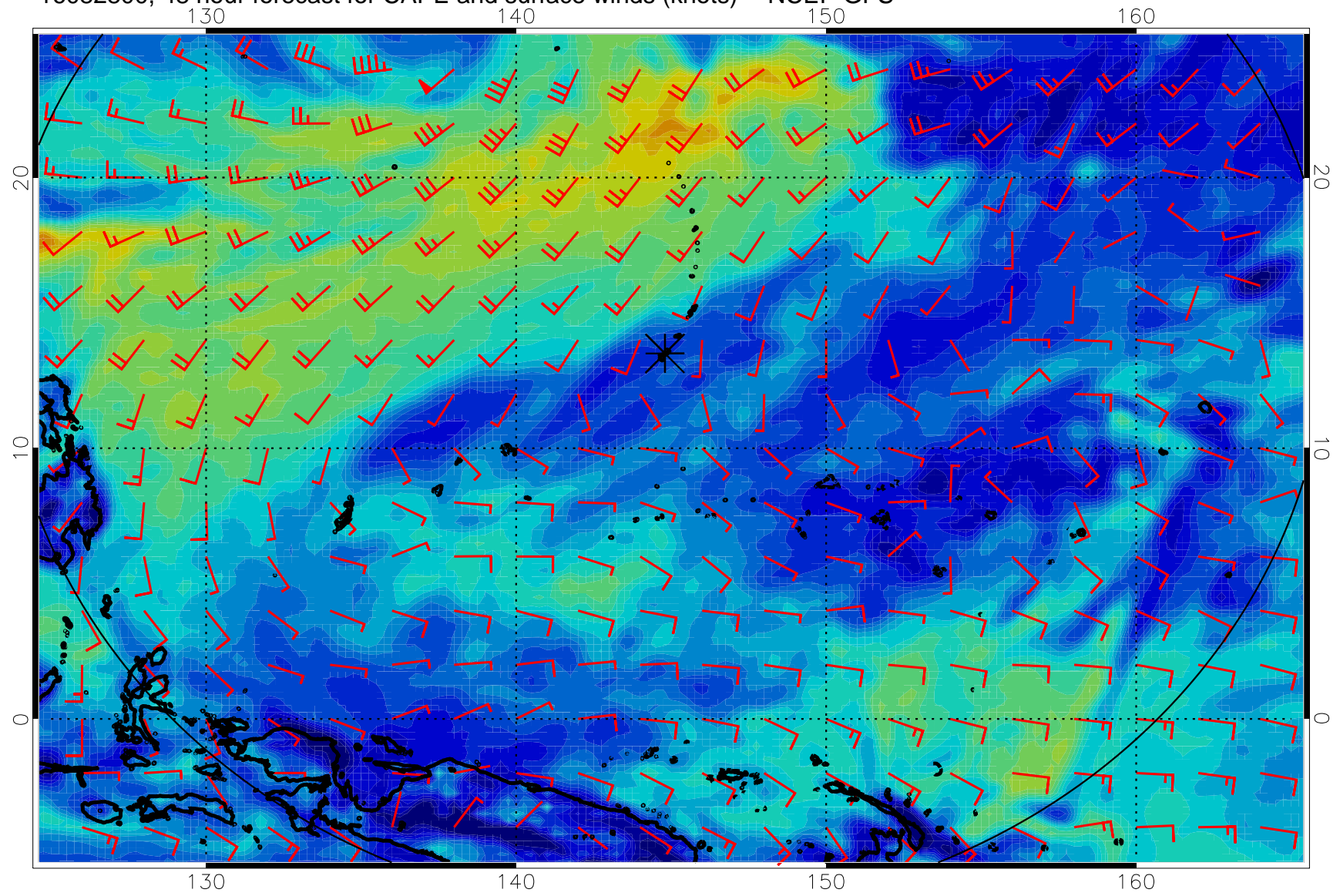
16082712, 36 hour forecast for CAPE and surface winds (knots) -- NCEP GFS



16082718, 42 hour forecast for CAPE and surface winds (knots) -- NCEP GFS

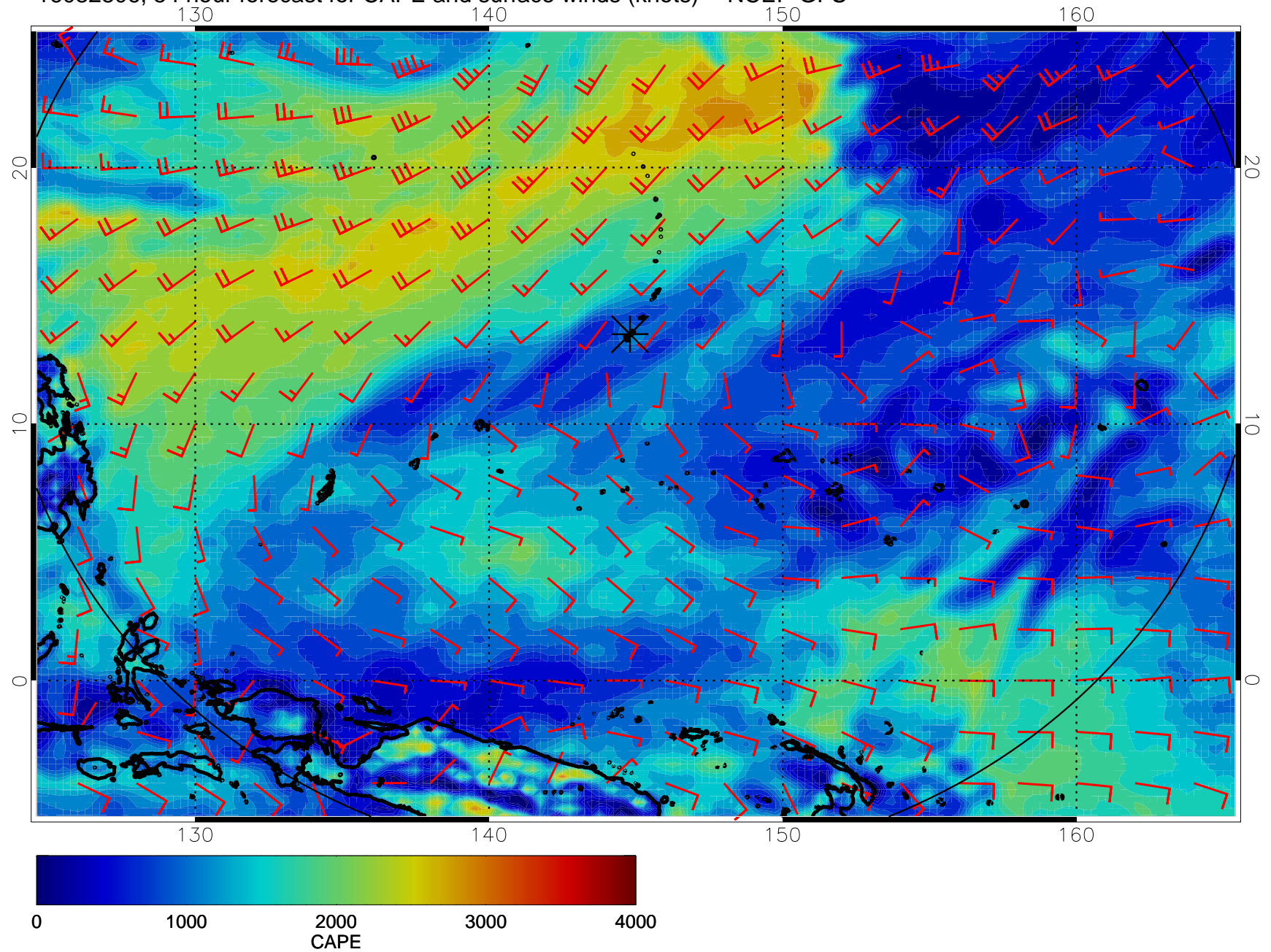


16082800, 48 hour forecast for CAPE and surface winds (knots) -- NCEP GFS

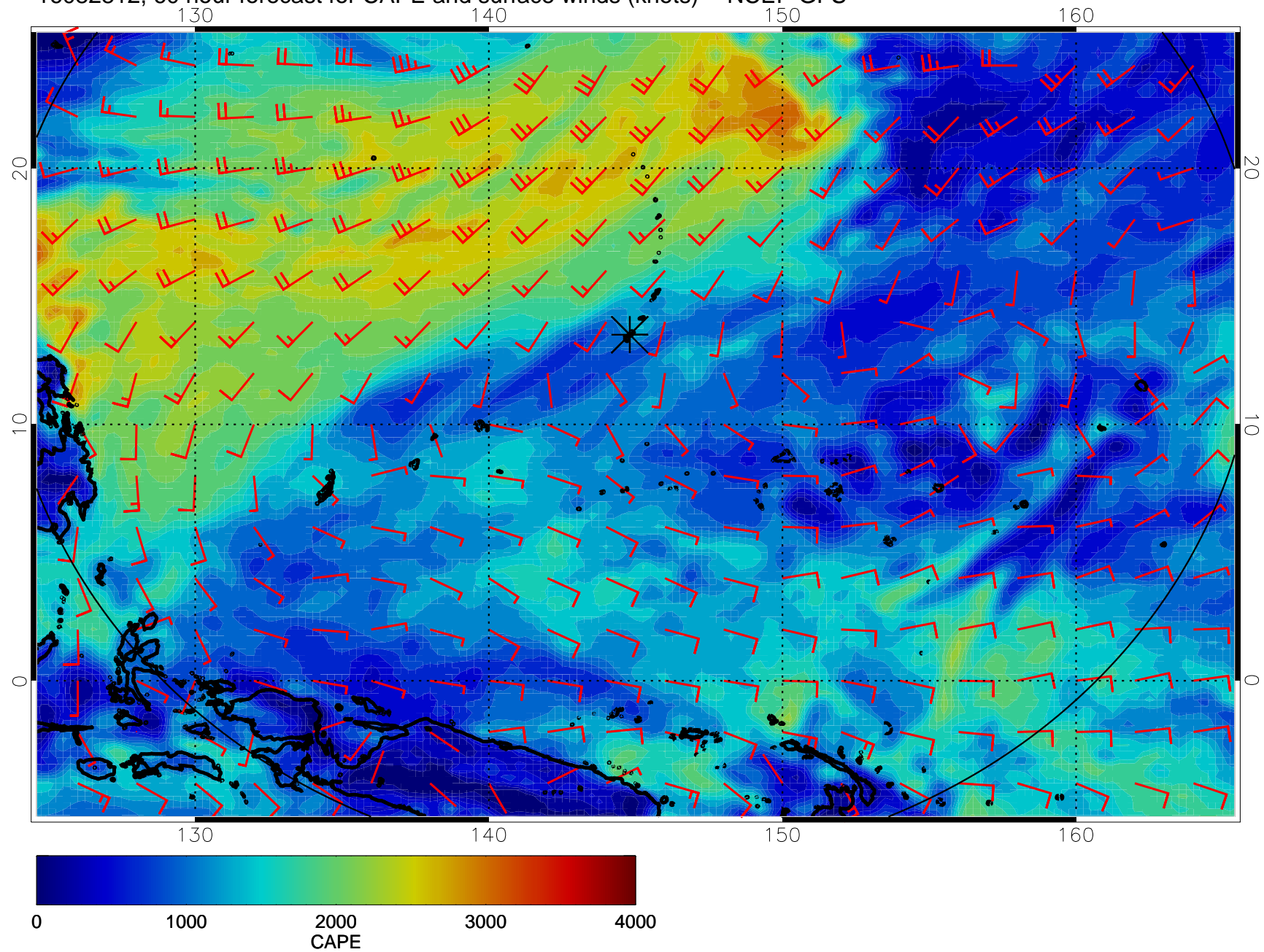




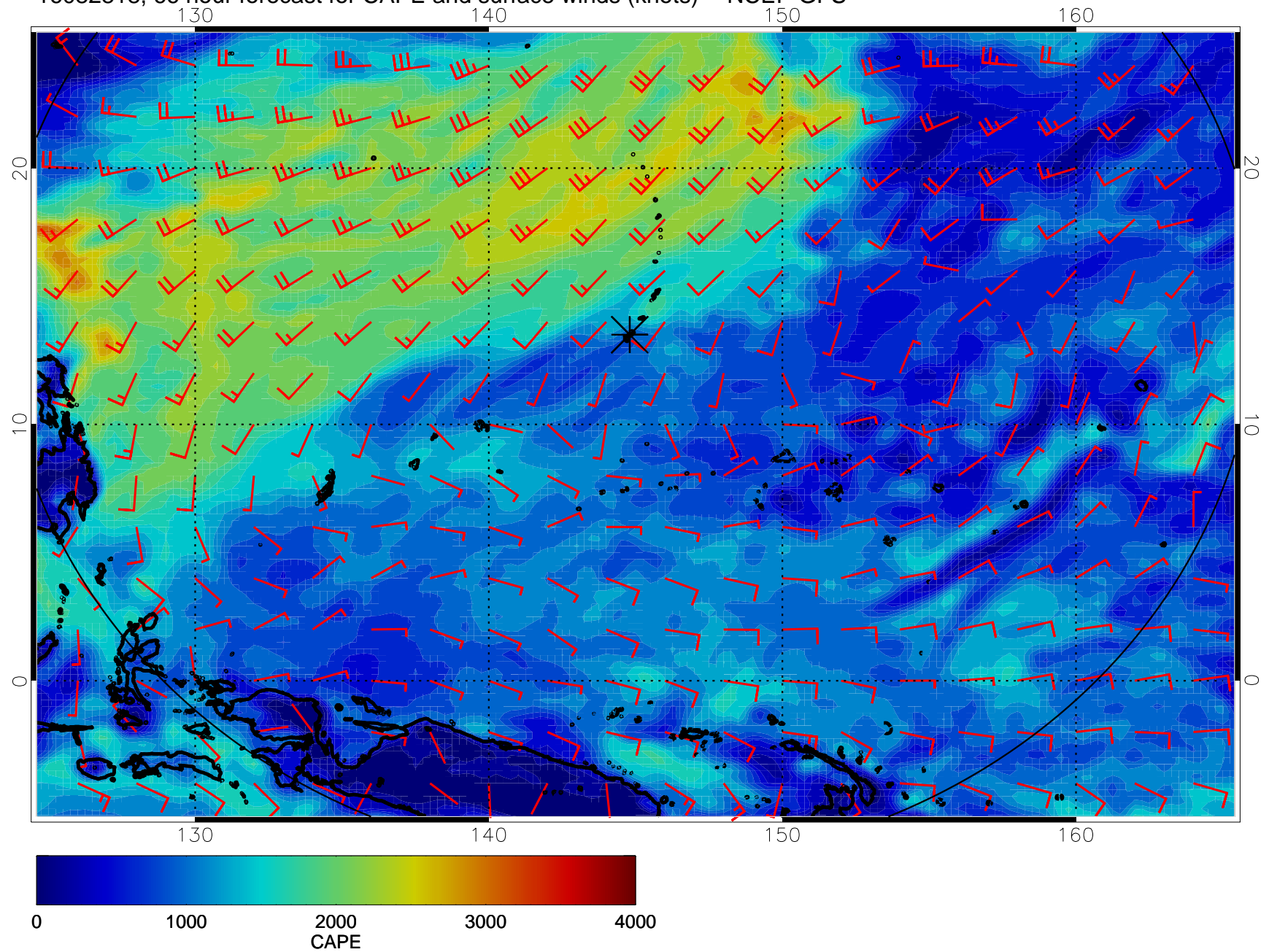
16082806, 54 hour forecast for CAPE and surface winds (knots) -- NCEP GFS



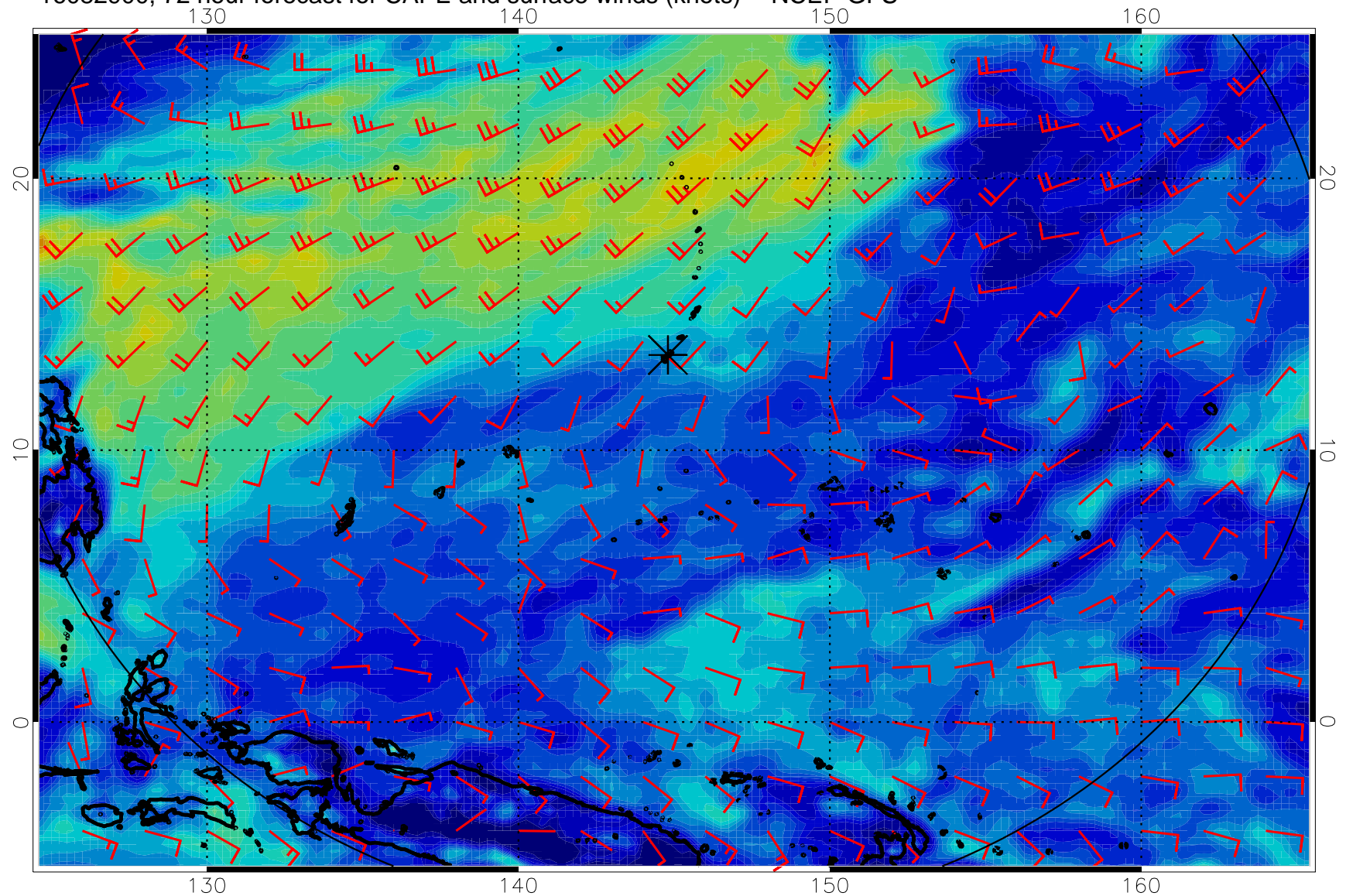
16082812, 60 hour forecast for CAPE and surface winds (knots) -- NCEP GFS



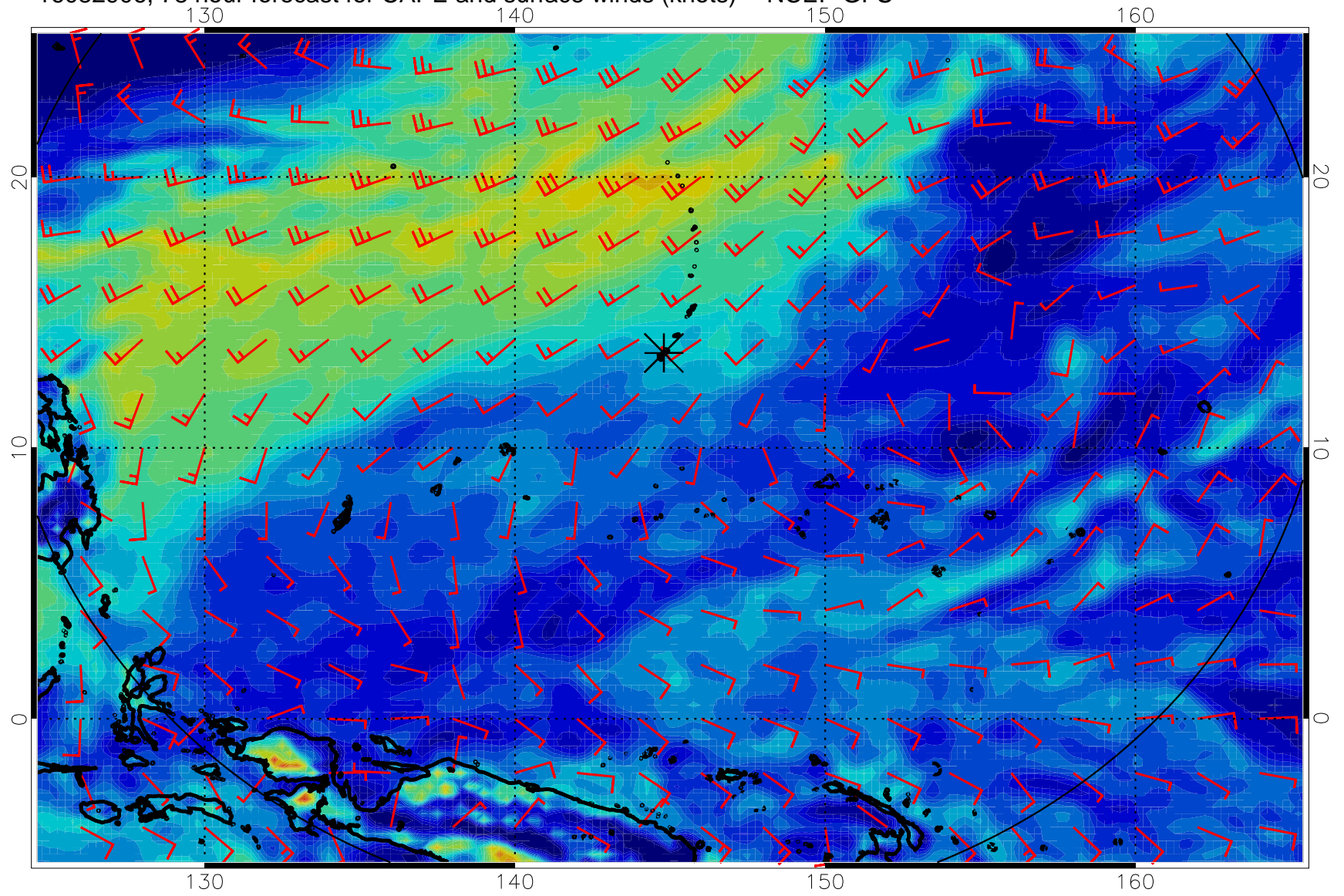
16082818, 66 hour forecast for CAPE and surface winds (knots) -- NCEP GFS



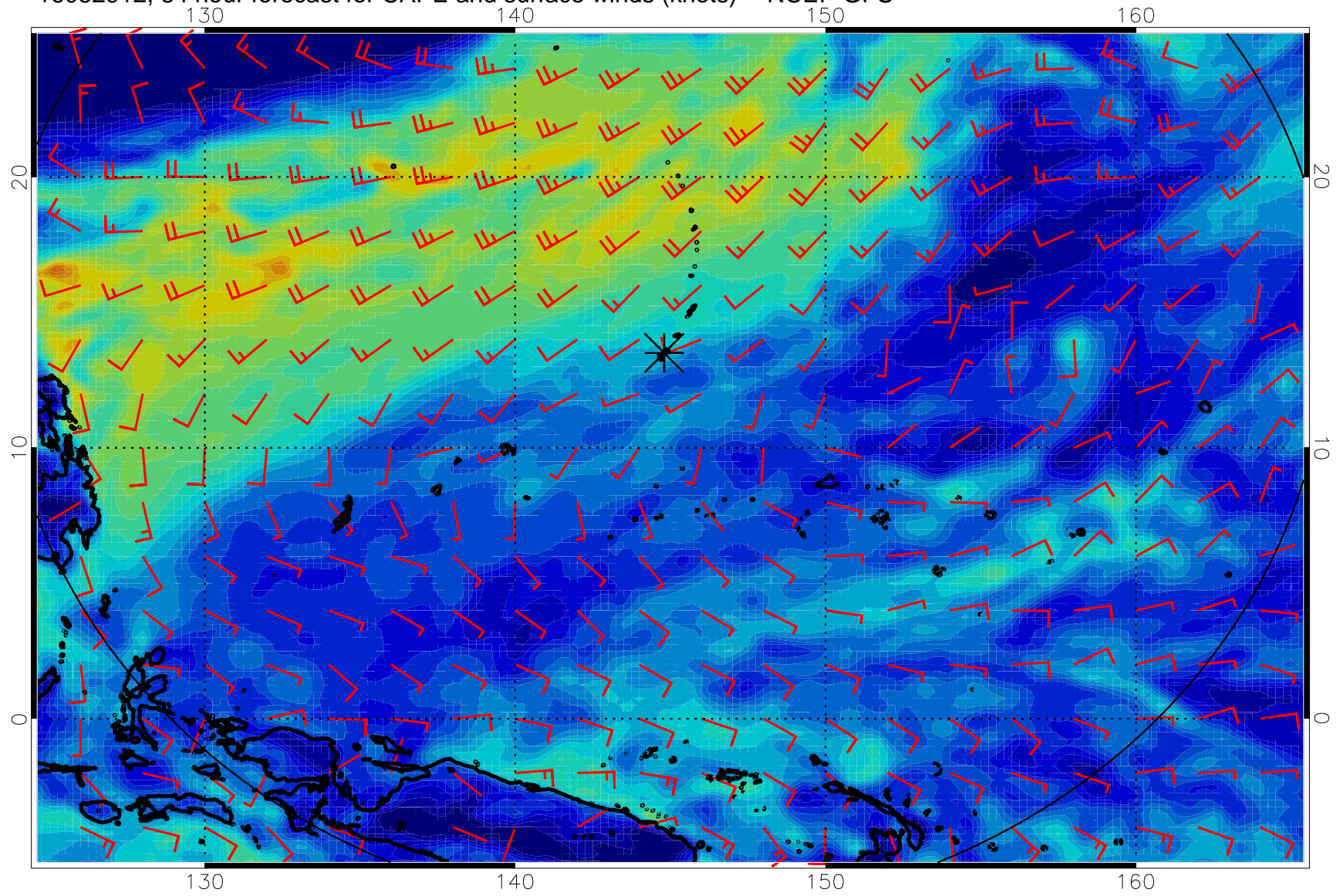
16082900, 72 hour forecast for CAPE and surface winds (knots) -- NCEP GFS



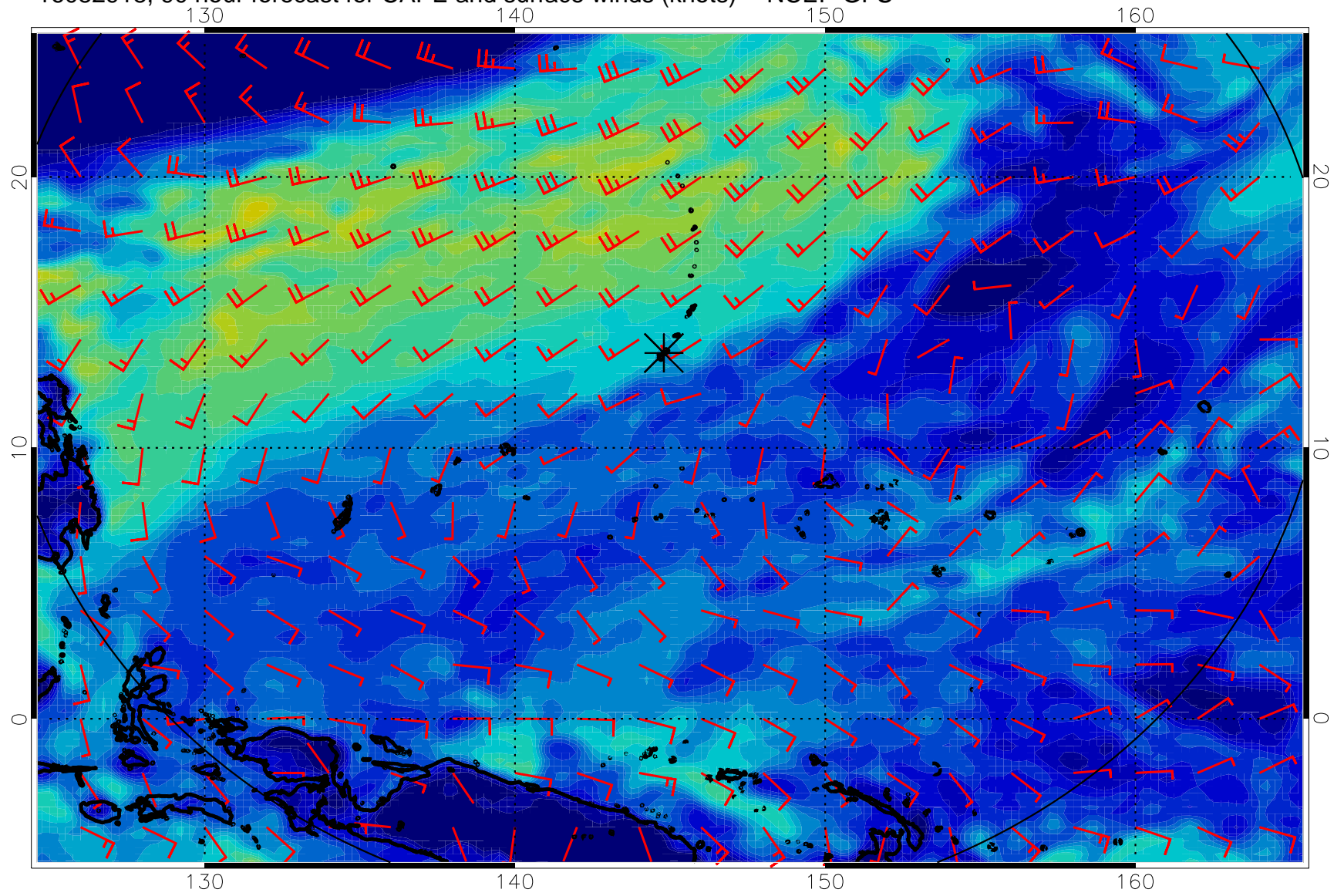
16082906, 78 hour forecast for CAPE and surface winds (knots) -- NCEP GFS



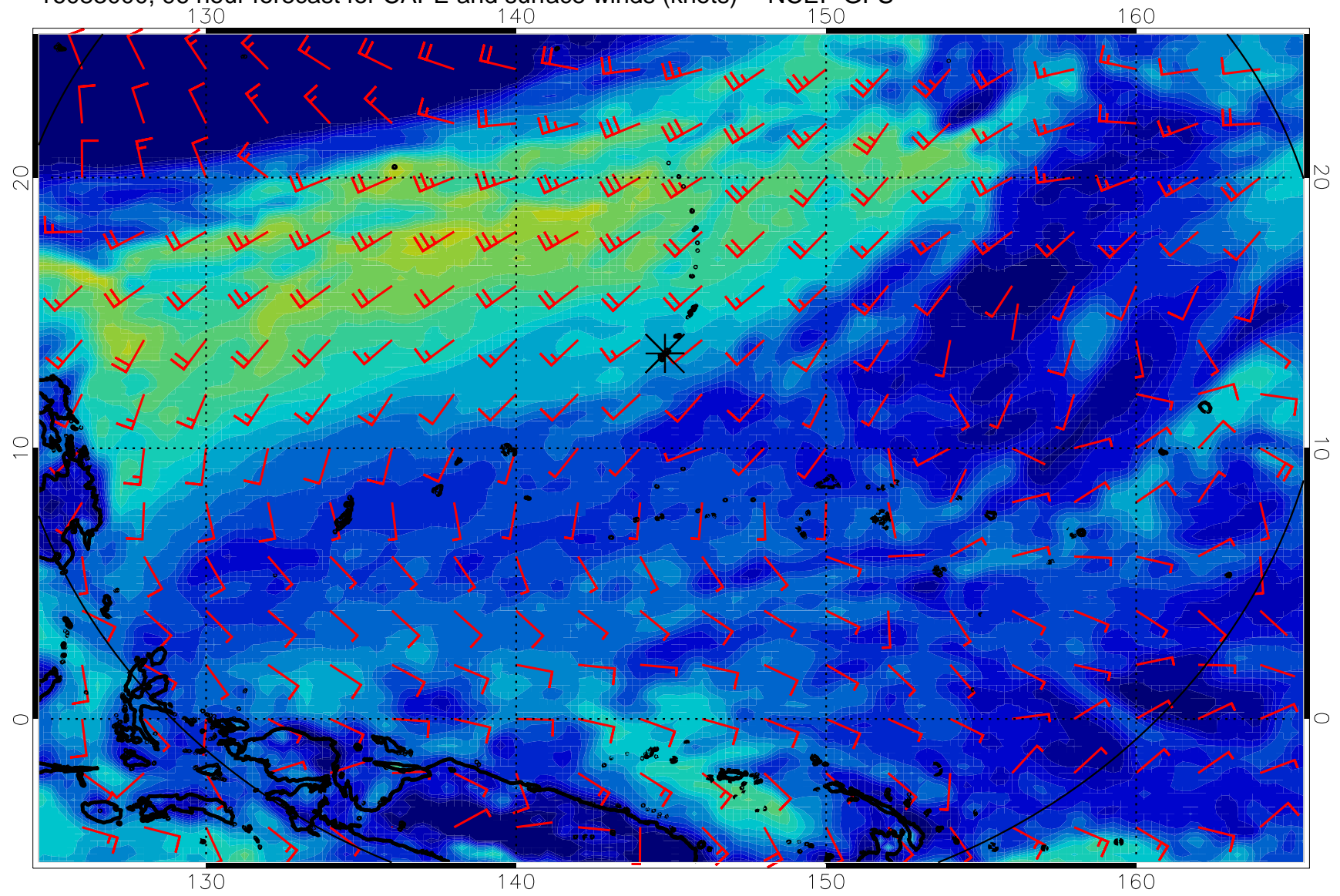
16082912, 84 hour forecast for CAPE and surface winds (knots) -- NCEP GFS



16082918, 90 hour forecast for CAPE and surface winds (knots) -- NCEP GFS

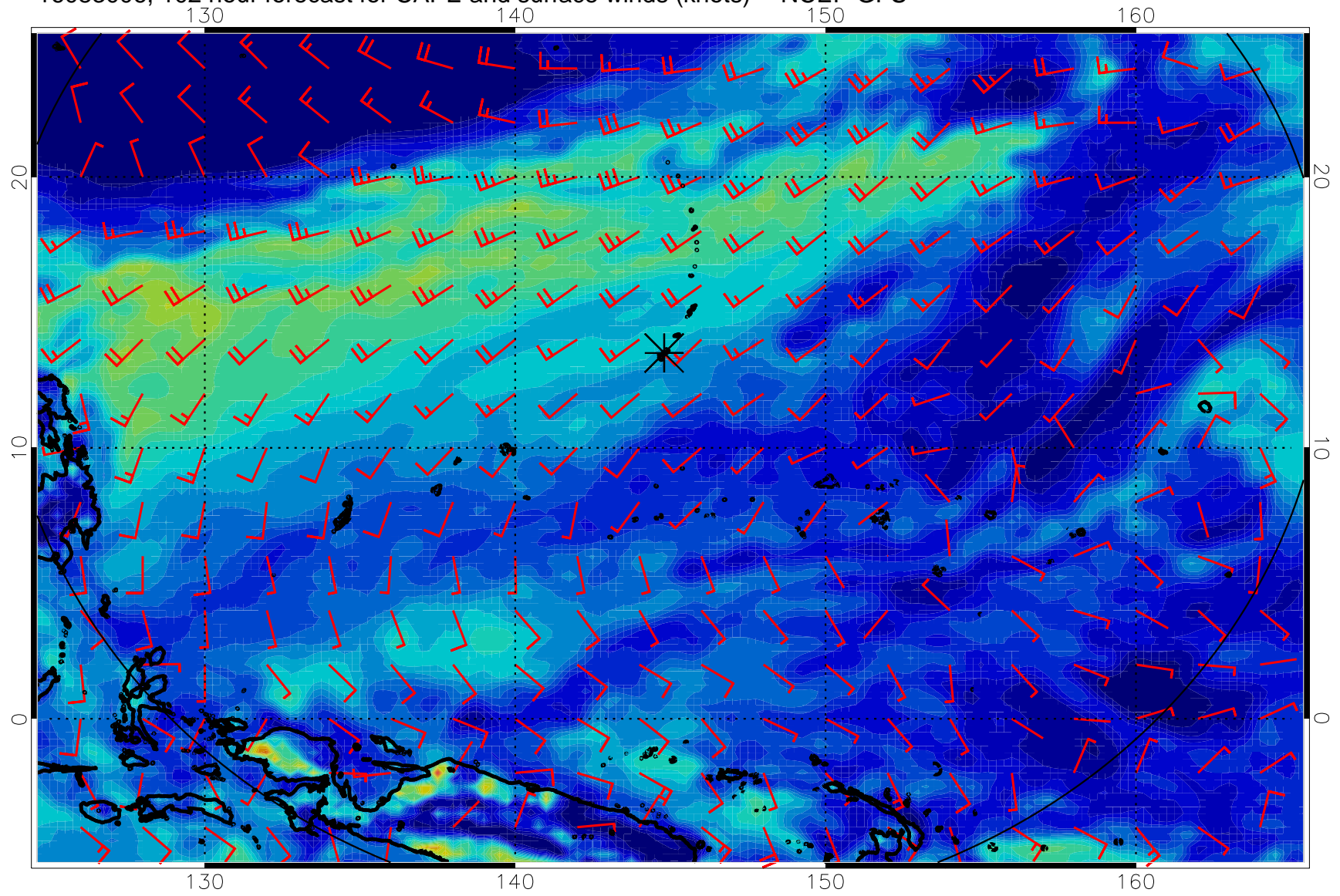


16083000, 96 hour forecast for CAPE and surface winds (knots) -- NCEP GFS

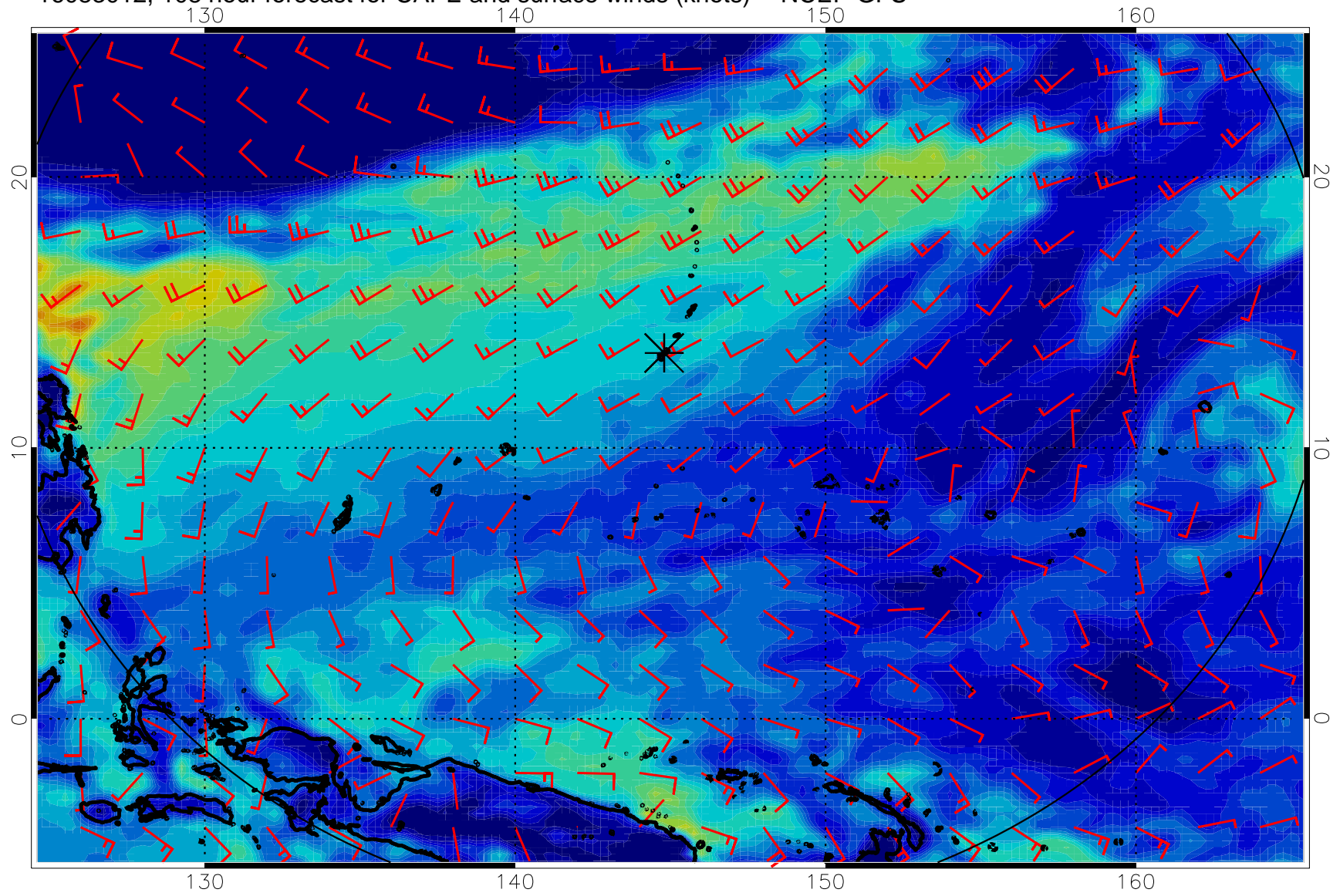




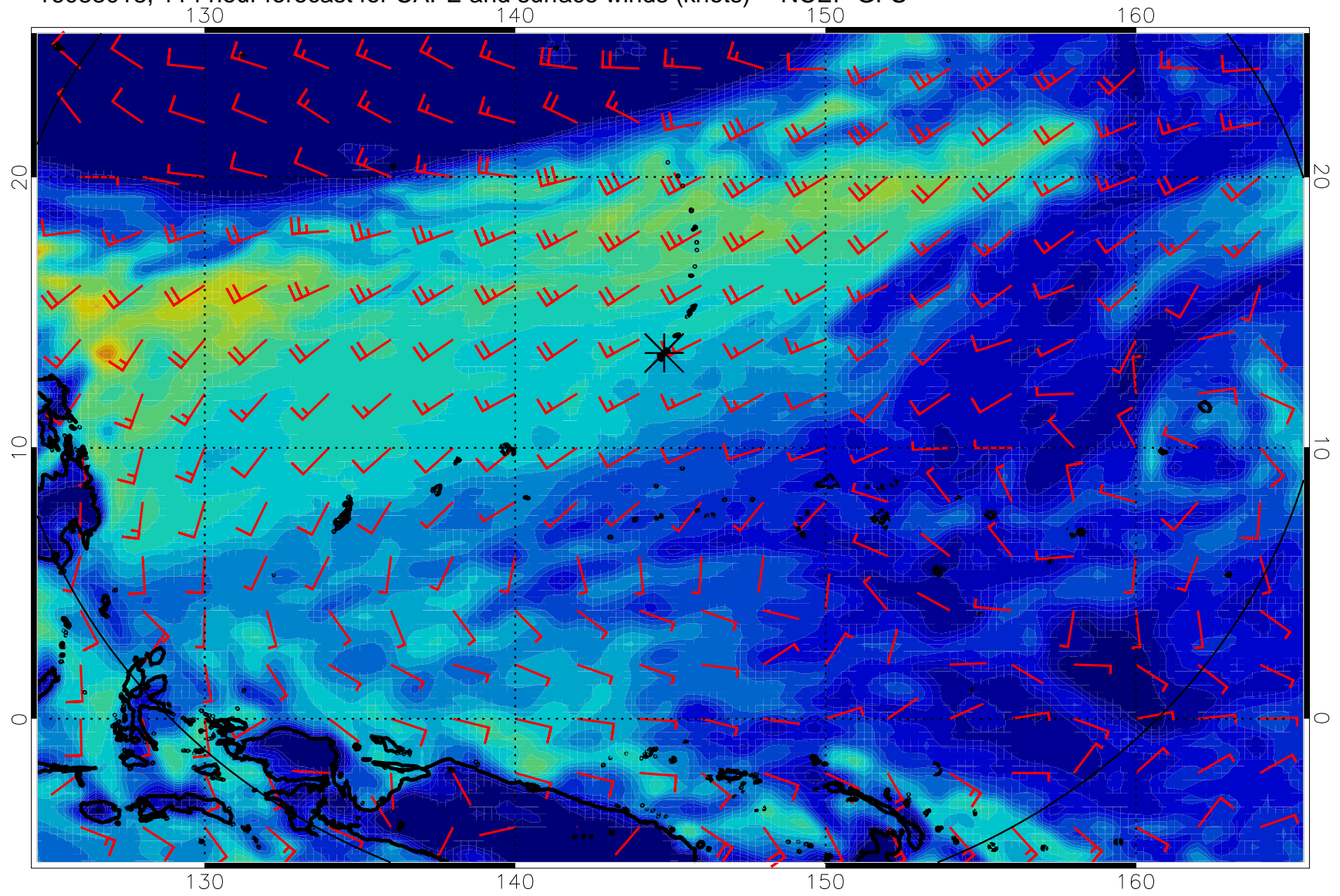
16083006, 102 hour forecast for CAPE and surface winds (knots) -- NCEP GFS



16083012, 108 hour forecast for CAPE and surface winds (knots) -- NCEP GFS



16083018, 114 hour forecast for CAPE and surface winds (knots) -- NCEP GFS



16083100, 120 hour forecast for CAPE and surface winds (knots) -- NCEP GFS

