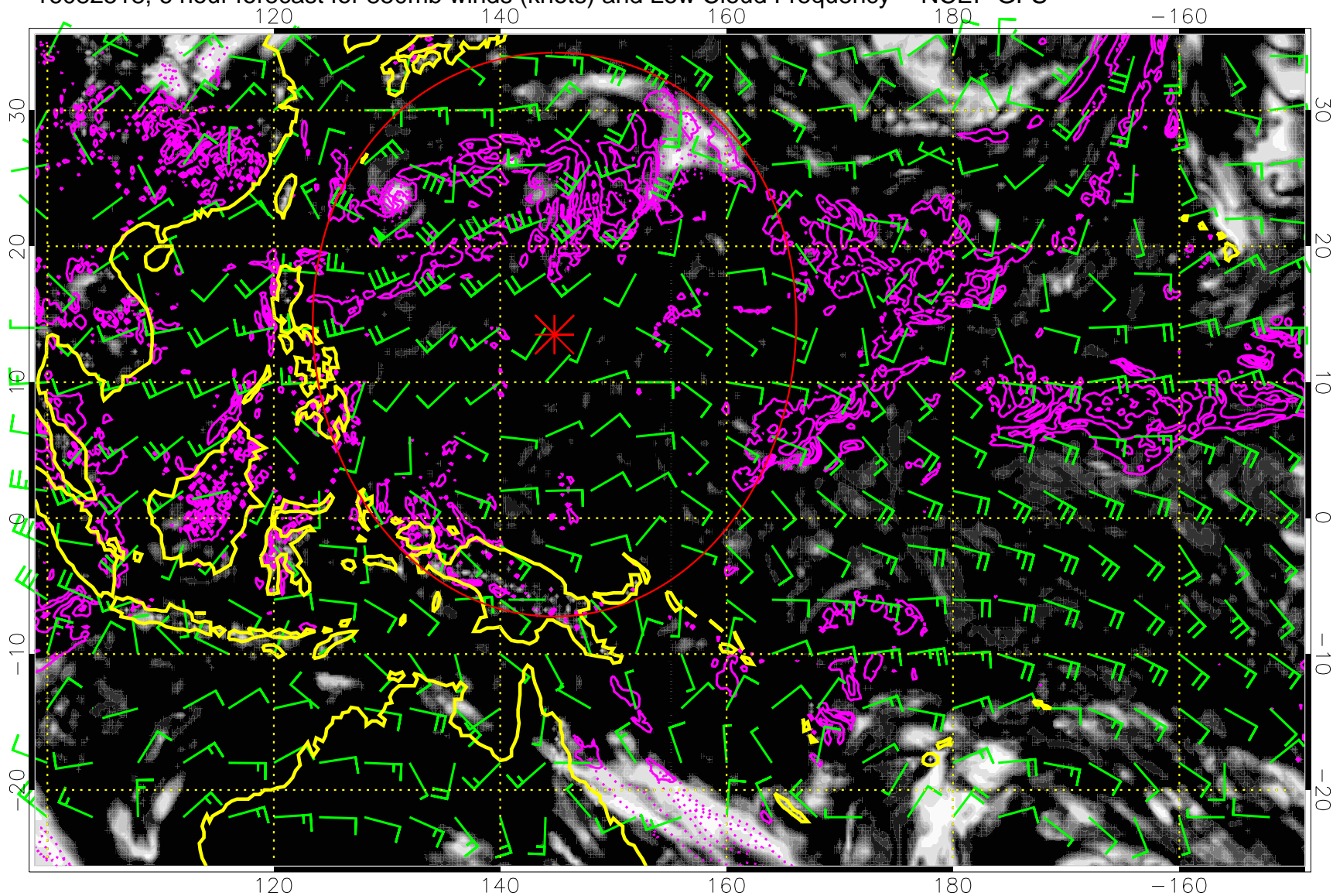


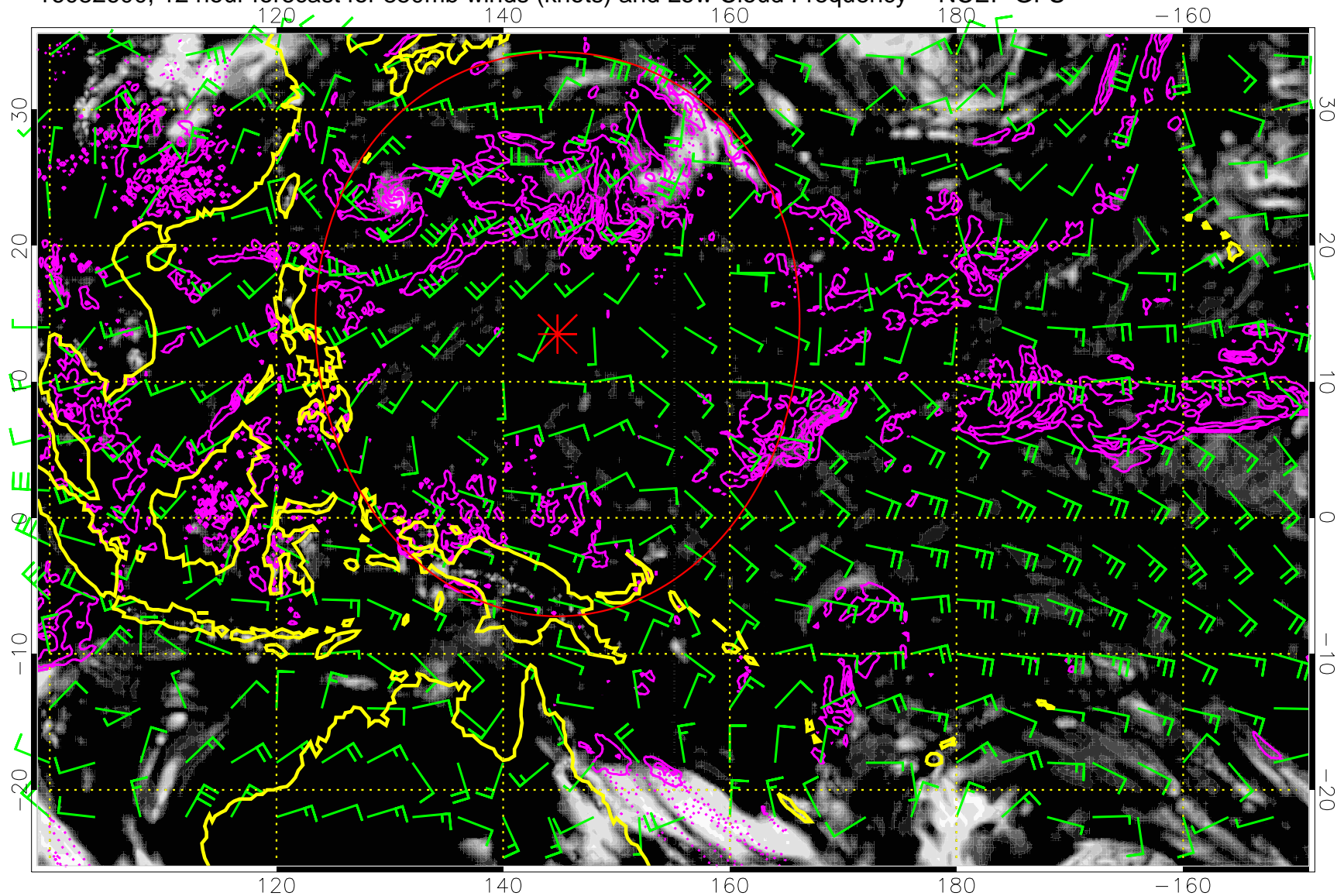
16082518, 6 hour forecast for 850mb winds (knots) and Low Cloud Frequency -- NCEP GFS



Precip (tot dot, conv sol) mm/day 40 mm/day contours, min 20

Range ring of 2304 km

16082600, 12 hour forecast for 850mb winds (knots) and Low Cloud Frequency -- NCEP GFS

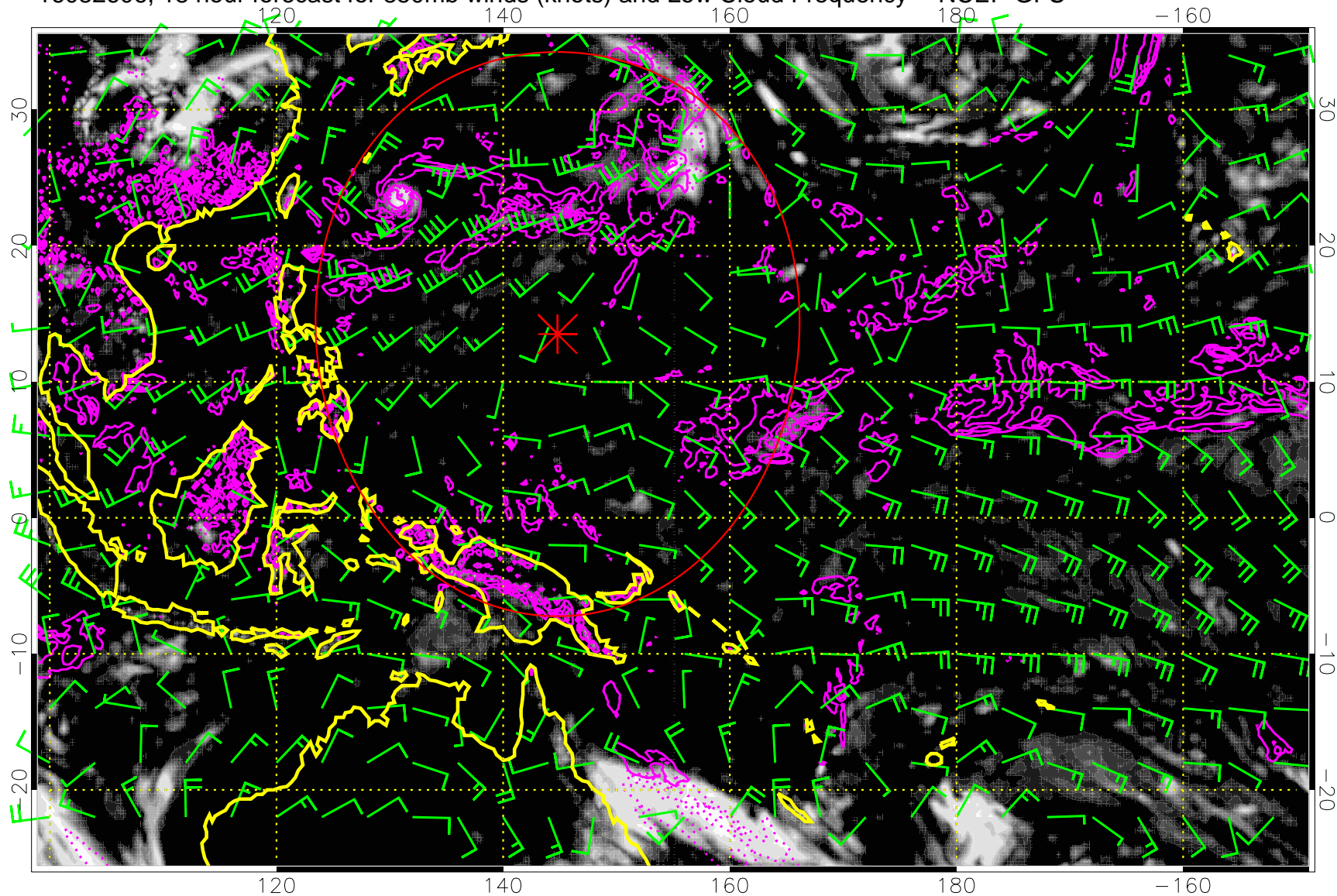


Precip (tot dot, conv sol) mm/day 40 mm/day contours, min 20

Range ring of 2304 km



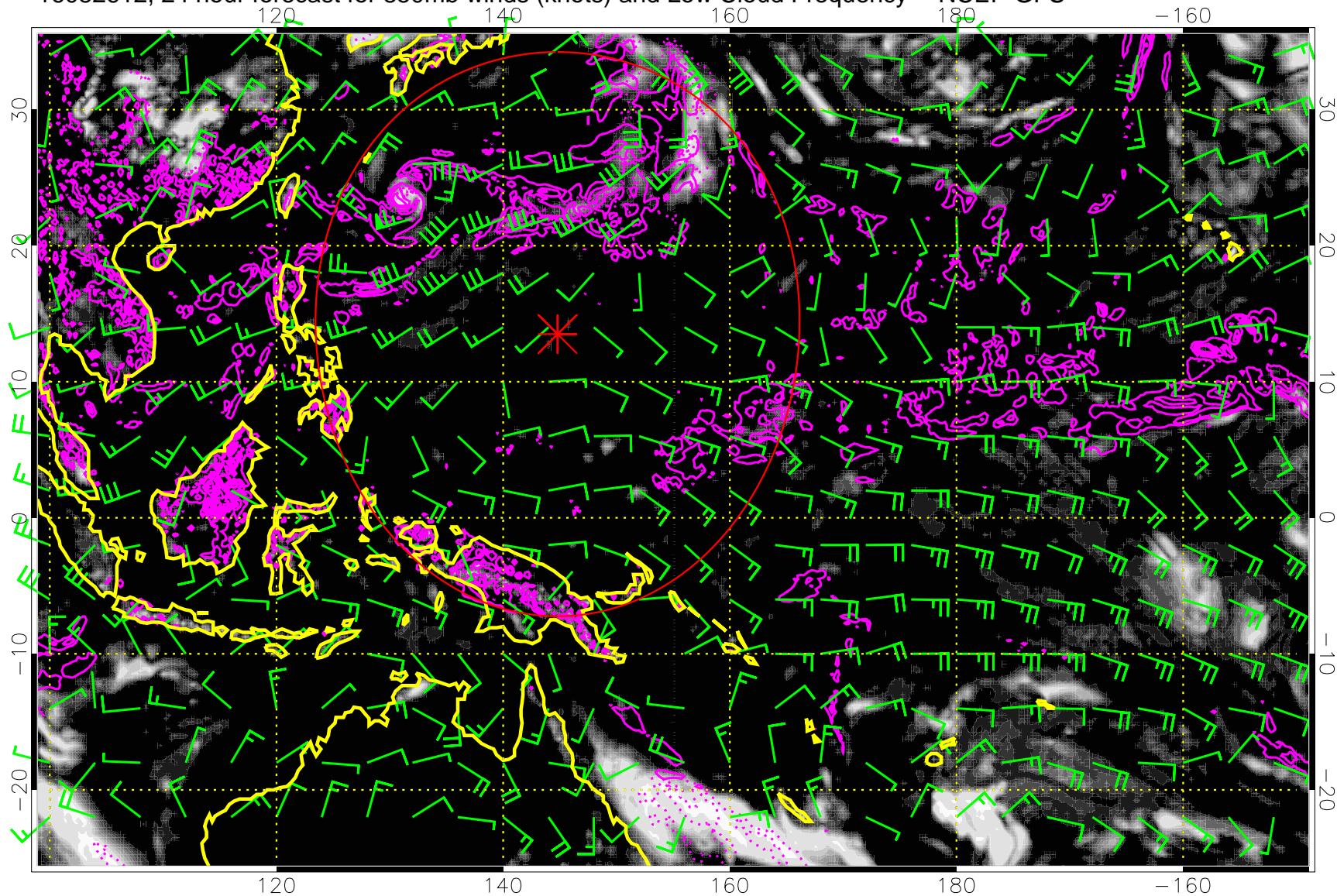
16082606, 18 hour forecast for 850mb winds (knots) and Low Cloud Frequency -- NCEP GFS



Precip (tot dot, conv sol) mm/day 40 mm/day contours, min 20

Range ring of 2304 km

16082612, 24 hour forecast for 850mb winds (knots) and Low Cloud Frequency -- NCEP GFS



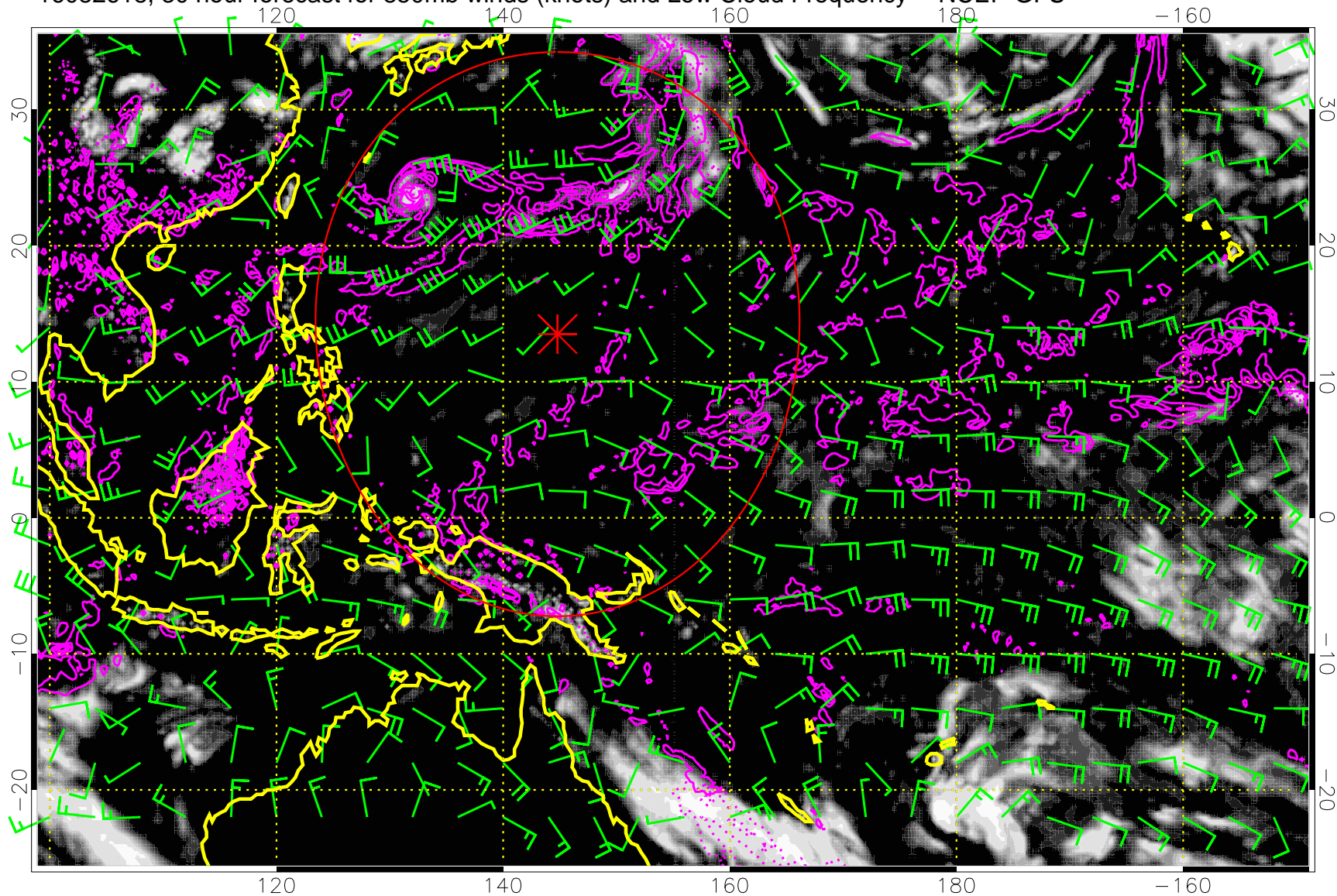
0.0 0.2 0.4 0.6 0.8 1.0  
Low Cloud Frequency

Precip (tot dot, conv sol) mm/day 40 mm/day contours, min 20

Range ring of 2304 km



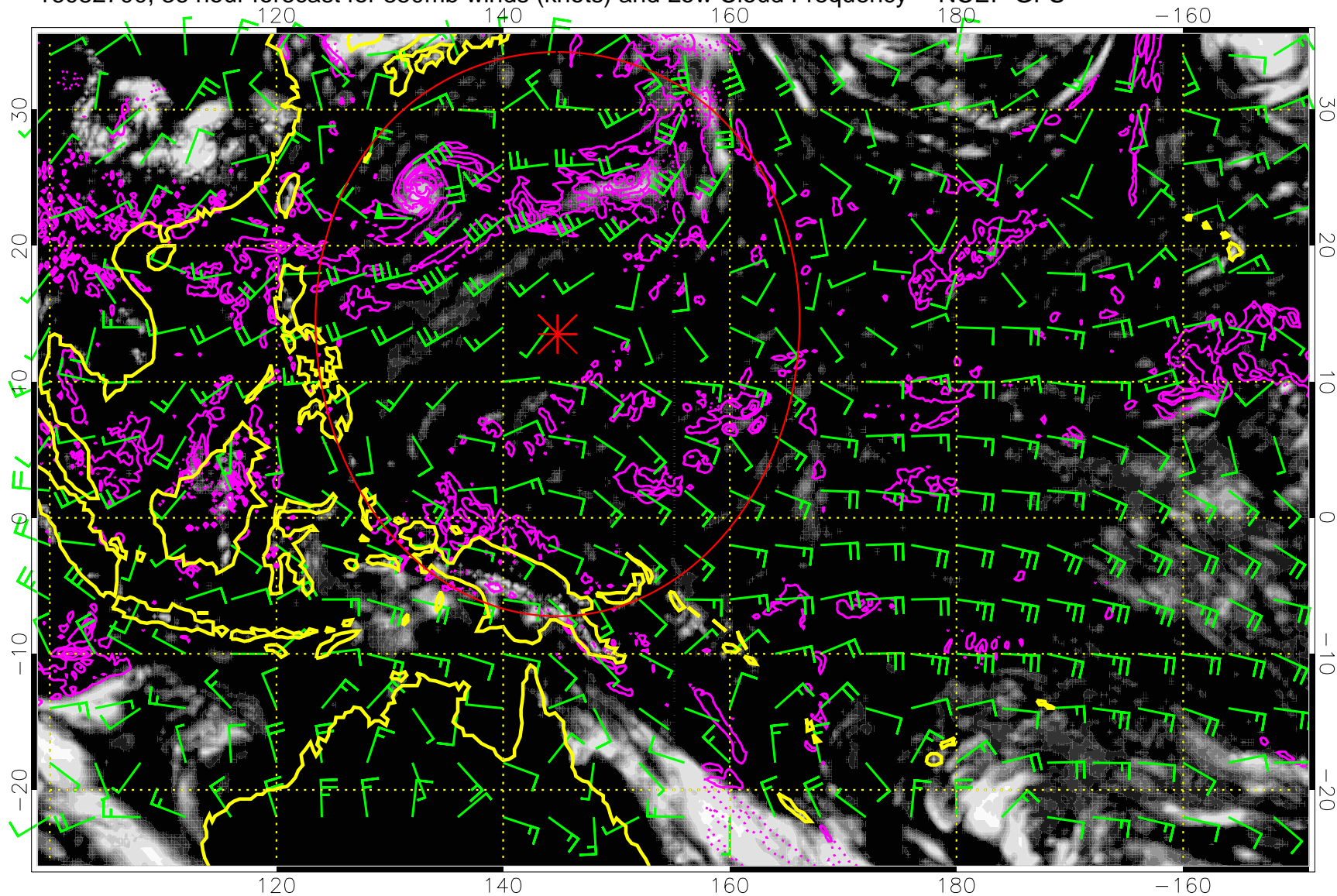
16082618, 30 hour forecast for 850mb winds (knots) and Low Cloud Frequency -- NCEP GFS



Precip (tot dot, conv sol) mm/day 40 mm/day contours, min 20

Range ring of 2304 km

16082700, 36 hour forecast for 850mb winds (knots) and Low Cloud Frequency -- NCEP GFS

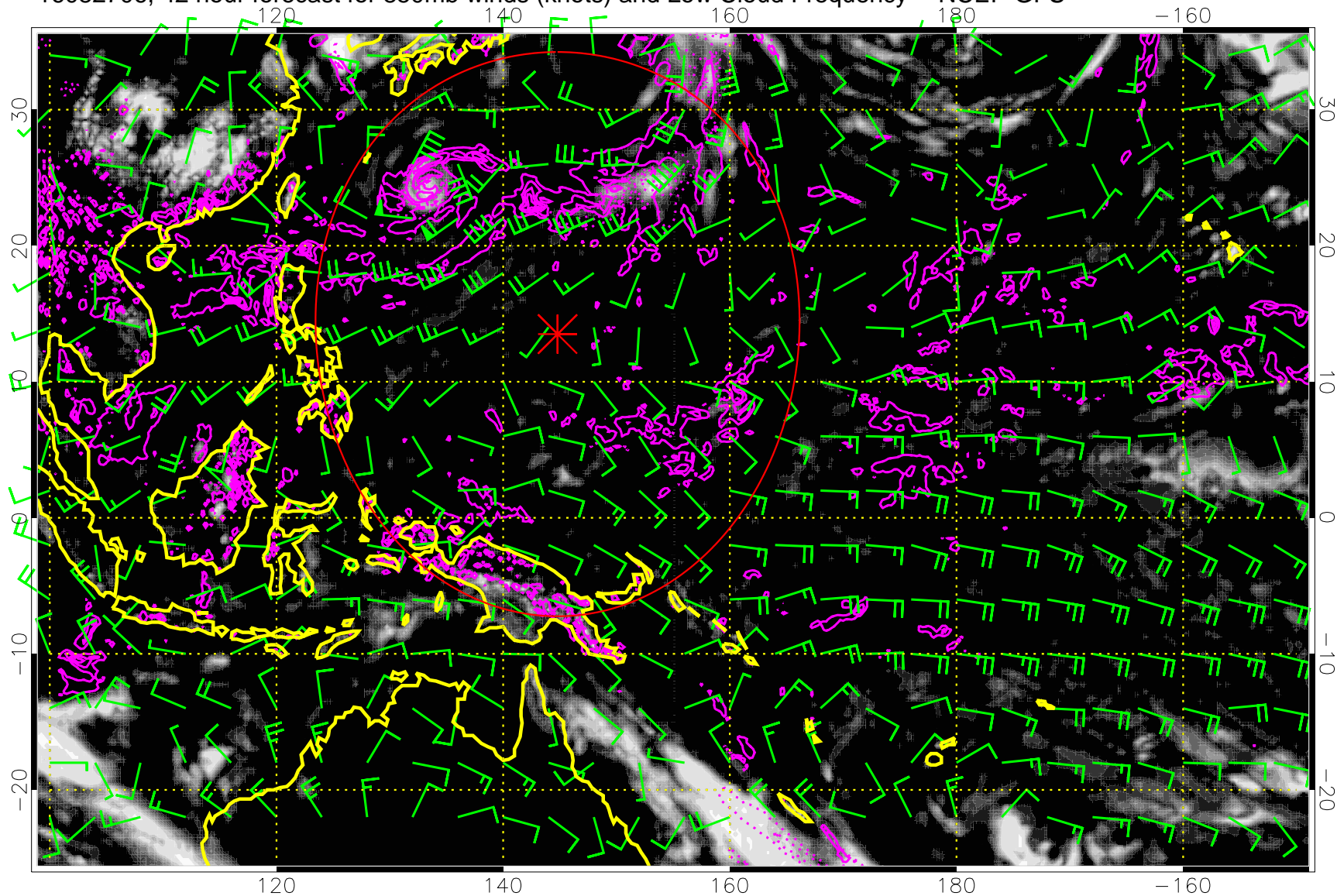


Precip (tot dot, conv sol) mm/day 40 mm/day contours, min 20

Range ring of 2304 km



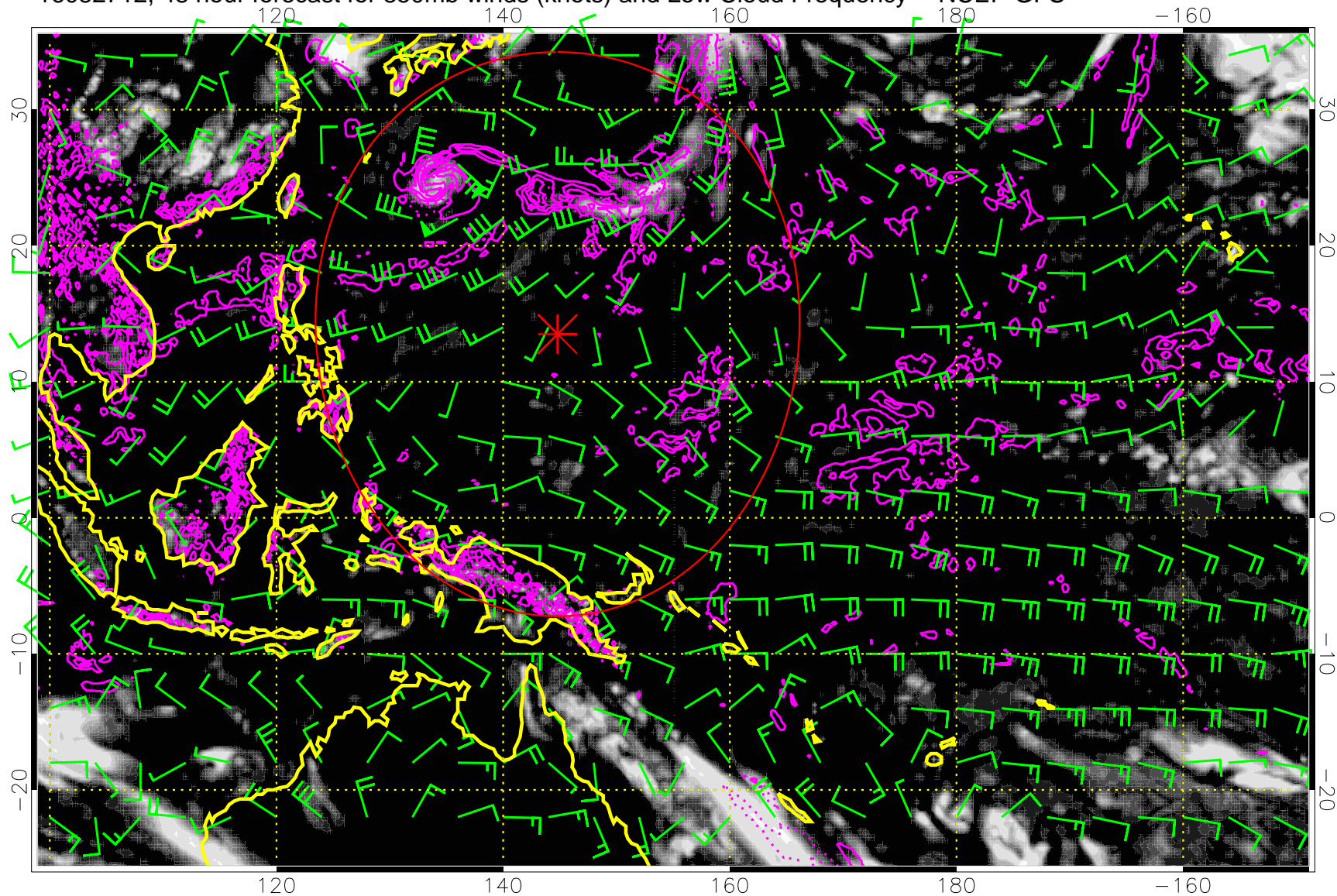
16082706, 42 hour forecast for 850mb winds (knots) and Low Cloud Frequency -- NCEP GFS



Precip (tot dot, conv sol) mm/day 40 mm/day contours, min 20

Range ring of 2304 km

16082712, 48 hour forecast for 850mb winds (knots) and Low Cloud Frequency -- NCEP GFS



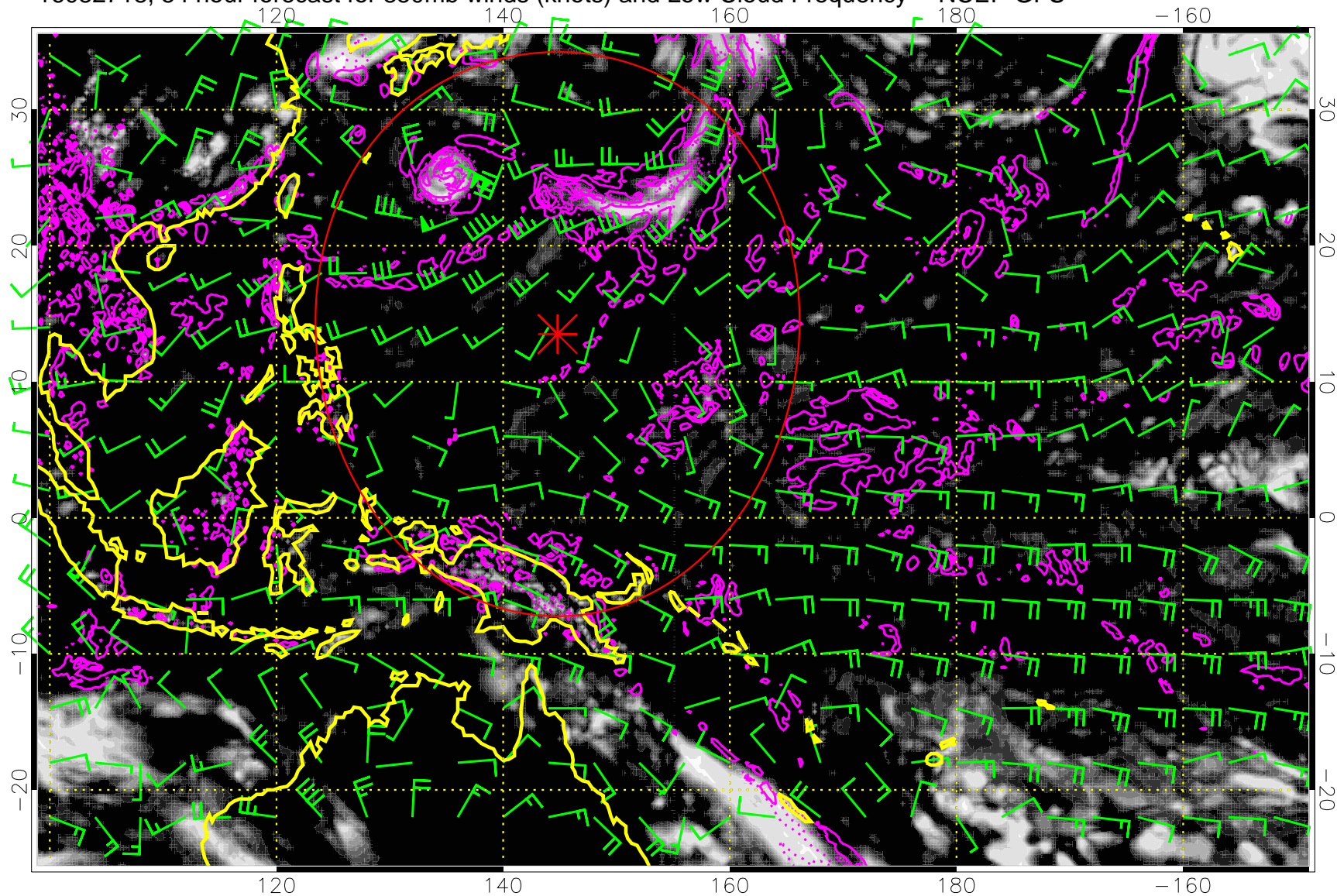
0.0 0.2 0.4 0.6 0.8 1.0  
Low Cloud Frequency

Precip (tot dot, conv sol) mm/day 40 mm/day contours, min 20

Range ring of 2304 km



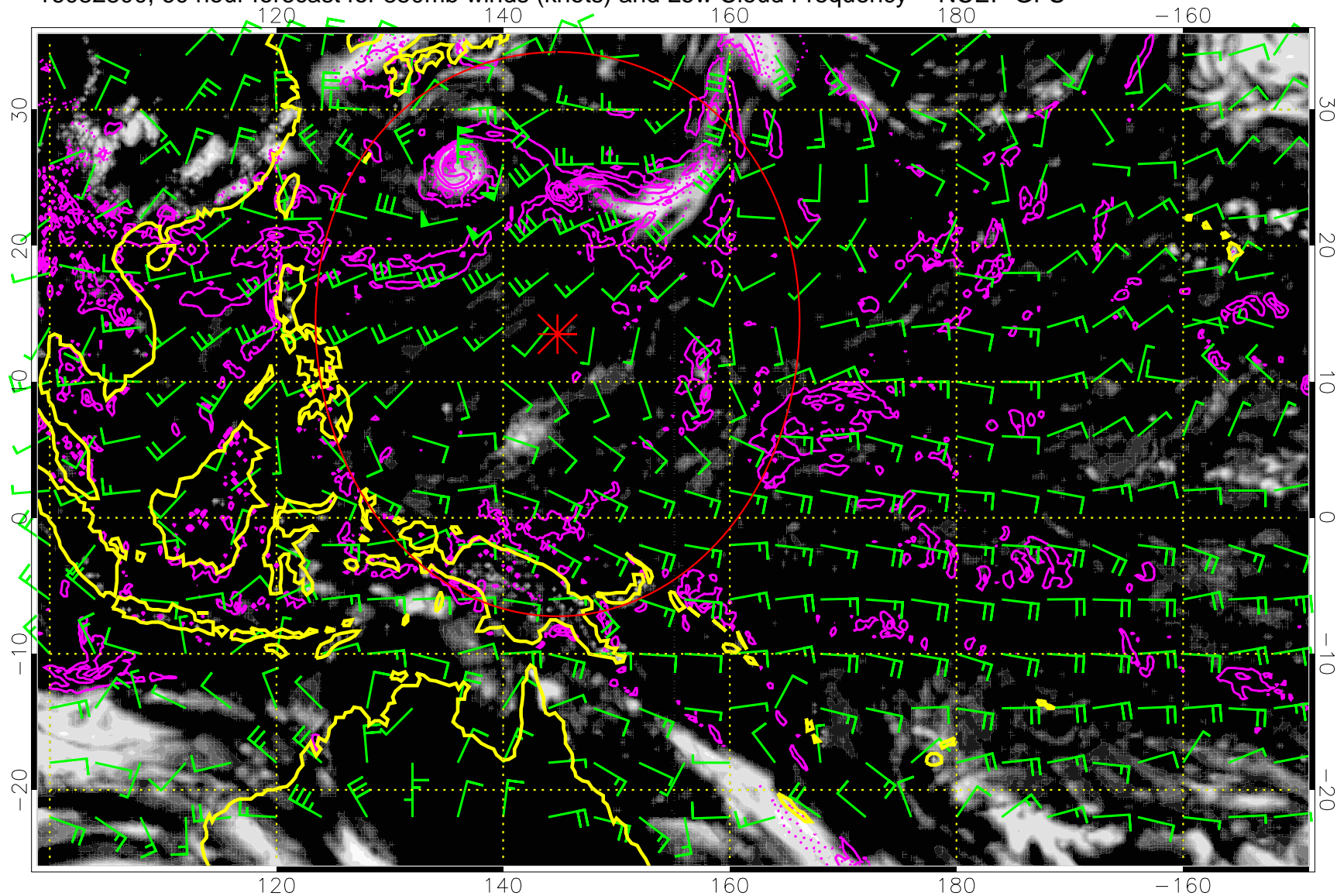
16082718, 54 hour forecast for 850mb winds (knots) and Low Cloud Frequency -- NCEP GFS



Precip (tot dot, conv sol) mm/day 40 mm/day contours, min 20

Range ring of 2304 km

16082800, 60 hour forecast for 850mb winds (knots) and Low Cloud Frequency -- NCEP GFS

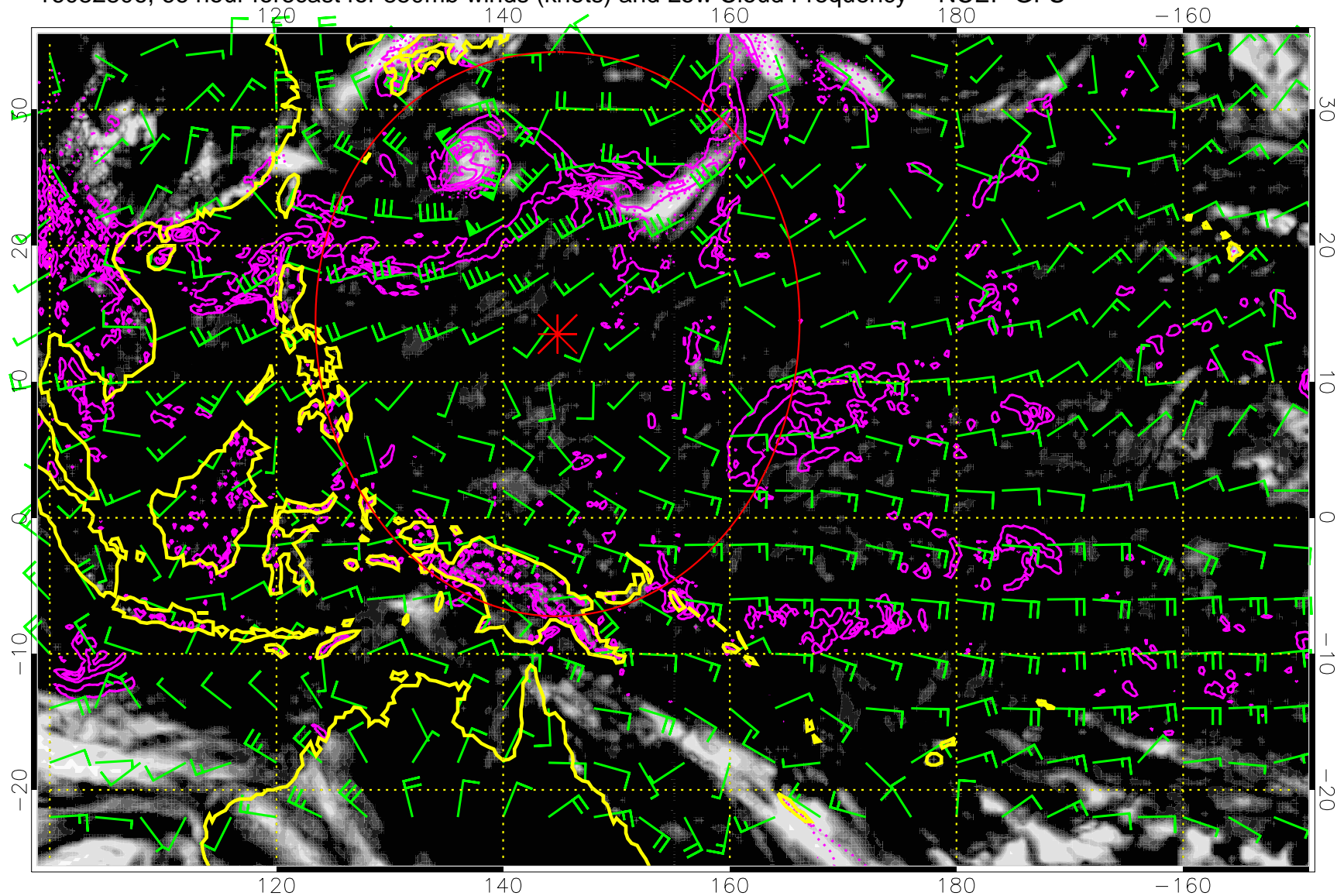


Precip (tot dot, conv sol) mm/day 40 mm/day contours, min 20

Range ring of 2304 km



16082806, 66 hour forecast for 850mb winds (knots) and Low Cloud Frequency -- NCEP GFS

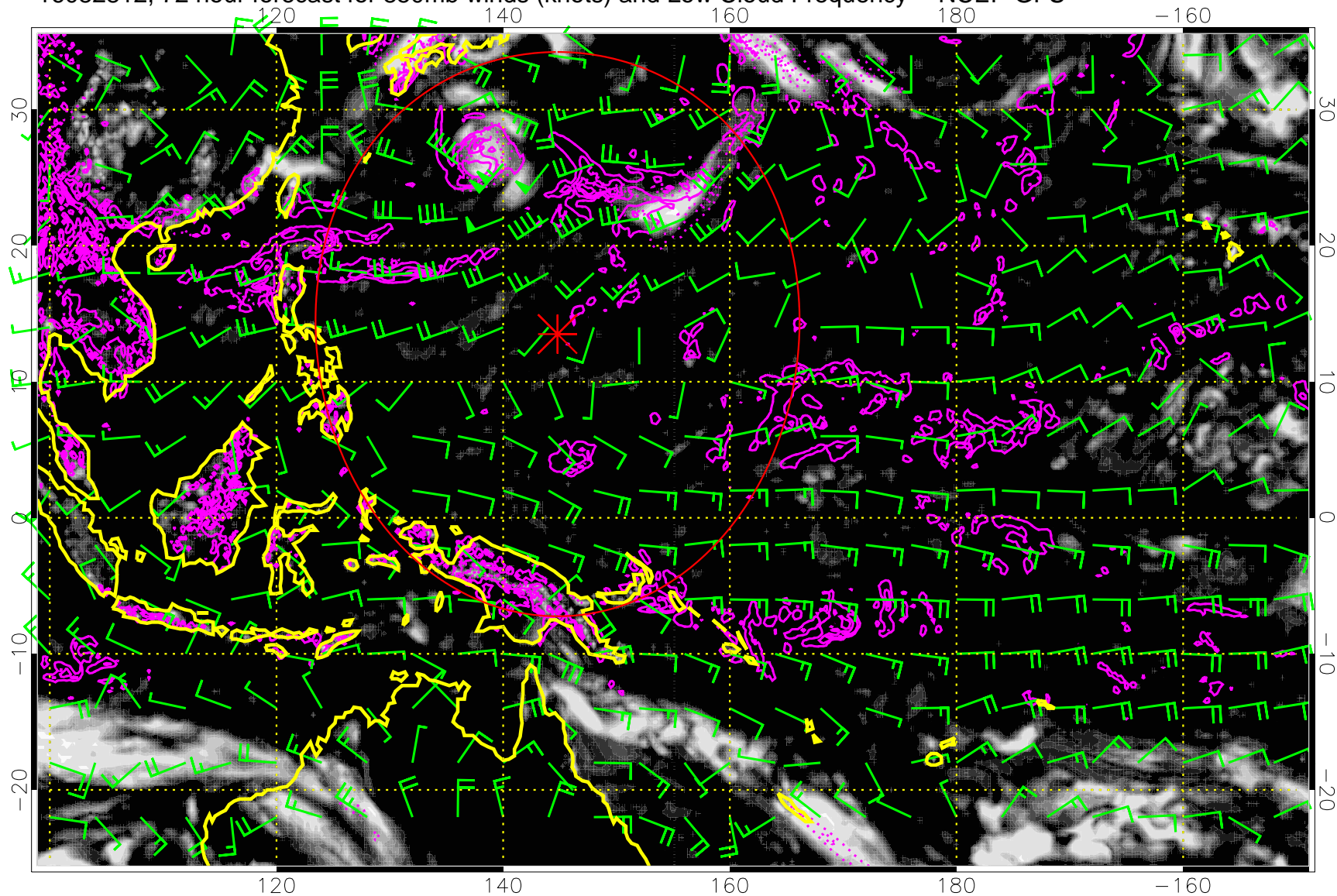


0.0 0.2 0.4 0.6 0.8 1.0  
Low Cloud Frequency

Precip (tot dot, conv sol) mm/day 40 mm/day contours, min 20

Range ring of 2304 km

16082812, 72 hour forecast for 850mb winds (knots) and Low Cloud Frequency -- NCEP GFS

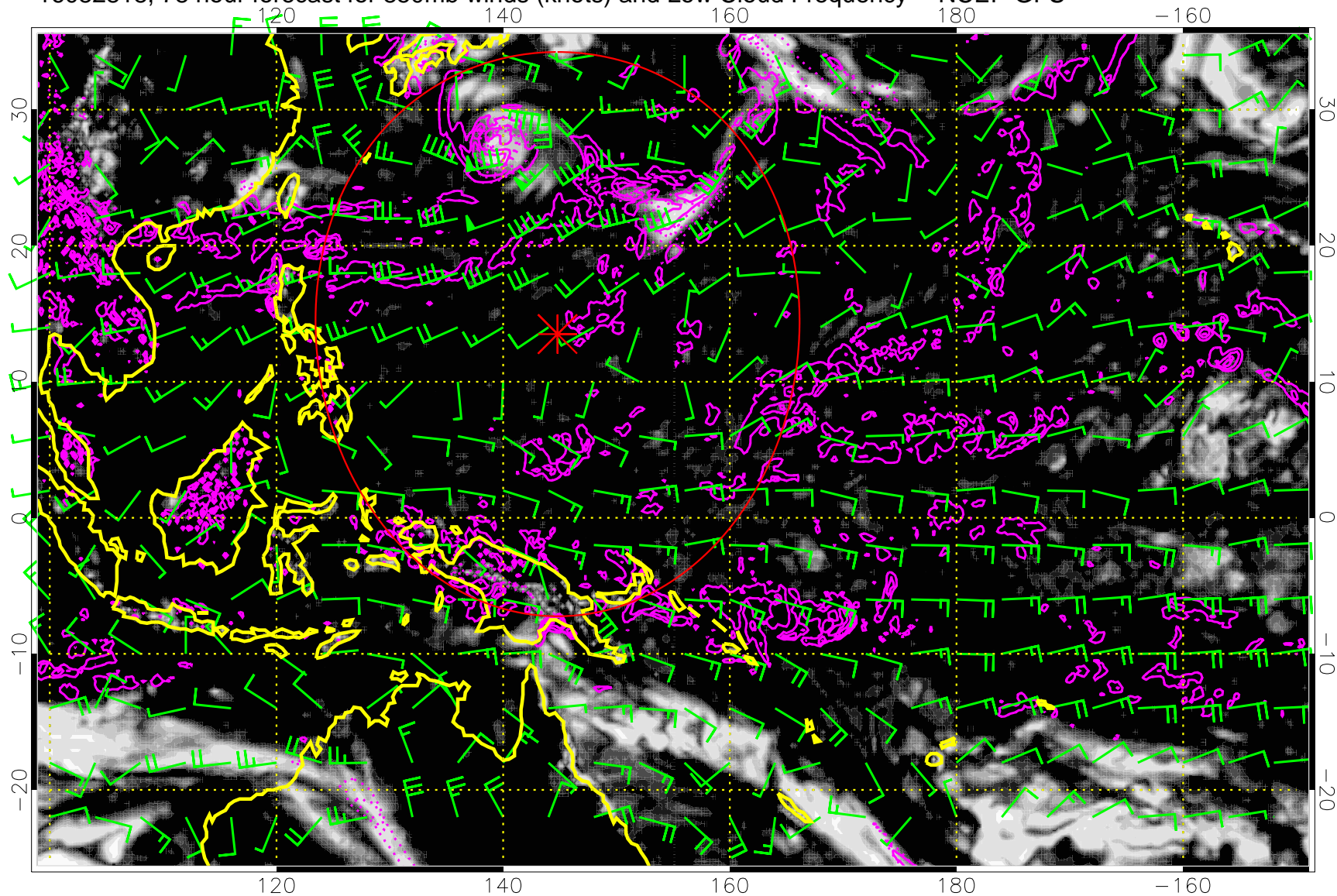


Precip (tot dot, conv sol) mm/day 40 mm/day contours, min 20

Range ring of 2304 km



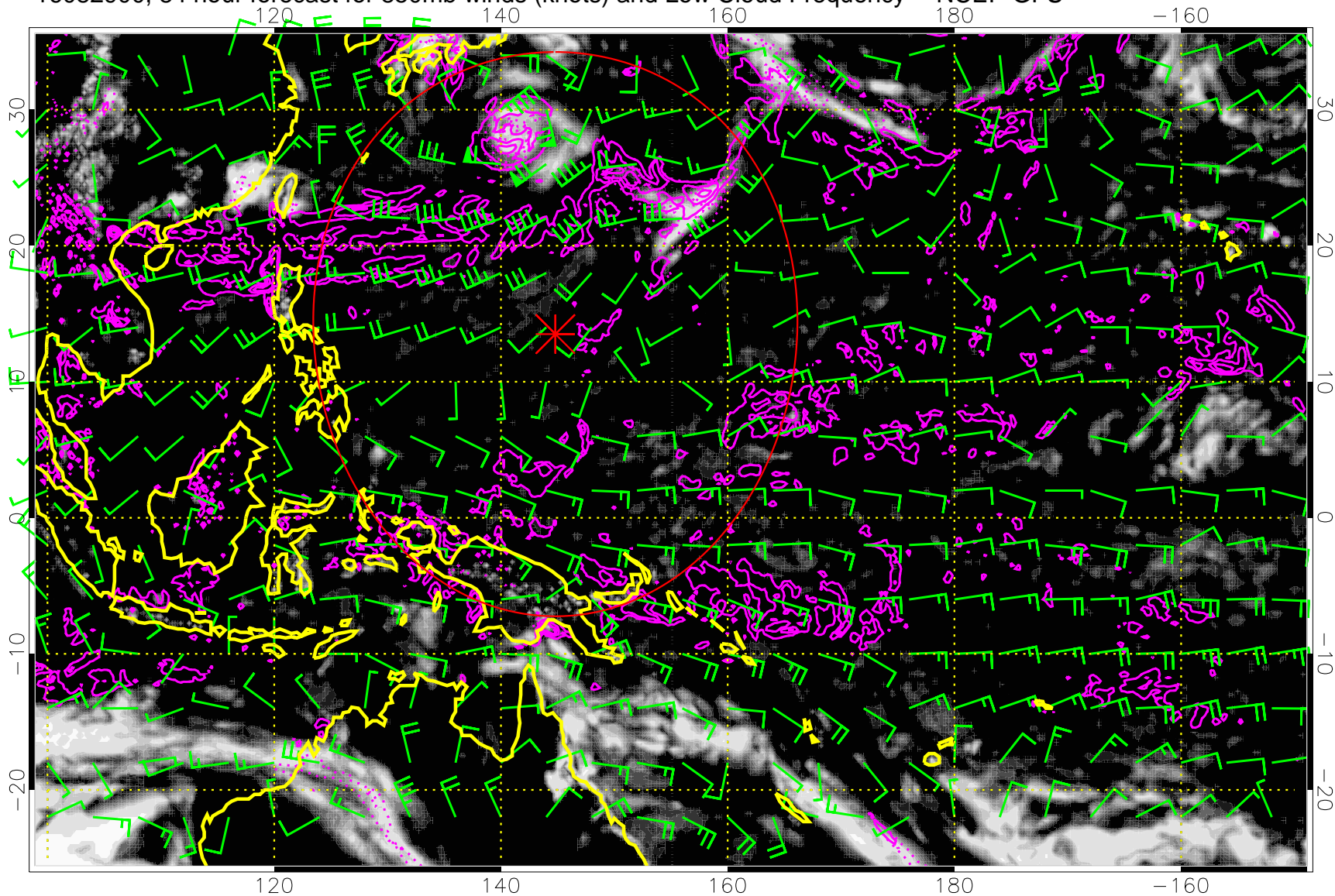
16082818, 78 hour forecast for 850mb winds (knots) and Low Cloud Frequency -- NCEP GFS



Precip (tot dot, conv sol) mm/day 40 mm/day contours, min 20

Range ring of 2304 km

16082900, 84 hour forecast for 850mb winds (knots) and Low Cloud Frequency -- NCEP GFS

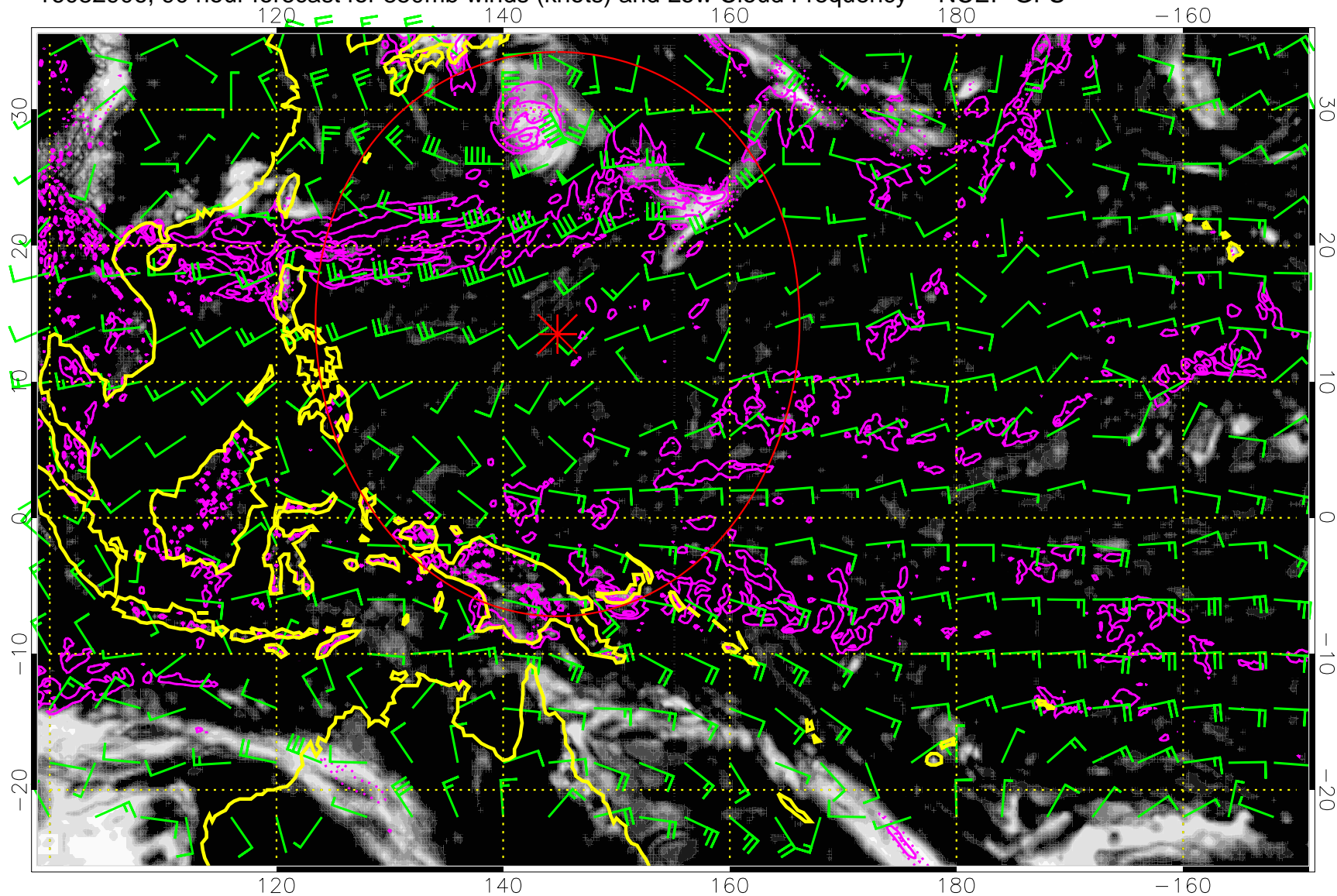


Precip (tot dot, conv sol) mm/day 40 mm/day contours, min 20

Range ring of 2304 km



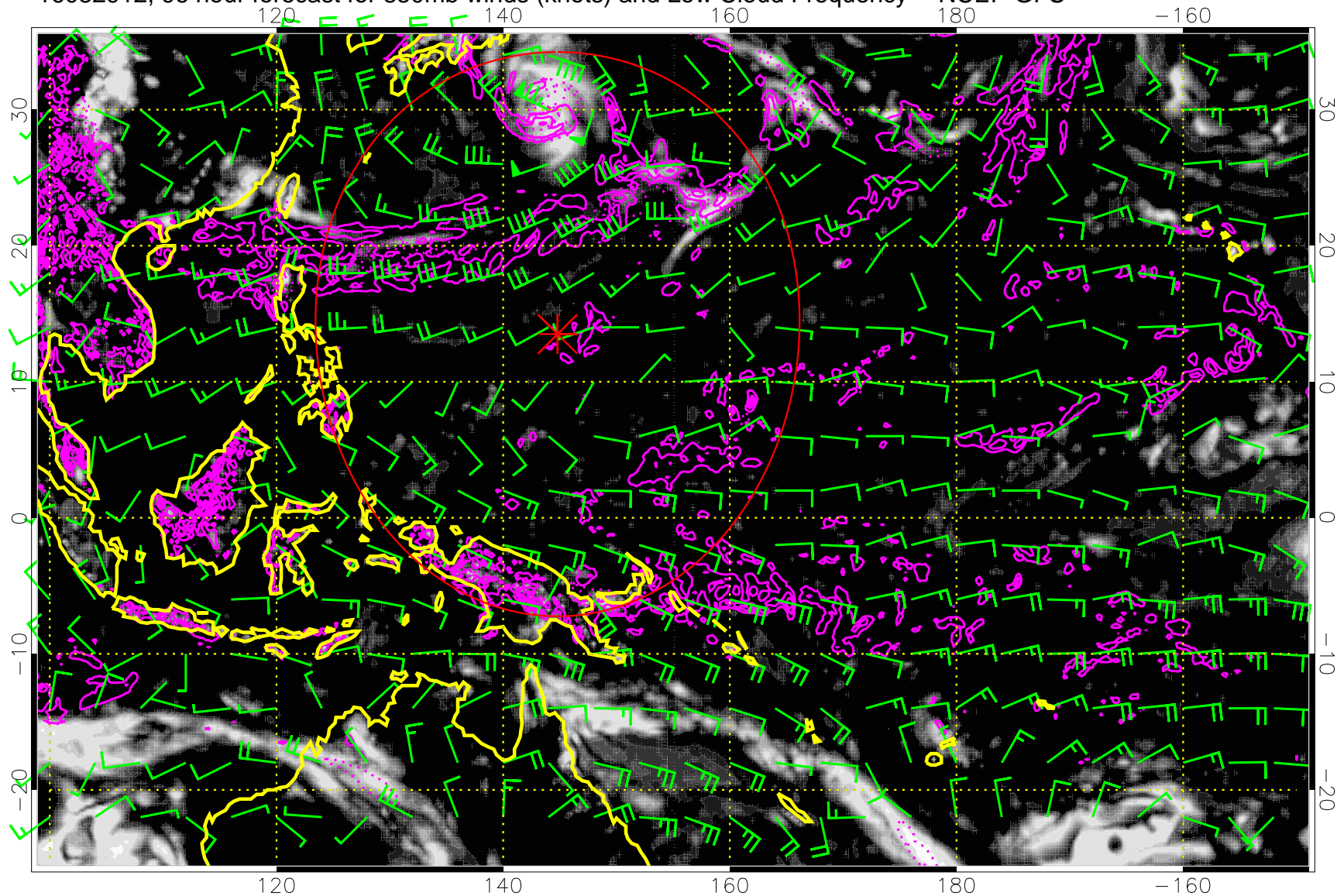
16082906, 90 hour forecast for 850mb winds (knots) and Low Cloud Frequency -- NCEP GFS



Precip (tot dot, conv sol) mm/day 40 mm/day contours, min 20

Range ring of 2304 km

16082912, 96 hour forecast for 850mb winds (knots) and Low Cloud Frequency -- NCEP GFS

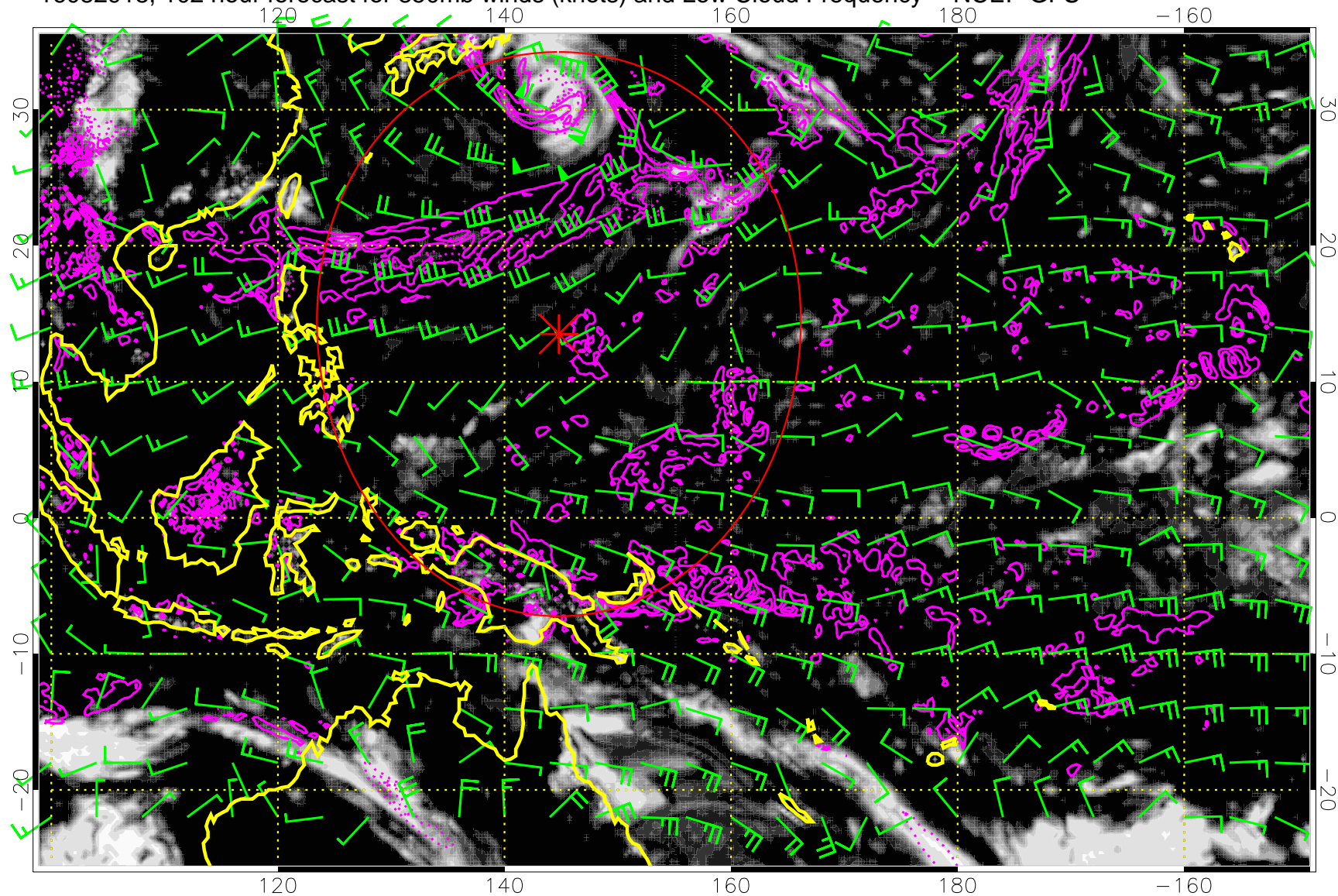


Precip (tot dot, conv sol) mm/day 40 mm/day contours, min 20

Range ring of 2304 km



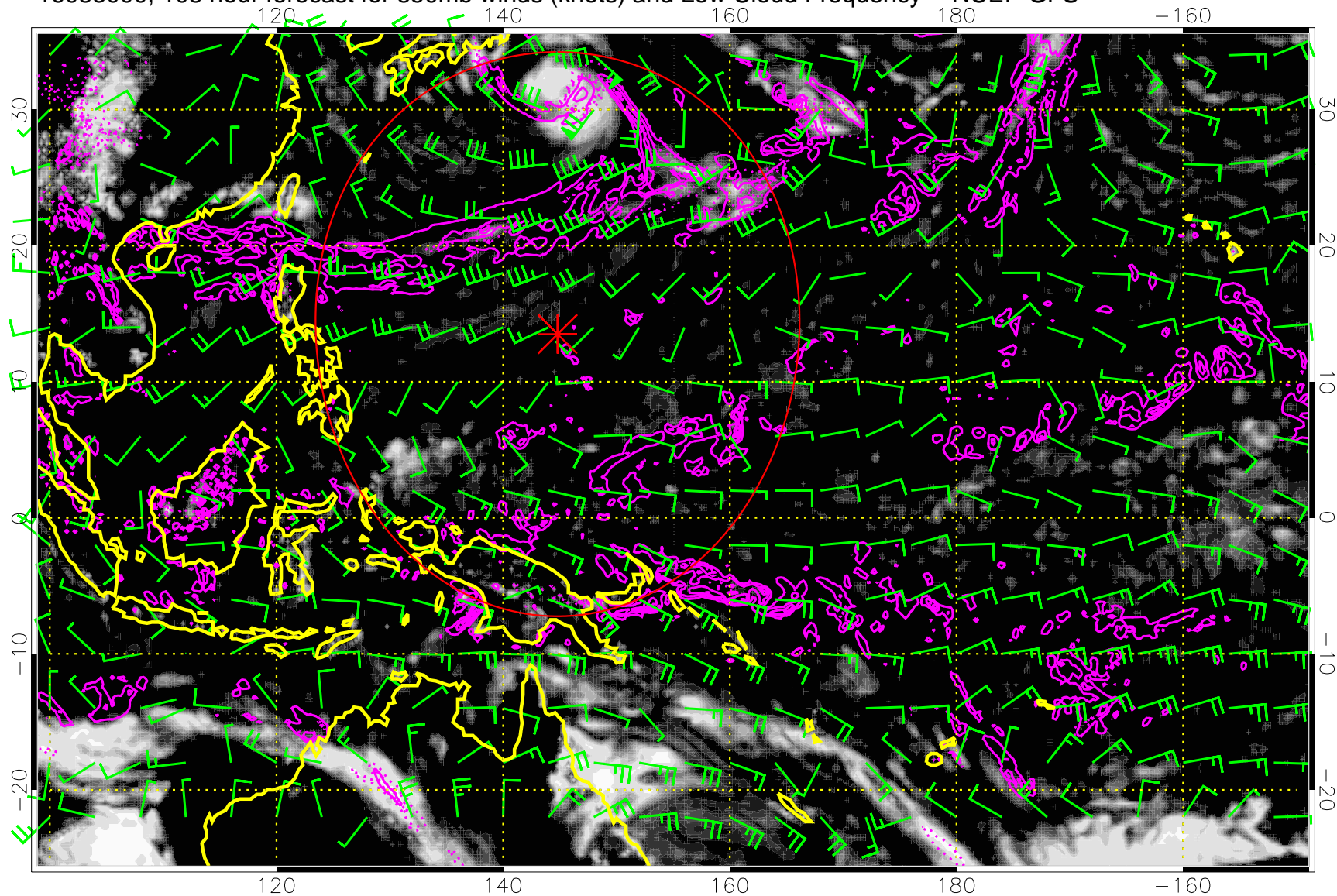
16082918, 102 hour forecast for 850mb winds (knots) and Low Cloud Frequency -- NCEP GFS



Precip (tot dot, conv sol) mm/day 40 mm/day contours, min 20

Range ring of 2304 km

16083000, 108 hour forecast for 850mb winds (knots) and Low Cloud Frequency -- NCEP GFS

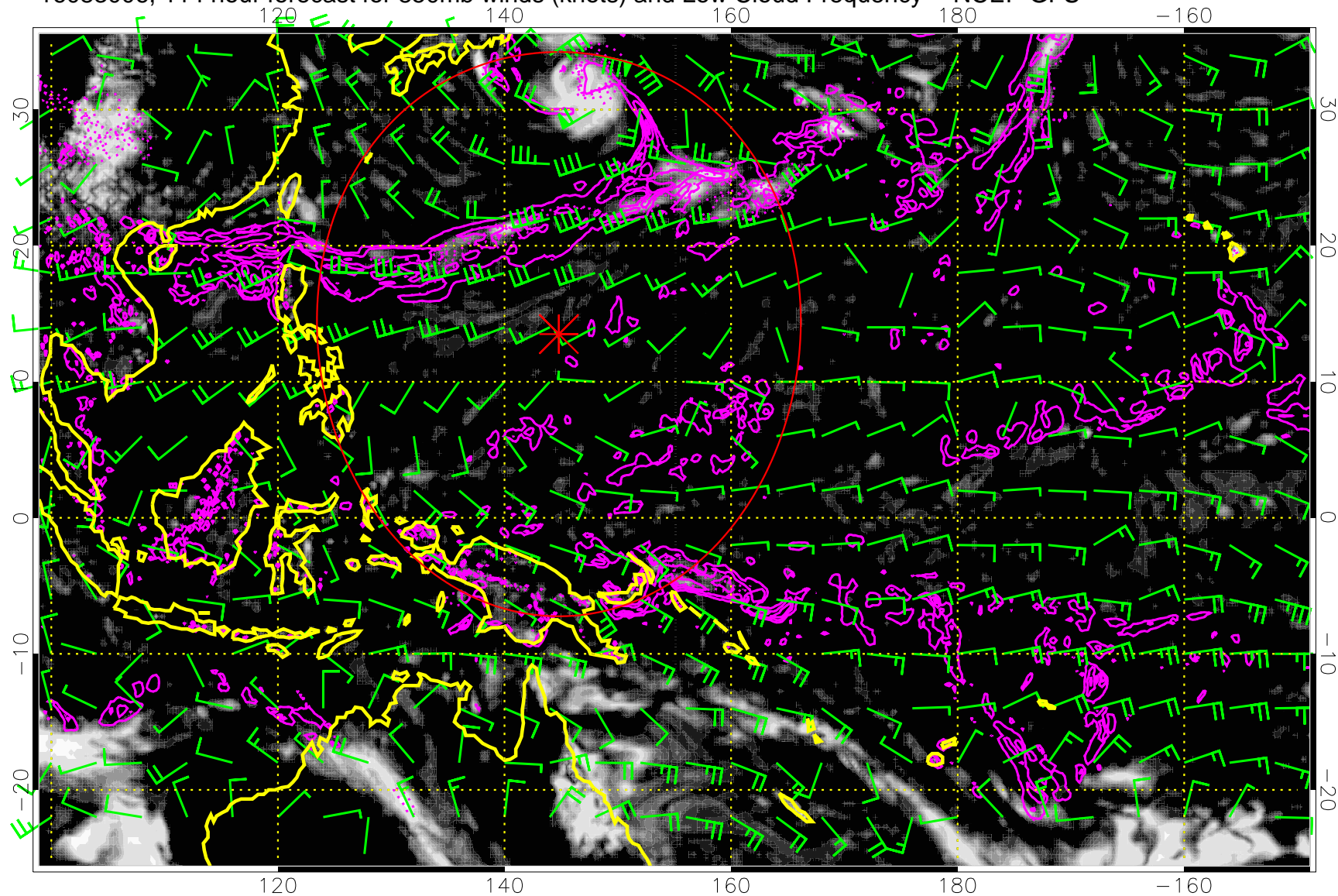


Precip (tot dot, conv sol) mm/day 40 mm/day contours, min 20

Range ring of 2304 km



16083006, 114 hour forecast for 850mb winds (knots) and Low Cloud Frequency -- NCEP GFS

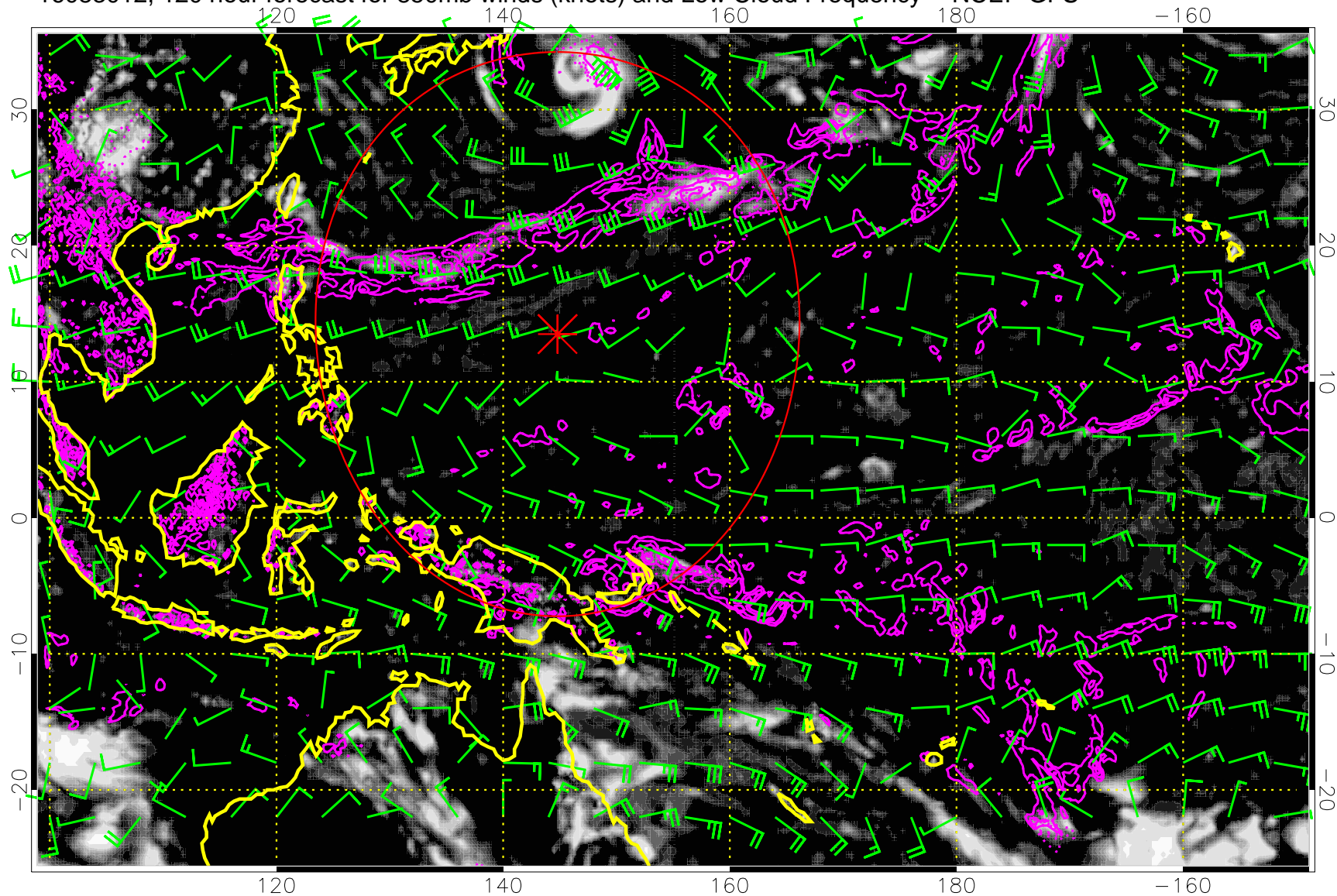


0.0 0.2 0.4 0.6 0.8 1.0  
Low Cloud Frequency

Precip (tot dot, conv sol) mm/day 40 mm/day contours, min 20

Range ring of 2304 km

16083012, 120 hour forecast for 850mb winds (knots) and Low Cloud Frequency -- NCEP GFS



Precip (tot dot, conv sol) mm/day 40 mm/day contours, min 20

Range ring of 2304 km