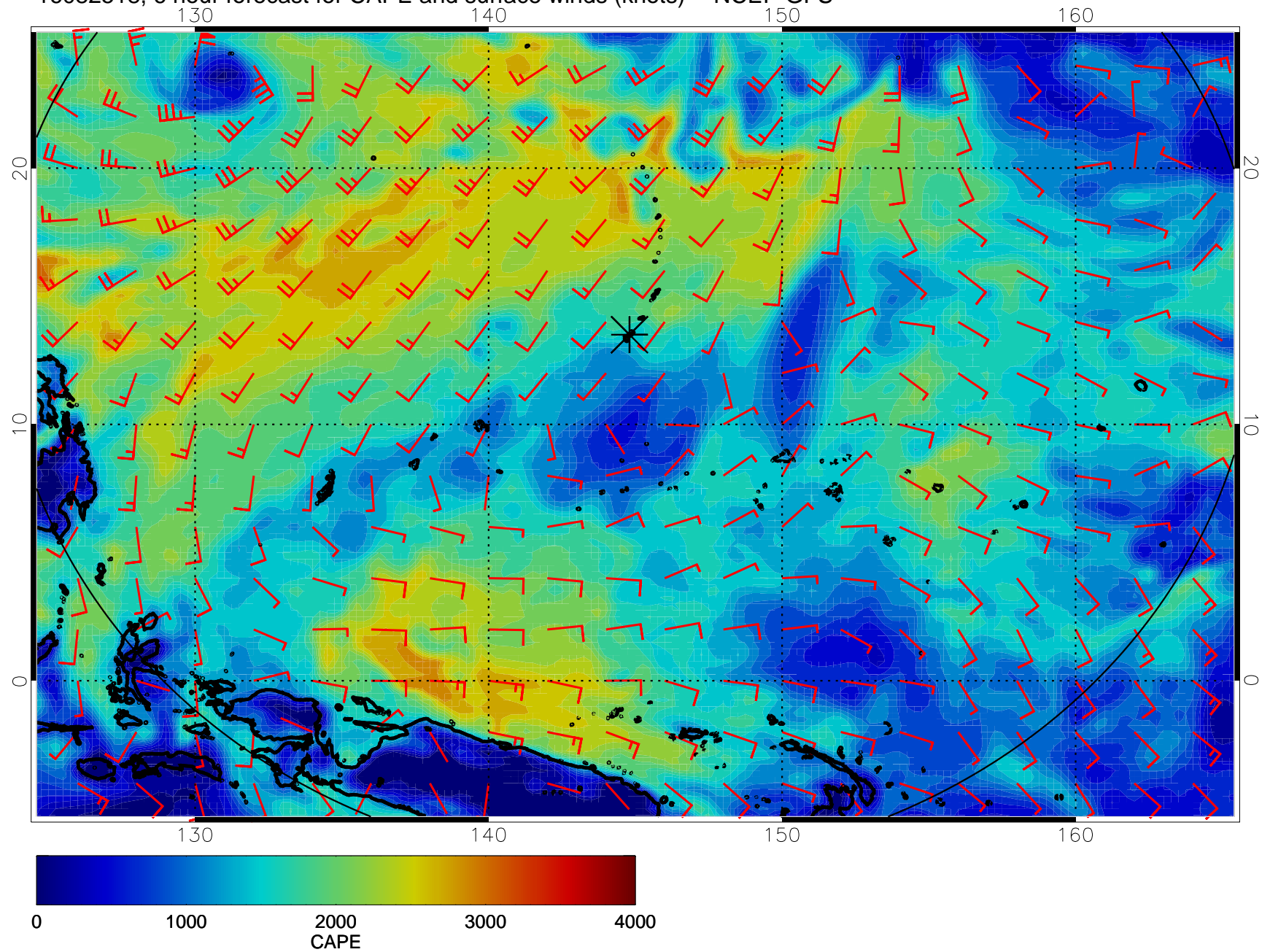
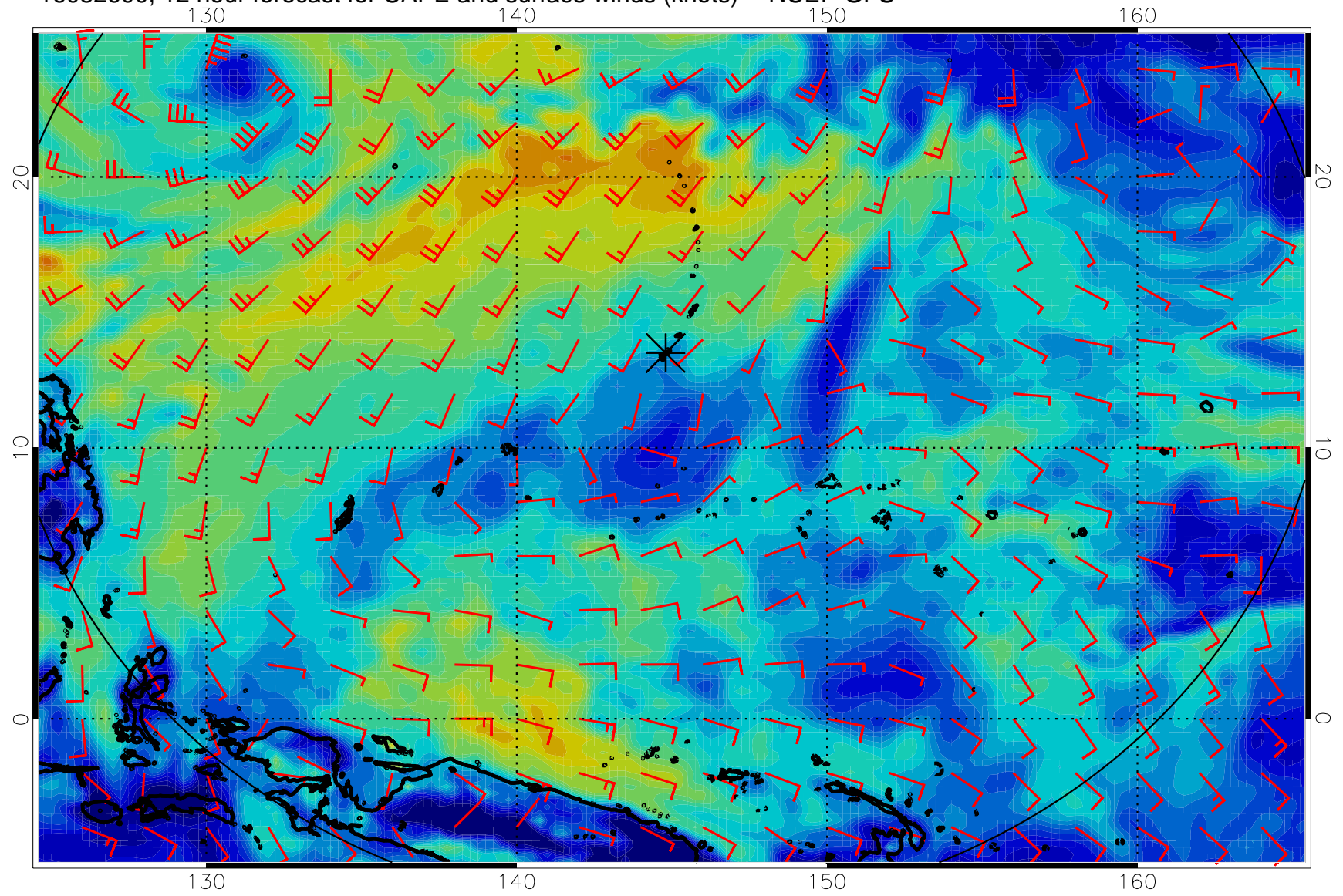


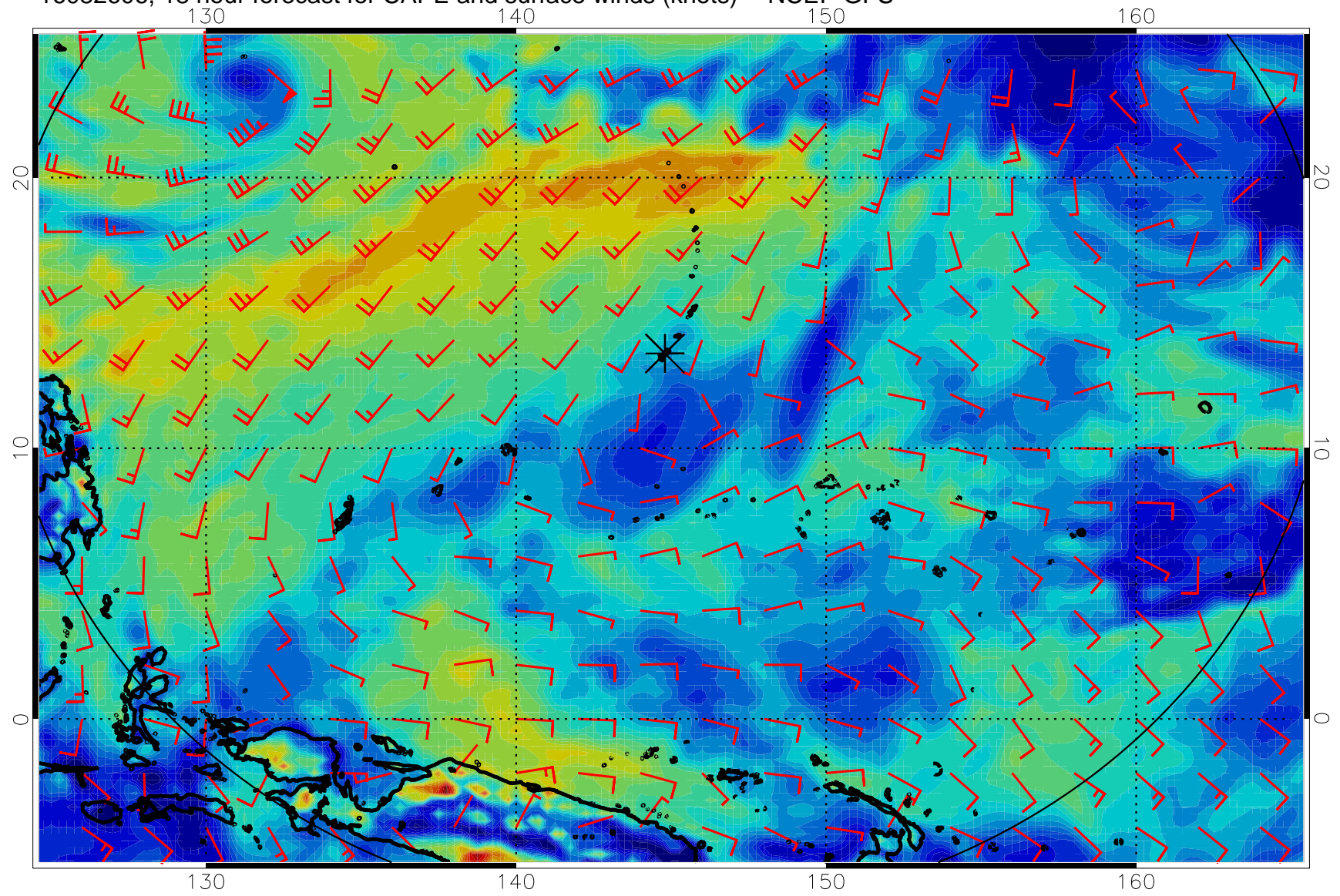
16082518, 6 hour forecast for CAPE and surface winds (knots) -- NCEP GFS



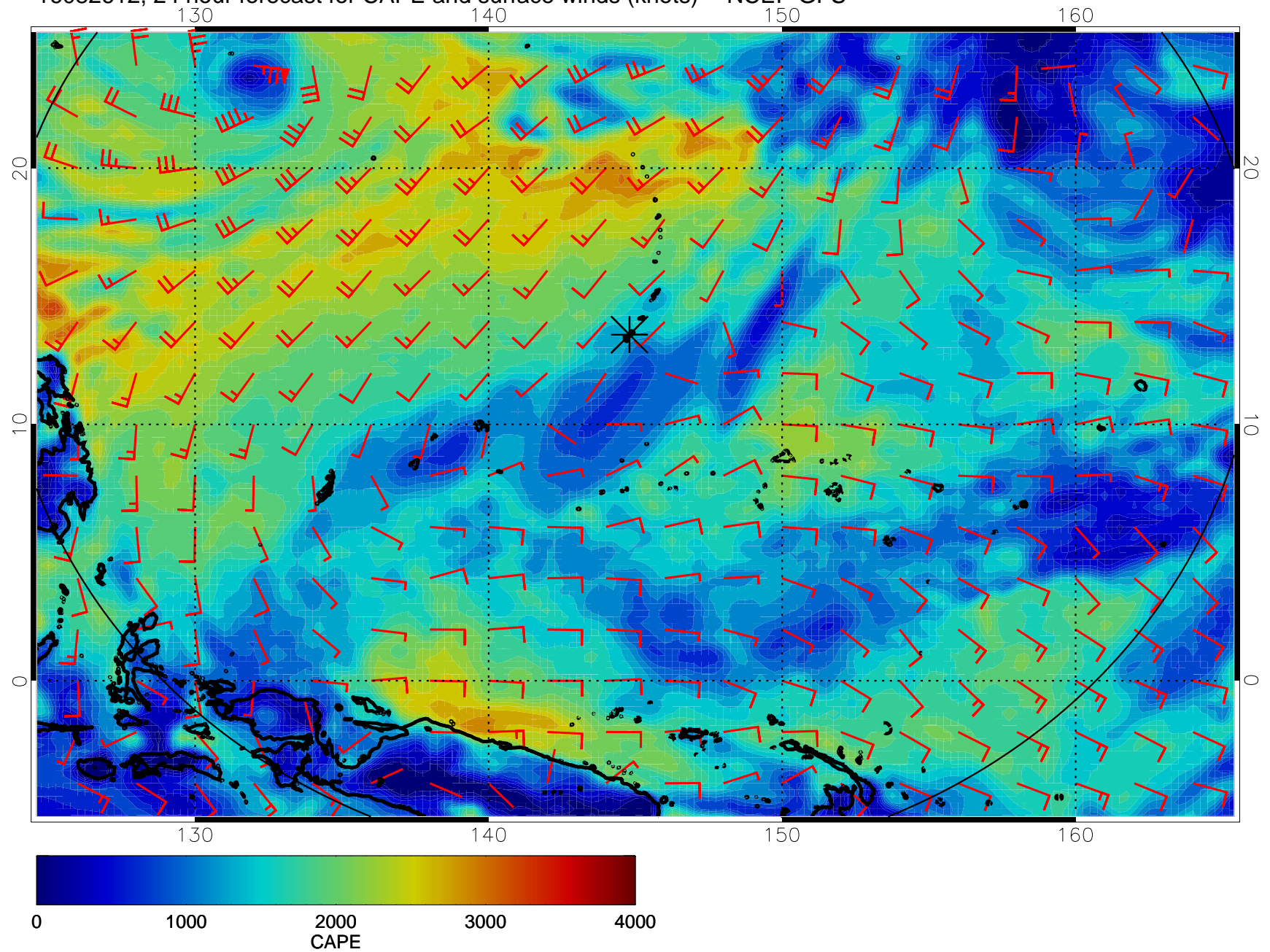
16082600, 12 hour forecast for CAPE and surface winds (knots) -- NCEP GFS



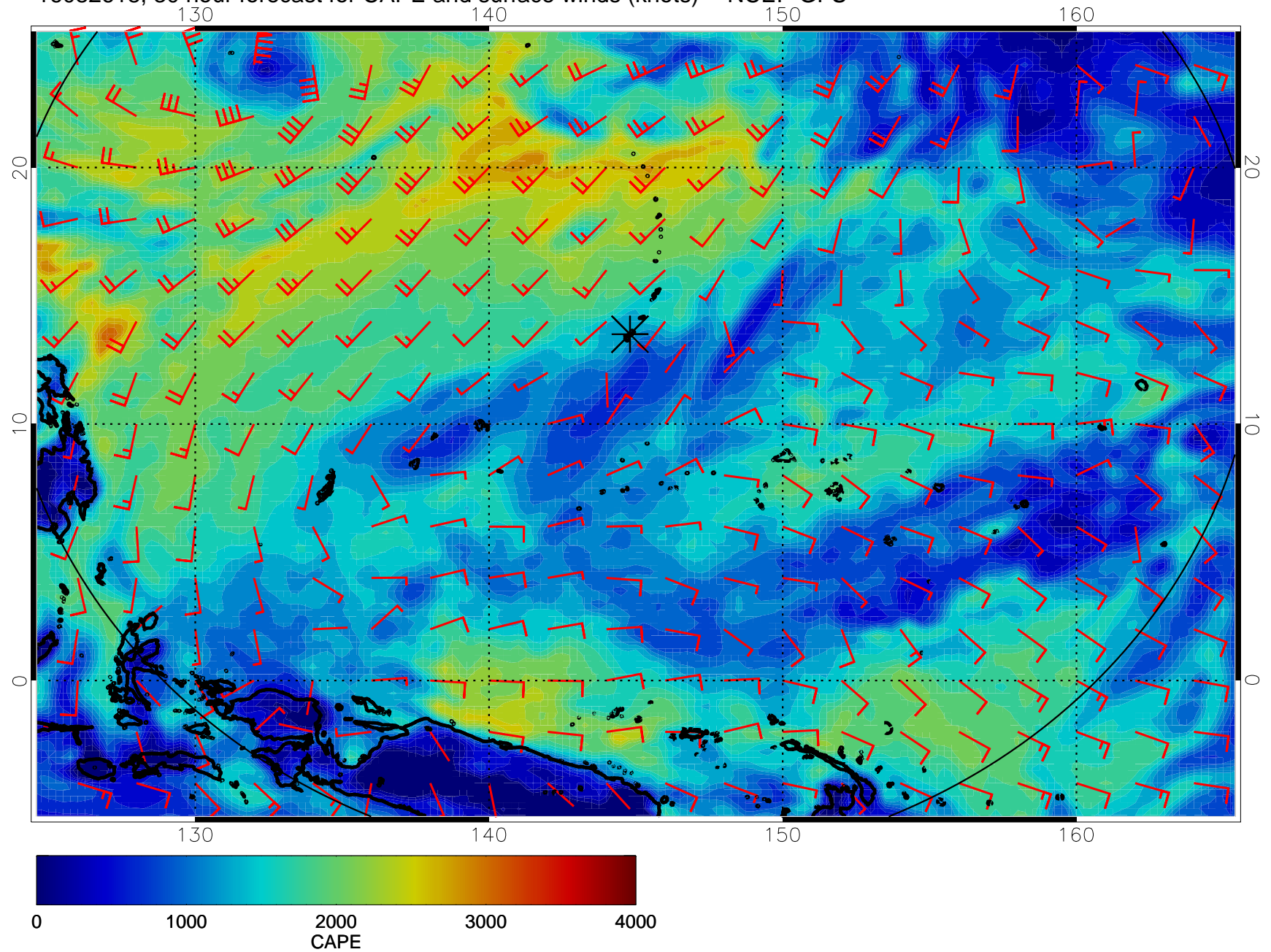
16082606, 18 hour forecast for CAPE and surface winds (knots) -- NCEP GFS



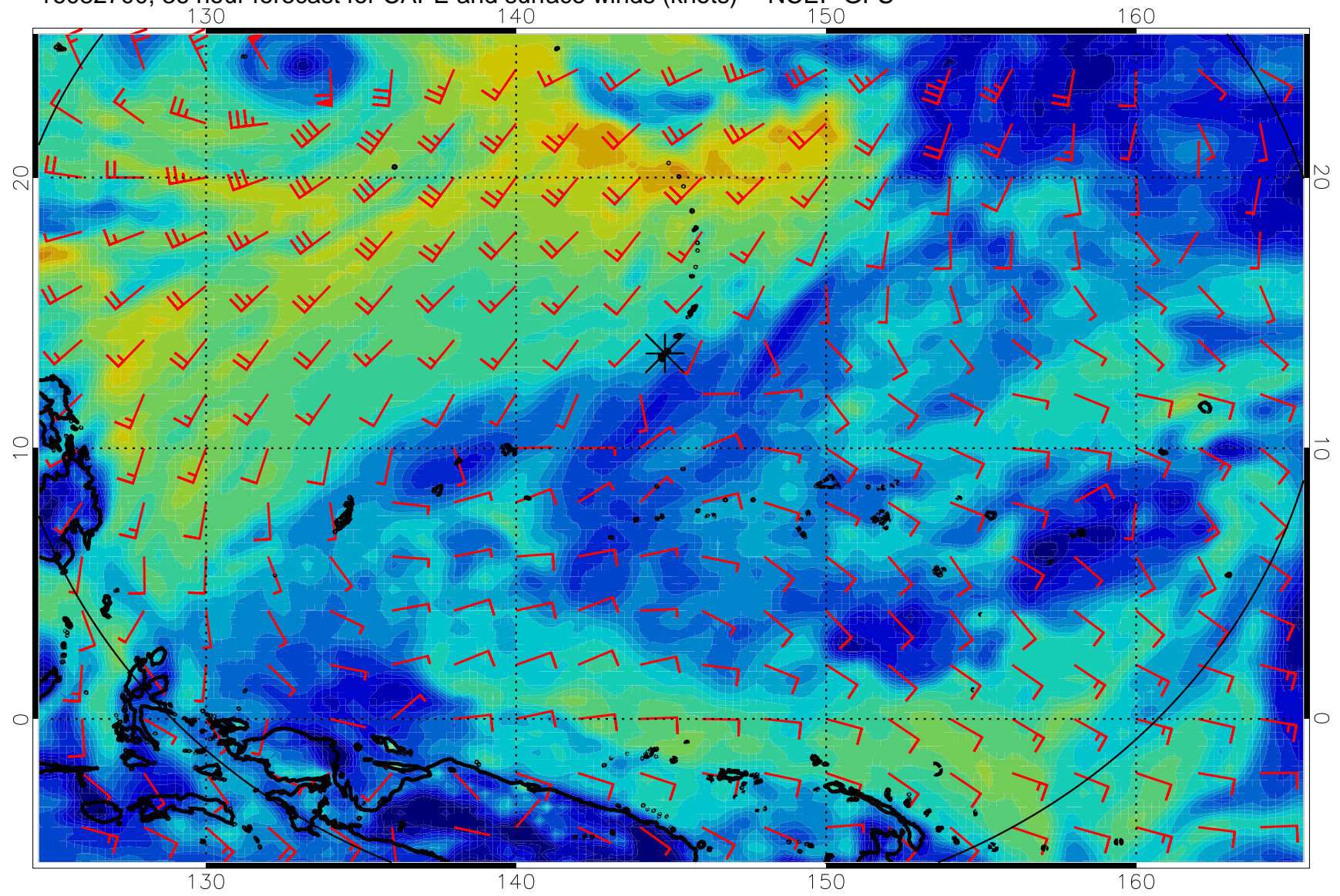
16082612, 24 hour forecast for CAPE and surface winds (knots) -- NCEP GFS



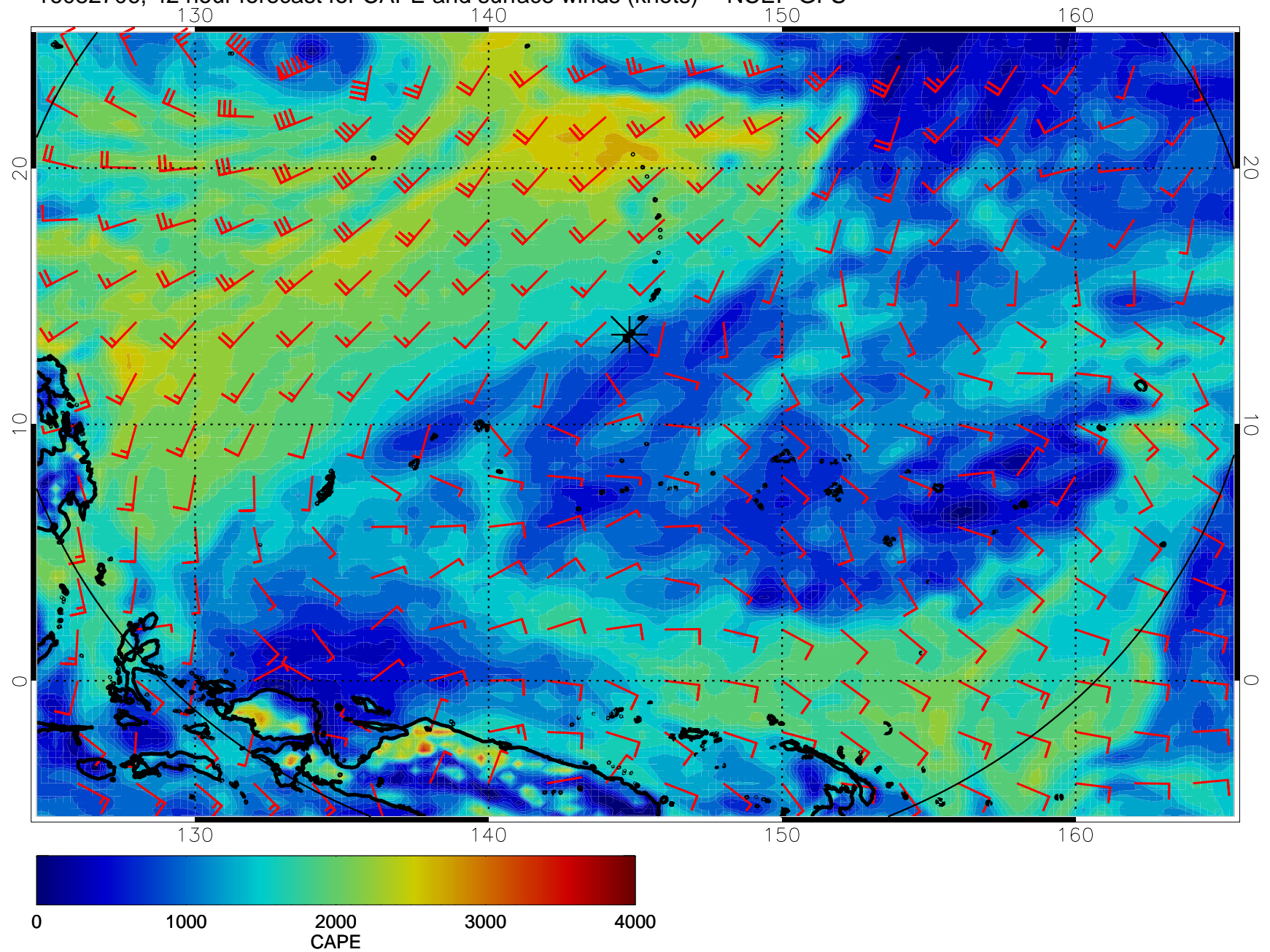
16082618, 30 hour forecast for CAPE and surface winds (knots) -- NCEP GFS



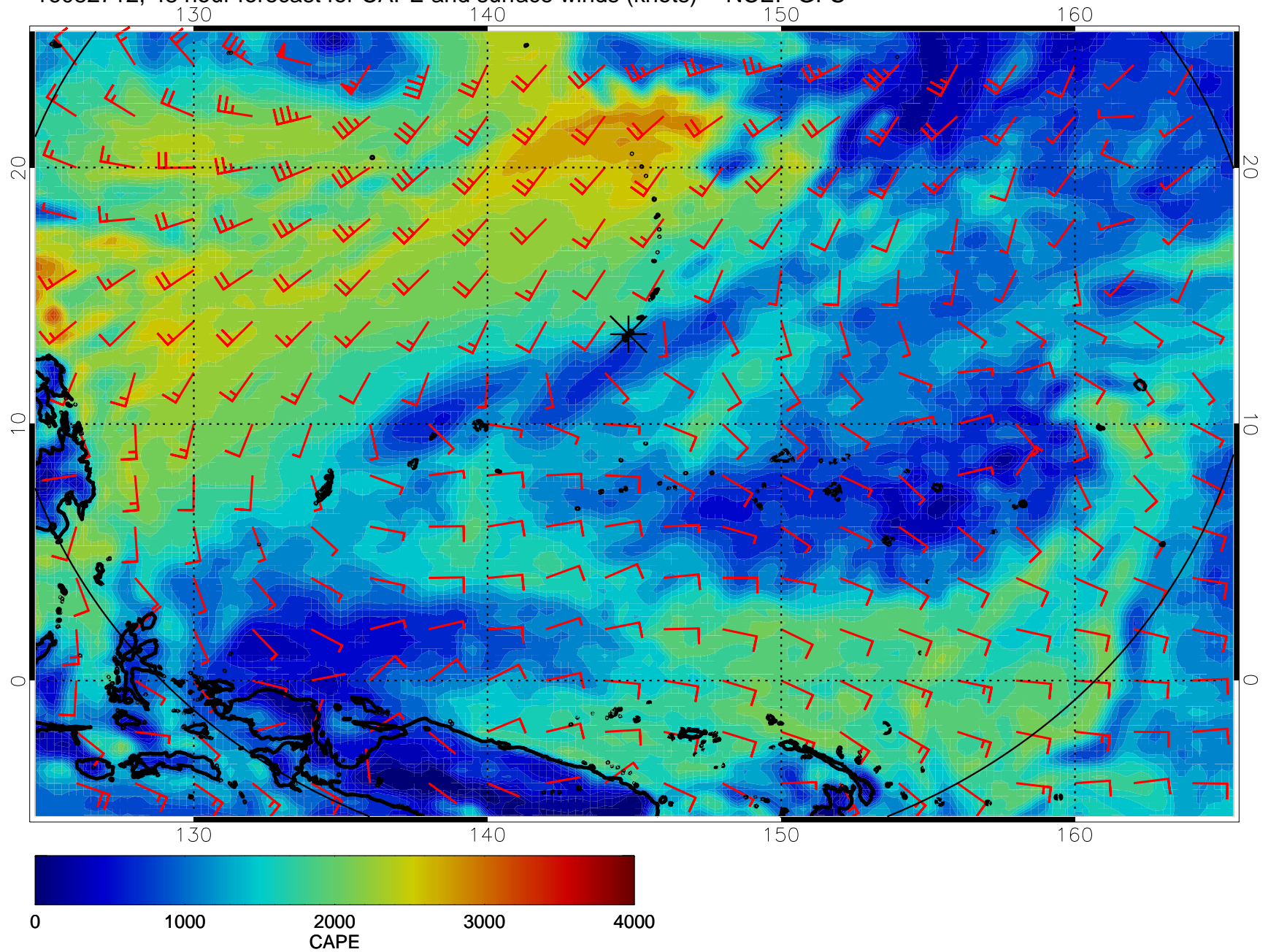
16082700, 36 hour forecast for CAPE and surface winds (knots) -- NCEP GFS



16082706, 42 hour forecast for CAPE and surface winds (knots) -- NCEP GFS

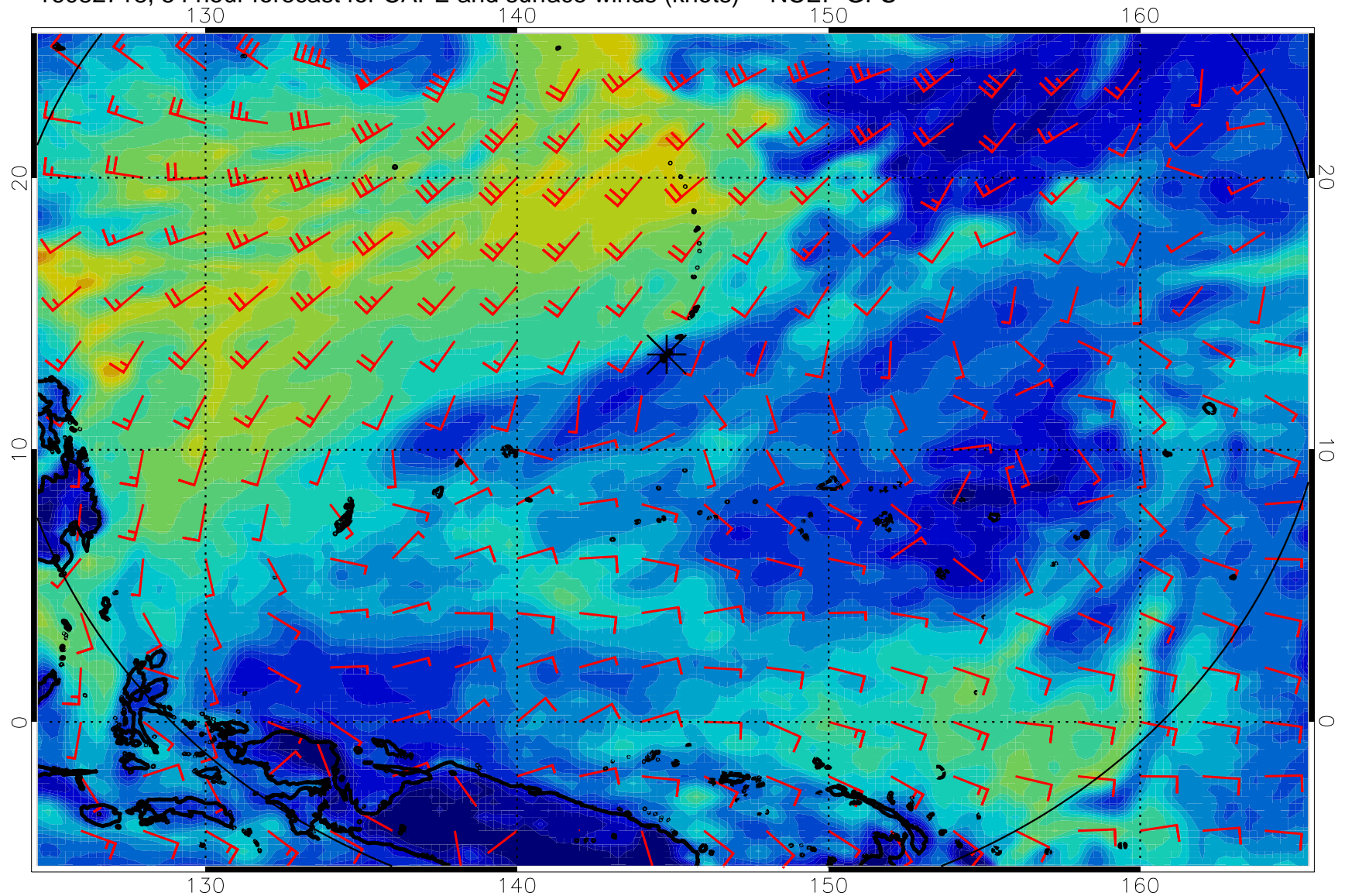


16082712, 48 hour forecast for CAPE and surface winds (knots) -- NCEP GFS

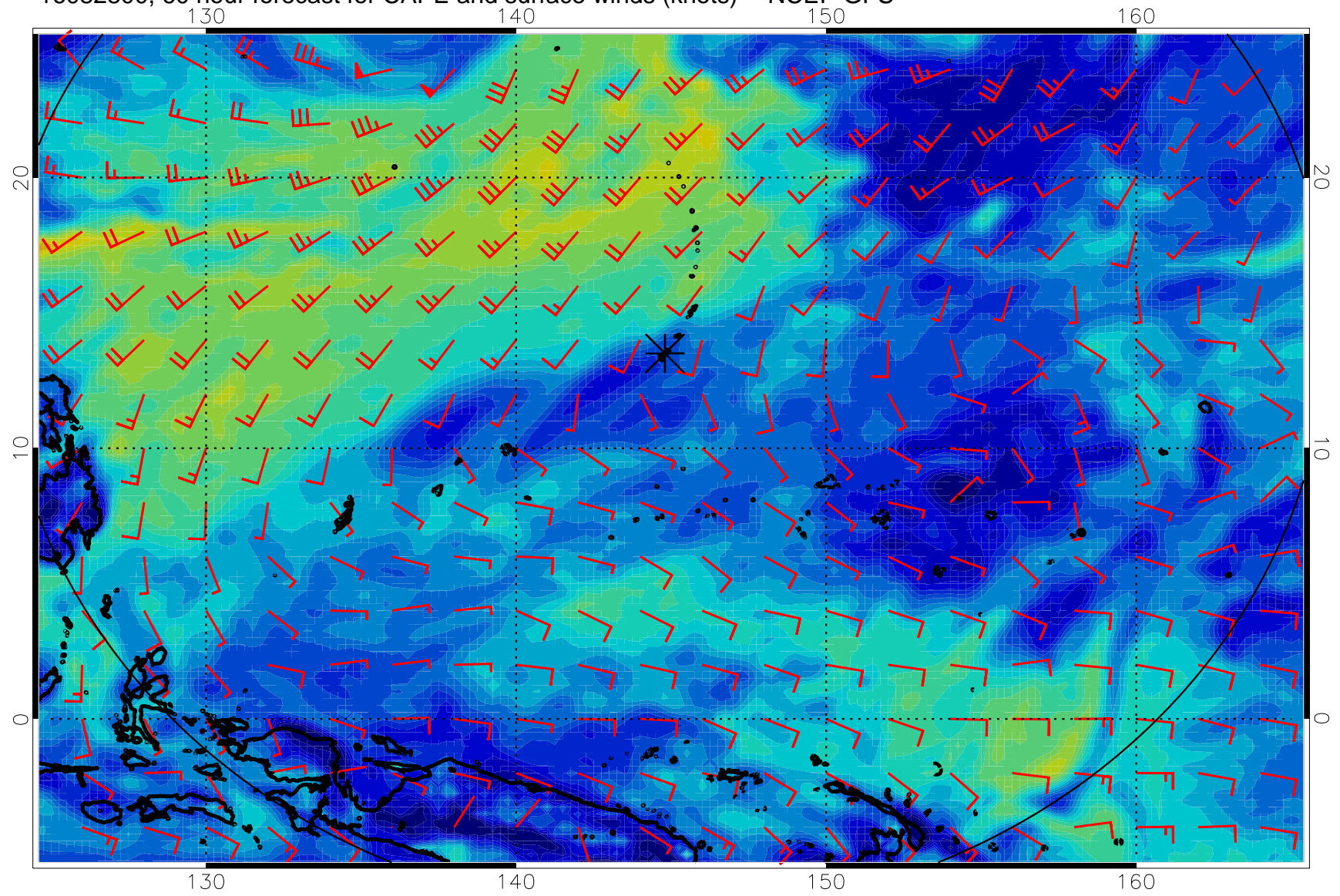




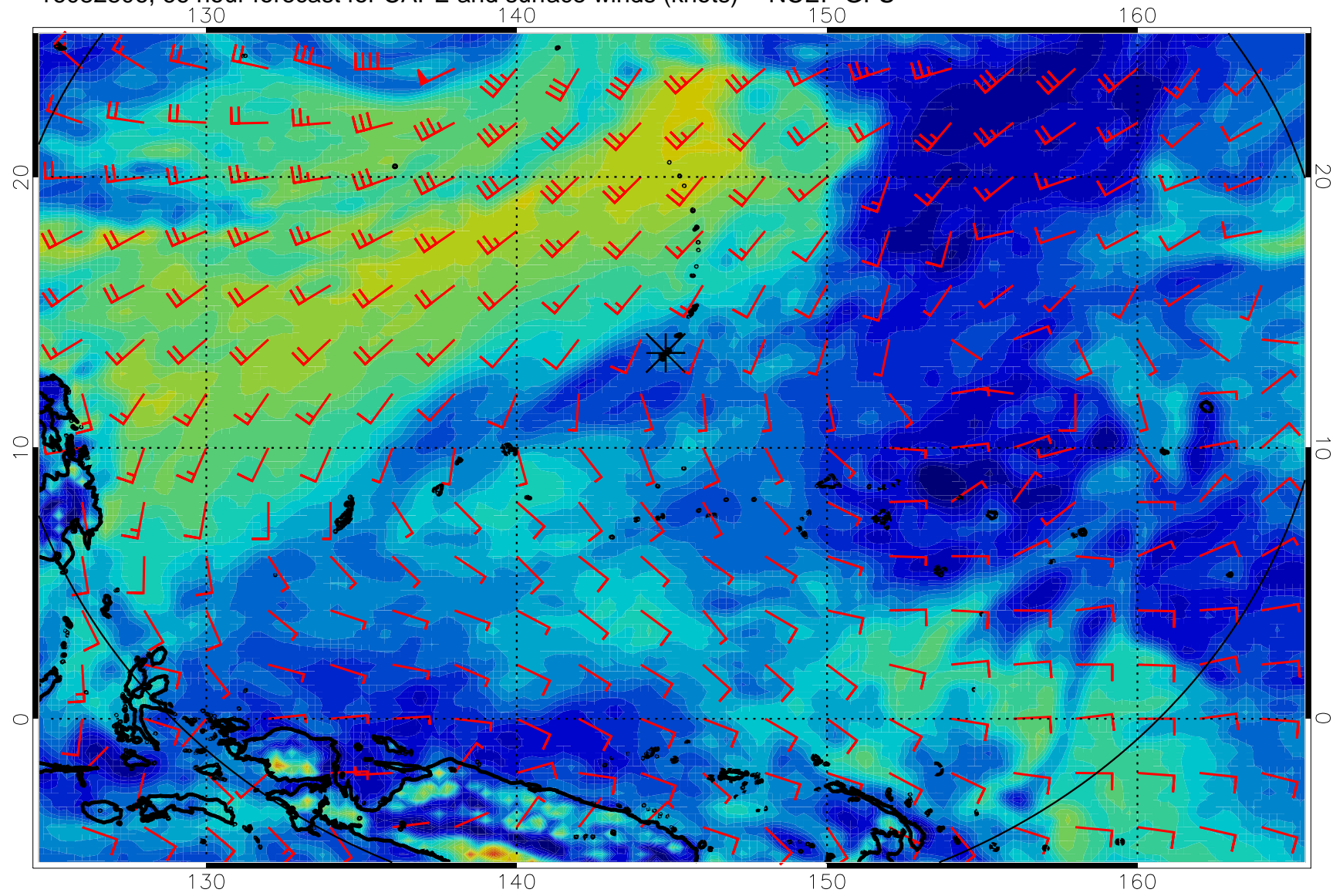
16082718, 54 hour forecast for CAPE and surface winds (knots) -- NCEP GFS



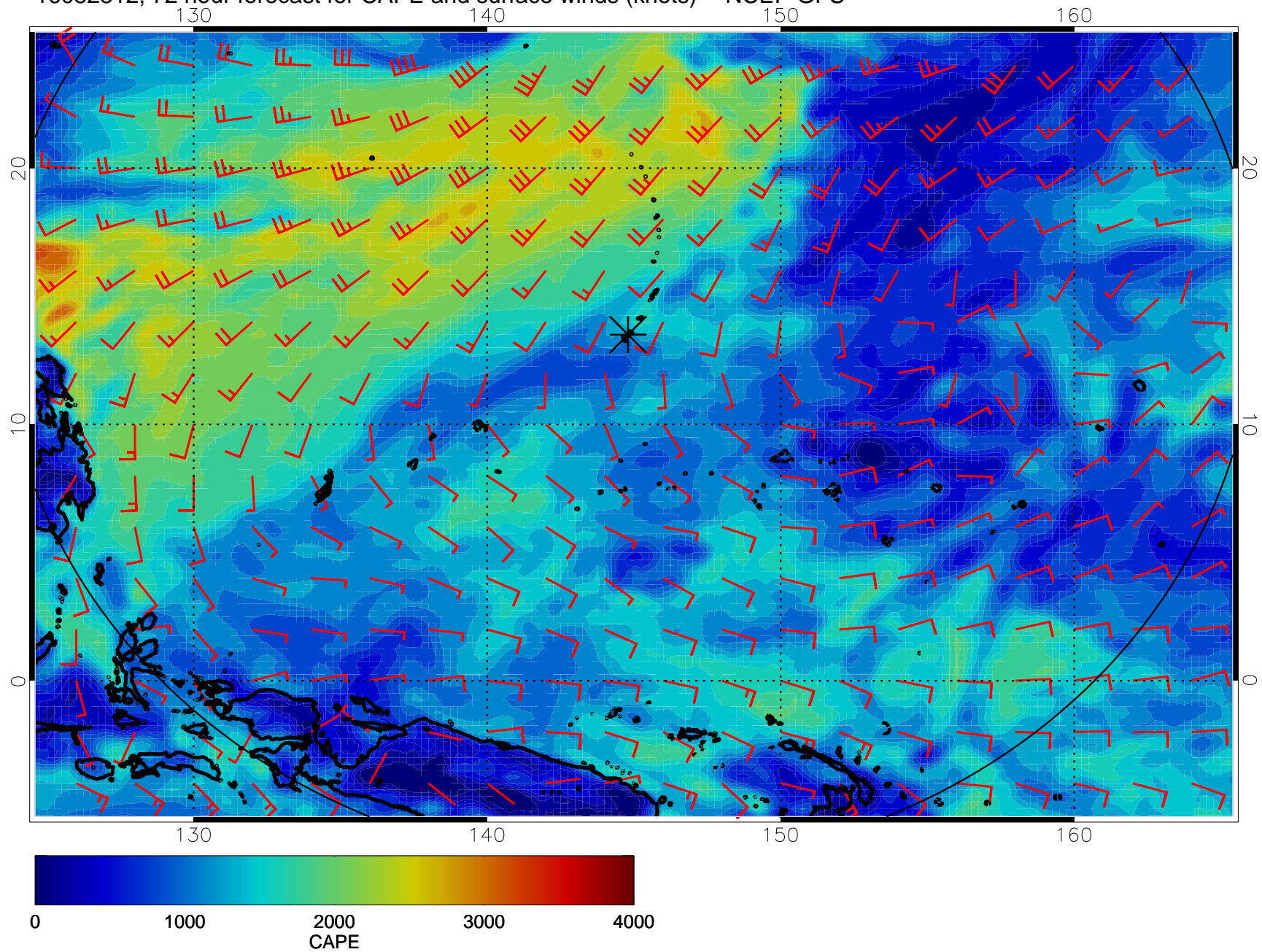
16082800, 60 hour forecast for CAPE and surface winds (knots) -- NCEP GFS



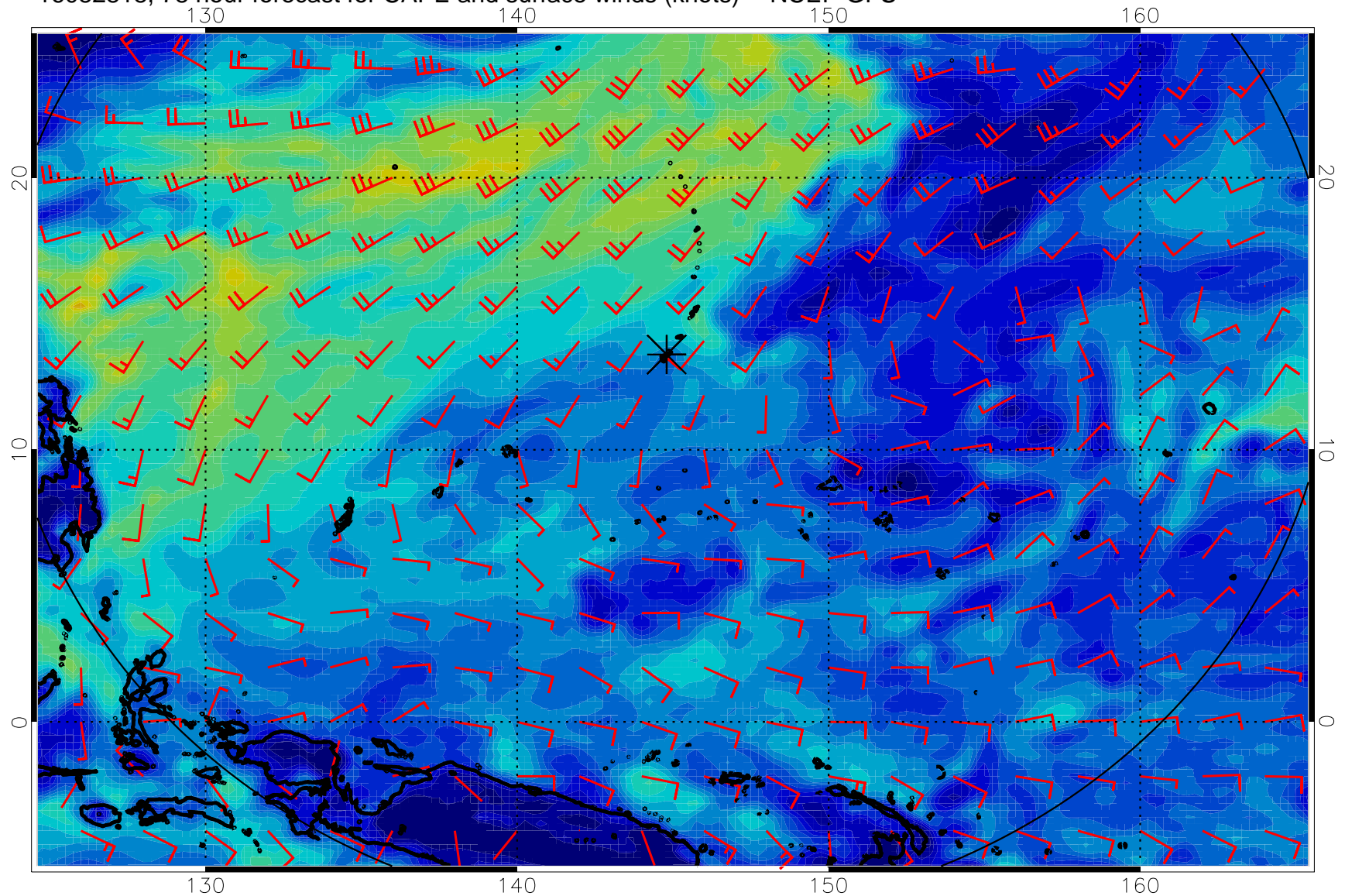
16082806, 66 hour forecast for CAPE and surface winds (knots) -- NCEP GFS



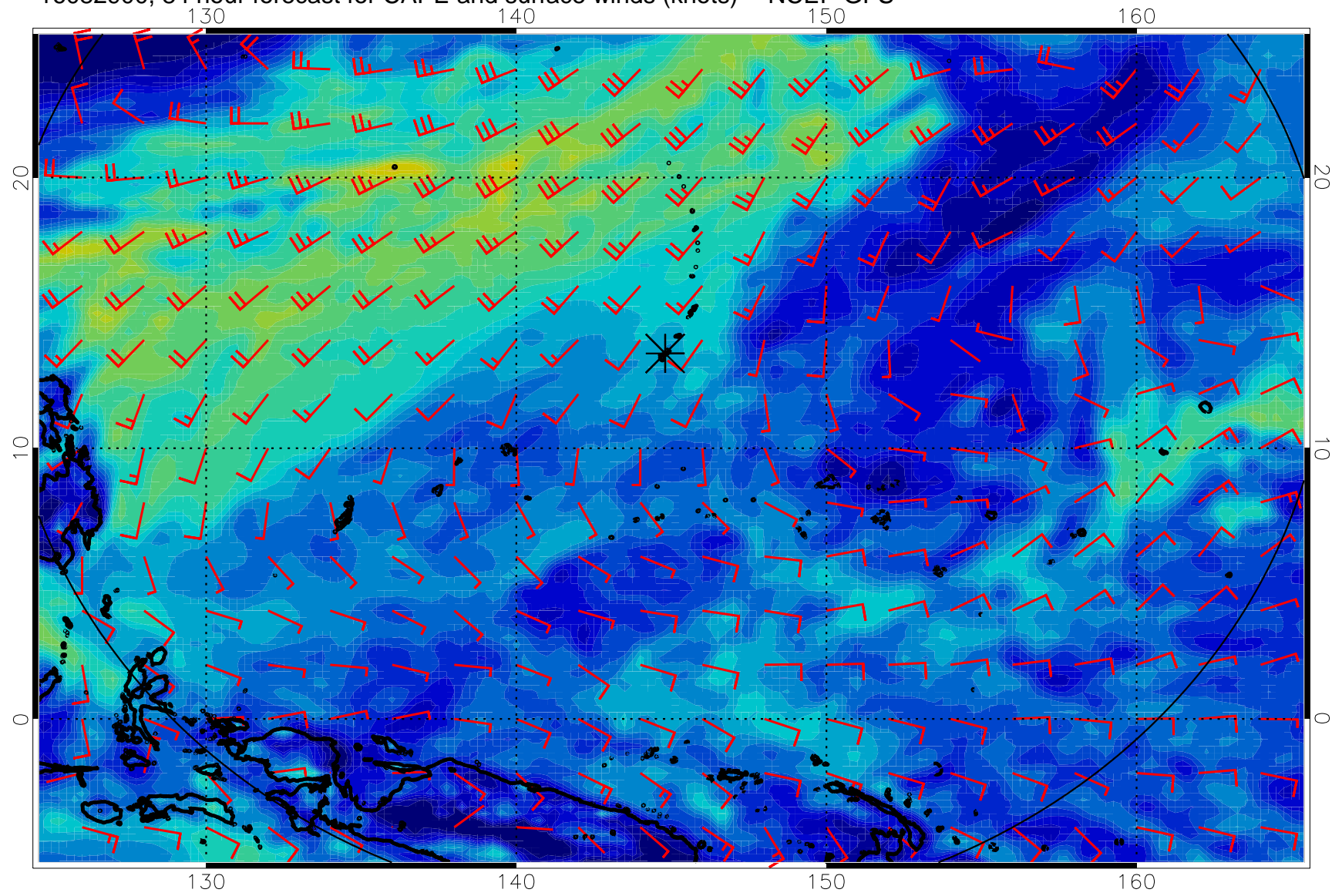
16082812, 72 hour forecast for CAPE and surface winds (knots) -- NCEP GFS



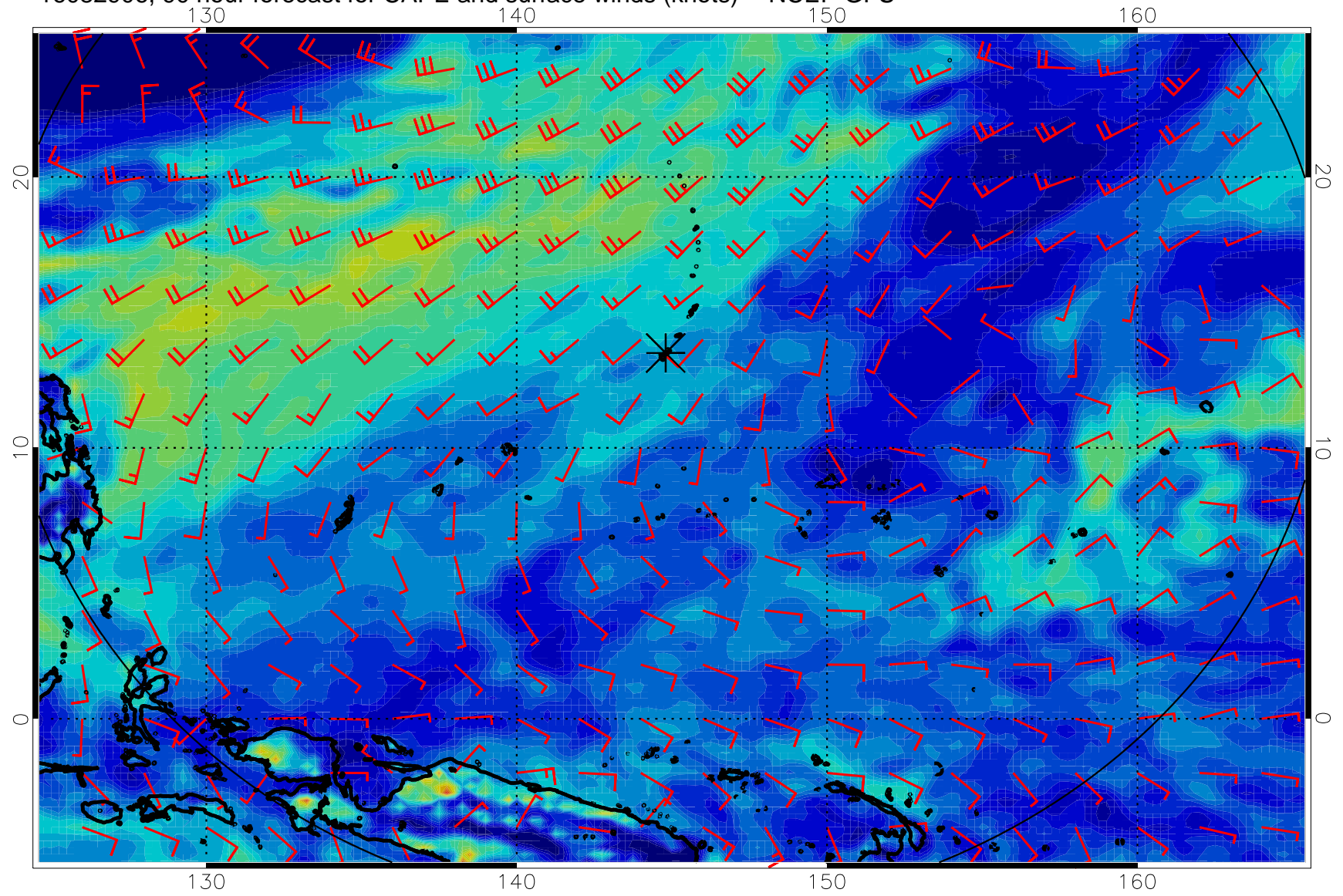
16082818, 78 hour forecast for CAPE and surface winds (knots) -- NCEP GFS



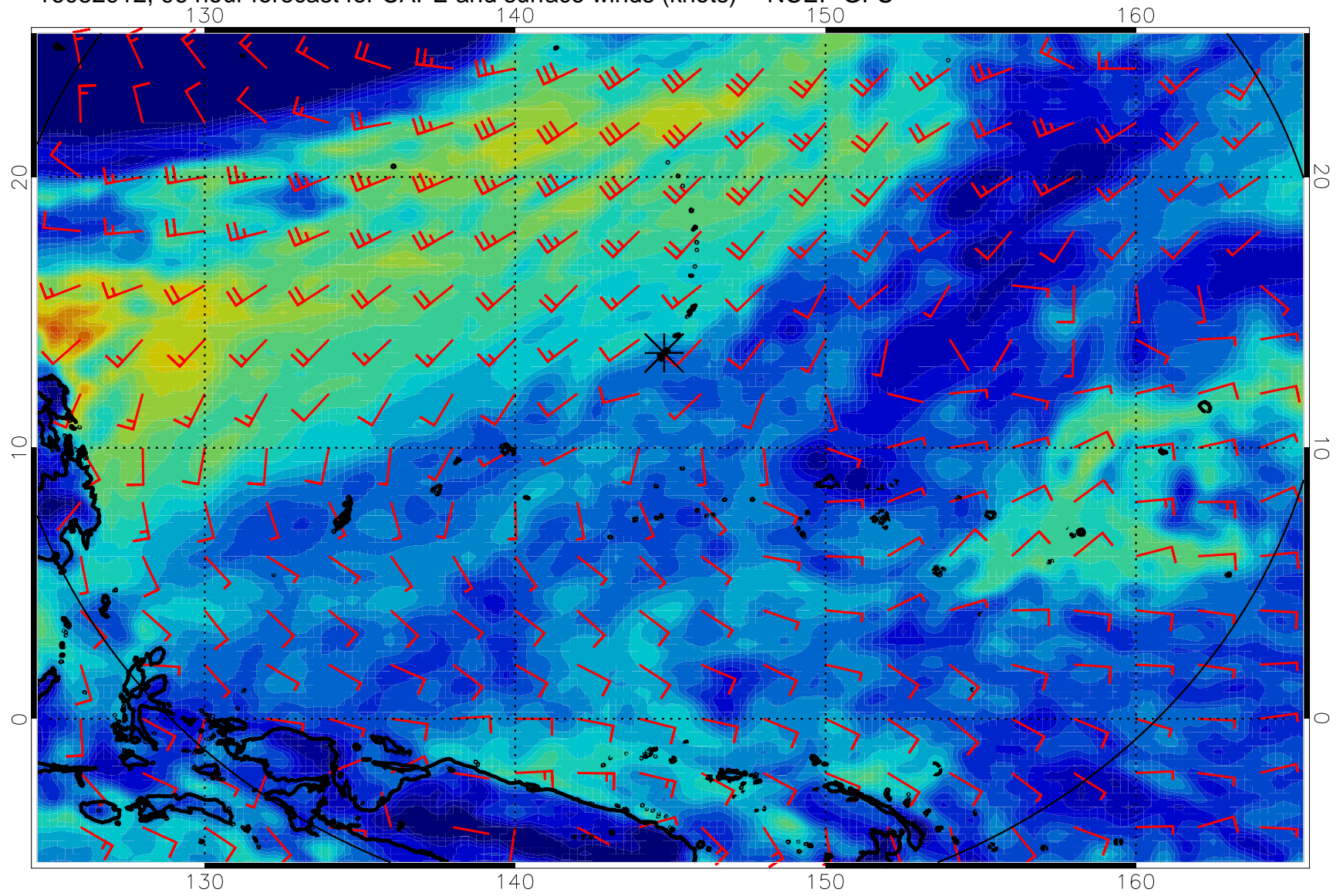
16082900, 84 hour forecast for CAPE and surface winds (knots) -- NCEP GFS



16082906, 90 hour forecast for CAPE and surface winds (knots) -- NCEP GFS

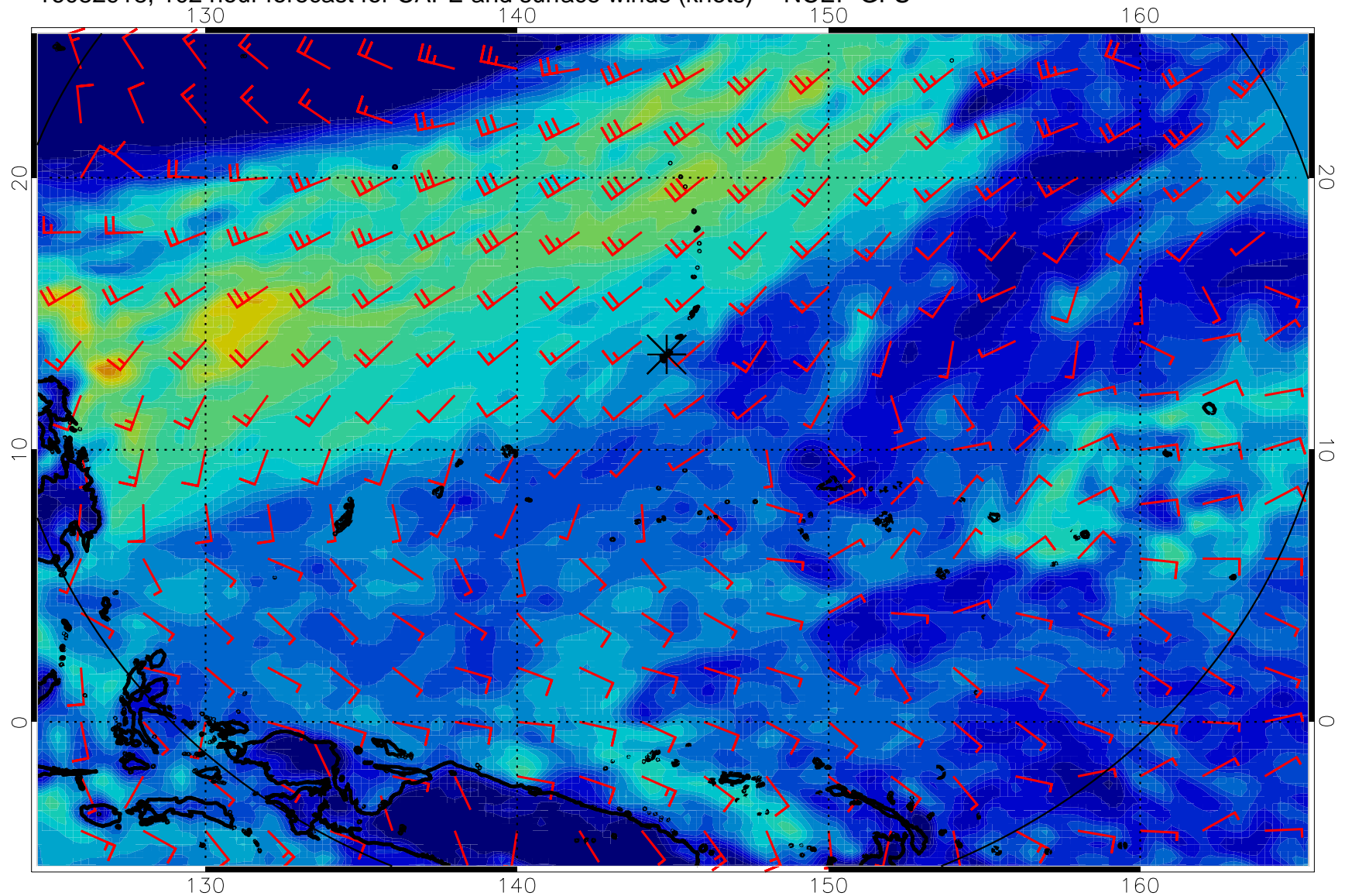


16082912, 96 hour forecast for CAPE and surface winds (knots) -- NCEP GFS

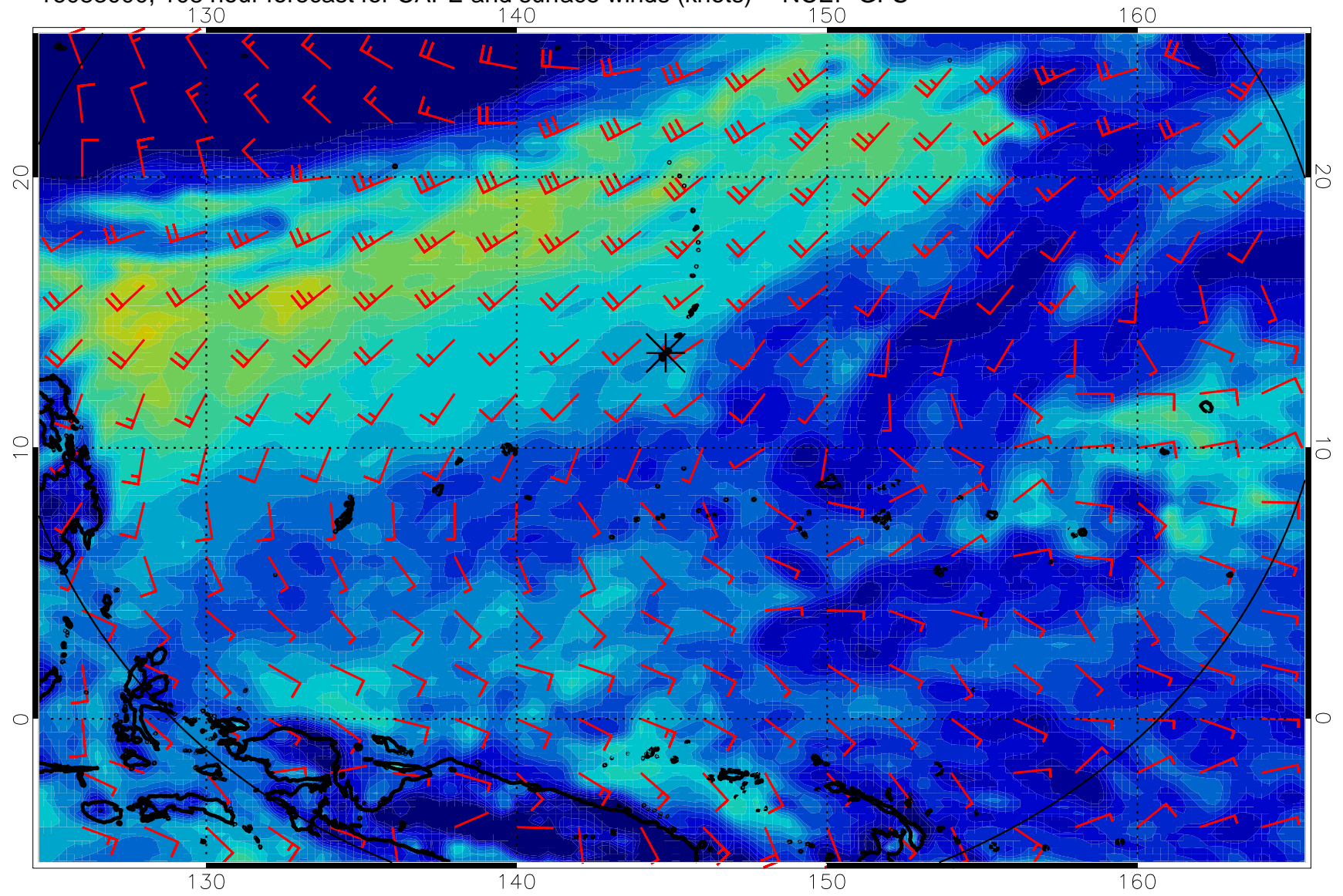




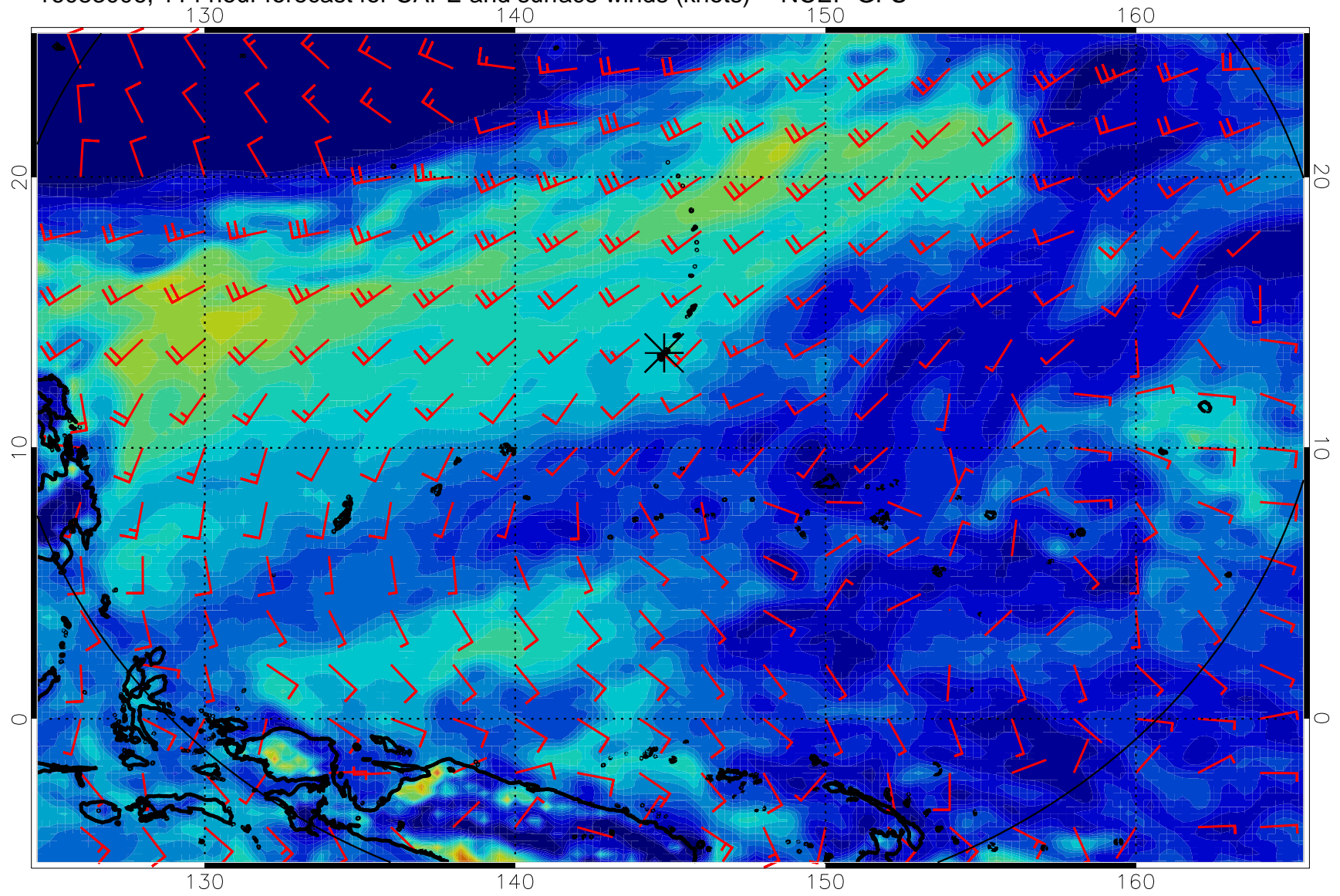
16082918, 102 hour forecast for CAPE and surface winds (knots) -- NCEP GFS



16083000, 108 hour forecast for CAPE and surface winds (knots) -- NCEP GFS



16083006, 114 hour forecast for CAPE and surface winds (knots) -- NCEP GFS



16083012, 120 hour forecast for CAPE and surface winds (knots) -- NCEP GFS

