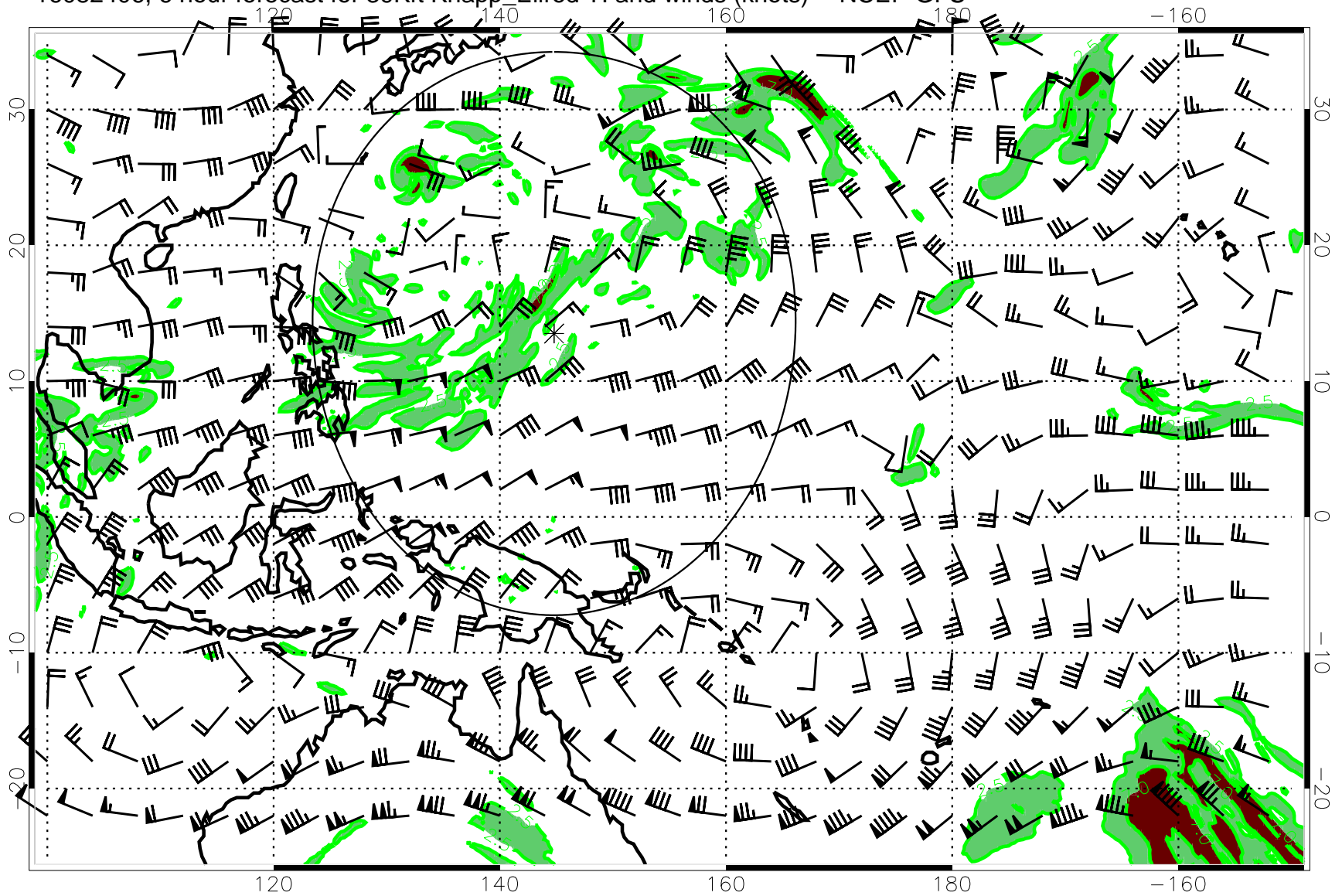
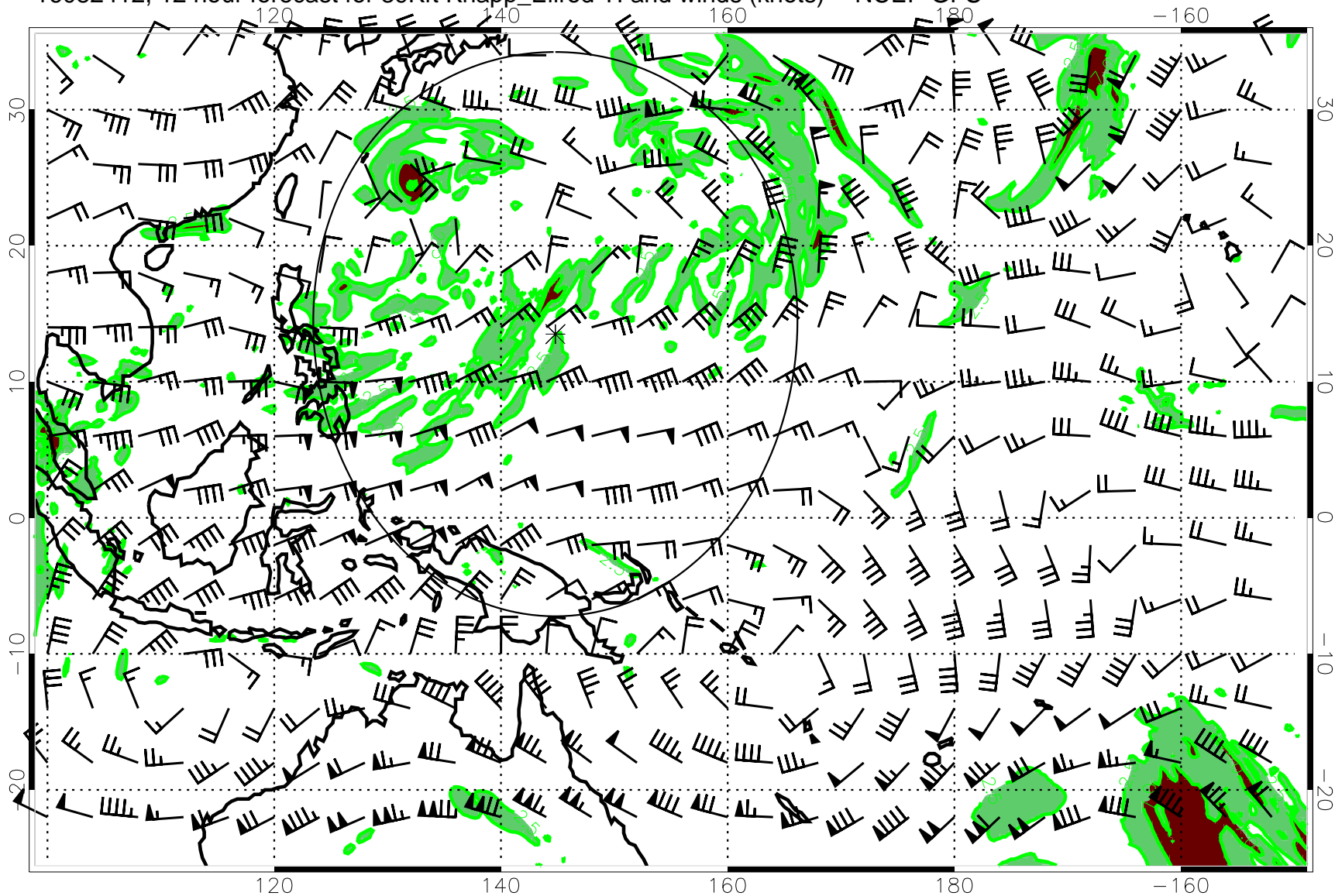


16082406, 6 hour forecast for 39Kft Knapp_Ellrod TI and winds (knots) -- NCEP GFS



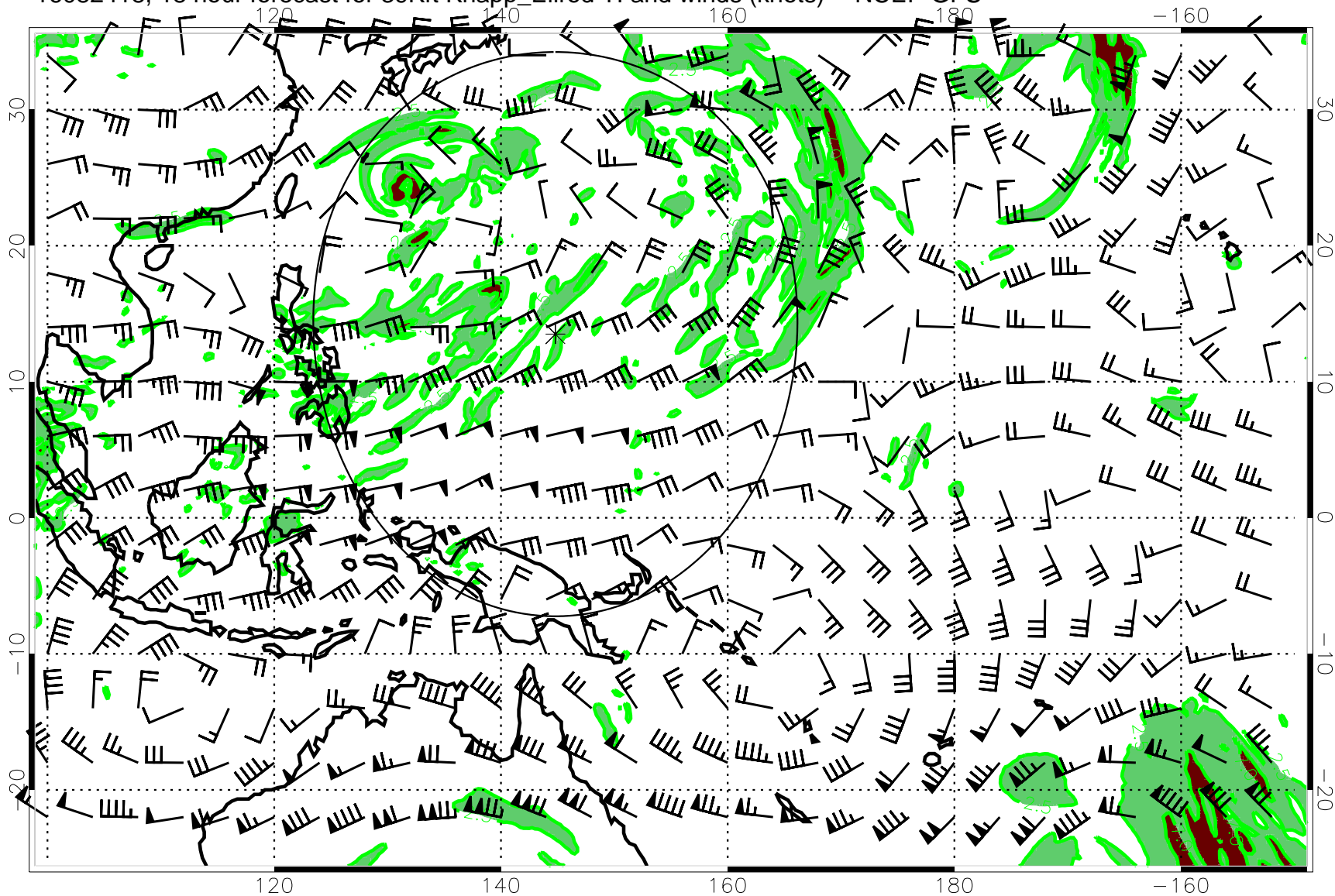
Turb value = 7 Turb value = 2.5

16082412, 12 hour forecast for 39Kft Knapp_Ellrod TI and winds (knots) -- NCEP GFS



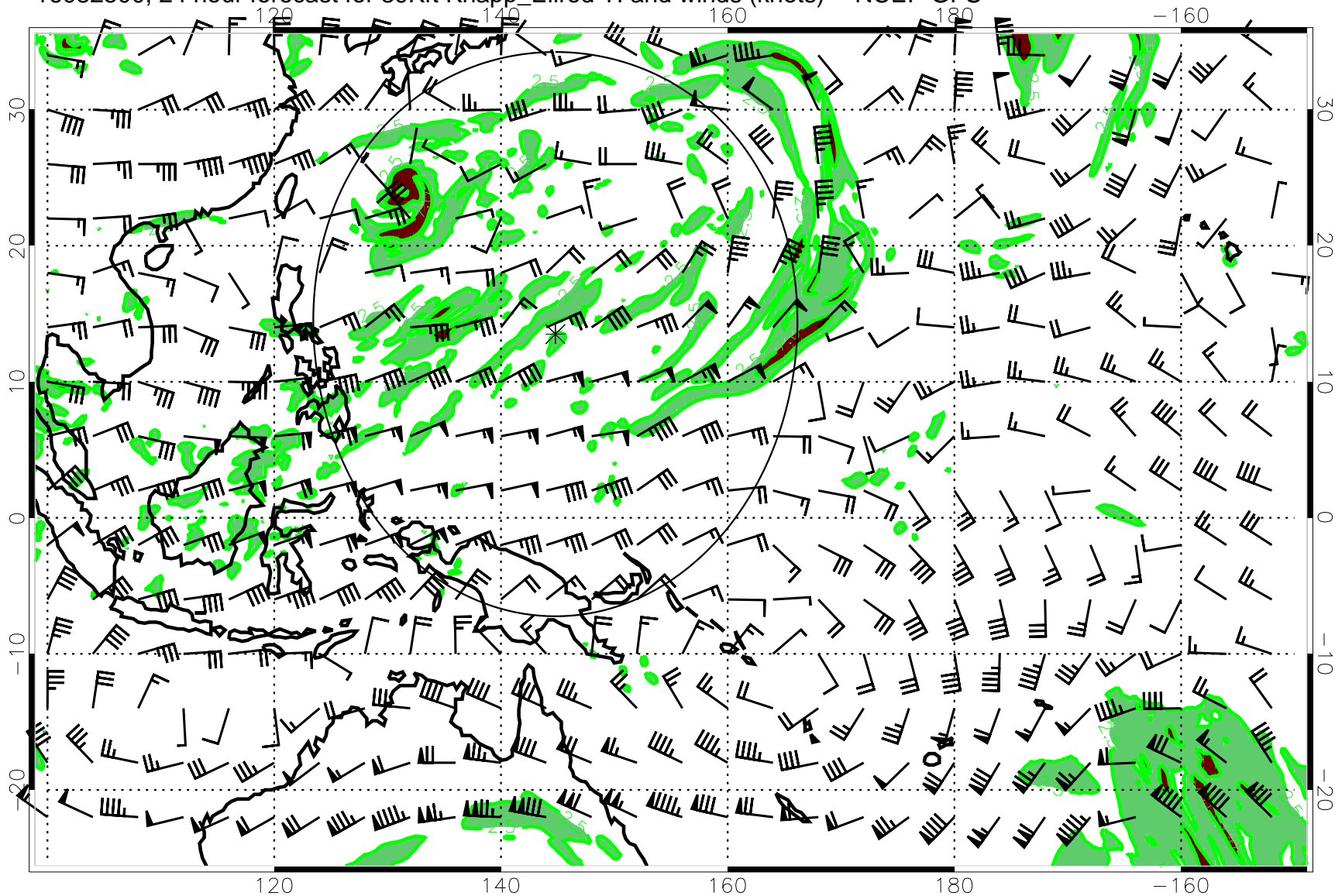
Turb value = 7 Turb value = 2.5

16082418, 18 hour forecast for 39Kft Knapp_Ellrod TI and winds (knots) -- NCEP GFS



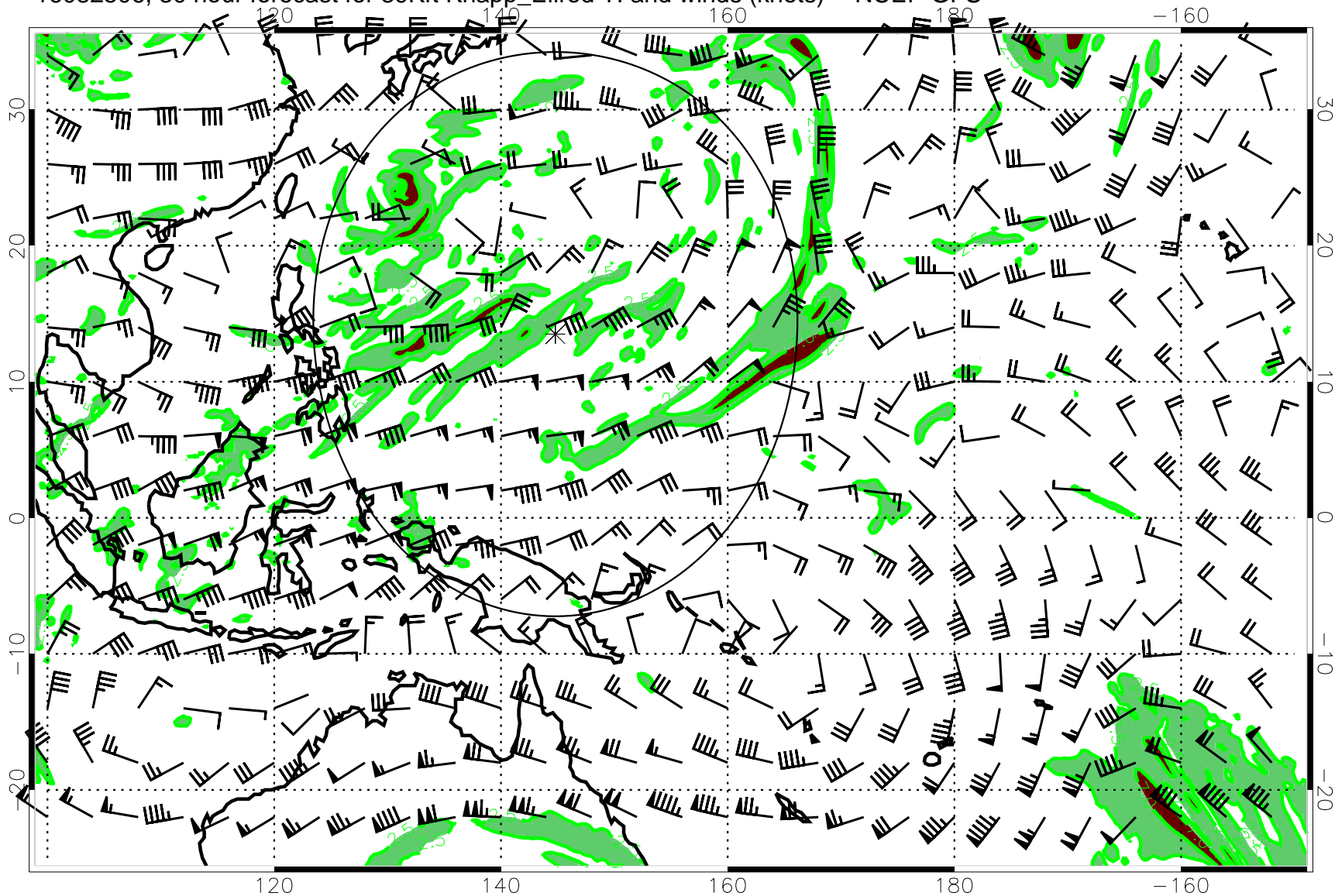
Turb value = 7 Turb value = 2.5

16082500, 24 hour forecast for 39Kft Knapp_Ellrod TI and winds (knots) -- NCEP GFS



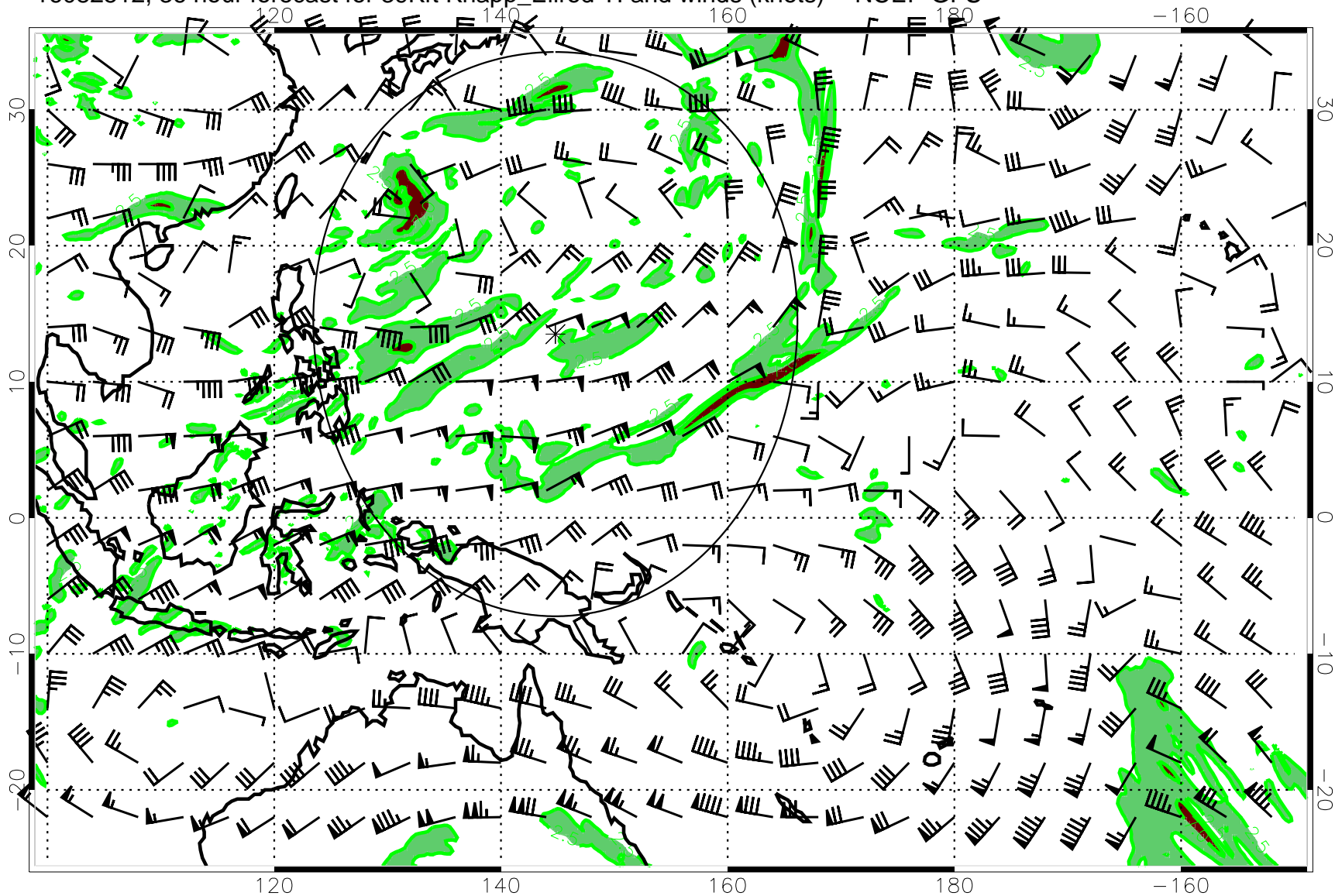
Turb value = 7 Turb value = 2.5

16082506, 30 hour forecast for 39Kft Knapp_Ellrod TI and winds (knots) -- NCEP GFS



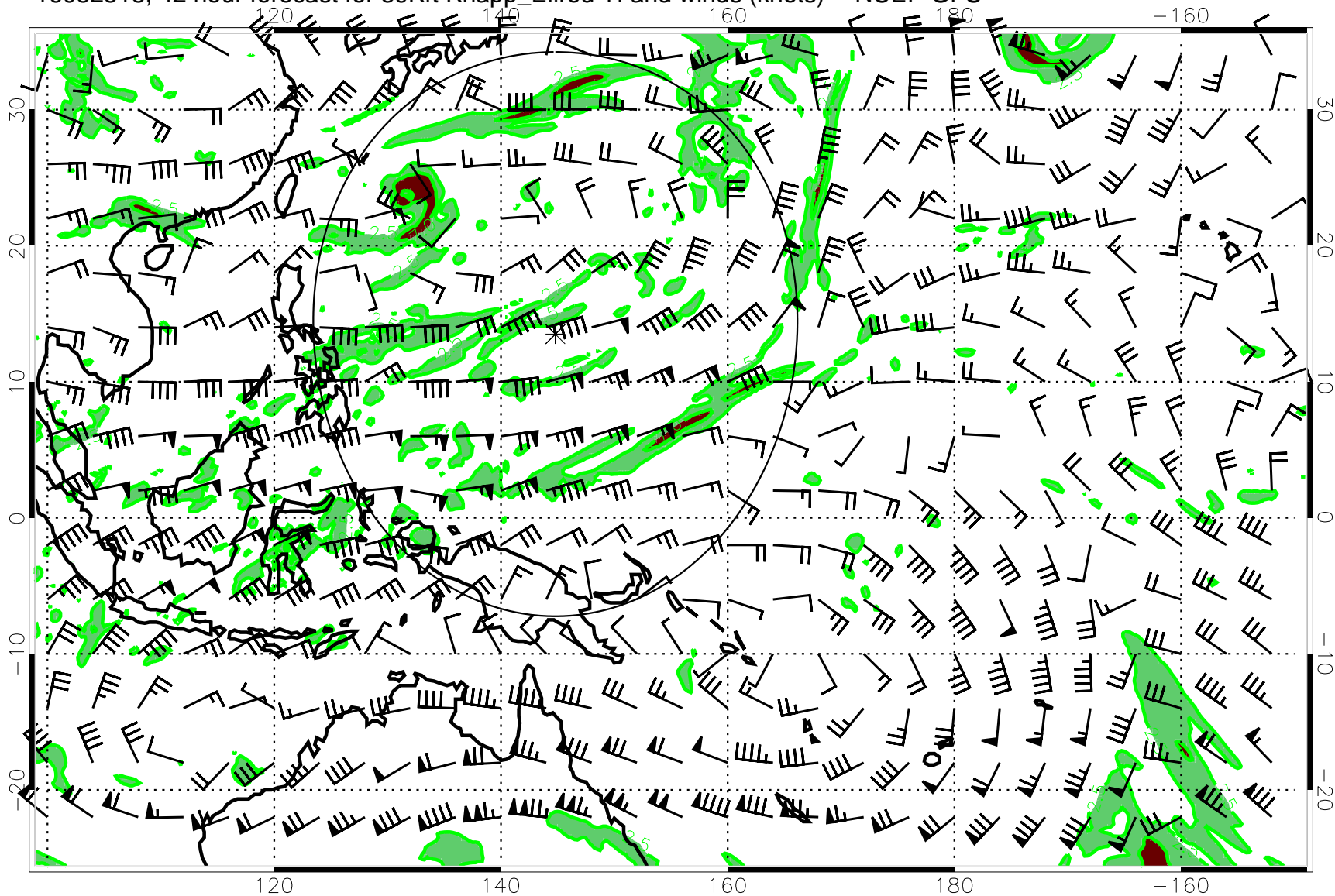
Turb value = 7 Turb value = 2.5

16082512, 36 hour forecast for 39Kft Knapp_Ellrod TI and winds (knots) -- NCEP GFS



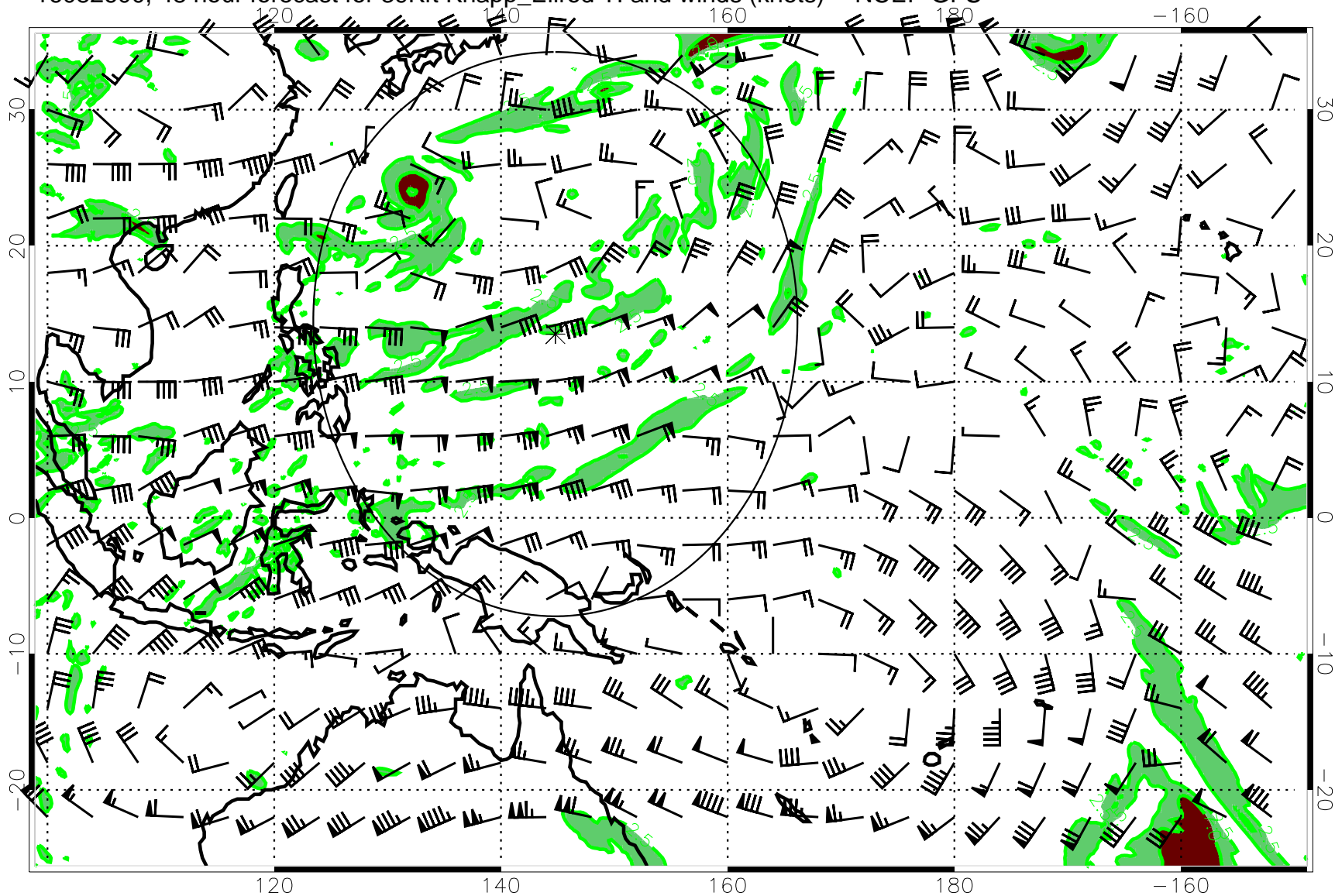
Turb value = 7 Turb value = 2.5

16082518, 42 hour forecast for 39Kft Knapp_Ellrod TI and winds (knots) -- NCEP GFS



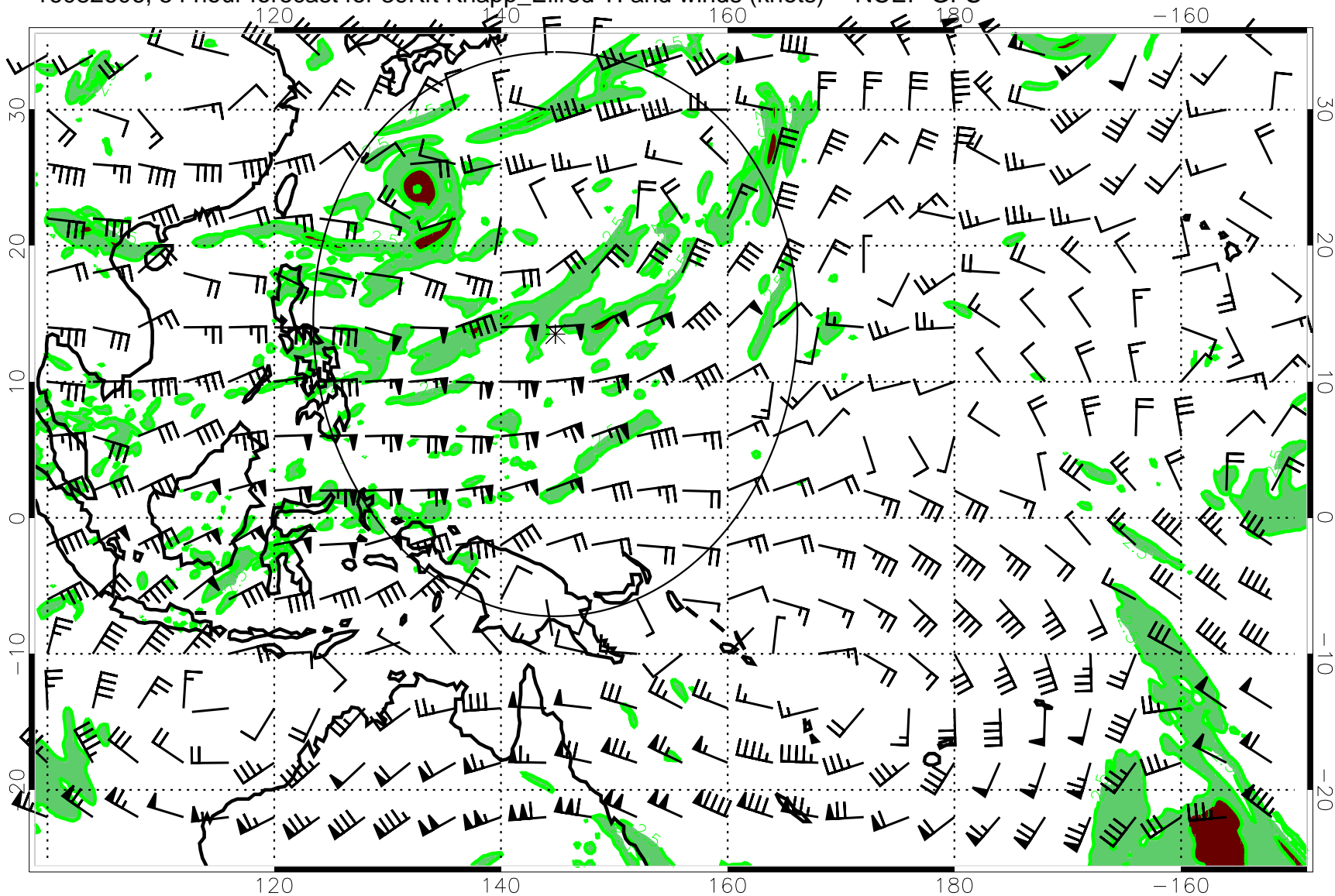
Turb value = 7 Turb value = 2.5

16082600, 48 hour forecast for 39Kft Knapp_Ellrod TI and winds (knots) -- NCEP GFS



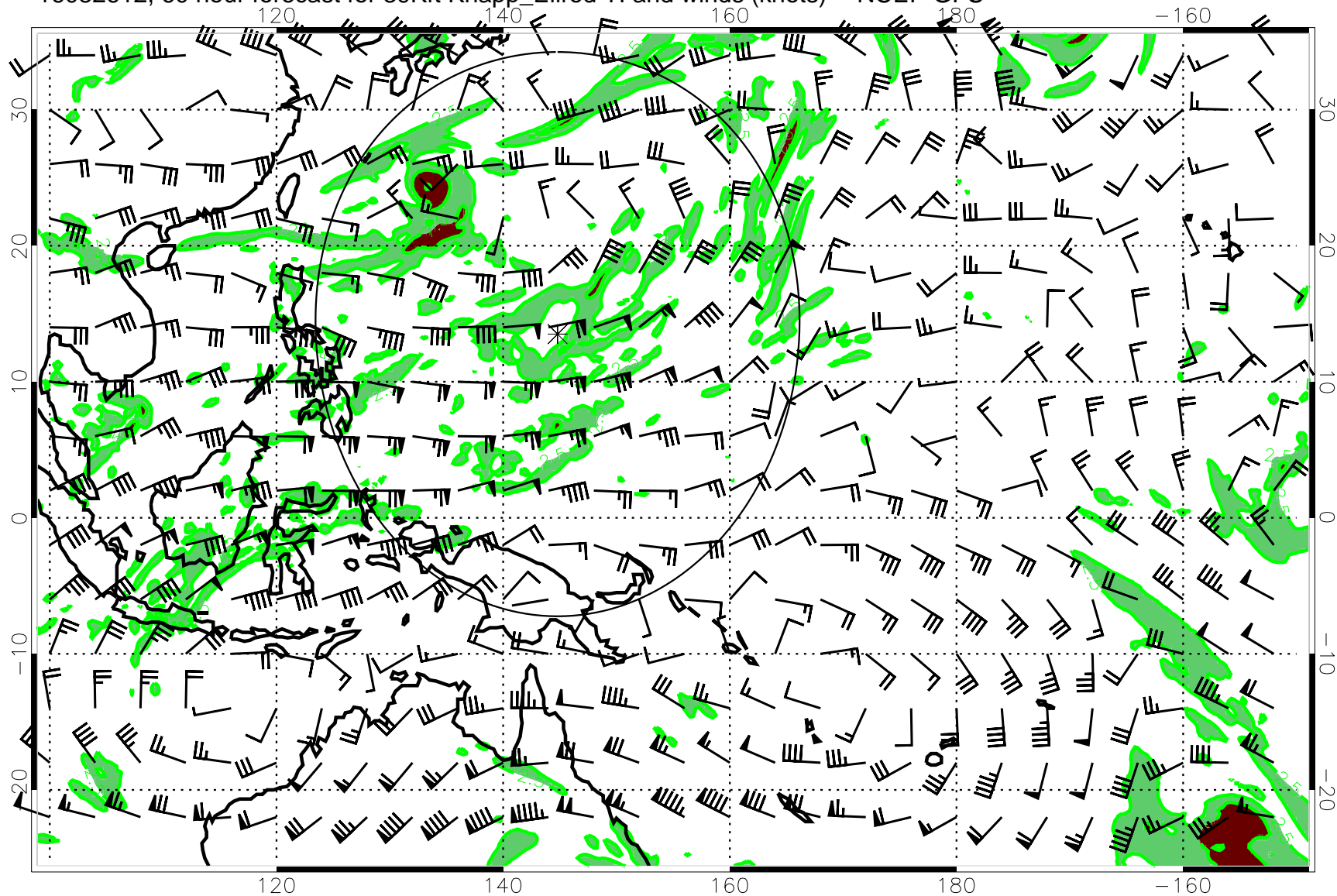
Turb value = 7 Turb value = 2.5

16082606, 54 hour forecast for 39Kft Knapp_Ellrod TI and winds (knots) -- NCEP GFS



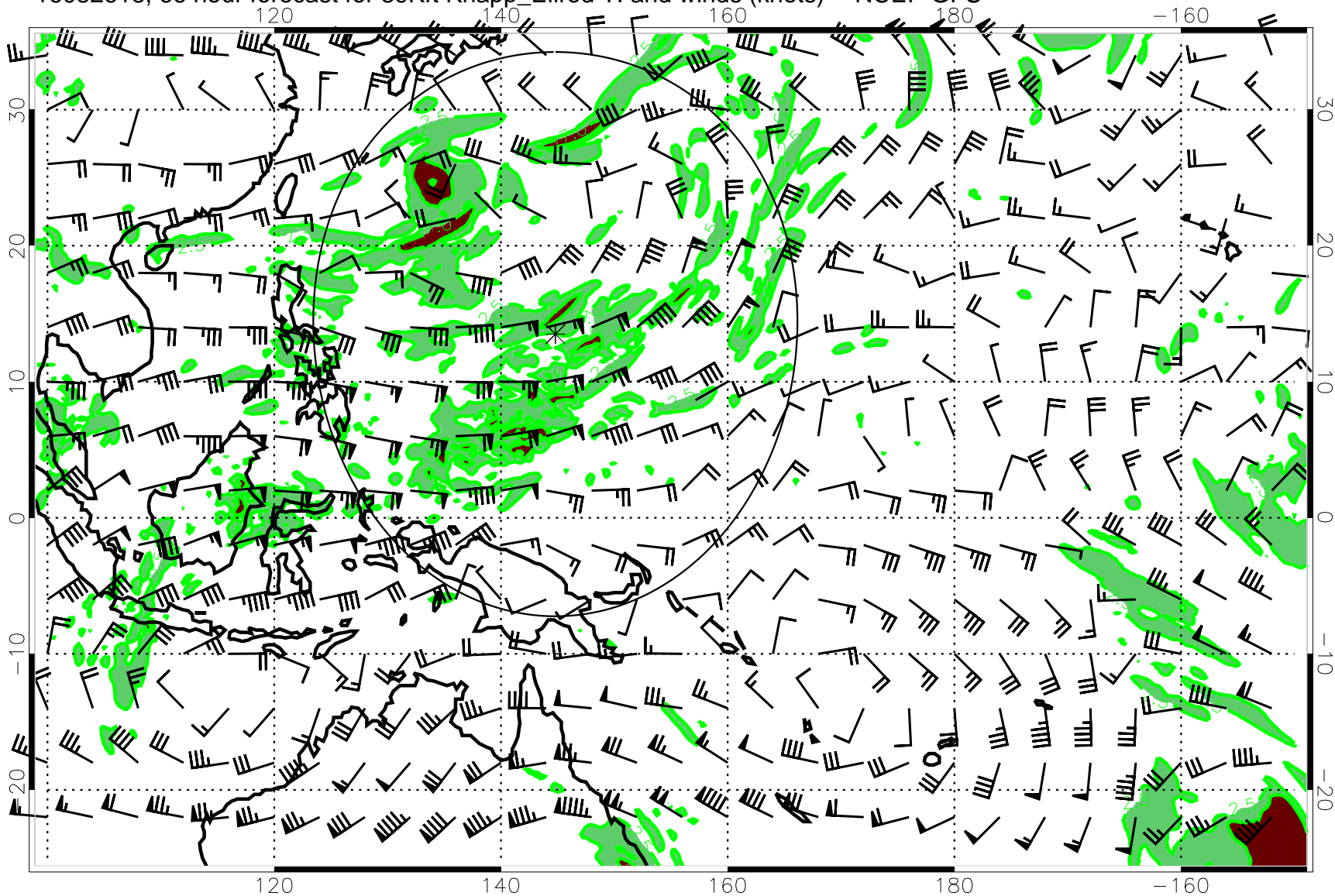
Turb value = 7 Turb value = 2.5

16082612, 60 hour forecast for 39Kft Knapp_Ellrod TI and winds (knots) -- NCEP GFS



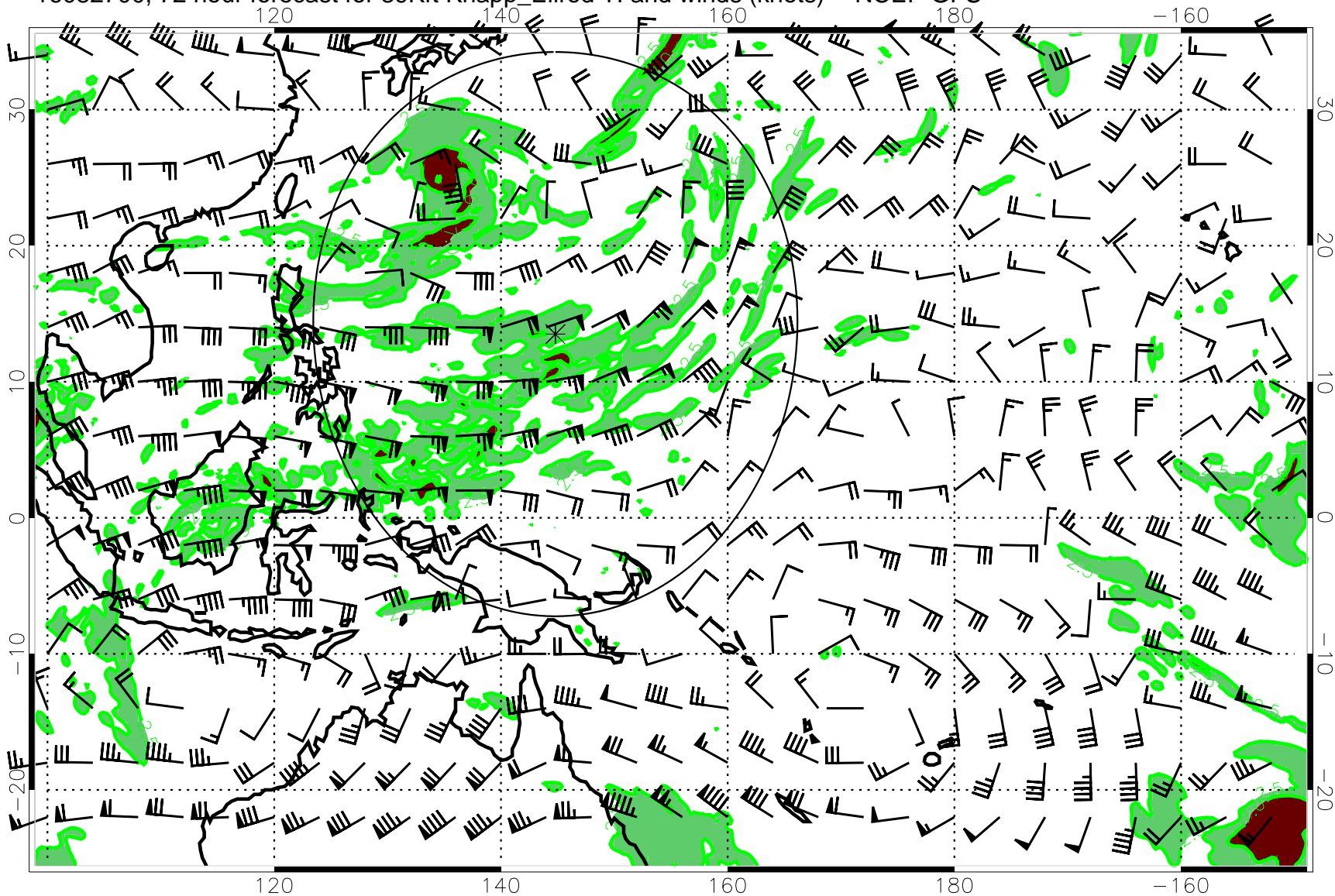
Turb value = 7 Turb value = 2.5

16082618, 66 hour forecast for 39Kft Knapp_Ellrod TI and winds (knots) -- NCEP GFS



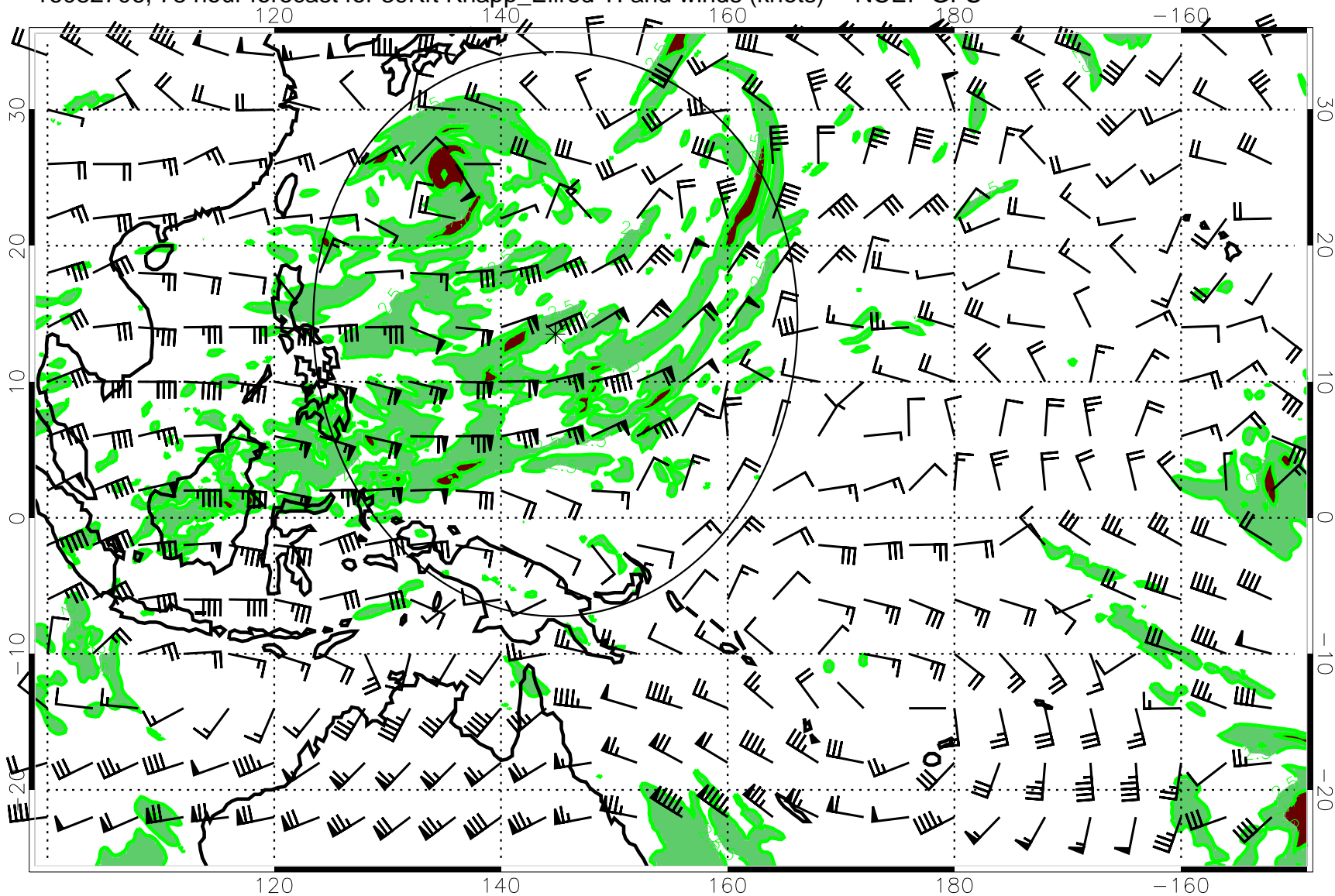
Turb value = 7 Turb value = 2.5

16082700, 72 hour forecast for 39Kft Knapp_Ellrod TI and winds (knots) -- NCEP GFS



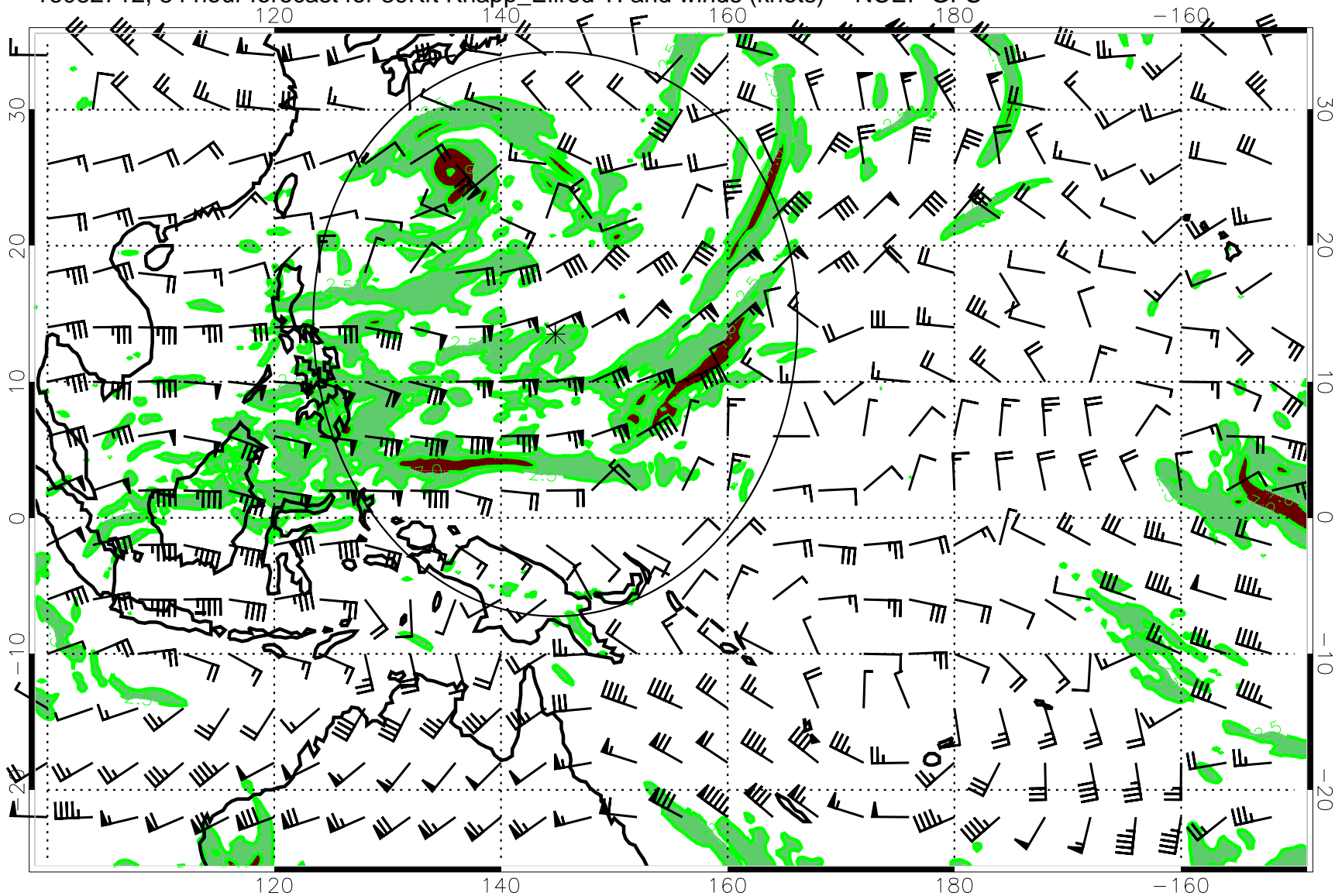
Turb value = 7 Turb value = 2.5

16082706, 78 hour forecast for 39Kft Knapp_Ellrod TI and winds (knots) -- NCEP GFS



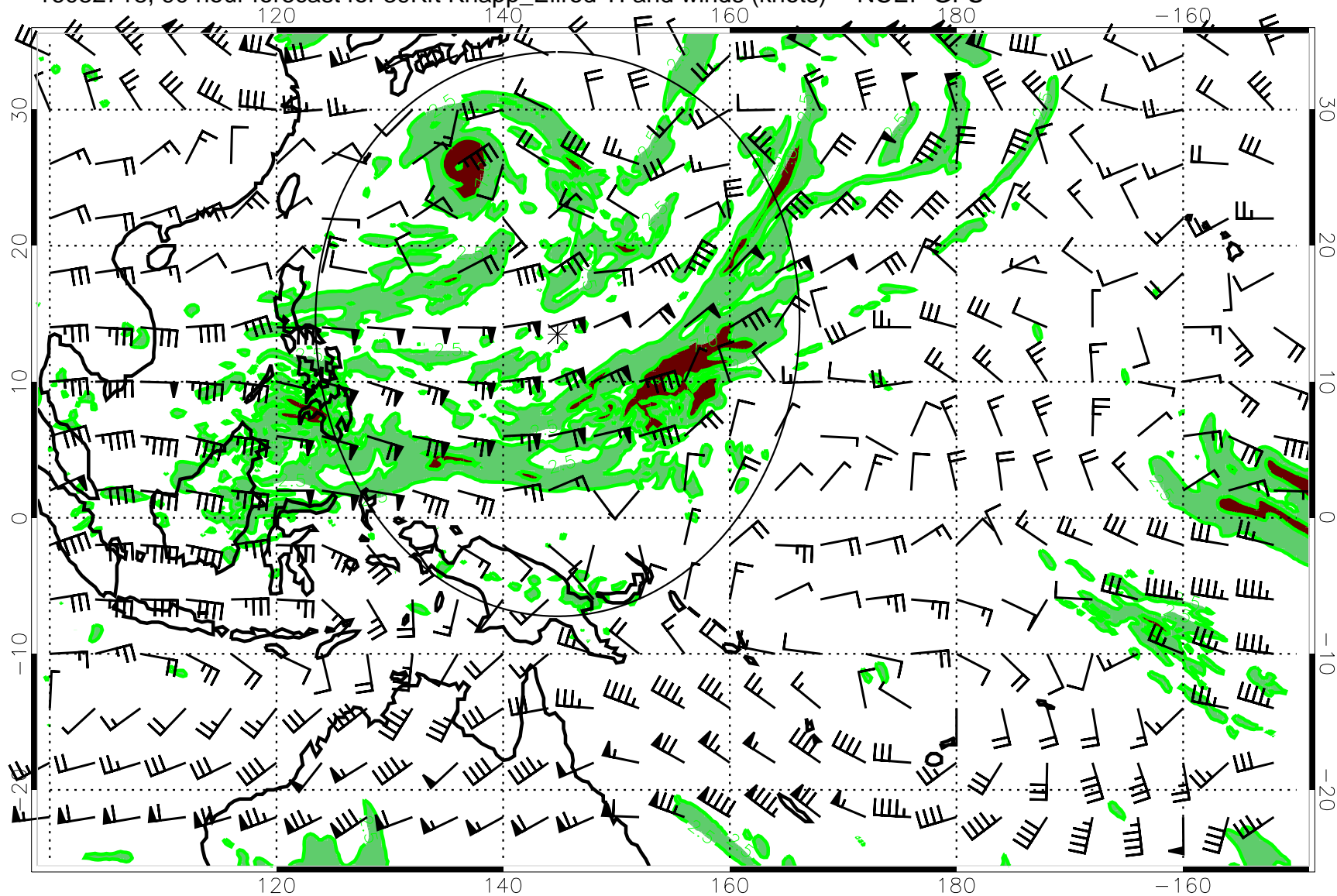
Turb value = 7 Turb value = 2.5

16082712, 84 hour forecast for 39Kft Knapp_Ellrod TI and winds (knots) -- NCEP GFS



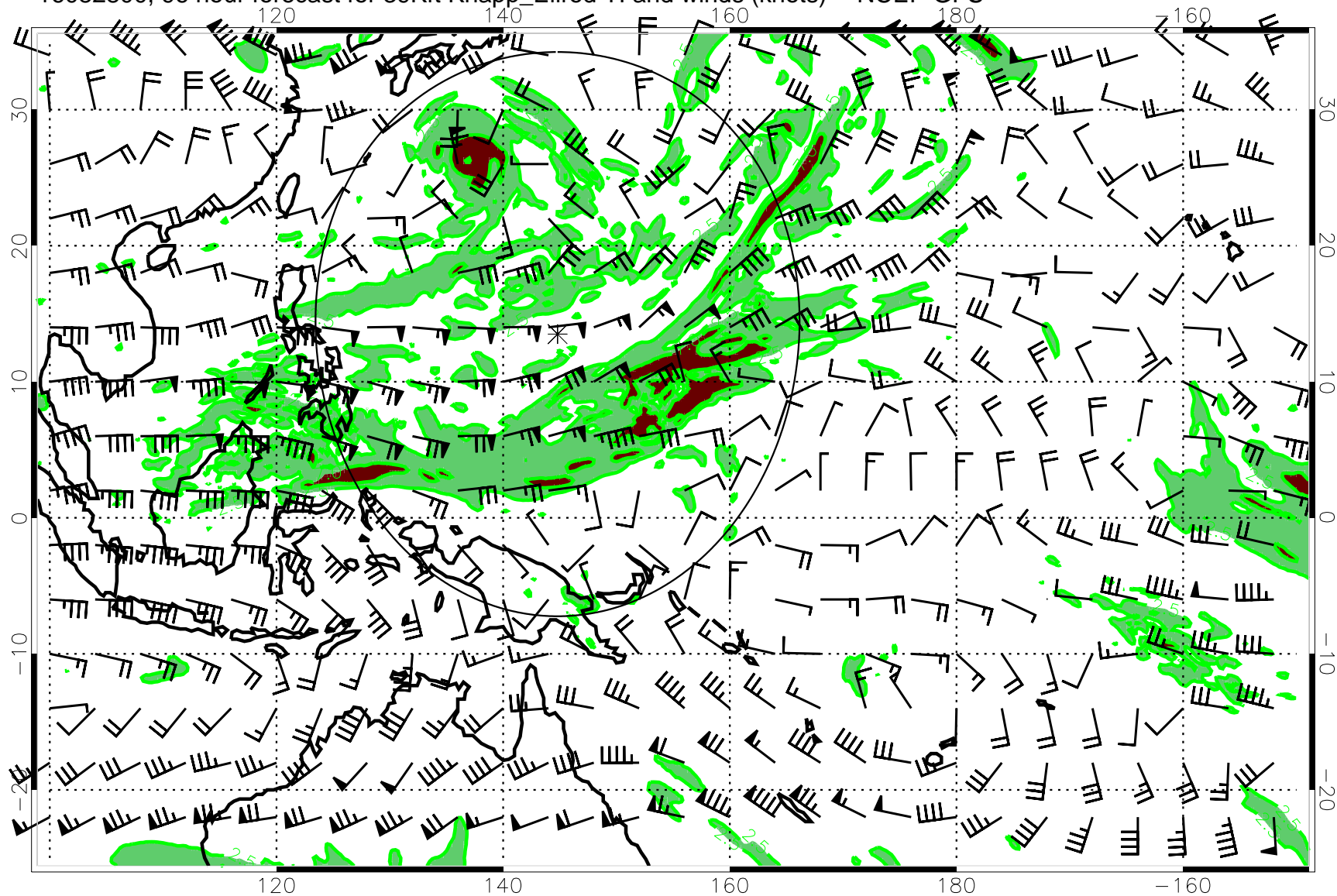
Turb value = 7 Turb value = 2.5

16082718, 90 hour forecast for 39Kft Knapp_Ellrod TI and winds (knots) -- NCEP GFS



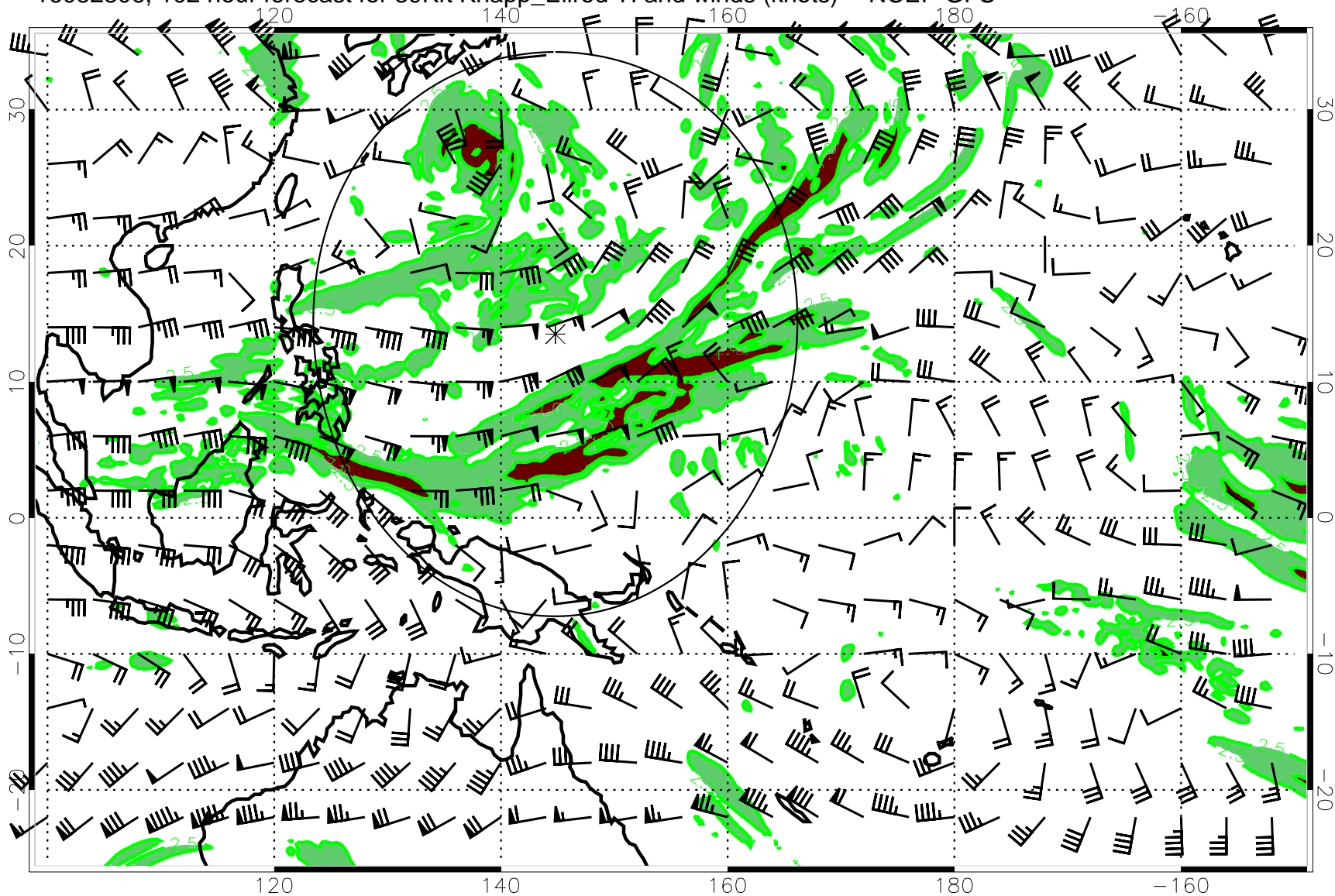
Turb value = 7 Turb value = 2.5

16082800, 96 hour forecast for 39Kft Knapp_Ellrod TI and winds (knots) -- NCEP GFS



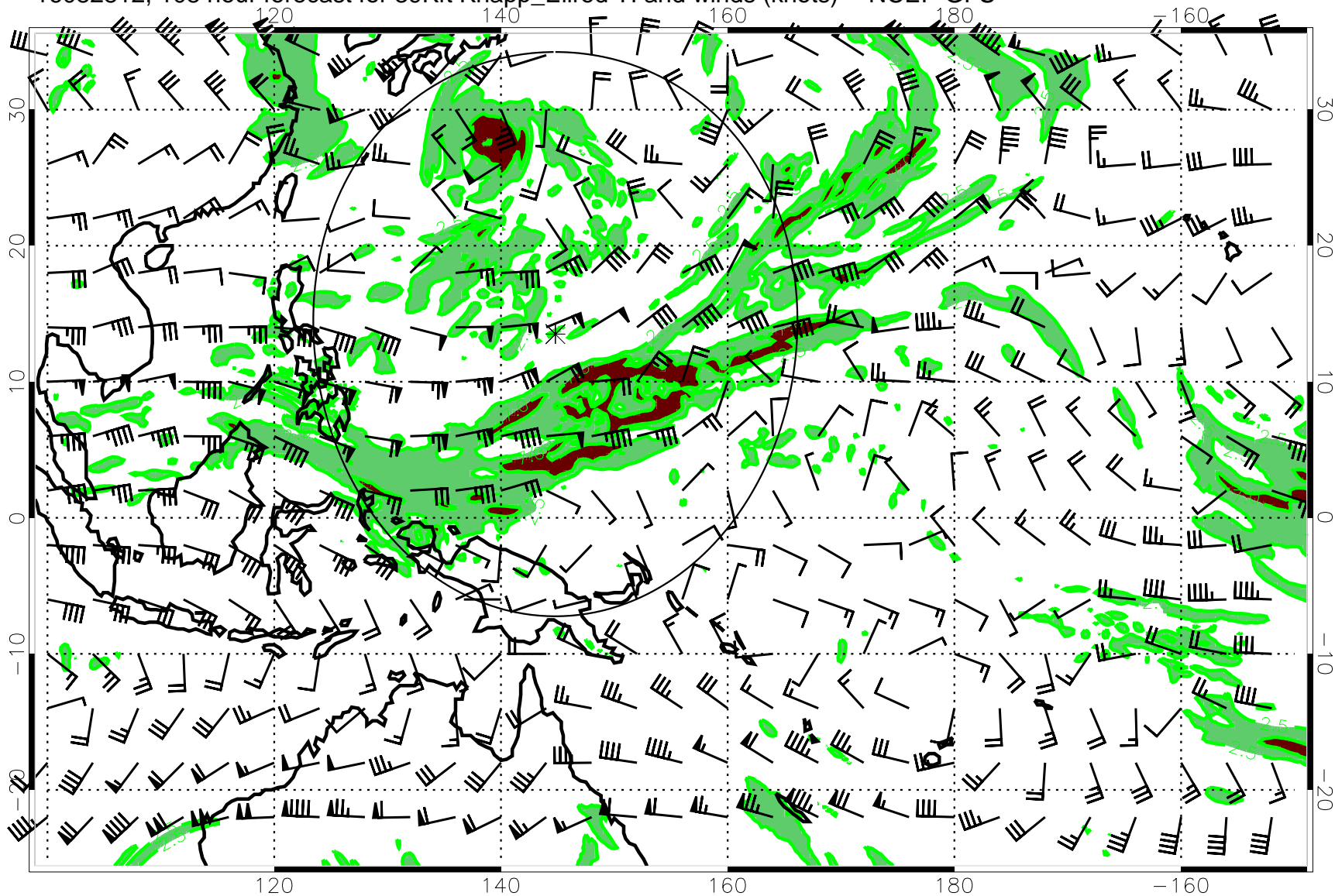
Turb value = 7 Turb value = 2.5

16082806, 102 hour forecast for 39Kft Knapp_Ellrod TI and winds (knots) -- NCEP GFS



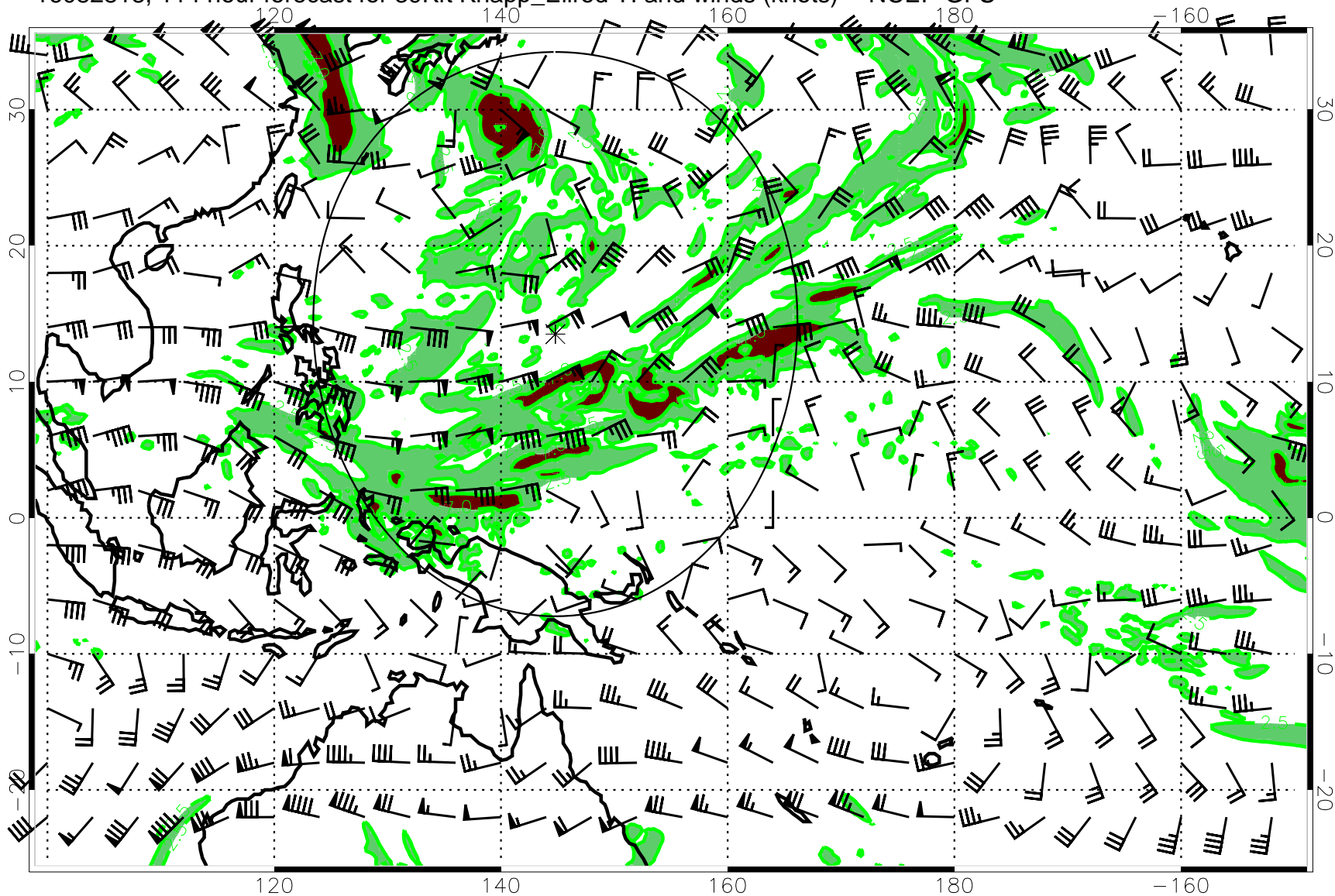
Turb value = 7 Turb value = 2.5

16082812, 108 hour forecast for 39Kft Knapp_Ellrod TI and winds (knots) -- NCEP GFS



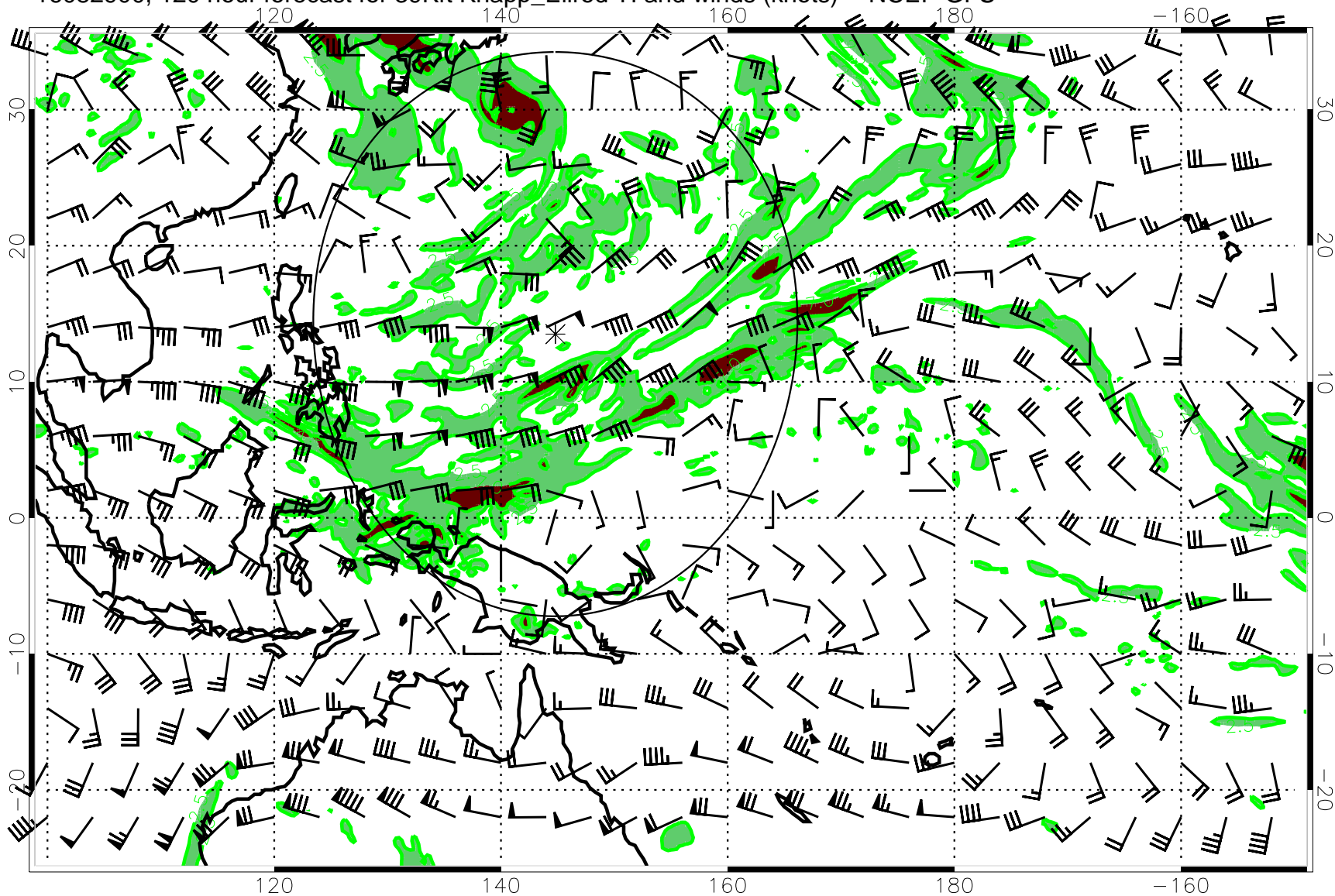
Turb value = 7 Turb value = 2.5

16082818, 114 hour forecast for 39Kft Knapp_Ellrod TI and winds (knots) -- NCEP GFS



Turb value = 7 Turb value = 2.5

16082900, 120 hour forecast for 39Kft Knapp_Ellrod TI and winds (knots) -- NCEP GFS



Turb value = 7 Turb value = 2.5