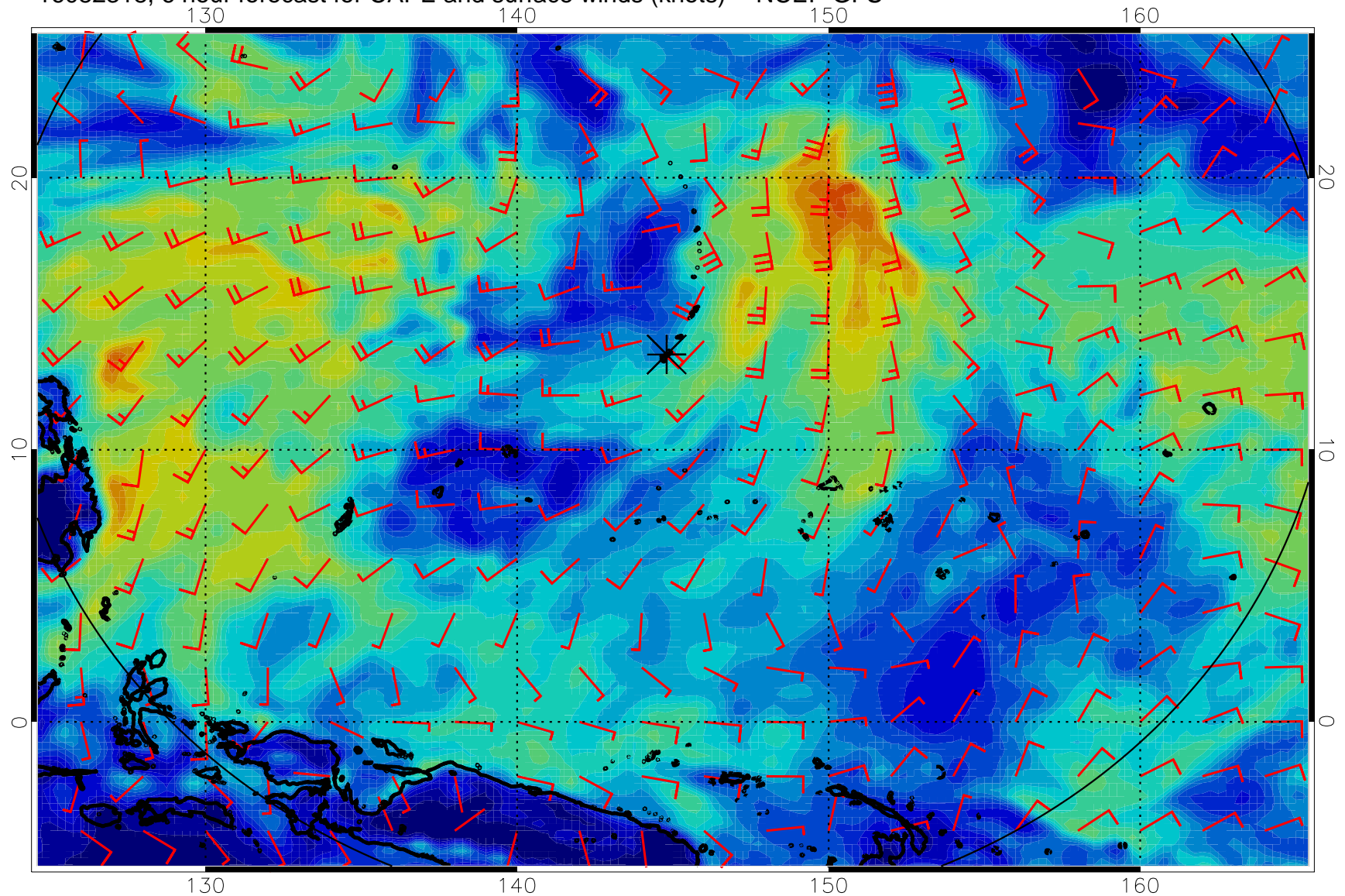
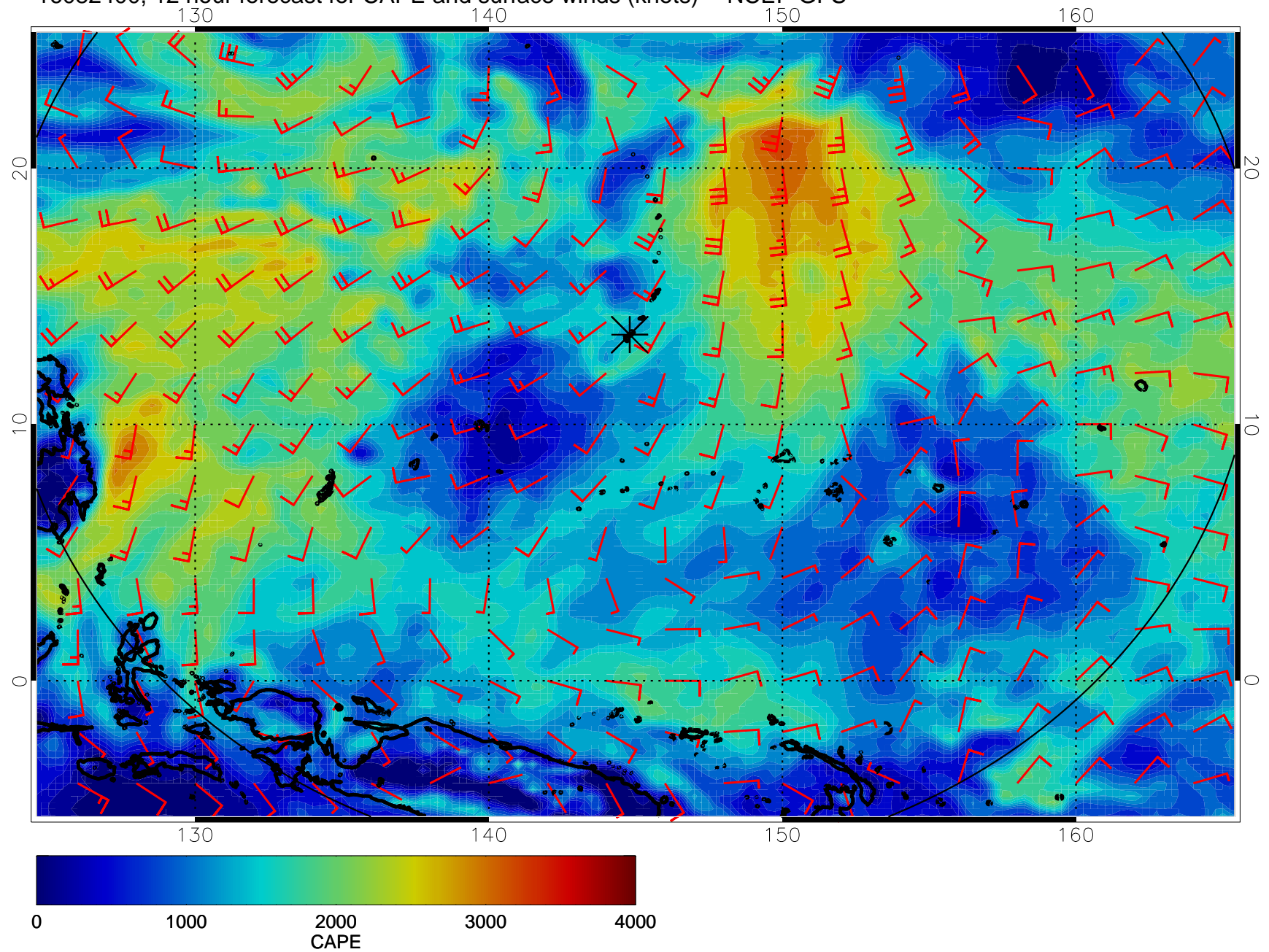


16082318, 6 hour forecast for CAPE and surface winds (knots) -- NCEP GFS

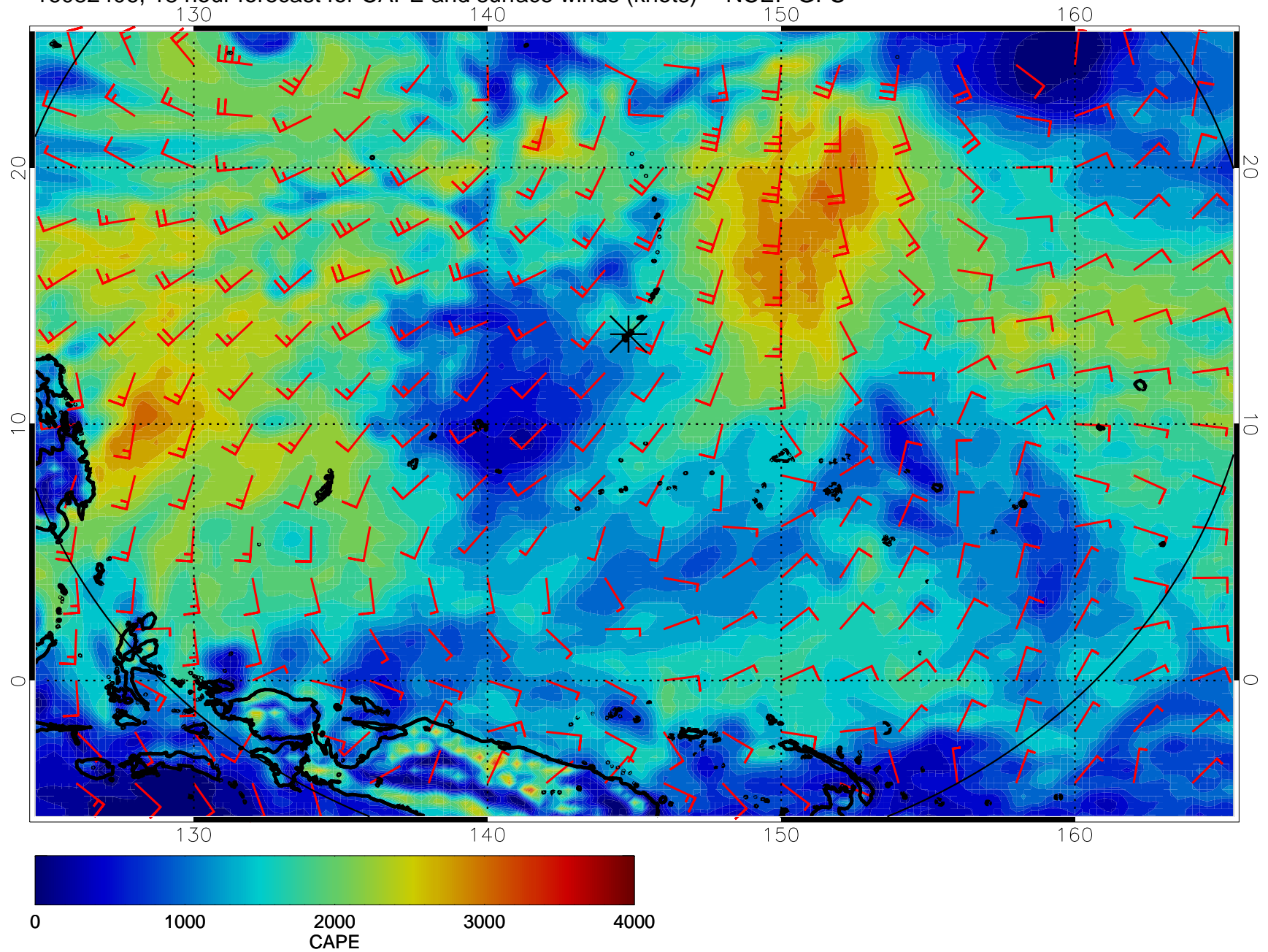


16082400, 12 hour forecast for CAPE and surface winds (knots) -- NCEP GFS

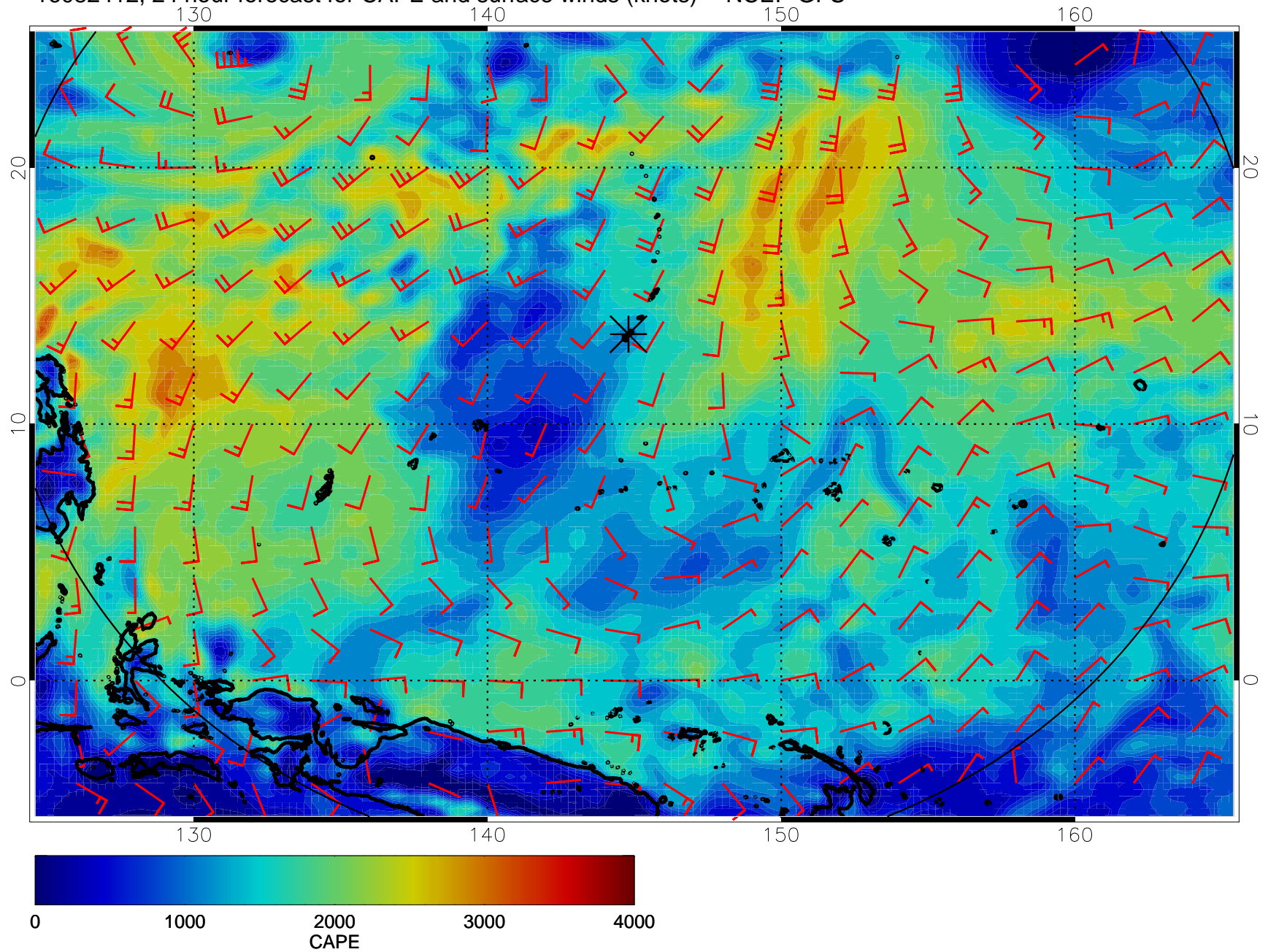




16082406, 18 hour forecast for CAPE and surface winds (knots) -- NCEP GFS

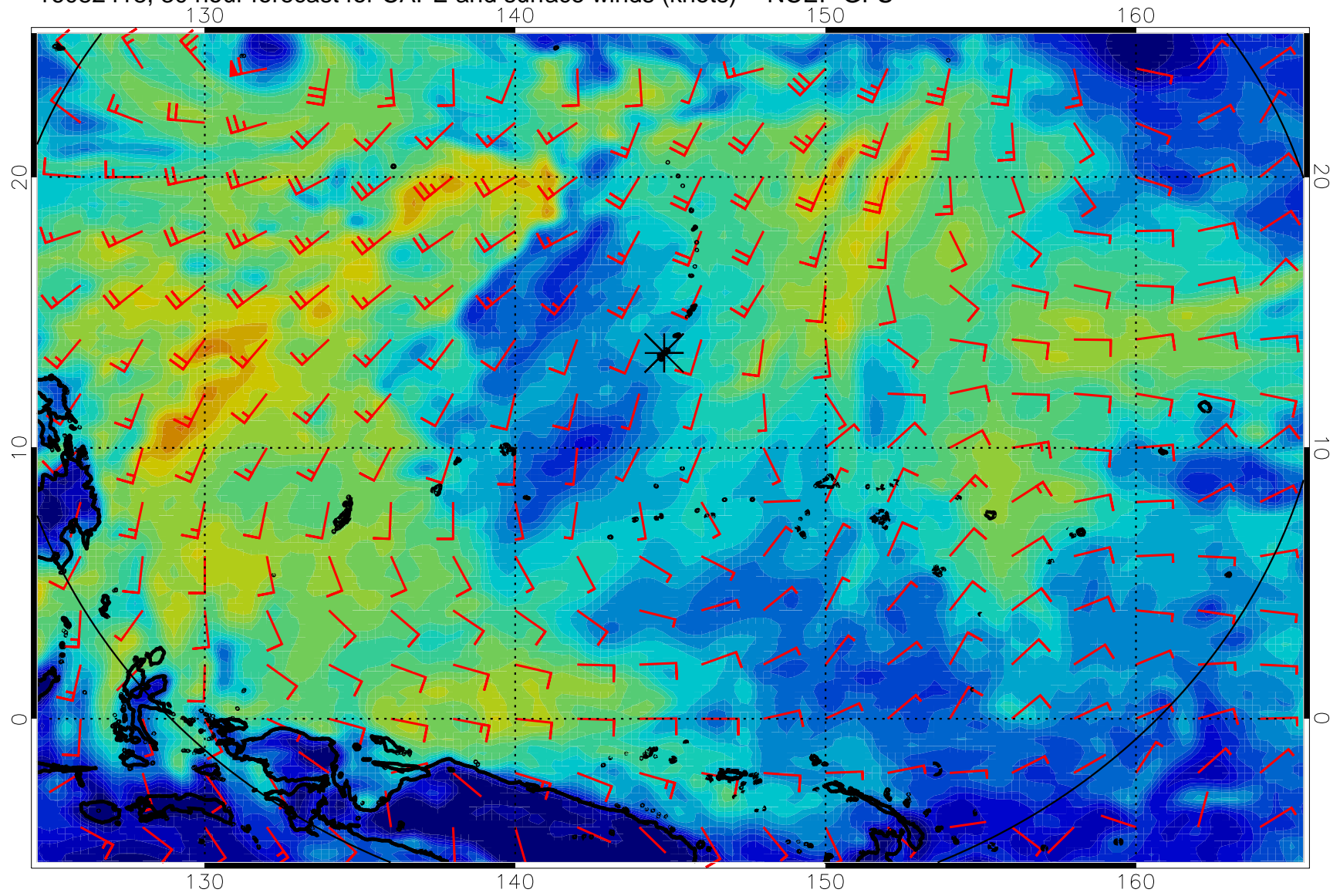


16082412, 24 hour forecast for CAPE and surface winds (knots) -- NCEP GFS

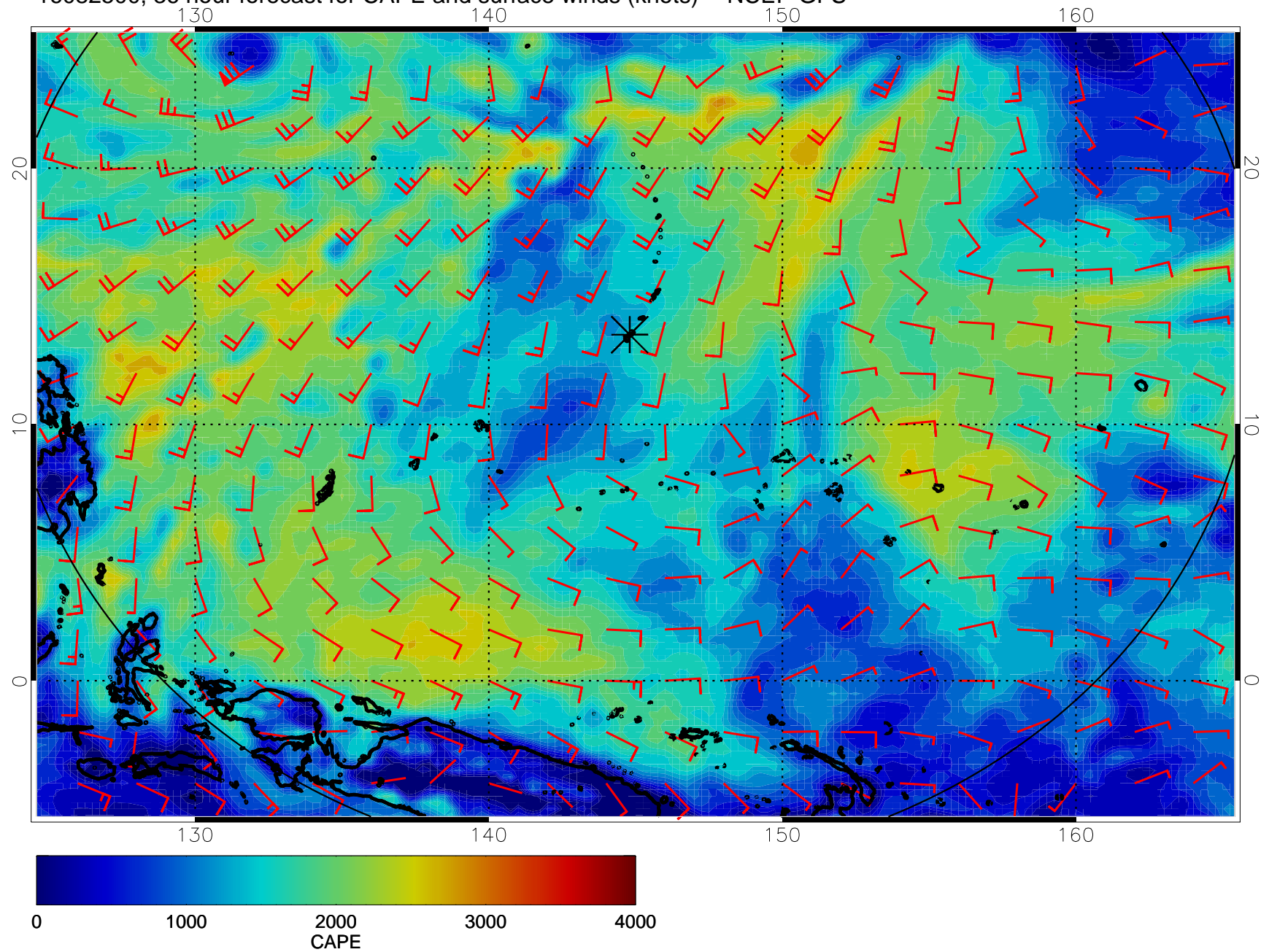




16082418, 30 hour forecast for CAPE and surface winds (knots) -- NCEP GFS

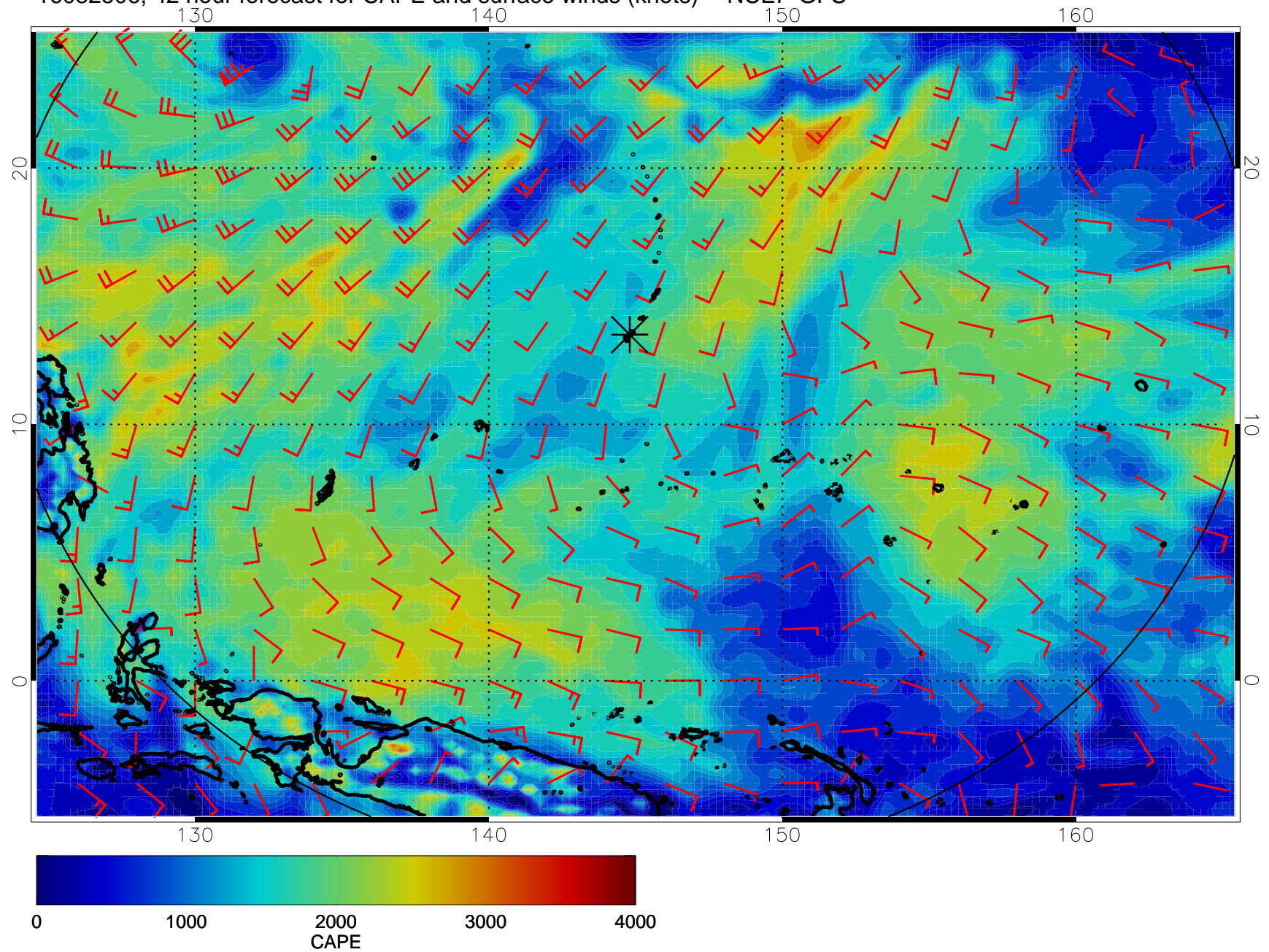


16082500, 36 hour forecast for CAPE and surface winds (knots) -- NCEP GFS

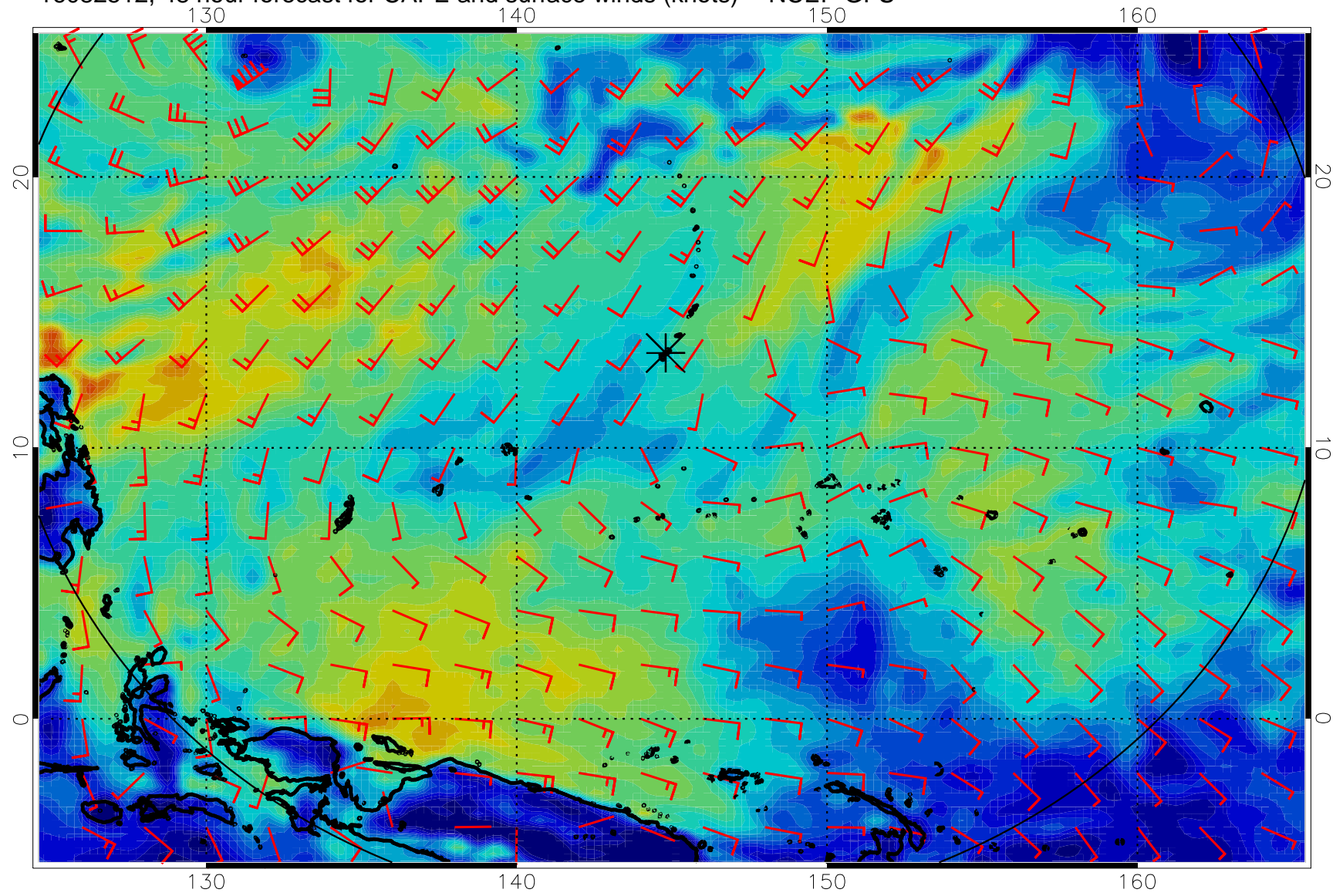




16082506, 42 hour forecast for CAPE and surface winds (knots) -- NCEP GFS

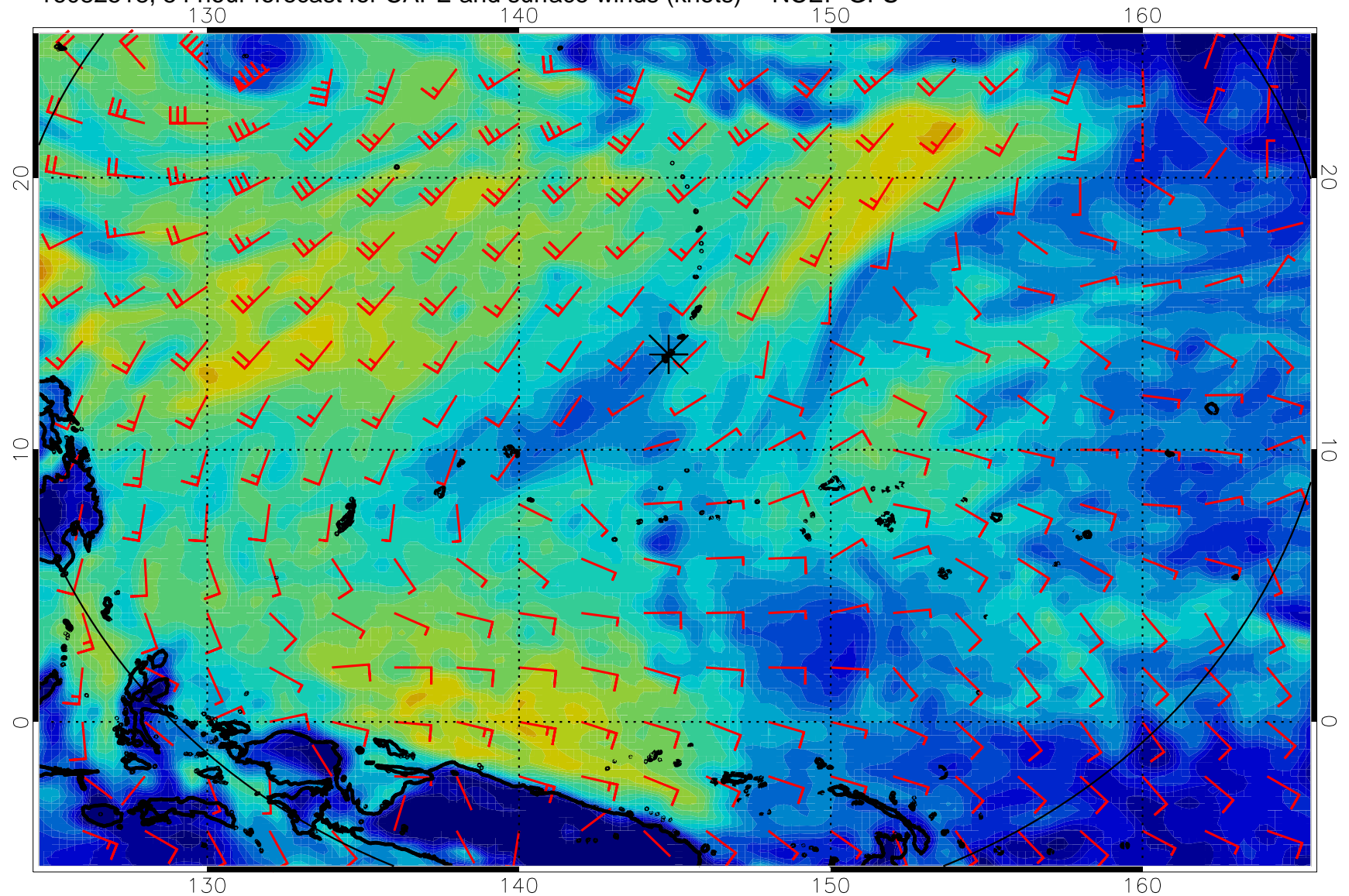


16082512, 48 hour forecast for CAPE and surface winds (knots) -- NCEP GFS

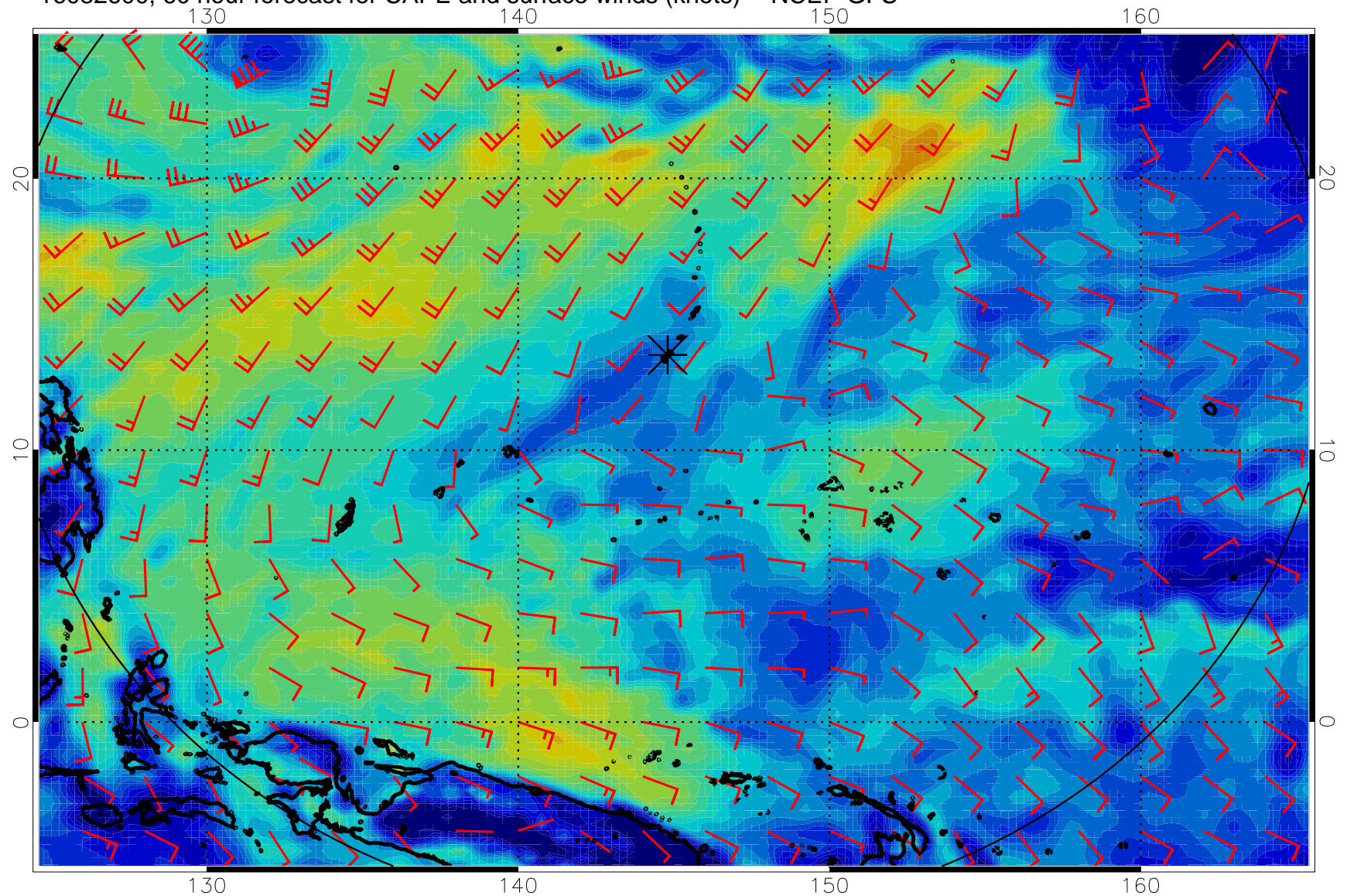




16082518, 54 hour forecast for CAPE and surface winds (knots) -- NCEP GFS

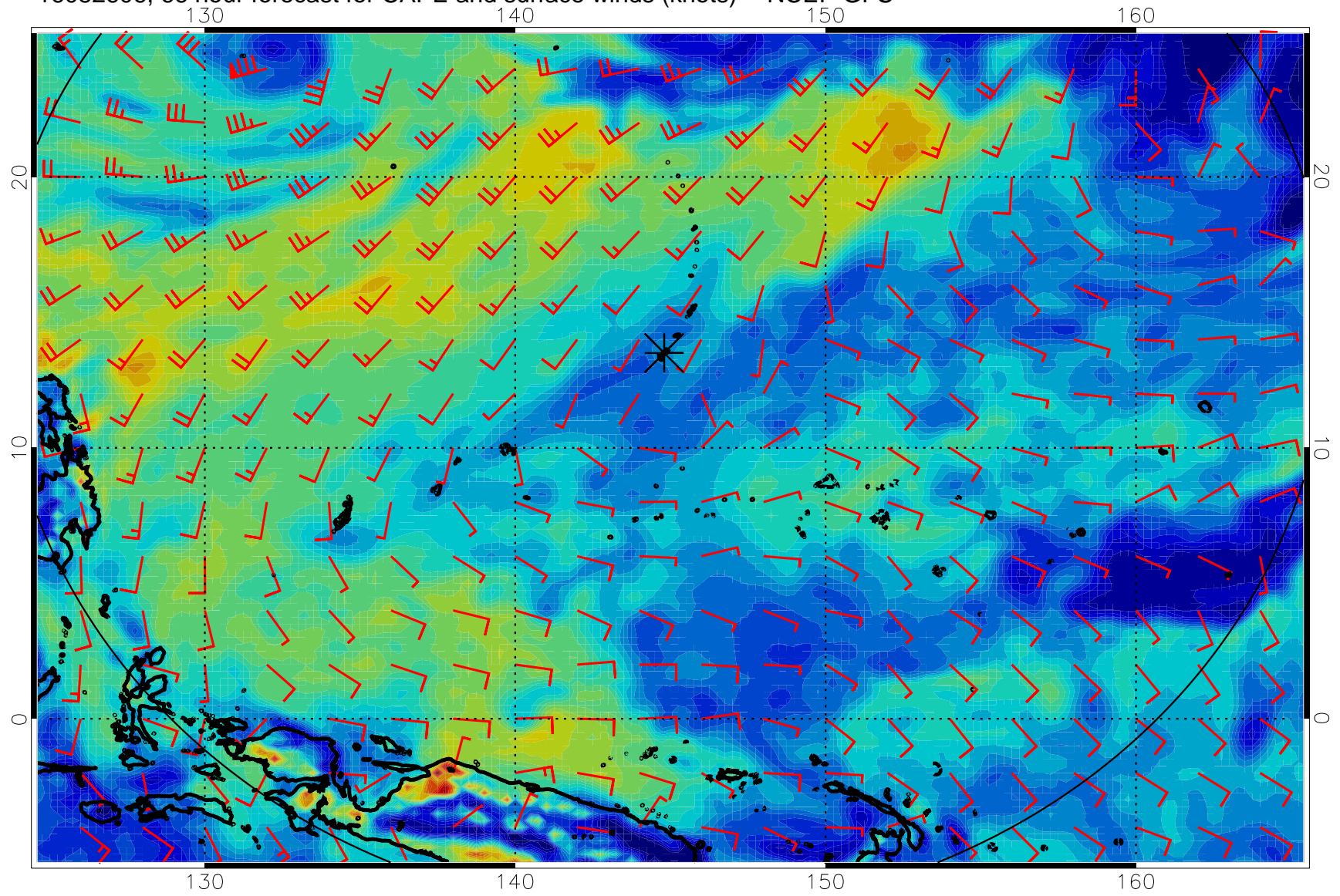


16082600, 60 hour forecast for CAPE and surface winds (knots) -- NCEP GFS

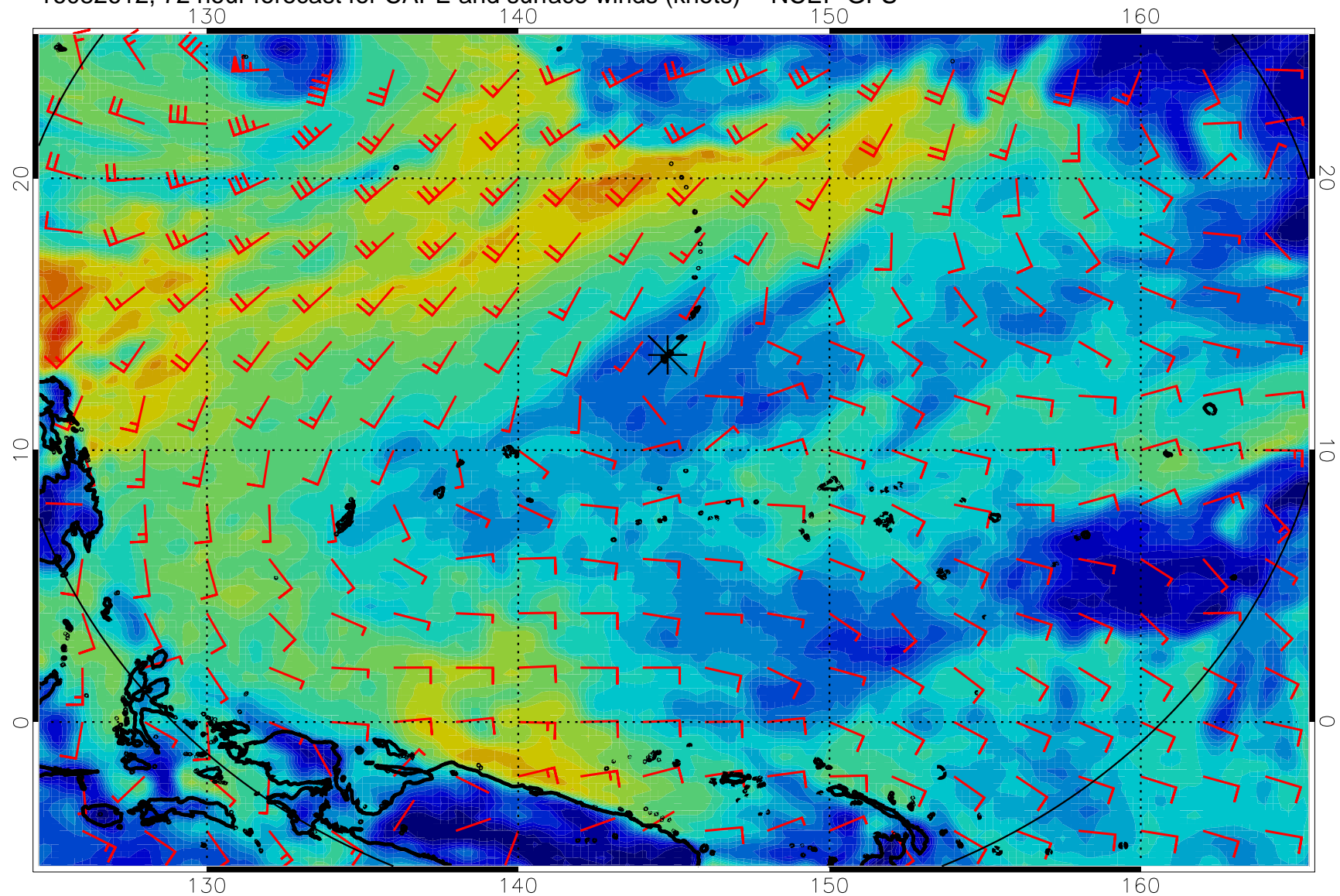




16082606, 66 hour forecast for CAPE and surface winds (knots) -- NCEP GFS

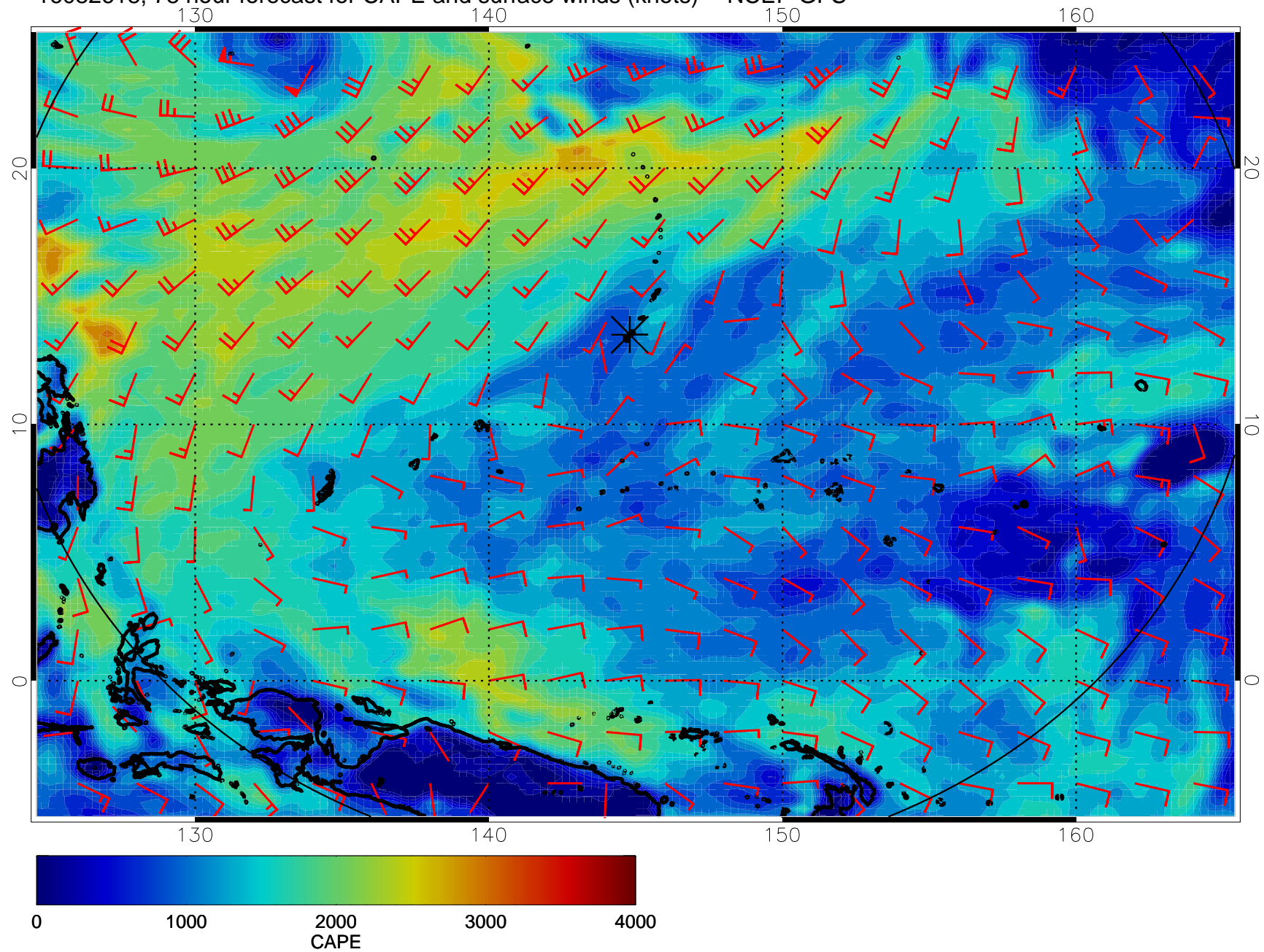


16082612, 72 hour forecast for CAPE and surface winds (knots) -- NCEP GFS

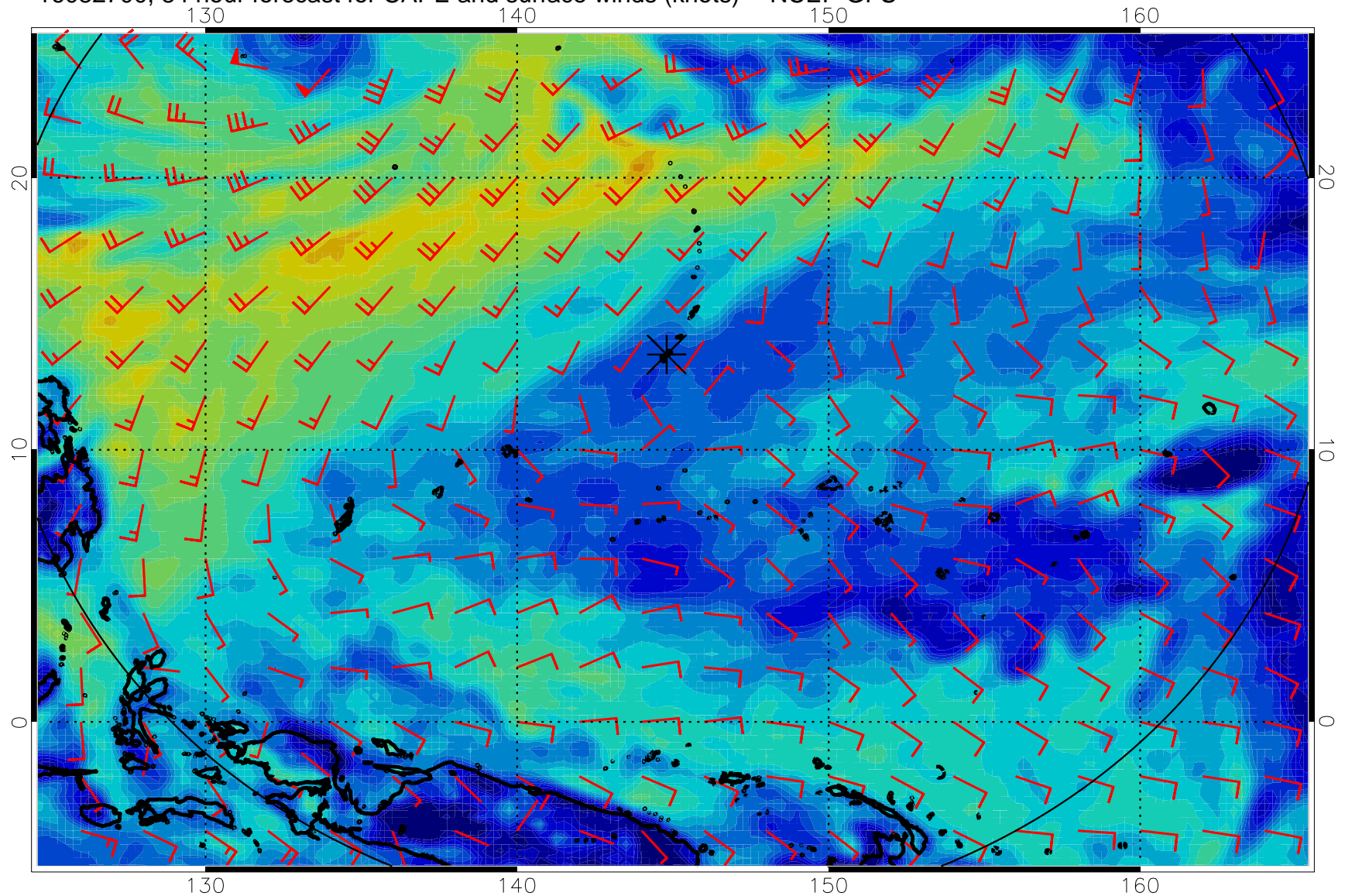




16082618, 78 hour forecast for CAPE and surface winds (knots) -- NCEP GFS

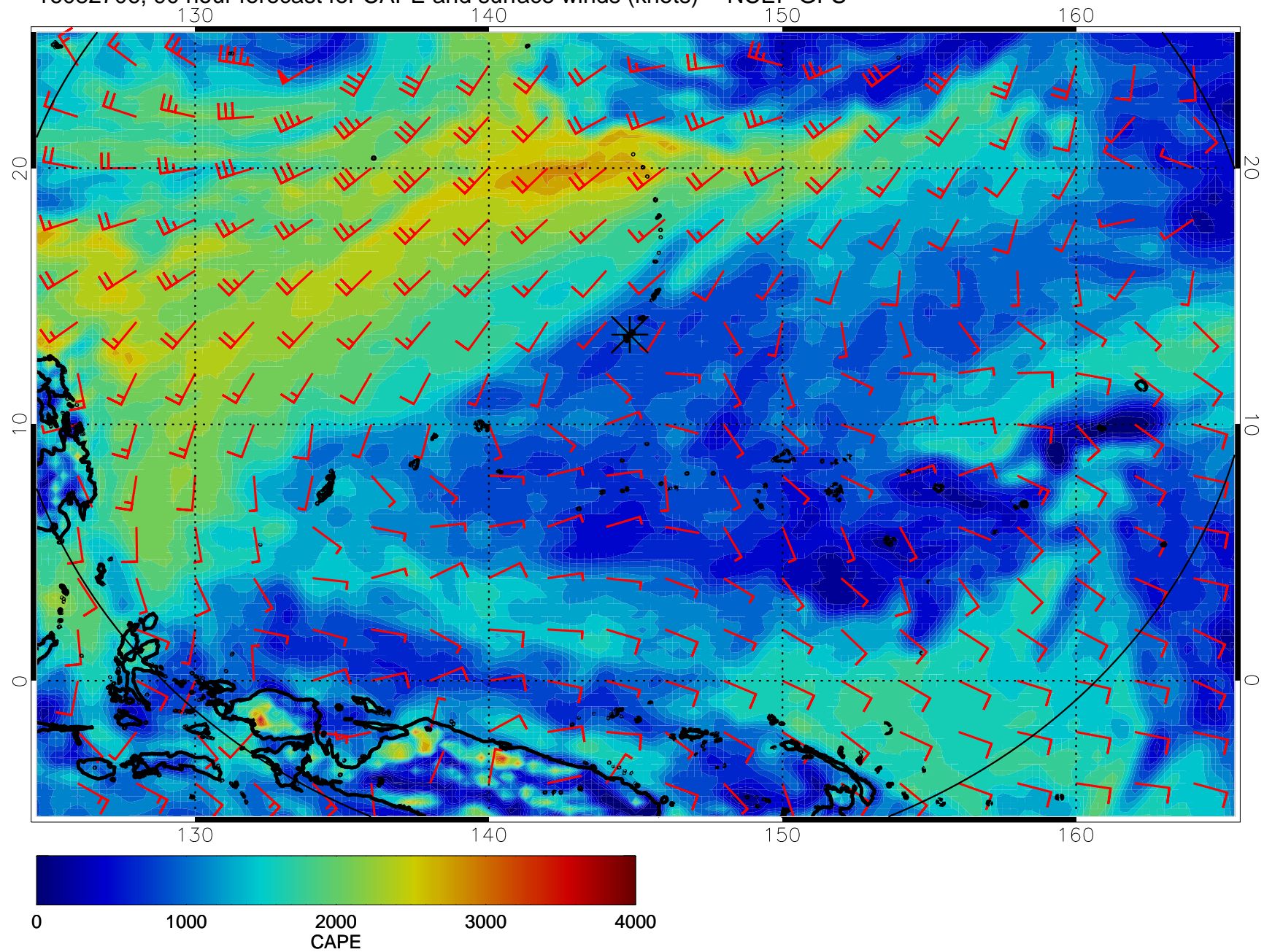


16082700, 84 hour forecast for CAPE and surface winds (knots) -- NCEP GFS

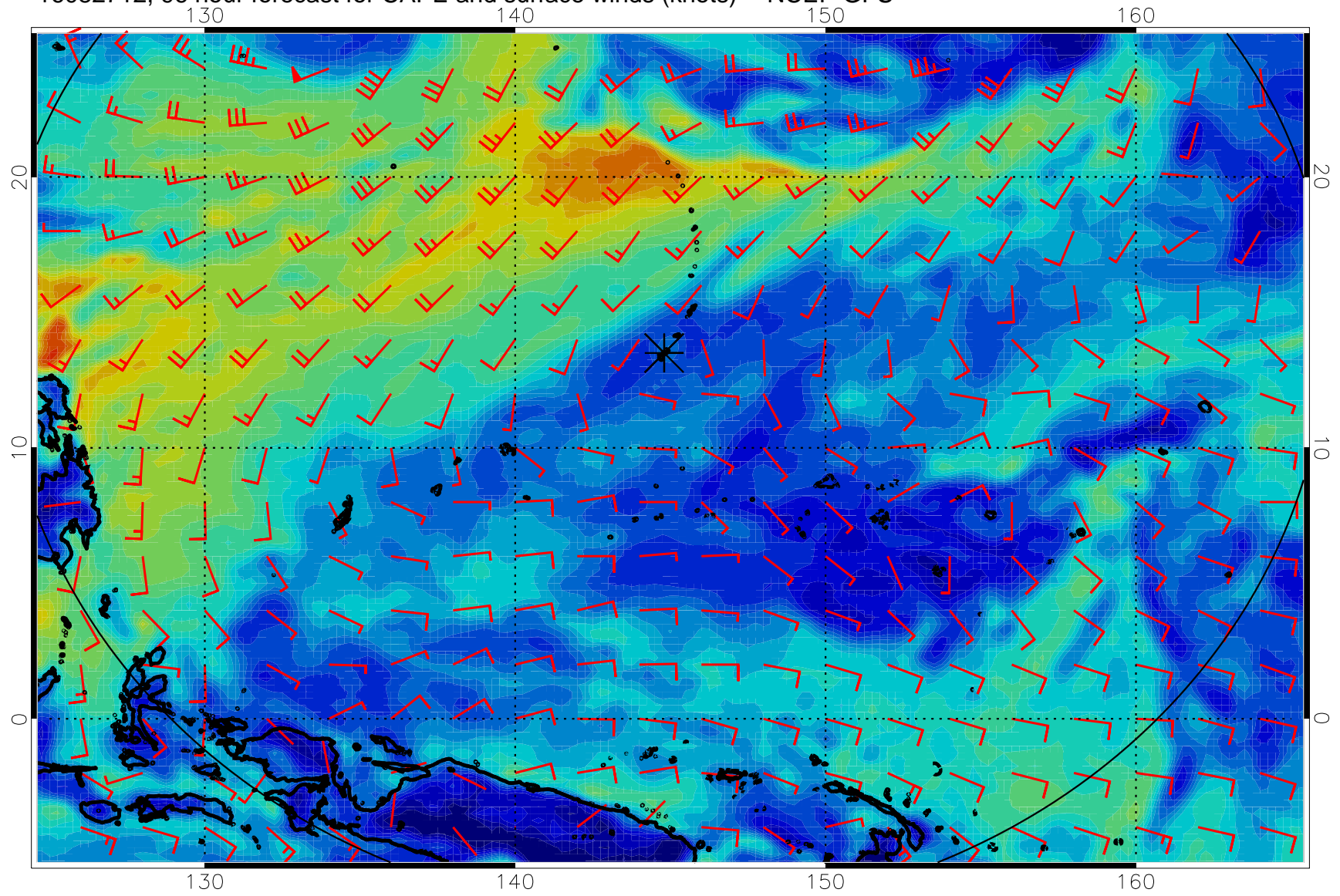




16082706, 90 hour forecast for CAPE and surface winds (knots) -- NCEP GFS

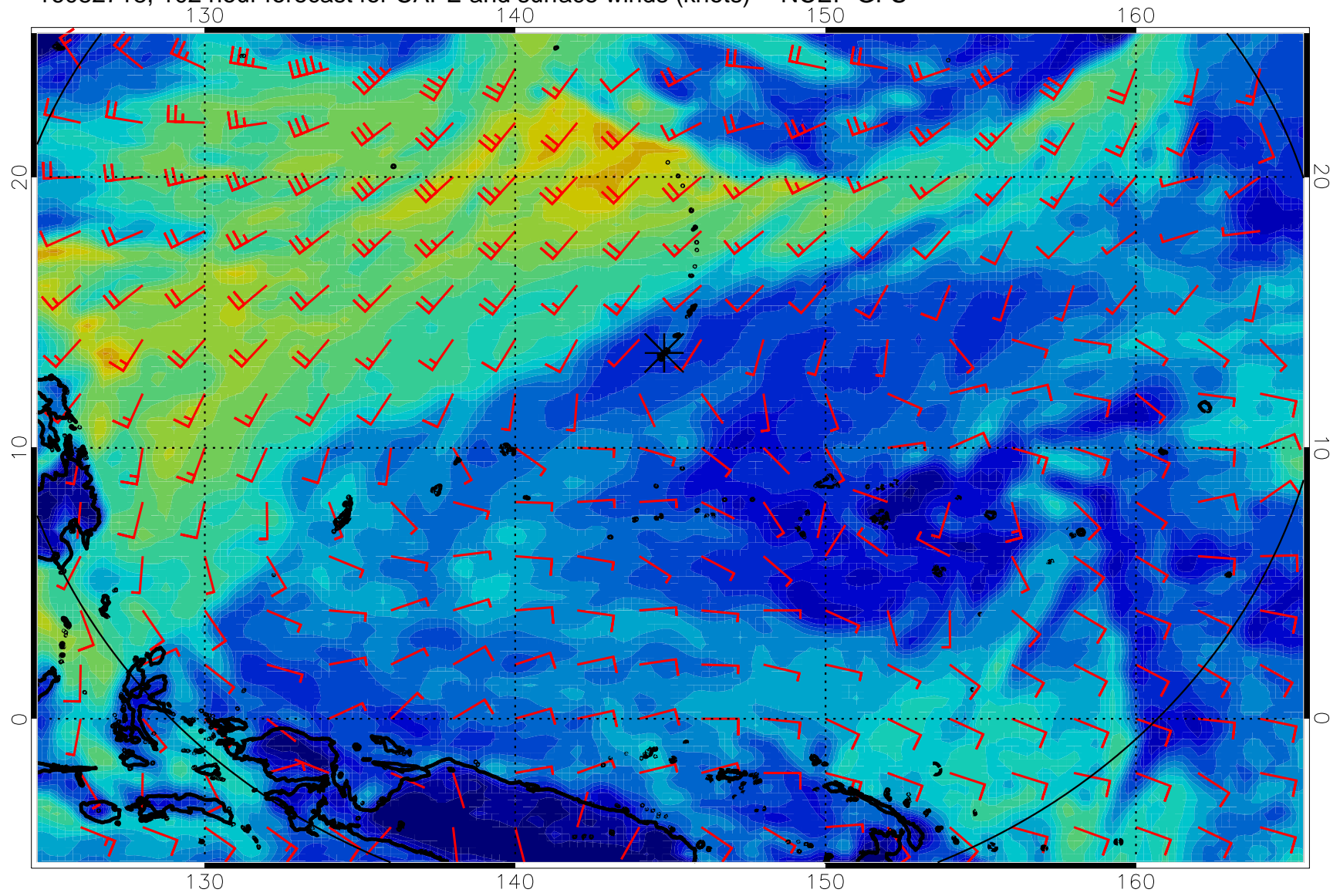


16082712, 96 hour forecast for CAPE and surface winds (knots) -- NCEP GFS

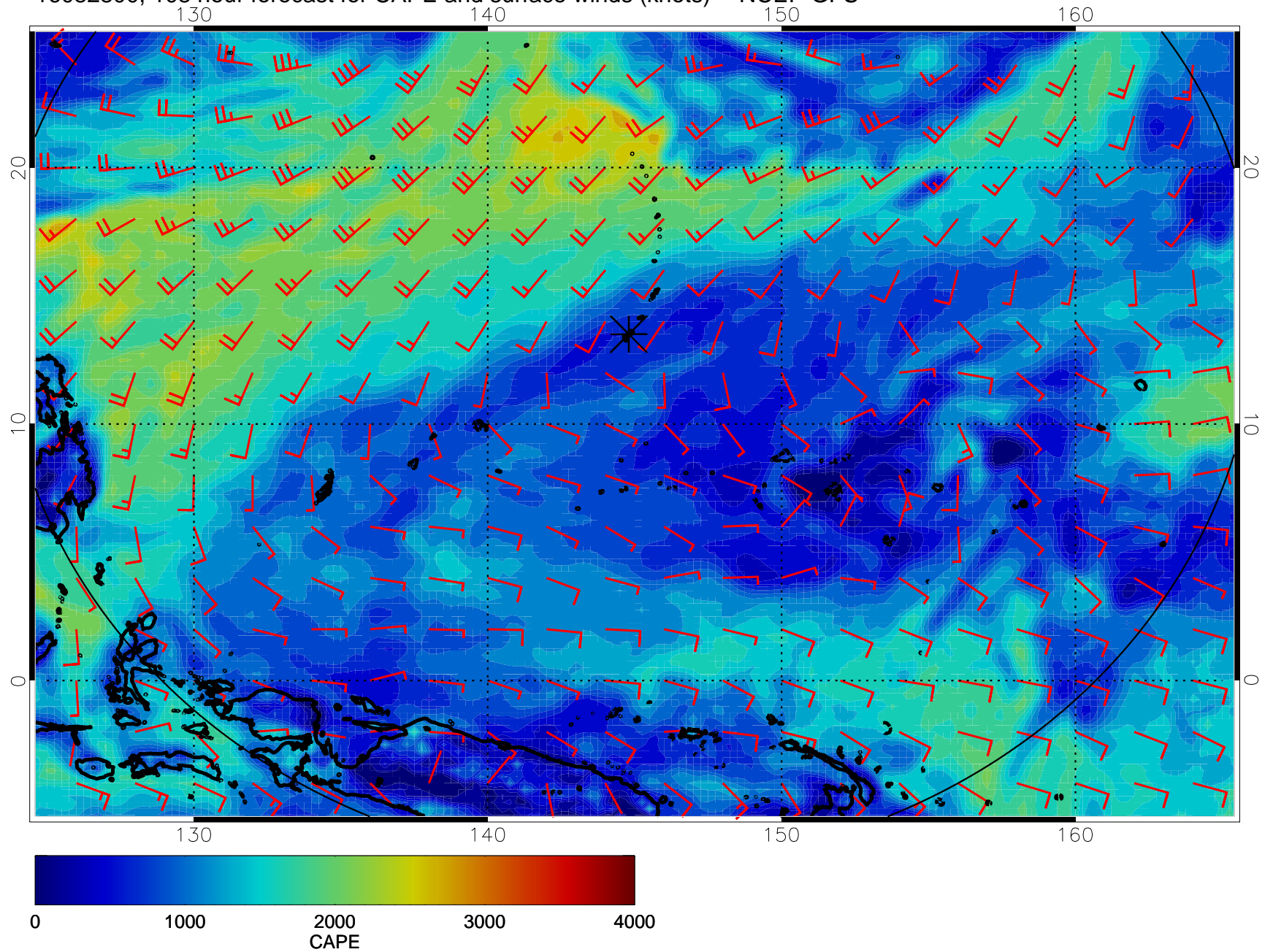




16082718, 102 hour forecast for CAPE and surface winds (knots) -- NCEP GFS

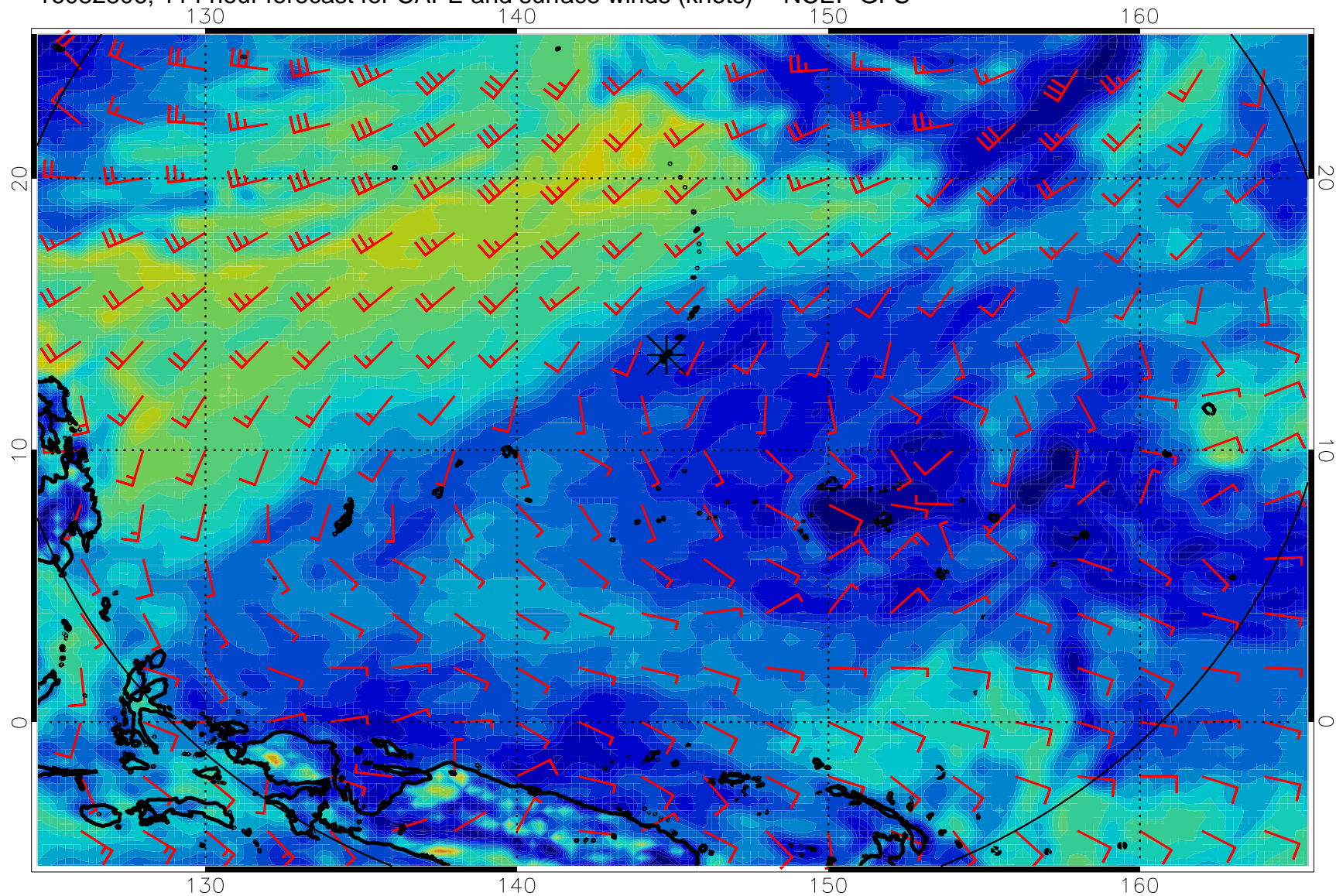


16082800, 108 hour forecast for CAPE and surface winds (knots) -- NCEP GFS





16082806, 114 hr forecast for CAPE and surface winds (knots) -- NCEP GFS



16082812, 120 hour forecast for CAPE and surface winds (knots) -- NCEP GFS

