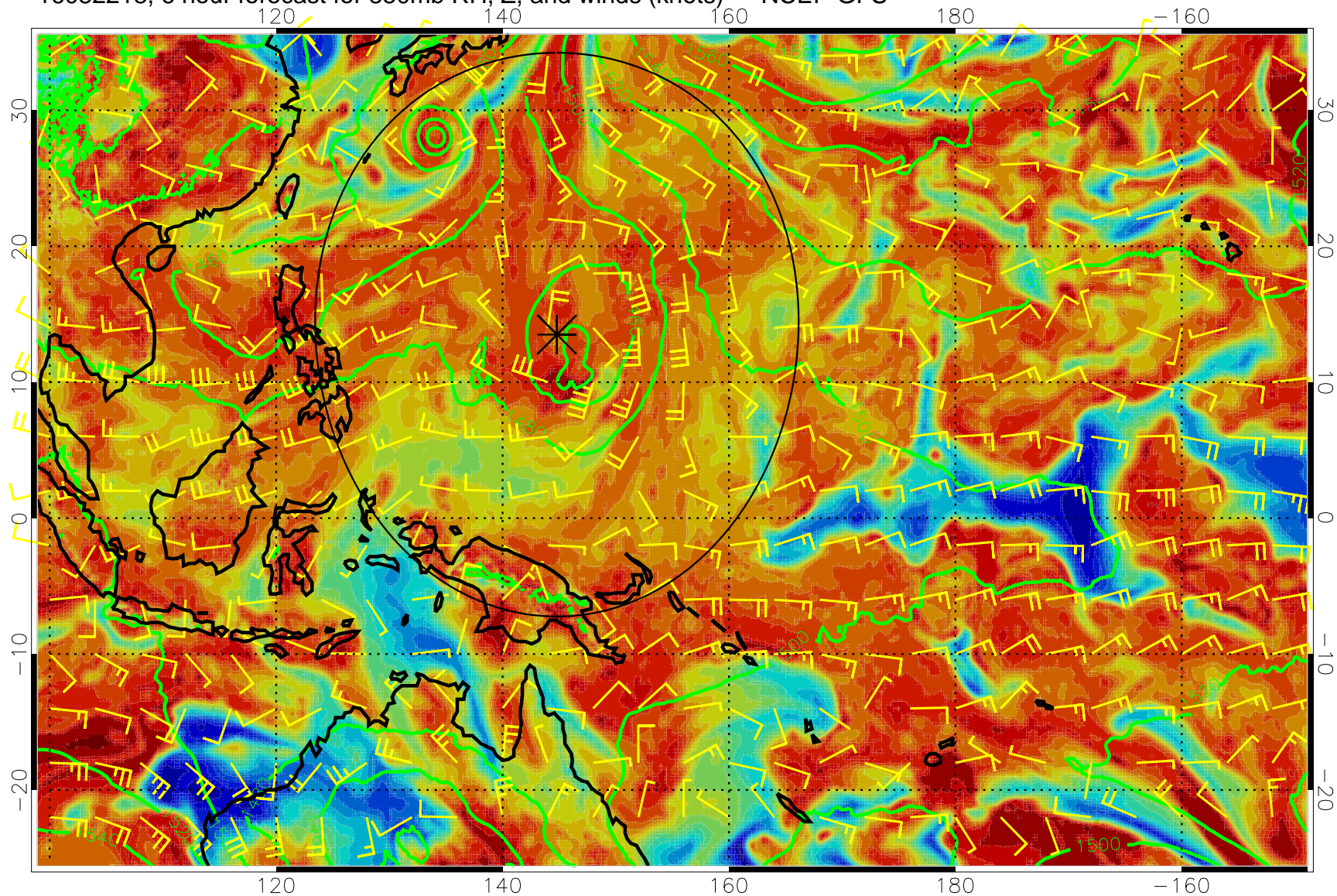
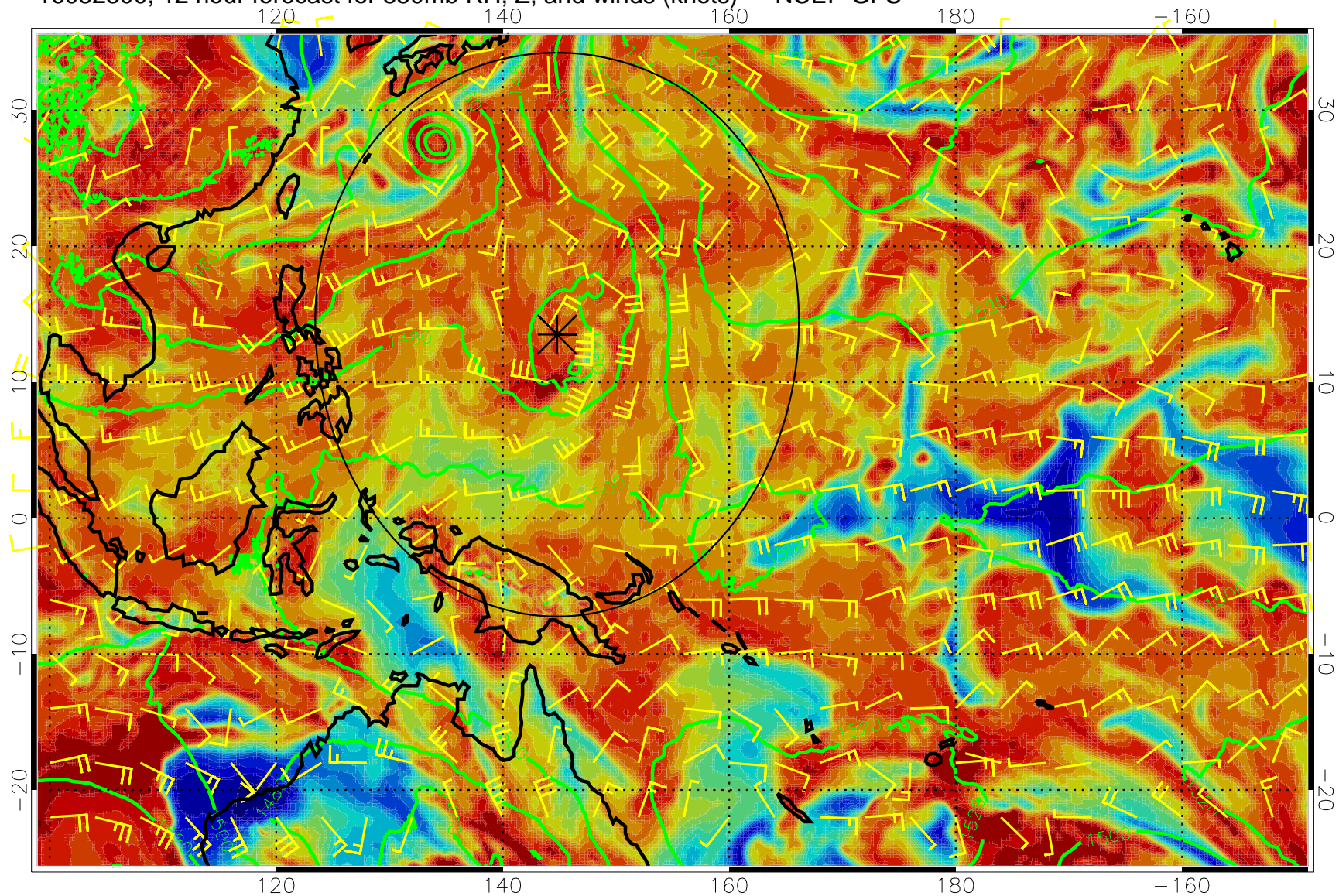


16082218, 6 hour forecast for 850mb RH, Z, and winds (knots) -- NCEP GFS

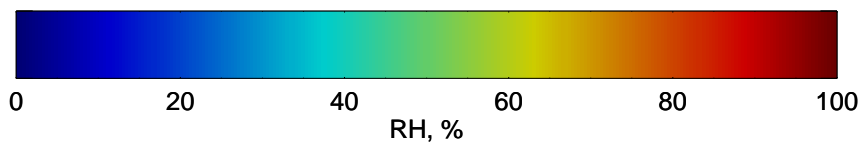


Precip (tot dot, conv sol) mm/day 40 mm/day contours, min 20

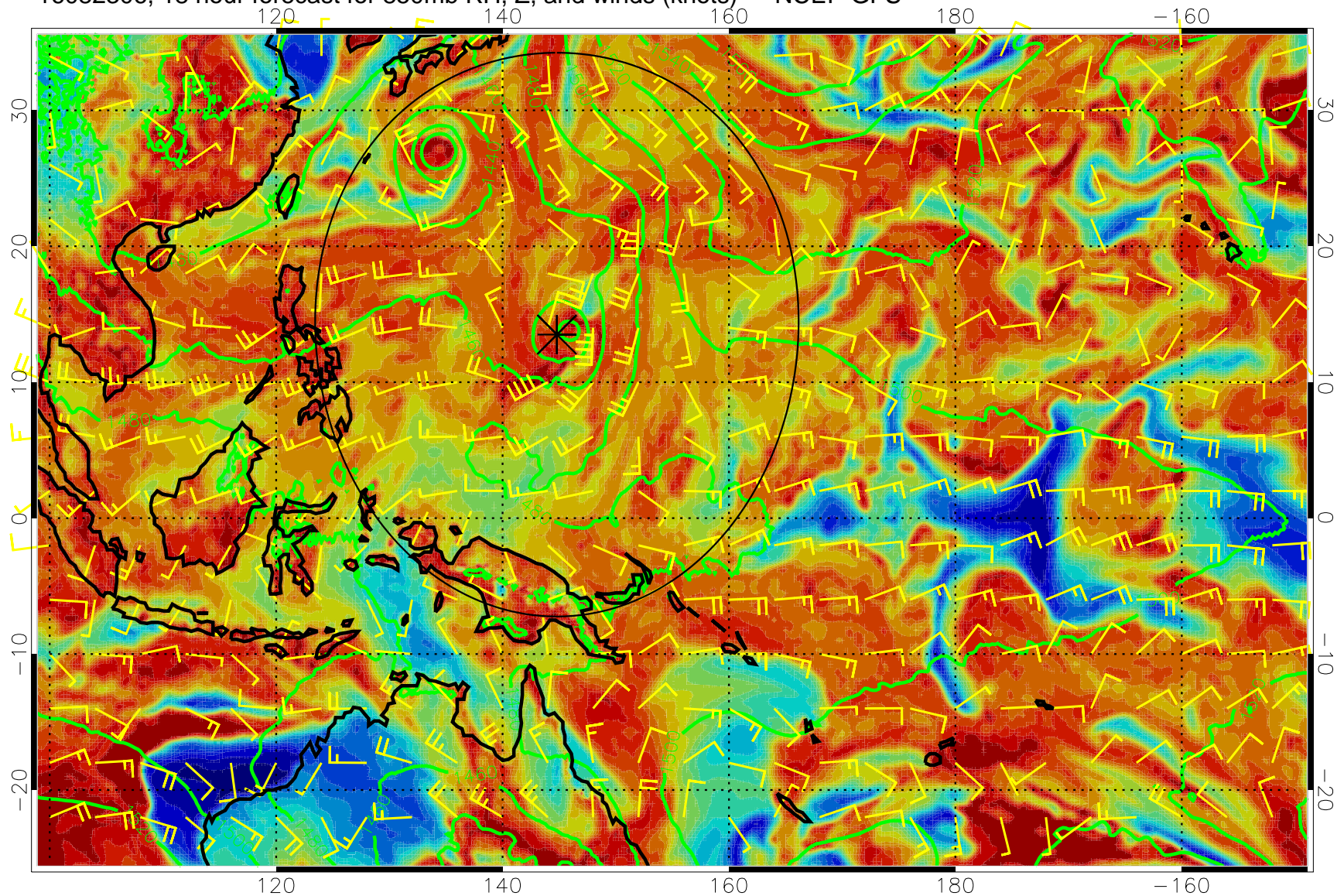
16082300, 12 hour forecast for 850mb RH, Z, and winds (knots) -- NCEP GFS



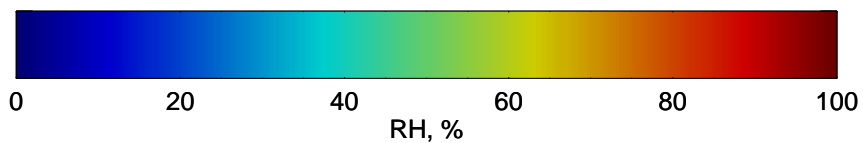
Precip (tot dot, conv sol) mm/day 40 mm/day contours, min 20



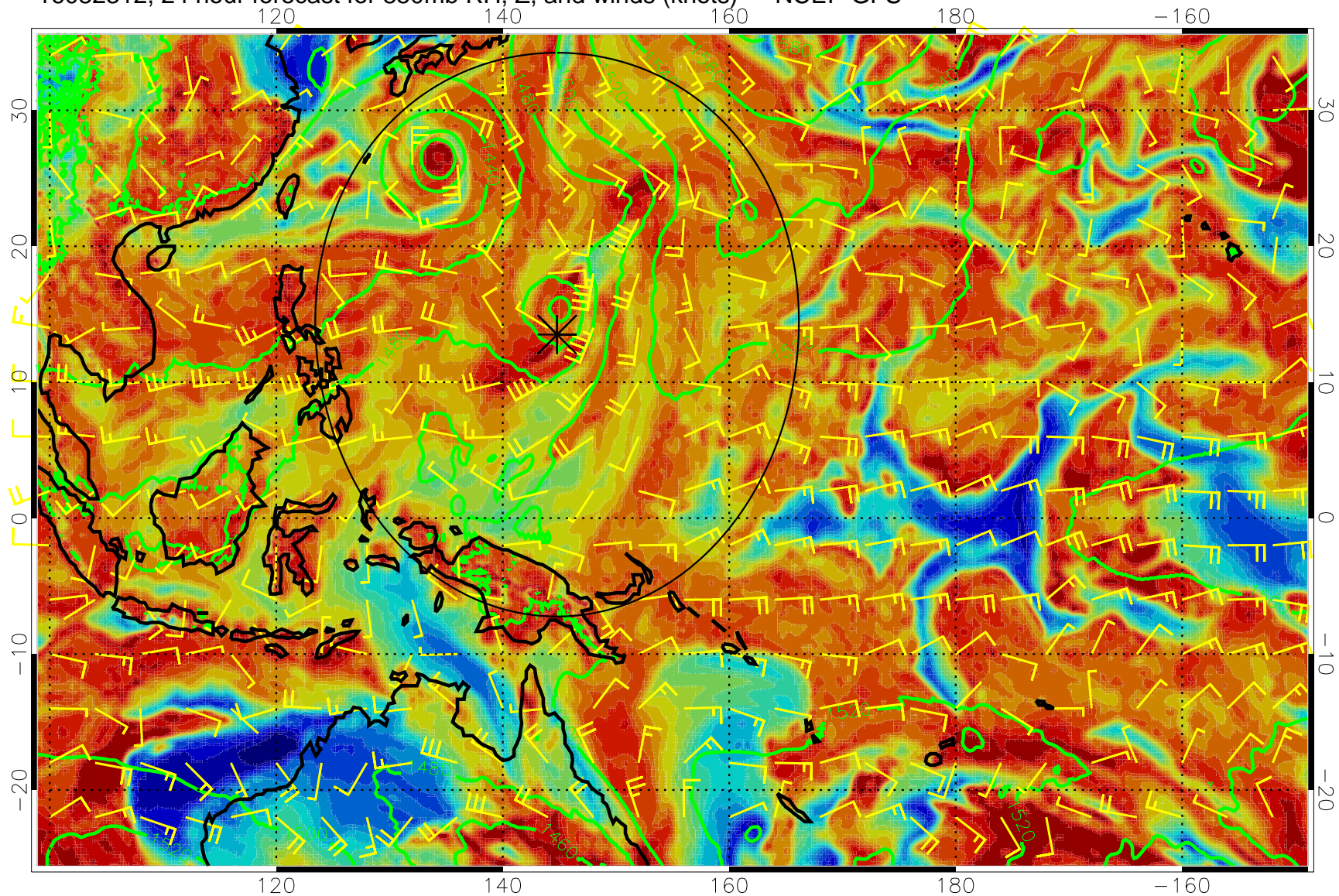
16082306, 18 hour forecast for 850mb RH, Z, and winds (knots) -- NCEP GFS



Precip (tot dot, conv sol) mm/day 40 mm/day contours, min 20

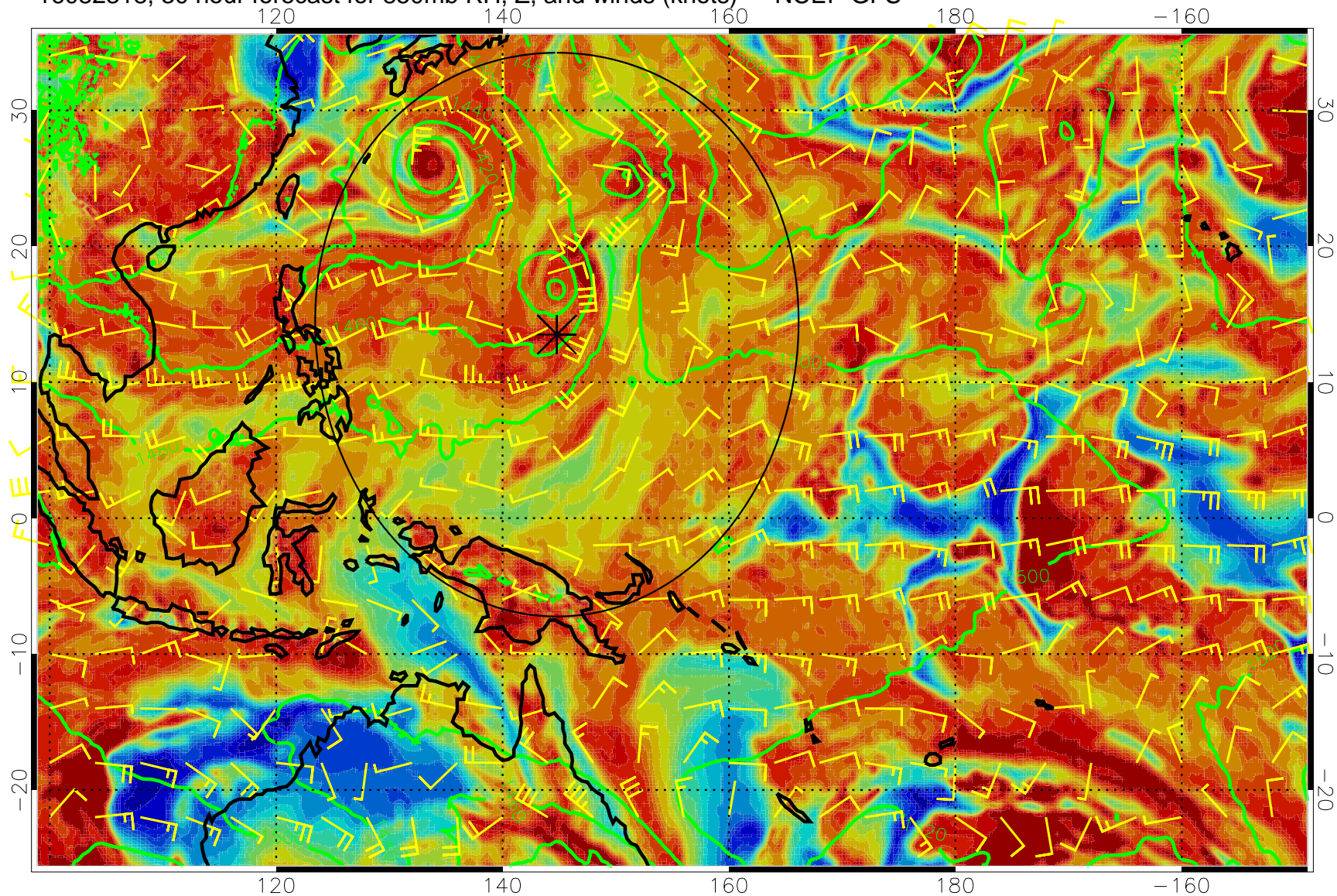


16082312, 24 hour forecast for 850mb RH, Z, and winds (knots) -- NCEP GFS



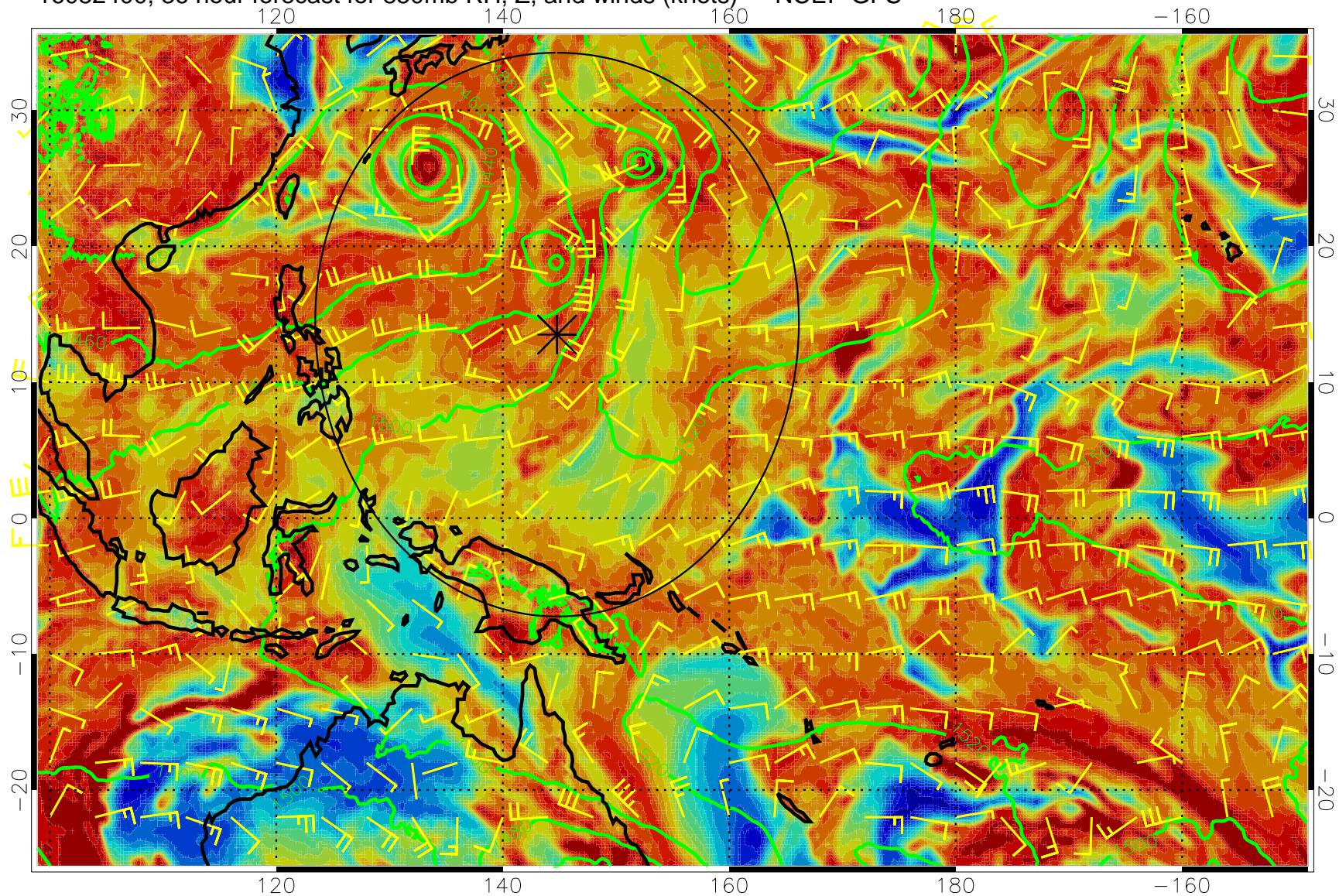
Precip (tot dot, conv sol) mm/day 40 mm/day contours, min 20

16082318, 30 hour forecast for 850mb RH, Z, and winds (knots) -- NCEP GFS



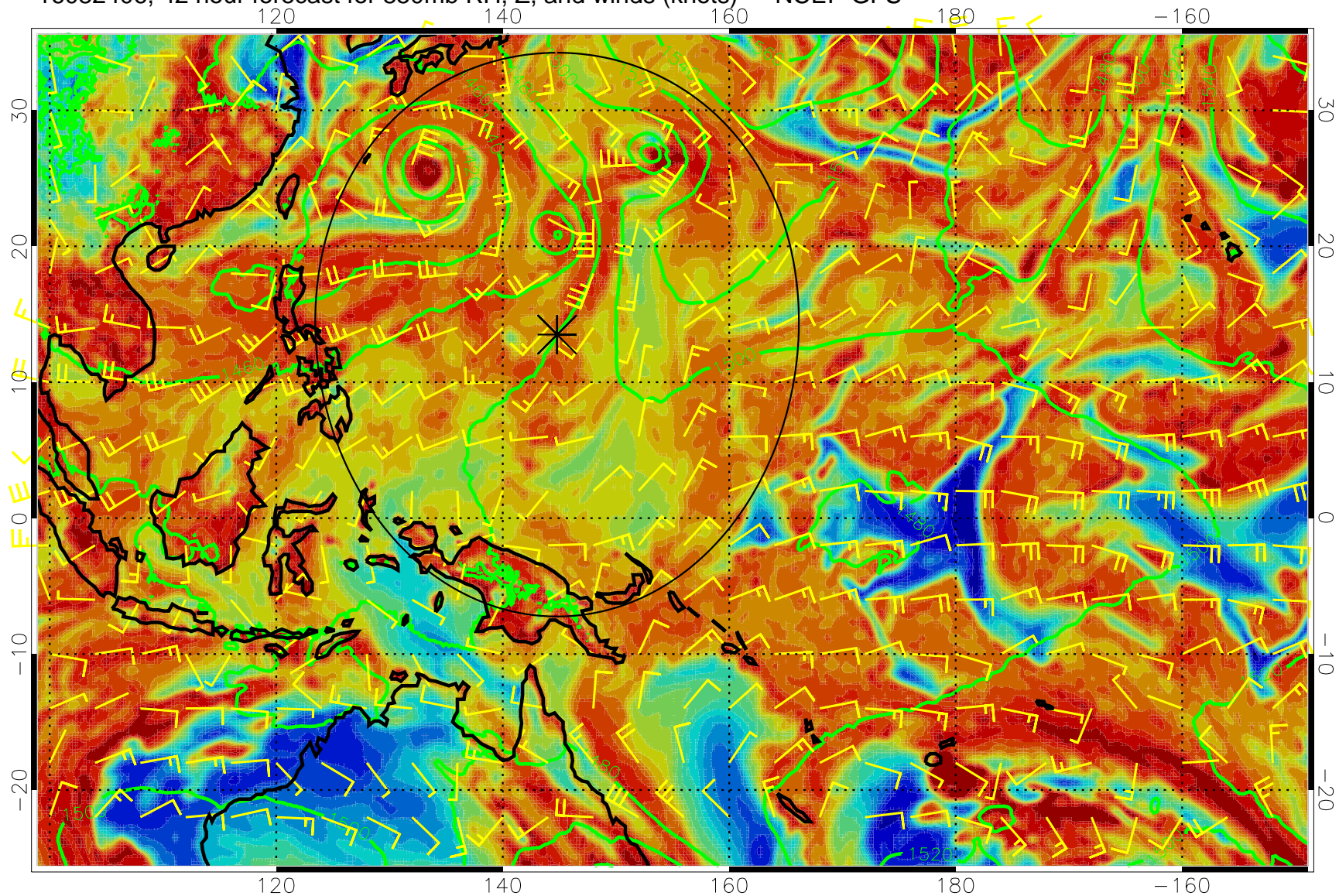
Precip (tot dot, conv sol) mm/day 40 mm/day contours, min 20

16082400, 36 hour forecast for 850mb RH, Z, and winds (knots) -- NCEP GFS



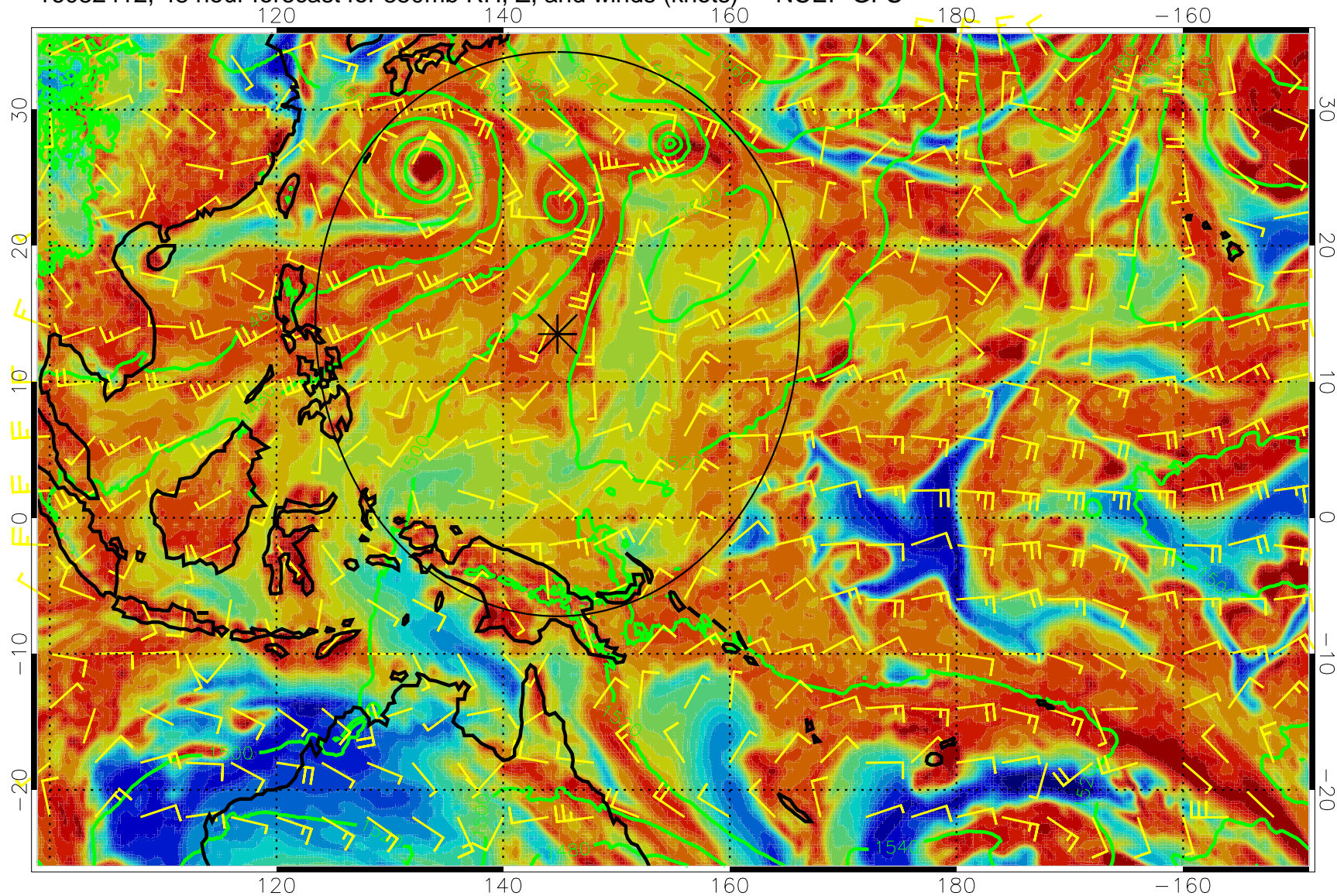
Precip (tot dot, conv sol) mm/day 40 mm/day contours, min 20

16082406, 42 hour forecast for 850mb RH, Z, and winds (knots) -- NCEP GFS



Precip (tot dot, conv sol) mm/day 40 mm/day contours, min 20

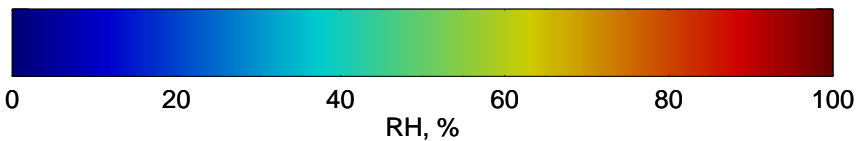
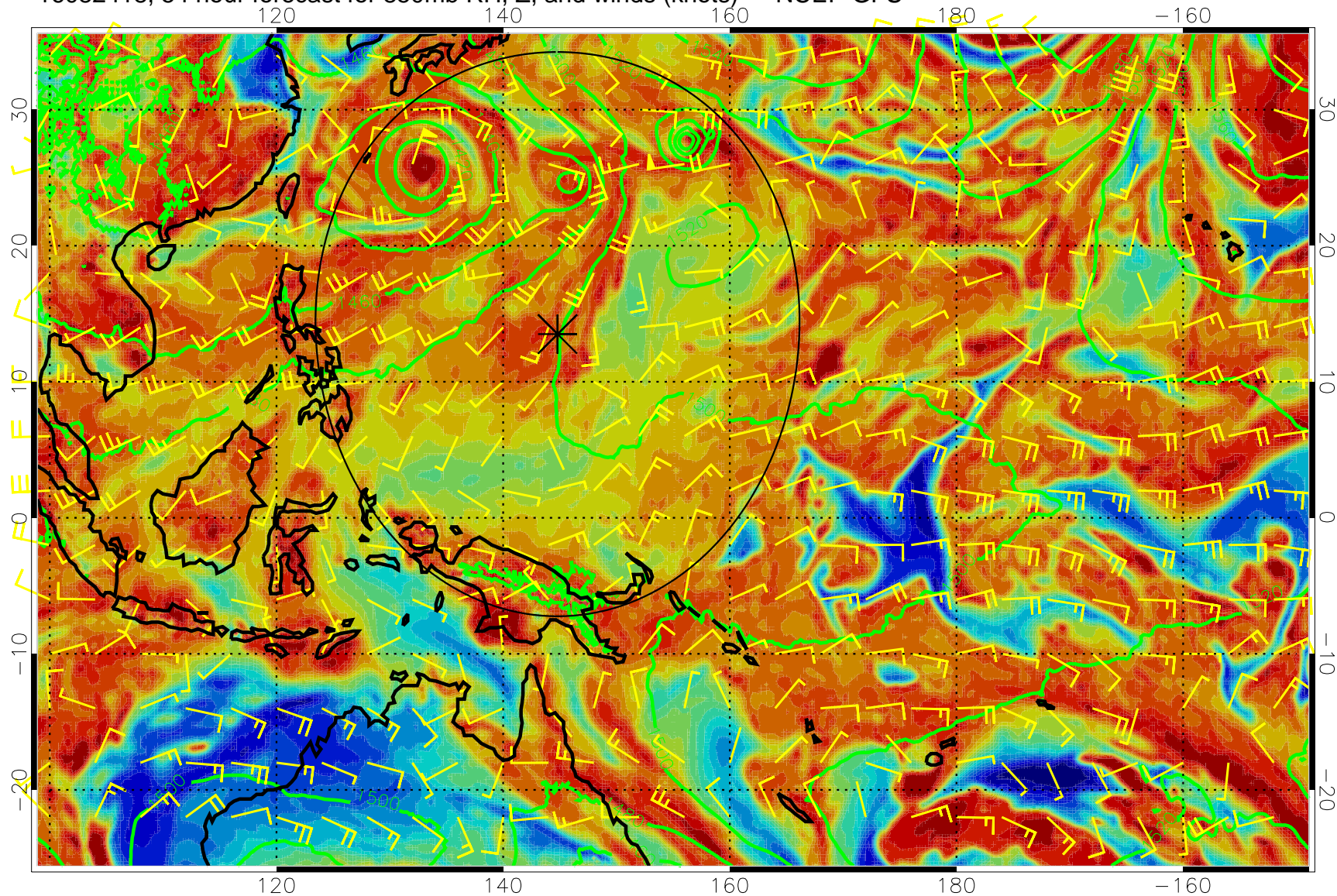
16082412, 48 hour forecast for 850mb RH, Z, and winds (knots) -- NCEP GFS



Precip (tot dot, conv sol) mm/day 40 mm/day contours, min 20

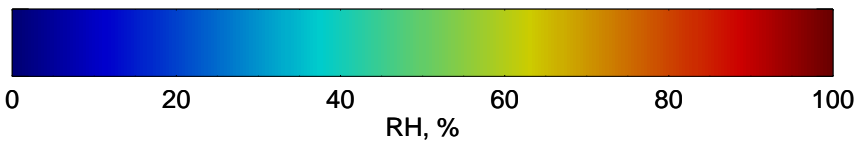
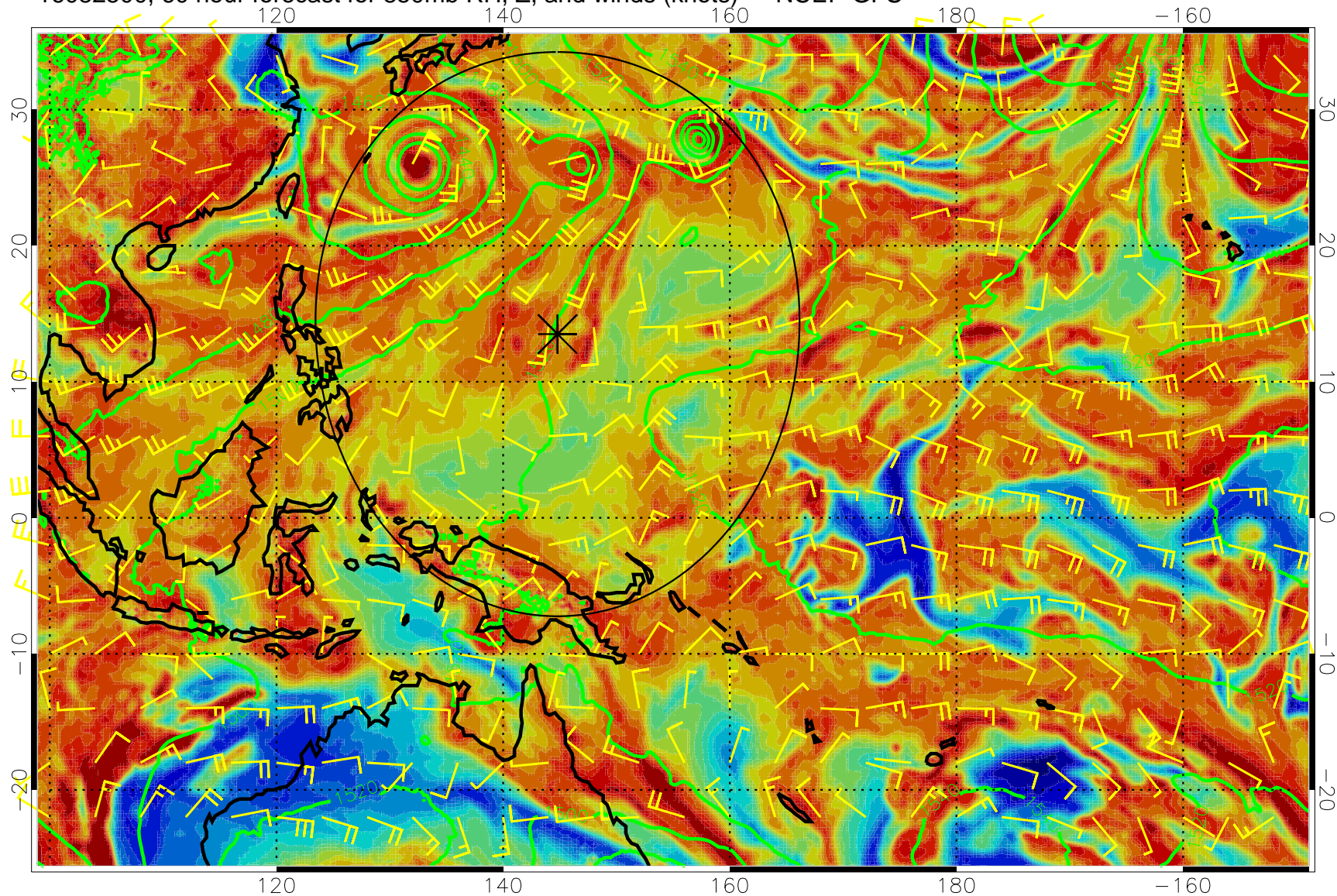


16082418, 54 hour forecast for 850mb RH, Z, and winds (knots) -- NCEP GFS



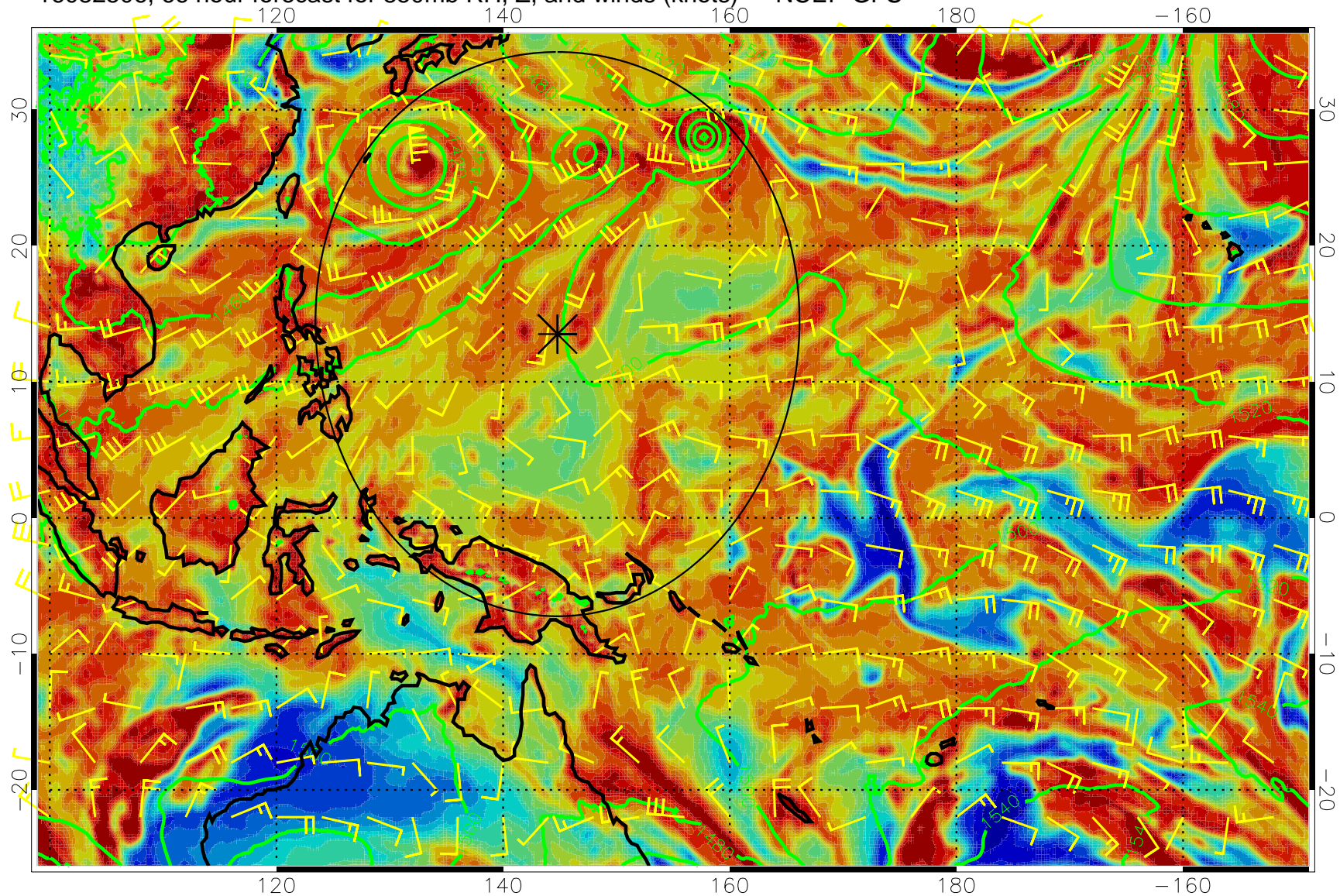
Precip (tot dot, conv sol) mm/day 40 mm/day contours, min 20

16082500, 60 hour forecast for 850mb RH, Z, and winds (knots) -- NCEP GFS



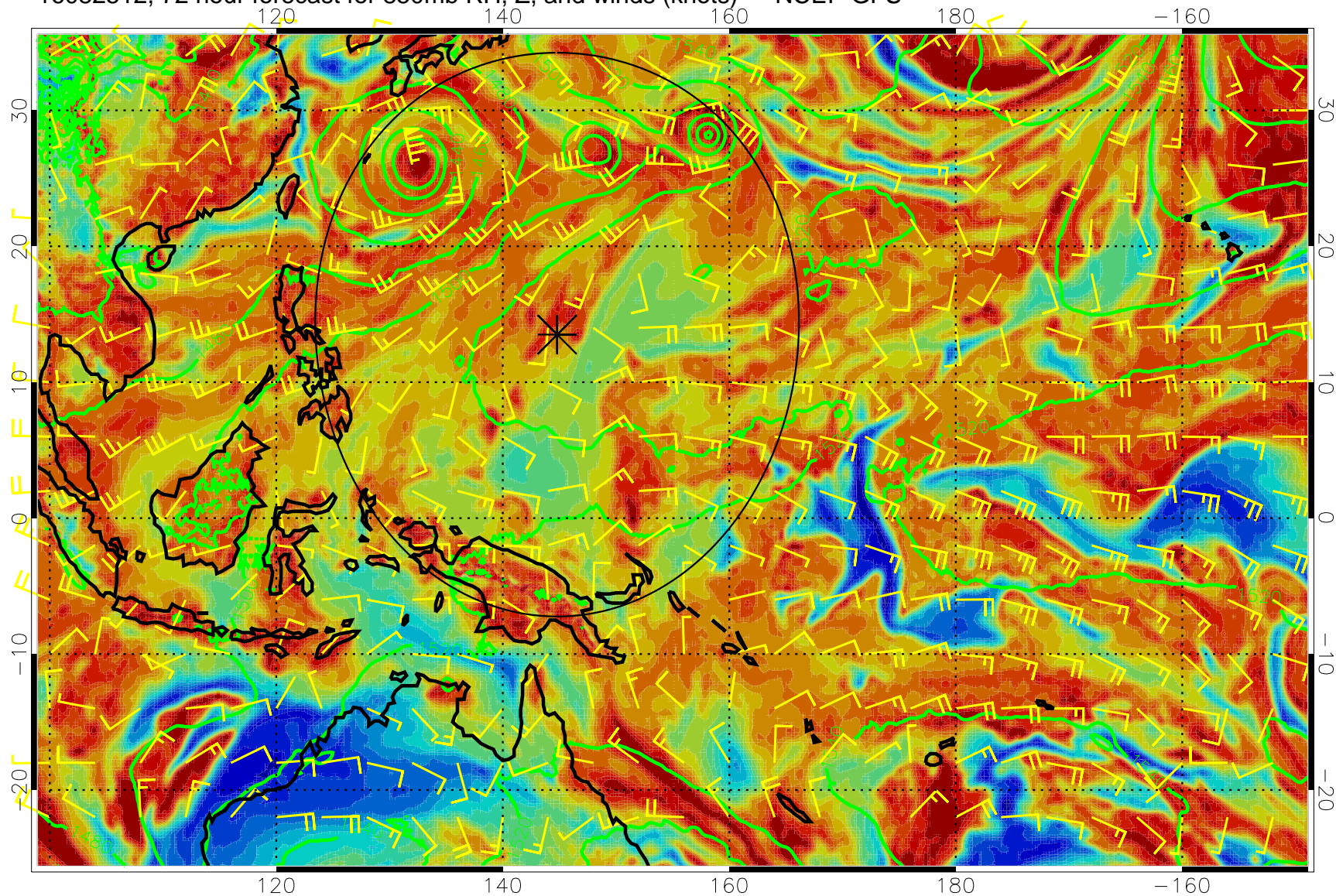
Precip (tot dot, conv sol) mm/day 40 mm/day contours, min 20

16082506, 66 hour forecast for 850mb RH, Z, and winds (knots) -- NCEP GFS



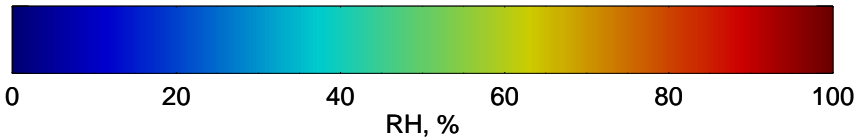
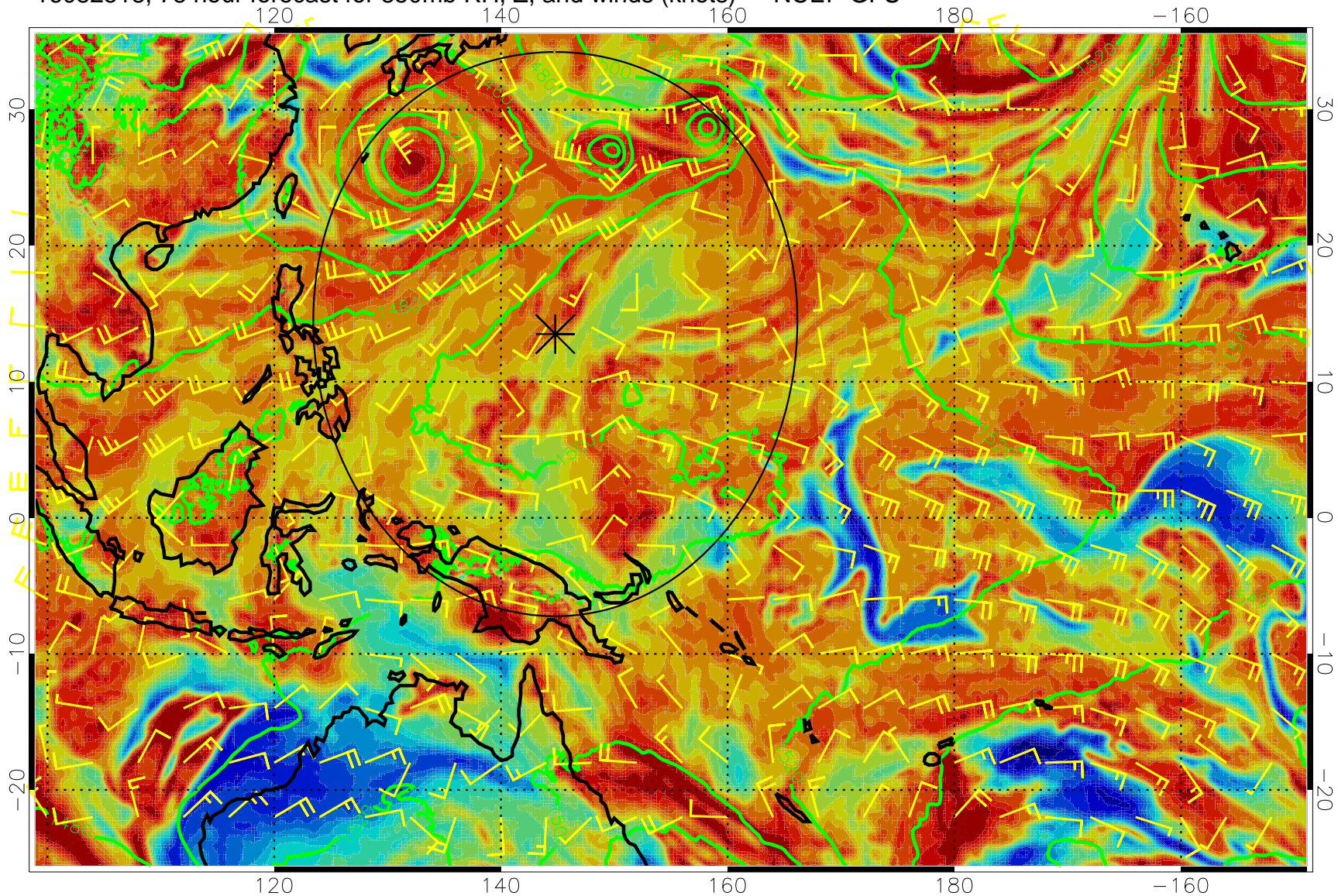
Precip (tot dot, conv sol) mm/day 40 mm/day contours, min 20

16082512, 72 hour forecast for 850mb RH, Z, and winds (knots) -- NCEP GFS



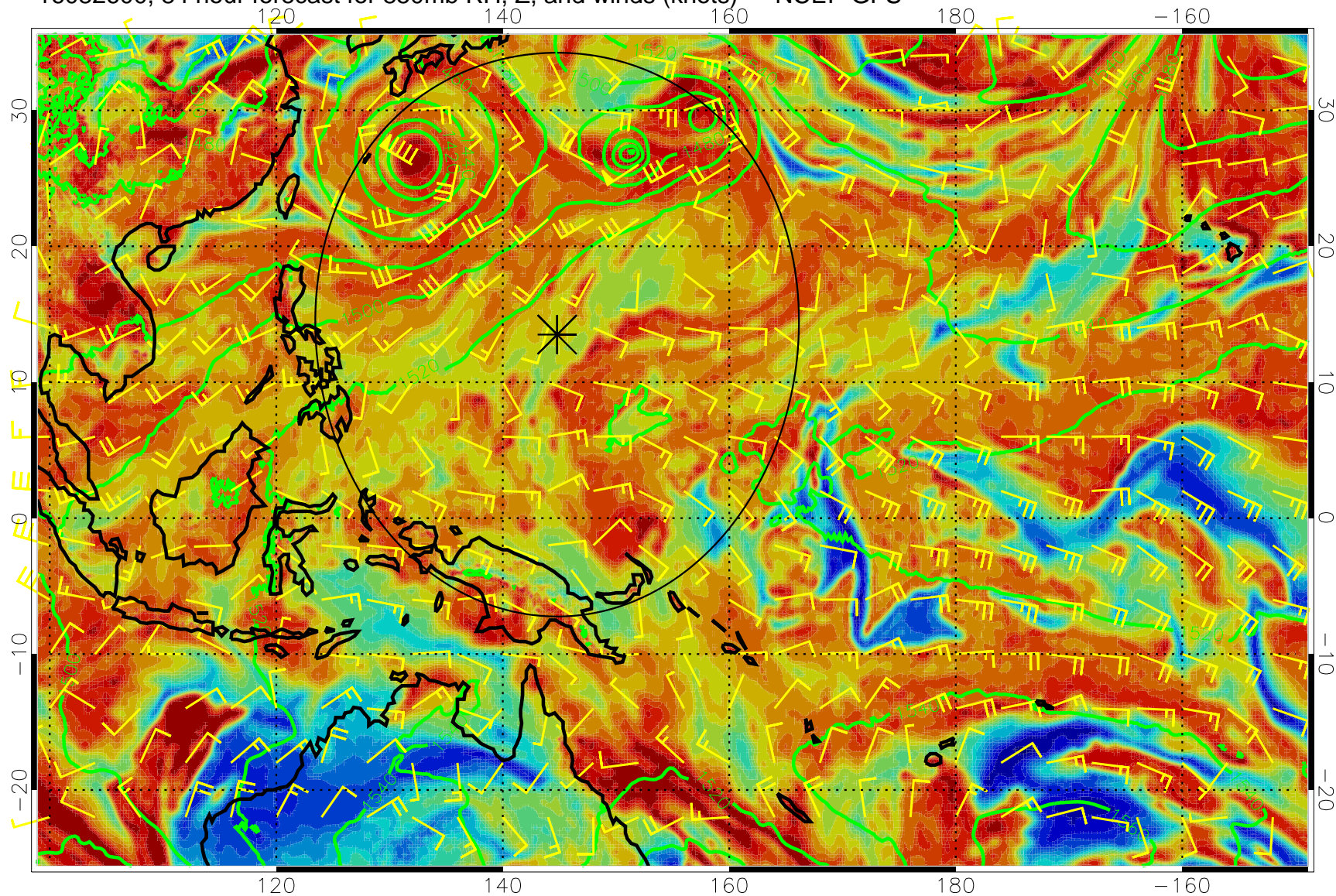
Precip (tot dot, conv sol) mm/day 40 mm/day contours, min 20

16082518, 78 hour forecast for 850mb RH, Z, and winds (knots) -- NCEP GFS



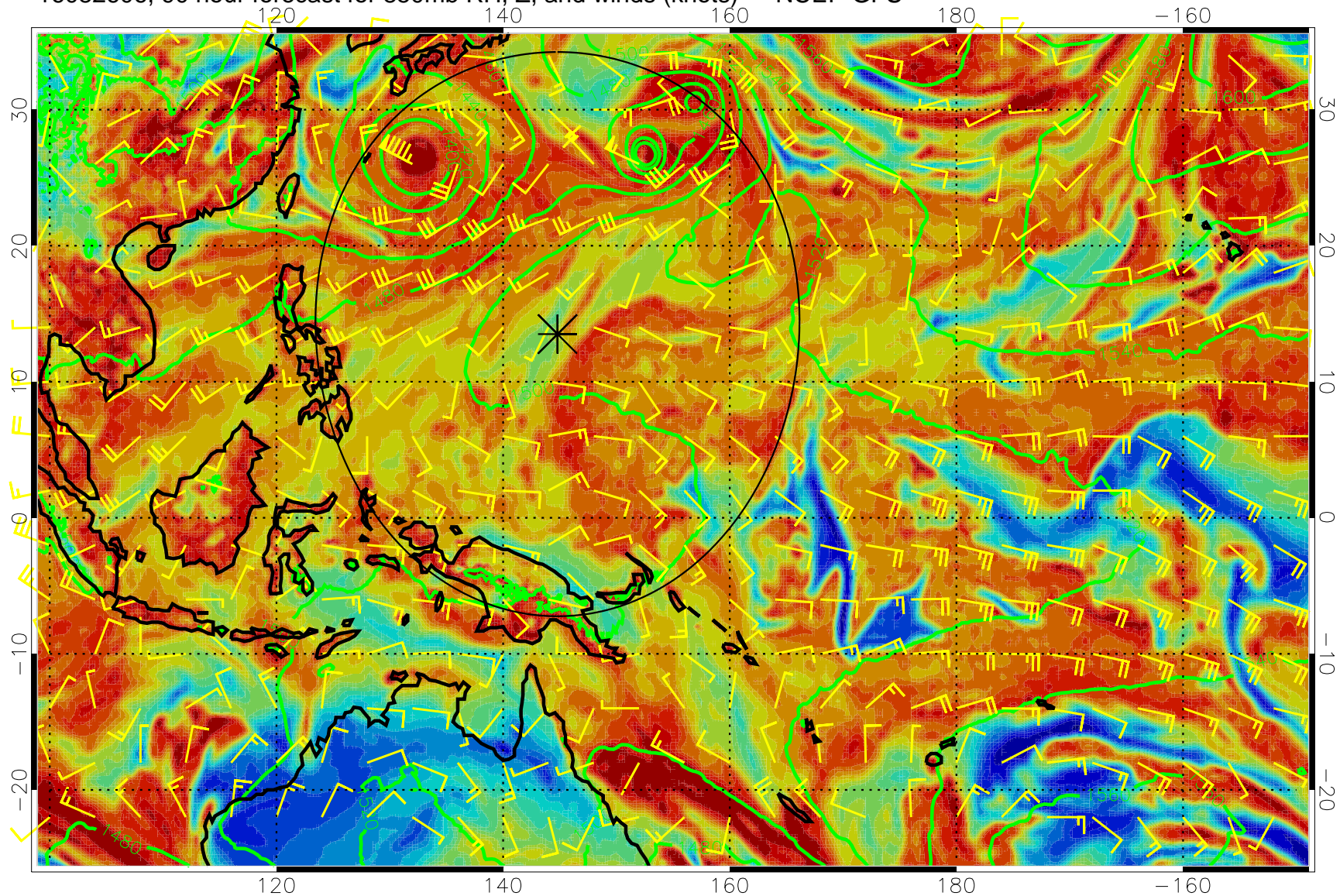
Precip (tot dot, conv sol) mm/day 40 mm/day contours, min 20

16082600, 84 hour forecast for 850mb RH, Z, and winds (knots) -- NCEP GFS

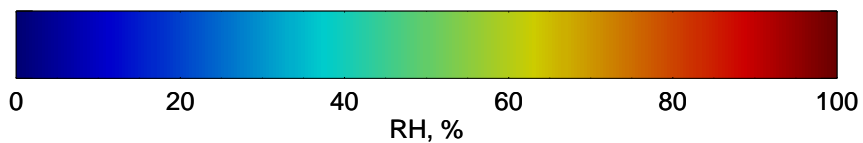


Precip (tot dot, conv sol) mm/day 40 mm/day contours, min 20

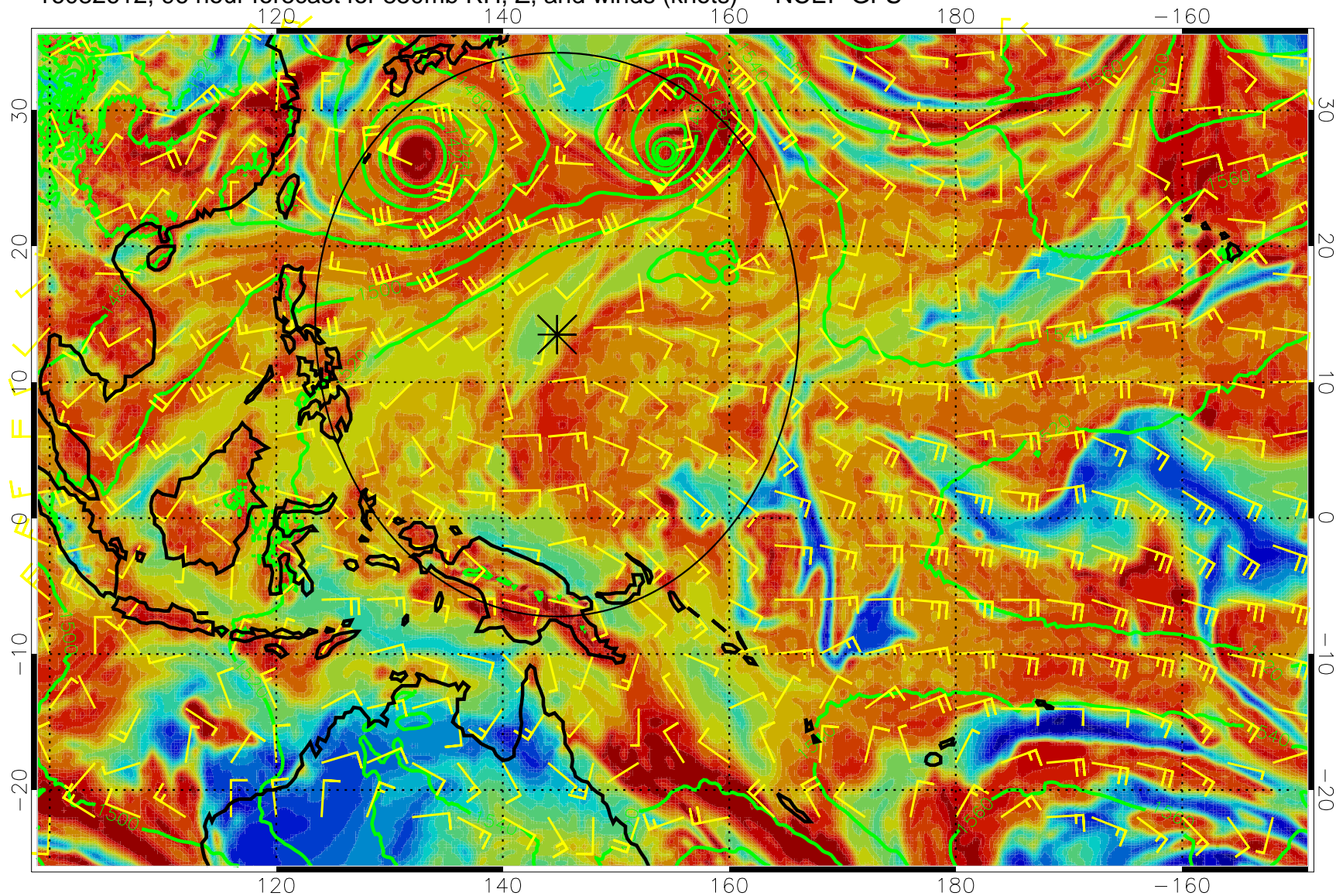
16082606, 90 hour forecast for 850mb RH, Z, and winds (knots) -- NCEP GFS



Precip (tot dot, conv sol) mm/day 40 mm/day contours, min 20



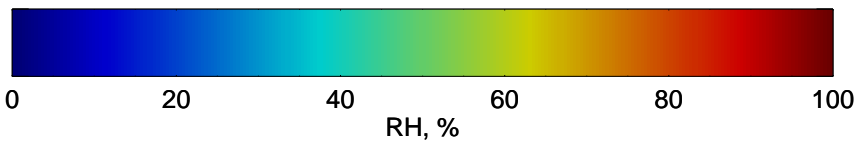
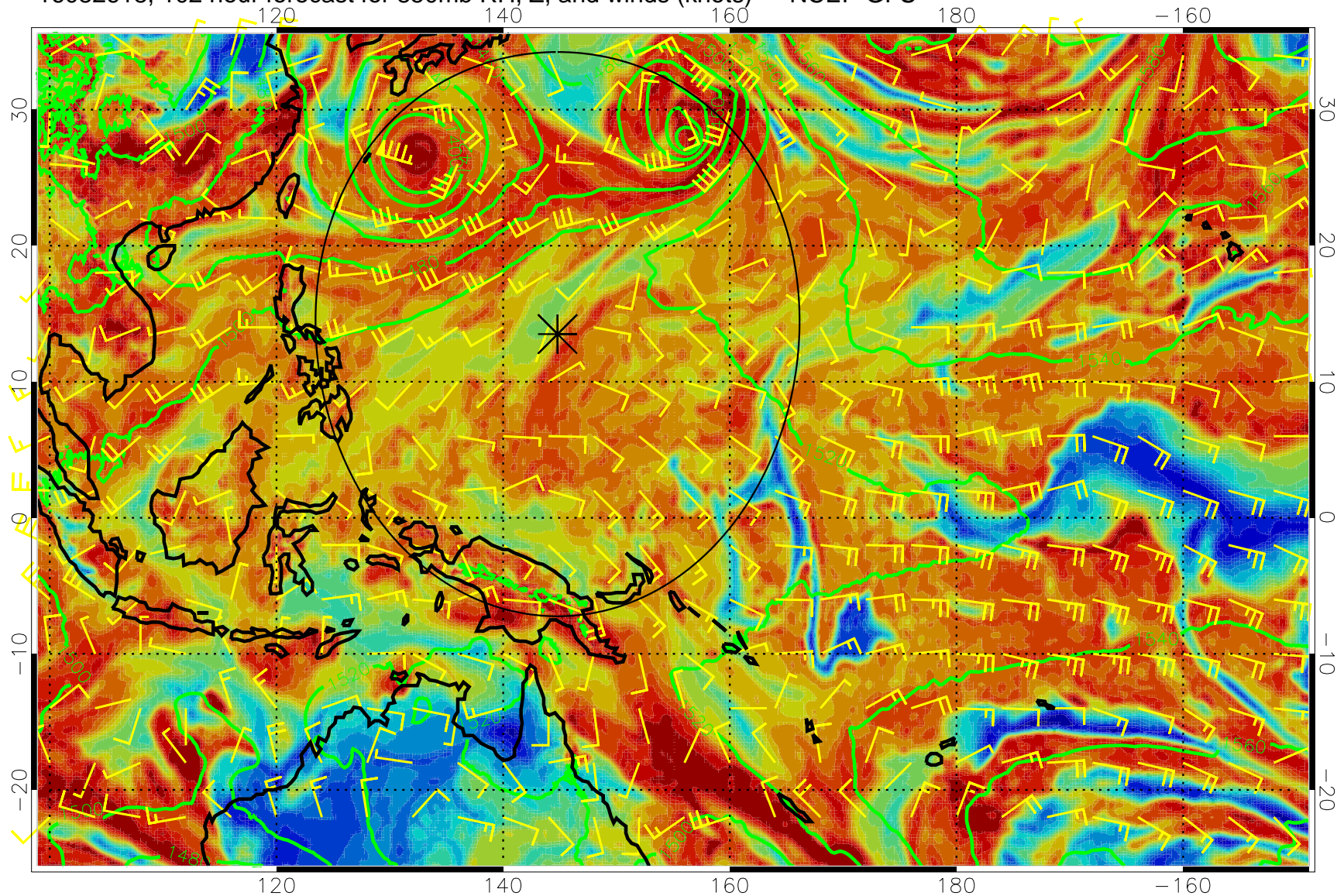
16082612, 96 hour forecast for 850mb RH, Z, and winds (knots) -- NCEP GFS



Precip (tot dot, conv sol) mm/day 40 mm/day contours, min 20

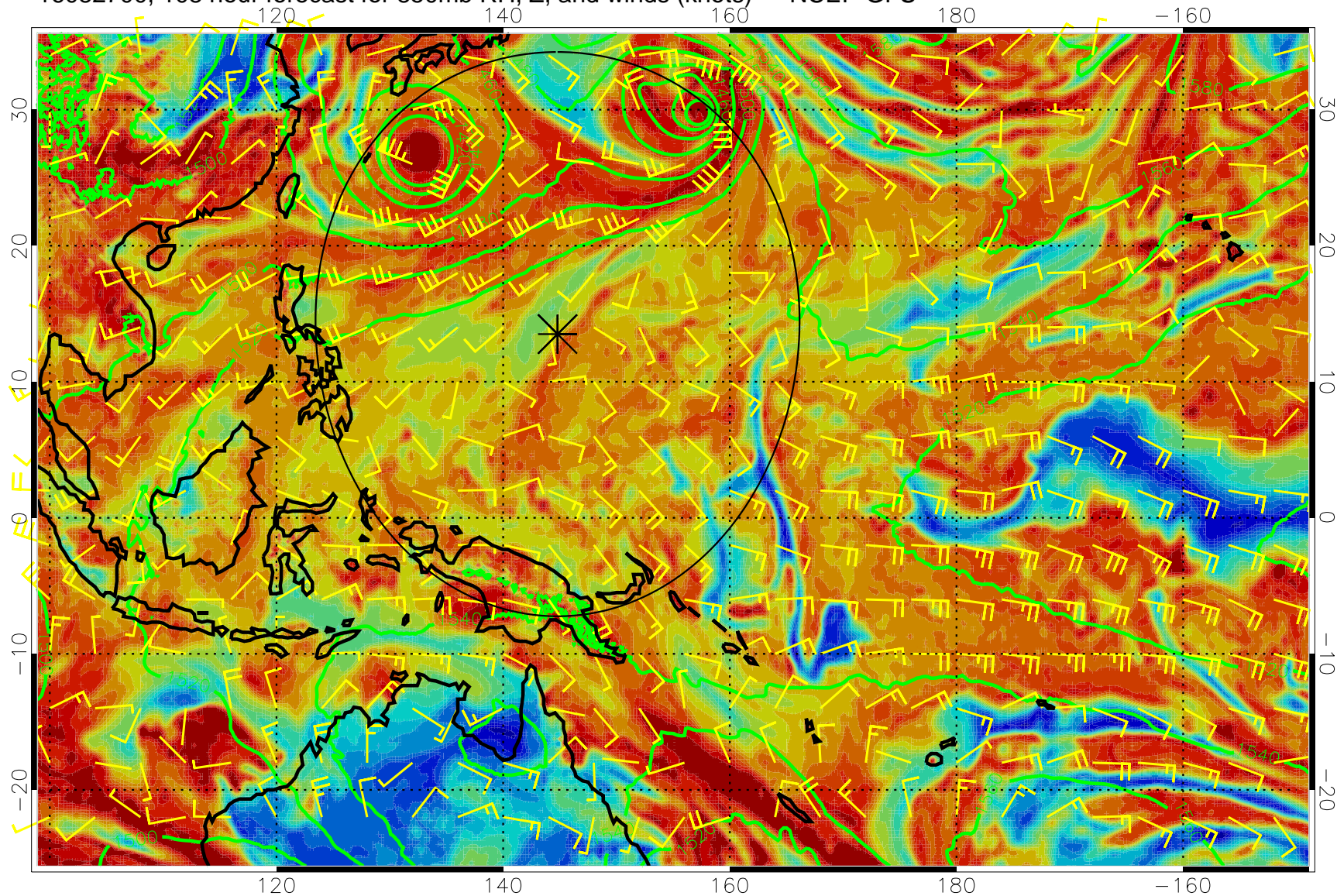


16082618, 102 hour forecast for 850mb RH, Z, and winds (knots) -- NCEP GFS



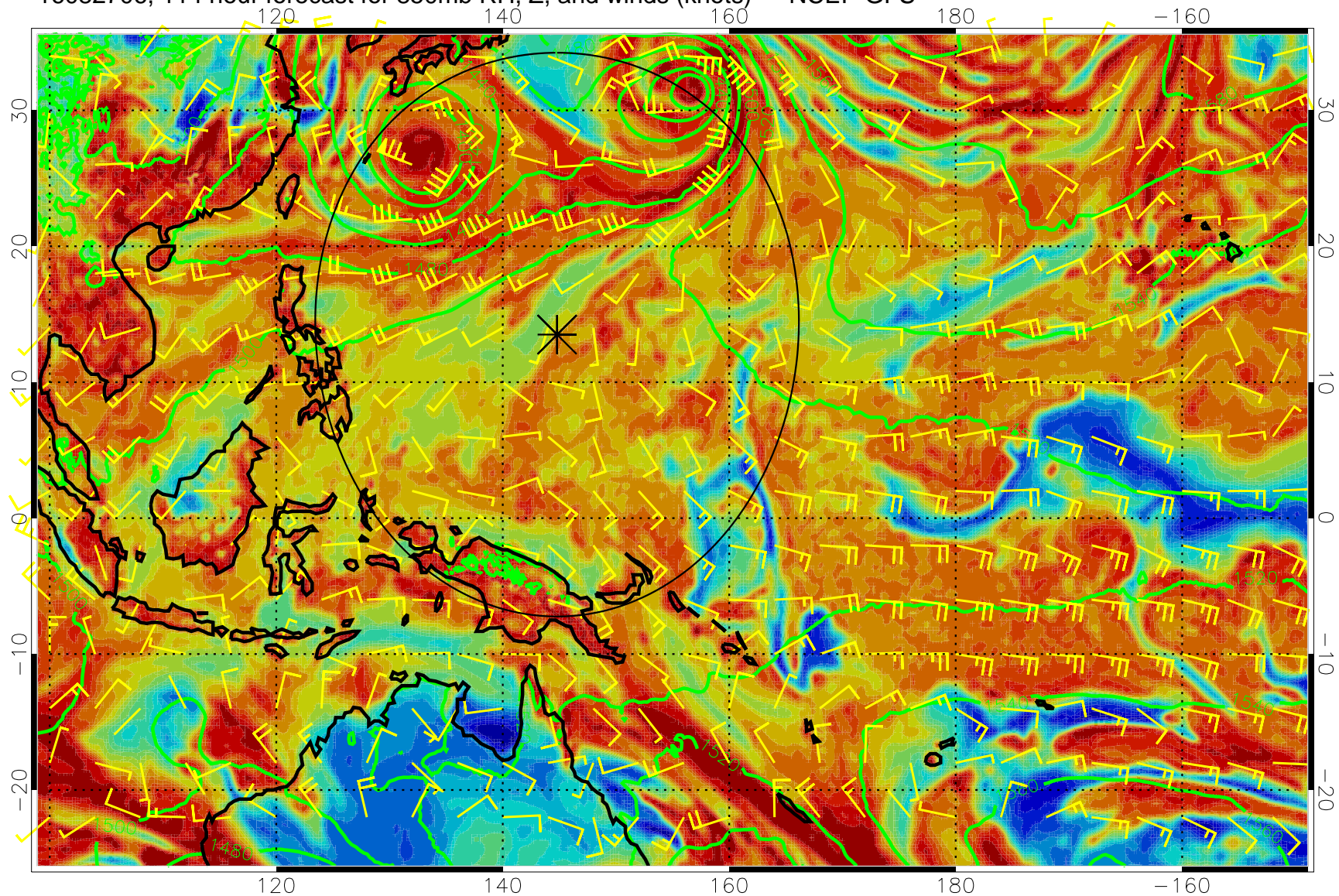
Precip (tot dot, conv sol) mm/day 40 mm/day contours, min 20

16082700, 108 hour forecast for 850mb RH, Z, and winds (knots) -- NCEP GFS



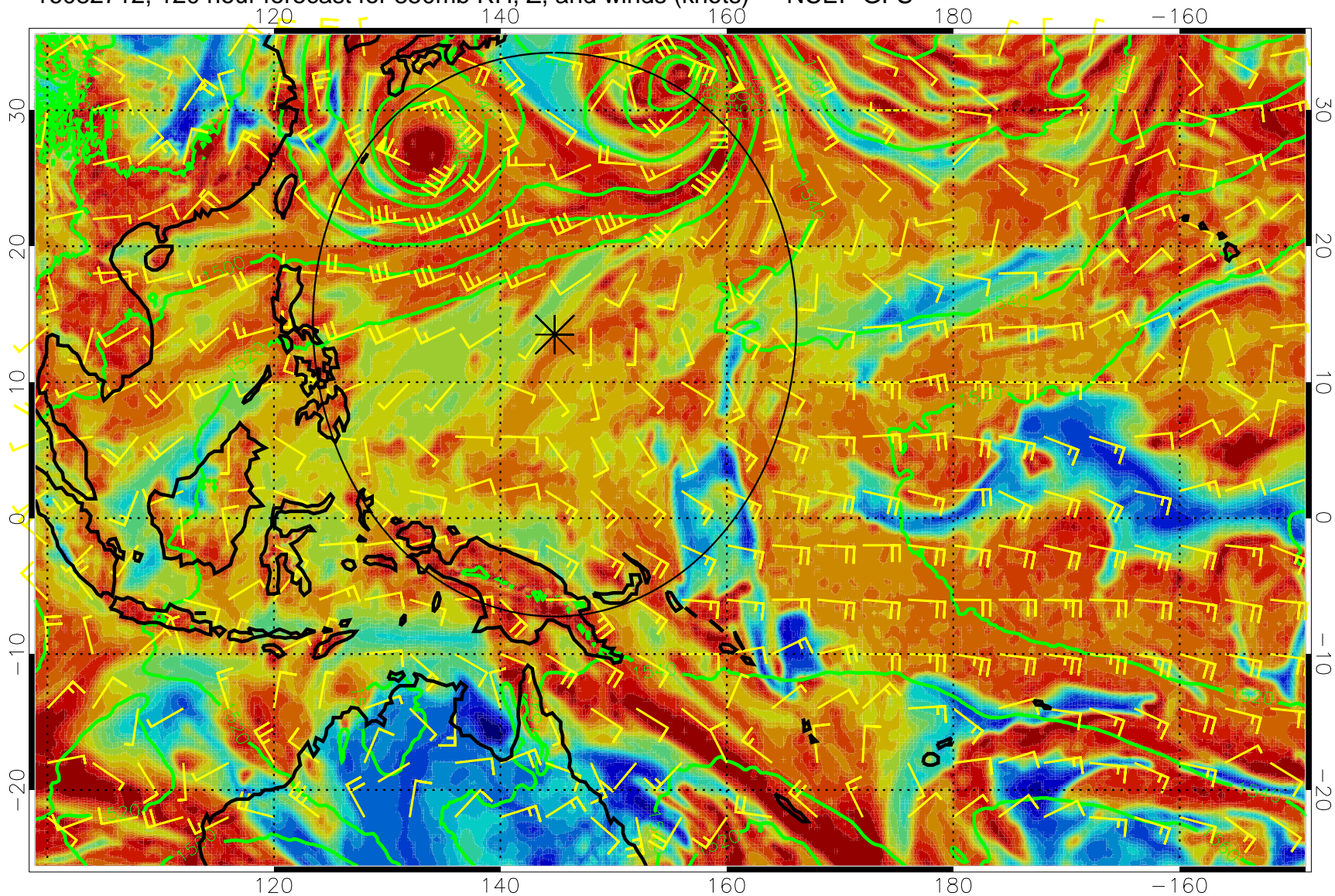
Precip (tot dot, conv sol) mm/day 40 mm/day contours, min 20

16082706, 114 hour forecast for 850mb RH, Z, and winds (knots) -- NCEP GFS



Precip (tot dot, conv sol) mm/day 40 mm/day contours, min 20

16082712, 120 hour forecast for 850mb RH, Z, and winds (knots) -- NCEP GFS



Precip (tot dot, conv sol) mm/day 40 mm/day contours, min 20