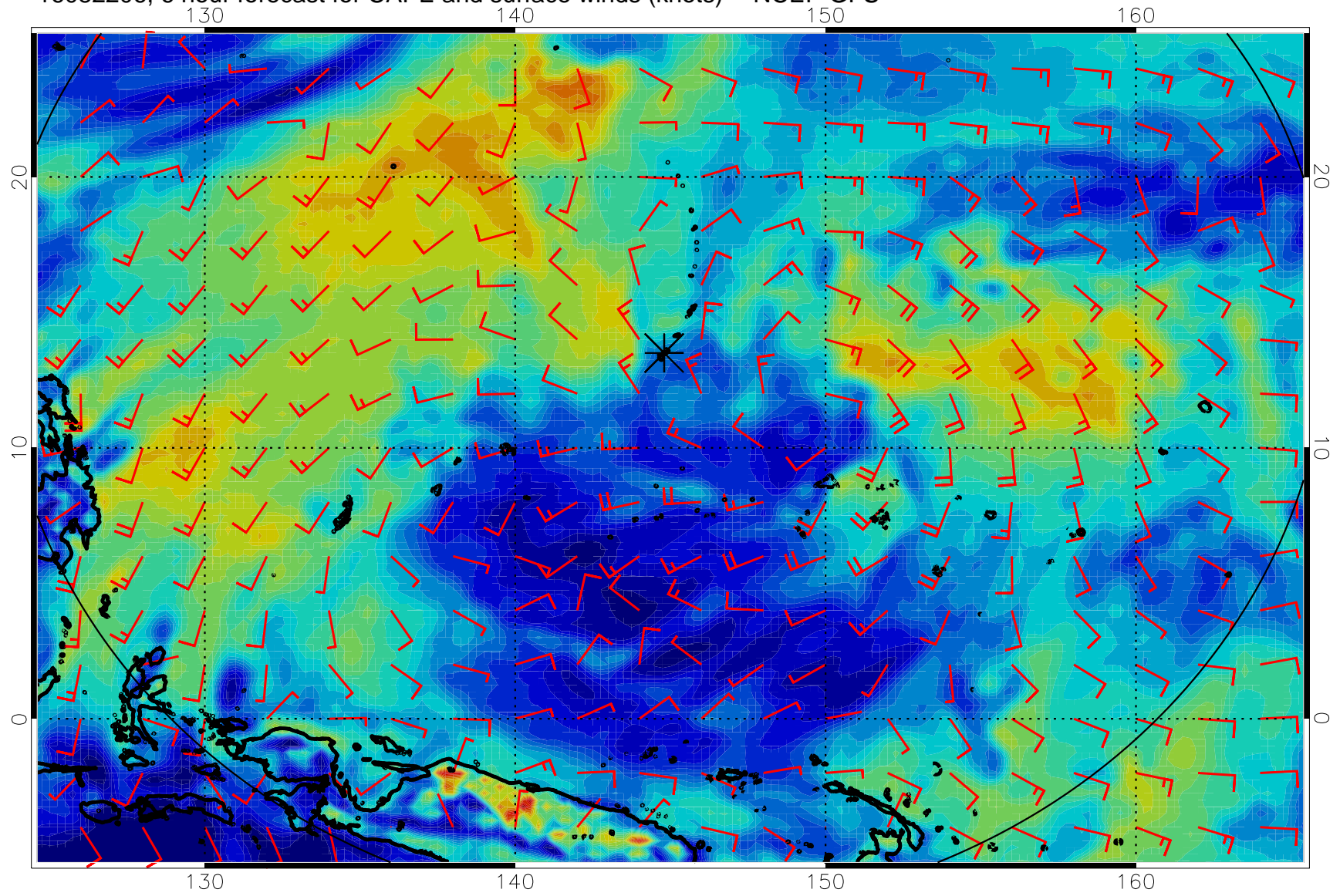
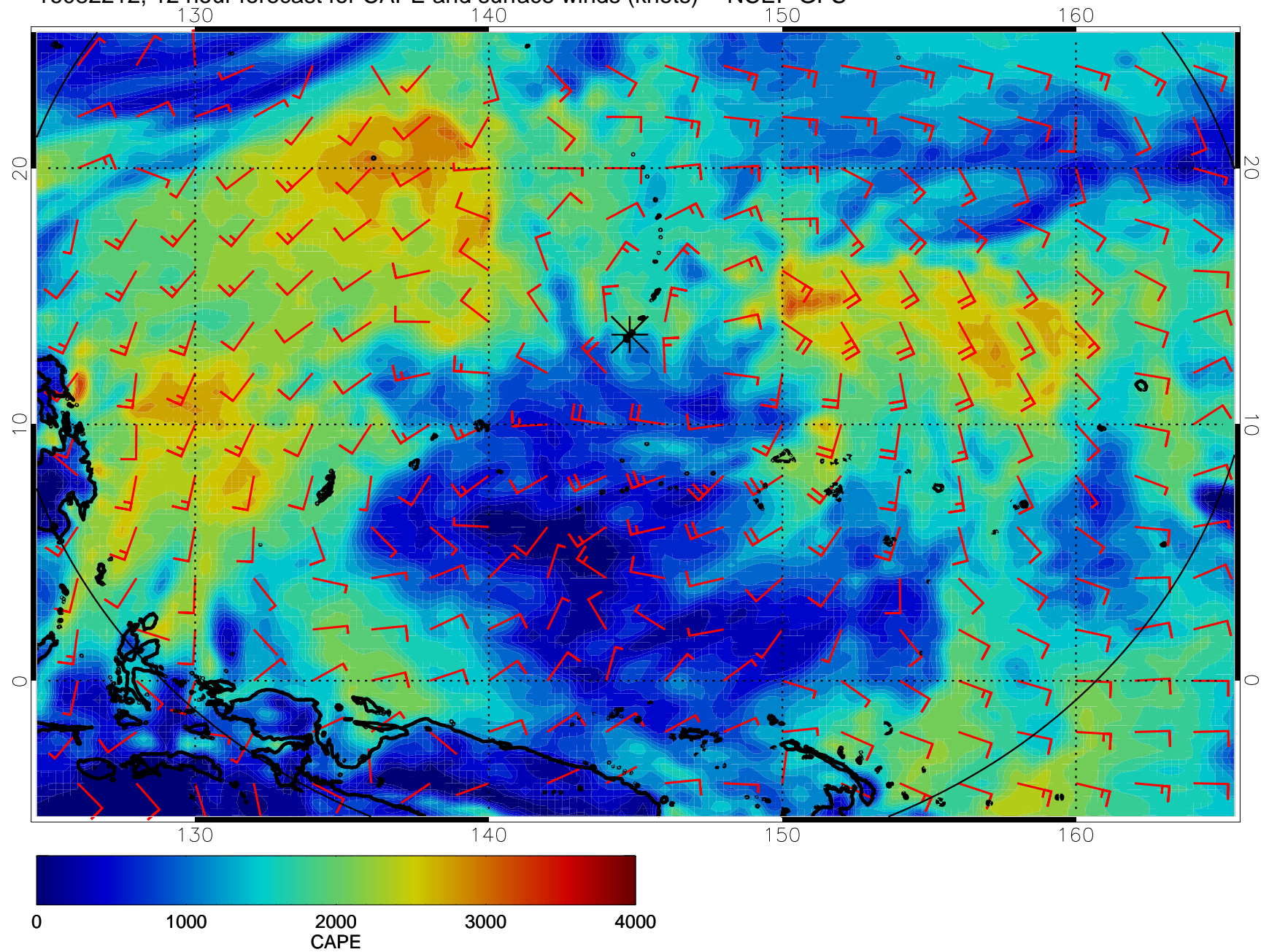


16082206, 6 hour forecast for CAPE and surface winds (knots) -- NCEP GFS

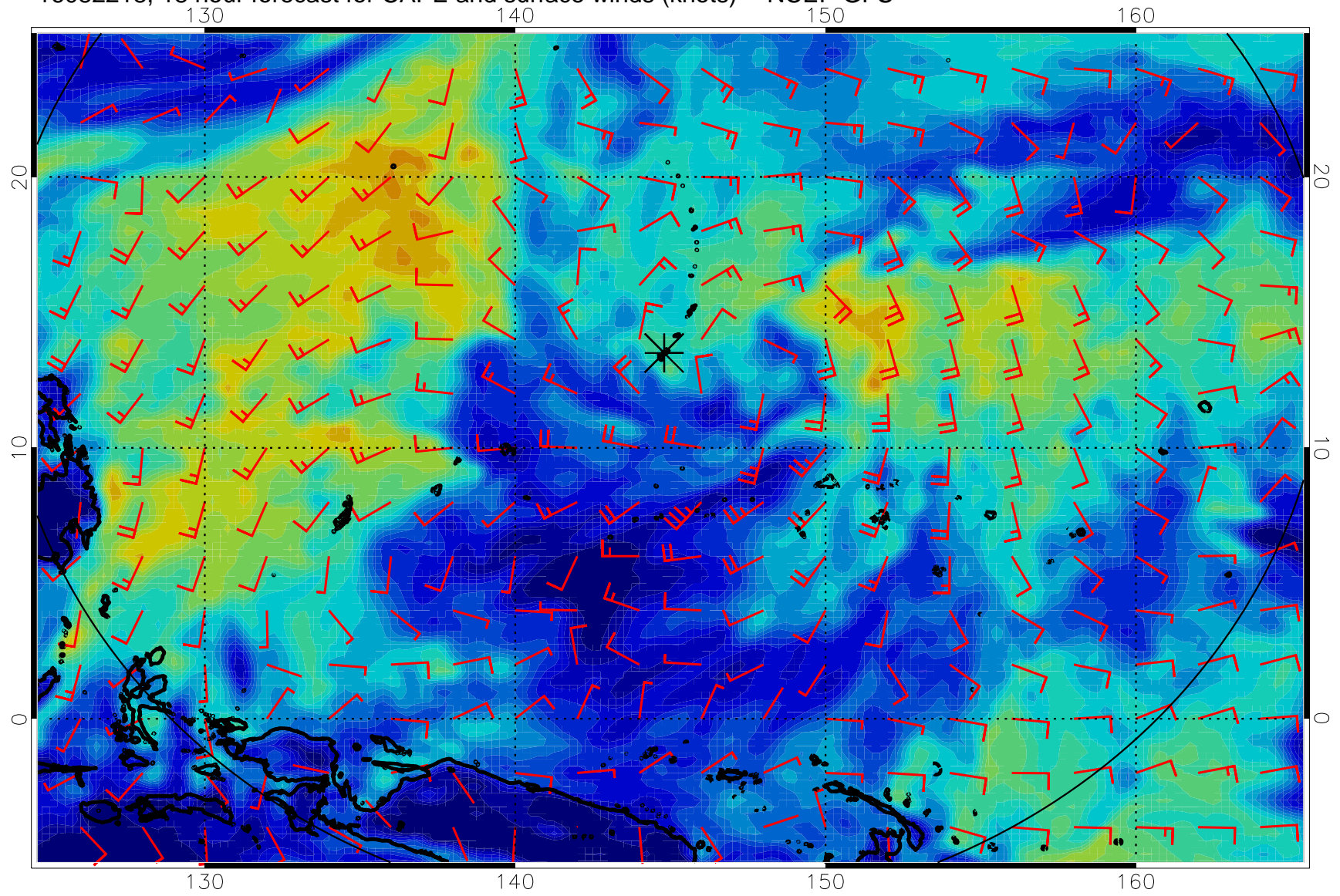


16082212, 12 hour forecast for CAPE and surface winds (knots) -- NCEP GFS

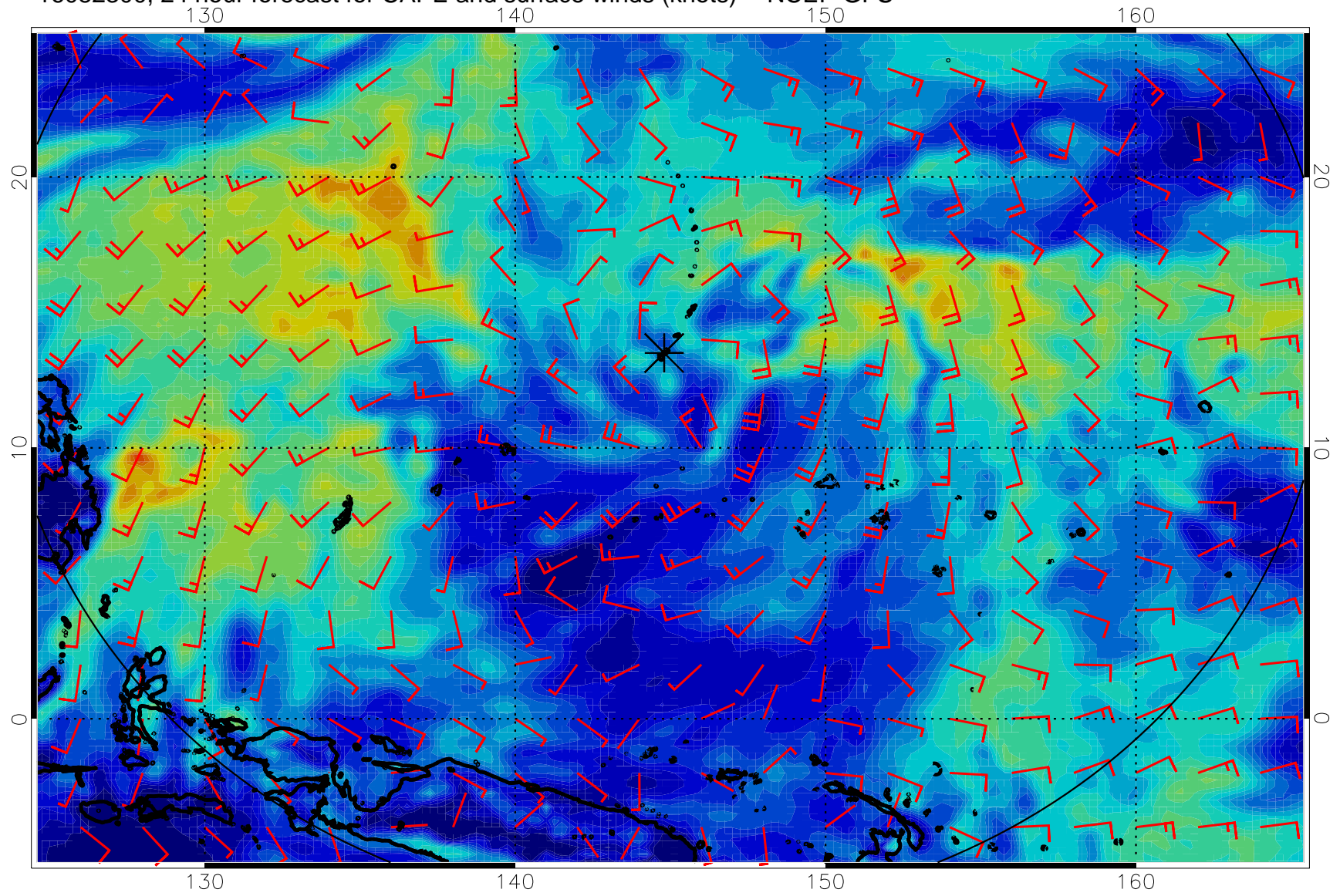




16082218, 18 hour forecast for CAPE and surface winds (knots) -- NCEP GFS

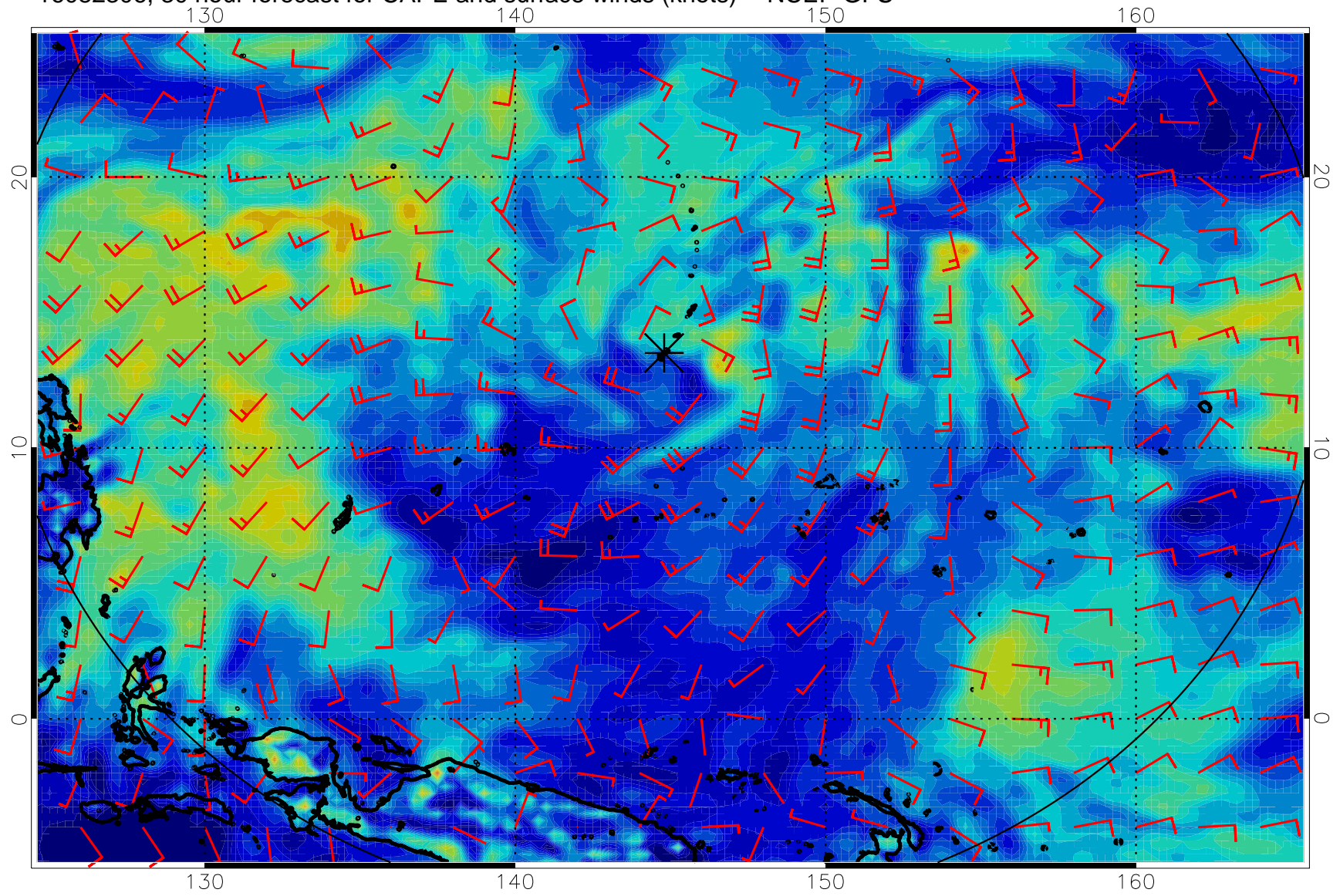


16082300, 24 hour forecast for CAPE and surface winds (knots) -- NCEP GFS

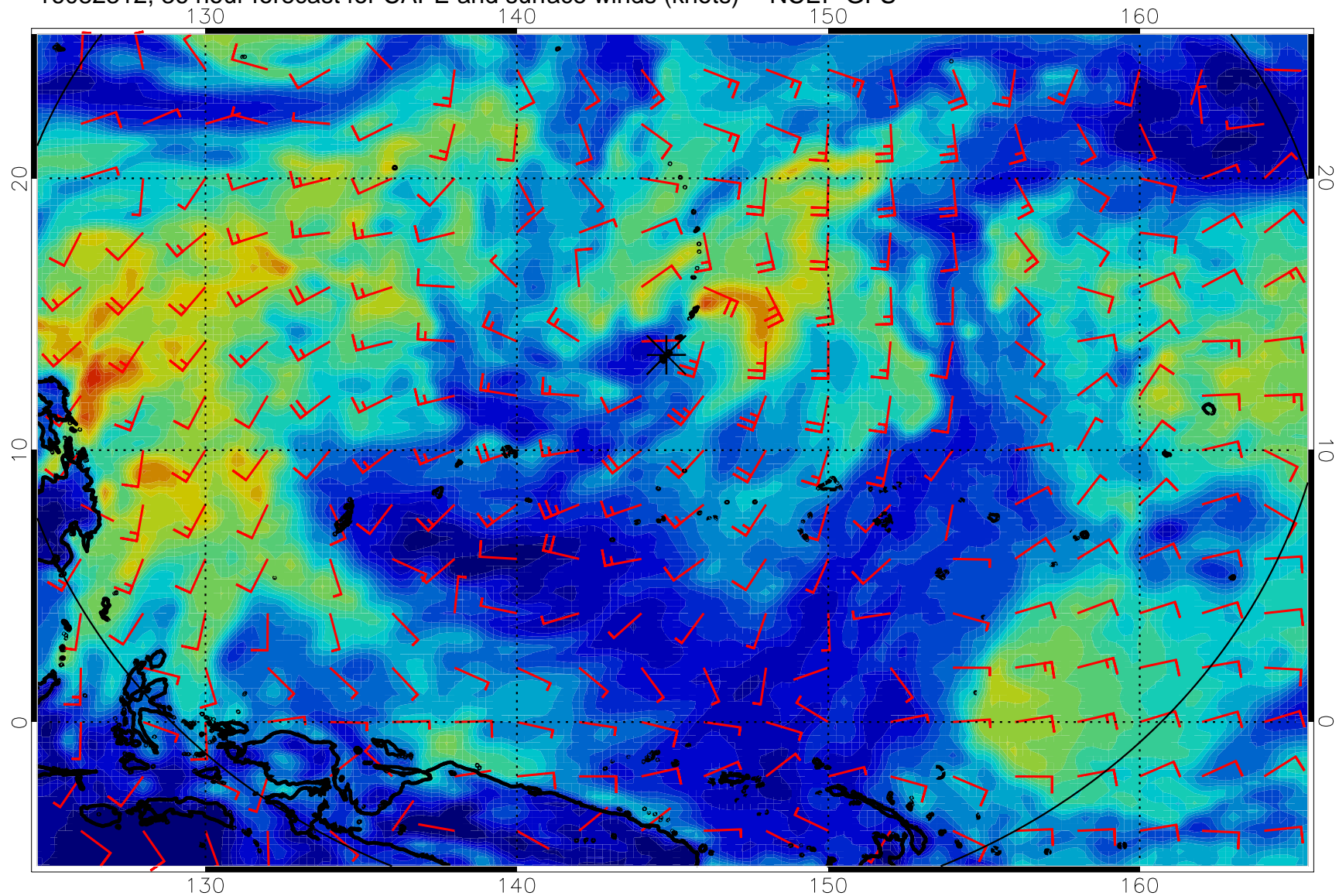




16082306, 30 hour forecast for CAPE and surface winds (knots) -- NCEP GFS

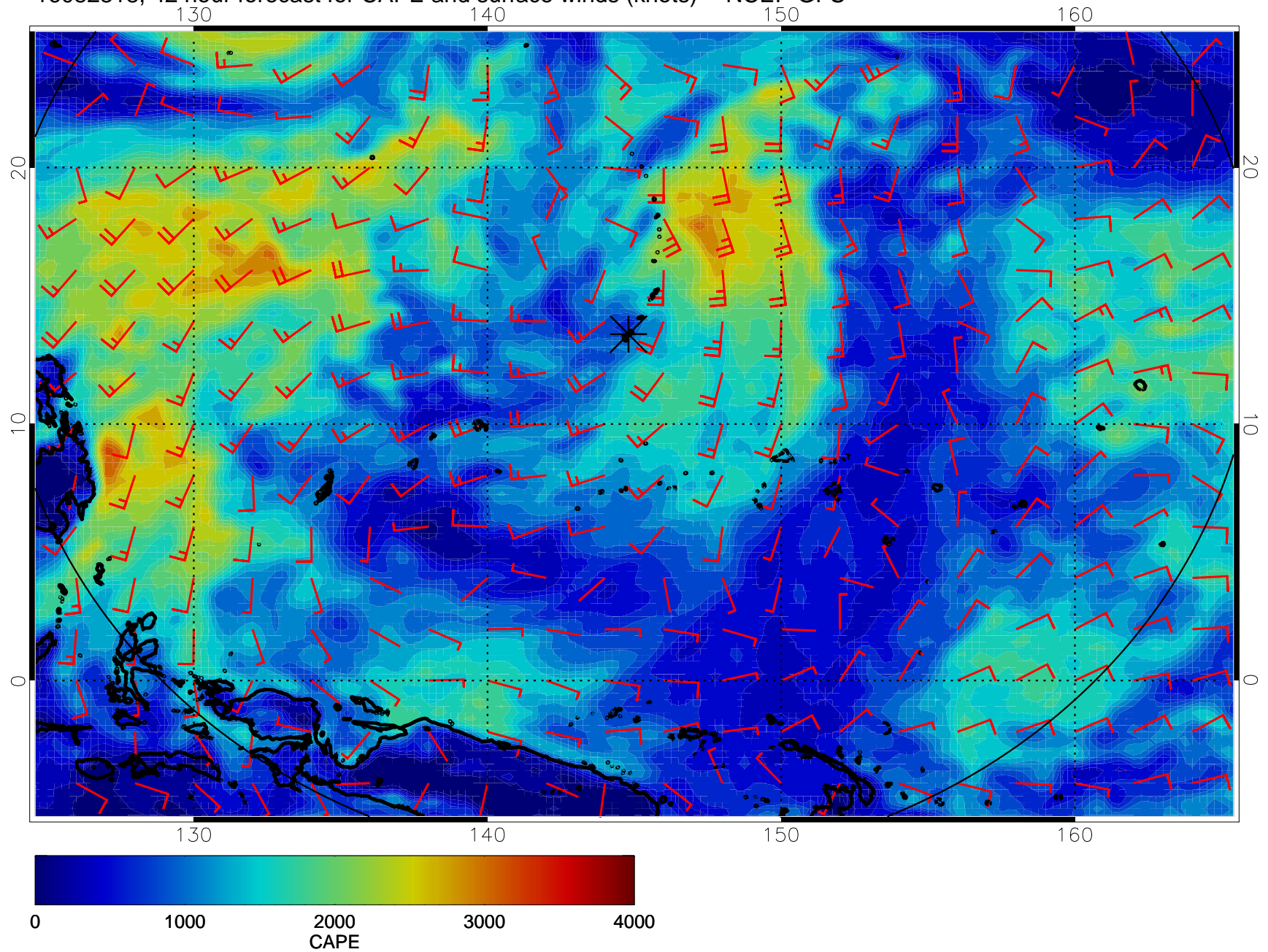


16082312, 36 hour forecast for CAPE and surface winds (knots) -- NCEP GFS

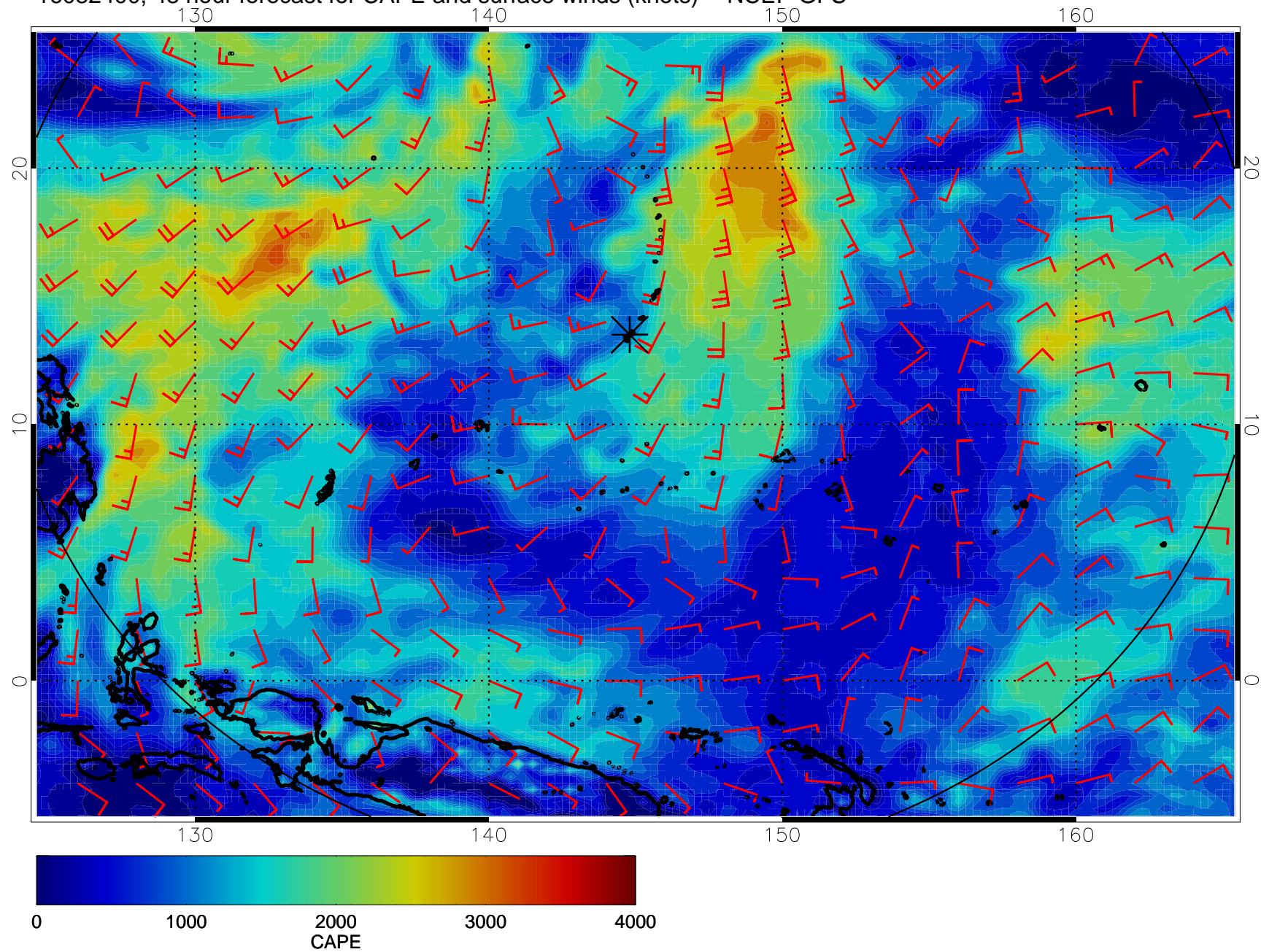




16082318, 42 hour forecast for CAPE and surface winds (knots) -- NCEP GFS

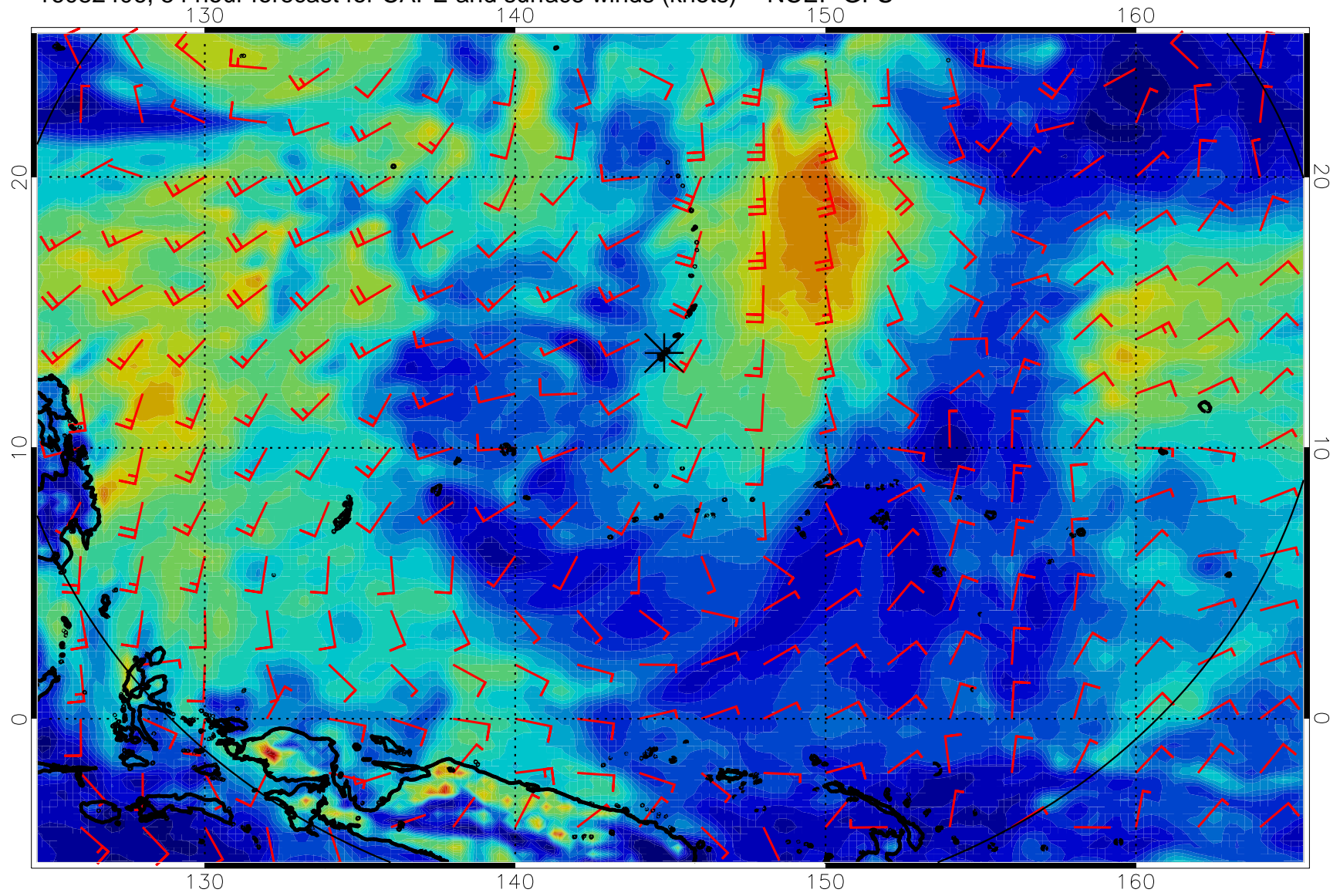


16082400, 48 hour forecast for CAPE and surface winds (knots) -- NCEP GFS

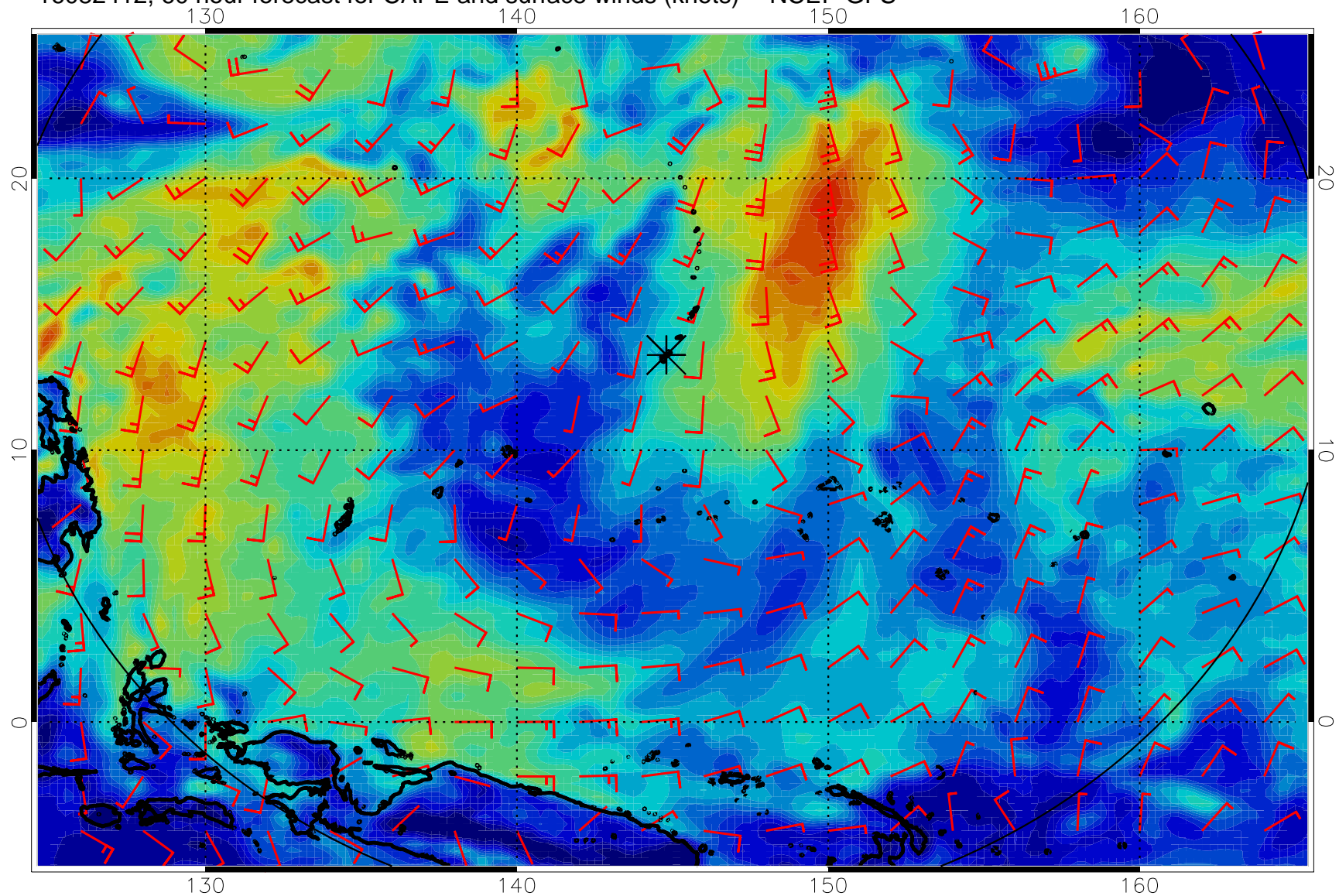




16082406, 54 hour forecast for CAPE and surface winds (knots) -- NCEP GFS

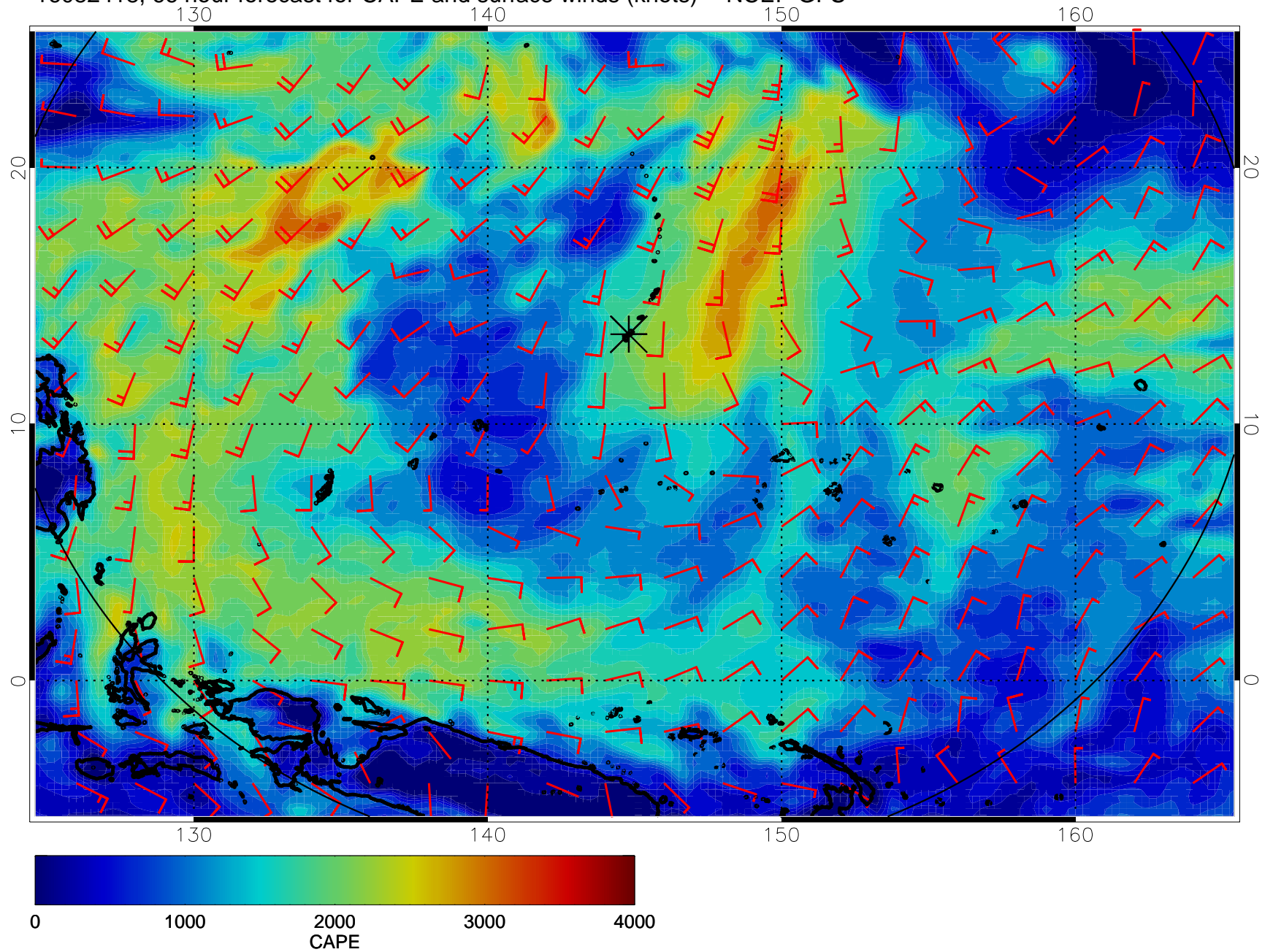


16082412, 60 hour forecast for CAPE and surface winds (knots) -- NCEP GFS

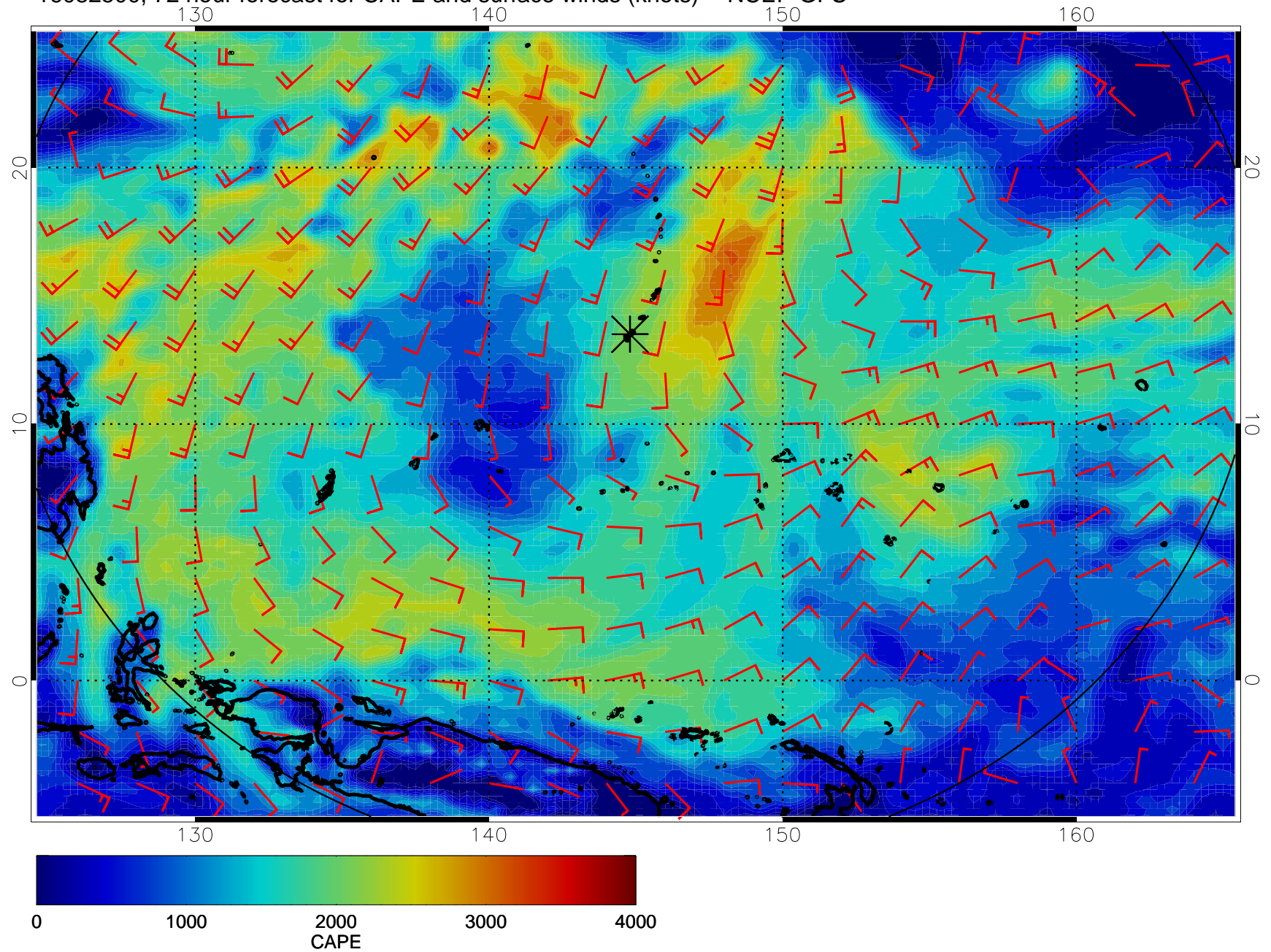




16082418, 66 hour forecast for CAPE and surface winds (knots) -- NCEP GFS

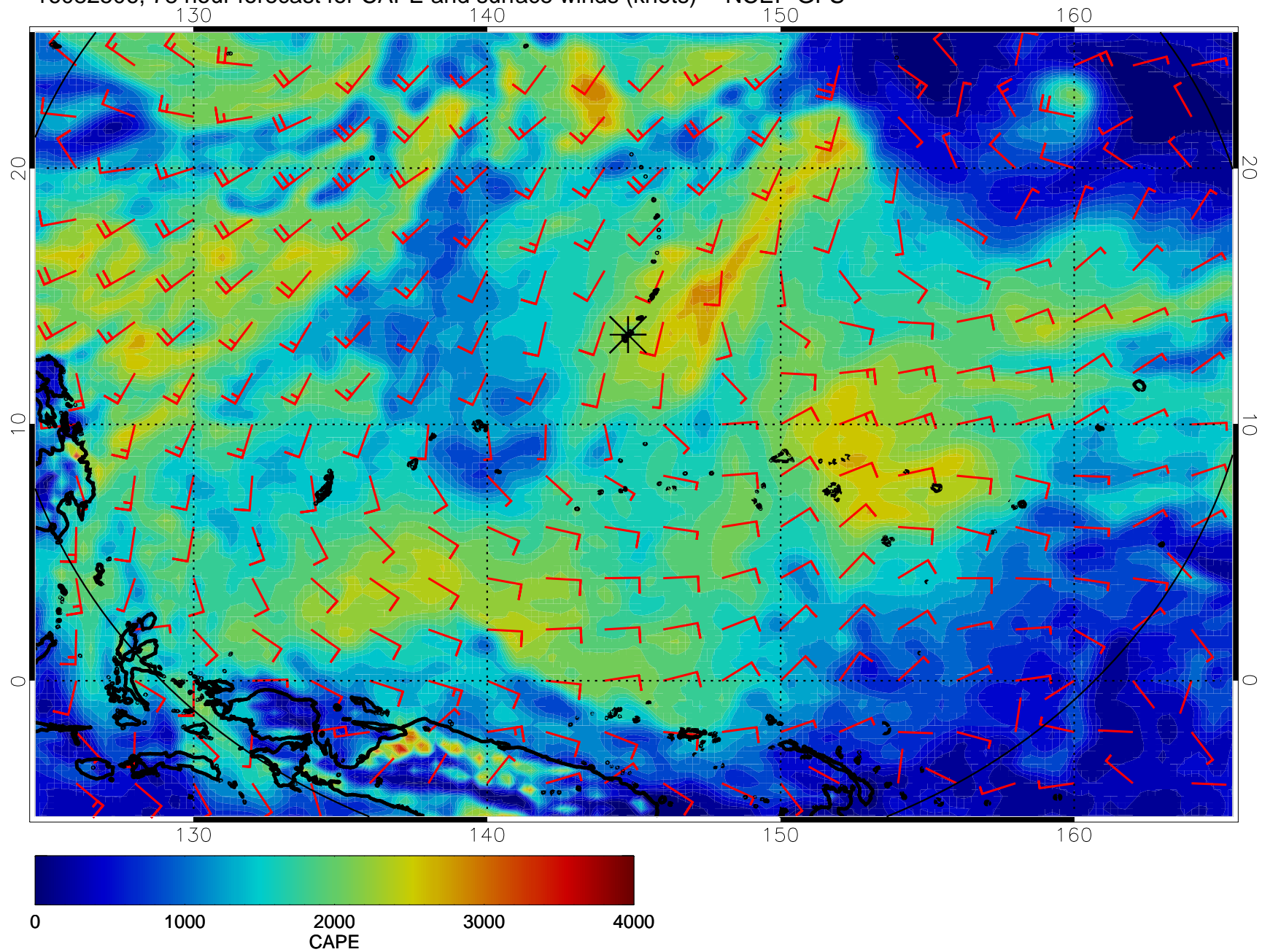


16082500, 72 hour forecast for CAPE and surface winds (knots) -- NCEP GFS

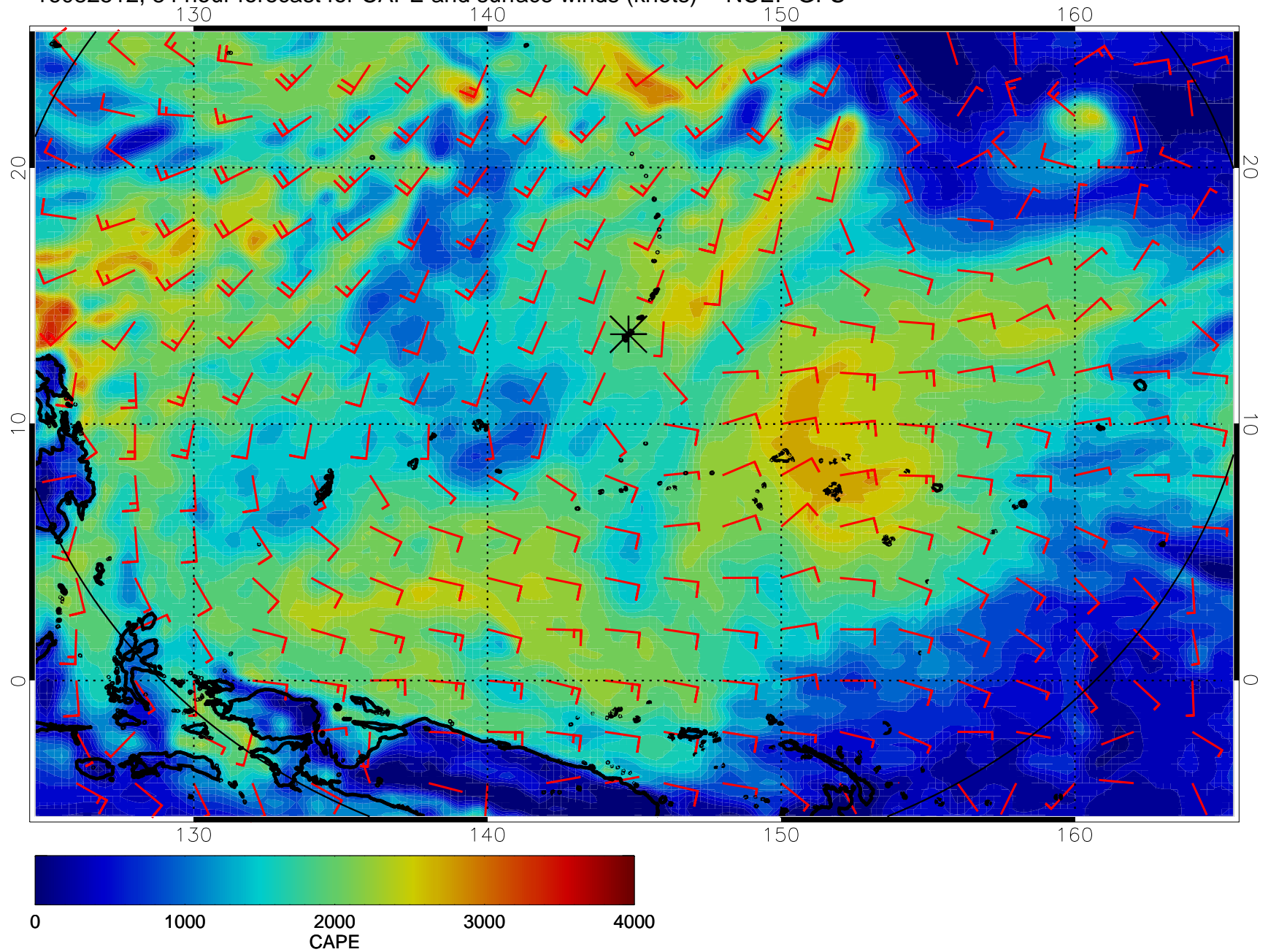




16082506, 78 hour forecast for CAPE and surface winds (knots) -- NCEP GFS

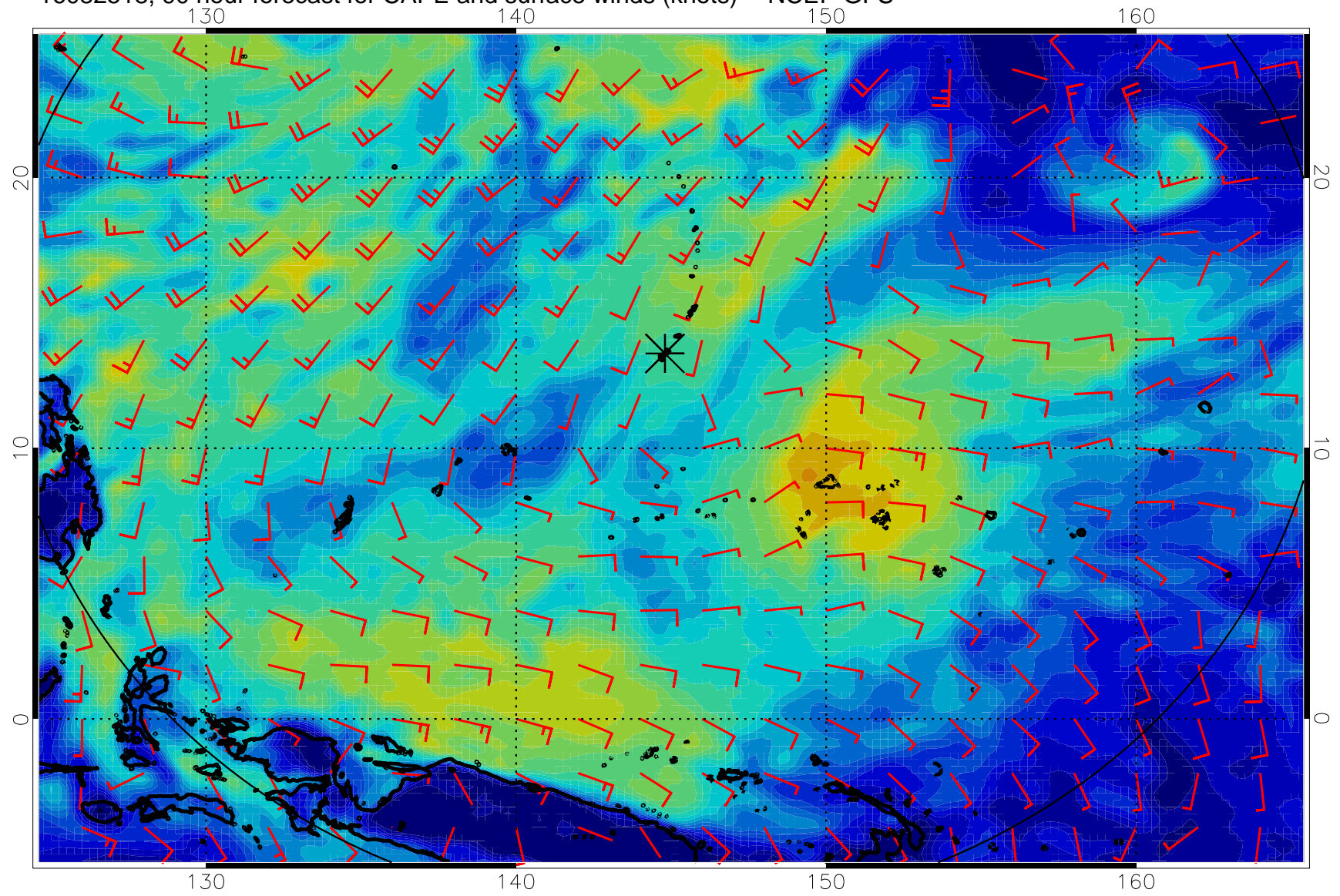


16082512, 84 hour forecast for CAPE and surface winds (knots) -- NCEP GFS

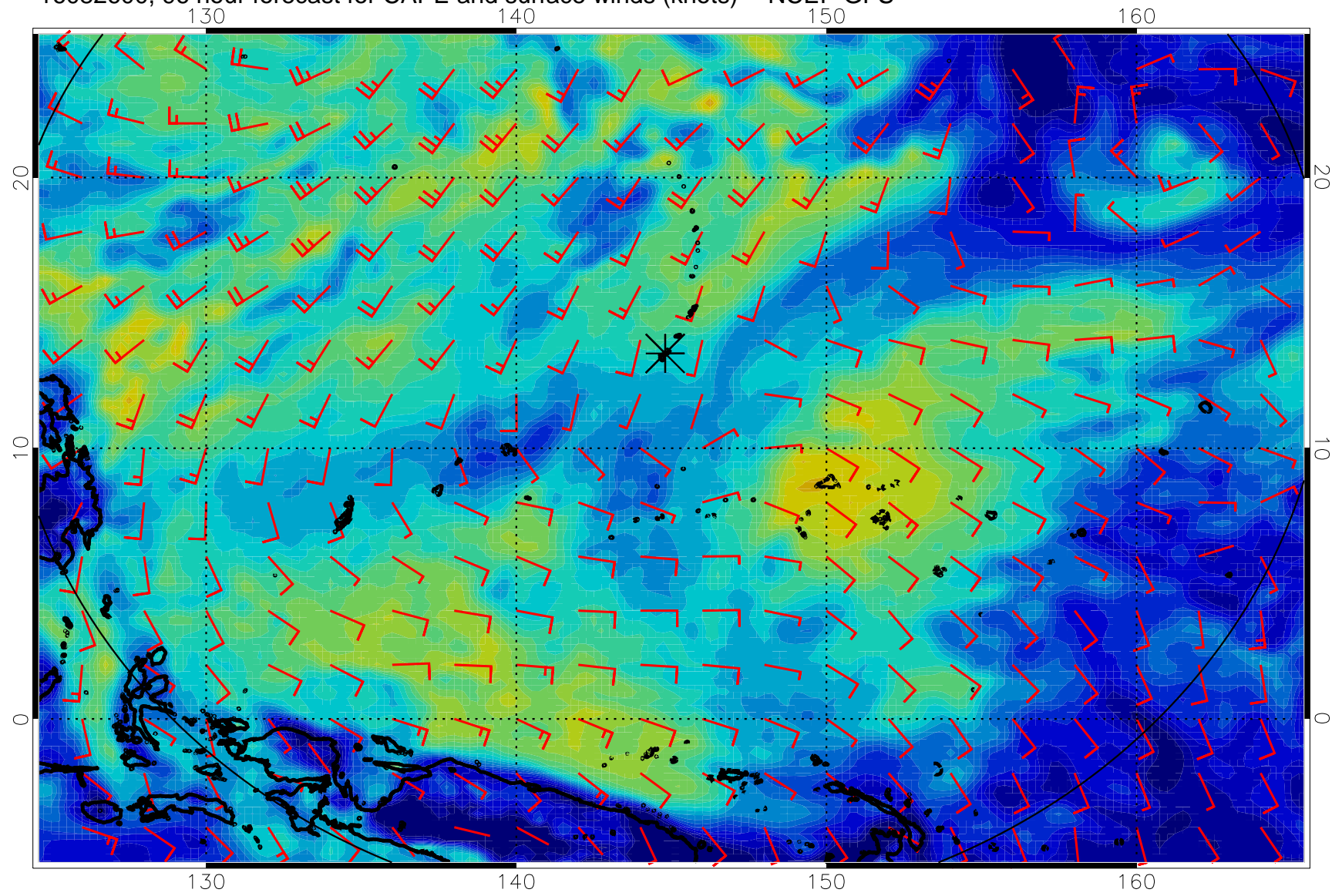




16082518, 90 hour forecast for CAPE and surface winds (knots) -- NCEP GFS

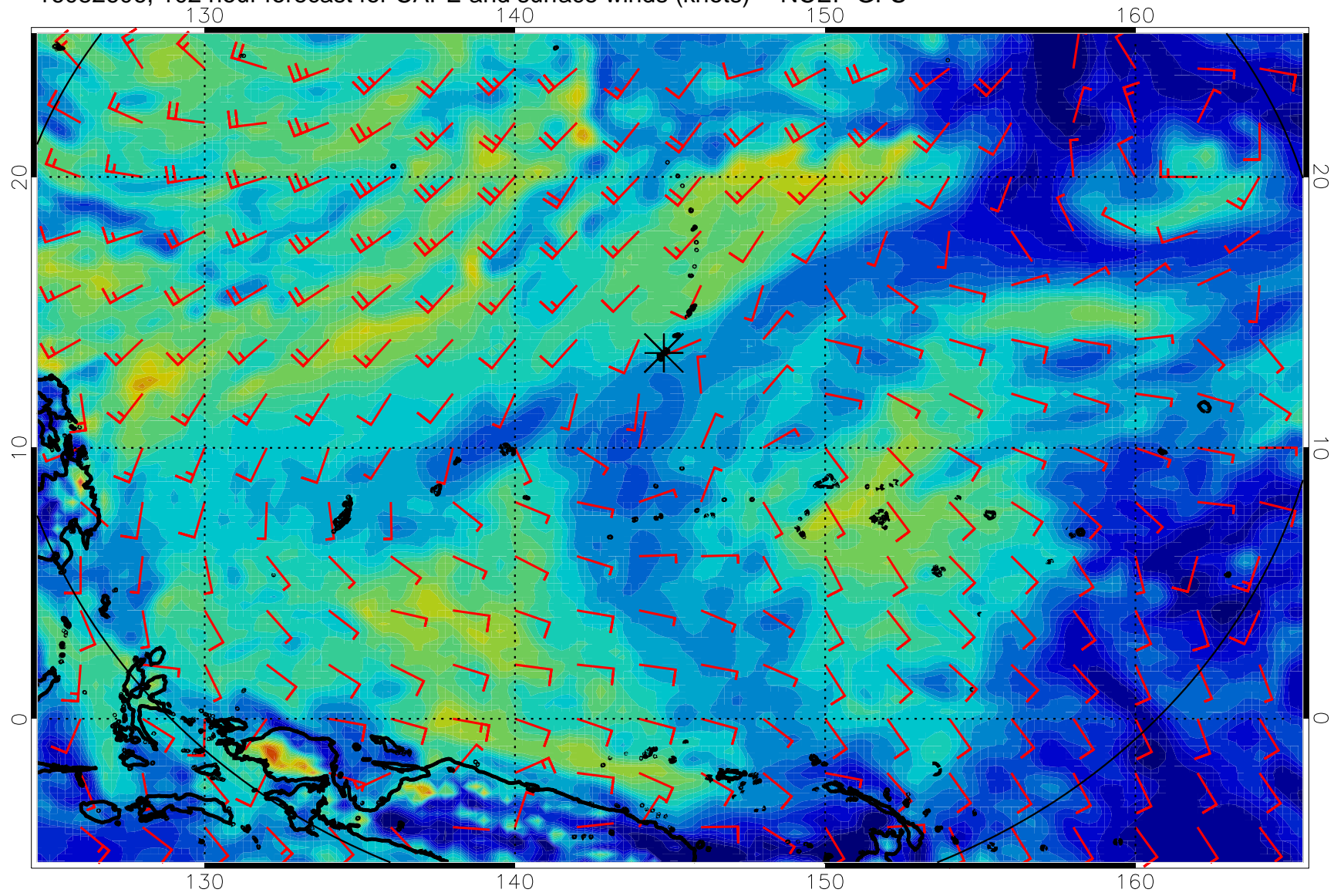


16082600, 96 hour forecast for CAPE and surface winds (knots) -- NCEP GFS

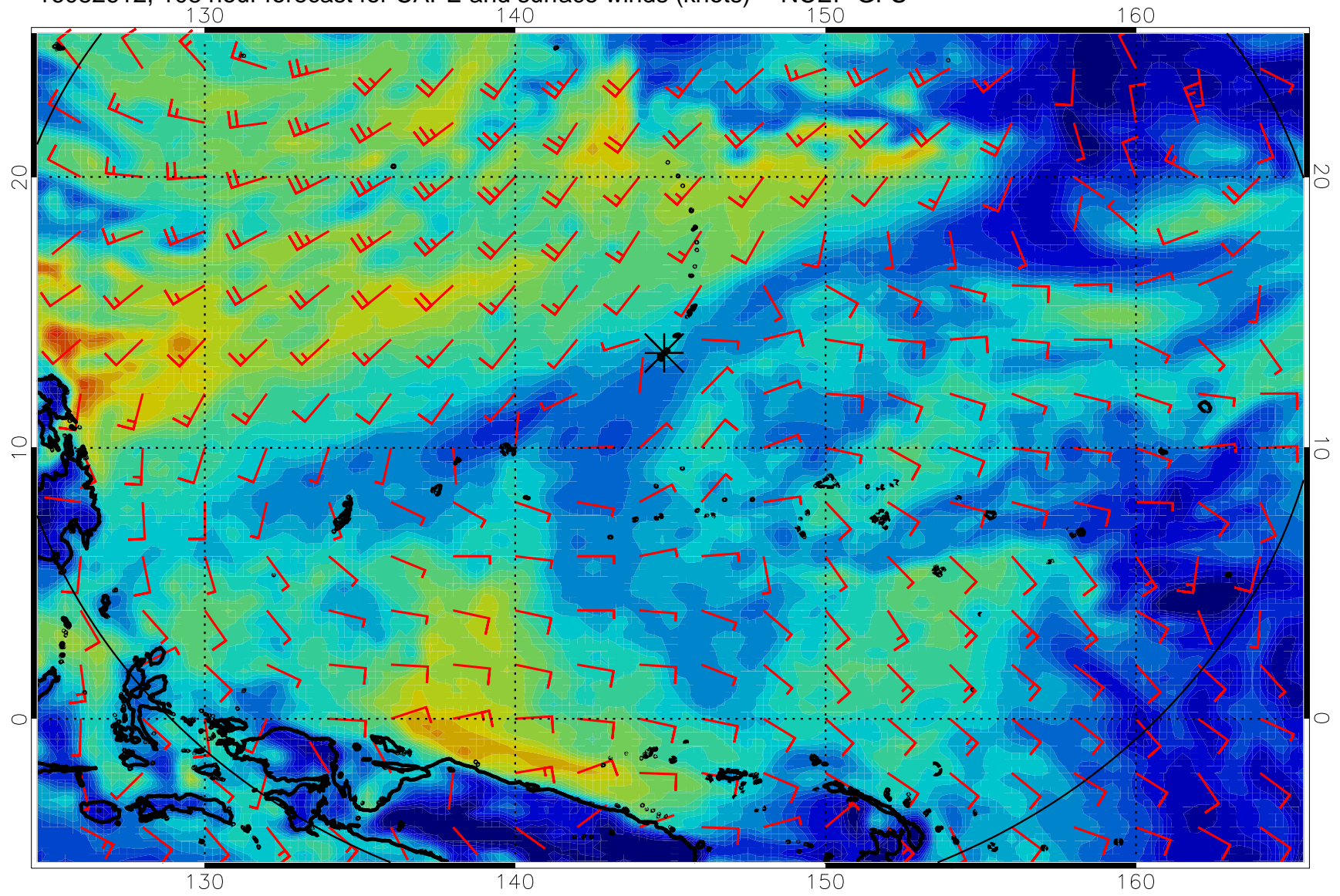




16082606, 102 hour forecast for CAPE and surface winds (knots) -- NCEP GFS

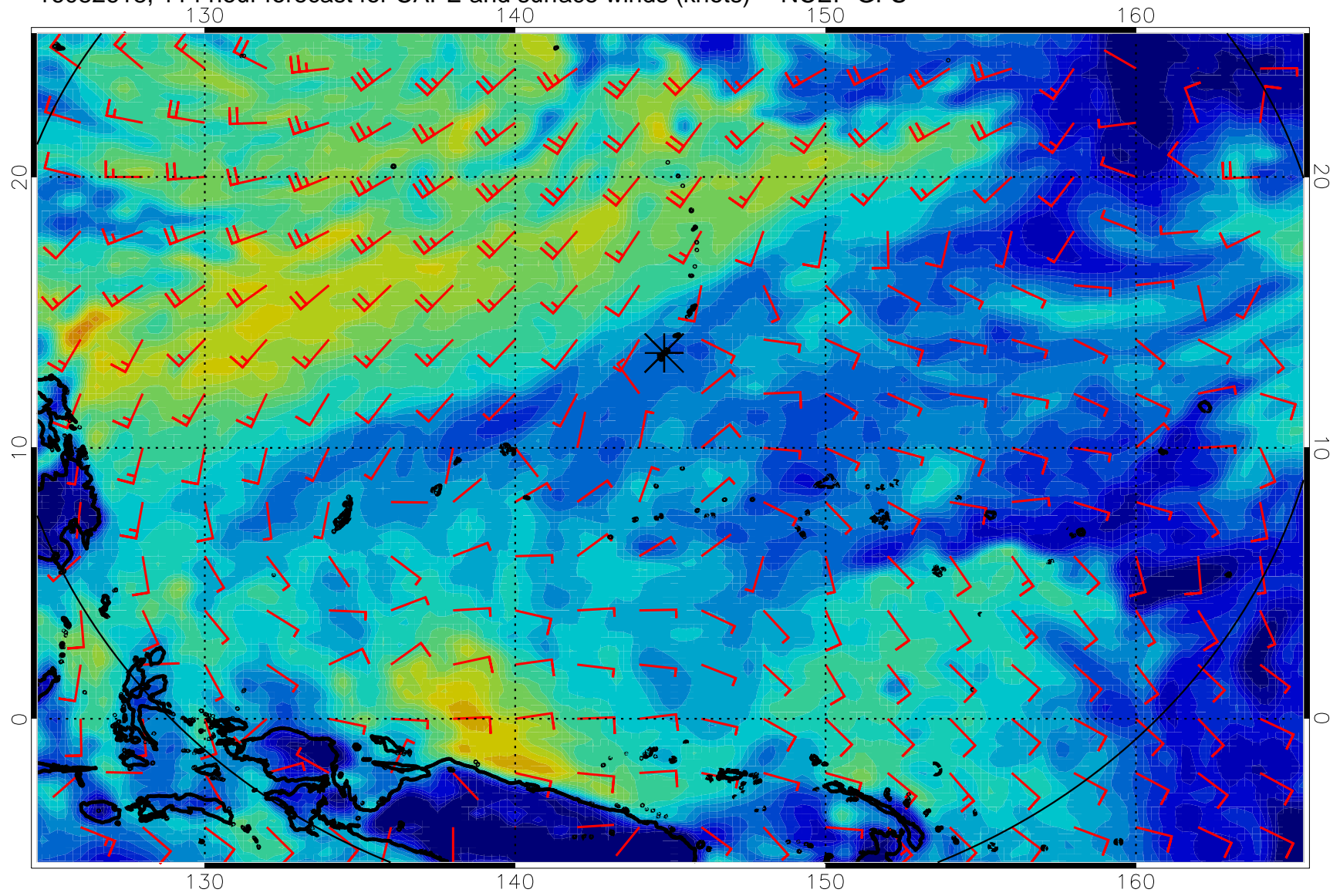


16082612, 108 hour forecast for CAPE and surface winds (knots) -- NCEP GFS





16082618, 114 hour forecast for CAPE and surface winds (knots) -- NCEP GFS



16082700, 120 hour forecast for CAPE and surface winds (knots) -- NCEP GFS

