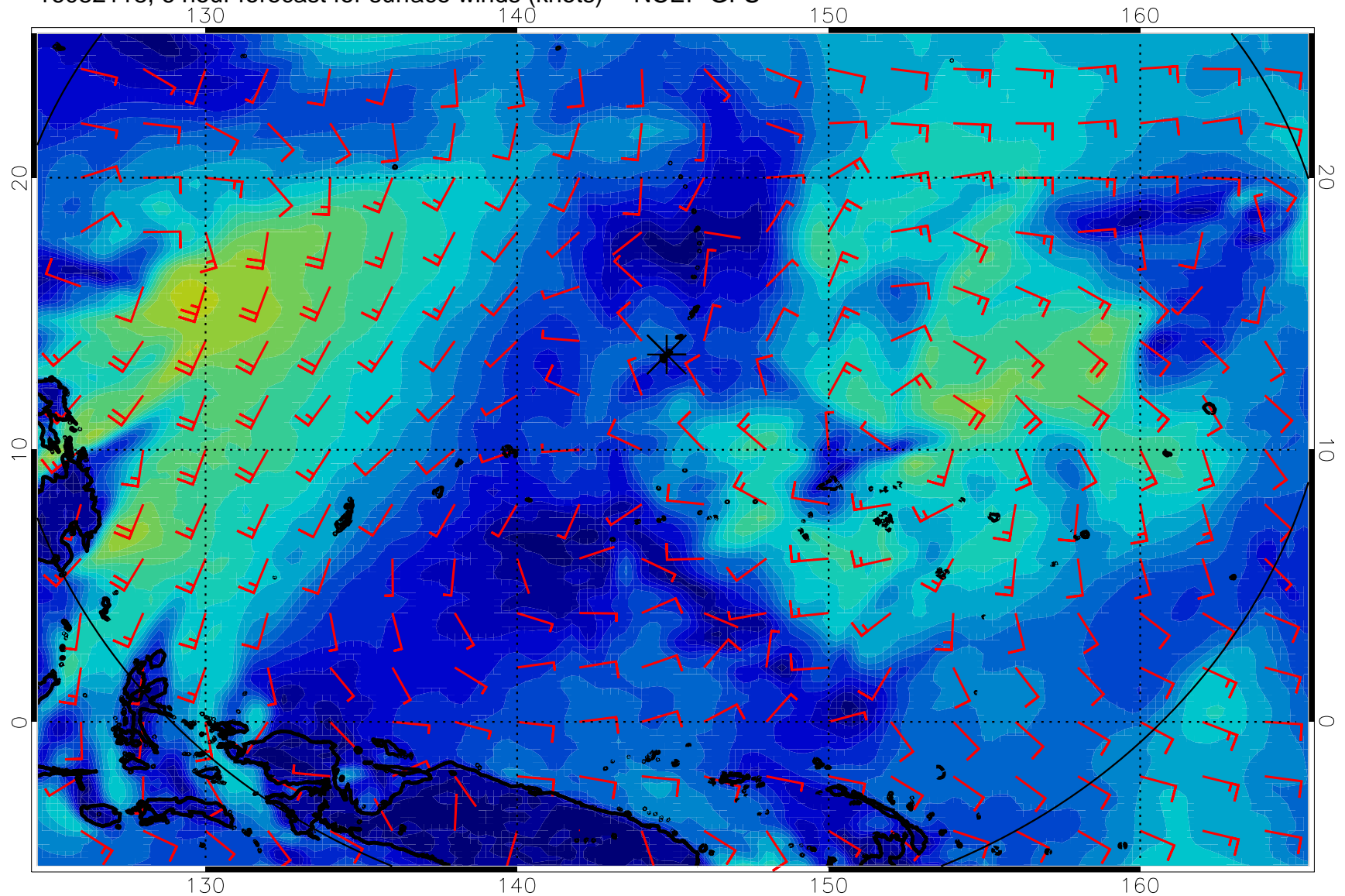
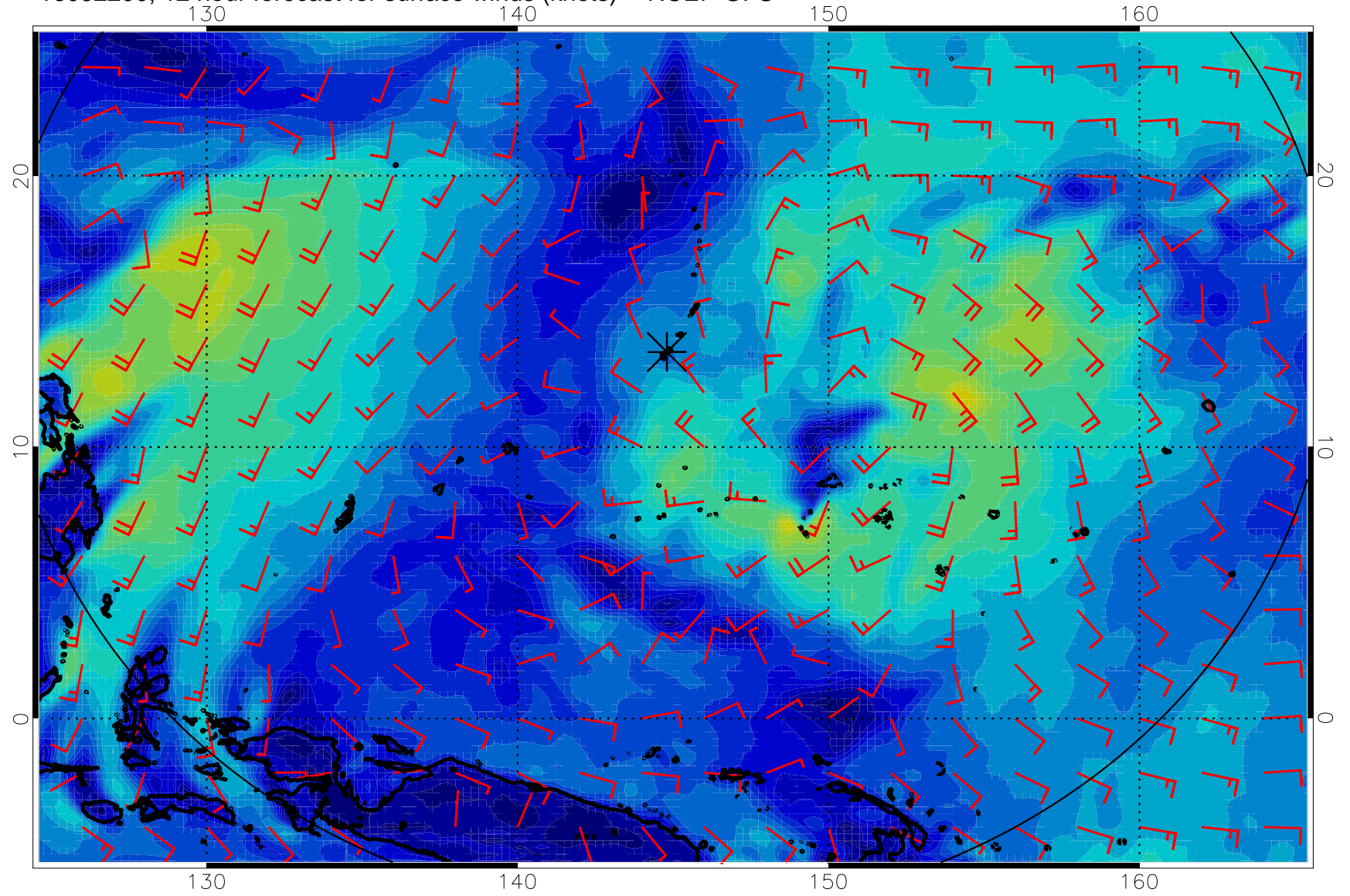


16082118, 6 hour forecast for surface winds (knots) -- NCEP GFS



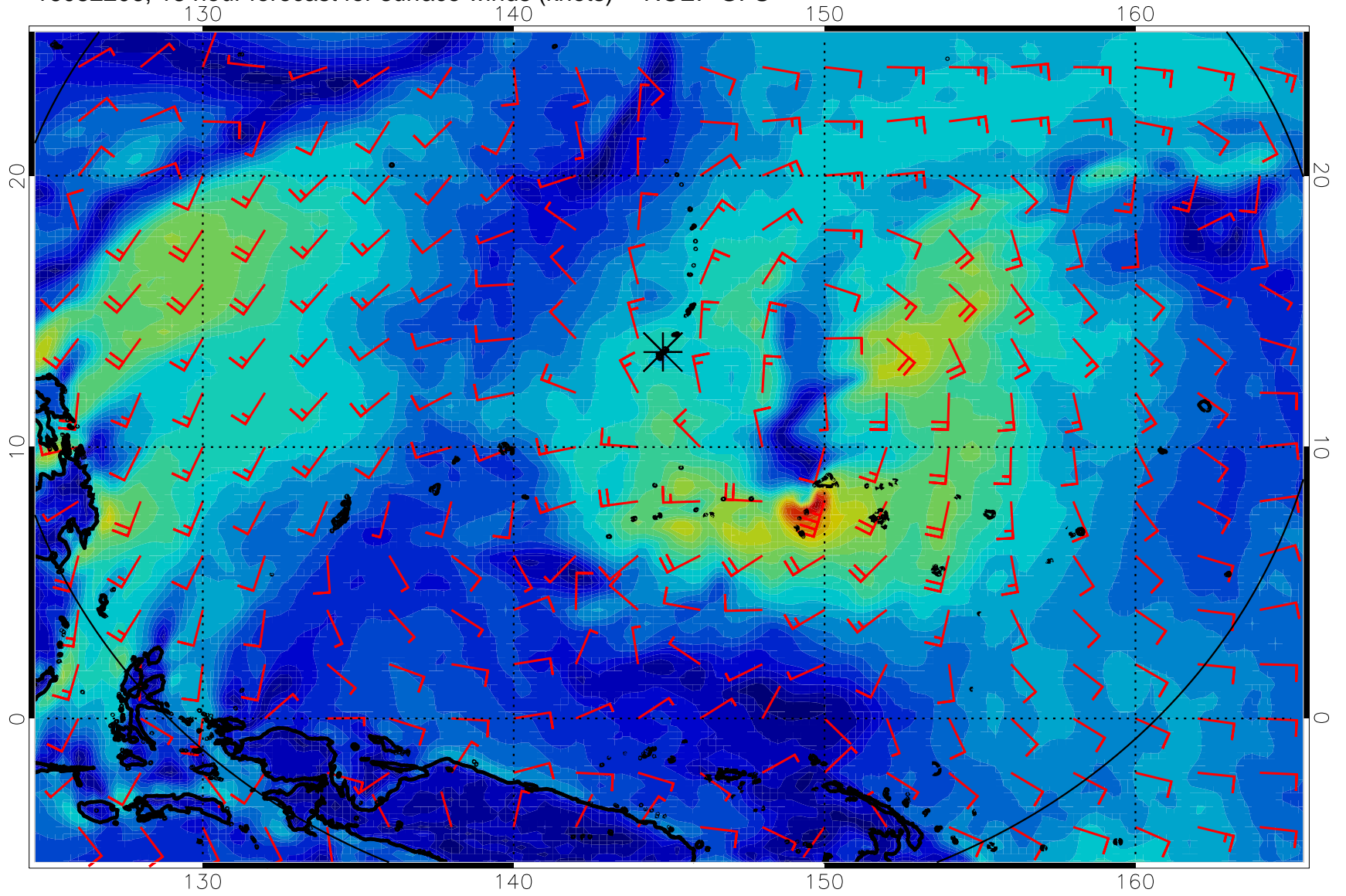
0 10 20 30
Surface Wind Speed, knots

16082200, 12 hour forecast for surface winds (knots) -- NCEP GFS



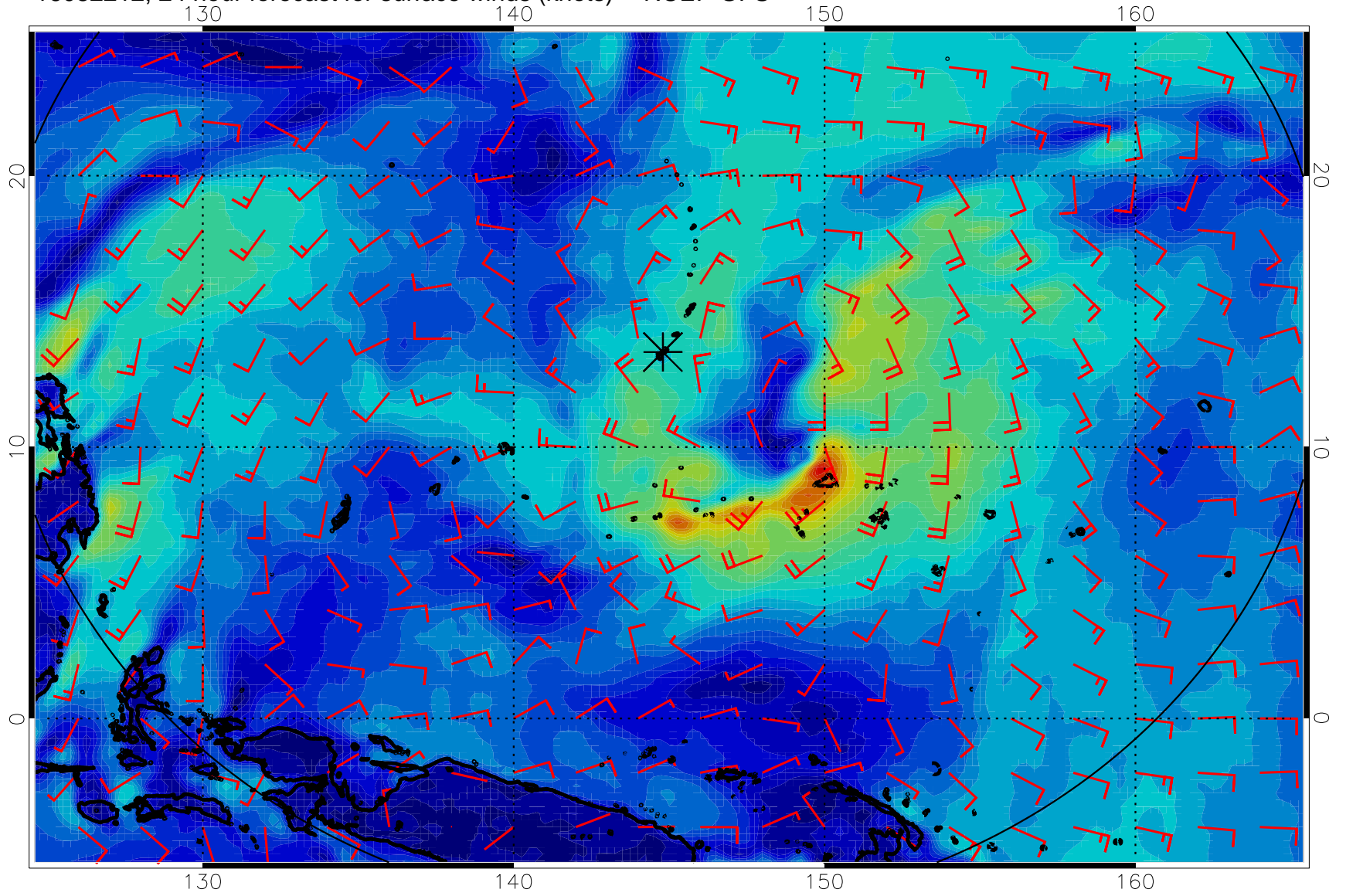
0 10 20 30
Surface Wind Speed, knots

16082206, 18 hour forecast for surface winds (knots) -- NCEP GFS



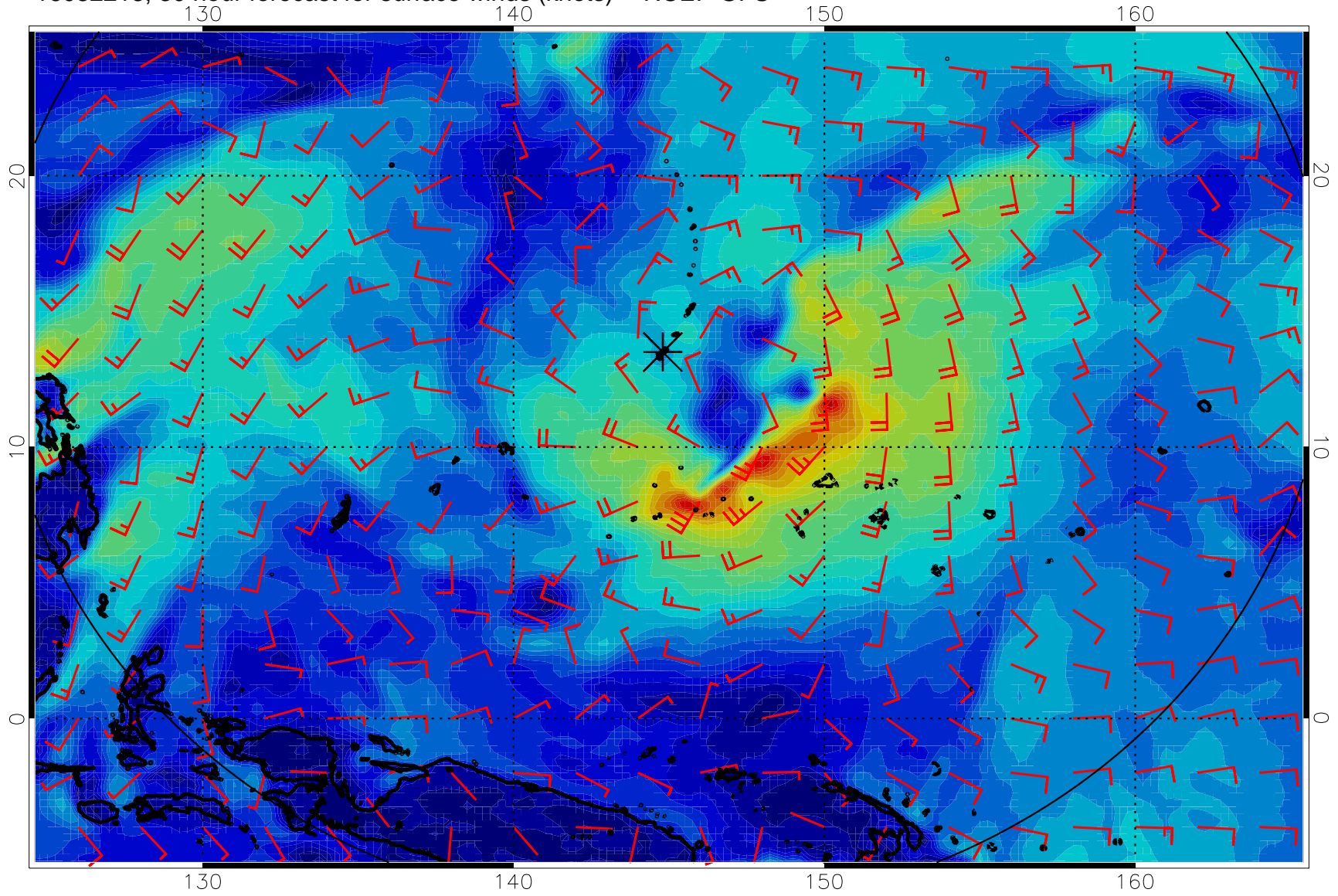
0 10 20 30
Surface Wind Speed, knots

16082212, 24 hour forecast for surface winds (knots) -- NCEP GFS



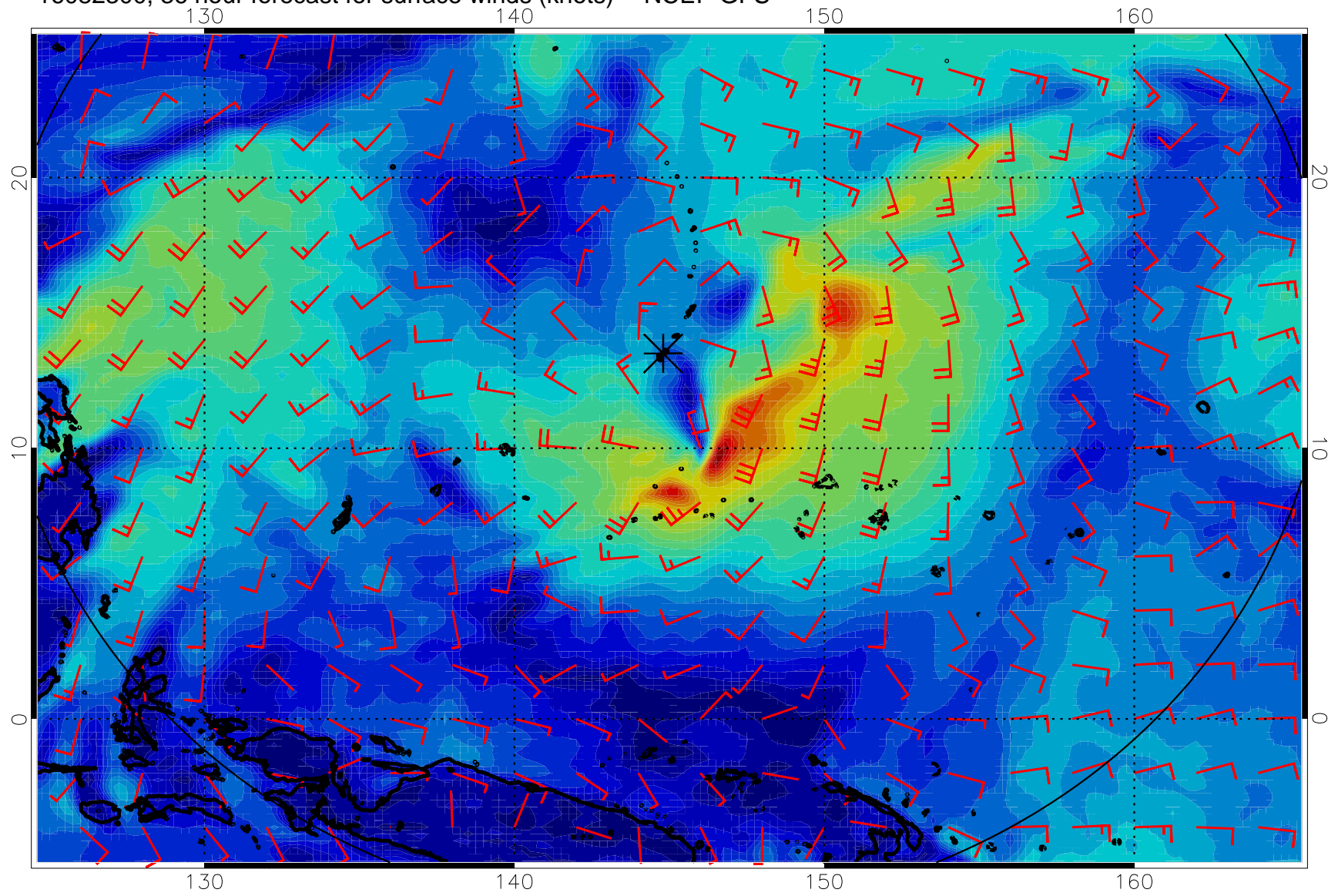
0 10 20 30
Surface Wind Speed, knots

16082218, 30 hour forecast for surface winds (knots) -- NCEP GFS



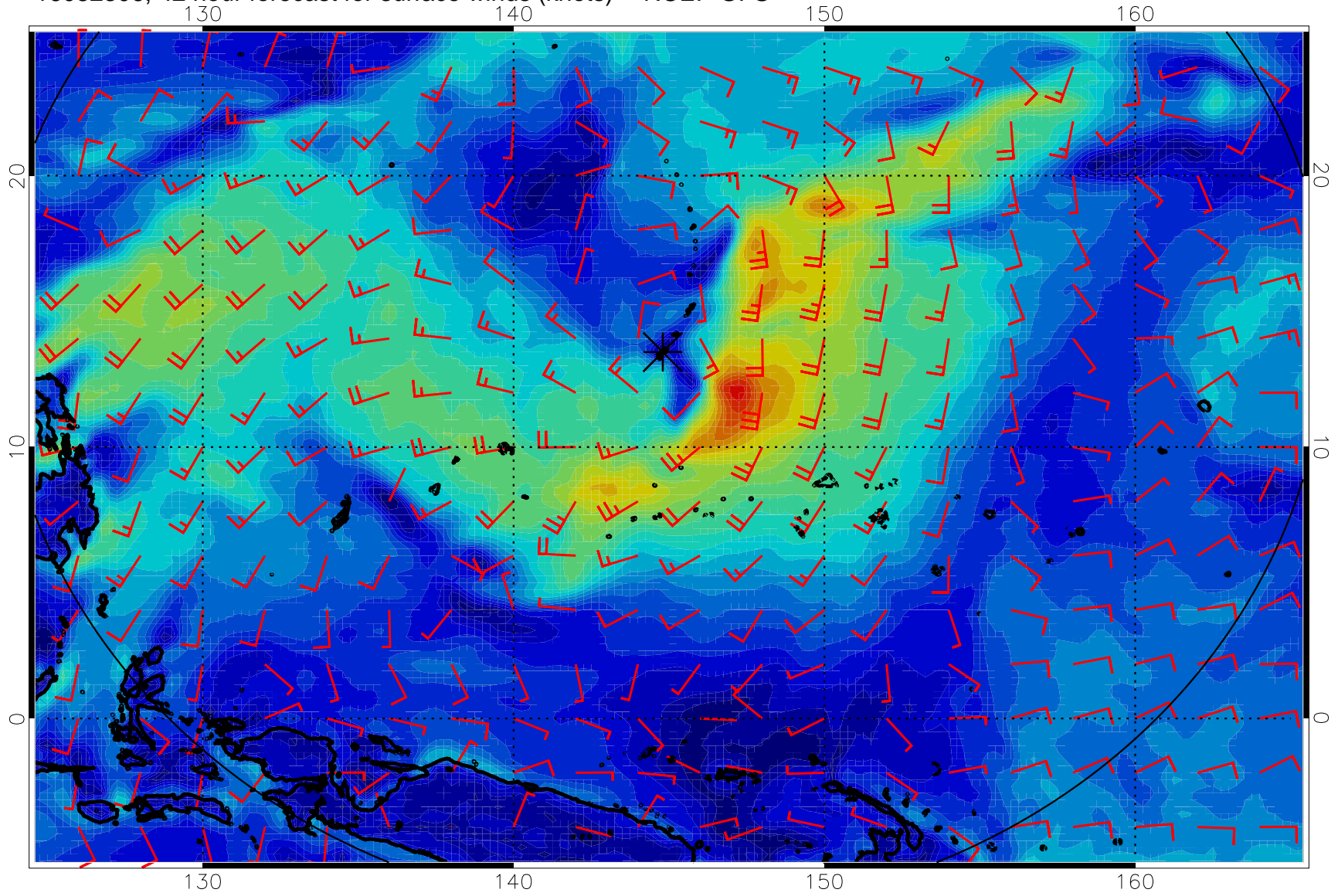
0 10 20 30
Surface Wind Speed, knots

16082300, 36 hour forecast for surface winds (knots) -- NCEP GFS



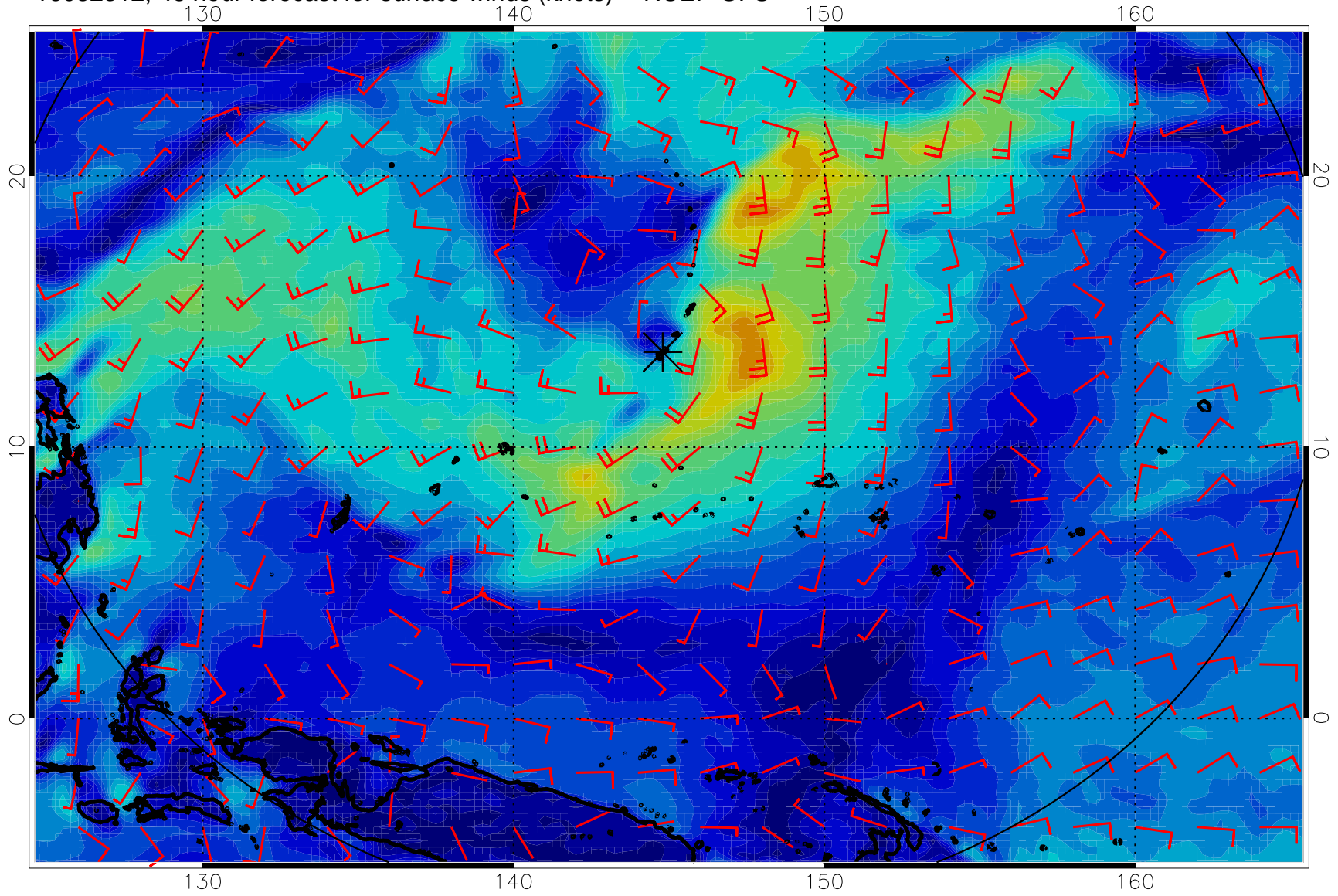
0 10 20 30
Surface Wind Speed, knots

16082306, 42 hour forecast for surface winds (knots) -- NCEP GFS



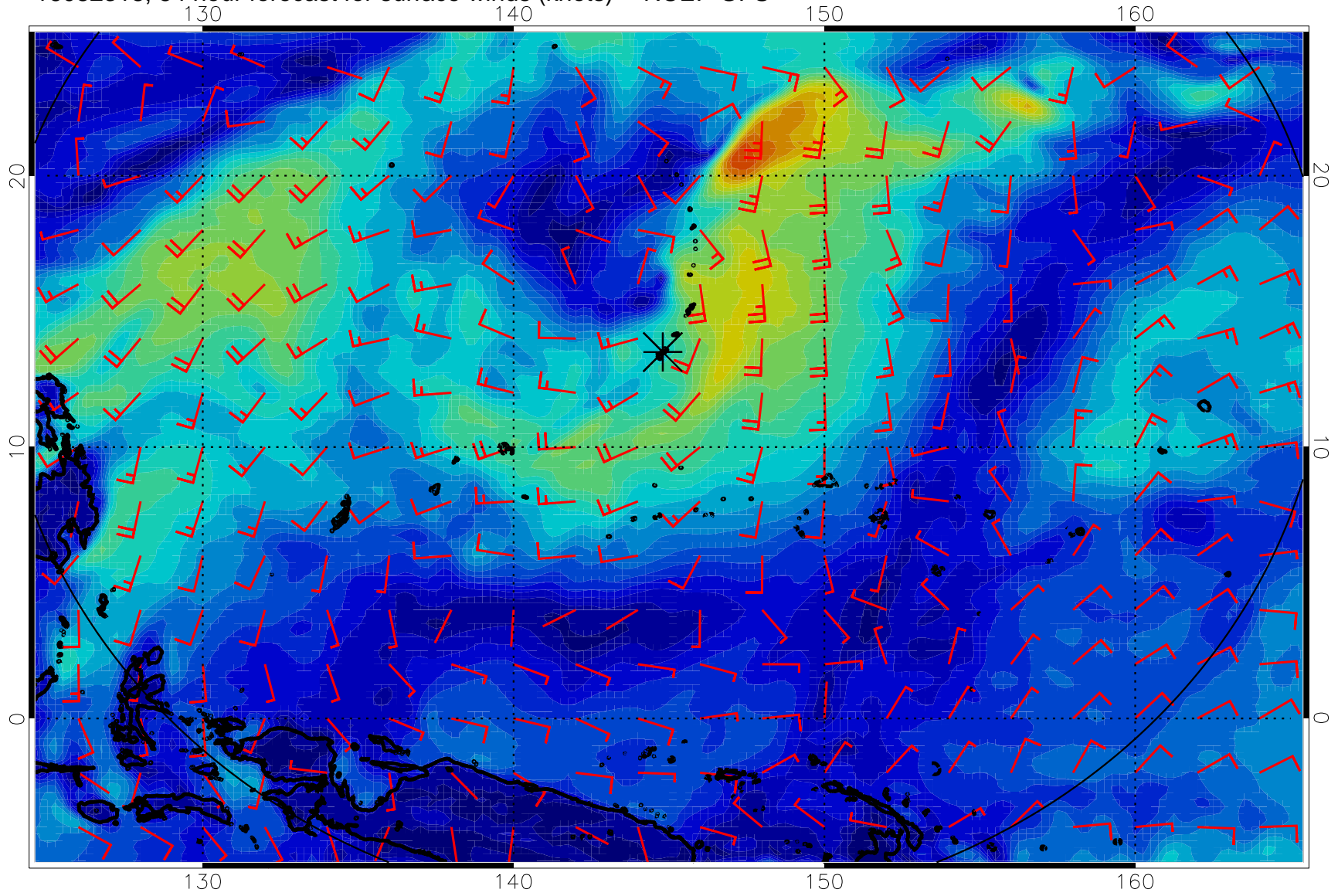
0 10 20 30
Surface Wind Speed, knots

16082312, 48 hour forecast for surface winds (knots) -- NCEP GFS



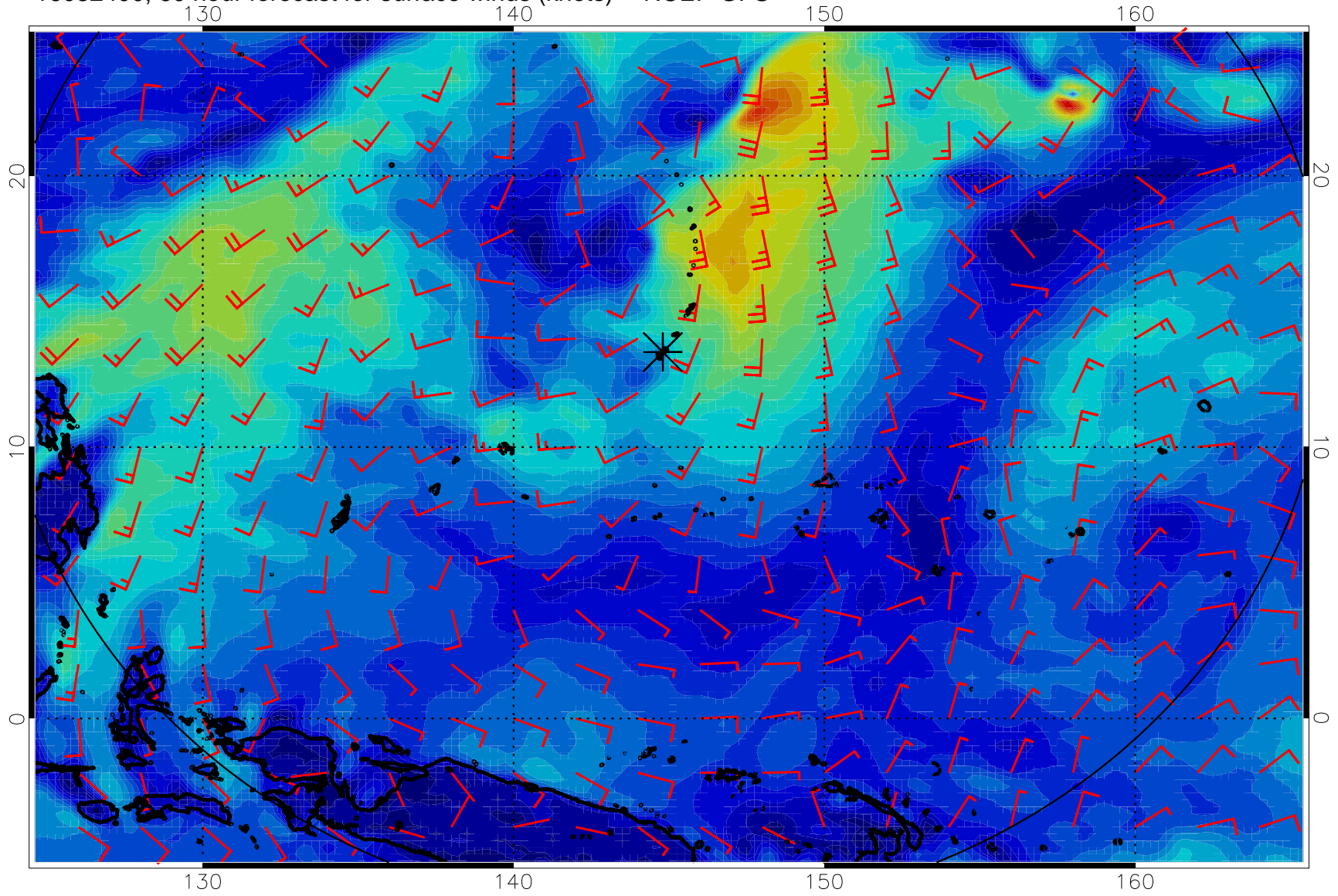
0 10 20 30
Surface Wind Speed, knots

16082318, 54 hour forecast for surface winds (knots) -- NCEP GFS



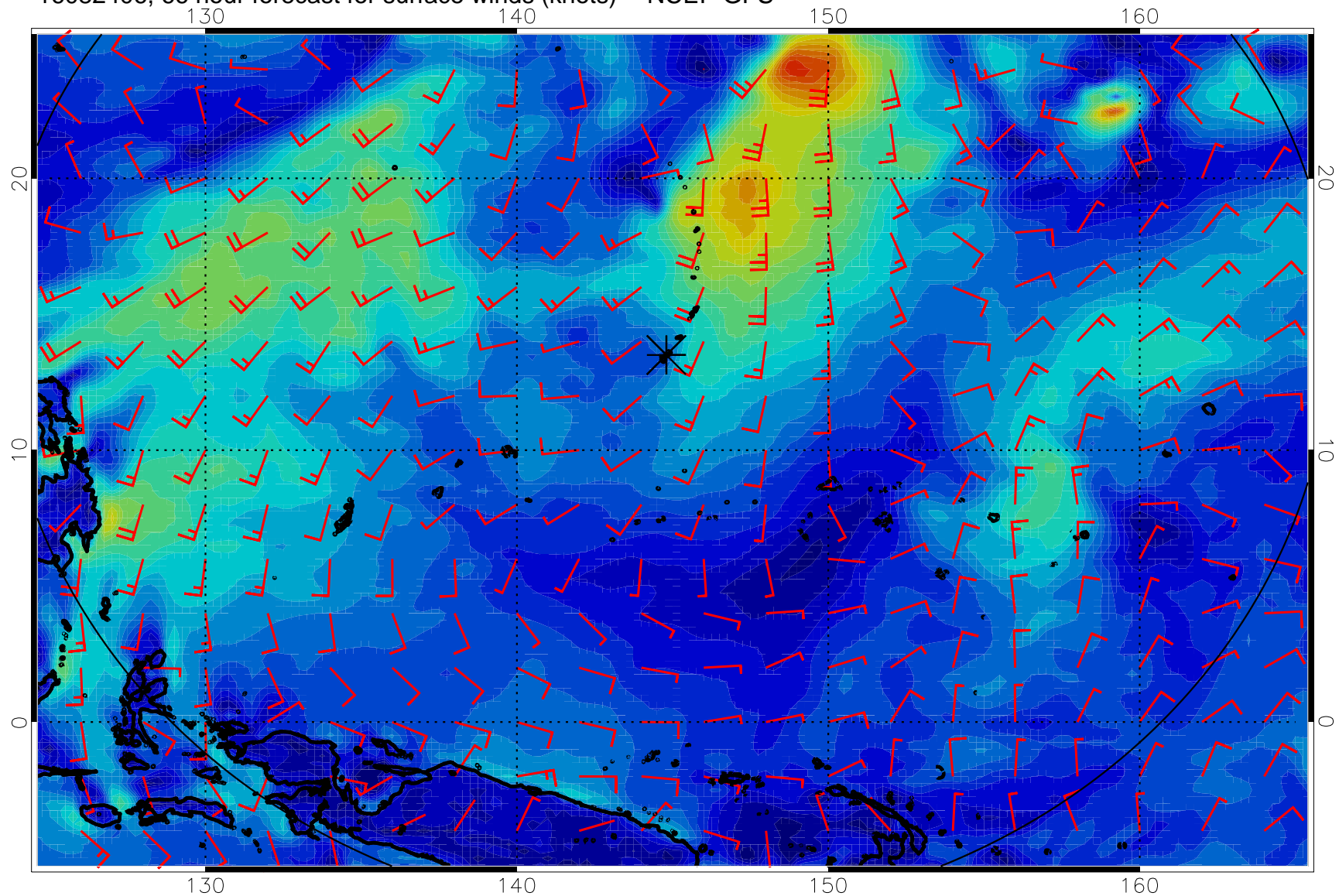
0 10 20 30
Surface Wind Speed, knots

16082400, 60 hour forecast for surface winds (knots) -- NCEP GFS



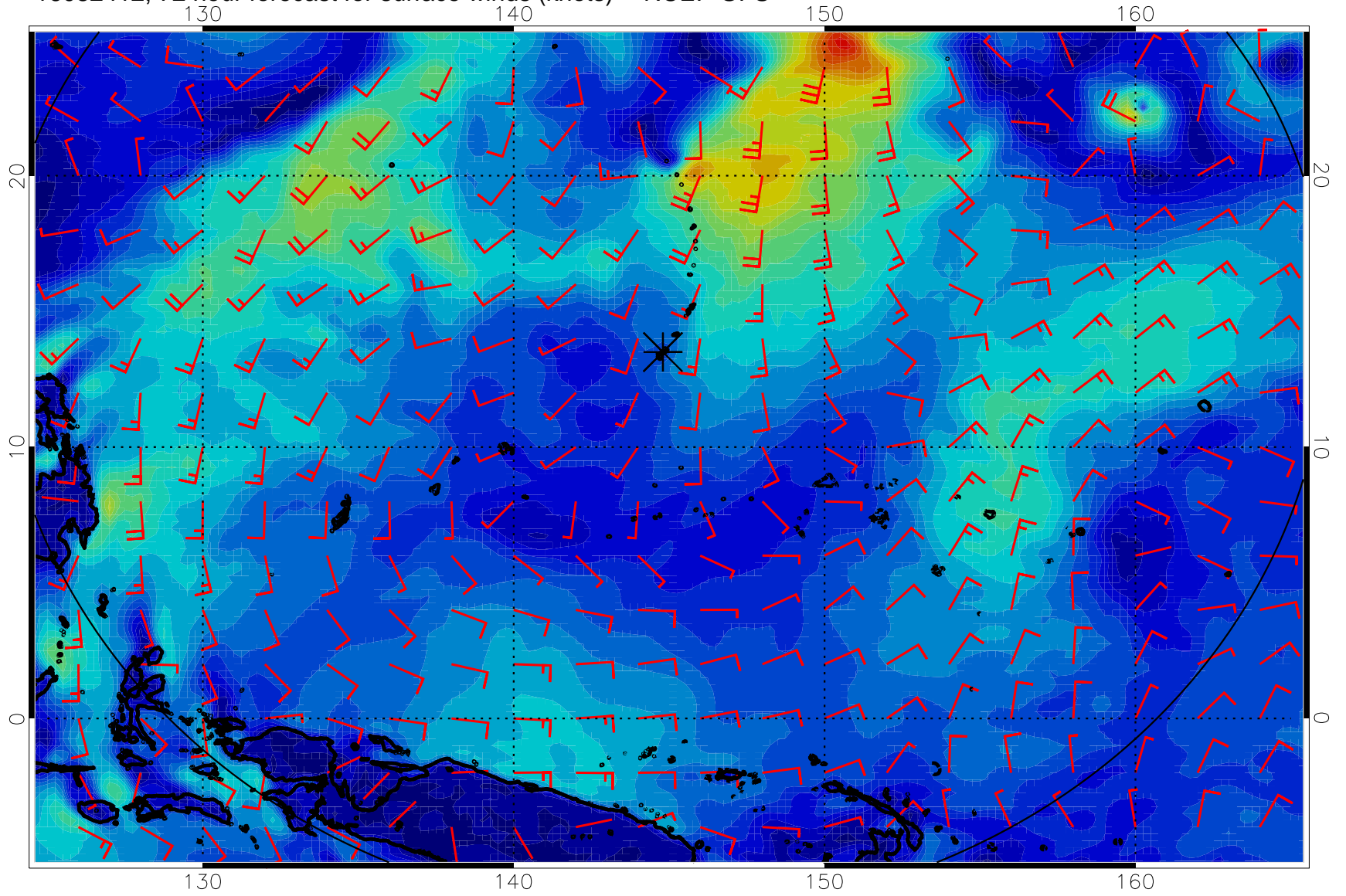
0 10 20 30
Surface Wind Speed, knots

16082406, 66 hour forecast for surface winds (knots) -- NCEP GFS



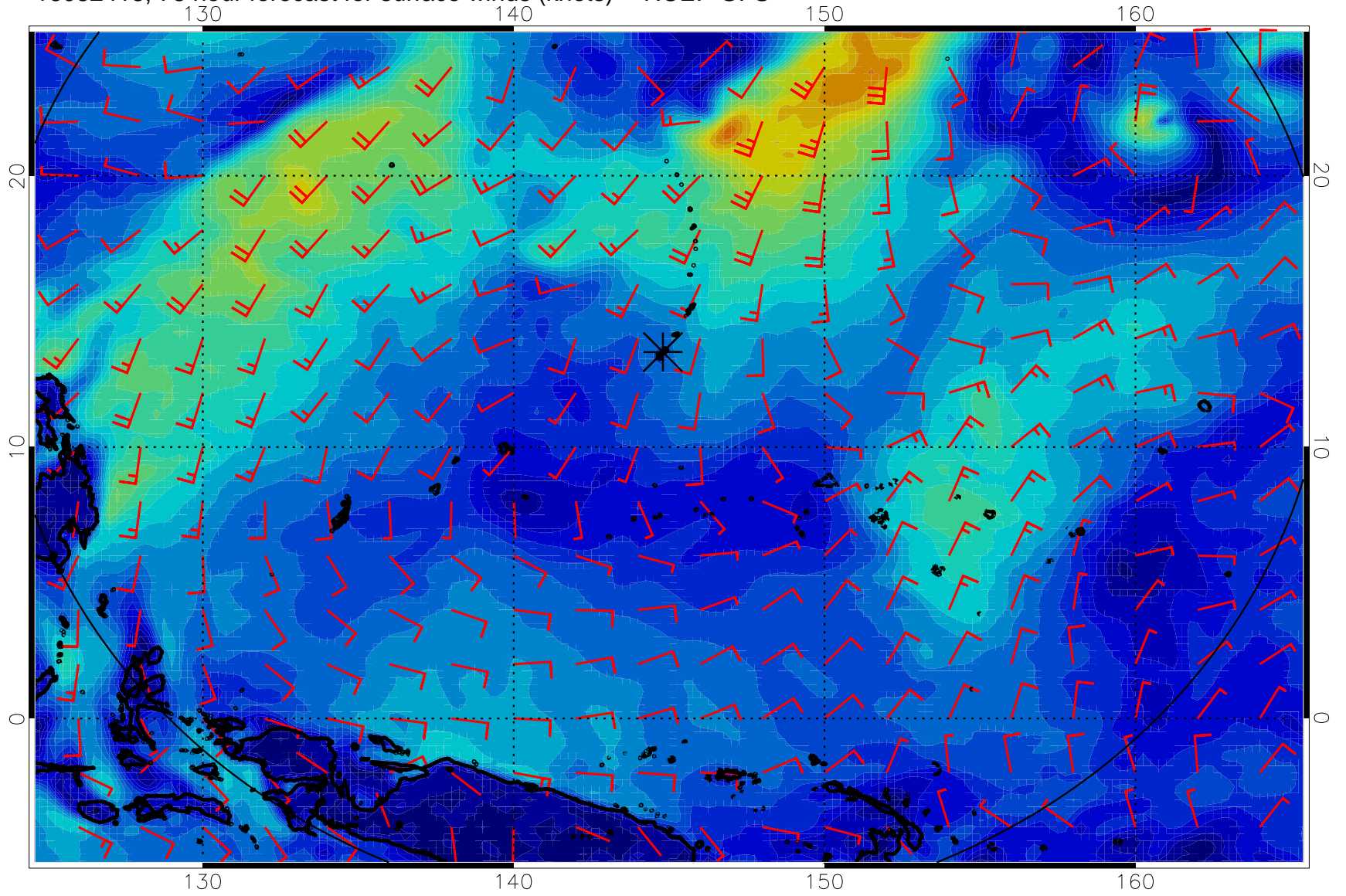
0 10 20 30
Surface Wind Speed, knots

16082412, 72 hour forecast for surface winds (knots) -- NCEP GFS



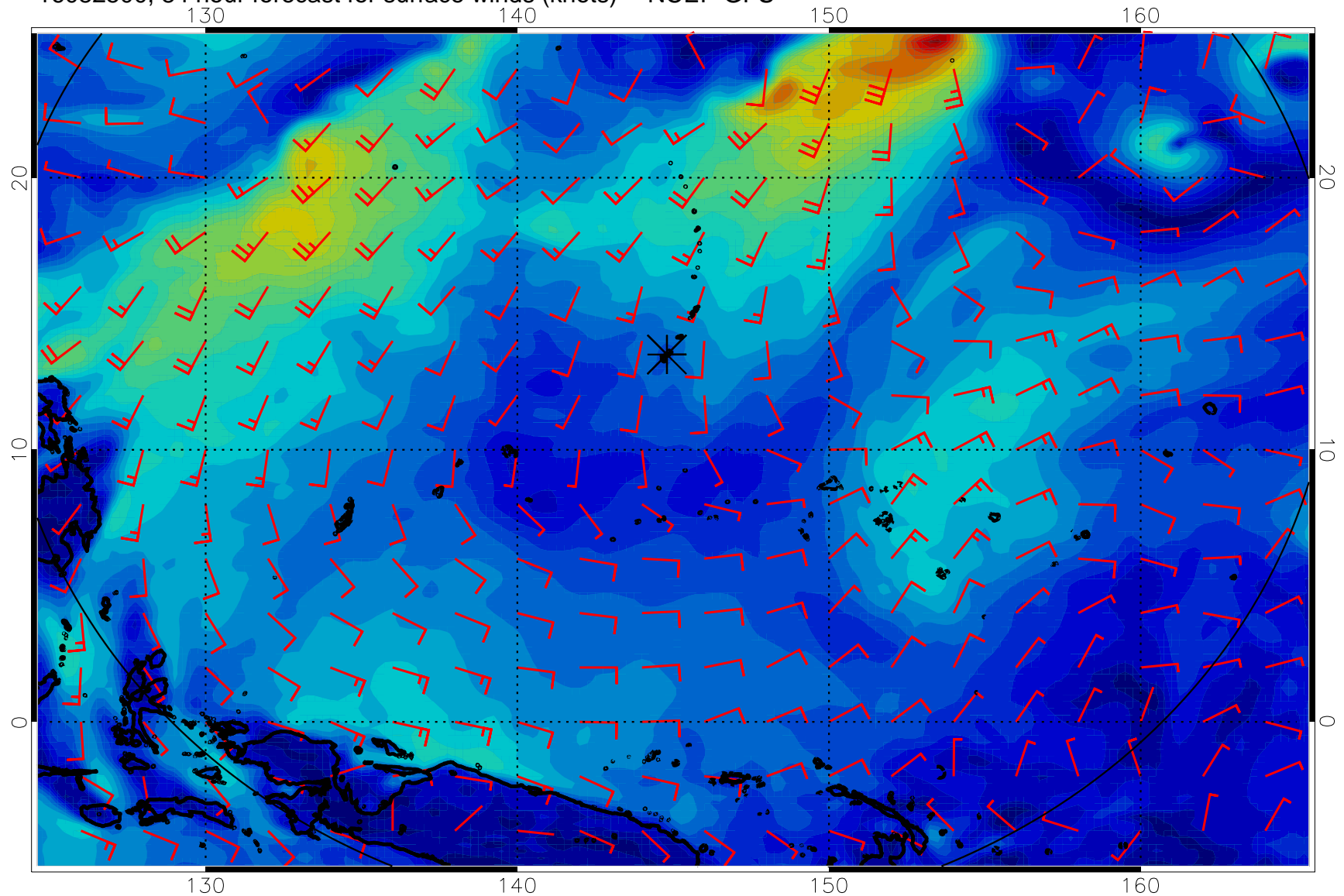
0 10 20 30
Surface Wind Speed, knots

16082418, 78 hour forecast for surface winds (knots) -- NCEP GFS



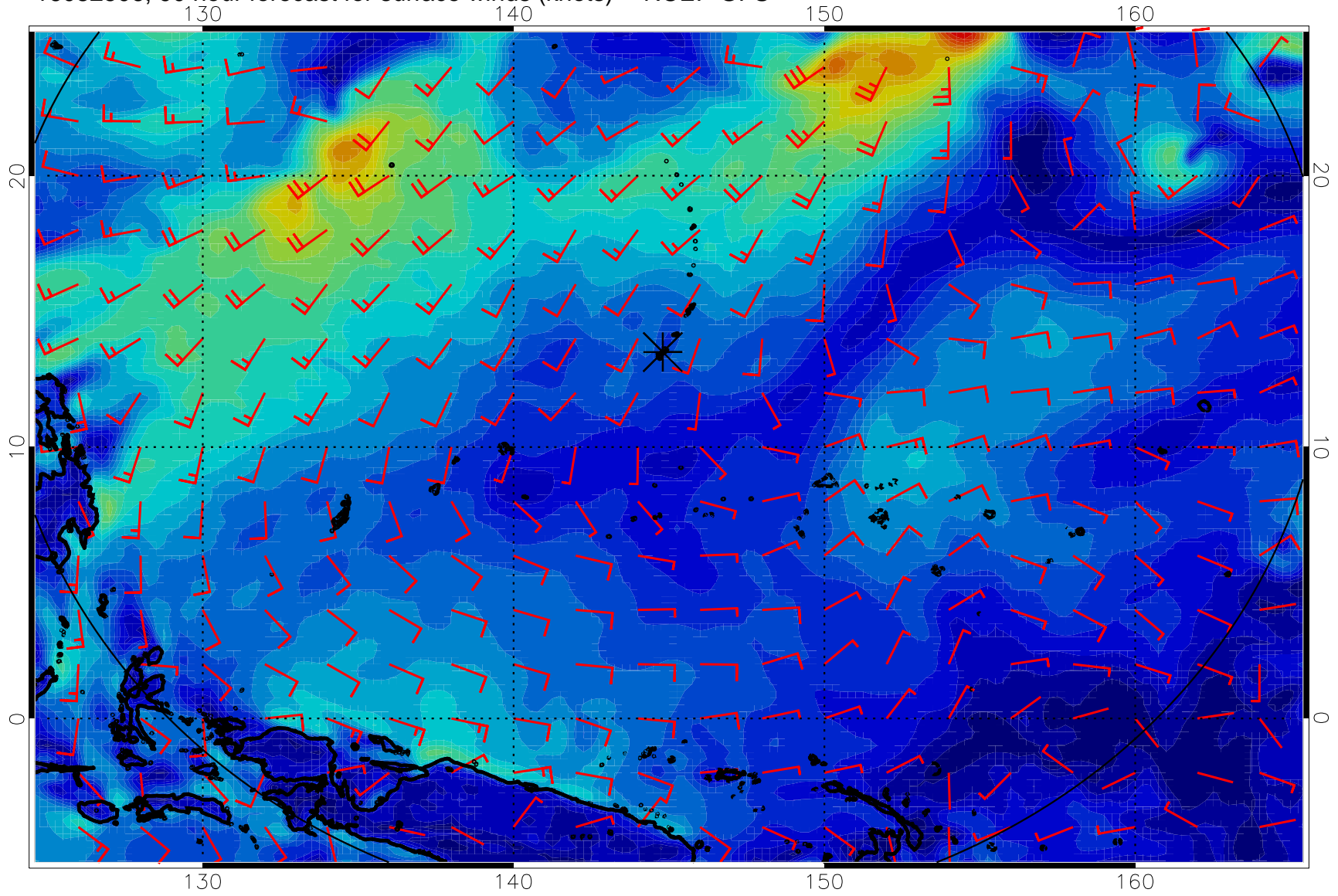
0 10 20 30
Surface Wind Speed, knots

16082500, 84 hour forecast for surface winds (knots) -- NCEP GFS



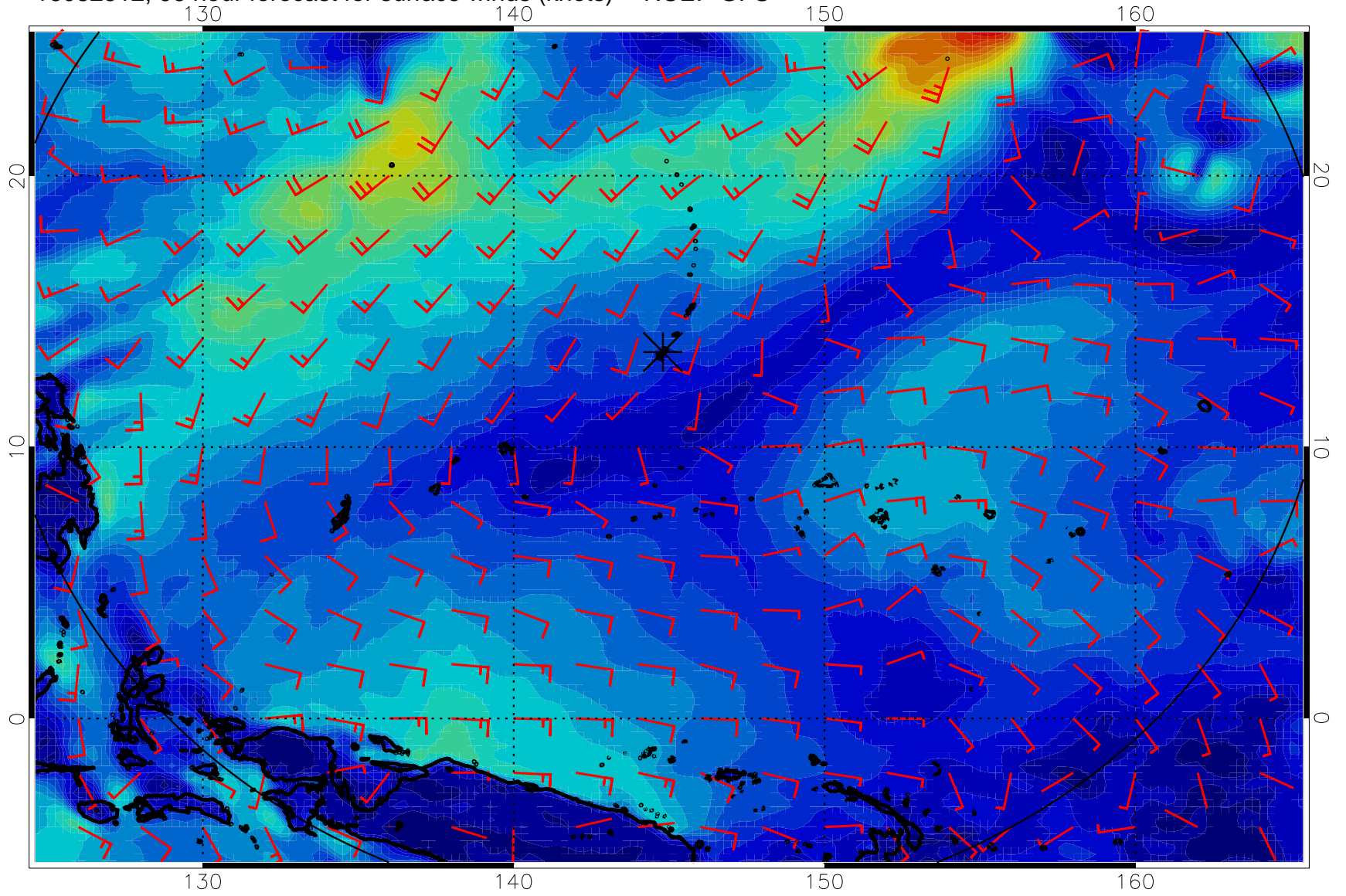
0 10 20 30
Surface Wind Speed, knots

16082506, 90 hour forecast for surface winds (knots) -- NCEP GFS



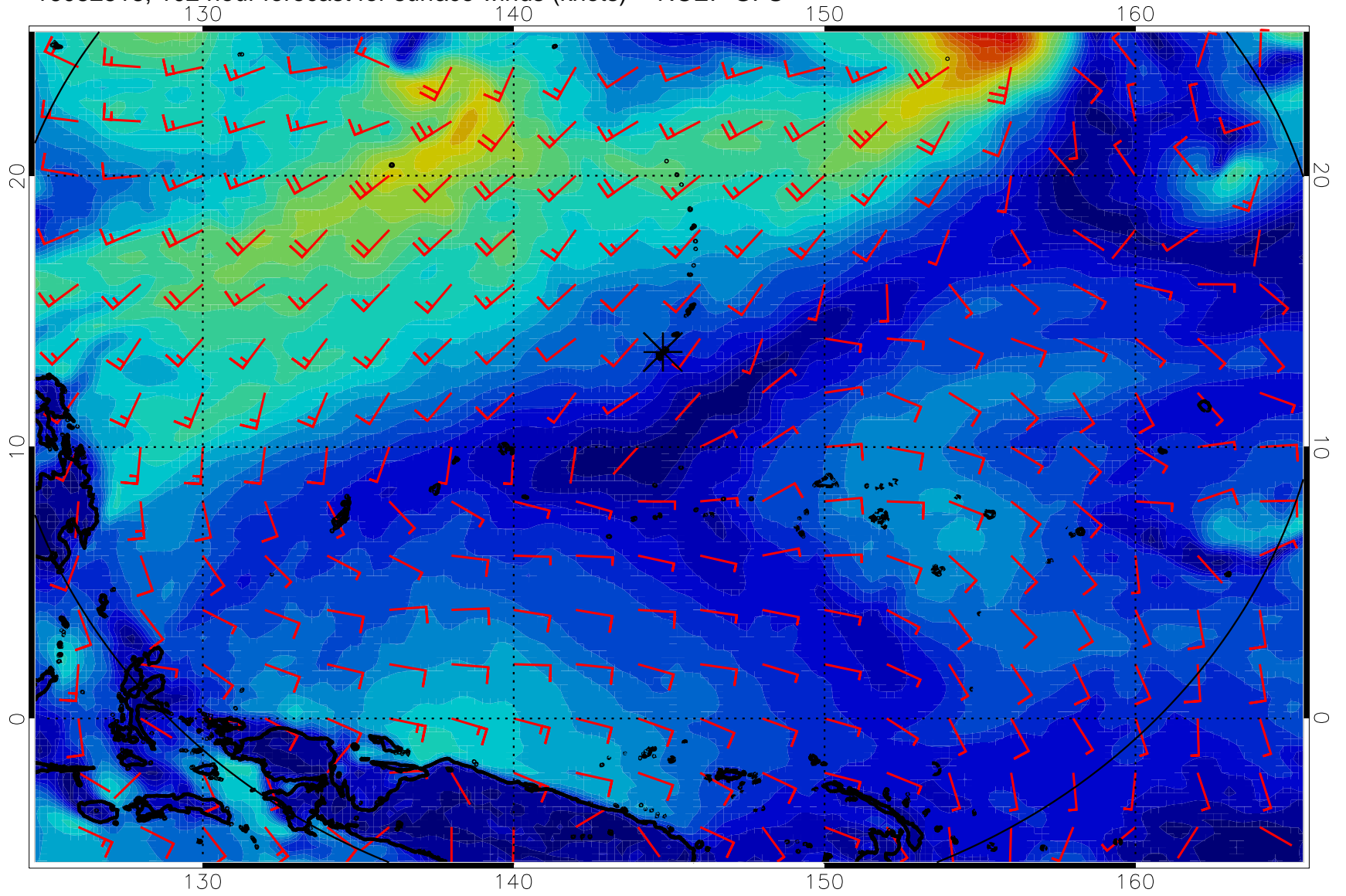
0 10 20 30
Surface Wind Speed, knots

16082512, 96 hour forecast for surface winds (knots) -- NCEP GFS



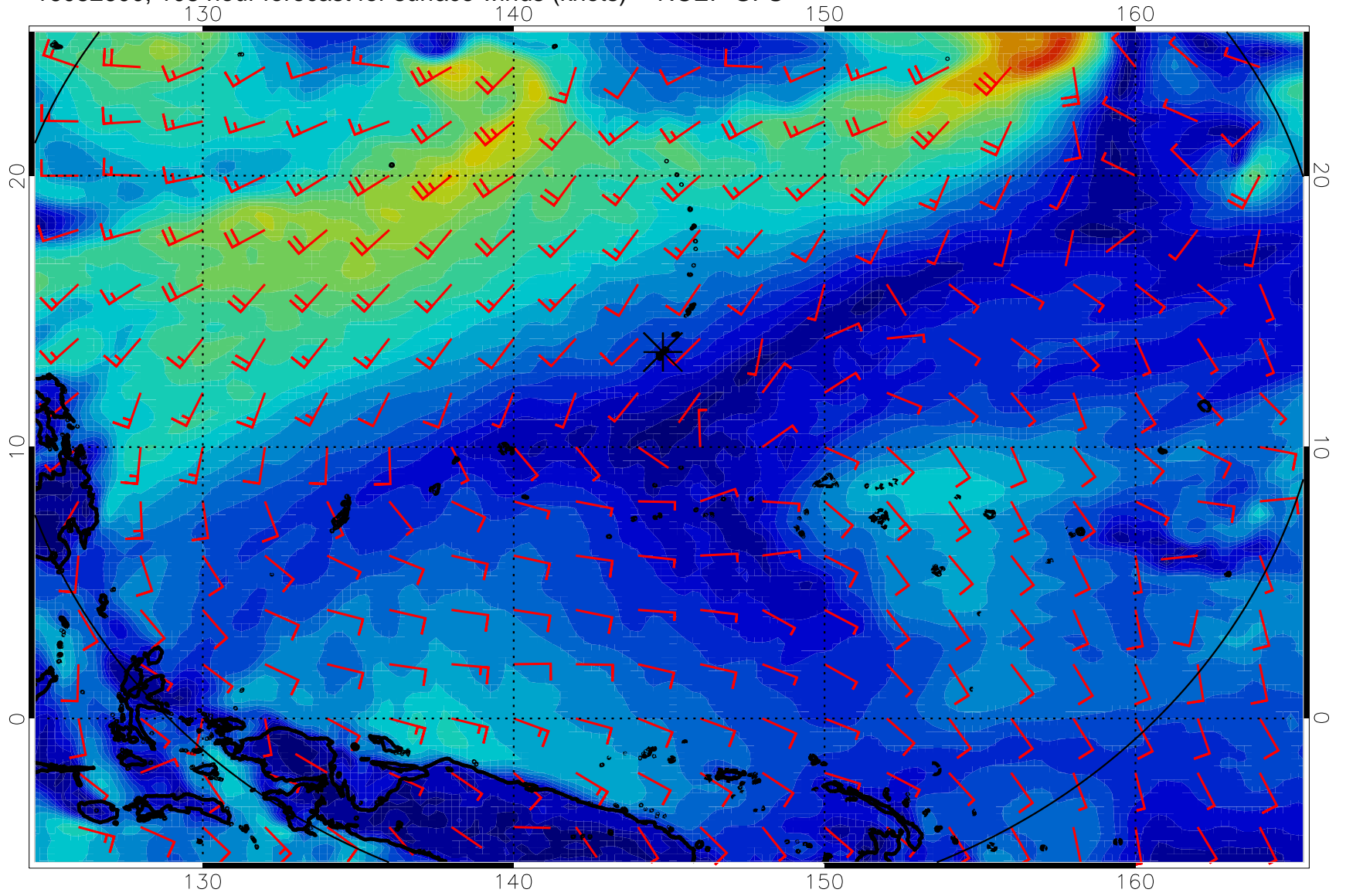
0 10 20 30
Surface Wind Speed, knots

16082518, 102 hour forecast for surface winds (knots) -- NCEP GFS



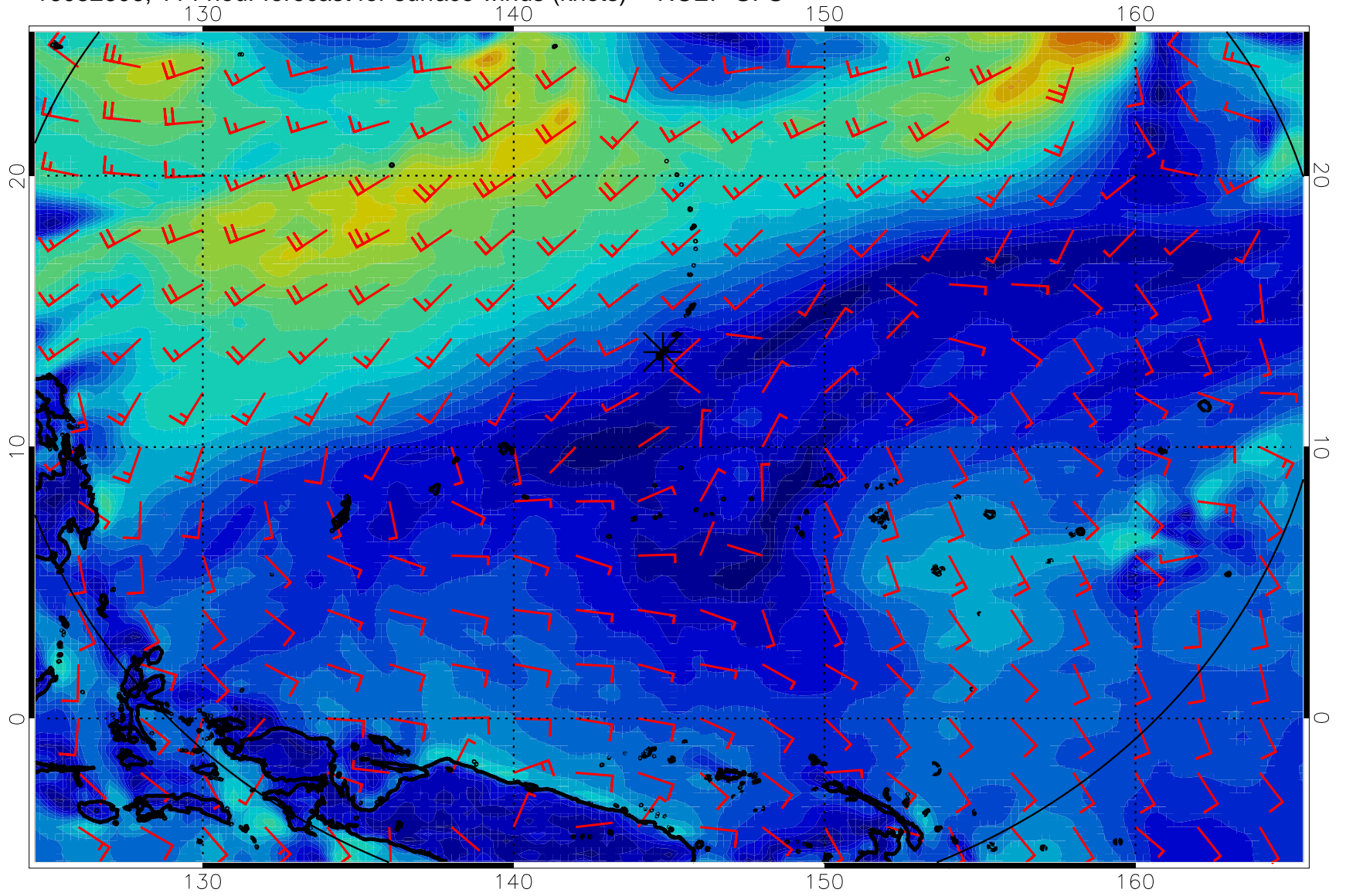
0 10 20 30
Surface Wind Speed, knots

16082600, 108 hour forecast for surface winds (knots) -- NCEP GFS



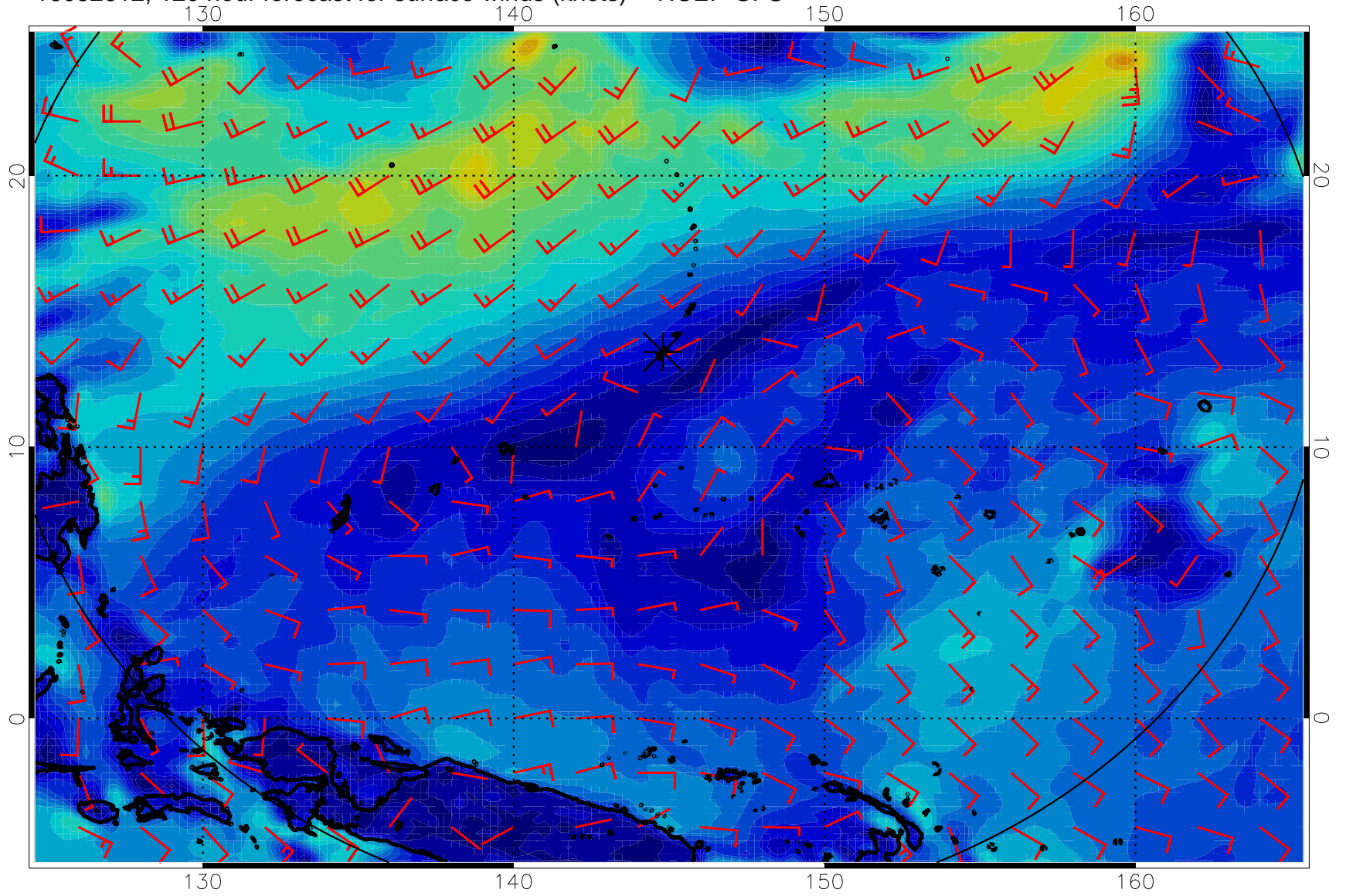
0 10 20 30
Surface Wind Speed, knots

16082606, 114 hour forecast for surface winds (knots) -- NCEP GFS



0 10 20 30
Surface Wind Speed, knots

16082612, 120 hour forecast for surface winds (knots) -- NCEP GFS



0 10 20 30
Surface Wind Speed, knots