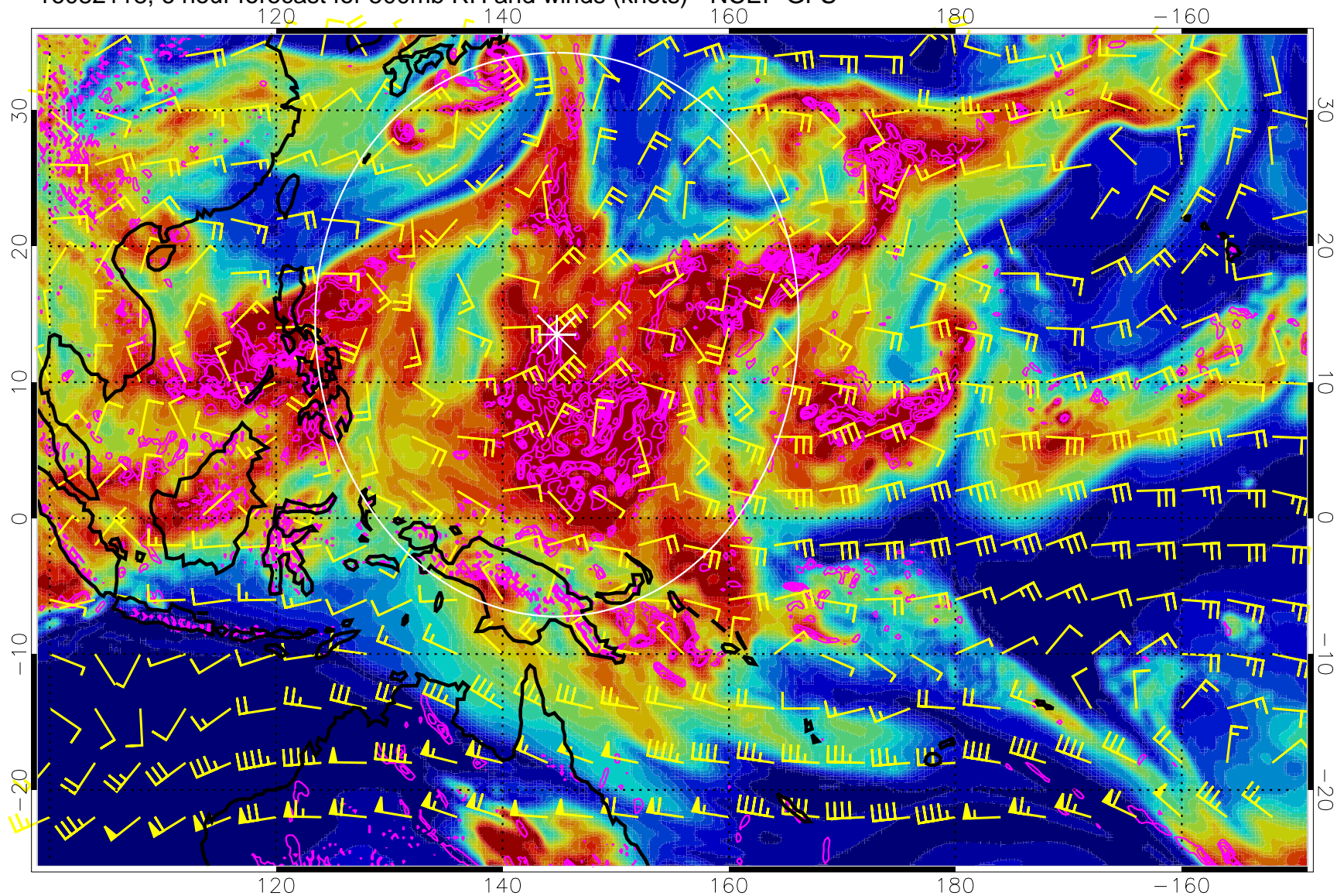


16082118, 6 hour forecast for 500mb RH and winds (knots) - NCEP GFS



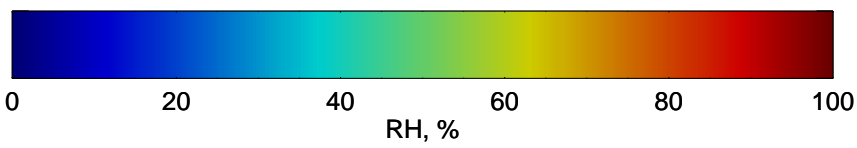
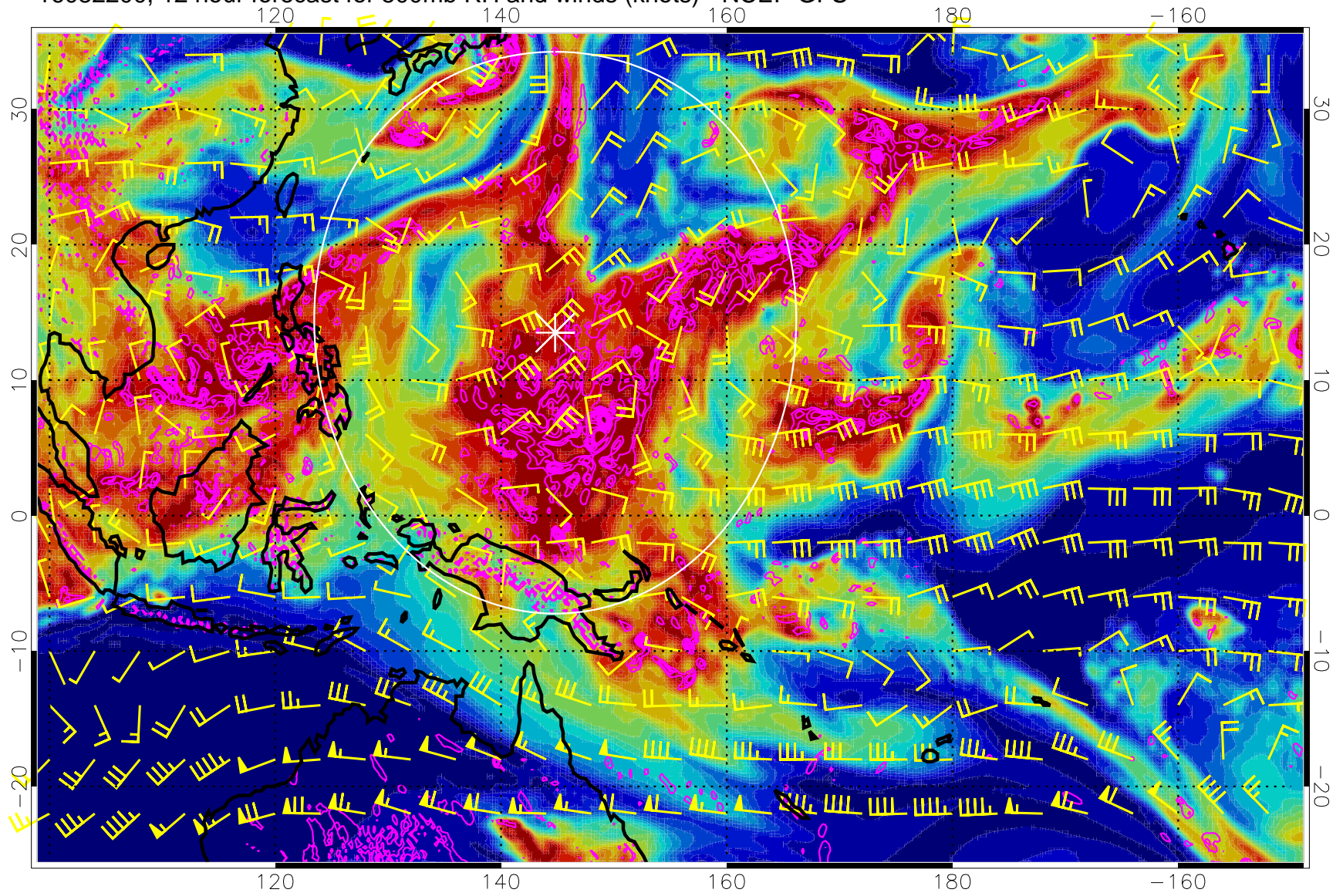
Negative Omegas less than -0.3 , contours of 0.3 Pa/s



0 20 40 60 80 100
RH, %

Range ring of 2304 km

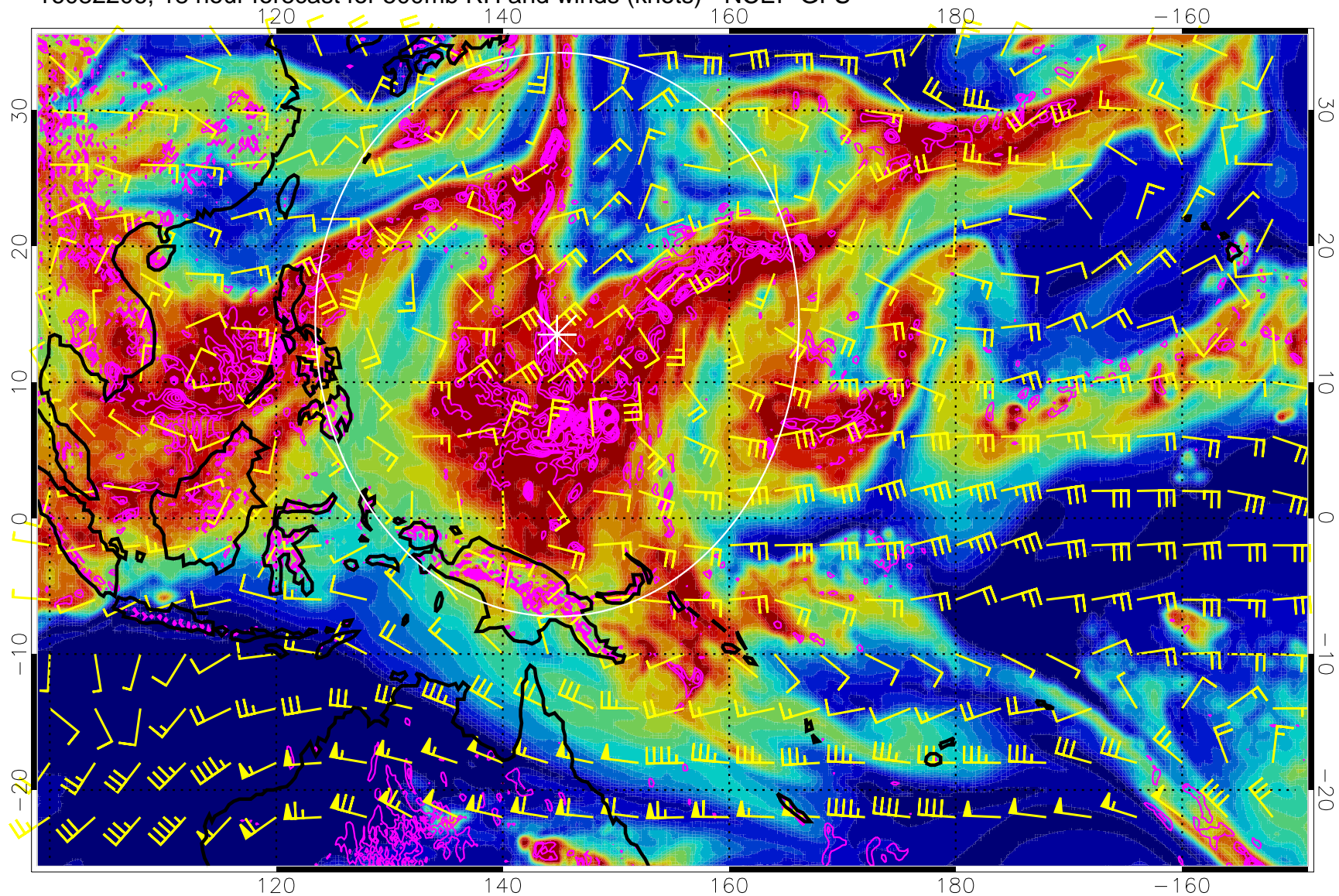
16082200, 12 hour forecast for 500mb RH and winds (knots) - NCEP GFS



Negative Omegas less than -0.3 , contours of 0.3 Pa/s

Range ring of 2304 km

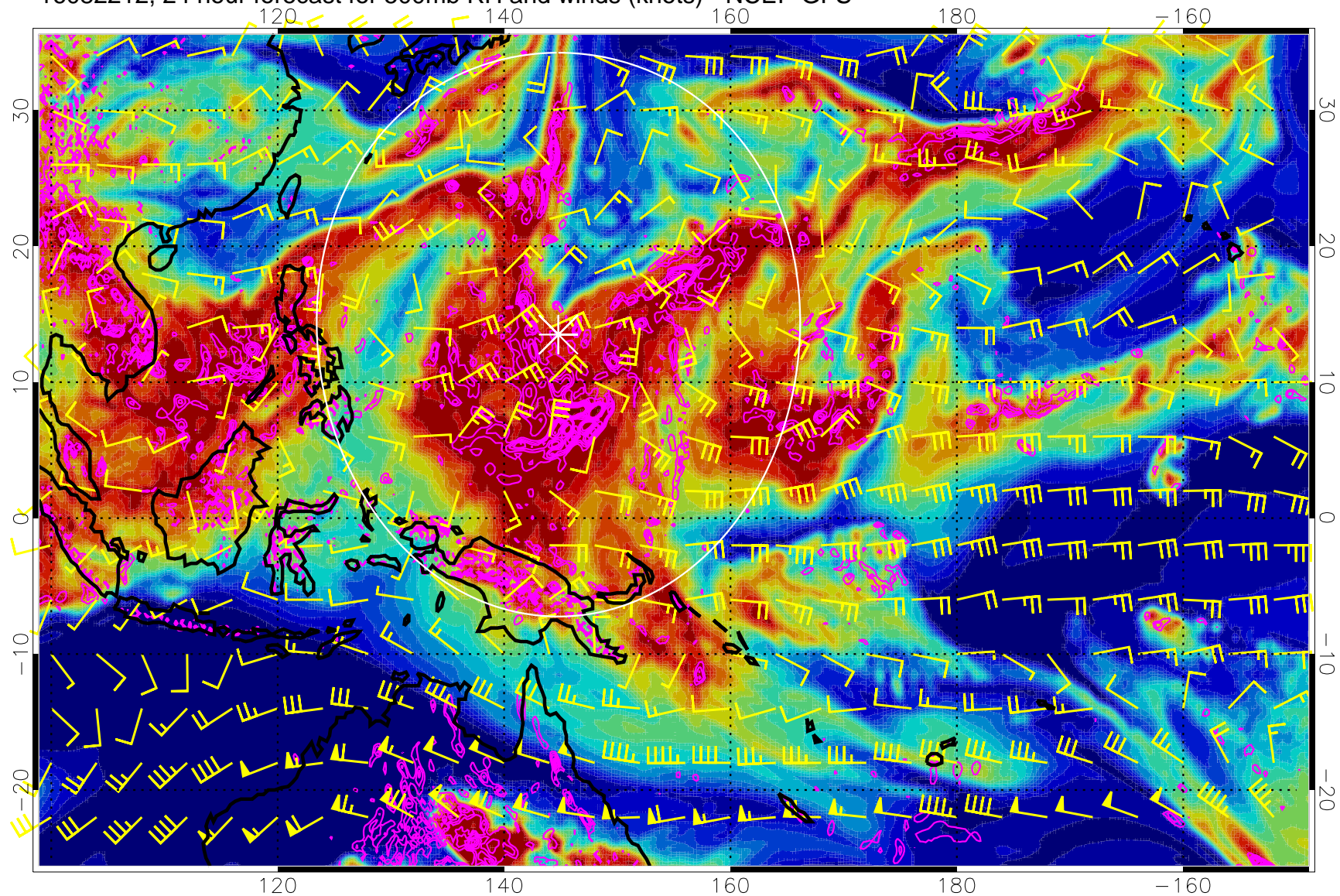
16082206, 18 hour forecast for 500mb RH and winds (knots) - NCEP GFS



Negative Omegas less than -0.3 , contours of 0.3 Pa/s

Range ring of 2304 km

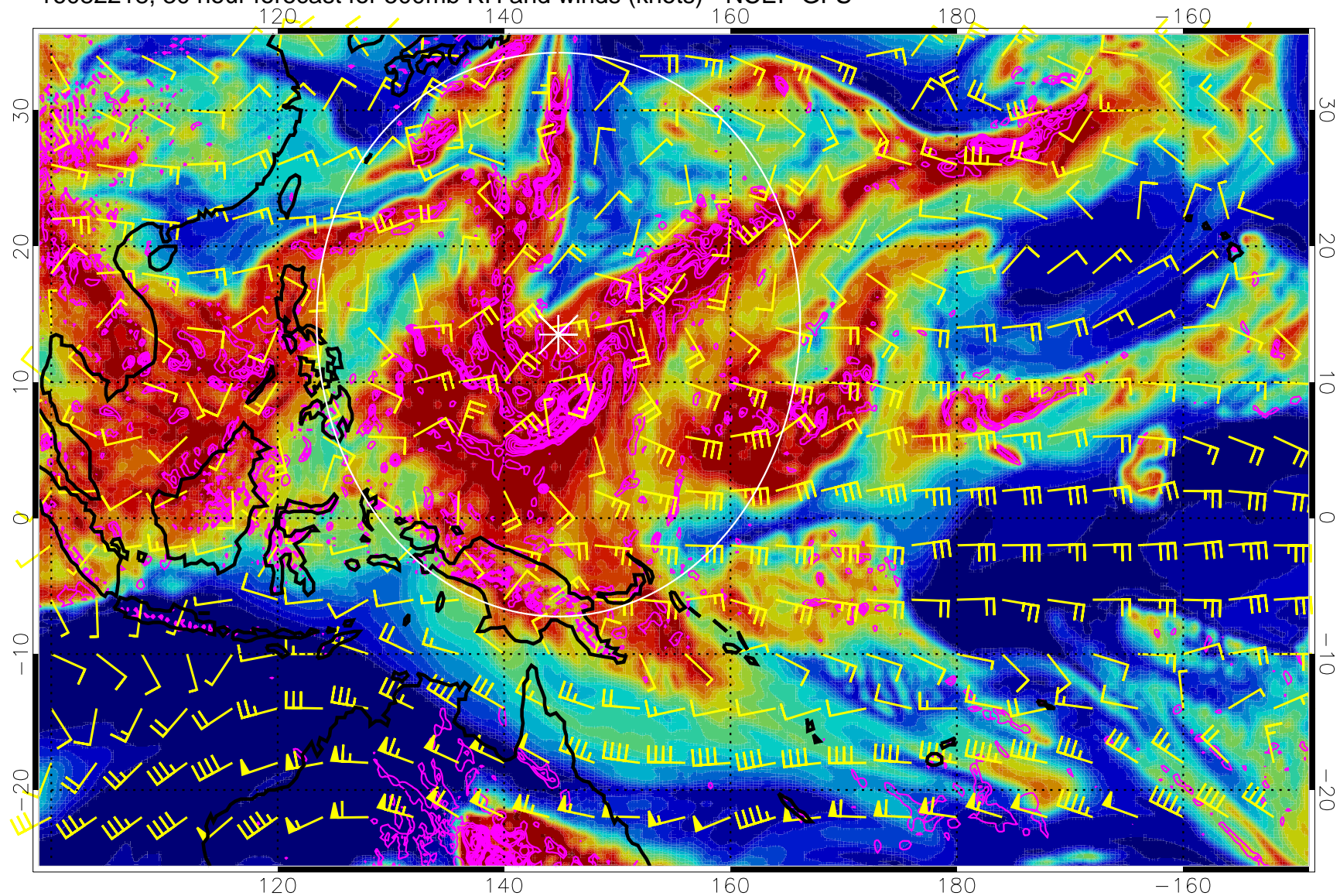
16082212, 24 hour forecast for 500mb RH and winds (knots) - NCEP GFS



Negative Omegas less than -0.3 , contours of 0.3 Pa/s

Range ring of 2304 km

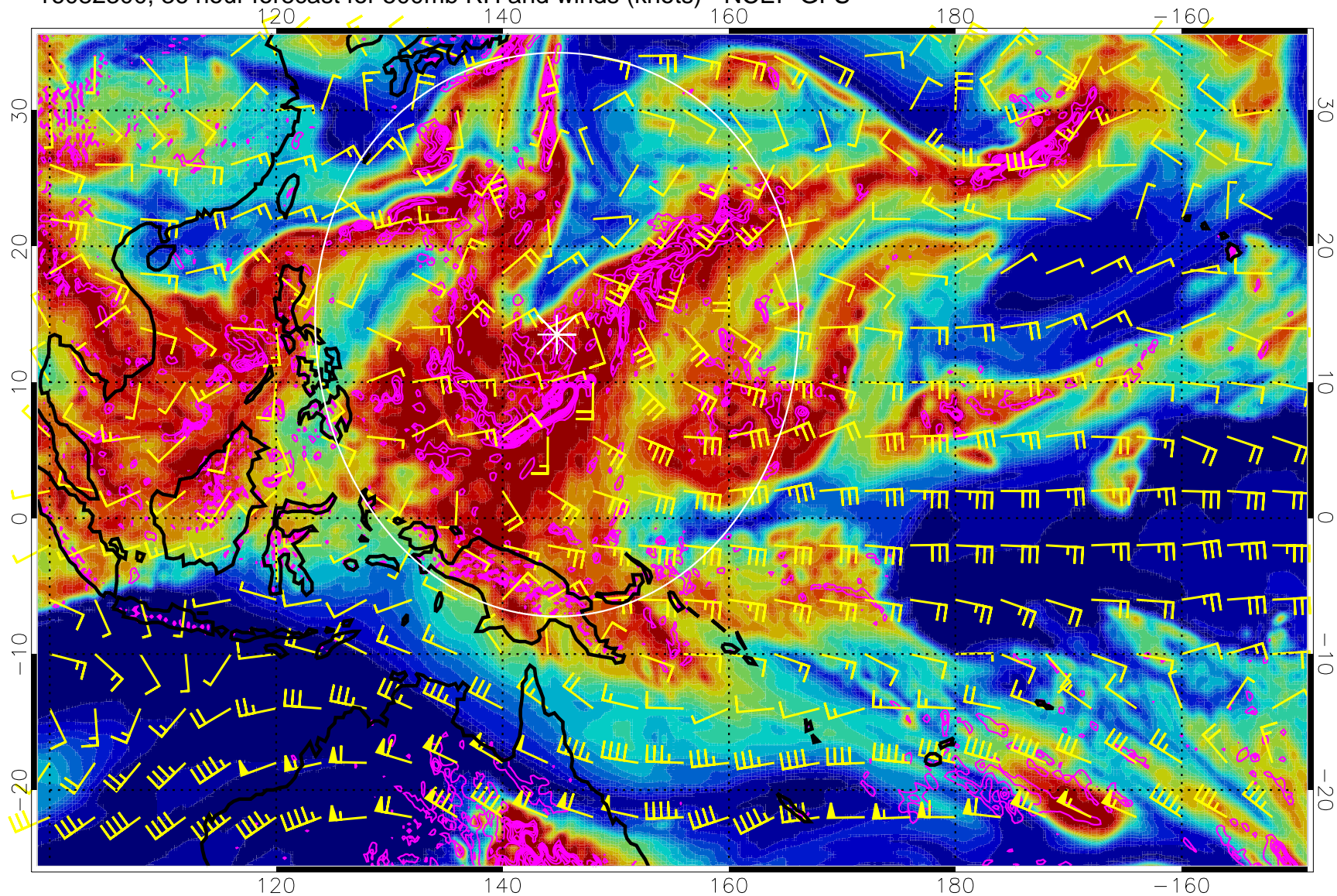
16082218, 30 hour forecast for 500mb RH and winds (knots) - NCEP GFS



Negative Omegas less than -0.3 , contours of 0.3 Pa/s

Range ring of 2304 km

16082300, 36 hour forecast for 500mb RH and winds (knots) - NCEP GFS

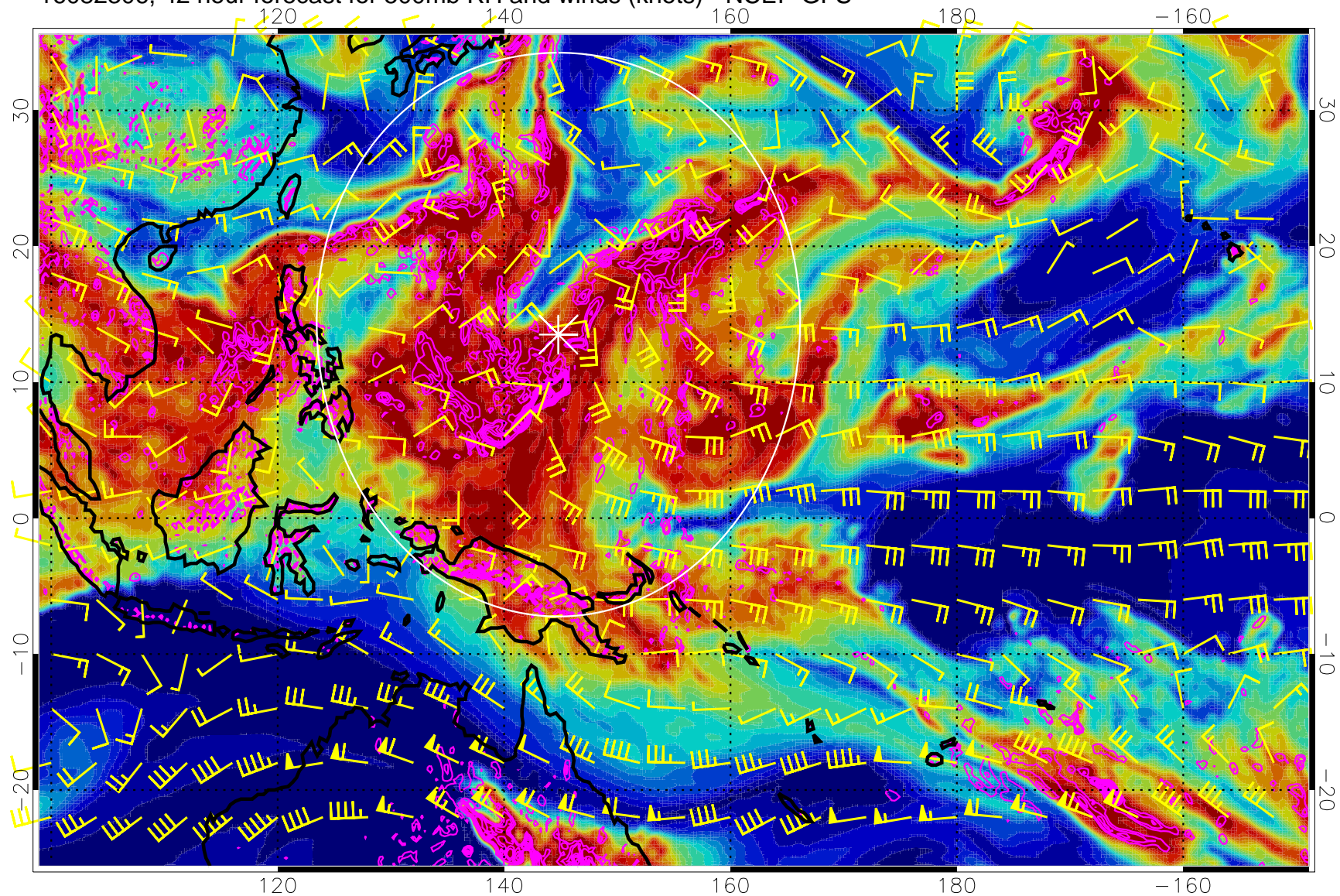


0 20 40 60 80 100
RH, %

Negative Omegas less than -0.3 , contours of 0.3 Pa/s

Range ring of 2304 km

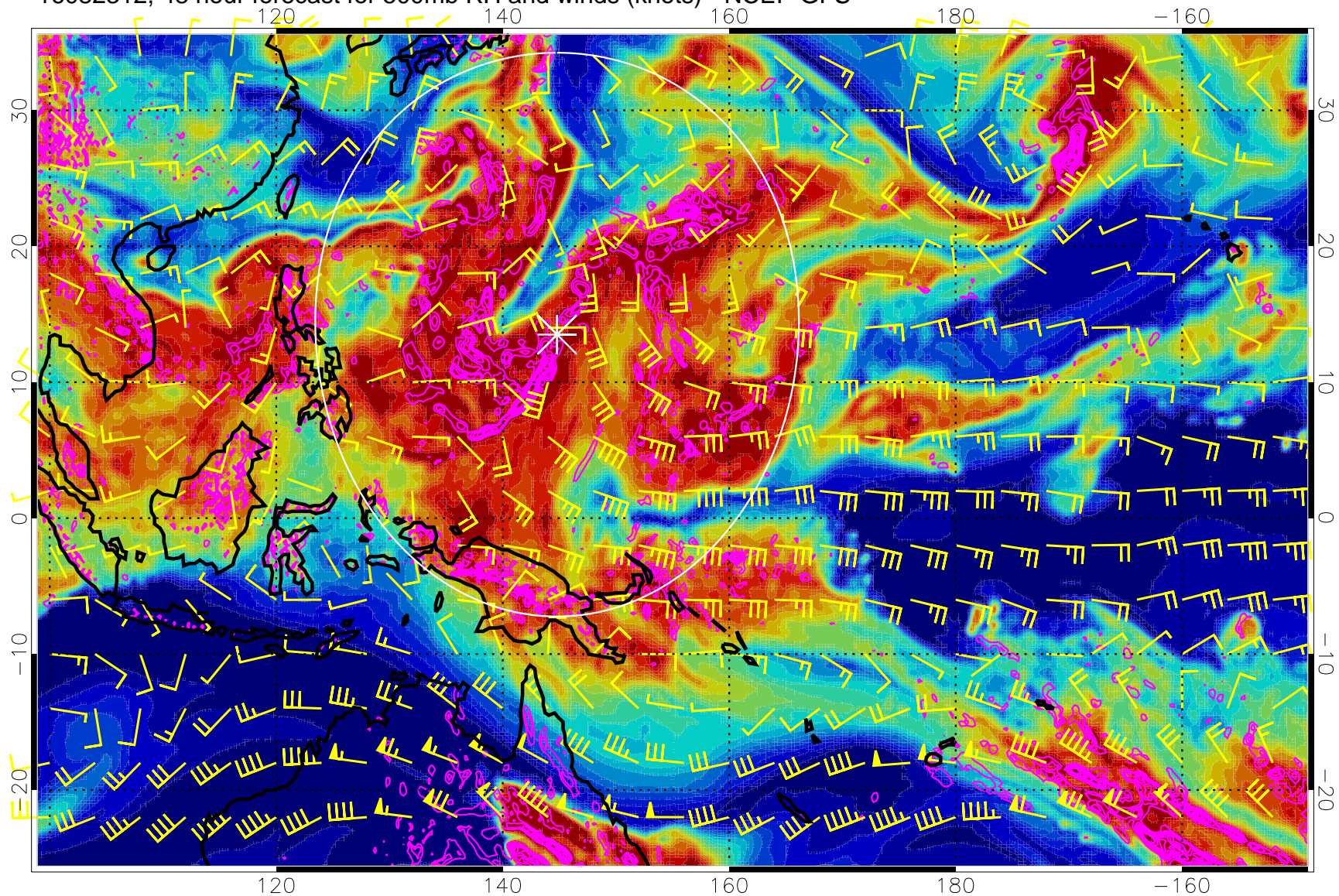
16082306, 42 hour forecast for 500mb RH and winds (knots) - NCEP GFS



Negative Omegas less than -0.3 , contours of 0.3 Pa/s

Range ring of 2304 km

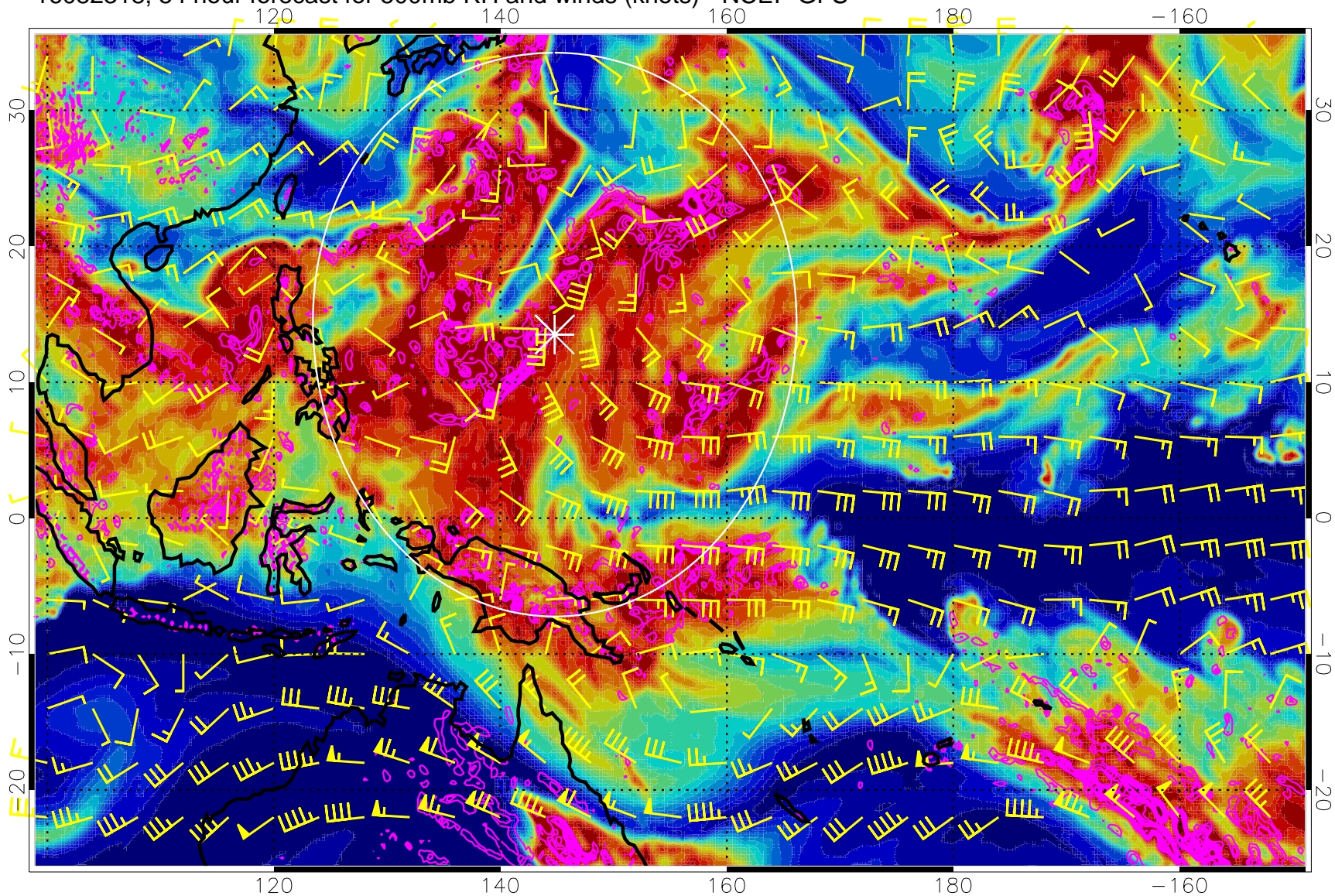
16082312, 48 hour forecast for 500mb RH and winds (knots) - NCEP GFS



Negative Omegas less than -0.3 , contours of 0.3 Pa/s

Range ring of 2304 km

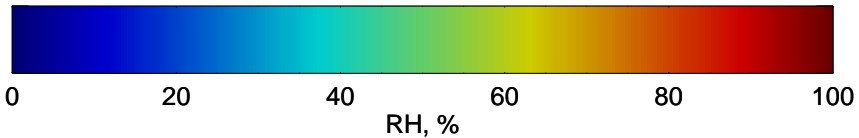
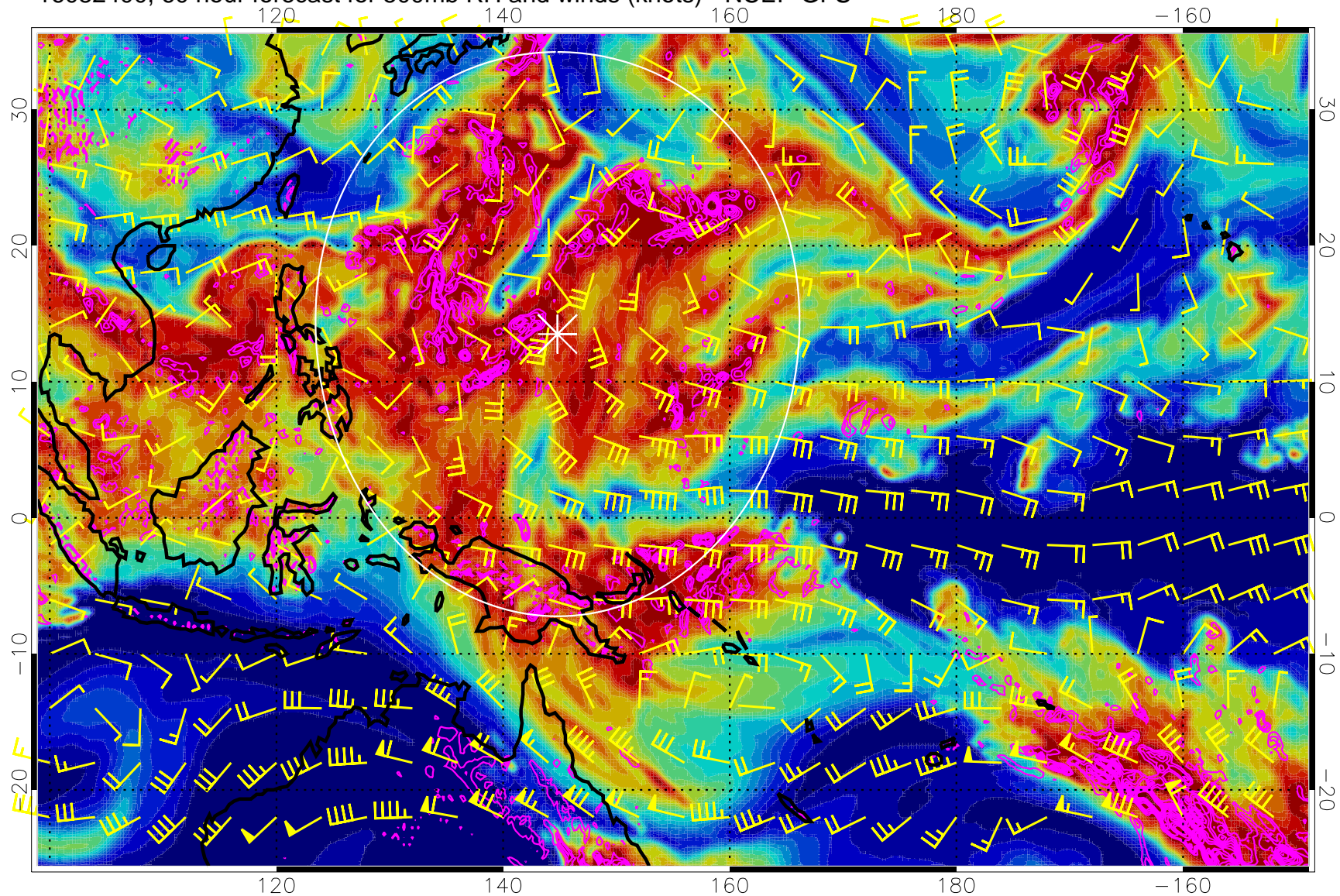
16082318, 54 hour forecast for 500mb RH and winds (knots) - NCEP GFS



Negative Omegas less than -0.3 , contours of 0.3 Pa/s

Range ring of 2304 km

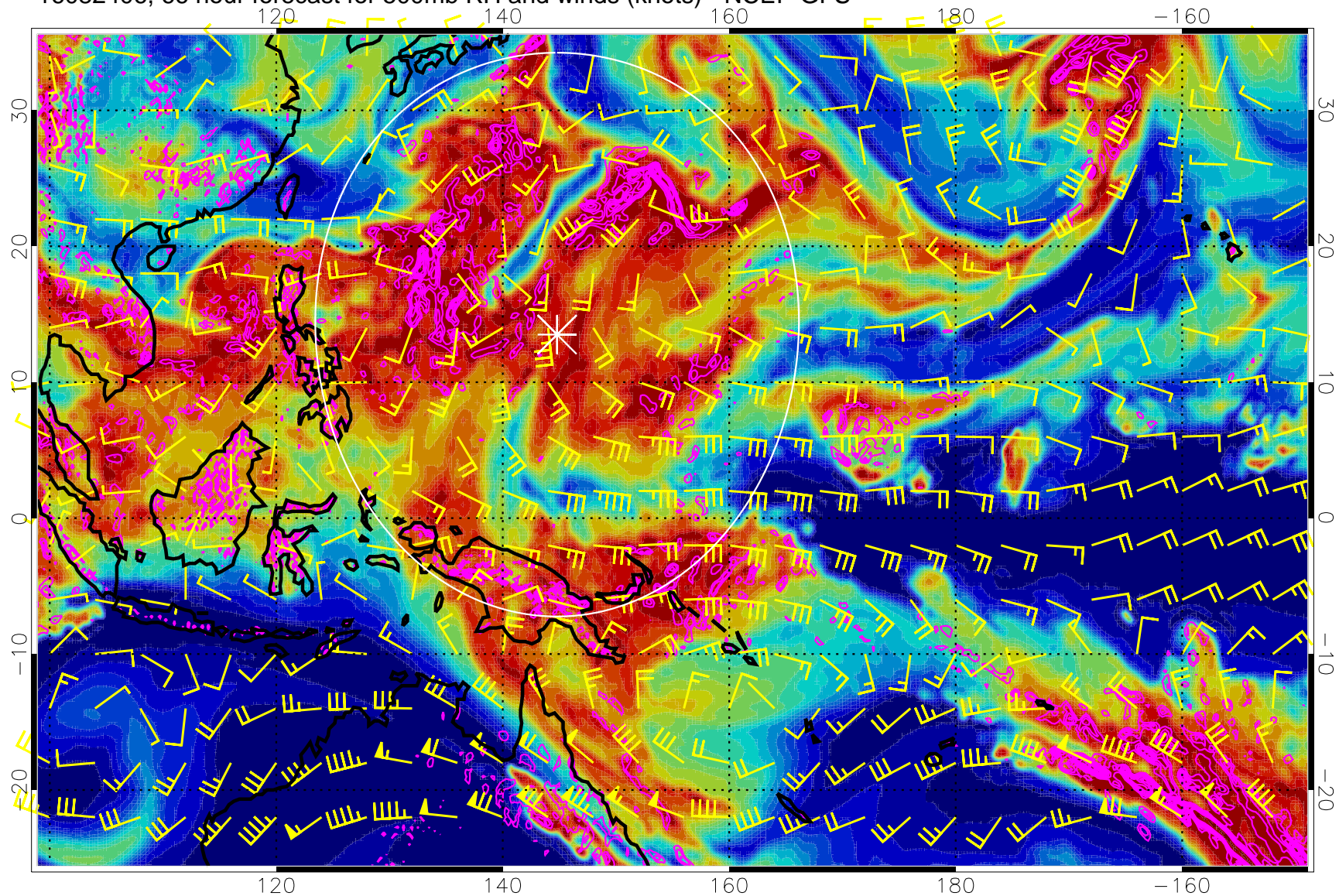
16082400, 60 hour forecast for 500mb RH and winds (knots) - NCEP GFS



Negative Omegas less than -0.3 , contours of 0.3 Pa/s

Range ring of 2304 km

16082406, 66 hour forecast for 500mb RH and winds (knots) - NCEP GFS

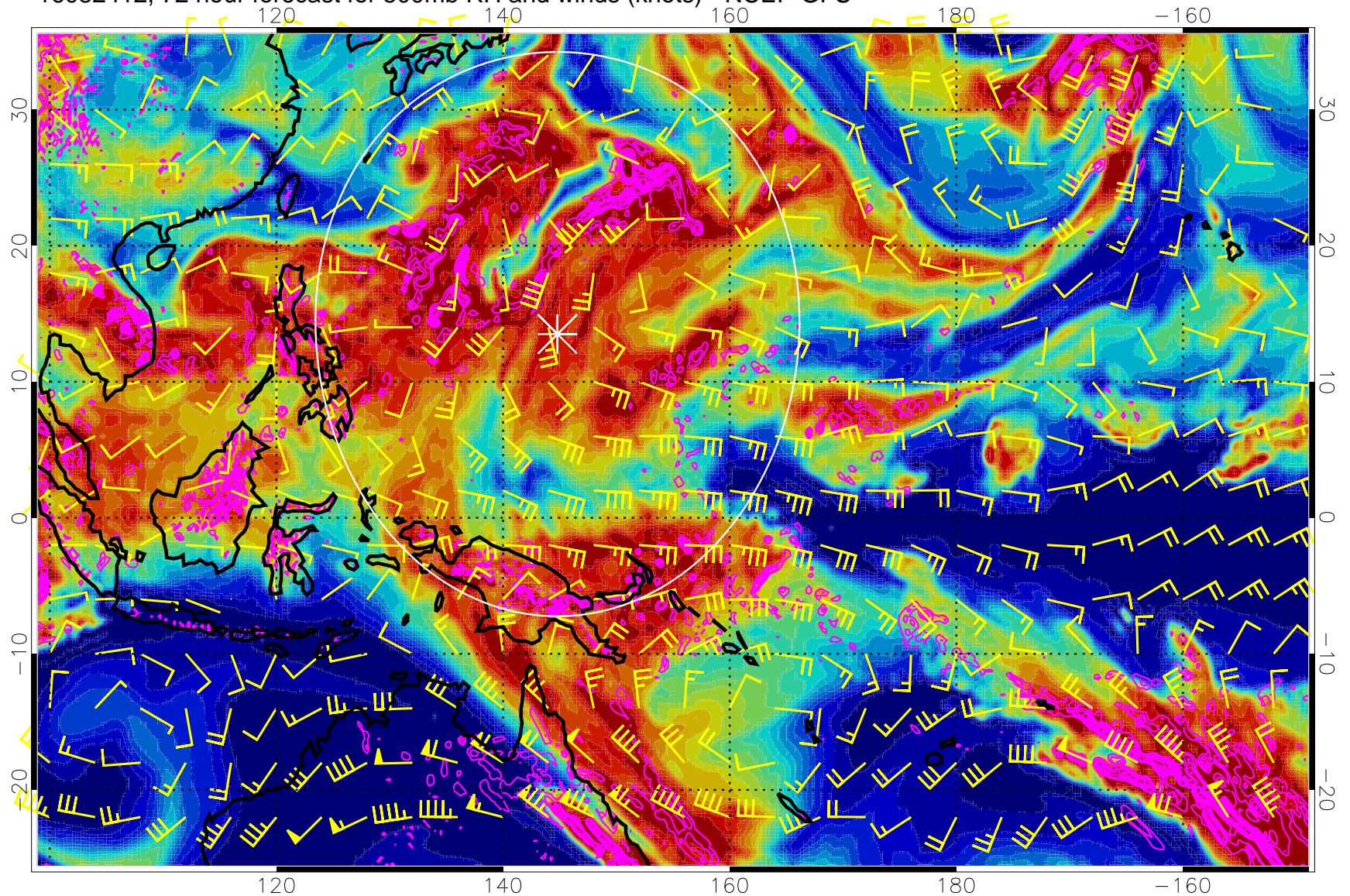


0 20 40 60 80 100
RH, %

Negative Omegas less than -0.3 , contours of 0.3 Pa/s

Range ring of 2304 km

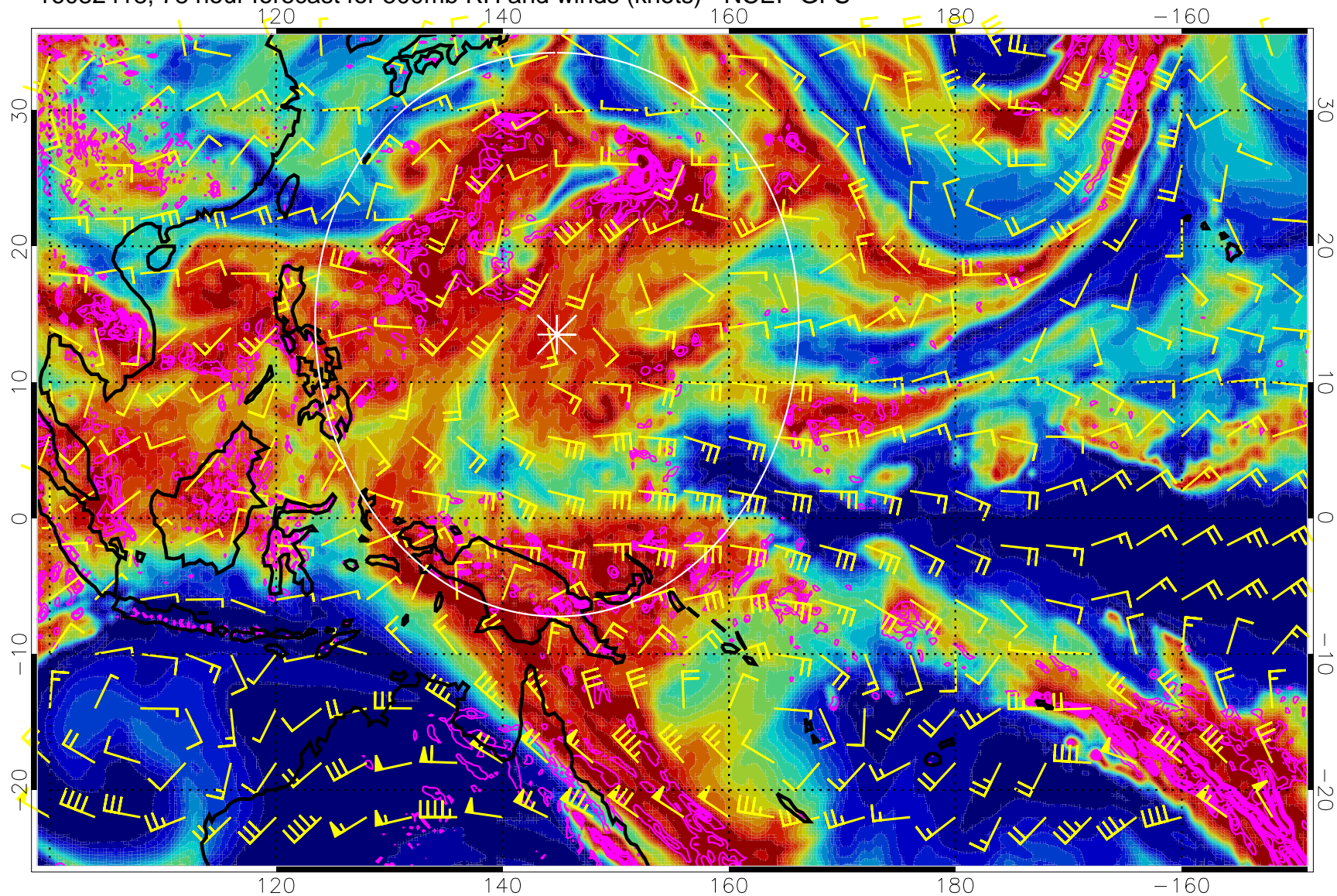
16082412, 72 hour forecast for 500mb RH and winds (knots) - NCEP GFS



Negative Omegas less than -0.3 , contours of 0.3 Pa/s

Range ring of 2304 km

16082418, 78 hour forecast for 500mb RH and winds (knots) - NCEP GFS

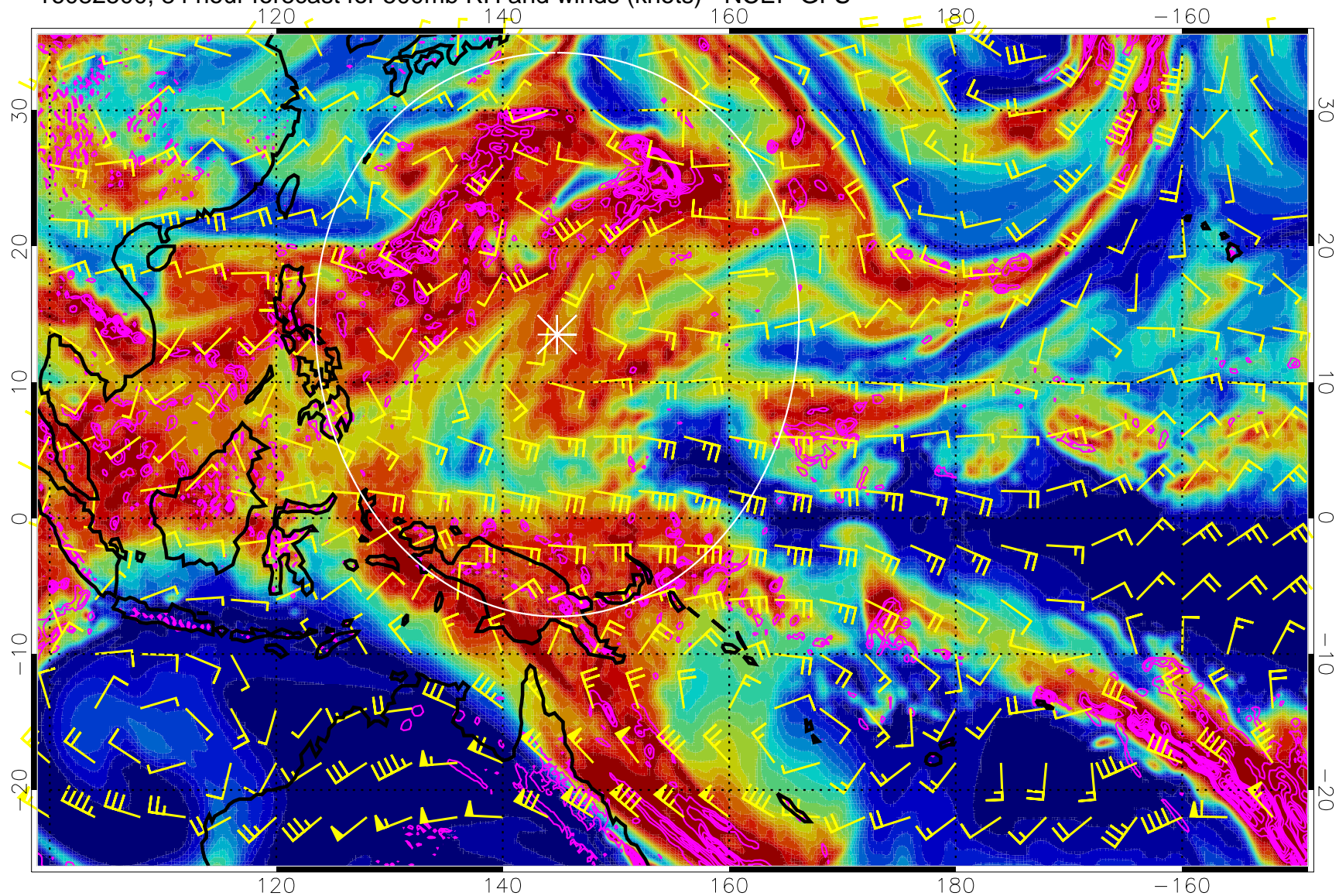


0 20 40 60 80 100
RH, %

Negative Omegas less than -0.3 , contours of 0.3 Pa/s

Range ring of 2304 km

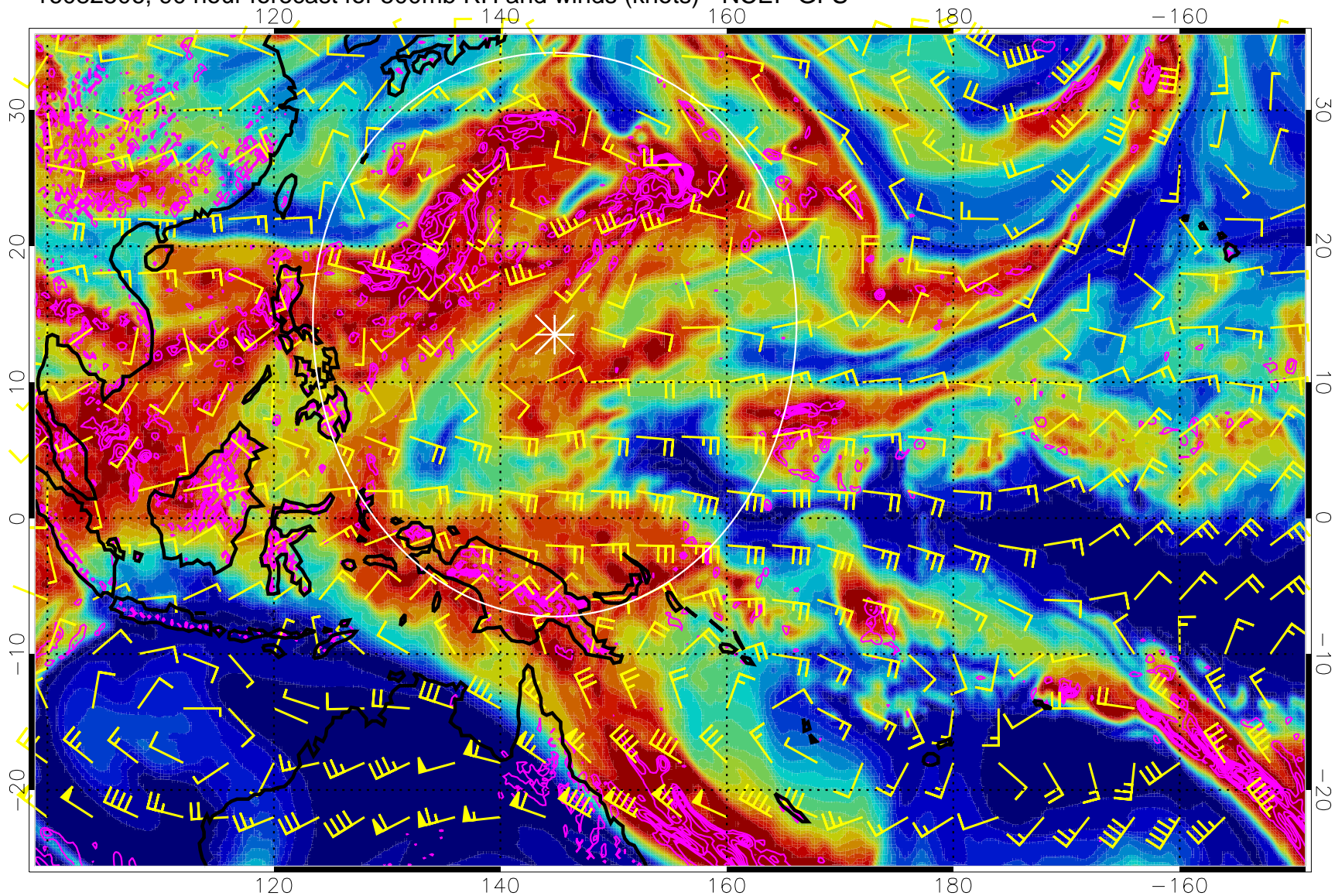
16082500, 84 hour forecast for 500mb RH and winds (knots) - NCEP GFS



Negative Omegas less than -0.3 , contours of 0.3 Pa/s

Range ring of 2304 km

16082506, 90 hour forecast for 500mb RH and winds (knots) - NCEP GFS

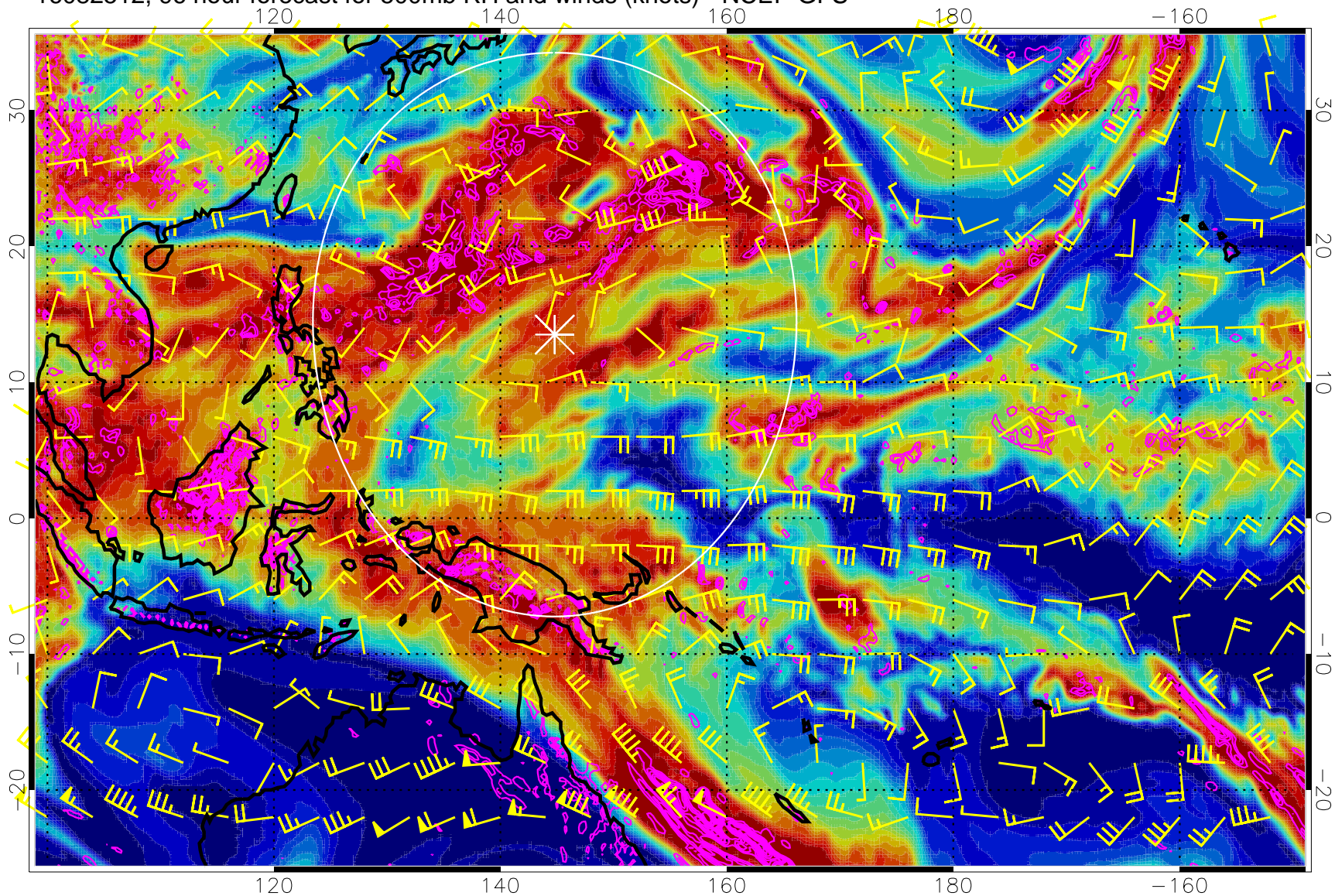


0 20 40 60 80 100
RH, %

Negative Omegas less than -0.3 , contours of 0.3 Pa/s

Range ring of 2304 km

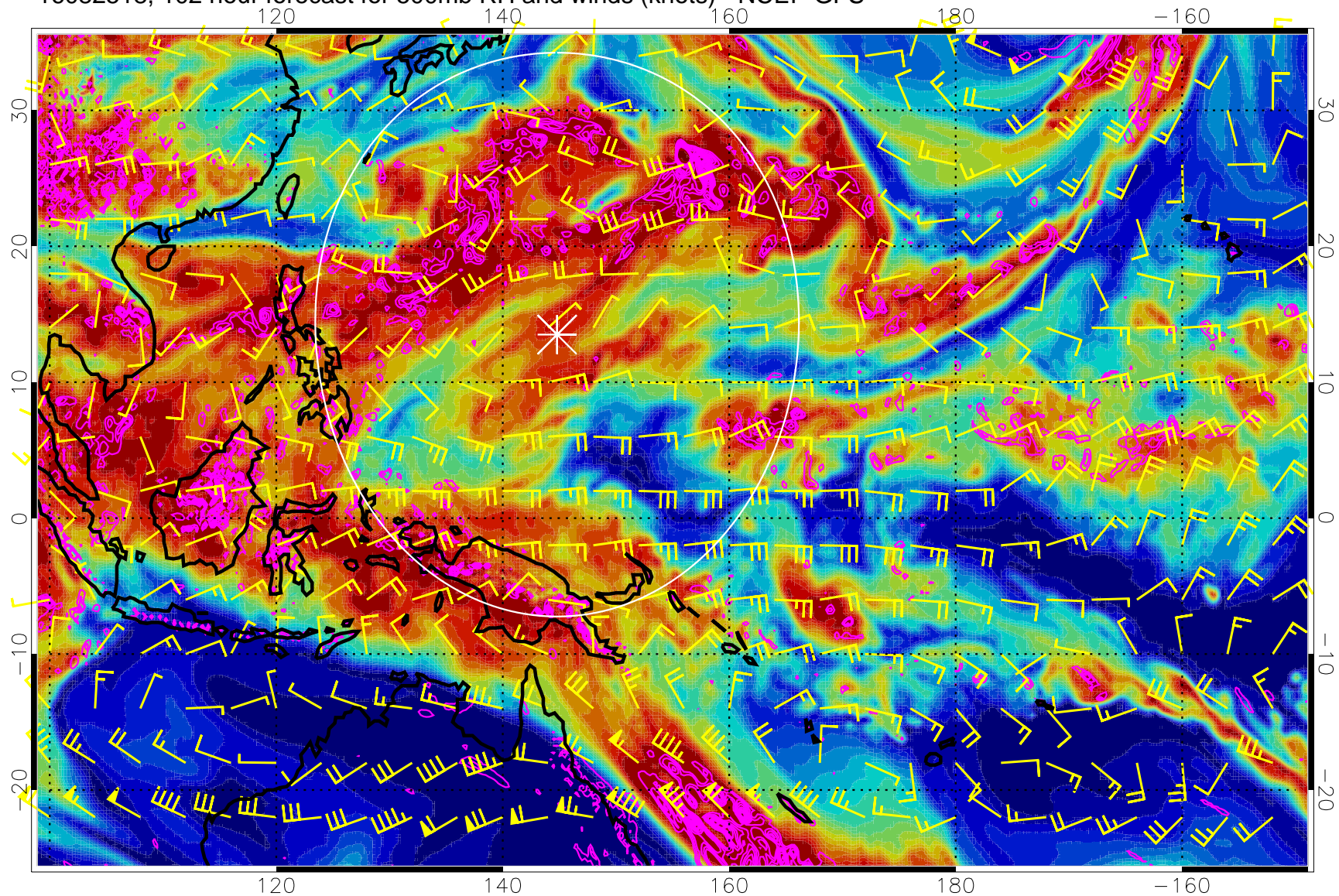
16082512, 96 hour forecast for 500mb RH and winds (knots) - NCEP GFS



Negative Omegas less than -0.3 , contours of 0.3 Pa/s

Range ring of 2304 km

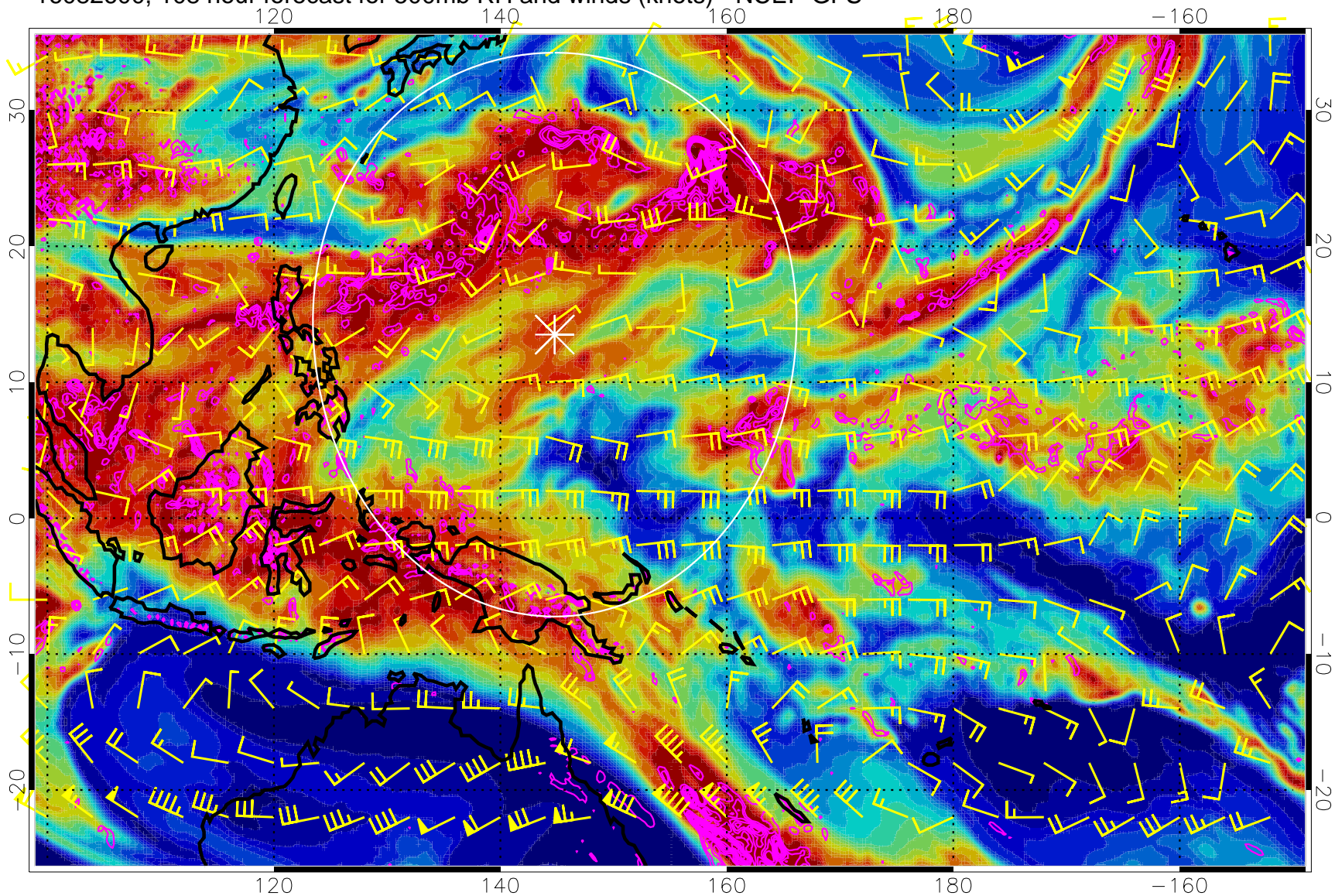
16082518, 102 hour forecast for 500mb RH and winds (knots) - NCEP GFS



Negative Omegas less than $-.3$, contours of $.3$ Pa/s

Range ring of 2304 km

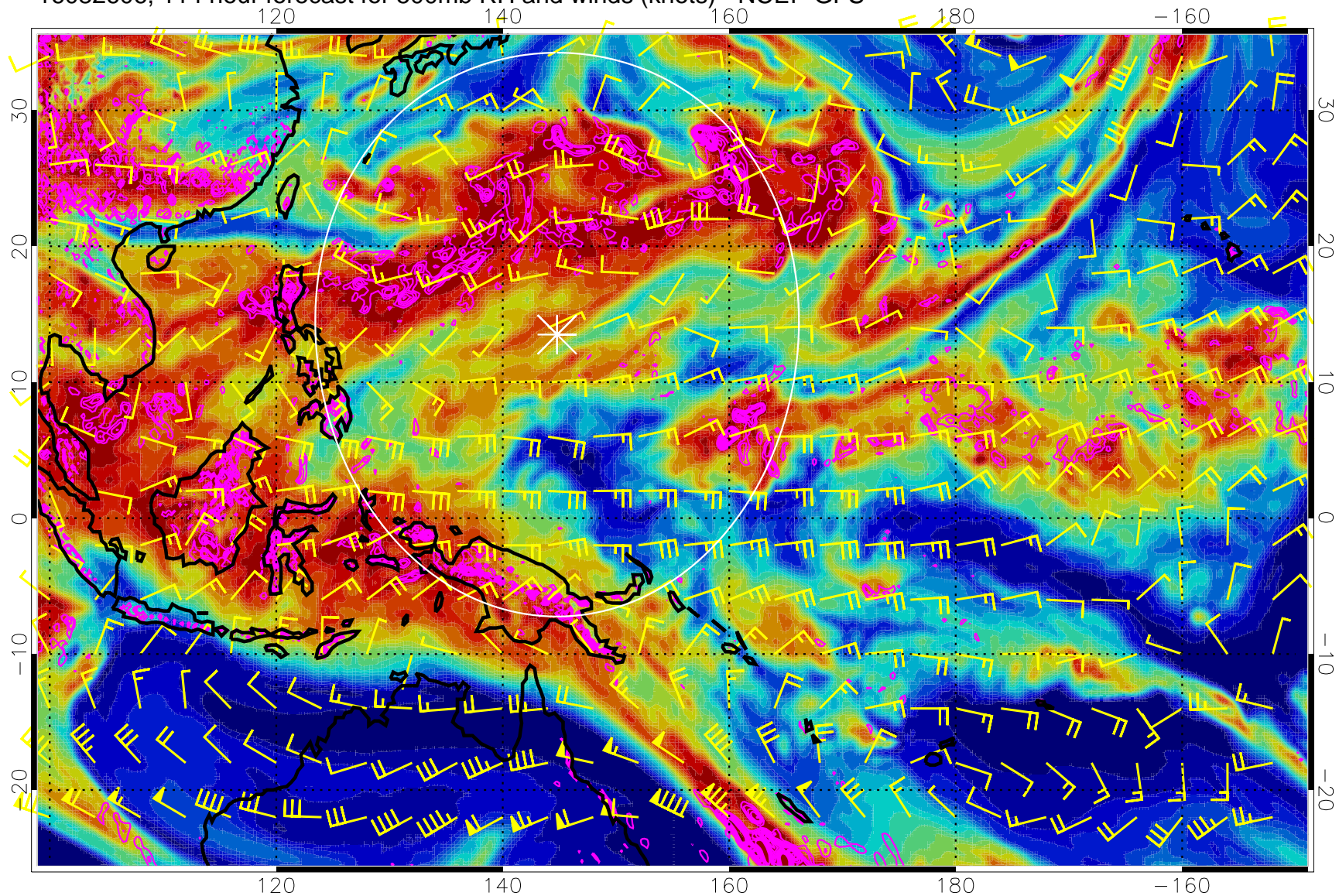
16082600, 108 hour forecast for 500mb RH and winds (knots) - NCEP GFS



Negative Omegas less than -0.3 , contours of 0.3 Pa/s

Range ring of 2304 km

16082606, 114 hour forecast for 500mb RH and winds (knots) - NCEP GFS

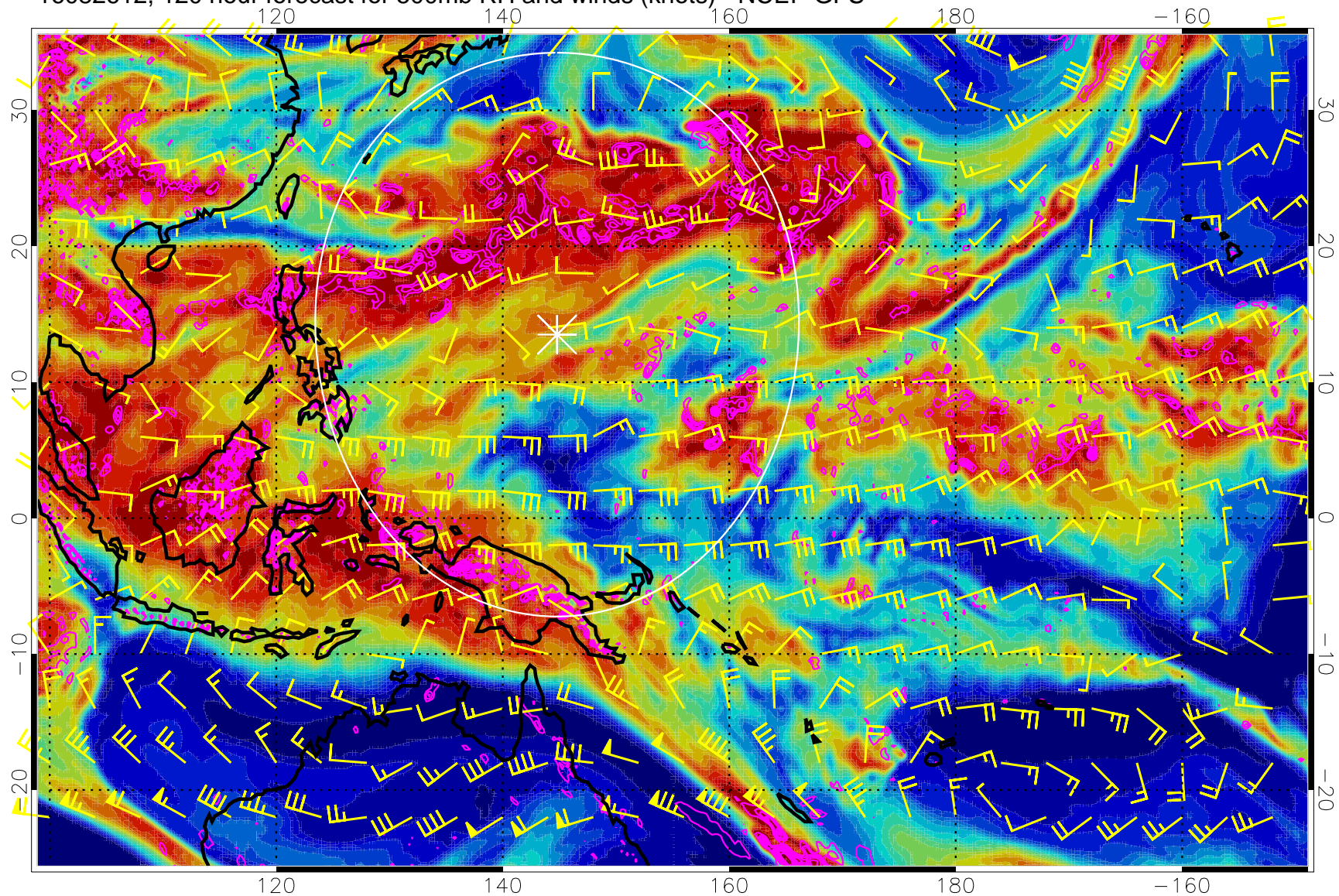


0 20 40 60 80 100
RH, %

Negative Omegas less than -0.3 , contours of 0.3 Pa/s

Range ring of 2304 km

16082612, 120 hour forecast for 500mb RH and winds (knots) - NCEP GFS



Negative Omegas less than -0.3 , contours of 0.3 Pa/s

Range ring of 2304 km