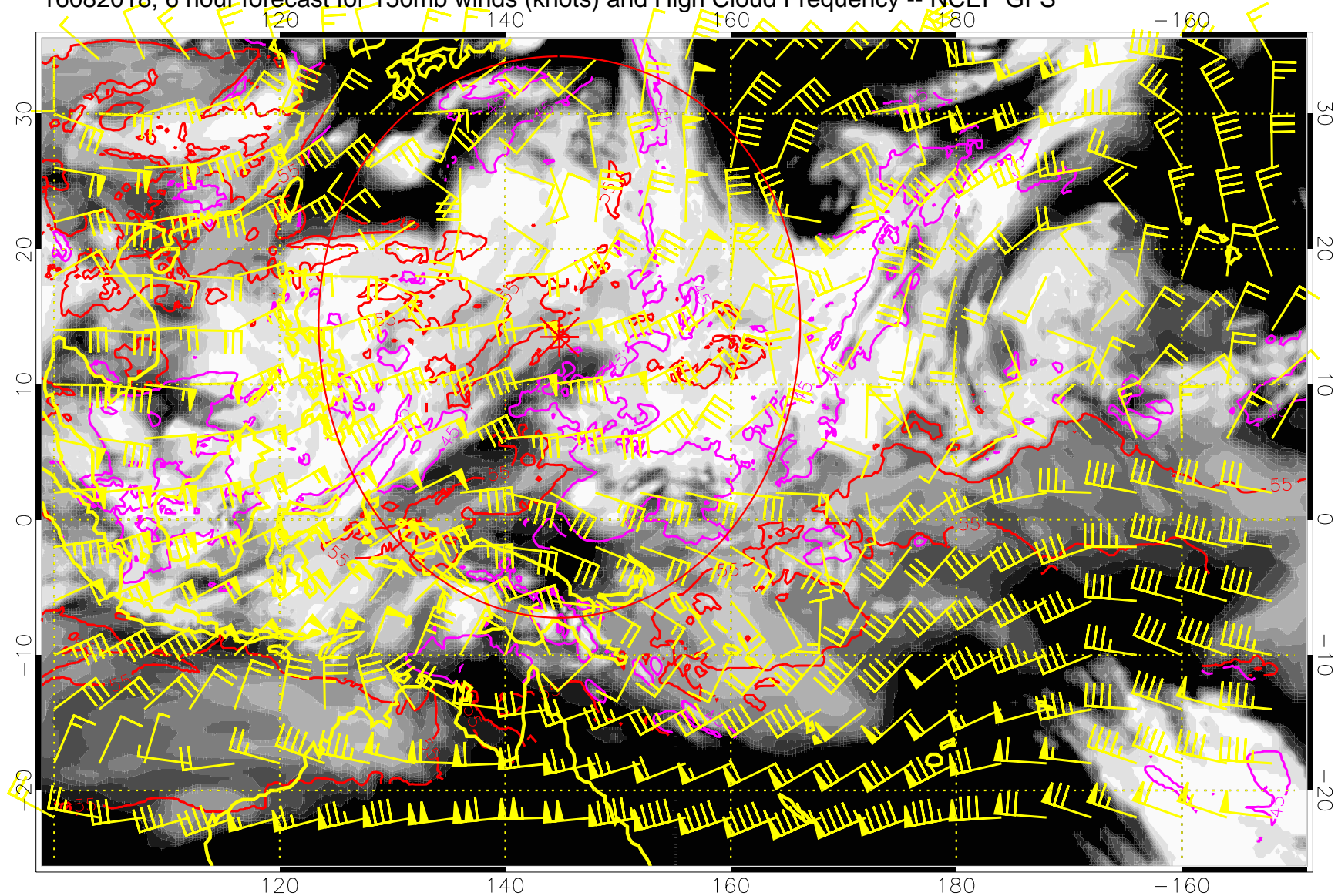


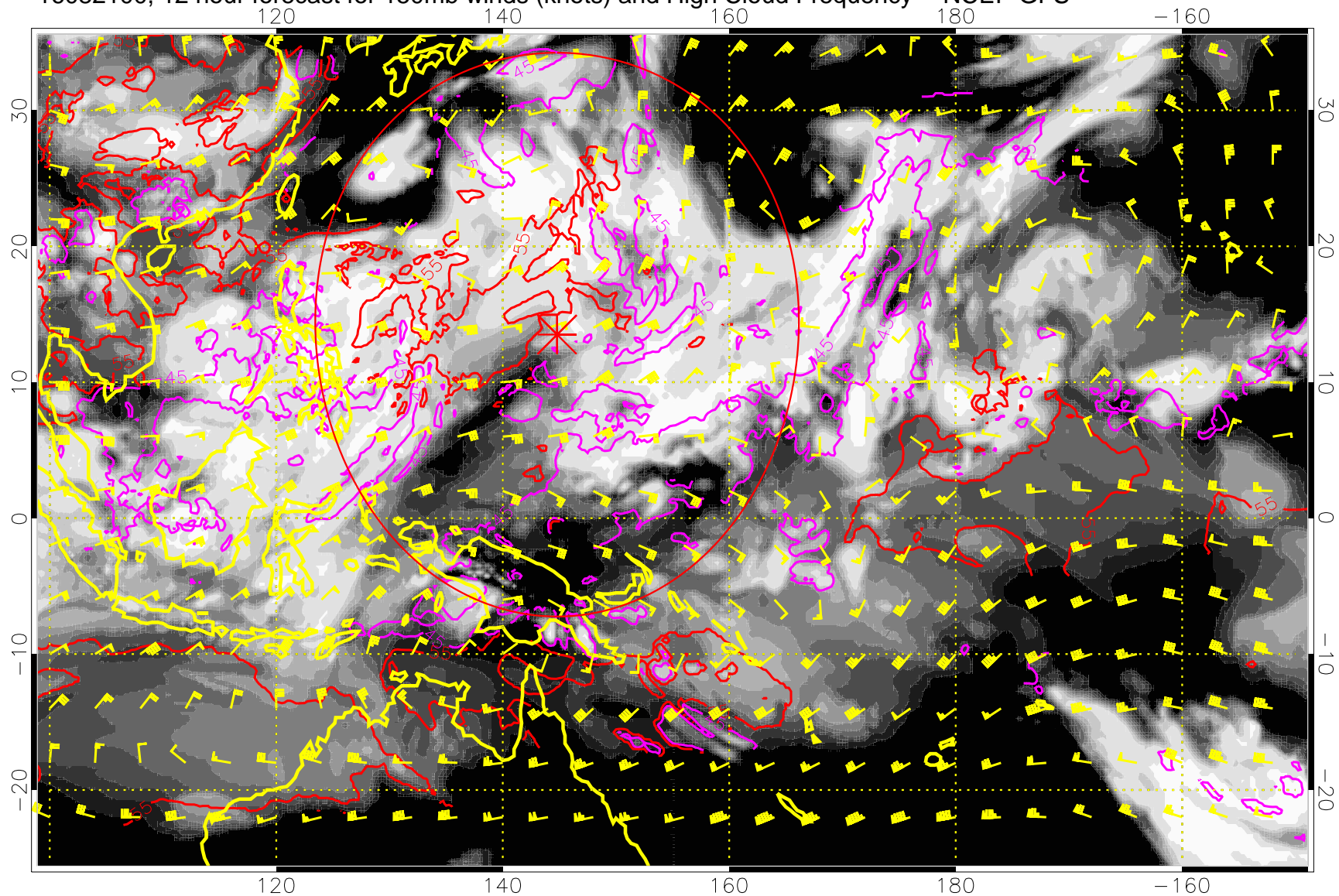
16082018, 6 hour forecast for 150mb winds (knots) and High Cloud Frequency -- NCEP GFS



45 kft
55 kft

Range ring of 2304 km

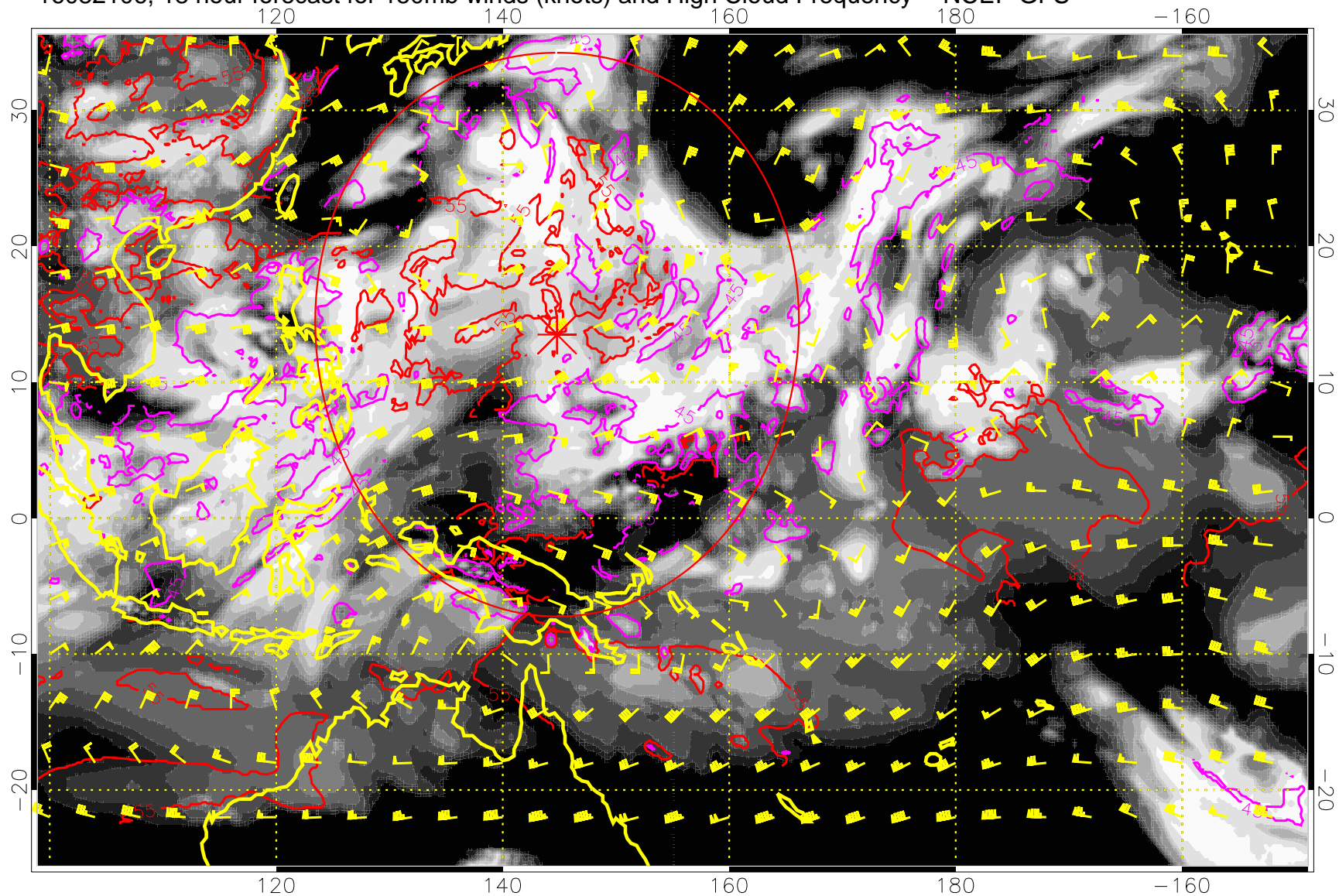
16082100, 12 hour forecast for 150mb winds (knots) and High Cloud Frequency -- NCEP GFS



45 kft
55 kft

Range ring of 2304 km

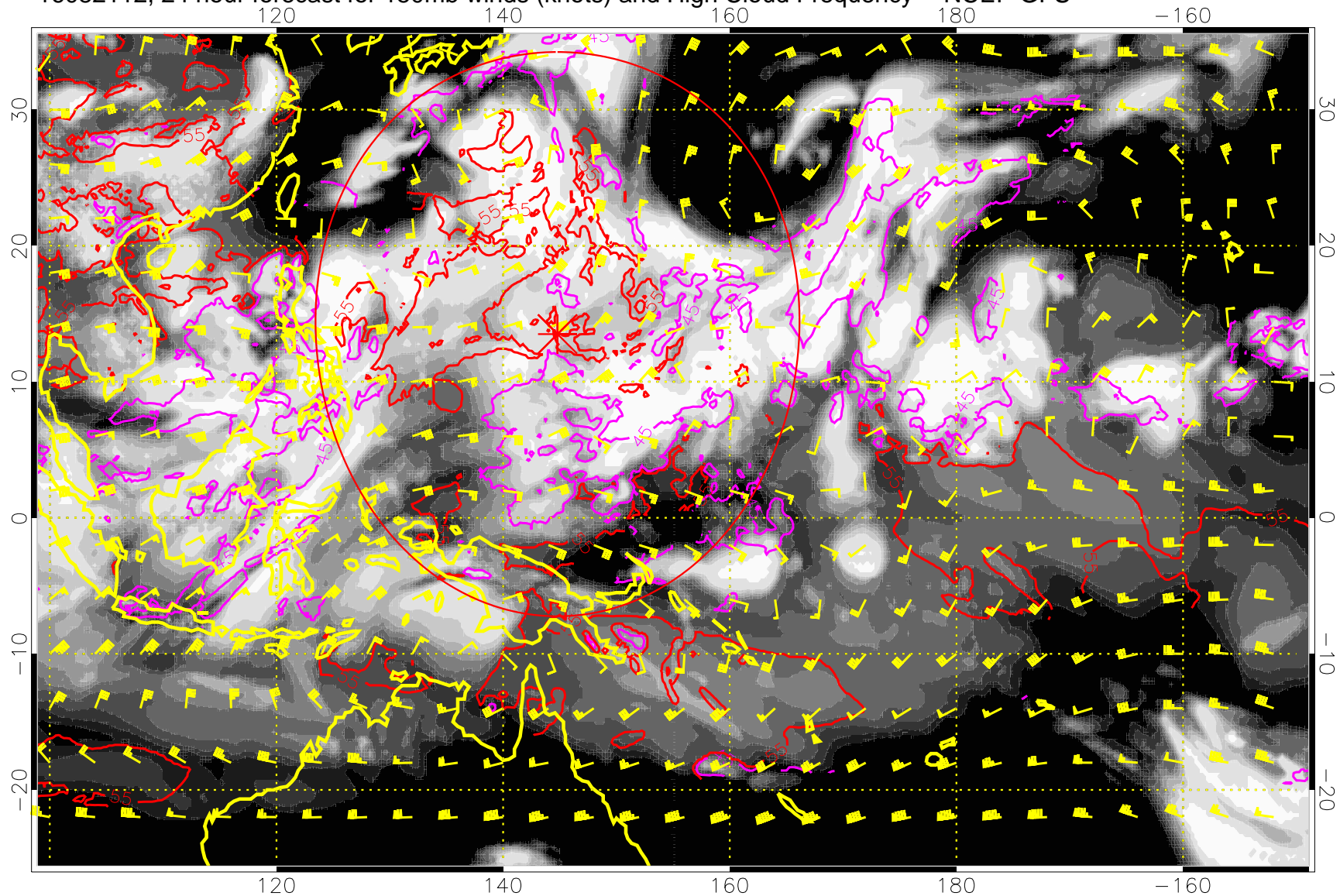
16082106, 18 hour forecast for 150mb winds (knots) and High Cloud Frequency -- NCEP GFS



45 kft
55 kft

Range ring of 2304 km

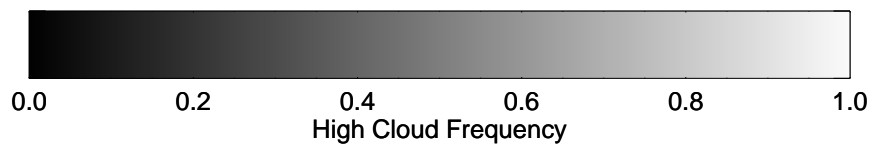
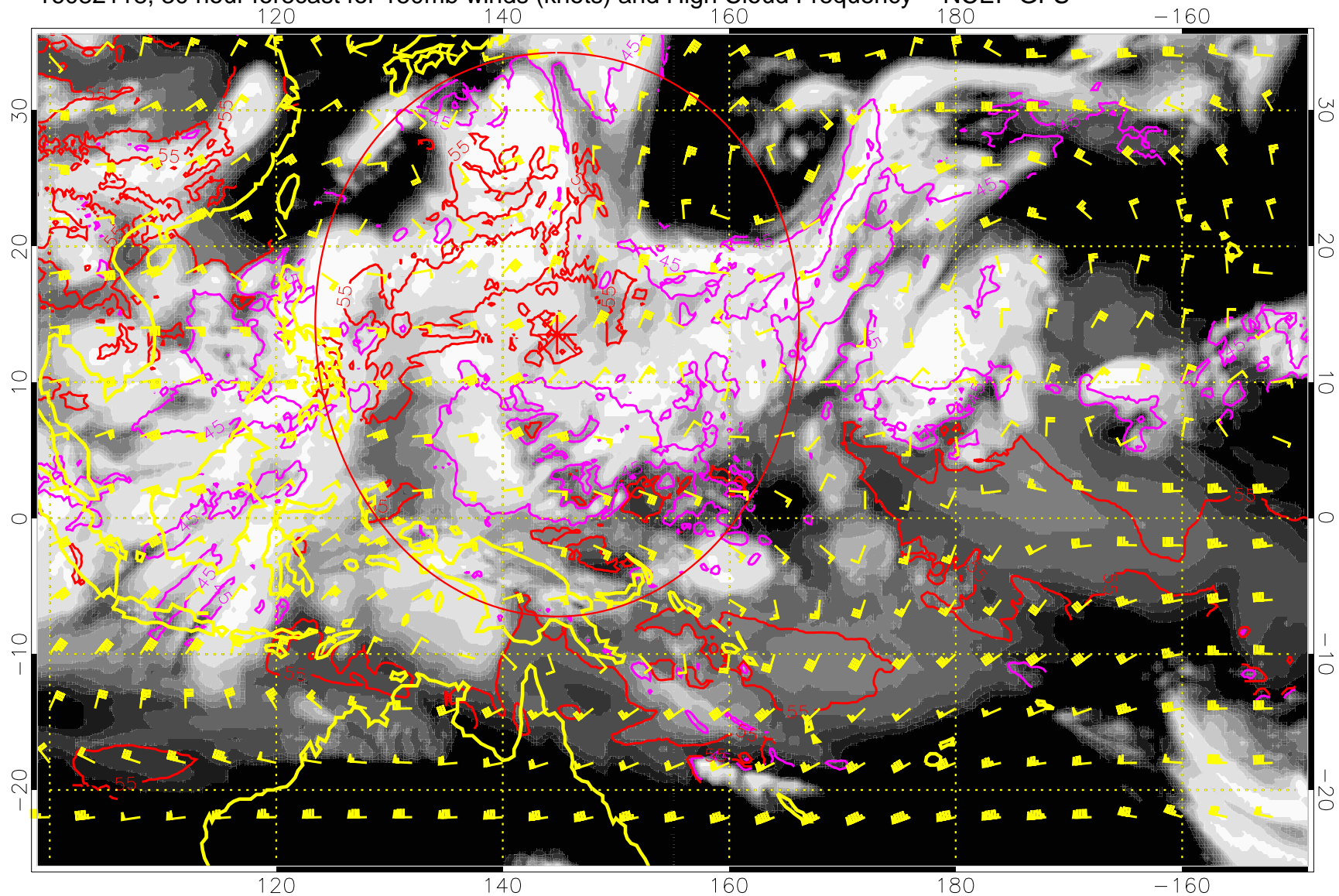
16082112, 24 hour forecast for 150mb winds (knots) and High Cloud Frequency -- NCEP GFS



45 kft
55 kft

Range ring of 2304 km

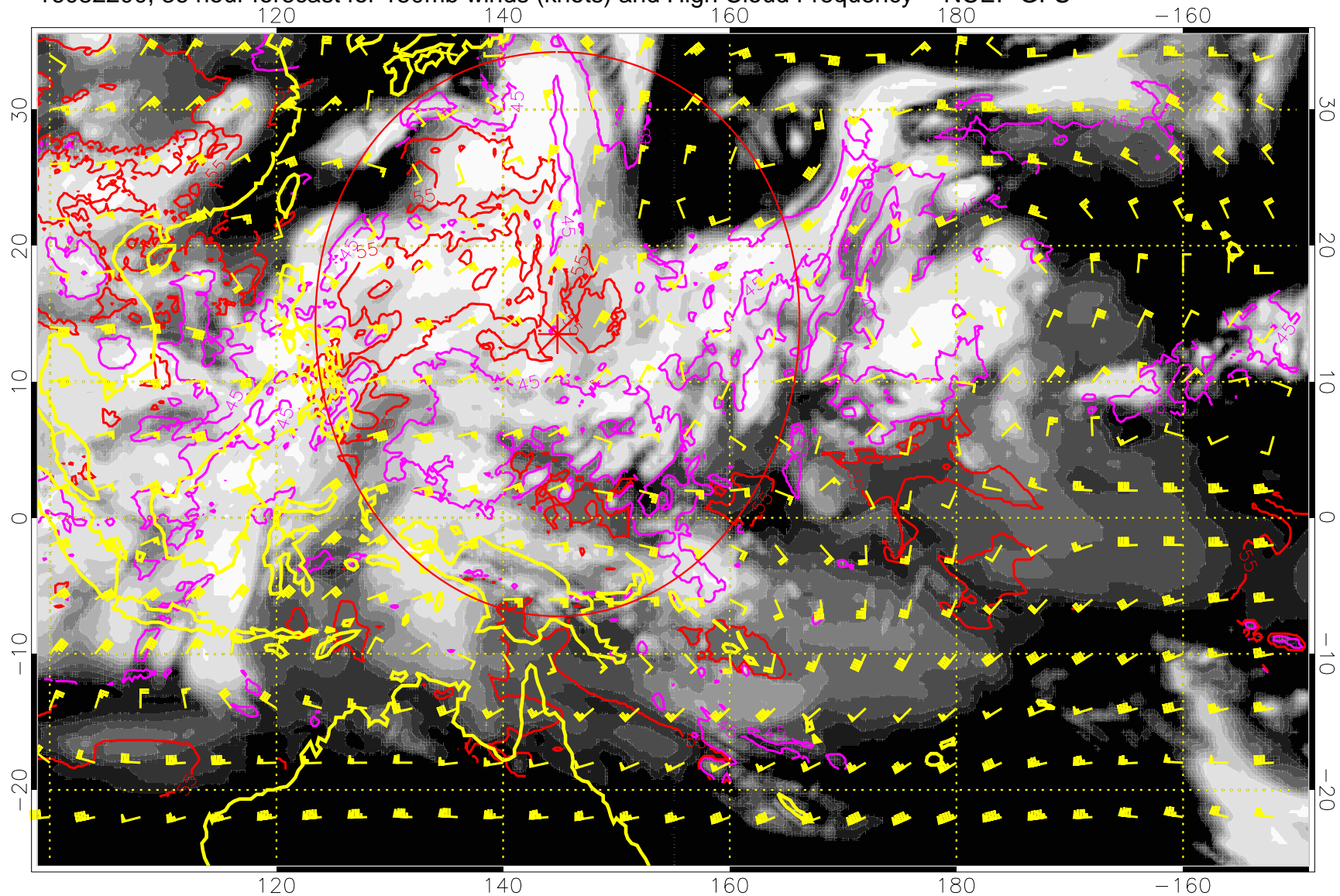
16082118, 30 hour forecast for 150mb winds (knots) and High Cloud Frequency -- NCEP GFS



45 kft
55 kft

Range ring of 2304 km

16082200, 36 hour forecast for 150mb winds (knots) and High Cloud Frequency -- NCEP GFS

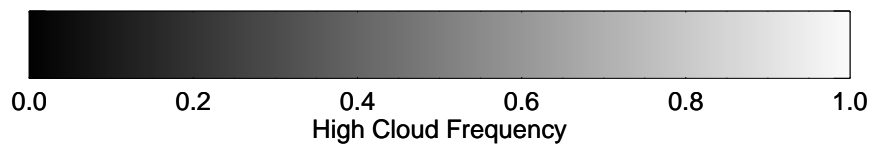
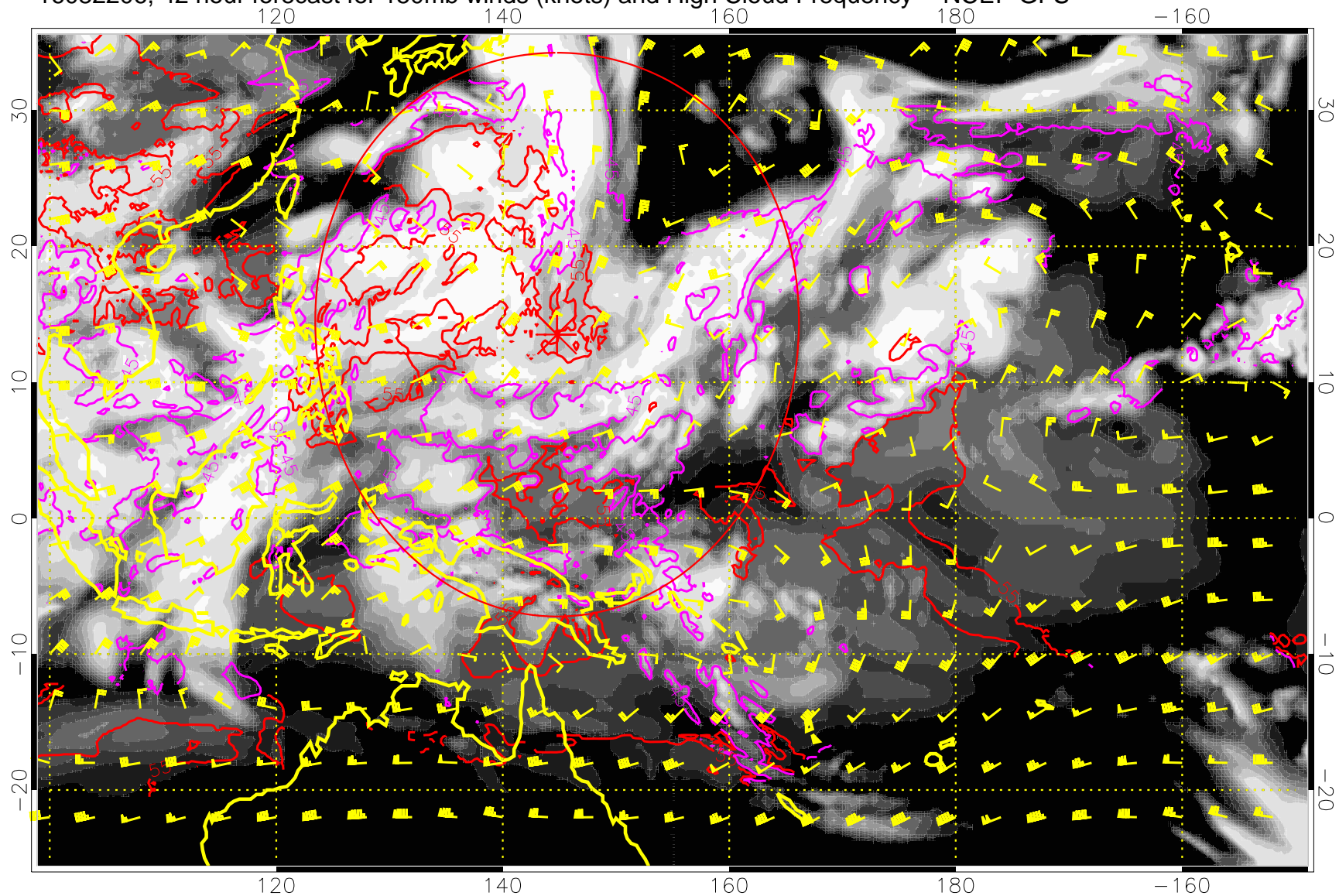


0.0 0.2 0.4 0.6 0.8 1.0
High Cloud Frequency

45 kft
55 kft

Range ring of 2304 km

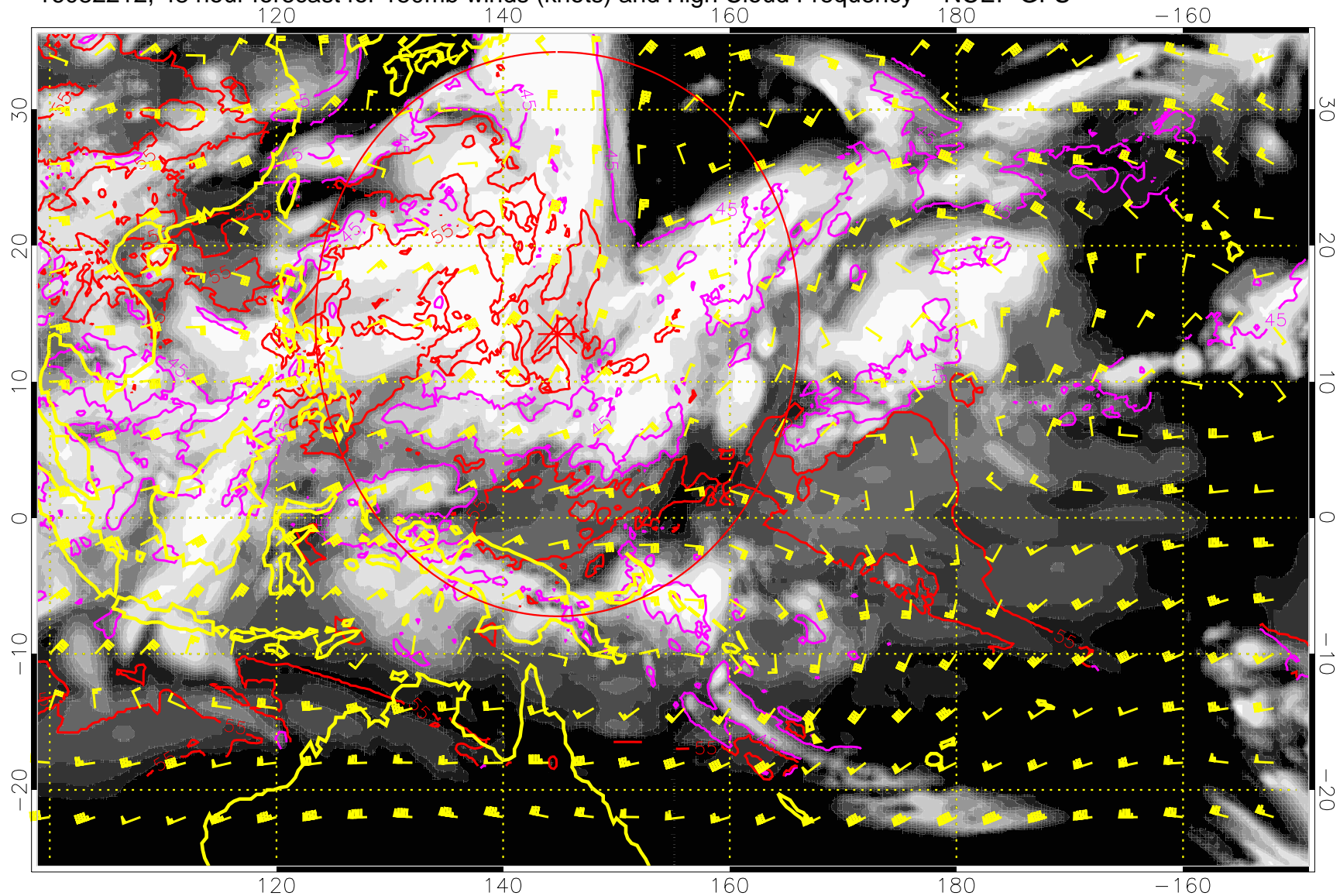
16082206, 42 hour forecast for 150mb winds (knots) and High Cloud Frequency -- NCEP GFS



45 kft
55 kft

Range ring of 2304 km

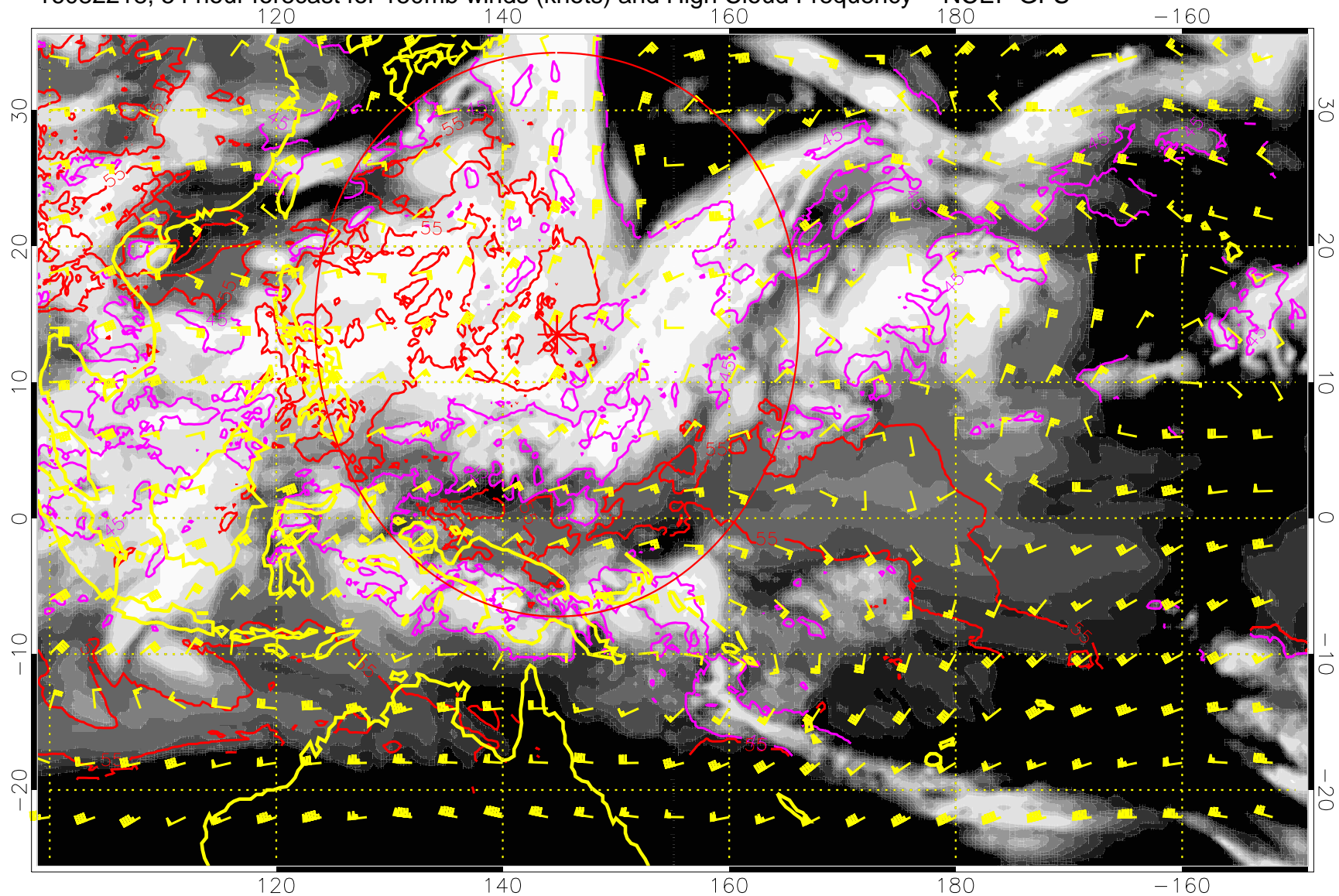
16082212, 48 hour forecast for 150mb winds (knots) and High Cloud Frequency -- NCEP GFS



45 kft
55 kft

Range ring of 2304 km

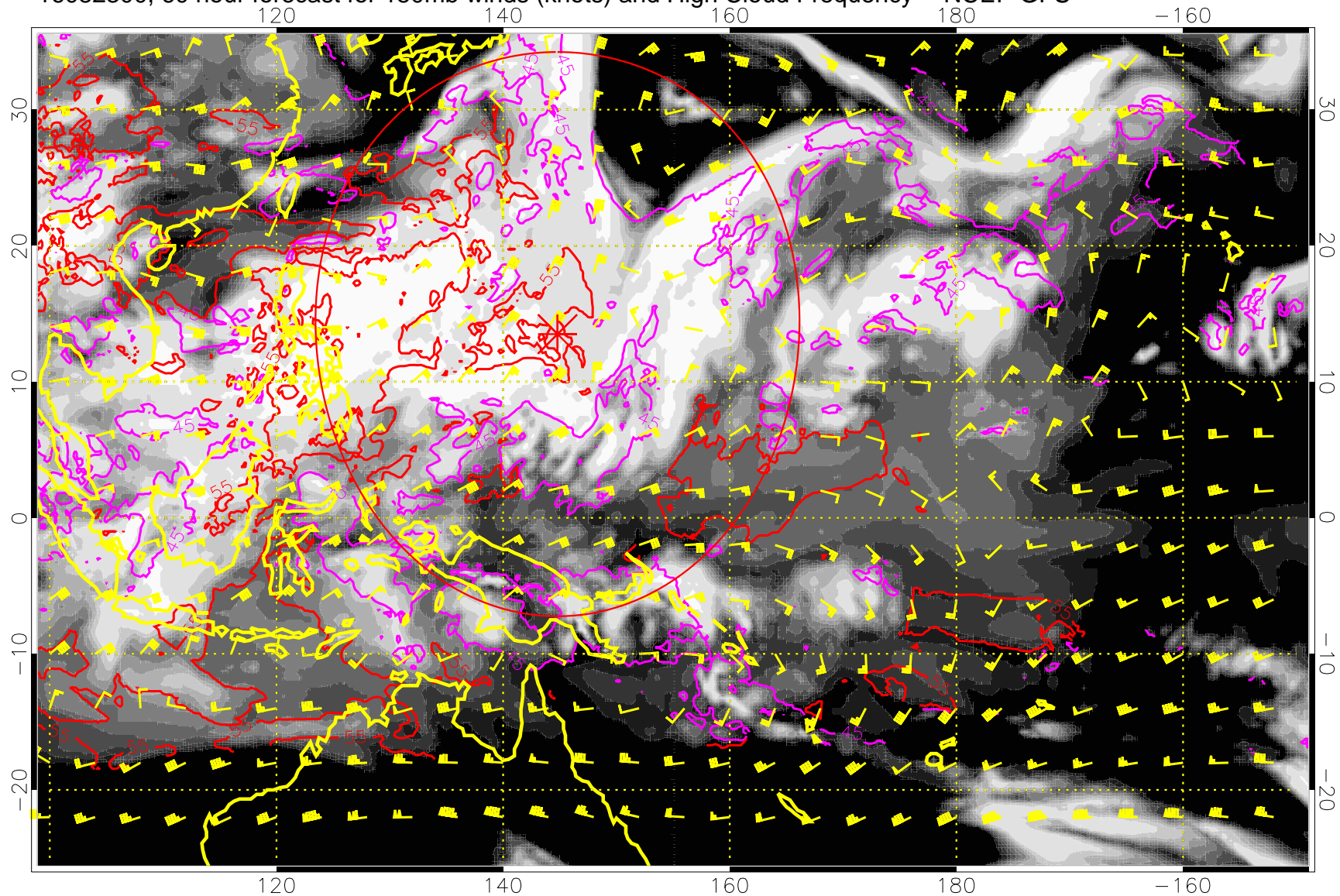
16082218, 54 hour forecast for 150mb winds (knots) and High Cloud Frequency -- NCEP GFS



45 kft
55 kft

Range ring of 2304 km

16082300, 60 hour forecast for 150mb winds (knots) and High Cloud Frequency -- NCEP GFS

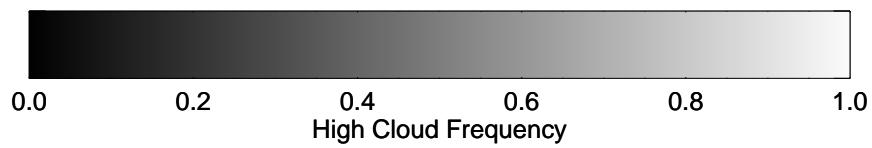
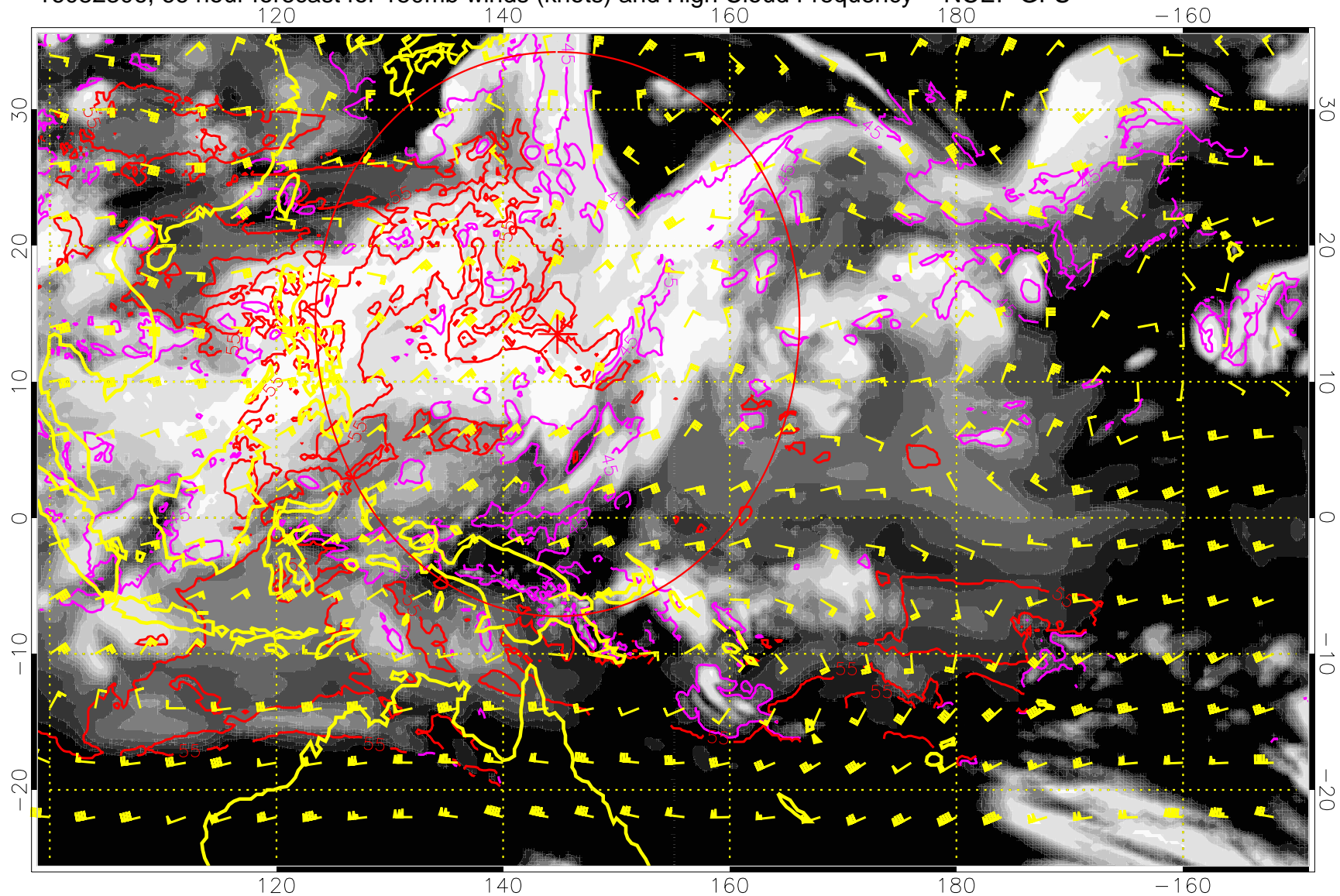


0.0 0.2 0.4 0.6 0.8 1.0
High Cloud Frequency

45 kft
55 kft

Range ring of 2304 km

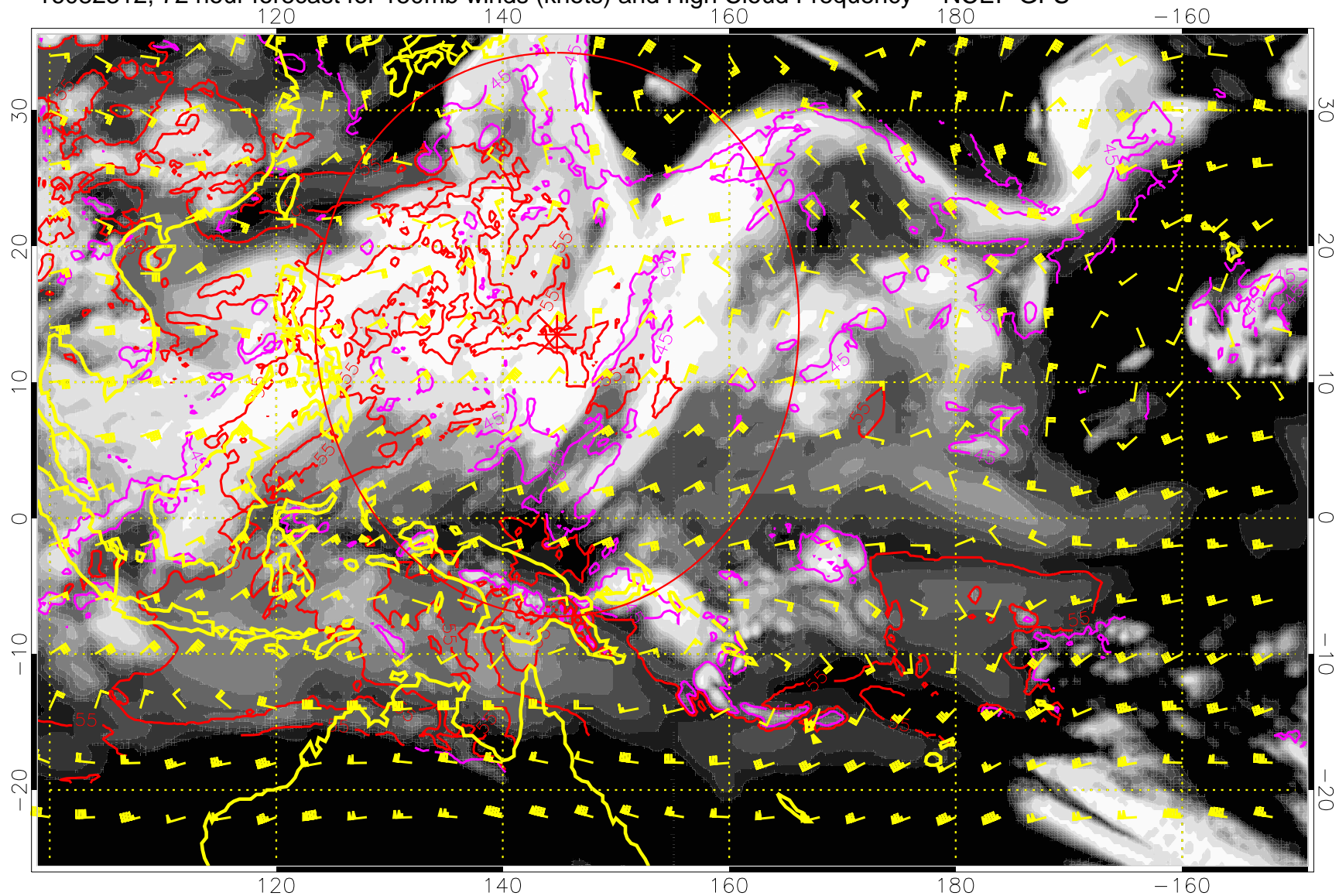
16082306, 66 hour forecast for 150mb winds (knots) and High Cloud Frequency -- NCEP GFS



45 kft
55 kft

Range ring of 2304 km

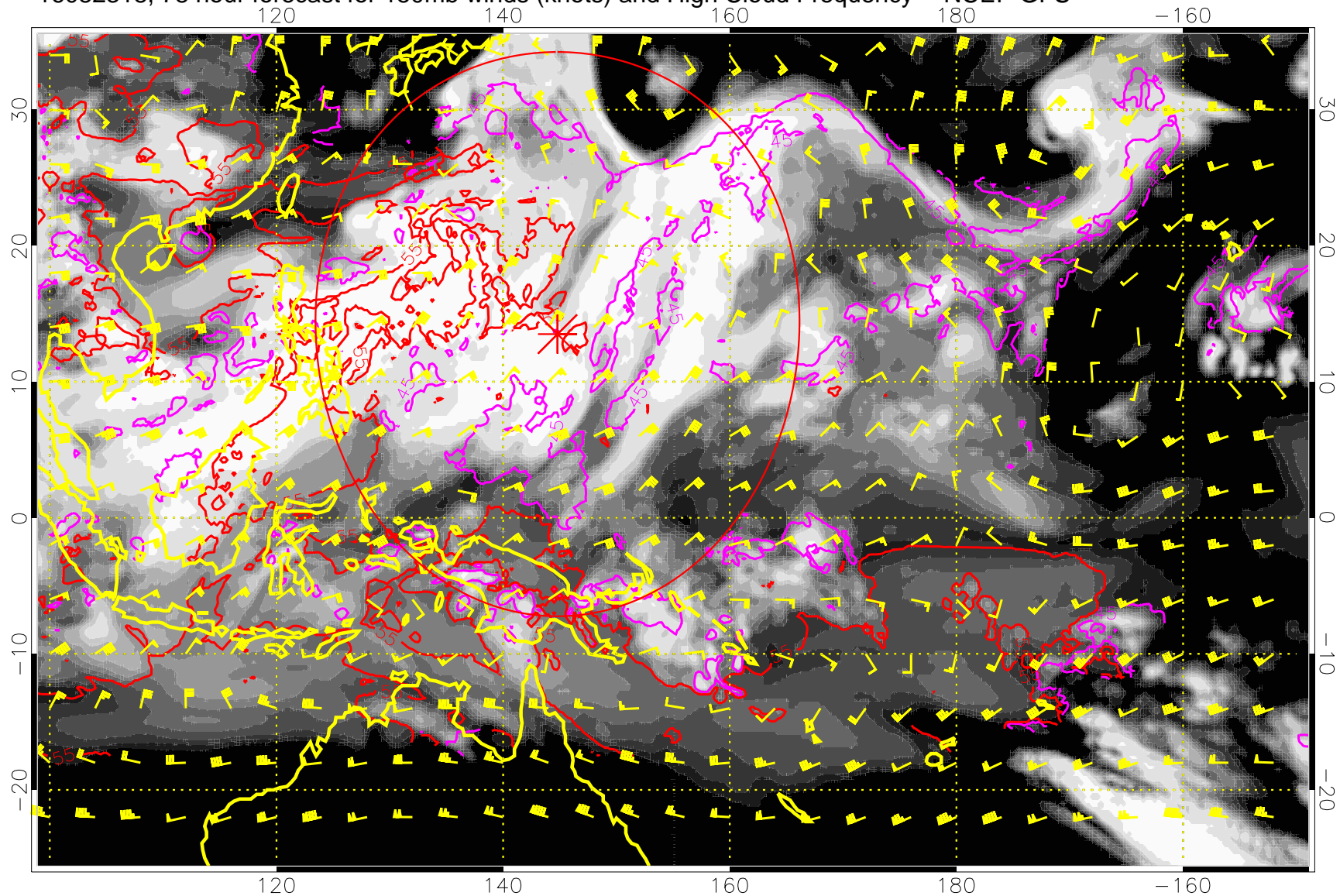
16082312, 72 hour forecast for 150mb winds (knots) and High Cloud Frequency -- NCEP GFS



45 kft
55 kft

Range ring of 2304 km

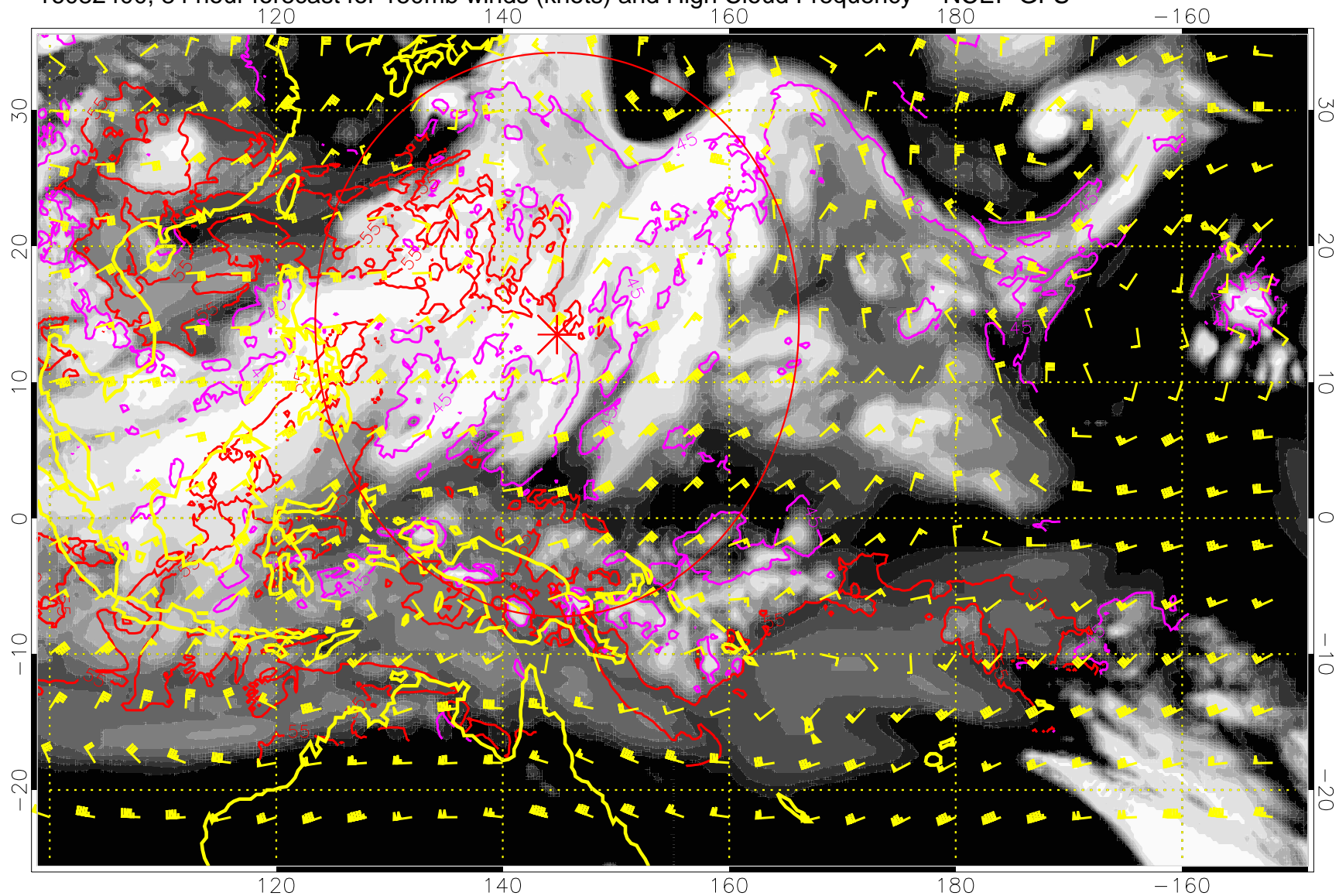
16082318, 78 hour forecast for 150mb winds (knots) and High Cloud Frequency -- NCEP GFS



45 kft
55 kft

Range ring of 2304 km

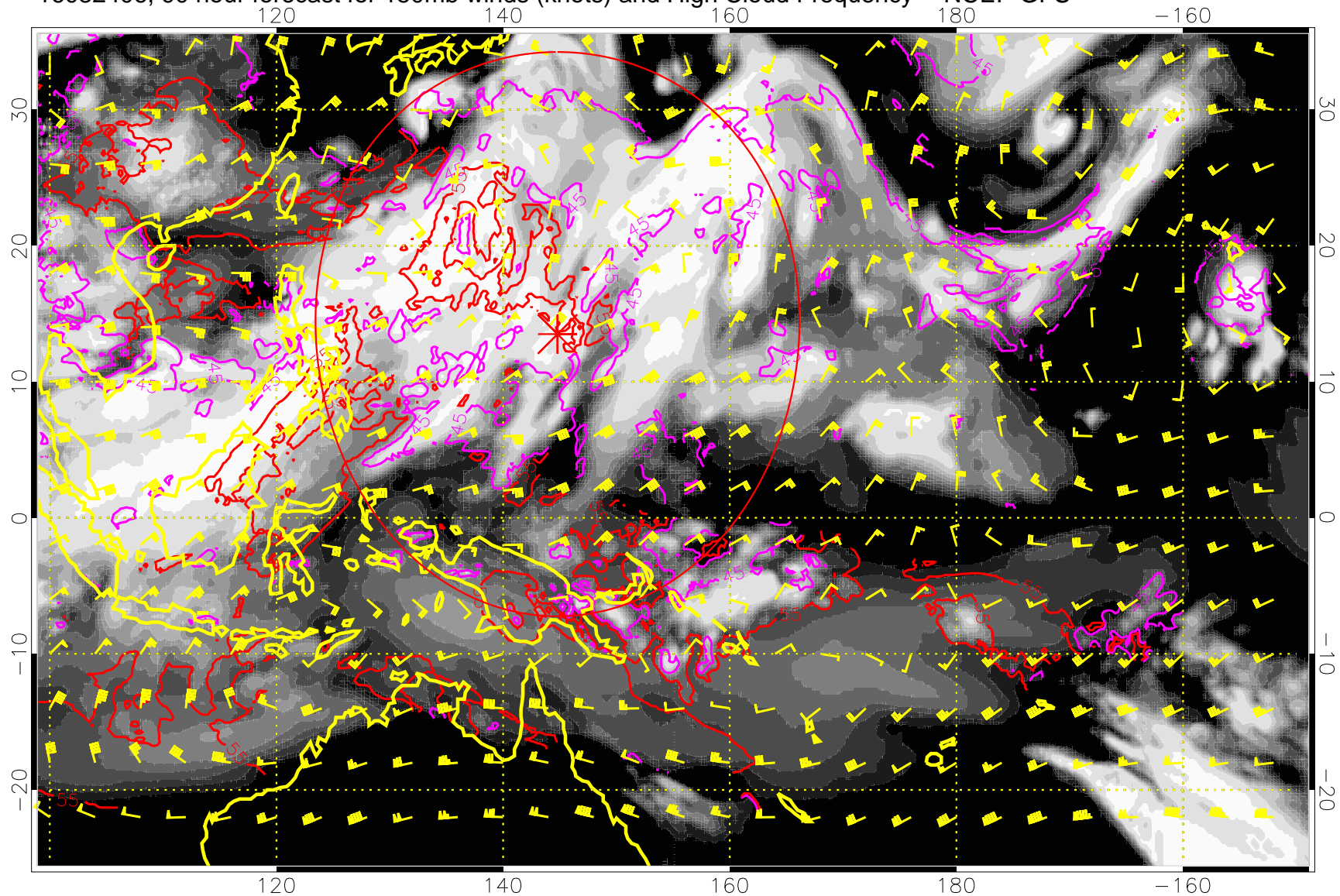
16082400, 84 hour forecast for 150mb winds (knots) and High Cloud Frequency -- NCEP GFS



45 kft
55 kft

Range ring of 2304 km

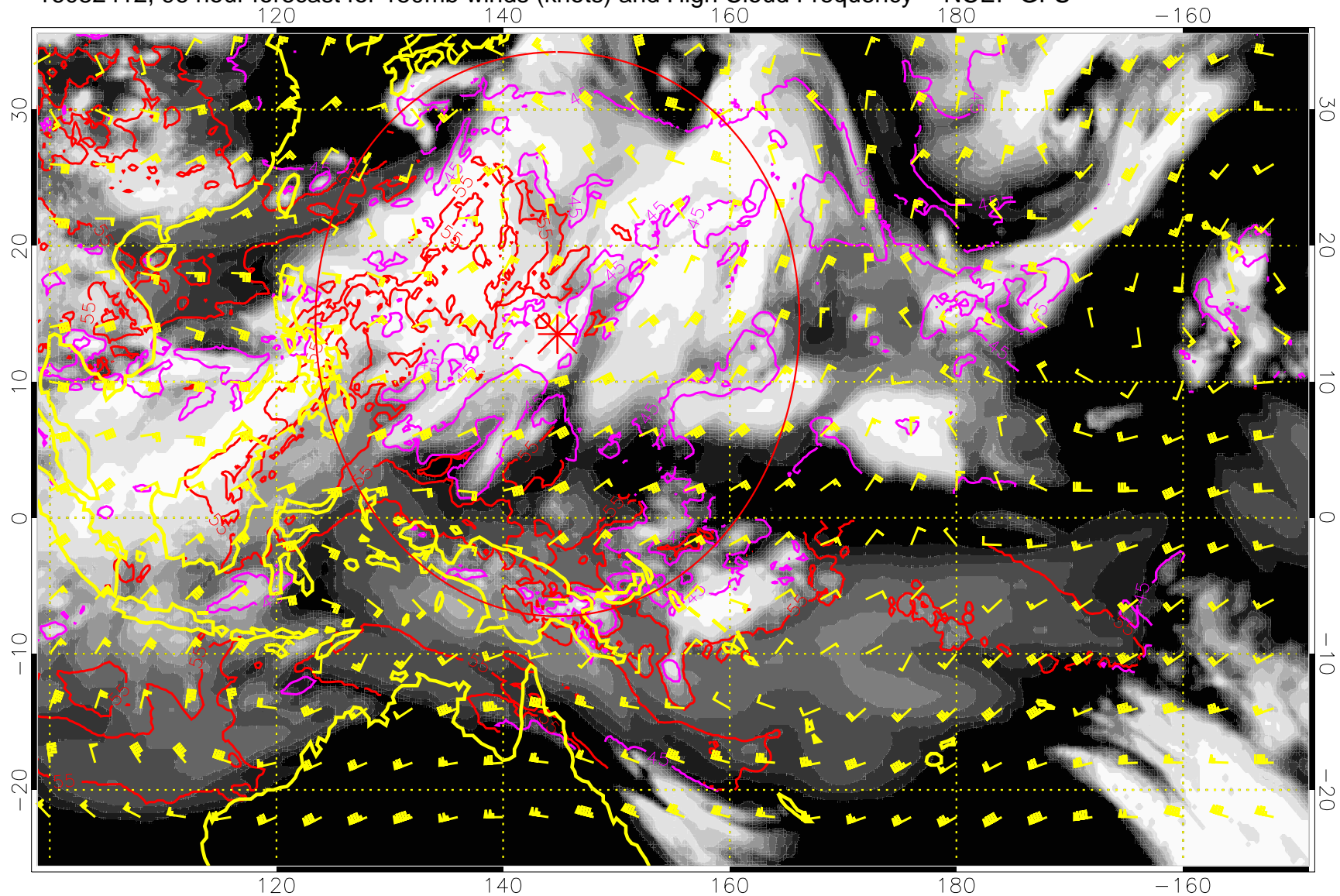
16082406, 90 hour forecast for 150mb winds (knots) and High Cloud Frequency -- NCEP GFS



45 kft
55 kft

Range ring of 2304 km

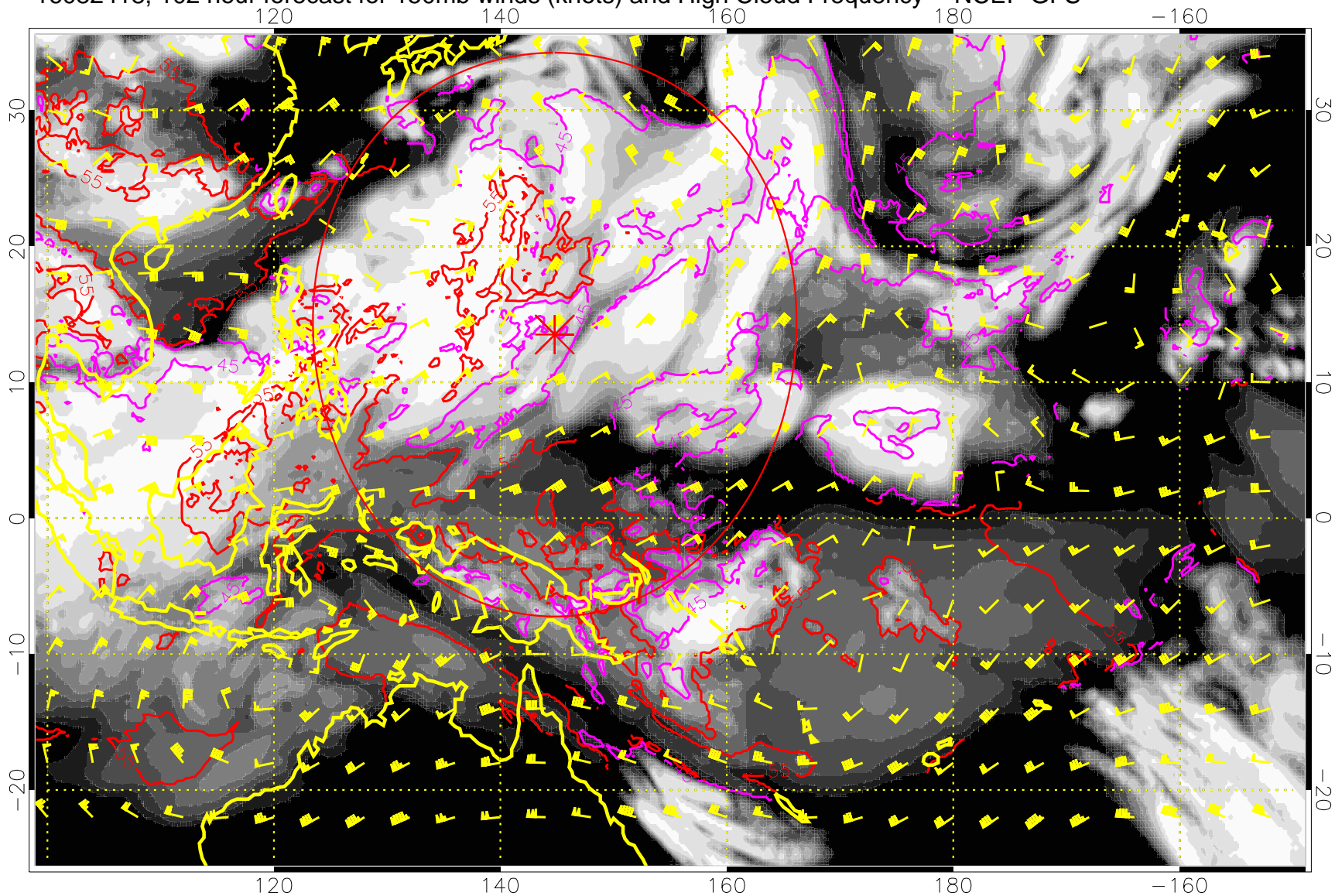
16082412, 96 hour forecast for 150mb winds (knots) and High Cloud Frequency -- NCEP GFS



45 kft
55 kft

Range ring of 2304 km

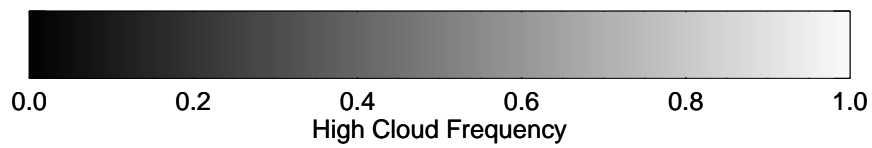
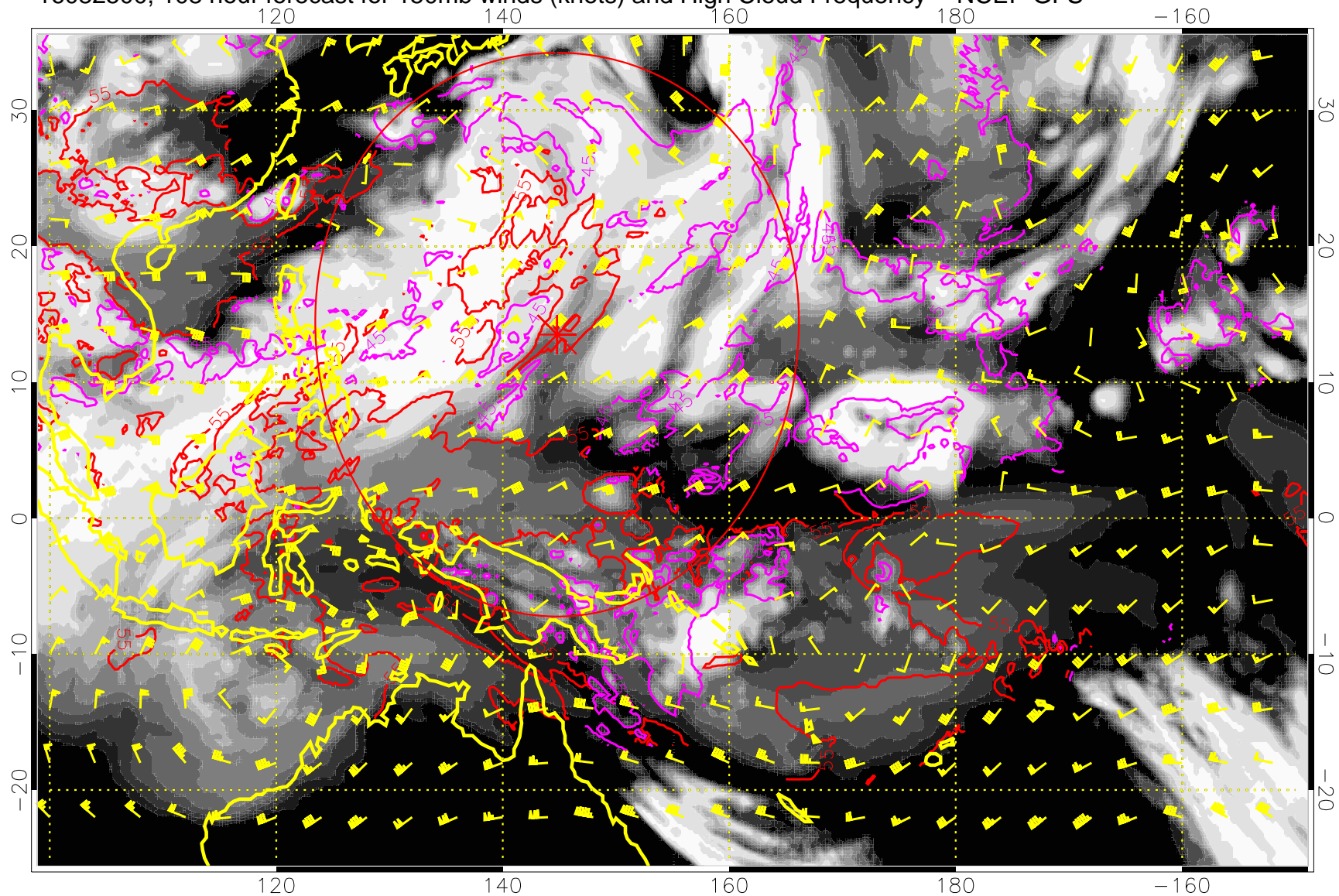
16082418, 102 hour forecast for 150mb winds (knots) and High Cloud Frequency -- NCEP GFS



45 kft
55 kft

Range ring of 2304 km

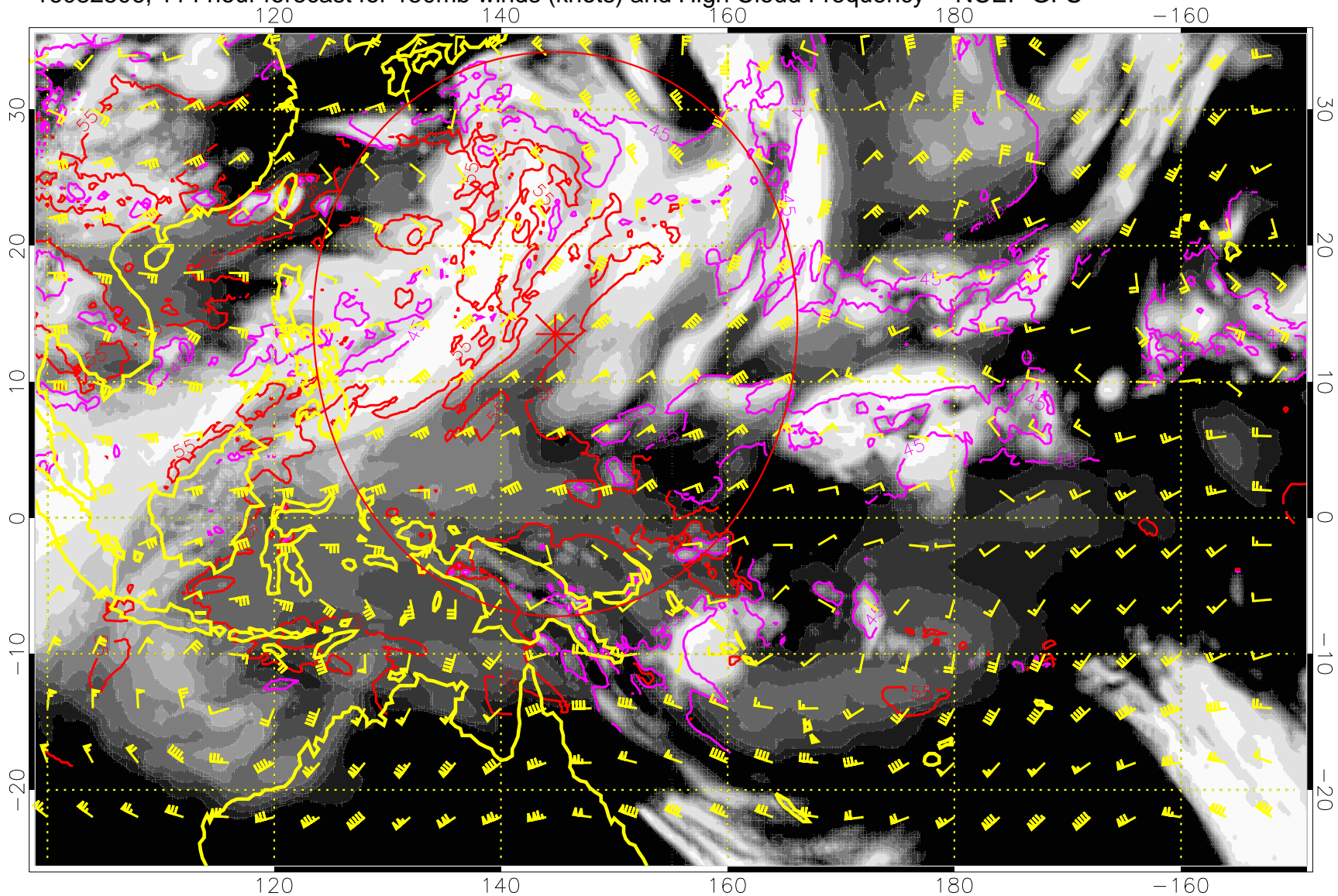
16082500, 108 hour forecast for 150mb winds (knots) and High Cloud Frequency -- NCEP GFS



45 kft
55 kft

Range ring of 2304 km

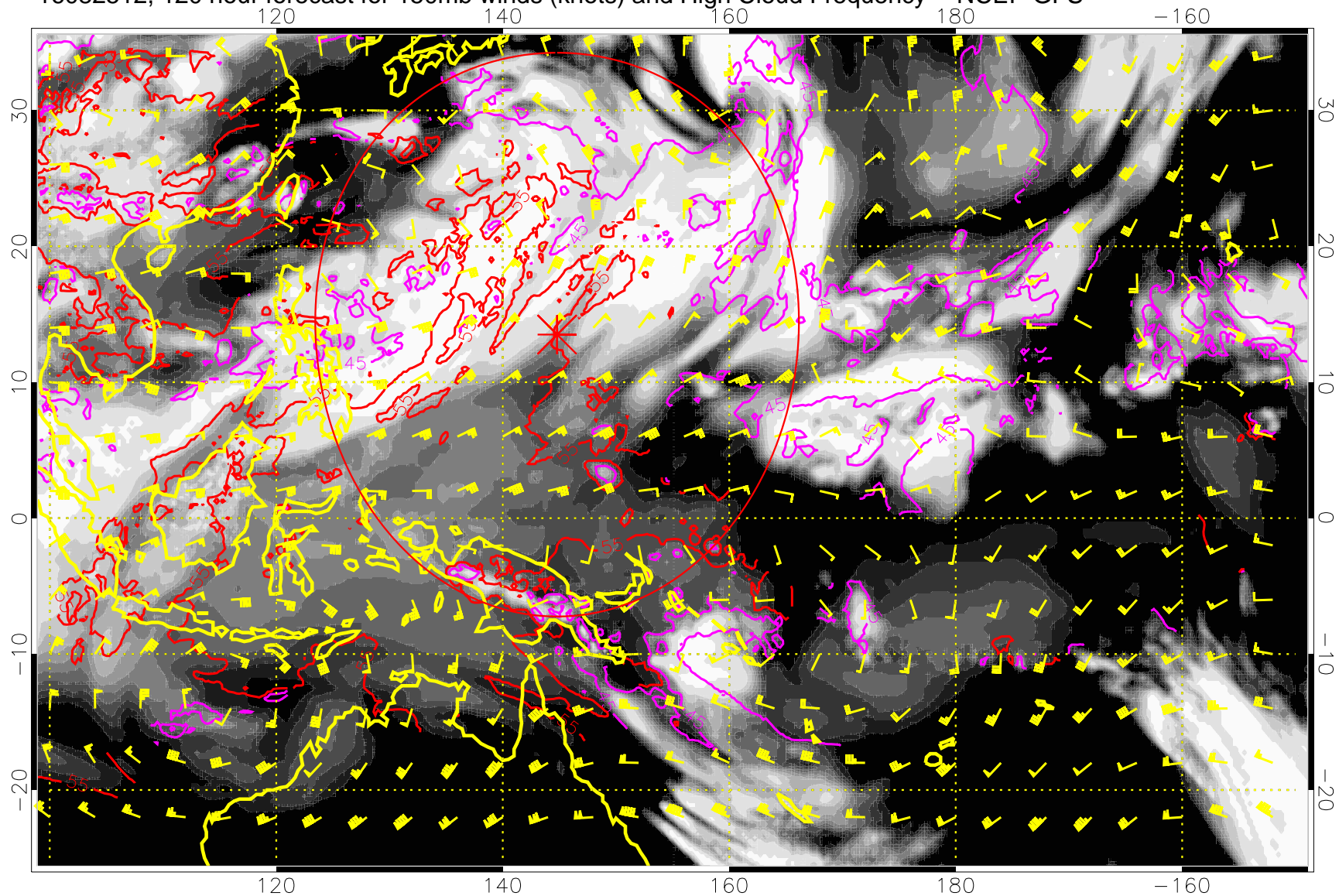
16082506, 114 hour forecast for 150mb winds (knots) and High Cloud Frequency -- NCEP GFS



45 kft
55 kft

Range ring of 2304 km

16082512, 120 hour forecast for 150mb winds (knots) and High Cloud Frequency -- NCEP GFS



45 kft
55 kft

Range ring of 2304 km