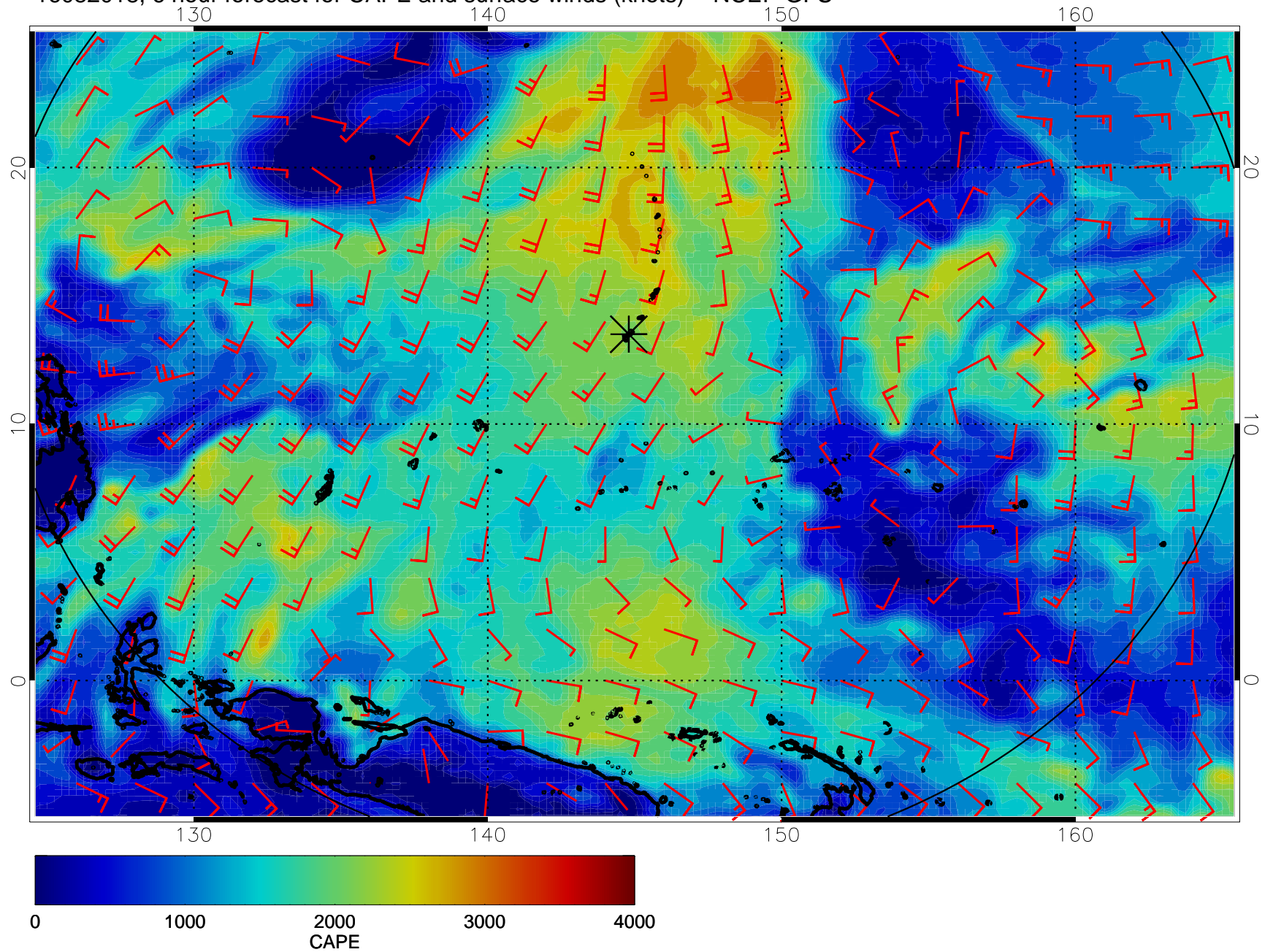
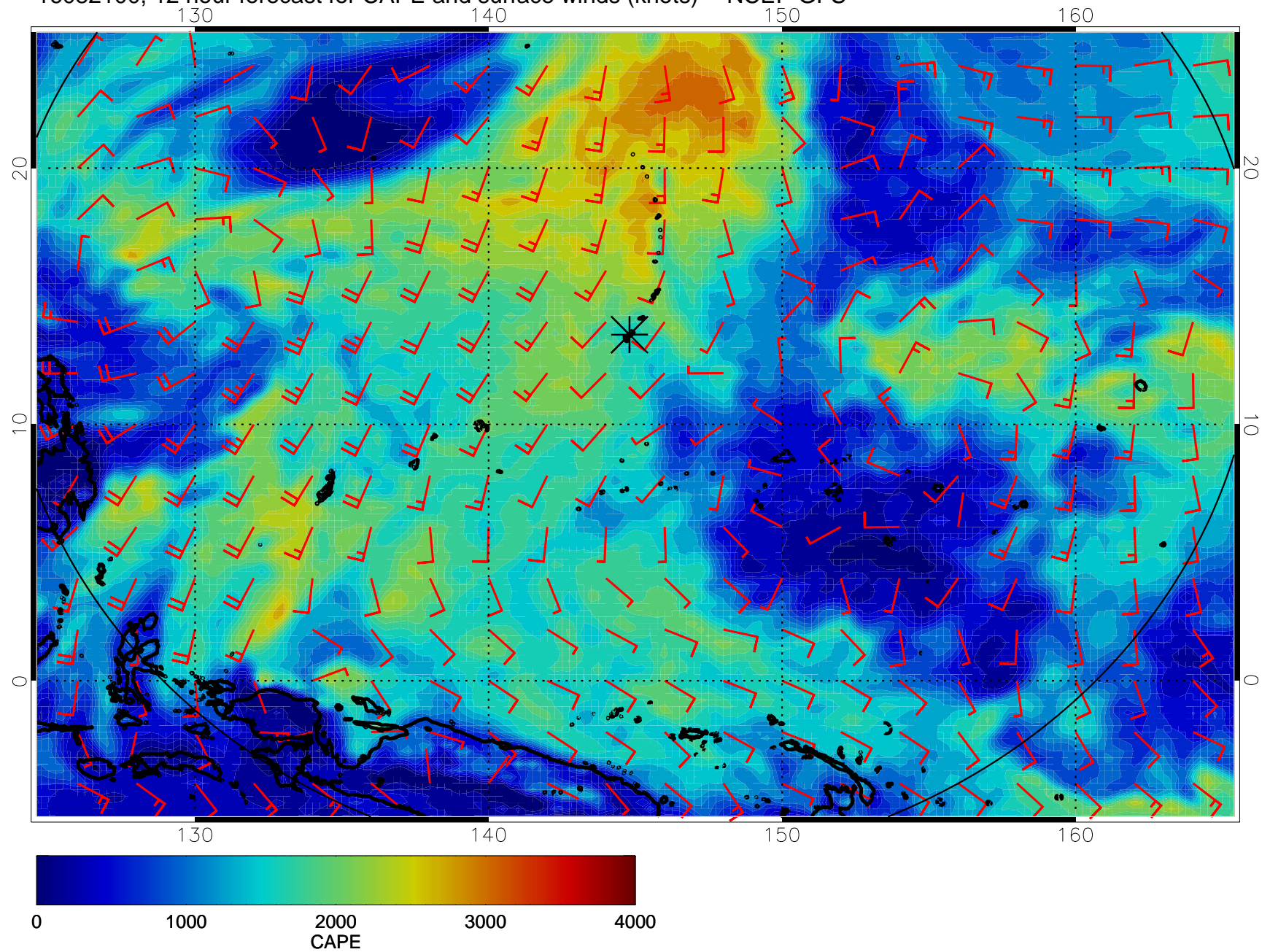


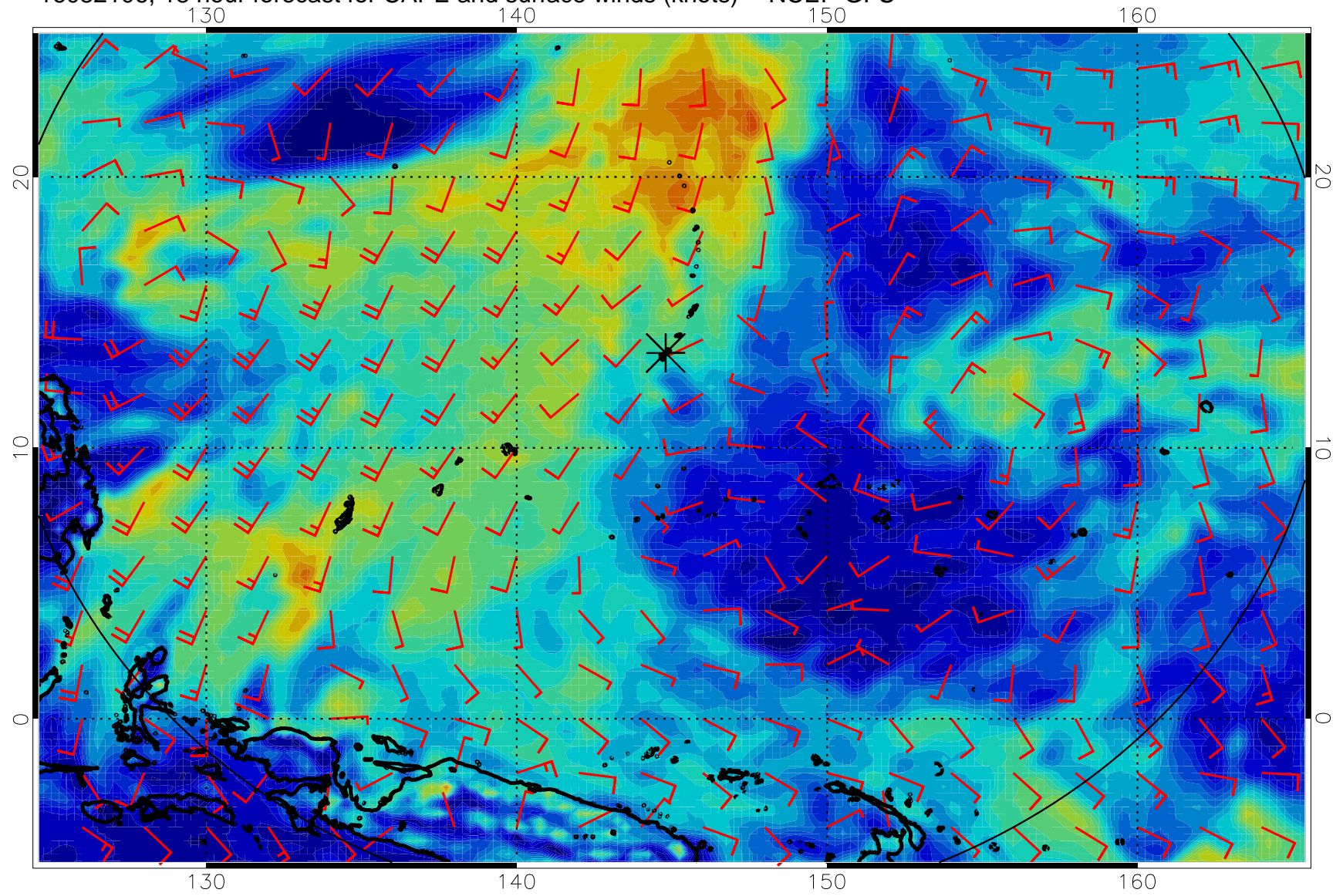
16082018, 6 hour forecast for CAPE and surface winds (knots) -- NCEP GFS



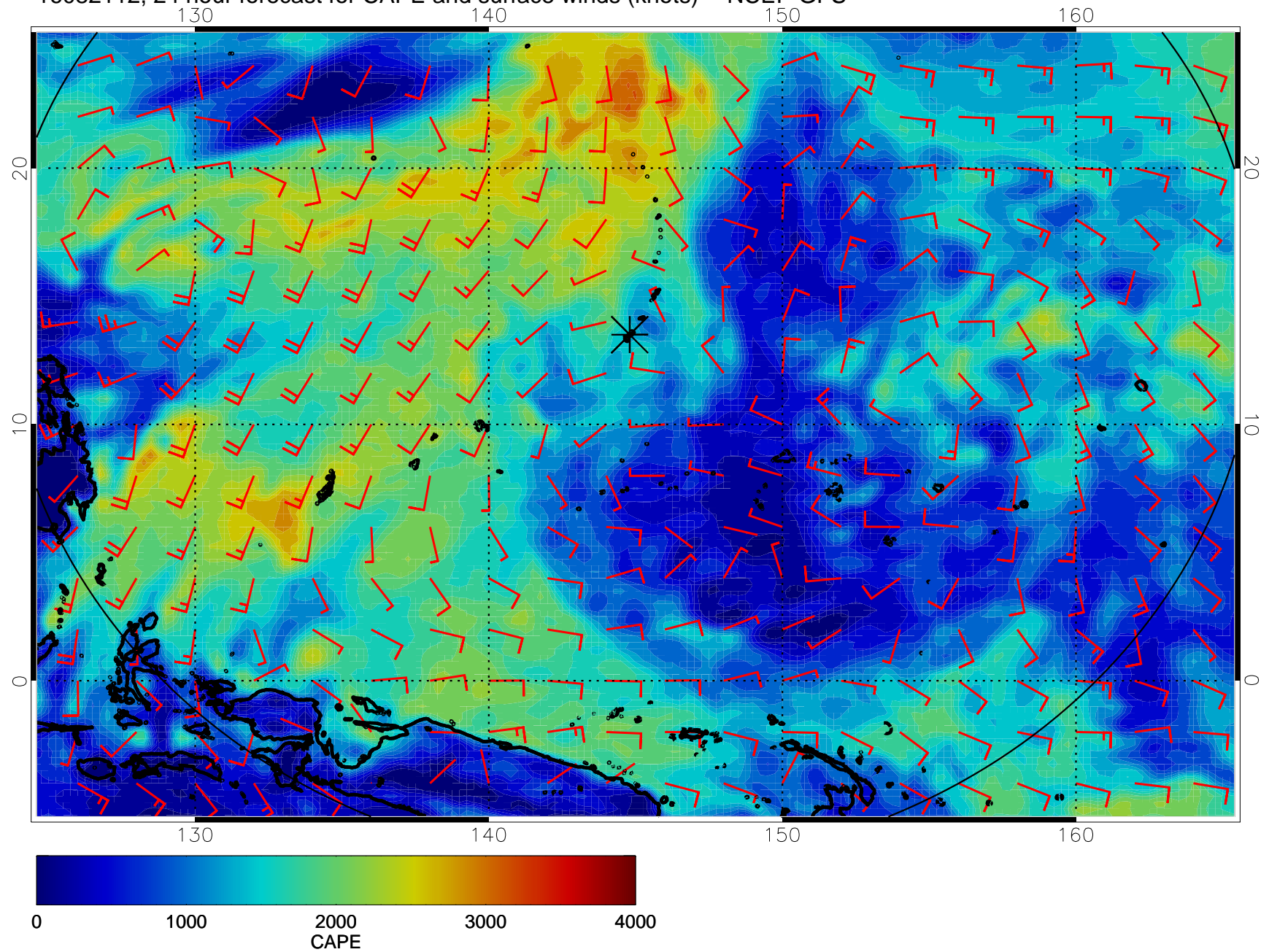
16082100, 12 hour forecast for CAPE and surface winds (knots) -- NCEP GFS



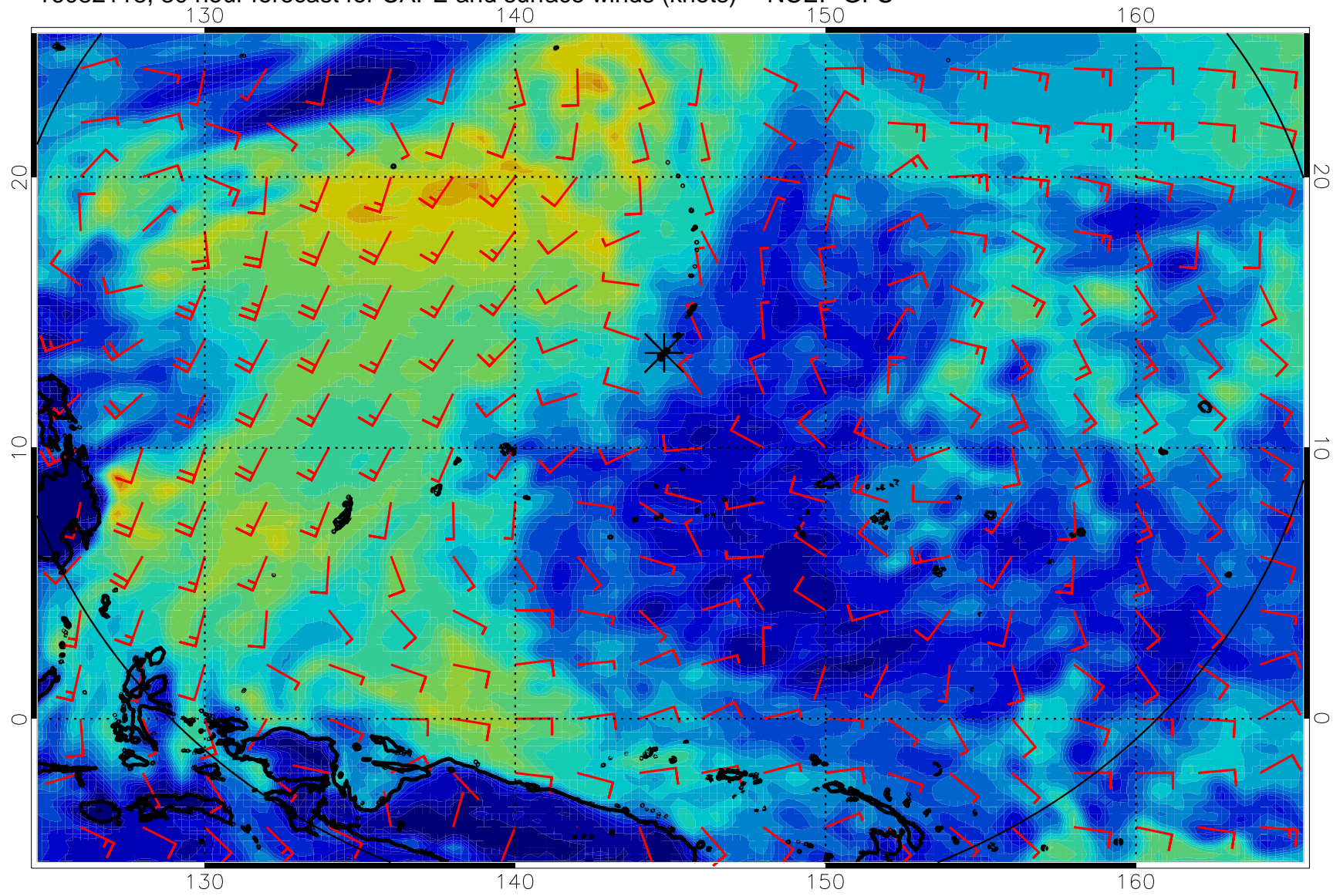
16082106, 18 hour forecast for CAPE and surface winds (knots) -- NCEP GFS



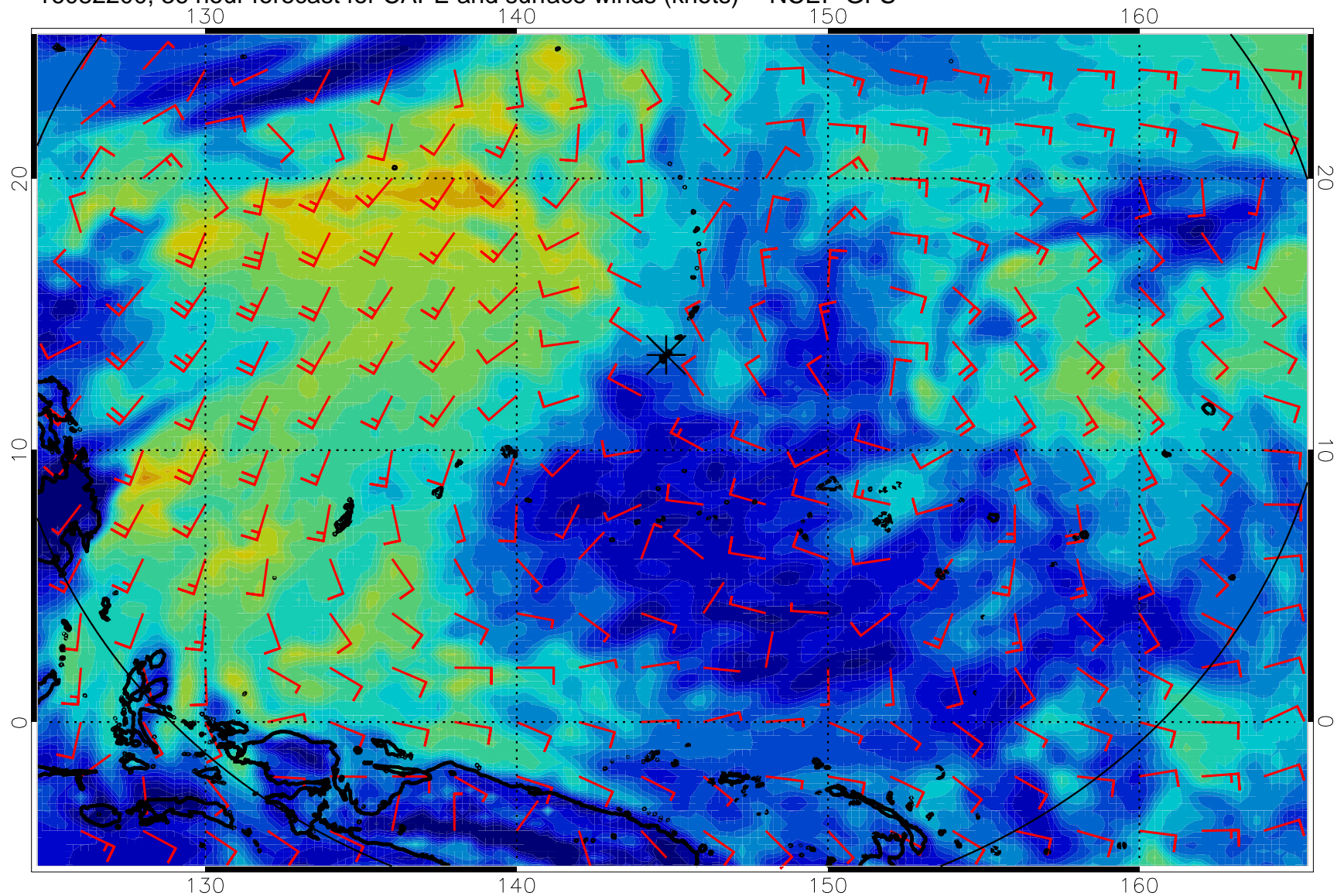
16082112, 24 hour forecast for CAPE and surface winds (knots) -- NCEP GFS



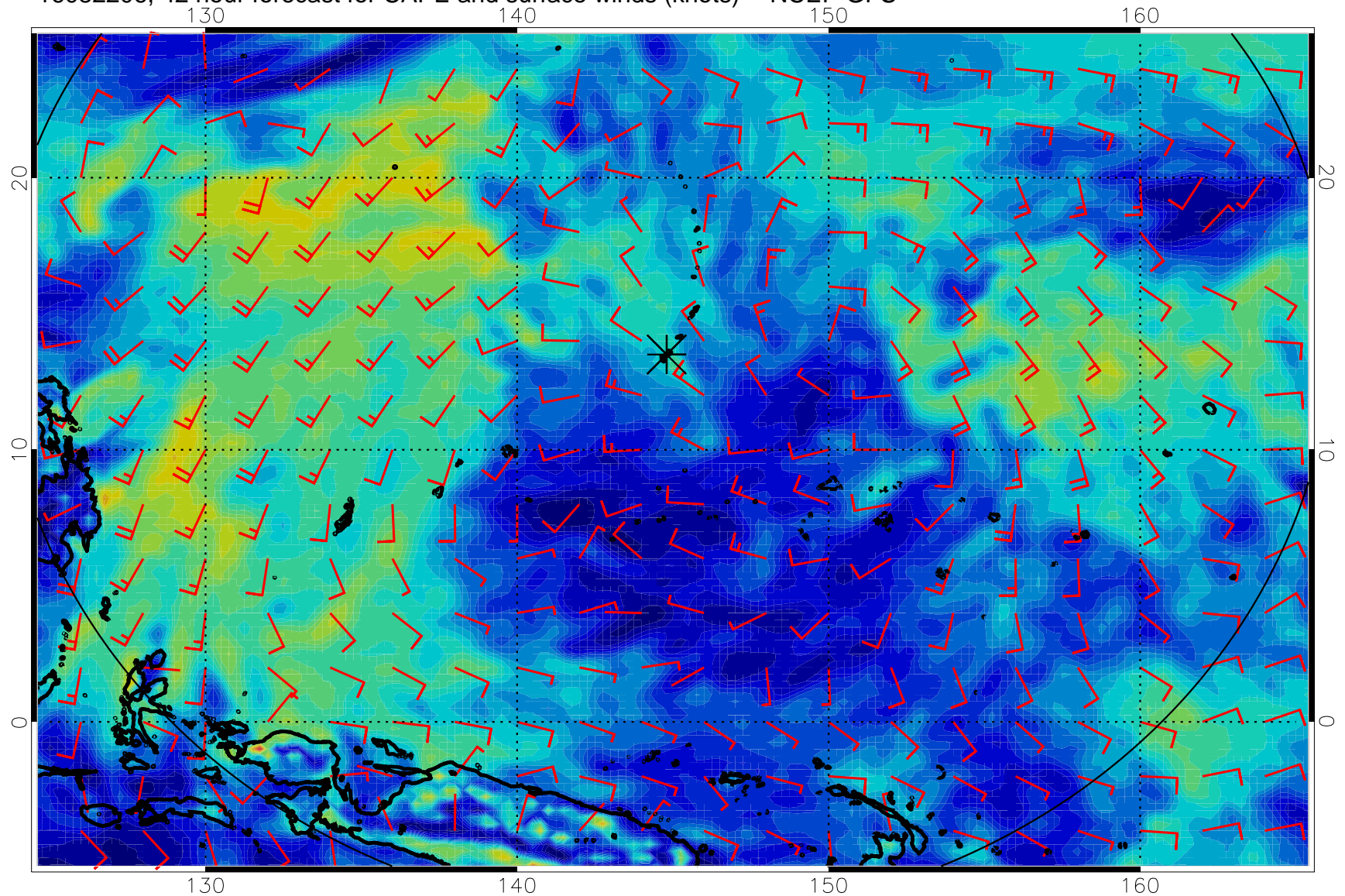
16082118, 30 hour forecast for CAPE and surface winds (knots) -- NCEP GFS



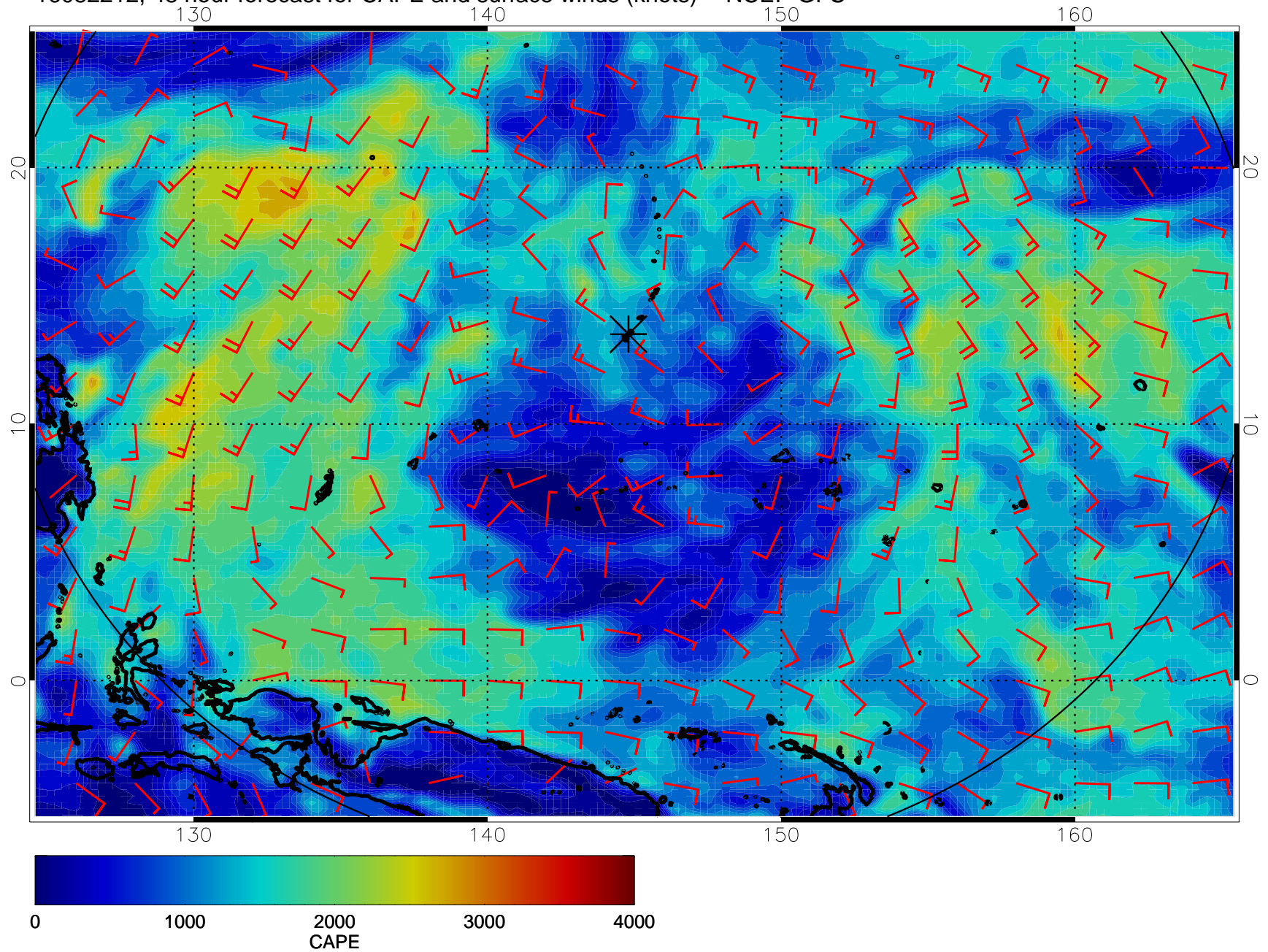
16082200, 36 hour forecast for CAPE and surface winds (knots) -- NCEP GFS



16082206, 42 hour forecast for CAPE and surface winds (knots) -- NCEP GFS

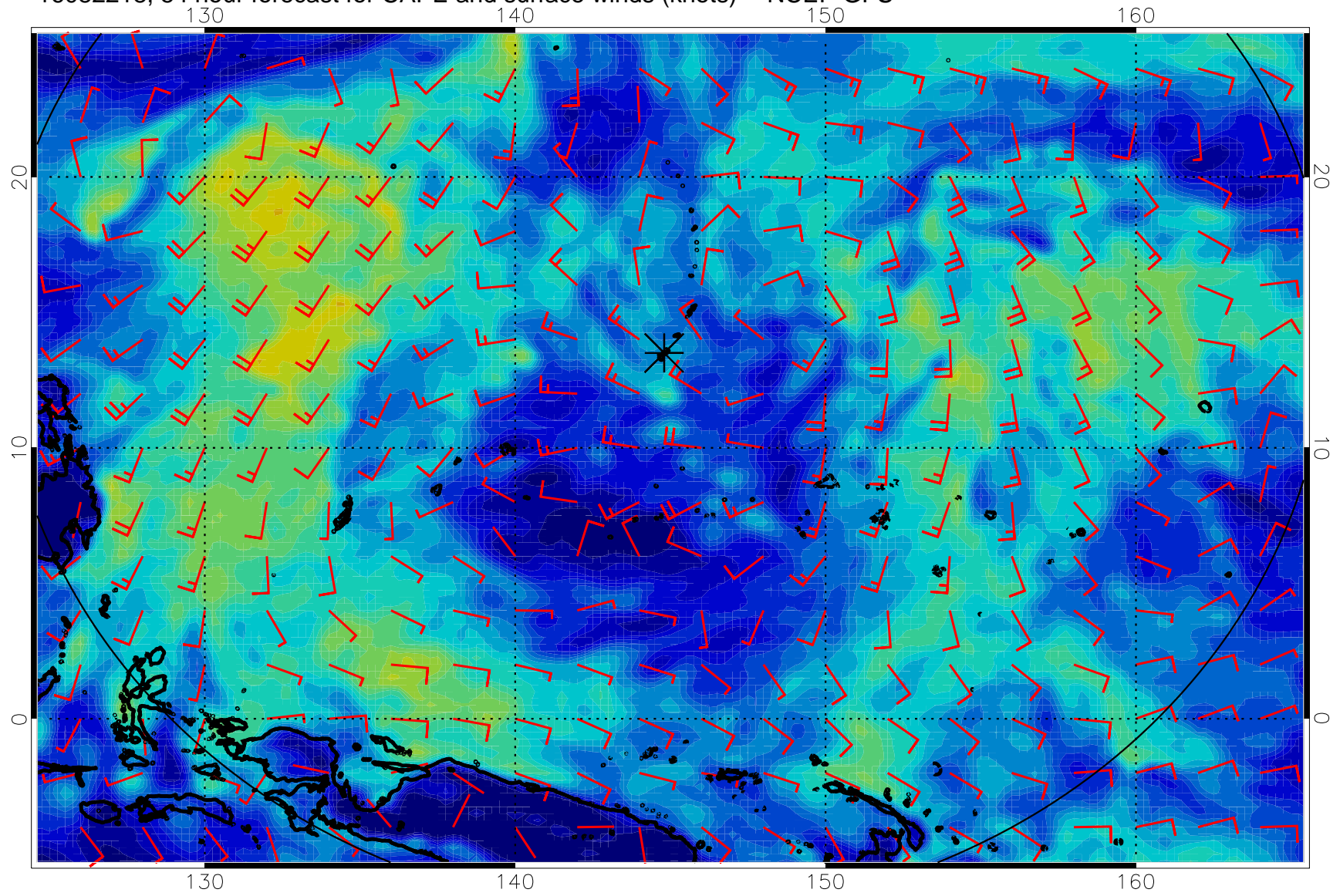


16082212, 48 hour forecast for CAPE and surface winds (knots) -- NCEP GFS

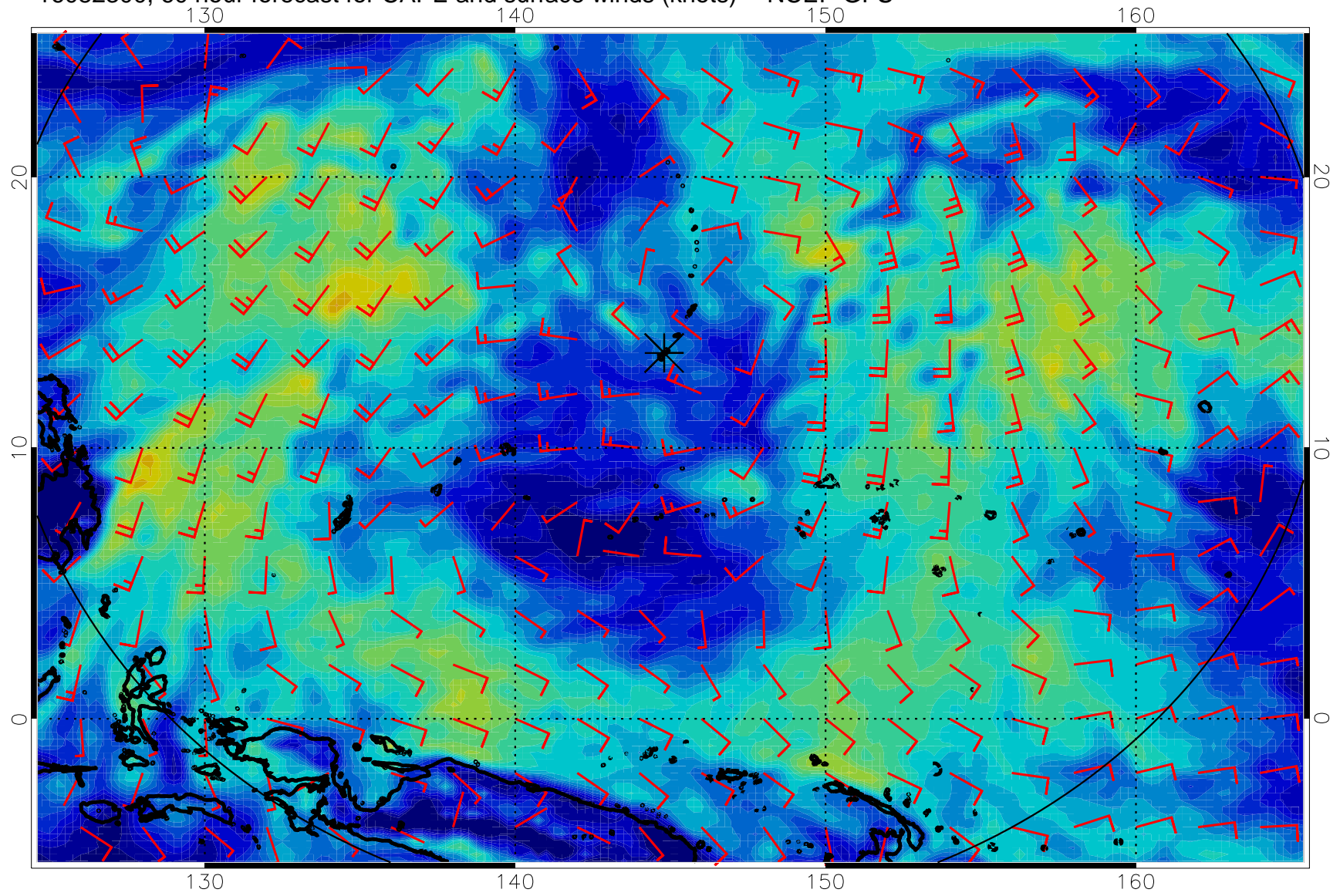




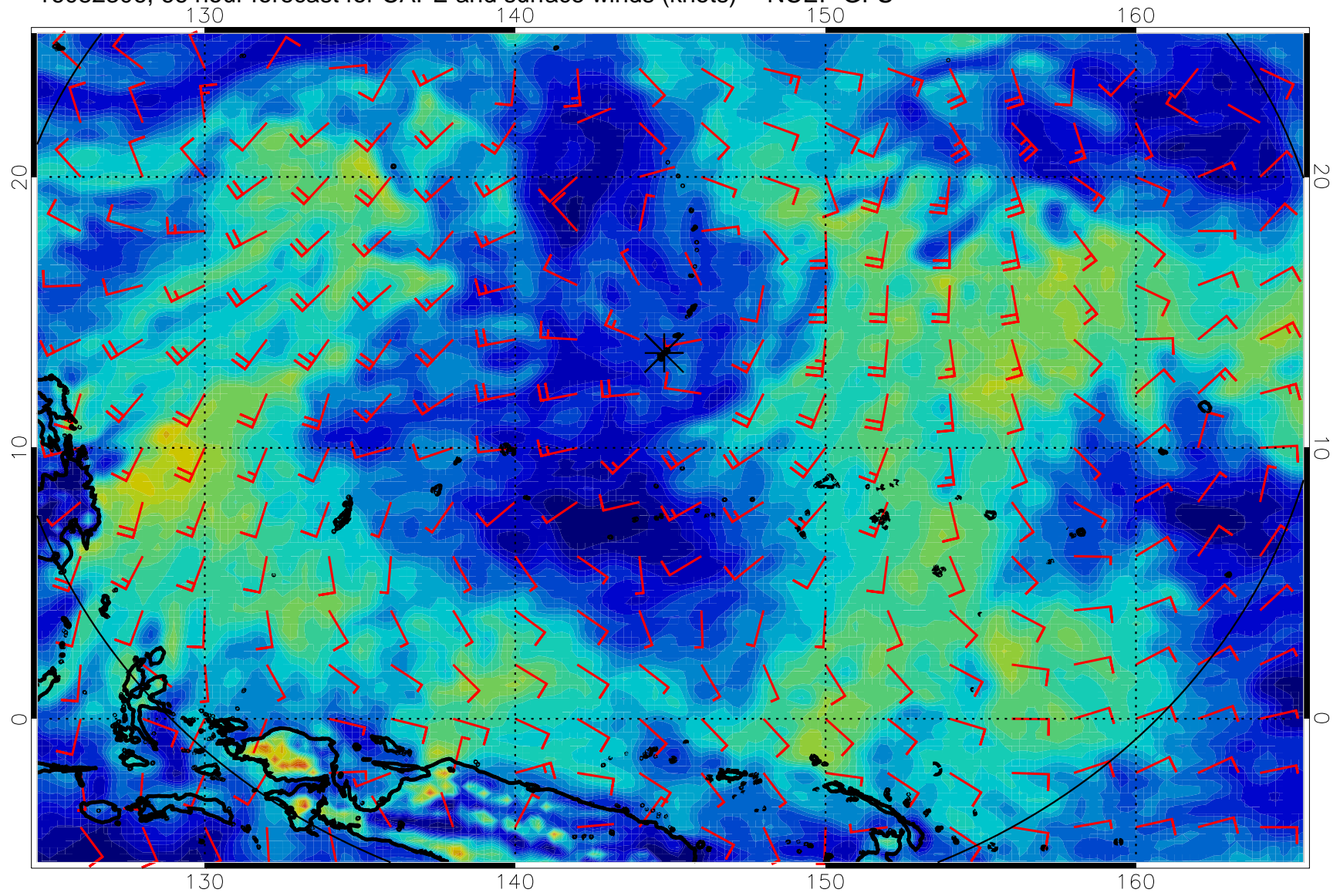
16082218, 54 hour forecast for CAPE and surface winds (knots) -- NCEP GFS



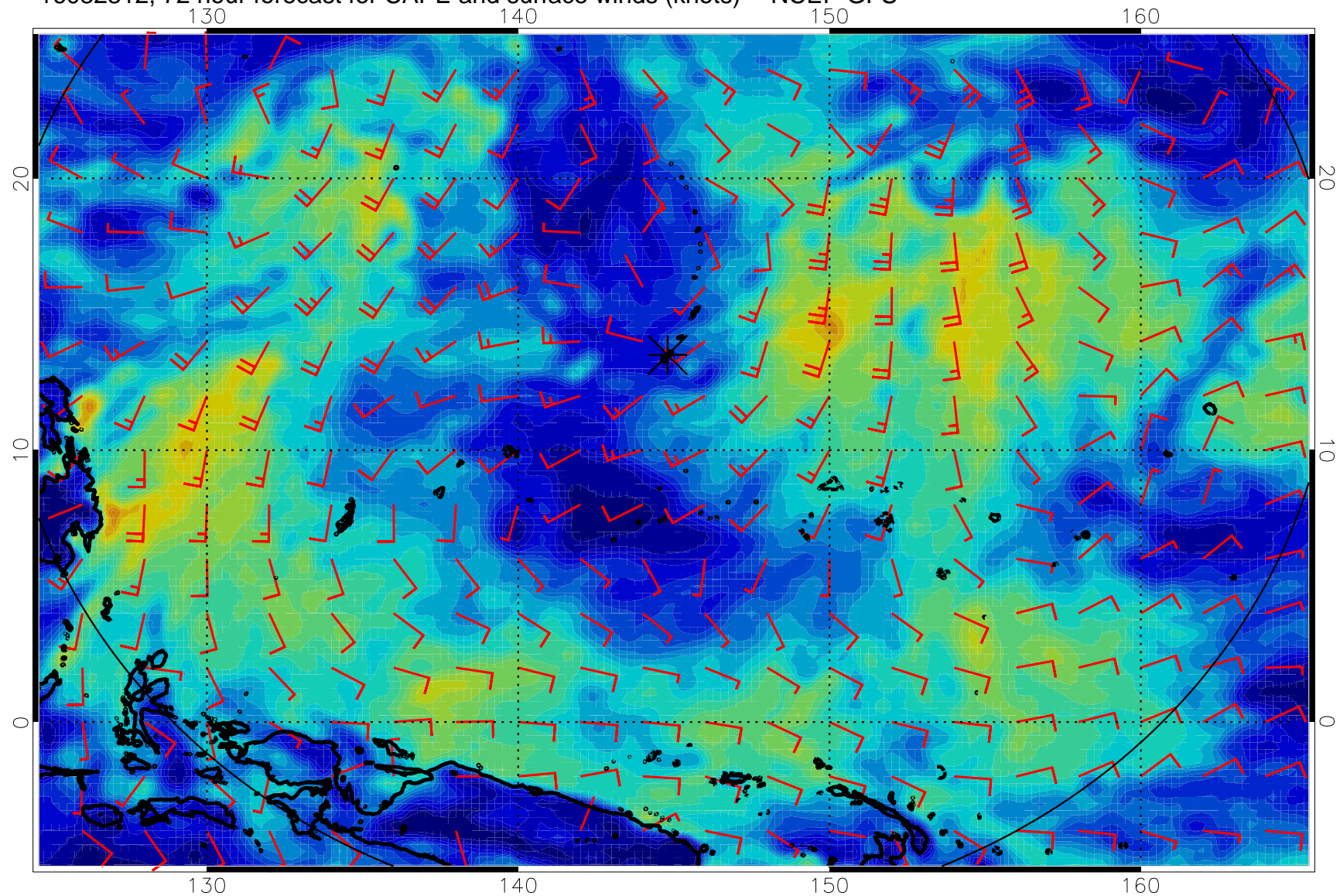
16082300, 60 hour forecast for CAPE and surface winds (knots) -- NCEP GFS



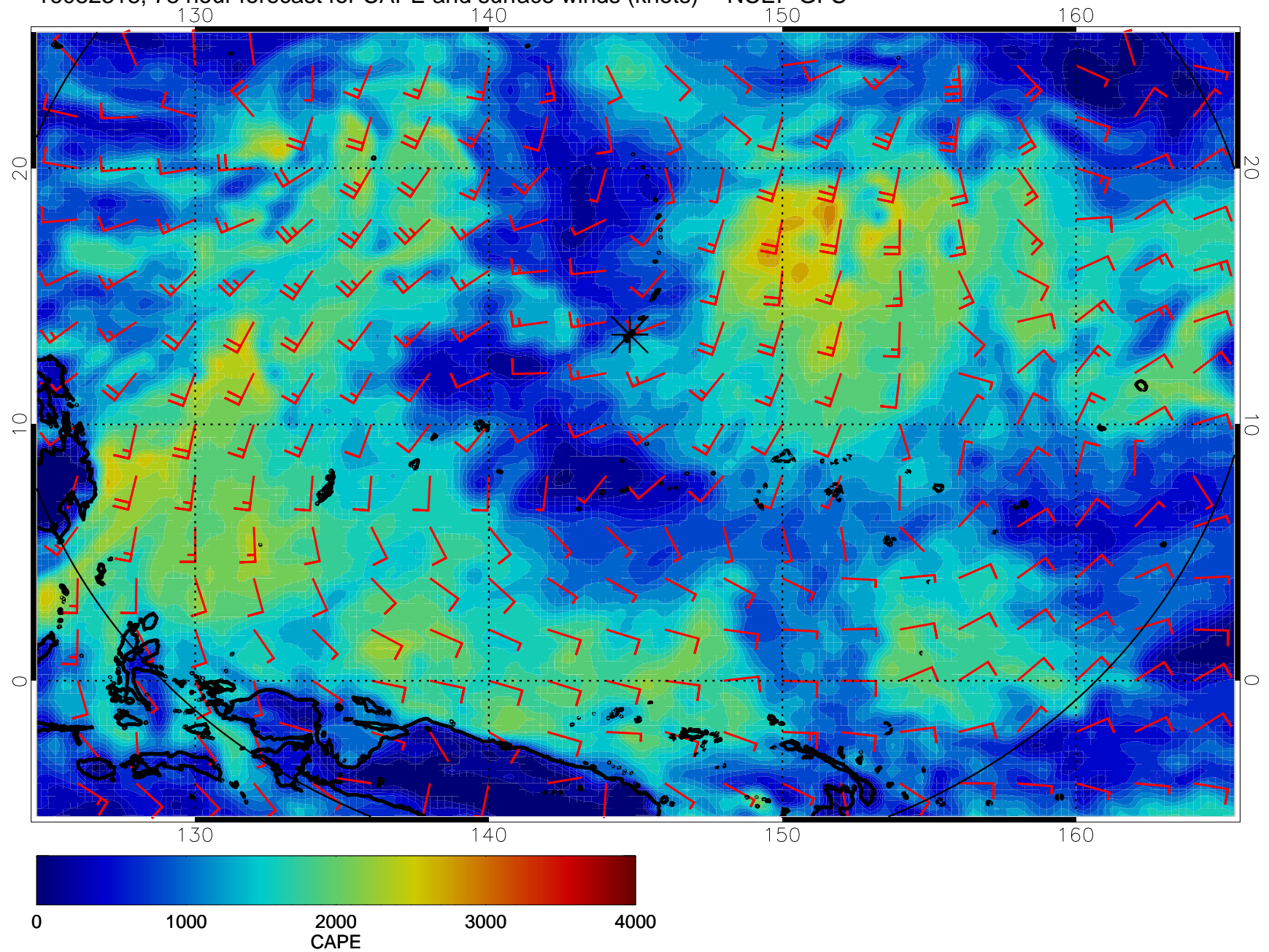
16082306, 66 hour forecast for CAPE and surface winds (knots) -- NCEP GFS



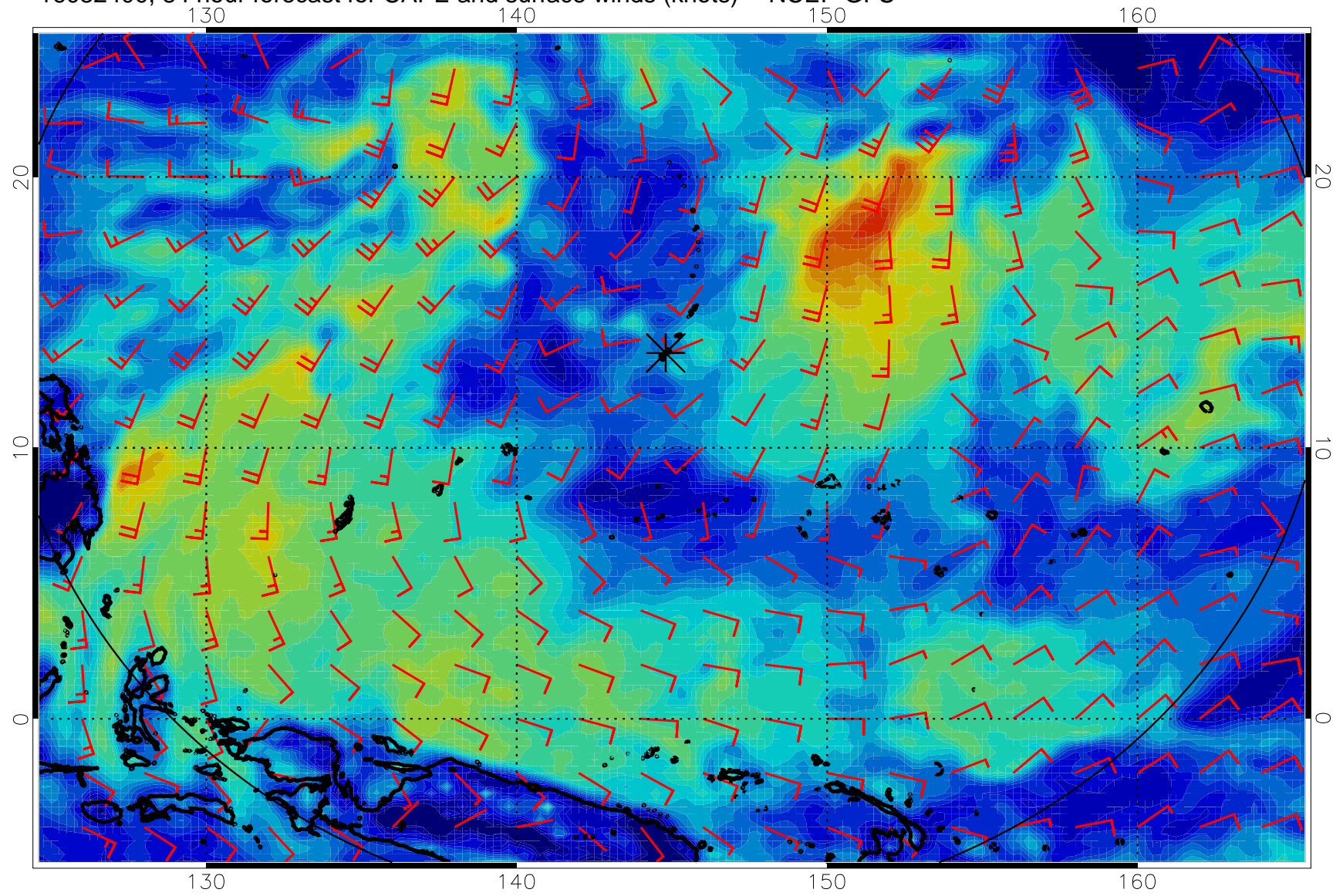
16082312, 72 hour forecast for CAPE and surface winds (knots) -- NCEP GFS



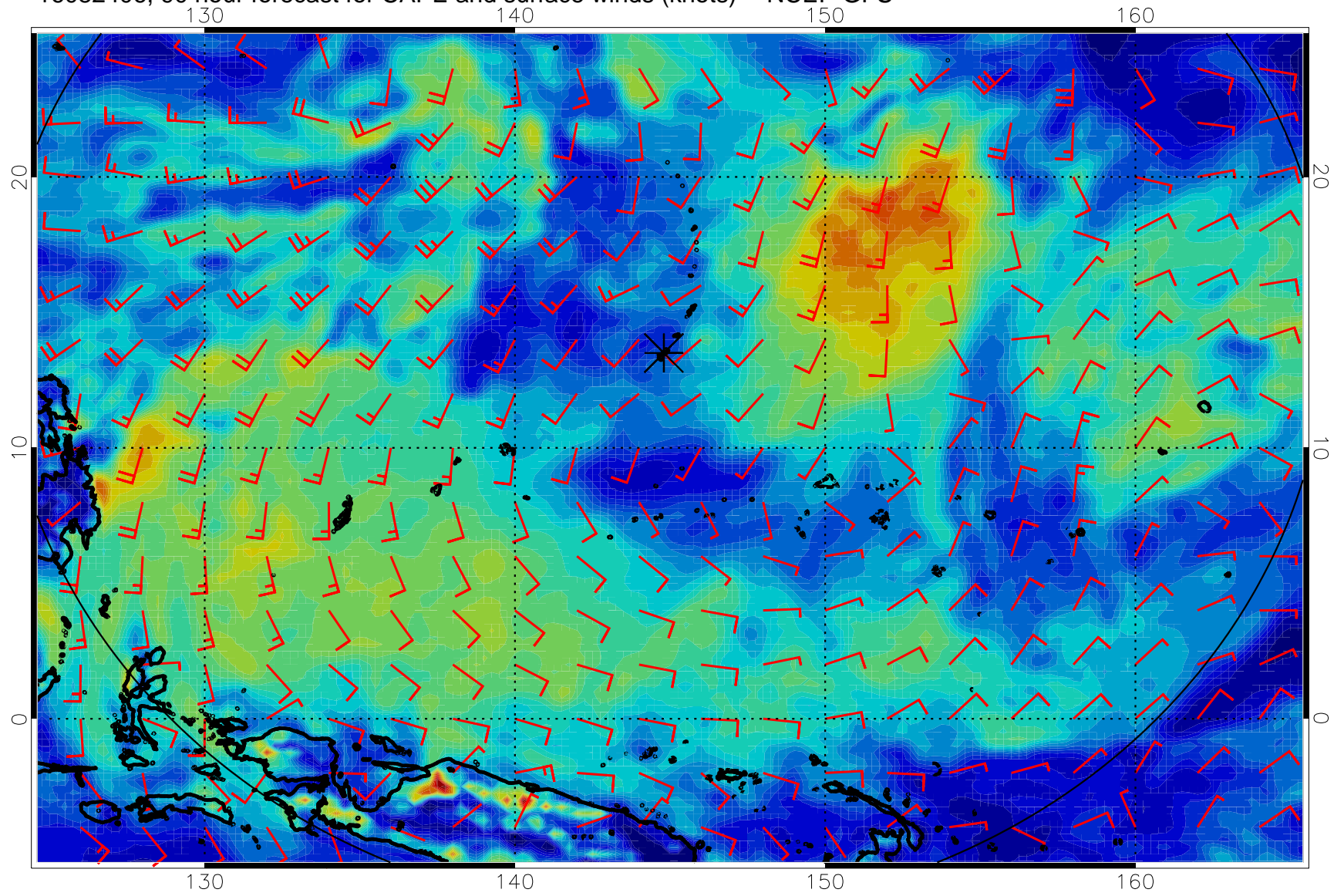
16082318, 78 hour forecast for CAPE and surface winds (knots) -- NCEP GFS



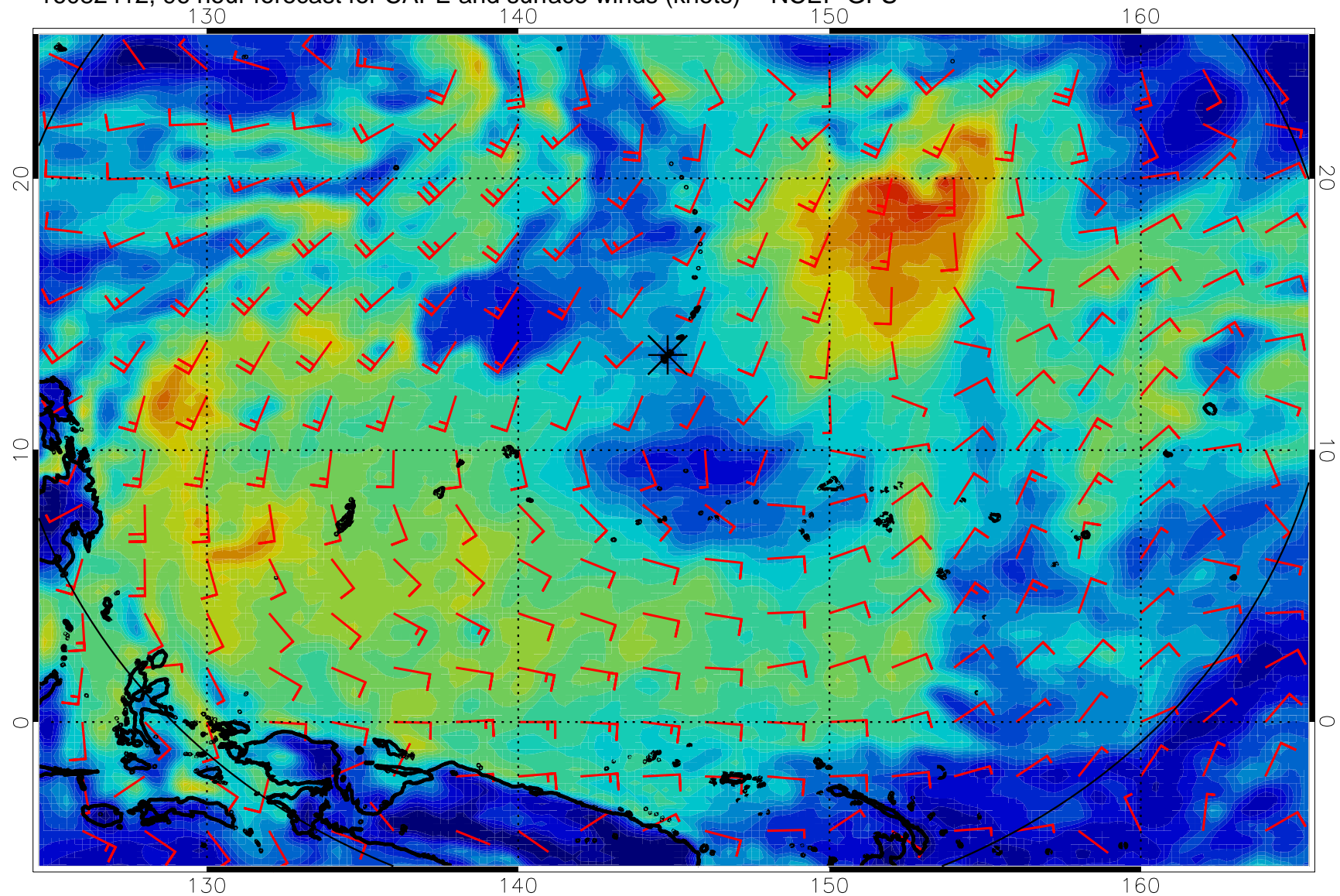
16082400, 84 hour forecast for CAPE and surface winds (knots) -- NCEP GFS



16082406, 90 hour forecast for CAPE and surface winds (knots) -- NCEP GFS

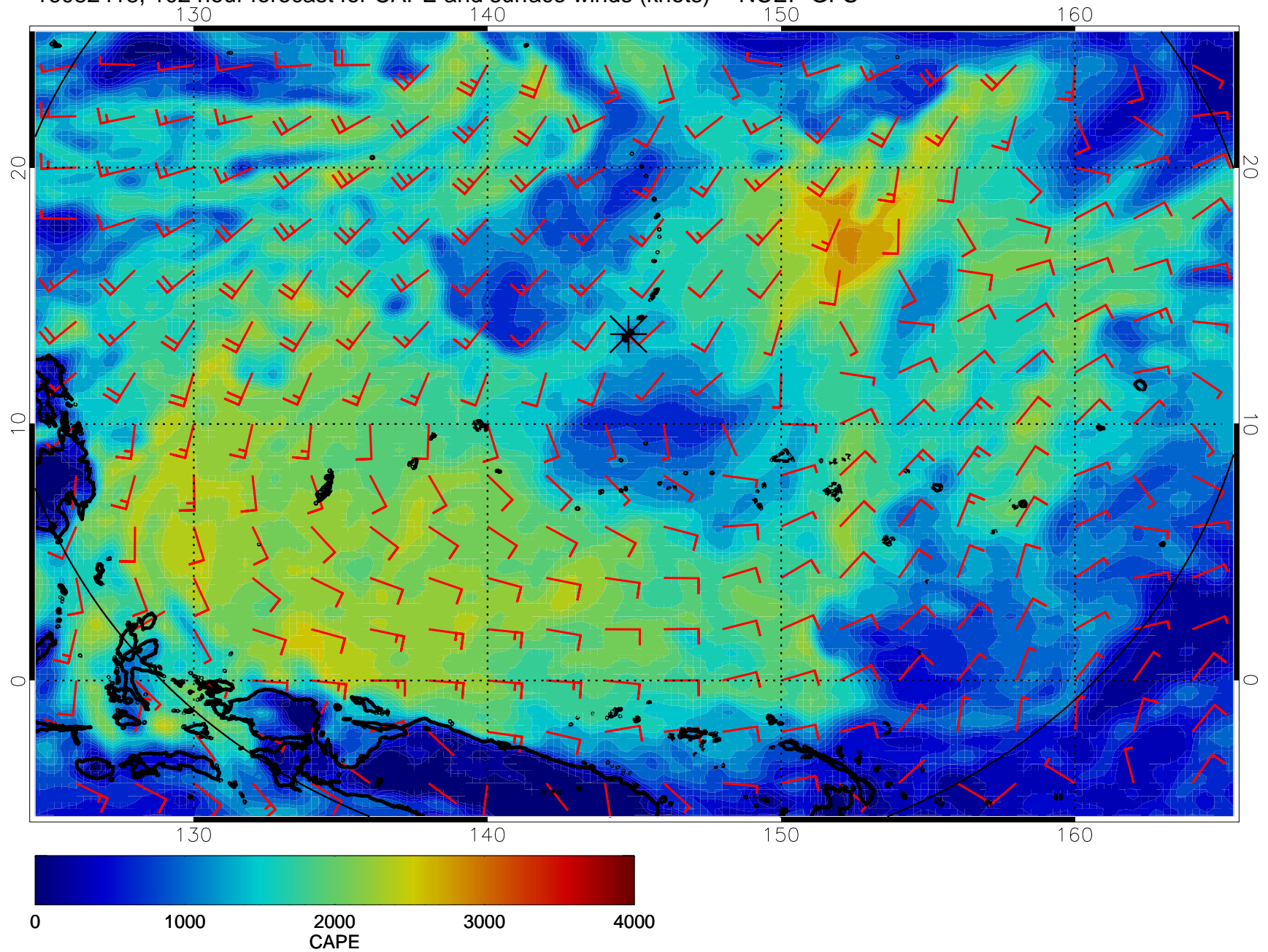


16082412, 96 hour forecast for CAPE and surface winds (knots) -- NCEP GFS

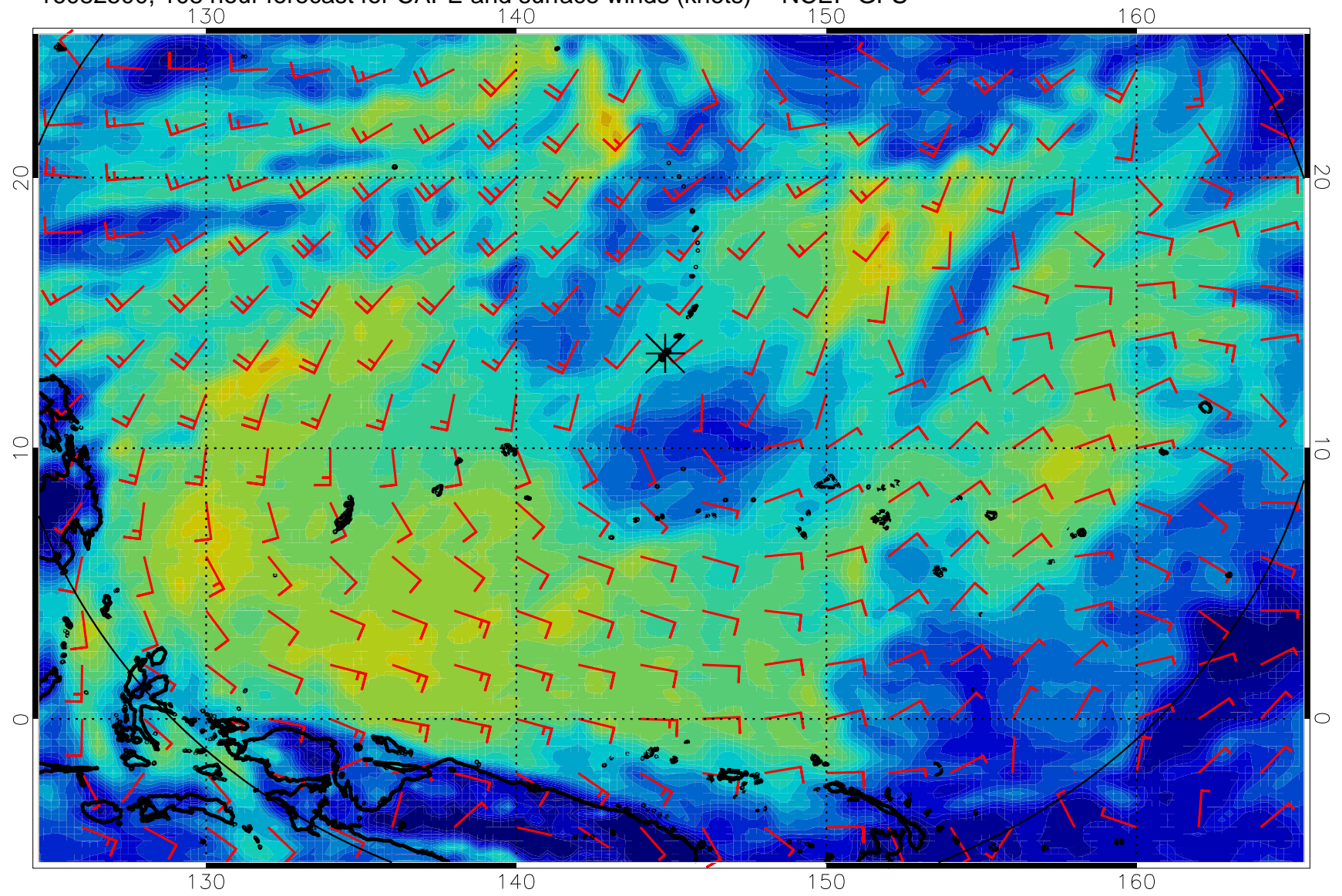




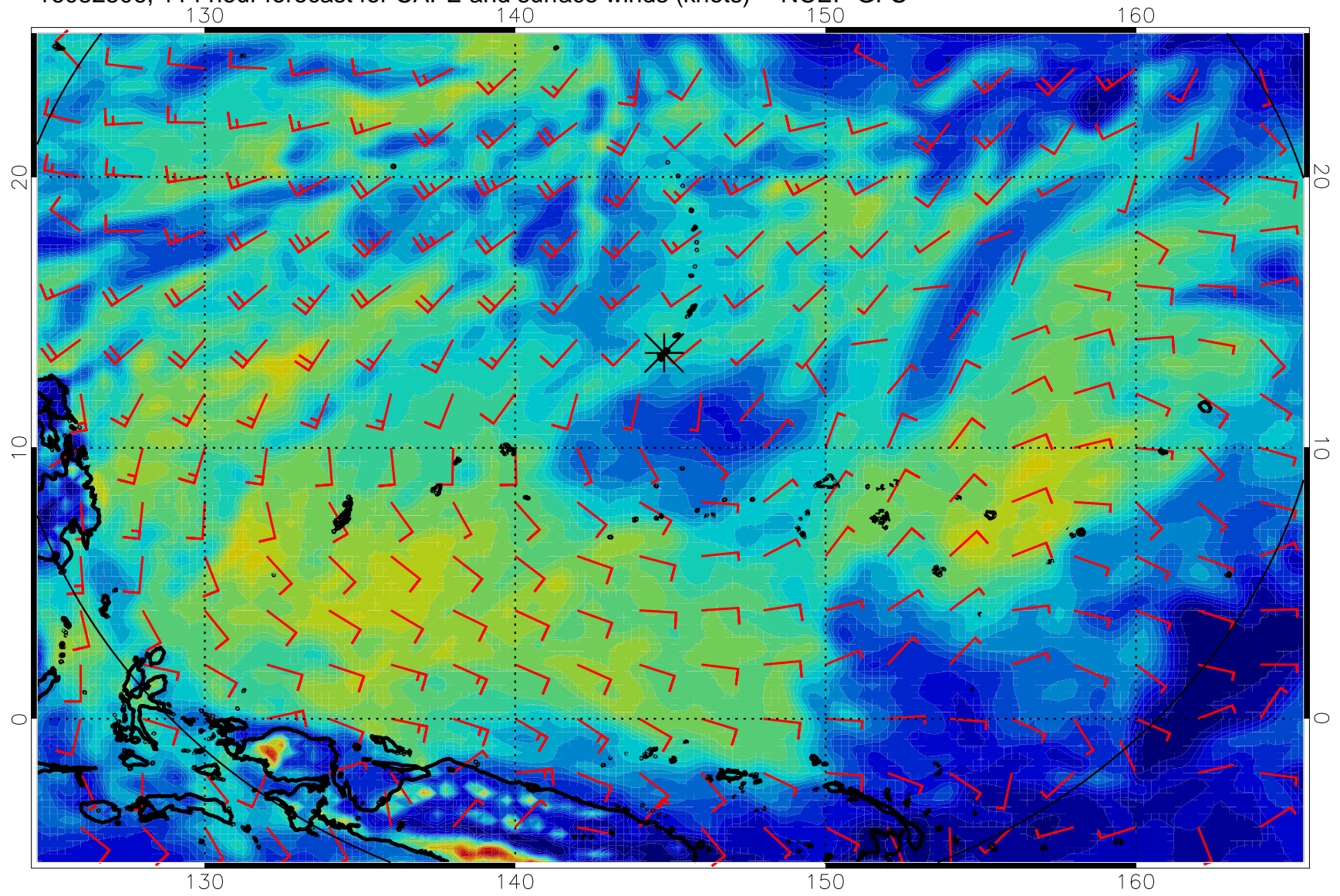
16082418, 102 hour forecast for CAPE and surface winds (knots) -- NCEP GFS



16082500, 108 hour forecast for CAPE and surface winds (knots) -- NCEP GFS



16082506, 114 hour forecast for CAPE and surface winds (knots) -- NCEP GFS



16082512, 120 hour forecast for CAPE and surface winds (knots) -- NCEP GFS

