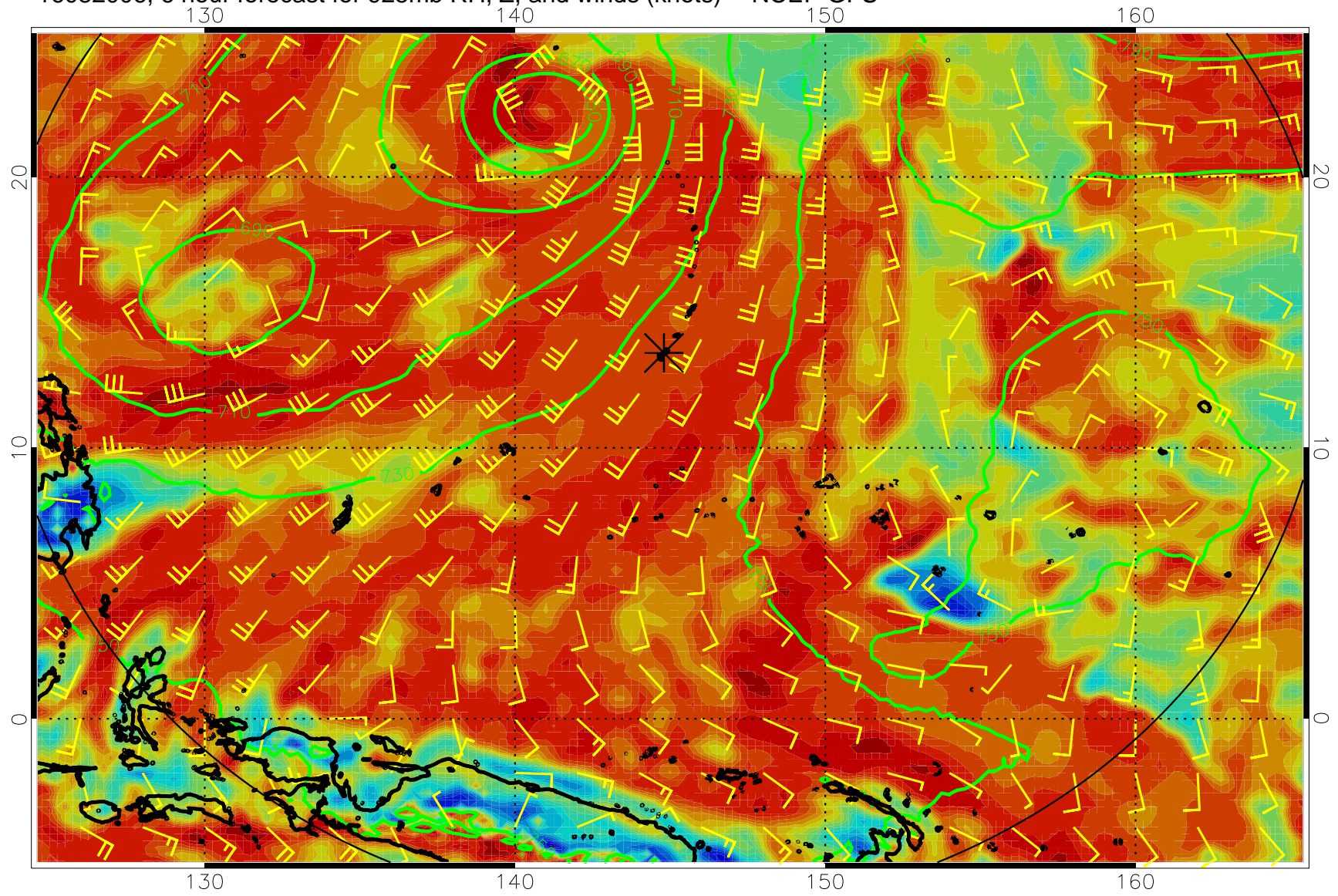
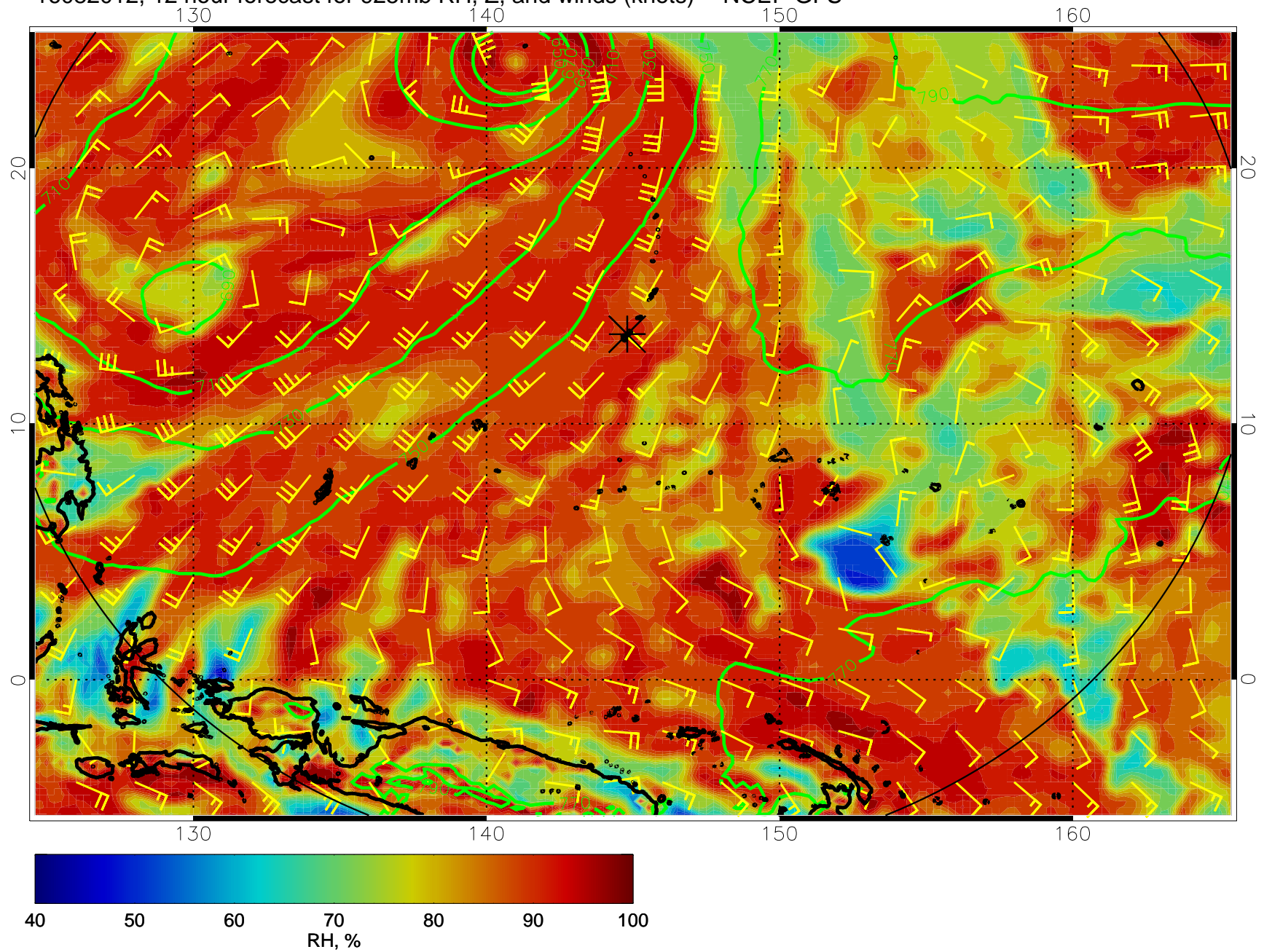


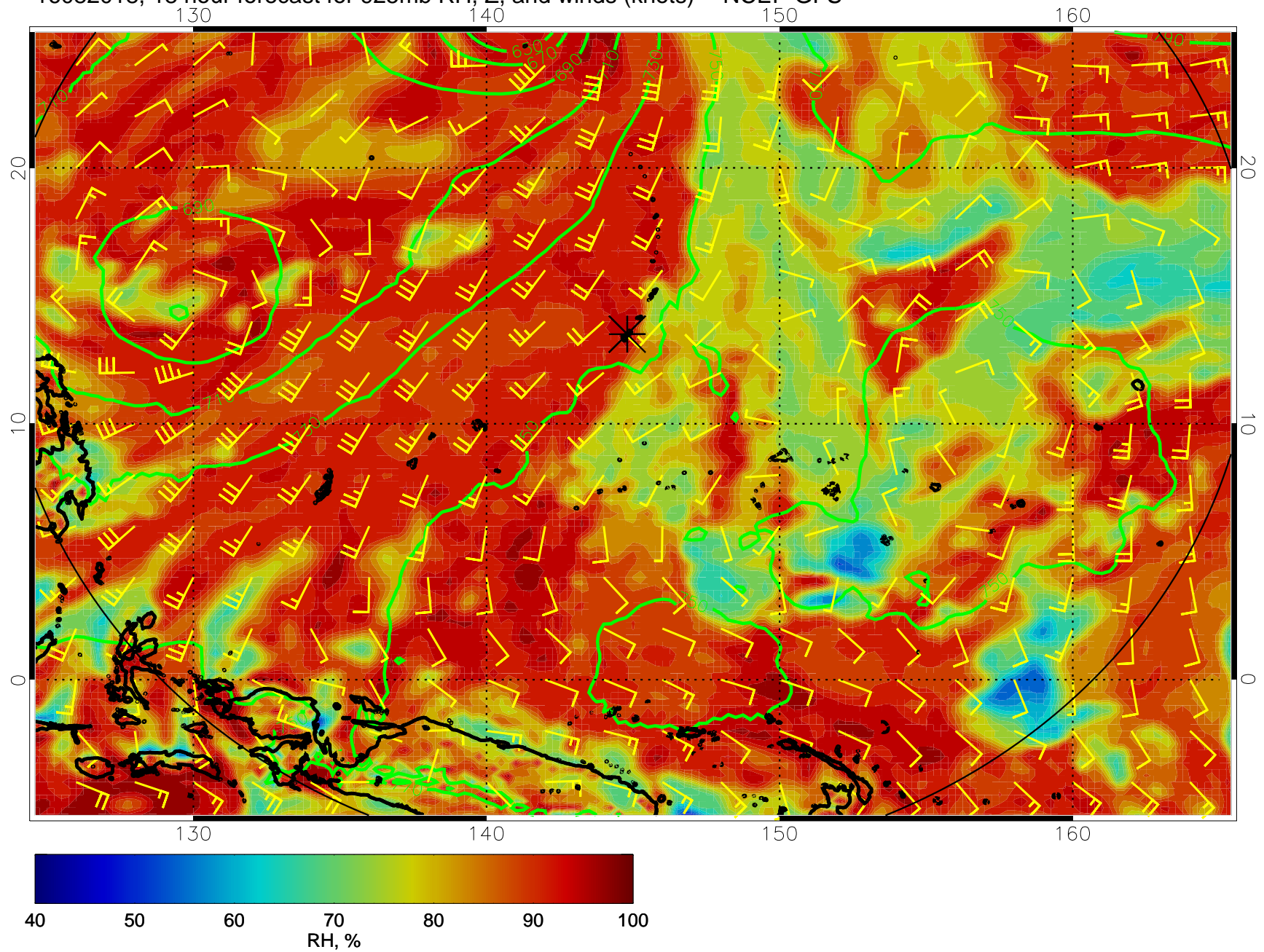
16082006, 6 hour forecast for 925mb RH, Z, and winds (knots) -- NCEP GFS



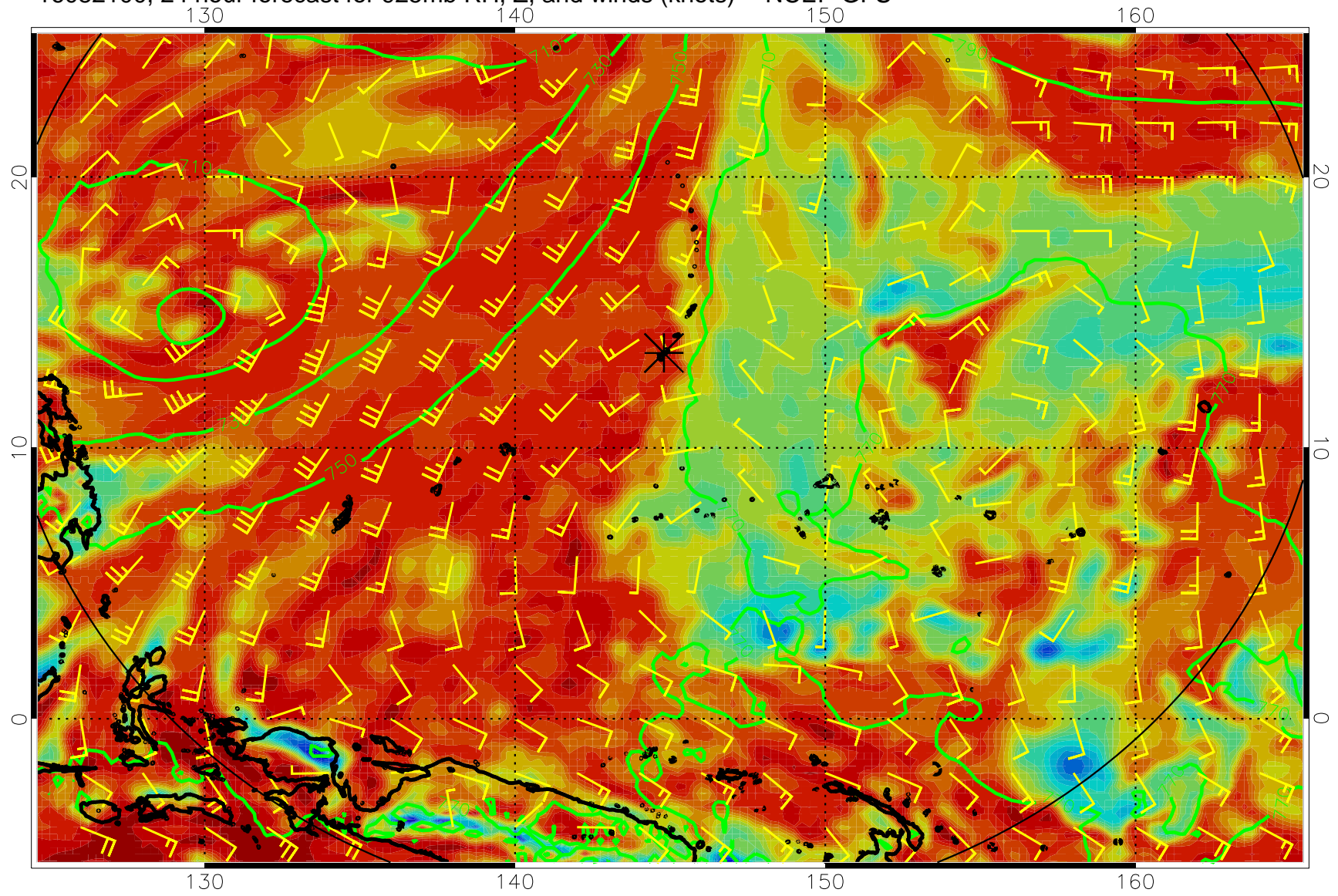
16082012, 12 hour forecast for 925mb RH, Z, and winds (knots) -- NCEP GFS



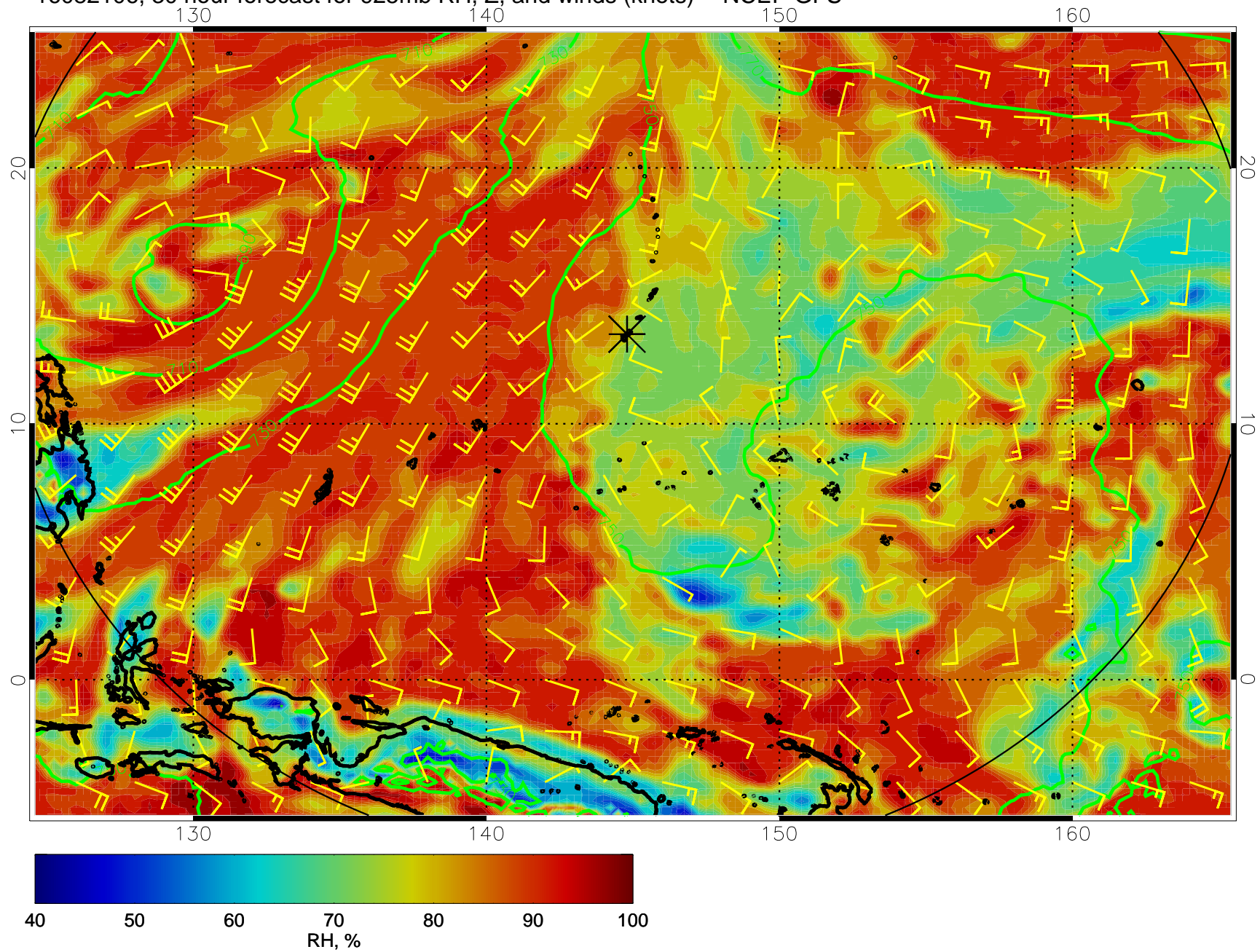
16082018, 18 hour forecast for 925mb RH, Z, and winds (knots) -- NCEP GFS



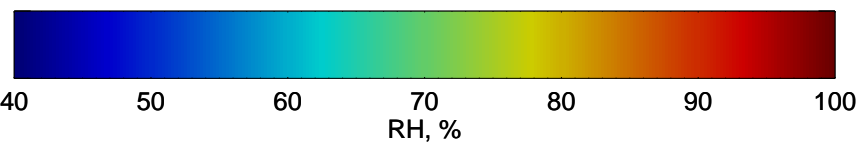
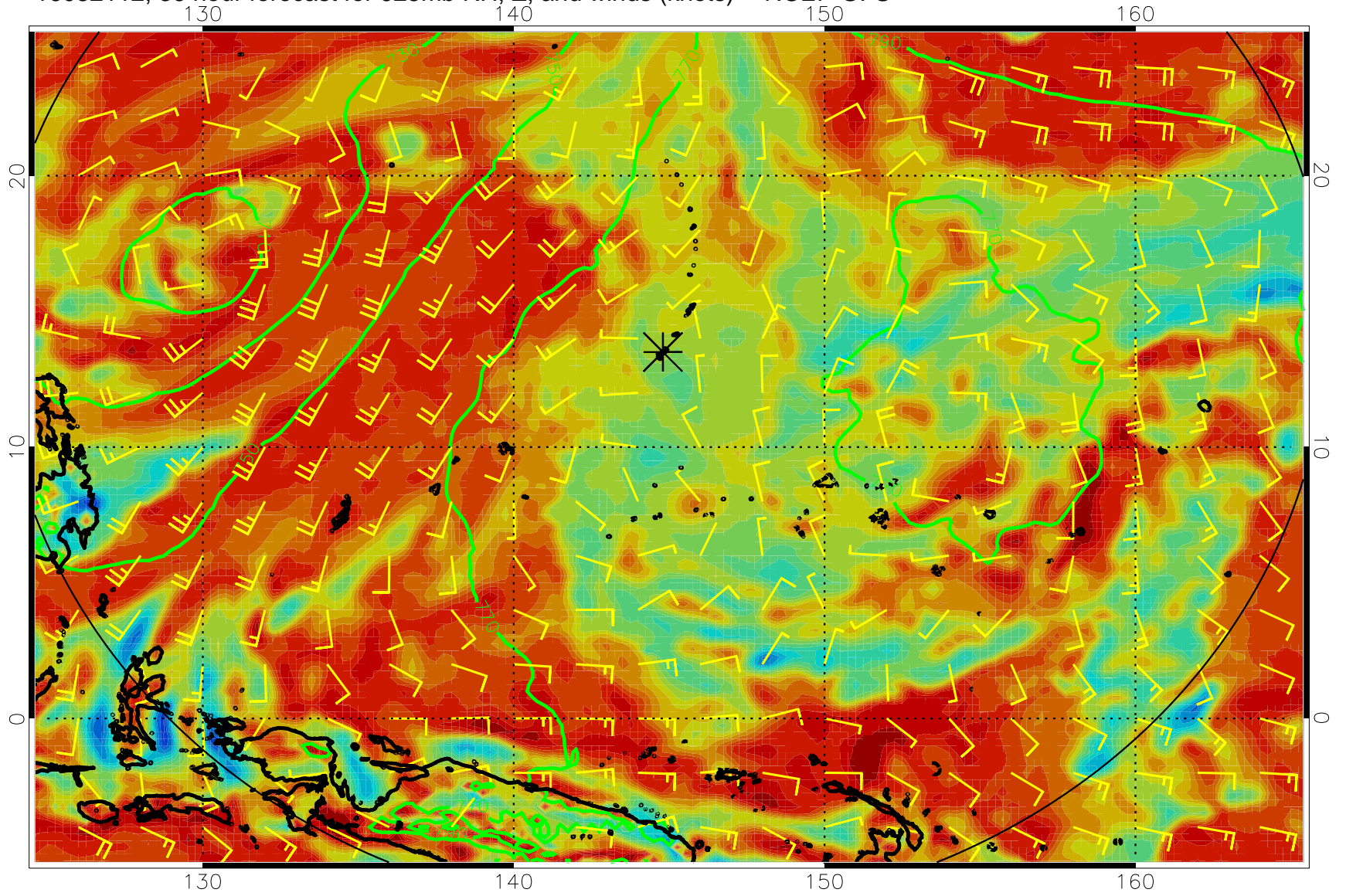
16082100, 24 hour forecast for 925mb RH, Z, and winds (knots) -- NCEP GFS



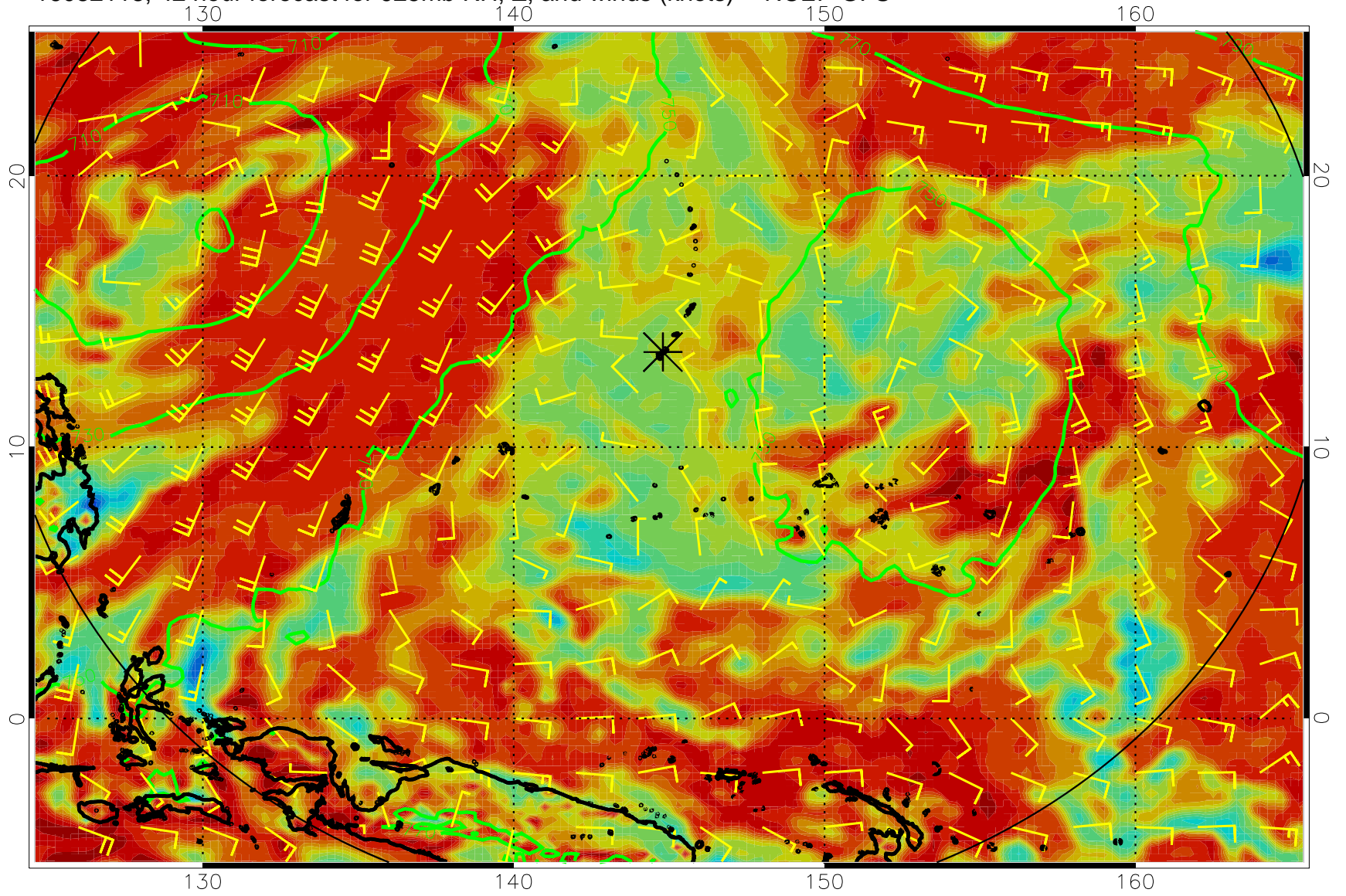
16082106, 30 hour forecast for 925mb RH, Z, and winds (knots) -- NCEP GFS



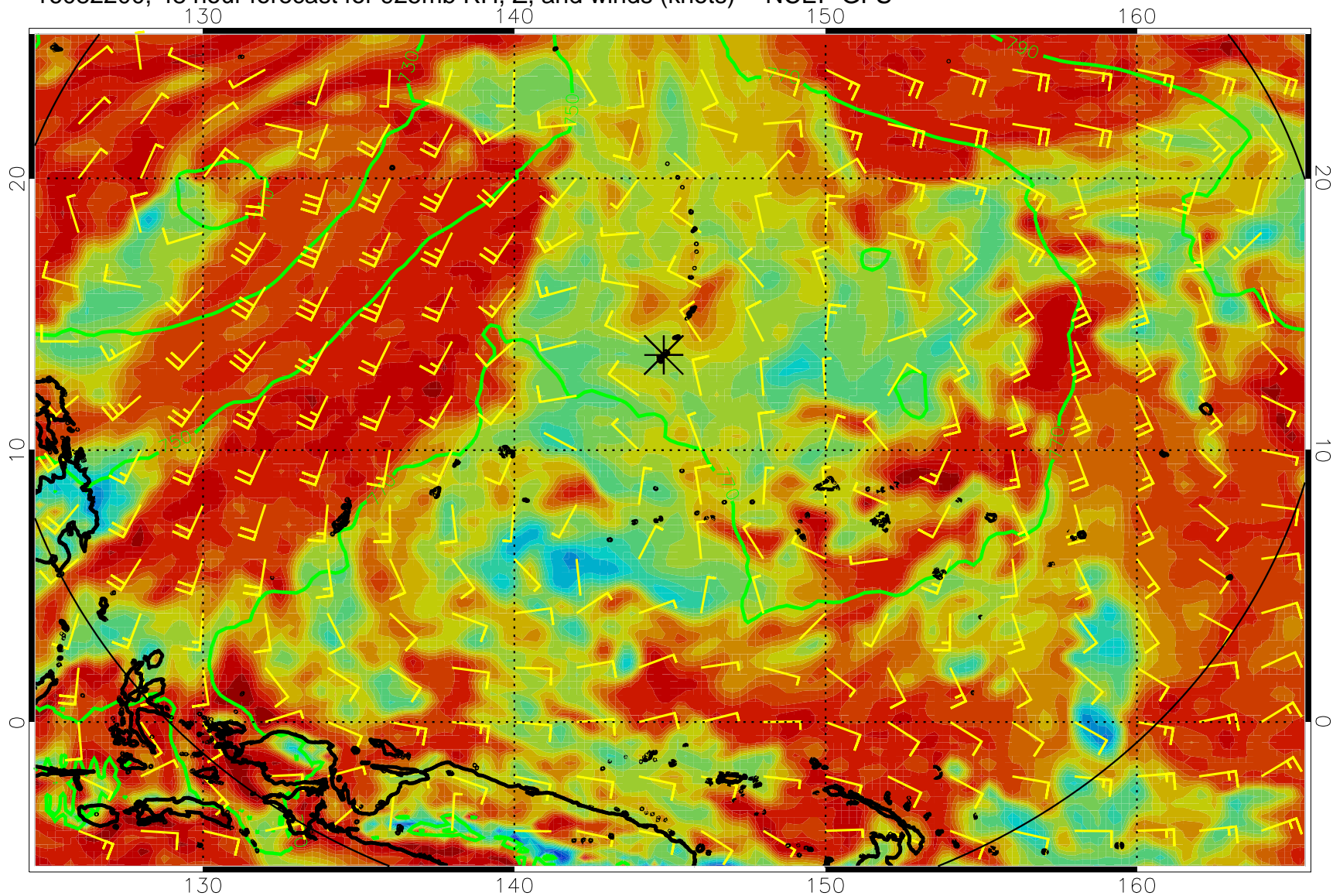
16082112, 36 hour forecast for 925mb RH, Z, and winds (knots) -- NCEP GFS



16082118, 42 hour forecast for 925mb RH, Z, and winds (knots) -- NCEP GFS

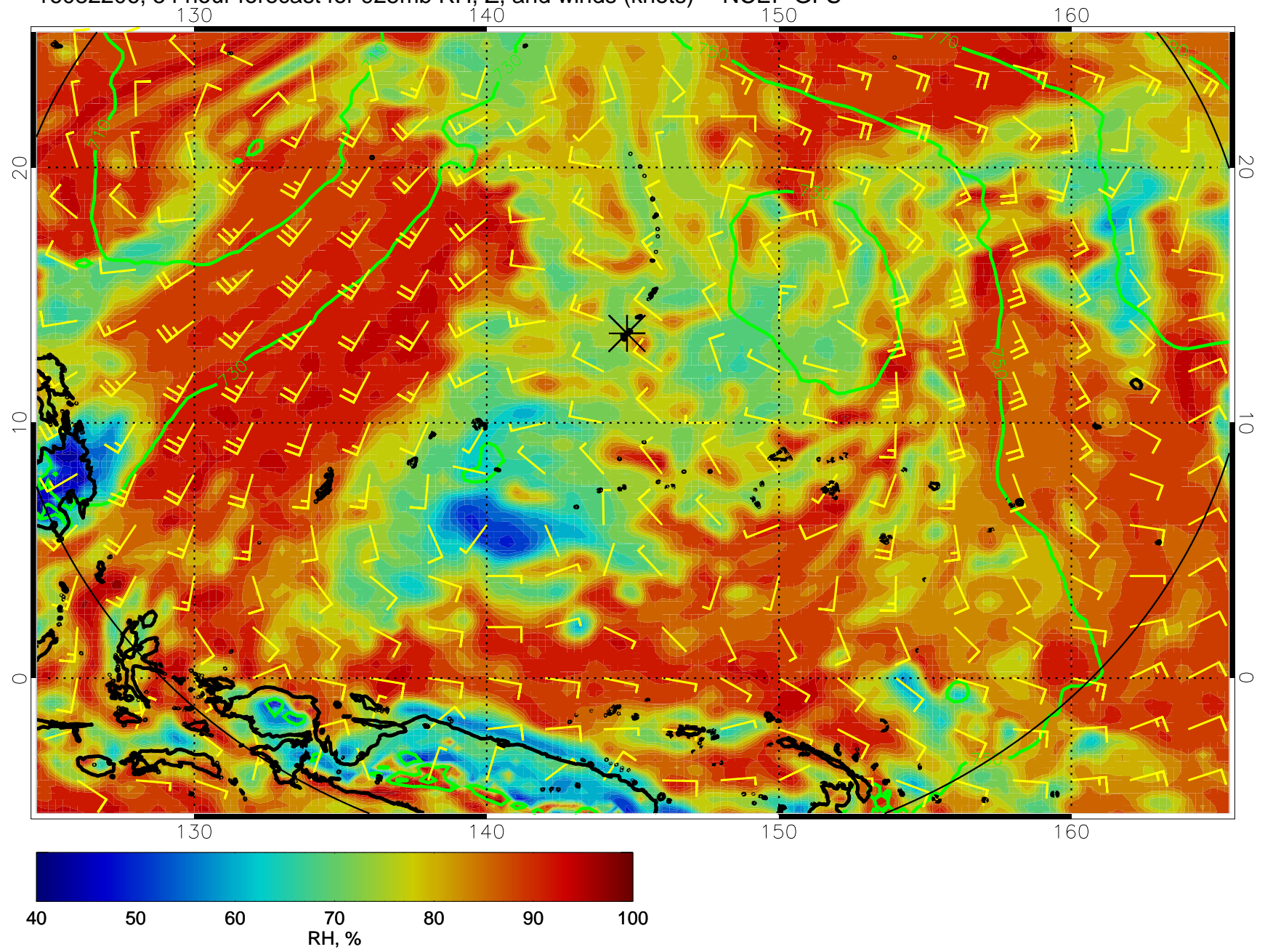


16082200, 48 hour forecast for 925mb RH, Z, and winds (knots) -- NCEP GFS

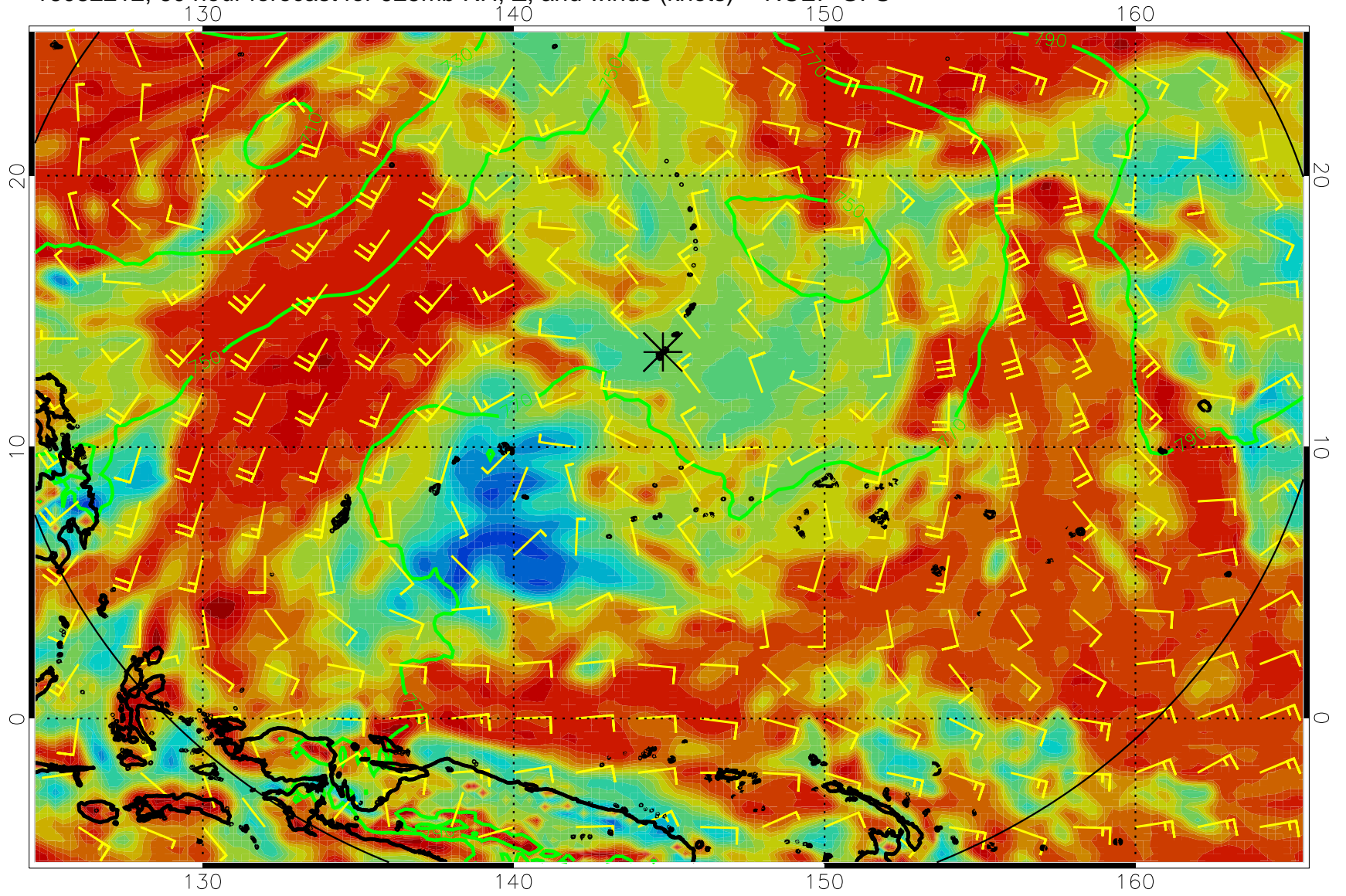




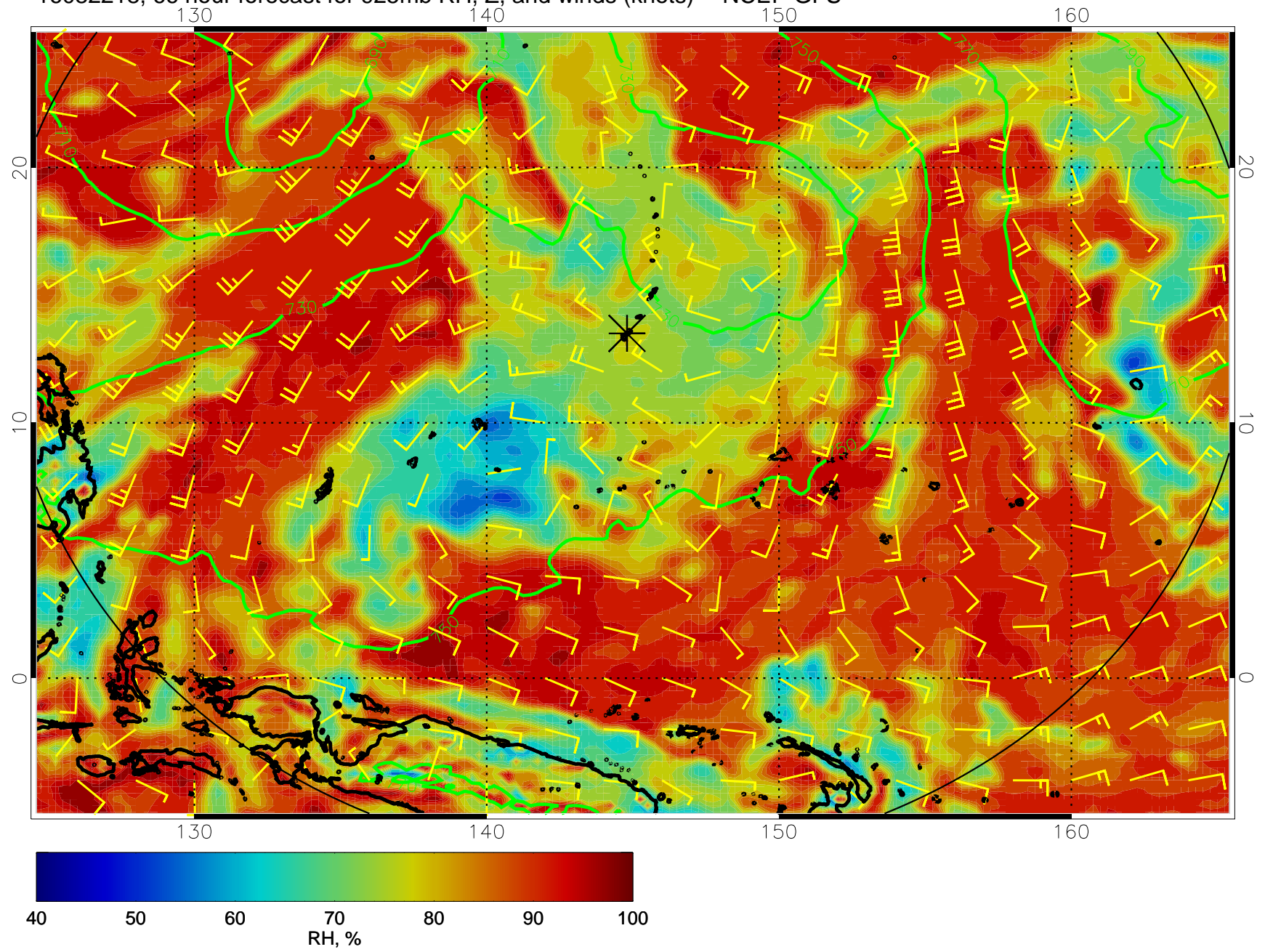
16082206, 54 hour forecast for 925mb RH, Z, and winds (knots) -- NCEP GFS



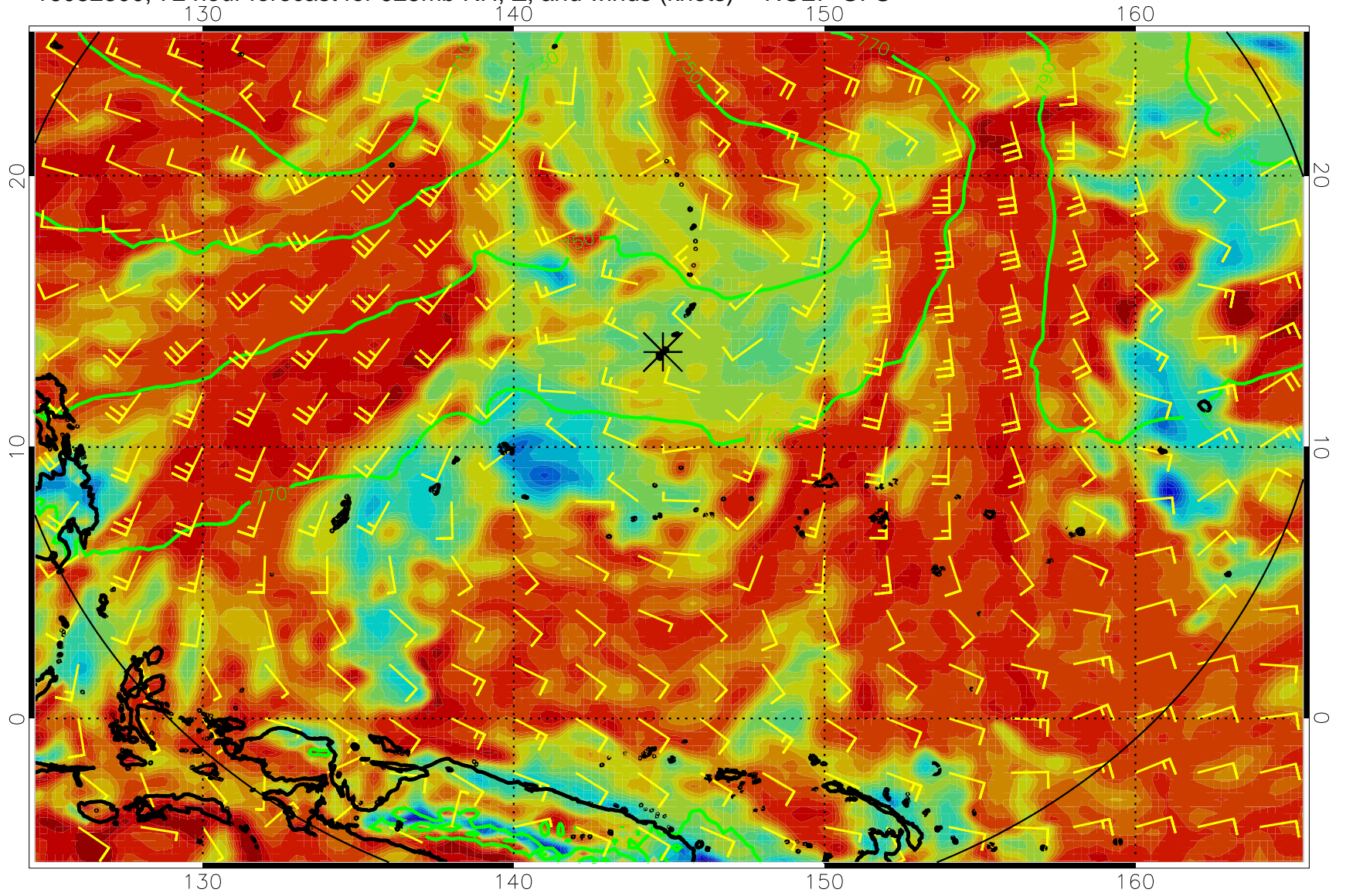
16082212, 60 hour forecast for 925mb RH, Z, and winds (knots) -- NCEP GFS



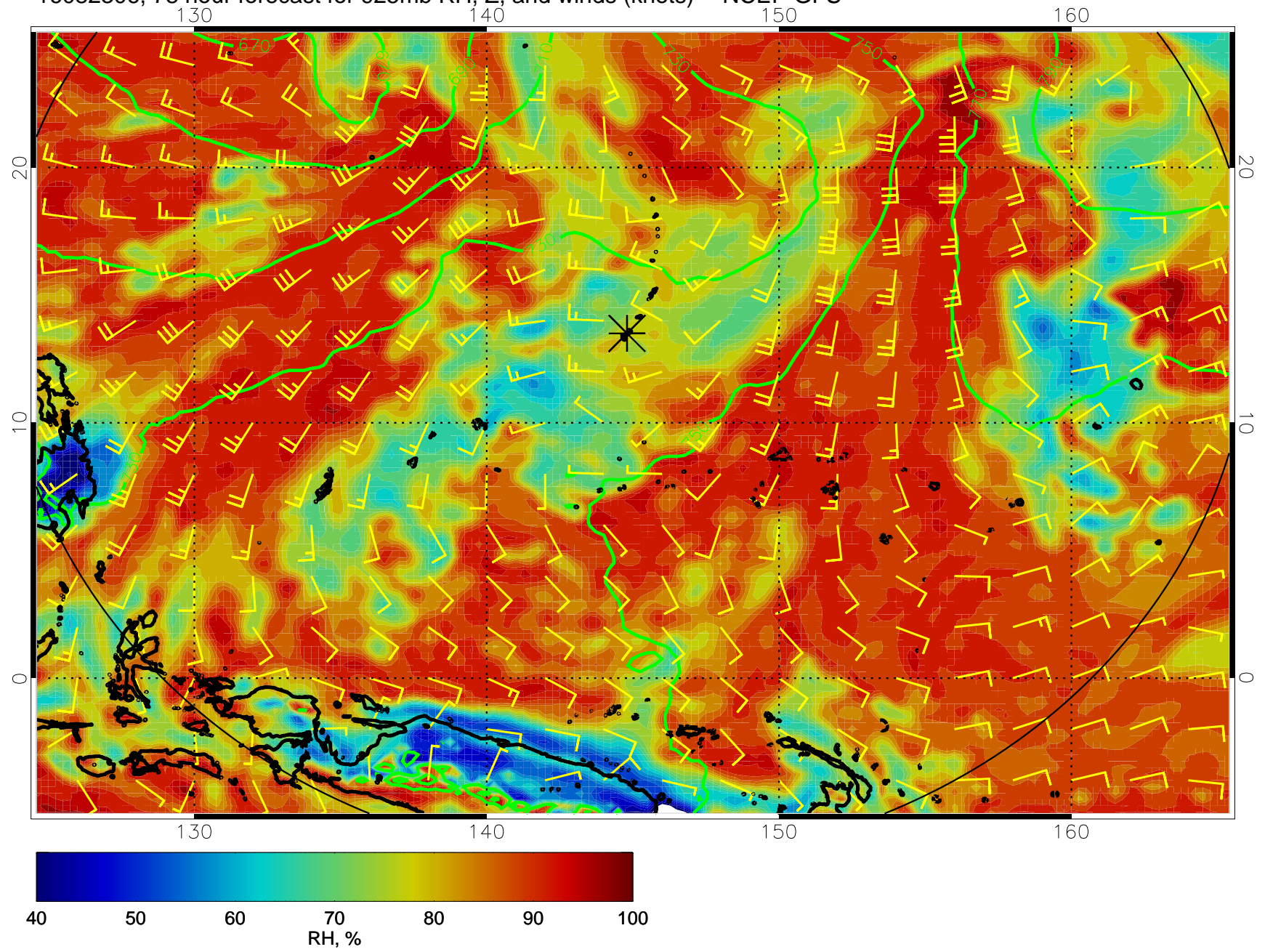
16082218, 66 hour forecast for 925mb RH, Z, and winds (knots) -- NCEP GFS



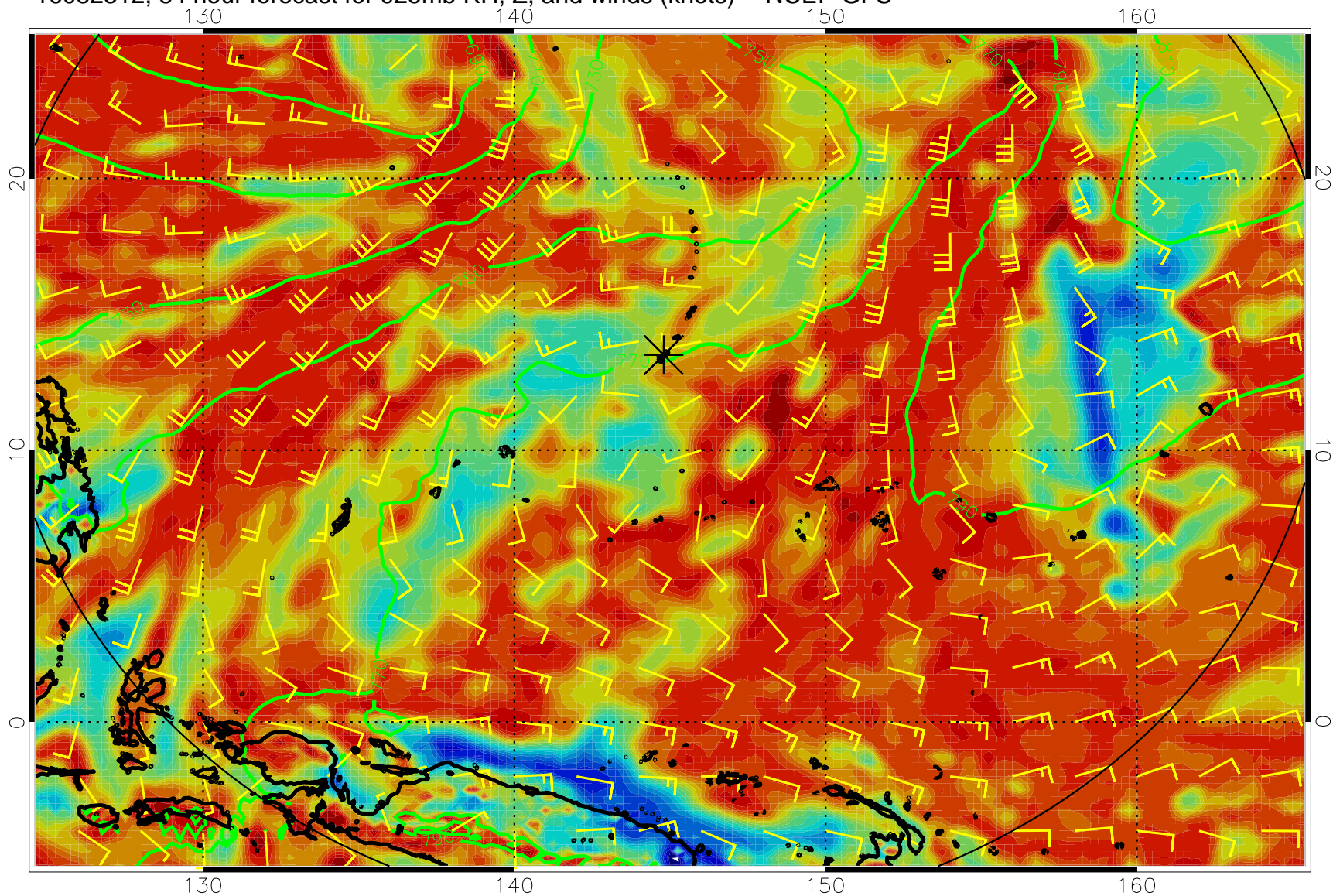
16082300, 72 hour forecast for 925mb RH, Z, and winds (knots) -- NCEP GFS



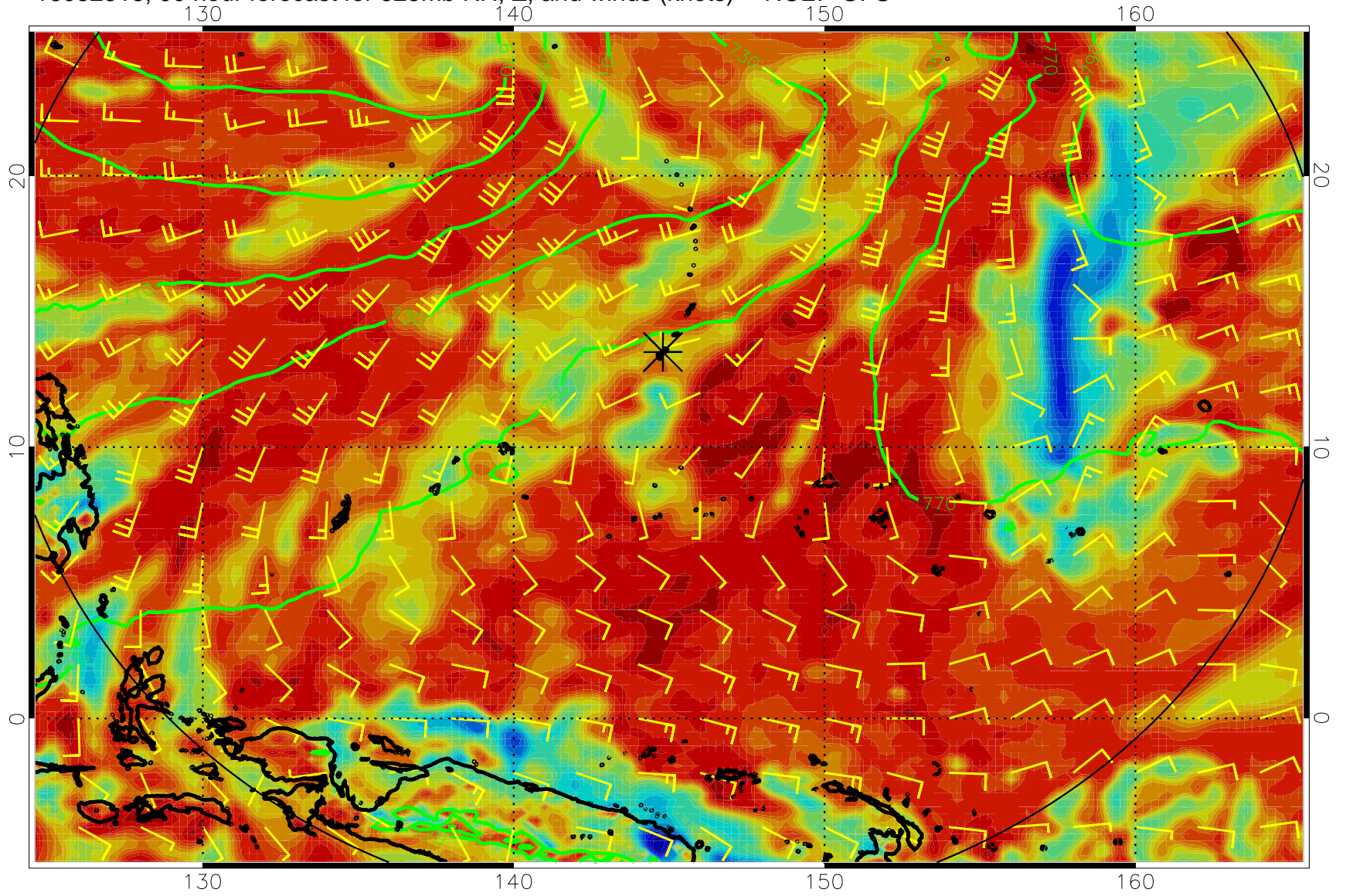
16082306, 78 hour forecast for 925mb RH, Z, and winds (knots) -- NCEP GFS



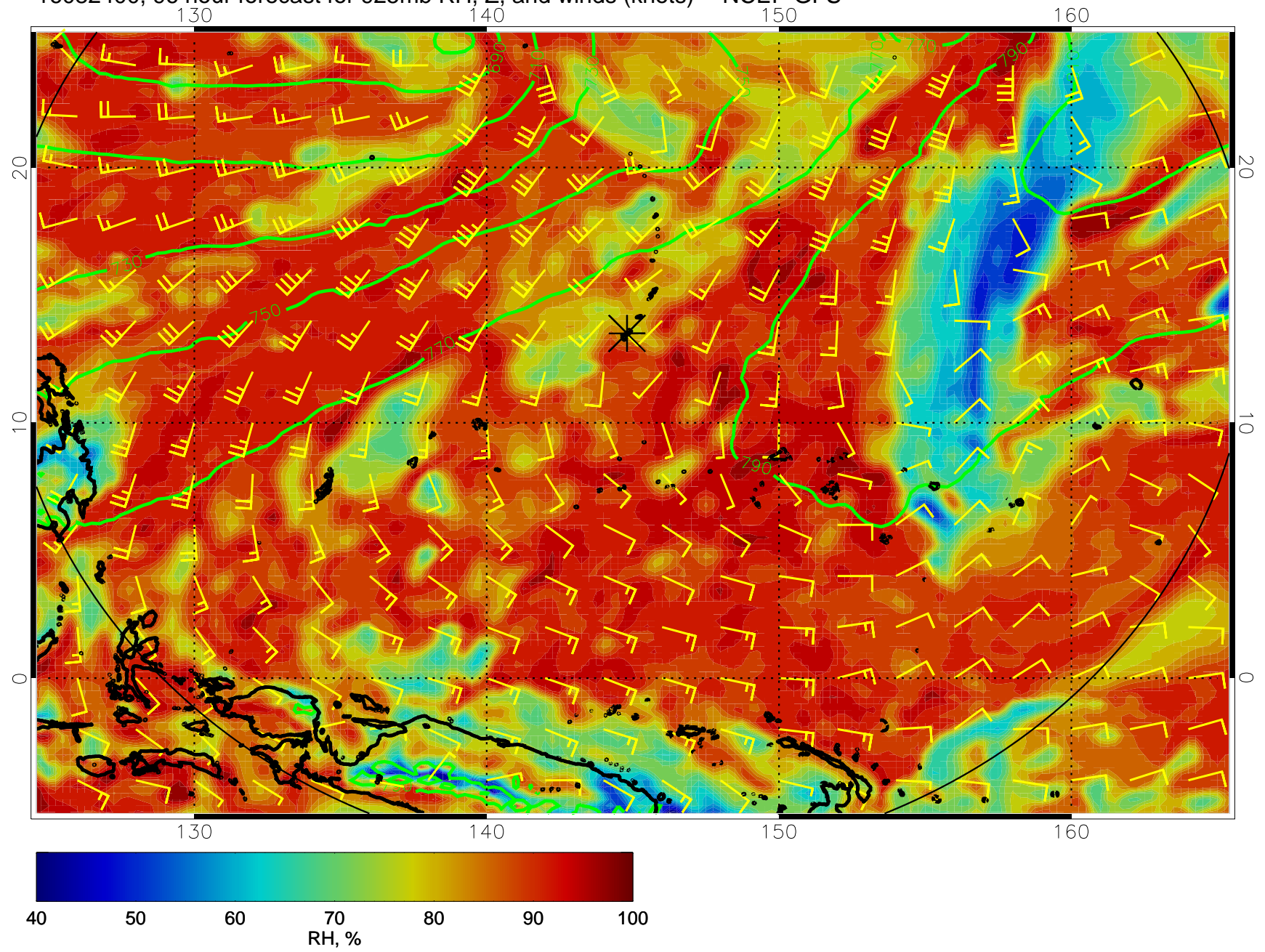
16082312, 84 hour forecast for 925mb RH, Z, and winds (knots) -- NCEP GFS



16082318, 90 hour forecast for 925mb RH, Z, and winds (knots) -- NCEP GFS

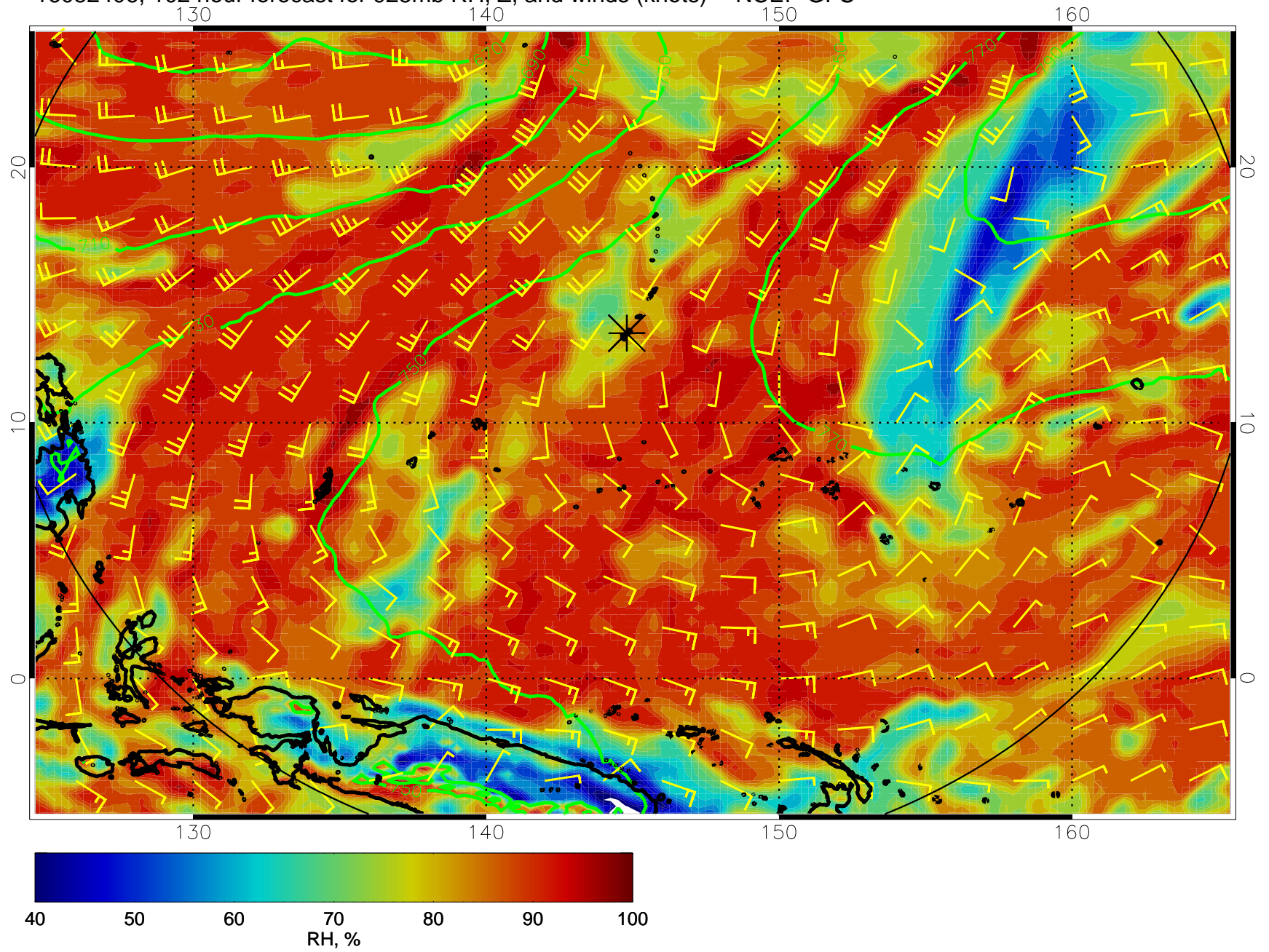


16082400, 96 hour forecast for 925mb RH, Z, and winds (knots) -- NCEP GFS

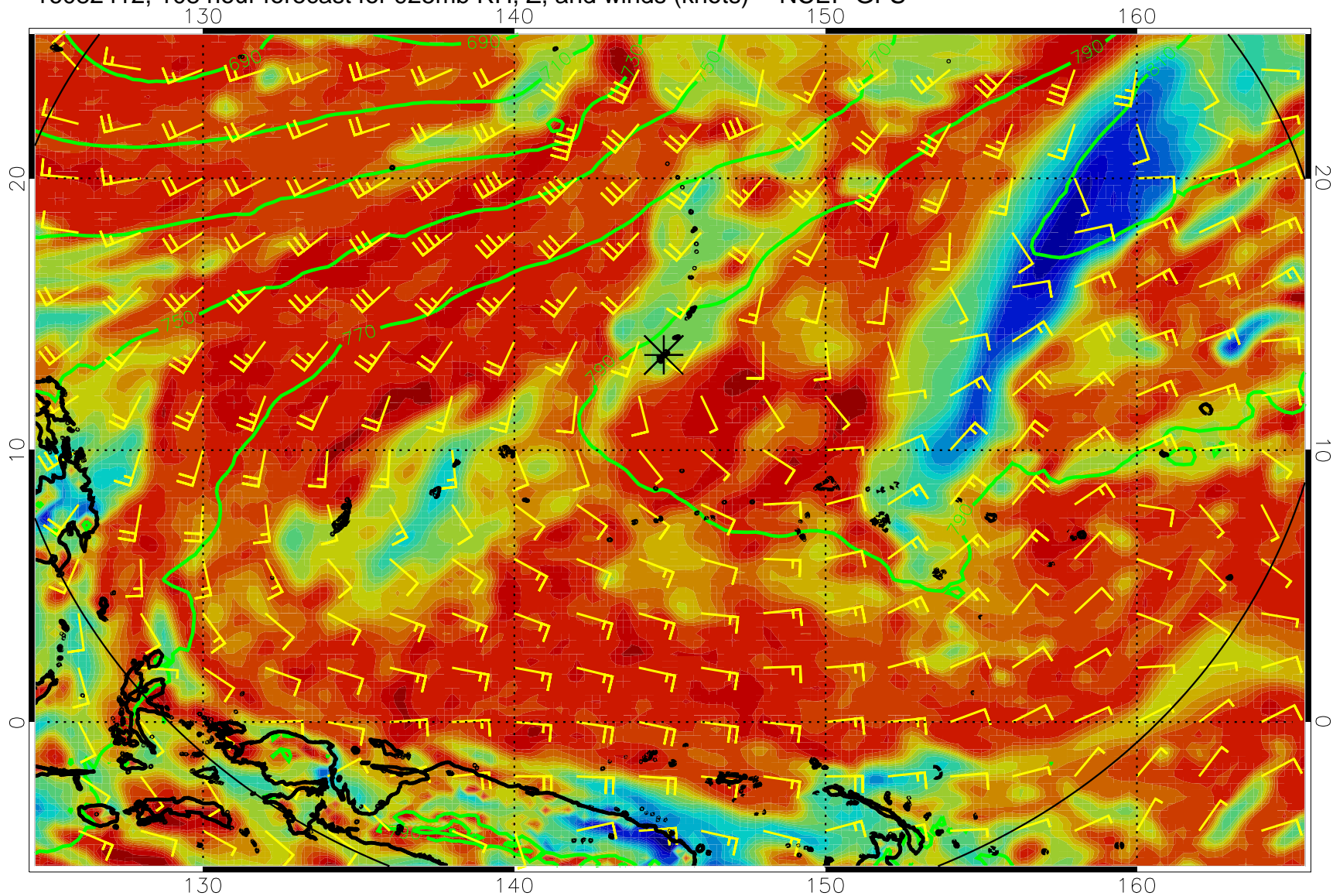




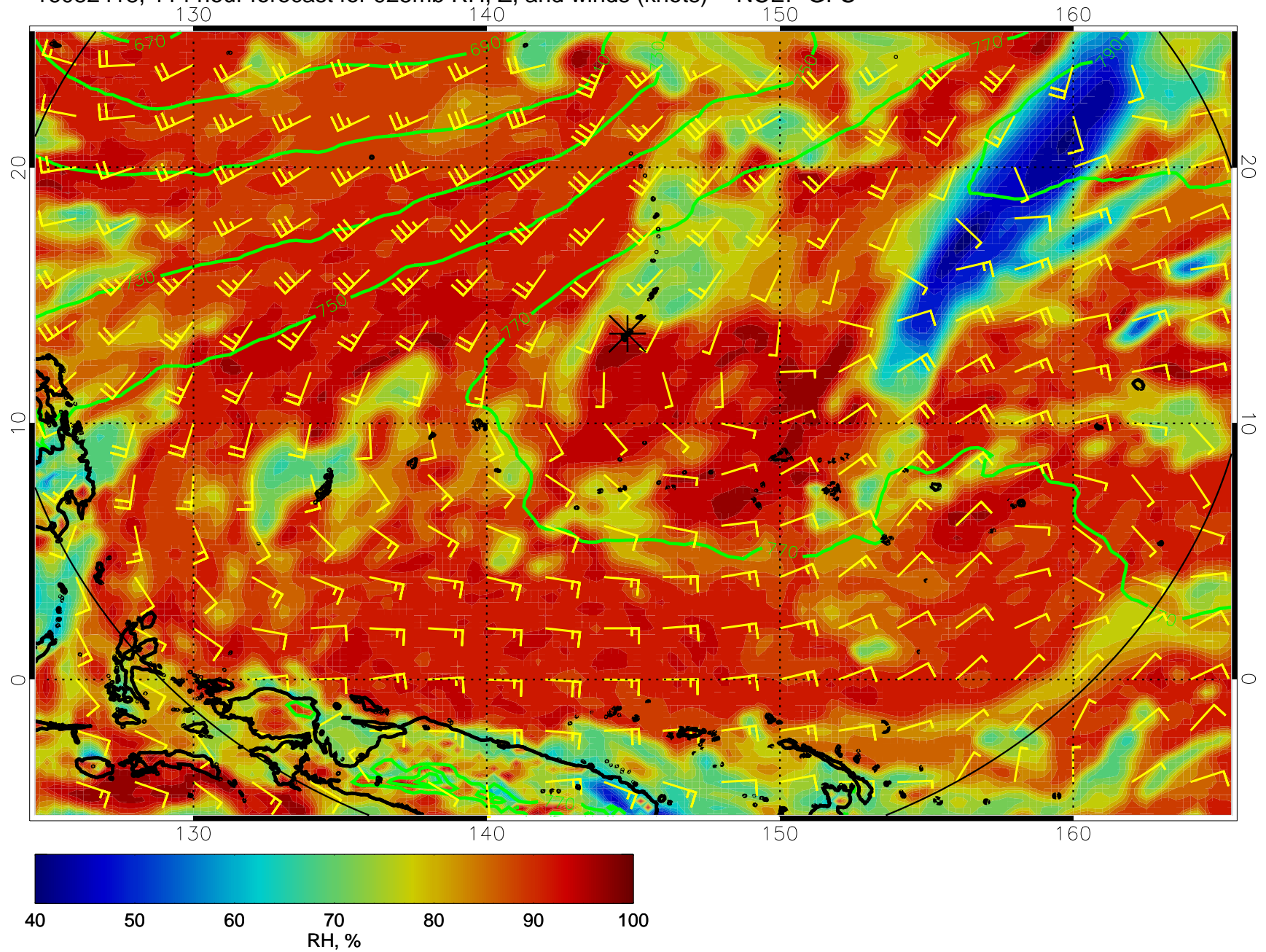
16082406, 102 hour forecast for 925mb RH, Z, and winds (knots) -- NCEP GFS



16082412, 108 hour forecast for 925mb RH, Z, and winds (knots) -- NCEP GFS



16082418, 114 hour forecast for 925mb RH, Z, and winds (knots) -- NCEP GFS



16082500, 120 hour forecast for 925mb RH, Z, and winds (knots) -- NCEP GFS

