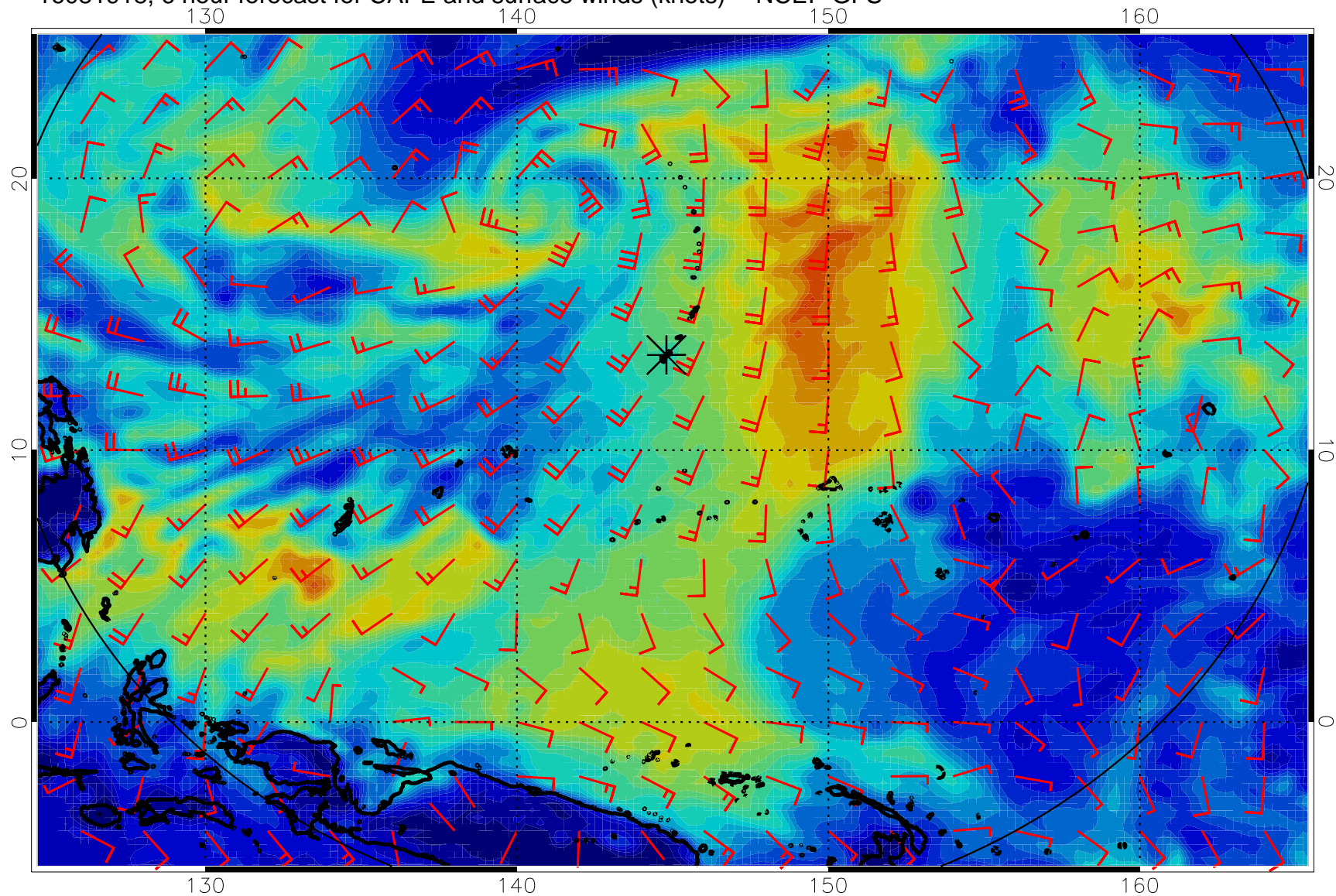
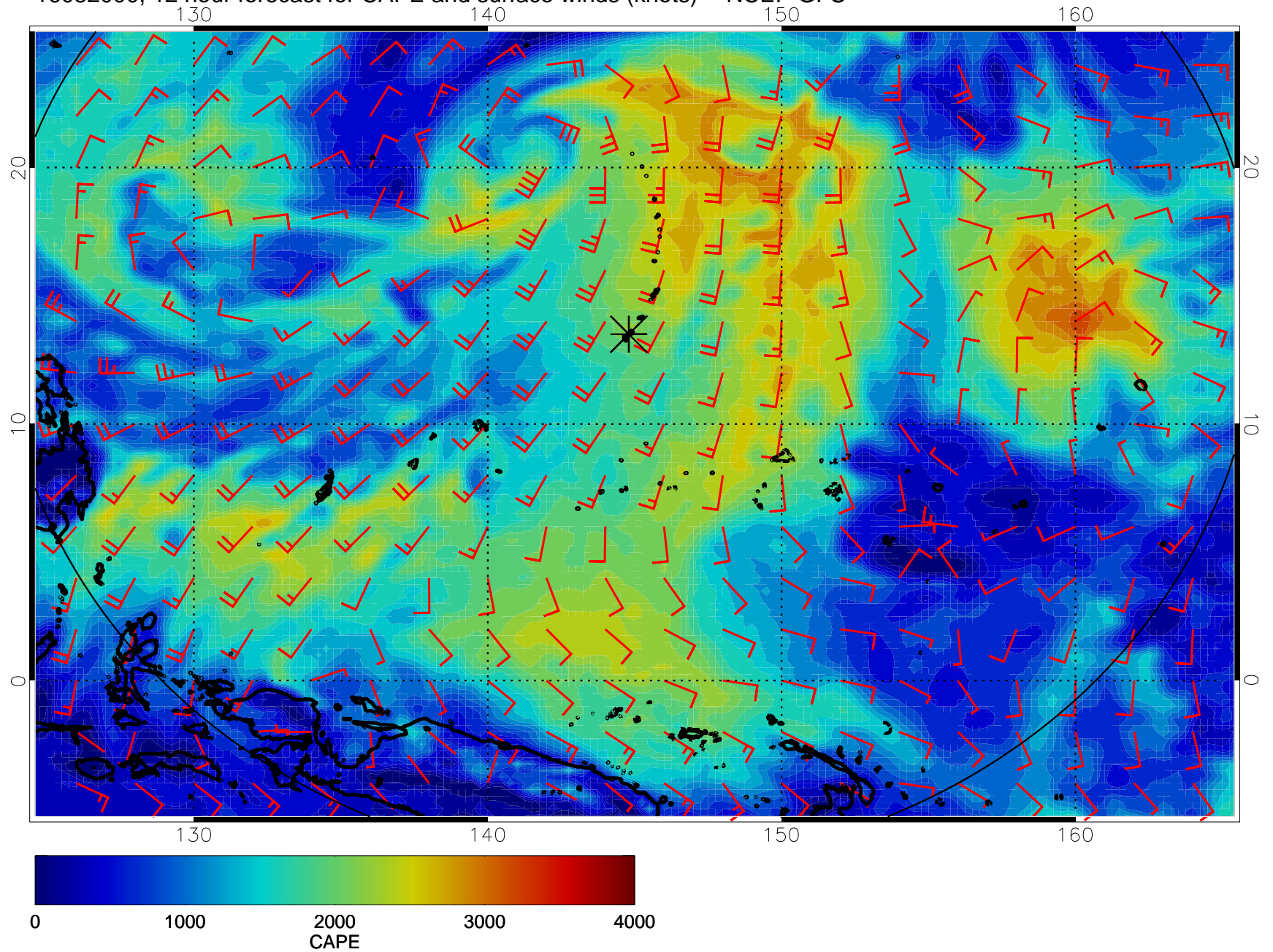


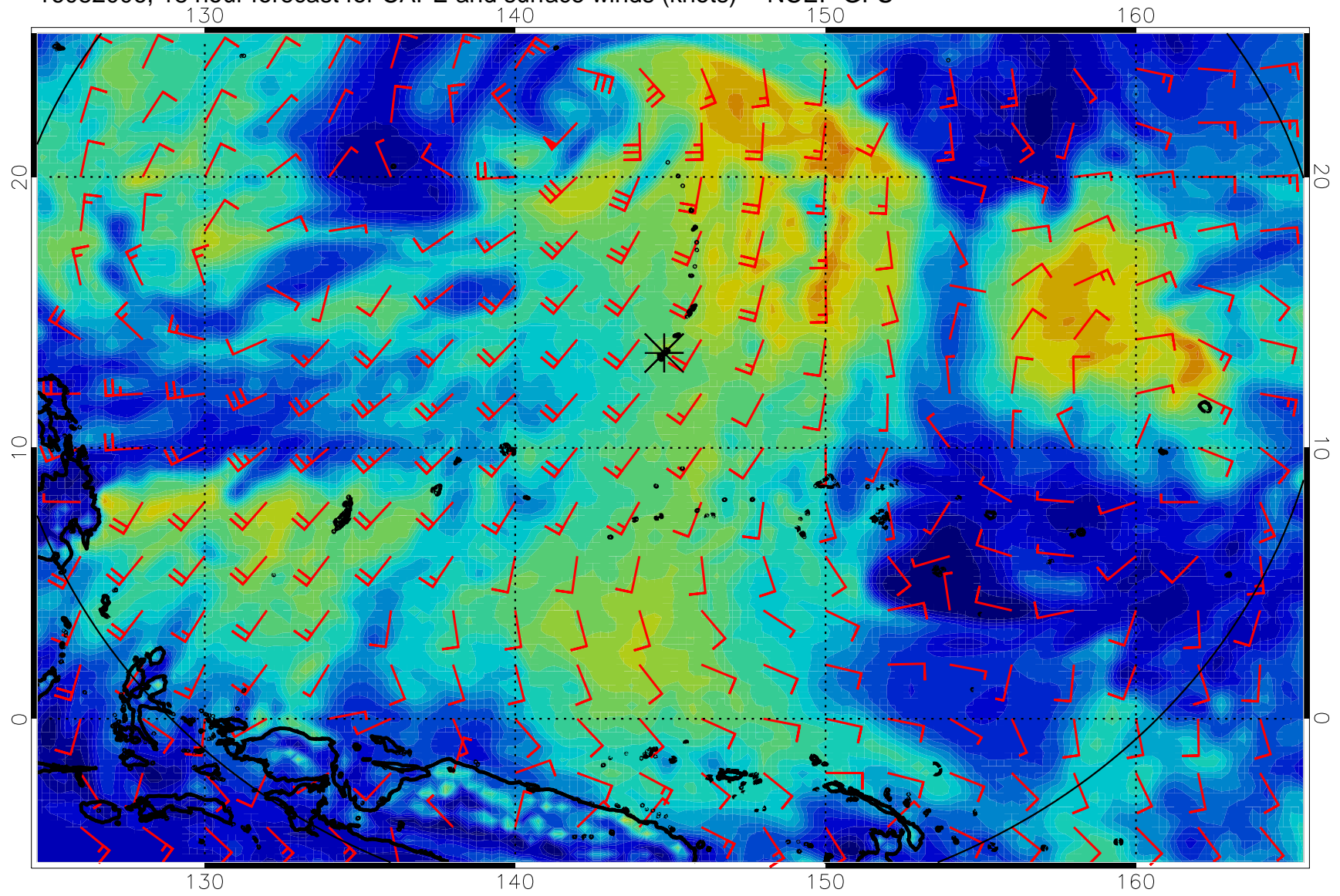
16081918, 6 hour forecast for CAPE and surface winds (knots) -- NCEP GFS



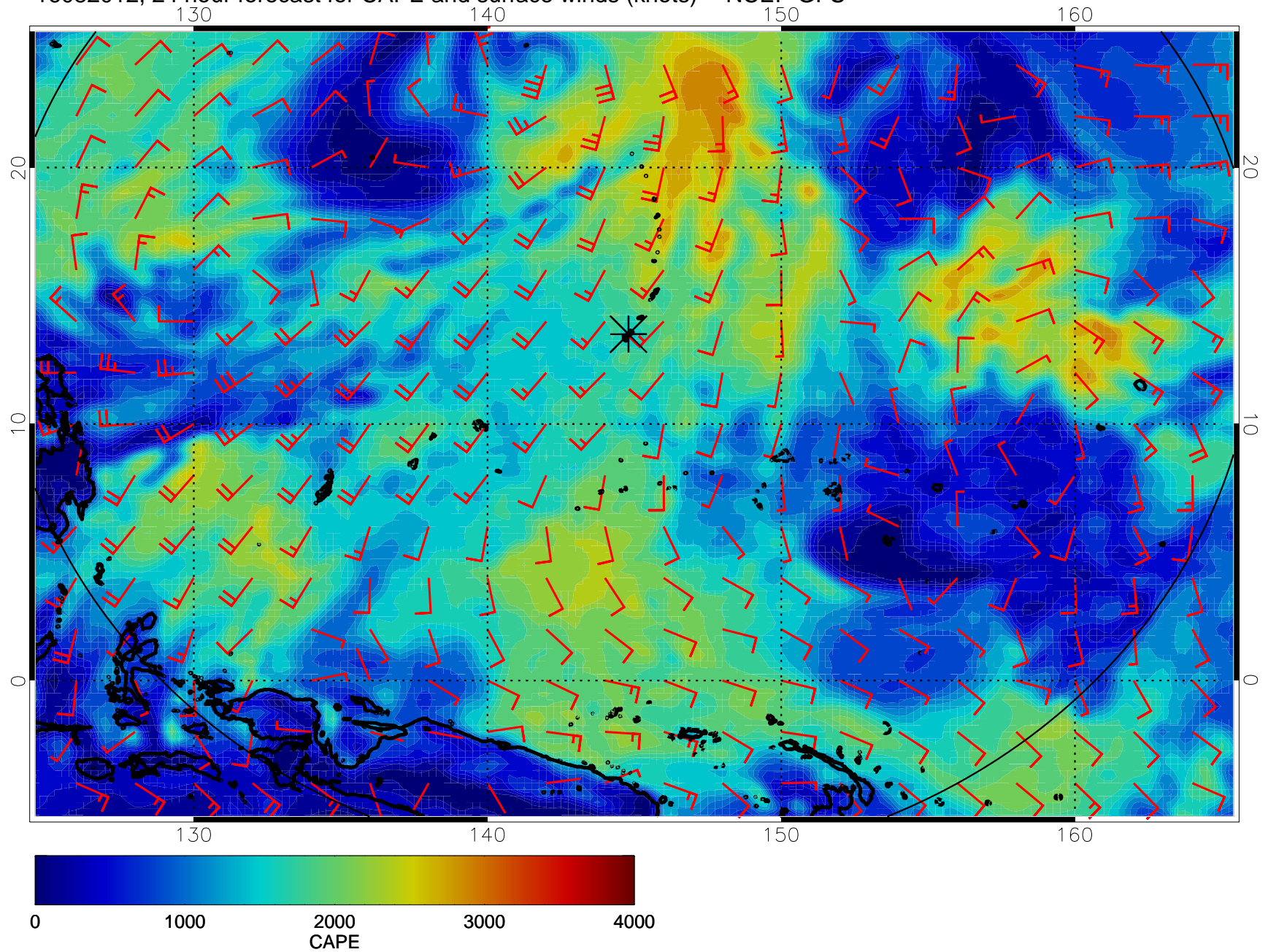
16082000, 12 hour forecast for CAPE and surface winds (knots) -- NCEP GFS



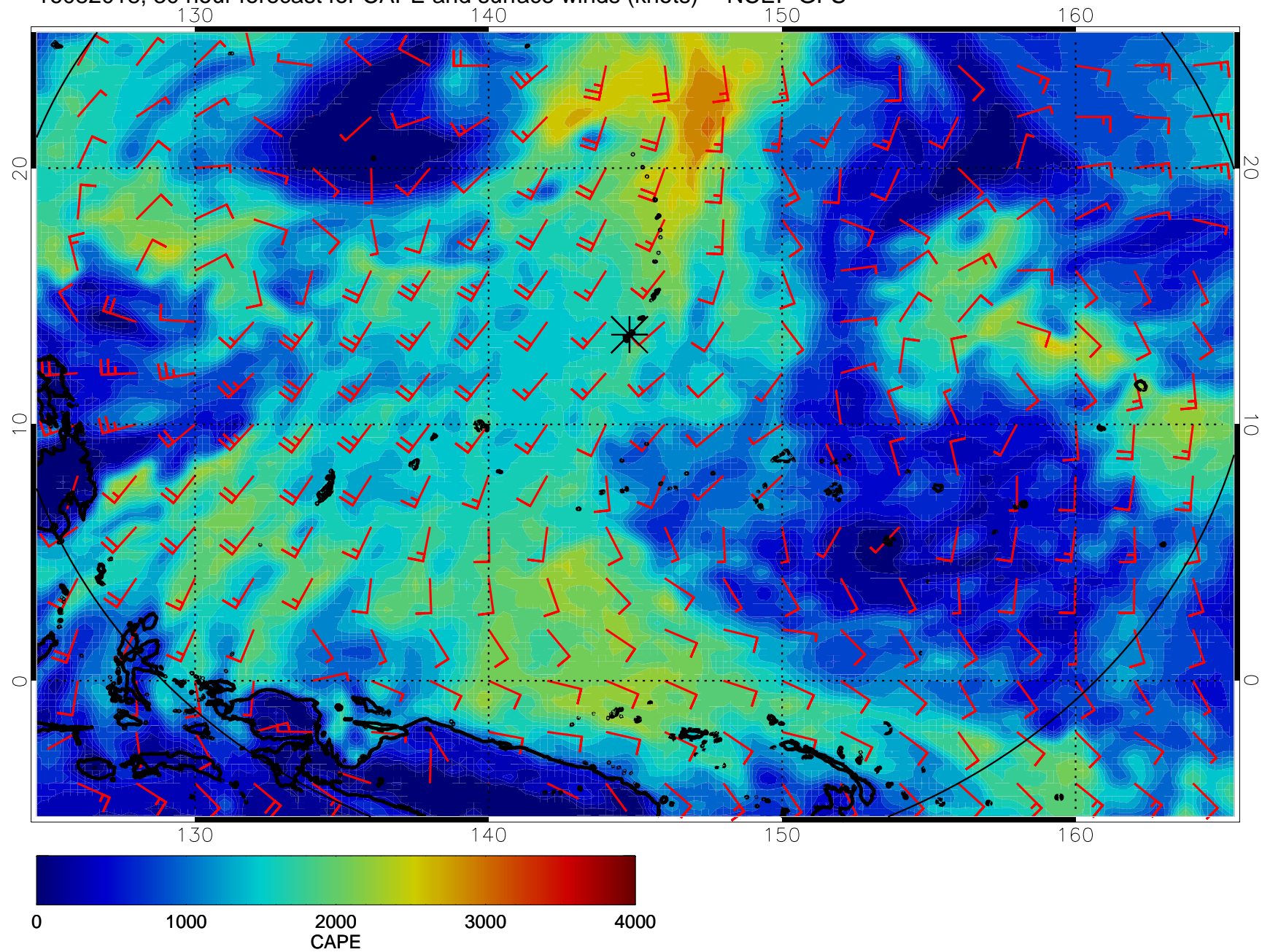
16082006, 18 hour forecast for CAPE and surface winds (knots) -- NCEP GFS



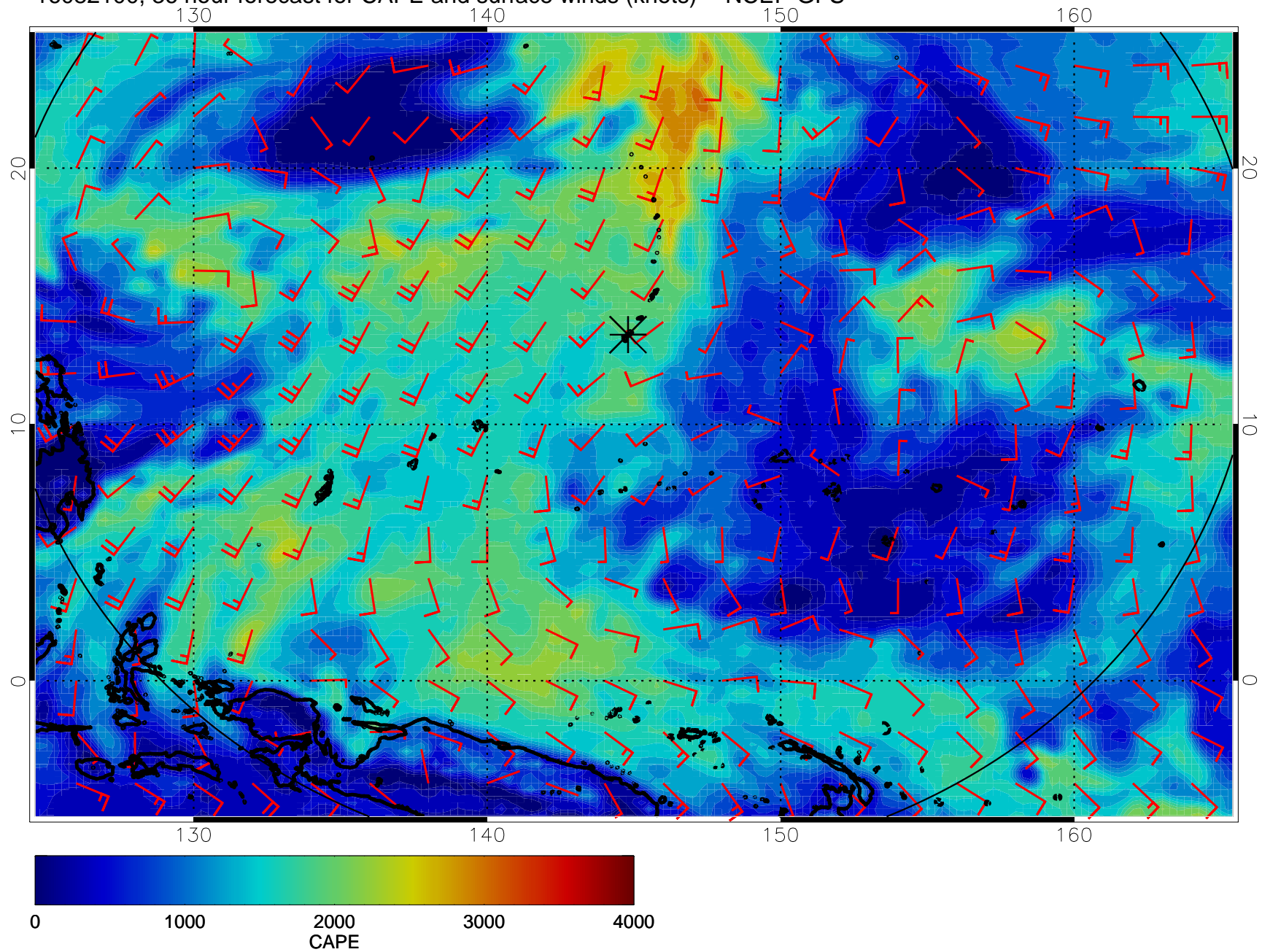
16082012, 24 hour forecast for CAPE and surface winds (knots) -- NCEP GFS



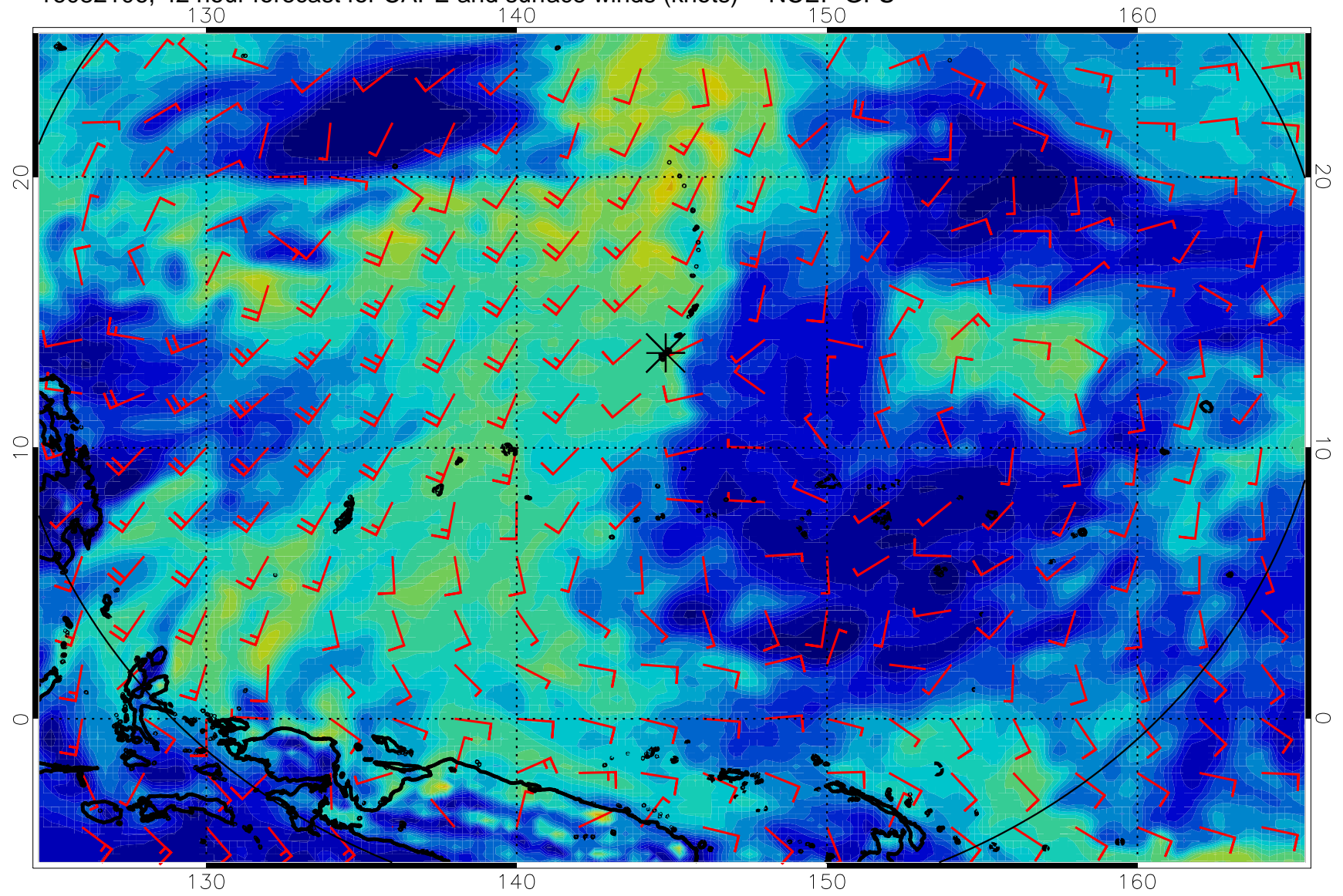
16082018, 30 hour forecast for CAPE and surface winds (knots) -- NCEP GFS



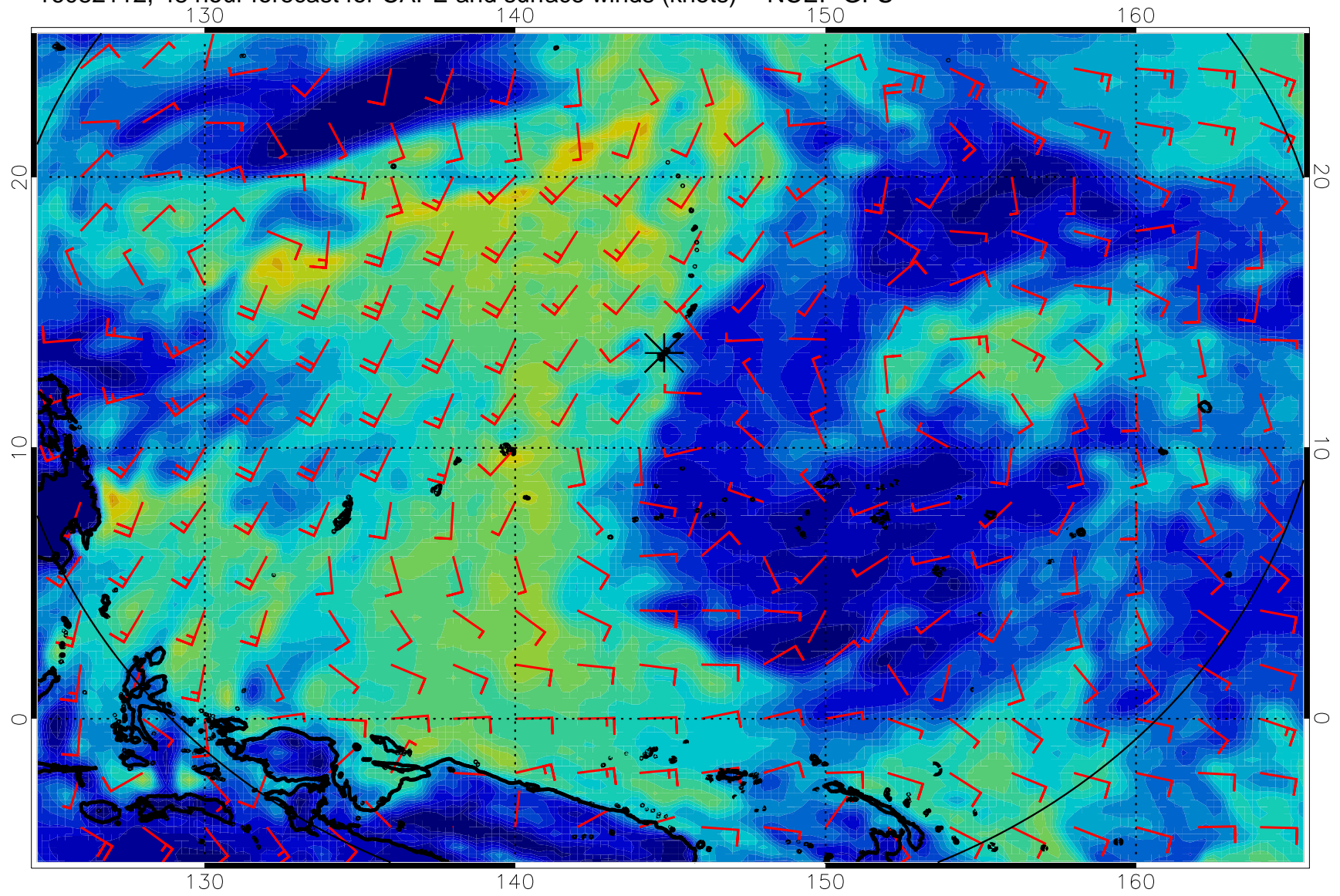
16082100, 36 hour forecast for CAPE and surface winds (knots) -- NCEP GFS



16082106, 42 hour forecast for CAPE and surface winds (knots) -- NCEP GFS

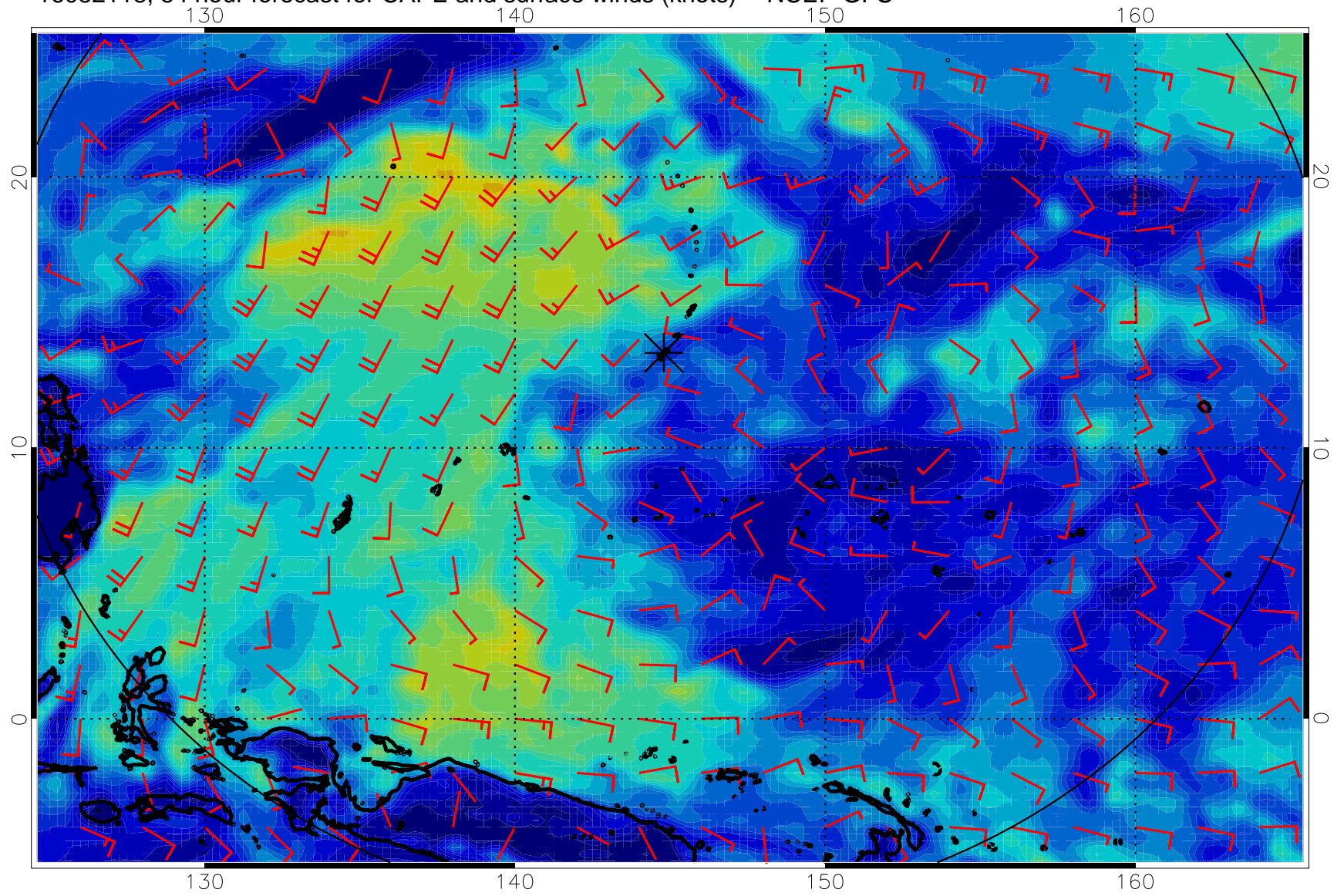


16082112, 48 hour forecast for CAPE and surface winds (knots) -- NCEP GFS

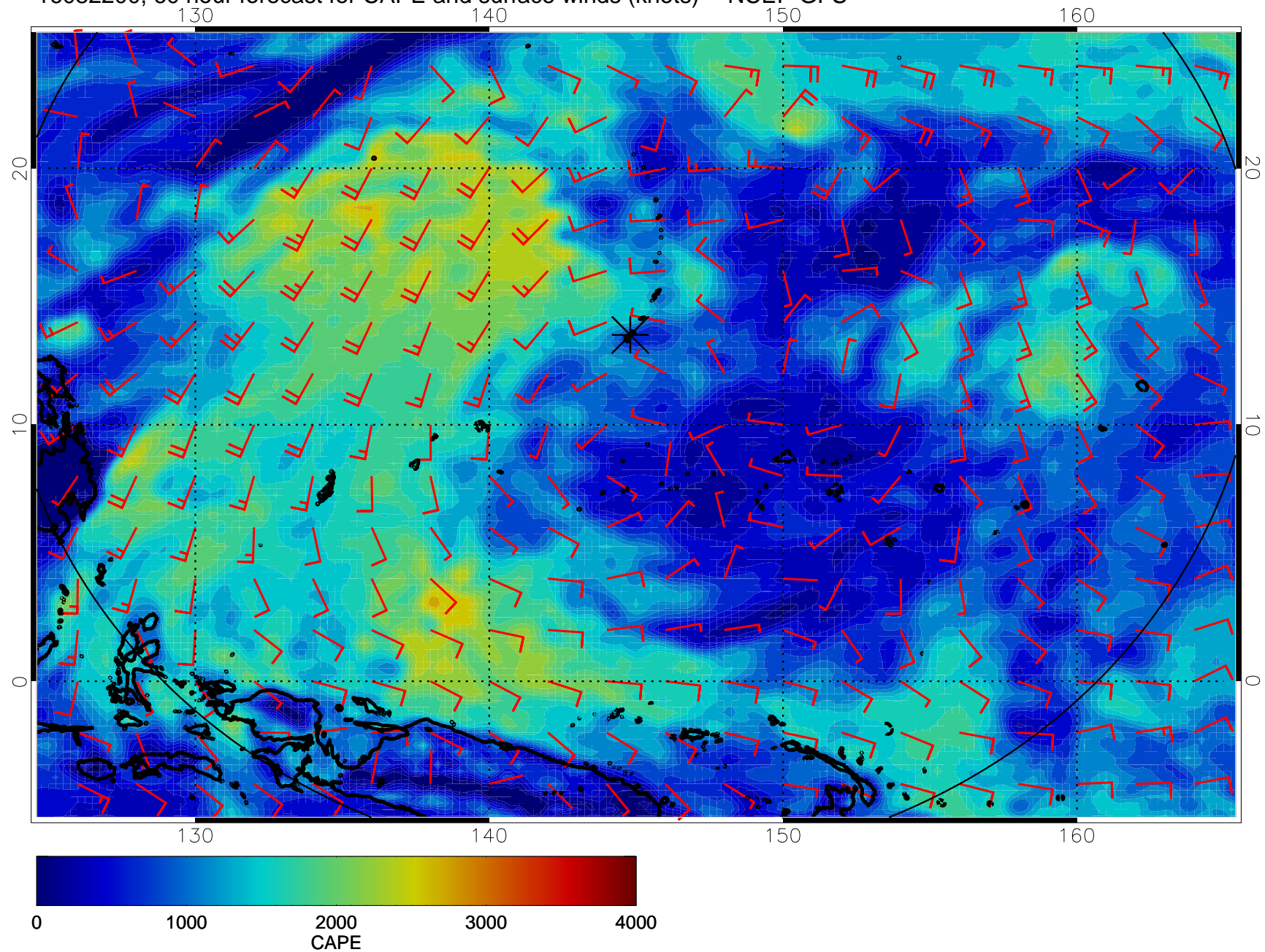




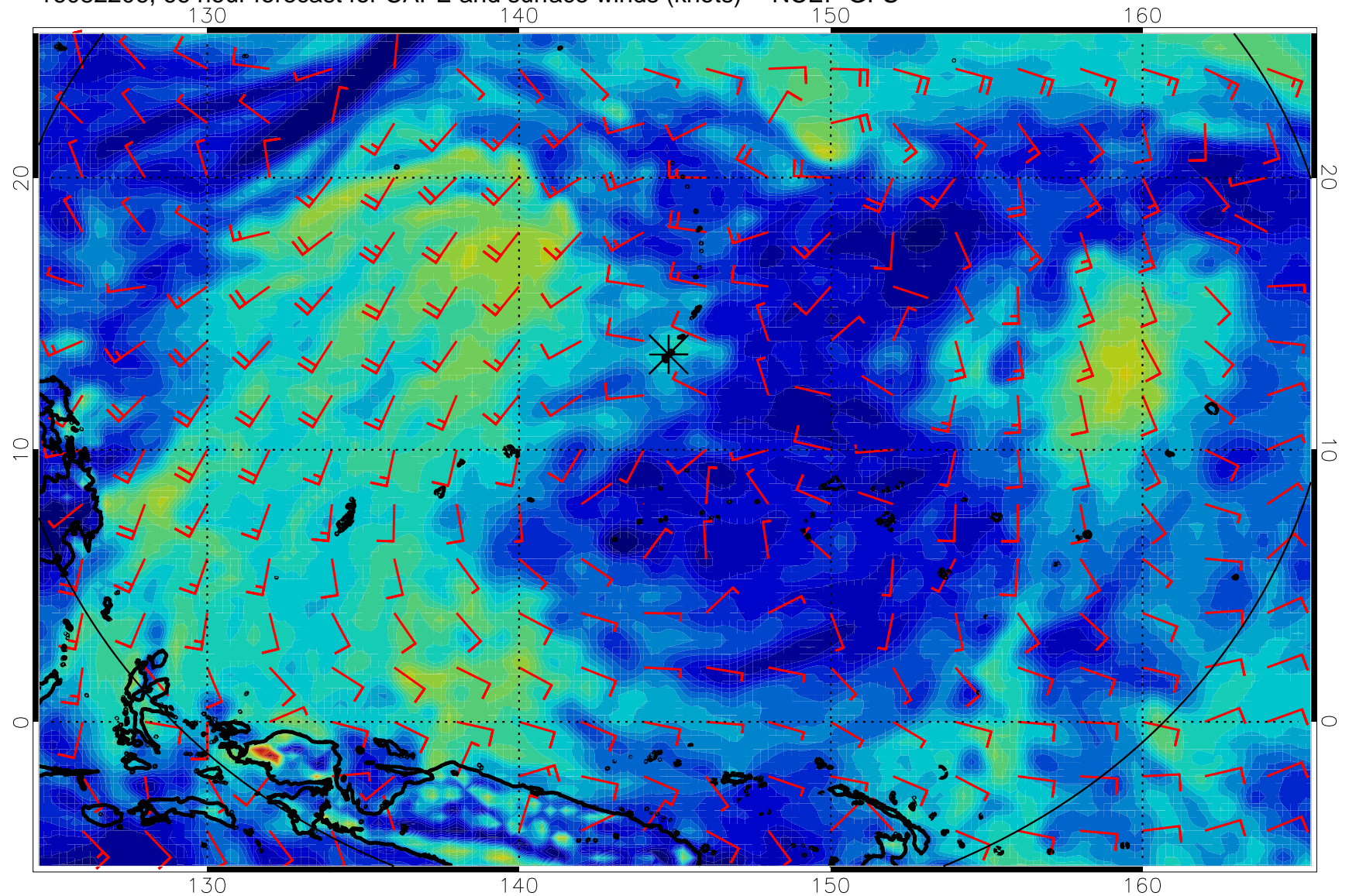
16082118, 54 hour forecast for CAPE and surface winds (knots) -- NCEP GFS



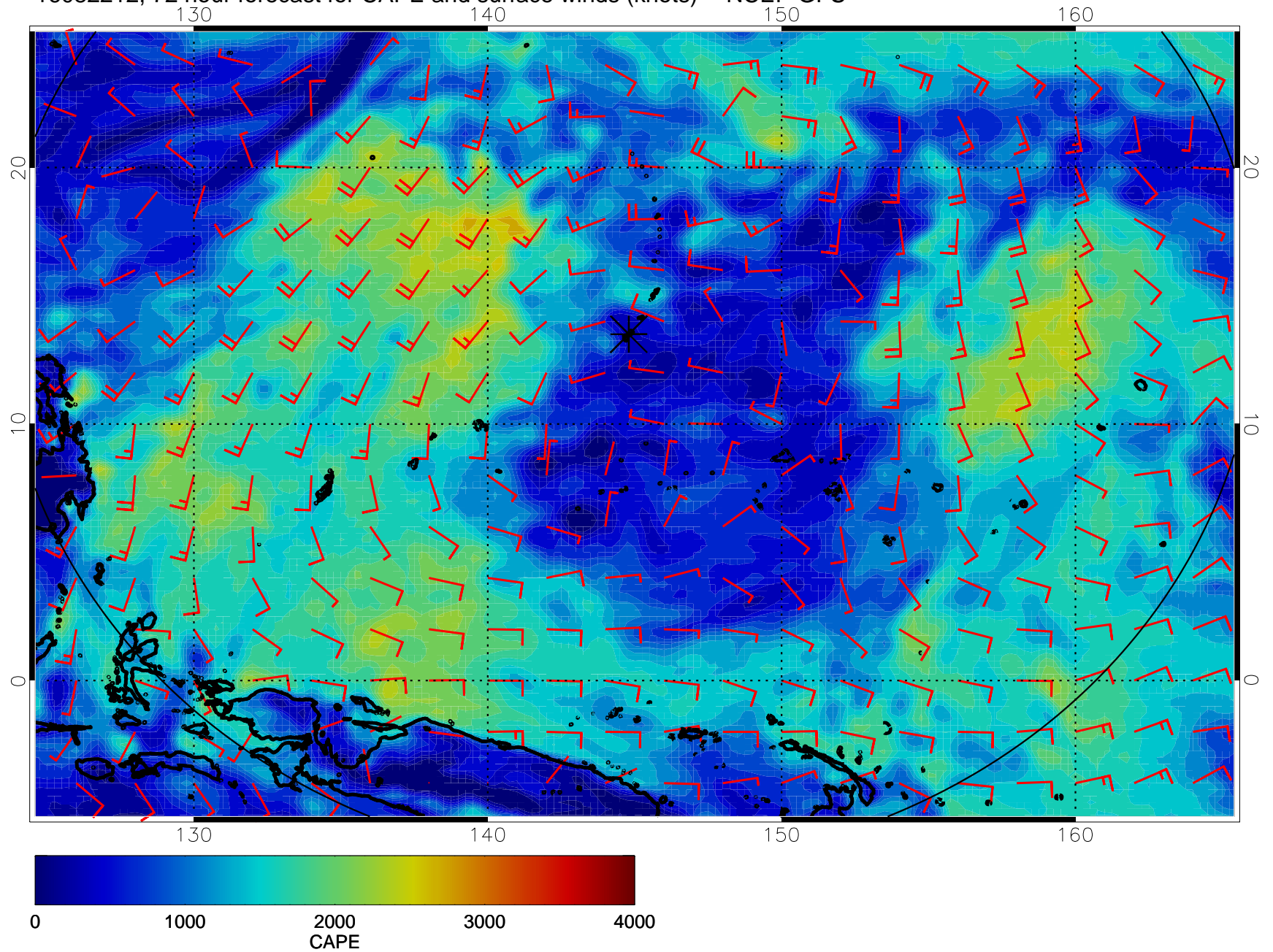
16082200, 60 hour forecast for CAPE and surface winds (knots) -- NCEP GFS



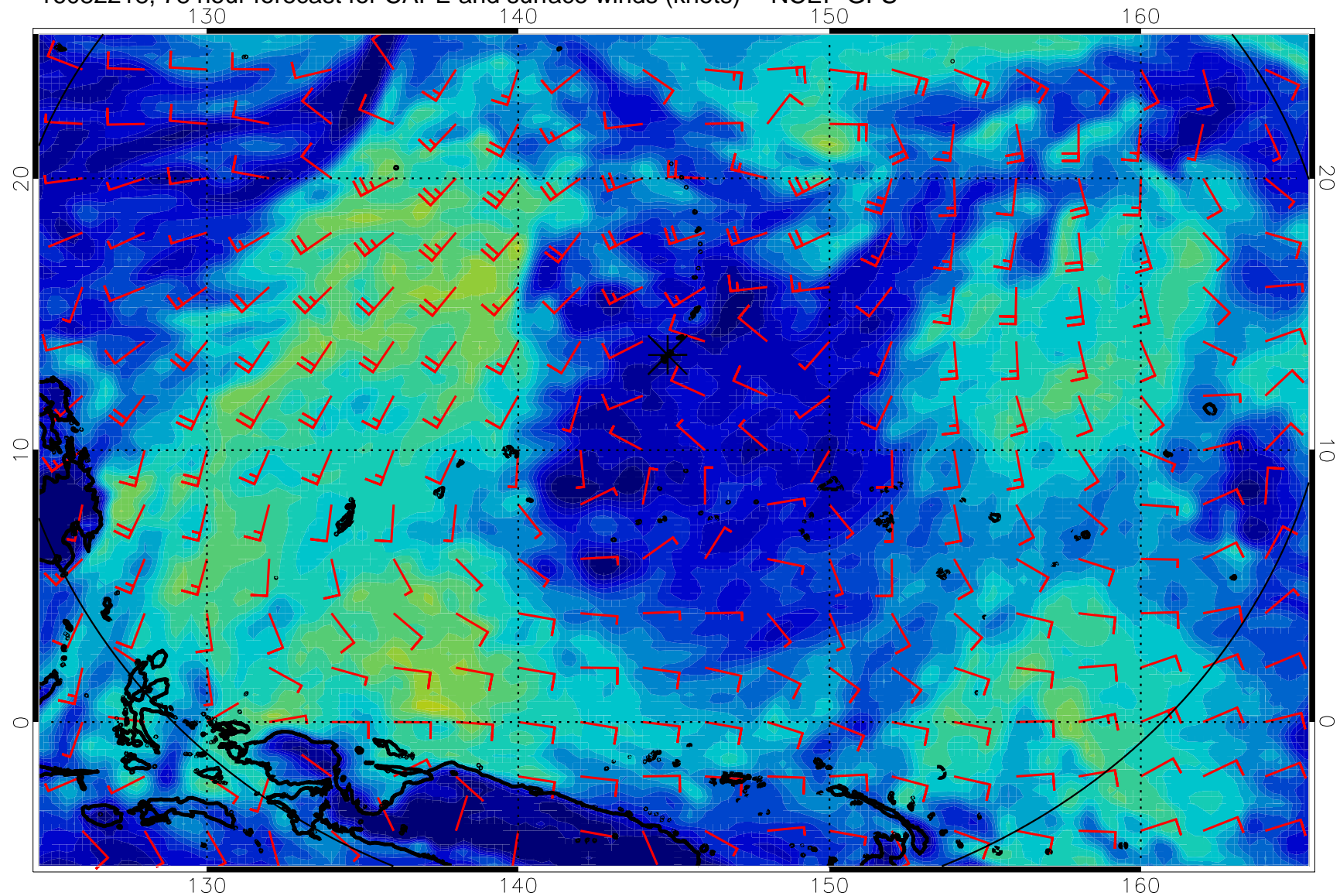
16082206, 66 hour forecast for CAPE and surface winds (knots) -- NCEP GFS



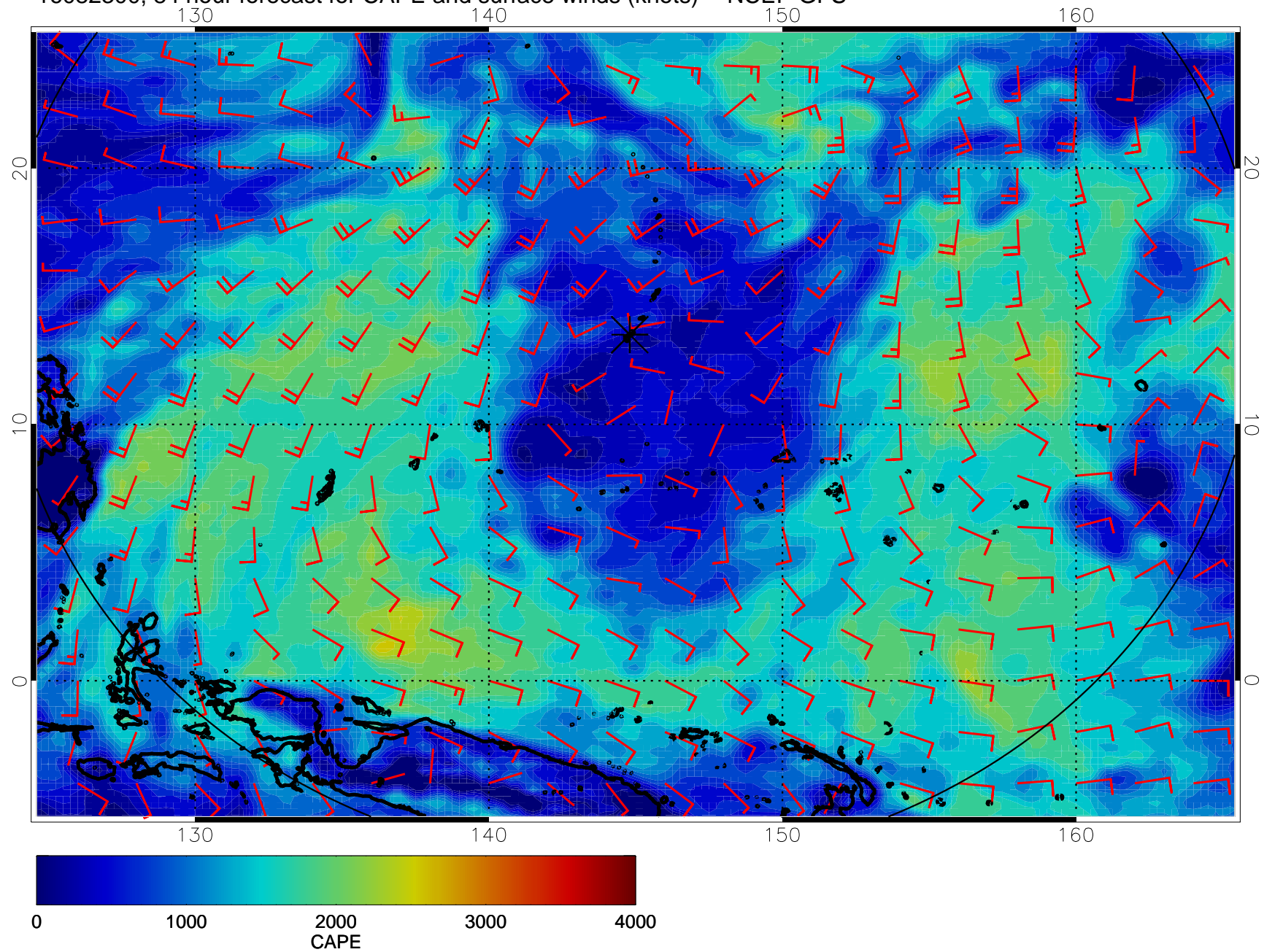
16082212, 72 hour forecast for CAPE and surface winds (knots) -- NCEP GFS



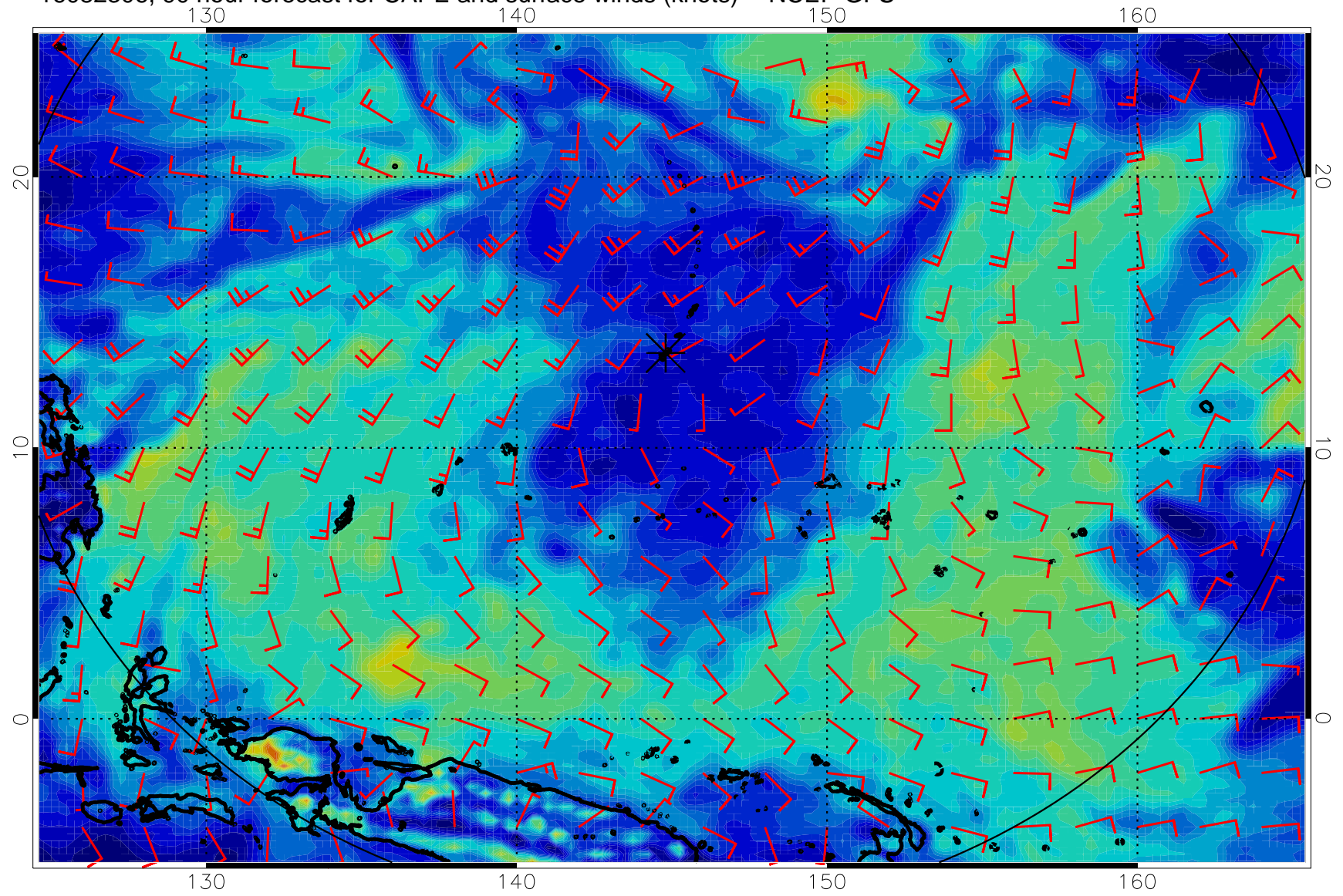
16082218, 78 hour forecast for CAPE and surface winds (knots) -- NCEP GFS



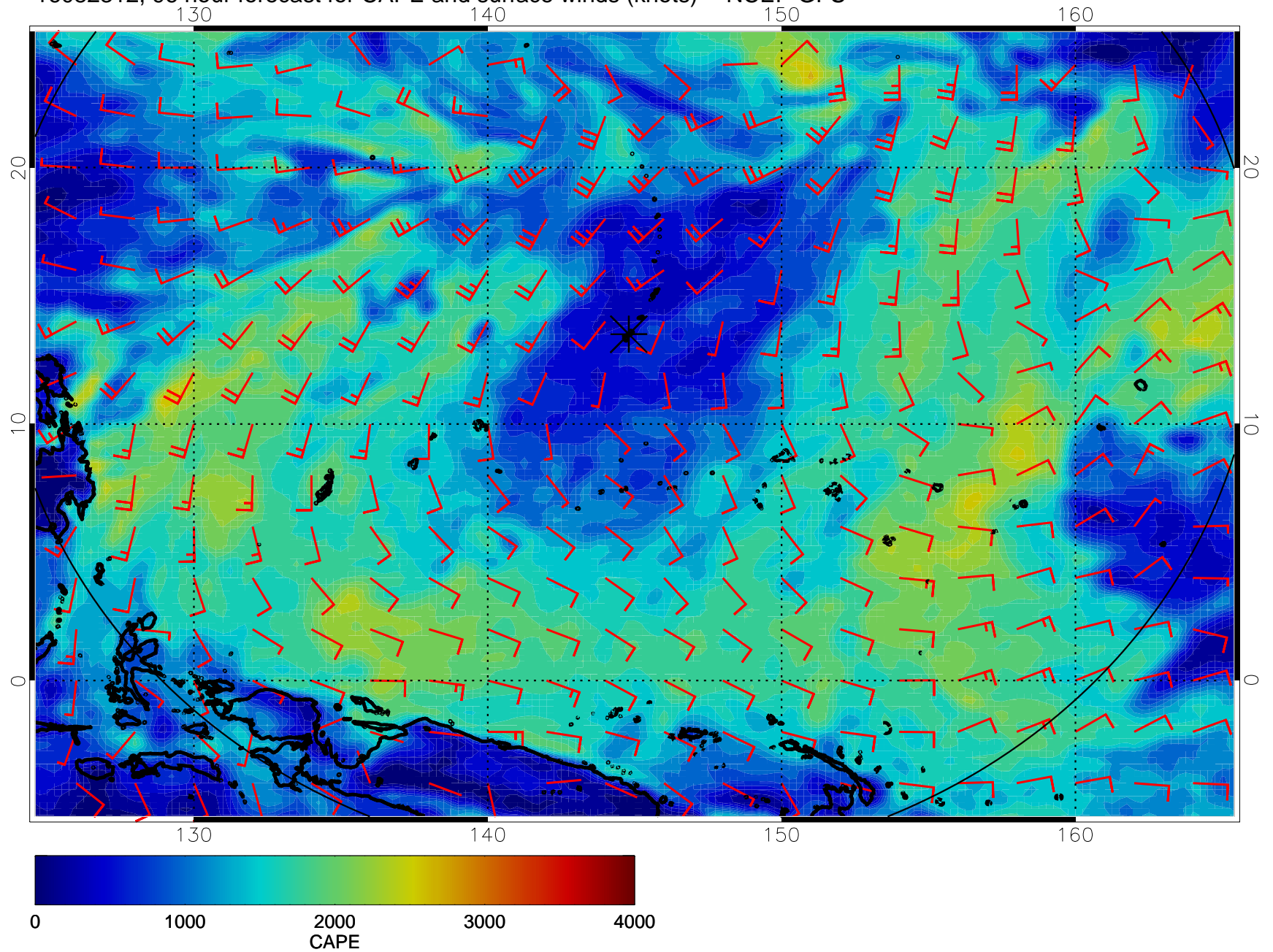
16082300, 84 hour forecast for CAPE and surface winds (knots) -- NCEP GFS



16082306, 90 hour forecast for CAPE and surface winds (knots) -- NCEP GFS

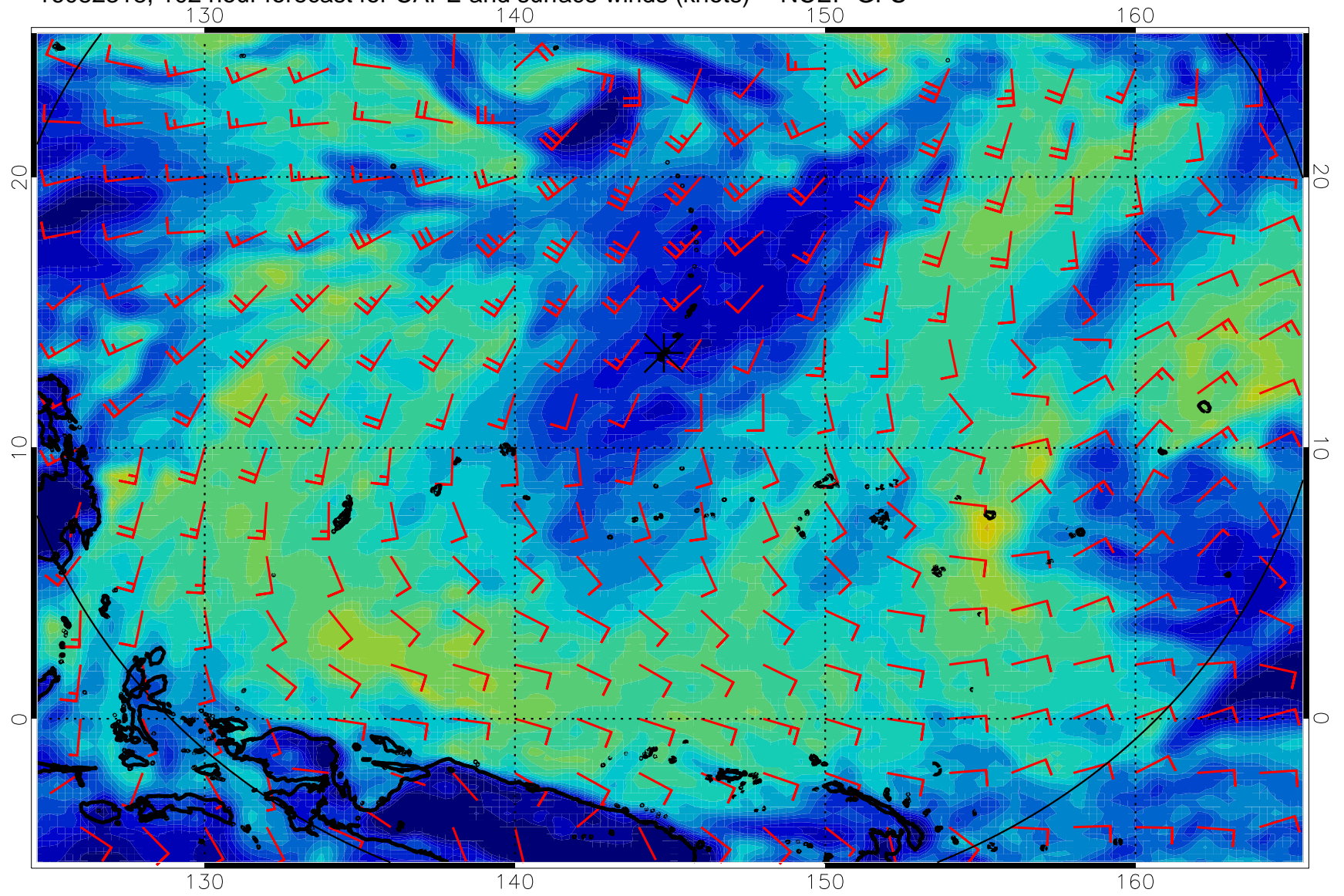


16082312, 96 hour forecast for CAPE and surface winds (knots) -- NCEP GFS

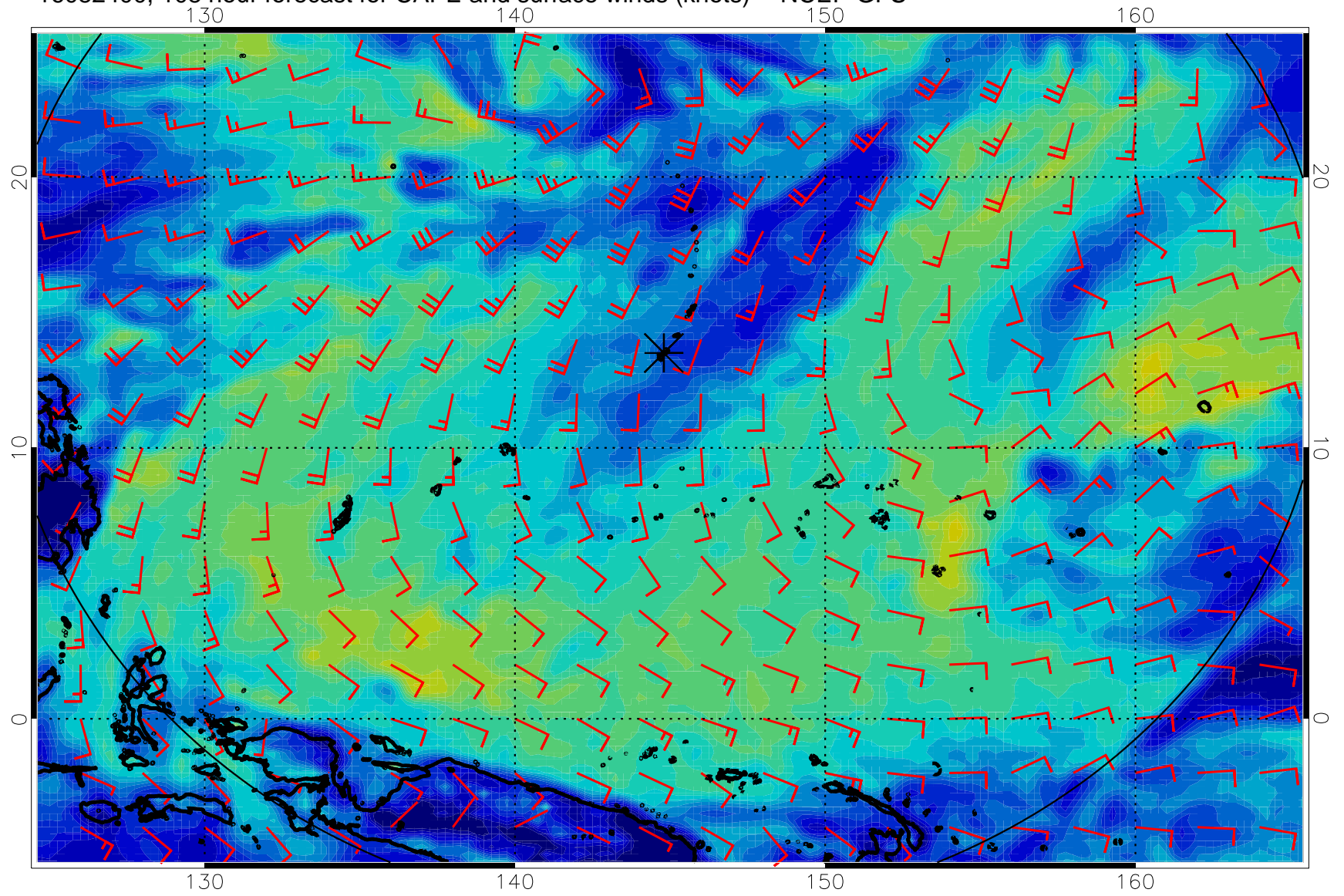




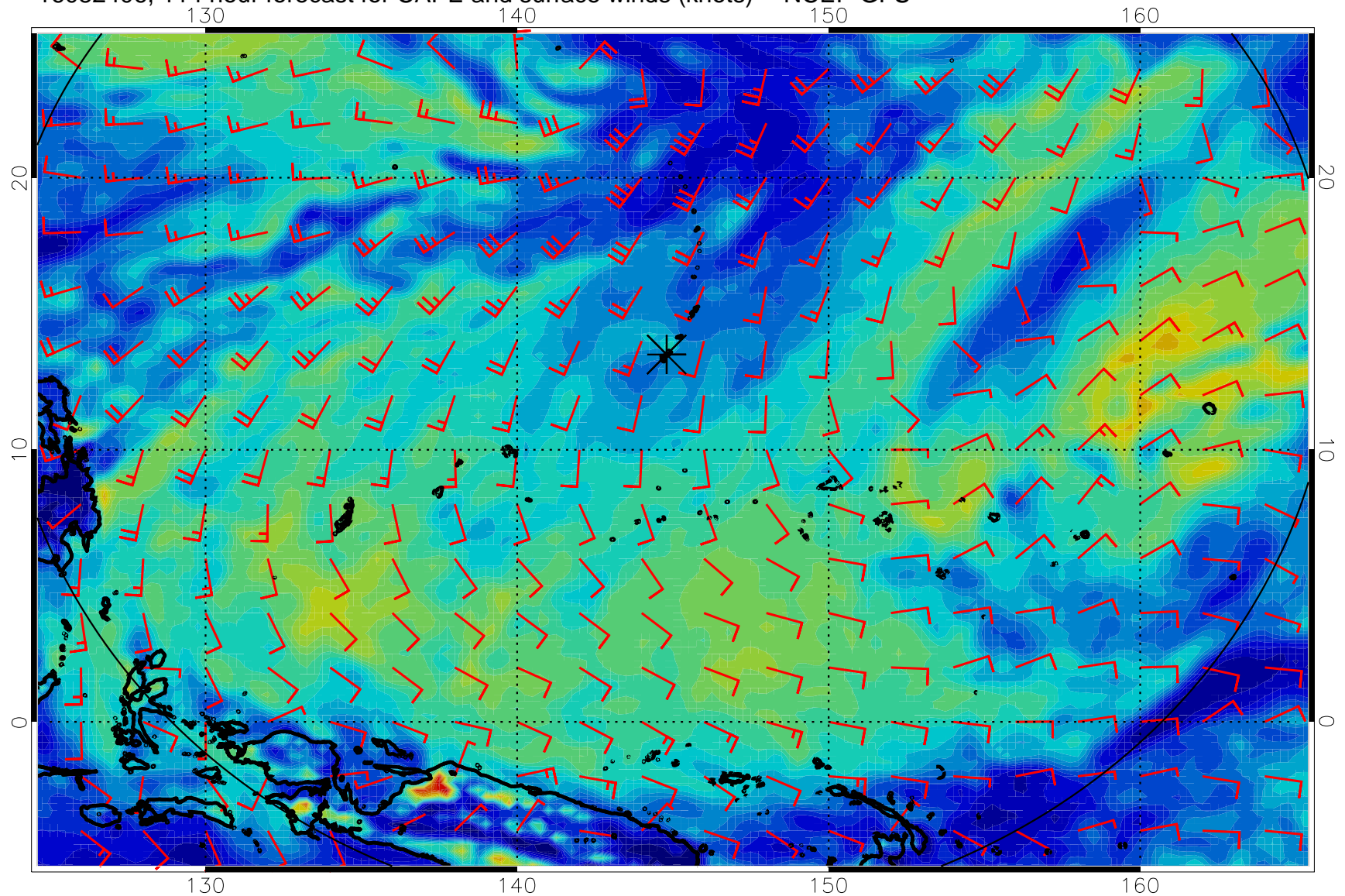
16082318, 102 hour forecast for CAPE and surface winds (knots) -- NCEP GFS



16082400, 108 hour forecast for CAPE and surface winds (knots) -- NCEP GFS



16082406, 114 hour forecast for CAPE and surface winds (knots) -- NCEP GFS



16082412, 120 hour forecast for CAPE and surface winds (knots) -- NCEP GFS

