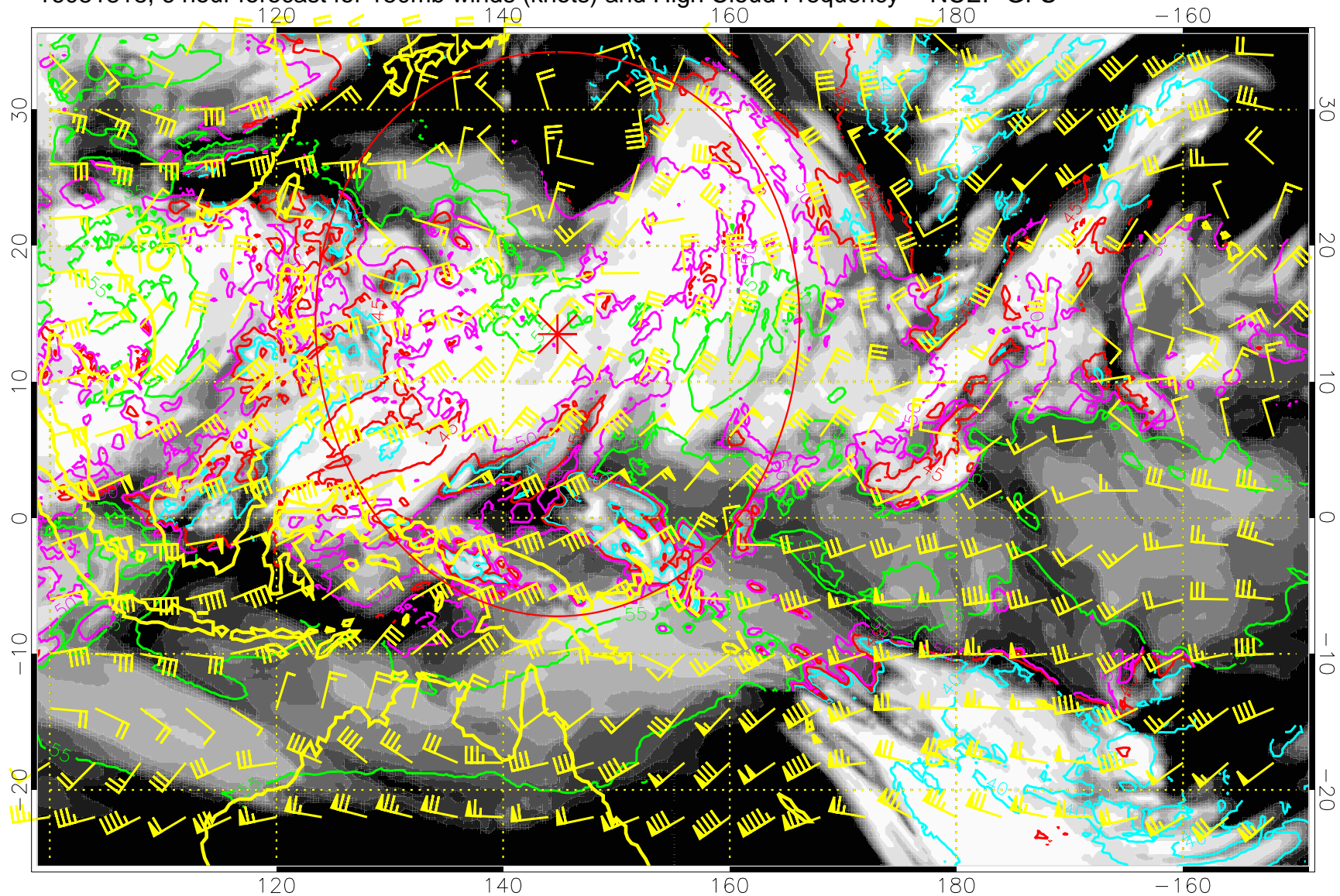


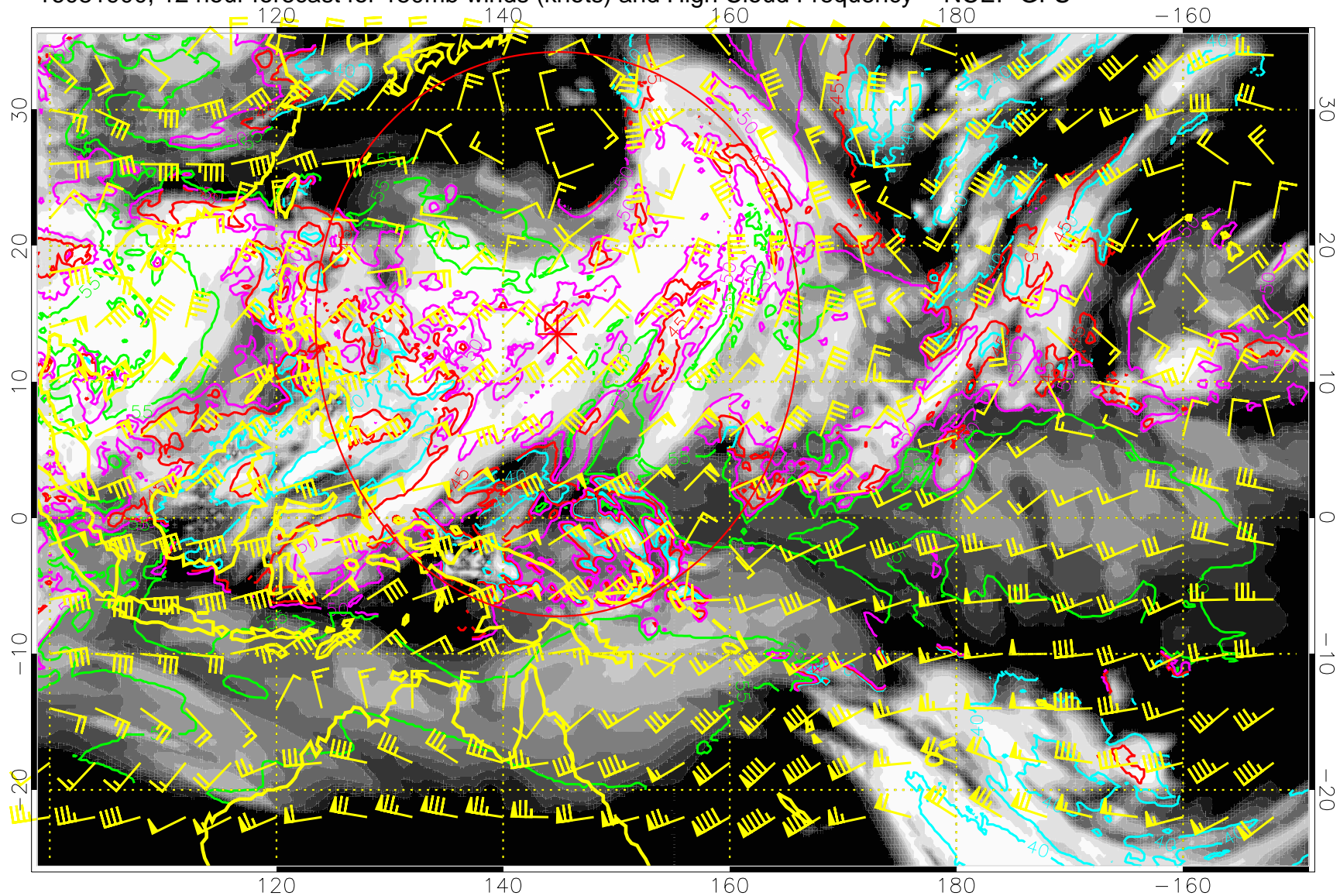
16081818, 6 hour forecast for 150mb winds (knots) and High Cloud Frequency -- NCEP GFS



40 kft
50 kft
45 kft
55 kft

Range ring of 2304 km

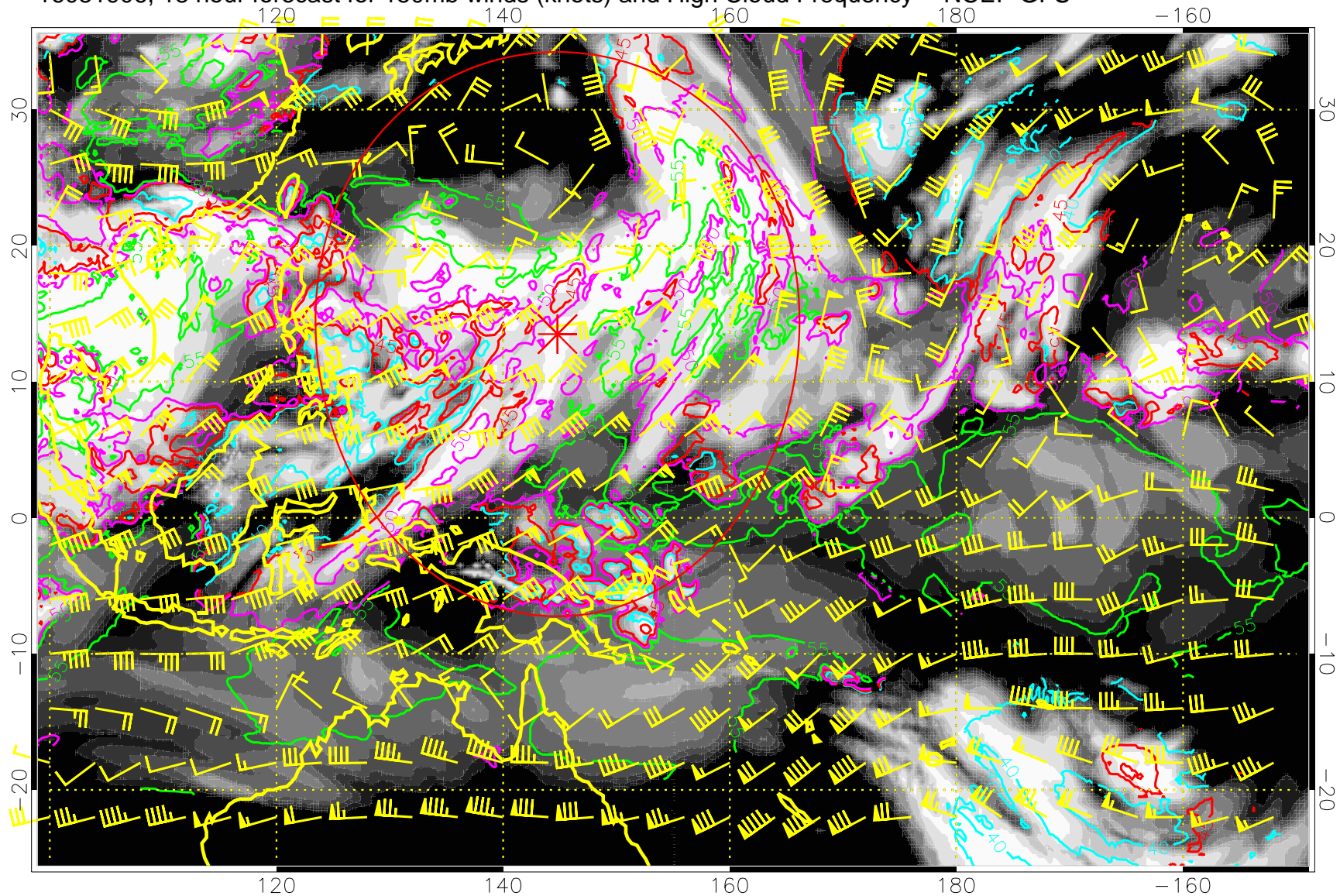
16081900, 12 hour forecast for 150mb winds (knots) and High Cloud Frequency -- NCEP GFS



40 kft
50 kft
45 kft
55 kft

Range ring of 2304 km

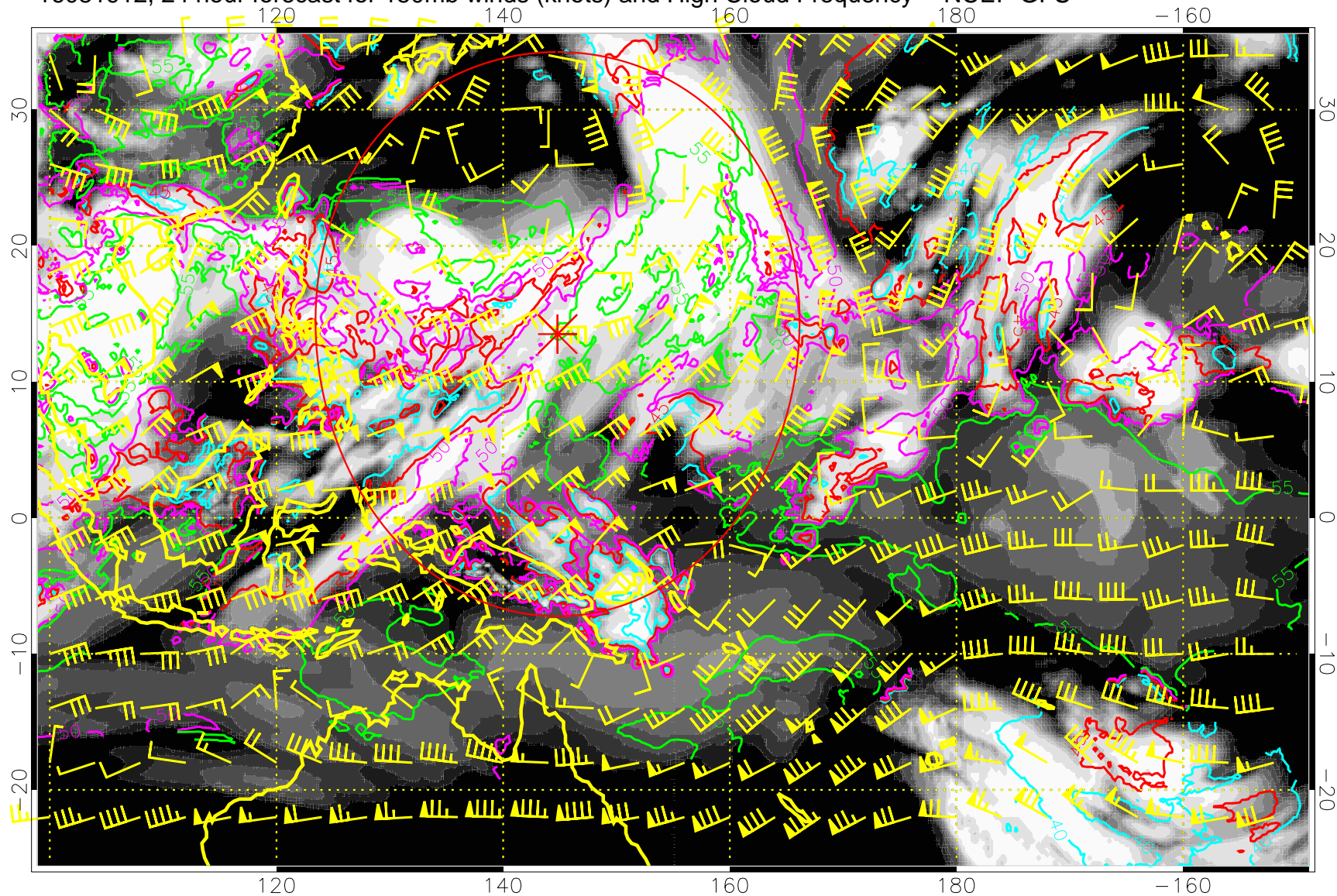
16081906, 18 hour forecast for 150mb winds (knots) and High Cloud Frequency -- NCEP GFS



40 kft
50 kft
45 kft
55 kft

Range ring of 2304 km

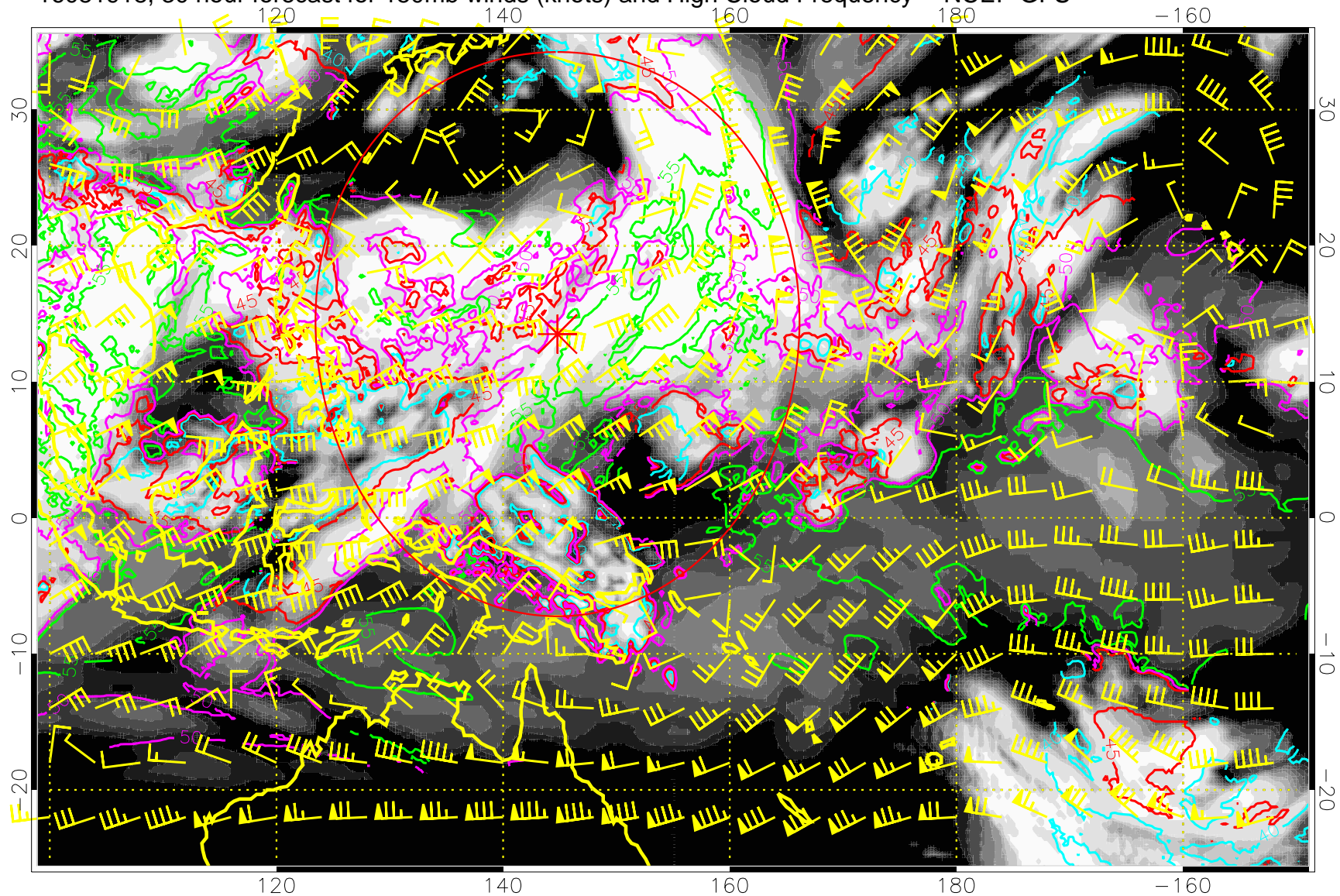
16081912, 24 hour forecast for 150mb winds (knots) and High Cloud Frequency -- NCEP GFS



40 kft
50 kft
45 kft
55 kft

Range ring of 2304 km

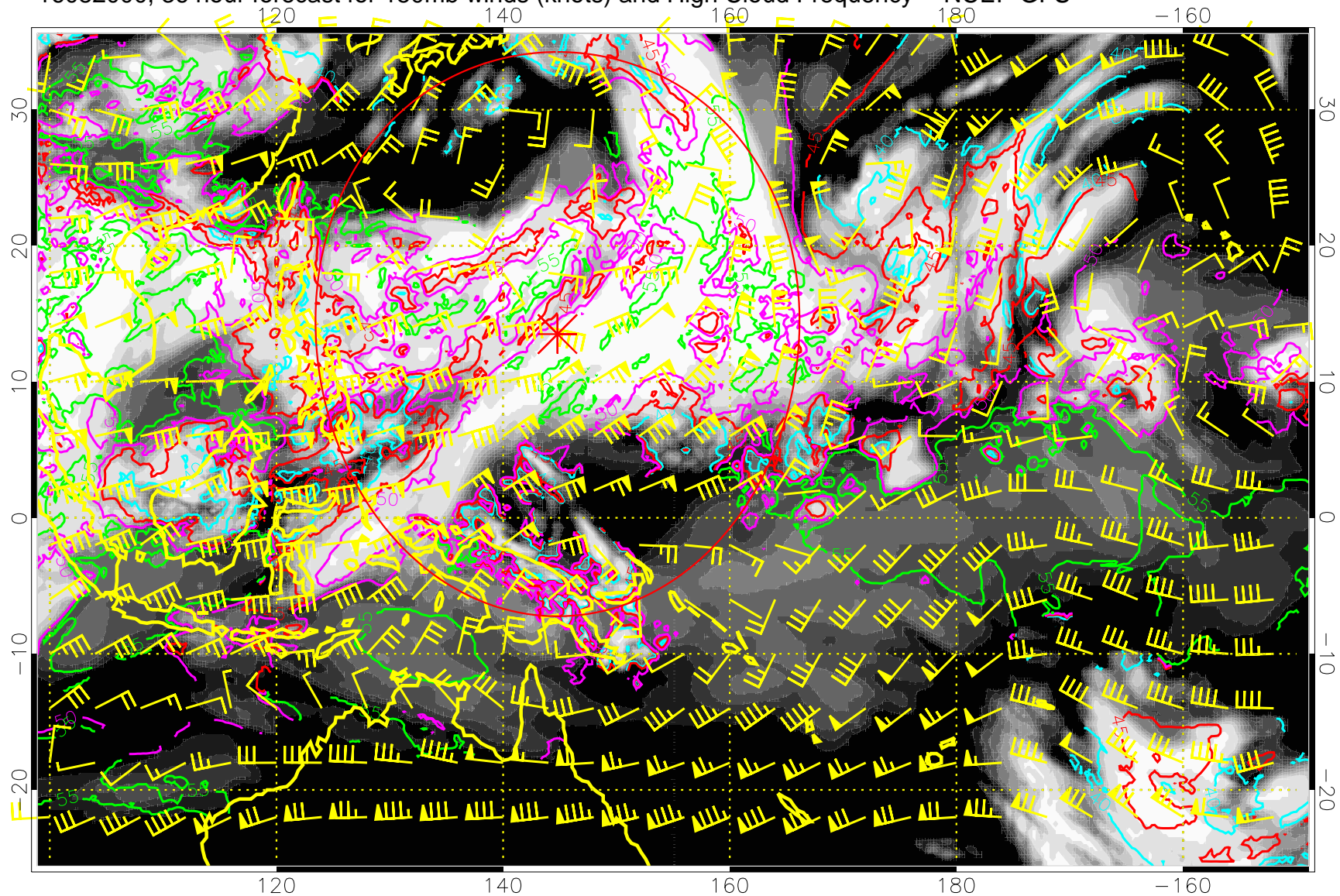
16081918, 30 hour forecast for 150mb winds (knots) and High Cloud Frequency -- NCEP GFS



40 kft
50 kft
45 kft
55 kft

Range ring of 2304 km

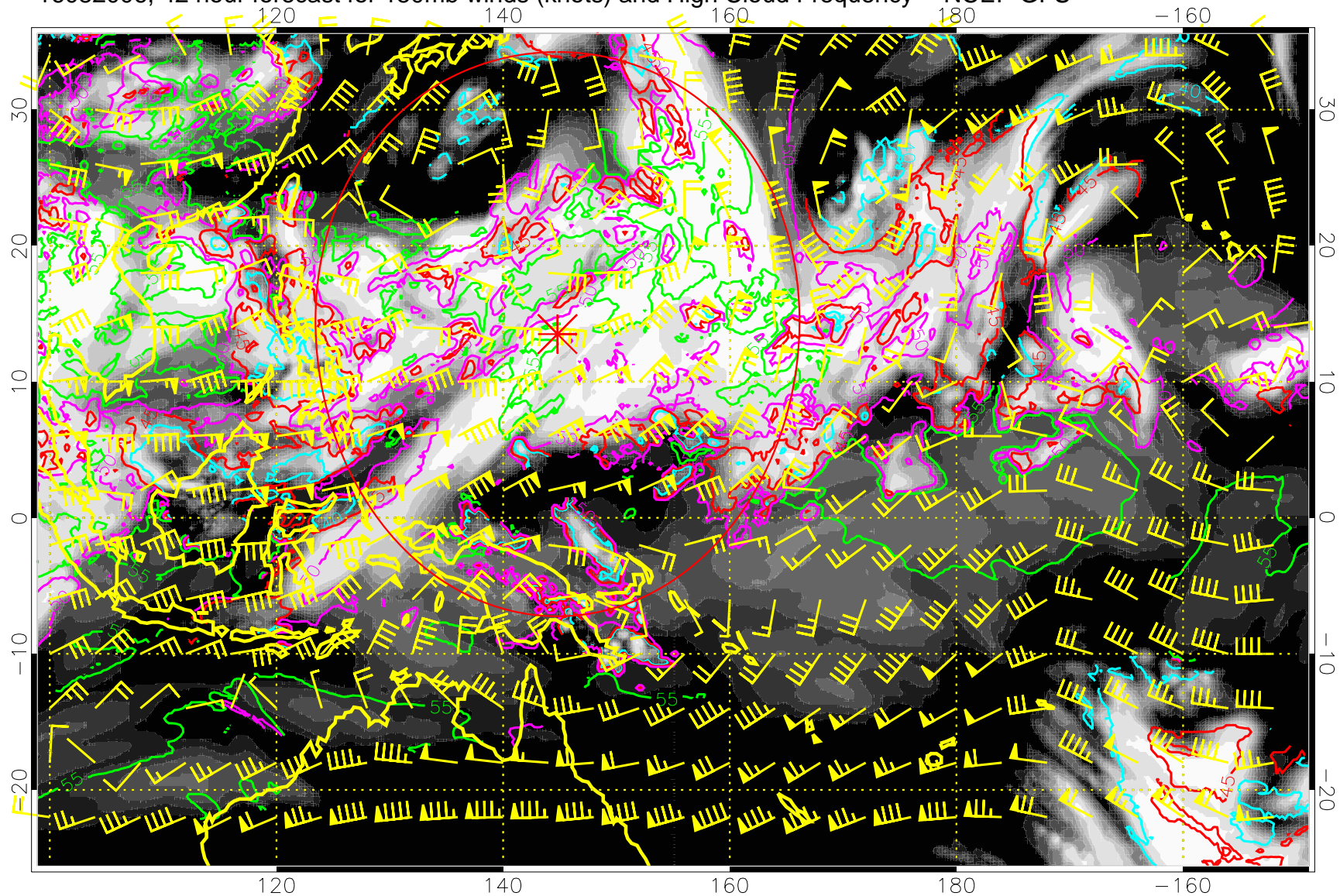
16082000, 36 hour forecast for 150mb winds (knots) and High Cloud Frequency -- NCEP GFS



40 kft
50 kft
45 kft
55 kft

Range ring of 2304 km

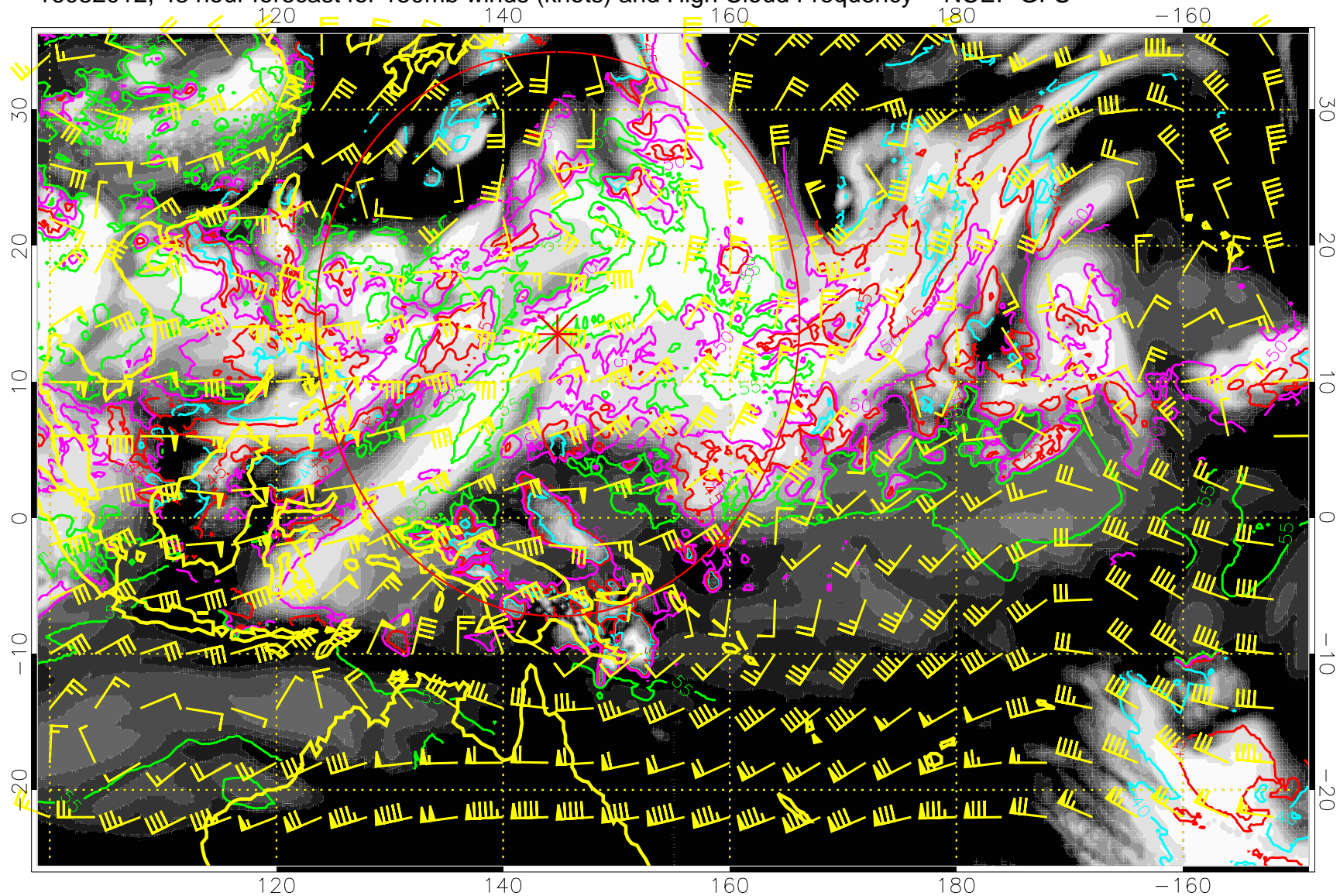
16082006, 42 hour forecast for 150mb winds (knots) and High Cloud Frequency -- NCEP GFS



40 kft
50 kft
45 kft
55 kft

Range ring of 2304 km

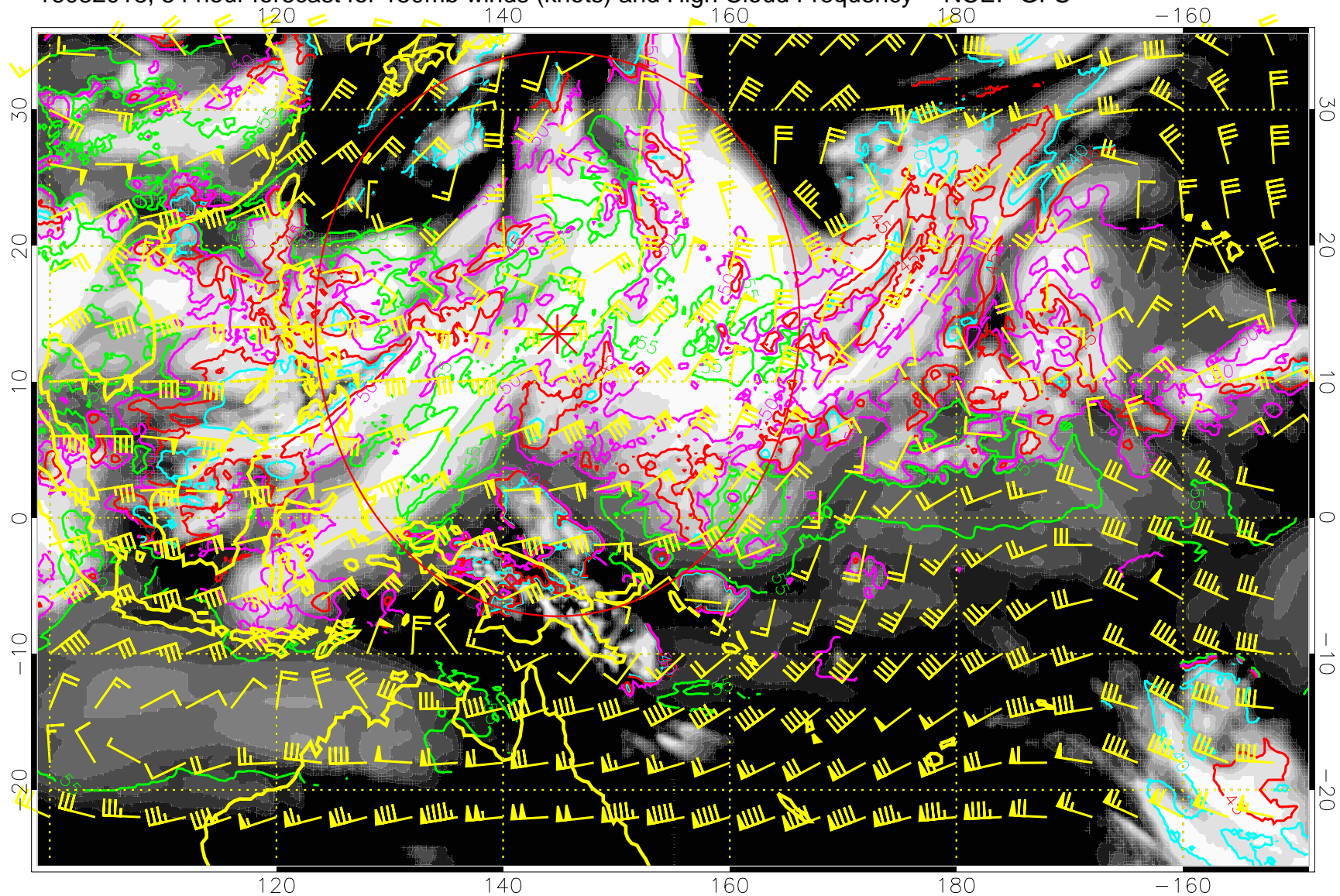
16082012, 48 hour forecast for 150mb winds (knots) and High Cloud Frequency -- NCEP GFS



40 kft
50 kft
45 kft
55 kft

Range ring of 2304 km

16082018, 54 hour forecast for 150mb winds (knots) and High Cloud Frequency -- NCEP GFS

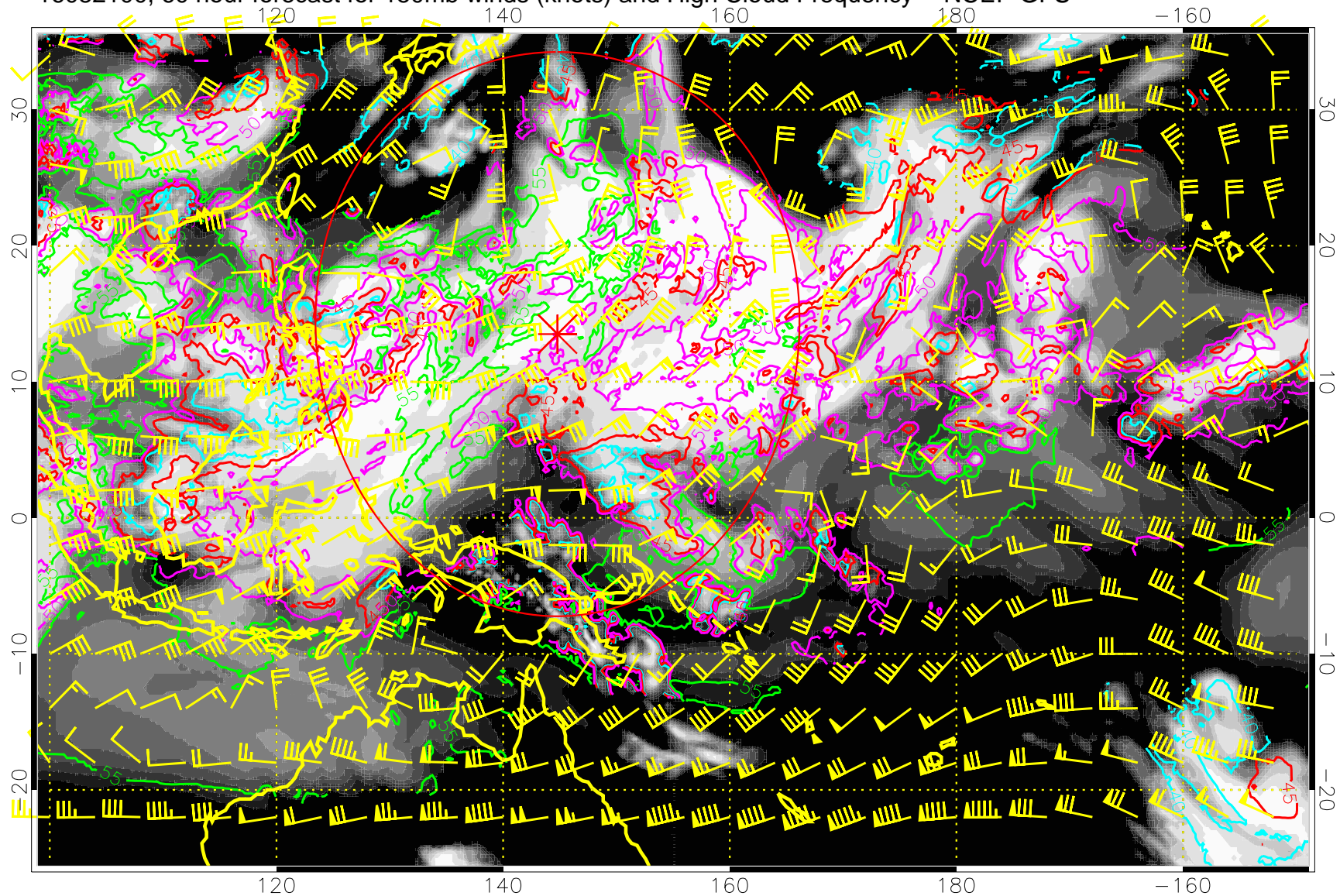


40 kft
50 kft

45 kft
55 kft

Range ring of 2304 km

16082100, 60 hour forecast for 150mb winds (knots) and High Cloud Frequency -- NCEP GFS

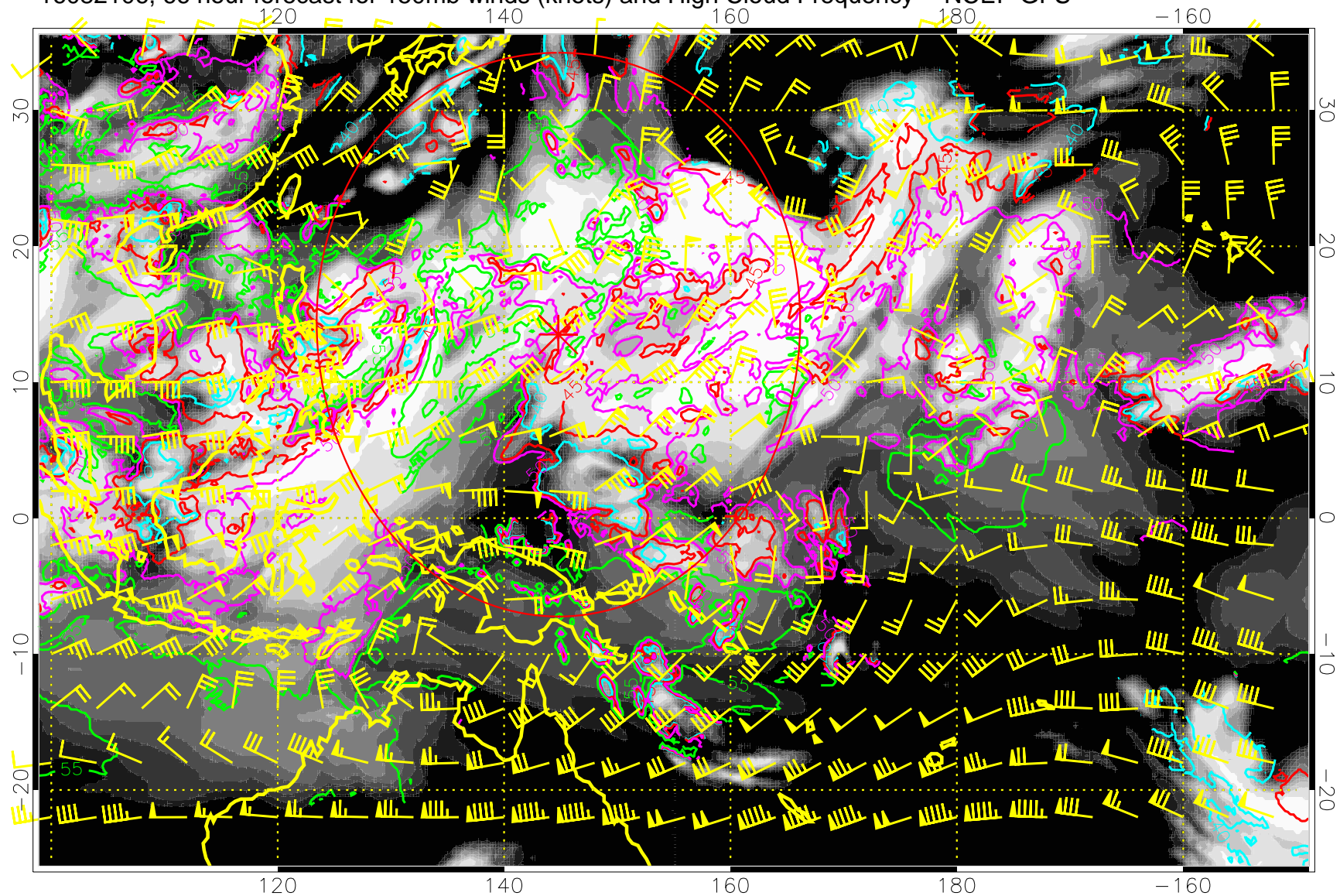


0.0 0.2 0.4 0.6 0.8 1.0
High Cloud Frequency

40 kft
50 kft
45 kft
55 kft

Range ring of 2304 km

16082106, 66 hour forecast for 150mb winds (knots) and High Cloud Frequency -- NCEP GFS

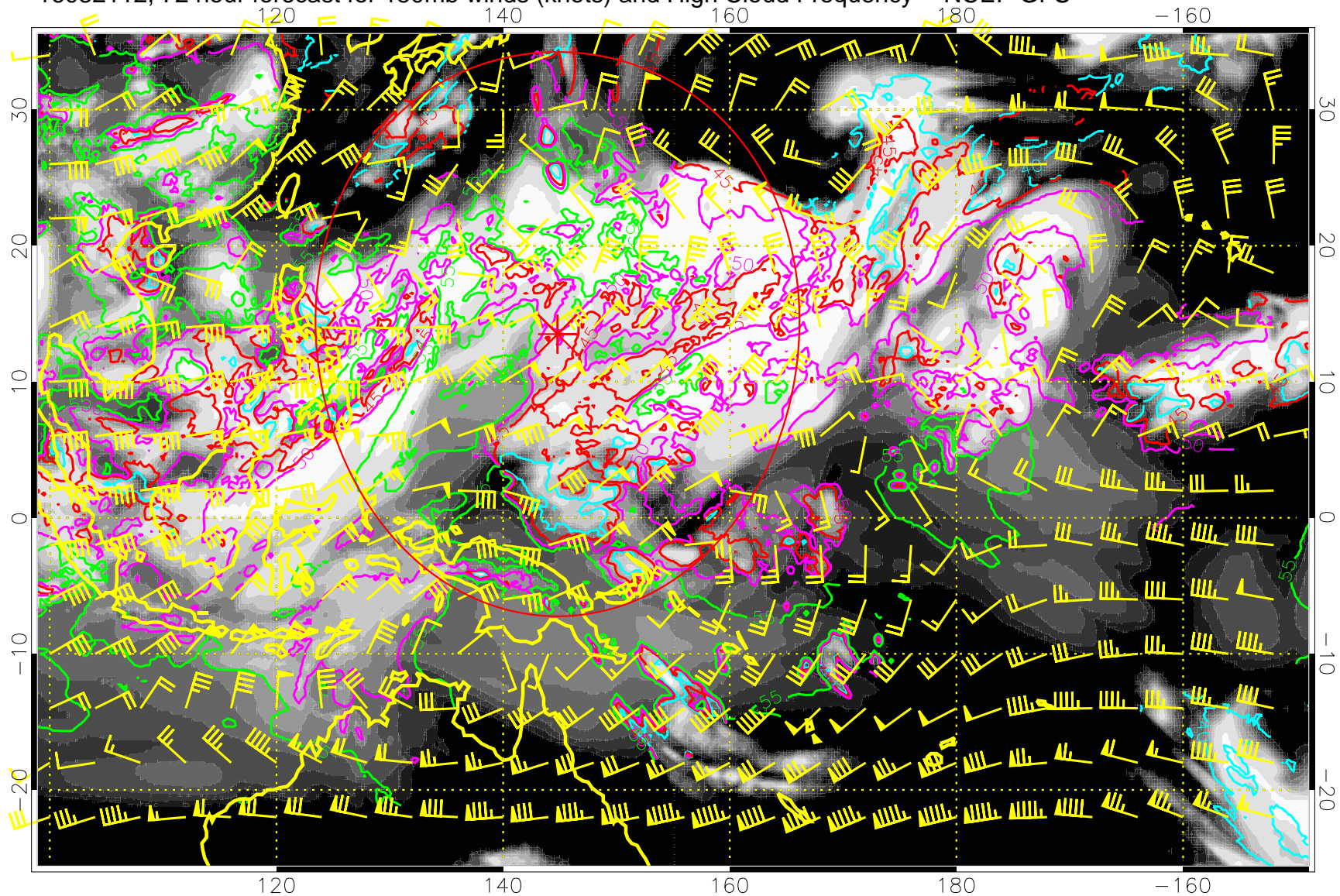


40 kft
50 kft
45 kft
55 kft

0.0 0.2 0.4 0.6 0.8 1.0

Range ring of 2304 km

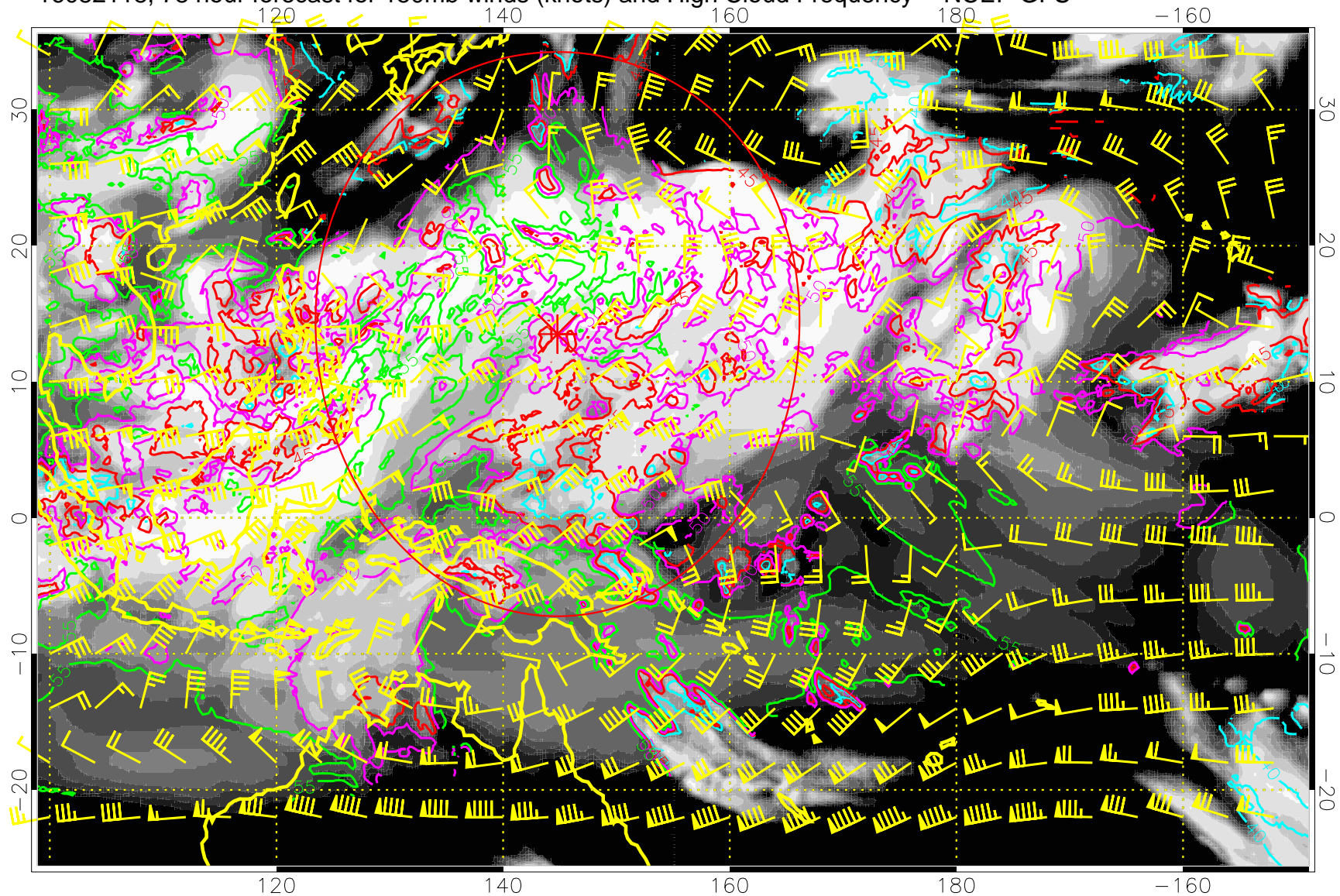
16082112, 72 hour forecast for 150mb winds (knots) and High Cloud Frequency -- NCEP GFS



40 kft
50 kft
45 kft
55 kft

Range ring of 2304 km

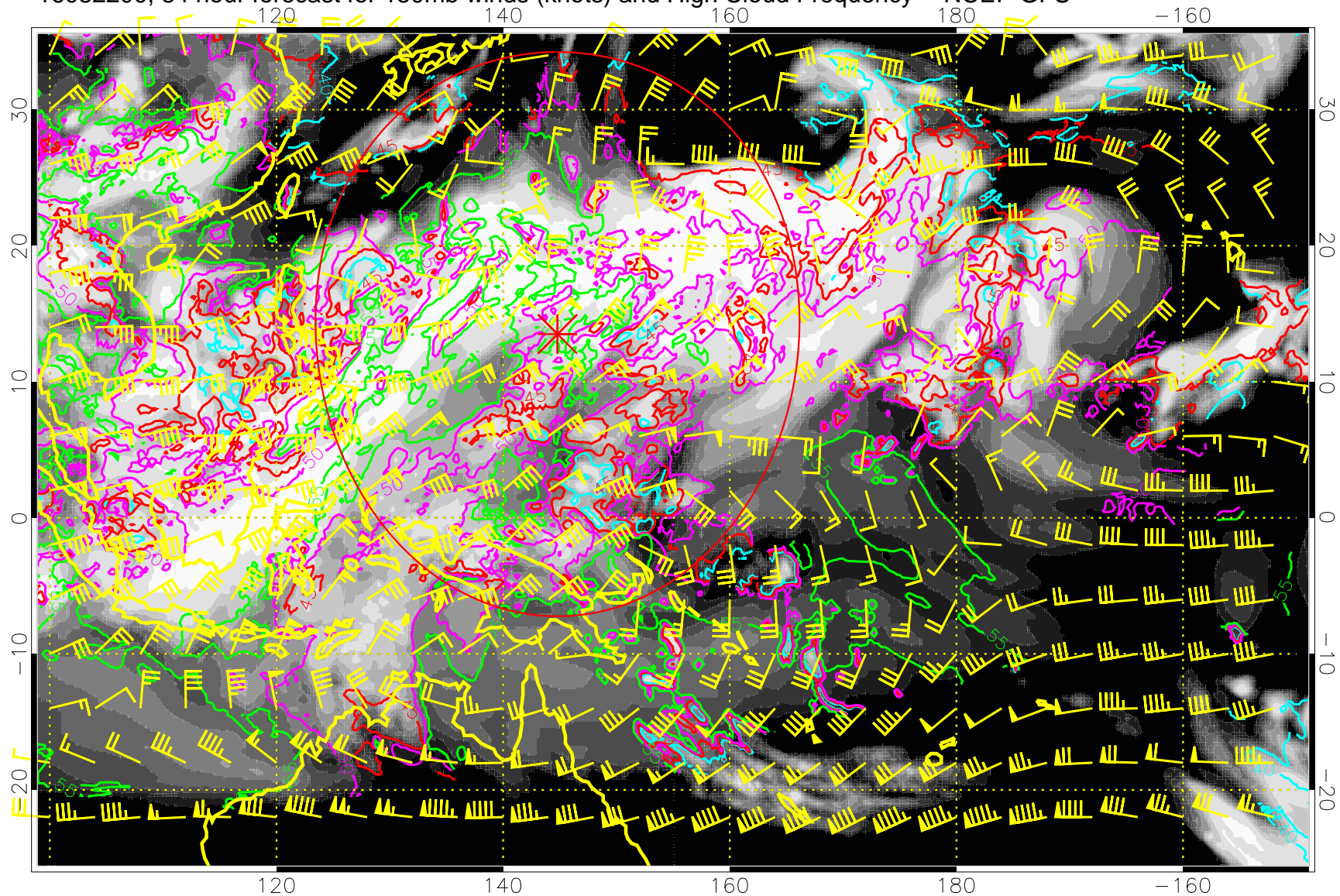
16082118, 78 hour forecast for 150mb winds (knots) and High Cloud Frequency -- NCEP GFS



40 kft
50 kft
45 kft
55 kft

Range ring of 2304 km

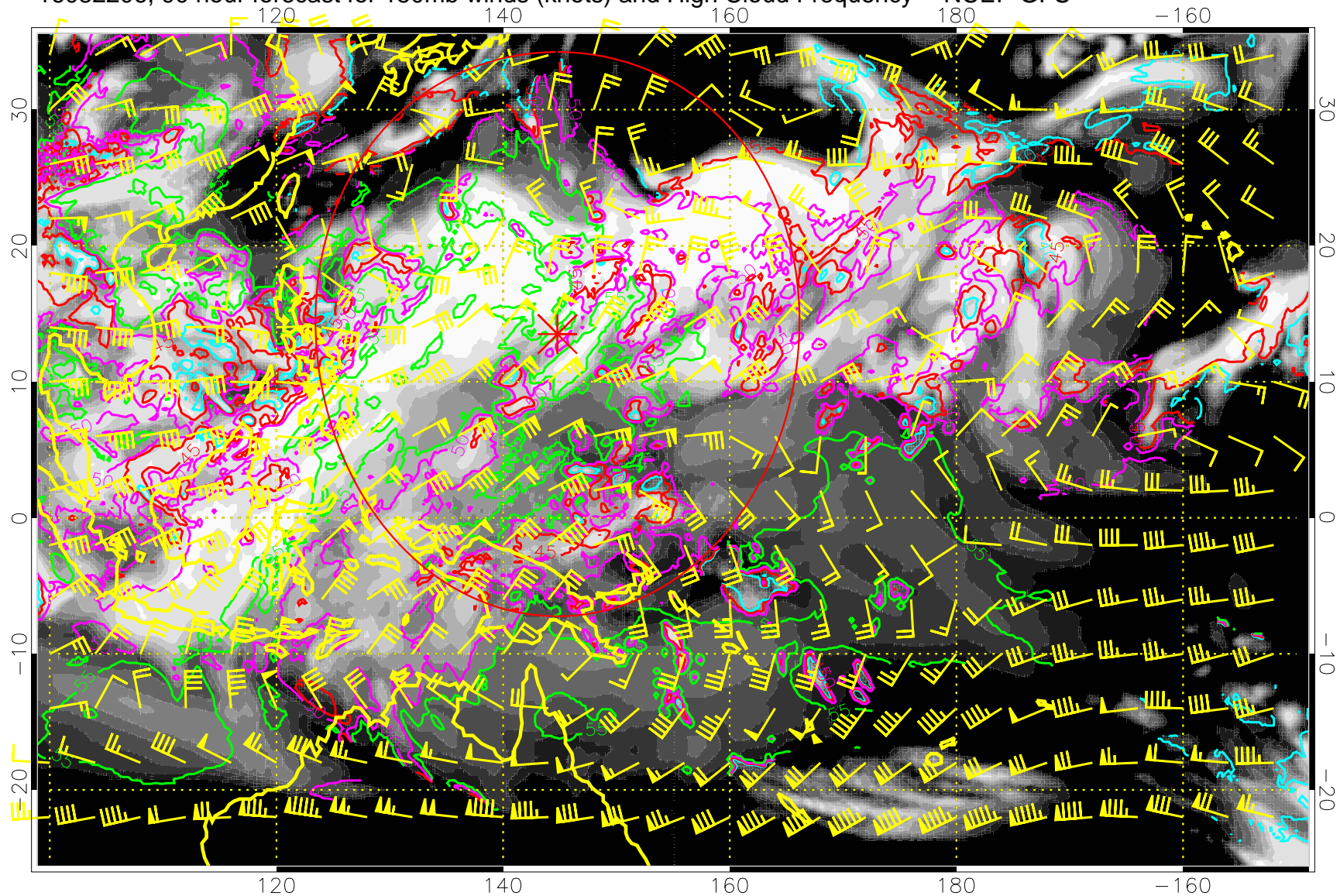
16082200, 84 hour forecast for 150mb winds (knots) and High Cloud Frequency -- NCEP GFS



40 kft
50 kft
45 kft
55 kft

Range ring of 2304 km

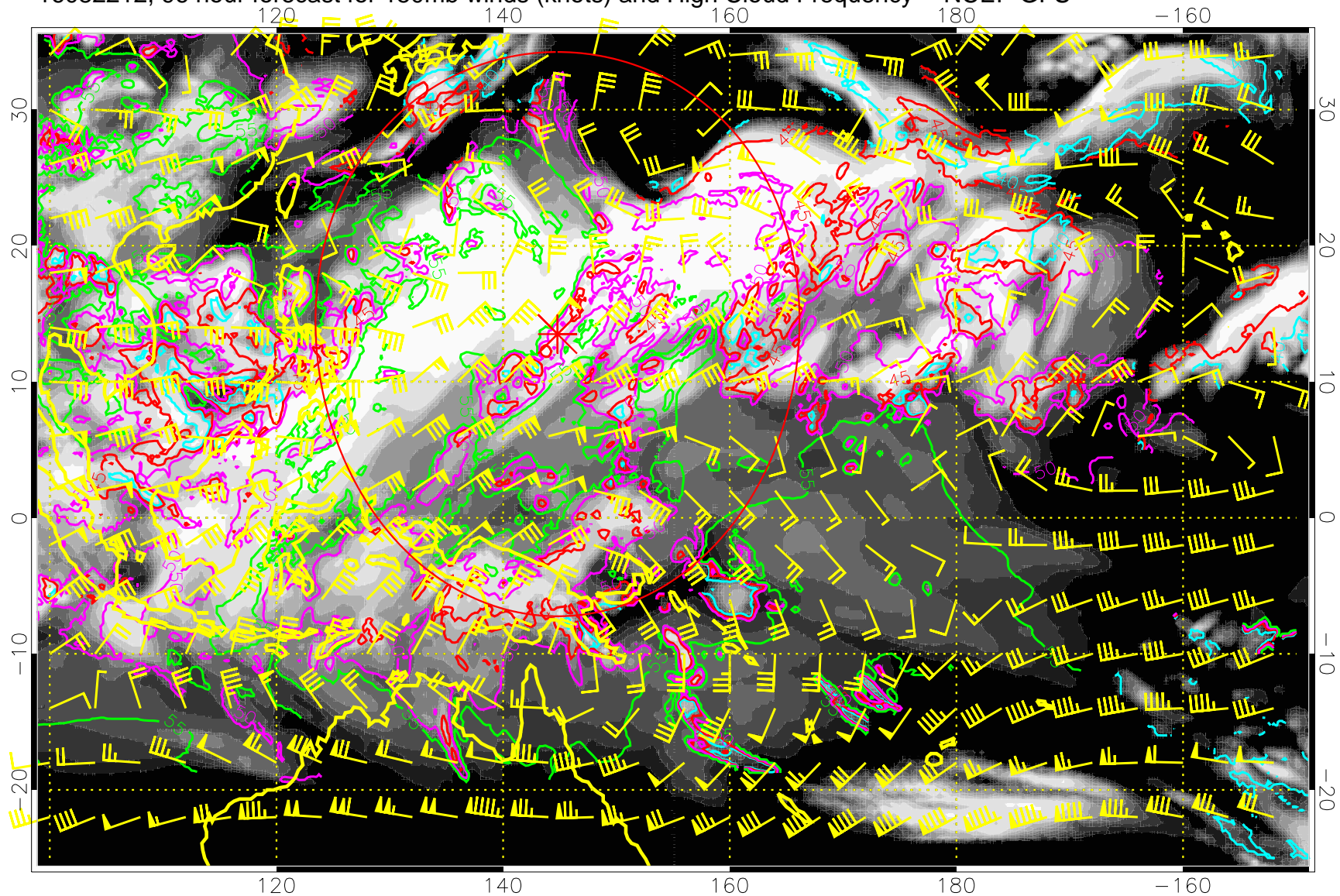
16082206, 90 hour forecast for 150mb winds (knots) and High Cloud Frequency -- NCEP GFS



40 kft
50 kft
45 kft
55 kft

Range ring of 2304 km

16082212, 96 hour forecast for 150mb winds (knots) and High Cloud Frequency -- NCEP GFS

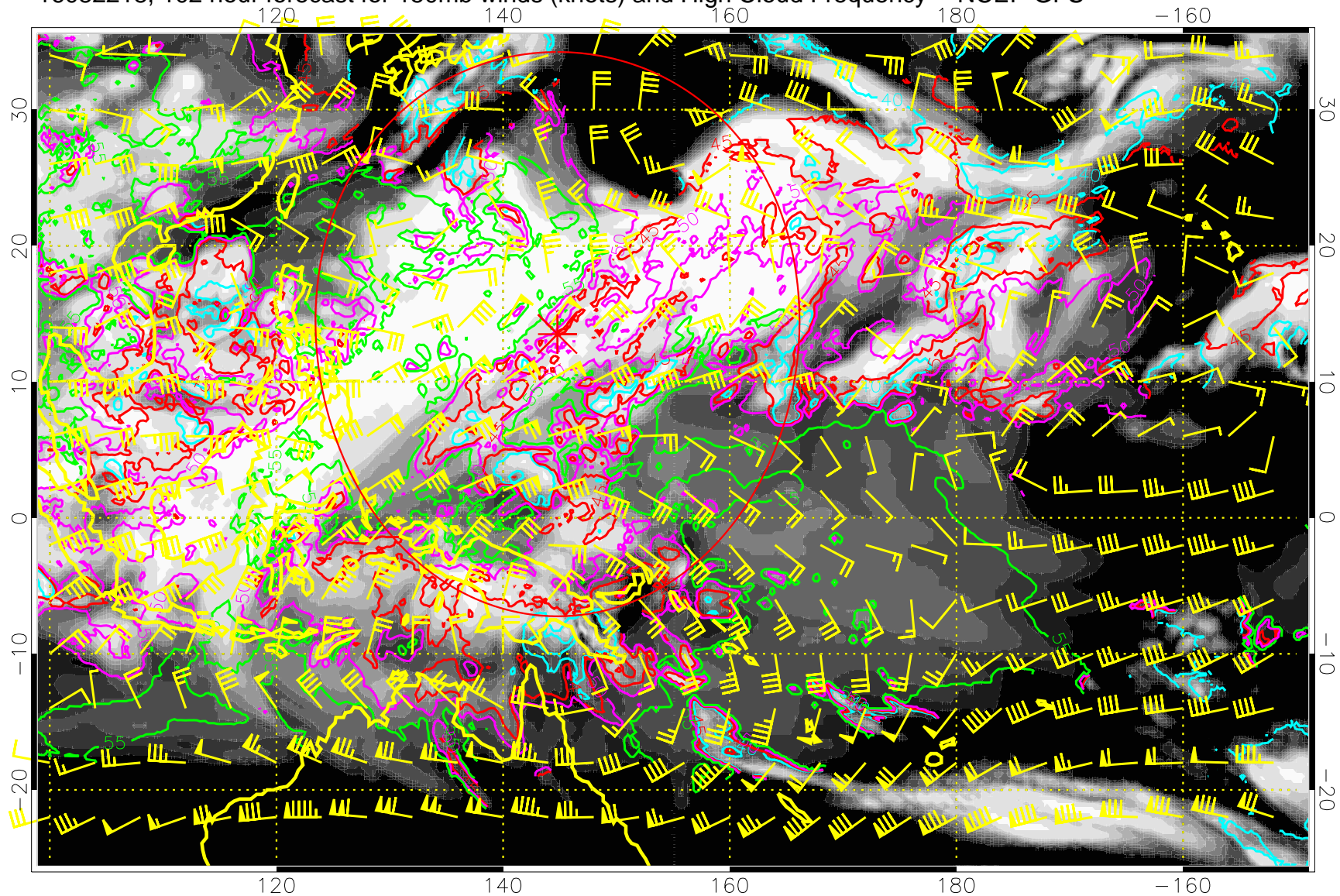


0.0 0.2 0.4 0.6 0.8 1.0
High Cloud Frequency

40 kft 45 kft
50 kft 55 kft

Range ring of 2304 km

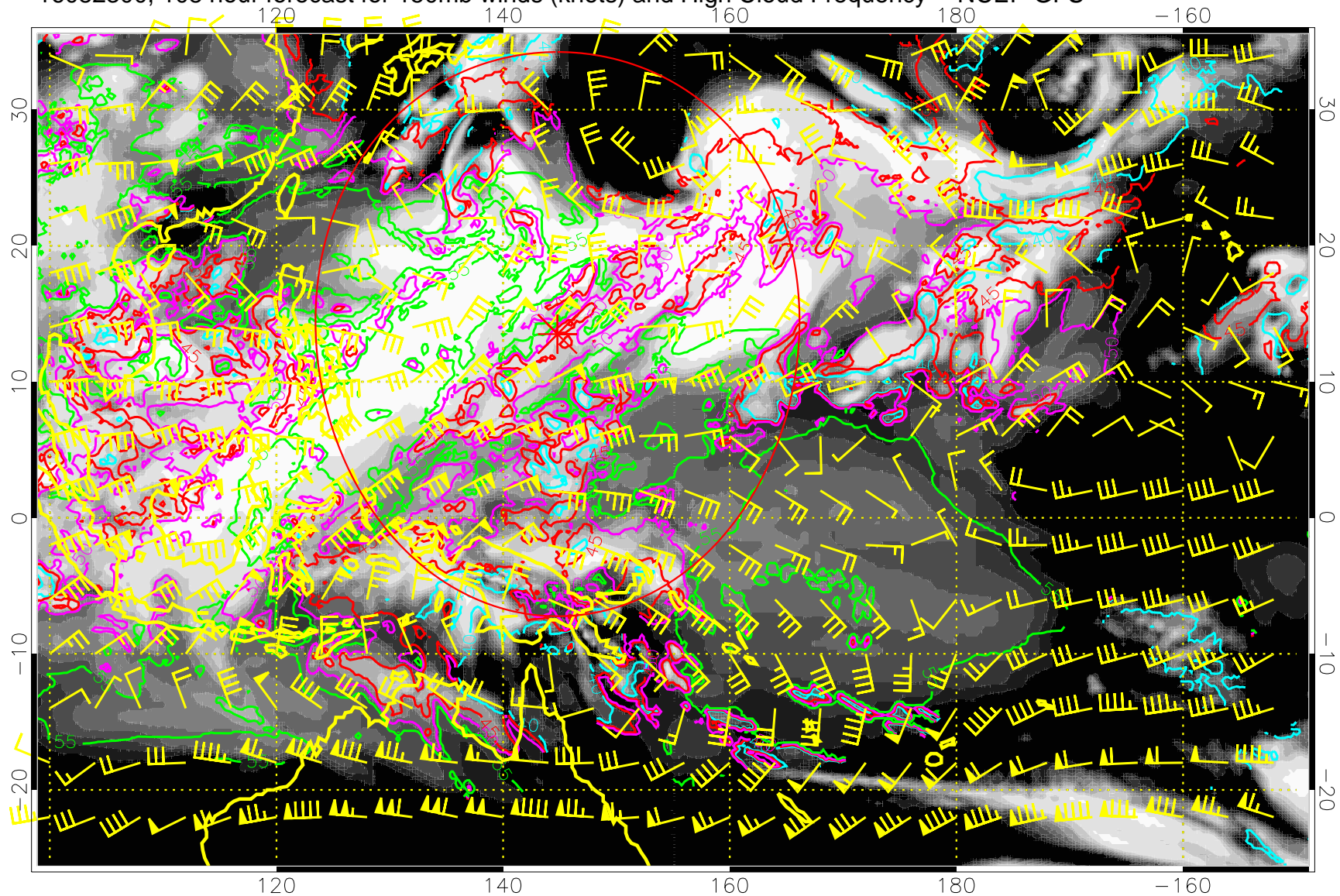
16082218, 102 hour forecast for 150mb winds (knots) and High Cloud Frequency -- NCEP GFS



40 kft
50 kft
45 kft
55 kft

Range ring of 2304 km

16082300, 108 hour forecast for 150mb winds (knots) and High Cloud Frequency -- NCEP GFS

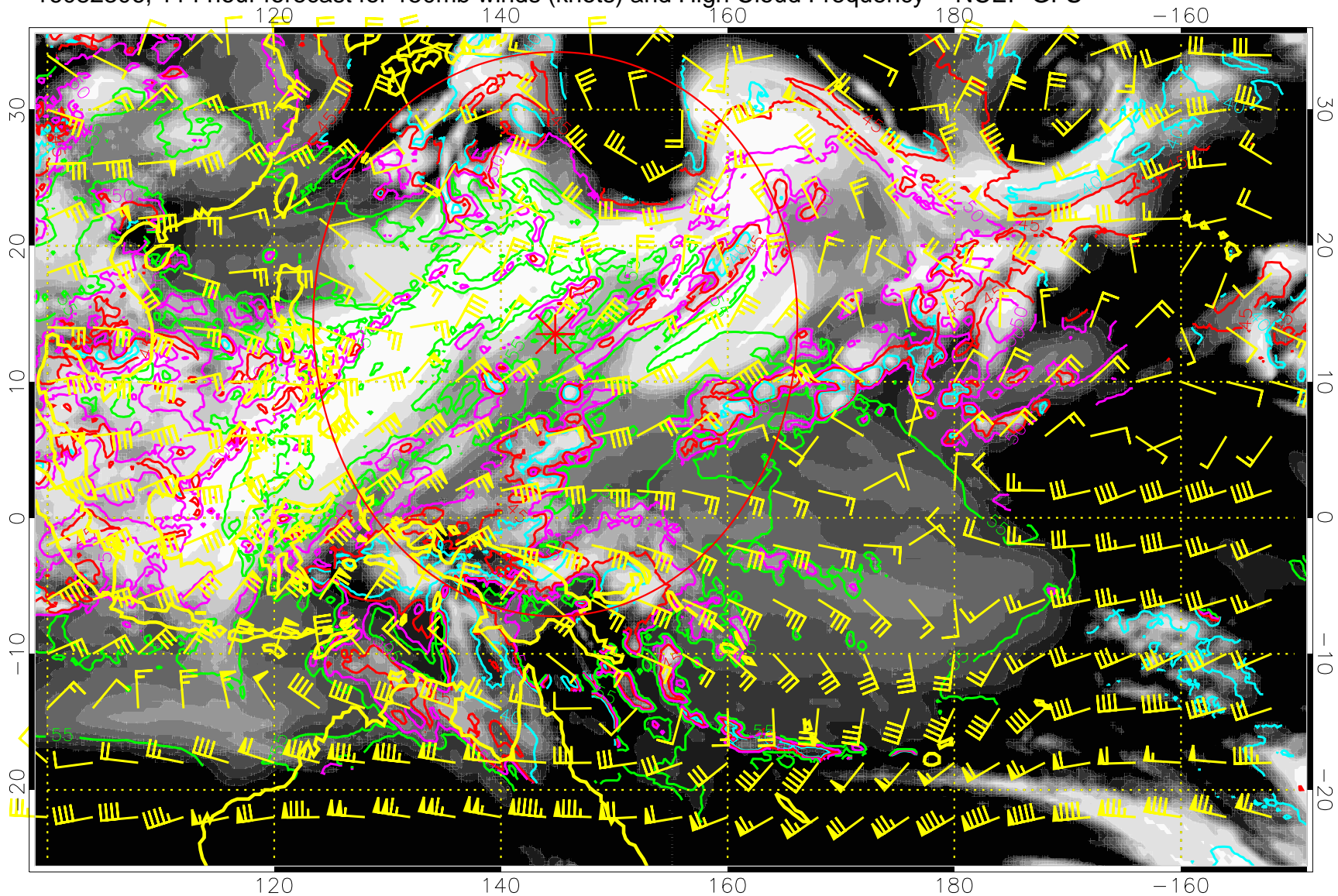


40 kft
50 kft

45 kft
55 kft

Range ring of 2304 km

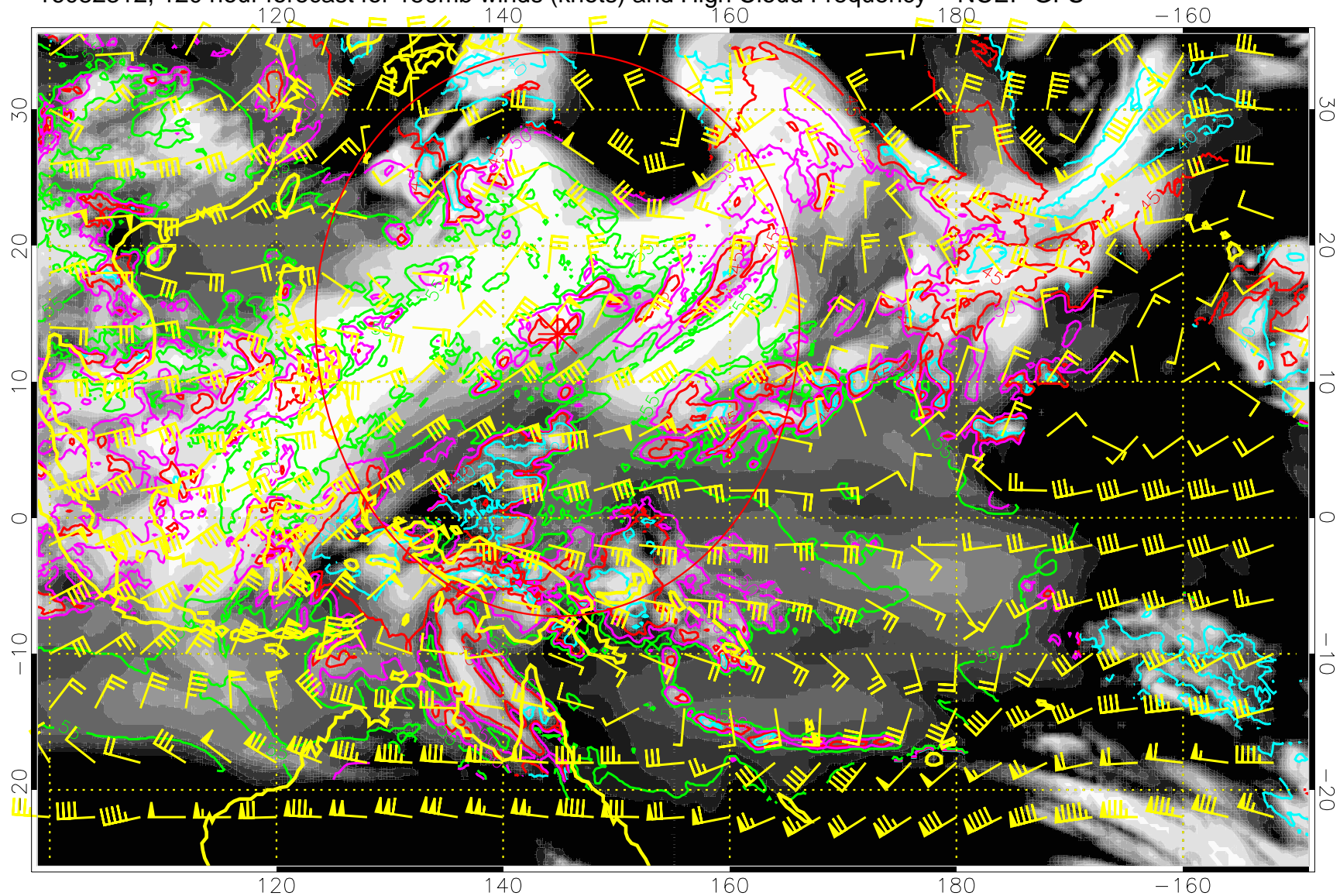
16082306, 114 hour forecast for 150mb winds (knots) and High Cloud Frequency -- NCEP GFS



40 kft
50 kft
45 kft
55 kft

Range ring of 2304 km

16082312, 120 hour forecast for 150mb winds (knots) and High Cloud Frequency -- NCEP GFS



0.0 0.2 0.4 0.6 0.8 1.0
High Cloud Frequency

40 kft 45 kft
50 kft 55 kft

Range ring of 2304 km