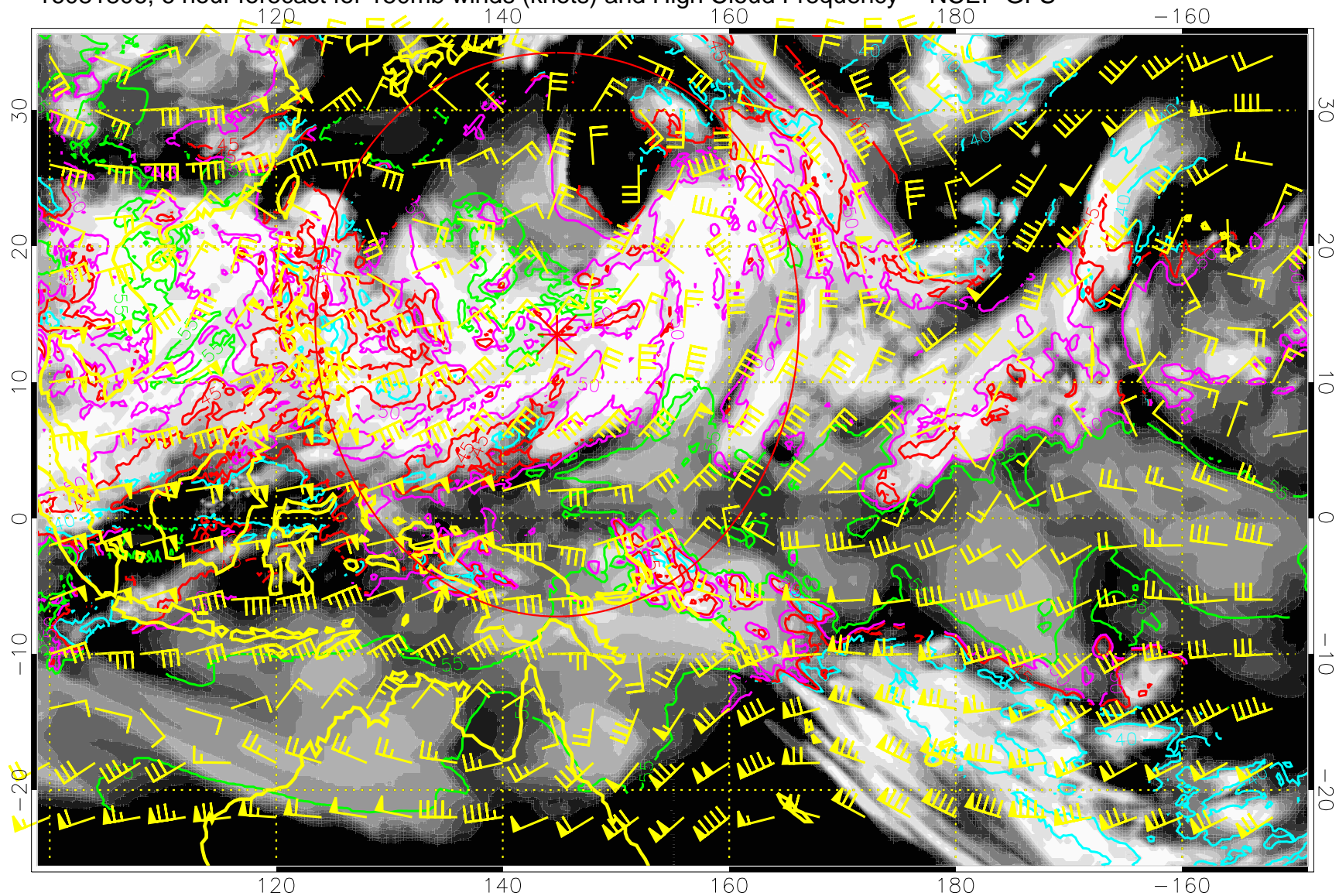


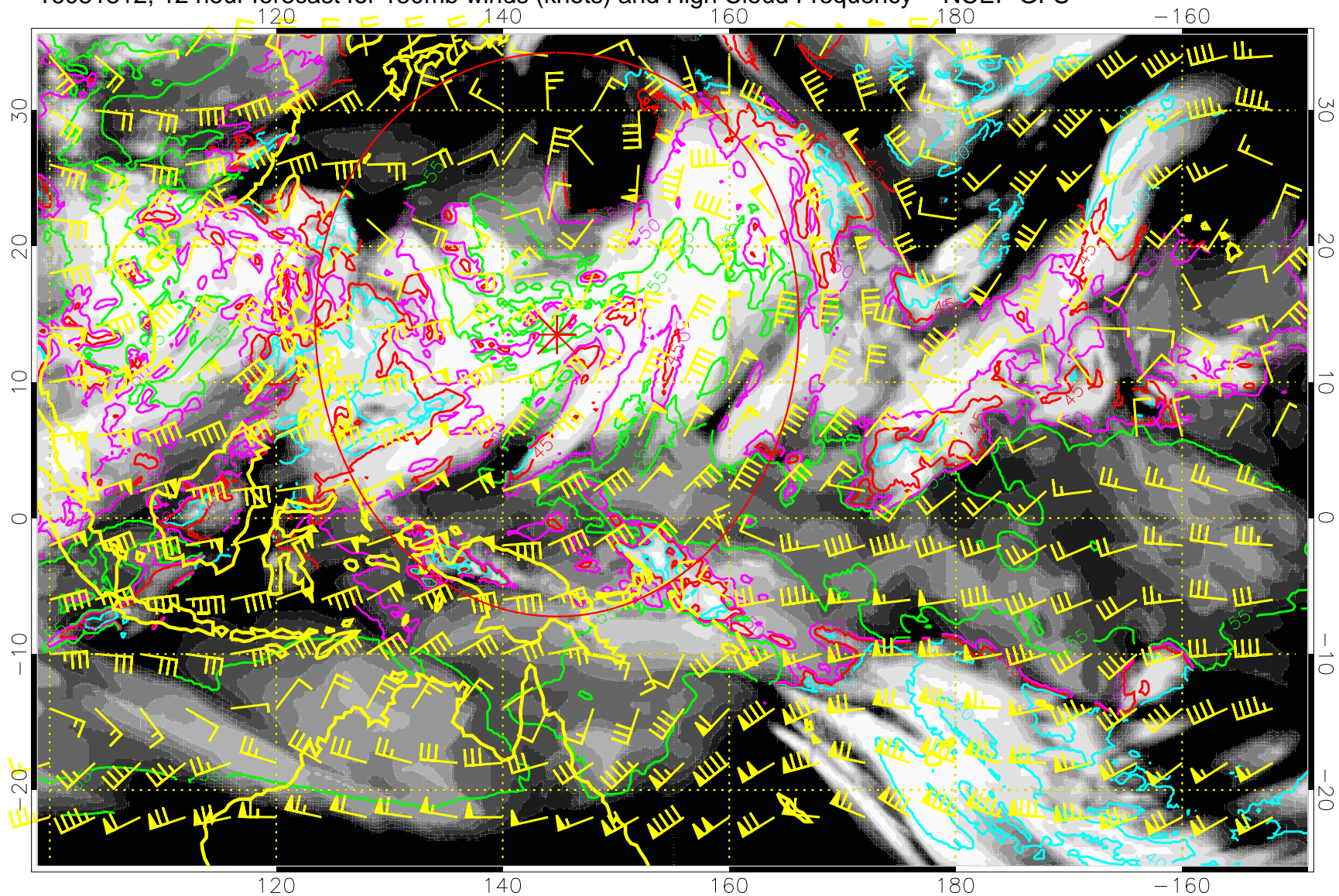
16081806, 6 hour forecast for 150mb winds (knots) and High Cloud Frequency -- NCEP GFS



40 kft
50 kft
45 kft
55 kft

Range ring of 2304 km

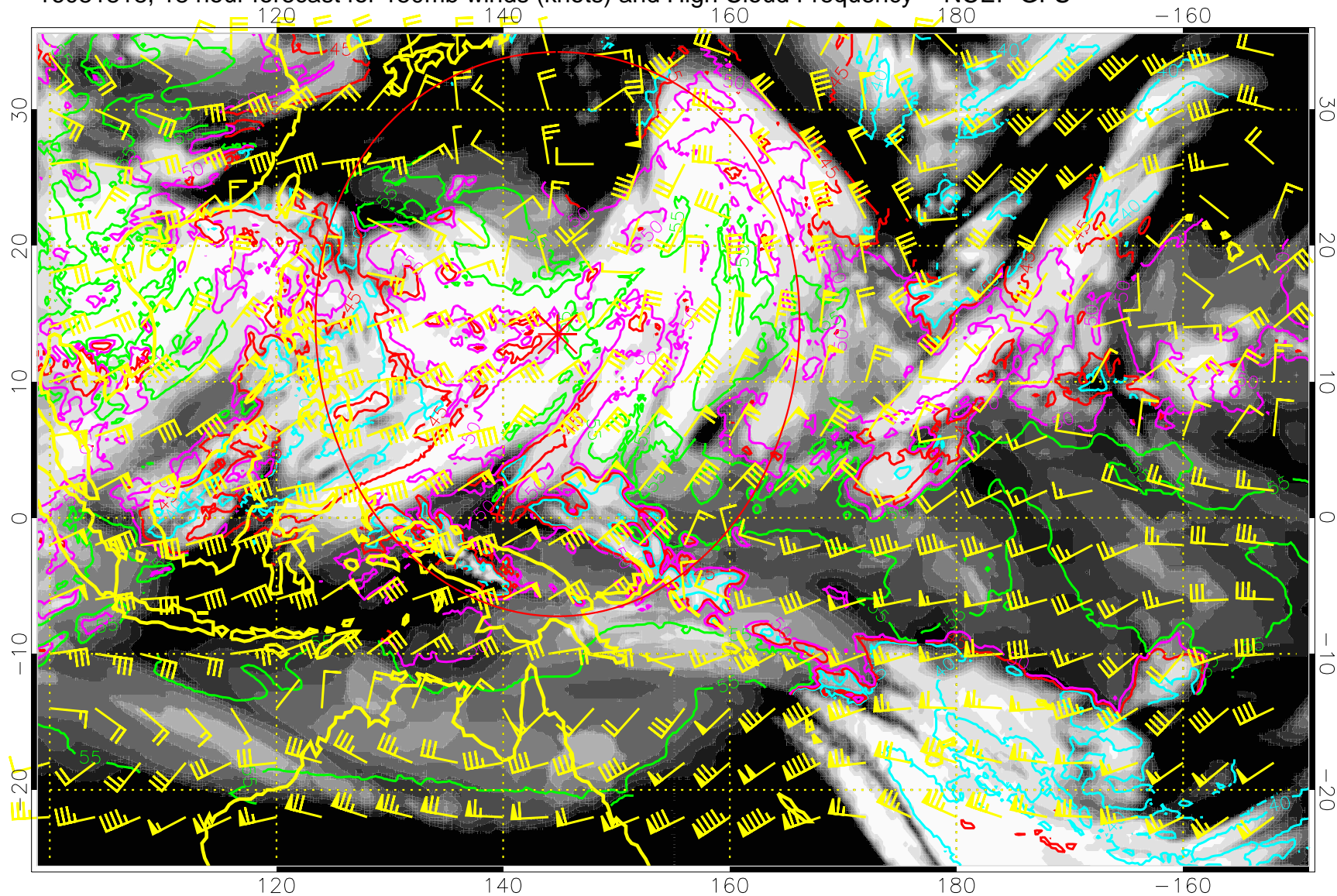
16081812, 12 hour forecast for 150mb winds (knots) and High Cloud Frequency -- NCEP GFS



40 kft
50 kft
45 kft
55 kft

Range ring of 2304 km

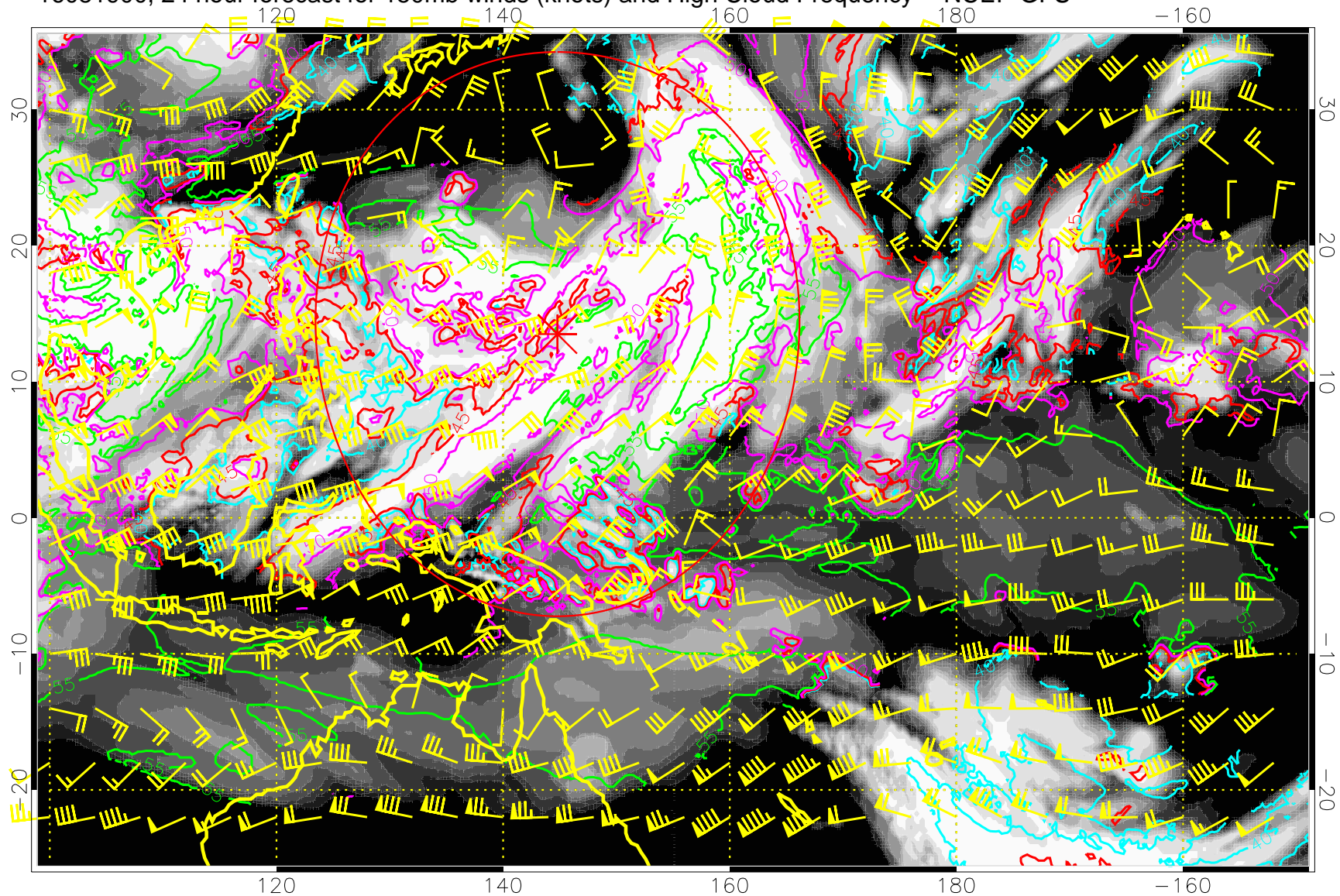
16081818, 18 hour forecast for 150mb winds (knots) and High Cloud Frequency -- NCEP GFS



40 kft
50 kft
45 kft
55 kft

Range ring of 2304 km

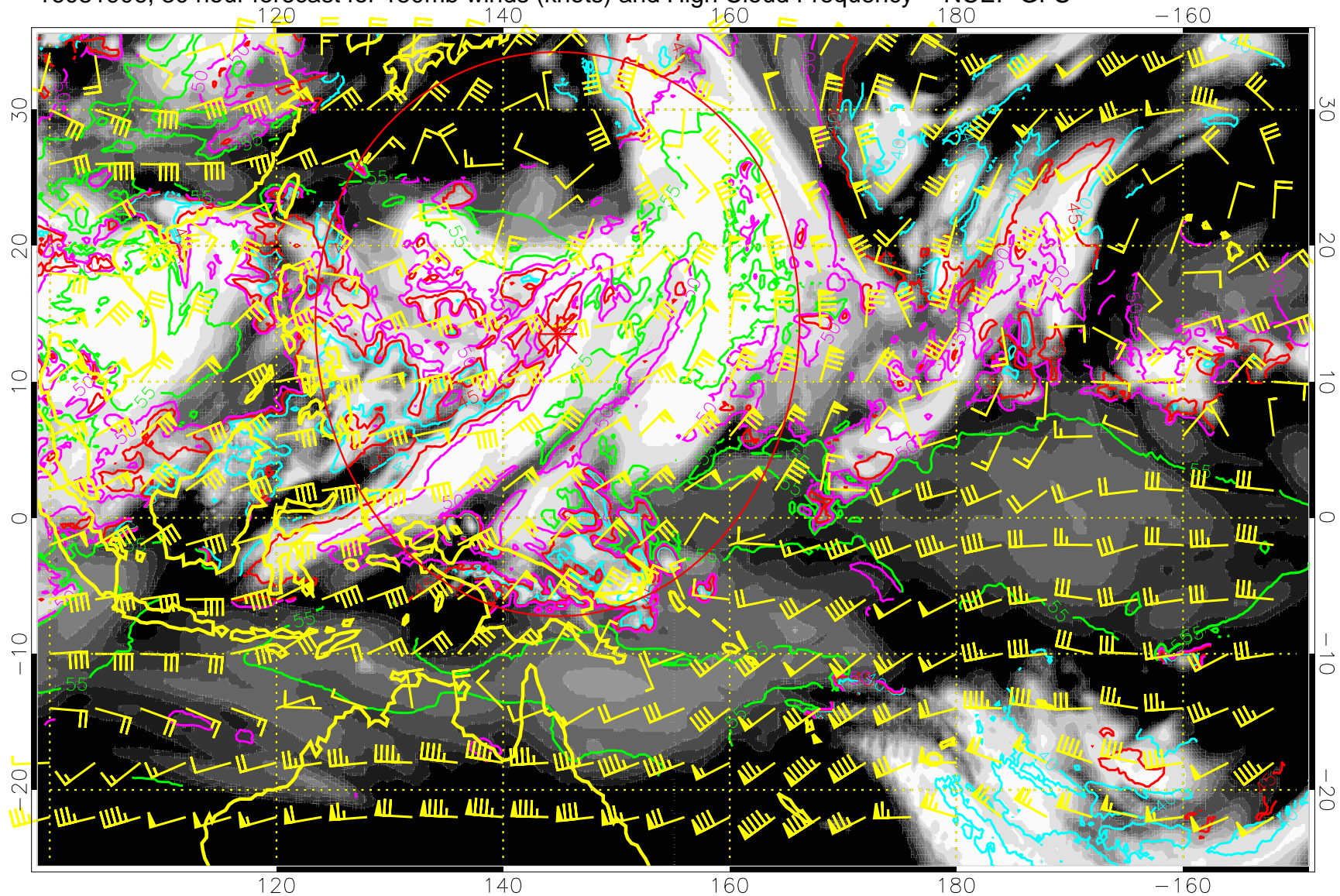
16081900, 24 hour forecast for 150mb winds (knots) and High Cloud Frequency -- NCEP GFS



40 kft
50 kft
45 kft
55 kft

Range ring of 2304 km

16081906, 30 hour forecast for 150mb winds (knots) and High Cloud Frequency -- NCEP GFS

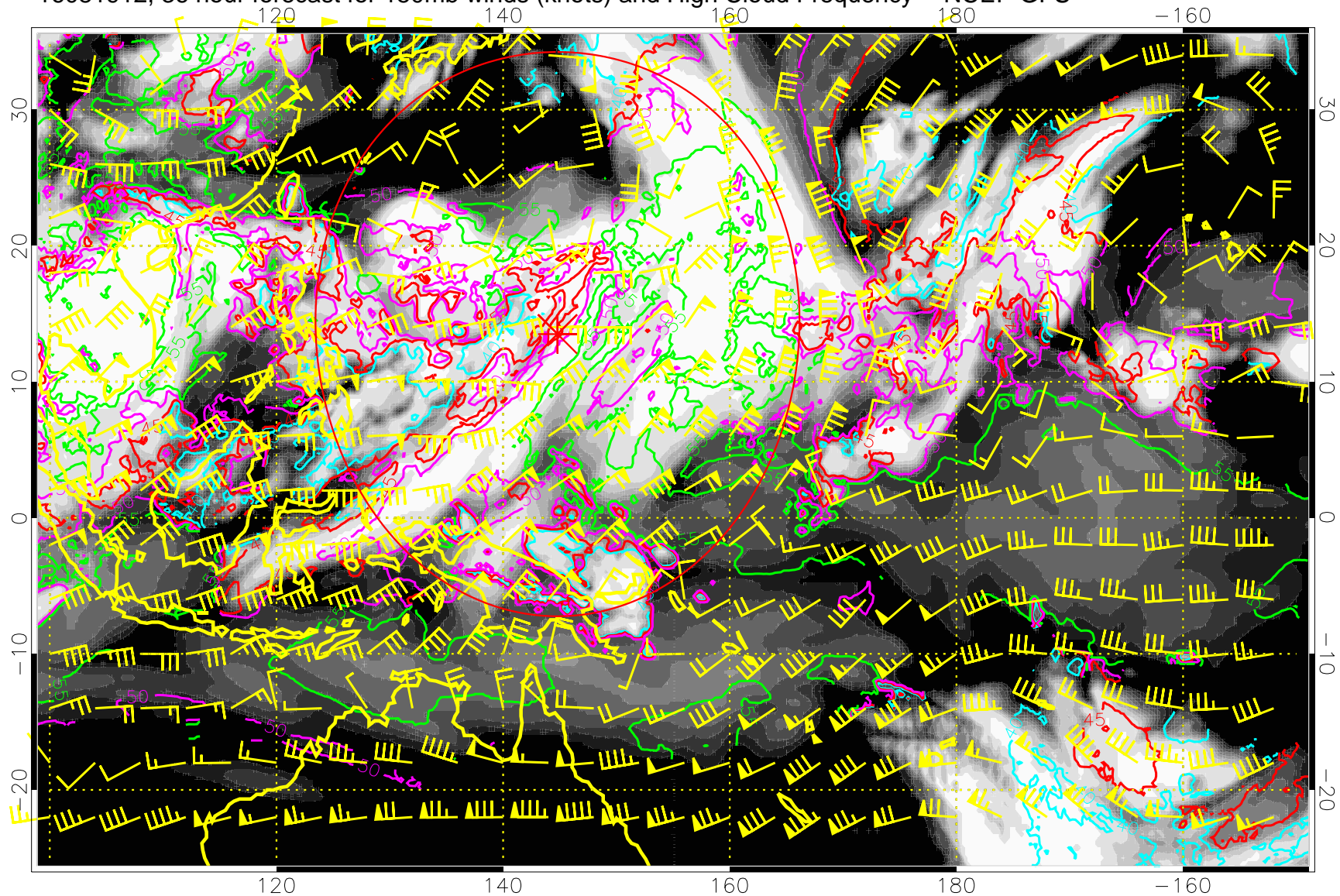


40 kft
50 kft

45 kft
55 kft

Range ring of 2304 km

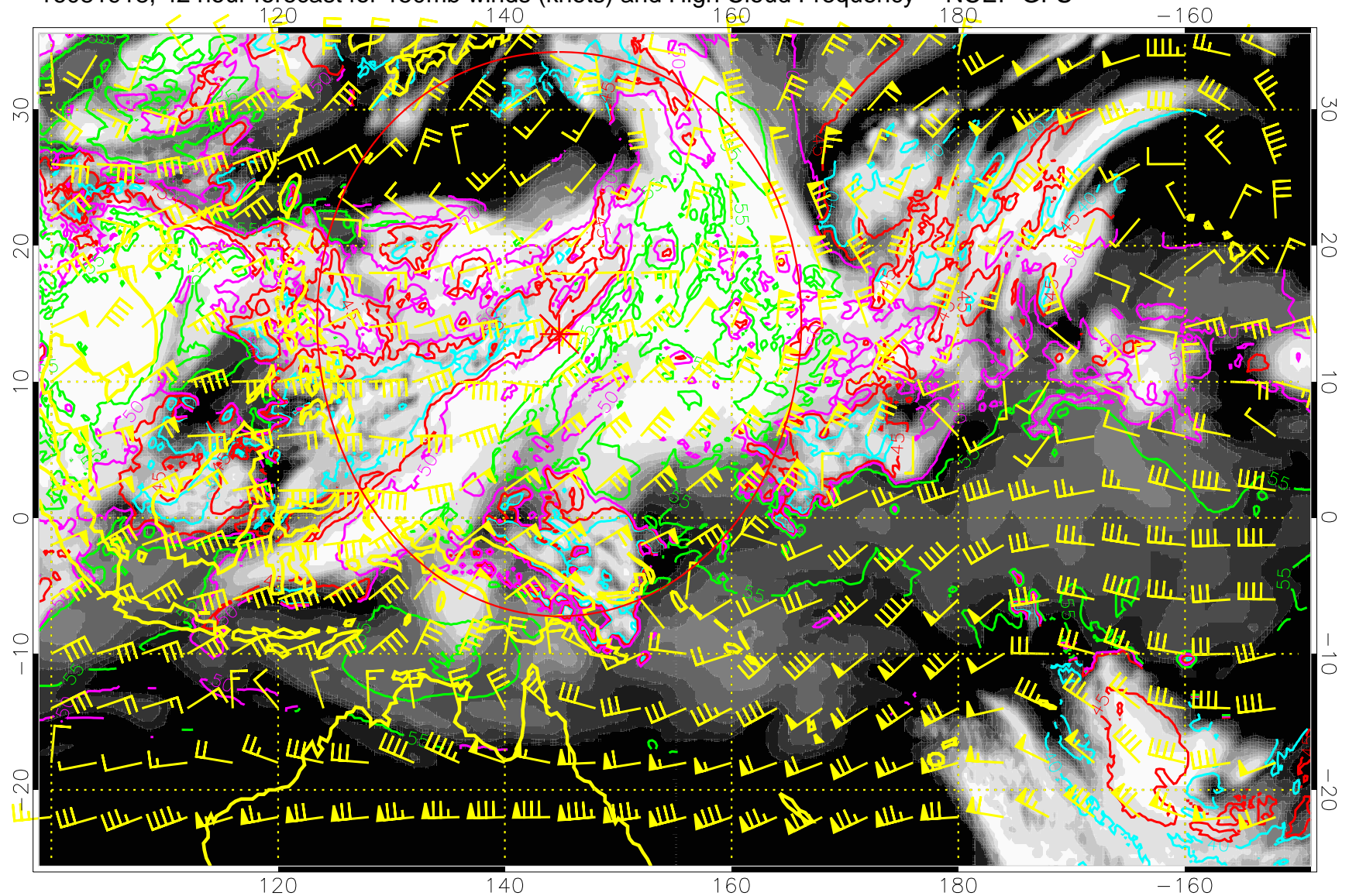
16081912, 36 hour forecast for 150mb winds (knots) and High Cloud Frequency -- NCEP GFS



40 kft
50 kft
45 kft
55 kft

Range ring of 2304 km

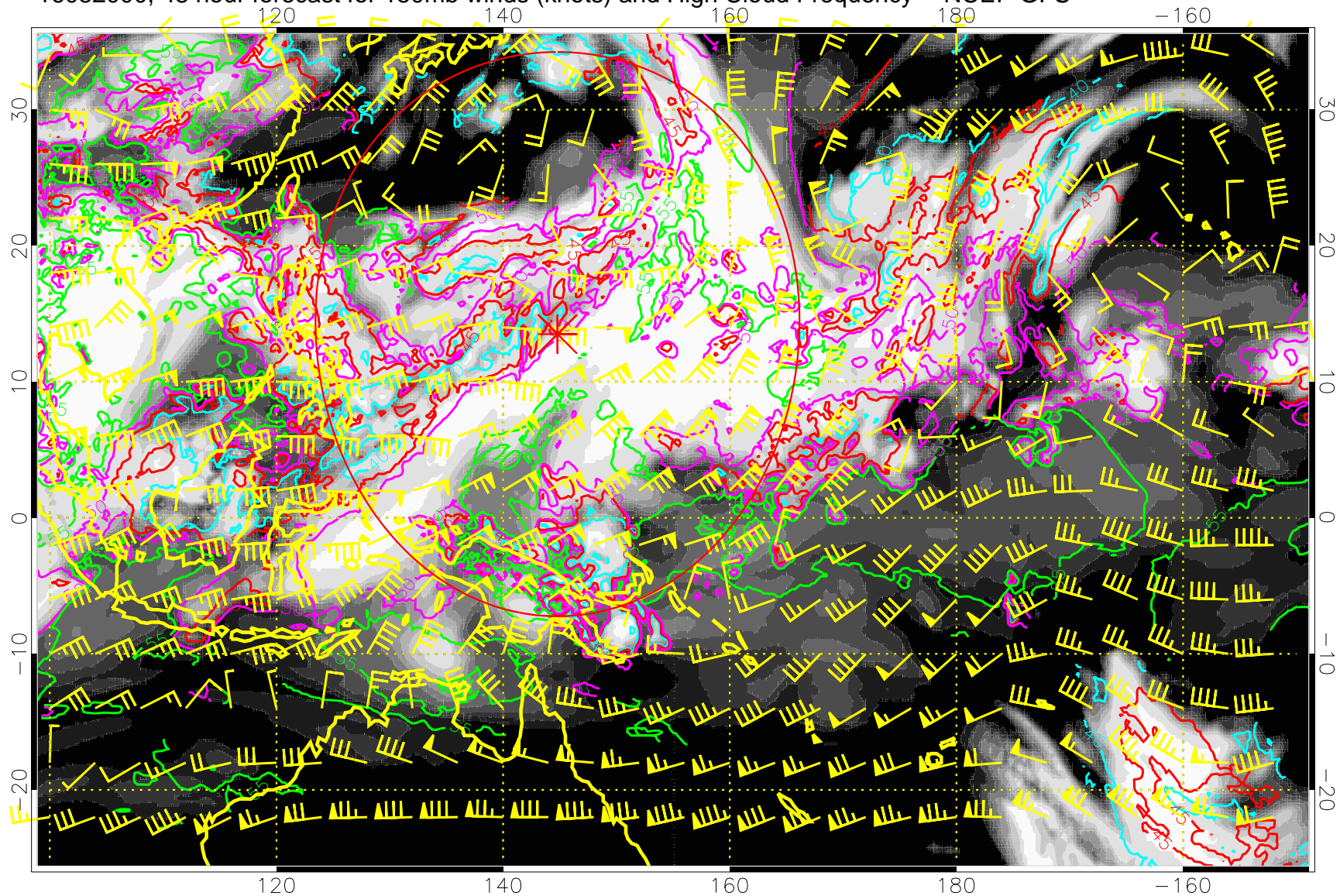
16081918, 42 hour forecast for 150mb winds (knots) and High Cloud Frequency -- NCEP GFS



40 kft
50 kft
45 kft
55 kft

Range ring of 2304 km

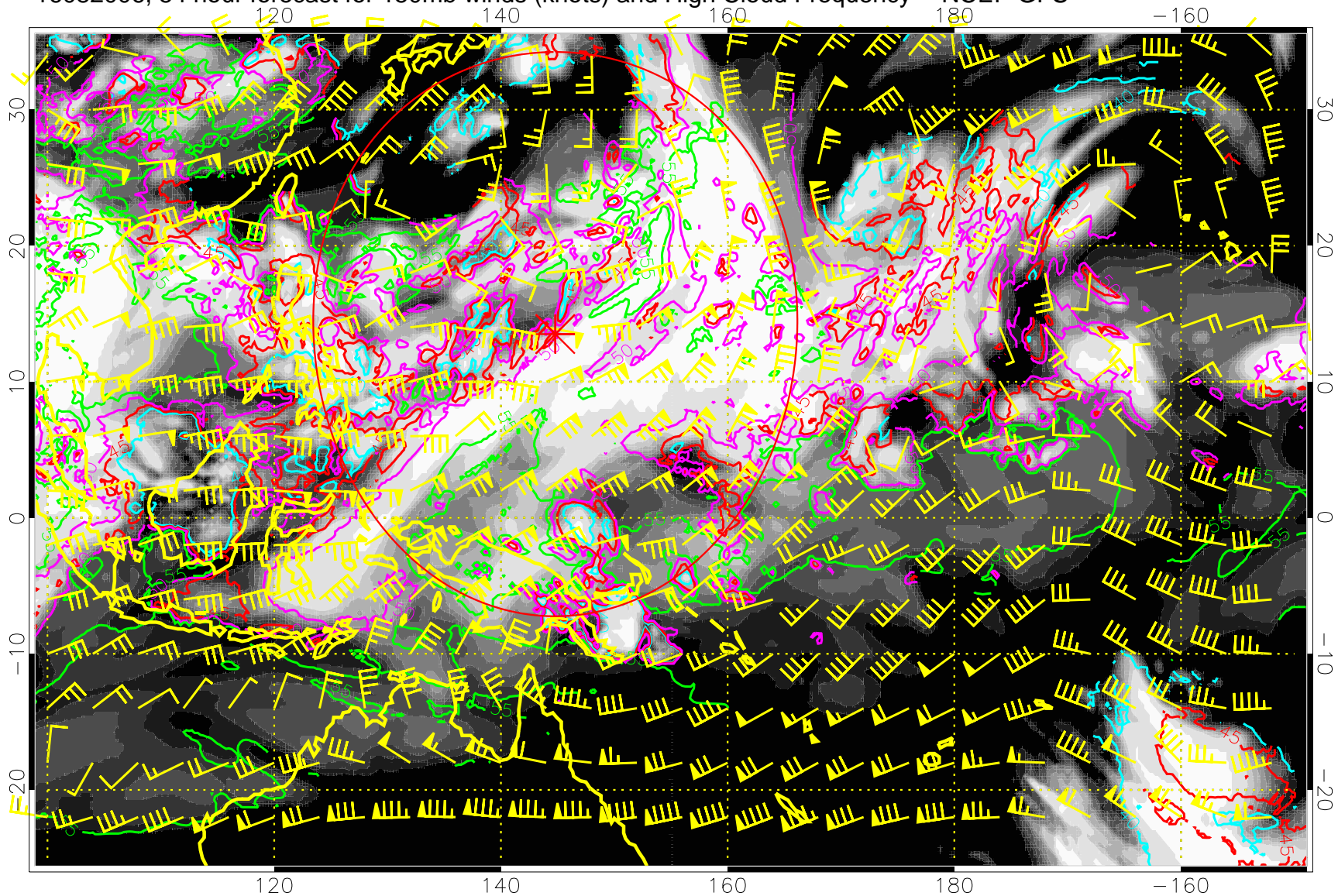
16082000, 48 hour forecast for 150mb winds (knots) and High Cloud Frequency -- NCEP GFS



40 kft
50 kft
45 kft
55 kft

Range ring of 2304 km

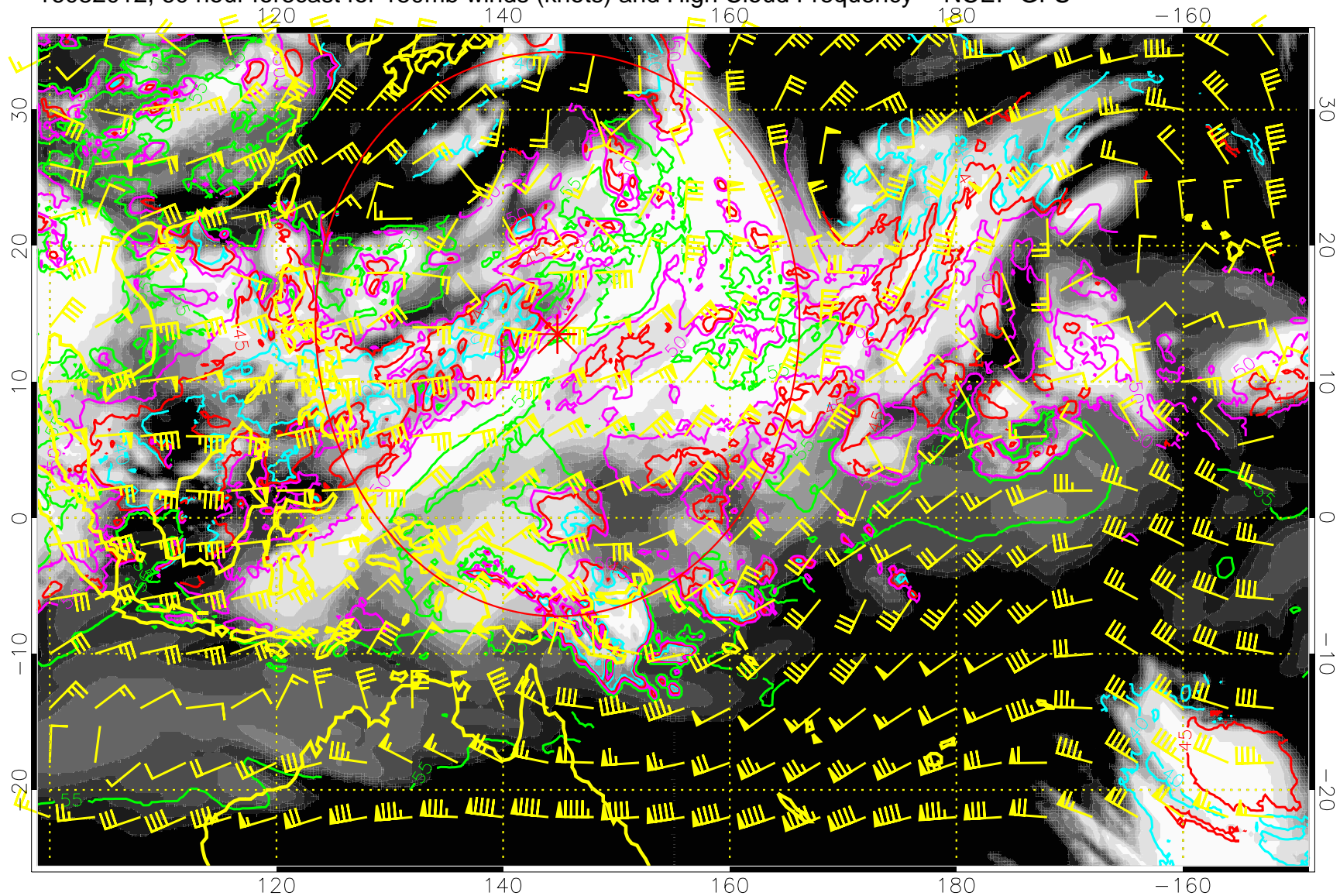
16082006, 54 hour forecast for 150mb winds (knots) and High Cloud Frequency -- NCEP GFS



40 kft
50 kft
45 kft
55 kft

Range ring of 2304 km

16082012, 60 hour forecast for 150mb winds (knots) and High Cloud Frequency -- NCEP GFS

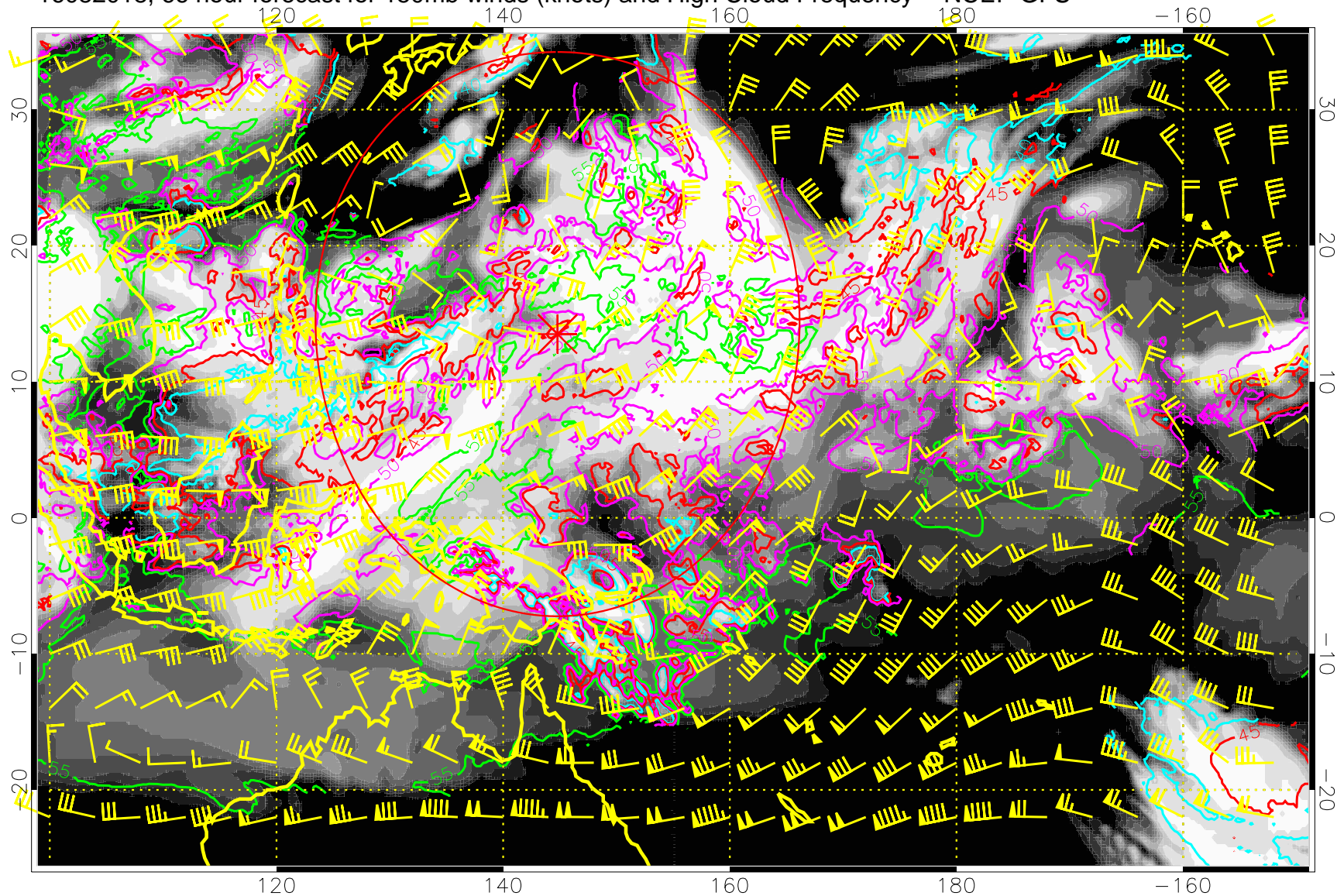


40 kft
50 kft

45 kft
55 kft

Range ring of 2304 km

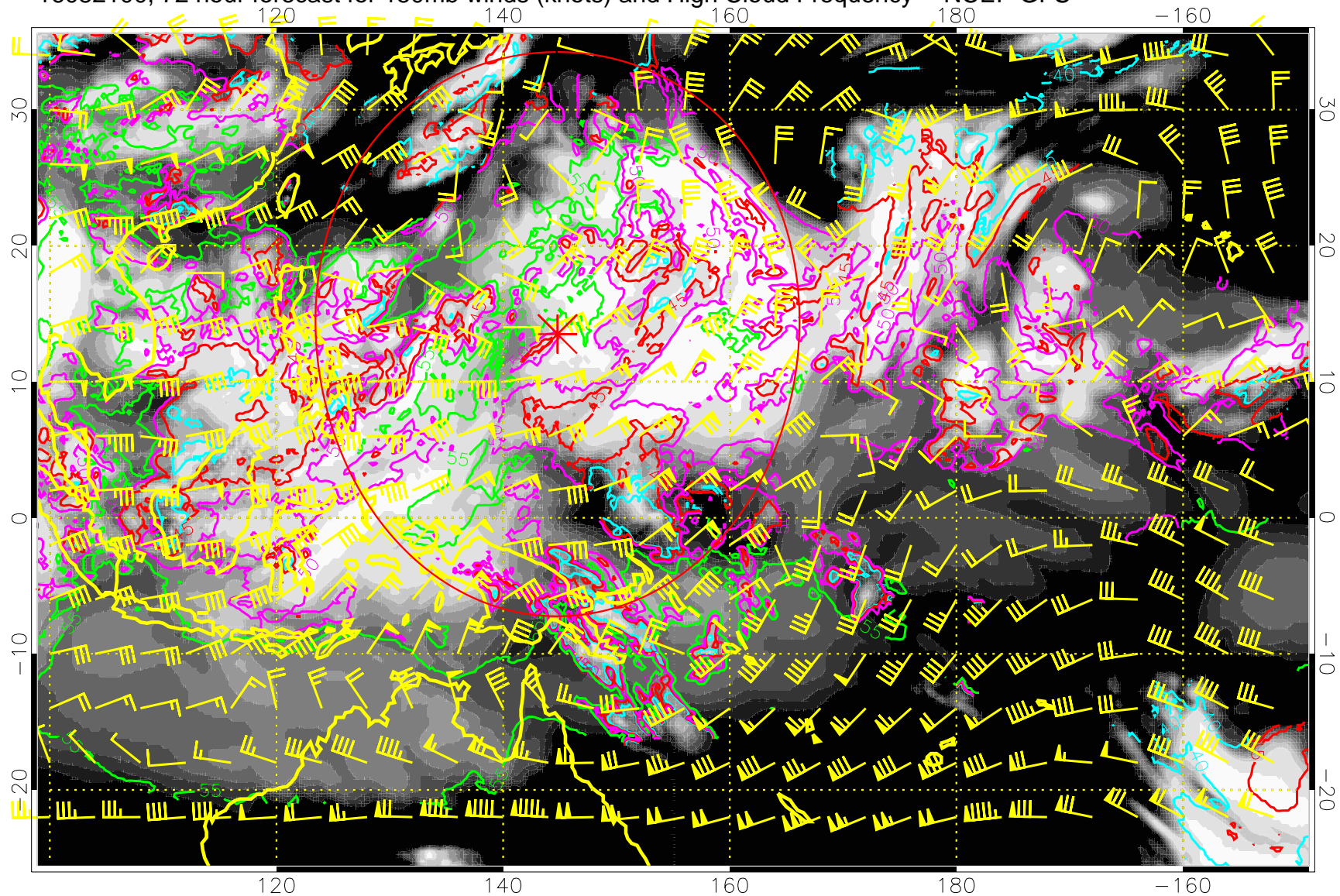
16082018, 66 hour forecast for 150mb winds (knots) and High Cloud Frequency -- NCEP GFS



40 kft
50 kft
45 kft
55 kft

Range ring of 2304 km

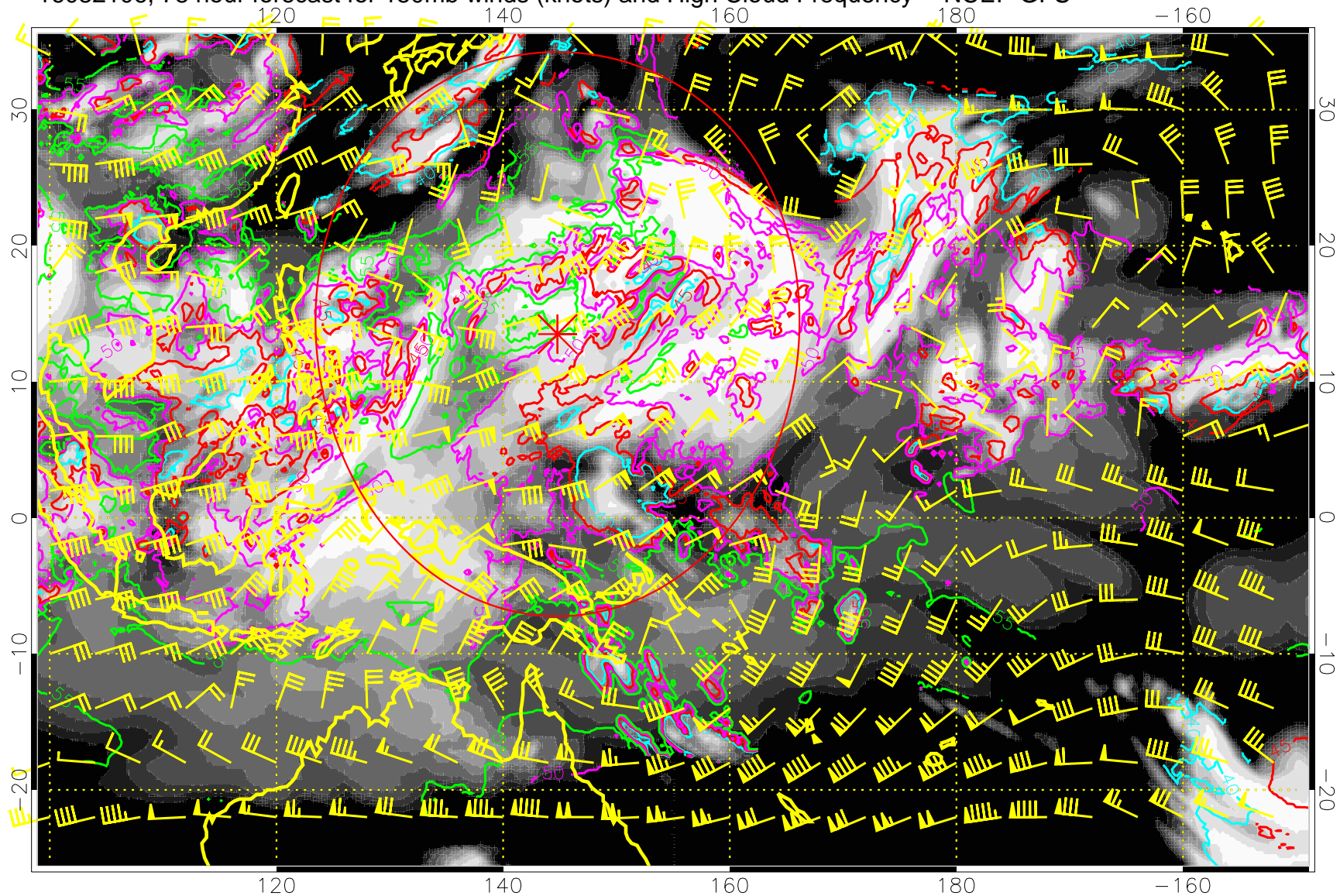
16082100, 72 hour forecast for 150mb winds (knots) and High Cloud Frequency -- NCEP GFS



40 kft
50 kft
45 kft
55 kft

Range ring of 2304 km

16082106, 78 hour forecast for 150mb winds (knots) and High Cloud Frequency -- NCEP GFS

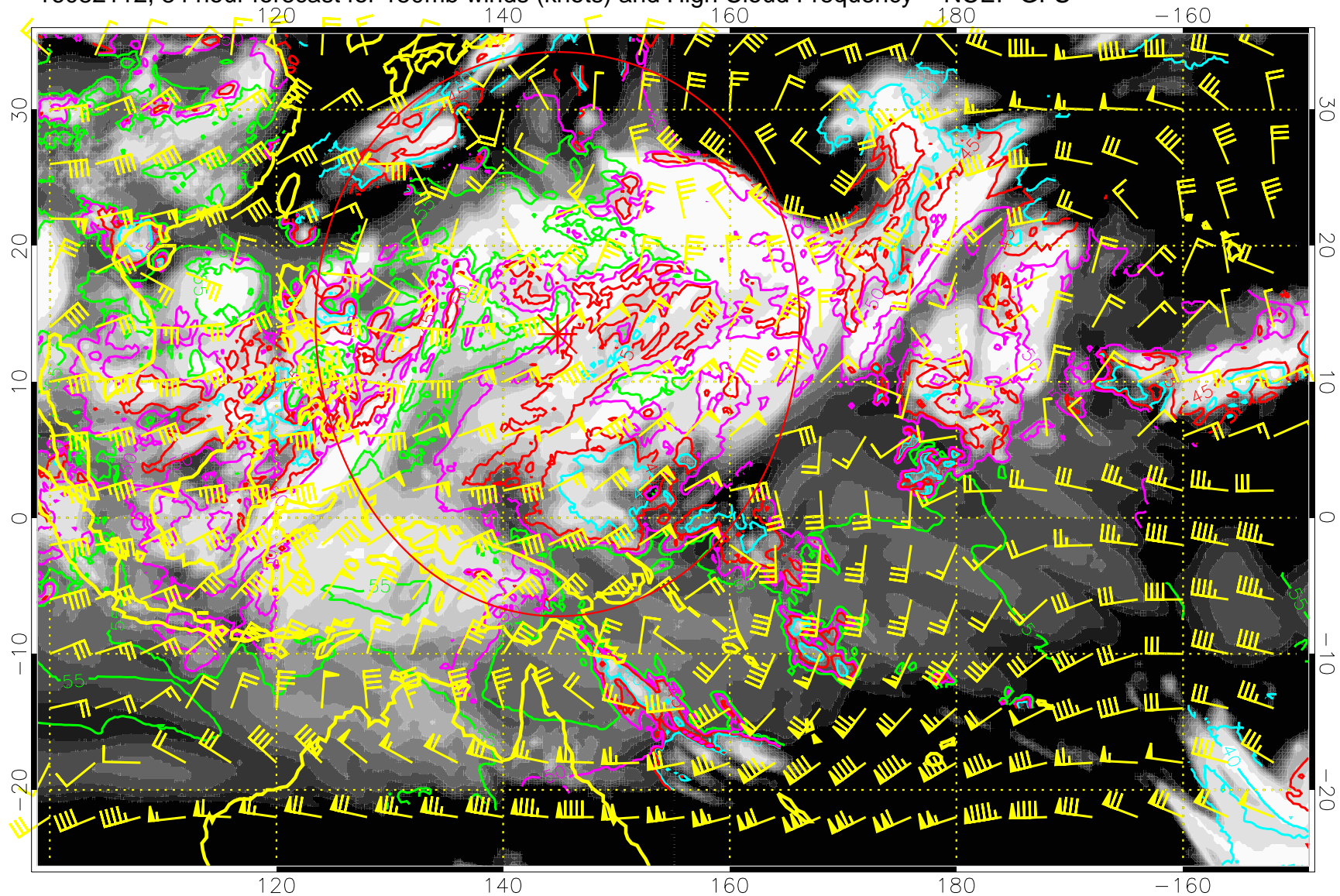


40 kft
50 kft

45 kft
55 kft

Range ring of 2304 km

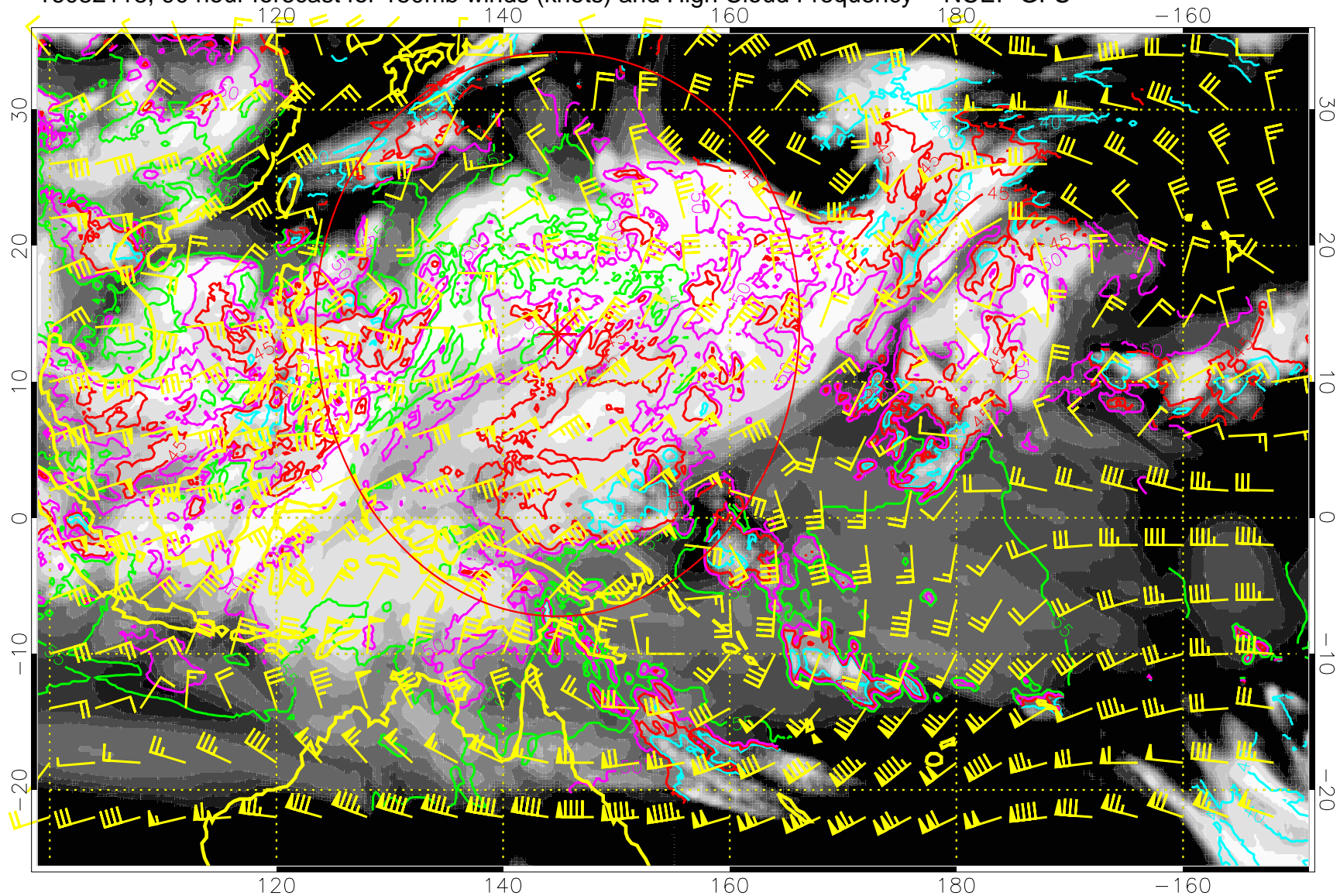
16082112, 84 hour forecast for 150mb winds (knots) and High Cloud Frequency -- NCEP GFS



40 kft
50 kft
45 kft
55 kft

Range ring of 2304 km

16082118, 90 hour forecast for 150mb winds (knots) and High Cloud Frequency -- NCEP GFS

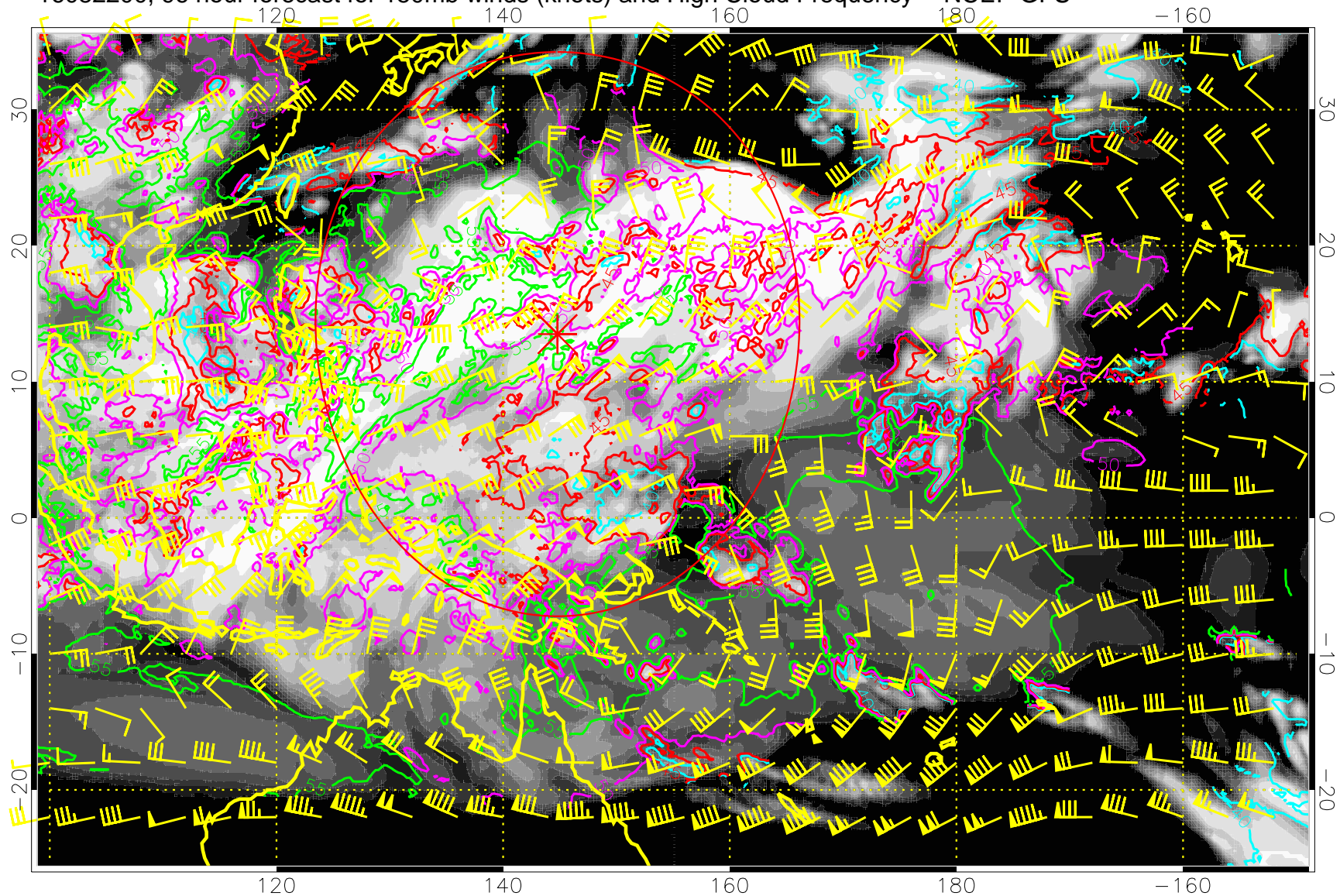


40 kft
50 kft

45 kft
55 kft

Range ring of 2304 km

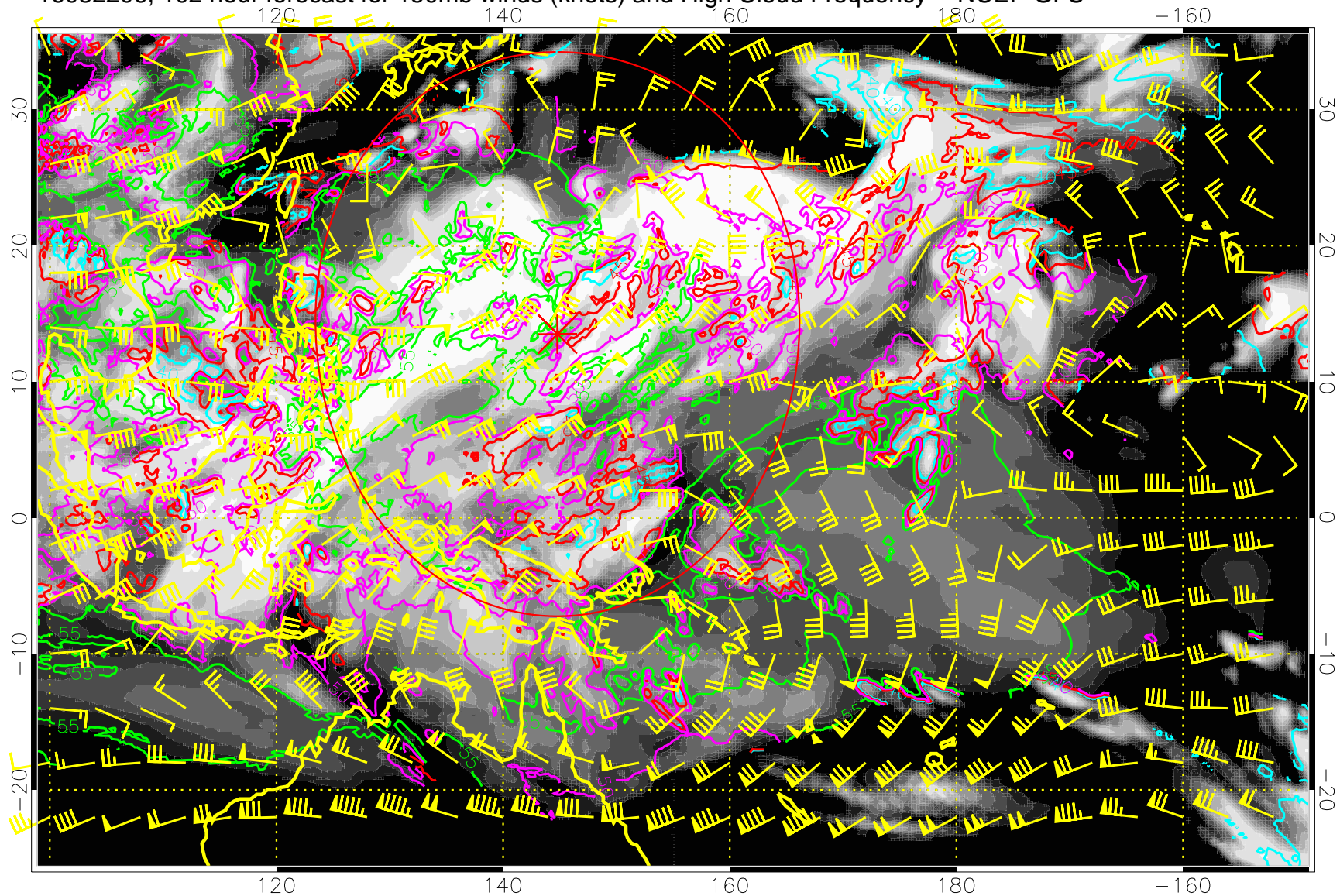
16082200, 96 hour forecast for 150mb winds (knots) and High Cloud Frequency -- NCEP GFS



40 kft
50 kft
45 kft
55 kft

Range ring of 2304 km

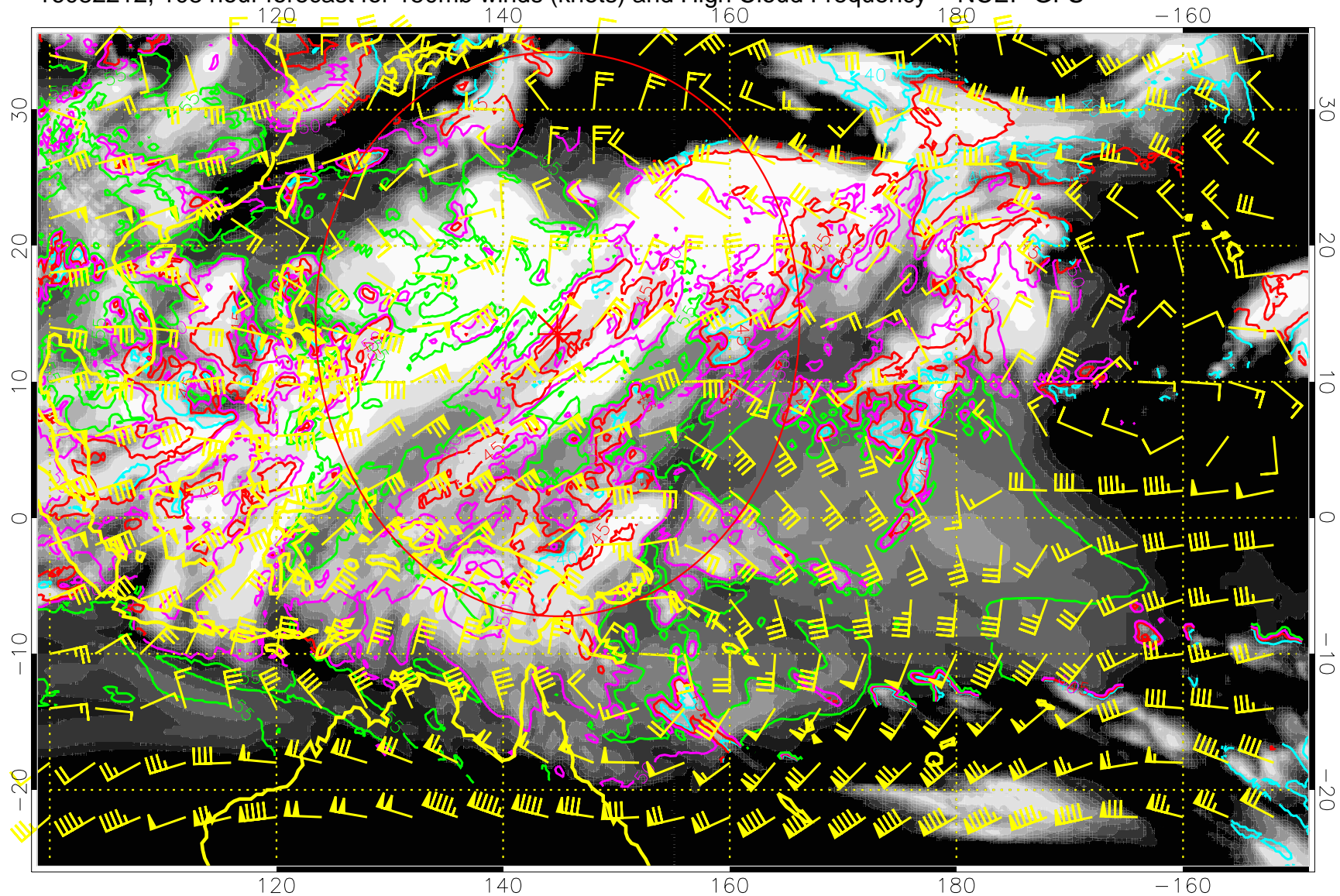
16082206, 102 hour forecast for 150mb winds (knots) and High Cloud Frequency -- NCEP GFS



40 kft
50 kft
45 kft
55 kft

Range ring of 2304 km

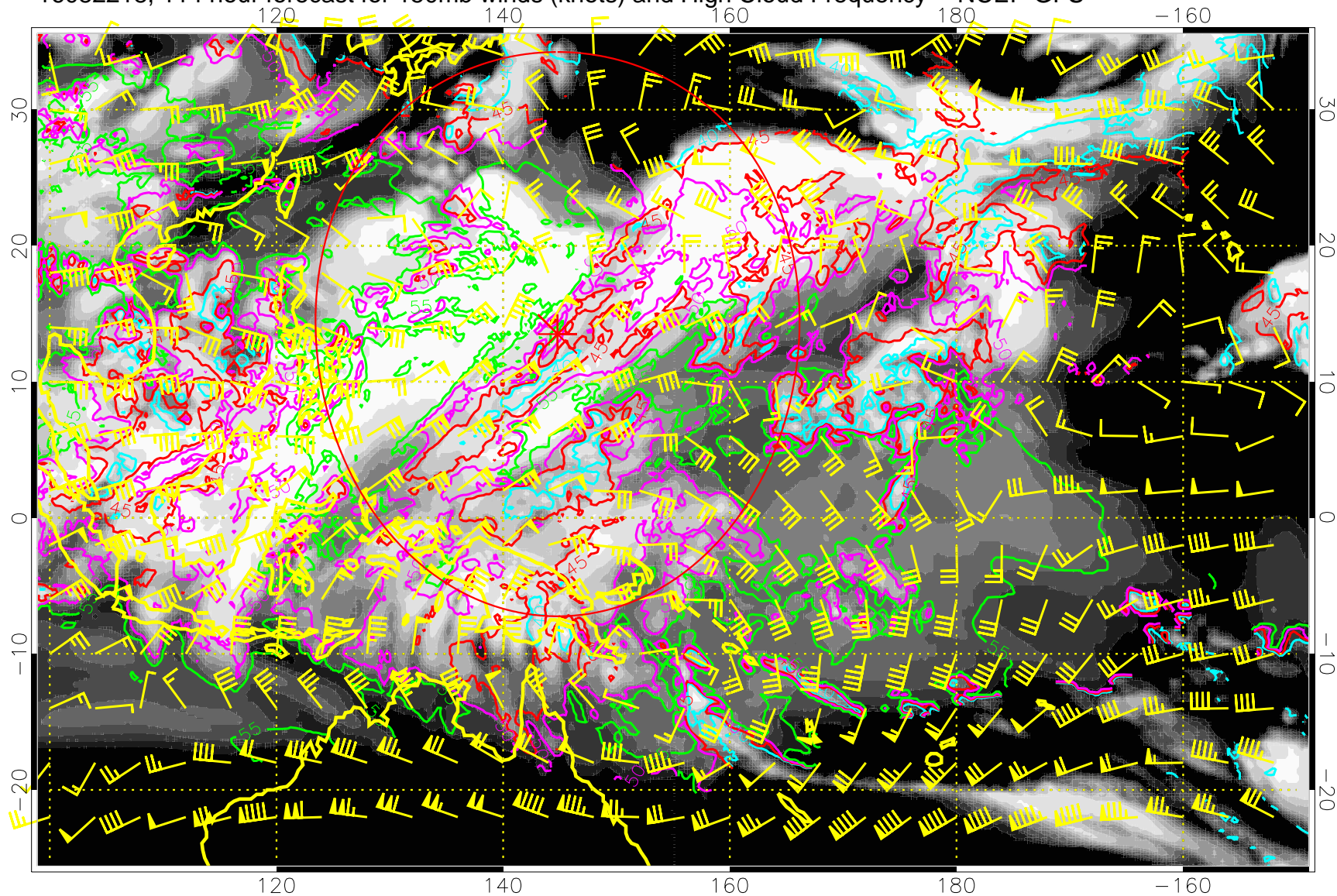
16082212, 108 hour forecast for 150mb winds (knots) and High Cloud Frequency -- NCEP GFS



40 kft
50 kft
45 kft
55 kft

Range ring of 2304 km

16082218, 114 hour forecast for 150mb winds (knots) and High Cloud Frequency -- NCEP GFS

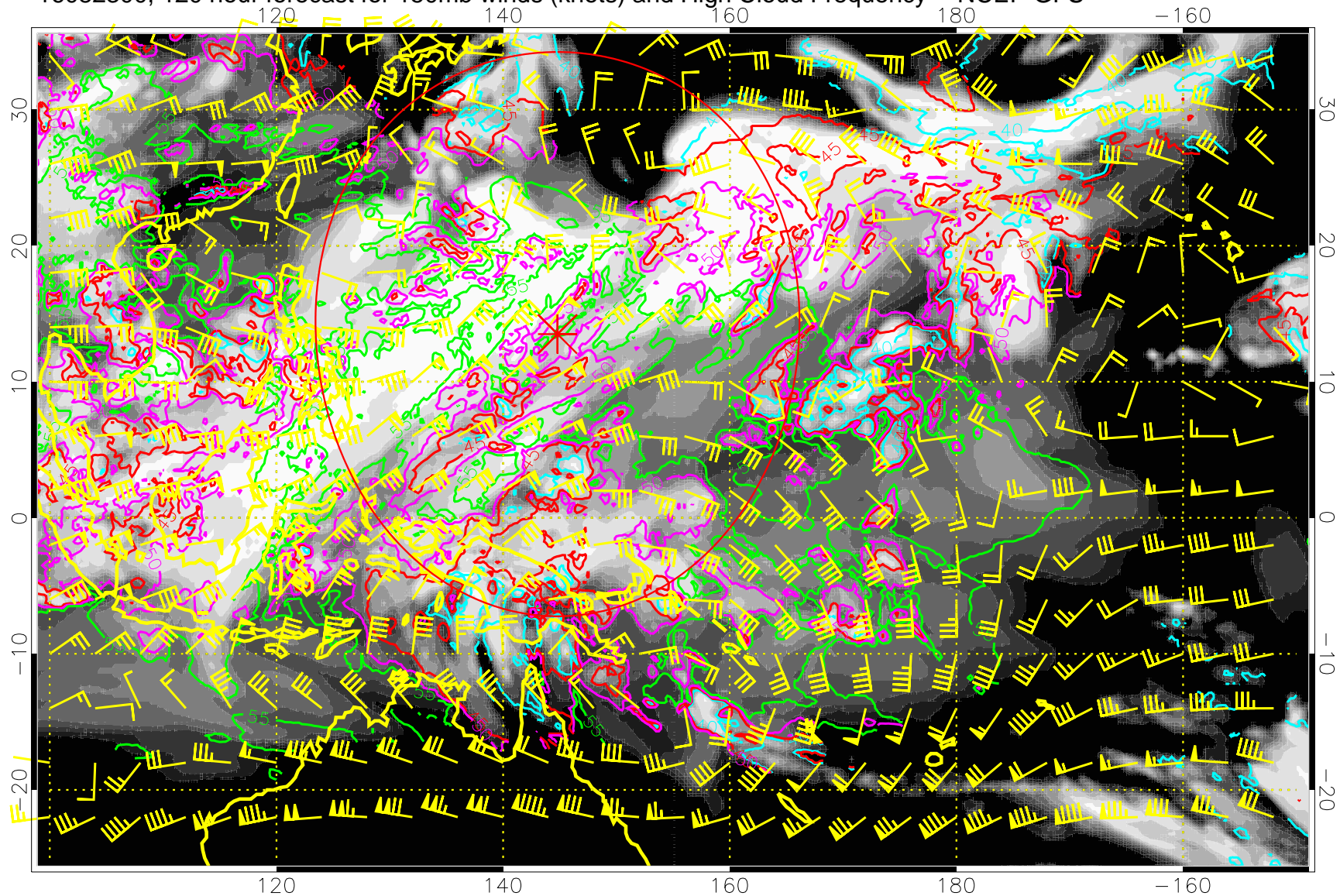


40 kft
50 kft

45 kft
55 kft

Range ring of 2304 km

16082300, 120 hour forecast for 150mb winds (knots) and High Cloud Frequency -- NCEP GFS



40 kft
50 kft
45 kft
55 kft

Range ring of 2304 km