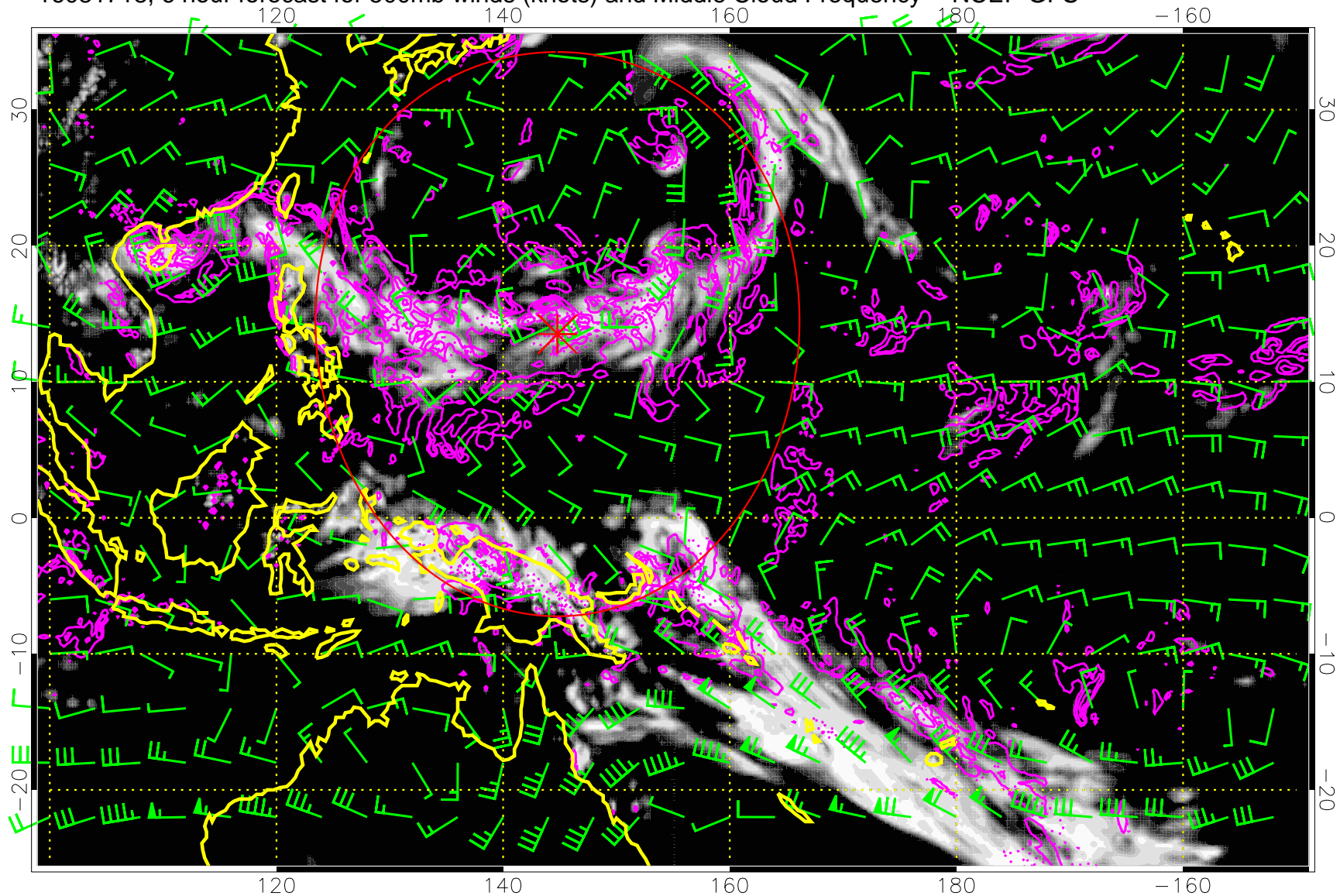


16081718, 6 hour forecast for 500mb winds (knots) and Middle Cloud Frequency -- NCEP GFS

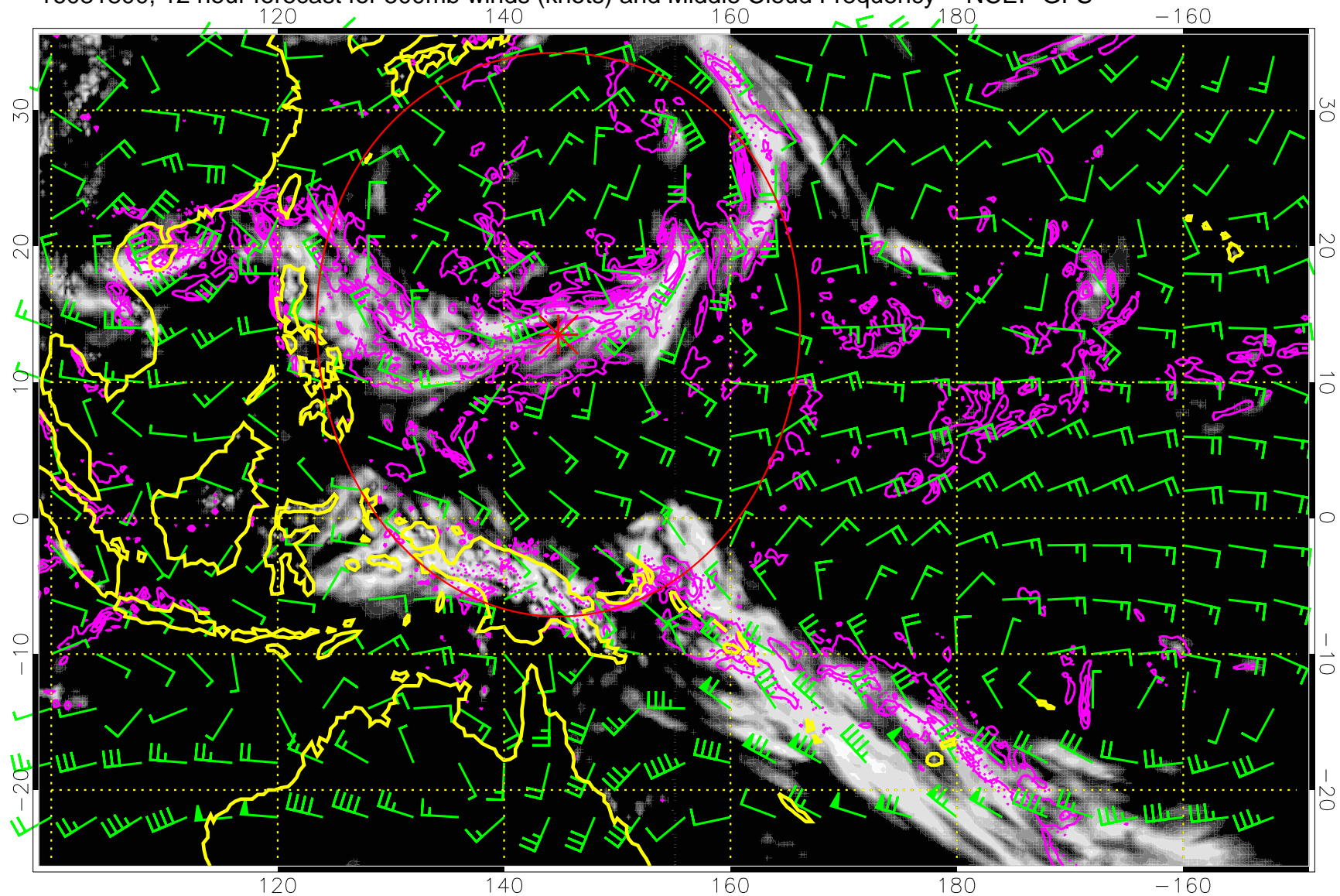


Middle Cloud Frequency

Precip (tot dot, conv sol) mm/day 40 mm/day contours, min 20

Range ring of 2304 km

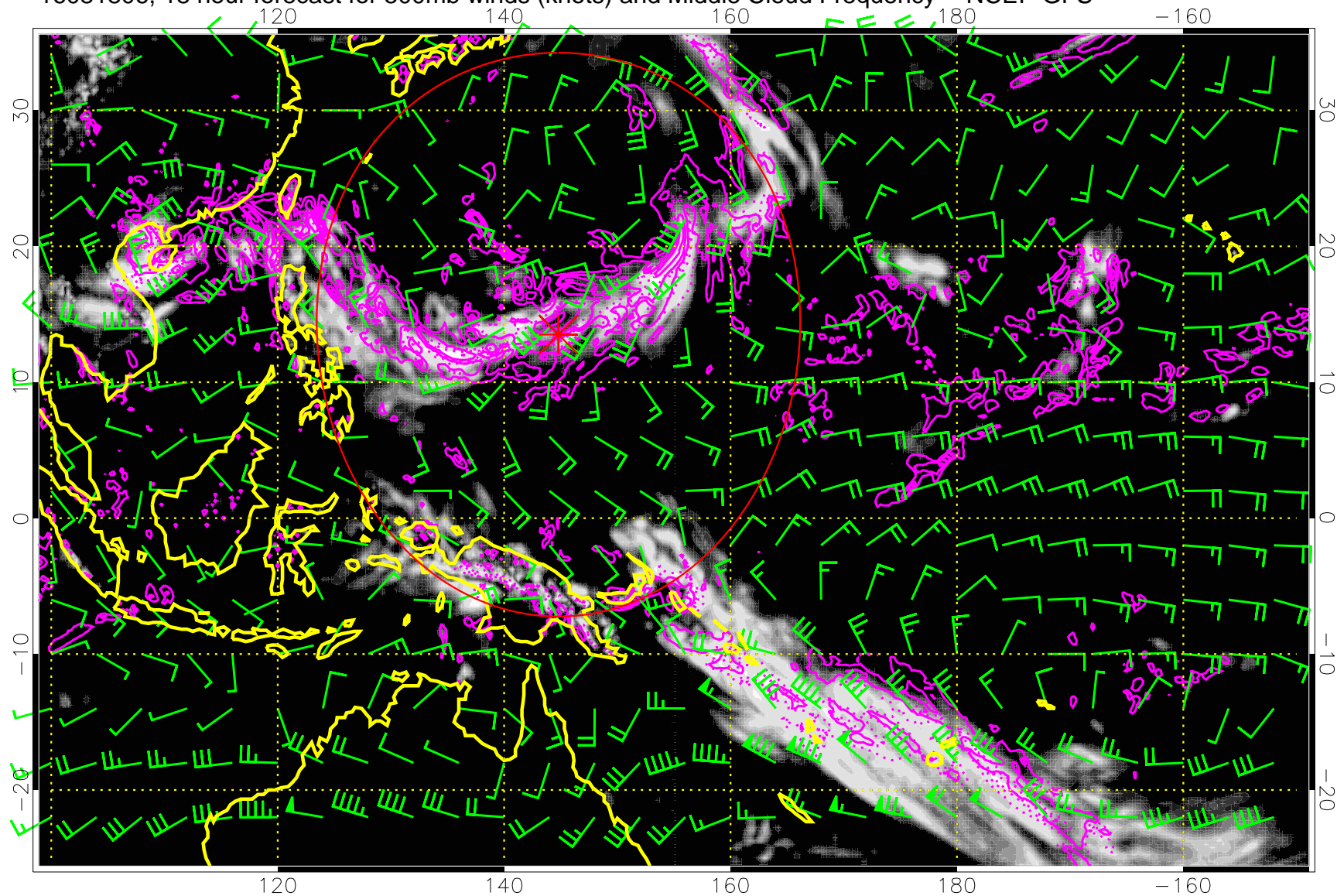
16081800, 12 hour forecast for 500mb winds (knots) and Middle Cloud Frequency -- NCEP GFS



Precip (tot dot, conv sol) mm/day 40 mm/day contours, min 20

Range ring of 2304 km

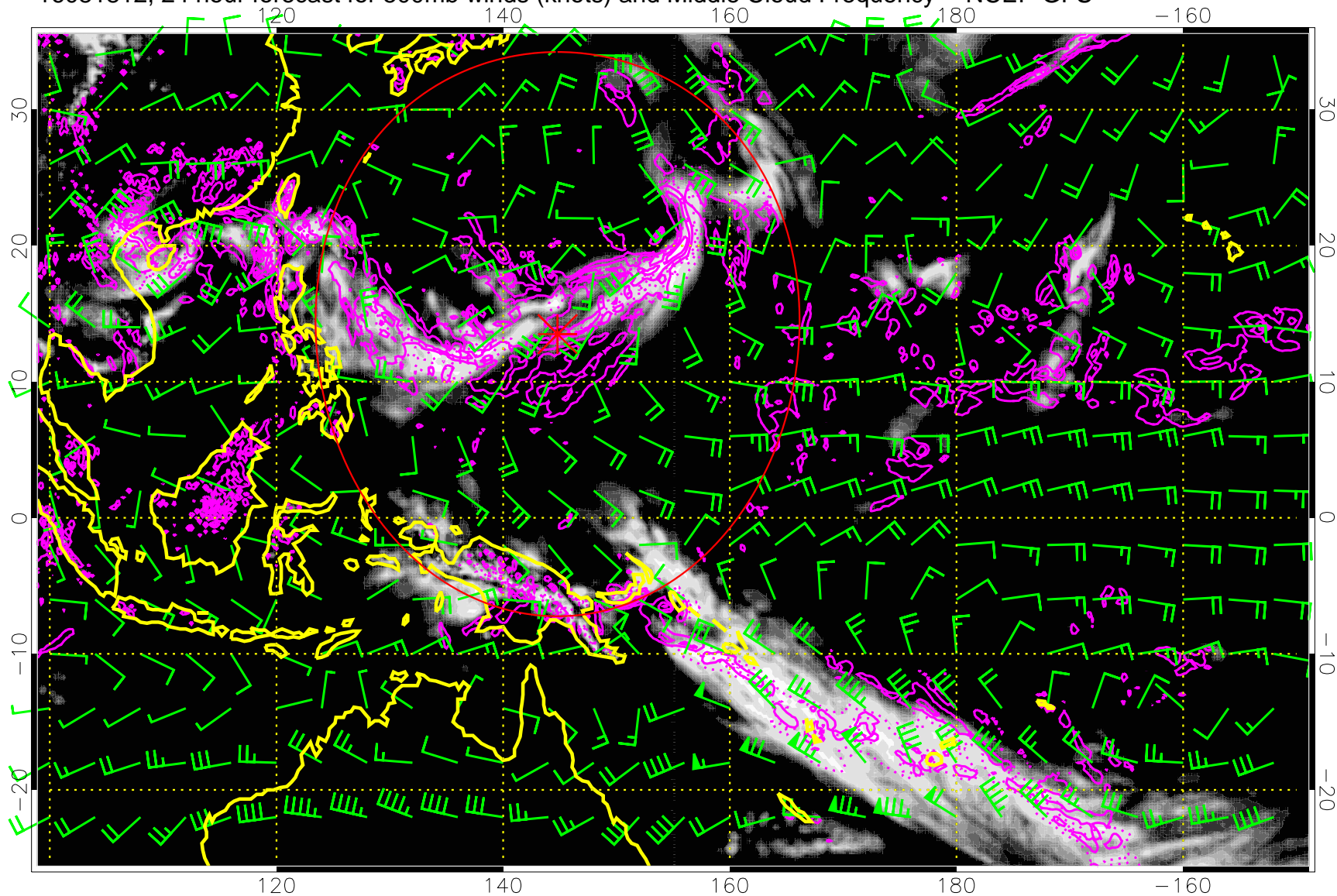
16081806, 18 hour forecast for 500mb winds (knots) and Middle Cloud Frequency -- NCEP GFS



Precip (tot dot, conv sol) mm/day 40 mm/day contours, min 20

Range ring of 2304 km

16081812, 24 hour forecast for 500mb winds (knots) and Middle Cloud Frequency -- NCEP GFS

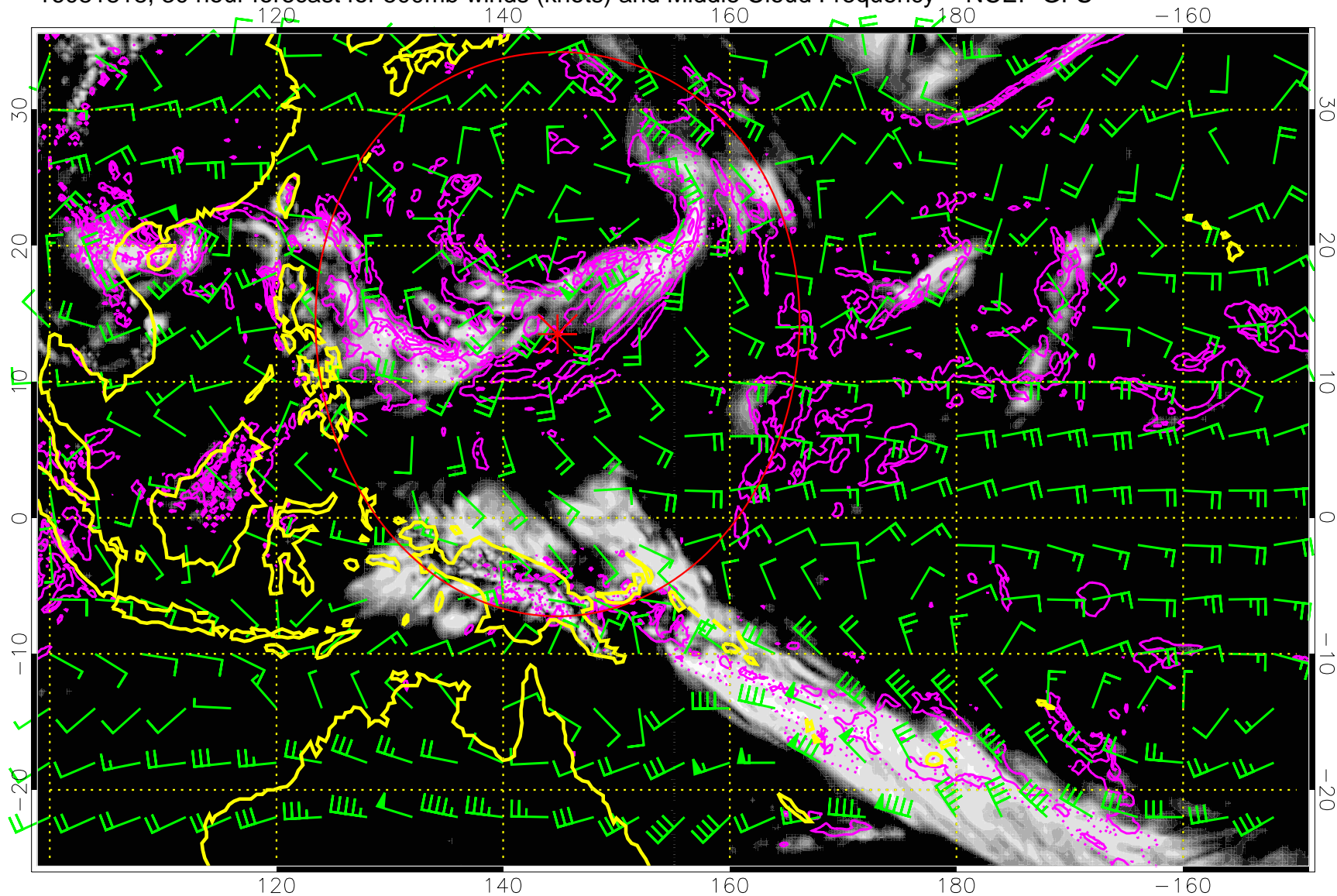


0.0 0.2 0.4 0.6 0.8 1.0
Middle Cloud Frequency

Precip (tot dot, conv sol) mm/day 40 mm/day contours, min 20

Range ring of 2304 km

16081818, 30 hour forecast for 500mb winds (knots) and Middle Cloud Frequency -- NCEP GFS

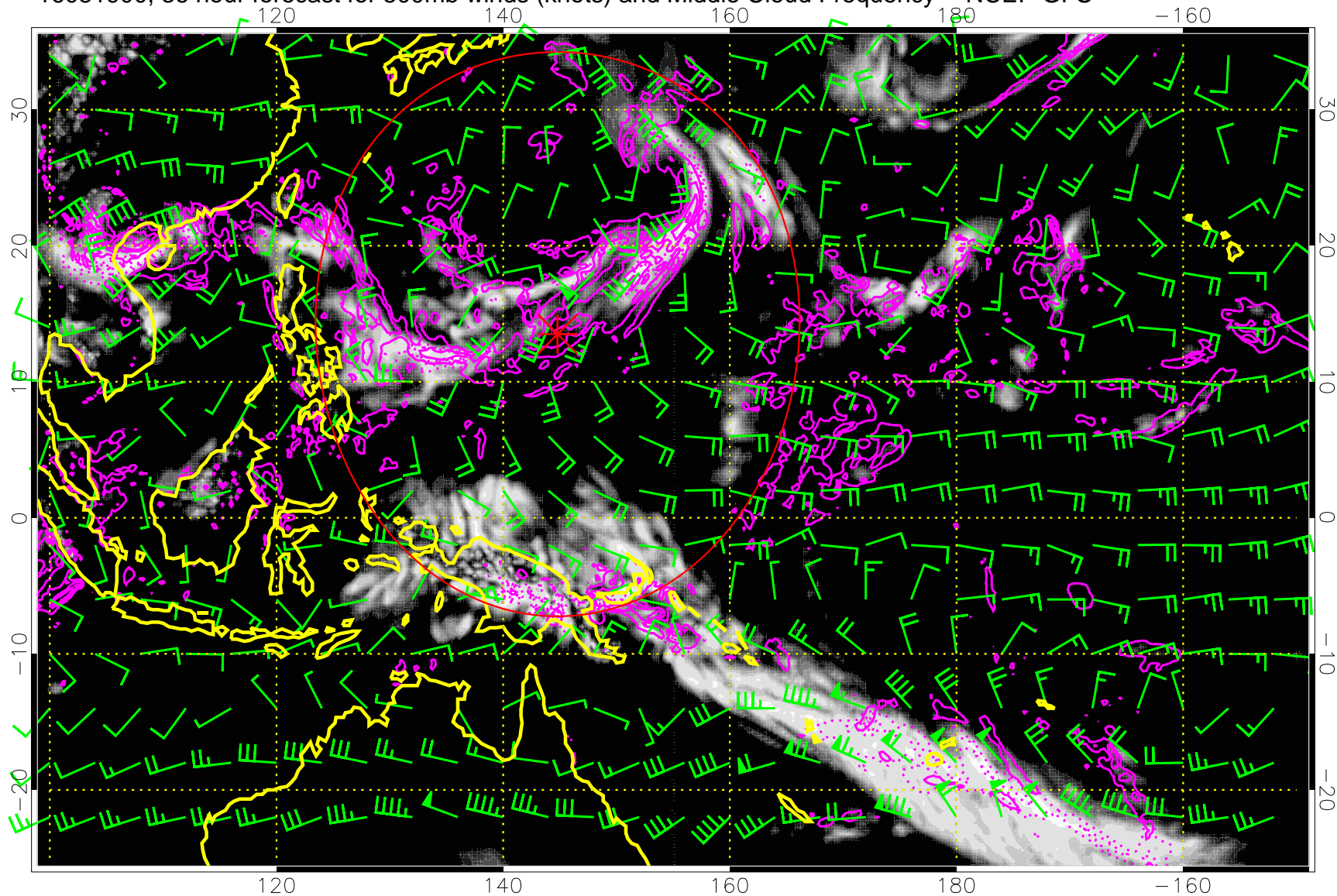


0.0 0.2 0.4 0.6 0.8 1.0
Middle Cloud Frequency

Precip (tot dot, conv sol) mm/day 40 mm/day contours, min 20

Range ring of 2304 km

16081900, 36 hour forecast for 500mb winds (knots) and Middle Cloud Frequency -- NCEP GFS

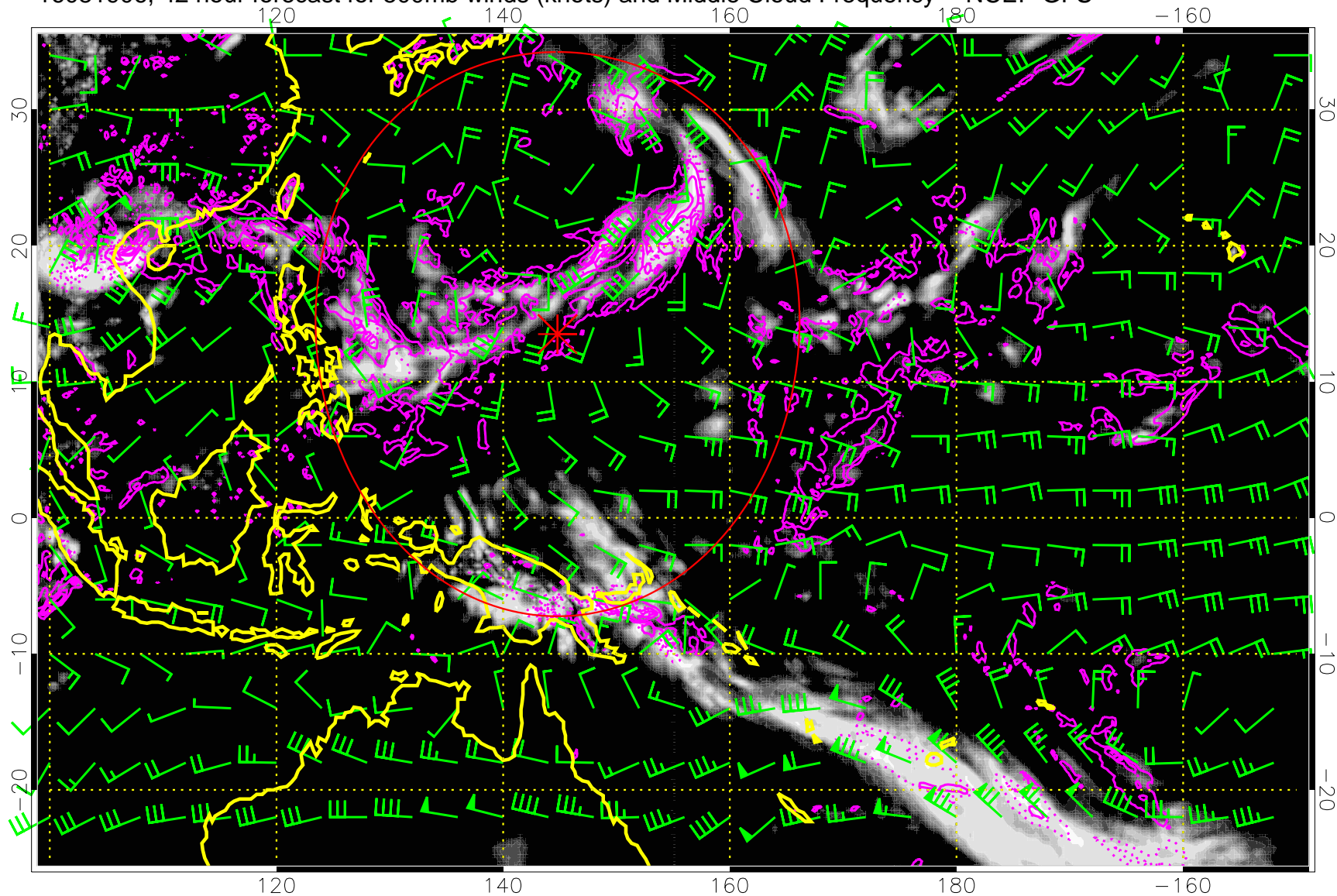


0.0 0.2 0.4 0.6 0.8 1.0
Middle Cloud Frequency

Precip (tot dot, conv sol) mm/day 40 mm/day contours, min 20

Range ring of 2304 km

16081906, 42 hour forecast for 500mb winds (knots) and Middle Cloud Frequency -- NCEP GFS

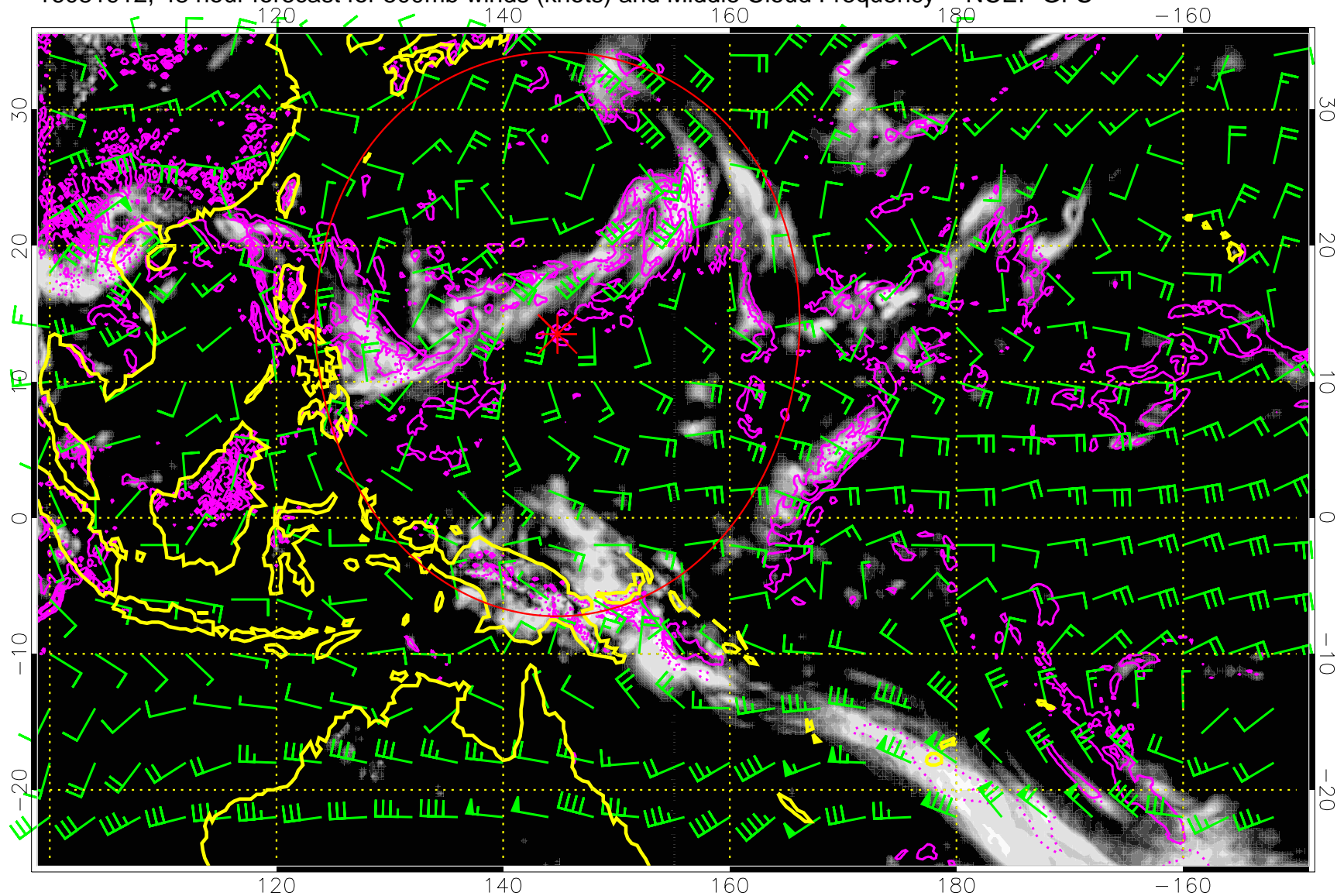


0.0 0.2 0.4 0.6 0.8 1.0
Middle Cloud Frequency

Precip (tot dot, conv sol) mm/day 40 mm/day contours, min 20

Range ring of 2304 km

16081912, 48 hour forecast for 500mb winds (knots) and Middle Cloud Frequency -- NCEP GFS

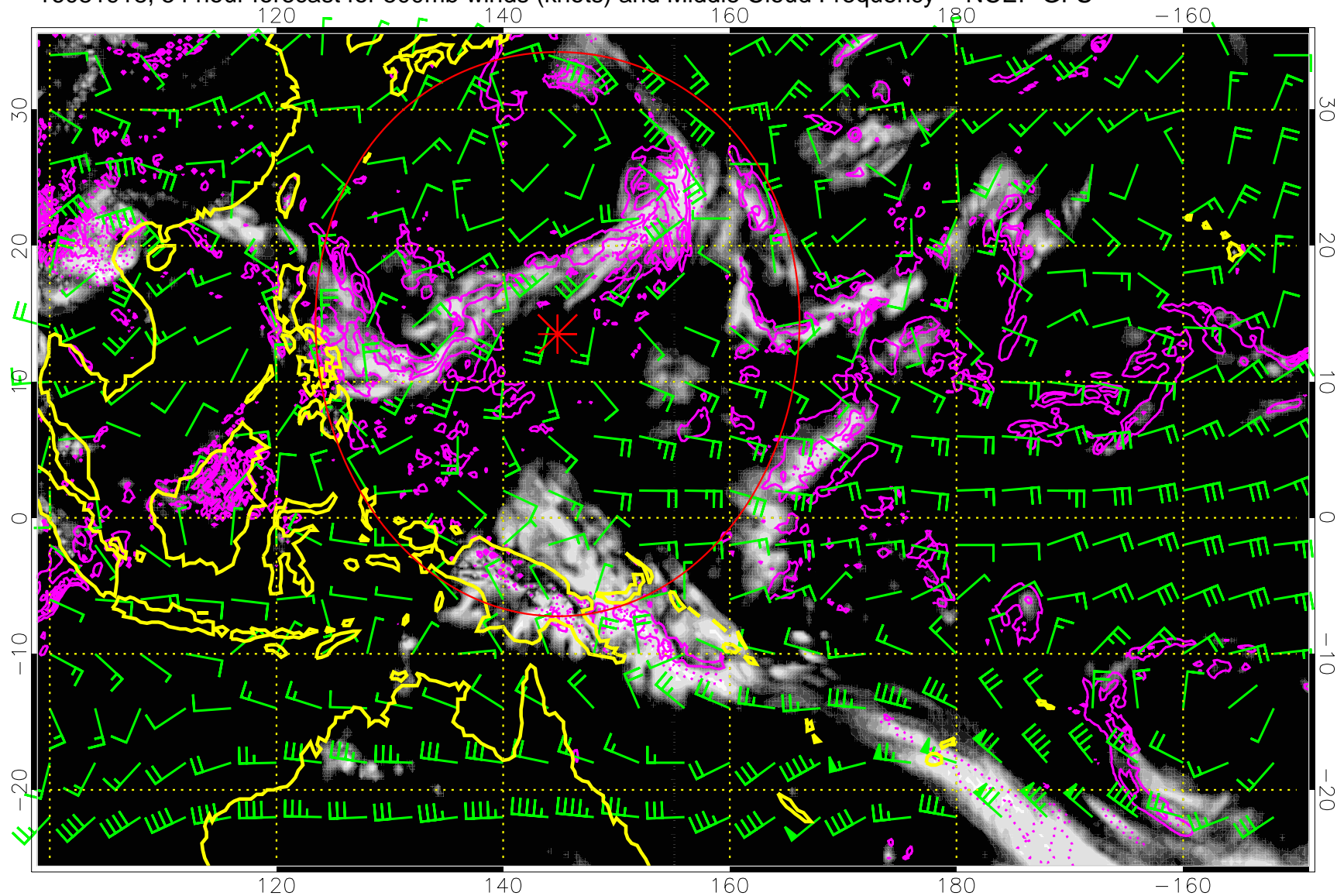


0.0 0.2 0.4 0.6 0.8 1.0
Middle Cloud Frequency

Precip (tot dot, conv sol) mm/day 40 mm/day contours, min 20

Range ring of 2304 km

16081918, 54 hour forecast for 500mb winds (knots) and Middle Cloud Frequency -- NCEP GFS

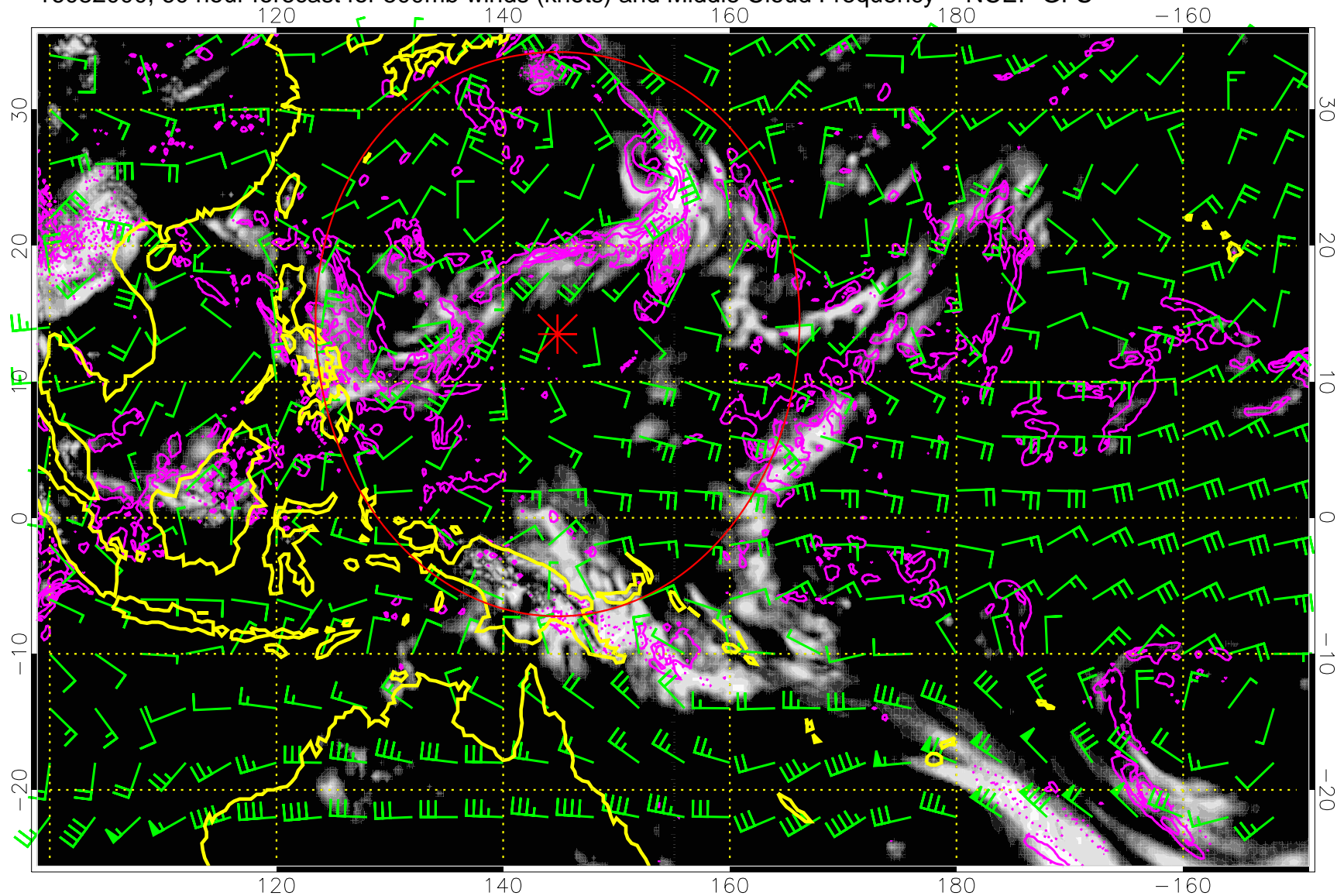


0.0 0.2 0.4 0.6 0.8 1.0
Middle Cloud Frequency

Precip (tot dot, conv sol) mm/day 40 mm/day contours, min 20

Range ring of 2304 km

16082000, 60 hour forecast for 500mb winds (knots) and Middle Cloud Frequency -- NCEP GFS

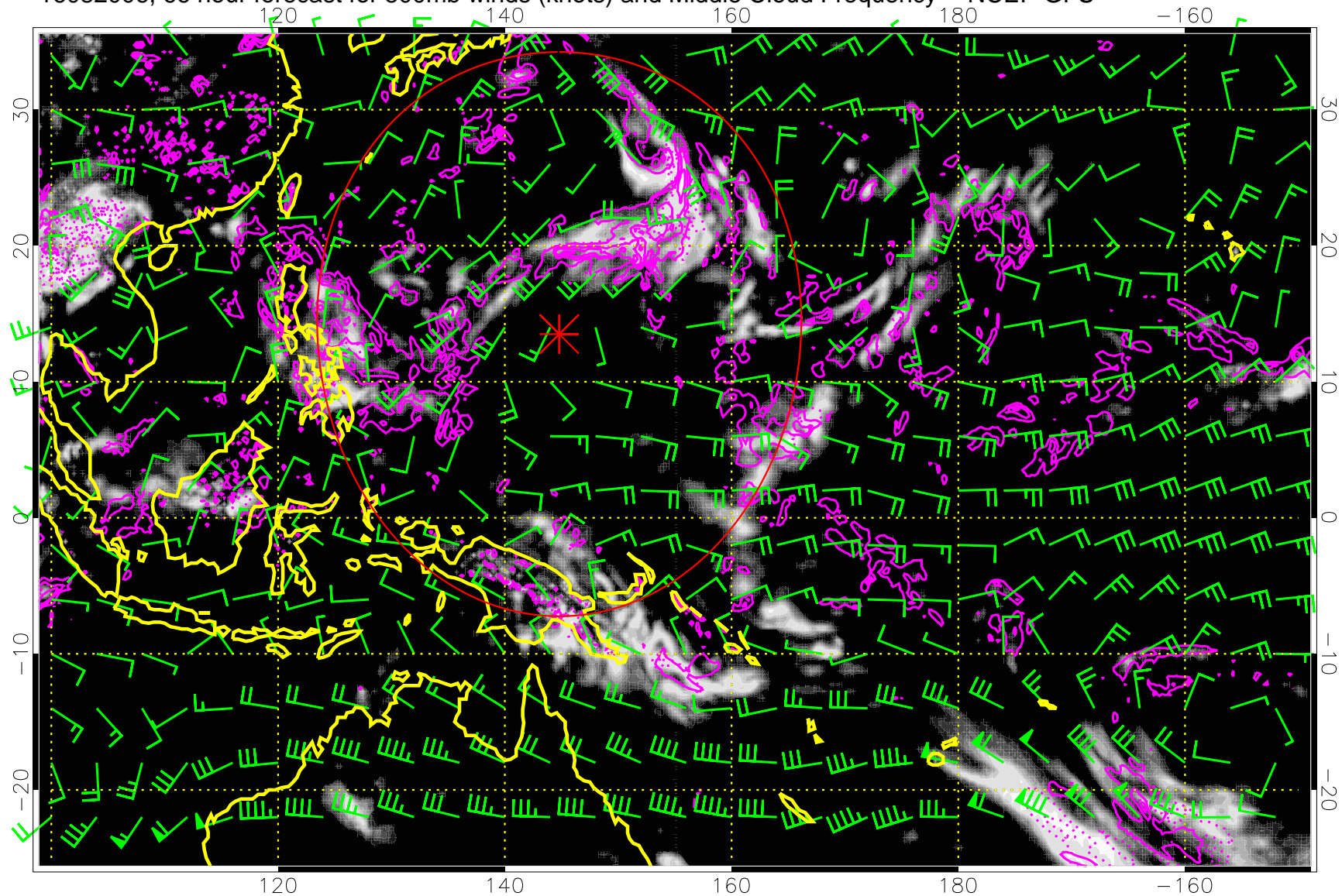


0.0 0.2 0.4 0.6 0.8 1.0
Middle Cloud Frequency

Precip (tot dot, conv sol) mm/day 40 mm/day contours, min 20

Range ring of 2304 km

16082006, 66 hour forecast for 500mb winds (knots) and Middle Cloud Frequency -- NCEP GFS

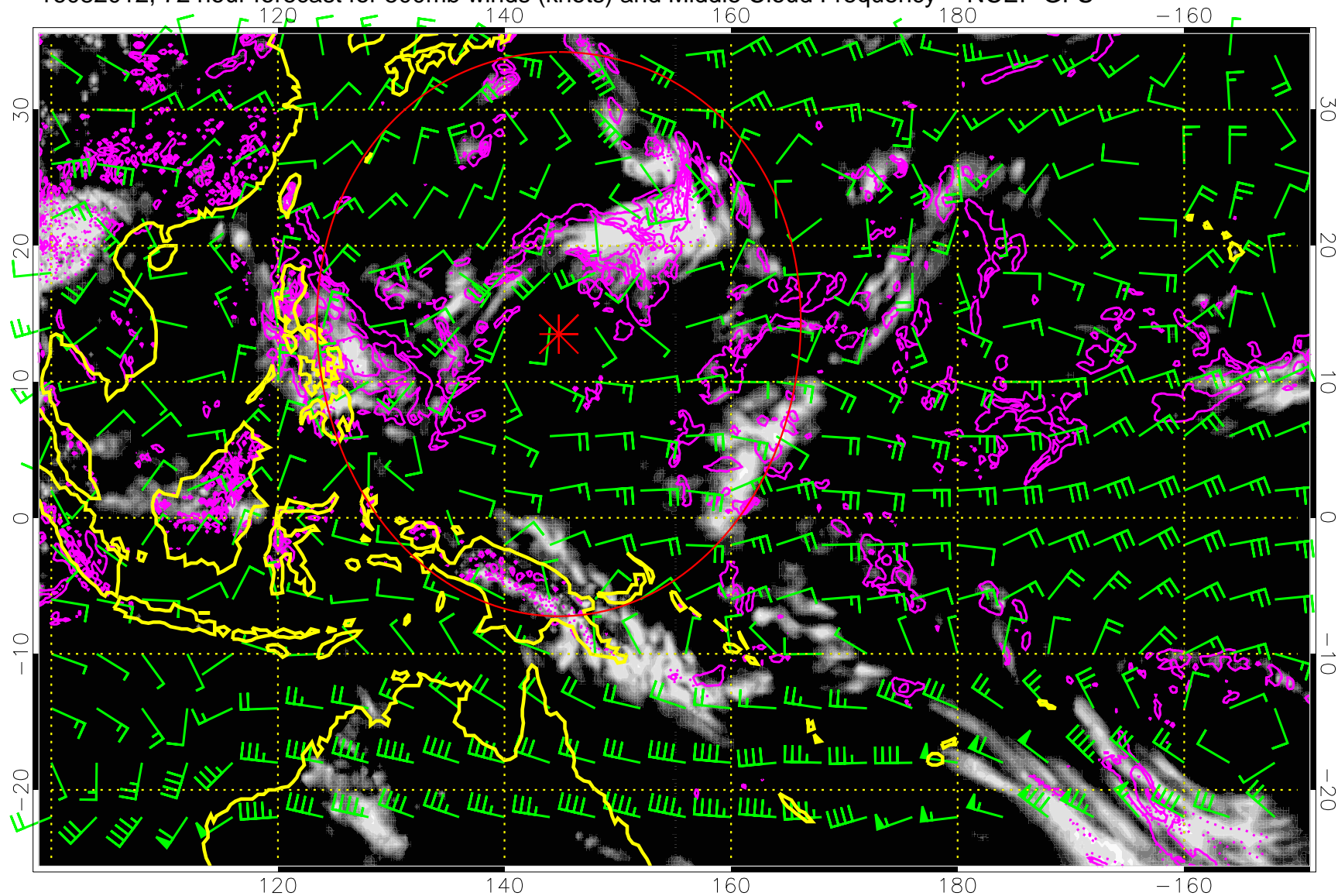


0.0 0.2 0.4 0.6 0.8 1.0
Middle Cloud Frequency

Precip (tot dot, conv sol) mm/day 40 mm/day contours, min 20

Range ring of 2304 km

16082012, 72 hour forecast for 500mb winds (knots) and Middle Cloud Frequency -- NCEP GFS

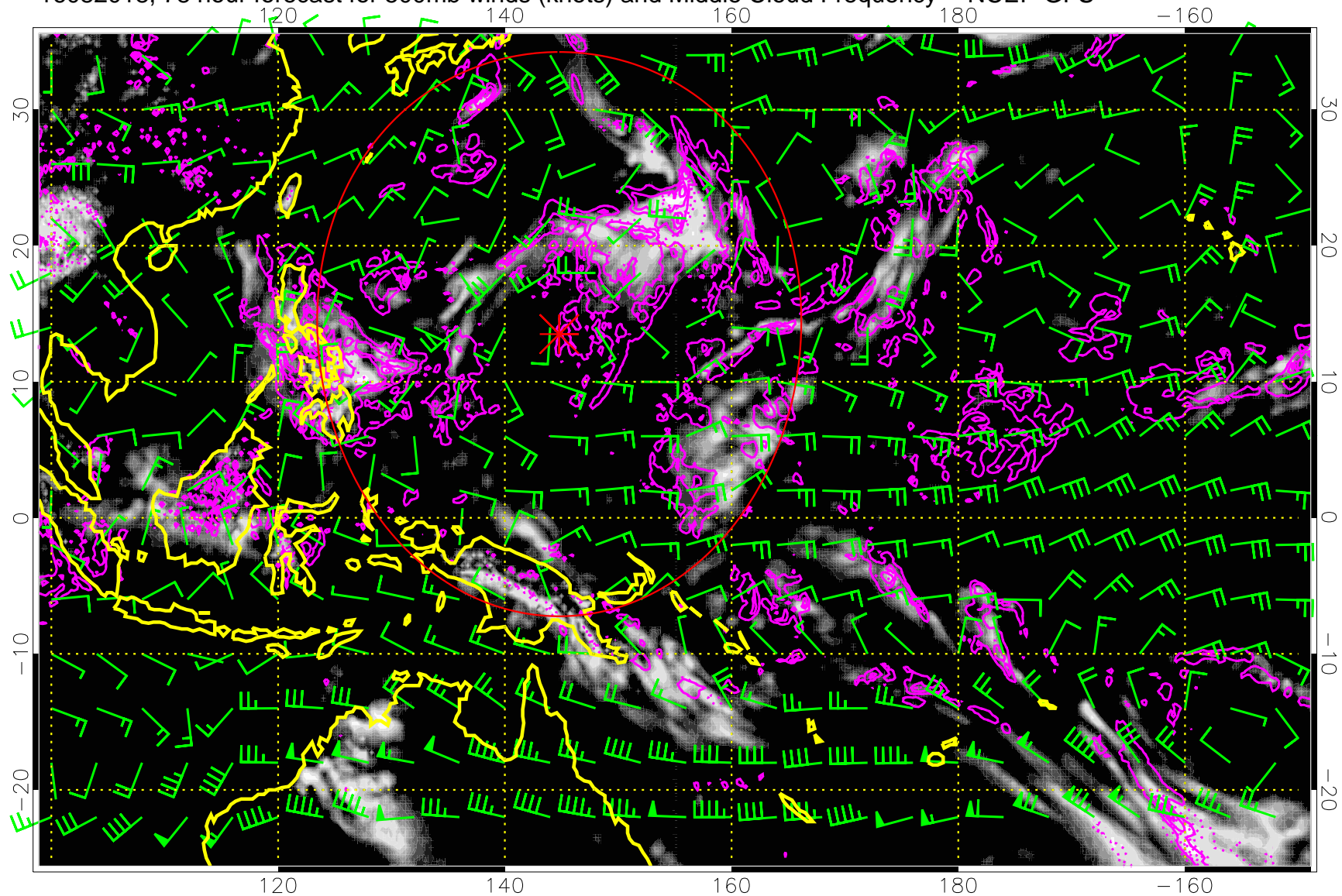


0.0 0.2 0.4 0.6 0.8 1.0
Middle Cloud Frequency

Precip (tot dot, conv sol) mm/day 40 mm/day contours, min 20

Range ring of 2304 km

16082018, 78 hour forecast for 500mb winds (knots) and Middle Cloud Frequency -- NCEP GFS

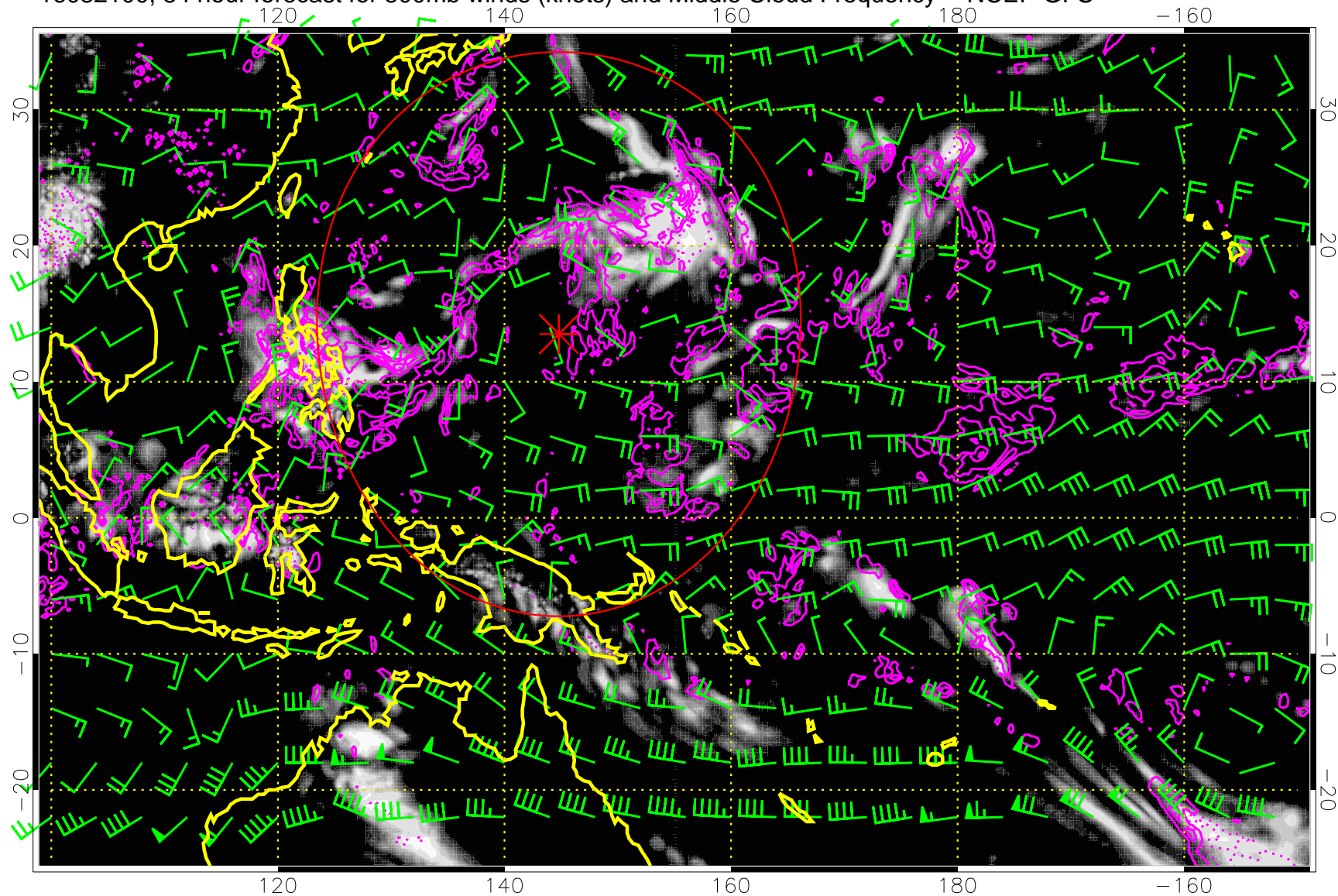


Middle Cloud Frequency

Precip (tot dot, conv sol) mm/day 40 mm/day contours, min 20

Range ring of 2304 km

16082100, 84 hour forecast for 500mb winds (knots) and Middle Cloud Frequency -- NCEP GFS

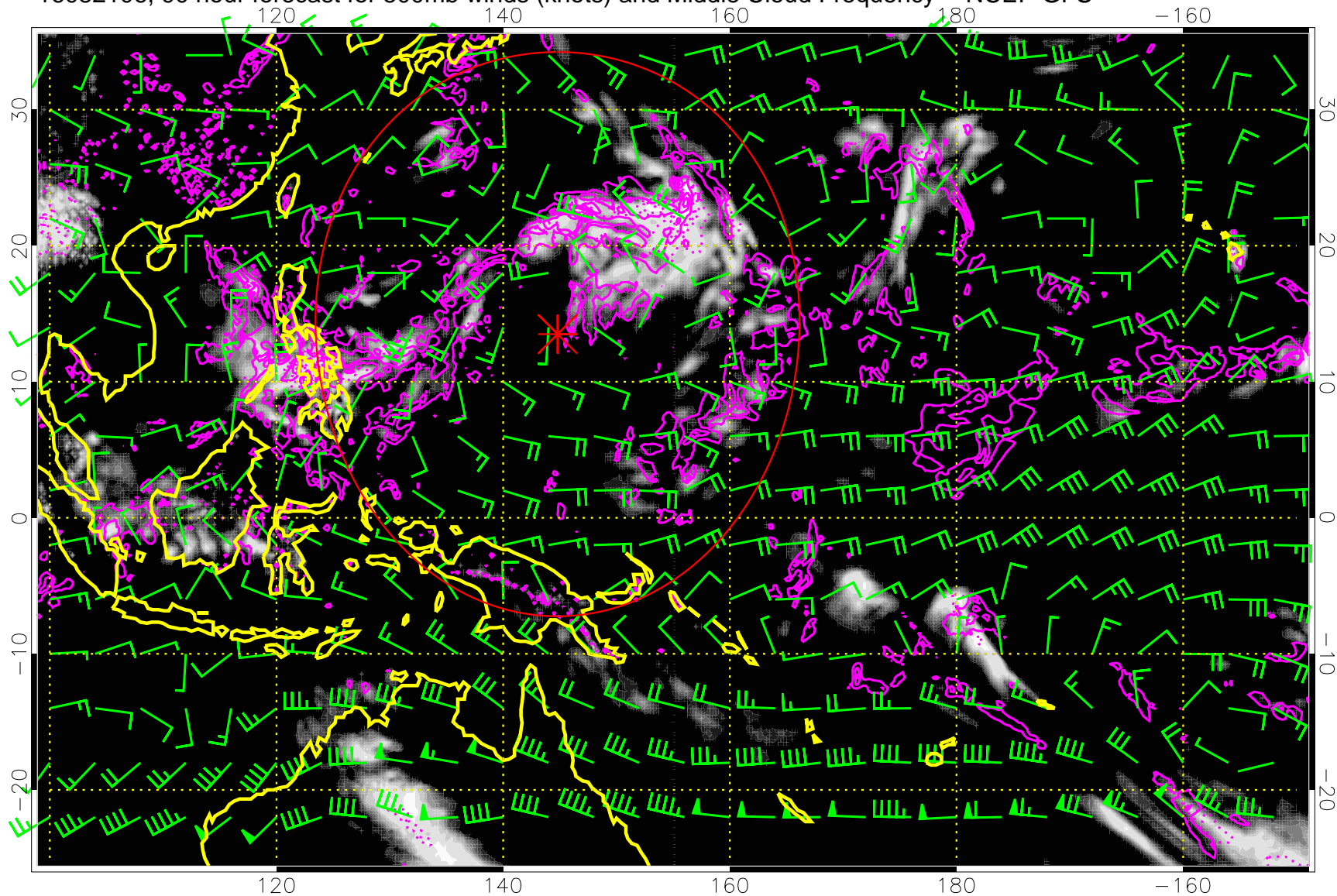


0.0 0.2 0.4 0.6 0.8 1.0
Middle Cloud Frequency

Precip (tot dot, conv sol) mm/day 40 mm/day contours, min 20

Range ring of 2304 km

16082106, 90 hour forecast for 500mb winds (knots) and Middle Cloud Frequency -- NCEP GFS

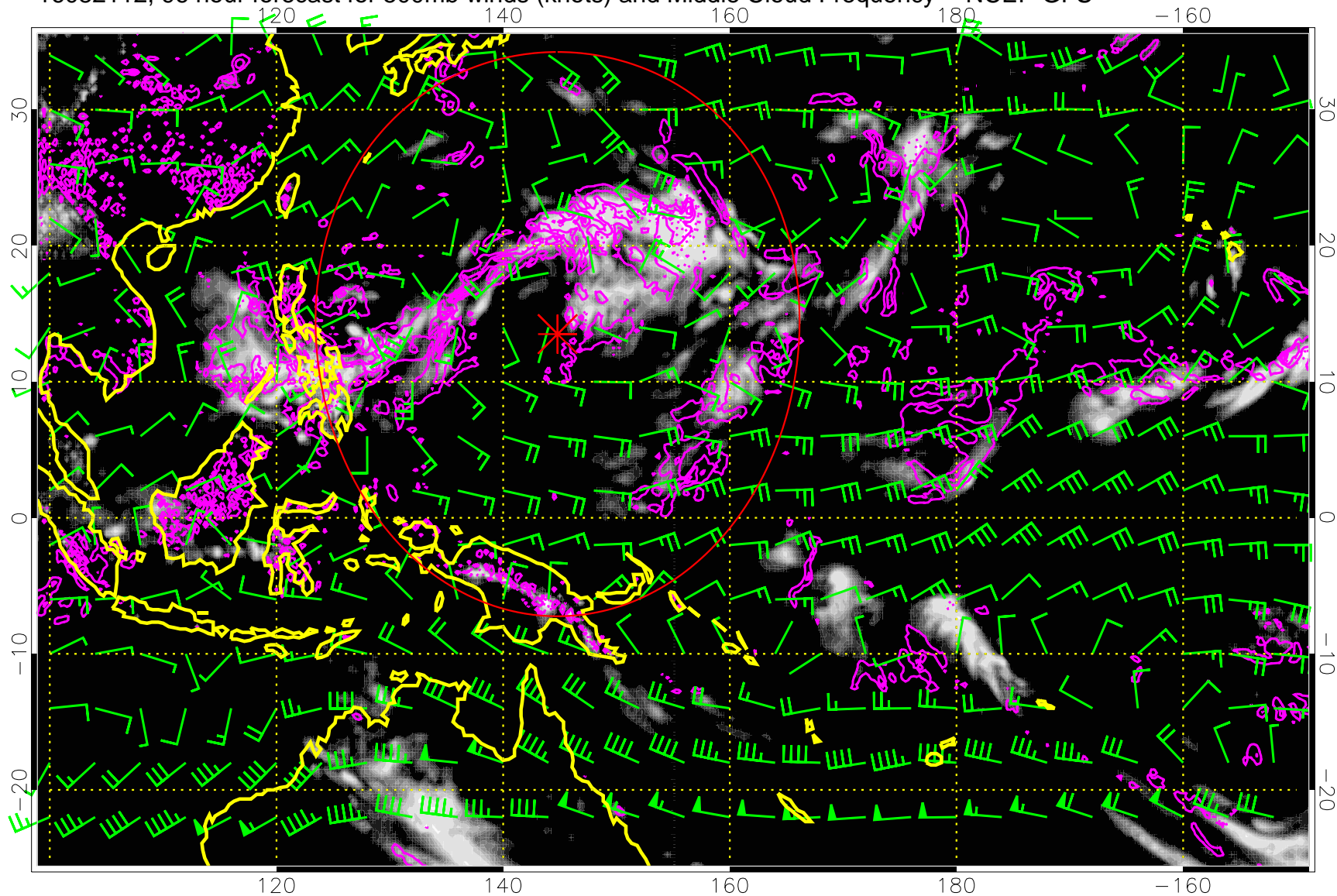


0.0 0.2 0.4 0.6 0.8 1.0
Middle Cloud Frequency

Precip (tot dot, conv sol) mm/day 40 mm/day contours, min 20

Range ring of 2304 km

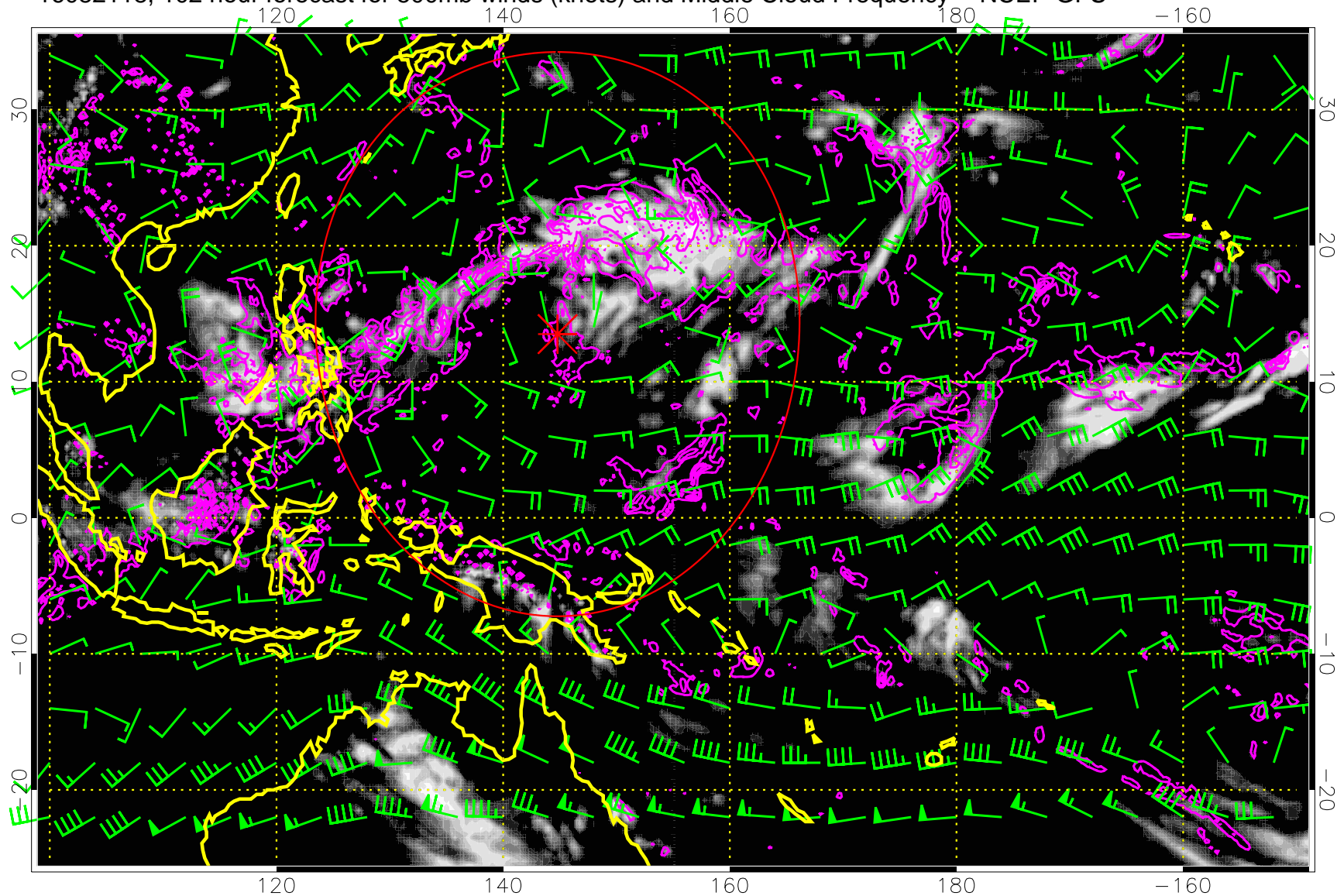
16082112, 96 hour forecast for 500mb winds (knots) and Middle Cloud Frequency -- NCEP GFS



Precip (tot dot, conv sol) mm/day 40 mm/day contours, min 20

Range ring of 2304 km

16082118, 102 hour forecast for 500mb winds (knots) and Middle Cloud Frequency -- NCEP GFS

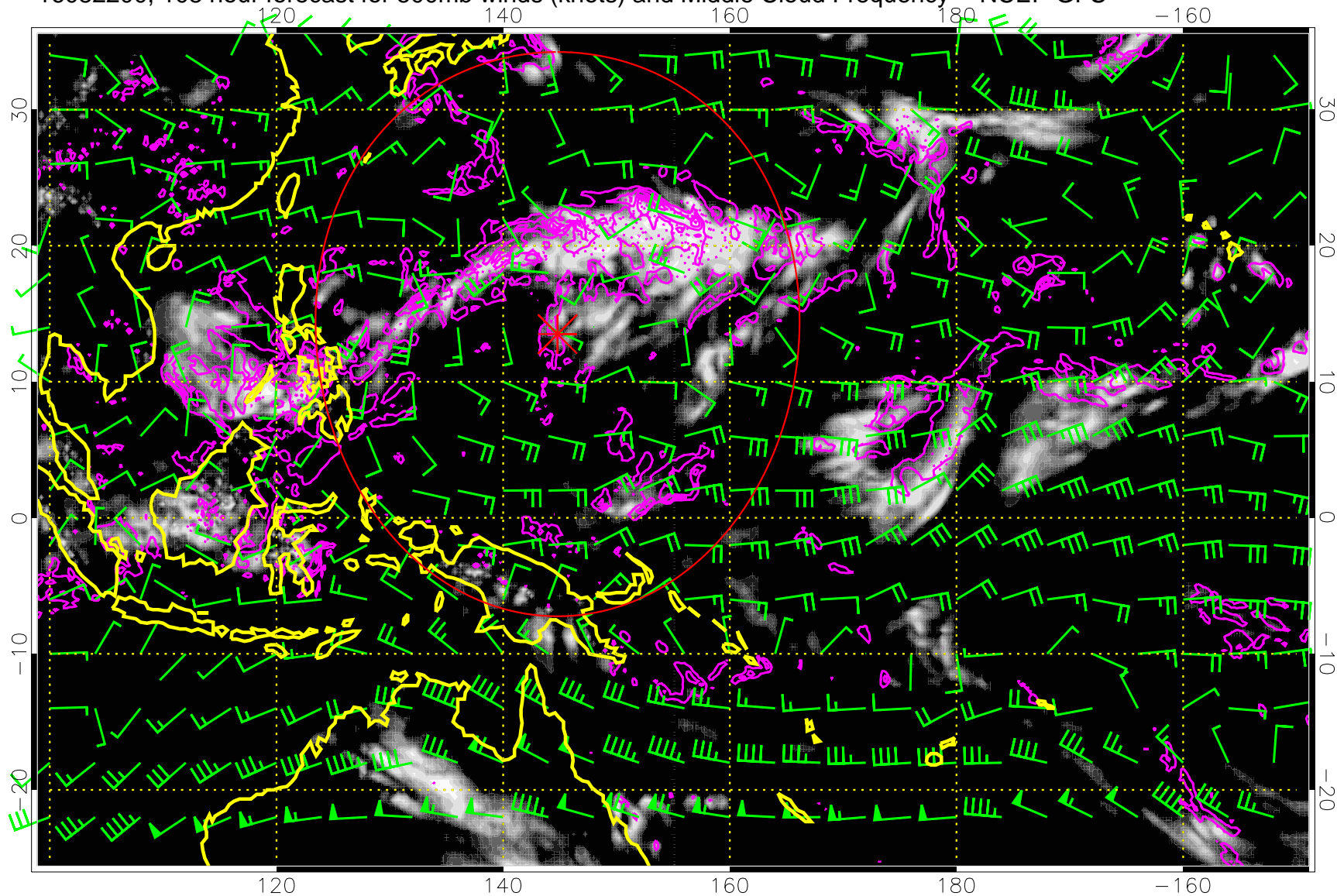


0.0 0.2 0.4 0.6 0.8 1.0
Middle Cloud Frequency

Precip (tot dot, conv sol) mm/day 40 mm/day contours, min 20

Range ring of 2304 km

16082200, 108 hour forecast for 500mb winds (knots) and Middle Cloud Frequency -- NCEP GFS

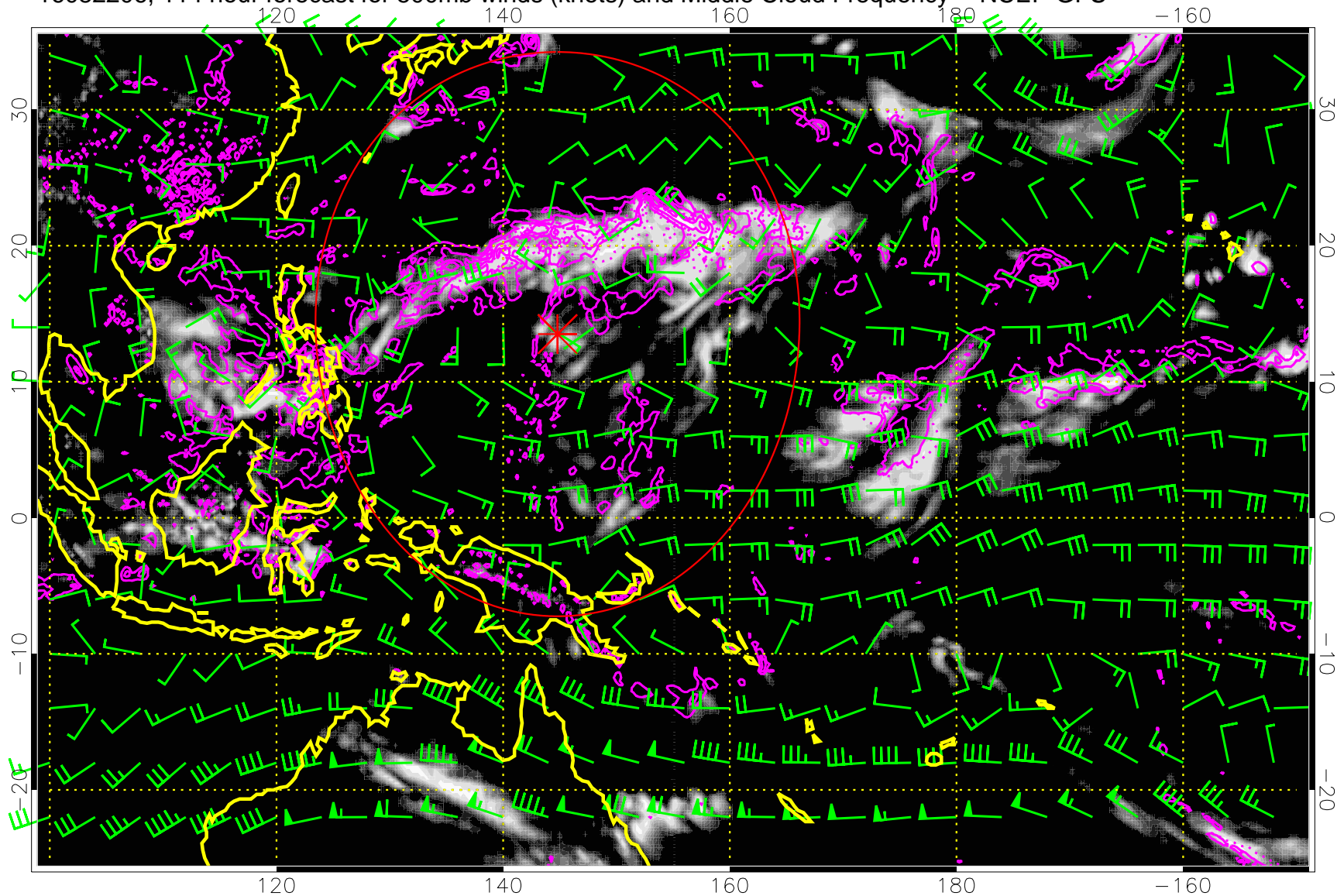


Precip (tot dot, conv sol) mm/day 40 mm/day contours, min 20

0.0 0.2 0.4 0.6 0.8 1.0
Middle Cloud Frequency

Range ring of 2304 km

16082206, 114 hour forecast for 500mb winds (knots) and Middle Cloud Frequency -- NCEP GFS

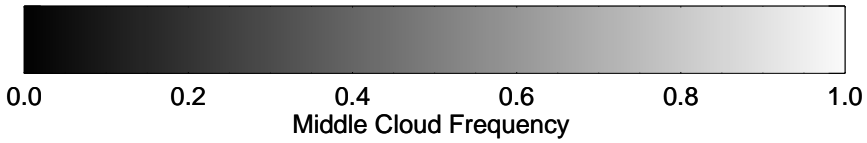
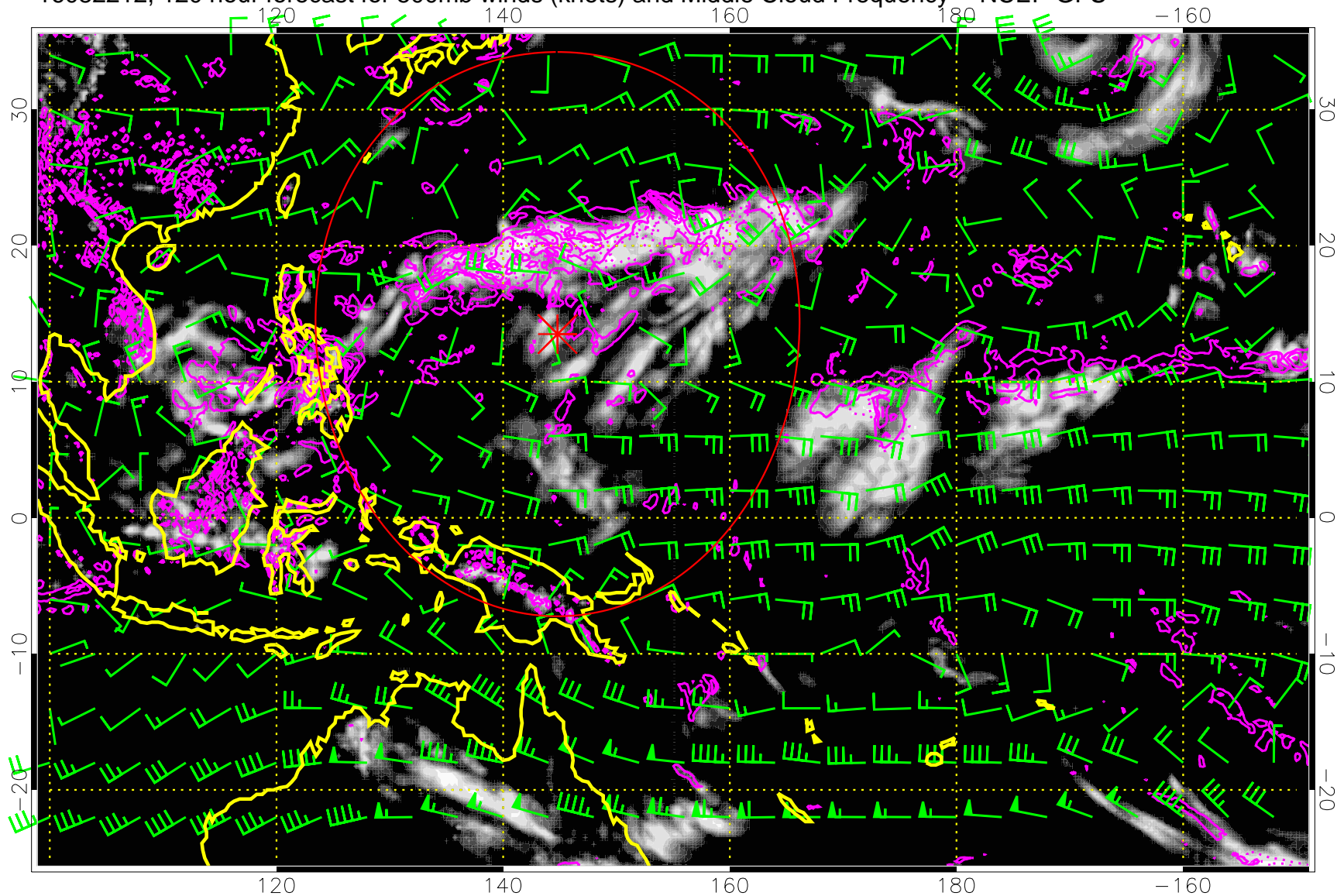


0.0 0.2 0.4 0.6 0.8 1.0
Middle Cloud Frequency

Precip (tot dot, conv sol) mm/day 40 mm/day contours, min 20

Range ring of 2304 km

16082212, 120 hour forecast for 500mb winds (knots) and Middle Cloud Frequency -- NCEP GFS



Precip (tot dot, conv sol) mm/day 40 mm/day contours, min 20

Range ring of 2304 km