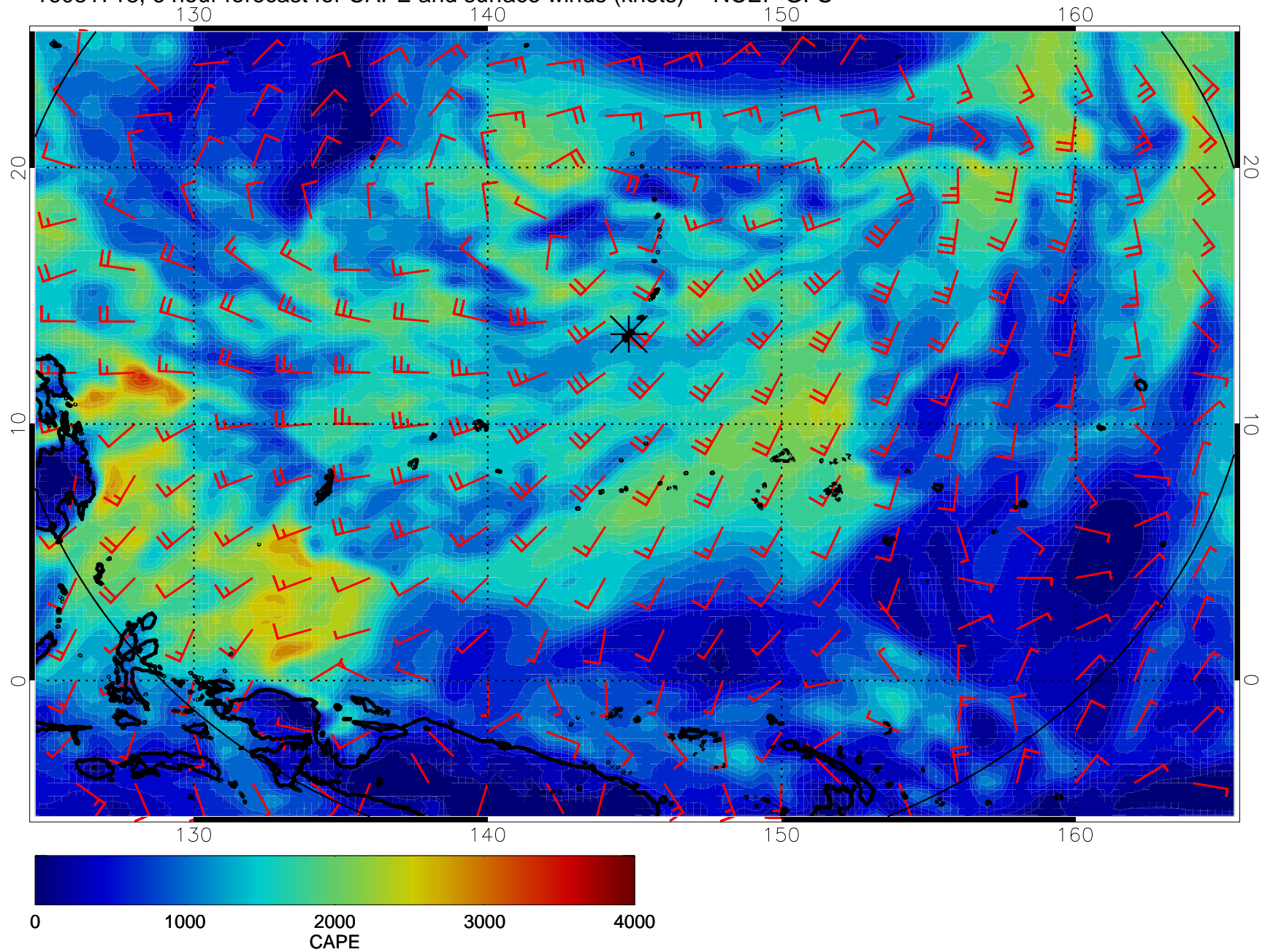
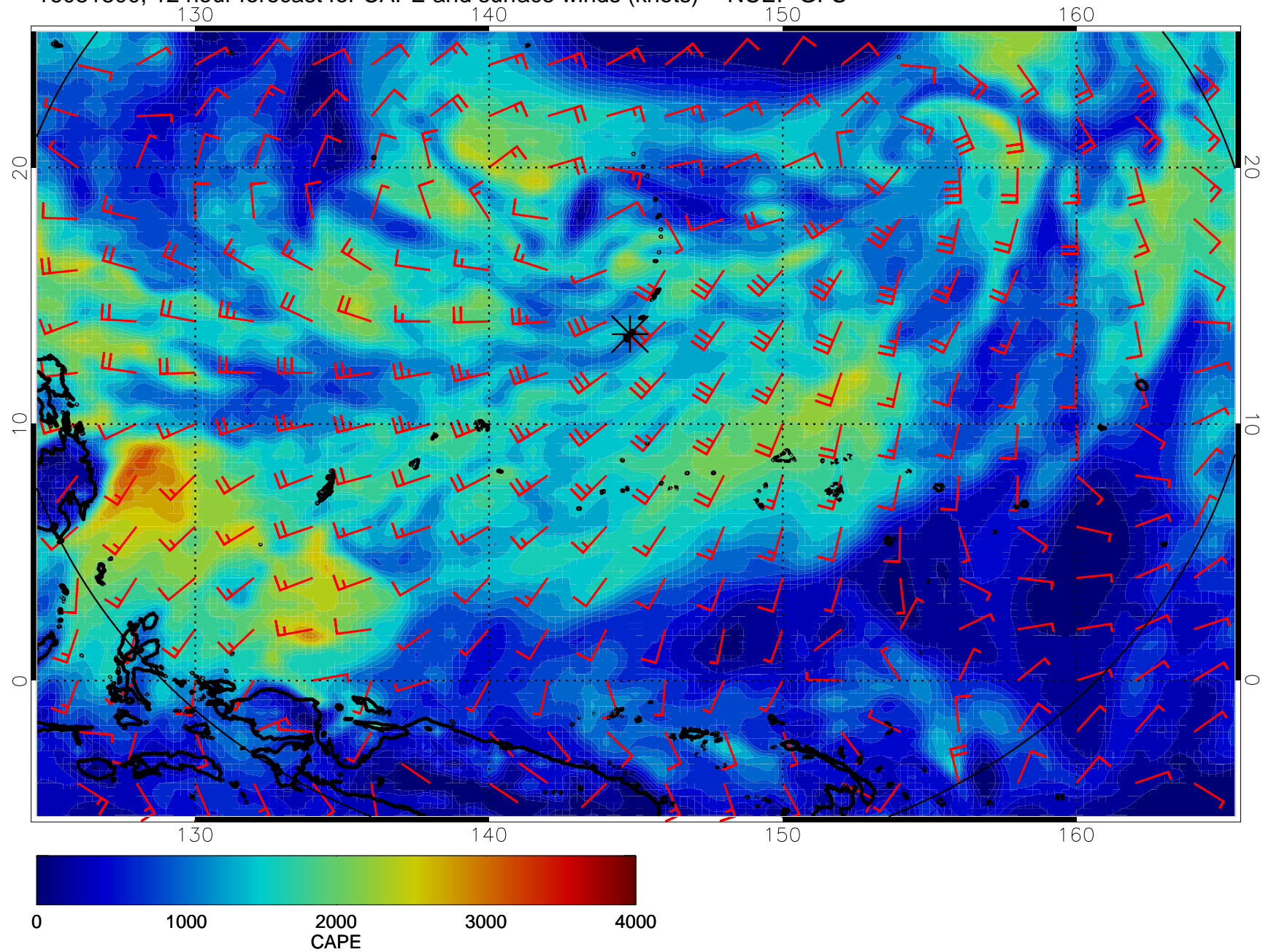


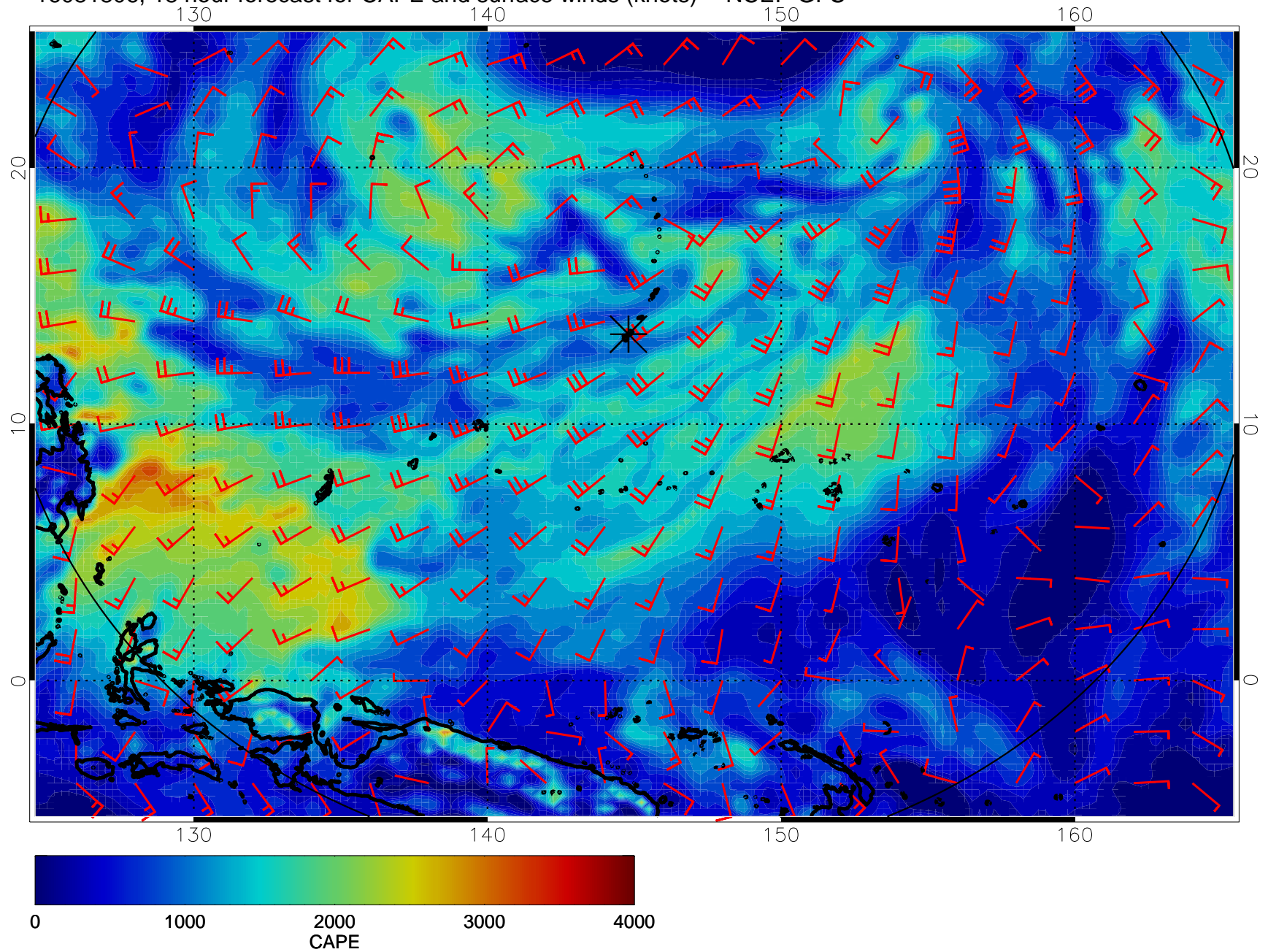
16081718, 6 hour forecast for CAPE and surface winds (knots) -- NCEP GFS



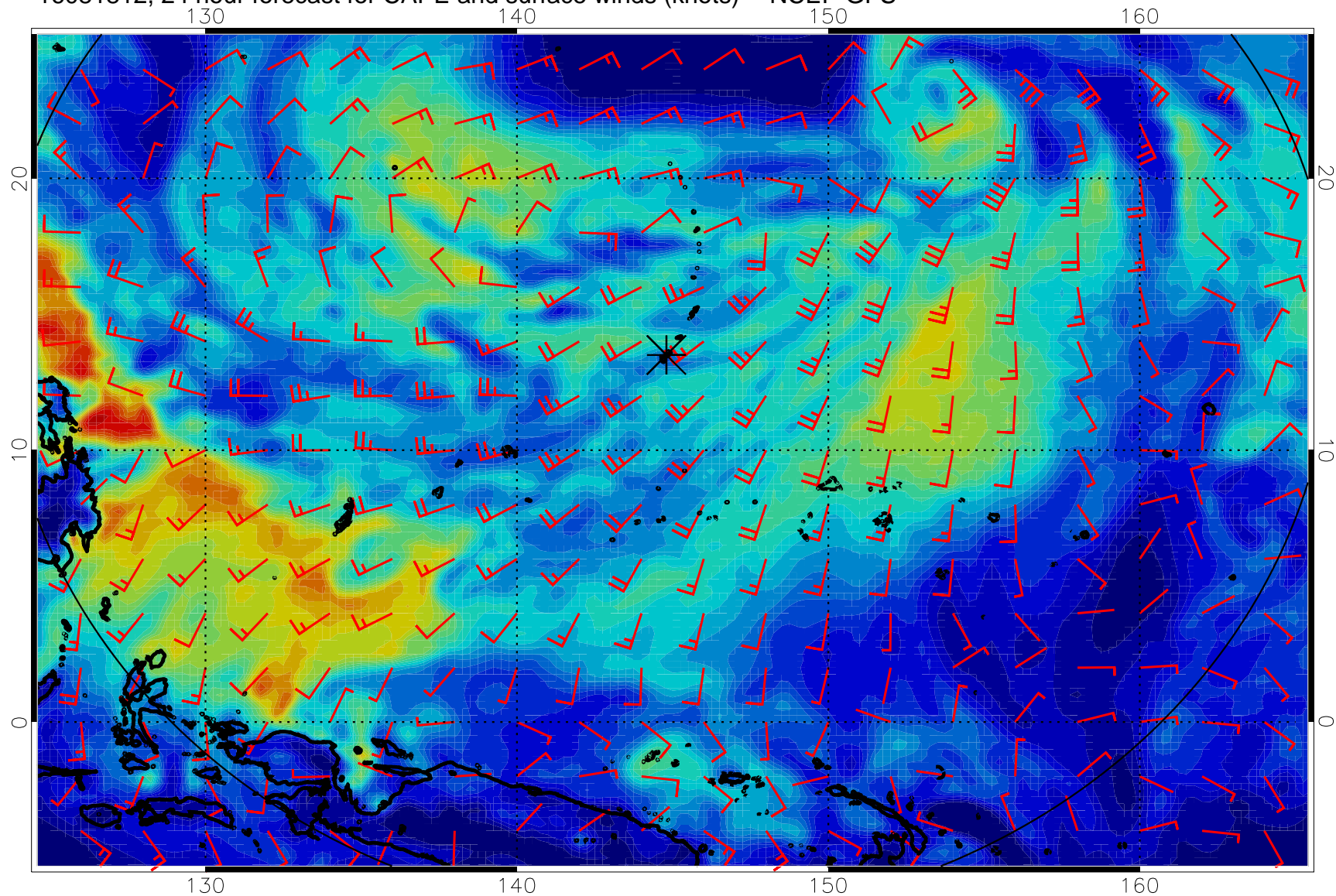
16081800, 12 hour forecast for CAPE and surface winds (knots) -- NCEP GFS



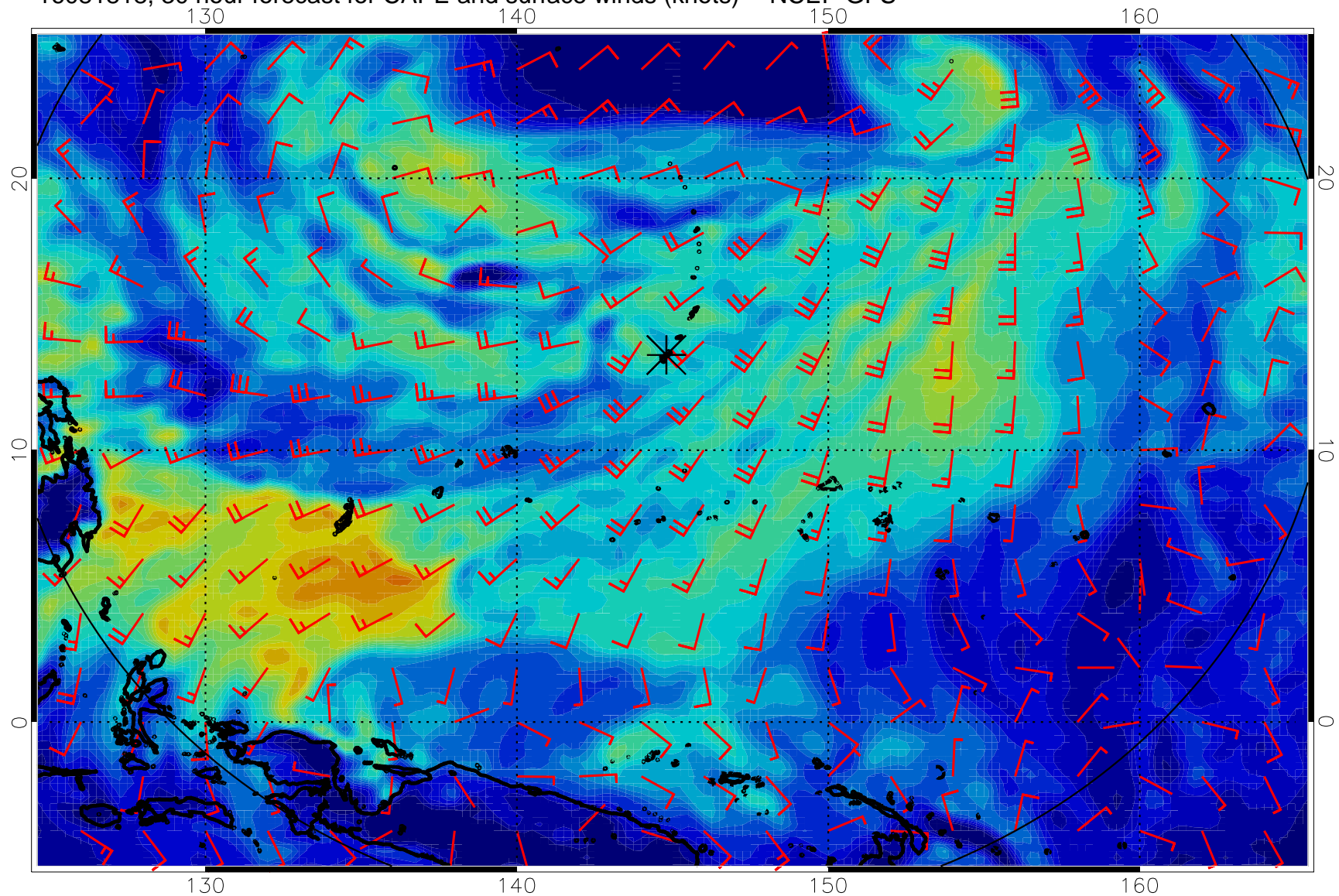
16081806, 18 hour forecast for CAPE and surface winds (knots) -- NCEP GFS



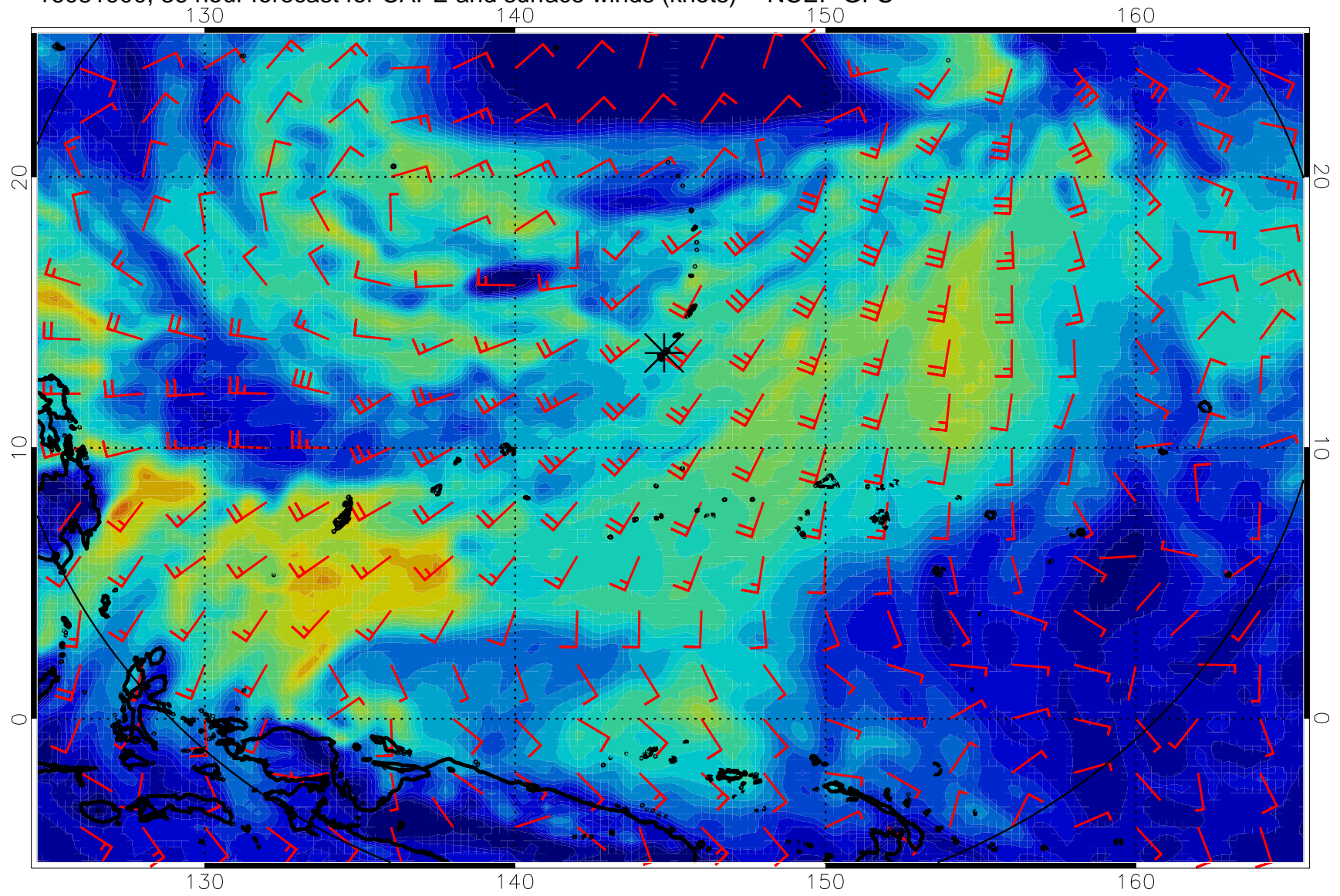
16081812, 24 hour forecast for CAPE and surface winds (knots) -- NCEP GFS



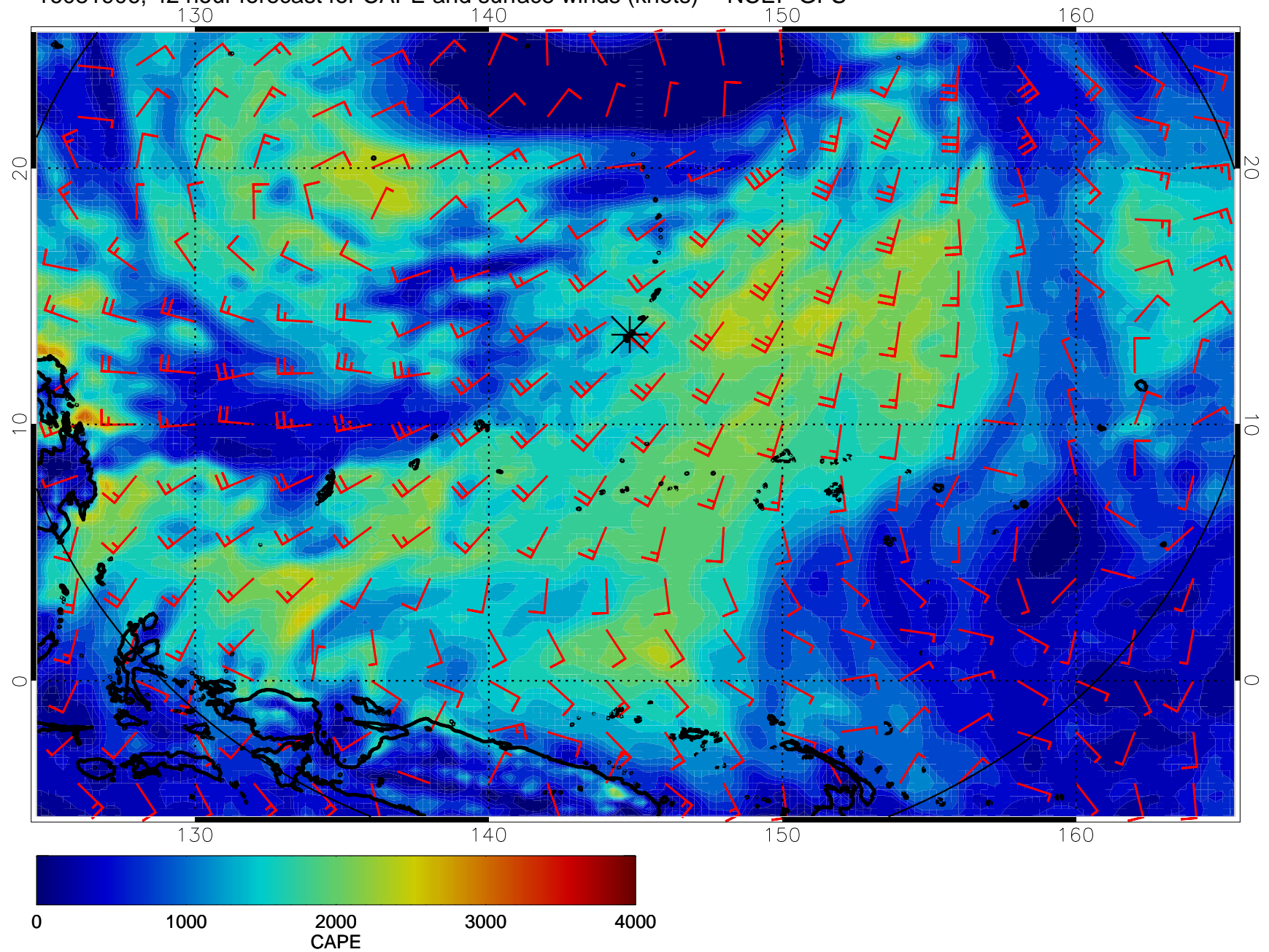
16081818, 30 hour forecast for CAPE and surface winds (knots) -- NCEP GFS



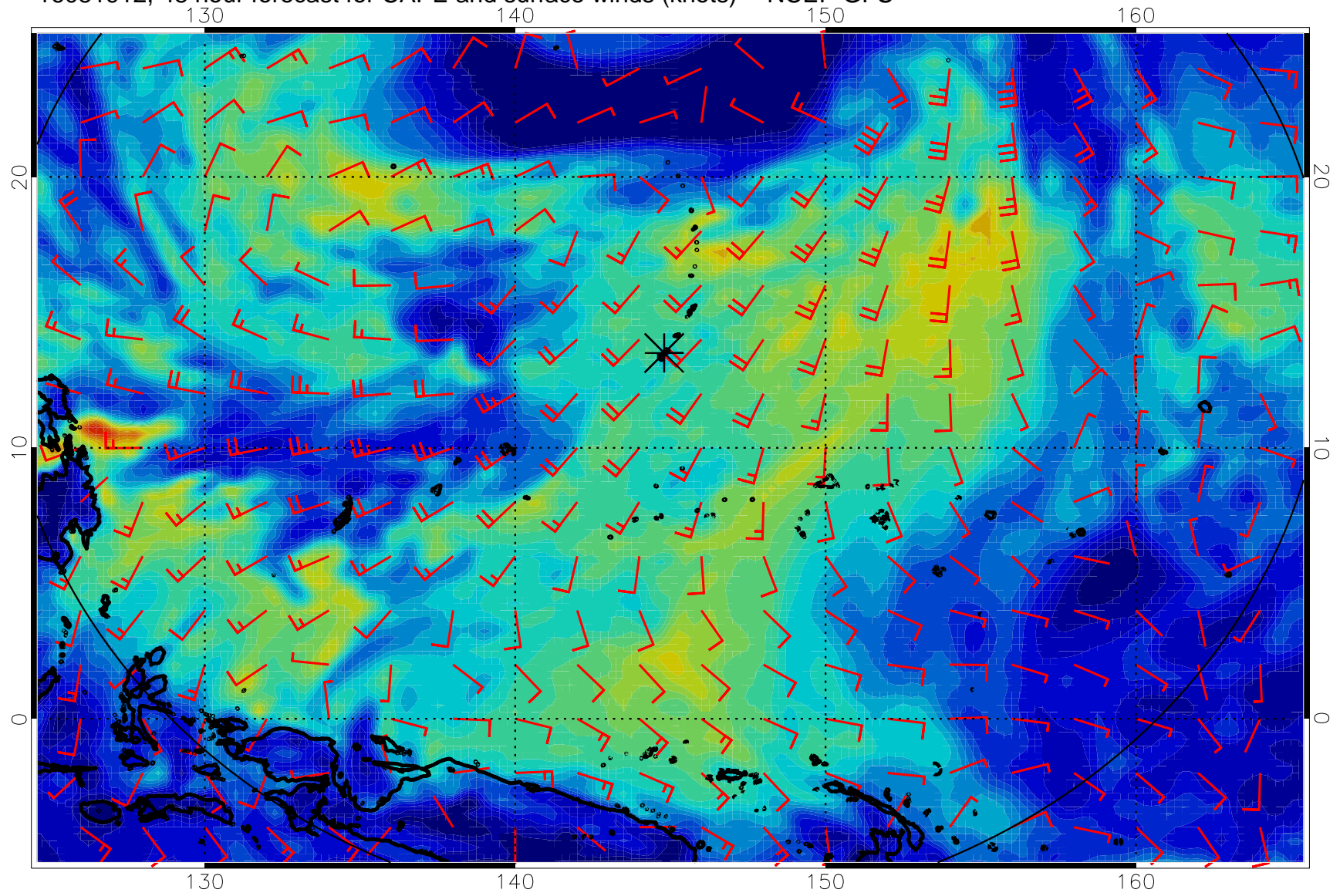
16081900, 36 hour forecast for CAPE and surface winds (knots) -- NCEP GFS



16081906, 42 hour forecast for CAPE and surface winds (knots) -- NCEP GFS

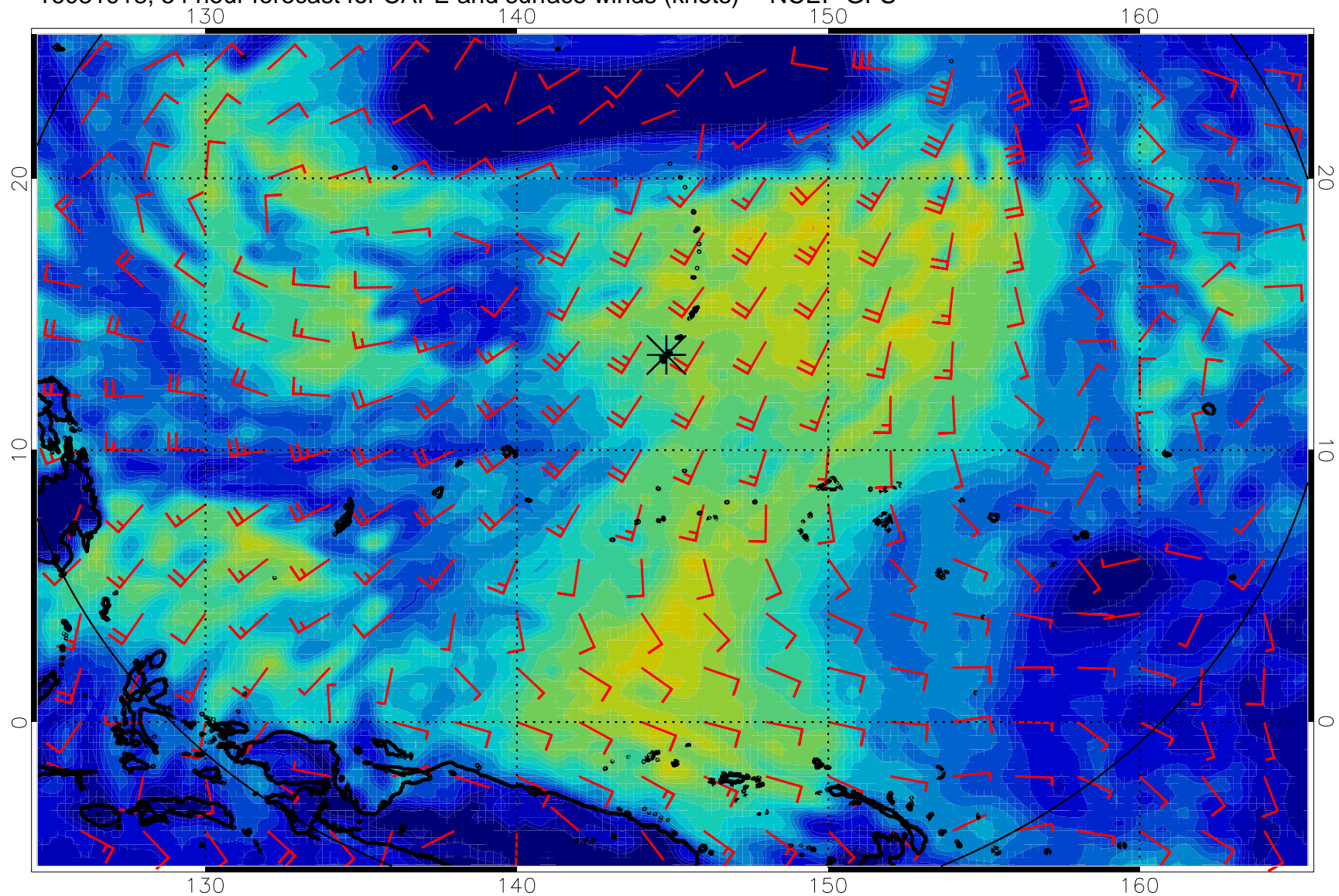


16081912, 48 hour forecast for CAPE and surface winds (knots) -- NCEP GFS

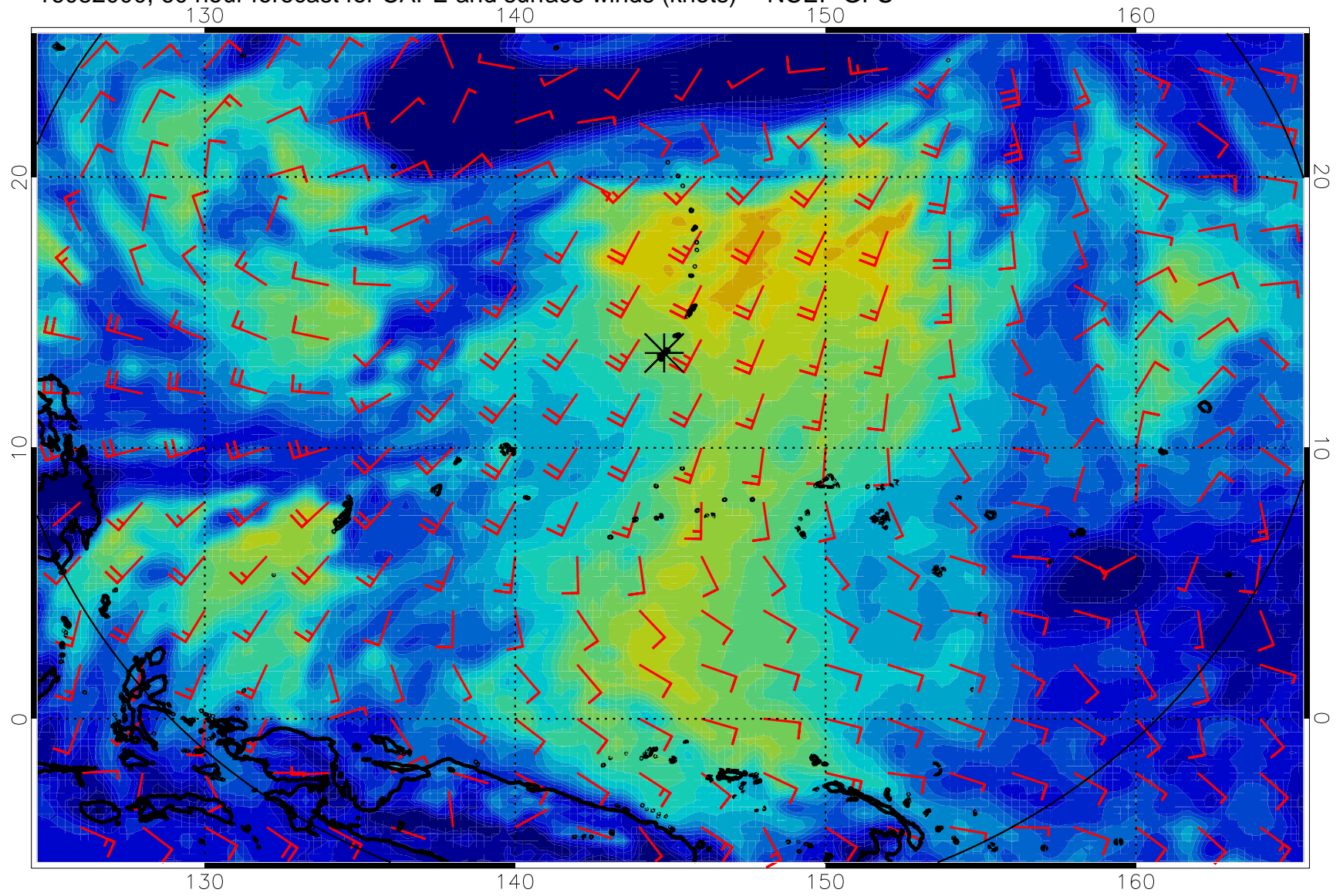




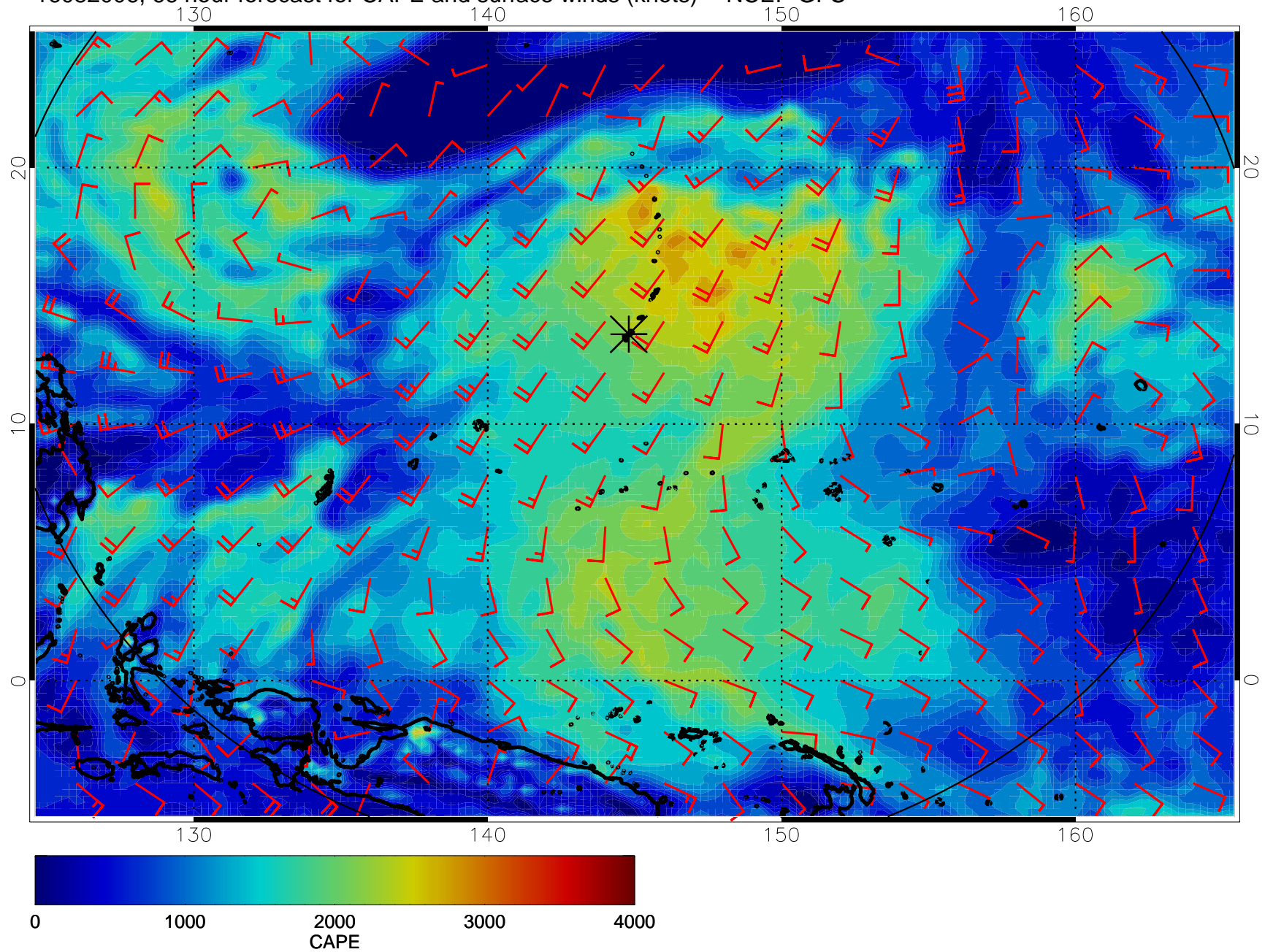
16081918, 54 hour forecast for CAPE and surface winds (knots) -- NCEP GFS



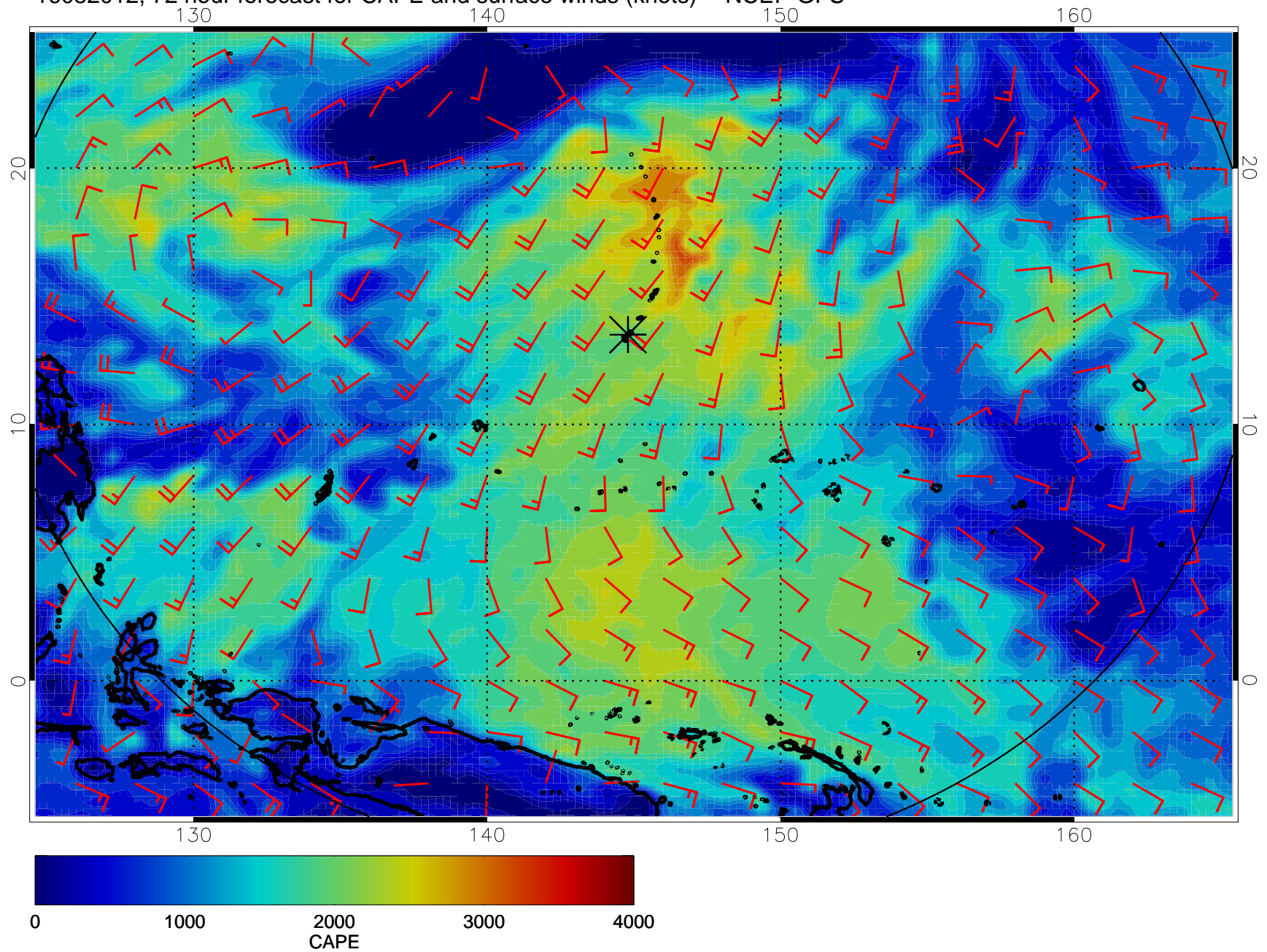
16082000, 60 hour forecast for CAPE and surface winds (knots) -- NCEP GFS



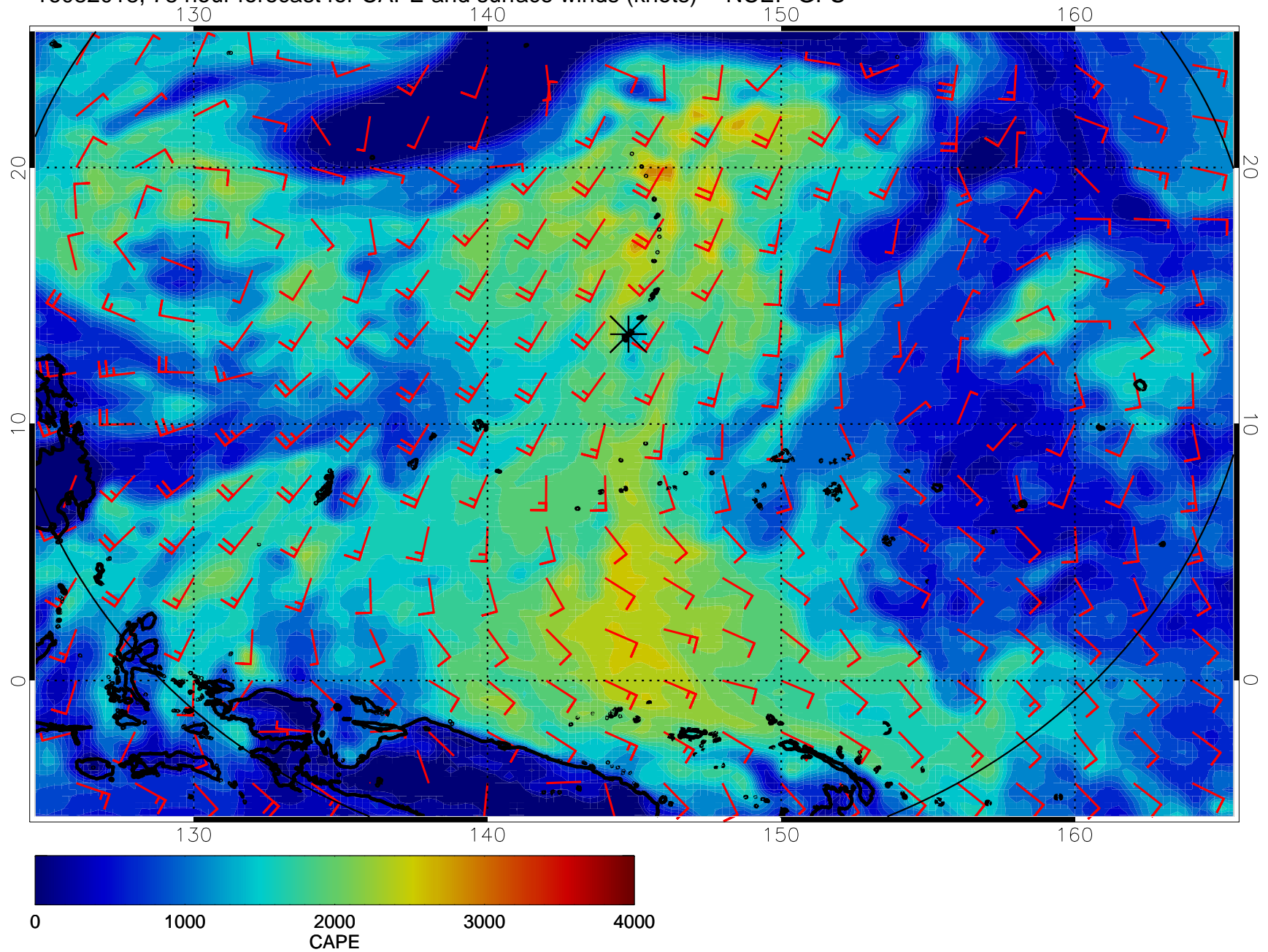
16082006, 66 hour forecast for CAPE and surface winds (knots) -- NCEP GFS



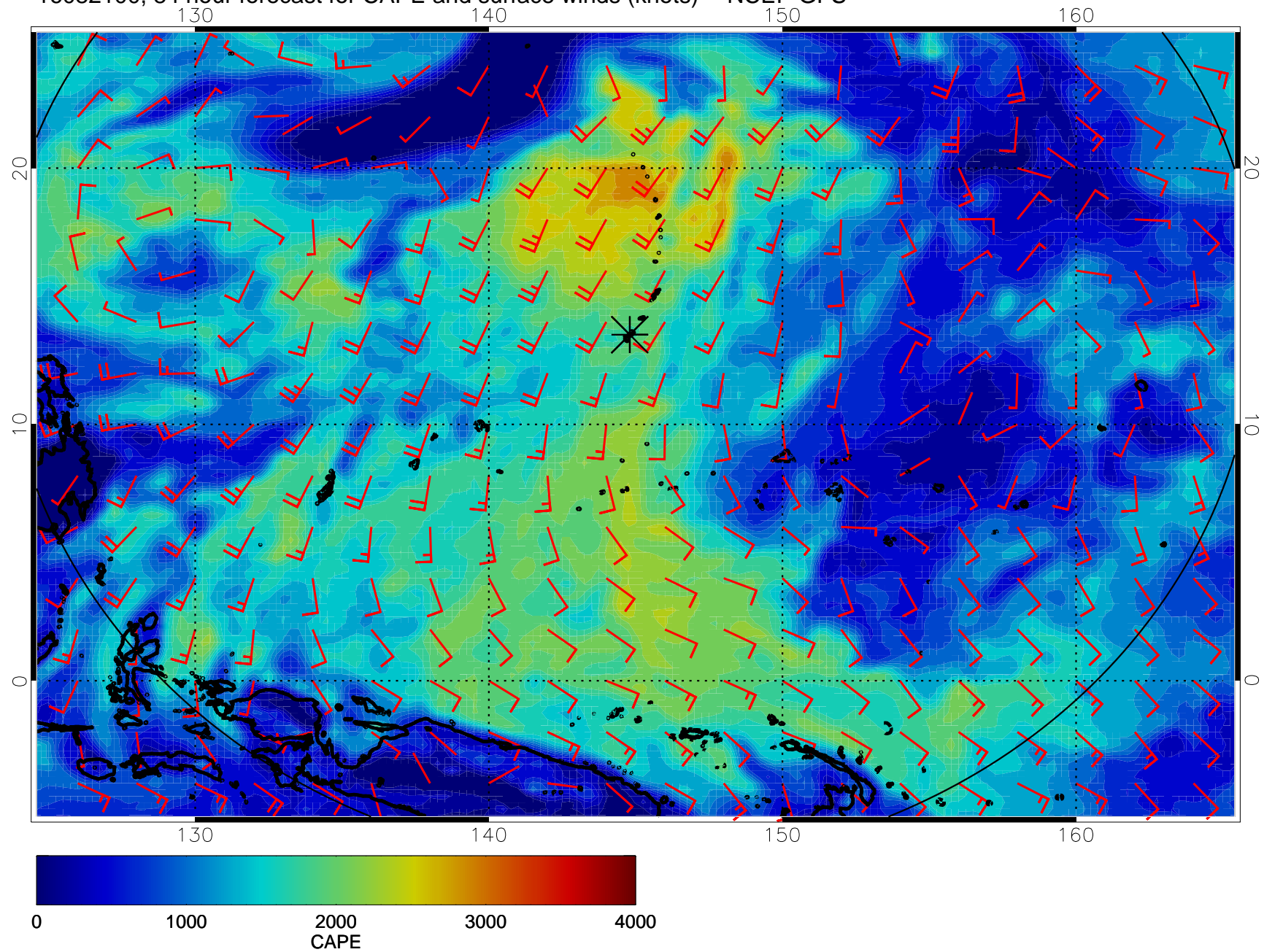
16082012, 72 hour forecast for CAPE and surface winds (knots) -- NCEP GFS



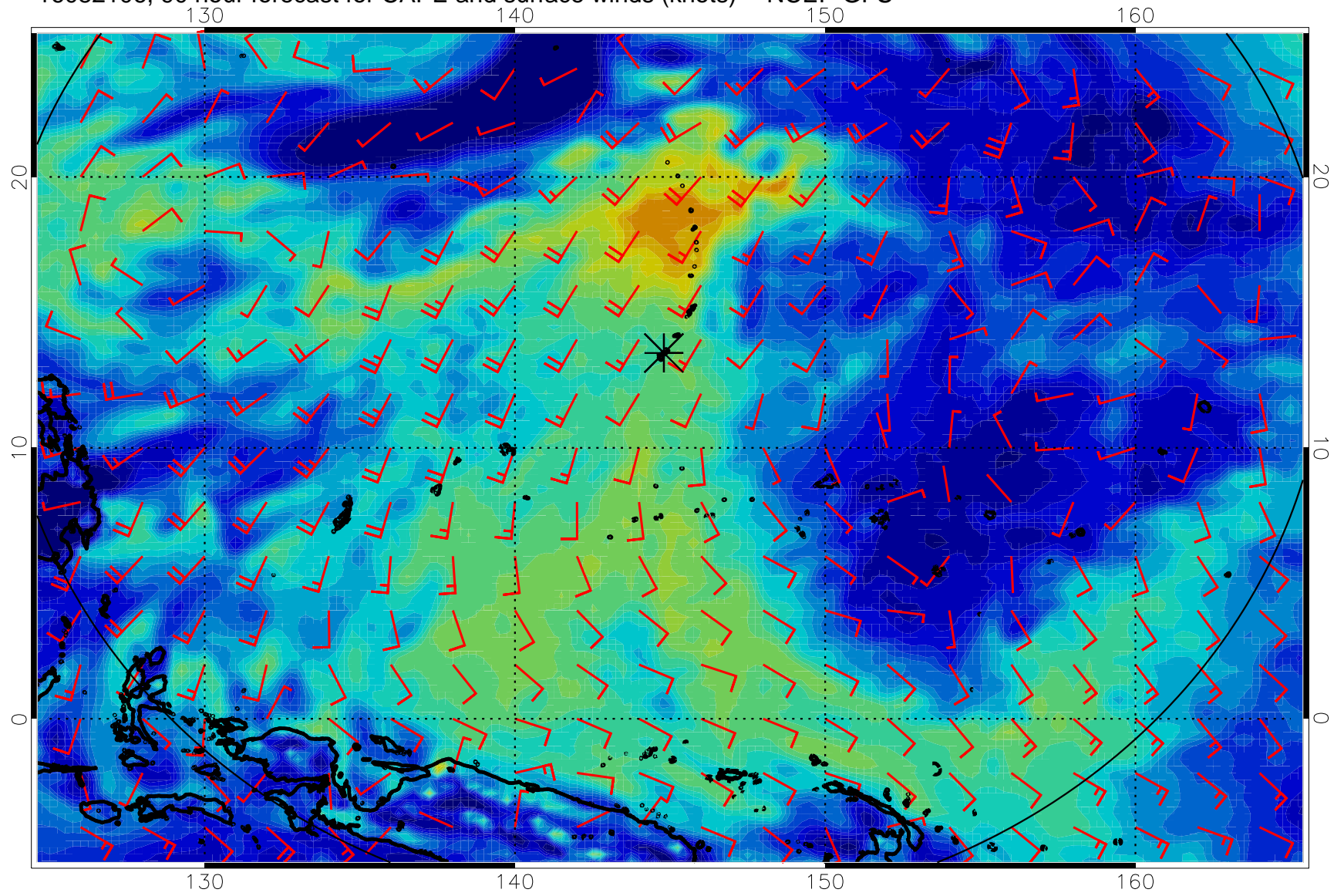
16082018, 78 hour forecast for CAPE and surface winds (knots) -- NCEP GFS



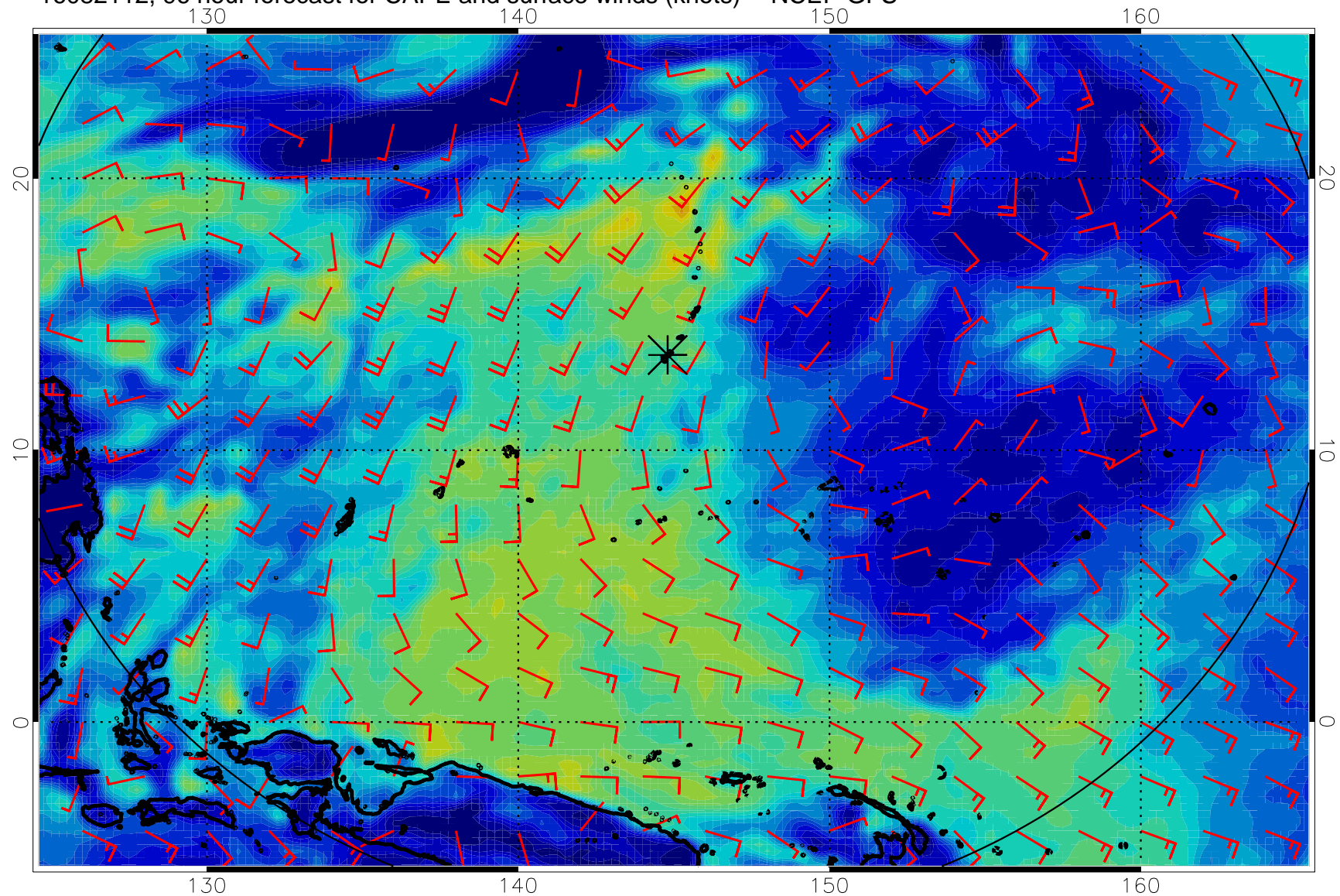
16082100, 84 hour forecast for CAPE and surface winds (knots) -- NCEP GFS



16082106, 90 hour forecast for CAPE and surface winds (knots) -- NCEP GFS

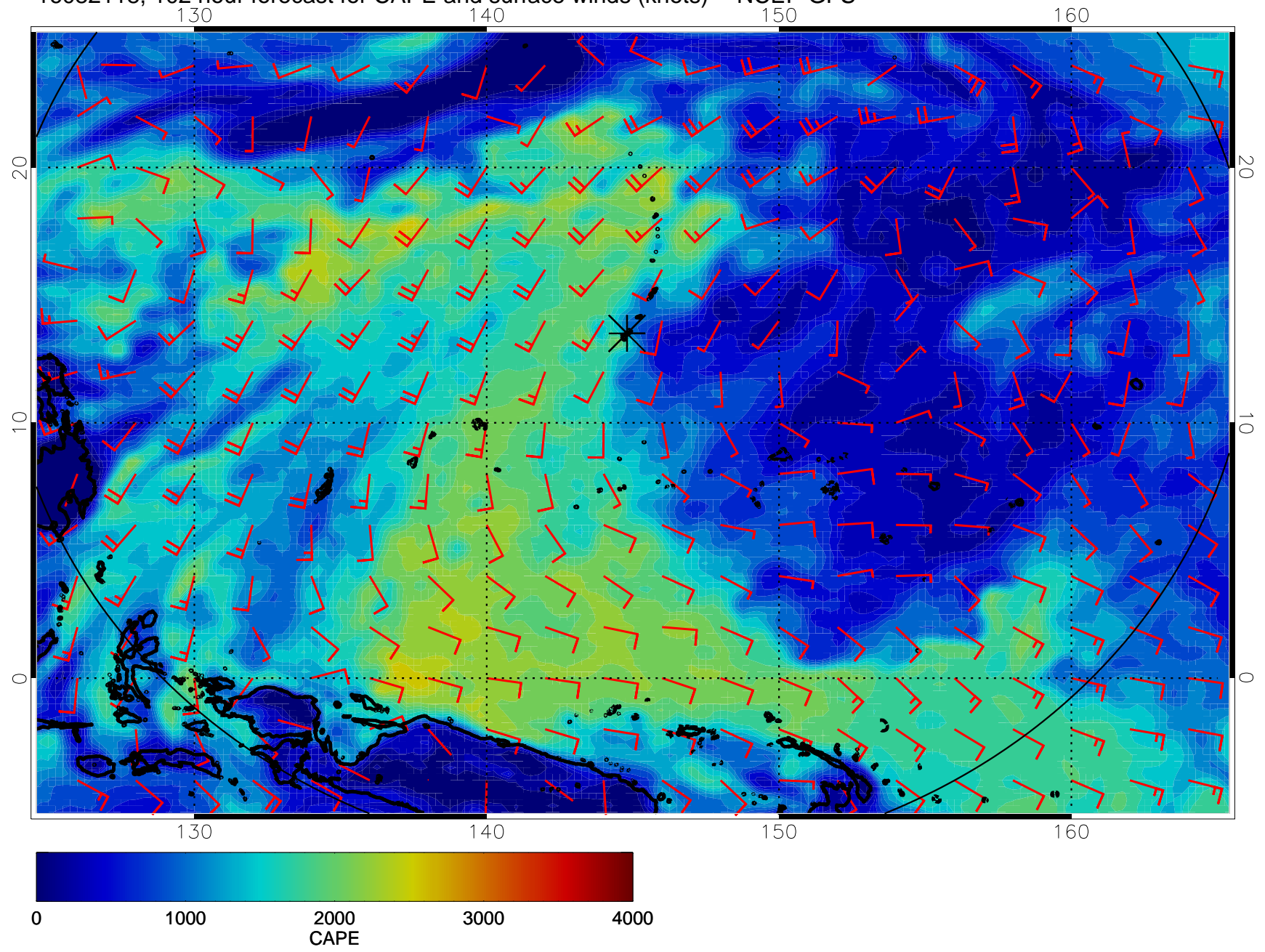


16082112, 96 hour forecast for CAPE and surface winds (knots) -- NCEP GFS

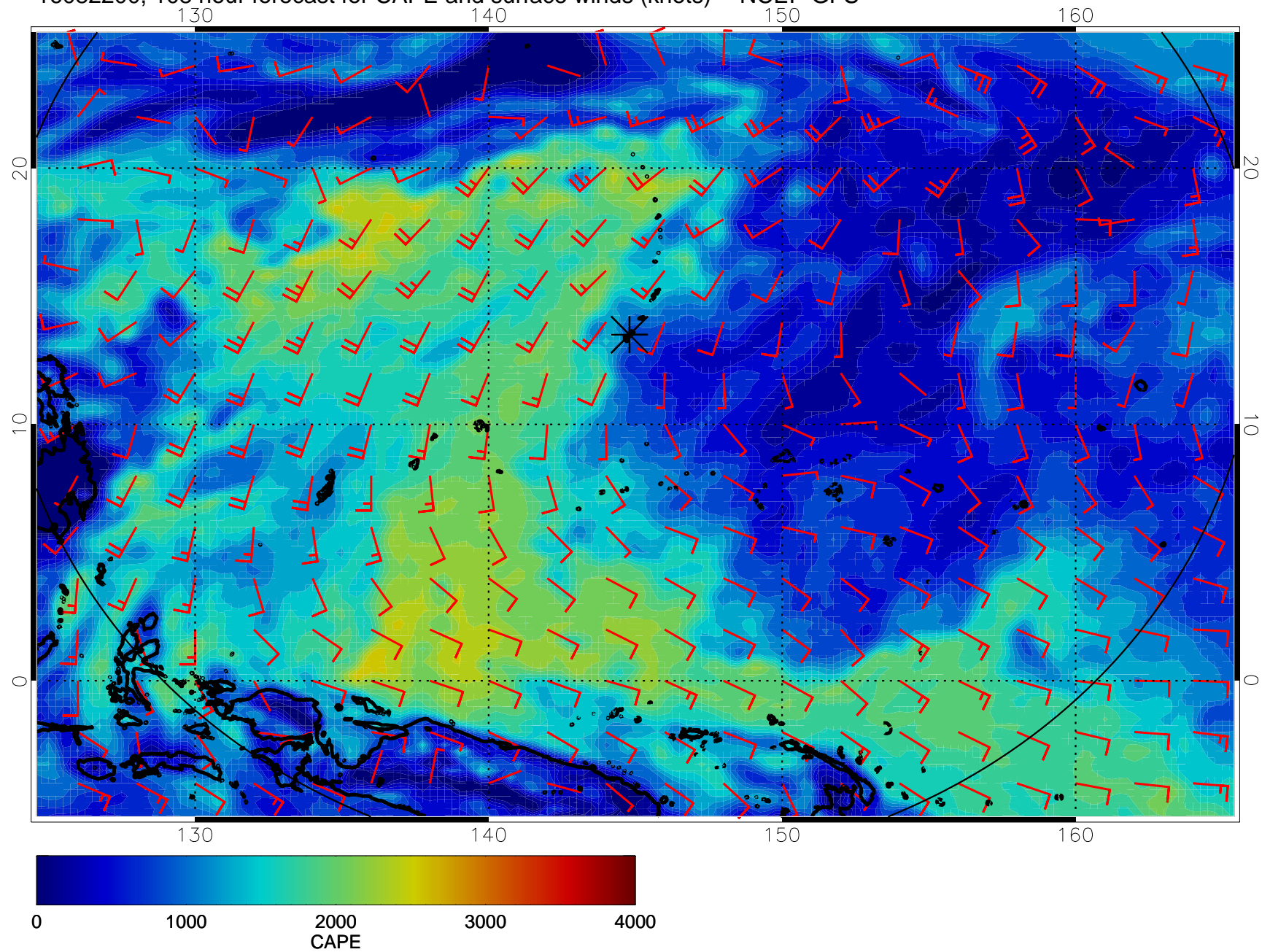




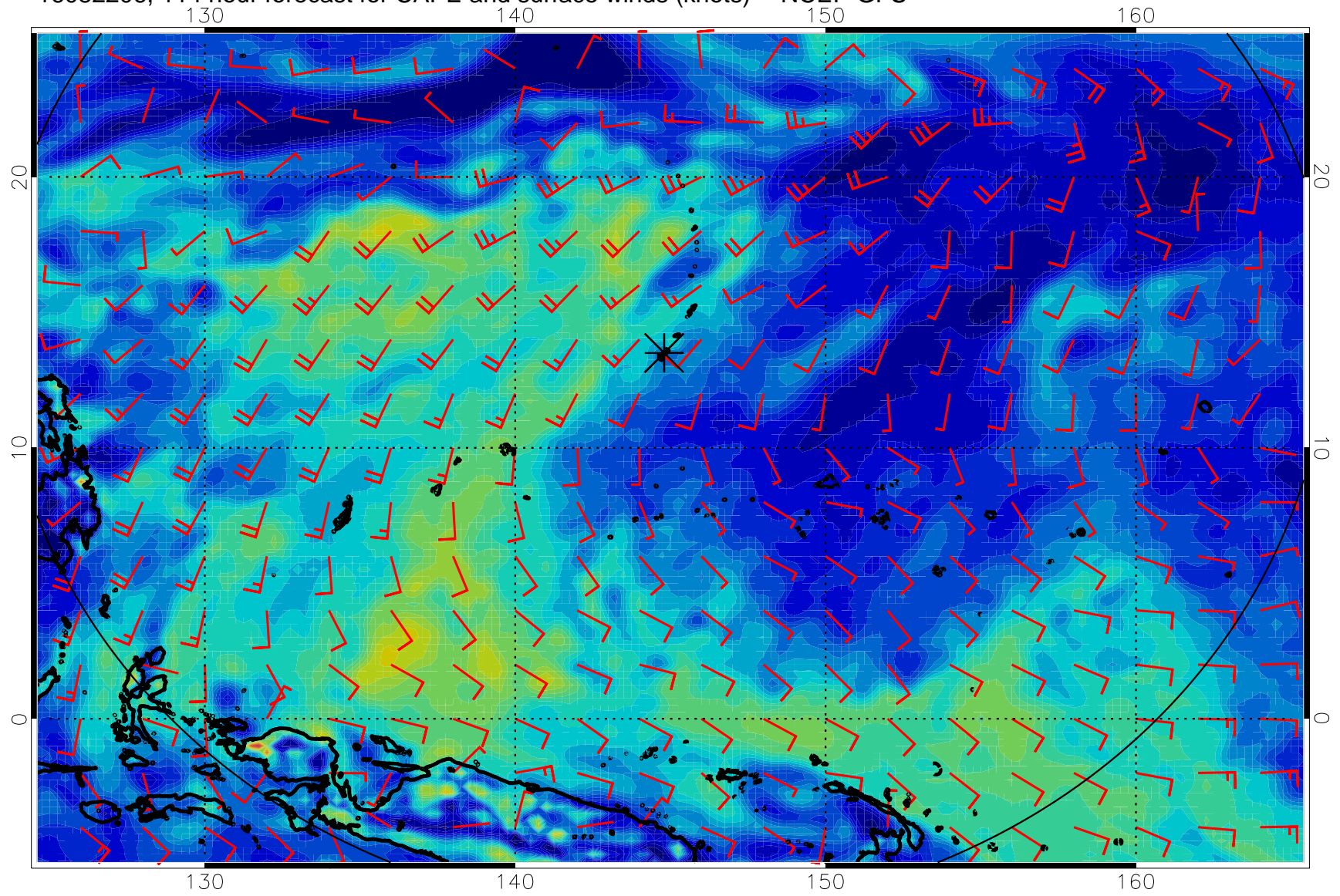
16082118, 102 hour forecast for CAPE and surface winds (knots) -- NCEP GFS



16082200, 108 hour forecast for CAPE and surface winds (knots) -- NCEP GFS



16082206, 114 hour forecast for CAPE and surface winds (knots) -- NCEP GFS



16082212, 120 hour forecast for CAPE and surface winds (knots) -- NCEP GFS

