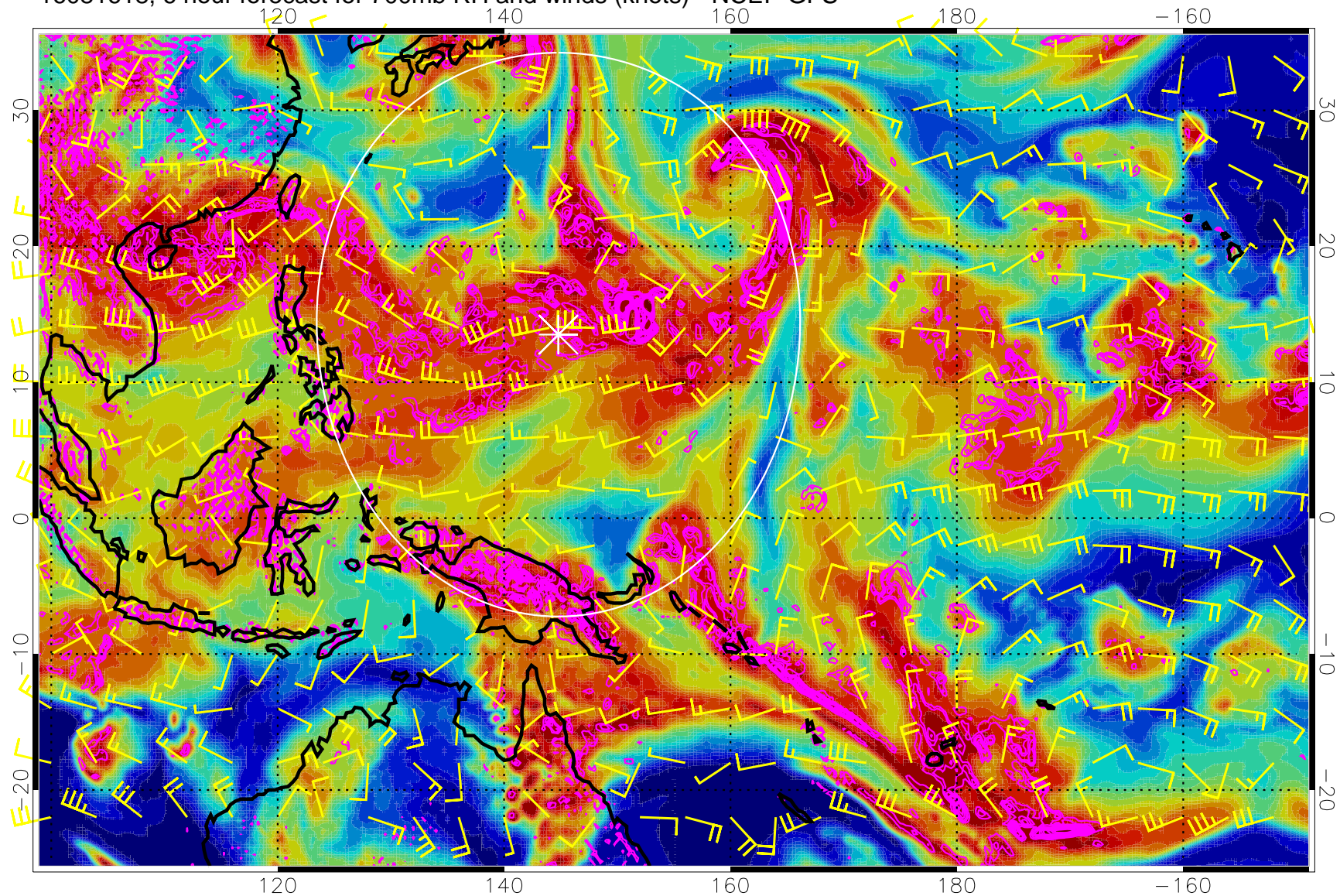


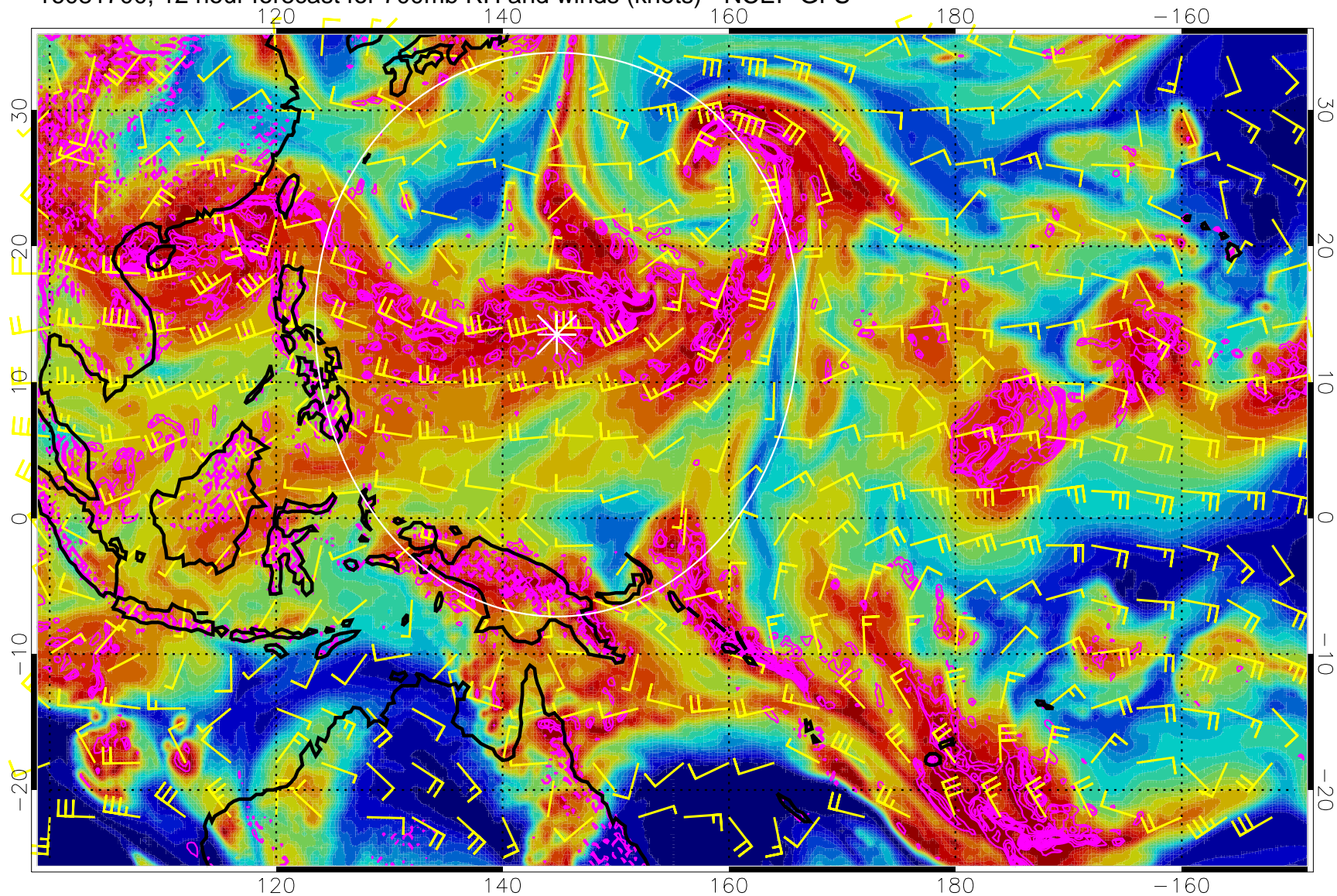
16081618, 6 hour forecast for 700mb RH and winds (knots) - NCEP GFS



Negative Omegas less than  $-0.3$ , contours of  $0.3$  Pa/s

Range ring of 2304 km

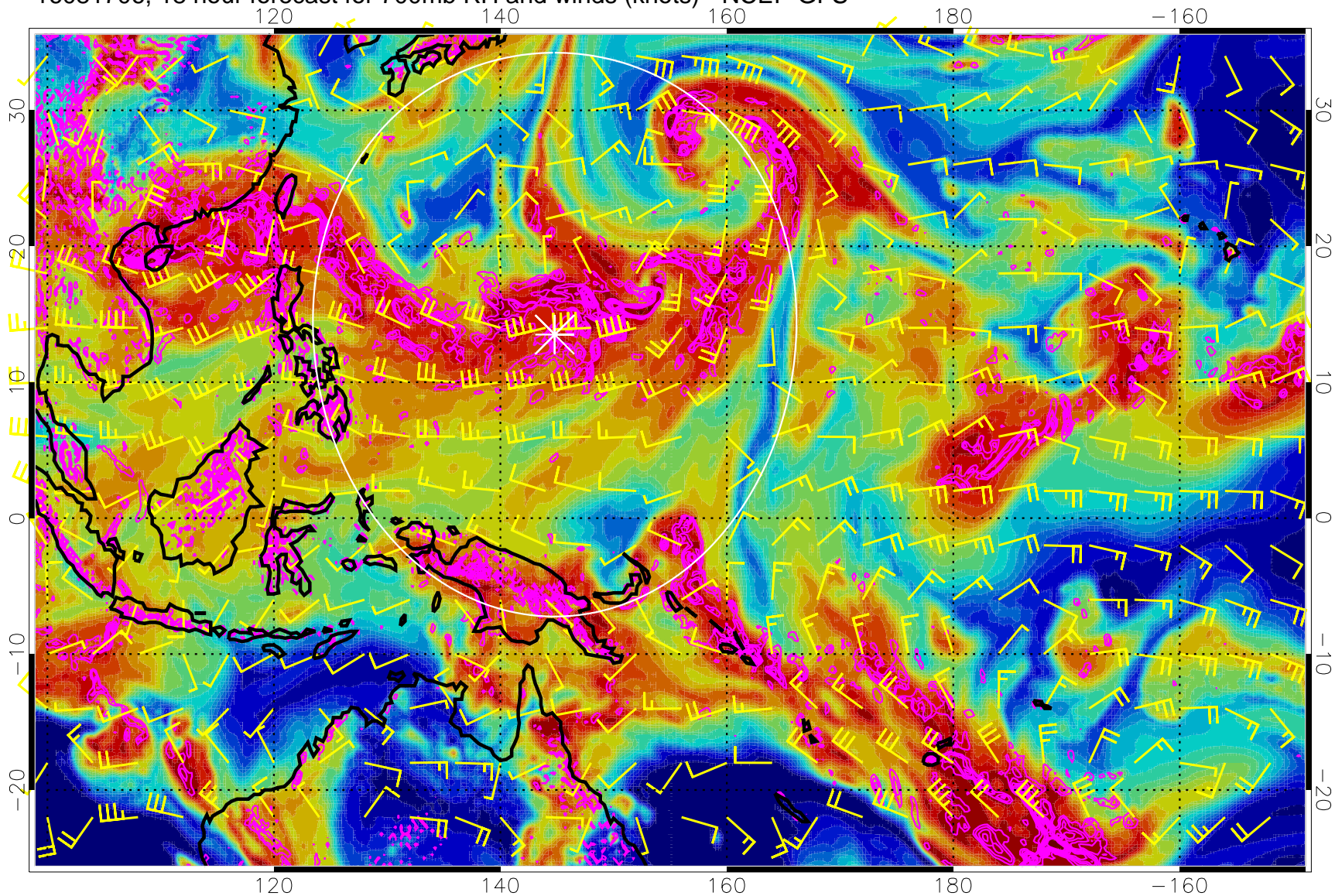
16081700, 12 hour forecast for 700mb RH and winds (knots) - NCEP GFS



Negative Omegas less than  $-0.3$ , contours of  $0.3$  Pa/s

Range ring of 2304 km

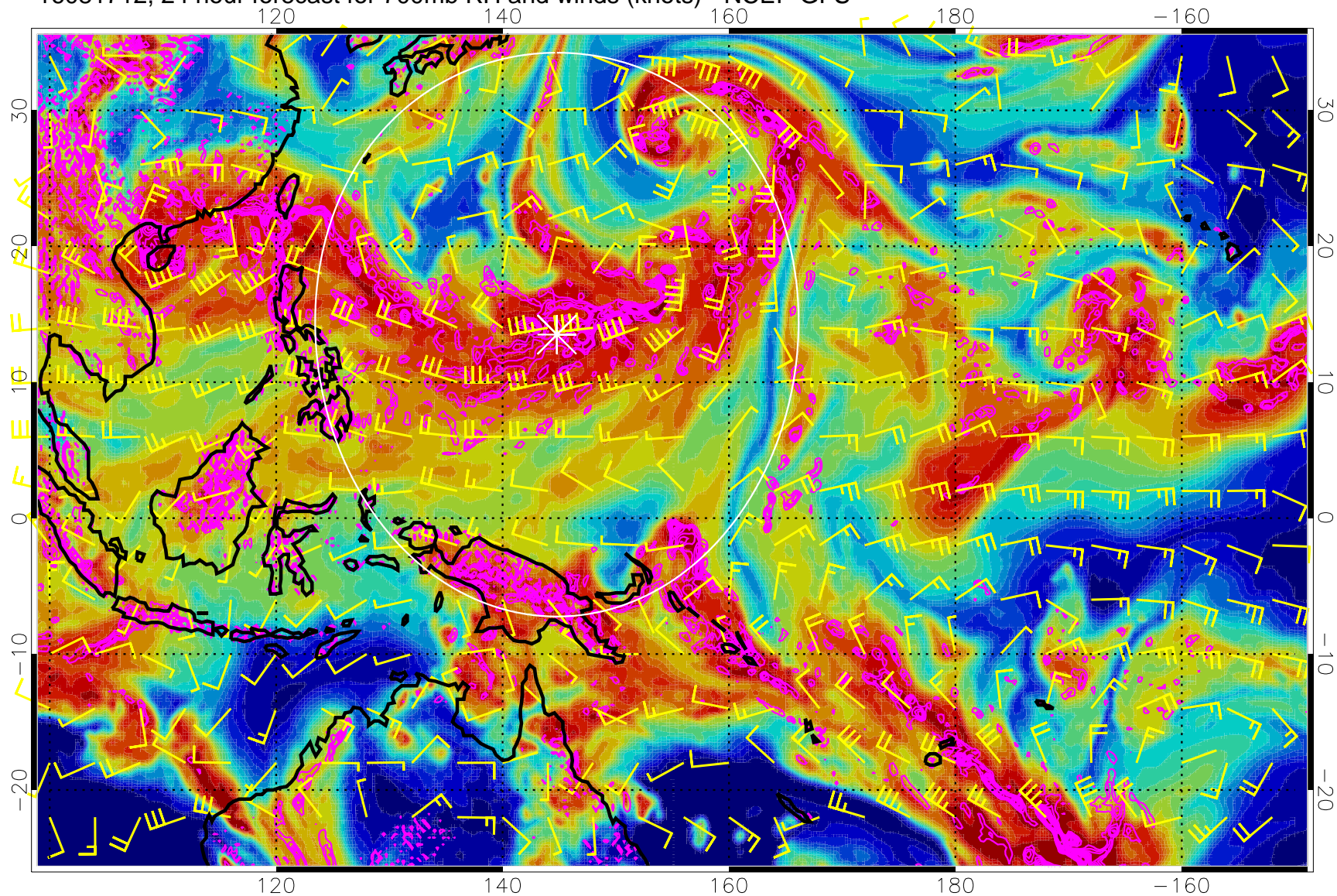
16081706, 18 hour forecast for 700mb RH and winds (knots) - NCEP GFS



Negative Omegas less than  $-0.3$ , contours of  $0.3$  Pa/s

Range ring of 2304 km

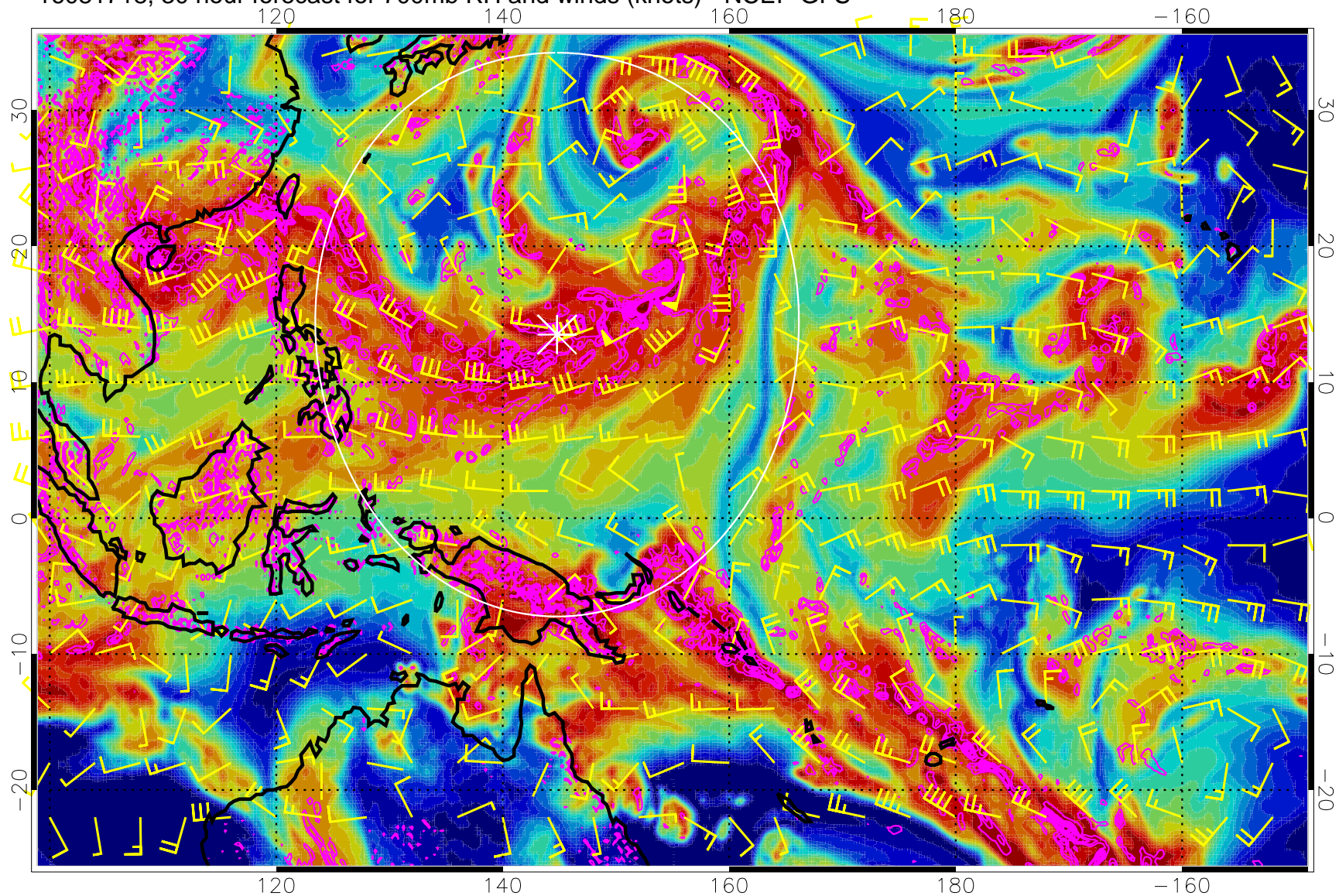
16081712, 24 hour forecast for 700mb RH and winds (knots) - NCEP GFS



Negative Omegas less than  $-0.3$ , contours of  $0.3$  Pa/s

Range ring of 2304 km

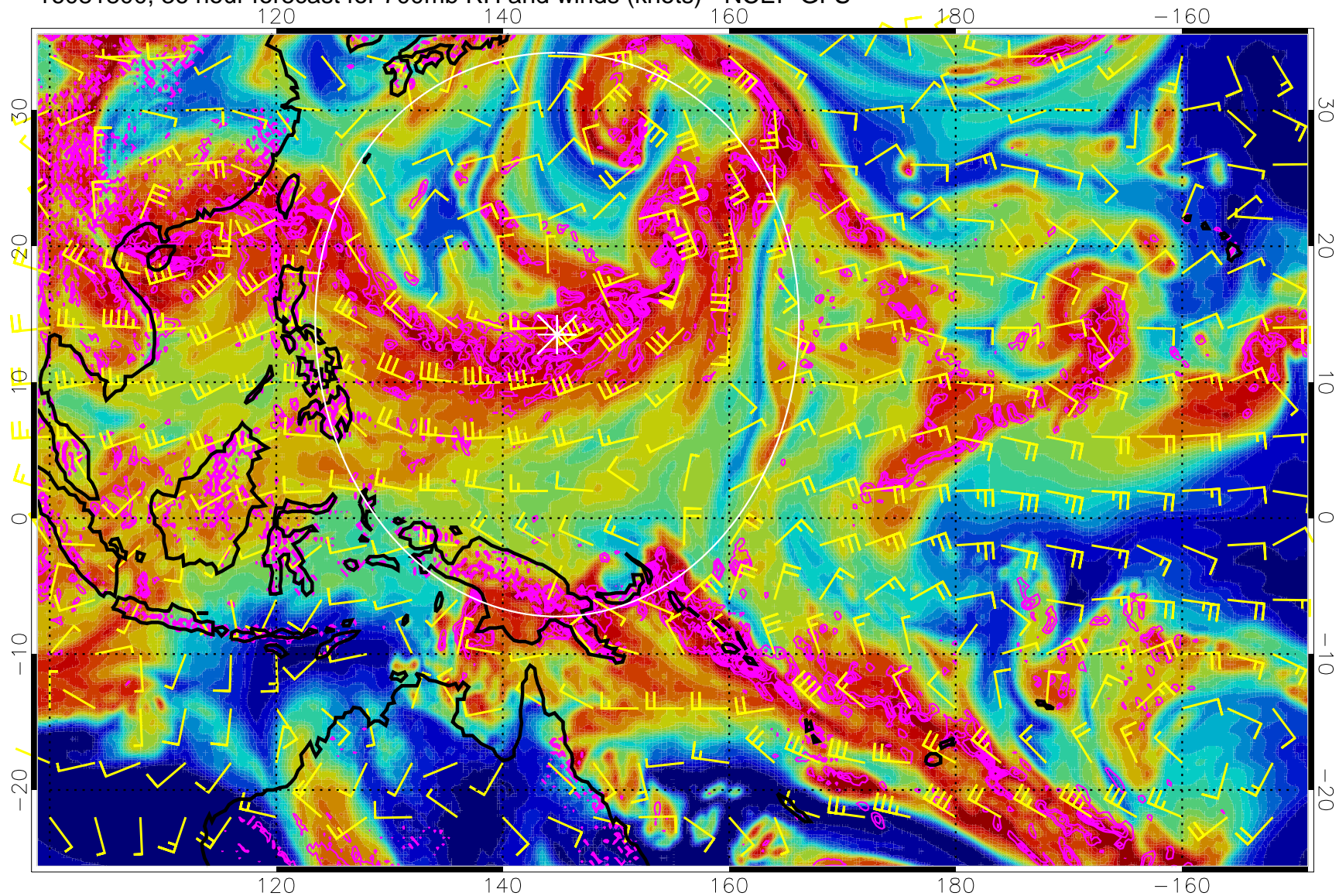
16081718, 30 hour forecast for 700mb RH and winds (knots) - NCEP GFS



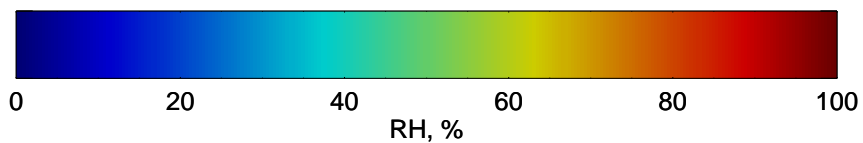
Negative Omegas less than  $-0.3$ , contours of  $0.3$  Pa/s

Range ring of 2304 km

16081800, 36 hour forecast for 700mb RH and winds (knots) - NCEP GFS

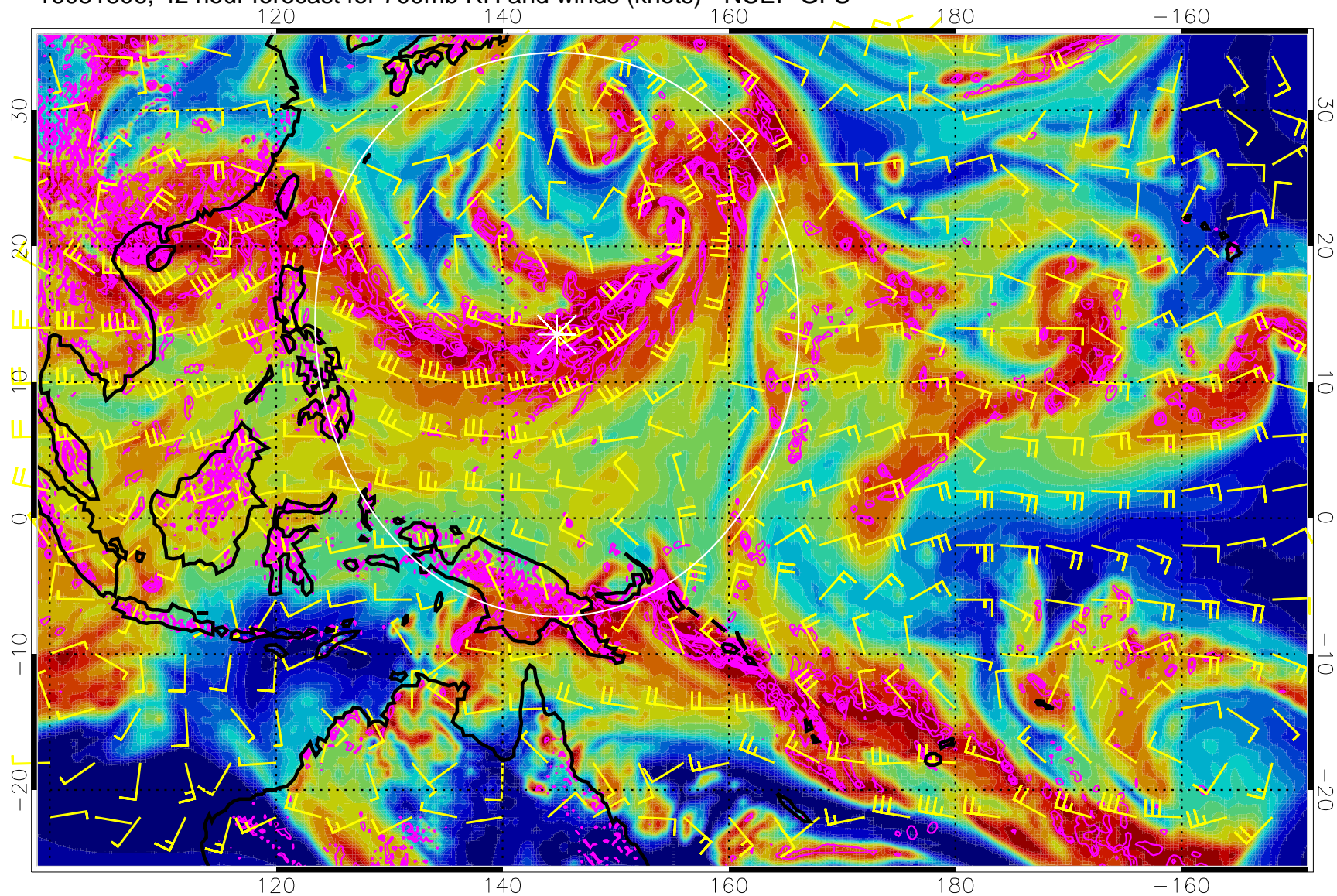


Negative Omegas less than  $-0.3$ , contours of  $0.3$  Pa/s



Range ring of 2304 km

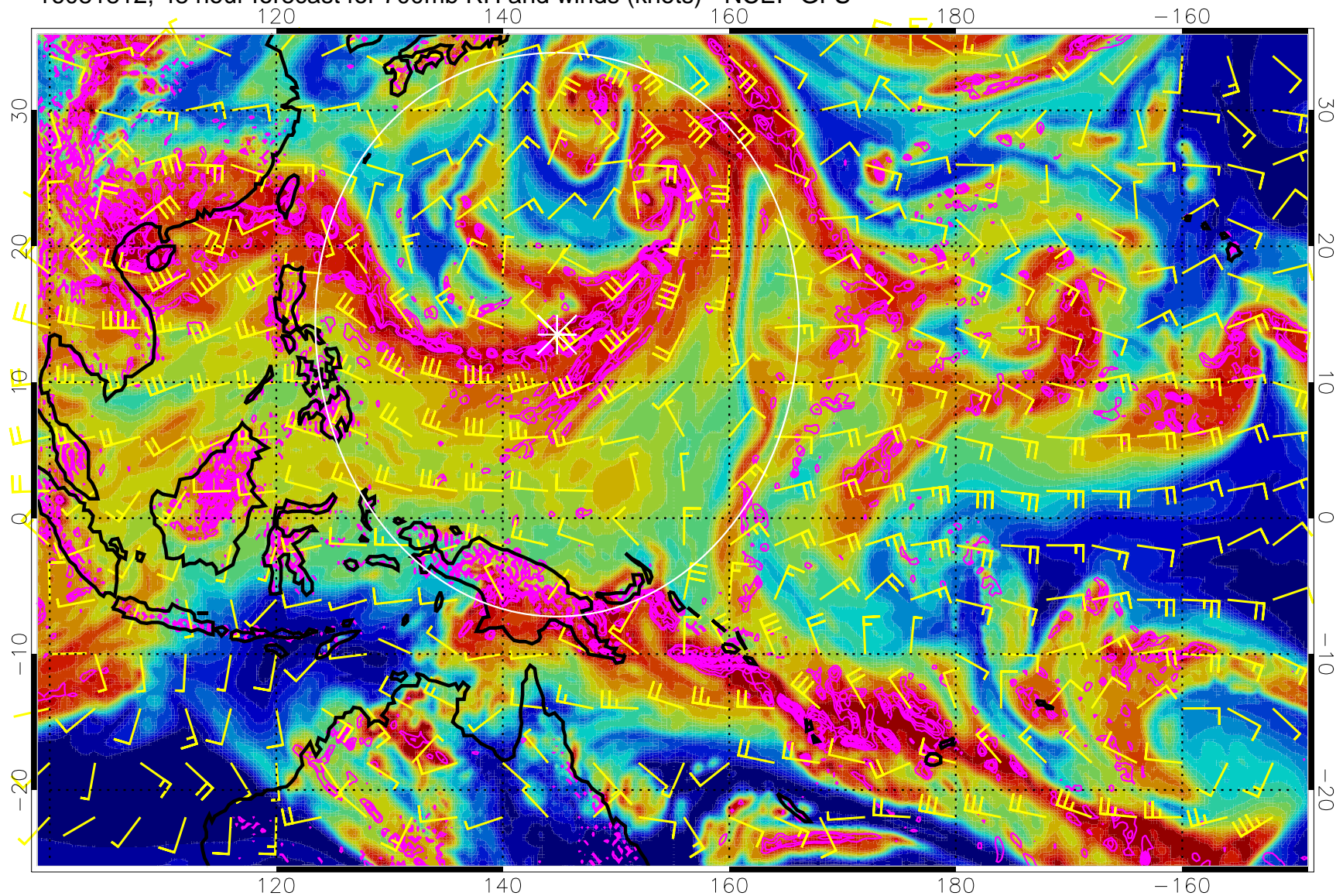
16081806, 42 hour forecast for 700mb RH and winds (knots) - NCEP GFS



Negative Omegas less than  $-0.3$ , contours of  $0.3$  Pa/s

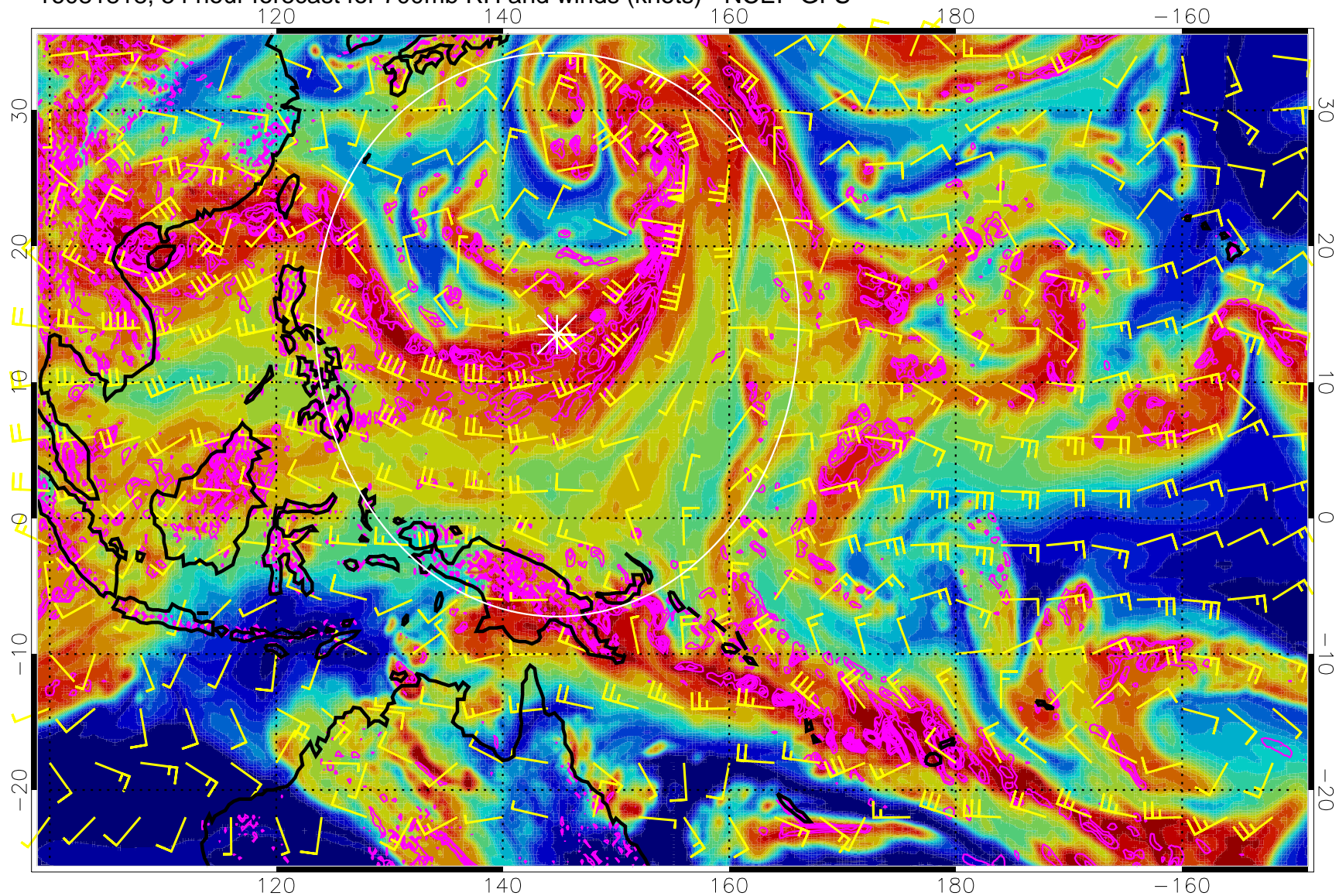
Range ring of 2304 km

16081812, 48 hour forecast for 700mb RH and winds (knots) - NCEP GFS





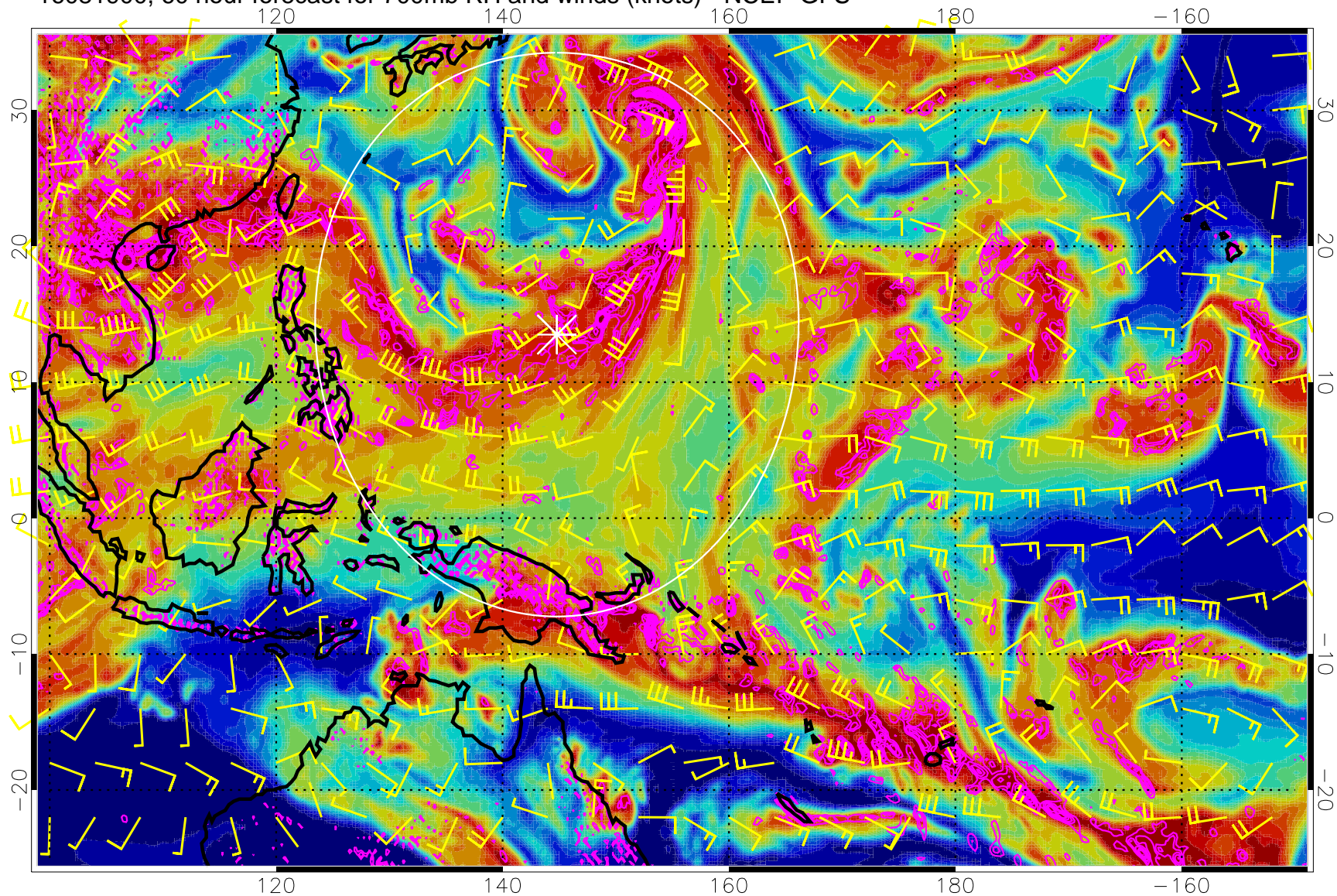
16081818, 54 hour forecast for 700mb RH and winds (knots) - NCEP GFS



Negative Omegas less than  $-0.3$ , contours of  $0.3$  Pa/s

Range ring of 2304 km

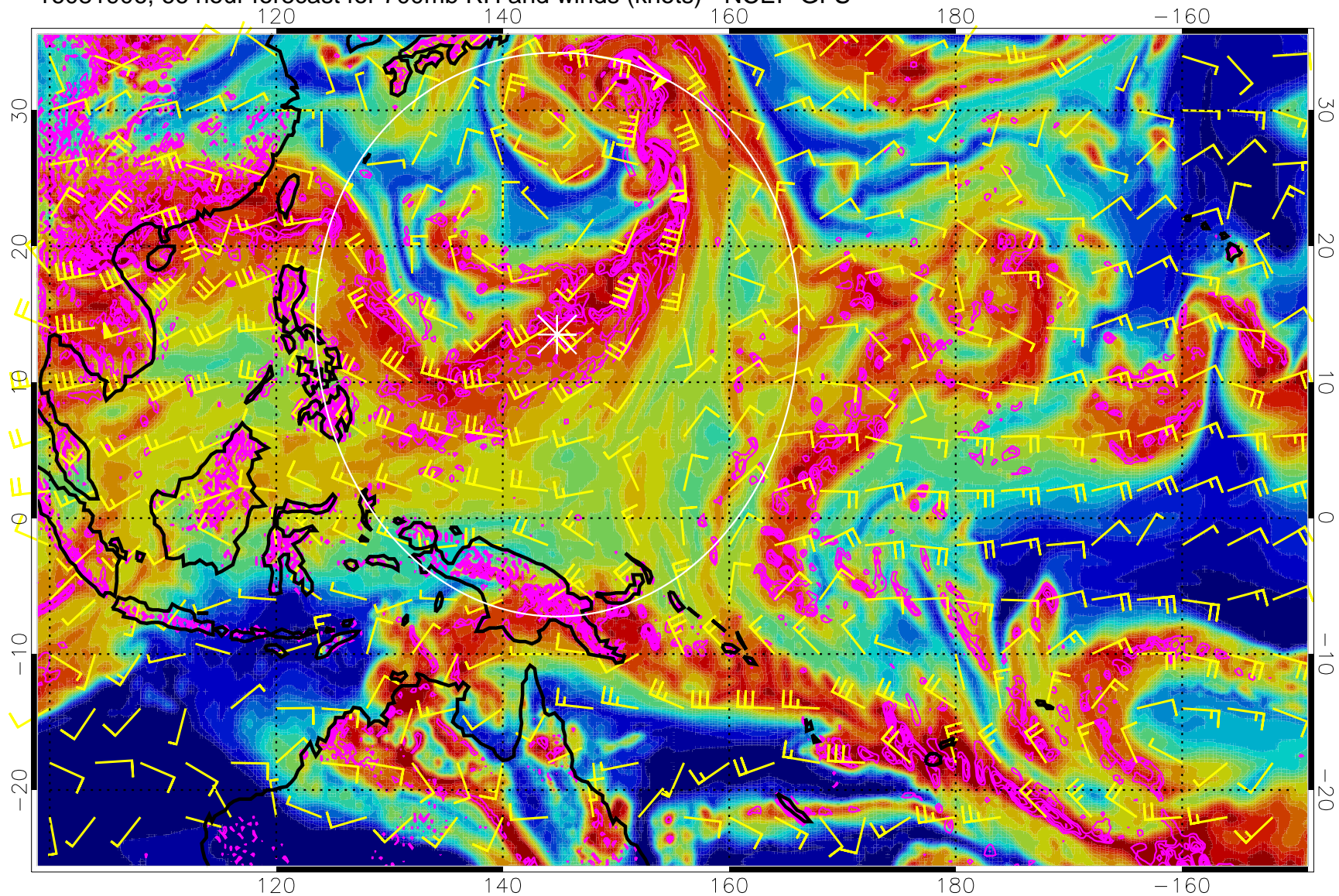
16081900, 60 hour forecast for 700mb RH and winds (knots) - NCEP GFS



Negative Omegas less than  $-0.3$ , contours of  $0.3$  Pa/s

Range ring of 2304 km

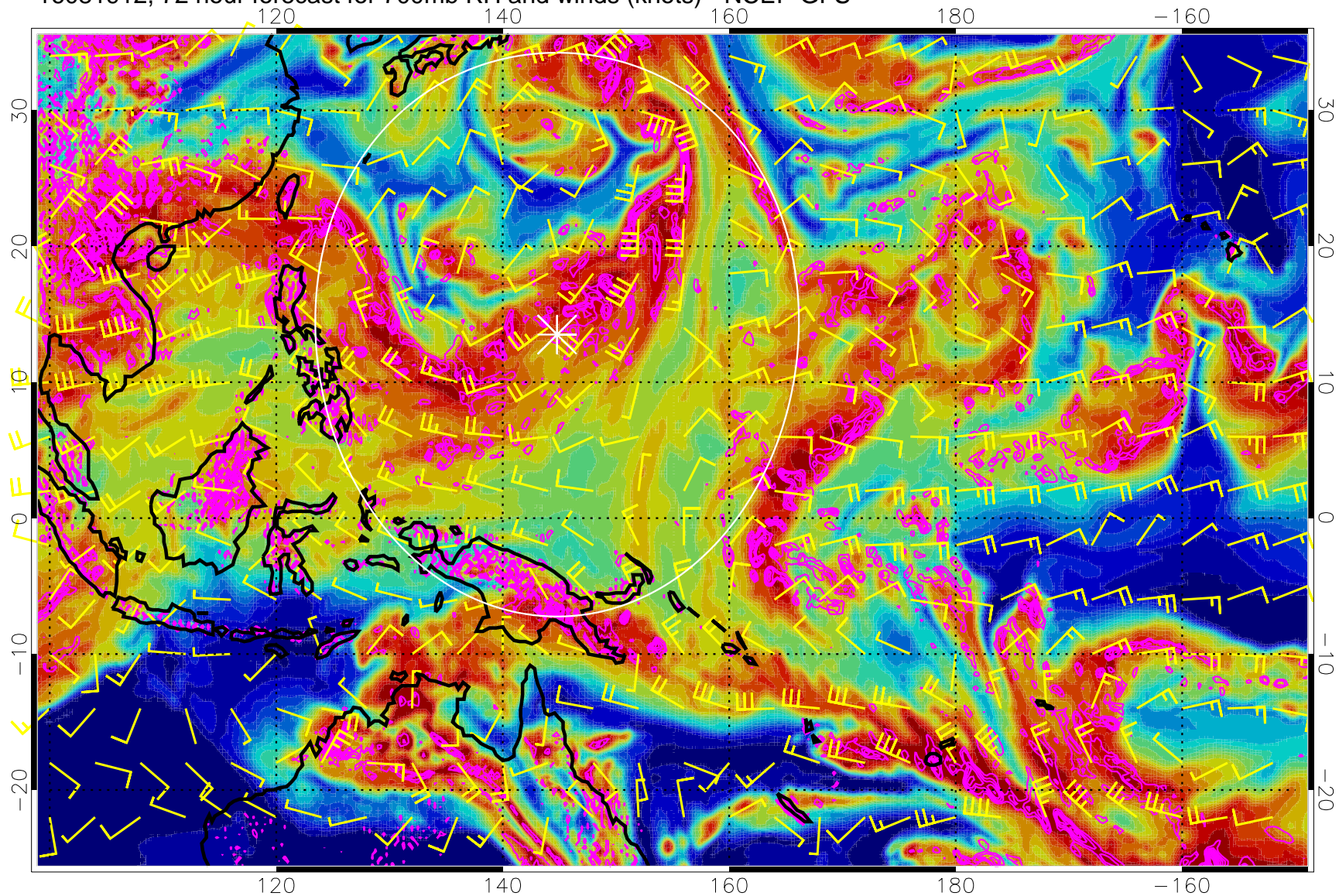
16081906, 66 hour forecast for 700mb RH and winds (knots) - NCEP GFS



Negative Omegas less than  $-0.3$ , contours of  $0.3$  Pa/s

Range ring of 2304 km

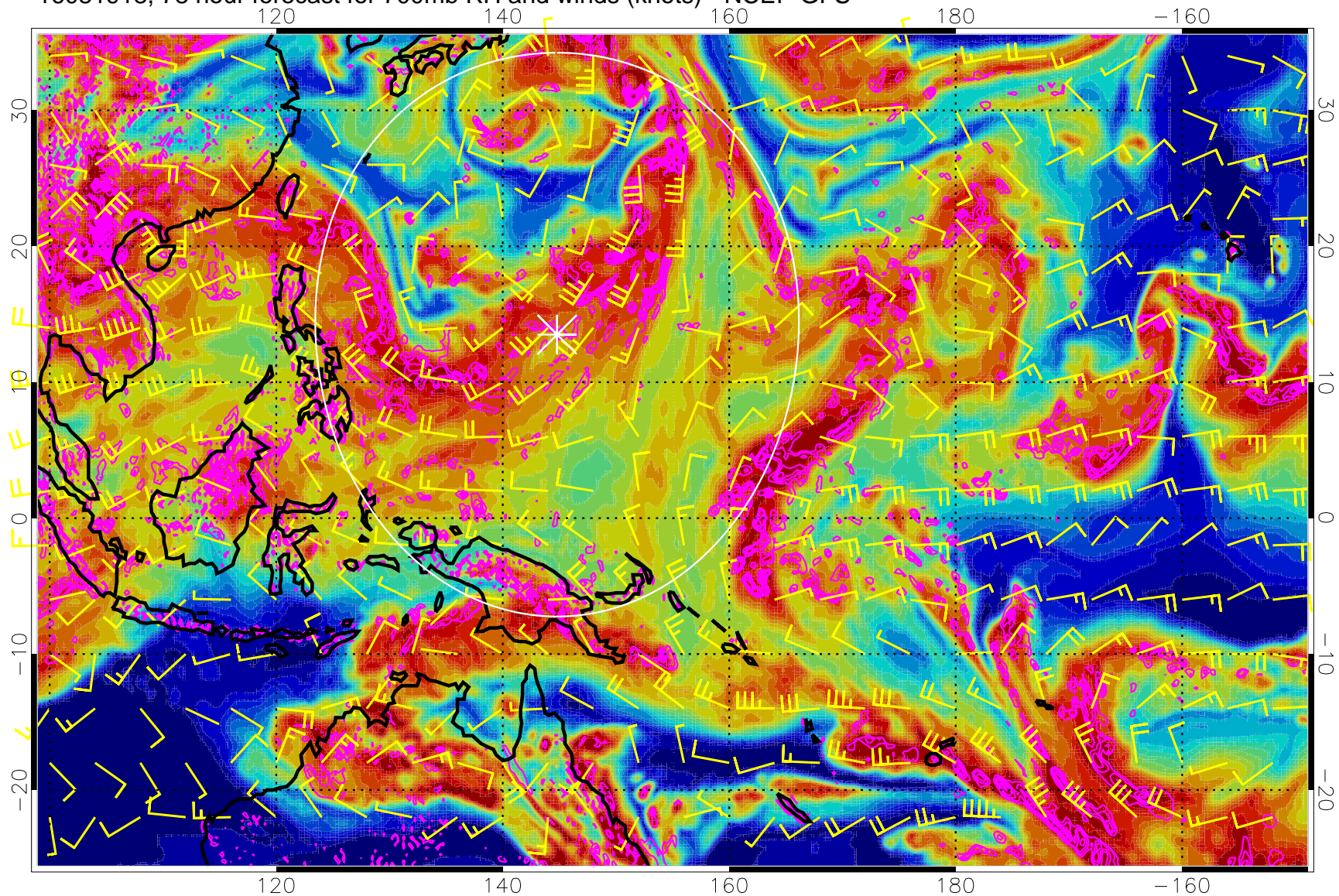
16081912, 72 hour forecast for 700mb RH and winds (knots) - NCEP GFS



Negative Omegas less than  $-0.3$ , contours of  $0.3$  Pa/s

Range ring of 2304 km

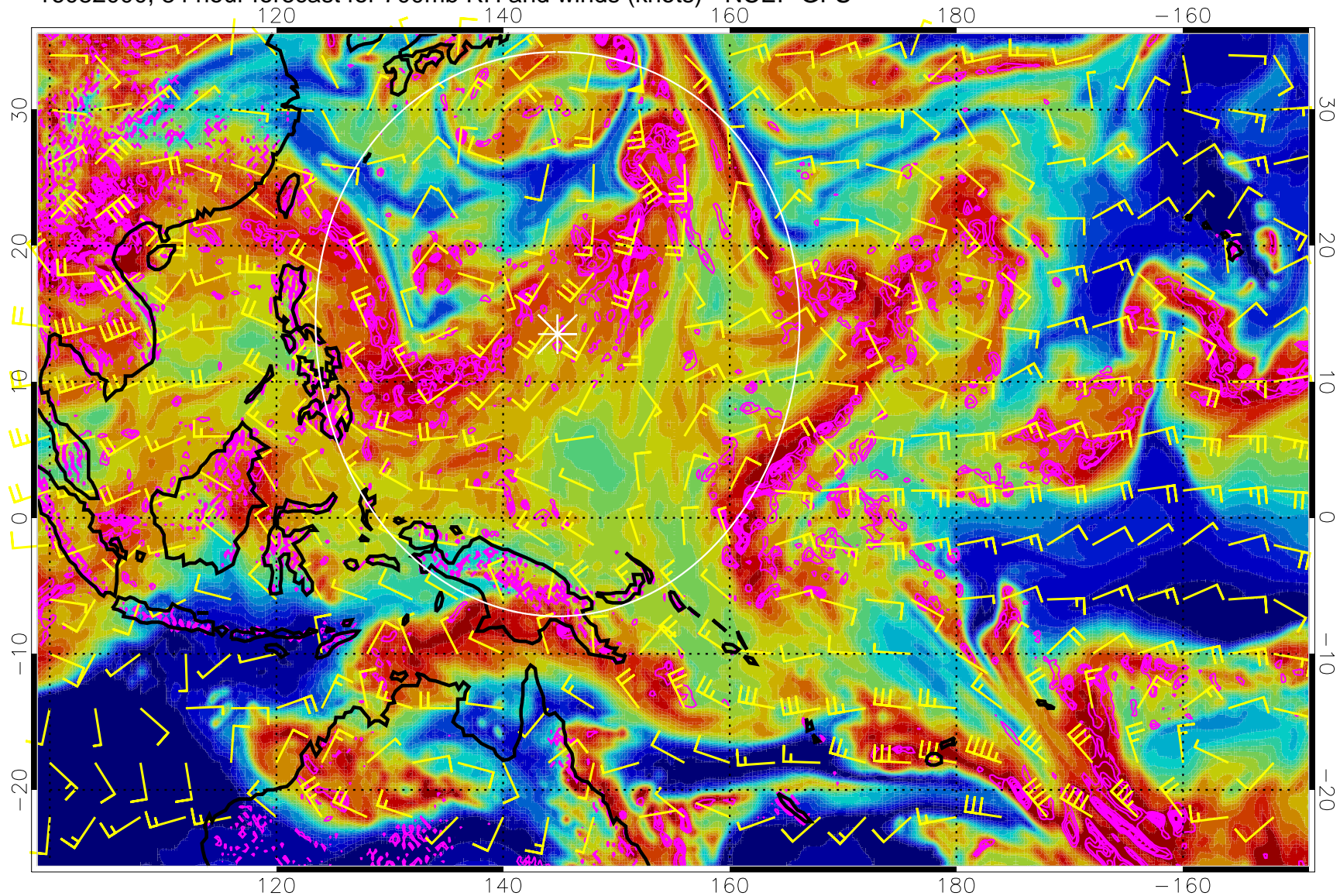
16081918, 78 hour forecast for 700mb RH and winds (knots) - NCEP GFS



Negative Omegas less than  $-0.3$ , contours of  $0.3$  Pa/s

Range ring of 2304 km

16082000, 84 hour forecast for 700mb RH and winds (knots) - NCEP GFS

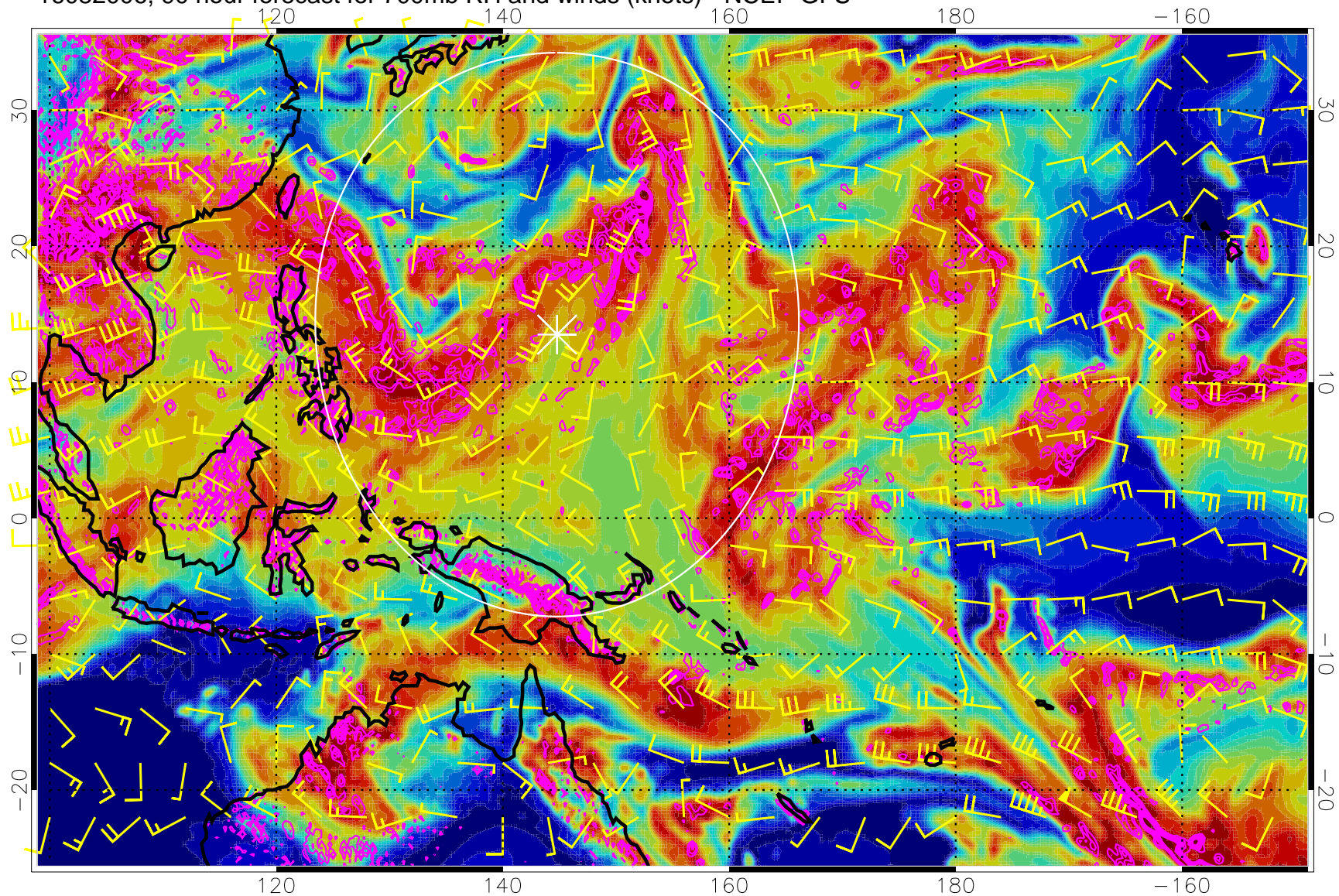


0 20 40 60 80 100  
RH, %

Negative Omegas less than  $-0.3$ , contours of  $0.3$  Pa/s

Range ring of 2304 km

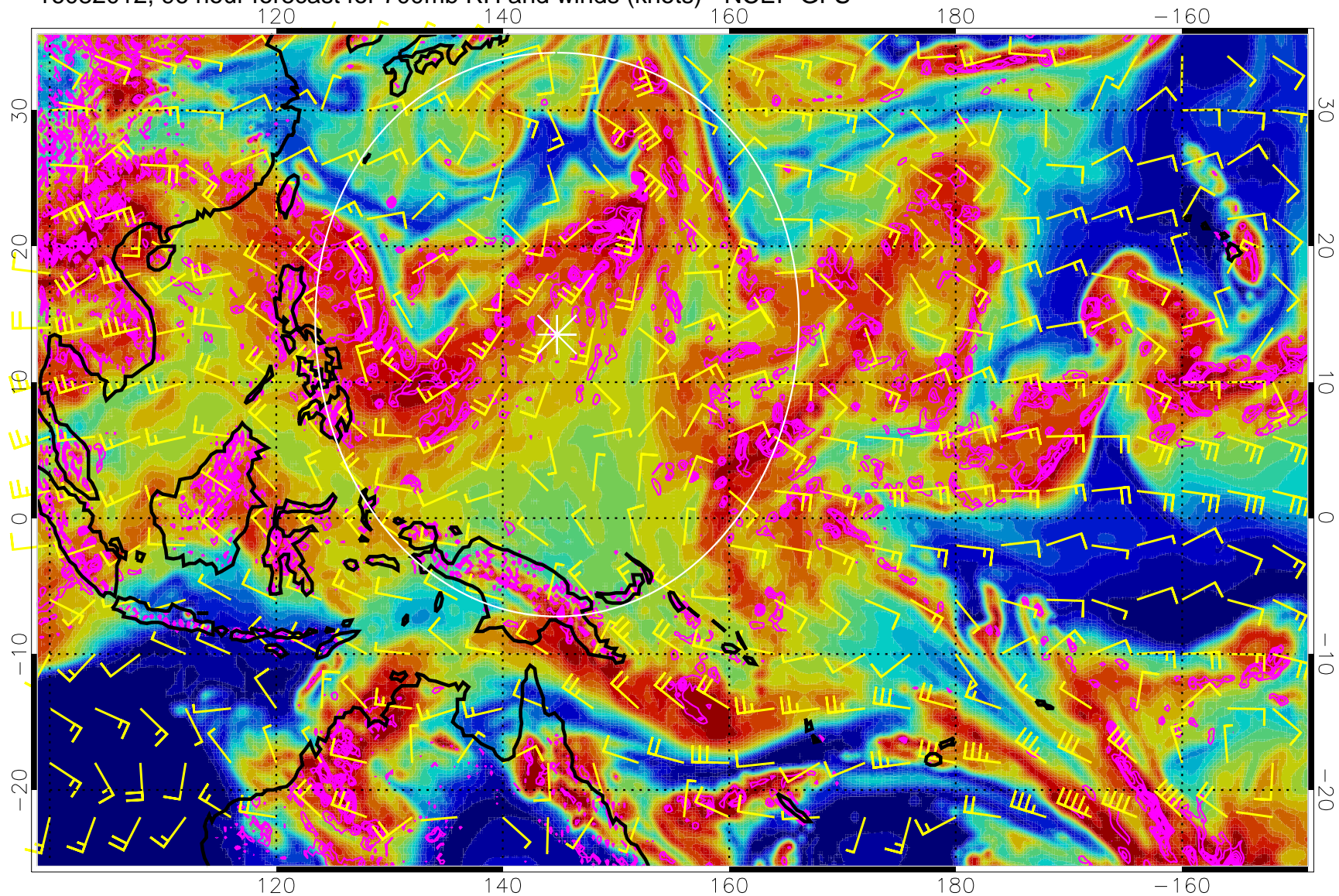
16082006, 90 hour forecast for 700mb RH and winds (knots) - NCEP GFS



Negative Omegas less than  $-0.3$ , contours of  $0.3$  Pa/s

Range ring of 2304 km

16082012, 96 hour forecast for 700mb RH and winds (knots) - NCEP GFS



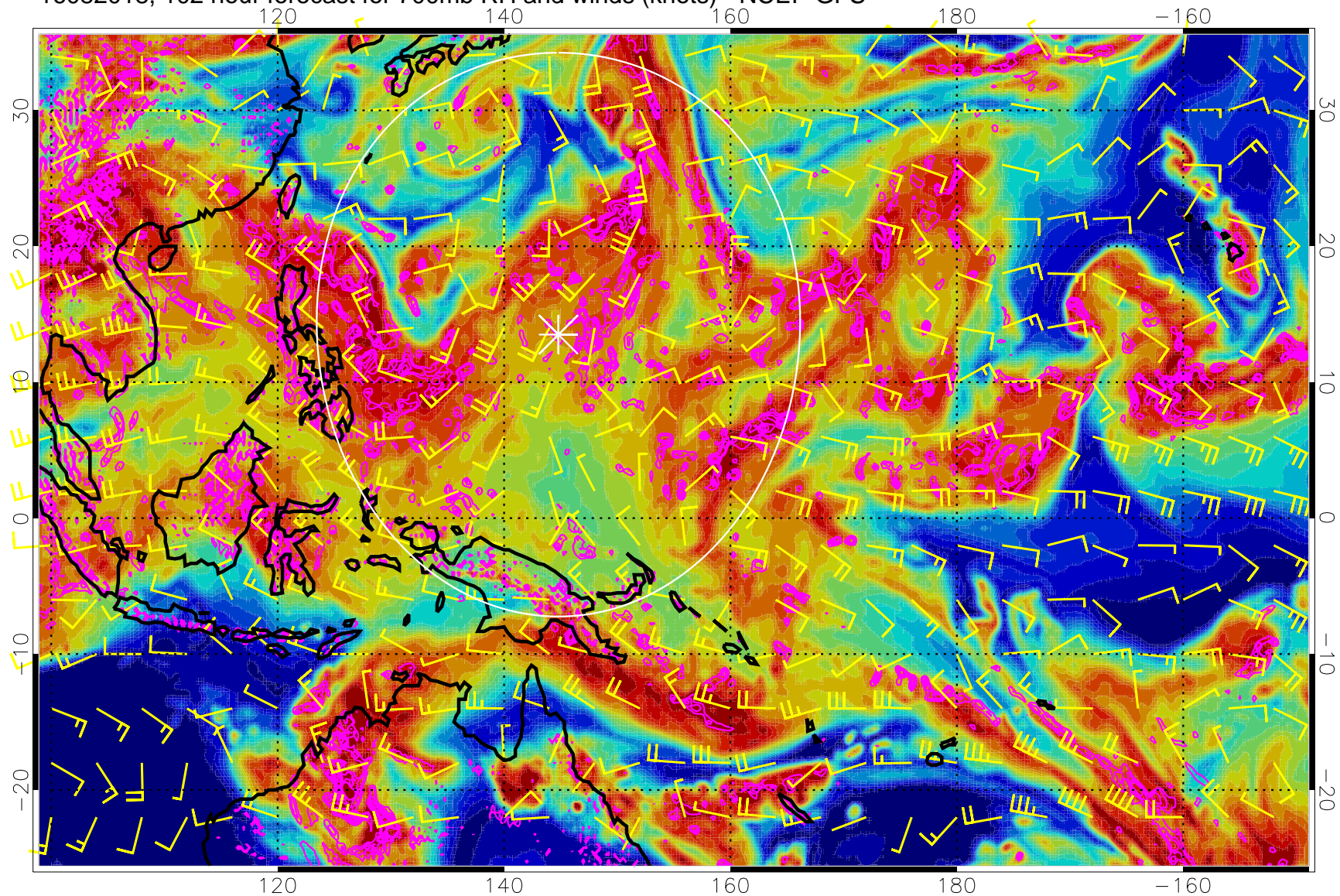
0 20 40 60 80 100  
RH, %

Negative Omegas less than  $-0.3$ , contours of  $0.3$  Pa/s

Range ring of 2304 km



16082018, 102 hour forecast for 700mb RH and winds (knots) - NCEP GFS

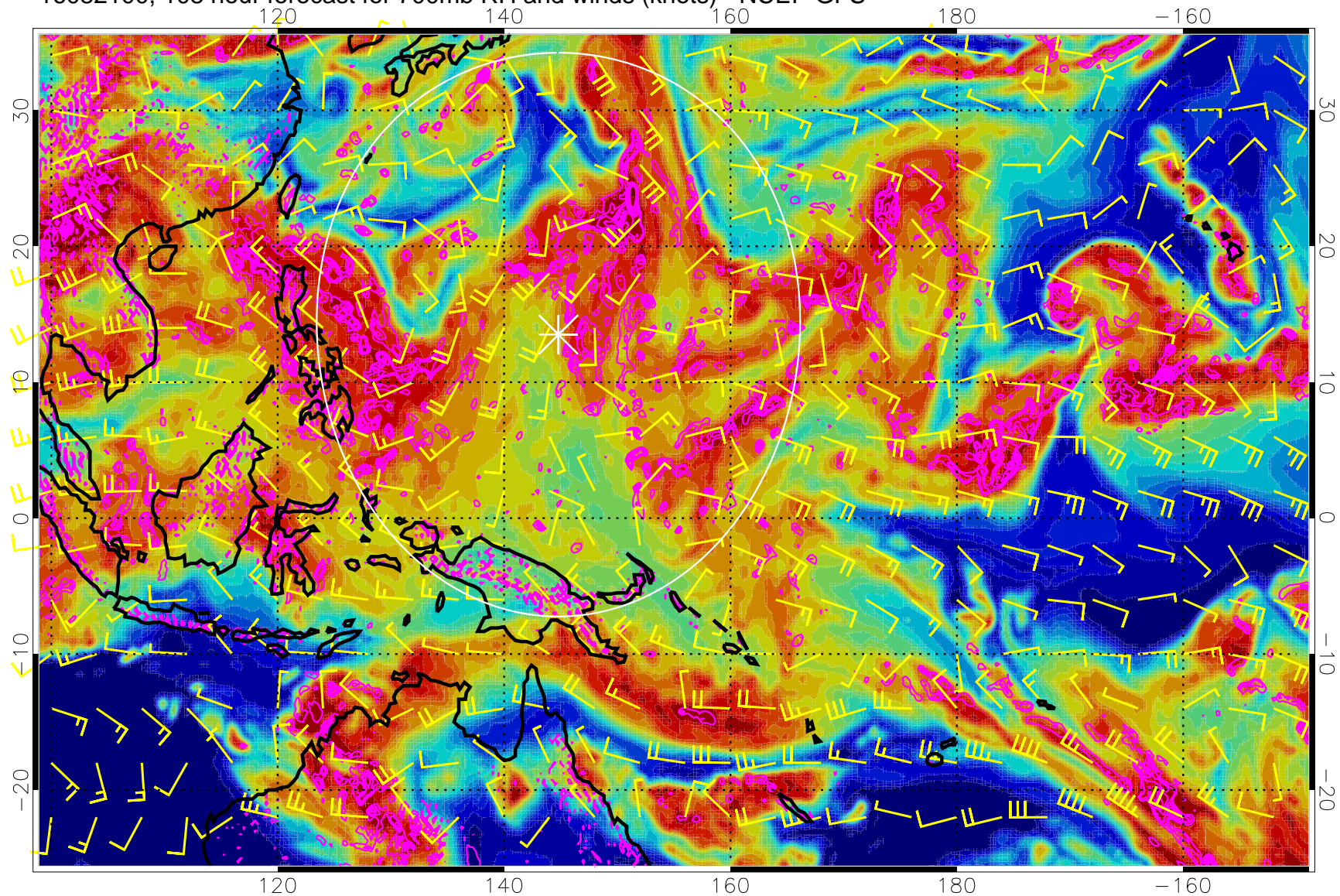


0 20 40 60 80 100  
RH, %

Negative Omegas less than  $-0.3$ , contours of  $0.3$  Pa/s

Range ring of 2304 km

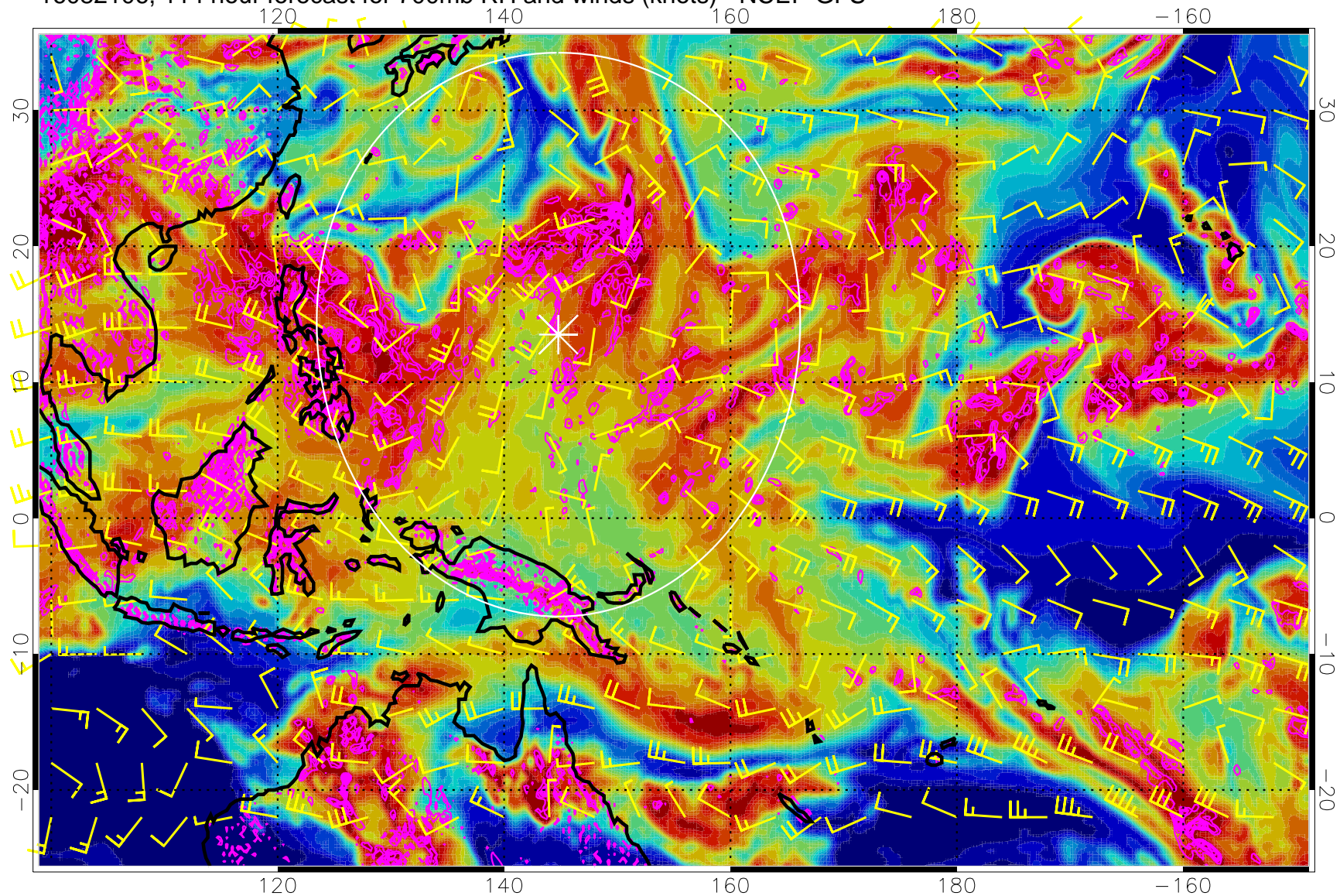
16082100, 108 hour forecast for 700mb RH and winds (knots) - NCEP GFS



Negative Omegas less than  $-0.3$ , contours of  $0.3$  Pa/s

Range ring of 2304 km

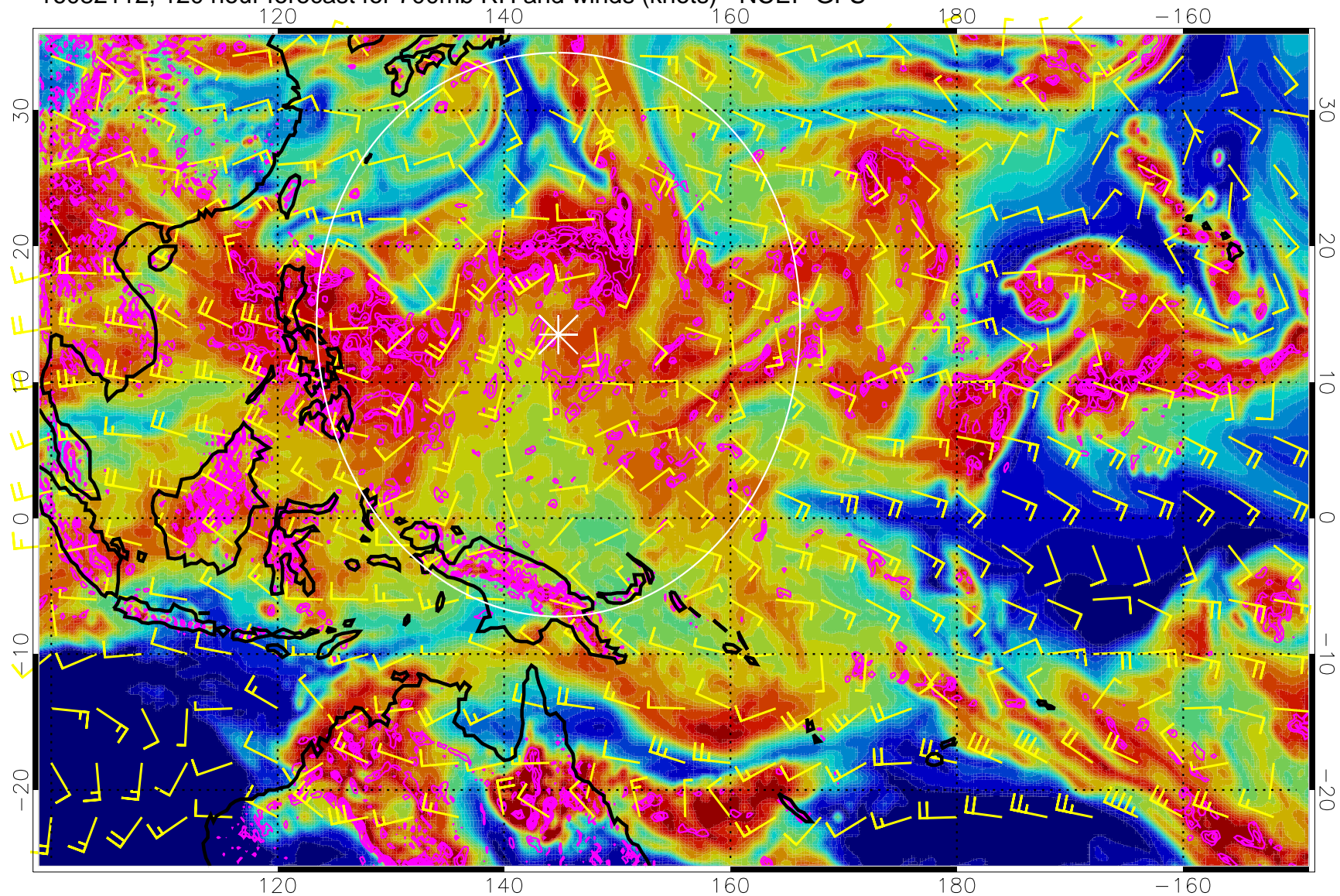
16082106, 114 hour forecast for 700mb RH and winds (knots) - NCEP GFS



Negative Omegas less than  $-0.3$ , contours of  $0.3$  Pa/s

Range ring of 2304 km

16082112, 120 hour forecast for 700mb RH and winds (knots) - NCEP GFS



Negative Omegas less than  $-0.3$ , contours of  $0.3$  Pa/s

Range ring of 2304 km