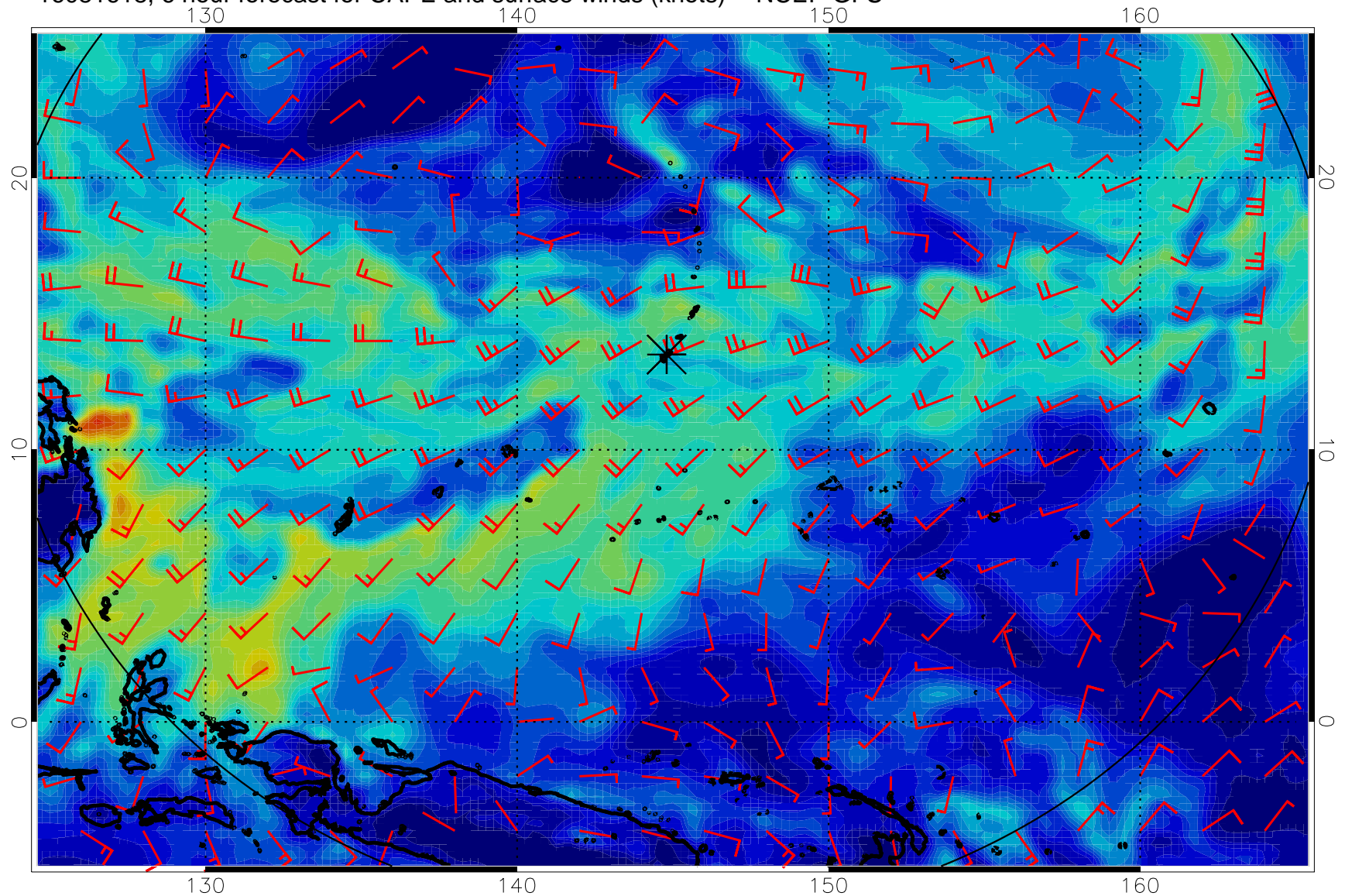
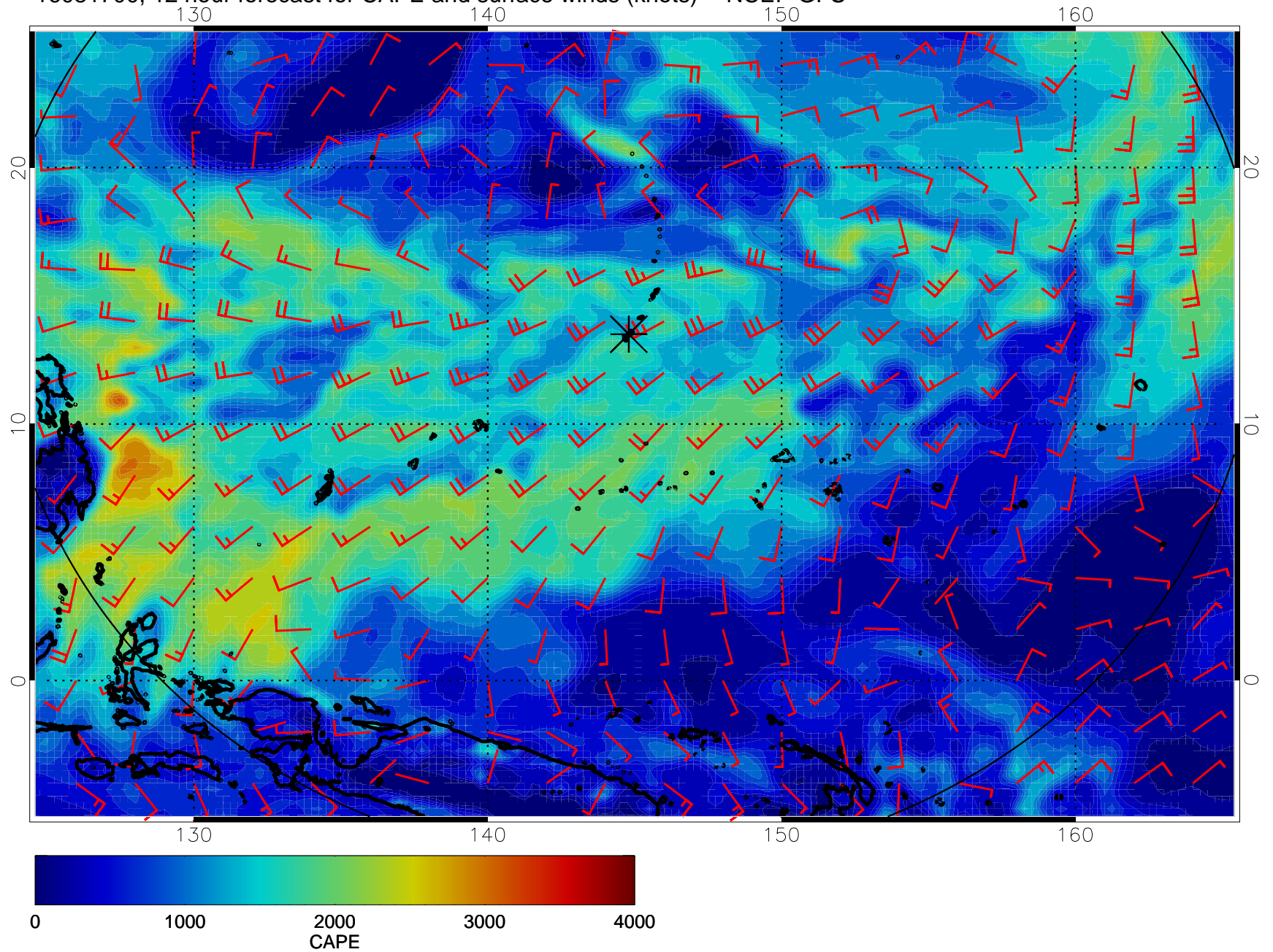


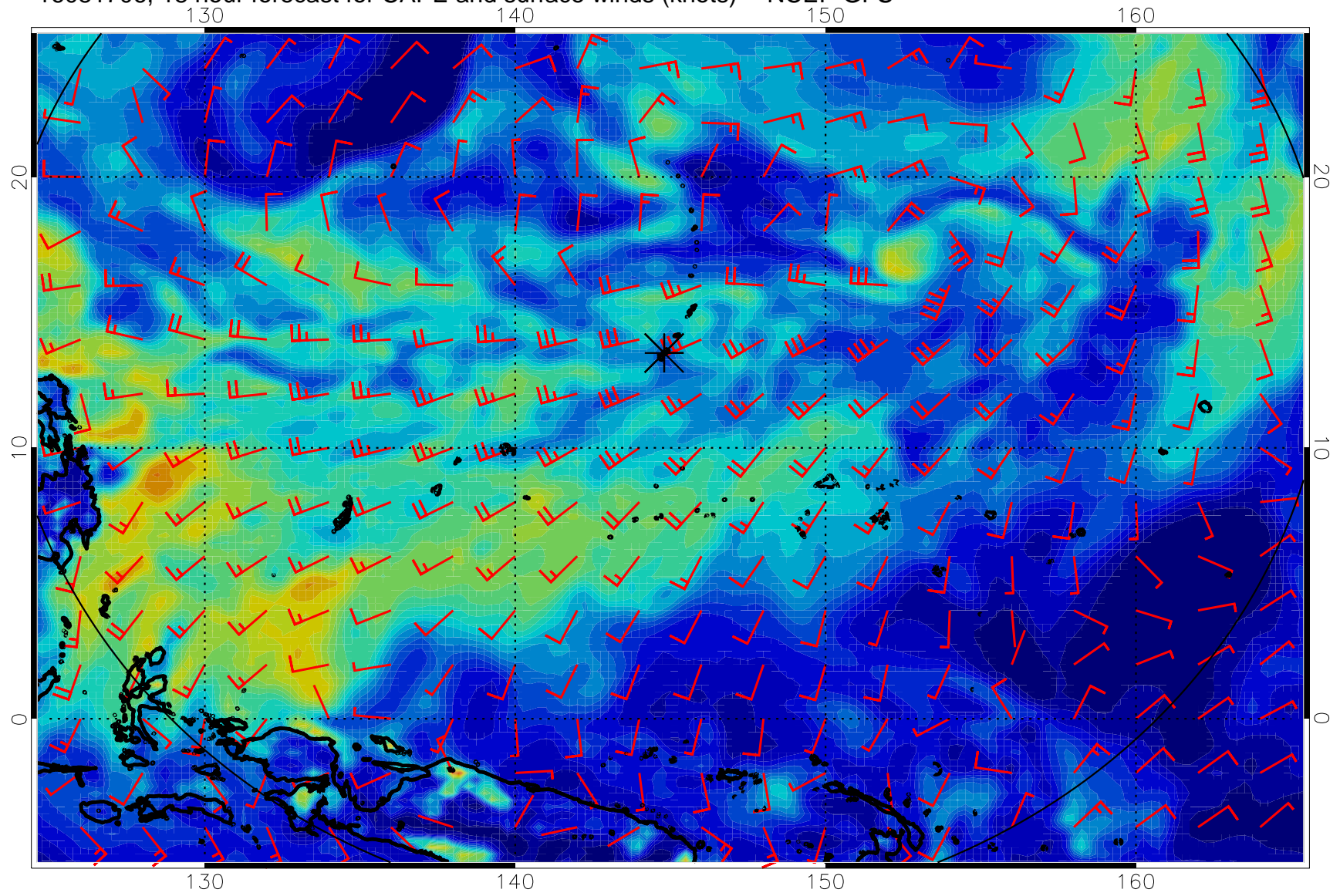
16081618, 6 hour forecast for CAPE and surface winds (knots) -- NCEP GFS



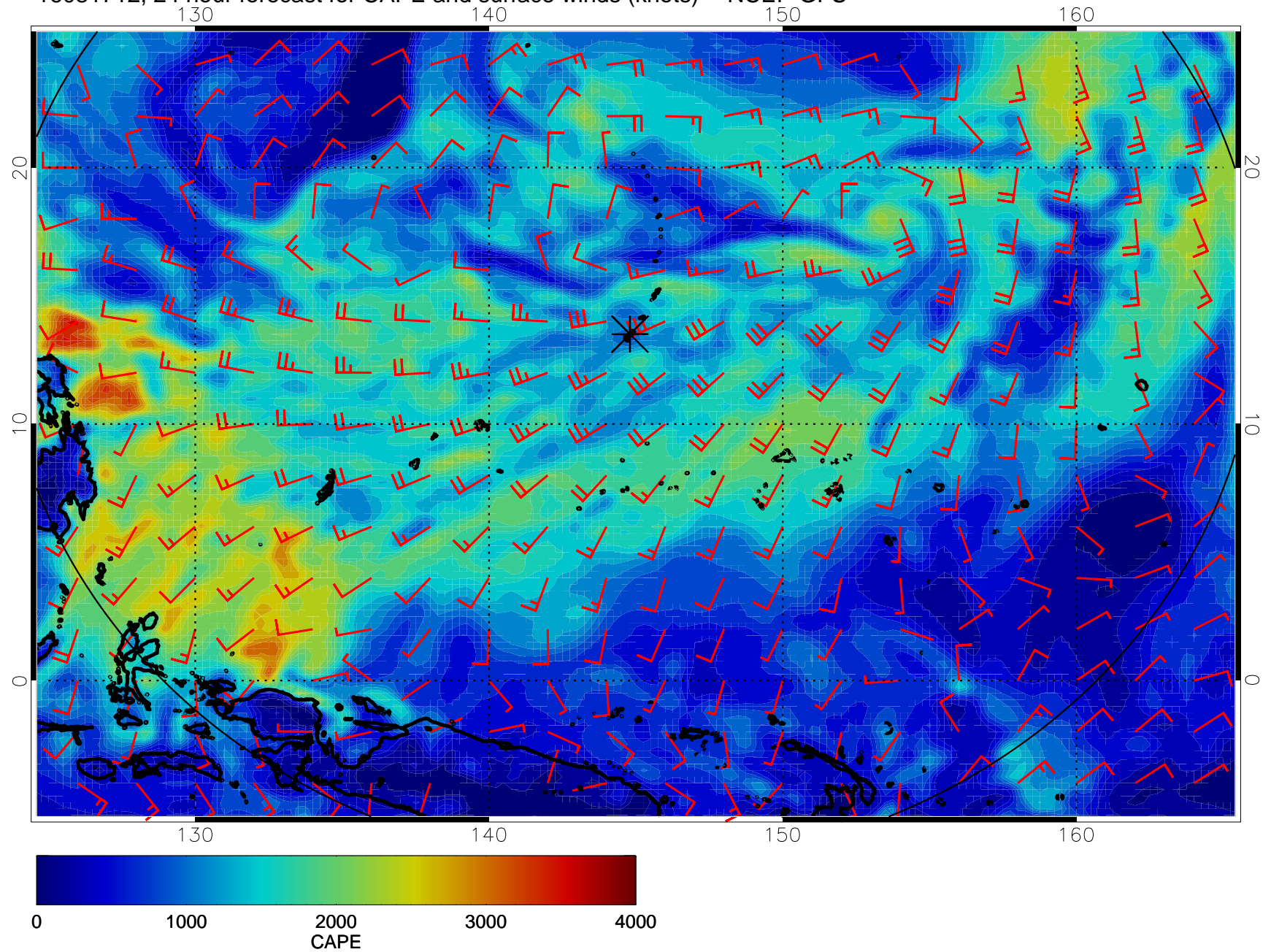
16081700, 12 hour forecast for CAPE and surface winds (knots) -- NCEP GFS



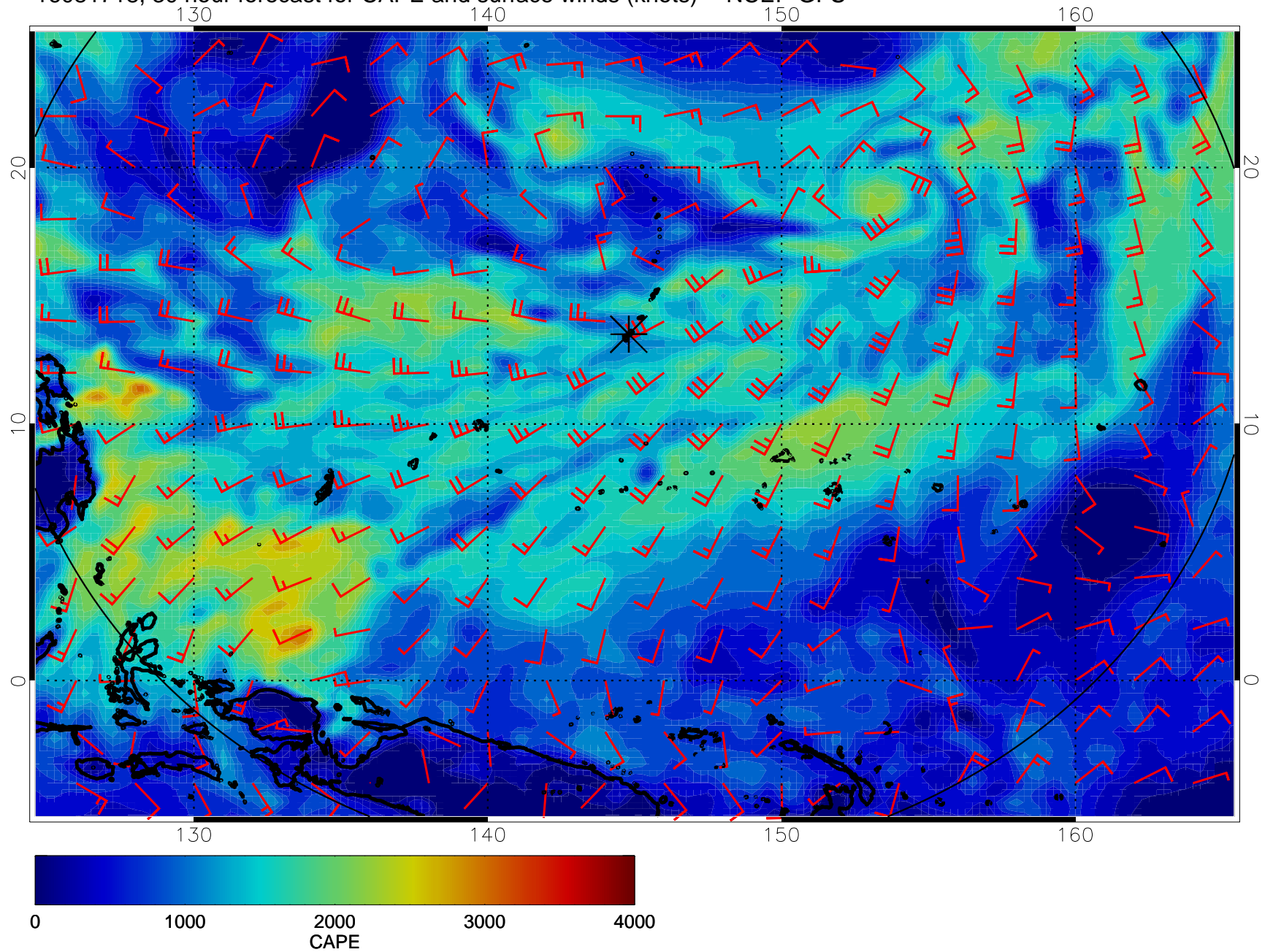
16081706, 18 hour forecast for CAPE and surface winds (knots) -- NCEP GFS



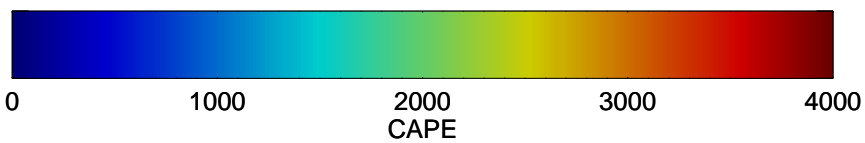
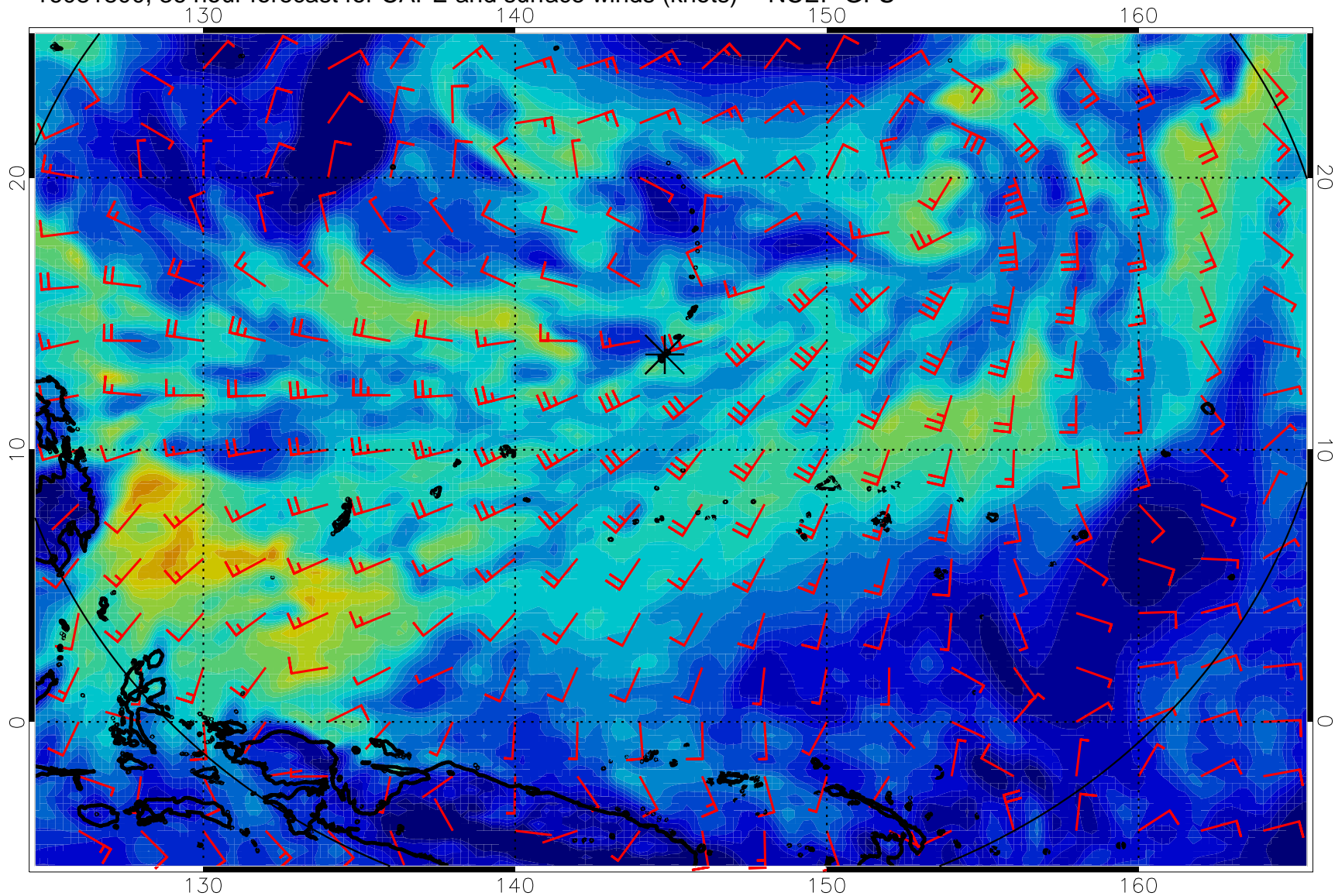
16081712, 24 hour forecast for CAPE and surface winds (knots) -- NCEP GFS



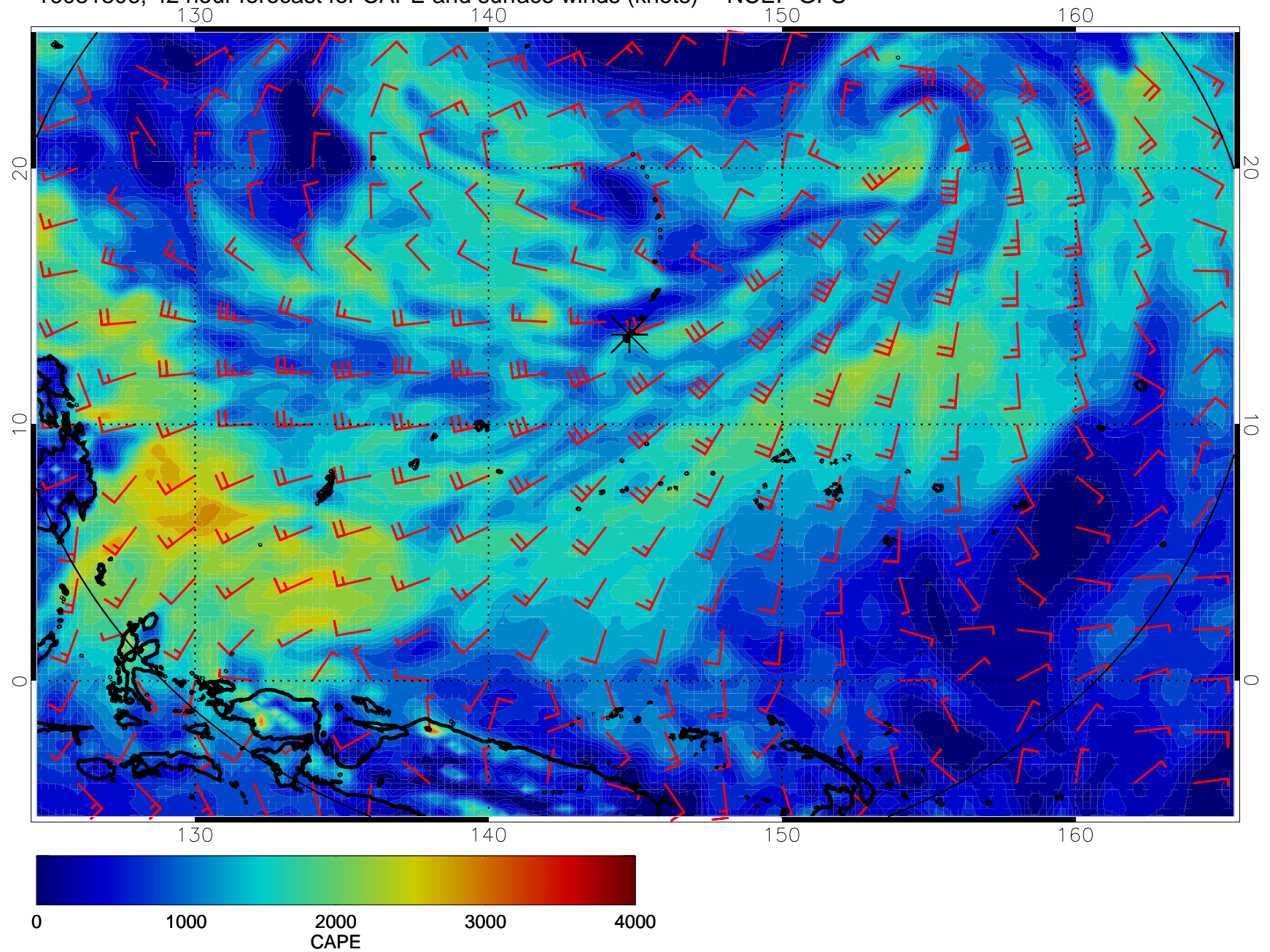
16081718, 30 hour forecast for CAPE and surface winds (knots) -- NCEP GFS



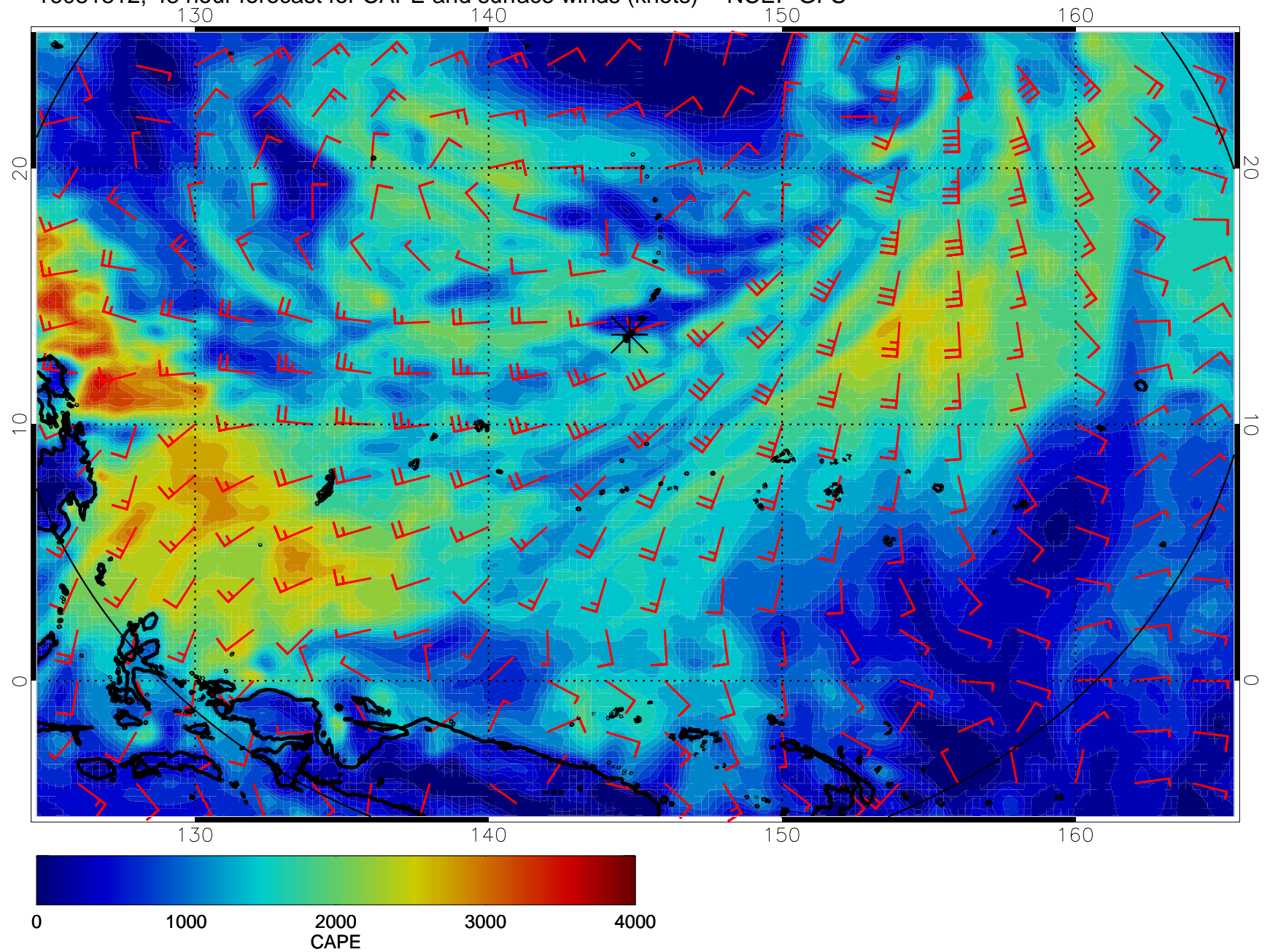
16081800, 36 hour forecast for CAPE and surface winds (knots) -- NCEP GFS



16081806, 42 hour forecast for CAPE and surface winds (knots) -- NCEP GFS

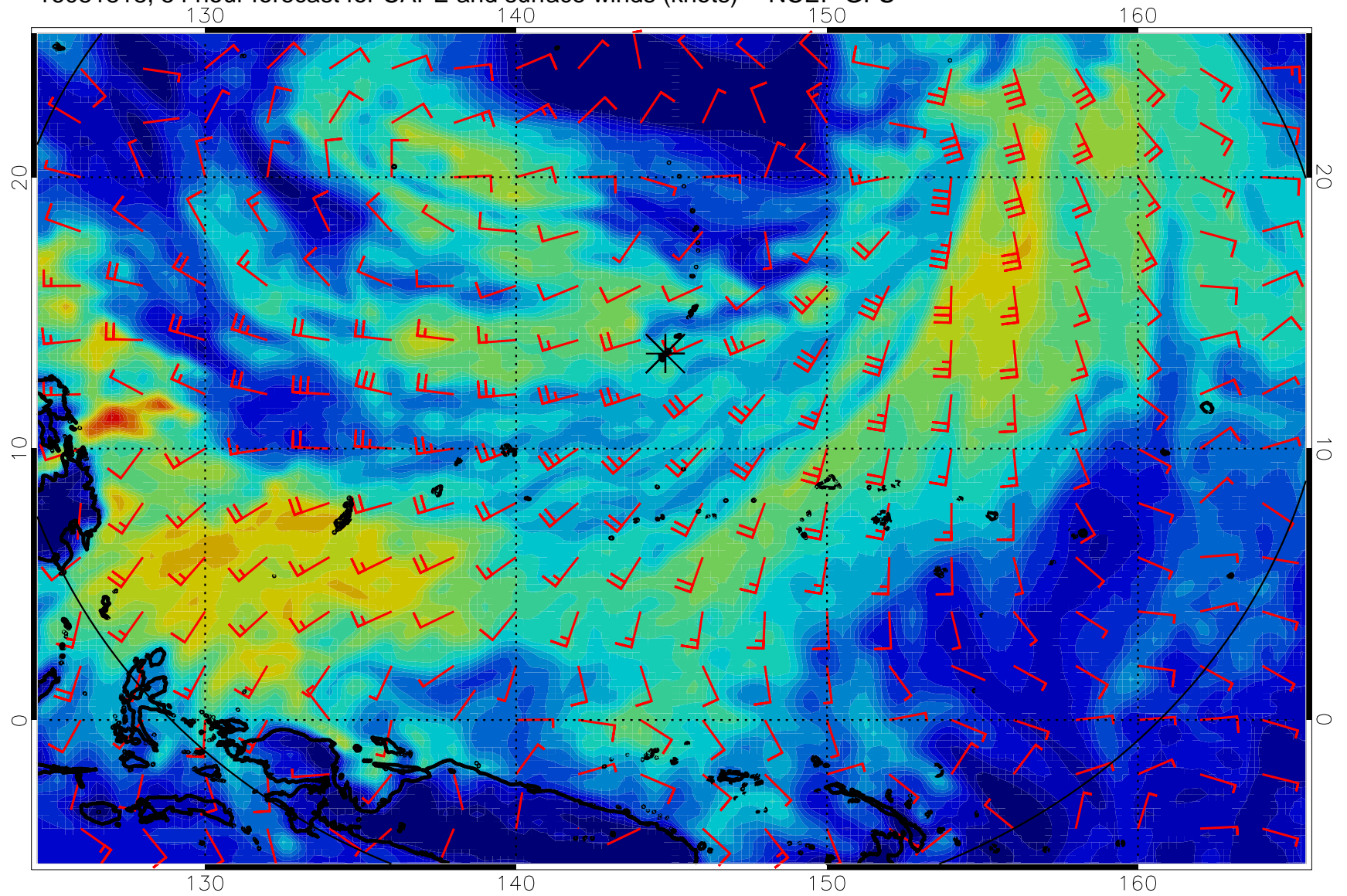


16081812, 48 hour forecast for CAPE and surface winds (knots) -- NCEP GFS

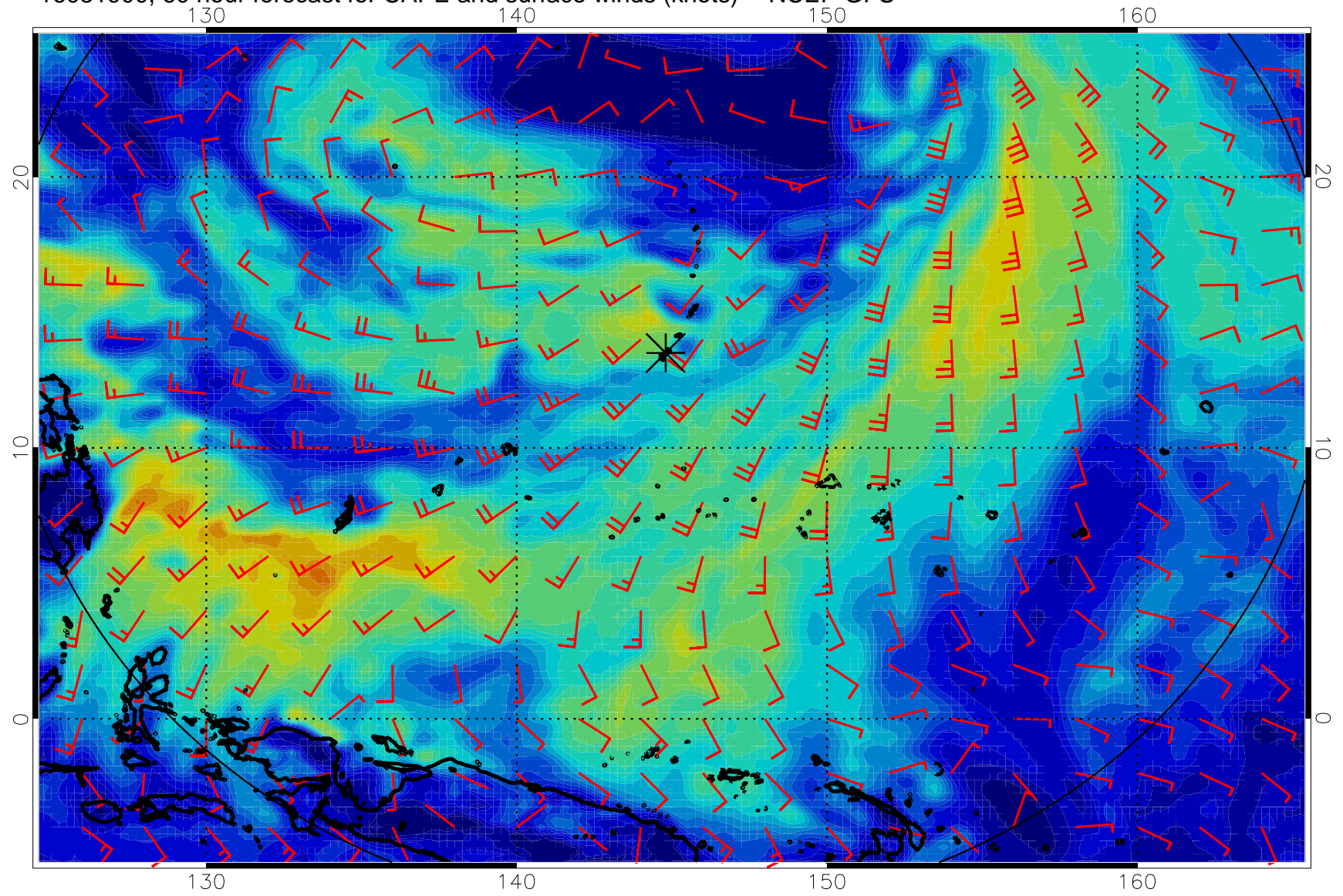




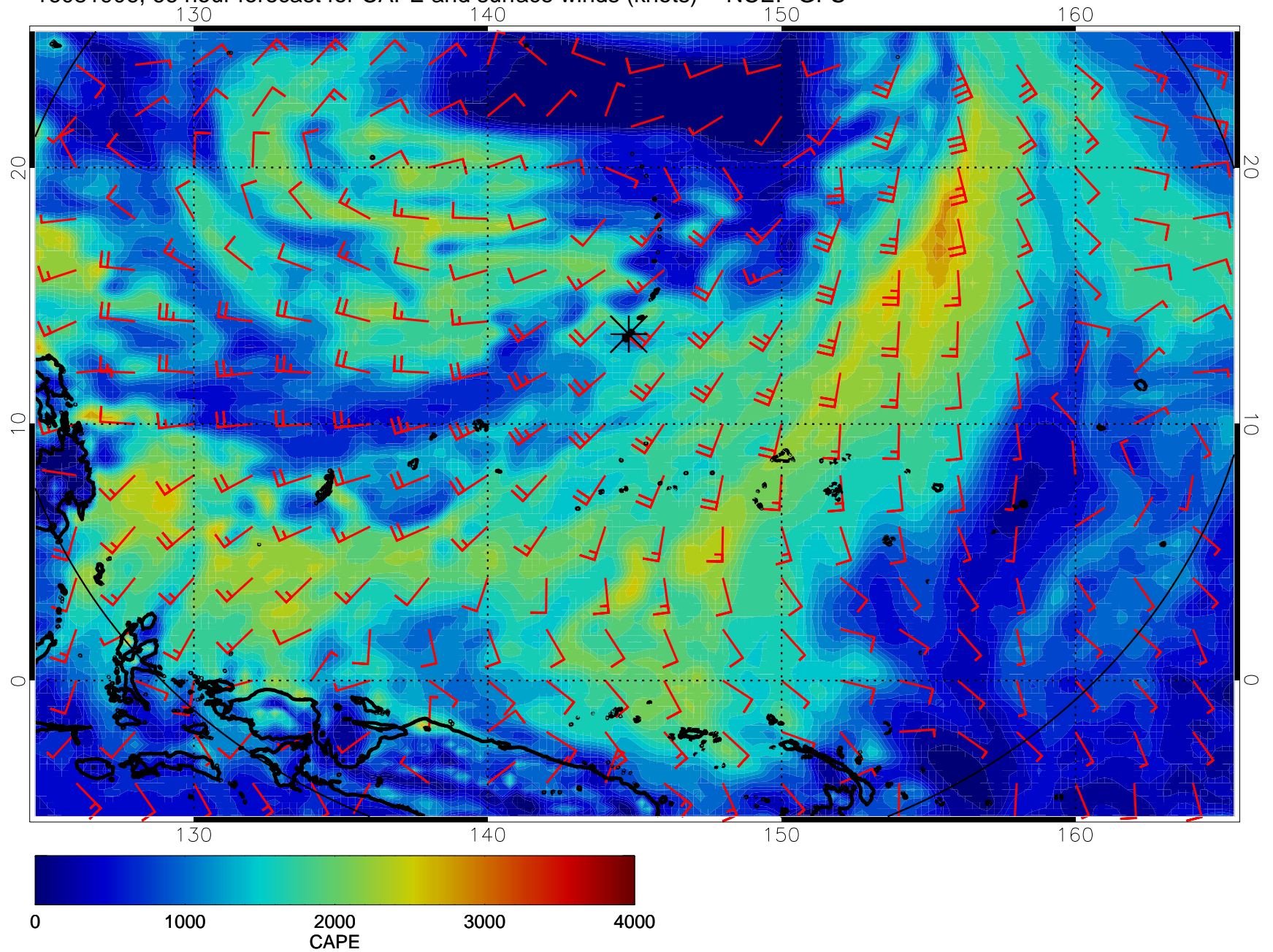
16081818, 54 hour forecast for CAPE and surface winds (knots) -- NCEP GFS



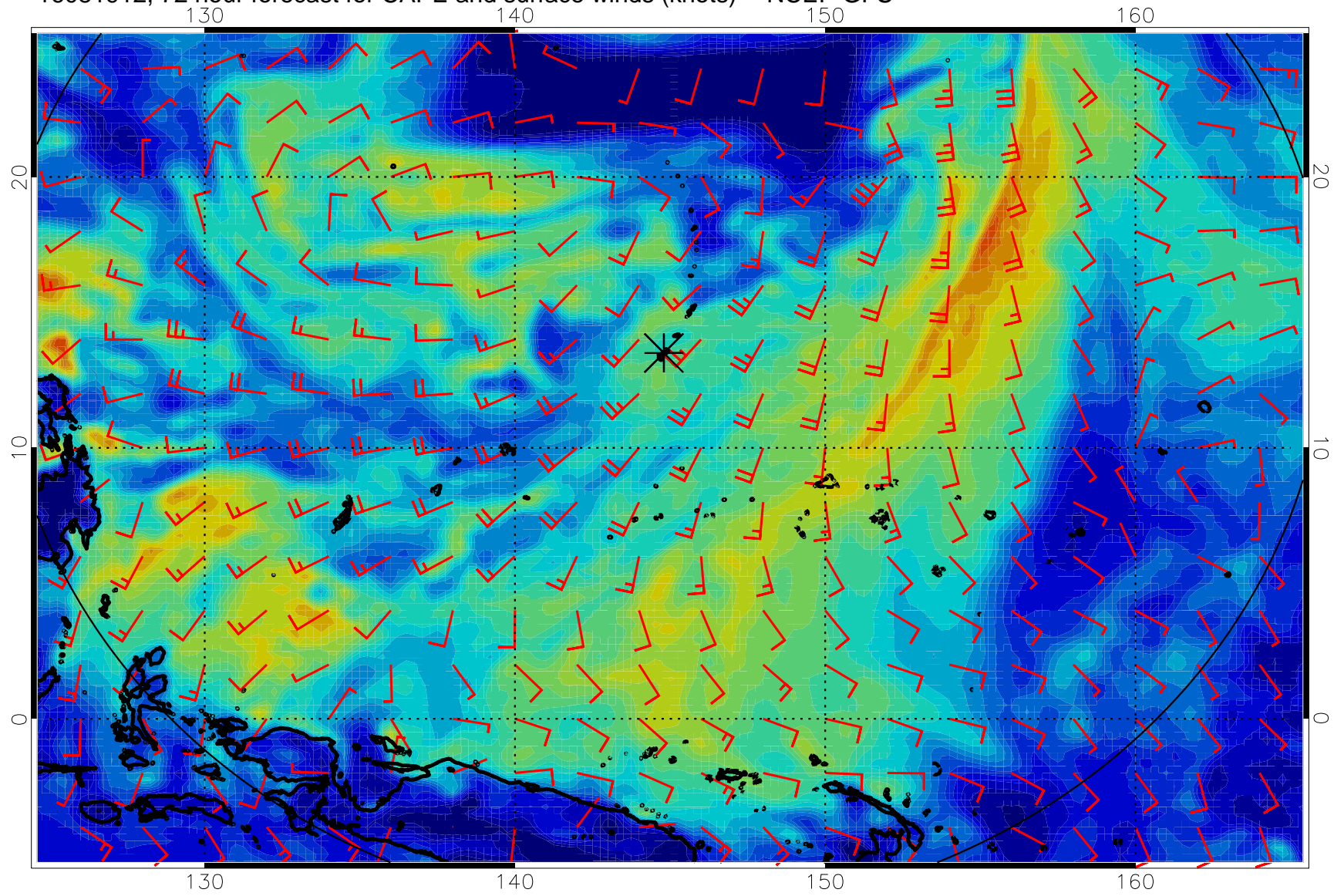
16081900, 60 hour forecast for CAPE and surface winds (knots) -- NCEP GFS



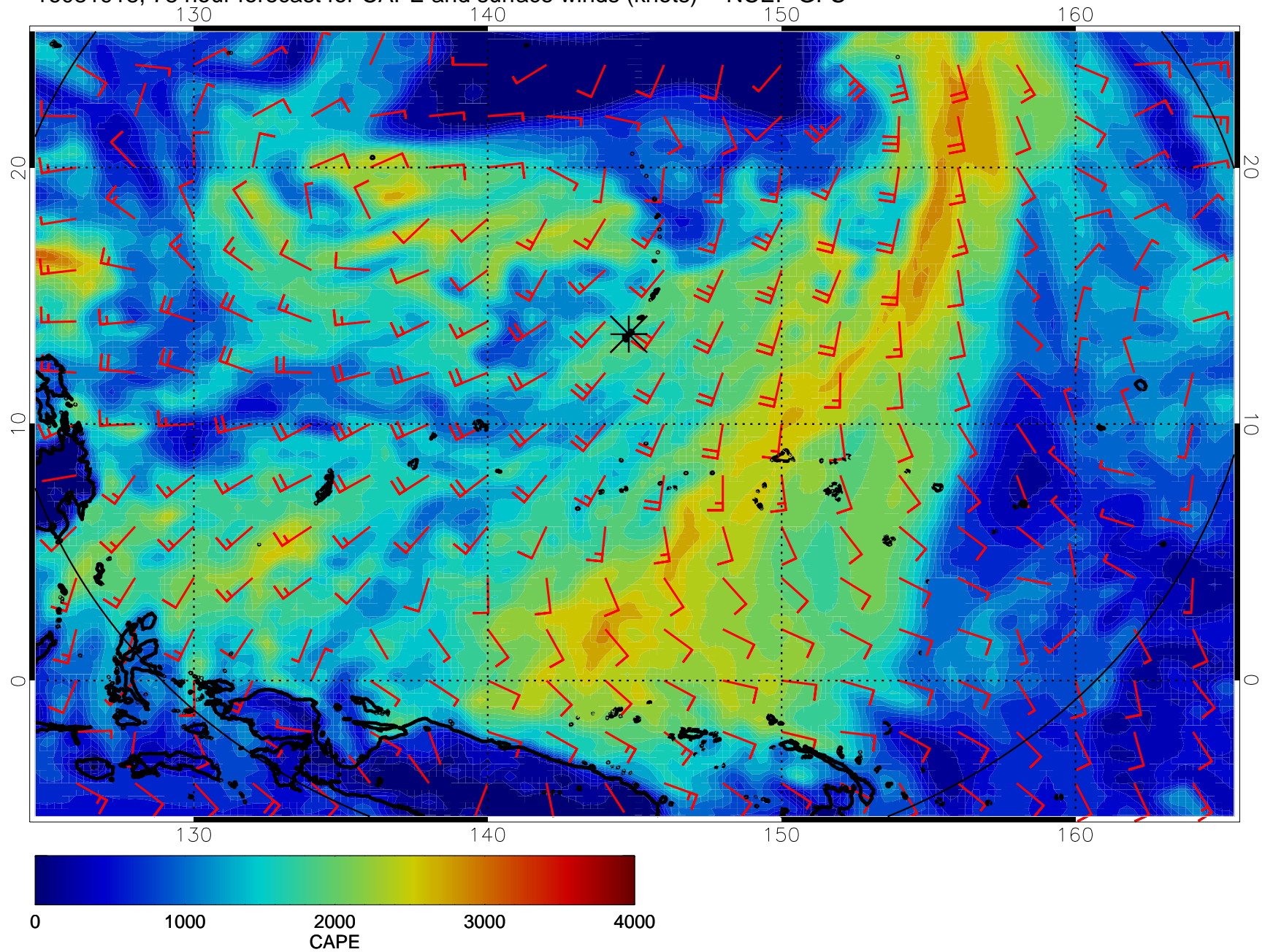
16081906, 66 hour forecast for CAPE and surface winds (knots) -- NCEP GFS



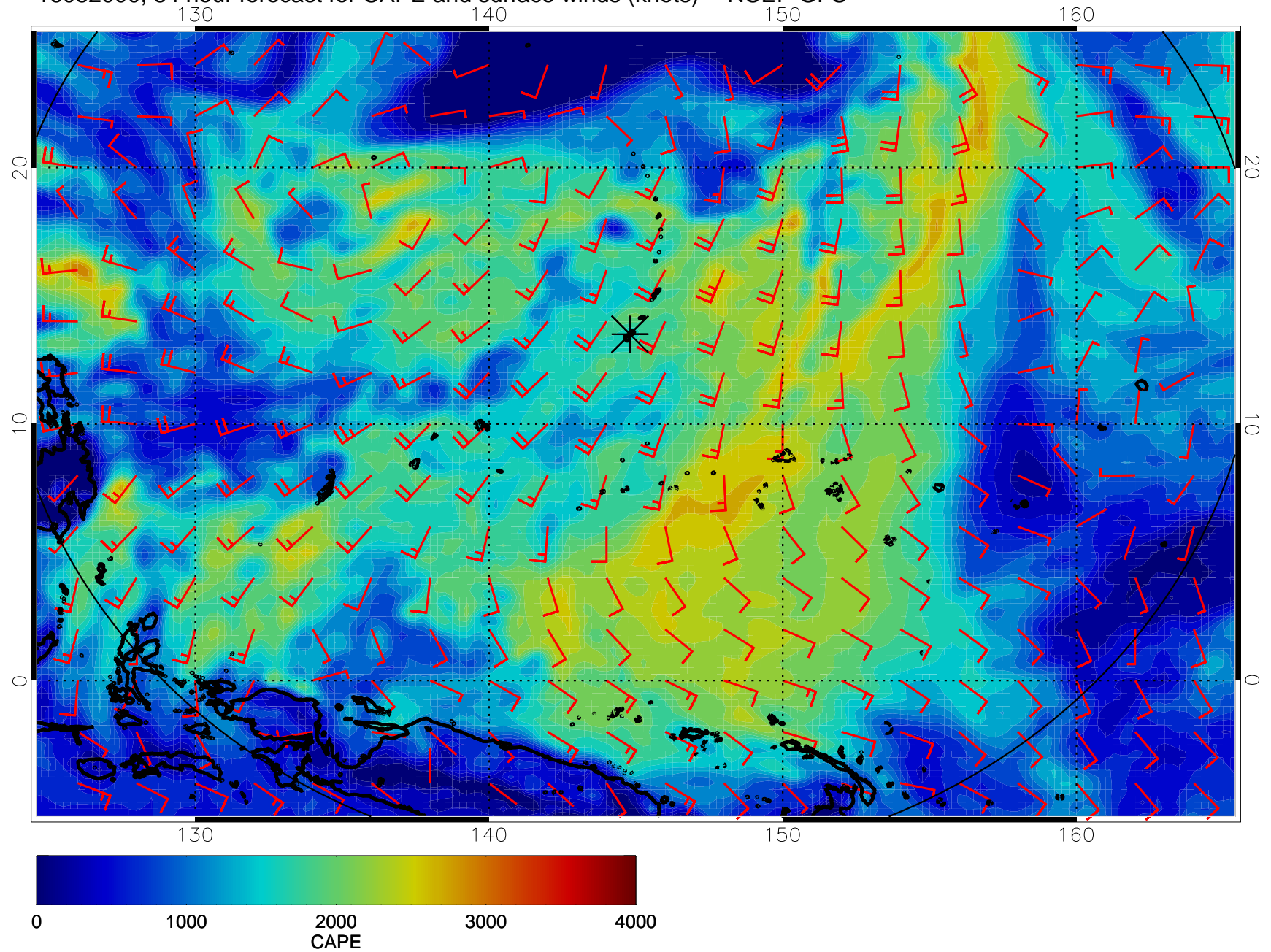
16081912, 72 hour forecast for CAPE and surface winds (knots) -- NCEP GFS



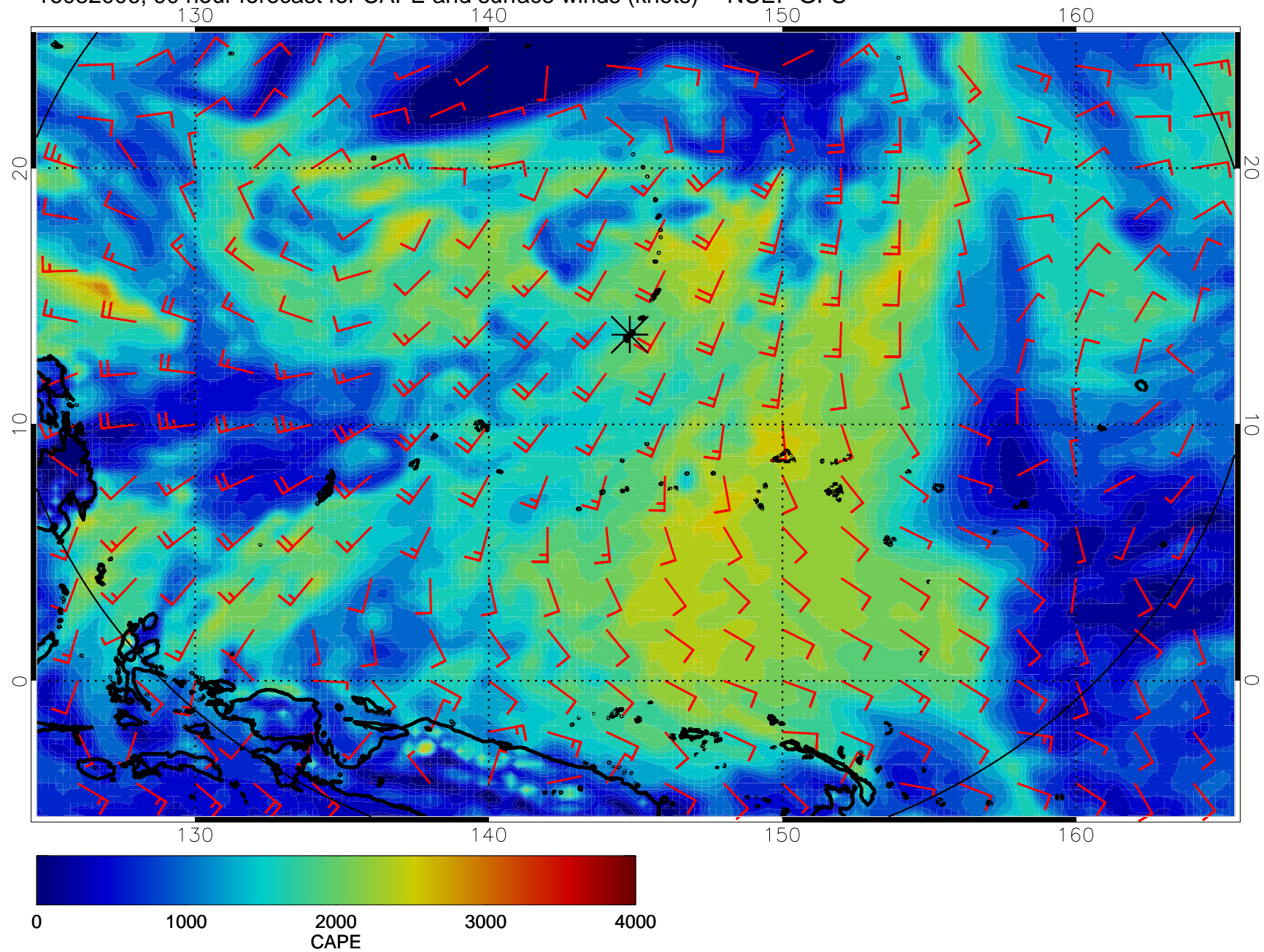
16081918, 78 hour forecast for CAPE and surface winds (knots) -- NCEP GFS



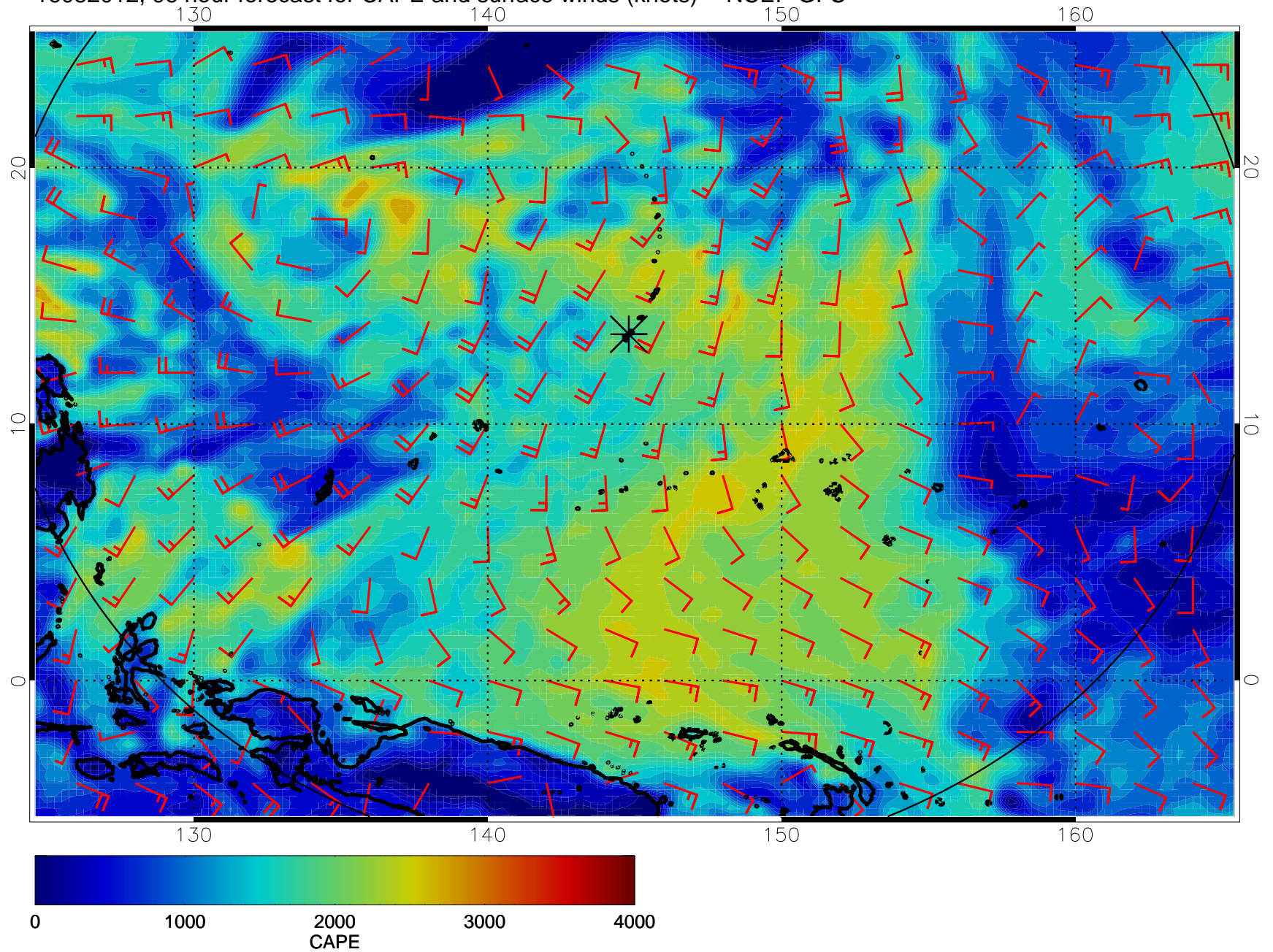
16082000, 84 hour forecast for CAPE and surface winds (knots) -- NCEP GFS



16082006, 90 hour forecast for CAPE and surface winds (knots) -- NCEP GFS

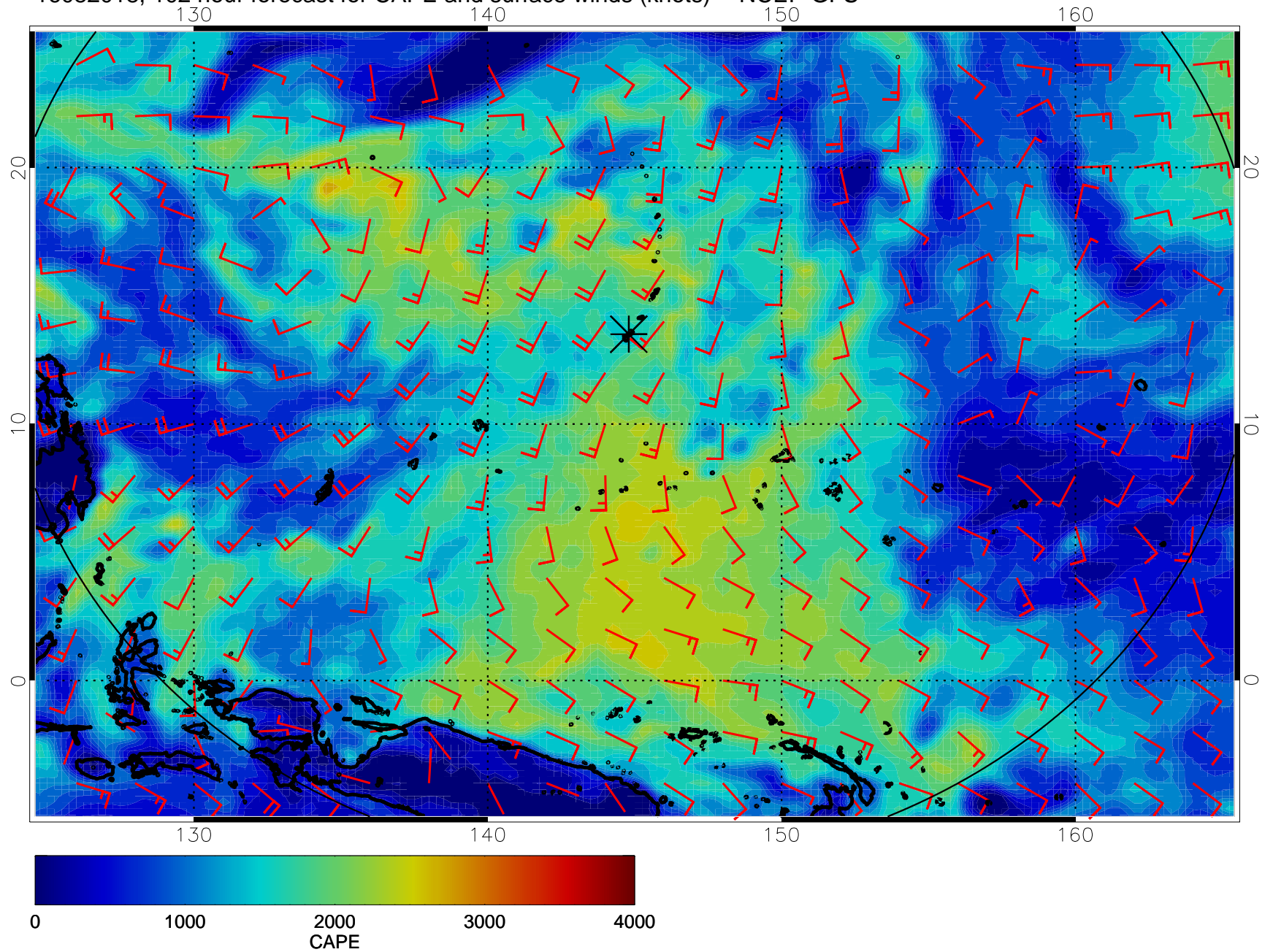


16082012, 96 hour forecast for CAPE and surface winds (knots) -- NCEP GFS

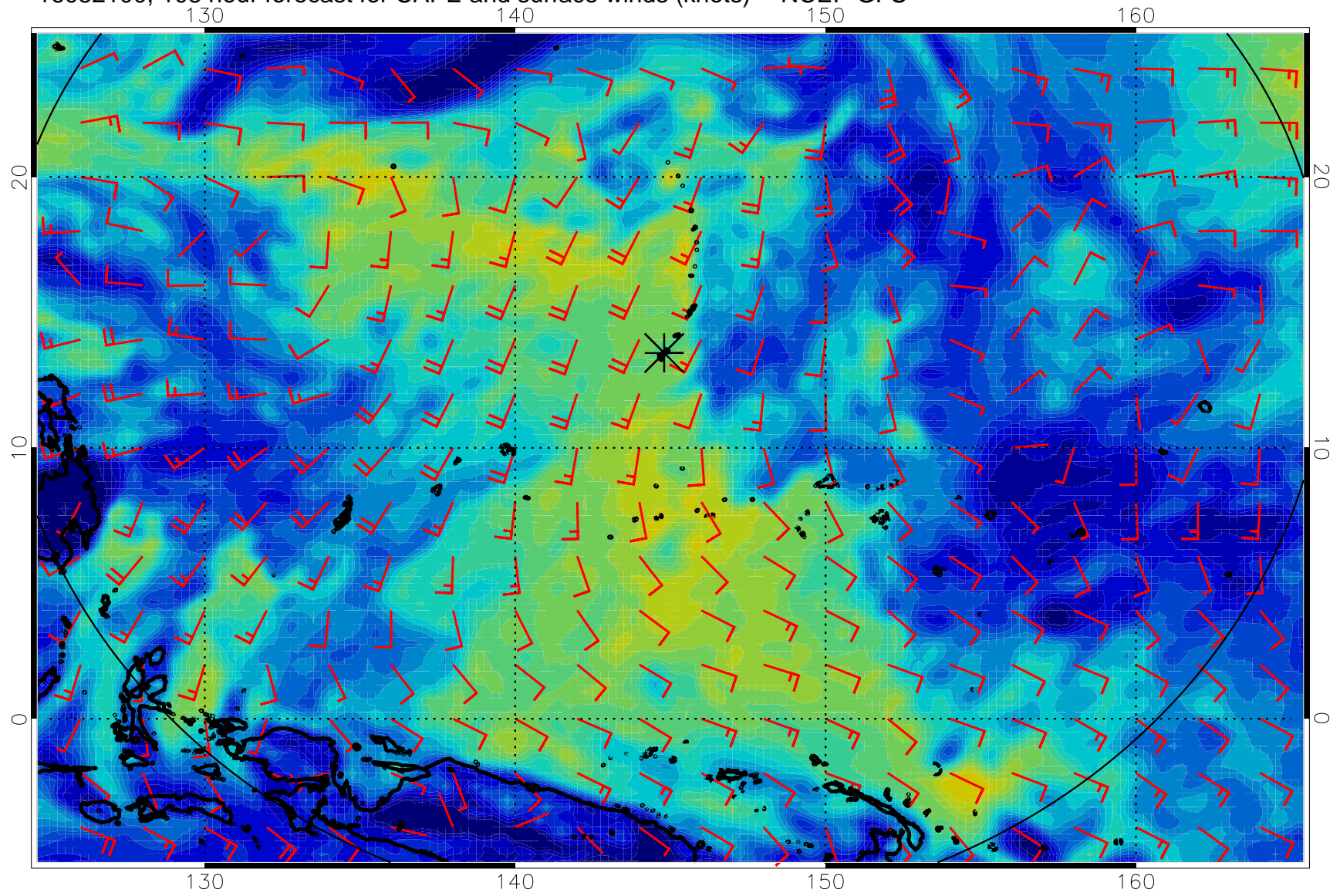




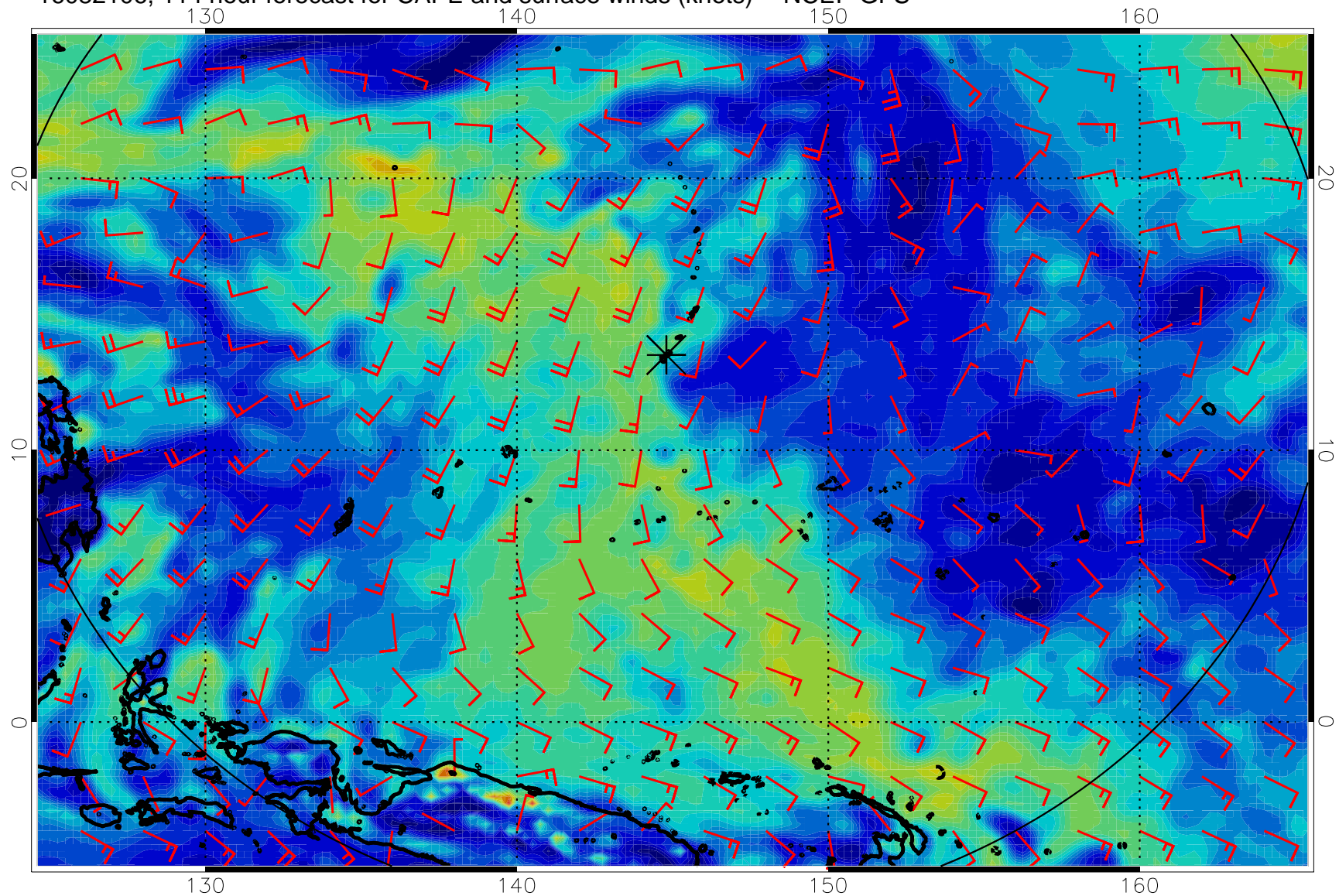
16082018, 102 hour forecast for CAPE and surface winds (knots) -- NCEP GFS



16082100, 108 hour forecast for CAPE and surface winds (knots) -- NCEP GFS



16082106, 114 hour forecast for CAPE and surface winds (knots) -- NCEP GFS



16082112, 120 hour forecast for CAPE and surface winds (knots) -- NCEP GFS

