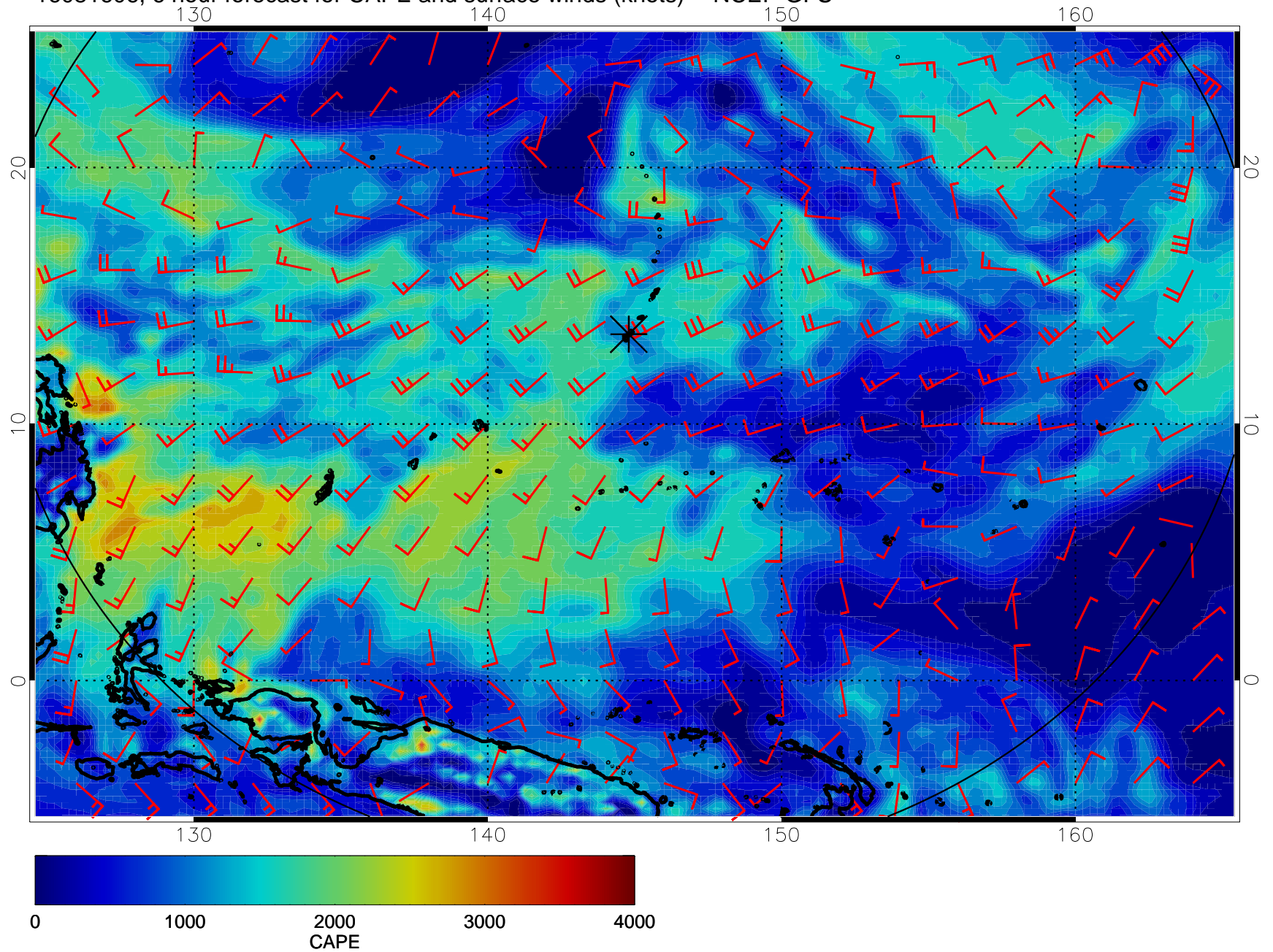
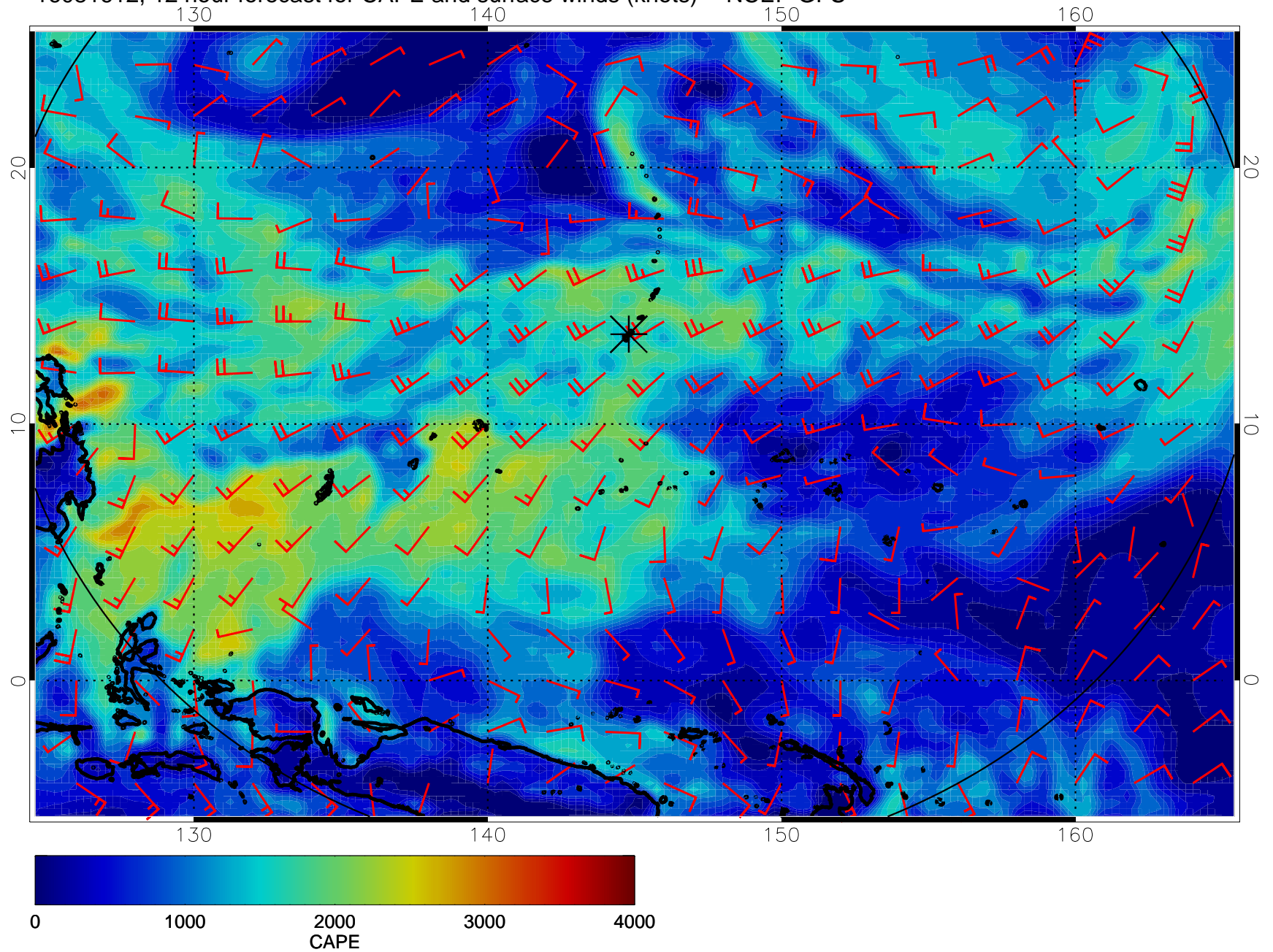


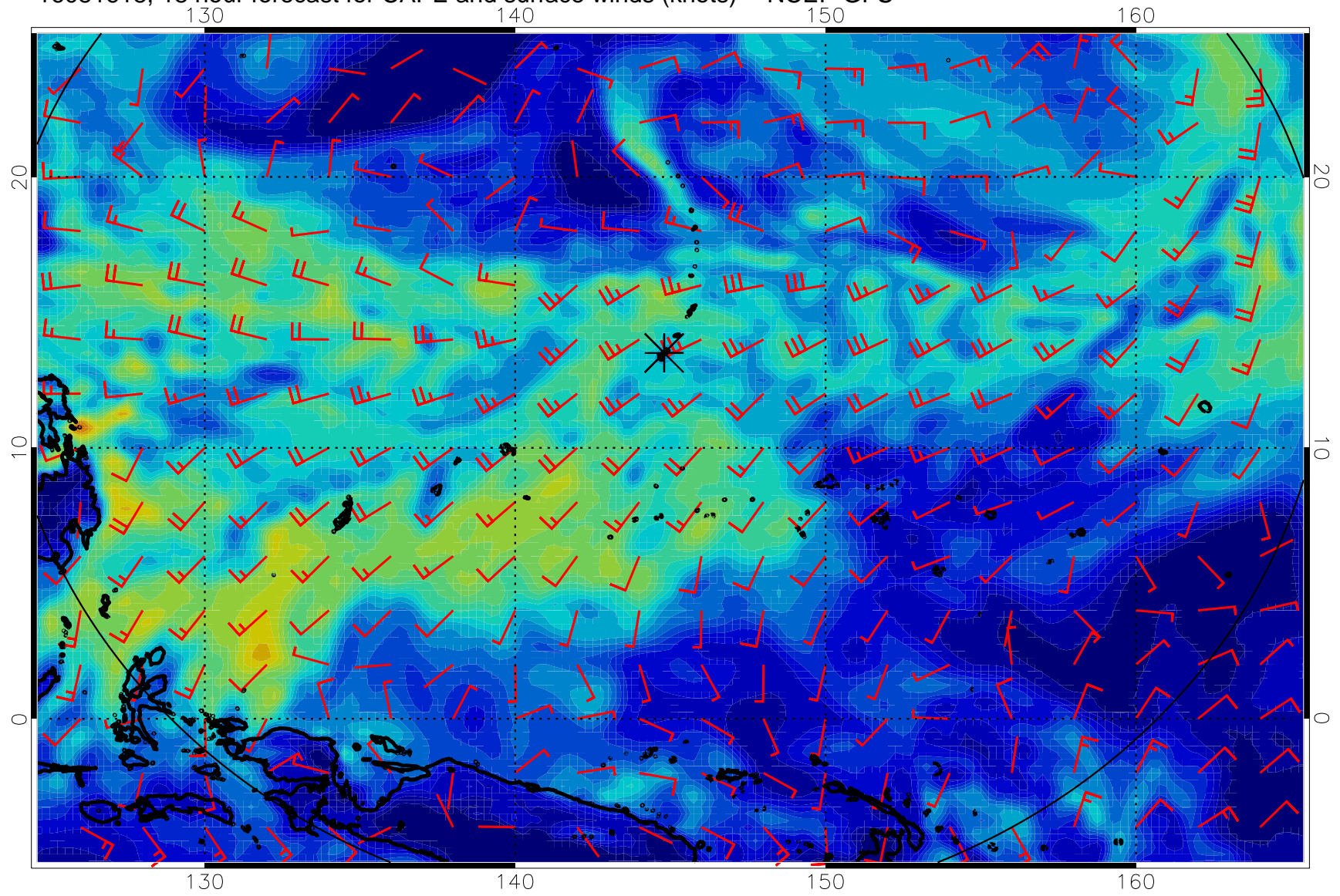
16081606, 6 hour forecast for CAPE and surface winds (knots) -- NCEP GFS



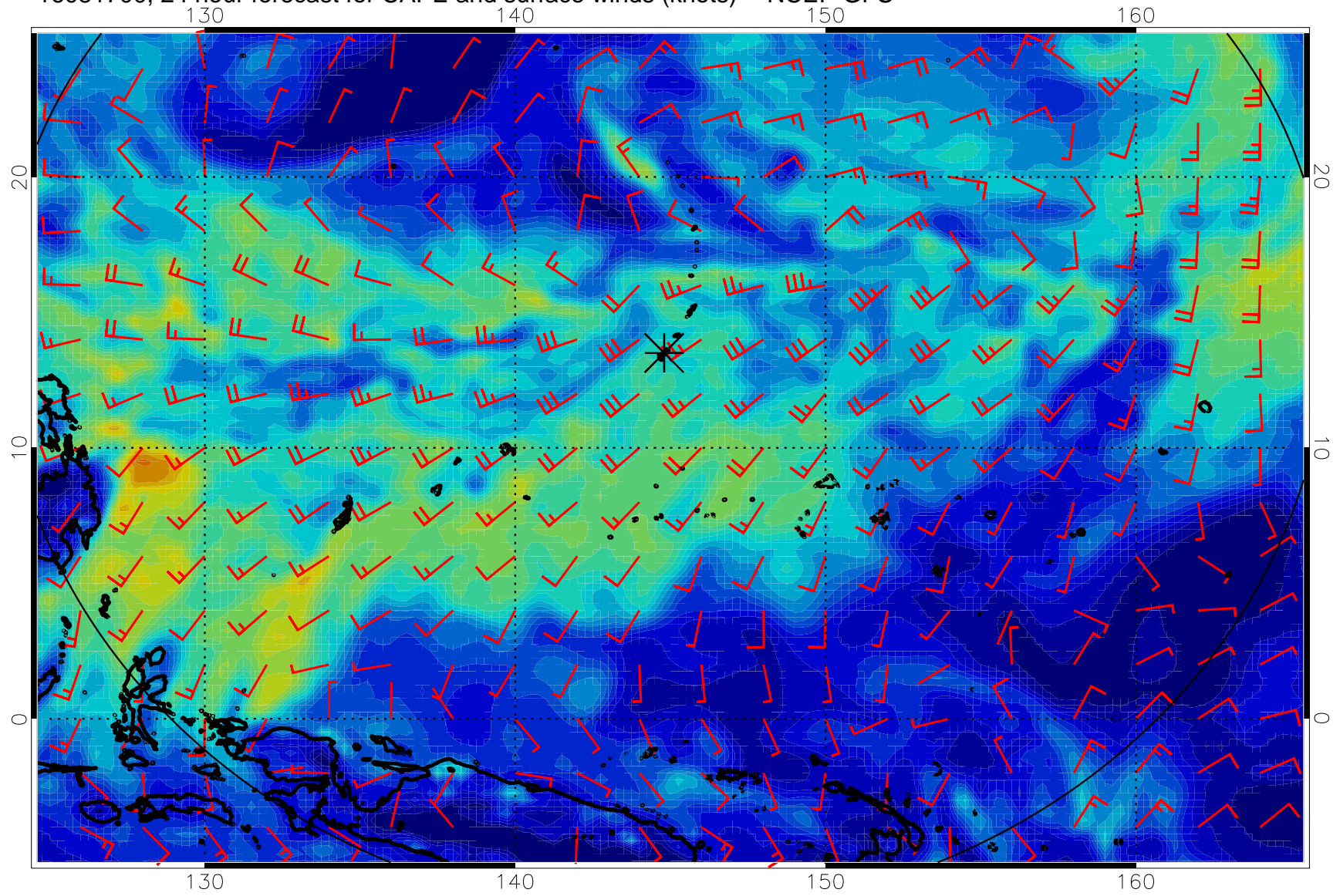
16081612, 12 hour forecast for CAPE and surface winds (knots) -- NCEP GFS



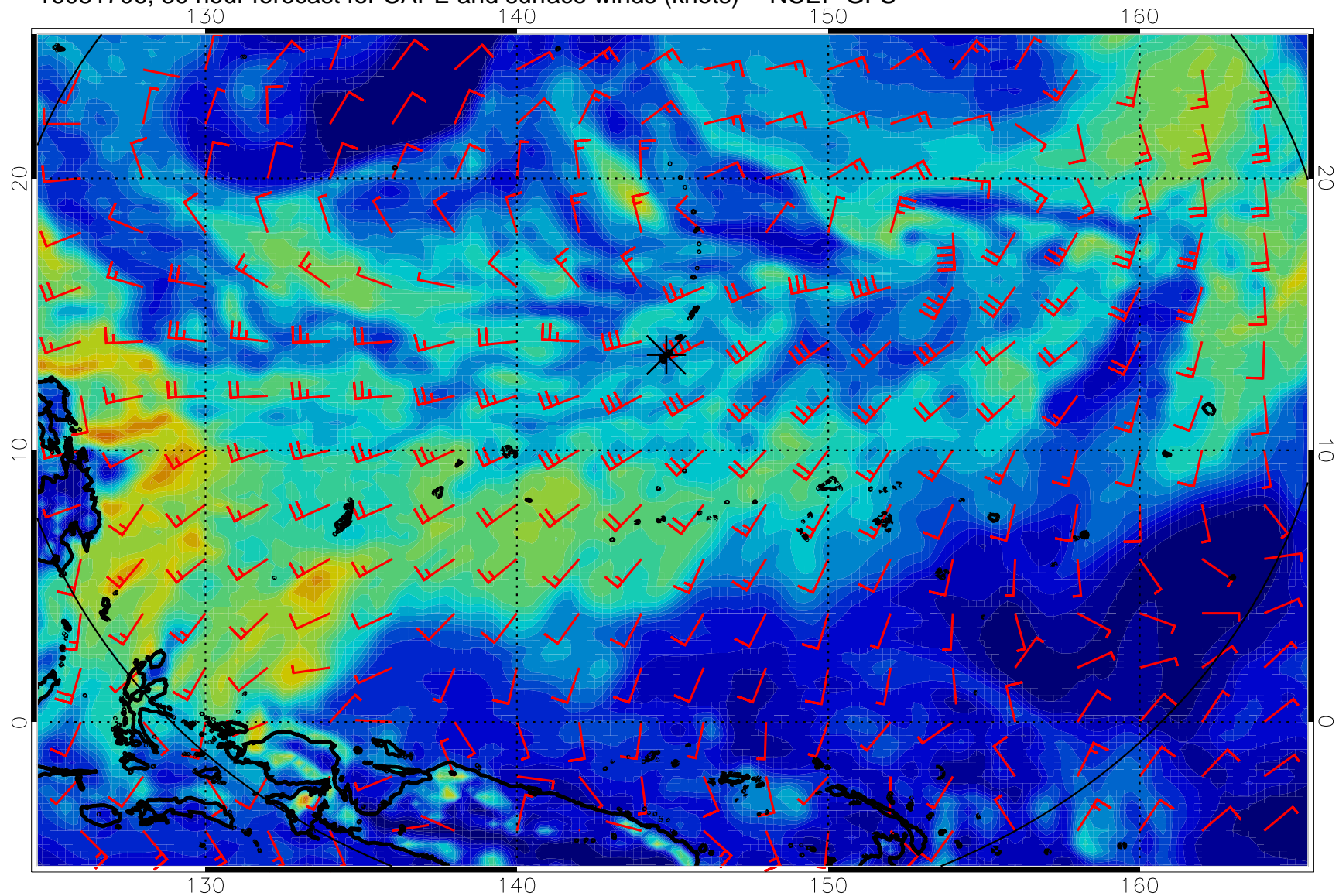
16081618, 18 hour forecast for CAPE and surface winds (knots) -- NCEP GFS



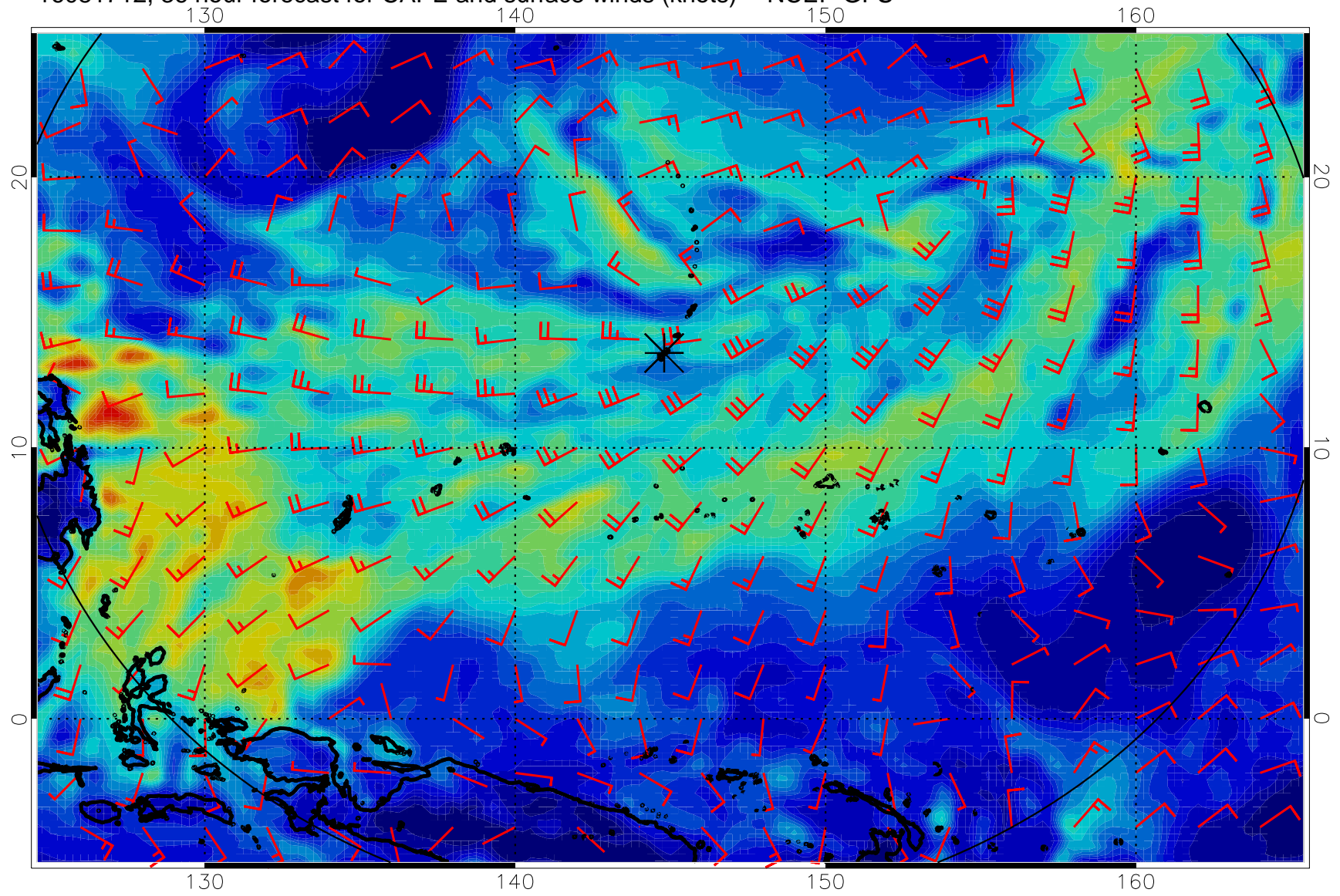
16081700, 24 hour forecast for CAPE and surface winds (knots) -- NCEP GFS



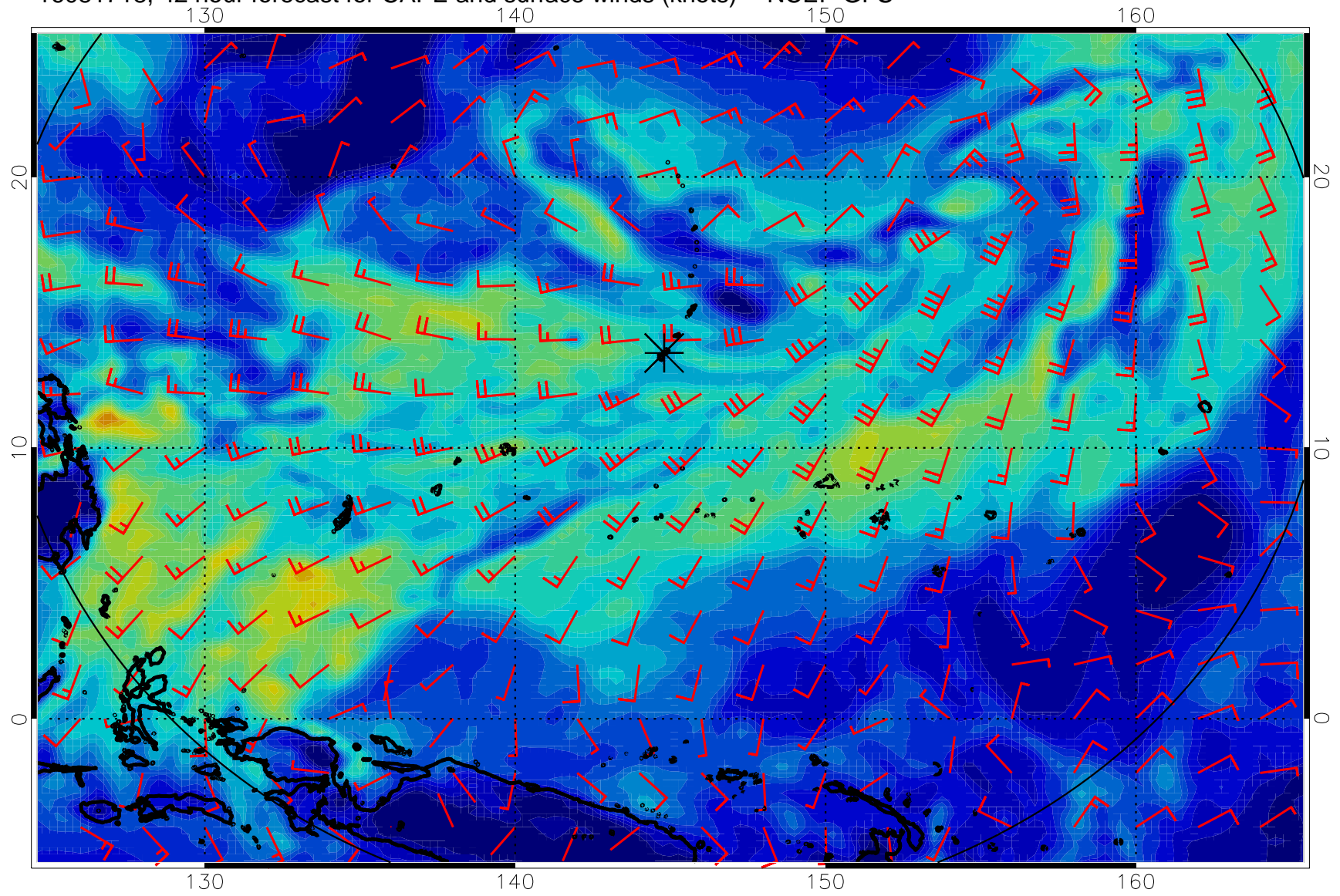
16081706, 30 hour forecast for CAPE and surface winds (knots) -- NCEP GFS



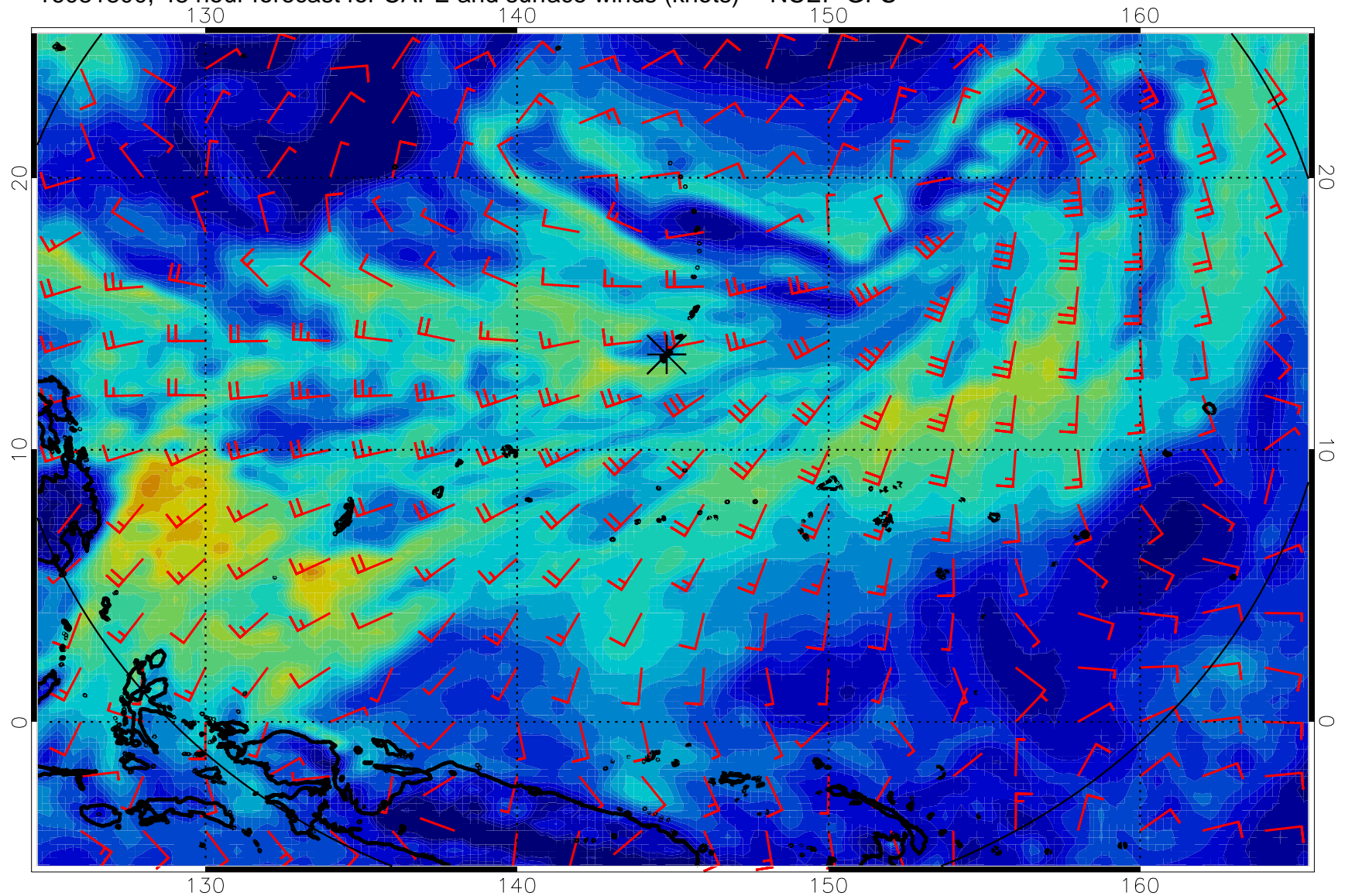
16081712, 36 hour forecast for CAPE and surface winds (knots) -- NCEP GFS



16081718, 42 hour forecast for CAPE and surface winds (knots) -- NCEP GFS

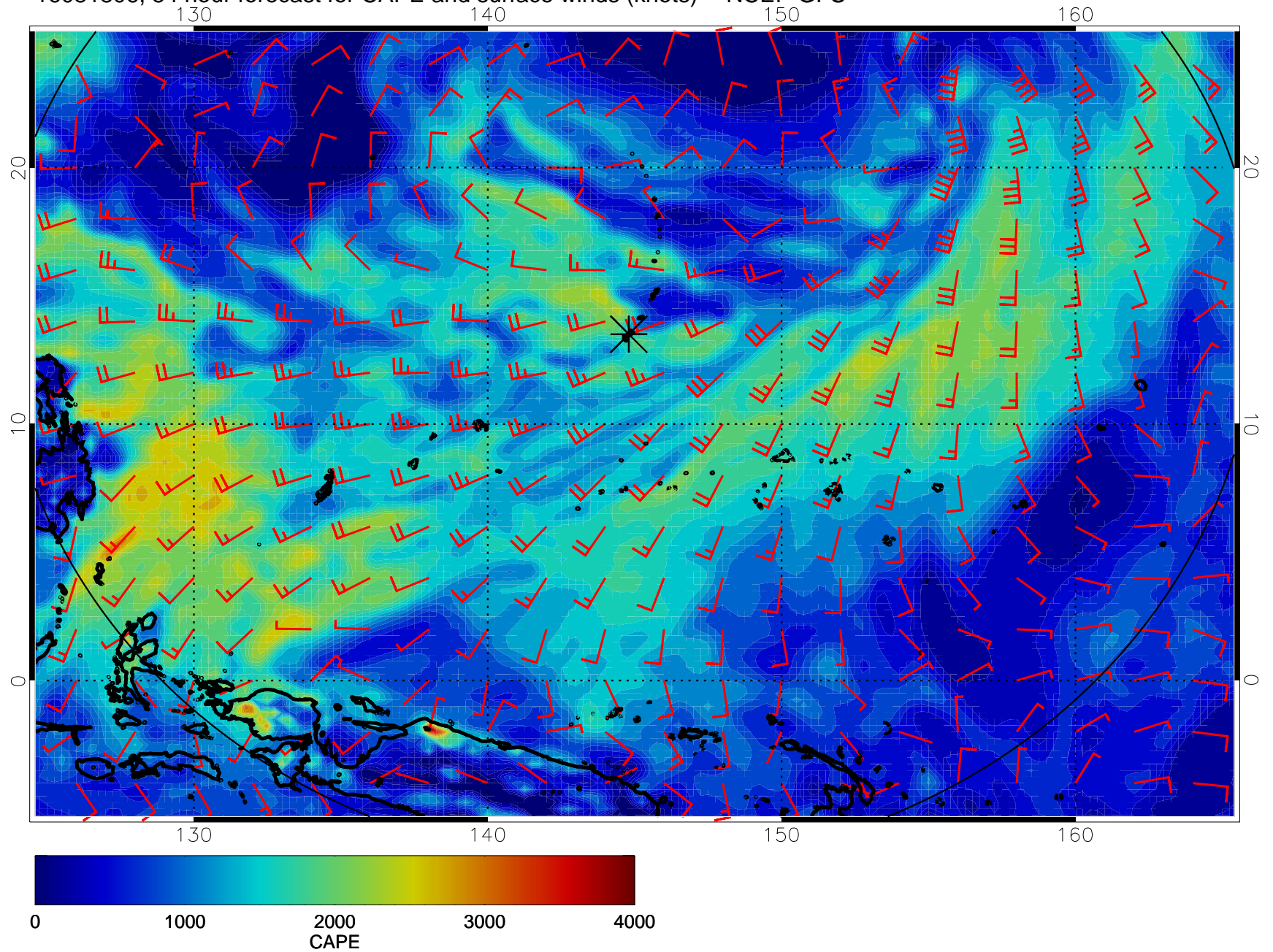


16081800, 48 hour forecast for CAPE and surface winds (knots) -- NCEP GFS

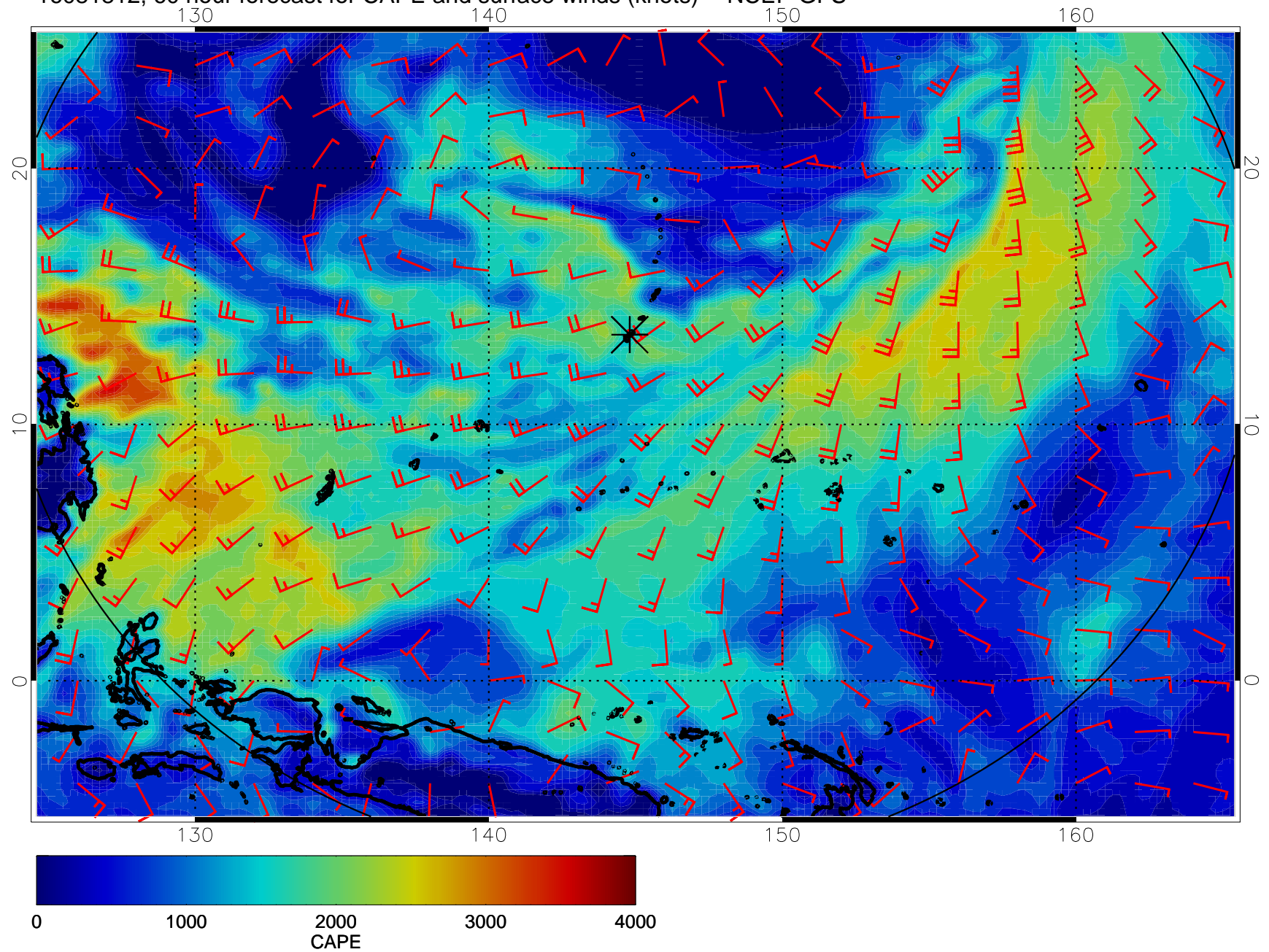




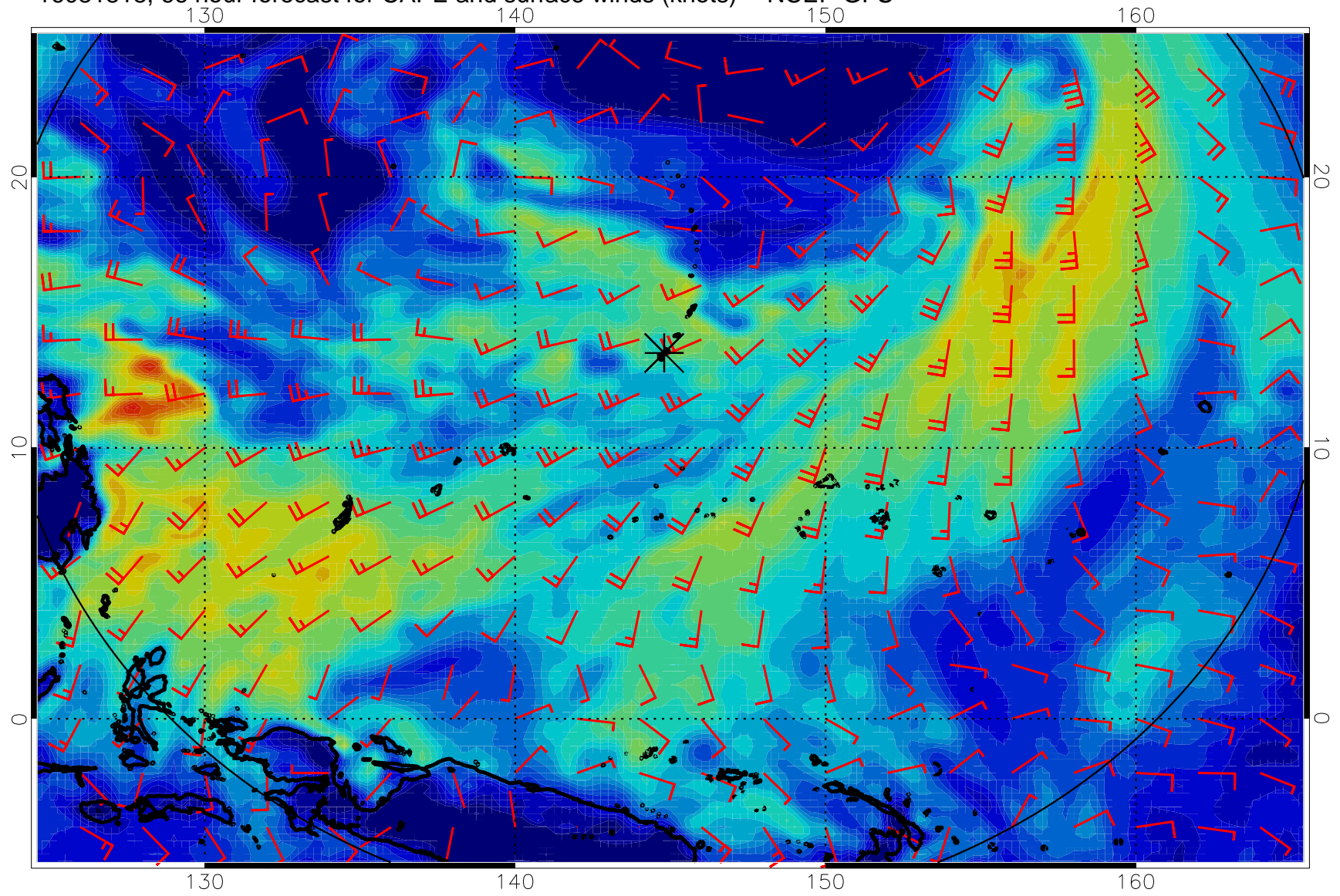
16081806, 54 hour forecast for CAPE and surface winds (knots) -- NCEP GFS



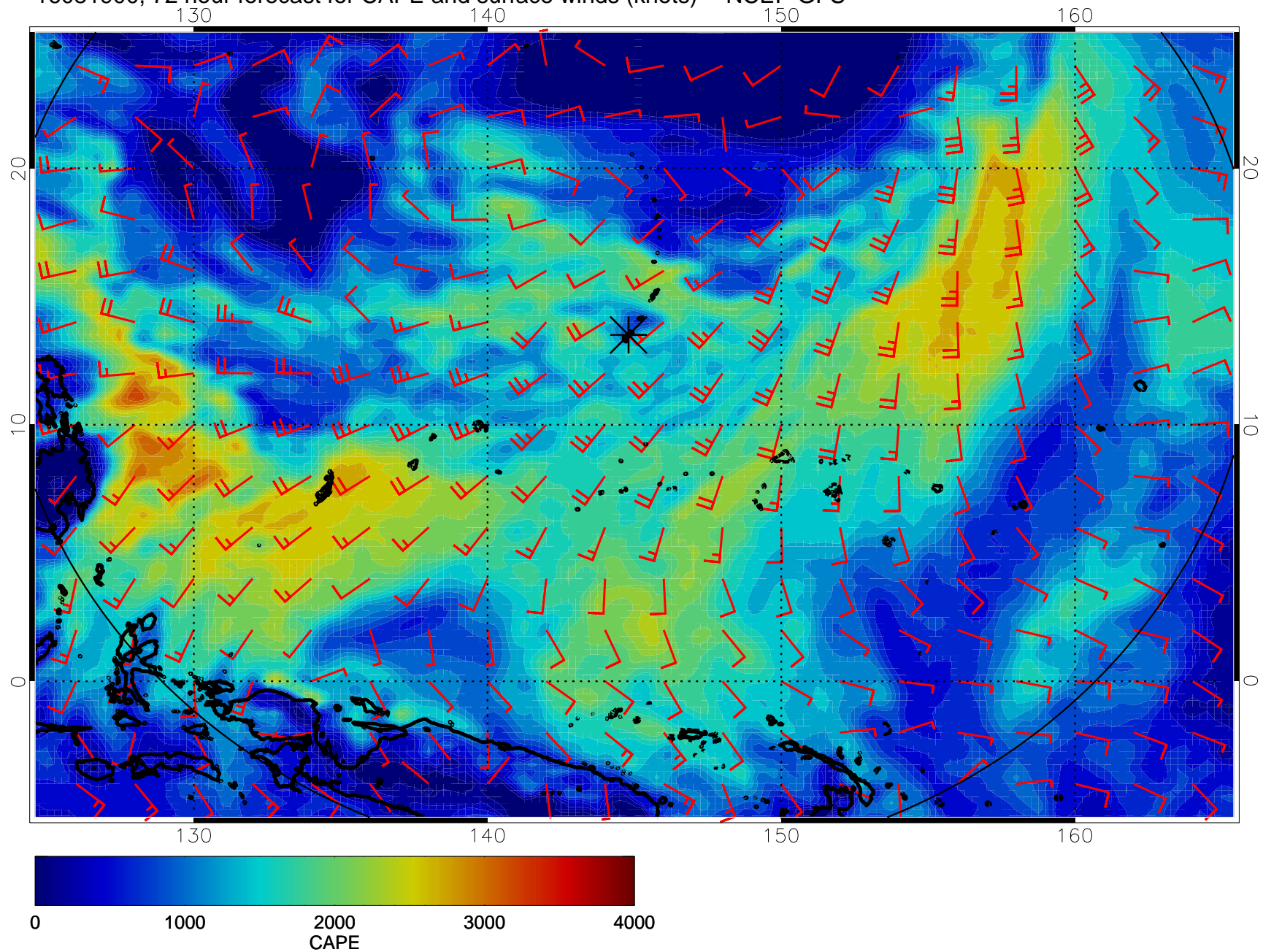
16081812, 60 hour forecast for CAPE and surface winds (knots) -- NCEP GFS



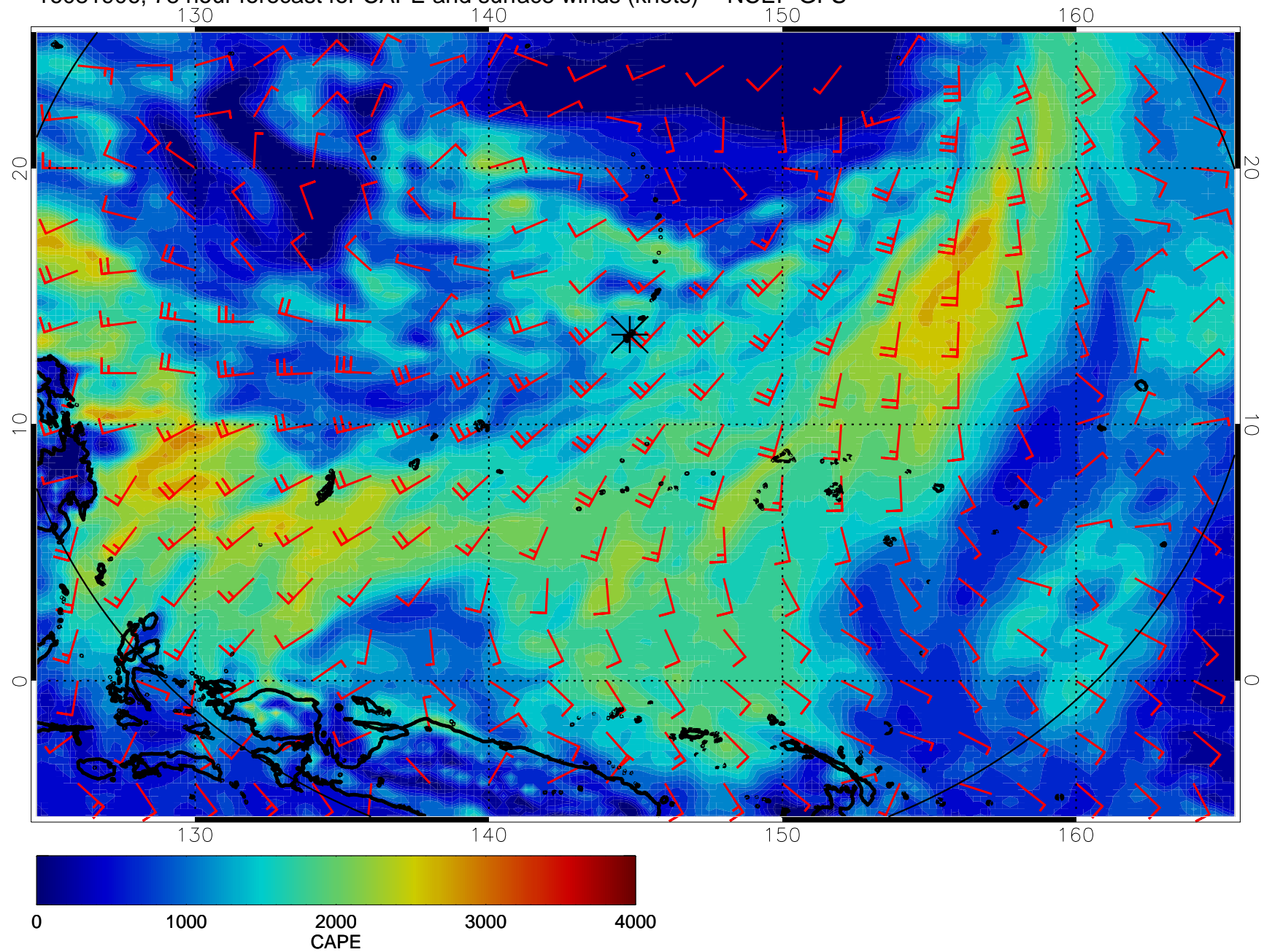
16081818, 66 hour forecast for CAPE and surface winds (knots) -- NCEP GFS



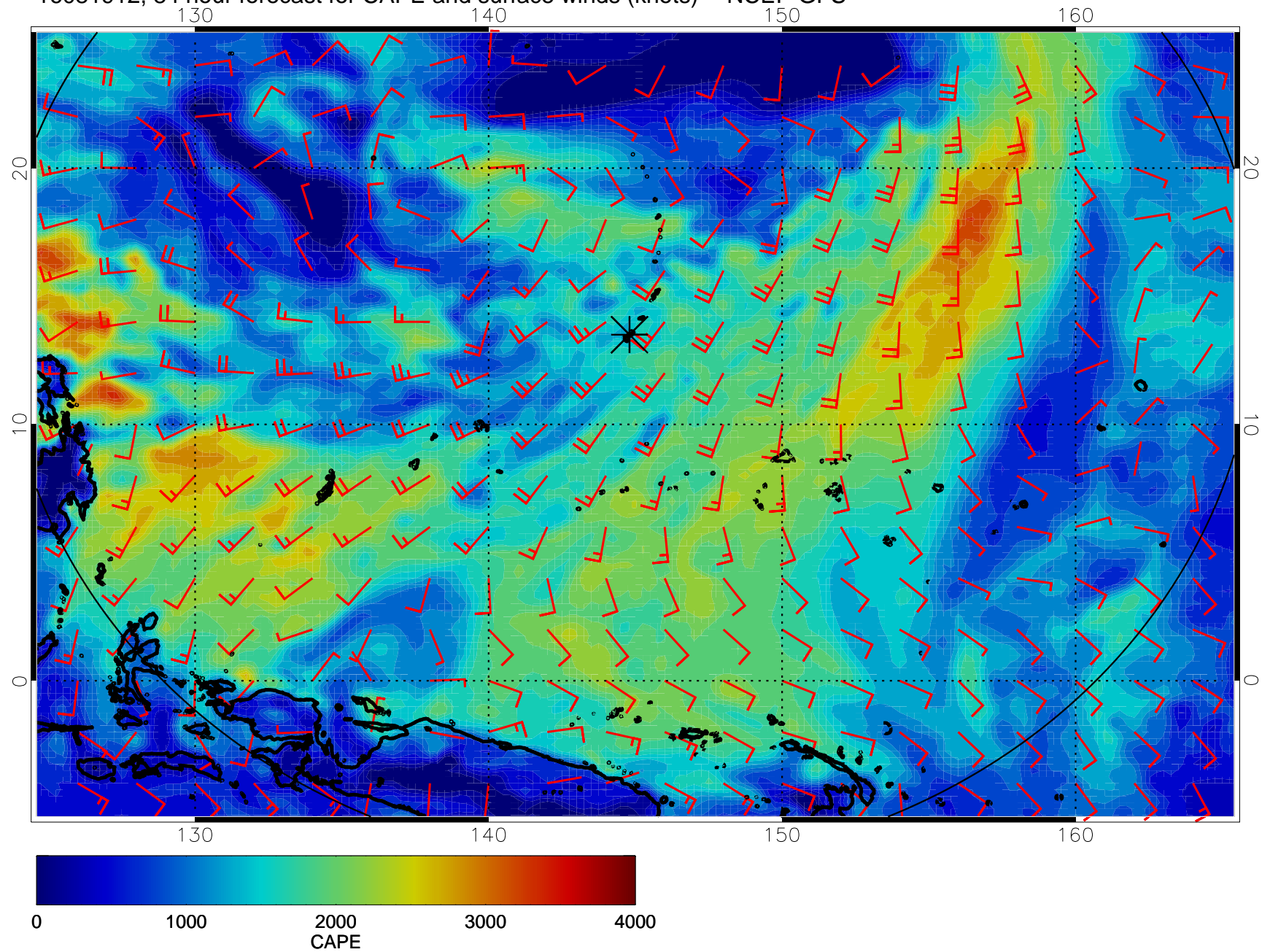
16081900, 72 hour forecast for CAPE and surface winds (knots) -- NCEP GFS



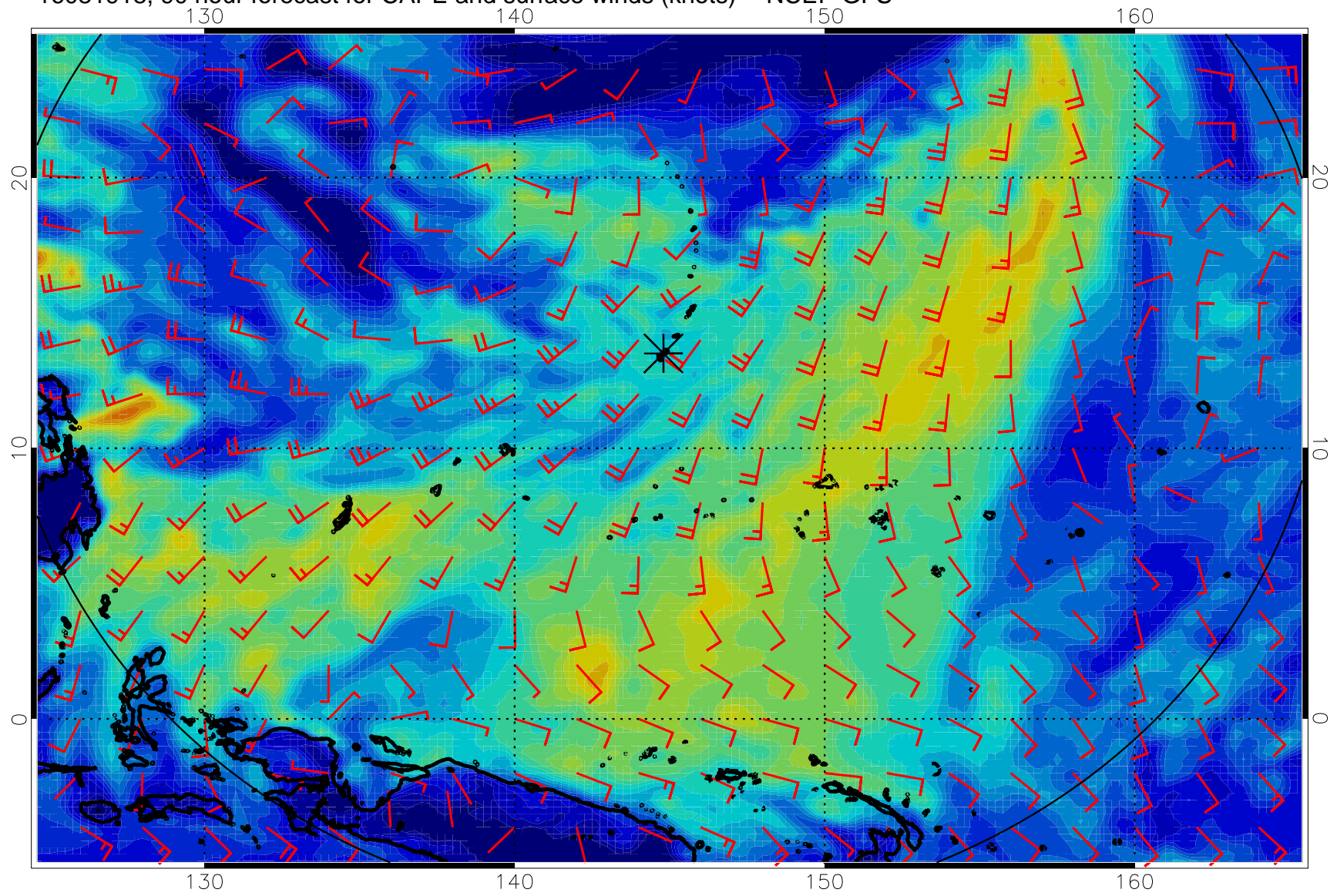
16081906, 78 hour forecast for CAPE and surface winds (knots) -- NCEP GFS



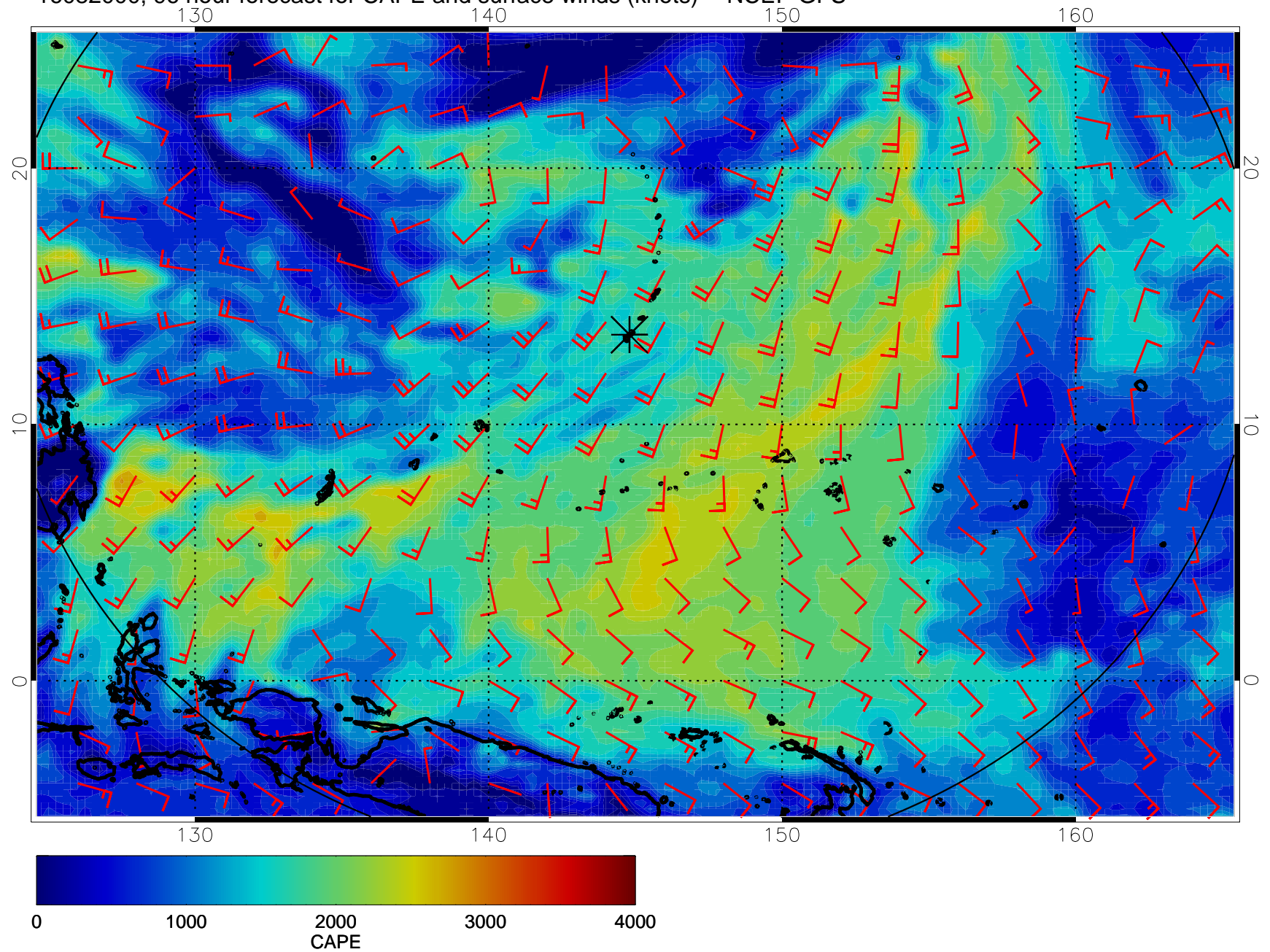
16081912, 84 hour forecast for CAPE and surface winds (knots) -- NCEP GFS



16081918, 90 hour forecast for CAPE and surface winds (knots) -- NCEP GFS

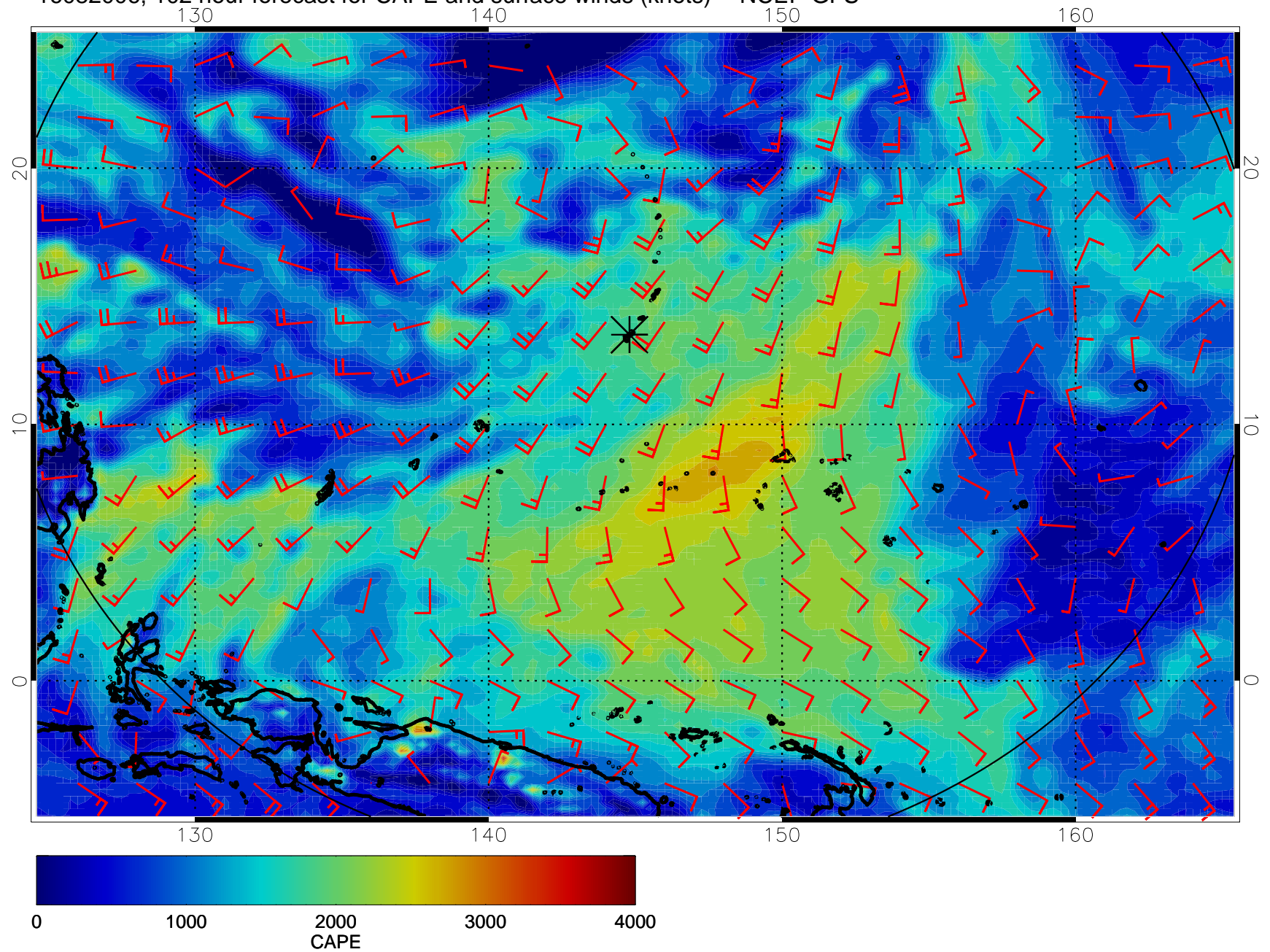


16082000, 96 hour forecast for CAPE and surface winds (knots) -- NCEP GFS

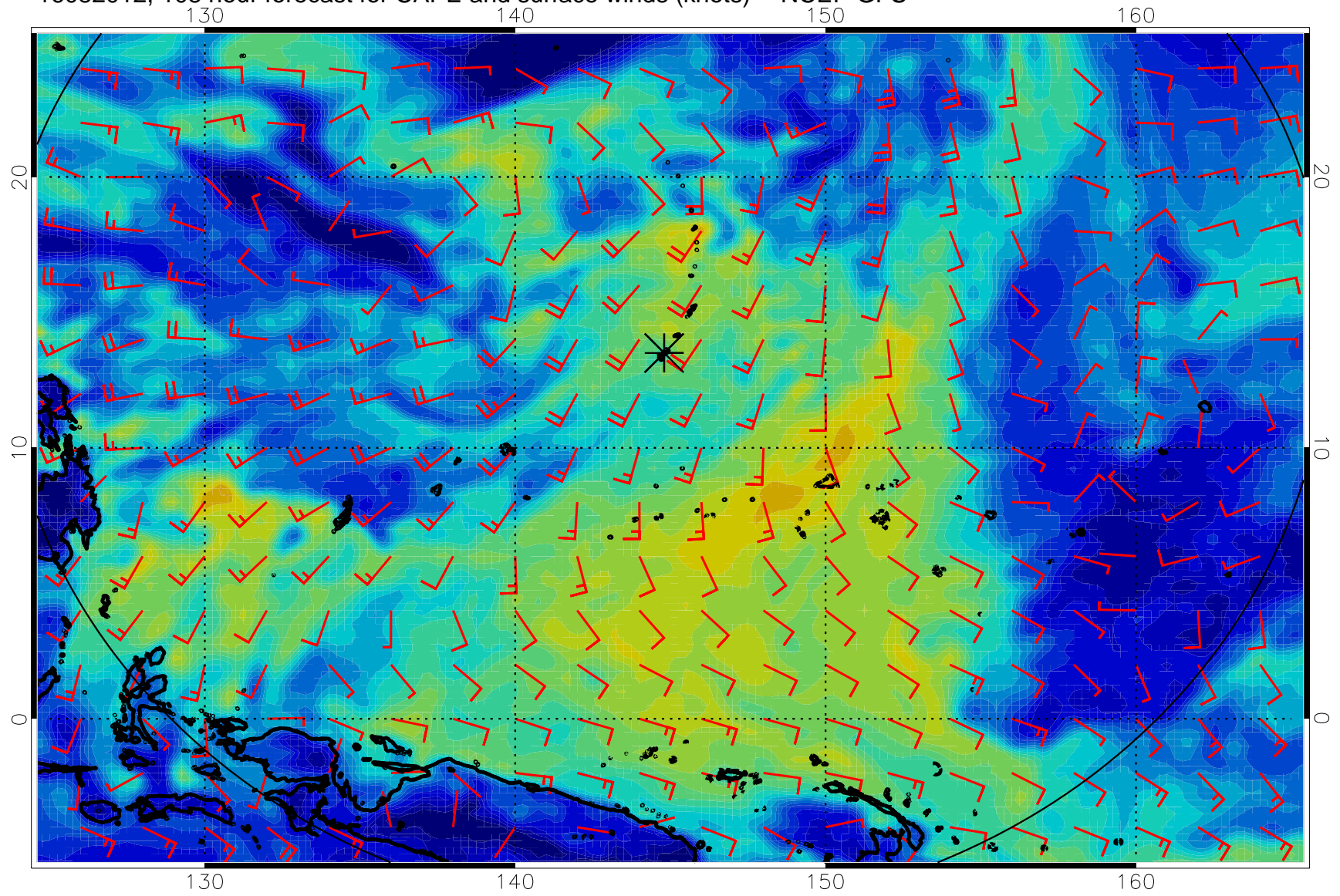




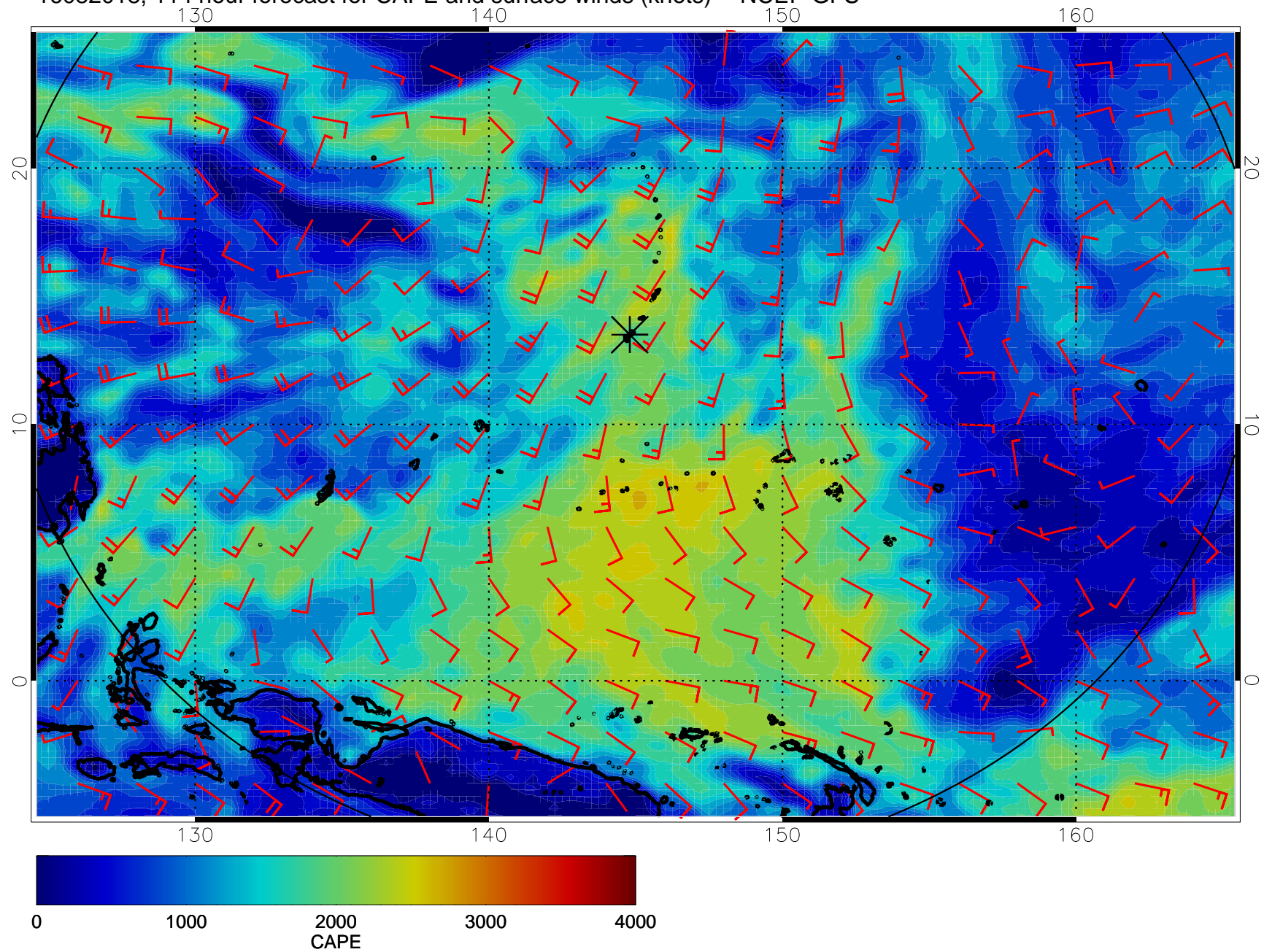
16082006, 102 hour forecast for CAPE and surface winds (knots) -- NCEP GFS



16082012, 108 hour forecast for CAPE and surface winds (knots) -- NCEP GFS



16082018, 114 hour forecast for CAPE and surface winds (knots) -- NCEP GFS



16082100, 120 hour forecast for CAPE and surface winds (knots) -- NCEP GFS

