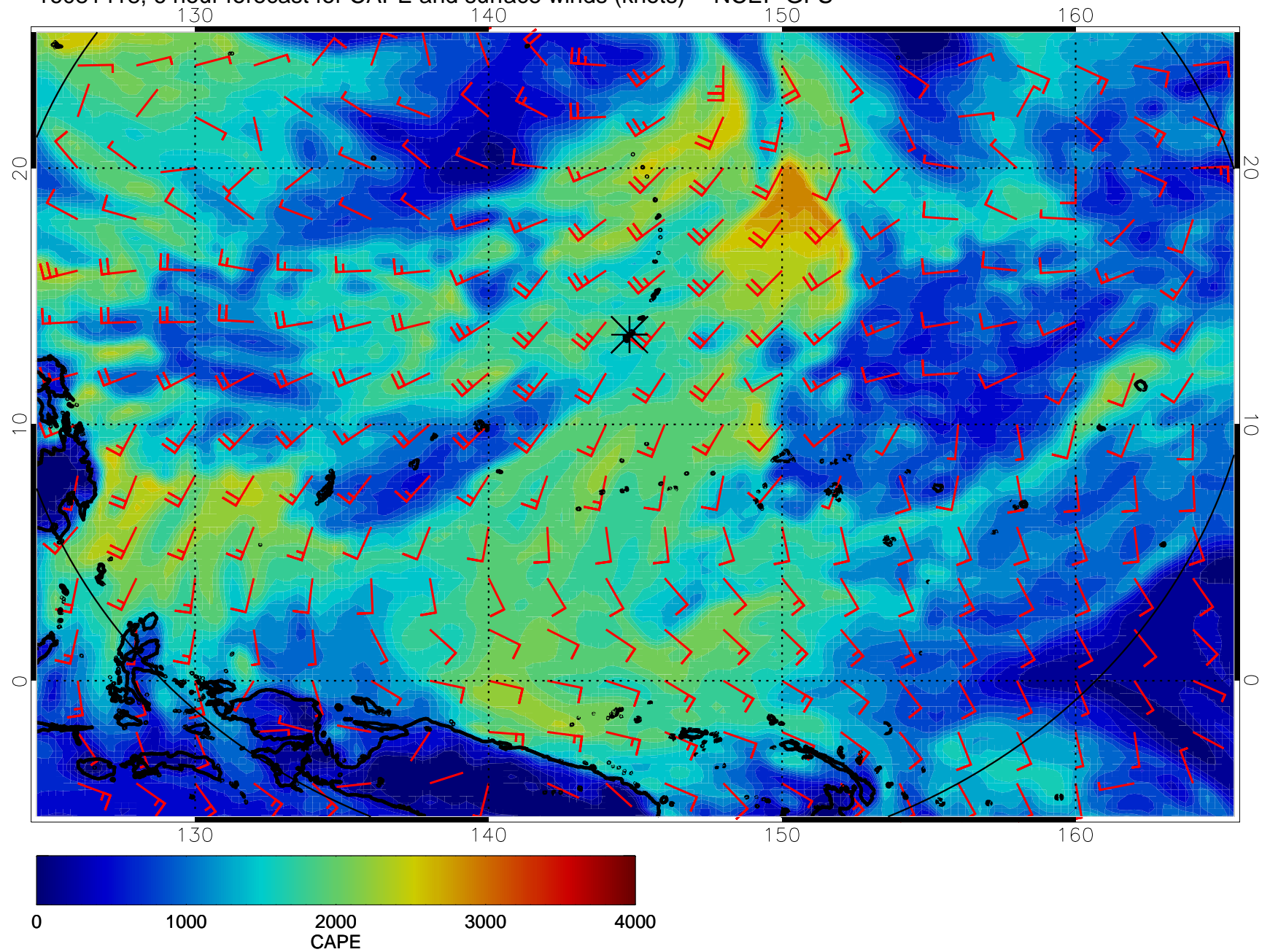
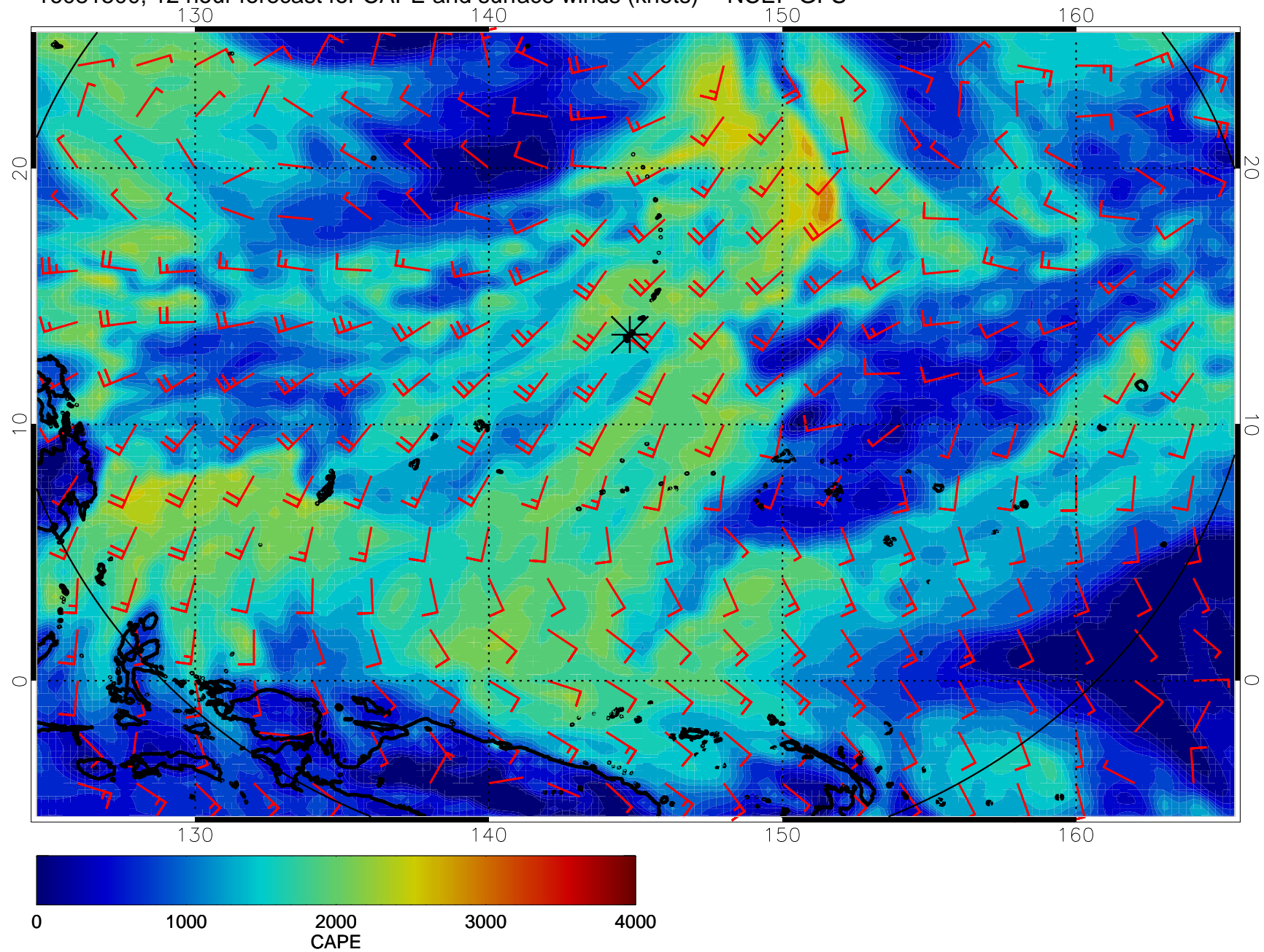


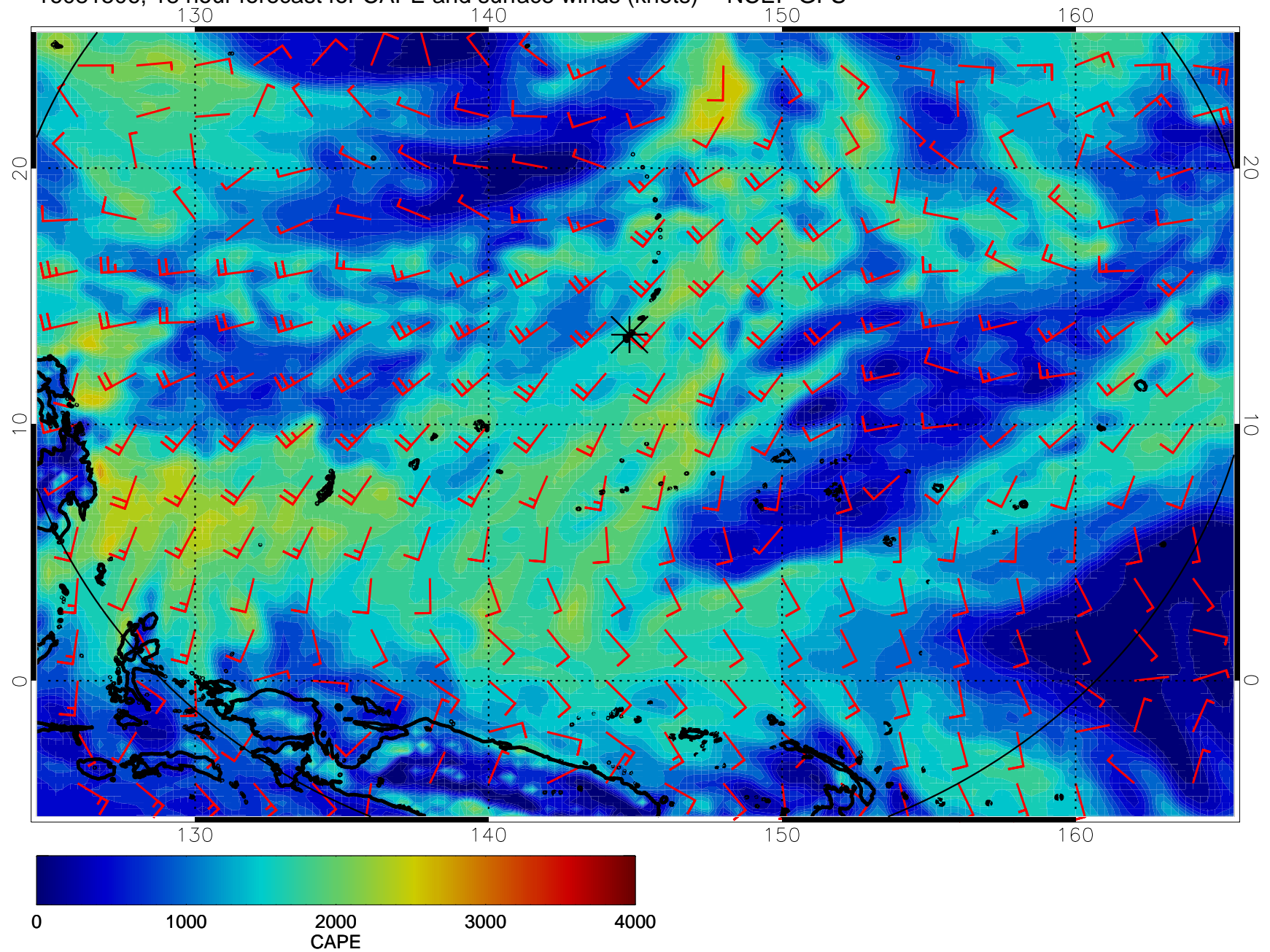
16081418, 6 hour forecast for CAPE and surface winds (knots) -- NCEP GFS



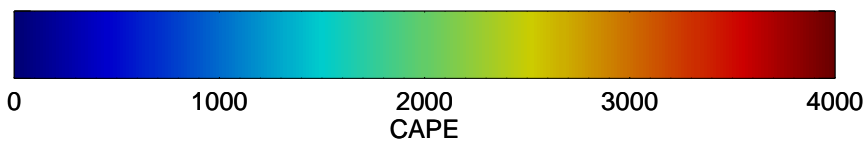
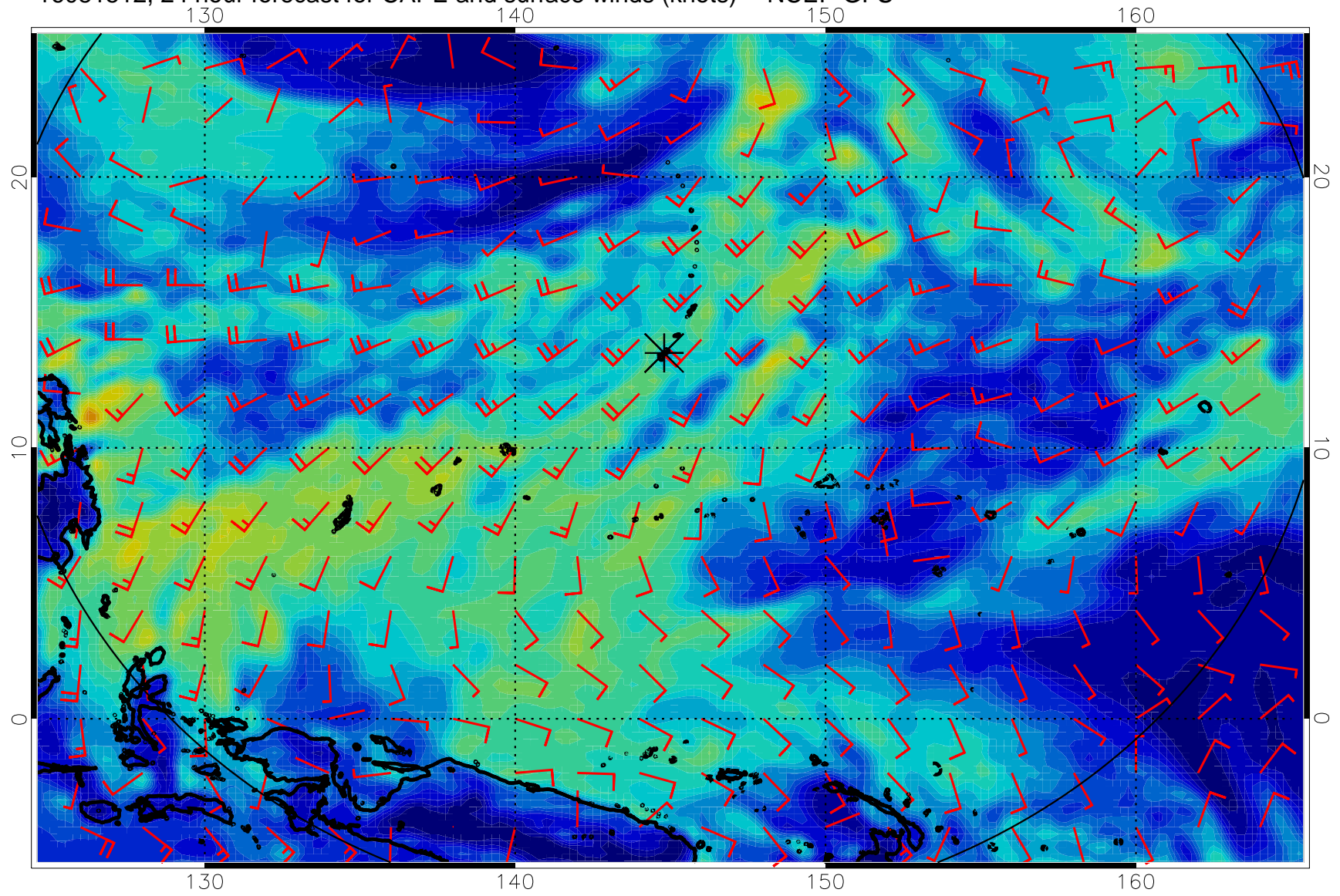
16081500, 12 hour forecast for CAPE and surface winds (knots) -- NCEP GFS



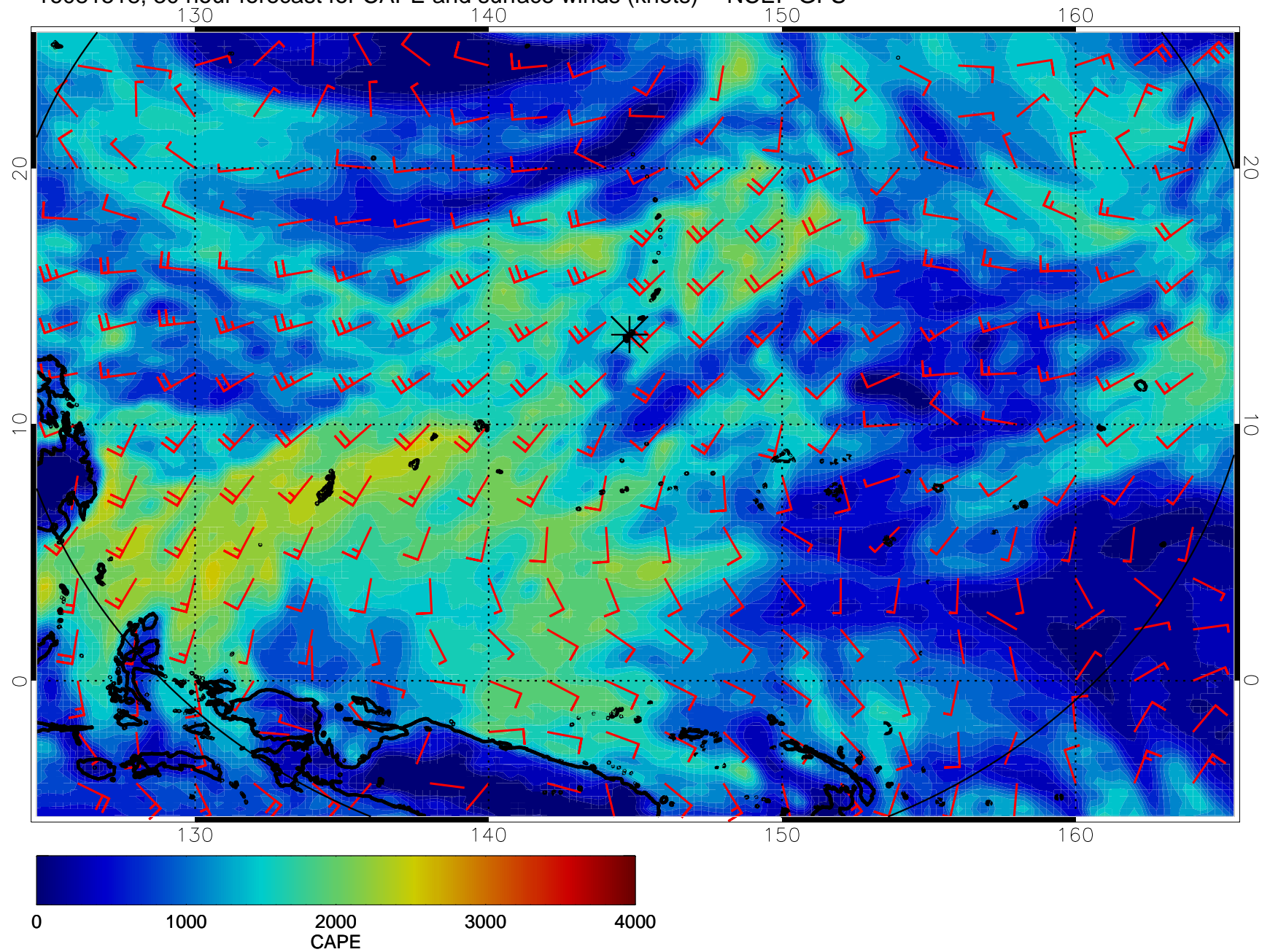
16081506, 18 hour forecast for CAPE and surface winds (knots) -- NCEP GFS



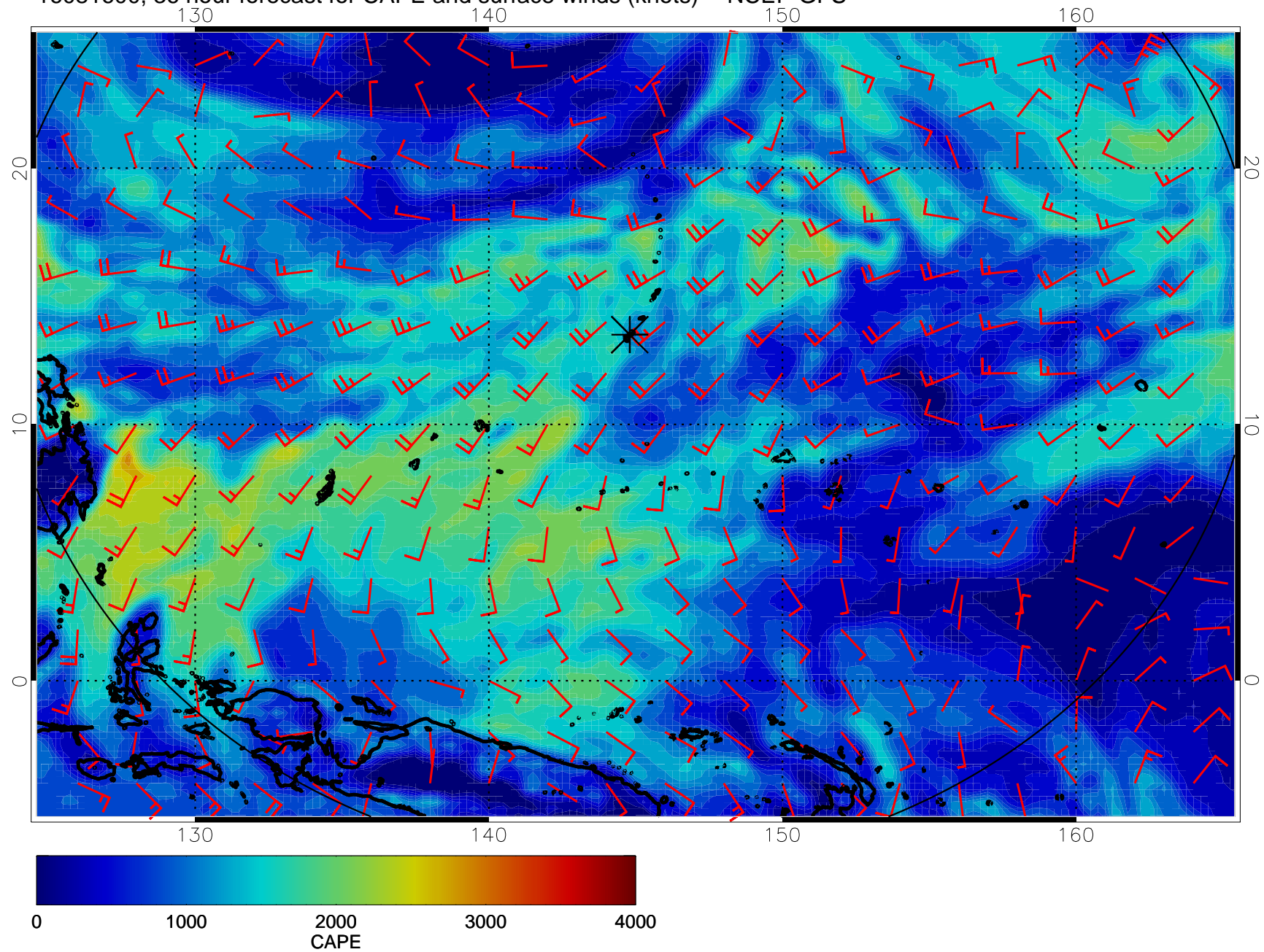
16081512, 24 hour forecast for CAPE and surface winds (knots) -- NCEP GFS



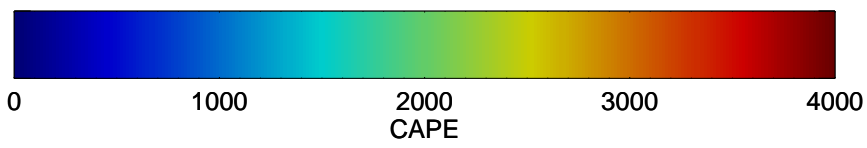
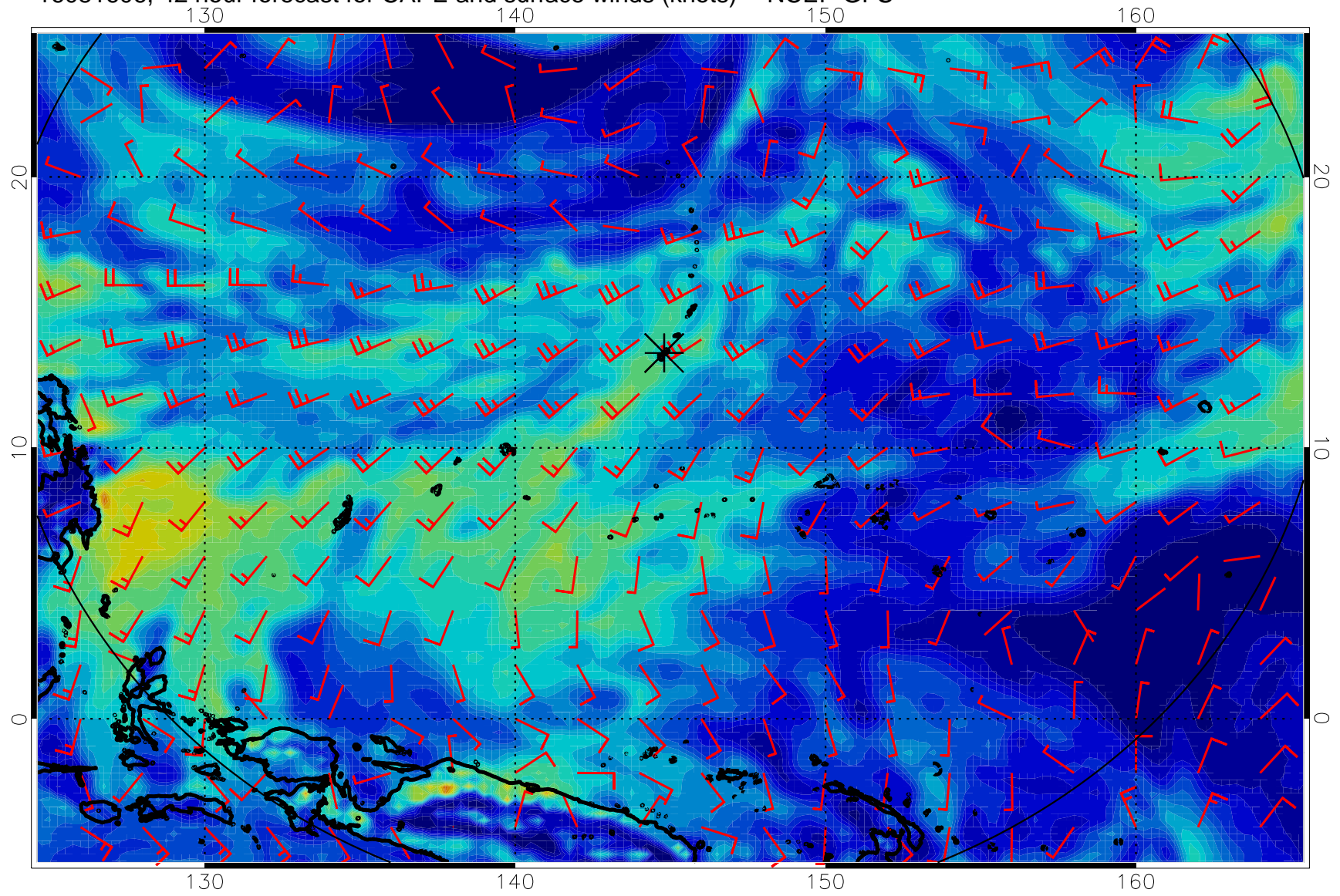
16081518, 30 hour forecast for CAPE and surface winds (knots) -- NCEP GFS



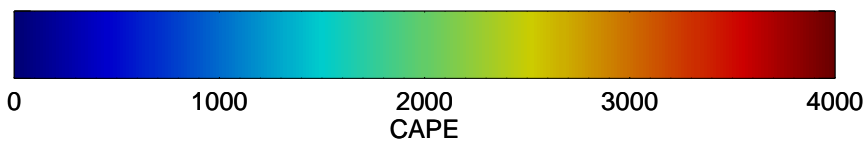
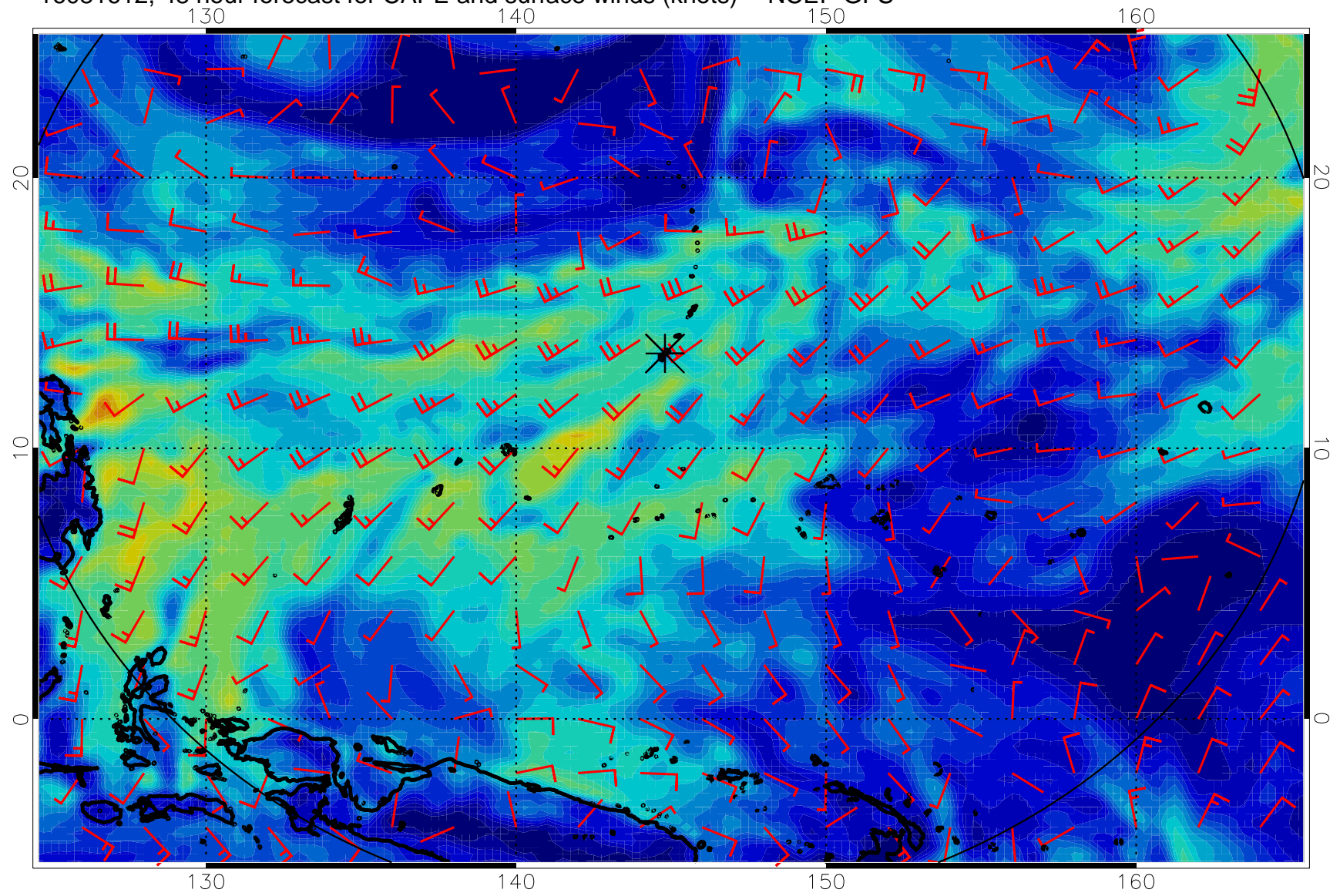
16081600, 36 hour forecast for CAPE and surface winds (knots) -- NCEP GFS



16081606, 42 hour forecast for CAPE and surface winds (knots) -- NCEP GFS

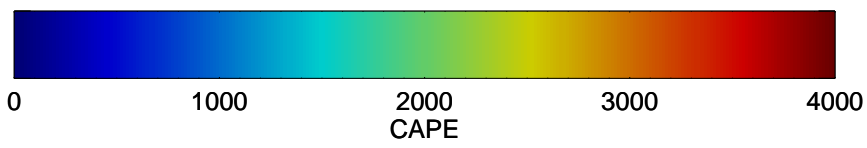
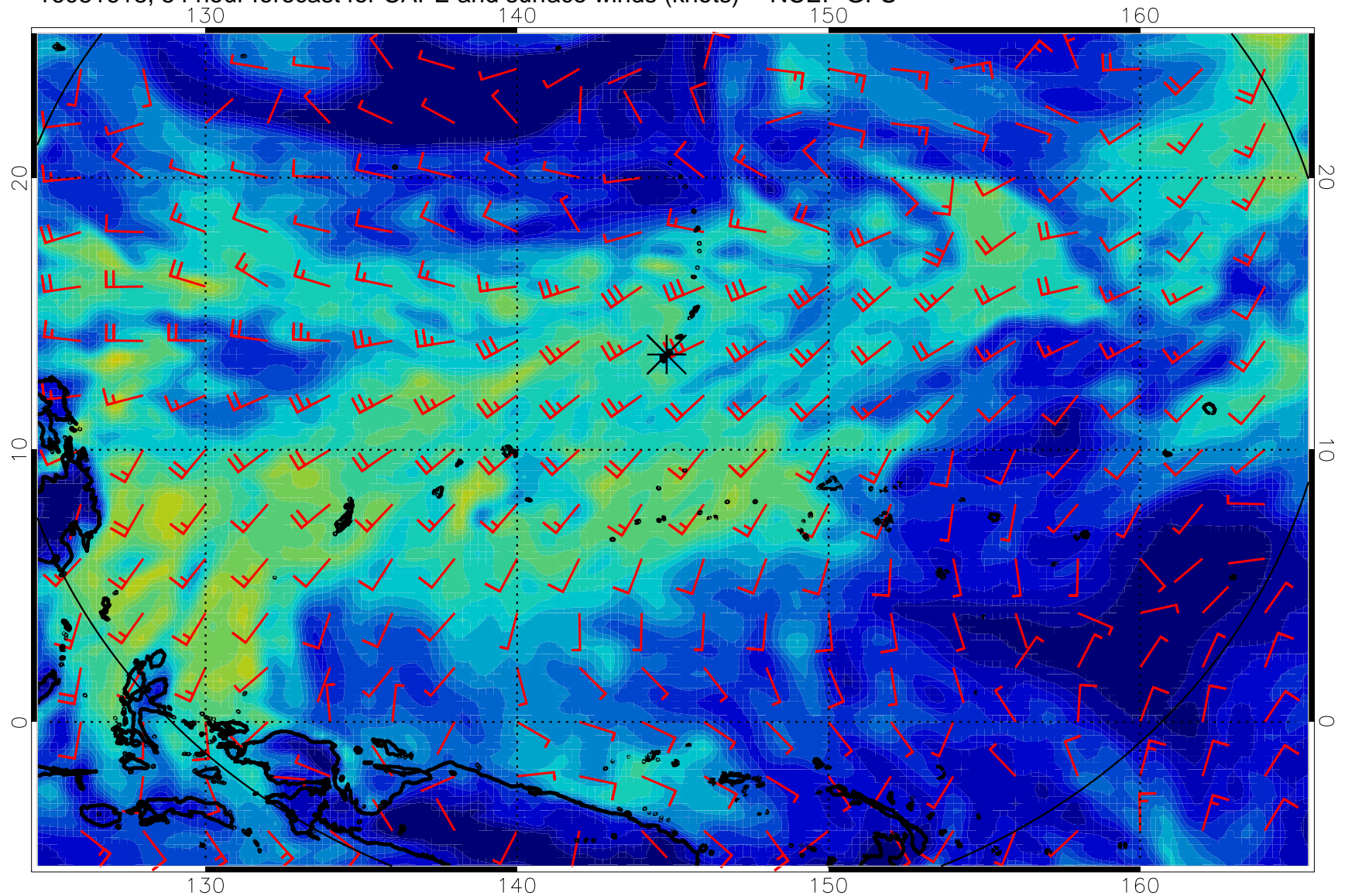


16081612, 48 hour forecast for CAPE and surface winds (knots) -- NCEP GFS

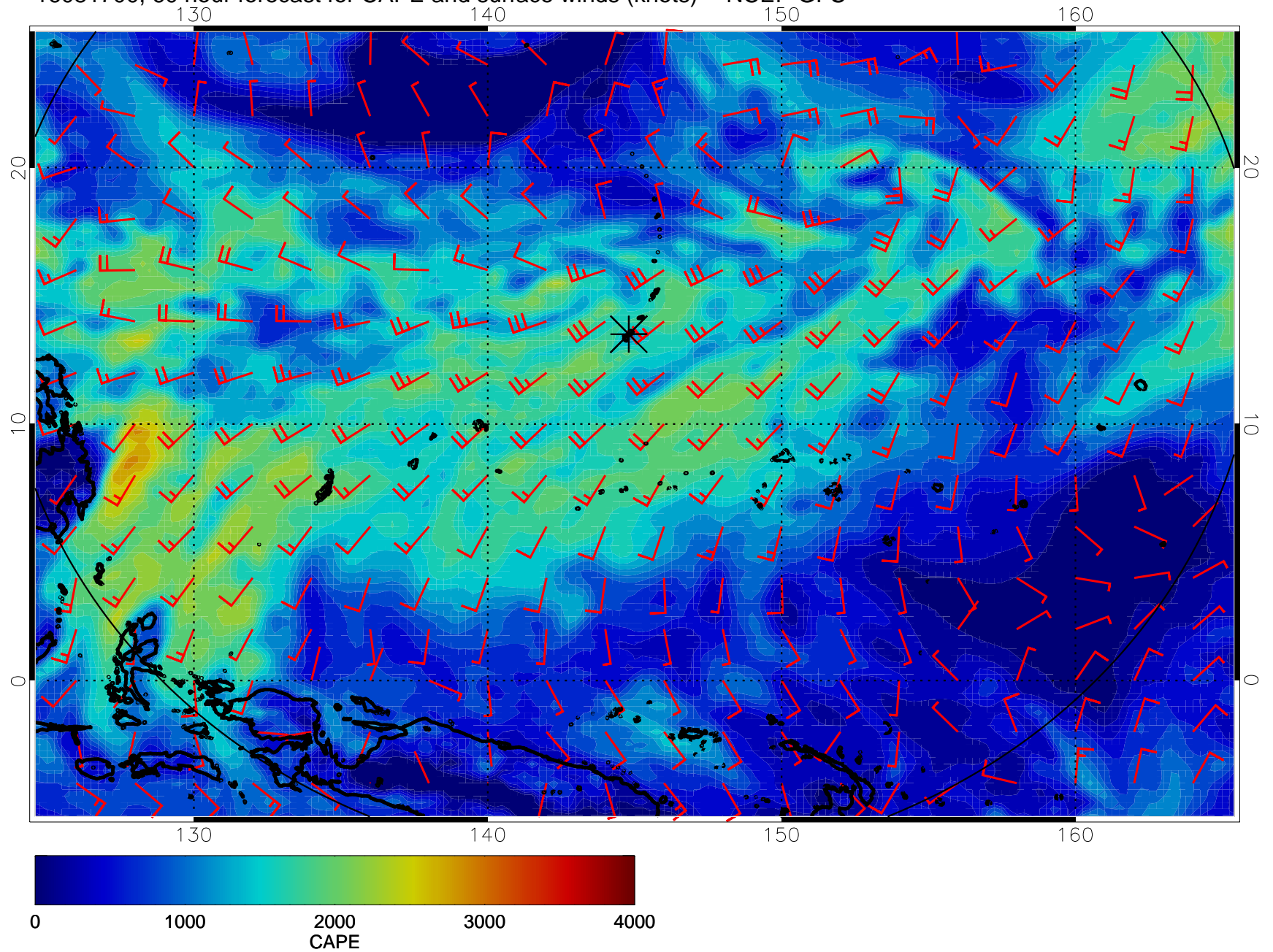




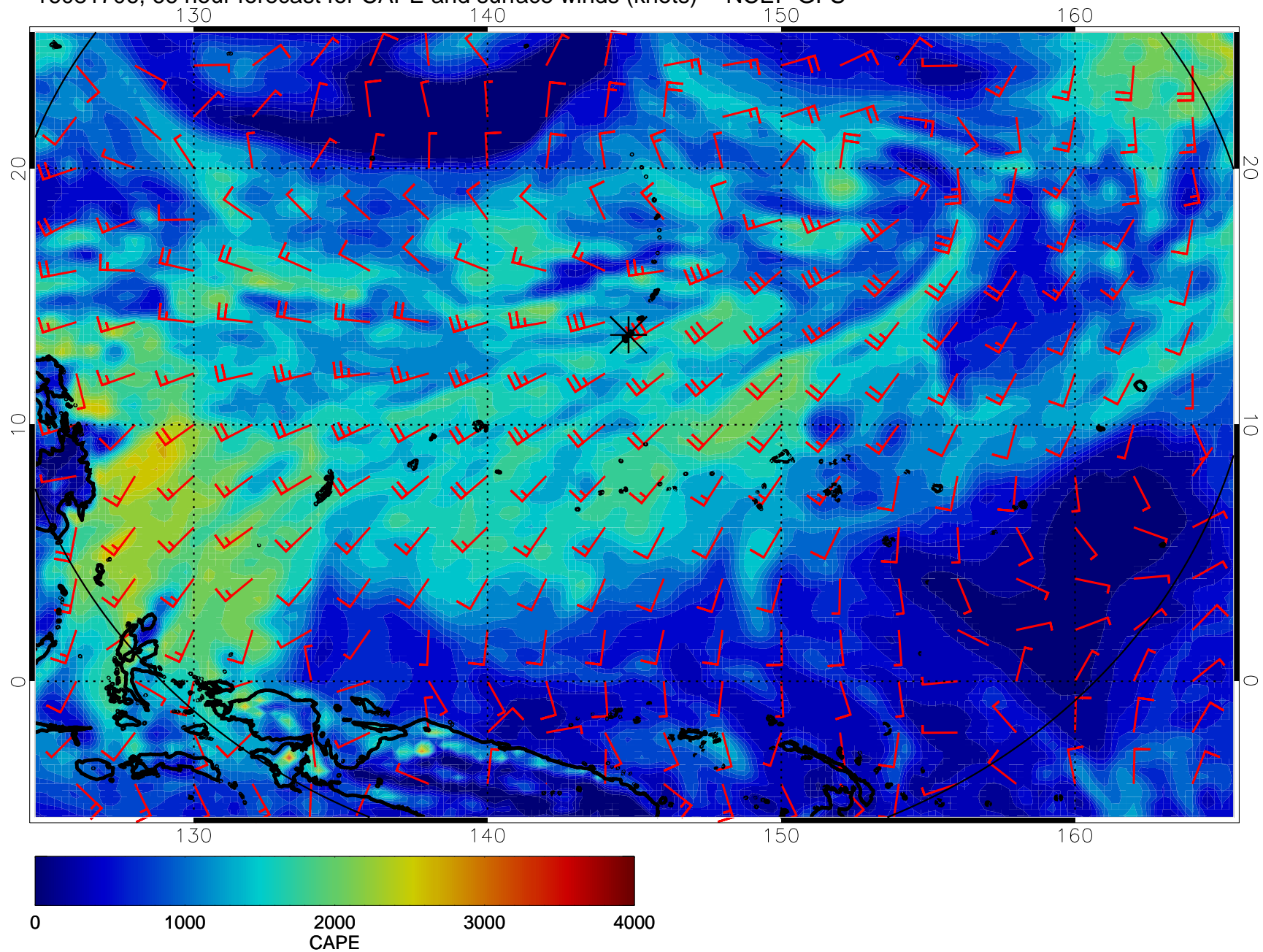
16081618, 54 hour forecast for CAPE and surface winds (knots) -- NCEP GFS



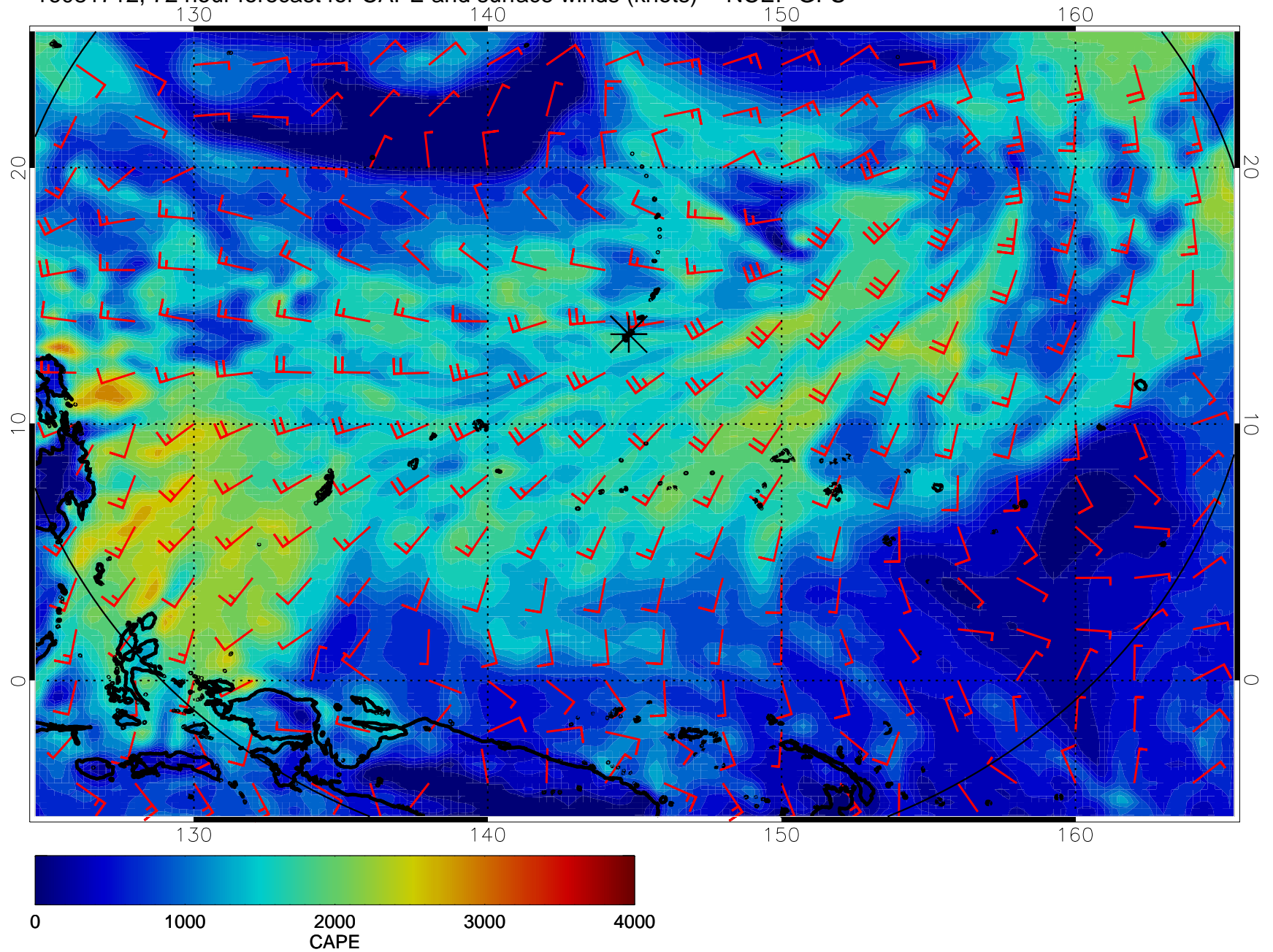
16081700, 60 hour forecast for CAPE and surface winds (knots) -- NCEP GFS



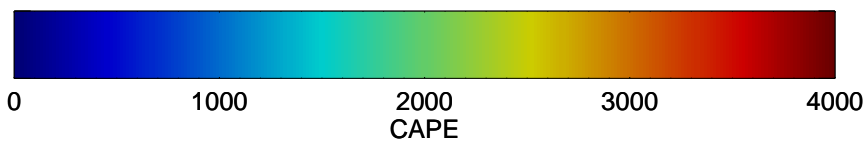
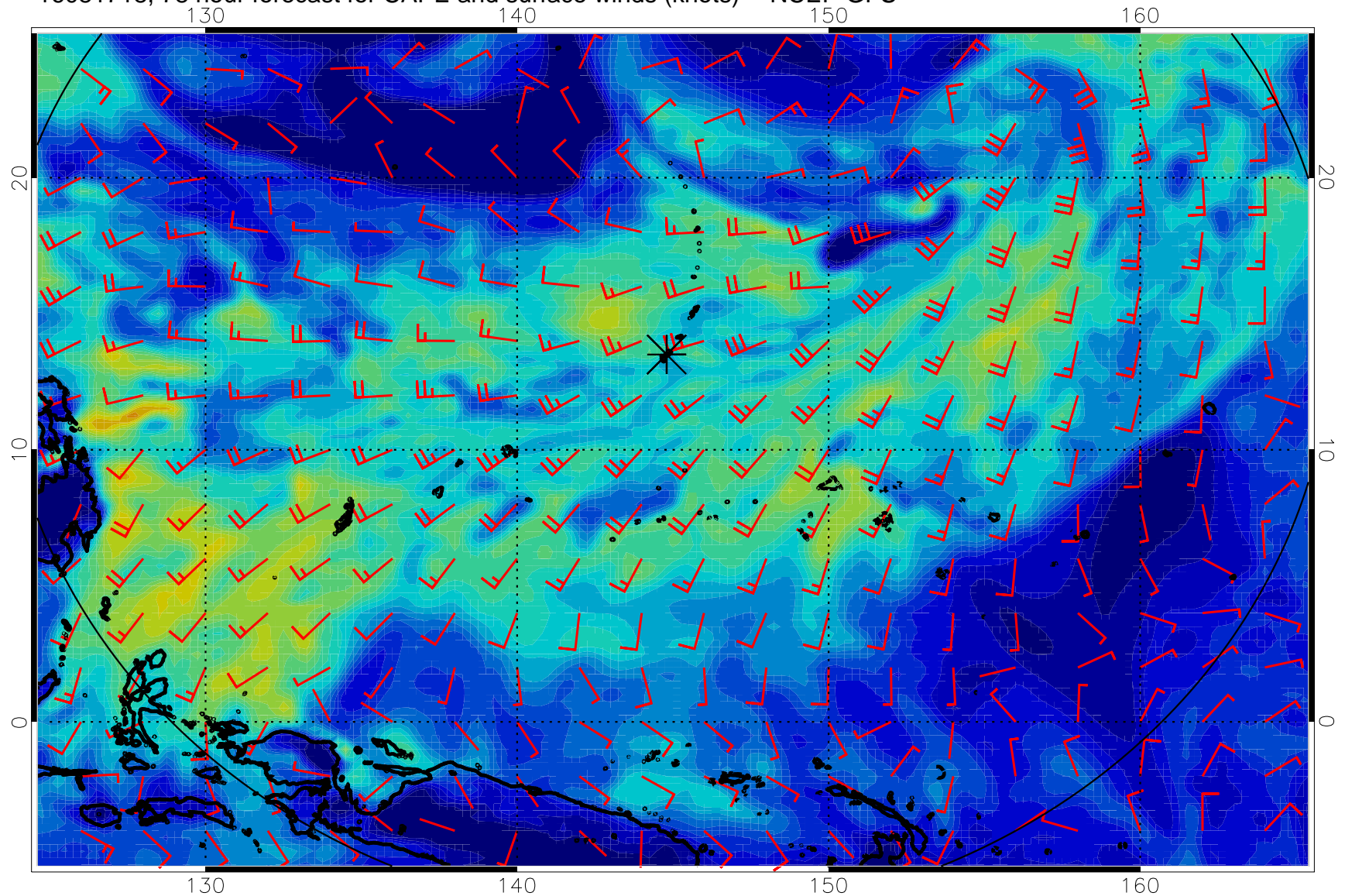
16081706, 66 hour forecast for CAPE and surface winds (knots) -- NCEP GFS



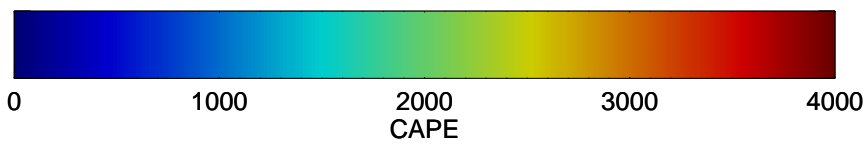
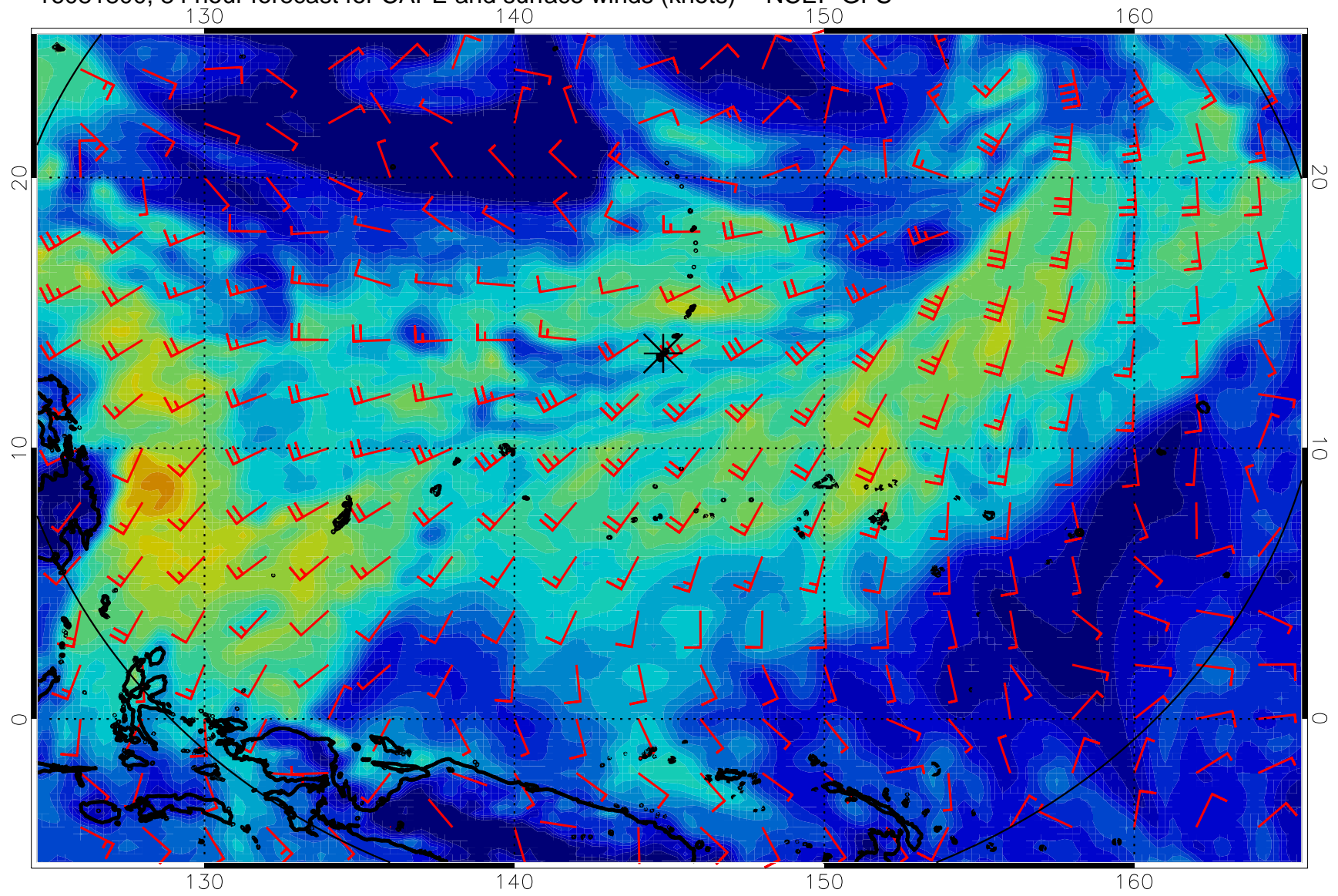
16081712, 72 hour forecast for CAPE and surface winds (knots) -- NCEP GFS



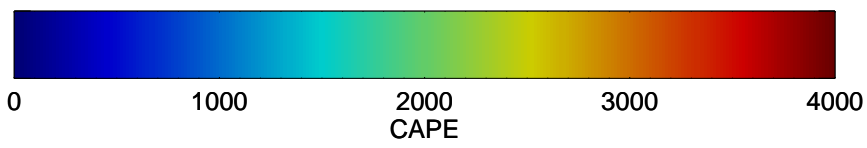
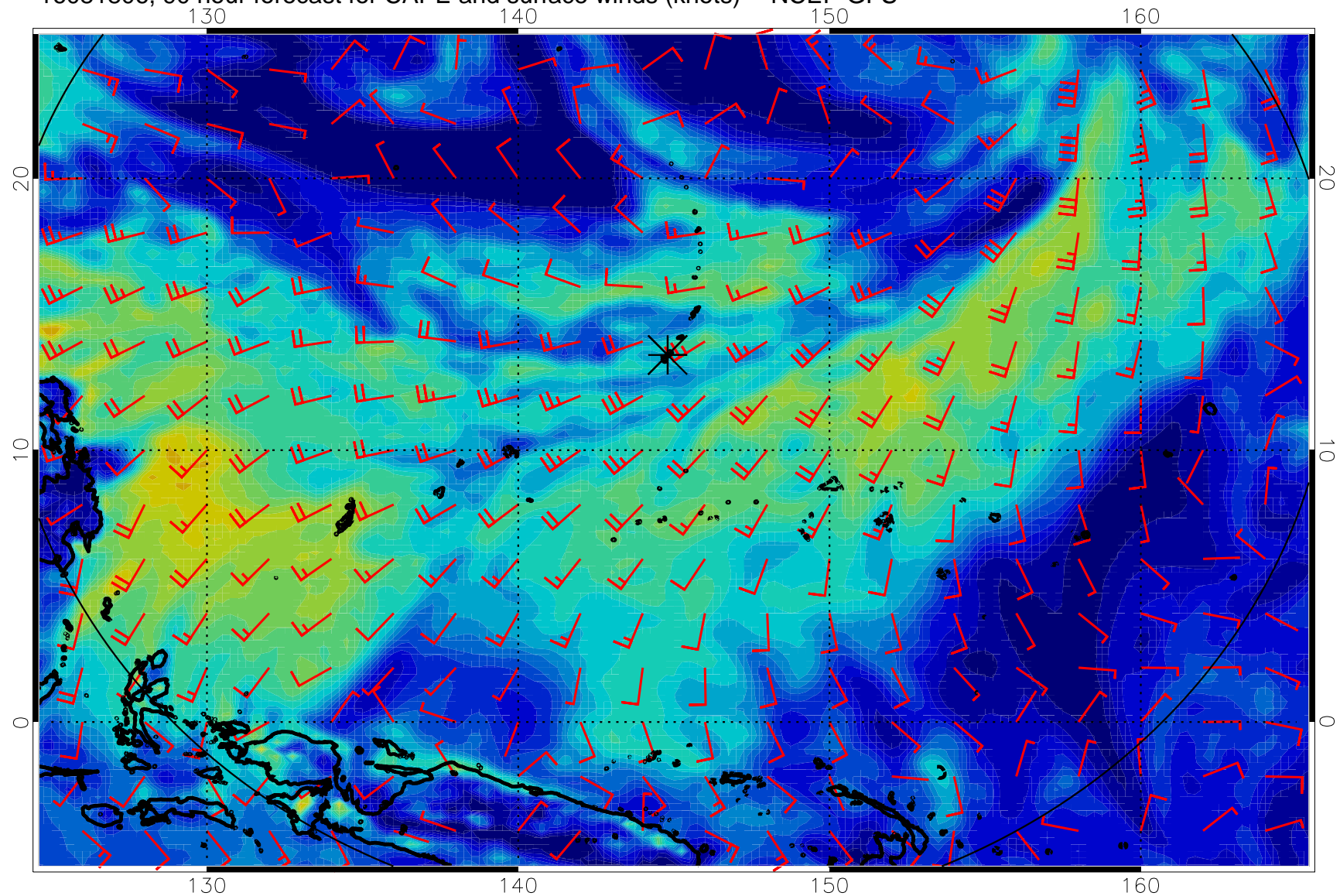
16081718, 78 hour forecast for CAPE and surface winds (knots) -- NCEP GFS



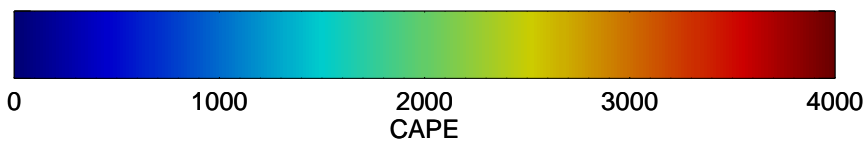
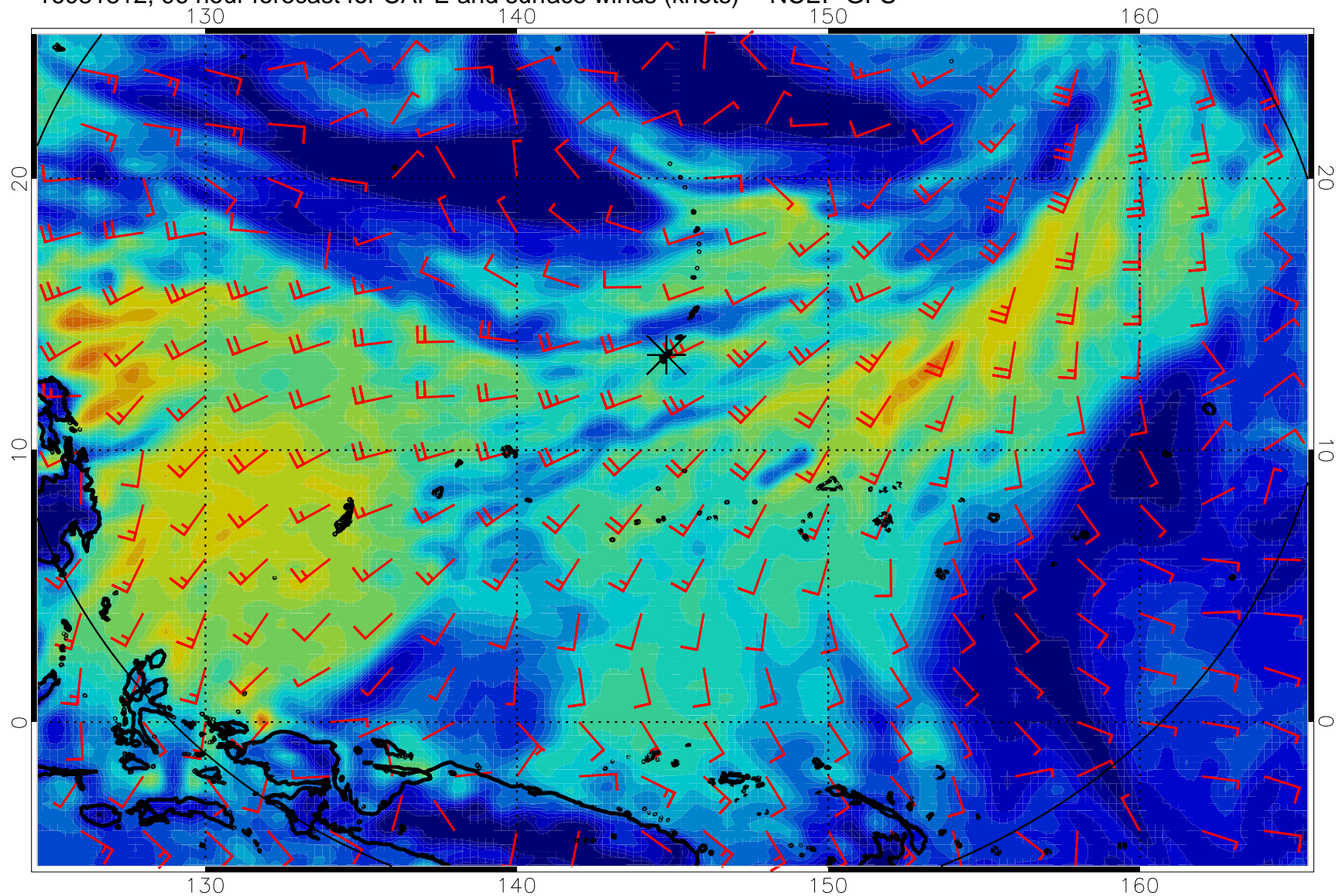
16081800, 84 hour forecast for CAPE and surface winds (knots) -- NCEP GFS



16081806, 90 hour forecast for CAPE and surface winds (knots) -- NCEP GFS

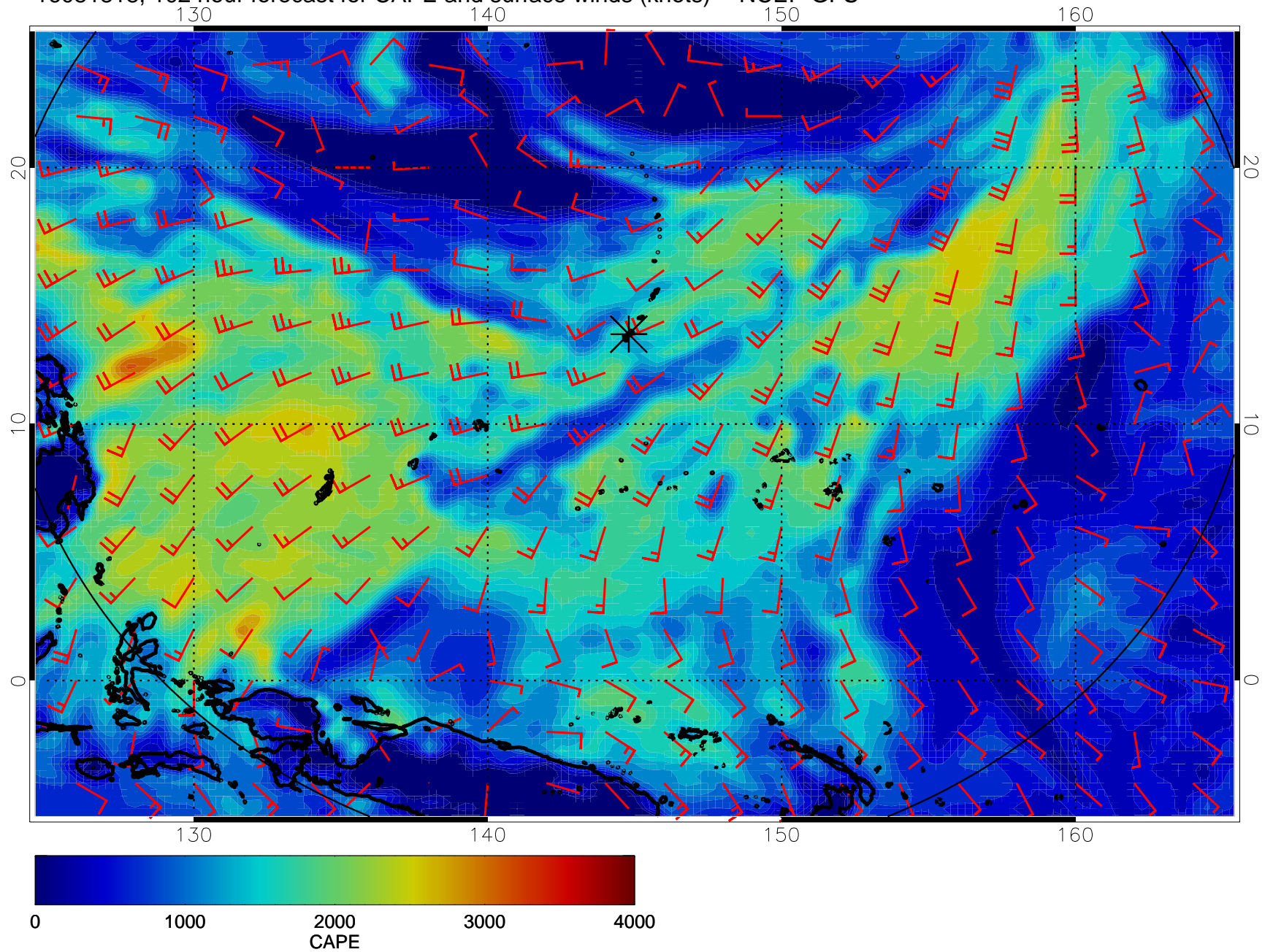


16081812, 96 hour forecast for CAPE and surface winds (knots) -- NCEP GFS

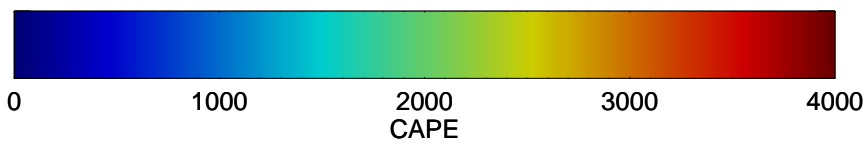
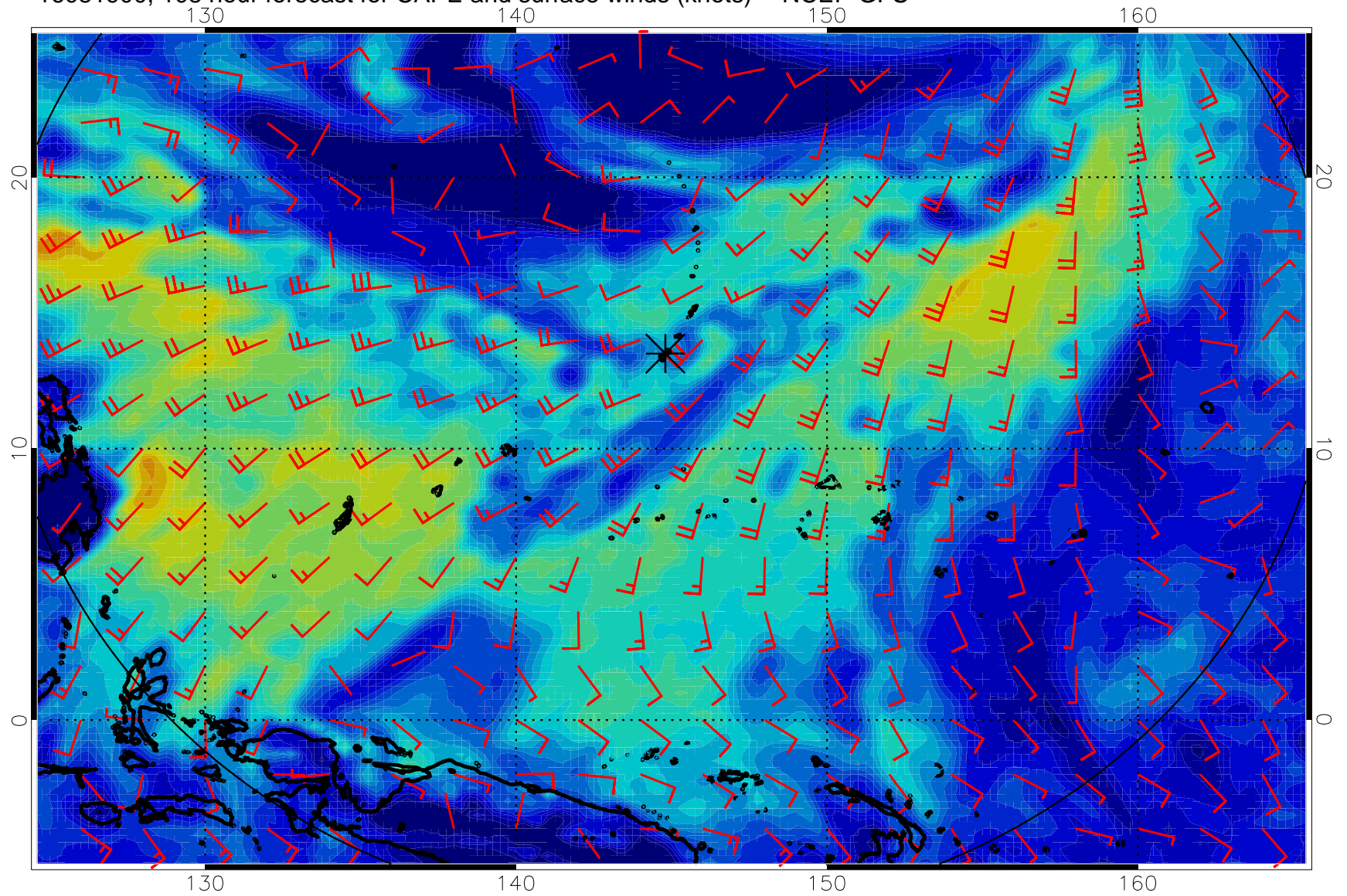




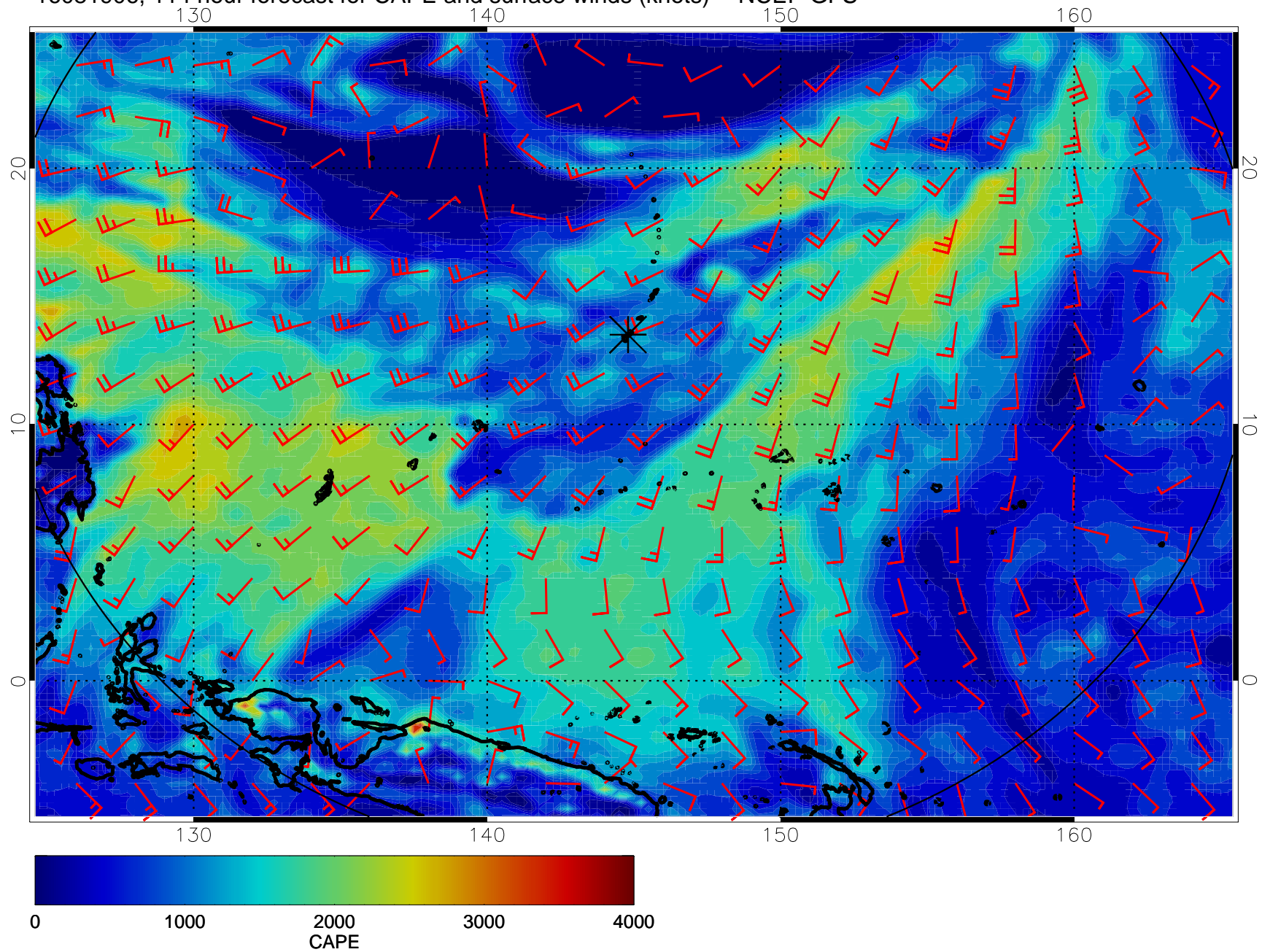
16081818, 102 hour forecast for CAPE and surface winds (knots) -- NCEP GFS



16081900, 108 hour forecast for CAPE and surface winds (knots) -- NCEP GFS



16081906, 114 hour forecast for CAPE and surface winds (knots) -- NCEP GFS



16081912, 120 hour forecast for CAPE and surface winds (knots) -- NCEP GFS

