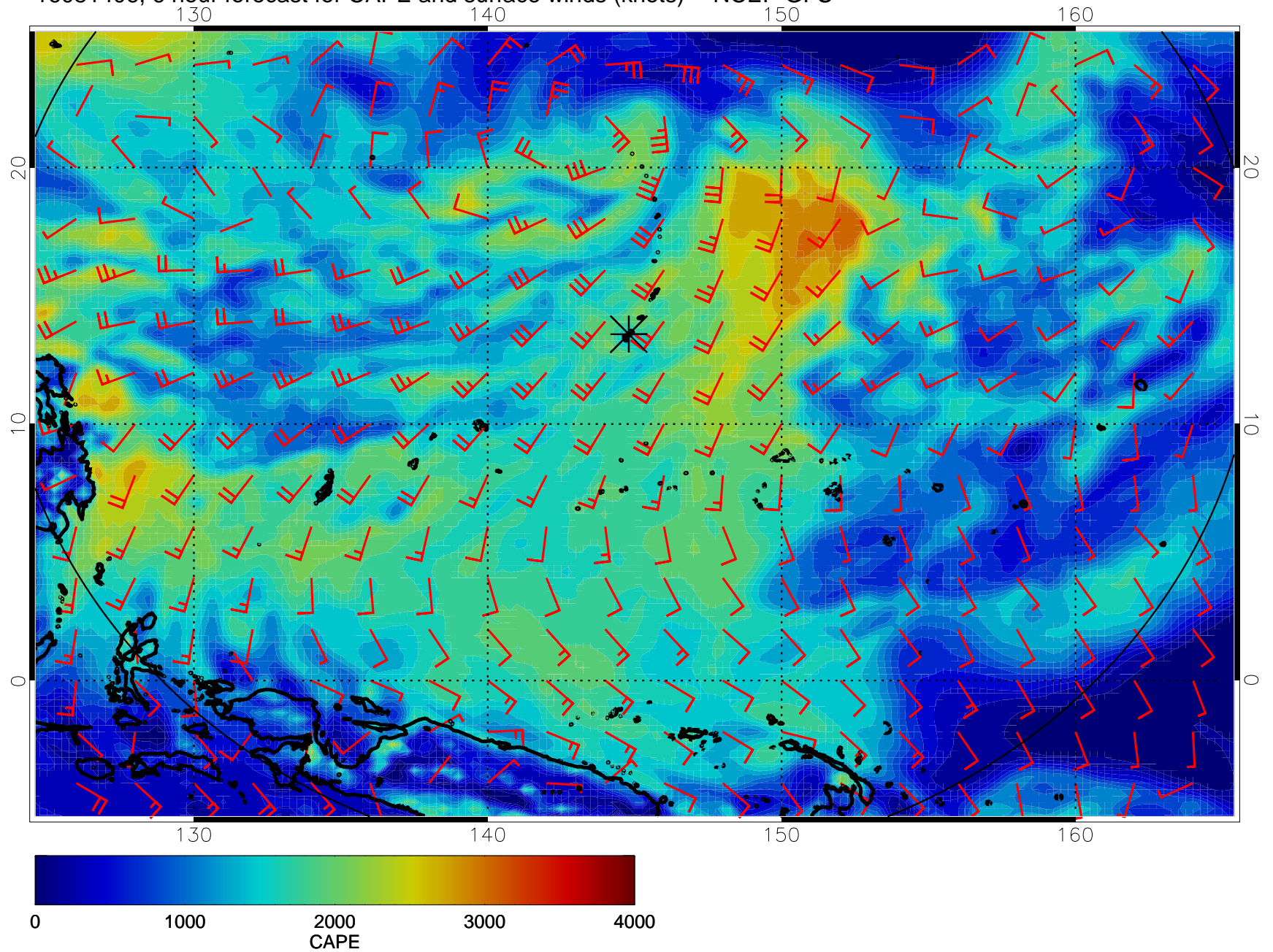
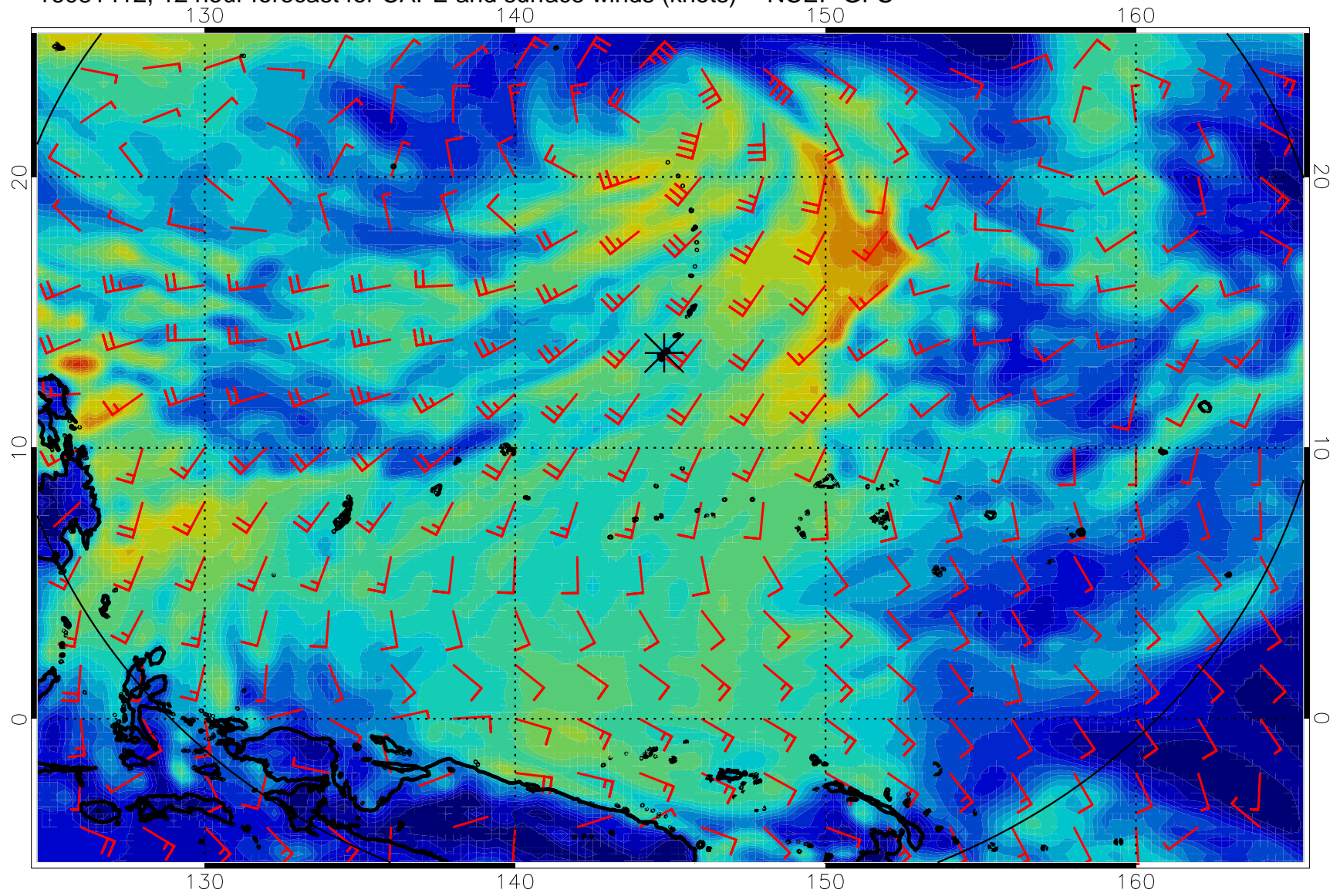


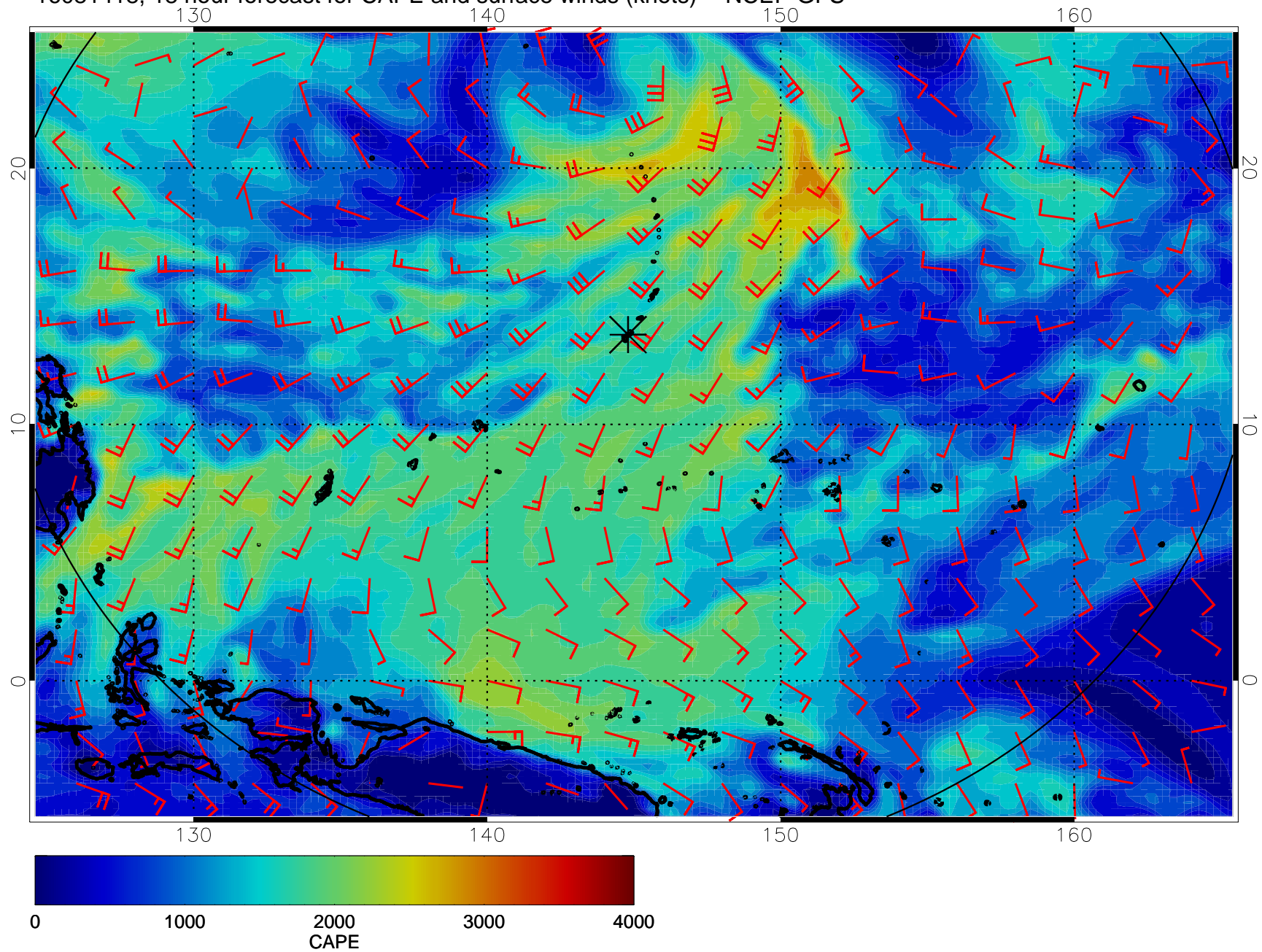
16081406, 6 hour forecast for CAPE and surface winds (knots) -- NCEP GFS



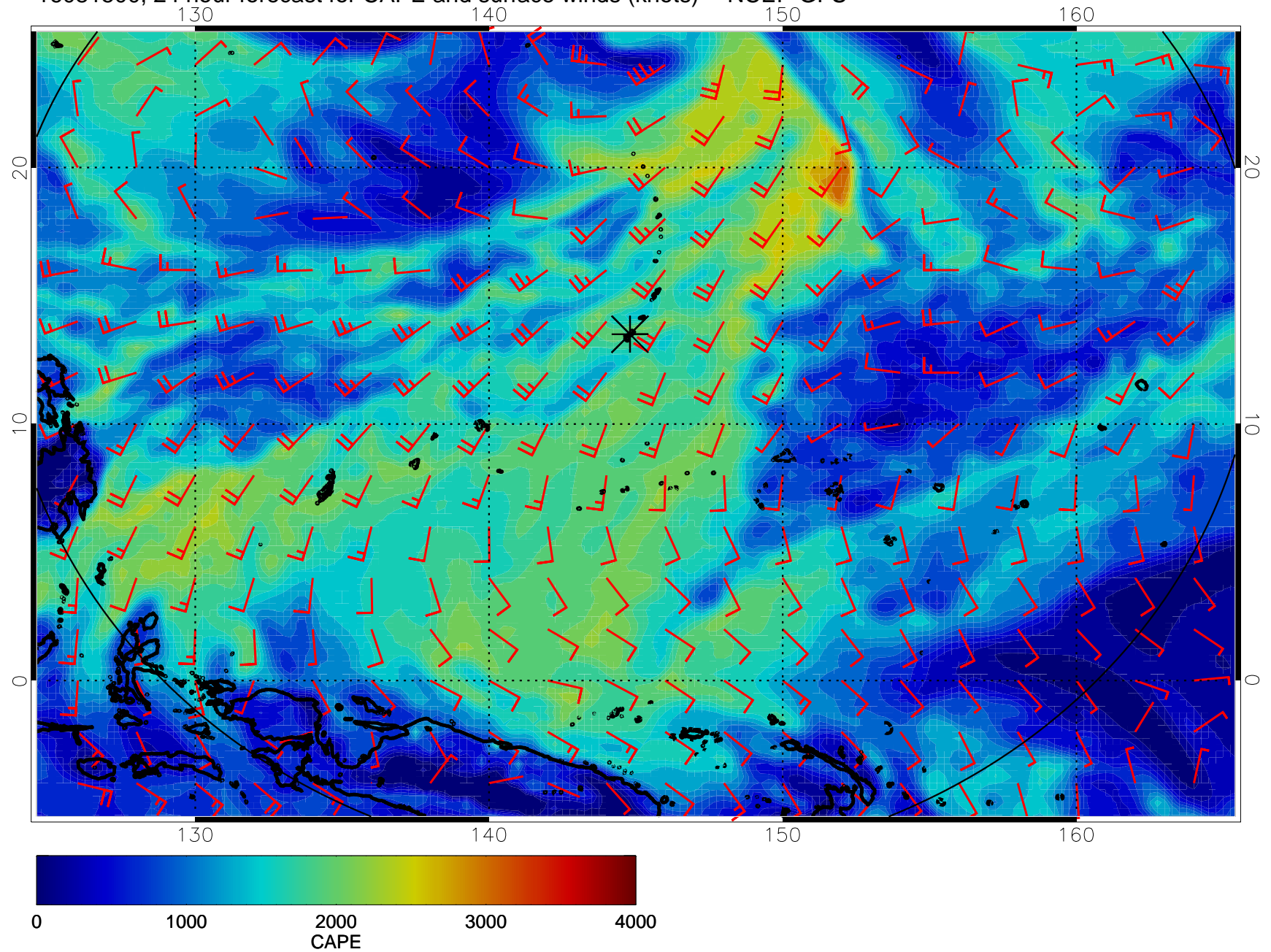
16081412, 12 hour forecast for CAPE and surface winds (knots) -- NCEP GFS



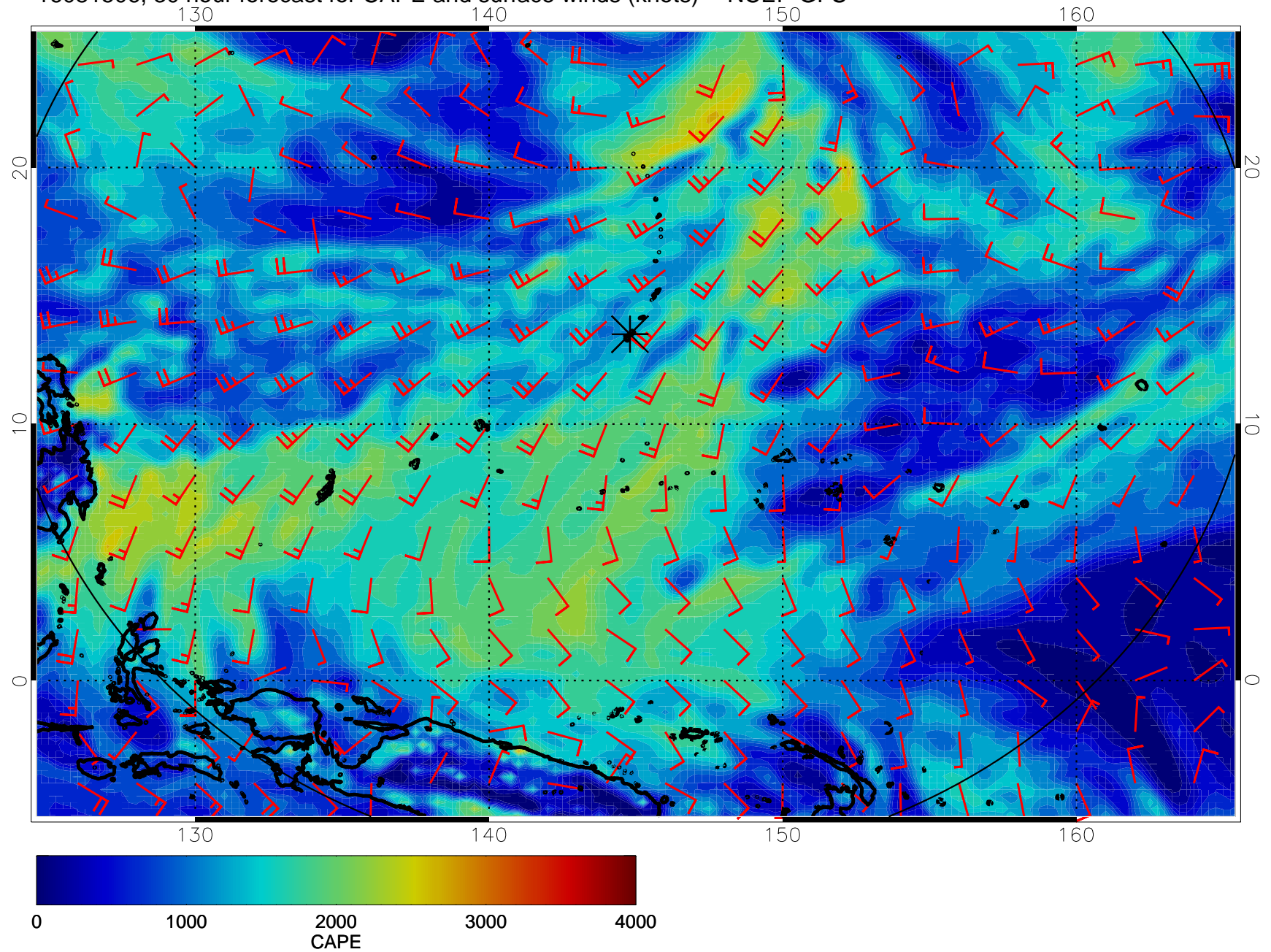
16081418, 18 hour forecast for CAPE and surface winds (knots) -- NCEP GFS



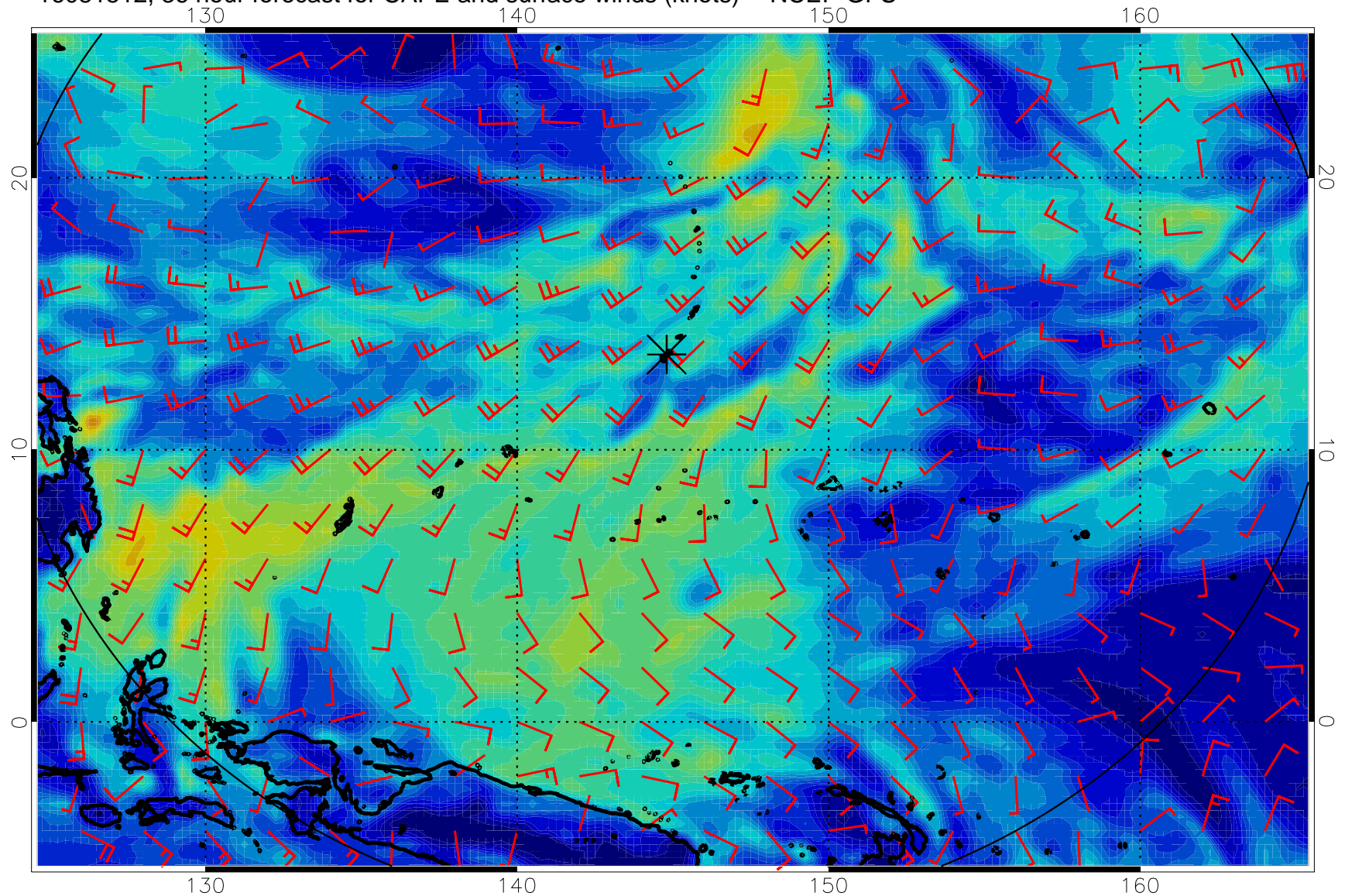
16081500, 24 hour forecast for CAPE and surface winds (knots) -- NCEP GFS



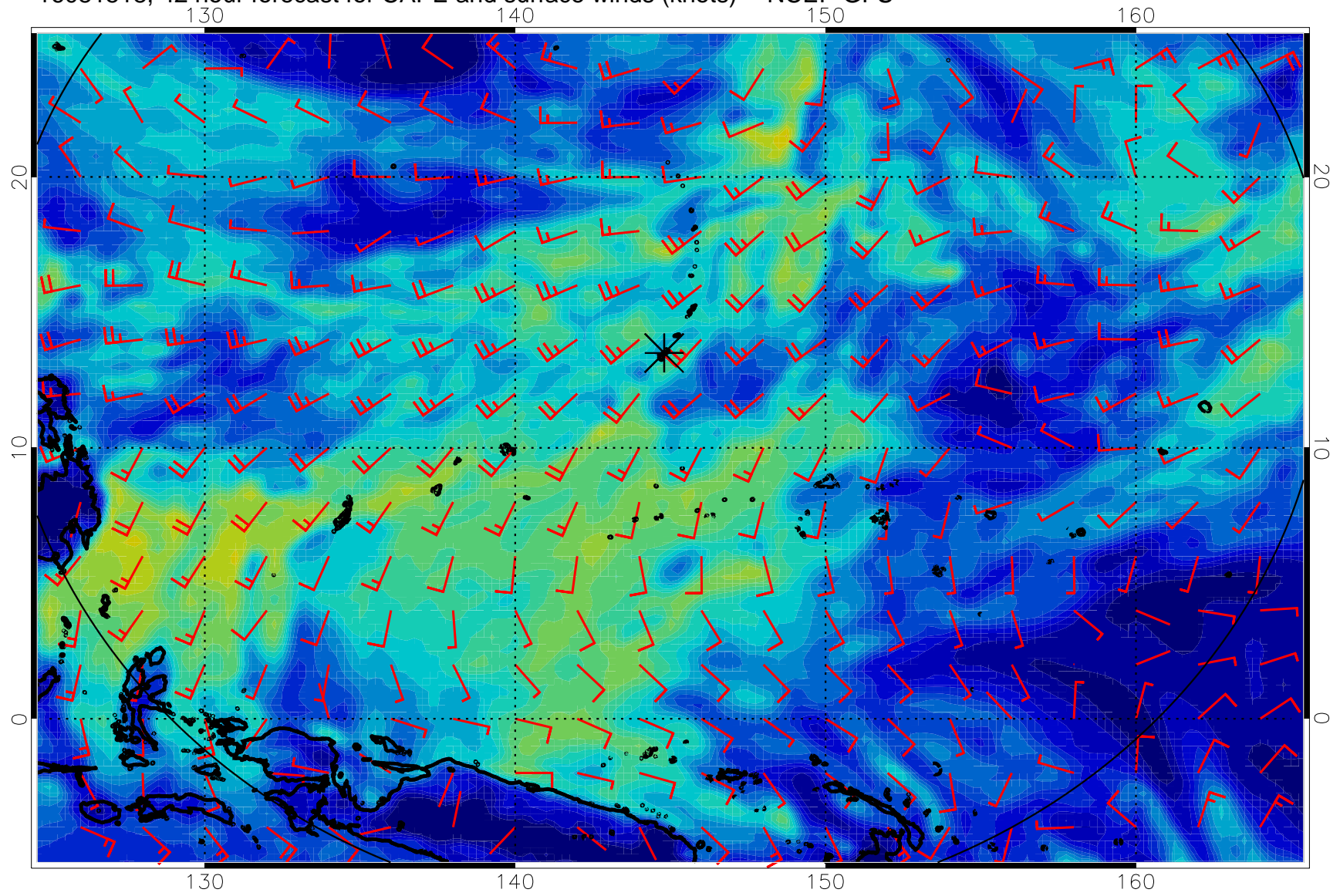
16081506, 30 hour forecast for CAPE and surface winds (knots) -- NCEP GFS



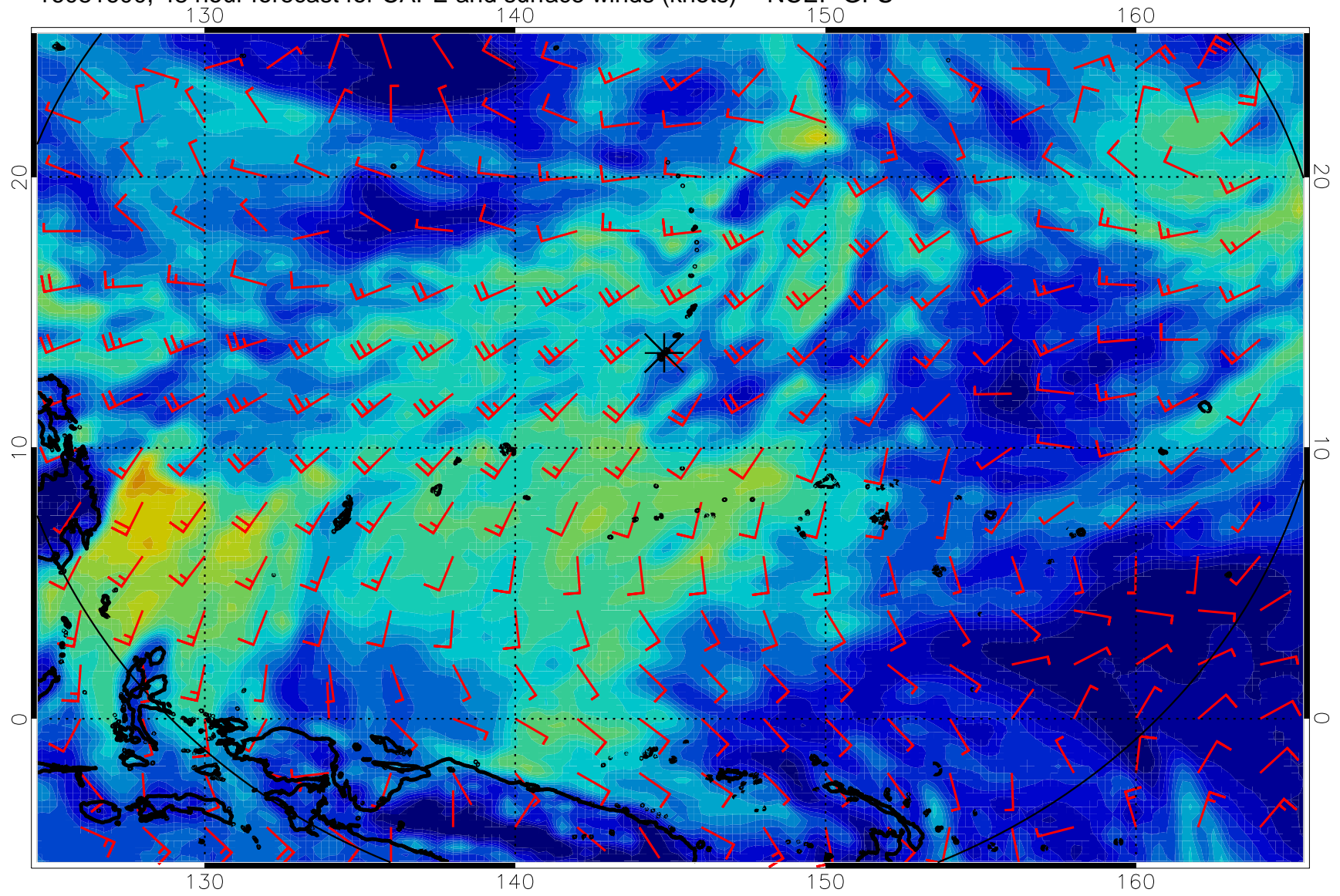
16081512, 36 hour forecast for CAPE and surface winds (knots) -- NCEP GFS



16081518, 42 hour forecast for CAPE and surface winds (knots) -- NCEP GFS

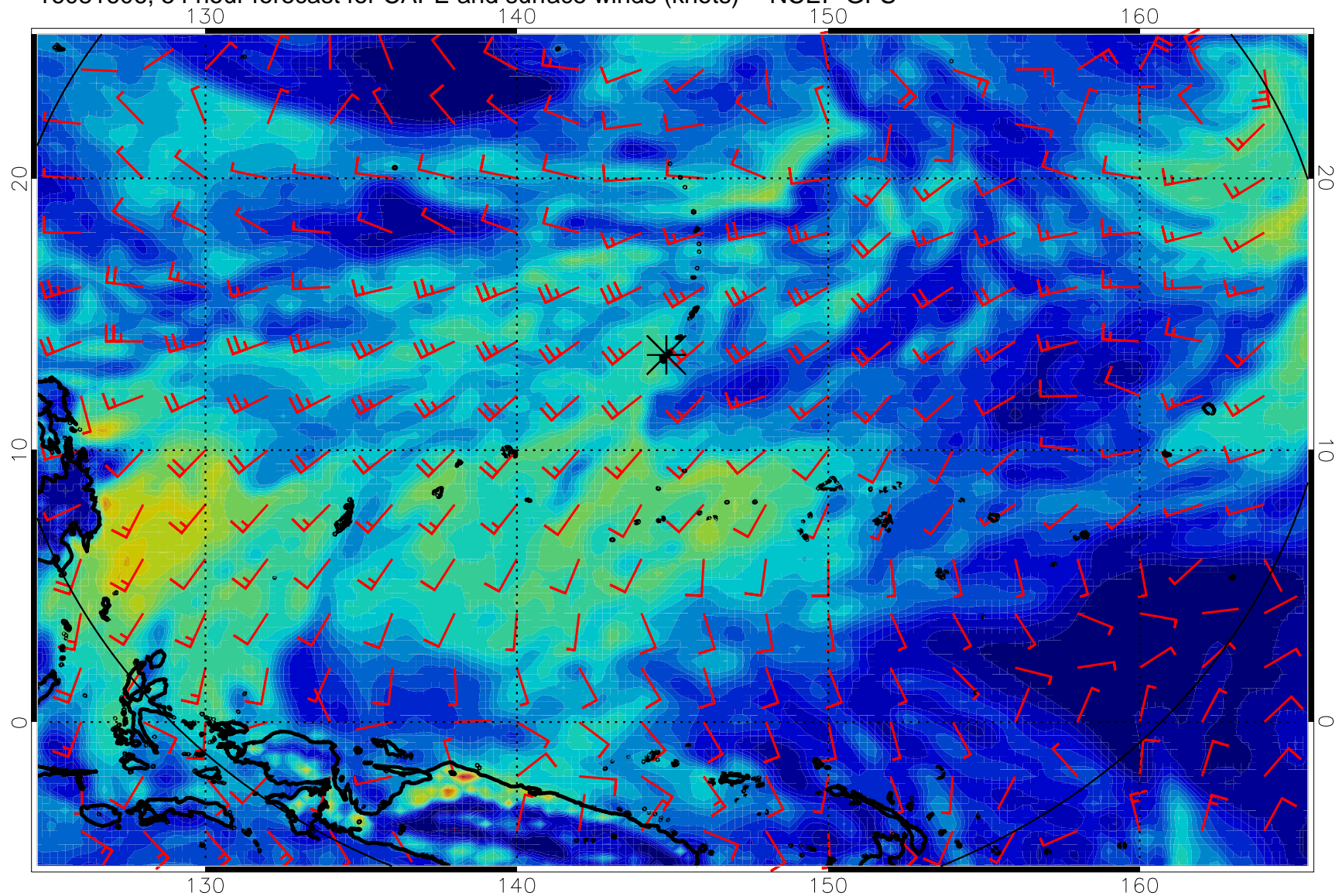


16081600, 48 hour forecast for CAPE and surface winds (knots) -- NCEP GFS

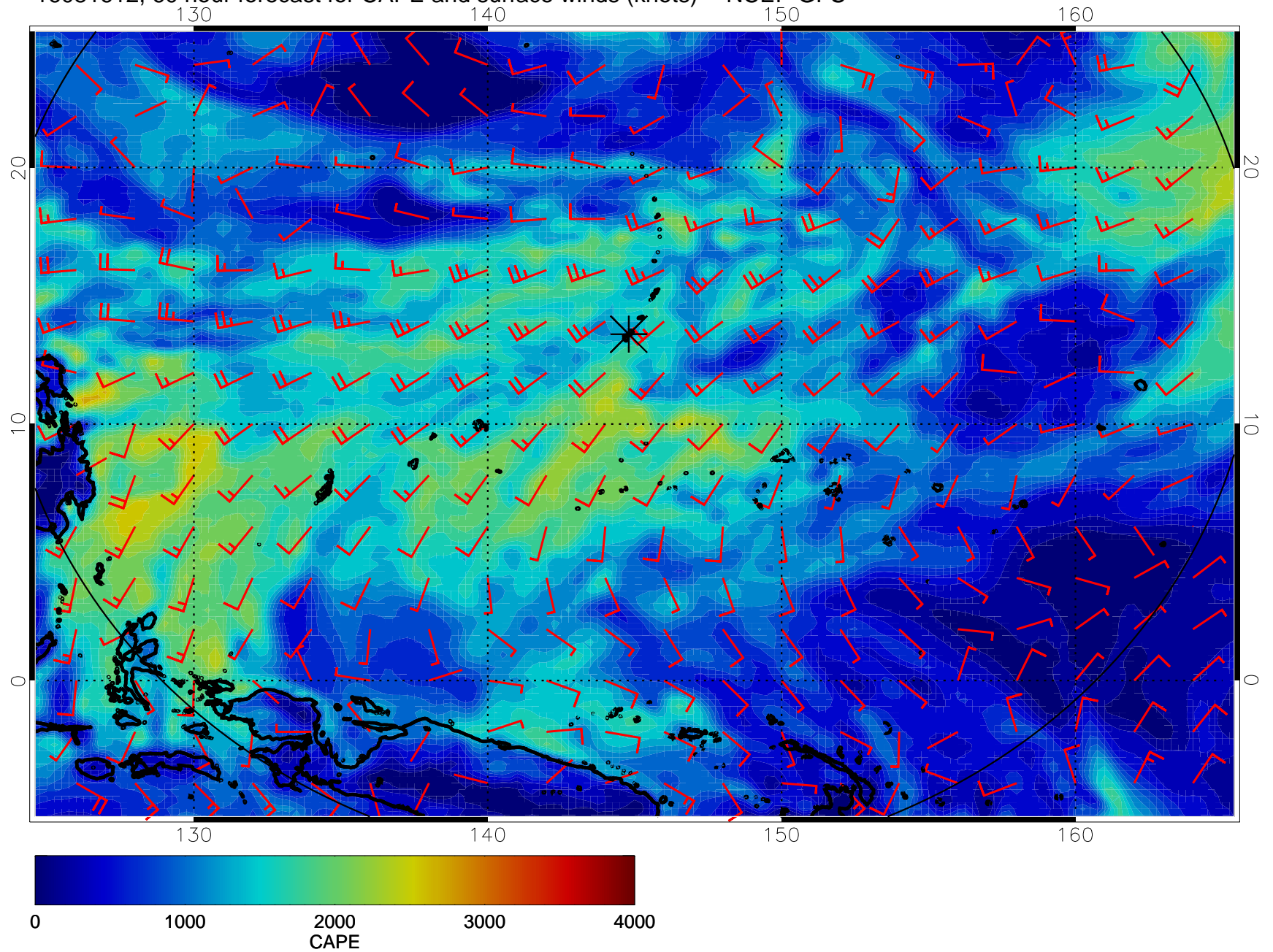




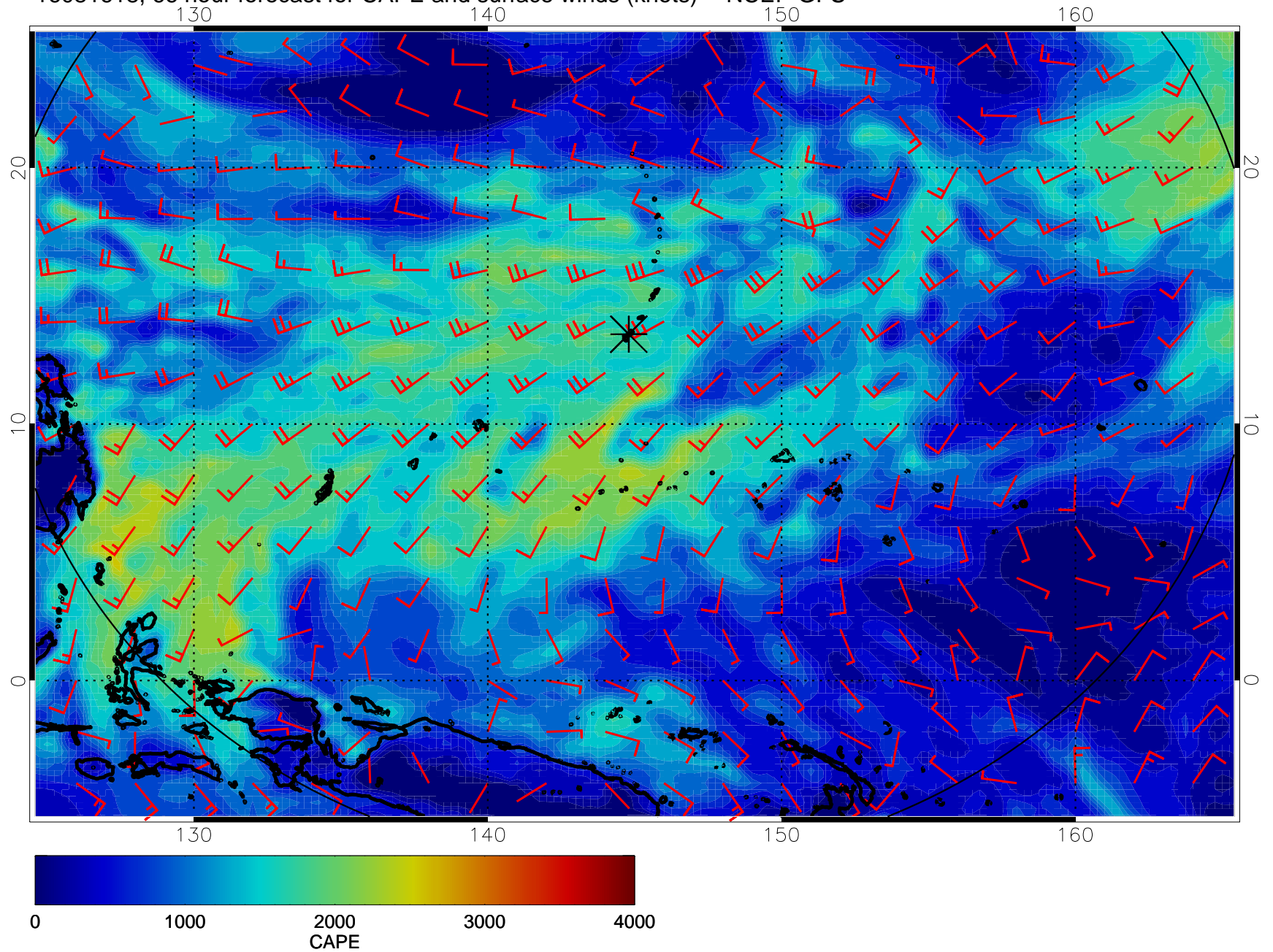
16081606, 54 hour forecast for CAPE and surface winds (knots) -- NCEP GFS



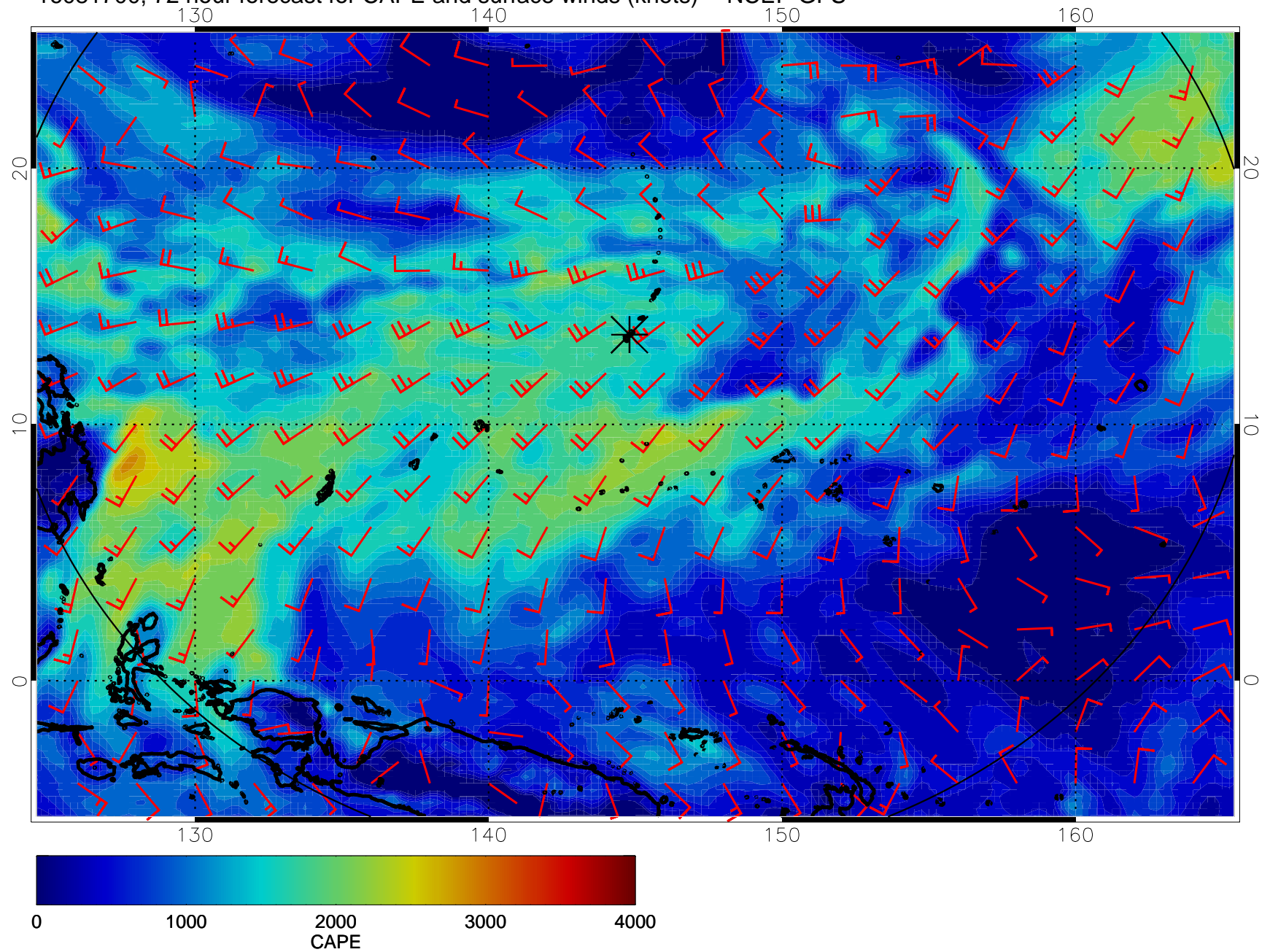
16081612, 60 hour forecast for CAPE and surface winds (knots) -- NCEP GFS



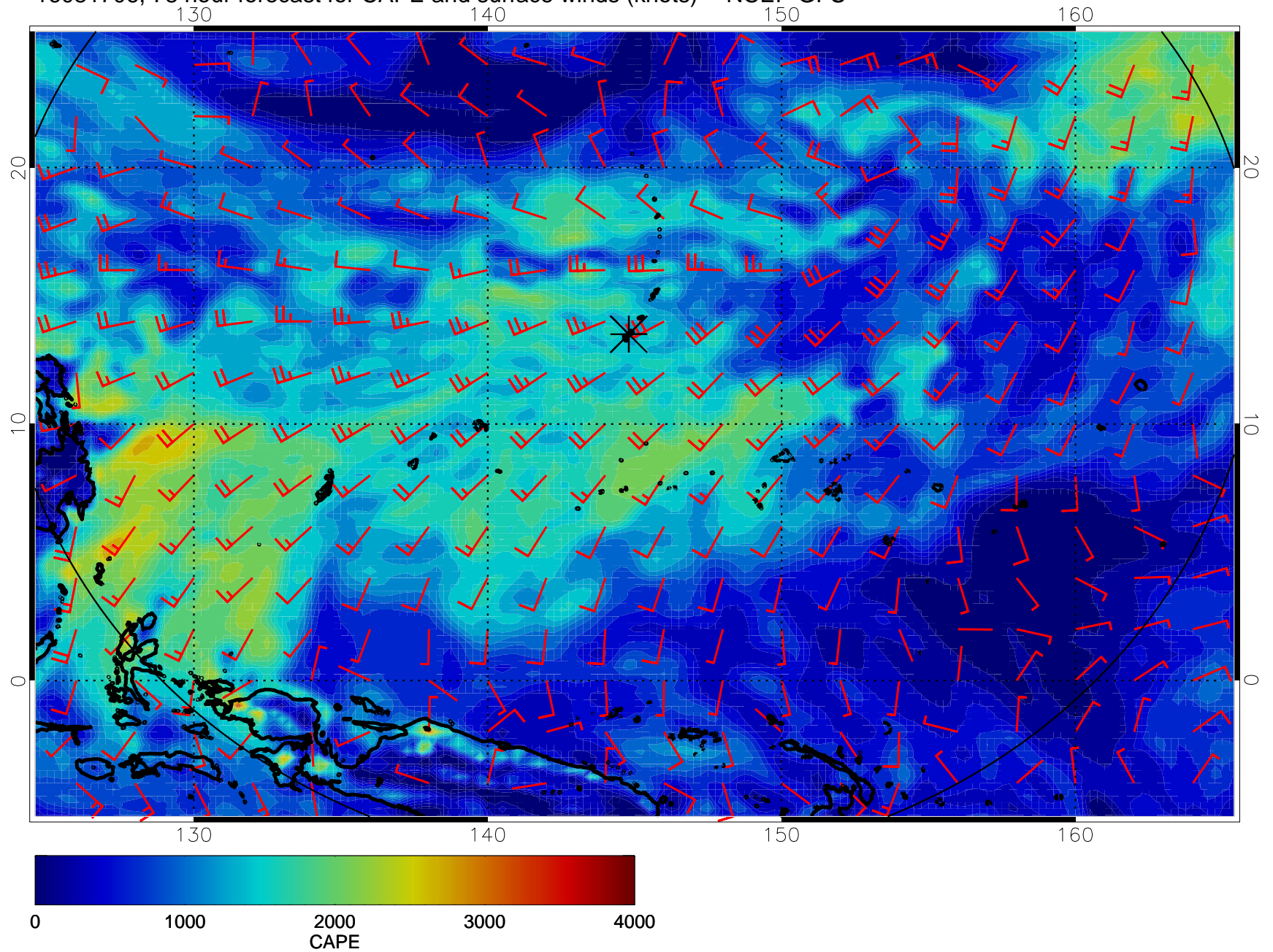
16081618, 66 hour forecast for CAPE and surface winds (knots) -- NCEP GFS



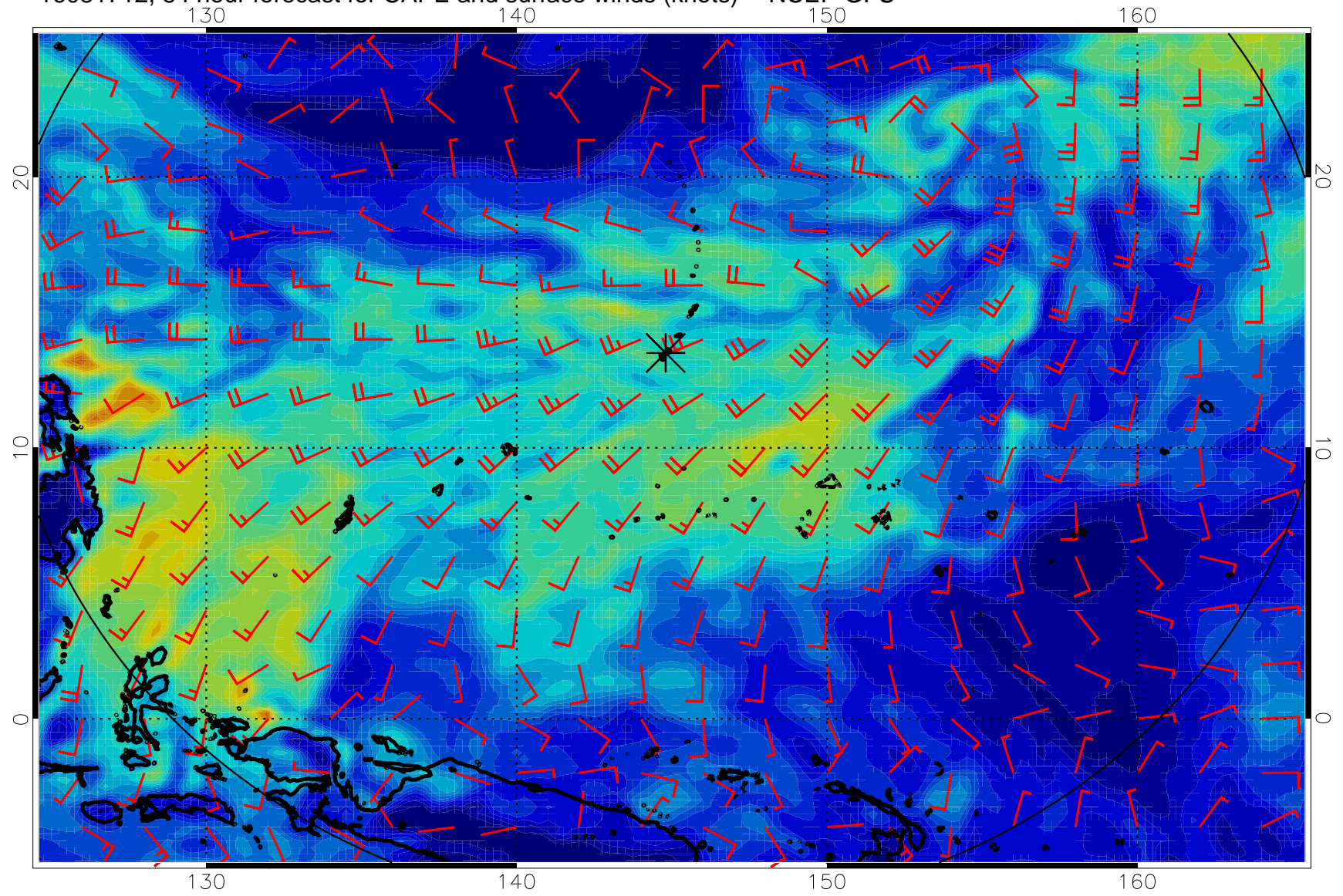
16081700, 72 hour forecast for CAPE and surface winds (knots) -- NCEP GFS



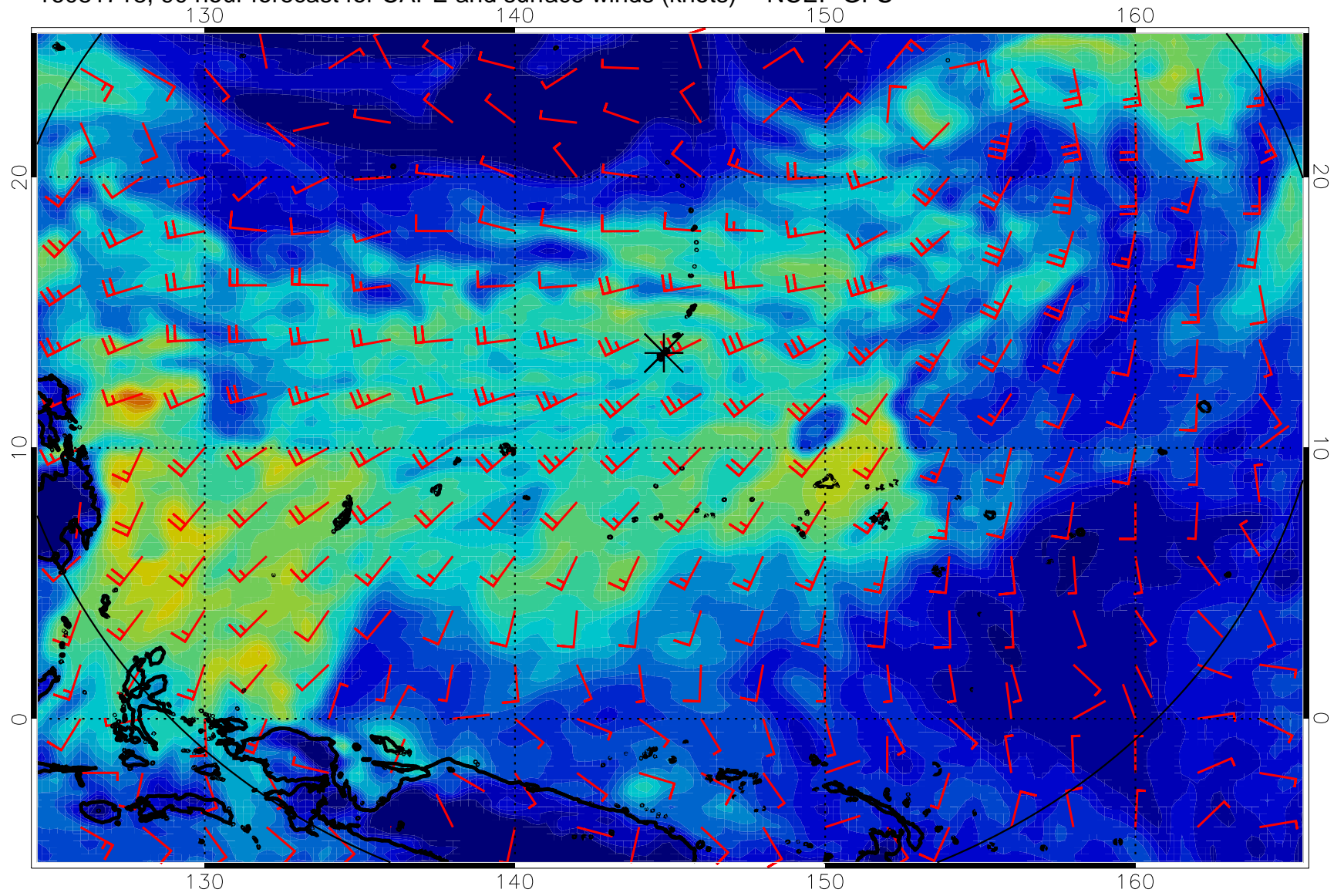
16081706, 78 hour forecast for CAPE and surface winds (knots) -- NCEP GFS



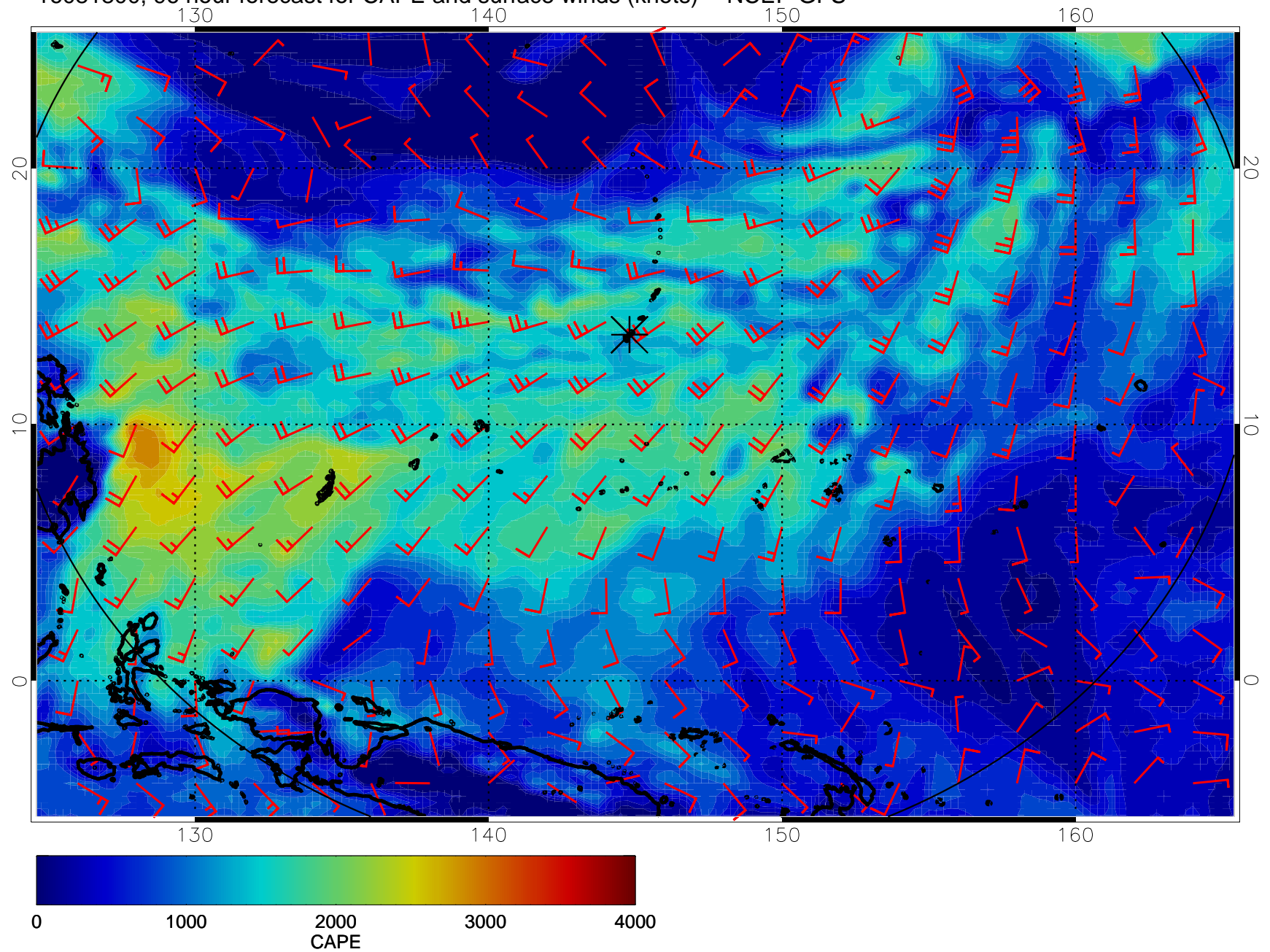
16081712, 84 hour forecast for CAPE and surface winds (knots) -- NCEP GFS



16081718, 90 hour forecast for CAPE and surface winds (knots) -- NCEP GFS

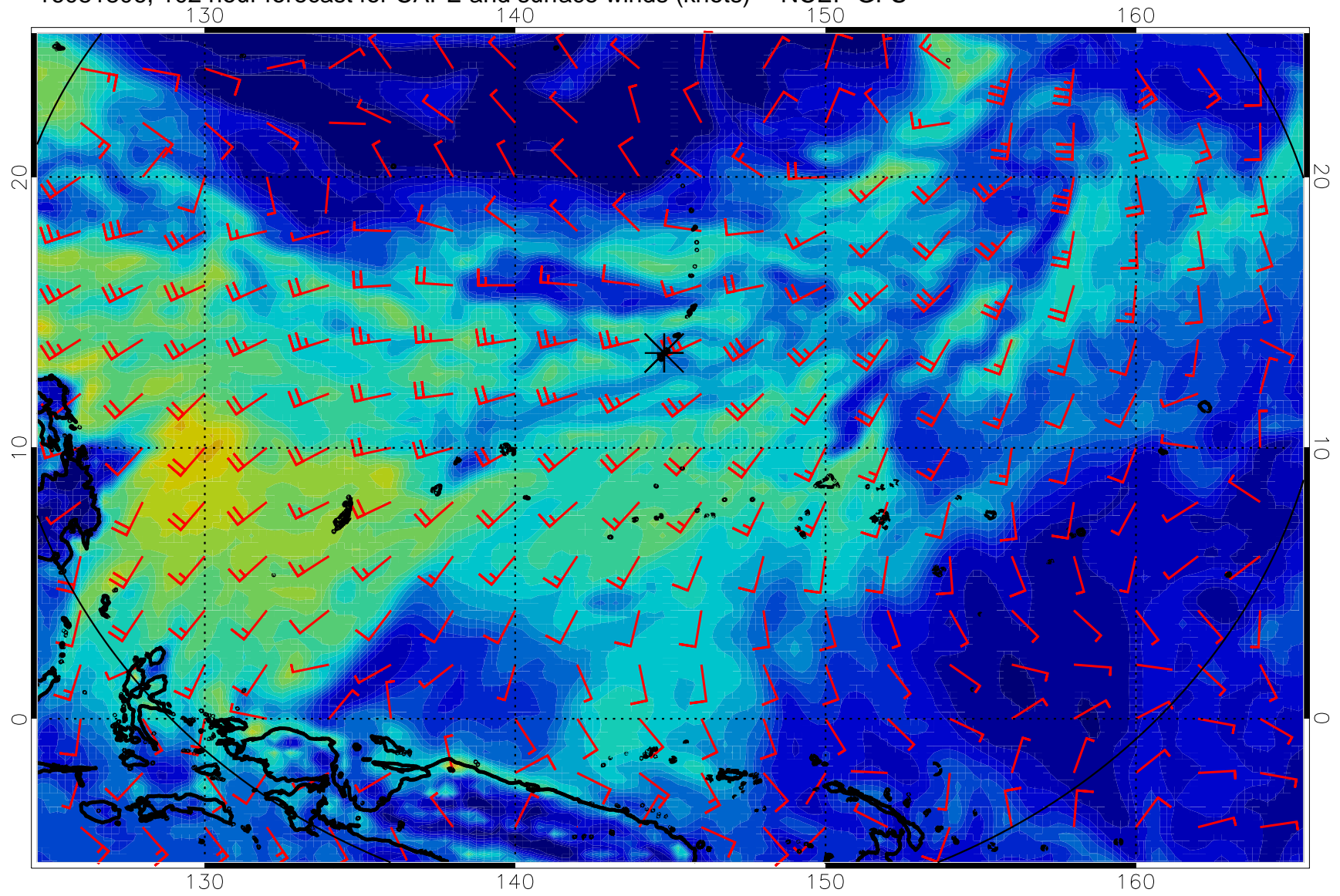


16081800, 96 hour forecast for CAPE and surface winds (knots) -- NCEP GFS

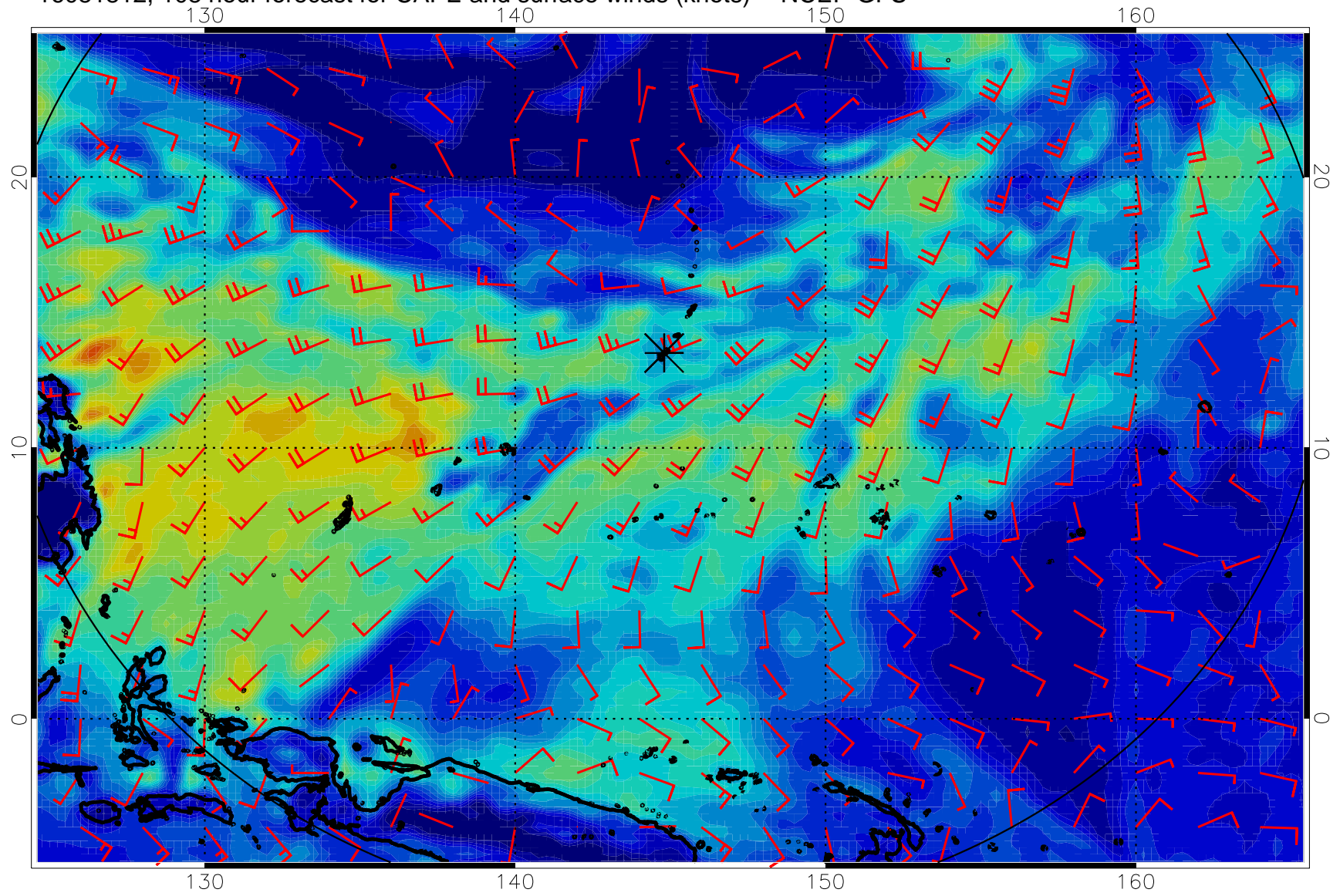




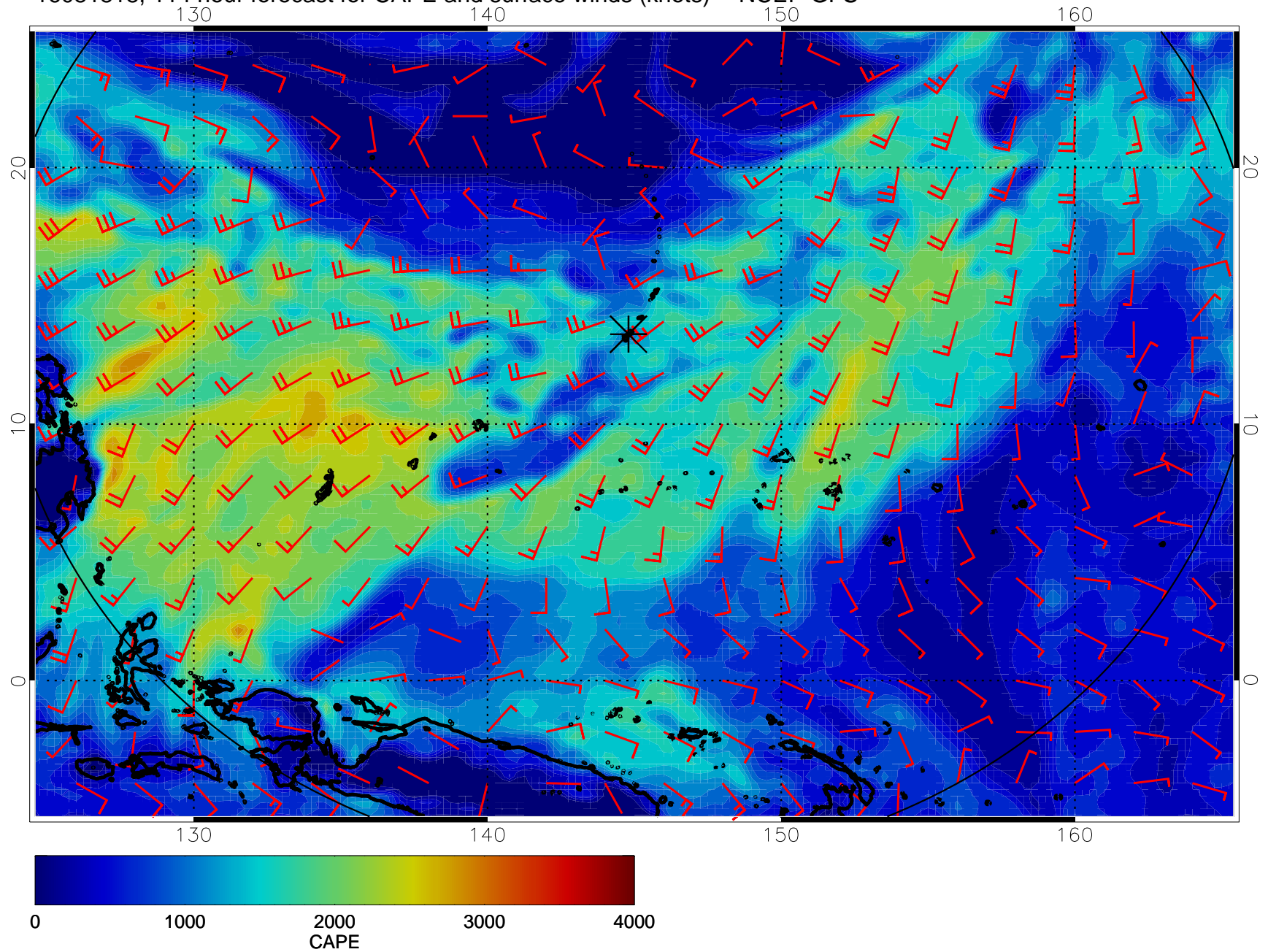
16081806, 102 hour forecast for CAPE and surface winds (knots) -- NCEP GFS



16081812, 108 hour forecast for CAPE and surface winds (knots) -- NCEP GFS



16081818, 114 hour forecast for CAPE and surface winds (knots) -- NCEP GFS



16081900, 120 hour forecast for CAPE and surface winds (knots) -- NCEP GFS

