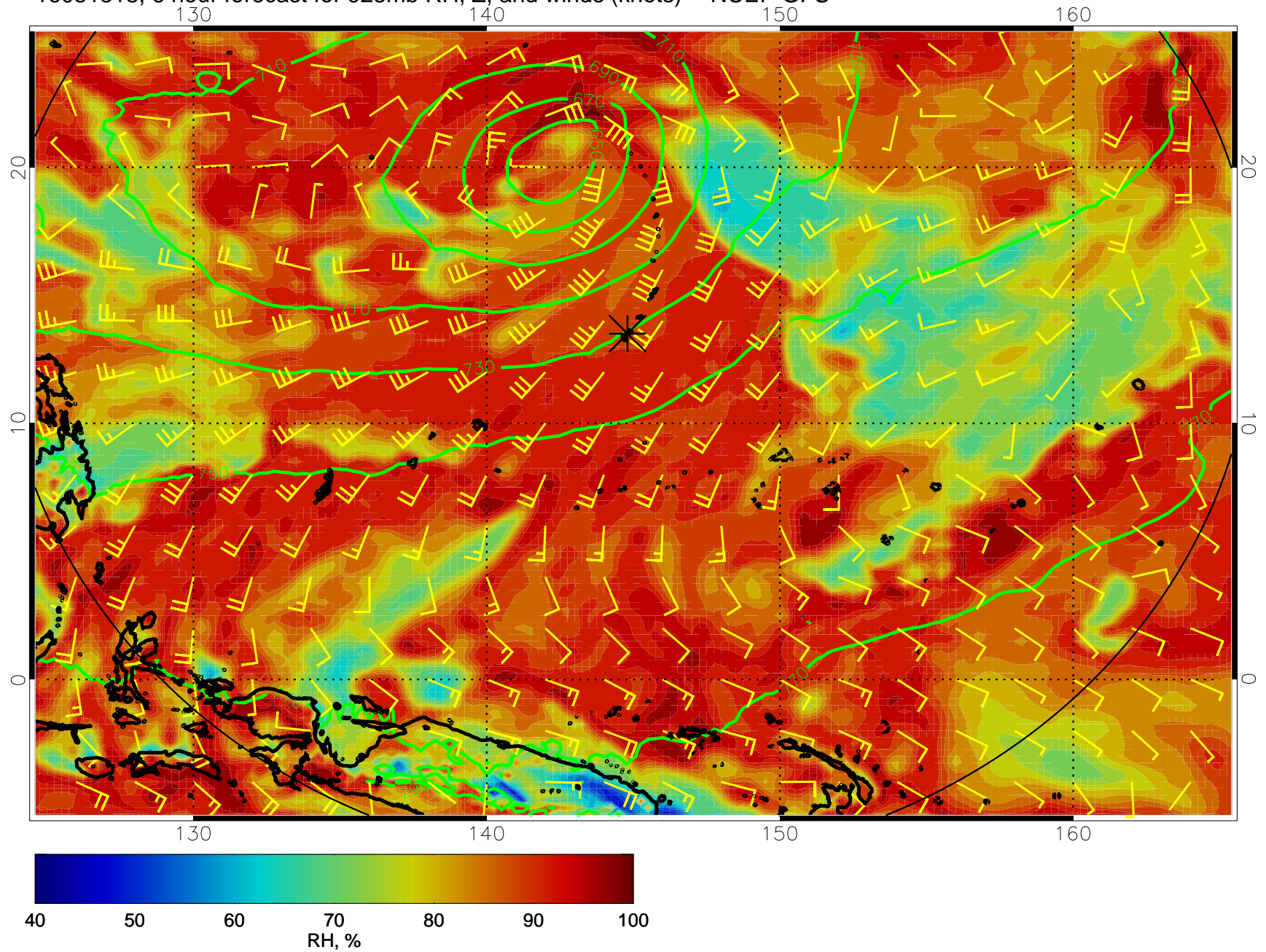
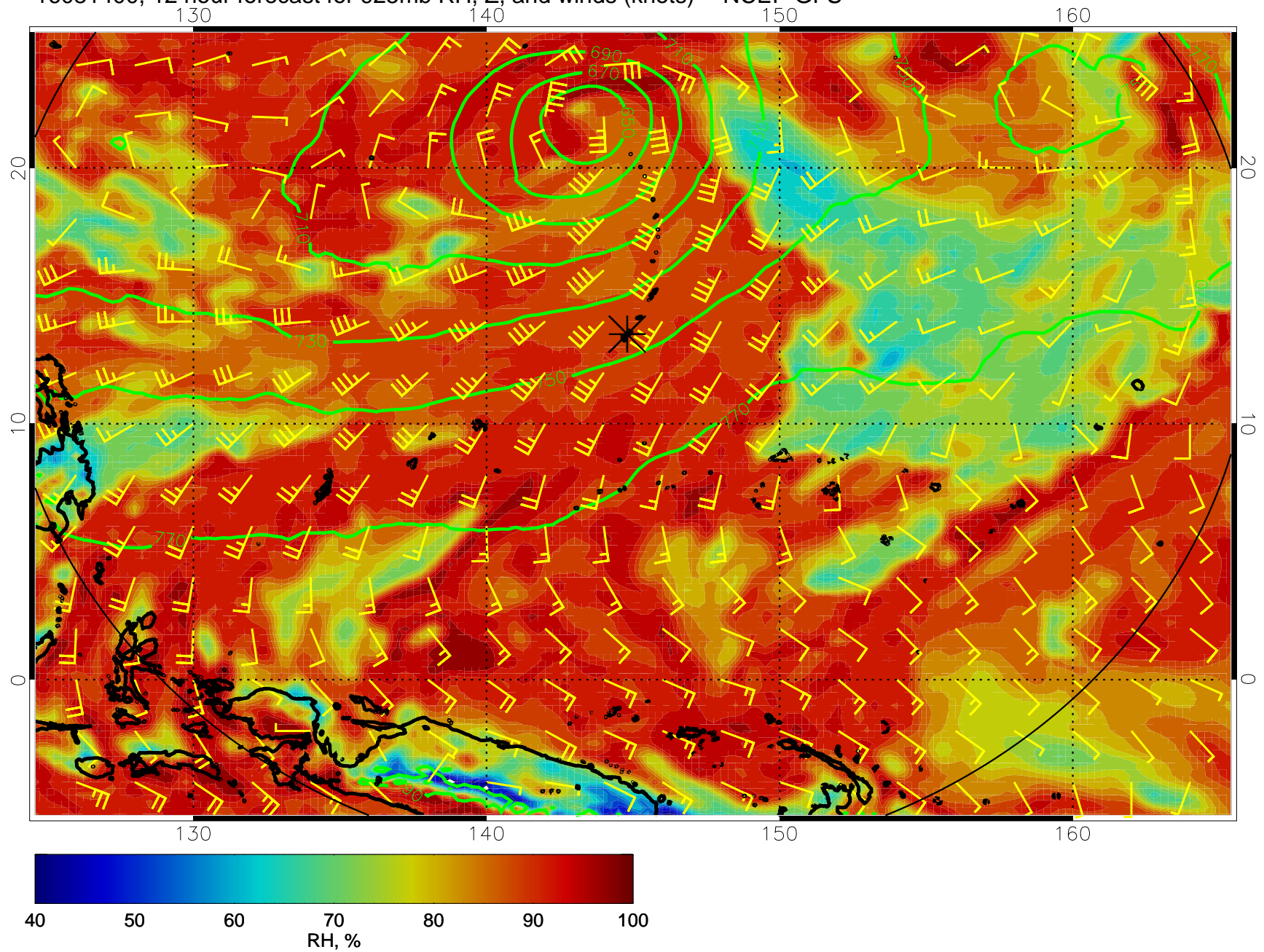


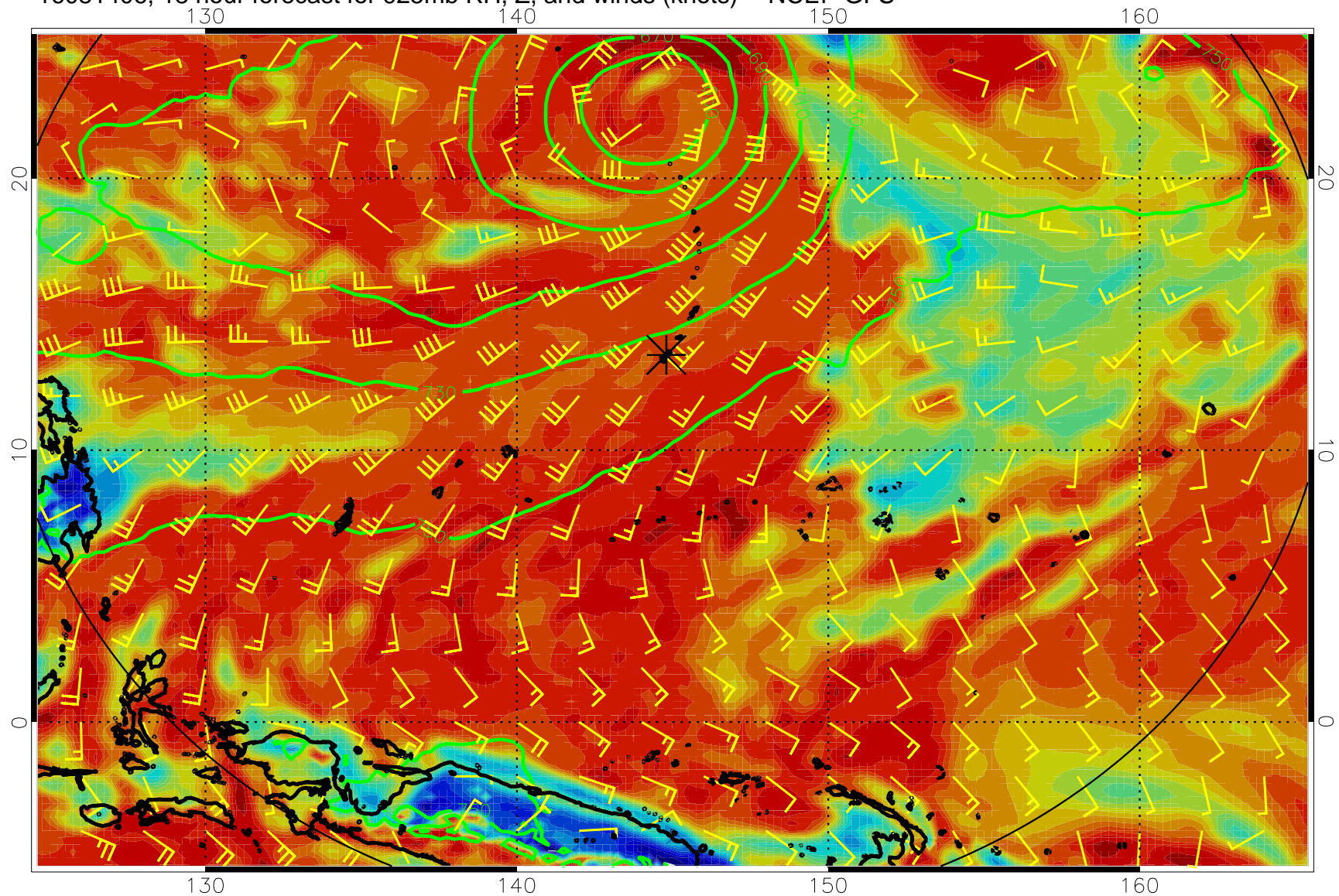
16081318, 6 hour forecast for 925mb RH, Z, and winds (knots) -- NCEP GFS



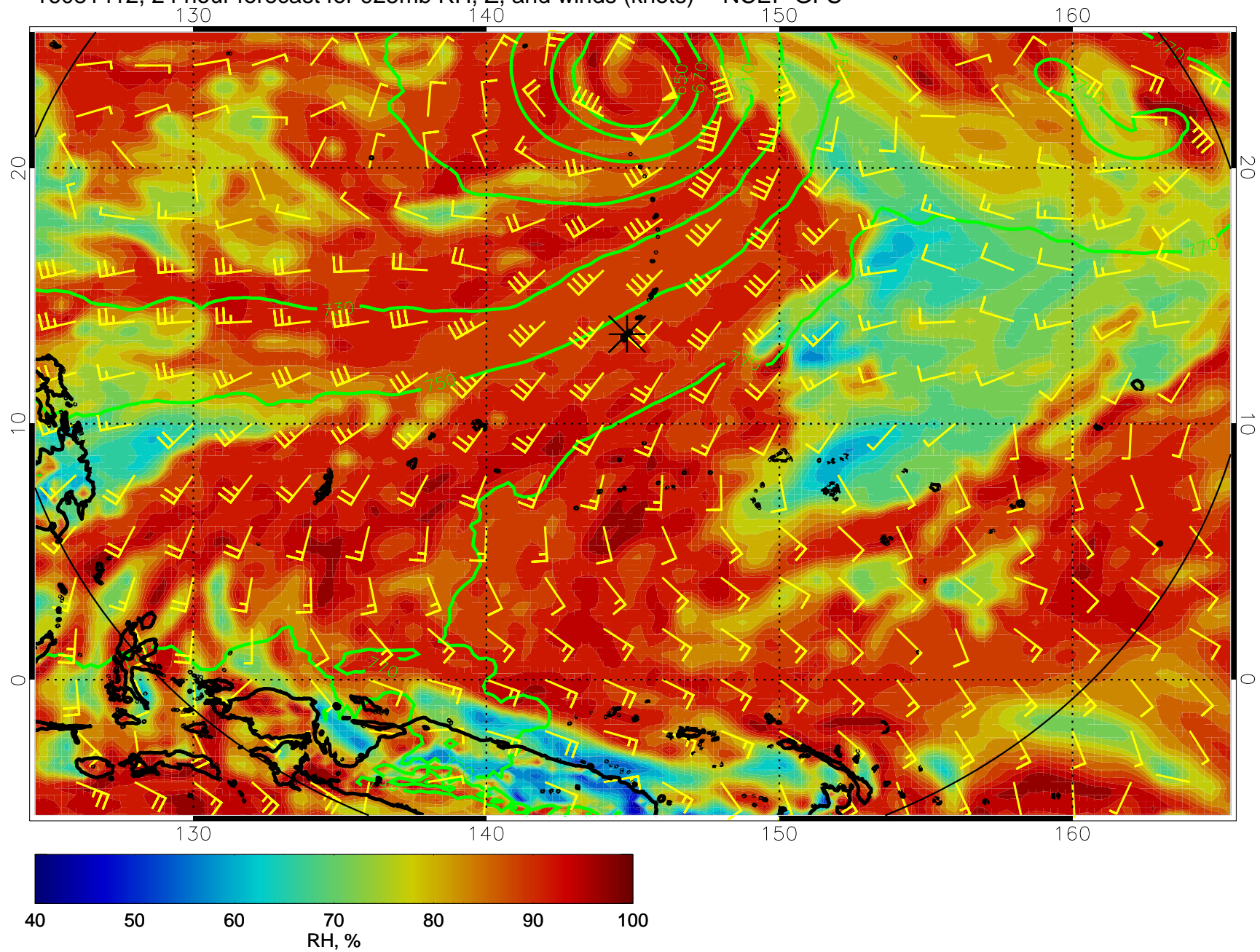
16081400, 12 hour forecast for 925mb RH, Z, and winds (knots) -- NCEP GFS



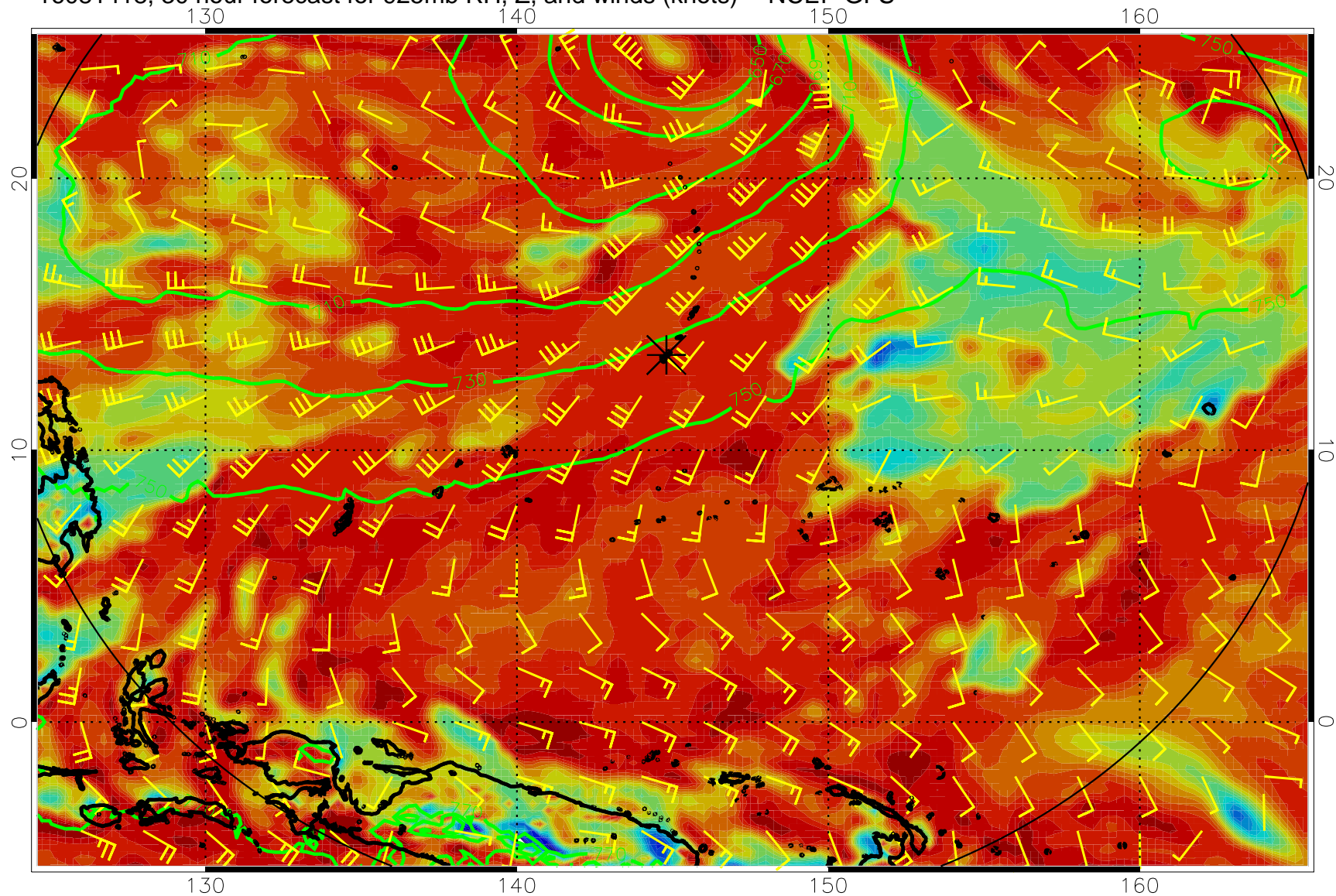
16081406, 18 hour forecast for 925mb RH, Z, and winds (knots) -- NCEP GFS



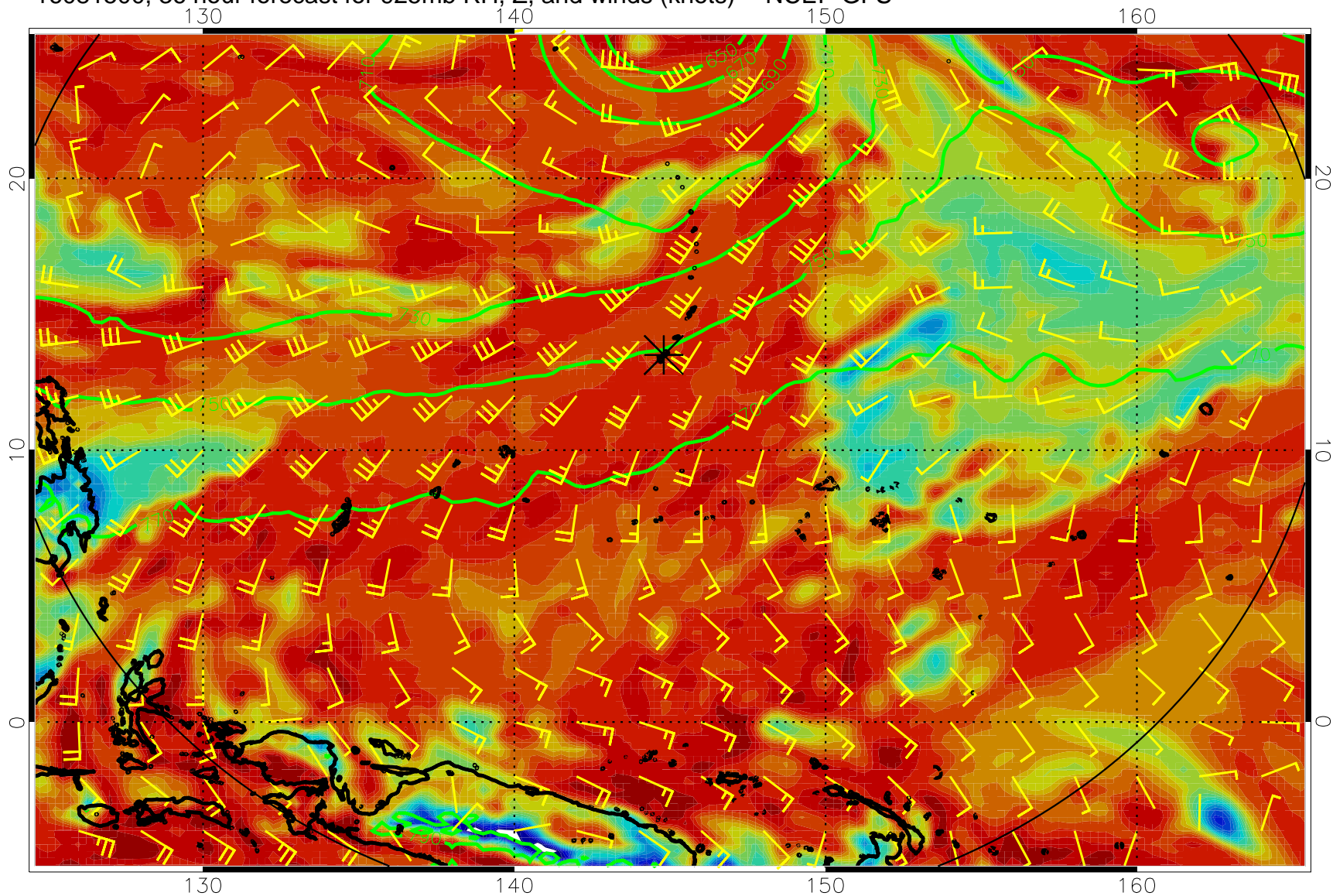
16081412, 24 hour forecast for 925mb RH, Z, and winds (knots) -- NCEP GFS



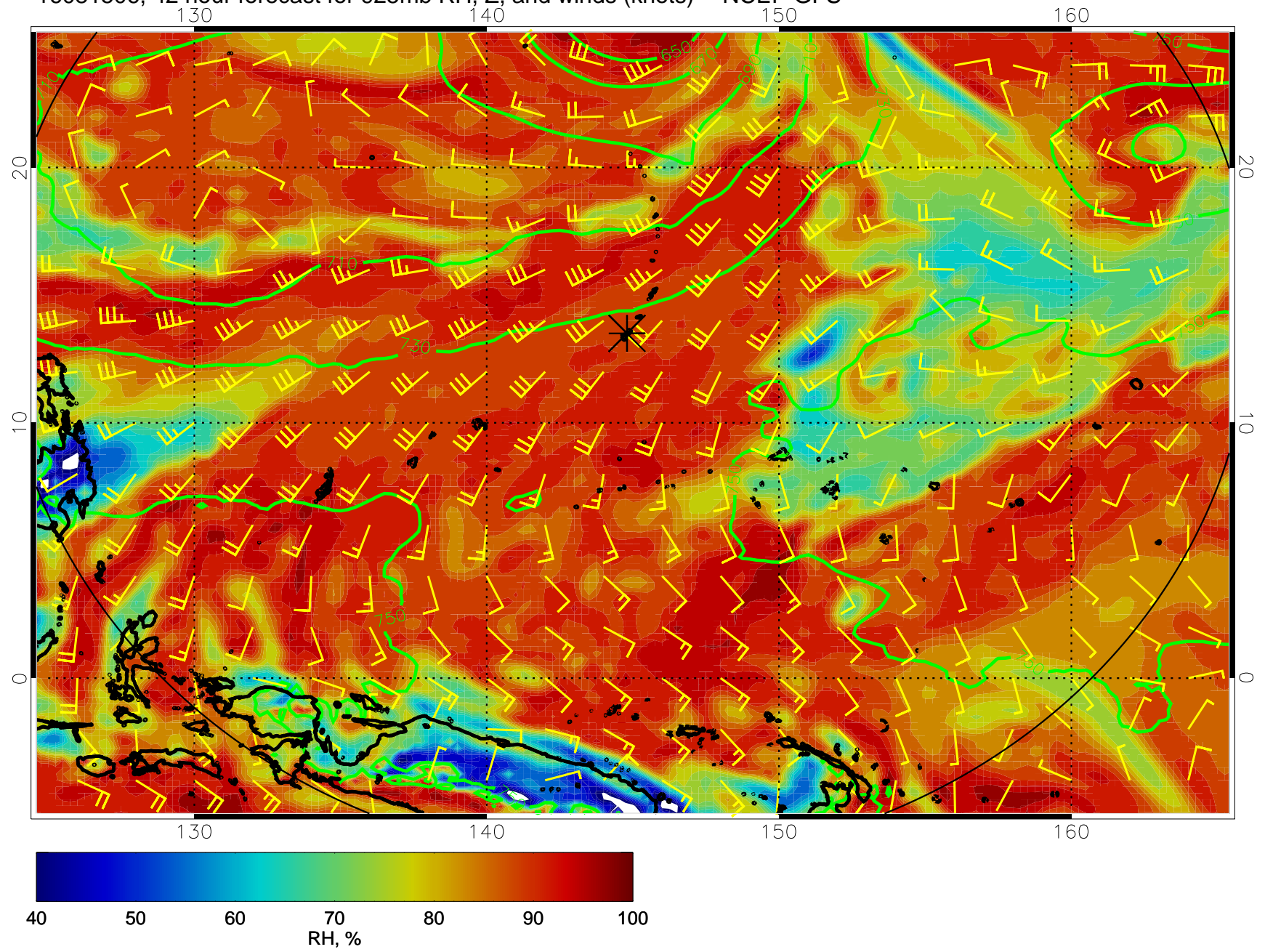
16081418, 30 hour forecast for 925mb RH, Z, and winds (knots) -- NCEP GFS



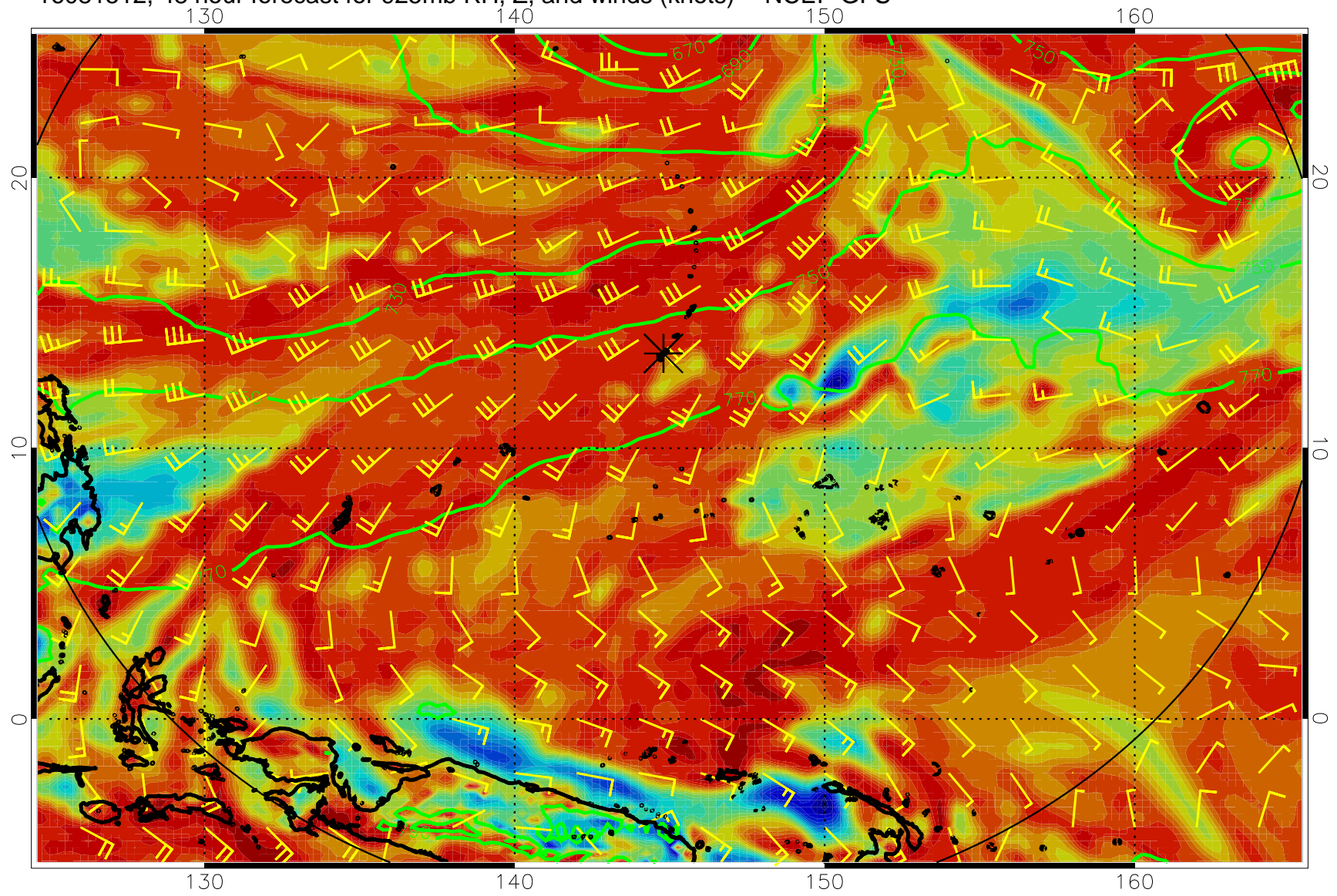
16081500, 36 hour forecast for 925mb RH, Z, and winds (knots) -- NCEP GFS



16081506, 42 hour forecast for 925mb RH, Z, and winds (knots) -- NCEP GFS

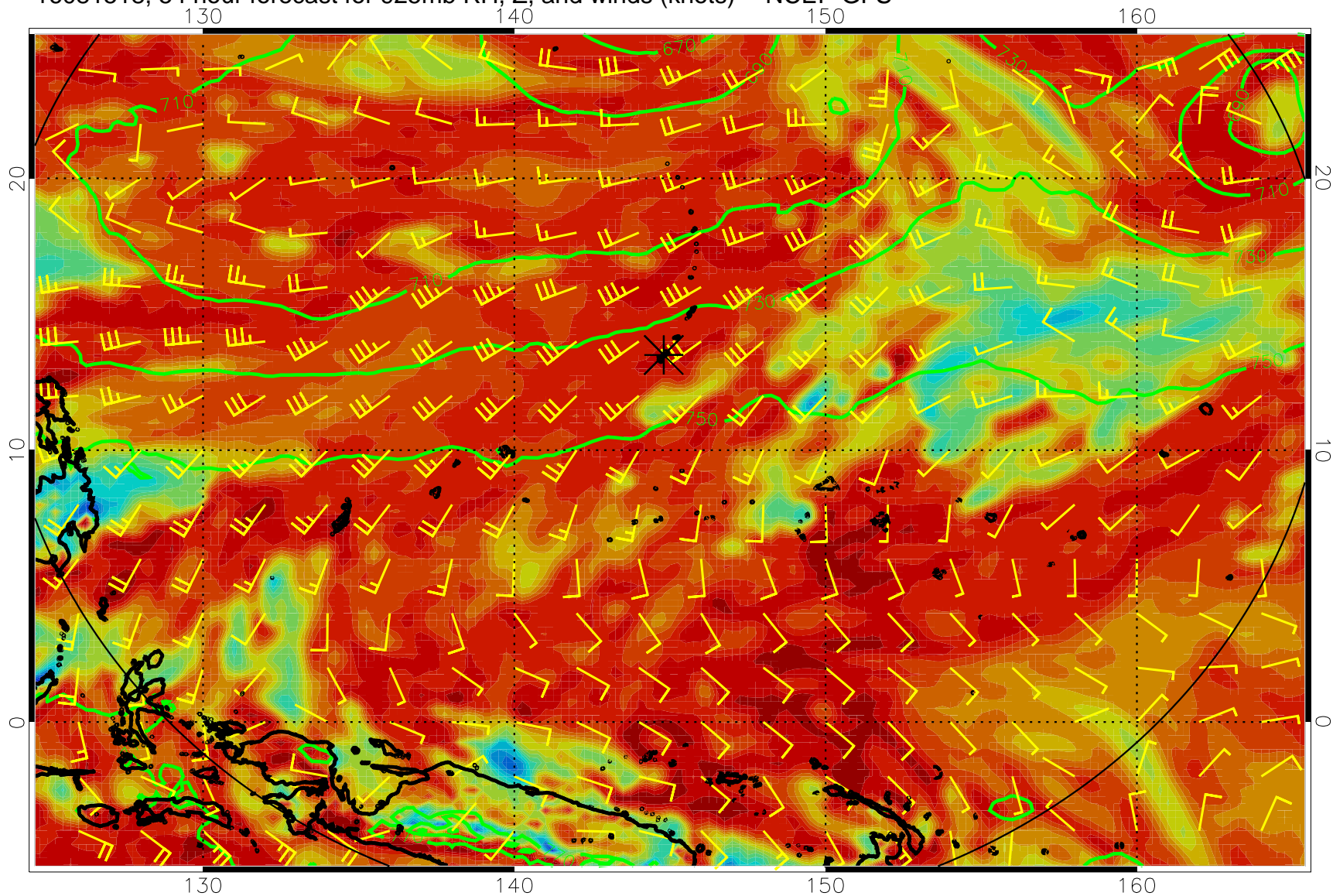


16081512, 48 hour forecast for 925mb RH, Z, and winds (knots) -- NCEP GFS

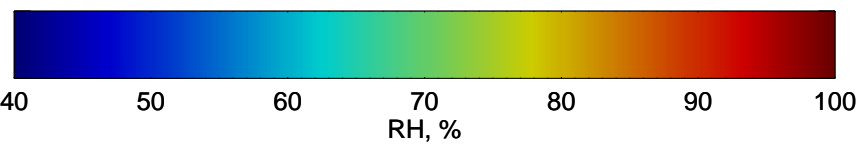
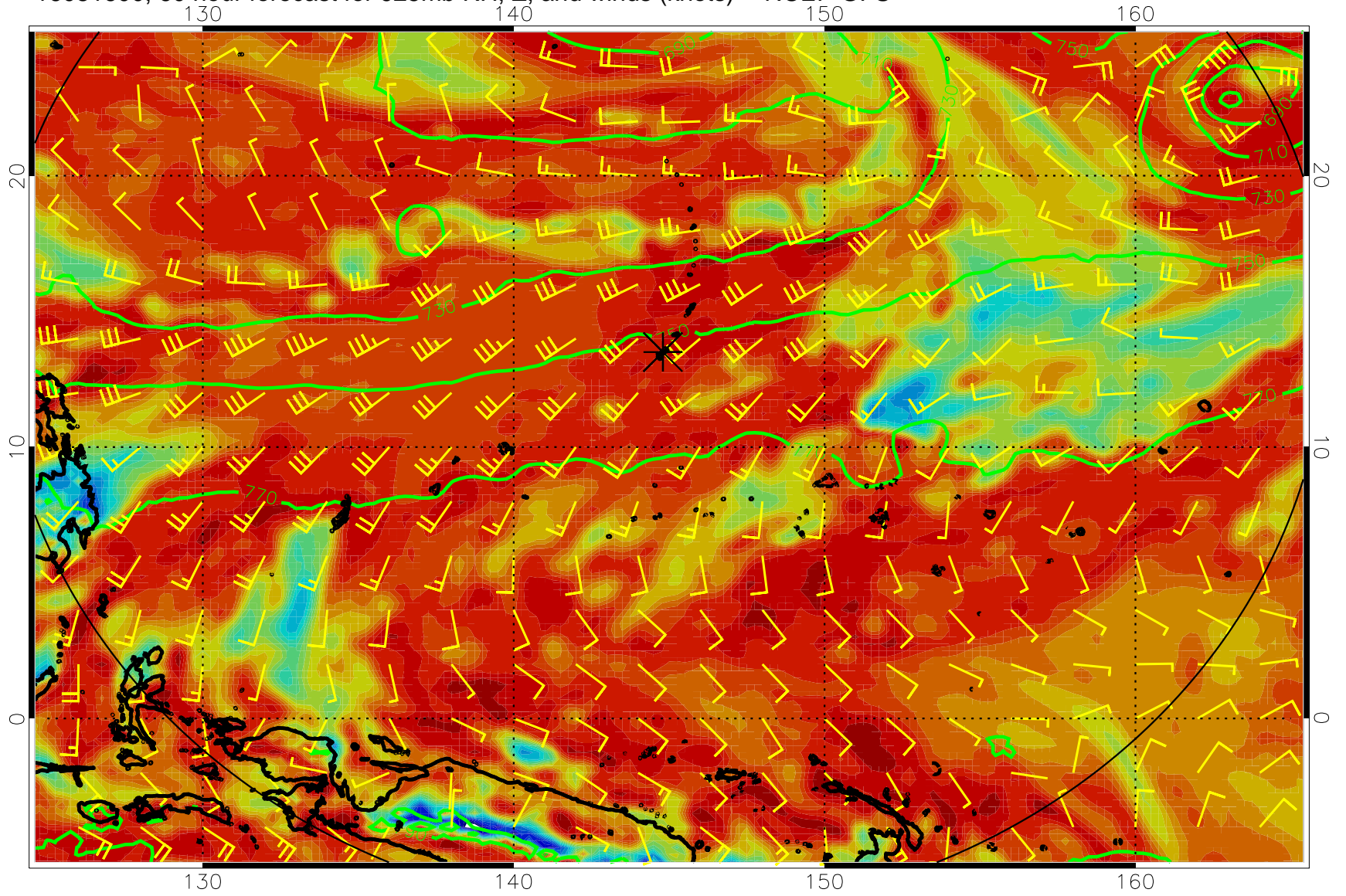




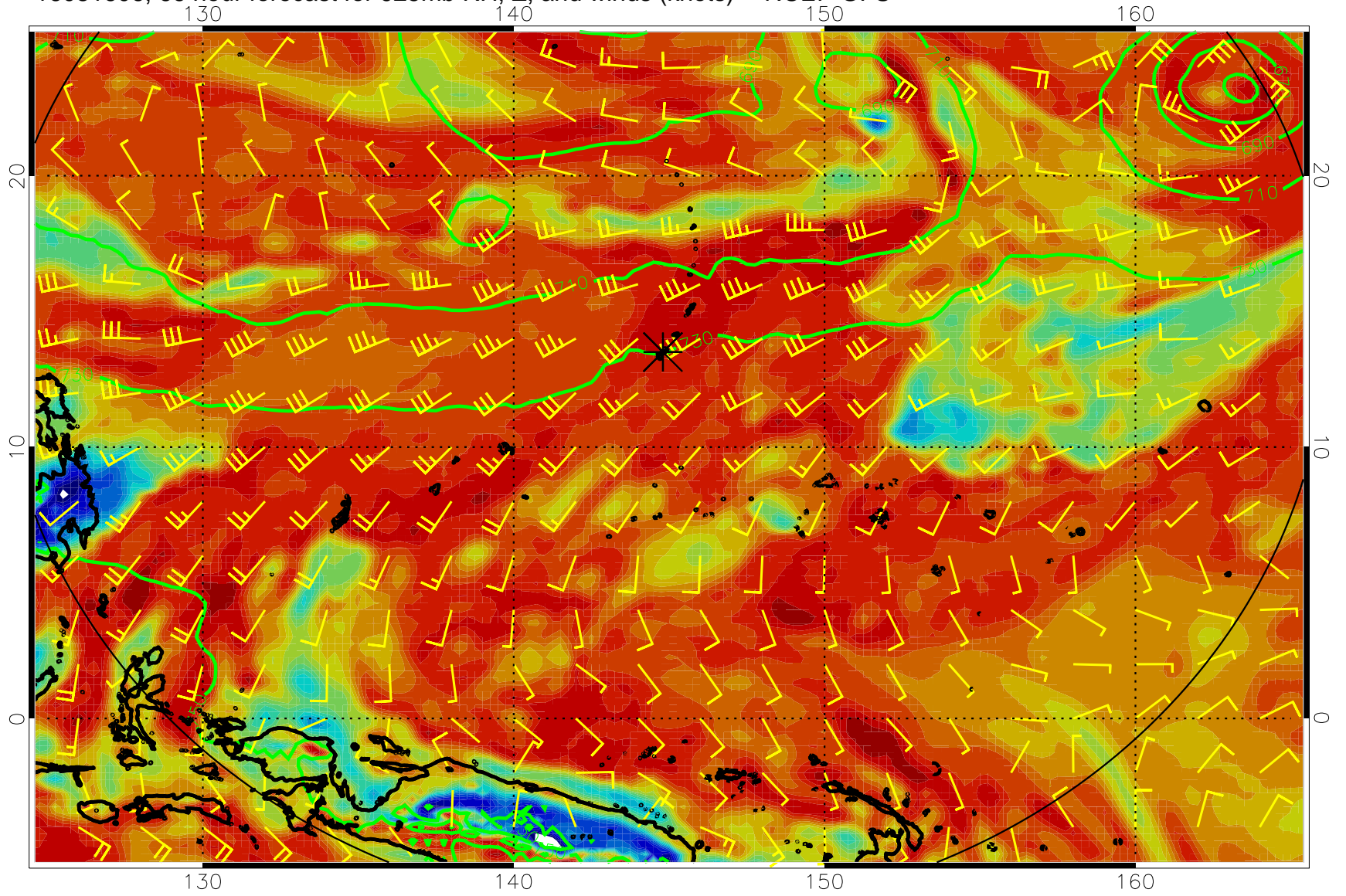
16081518, 54 hour forecast for 925mb RH, Z, and winds (knots) -- NCEP GFS



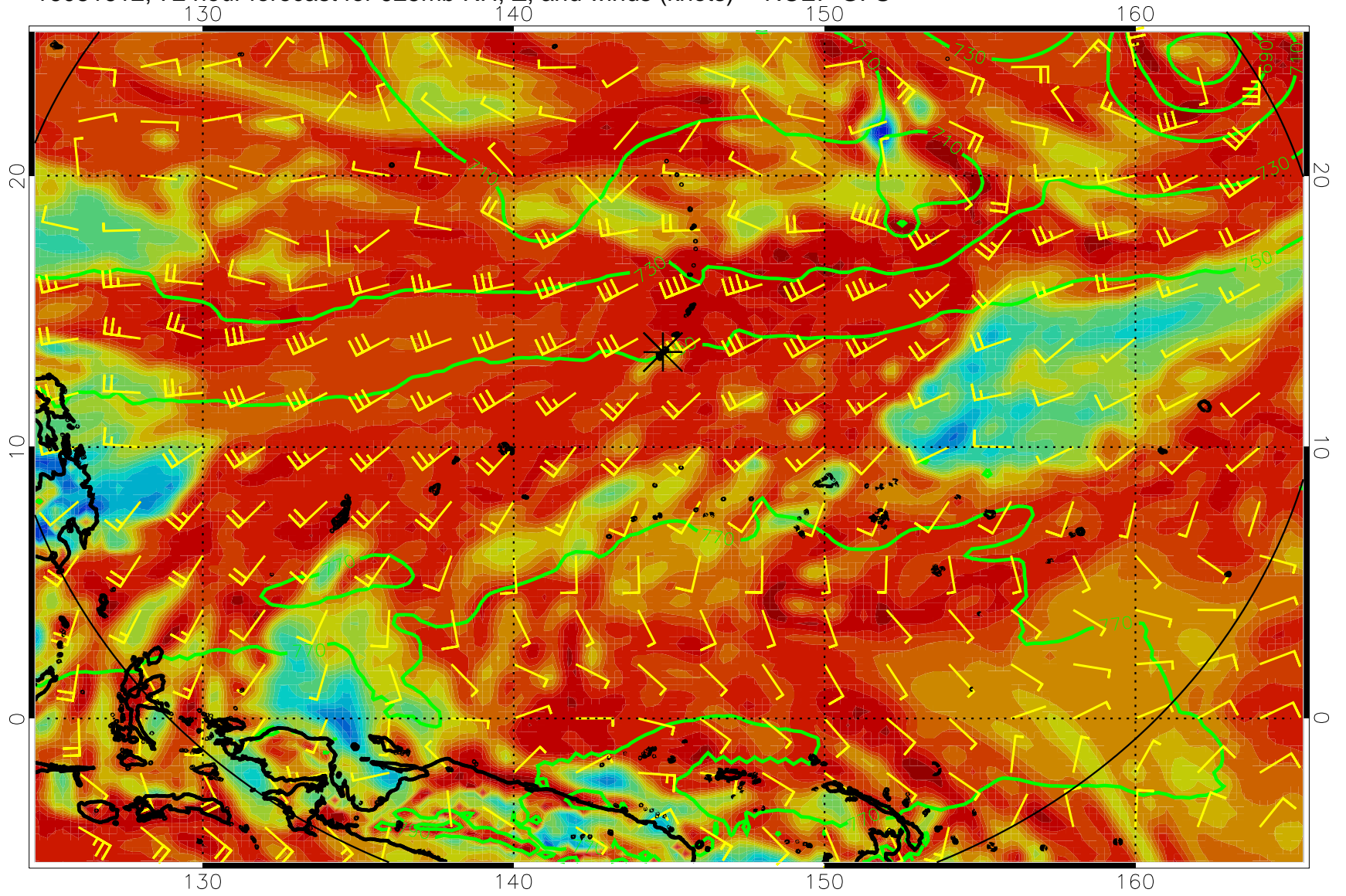
16081600, 60 hour forecast for 925mb RH, Z, and winds (knots) -- NCEP GFS



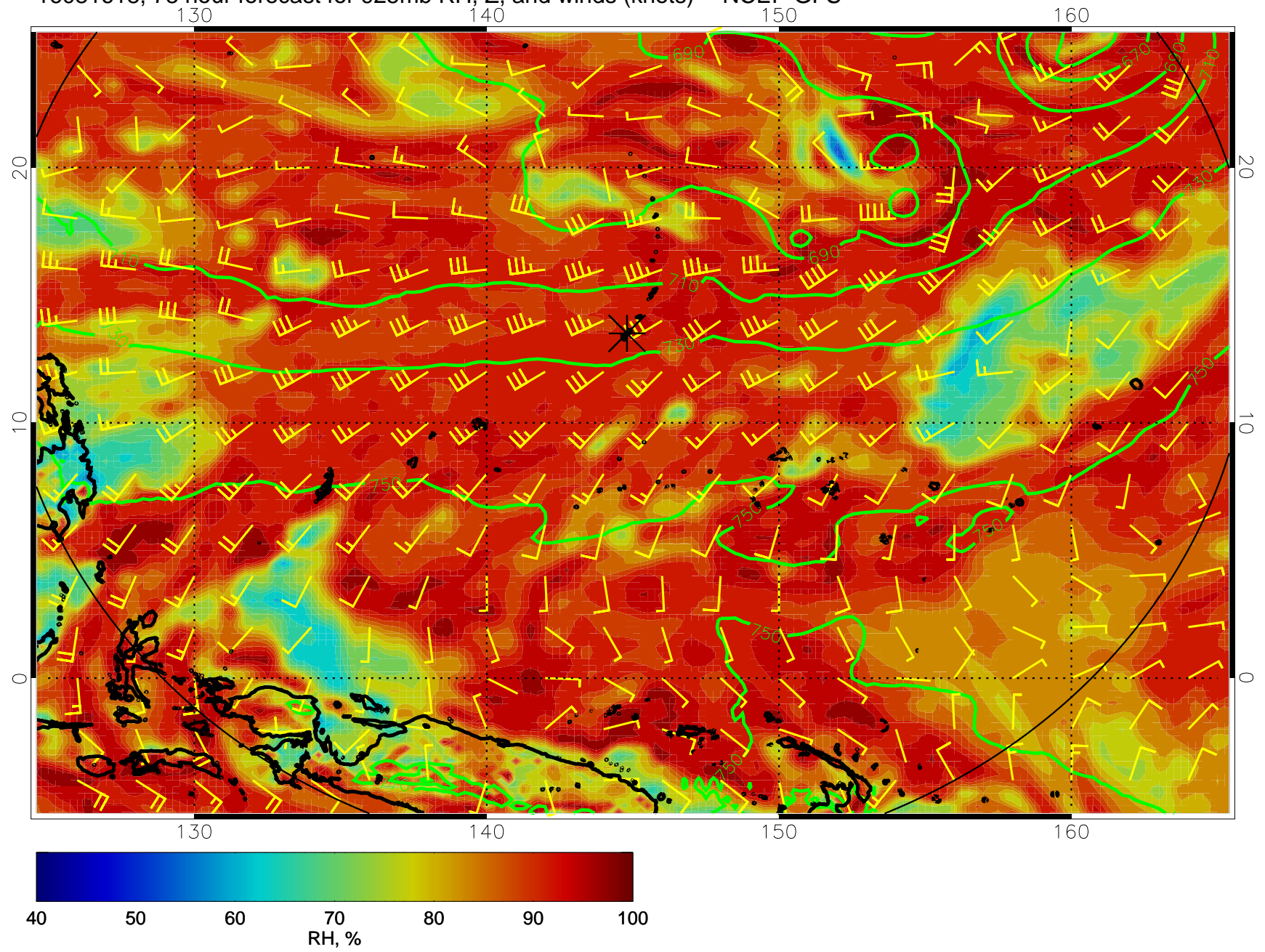
16081606, 66 hour forecast for 925mb RH, Z, and winds (knots) -- NCEP GFS



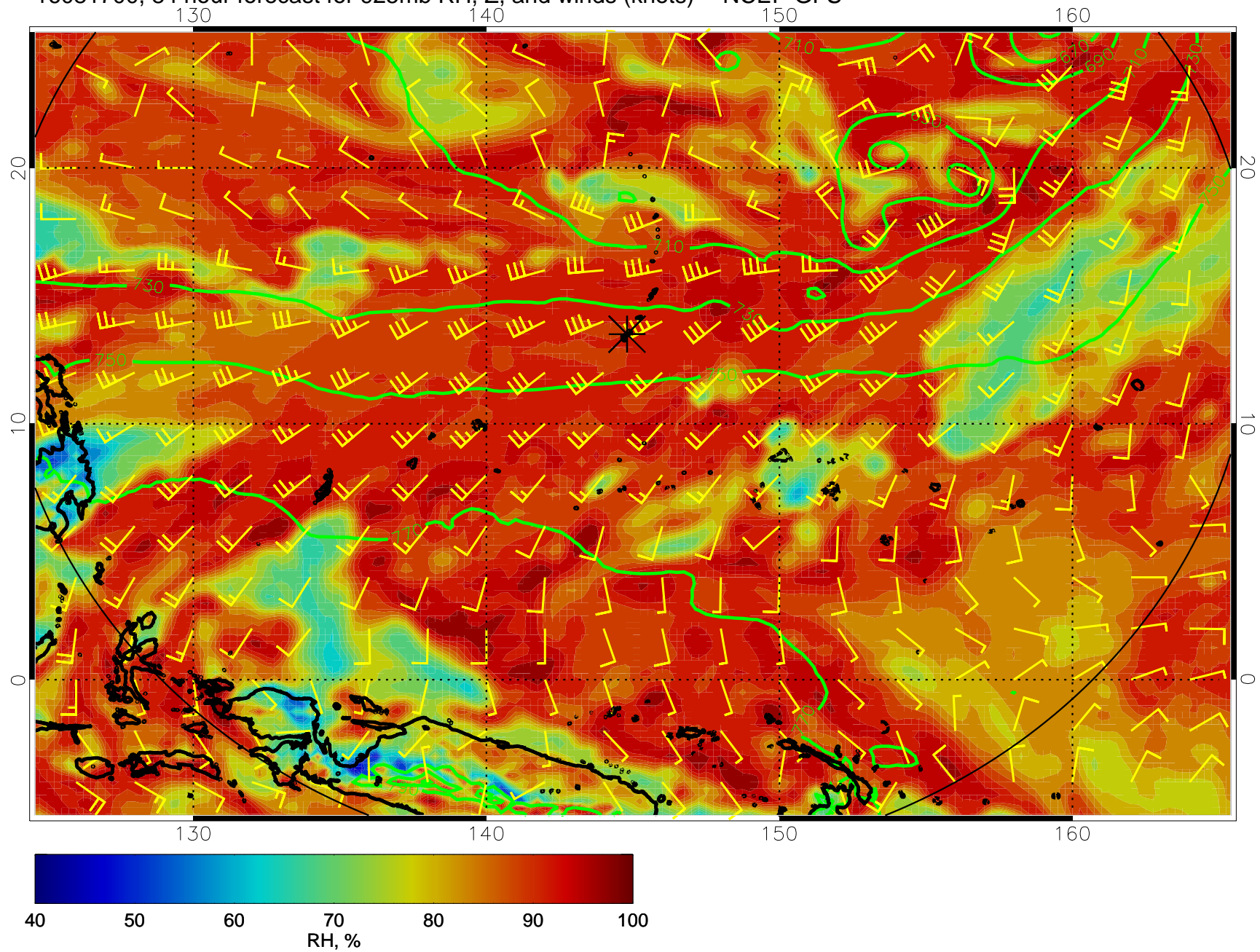
16081612, 72 hour forecast for 925mb RH, Z, and winds (knots) -- NCEP GFS



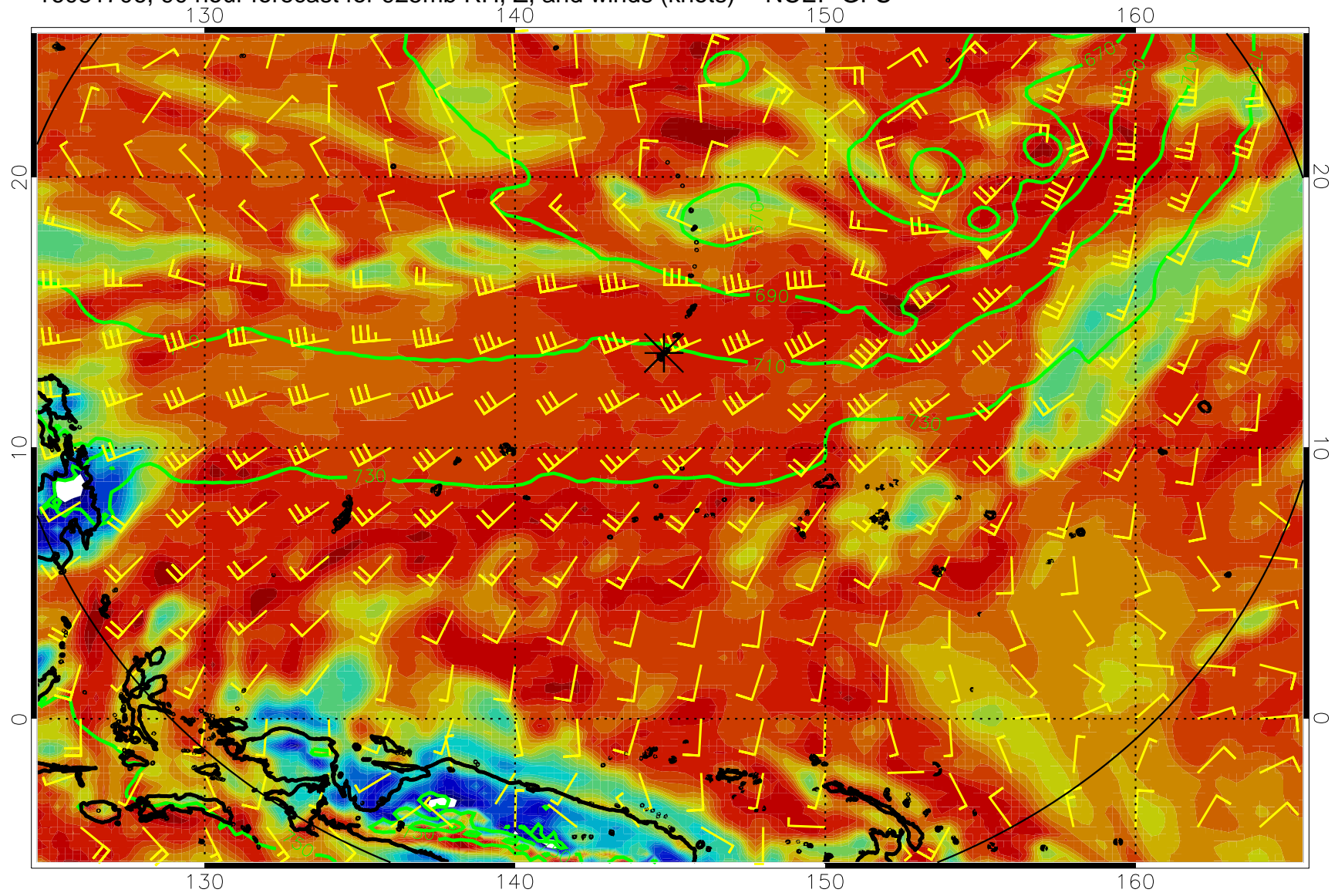
16081618, 78 hour forecast for 925mb RH, Z, and winds (knots) -- NCEP GFS



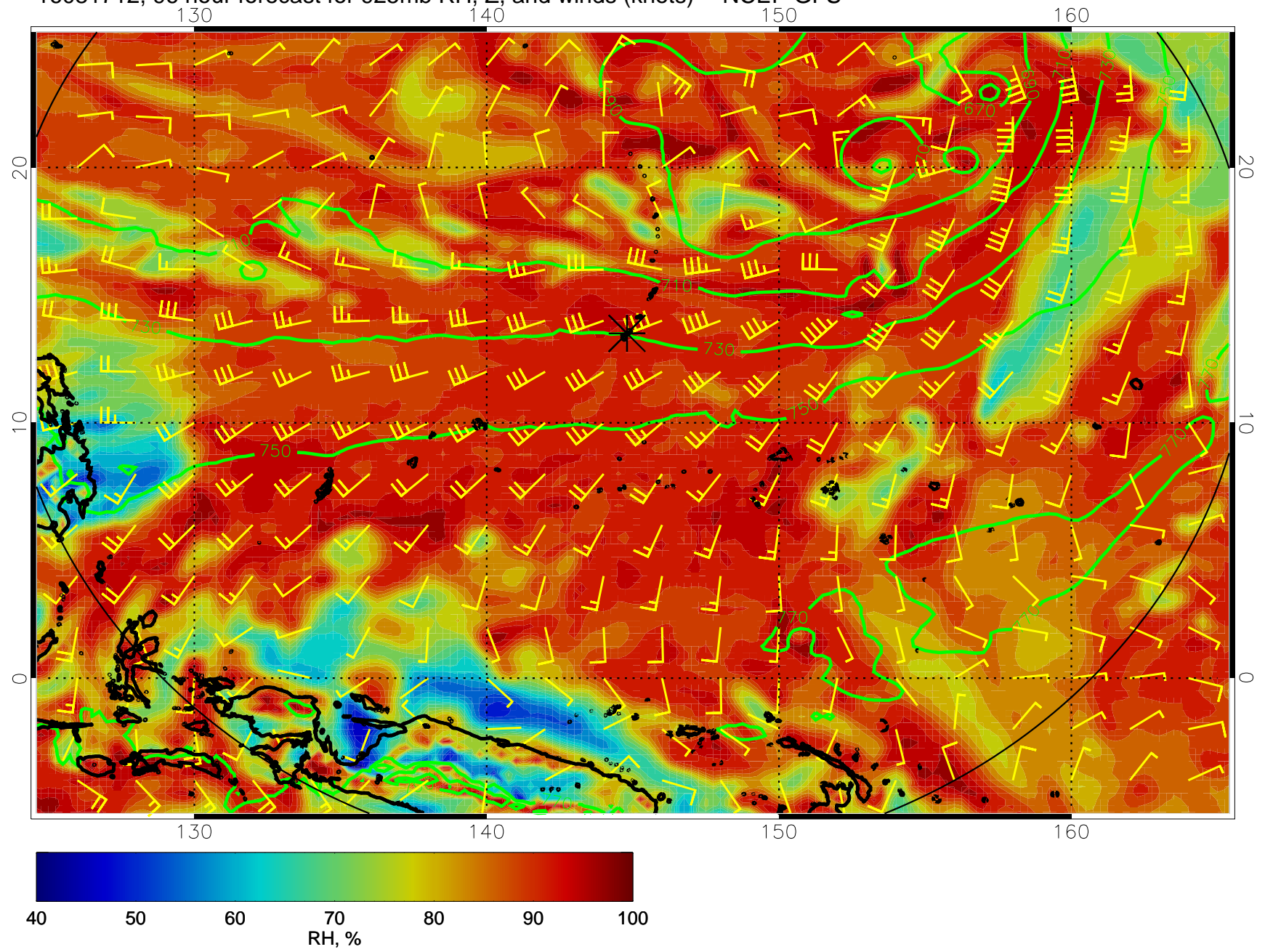
16081700, 84 hour forecast for 925mb RH, Z, and winds (knots) -- NCEP GFS



16081706, 90 hour forecast for 925mb RH, Z, and winds (knots) -- NCEP GFS

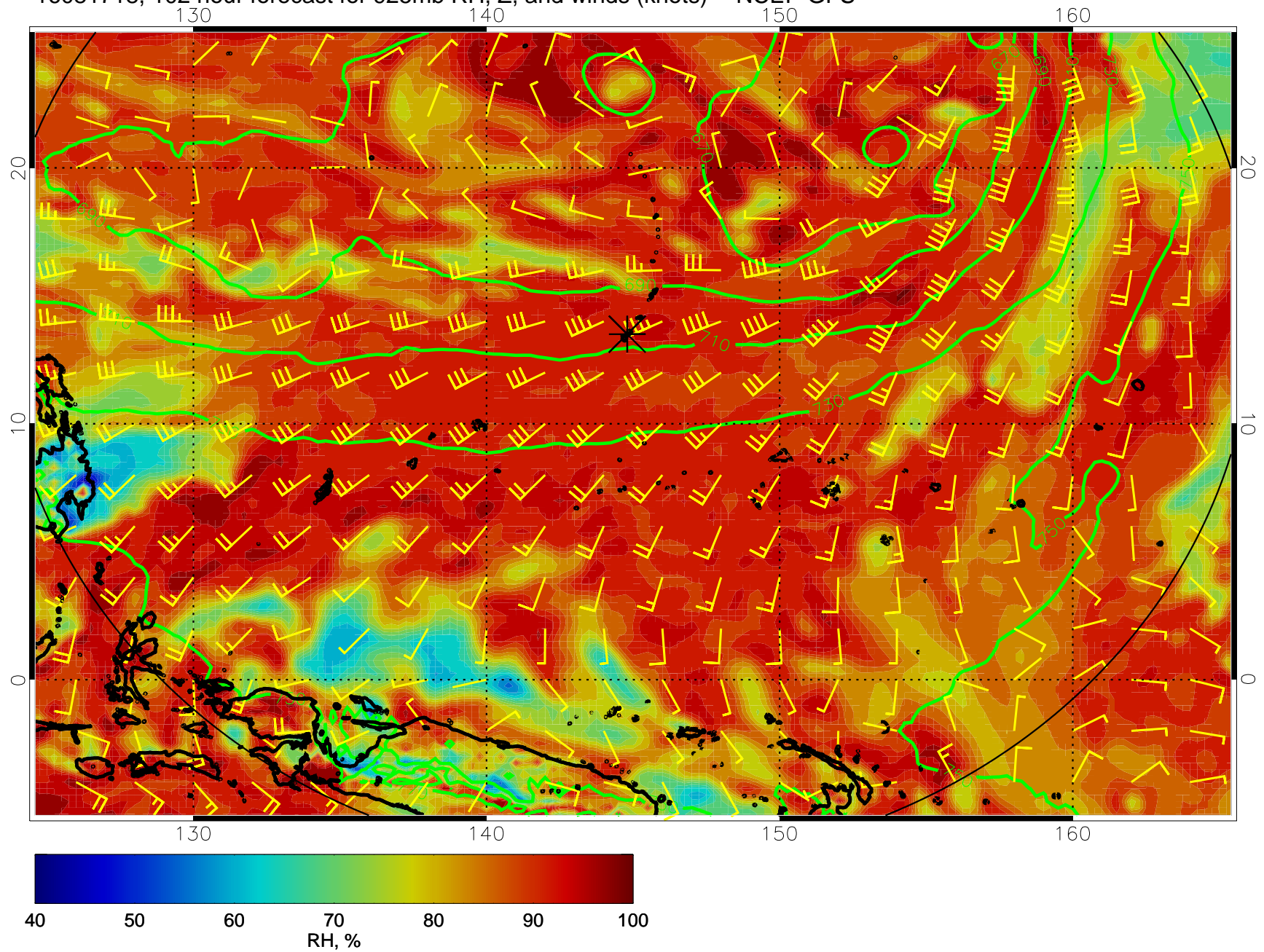


16081712, 96 hour forecast for 925mb RH, Z, and winds (knots) -- NCEP GFS

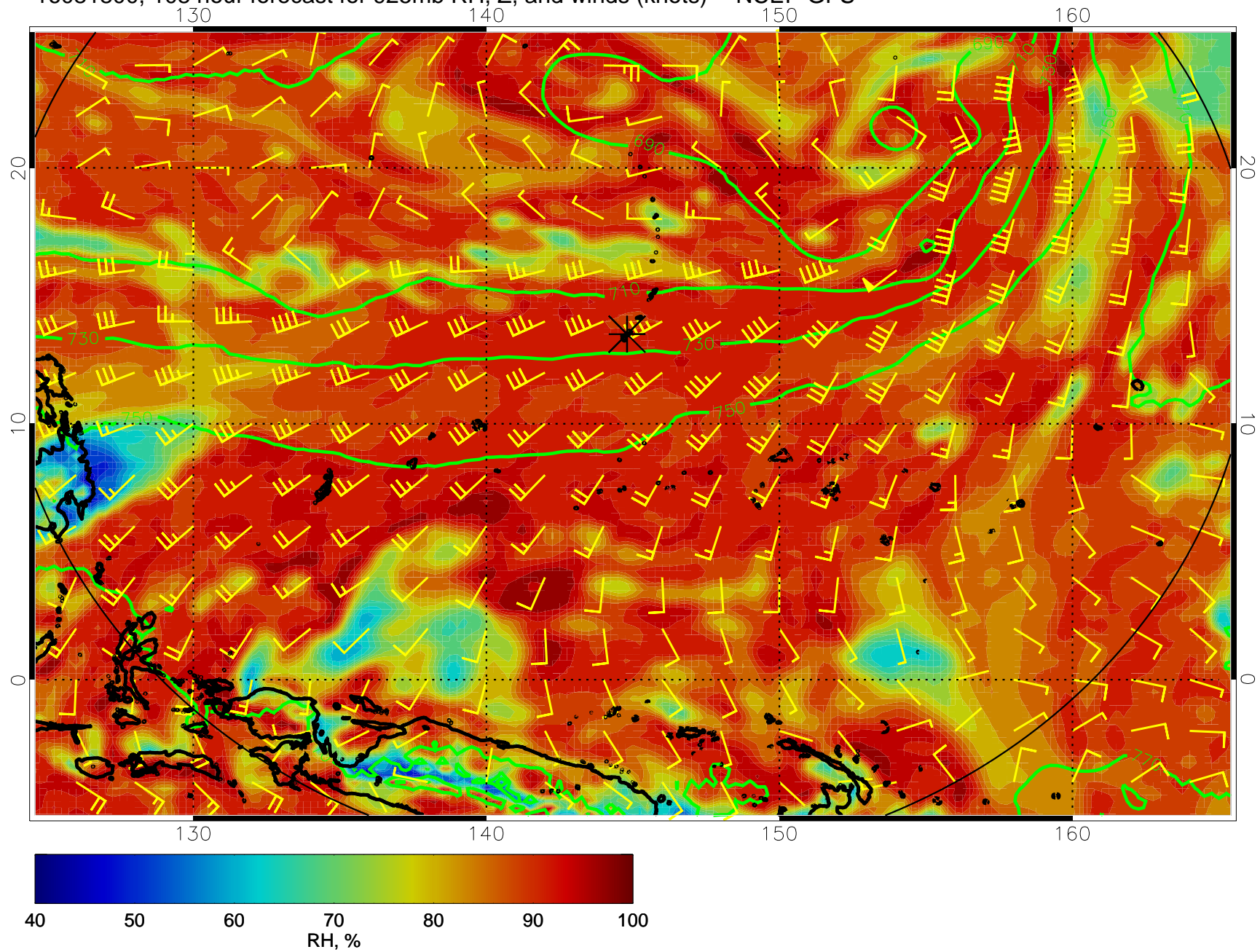




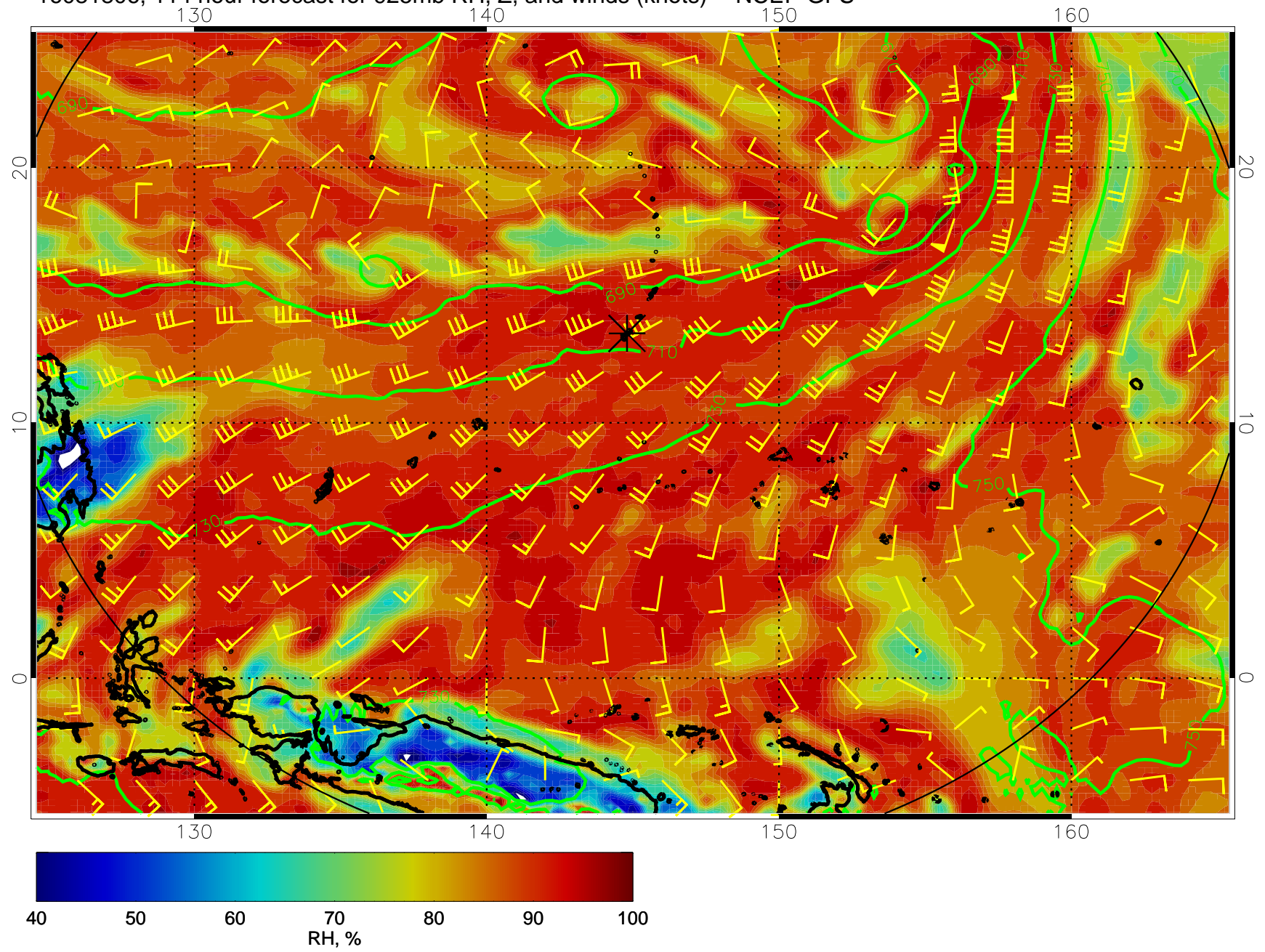
16081718, 102 hour forecast for 925mb RH, Z, and winds (knots) -- NCEP GFS



16081800, 108 hour forecast for 925mb RH, Z, and winds (knots) -- NCEP GFS



16081806, 114 hour forecast for 925mb RH, Z, and winds (knots) -- NCEP GFS



16081812, 120 hour forecast for 925mb RH, Z, and winds (knots) -- NCEP GFS

