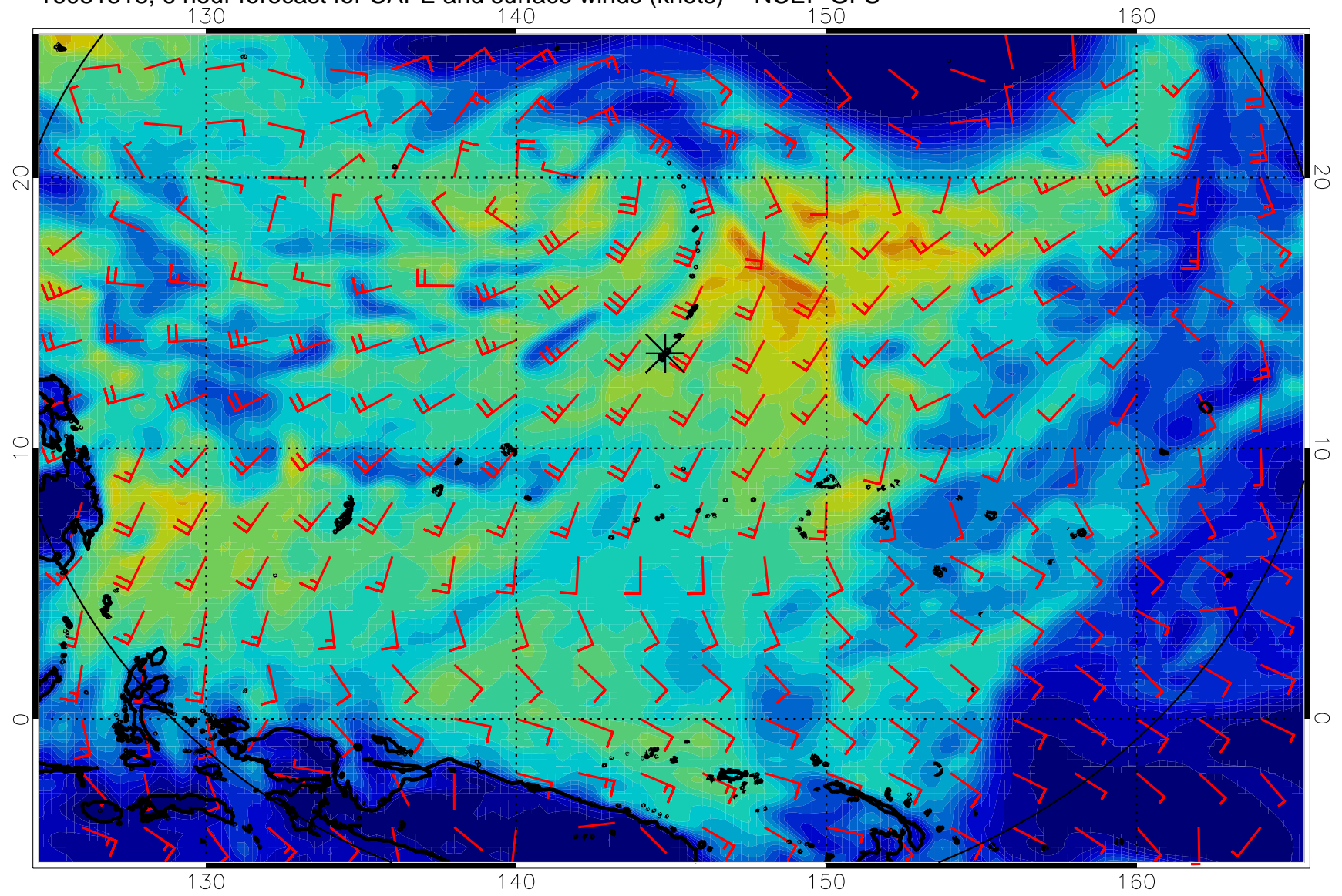
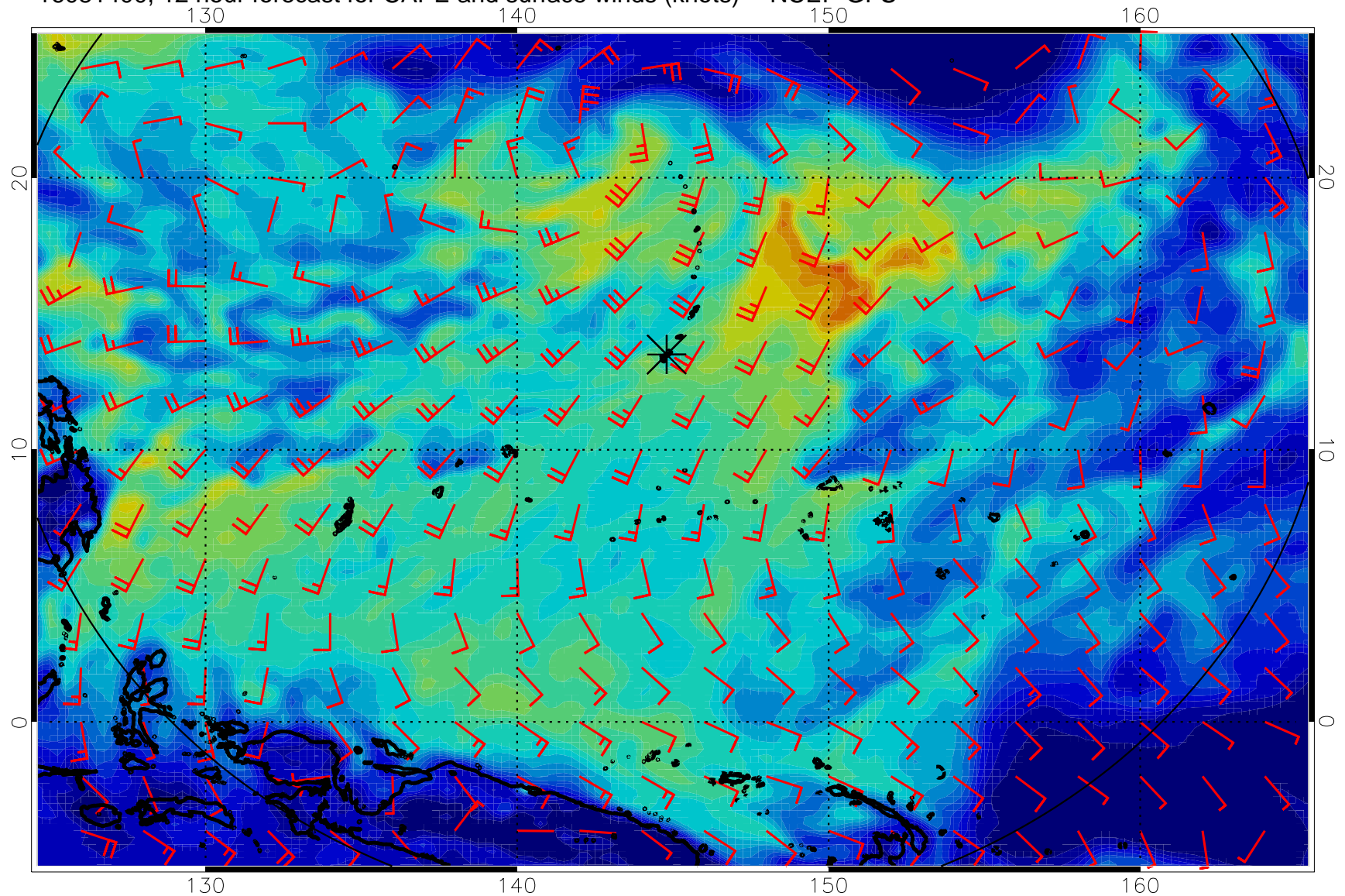


16081318, 6 hour forecast for CAPE and surface winds (knots) -- NCEP GFS

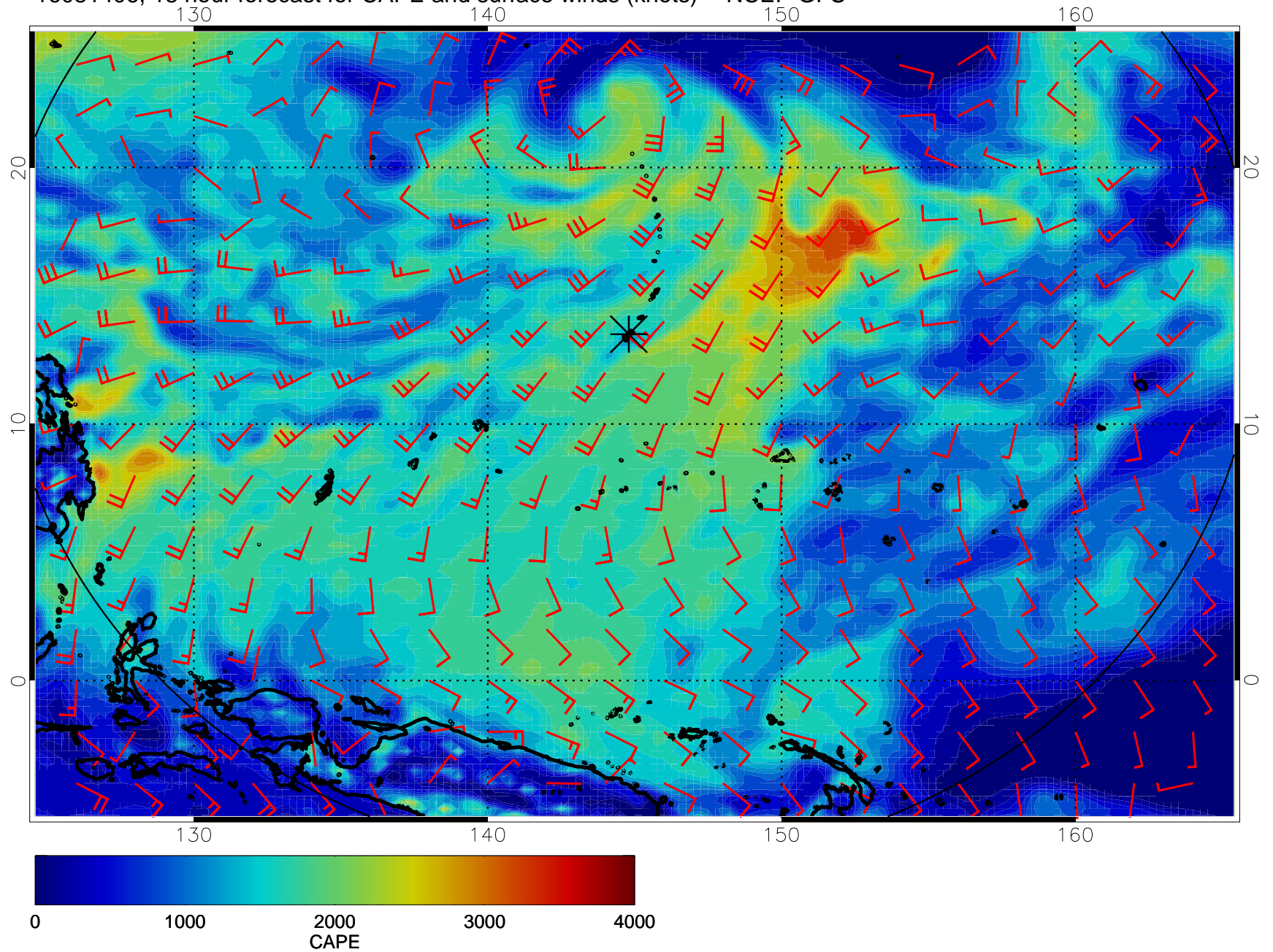


16081400, 12 hour forecast for CAPE and surface winds (knots) -- NCEP GFS

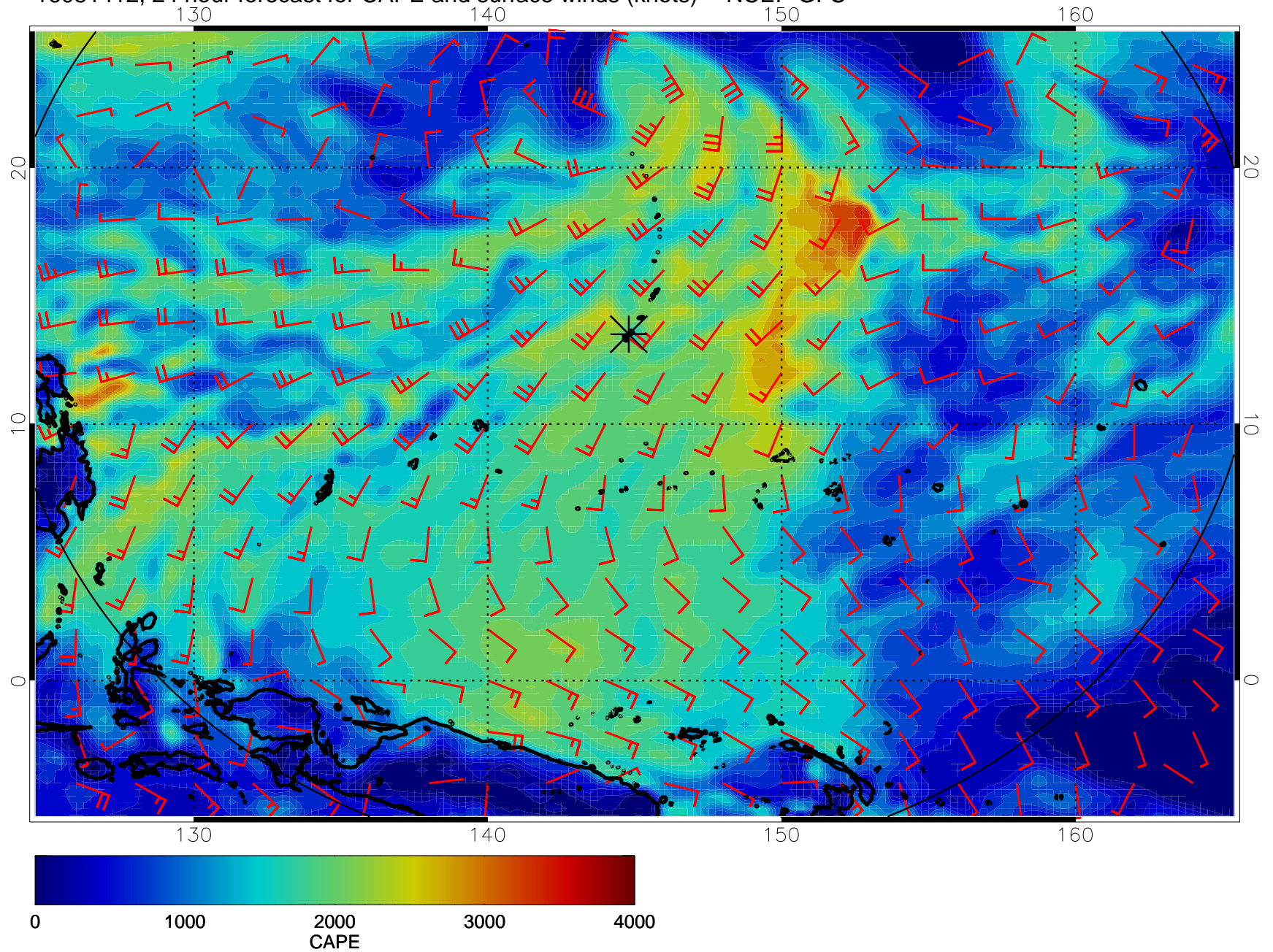




16081406, 18 hour forecast for CAPE and surface winds (knots) -- NCEP GFS

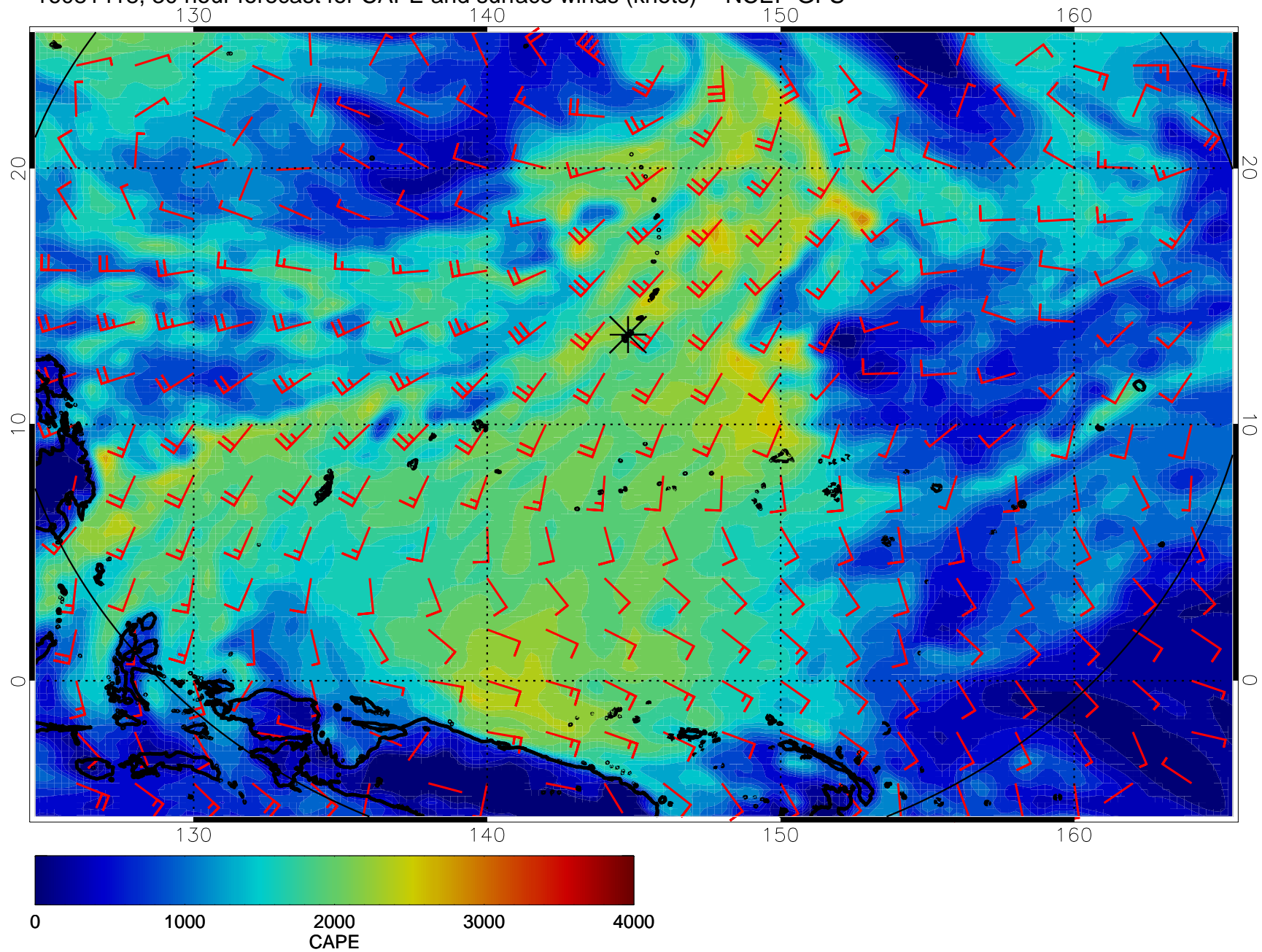


16081412, 24 hour forecast for CAPE and surface winds (knots) -- NCEP GFS

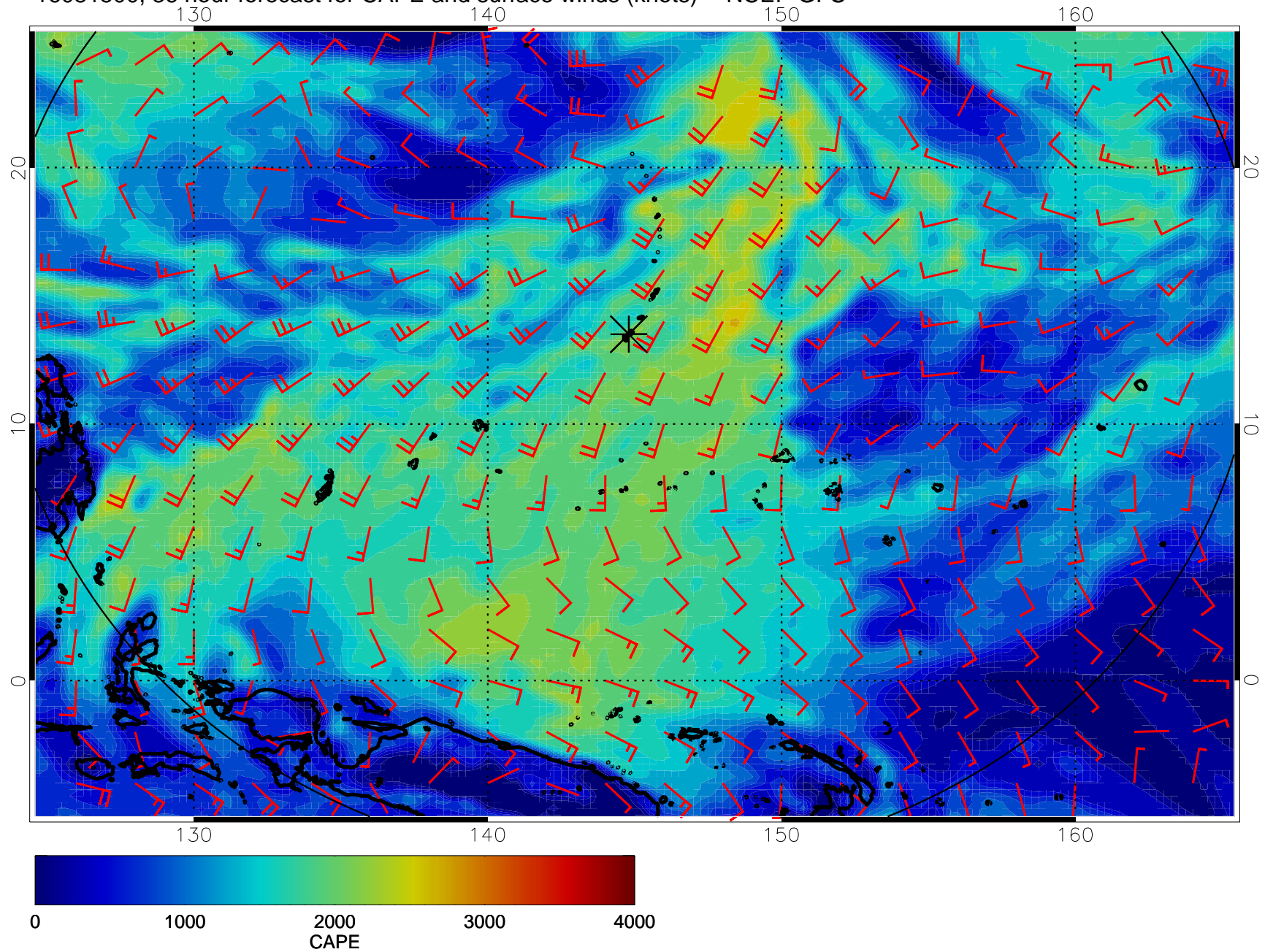




16081418, 30 hour forecast for CAPE and surface winds (knots) -- NCEP GFS

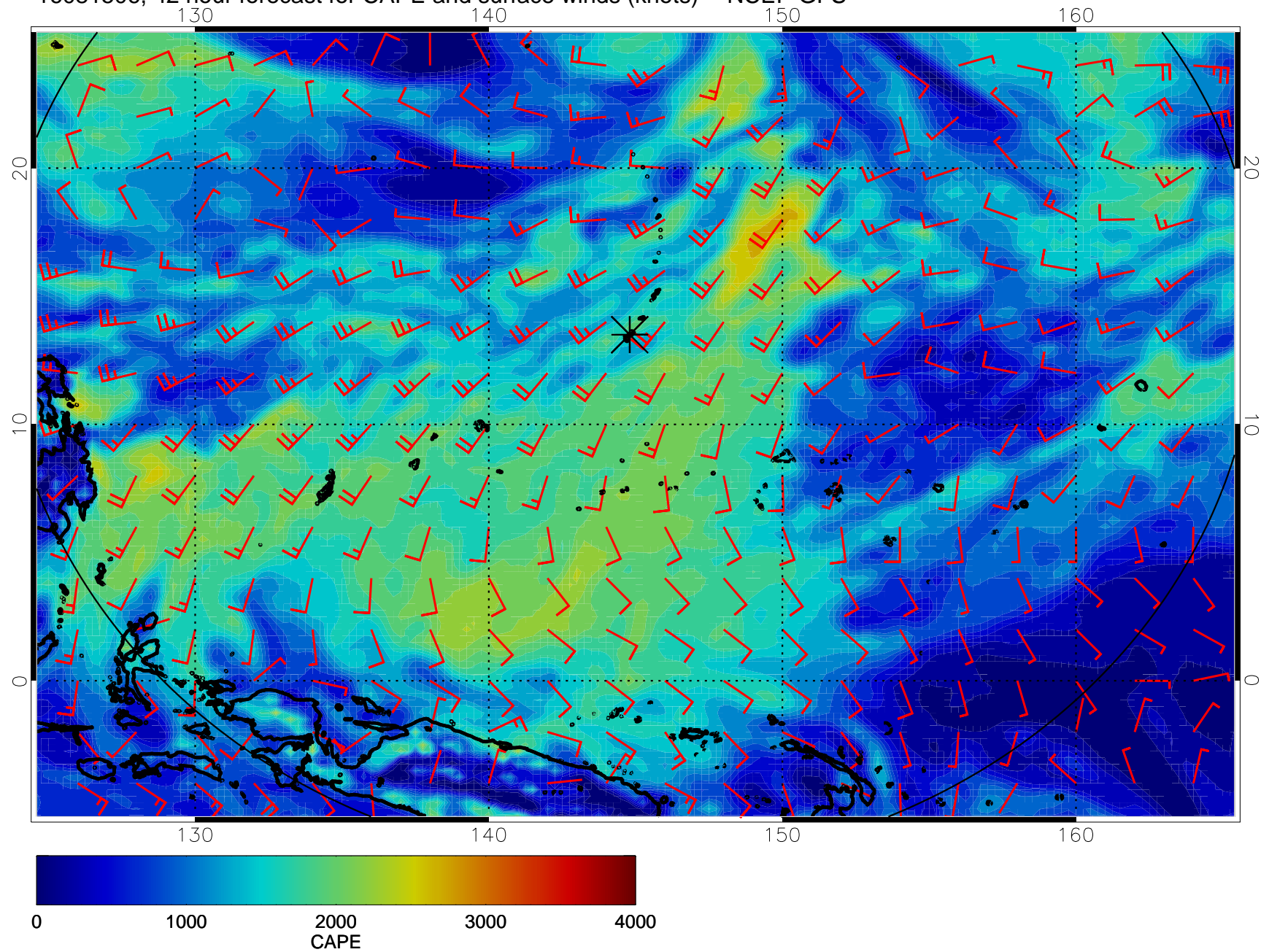


16081500, 36 hour forecast for CAPE and surface winds (knots) -- NCEP GFS

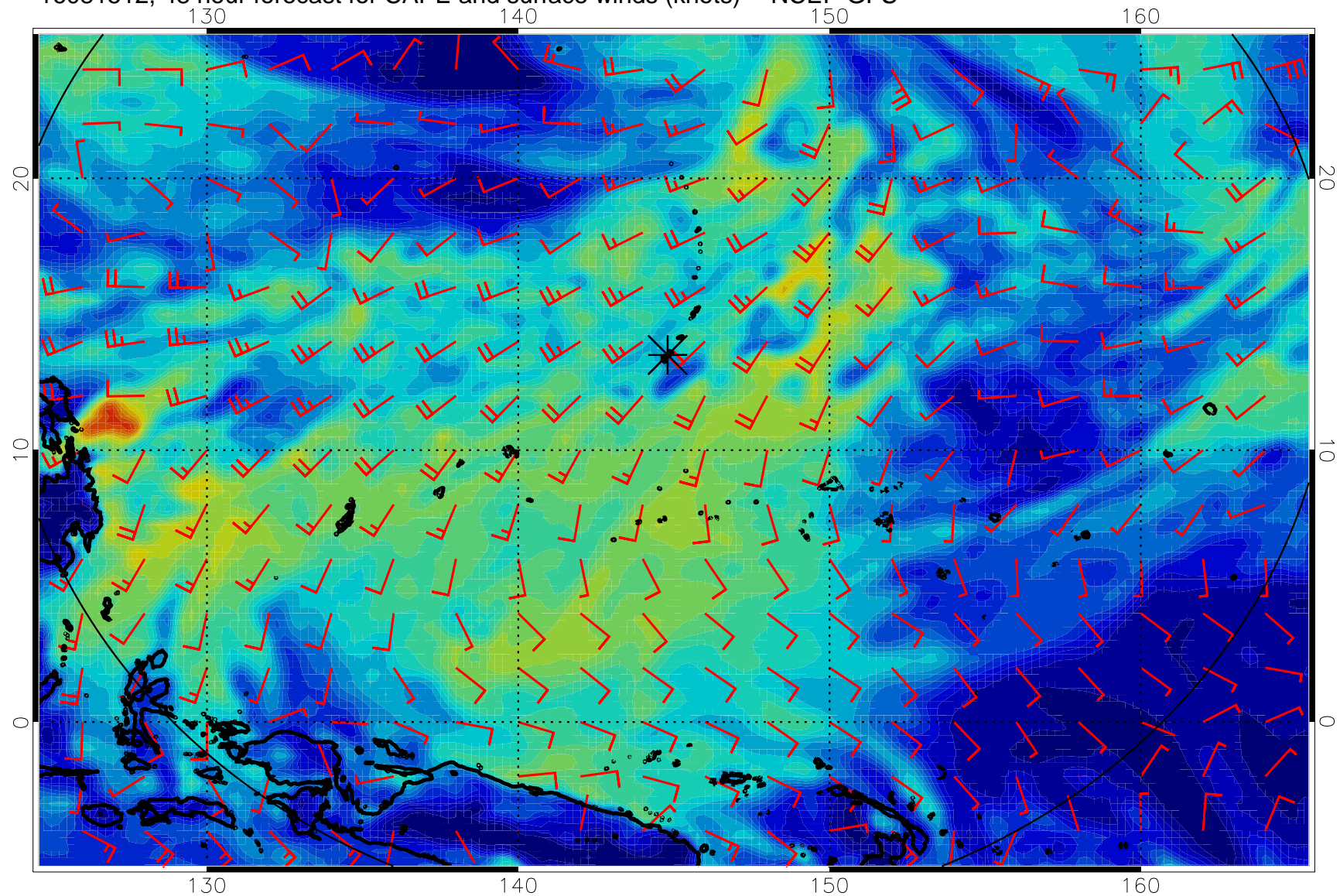




16081506, 42 hour forecast for CAPE and surface winds (knots) -- NCEP GFS

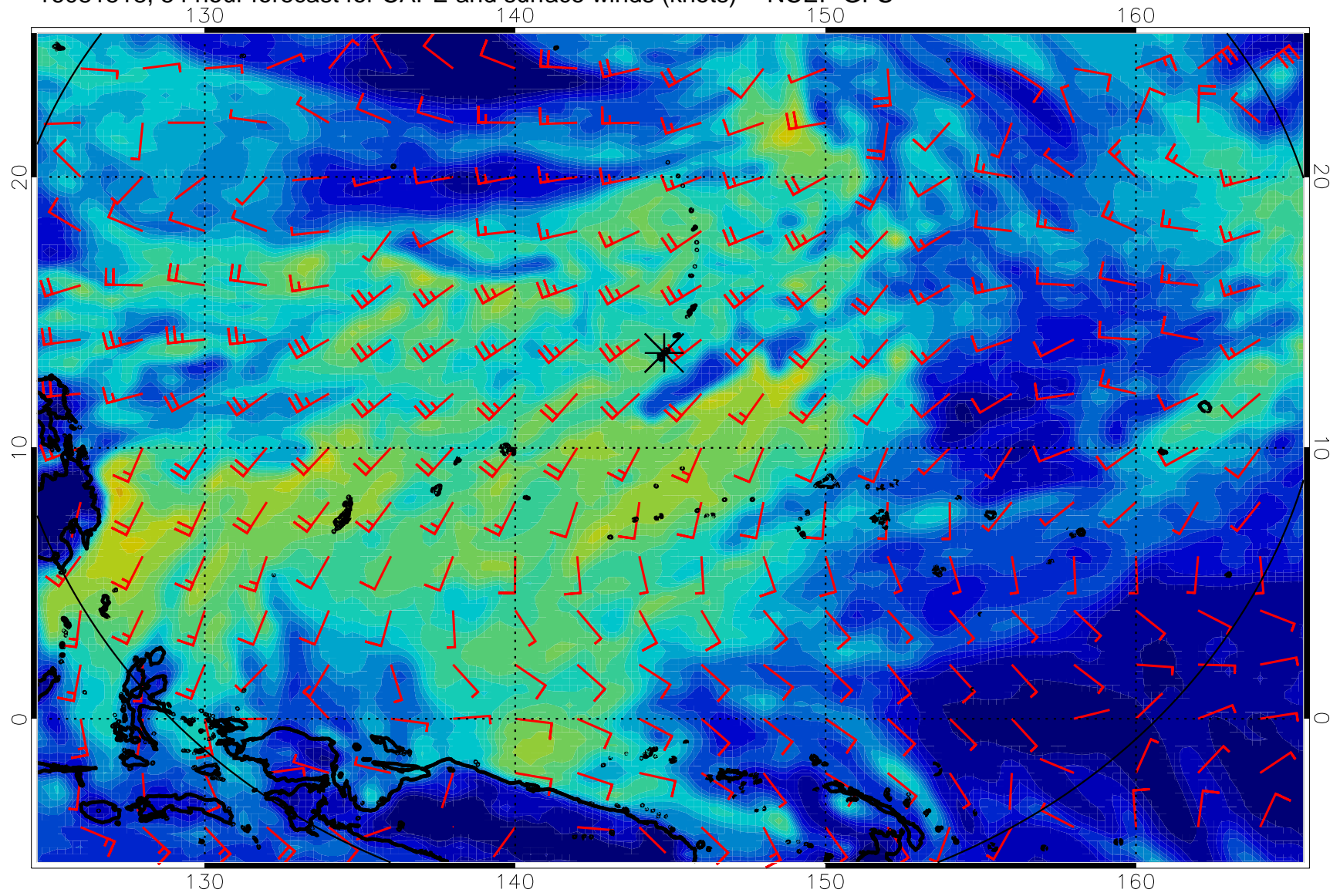


16081512, 48 hour forecast for CAPE and surface winds (knots) -- NCEP GFS

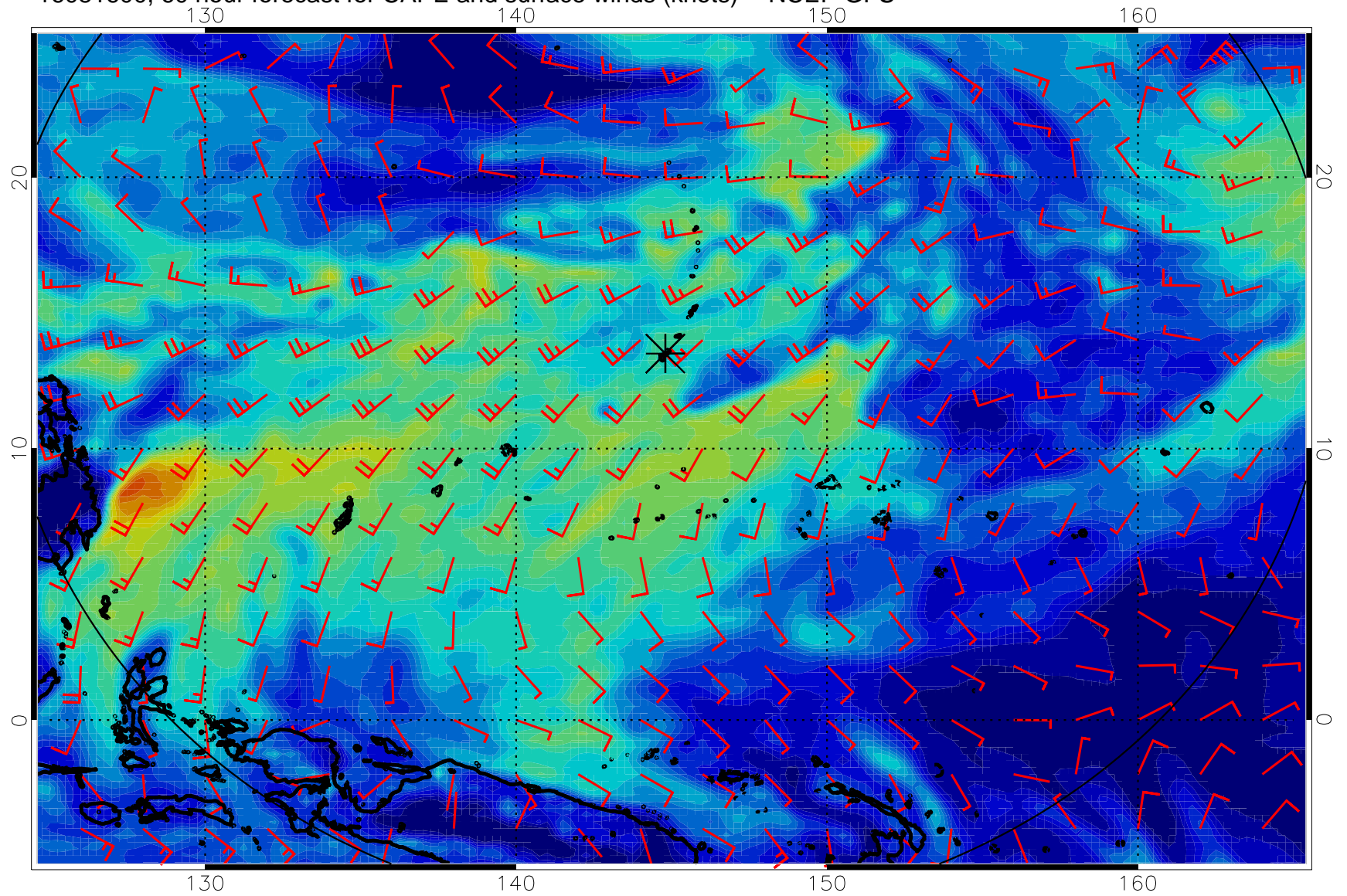




16081518, 54 hour forecast for CAPE and surface winds (knots) -- NCEP GFS

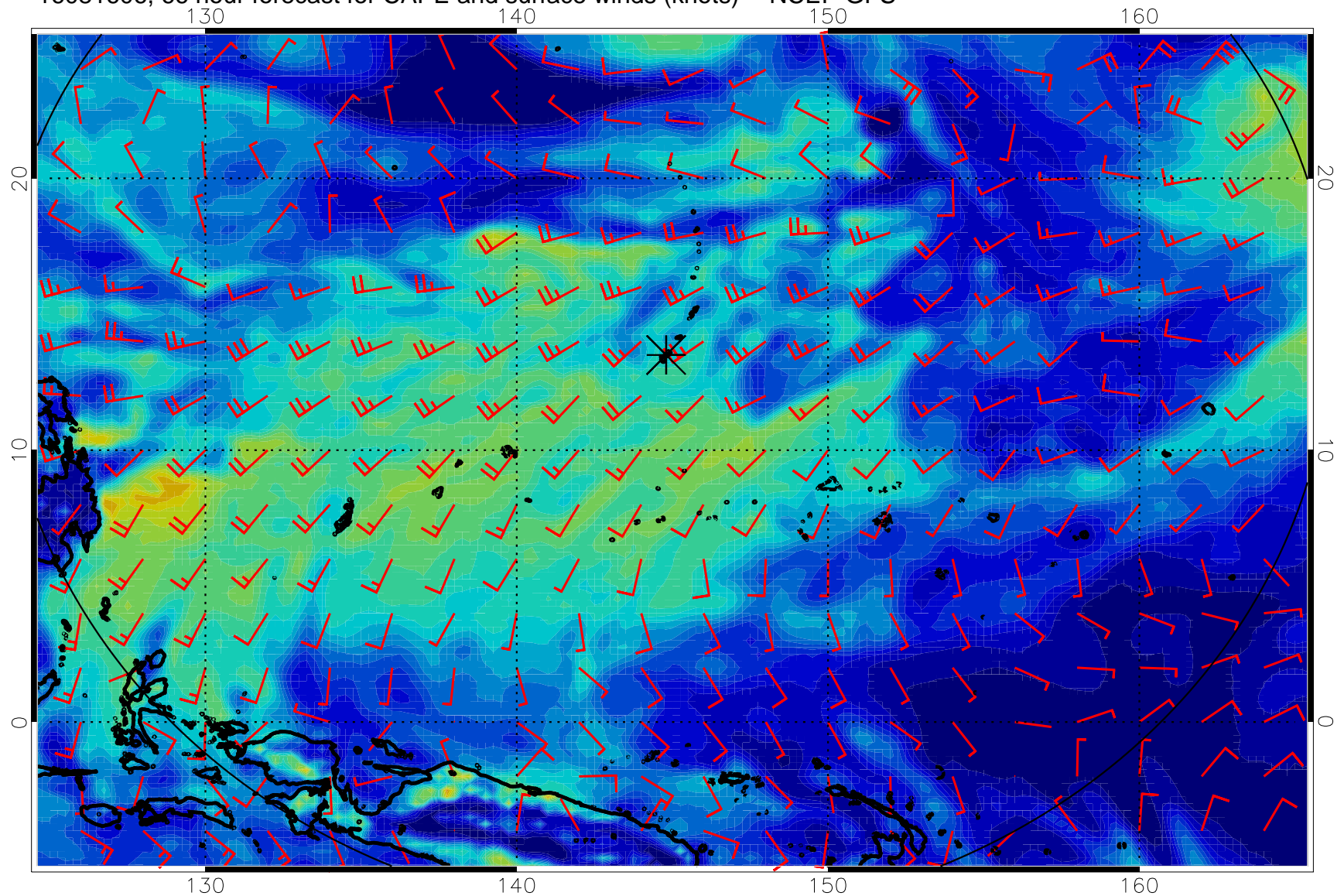


16081600, 60 hour forecast for CAPE and surface winds (knots) -- NCEP GFS

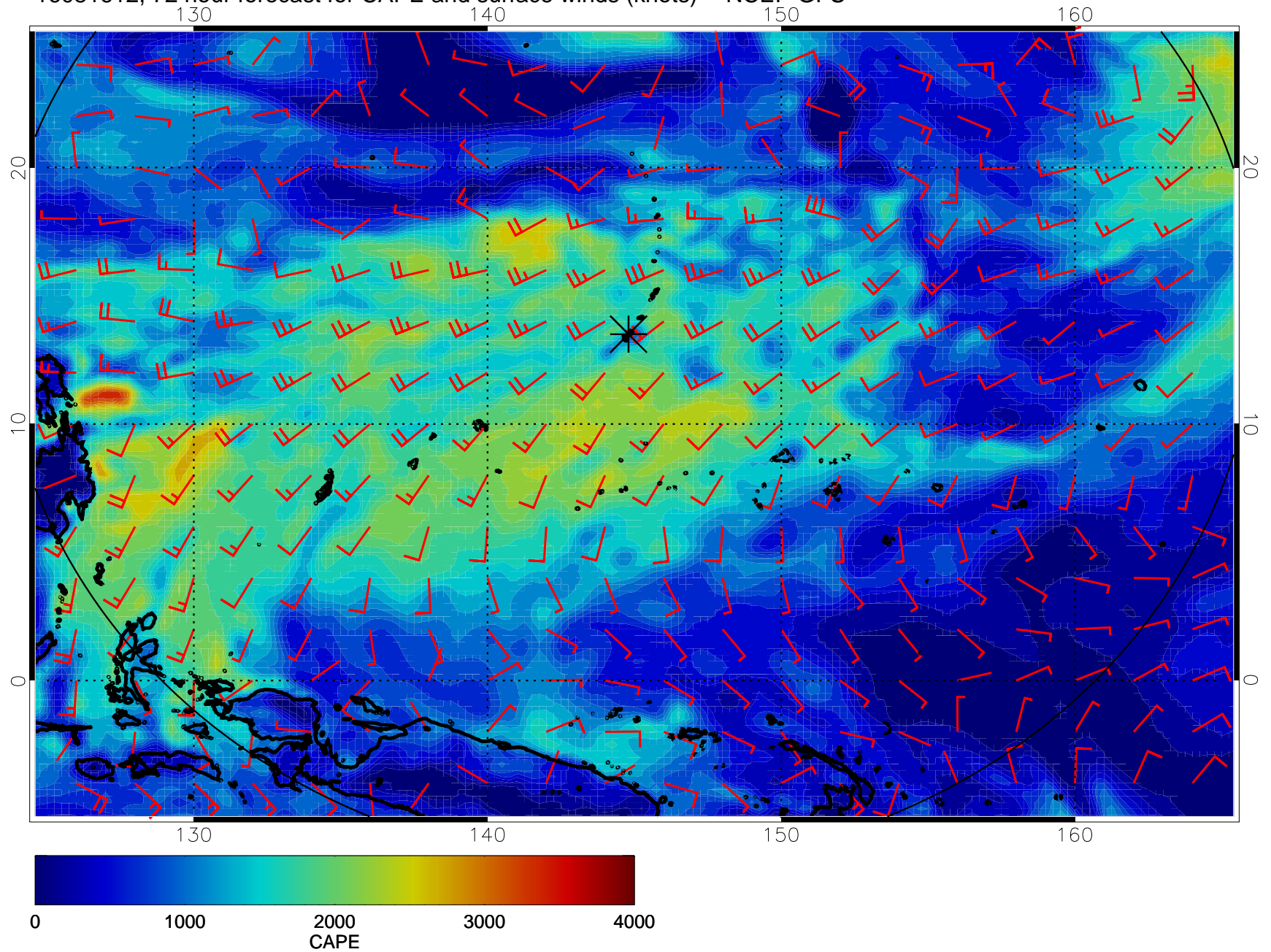




16081606, 66 hour forecast for CAPE and surface winds (knots) -- NCEP GFS

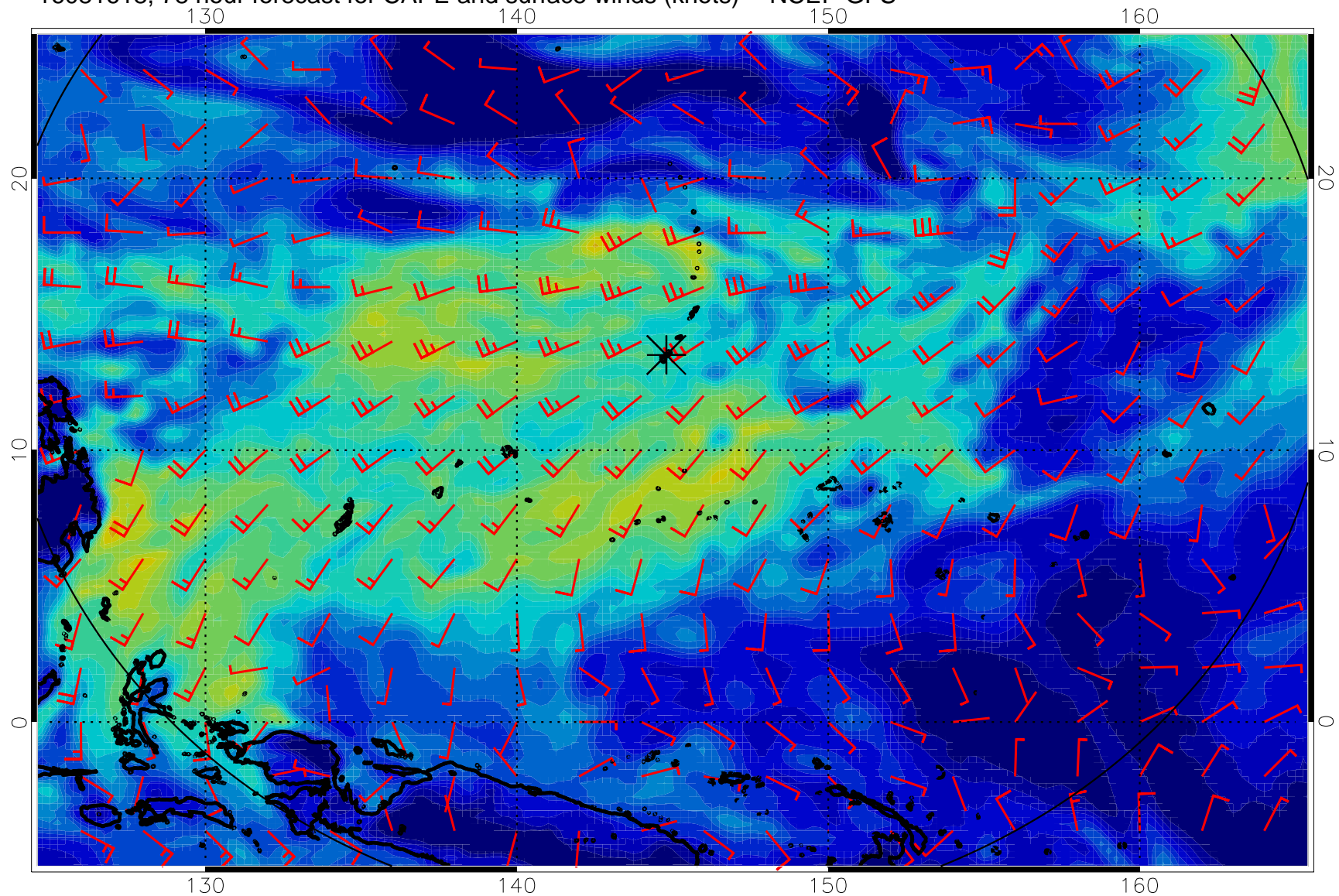


16081612, 72 hour forecast for CAPE and surface winds (knots) -- NCEP GFS

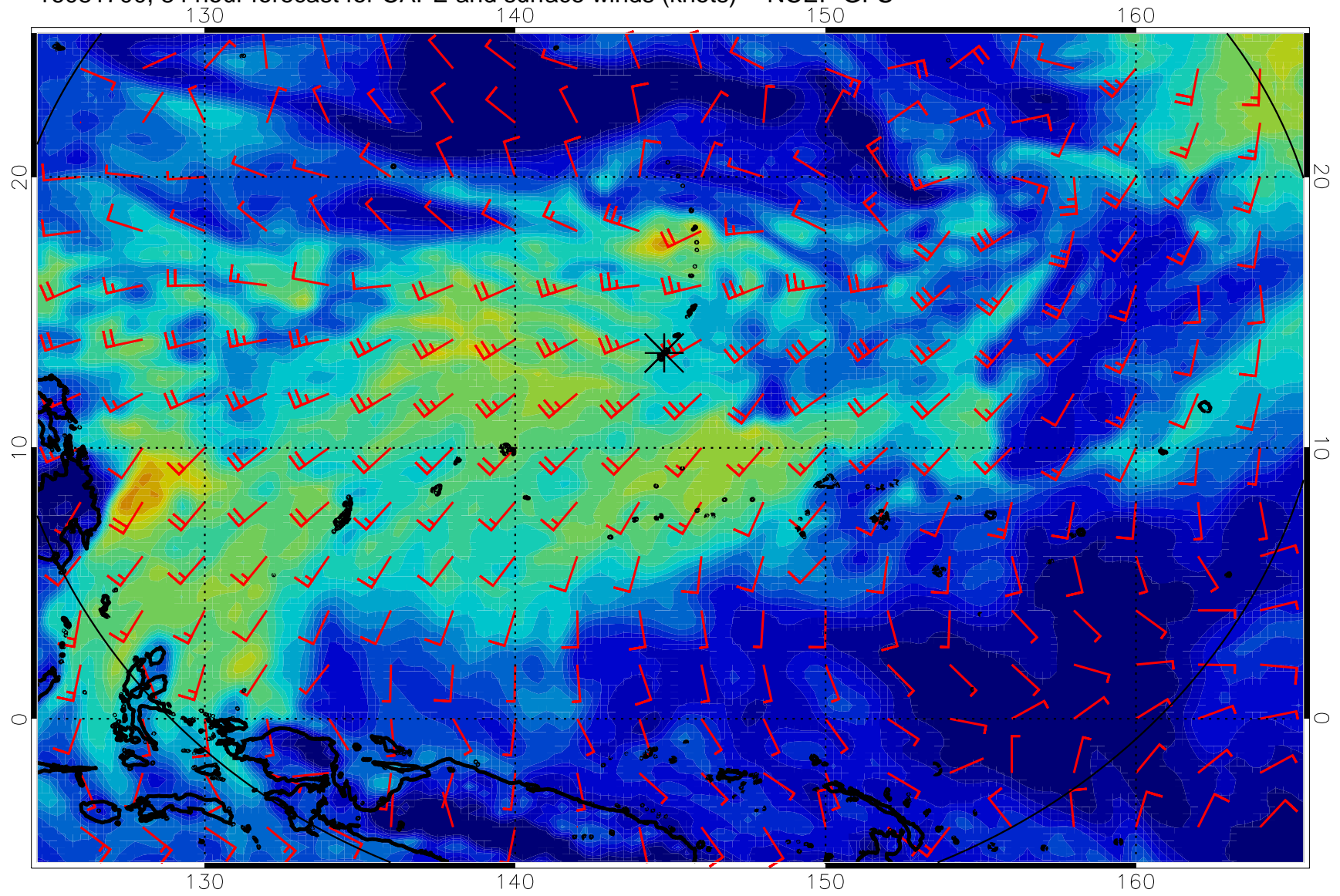




16081618, 78 hour forecast for CAPE and surface winds (knots) -- NCEP GFS

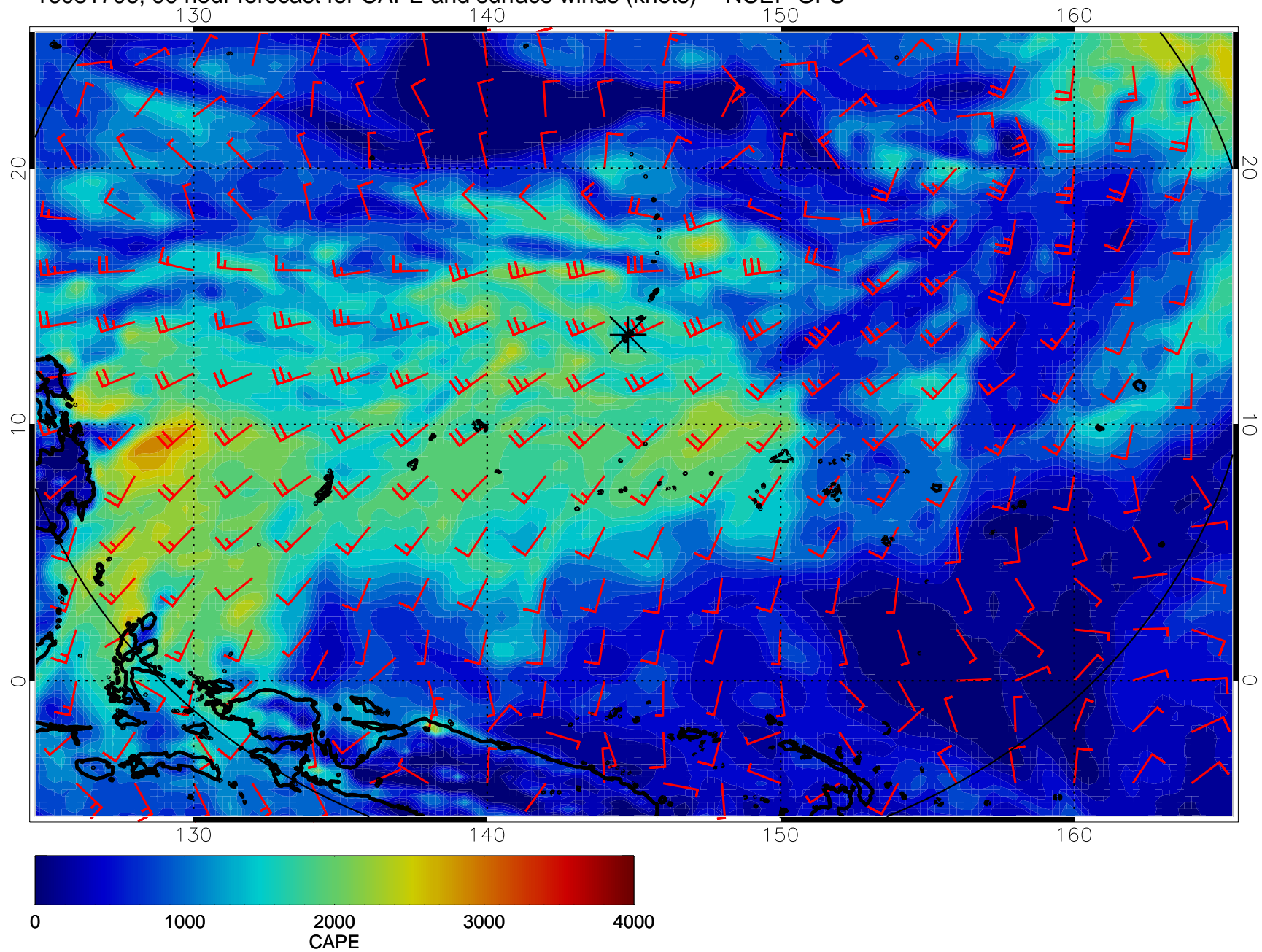


16081700, 84 hour forecast for CAPE and surface winds (knots) -- NCEP GFS

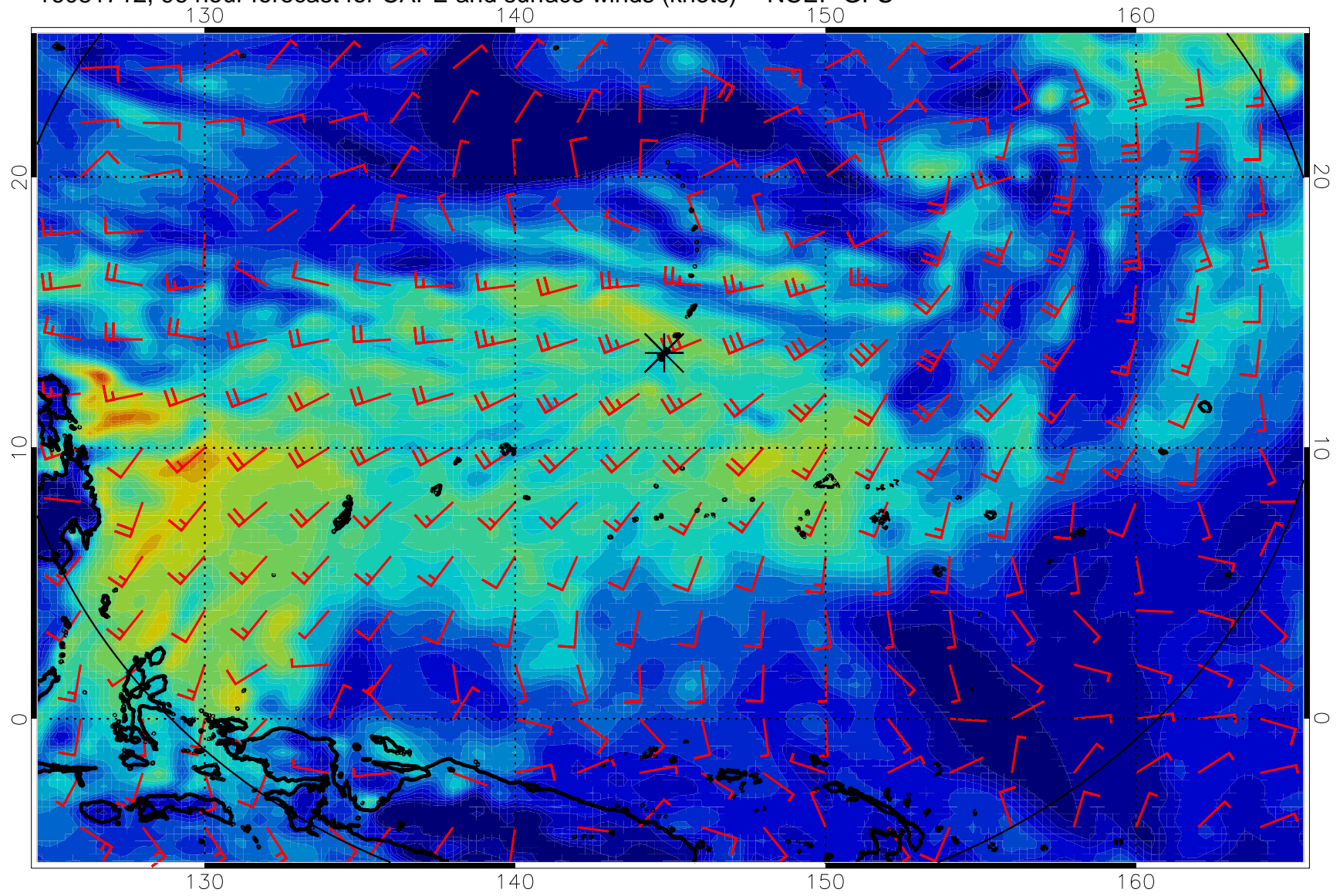




16081706, 90 hour forecast for CAPE and surface winds (knots) -- NCEP GFS

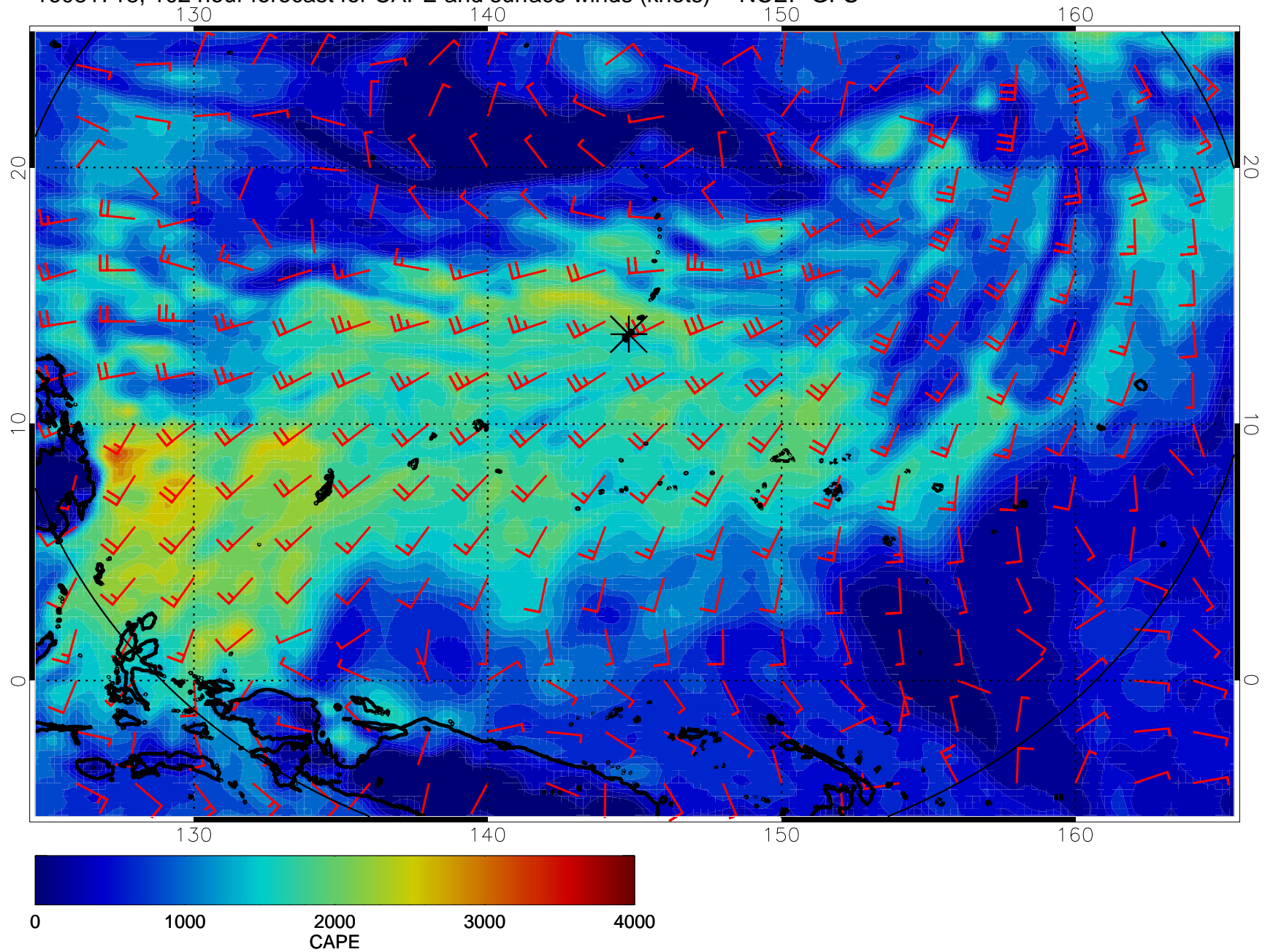


16081712, 96 hour forecast for CAPE and surface winds (knots) -- NCEP GFS

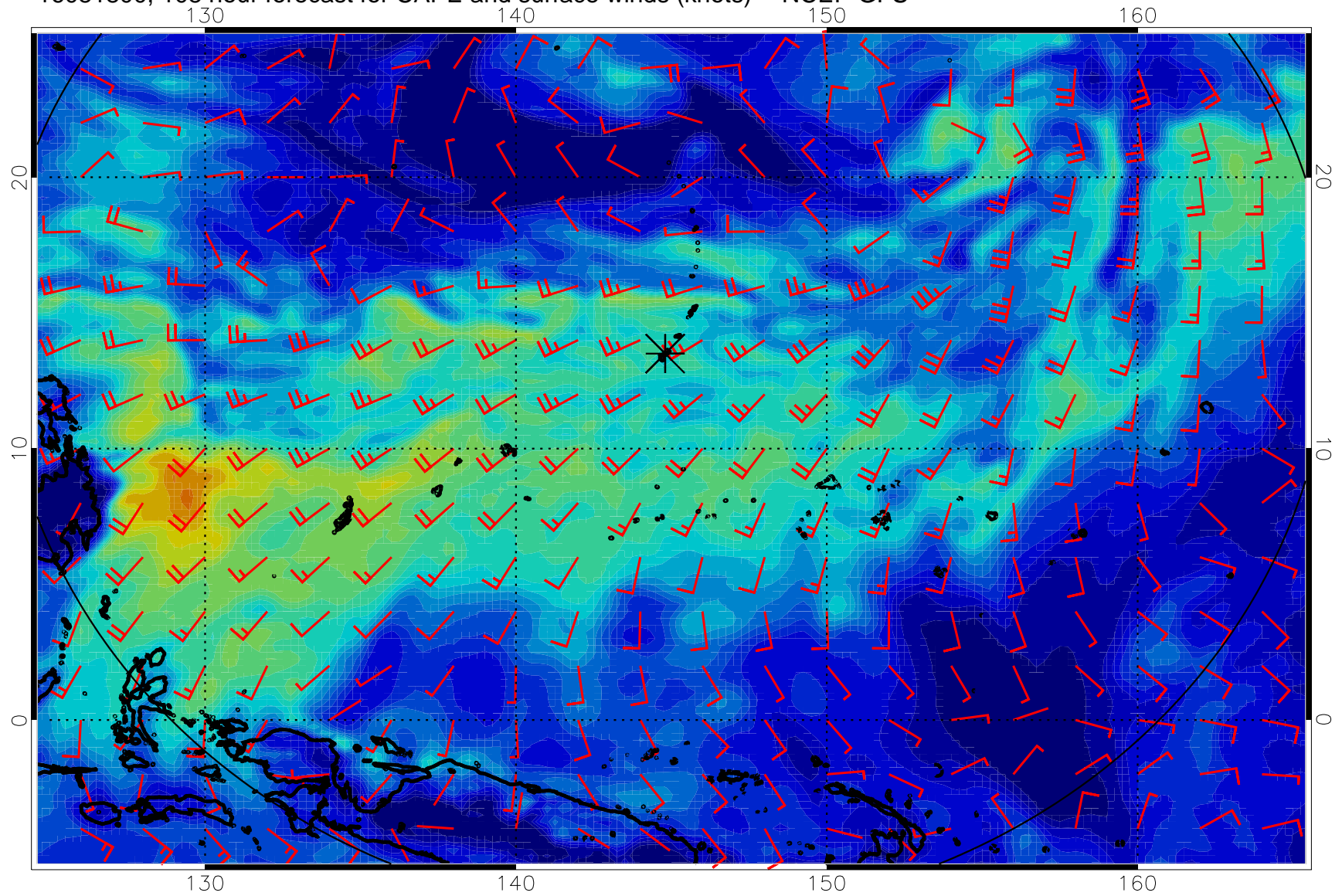




16081718, 102 hour forecast for CAPE and surface winds (knots) -- NCEP GFS

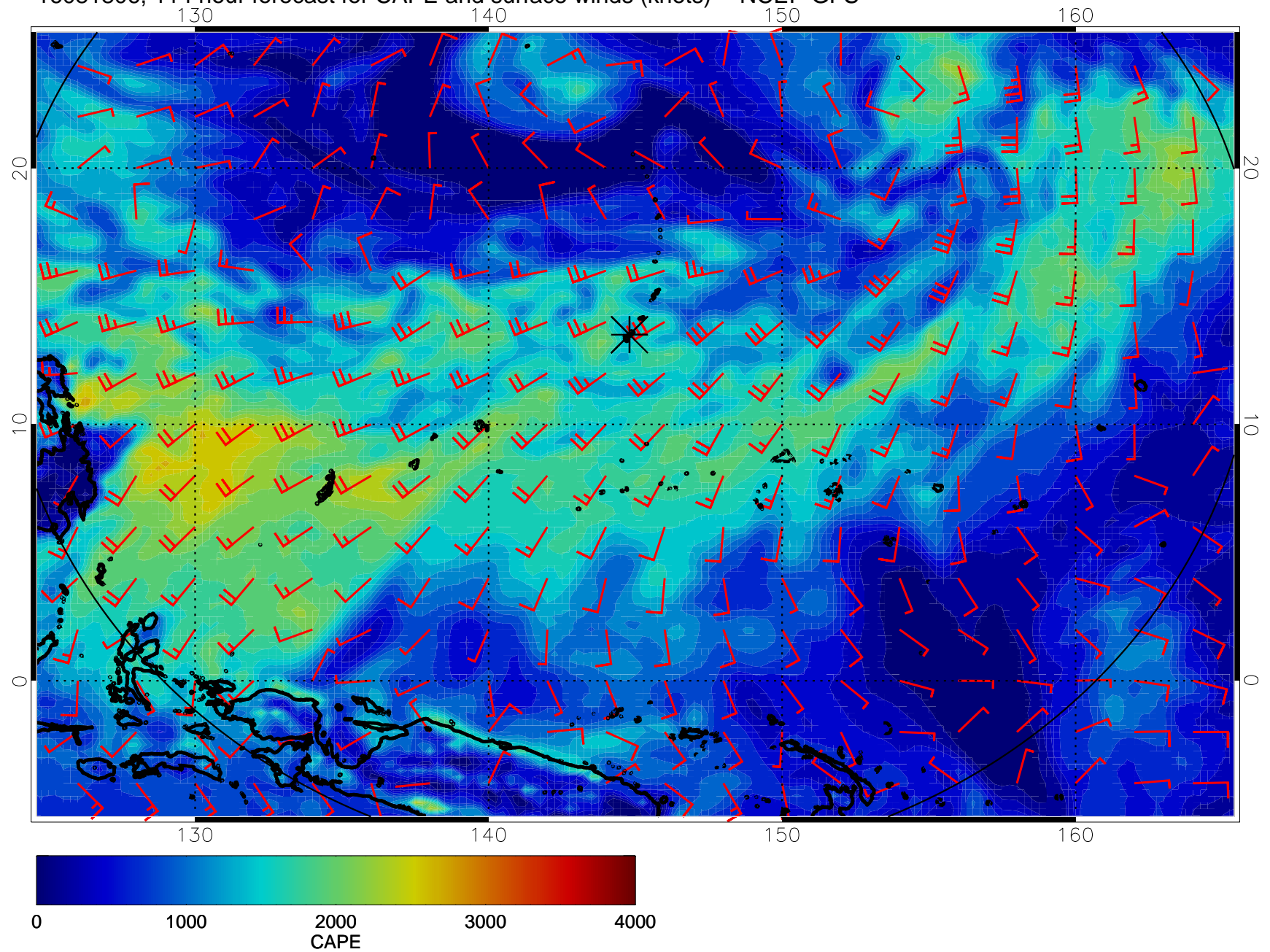


16081800, 108 hour forecast for CAPE and surface winds (knots) -- NCEP GFS





16081806, 114 hour forecast for CAPE and surface winds (knots) -- NCEP GFS



16081812, 120 hour forecast for CAPE and surface winds (knots) -- NCEP GFS

