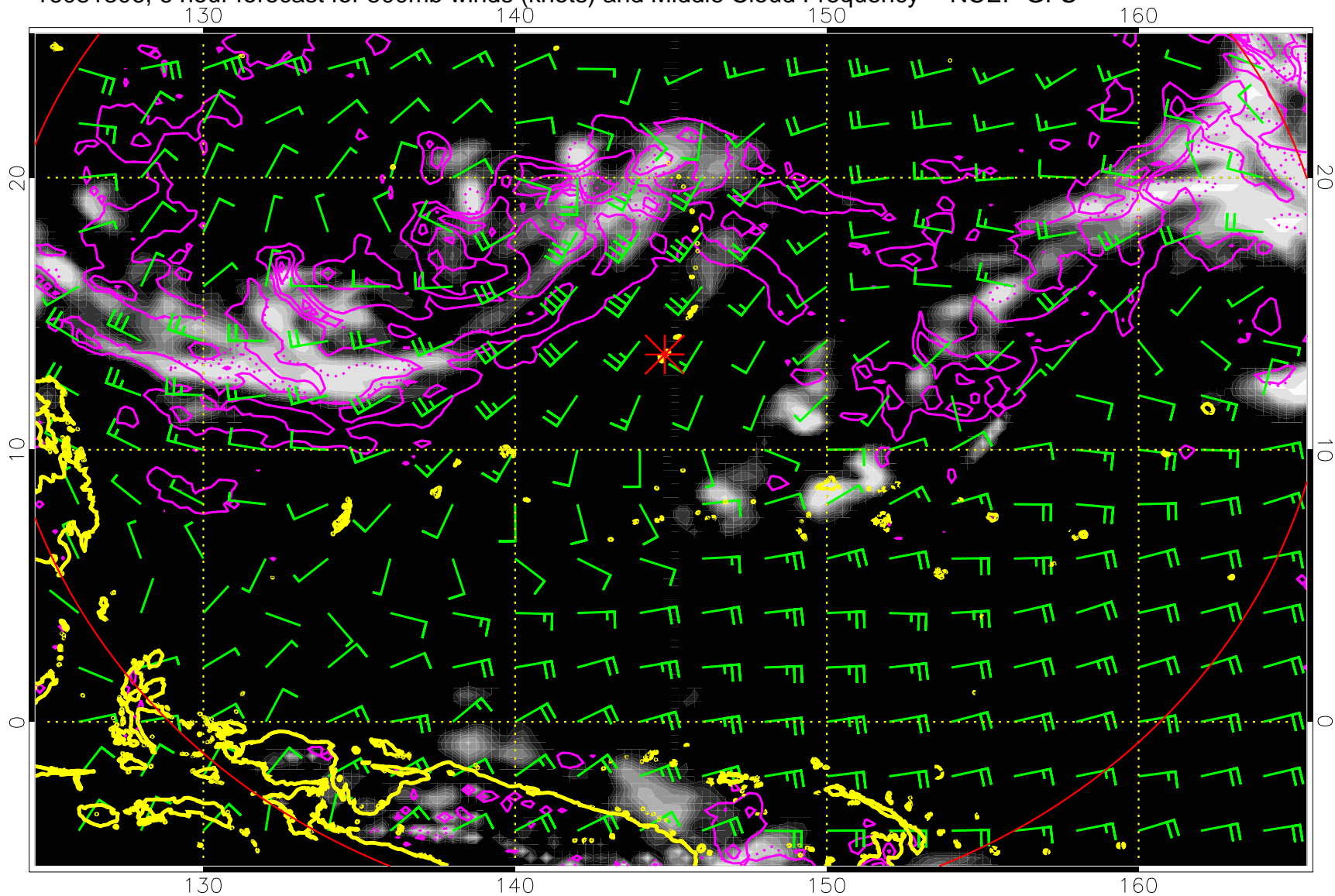
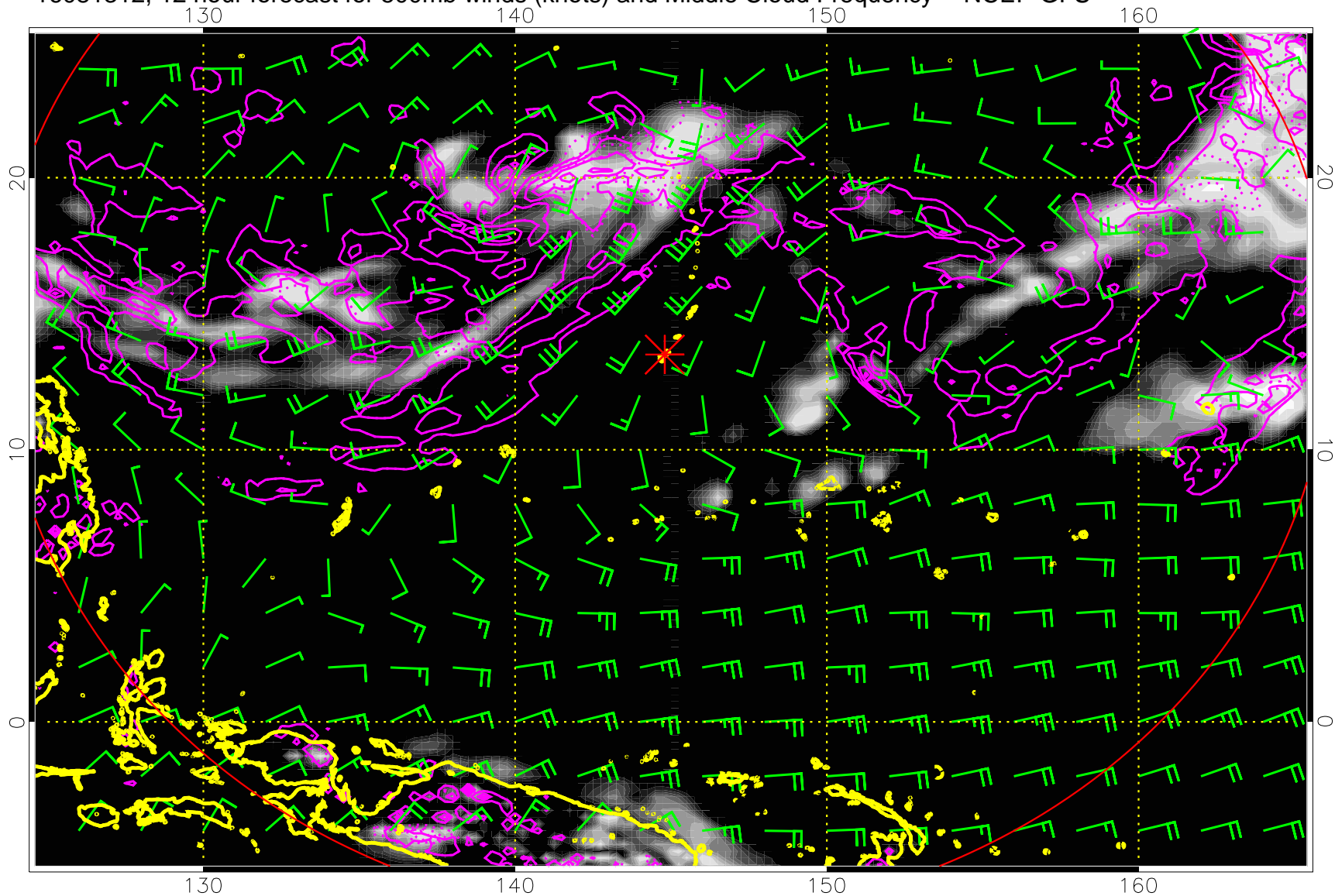


16081306, 6 hour forecast for 500mb winds (knots) and Middle Cloud Frequency -- NCEP GFS



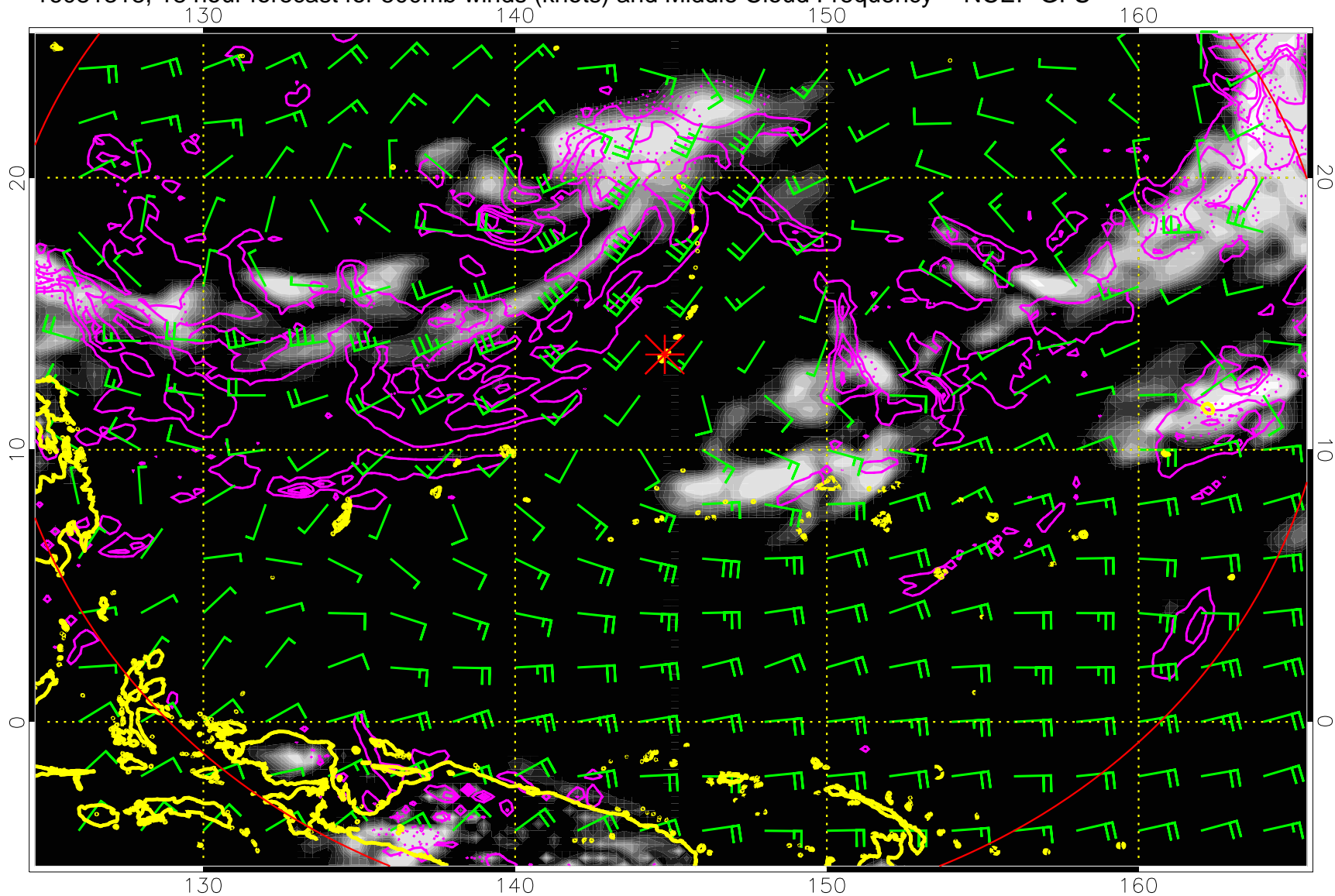
Precip (tot dot, conv sol) mm/day 40 mm/day contours, min 20

16081312, 12 hour forecast for 500mb winds (knots) and Middle Cloud Frequency -- NCEP GFS



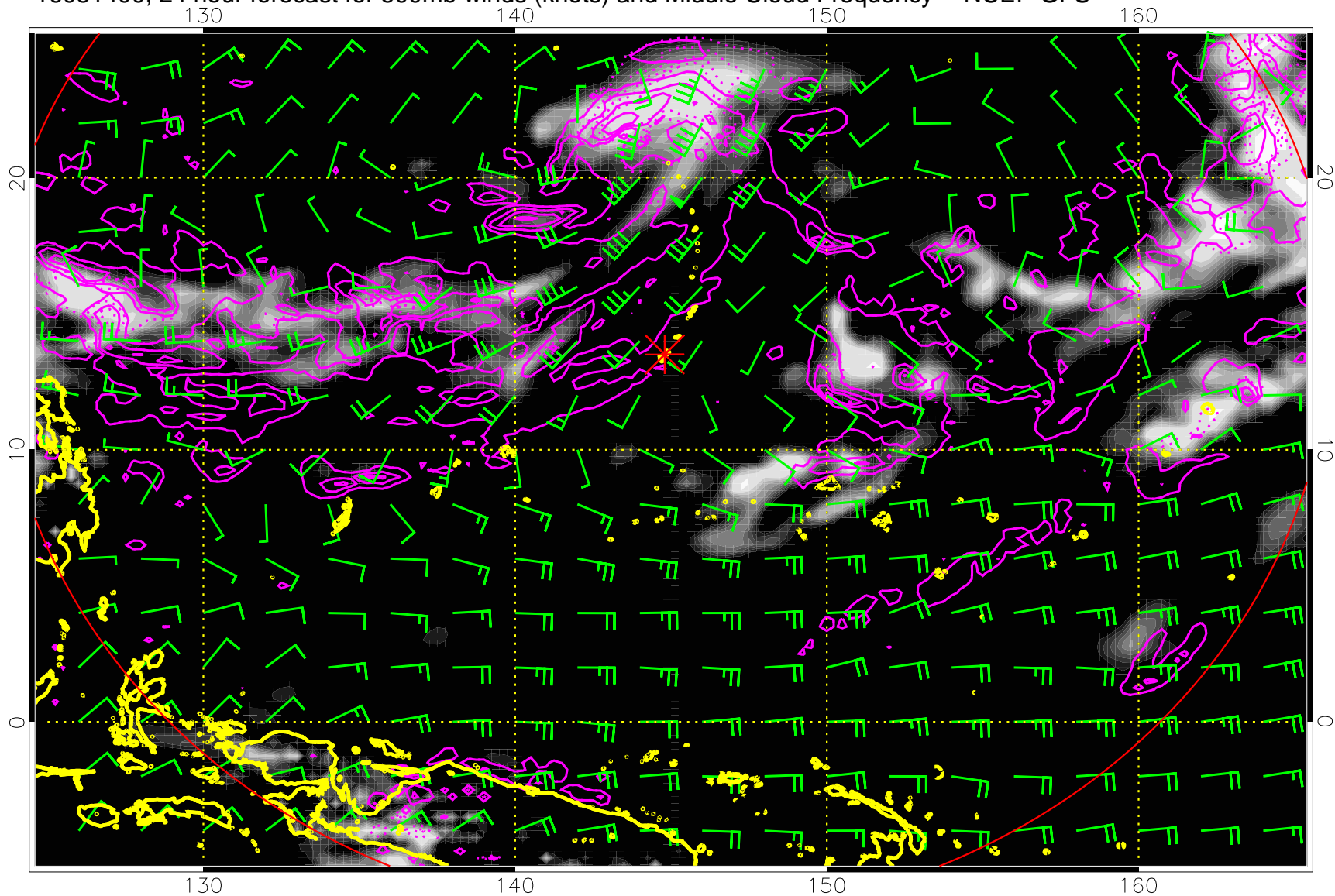
Precip (tot dot, conv sol) mm/day 40 mm/day contours, min 20

16081318, 18 hour forecast for 500mb winds (knots) and Middle Cloud Frequency -- NCEP GFS



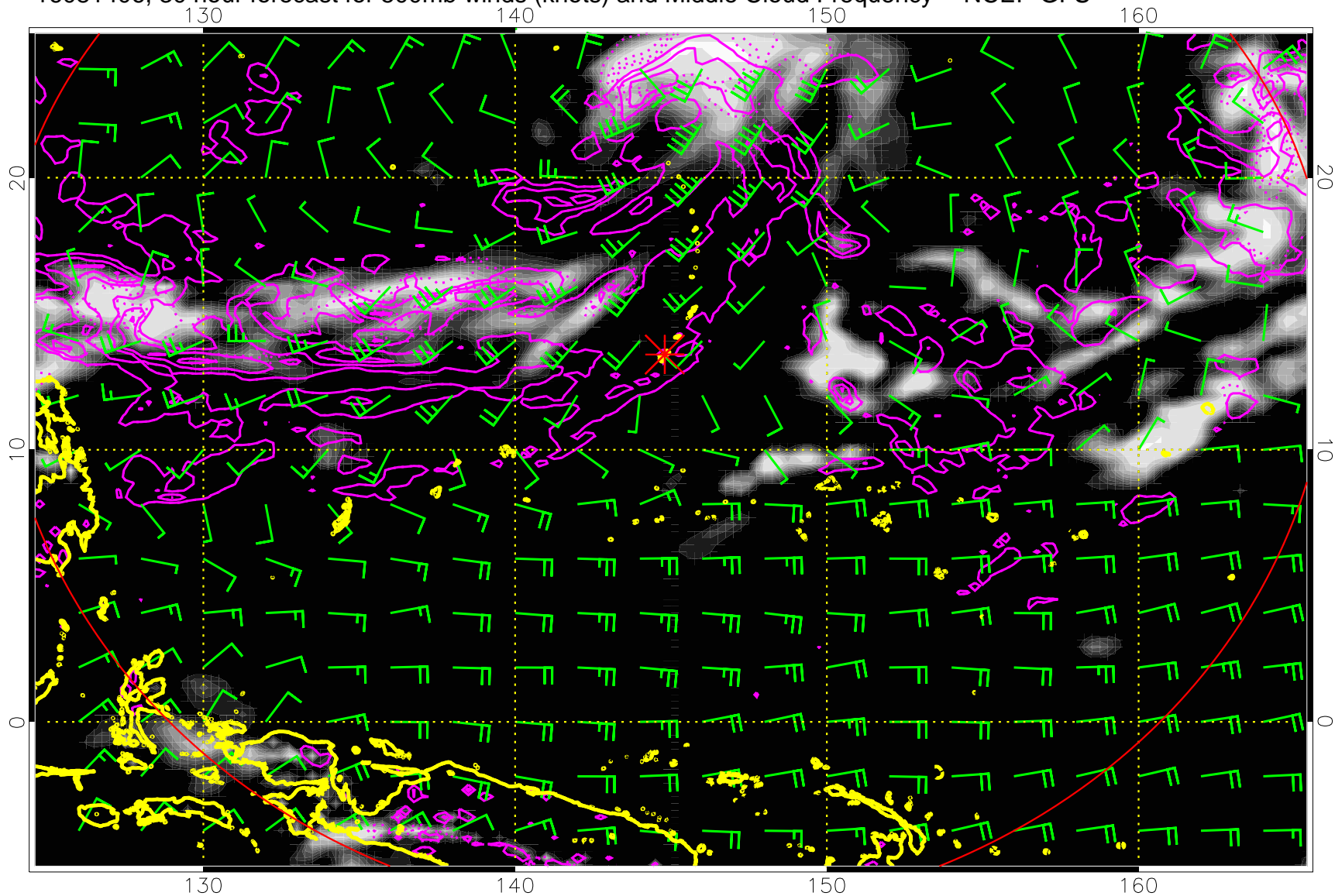
Precip (tot dot, conv sol) mm/day 40 mm/day contours, min 20

16081400, 24 hour forecast for 500mb winds (knots) and Middle Cloud Frequency -- NCEP GFS



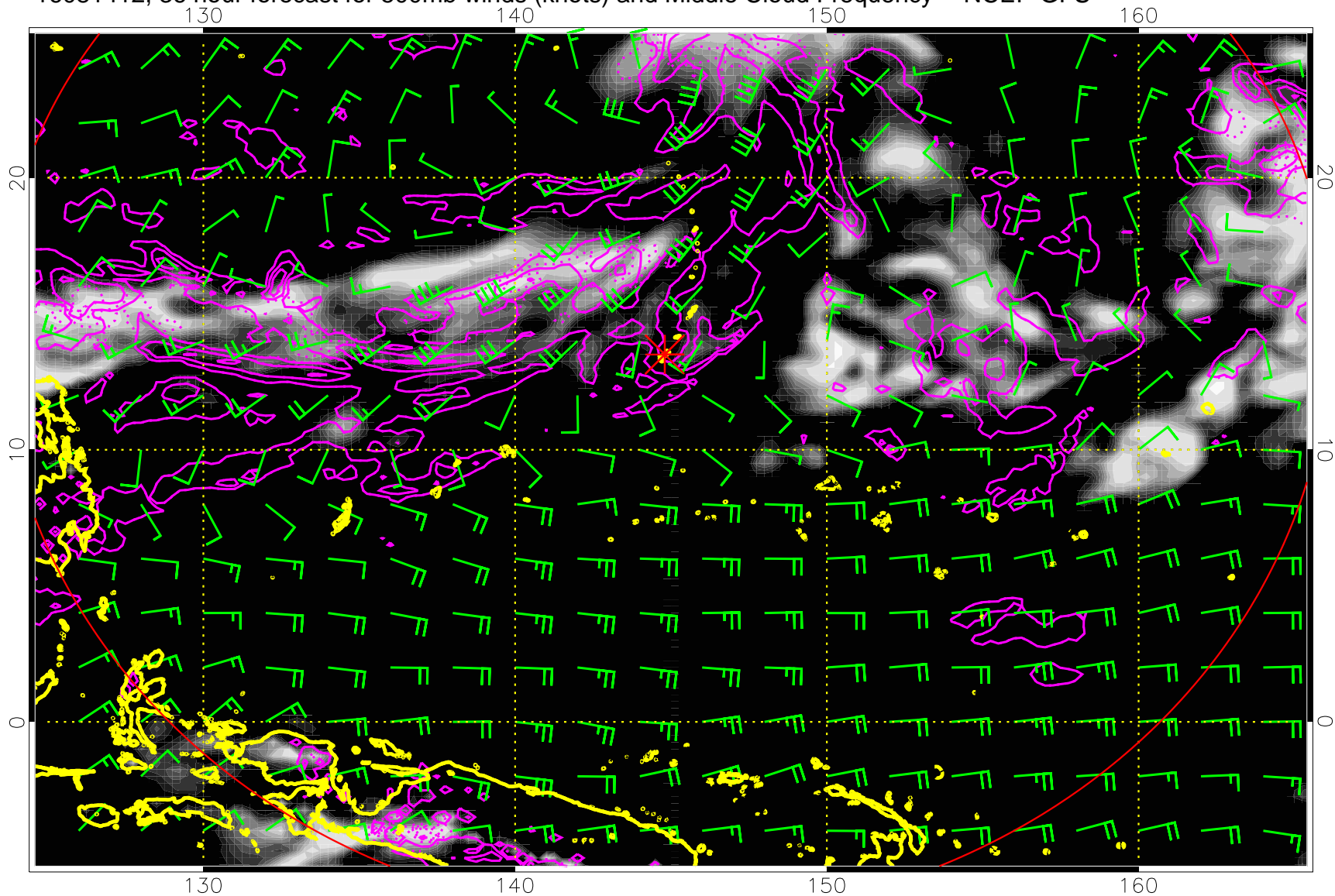
Precip (tot dot, conv sol) mm/day 40 mm/day contours, min 20

16081406, 30 hour forecast for 500mb winds (knots) and Middle Cloud Frequency -- NCEP GFS



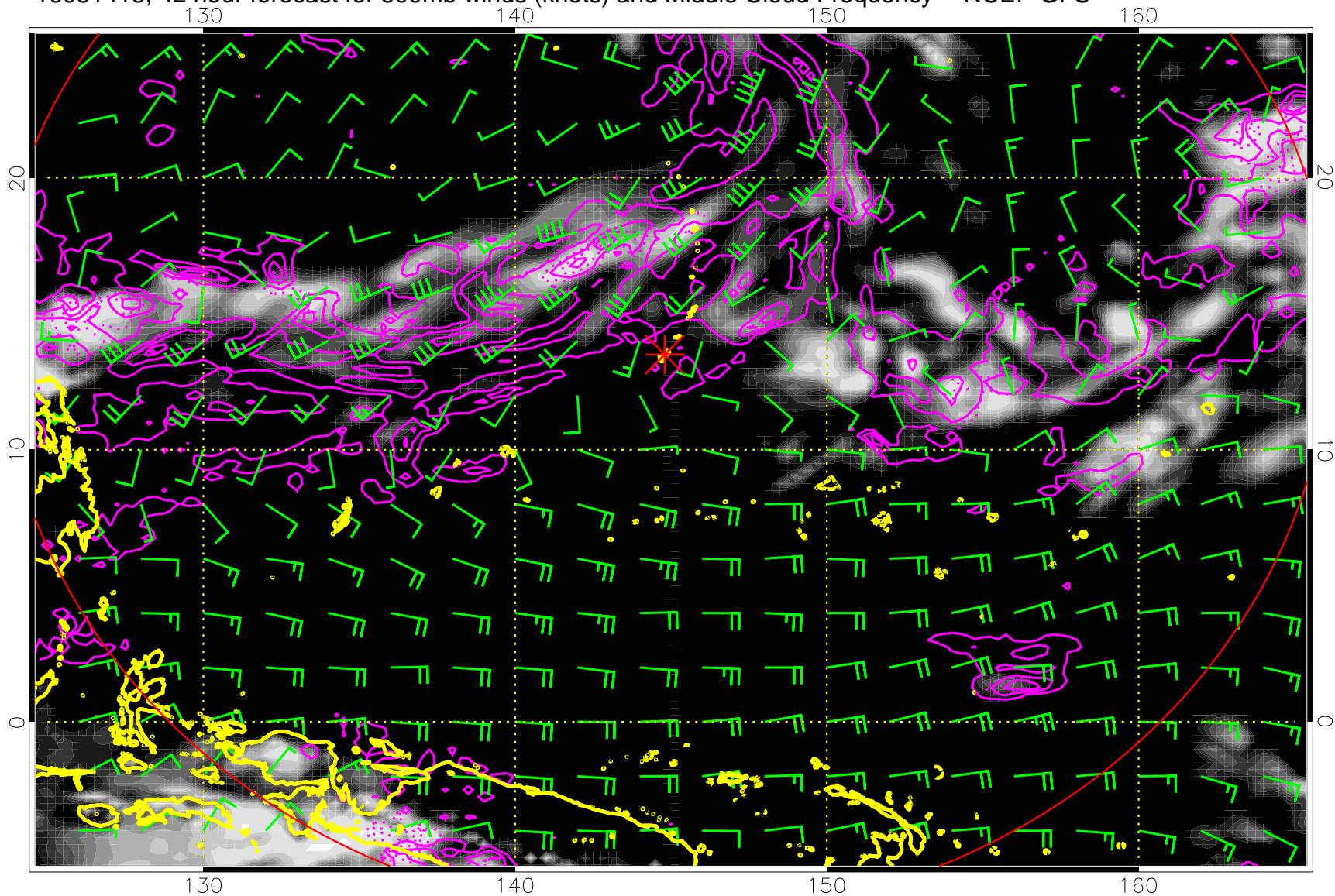
Precip (tot dot, conv sol) mm/day 40 mm/day contours, min 20

16081412, 36 hour forecast for 500mb winds (knots) and Middle Cloud Frequency -- NCEP GFS



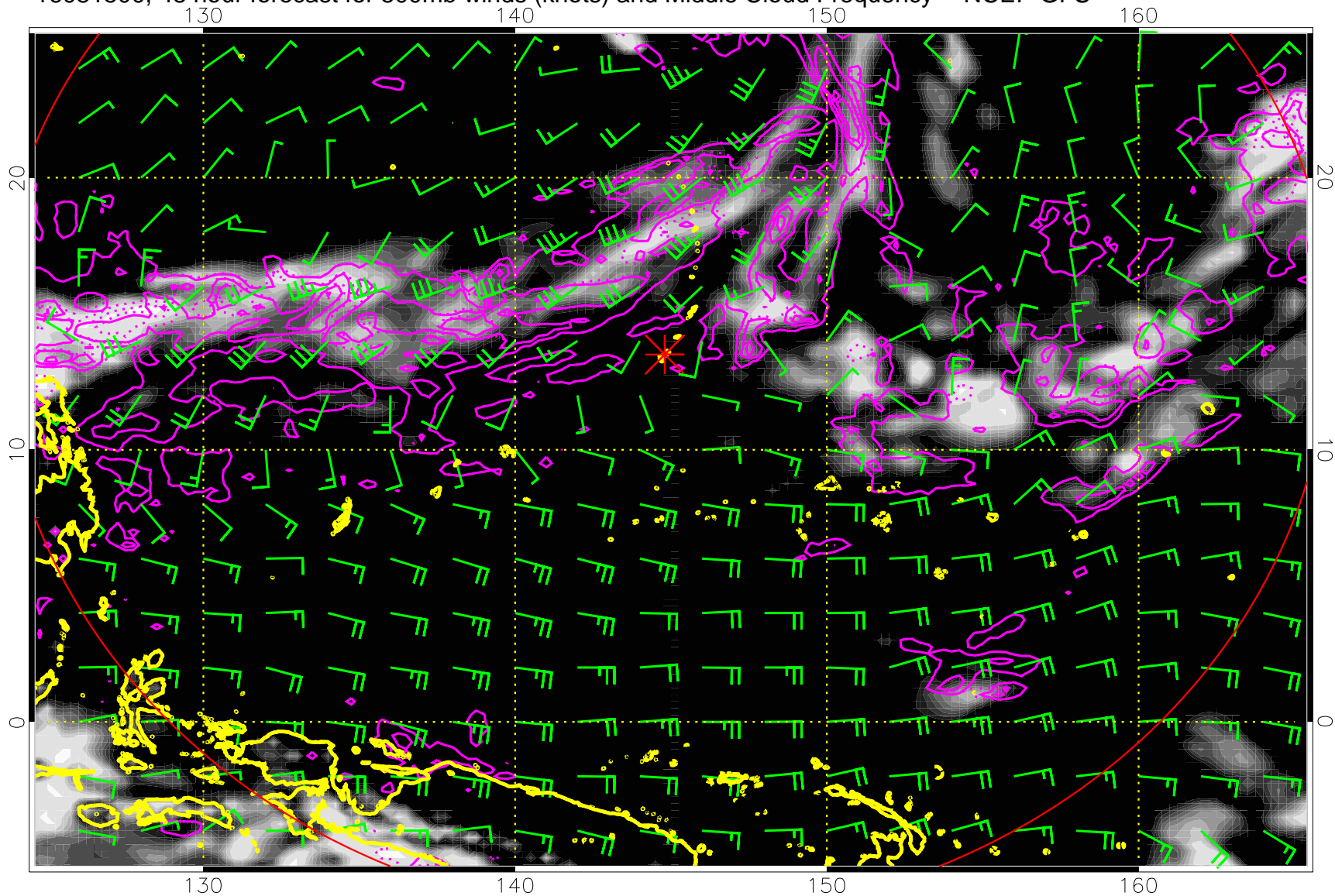
Precip (tot dot, conv sol) mm/day 40 mm/day contours, min 20

16081418, 42 hour forecast for 500mb winds (knots) and Middle Cloud Frequency -- NCEP GFS



Precip (tot dot, conv sol) mm/day 40 mm/day contours, min 20

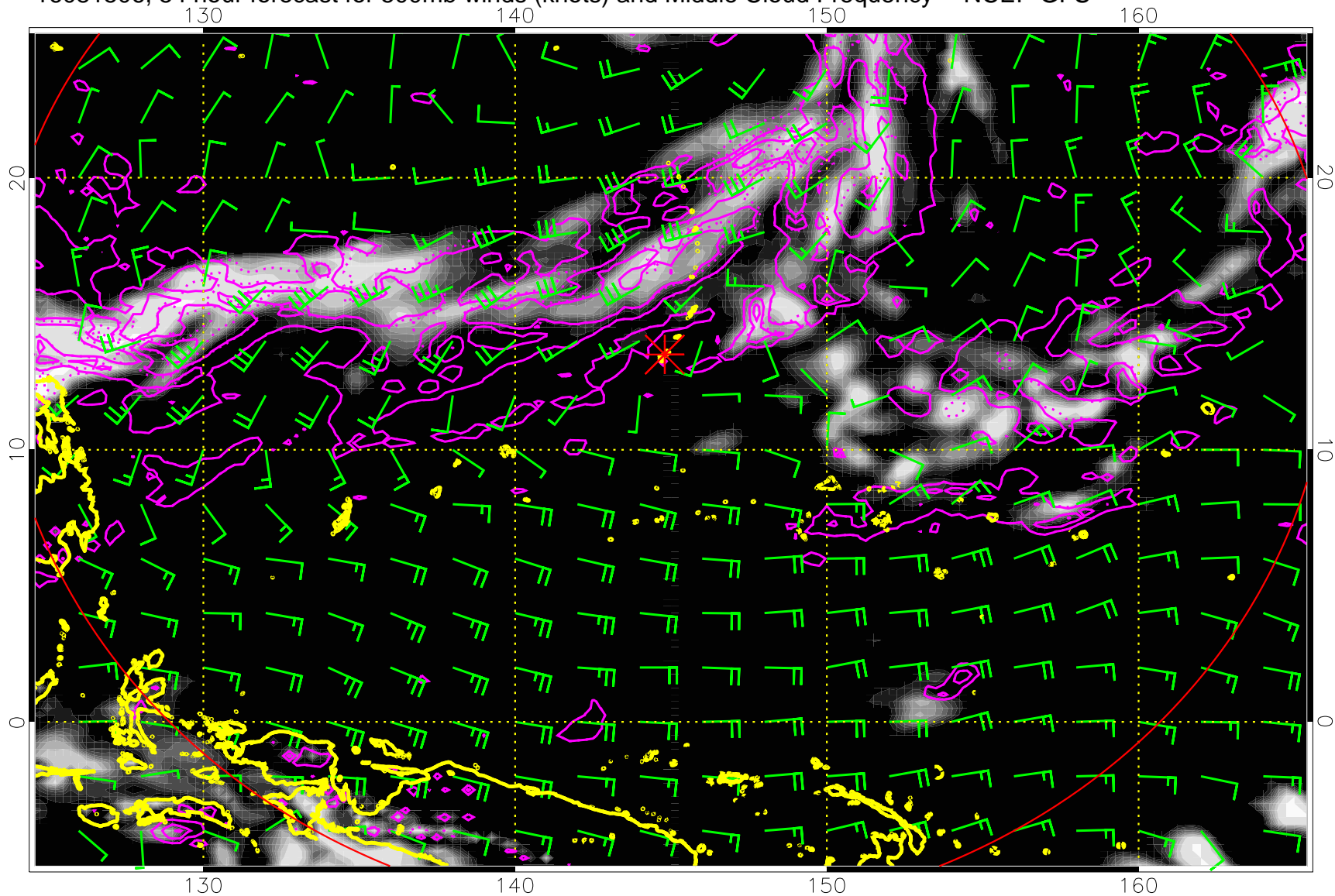
16081500, 48 hour forecast for 500mb winds (knots) and Middle Cloud Frequency -- NCEP GFS



Precip (tot dot, conv sol) mm/day 40 mm/day contours, min 20

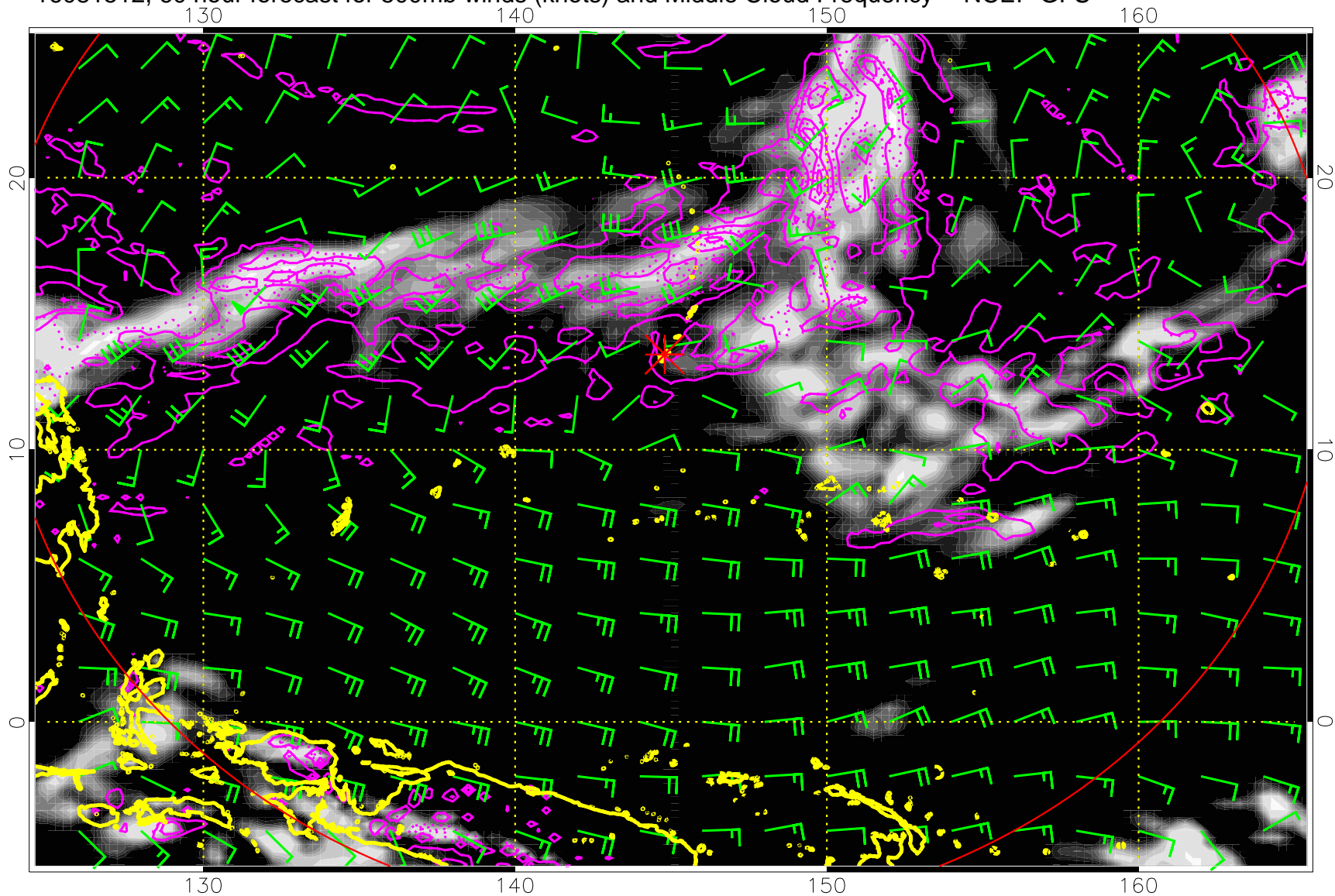


16081506, 54 hour forecast for 500mb winds (knots) and Middle Cloud Frequency -- NCEP GFS



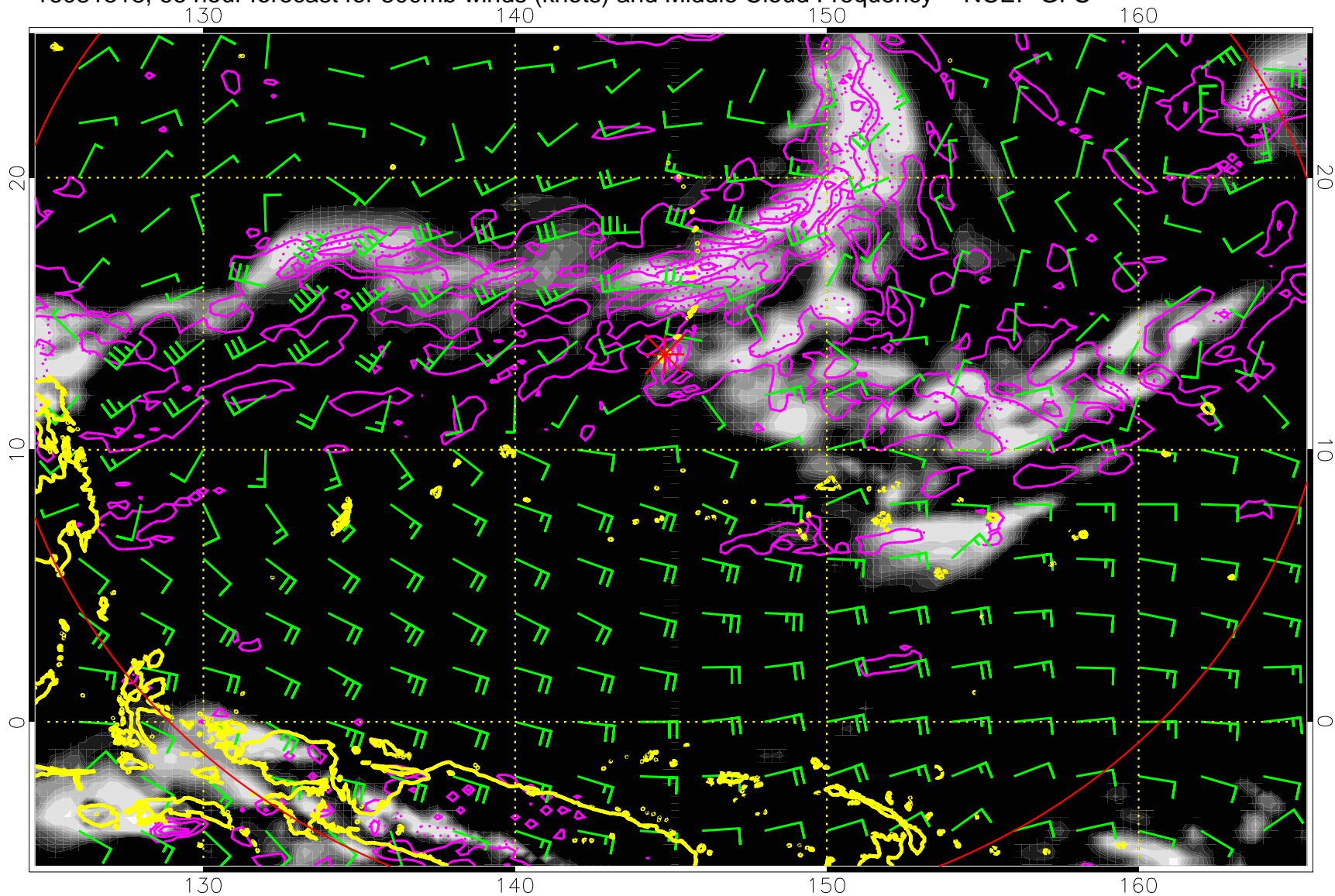
Precip (tot dot, conv sol) mm/day 40 mm/day contours, min 20

16081512, 60 hour forecast for 500mb winds (knots) and Middle Cloud Frequency -- NCEP GFS



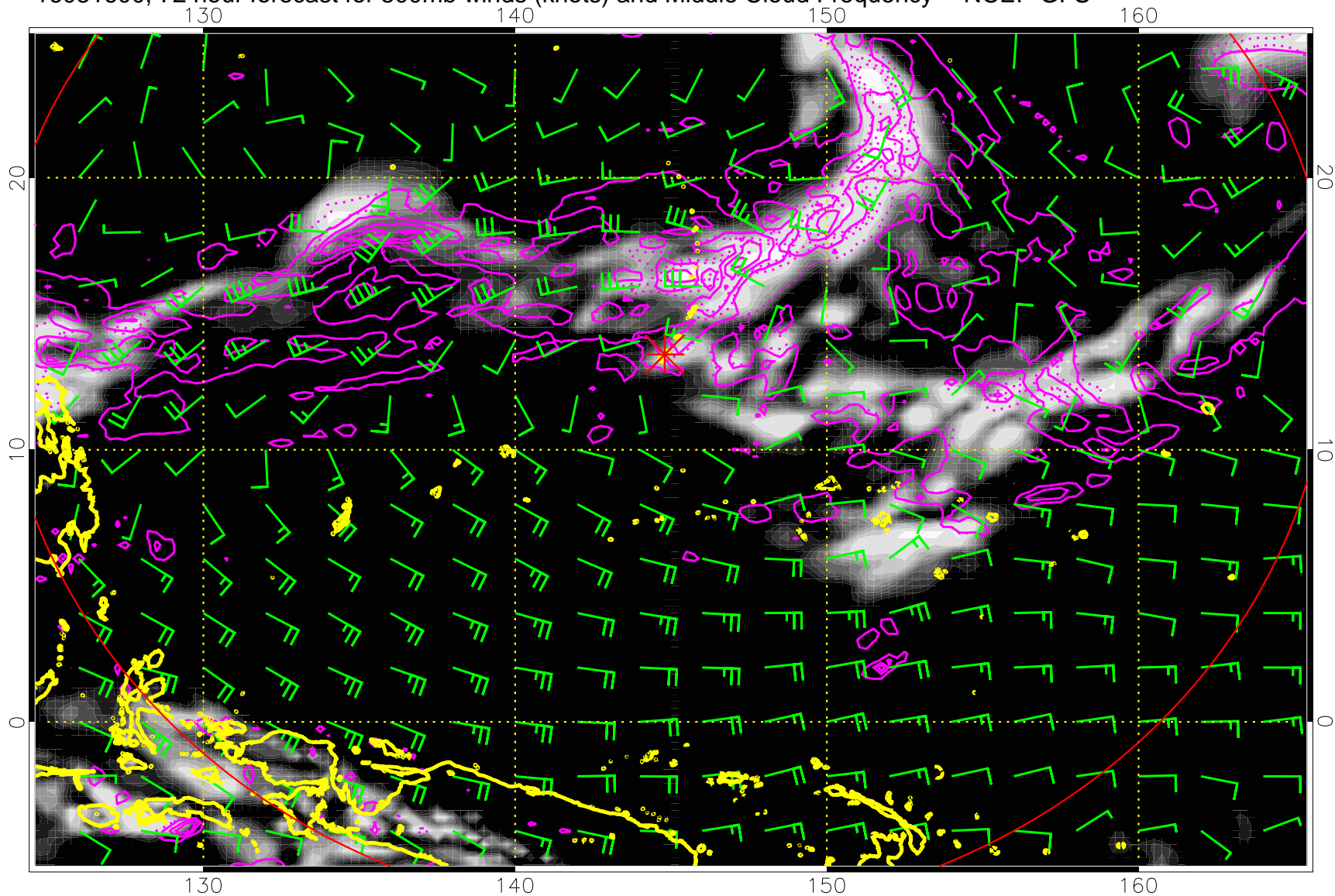
Precip (tot dot, conv sol) mm/day 40 mm/day contours, min 20

16081518, 66 hour forecast for 500mb winds (knots) and Middle Cloud Frequency -- NCEP GFS



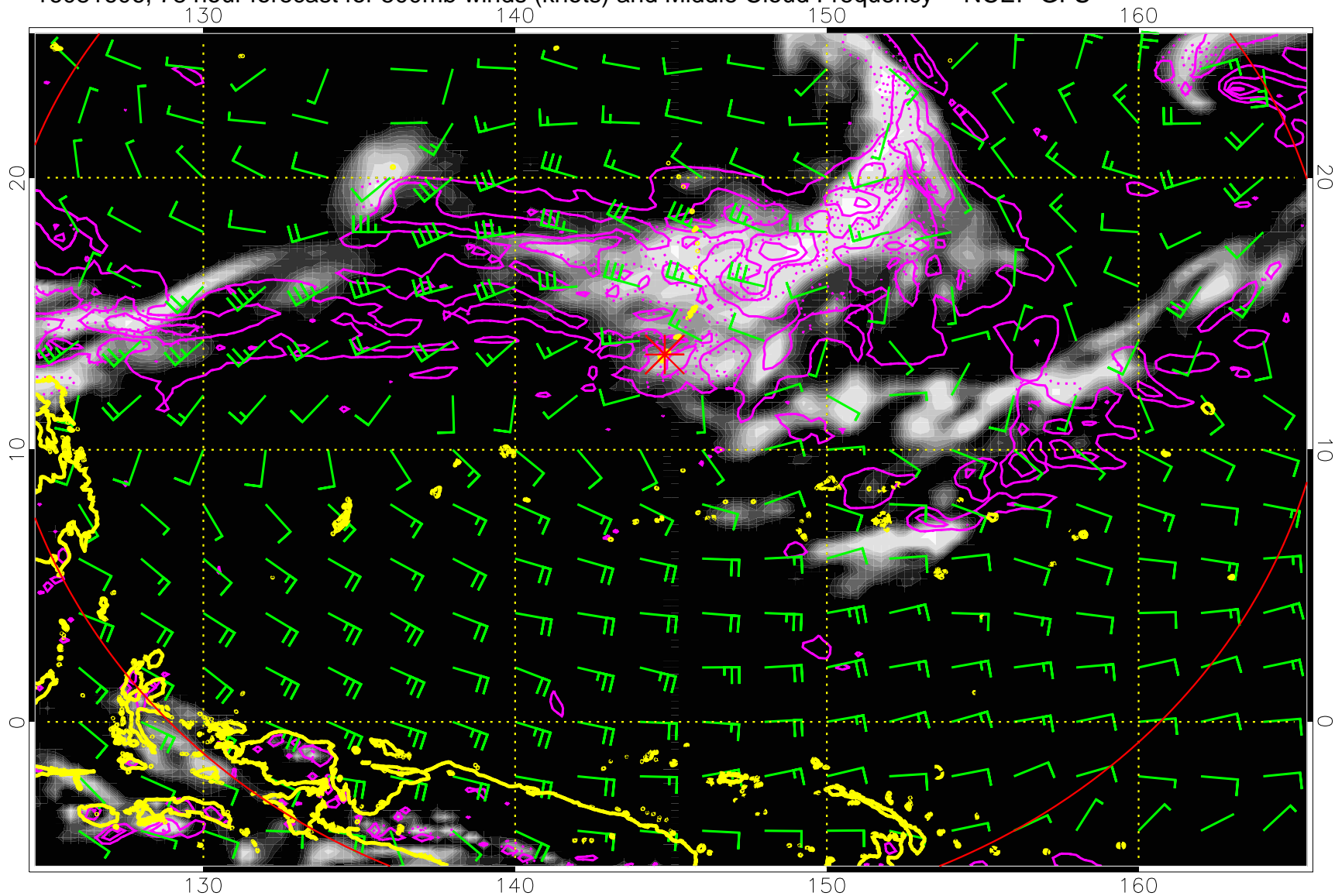
Precip (tot dot, conv sol) mm/day 40 mm/day contours, min 20

16081600, 72 hour forecast for 500mb winds (knots) and Middle Cloud Frequency -- NCEP GFS



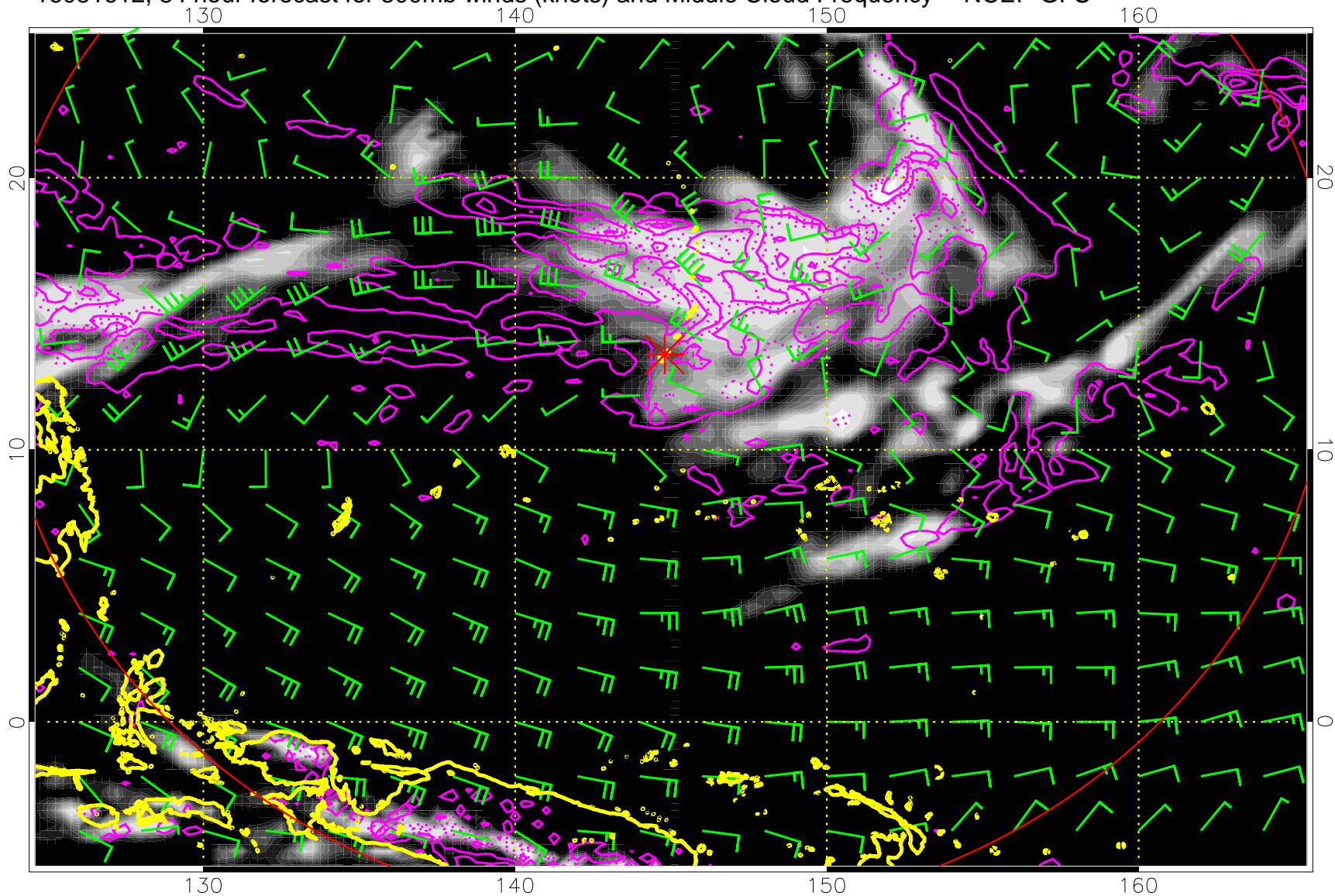
Precip (tot dot, conv sol) mm/day 40 mm/day contours, min 20

16081606, 78 hour forecast for 500mb winds (knots) and Middle Cloud Frequency -- NCEP GFS



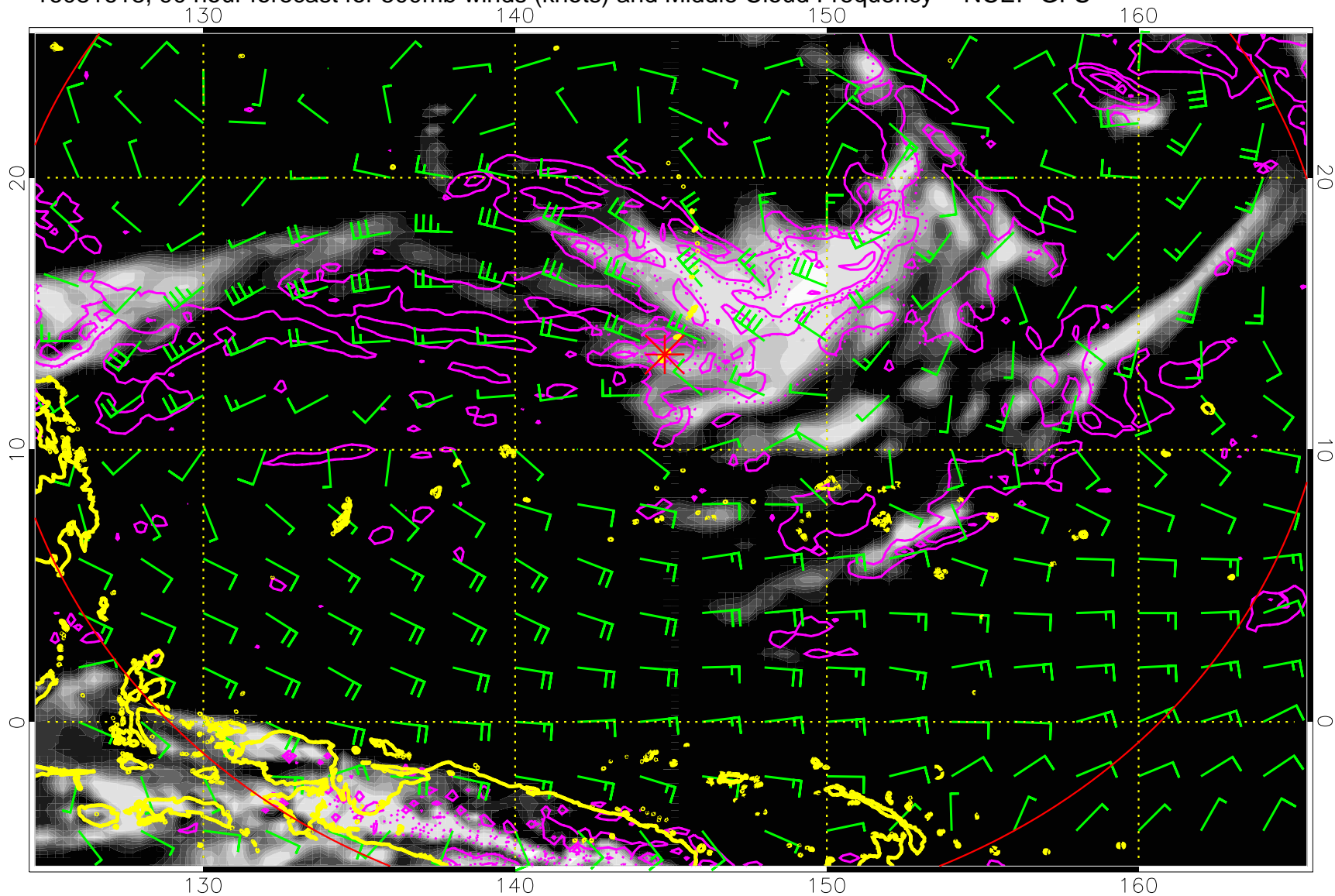
Precip (tot dot, conv sol) mm/day 40 mm/day contours, min 20

16081612, 84 hour forecast for 500mb winds (knots) and Middle Cloud Frequency -- NCEP GFS



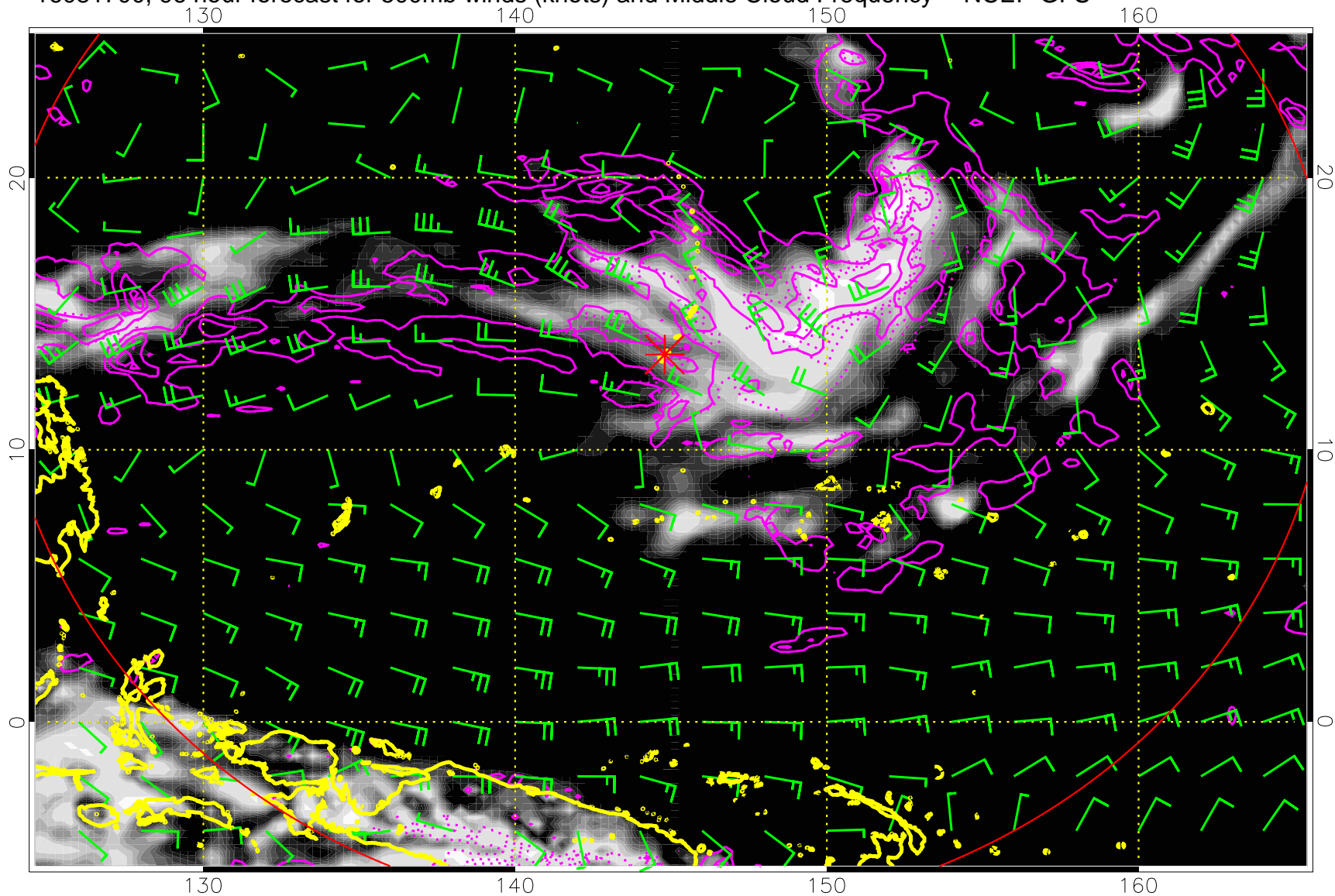
Precip (tot dot, conv sol) mm/day 40 mm/day contours, min 20

16081618, 90 hour forecast for 500mb winds (knots) and Middle Cloud Frequency -- NCEP GFS



Precip (tot dot, conv sol) mm/day 40 mm/day contours, min 20

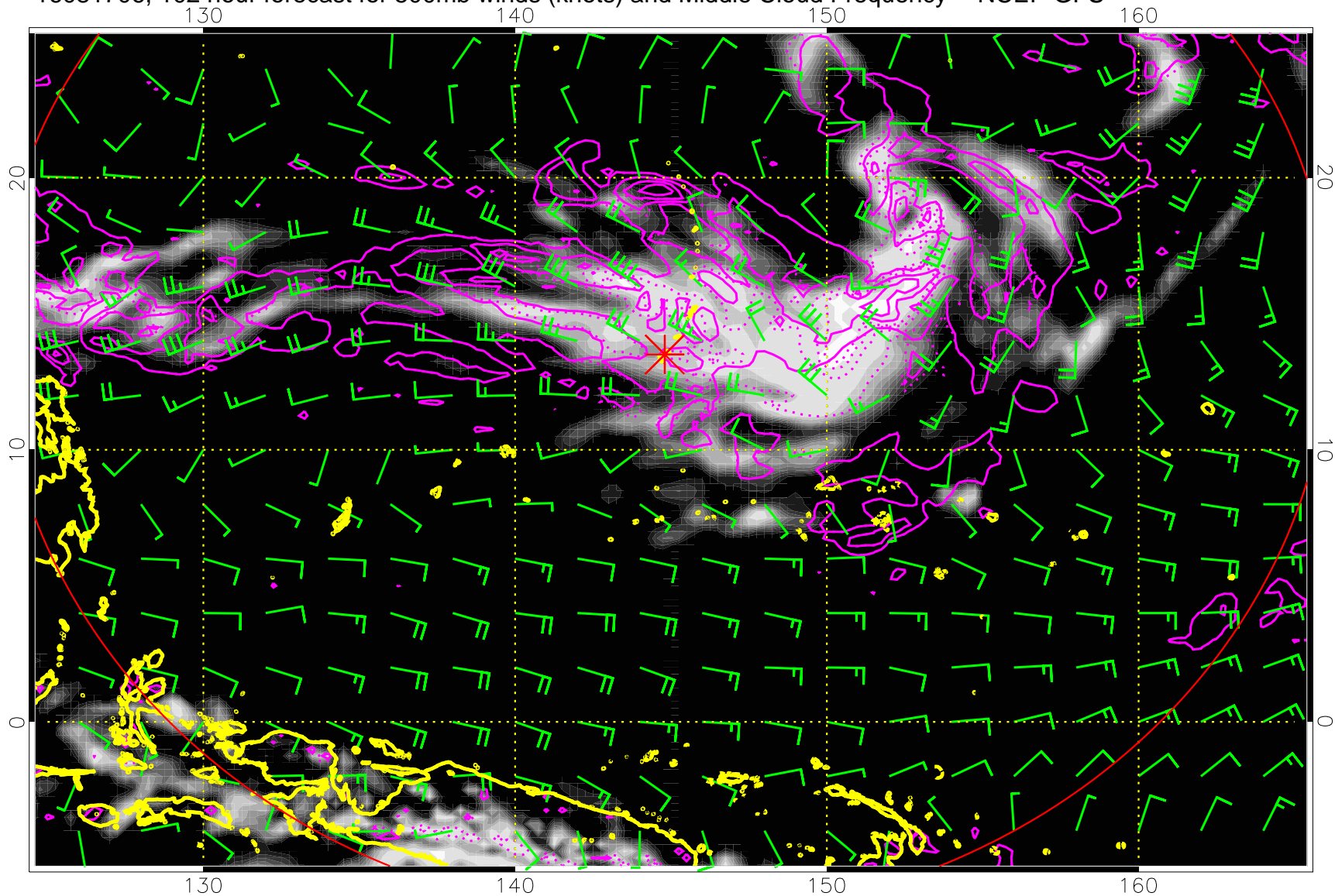
16081700, 96 hour forecast for 500mb winds (knots) and Middle Cloud Frequency -- NCEP GFS



Precip (tot dot, conv sol) mm/day 40 mm/day contours, min 20

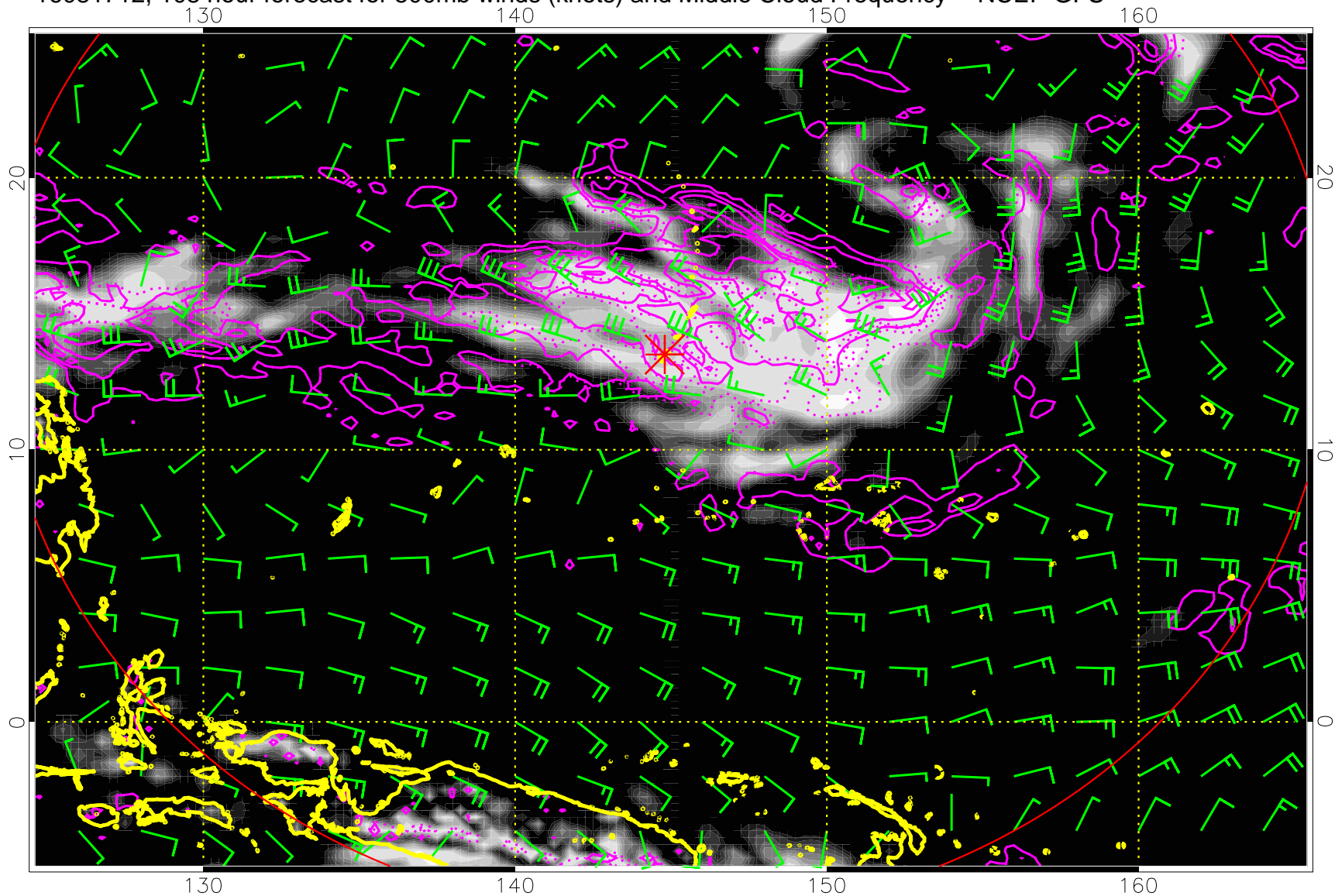


16081706, 102 hour forecast for 500mb winds (knots) and Middle Cloud Frequency -- NCEP GFS



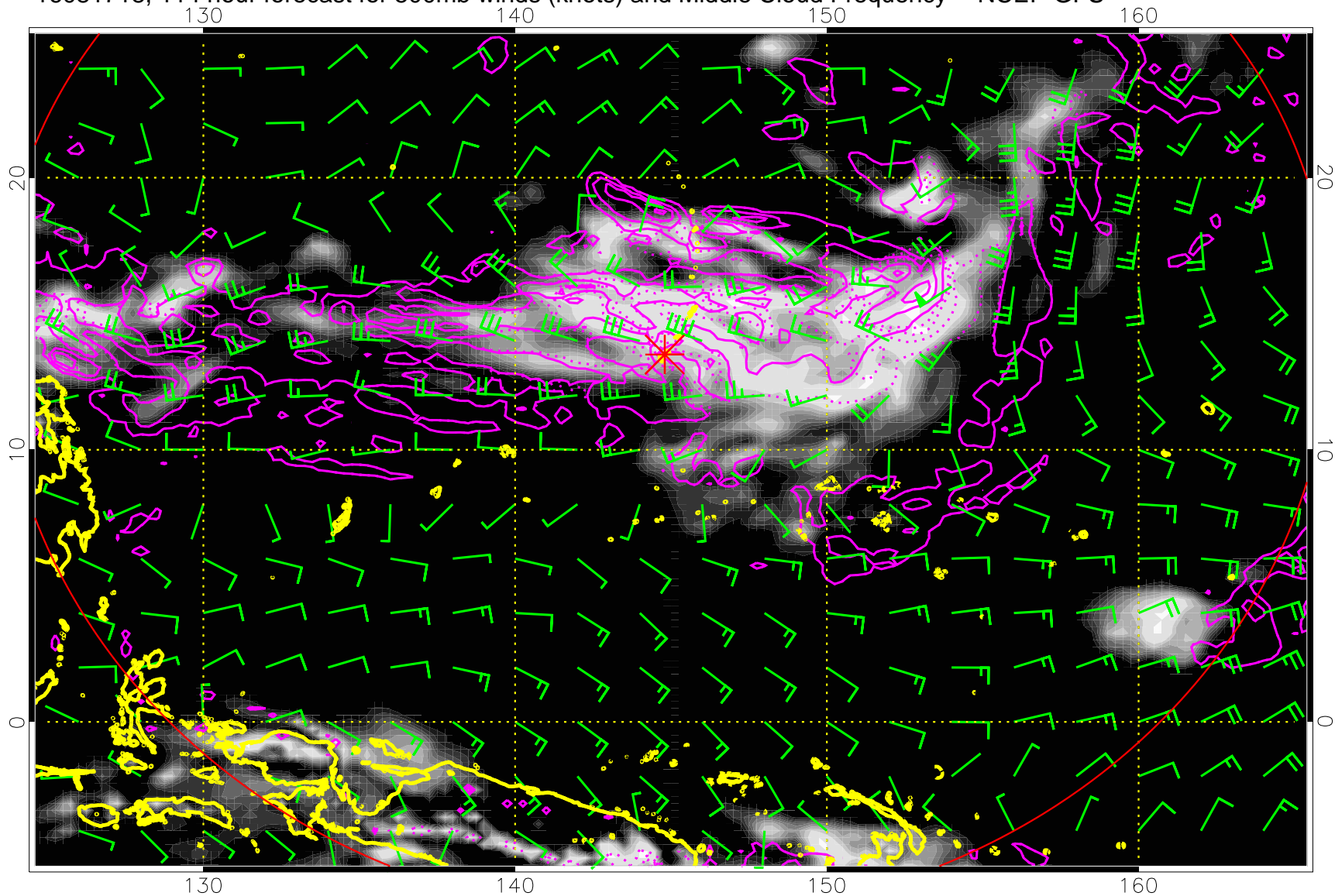
Precip (tot dot, conv sol) mm/day 40 mm/day contours, min 20

16081712, 108 hour forecast for 500mb winds (knots) and Middle Cloud Frequency -- NCEP GFS



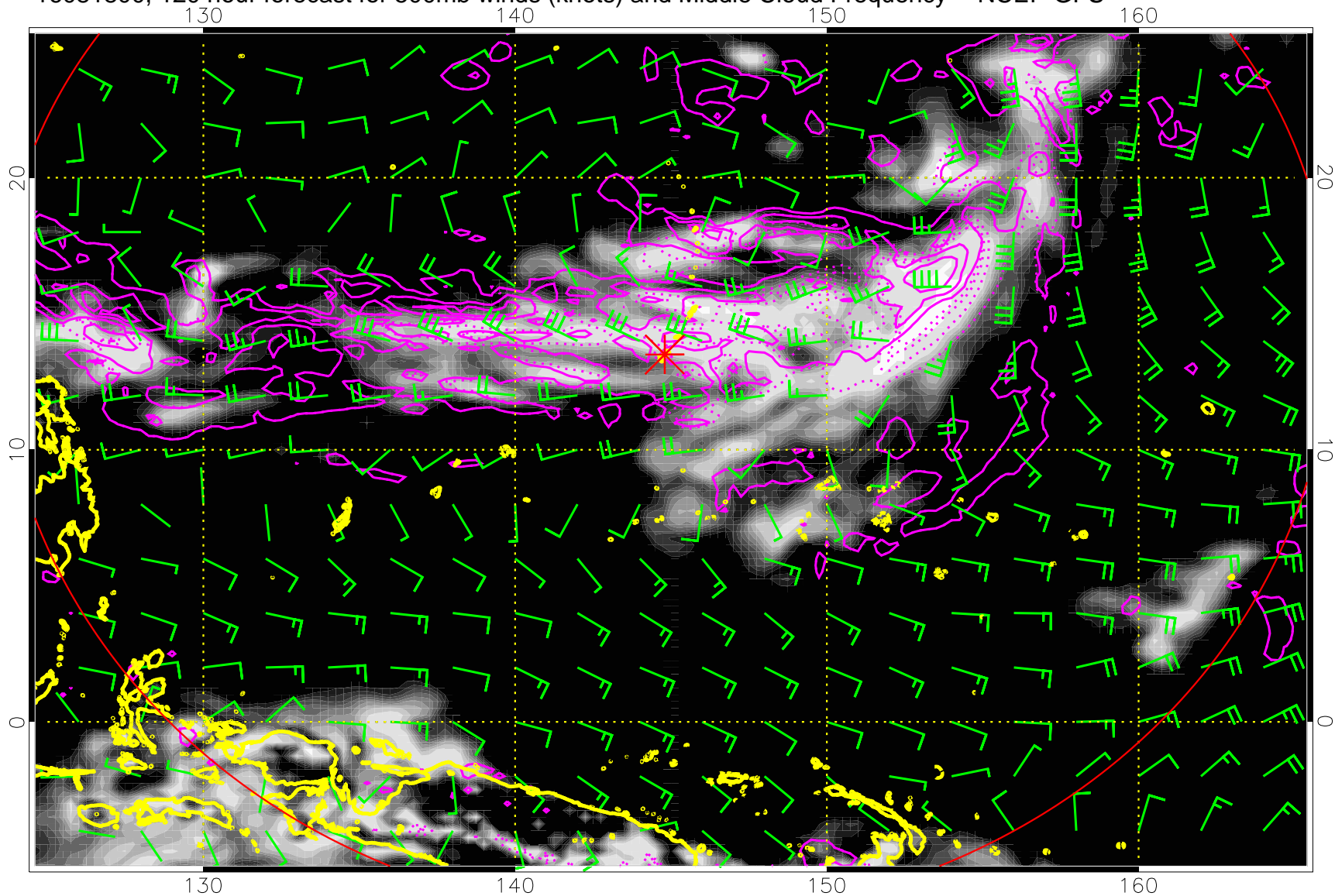
Precip (tot dot, conv sol) mm/day 40 mm/day contours, min 20

16081718, 114 hour forecast for 500mb winds (knots) and Middle Cloud Frequency -- NCEP GFS



Precip (tot dot, conv sol) mm/day 40 mm/day contours, min 20

16081800, 120 hour forecast for 500mb winds (knots) and Middle Cloud Frequency -- NCEP GFS



Precip (tot dot, conv sol) mm/day 40 mm/day contours, min 20