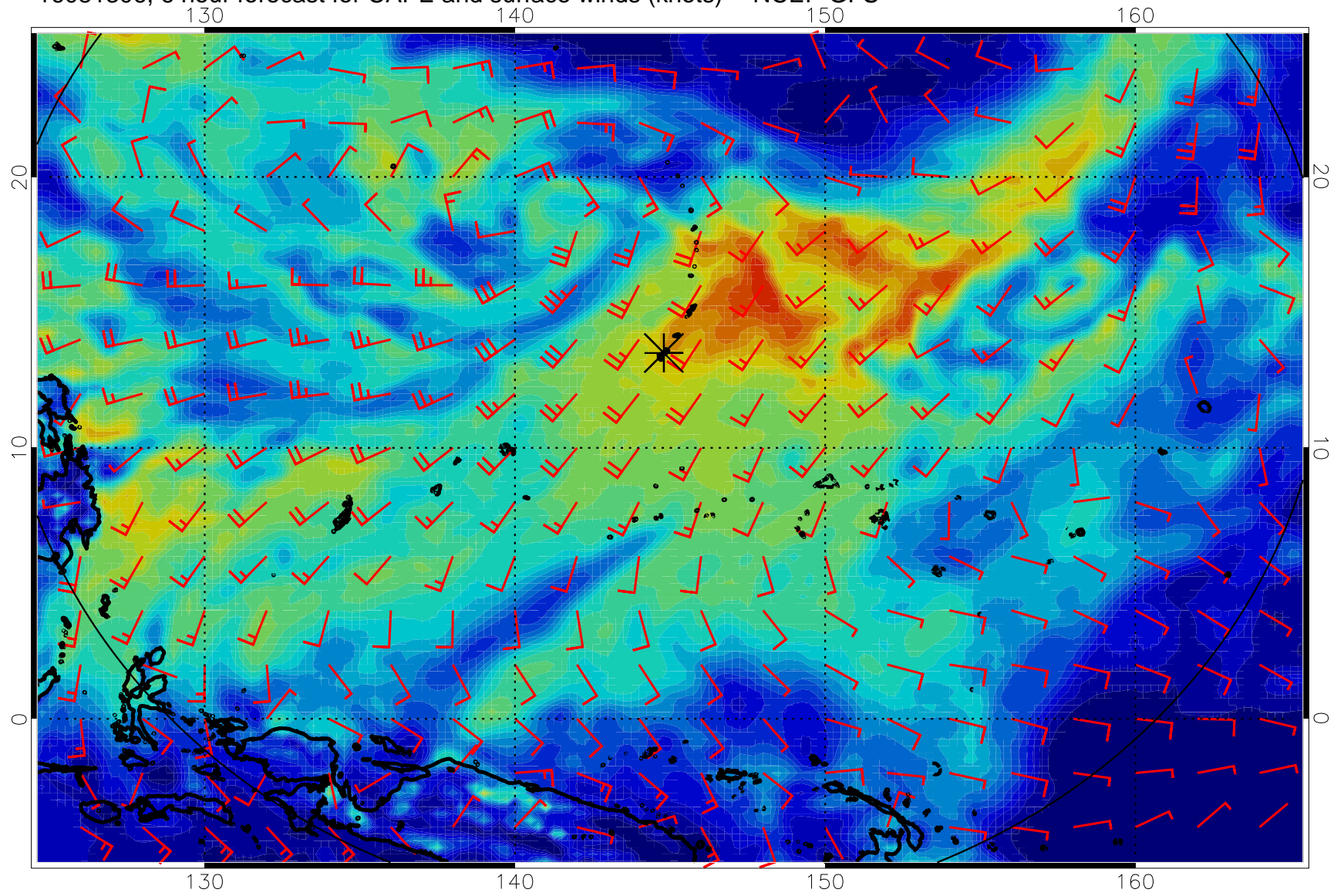
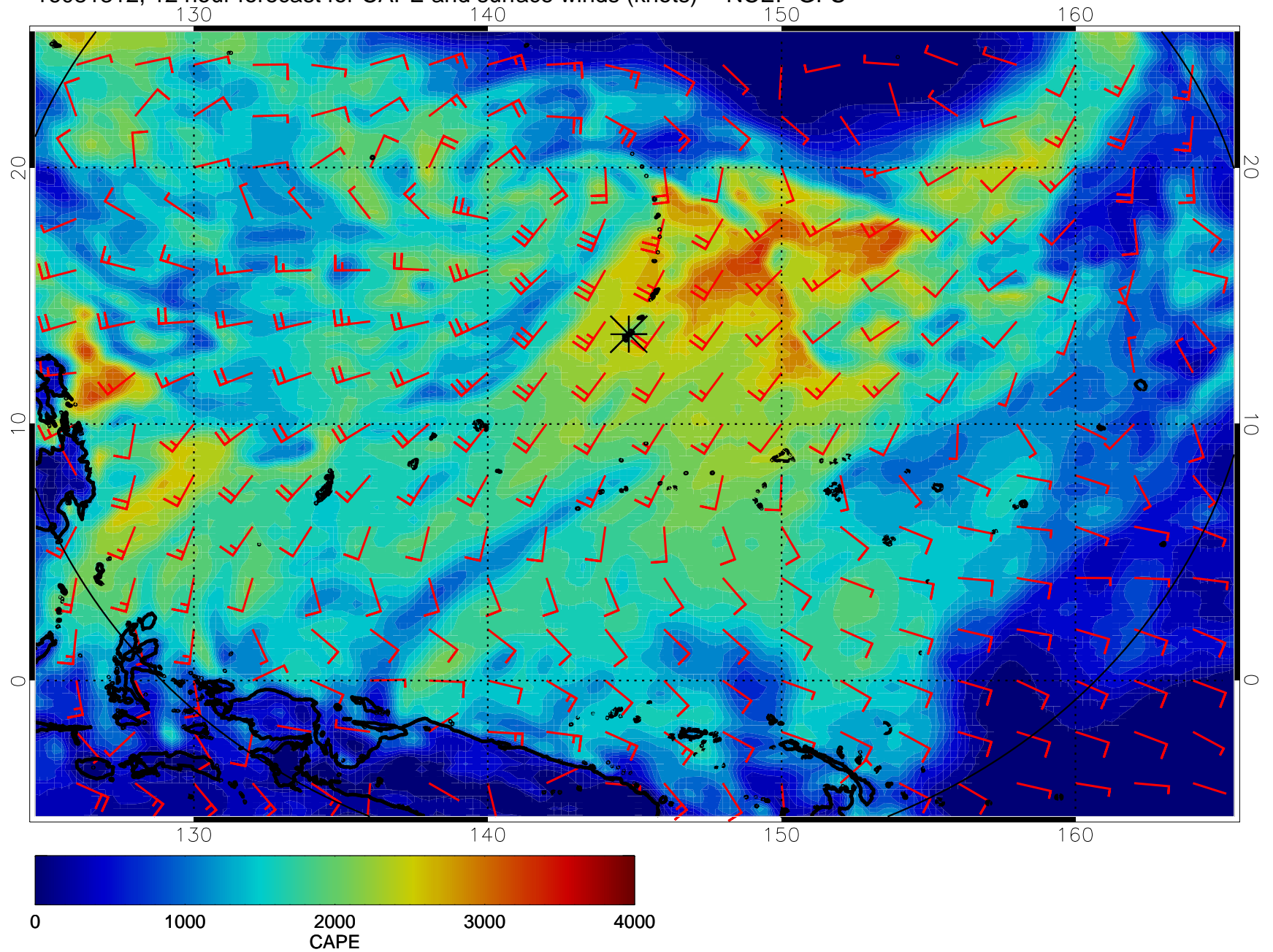


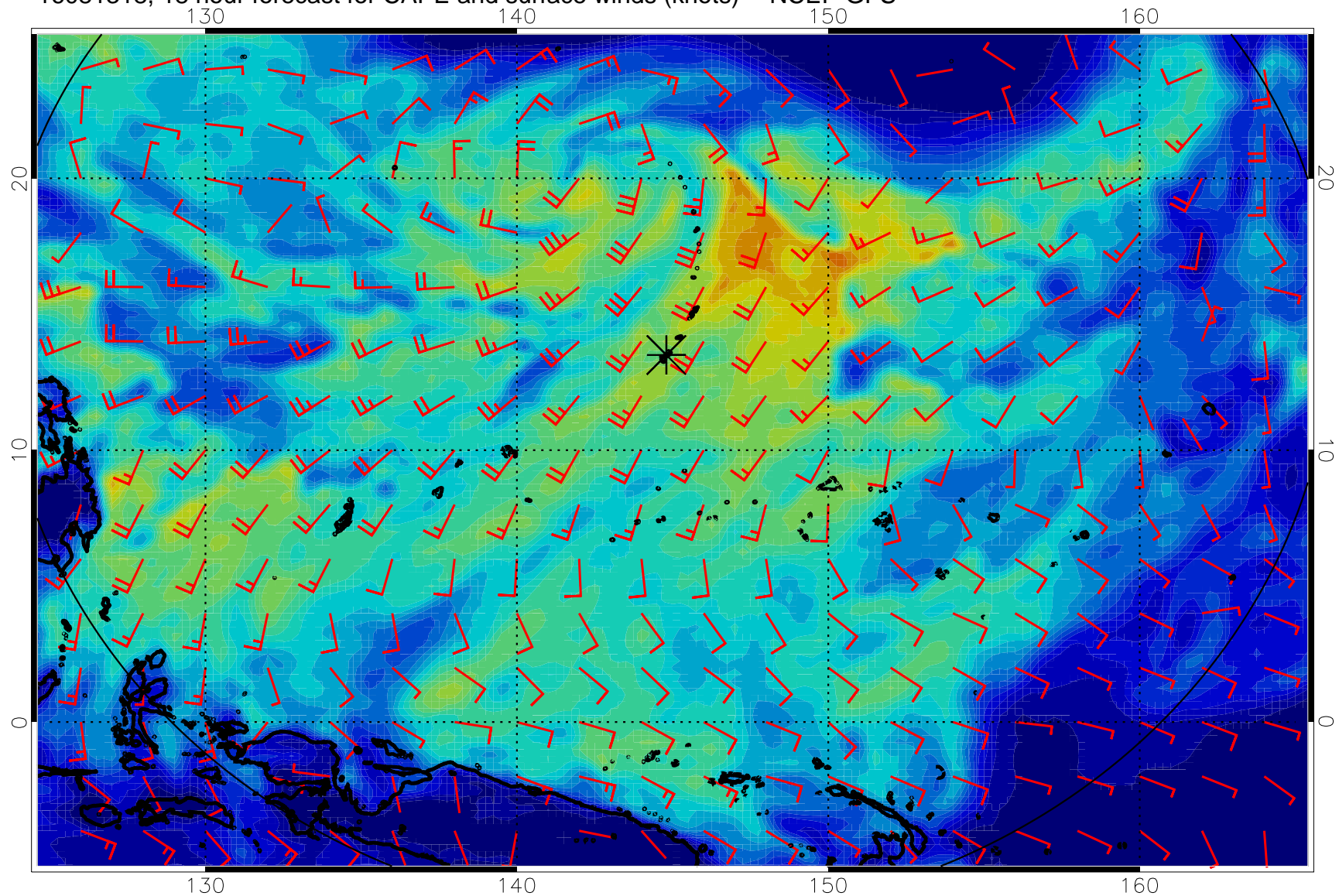
16081306, 6 hour forecast for CAPE and surface winds (knots) -- NCEP GFS



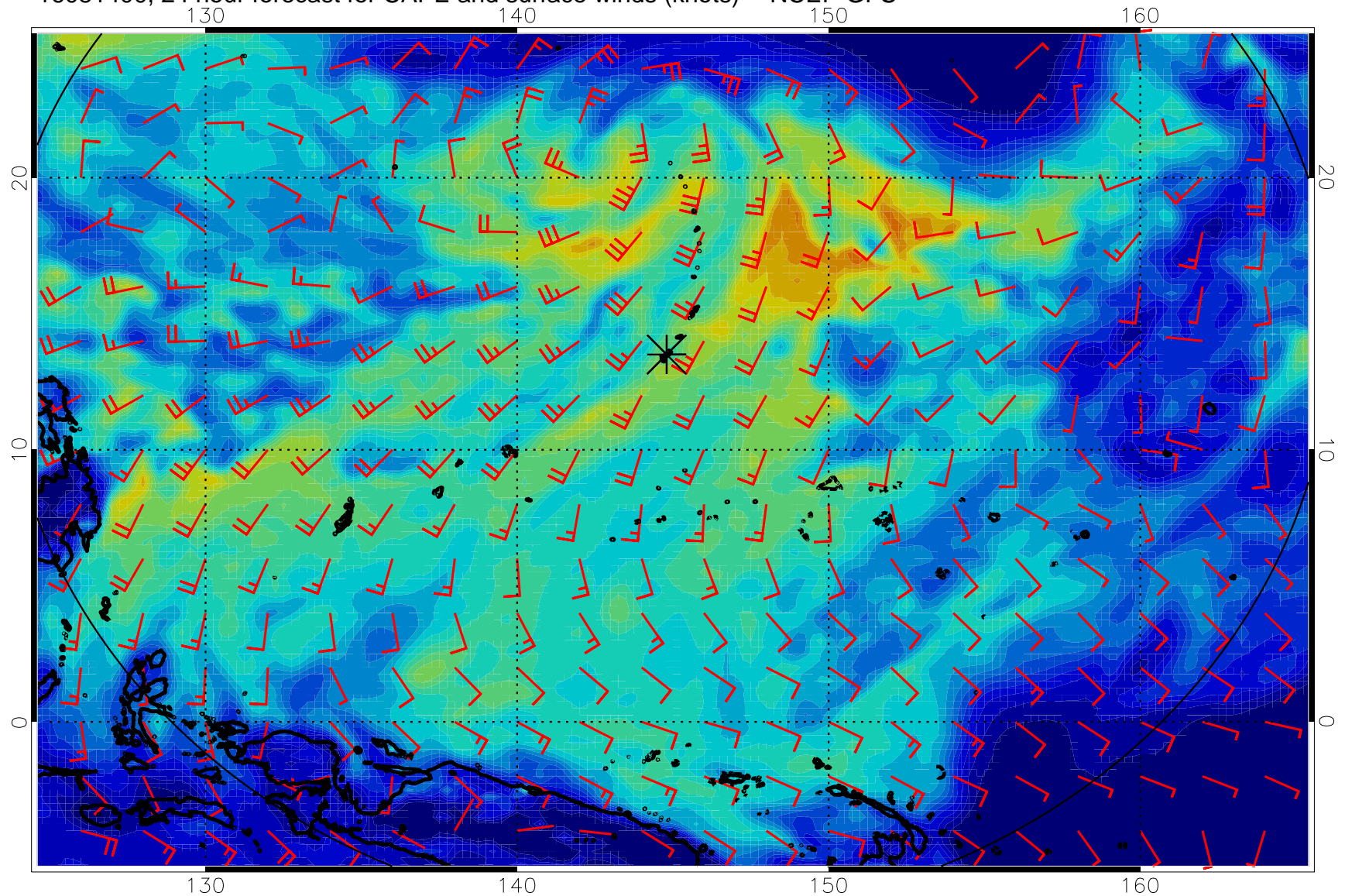
16081312, 12 hour forecast for CAPE and surface winds (knots) -- NCEP GFS



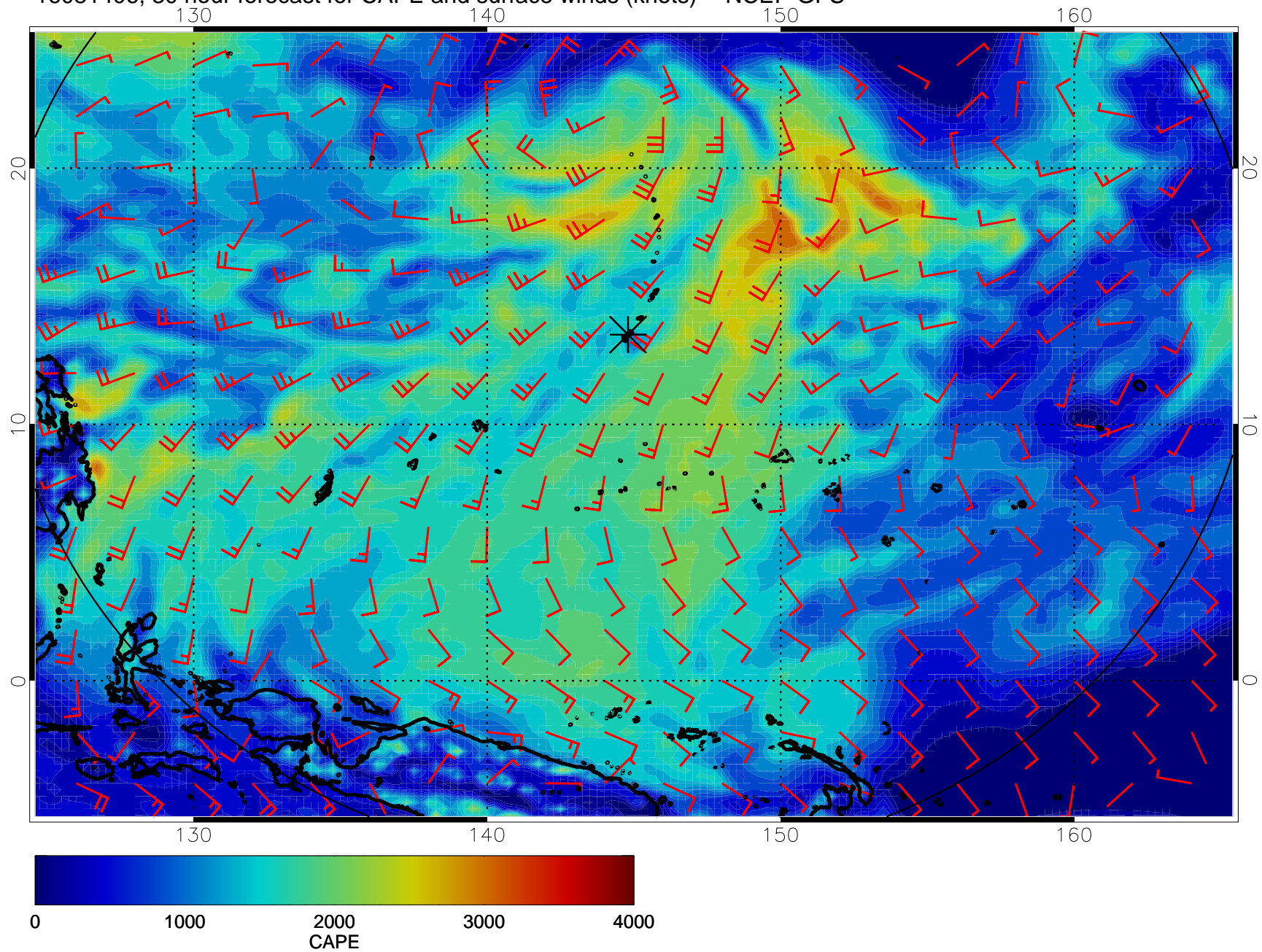
16081318, 18 hour forecast for CAPE and surface winds (knots) -- NCEP GFS



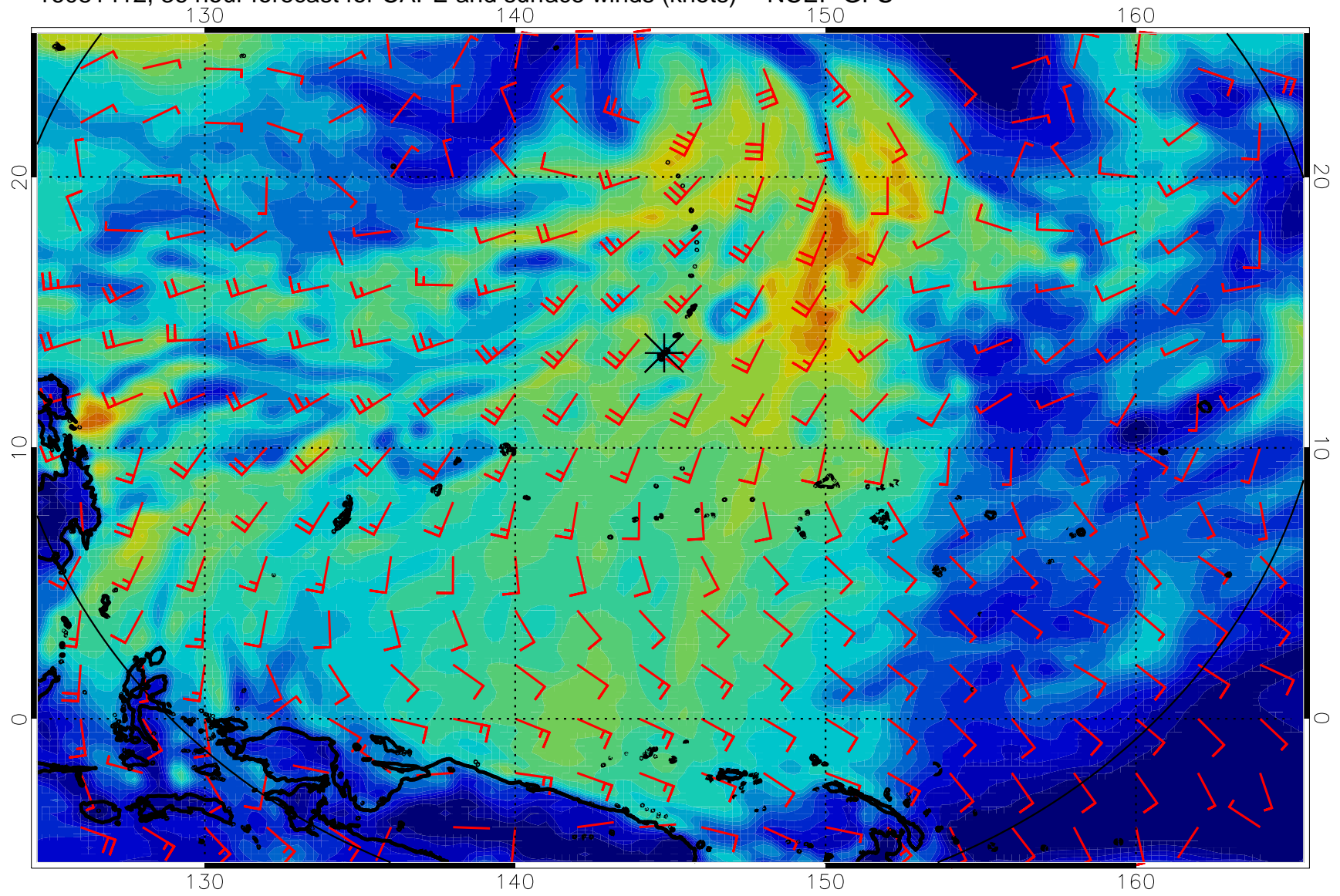
16081400, 24 hour forecast for CAPE and surface winds (knots) -- NCEP GFS



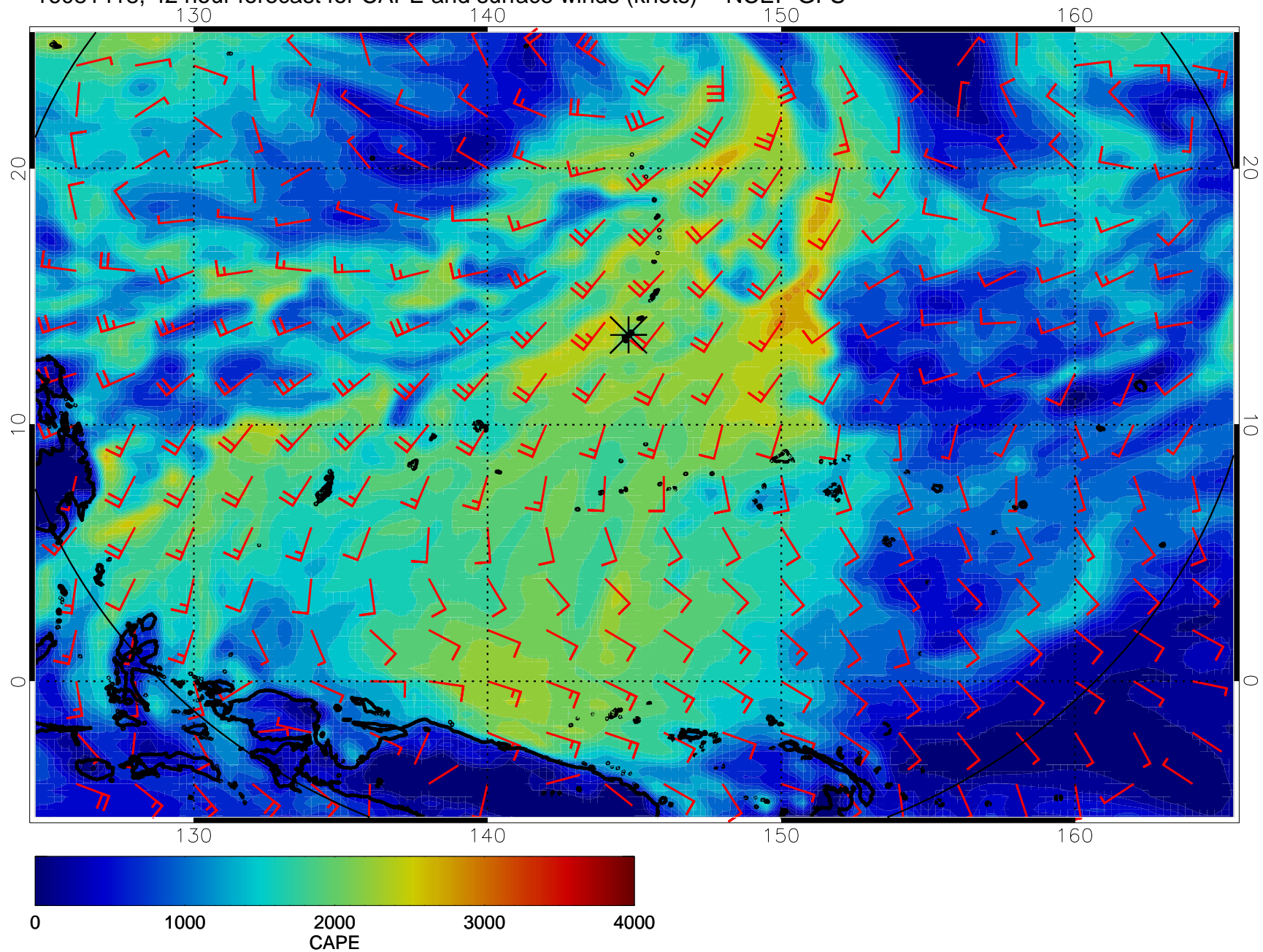
16081406, 30 hour forecast for CAPE and surface winds (knots) -- NCEP GFS



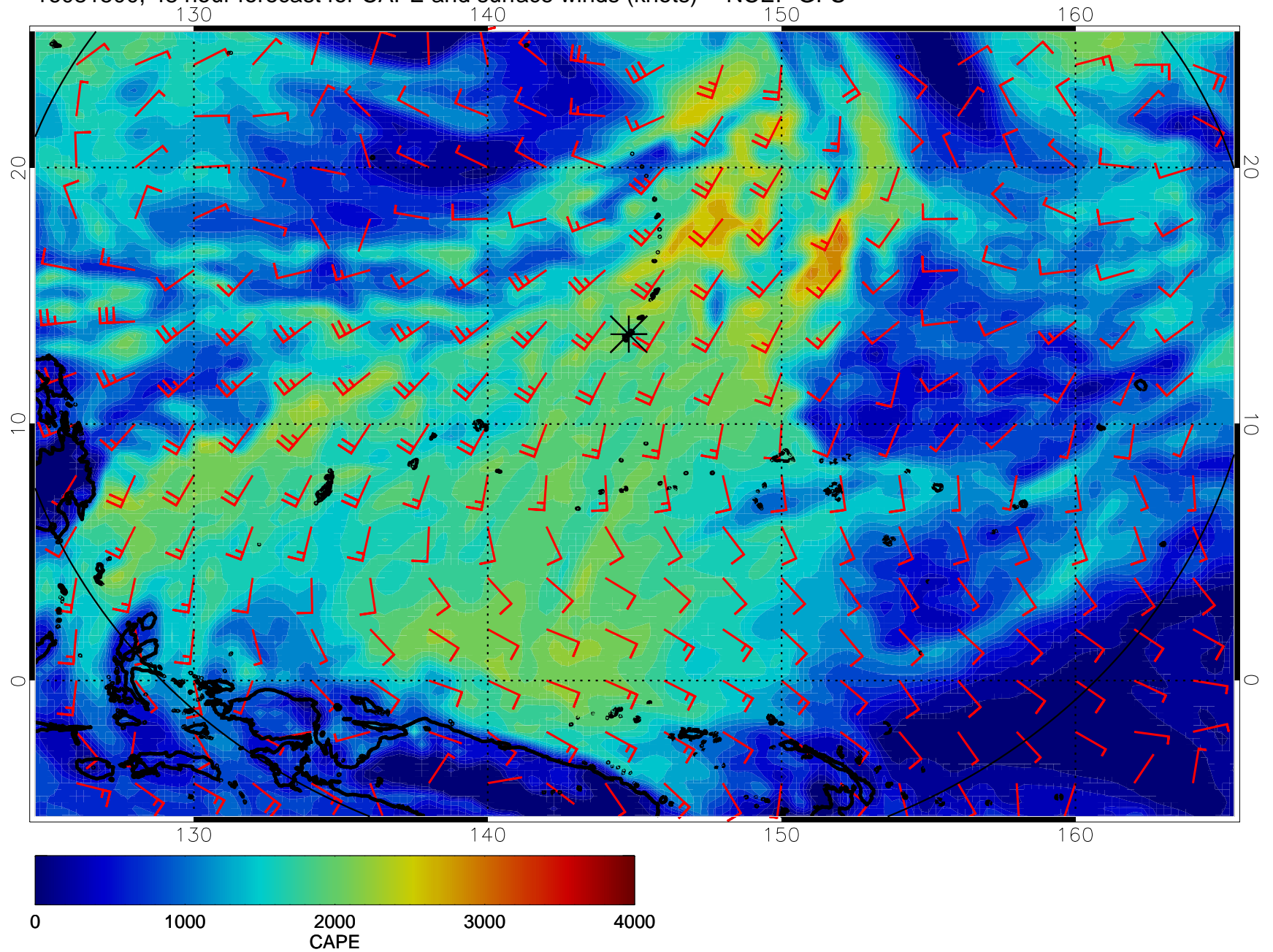
16081412, 36 hour forecast for CAPE and surface winds (knots) -- NCEP GFS



16081418, 42 hour forecast for CAPE and surface winds (knots) -- NCEP GFS

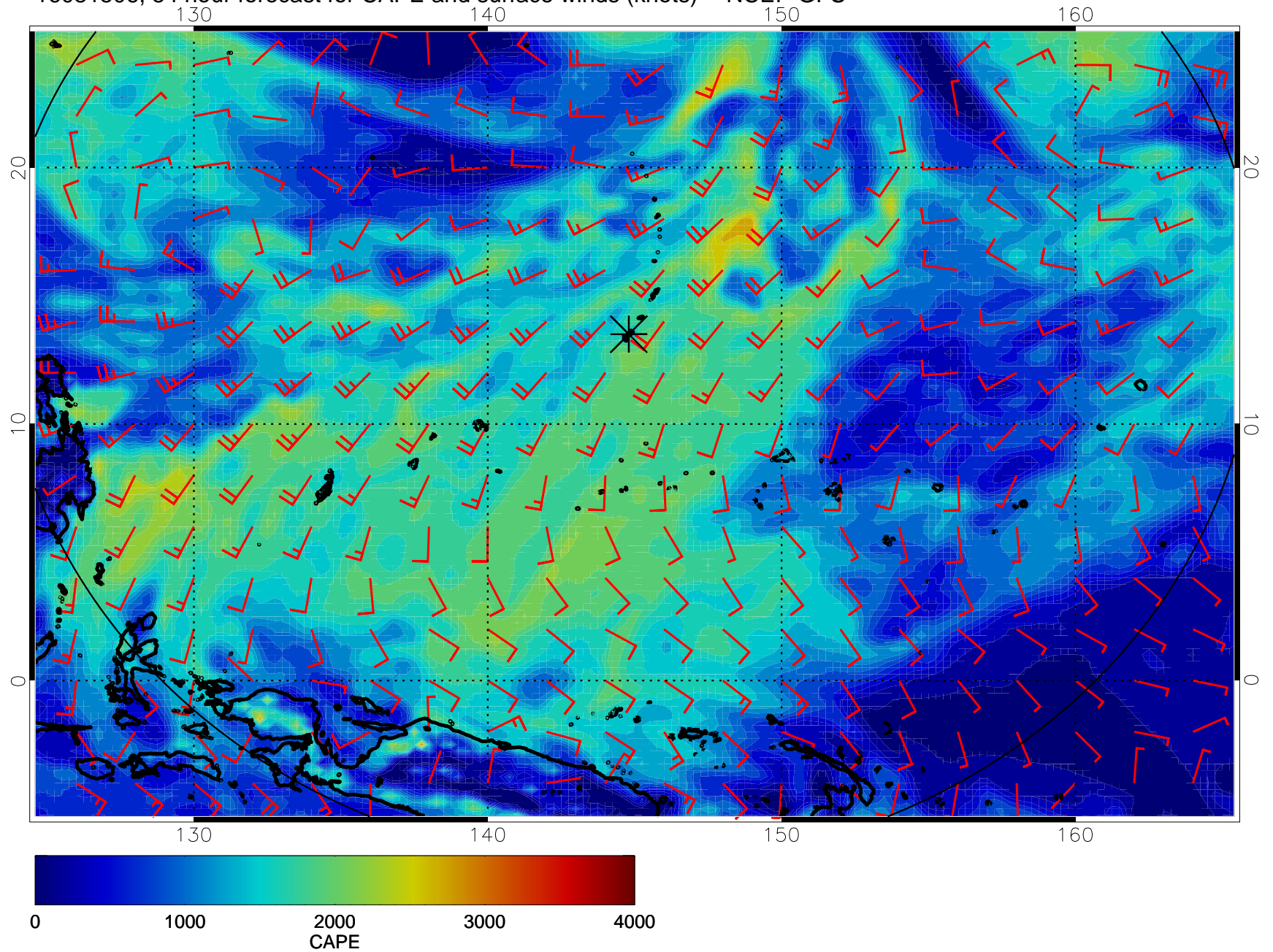


16081500, 48 hour forecast for CAPE and surface winds (knots) -- NCEP GFS

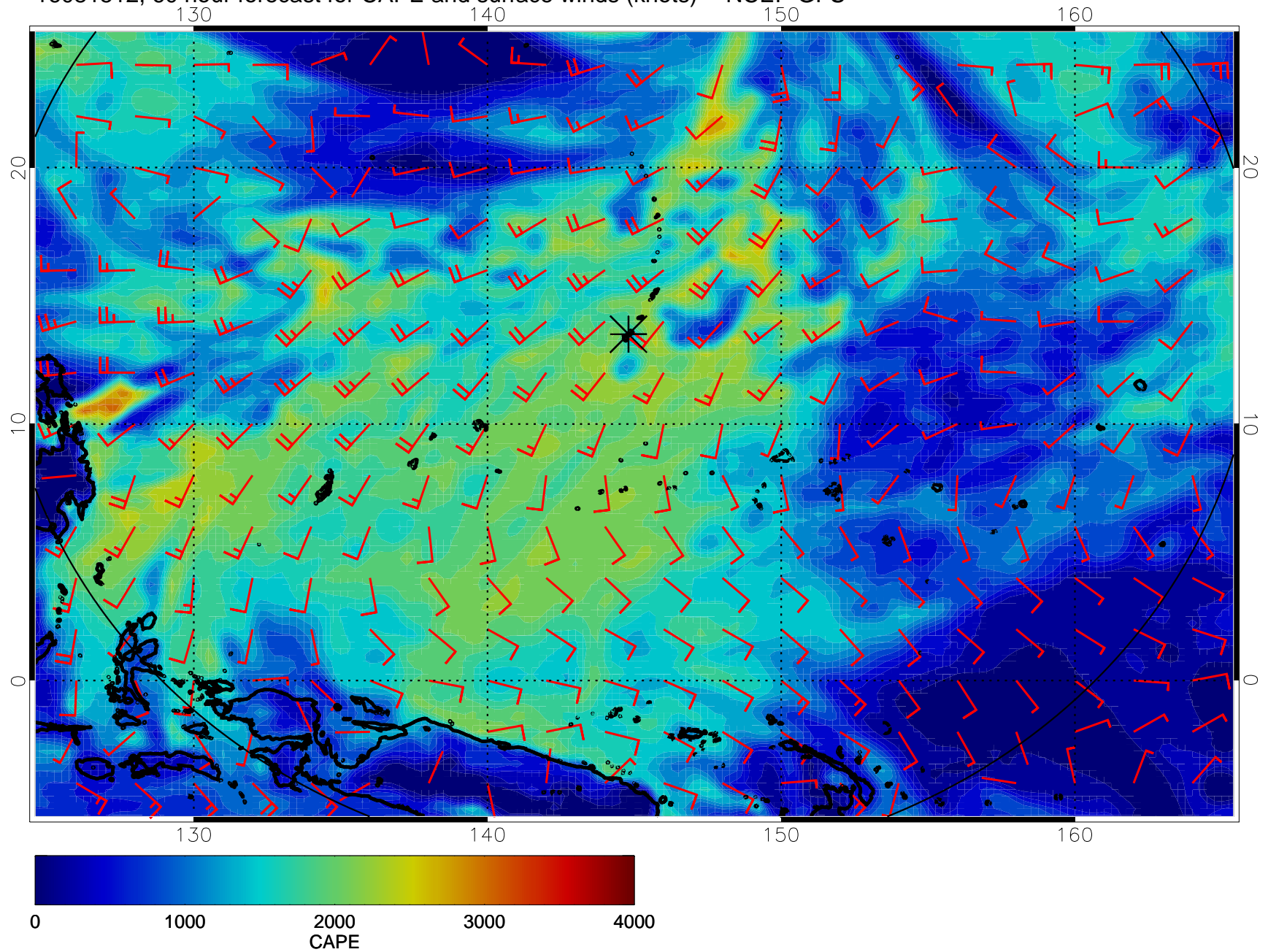




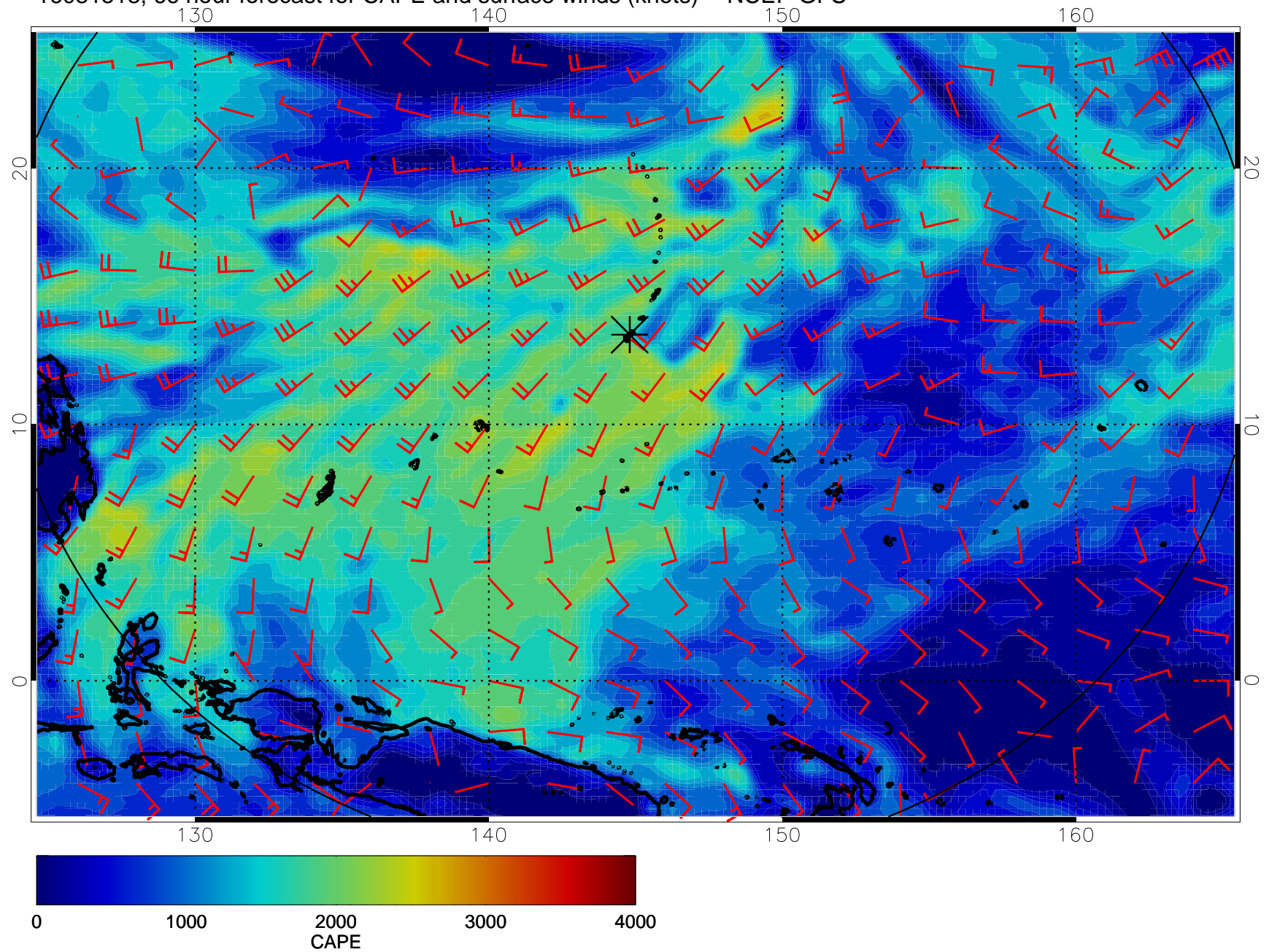
16081506, 54 hour forecast for CAPE and surface winds (knots) -- NCEP GFS



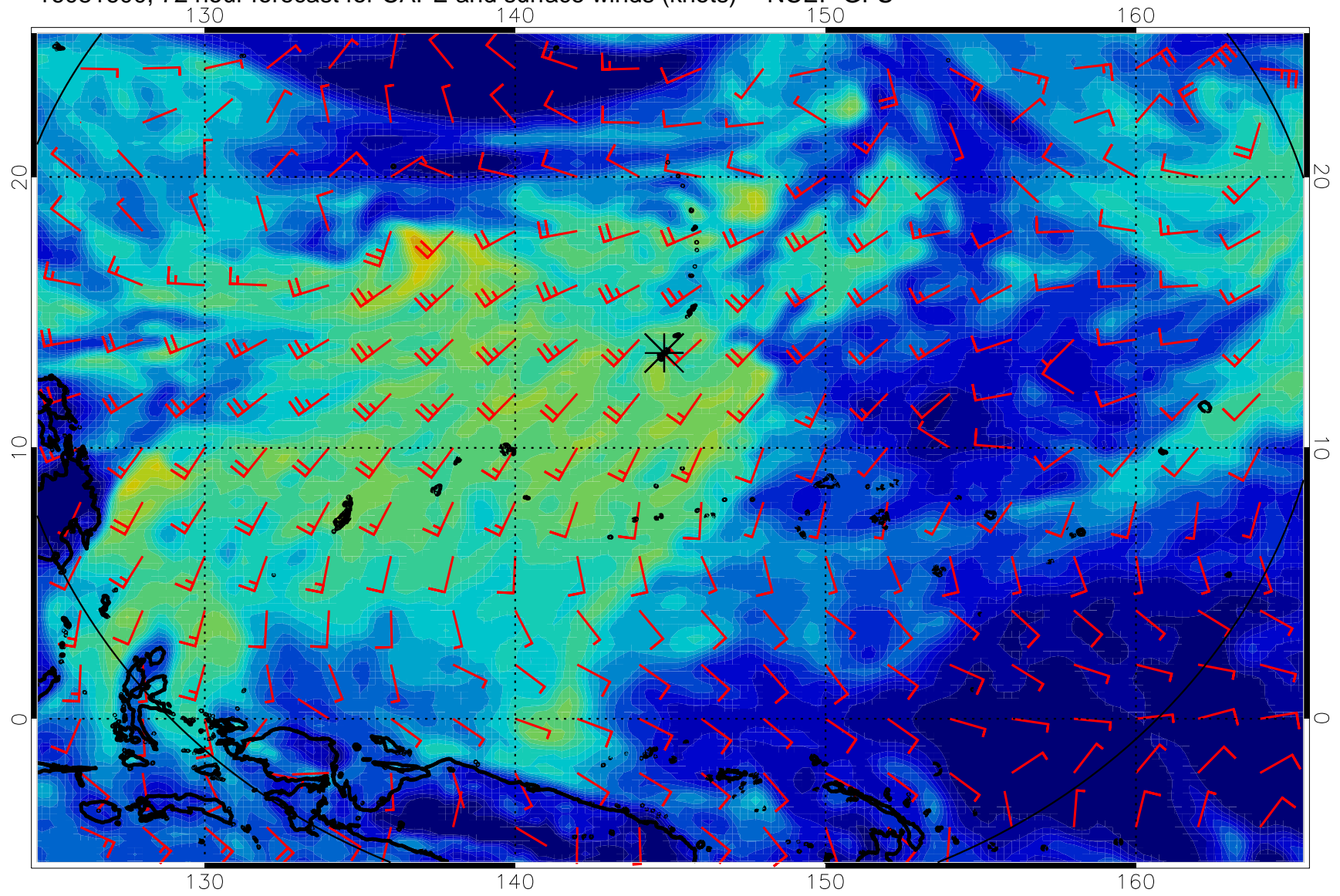
16081512, 60 hour forecast for CAPE and surface winds (knots) -- NCEP GFS



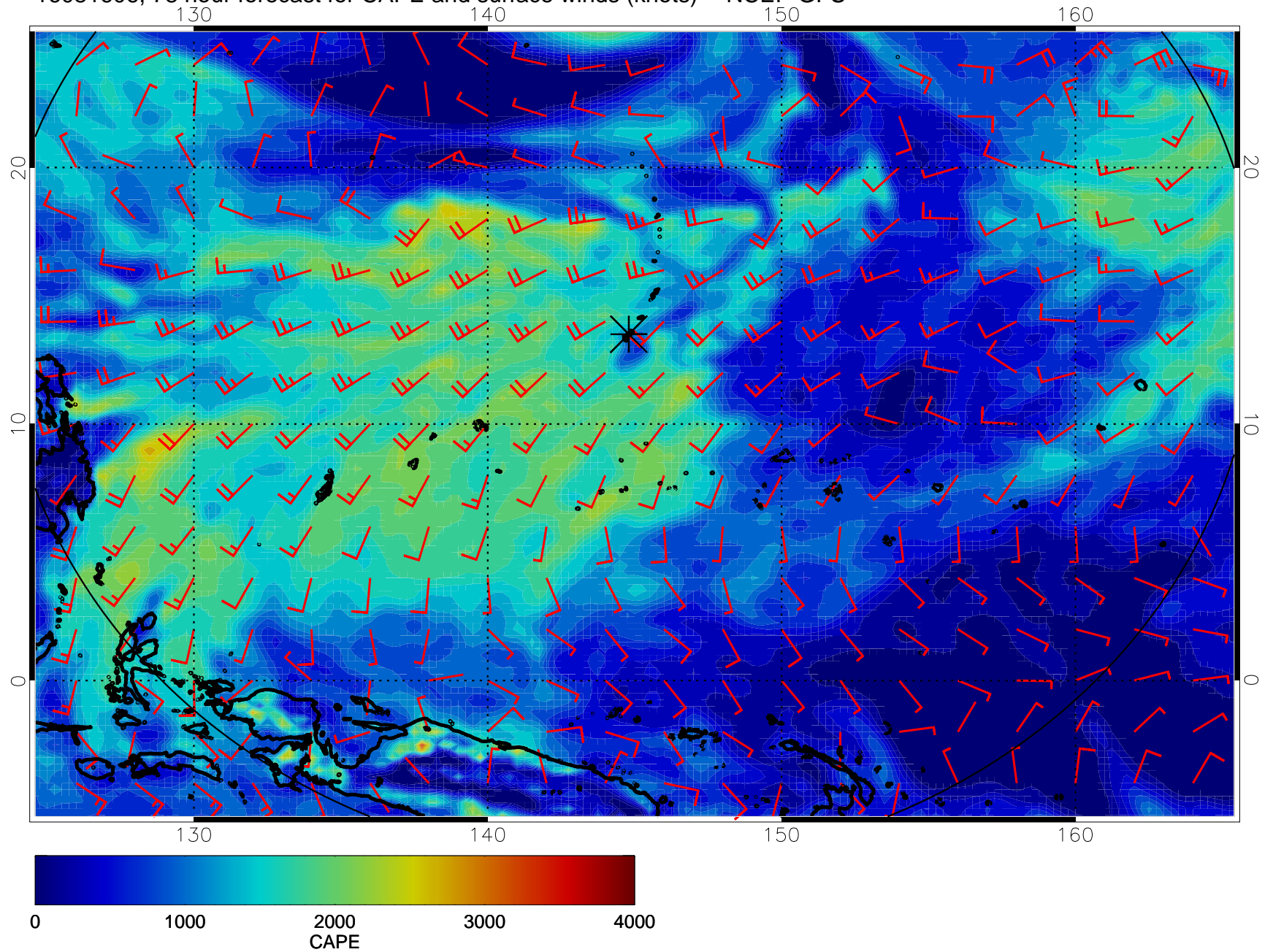
16081518, 66 hour forecast for CAPE and surface winds (knots) -- NCEP GFS



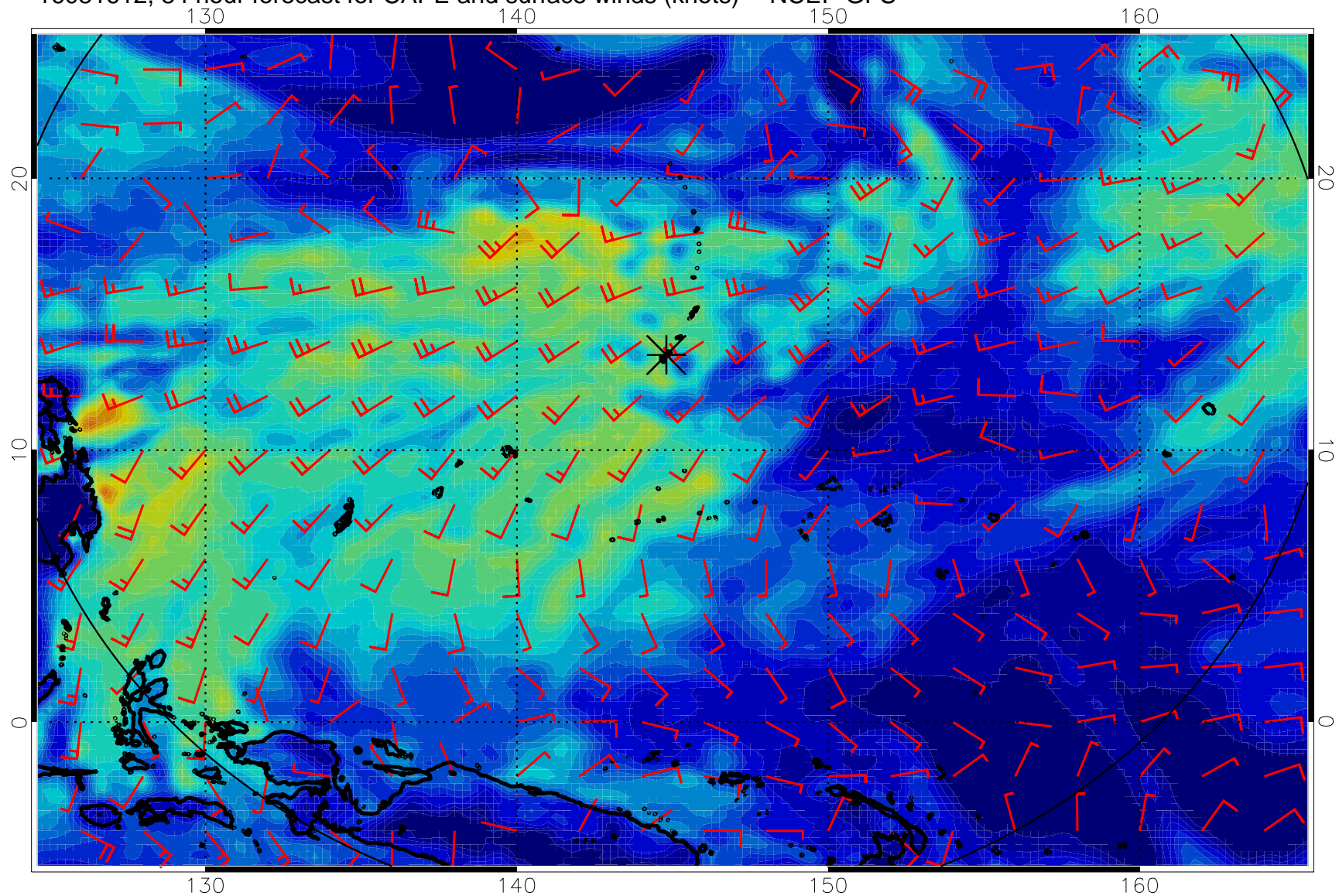
16081600, 72 hour forecast for CAPE and surface winds (knots) -- NCEP GFS



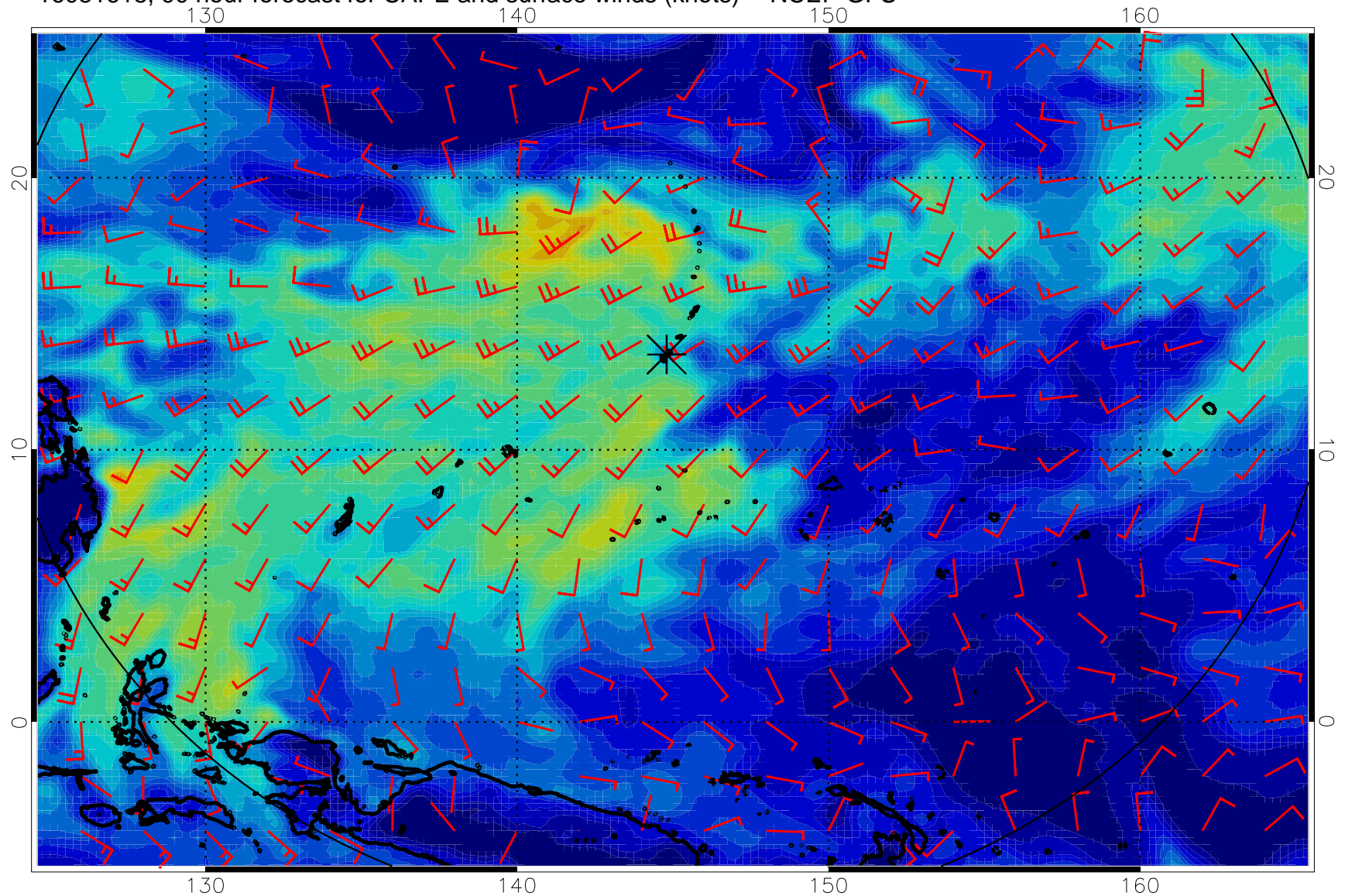
16081606, 78 hour forecast for CAPE and surface winds (knots) -- NCEP GFS



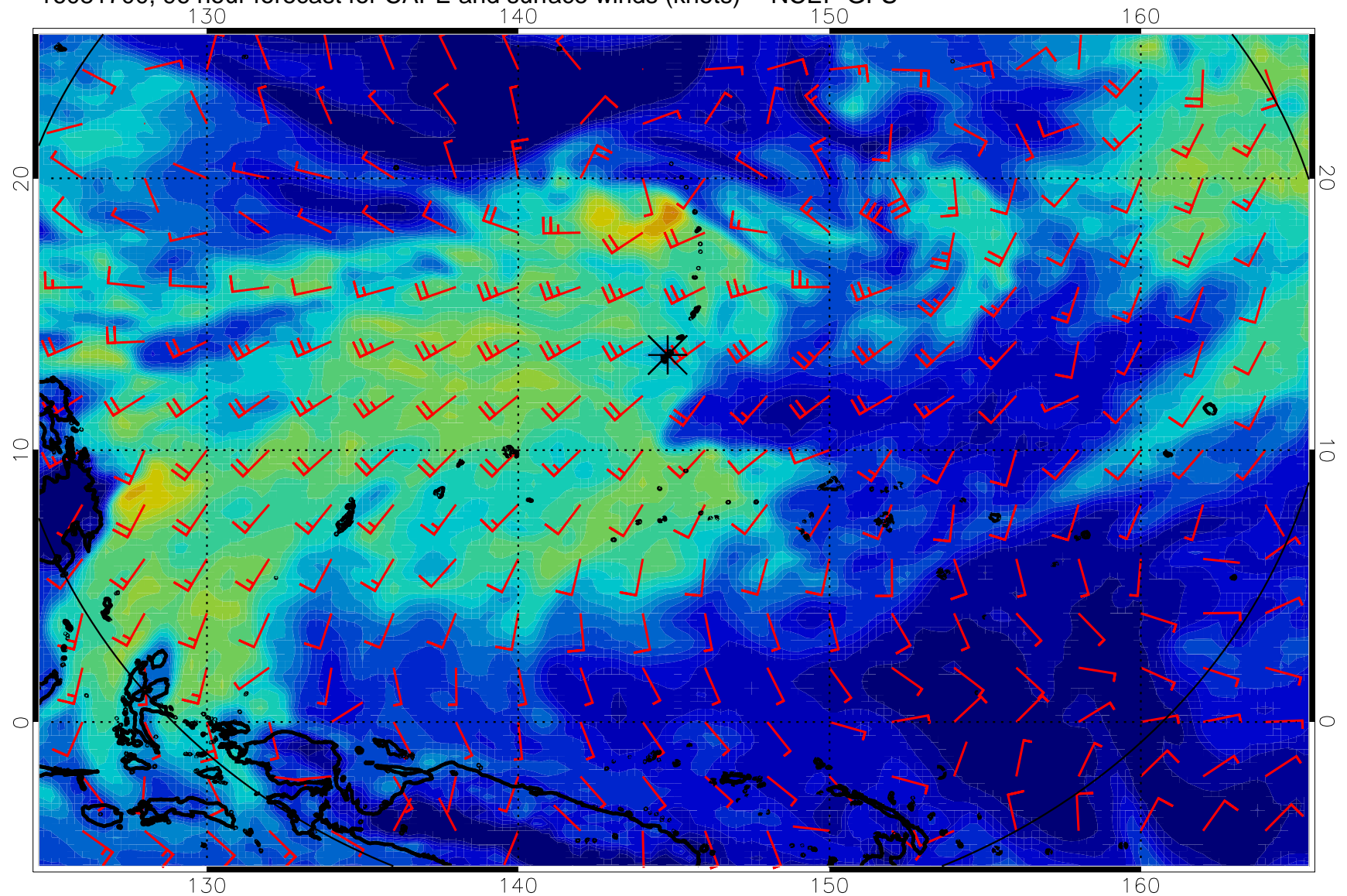
16081612, 84 hour forecast for CAPE and surface winds (knots) -- NCEP GFS



16081618, 90 hour forecast for CAPE and surface winds (knots) -- NCEP GFS

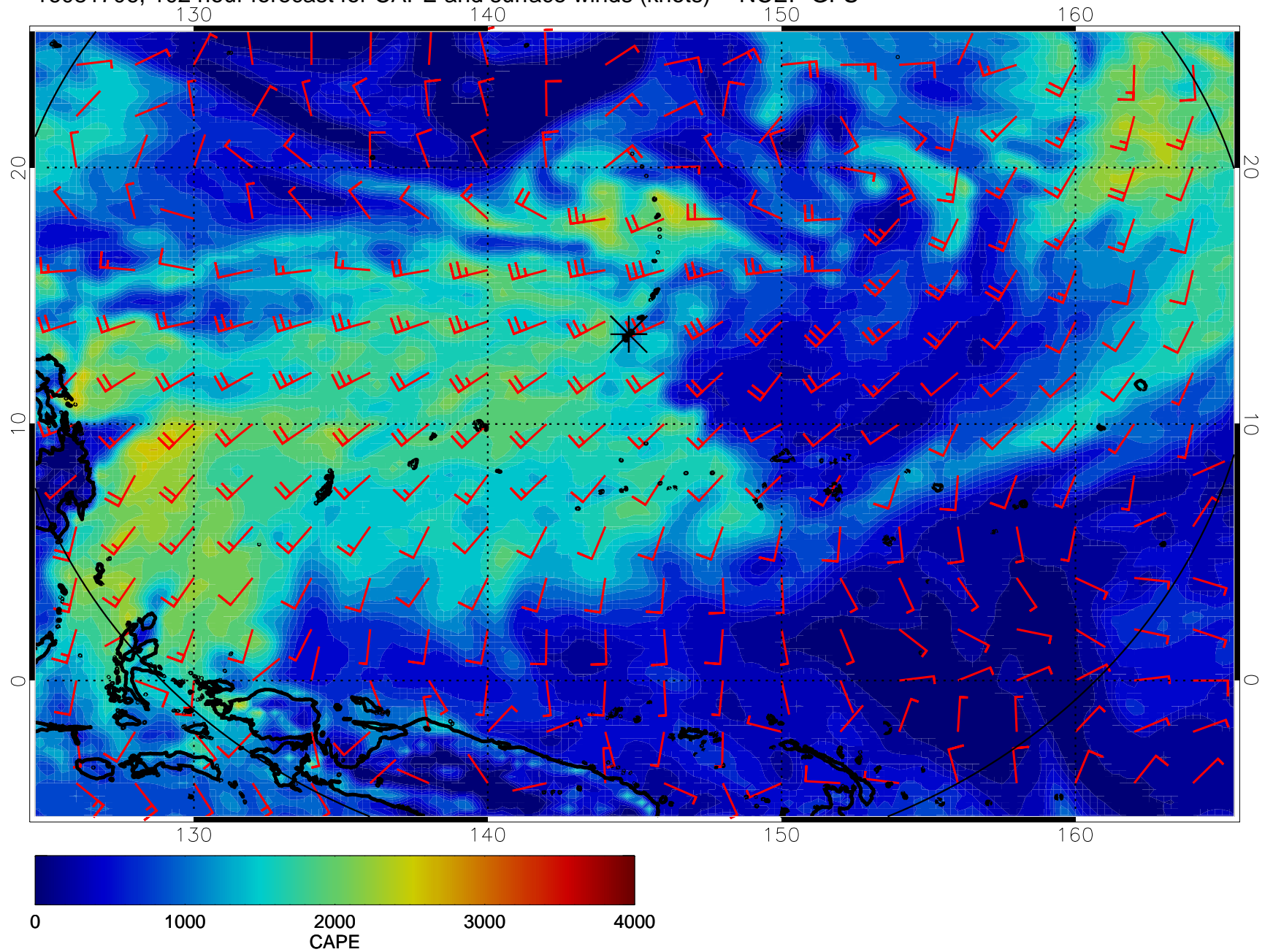


16081700, 96 hour forecast for CAPE and surface winds (knots) -- NCEP GFS

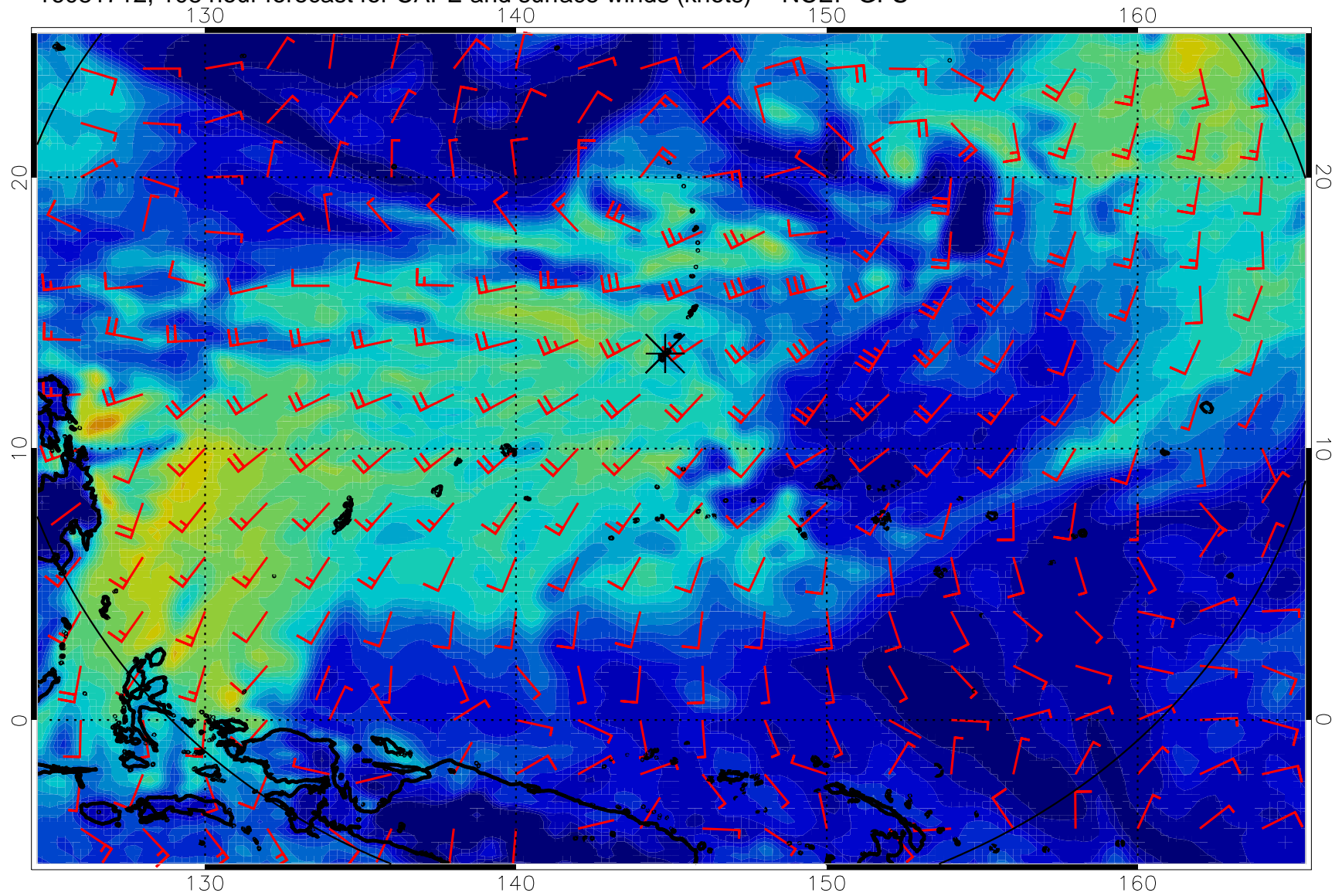




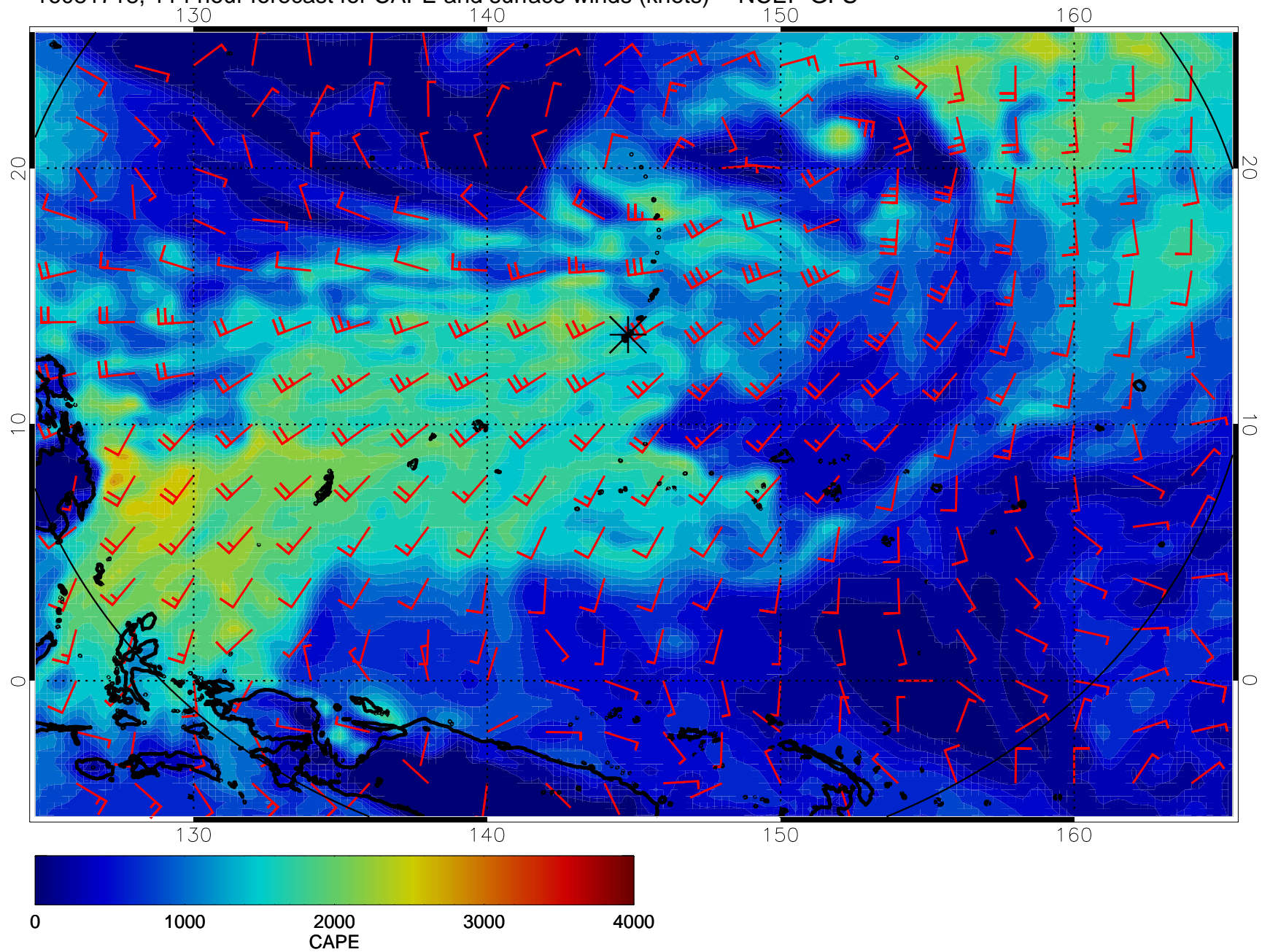
16081706, 102 hour forecast for CAPE and surface winds (knots) -- NCEP GFS



16081712, 108 hour forecast for CAPE and surface winds (knots) -- NCEP GFS



16081718, 114 hour forecast for CAPE and surface winds (knots) -- NCEP GFS



16081800, 120 hour forecast for CAPE and surface winds (knots) -- NCEP GFS

