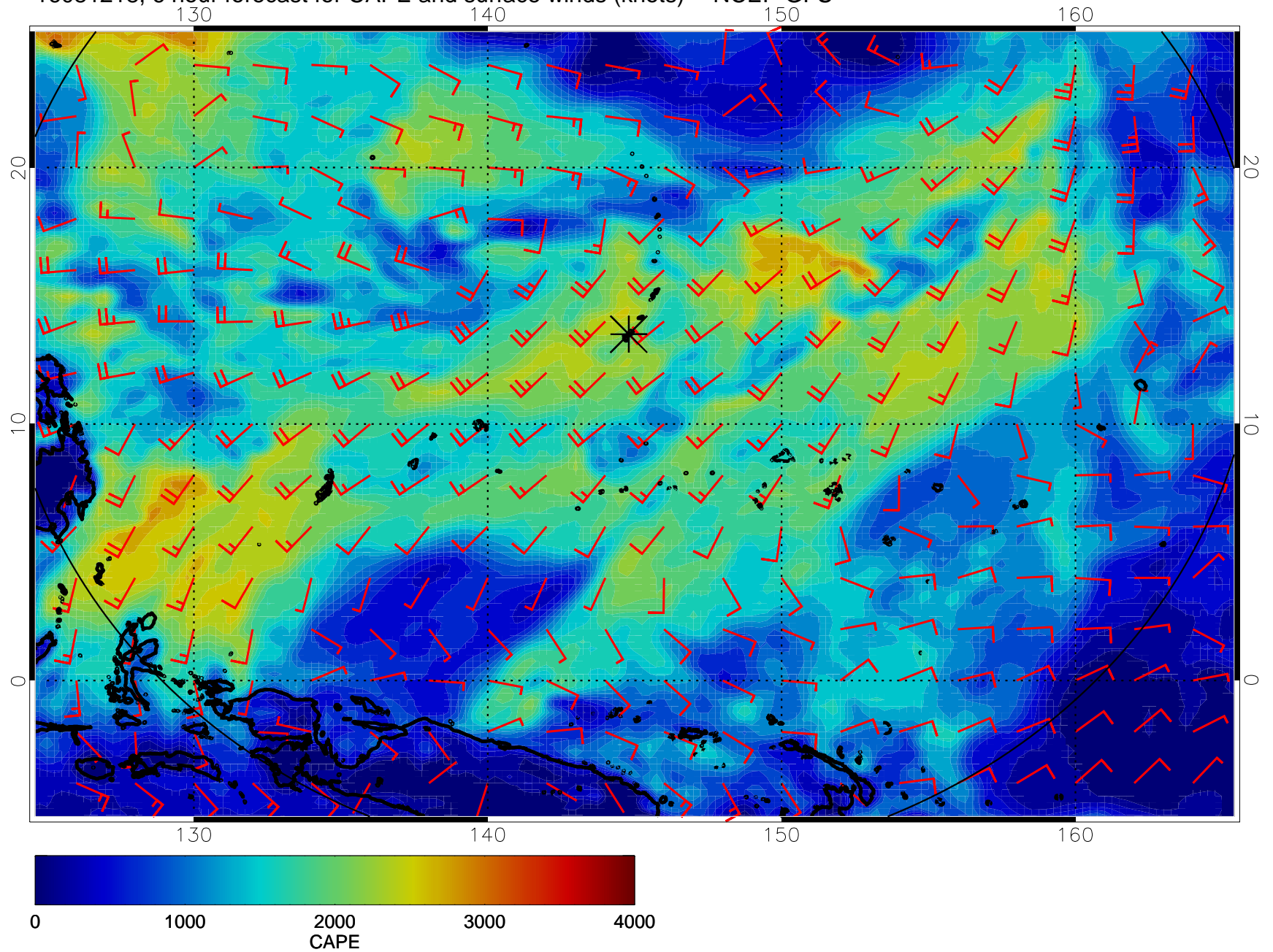
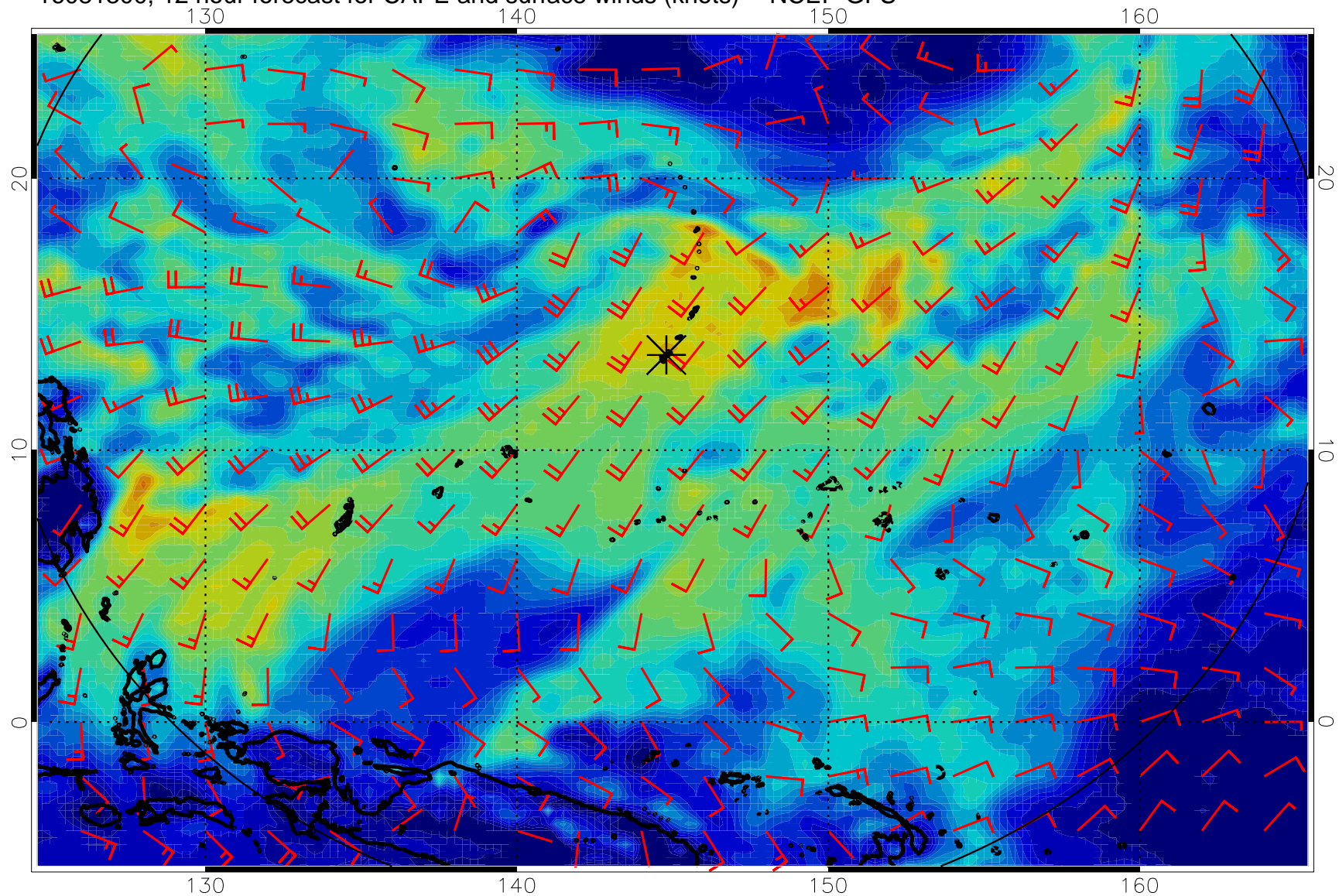


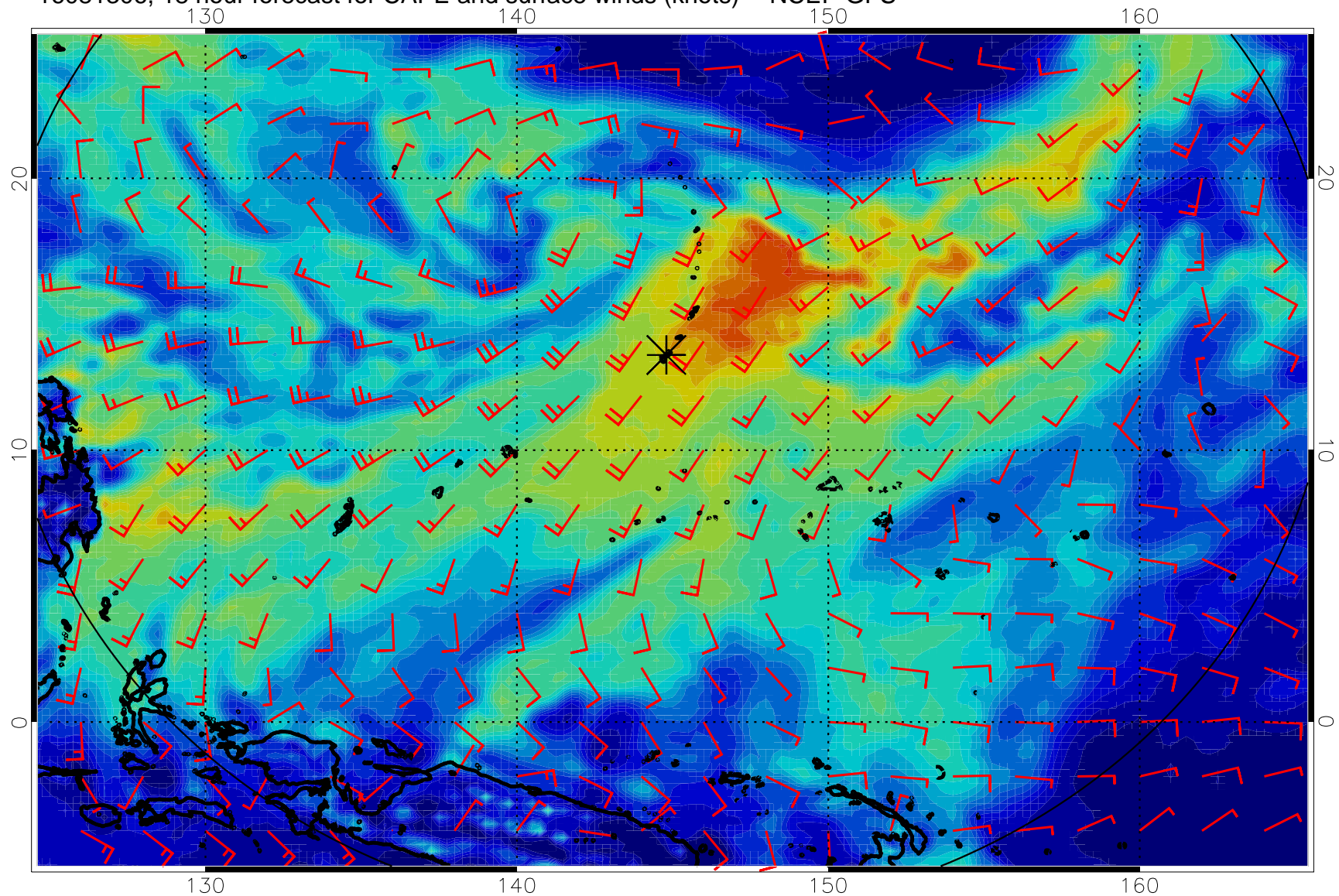
16081218, 6 hour forecast for CAPE and surface winds (knots) -- NCEP GFS



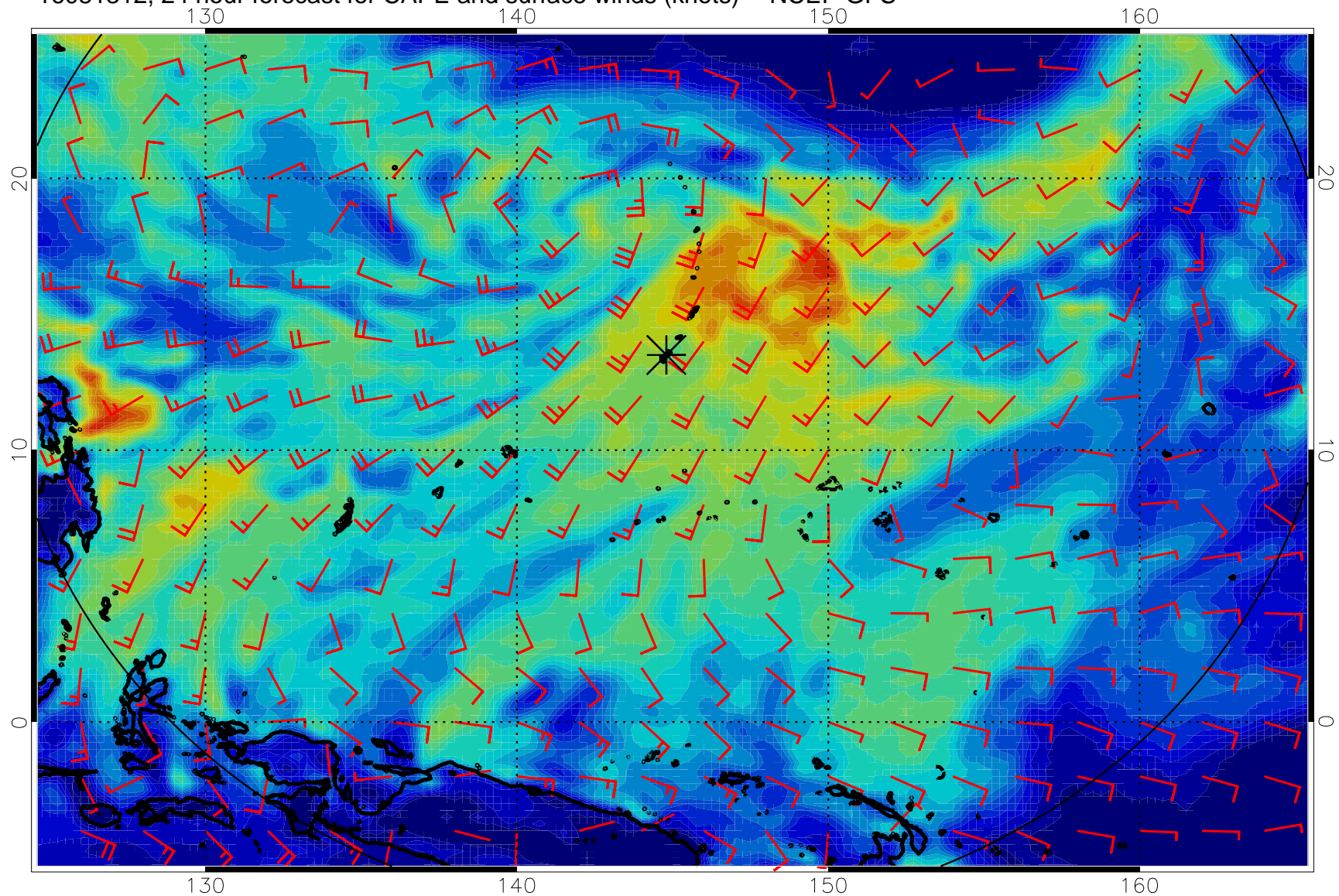
16081300, 12 hour forecast for CAPE and surface winds (knots) -- NCEP GFS



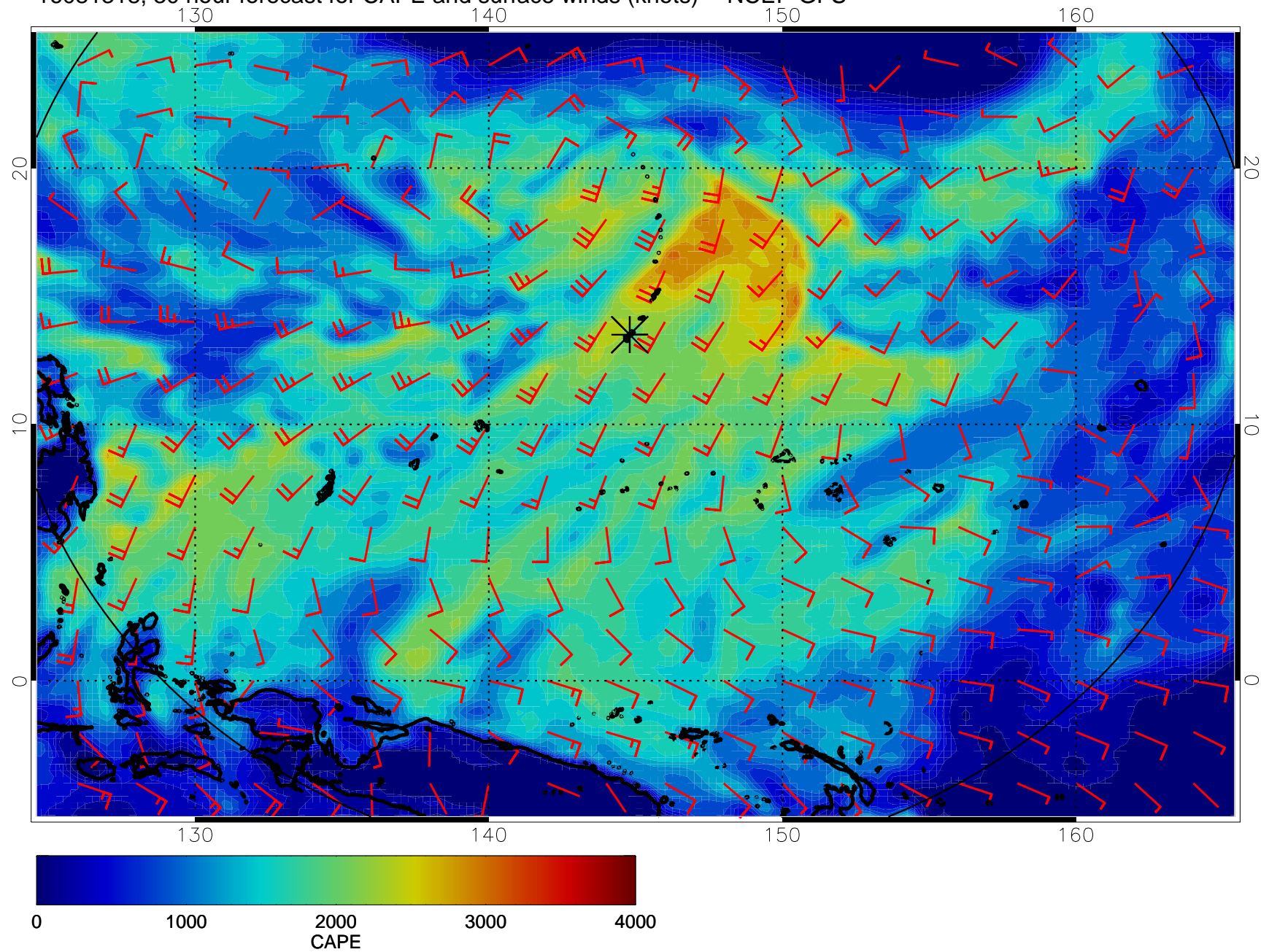
16081306, 18 hour forecast for CAPE and surface winds (knots) -- NCEP GFS



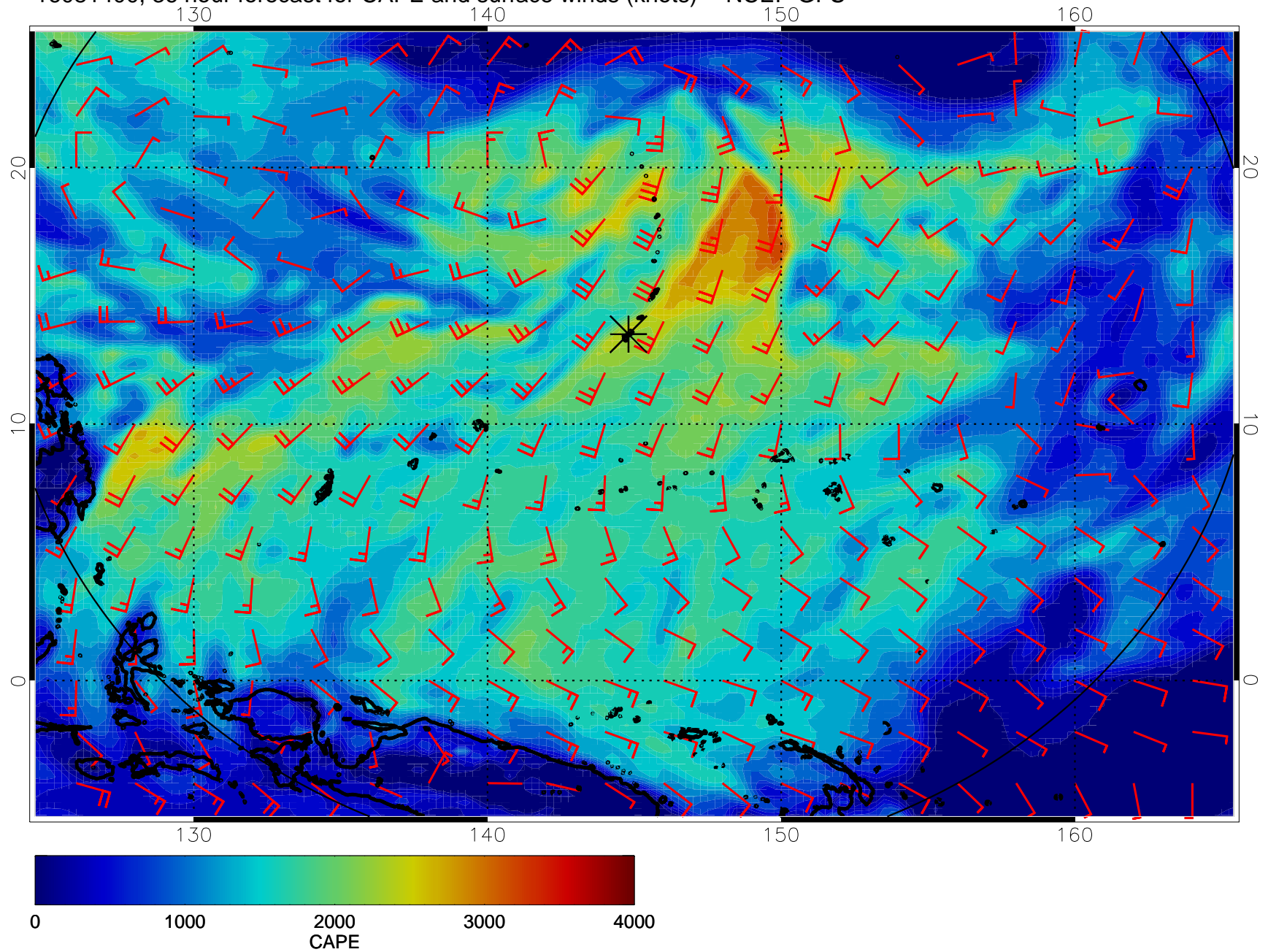
16081312, 24 hour forecast for CAPE and surface winds (knots) -- NCEP GFS



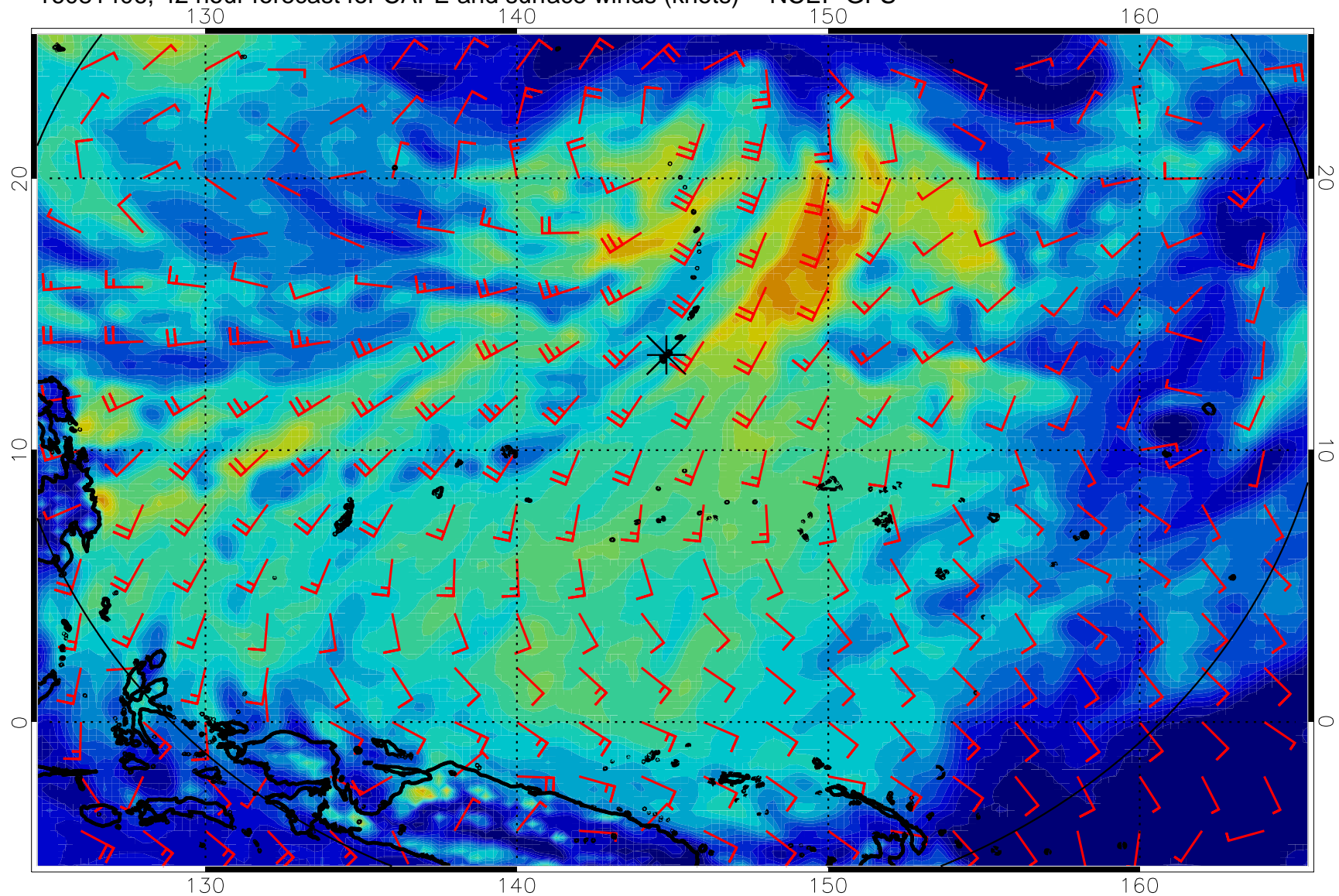
16081318, 30 hour forecast for CAPE and surface winds (knots) -- NCEP GFS



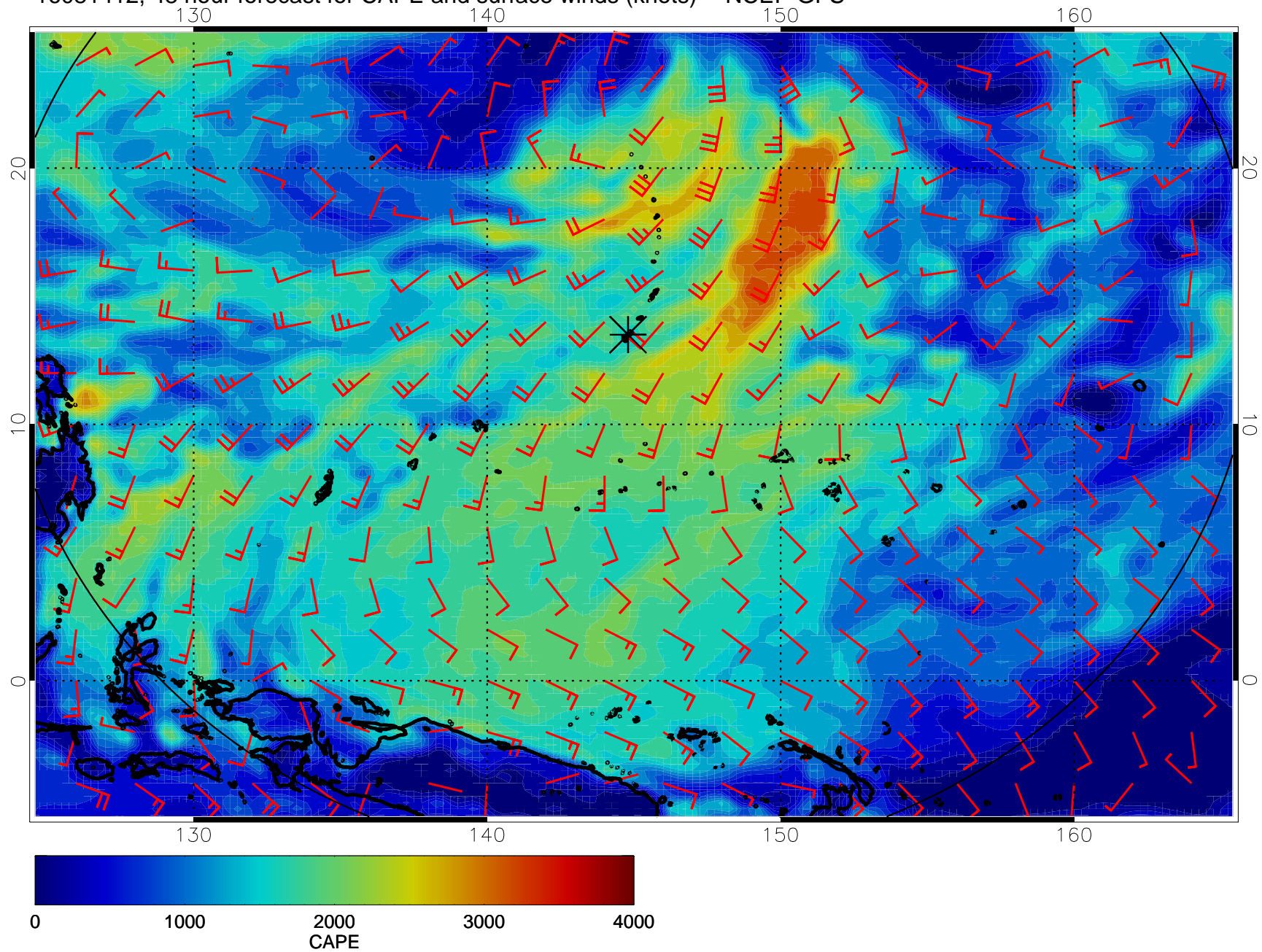
16081400, 36 hour forecast for CAPE and surface winds (knots) -- NCEP GFS



16081406, 42 hour forecast for CAPE and surface winds (knots) -- NCEP GFS

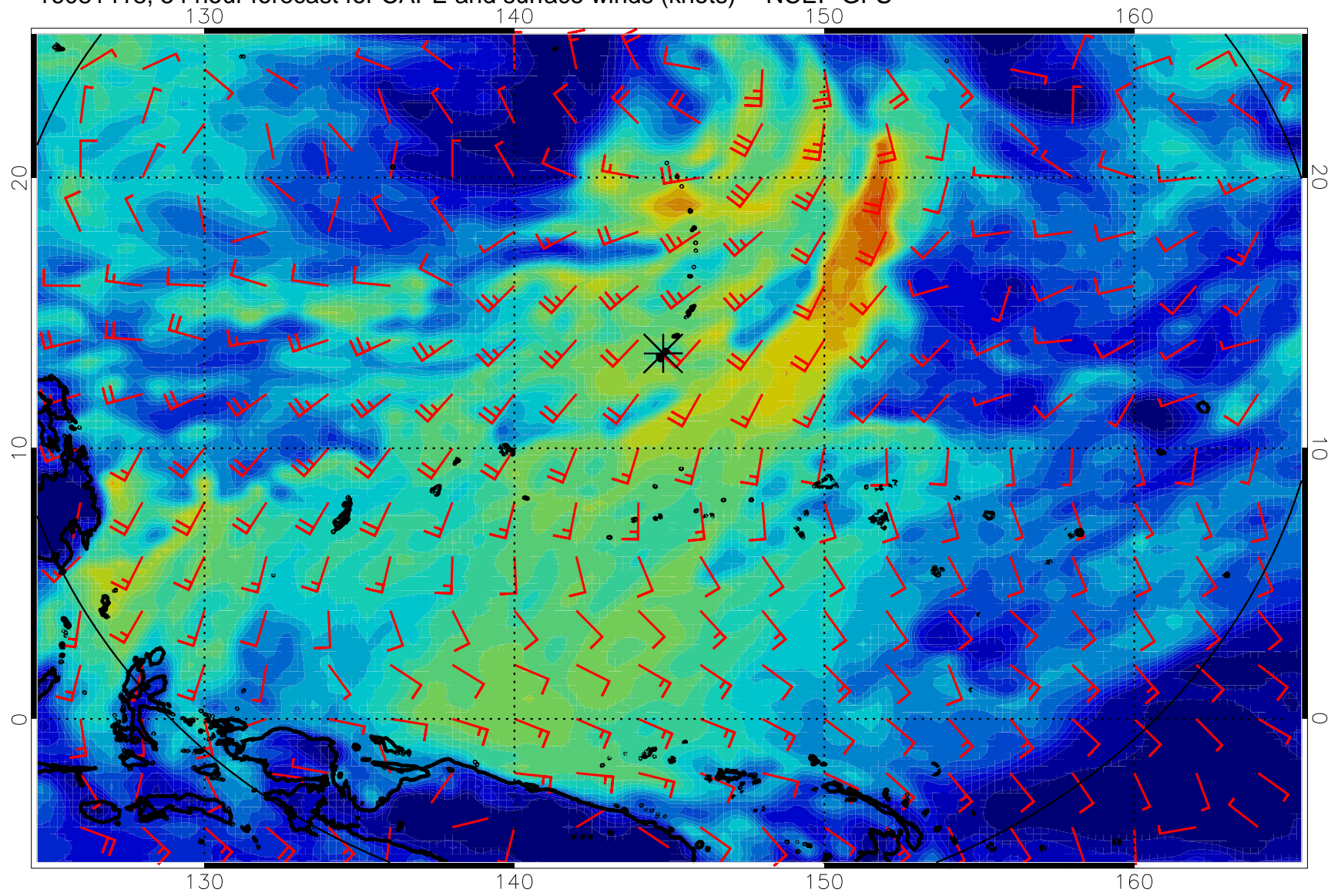


16081412, 48 hour forecast for CAPE and surface winds (knots) -- NCEP GFS

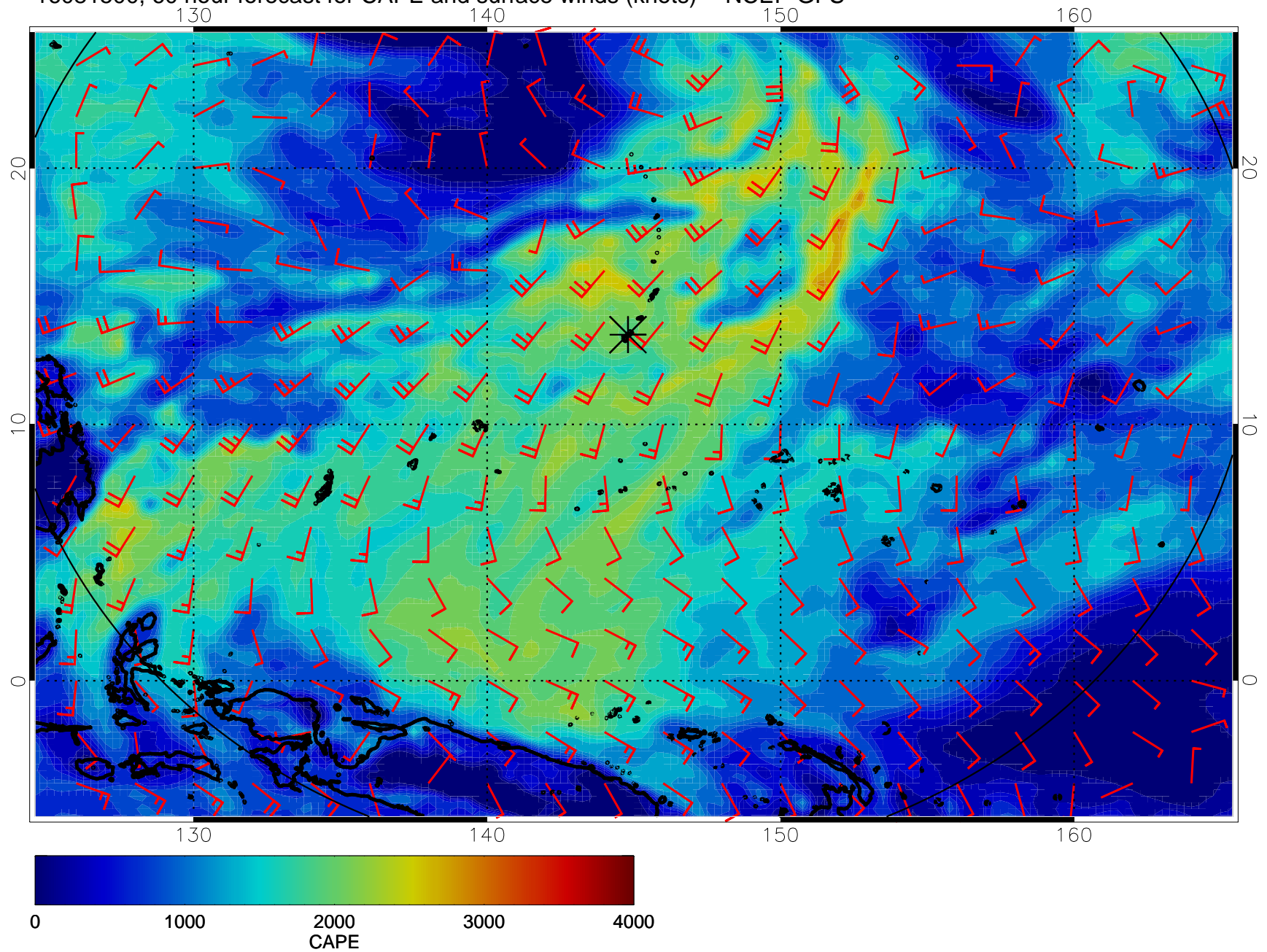




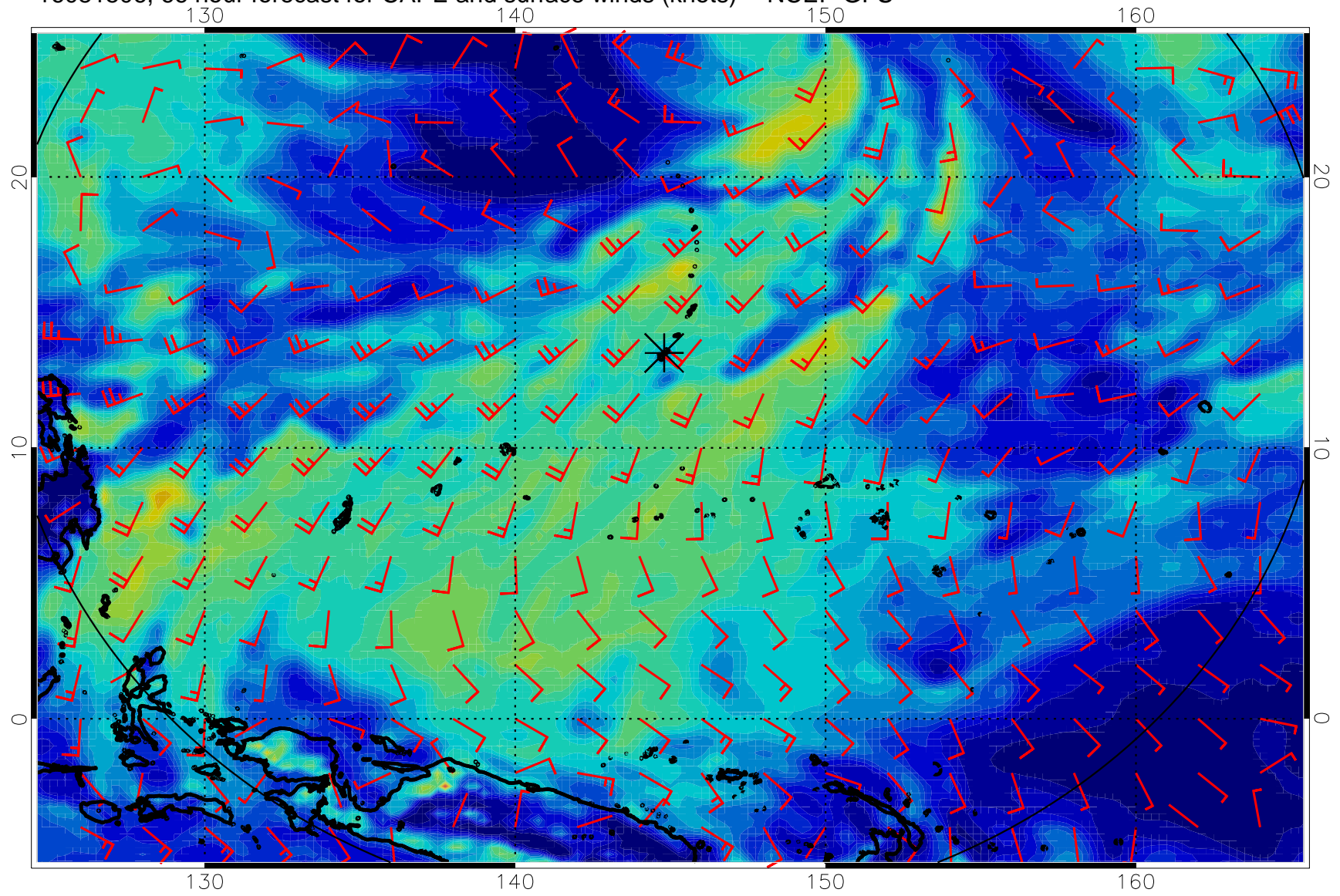
16081418, 54 hour forecast for CAPE and surface winds (knots) -- NCEP GFS



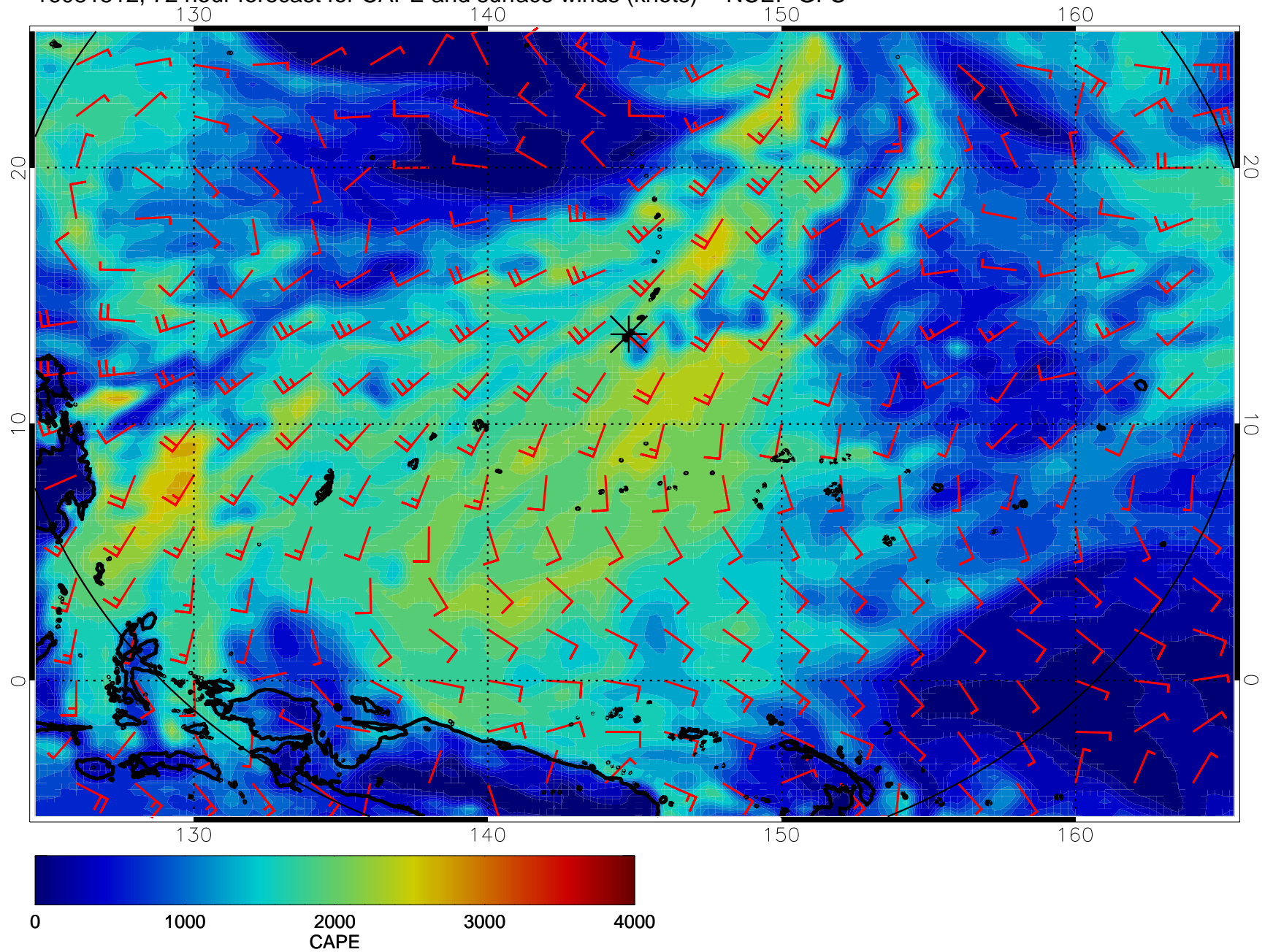
16081500, 60 hour forecast for CAPE and surface winds (knots) -- NCEP GFS



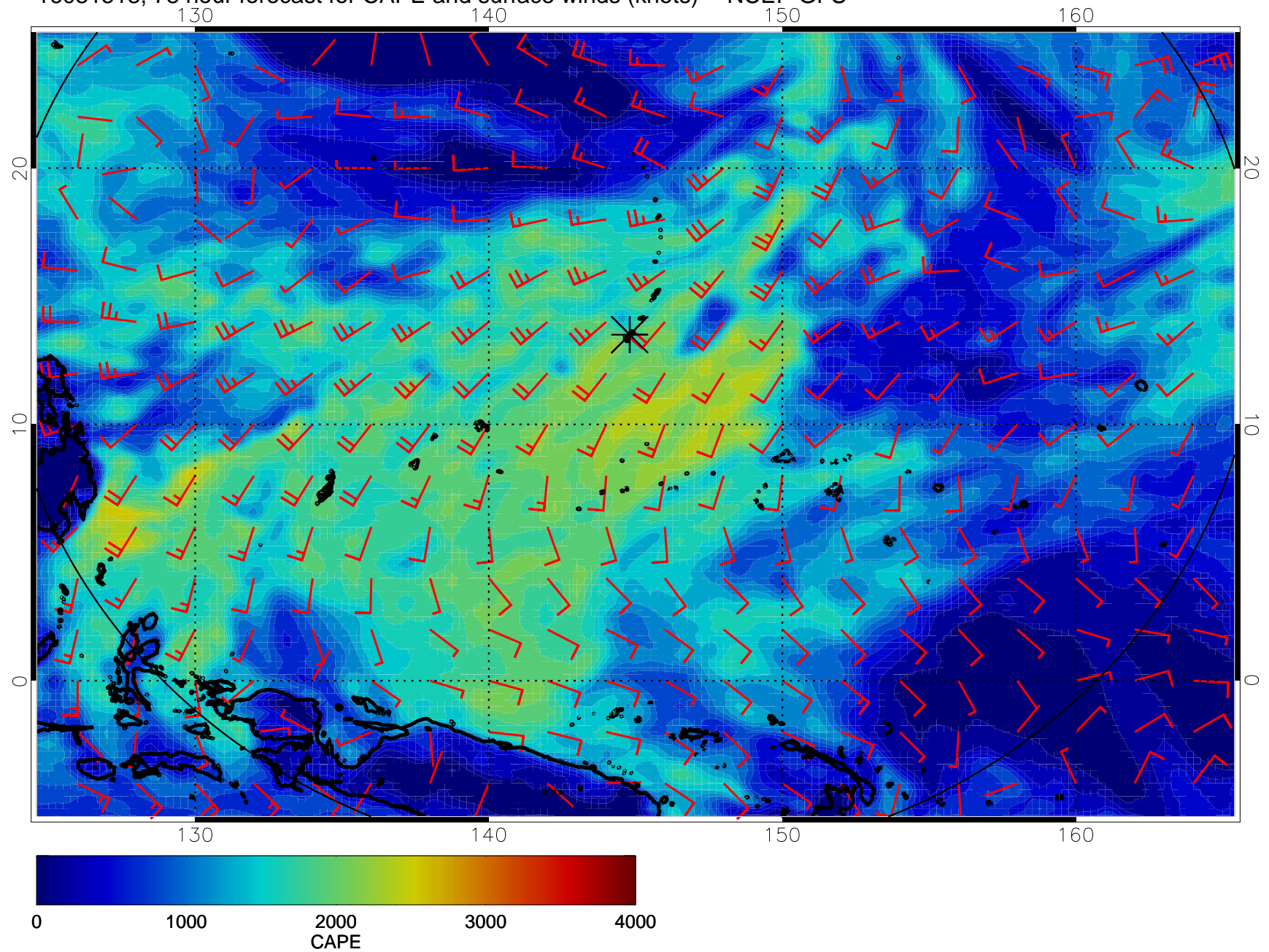
16081506, 66 hour forecast for CAPE and surface winds (knots) -- NCEP GFS



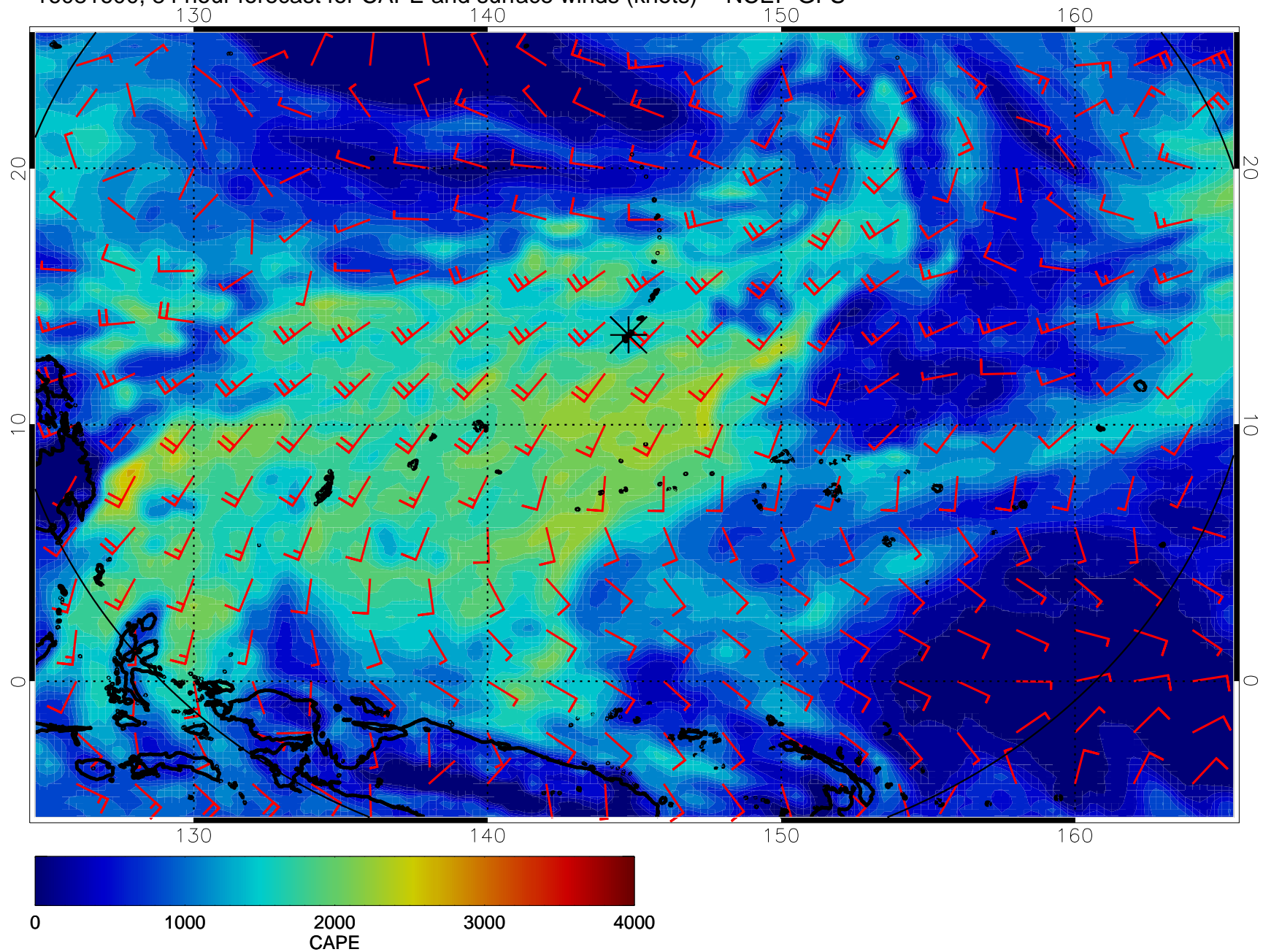
16081512, 72 hour forecast for CAPE and surface winds (knots) -- NCEP GFS



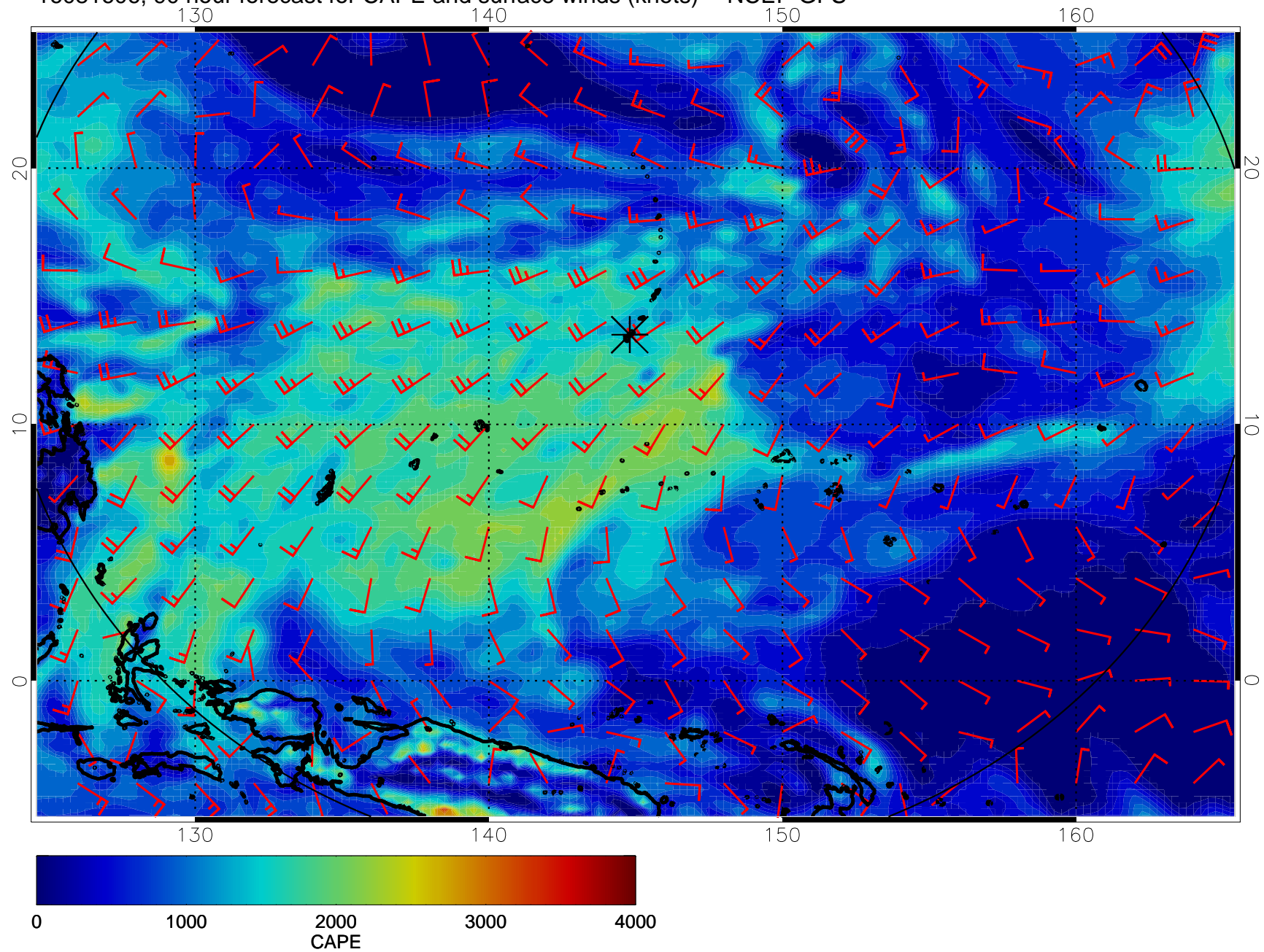
16081518, 78 hour forecast for CAPE and surface winds (knots) -- NCEP GFS



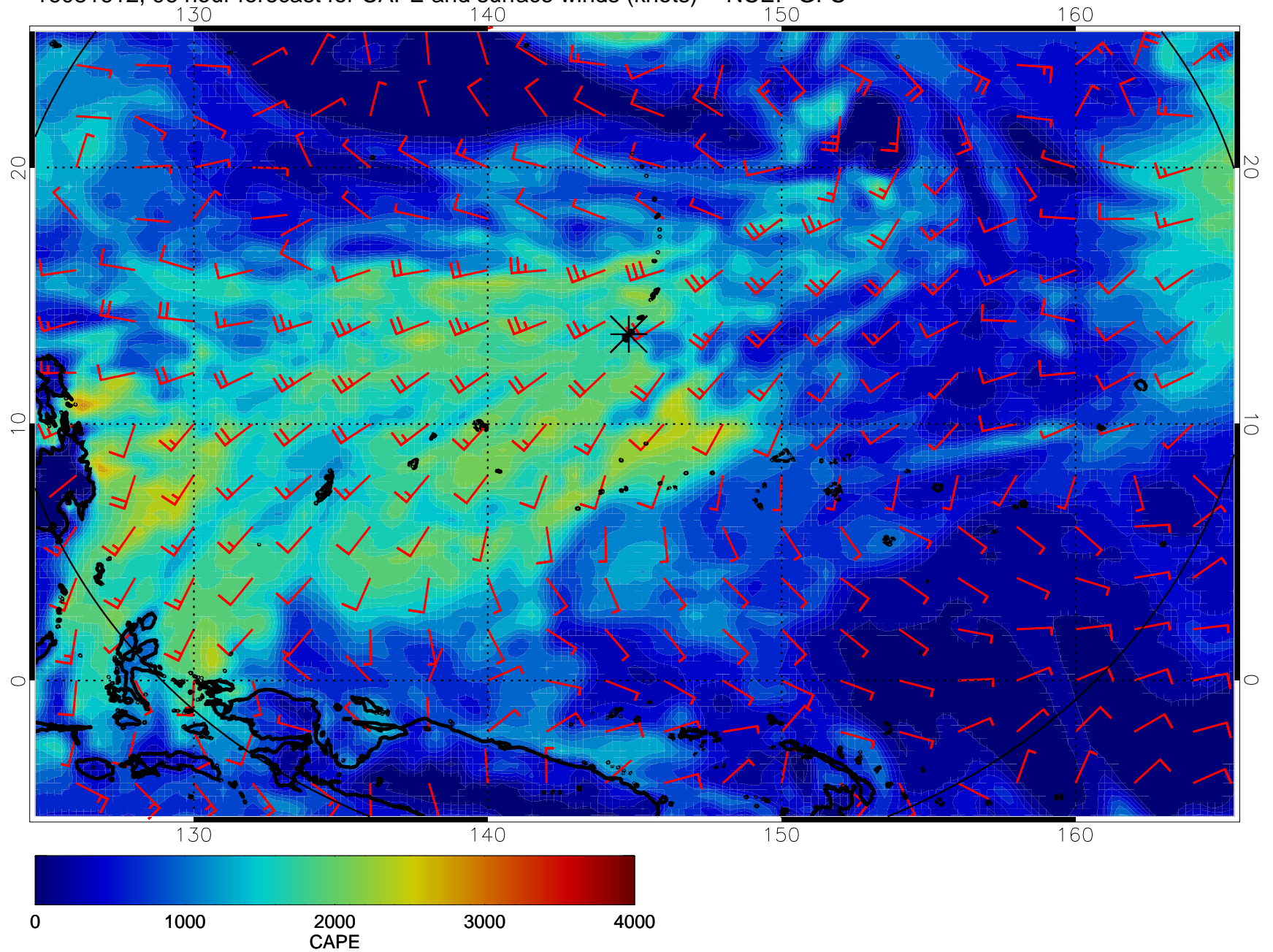
16081600, 84 hour forecast for CAPE and surface winds (knots) -- NCEP GFS



16081606, 90 hour forecast for CAPE and surface winds (knots) -- NCEP GFS

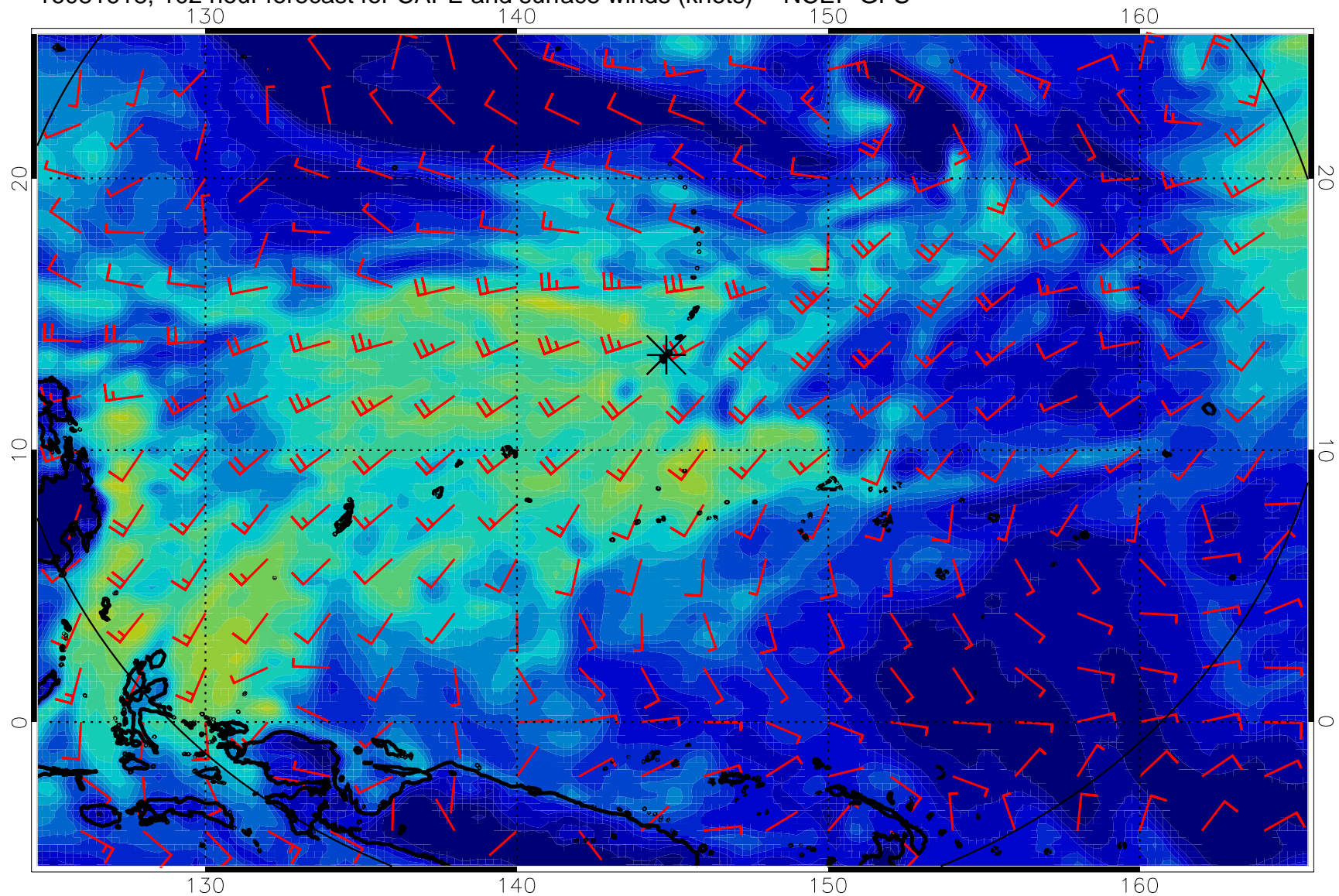


16081612, 96 hour forecast for CAPE and surface winds (knots) -- NCEP GFS

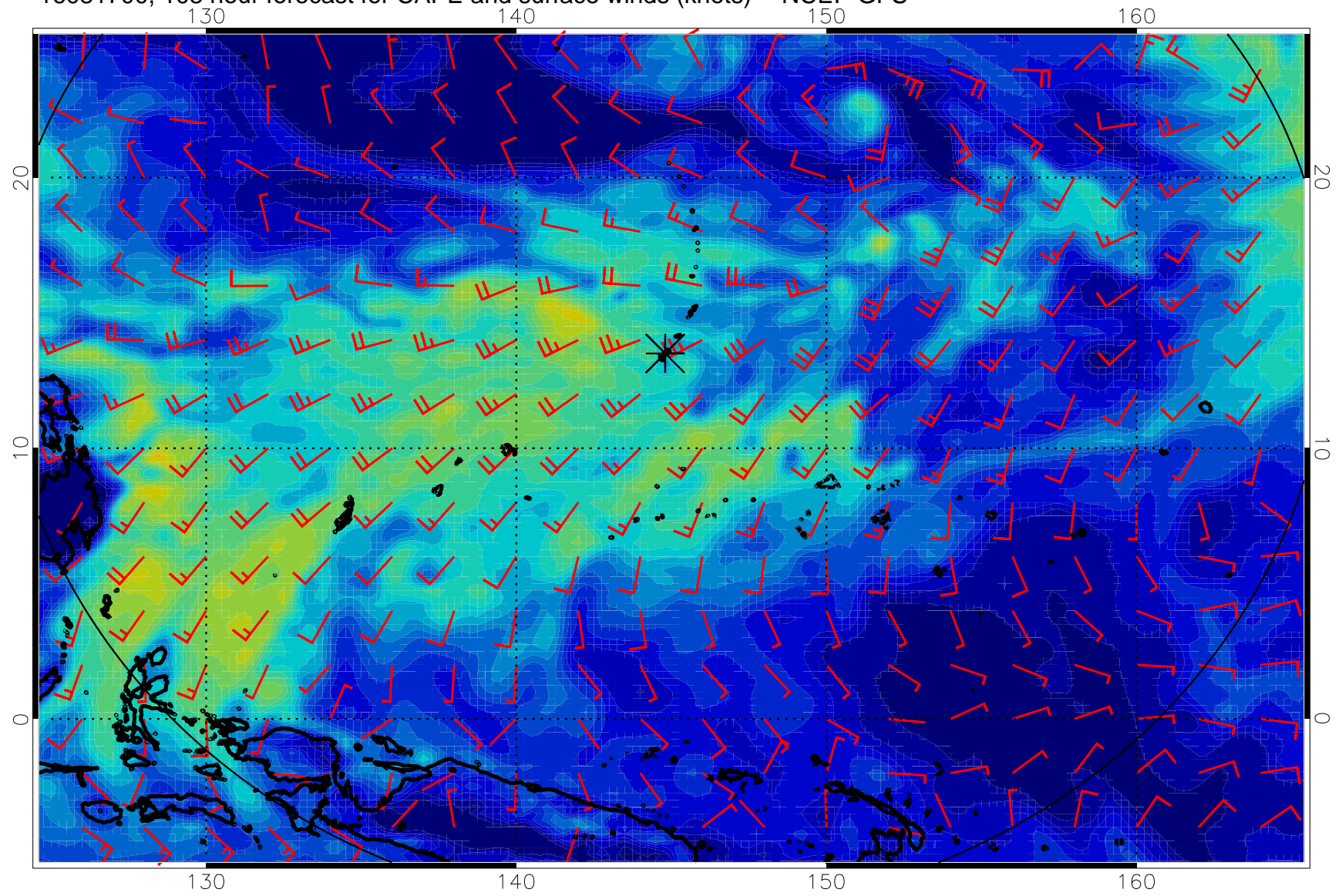




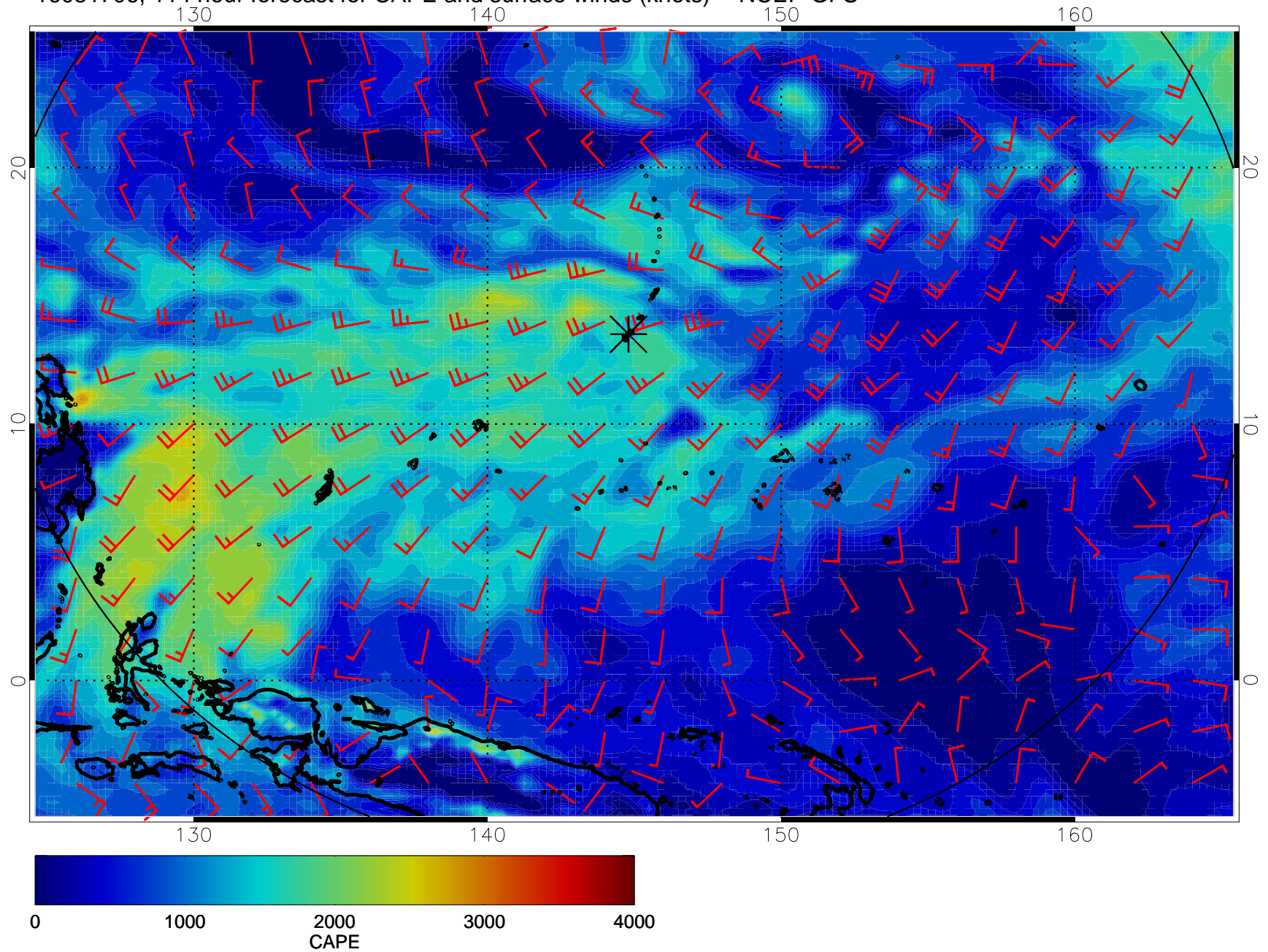
16081618, 102 hour forecast for CAPE and surface winds (knots) -- NCEP GFS



16081700, 108 hour forecast for CAPE and surface winds (knots) -- NCEP GFS



16081706, 114 hour forecast for CAPE and surface winds (knots) -- NCEP GFS



16081712, 120 hour forecast for CAPE and surface winds (knots) -- NCEP GFS

