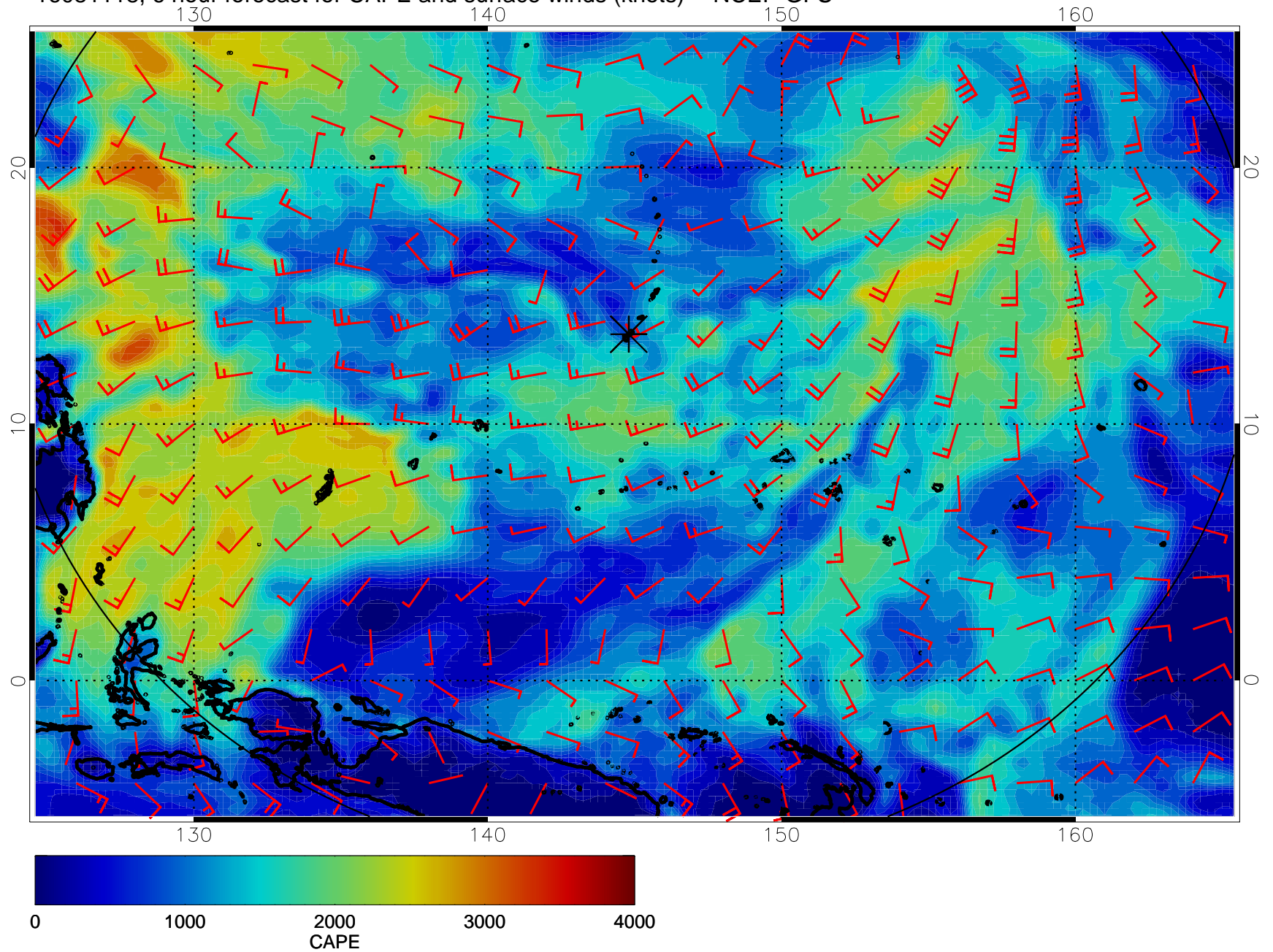
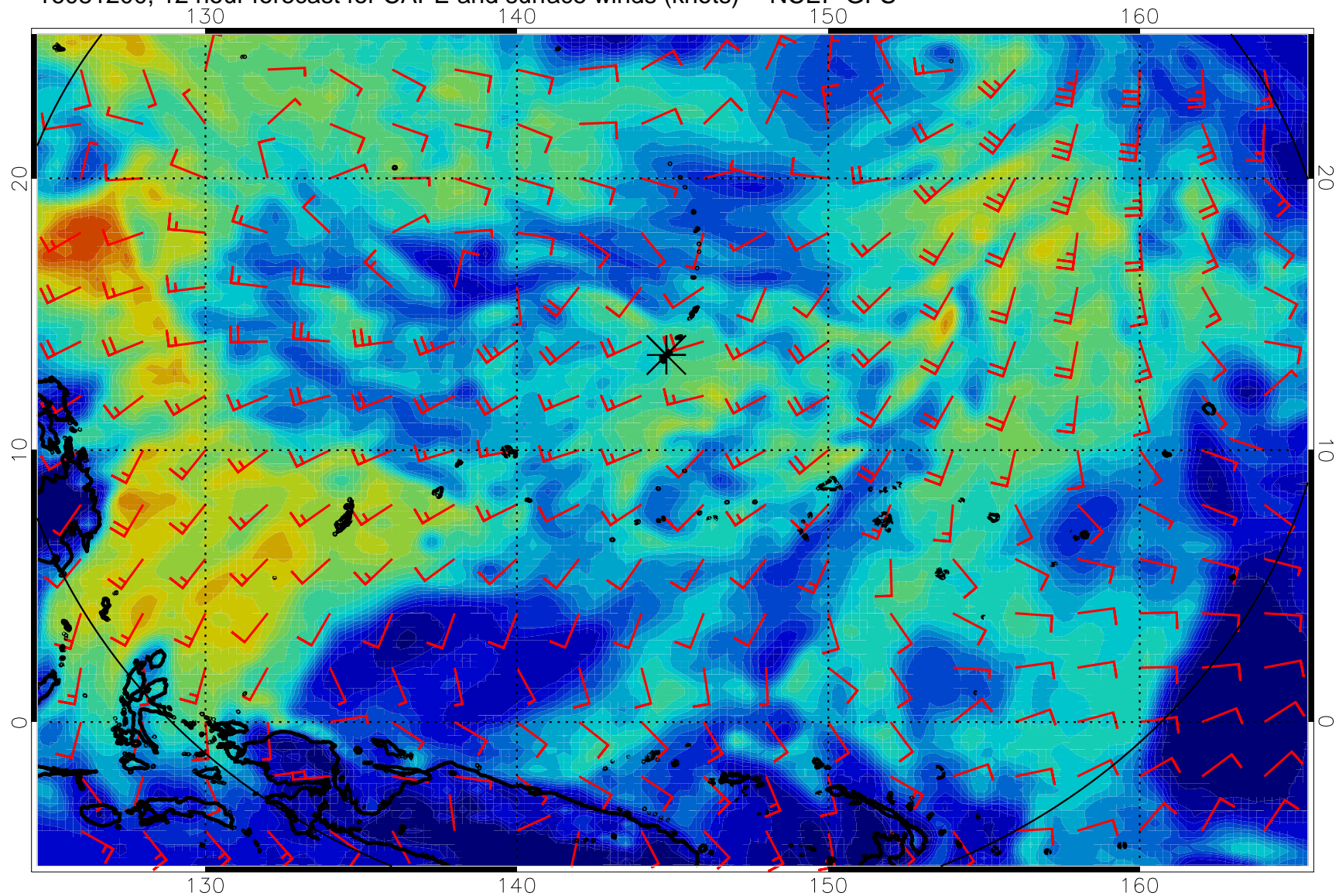


16081118, 6 hour forecast for CAPE and surface winds (knots) -- NCEP GFS

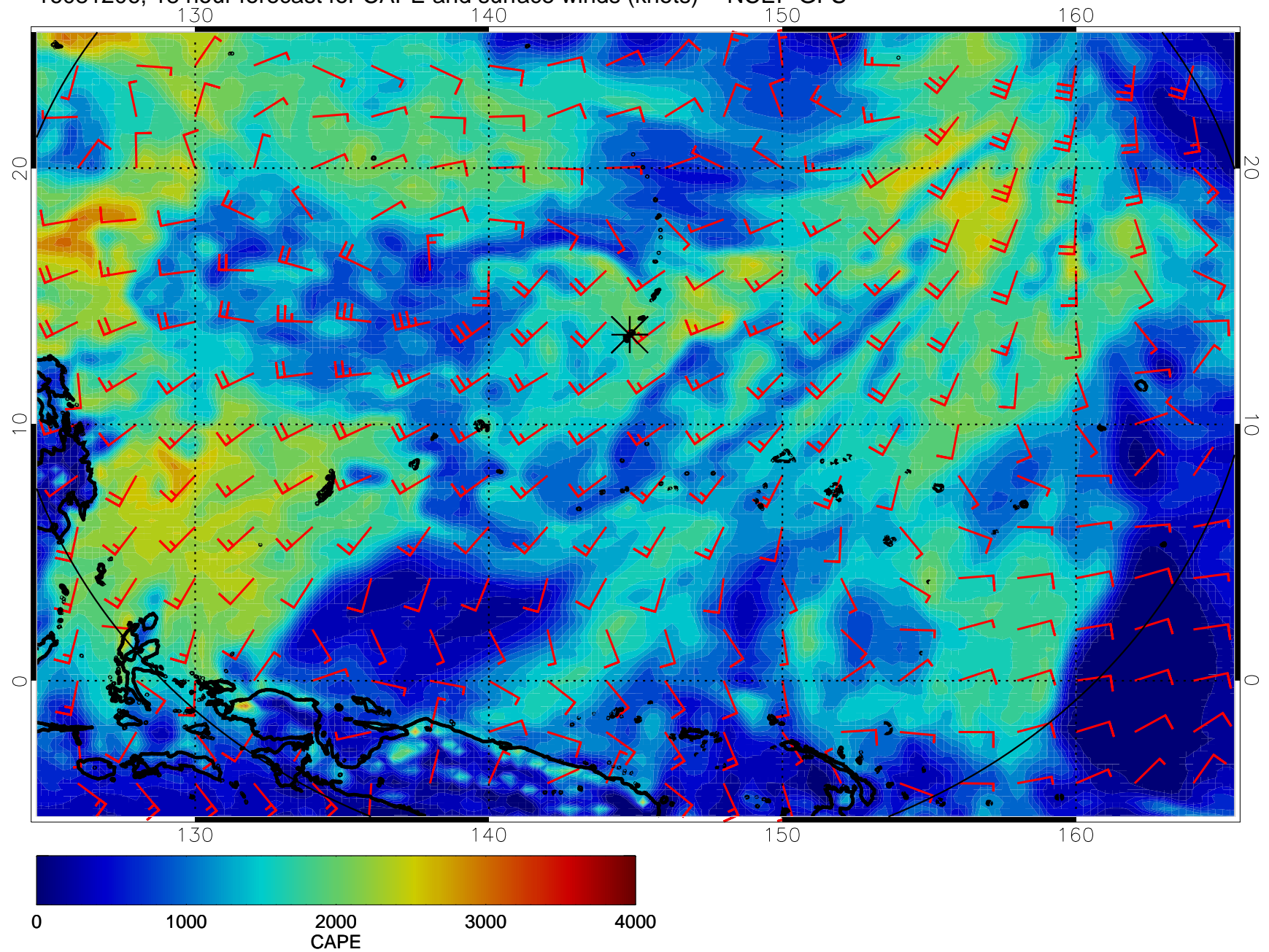


16081200, 12 hour forecast for CAPE and surface winds (knots) -- NCEP GFS

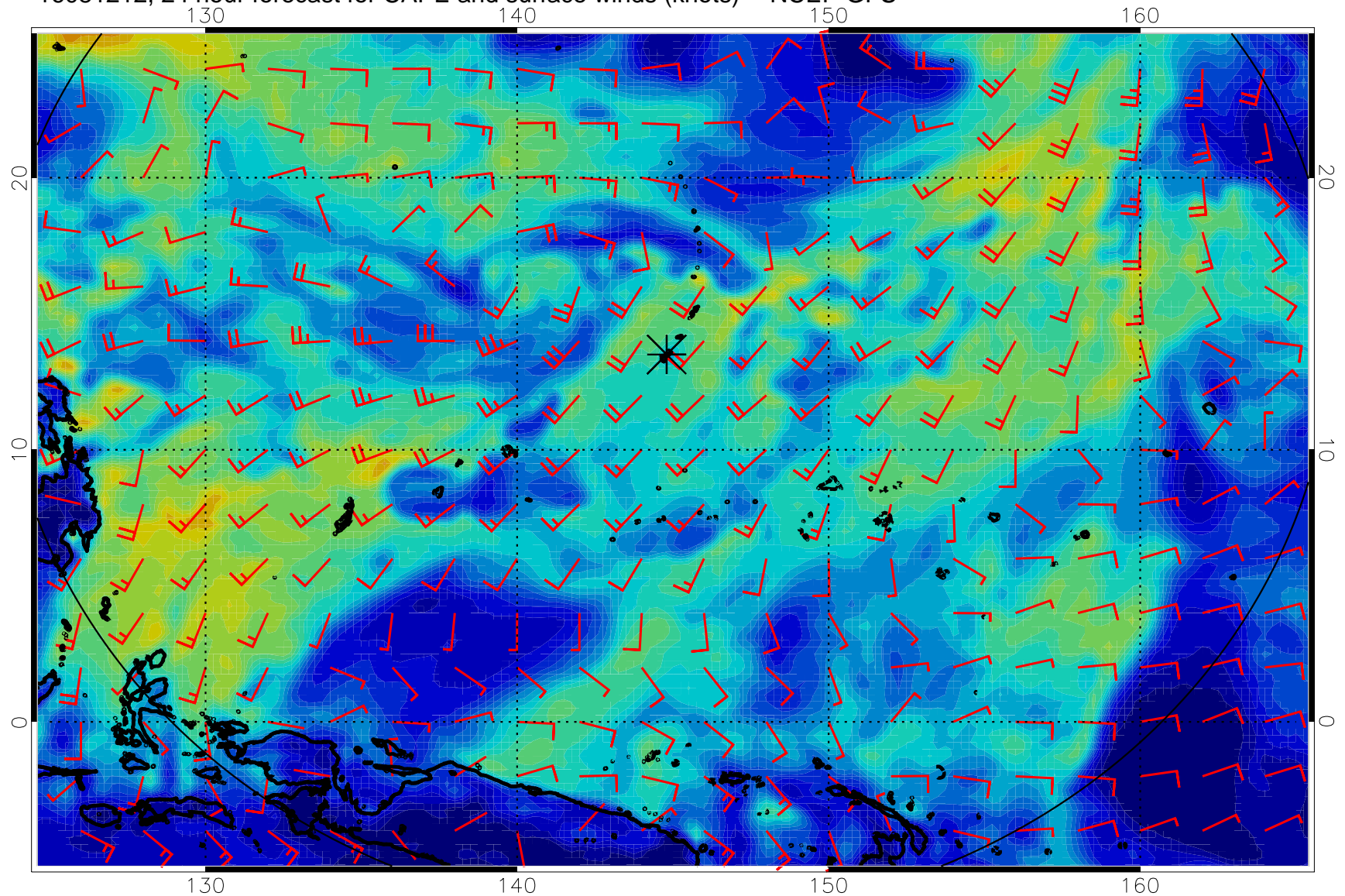




16081206, 18 hour forecast for CAPE and surface winds (knots) -- NCEP GFS

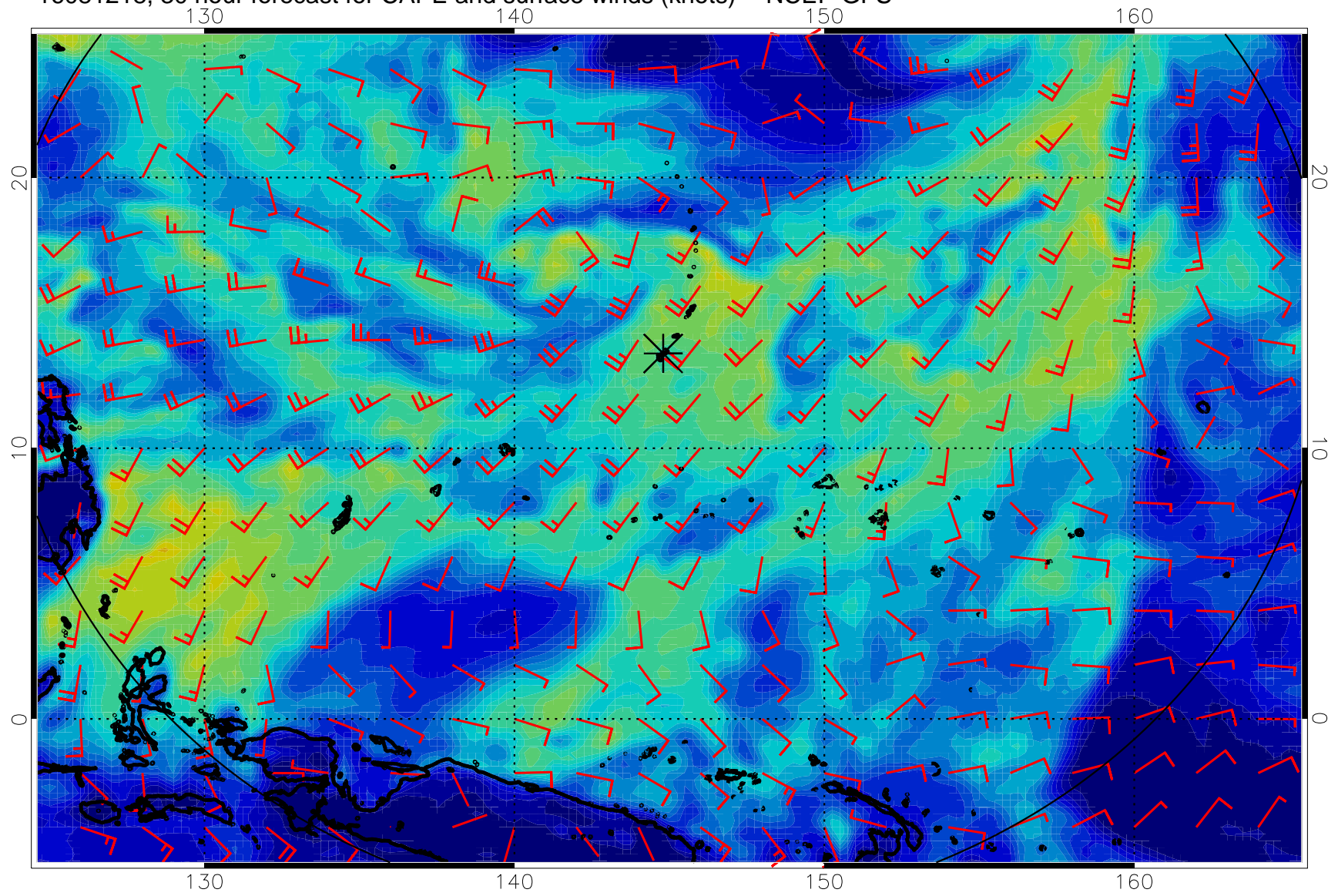


16081212, 24 hour forecast for CAPE and surface winds (knots) -- NCEP GFS

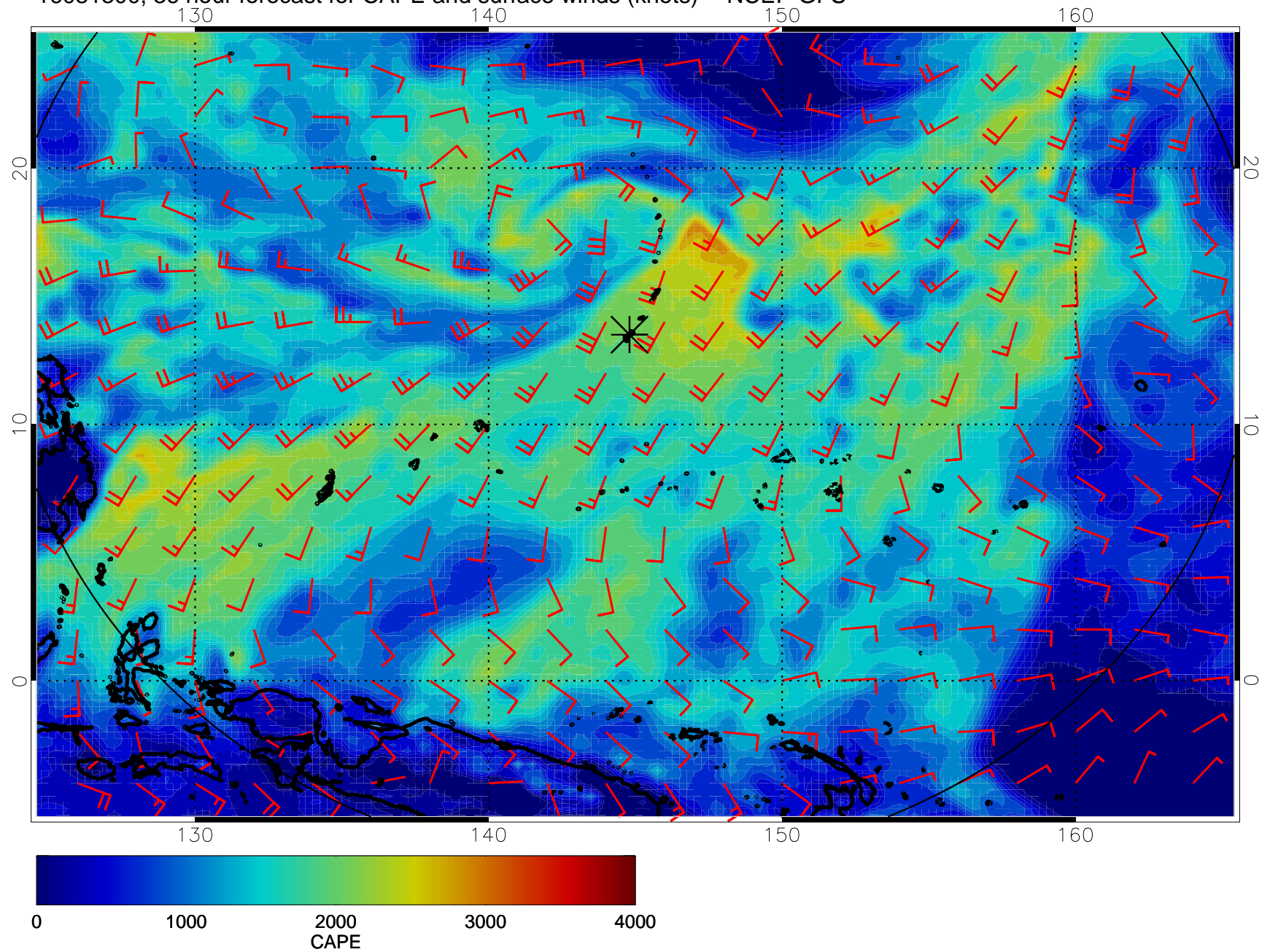




16081218, 30 hour forecast for CAPE and surface winds (knots) -- NCEP GFS

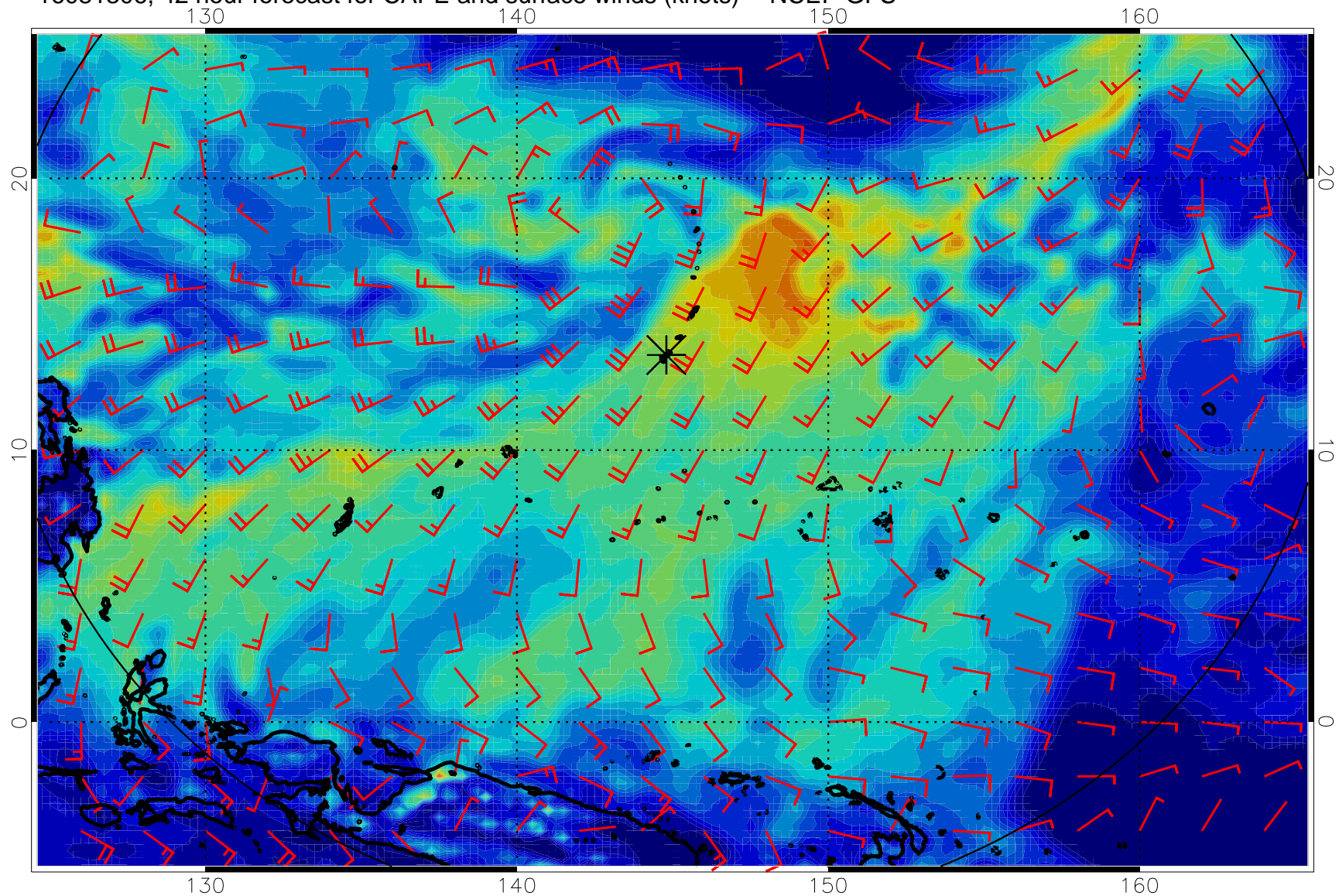


16081300, 36 hour forecast for CAPE and surface winds (knots) -- NCEP GFS

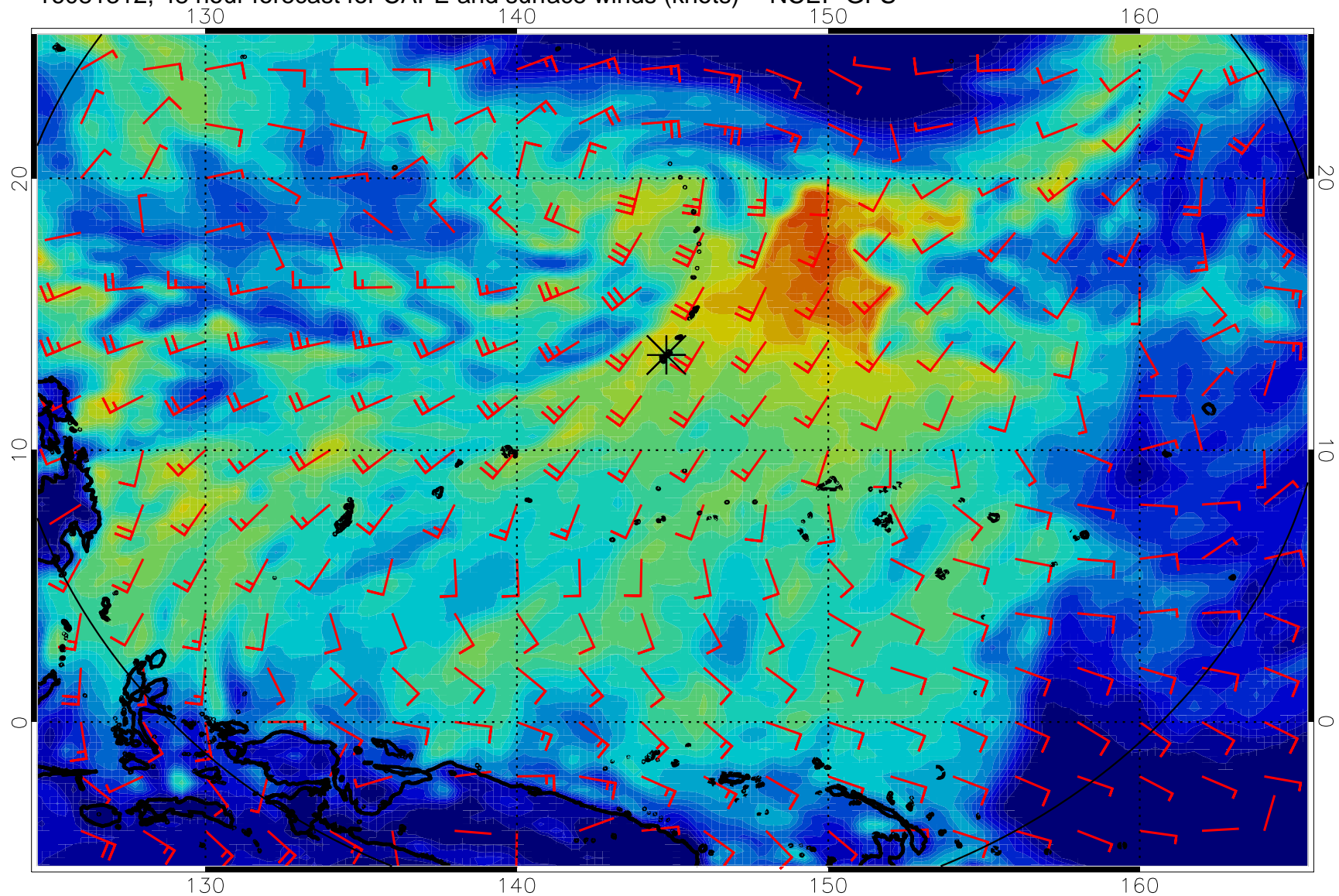




16081306, 42 hour forecast for CAPE and surface winds (knots) -- NCEP GFS

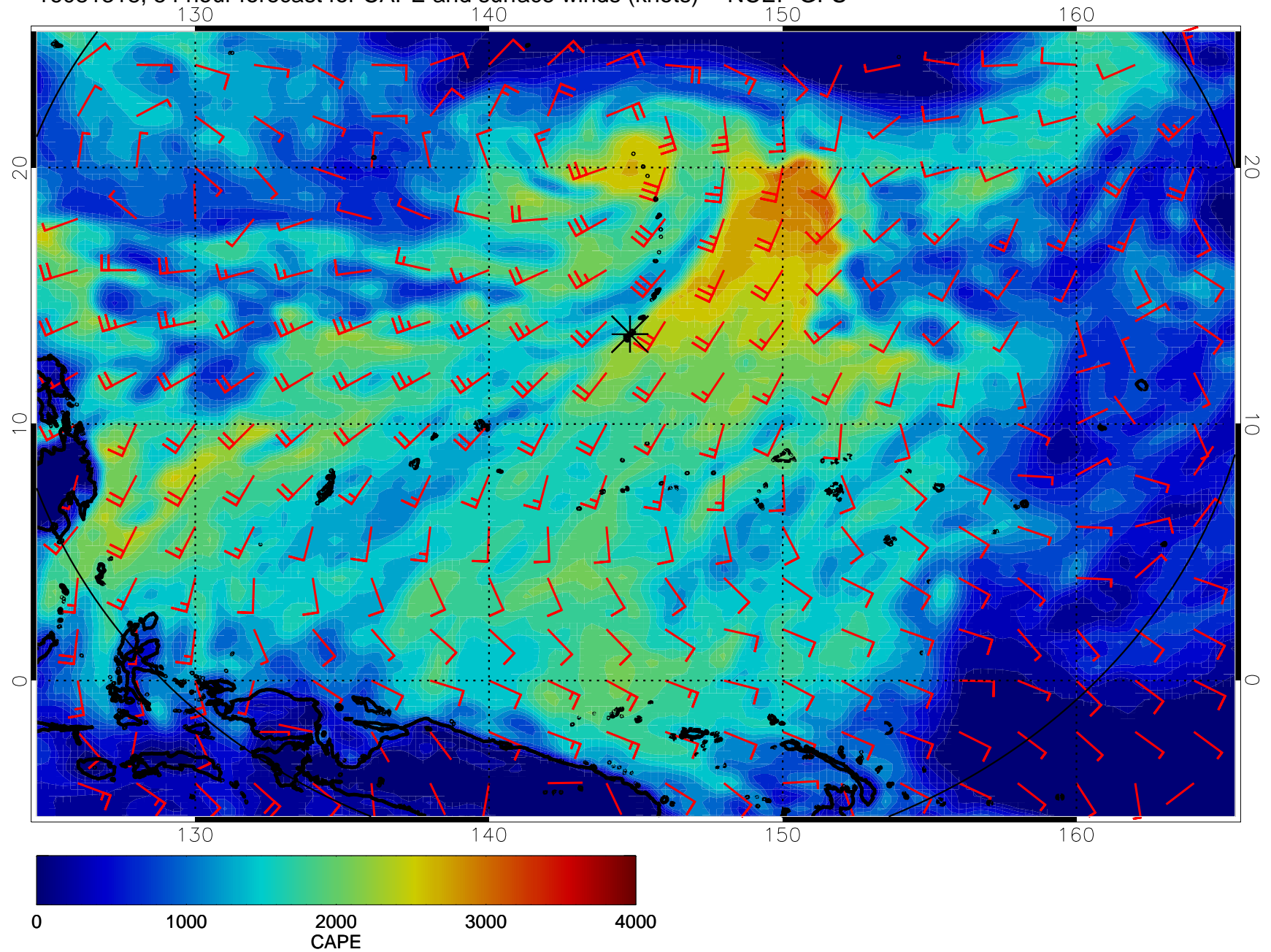


16081312, 48 hour forecast for CAPE and surface winds (knots) -- NCEP GFS

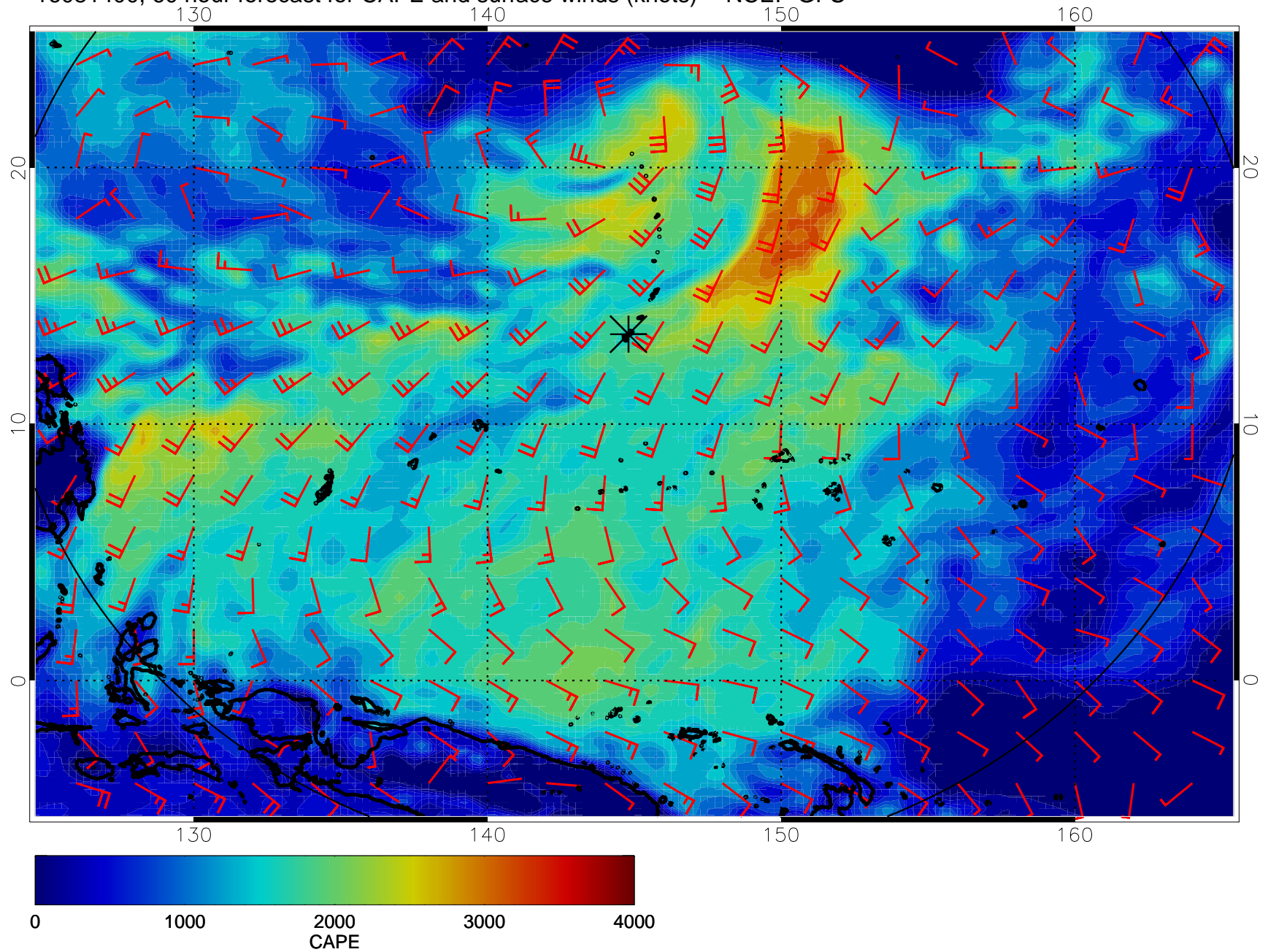




16081318, 54 hour forecast for CAPE and surface winds (knots) -- NCEP GFS

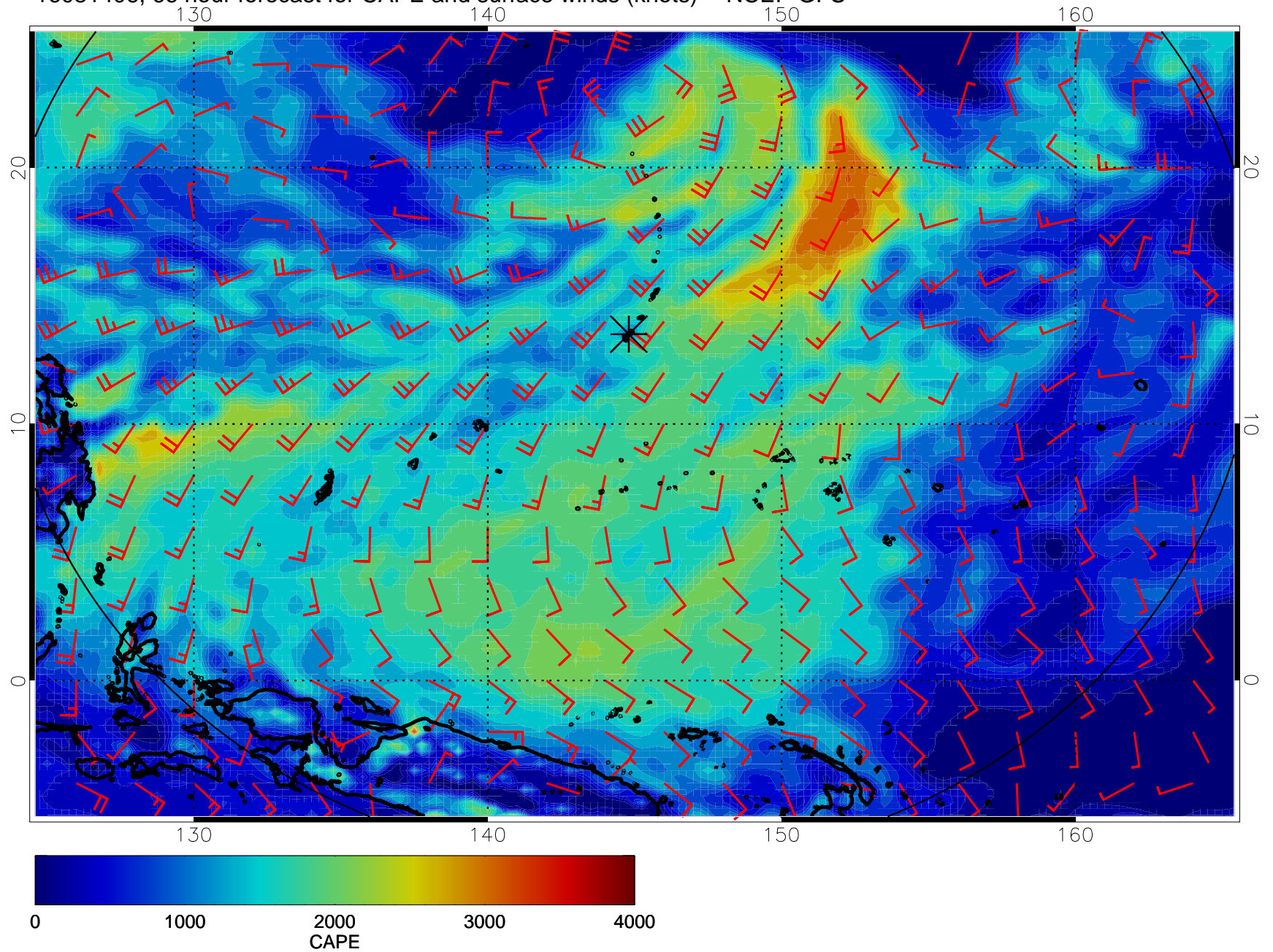


16081400, 60 hour forecast for CAPE and surface winds (knots) -- NCEP GFS

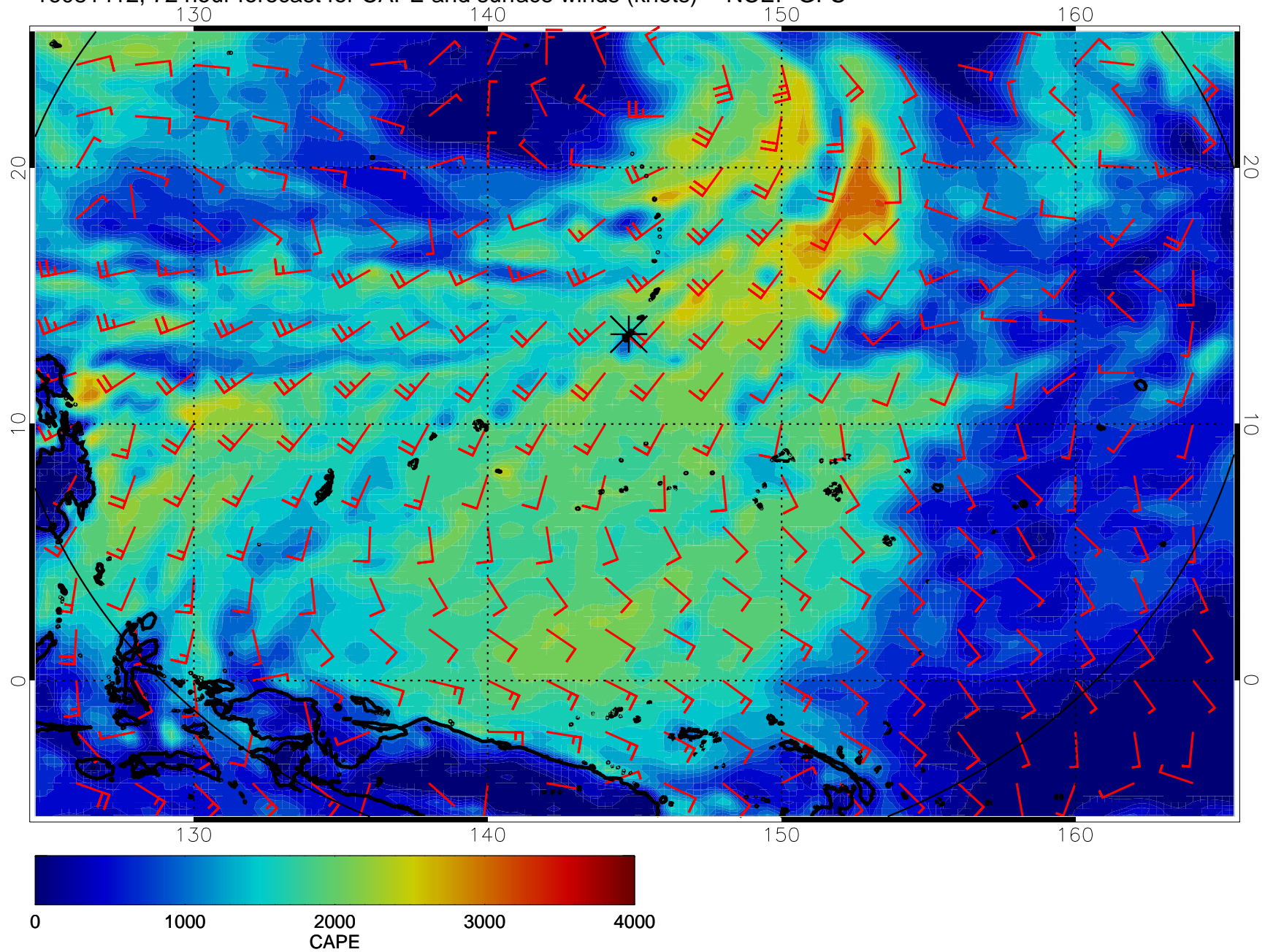




16081406, 66 hour forecast for CAPE and surface winds (knots) -- NCEP GFS

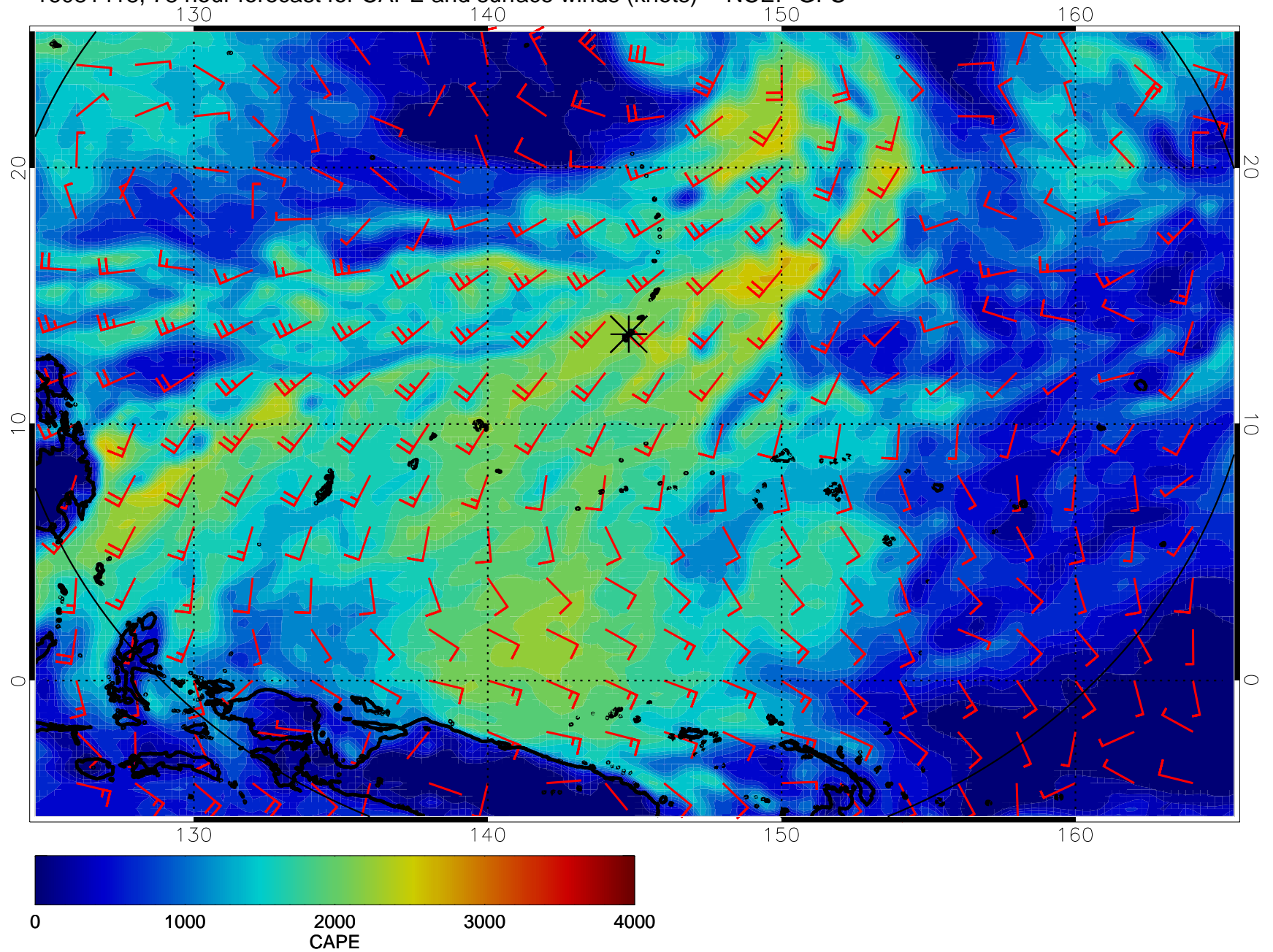


16081412, 72 hour forecast for CAPE and surface winds (knots) -- NCEP GFS

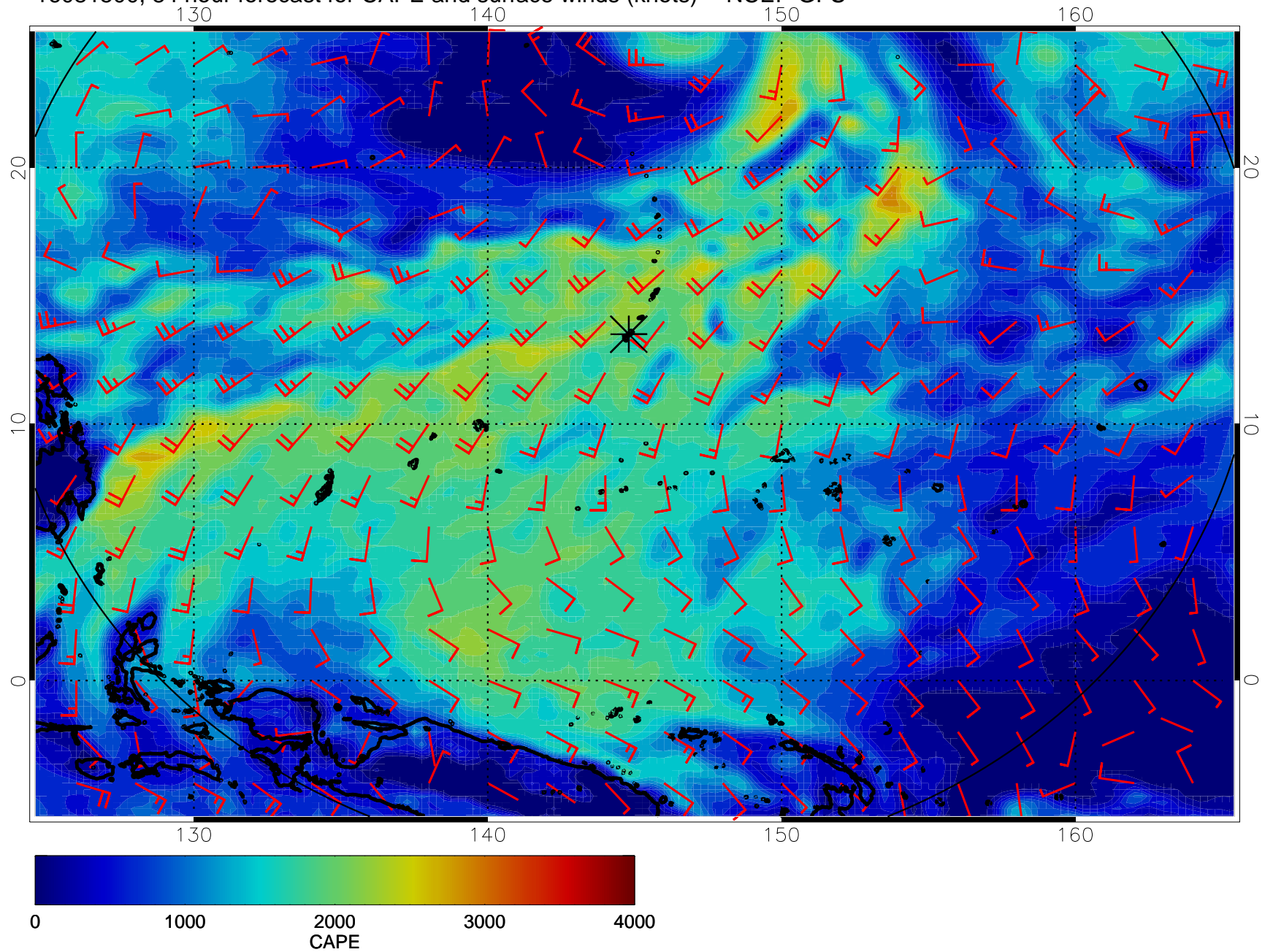




16081418, 78 hour forecast for CAPE and surface winds (knots) -- NCEP GFS

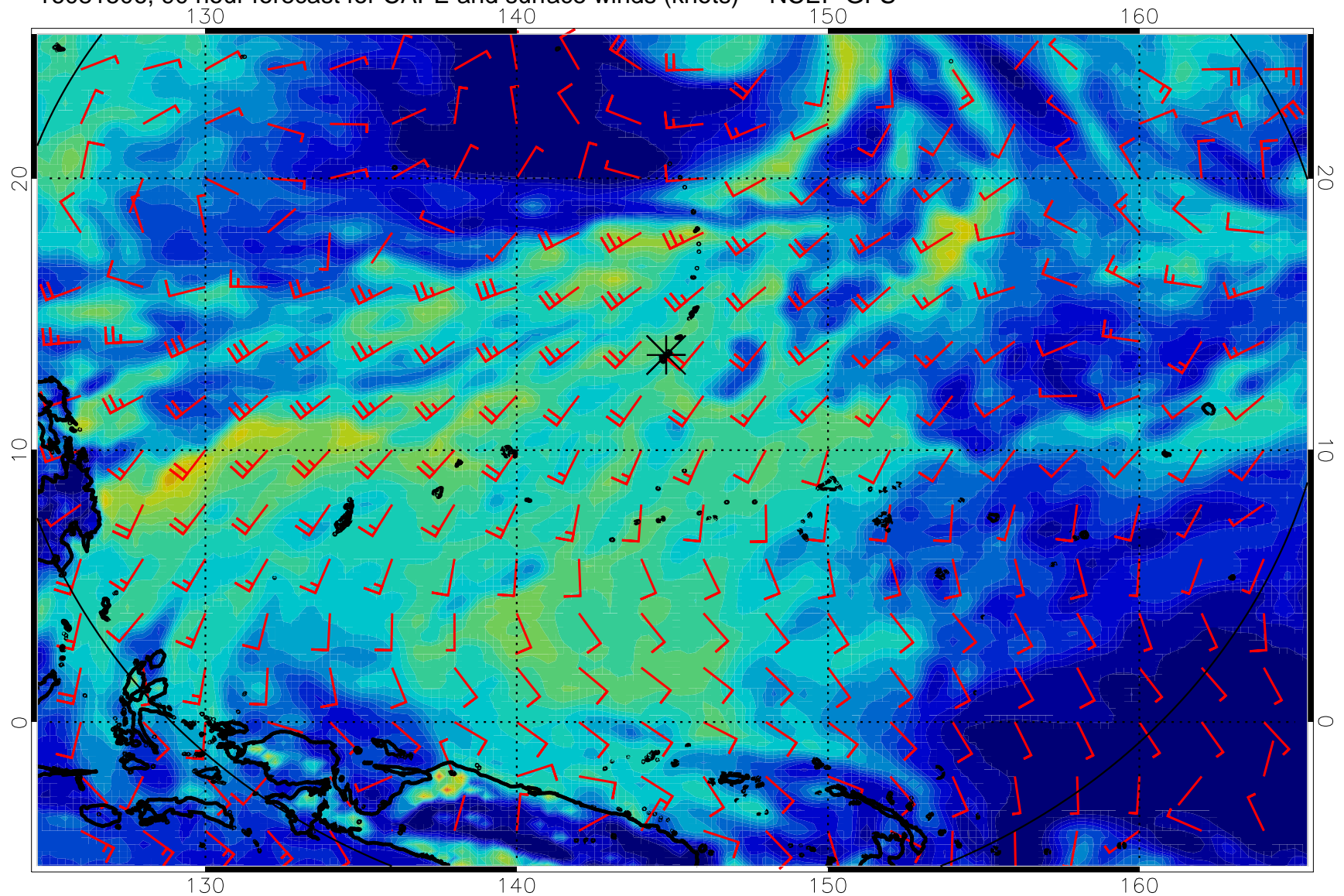


16081500, 84 hour forecast for CAPE and surface winds (knots) -- NCEP GFS

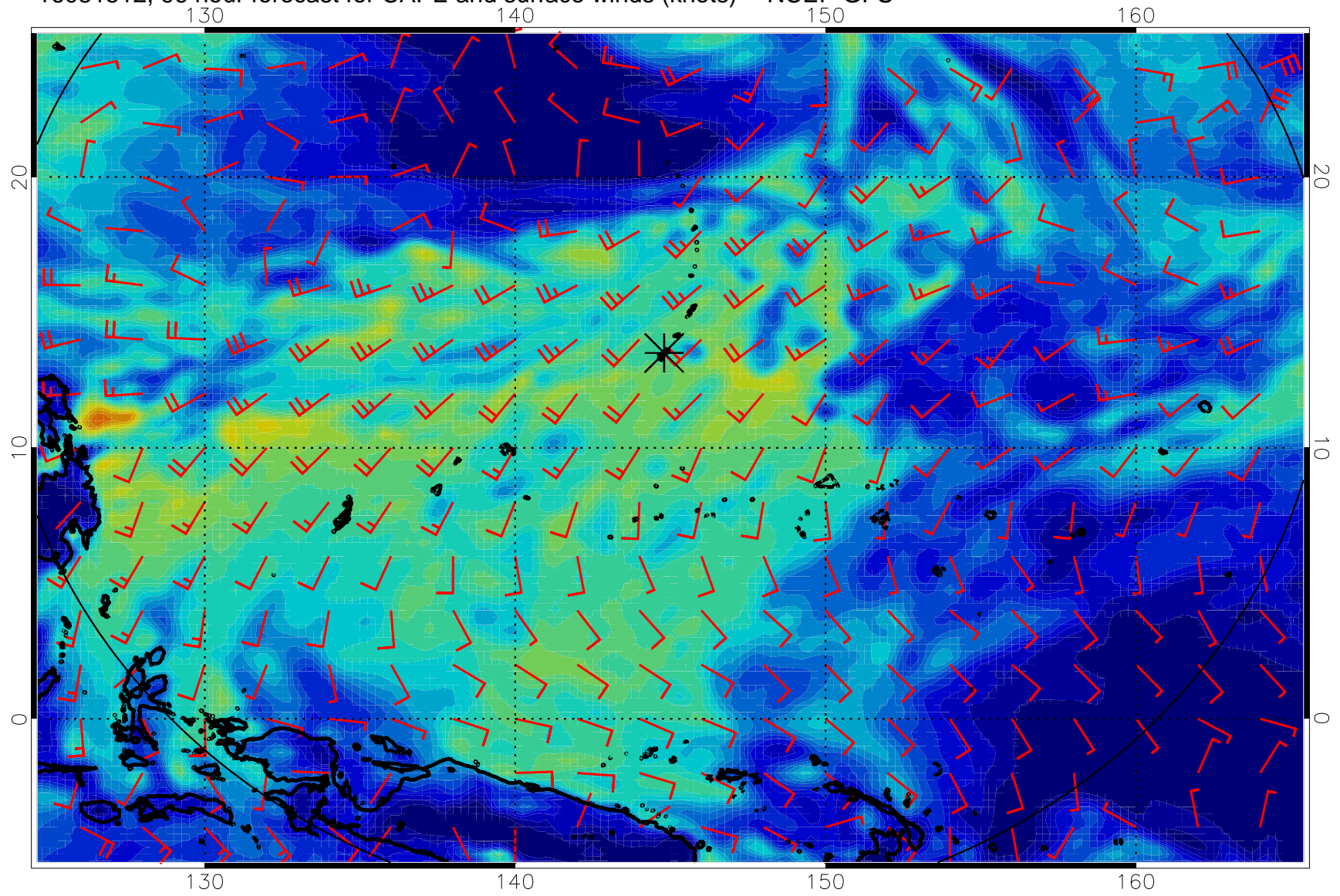




16081506, 90 hour forecast for CAPE and surface winds (knots) -- NCEP GFS

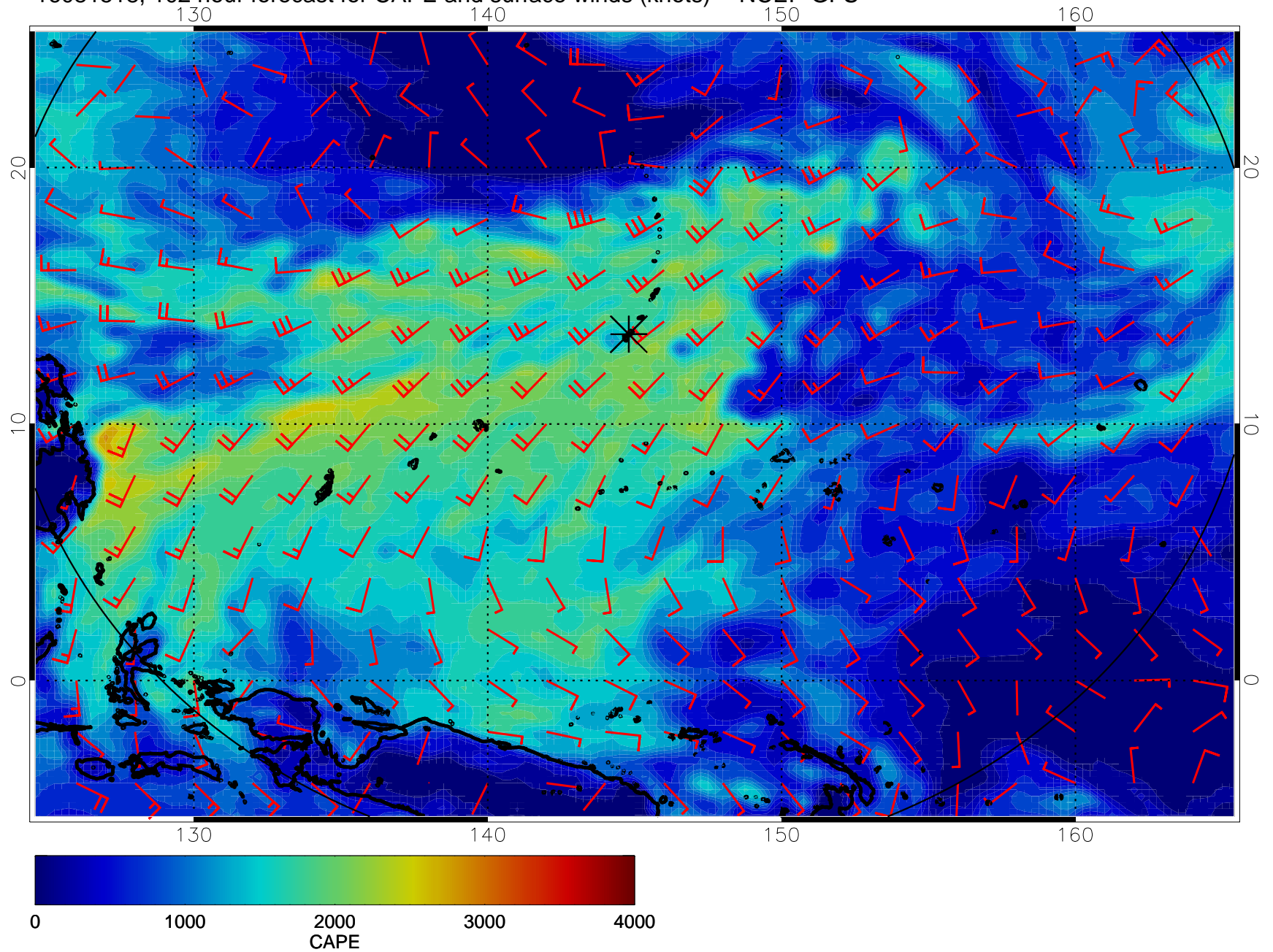


16081512, 96 hour forecast for CAPE and surface winds (knots) -- NCEP GFS

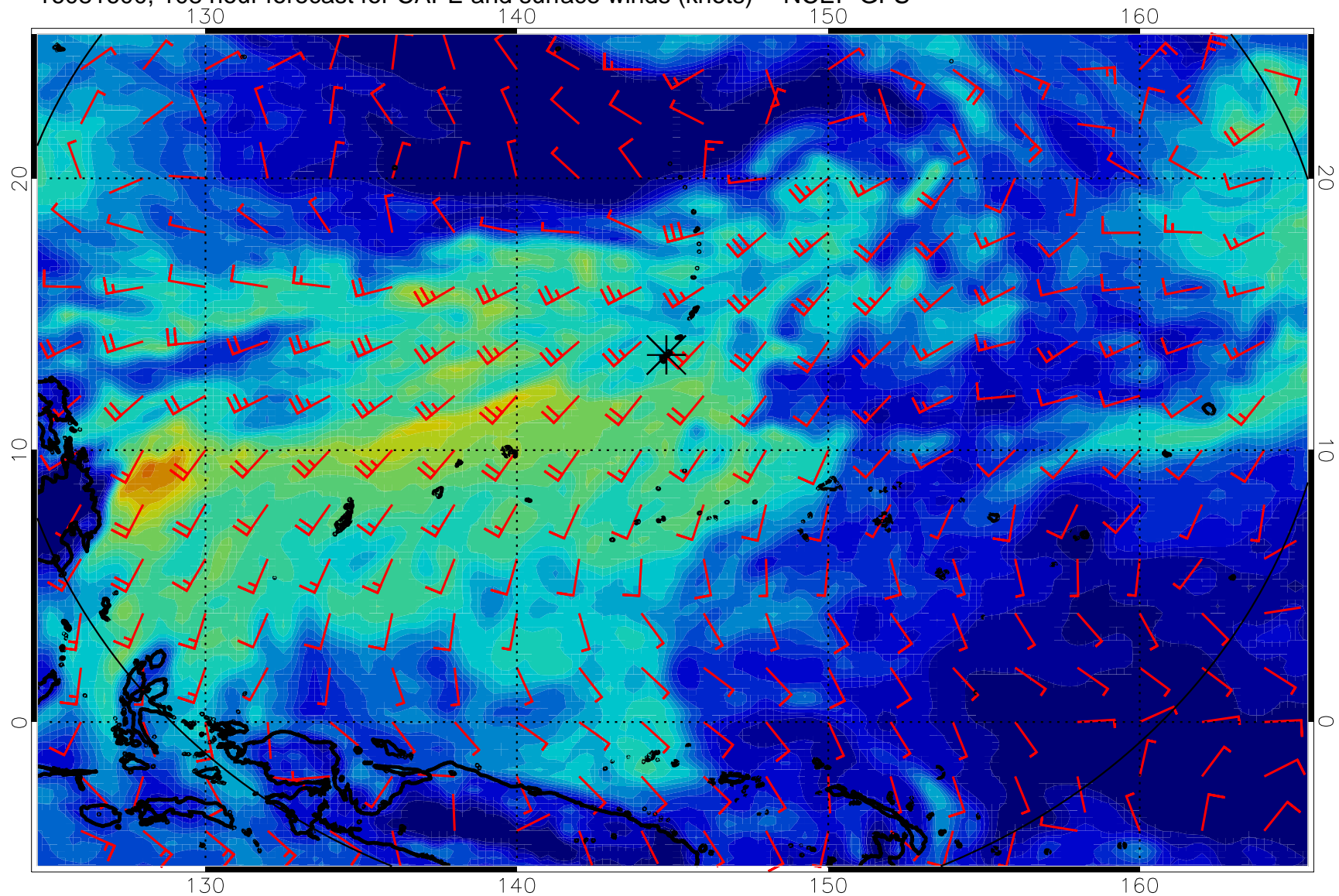




16081518, 102 hour forecast for CAPE and surface winds (knots) -- NCEP GFS

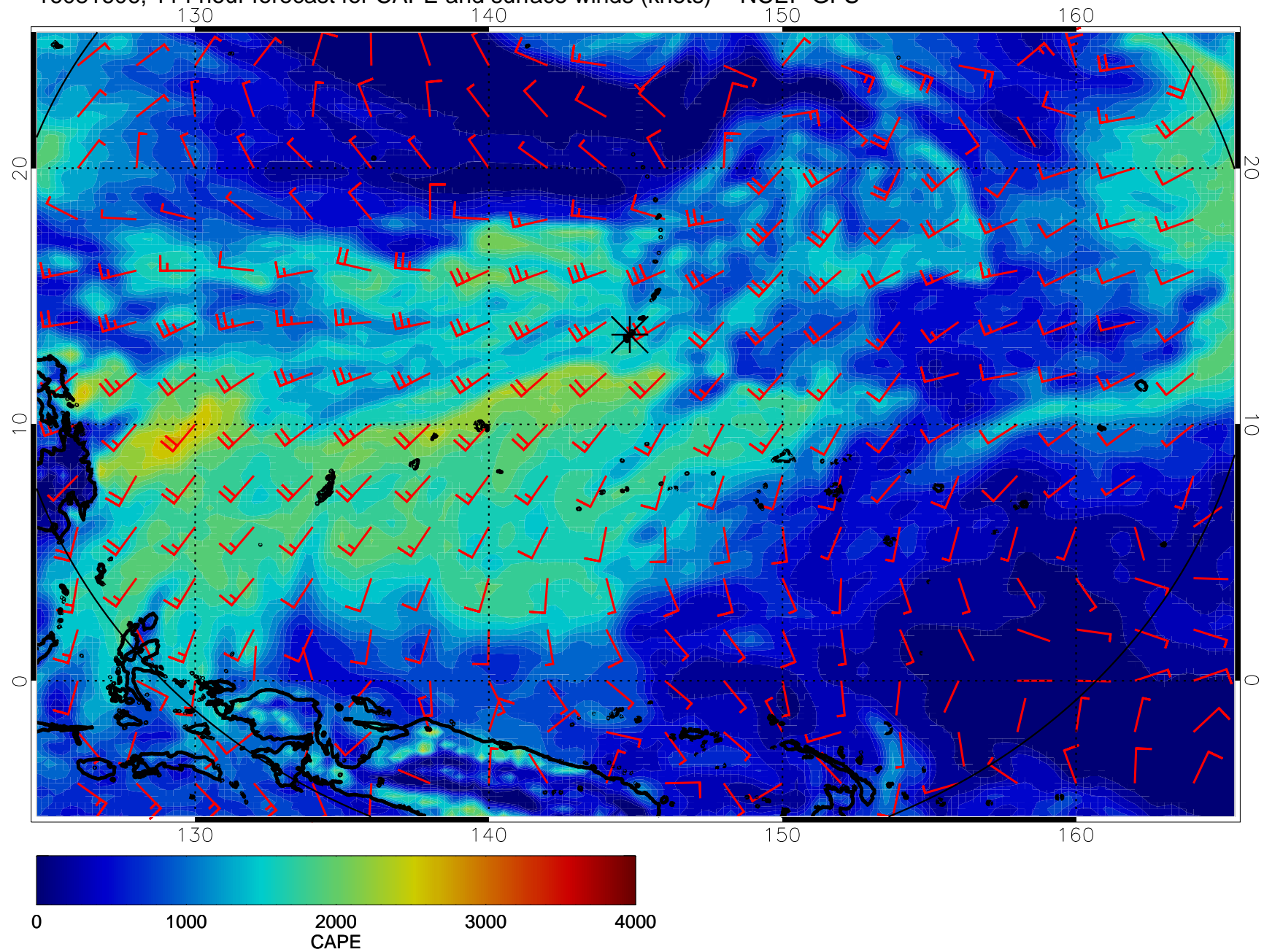


16081600, 108 hour forecast for CAPE and surface winds (knots) -- NCEP GFS





16081606, 114 hour forecast for CAPE and surface winds (knots) -- NCEP GFS



16081612, 120 hour forecast for CAPE and surface winds (knots) -- NCEP GFS

