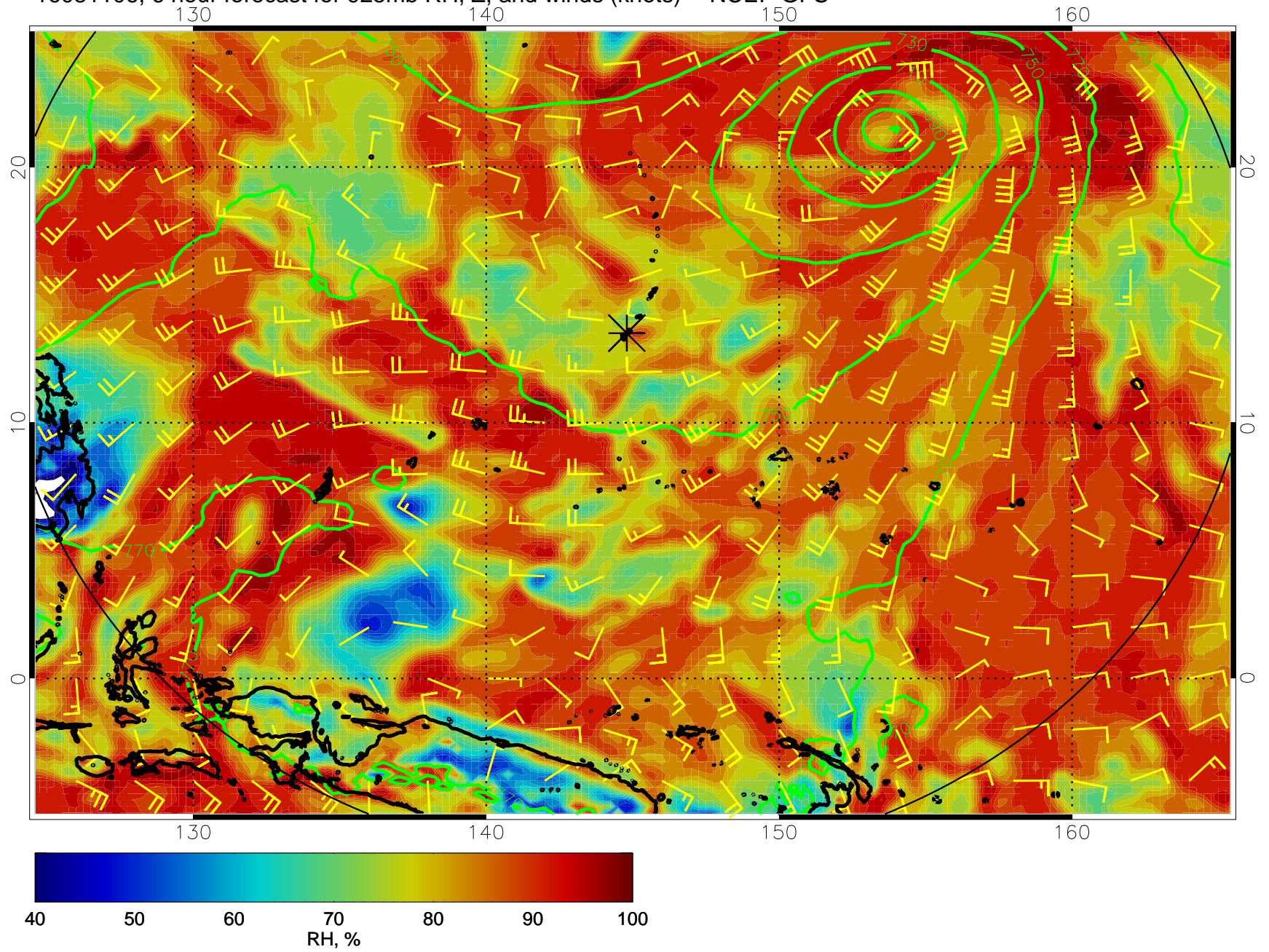
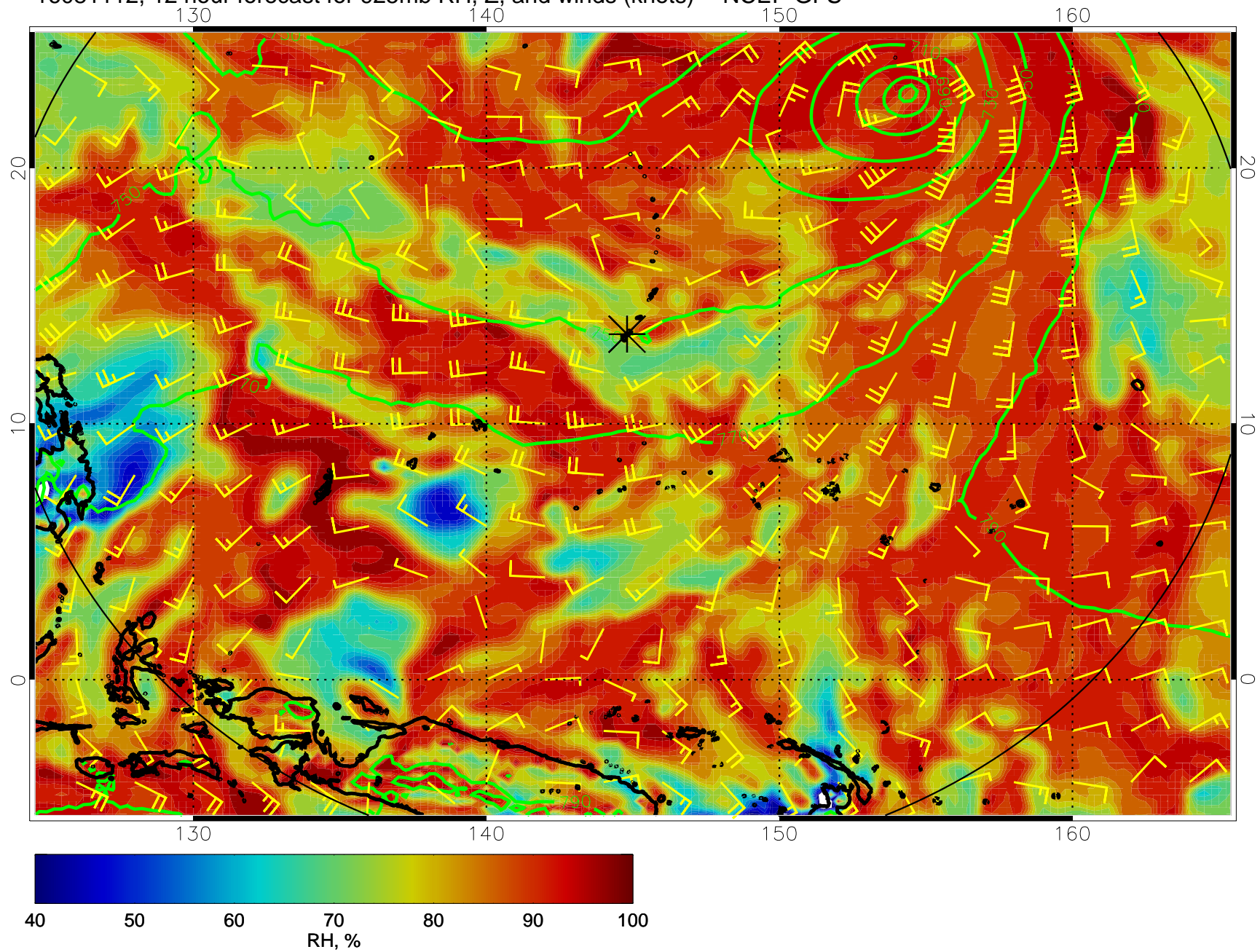


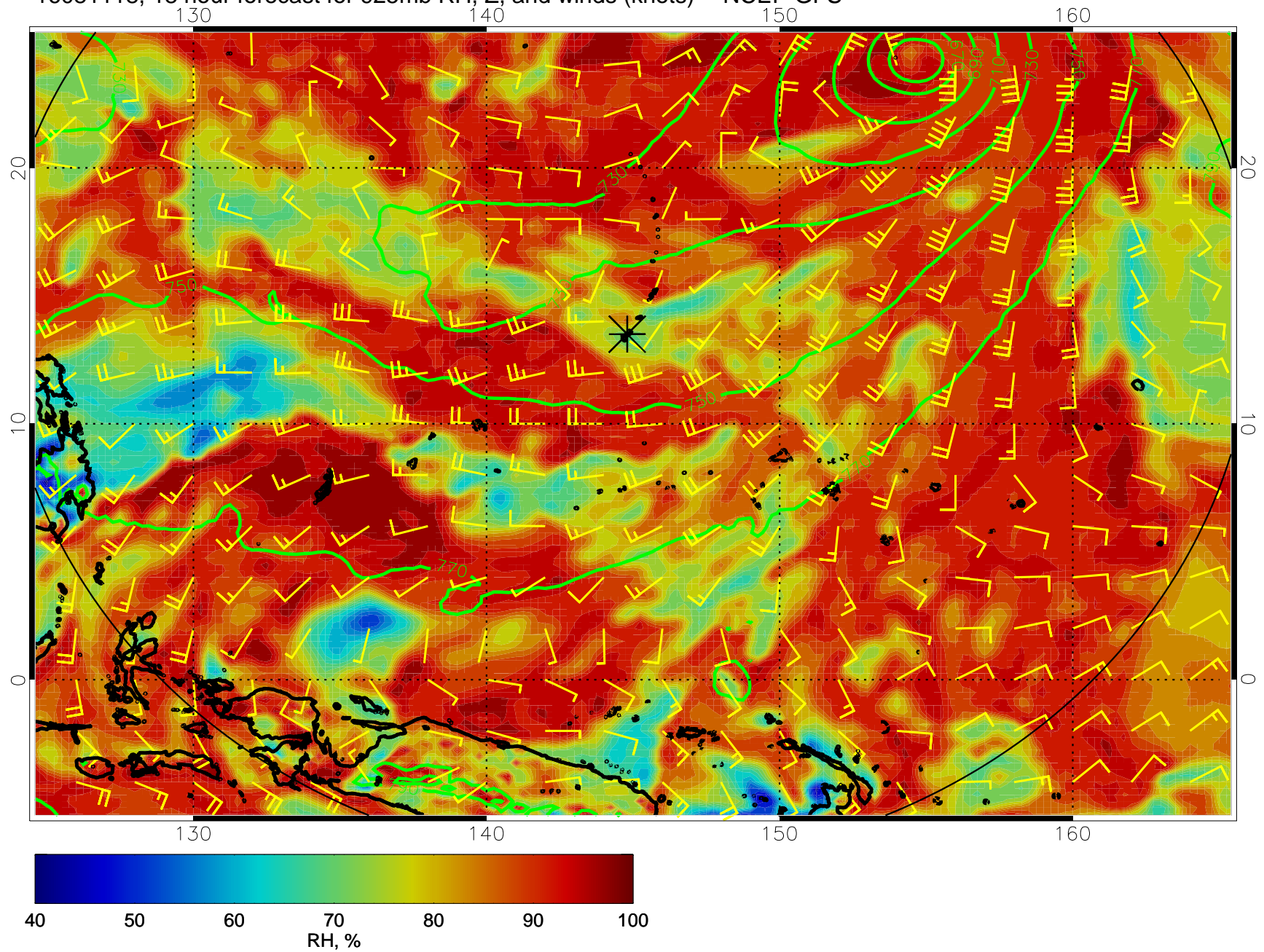
16081106, 6 hour forecast for 925mb RH, Z, and winds (knots) -- NCEP GFS



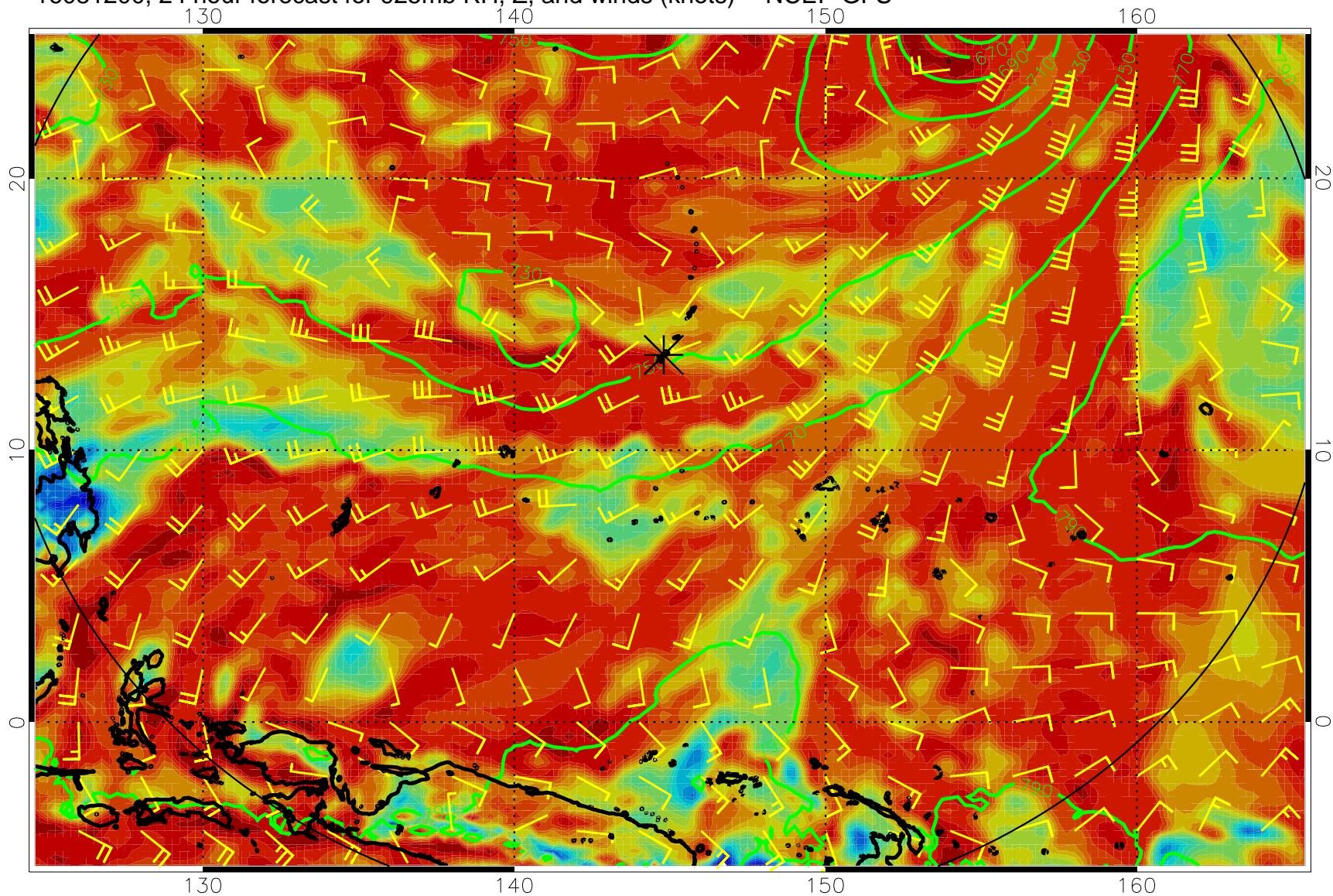
16081112, 12 hour forecast for 925mb RH, Z, and winds (knots) -- NCEP GFS



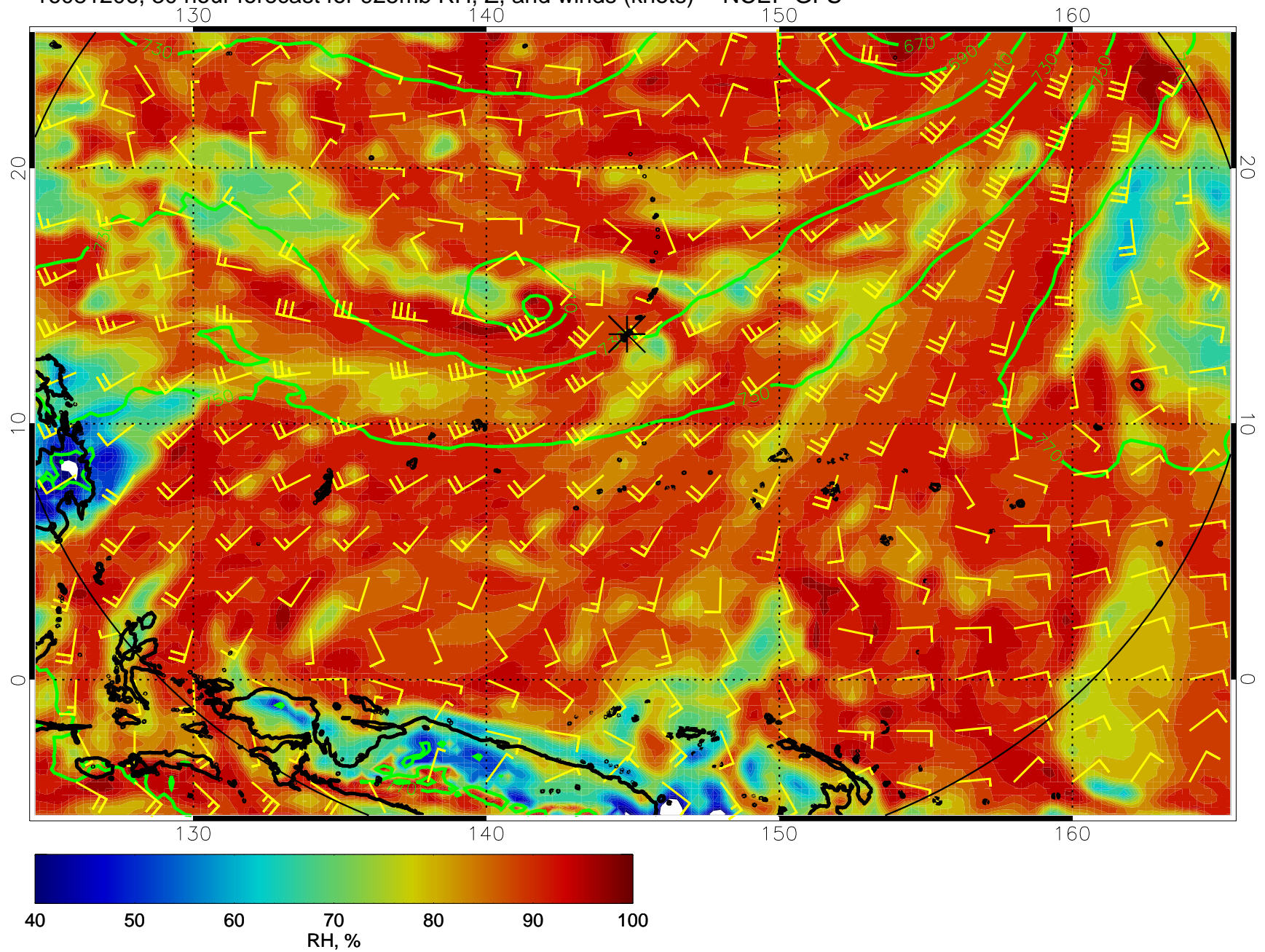
16081118, 18 hour forecast for 925mb RH, Z, and winds (knots) -- NCEP GFS



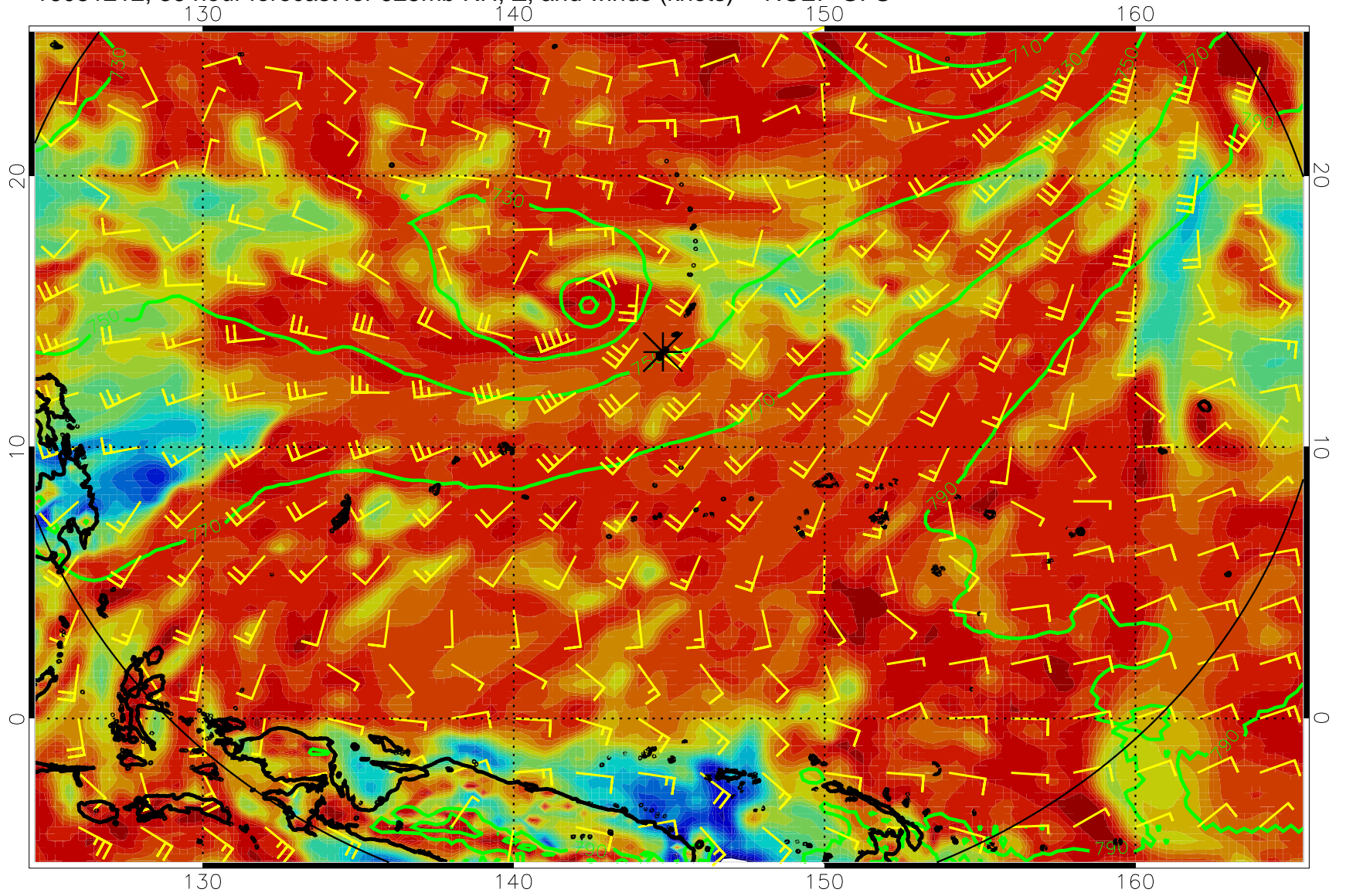
16081200, 24 hour forecast for 925mb RH, Z, and winds (knots) -- NCEP GFS



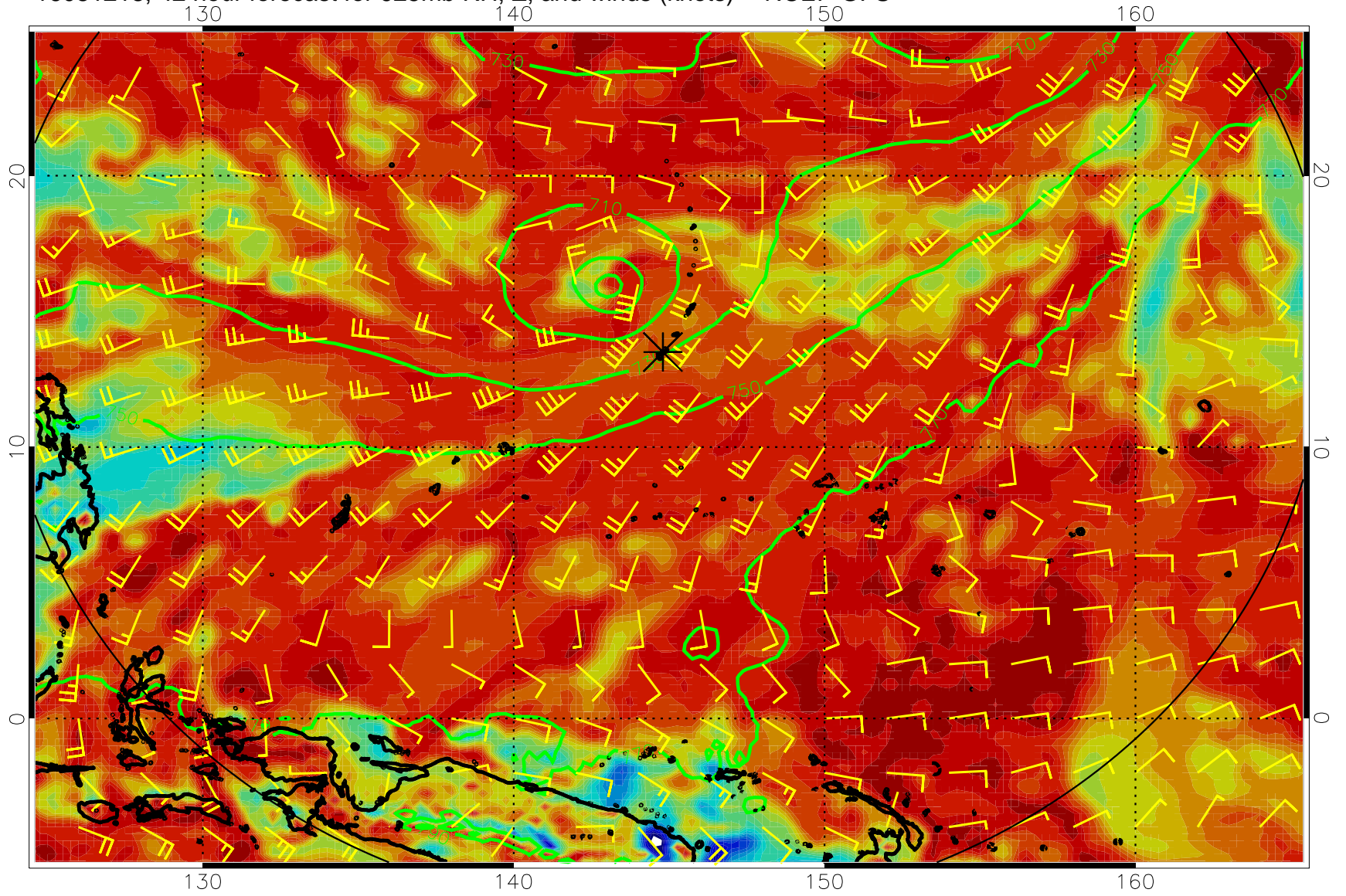
16081206, 30 hour forecast for 925mb RH, Z, and winds (knots) -- NCEP GFS



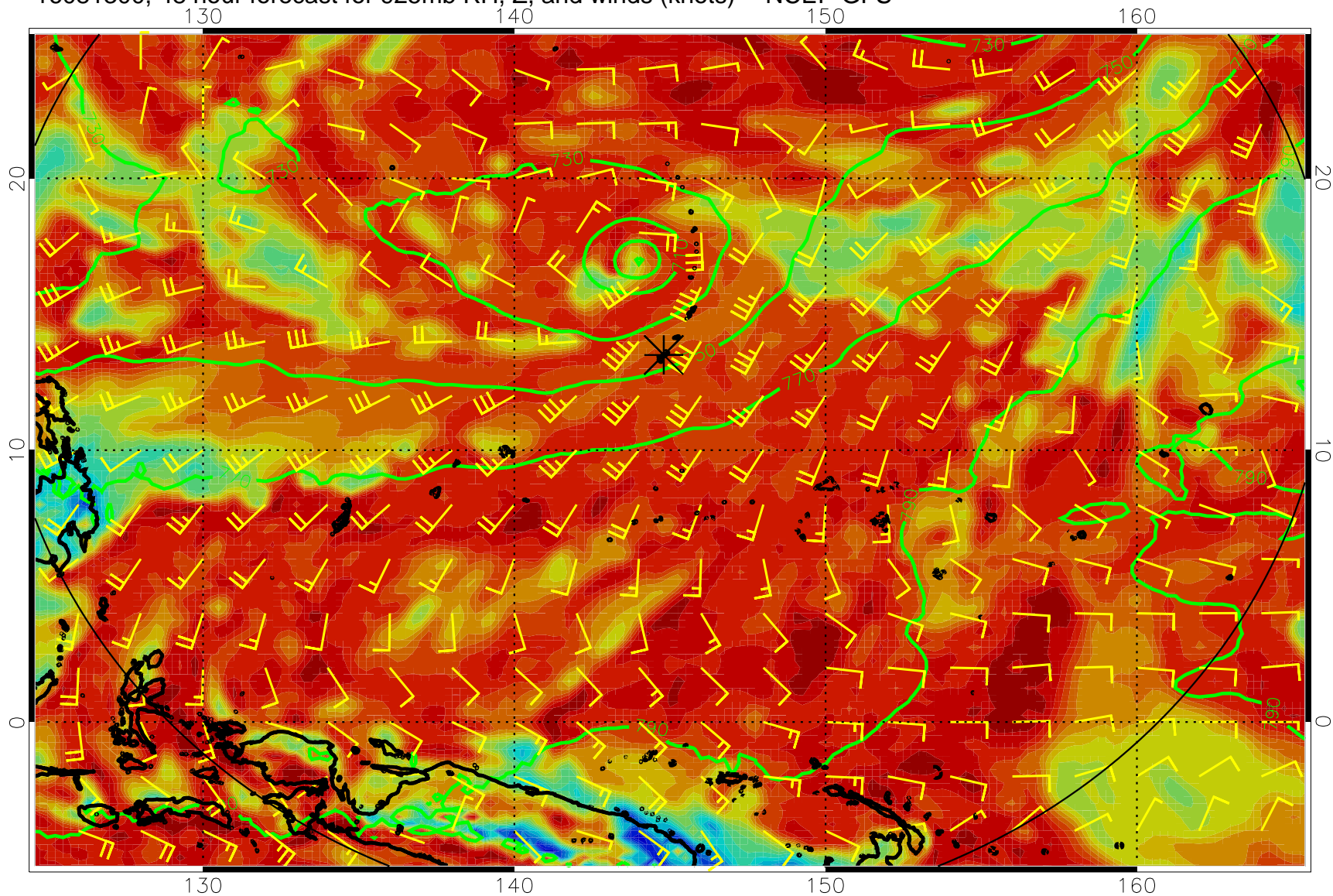
16081212, 36 hour forecast for 925mb RH, Z, and winds (knots) -- NCEP GFS



16081218, 42 hour forecast for 925mb RH, Z, and winds (knots) -- NCEP GFS

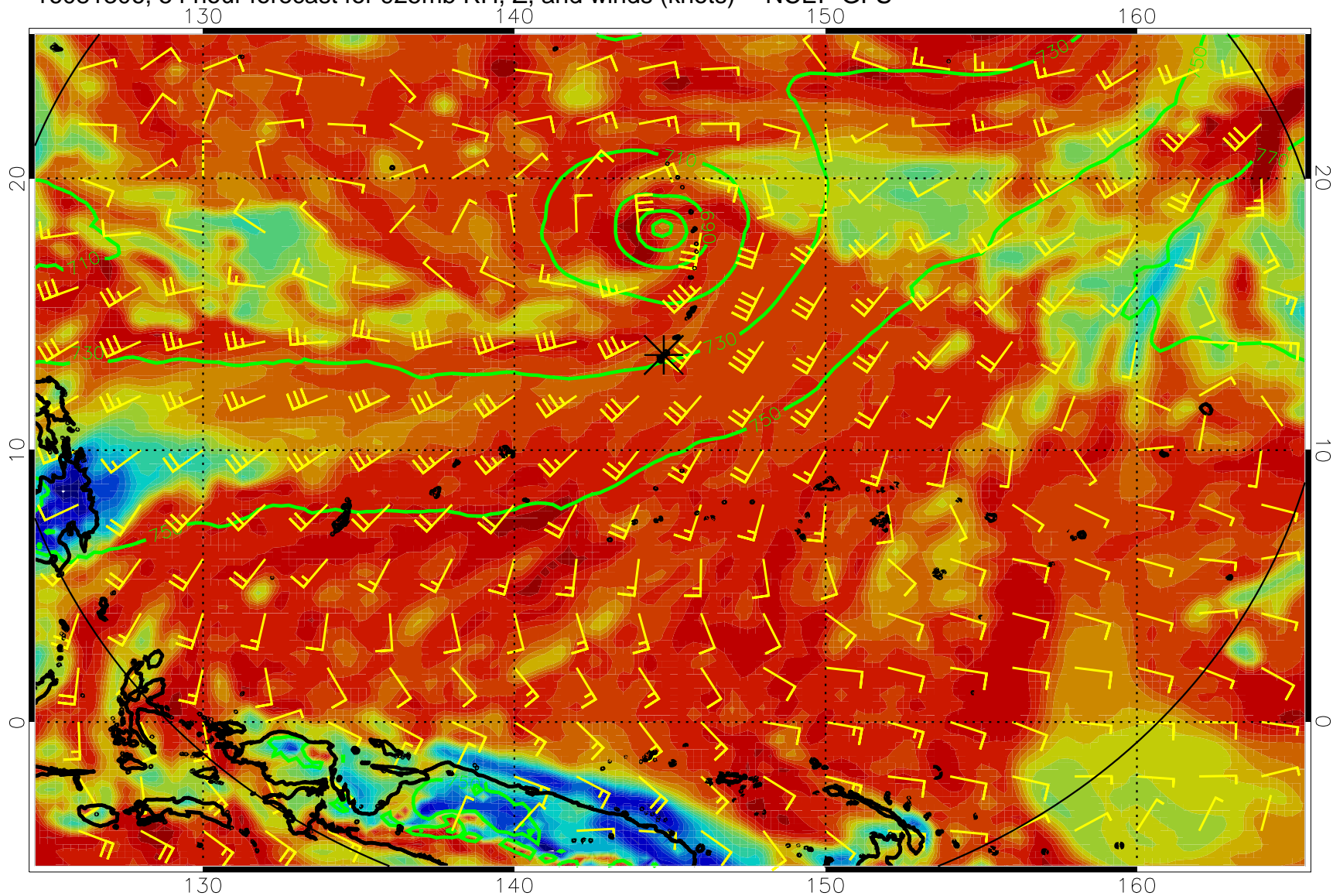


16081300, 48 hour forecast for 925mb RH, Z, and winds (knots) -- NCEP GFS

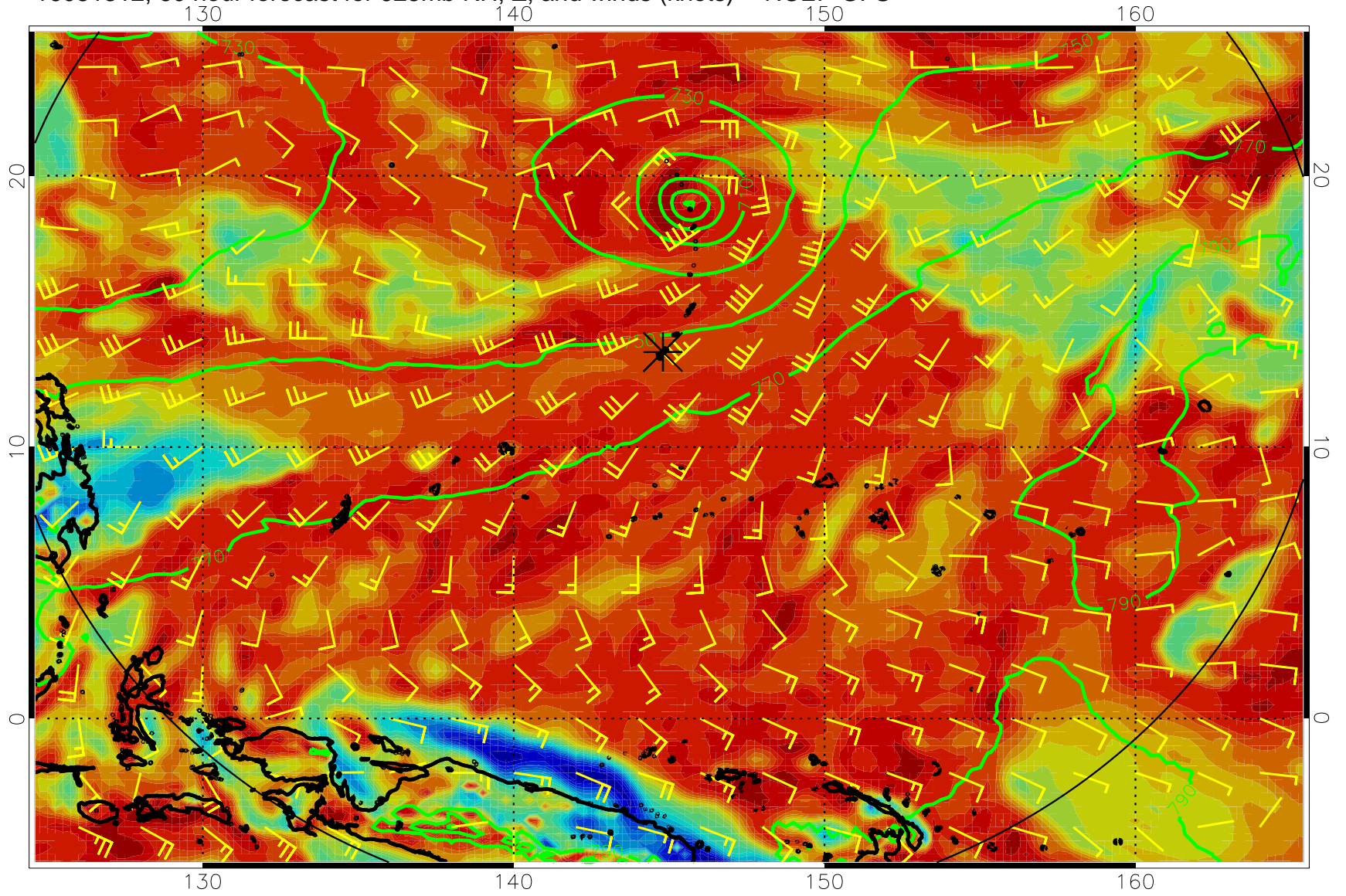




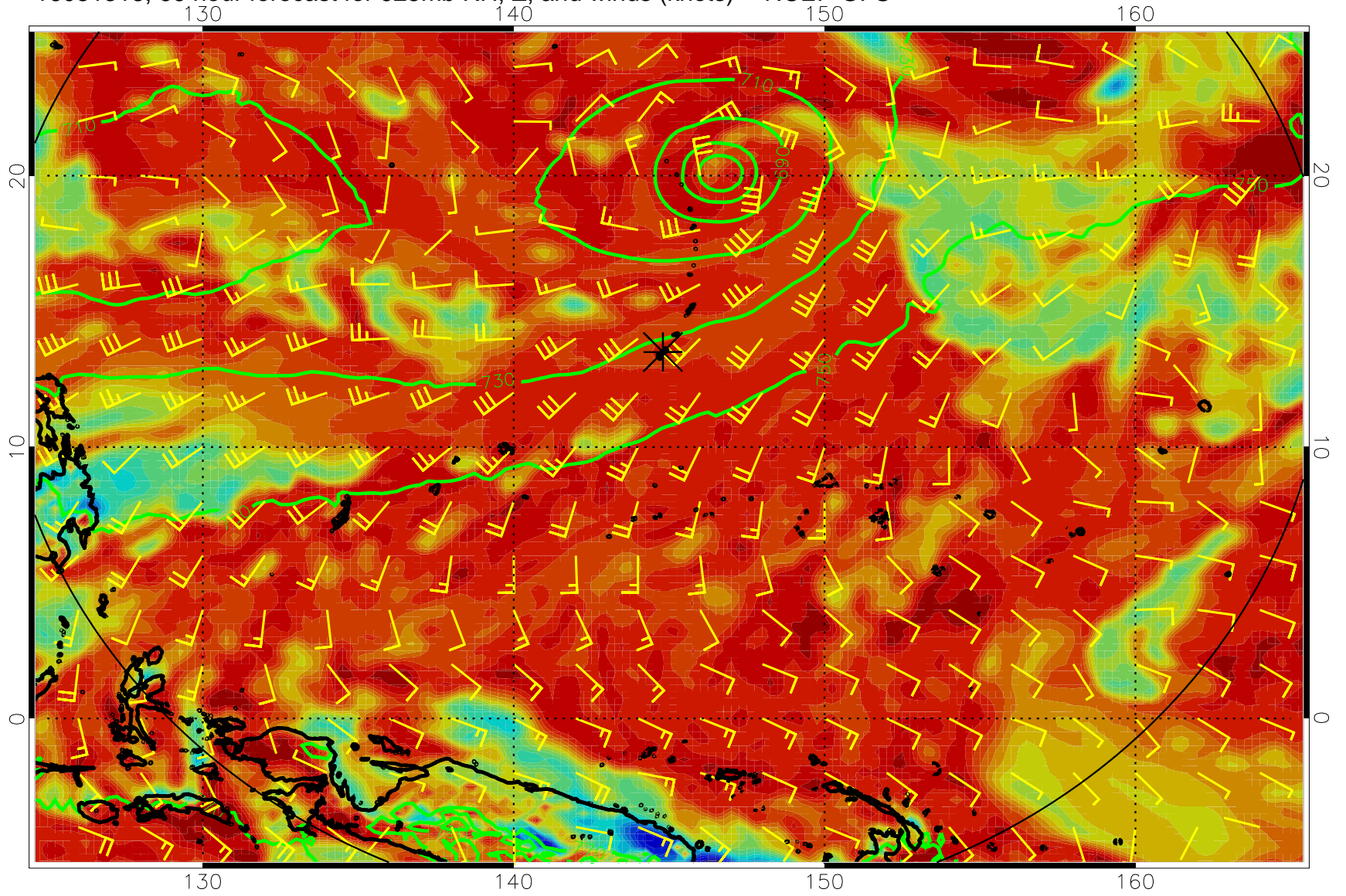
16081306, 54 hour forecast for 925mb RH, Z, and winds (knots) -- NCEP GFS



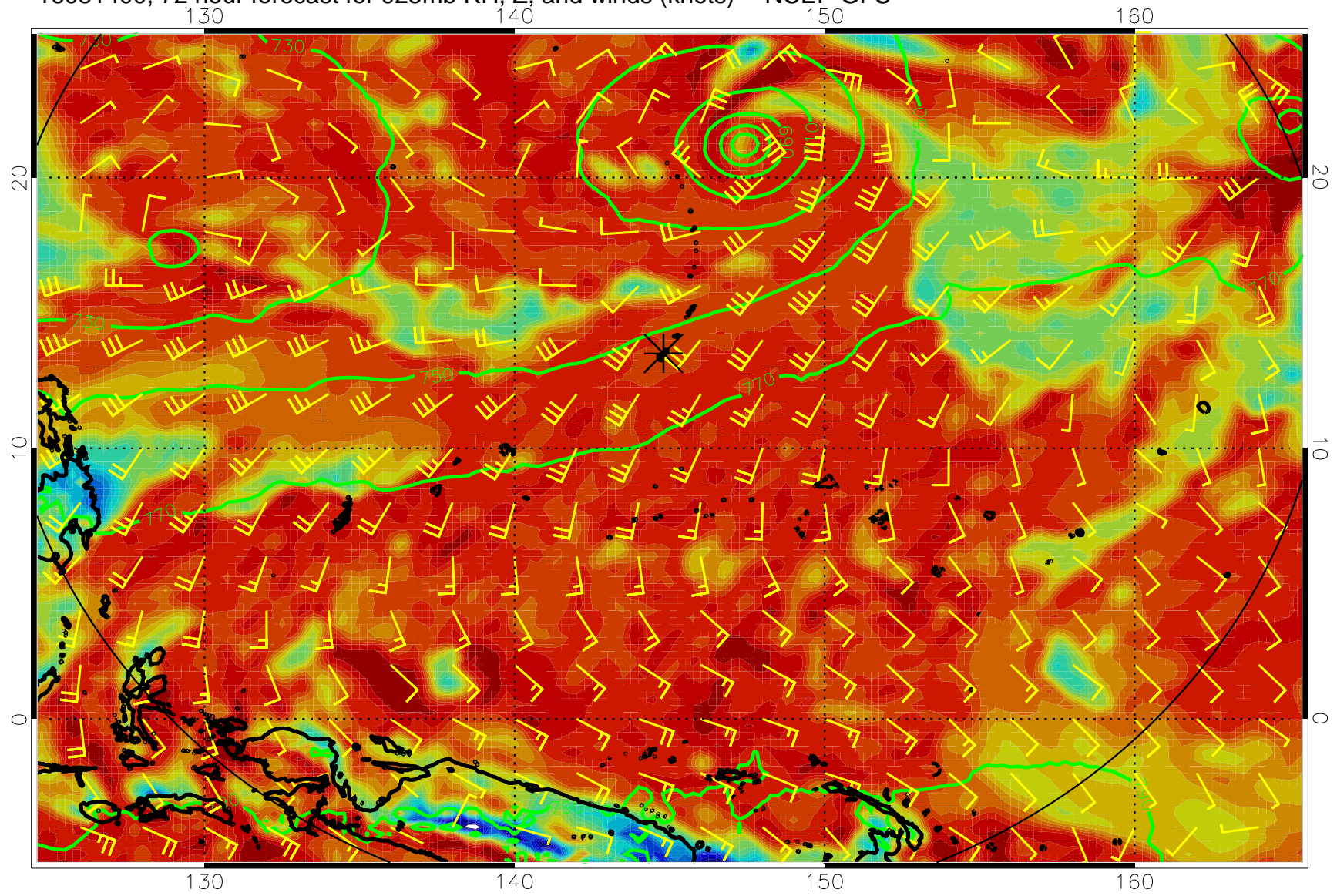
16081312, 60 hour forecast for 925mb RH, Z, and winds (knots) -- NCEP GFS



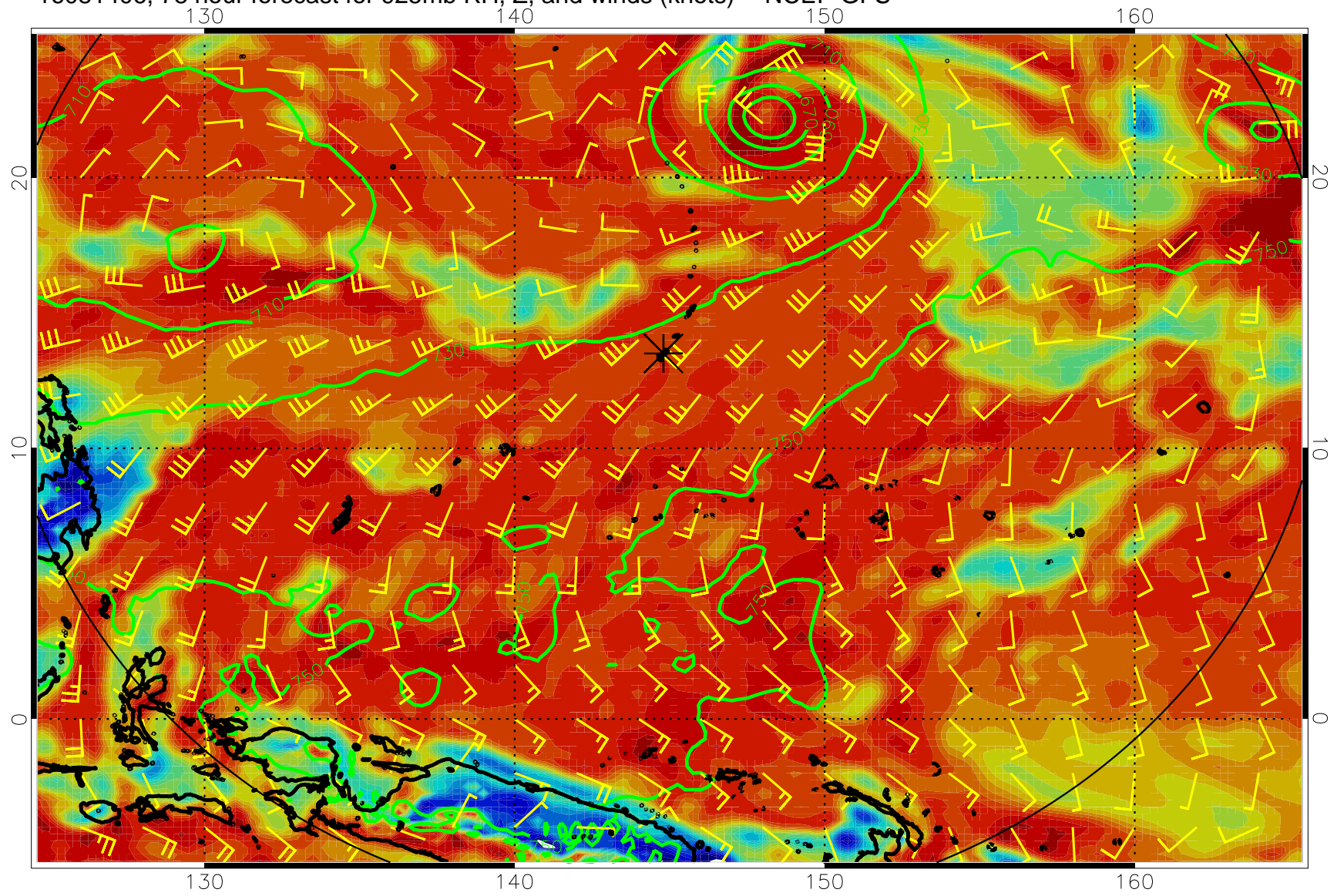
16081318, 66 hour forecast for 925mb RH, Z, and winds (knots) -- NCEP GFS



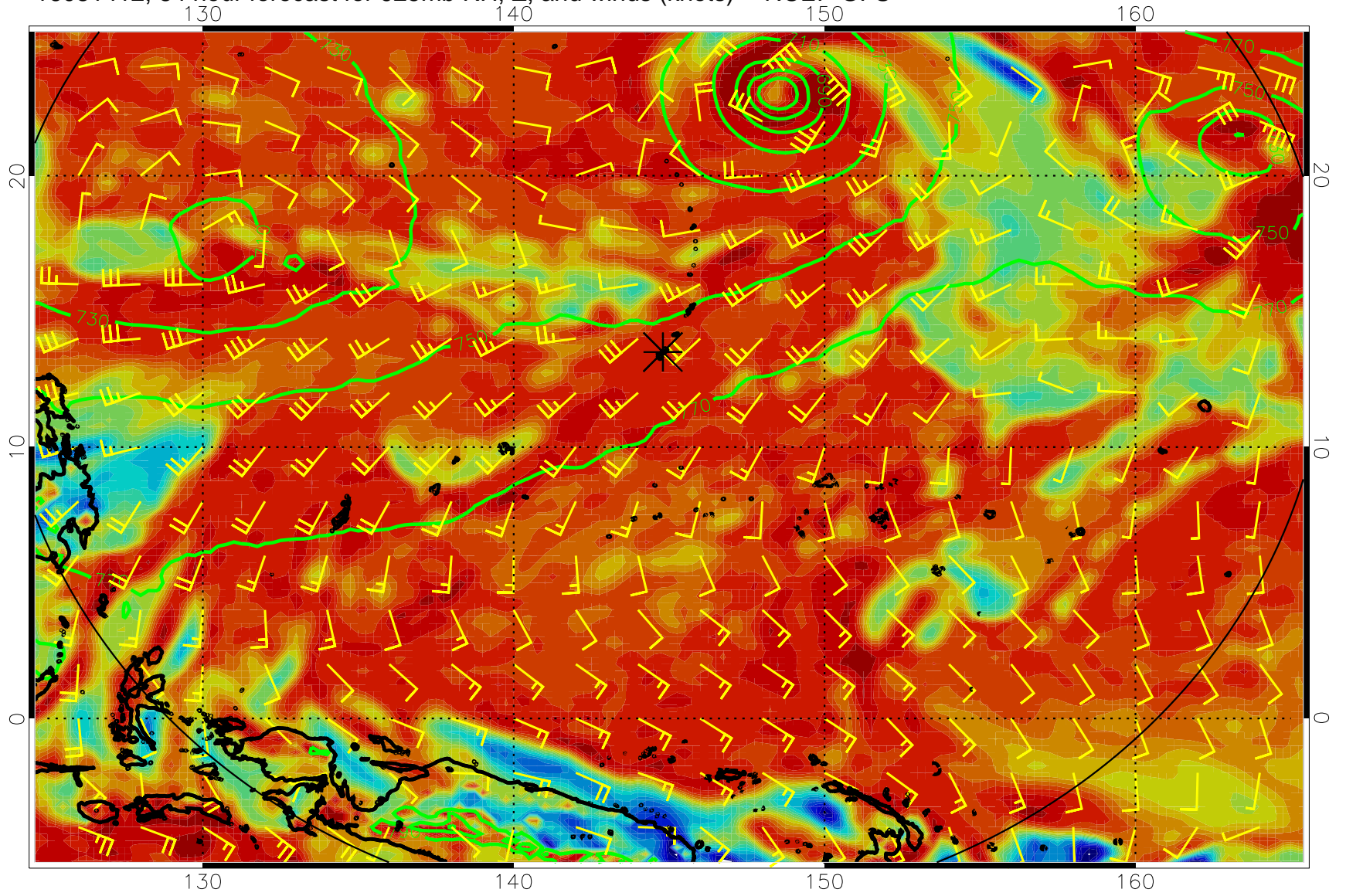
16081400, 72 hour forecast for 925mb RH, Z, and winds (knots) -- NCEP GFS



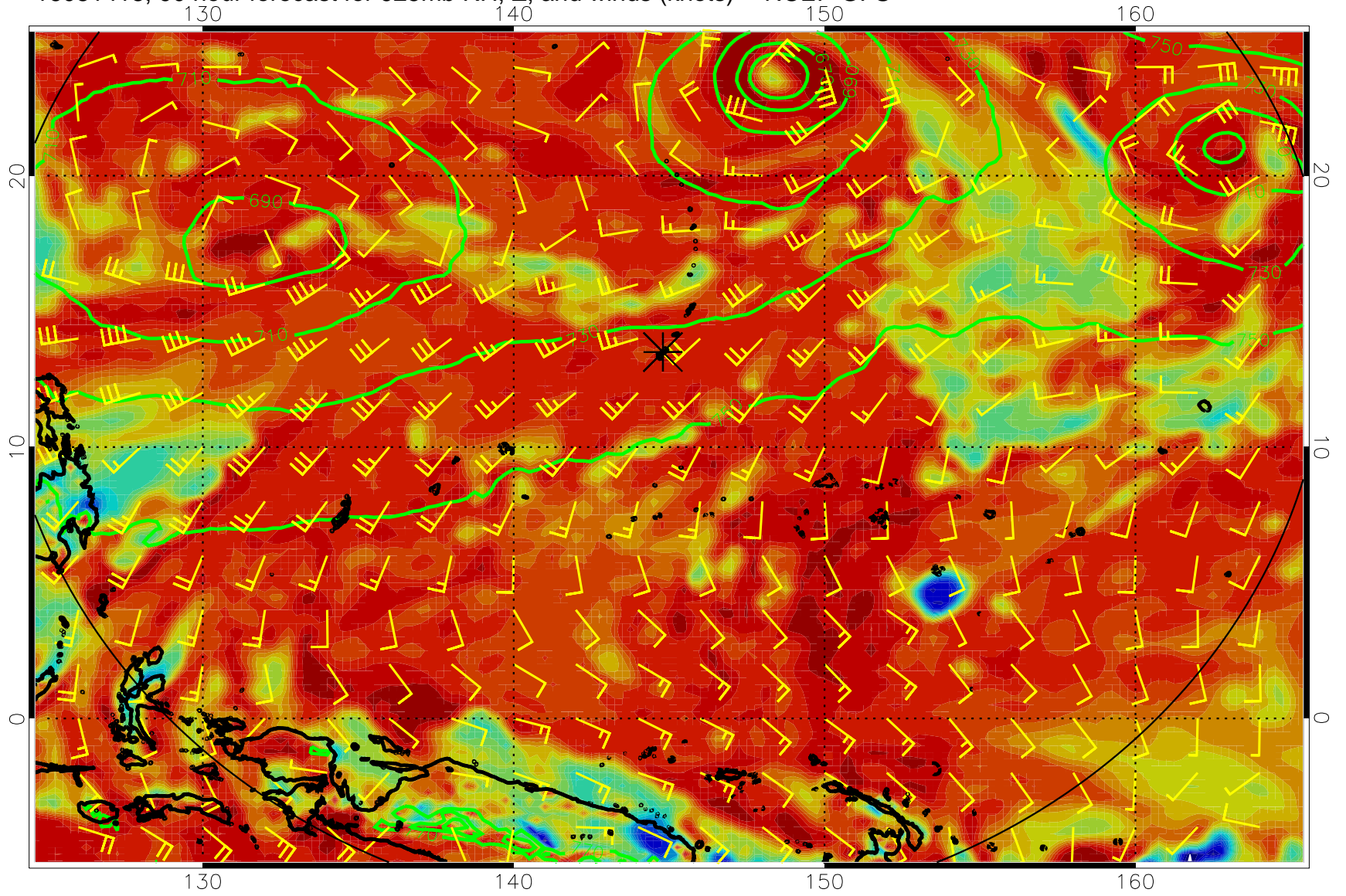
16081406, 78 hour forecast for 925mb RH, Z, and winds (knots) -- NCEP GFS



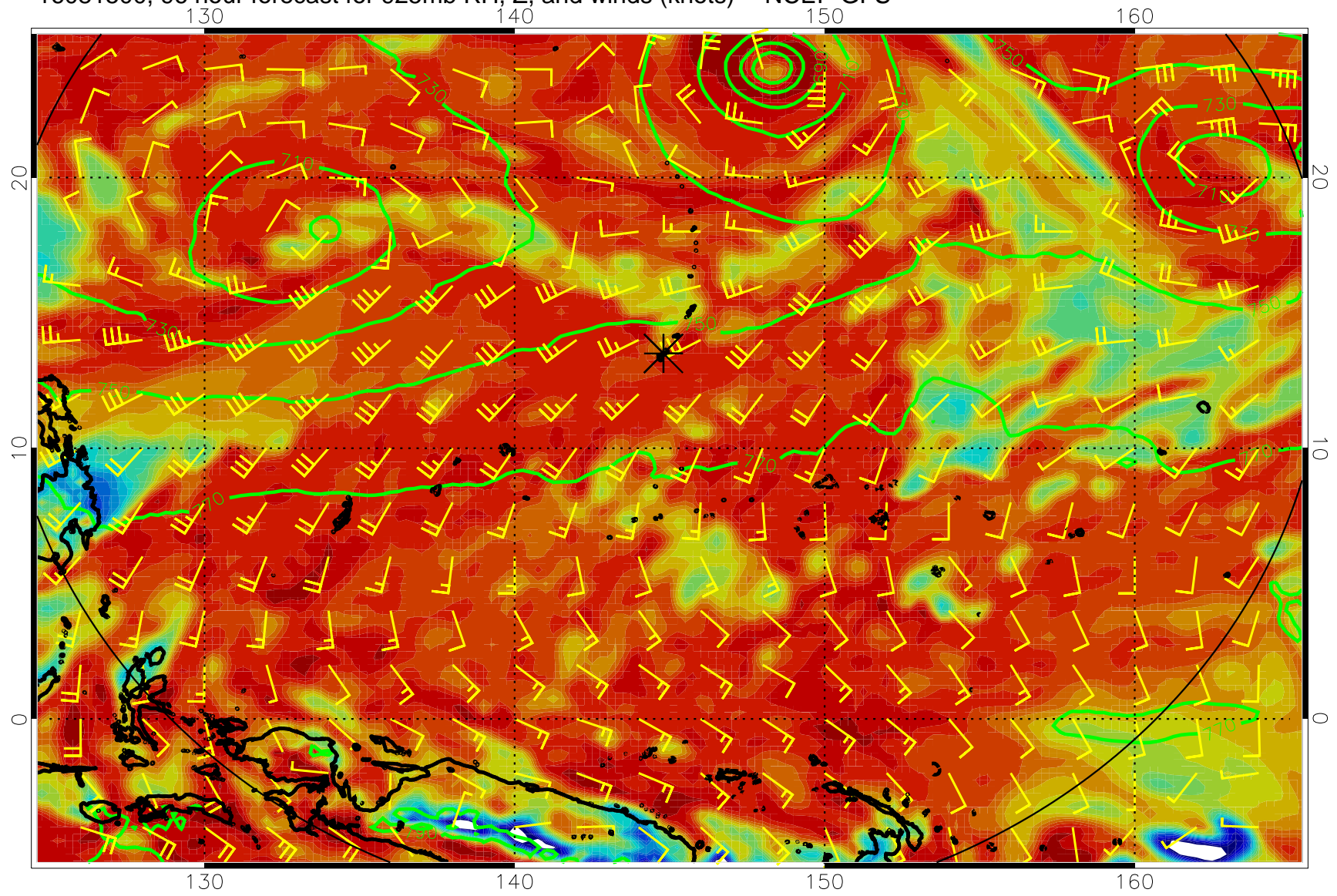
16081412, 84 hour forecast for 925mb RH, Z, and winds (knots) -- NCEP GFS



16081418, 90 hour forecast for 925mb RH, Z, and winds (knots) -- NCEP GFS

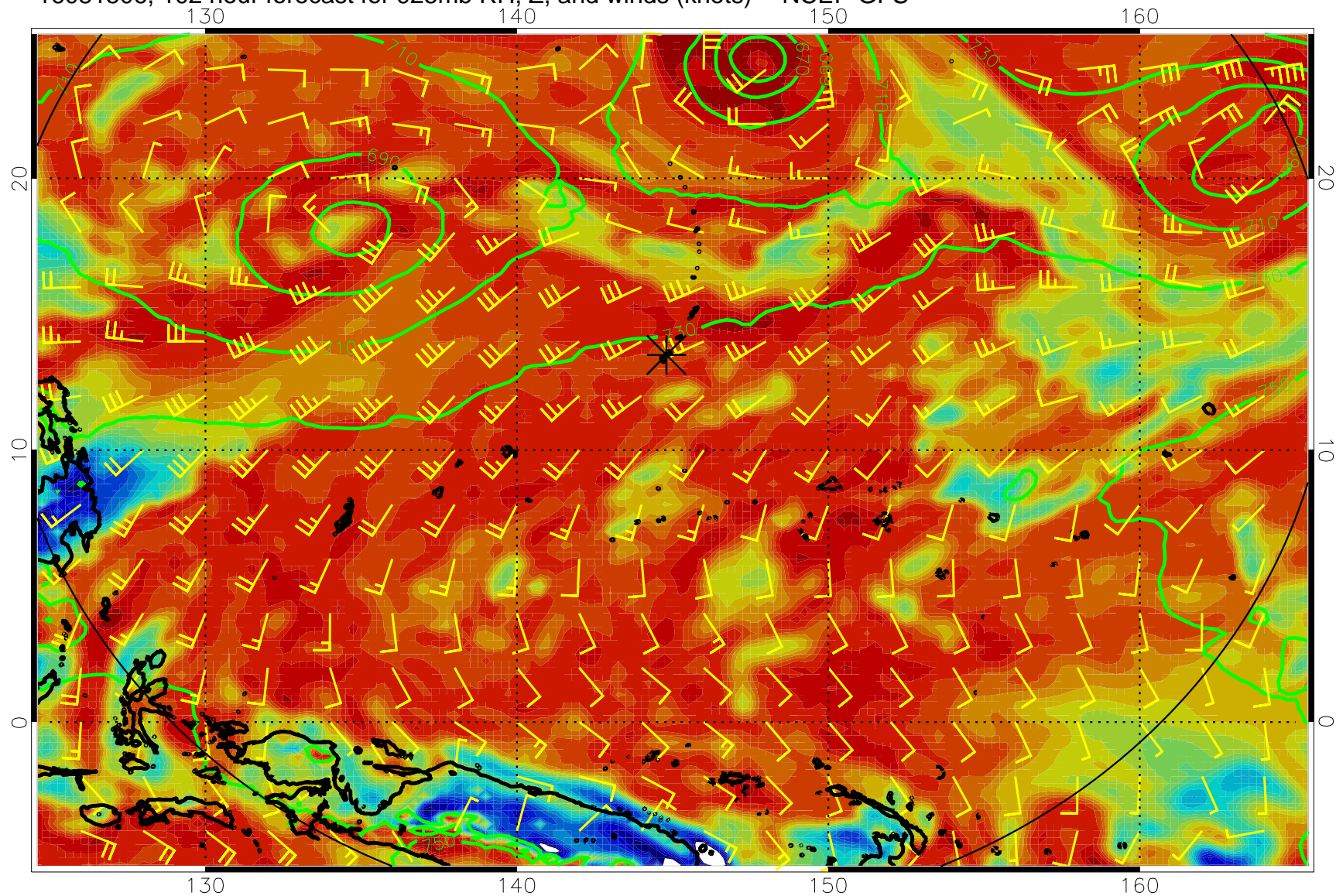


16081500, 96 hour forecast for 925mb RH, Z, and winds (knots) -- NCEP GFS

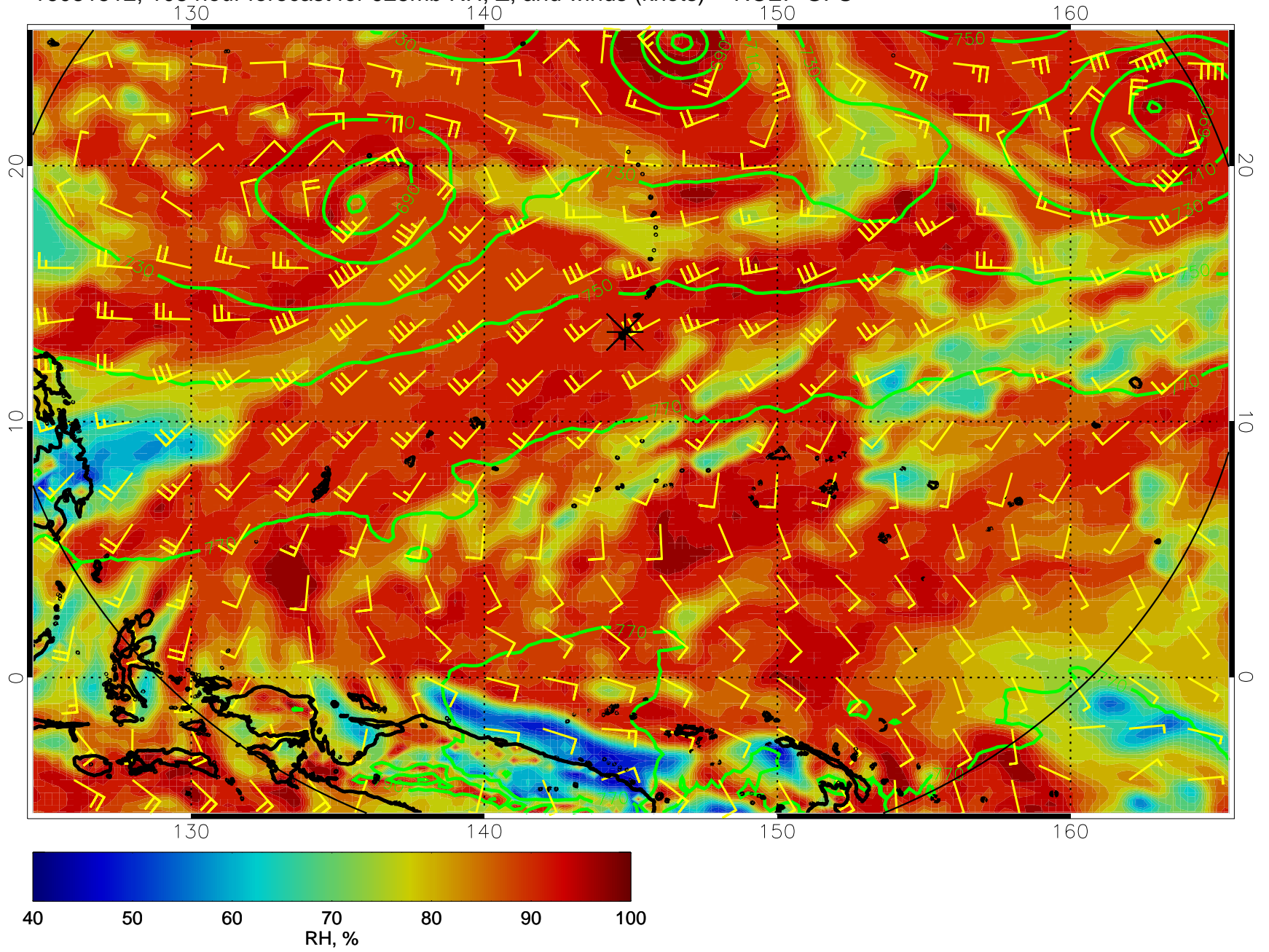




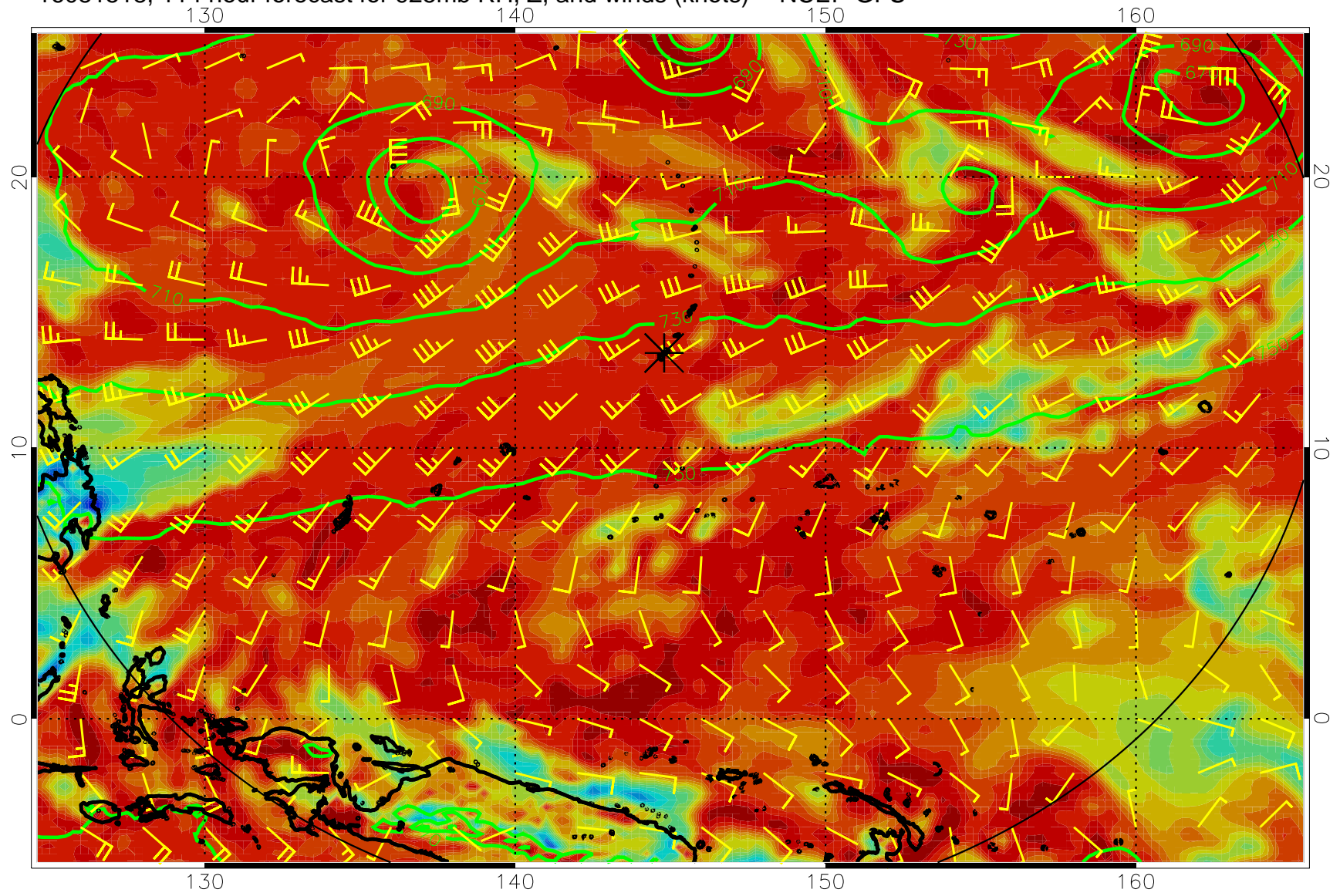
16081506, 102 hour forecast for 925mb RH, Z, and winds (knots) -- NCEP GFS



16081512, 108 hour forecast for 925mb RH, Z, and winds (knots) -- NCEP GFS



16081518, 114 hour forecast for 925mb RH, Z, and winds (knots) -- NCEP GFS



16081600, 120 hour forecast for 925mb RH, Z, and winds (knots) -- NCEP GFS

