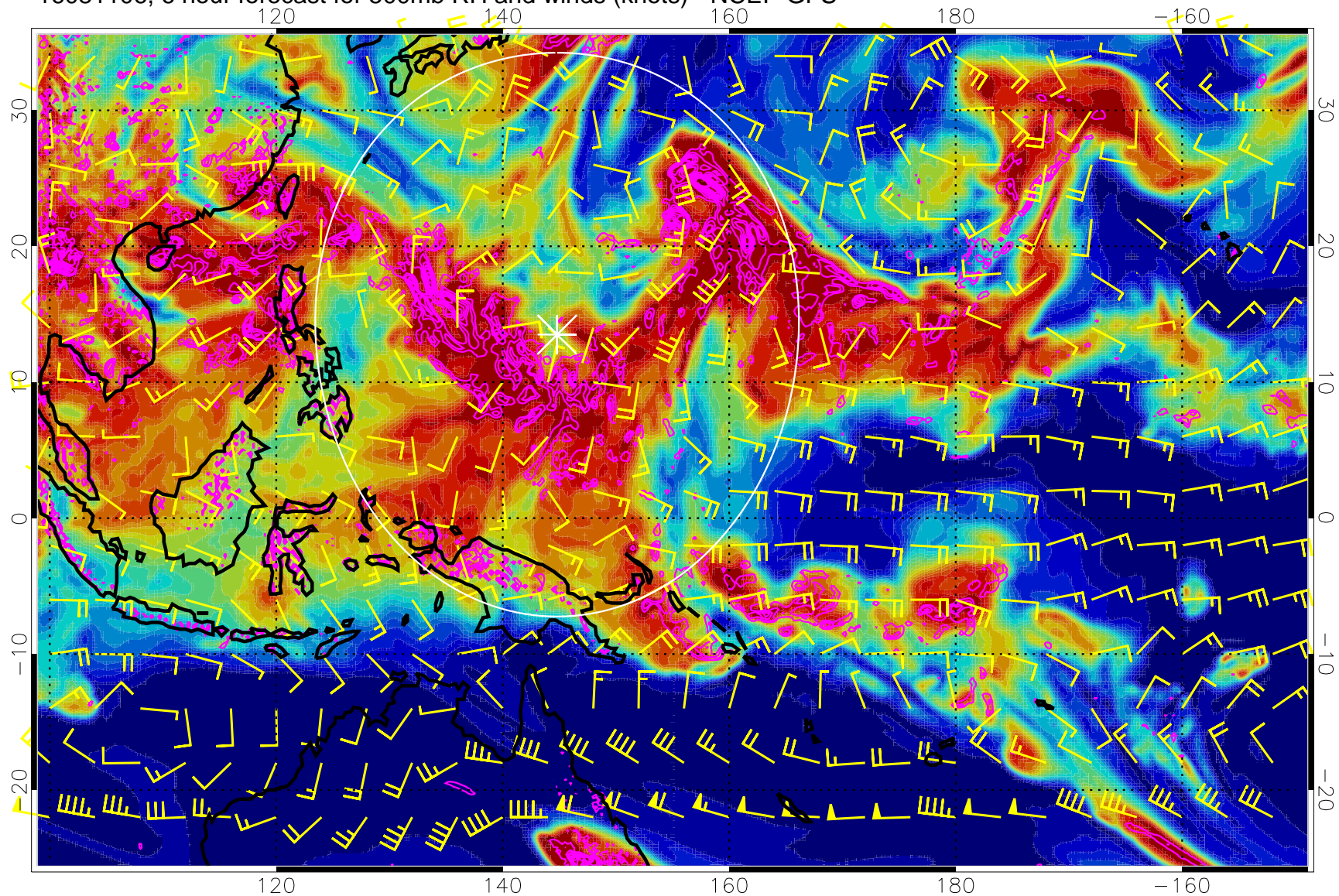


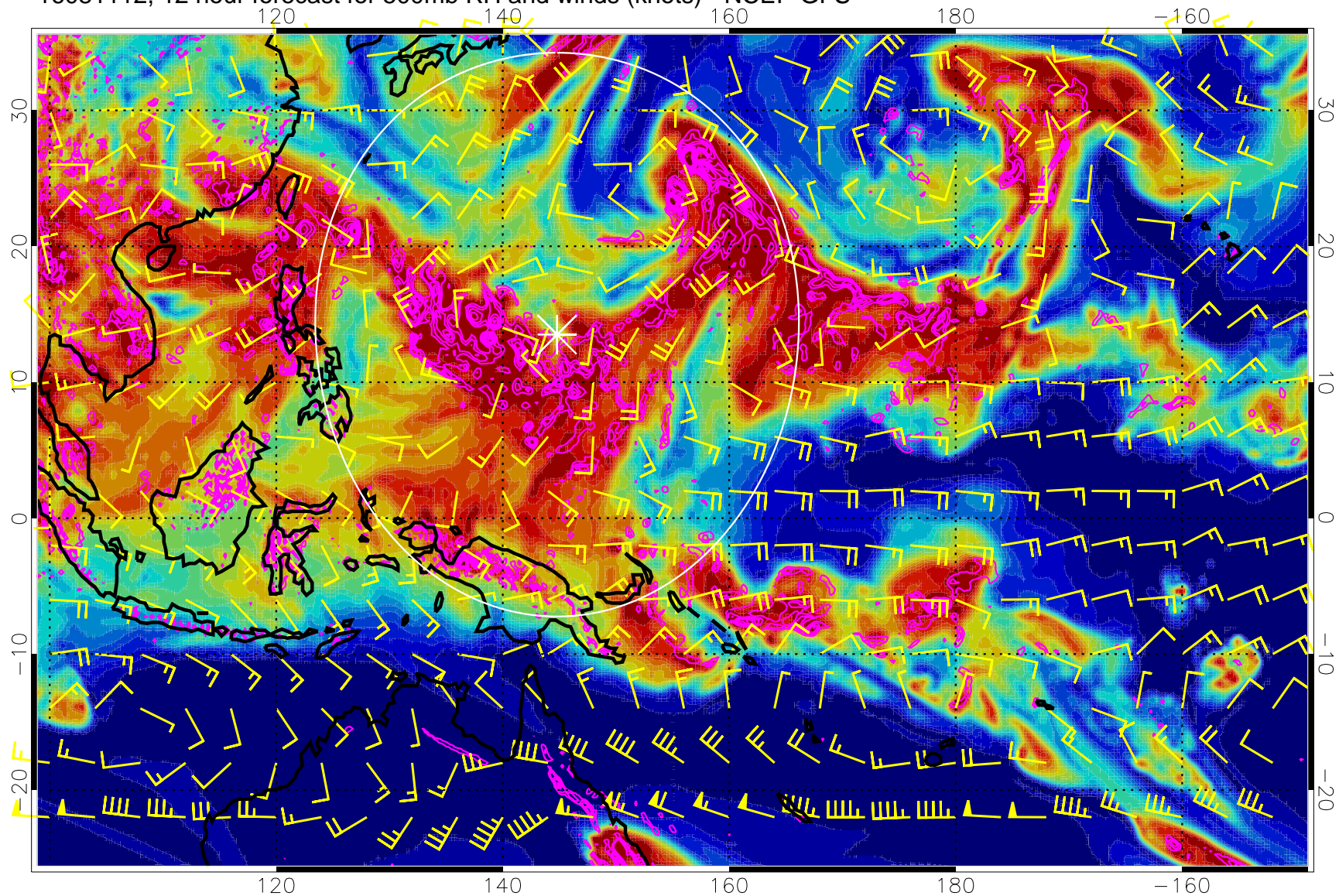
16081106, 6 hour forecast for 500mb RH and winds (knots) - NCEP GFS



Negative Omegas less than -0.3 , contours of 0.3 Pa/s

Range ring of 2304 km

16081112, 12 hour forecast for 500mb RH and winds (knots) - NCEP GFS

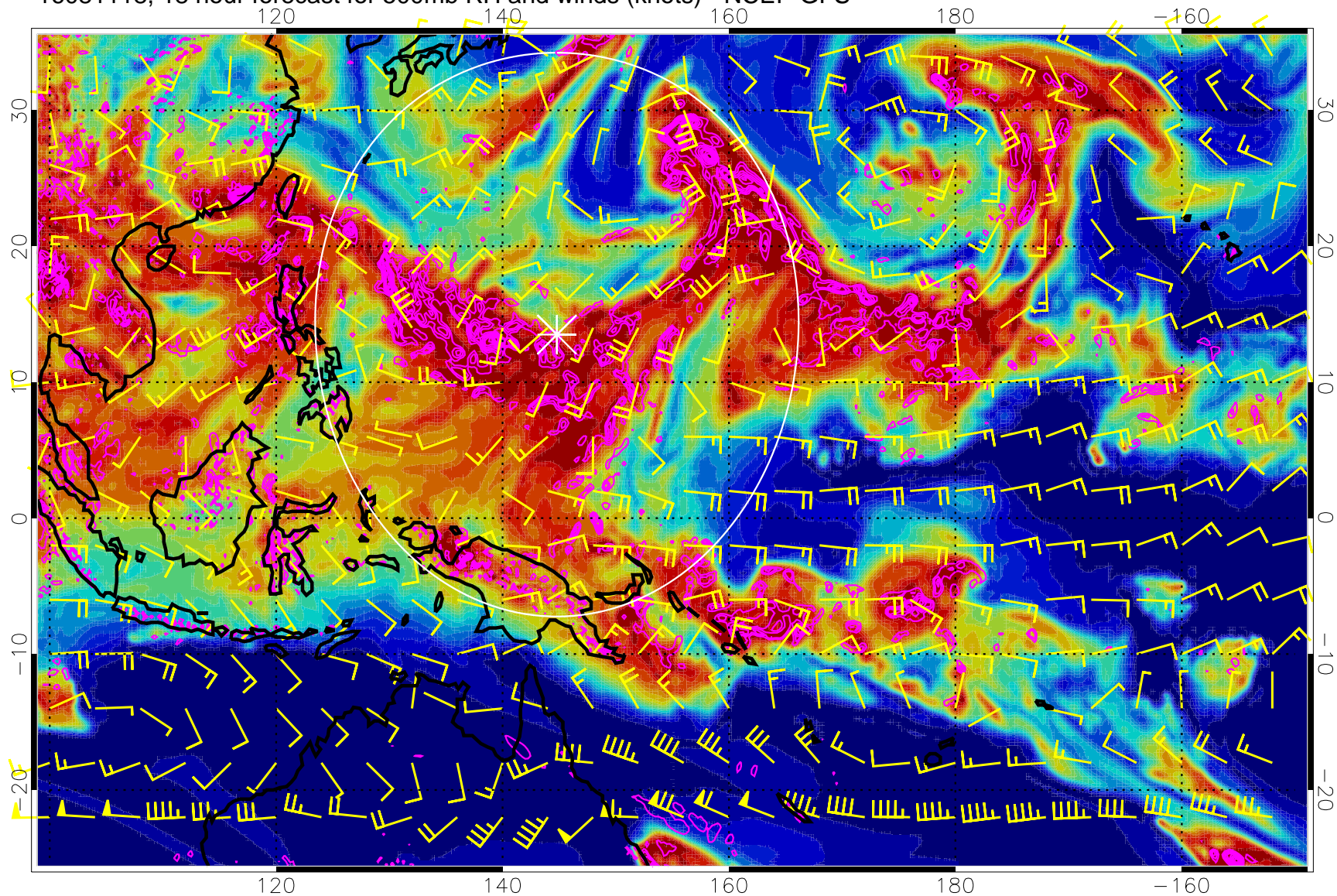


0 20 40 60 80 100
RH, %

Negative Omegas less than -0.3 , contours of 0.3 Pa/s

Range ring of 2304 km

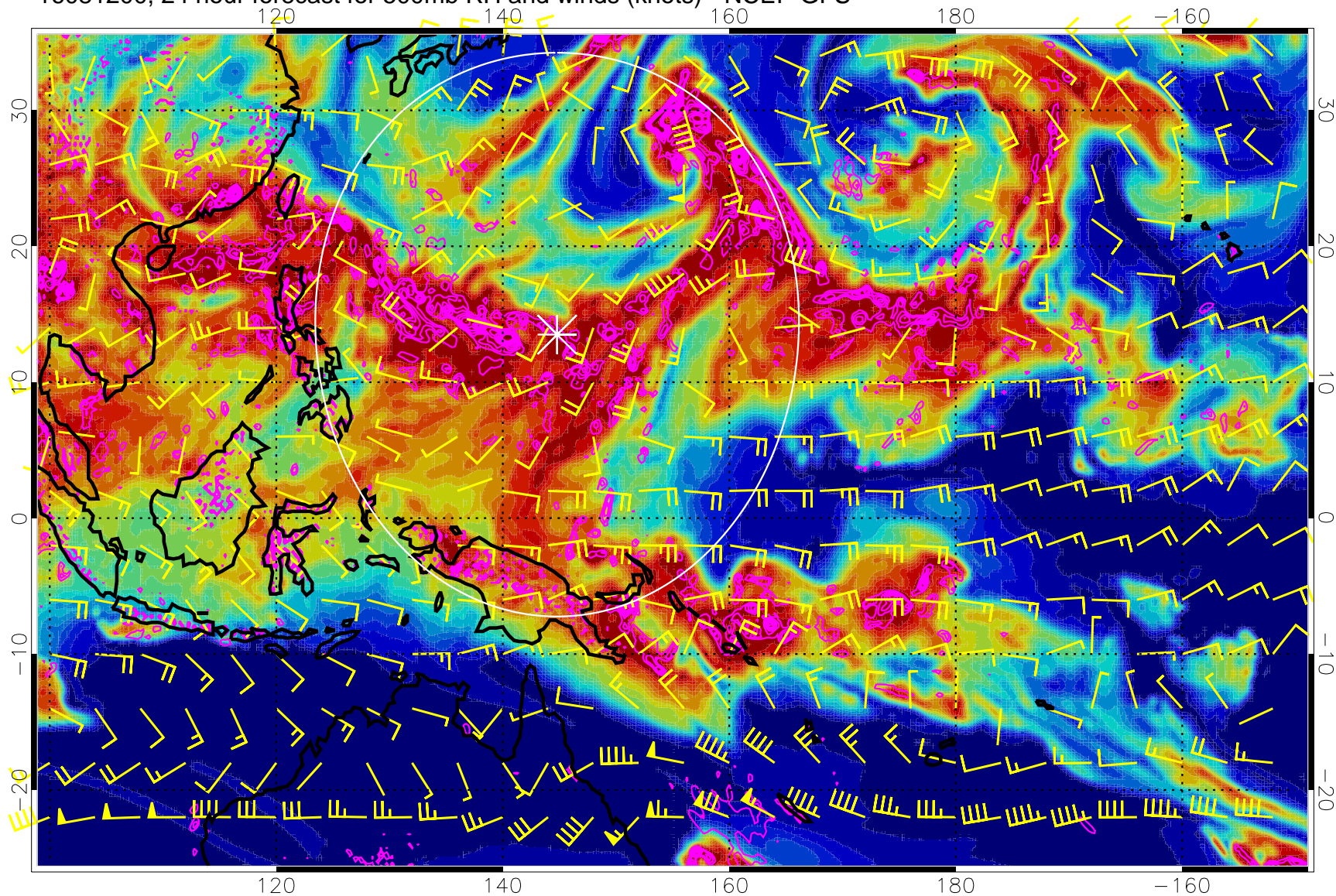
16081118, 18 hour forecast for 500mb RH and winds (knots) - NCEP GFS



Negative Omegas less than -0.3 , contours of 0.3 Pa/s

Range ring of 2304 km

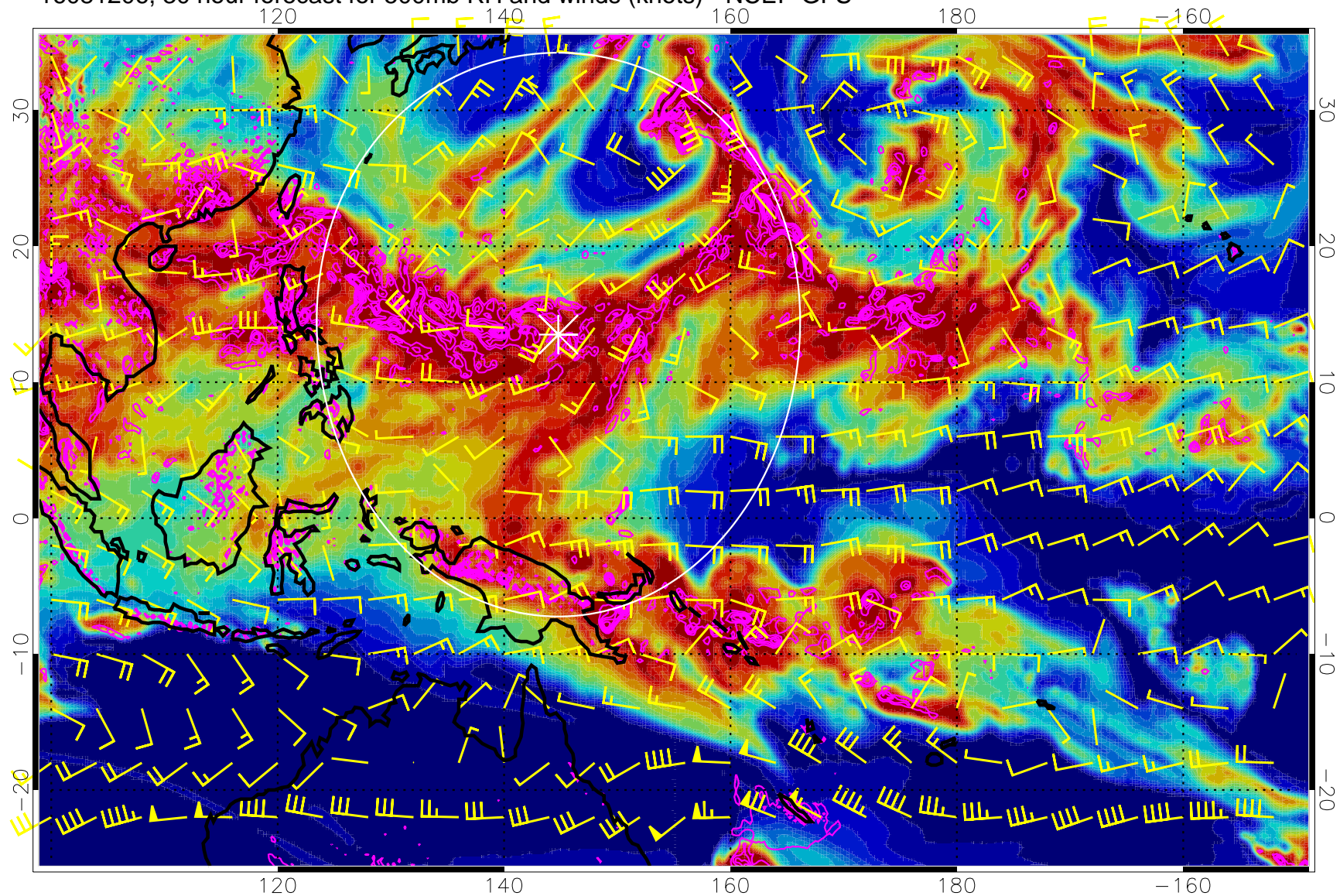
16081200, 24 hour forecast for 500mb RH and winds (knots) - NCEP GFS



Negative Omegas less than -0.3 , contours of 0.3 Pa/s

Range ring of 2304 km

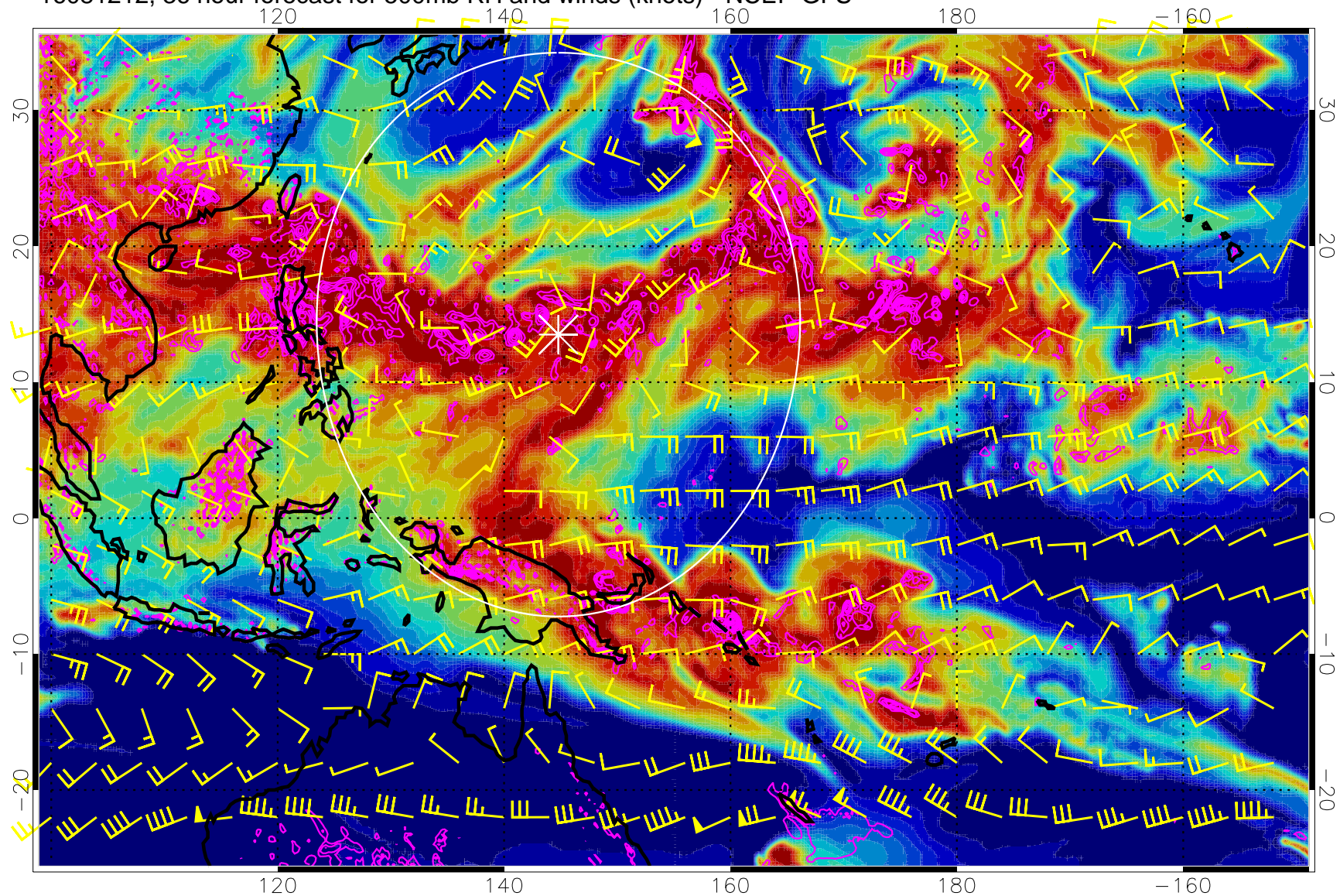
16081206, 30 hour forecast for 500mb RH and winds (knots) - NCEP GFS



Negative Omegas less than -0.3 , contours of 0.3 Pa/s

Range ring of 2304 km

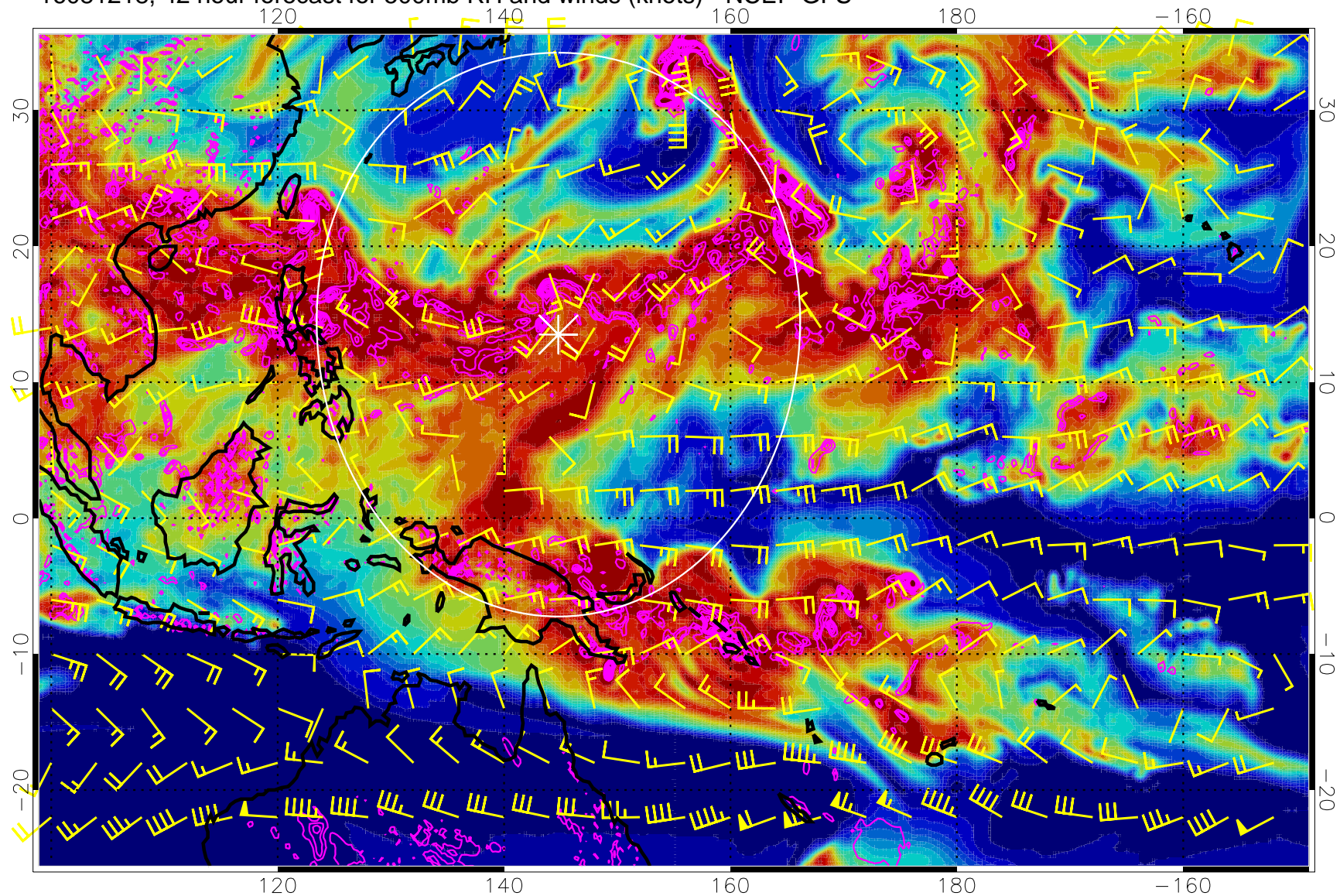
16081212, 36 hour forecast for 500mb RH and winds (knots) - NCEP GFS



Negative Omegas less than -0.3 , contours of 0.3 Pa/s

Range ring of 2304 km

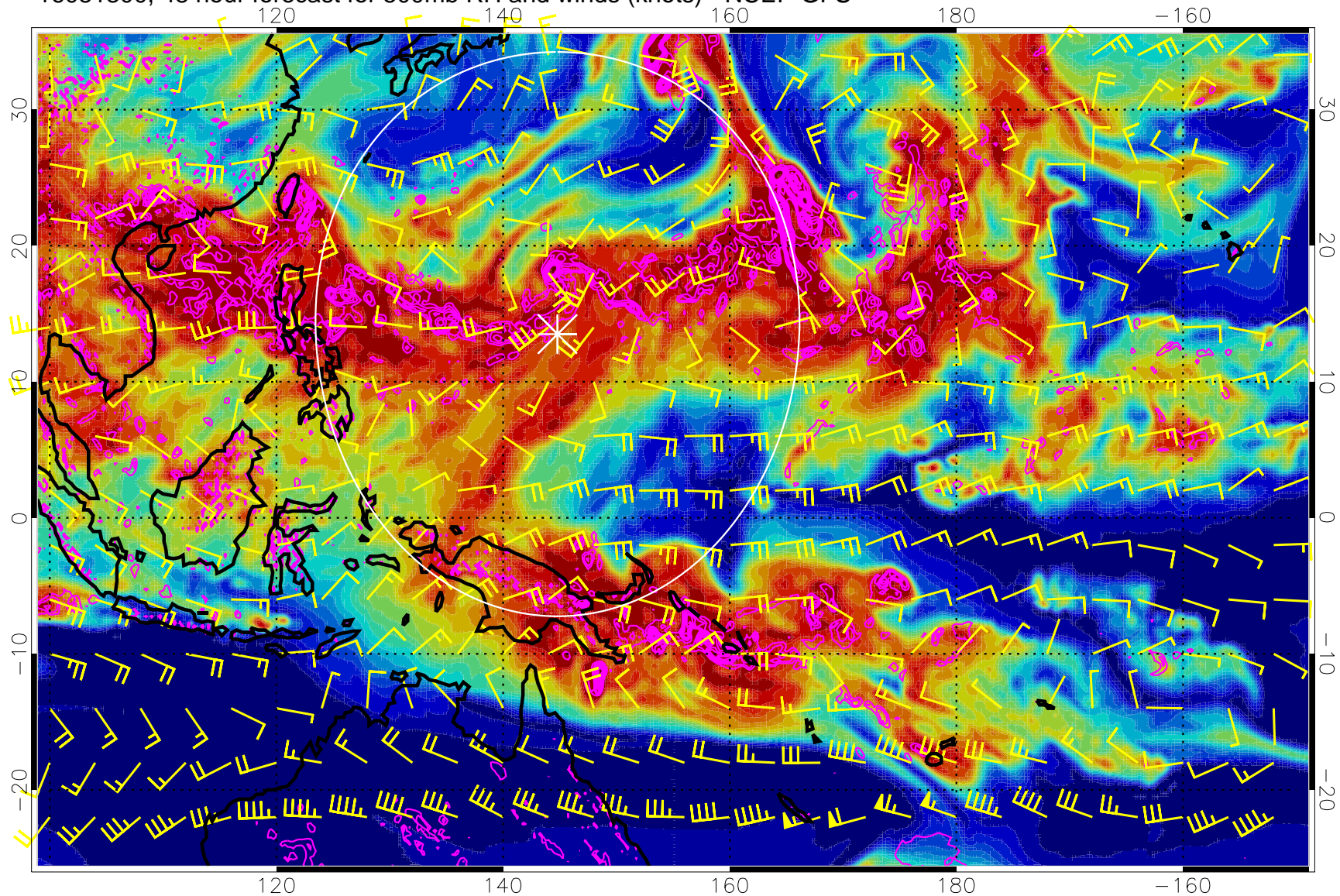
16081218, 42 hour forecast for 500mb RH and winds (knots) - NCEP GFS



Negative Omegas less than -0.3 , contours of 0.3 Pa/s

Range ring of 2304 km

16081300, 48 hour forecast for 500mb RH and winds (knots) - NCEP GFS

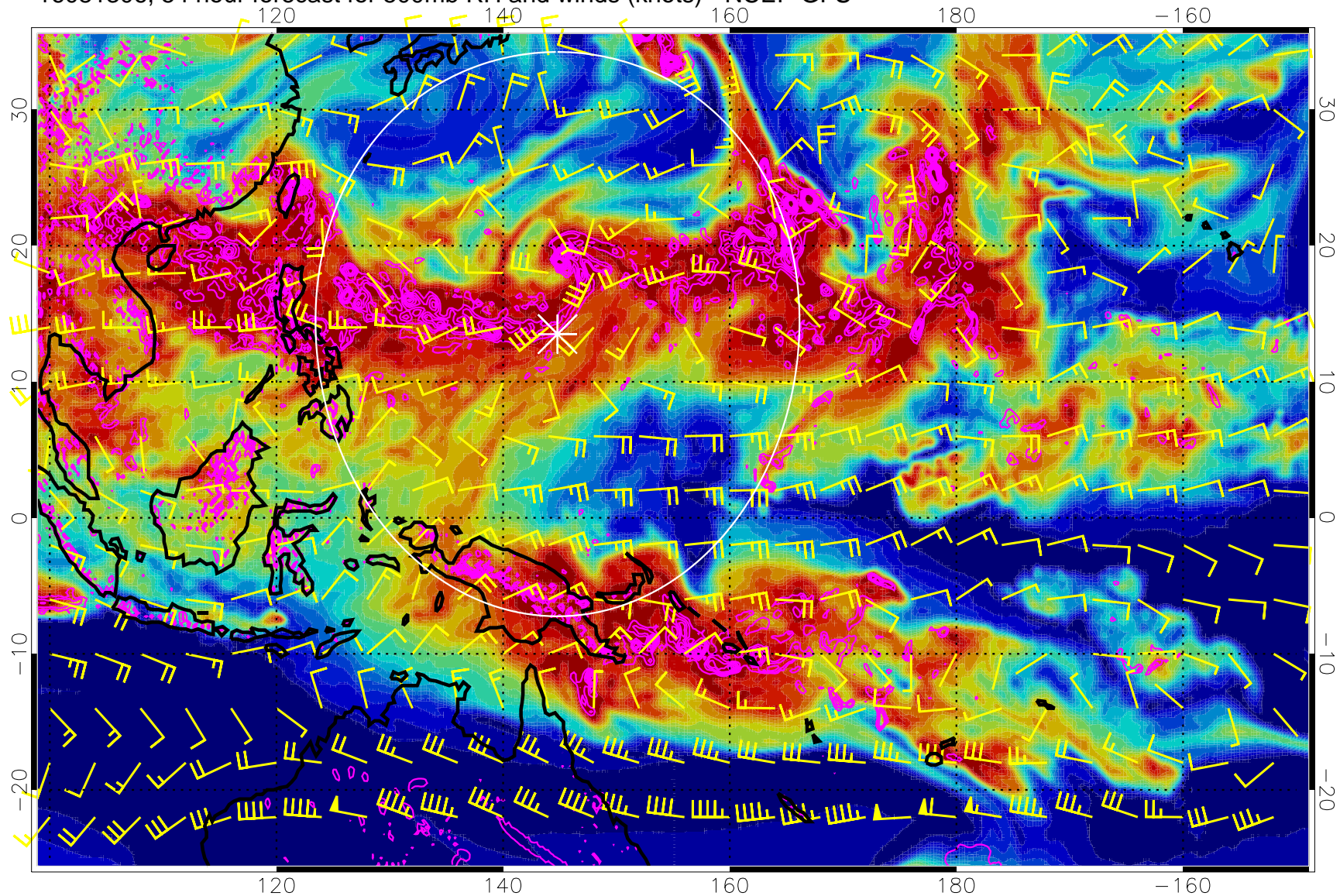


0 20 40 60 80 100
RH, %

Negative Omegas less than -0.3 , contours of 0.3 Pa/s

Range ring of 2304 km

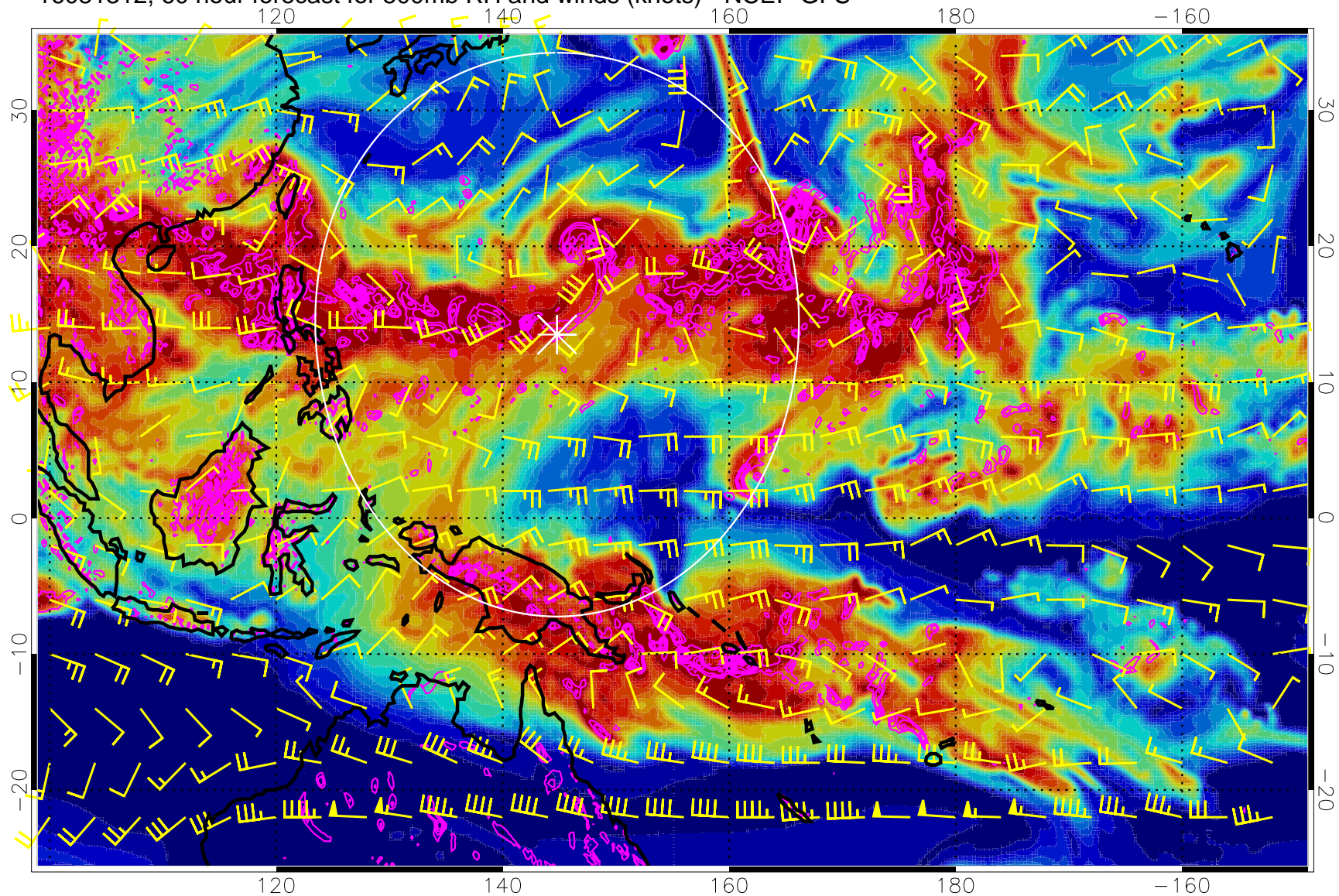
16081306, 54 hour forecast for 500mb RH and winds (knots) - NCEP GFS



Negative Omegas less than -0.3 , contours of 0.3 Pa/s

Range ring of 2304 km

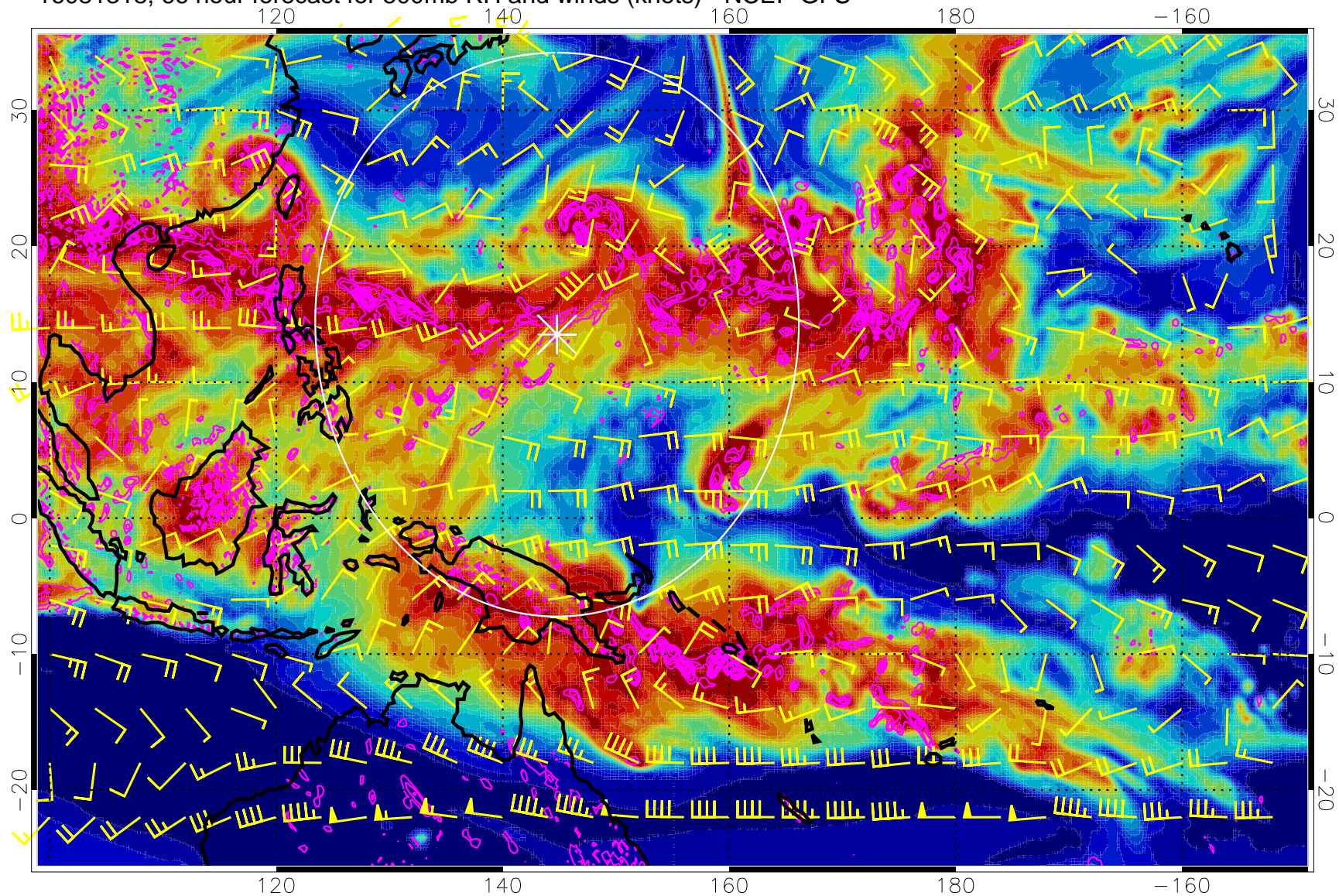
16081312, 60 hour forecast for 500mb RH and winds (knots) - NCEP GFS



Negative Omegas less than -0.3 , contours of 0.3 Pa/s

Range ring of 2304 km

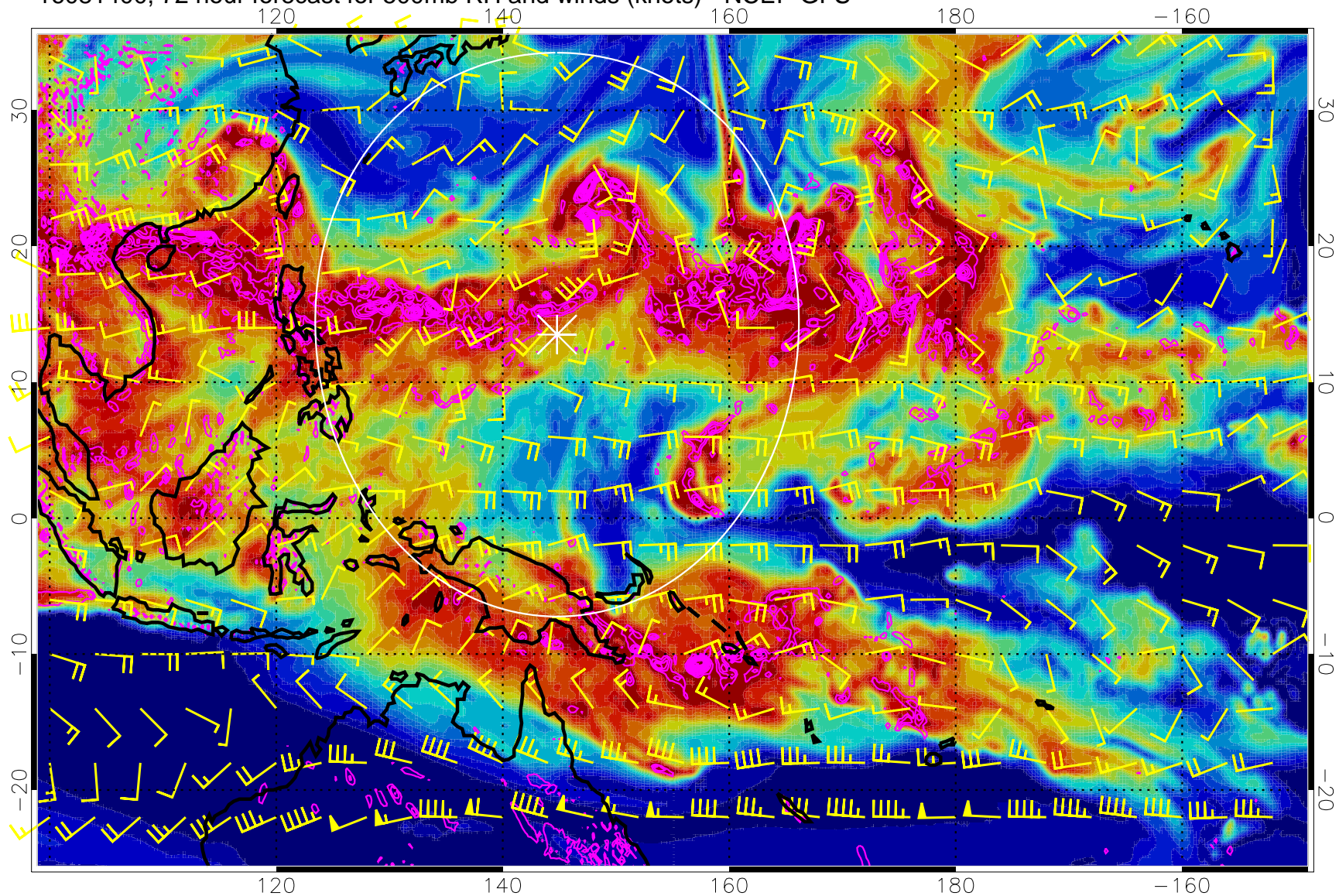
16081318, 66 hour forecast for 500mb RH and winds (knots) - NCEP GFS



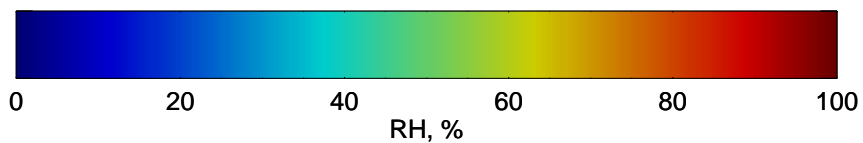
Negative Omegas less than -0.3 , contours of 0.3 Pa/s

Range ring of 2304 km

16081400, 72 hour forecast for 500mb RH and winds (knots) - NCEP GFS

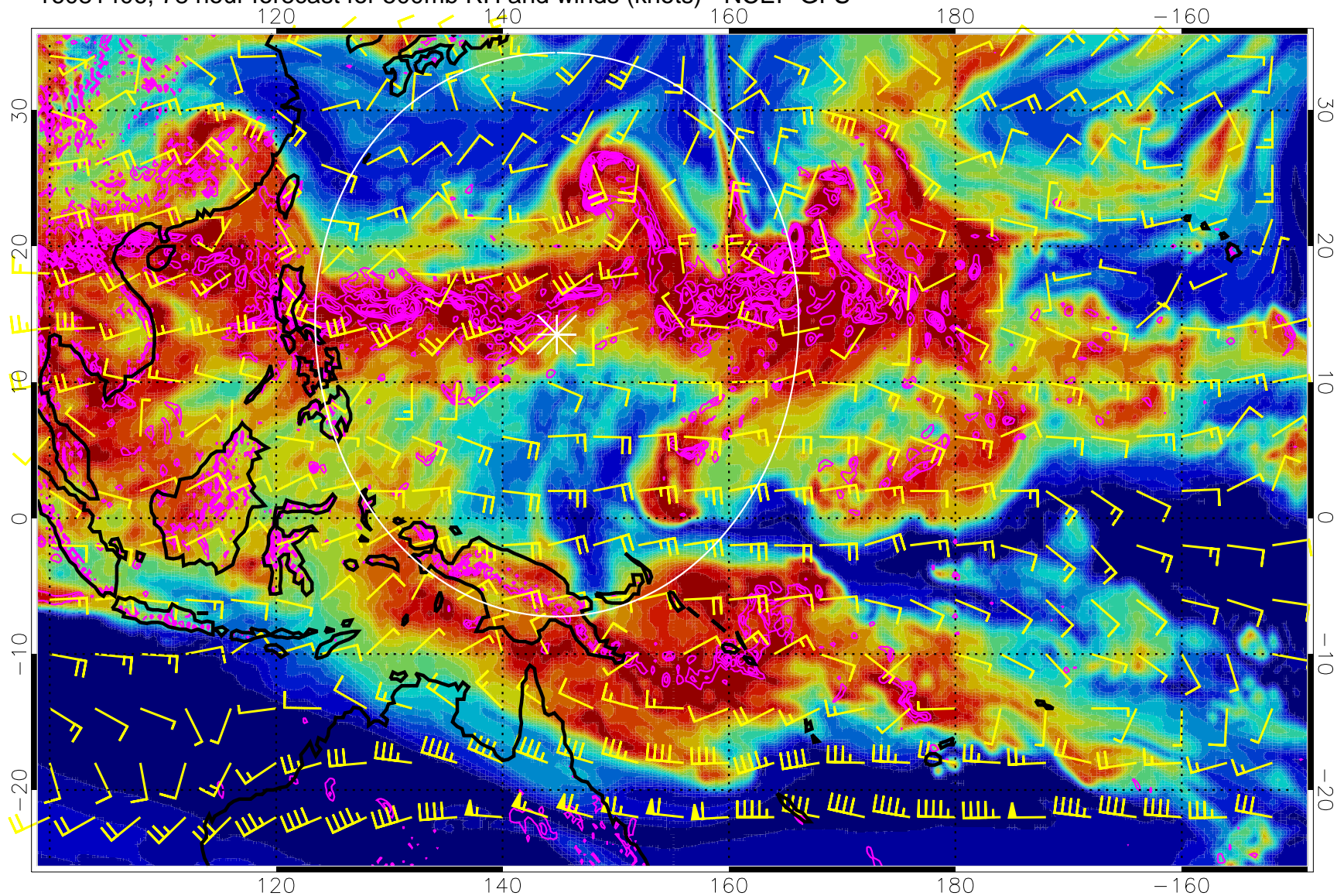


Negative Omegas less than -0.3 , contours of 0.3 Pa/s



Range ring of 2304 km

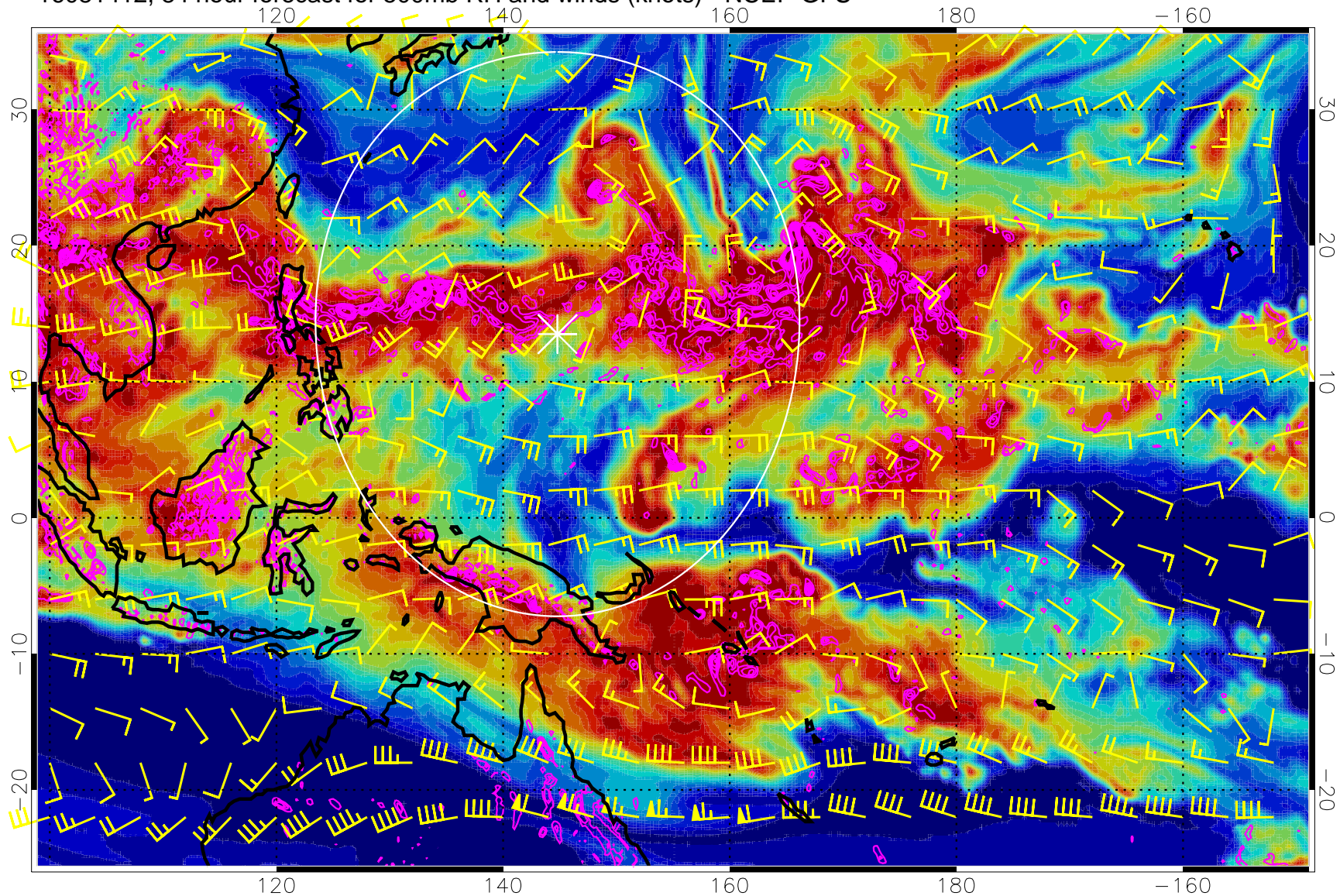
16081406, 78 hour forecast for 500mb RH and winds (knots) - NCEP GFS



Negative Omegas less than -0.3 , contours of 0.3 Pa/s

Range ring of 2304 km

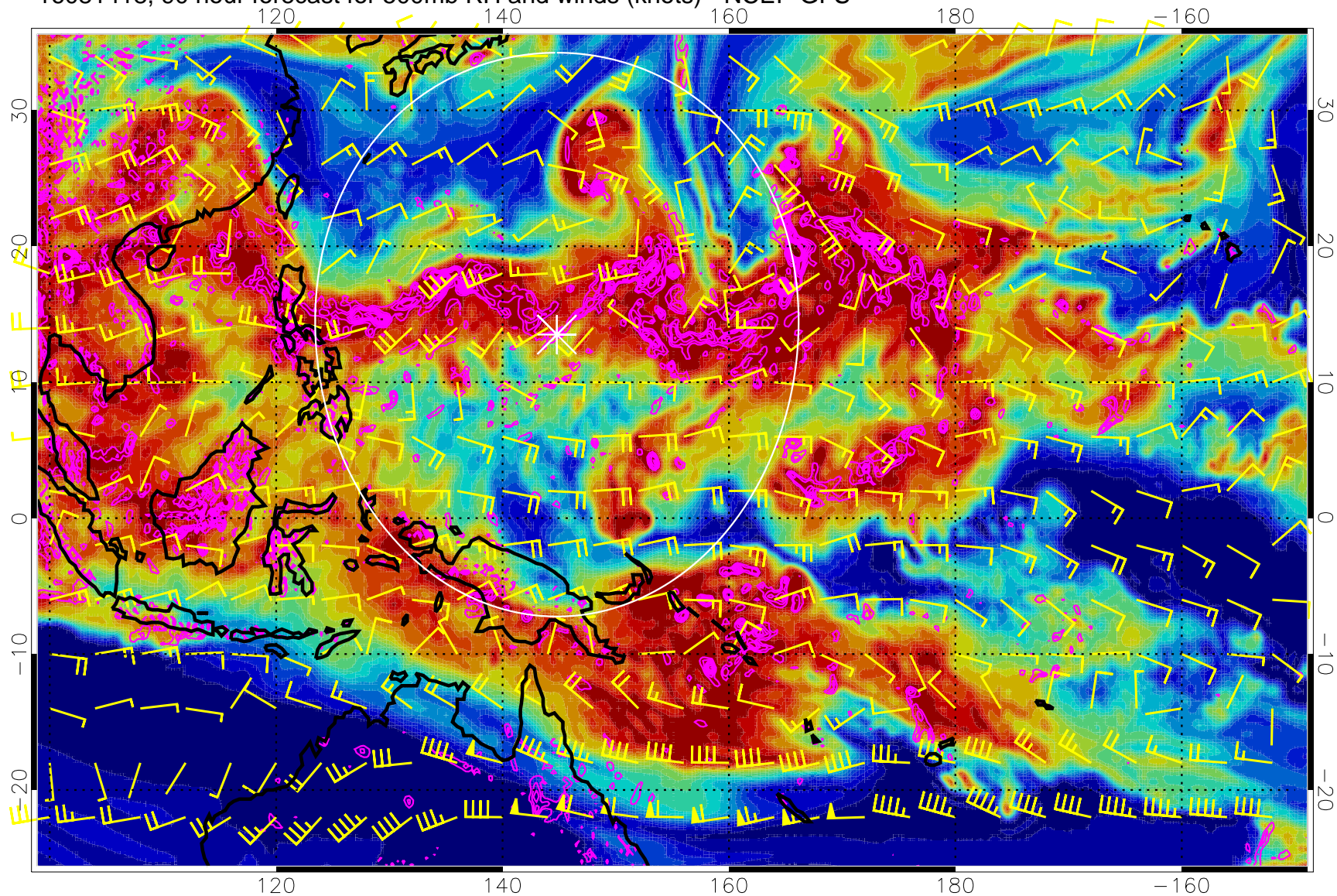
16081412, 84 hour forecast for 500mb RH and winds (knots) - NCEP GFS



Negative Omegas less than -0.3 , contours of $.3$ Pa/s

Range ring of 2304 km

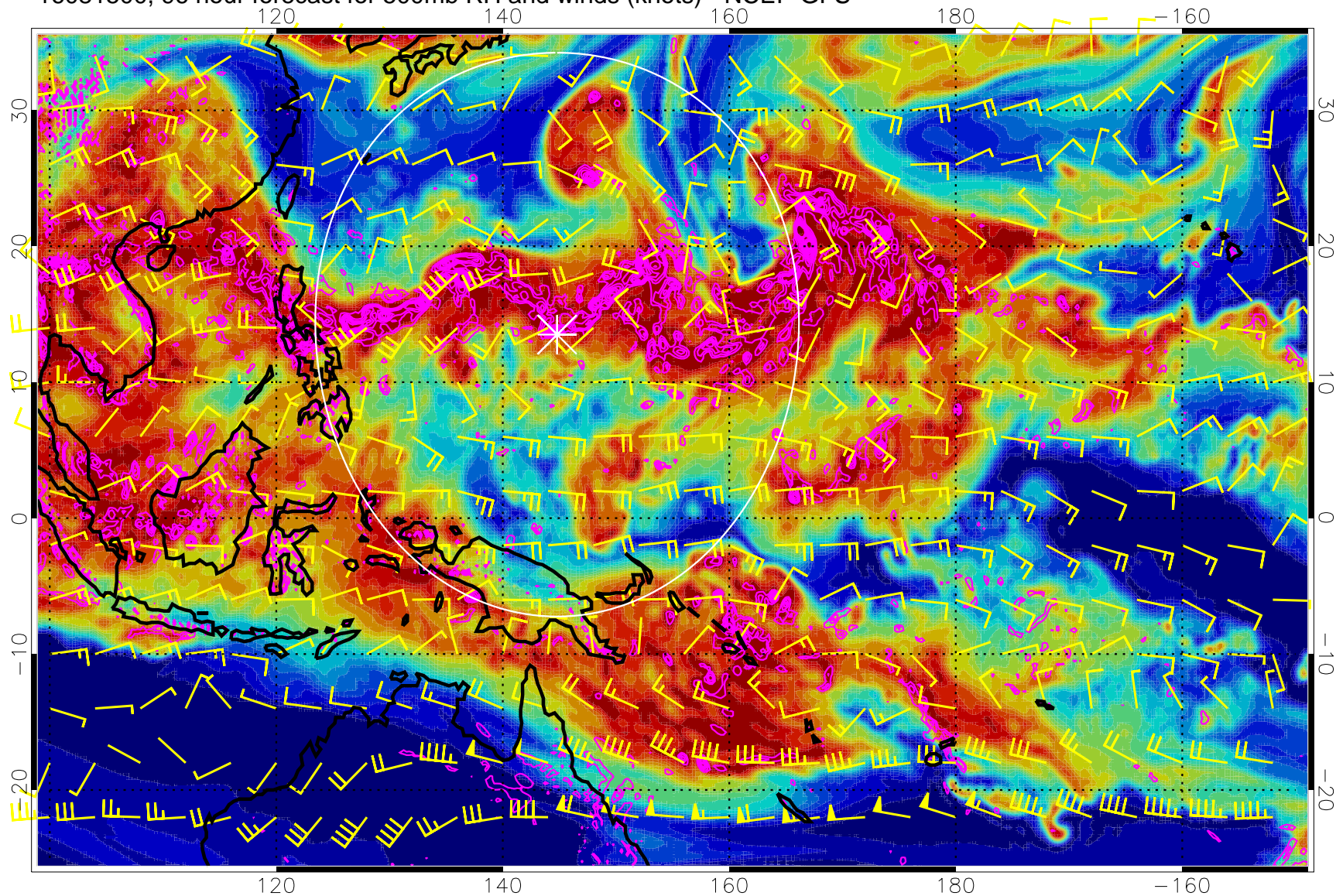
16081418, 90 hour forecast for 500mb RH and winds (knots) - NCEP GFS



Negative Omegas less than $-.3$, contours of $.3$ Pa/s

Range ring of 2304 km

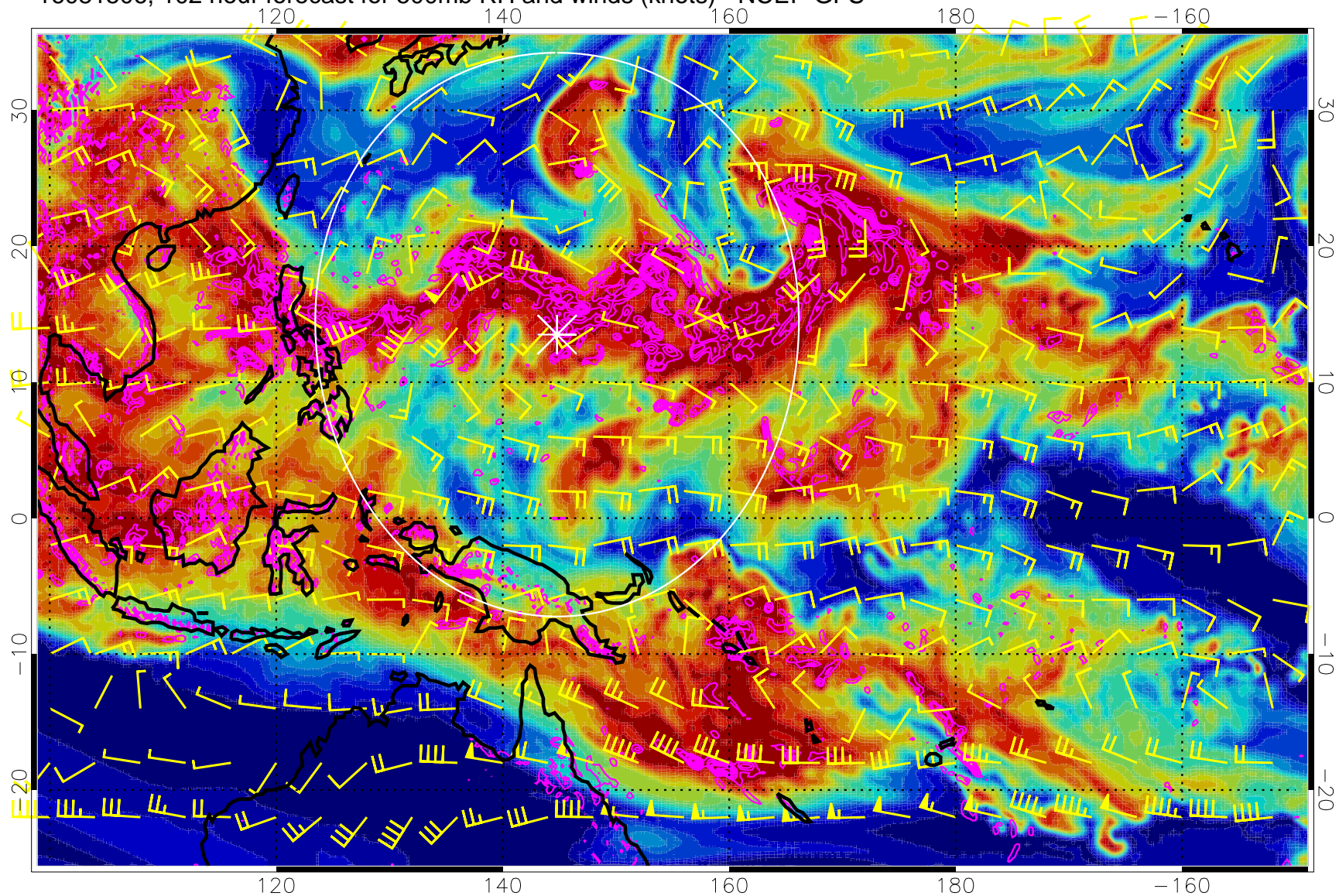
16081500, 96 hour forecast for 500mb RH and winds (knots) - NCEP GFS



Negative Omegas less than -0.3 , contours of 0.3 Pa/s

Range ring of 2304 km

16081506, 102 hour forecast for 500mb RH and winds (knots) - NCEP GFS



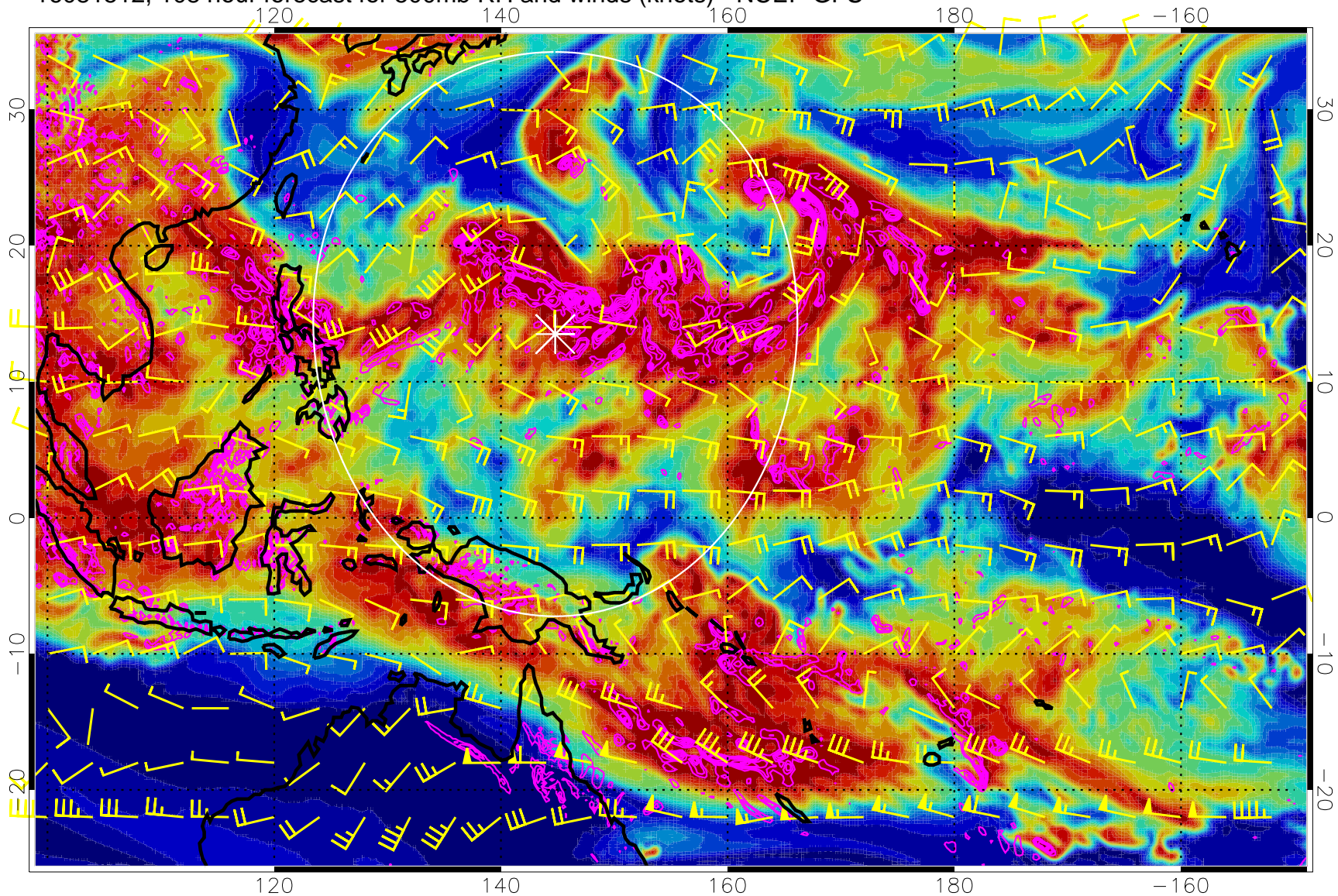
Negative Omegas less than -0.3 , contours of 0.3 Pa/s



0 20 40 60 80 100
RH, %

Range ring of 2304 km

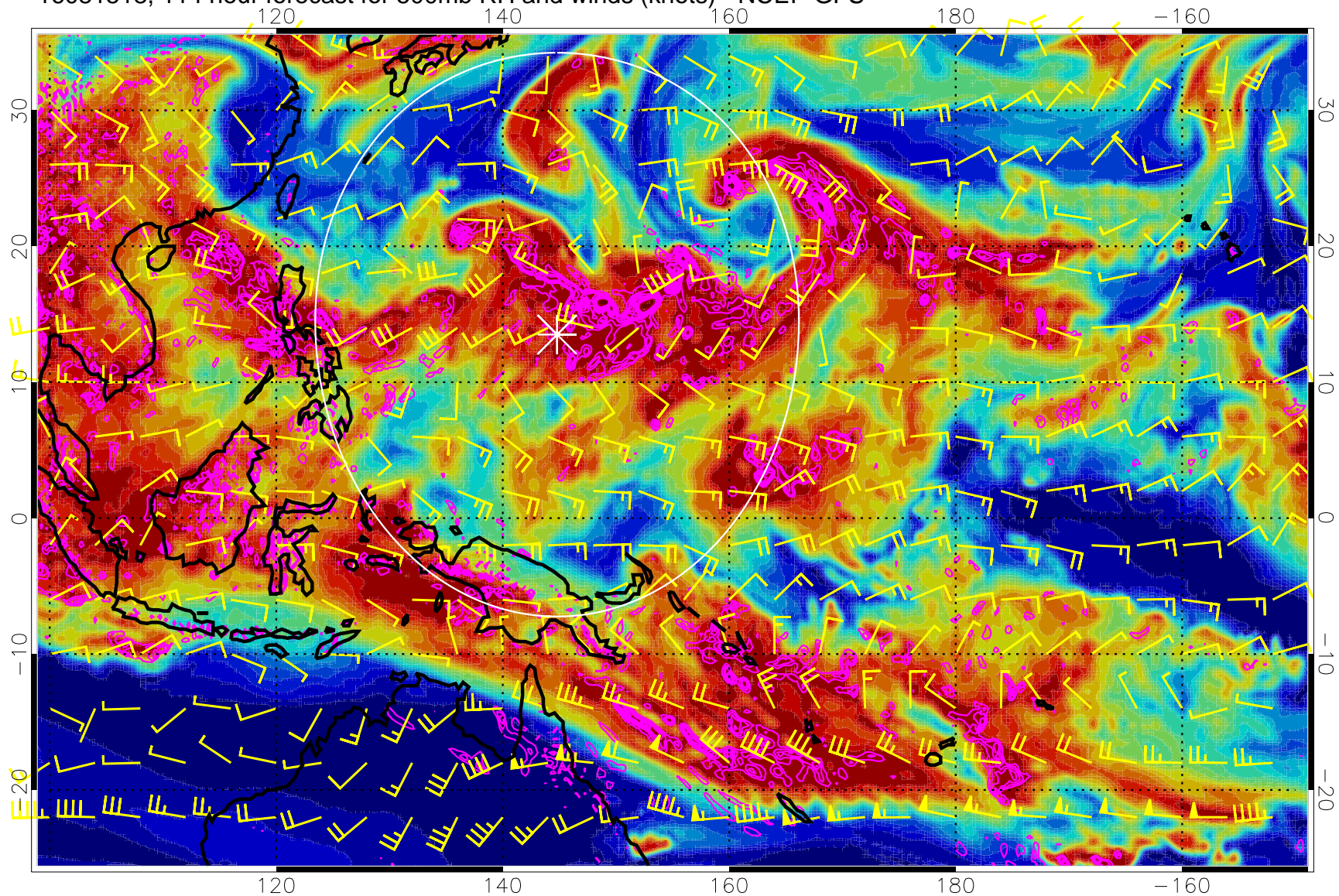
16081512, 108 hour forecast for 500mb RH and winds (knots) - NCEP GFS



Negative Omegas less than -0.3 , contours of 0.3 Pa/s

Range ring of 2304 km

16081518, 114 hour forecast for 500mb RH and winds (knots) - NCEP GFS

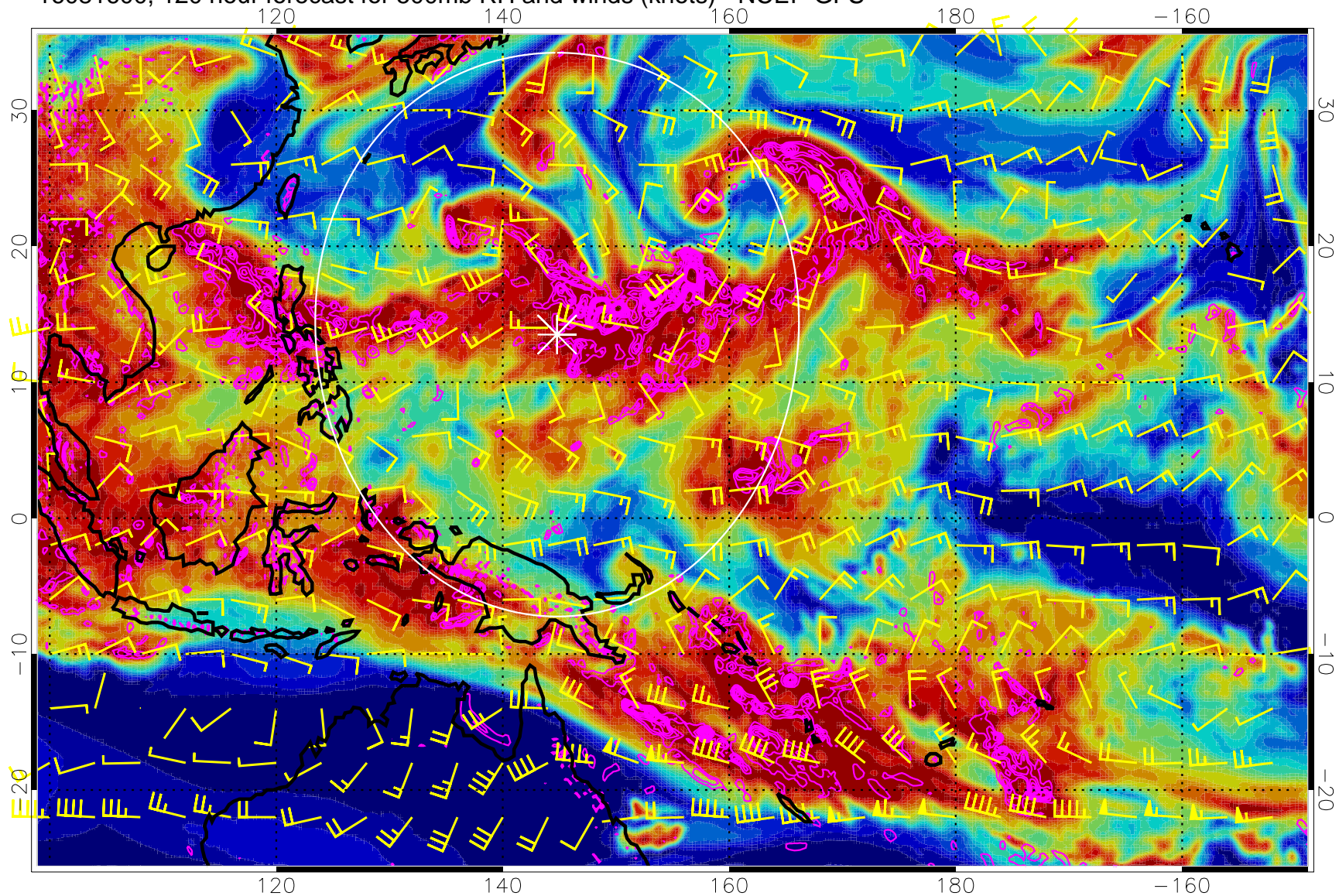


0 20 40 60 80 100
RH, %

Negative Omegas less than -0.3 , contours of 0.3 Pa/s

Range ring of 2304 km

16081600, 120 hour forecast for 500mb RH and winds (knots) - NCEP GFS



Negative Omegas less than -0.3 , contours of 0.3 Pa/s



0 20 40 60 80 100
RH, %

Range ring of 2304 km