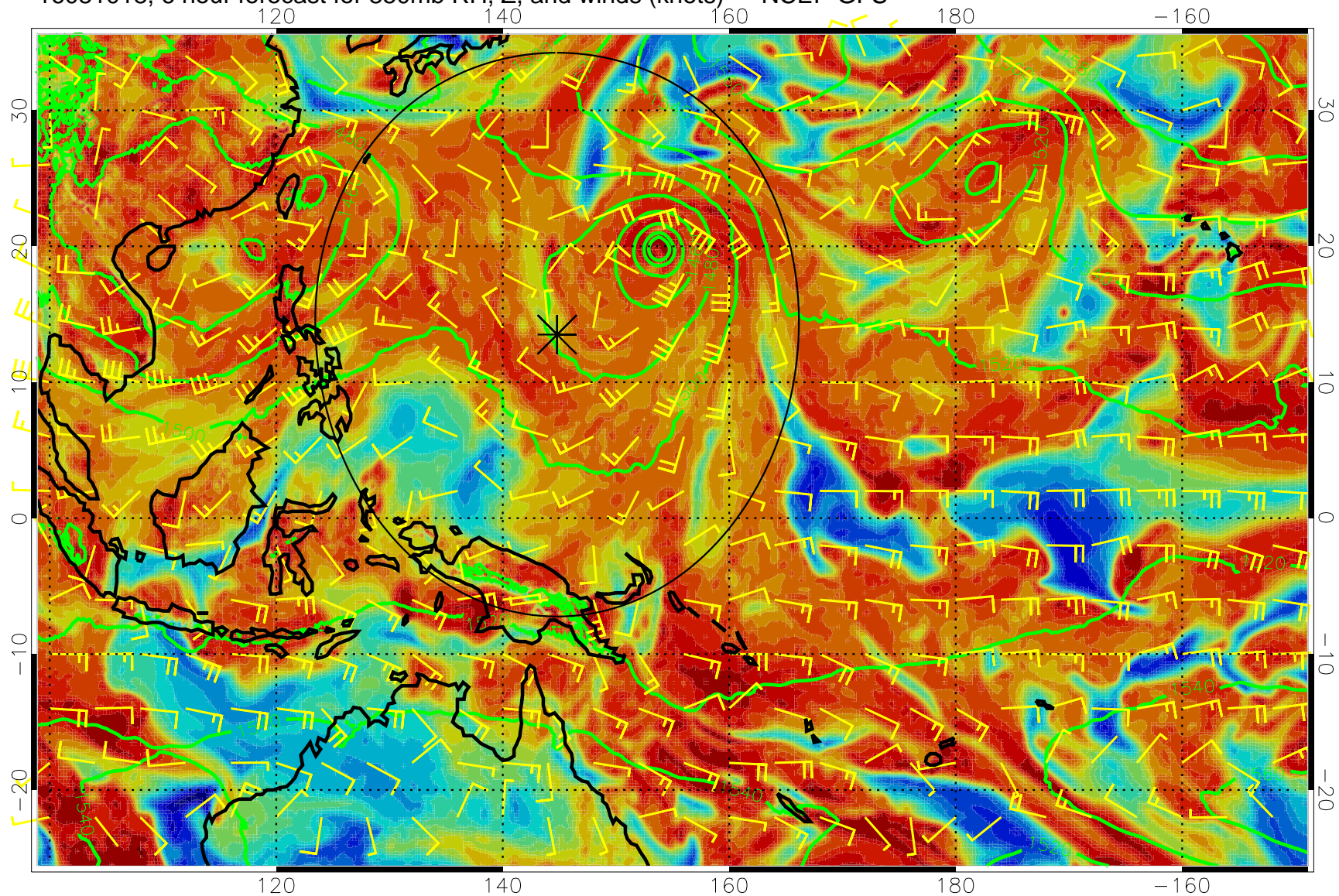


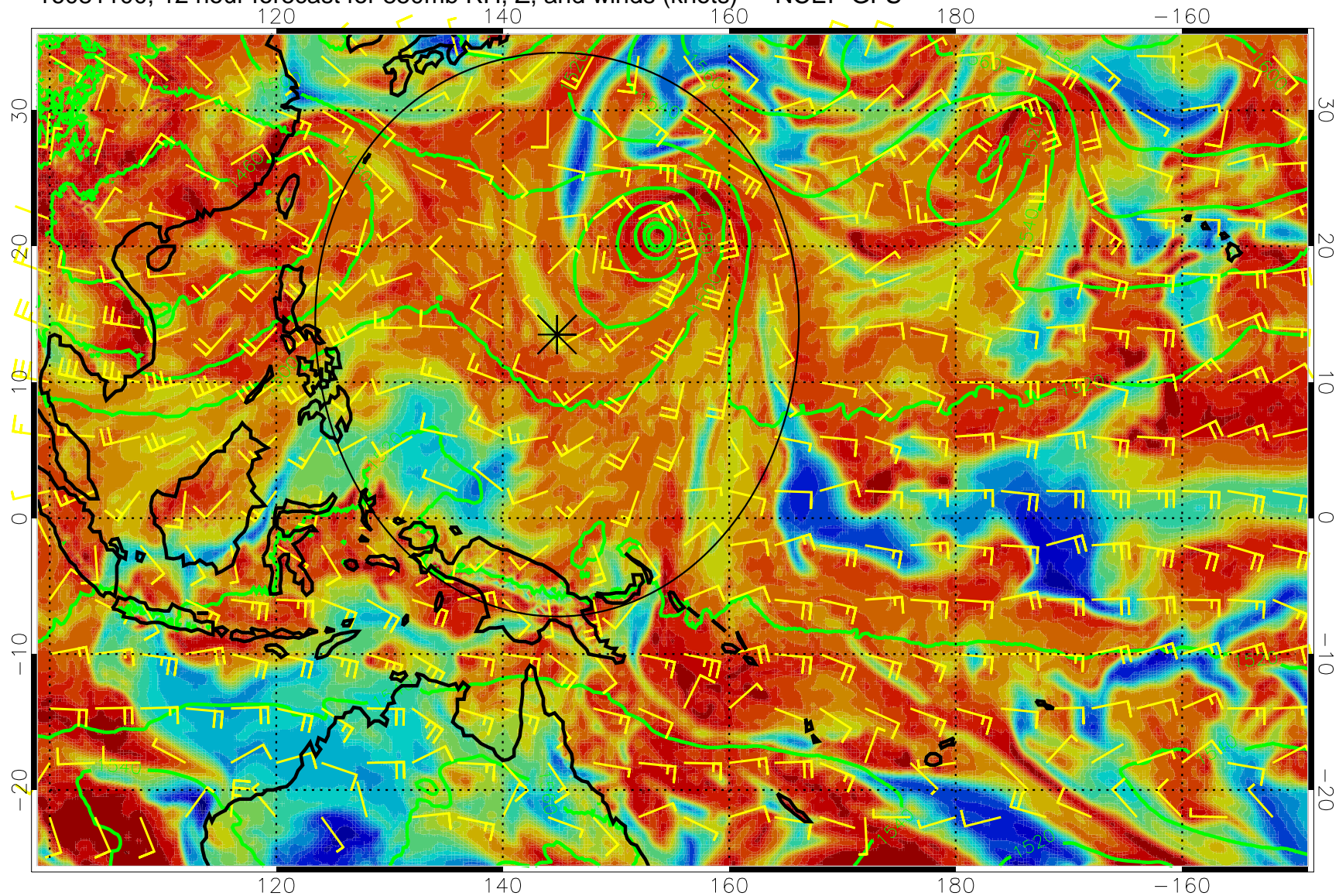
16081018, 6 hour forecast for 850mb RH, Z, and winds (knots) -- NCEP GFS



Precip (tot dot, conv sol) mm/day 40 mm/day contours, min 20



16081100, 12 hour forecast for 850mb RH, Z, and winds (knots) -- NCEP GFS

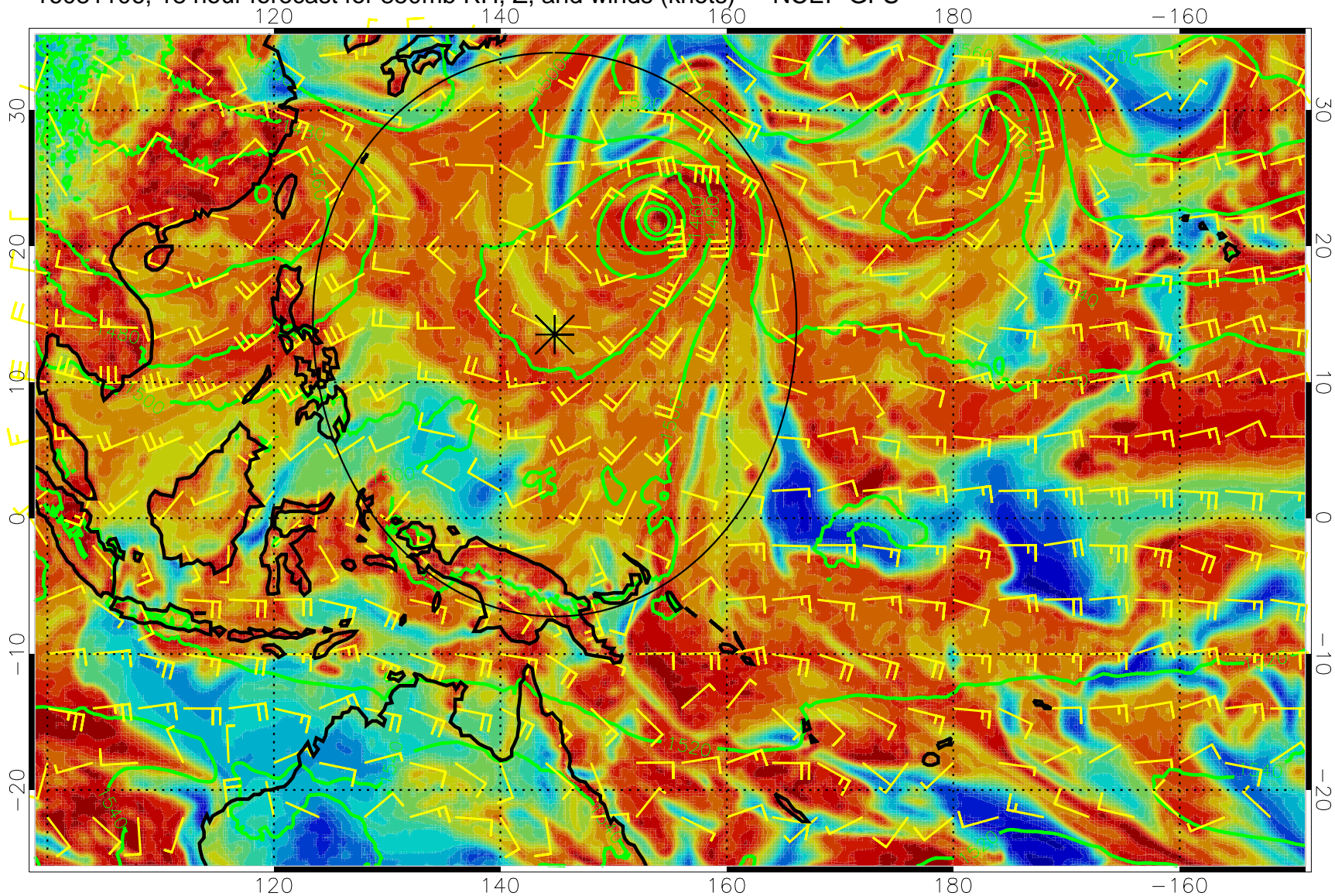


Precip (tot dot, conv sol) mm/day 40 mm/day contours, min 20





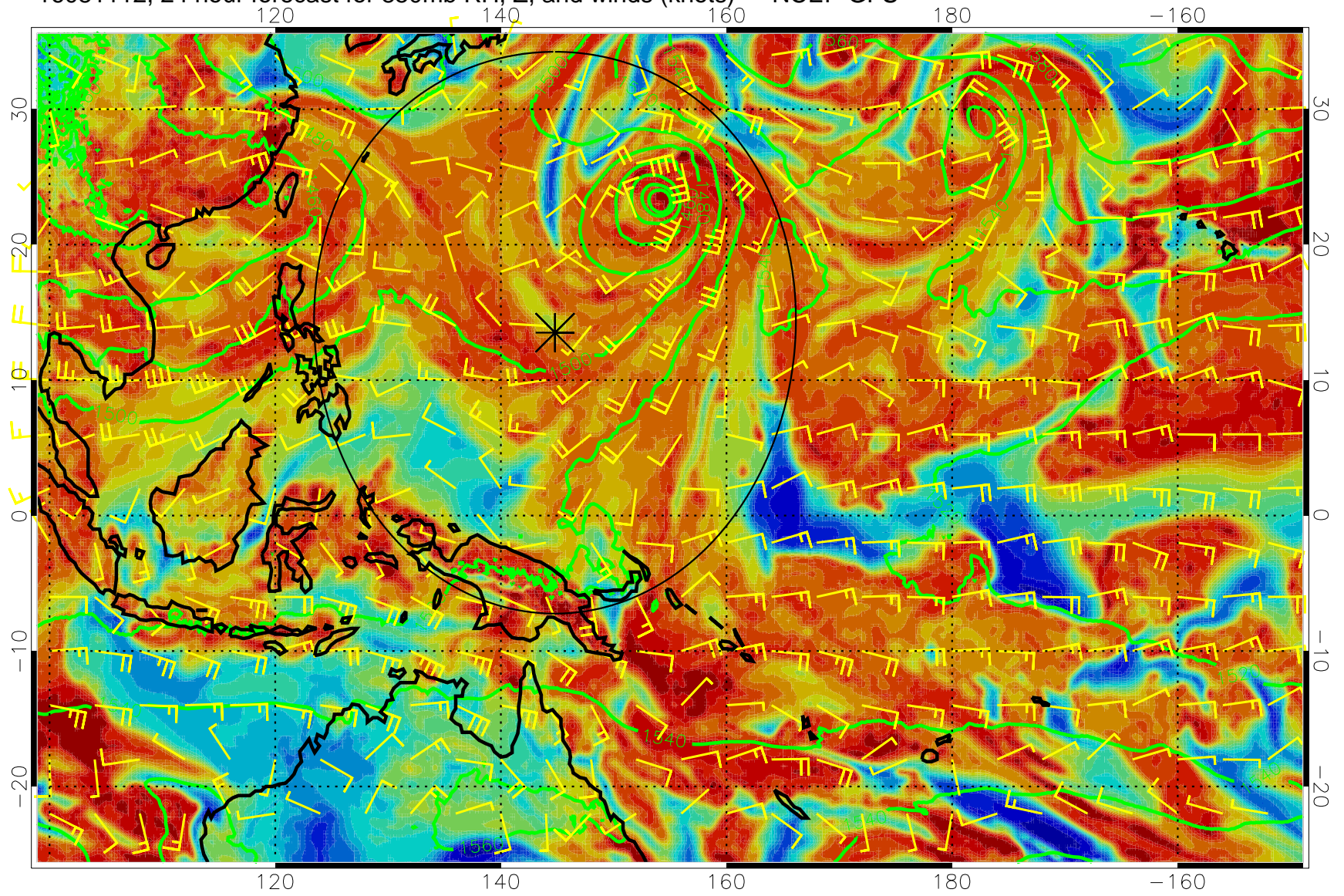
16081106, 18 hour forecast for 850mb RH, Z, and winds (knots) -- NCEP GFS



Precip (tot dot, conv sol) mm/day 40 mm/day contours, min 20



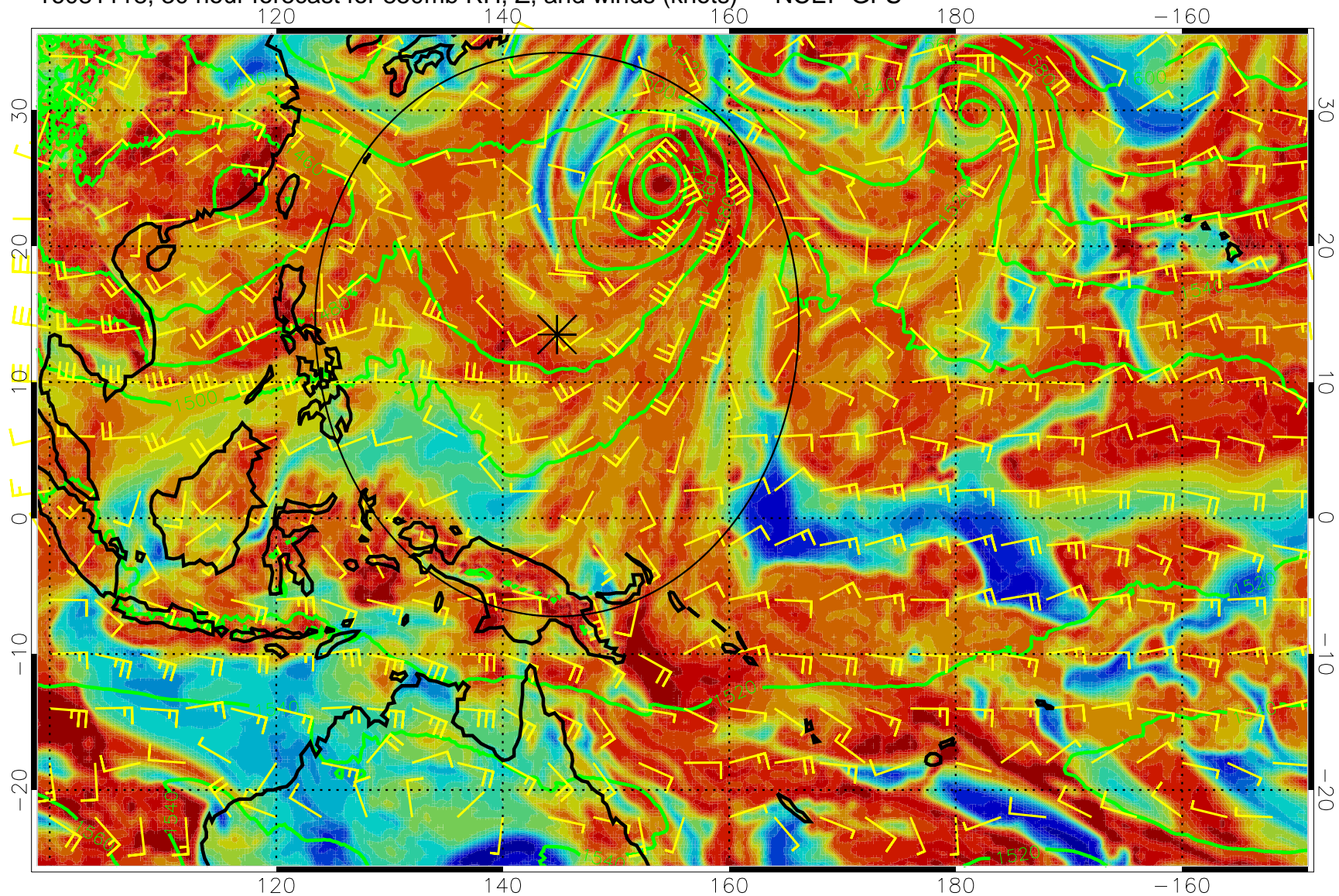
16081112, 24 hour forecast for 850mb RH, Z, and winds (knots) -- NCEP GFS



Precip (tot dot, conv sol) mm/day 40 mm/day contours, min 20



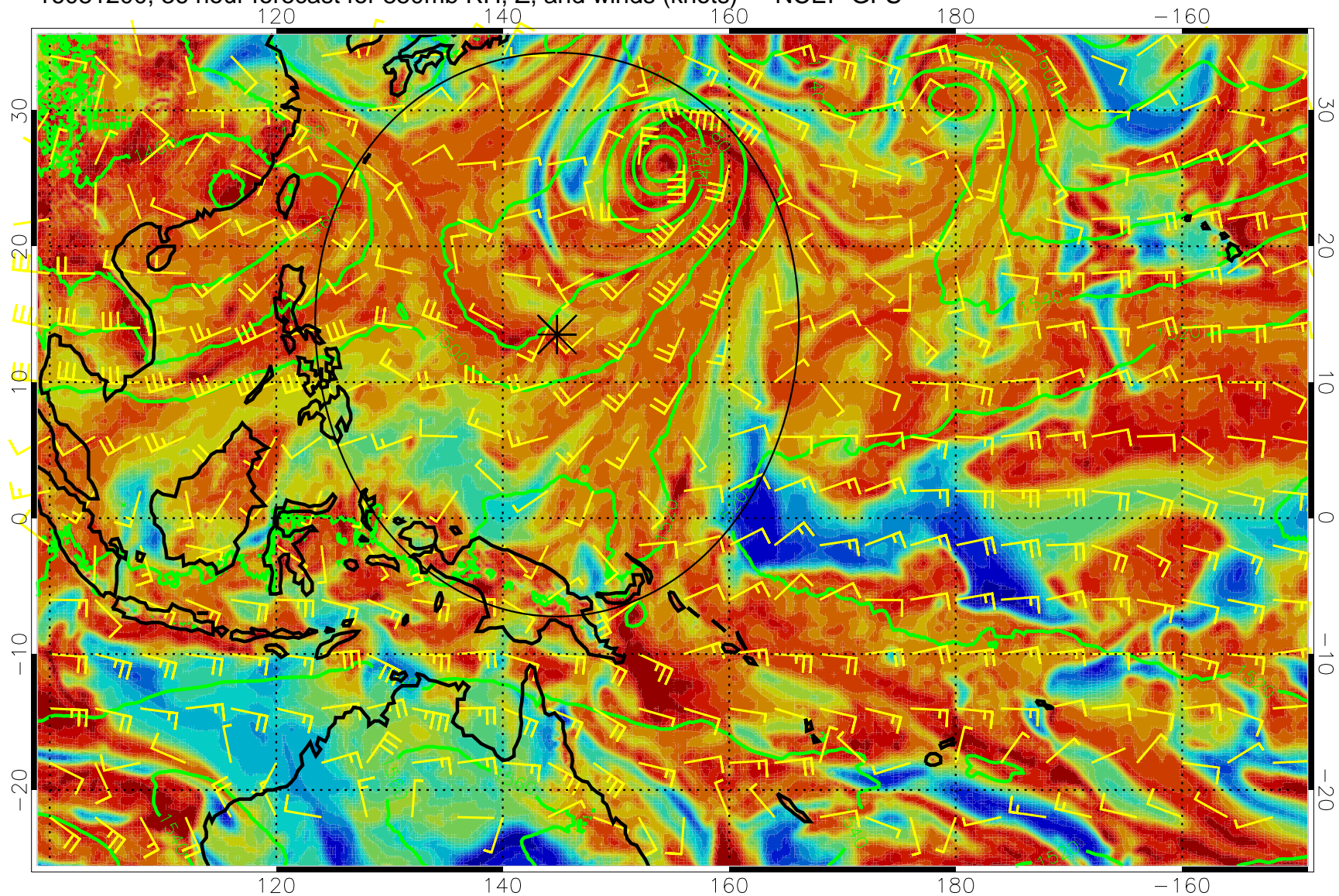
16081118, 30 hour forecast for 850mb RH, Z, and winds (knots) -- NCEP GFS



Precip (tot dot, conv sol) mm/day 40 mm/day contours, min 20



16081200, 36 hour forecast for 850mb RH, Z, and winds (knots) -- NCEP GFS

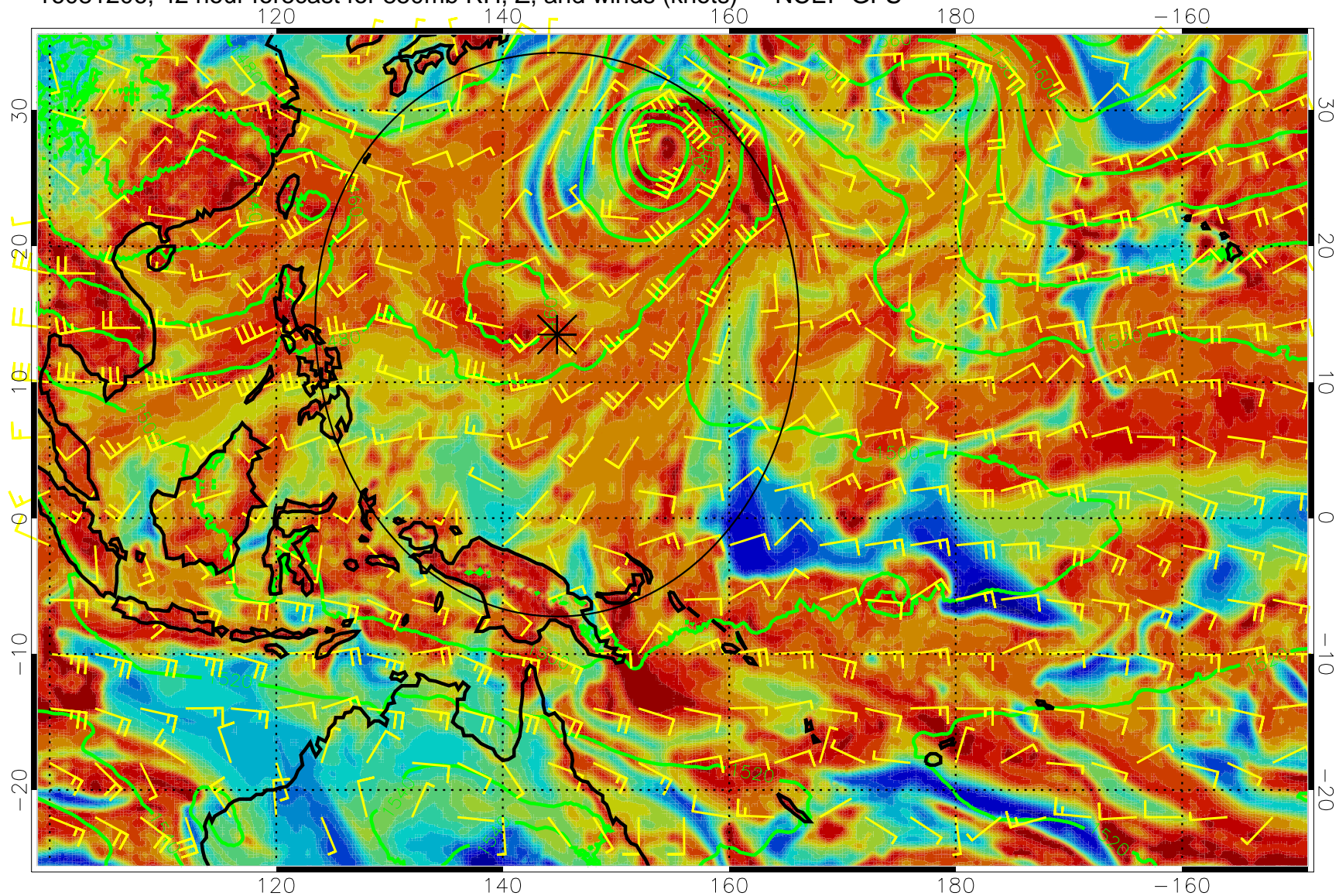


Precip (tot dot, conv sol) mm/day 40 mm/day contours, min 20





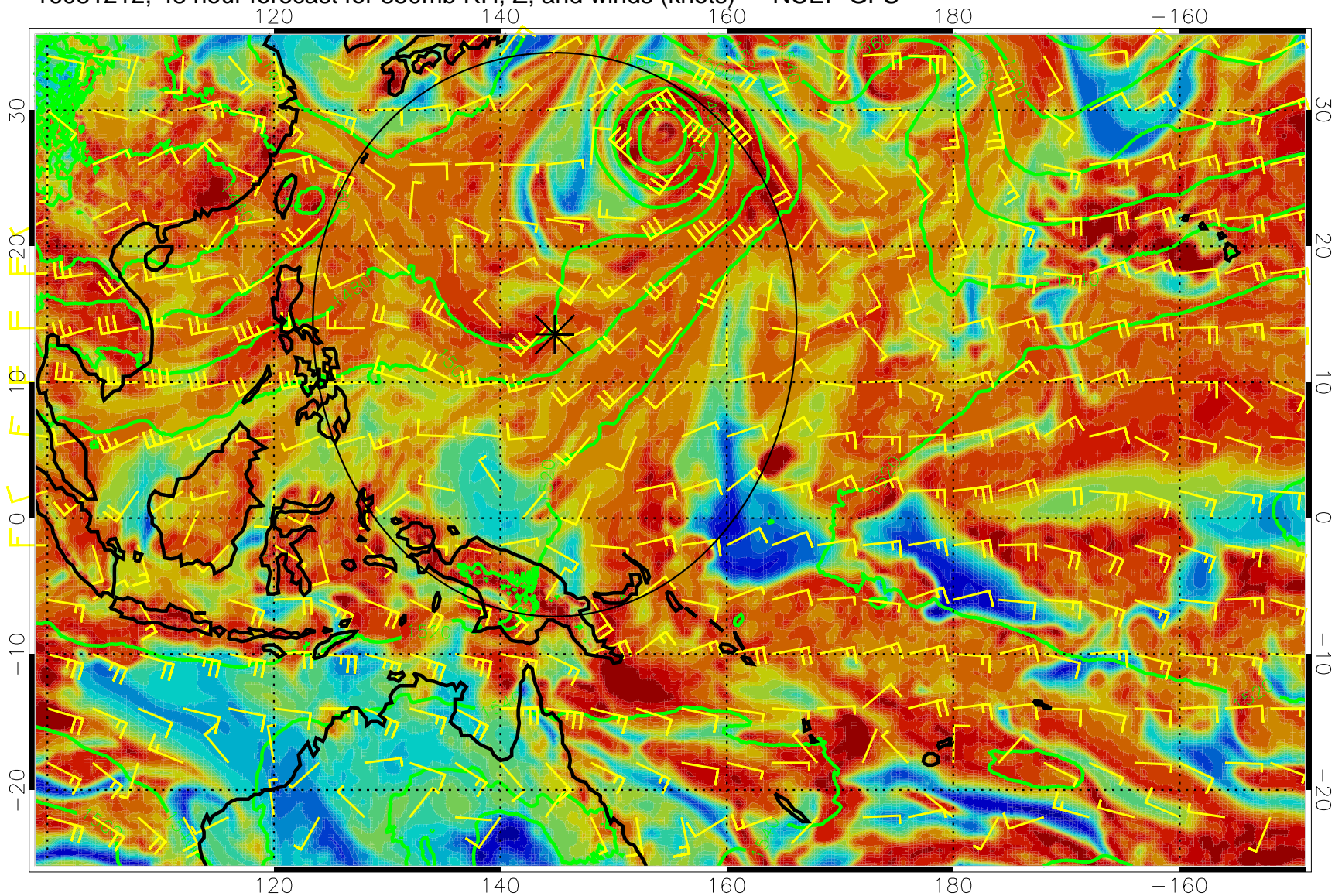
16081206, 42 hour forecast for 850mb RH, Z, and winds (knots) -- NCEP GFS



Precip (tot dot, conv sol) mm/day 40 mm/day contours, min 20



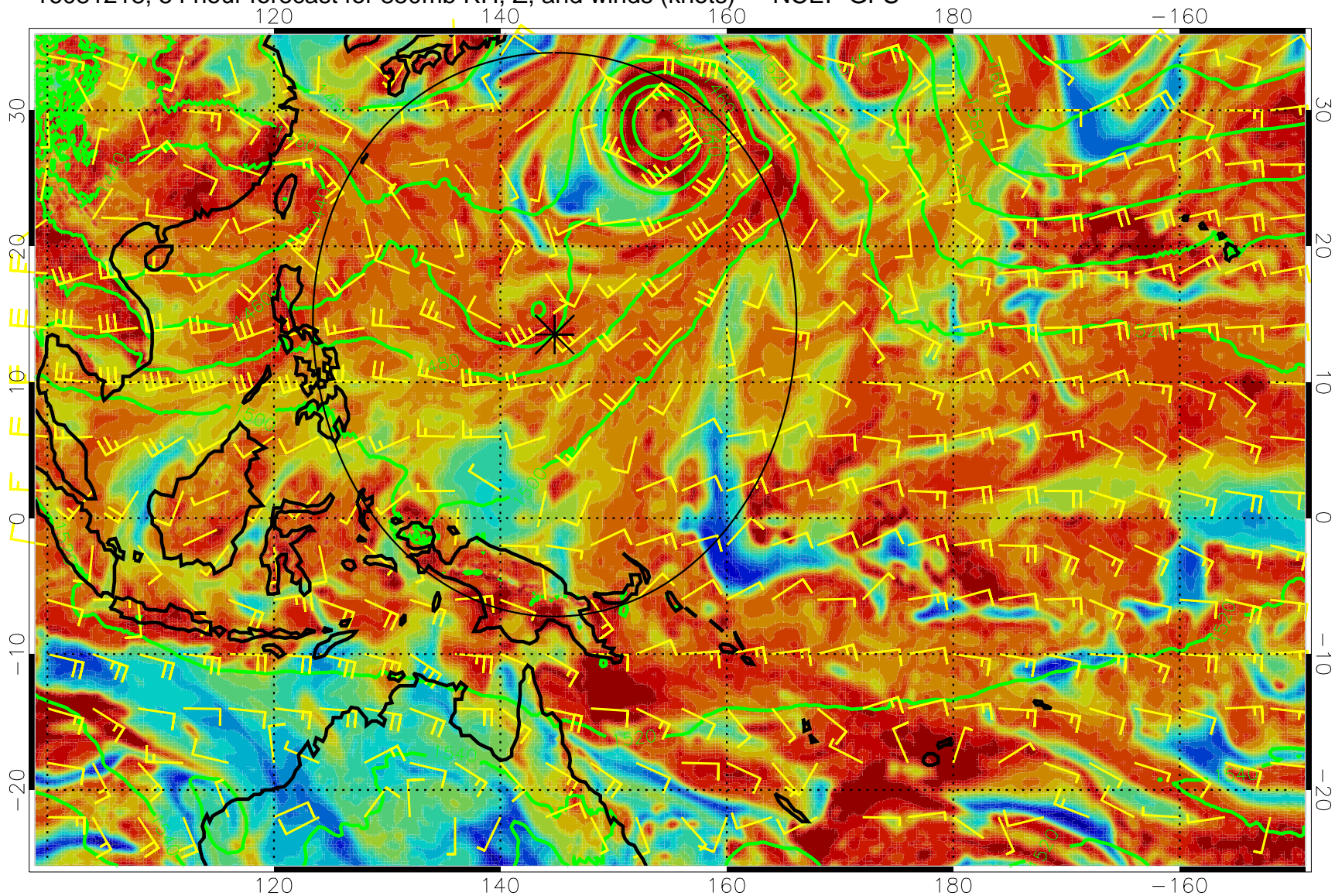
16081212, 48 hour forecast for 850mb RH, Z, and winds (knots) -- NCEP GFS



Precip (tot dot, conv sol) mm/day 40 mm/day contours, min 20



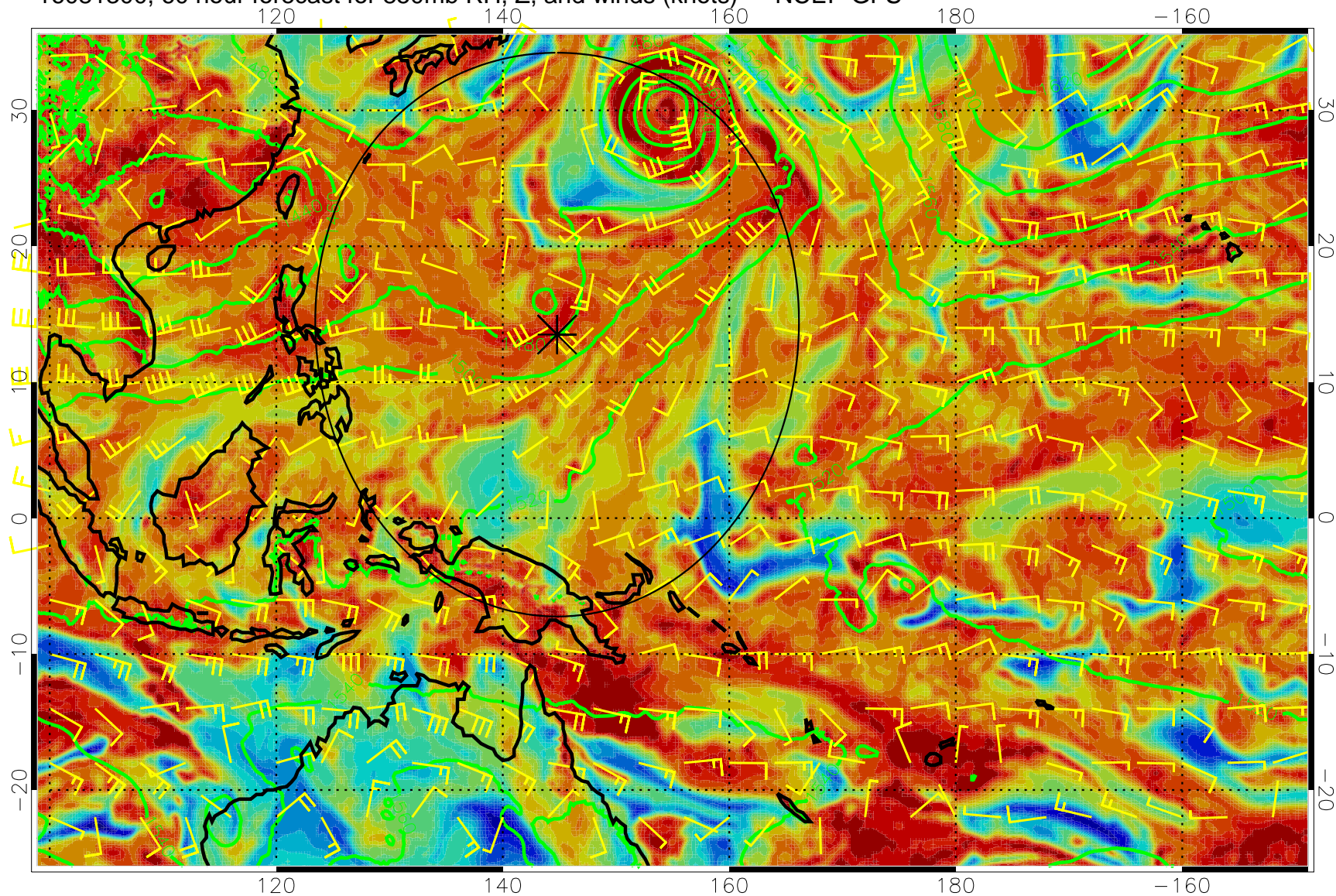
16081218, 54 hour forecast for 850mb RH, Z, and winds (knots) -- NCEP GFS



Precip (tot dot, conv sol) mm/day 40 mm/day contours, min 20



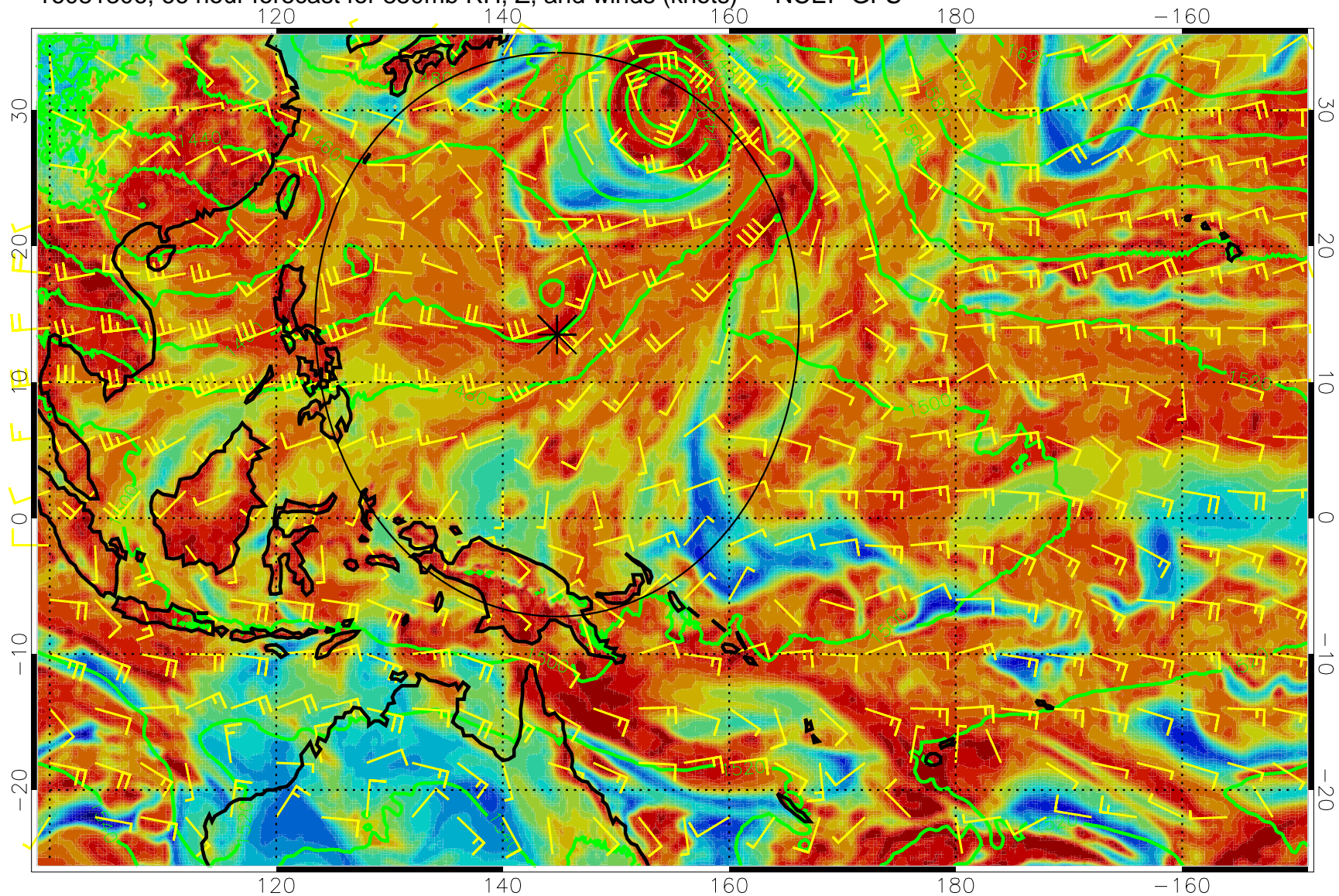
16081300, 60 hour forecast for 850mb RH, Z, and winds (knots) -- NCEP GFS



Precip (tot dot, conv sol) mm/day 40 mm/day contours, min 20



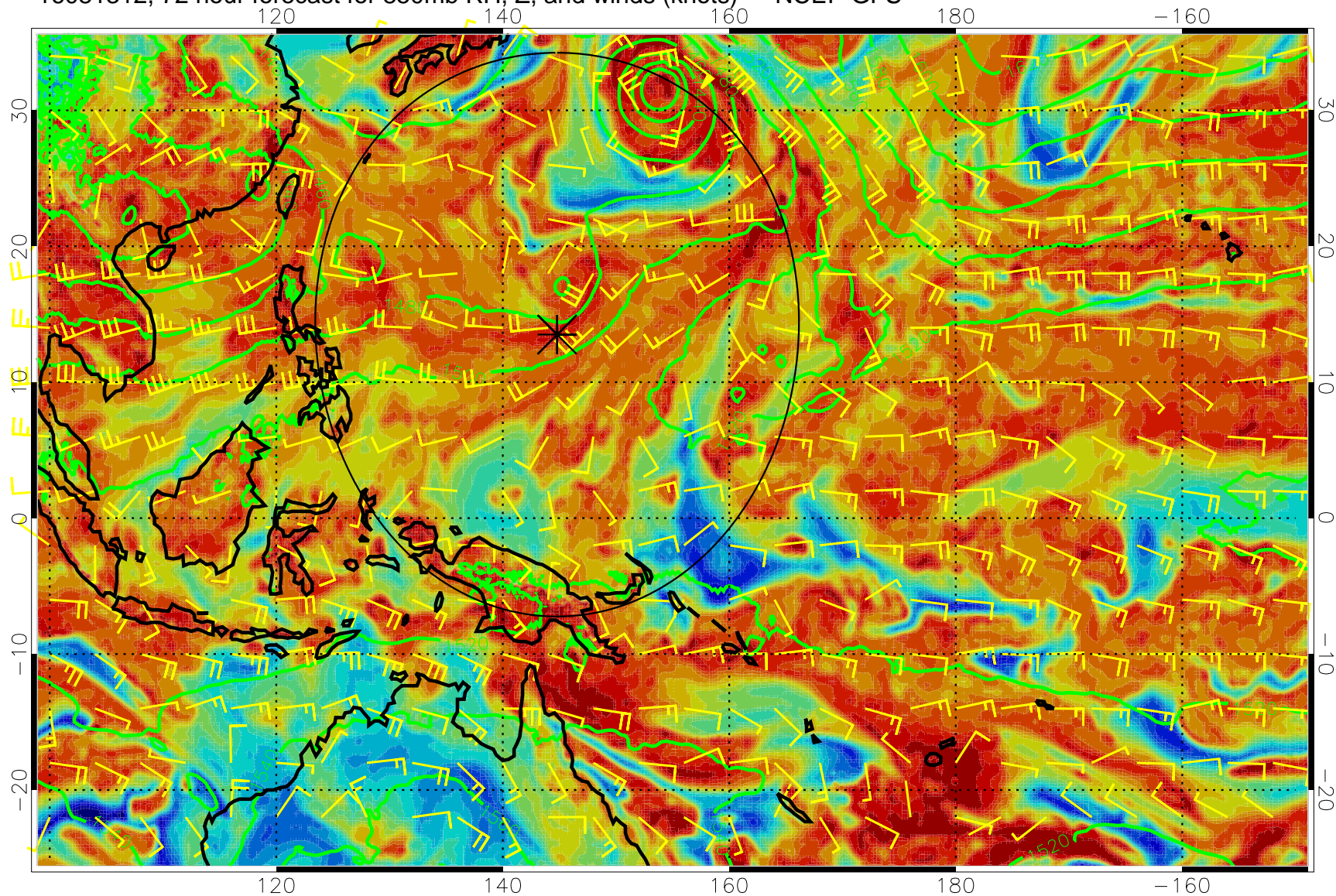
16081306, 66 hour forecast for 850mb RH, Z, and winds (knots) -- NCEP GFS



Precip (tot dot, conv sol) mm/day 40 mm/day contours, min 20



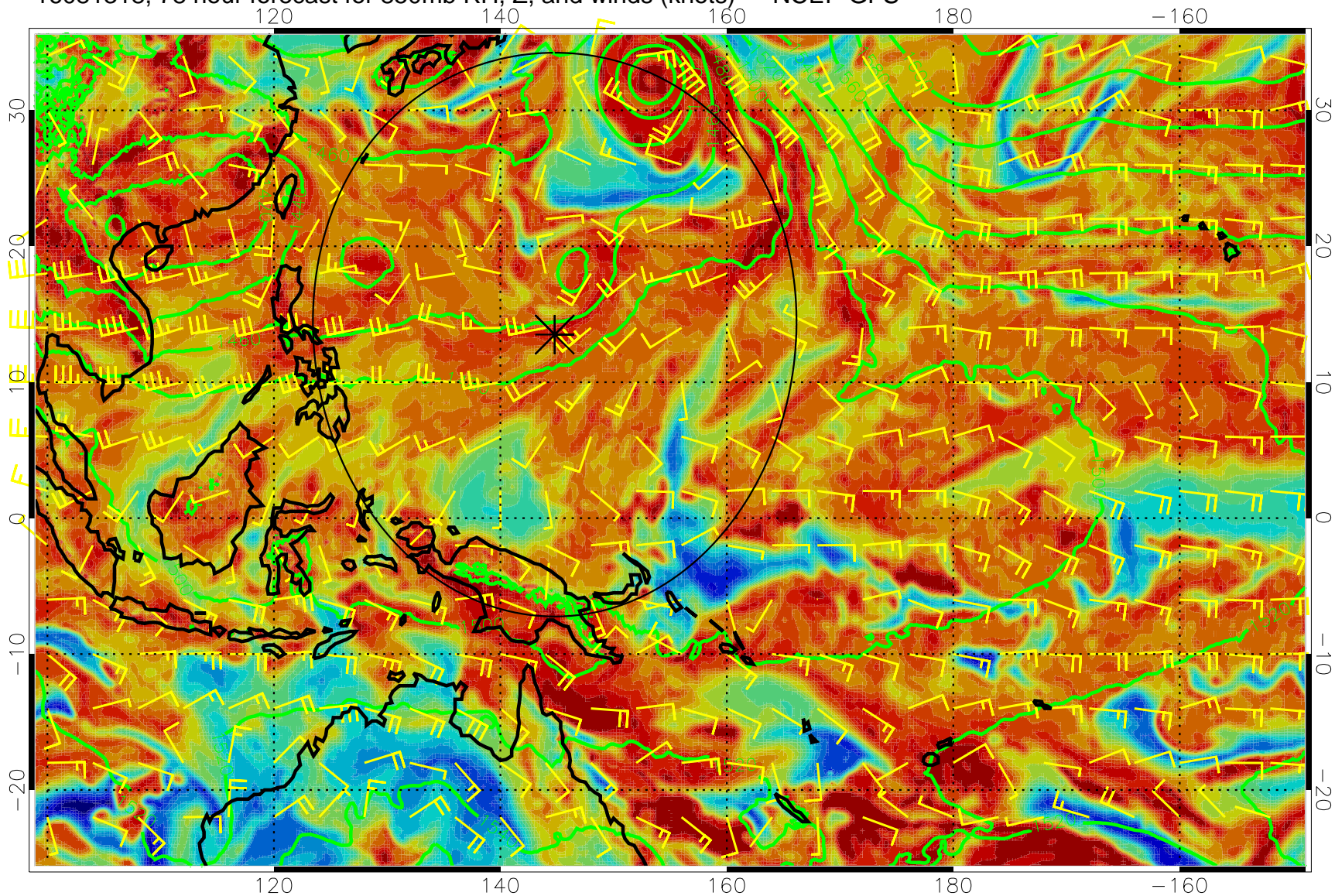
16081312, 72 hour forecast for 850mb RH, Z, and winds (knots) -- NCEP GFS



Precip (tot dot, conv sol) mm/day 40 mm/day contours, min 20



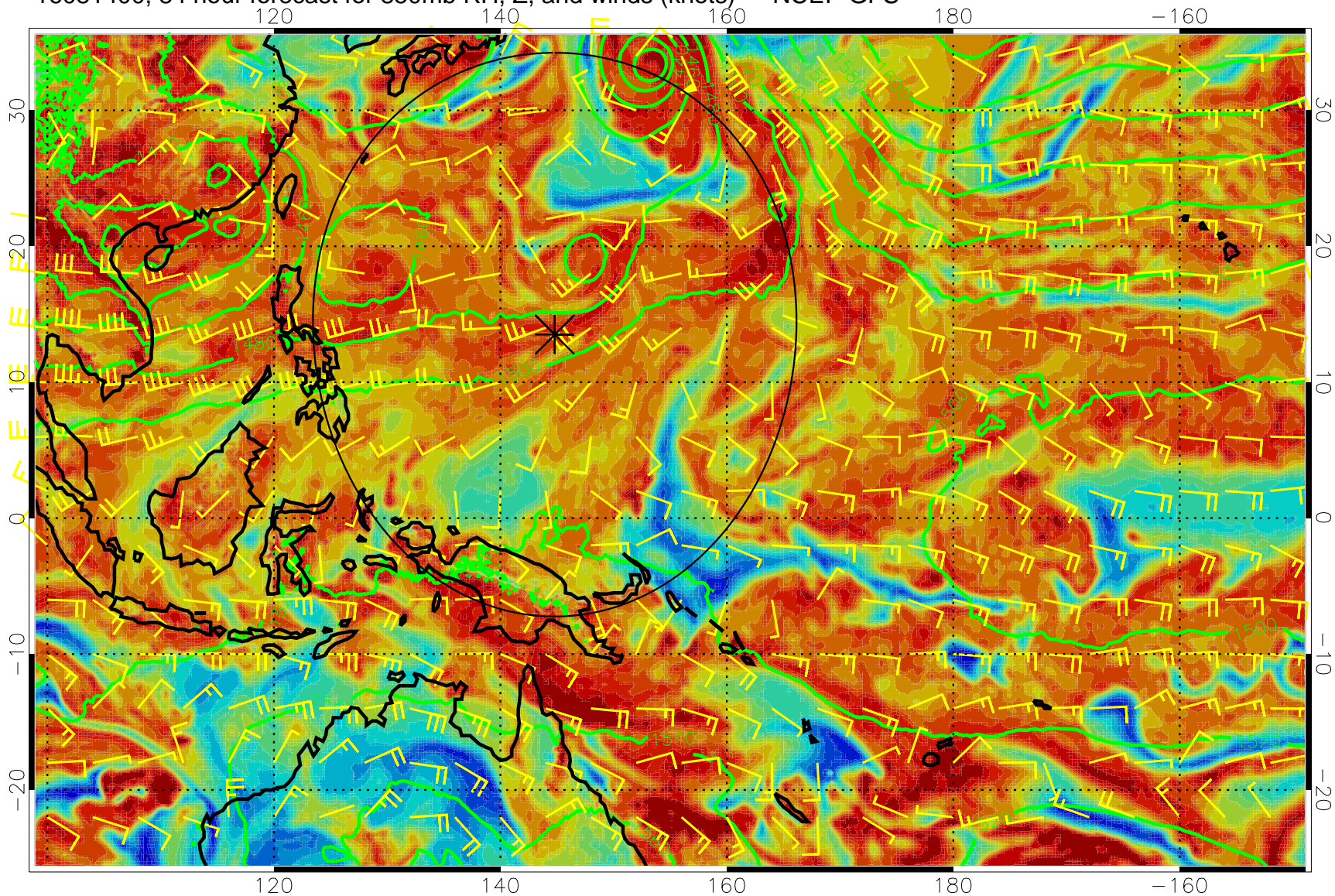
16081318, 78 hour forecast for 850mb RH, Z, and winds (knots) -- NCEP GFS



Precip (tot dot, conv sol) mm/day 40 mm/day contours, min 20



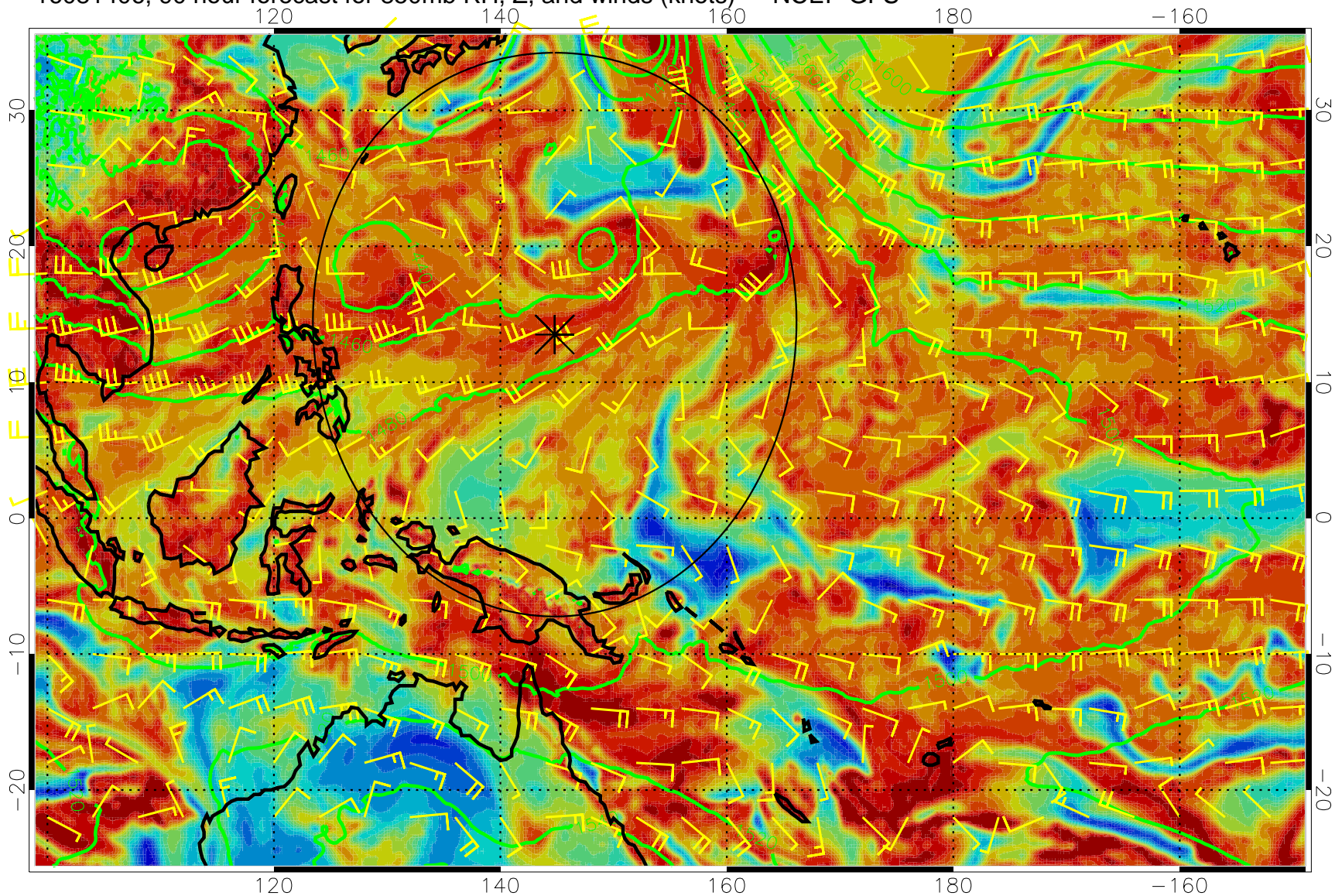
16081400, 84 hour forecast for 850mb RH, Z, and winds (knots) -- NCEP GFS



Precip (tot dot, conv sol) mm/day 40 mm/day contours, min 20



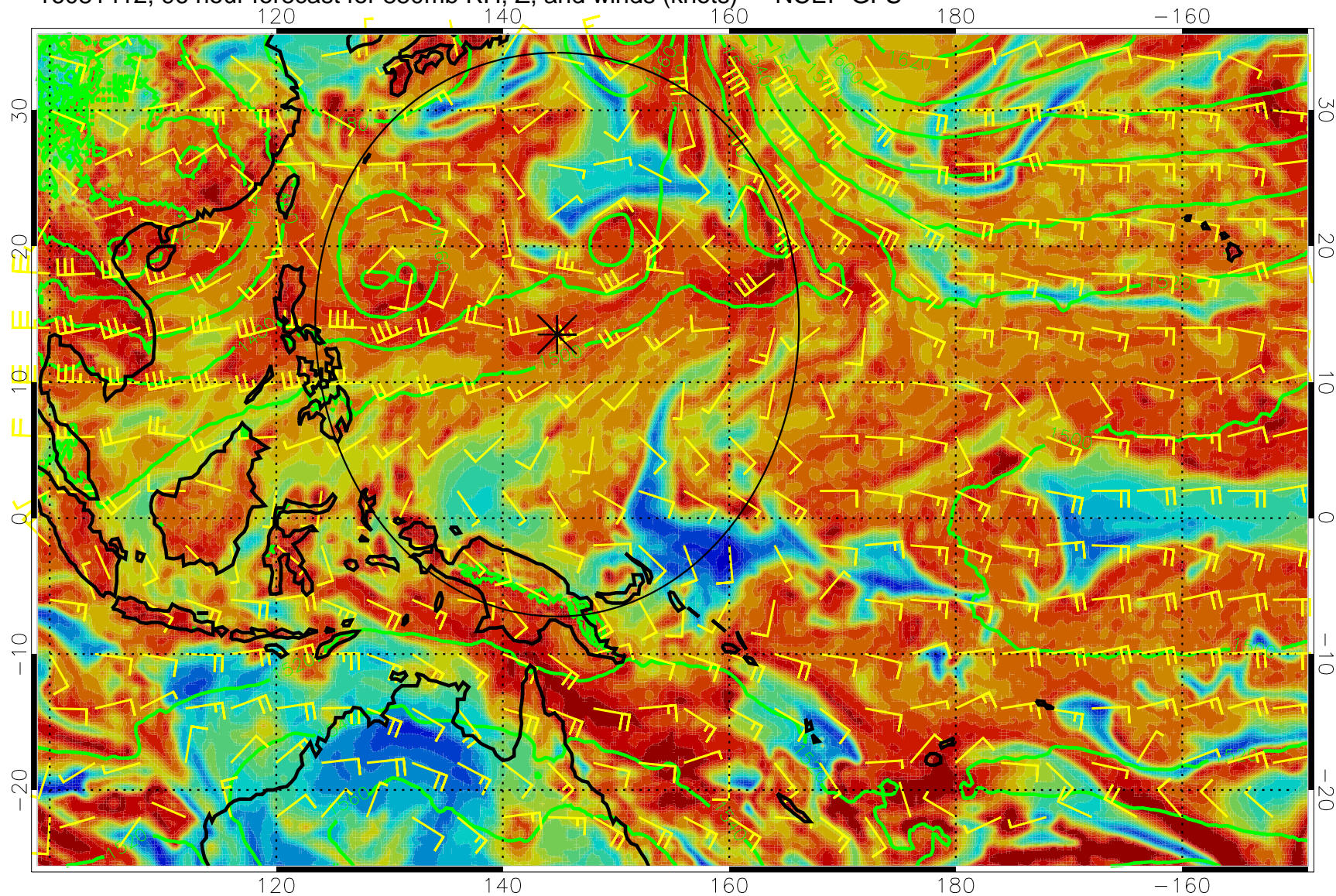
16081406, 90 hour forecast for 850mb RH, Z, and winds (knots) -- NCEP GFS



Precip (tot dot, conv sol) mm/day 40 mm/day contours, min 20



16081412, 96 hour forecast for 850mb RH, Z, and winds (knots) -- NCEP GFS

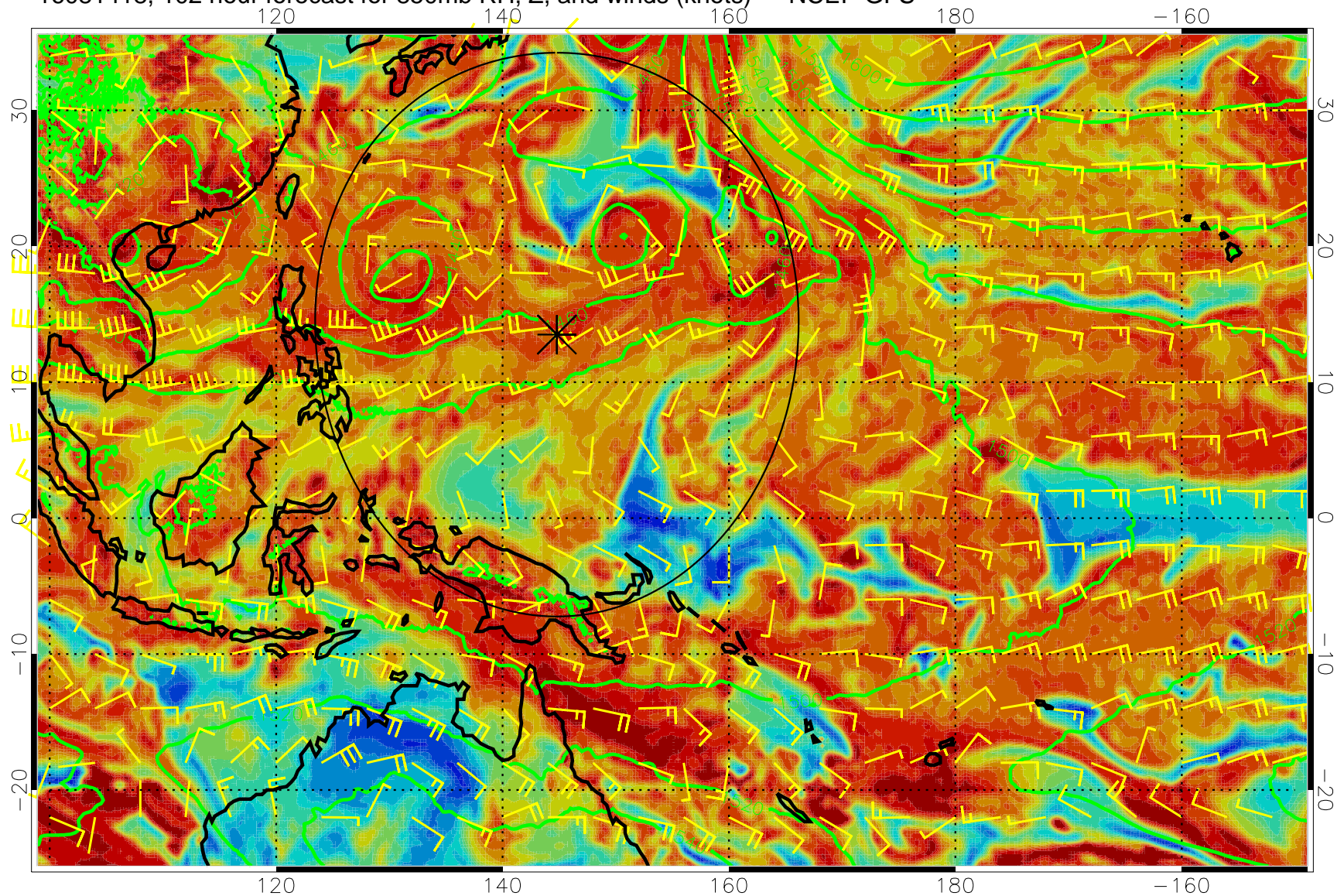


Precip (tot dot, conv sol) mm/day 40 mm/day contours, min 20





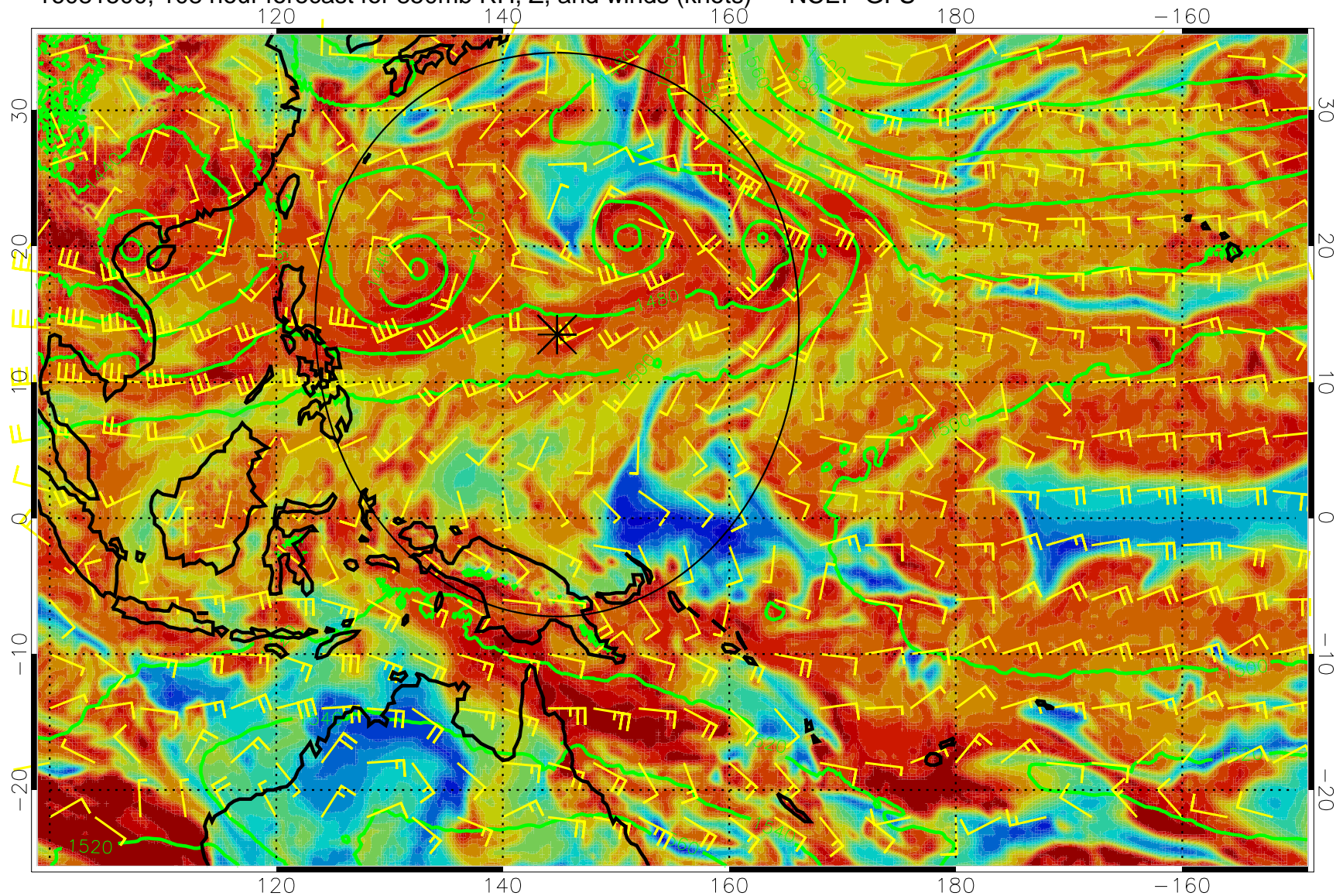
16081418, 102 hour forecast for 850mb RH, Z, and winds (knots) -- NCEP GFS



Precip (tot dot, conv sol) mm/day 40 mm/day contours, min 20



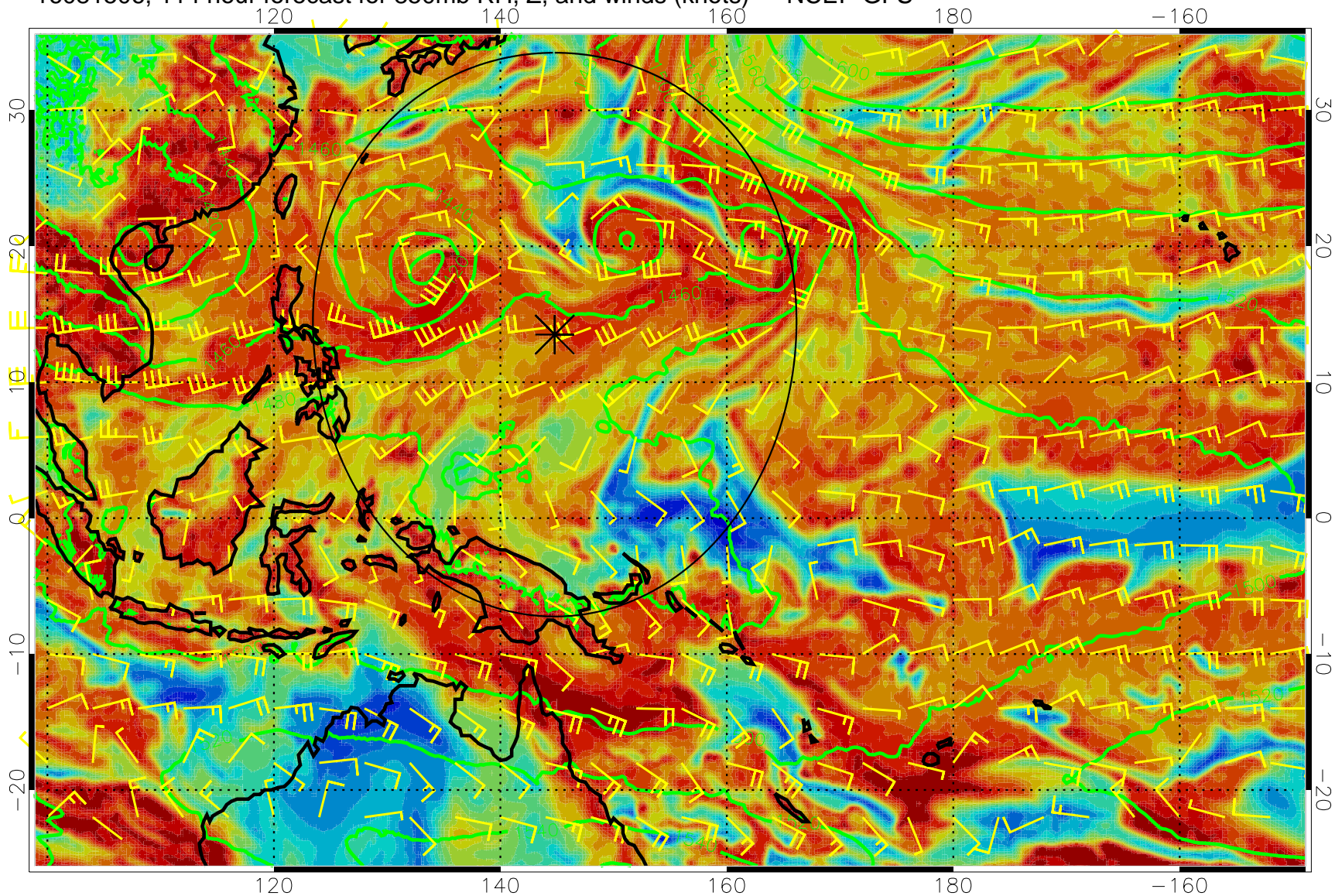
16081500, 108 hour forecast for 850mb RH, Z, and winds (knots) -- NCEP GFS



Precip (tot dot, conv sol) mm/day 40 mm/day contours, min 20



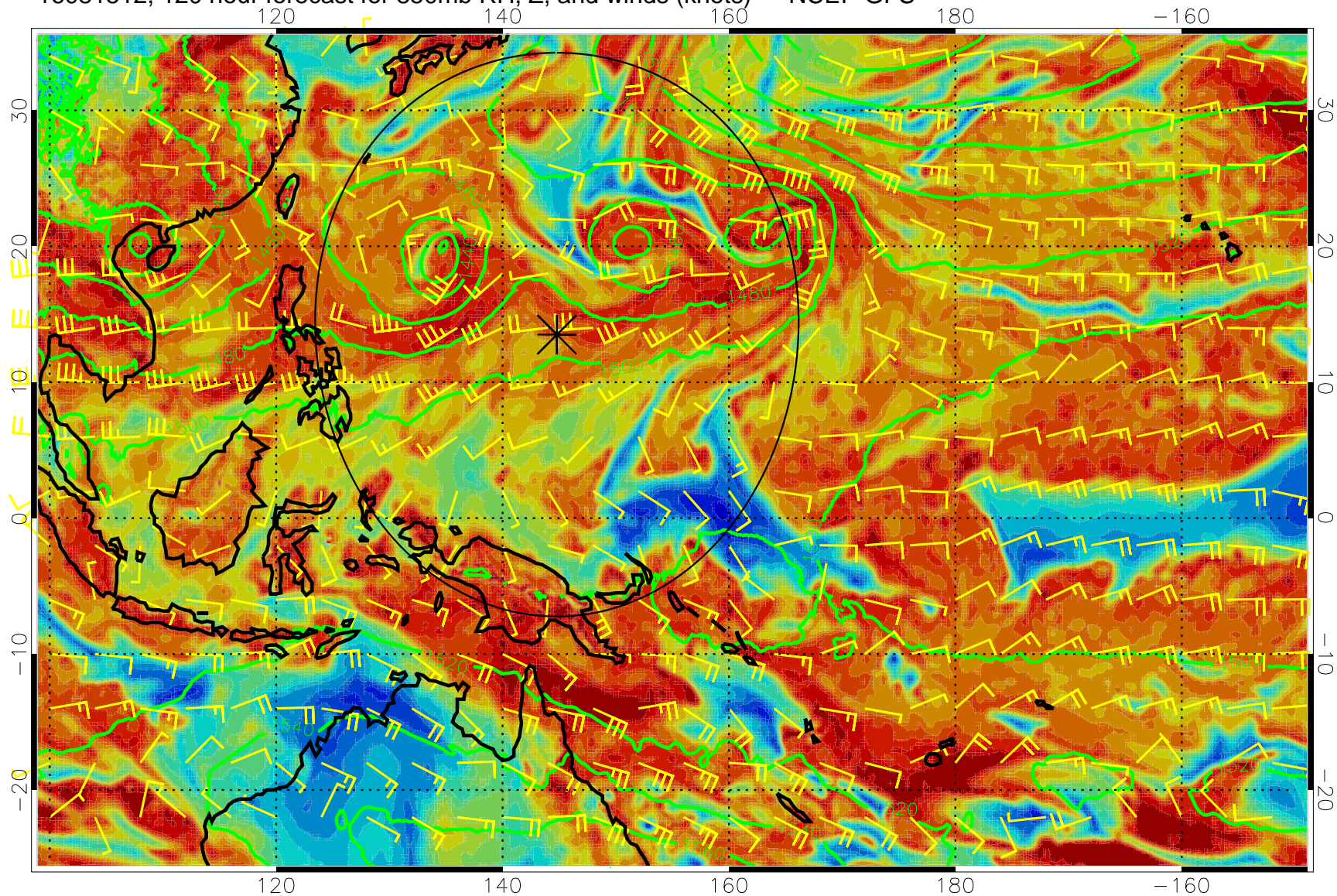
16081506, 114 hour forecast for 850mb RH, Z, and winds (knots) -- NCEP GFS



Precip (tot dot, conv sol) mm/day 40 mm/day contours, min 20



16081512, 120 hour forecast for 850mb RH, Z, and winds (knots) -- NCEP GFS



Precip (tot dot, conv sol) mm/day 40 mm/day contours, min 20