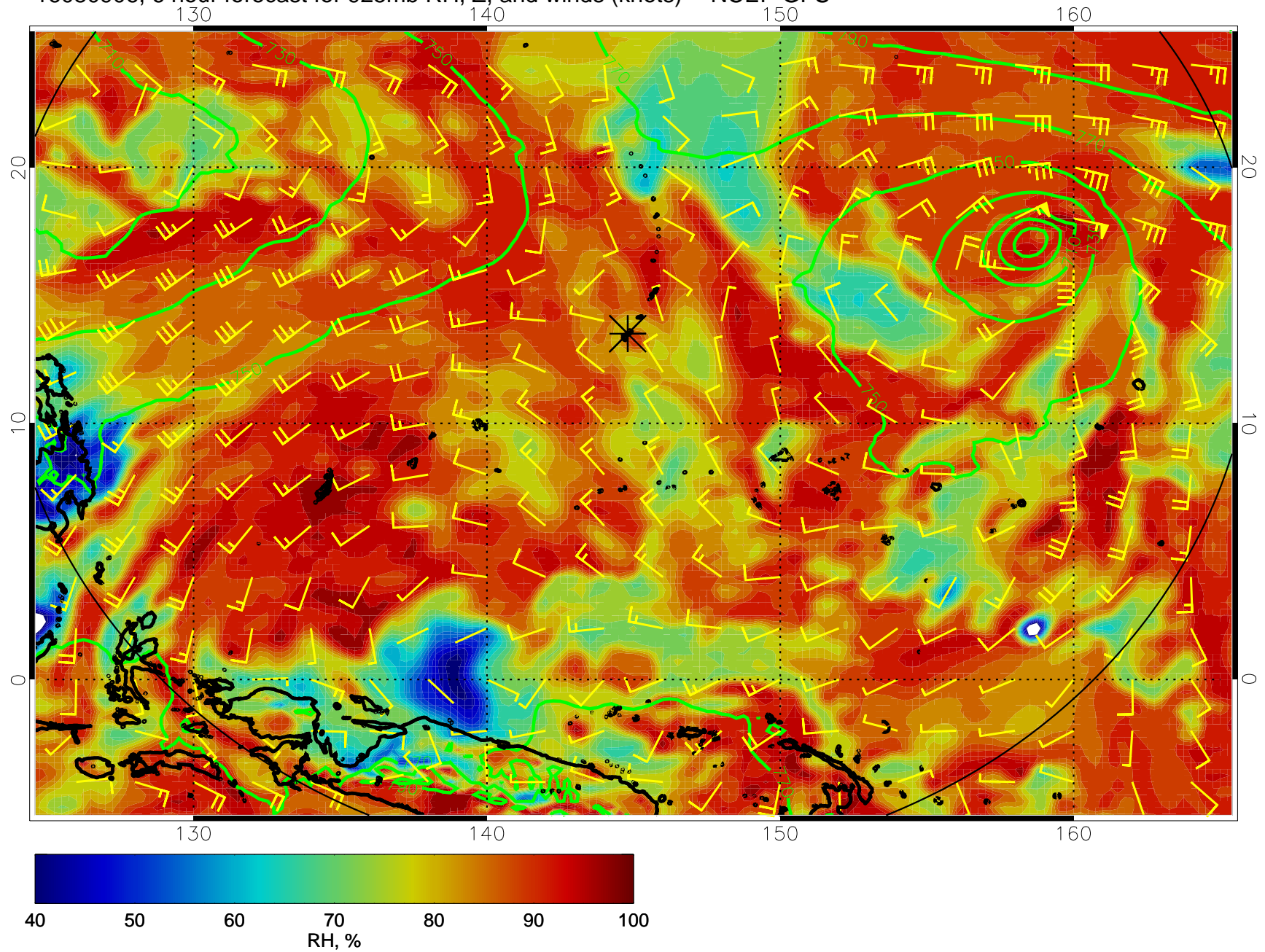
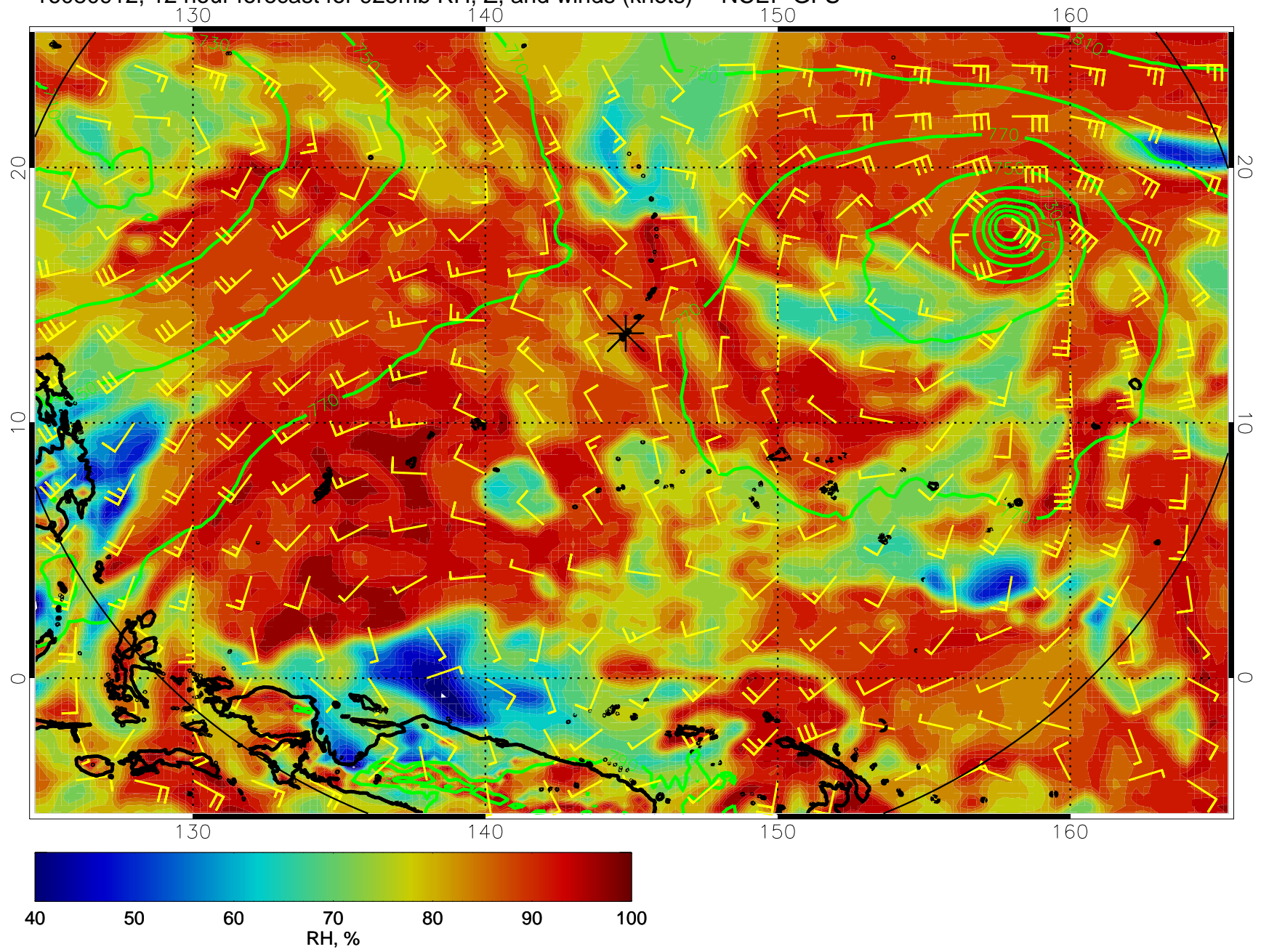


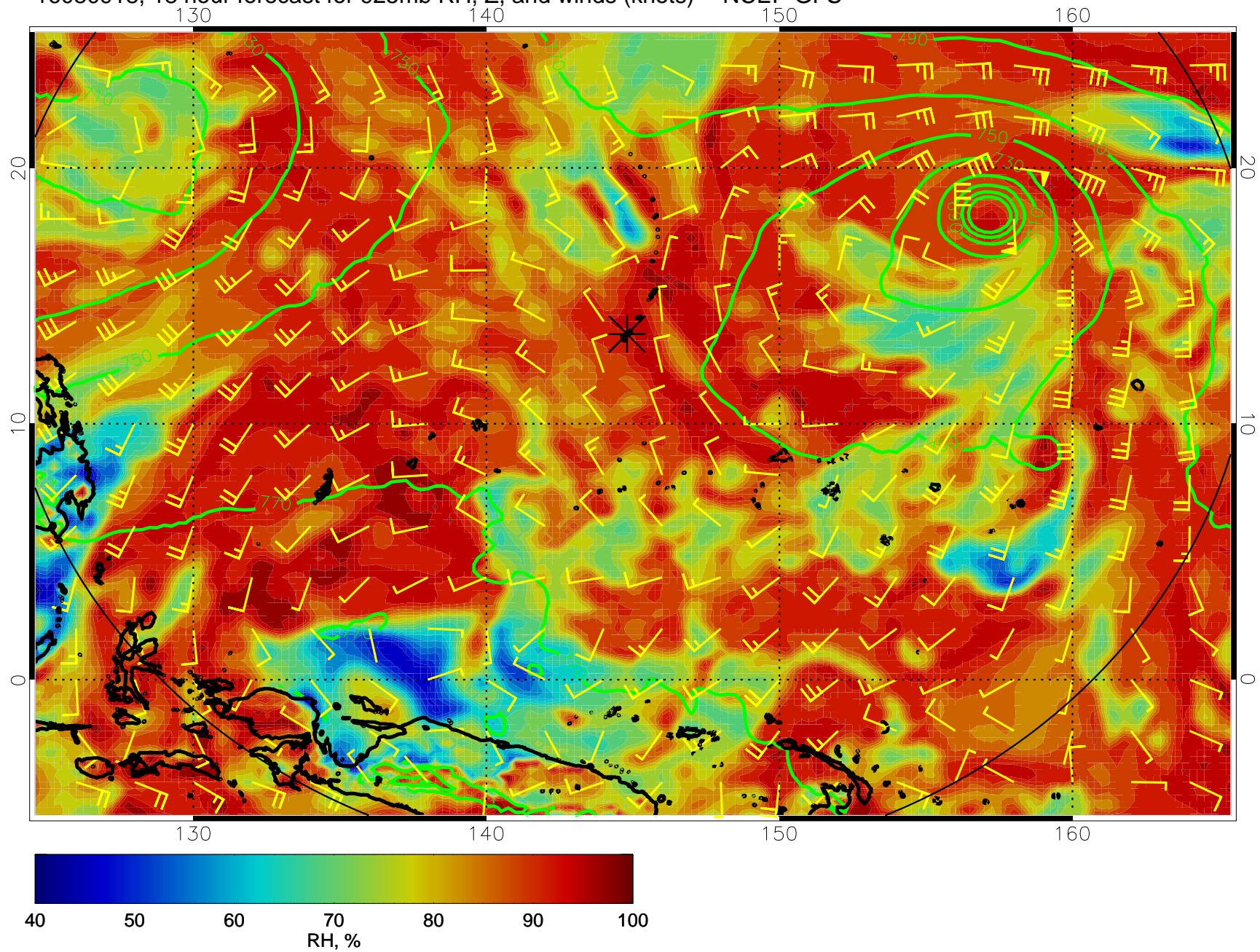
16080906, 6 hour forecast for 925mb RH, Z, and winds (knots) -- NCEP GFS



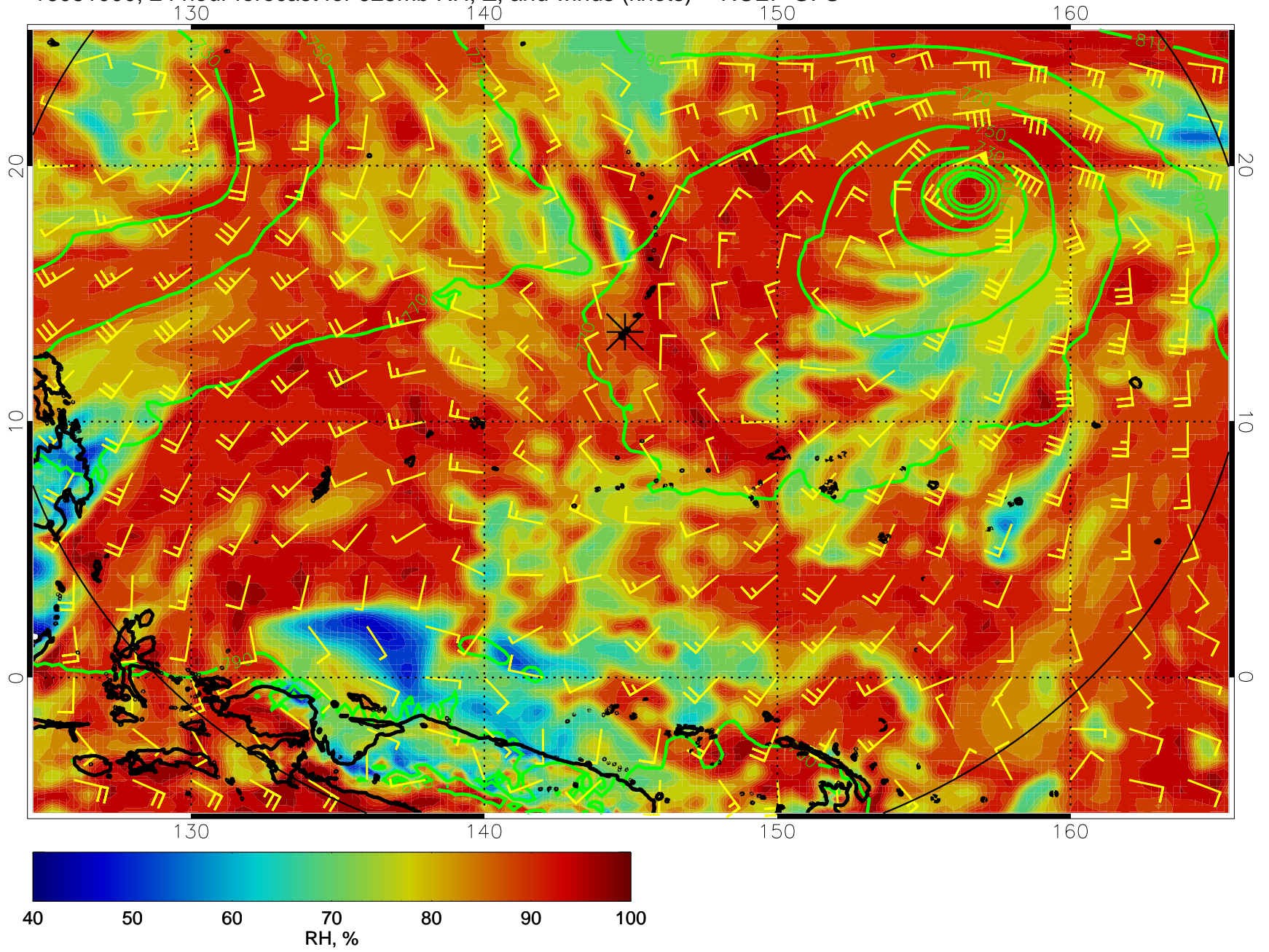
16080912, 12 hour forecast for 925mb RH, Z, and winds (knots) -- NCEP GFS



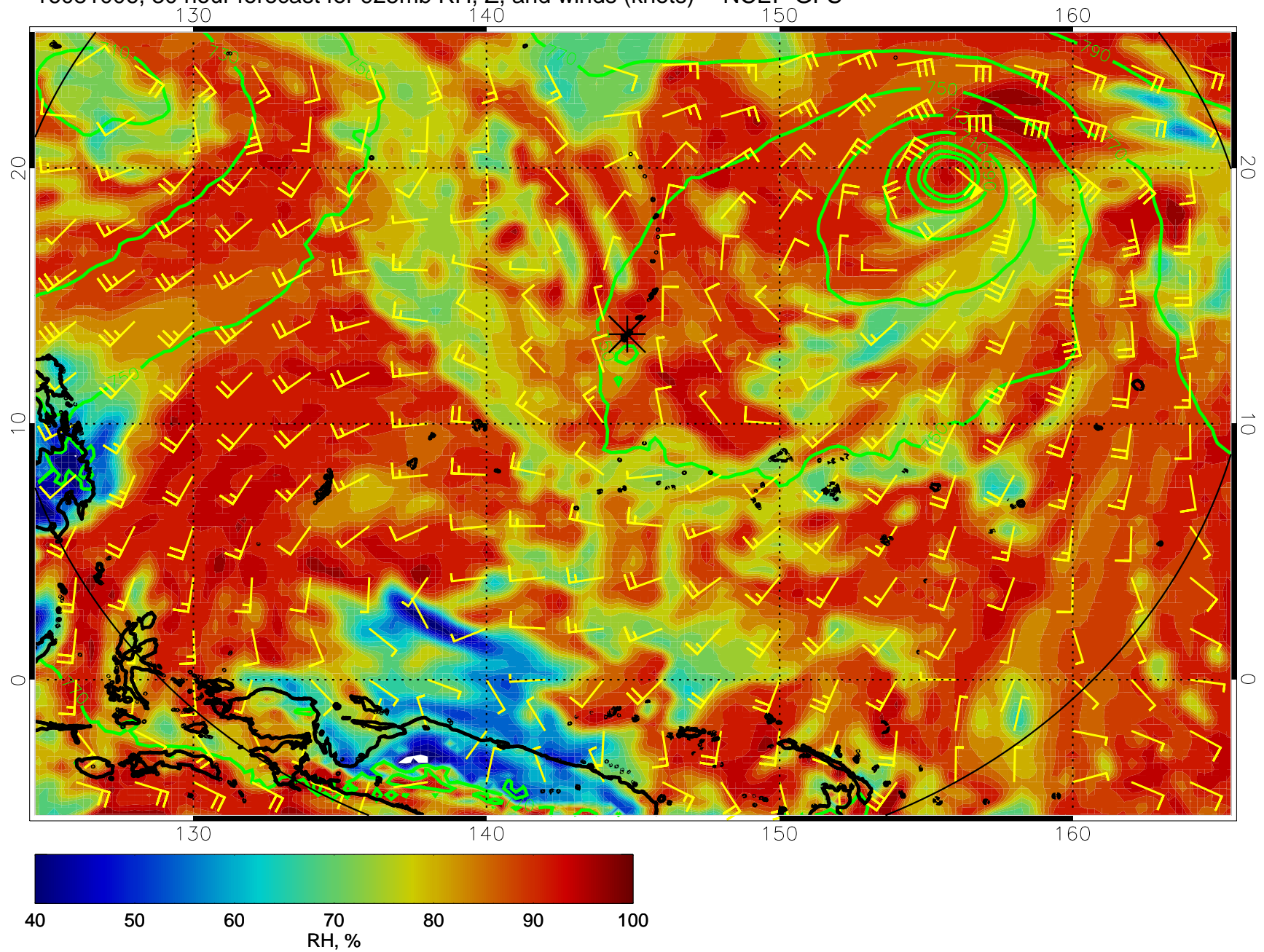
16080918, 18 hour forecast for 925mb RH, Z, and winds (knots) -- NCEP GFS



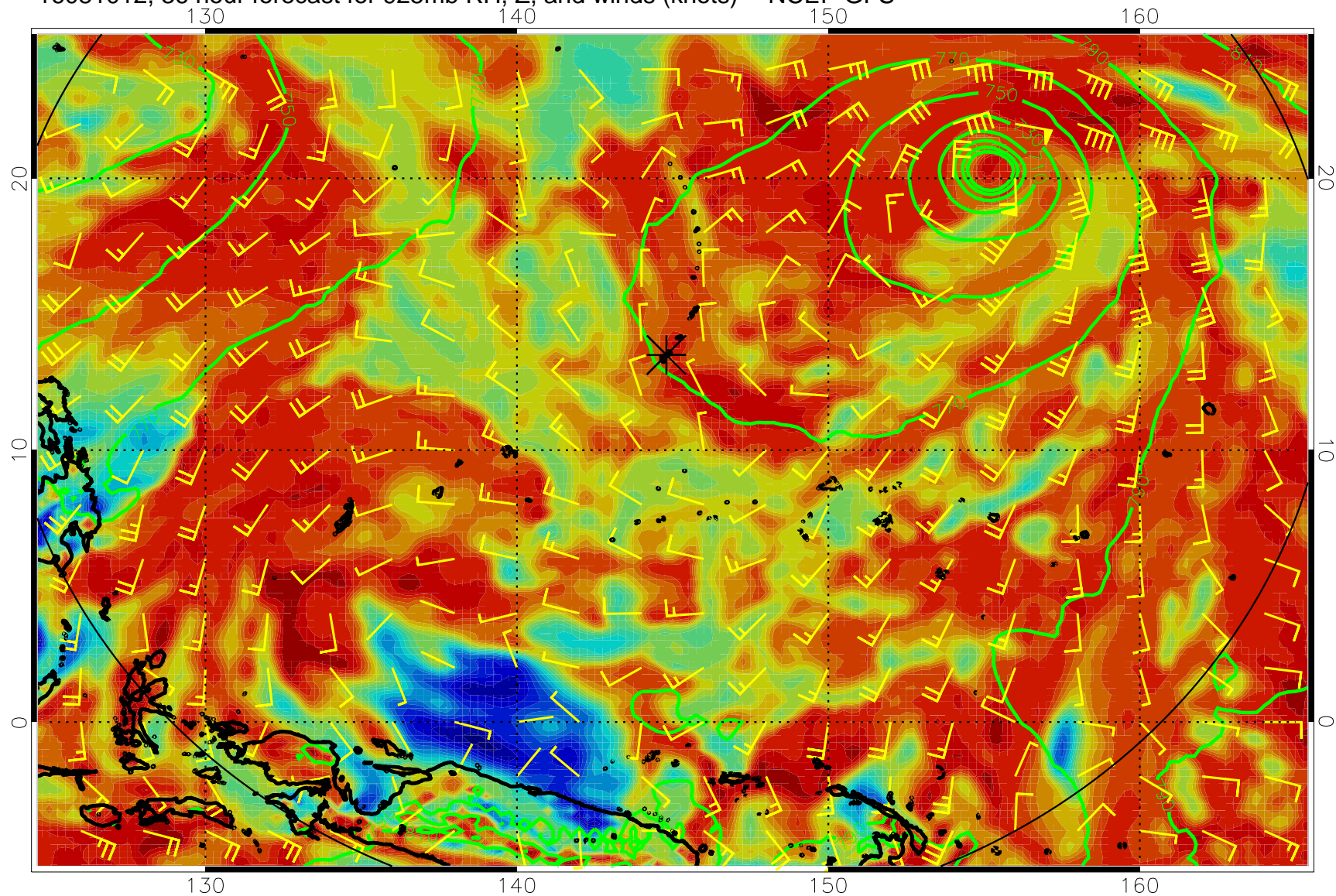
16081000, 24 hour forecast for 925mb RH, Z, and winds (knots) -- NCEP GFS



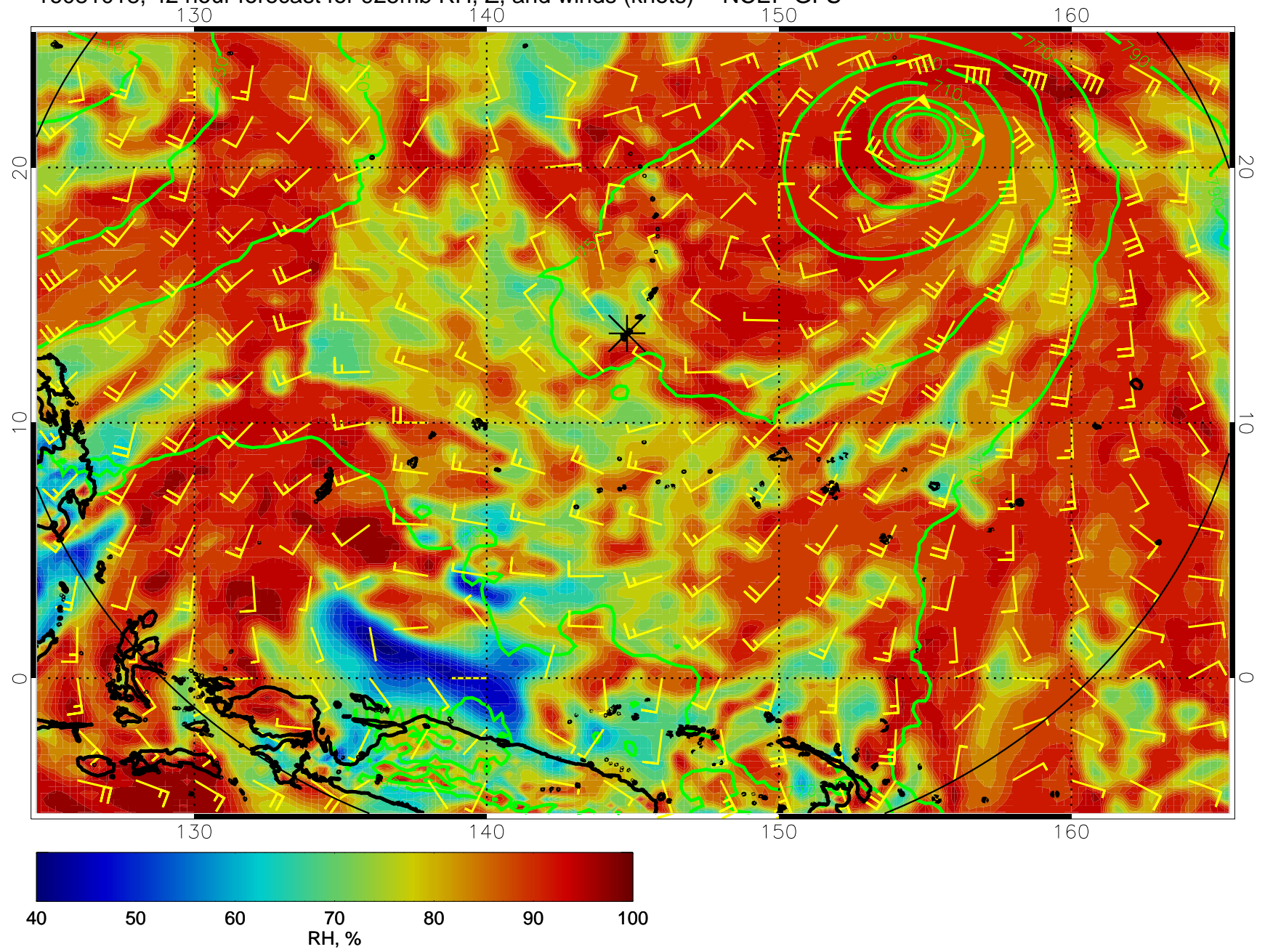
16081006, 30 hour forecast for 925mb RH, Z, and winds (knots) -- NCEP GFS



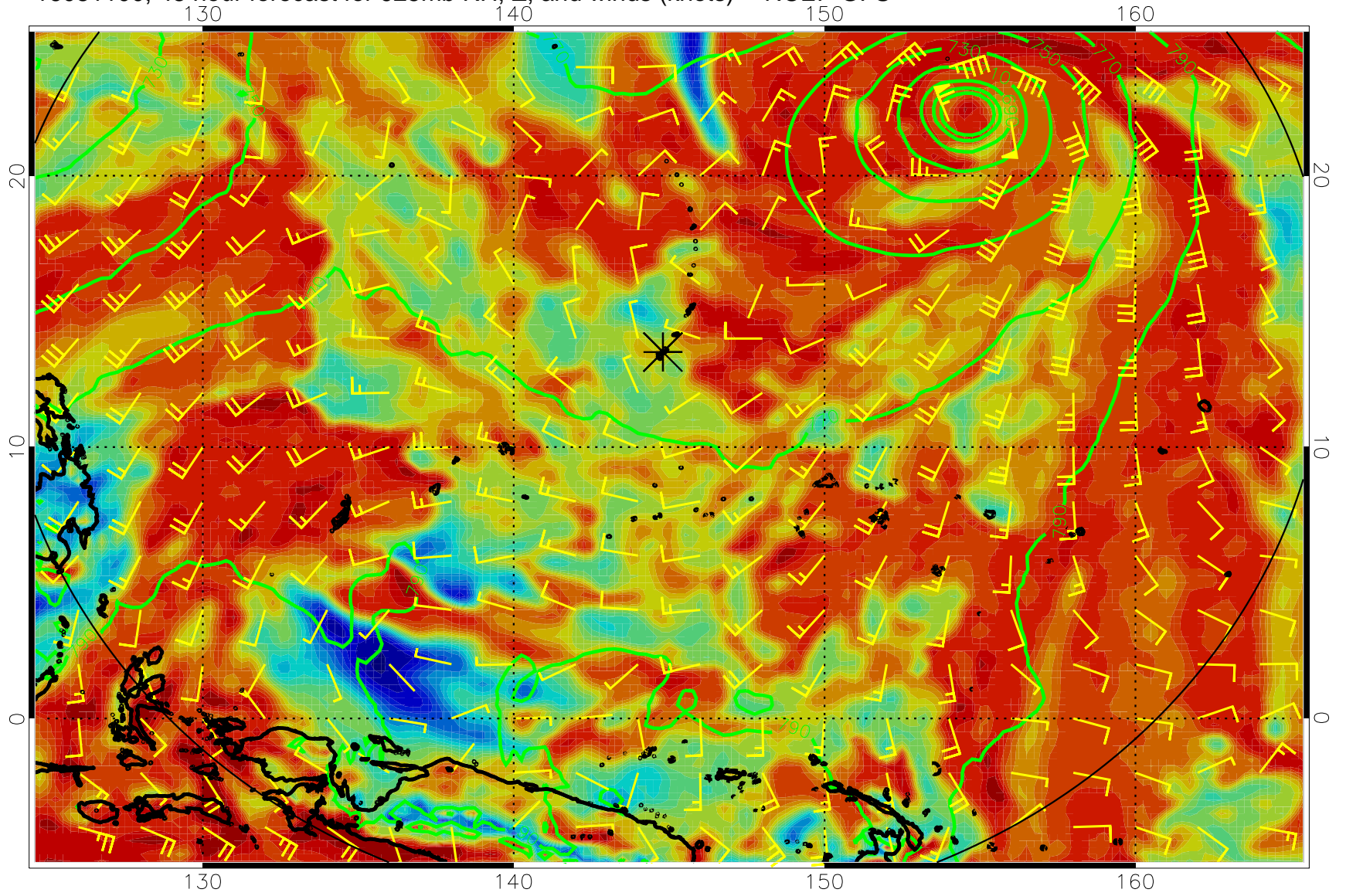
16081012, 36 hour forecast for 925mb RH, Z, and winds (knots) -- NCEP GFS



16081018, 42 hour forecast for 925mb RH, Z, and winds (knots) -- NCEP GFS

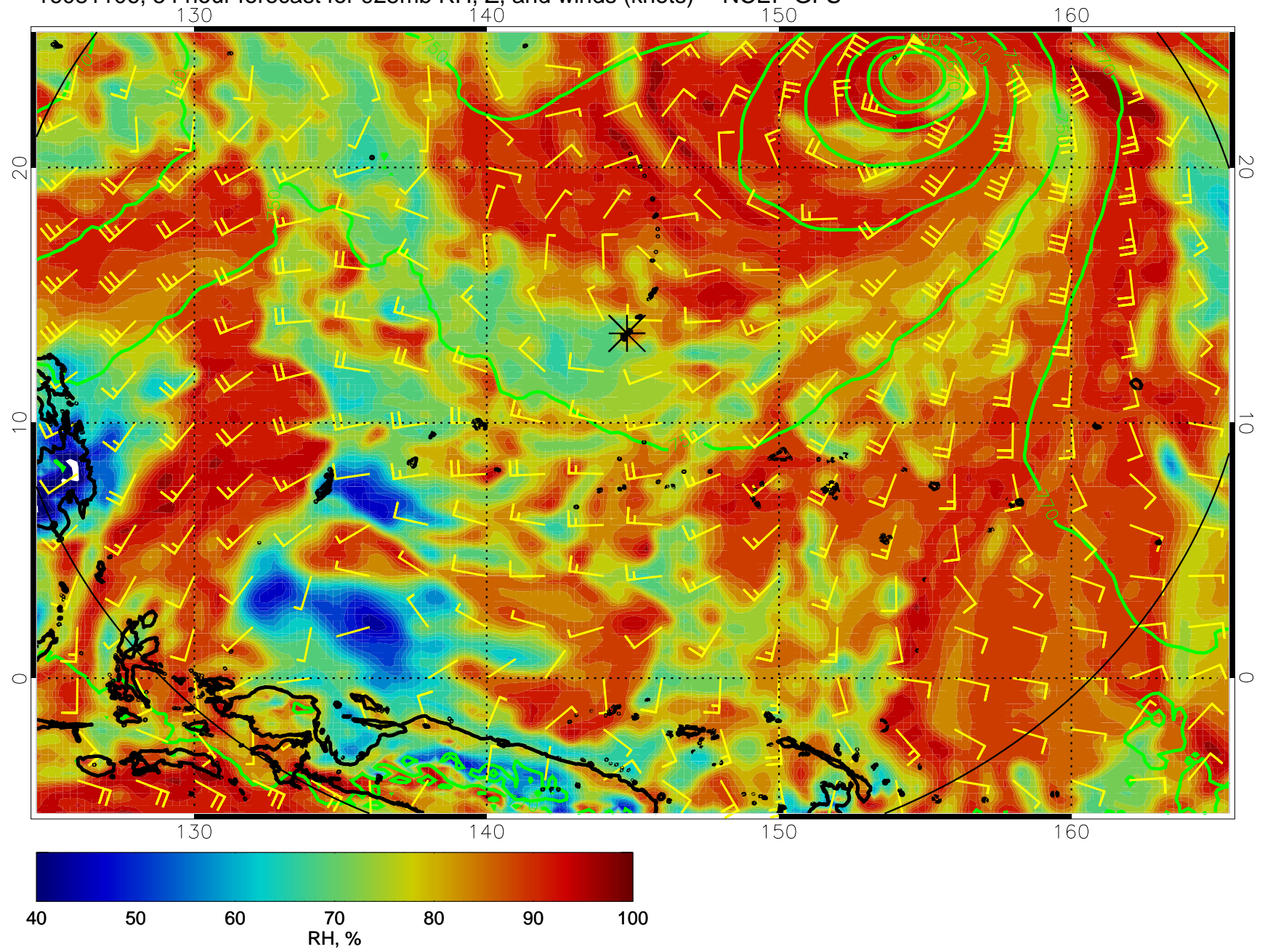


16081100, 48 hour forecast for 925mb RH, Z, and winds (knots) -- NCEP GFS

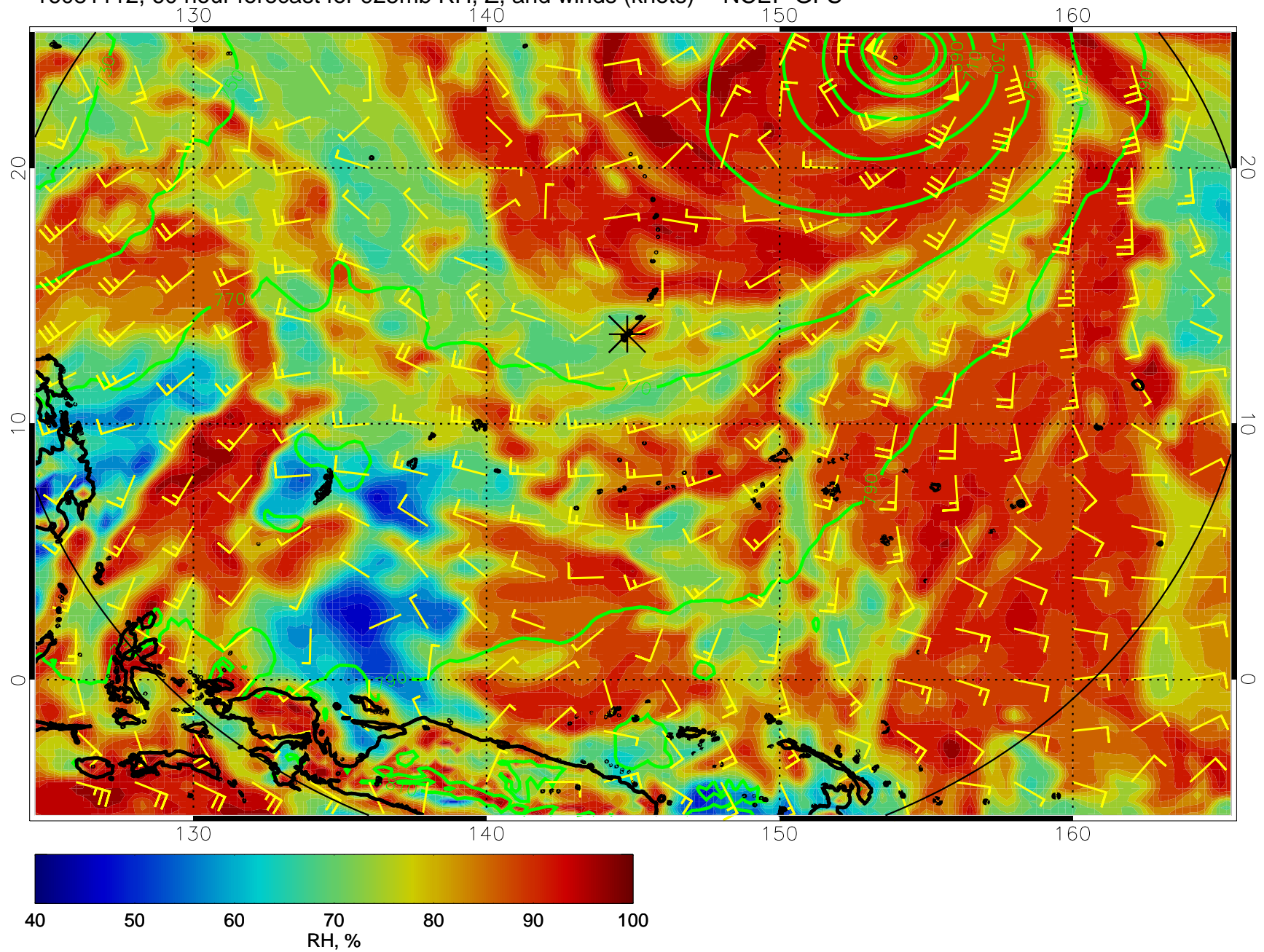




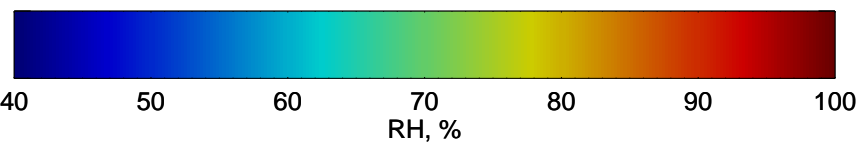
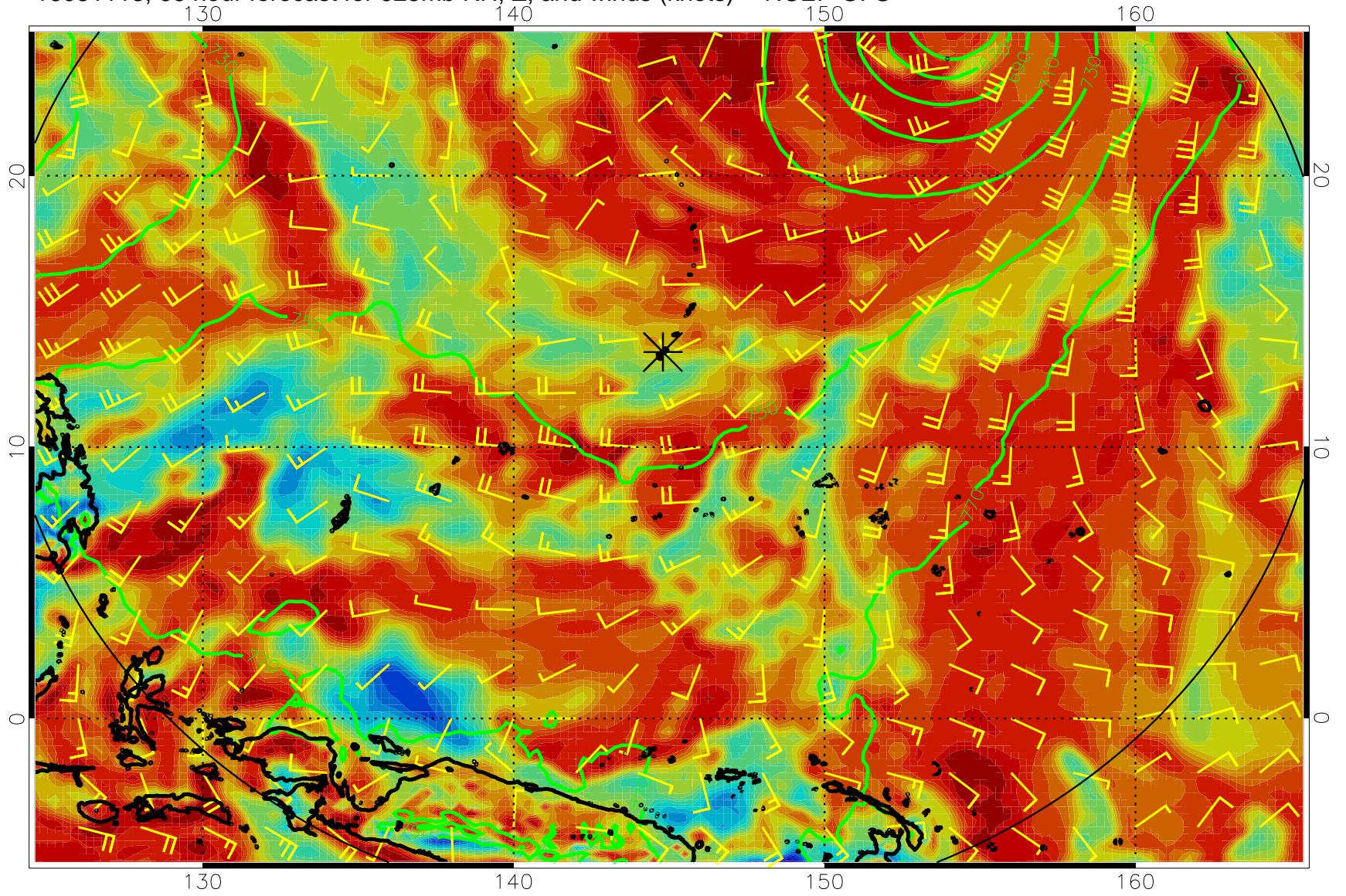
16081106, 54 hour forecast for 925mb RH, Z, and winds (knots) -- NCEP GFS



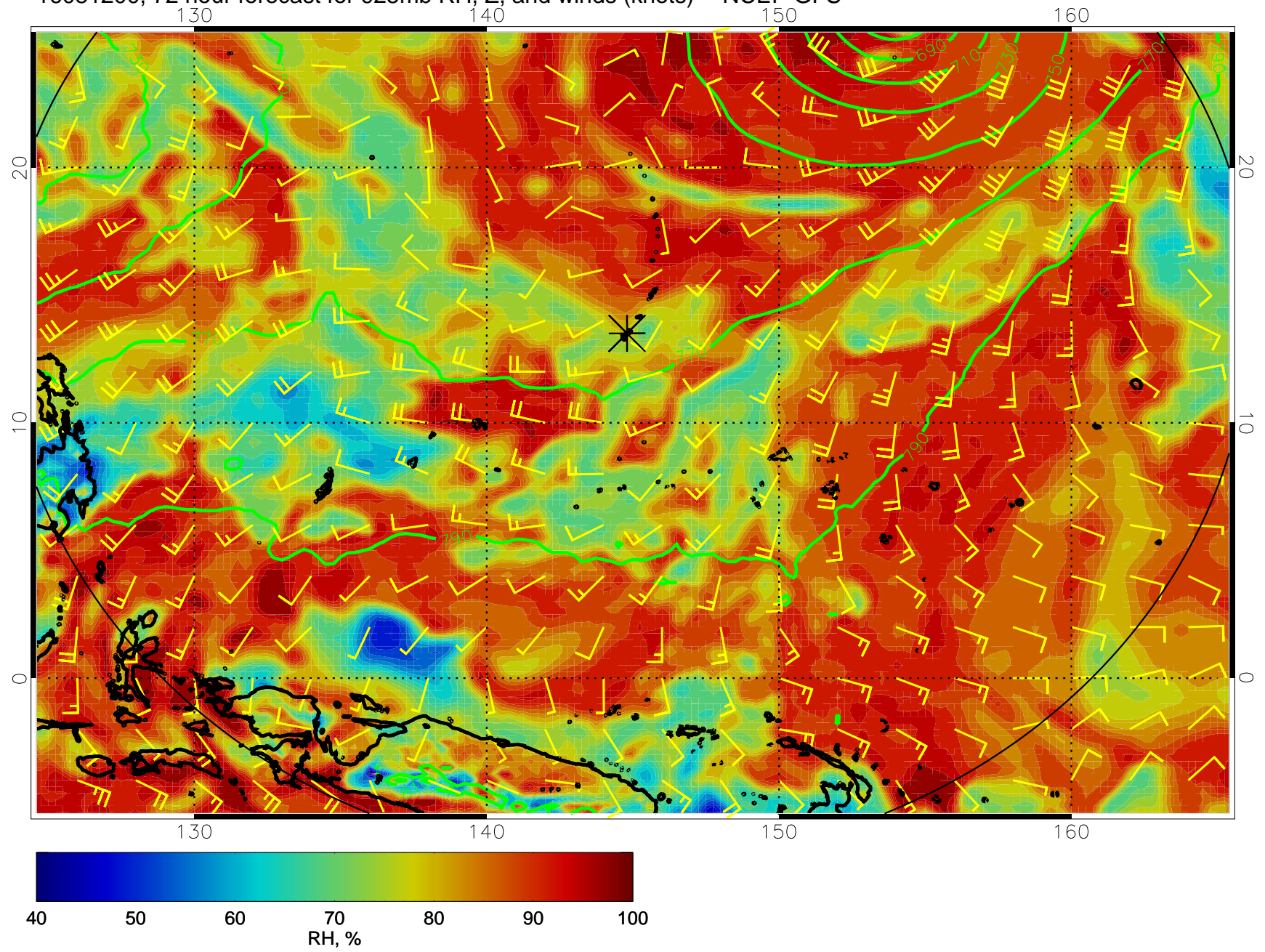
16081112, 60 hour forecast for 925mb RH, Z, and winds (knots) -- NCEP GFS



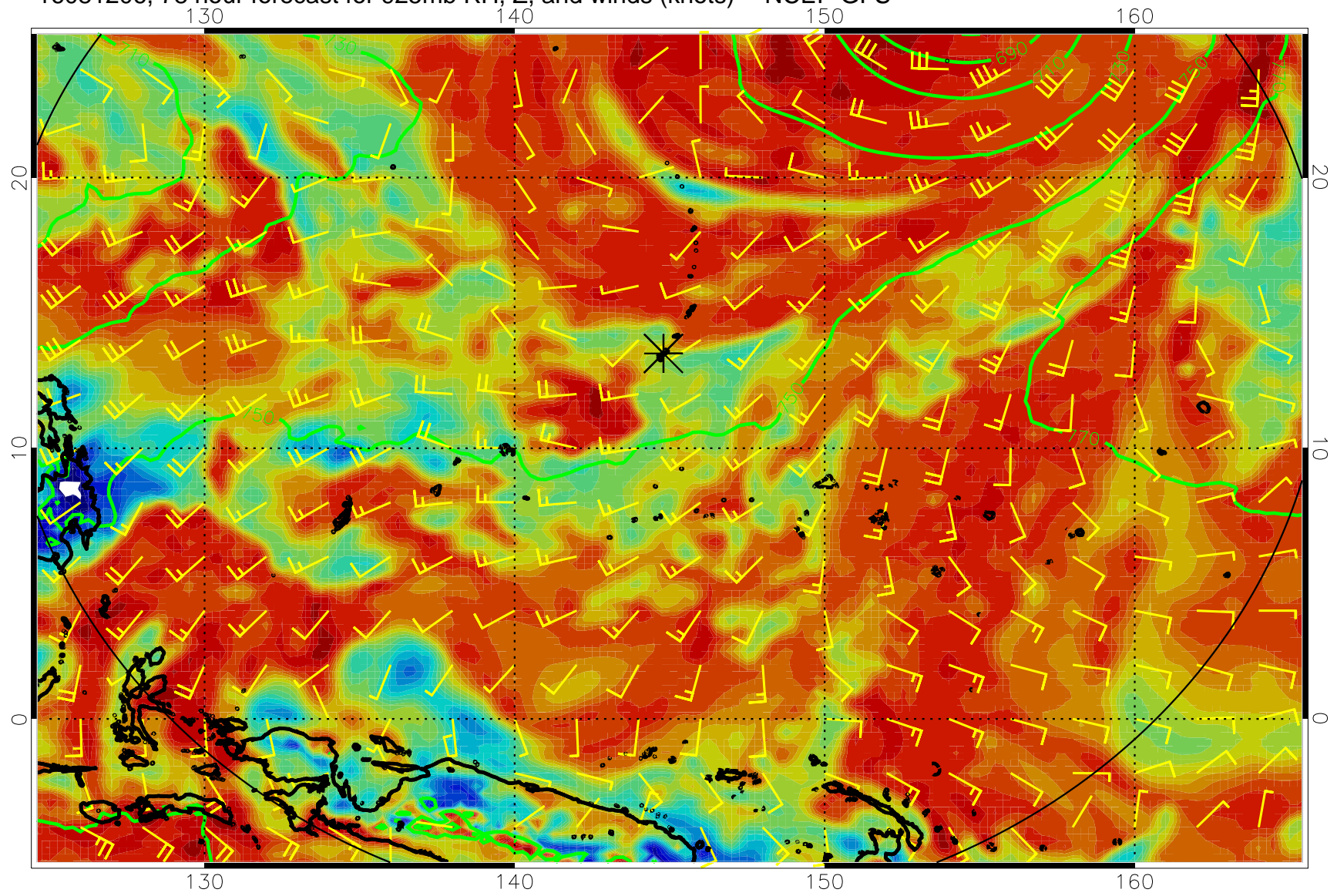
16081118, 66 hour forecast for 925mb RH, Z, and winds (knots) -- NCEP GFS



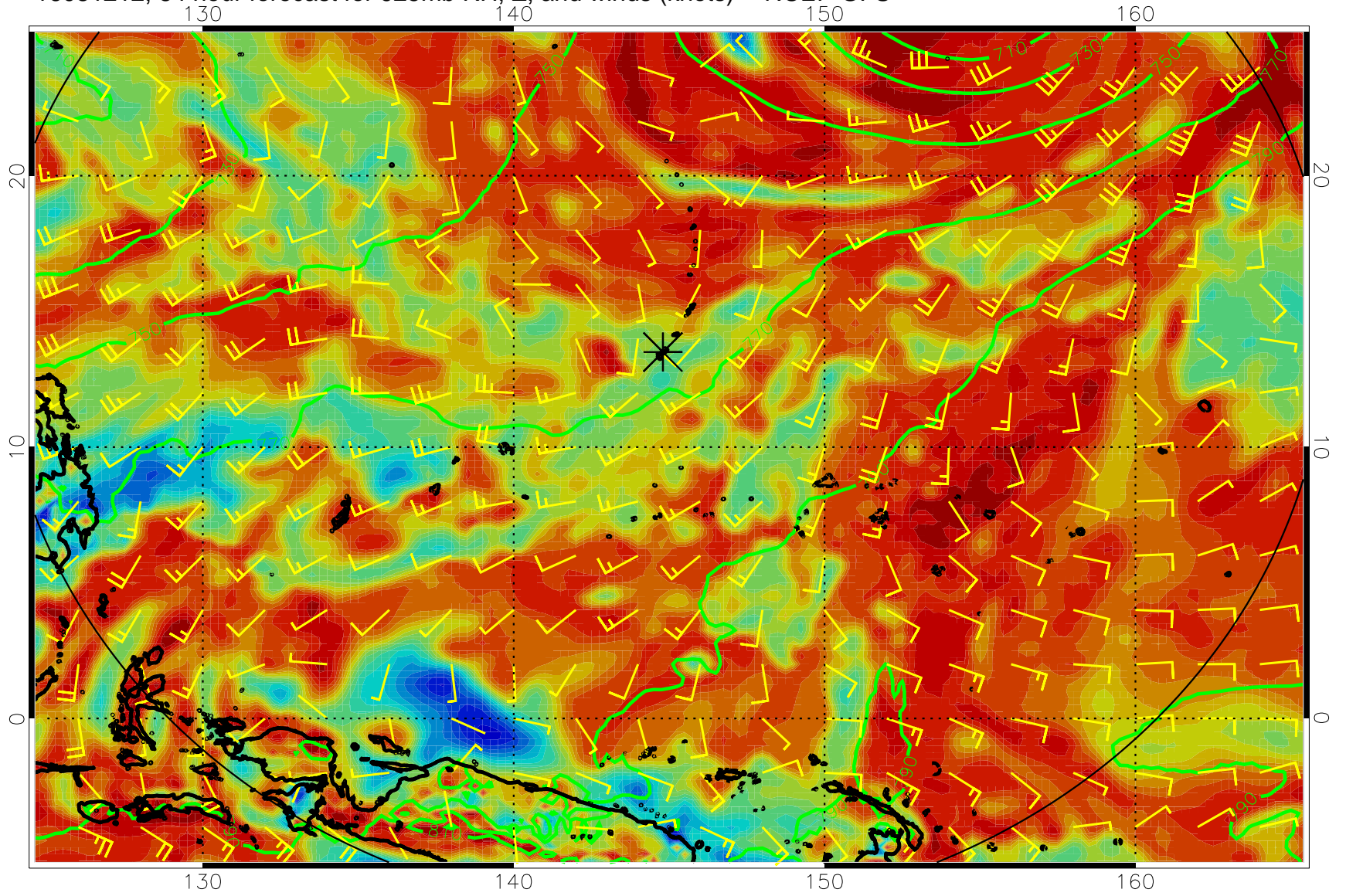
16081200, 72 hour forecast for 925mb RH, Z, and winds (knots) -- NCEP GFS



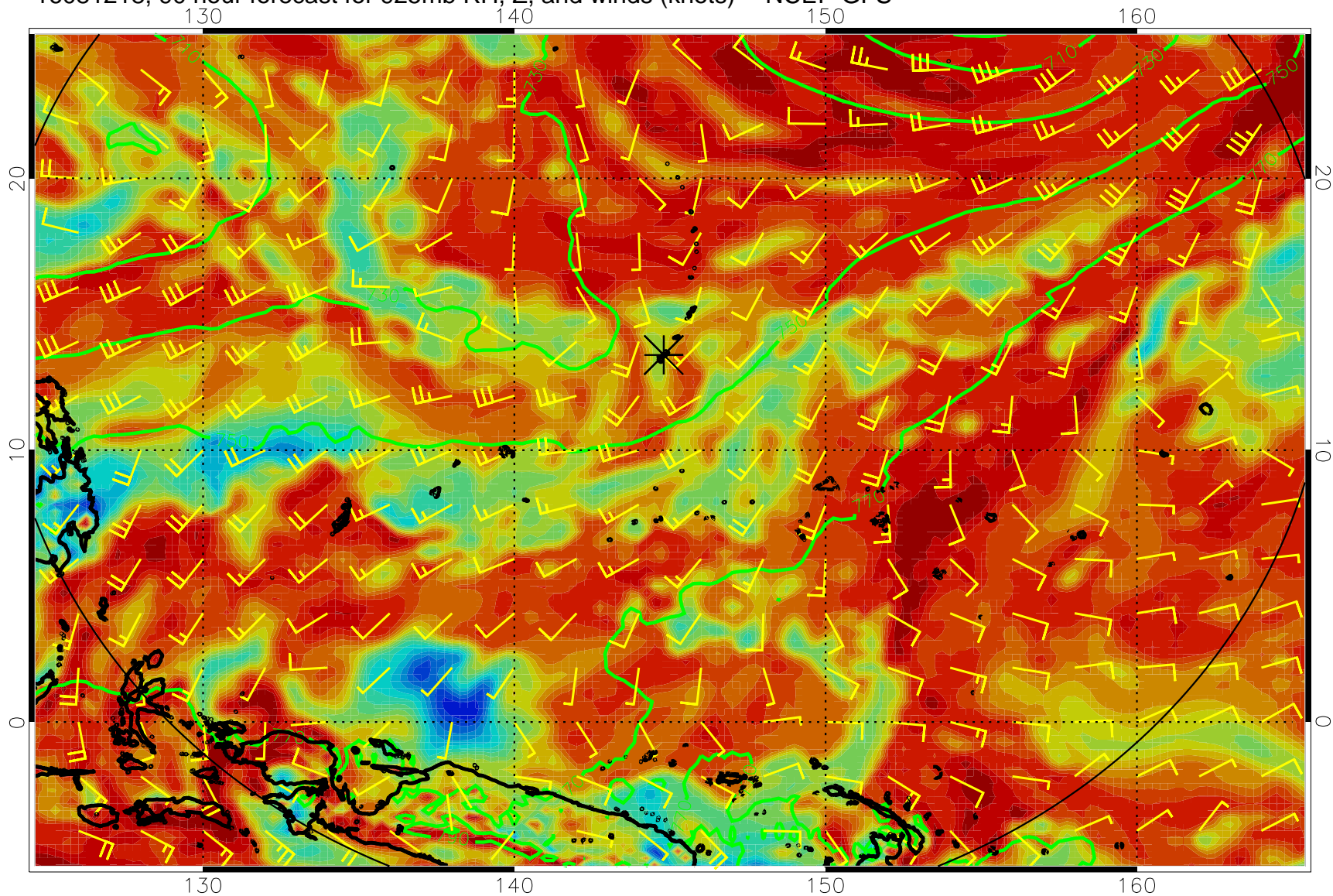
16081206, 78 hour forecast for 925mb RH, Z, and winds (knots) -- NCEP GFS



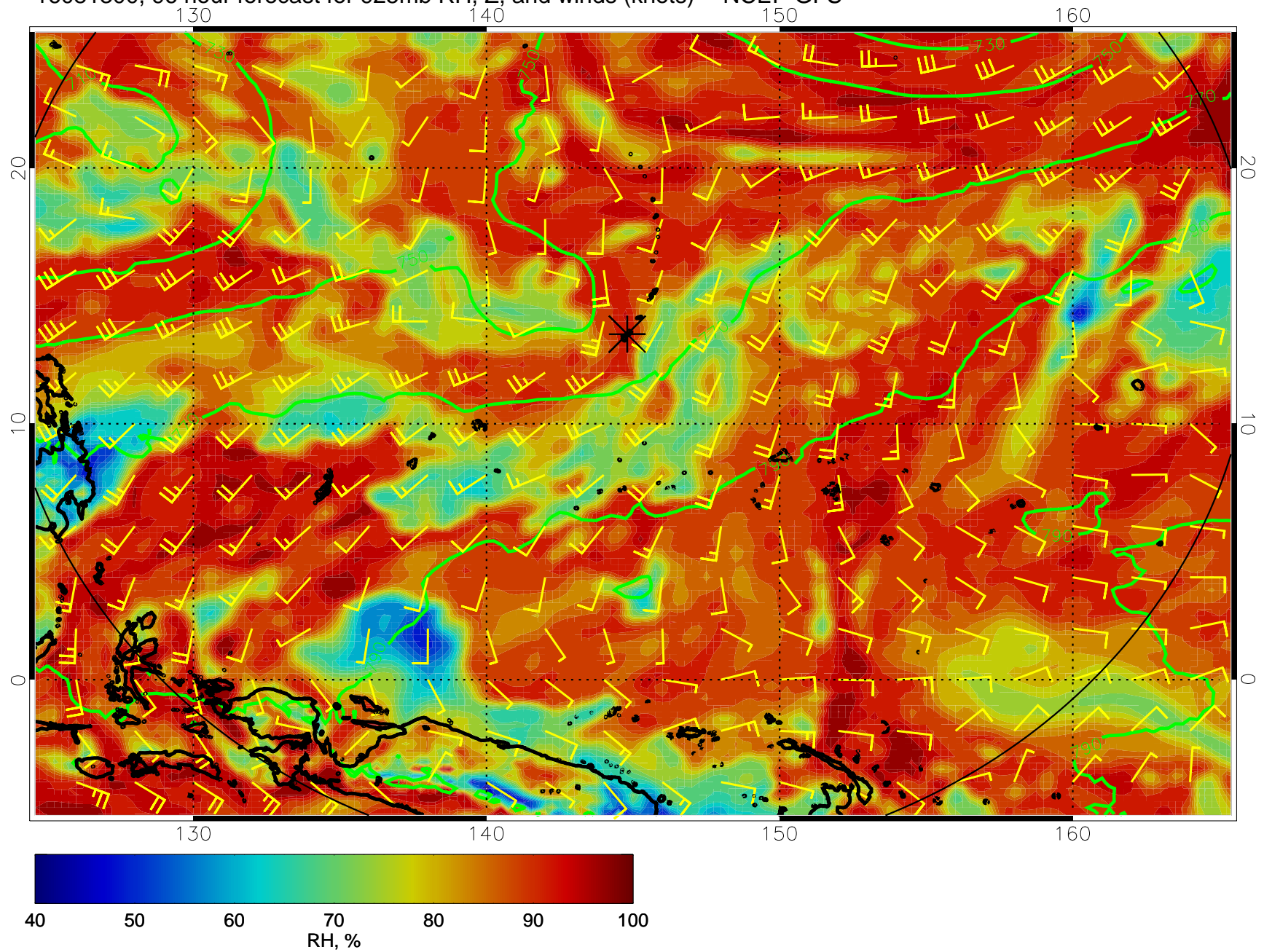
16081212, 84 hour forecast for 925mb RH, Z, and winds (knots) -- NCEP GFS



16081218, 90 hour forecast for 925mb RH, Z, and winds (knots) -- NCEP GFS

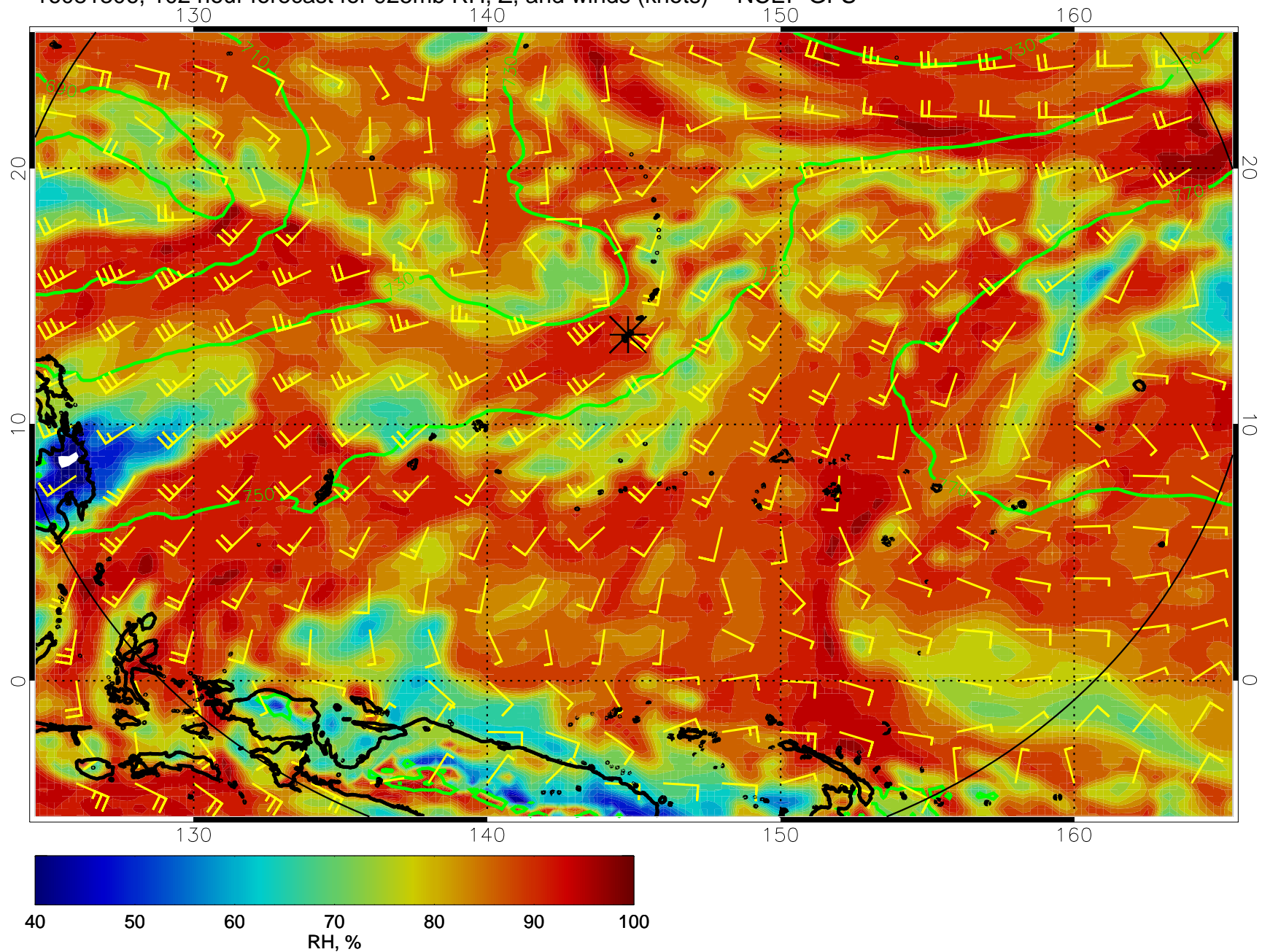


16081300, 96 hour forecast for 925mb RH, Z, and winds (knots) -- NCEP GFS

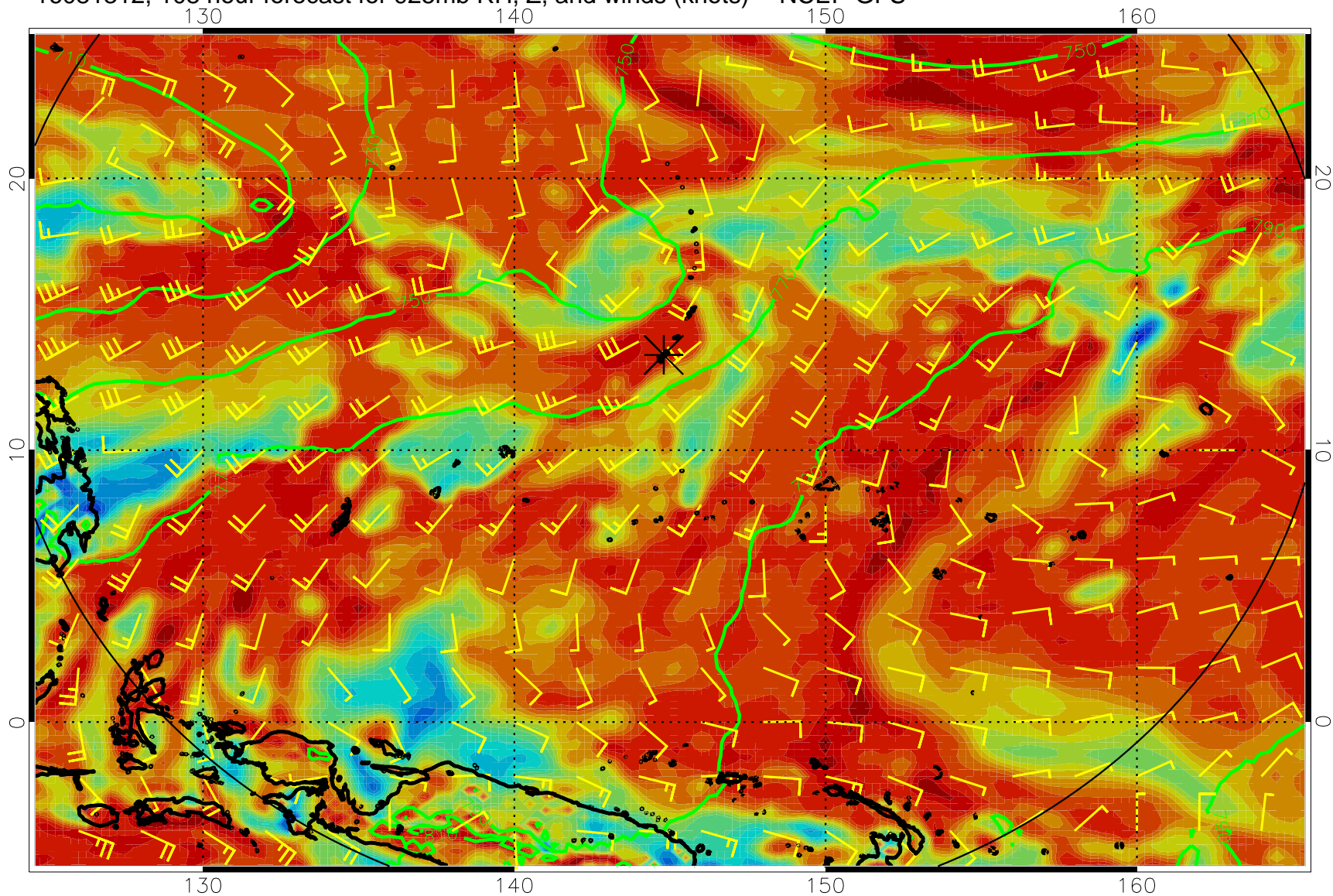




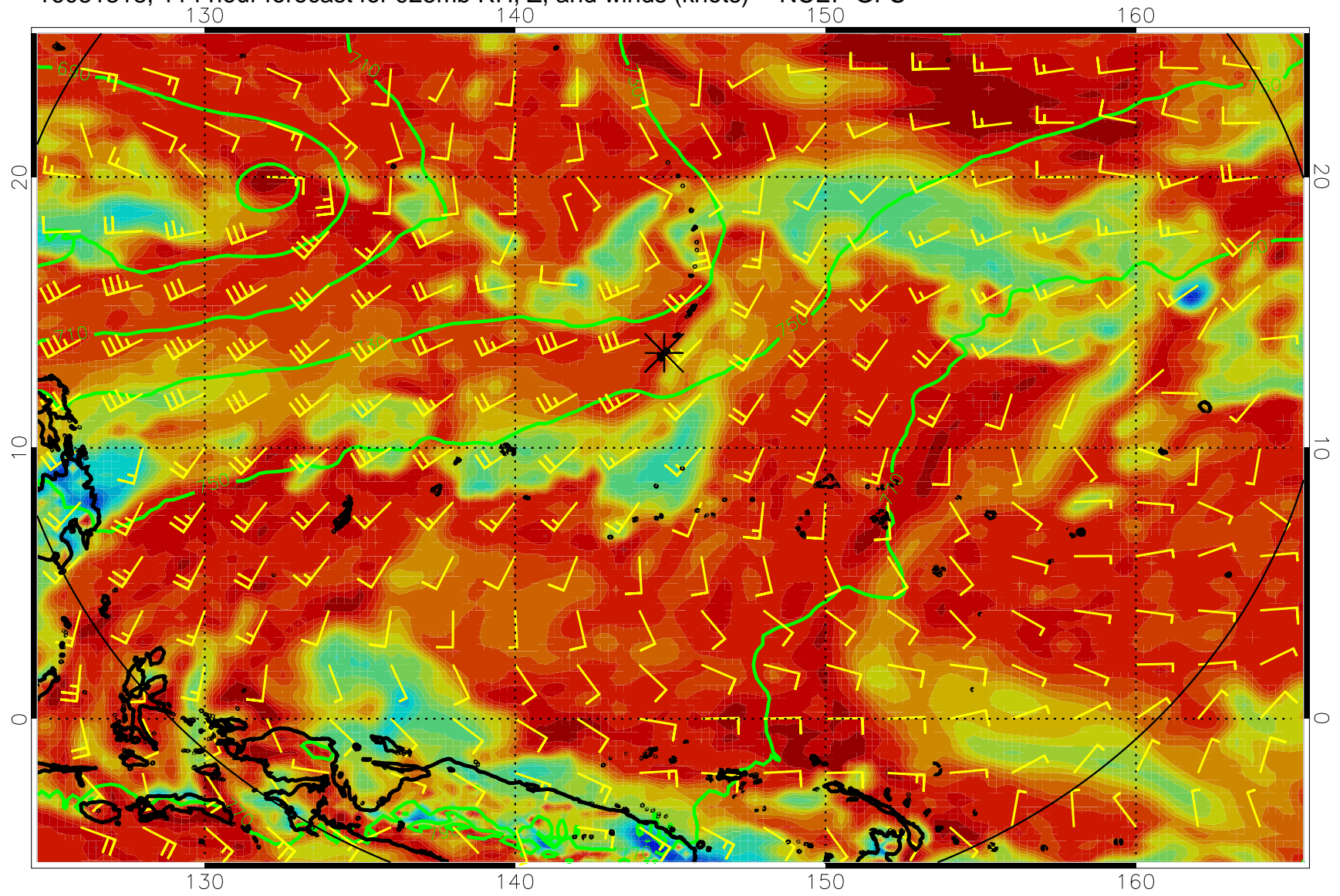
16081306, 102 hour forecast for 925mb RH, Z, and winds (knots) -- NCEP GFS



16081312, 108 hour forecast for 925mb RH, Z, and winds (knots) -- NCEP GFS



16081318, 114 hour forecast for 925mb RH, Z, and winds (knots) -- NCEP GFS



16081400, 120 hour forecast for 925mb RH, Z, and winds (knots) -- NCEP GFS

