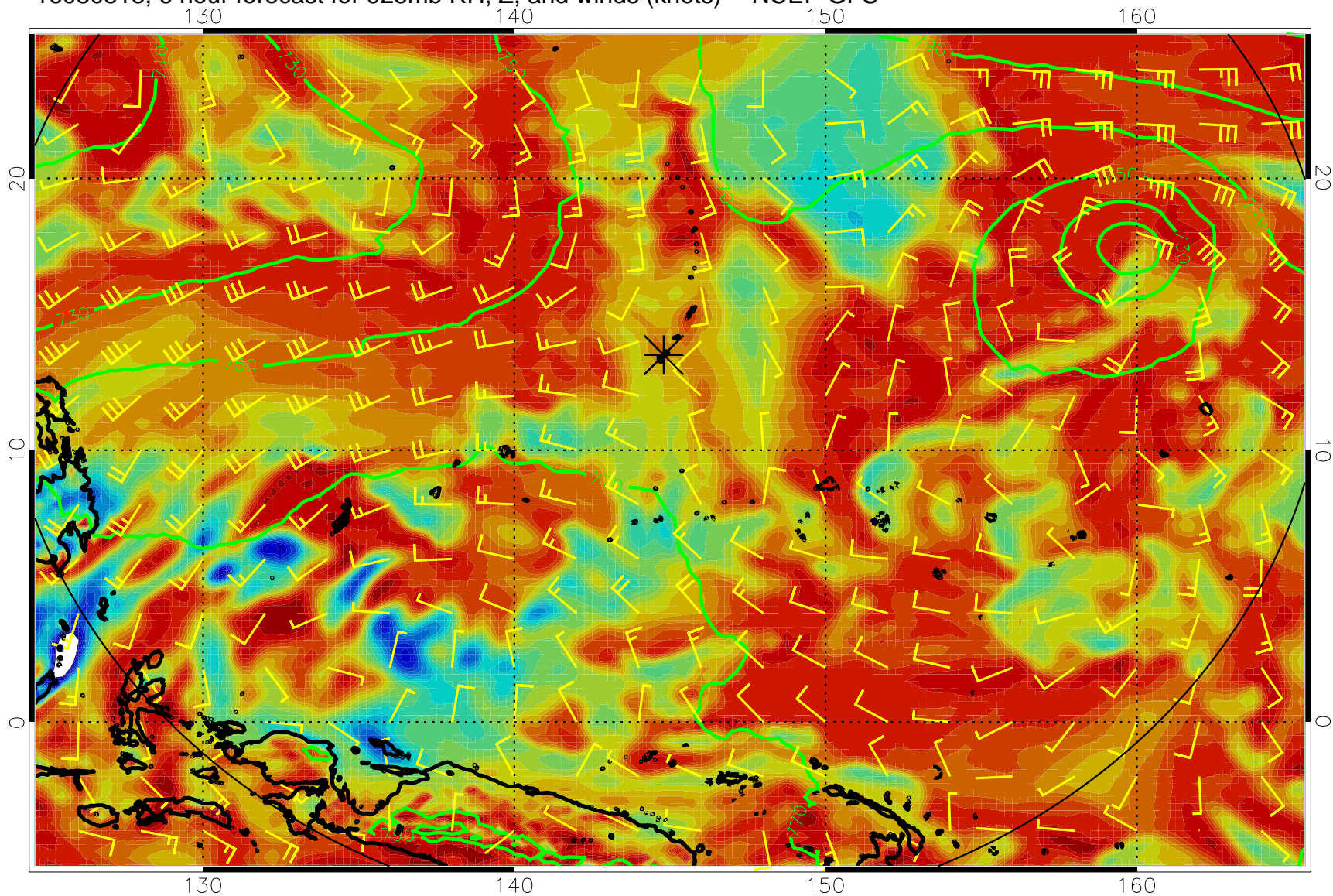
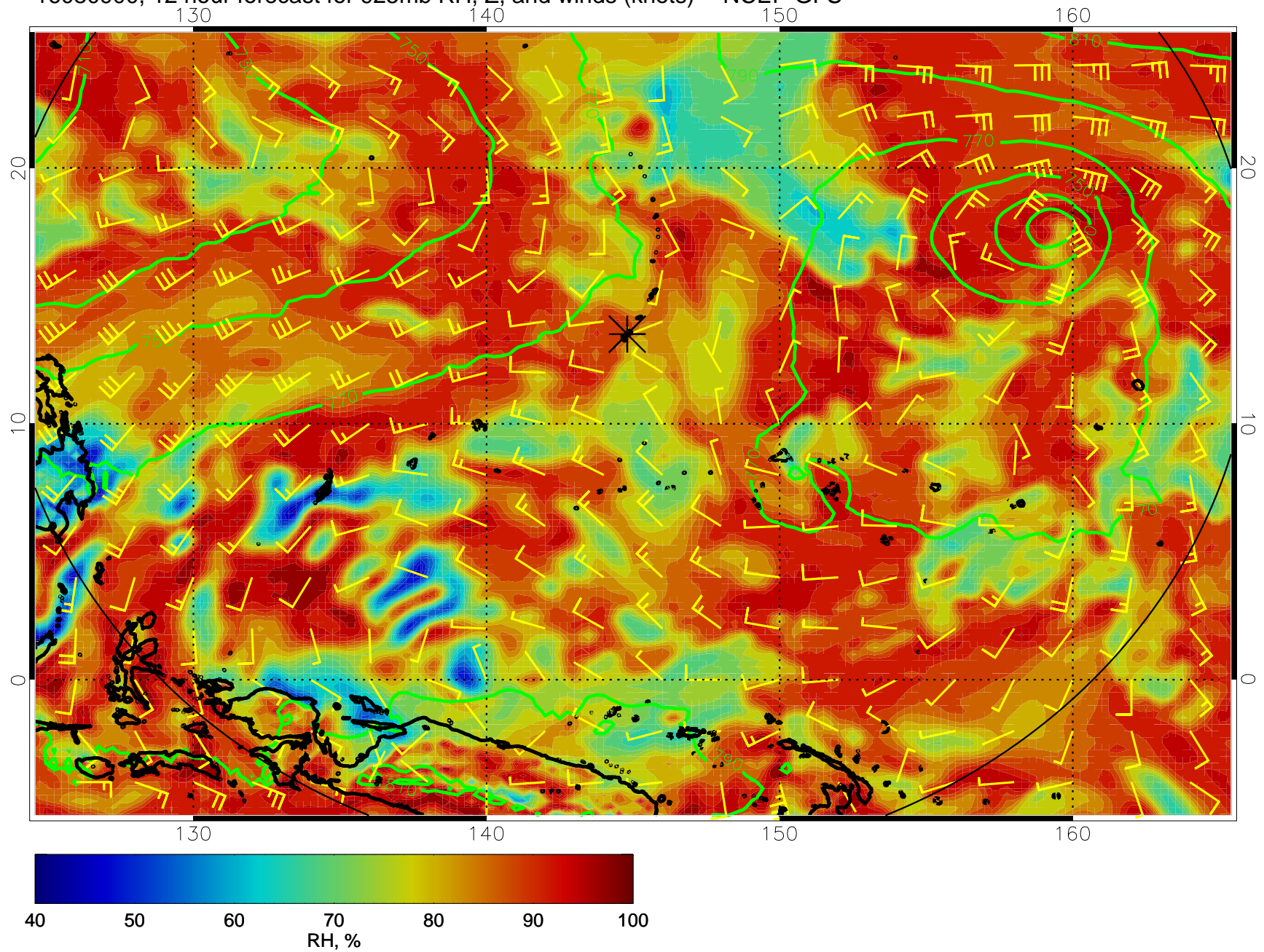


16080818, 6 hour forecast for 925mb RH, Z, and winds (knots) -- NCEP GFS

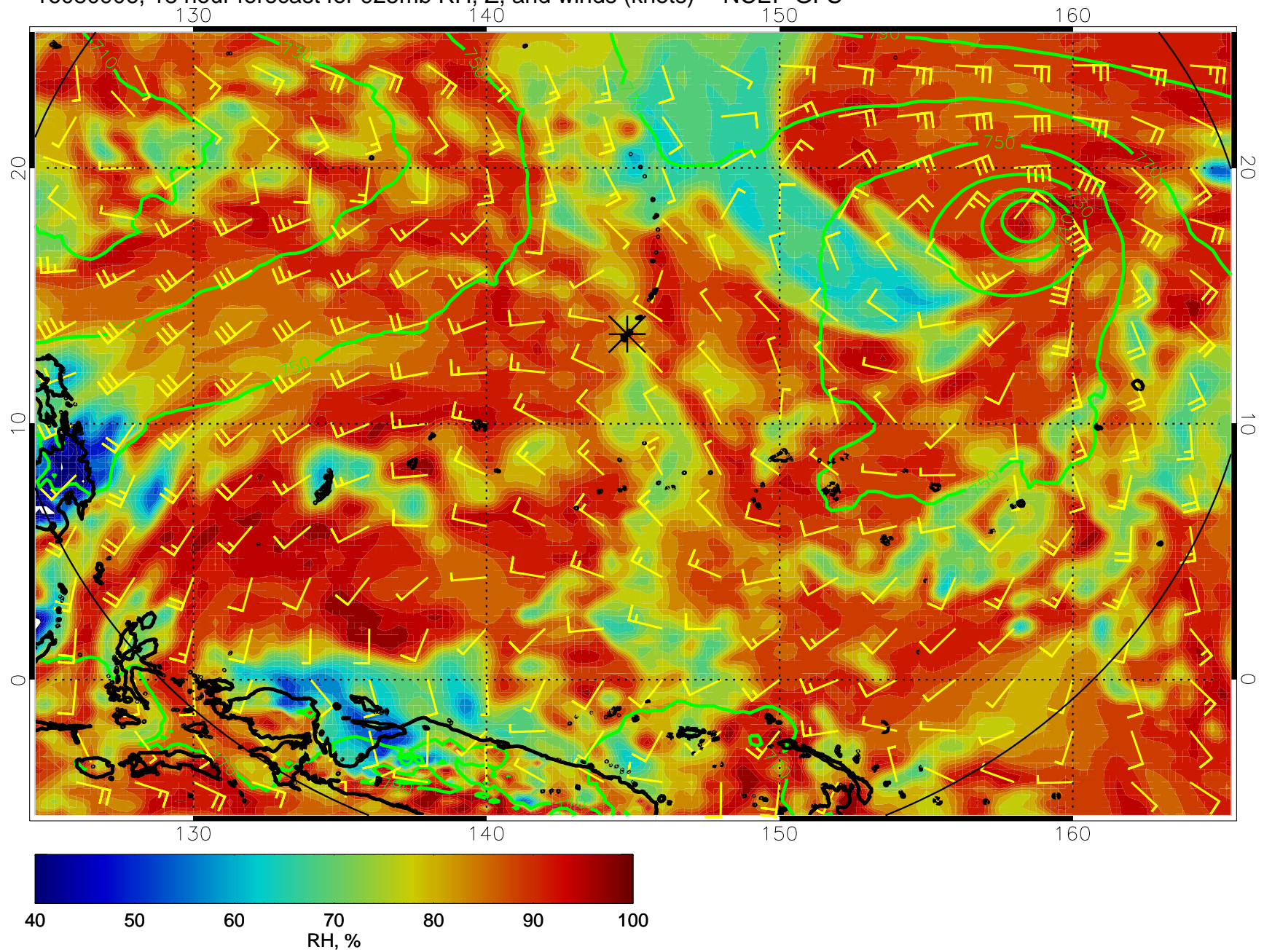


16080900, 12 hour forecast for 925mb RH, Z, and winds (knots) -- NCEP GFS

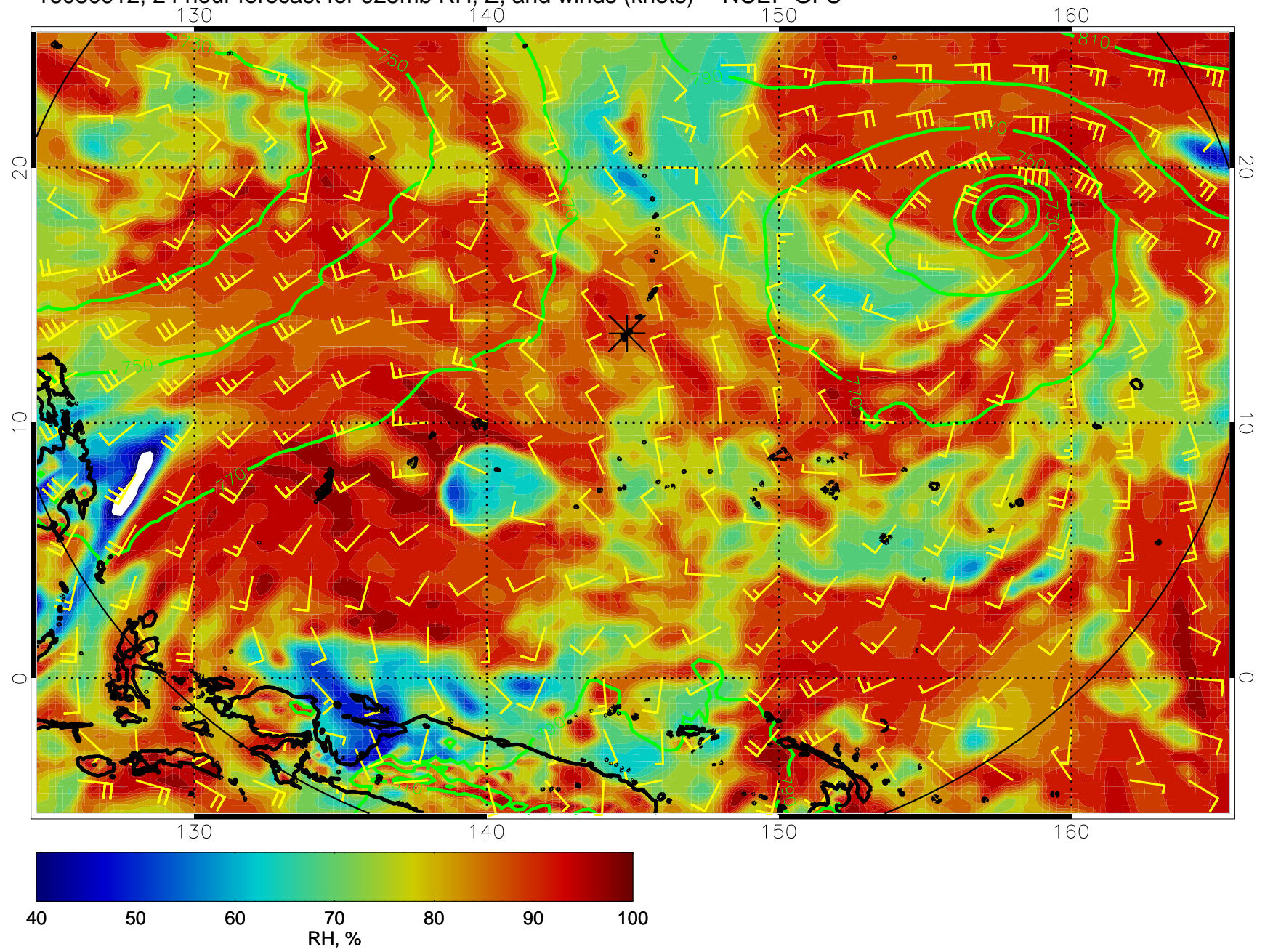




16080906, 18 hour forecast for 925mb RH, Z, and winds (knots) -- NCEP GFS

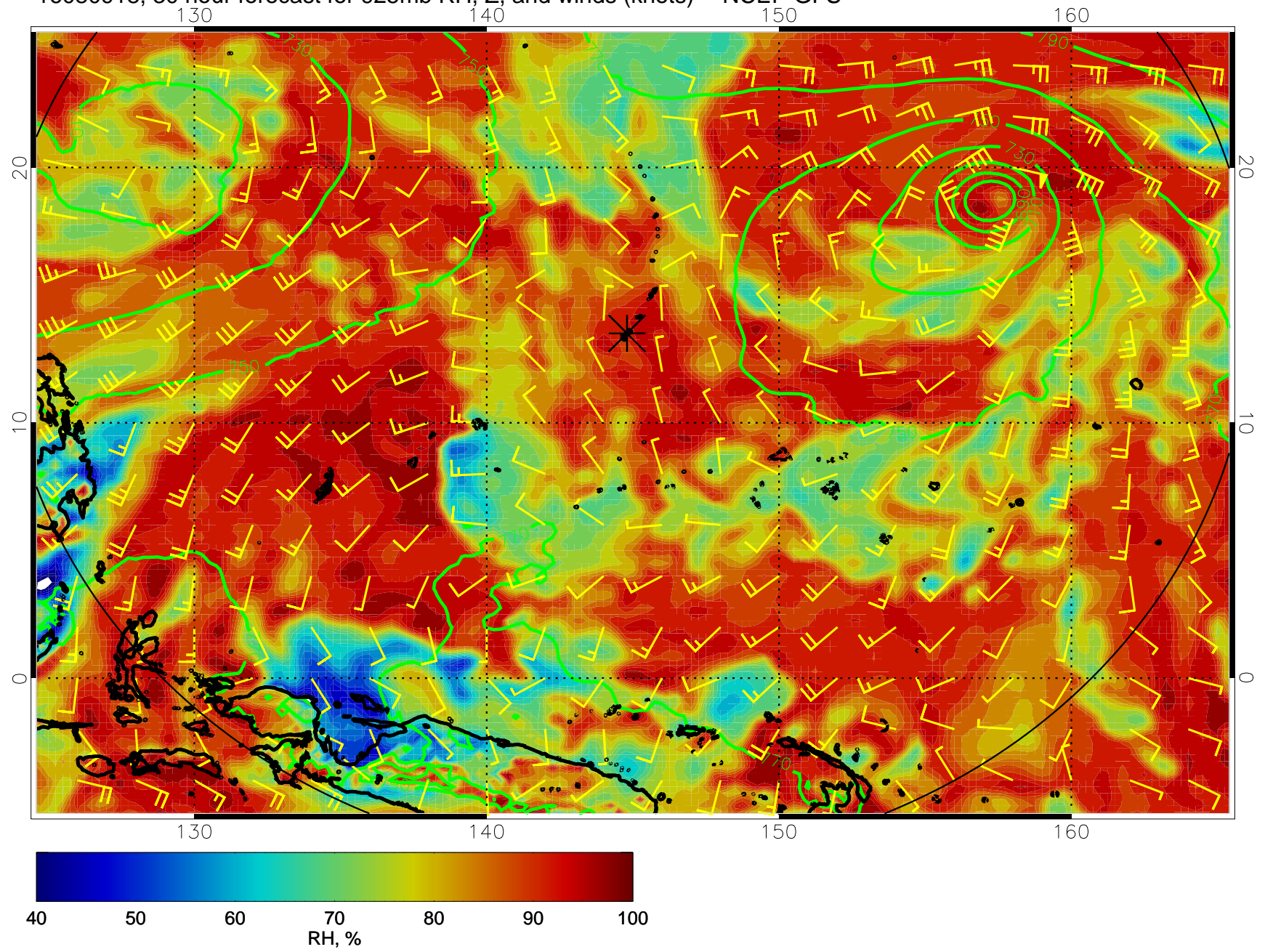


16080912, 24 hour forecast for 925mb RH, Z, and winds (knots) -- NCEP GFS

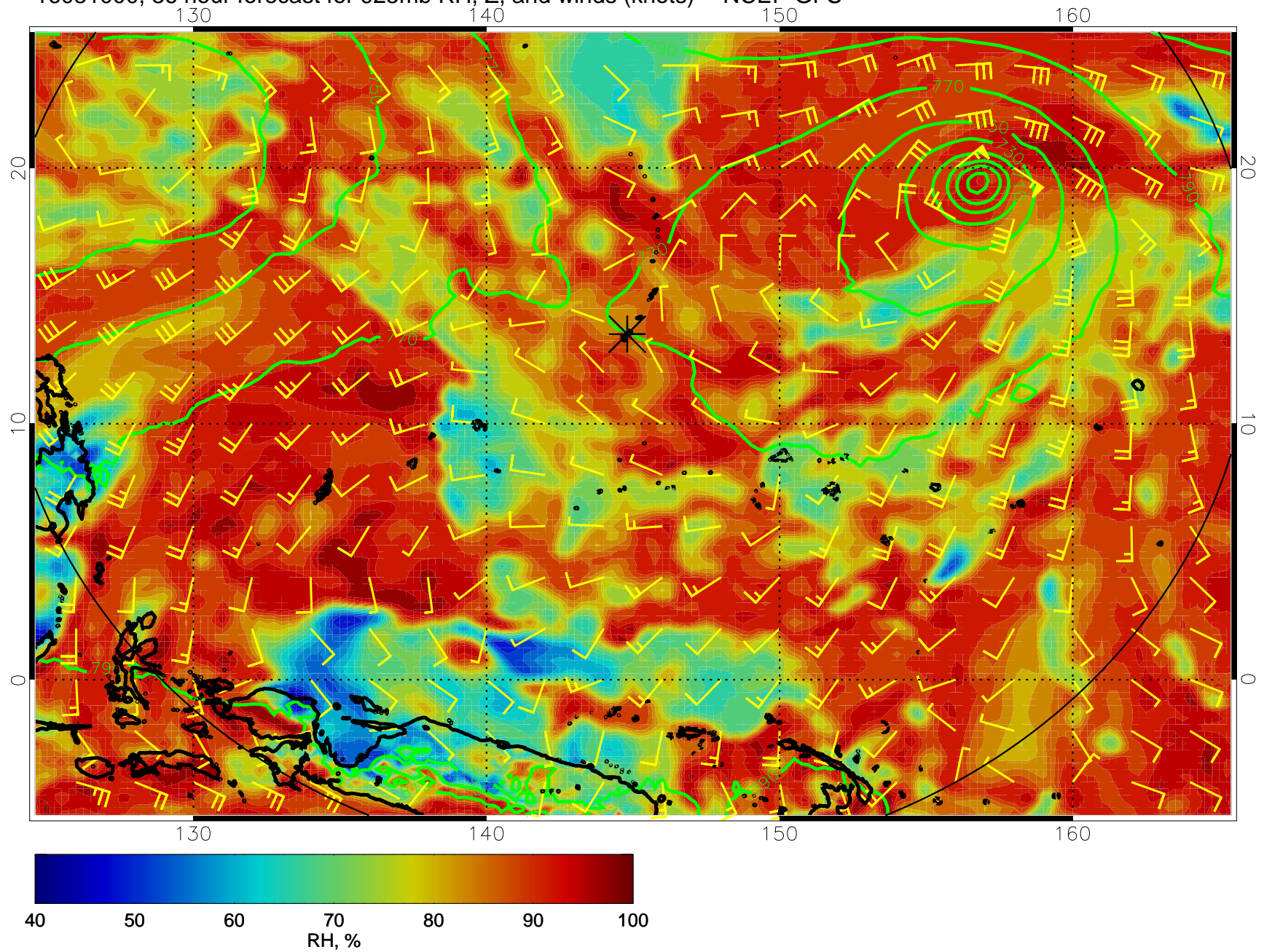




16080918, 30 hour forecast for 925mb RH, Z, and winds (knots) -- NCEP GFS

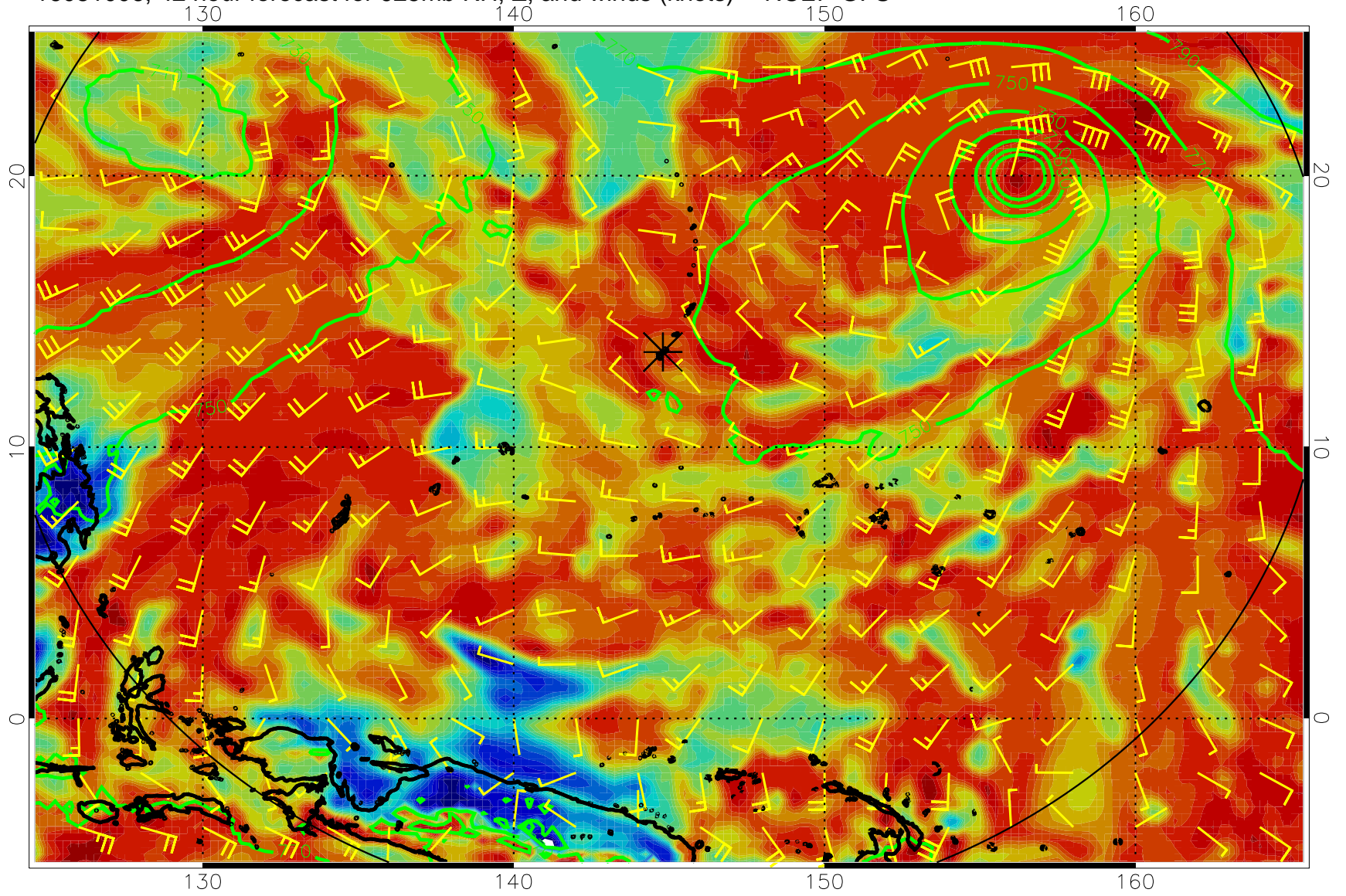


16081000, 36 hour forecast for 925mb RH, Z, and winds (knots) -- NCEP GFS

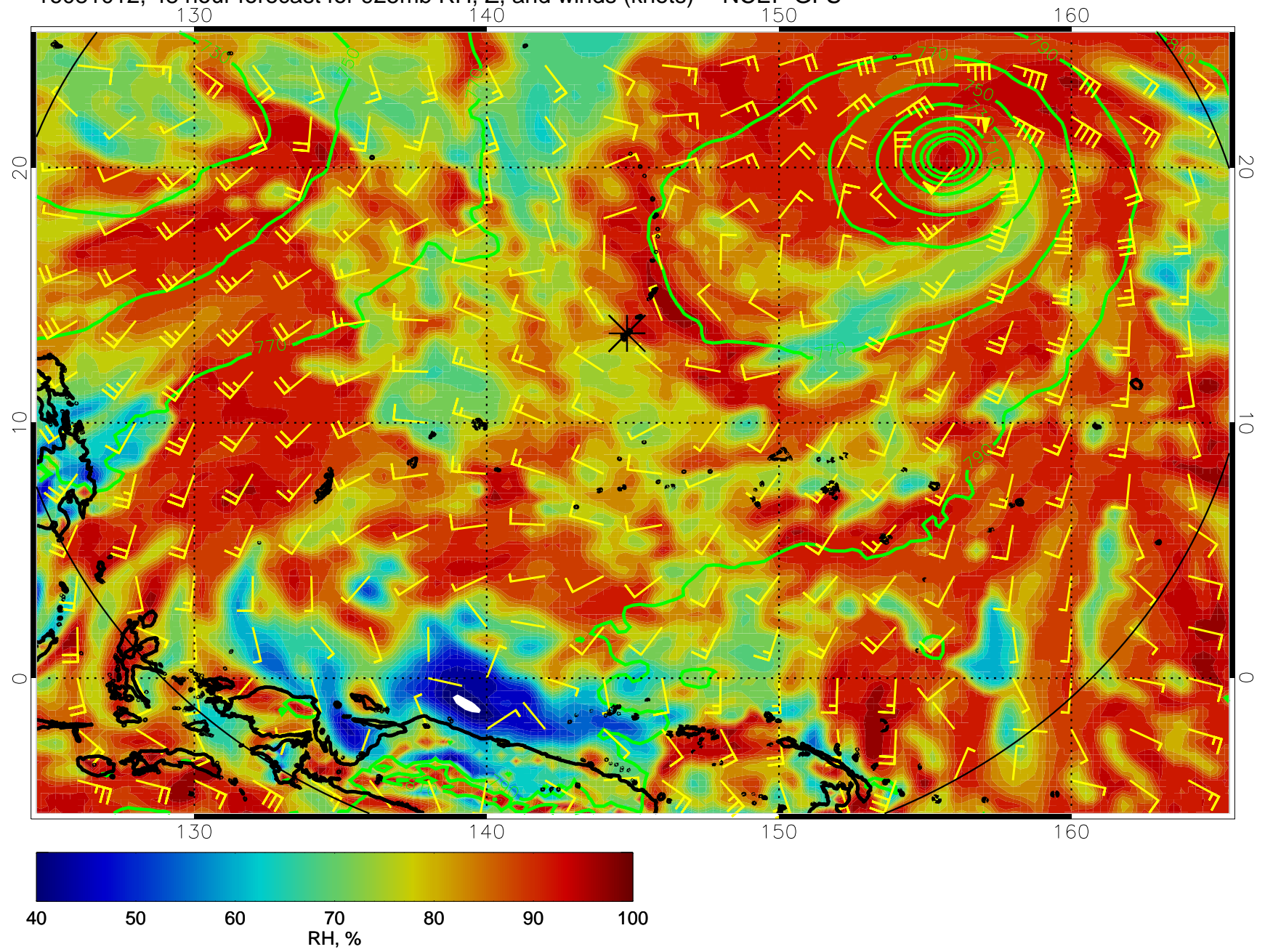




16081006, 42 hour forecast for 925mb RH, Z, and winds (knots) -- NCEP GFS

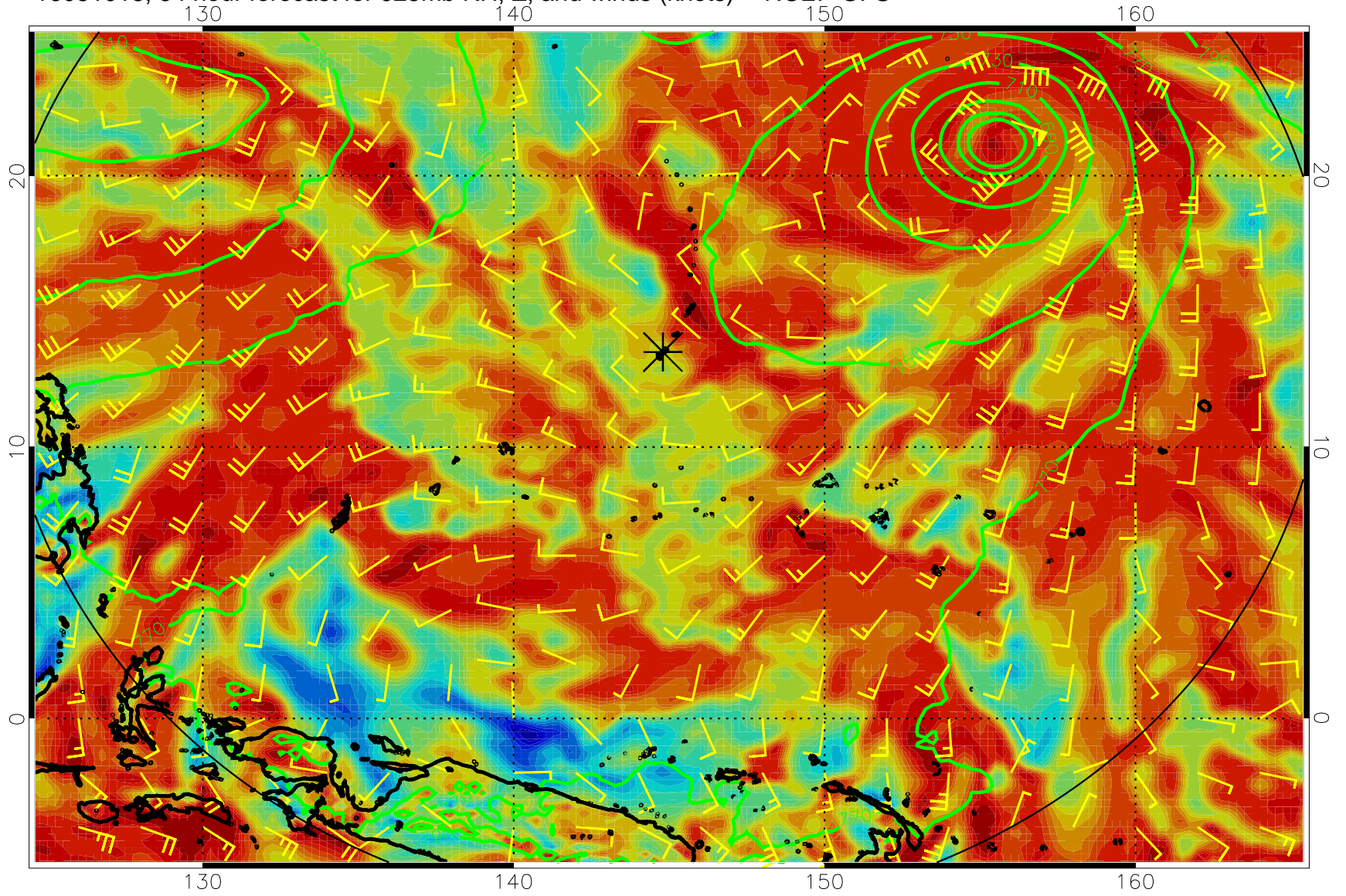


16081012, 48 hour forecast for 925mb RH, Z, and winds (knots) -- NCEP GFS

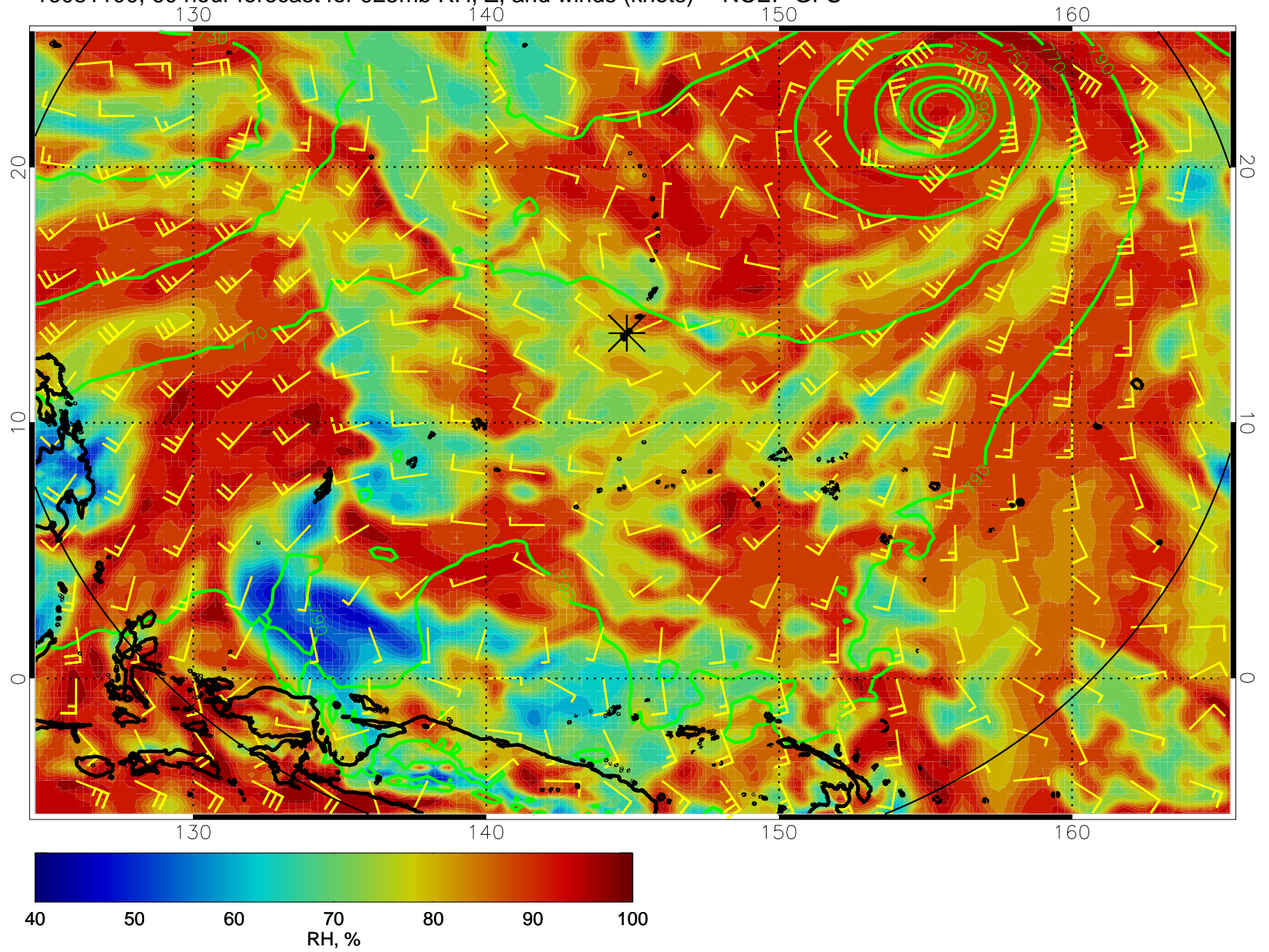




16081018, 54 hour forecast for 925mb RH, Z, and winds (knots) -- NCEP GFS

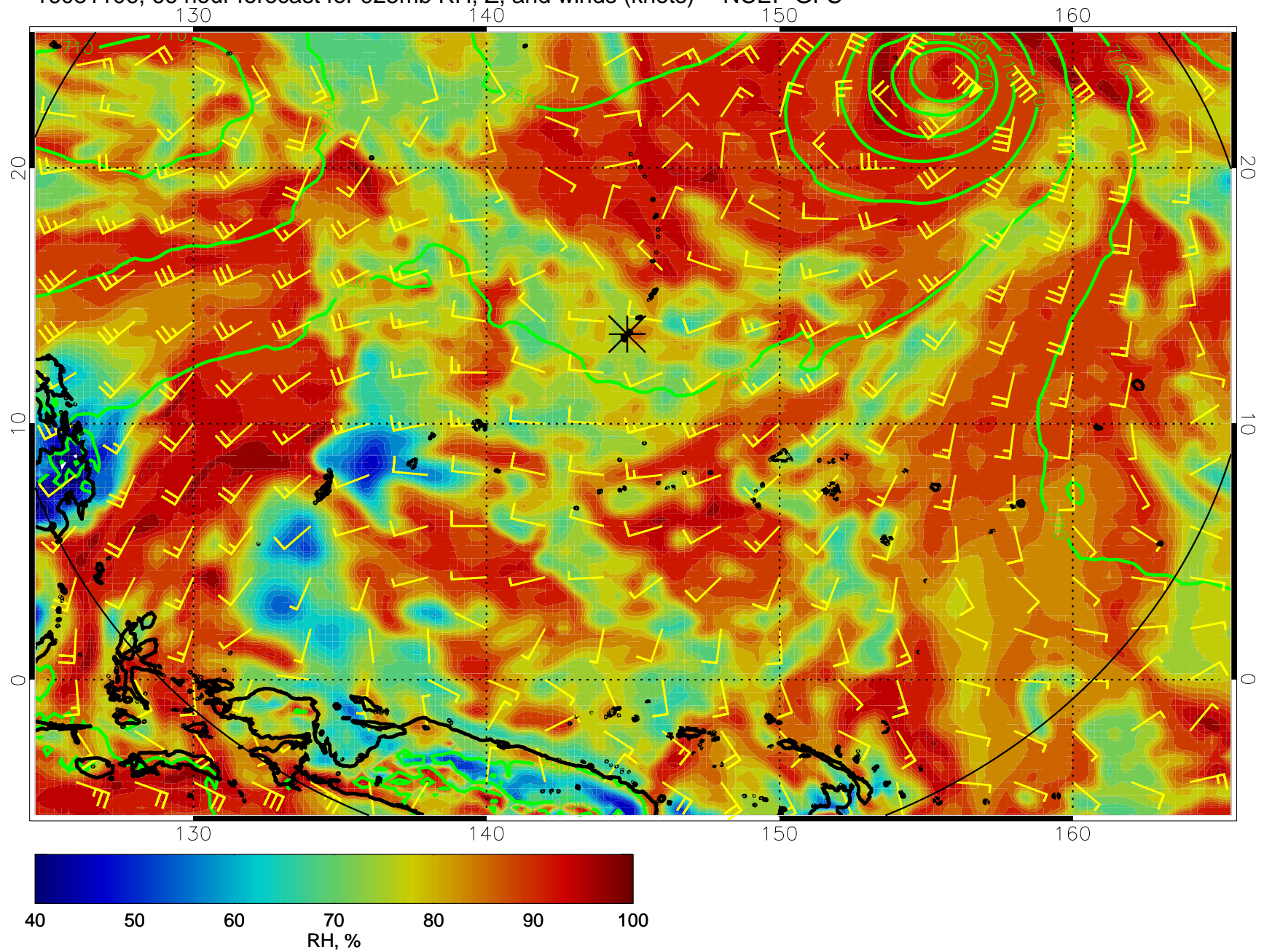


16081100, 60 hour forecast for 925mb RH, Z, and winds (knots) -- NCEP GFS

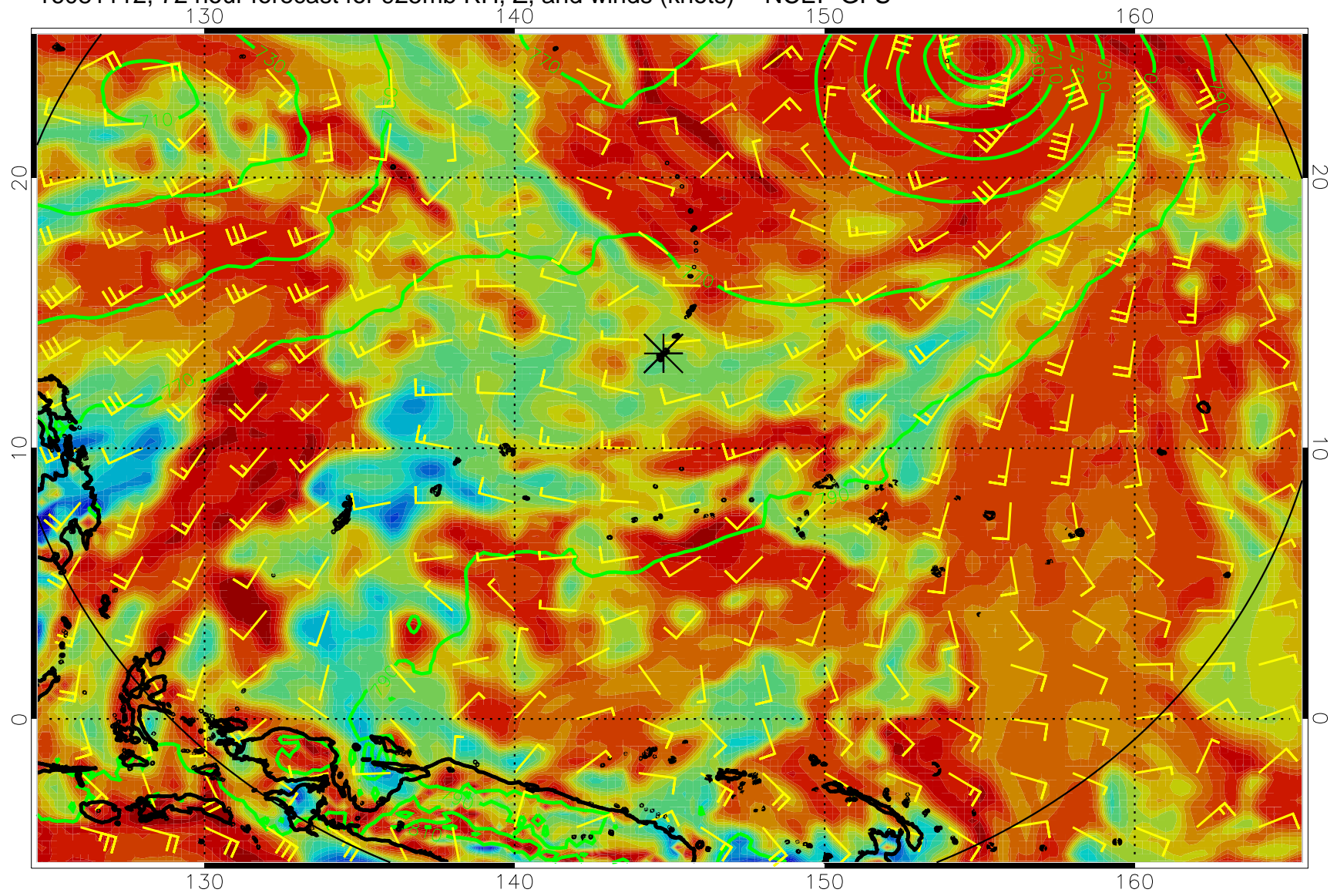




16081106, 66 hour forecast for 925mb RH, Z, and winds (knots) -- NCEP GFS

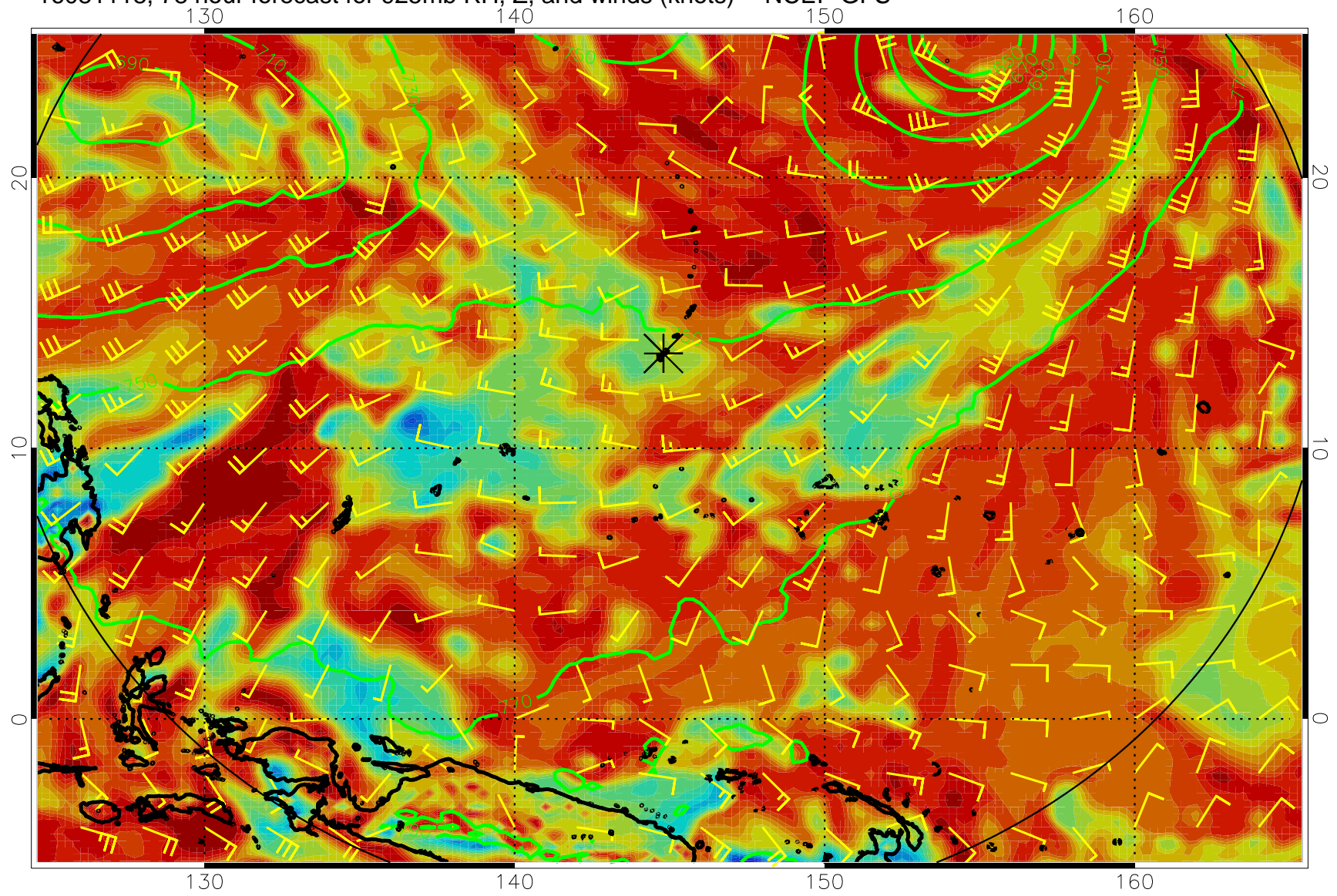


16081112, 72 hour forecast for 925mb RH, Z, and winds (knots) -- NCEP GFS

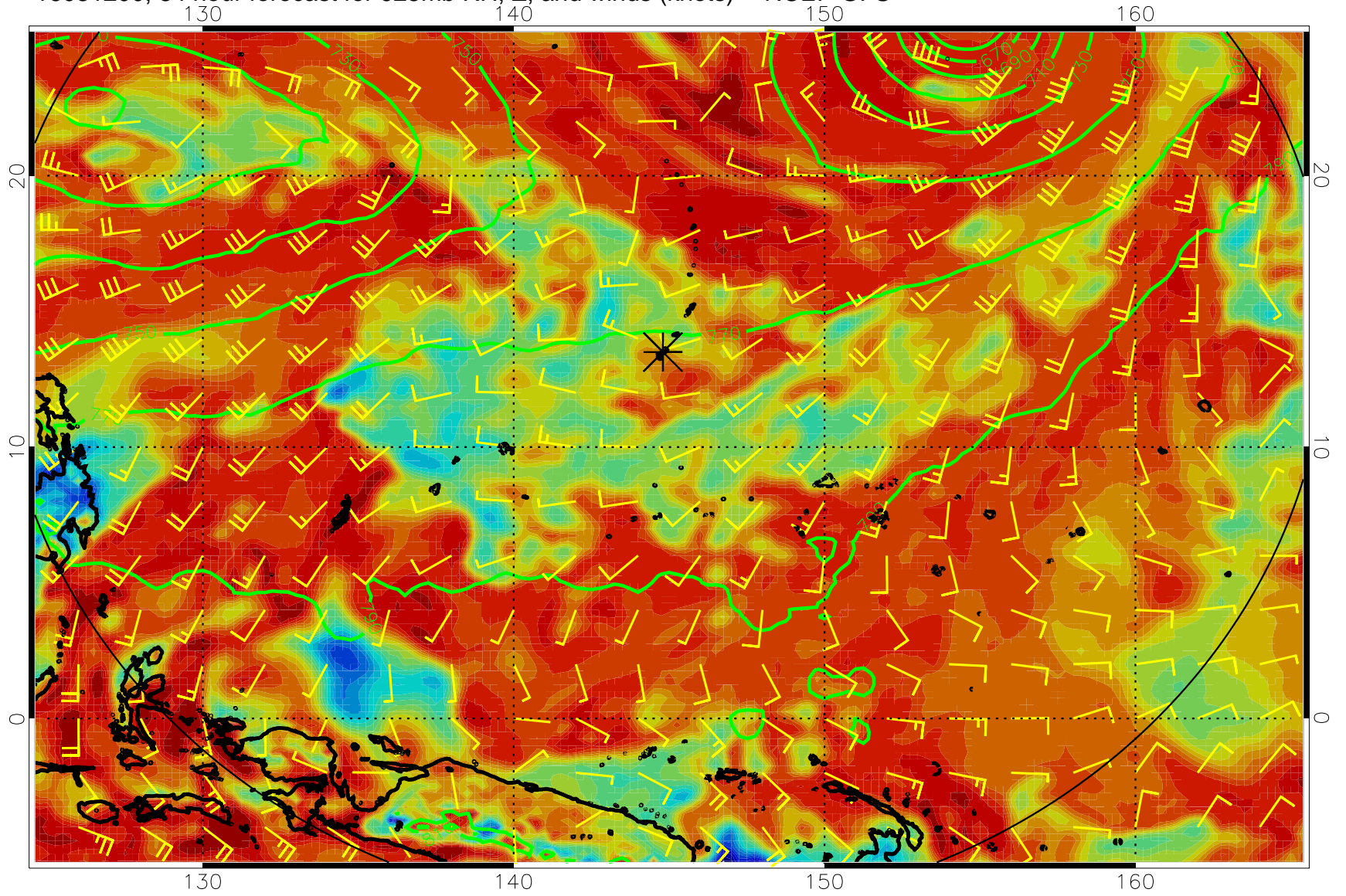




16081118, 78 hour forecast for 925mb RH, Z, and winds (knots) -- NCEP GFS

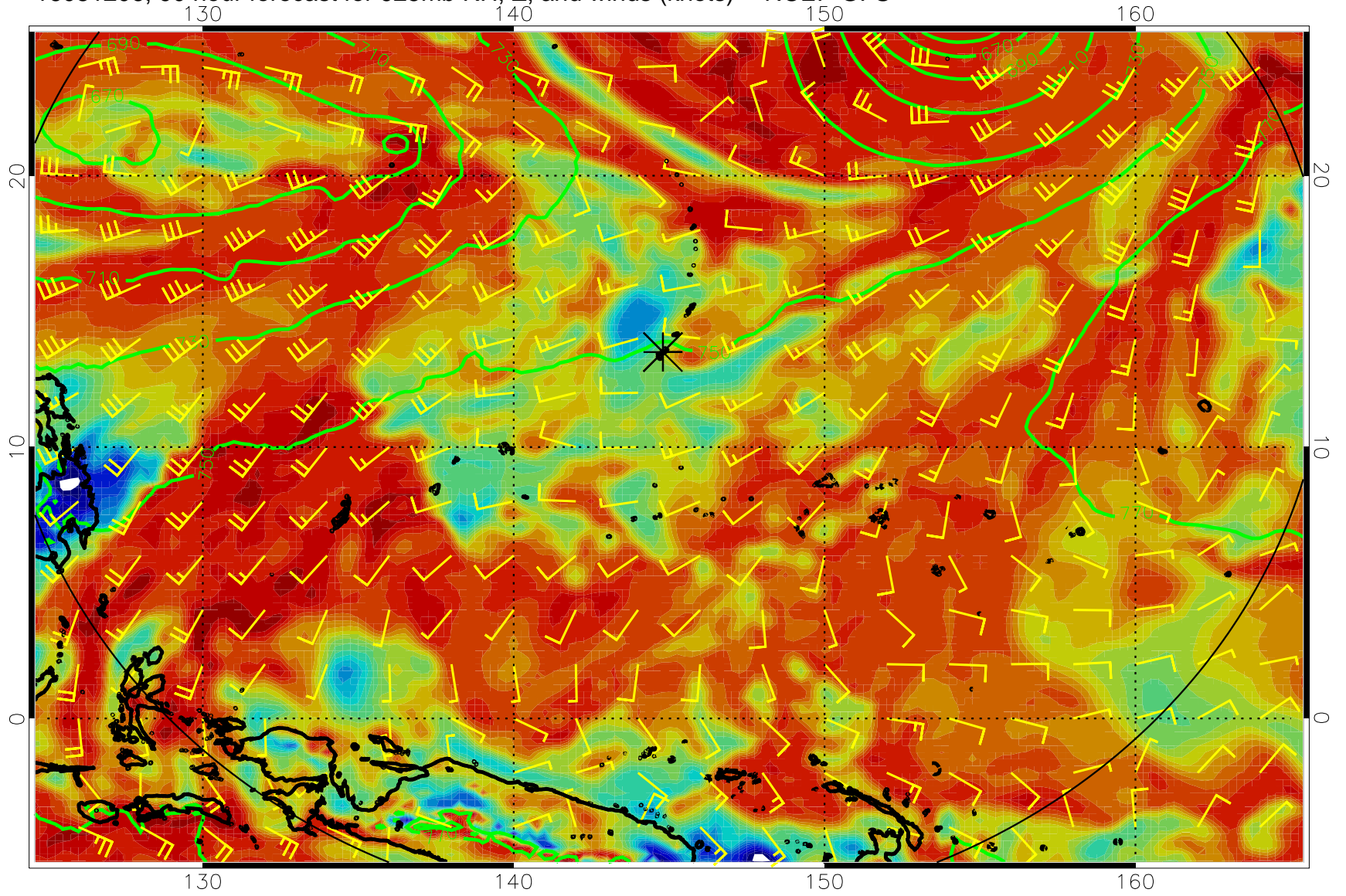


16081200, 84 hour forecast for 925mb RH, Z, and winds (knots) -- NCEP GFS

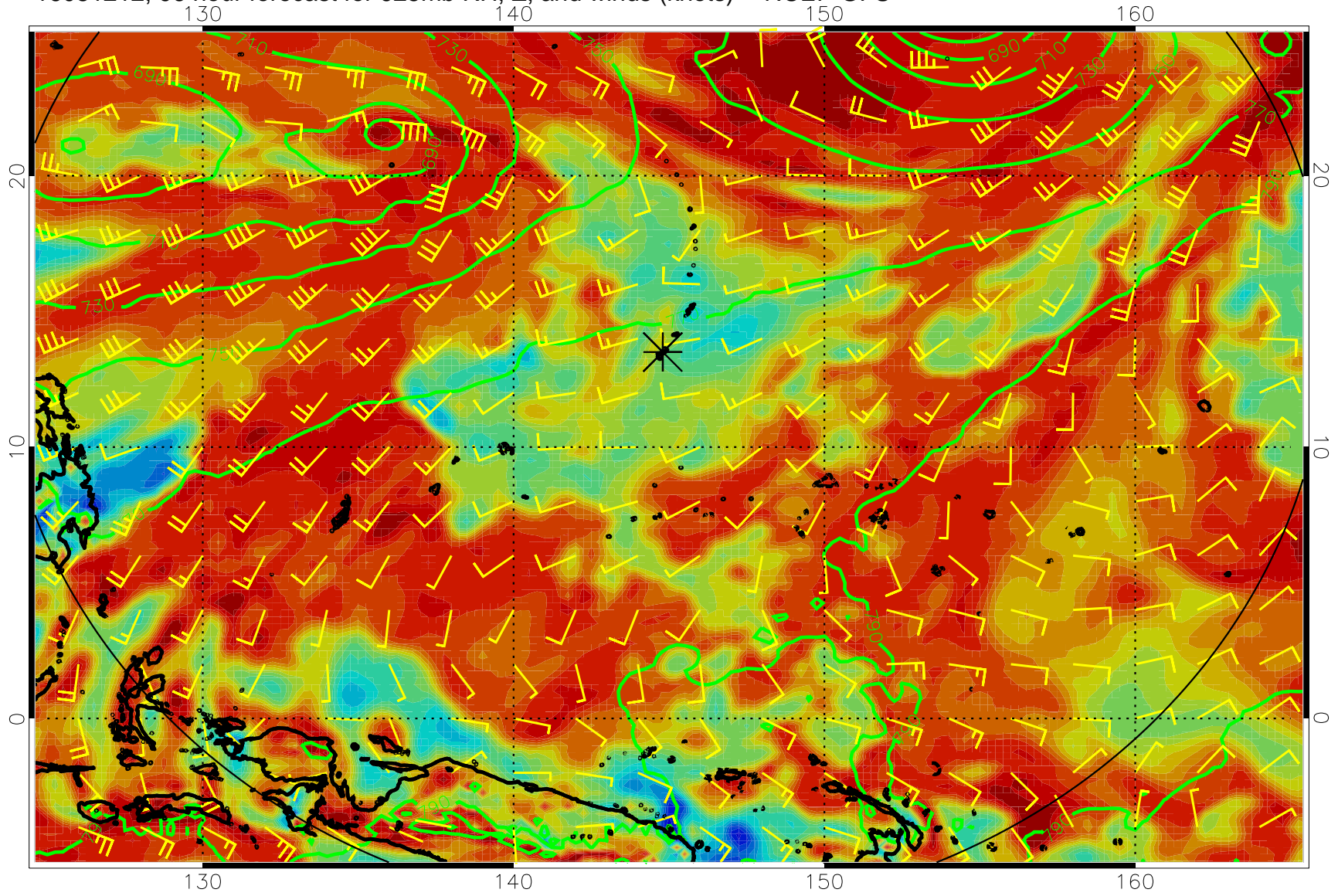




16081206, 90 hour forecast for 925mb RH, Z, and winds (knots) -- NCEP GFS

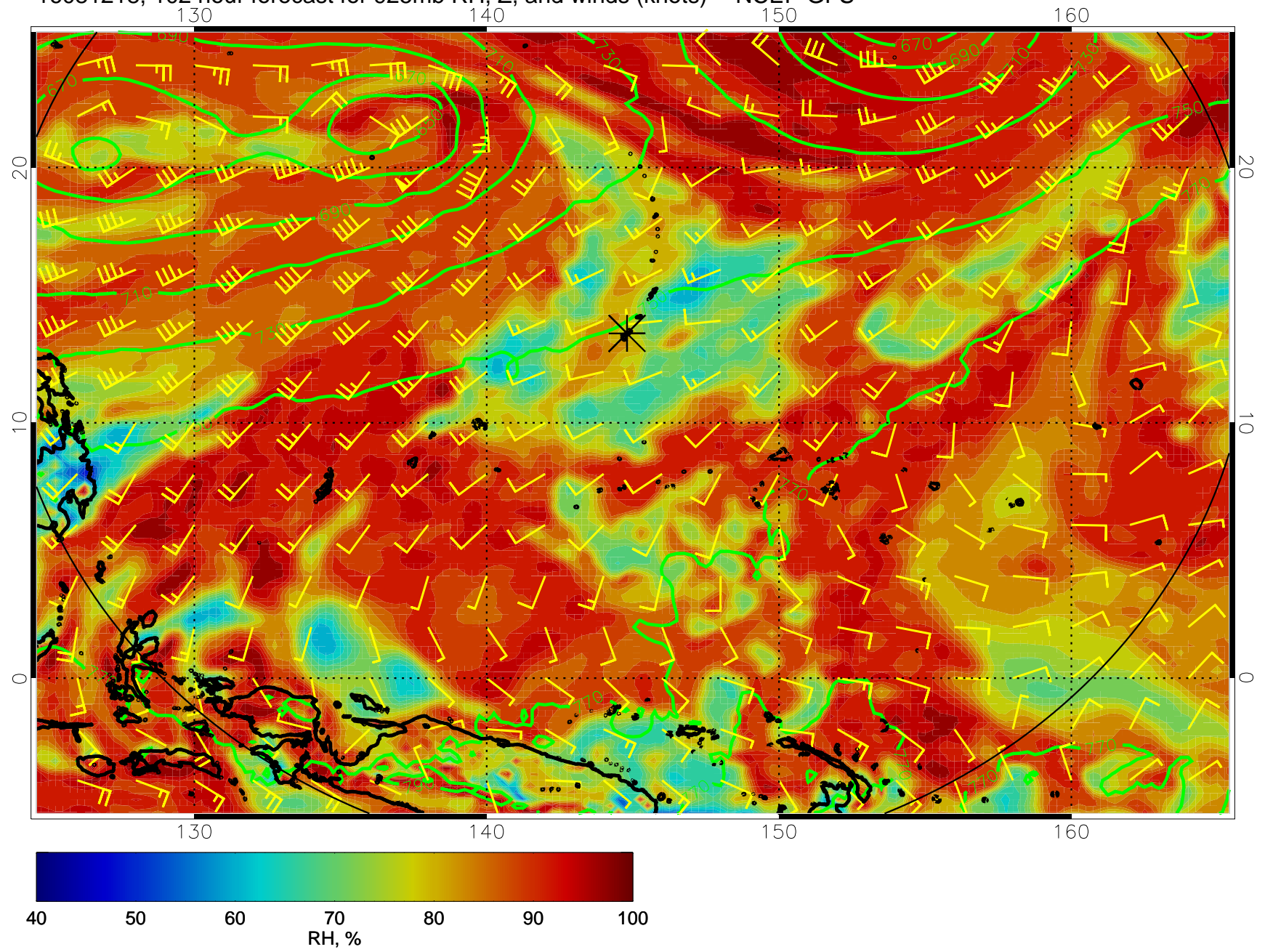


16081212, 96 hour forecast for 925mb RH, Z, and winds (knots) -- NCEP GFS

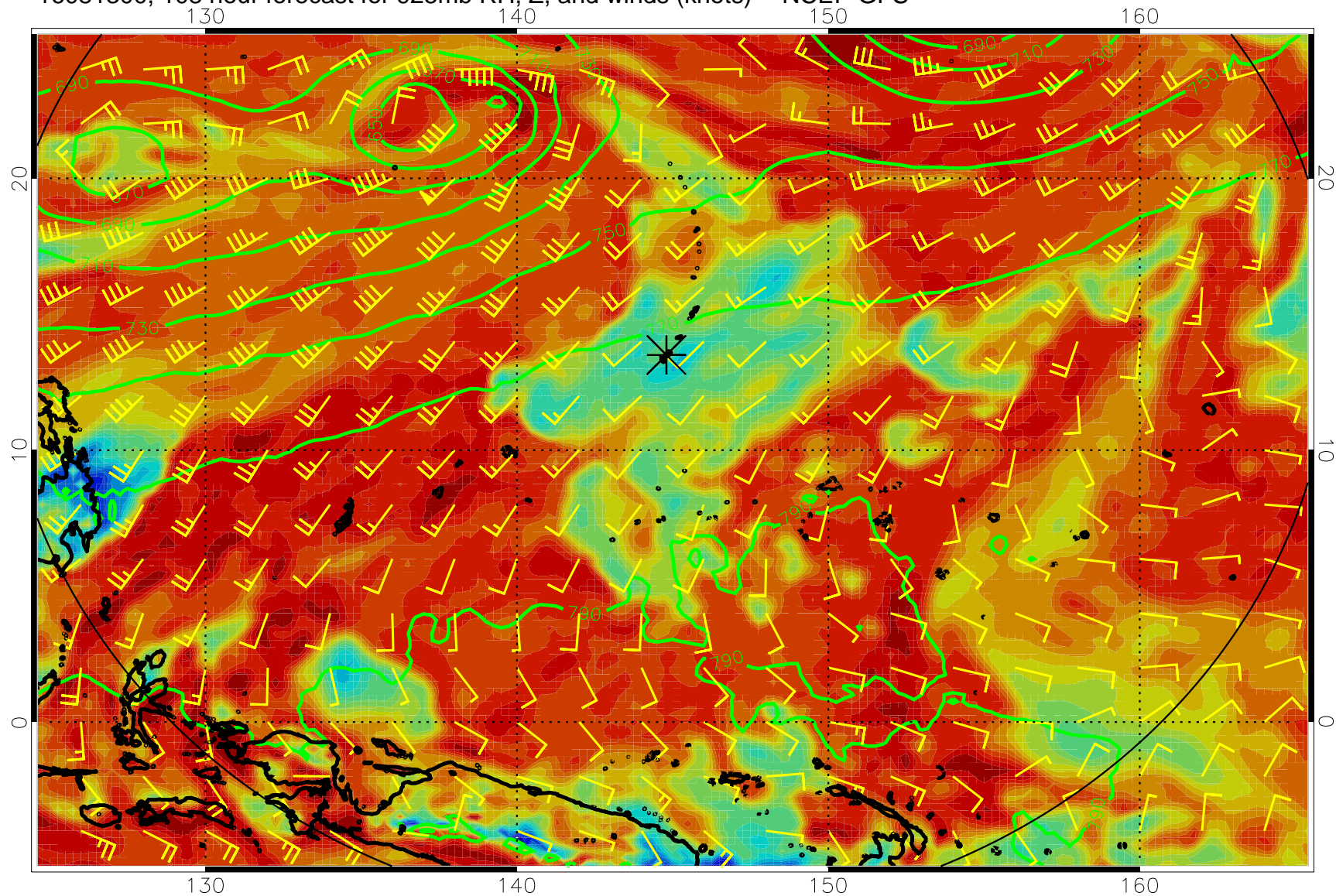




16081218, 102 hour forecast for 925mb RH, Z, and winds (knots) -- NCEP GFS

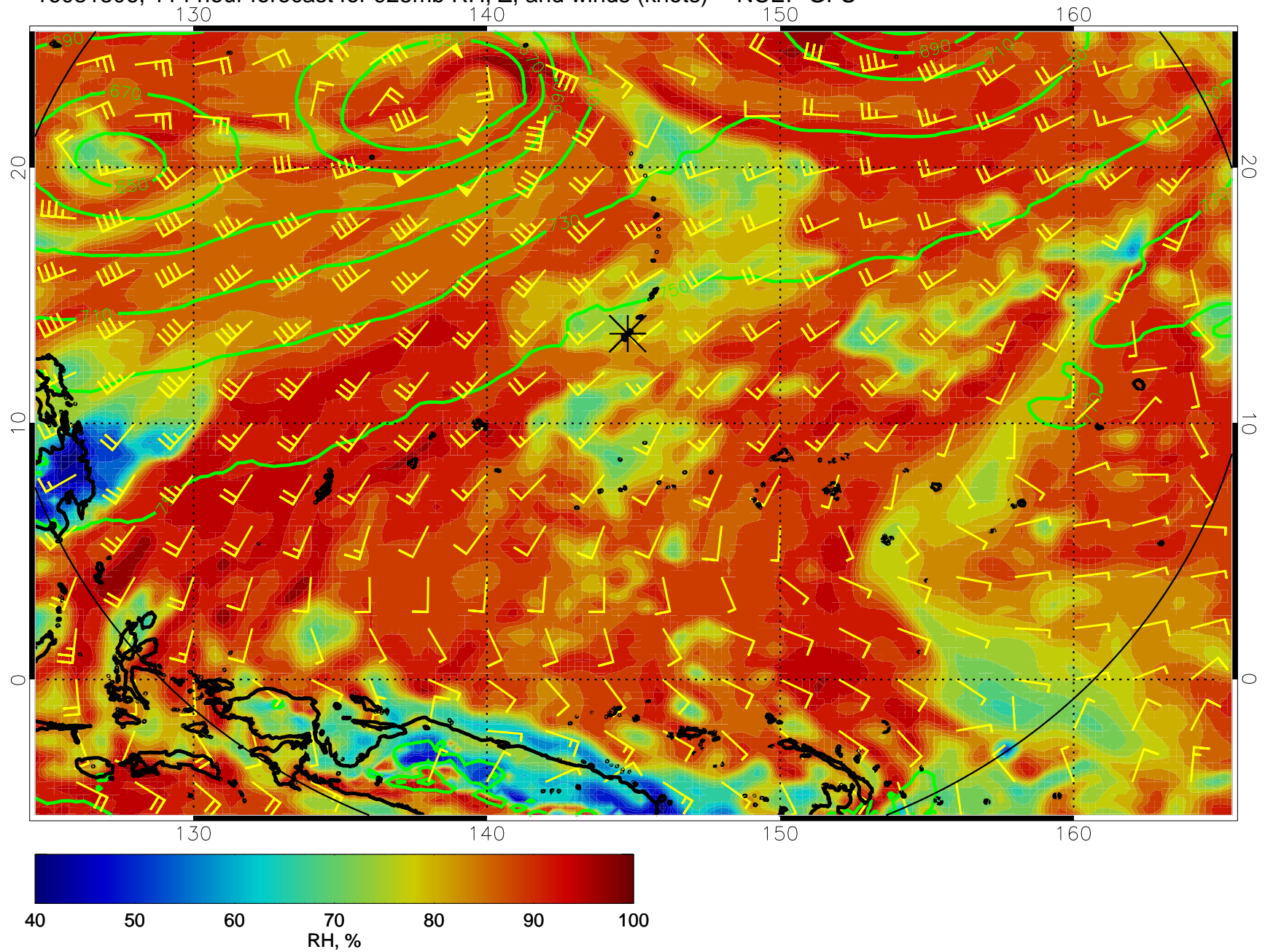


16081300, 108 hour forecast for 925mb RH, Z, and winds (knots) -- NCEP GFS





16081306, 114 hour forecast for 925mb RH, Z, and winds (knots) -- NCEP GFS



16081312, 120 hour forecast for 925mb RH, Z, and winds (knots) -- NCEP GFS

