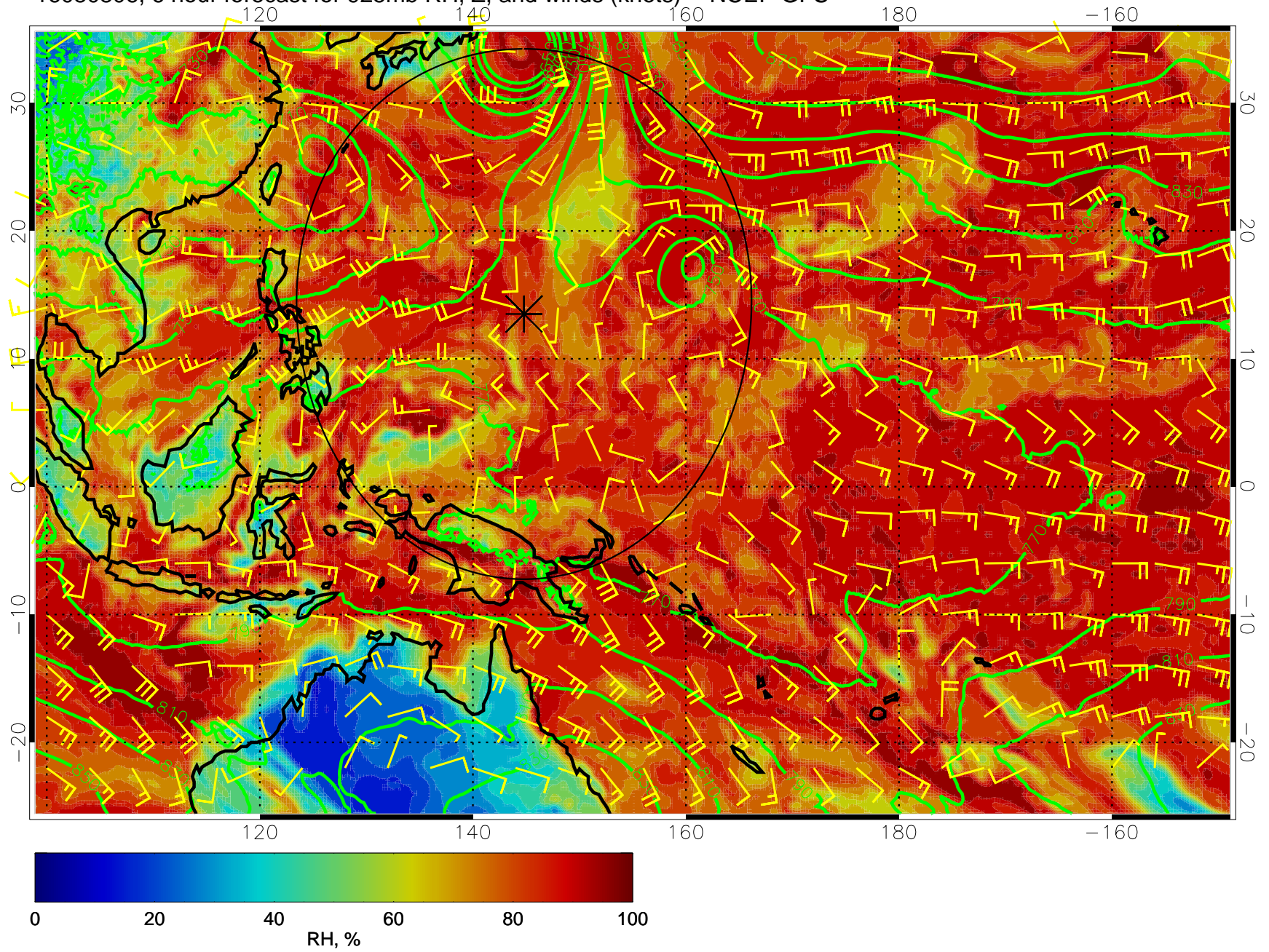
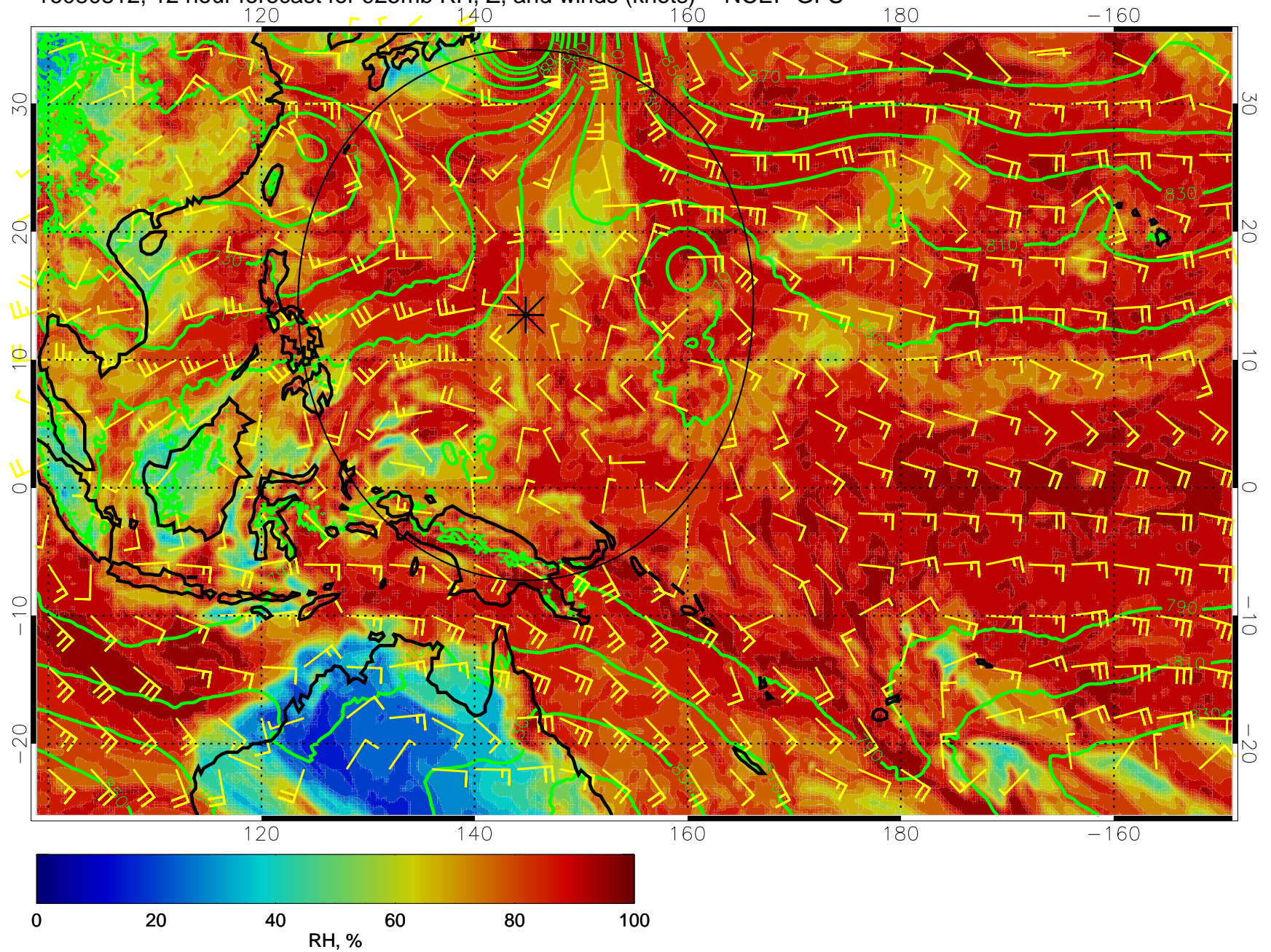


16080806, 6 hour forecast for 925mb RH, Z, and winds (knots) -- NCEP GFS



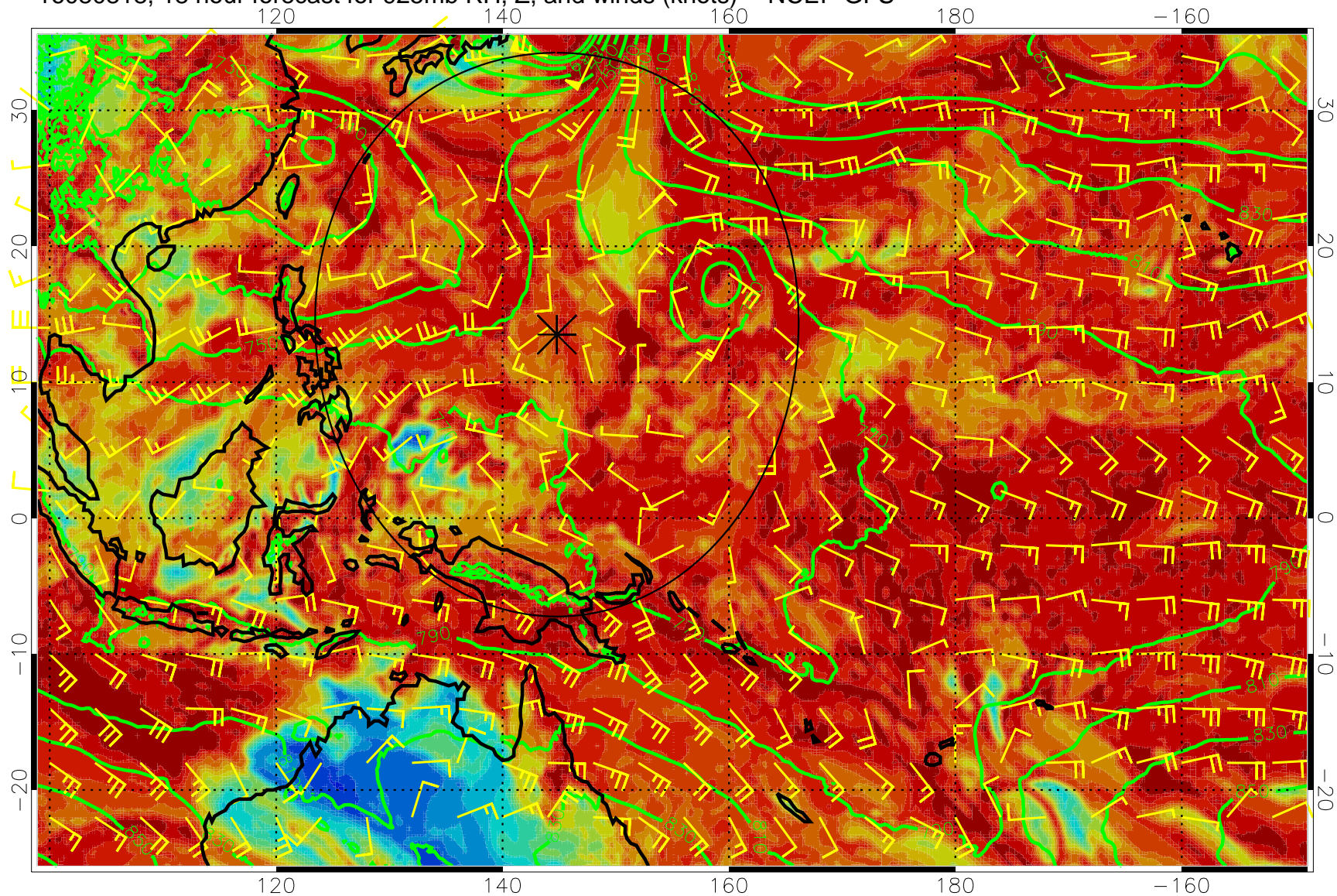


16080812, 12 hour forecast for 925mb RH, Z, and winds (knots) -- NCEP GFS



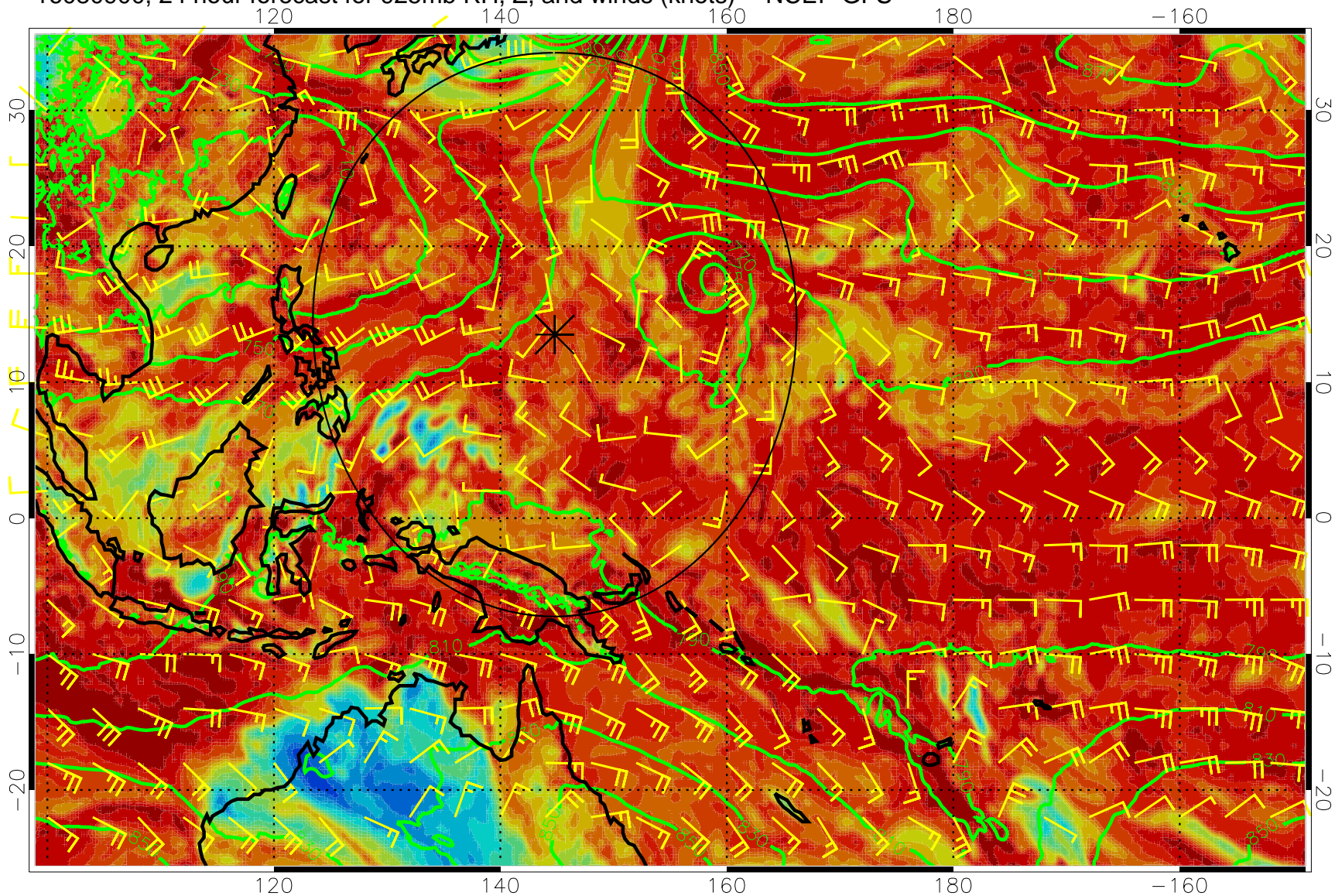


16080818, 18 hour forecast for 925mb RH, Z, and winds (knots) -- NCEP GFS



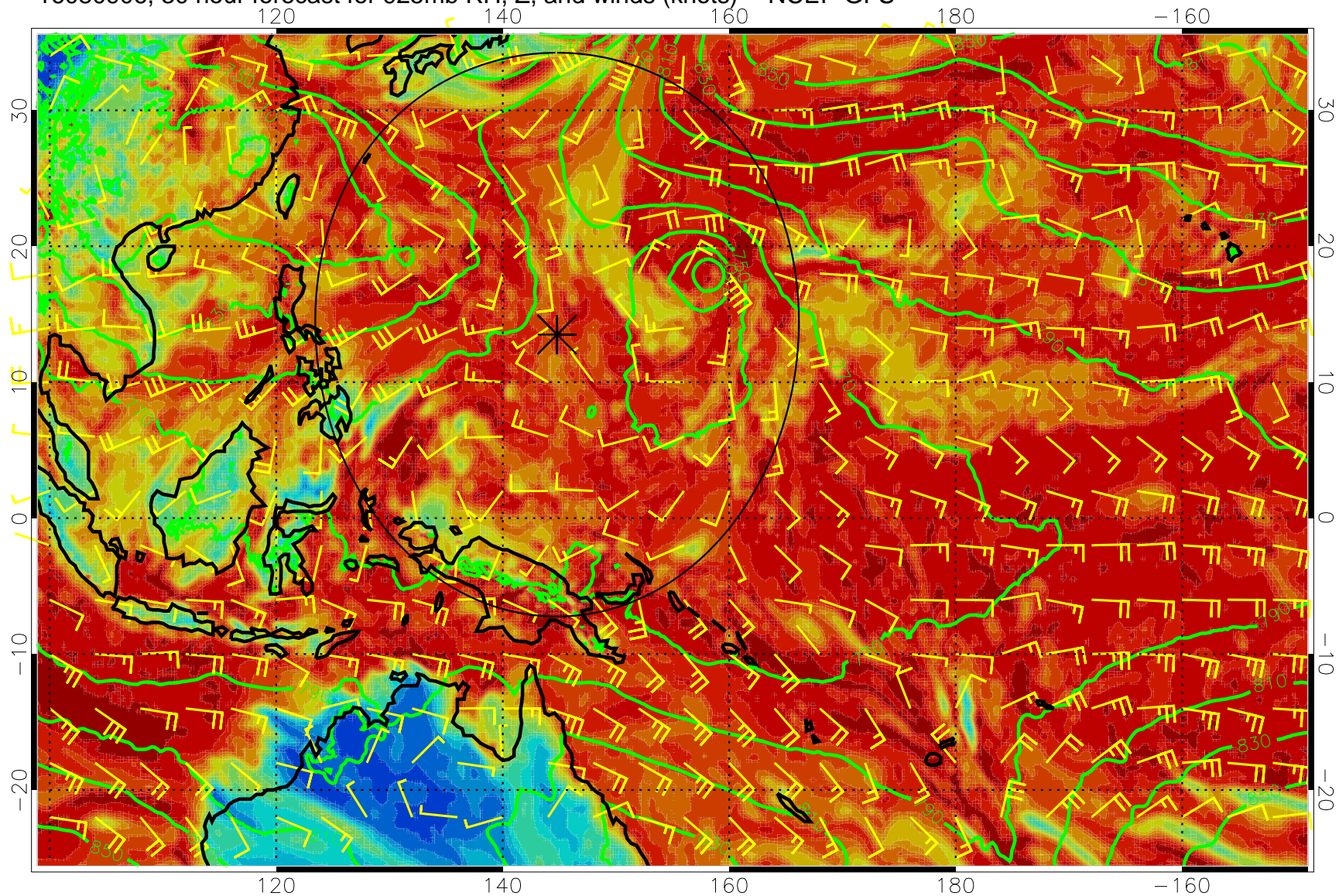


16080900, 24 hour forecast for 925mb RH, Z, and winds (knots) -- NCEP GFS



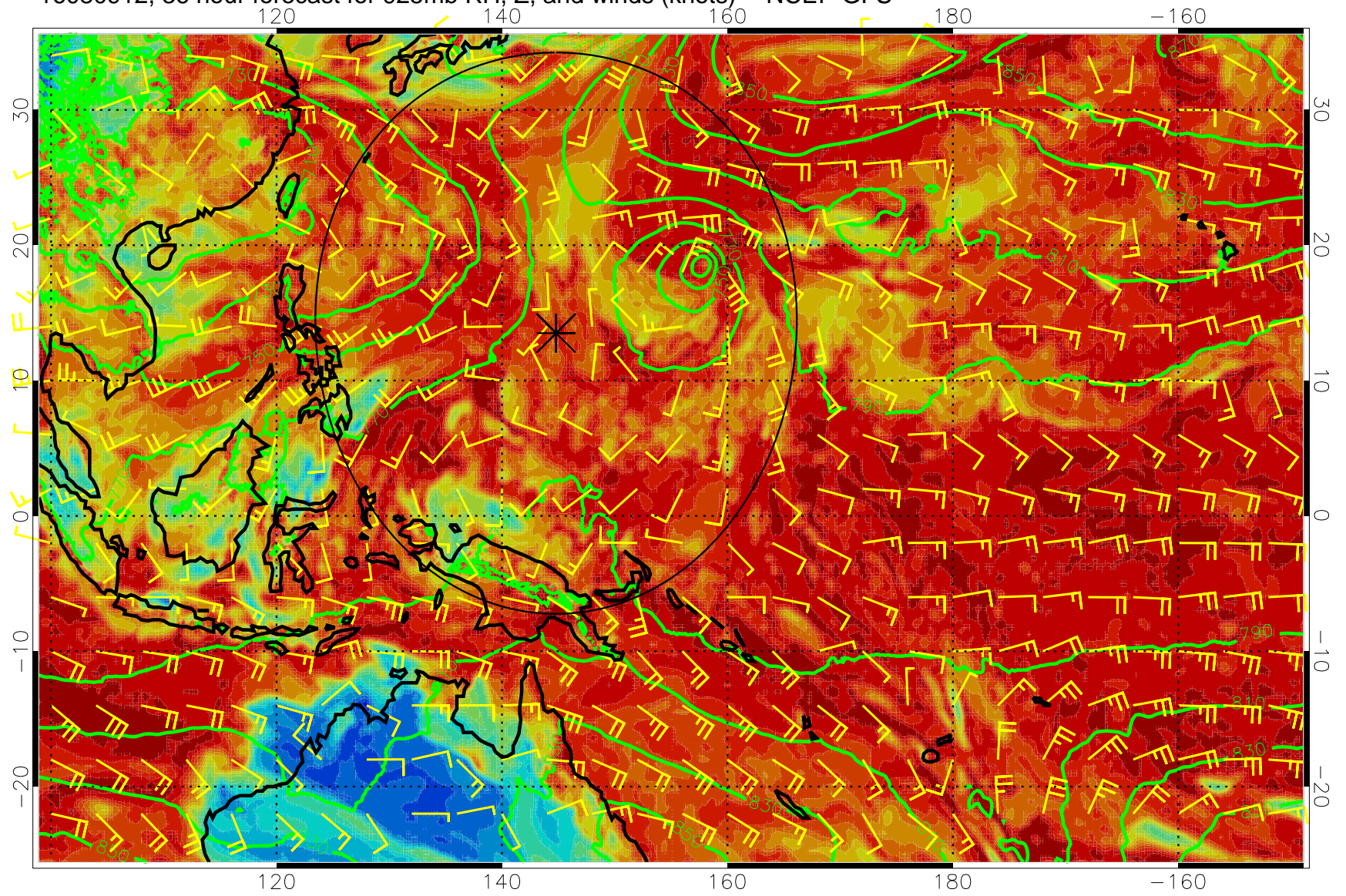


16080906, 30 hour forecast for 925mb RH, Z, and winds (knots) -- NCEP GFS



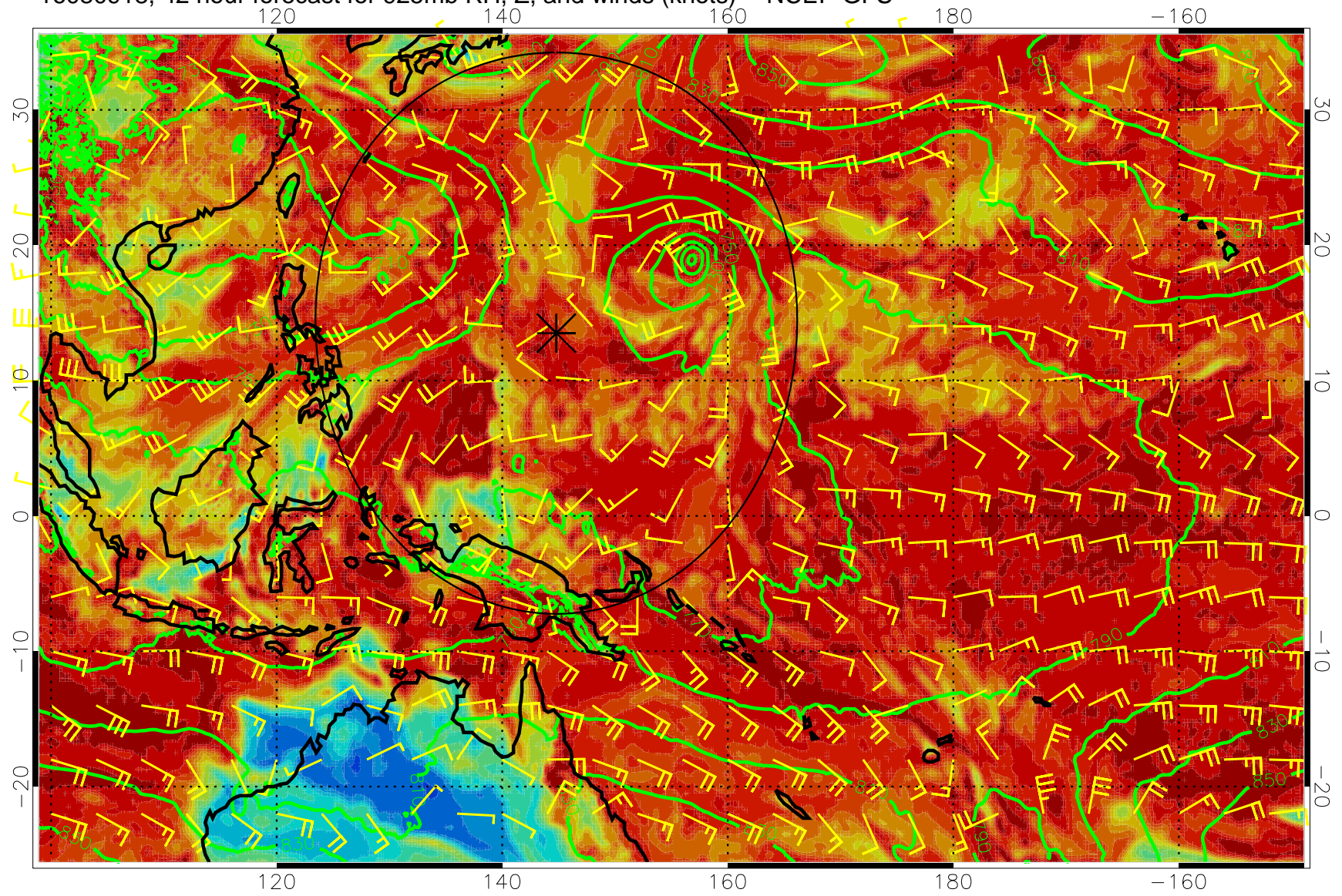


16080912, 36 hour forecast for 925mb RH, Z, and winds (knots) -- NCEP GFS



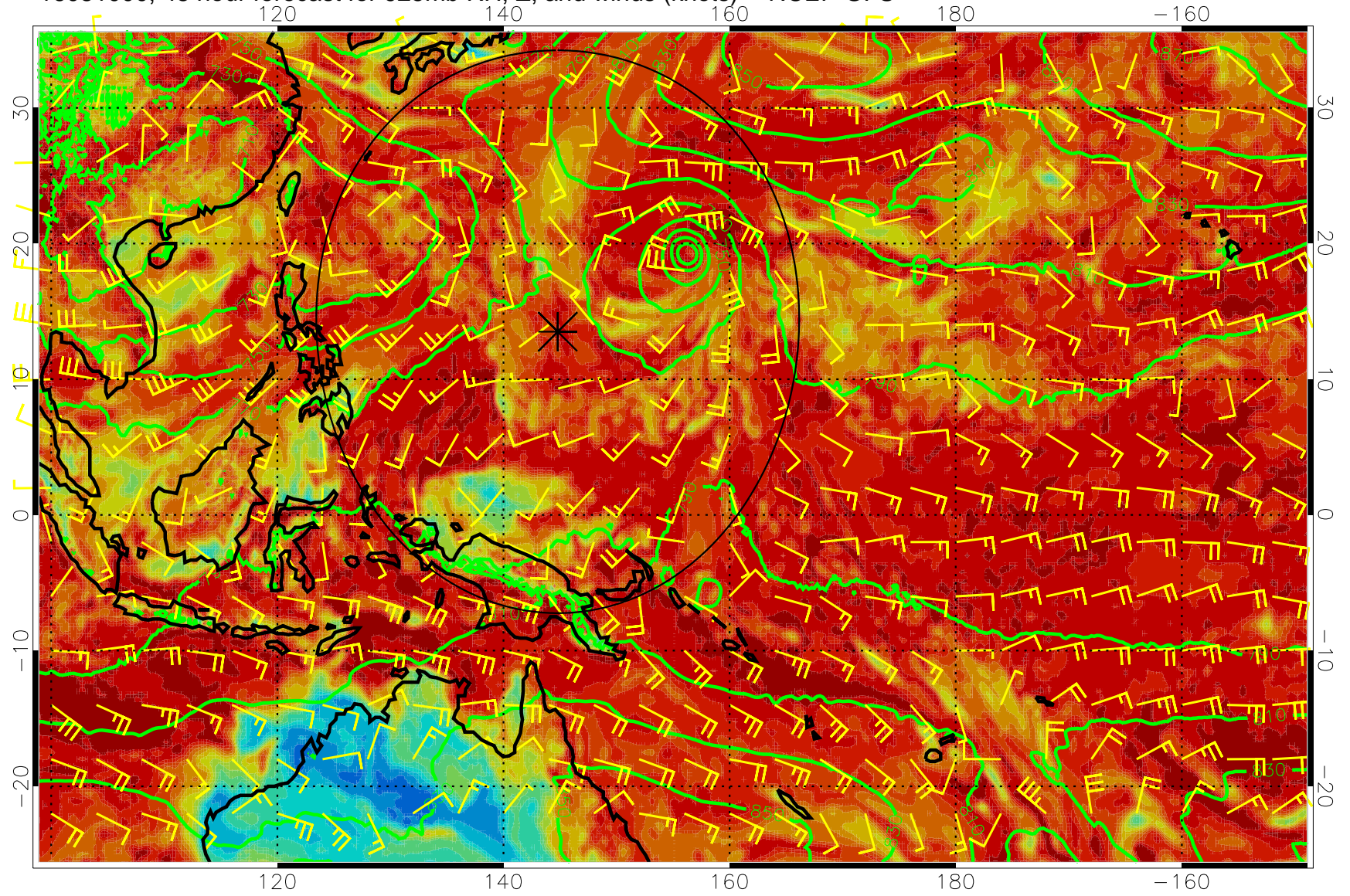


16080918, 42 hour forecast for 925mb RH, Z, and winds (knots) -- NCEP GFS



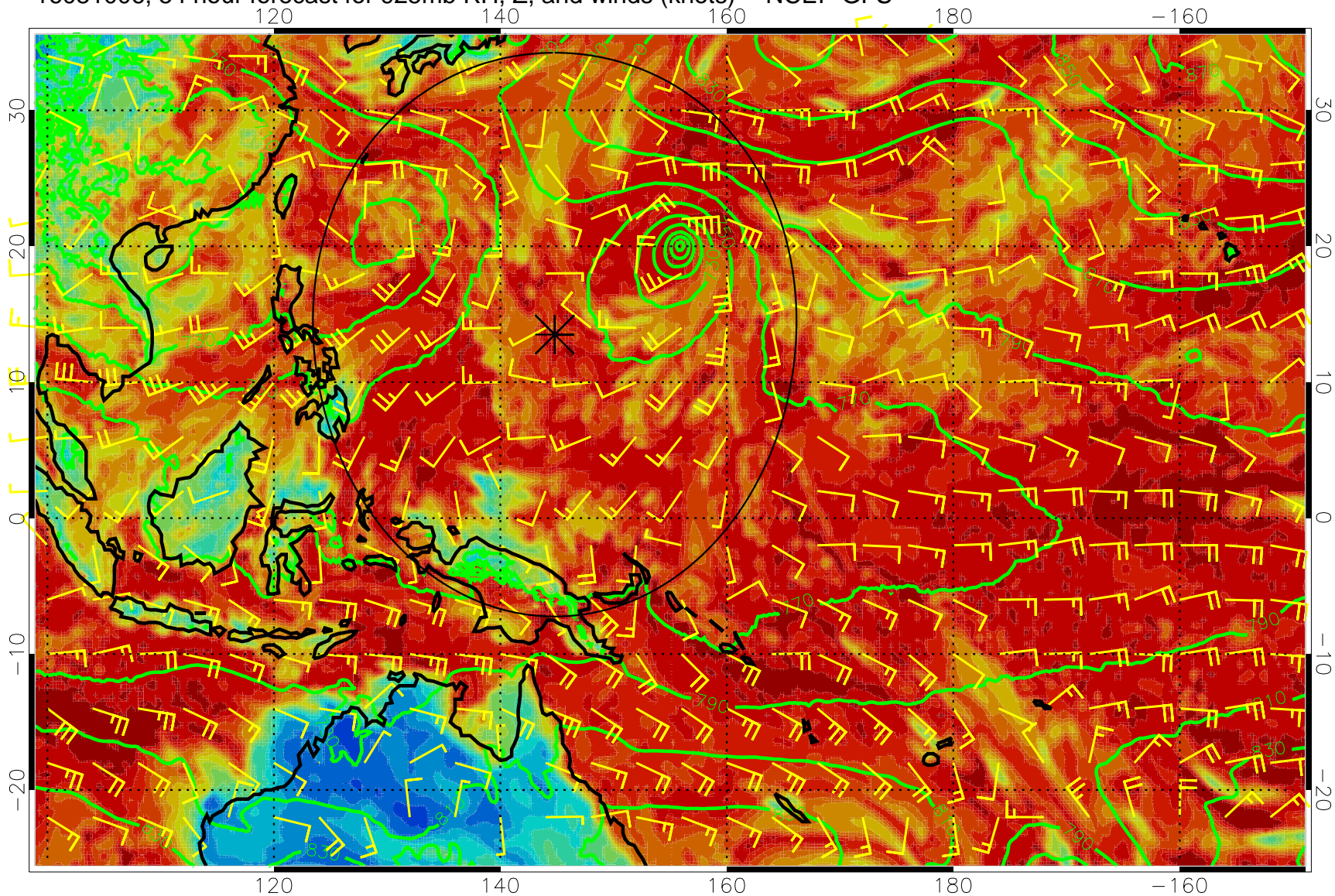


16081000, 48 hour forecast for 925mb RH, Z, and winds (knots) -- NCEP GFS



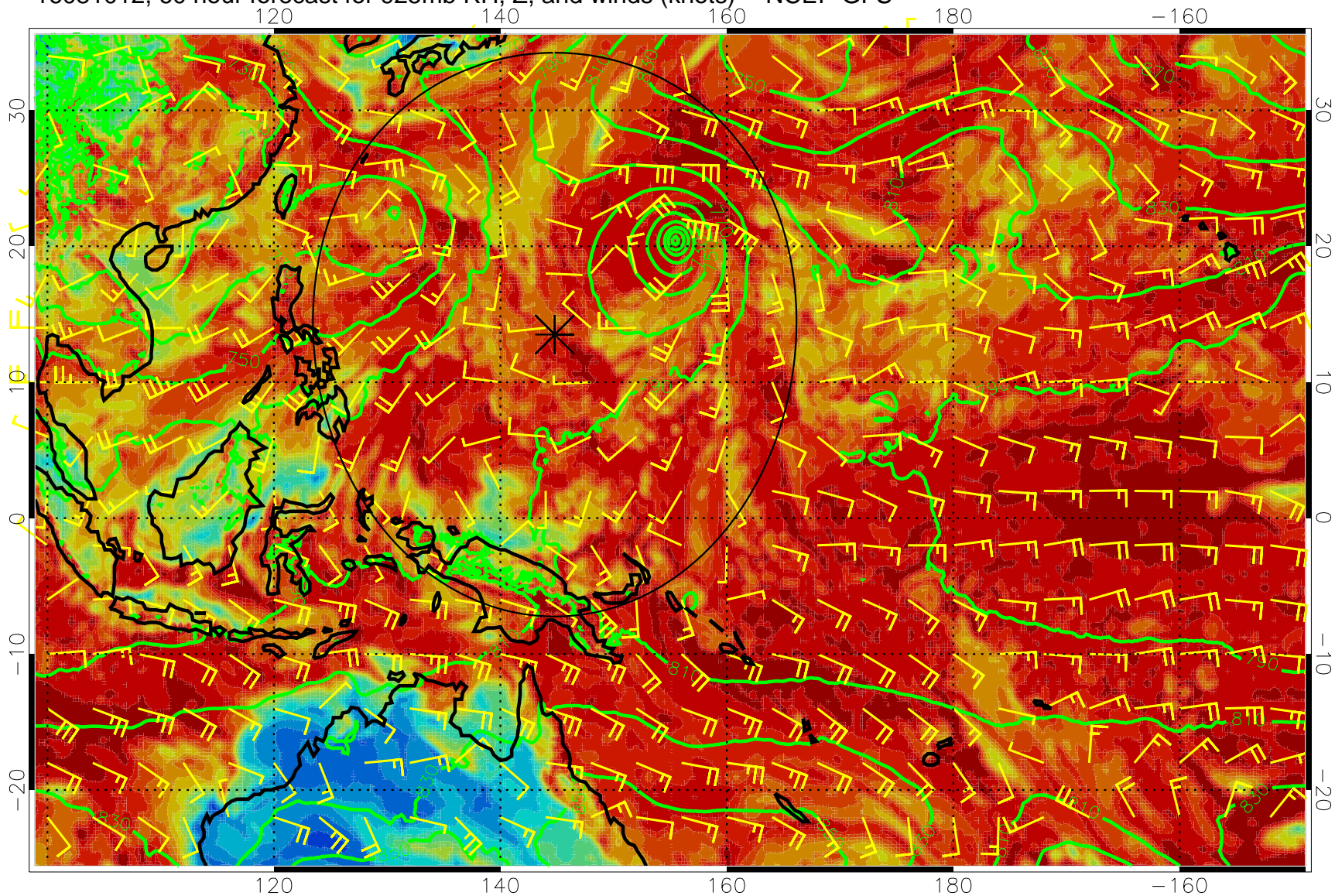


16081006, 54 hour forecast for 925mb RH, Z, and winds (knots) -- NCEP GFS



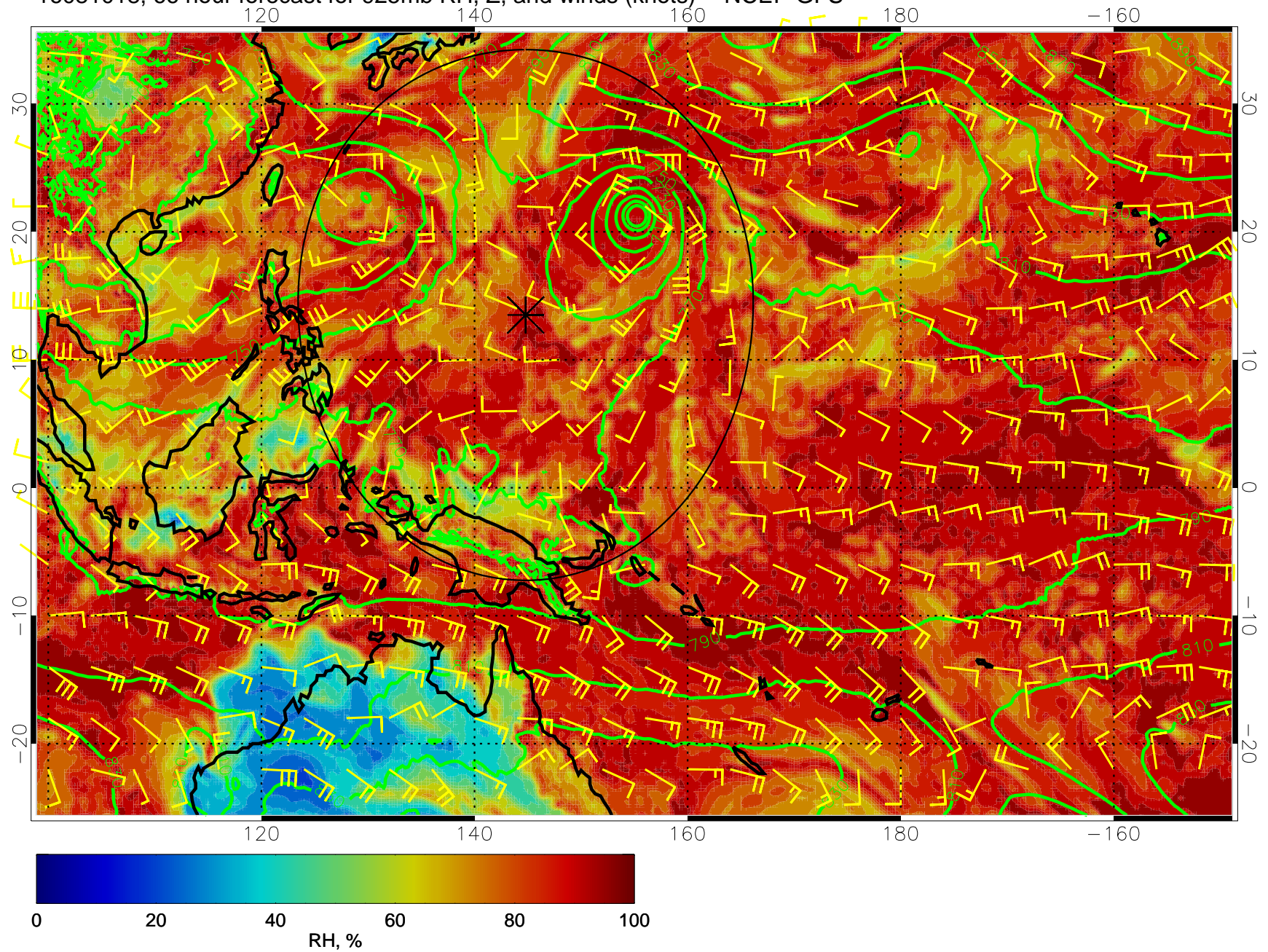


16081012, 60 hour forecast for 925mb RH, Z, and winds (knots) -- NCEP GFS



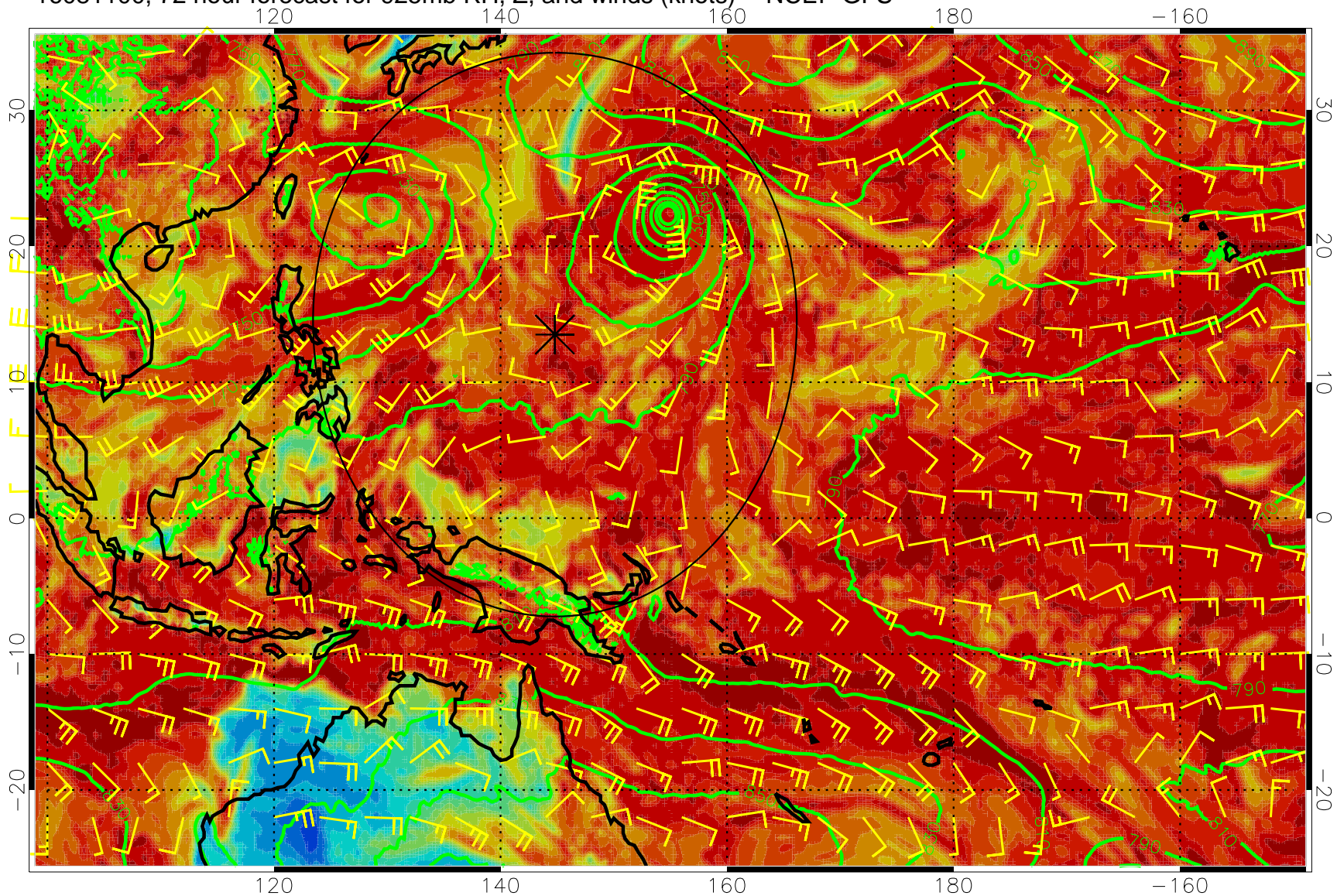


16081018, 66 hour forecast for 925mb RH, Z, and winds (knots) -- NCEP GFS



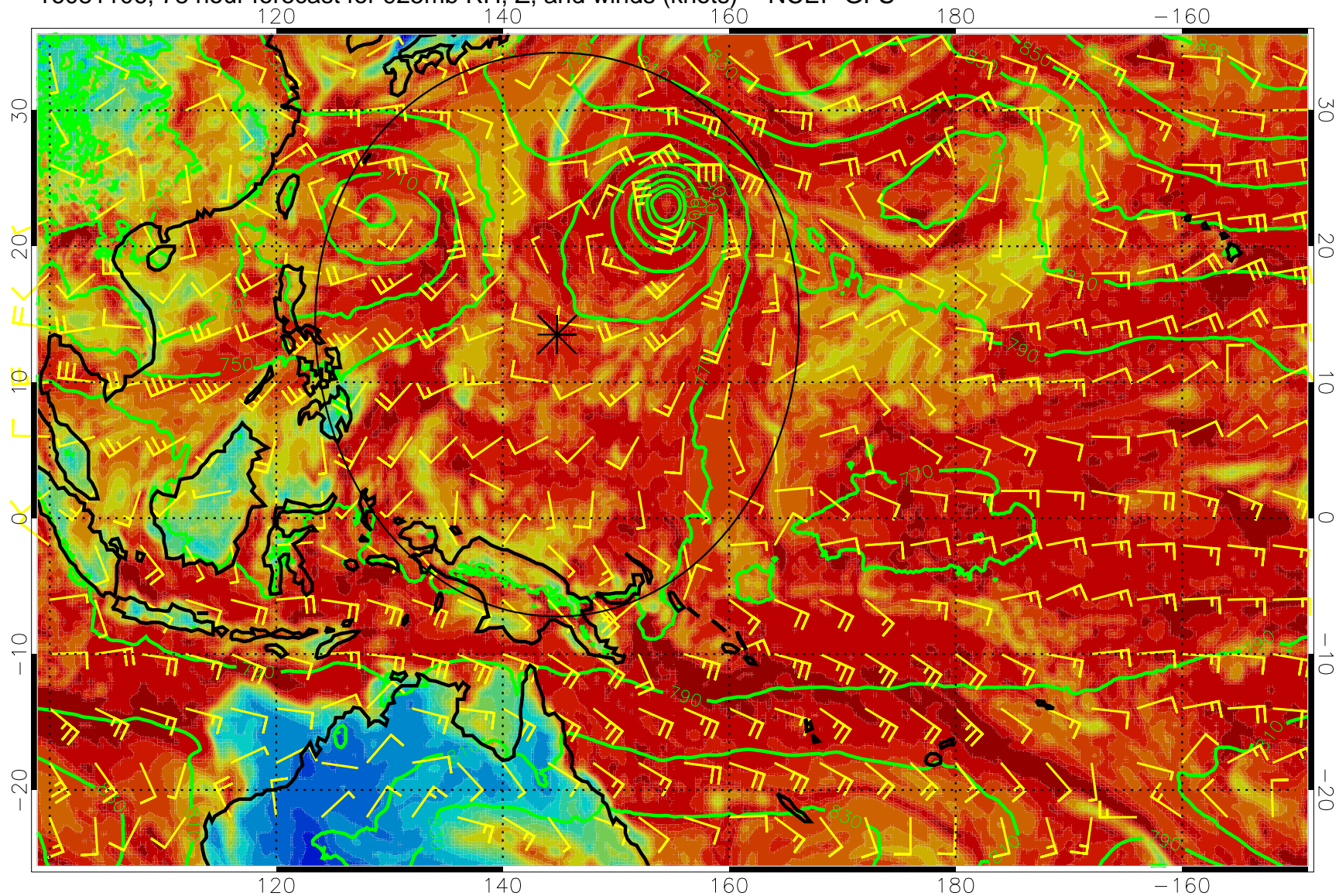


16081100, 72 hour forecast for 925mb RH, Z, and winds (knots) -- NCEP GFS



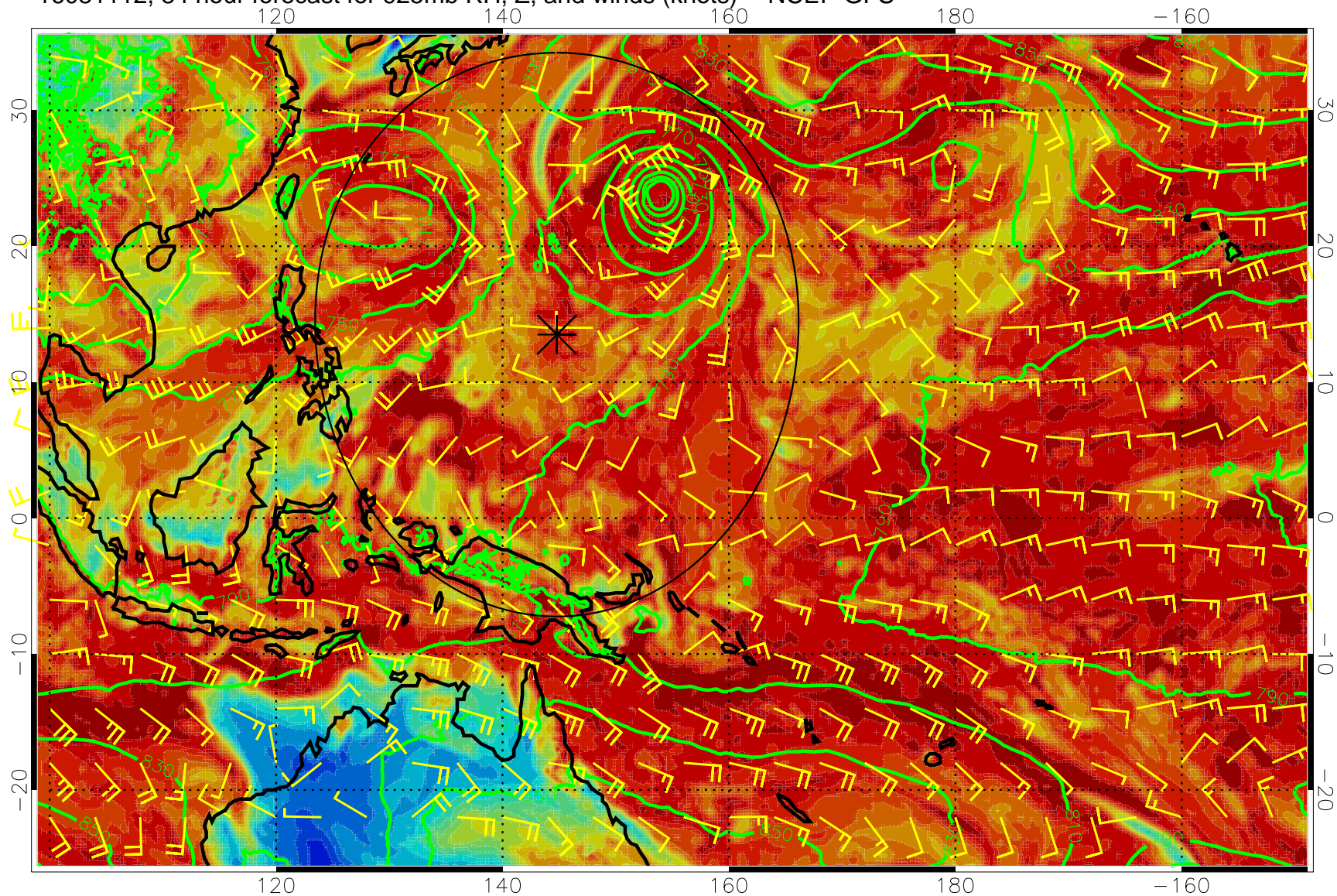


16081106, 78 hour forecast for 925mb RH, Z, and winds (knots) -- NCEP GFS



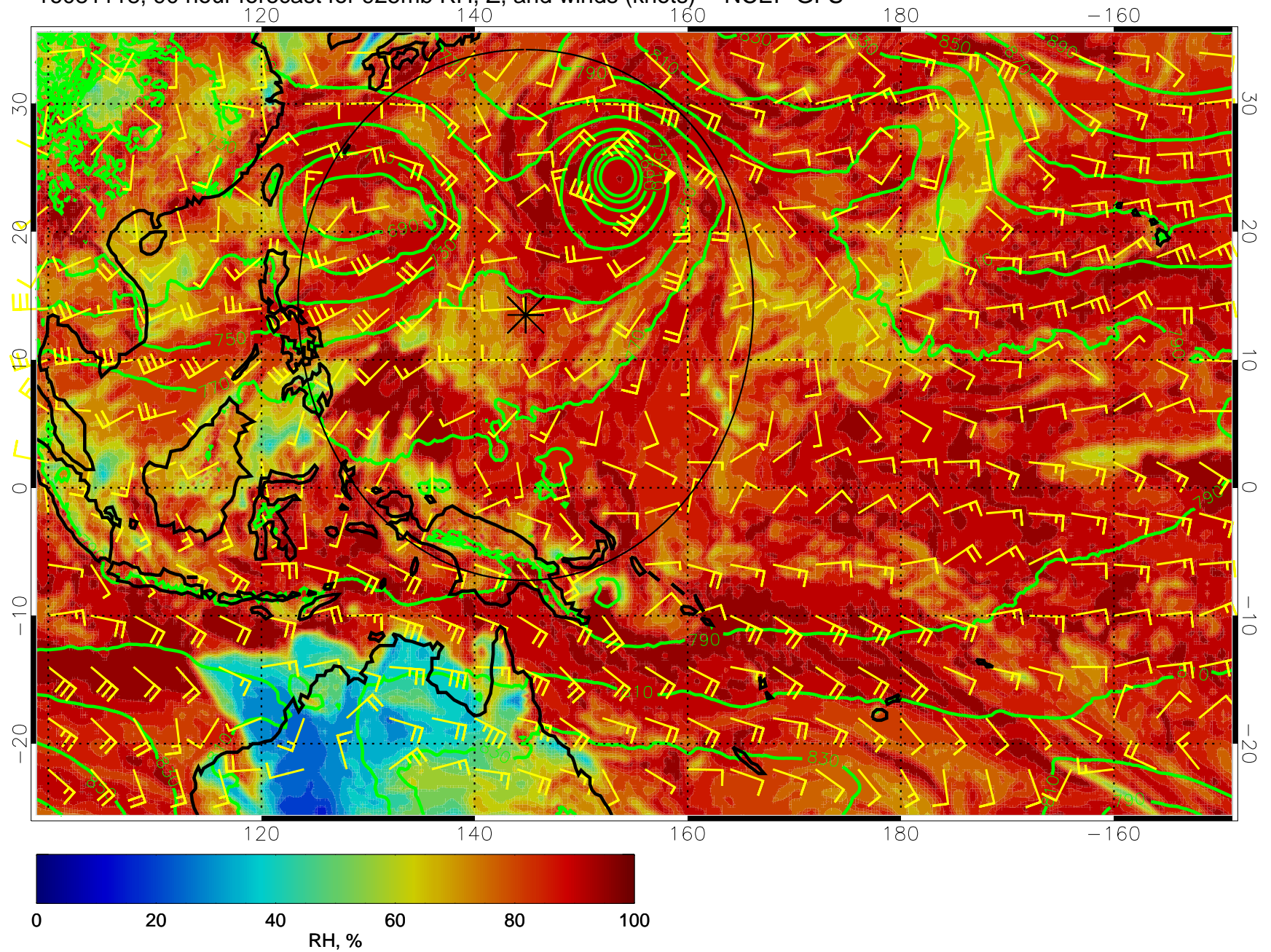


16081112, 84 hour forecast for 925mb RH, Z, and winds (knots) -- NCEP GFS



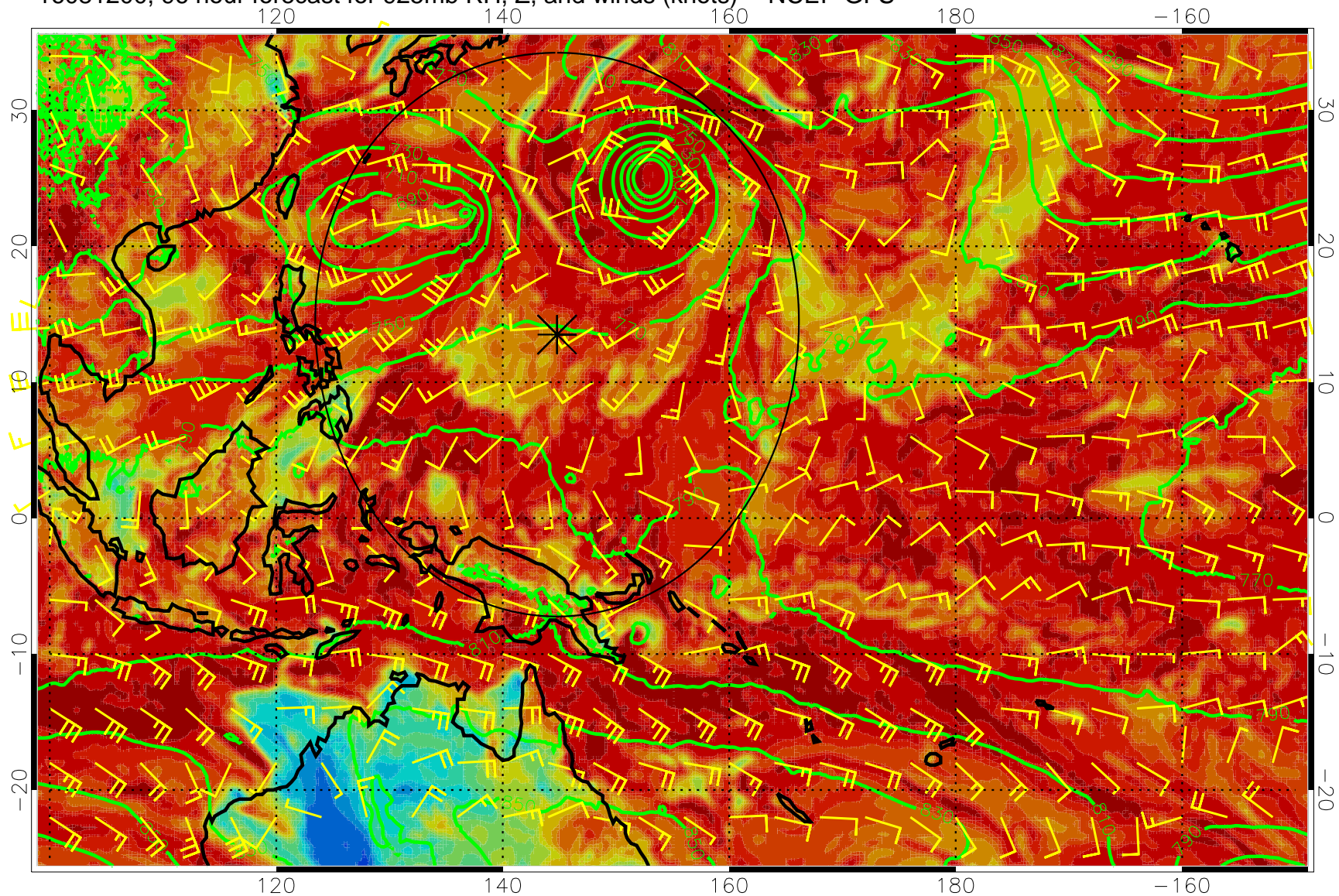


16081118, 90 hour forecast for 925mb RH, Z, and winds (knots) -- NCEP GFS



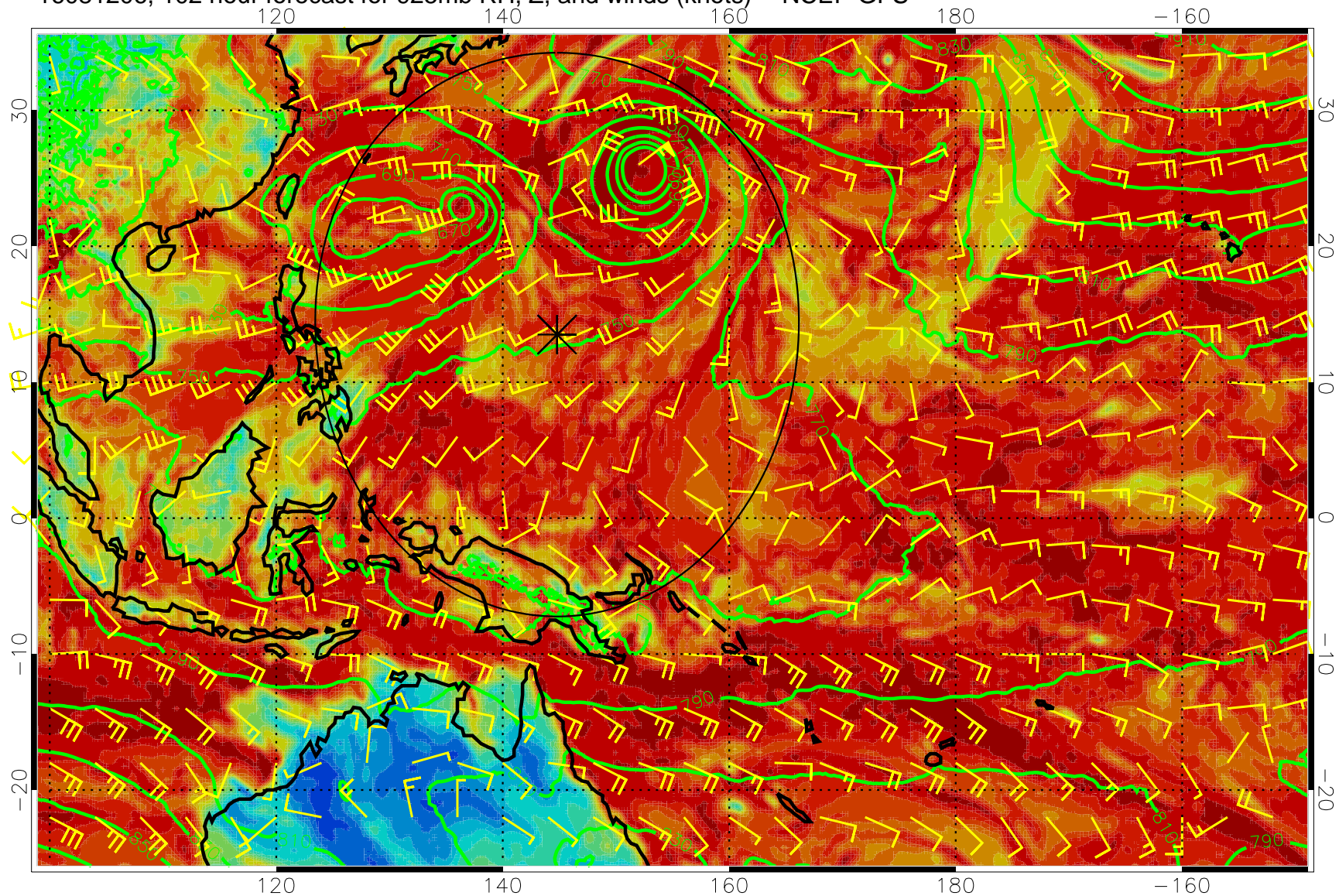


16081200, 96 hour forecast for 925mb RH, Z, and winds (knots) -- NCEP GFS



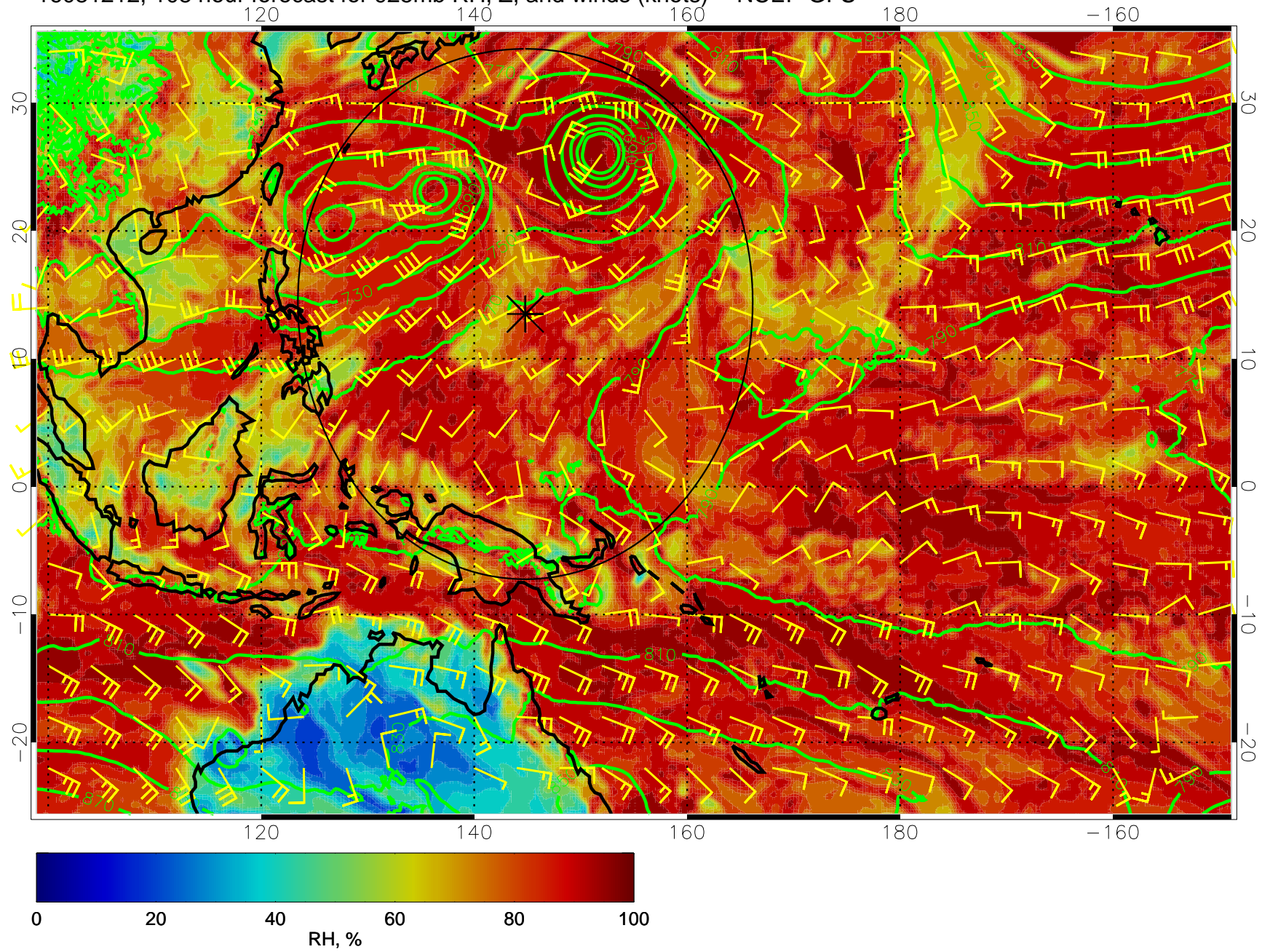


16081206, 102 hour forecast for 925mb RH, Z, and winds (knots) -- NCEP GFS



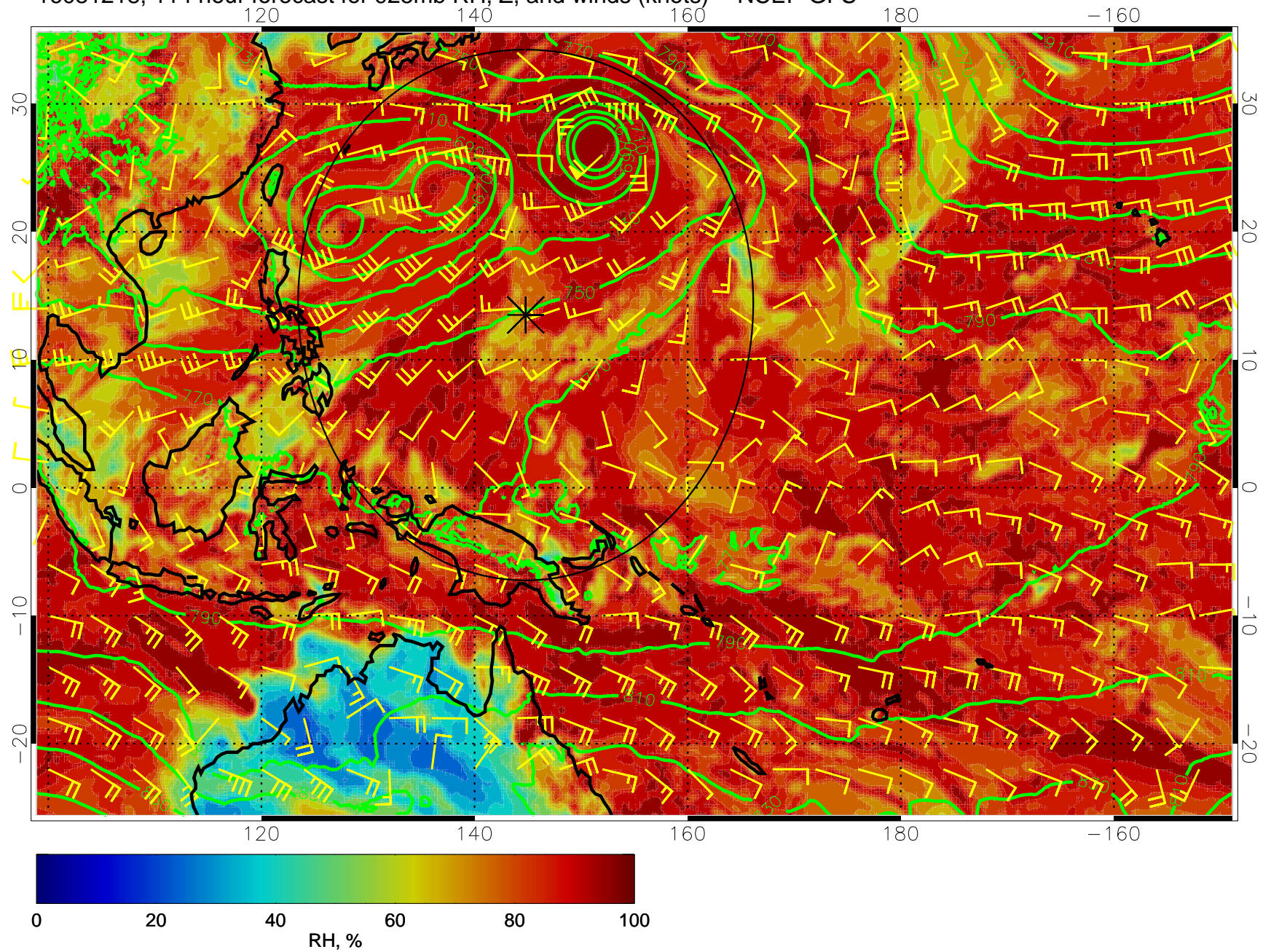


16081212, 108 hour forecast for 925mb RH, Z, and winds (knots) -- NCEP GFS





16081218, 114 hour forecast for 925mb RH, Z, and winds (knots) -- NCEP GFS





16081300, 120 hour forecast for 925mb RH, Z, and winds (knots) -- NCEP GFS

