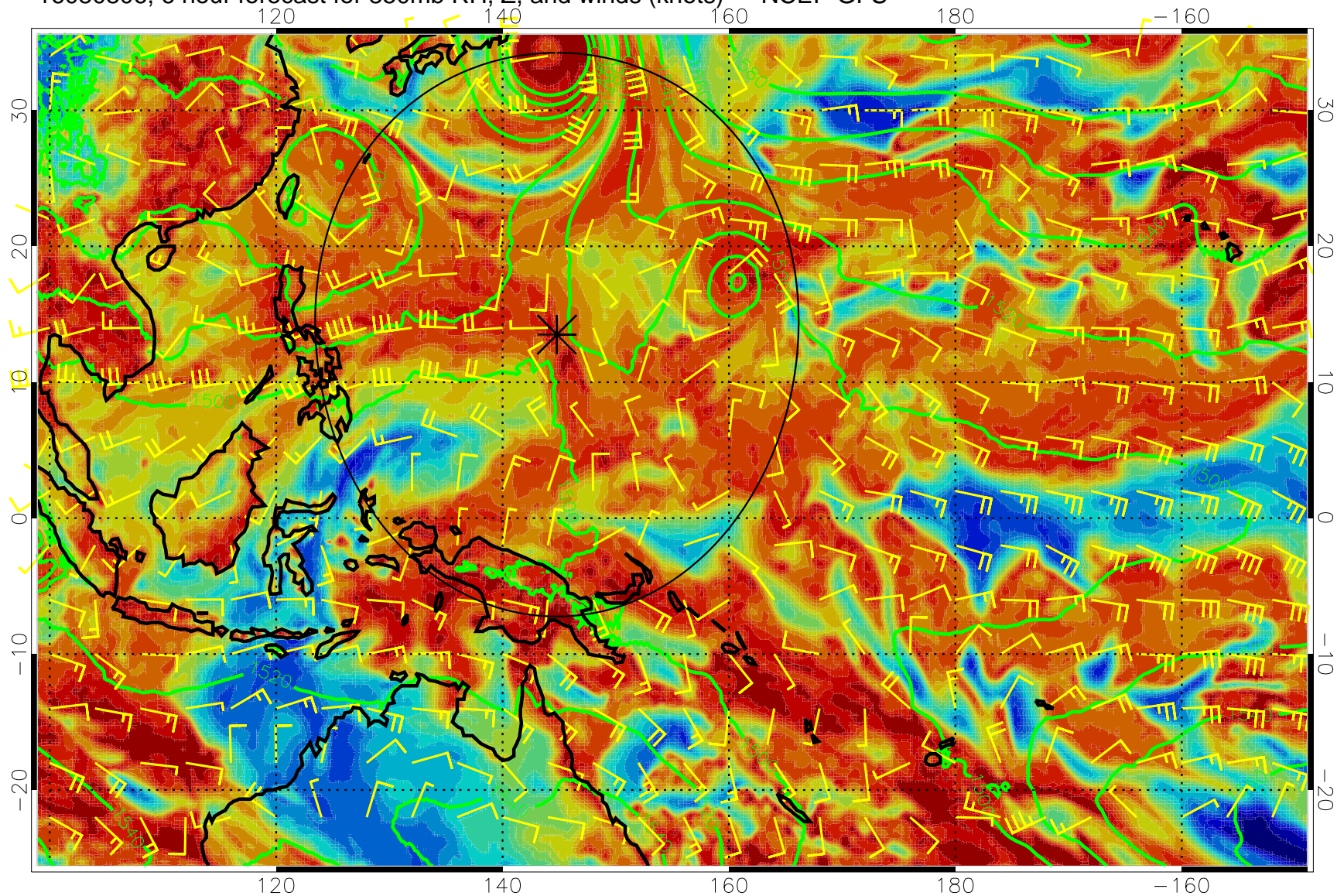
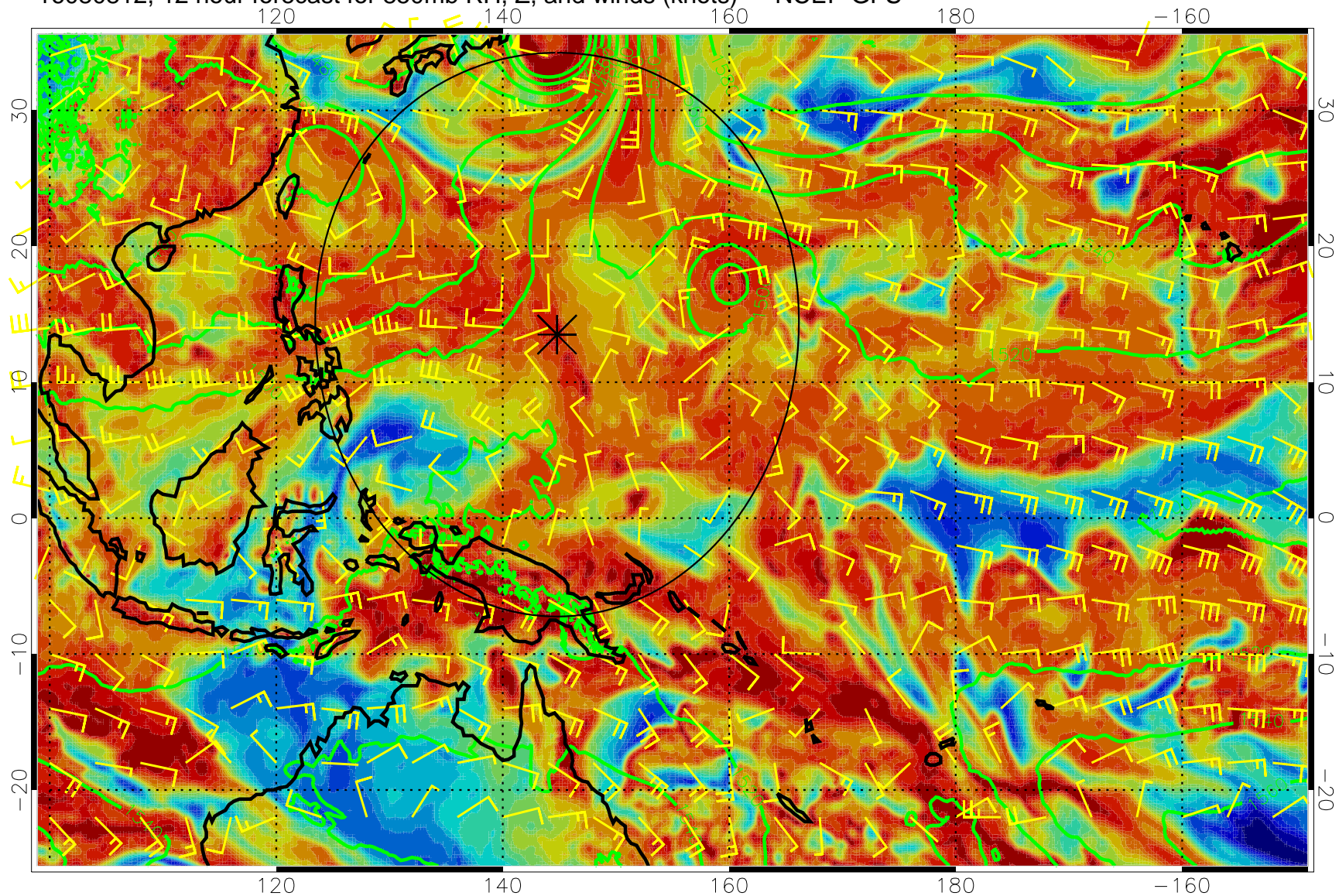


16080806, 6 hour forecast for 850mb RH, Z, and winds (knots) -- NCEP GFS



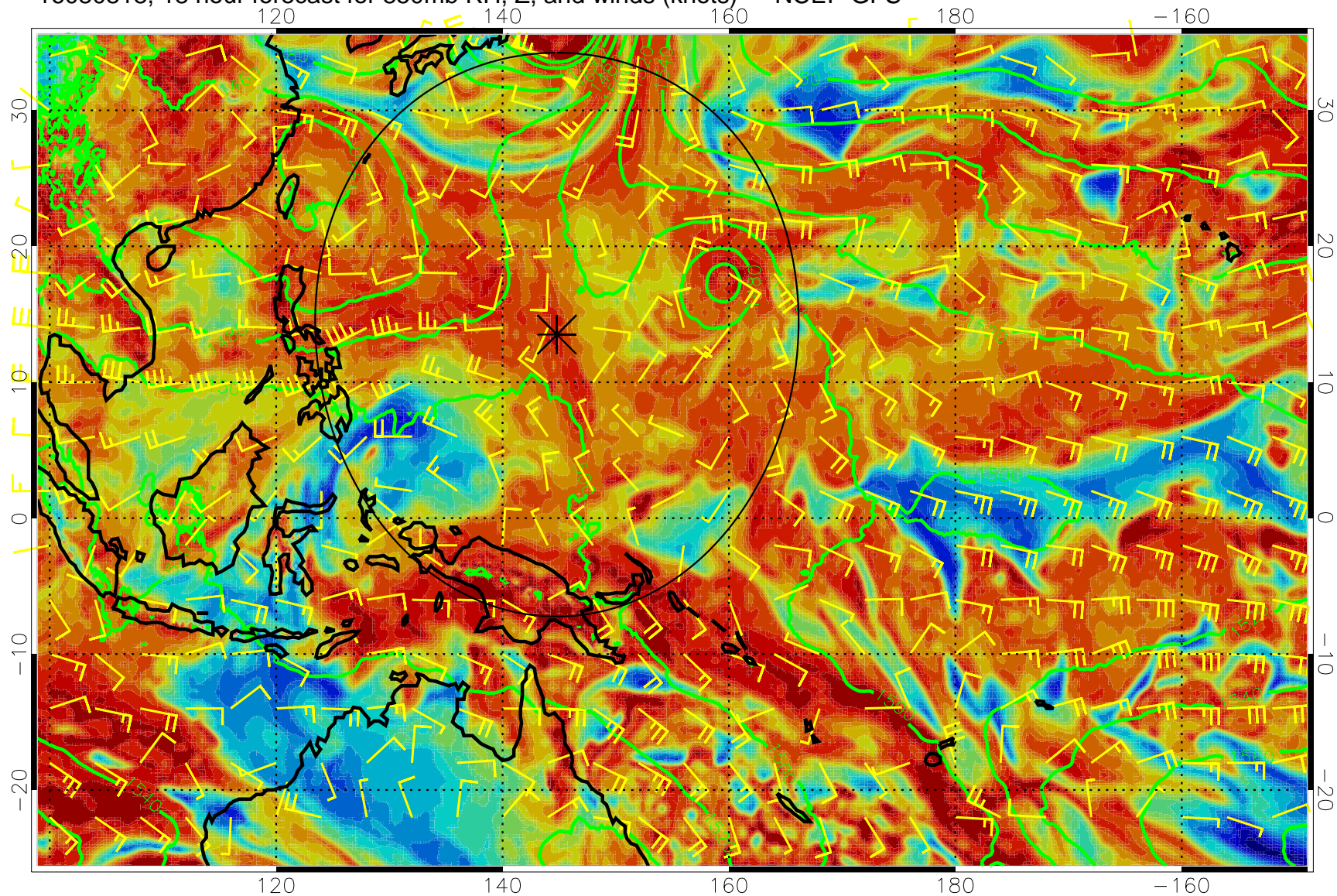
Precip (tot dot, conv sol) mm/day 40 mm/day contours, min 20

16080812, 12 hour forecast for 850mb RH, Z, and winds (knots) -- NCEP GFS



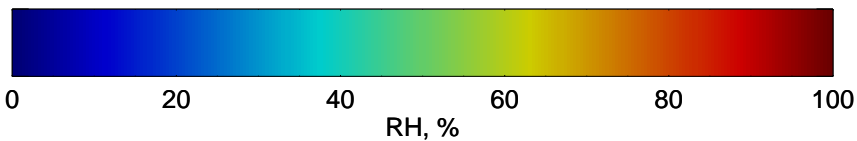
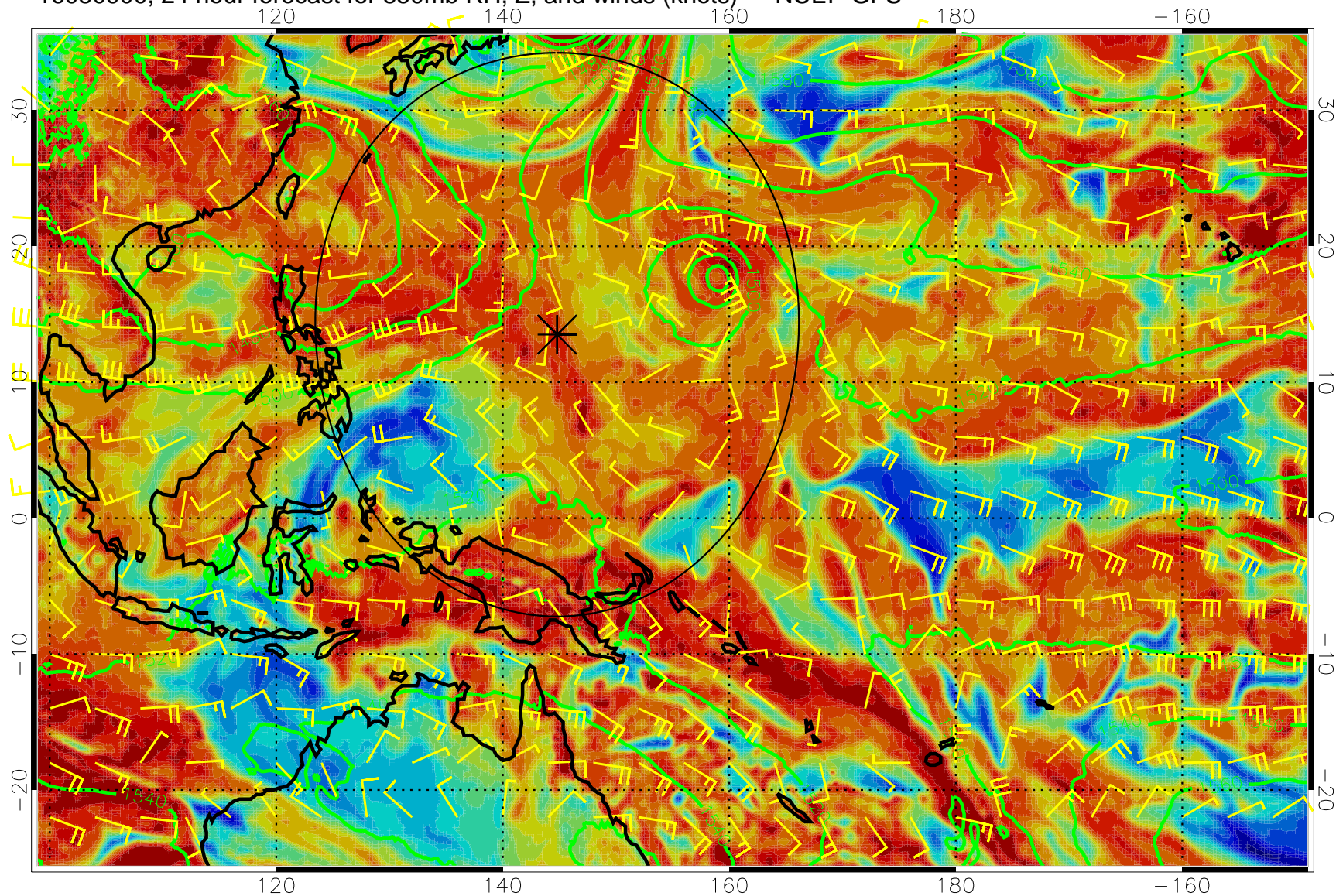
Precip (tot dot, conv sol) mm/day 40 mm/day contours, min 20

16080818, 18 hour forecast for 850mb RH, Z, and winds (knots) -- NCEP GFS



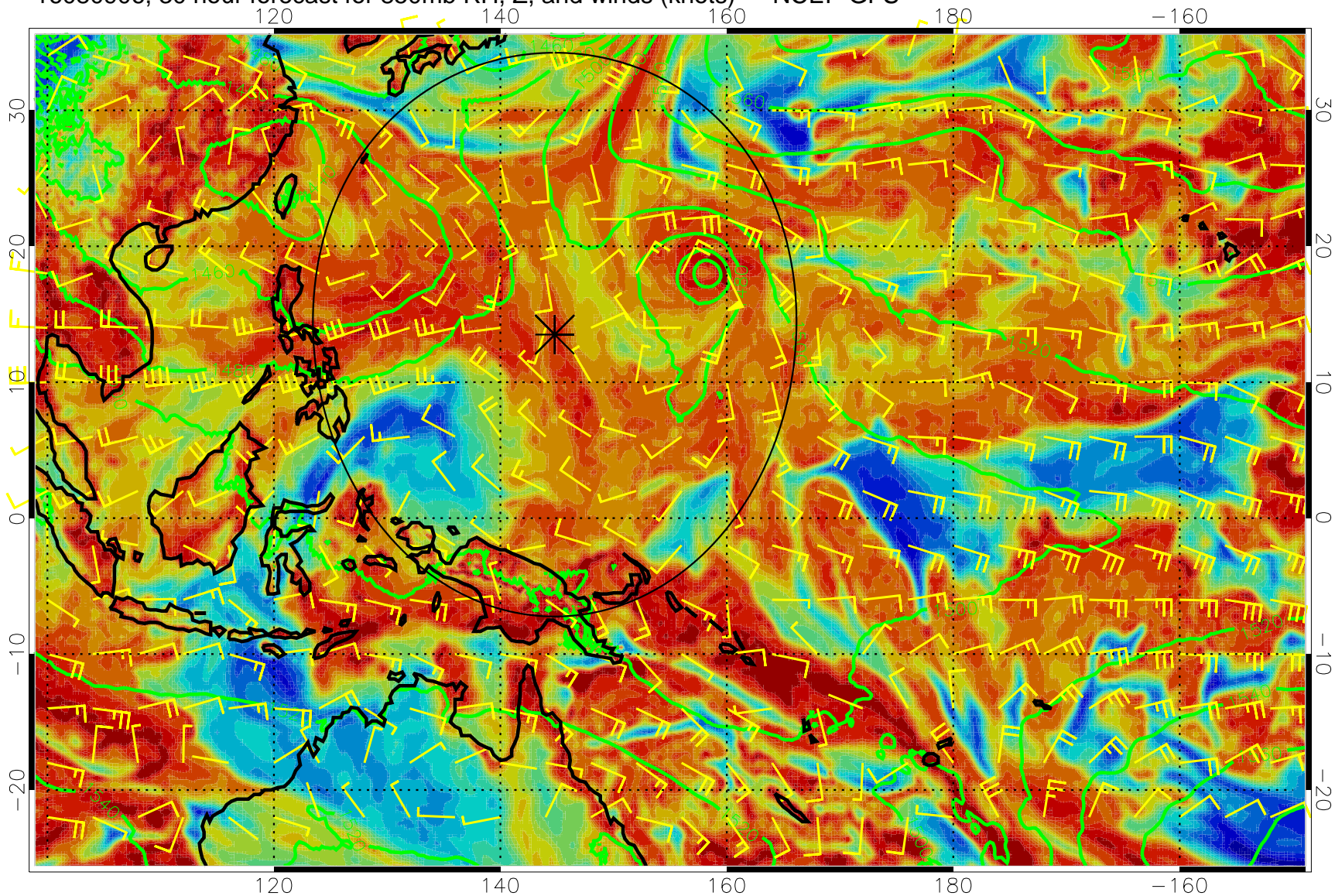
Precip (tot dot, conv sol) mm/day 40 mm/day contours, min 20

16080900, 24 hour forecast for 850mb RH, Z, and winds (knots) -- NCEP GFS



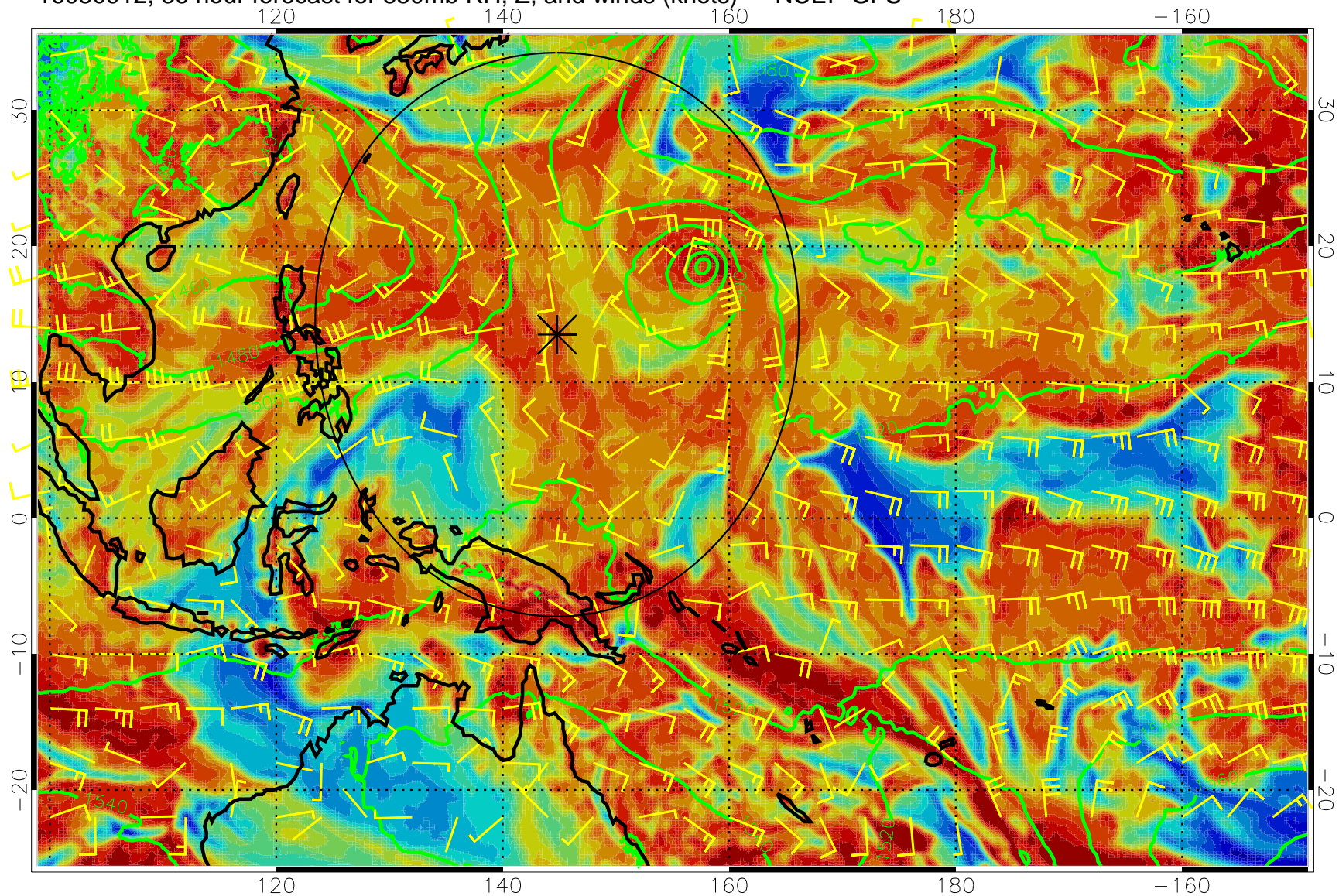
Precip (tot dot, conv sol) mm/day 40 mm/day contours, min 20

16080906, 30 hour forecast for 850mb RH, Z, and winds (knots) -- NCEP GFS



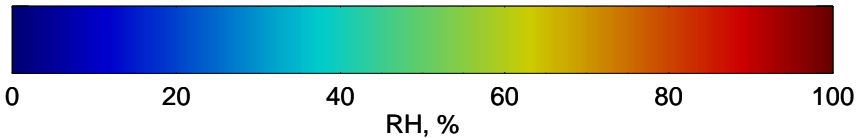
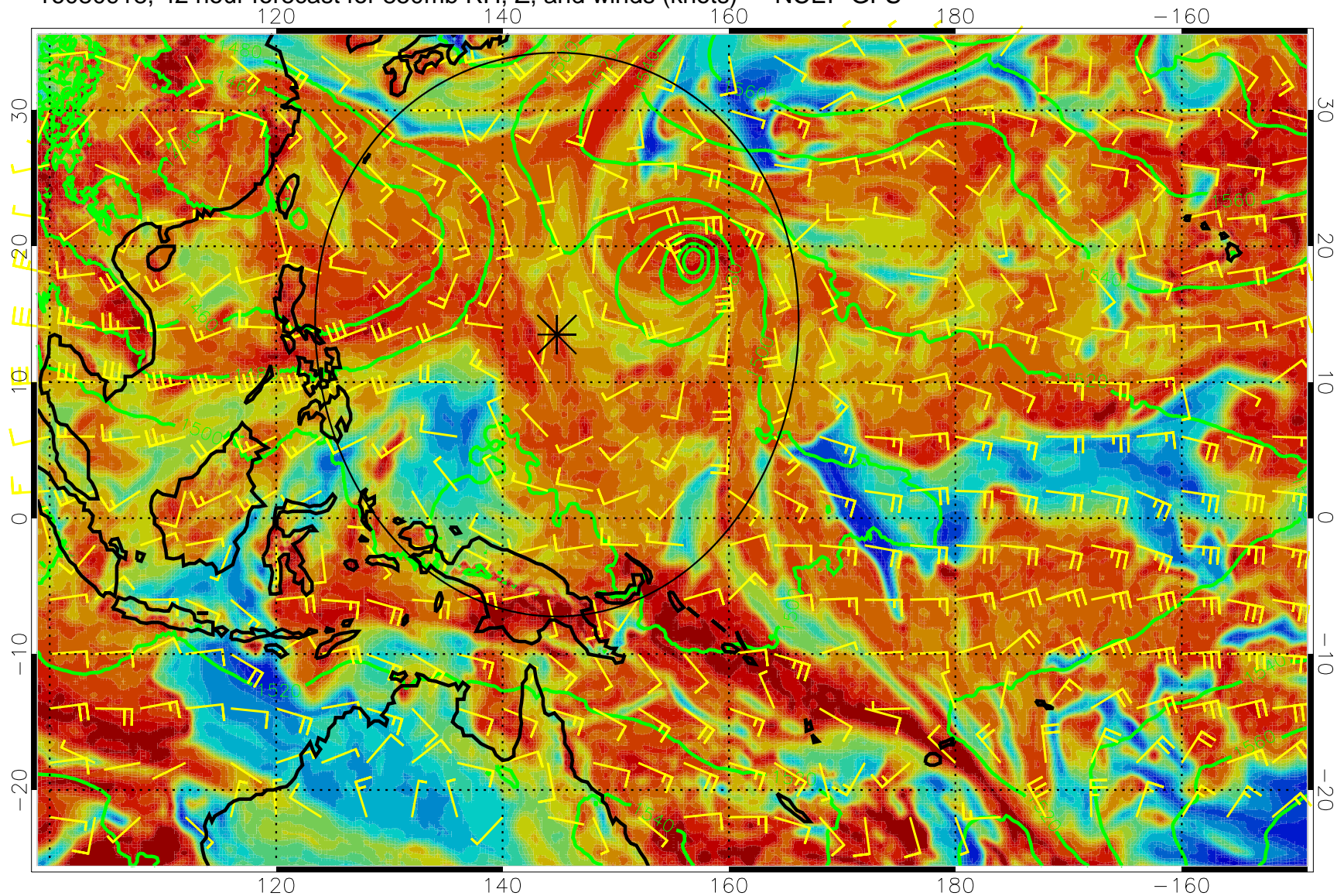
Precip (tot dot, conv sol) mm/day 40 mm/day contours, min 20

16080912, 36 hour forecast for 850mb RH, Z, and winds (knots) -- NCEP GFS



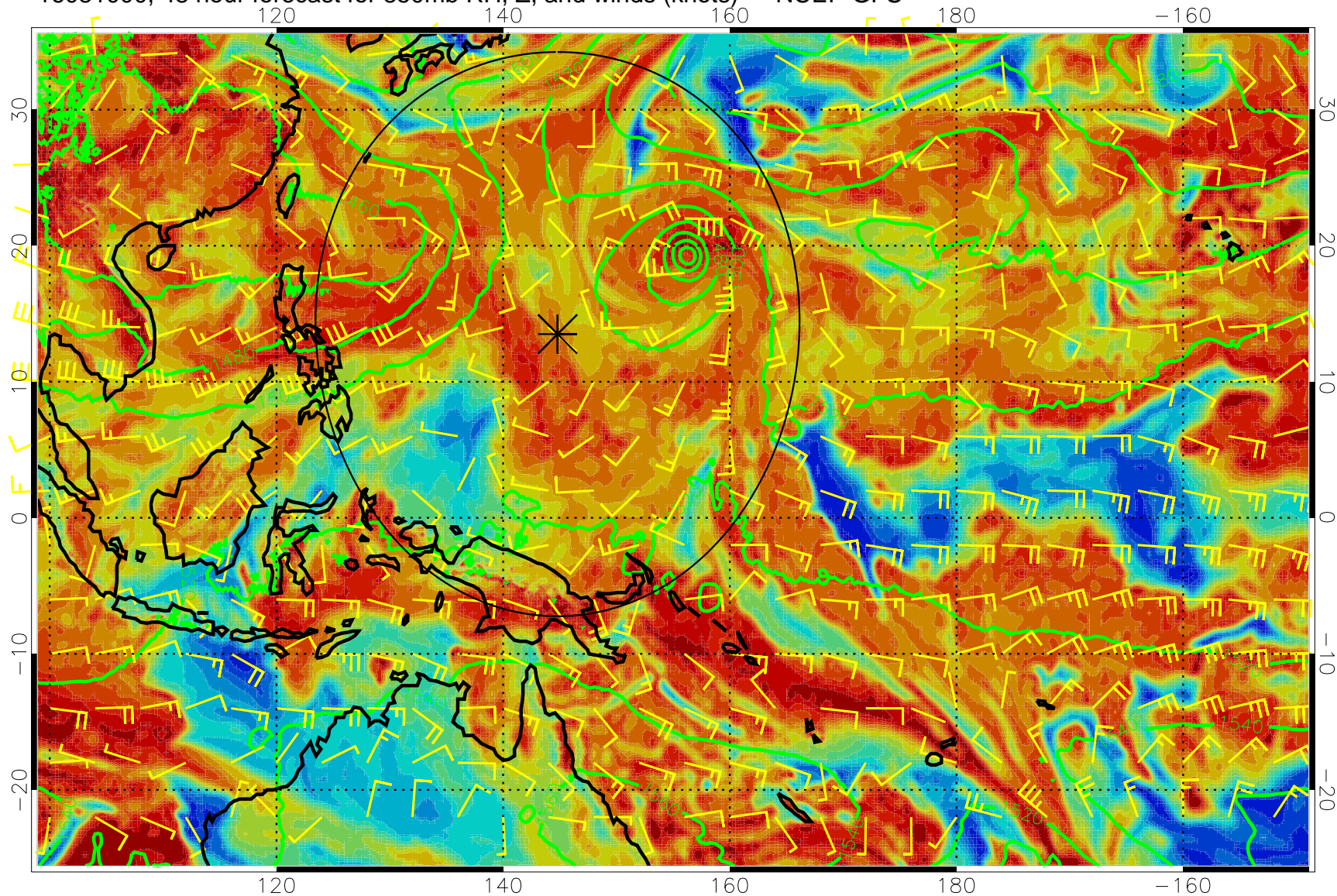
Precip (tot dot, conv sol) mm/day 40 mm/day contours, min 20

16080918, 42 hour forecast for 850mb RH, Z, and winds (knots) -- NCEP GFS



Precip (tot dot, conv sol) mm/day 40 mm/day contours, min 20

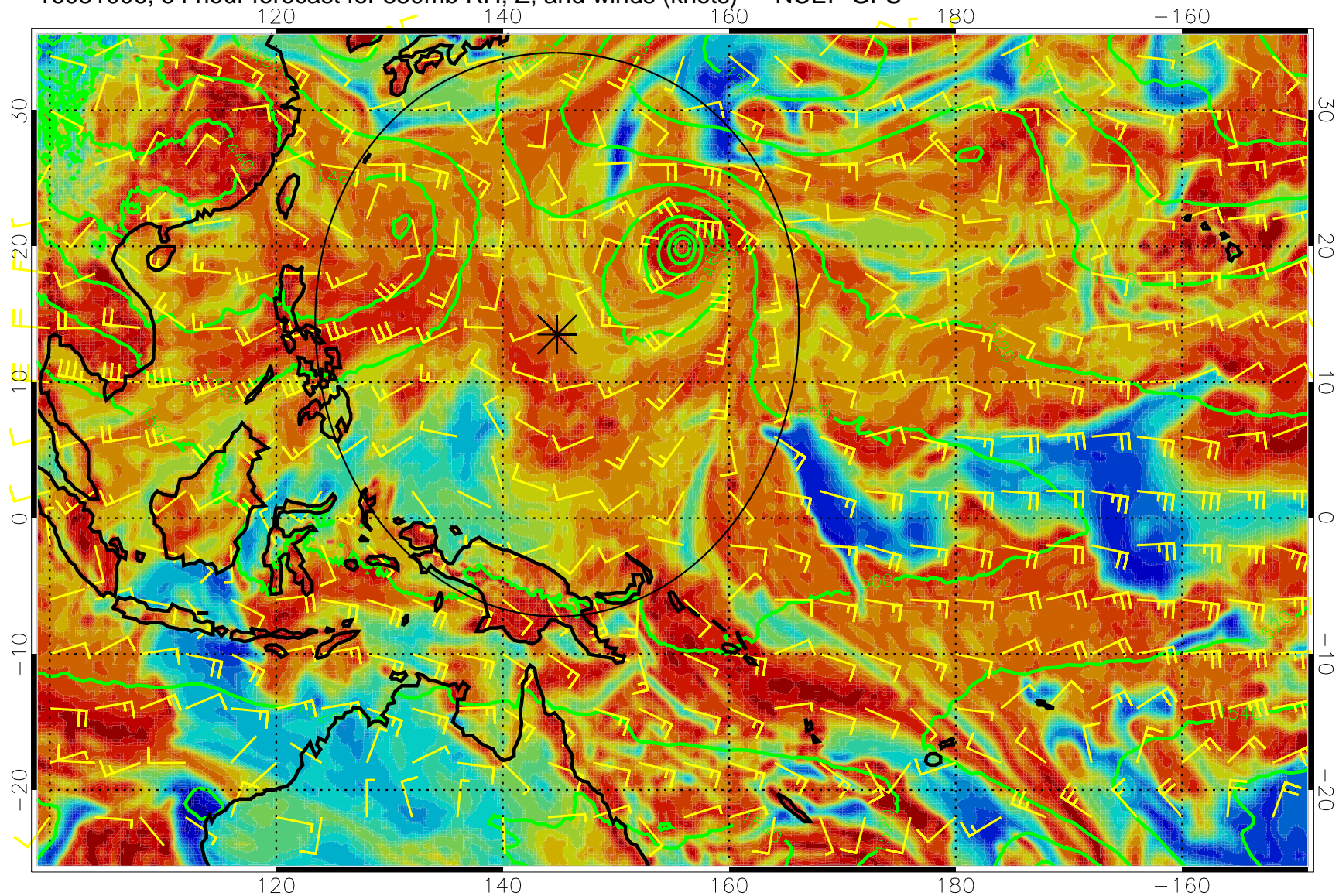
16081000, 48 hour forecast for 850mb RH, Z, and winds (knots) -- NCEP GFS



Precip (tot dot, conv sol) mm/day 40 mm/day contours, min 20

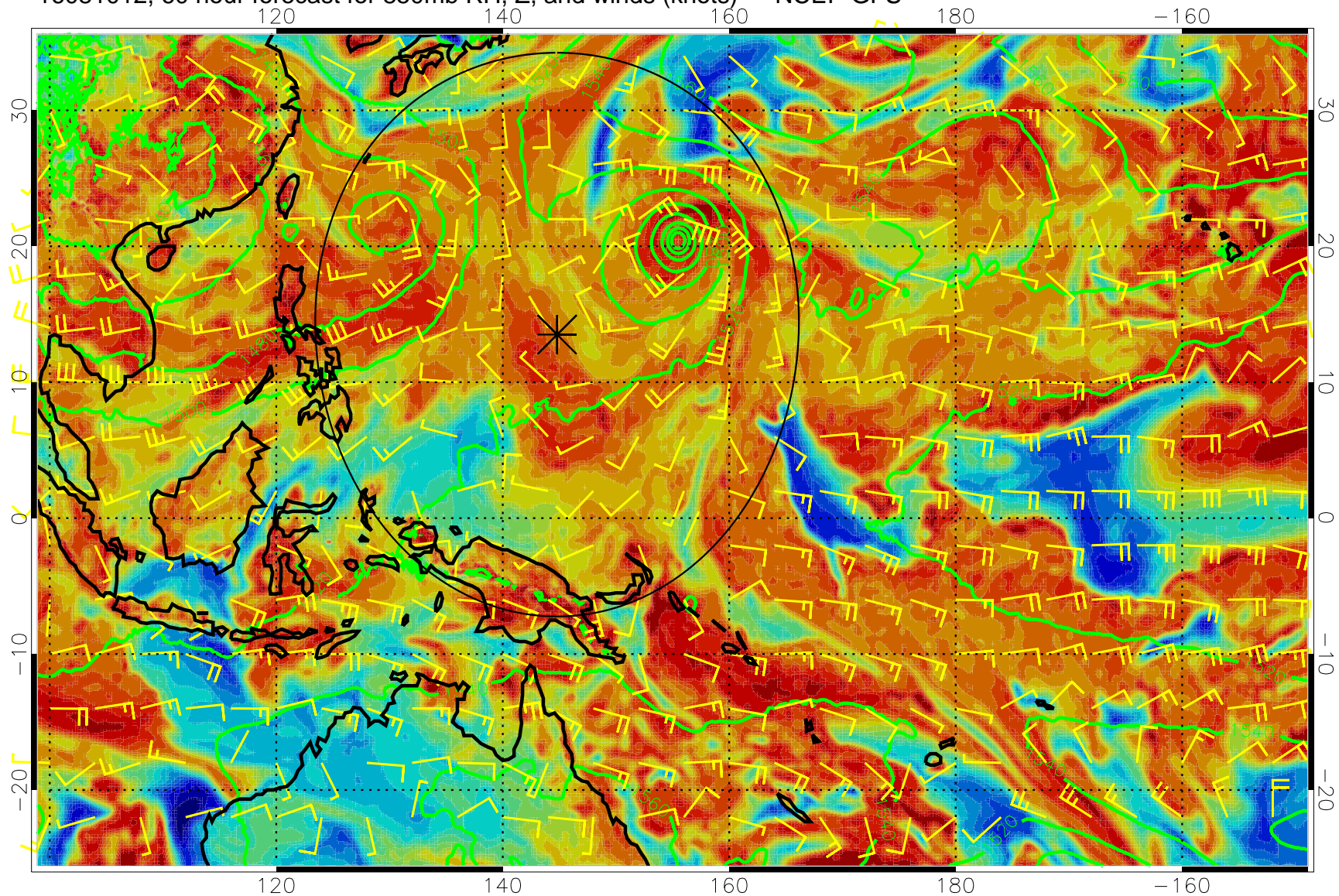


16081006, 54 hour forecast for 850mb RH, Z, and winds (knots) -- NCEP GFS



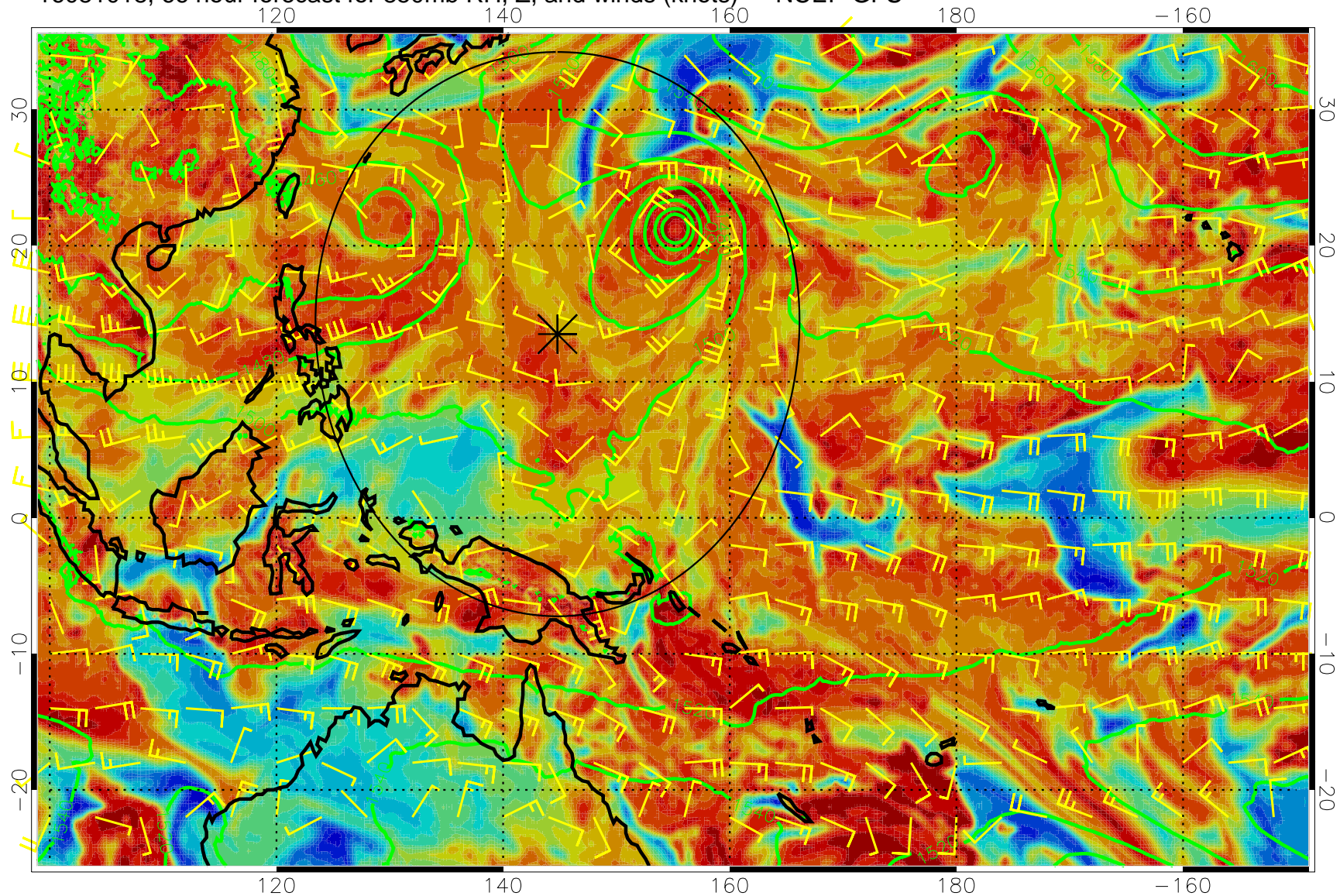
Precip (tot dot, conv sol) mm/day 40 mm/day contours, min 20

16081012, 60 hour forecast for 850mb RH, Z, and winds (knots) -- NCEP GFS



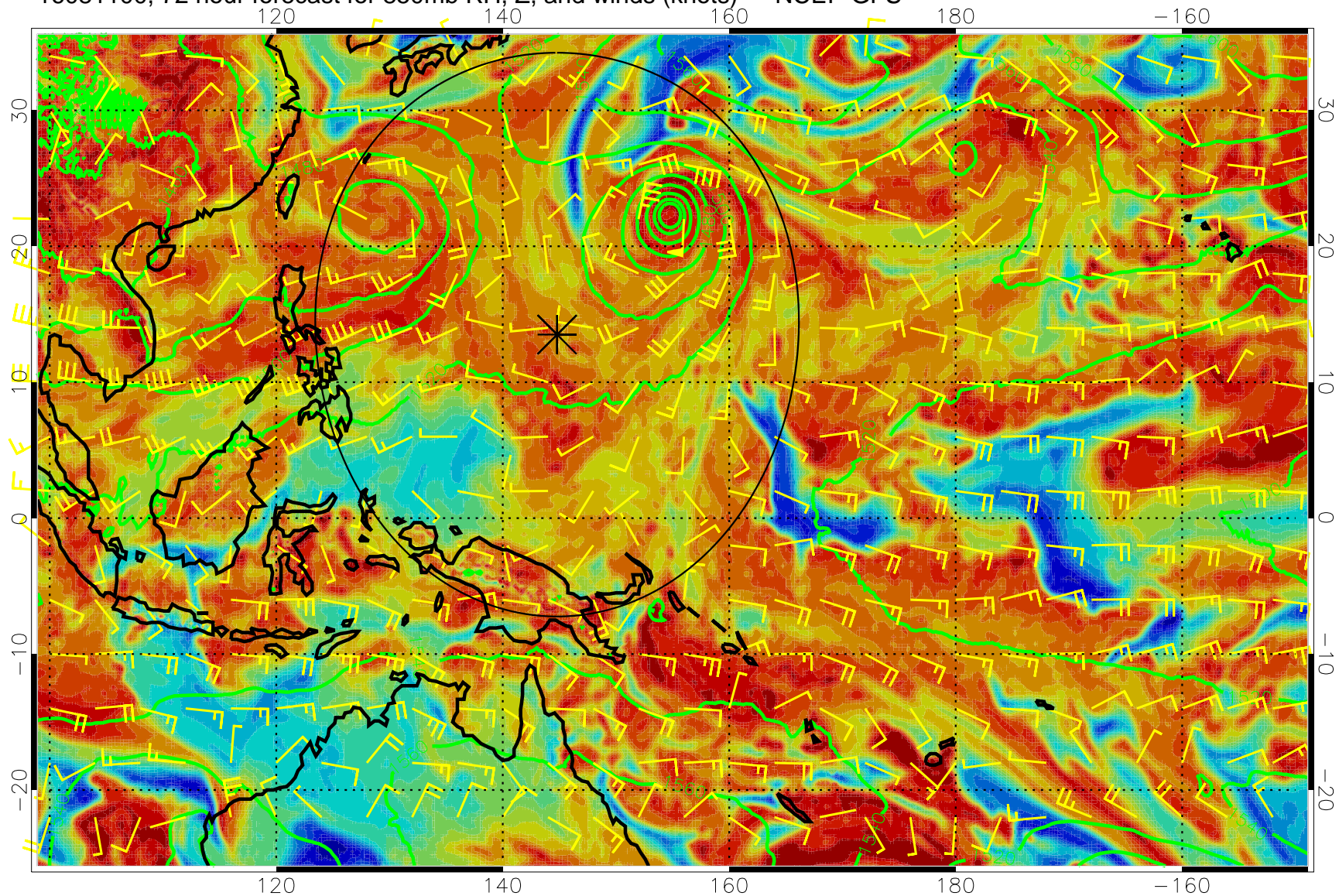
Precip (tot dot, conv sol) mm/day 40 mm/day contours, min 20

16081018, 66 hour forecast for 850mb RH, Z, and winds (knots) -- NCEP GFS



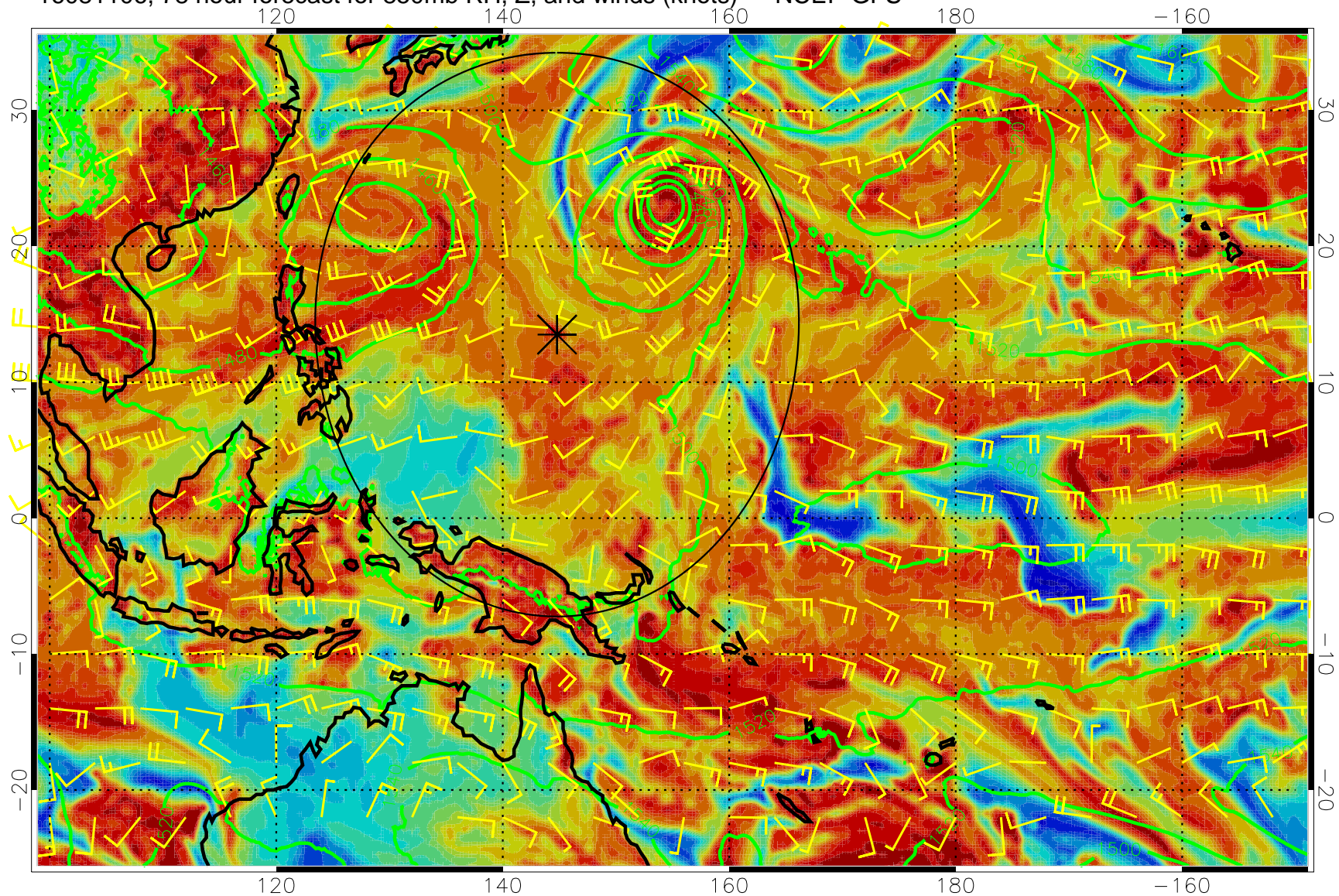
Precip (tot dot, conv sol) mm/day 40 mm/day contours, min 20

16081100, 72 hour forecast for 850mb RH, Z, and winds (knots) -- NCEP GFS



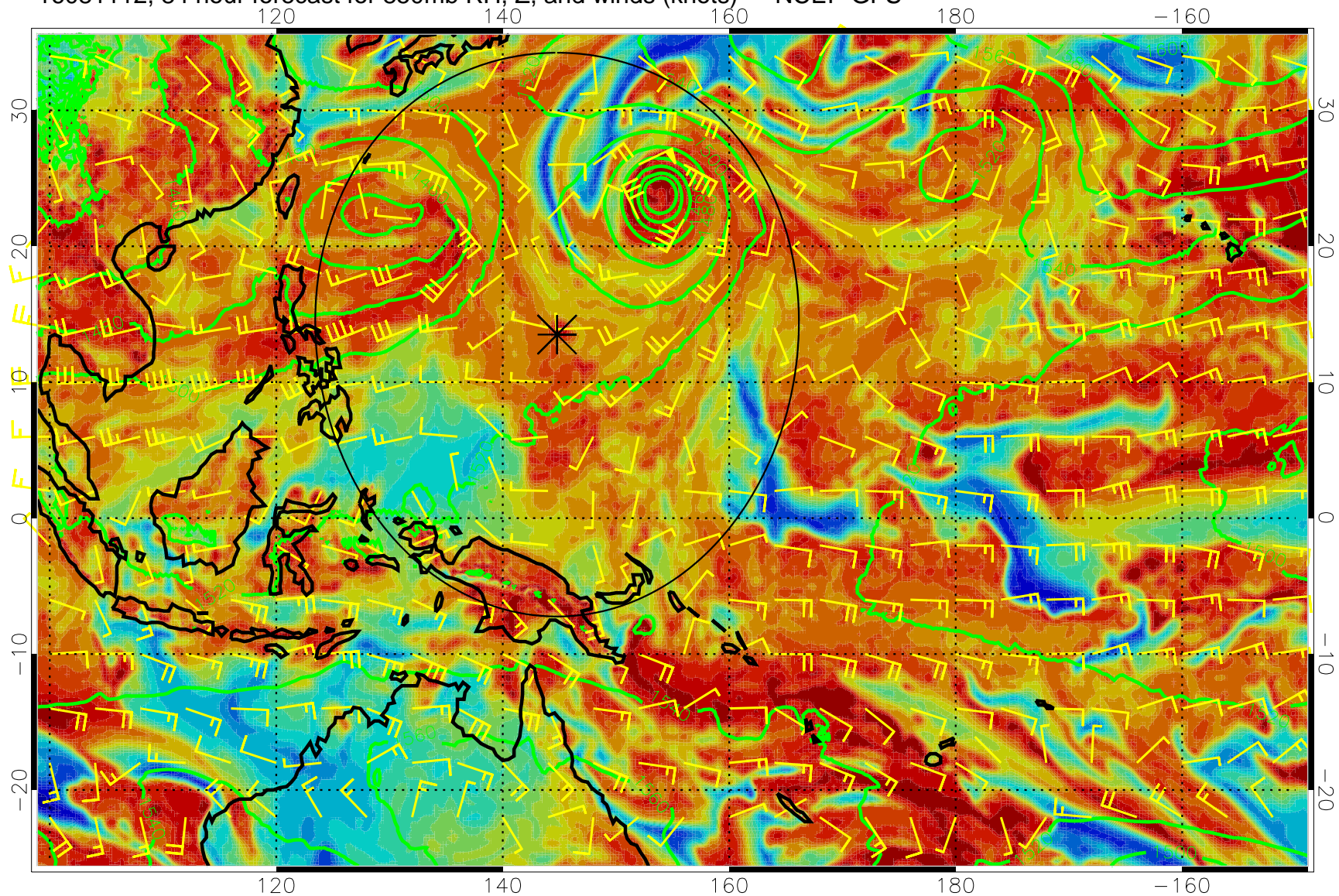
Precip (tot dot, conv sol) mm/day 40 mm/day contours, min 20

16081106, 78 hour forecast for 850mb RH, Z, and winds (knots) -- NCEP GFS



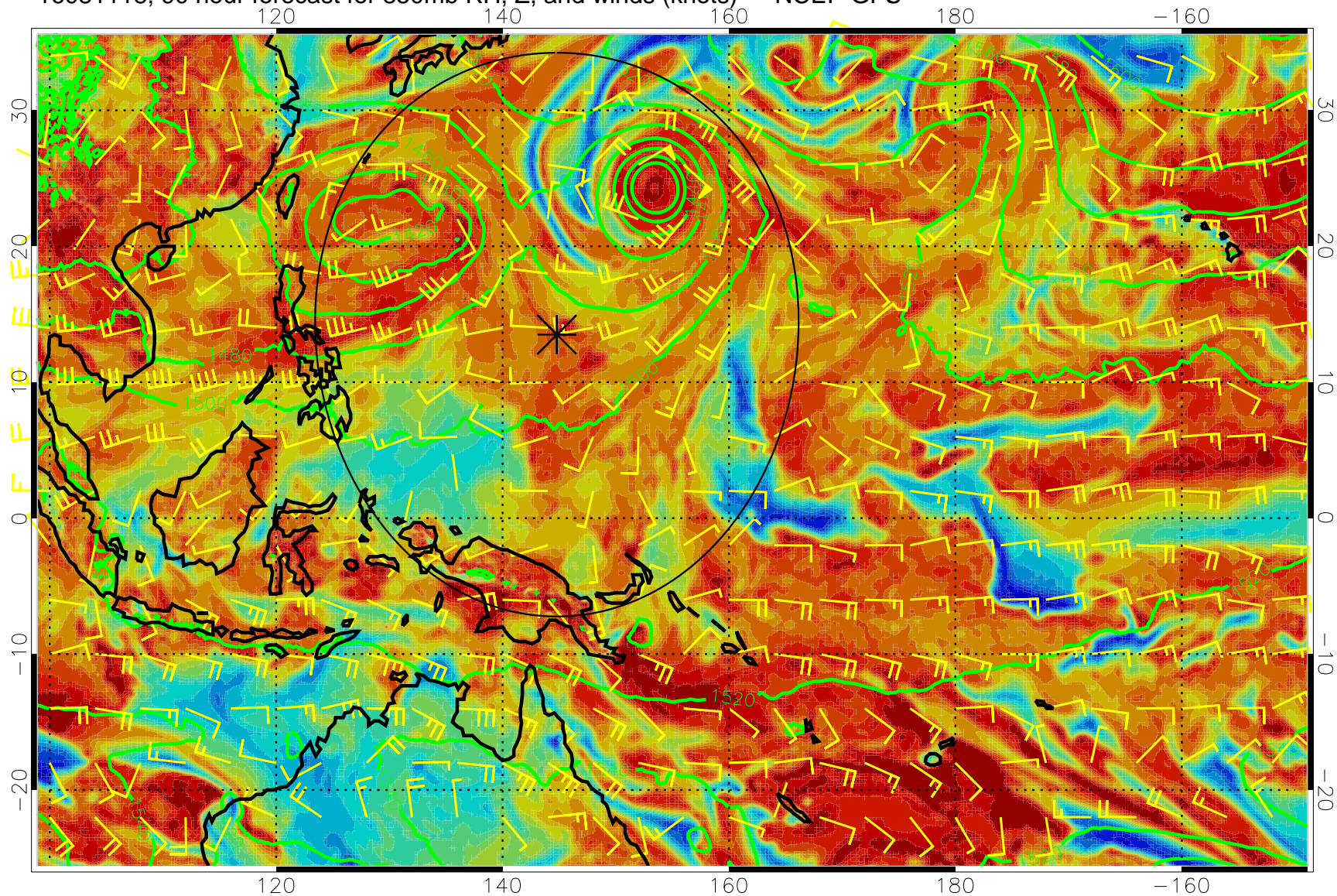
Precip (tot dot, conv sol) mm/day 40 mm/day contours, min 20

16081112, 84 hour forecast for 850mb RH, Z, and winds (knots) -- NCEP GFS



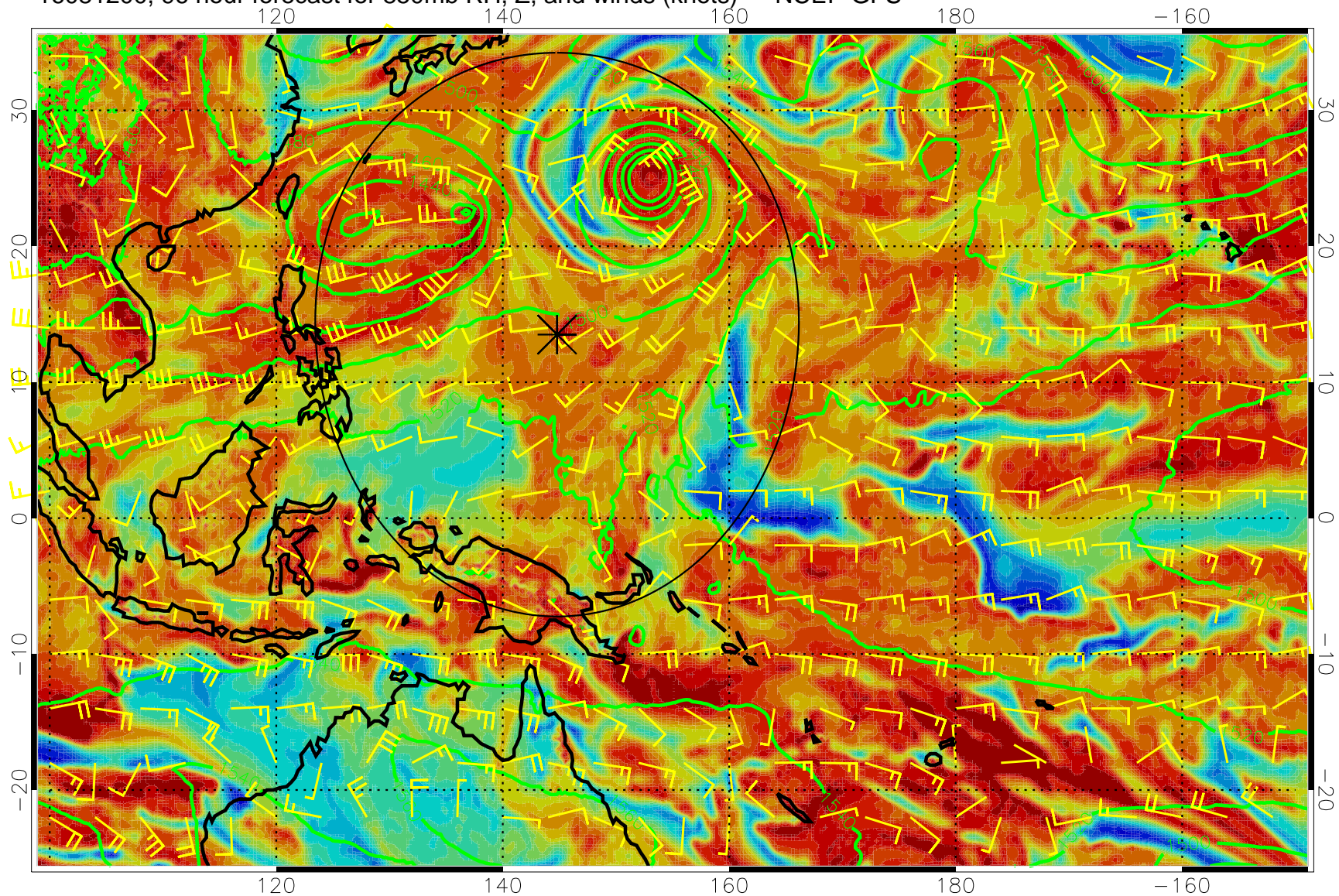
Precip (tot dot, conv sol) mm/day 40 mm/day contours, min 20

16081118, 90 hour forecast for 850mb RH, Z, and winds (knots) -- NCEP GFS

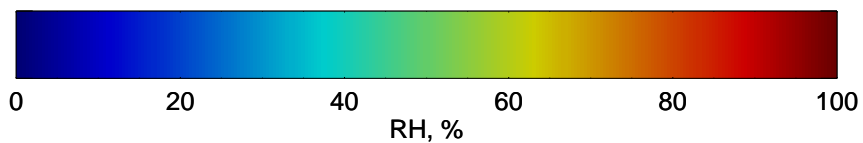


Precip (tot dot, conv sol) mm/day 40 mm/day contours, min 20

16081200, 96 hour forecast for 850mb RH, Z, and winds (knots) -- NCEP GFS

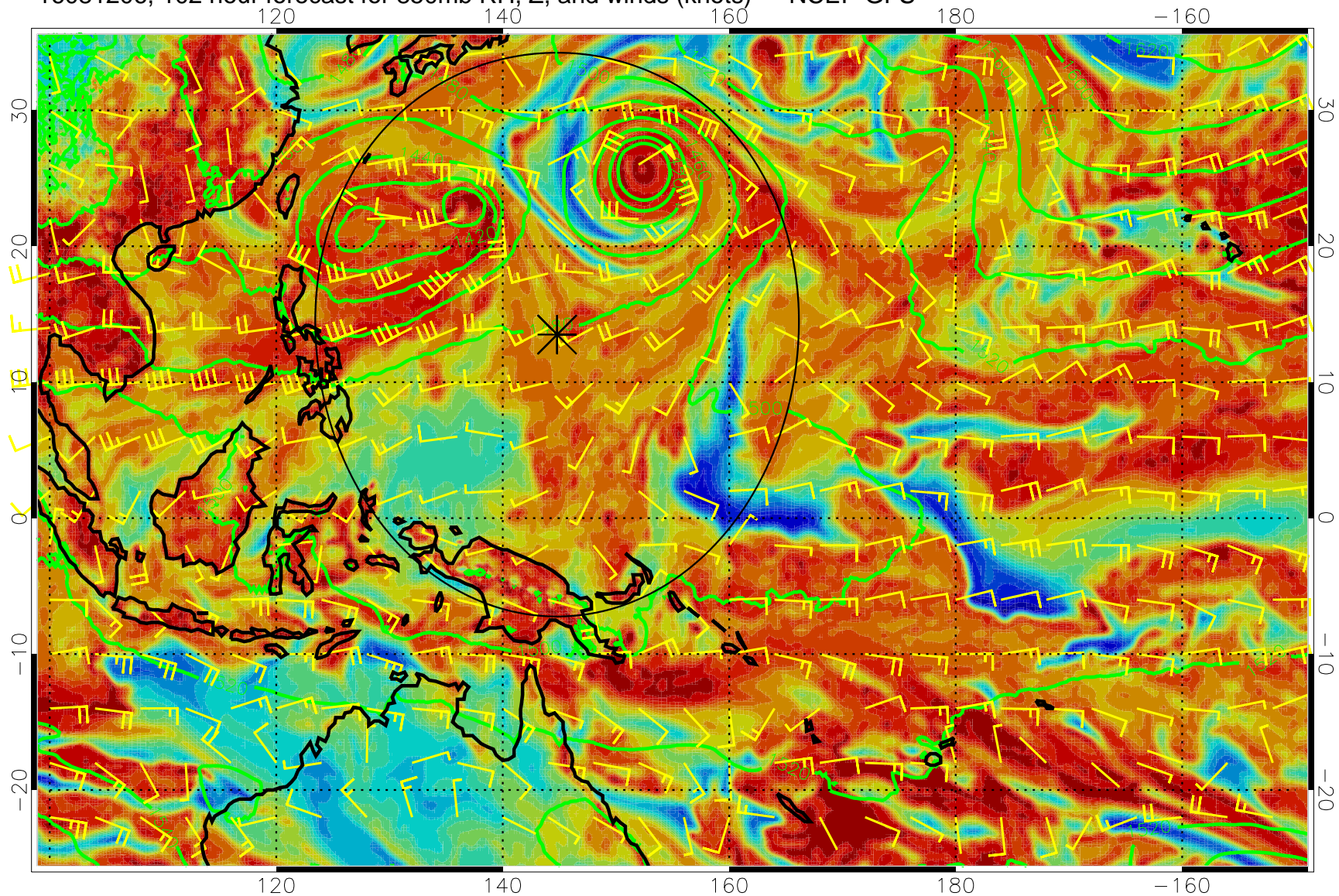


Precip (tot dot, conv sol) mm/day 40 mm/day contours, min 20





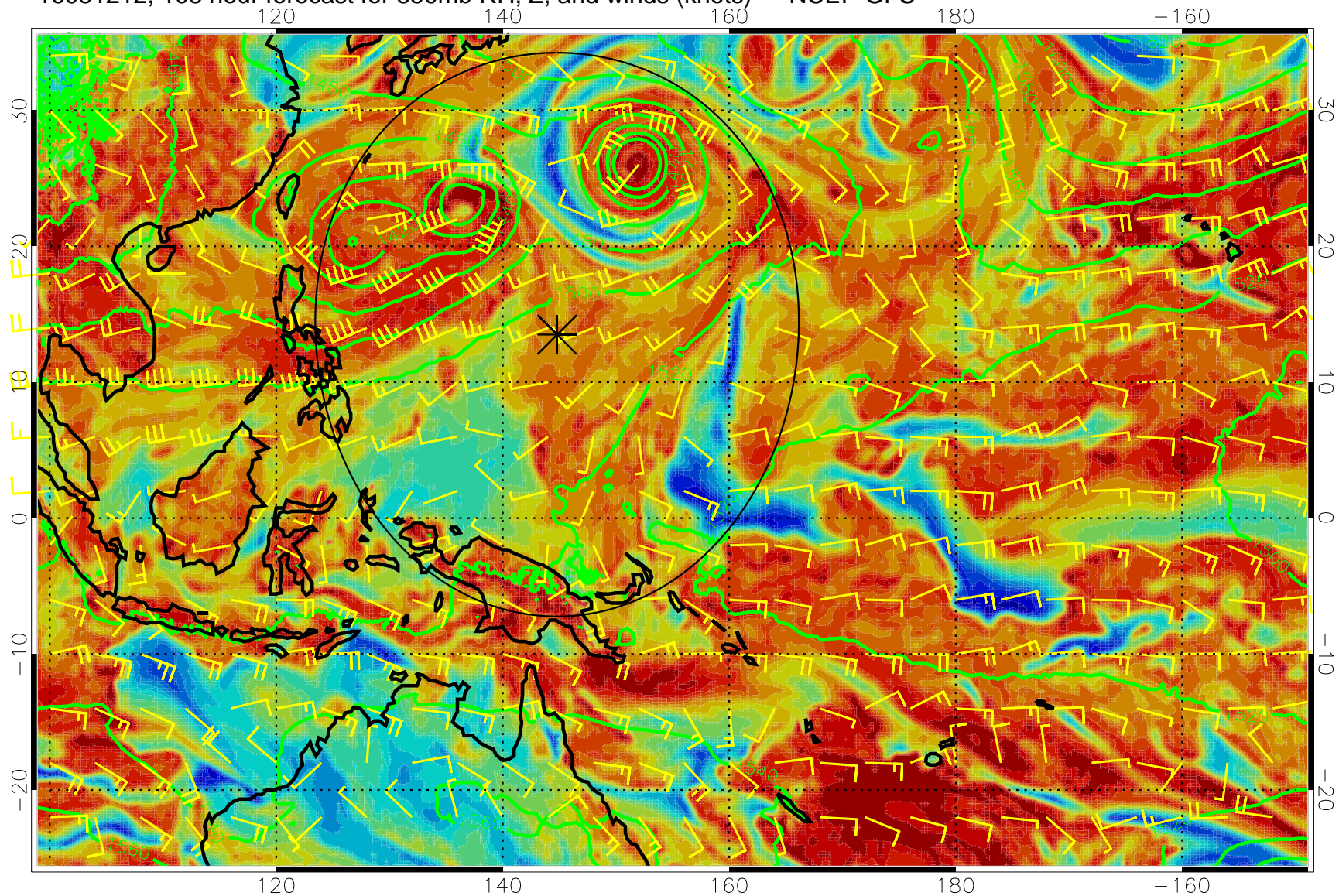
16081206, 102 hour forecast for 850mb RH, Z, and winds (knots) -- NCEP GFS



Precip (tot dot, conv sol) mm/day 40 mm/day contours, min 20

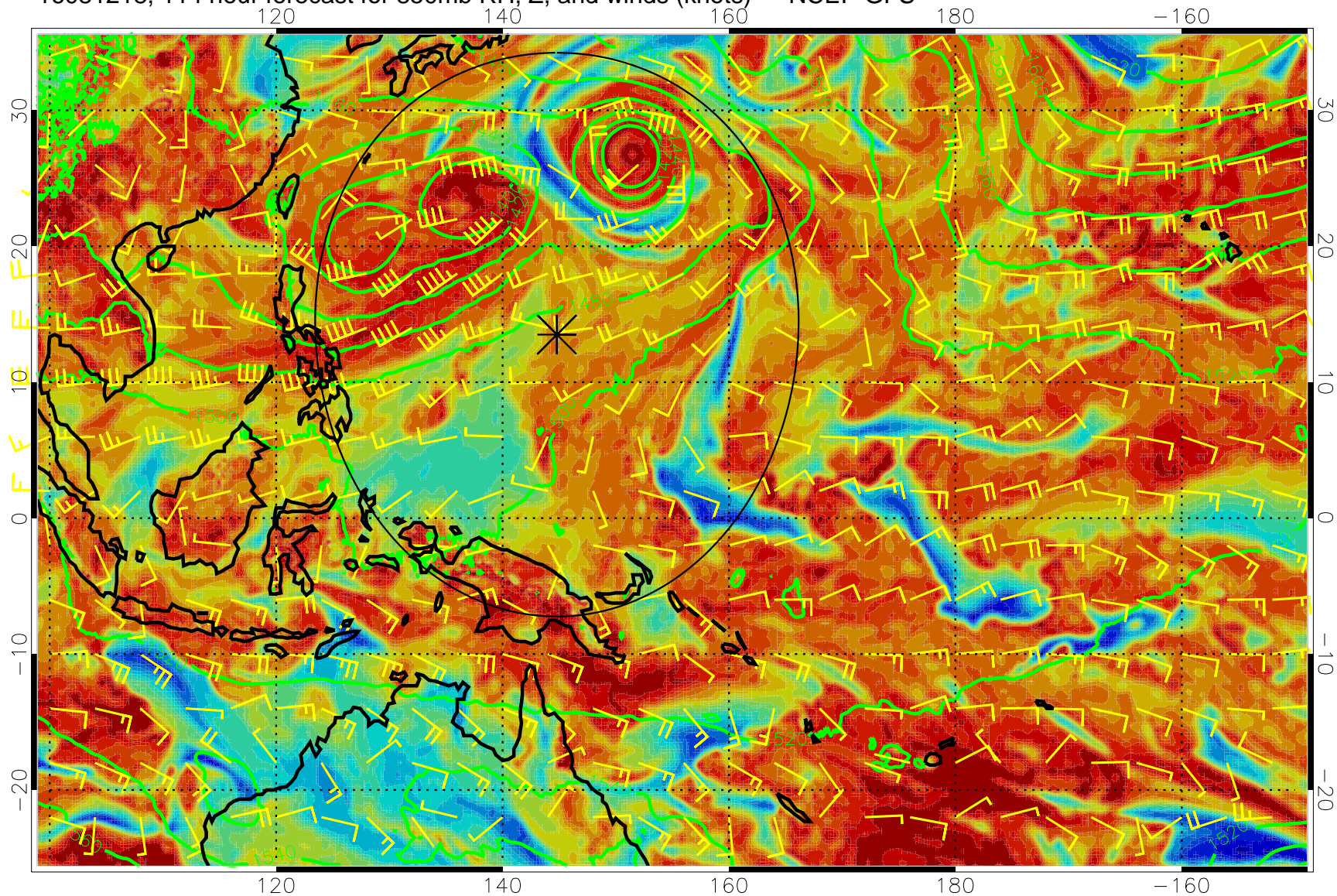


16081212, 108 hour forecast for 850mb RH, Z, and winds (knots) -- NCEP GFS



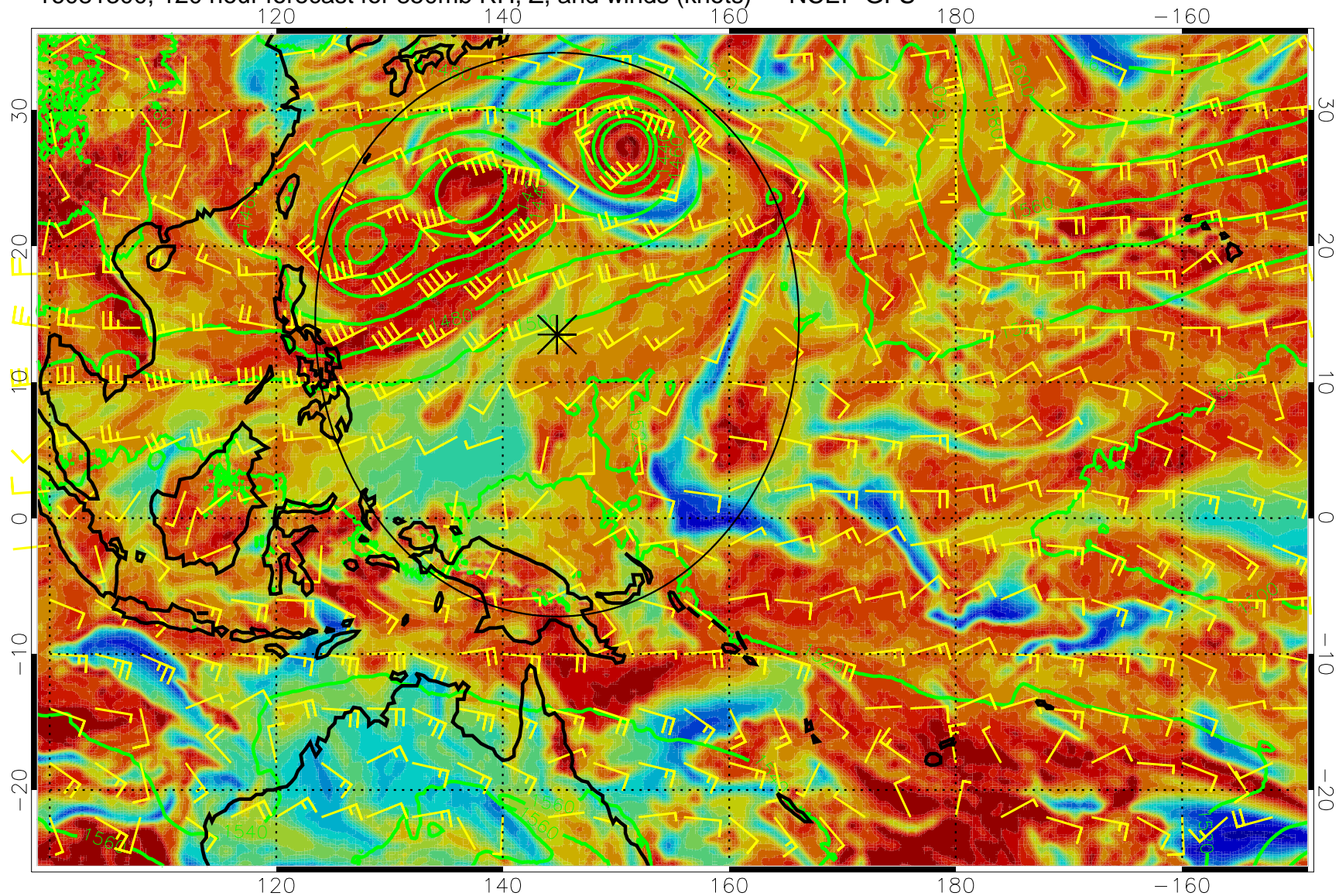
Precip (tot dot, conv sol) mm/day 40 mm/day contours, min 20

16081218, 114 hour forecast for 850mb RH, Z, and winds (knots) -- NCEP GFS



Precip (tot dot, conv sol) mm/day 40 mm/day contours, min 20

16081300, 120 hour forecast for 850mb RH, Z, and winds (knots) -- NCEP GFS



Precip (tot dot, conv sol) mm/day 40 mm/day contours, min 20

