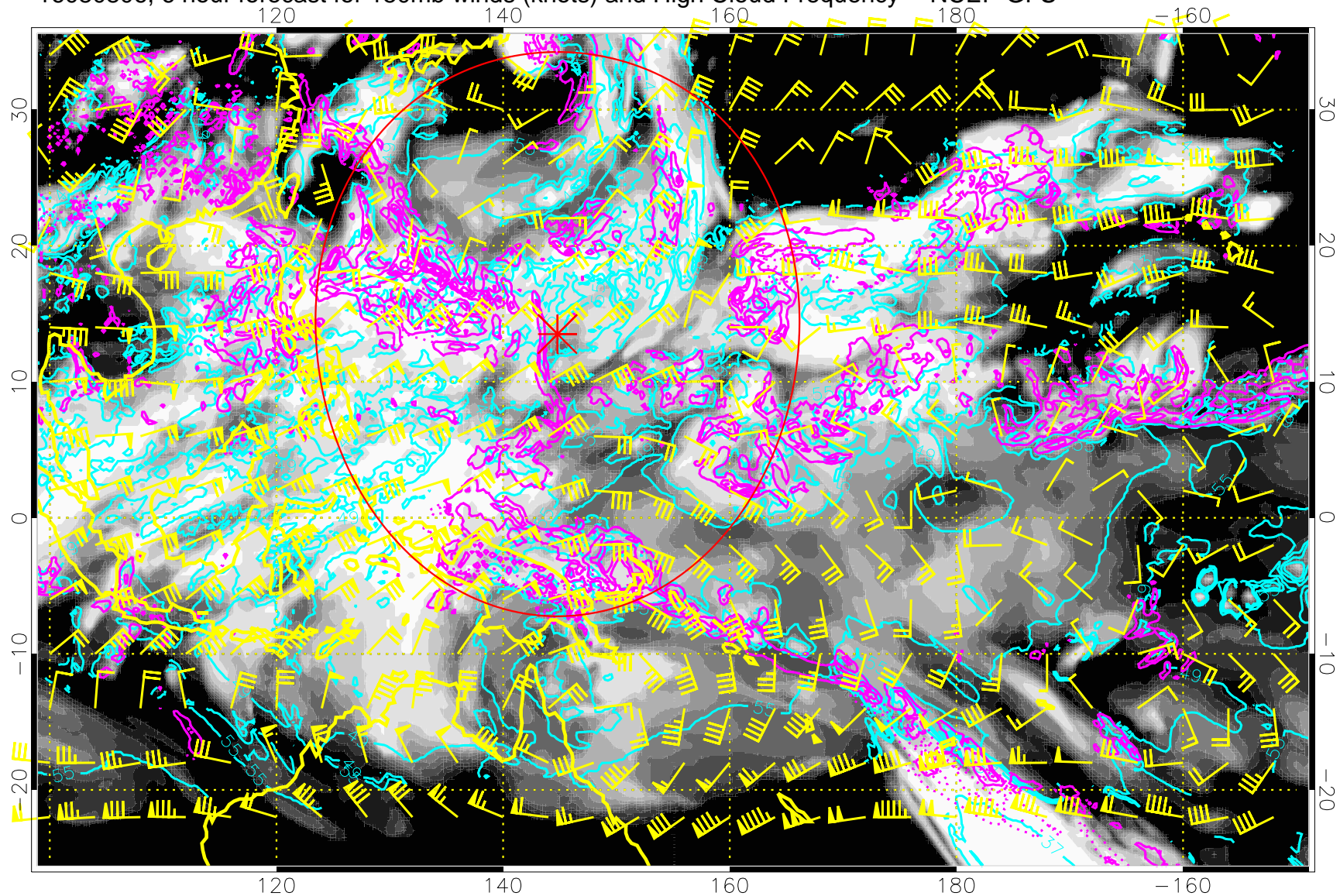


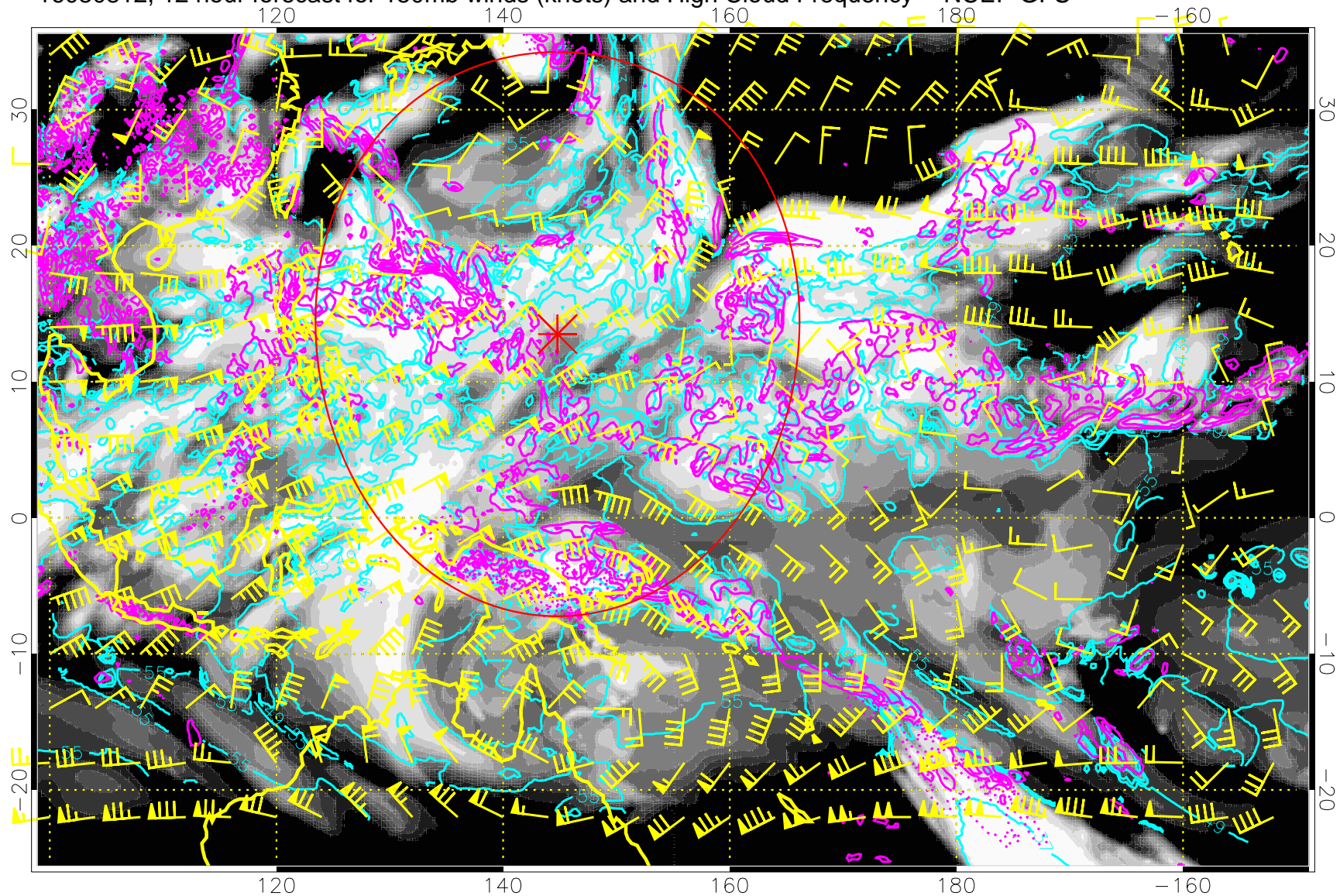
16080806, 6 hour forecast for 150mb winds (knots) and High Cloud Frequency -- NCEP GFS



High Cloud Altitude from 37 kft at 6 kft intervals
Precip (tot dot, conv sol) mm/day 40 mm/day contours, min 20

Range ring of 2304 km

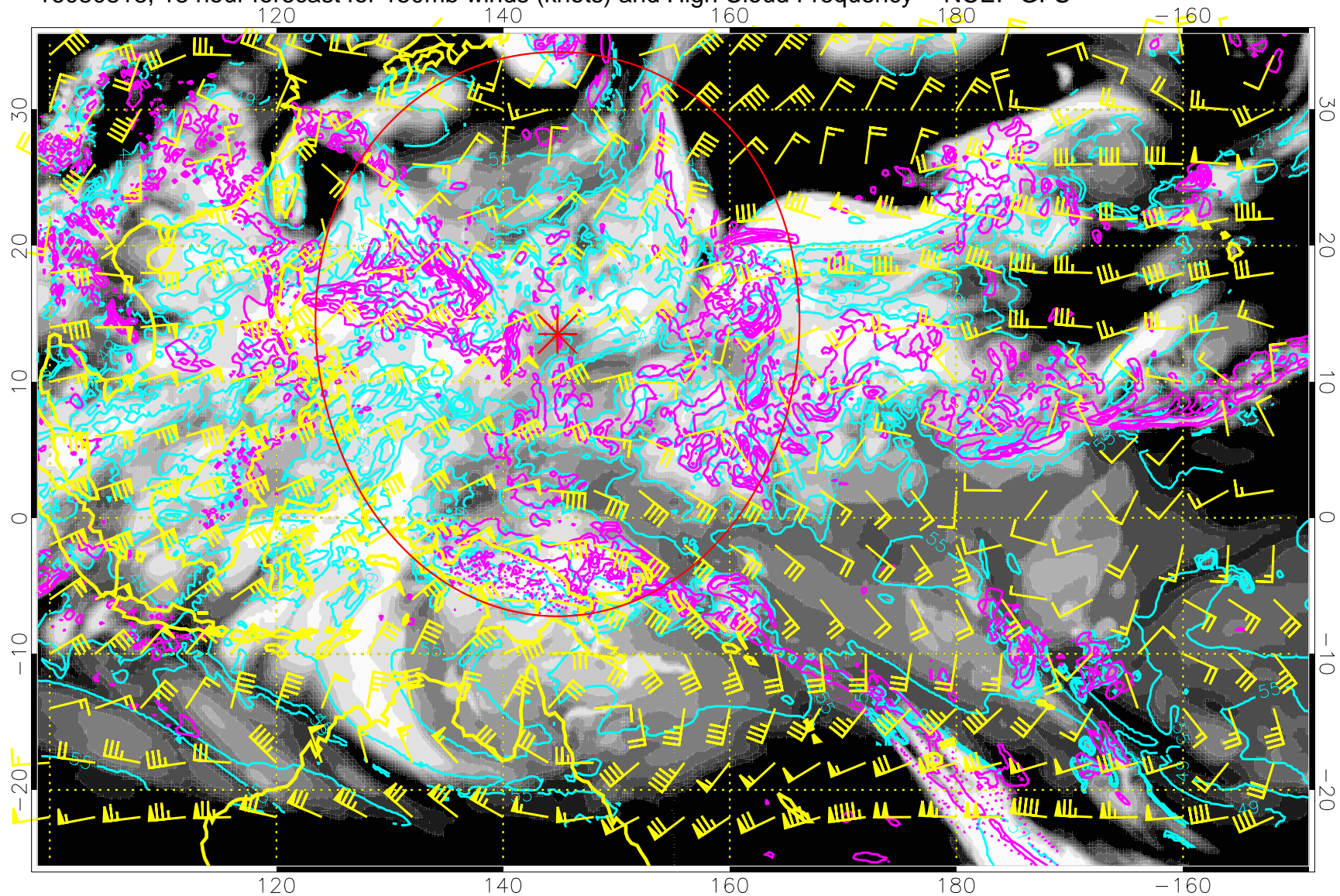
16080812, 12 hour forecast for 150mb winds (knots) and High Cloud Frequency -- NCEP GFS



High Cloud Altitude from 37 kft at 6 kft intervals
Precip (tot dot, conv sol) mm/day 40 mm/day contours, min 20

Range ring of 2304 km

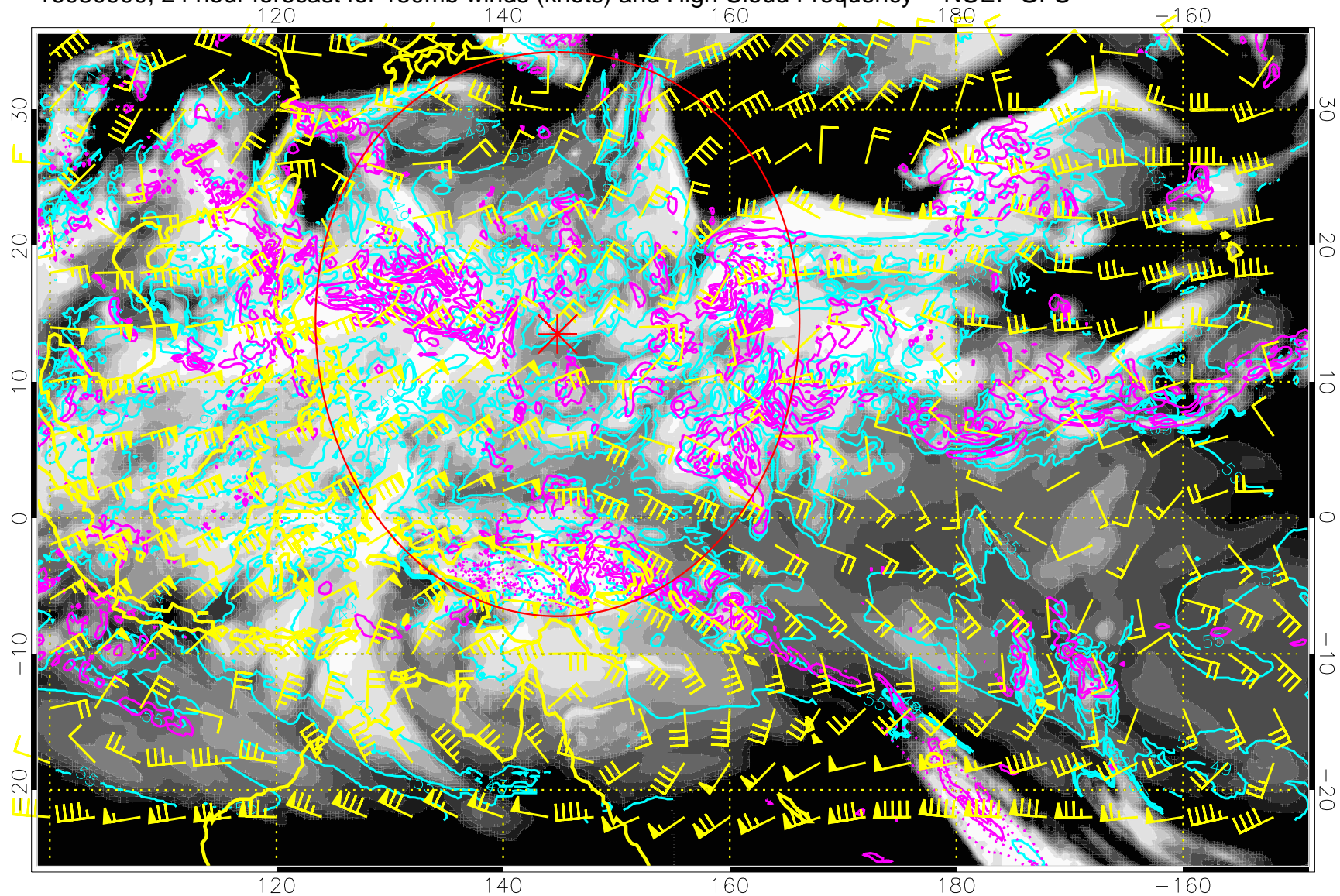
16080818, 18 hour forecast for 150mb winds (knots) and High Cloud Frequency -- NCEP GFS



High Cloud Altitude from 37 kft at 6 kft intervals
Precip (tot dot, conv sol) mm/day 40 mm/day contours, min 20

Range ring of 2304 km

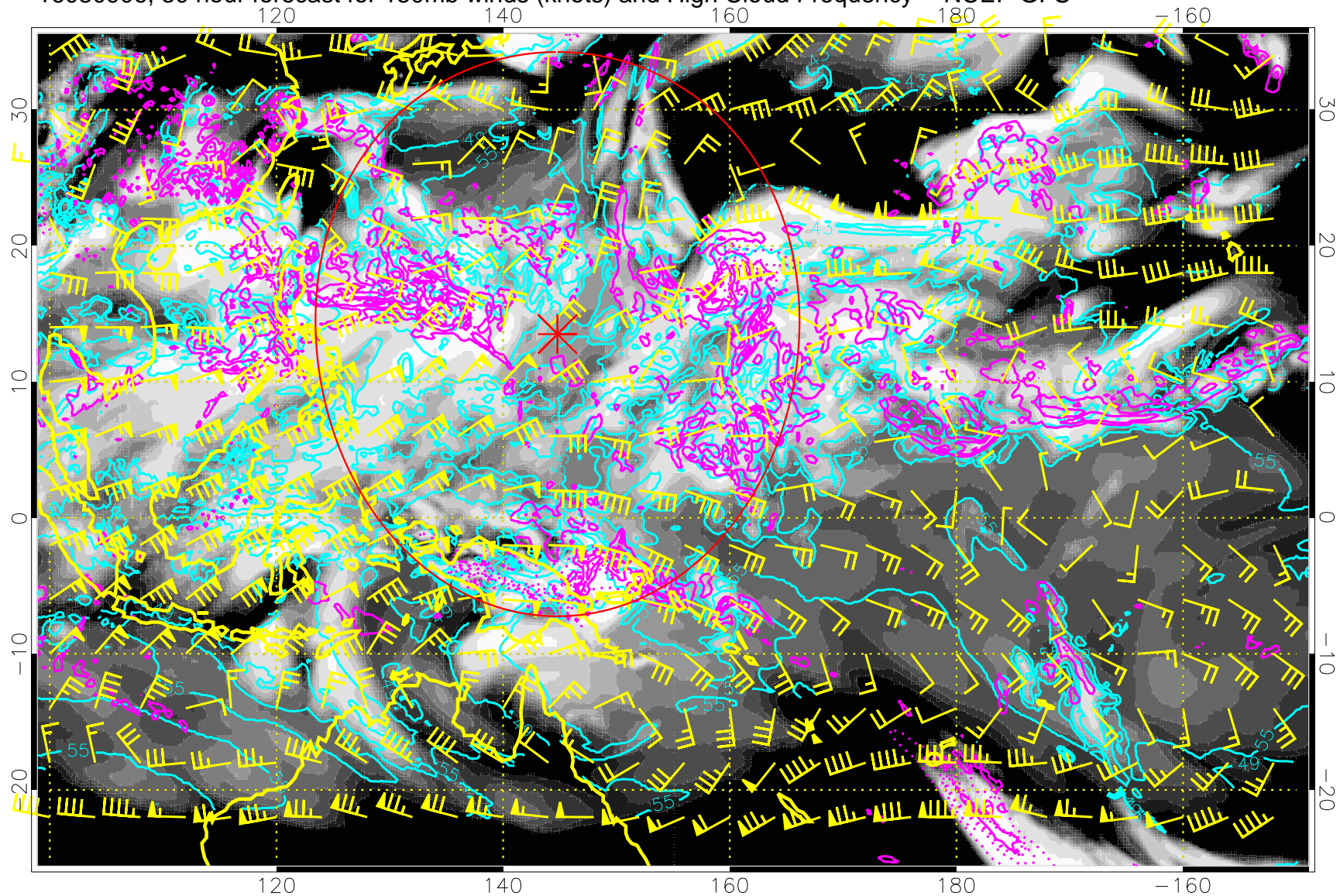
16080900, 24 hour forecast for 150mb winds (knots) and High Cloud Frequency -- NCEP GFS



High Cloud Altitude from 37 kft at 6 kft intervals
Precip (tot dot, conv sol) mm/day 40 mm/day contours, min 20

Range ring of 2304 km

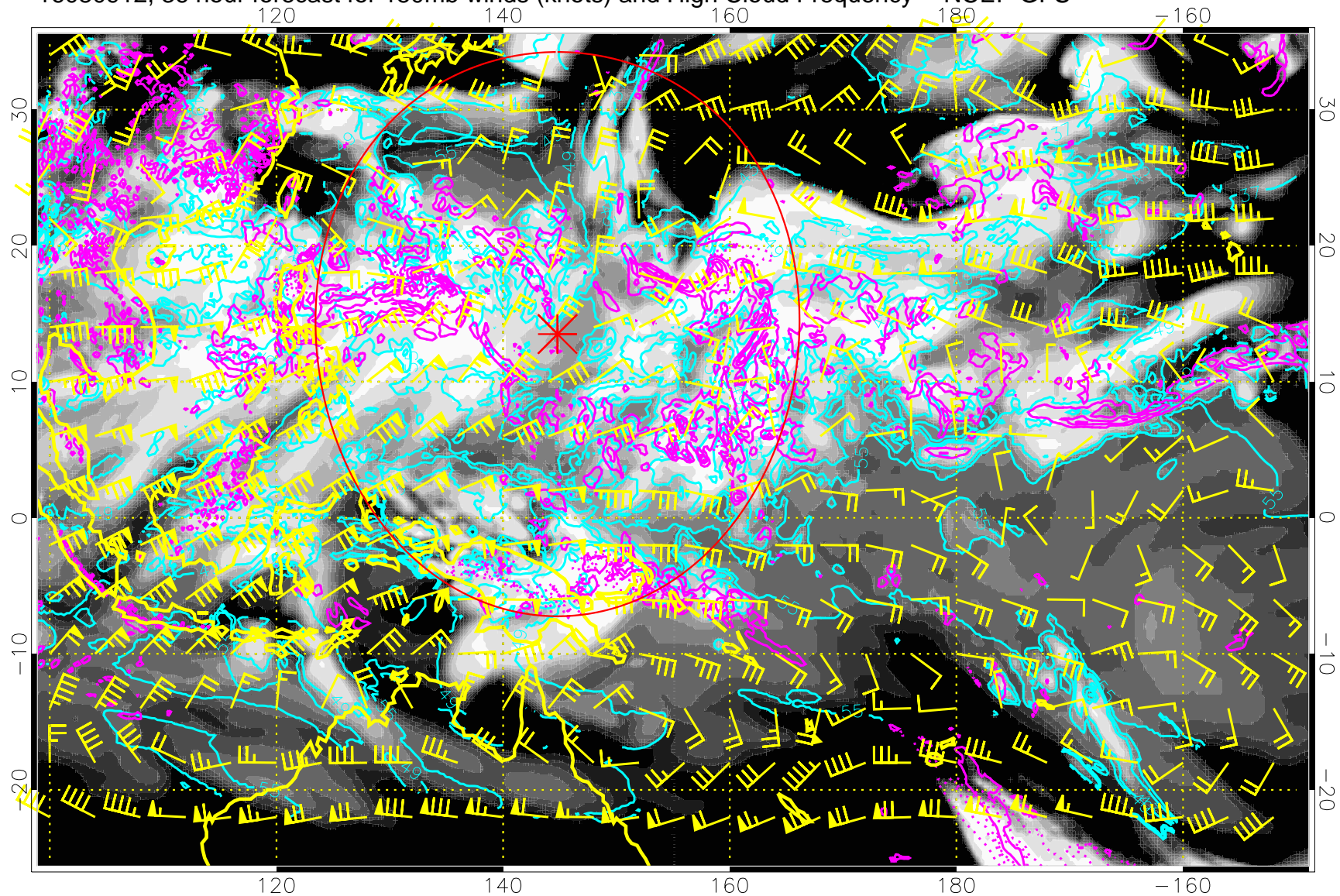
16080906, 30 hour forecast for 150mb winds (knots) and High Cloud Frequency -- NCEP GFS



High Cloud Altitude from 37 kft at 6 kft intervals
Precip (tot dot, conv sol) mm/day 40 mm/day contours, min 20

Range ring of 2304 km

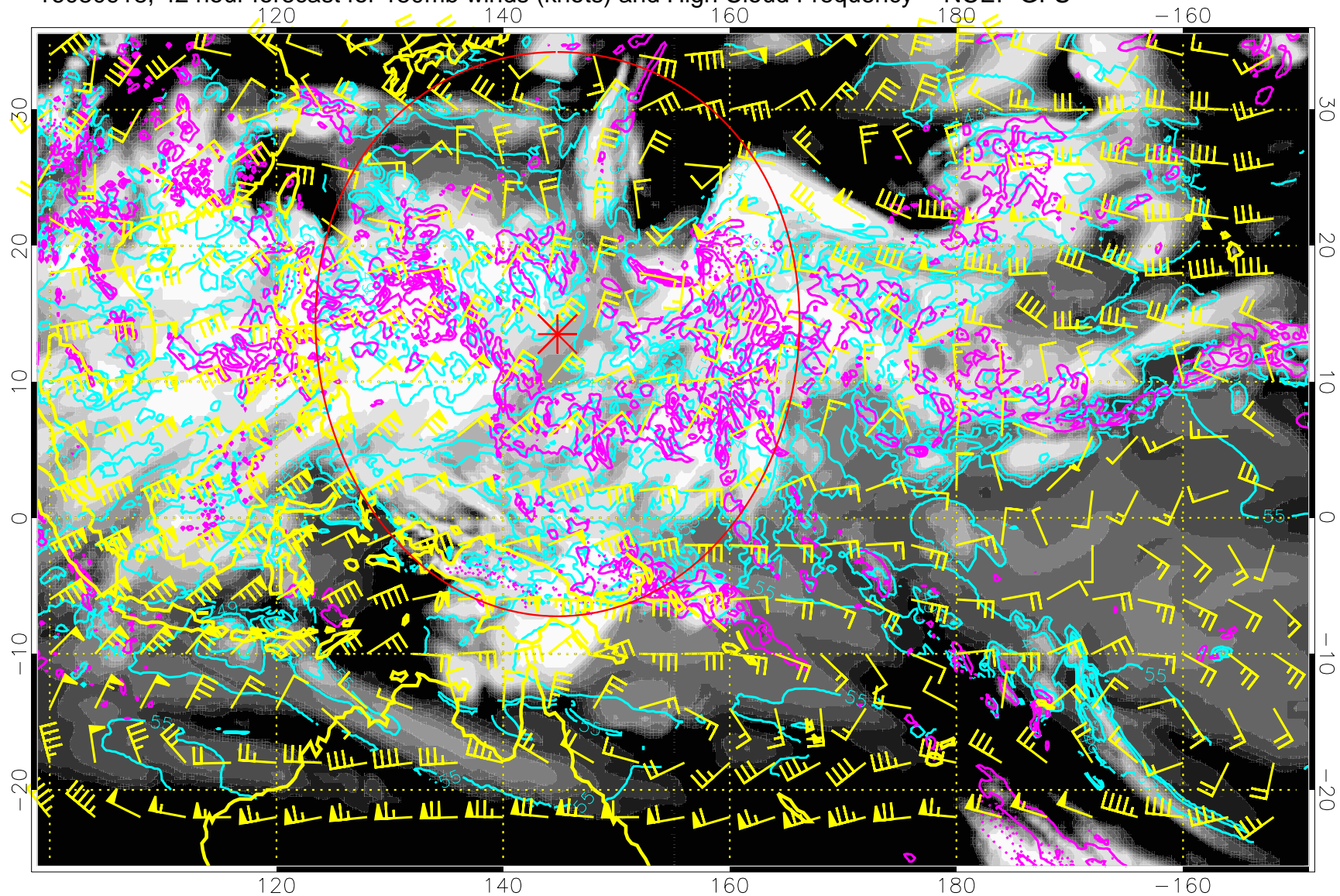
16080912, 36 hour forecast for 150mb winds (knots) and High Cloud Frequency -- NCEP GFS



High Cloud Altitude from 37 kft at 6 kft intervals
Precip (tot dot, conv sol) mm/day 40 mm/day contours, min 20

Range ring of 2304 km

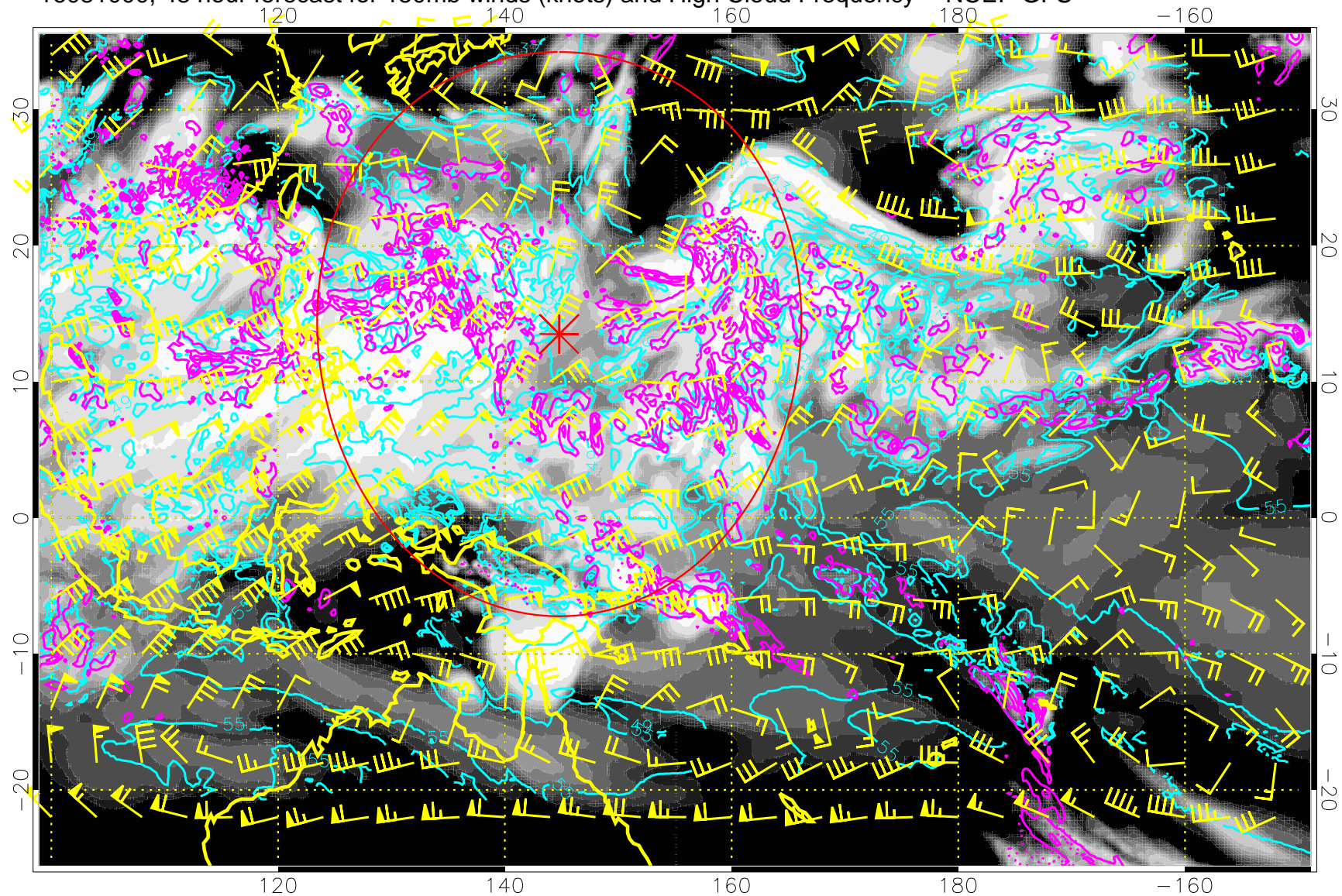
16080918, 42 hour forecast for 150mb winds (knots) and High Cloud Frequency -- NCEP GFS



High Cloud Altitude from 37 kft at 6 kft intervals
Precip (tot dot, conv sol) mm/day 40 mm/day contours, min 20

Range ring of 2304 km

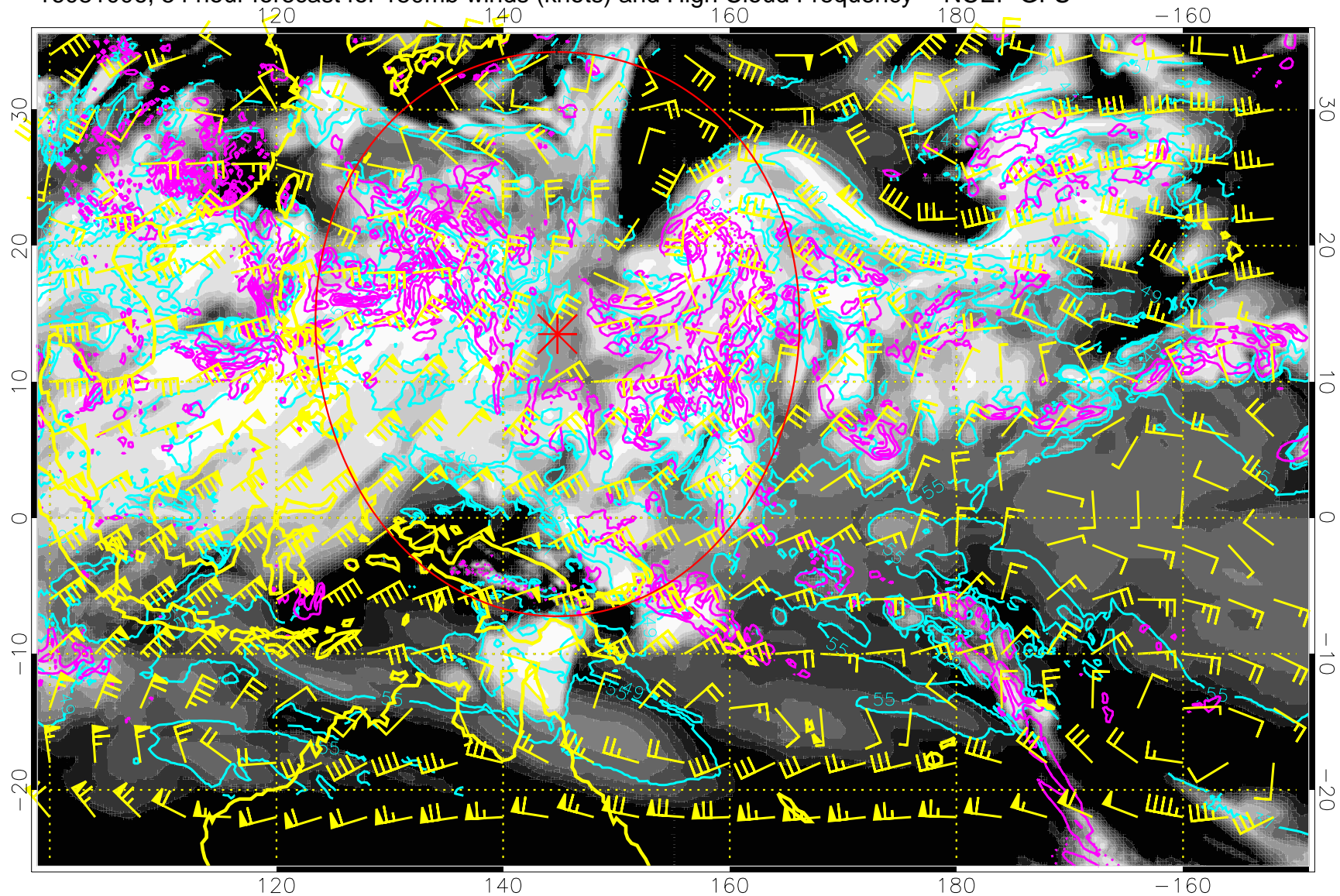
16081000, 48 hour forecast for 150mb winds (knots) and High Cloud Frequency -- NCEP GFS



High Cloud Altitude from 37 kft at 6 kft intervals
Precip (tot dot, conv sol) mm/day 40 mm/day contours, min 20

Range ring of 2304 km

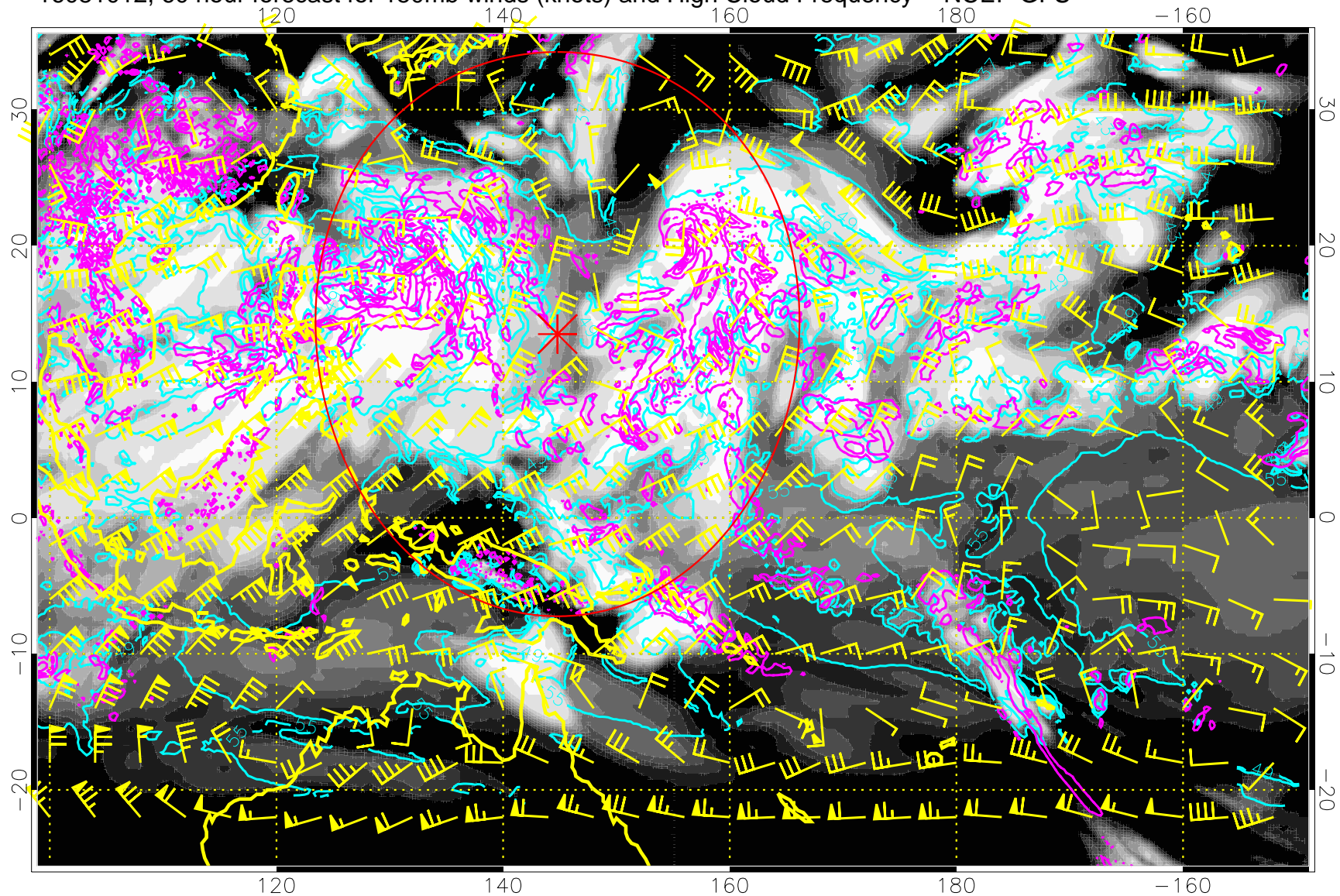
16081006, 54 hour forecast for 150mb winds (knots) and High Cloud Frequency -- NCEP GFS



High Cloud Altitude from 37 kft at 6 kft intervals
Precip (tot dot, conv sol) mm/day 40 mm/day contours, min 20

Range ring of 2304 km

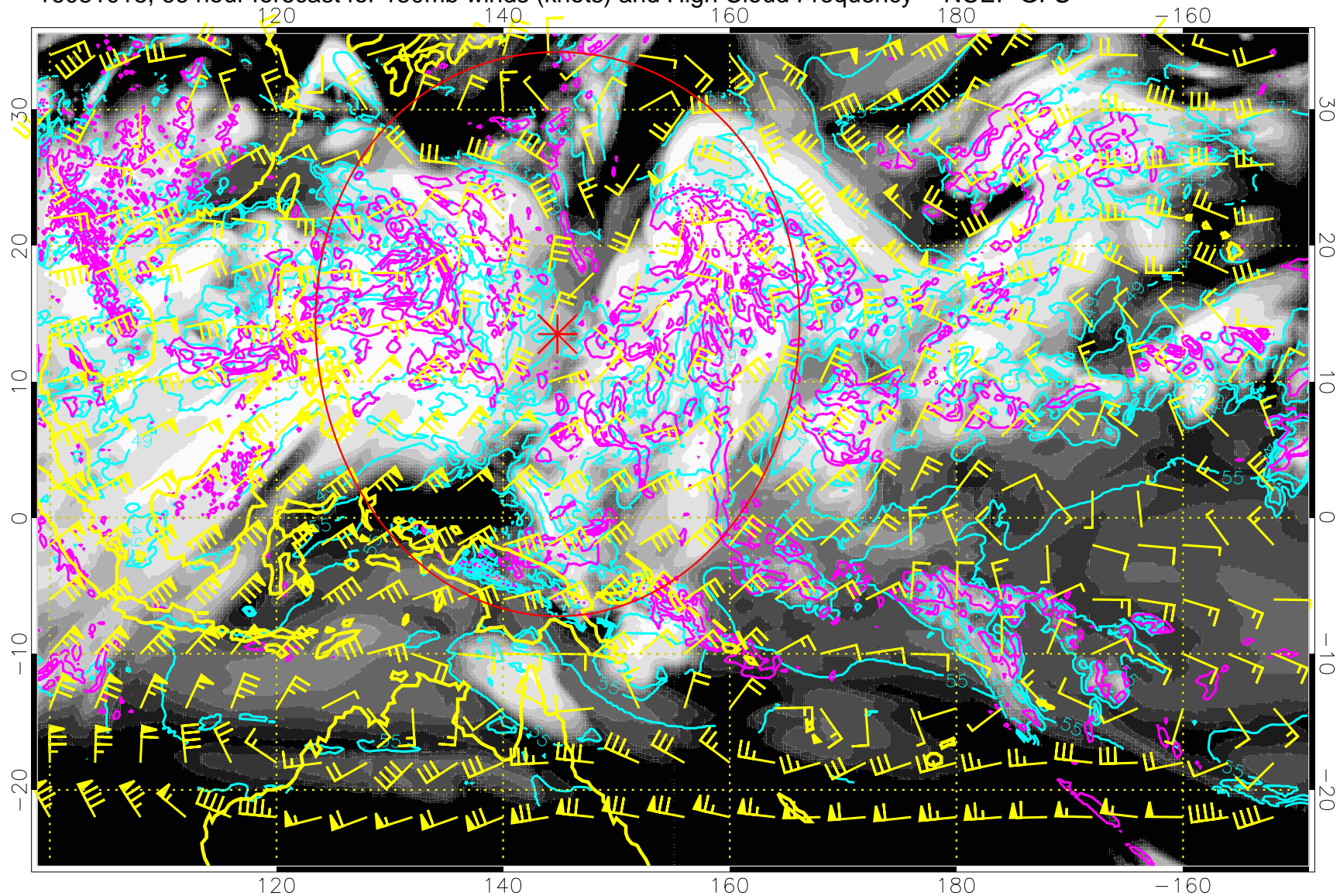
16081012, 60 hour forecast for 150mb winds (knots) and High Cloud Frequency -- NCEP GFS



High Cloud Altitude from 37 kft at 6 kft intervals
Precip (tot dot, conv sol) mm/day 40 mm/day contours, min 20

Range ring of 2304 km

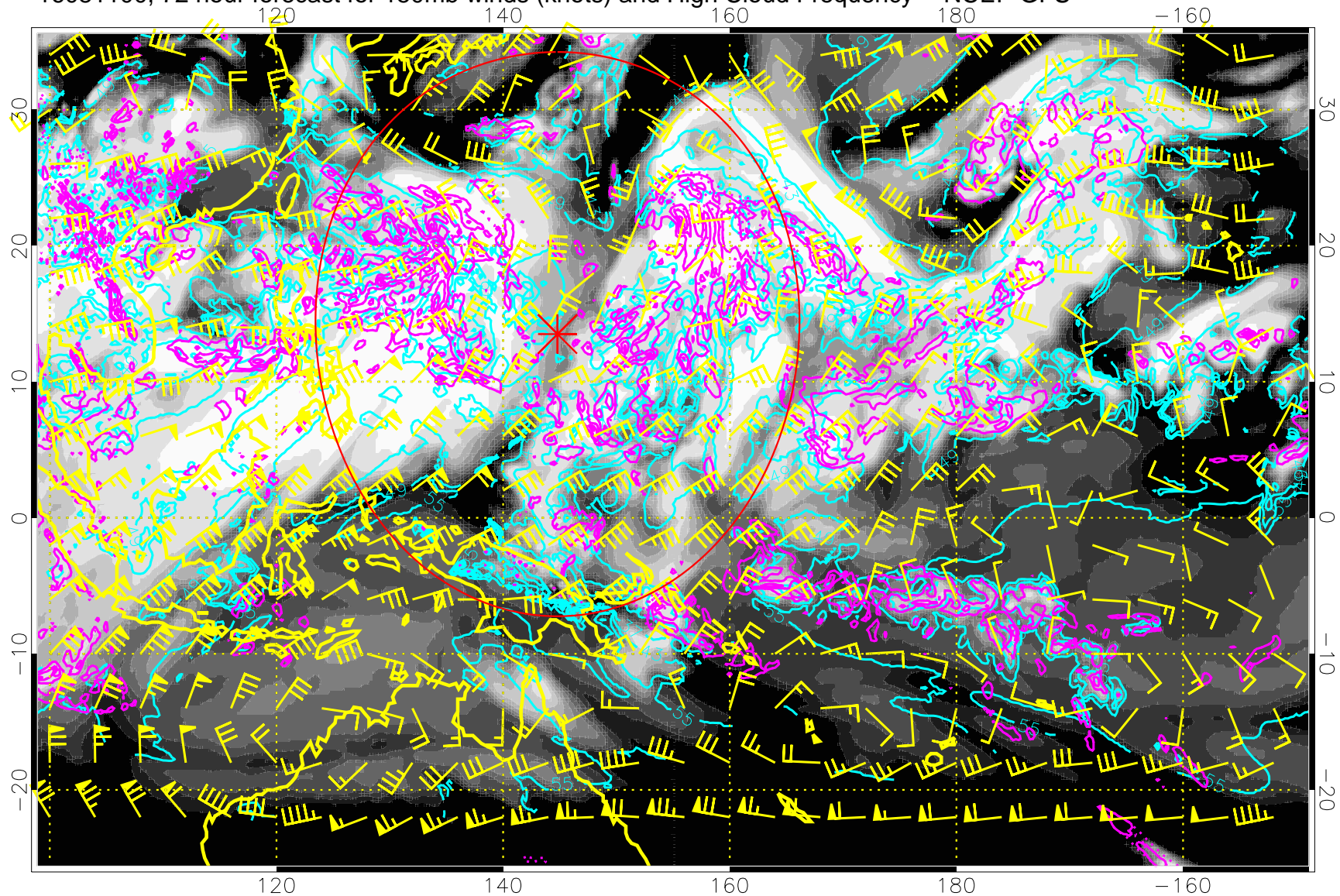
16081018, 66 hour forecast for 150mb winds (knots) and High Cloud Frequency -- NCEP GFS



High Cloud Altitude from 37 kft at 6 kft intervals
Precip (tot dot, conv sol) mm/day 40 mm/day contours, min 20

Range ring of 2304 km

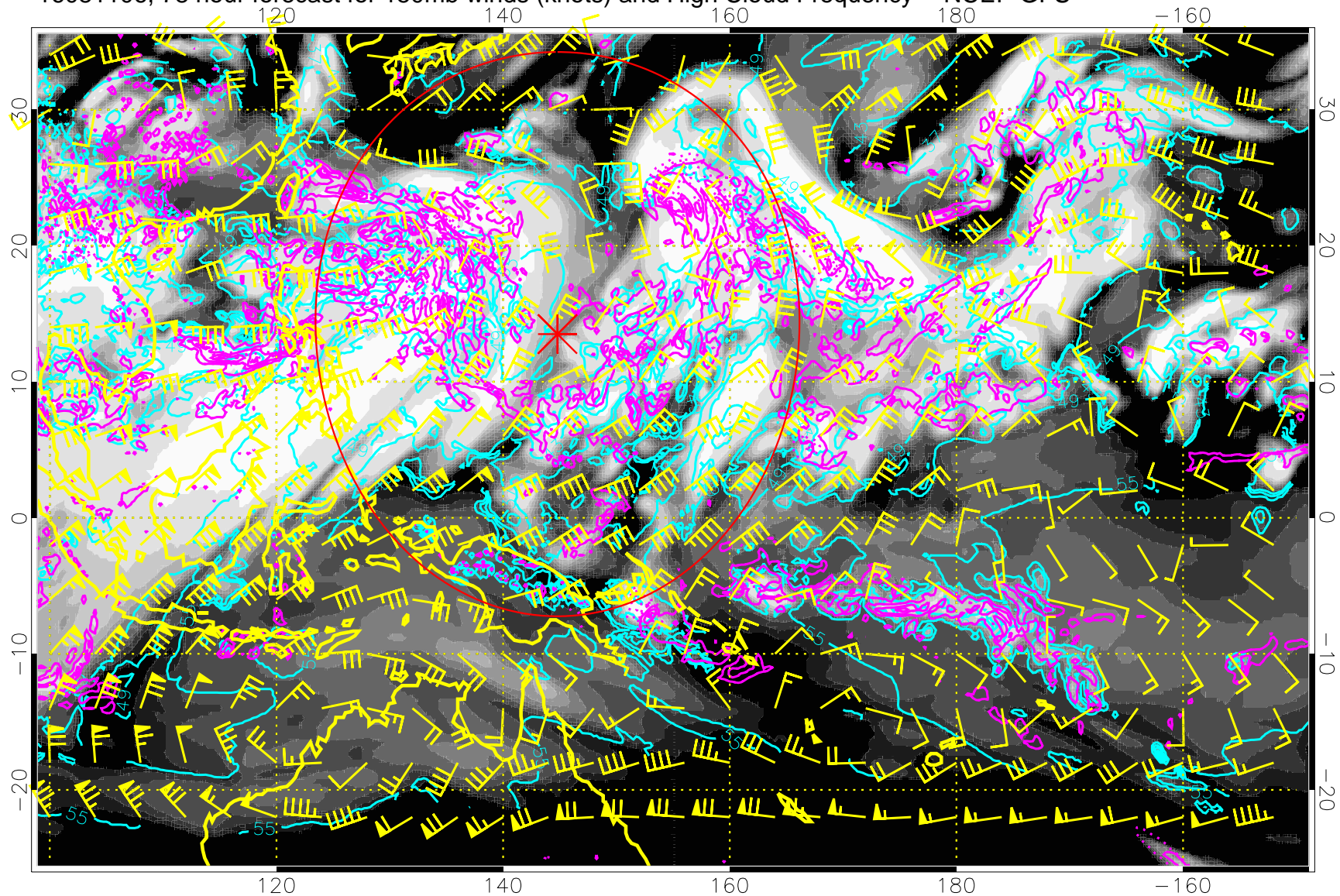
16081100, 72 hour forecast for 150mb winds (knots) and High Cloud Frequency -- NCEP GFS



High Cloud Altitude from 37 kft at 6 kft intervals
Precip (tot dot, conv sol) mm/day 40 mm/day contours, min 20

Range ring of 2304 km

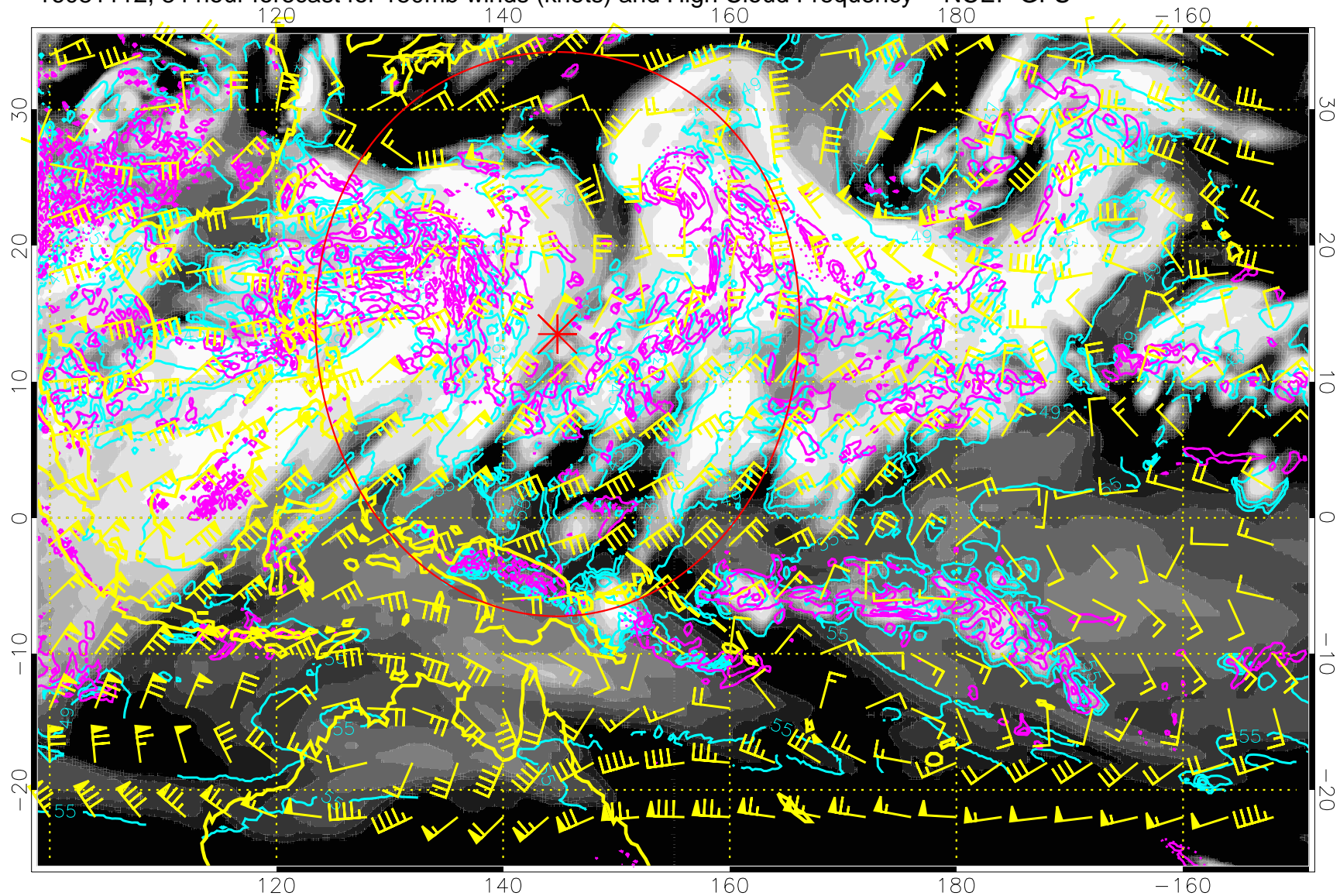
16081106, 78 hour forecast for 150mb winds (knots) and High Cloud Frequency -- NCEP GFS



High Cloud Altitude from 37 kft at 6 kft intervals
Precip (tot dot, conv sol) mm/day 40 mm/day contours, min 20

Range ring of 2304 km

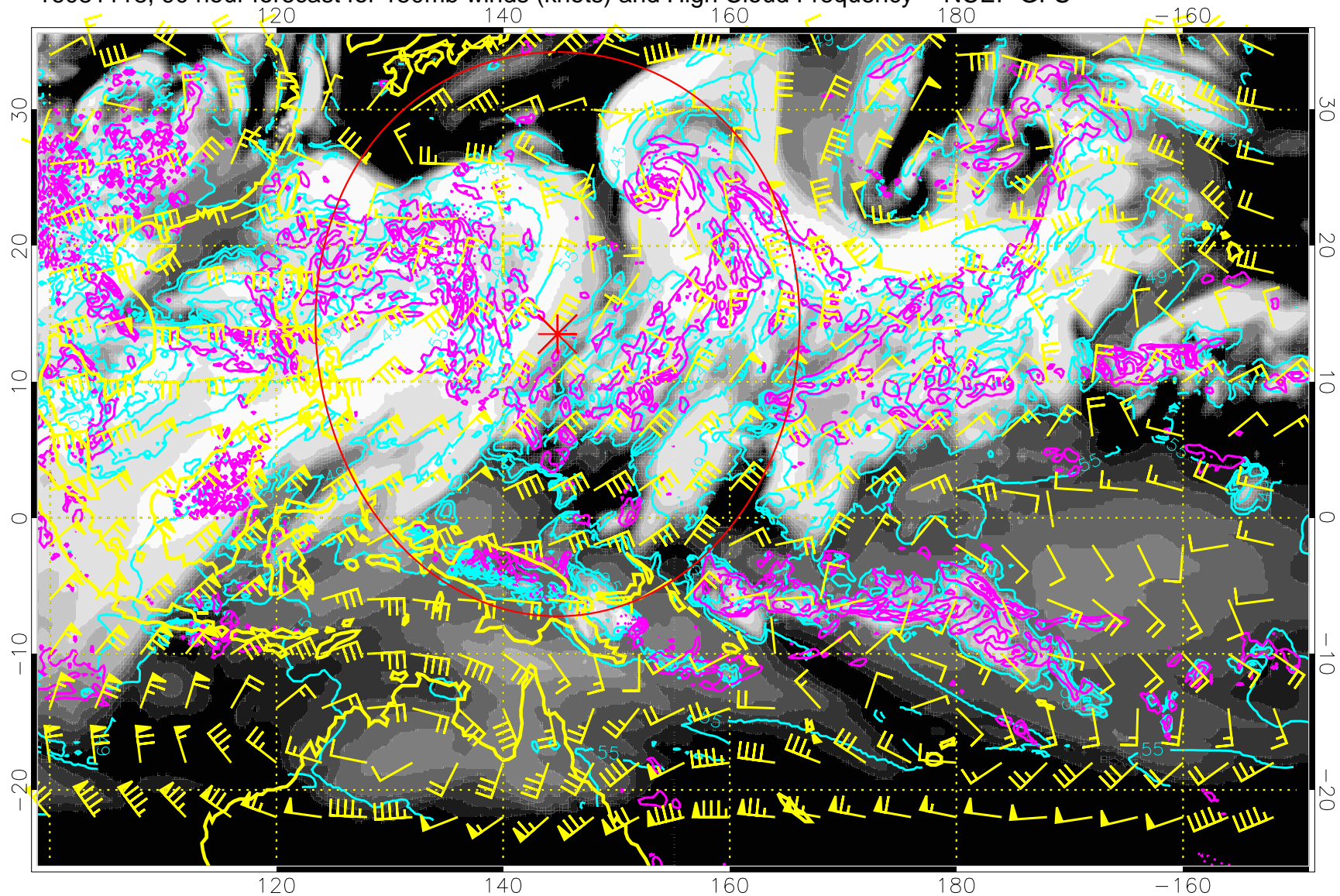
16081112, 84 hour forecast for 150mb winds (knots) and High Cloud Frequency -- NCEP GFS



High Cloud Altitude from 37 kft at 6 kft intervals
Precip (tot dot, conv sol) mm/day 40 mm/day contours, min 20

Range ring of 2304 km

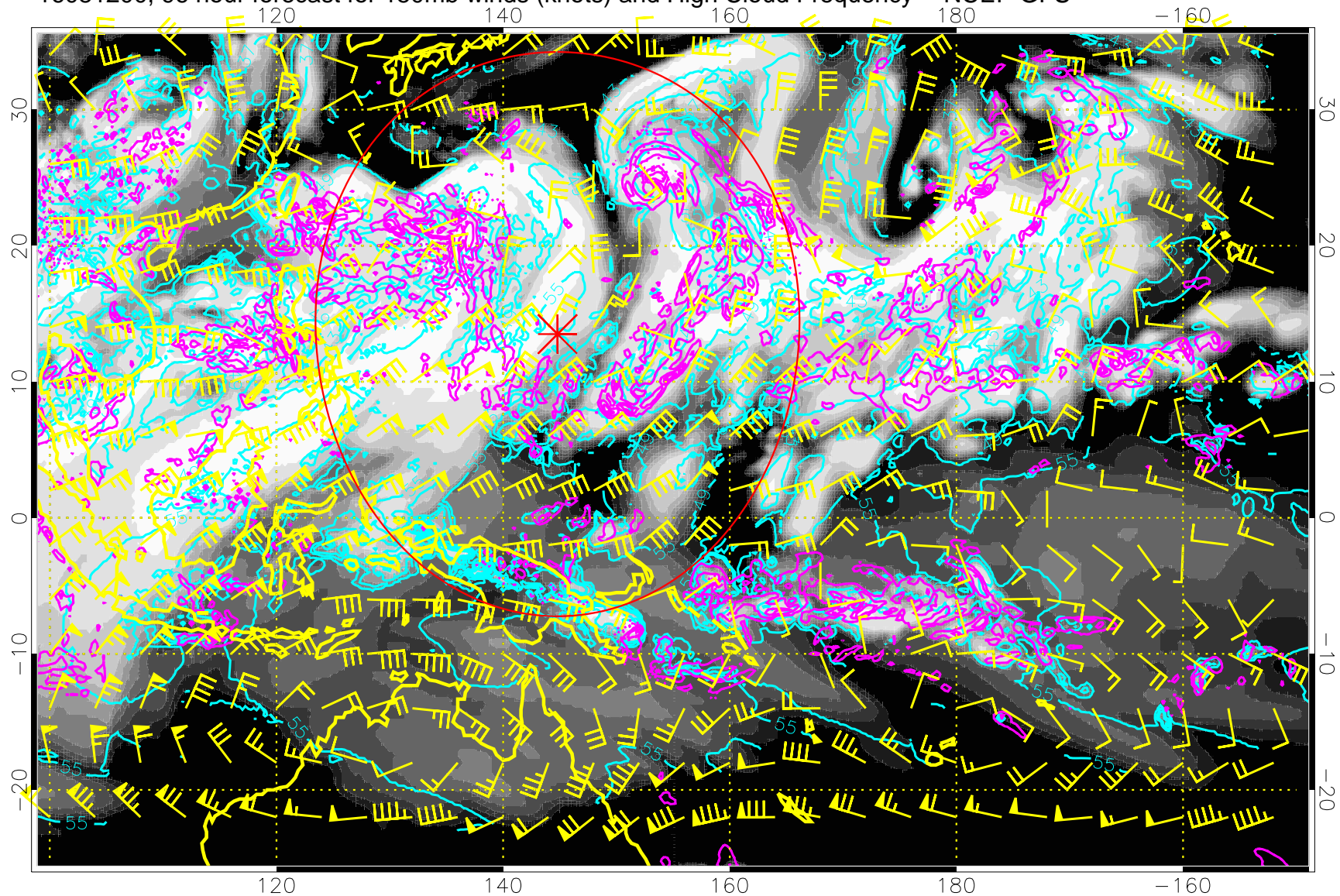
16081118, 90 hour forecast for 150mb winds (knots) and High Cloud Frequency -- NCEP GFS



High Cloud Altitude from 37 kft at 6 kft intervals
Precip (tot dot, conv sol) mm/day 40 mm/day contours, min 20

Range ring of 2304 km

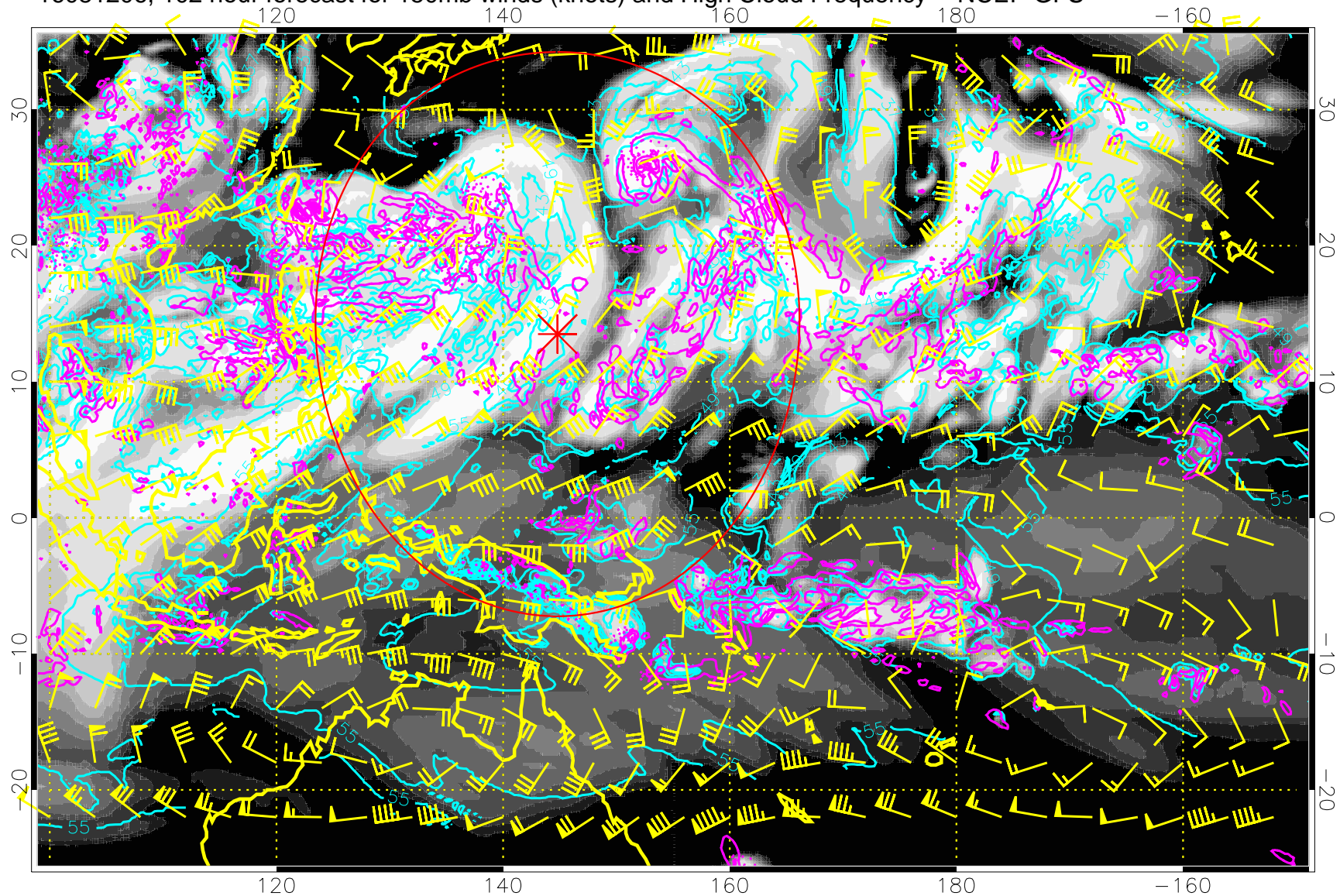
16081200, 96 hour forecast for 150mb winds (knots) and High Cloud Frequency -- NCEP GFS



High Cloud Altitude from 37 kft at 6 kft intervals
Precip (tot dot, conv sol) mm/day 40 mm/day contours, min 20

Range ring of 2304 km

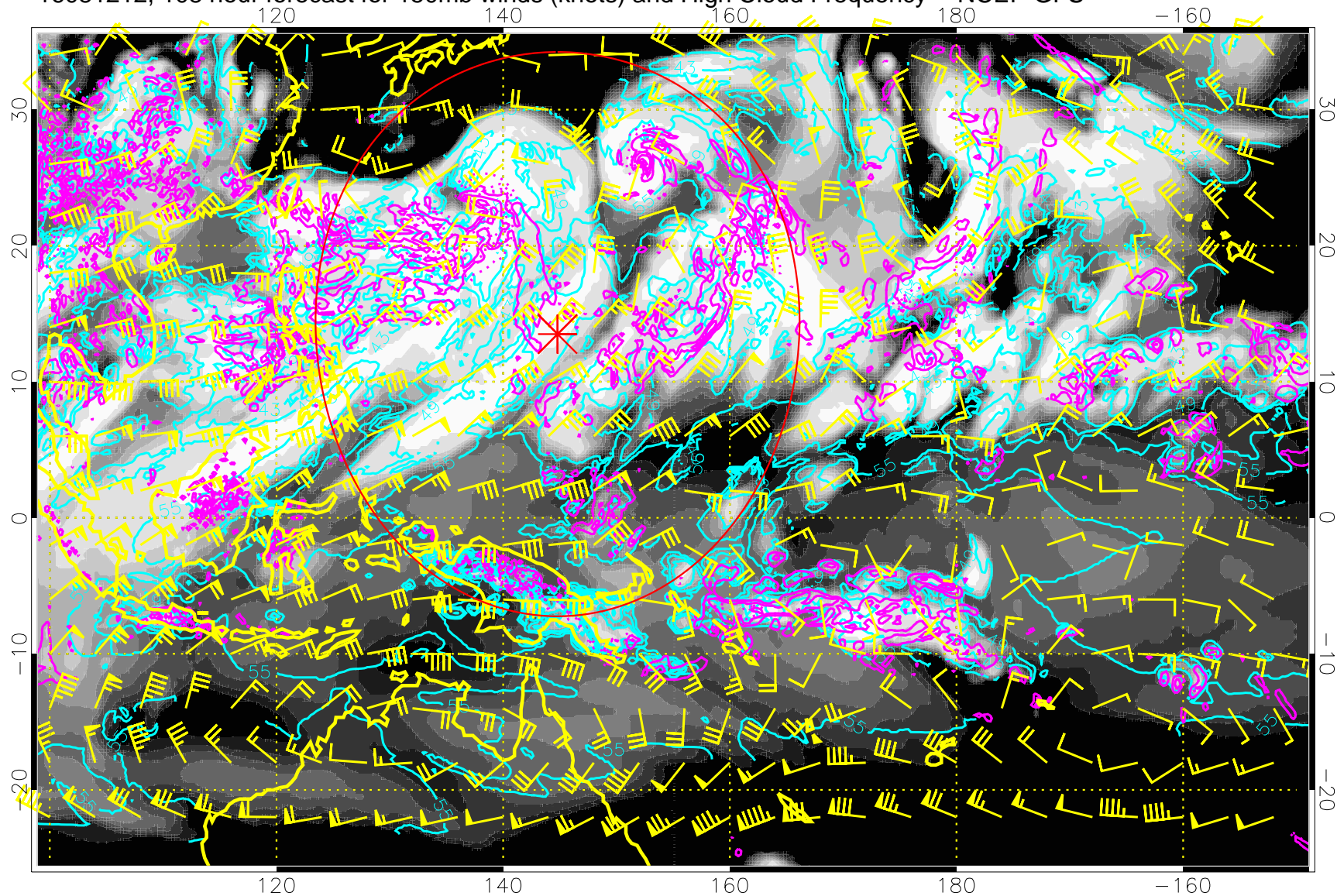
16081206, 102 hour forecast for 150mb winds (knots) and High Cloud Frequency -- NCEP GFS



High Cloud Altitude from 37 kft at 6 kft intervals
Precip (tot dot, conv sol) mm/day 40 mm/day contours, min 20

Range ring of 2304 km

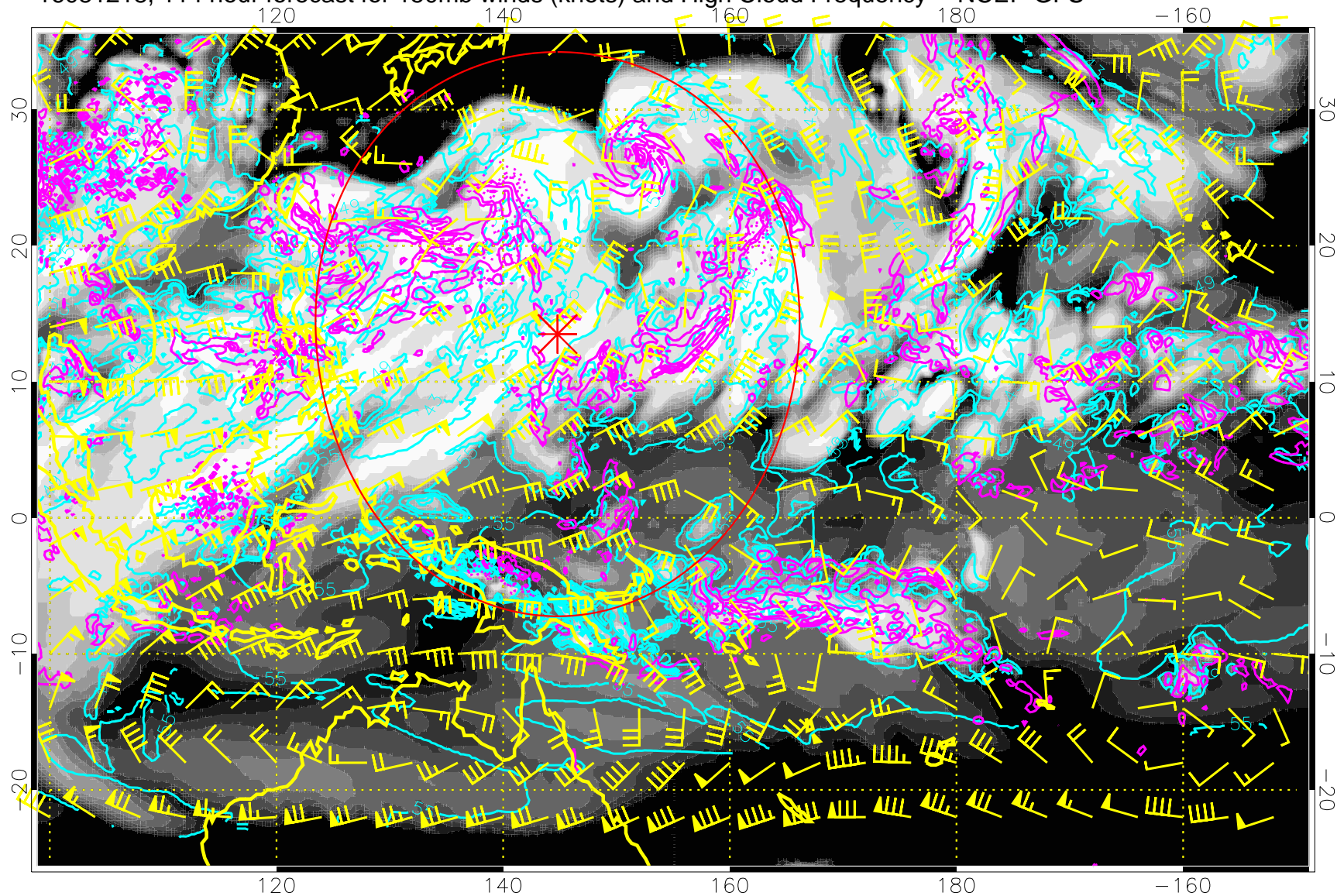
16081212, 108 hour forecast for 150mb winds (knots) and High Cloud Frequency -- NCEP GFS



High Cloud Altitude from 37 kft at 6 kft intervals
Precip (tot dot, conv sol) mm/day 40 mm/day contours, min 20

Range ring of 2304 km

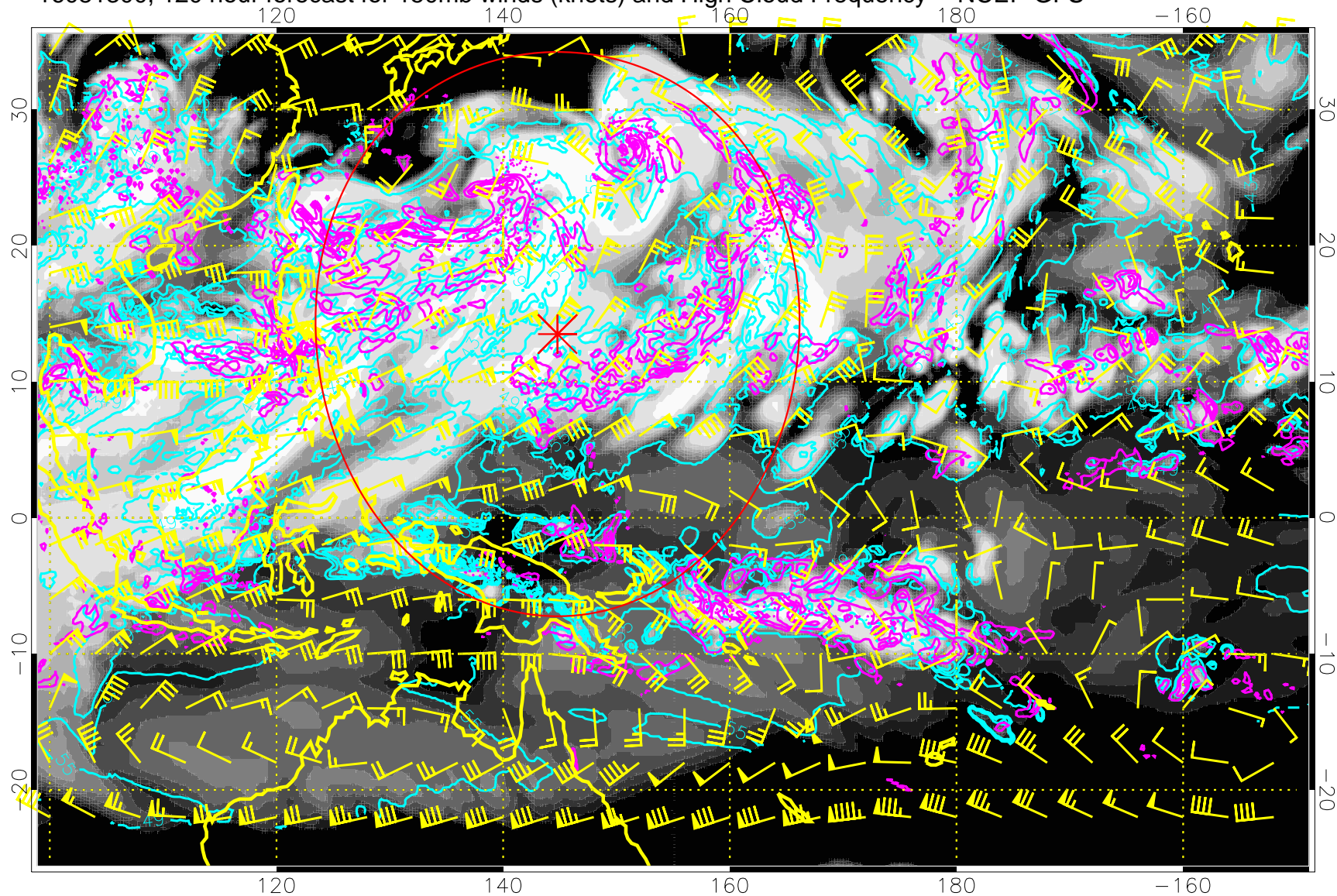
16081218, 114 hour forecast for 150mb winds (knots) and High Cloud Frequency -- NCEP GFS



High Cloud Altitude from 37 kft at 6 kft intervals
Precip (tot dot, conv sol) mm/day 40 mm/day contours, min 20

Range ring of 2304 km

16081300, 120 hour forecast for 150mb winds (knots) and High Cloud Frequency -- NCEP GFS



High Cloud Altitude from 37 kft at 6 kft intervals
Precip (tot dot, conv sol) mm/day 40 mm/day contours, min 20

Range ring of 2304 km