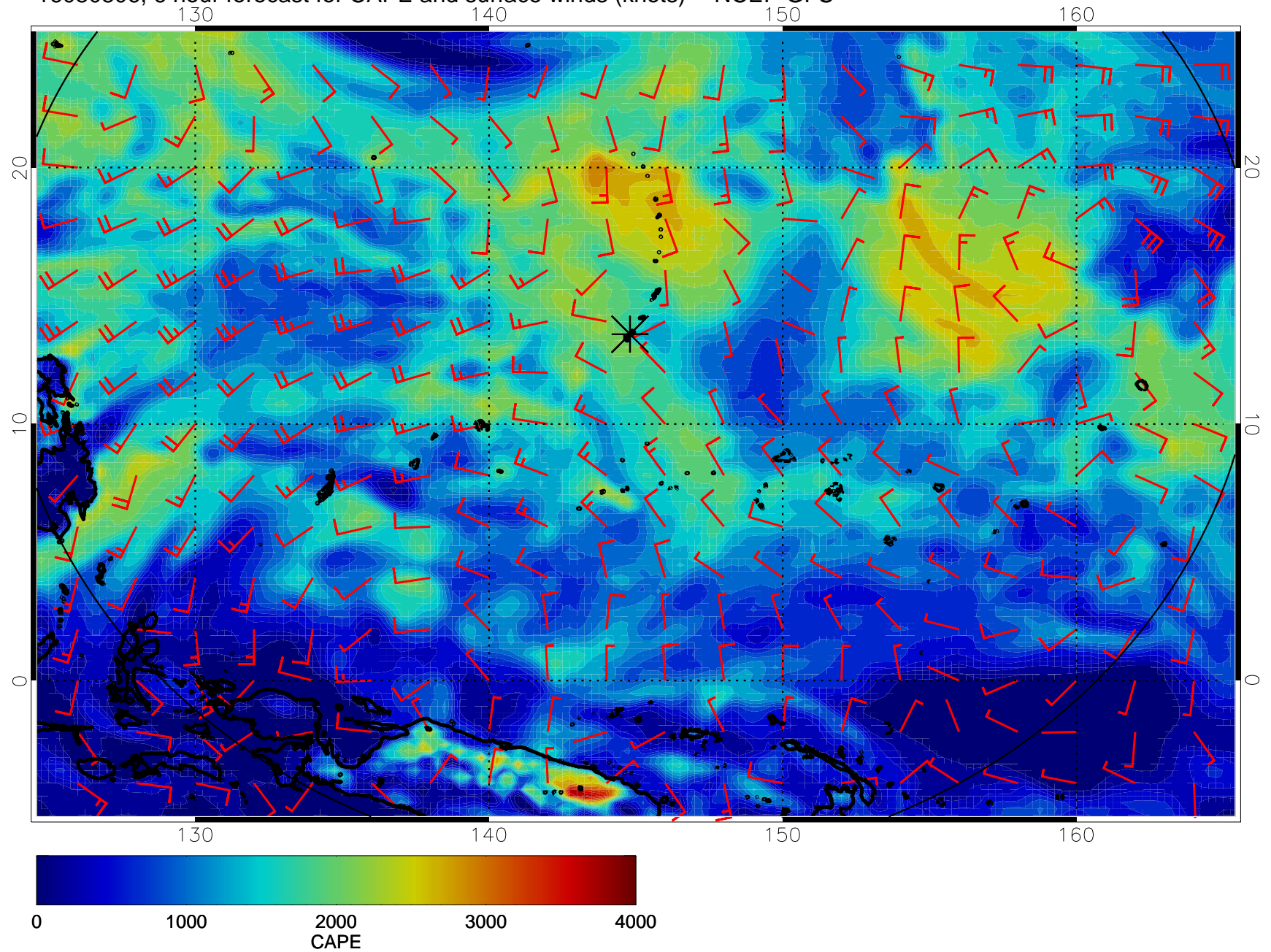
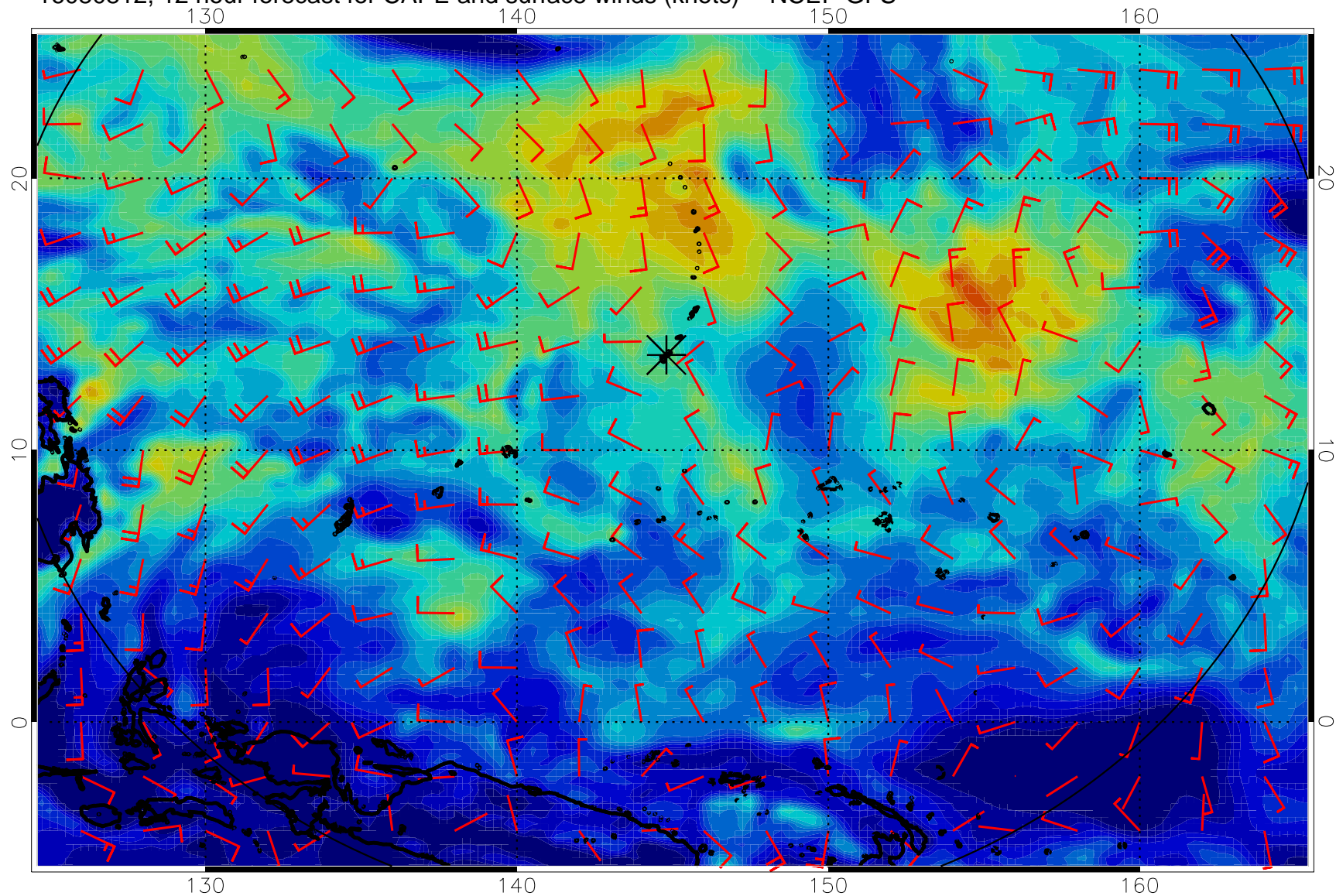


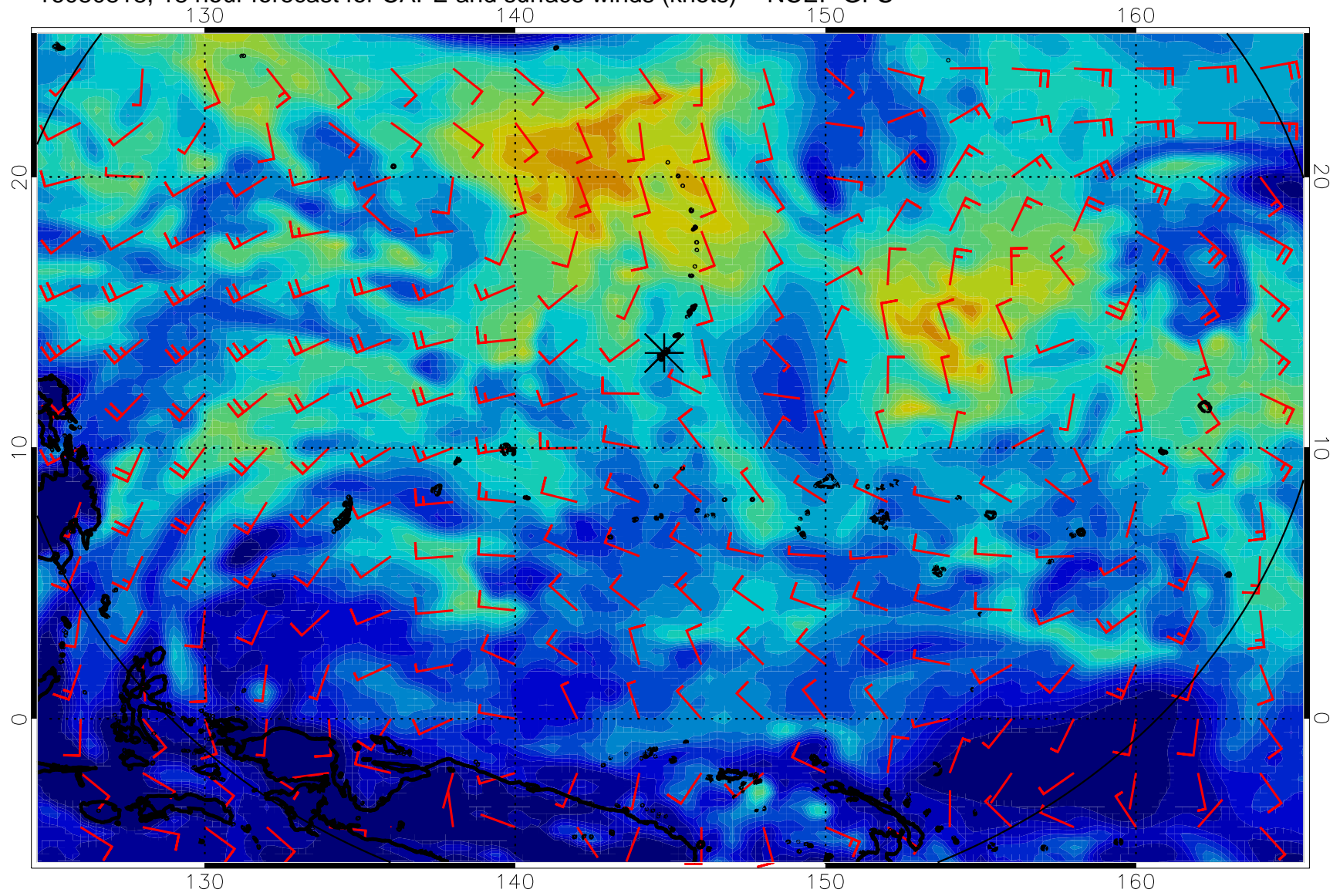
16080806, 6 hour forecast for CAPE and surface winds (knots) -- NCEP GFS



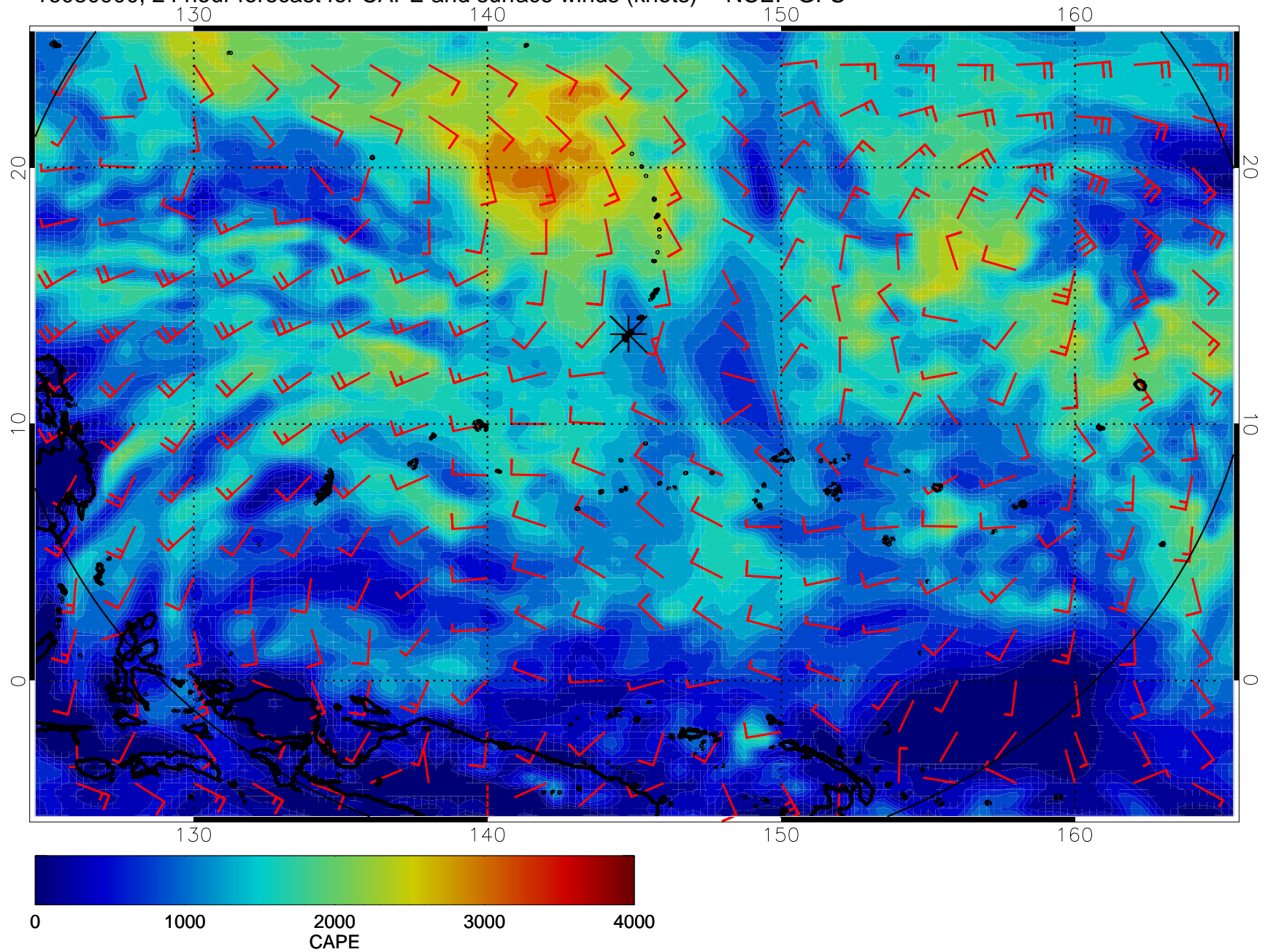
16080812, 12 hour forecast for CAPE and surface winds (knots) -- NCEP GFS



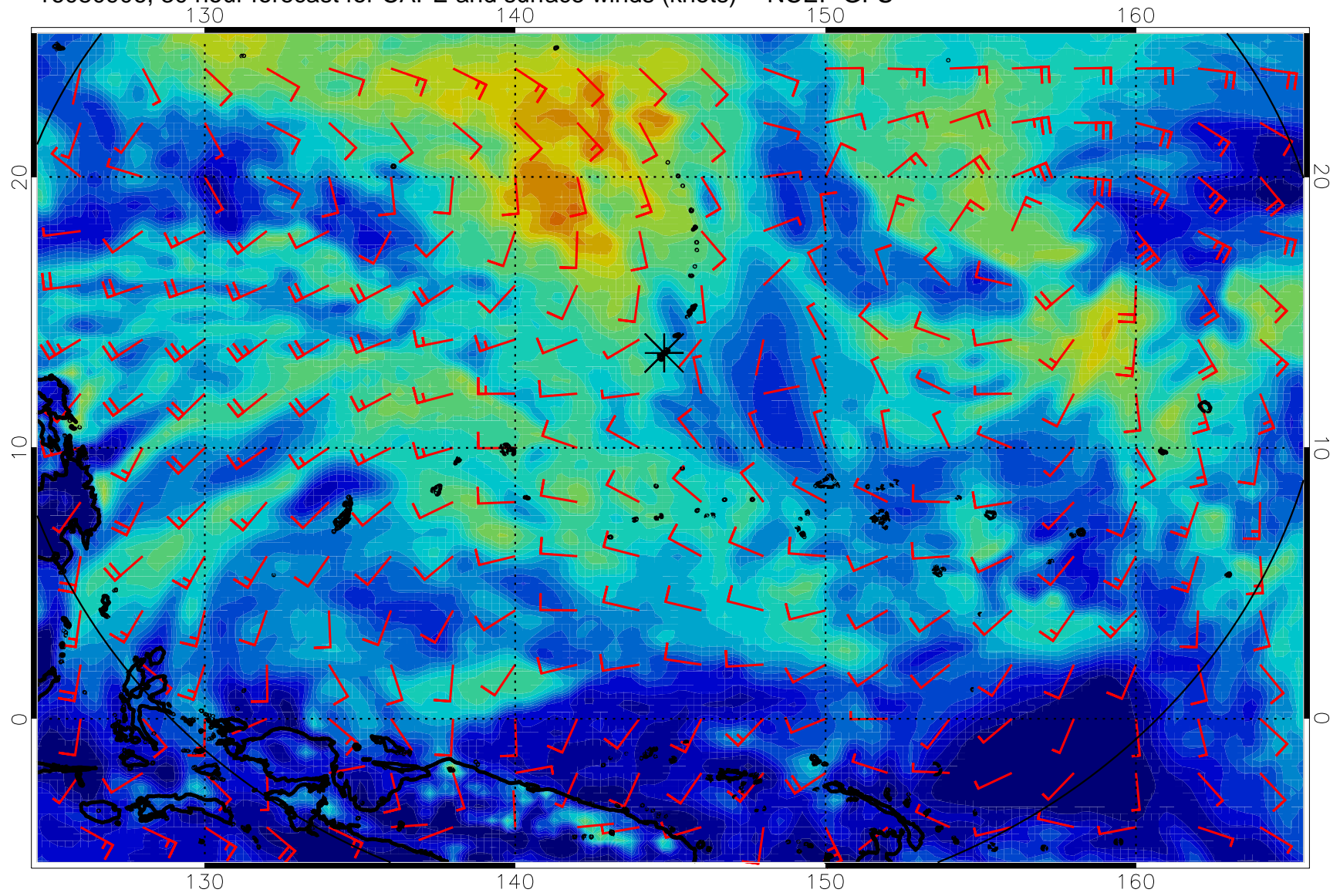
16080818, 18 hour forecast for CAPE and surface winds (knots) -- NCEP GFS



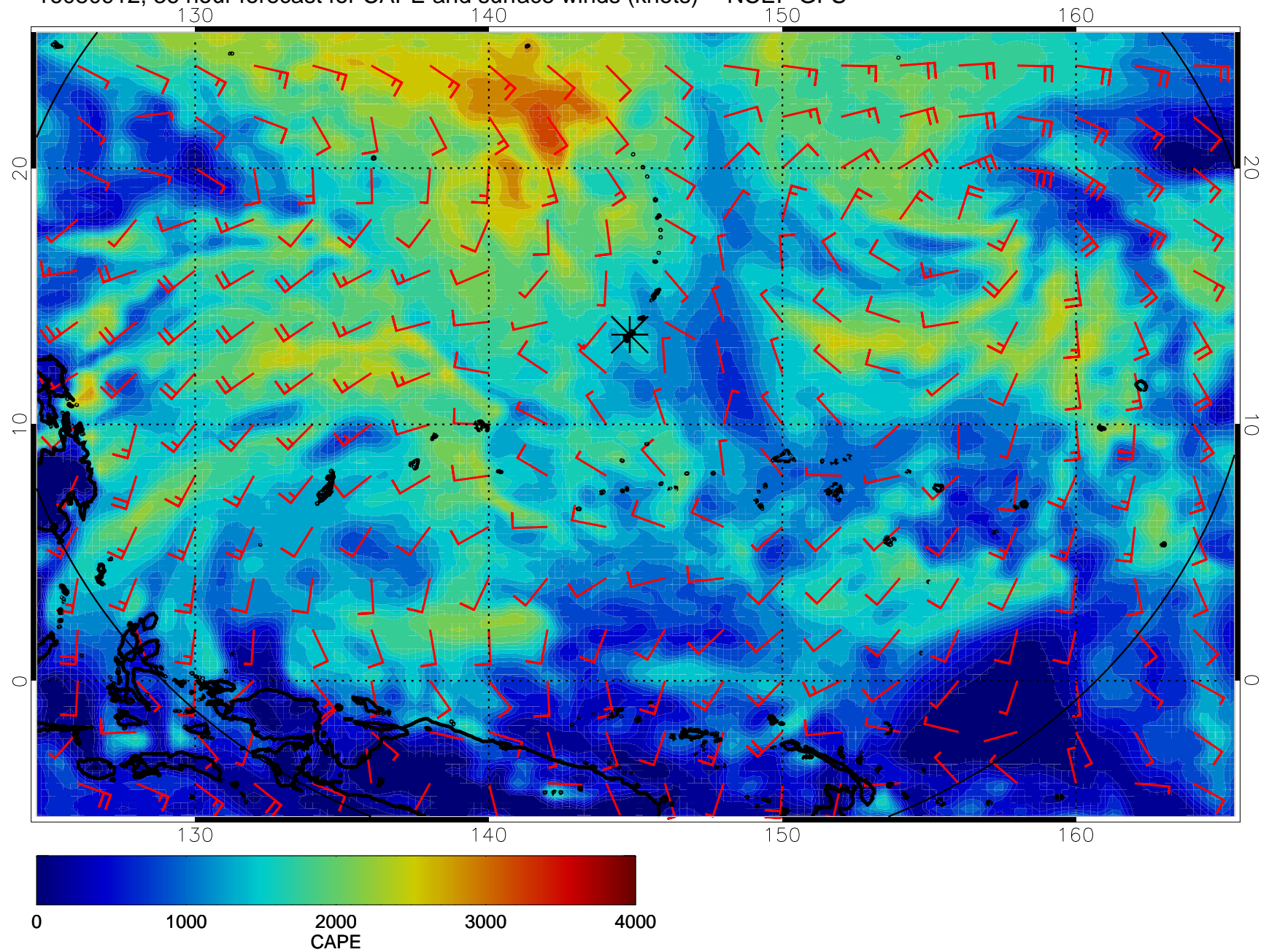
16080900, 24 hour forecast for CAPE and surface winds (knots) -- NCEP GFS



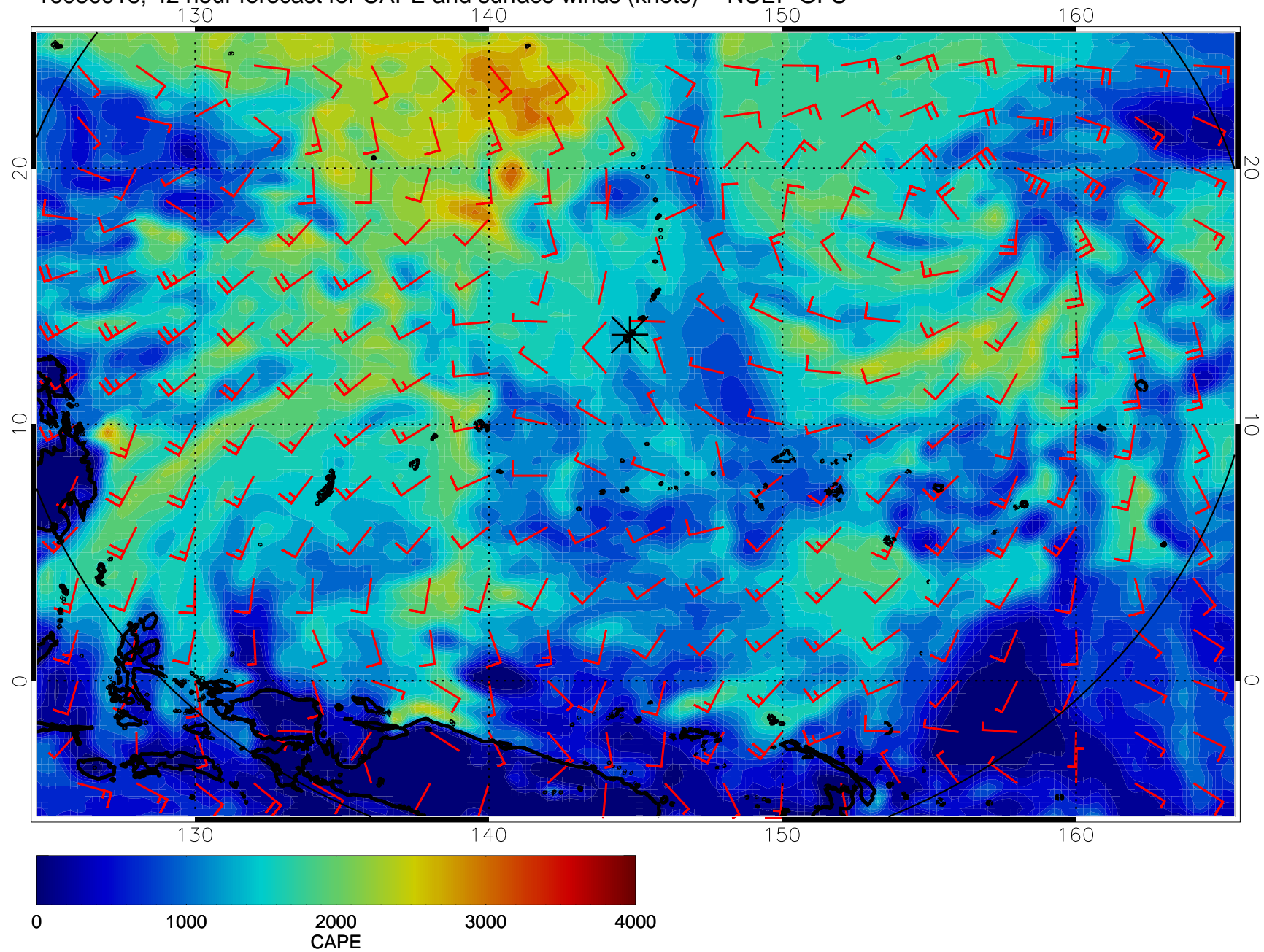
16080906, 30 hour forecast for CAPE and surface winds (knots) -- NCEP GFS



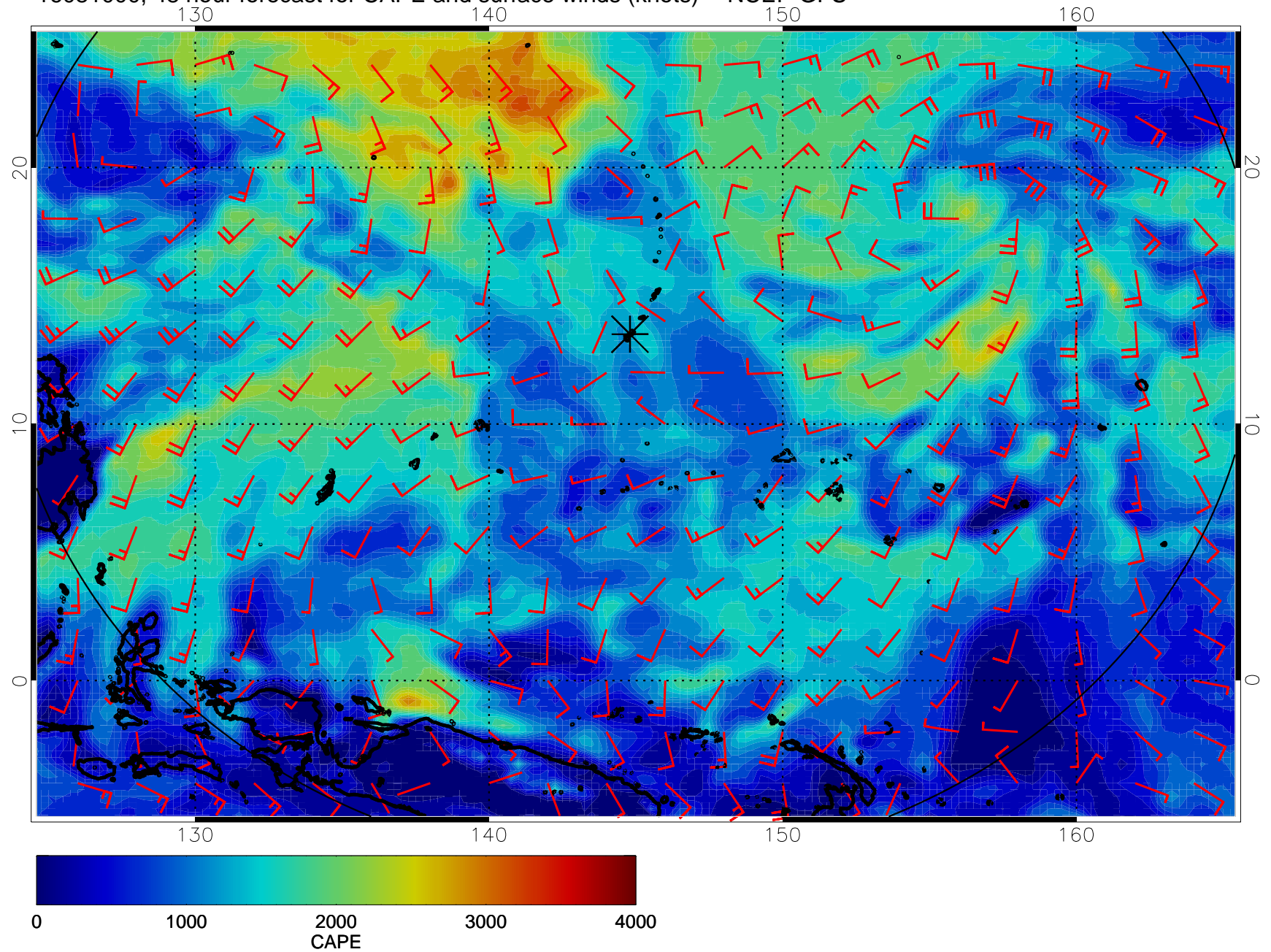
16080912, 36 hour forecast for CAPE and surface winds (knots) -- NCEP GFS



16080918, 42 hour forecast for CAPE and surface winds (knots) -- NCEP GFS

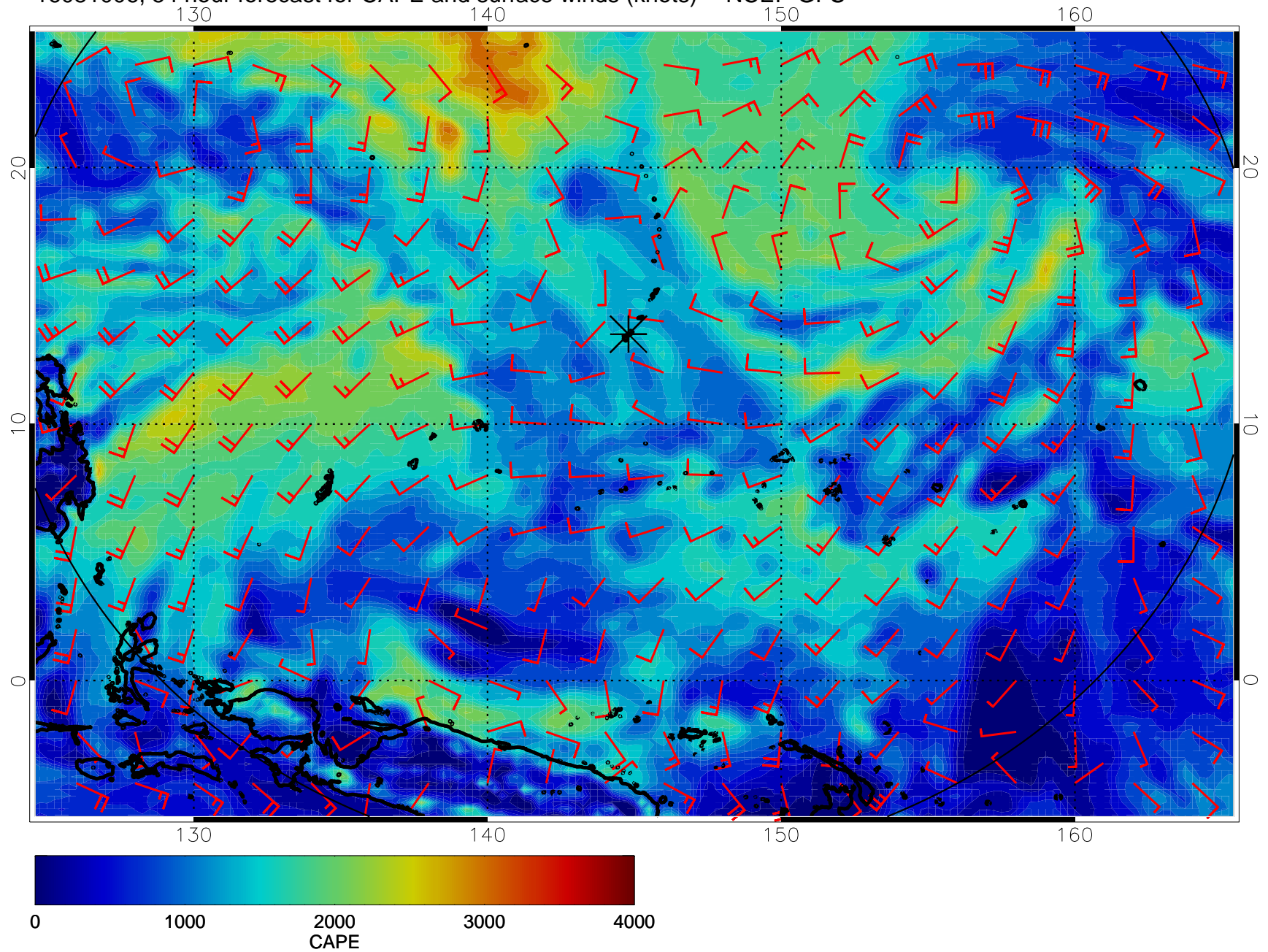


16081000, 48 hour forecast for CAPE and surface winds (knots) -- NCEP GFS

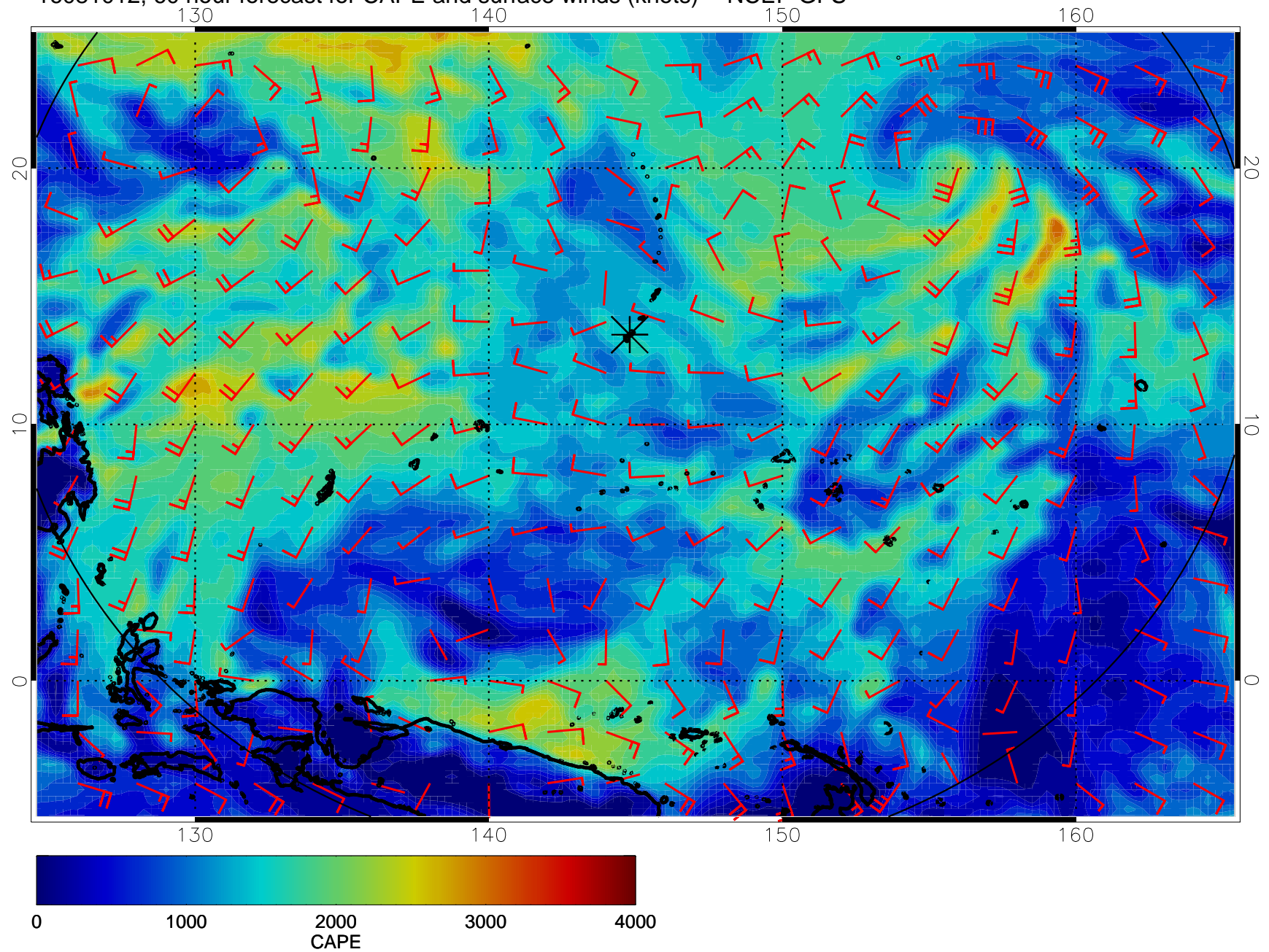




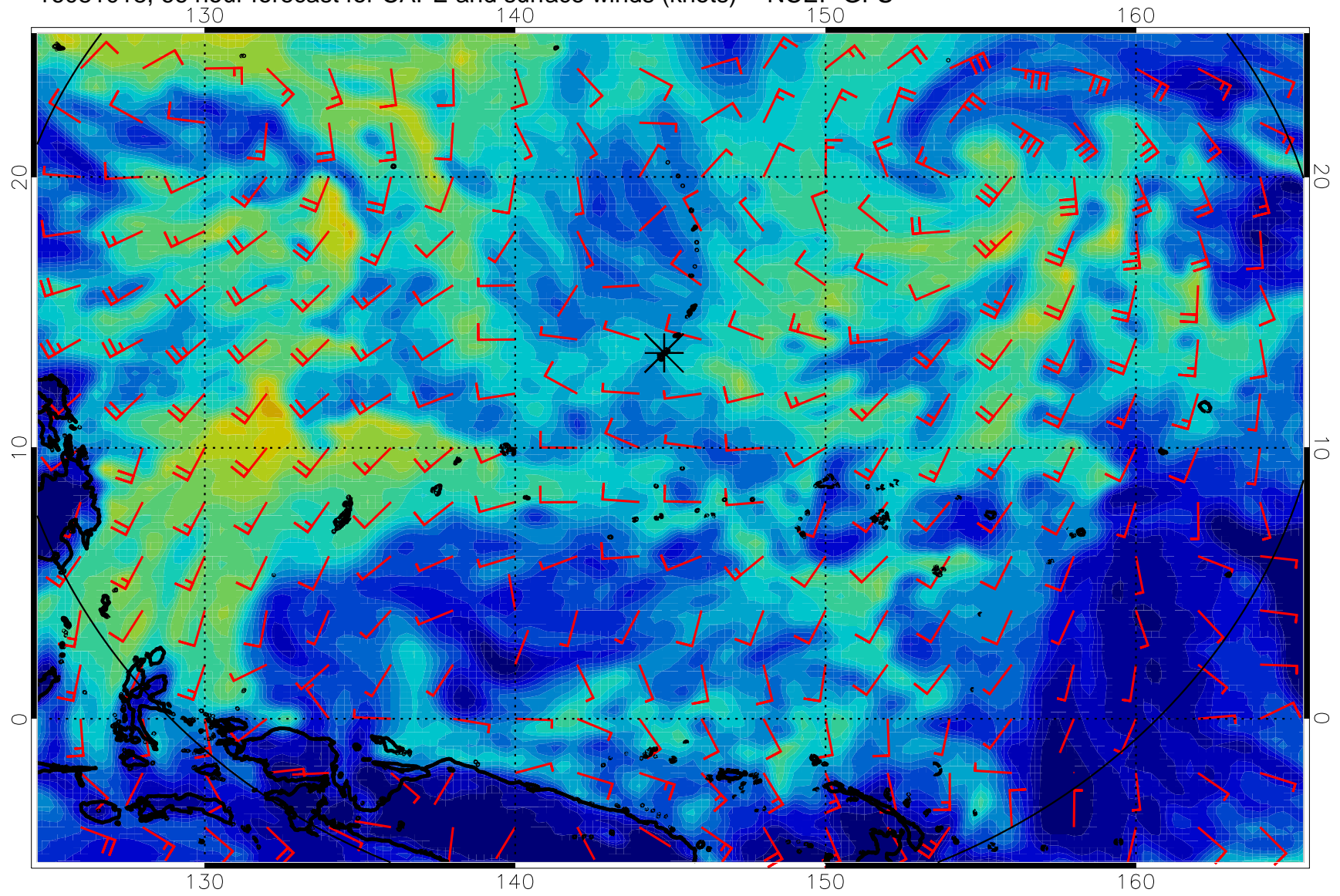
16081006, 54 hour forecast for CAPE and surface winds (knots) -- NCEP GFS



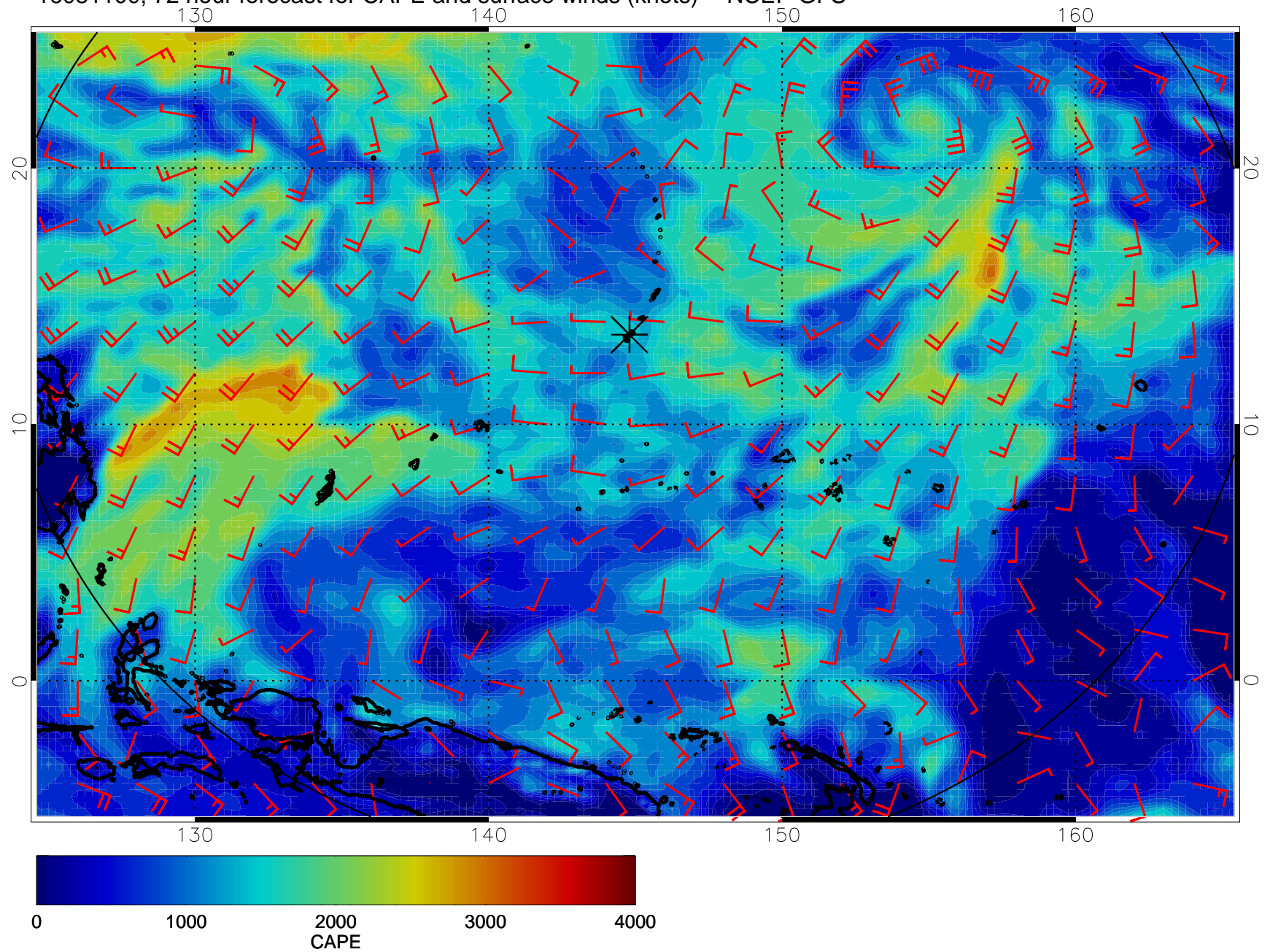
16081012, 60 hour forecast for CAPE and surface winds (knots) -- NCEP GFS



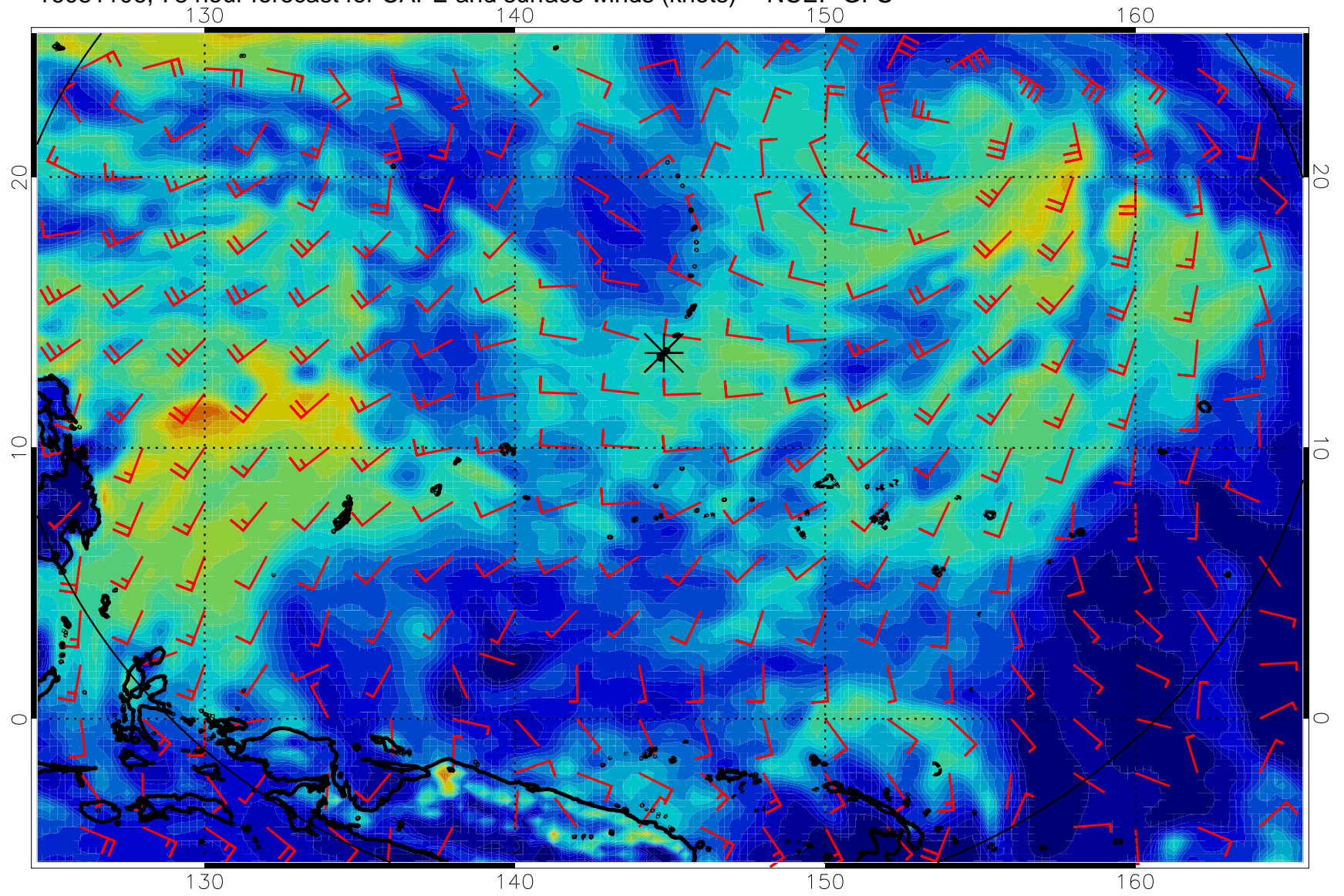
16081018, 66 hour forecast for CAPE and surface winds (knots) -- NCEP GFS



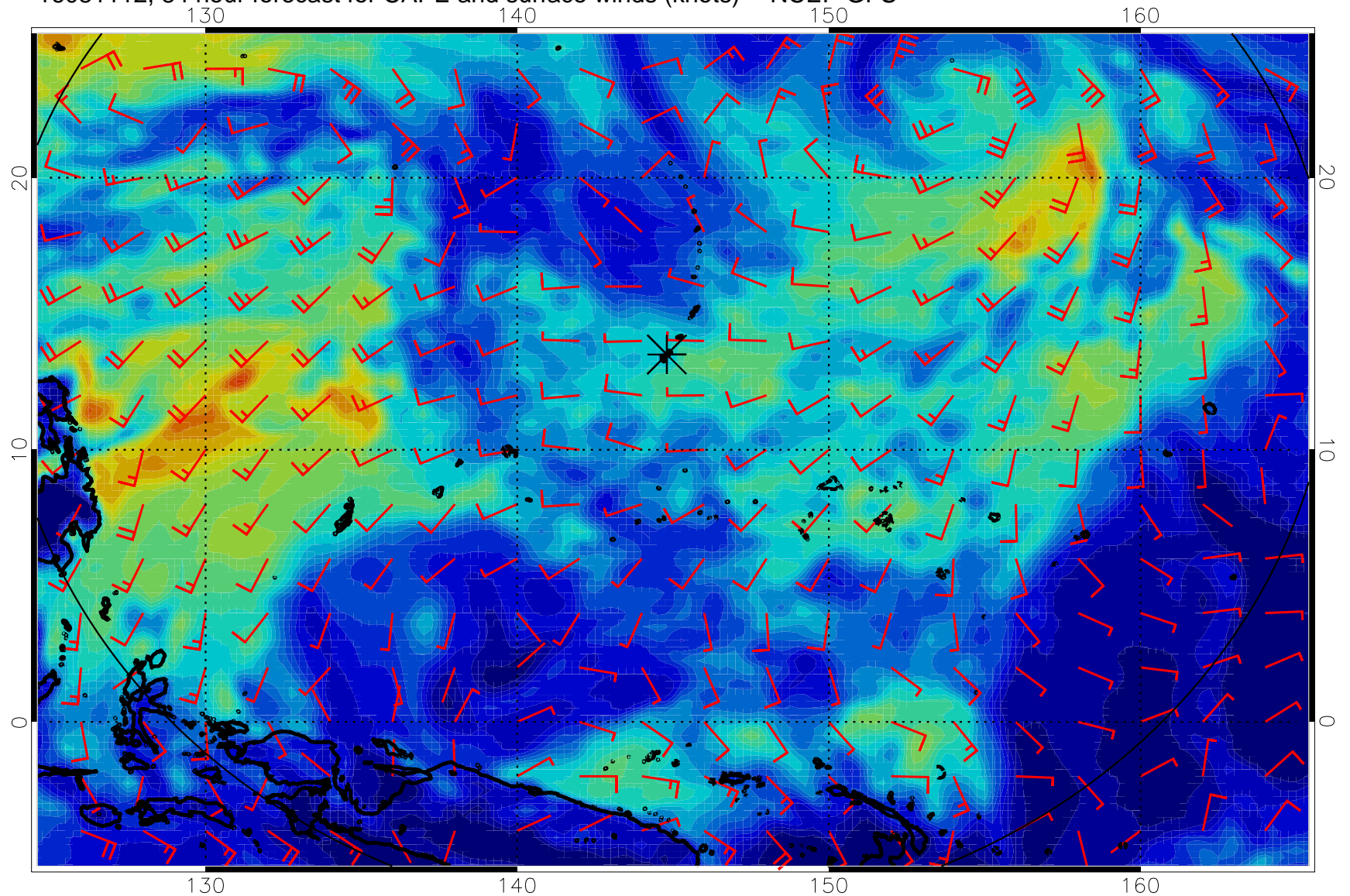
16081100, 72 hour forecast for CAPE and surface winds (knots) -- NCEP GFS



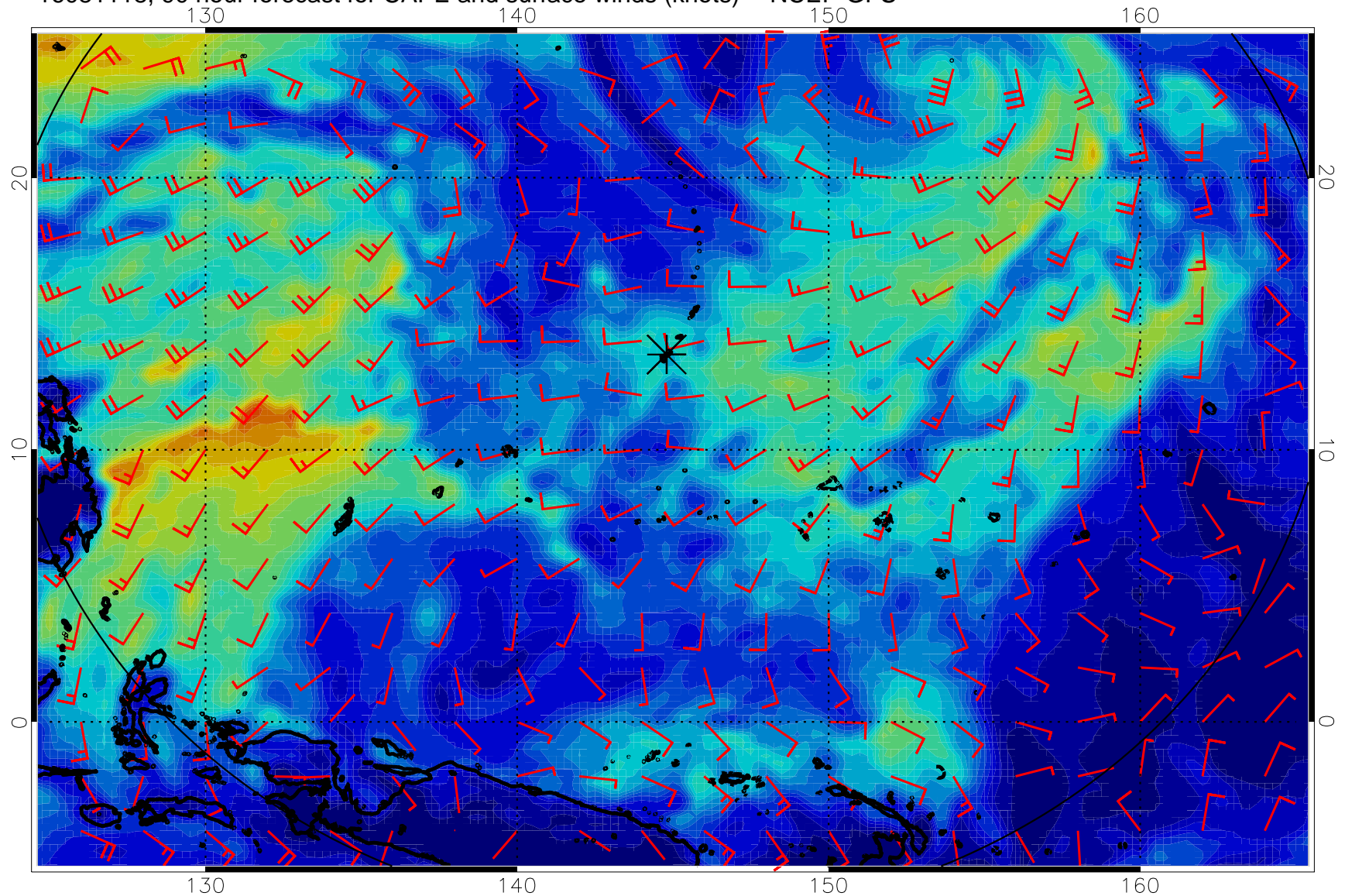
16081106, 78 hour forecast for CAPE and surface winds (knots) -- NCEP GFS



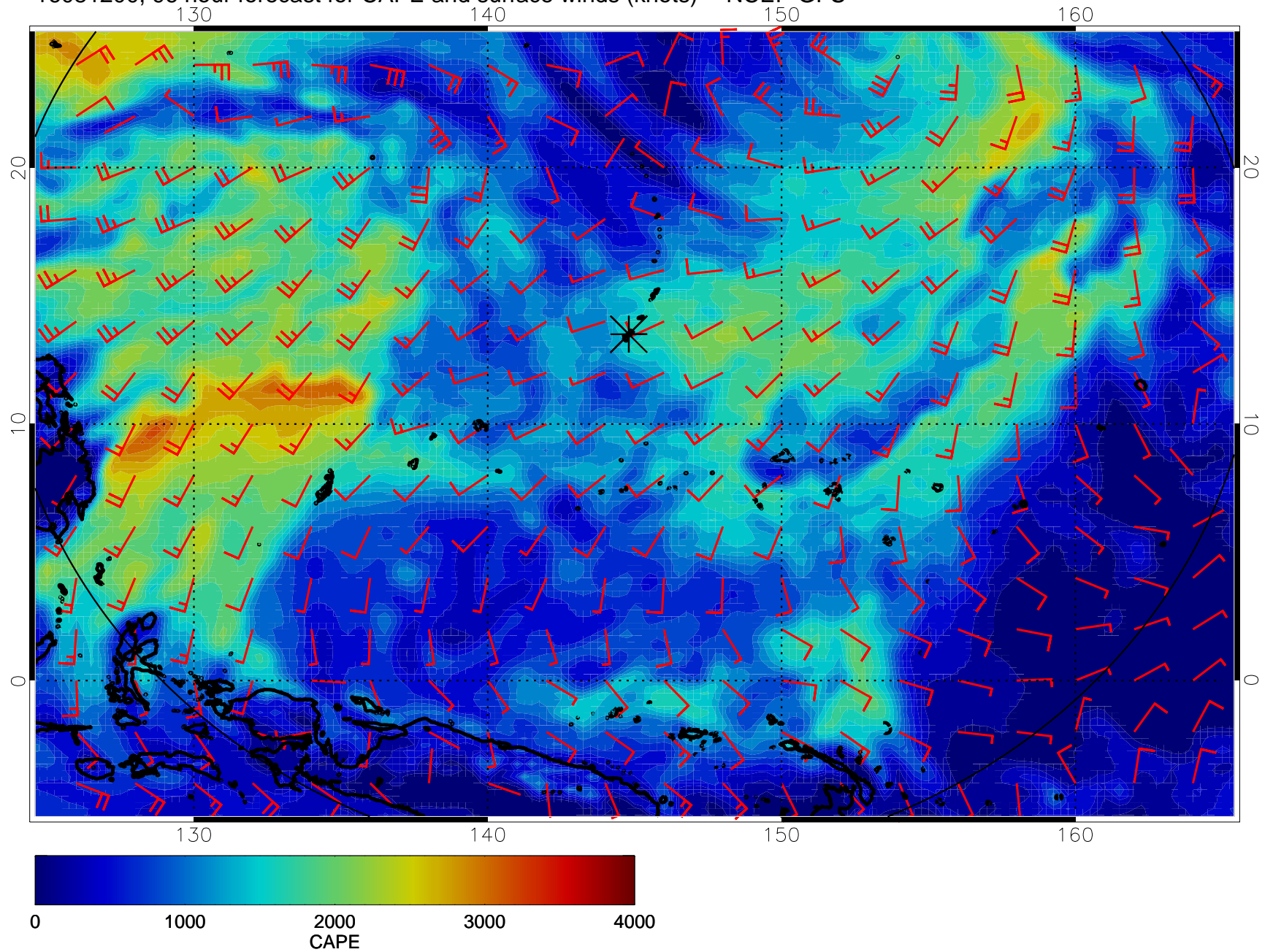
16081112, 84 hour forecast for CAPE and surface winds (knots) -- NCEP GFS



16081118, 90 hour forecast for CAPE and surface winds (knots) -- NCEP GFS

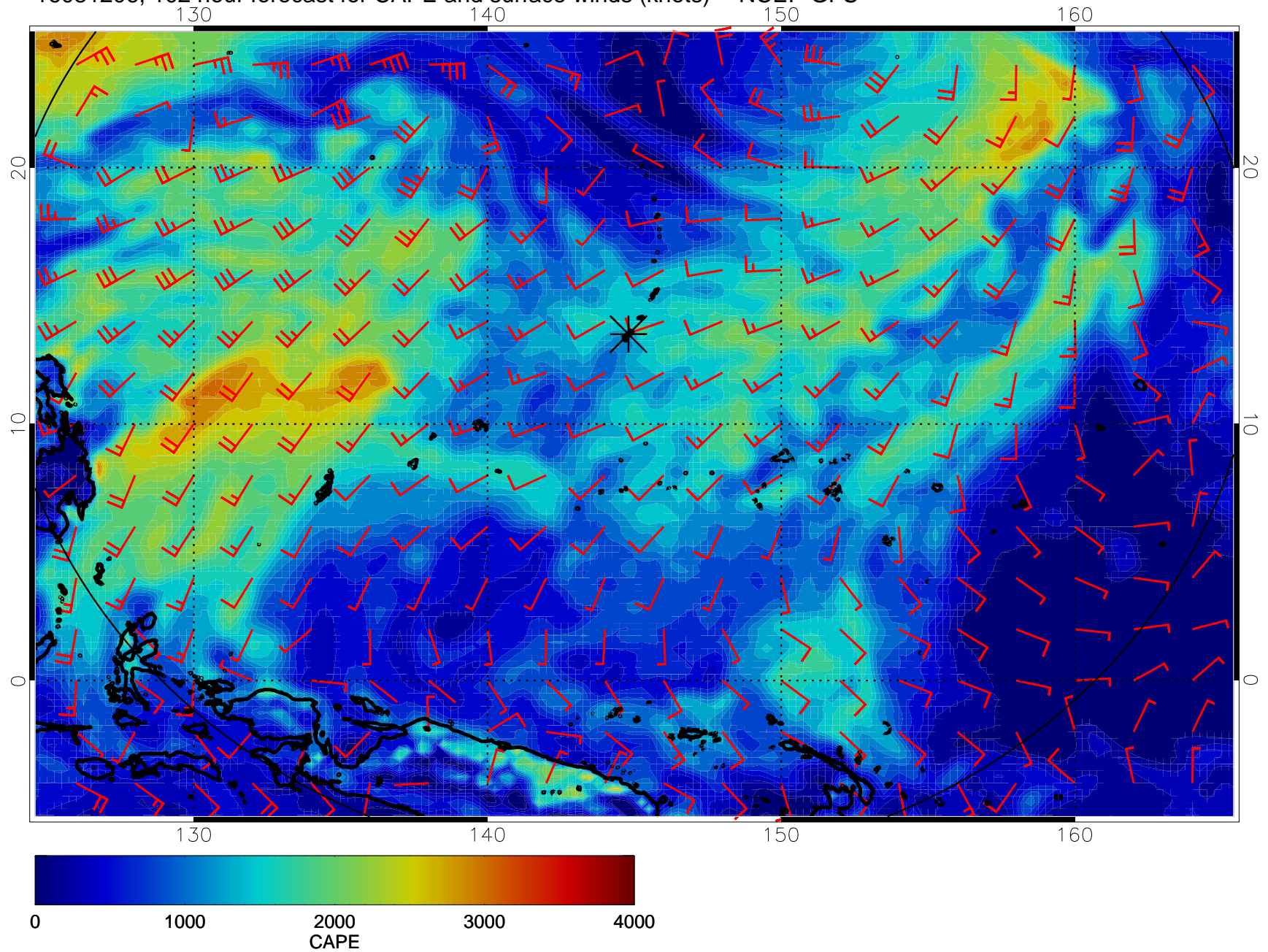


16081200, 96 hour forecast for CAPE and surface winds (knots) -- NCEP GFS

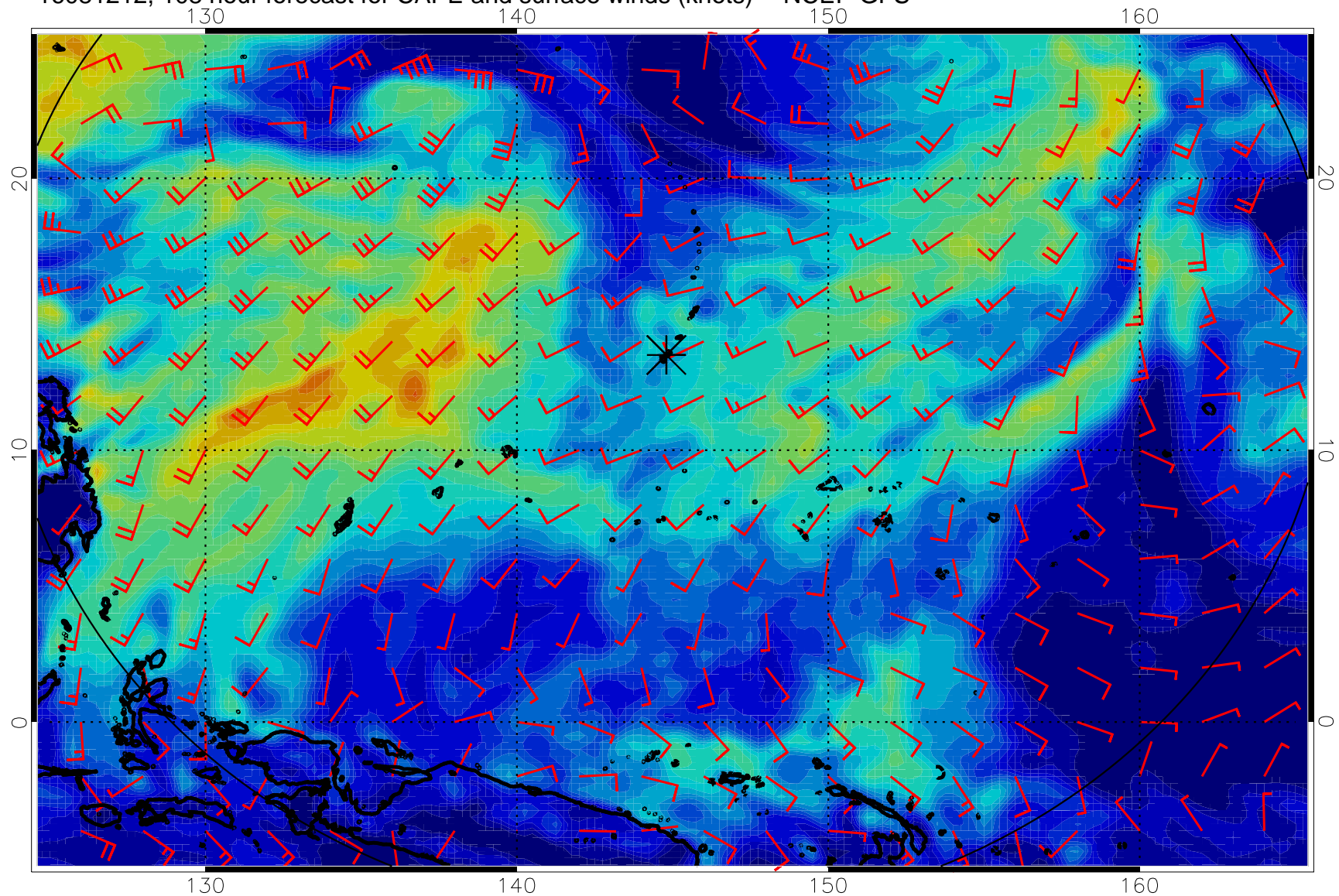




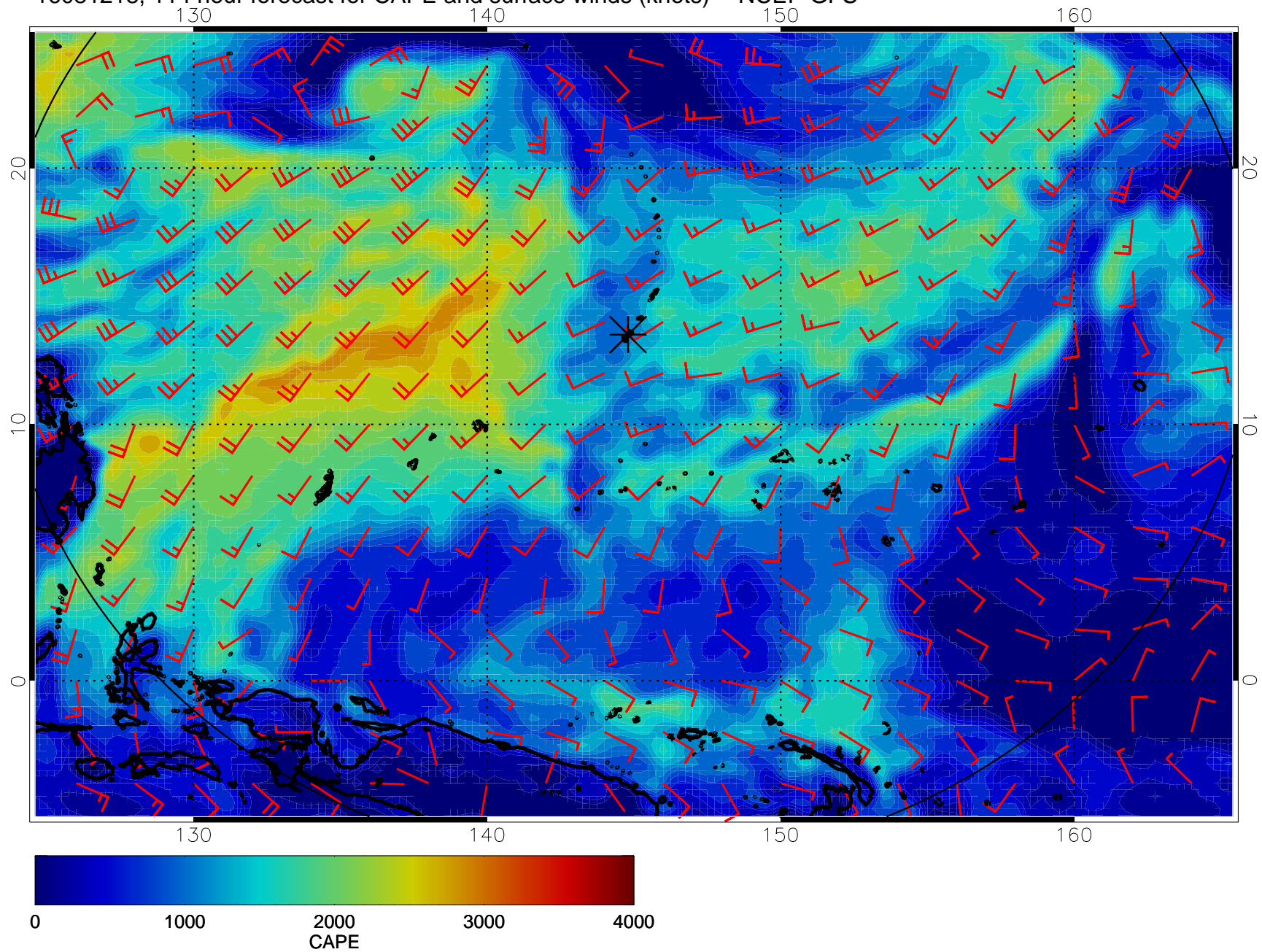
16081206, 102 hour forecast for CAPE and surface winds (knots) -- NCEP GFS



16081212, 108 hour forecast for CAPE and surface winds (knots) -- NCEP GFS



16081218, 114 hour forecast for CAPE and surface winds (knots) -- NCEP GFS



16081300, 120 hour forecast for CAPE and surface winds (knots) -- NCEP GFS

