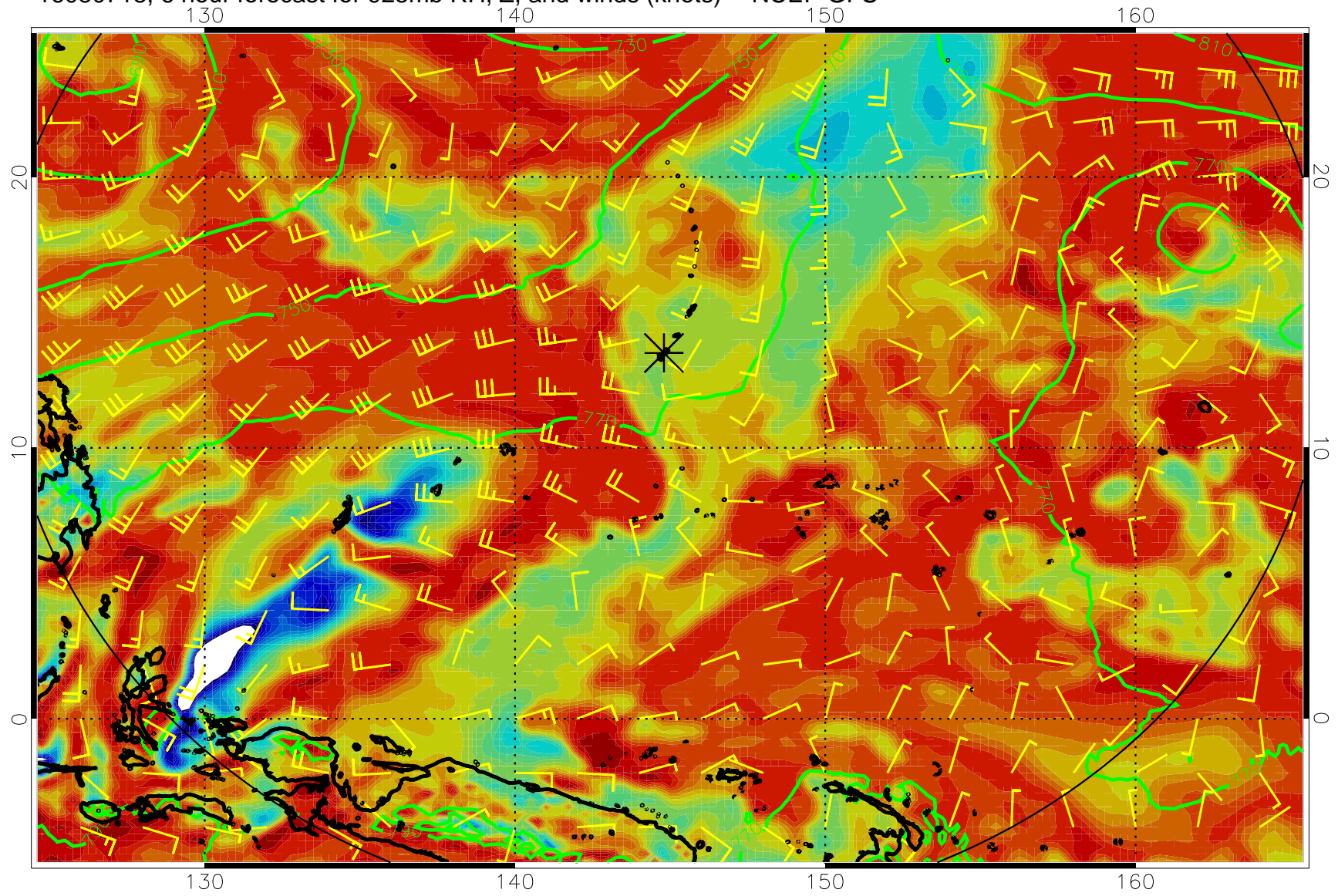
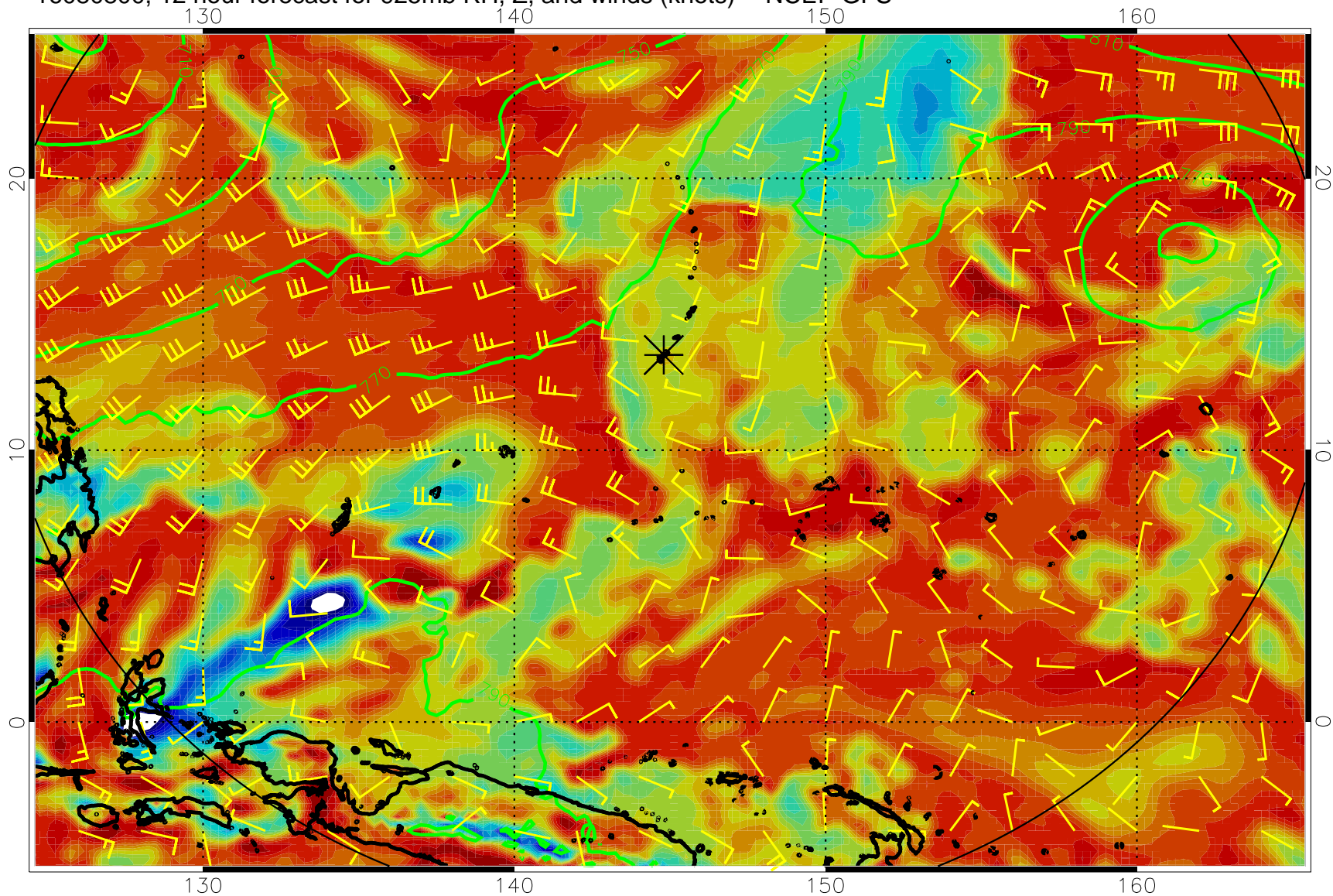


16080718, 6 hour forecast for 925mb RH, Z, and winds (knots) -- NCEP GFS

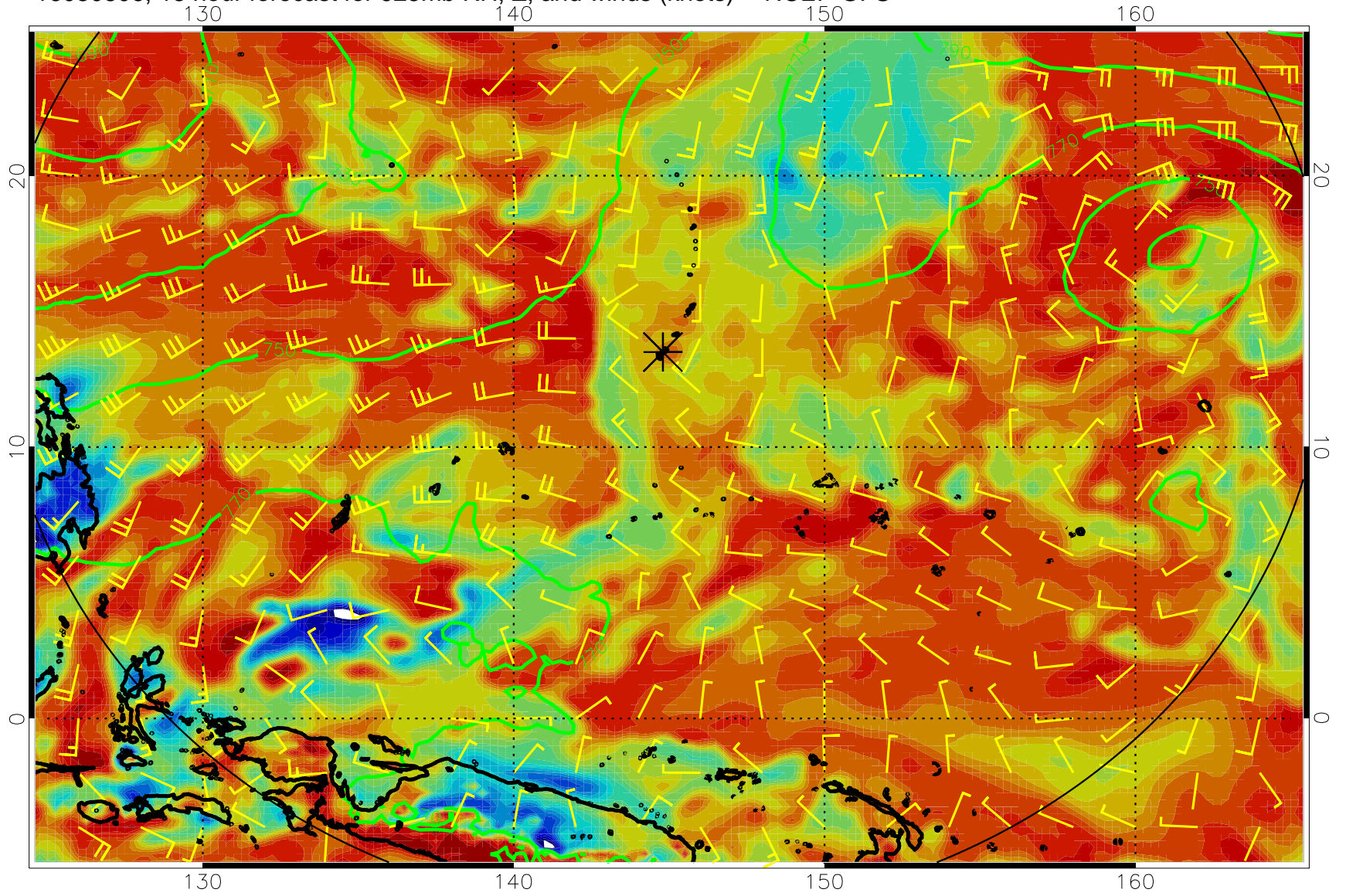


16080800, 12 hour forecast for 925mb RH, Z, and winds (knots) -- NCEP GFS

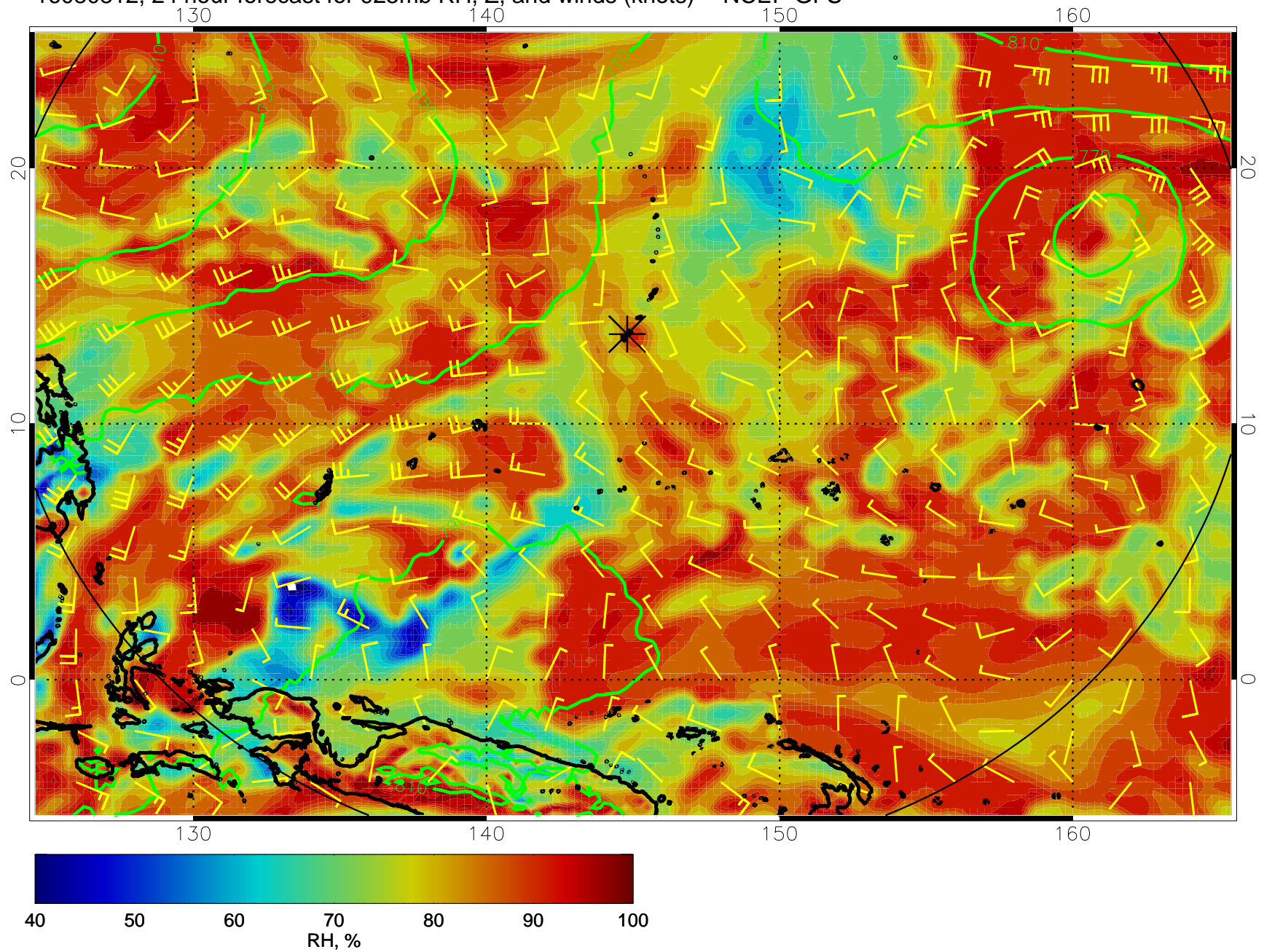




16080806, 18 hour forecast for 925mb RH, Z, and winds (knots) -- NCEP GFS

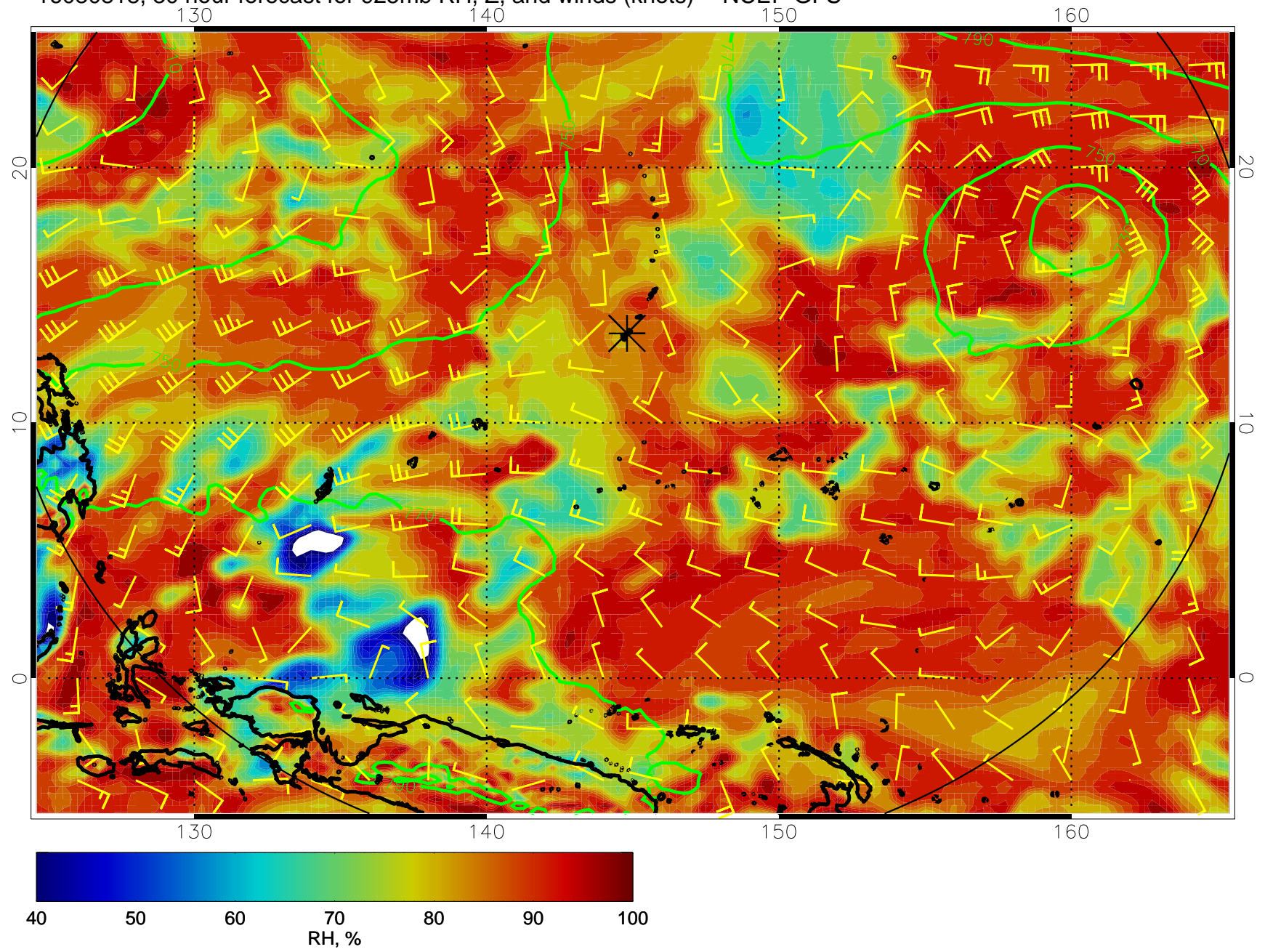


16080812, 24 hour forecast for 925mb RH, Z, and winds (knots) -- NCEP GFS

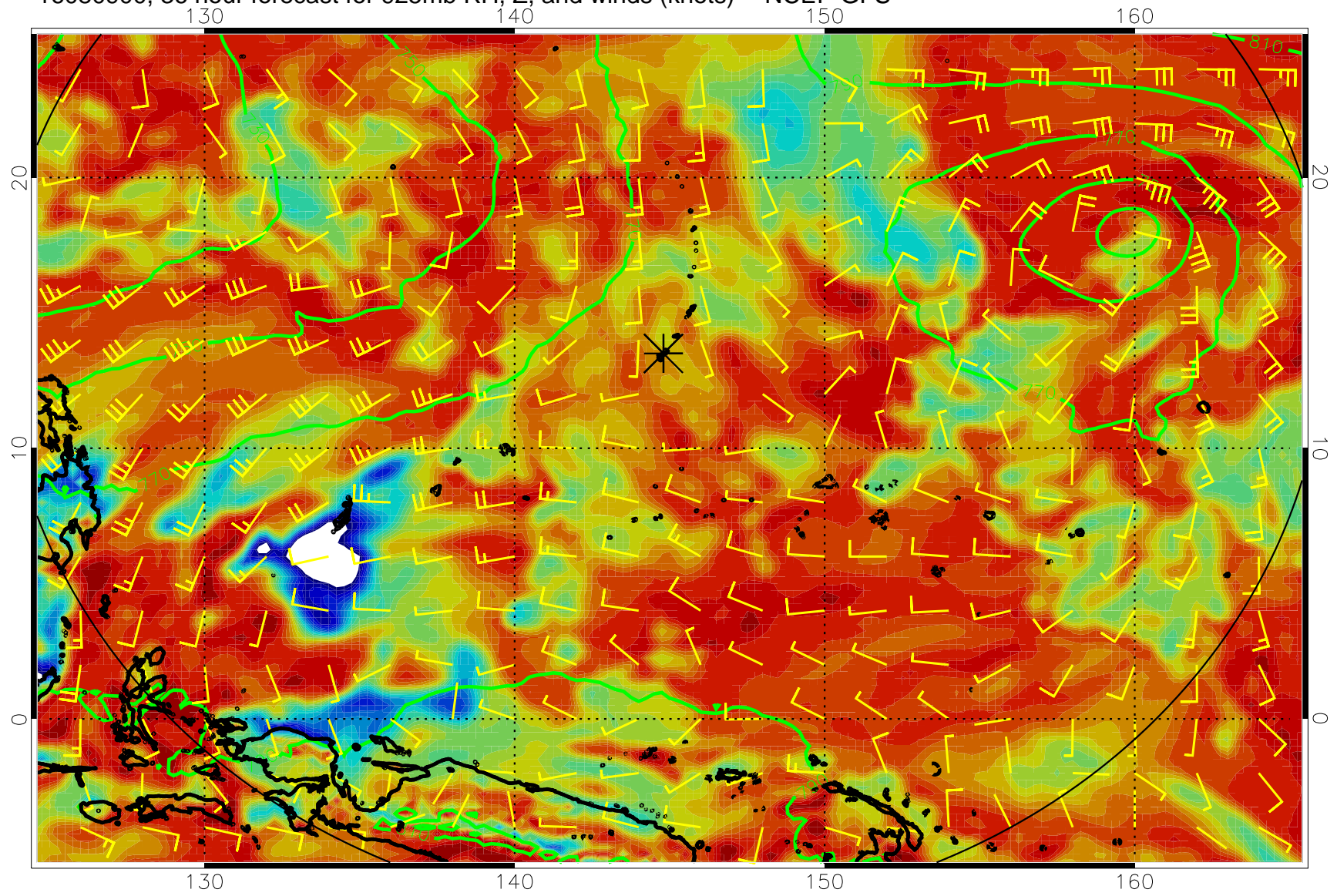




16080818, 30 hour forecast for 925mb RH, Z, and winds (knots) -- NCEP GFS

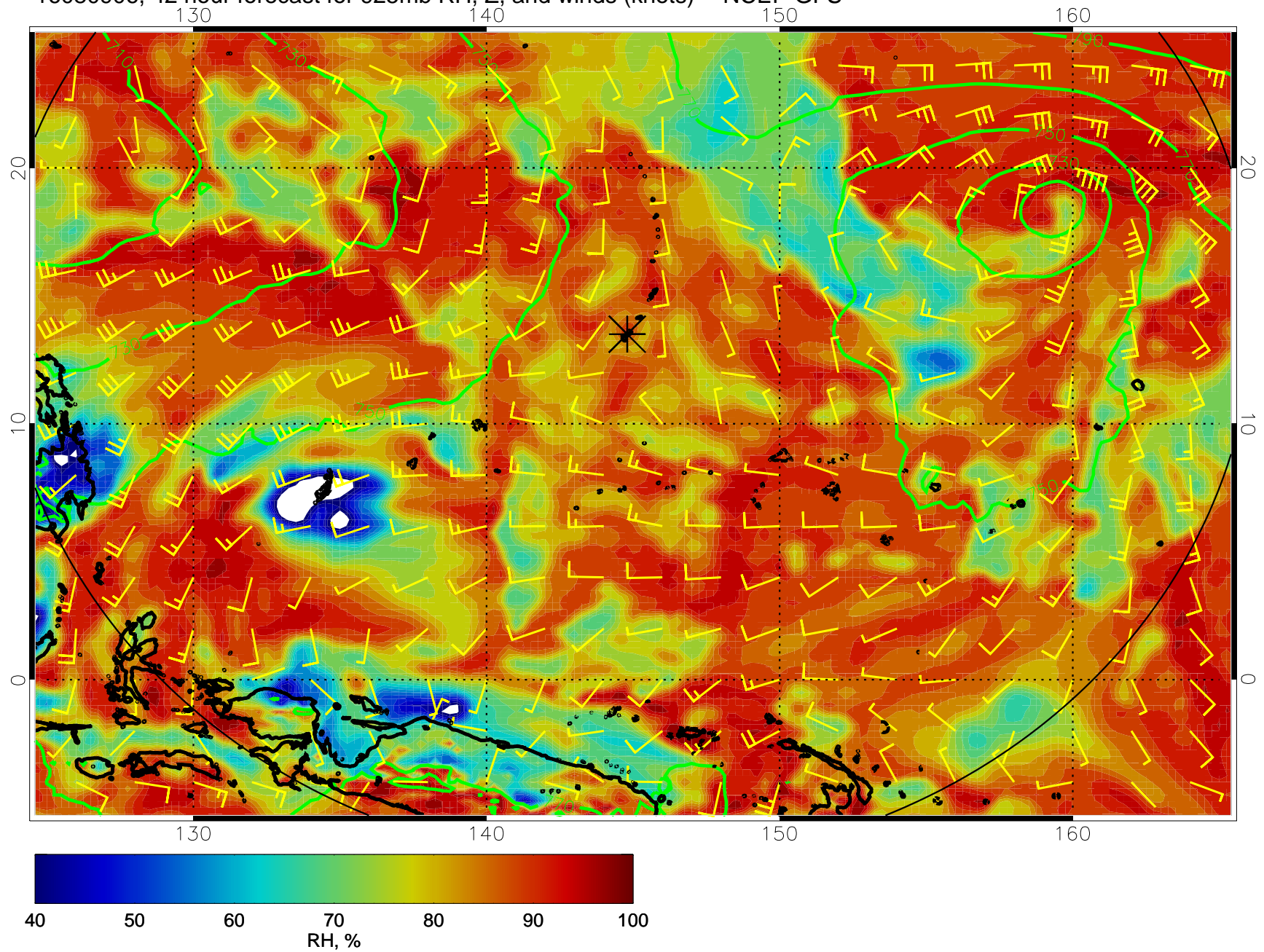


16080900, 36 hour forecast for 925mb RH, Z, and winds (knots) -- NCEP GFS

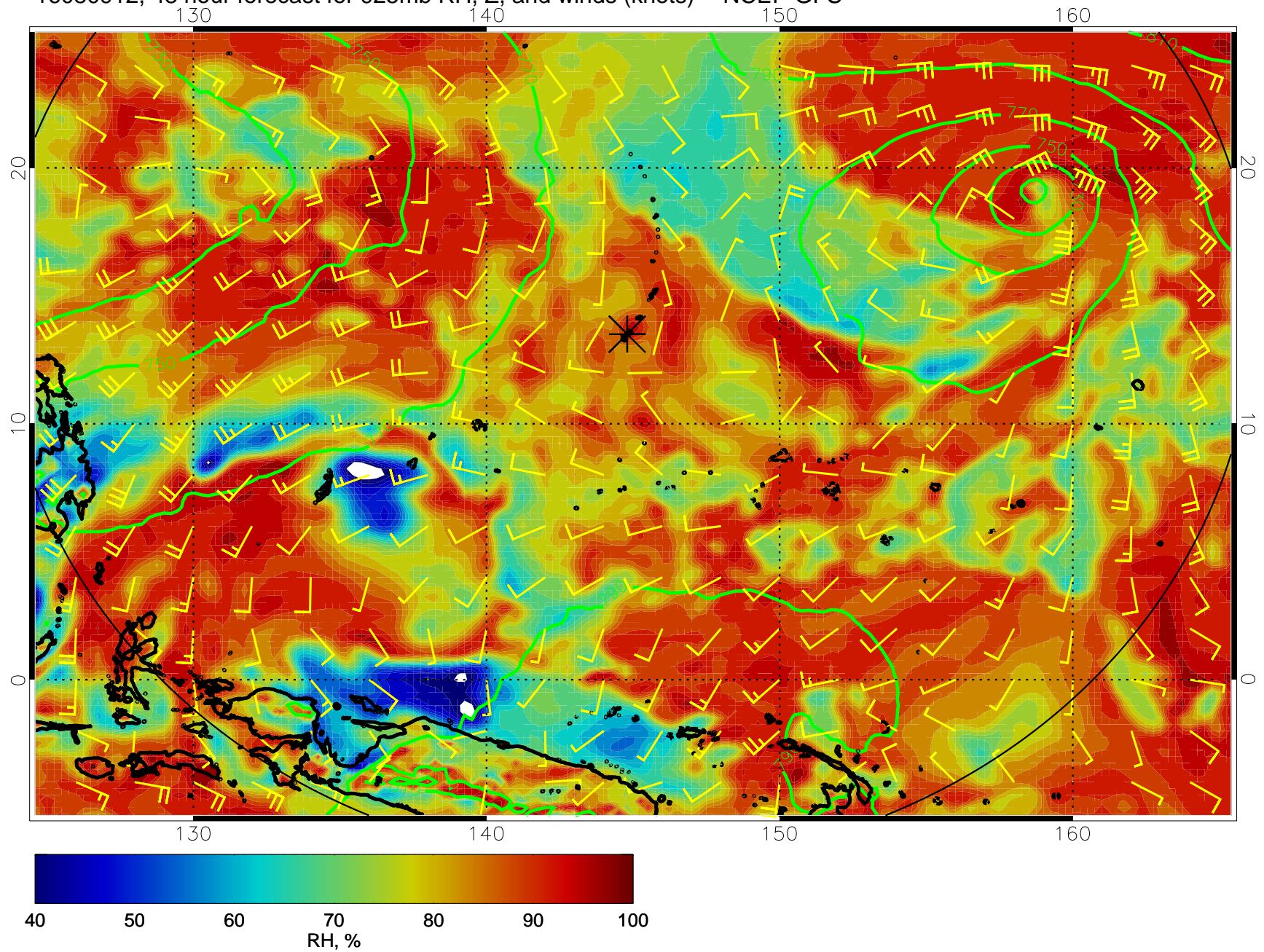




16080906, 42 hour forecast for 925mb RH, Z, and winds (knots) -- NCEP GFS

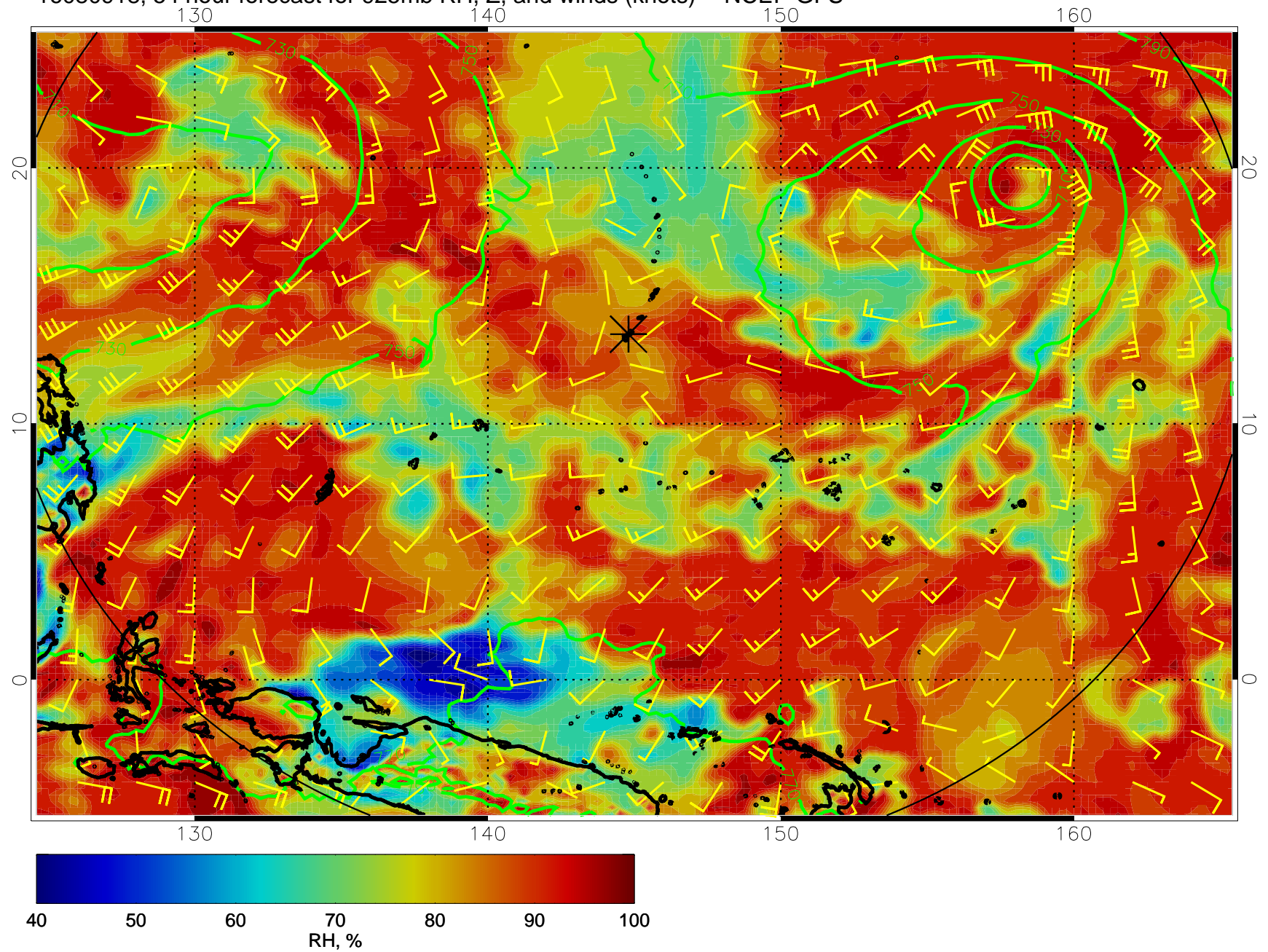


16080912, 48 hour forecast for 925mb RH, Z, and winds (knots) -- NCEP GFS

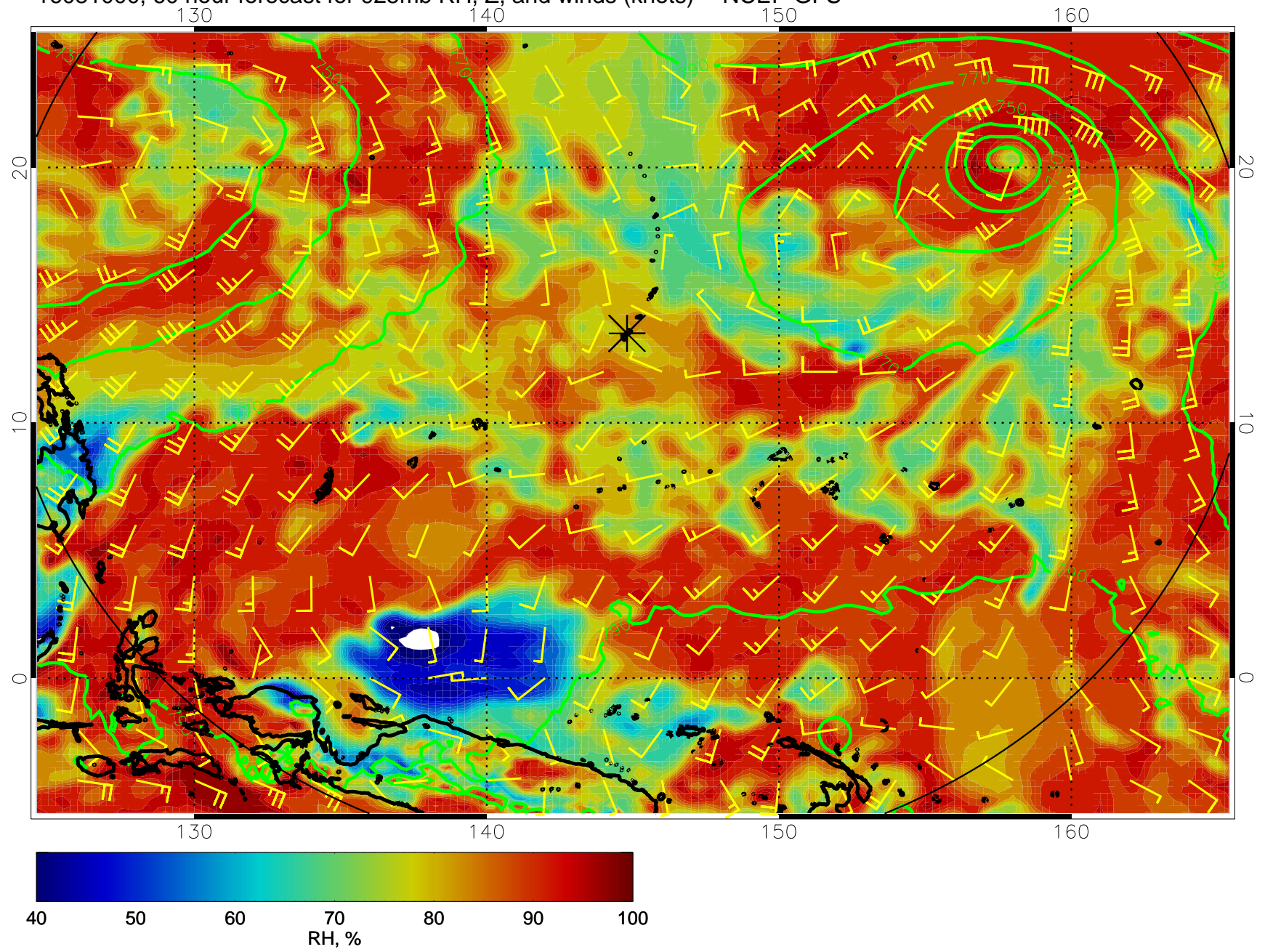




16080918, 54 hour forecast for 925mb RH, Z, and winds (knots) -- NCEP GFS

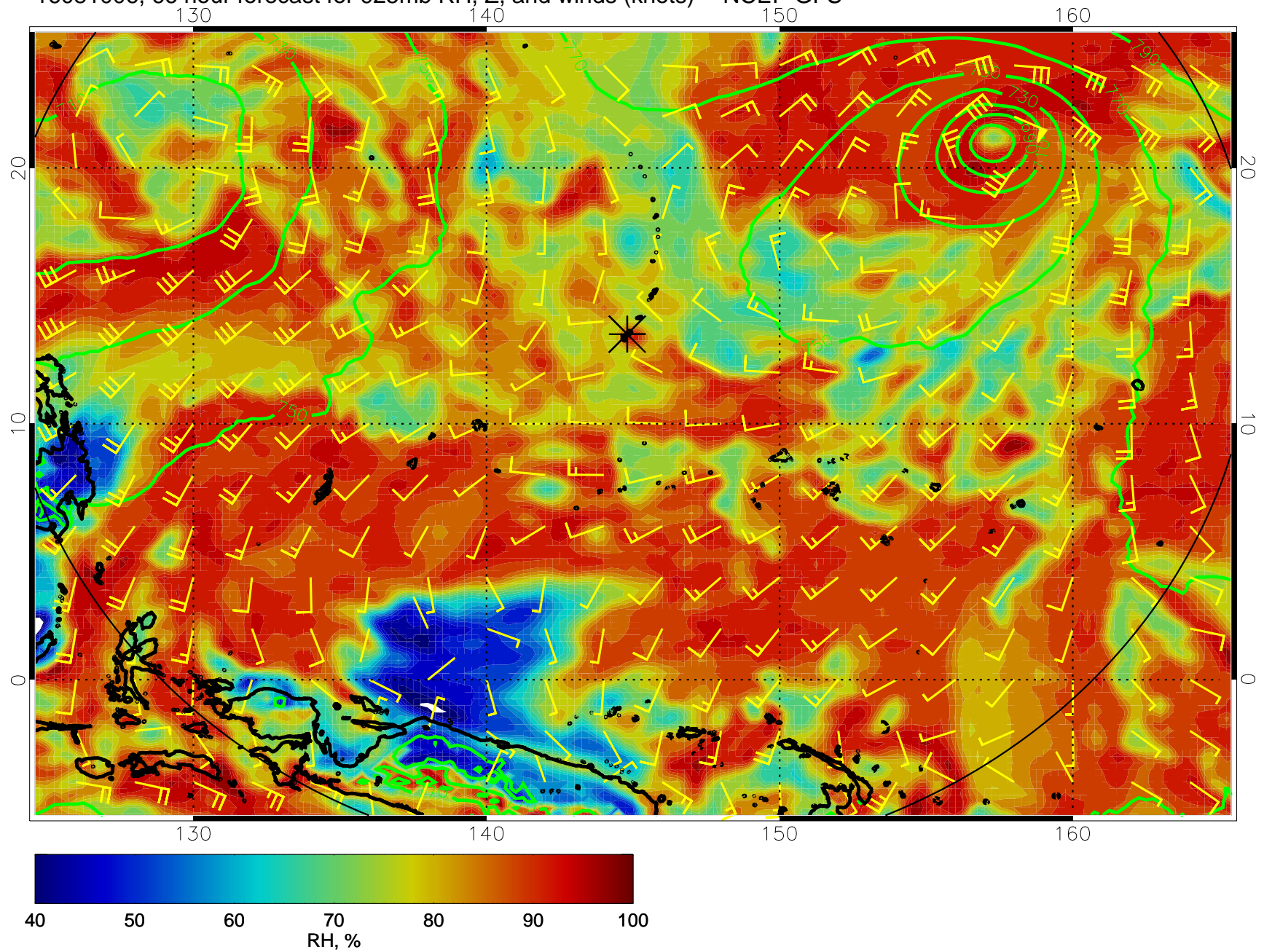


16081000, 60 hour forecast for 925mb RH, Z, and winds (knots) -- NCEP GFS

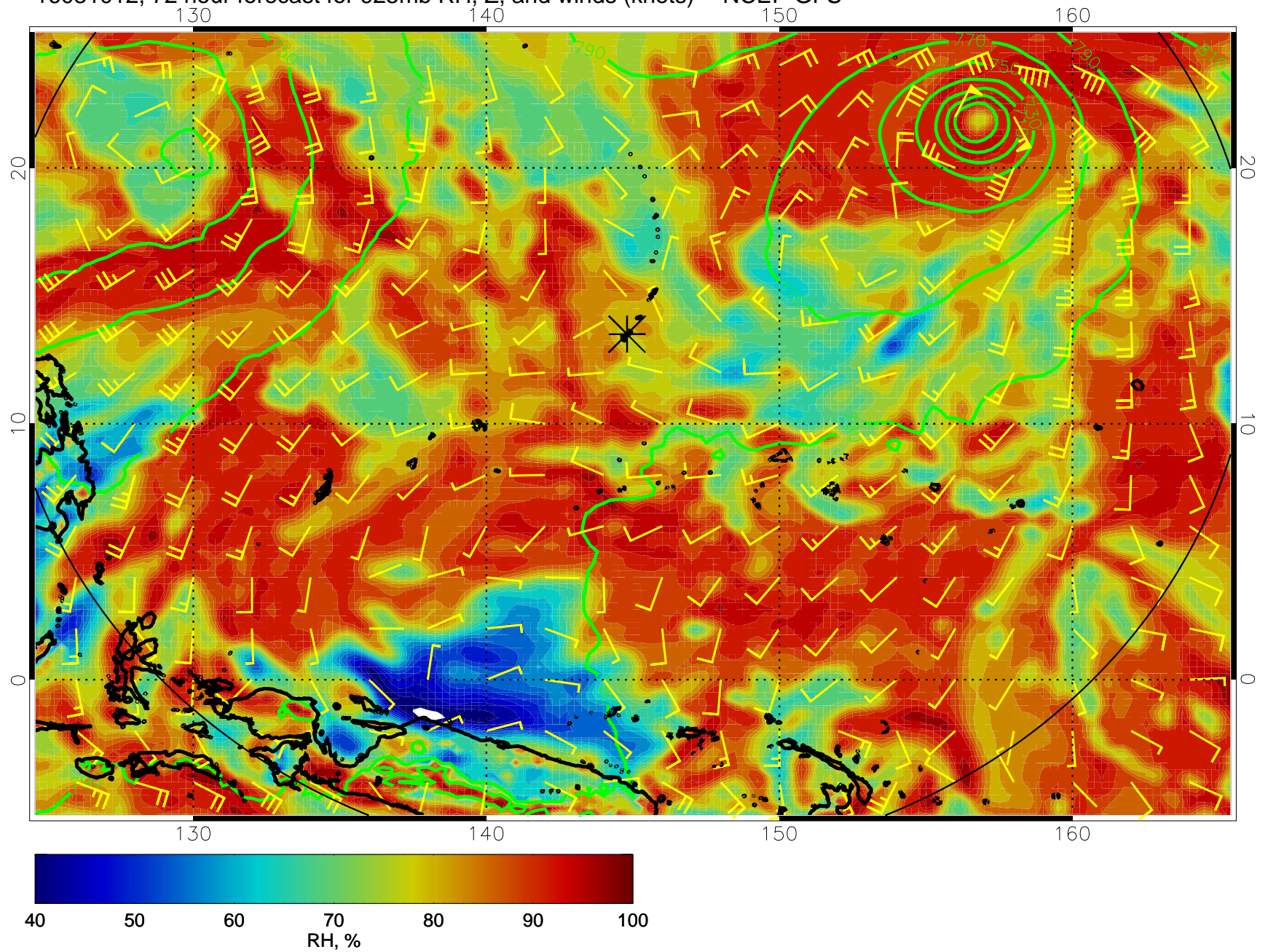




16081006, 66 hour forecast for 925mb RH, Z, and winds (knots) -- NCEP GFS

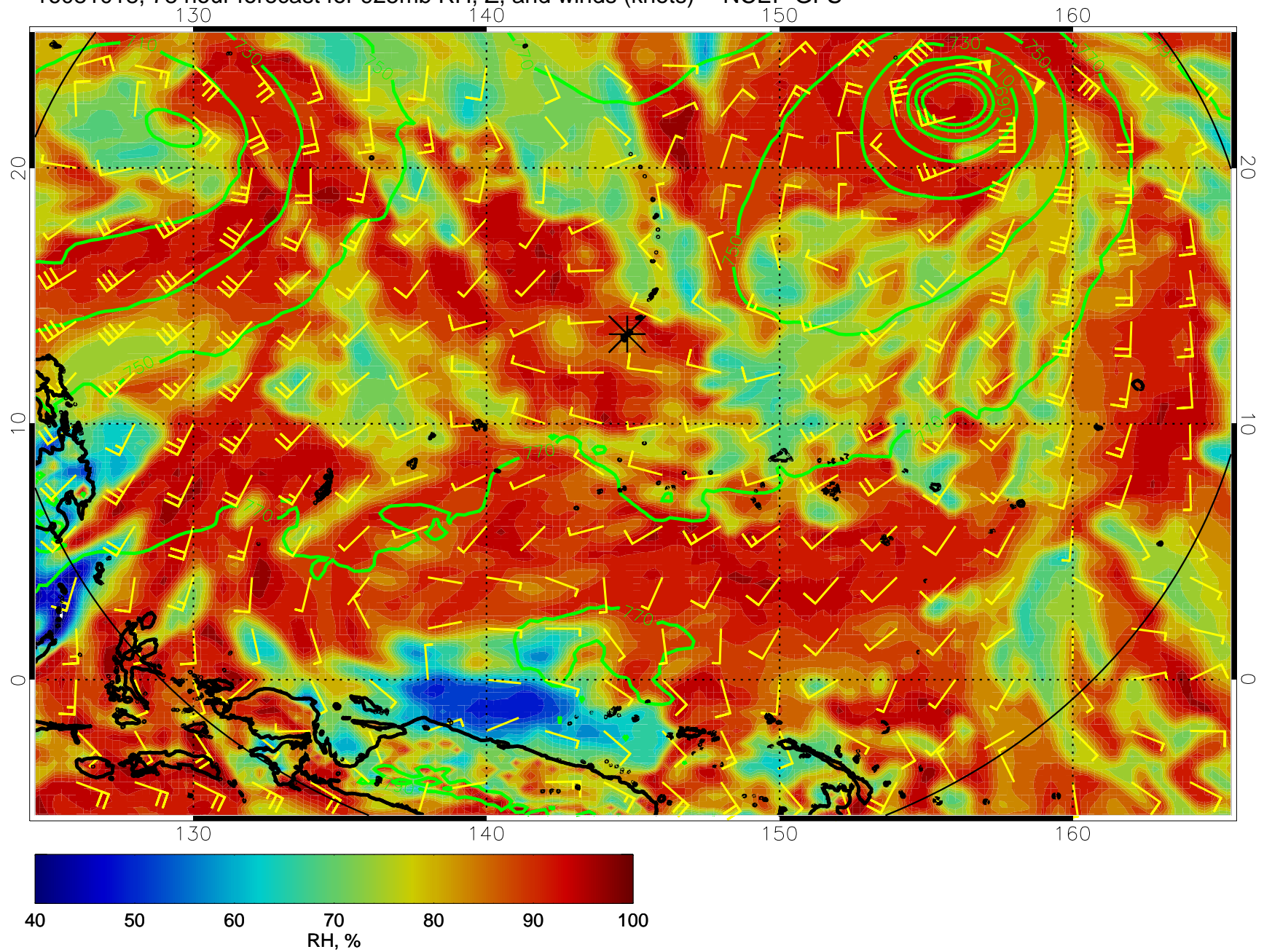


16081012, 72 hour forecast for 925mb RH, Z, and winds (knots) -- NCEP GFS

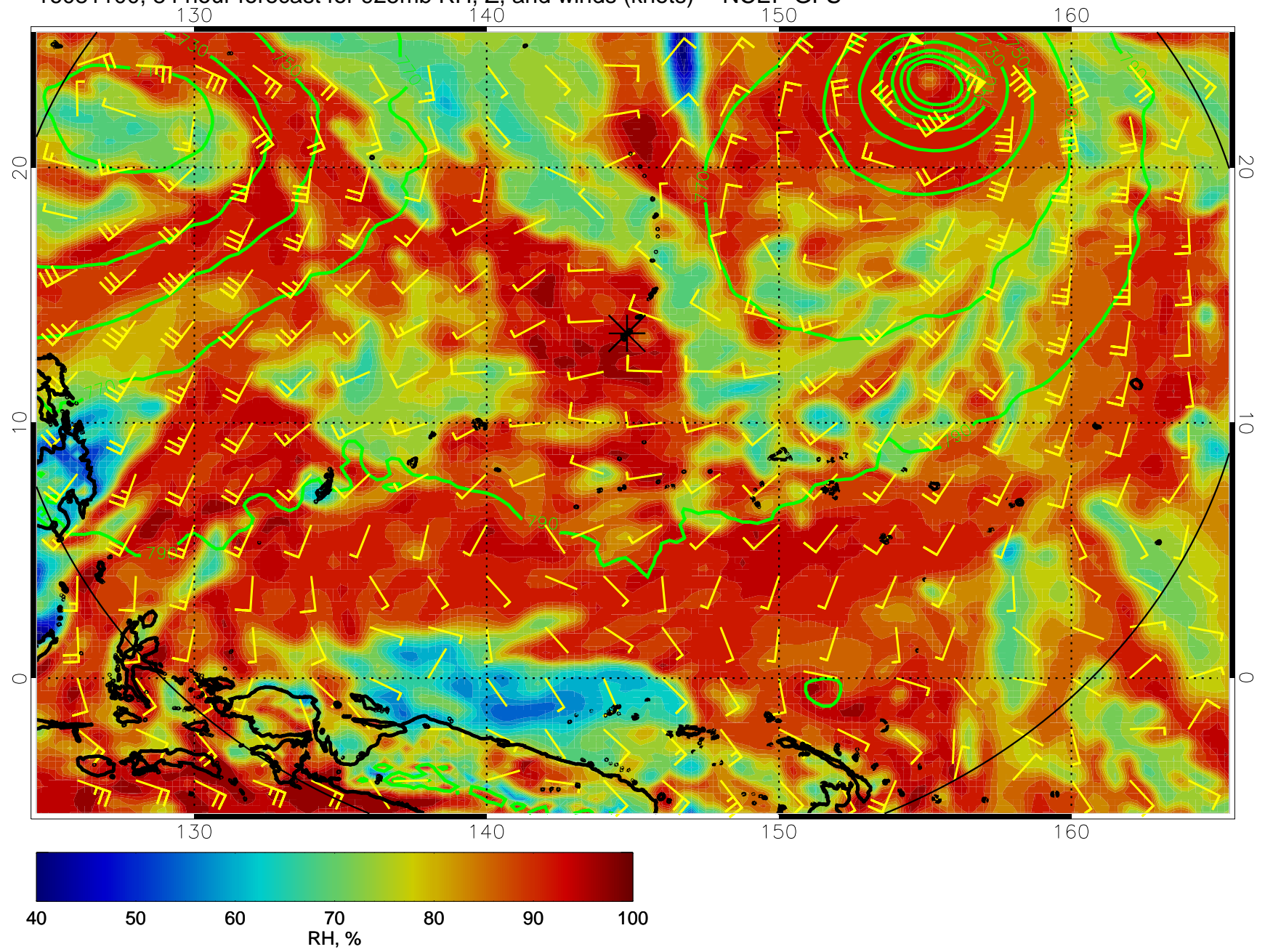




16081018, 78 hour forecast for 925mb RH, Z, and winds (knots) -- NCEP GFS

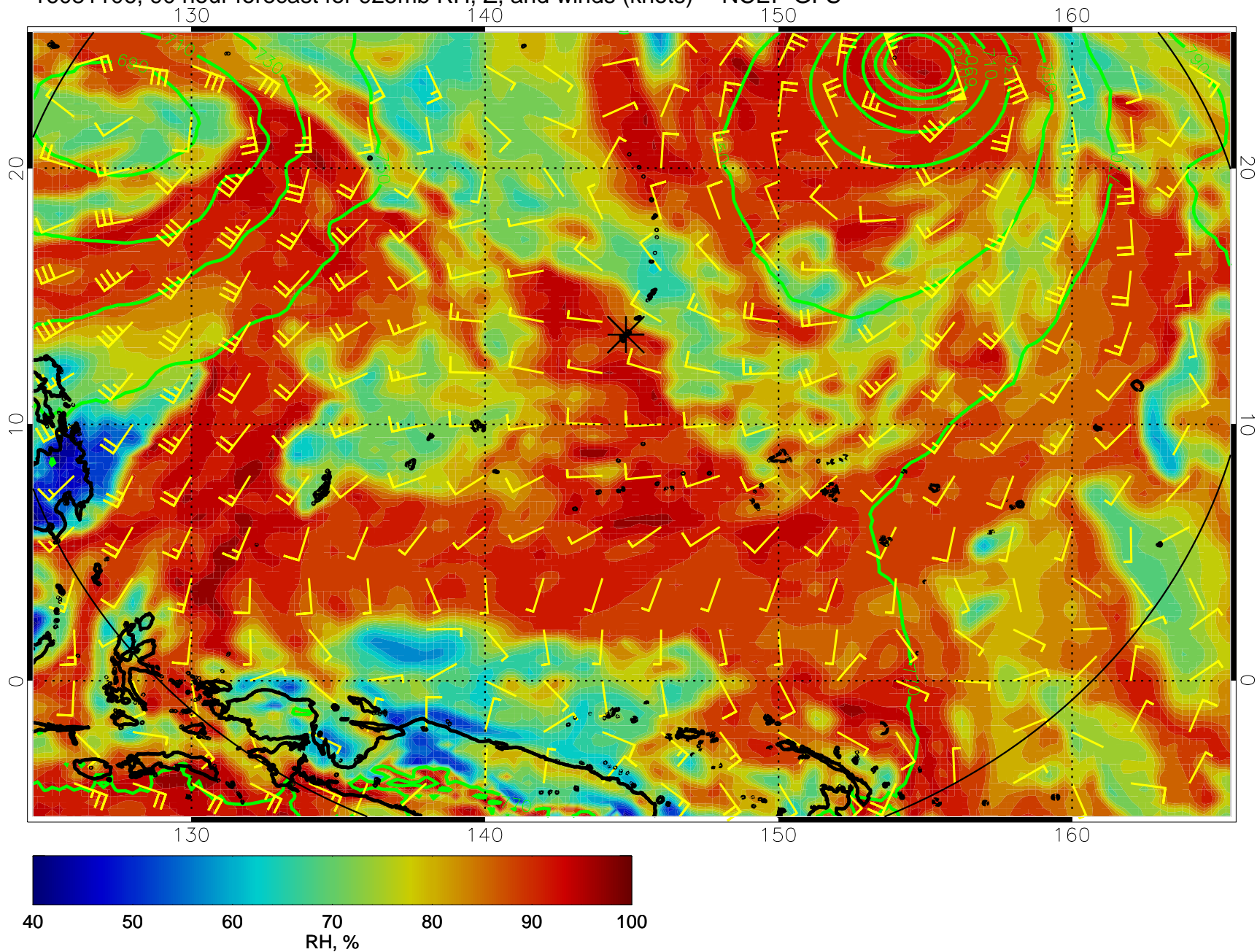


16081100, 84 hour forecast for 925mb RH, Z, and winds (knots) -- NCEP GFS

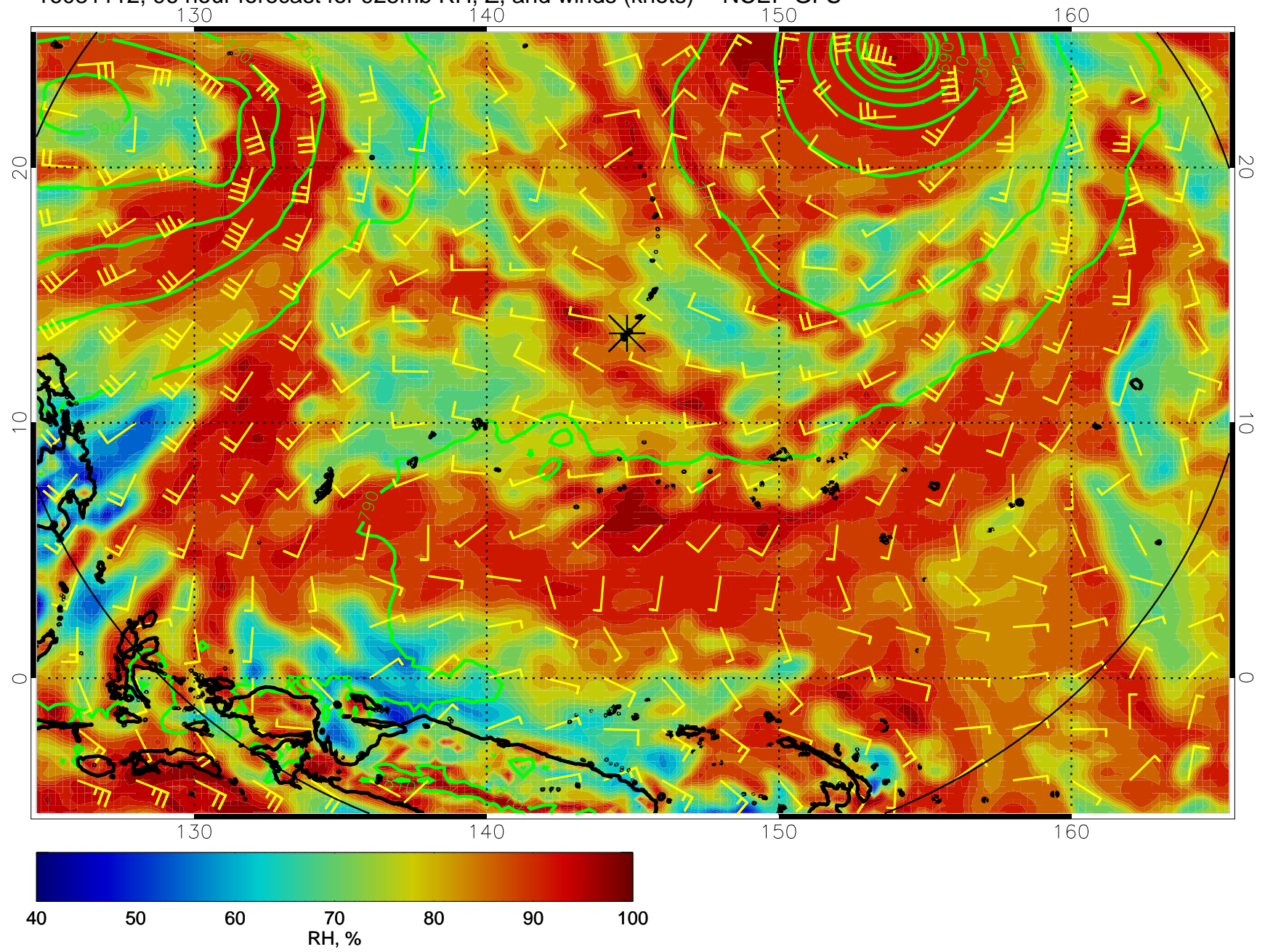




16081106, 90 hour forecast for 925mb RH, Z, and winds (knots) -- NCEP GFS

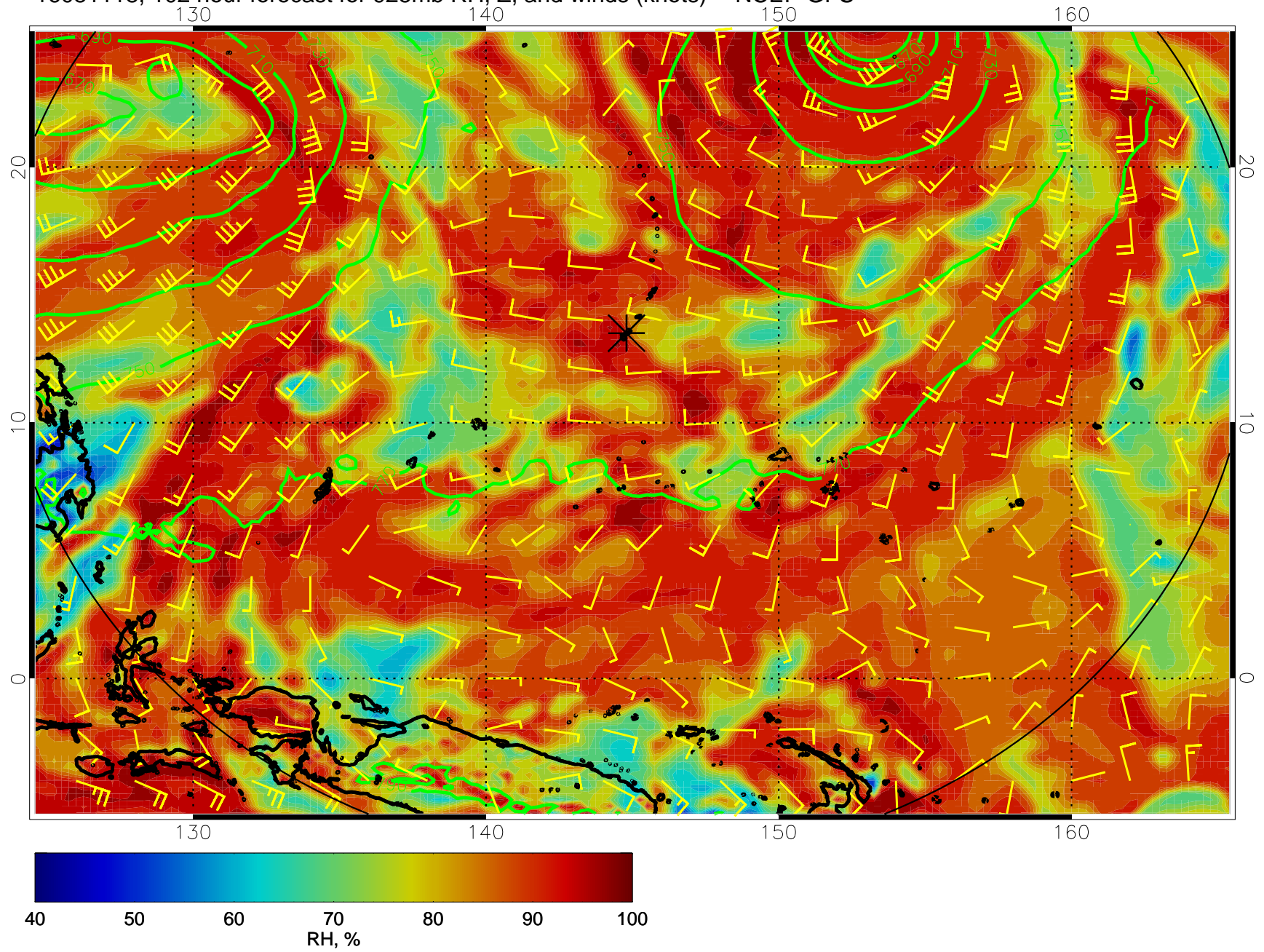


16081112, 96 hour forecast for 925mb RH, Z, and winds (knots) -- NCEP GFS

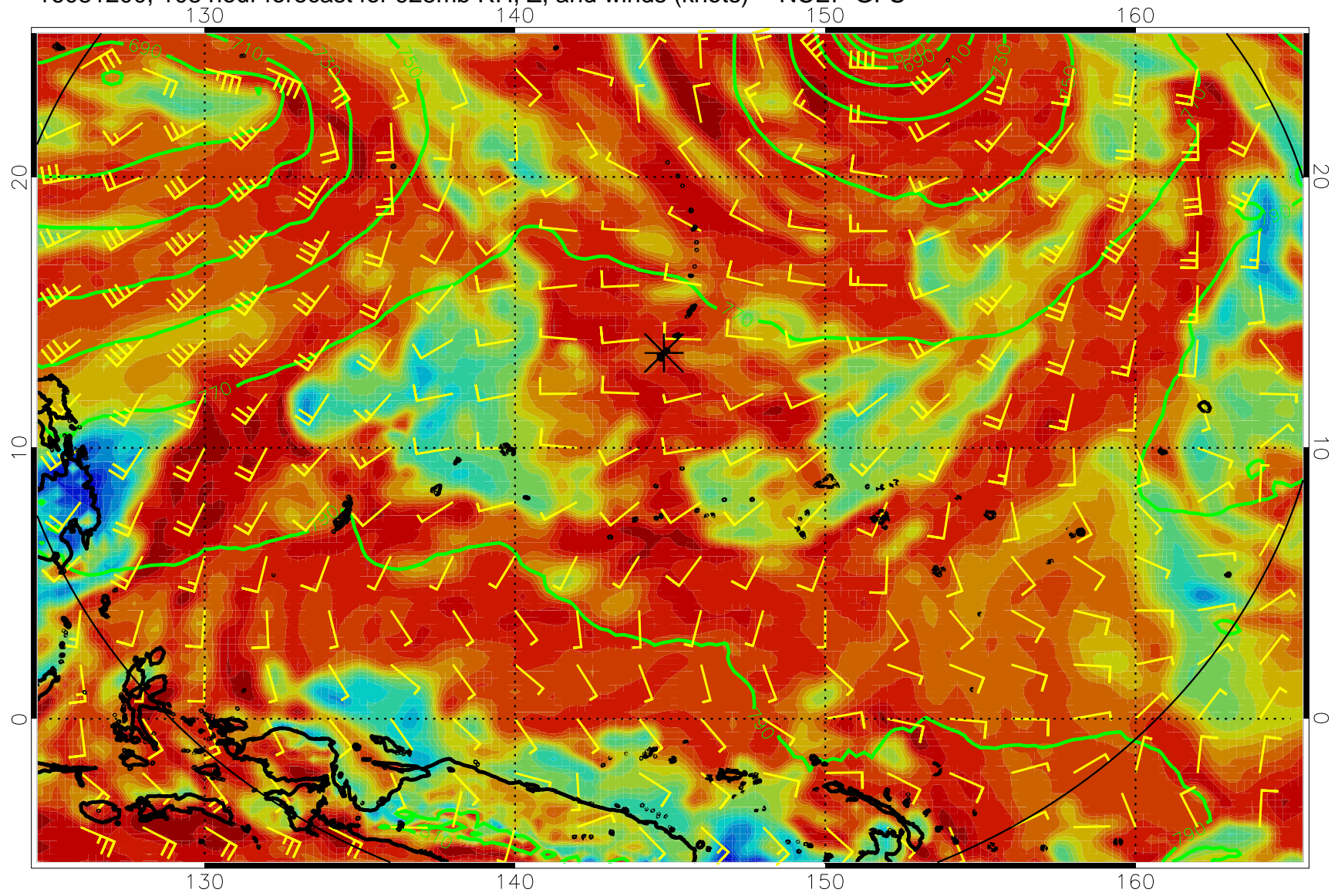




16081118, 102 hour forecast for 925mb RH, Z, and winds (knots) -- NCEP GFS

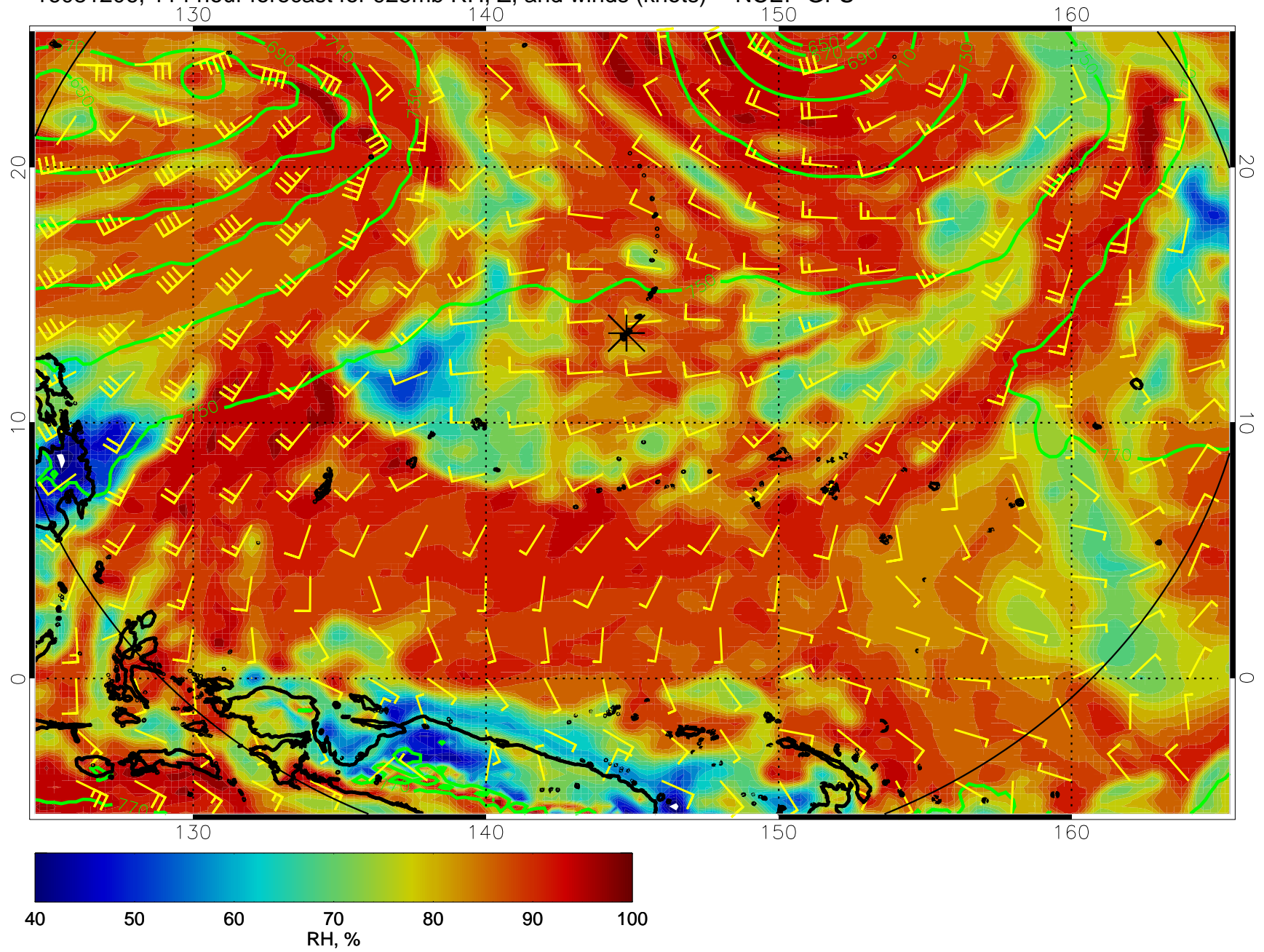


16081200, 108 hour forecast for 925mb RH, Z, and winds (knots) -- NCEP GFS





16081206, 114 hour forecast for 925mb RH, Z, and winds (knots) -- NCEP GFS



16081212, 120 hour forecast for 925mb RH, Z, and winds (knots) -- NCEP GFS

